

Spatially explicit assessment of water stress and potential mitigating solutions in a large
water-limited basin: the Yellow River basin in China

删除的内容: scarcity

Weibin Zhang^{1,2}, Xining Zhao^{3,4}, Xuerui Gao⁴, Wei Liang⁵, Junyi Li⁵, and
Baoqing Zhang^{6*}

5 ¹College of Water Resources and Architectural Engineering, Northwest A&F
University, 712100 Yangling, Shaanxi Province, China.

²Key Laboratory of Agricultural Soil and Water Engineering in Arid and Semiarid
Areas, Ministry of Education, Northwest A&F University, 712100 Yangling, Shaanxi
Province, China.

10 ³Institute of Soil and Water Conservation, Northwest A&F University, 712100
Yangling, Shaanxi Province, China.

⁴Institute of Soil and Water Conservation, Chinese Academy of Sciences and Ministry
of Water Resources, 712100 Yangling, Shaanxi Province, China.

15 ⁵School of Geography and Tourism, Shaanxi Normal University, 710119 Xi'an,
Shaanxi Province, China.

⁶Key Laboratory of Western China's Environmental Systems (Ministry of Education),
College of Earth and Environmental Sciences, Lanzhou University, 730000 Lanzhou,
Gansu Province, China.

20 ***Corresponding author:**

Email: baoqzhang@lzu.edu.cn;

Tel (Fax): +86 (931) 8912404;

Address: NO. 222 Tianshui Road (South), Chengguan District, Lanzhou, Gansu
Province, China

25

Abstract:

Comprehensive assessment of the long-term evolution of water scarcity and its driving factors is essential for designing effective water resource management strategies.

30 However, the role of water withdrawal and water availability components in determining water scarcity and potential mitigating measures in large water-scarce basins are poorly understood. Here, an integrated analytical framework was applied to the Yellow River basin (YRB), where the water crisis has been a core issue for sustainable development. ~~The analysis suggests that the YRB has experienced~~
35 ~~unfavorable changes in critical water stress indicators over the past fifty-six years.~~ ~~Compared to the period from 1965 to 1980, the regional water stress index (WSI), the frequency and duration of water scarcity, increased by 76%, 100%, and 92%, respectively, over the recent two decades. Water withdrawal was the primary driver of the increased WSI before 2000; however, it has since contributed equally with water~~
40 ~~availability.~~ Meanwhile, local water management and climate change adaptation were shown to be important in determining total water availability at the sub-basin scale. Water demand in the 2030s is predicted to be ~~6.5% higher than during 2001–2020 (34.2 km³), based on the trajectory of historical irrigation water use and corrected socio-economic data under different Shared Socioeconomic Pathways (SSPs).~~ To meet all
45 sectoral water needs, a ~~surface water deficit of 8.36 km³ is projected.~~ Potential improvements in irrigation efficiency could ~~address 25% of this deficit, thereby alleviating the pressure on external water transfer projects. Such efficiency gains would enable the WSI of the YRB in the 2030s to be maintained at the current level (0.95), which would worsen conditions for 44.9% of the total population while easing them for~~
50 ~~10.7%, compared to the 2000s.~~ Our results have vital implications for water resource management in basins facing similar water crises to that in the YRB.

删除的内容: A

删除的内容: of the water scarcity index (WSI) and other critical indicators, including frequency, duration, and exposed population,

删除的内容: water crisis during

删除的内容: 1965–2013

删除的内容: Irrigation dominated the increase in WSI in the northwest part of the basin before 2000, whereas climate change was primarily responsible for changes in the WSI in most sub-basins during the recent decade.

删除的内容: 37.4 km³

删除的内容: 10

删除的内容: water deficit

删除的内容: The p

删除的内容: solve

删除的内容: 26

删除的内容: easing

删除的内容: ,

删除的内容: ing

删除的内容: 28

删除的内容: .7

删除的内容: and

删除的内容: 12

删除的内容: 5

删除的内容: of the total population

删除的内容: respectively.

删除的内容: In conclusion, the integration of water supply and demand-oriented strategies is essential to effectively alleviate the water crisis in the YRB.

1 Introduction

Water resources underpin human life, socio-economic development, and ecosystem health (Oki and Kanae, 2006; Han et al., 2023), but often have an uneven spatiotemporal distribution as well as a mismatch with water demands (Veldkamp et al., 2017; Wang et al., 2020; Scanlon et al., 2023). This problem has been worsened by an increased human water demand during the last few decades, driven by population growth, improving living standards, and expansion of irrigated agriculture (McDonald et al., 2011; Wada et al., 2016b; Huang et al., 2018). Climate change poses an additional threat to already stressed water resources by adding uncertainty, especially in terms of changes in interannual and seasonal precipitation and temperature (Schewe et al., 2014; Rodell and Li, 2023). Water scarcity is challenging the stability and sustainable development of human society in many regions of the world, especially in developing countries (Munia et al., 2020; Huang et al., 2021). Approximately one-third to half of the global population is currently experiencing water scarcity, with most water scarcity occurring in India and China (Mekonnen and Hoekstra, 2016; Qin, 2021). By 2030, half of the global population is predicted to experience severe water stress (UNEP, 2015). Droughts and floods would further intensify water stress, with high-income areas not immune to these threats (Rodell and Li, 2023). Water scarcity results in many social and environmental issues, such as food production reduction, drinking water shortage, and ecosystem health degradation (Porkka et al., 2016; Wang et al., 2017; Long et al., 2020). Thus, it is essential to understand the evolution of water stress and the associated driving factors; this is a prerequisite for designing effective water resource management strategies and achieving Sustainable Development Goal (SDG) target 6.

The Yellow River basin (YRB), the second-largest river basin in China, is known as the "Chinese cradle". It is responsible for 13% of national grain production but only possesses approximately 2% of national water resources (Zhuo et al., 2016). Meanwhile, the reserves of coal and oil in this basin account for 70% and 50% of China's total, respectively (Ma et al., 2020b). The large-scale exploration of energy sources also comes at the cost of a large amount of water usage. Accompanying a boom in

agriculture and prosperous economy, the total water consumption (both surface and groundwater) in the YRB increased by 120% between the 1960s and 2009 (Zhuo et al., 2016). In contrast, natural runoff significantly decreased during the period 1960–1990s, before slightly recovering in recent years (Tang et al., 2013). Owing to climate change-induced natural water availability and intensive human water usage, the YRB has been facing severe water stress (Xie et al., 2020; Niu et al., 2022; Zhang et al., 2023c). This problem has constrained the ecological protection and high-quality development of the YRB, which was stressed as a major national strategy in 2019 by the Chinese government.

删除的内容: scarcity

Water scarcity in the YRB has been widely reported in global assessments, which have provided general overviews of water stress for both historical and future periods (Veldkamp et al., 2017; Greve et al., 2018; Qin et al., 2019). However, these estimates were based on data having a coarse spatial resolution, such as a whole river basin or at $0.5^\circ \times 0.5^\circ$ level (Huang et al., 2021). The insights obtained at such spatial resolution might be difficult for water resource managers and policymakers to utilize (Degefu et al., 2018). Moreover, due to the lack of validation of most global hydrological models used to simulate runoff, there may be large biases in water supply assessment. A wealth of previous studies in China have explored the general feature of water stress in the YRB at different spatial scales, ranging from provincial or prefectural (Zhao et al., 2015; Huang et al., 2023), to river basin scale (Yin et al., 2020), to sub-basin scale (Zhou et al., 2019; Xu et al., 2022), to grid scales (Zhuo et al., 2016). Recently, considering quality requirements, a comprehensive series of assessments of nationwide water stress at multiple temporal and geographic scales has been performed in China (Ma et al., 2020a), which has markedly advanced our understanding of current water stress conditions. However, upstream inflows and water consumption were typically not considered in most of these assessments. Neglecting upstream water availability leads to an overestimation of downstream water stress (Munia et al., 2020; Sun et al., 2021). Previous work in China showed that the difference in population affected by severe water stress was 60% with and without consideration of upstream water resources.

删除的内容: scarcity

删除的内容: scarcity

删除的内容: , these assessments often covered only short periods, overlooked environmental water needs, or suffered from the same problems faced by global water stress assessments. In addition

删除的内容: usually

删除的内容: taken

删除的内容: into account

删除的内容: A n

删除的内容: on

删除的内容: means

删除的内容: that

删除的内容: scarcity

删除的内容: will be overestimated

删除的内容: Liu et al., 2019;

160 which is even larger in northern water-limited areas (Liu et al., 2019). Incorporating upstream flows and water consumption provides a more accurate assessment of water stress in the real world. Some studies have significantly advanced the understanding of water stress in the YRB by accounting for upstream components, reservoir operations, and water transfer projects (Omer et al., 2020; Xie et al., 2020; Albers et al., 2021; Sun et al., 2021). Yet, these studies often covered only short periods (less than 20 years), thereby limiting the comprehensive documentation of the temporal dynamics of water stress. More importantly, human water usage estimates in both the historical and future
 165 have mostly been based on macroscale socio-economic data, such as gross domestic product and population (Wada et al., 2016a; Yin et al., 2017; Liu et al., 2019). However, changes in water use efficiency, particularly in irrigation, were not considered. This omission may underestimate the effects of technological factors and water conservancy measures, introducing uncertainties into water stress assessments (Zhou et al., 2020;
 170 Huang et al., 2021). A long-term water withdrawal dataset at the prefectural scale, based on nationally coordinated surveys, was recently constructed by Zhou et al. (2020). Utilizing this newly developed dataset could bring new insights into the changing pattern of historical water stress and lead to more reliable future projections. A previous study has explored the spatiotemporal features of water stress in the YRB at finer
 175 resolution using this dataset (Zhang et al., 2024). Nevertheless, the role of water withdrawal (i.e., different sectors) and water availability components in determining water stress remains unclear. Meanwhile, potentially feasible solutions in terms of water use efficiency improvement for mitigating future water stress have not been quantified.

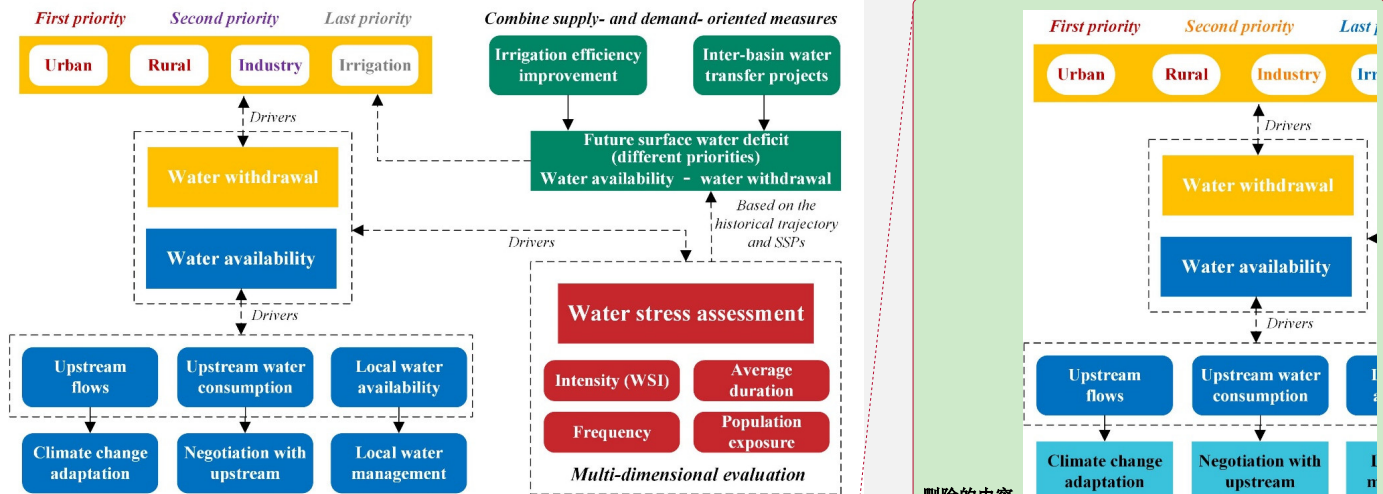
180 Here, we provide a spatially explicit assessment of water stress in the YRB at the sub-basin scale, taking into account environmental flow requirements (EFR) and upstream flows. The objectives of our study were to: (1) assess the evolution of water stress over the past fifty-six years in terms of critical indicators, including the intensity, frequency, duration, and exposed population of water scarcity; (2) identify the dominant driver of changes in water stress during 1965–2020; and (3) quantify future water stress
 185 and explore potential solutions. Our findings provide valuable information for

- 删除的内容: activity
- 删除的内容: (
- 删除的内容:)
- 删除的内容: ;
- 删除的内容: this
- 删除的内容: and bring
- 删除的内容: scarcity
- 删除的内容: has
- 删除的内容: been
- 删除的内容: The use of
- 删除的内容: scarcity
- 删除的内容: result in
- 删除的内容: scarcity
- 删除的内容: scarcity
- 删除的内容: scarcity
- 删除的内容: scarcity
- 删除的内容: scarcity
- 删除的内容: five decades
- 删除的内容: exposure of
- 删除的内容: 2013

designing policies towards integrated water resource management in the YRB.

2 Materials and methods

Multiple datasets and methods were used to develop an integrated analytical framework, including multi-dimensional water stress indicators (i.e., intensity, duration, frequency, and exposed population), driving factors of changes in historical water stress, and surface water deficits in the future along with potential solutions to address these (Fig. 1). A more detailed description can be seen in the following section.



215 **Figure 1.** Framework for water stress assessment. The red, orange, blue, and green colors indicate water stress assessment, water withdrawal, water availability, and future surface water deficit, respectively. The rectangles and rounded rectangles indicate the main and detailed components of the aforementioned four parts, respectively. The dashed and solid arrows indicate impact factors and mitigation measures, respectively.

220

2.1. Study area

The YRB is the second-largest basin in China, with a total drainage area of 79.5×10^4 km² and a mainstream length of 5464 km. It runs through nine provinces or

删除的内容:

带格式的: 两端对齐

删除的内容: scarcity

municipalities and three geomorphological units: the Qinghai–Tibet Plateau, Loess Plateau, and North China Plain (Fig. 2). Our study focused on the areas above the Huayuankou hydrological station, the outlet of the middle reaches of the YRB, owing to the negligible runoff downstream of this. Based on the Soil and Water Assessment Tool (SWAT), the study area was further divided into 425 sub-basins (Fig. S1). Most parts of the YRB are arid or semi-arid regions, with the mean annual precipitation being 450 mm. The rapid expansion of irrigated agriculture has induced a very large irrigation water demand, while population growth and socio-economic development have led to an increase in domestic and industrial water use (Zhou et al., 2020), leading to an intensified water crisis in this water-limited basin (Song et al., 2023).

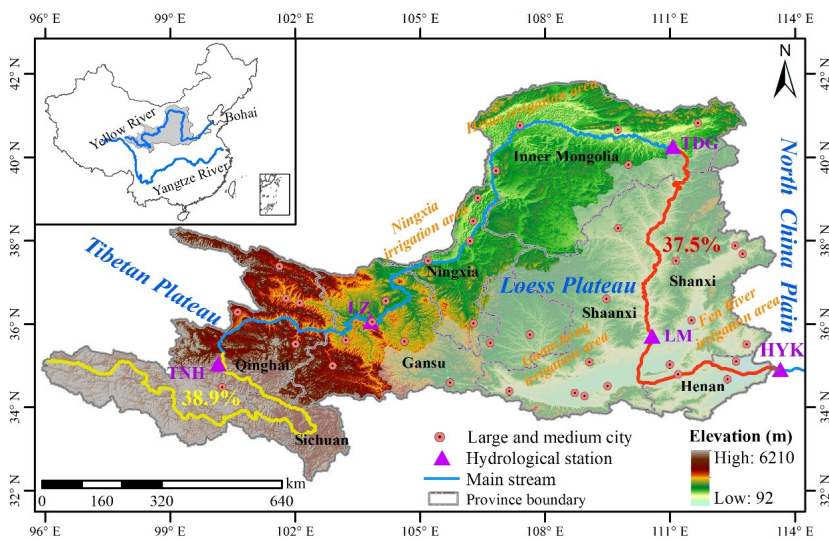


Figure 2. Location of the study area. TNH = Tangnaihai, LZ = Lanzhou, TDG = Toudaoguai, LM = Longmen, and HYK = Huayuankou. Yellow and red numbers indicate the ratio of mean annual natural runoff above the TNH station and the section between TDG and HYK station to that of the HYK station, respectively.

2.2. Critical indicators of water stress

The water stress index (WSI), widely used to assess the water stress intensity, is defined

删除的内容: scarcity

删除的内容: scarcity

删除的内容: which is

as the ratio of water withdrawal to water availability. When the WSI is greater than 1, water resources cannot sustain environmental or anthropogenic needs and water scarcity occurs.

删除的内容: :

$$WSI_{i,m} = \frac{WW_{i,m}}{WA_{i,m}}, \quad (1)$$

where, $WW_{i,m}$ is the total water withdrawal (irrigation, industry, urban, and rural) in sub-basin i and month m ; $WA_{i,m}$ is the total water availability for sub-basin i in month m , which consists of the locally generated runoff and incoming discharge from upstream sub-basins taking into account the EFR and upstream water consumption (Liu et al., 2019):

$$WA_{i,m} = R_{i,m} + \sum_{j=0}^i (Q_{j,m} - WC_m) - EFR_{i,m}, \quad (2)$$

where, $R_{i,m}$ is the local water yield, including surface, baseflow, and lateral flow, simulated by the SWAT model; $Q_{j,m}$ is the discharge entering sub-basin i from all upstream sub-basins j in month m ; WC_m is the total upstream water consumption in month m ; and $EFR_{i,m}$ is the environmental flow requirements in sub-basin i and month m . Pastor et al. (2014) compared and tested different calculation methods for estimating EFR. They demonstrated that the Variable Monthly Flow (VMF) method was most compatible with actual environmental water requirements, distinguishing between low-flow (60% of a water resource allocated to EFR), mediate-flow (45%), and high-flow conditions (30%). Given its performance in the seasonal assessment of water availability (Veldkamp et al., 2017), we therefore adopted the VMF method in our study.

删除的内容: , which is determined based on the variable monthly flow method (Pastor et al., 2014).

In addition to the severity of water stress (WSI), frequency and average duration of water scarcity were also used to describe water stress (Veldkamp et al., 2017):

删除的内容: scarcity

$$Frequency_i = \frac{NMWS_i}{TM}, \quad (3)$$

$$Average\ duration_i = \frac{NMWS_i}{NEWS_i}. \quad (4)$$

where, $NMWS_i$ is the number of months with $WSI > 1$ in sub-basin i ; TM is the total

number of months in different periods (e.g., ~~20~~ years = ~~240~~ months); $NEWS_i$ is the number of water scarcity events in sub-basin i .

删除的内容: 10

删除的内容: 120

In terms of the population exposed to water scarcity, we categorized sub-basins into four groups with varying WSI values between two consecutive periods: moving into/out of water scarcity and alleviation/aggravation of water scarcity (Table S1).

2.3. Attribution analysis

To identify the dominant factor affecting the changing pattern of water stress at the sub-basin scale, we first calculated the differences in WSI between consecutive time steps (ΔWSI) at the decadal scale (P1: 1965–~~1980~~, P2: ~~1981–2000~~, and P3: ~~2001–2020~~).

删除的内容: 1979

删除的内容: 1980

删除的内容: 1989

删除的内容: 1990

删除的内容: 1999

删除的内容: , and P4: 2000–2013)

$$\Delta WSI = WSI_{t+1} - WSI_t, \quad (5)$$

Then, the relative contributions of water withdrawal (different water use sectors) and water availability (climate change) to changes in WSI (ΔWSI) were obtained by keeping one factor constant, as follows:

$$\Delta WSI_{WW} = \left(\frac{WW_{t+1}}{WA_t} - \frac{WW_t}{WA_t} \right) / |\Delta WSI|, \quad (6)$$

$$\Delta WSI_{WA} = \left(\frac{WW_t}{WA_{t+1}} - \frac{WW_t}{WA_t} \right) / |\Delta WSI|, \quad (7)$$

$$Driver_{WSI} = \text{maximum} (|\Delta WSI_{WW}|, |\Delta WSI_{WA}|). \quad (8)$$

where, ΔWSI_{WW} and ΔWSI_{WA} are the contributions of water withdrawal and water availability, respectively.

According to Equation 2, water availability comprises local water availability ($\Delta Local WA$), upstream flows ($\Delta Up WA$), and upstream water consumption ($\Delta Up WC$). We further explored the relative changes in components of water availability for each sub-basin between two consecutive periods (Munia et al., 2020).

$$\Delta Local WA = Local WA_{t+1} - Local WA_t, \quad (9)$$

$$\Delta \text{Up WA} = \text{Up WA}_{t+1} - \text{Up WA}_t, \quad (10)$$

$$\Delta \text{Up WC} = \text{Up WC}_{t+1} - \text{Up WC}_t, \quad (11)$$

310 Similarly, the dominant driver of water availability ($Driver_{WA}$) was calculated as follows:

$$Driver_{WA} = \text{maximum} (|\Delta \text{Local WA}, \Delta \text{Up WA}, \Delta \text{Up WC}|). \quad (12)$$

315 Additionally, to assess the impact of vegetation restoration on water availability, we ran the SWAT model with two simulation scenarios. Under a normal scenario, the model was driven by land cover data from 2015 and climatic data from 2001 to 2020. Another scenario was driven by land cover data from 1990, while maintaining the same climatic conditions as in the normal scenario (2001–2020). The WSI and population exposed to water scarcity in P3 have been recalculated.

320 2.4. Water availability and water use data processing

Natural water availability data for the period 1965–2020 at the sub-basin scale are based on the SWAT model simulation that have been validated against natural discharges from hydrological stations. Generally, the SWAT model performed well in most cases, with the Nash–Sutcliffe efficiency (NSE) and the coefficient of determination (R^2) exceeding 0.7 for stations along the main stream, and exceeding 0.6 for most stations along the tributaries during the validation period (Fig. S2). Historical annual prefectural-level human sectoral water withdrawal data during 1965–2013, including irrigation, industry, urban, and rural water uses, were obtained from Zhou et al. (2020), which is based on the National Water Resources Assessment Programs (1965–2000) and Water Resources Bulletins (2001–2013). We extended this dataset at the prefectural-level to 2020 by collecting Water Resources Bulletins from various provinces within the YRB. For cities that did not distinguish between urban and rural water use (presented as an aggregate under domestic water use), we disaggregated the data using the 2013 ratio. This annual water withdrawal dataset from 1965–2020 was first disaggregated at the 1-km spatial

删除的内容: Besides

删除的内容: re-

删除的内容: u

删除的内容: with the fixed land use in 1990 and varied climatic conditions.

删除的内容: P4

删除的内容: 2013

带格式的: 字体: 倾斜

带格式的: 上标

删除的内容: (7 sub-sectors)

删除的内容: (11)

删除的内容: (2)

删除的内容: (2)

删除的内容: the

resolution grid scale according to land use and population density data (<https://www.resdc.cn/>).

已移动(插入) [3]

删除的内容: Then, the grid-level water withdrawal datasets were aggregated at the sub-basin scale. The detailed calculation process of historical water availability and water withdrawal can be found in Zhang et al. (2024).

删除的内容: s

删除的内容: were

Specifically, irrigation water withdrawal was downscaled based on the irrigated cropland land use and net irrigation requirement, as follows:

$$IRW_{j,m} = \frac{I_{j,m} \times A_j}{\sum_{m=1}^{12} \sum_{k=1}^N I_{k,m} \times A_k} \times IRW_a \quad (13)$$

where, $IRW_{j,m}$ is the irrigation water withdrawal of grid cell j in month m ; $I_{j,m}$ is the net irrigation requirement of grid cell j in month m for different crops, which was calculated as the difference between the reference crop evapotranspiration and effective precipitation; A_j is the irrigated area; IRW_a is the annual irrigation water withdrawal in the city where grid cell j is located; N is the number of irrigated cropland grid cells in that city.

删除的内容: s

删除的内容: were

删除的内容: of

删除的内容: can

删除的内容: be found

删除的内容:

已上移 [3]: Then, the grid-level water withdrawal datasets were aggregated at the sub-basin scale. The detailed calculation process of historical water availability and water withdrawal can be found in Zhang et al. (2024).

删除的内容: future

删除的内容: water

删除的内容: demand from different sectors

删除的内容: in

删除的内容: 2030s were

删除的内容: the

删除的内容: of water withdrawals during recent decade

删除的内容: the

删除的内容: used

删除的内容: detect

删除的内容: of

删除的内容: individual sectoral water withdrawal

Similarly, industrial water withdrawal was downscaled according to the maps of industrial and mining land, and assumed equally distributed within a year. The urban and rural water withdrawals were disaggregated based on the urban and rural residential areas, population density, and a monthly factor:

$$URW_{j,m} = \frac{Pop_j}{\sum_{m=1}^{12} \sum_{k=1}^N M_{k,m} \times Pop_k} \times URW_a \times M_{j,m} \quad (14)$$

where, $URW_{j,m}$ is the monthly urban and rural water withdrawals in grid cell j ; Pop_j is the population in grid cell j and URW_a is the annual urban and rural water withdrawals in the city where grid cell j is located; $M_{j,m}$ is a monthly factor considering seasonal water use variations (Huang et al., 2018).

Then, the grid-level water withdrawal datasets were aggregated at the sub-basin scale. The detailed calculation process for historical water availability and water withdrawal is described in Zhang et al. (2024).

The annual irrigation water withdrawal at the sub-basin scale for the 2030s (mean value from 2031 to 2040) was estimated based on historical trajectories. Specifically, linear regression was employed to identify the trend in irrigation water withdrawal from

2001 to 2020 (P3 period). If the trend was significant ($p < 0.05$), future irrigation withdrawal was predicted using Equation 15; otherwise, the irrigation water withdrawal for the base year (mean value from 2016 to 2020) was used as the future value,

$$FIR_t = IRW_{t_0} + trend \times (t - t_0) \quad (15)$$

405 where, FIR_t is the future irrigation water withdrawal for each year during 2031–2040; IRW_{t_0} is the irrigation water withdrawal for the base year; $trend$ is the linear slope of the irrigation during P3 period.

410 The projected second industrial value added and population (urban and rural) at the grid scale under the five Shared Socioeconomic Pathways (SSP1–5) during 2020–2040 were used to estimate industrial and domestic water use in the 2030s (Tong et al., 2024). Statistical data at the prefectural level in 2020 from the Statistical Yearbook of various provinces were used as the benchmark to correct the projected industrial value added (IVA) and population under different SSPs. Future industrial water withdrawal was estimated by multiplying the IVA by the water use intensity (Florke et al., 2013; Wada et al., 2016b). The IVA was estimated by multiplying its share of the second industrial value added, and the water use intensity was calculated as follows:

$$WUI_{ind} = WUI_{ind,t_0} \times (1 - C_{ind})^{t-t_0} \quad (16)$$

420 where, WUI_{ind} is the water use intensity for industry; WUI_{ind,t_0} is the industrial water use intensity for the base year (2020 in this study); C_{ind} is the annual change rate in water use intensity (%), which varies according to different SSPs: 1.1% for SSP1 and SSP5, 0.6% for SSP2, and 0.3% for SSP3 and SSP4 (Wada et al., 2016b).

Similarly, urban and rural domestic water withdrawal was estimated by multiplying the population by the domestic water use intensity. The latter was calculated as follows:

$$WUI_{dom} = WUI_{dom,t_0} + C_{dom} \times (t - t_0) \quad (17)$$

425 where, WUI_{dom} is urban and rural domestic water use intensity; WUI_{dom,t_0} is the domestic water use intensity for the base year (2020); C_{dom} is the annual change in

- 删除的内容: 2000
- 删除的内容: 2013
- 删除的内容: P4
- 删除的内容: is
- 删除的内容: the
- 删除的内容: predicted water demand
- 删除的内容: obtained
- 删除的内容: water withdrawal
- 删除的内容: of
- 删除的内容: 2009
- 删除的内容: -
- 删除的内容: 2013
- 删除的内容: adopted
- 删除的内容: water demand
- 删除的内容: in the 2030s
- 删除的内容: based on the corresponding water withdrawal for the base year and this trend (equation 15),
- 删除的内容: FWD
- 删除的内容: W
- 删除的内容: FWD
- 删除的内容: demand
- 删除的内容: 2030
- 删除的内容: 2039
- 删除的内容: W_{t_0}
- 删除的内容: water
- 删除的内容: water
- 删除的内容: withdrawal
- 删除的内容: P4
- 删除的内容: (10^4 m³ per year)
- 删除的内容: The mean annual value of the ten years (2030–2039)
- 删除的内容: .
- 带格式的: 右
- 带格式的: 缩进: 首行缩进: 1 字符
- 带格式的: 右

460 water use intensity (liter per day per person), which varies according to different SSPs
(Hanasaki et al., 2013) (see Table S2).

The future livestock water withdrawal was assumed to be equal to the average of the
past five years (2016–2020) due to the general unavailability of related data.

465 2.5. Future water stress and potential solutions

Given the high uncertainty in climate change projections (Greve et al., 2018), we only
focused here on the impact of changes in human water usage on water stress. Thus,
470 future water availability in the 2030s was maintained at the same level as the historical
P3 period. Because the absolute values of water storage in groundwater aquifers are
difficult to estimate and often unknown (Veldkamp et al., 2017; Huang et al., 2021), we
calculated only the future surface water deficit by subtracting surface water demand
from water availability for each sub-basin. Surface water use was estimated based on
its proportion of the total water withdrawal in 2020, which was obtained from the Water
Resources Bulletins of each province and the Yellow River. We considered water use
475 in different sectors. The first priority was urban and rural water demand, the second
priority was industrial water demand, and the last priority water was irrigation. From
first priority to last priority, greater water stress equated to greater socio-economic loss.
Competition between the agricultural and other sectors for water is increasing.
Irrigation water usage accounts for the largest proportion of total water demand, which
480 also provides the most practical solution for alleviating water stress across all sectors.

Therefore, we collected data on irrigation efficiencies for 2020 and 2025 (target values)
at the prefectural scale from the 14th Five-Year Plan for water resources for various
cities and provinces within the YRB. Based on previous similar water resource planning
documents released by the Chinese government, these irrigation efficiency targets are
485 generally attainable. It thus was assumed that irrigation efficiency would continue to
increase at the same rate after 2025, allowing us to project irrigation efficiency into the
2030s (see the relative change in Fig. S3). Next, we estimated future net irrigation water

带格式的：缩进：首行缩进： 1 字符

删除的内容: scarcity

删除的内容: the

删除的内容: WSI was estimated based on the water demand

删除的内容: (see section 2.4) and

删除的内容: water availability in

删除的内容: P4

删除的内容: The

删除的内容: was further calculated

删除的内容: (fixed in P4)

删除的内容: with WSI>1

删除的内容: priority

删除的内容: a

删除的内容: scarcity

删除的内容:

withdrawal (NIR) by multiplying the current irrigation efficiency (2020) by the projected irrigation water withdrawal (Equation 15). The future irrigation water withdrawal, accounting for improved irrigation efficiency, was then calculated by dividing the NIR by the improved irrigation efficiency values. We further quantified the contributions of improved irrigation efficiency to the surface water deficit and water stress in the future.

3 Results

3.1. Multi-dimensional assessment of water stress and attribution of changes in WSI

As shown in Fig. 3a, annual WSI exhibited a rapid upward trend before 2002, followed by a gradual decrease, with water scarcity first occurring in the 1990s. On a decadal scale, the regional WSI increased from 0.55 in P1 to 0.78 in P2 and 0.96 in P3, representing a relative increase of 76% over the entire study period. This exacerbation of water stress was primarily driven by increased water withdrawals from P1 to P2. However, the contributions of water withdrawals and water availability to the changes in WSI were nearly equal from P2 to P3 (10.4% versus 11%). Water stress hotspots were mainly found in the Lanzhou–Toudaoguai section, characterized by high water demand but limited water availability (Fig. S4). In contrast, water stress was low in regions above Lanzhou station and the middle parts of the Loess Plateau, with annual WSI values < 0.2. The regional average duration and the frequency of water scarcity have almost doubled, increasing from 3 months and 0.25 in P1 to 5.8 months and 0.5 in P3, respectively (Fig. 3b). These indicators showed a similar spatial distribution pattern to that of severity (WSI value). For example, in areas where large irrigated districts or cities are located (e.g., Lanzhou–Toudaoguai section and eastern parts of Shanxi province), the frequency was > 0.6 and average duration was at least four months, with some sub-basins facing year-round water scarcity (Fig. S5).

删除的内容: We thus quantified the required improvements in irrigation efficiency (IE) to address future water deficits under different priority assumptions. Meanwhile, based on the predicted IE increase rate from Zhao et al. (2015) (Table S2), we further calculated the contributions of IE improvement to the regional water deficit.

删除的内容:

删除的内容: scarcity

删除的内容: consistently increased during the last five decades, almost doubling from

删除的内容: 0.59 in P1 to 1.17 in P4.

删除的内容: exacerbated

删除的内容: dominated

删除的内容: an

删除的内容: in

删除的内容: moving

删除的内容: one sub-period

删除的内容: the next,

删除的内容: except for the phase from P2 to P3 when water withdrawals and climate change combined to an increased WSI. In other sub-periods, climate change had a minor alleviation effect on water stress.

删除的内容: S1

删除的内容: increased

删除的内容: 3

删除的内容: 7

删除的内容: P4

删除的内容: , and the frequency increased from 0.43 in P1 to 0.65 in P3

删除的内容: , then dropped slightly to 0.63 in P4

删除的内容: s

删除的内容: S2a

删除的内容: and S2b

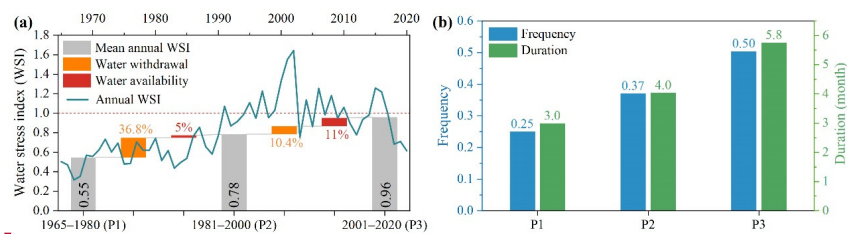
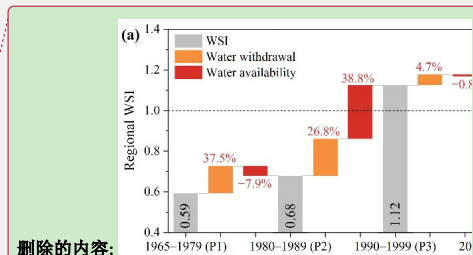


Figure 3. (a) Evolution of the regional water stress index (WSI) and its drivers. (b) Frequency and average duration of water scarcity.



删除的内容:

删除的内容:

Figure 3. (a) Evolution of the regional water scarcity...

删除的内容: ... [2]

删除的内容: S2c...5c-h...). Specifically, Generally, the change directions of WSI, frequency, and duration of water scarcity presented similar patterns (Figs. 4 and S2c-h). Specifically, most sub-basins experienced increases in WSI... from P1 to P2, with the highest increases occurring in the Lanzhou-Toudaoguai section and the Fen River irrigation area (Fig. 4a). From P2 to P3, the areas with the largest increases in WSI were primarily concentrated in the northern part of the YRB and in some cities (Fig. 4b). In contrast, decreases in WSI were observed mainly around the Ningxia irrigation area. Overall, the WSI decreased in more sub-basins compared with the other indicators... SI, and there were fewer areas showed decreases in where both the frequency and duration of water scarcity decreased... Figs. 4c and 4f

带格式的: 字体: (默认) Times New Roman, 小四

删除的内容: were more spatially confined. From P2 to P3, frequency, and duration of water scarcity from P1 to P2, except for some southern parts of the YRB and the western Hetao irrigation area (Figs. 4a and 4d). From P2 to P3, decreases in the three indicators were concentrated in the eastern YRB, whereas, from P3 to P4, changes were not spatially confined.

已下移 [1]: **Figure 4.** Changes in the (a, b, and c) water scarcity index (WSI), (d, e, and f) frequency, and duration of water scarcity.

删除的内容: ...-2.7...8% and 3.2...-13.9...6%, respectively, of the total population during different periods; this was always much lower than the proportion of the population moving into (4...5%-11.2...0.3%) or experiencing an aggravation (14...7.1...-17...4.7%) in water scarcity in the corresponding periods (Figs. 4e and 4f)

删除的内容: ... [5]

565

Generally, the change directions of WSI, frequency, and duration presented similar patterns (Figs. 4 and S5c-f). Specifically, most sub-basins experienced increases in WSI from P1 to P2, with the highest increases occurring in the Lanzhou-Toudaoguai section and the Fen River irrigation area (Fig. 4a). From P2 to P3, the areas with the largest increases in WSI were primarily concentrated in the northern part of the YRB and in some cities (Fig. 4b). In contrast, decreases in WSI were observed mainly around the Ningxia irrigation area. Compared to WSI, fewer areas showed decreases in both the frequency and duration of water scarcity (Figs. 4c and 4d). Most sub-basins downstream of the Lanzhou station experienced increases in both the frequency and duration, with these increases becoming more spatially confined over the past two decades. Further

570

575

analysis showed that the population moving out of and experiencing alleviation in water scarcity accounted for 0%-7.8% and 3.5%-6.6%, respectively, of the total population during different periods; this was always much lower than the proportion of the population moving into (7.5%-10.3%) or experiencing an aggravation (27.3%-34.7%) in water scarcity in the corresponding periods (Figs. 4e and 4f). Much greater differences were found in the proportion of the population experiencing both changes in frequency and duration of water scarcity; 54.2%-71.2% of the population experienced an increase in both indicators, while only 1% experienced a decrease in both indicators. In summary, changes in critical indicators of water stress suggest that

580

585

the YRB has been facing an increasingly unfavorable water crisis during the last five

decades.

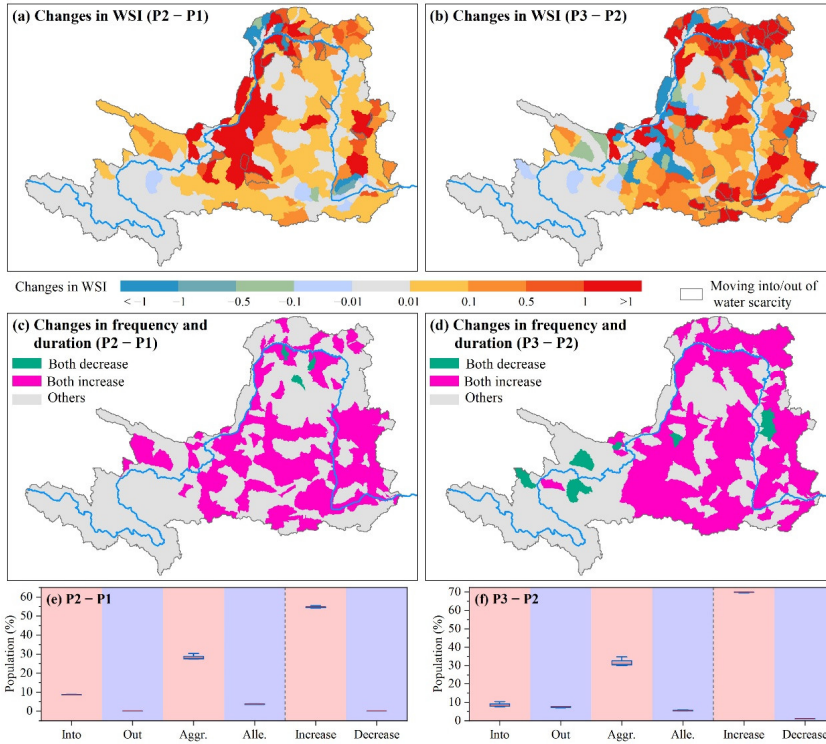


Figure 4. Changes in the (a and b) water stress index (WSI), (c and d) frequency, and duration of water scarcity. (e and f) Proportion of the population moving into (Into)/out of (Out) water scarcity, experiencing aggravated (Aggr./alleviated (Alle.) water scarcity, and (right-hand side of dashed line) experiencing both increases and decreases in both frequency and average duration of water scarcity between two consecutive periods.

However, the dominant drivers of changes in WSI varied (Fig. 5). For example, the increased WSI in the western parts of Gansu, Ningxia and Henan provinces can mainly be ascribed to the rapid rise in irrigation from P1 to P2 (Fig. 5a). Additionally, water use by other sectors (industry, urban, and rural) was also the main reason for the increase

带格式的：缩进：首行缩进： 0 字符

删除的内容：

已移动(插入) [1]

删除的内容：

删除的内容：, and c

删除的内容: scarcity

删除的内容：

删除的内容：, e, and f

删除的内容：

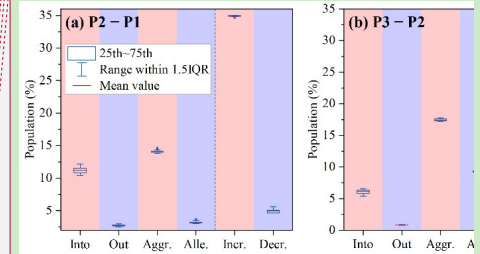


Figure 5.

删除的内容: (Iner.)

删除的内容: (Decr.)

删除的内容: were not the same

删除的内容: s

删除的内容: 6

删除的内容: and S3

删除的内容: Specifically

删除的内容: province

删除的内容: an

删除的内容: increase

删除的内容: wheat

删除的内容: resulting from the expansion of the irrigated ... [6]

删除的内容：, whereas in other regions it was related to

删除的内容: decreased water availability owing to climate ... [7]

删除的内容: s

删除的内容: 6a

删除的内容：, 6d, 6g, S3a, and S3d

带格式的：字体：(默认) Times New Roman, 小四

带格式的：字体：(默认) Times New Roman, 小四

730 in water stress in the central parts of the Loess Plateau. In contrast, water availability
 was the primary driver of changes in WSI in 178 sub-basins from P2 to P3 (Fig. 5b),
 735 underscoring the climatic controls on changes in water stress in these regions over the
 recent decades. Specifically, climate change contributed to a reduction in water stress
 in regions above Ningxia but exacerbated it in other parts of the YRB. Water
 withdrawals were responsible for the increased WSI in only 34 sub-basins.

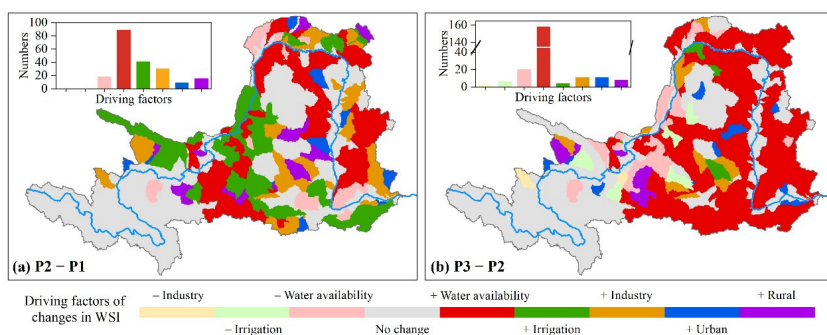


Figure 5. Driving factors of changes in WSI between two consecutive periods at the sub-basin scale. For the drivers, a '+' prefix indicates a positive effect on ΔWSI , whereas a '-' indicates a negative effect.

3.2. Important roles of local water availability and upstream flows

740 We further investigated the drivers of changes in total water availability in terms of
 local water availability, upstream flows, and upstream water consumption (see
 Equations 9–12). We found that upstream flows were responsible for changes in total
 745 water availability in 36%–43% (154–184) of the sub-basins (Fig. 6a), most of which
 were located along the main stem of the Yellow River (Fig. S6). The upper regions
 above Tangnaihai and Lanzhou hydrological stations had the largest shares of total
 natural flows of the study area (Huayuankou station), with mean annual ratios of 0.39
 and 0.64, respectively. More importantly, these ratios consistently increased over the
 750 study period (Fig. 6b), suggesting that these regions have increasingly dominated the
 determination of total water resources of the whole YRB owing to climate change.

删除的内容: Climate change also led to some alleviation of water stress in Shanxi province from P2 to P3 but exerted the opposite effect in central and southern parts of Shaanxi province (Fig. 6b). Irrigation of wheat, rice, and vegetables and fruit was the key factor leading to intensified water stress in the Lanzhou–Toudaoguai section (Figs. 6c, 6h–6k, S3b, and 3e). The recent two decades witnessed mixed and more spatially distributed patterns of changes in WSI, and ...ater availability irrigation ...as not ...he primary reason ...river for ...f increased ...hanges in WSI in most

带格式的: 突出显示

删除的内容: s... 6c ...band 6f..., underscoring highlighting ...he climatic controls on changes in water stress in these regions over the recent decades. Specifically

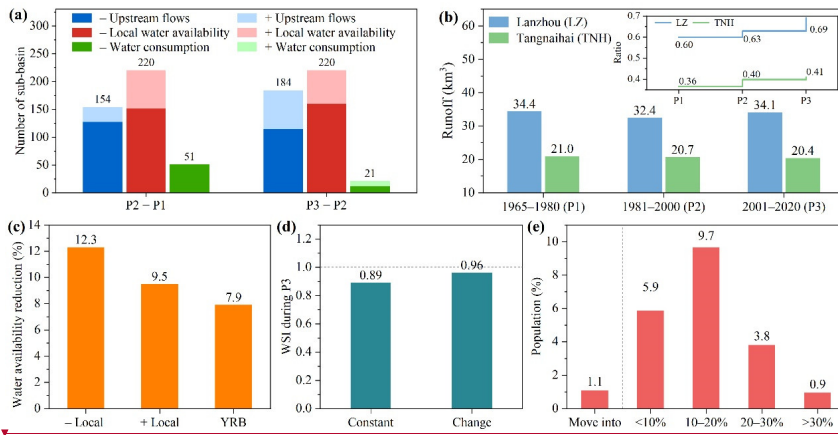
删除的内容: Meanwhile, we found that despite the rapid growth of irrigation in vegetables and fruit in southern Gansu and Shaanxi provinces since the 1980s, its influence on changes in WSI was less than that of water availability (Figs. 6b and 6c).

删除的内容: 6... Driving factors of changes in (a, b, and c)... WSI and (d, e, and f) irrigation

删除的内容: or irrigation... whereas a '-' indicates a negative effect. (g-l) Interannual variation in water withdrawals from 1965 to 2013 in typical cities across the study area. Gray shadings show the periods: from P1 to P2 (g), from P2 to P3 (h–k), and from P3 to P4 (i). The dashed lines show the start year of the latter period (i.e., 1980 in g)

删除的内容: Given the important role of water availability in changes in water scarcity at the sub-basin scale, w...e further explored ...nvestigated its ...he drivers of changes in total water availability in terms of changes in ...ocal water availability, upstream flows, and upstream water consumption (see equations ...quations 9–12). We found that up...

However, this is also mostly beyond the control of local decision-makers.

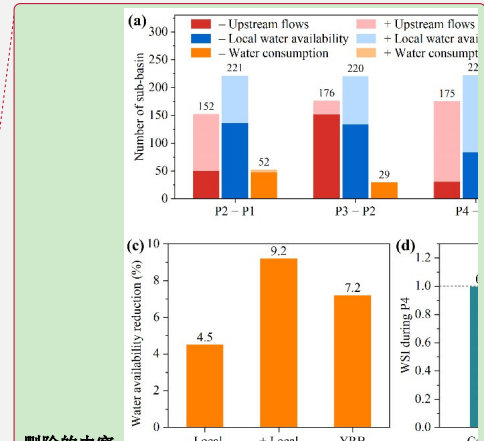


875 **Figure 6.** (a) Number of sub-basins experiencing different drivers of total water availability between two consecutive periods. For the drivers, a '+' prefix indicates a positive effect on water availability, whereas a '-' indicates a negative effect. (b) Runoff at the Tangnaihai (TNH) and Lanzhou (LZ) stations during different periods. The inset shows the runoff ratio of TNH and LZ to the Huayuankou station. (c) Reduction in water availability for sub-basins dominated by local water availability (- local and + local) and for the YRB with and without vegetation restoration. (d) WSI in P3 with (Change) and without (Constant) vegetation restoration. (e) Population moving into water scarcity and experiencing aggravated water scarcity (increased WSI expressed as a percentage) owing to vegetation restoration.

885

The effects of local water resource management were also prominent in half of the sub-basins (220). Owing to the implementation of large-scale ecological restoration projects (e.g., the Grain for Green Program) since the end of the 1990s, the vegetation coverage of the YRB has significantly improved and large amounts of cropland and barren land have been converted into forest and grassland (Figs. S7a-7c). However, the underlying surface changes reduced local water yield as a result of increased evapotranspiration (Fig. S7d). In terms of local water availability-dominant sub-basins,

890



删除的内容:

删除的内容: 7

删除的内容: Natural r

删除的内容: W

删除的内容: reduction of

删除的内容: -dominated

删除的内容: sub-basins

删除的内容: (i.e., land use in 1990)

删除的内容: P4

删除的内容: ~

删除的内容: (Fig. 7a)

删除的内容: been

删除的内容: were

删除的内容: S5a

删除的内容: 5c

删除的内容: availability

删除的内容: S5d

910 land cover transitions led to a mean annual reduction in natural flows of 12.3%/9.5%
(Fig. 6c). Over the entire basin, this generally decreased natural flows by 7.9% during
P4, giving a corresponding regional WSI of 0.89 (Fig. 6d). Vegetation restorations led
to 1.1% of the regional population moving into water scarcity and 10–20% increase in
WSI for 9.7% of the total population (Fig. 6e). This implies that local vegetation
915 restoration in some places should be approached with caution to avoid water stress. For
some sub-basins (less than 12%) where water availability is controlled by changes in
upstream water consumption, integrated water management strategies, such as water
resource recycling, should be considered to indirectly reduce water consumption and
meet the water usage needs of downstream areas (Zhou et al., 2021).

920

3.3. Future water stress and potential solutions

As shown in Fig. 7a, regional total irrigation is projected to decrease by 13.3% in the
2030s compared to the recent two decades (P3). This decrease is mainly attributed to
reductions in irrigation in northwestern parts of the YRB and central parts of the Loess
925 Plateau (Fig. 7b). With the development of industry and the rapid growth of urban
population under different SSPs (Fig. S8), a general increase in industrial and urban
water usage is projected. This increase is expected to be above 20% in most sub-basins
(despite a reduction in some areas) and over 100%, respectively (Figs. 7c, 7d, and S9).
Rural water use has a moderate growth rate of 38% across five SSPs. In total, the water
930 use of the study area in the 2030s is projected to be 34.2 km³ (6.5% higher than the
current 32.1 km³ during P3), 56.2% (19.2 km³) of which will be contributed by
irrigation (Fig. 7f). The industrial and urban sectors will account for the second-largest
shares of total water use, with nearly equal proportions of 18.3% and 18.8%,
respectively. The rural sector will have the smallest share (6.7%).

删除的内容: 4.5...2.3%/9.2...% (Fig. 7c...c). Over the entire basin, this generally decreased natural flows by 7.2...% during P4, giving a corresponding regional WSI of 0.997...9 (Fig. 7d...d), i.e., moving out of water scarcity or just approaching the threshold (WSI = 1)... Vegetation restorations led to 3...8...% of the regional population moving into water scarcity and a ...0→5...0% increase in WSI for 13.1...7% of the total population (Fig. 7e...e). This implies that local vegetation restoration in some places should be approached with caution to avoid water stress. For some sub-basins (approximately ... less than 10 ... [14]

删除的内容: Total water usage in the 2030s is projected to decrease (except for Ningxia regions) but increase in southeastern parts (Fig. S6), (Fig. S7a). At the...s shown in regional scale, despite the continuous increase in water use for maize, and vegetables and fruit (...ig. 8a...a)... regional total irrigation is projected to decrease by 10.7...3.3% in the 2030s compared to the recent two decades (P3). This decrease is mainly attributed ascribed ...o reductions of ...n irrigation in northwestern parts of the YRB and central parts of the Loess Plateau (Fig. 7b). With the development of industry and the rapid growth of urban population under different SSPs (Fig. S8), there is ... general projected ...increase in industrial and urban water usage is projected. This increase is expected to be with rates of increase generally ...bove 20% in most sub-basins (despite a reduction in some areas) and over 100%, respectively (Figs. 7c, 7d, S7b ...nd S7c...9). Rural water use has a moderate growth rate of 38% across five SSPs. Urban water use shows the largest rate of increase (117%), followed by industrial (63.8%) and rural (1.4%... [15]

带格式的: 突出显示

删除的内容: 37...4.4 ... km³ (12...5% higher than the current 33...2.2 ... km³ during the period...3 2000–2013..., 55...6.5...% (20.8...9.2 km³) of which will be contributed by irrigation (Fig. 8b...f). The industrial and urban sectors will account for the second-largest shares of total water use, with nearly equal proportions of 18.3% and 18.8%, respectively. have the second-largest share of total water use (24.2%),...The rural sector will have the smallest share followed by ... urban ...16...7%), then rural (1.2%... [16]

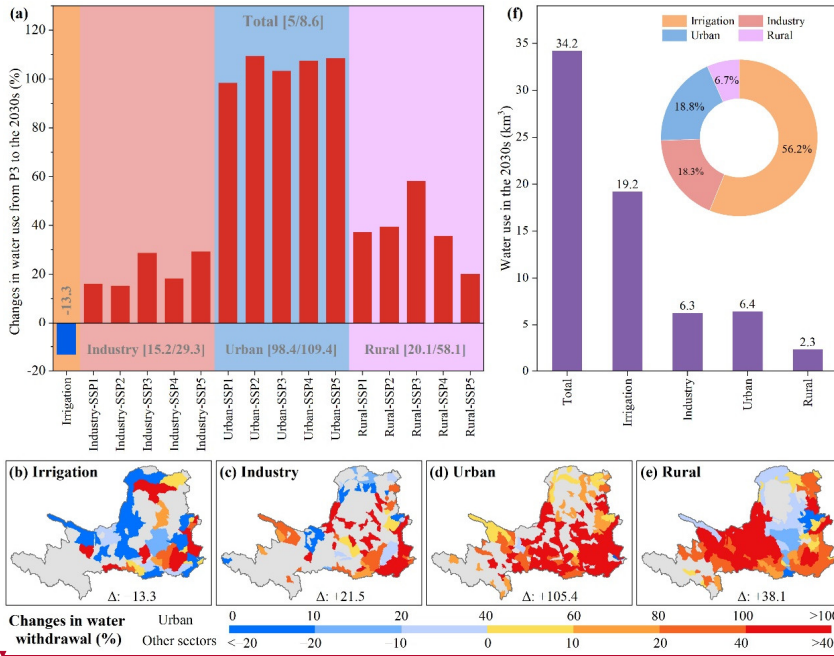
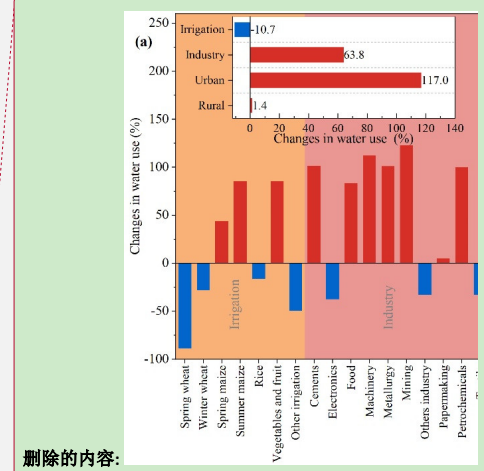


Figure 7. (a) Relative changes in water use of different sectors from the recent two decades (2001–2020) to the 2030s (%). The numbers in brackets are the minimum and maximum values for different SSPs. Panels (b–e) illustrate the spatial patterns of relative changes in sectoral water withdrawal. For the industrial, urban, and rural sectors, the mean annual values across five SSPs were used (see changes in individual SSP in Fig. S9). The numbers at the bottom indicate the values at the regional scale. (f) Water use in the 2030s and the proportion of use by different sectors (pie chart).

Further analysis showed that the surface water deficit of the YRB in the 2030s would be 0.6–8.36 km³ in the absence of additional measures when considering sectoral water use with different priorities (Fig. 8a). When all sectoral water usages need to be fulfilled, the possible improvement of irrigation efficiency in the future could solve 25% of the water deficit, leading to a net surface water deficit of 6.3 km³. From the perspective of water supply, the inter-basin water diversion project is regarded as an important measure to alleviate the severe water stress problems experienced in northern China.



删除的内容:

删除的内容: 8.... (a) Relative C...anges in water use of different sectors from the recent two decades (2000...001–2013...020) to the 2030s (%). The numbers in brackets are the minimum and maximum values for different SSPs. Panels (b–e) illustrate the spatial patterns of relative changes in sectoral water withdrawal. For the industrial, urban, and rural sectors, the mean annual values across five SSPs were used (see changes in individual SSP in Fig. S9). The numbers at the bottom indicate the values at the regional scale. (b) 17

带格式的: 段落间距段前: 0 磅

删除的内容: Improving water use efficiency is a key solution to alleviate water scarcity. Thus, we first determined how much water stress could be alleviated by improving water efficiency by 10% via technical and economic progress in different sectors. We focused on the top 5% of water use sub-basin sectors (Fig. S8), the combination of which accounted for 43.8% of all water withdrawals in the 2030s (Fig. 9a). In other words, a decrease in water use intensity of 10% in these sub-basin sectors could save 4.38% of the total water use in the YRB. Four of the top five sectors were related to... 18

已移动(插入) [2]

删除的内容: , respectively ...Fig. 10...ac.... When all sectoral water usages need to be fulfilled (Fig. 10b) ... 19

已上移 [2]: in the absence of additional measures

删除的内容: s T...he possible improvement of irrigation efficiency in the future (Table S2)...could solve 26...5% of the maximum ...ater deficit (all sector demands are met)... leading to a net surface water deficit of 7....39 ... 20

The Hanjiang-to-Weihe River (HWR) project and the South-to-North Water Diversion (SNWD) project are the two most important projects for the YRB. The total water coming from the HWR project to Guanzhong Plain and from the Middle Route of the SNWD project to Henan province (SN-HN) would be 5.27 km³ (Fig. 8b). The planning Western Route of the SNWD project (SN-WR), which links the headwaters of the Yangtze and YRB, is 8 km³ in the first phase. The implementation of irrigation water-saving strategies can effectively alleviate the water supply pressure of these external water diversion projects. In the 2030s, the WSI is projected to reach 1.02, i.e., water resources cannot sustain environmental or anthropogenic needs (Fig. 8c). However, improving irrigation efficiency could counterbalance the growth in water demand from other sectors and even reduce water stress below P3 level (0.95). As a result, water stress would decrease in the northwestern and northern regions, but it will increase further in most other areas, with some sub-basins experiencing WSI increases of more than 30% (Fig. 8d). Between the recent two decades and the 2030s, 42% (10.2%) and 2.9% (0.5%) of the population will experience aggravated (alleviated) and be moved into (out of) water scarcity conditions, respectively (Fig. 8e). An additional 4.5% of the total population would benefit from improvements in irrigation efficiency.

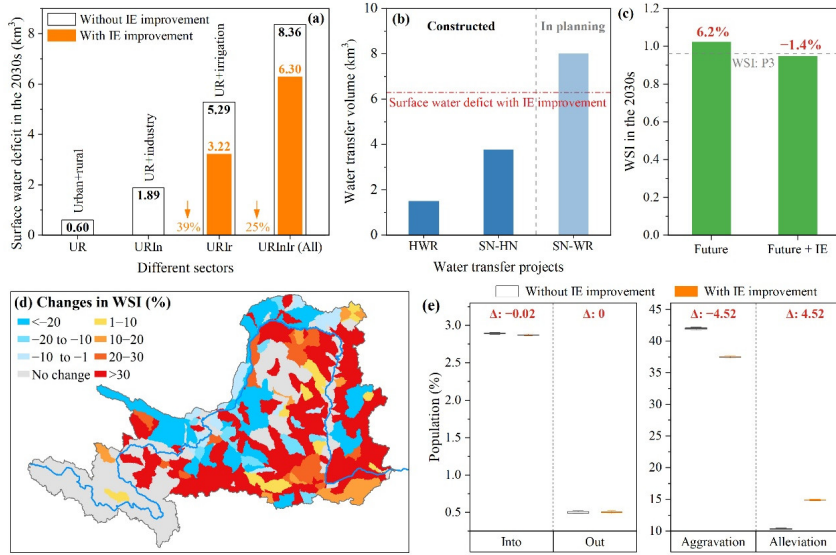


Figure 8. Impacts of improvement in irrigation efficiency (IE) on water stress alleviation

删除的内容: 10d

删除的内容: Combined these projects with IE improvements, the water scarcity in the YRB can be effectively alleviated.

删除的内容: in the absence of any water use efficiency action, 23

删除的内容: 11

删除的内容: 8

删除的内容: 5.7

删除的内容: 7

删除的内容: (2013)

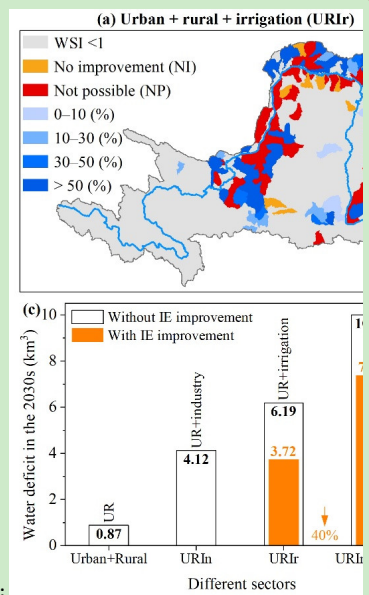
删除的内容: 2.8

删除的内容: -4.6%

删除的内容: be

删除的内容: water use

删除的内容: improvements (Fig. 9d)



删除的内容:

删除的内容: 10

带格式的: 字体: 非加粗

删除的内容: Sub-basins where an

删除的内容: could help to solve

删除的内容: scarcity

1200 in the 2030s. (a) Surface water deficit in the 2030s under different sectoral water
demand. (b) Water transfer volumes to the study area from the HWR project, SNWD
project to Henan Province (SN-HN), and Western Route of the SNWD project (SN-WR)
in the first phase. (c) Future WSI with and without IE improvement. The red numbers
are the relative change in WSI from P3 to the 2030s. (d) Spatial pattern of relative
changes in WSI with IE improvement (from P3 to the 2030s). (e) Percentage of the
1205 population experiencing aggravated/alleviated water scarcity and moving into/out of
water scarcity (from P3 to the 2030s).

删除的内容: : (a) urban, rural, and irrigation (URIr) and (b) all sectors including urban, rural, industry, and irrigation (URInIr). Red color denotes sub-basins where improvement in IE > 100% or water deficit would exceed the irrigation demand. The inset in panel b shows the number of sub-basins with different IE improvement levels with the consideration of URIr (left bar) and URInIr (right bar).

删除的内容: c

删除的内容: W

删除的内容: d

4 Discussion

4.1. Water stress in the past and futures: comparison with other studies

Water stress hotspots were mainly concentrated in areas between the Lanzhou and
1210 Toudaoguai hydrological stations and in large cities with higher water demands (Fig.
S4); this was similar to the findings of previous studies (Ma et al., 2020a; Xie et al.,
2020; Sun et al., 2021). However, the severity of water stress was not the same as that
reported in previous studies because of the choice of different water withdrawals, water
availability datasets, proportion of EFR, and even study period in the WSI estimation.
1215 We also found that water stress over the whole study area has generally intensified
during the past few decades, which also generally corroborates previous findings at
different scales (Liu et al., 2019; Zhou et al., 2019; Huang et al., 2021; Huang et al.,
2023). Regarding the driving factors of changes in WSI, previous studies have
concluded that rapid growth in water use was the primary factor leading to increased
1220 WSI in northern China over the past four decades (Wada et al., 2011; Huang et al.,
2021). In contrast, increased water availability owing to enhanced precipitation was the
main contributor to alleviating water stress in the YRB during 2001–2020 (Huang et al.,
2023). These results were confirmed by our study (Fig. 4a). By using survey-based
water withdrawal datasets and SWAT simulations, our study further isolated the
1225 contribution of water withdrawals by various water use sectors on the evolution of water

删除的内容: S1

删除的内容: and

删除的内容: five

删除的内容: In terms of

删除的内容: water stress

删除的内容: a

删除的内容: an

删除的内容: during

删除的内容: (Wada et al., 2011; Huang et al., 2021),

删除的内容: while

删除的内容: scarcity

删除的内容: we found that changes in water stress and its drivers in the YRB were sub-basin and study period dependent (Fig. 4). In addition,

1250 stress at the sub-basin scale (Fig. 5), which was rarely considered in previous studies. We found that water withdrawals, particularly for irrigation and industrial water use, dominated the increase in WSI in the northwestern regions and the Loess Plateau before 2000. However, since 2000, China's State Council and Ministries have implemented a series of laws, regulations, action plans, and technology related to water conservation (Zhao et al., 2015; Zhou et al., 2020), especially the strict Three Red Lines in 2012. This led to a widespread stagnation and even a reduction in human water withdrawals in northern China (Huang et al., 2023), indicating the remarkable success of government-led water conservation efforts. As a result, human water use is no longer the main reason for the increased WSI in most sub-basins (Fig. 5b). Thus, a regional deceleration in the rate of WSI increase was observed (41.8% versus 21.4%) and the changes in WSI were driven almost equally by water withdrawals and water availability from P2 to P3 (Fig. 4a), underscoring the important role of climate change in influencing water stress under increasingly stringent water management strategies. Additionally, we found that the frequency and duration of water scarcity in the YRB and some sub-basins exceeded 0.5 and 6 months, respectively (Figs. 4b and S5), indicating that water scarcity occurred more than half the time at the monthly scale, despite WSI being less than 1 at the decadal scale. These seasonal analyses can provide valuable scientific guidance for the planning of reservoirs and water diversion projects.

1270 Because the decrease in irrigation water use was offset by an increase in water use from the other three sectors (industry, urban, and rural), the final total water use in the 2030s was predicted as 34.2 km³ based on the trajectory of historical withdrawal and different SSPs (Fig. 7). When further water withdrawals of ~12 km³ below the Huayuankou station (the lower reaches of the Yellow River) were taken into account (<http://yrcc.gov.cn/gzfw/szygb/index.html>), the total water demand of the entire YRB was approximately 46 km³. This value is 10–20 km³ lower than that reported by Yin et al. (2020), based on different global hydrological models (GHM) and SSP combinations. On the one hand, our analysis based on historical survey data showed that irrigation water use has presented a steady downward trend over the past 20 years, which was not

删除的内容: 6...); ..., this ...hich was rarely considered in previous studies. We found that water withdrawals, particularly for irrigation and industrial water use., for wheat, rice, and vegetables and fruit,...dominated the increases...in the ...SI in the northwestern parts ...egions (except for the source regions) ...nd the Loess Plateauf of the basin...before 2000. In some sub-basins, industry was the primary driver of WSI increases. ...owever, since 2000, China's State Council and Ministries have implemented owing to the implementation of ... series of laws, regulations, action plans, and technology related related ...o saving ...ater promoted by China's State Council and Ministries after 2000...conservation (Zhao et al., 2015; Zhou et al., 2020), especially the strict Three Red Lines in 2012. This led to aa...widespread stagnation and even a reduction decrease ...n human water withdrawals in the ...orthern China (Huang et al., 2023), indicating the remarkable success of government-led water conservation efforts. As a result, human water use is no longer the main reason for the increased WSI in most sub-basins (Fig. 5b). northwestern parts of the basin and t...hus, a regional deceleration in the rate of WSI increase was observed (41.8% versus 21.4%) and the changes in WSI were driven almost equally by water withdrawals and water availability from P2 to P3 (Figs... 3a ...and S3c... [21]

删除的内容: Despite some increase in water withdrawals in the middle and southern parts of the basin owing to the irrigation of vegetables and fruit, the withdrawal magnitudes were lower than those of water availability (Figs. 6 and S3); hence water stress conditions were alleviated. Because the decrease in irrigation water use was offset by an increase in water use from the other three sectors (industry, urban, and rural, and industry..., the final estimated ...otal water use in the 2030s was calculated ...redicted as 37...4.4 ... km³ based on the trajectory of historical water ...ithdrawal and different SSPs...(Fig. 8...). When further water withdrawals of ~12 km³ below the Huayuankou station (the lower reaches of the Yellow River) were taken into account (<http://yrcc.gov.cn/gzfw/szygb/index.html>), the total water demand of the entire YRB was approximately 50 ...6 km³. This value is 5...0–15 ...0 km³ lower than that reported by Yin et al. (2020), based on different global hydrological models (GHM) and shared socio-economic pathways (...SP) [22]

1365 often captured by large-scale GHMs (Haddeland et al., 2014; Liu et al., 2019). On the
other hand, we calibrated the SSP predictions using the latest socio-economic data.
Overall, we believe that including data from the most recent decade can incorporate the
effect of water efficiency improvements and current water-saving technologies, thereby
making water withdrawal predictions more reliable and providing valuable insights for
policymakers. When water availability remained stable (constant at the 2001–2020
1370 level), the water stress was projected to be further aggravated, which was also reported
in earlier studies (Yin et al., 2017; Liu et al., 2019; Yang et al., 2023). For example,
Omer et al. (2020) indicated that critical water scarcity would occur in the YRB if the
current trend of water use continues in the near future. However, we found that if
improvements in irrigation efficiency are taken into account, regional water stress could
1375 be maintained at its current level (0.95), a finding rarely reported previously.

删除的内容: One reason for this is that large-scale GHMs, used to simulate sectoral water withdrawal, assume simple changes in technological factors and the effect of water conservancy measures was often negligible

删除的内容: .

删除的内容: level of 2000

删除的内容: 2013

删除的内容: especially in the southern parts of the basin (Fig. S6),

删除的内容: by

删除的内容: changes in technological factors and the effect of water conservancy measures .

4.2. Broader implications for water resources management

In terms of water supply, the upper YRB including the source regions (above the Tangnaihai station) provides a vital water source for the whole YRB. However, water
1380 availability in this region is highly sensitive to global warming (Zhang et al., 2014; Kuang and Jiao, 2016; Ji et al., 2023), which can then further exert a considerable impact on the security of food, energy, and water in downstream regions (Cui et al., 2023). Meltwater from snow and glaciers can help mitigate water stress for both local and downstream areas. However, meltwater acting as an additional source of water is
1385 not sustainable in the long term (Wang et al., 2023). Influenced by global warming, the terrestrial water storage deficit is predicted to expand northwards on the Tibetan Plateau by the end of the century, which threatens the sustainability of water supplies in the upper YRB (Zhang et al., 2023b). Worse still, the acceleration of glacier mass loss may bring about a series of unintended and detrimental environmental and ecological
1390 consequences (Hugonnet et al., 2021). Therefore, it is necessary to urgently reduce carbon emissions and slow climate warming to alleviate the water stress of millions of people living downstream in the YRB.

1410 Meanwhile, we found that total water availability in more than half of the sub-basins was controlled by local water yields (Fig. 6a), underscoring the importance of local water management strategies. Owing to several ambitious programs to conserve and expand forests (Bryan et al., 2018), vegetation greening of the YRB has been strikingly prominent during recent years (Zhang et al., 2023a); however, a strain on water resources has been observed in our study (Fig. S7) and many other previous studies (Feng et al., 2016; Wang et al., 2019; Zhang et al., 2023c; Yao et al., 2024). By scenario simulation, we estimated that vegetation restoration led to a reduction in runoff of 7.9% over the YRB during 2001–2020. This is generally in line with results from semi-arid and arid regions in China (Zhang et al., 2018), where vegetation restoration resulted in 8.5% and 11.7% reductions in runoff in the 1990s and 2000s, respectively. In areas already experiencing a decrease in water availability induced by climate change, vegetation greening has undoubtedly exacerbated the water crisis. Therefore, to alleviate regional water stress, in addition to climate change adaptation strategies and substantial investment in hard-path infrastructure, nature-based solutions should also be considered. For example, controlling the scale of reforestation and conducting appropriate grazing activities in excessively restored grasslands (Liang et al., 2019; Deng et al., 2023) could potentially achieve a triple-win in economic development, ecological protection, and water resource security.

1425 With changes in the economic structure and rapid urbanization, urban domestic water use is projected to equal or even exceed industrial water use by the 2030s, highlighting the importance of effective urban water resource management in alleviating future water stress. Irrigation still accounts for the largest share of total water use in the future; therefore, enhancing its efficiency will likely provide the most feasible solution for mitigating water stress in the YRB. The YRB is a water-scarce region, where resolving the water shortage issue by focusing only on either the supply or demand perspective is challenging. We found that it will be almost impossible to meet both productive and domestic water demands through irrigation efficiency improvements alone in most sub-basins in the 2030s (Figures not shown). While relying on external inter-basin water

删除的内容: 7a

删除的内容: s

删除的内容: 7c–e and

删除的内容: 5

删除的内容: fixing the land cover in 1990 and varying climatic conditions

删除的内容: 2

删除的内容: the recent decade

删除的内容: those

删除的内容: facing

删除的内容: can

删除的内容: adopted

删除的内容: ;

删除的内容: for

删除的内容: .

删除的内容: This can

删除的内容: Despite considerable changes in economic structure, irrigation still accounts for the largest share of total water use in the 2030s; therefore, its efficiency improvement likely provides the most feasible solution for mitigating water stress in the YRB. Industrial water use also comprised a large share of total water use, but most efforts in promoting efficiency gains in the industrial sector are currently in the pilot projects requiring high investment for low return (Blanke et al., 2007; Zhao et al., 2015)。因此，限制生活用水需求也是为了缓解水压力的主要措施。

删除的内容: area

删除的内容: ,

删除的内容: it is difficult to entirely solve

删除的内容: problem

删除的内容: As shown in Fig. 10b, w

删除的内容: e

删除的内容: R

transfer projects can significantly and directly mitigate water stress in the region, such measures should be approached with caution, as these large-scale infrastructures often have considerable ecological and social impacts (Webber et al., 2021; Liu et al., 2023). Improvements in irrigation efficiency can free up water resources and reduce 25% of the surface water deficit to meet all sectoral water demands, greatly alleviating the pressure on water diversion projects (Figs. 8a and 8b). Such efficiency gains would allow the water stress in the study area to be maintained at its current level (0.95) in the future (Fig. 8c), which is approaching the threshold of water scarcity (WSI=1). Given the great water demand in the lower reaches of the YRB (below the HYK station) and the task of supplying water to other basins (such as the Hai River), water scarcity is inevitable across the entire YRB. However, there is a positive development: since the ecological protection and high-quality development of the Yellow River Basin was designated a national strategy in 2019, the Chinese government has implemented several proactive strategies in this basin. For instance, the implementation of the Yellow River Protection Law (2023) has legally constrained the intensity and total volume of water usage (http://en.npc.gov.cn.cdurl.cn/2022-10/30/c_954870.htm). Moreover, the recently planned Bailong River Water Diversion project is expected to provide 774 million cubic meters of water resources to Gansu and Shaanxi provinces in 2040 (https://www.mee.gov.cn/xxgk2018/xxgk/xxgk11/202307/t20230725_1037157.html). In summary, it will be necessary to implement a variety of adaptation measures on both the supply and demand sides to resolve the water crisis in the YRB.

4.3. Uncertainty

Our study contains several uncertainties. First, the impact of reservoirs was not considered in our study due to data inaccessibility at a finer time scale. Although of little impact on the decadal scale, this may result in overestimations of the frequency and duration of water scarcity. This is because there are many reservoirs in the YRB and occasionally monthly water scarcity in some sub-basins may be addressed or alleviated through seasonal flow regulations (Ma et al., 2020a; Ji et al., 2023). Second,

- 删除的内容: the
- 删除的内容: scarcity
- 删除的内容: but
- 删除的内容: projects
- 删除的内容: substantial
- 删除的内容: 1
- 删除的内容: improvements
- 删除的内容: -
- 删除的内容: 26
- 删除的内容: (Fig. 10c)
- 删除的内容: 10d
- 删除的内容: recent
- 删除的内容: In addition, the strict Three Red Lines in 2012 and, which may also alleviate the pressure on water resources to a certain extent.
- 删除的内容: solve
- 删除的内容: YRB

1515 in calculating water availability, we adopted the method widely used by previous
estimates (Liu et al., 2019; Munia et al., 2020; He et al., 2021), which only considers
the water resources in the river (see section 2.2). The water storage in lakes, aquifers,
and groundwater, for which the absolute volumes were not known, was assumed to be
1520 in a state of equilibrium (Veldkamp et al., 2017; Huang et al., 2021). Thus, without
considering groundwater pumping from deep aquifers, water availability may be
underestimated in regions heavily dependent on such resources, potentially leading to
a lower anticipated water stress level in reality. Moreover, the future WSI only
considered the effects of water withdrawals and overlooked the impacts of climate
1525 change. Previous studies projected that changes in annual runoff in the YRB would not
be evident in the near future during the period from 2000 to the 2030s (Yin et al. 2017;
Yin et al. 2020), but the long-term and seasonal climatic impacts should be considered
in our further research.

删除的内容: we may have overestimated the number of people exposed to water scarcity. In the real world, non-agricultural water use has a higher priority than agricultural water given the fact that limited water resources are firstly allocated to maintain human domestic demand (Flörke et al., 2018). Cropland is also generally far from urban areas, so water scarcity in a sub-basin does not necessarily mean a shortage of domestic water.

Reclaimed water is regarded as an important alternative water source for cities (Liu et al., 2020; Hastie et al., 2022). As domestic water use continues to increase rapidly,
1530 the potential for reclaimed water utilization in the future is likely to be enormous.
Previous analyses from China have shown that water reuse could alleviate up to 12%
of the national water stress by 2030 (Chen et al., 2023). Thus, further studies are
required to better incorporate these water resources in the YRB. Additionally, current
1535 water-saving technologies have already been widely adopted (Zhou et al., 2020). We
considered the effects of improved irrigation efficiency in future water stress
assessments, assuming that water management policies would be implemented
effectively. However, as water use efficiency increases, the marginal cost of
maintaining a decreasing trend in water use intensity increases (Sun, 2023). In other
1540 words, the sustained alleviation of water stress through improved water efficiency
would entail higher economic costs in the future. The estimation of water availability
and thus the WSI largely depends on the chosen method for determining EFR (Liu et al., 2021). A higher EFR ratio results in higher water stress, and vice versa. However,
identifying an appropriate EFR method to assess water stress is beyond the scope of

带格式的: 缩进: 首行缩进: 1 字符

删除的内容: Finally,

删除的内容: it is challenging to predict water withdrawals because future water demand will depend on the integrated effects of many factors related to economics, policies, and population (Bijl et al., 2018; Ren et al., 2024). We assumed that the water use trends of the historical period would continue in the future period. According to the predictions under various SSPs, the population of the YRB and northern China will peak around 2030 (Yin et al., 2017; Yin et al., 2020). However, the National Bureau of Statistics' latest demographic assessments show that China's population has begun to show negative growth since 2022. This is bound to affect future economic growth and changes in water use. Moreover

删除的内容: future projected water use partly incorporated the effect of water efficiency improvements and

删除的内容: W

删除的内容: hen

删除的内容: for

删除的内容: trend

删除的内容: Therefore, the ability to conserve water would gradually diminish in the future and

删除的内容: relief

删除的内容: improvement

删除的内容: be

this study.

5 Conclusions

1580 This study presents an integrated analytical framework to reveal a comprehensive
picture of a given water crisis in the YRB, including multiple water stress indicators,
driving factors of changes in WSI, and future predictions of water stress along with
potential feasible solutions. Generally speaking, analysis of critical indicators (WSI,
frequency, duration, and exposed population of water scarcity) shows that the water
1585 supply and demand situation in the YRB has evolved in an unfavorable direction during
1965–2020. Compared with the period before 1980, the regional WSI, frequency, and
duration of water scarcity increased by 76%, 100%, and 92%, respectively, over the
past two decades. Water withdrawal and water availability induced by climate change
contributed to a 36.8% and 5% increase in WSI, respectively, from P1 to P2. In contrast,
1590 these contributions were 10.4% and 11%, respectively, from P2 to P3. At the sub-basin
scale, irrigation was the primary factor driving WSI increases in the western parts of
Gansu, Ningxia, and Henan provinces before 2000. Additionally, water use in other
sectors (industry, urban, and rural) was the main reason for the rise in water stress in
the central regions of the Loess Plateau. In contrast, water availability was responsible
1595 for the changes in WSI in most of the sub-basins during the most recent decades studied.
Meanwhile, further analysis showed that upstream flows and local water yields were
the main factors contributing to changes in total water availability at the sub-basin scale.
Pressure from upstream regions of the YRB on downstream water use has gradually
increased and will be unsustainable in the future. Vegetation restoration led to a
1600 reduction in natural flow of 79% after 2000, aggravating regional water shortages.

Based on the historical trajectory of irrigation water use and the corrected socio-
economic data under different SSPs, we predict that the total water demand in the study
area during the 2030s will be 6.5% higher than in P3 (34.2 km³). This increase largely
resulted from increased urban and industrial use, partly offset by reduced irrigation.

删除的内容: limited, highlighting the important role of climate change in affecting water stress under increasingly stringent water management strategies. ... 23

删除的内容: scarcity

删除的内容: amount of people

删除的内容: to

删除的内容: the past five decades

删除的内容: the

删除的内容: s

删除的内容: had

删除的内容: 98.3

删除的内容: 112

删除的内容: 46.5

删除的内容: by

删除的内容: 2000s

删除的内容: Changes in the WSI and its drivers were sub- ... 24

删除的内容: , including wheat, rice, and vegetables and fruit,

删除的内容: dominated increases in

删除的内容: the

删除的内容: northwestern parts of the basin

删除的内容: climate change

删除的内容: 2

删除的内容: 0

删除的内容: basis of the

删除的内容: trajectory

删除的内容: of

删除的内容: YRB

删除的内容: in

删除的内容: 37

删除的内容: 4

删除的内容: ,

带格式的: 非上标/ 下标

删除的内容: resulting

删除的内容: decreased

1645 Considering sectoral water use with different priorities, the surface water deficit in the study area is predicted to range from 0.6 to 8.36 km³. The potential improvement in irrigation efficiency could resolve 25% of this water deficit (all sector demands are met), leading to a net surface water deficit of 6.3 km³. This reduction would greatly alleviate the water supply pressure on external inter-basin water transfer projects. Such efficiency gains would allow the water stress in the study area to be maintained at its 1650 current level (0.95) in the future. Under these conditions, the water crisis is expected to worsen for 44.9% of the total population and ease for 10.7%. Given the great water demand in the lower reaches of the Yellow River (below the HYK station) and the task of supplying water to other basins, it is essential to combine water supply- and demand-oriented measures to address the water crisis in the YRB. The results of this study have 1655 important implications for coping with water scarcity not only in the YRB but also in other basins facing similar situations.

Data availability

Data will be made available on request (baoqzhang@lzu.edu.cn).

1660 Author contributions

Weibin Zhang: Conceptualization, Data curation, Formal analysis, Methodology, Validation, Visualization, Writing - original draft. *Xining Zhao*: Conceptualization, Funding acquisition, Validation, Resources, Writing - Review. *Xuerui Gao*: Data curation, Methodology, Writing - Review. *Wei Liang*: Conceptualization, Methodology, 1665 Validation. *Junyi Li*: Formal analysis, Resources, Writing - Review. *Baoqing Zhang*: Conceptualization, Formal analysis, Funding acquisition, Writing - Review and Editing.

Competing interests

The authors declare that they have no known competing financial interests or personal relationships that could have appeared to influence the work reported in this paper.

已下移 [4]: In this context, the water crisis will worsen for 28.7% of the total population and ease for 12.5% of the population in the absence of any other action.

删除的内容: the

删除的内容: of

删除的内容: be

删除的内容: 0.87–10

删除的内容: in the 2030s

删除的内容: possible

删除的内容: of

删除的内容: solve 26

删除的内容: the

删除的内容: 7

删除的内容: 9

删除的内容: .

删除的内容: These measures could

删除的内容: alleviate

删除的内容: water

删除的内容: ,

删除的内容: and have the benefit of lower economic and environmental costs.

已移动 (插入) [4]

删除的内容: In this context

删除的内容: will

删除的内容: 28

删除的内容: 7

删除的内容: 2

删除的内容: 5

删除的内容: of the population in the absence of any other action

删除的内容: In summary

删除的内容: necessary

删除的内容: solve

Acknowledgments

This research was jointly supported by National Natural Science Foundation of China (NSFC) (42125705 and 42041004), National Key Research and Development Program of China (2021YFD1900700), and Fundamental Research Funds for the Central Universities (lzujbky-2023-eyt01 and lzujbky-2023-ey09). Wei Liang would like to acknowledge support from the NSFC (42071144). We also thank the editor, associate editor, and anonymous reviewers for constructive comments, which helped us to improve the manuscript substantially.

References

- Albers, L. T., Schyns, J. F., Booij, M. J., and Zhuo, L.: Blue water footprint caps per sub-catchment to mitigate water scarcity in a large river basin: The case of the Yellow River in China, *J. Hydrol.*, 603, 126992, <https://doi.org/10.1016/j.jhydrol.2021.126992>, 2021.
- Bryan, B. A., Gao, L., Ye, Y., Sun, X., Connor, J. D., Crossman, N. D., Stafford-Smith, M., Wu, J., He, C., Yu, D., Liu, Z., Li, A., Huang, Q., Ren, H., Deng, X., Zheng, H., Niu, J., Han, G., and Hou, X.: China's response to a national land-system sustainability emergency, *Nature*, 559, 193-204, 10.1038/s41586-018-0280-2, 2018.
- Chen, S., Zhang, L., Liu, B., Yi, H., Su, H., Kharrazi, A., Jiang, F., Lu, Z., Crittenden, J. C., and Chen, B.: Decoupling wastewater-related greenhouse gas emissions and water stress alleviation across 300 cities in China is challenging yet plausible by 2030, *Nature Water*, 1, 534-546, 10.1038/s44221-023-00087-4, 2023.
- Cui, T., Li, Y., Yang, L., Nan, Y., Li, K., Tudaji, M., Hu, H., Long, D., Shahid, M., Mubeen, A., He, Z., Yong, B., Lu, H., Li, C., Ni, G., Hu, C., and Tian, F.: Non-monotonic changes in Asian Water Towers' streamflow at increasing warming levels, *Nat. Commun.*, 14, 1176, 10.1038/s41467-023-36804-6, 2023.
- Degefu, D. M., Weijun, H., Zaiyi, L., Liang, Y., Zhengwei, H., and Min, A.: Mapping monthly water scarcity in global transboundary basins at country-basin mesh

- 1730 based spatial resolution, *Sci. Rep.*, 8, 2144, 10.1038/s41598-018-20032-w, 2018.
- Deng, L., Shangguan, Z., Bell, S. M., Soromotin, A. V., Peng, C., An, S., Wu, X., Xu, X., Wang, K., Li, J., Tang, Z., Yan, W., Zhang, F., Li, J., Wu, J., and Kuzyakov, Y.: Carbon in Chinese grasslands: meta-analysis and theory of grazing effects, *Carbon Research*, 2, 19, 10.1007/s44246-023-00051-7, 2023.
- 1735 Feng, X., Fu, B., Piao, S., Wang, S., Ciais, P., Zeng, Z., Lu, Y., Zeng, Y., Li, Y., Jiang, X., and Wu, B.: Revegetation in China's Loess Plateau is approaching sustainable water resource limits, *Nat. Clim. Change*, 6, 1019-1022, 10.1038/nclimate3092, 2016.
- Florke, M., Kynast, E., Barlund, I., Eisner, S., Wimmer, F., and Alcamo, J.: Domestic
1740 and industrial water uses of the past 60 years as a mirror of socio-economic development: A global simulation study, *Global Environ. Change*, 23, 144-156, 2013.
- Greve, P., Kahil, T., Mochizuki, J., Schinko, T., Satoh, Y., Burek, P., Fischer, G., Tramberend, S., Burtscher, R., Langan, S., and Wada, Y.: Global assessment of
1745 water challenges under uncertainty in water scarcity projections, *Nat. Sustain.*, 1, 486-494, 10.1038/s41893-018-0134-9, 2018.
- Haddeland, I., Heinke, J., Biemans, H., Eisner, S., Flörke, M., Hanasaki, N., Konzmann, M., Ludwig, F., Masaki, Y., Schewe, J., Stacke, T., Tessler, Z. D., Wada, Y., and
1750 Wissler, D.: Global water resources affected by human interventions and climate change, *Proc. Natl. Acad. Sci. USA*, 111, 3251-3256, 10.1073/pnas.1222475110, 2014.
- Han, S., Leng, G., and Yu, L.: Review of Quantitative Applications of the Concept of the Water Planetary Boundary at Different Spatial Scales, *Water Resour. Res.*, 59, e2022WR033646, <https://doi.org/10.1029/2022WR033646>, 2023.
- 1755 Hanasaki, N., Fujimori, S., Yamamoto, T., Yoshikawa, S., Masaki, Y., Hijioka, Y., Kainuma, M., Kanamori, Y., Masui, T., Takahashi, K., and Kanae, S.: A global water scarcity assessment under Shared Socio-economic Pathways – Part 1: Water use, *Hydrol. Earth Syst. Sci.*, 17, 2375-2391, 10.5194/hess-17-2375-2013, 2013.

- 1760 Hastie, A. G., Otrubina, V. V., and Stillwell, A. S.: Lack of Clarity Around Policies, Data Management, and Infrastructure May Hinder the Efficient Use of Reclaimed Water Resources in the United States, *ACS ES&T Water*, 2, 2289-2296, 10.1021/acsestwater.2c00307, 2022.
- He, C., Liu, Z., Wu, J., Pan, X., Fang, Z., Li, J., and Bryan, B. A.: Future global urban water scarcity and potential solutions, *Nat. Commun.*, 12, 4667, 10.1038/s41467-021-25026-3, 2021.
- 1765 Huang, Z., Hejazi, M., Li, X., Tang, Q., Vernon, C., Leng, G., Liu, Y., Döll, P., Eisner, S., Gerten, D., Hanasaki, N., and Wada, Y.: Reconstruction of global gridded monthly sectoral water withdrawals for 1971–2010 and analysis of their spatiotemporal patterns, *Hydrol. Earth Syst. Sci.*, 22, 2117-2133, 10.5194/hess-22-2117-2018, 2018.
- 1770 Huang, Z., Yuan, X., and Liu, X.: The key drivers for the changes in global water scarcity: Water withdrawal versus water availability, *J. Hydrol.*, 601, 126658, <https://doi.org/10.1016/j.jhydrol.2021.126658>, 2021.
- 1775 Huang, Z., Yuan, X., Liu, X., and Tang, Q.: Growing control of climate change on water scarcity alleviation over northern part of China, *Journal of Hydrology: Regional Studies*, 46, 101332, <https://doi.org/10.1016/j.ejrh.2023.101332>, 2023.
- Hugonnet, R., McNabb, R., Berthier, E., Menounos, B., Nuth, C., Girod, L., Farinotti, D., Huss, M., Dussailant, I., Brun, F., and Kääb, A.: Accelerated global glacier mass loss in the early twenty-first century, *Nature*, 592, 726-731, 10.1038/s41586-021-03436-z, 2021.
- 1780 Ji, P., Yuan, X., and Jiao, Y.: Future hydrological drought changes over the upper Yellow River basin: The role of climate change, land cover change and reservoir operation, *J. Hydrol.*, 617, 129128, <https://doi.org/10.1016/j.jhydrol.2023.129128>, 2023.
- 1785 Kuang, X., and Jiao, J. J.: Review on climate change on the Tibetan Plateau during the last half century, *J. Geophys. Res.: Atmos.*, 121, 3979-4007, <https://doi.org/10.1002/2015JD024728>, 2016.
- Liang, W., Fu, B., Wang, S., Zhang, W., Jin, Z., Feng, X., Yan, J., Liu, Y., and Zhou, S.: Quantification of the ecosystem carrying capacity on China's Loess Plateau, *Ecol.*

- 1790 Indicators, 101, 192-202, <https://doi.org/10.1016/j.ecolind.2019.01.020>, 2019.
- Liu, L., Lopez, E., Dueñas-Osorio, L., Stadler, L., Xie, Y., Alvarez, P. J. J., and Li, Q.: The importance of system configuration for distributed direct potable water reuse, *Nat. Sustain.*, 3, 548-555, [10.1038/s41893-020-0518-5](https://doi.org/10.1038/s41893-020-0518-5), 2020.
- Liu, X., Liu, W., Liu, L., Tang, Q., Liu, J., and Yang, H.: Environmental flow requirements largely reshape global surface water scarcity assessment, *Environmental Research Letters*, 16, 104029, [10.1088/1748-9326/ac27cb](https://doi.org/10.1088/1748-9326/ac27cb), 2021.
- 1795 Liu, X., Tang, Q., Liu, W., Veldkamp, T. I. E., Boulange, J., Liu, J., Wada, Y., Huang, Z., and Yang, H.: A spatially explicit assessment of growing water stress in China from the past to the future, *Earth's Future*, 7, 1027-1043, <https://doi.org/10.1029/2019EF001181>, 2019.
- 1800 Liu, Y., Xin, Z., Sun, S., Zhang, C., and Fu, G.: Assessing environmental, economic, and social impacts of inter-basin water transfer in China, *J. Hydrol.*, 625, 130008, [10.1016/j.jhydrol.2023.130008](https://doi.org/10.1016/j.jhydrol.2023.130008), 2023.
- Long, D., Yang, W., Scanlon, B. R., Zhao, J., Liu, D., Burek, P., Pan, Y., You, L., and 1805 Wada, Y.: South-to-North Water Diversion stabilizing Beijing's groundwater levels, *Nat. Commun.*, 11, 3665, [10.1038/s41467-020-17428-6](https://doi.org/10.1038/s41467-020-17428-6), 2020.
- Ma, T., Sun, S., Fu, G., Hall, J. W., Ni, Y., He, L., Yi, J., Zhao, N., Du, Y., Pei, T., Cheng, W., Song, C., Fang, C., and Zhou, C.: Pollution exacerbates China's water scarcity and its regional inequality, *Nat. Commun.*, 11, 650, [10.1038/s41467-020-14532-5](https://doi.org/10.1038/s41467-020-14532-5), 1810 2020a.
- Ma, Z. G., Fu, C. B., Zhou, T. J., Li, M. X., Zheng, Z. Y., Chen, L., Lv, M. X., and Yan, Z. W.: Status and ponder of climate and hydrology changes in the Yellow River Basin, *Bulletin of Chinese Academy of Sciences*, 35, 52-60, [10.16418/j.issn.1000-3045.20191223002](https://doi.org/10.16418/j.issn.1000-3045.20191223002), 2020b.
- 1815 McDonald, R. I., Green, P., Balk, D., Fekete, B. M., Revenga, C., Todd, M., and Montgomery, M.: Urban growth, climate change, and freshwater availability, *Proc. Natl. Acad. Sci. USA*, 108, 6312-6317, [doi:10.1073/pnas.1011615108](https://doi.org/10.1073/pnas.1011615108), 2011.
- Mekonnen, M. M., and Hoekstra, A. Y.: Four billion people facing severe water scarcity, *Sci. Adv.*, 2, e1500323, [doi:10.1126/sciadv.1500323](https://doi.org/10.1126/sciadv.1500323), 2016.

- 1820 Munia, H. A., Guillaume, J. H. A., Wada, Y., Veldkamp, T., Virkki, V., and Kummu, M.:
Future transboundary water stress and its drivers under climate change: a global
study, *Earth's Future*, 8, e2019EF001321, <https://doi.org/10.1029/2019EF001321>,
2020.
- Niu, C., Chang, J., Wang, Y., Shi, X., Wang, X., Guo, A., Jin, W., and Zhou, S.: A Water
1825 Resource Equilibrium Regulation Model Under Water Resource Utilization
Conflict: A Case Study in the Yellow River Basin, *Water Resour. Res.*, 58,
e2021WR030779, <https://doi.org/10.1029/2021WR030779>, 2022.
- Oki, T., and Kanae, S.: Global hydrological cycles and world water resources, *Science*,
313, 1068-1072, doi:10.1126/science.1128845, 2006.
- 1830 Omer, A., Elagib, N. A., Zhuguo, M., Saleem, F., and Mohammed, A.: Water scarcity
in the Yellow River Basin under future climate change and human activities, *Sci.
Total Environ.*, 749, 141446, <https://doi.org/10.1016/j.scitotenv.2020.141446>,
2020.
- Pastor, A. V., Ludwig, F., Biemans, H., Hoff, H., and Kabat, P.: Accounting for
1835 environmental flow requirements in global water assessments, *Hydrol. Earth Syst.
Sci.*, 18, 5041-5059, 10.5194/hess-18-5041-2014, 2014.
- Porkka, M., Gerten, D., Schaphoff, S., Siebert, S., and Kummu, M.: Causes and trends
of water scarcity in food production, *Environmental Research Letters*, 11, 015001,
10.1088/1748-9326/11/1/015001, 2016.
- 1840 Qin, Y.: Global competing water uses for food and energy, *Environmental Research
Letters*, 16, 064091, 10.1088/1748-9326/ac06fa, 2021.
- Qin, Y., Mueller, N. D., Siebert, S., Jackson, R. B., AghaKouchak, A., Zimmerman, J.
B., Tong, D., Hong, C., and Davis, S. J.: Flexibility and intensity of global water
use, *Nat. Sustain.*, 2, 515-523, 10.1038/s41893-019-0294-2, 2019.
- 1845 Rodell, M., and Li, B.: Changing intensity of hydroclimatic extreme events revealed by
GRACE and GRACE-FO, *Nature Water*, 1, 241-248, 10.1038/s44221-023-00040-
5, 2023.
- Scanlon, B. R., Fakhreddine, S., Rateb, A., de Graaf, I., Famiglietti, J., Gleeson, T.,
Grafton, R. Q., Jobbagy, E., Kebede, S., Kolusu, S. R., Konikow, L. F., Long, D.,

- 1850 Mekonnen, M., Schmied, H. M., Mukherjee, A., MacDonald, A., Reedy, R. C., Shamsudduha, M., Simmons, C. T., Sun, A., Taylor, R. G., Villholth, K. G., Vörösmarty, C. J., and Zheng, C.: Global water resources and the role of groundwater in a resilient water future, *Nature Reviews Earth & Environment*, 4, 87-101, 10.1038/s43017-022-00378-6, 2023.
- 1855 Schewe, J., Heinke, J., Gerten, D., Haddeland, I., Arnell, N. W., Clark, D. B., Dankers, R., Eisner, S., Fekete, B. M., and Cológonzález, F. J.: Multimodel assessment of water scarcity under climate change, *Proc. Natl. Acad. Sci. USA*, 111, 3245, 2014.
- Song, S., Wang, S., Wu, X., Wei, Y., Cumming, G. S., Qin, Y., Wu, X., and Fu, B.: Identifying regime transitions for water governance in the Yellow River Basin, China, *Water Resour. Res.*, 59, e2022WR033819, <https://doi.org/10.1029/2022WR033819>, 2023.
- 1860 Sun, S.: Water use efficiency evolution in the Yellow River Basin: an integrated analysis of spatial-temporal decomposition, *Hydrol. Sci. J.*, 68, 119-130, 10.1080/02626667.2022.2150552, 2023.
- 1865 Sun, S., Zhou, X., Liu, H., Jiang, Y., Zhou, H., Zhang, C., and Fu, G.: Unraveling the effect of inter-basin water transfer on reducing water scarcity and its inequality in China, *Water Res.*, 194, 116931, <https://doi.org/10.1016/j.watres.2021.116931>, 2021.
- Tang, Y., Tang, Q., Tian, F., Zhang, Z., and Liu, G.: Responses of natural runoff to recent climatic variations in the Yellow River basin, China, *Hydrol. Earth Syst. Sci.*, 17, 4471-4480, 10.5194/hess-17-4471-2013, 2013.
- 1870 UNEP: Options for Decoupling Economic Growth from Water use and Water Pollution (<https://www.resourcepanel.org/file/342/download?token=LmsRBoq4>), 2015.
- Veldkamp, T. I. E., Wada, Y., Aerts, J. C. J. H., Döll, P., Gosling, S. N., Liu, J., Masaki, Y., Oki, T., Ostberg, S., Pokhrel, Y., Satoh, Y., Kim, H., and Ward, P. J.: Water scarcity hotspots travel downstream due to human interventions in the 20th and 21st century, *Nat. Commun.*, 8, 15697, 10.1038/ncomms15697, 2017.
- 1875 Wada, Y., de Graaf, I. E. M., and van Beek, L. P. H.: High-resolution modeling of human and climate impacts on global water resources, *Journal of Advances in Modeling*

- 1880 Earth Systems, 8, 735-763, <https://doi.org/10.1002/2015MS000618>, 2016a.
- Wada, Y., Florke, M., Hanasaki, N., Eisner, S., Fischer, G., Tramberend, S., Satoh, Y., Van Vliet, M., Yillia, P., and Ringler, C.: Modeling global water use for the 21st century: the Water Futures and Solutions (WFaS) initiative and its approaches, *Geoscientific Model Development*, 9, 175-222, 2016b.
- 1885 Wada, Y., van Beek, L. P. H., and Bierkens, M. F. P.: Modelling global water stress of the recent past: on the relative importance of trends in water demand and climate variability, *Hydrol. Earth Syst. Sci.*, 15, 3785-3808, [10.5194/hess-15-3785-2011](https://doi.org/10.5194/hess-15-3785-2011), 2011.
- Wang, F., Duan, K., Fu, S., Gou, F., Liang, W., Yan, J., and Zhang, W.: Partitioning
1890 climate and human contributions to changes in mean annual streamflow based on the Budyko complementary relationship in the Loess Plateau, China, *Sci. Total Environ.*, 665, 579-590, <https://doi.org/10.1016/j.scitotenv.2019.01.386>, 2019.
- Wang, J., Li, Y., Huang, J., Yan, T., and Sun, T.: Growing water scarcity, food security and government responses in China, *Global Food Security*, 14, 9-17,
1895 <https://doi.org/10.1016/j.gfs.2017.01.003>, 2017.
- Wang, T., Yang, D., Yang, Y., Zheng, G., Jin, H., Yao, T., and Cheng, G.: Unsustainable water supply from thawing permafrost on the Tibetan Plateau in a changing climate, *Science Bulletin*, 68, [10.1016/j.scib.2023.04.037](https://doi.org/10.1016/j.scib.2023.04.037), 2023.
- Wang, X., Xiao, X., Zou, Z., Dong, J., Qin, Y., Doughty, R. B., Menarguez, M. A., Chen,
1900 B., Wang, J., Ye, H., Ma, J., Zhong, Q., Zhao, B., and Li, B.: Gainers and losers of surface and terrestrial water resources in China during 1989–2016, *Nat. Commun.*, 11, 3471, [10.1038/s41467-020-17103-w](https://doi.org/10.1038/s41467-020-17103-w), 2020.
- Webber, M., Han, X., Rogers, S., Wang, M., Jiang, H., Zhang, W., Barnett, J., and Zhen, N.: Inside-out: Chinese academic assessments of large-scale water infrastructure,
1905 *WIREs Water*, 8, e1556, <https://doi.org/10.1002/wat2.1556>, 2021.
- Xie, P., Zhuo, L., Yang, X., Huang, H., Gao, X., and Wu, P.: Spatial-temporal variations in blue and green water resources, water footprints and water scarcities in a large river basin: A case for the Yellow River basin, *J. Hydrol.*, 590, 125222, <https://doi.org/10.1016/j.jhydrol.2020.125222>, 2020.

- 1910 Xu, Z., Cheng, L., Liu, P., Hou, Q., Cheng, S., Qin, S., Liu, L., and Xia, J.: Investigating the spatial variability of water security risk and its driving mechanisms in China using machine learning, *Journal of Cleaner Production*, 362, 132303, <https://doi.org/10.1016/j.jclepro.2022.132303>, 2022.
- Yang, Y., Chen, S., Zhou, Y., Ma, G., Huang, W., and Zhu, Y.: Method for quantitatively assessing the impact of an inter-basin water transfer project on ecological environment-power generation in a water supply region, *J. Hydrol.*, 618, 129250, <https://doi.org/10.1016/j.jhydrol.2023.129250>, 2023.
- 1915
- Yao, C., Zhang, H., Zhang, S., Dang, C., Mu, D., Zhang, Y., and Lyu, F.: A categorical quantification of the effects of vegetation restorations on streamflow variations in the Loess Plateau, China, *J. Hydrol.*, 628, 130577, <https://doi.org/10.1016/j.jhydrol.2023.130577>, 2024.
- 1920
- Yin, Y., Tang, Q., Liu, X., and Zhang, X.: Water scarcity under various socio-economic pathways and its potential effects on food production in the Yellow River basin, *Hydrol. Earth Syst. Sci.*, 21, 1-29, 10.5194/hess-21-791-2017, 2017.
- 1925
- Yin, Y., Wang, L., Wang, Z., Tang, Q., Piao, S., Chen, D., Xia, J., Conradt, T., Liu, J., Wada, Y., Cai, X., Xie, Z., Duan, Q., Li, X., Zhou, J., and Zhang, J.: Quantifying water scarcity in Northern China within the context of climatic and societal changes and South-to-North Water Diversion, *Earth's Future*, 8, e2020EF001492, <https://doi.org/10.1029/2020EF001492>, 2020.
- 1930
- Zhang, B., Tian, L., He, C., and He, X.: Response of erosive precipitation to vegetation restoration and its effect on soil and water conservation over China's Loess Plateau, *Water Resour. Res.*, 59, 10.1029/2022WR033382, 2023a.
- Zhang, Q., Shen, Z., Pokhrel, Y., Farinotti, D., Singh, V. P., Xu, C.-Y., Wu, W., and Wang, G.: Oceanic climate changes threaten the sustainability of Asia's water tower, *Nature*, 615, 87-93, 10.1038/s41586-022-05643-8, 2023b.
- 1935
- Zhang, S., Yang, Y., McVicar, T., and Yang, D.: An analytical solution for the impact of vegetation changes on hydrological partitioning within the Budyko framework, *Water Resour. Res.*, 54, 10.1002/2017WR022028, 2018.
- Zhang, W., Liang, W., Gao, X., Li, J., and Zhao, X.: Trajectory in water scarcity and

- 1940 potential water savings benefits in the Yellow River basin, *J. Hydrol.*, 130998, <https://doi.org/10.1016/j.jhydrol.2024.130998>, 2024.
- Zhang, W., Liang, W., Tian, L., and Zhao, X.: Climatic and different human influences on annual and seasonal streamflow with considering the soil water storage change in the middle reaches of the Yellow River basin, China, *J. Hydrol.*, 619, 129298, 1945 <https://doi.org/10.1016/j.jhydrol.2023.129298>, 2023c.
- Zhang, W., Zha, X., Li, J., Liang, W., Ma, Y., Fan, D., and Li, S.: Spatiotemporal change of blue water and green water resources in the Headwater of Yellow River Basin, China, *Water Resour. Manage.*, 28, 4715-4732, 10.1007/s11269-014-0769-x, 2014.
- Zhao, X., Liu, J., Liu, Q., Tillotson, M. R., Guan, D., and Hubacek, K.: Physical and 1950 virtual water transfers for regional water stress alleviation in China, *Proc. Natl. Acad. Sci. USA*, 112, 1031-1035, doi:10.1073/pnas.1404130112, 2015.
- Zhou, F., Bo, Y., Ciais, P., Dumas, P., Tang, Q., Wang, X., Liu, J., Zheng, C., Polcher, J., Yin, Z., Guimberteau, M., Peng, S., Otle, C., Zhao, X., Zhao, J., Tan, Q., Chen, L., Shen, H., Yang, H., Piao, S., Wang, H., and Wada, Y.: Deceleration of China's 1955 human water use and its key drivers, *Proc. Natl. Acad. Sci. USA*, 117, 7702, 10.1073/pnas.1909902117, 2020.
- Zhou, X., Polcher, J., and Dumas, P.: Representing human water management in a land surface model using a supply/demand approach, *Water Resour. Res.*, 57, 10.1029/2020WR028133, 2021.
- 1960 Zhou, X., Yang, Y., Sheng, Z., and Zhang, Y.: Reconstructed natural runoff helps to quantify the relationship between upstream water use and downstream water scarcity in China's river basins, *Hydrol. Earth Syst. Sci.*, 23, 2491-2505, 10.5194/hess-23-2491-2019, 2019.
- Zhuo, L., Mekonnen, M. M., Hoekstra, A. Y., and Wada, Y.: Inter- and intra-annual 1965 variation of water footprint of crops and blue water scarcity in the Yellow River basin (1961–2009), *Advances in Water Resources*, 87, 29-41, <https://doi.org/10.1016/j.advwatres.2015.11.002>, 2016.