

Response to Reviewer#1:

Your valuable insights have significantly contributed to enhancing the quality of our manuscript. I feel extremely honored to receive such positive and constructive feedback from you. I genuinely appreciate every thoughtful suggestion you've provided and will address each one of them with utmost care, offering detailed responses in return.

In the revised manuscript, we have meticulously restructured and refined the logic and content of the abstract, introduction, discussion, and image sections. **The revisions in the manuscript are indicated using red font.** Below is a comprehensive overview of the modifications we have made:

General comments:

This paper analyze the changes in soil salinity in the Shiyang River Basin using remote sensing and observation data from 2002 to 2022 and attempt to explore the impacts of the soil salinity changes on water conservancy projects, farmland, irrigation, and climate change. The scope of the study fits well with the journal's theme of the study of the spatial and temporal characteristics of the global water resources.

However, although the title claims that Soil salinity patterns reveal changes in the water cycle, the results section and the subsequent analysis do not justify this claim. The results section only shows the results relating to the evolution (trend of increase or decrease) of the surfaces in the different severity ranges considered, without detailing the specific methodology used to obtain them or the assessment of the accuracy of these results. In the discussion section, it is not put in context with the existing literature and appears to be a continuation of the results. Moreover, the conclusions on the impact on the water cycle are not justified by the results presented. After reviewing the manuscript and based on these comments, I recommend that the manuscript be reconsidered after a major revision to address the identified shortcomings.

Respond: Thank you very much for your insights. To provide more comprehensive

content, we have diligently reviewed and refined the abstract, introduction, literature review, research methods, results, discussion and conclusion, aiming to enhance the depth of our research focus.

Specific comments:

The introduction section should expand the study of the use of remote sensing in salinity analysis, and coordinate with the new discussion section that will need to be written to compare with previous works in this field. The novelty of the article should be emphasized, especially in the Introduction.

Respond: We have reorganized the structure of the introduction section and added relevant research, as shown below:

Land is an essential natural resource for human beings with economic, social, and ecological benefits in various production activities (Lambin and Meyfroidt., 2011). Soil is the basis of natural ecosystems. Material and energy can cycle within the system and interact with the biosphere, hydrosphere, atmosphere, and so on (Seneviratne et al., 2010; Smith et al., 2015). Soils can promote plant growth and coordinate the watershed water cycle by regulating infiltration and distribution of precipitation. The purification capacity of soils breaks down potential pollutants, preventing water and air pollution to some extent (Bünemann et al., 2018; Banwater et al., 2019). At the same time, water bodies also impact soil quality, mainly through irrigation and precipitation, which influence changes in soil composition. Once soil quality decreases or degrades, it will cause irreversible damage and directly affect human life (Reynolds et al., 2007; Abu Hammad and Tumeizi, 2012). Soil salinization is critical to land degradation (Daliakopoulos et al., 2016). It specifically means that water is lost after groundwater rises to the surface through evaporation from soil pores to the atmosphere under high temperatures. At the same time, heavy masses of salts remain at the surface as they precipitate. Long-term accumulation of salts at the soil surface affects the growth of all types of crops, which can lead to negative consequences such as reduced yields (Qadir and Oster, 2004; Folberth et al., 2016). Soil salinization can be divided into primary and secondary salinization according to

the cause of its formation. Primary salinization is mainly influenced by natural factors such as physical or chemical interaction of rocks during the water cycle, sea level rise leading to erosion of coastal land, infiltration of sedimentary brine, evaporation from sea level, changes in the composition of the soil colony, and atmospheric precipitation, all of which increase the salt concentration in the groundwater, resulting in widespread soil salinization (Kaushal et al., 2005; Zhuang et al., 2021; Perri et al., 2022).

The problem of secondary salinization of soil triggered by human activities and incredibly irrational agricultural irrigation has increased the risk of elevated salt concentrations in groundwater (Sharma and Minhas, 2005). It has become a challenge in areas such as hydrology and agriculture. Artificial water transfer projects have significantly altered the connectivity between groundwater and soil water, and the trend of salt enrichment to the surface through evaporation has become more pronounced. Seasonal storage in reservoirs also affects soil water salinity in watersheds. The global area of saline soils is estimated to have exceeded 833 million hectares (Food and Agriculture Organization of the United Nations). Globally, about 20 percent of agricultural land and 33 percent of irrigated agricultural land is saline (Xiao et al., 2023), which is expected to worsen (Hassani et al., 2021). In the inland river basins of the arid zone, the climate is exceptionally arid, the intensity of evaporation from soils and plants is high, and the water table is high. Soil salinization in arid and semi-arid regions is more severe and more extensive, with salinized cultivated land in the inland northwest accounting for nearly one-fifth of the total cultivated land in China; therefore, the study of soil salinization in inland river basins in the arid zone is conducive to the understanding of water cycle processes and mechanisms in the basins and is of great significance in irrigated agriculture and water resource management (Wei et al., 2020).

Remote sensing technology has been widely used to assess soil salinization, and feature spectral characteristics are essential markers for identifying saline soils (Konstantin et al., 2019). There is a significant difference in reflectance between various soil salinity levels in the visible light and near-infrared bands. Saline soils

exhibit higher reflectance compared to non-saline soils and show absorption peaks in the visible light band. There is a positive correlation between soil reflectance and soil salinization. (Metternicht et al., 2003; Farifteh et al., 2007; Abderrazak et al., 2016; Zhang and Huang, 2019; Lotfollahi et al., 2023). Saline soils show absorption peaks in the visible band, and there is a positive correlation between their soil reflectance and soil salinity. In world-scale soil salinity studies, researchers have used machine learning methods to monitor the dynamics of soil surface salinity over the past four decades (Hassani et al., 2020) and ML algorithms to predict soil salinity in the 21st century in the context of global climate change (Hassani et al., 2021). It was found that the salt-affected areas were mainly distributed in arid and semi-arid regions, significantly more severe in northwestern China (Li et al., 2014). The risk challenge of soil salinization is further increased in arid and semi-arid regions of China due to their special climatic conditions, which are influenced by irrigation, drainage, and ecological water transport (Wang et al., 2012; Miguel et al., 2013). The temporal and spatial relationship between soil salinization and groundwater decline exacerbates the regional water-salt imbalance. Irrigated agriculture carries salts into the groundwater layers, leading to increased groundwater salinity and resulting in soil salinization in irrigation areas (Foster et al., 2018). Furthermore, as more land is converted to farmland, increased irrigation leads to salt accumulation. The overexploitation of land resources has had a significant and lasting impact on soil salinization (Wang et al., 2013; Yin et al., 2021).

The Shiyang River Basin, located in the arid region of Northwest China, is a typical inland river basin where soil salinization is a prominent issue closely linked to factors such as hydraulic engineering and irrigation activities. Therefore, assessing the distribution of soil salinization in this basin is crucial for understanding how natural and human activities impact soil salinization in arid areas. In this study, we aim to address the following questions: (1) Quantitatively analyze the degree of salinization in the Shiyang River Basin and reveal its spatial and temporal distribution characteristics; (2) analyze the impacts of water cycle changes on salinization. The study's results will help clarify the impact of the water cycle on soil salinization in the

inland river basin and provide a scientific basis for agricultural development, ecological construction, and water resource use planning in the arid zone.

All data sources should be grouped together in a single section, in order to have a better overview of the whole set of data used: satellite images, land use maps, land use maps, etc.

Respond: Thank you for your suggestions. We have summarized and organized the data sources used in section 2.2, including land satellite data, land use data, and digital elevation models, and indicated their sources.

- Line 159 refers to a DEM but does not indicate its source.

Respond: The source of the DEM is the ASTER GDEM data, jointly developed and freely distributed to the public by Japan's METI and NASA. I have added the data source to the text, as shown below:

The Digital Elevation Model (DEM) data is ASTER GDEM data jointly developed by Japan's METI and the U.S. NASA, distributed to the public for free with a resolution of 30m. This data can be downloaded at <http://reverb.echo.nasa.gov/reverb/>. Slope data is calculated from the DEM data.

- Line 152, please clarify if you are referring to satellite images.

Respond: We are referring to the Landsat series satellite imagery, and I have made clarifications in the text as shown below:

This article selects the years 2002, 2007, 2012, 2017, and 2022 as the study periods, with four satellite remote sensing images chosen for each period to cover the entire study area.

• Line 153, summer images are the least likely to have clouds, but could you indicate why summer images are the best for measuring salinity?

Respond: In the identification of saline soils, the primary reason for prioritizing summer remote sensing images is that the high-temperature and dry conditions in summer promote more frequent water and salt movement. In this environment, surface evaporation is significant, salt crystallization is enhanced, and combined with the effects of irrigation, soil salinity tends to accumulate on the surface. Therefore, it is easier to identify through remote sensing images (Allbed & Kumar, 2013).

Additionally, the area around the Shiyang River is covered with snow in winter, March in spring, and November in autumn, making it difficult to effectively identify salinity.

Allbed A, Kumar L. Soil salinity mapping and monitoring in arid and semi-arid regions using remote sensing technology: a review[J]. *Advances in remote sensing*, 2013, 2013.

- Line 155, pre-processing of the image (radiometric correction) is not "improving the image quality", it is a necessary step in the process.

Respond: Thank you for pointing out the issue. We have made modifications to this section in the original text as shown below:

For the subsequent remote sensing inversion of salinity and alkalinity, preliminary preprocessing of the images in ENVI5.3 software is necessary(Source: <https://www.l3harrisgeospatial.com/Software-Technology/ENVI>), including steps such as radiometric calibration, atmospheric correction, image fusion, image mosaicking, and image clipping.

- Line 160, The workflow in figure 2 helps in understanding the steps but should also be explained in the body of the text.

Respond: We have provided a textual description of the flowchart in Figure 2 in Section 2.3, as shown below:

This article selects the years 2002, 2007, 2012, 2017, and 2022 as the study periods, with four satellite remote sensing images chosen for each period to cover the entire study area. Preference is given to downloading high-quality satellite remote sensing images from the summer of each year, with cloud cover less than 1%, as this is more conducive to identifying the salinity and alkalinity levels of the soil (Allbed & Kumar, 2013). For the subsequent remote sensing inversion of salinity and alkalinity, preliminary preprocessing of the images in ENVI5.3 software is necessary(Source: <https://www.l3harrisgeospatial.com/Software-Technology/ENVI>), including steps such as radiometric calibration, atmospheric correction, image fusion, image mosaicking, and image clipping. Based on the natural attributes of the soil in the study area, auxiliary data, and field survey conditions, we use high-resolution images from

Google Maps to select interpretation markers for mild, moderate, and severe saline-alkaline land and other land types. Next, we adjust the band combination of satellite remote sensing images to be most suitable for extracting saline-alkaline land (Khan et al., 2005; Jia et al., 2024). Using the Normalized Difference Salinity Index (NDSI), slope data, and texture features as references, we employ a Support Vector Machine (SVM) algorithm for supervised classification to identify the distribution of saline-alkaline land in the study area. The formula is as follows:

$$\min_{w, b, \xi_i} \left(\frac{1}{2} \|w\|^2 + C \sum_{i=1}^n \xi_i \right) \quad (1)$$

$$y_i(w \cdot x_i) \geq 1 - \xi_i, \xi_i \geq 0, i = 1, \dots, n \quad (2)$$

In the formula, w represents the weight vector, which defines the direction of the hyperplane; b is the bias term, defining the offset of the hyperplane; ξ_i is the slack variable, which increases the robustness of the model; C is the regularization parameter, balancing the model complexity and training error; y_i is the label of data point i , commonly used to define a hyperplane.

Finally, the accuracy of the supervised classification results is evaluated using the confusion matrix method, including overall classification accuracy, Kappa coefficient, etc. The data processing flow is shown in Figure 2.

- Line 164, it is mentioned that "In the spectral region, saline soils have higher reflectance than non-saline soils" given the importance of this aspect, it should be expanded and justified with other previous works.

Respond: During the literature review for the article, we observed this viewpoint extensively in numerous studies: in the visible and near-infrared bands, saline soils reflect more than non-saline soils due to their lower moisture content. Therefore, we adopted this viewpoint in our research. Given its importance, we have added the relevant references in the original text, as shown below:

Metternicht G I, Zinck J A. Remote sensing of soil salinity: potentials and constraints[J]. Remote sensing of environment, 2003, 85(1): 1-20.

Farifteh J, Van der Meer F, Atzberger C, et al. Quantitative analysis of salt-affected

soil reflectance spectra: A comparison of two adaptive methods (PLSR and ANN)[J]. *Remote Sensing of Environment*, 2007, 110(1): 59-78.

El Harti A, Lhissou R, Chokmani K, et al. Spatiotemporal monitoring of soil salinization in irrigated Tadla Plain (Morocco) using satellite spectral indices[J]. *International Journal of Applied Earth Observation and Geoinformation*, 2016, 50: 64-73.

Zhang X, Huang B. Prediction of soil salinity with soil-reflected spectra: A comparison of two regression methods[J]. *Scientific Reports*, 2019, 9(1): 5067.

Lotfollahi L, Delavar M A, Biswas A, et al. Spectral prediction of soil salinity and alkalinity indicators using visible, near-, and mid-infrared spectroscopy[J]. *Journal of Environmental Management*, 2023, 345: 118854.

- Line 165 Indicate how many control points have been used for each salinity range studied, detail their spatial location, check if there is a balance in relation to the irrigation areas studied, etc. It should also be indicated how they have been divided into train-test-validation for accuracy control.

Respond:In this study, remote sensing images from 2002, 2007, 2012, 2017, and 2022 were selected for salinity inversion in the Shiyang River Basin. Control points were selected on Google Maps for classification, with 25 points each chosen for the four areas of interest: slightly saline-alkaline land, moderately saline-alkaline land, heavily saline-alkaline land, and others. These control points can be overlaid on the irrigation area. Finally, sample points were used to verify the accuracy of the classification results. The classification accuracies for the five years were 89.40%, 88.37%, 89.80%, 99.52%, and 96.83%, respectively, and the kappa coefficients were 0.82, 0.81, 0.82, 0.99, and 0.95.

- Line 166 indicates that the band combinations of remote sensing imagery most suitable for saline soil extraction have been adjusted. However, no further information is given on how this has been done. This part of the methodology is of vital importance in the results obtained and should be completed extensively. What alternative band combinations have been used? Which are the ones that work best and on what criteria are they based to measure it?

Respond: Since the spectral characteristics of saline soils are quite distinct in the visible and near-infrared bands, we often use various spectral salinity indices for monitoring saline soils. Examples include the three salinity indices proposed by Khan: Brightness Index (BI), Normalized Difference Salinity Index (NDSI), and Salinity Index (SI), among which the NDSI has shown better results in research (Khan et al., 2005; Jia et al., 2024). Therefore, in the preliminary stages, we calculate the NDSI for the bands and use it as one of the features to identify and classify saline-alkaline land.

Jia P, Zhang J, Liang Y, et al. The inversion of arid-coastal cultivated soil salinity using explainable machine learning and Sentinel-2[J]. *Ecological Indicators*, 2024, 166: 112364.

Khan N M, Rastokuev V V, Sato Y, et al. Assessment of hydrosaline land degradation by using a simple approach of remote sensing indicators[J]. *Agricultural Water Management*, 2005, 77(1-3): 96-109.

- Line 168 should indicate the supervised classification method that has been used, taking into account the importance of these results in the conclusions that are intended to be drawn in this study, the way in which the accuracy of the classifications has been evaluated should be described in an exhaustive manner.

Respond: Thank you for your suggestion. We have conducted an accuracy verification of the classification results, and we will include this part in the uncertainty analysis. Additionally, we have made revisions and additions to the supervised classification methods in the original text, as shown below:

we employ a Support Vector Machine (SVM) algorithm for supervised classification to identify the distribution of saline-alkaline land in the study area. The formula is as follows:

$$\min_{w, b, \xi_i} \left(\frac{1}{2} \|w\|^2 + C \sum_{i=1}^n \xi_i \right) \quad (1)$$

$$y_i (w \cdot x_i) \geq 1 - \xi_i, \xi_i \geq 0, i = 1, \dots, n \quad (2)$$

In the formula, w represents the weight vector, which defines the direction of the hyperplane; b is the bias term, defining the offset of the hyperplane; ξ_i is the slack

variable, which increases the robustness of the model; C is the regularization parameter, balancing the model complexity and training error; y_i is the label of data point i , commonly used to define a hyperplane.

- The sentence on lines 169 to 174 "In this process, the slope data, image texture features....". It is a very long sentence, and the meaning is not clear, it should be rewritten in a clearer way.

Respond: Thank you for your suggestion. We have reorganized this part as follows:

Using the Normalized Difference Salinity Index (NDSI), slope data, and texture features as references, we employ a Support Vector Machine (SVM) algorithm for supervised classification to identify the distribution of saline-alkaline land in the study area.

- Line 172, the concept of field sample points appears for the first time, but it is not clear whether they refer to those taken on satellite images or are field work. The location and number of these sample points should also be clarified.

Respond: The description in this section was not clear enough. The sampling points here refer to the interpretation markers we determined on various land categories. We have rewritten this part as follows:

Based on the natural attributes of the soil in the study area, auxiliary data, and field survey conditions, we use high-resolution images from Google Maps to select interpretation markers for mild, moderate, and severe saline-alkaline land and other land types.

- Line 180 The criteria used to define low, moderate and severe salinity ranges should be explained in detail in the method section. Given that the results of the article show almost exclusively the area classified in each severity range, it is considered of vital importance to explain how these areas have been obtained and how the accuracy of these results has been assessed.

Respond: Thank you for your suggestion. Initially, we established interpretation marker points on slight, moderate, and severe saline-alkaline lands, as well as other land categories, based on the natural attributes of the soil in the study area, auxiliary data, and field surveys. These marker points were then input into the remote sensing

images, and a supervised classification of the study area was conducted using the Support Vector Machine (SVM) algorithm. Finally, the accuracy of the supervised classification results was assessed using the confusion matrix method, which included overall classification accuracy and kappa coefficients. According to the accuracy results, the classification accuracies for the years 2002, 2007, 2012, 2017, and 2022 were 89.40%, 88.37%, 89.80%, 99.52%, and 96.83%, respectively, with kappa coefficients of 0.82, 0.81, 0.82, 0.99, and 0.95.

Regarding the results and discussion sections, it seems that the division of the two sections is not clear, especially in the discussion section, as this section shows new results and new figures and does not compare the results obtained with other previous studies. In fact, the discussion section is a continuation of the results, in the entire discussion section only two papers are cited, (Thorslund et al., 2021 and Jägermeyr et al., 2017), which is a clear sign that it is not a discussion per se, but a continuation of the presentation of the results, and what is more, conclusions are observed that are not justified by the results presented.

Respond: In the results section, we demonstrate the spatiotemporal changes of salinization in the Shiyang River Basin. The discussion section, on the other hand, focuses more on relating the salinization results to water conservancy projects, irrigation, reservoirs, etc. Based on your suggestion, we have revised the discussion section and added references.

- The analysis in the Temporal changes in soil salinization section should be rewritten to describe what is observed in the graphs, and it is useful to indicate the figure a, b, c, etc., to which you refer in each case.

Respond: We have rewritten the content of this section as follows:

The study area is divided into three parts based on natural landform units. The Southern Qilian mountain area did not exhibit soil salinization, so the focus is on the temporal changes in soil salinization area in the central corridor plains and the northern low hills and deserts (Fig 4). Over the 21 years, the change in the area of soil salinization in the basin was not substantial. Specifically, the area decreased from 2002 to 2007, increased from 2007 to 2012, and decreased again from 2017 to 2022.

In the central corridor plains, although the soil salinization area reached a historic low in 2007, overall, it shows an increasing trend. Compared to 2002, the area of soil salinization in 2022 increased by over 18%. The mild salinization area reached its maximum in 2017 and returned to the 2002 level by 2022. The increase in moderate salinization area is the most notable, while the area of severe salinization changed little. In the northern low mountains, hills, and desert areas, the soil salinization area showed an overall decreasing trend, with an average annual reduction rate of 38.19 km². The area of mild salinization changed little, with a slight increase in 2022 compared to 2002. The area of moderate salinization consistently decreased, especially significantly from 2002 to 2007. The area of severe salinization slowly decreased from 2002 to 2017 but increased from 2017 to 2022. Overall, the reduction in the soil salinization area in the northern low mountains and desert areas was significant, although the increase in the central corridor plains' soil salinization area was slightly less than the decrease in the northern areas.

- Lines 216 – 217: “From 2002 to 2022, the overall salinized area of the basin shows an increasing trend, with an average annual growth rate of 1881.9hm²/a”. However, in fig 4a, the grey bar does not so clearly present this growth, in fact, from 2017 to 2022 there is a decrease in overall terms.

Respond: We have carefully reviewed the original text and data, and based on your suggestions, we have organized the salinization results according to the three natural divisions. From the time scale of 2002 to 2022, the overall change in salinization area is not significant. This is mainly due to the reduction in moderately salinized areas in the northern low hills and desert zones, while the moderately salinized areas in the central corridor plains have increased. Additionally, we have rewritten this part in the original text as follows:

Over the 21 years, the change in the area of soil salinization in the basin was not substantial. Specifically, the area decreased from 2002 to 2007, increased from 2007 to 2012, and decreased again from 2017 to 2022. In the central corridor plains, although the soil salinization area reached a historic low in 2007, overall, it shows an increasing trend. Compared to 2002, the area of soil salinization in 2022 increased by

over 18%. The mild salinization area reached its maximum in 2017 and returned to the 2002 level by 2022. The increase in moderate salinization area is the most notable, while the area of severe salinization changed little. In the northern low mountains, hills, and desert areas, the soil salinization area showed an overall decreasing trend, with an average annual reduction rate of 38.19 km². The area of mild salinization changed little, with a slight increase in 2022 compared to 2002. The area of moderate salinization consistently decreased, especially significantly from 2002 to 2007. The area of severe salinization slowly decreased from 2002 to 2017 but increased from 2017 to 2022. Overall, the reduction in the soil salinization area in the northern low mountains and desert areas was significant, although the increase in the central corridor plains' soil salinization area was slightly less than the decrease in the northern areas.

- Lines 214 and 218. The results are referred to as heavy salinization, the same nomenclature "severe" should be used.

Respond:We have made the necessary amendments in the original text.

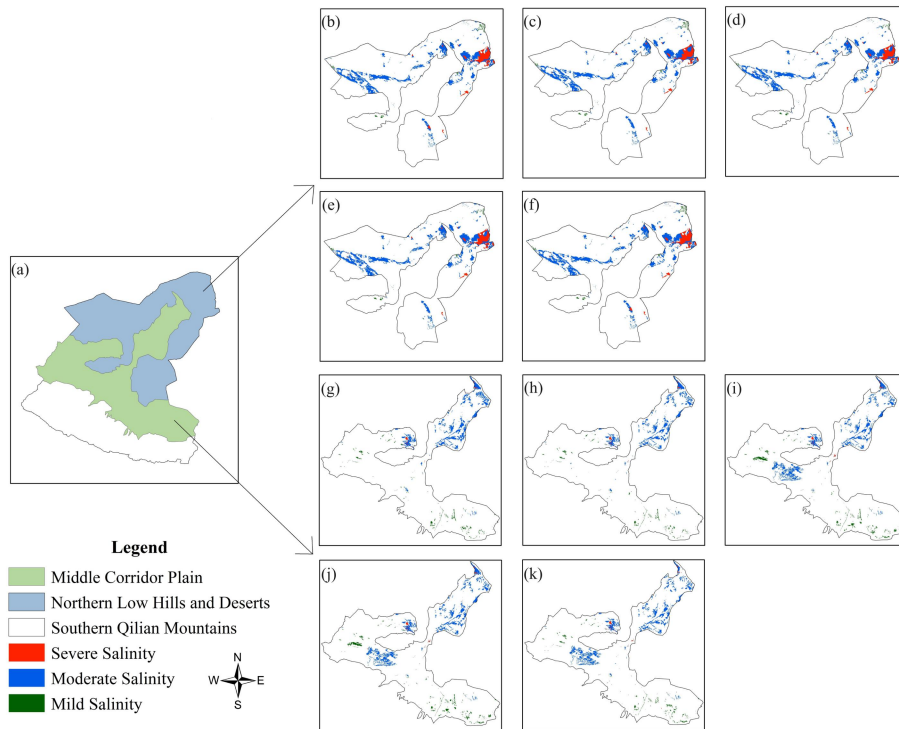
- Lines 217 to 219:“shows an increasing trend”, however it is maintained over time until the increase in the last period.

Respond:We have re-examined the data and found that the area of severe salinization in the basin remained relatively stable from 2002 to 2017, with little change. However, the area expanded from 2017 to 2022.

- Trends are analyzed by administrative counties, but the characteristics of each of them are not described: e.g. soil types, cultivated area, natural areas, semi-desertic areas, etc. Why is it analyzed by administrative terms and not for example by cluster of territory with similar characteristics? What are the factors that determine the response of the soil to the increase or decrease in salinity?

Respond:We also considered that it might be better to conduct the analysis based on natural landform divisions. Therefore, we have divided the study area into the Southern Qilian Mountain region, the Central Corridor Plains, and the Northern Low Hills and Desert region. There is no salinized soil in the Southern Qilian Mountain region, so we focused our analysis on the other two regions. In the inland river basins

of arid zones, factors such as irrigation, precipitation, and evaporation all influence soil salinity.



The description of the results in the irrigation districts, line 331 onwards, should be done graphically, and not with the names of the 27 districts because it is very confusing.

Respond:In Figure 7, we have labeled the location and degree of salinization for each irrigation area, and described it in the text.

- line 257, What do they mean when they talk about transfer of water for irrigation and the rise in the water table caused by the foreign water? Figure 5 seems key in the study but appears for the first time at the end.

Respond:Given the arid climate, low rainfall, and water scarcity in the Shiyang River Basin located in China's northwest arid region, a large number of water conservancy projects have been constructed to meet agricultural production needs through water transfer irrigation. The introduction of external water for irrigation leads to significant changes primarily in two areas: evaporation and groundwater levels. Firstly, as the amount of irrigation water increases, the soil moisture content rises, which under the unique conditions of arid regions, intensifies soil evaporation and plant transpiration, resulting in relatively low irrigation water use efficiency. Secondly, while external

water irrigation can temporarily alleviate the water resource scarcity in the basin, irrational irrigation practices may increase the risk of salinization and lead to further salt accumulation. Figure 5 is a conceptual diagram used in section 4.1 of the discussion, primarily to describe the salinization cycle in the study area. We have included annotations in the article.

- There is no relationship between conclusion (3) and the results shown and actually obtained in this document: the regional salinization problem is more prominent as a result of the rise in the groundwater level around the reservoirs, the evaporation from the irrigation of the agricultural fields, and the evaporation from the downstream ecological water conveyance. It should be completed and clarified. What data and results analyzed in this work support this conclusion?

Respond: Translation: Thank you for your careful review and feedback. Conclusion (3) is a summary of the discussion section. In section 4.1, we have demonstrated the salinization issues around the reservoirs. As the reservoir capacity increases, the surrounding soil salinization gradually worsens. Farmland irrigation primarily occurs in the central corridor plains, where saline-alkali land is widespread (Figure 7 labels the salinization degree of the irrigation areas). The annual precipitation is 150-300mm, whereas evaporation is as high as 1300-2000mm. The flood irrigation method and intense evaporation lead to salt accumulation in the surface soil, gradually worsening soil salinization. Downstream ecological water delivery primarily refers to water transfer projects to the Minqin area, where evaporation ranges from 2000-3000mm, and in some areas, precipitation is less than 150mm. Previous studies by our team have already indicated that in arid region farmland irrigation areas, non-productive water loss due to rainfall and irrigation reaches a peak proportion of 58%, and crop transpiration capabilities become a significant factor influencing evaporation loss. We have added references to some of our past work in the text.

Jiao Y, Zhu G, Meng G, et al. Estimating non-productive water loss in irrigated farmland in arid oasis regions: Based on stable isotope data[J]. *Agricultural Water Management*, 2023, 289: 108515.

- Line 370, in the statement: The relationship between salinity and irrigation is

apparent: over-irrigation increases the concentration of salts in the soil, leading to salinity problems. It should be clarified and related to which of the irrigation areas studied have over-irrigation and relate this aspect to the specific results obtained for these areas, in order to verify if what is stated is really what is happening in these areas.

Respond:In the Shiyang River Basin, the oasis irrigation area is the primary region for agricultural activities and is also where soil salinization is relatively concentrated. Due to the arid climate and low rainfall, irrigation is a crucial means of sustaining agricultural development. The irrigation method predominantly used in this area is flood irrigation, which has a significant impact on salinization. Upon correlating the salinization in the basin with the irrigation areas, we found that every irrigation area in the basin experiences soil salinization. Furthermore, the severity of soil salinization increases progressively from the midstream to the downstream regions. Our team has an observation station in the Shiyang River Basin (Northwest Normal University Shiyang River Basin Observation Station), and the farmland observation system has been continuously collecting data on irrigation practices, irrigation water volume, and crop planting structures for nearly 10 years.

As mentioned above, there are conclusions that are not justified by the results presented:

- Lines 381- 383, The following is stated: Farmland, grassland, and wasteland are at the most significant risk of being converted into saline soils, challenging farmland management. However, at no point in the article are the different types of crops analyzed by irrigation areas nor are results grouped into these categories of crop types provided.

Respond:Regarding the concern you mentioned, in our preliminary work, we processed land use type data in the Shiyang River Basin and calculated the land use transition matrix from 2002 to 2022. In the statistics of land type changes, saline-alkali land converted from farmland accounts for 3.07% of the saline-alkali land area in 2022, that converted from grassland accounts for 6.23%, and the largest proportion comes from barren land, which accounts for 11.27%. Therefore, we

presented this perspective in the conclusion section. Currently, we have added the corresponding calculation results in section 4.2 of the original text, as shown below:

The development of irrigated agriculture is necessary to meet the growing food needs of the global population (Jägermeyr et al., 2017). In the Shiyang River Basin, the saline-alkali land converted from farmland accounted for 3.07% of the saline-alkali land area in 2022. The conversion from grassland accounted for 6.23%, and the wasteland conversion rate was the highest, reaching 11.27%. These data indicate a significant risk of salinization occurring in farmland, grassland, and wasteland.

- The conclusions presented in lines 384 to 394 are not supported by the information and results presented in this work.

Respond: Firstly, external water transfer primarily refers to the water diversion projects in the Shiyang River Basin. In section 4.1, we mentioned that the Xiyang River water diversion project began transferring water to Minqin in 2006, and the Jingdian Phase II project started diverting Yellow River water to the Minqin area in 2011. These water projects have significantly alleviated local water resource issues, and the salinized area in Minqin has been decreasing annually. However, we have also observed that the area of severe salinization is increasing. Therefore, while external water transfer can mitigate salinization to some extent, its impact on future water resources requires further study. Secondly, soil salinization around reservoirs is quite severe. Taking the Hongyashan Reservoir as an example, as the reservoir was constructed and expanded, soil salinization in the surrounding farmland worsened. Additionally, every irrigation area in the Shiyang River Basin has experienced soil salinization, which is widespread. There is a significant risk of farmland, grassland, and barren land being converted into saline soils. Thus, we propose that rational irrigation methods and land management are necessary to effectively address soil salinization issues in the future.

Technical corrections:

In figure 1:

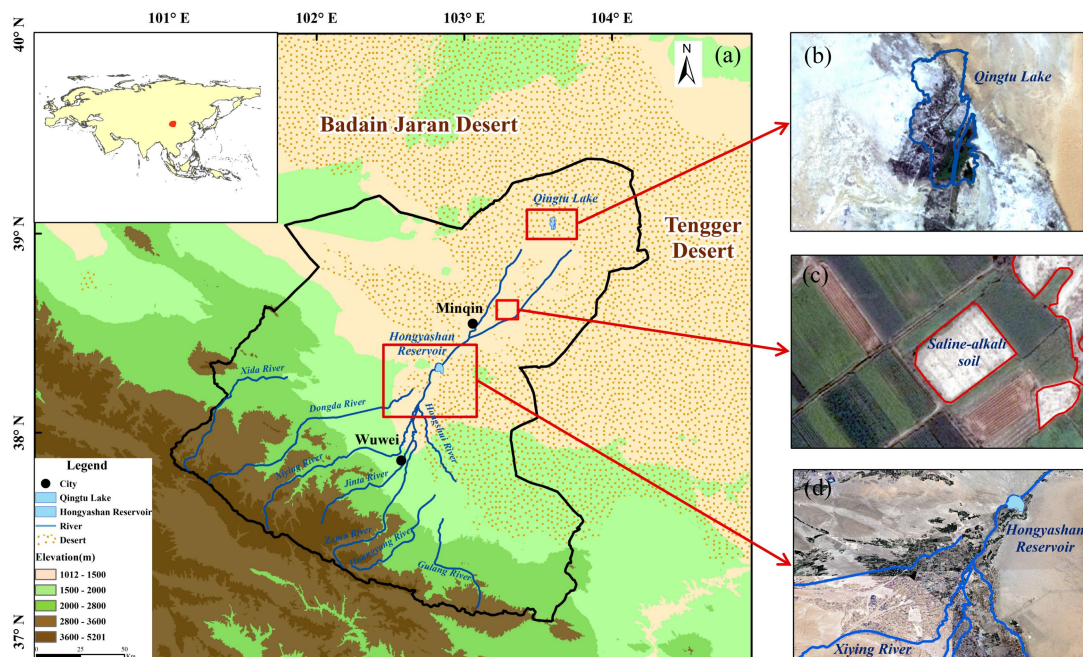
I would recommend adding a more general situation map of the country,

adapting the legends of the rivers, and clarifying why the lines of the channels are cut; it seems that there is no connection to the hydrological network.

Respond: Thank you for your thoughtful reminder. We have added the boundary of the Eurasian continent in Figure 1 and marked the location of the Shiyang River Basin. The basin is located in the arid region of northwestern China, with very little rainfall and intense evaporation. These factors severely affect the basin's water resources, resulting in river discontinuities. Additionally, rivers in arid regions often have low flow volumes and can completely convert into groundwater when passing through loose surface deposits, later transforming back into surface water to form runoff in downstream areas. The hydrological network formed by these rivers and the constructed water conservancy projects are of great significance for agricultural irrigation in this inland river basin of the arid region.

Fig 1b is within the desert zone, however they look like crop areas.

Respond: Thank you very much for raising this question. We have modified the original Fig 1b (now Fig 1c). The revised figure 1 are as follows:



Is Fig 1c in 3D? It is not clear what is being represented

Respond: The original Fig 1c (now Fig 1d) is not a 3D image, but rather a remote sensing image as the base map, on which we have overlaid the Hongyashan Reservoir

and some river elements. This approach allows for a more intuitive display of the spatial characteristics of this area. Due to the unique natural conditions and climate characteristics of the Shiyang River Basin, numerous water conservancy projects have been constructed throughout the basin to ensure agricultural development. These projects are mainly concentrated in the middle reaches of the basin, with the construction of the Hongyashan Reservoir having a particularly significant impact on ecological water supply to the downstream Minqin area. Additionally, the salinization issue around the reservoir is also a key focus of our research. For these reasons, we have specifically added the original Fig 1c (now Fig 1d).

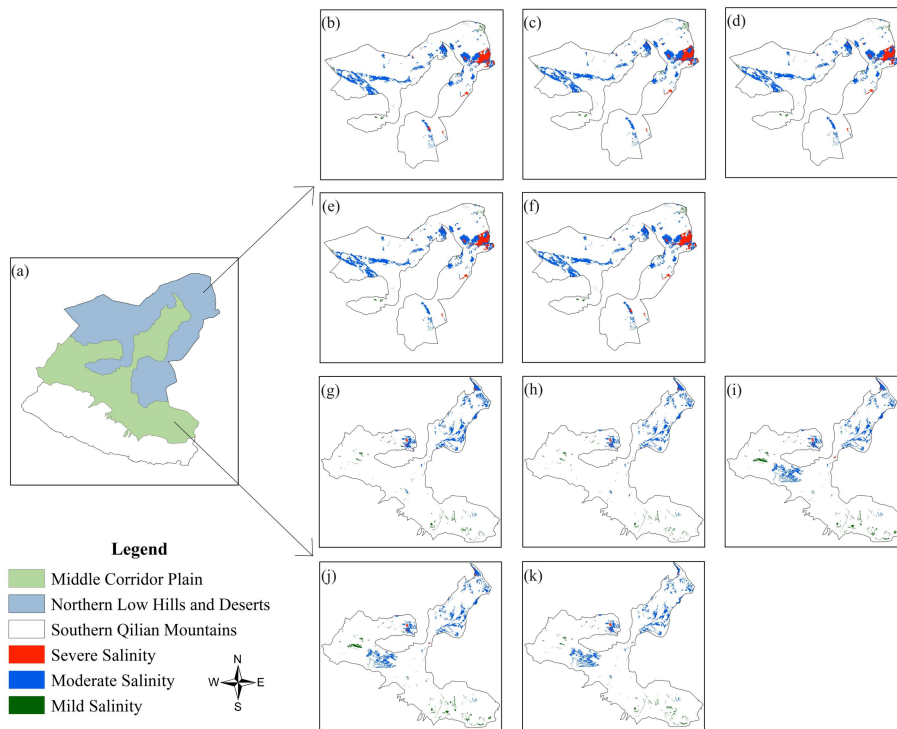
In figure 3:

- In the figure, unnamed counties appear; if they are part of the studied basin area, they should be named. Clarify if they are ignored because the results do not show salinity in these areas.

Respond:In the original Figure 3, the unnamed counties are primarily located in the Southern Qilian mountain region of the basin, where soil salinization does not occur. Therefore, no analysis was conducted for these areas.

- It is difficult to follow the presentation of the results showed in this figure in the body of the text.

Respond:We have recreated Figure 3 and conducted descriptive analysis according to the natural landforms, as detailed below:

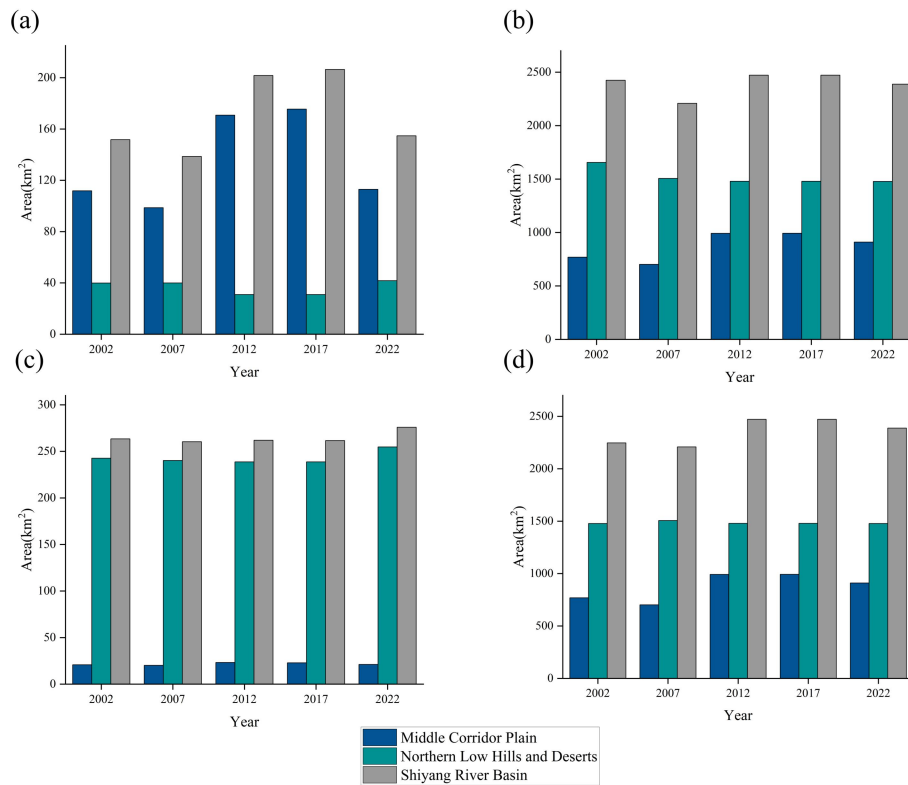


• The temporal evolution of salinity did not look very good to the naked eye in figures 3a to 3e. In addition to the figures presented, a single figure that represents, for each pixel, the relative temporal evolution throughout the time series (increase or decrease) would help in presenting the results.

Respond:Figure 3 primarily illustrates the spatial variation of soil salinization in the basin. To better observe this spatial variation, the new Figure 3 separately presents the salinization results for the central corridor plains and the northern low mountains, hills, and desert areas.

In figure 4, taking into account that results are represented with a spatial component, it is recommended to represent these results on a map with their spatial distribution.

Respond:We have reworked Figure 4 and redescribed it in the original text, as follows:



The Figure 5 is not cited in the text.

Respond: Thank you for your reminder. We have added the citations in the original text as shown below:

Ecological water transfer mainly refers to the Jingdian water transfer (i.e., water diversion from the Yellow River), which regulates the irrigation water use pattern by transferring water to Qingtuhu Lake through the Hongya Mountain Reservoir (Fig. 5).

In Figure 6, the results shown are not located correctly in space, it would be helpful to superimpose the scale, north, etc. on the aerial image.

Respond: Thank you for your suggestion, we have modified Figure 6, as shown below:

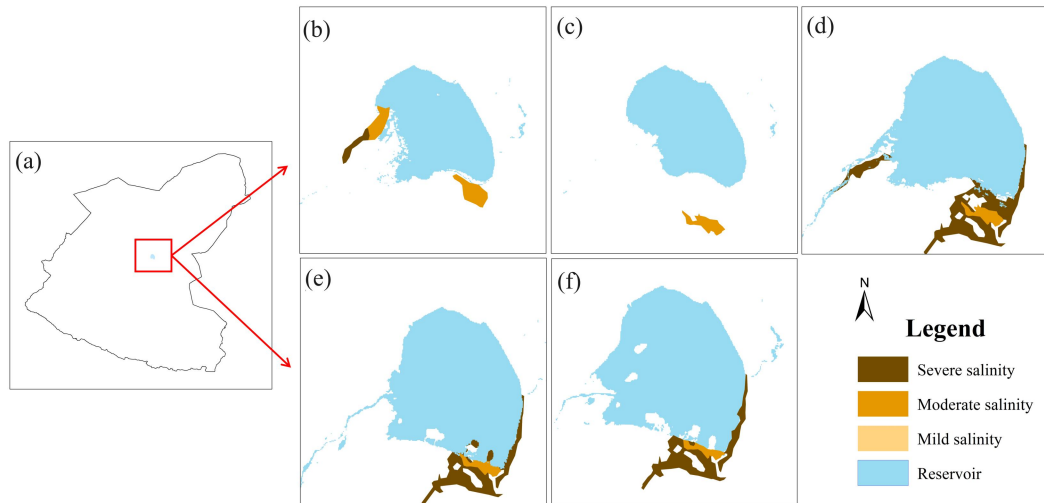
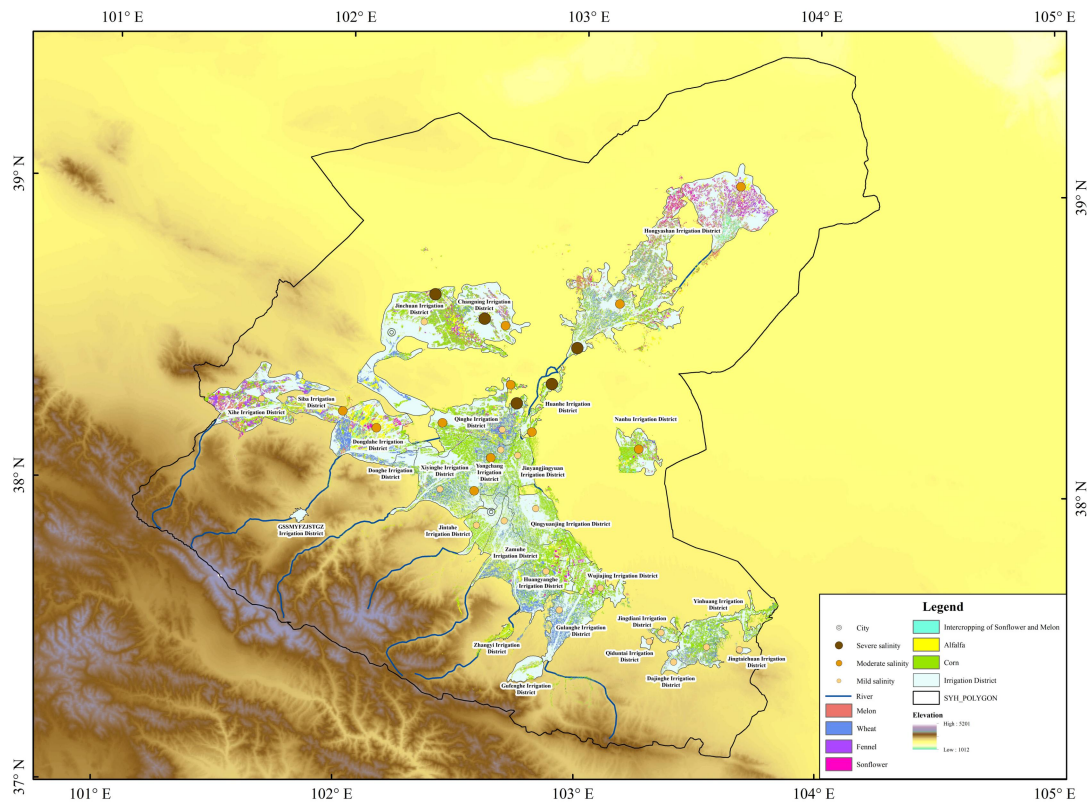


Figure 7, in this figure it seems that there is continuity of the channels and irrigation areas. Is that why they appear cut off in Fig. 1? This figure can be greatly improved, for example with maps of crop types in each area, soil types, etc., with data that provides information on the context of the space studied.

Respond: Regarding the issue of river disruption in Figure 1, this is primarily influenced by the topography and climate of the basin. The irrigation areas are mainly located where there are rivers, which is conducive to agricultural development. We have also optimized Figure 7 by adding crop types, as shown below:



Other minor comments:

- It is detected that a space is missing after the period and it often happens frequently throughout the document (e.g. 136, 142, 150, etc.)

Respond: Thank you for your careful pointing out. We have checked and revised the full text.

- line 144, It seems that the phrase “Detect more subtleties” is repetitive of the previous one.

Respond: Thank you for your careful pointing out. We have revised it in the original text.

- line 217, in units hm^2/a What is the meaning of a? annual?

Respond: “/a” typically stands for "per annum," which means the average annual change. It is used to indicate the change per year.