

# How system dynamics explains long-term hydrological behaviors? The role of endogenous linkage structure

Xinyao Zhou<sup>1</sup>, Zhuping Sheng<sup>2</sup>, Kiril Manevski<sup>3,4,5</sup>, Rongtian Zhao<sup>6,7</sup>, Yanmin Yang<sup>1</sup>, Shumin Han<sup>1</sup>, Mathias Neumann Andersen<sup>3,4</sup>, Qingzhou Zhang<sup>8</sup>, Jinghong Liu<sup>1,9</sup>, Huilong Li<sup>1</sup>, Yonghui Yang<sup>1,4,9</sup>

<sup>1</sup>Key Laboratory of Agricultural Water Resources, Hebei Laboratory of Agricultural Water-Saving, Center for Agricultural Resources Research, Institute of Genetics and Developmental Biology, Chinese Academy of Sciences, Shijiazhuang 050021, China

<sup>2</sup>Department of Civil Engineering, Morgan State University, Baltimore, MD 21251, USA

<sup>3</sup>Department of Agroecology, Aarhus University, Tjele 8830, Denmark

<sup>4</sup>Sino-Danish College, University of Chinese Academy of Sciences, Yanqihu Campus, Beijing 101408, China

<sup>5</sup>Climate – Aarhus University Interdisciplinary Center for Climate Change, Department of Environmental Science, Roskilde 4000, Denmark

<sup>6</sup>State Key Laboratory of Resources and Environmental Information System, Institute of Geographic Sciences and Natural Resources Research, Chinese Academy of Sciences, Beijing 100101, China

<sup>7</sup>College of Resources and Environment, University of Chinese Academy of Sciences, Beijing 100049, China

<sup>8</sup>Land Resources Exploration Center of Hebei Bureau of Geology and Mineral Exploration and Development (Hebei Mine and Geological Disaster Emergency Rescue Center), Shijiazhuang 050081, China

<sup>9</sup>University of Chinese Academy of Sciences, Beijing 100190, China

Correspondence to: Xinyao Zhou ([zhouxu@sjziam.ac.cn](mailto:zhouxu@sjziam.ac.cn)) and Yonghui Yang ([yonghui.yang@sjziam.ac.cn](mailto:yonghui.yang@sjziam.ac.cn))

**Abstract.** Hydrological models with the conceptual tipping bucket and the process-based evapotranspiration formulations are the most common tools in hydrology. However, these models consistently fail to replicate long-term and slow dynamics of a hydrological system, indicating the need for model augmentation and a shift in formulation approach. This study employed an entirely different approach – system dynamics – towards more realistic replication of the observed slow hydrological behaviors at interannual to decadal scales. Using the headwaters of Baiyang Lake in China as a case study, the endogenous linkage structure of the hydrological system was gradually unravelled from 1982 to 2015 through wavelet analysis, Granger's causality test, and system dynamics model. The wavelet analysis and the Granger's causality test identified a negatively correlated and bidirectional causal relationship between actual evapotranspiration and catchment water storage change across distinct climatic periodicities, and the system dynamics approach suggested a combined structure of a vegetation reinforcing feedback and a soil water-vegetation balancing feedback in the hydrological system. The system dynamics' structure successfully captured the slow hydrological behavior under both natural and human-intervention scenarios, demonstrating a self-sustained oscillation arising within the system's boundary. Our results showed that the interaction between the vegetation structure and the soil bound water dominated the hydrological process at an interannual scale, while the interaction between the climatic oscillation and the soil water holding capacity dominated the hydrological process at a decadal scale. Conventional hydrological models, which typically employ physiological-based evapotranspiration formulations and assume invariable soil characteristics, ignore vegetation structure change at the

删除的内容: System

删除的内容: perspective: lack of

删除的内容: endogenous feedback accounts for failure of bucket models to replicate slow

删除的内容: Manevski<sup>3,6,7</sup>,

删除的内容: Andersen<sup>3,6</sup>,

删除的内容: Zhang<sup>4</sup>,

删除的内容: Liu<sup>1,5</sup>,

删除的内容: <sup>4</sup>Land Resources Exploration Center of Hebei Bureau of Geology and Mineral Exploration and Development (Hebei Mine and Geological Disaster Emergency Rescue Center), Shijiazhuang 050081, China -

<sup>5</sup>University of Chinese Academy of Sciences, Beijing 100190, China -

<sup>6</sup>Sino-Danish

删除的内容: <sup>7</sup>Climate

删除的内容: [zhouxu@sjziam.ac.cn](mailto:zhouxu@sjziam.ac.cn)

删除的内容: [yonghui.yang@sjziam.ac.cn](mailto:yonghui.yang@sjziam.ac.cn)

删除的内容: models

删除的内容: long-term and

删除的内容: by removing limits of exogenous climate on evapotranspiration and involving endogenous soil water-vegetation feedback loop.

删除的内容: mechanisms

删除的内容: slow

删除的内容: dynamics were

删除的内容: unraveled

删除的内容: negative-

删除的内容: ,

删除的内容: the

删除的内容: budget

删除的内容: suggesting

删除的内容: robust endogenous

删除的内容: structure operating on a long-term scale.

删除的内容: approach

删除的内容: of the hydrological system

interannual scale and soil water holding capacity change at the decadal scale, leading to failure in predicting the observed long-term hydrological behaviors. These novel insights proposed in our study, including the different hierarchies corresponding to distinct mechanisms and time scales, and the endogenous linkage structure among stocks being more important driver of the hydrological behaviors, offer potential solutions for better understanding a hydrological system and guidelines for improving configuration and performance of conventional hydrological models.

**Short Summary.** Conventional hydrological models erratically replicate slow hydrological dynamics, necessitating model modification and paradigm shift in hydrological science. The system dynamics approach excels at explaining pattern of slow hydrological behaviors by dividing a hydrological system into different hierarchies and building endogenous linkage structure among stocks. It was employed in a case study and successfully captured slow hydrological behaviors at interannual and decadal scales. This highlights the importance of systematic and holistic perspective.

## 1 Introduction

Hydrological models are scientific tools for describing and predicting the processes of the water cycle under the current and the future climate. In the simplest concept, a "bucket" is used to represent the water storage of a catchment, which fills by rain and empties by evaporation, transpiration and streamflow (Fowler et al., 2020). In spite of the success of this concept in understanding the physical processes and revealing the physical parameters involved in the hydrological events, conventional hydrological models have performed poorly in simulating the long-term and the slowly-variable hydrological system observed in many regions across the world, e.g., the interannual cycles of catchment water storage (Creutzfeldt et al., 2012; Hulsman et al., 2021), and the multi-decadal decline of runoff (Chen et al., 2016; Peterson et al., 2021). Consistent inaccuracies of the conventional hydrological models in replicating slow hydrological behaviors suggest a lack of key mechanisms involved in the hydrological system. Alongside structural deficiencies (Fowler et al., 2020; Bouaziz et al., 2021), reasons for erratic model performance also involve data errors (Kuczera et al., 2010; Hulsman et al., 2021), model structural deficiencies (Fowler et al., 2020; Bouaziz et al., 2021), poor parameterization (Fowler et al., 2016, 2018), or their combination. However, model structural deficiency likely plays the key role in most cases of poor performance (Fowler et al., 2020).

From a hydrological perspective, two main solutions have been proposed to improve the conventional hydrological model structure. The first introduces a "bottomless bucket" to avoid the "minimum possible storage" limit to the bucket, which empties the bucket on a seasonal basis and restricts the accumulation of water deficit (Fowler et al., 2020). The "bottomless bucket" configuration better tracks a long-term decline in soil moisture seen, for instance, in Australia during the 13-year "Millennium" drought desiccating catchments slowly and gradually (Fowler et al., 2021). On the other hand, groundwater usually responds slowly to rainfall variability and the lag time scales are mediated by the hydrogeology of aquifers and the soil physical characteristics (Hughes et al., 2012; Markovich et al., 2016). Thus, it is suggested that inter-basin groundwater

删除的内容: Conventional hydrological models, which rely on process-based evapotranspiration models, operate on an instantaneous scale and are thus susceptible to short-time climatic and vegetation physiological variations. This results in inaccurate depletion rate of soil water stock and in turn, can lead to incorrect calculations of other hydrological variables. However, long-term and slow hydrological dynamics typically involves in endogenous state-dependent modulation and feedback related to changes in vegetation structure, thus are insensitive to exogenous disturbances and can be well replicated using system dynamics approach. This insight that the failure of hydrological models to replicate slow dynamics can be attributed to a time-scale mismatch may offer potential solutions for improving

删除的内容: bucket-type

删除的内容: have struggled to accurately

删除的内容: making

删除的内容: key concern

删除的内容: long-term behavioral

删除的内容: through the system's

删除的内容: feedback

删除的内容: .

删除的内容: the

删除的内容: .

删除的内容: that the time-scale mismatch can be attributed to the failure of conventional hydrological models.

删除的内容: the bucket model has

删除的内容: against

删除的内容: multi-year variability of catchment water storage reported

删除的内容:

删除的内容: Jing et al., 2019; Shao

删除的内容: bucket

删除的内容: bucket

150 flow should be incorporated in hydrological models through a new deeper groundwater reservoir to allow models to better reproduce the long-term storage fluctuations (Bouaziz et al., 2018; Hulsman et al., 2021). Although some aspects are improved by the model reconfigurations or modifications, other aspects of the hydrology behavior are still not captured or reflected well, for instance those related to the effect of the terrestrial vegetation on the long-term and slow dynamics in hydrological models (Fowler et al., 2021).

155 The system dynamics approach assumes that ample time is required for a system to undergo changes (Meadows, 2008) and ~~is thus a different approach to describe and interpret the mechanism of the ubiquitously long-term and slow variations of the hydrological system.~~ Different from the conventional viewpoint postulating that the dynamics of a system are primarily driven by exogenous variables, the system dynamics ~~approach~~ seeks explanations of endogenous structure for the often complex, difficult-to-understand dynamics and "behaviors" (Forrester, 1968). This is because, on one hand, stocks generally

160 change slowly, thus can act as delays, lags, buffers or shock absorbers in the system (Meadows, 2008). ~~This characteristic is also prominent in hydrological system and has been described by conventional hydrological models using various stocks (soil moisture/groundwater/lakes) leading to some slow hydrological dynamics (O'Connell et al., 2016). On the other hand, stocks are complexly linked with other even~~ competing feedback loops operating simultaneously, creating counteracting and compensating pressures in response to exogenous disturbances (Richardson, 2020). Therefore, exogenous drivers might not

165 be able to explain and anticipate a system's main pattern of behaviors, as the cause and the effect are often distant in time and space in dynamically complex systems (Davis, 2003). ~~However, the complexity of linkage structure among stocks was not well recognized in conventional hydrological models, which often link these stocks simply and sequentially. The fact that stocks usually operate at different time scales further increase the complexity of linkage structure among stocks in a hydrological system.~~ In spite of the wide application of system dynamics in different areas (Wiener, 1948; Zera, 2002;

170 Hofkirchner and Schafranek, 2011; Seth and Bayne, 2022), ~~including land use dynamics (Lauf et al., 2012)~~ and water management (Bai et al., 2021; Simonovic, 2020) in which natural system only plays a minor role, to our knowledge, the concept has ~~not~~ been used in hydrology under natural conditions. System dynamics approach may thus open a new avenue to understand the mechanisms of long-term and slow dynamics of hydrological system.

175 ~~By means of system dynamics approach, the~~ main aim of this paper was two-fold, to 1) seek the explanation of endogenous ~~linkage structure among stocks~~ for the long-term and slow ~~hydrological~~ dynamics, with a case study, and 2) test the ability of the ~~endogenous linkage structure~~ for (re)producing and predicting long-term and slow hydrological dynamics. ~~To make the discussion clearer, the "long-term" is constrained. As a complex system, a hydrological system comprises multiple hierarchies. Each hierarchy is governed by a distinct mechanism and produces fluctuations/cycles at certain time scale. Notably, the time series yielded at each hierarch can be considered as "long-term" or "slow" compared to its predecessor.~~

180 ~~Here, we define that the low hierarchy corresponds to sub-year scale, the high hierarchy corresponds to interannual scale, and the even higher hierarchy corresponds to decadal scale. This definition has been inspired by a previous study which result showed that a clayey-soil catchment tend to exhibit higher flow in the short term but less discharge in the long term than its sandstone counterpart, indicating distinct underlying mechanisms to control streamflow generation at different~~

删除的内容: might be

删除的内容: system's hydrology.

删除的内容: On the other hand, systems often have several

删除的内容: rarely

删除的内容: The

删除的内容: of catchment water storage

删除的内容: system dynamics approach

[hierarchies/time scales \(Xiao et al., 2019\)](#), as well as a study which proposed a fill-spill phenomena across scales ([McDonnell et al., 2021](#)). Considering the objectives of this study and the data span, we specify the "long-term" as [interannual to decadal scales](#).

## 195 2 Methodology

### 2.1 Study site description

The study area was located at Taihang Mountain in northern China and comprised of the catchments of the rivers Sha, Tang, and Juma (Fig. 1). The climate is semi-arid with continental monsoons, i.e., hot humid summers, and cold dry winters. The average annual temperature, precipitation, and potential evapotranspiration are 7.5 °C, 556 mm, and 1369 mm, respectively (Yang and Mao, 2011; Zeng et al., 2021). [Rainfall is the main source of streamflow in the study area \(Fu et al., 2024\)](#). The main geologic characteristics of the Taihang Mountain area are "soil and rock dual texture", with thin topsoil of 0.2-0.5 m rich in plant roots and gravel, and a thick 0.5-10 m subsoil of weathered granite gneiss with highly developed fractures (Cao et al., 2022). [The soil of Taihang Mountains is primarily developed from granite, gneiss, limestone, and sandstone. Cambisols and luvisols constitute the dominant soil types, accounting for 46.86% and 15.46% of the total area, respectively \(Fu et al., 2021\)](#). These soil types all have high content of sand gradation, approximately 50%, followed by silt. [Clay comprises the smallest proportion of the soil content, at approximately 20% \(Yang and Cao, 2021\)](#). The three rivers flow into Baiyang Lake, the largest freshwater lake in the North China Plain (Zhuang et al., 2011). Due to prolonged droughts and intensive human interference since the 1980s, the amount of inflow water to the lake has decreased significantly (Fig. S1). This has resulted in a continuous shrinkage of the water body and ecological degradation in the lake area (Han et al., 2020).  
210 Despite many efforts quantifying the impacts of climate change and human activities on the dramatic runoff reduction (Zhuang et al., 2011; Hu et al., 2012; Wang et al., 2021), no studies investigated the dynamics of the catchment water storage.

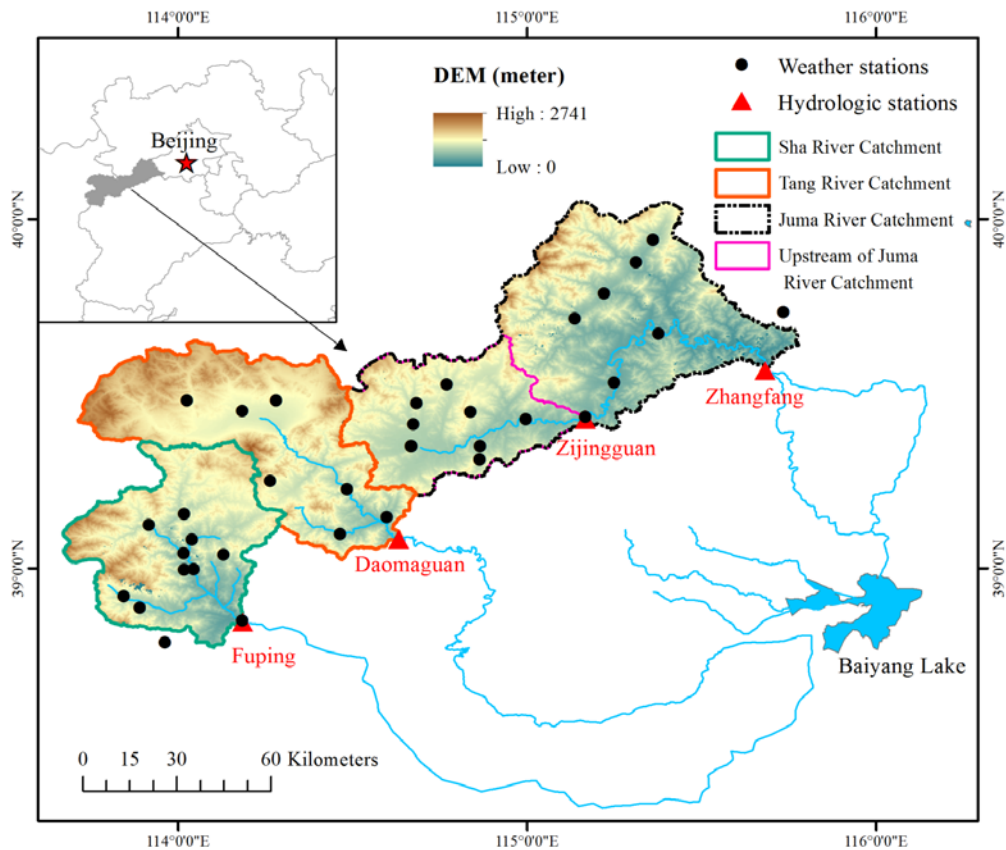


Figure 1: The location of the study area in China at Baiyang Lake and its headwaters.

## 2.2 Data compilation and pre-processing

215 Yearly streamflow, rainfall, and actual evapotranspiration data spanning the years 1982-2015 period were compiled for the  
 catchments. Streamflow ( $Q$ ) from four hydrological stations, viz, Fuping (FP), Daomaguan (DMG), Zijingguan (ZJG), and  
 Zhangfang (ZF) were acquired from the Department of Water Resources of Hebei Province (hereafter the names of the  
 gauge stations was used for representing the catchments; Fig. 1). FP station is located in the Sha River catchment with a  
 drainage area of  $2,160 \text{ km}^2$ , whereas DMG station is located in the Tang River catchment with a drainage area of  $2,704 \text{ km}^2$ .  
 220 ZJG and ZF are the upstream and the downstream stations of the Juma River, respectively, with corresponding drainage

areas of 1,751 and 4,737 km<sup>2</sup>. The unit of streamflow data was in m<sup>3</sup> s<sup>-1</sup> in the original dataset and was converted to mm year<sup>-1</sup> by dividing with the area.

Precipitation data (P; mm year<sup>-1</sup>) from 34 national weather stations within the study area were downloaded from the China Meteorological Data Sharing Service System (<http://data.cma.cn/>). Actual evapotranspiration (AET; mm year<sup>-1</sup>) from 1982 to 2015 was the average of two gridded remote-sensing based AET products, Numerical Terra-dynamic Simulation Group (NTSG; University of Montata, 2023; 8 km spatial resolution) and ETWatch (8 km resolution for 1984-1989 and 1 km for 1990-2015). The AET data for the first two years were taken from NTSG and that of 1984-2015 were taken from ETWatch. ETWatch (2023) uses the Penman-Monteith model integrated with the SEBAL and the SEBS models (Wu et al., 2008; Wu et al., 2021) and previous studies show reliable ET estimates over the Haihe Basin where the study area is located (Moiwo et al., 2011; Wu et al., 2012). The NTSG is also a Penman-Monteith model (Zhang et al., 2009, 2010). Furthermore, two alternative AET products, CR (Complementary-Relationship-based modelling, Ma et al., 2019a,b) and PEW (Proportionality hypothesis-based surface Energy-Water balance model, Fu et al., 2022a,b) were taken for cross-validation with ETWatch and NTSG. Complementary-relationship and Priestley-Taylor approaches were employed by CR and PEW, respectively. Despite their algorithmic difference, the four AET products exhibit comparable values and common characteristics (Fig. S2). Firstly, all products successfully captured the annual AET fluctuations. Secondly, in terms of long-term trends, all products indicated a decline in AET at the end of 1990s and the beginning of 2000s. While AET data of NTSG and ETWatch showed an upward trend thereafter, AET data of CR and PEW continued to decrease during the study period. Thirdly, the magnitude of fluctuations of P and Q reduced in the later stage. Given these observations, we conclude that the ETWatch product demonstrates reliable values and the most distinguishable pattern among the four AET products, thus deemed reliable choice for AET estimation.

Catchment water storage change ( $\Delta S$ ; mm year<sup>-1</sup>) was calculated by the mass balance method subtracting streamflow and actual evapotranspiration from precipitation ( $\Delta S = P - Q - AET$ ). Detrended Total Water Storage Anomalies (TWSA; mm year<sup>-1</sup>) and surface Soil Moisture (SM; m<sup>3</sup> m<sup>-3</sup>) data were used for comparison with  $\Delta S$ . The TWSA data was based on reconstructed GRACE/GRACE-FO global surface mass changes (land + ocean) from 1979 to 2020 at 0.5° spatial resolution (Li et al., 2021). Surface SM data with spatial resolution of 0.25° and temporal coverage from 1979 to 2020 were downloaded from the European Space Agency Climate Change Initiative (ESA CCI) website (Dorigo et al., 2023). This dataset had a high outperformance among satellite-based products (Ma et al., 2019). Comparison of the three datasets were shown in Fig. S3.

Land use data for the Haihe Basin for the 1980s, 1990s, 2000s, and 2010s at 30 m spatial resolution were obtained from the ETWatch (2023) website. From 1980s to 2010s, arable land and high-coverage forest land kept decreasing, while low-coverage vegetation had greatly increased after 2000s (Fig. S4).

Future monthly rainfall ("pr" in CMIP), monthly total runoff ("mro" in CMIP) and AET ("evspsblsoil" and "evspsblveg" in CMIP), stemming from three scenarios (SSP126, SSP245, and SSP585) within four Global Climate Models (ACCESS-CM2, CNRM-ESM2, EC-Earth3, and GFDL-CM4), were retrieved from the CMIP6 (the phase 6 of the Coupled Model

带格式的: 上标

删除的内容: (ET;

删除的内容: ET data,

删除的内容: 1

删除的内容: 1990-2015;

删除的内容: ).

删除的内容: The two ET datasets were comparable with each other.

删除的内容: budget

删除的内容: S2.

删除的内容: S3).

265 <https://esgf-node.llnl.gov/search/cmip6/>), covering the time span from 2015 to 2100. Notably, the  
GFDL-CM4 model lacks the SSP126 experiment, and the ACCESS-CM2 model lacks the "evspsblveg" variable. The spatial  
270 resolution varies, with 250 km for ACCESS-CM2 and CNRM-ESM2 models, and 100 km for EC-Earth2 and GFDL-CM4  
models. The grid values corresponding to the study area were extracted. For ACCESS-CM2 (CNRM-ESM2), the grid value  
at the 62nd (83rd) row and 104th (93rd) column, corresponding to longitudes of 115.3125° (115.3125°) and latitudes of  
39.375° (39.9218°), were used. Similarly, for EC-Earth3 (GFDL-CM4), the grid values at the 164th (92nd) and 165th (93rd)  
rows, and the 185th (130th) column, corresponding to longitudes of 114.6094° (114.375°) and 115.3125° (115.625°), and  
latitudes of 39.649° (39.5°), were utilized. The unit of  $\text{kg m}^{-2} \text{s}^{-1}$  was converted to  $\text{mm month}^{-1}$  by multiplying it with 86400  
275 seconds and 30 days. Subsequently, annual values were calculated by summing the monthly values. The annual rainfall was  
averaged from four GCMs and used to drive system dynamics (SD) model, generating Q and AET estimates under different  
SSP scenarios.

### 2.3 Formal data analysis

280 We propose three approaches — wavelet analysis, Granger's causality test and system dynamics. Although some information  
about the endogenous linkage structure of hydrological system can be inferred from the wavelet analysis and the Granger's  
causality test, additional knowledge from multiple subjects is necessary to build the system dynamics' structure. For example,  
considering vegetation growth as a reinforcing feedback loop requires collective prior knowledge of plant physiology (Lian  
et al., 2021; Wright and Francia, 2024), resource competition theory (Craine and Dybzinski, 2013), population ecology  
(Snider and Brimlow, 2013), and likely other knowledge not included in this study. Therefore, the proposed three approaches  
run in parallel but are not sequential and help us understanding the endogenous linkage structure among the stocks in the  
hydrological system.

#### 2.3.1 Wavelet Analysis

285 Continuous Wavelet Transform (CWT) was employed to preliminarily identify connection patterns among variables in the  
time series. The wavelet transform has emerged as one of the most promising function transformation methods acting as a  
time and frequency localization operator (Pathak, 2009). The advantage of the wavelet transform is that it can reflect the  
evolution over time of non-stationary time series. Here the CWT analysis was used to generate varying coefficients that  
290 signify the similarity between the signal and mother wavelets at any specific scale base. The CWT of a function  $f$  with  
respect to the mother wavelet  $\Psi$  is defined by Pathak (2009):

$$W_f(a, b) = \frac{1}{\sqrt{|a|}} \int f(t) \Psi\left(\frac{t-b}{a}\right) dt \quad (1)$$

删除的内容: Future rainfall data projected by 22 Global Circulation Models (GCMs) were obtained from the Coupled Model Intercomparison Project Phase 6 (CMIP6) website (WCRP, 2023). Details on the 22 GCMs are shown in Table S1. The projected precipitation data from three climatic scenarios under different socio-economic paths, SSP1+RCP2.6, SSP2+RCP4.5, and SSP5+RCP8.5, were used to predict the dynamics of the hydrological system. •

305 where  $W_f(a, b)$  is the wavelet coefficient,  $a$  is the wavelet scale associated with dilation and contraction of a wavelet, and  $b$  is a time index describing the location of the wavelet in time.  $\Psi$  is known as "mother" wavelet because it can generate "child" wavelets by dilation and translation. Function is then processed with these child wavelets to yield wavelet coefficient (Sayood, 2012).

310 Prior to the analysis, the time series data of P,  $\Delta$ ET, Q and  $\Delta$ S were standardized by subtracting the mean and dividing the standard deviation. Afterwards, correlation analysis was conducted based on the CWT coefficients. A contraction parameter of 8 was used in this study as the highest for the wavelet power spectrum of multi-decadal periodicities (Fig. S5).

### 2.3.2 Granger's Causality Test

Granger's Causality Test was adopted to decide causal direction of connections among variables. Correlation analysis alone can only tell how "similar" two variables are, however, correlation is neither necessary nor sufficient condition for causality (Sugihara et al., 2012). Inferring causal direction is important for understanding how a complex system works. The Granger's Causality Test is a widely used method to investigate causality between two variables in a time series (Stokes and Purdon, 2017; Shi et al., 2022). For two time series from processes X and Y, it can be said that X does not Granger-cause Y if X, conditional on its own past, is independent of the past of Y (Banerjee et al., 2023). The typical method to test this dependency of two time series involves fitting a vector autoregressive model for X and measuring whether inclusion of Y in that model makes the fitting error significantly lower:

$$y_i = \alpha_0 + \sum_{j=1}^m \alpha_j y_{i-j} + \sum_{j=1}^m \beta_j x_{i-j} + \varepsilon_i \quad (2)$$

where  $\alpha_j$  and  $\beta_j$  are the regression coefficients and  $\varepsilon_i$  is the error term. The test is based on the null hypothesis:

$$H_0: \beta_1 = \beta_2 = \dots = \beta_m = 0$$

The X Granger-causes Y when the null hypothesis is rejected.

325 Further details on the theory behind the Granger's Causality Test and the Matlab toolbox used in this work can be found in Robert (2023).

### 2.3.3 System Dynamics approach

Causal structure is different from system dynamics' structure due to the lack of "feedback" concept in causal inference. Feedback is in the core of the system dynamics concepts (Meadows, 2008; Richardson, 2020). A feedback loop exists when information resulting from certain actions eventually returns in some form, potentially influencing future actions (Richardson, 2020). Feedback loops can be reinforcing or balancing, the former aiming for exponential growth or accelerating collapse, as disequilibrating and destabilizing structures in systems, whereas the latter aiming for stability and resistance to change, for equilibrating or goal-seeking structures in the system (Meadows, 2008). Combined, reinforcing and balancing feedback loops can generate all manners of dynamic patterns. The inference of feedback loops should be from

删除的内容: Y

删除的内容: X

删除的内容: , as well as

删除的内容: Hydrological System .



340 prior experience. Both feedback loops coexist in the case study. The reinforcing feedback loop can be considered as the change of vegetation structure because the processes tend to self-enhance once they started. Here, vegetation structure involves non-physiologic components, e.g., change of compositions by growth and mortality (Li et al., 2023). For example, vegetation growth will create a more humid environment for the benefit of its further growth, while vegetation mortality will exacerbate deterioration and trigger a "death spiral" (Bruehlheide et al., 2018). Soil moisture, on the other hand, can interrupt the self-enhancing processes of change in vegetation structure and is thus considered as a balancing feedback loop. For example, soil moisture approaching the wilting point increases the difficulties of the root to absorb water, causing slower and finally stagnant vegetation growth, and *vice versa* (Stocker et al., 2023).

删除的内容: area.

How does the interplay between soil moisture and vegetation structure drive the dynamics of the hydrological system at interannual scale? Firstly, every balancing feedback loop has a desired goal used to compared to the actual system state. If a stock level is above or below the goal, the discrepancy between the actual and the desired levels will initiate corrective action and bring the state of the system back in line with the goal. Here the desired soil moisture was considered as a value within the range between field capacity and wilting point because at this range water can be held in soil and used for vegetation absorption. Secondly, while traditional hydrological models usually use exogenous variables to calculate AET by physical process-based models such as the Penman or the Thornthwaite models, the system dynamics approach calculated  $\Delta ET$  based on its earlier value. This is because there was an implicit vegetation structure stock behind  $\Delta ET$ . Starting with an initial vegetation structure level, the growth of new vegetation can be shown as an inflow and mortality of old vegetation as outflow, which would also drive smooth transformation of  $\Delta ET$ . Since vegetation structure stock can remember the history of changing flows and the growth/mortality of vegetation generally took several years,  $\Delta ET$  gradually changed and showed a interannual scale increase or decrease cycles. The equations of the dynamics of hydrological system solved for each year from 1982 to 2015 are:

删除的内容: ?

删除的内容: to calculate ET,

$$360 \quad TWS(t) = SMS(t) + GWS(t) + SWS(t) \quad (3)$$

$$SMS(t) = SMS(t-1) + \Delta s(t) * DT \quad (4)$$

$$\Delta s(t) = [P(t) - Qr(t) - \Delta ET(t) - RCH(t)] \quad (5)$$

$$DISC(t) = [SMS(t-1) - ESMS] / DT \quad (6)$$

$$Qr(t) = [P(t) + DISC(t)] * C1 \quad (7)$$

$$365 \quad \Delta ET(t) = \Delta ET(t-1) + [VEG(t) + DISC(t)] * C2 \quad (8)$$

$$RCH(t) = [P(t) * C3 + DISC(t)] * K(t) \quad (9)$$

$$Qs(t) = GWS(t-1) * C4 / DT \quad (10)$$

$$GWS(t) = GWS(t-1) + RCH(t) * DT - Qs(t) * DT - GP(t) * DT \quad (11)$$

$$SWS(t) = [Qr(t) + Qs(t)] * DT \quad (12)$$

删除的内容: multi-annual

删除的内容: trend.

删除的内容:

删除的内容:

370 where TWS, SMS, GWS and SWS are, respectively, total water stock, soil moisture stock, groundwater stock, and surface water stock, all in mm;  $\Delta s$  is the change in water in soil moisture stock in mm year<sup>-1</sup>; DISC in mm year<sup>-1</sup> is the discrepancy between actual (SMS) and desired (expected) soil moisture stock ESMS (mm); P is precipitation inflow in mm year<sup>-1</sup>

380 | whereas  $\Delta$ AET, RCH, Qr, and Qs are outflows indicating, respectively, actual evapotranspiration, recharge, rapid-response runoff, and slow-response runoff (mm year<sup>-1</sup>). VEG and GP are human activity parameters for, respectively, vegetation-related activities such as reforestation, and groundwater pumpage both in mm year<sup>-1</sup>, with their value of 0 representing no human influence. C1, C2, C3, and C4 are dimensionless coefficients with physical interpretations of respectively, proportion of impermeable area, proportion of soil bound water utilization by AET, proportion of rainfall into deeper layer, and proportion of outflowing groundwater. K is dimensionless response coefficient related to intrinsic permeability and determined by soil type only, and DT is time interval of one year in this study. The choice of the time interval is due to both the study's purpose and the fact that mean travel time of a non-groundwater-dominant catchment is around one year or slightly longer, leading to catchment soil water stock typically updates at an annual step (Sterte et al., 2021). The initial values of parameters are first obtained from literature, then calibrated against observed AET and Q.

删除的内容: correction coefficients,

### 390 3 Results

#### 3.1 Preliminary Identification of Interconnection Pattern

The wavelet analysis revealed significant periodicities in the precipitation data for the study area at 7-8<sup>th</sup>, and 14-15<sup>th</sup> years of the 1982-2015 period (Fig. S5). The periodicities were consistent with those of the Pacific Decadal Oscillation (PDO), which is the prime driver of interdecadal change in summer rainfall over East China (Nalley et al., 2016; Zhu et al., 2015). Here we divide the whole study period into two distinct phases — wet and dry. Firstly, from climatic perspective, this is because, the PDO phase shifted from positive to negative mode since the late 1990s, corresponding to the decrease in rainfall in the study area (Fig. S6). Meanwhile the self-calibrating Palmer Drought Severity Index (SC-PDSI) and the Standardized Precipitation Evapotranspiration Index (SPEI) calculated from the climatic data in Beijing, China, both showed major dry periods in 1980-1985 and 1999-2011 (Zhao et al., 2017). Secondly, in term of streamflow, streamflow of the headwater of Baiyang Lake significantly decreased, with tipping point in around 2000 (Fig. S7; Cui et al., 2019; Xu et al., 2019), although precipitation does not show significant trend (Fig. S8). Thirdly according to wavelet analysis, a dampening process in the magnitude of fluctuations in the wavelet coefficients was identified for P and Q after 2000. All these information indicated that the hydrological system has transitioned from wet phase to dry phase around 2000. The wet phase started in 1984 and ended in 2000, while the dry phase was from 2001 to 2015.

删除的内容: S4).

405 | Figure 2 showed the comparison of the four signals (P,  $\Delta$ AET, Q, and  $\Delta$ S) in the four catchments of the study area. The P signal in the four catchments regularly fluctuated in the wet phase, while dampening fluctuations appeared in the dry phase with weaker amplitudes and lower frequencies. The Q signal was roughly synchronous with the P signal, with similar amplitude and frequency. The  $\Delta$ S signal showed in-phase connection with P signal in the wet phase, however, the in-phase connection disappeared in the dry phase. The  $\Delta$ AET signal was out of phase with the other signals in the wet phase, while in the dry phase,  $\Delta$ AET signal only opposed the  $\Delta$ S signal in their phases.

删除的内容: Since the late 1990s,

删除的内容: ,

删除的内容: S5). The

删除的内容: At the same time,

删除的内容: occurring

删除的内容: 1998 (

删除的内容: 2019). These

删除的内容: study period can be divided into two distinct phases —

删除的内容: and

删除的内容: .

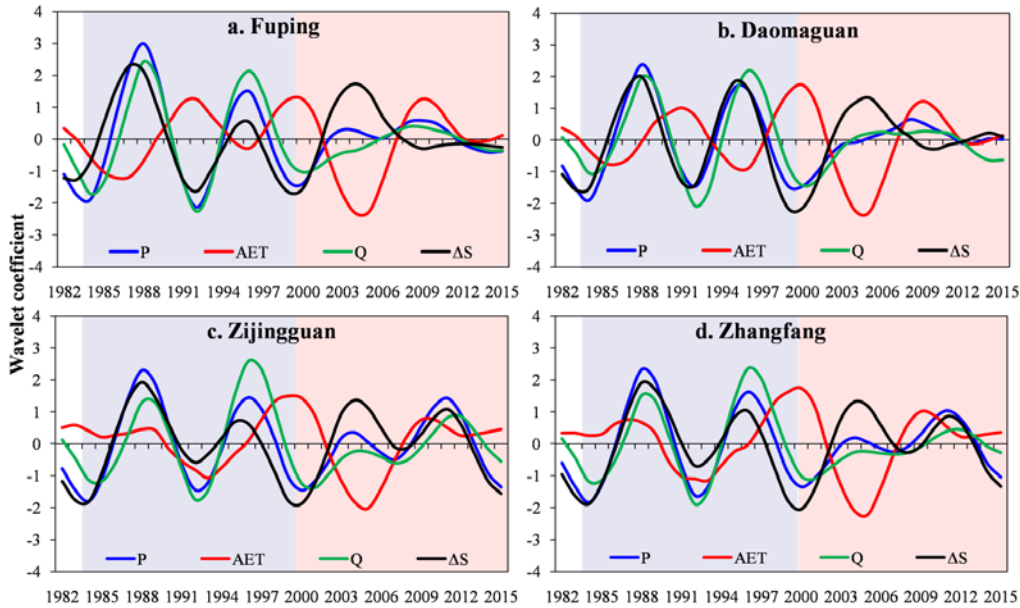
删除的内容: with the lowest wavelet coefficient of precipitation

删除的内容: with

删除的内容: second lowest coefficient. The

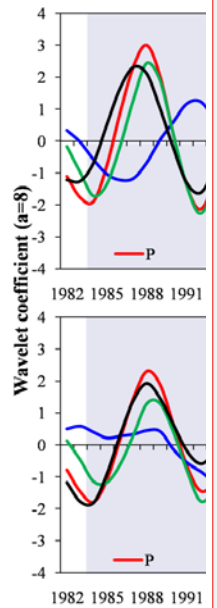
删除的内容: A scale parameter of 8 was used in this study as the highest for the wavelet power spectrum of multi-decadal periodicities (Fig. S4).

删除的内容: it dis



435 **Figure 2: Wavelet coefficients of four signals (precipitation, P, actual evapotranspiration, AET, streamflow, Q, and catchment water storage change,  $\Delta S$ ) with contraction parameter of 8 in the Fuping catchment (a), Daomaguan catchment (b), Zijingguan catchment (c), and Zhangfang catchment (d). Blue background indicates wet phase from 1984 to 2000, while the red background indicates dry phase from 2001 to 2015.**

440 The correlation analysis (Fig. 3) corroborated the preliminary interconnection results observed in the wavelet analysis, both for the entire study period and the dry/wet phase period. The  $\Delta AET$  signal was significantly and negatively correlated with the other signals in the wet phase, but only to the  $\Delta S$  signal in the dry phase. The Q signal significantly and positively correlated to P signal in both dry and wet phases. The  $\Delta S$  signal in the wet phase showed significant positive correlations with P and Q signals while negative correlation with  $\Delta AET$  signal in wet phase. In the dry phase,  $\Delta S$  signal significantly negatively correlated only to the  $\Delta AET$  signal. Comparable correlations were observed for all four catchments, with larger and more significant values (e.g.,  $\Delta S$  versus  $\Delta AET$ ) for FP and DMG catchments than ZJG and ZF.



删除的内容:

删除的内容: ( $a=8$ )

删除的内容: budget,

删除的内容: four catchments.

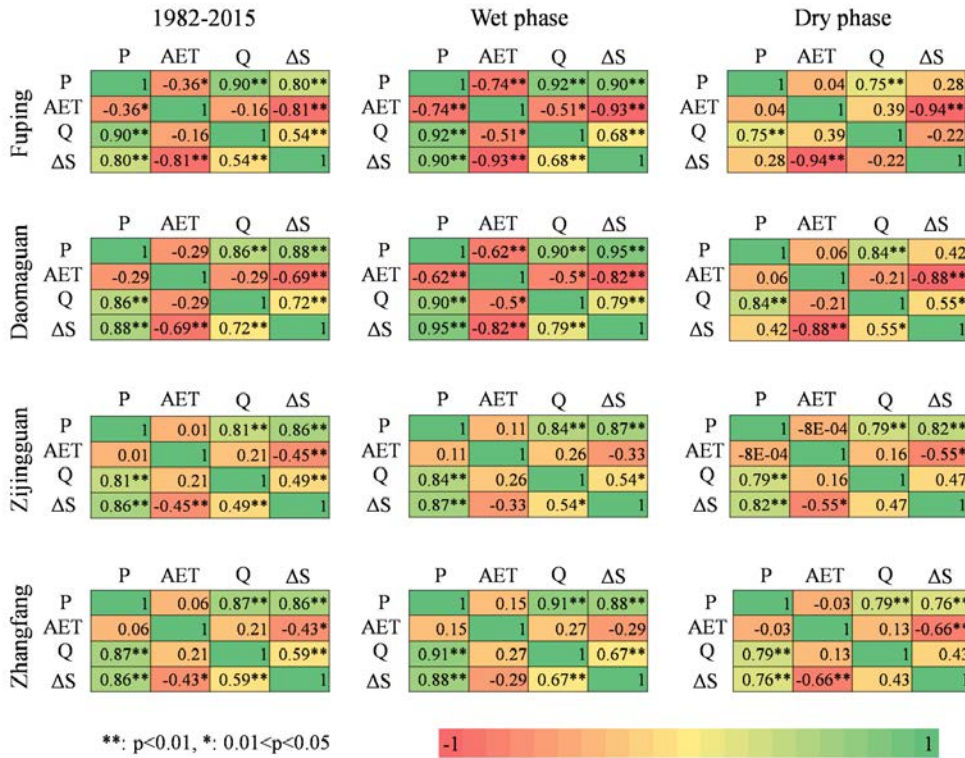
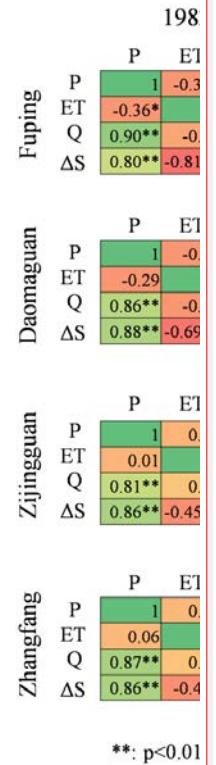


Figure 3: Pearson's correlation matrices for four variables for the whole study period, the wet phase and the dry phase. The calculation is based on wavelet coefficients with contraction parameter of 8.

### 3.2 Development of endogenous linkage structure of the hydrological system

The causal relationships among variables play an important role in helping to understand the endogenous linkage structure of a hydrological system. Taking FP catchment as an example (Fig. 4), the Granger's causality test showed that P does not Granger-cause AET, while it does Granger-cause Q and ΔS; AET does not Granger-cause Q, while it Granger-causes ΔS; ΔS Granger-causes Q and AET. The bidirectional causal relationship between ΔS and AET denotes the existence of unobserved common variables, referred to as confounders (Pearl, 2009; Morgan and Winship, 2015). According to the theory of causal inference, confounders can obscure or blur the "real" causal relationship, thus it is advisable to establish subgroups to analyze the causal relationship separately. In the context of our study, the causal relationship of ΔS and AET is "confounded" by soil water: AET causes ΔS when soil water is plentiful, whereas ΔS causes AET when soil water is scarce.



删除的内容:

删除的内容: at scale

删除的内容: Endogenous

删除的内容: development

删除的内容: Understanding

删除的内容: is very

删除的内容: for developing a correct

删除的内容: and understanding the behavior of

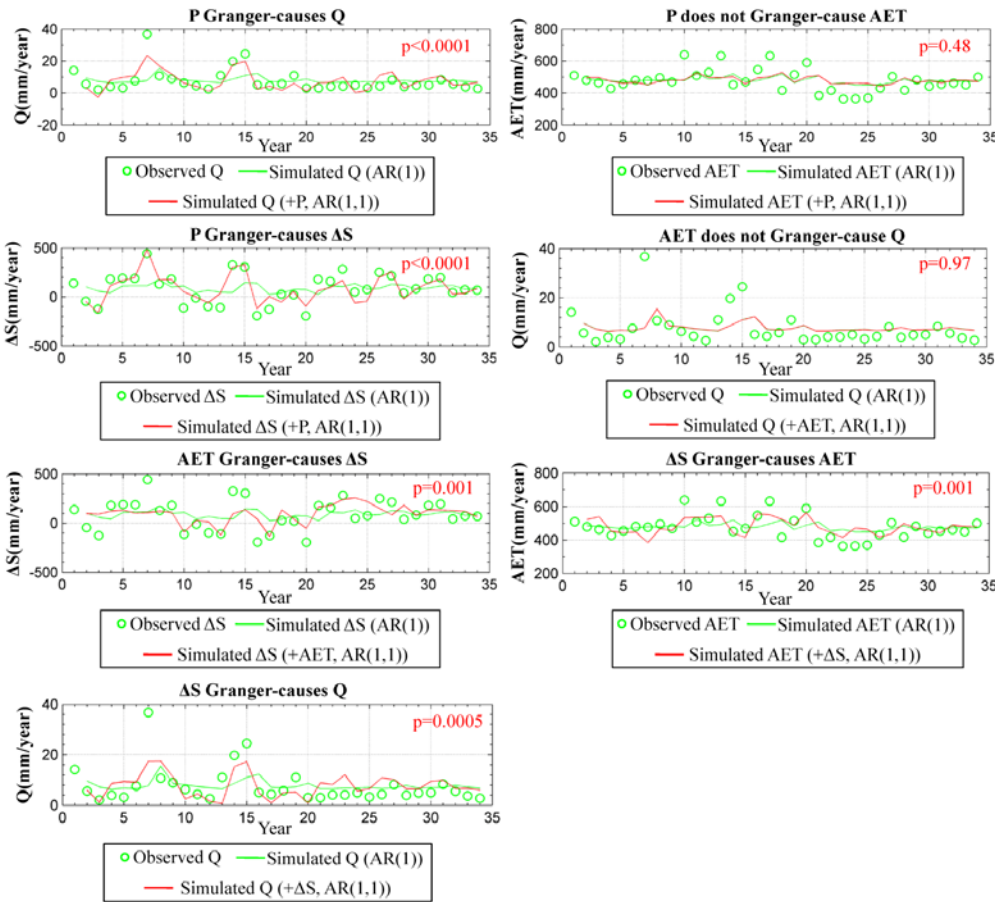
删除的内容: which is the base of simulation of system dynamics.

删除的内容: ΔS. The

删除的内容: ΔS.

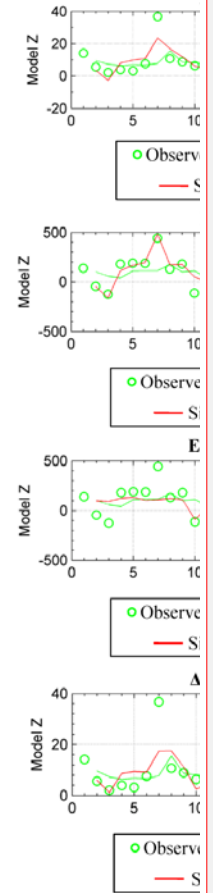
删除的内容: ET. The results indicated that there is an important trade-off structure

删除的内容: moisture and ET in hydrological system.



480 **Figure 4: Causal relationships among four hydrological variables of FP catchment. P, Q, AET, and ΔS indicate rainfall, streamflow, actual evapotranspiration, and catchment water storage change, respectively. AR(p) represents the autoregressive model, where "p" is called the order of the model and represents the number of lagged values we want to include. AR(p,q) represents that additional q-order variable is included. The p-value indicates significance at 95% confidence. Comparable results of Granger's causality test were seen for the other catchments (not shown for clarity purpose).**

485 The endogenous linkage structure of the hydrological system based on the Granger's causality test was built in a three-step procedure. First a complete undirected graph is constructed (Fig. 5a), followed by elimination of edges between variables that are independent; in this case the edges between AET and P, and between AET and Q (structure shown in Fig. 5b), and finally providing a direction of the adjacent edges, according to the results (Fig. 5c). However, additional knowledge is



删除的内容:

删除的内容: budget

删除的内容: results

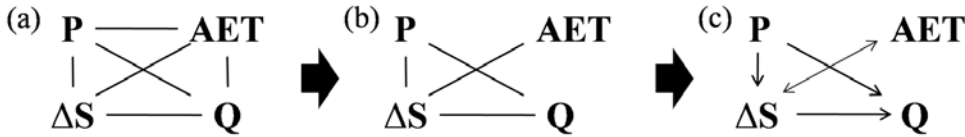
带格式的: 正文

删除的内容: refore, starting from a fully connected network, the links between ET and P or Q could be removed as no causal relationships existed

删除的内容: them, and causal directions were added

necessary to identify the reinforcing/balancing feedback loops and to form the system dynamics' structure of the hydrological system. As shown in Figure 5d, the main trait of the structure built using the system dynamics approach is the soil-vegetation feedback to drive system's dynamic equilibrium, while P was input and Q was influenced by the soil-vegetation feedback structure.

### Structure of hydrological system based on Granger's causality test



### Structure of hydrological system based on system dynamics approach

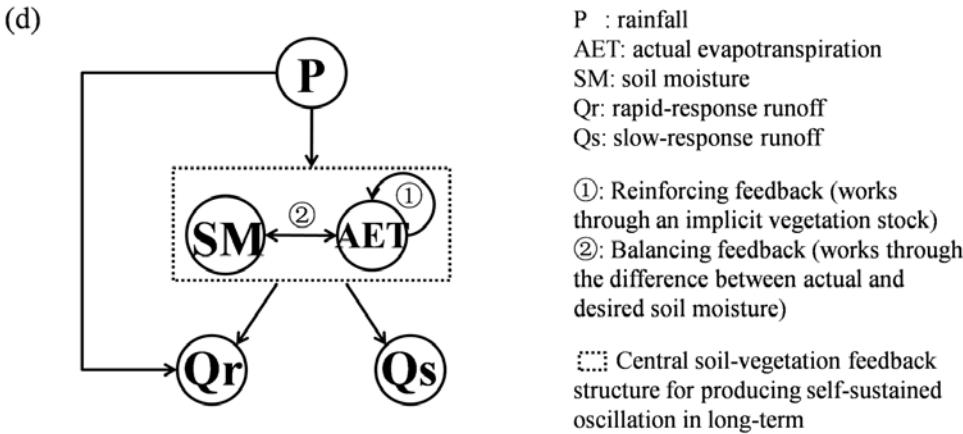


Figure 5: The comparison of endogenous linkage structures of hydrological system built using two approaches, Granger's causality test and system dynamics approach. a-c, illustration of how the structure built using causal analysis, d structure built using system dynamics approach.

The most interesting knowledge that the system dynamics' structure depicted was that the boundary of the hydrological system should be expanded to incorporate AET (vegetation structure) as an endogenous variable. According to system dynamics theory, exogenous variables should have no feedbacks from or interactions with the stocks inside system boundary (Sterman, 2000). For this study, it was appropriate to exclude P outside the system boundary and consider P as the sole source variable because P was insensitive to AET and SM over small area (Wei and Dirmeyer, 2019). Meanwhile, AET

删除的内容: above (Fig. 5a). Finally, by combing systematic theory, causal analysis and

删除的内容: knowledge,

删除的内容: final

删除的内容: and

删除的内容: equations of hydrological system have been derived (Fig. 5b). In the hydrological system, a

删除的内容: structure was at the center position

删除的内容: status of

删除的内容: moisture. .

删除的内容: (b) of hydrological system.

删除的内容: The final structure suggested that the hydrological

删除的内容: was

删除的内容: local surface

删除的内容: soil moisture

删除的内容: such a

535 (vegetation structure) exhibited strong interactions with SM. Therefore, AET (vegetation structure) should be included as an endogenous variable. Over interannual time scale, AET (vegetation structure) was SM-dependent and played an important role in maintaining the dynamic equilibrium of SM. The outflow rate of AET (vegetation structure) could be higher under ample soil water while lower under lack of soil water. Treating AET (vegetation structure) as an exogenous variable may lead to inappropriate depletion rate of SM, as current AET (vegetation structure) was often not related to current climate, which in turn caused further miscalculations of hydrological variables in subsequent periods. Currently, the AET estimation is based on remote-sensing-based vegetation index, which, however, makes the predictions of future AET impossible because the future vegetation index cannot be obtained. Additionally, rapid- and slow-response runoff were considered as sink variables of the hydrological system because their influence on SM and AET could be disregarded once they have coalesced into the riverbed.

删除的内容: SM, despite the significant hysteresis effect that decoupled their short-term relationship.

删除的内容: long

### 545 3.3 Dynamics simulation of the hydrological system

According to the system dynamics equations (3) - (12), using observed P as input and starting with an initial soil moisture state, the dynamics of AET, Q,  $\Delta S (= P - \text{AET} - Q)$  and TWS (total water storage=soil moisture + groundwater + surface water) were simulated for the FP catchment as an example under both natural and human activities scenarios (Fig. 6). Here AET1, Q1,  $\Delta S1$  and TWS1 represent the simulated values with constant ESMS, while AET2, Q2,  $\Delta S2$  and TWS2 represent the simulated values with varying ESMS. Under natural scenario (GP = 0, VEG = 0), with a constant ESMS value, the simulated AET captured the interannual cycles during the study period, despite the lack of annual fluctuations. Simulated Q and  $\Delta S$  captured both the annual fluctuations and the interannual cycles (the R-square values of simulated AET, Q, and  $\Delta S$  are 0.19, 0.21, and 0.82, respectively). However, the discrepancies between observed and simulated AET and  $\Delta S$  increased over time. If different climatic phases were considered and varying ESMS was adopted to reflect the shift of climatic phase over decadal scale (lower ESMS from 1982-2000 and higher ESMS from 2001-2015), the discrepancies became smaller (the R-square values of simulated AET, Q, and  $\Delta S$  were 0.33, 0.17, and 0.85, respectively).

删除的内容: beginning

删除的内容: (soil

删除的内容: of

删除的内容: were simulated

删除的内容: -intervening

删除的内容: The

删除的内容: long-term and slow dynamics

删除的内容: long-term trends

删除的内容: Under natural scenario (GP = 0, VEG = 0), when a constant ESMS value was used,

删除的内容: However, if

删除的内容: for such

删除的内容: periodicity

删除的内容: are

Evident from Figure 6 was the increase in simulated total water storage after 2000 against an observed anomaly decrease, which was probably caused by human interventions not reflected in the simulation such as groundwater overexploitation and afforestation activity in the study area since 2000, also seen in the increase in the regional NDVI (Fig. S9). Both observed data and literature review were used to set up human activities scenarios. Firstly, given the lack of groundwater pumpage data for the study area and the time frame, we estimated it based on existing literature. The water use of household sector in FP county mainly relies on groundwater and water demand is projected to increase in the future (Wei and Wang, 2019). Furthermore, the groundwater depletion or the decline of water table in North China Plain also showed an exponential increase during the study period (Gong et al., 2018; Lancia et al., 2022; Huang et al., 2023). Secondly, NDVI data showed a linear upward trend during the majority of the study period (Fig. S9), and literature showed that the Taihang Mountain Afforestation Project launched in 1987 and the coverage of vegetation increased 11.2% from 1994 to 2013 (Hu et al., 2017, 2019; Yuan et al., 2019). Therefore, two human-intervention scenarios were assumed to linearly increase AET and

删除的内容: 2000. It is reported that the

删除的内容: Also,

删除的内容: 2017). These

exponentially increase groundwater pumpage. When groundwater pumpage scenario was introduced, the simulated  $\Delta$ AET,  $\Delta$ S, Q and TWS all greatly improved. When the afforestation scenario was added, it pushed further all the simulated values closer to the observations (the R-square values of simulated  $\Delta$ AET, Q, and  $\Delta$ S increased notably to 0.35, 0.30, and 0.86, respectively).

600 Simulations were conducted for other three catchments with same initial values, parameters, and scenarios (Fig. S10-S12).  
 605 Despite small discrepancies caused by the parameterization, for instance, the overestimated Q in ZF catchment, the interannual cycles were well captured in all catchments, indicating the robustness of the system dynamic approach. It is thus important to note that system dynamics approach was insensitive to initial values of variables. In addition, the divergence between observed TWSA and simulated TWS in the first several years was probably caused by the inaccurate reconstruction of TWSA series because TWS was less likely decreasing under humid climate and marginal groundwater pumpage.

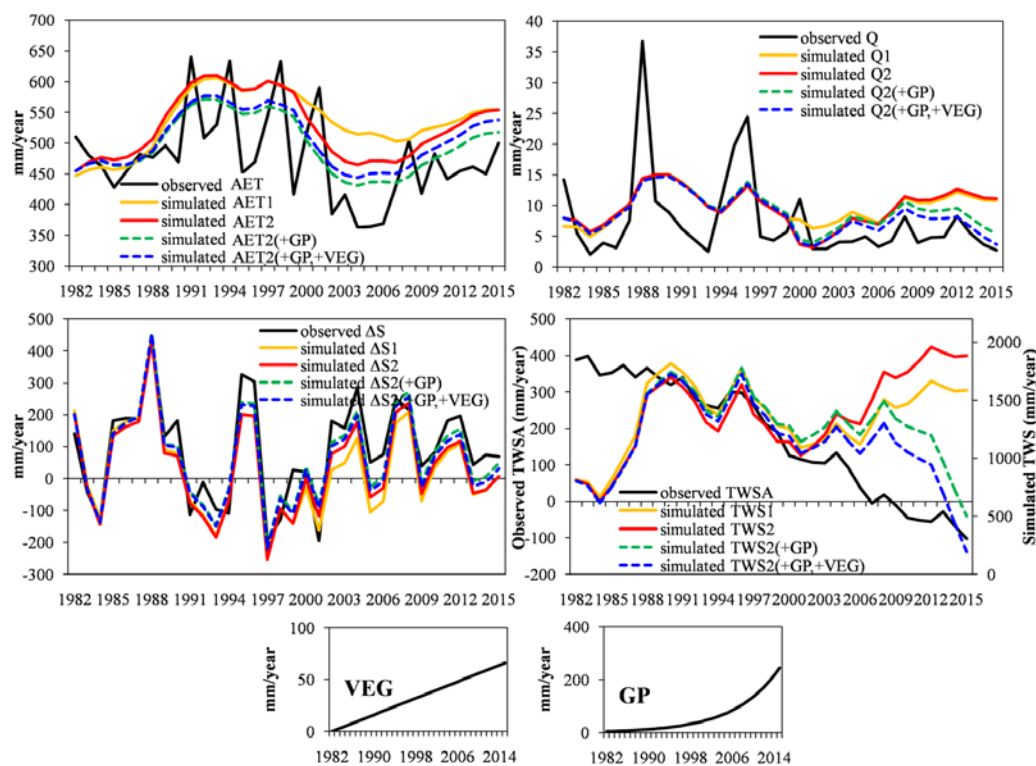
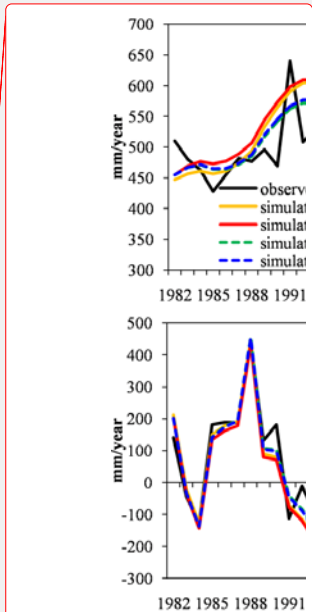


Figure 6: Observed and simulated actual evapotranspiration (AET), streamflow (Q), catchment water storage change ( $\Delta$ S) and total water storage (TWS) using system dynamics approach for the FP catchment. Yellow and red lines indicate the simulation

删除的内容: are  
 删除的内容: 0.3,

删除的内容: S6-S8). In spite of some  
 删除的内容: long-term trends

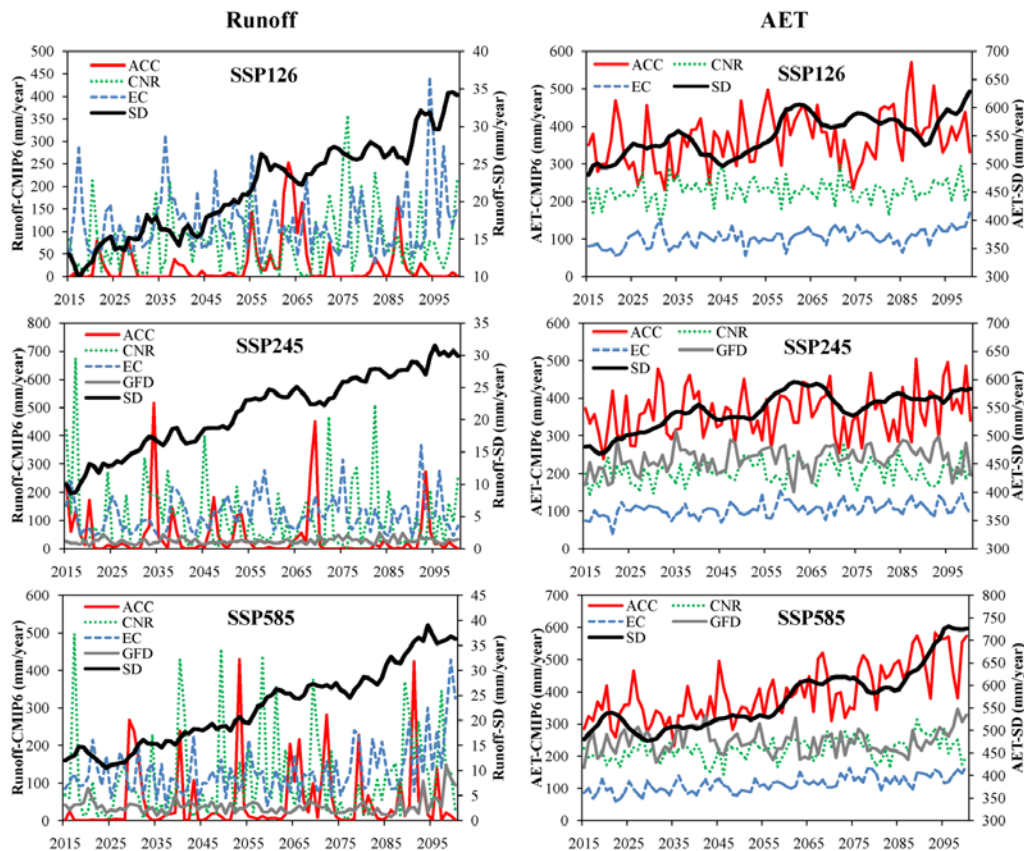


删除的内容:  
 删除的内容: (ET),  
 删除的内容: budget



without human intervention (GP=0 and VEG=0), with respectively fixed and varying desired soil moisture (ESMS). Green dashed line indicates simulation with groundwater pumpage (GP), which increased at an exponential rate. Blue dash line is the simulation with GP and vegetation change (VEG) which is increasing at a linear rate. AET1, Q1, AS1 and TWS1 represent the simulated values with constant ESMS, while AET2, Q2, AS2 and TWS2 represent the simulated values with varying ESMS. TWSA is the anomaly of total water storage.

Using the system dynamics' structure, we computed future runoff and AET from 2015 to 2100 under different SSP+RCP scenarios and compared the results with those from four GCMs. In term of AET, the system dynamics' structure aptly captured its primary behavioral patterns: a decline in 2040s and 2070s, followed by an increase in 2060s and 2090s. Notably, the R-squared values between system dynamics' results and GCMs' results were relatively higher for SSP585, specifically 0.48 for ACCESS-CM2, 0.15 for CNRM-ESM2, 0.41 for EC-Earth2, but 0.04 for GFDL-CM4. For the other two SSPs, the R-squared values were relatively poor. Regarding runoff, the system dynamics' simulations indicated an increasing trend, whereas the GCMs' estimation did not exhibit any discernible trend. The R-squared values between system dynamics' results and GCMs' results for runoff were poor across all experiments. These findings further emphasized that process-based models, while adept at capturing short-term fluctuations, may be inadequate in simulating long-term hydrological behaviors.



630 **Figure 7: Future runoff and AET predicted by system dynamics approach under three climatic scenarios and their comparison with predictions from four GCMs. All the dynamics were simulated with fixed ESMS and without human interventions (GP and VEG = 0).**

#### 4 Discussions

##### 4.1 Distinct mechanisms at different hierarchies of a hydrological system

635 Here we discuss the interpretation of the underlying mechanisms in term of the hierarchies we defined in hydrological system. At the lowest hierarchy, hydrological processes are primarily controlled by the interaction between rainfall density and sink-filling/macropore flow (McDonnell et al., 2021), which was conceptualized as a small, active reservoir (Xiao et al.,

删除的内容: The simulations were also run under different SSP+RCP scenarios for a future climate with probably more severe extreme events – alternate floods and droughts. Here future climate from Baoding station (close to Beijing and study area) was used for representing the whole area. The system dynamics approach showed that Q and TWS will increase in the future under all climatic scenarios, while ET will be comparatively more stable. The projection also pointed on a drought period likely in the 2030s under the low challenging scenario SSP1+RCP2.6 (Fig. 7). . .

删除的内容: of hydrological systems

删除的内容: . Future precipitation was from Baoding station close to study area.

删除的内容: .

删除的内容: Why is

删除的内容: desired soil moisture higher in

675 2019). At this level, soil properties, particularly non-capillary pores in the top layer, are predominant and direct factor  
influencing the storage-discharge relationship at intra-annual scale. At the higher hierarchy, hydrological processes primarily  
involve the interaction between vegetation structure change and soil bound water, defined as water stored in capillary pores  
(Good et al., 2015), which was conceptualized as a large, passive reservoir (Xiao et al., 2019). At this level, soil capillary  
pores in the deep layer become predominant and direct influencing factor. Water stored in capillary pores is primarily  
680 utilized by vegetation, further strengthening the link between vegetation and hydrological behaviors at the interannual scale.  
As ascending to even higher hierarchy, the interaction between climatic oscillation and soil water holding capacity takes over  
the priority of a hydrological system to generate decadal-scale hydrological dynamics. This is because, soil water holding  
capacity can be enhanced by the interplays of soil physical, chemical and biological components during drought (Delgado  
and Gómez, 2016). Physically, drought alters aggregate size fraction with less macro- and more micro-aggregates (Zhang et  
685 al., 2019; Su et al., 2020). Also pore network connectivity decreases due to reduced vegetation growth (Nagassa et al., 2015),  
which likely increases soil water holding capacity under drought conditions because of poorly connected soil pore network  
and larger water holding capacity of micropores (Patel et al., 2021). Chemically, the ionic strength of soil solution can be up  
to nine orders of magnitude greater in dry soils compared to saturated soils, creating extremely different chemical  
environment (Patel et al., 2021). This can cause desorption of different carbon molecules from minerals, and soil organic  
690 carbon (SOM) destabilization (Bailey et al., 2019). Biologically, drought stress reduces population and activity of soil  
animals and microbes. This can also destabilize SOM because the microbial community would preferentially consume the  
more labile/biodegradable organic molecules, leaving behind a more uniform, stable SOM pool (Kaiser et al., 2015).  
Furthermore, rainfall pulses in drought period would drive water going deeper because rainfall in dry spells usually occurs as  
discrete events (Manzoni et al., 2020). These make water easier to be trapped by soil particles rather than utilized by plants,  
695 further decreasing evapotranspiration.

The lack of mechanisms in higher hierarchies in conventional hydrological models leads to their hierarchy at sub-year scale  
and consequently the failure in producing long-term hydrological dynamics. Firstly, vegetation structure change rather than  
physiological processes has not been considered. Conventional hydrological models generally employ physiological process-  
based models to calculate AET. These are derived from experimental data obtained from individual leaf, and then upscaled  
700 to canopy by replacing the leaf-scale resistances with their assumed canopy-scale counterparts (Schymanski and Or, 2017).  
Thus such models still operate on a short-term scale, in which AET is sensitive to environmental turbulent diffusion  
(characterized by weather data) and vegetation physiological processes (e.g., leaf expansion and abscission) (Chen et al.,  
2022). However, alongside the spatial scaling up, vegetation structure change, such as growth and mortality, takes over the  
priority to influence AET. This process often takes several years but is ignored in conventional hydrological models.  
705 Secondly, the change of soil water holding capacity has not been included. Conventional hydrological models typically  
assume unvarying soil characteristics and thus stable soil water holding capacity. As the soil structural characteristics change  
slowly, it is permissible to disregard such changes during simulation when the time span is less than decades. However, these

删除的内容: dry phase? .  
Desired soil moisture is a value between wilting point and field capacity, thus it reflects soil water retention capacity of a catchment and higher value suggests higher soil water retention capacity. This is because, firstly, soil holds less water during drought and as a result, there is more space for the soil moisture stock to retain more water. In addition, soil water retention capacity can be further enhanced by the interactions of soil physical, chemical and biological components during drought (Delgado and Gómez, 2017).

删除的内容: .  
Overall, the soil water holding capacity of a catchment has enhanced in dry period due to more water storage space and complex interactions among physical, chemical and biological processes of soils. It makes

删除的内容: 4.2 Is the time scales implied by the

删除的内容: approaches? .  
Physical process-based ET

删除的内容: are widely used in various

删除的内容: , such as the Penman-Monteith model. It is

删除的内容: believed that these physically based equations were

删除的内容: However, the time scale has not scaled up accordingly alongside the spatial scaling up, thus

删除的内容: instantaneous

删除的内容: (Chen et al., 2022). In this short time scale,

删除的内容: climate

删除的内容: . As ET is a crucial variable in hydrological models,

删除的内容: climate-sensitive hydrological behaviors have also been reproduced due to this short-term mechanism. .  
In the long time scale, the climatic and physiological influence becomes minima...

删除的内容: tree

删除的内容: mortality, has become significant factors influencing ET over climate. The accessibility to water and th...

删除的内容: grow or die, and soil water may take

删除的内容: to deplete or replenish. System dynamics thus becomes a useful tool aiming to capture long-term dynami...

790 changes become discernible at a decadal scale, thereby necessitating the consideration of alterations in soil structural characteristics.

#### 795 4.2 Advantages and limitations of the system dynamics approach

800 Firstly, the system dynamics' model in our study is a simplified representation of the complex reality. We argue that both scientific and developmental merits are involved in the proposed model. In essence, the model is a "toy" model, also known as a minimal or exploratory model. Toy models are used in theoretical physics and many advanced research scopes (Georgescu, 2012). Complex systems usually involve a vast number of interacting elements; however, it is often the case that a small number of factors are quantitatively more significant than the others. Therefore, our highly simplified model only includes key factors providing a good starting point for building a more complex model (Luczak, 2017). Toy model can help us understand a complex system in its broadest strokes. By breaking it down and then building it back up, we gain profound insights into the system's essence. Moreover, although the lack of short-term hydrological behaviors may reduce the performance of our model, it is not significantly inferior compared to large models. For instance, previous studies evaluated runoff simulation from global climate (GCMs), global hydrological (GHMs) and land surface models (LSMs) and results showed that the GCMs failed in capturing observed runoff with median value of Pearson's correlation coefficient ( $r$ ) close to 0, while GHMs and LSMs can capture observed runoff with a median value of  $r$  higher than 0.6 ( $r$ -square values ranging from 0.5-0.6) (Zhou et al., 2012; Hou et al., 2023). Given this, our model ( $r$ -square values around 0.3) exhibits comparable performance to large models, while requiring significantly less data and computational time.

810 Secondly, ESMS as an important parameter represents the soil water holding capacity with value ranging from field capacity to wilting point. Thus, accurate estimation of ESMS is crucial for gaining insights into the long-term hydrological behaviors. However, ESMS estimation remains a significant challenge in hydrology, primarily due to the complexity of measuring the total volume of soil capillary pores across an entire catchment. The measurement is difficult using the "bottom-up" method as underground characteristics, such as soil depth and soil porosity, exhibit high heterogeneity and are not readily observable. Moreover, such measurements are often labour-intensive, constrained by space and depth limitations. In our study area, soil characteristics are sparsely observed (Fu et al., 2021), and the results obtained from limited soil samples have a strong bias against the plausible distribution. Furthermore, soil structural characteristics undergo gradual changes over time due to the intricate interplay of soil physical, chemical and biological components. Often, the measurement scales are significantly smaller than the scales relevant to changes in soil structural characteristics.

815 To address these challenges, this study introduces a "top-down" methodology for estimating ESMS, grounded in system dynamics principles. Following the exogenous interventions, a dynamical system evolves over time, with its trajectories repeatedly passing through a fixed point or multiple points called "attractor" (Ricklefs et al., 2007). In this context, ESMS can be considered as "attractor" of the hydrological system, which can be inferred from the trajectories of hydrological system dynamics. Previous studies have also suggested that vegetation metrics, such as Gross Primary Productivity (GPP), Leaf Area Index (LAI), can serve as surrogates for soil structure modifications and soil hydraulic properties (Jha et al., 2023). Although

删除的内容: shifts and especially flow reductions such as those caused by the increasing enduring multi-year drought can only be described accurately with the system dynamics approach. One should carefully choose suitable tool according to their problems.

830 vegetation is still considered as exogenous driver in that framework, they highlight the intricate interactions among vegetation, soil structure, and soil moisture.

835 Finally, it is notable that our model was developed for a study area characterized by a semi-arid climate with limited water resources. In such regions, energy (temperature and light) is typically abundant and does not constrain vegetation growth or AET. Despite the higher evaporative demand resulting from hotter and drier atmospheric conditions, lack of water hinders the increase in AET by drying out the soil surface, weakening the vegetation, or even causing vegetation death to decrease AET. Therefore, the energy factors such as temperature and light are omitted in our model as our model aims to capture the most critical mechanism in the study area. The success of the model in replicating nonlinear hydrological dynamics proves that the core factors has been identified. For regions with energy limitation, such as high latitudes and tropic regions, energy factors could serve as the primary factors and the soil water-vegetation interaction should be modified into the interaction between energy (temperature/light) and vegetation.

## 840 5. Conclusions

Using wavelet analysis, Granger's causality test, and ultimately the system dynamics approach for the headwater of Baiyang Lake in China as an example, this study aimed to investigate the mechanism of slow variation of a hydrological system at interannual to decadal scales based on four observed variables (P, AET, Q, and  $\Delta S$ ) during the period of 1982-2015. Holistic and insightful understanding was achieved on how a hydrological system functions slowly, as summarized below:

845 (1) Correlation analysis in term of wavelet coefficients showed that there were constantly negative correlations between AET and the  $\Delta S$ , regardless of climatic periodicity. Meanwhile, the correlations between the two factors and other variables differed in wet and dry phases, for instance, Q significantly and positively correlated to the  $\Delta S$  in the wet phase and lost the link in the dry phase. This implies that interconnections between the AET and the  $\Delta S$  were robust while the relationships between the two factors and other variables were changing over time.

850 (2) Causal analysis showed a bidirectional causal relationship between AET and  $\Delta S$ , suggesting the existence of confounding factor and soil water serves as a "confounder" in this relationship. Thus the causal relationship was subgrouped according to soil water: AET played a dominant role in driving  $\Delta S$  under plentiful soil water, whereas  $\Delta S$  determined AET under lack of soil water.

855 (3) System dynamics approach built an endogenous linkage structure among stocks, which comprised a reinforcing feedback representing the vegetation structure change, and a balancing feedback representing the soil water-vegetation relationship. The structure successfully captured the slow behaviors of a hydrological system at interannual to decadal scales under both natural and human-intervention scenarios. Our results showed that at a interannual scale, the interaction between the vegetation structure change and the soil bound water dominated the hydrological processes, while at a decadal scale, the interaction between the climatic oscillation and soil water holding capacity controlled the hydrological processes.

删除的内容: ,

删除的内容: long-term,

删除的内容: (precipitation, ET, streamflow

删除的内容: water budget)

删除的内容: Unique improved

删除的内容: transferable

删除的内容: There was

删除的内容: evapotranspiration

删除的内容: water budget

删除的内容: periodicity, indicating the soil-vegetation feedback structure acted as the central role in the hydrological system.

删除的内容: water budget

删除的内容: phase, implying the

删除的内容: pivotal structure

删除的内容: flexible and could change

删除的内容: Water budget and ET Granger-caused each other, suggesting

删除的内容: effect in

删除的内容: -vegetation feedback structure. Self-enhanced vegetation growth process

删除的内容: the hydrological system

删除的内容: ample

删除的内容: soil moisture dominated and balanced the process by forcing vegetation to die

删除的内容: The endogenous soil-vegetation feedback structure guaranteed the dynamic equilibrium of soil moisture within a range and caused the slow changes of hydrological system because growth and mortality of vegetation generally took years.

删除的内容: The system

删除的内容: involved endogenous soil-vegetation feedback

删除的内容: to

删除的内容: long-term and

删除的内容: The simulations better reflected observed patterns when varying desired soil moisture was adopted, suggesting soil had higher water retention

删除的内容: in the dry phase than wet phase. Meanwhile, reforestation and groundwater pumpage scenarios greatly ...

In conclusion, the system dynamics approach provides a hierarchical view to understand endogenous linkage structure of a hydrological system, and better reproduces the slow hydrological processes at interannual to decadal scales compared to conventional hydrological models. With these insights on the hydrological system, we could advance our knowledge in hydrological science in the century of complexity.

删除的内容: different

删除的内容: on the long-term

删除的内容: processes in

删除的内容: system, and better represents the observed functions of

删除的内容: system compared to bucket

删除的内容: quantitative

删除的内容: behavior,

删除的内容: a new era of

删除的内容: .

删除的内容: :

删除的内容: 4217012319 and 42301036).

#### 915 Financial support

This work was supported by two grants of the National Natural Science Foundation of China (Grant no. 42171046 and 42301036), and the Open Project Program for Hebei Province Collaborative Innovation Center for Sustainable Utilization of Water Resources and Optimization of Industrial Structure (No. XTZX202101).

#### Data Availability

920 The gridded data are available in the main text and the catchment-scale data can be obtained by contacting Xinyao Zhou (zhouxu@sjziam.ac.cn) and Yonghui Yang (yonghui.yang@sjziam.ac.cn).

#### Author contributions

Xinyao Zhou: Conceptualization, Methodology, Visualization, Writing — Original draft preparation. Zhuping Sheng and Kiril Manevski: Methodology. Supervision, Writing — Review & Editing. Yonghui Yang and Mathias Neumann Andersen: Supervision, Writing — Review & Editing. Yanming Yang, Shumin Han, Rongtian Zhao, Jinghong Liu, Qingzhou Zhang and Huilong Li: Resources.

删除的内容: ,

删除的内容: Manevski, Mathias Andersen, and Yonghui Yang:

#### Competing interests

The contact author has declared that none of the authors has any competing interests.

#### References

930 Banerjee, A., Chandra, S., and Ott, E.; Network inference from short, noisy, low time-resolution, partial measurements: Application to *C. elegans* neuronal calcium dynamics, P. Natl. Acad. Sci. USA, 120(12), e2216030120, https://doi.org/10.1073/pnas.221603012, 2023.

删除的内容: E., 2023.

Bai, Y., Langarudi, S.P., and Fernald, A.G.; System dynamics modeling for evaluating regional hydrologic and economic effects of irrigation efficiency policy, Hydrology, 8(2), 61, https://doi.org/10.3390/hydrology8020061, 2021.

删除的内容: dynamics. PNAS, 120(12), e2216030120.

删除的内容: A.G., 2021.

删除的内容: policy. Hydrology, 8(2), 61.

955 Bailey, V.L., Pries, C.H., and Lajtha, ~~K.~~; What do we know about soil carbon destabilization? *Environ. Res. Lett.*, 14, 083004, <https://iopscience.iop.org/article/10.1088/1748-9326/ab2c11>, 2019.

~~Bouaziz, L.J.E., Fenicia, F., Thirel, G., de Boer-Euser, T., Buitink, J., Brauer, C.C., Niel, J.D., Dewals, B.J., Drogue, G., Grelier, B., Melsen, L.A., Moustakas, S., Nossent, J., Pereira, F., Sprokkereef, E., Stam, J., Weerts, A.H., Willems, P., Savenije, H.H.G., and Hrachowitz, M.~~; Behind the scenes of streamflow model performance, *Hydrol. Earth Syst. Sci.*, 25, 1069-1095, <https://doi.org/10.5194/hess-25-1069-2021>, 2021.

960 ~~Bruehlheide, H., Dengler, J., Purschke, O., Lenoir, J., Jimenez-Alfaro, B., Hennekens, S.M., Botta-Dukat, Z., Chytrý, M., Field, R., Jansen, F., Kattge, J., Pillar, V.D., Schrod, F., Mahecha, M.D., Peet, R.K., Sandel, B., van Bodegom, P., Altman, J., Alvarez-Davila, E., Khan, M.A.S.A., Attorre, F., Aubin, I., Baraloto, C., Barroso, J.G., Bauters, M., Bergmeier, E., Biurrun, I., Bjorkman, a.D., Blonder, B., Carni, A., Cayuela, L., Cerny, T., Cornelissen, J.H.C., Craven, D., Dainese, M., Derroire, G., Sanctis, M.D., Diaz, S., Dolezal, J., Farfan-Rios, W., Feldpausch, T.R., Fenton, N.J., Garnier, E., Guerin, G.R., Gutierrez, A.G., Haider, S., Hattab, T. Henry, G., Herault, B., Higuchi, P., Holz, N., Homeier, J., Jentsch, A., Jurgens, N., Kachi, Z., Karger, D.N., Kessler, M., Kleyer, M., Knollova, I., Korolyuk, A.Y., Kuhn, I., Laughlin, D.C., Lens, F., Loos, J., Louault, f., Lyubenova, M.I., Malhi, Y., Marceno, C., Mencuccini, M., Muller, J.V., Munzinger, J., Myers-Smith, I.H., Neill, D.A., Niinemets, U., Orwin, K.H., Ozinga, W.A., Penuelas, J., Perez-Haase, A., Petrik, P., Phillips, O.L., Partel, M., Reich, P.B., Romermann, C., Rodrigues, a.V., Sabatini, F.M., Sardans, J., Schmidt, M., Seidler, G., Espejo, J.E.S., Silveira, M., Smyth, A., Sporbert, M., Svenning, J.-C., Tang, Z., Thomas, R., Tsiripidis, I., Vassilev, K., Violle, C., Virtanen, R., Weiher, E., Welk, E., Wesche, K., Winter, M., Wirth, C., and Jandt, U.~~; Global trait-environment relationships of plant communities, *Nat. Ecol. Evol.*, 2, 1906-1917, <https://doi.org/10.1038/s41559-018-0699-8>, 2018..

965 ~~Cao, J., Yang, H., and Zhao, Y.~~; Experimental analysis of infiltration process and hydraulic properties in soil and rock profile in the Taihang Mountain, North China, *Water Supply*, 22(2), 1691-1703, <https://doi.org/10.2166/ws.2021.321>, 2022.

970 ~~Chen, J., Wilson, C.R., Tapley, B.D., Scanlon, B., and Güntner, A.~~; Long-term groundwater storage change in Victoria, Australia from satellite gravity and in situ observations, *Global Planet. Change*, 139, 56-65, <https://doi.org/10.1016/j.gloplacha.2016.01.002>, 2016.

~~Chen, H., Huang, J.J., Dash, S.S., Wei, Y., and Li, H.~~; A hybrid deep learning framework with physical process description for simulation of evapotranspiration, *J. Hydrol.*, 606, 127422, <https://doi.org/10.1016/j.jhydrol.2021.127422>, 2022.

975 ~~Craine, J.M., and Dybzinski, R.~~; Mechanisms of plant competition for nutrients, water and light, *Funct. Ecol.*, 27(4), 833-840, <https://doi.org/10.1111/1365-2435.12081>, 2013.

~~Creutzfeldt, B., Ferré, T., Troch, P., Merz, B., Wziontek, H., and Güntner, A.~~; Total water storage dynamics in response to climate variability and extremes: Inference from long-term terrestrial gravity measurement, *J. Geophys. Res.*, 117, D08112, <https://doi.org/10.1029/2011JD016472>, 2012.

980 ~~Cui, H., Xiao, W., Zhou, Y., Chen, Y., and Lu, F.~~; Runoff responses to climate change and human activities in the upper Daqing River Basin, *South-to-North Water Transfers and Water Science & Technology*, 17(4), 54-62, <https://doi.org/10.13476/j.cnki.nsbdbqk.2019.0084>, 2019. (in Chinese)

删除的内容: K., 2019.

删除的内容: Environmental Research Letter,

删除的内容: 083004.

删除的内容: Bouaziz, L., Weerts, A., Schellekens, J., et al., 2018. Redressing the balance: quantifying net intercatchment groundwater flows. *Hydrology and Earth System Sciences*, 22, 6415-6434. .

删除的内容: et al., 2021.

删除的内容: performance. *Hydrology and*

删除的内容: *System Sciences*,

删除的内容: 1069-1095.

删除的内容: Bruehlheide, H., Dengler, J., Purschke, O., et al., 2018. Global trait-environment relationships of plant communities. *Nature Ecology & Evolution*, 2, 1906-1917. .

删除的内容: Y., 2022.

删除的内容: China.

删除的内容: 1691-1703.

删除的内容: A., 2016.

删除的内容: observations. *Global and Planetary Change*, 139, 56-65.

删除的内容: H., 2022.

删除的内容: evapotranspiration. *Journal of Hydrology*, 606, 127422.

删除的内容: et al., 2012.

删除的内容: measurement. *Journal of Geophysical Research*, 117, D08112.

删除的内容: et al., 2019.

删除的内容: Basin.

删除的内容: 54-62.

Davis, G.B.; Systems Approach, Encyclopedia of Information Systems, 2003, 351-360, <https://doi.org/10.1016/B0-12-227240-4/00178-7>, 2003.

1025 Delgado, A., and Gómez, J.A.; The soil. Physical, chemical and biological properties, in: Principles of Agronomy for Sustainable Agriculture, edited by: Villalobos, F.J., and Fereres, E., Springer Cham, Cordoba, Spain, 15-26, [https://doi.org/10.1007/978-3-319-46116-8\\_2](https://doi.org/10.1007/978-3-319-46116-8_2), 2016.

Dorigo, W., Preimesberger, W., Moesinger, L., et al.; ESA Soil Moisture Climate Change Initiative (Soil Moisture\_cci): Version 07.1 data collection, NERC EDS Centre for Environmental Data Analysis [data set], <http://doi.org/10.5285/ea3eb0714dc6402b905fe9f7ee50dbbc>, 2023.

1030 ETWatch; Haihe Basin ET Dataset and Haihe Basin Landuse, [www.etwatch.cn](http://www.etwatch.cn), (last access: 28 September 2023), 2023.

Fowler, K., Peel, M., Western, A., Zhang, L., and Peterson, T.J.; Simulating runoff under changing climatic conditions: Revisiting an apparent deficiency of conceptual rainfall-runoff models, *Water Resour. Res.*, 52(3), 1820-1846, <https://doi.org/10.1002/2015WR018068>, 2016.

1035 Fowler, K., Pell, M., Western, A., and Zhang, L.; Improved rainfall-runoff calibration for drying climate: Choice of objective function, *Water Resour. Res.*, 54(5), 3392-3408, <https://doi.org/10.1029/2017WR022466>, 2018.

Fowler, K., Knoben, W., Peel, M., Peterson, T., Ryu, D., Saft, M., Seo, K.-W., and Western, A.; Many commonly used rainfall-runoff models lack long, slow dynamics: Implications for runoff projections, *Water Resour. Res.*, 56(5), e2019WR025286, <https://doi.org/10.1029/2019WR025286>, 2020.

1040 Fowler, K.J.A., Coxon, G., Freer, J.E., Knoben, W.J.M., Peel, M.C., Wagener, T., Western, A.W., Woods, R.A., and Zhang, L.; Towards more realistic runoff projections by removing limits on simulated soil moisture deficit, *J. Hydrol.*, 600, 126505, <https://doi.org/10.1016/j.jhydrol.2021.126505>, 2021.

Forrester, J.W. (Eds); Principles of Systems, Pegasus Communications Publications, Waltham, MA, ISBN 1883823412, 1968.

1045 Fu, J. and Wang, W.; Global PEW Land Evapotranspiration Data Set (1982-2018), National Tibetan Plateau / Third Pole Environment Data Center [data set], <https://doi.org/10.11888/TERRE.TPDC.272874>, 2022.

Fu, J., Wang, W., Shao, Q., Xing, W., Cao, M., Wei, J., Chen Z., and Nie, W.; Improved global evapotranspiration estimates using proportionality hypothesis-based water balance constraints, *Remote Sensing Environ.*, 279(15), 113140, <https://doi.org/10.1016/j.rse.2022.113140>, 2022.

1050 Fu, T., Gao, H., Liang, H., and Liu, J.; Controlling factors of soil saturated hydraulic conductivity in Taihang Mountain Region, northern China, *Geoderma Reg.*, 26, e00417, <https://doi.org/10.1016/j.geodrs.2021.e00417>, 2021.

Fu, T., Liu, J., Gao, H., Qi, F., Wang, F., and Zhang, M.; Surface and subsurface runoff generation processes and their influencing factors on a hillslope in northern China, *Sci. Total Env.*, 906, 167372, <https://doi.org/10.1016/j.scitotenv.2023.167372>, 2024.

Georgescu, I.; Toy model, *Nat. Phys.*, 8, 444, <https://doi.org/10.1038/nphys2340>, 2012.

- 删除的内容: G.B., 2003.
- 删除的内容: Approach.
- 删除的内容: Elsevier,
- 删除的内容: <https://doi.org/10.1016/B0-12-227240-4/00178-7>.
- 删除的内容: J.A., 2017.
- 删除的内容: properties.
- 删除的内容: , Chapter
- 删除的内容: pp15-26.
- 删除的内容: al., 2023.
- 删除的内容: collection.
- 删除的内容: , 03 May 2023, doi: 10.5285/ea3eb0714dc6402b905fe9f7ee50dbbc.
- 删除的内容: ETWatch, 2023.
- 删除的内容: Landuse.
- 删除的内容: [www.etwatch.cn](http://www.etwatch.cn). Available at 2023-9-
- 删除的内容: .
- 删除的内容: et al., 2016.
- 删除的内容: models. Water Resources Research, 52, 1820-1846.
- 删除的内容: L., 2018.
- 删除的内容: function.
- 删除的内容: Resources Research,
- 删除的内容: 54.
- 删除的内容: et al., 2020.
- 删除的内容: projections. Water Resources Research, 56, e2019WR025286.
- 删除的内容: et al., 2021.
- 删除的内容: deficit. Journal of Hydrology,
- 删除的内容: 126505.
- 删除的内容: , 1968.
- 删除的内容: Systems.
- 删除的内容: :
- 删除的内容: MA.



1095 [Gong, H., Pan, Y., Zheng, L., Li, X., Zhu, L., Zhang, C., Huang, Z., Li, Z., Wang, H., and Zhou, C.: Long-term groundwater storage changes and land subsidence development in the North China Plain, \*Hydrogeol. J.\*, \*\*26\*\*, 1417-1427, <https://doi.org/10.1007/s10040-018-1768-4>, 2018.](#)

1095 [Good, S.P., Noone, D., and Bowen, G.: Hydrologic connectivity constrains partitioning of global terrestrial water fluxes, \*Science\*, \*\*349\*\*\(6244\), 175-177, <https://doi.org/10.1126/science.aaa5931>, 2015.](#)

Han, Q., Tong, R., Sun, W., [Zhao, Y., Yu, J., Wang, G., Shrestha, S., and Jin, Y.:](#) Anthropogenic influences on the water quality of the Baiyangdian Lake in North China over the last decade, *Sci. Total Env.*, **701**, 134929, <https://doi.org/10.1016/j.scitotenv.2019.134929>, 2020.

1100 Hofkirchner, W., and Schafranek, [M.:](#) General System Theory, in: *Volume 10 in Handbook of the Philosophy of Science, Philosophy of complex systems*, edited by: Cliff Hooker, North-Holland, 177-194, <https://doi.org/10.1016/B978-0-444-52076-0.50006-7>, 2011.

[Hou, Y., Guo, H., Yang, Y., and Liu, W.:](#) Global evaluation of runoff simulation from climate, hydrological and land surface models, *Water Resour. Res.*, **59**, e2021WR031817, <https://doi.org/10.1029/2021WR031817>, 2023.

1105 Hu, S., Liu, C., Zheng, H., [Wang, Z., and Yu, J.:](#) Assessing the impacts of climate variability and human activities on streamflow in the water source area of Baiyangdian Lake, *J. Geogr. Sci.*, **22**(5), 895-905, <https://doi.org/10.1007/s11442-012-0971-9>, 2012.

Hu, Y., Zhai, H., and Tian, [Y.:](#) Analysis on sustainability of Taihang Mountain Greening Program construction, *Forestry Economics*, 2017(9), 48-52, <https://doi.org/10.13843/j.cnki.lyji.2017.09.009>, 2017. (in Chinese)

1110 [Hu, S., Wang, F., Zhan, C., Zhao, R., Mo, X., and Liu, L.:](#) Detecting and attributing vegetation changes in Taihang Mountain, China, *J. Mt. Sci.*, **16**(2), 337-350, <https://doi.org/10.1007/s11629-018-4995-1>, 2019.

[Huang, Z., Yuan, X., Sun, S., Leng, G., and Tang, Q.:](#) Groundwater depletion rate over China during 1965–2016: The long-term trend and inter-annual variation, *J. Geophys. Res.-Atmos.*, **128**, e2022JD038109, <https://doi.org/10.1029/2022JD038109>, 2023.

1115 Hughes, J.D., Petrone, K.C., and Silberstein, [R.P.:](#) Drought, groundwater storage and stream flow decline in southwestern Australia, *Geophys. Res. Lett.*, **39**(3), <https://doi.org/10.1029/2011GL050797>, 2012.

Hulsman, P., Hrachowitz, M., and Savenije, [H.H.G.:](#) Improving the representation of long-term storage variations with conceptual hydrological models in data-scarce regions, *Water Resour. Res.*, **57**, e2020WR028837, <https://doi.org/10.1029/2020WR028837>, 2021.

1120 [Jha, A., Bonetti, S., Smith, A.P., Souza, R., and Calabrese, S.:](#) Linking soil structure, hydraulic properties, and organic carbon dynamics: A holistic framework to study the impact of climate change and land management, *J. Geophys. Res. Biogeoscience*, **128**, e2023JG007389, <https://doi.org/10.1029/2023JG007389>, 2023.

[Kaiser, M., Kleber, M., and Berhe, A.A.:](#) How air-drying and rewetting modify soil organic matter characteristics: an assessment to improve data interpretation and inference, *Soil Biol. Biochem.*, **80**, 324-340, <https://doi.org/10.1016/j.soilbio.2014.10.018>, 2015.

删除的内容: et al., 2020.

删除的内容: decade. Science of the Total Environment, 701, 134929.

删除的内容: M., 2011.

删除的内容: Theory.

删除的内容: 10:

删除的内容: systems.

删除的内容: et al., 2012.

删除的内容: Lake. Journal of Geographical Sciences, 22(5), 895-905.

删除的内容: Y., 2017.

删除的内容: construction.

删除的内容: 48-52.

删除的内容: R.P., 2012.

删除的内容: Australia. Geophysical Research Letters,

删除的内容: 39(3).

删除的内容: H.H.G., 2021.

删除的内容: regions. Water Resources Research, 57, e2020WR028837.

删除的内容: Jing, W., Yao, L., Zhao, X., et al., 2019. Understanding terrestrial water storage declining trends in the Yellow River Basin. *Journal of Geophysical Research: Atmospheres*, **124**, 12963-12984. .

删除的内容: A.A., 2015.

删除的内容: inference. Soil Biology & Biochemistry, 80, 324-340.

1155 Kuczera, G., Renard, B., Thyer, M., and Kavetski, **D.**: There are no hydrological monsters, just models and observations with large uncertainties!, *Hydrol. Sci. J.*, 55(6), 980-991, <https://doi.org/10.1080/02626667.2010.504677>, 2010.

**删除的内容:** D., 2010.

**删除的内容:** Hydrological Sciences Journal,

**删除的内容:** 980-991.

Lancia, M., Yao, Y., Andrews, C.B., Wang, W., Kuang, X., Ni, J., Gorelick, S.M., Scanlon, B.R., Wang, Y., and Zheng, C.: *The China groundwater crisis: A mechanistic analysis with implications for global sustainability*, *Sustainable Horizons*, 4, 100042, <https://doi.org/10.1016/j.horiz.2022.100042>, 2022.

1160 Lauf, S., Haase, D., Hostert, P., Lakes, T., and Kleinschmit, B.: Uncovering land-use dynamics driven by human decision-making - A combined model approach using cellular automata and system dynamics, *Environ. Modell. Softw.*, 27-28, 71-72, <https://doi.org/10.1016/j.envsoft.2011.09.005>, 2012.

Li, F., Kusche, J., Chao, N., **Wang, Z., and Löcher A.**: Long-term (1979-present) total water storage anomalies over the global land derived by reconstructing GRACE data, *Geophys. Res. Lett.*, 48, e2021GL093492, <https://doi.org/10.1029/2021GL093492>, 2021.

**删除的内容:** et al., 2021.

**删除的内容:** data. Geophysical Research Letters, 48, e2021GL093492.

1165 Li, W., Pacheco-Labrador, J., Migliavacca, M., Miralles, D., van Dijke, A.H., Reichstein, M., Forkel, M., Zhang, W., Frankenberg, C., Panwar, A., Zhang, Q., Weber, U., Gentine, P., and Orth, R.: Widespread and complex drought effects on vegetation physiology inferred from space, *Nat. Commun.*, 14, 4640, <https://doi.org/10.1038/s41467-023-40226-9>, 2023.

Lian, X., Piao, S., Chen, A., Wang, K., Li, X., Buermann, W., Huntingford, C., Peñuelas, J., Xu, H., and Myneni, R.B.: Seasonal biological carryover dominates northern vegetation growth, *Nat. Commun.*, 12, 983, <https://doi.org/10.1038/s41467-021-21223-2>, 2021.

1170 Luczak, J.: Talk about toy models, *Studies in History and Philosophy of Science Part B: Studies in History and Philosophy of Modern Physics*, 57, 1-7, <https://doi.org/10.1016/j.shpsb.2016.11.002>, 2017.

Ma, H., Zeng, J., Chen, N., **Zhang, X., Cosh, M.H., and Wang, W.**: Satellite surface soil moisture from SMAP, SMOS, AMSR2 and ESA CCI: A comprehensive assessment using global ground-based observations, *Remote Sens. Environ.*, 231, 111215, <https://doi.org/10.1016/j.rse.2019.111215>, 2019.

**删除的内容:** et al., 2019.

1175 Manzoni, S., Chakrawal, A., Fischer, T., **Schimel, J.P., Porporato, A., and Vico, G.**: Rainfall intensification increases the contribution of rewetting pulses to soil heterotrophic respiration, *Biogeosciences*, 17, 4007-4023, <https://doi.org/10.5194/bg-17-4007-2020>, 2020.

**删除的内容:** observations. Remote Sensing of Environment, 231, 111215.

**删除的内容:** et al., 2020.

**删除的内容:** respiration.

**删除的内容:** 4007-4023.

Ma, N., Jozsef, S., Zhang, Y., and Liu, W.: Terrestrial evapotranspiration dataset across China (1982-2017), National Tibetan Plateau / Third Pole Environment Data Center [data set], <https://doi.org/10.11888/AtmosPhys.tpe.249493.file>, 2019.

1180 Ma, N., Szilagyi, J., Zhang, Y.S., and Liu, W.B.: Complementary-relationship-based modeling of terrestrial evapotranspiration across China during 1982-2012: Validations and spatiotemporal analyses, *J. Geophys. Res-Atmos.*, 124, <https://doi.org/10.1029/2018JD029850>, 2019.

Markovich, K.H., Maxwell, R.M., and Fogg, **G.E.**: Hydrogeological response to climate change in alpine hillslopes, *Hydrol. Process*, 30(18), 3126-3138, <https://doi.org/10.1002/hyp.10851>, 2016.

**删除的内容:** G.E., 2016.

**删除的内容:** hillslopes. Hydrological Processes,

**删除的内容:** 3126-3138.

McDonnell, J.J., Spence, C., Karran, D.J., van Meerveld, H.J., and Harman, C.J.: Fill-and Spill: A process description of runoff generation at the scale of the beholder, *Water Resour. Res.*, 57(5), e2020WR027514, <https://doi.org/10.1029/2020WR027514>, 2021.

1205 Meadows, D.H. (eds.): *Thinking in Systems: A Primer*, Chelsea Green Publishing, ISBN 9781603581486, 2008.

Moiwo, J.P., Yang, Y., Yan, N., and Wu, B.: Comparison of evapotranspiration estimated by ETWatch with that derived from combined GRACE and measured precipitation data in Hai River Basin, North China, *Hydrol. Sci. J.*, 56(2), 249-267, <https://doi.org/10.1080/02626667.2011.553617>, 2011.

1210 Morgan, S.L., and Winship, C. (eds.): *Counterfactuals and causal inference: Methods and Principles for social research (second edition)*, Cambridge University Press, Cambridge, UK, ISBN 9781107694163, 2015.

Nalley, D., Adamowski, J., Khalil, B., and Biswas, A.: Inter-annual to inter-decadal streamflow variability in Quebec and Ontario in relation to dominant large-scale climate indices, *J. Hydrol.*, 536, 426-446, <https://doi.org/10.1016/j.jhydrol.2016.02.049>, 2016.

1215 Negassa, W.C., Guber, A.K., Kravchenko, A.N., Marsh, T.L., Hildebrandt, B., and Rivers, M.L.: Properties of soil pore space regulate pathways of plant residue decomposition and community structure of associated bacteria, *PLoS ONE*, 10, 1-22, <https://doi.org/10.1371/journal.pone.0123999>, 2015.

O'Connell, P.E., Koutsoyiannis, D., Lins, H.F., Markonis, Y., Montanari, A., and Cohn, T.A.: The scientific legacy of Harold Edwin Hurst (1880–1978), *Hydrol. Sci. J.*, 61(9), 1571-1590, <https://doi.org/10.1080/02626667.2015.1125998>, 2016.

1220 Patel, K.F., Fansler, S.J., Compbell, T.P., Bond-Lamberty, B., Smith, A.P., RoyChowdhury, T., McCue, L.A., Varga, T., and Bailey, V.L.: Soil texture and environmental conditions influence the biogeochemical responses of soils to drought and flooding, *Commun. Earth Environ.*, 2, 127, <https://doi.org/10.1038/s43247-021-00198-4>, 2021.

Pathak, R.S. (eds.): *The wavelet transform (Atlantis Studies in Mathematics for Engineering and Science)*, AP/World Scientific Publishing, Paris, France, 192pp, ISBN 9078677260, 2009.

1225 Pearl, J. (eds.): *Causality: Models, reasoning, and inference (second edition)*, Cambridge University Press, Cambridge, UK, ISBN 052189560X, 2009.

Richardson, G.P.: Core of System Dynamics, in: *System Dynamics. Encyclopedia of Complexity and System Science Series*, edited by: Dangerfield, B., Springer, New York, NY, 11-20, [https://doi.org/10.1007/978-1-4939-8790-0\\_536](https://doi.org/10.1007/978-1-4939-8790-0_536), 2020.

Peterson, T.J., Saft, M., Peel, M.C., and John, A.: Watersheds may not recover from drought, *Science*, 372(6543), 745-749, <https://doi.org/10.1126/science.abd5085>, 2021.

1230 Robert, Granger\_Cause\_1, MATLAB Central File Exchange [code], [https://www.mathworks.com/matlabcentral/fileexchange/59390-granger\\_cause\\_1](https://www.mathworks.com/matlabcentral/fileexchange/59390-granger_cause_1), 2023.

Rickles, D., Hawe, P., and Shiell, A.: A simple guide to chaos and complexity, *J. Epidemiol. Commu. H.*, 61(11), 933-937, <https://doi.org/10.1136/jech.2006.054254>, 2007.

1235 Sayood, K.: Wavelets, in: *Introduction to Data Compression, the Morgan Kaufmann Series in Multimedia Information and Systems*, Morgan Kaufmann, 497-528, <http://dx.doi.org/10.1016/B978-0-12-415796-5.00015-6>, 2012.

删除的内容: , 2008.

删除的内容: Primer.

删除的内容: Publishing.

删除的内容: B., 2011.

删除的内容: China. Hydrological Sciences Journal, 56(2), 249-267.

删除的内容: et al., 2016.

删除的内容: indices. Journal of Hydrology, 536, 426-446.

删除的内容: et al., 2015.

删除的内容: bacteria.

删除的内容: 1-22.

删除的内容: et al., 2021.

删除的内容: flooding. Communications Earth & Environment, 2:127.

删除的内容: , 2009.

删除的内容: .

删除的内容: Science. Series Editor: Chui, C.K. Atlantis

删除的内容: Paris, France.

删除的内容: 2020.

删除的内容: Dynamics.

删除的内容: - Theory and Application. A Volume in the Encyclopedia

删除的内容: s Science, Second Edition. Springer.

删除的内容: Robert, 2023.

删除的内容: (https://www.mathworks.com/matlabcentral/fileexchange/59390-granger\_cause\_1),

删除的内容: .

1270 Schymanski, S.J., and Or, D.: Leaf-scale experiments reveal an important omission in the Penman-Moneith equation, *Hydrol. Earth Syst. Sci.*, 21, 685-706, <https://doi.org/10.5194/hess-21-685-2017>, 2017.

Seth, A.K., and Bayne, T.: Theories of consciousness, *Nat. Rev. Neurosci.*, 23, 439-452, <https://doi.org/10.1038/s41583-022-00587-4>, 2022.

Shi, H., Zhao, Y., Liu, S., Cai, H., and Zhou, Z.: A new perspective on drought propagation: causality, *Geophys. Res. Lett.*, 49(2), e2021GL096758, <https://doi.org/10.1029/2021GL096758>, 2022.

Simonovic, S.P.: Application of the systems approach to the management of complex water systems, *Water*, 12(10), 2923, <https://doi.org/10.3390/w12102923>, 2020.

1275 Snider, S.B., and Brimlow, J.N.: An introduction to population growth, *Nature Education Knowledge*, 4(4), 3, 2013.

Sterman, J.D. (eds.): Business Dynamics: System thinking and modeling for a complex world, McGraw-Hill Education, ISBN 9780072389159, 2000.

Sterte, E.J., Lidman, F., Lindborg, E., Sjoberg, Y., and Laudon, H.: How catchment characteristics influence hydrological pathways and travel time in a boreal landscape, *Hydrol. Earth Syst. Sci.*, 25, 2133-2158, <https://doi.org/10.5194/hess-25-2133-2021>, 2021.

1280 Su, X., Su, X., Yang, S., Zhou, G., Ni, M., Wang, C., Qin, H., Zhou, X., and Deng, J.: Drought changed soil organic carbon composition and bacterial carbon metabolizing patterns in a subtropical evergreen forest, *Sci. Total Env.*, 76(2020), 139568, <https://doi.org/10.1016/j.scitotenv.2020.139568>, 2020.

Sugihara, G., May, R., Ye, H., Hsieh, C., Deyle, E., Fogarty, M., and Munch, S.: Detecting causality in complex ecosystems, *Science*, 338(6106), 496-500, <https://doi.org/10.1126/science.1227079>, 2012.

1285 Stokes, P.A., and Purdon, P.L.: A study of problems encountered in Granger causality analysis from a neuroscience perspective, *P. Natl. Acad. Sci. USA*, E7063-E7072, <https://doi.org/10.1073/pnas.1704663114>, 2017.

Stocker, B.D., Tumber-Dávila, S.J., Konlgs, A.G., Anderson, M.C., Hain, C., and Jackson, R.B.: Global patterns of water storage in the rooting zones of vegetation, *Nat. Geosci.*, 16, 250-256, <https://doi.org/10.1038/s41561-023-01125-2>, 2023.

1290 University of Montana: NTSG website, <https://www.umt.edu/numerical-terradynamic-simulation-group/default.php>. (last access: 28 September 2023), 2023.

Wang, H., Lv, X., and Zhang, M.: Sensitivity and attribution analysis based on the Budyko hypothesis for streamflow change in Baiyangdian catchment, *China. Ecol. Indic.*, 121, 107221, <https://doi.org/10.1016/j.ecolind.2020.107221>, 2021.

Wei, C., and Wang, H.: Research of water supply strategies in Fuping county, *Design of Water Resources & Hydroelectric Engineering*, 38(4), 21-23, 2019. (in Chinese)

1295 Wei, J., and Dirmeyer, P.A.: Sensitivity of land precipitation to surface evapotranspiration: a nonlocal perspective based on water vapor transport, *Geophys. Res. Lett.*, 46(21), 12588-12597, <https://doi.org/10.1029/2019GL085613>, 2019.

Wiener, N. (eds.): Cybernetics: or Control and Communication in the Animal and the Machine, John Wiley & Sons, New York, ISBN 9780262355902, 194pp, 1948.

1390 [Wright, A.J., Francia, R.M.: Plant traits, microclimate temperature and humidity: A research agenda for advancing nature-based solution to a warming and drying climate. \*J. Ecol.\*, 00:1-9, <https://doi.org/10.1111/1365-2745.14313>, 2024.](#)

1395 Wu, B., Xiong, J., and Yan, N., [Yang, L., and Du, X.:](#) ETWatch for monitor regional evapotranspiration with remote sensing. *Advances in Water Science*, 19(5), 671-678, 2008.

1400 Wu, B., Yan, N., Xiong, J., [Bastiaanssen, W.G.M., Zhu, W., and Stein, A.:](#) Validation of ETWatch using field measurements at diverse landscapes: A case study in Hai Basin of China. *Journal of Hydrology*, 436-437, 67-80, <https://doi.org/10.1016/j.jhydrol.2012.02.043>, 2012.

1405 Wu, F., Wu, B., Zhu, W., [Yan, N., Ma, Z., Wang, L., Lu, Y., and Xu, J.:](#) ETWatch cloud: APIs for regional actual evapotranspiration data generation. *Environ. Modell. Softw.*, 145, 105174, <https://doi.org/10.1016/j.envsoft.2021.105174>, 2021.

1410 [Xiao, D., Shi, Y., Brantley, S.L., Forsythe, B., DiBiase, R., Davis, K., and Li, L.:](#) Streamflow generation from catchments of contrasting lithologies: the role of soil properties, topography, and catchment size. *Water Resour. Res.*, 55, 9234-9257, <https://doi.org/10.1029/2018WR023736>, 2019.

1415 Xu, Q., Cheng, W., Sun, T., and [Bo, Q.:](#) The influence of climate factors on runoff of major rivers in upper reaches of Baiyangdian lake. *Journal of Hebei Agricultural University*, 42(2), 110-115, <https://doi.org/10.13320/j.cnki.jauh.2019.0043>, 2019. (in Chinese)

1420 Yang, Z., and Mao, [X.:](#) Wetland system network analysis for environmental flow allocations in the Baiyangdian Basin, China. *Ecol. Model.*, 222(20-22), 3785-3794, <https://doi.org/10.1016/j.ecolmodel.2011.09.013>, 2011.

1425 [Yang, H., and Cao, J.:](#) Analysis of basin morphologic characteristics and their influence on the water yield of mountain watersheds upstream of the Xiongan New Area, North China. *Water*, 13(20), 2903, <https://doi.org/10.3390/w13202903>, 2021.

1430 [Yuan, Z., Yan, D.H., Xu, J.J., Wang, Y.Q., Yao, L.Q., and Yu, Z.Q.:](#) Effects of the precipitation pattern and vegetation coverage variation on the surface runoff characteristics in the eastern Taihang Mountain. *Appl. Ecol. Environ.*, 17(3), 5753-5764, [https://doi.org/10.15666/aeer/1703\\_57535764](https://doi.org/10.15666/aeer/1703_57535764), 2019.

1435 Zera, [D.A.:](#) What is a system and a system perspective? *Educ. Horiz.*, 81(1), 18-20, <http://www.jstor.org/stable/42925422>, 2002.

1440 Zeng, Y., Zhao Y., and Qi, [Z.:](#) Evaluating the ecological state of Chinese Lake Baiyangdian (BYD) based on ecological network analysis. *Ecol. Indic.*, 127, 107788, <https://doi.org/10.1016/j.ecolind.2021.107788>, 2021.

1445 Zhang, K., Kimball, J.S., Mu, Q., Jones, L.A., Goetz, S.J., Running, [S.W.:](#) Satellite based analysis of northern ET trends and associated changes in the regional water balance from 1983 to 2005. *J. Hydrol.*, 379, 92-110, <https://doi.org/10.1016/j.jhydrol.2009.09.047>, 2009.

1450 Zhang, K., Kimbal, J.S., Nemani, R.R., Running, [S.W.:](#) A continuous satellite-derived global record of land surface evapotranspiration from 1983 to 2006. *Water Resour. Res.*, 46, W09522, <https://doi.org/10.1029/2009WR008800>, 2010.

删除的内容: 2008.

删除的内容: sensing.

删除的内容: 671-678.

删除的内容: et al., 2012.

删除的内容: China. Journal of Hydrology, 436-437, 67-80.

删除的内容: et al., 2021.

删除的内容: generation. Environmental Modelling & Software,

删除的内容: 105174.

删除的内容: et al., 2019.

删除的内容: lake.

删除的内容: 110-115.

删除的内容: X., 2011.

删除的内容: China. Ecological Modelling.

删除的内容: 3785-3794.

删除的内容: D.A., 2002.

删除的内容: Educational Horizons,

删除的内容: 18-20.

删除的内容: Z., 2021.

删除的内容: analysis. Ecological Indicators, 127, 107788.

删除的内容: S.W., 2009.

删除的内容: 2005. Journal of Hydrology, 379, 92-110.

删除的内容: S.W., 2010.

删除的内容: 2006.

删除的内容: Resource Research,

删除的内容: W09522.

1450 Zhang, Q., Shao, M., Jia, X., and Wei, X.; Changes in soil physical and chemical properties after short drought stress in semi-humid forests, *Geoderma*, 338(2019), 170-177, <https://doi.org/10.1016/j.geoderma.2018.11.051>, 2019.

Zhao, H., Gao, G., An, W., Zou, X., Li, H., and Hou, M.; Timescale differences between SC-PDSI and SPEI for drought monitoring in China, *Phys. Chem. Earth*, 102, 48-58, <https://doi.org/10.1016/j.pce.2015.10.022>, 2017.

1455 Zhou, X., Zhang, Y., Wang, Y., Zhang, H., Vaze, J., Zhang, L., Yang, Y., and Zhou, Y.; Benchmarking global land surface models against the observed mean annual runoff from 150 large basins, *J. Hydrol.*, 470-471(2012), 269-279, <https://doi.org/10.1016/j.jhydrol.2012.09.002>, 2012.

Zhu, Y., Wang, H., Ma, J., Wang, T., and Sun, J.; Contribution of the phase transition of Pacific Decadal Oscillation to the late 1990s' shift in East China summer rainfall, *J. Geophys. Res-Atmos.*, 120, 8817-8827, <https://doi.org/10.1002/2015JD023545>, 2015.

1460 Zhuang, C., Ouyang, Z., Xu, W., Bai, Y., Zhou, W., Zheng, H., and Wang, X.; Impacts of human activities on the hydrology of Baiyangdian Lake, *China, Environ. Earth Sci.*, 62, 1343-1350, <https://doi.org/10.1007/s12665-010-0620-5>, 2011.

删除的内容: et al., 2019.

删除的内容: forests.

删除的内容: 170-177.

删除的内容: et al., 2017.

删除的内容: China, Physics and Chemistry of the

删除的内容: 48-58.

删除的内容: et al., 2015.

删除的内容: rainfall. Journal of Geophysical Research: Atmospheres, 120, 8817-8827.

删除的内容: et al., 2011.

删除的内容: China, Environmental

删除的内容: Sciences,

删除的内容: .