

Towards a community-wide effort for benchmarking in subsurface hydrological inversion: benchmarking cases, high-fidelity reference solutions, procedure and a first comparison

Teng Xu¹, Sinan Xiao², Sebastian Reuschen³, Nils Wildt³, Harrie-Jan Hendricks Franssen^{4,5}, and Wolfgang Nowak³

¹College of Water Conservancy and Hydropower Engineering, Hohai University, Nanjing, China

²Department of Mathematical Sciences, University of Bath, Claverton Down, Bath, BA2 7AY, United Kingdom

³Institute for Modelling Hydraulic and Environmental Systems, University of Stuttgart, 70569 Stuttgart, Germany

⁴Institute of Bio- and Geosciences: Agrosphere (IBG-3), Forschungszentrum Jülich GmbH, 52425 Jülich, Germany

⁵Centre for High Performance Scientific Computing in Terrestrial Systems: HPSC TerrSys, Geoverbund ABC/J, Leo Brandt Strasse, Jülich, Germany

Correspondence: Wolfgang Nowak (wolfgang.nowak@iws.uni-stuttgart.de)

Abstract. Inversion in subsurface hydrology refers to estimating spatial distributions of (typically hydraulic) properties, often associated with quantified uncertainty. Many methods are available, each characterized by a set of assumptions, approximations, and numerical implementations. Only a few intercomparison studies have been performed (in the remote past) amongst different approaches (e.g., Zimmerman et al., 1998; Hendricks Franssen et al., 2009). These intercomparisons guarantee broad participation to push forward research efforts of the entire subsurface hydrological inversion community. **However, in past studies until now, comparisons were made among approximate methods without firm reference solutions. Note that the reference solutions are the best possible solutions with best estimate, and posterior standard deviation and so forth.** Without reference solutions, one can only compare competing best estimates and their associated uncertainties in an intercomparison sense, and absolute statements on accuracy are unreachable.

Our current initiative defines benchmarking scenarios for groundwater model inversion. These are targeted for community-wide use as test cases in intercomparison scenarios. Here, we develop five synthetic, open-source benchmarking scenarios for the inversion of hydraulic conductivity from pressure data. We also provide highly accurate reference solutions produced with massive high-performance computing and with a high-fidelity MCMC-type solution algorithm. Our high-end reference solutions are publicly available, as well as the benchmarking scenarios, the reference algorithm, and suggested benchmarking metrics. Thus, in comparison studies, one can test against high-fidelity reference solutions rather than discussing different approximations.

To demonstrate how to use these benchmarking scenarios, reference solutions, and suggested metrics, we provide a blueprint comparison of a specific ensemble Kalman filter version. We invite the community to use our benchmarking scenarios and reference solutions now and into the far future in a community-wide effort towards clean and conclusive benchmarking. For now, we aim at an article collection in an appropriate journal, where such clean comparison studies can be submitted together with an editorial summary that provides an overview.

1 Introduction

Subsurface flow processes take place in geologic media where heterogeneities occur across a multiplicity of scales. These cause the values of relevant hydrogeological parameters to vary over several orders of magnitude. When considering this heterogeneity together with the fact that we have a limited ability

30 to look deep into the subsurface, it is easy to understand the reasons why predicting the behavior of subsurface environments is fraught with remarkable uncertainty.

Only data can assist in reducing this uncertainty. In practice, direct measurements of model parameters (such as hydraulic conductivity, porosity, or storativity) are scarce and only available at a limited number of locations. Additionally, such data are defined or measured at scales inconsistent with the used model, 35 and they are subject to measurement inaccuracies and imprecision. Hence, one must employ indirect information, i.e., observations of state variables such as pressure heads and/or concentrations. To embed these data in a procedure to estimate system parameters is typically termed model calibration or inverse modeling. Solving the inverse problem is at the heart of characterizing complex natural systems.

There are multiple contributing factors to the uncertainty, including cognitive limitations of models, 40 recharge values, lateral inflows, data scarcity, and subsurface heterogeneity. These factors are responsible for the persistence of uncertainty even after calibration. The latter type of uncertainty is crucial and must be quantified to provide robust decision support in engineering and management practice. Stochastic (or probabilistic) inverse approaches (also known as conditional simulation, Bayesian updating, and statistical parameter inference) are the only way to obtain such uncertainty estimates. Providing algorithms for 45 solving stochastic inverse problems acceptably fast, robustly, and accurately is one of the remaining key challenges in modern subsurface characterization approaches. In recent years, a remarkable variety of inverse modeling approaches has been proposed. The most popular approaches, such as geostatistical regularization (de Marsily, 1978), pilot points and sequential self-calibration (e.g., RamaRao et al., 1995;

Gómez-Hernández et al., 1997, 2001; Hendricks Franssen et al., 1999, 2003), quasi-linear geostatistical
50 approaches (e.g., Kitanidis, 1995; Nowak and Cirpka, 2006; Schwede and Cirpka, 2009), MCMC-based
approaches (e.g., Laloy et al., 2013; Cotter et al., 2013b; Xu et al., 2020), ensemble Kalman filters (EnKFs)
and ensemble smoothers (e.g., Evensen, 2003; Van Leeuwen and Evensen, 1996; Xu et al., 2021), have
been applied in many fields. However, a conclusive and convincing assessment of their relative merits and
drawbacks is still lacking, especially in the area of groundwater modeling. This is mostly related to the
55 fact that there are no well-defined benchmarking scenarios for rigorous comparison under standardized,
controlled, and reproducible conditions.

There are only two large comparison studies, in which many (i.e. seven in both studies) methods were
compared against each other (Zimmerman et al., 1998; Hendricks Franssen et al., 2009). Although very
useful, these two comparison studies still suffer from several limitations: 1) several more recent methods
60 were not included (e.g., all EnKF-based methods and non-multi-Gaussian inversion approaches); 2) the
candidate solutions were not compared against reference inverse solutions (obtained, e.g., with brute-force
Monte Carlo approaches), but to synthetic data-generating realities; this also implies that estimated post-
calibration variances could not be evaluated properly; 3) no joint efforts were undertaken by the scientific
community as a whole to consistently disseminate and use/advance these test cases in future studies; 4) the
65 tests were strongly idealized and contained only a limited number of variants, which were not sufficient
to assess and compare methods under a broader set of conditions.

Most other comparison studies are smaller in scope. For example, Keidser and Rosbjerg (1991) and Kuiper (1986) compared four and three inverse methods, respectively, and Sun et al. (2009) compared four deterministic Kalman filters. A significant number of works rely on comparisons between only two
70 (with a maximum of three) inverse methods when proposing a new approach. Most remarkably, new EnKF-variants are typically compared against the classical EnKF (e.g., Li et al., 2015; Gharamti et al., 2015; Liu et al., 2016), but are seldom tested against other improved versions of the EnKF. Xu and Gómez-Hernández (2015) compared inverse sequential simulation and the sequential normal-score EnKF. Hendricks Franssen and Kinzelbach (2009) compared the EnKF and sequential self-calibration. Keating et al.
75 (2010) compared null-space Monte Carlo and the MCMC-based DREAM-algorithm. Berg and Illman (2015) compared various methods for estimating hydraulic conductivities, including two inverse methods. Nowak (2009) compared the so-called Kalman ensemble generator to the quasi-linear geostatistical method by Kitanidis (1995). Keller et al. (2018, 2021) compared seven EnKF-based inverse algorithms, in both studies using as reference (different) synthetic realities. Keller et al. (2018, 2021) repeated data
80 assimilation experiments with different ensemble sizes, including very large ensemble sizes, and also different repetitions for the same ensemble size (just varying the random seed used to generate the ensemble members). This increases the robustness of the comparison but is still based on a comparison with a synthetic reality. All of these listed comparison studies were important but with similar limitations as the two large comparison studies by Zimmerman et al. (1998) and Hendricks Franssen et al. (2009).

85 The major limitation is that almost all of these comparison studies were ad-hoc comparisons to data-generating synthetic realities - they did not compare with accurate reference solutions to the inverse problem. Without the latter, one can only compare two different approximations against each other and speculate about the correctness of both estimates. It is incorrect to ask inverse modeling results to be as close as possible to a numerically generated synthetic truth, unless in the limit of infinite information that is never
90 reached in reality. Thus, the resulting estimate has to be a specific compromise between the smoothness of prior assumptions and the limited amount of information contained in the available data. For the same reason, it is inadequate to require the post-calibration uncertainty to be as small as possible and celebrate a competitor that pretends a smaller estimation variance as the winner. Instead, there is an exact level of post-calibration uncertainty that is justified by the weakness of prior information combined with the
95 strength of information in the data (prior information inherently contains a certain degree of subjectivity, and its effectiveness directly influences the accuracy and reliability of estimation outcomes). A remarkable exception is the study by Schöniger et al. (2012), who compared their normal-score version of the EnKF against a brute-force bootstrap filter. This is one of the very few studies where a high-accuracy, non-linearized reference solution was actually provided and used. However, the conditions in this study
100 were tuned in an ad-hoc fashion (little data, relatively large measurement error variance) so that it was possible to obtain that reference solution within a reasonable computing time.

The objective of our work is to overcome these shortcomings. We do so by providing a suite of well-defined benchmarking scenarios for stochastic inversion together with highly accurate reference solutions

for the groundwater model inversion problem. As a starting point for this development, we choose a non-
105 linear groundwater model inversion of groundwater flow in multi-Gaussian log-conductivity fields. We
take this choice because this is the most frequent type of scenario found in previous comparison papers.
Later extensions to non-multi-Gaussian problems, to advective-diffusive transport, or to multiphase-flow
are desirable. If our current study is successful, then researchers from the community will gladly use our
benchmarking scenarios for assessing their new methods in future studies, and provide further extensions
110 to the benchmarking scenarios in a controlled and well-selected manner.

To achieve this goal, first, we discuss a suite of benchmarking metrics. This suite aims at capturing a
fair trade-off between the various properties that a groundwater model inversion algorithm could have
(e.g., accuracy under increasing non-linearity, speed, non-intrusiveness, ease of implementation, to name
a few). Then, we propose a set of benchmarking scenarios, hoping that they will find widespread use as a
115 standard in the community in future studies. We also select and quickly summarize a recent MCMC-based
algorithm that is capable of computing high-end reference solutions to these benchmarking scenarios,
even if at high computational expense. With that algorithm, we produce and then present the reference
solutions. Both the algorithm and the reference solutions are made available publicly for download. The
reference algorithm is the pCN-PT MCMC algorithm recently proposed by Xu et al. (2020) for that very
120 purpose.

To provide a guiding example of how to use these benchmarking scenarios for comparisons, we perform
and demonstrate a blueprint comparison between a specific EnKF variant and our reference solutions in

our benchmarking scenarios. We do this with our discussed set of benchmarking metrics. When future studies add new algorithms to the literature and consistently use these scenarios, solutions, and metrics, then an inter-comparable body of benchmarking studies will build up over time. With this, we hope to assist the groundwater model inversion community to move on faster and more efficiently in their research work. That means, we cordially welcome the scientific community to apply these benchmarking scenarios and reference solutions and evaluate their candidate inverse modeling methods in a multi-objective manner that will fairly and transparently reveal trade-offs between computational intensity, achievable accuracy, (non-)intrusiveness to forward simulation codes, robustness against non-linearities and limits of applicability posed by more or less restrictive assumptions.

Accordingly, this paper is organized as follows. In the methods section, we recapitulate the Bayesian groundwater model inversion problem. Then, we discuss benchmarking metrics. Next, we define a base domain for the benchmarking scenarios and provide five scenario versions. To conclude, we present our choice of reference algorithm and present the reference solutions. In the application section, we quickly summarize the EnKF version we are testing as a demonstrator example and then perform the benchmarking comparison as a blueprint example of how to discuss the metrics and results in future studies. We finalize our study with a discussion and conclusion on the unified benchmarking idea.

2 Problem definition: Bayesian groundwater model inversion

140 Given a forward model (here: the groundwater flow equation) $\mathbf{y} = M(\boldsymbol{\theta})$ with a vector of uncertain parameters (here: hydraulic log-conductivity) $\boldsymbol{\theta}$, and the vector of simulated measurements (here: hydraulic head values) \mathbf{y} . The relation to the measured data \mathbf{d} to be used for inversion is commonly written as

$$\mathbf{d} = M(\boldsymbol{\theta}) + \mathbf{e}, \tag{1}$$

where \mathbf{e} represents the lump sum of unavoidable measurement errors and model errors. In the context of
145 numerical modeling, the parameter vector $\boldsymbol{\theta}$ contains discretized values of a random space function, such as hydraulic log-conductivity values on some numerical grid.

The purpose of groundwater model inversion is to calibrate this model, i.e. to learn about $\boldsymbol{\theta}$ by **assimilating information in the hard and other data (or the prior)**. As typically the number of uncertain, discretized values in $\boldsymbol{\theta}$ is larger than the number of data values available in \mathbf{d} , the best one can do is to *estimate*
150 $\boldsymbol{\theta}$. Conventionally, this is done by providing a best-fit estimate under the regularization of geostatistical information about the spatial variability in $\boldsymbol{\theta}$. The next best thing one can do is to equip this estimate with a statement of uncertainty, e.g., via an estimation variance. The fully Bayesian approach provides a so-called posterior distribution of the uncertain parameters $\boldsymbol{\theta}$ given statistical prior knowledge about $\boldsymbol{\theta}$ and the measurement data \mathbf{d} . The posterior distribution is a full probabilistic description of the post-calibration
155 uncertainty using a joint, multivariate probability distribution of all model parameters.

The posterior distribution of the uncertain parameters θ can be obtained through Bayes' rule as (e.g., Congdon, 2003)

$$p(\theta|\mathbf{d}) = \frac{p(\theta)p(\mathbf{d}|\theta)}{p(\mathbf{d})} \propto p(\theta)p(\mathbf{d}|\theta), \quad (2)$$

where $p(\theta)$ is the prior distribution of the unknown (hydraulic) parameters θ , which statistically describes the prior knowledge of θ before collecting any data \mathbf{d} ; $p(\mathbf{d}|\theta)$ is the likelihood function, which quantifies the probability of the data \mathbf{d} for a given realization of the uncertain parameters θ ; and $p(\mathbf{d})$ is the marginal likelihood, which is a normalizing factor for the posterior distribution. This factor can often be ignored (hence the last part of equation (2)) when making inference of parameters (e.g., Duijndam, 1988; Cary and Chapman, 1988).

In our benchmarking scenarios, we will consider the residuals e to be independently Gaussian with zero mean and uniform variance. This leads to a likelihood function $p(\mathbf{d}|\theta)$ that follows the Gaussian distribution over residuals e . Given the zero-mean (unbiasedness) assumption, one merely needs to specify a variance for the errors, and the definition of likelihood is complete. Separating between observational errors and model errors, and speculating over their correlation or other form of dependence is beyond our scope of study (see, e.g., Schoups and Vrugt (2010)).

As statistical prior, we will consider $p(\theta)$ to be populated with log-hydraulic conductivities that are multivariate Gaussian and second-order stationary, i.e. it suffices to specify a value for the mean and a spatial covariance that depends on lag distances between locations on the numerical grid.

As a general property of the Bayesian inverse problem in this situation, the posterior distribution $p(\boldsymbol{\theta}|\mathbf{d})$ would again be multivariate Gaussian if (and only if) the forward model $\mathbf{y} = M(\boldsymbol{\theta})$ was linear in $\boldsymbol{\theta}$, additionally to the Gaussian assumptions on errors and parameters. Only in that case, the posterior distribution would be fully specified by a posterior mean and by a posterior (co-)variance. In typical applications, however, the forward model is non-linear in its parameters (like the groundwater flow equation), and therefore we are interested in solving the full Bayesian problem. **The posterior mean and its posterior variance are** still a good visualization of key aspects, but other aspects of the entire multivariate posterior distribution may be important just as well.

3 Information and benchmarking metrics to be provided

To fairly evaluate the overall properties, performance, and fitness of a candidate inversion method, specific fundamental information about the method and implementation must be provided, its solutions must be compared to the reference solution, and user-relevant and application-relevant metrics and properties are to be assessed and reported. Ideally, these are the same metrics and properties across all tested candidate methods, even across different studies, so that inter-comparable results can accumulate to an overall body of knowledge. Thus, we propose a range of statistics and metrics, see Table 1.

For obtaining easily interpretable visual diagnostics over a bundle of metrics, we ensure that all metrics fall into the interval $[0, 1]$, where 0 means best (no error) and 1 means worst. This can be achieved, in

Table 1. Overview of information and metrics to be provided for the candidate inverse method

Subsection	Category	Name	Equation
3.1	Methods & implementation	1. Assumptions, simplifications (text)	(-)
		2. Ease of implementation (point-scale)	(-)
		3. Code FAIRness (point scale)	(-)
3.2	Benchmark selection	Reasons for choosing benchmarking scenarios (text)	(-)
3.3	Simulation verification	Assessing the plausibility of inversion results (text)	(-)
3.4	Metrics: accuracy	1. Mean absolute error ($NMAE^*$) ¹	(5,3)
		2. Root mean square error ($NRMSE^*$) ²	(7,3)
		3. Averaged KS Distance (AD_{KS})	(10)
		4. Energy distance (ND_E) ³	(13)
		(<i>optional</i>)	5. Potential scale reduction factor (\hat{R})
3.5	Metrics: compute cost	1. Log-number of forward calls (LN_f^*) ⁴	(-,3)
		2. Percent overhead wallclock time (T_o)	(18)
		3. Multi-core/multi-thread speedup loss ($S_{\%}$)	(19)

¹ The mean absolute error MAE needs a normalization ($NMAE$) to put it onto an interpretable scale, and an additional transformation ($NMAE^*$, Equation 3) to ensure it is bounded to $[0, 1]$ like all other metrics.

² The root mean square error $RMSE$ needs a normalization ($NRMSE$) to put it onto an interpretable scale, and an additional transformation ($NRMSE^*$, Equation 3) to ensure it is bounded to $[0, 1]$ like all other metrics.

³ The energy distance D_E needs a normalization (ND_E), but no additional transformation to ensure it is bounded to $[0, 1]$ like all other metrics.

⁴ The log-number of forward model calls LN_f requires an additional transformation (LN_f^* , Equation 3) to ensure it is bounded to $[0, 1]$ like all other metrics.

most cases, by meaningful scaling or normalization, **although there are specific metrics or application environments where normalization may not be appropriate and should remain unnormalized.**

All five categories are discussed in the upcoming sections.

3.1 Methods and implementation

195 To assess the benchmarking performance later on and ensure the reproducibility of results, it is helpful to first recall the fundamental assumptions, equations, and specific numerical settings chosen for the method:

1. List of assumptions and/or simplifications inherent in the method.

Usually, each method has its own assumptions and/or simplifications when performing groundwater model inversion. For instance, EnKF methods assume the usefulness of correlations in inversion, which is related to an implicit global linearization (Nowak, 2009). Listing the assumptions and/or simplifications of the candidate method is helpful to get a more complete understanding of its performance.

2. Ease of implementation/intrusiveness into forward code. To our knowledge, this aspect can be generally divided into 3 different levels, and so we suggest expressing it on a discrete point scale between zero and one:

(a) Perfectly non-intrusive: Just forward calls with parameter modification (value: 0);

(b) Modified forward calls with different initial and boundary conditions as in adjoint-state sensitivities, but they can be controlled by simple adapted functions calls (value: 0.5);

(c) Actual need to enter the source code of the forward problem. Examples are dedicated adjoint computations, or stochastic moment equations that need new types of computations not foreseen in the original forward code (value: 1).

3. Results should always be easily reproducible by the scientific community. Therefore, we encourage authors to make not only their data FAIR (findable, accessible, interoperable, reusable, Wilkinson et al., 2016)), but also to apply the same principles to their software (Lamprecht et al., 2020; Martinez

215 et al., 2019). If none of the following standards are met, a score of 1 is given; for each point met, the score reduces by 0.25:

(a) Make your software accessible online and explain how to set up an environment to run the code.

Make versions that were used to generate published results explicit and assign a DOI to them.

(b) Meet domain-relevant community standards of your documentation.

220 (c) Output data follow FAIR principles (types and formats).

(d) Licenses (see, e.g., www.choosealicense.com, 2023, for an overview of open source licenses) are valid (dependent on the dependencies) and clearly stated.

3.2 Benchmark selection

What are the reasons to choose all, or only a subset of, the benchmarking scenarios? Although all the
225 benchmarking scenarios are chosen carefully for a relatively fair and complete comparison, one may not use all the benchmarking scenarios due to some reasons. For example, if the candidate method is designed to solve problems with strong heterogeneity or large observational errors, then running benchmarking scenarios for mild heterogeneity is optional.

3.3 Simulation validation

230 We propose to show results and discuss some standard views on inversion results to allow domain experts to assess the solution. For this, we suggest plotting the spatial distribution of log-hydraulic conductivity

via $\mathbb{E}(\ln(K))$ and the corresponding inversion uncertainty via $\text{std}(\ln(K))$, and the same for **hydraulic head or pressure, as appropriate**, with $\mathbb{E}(p)$ and $\text{std}(p)$. When using more than one benchmarking scenario, we recommend appending the respective plots after the first presented set of plots.

235 3.4 Metrics for accuracy

Accuracy means how close an approximate solution is to the true (reference) solution of the Bayesian inverse problem. The most comprehensive metric would address some distance (hopefully small) between the joint, high-dimensional posterior distributions of the discretized random space function of the candidate method and that of the reference solution. Since this is computationally unfeasible, we propose a
240 selection of different benchmark metrics, each of which highlights specific aspects that should be met by the inversion method.

Recall that we wish to have all metrics in the interval $[0, 1]$. If a metric METRIC cannot be bounded even after scaling (i.e. things worse than a score of 1 cannot be excluded), it can be transformed for visualization in a non-linear fashion that achieves a *visually* bounded representation:

$$245 \text{METRIC}^*(x) = \frac{\text{METRIC}}{1 + \text{METRIC}}. \quad (3)$$

This transformation is almost linear for $\text{METRIC} \ll 1.0$ and then saturates for larger values, thus limiting the range of the transformed metric METRIC^* to $[0, 1]$. These transformed metrics will be marked by an asterisk as superscript, e.g., METRIC^* instead of METRIC for a bounded normalized mean square error.

Overall, we suggest the following five metrics (plus their variations):

250 1. Mean absolute error (MAE) across point-wise inversion statistics

$$\text{MAE}(\hat{X}) = \frac{1}{N} \sum_{i=1}^N |\hat{X}_{cand,i} - \hat{X}_{ref,i}|, \quad (4)$$

where N is the number of discrete points (nodes) in the spatial domain. $\hat{X}_{cand,i}$ is a posterior statistic of X at node i provided by a candidate method for inversion, and $\hat{X}_{ref,i}$ is the corresponding posterior statistic of X at node i in the reference solution. The featured variable X could be hydraulic head or hydraulic conductivity. The statistic \hat{X} to be compared can be either the best estimate (posterior mean) or the corresponding uncertainty (posterior standard deviation).

255

Being the (spatial) ℓ_1 norm (rather than ℓ_2), it is relatively mild on strong outliers at individual spatial positions. For meaningful normalization to a range between 0 (perfect identity between solutions) and 1 (largest meaningfully expectable error), we define:

$$\text{NMAE}(\hat{X}) = \frac{\text{MAE}(\hat{X})}{\text{MAE}(\hat{X}_{prior})}, \quad (5)$$

260

$$\text{MAE}(\hat{X}_{prior}) = \frac{1}{N} \sum_{i=1}^N |\hat{X}_{prior,i} - \hat{X}_{ref,i}|, \quad (6)$$

where $\hat{X}_{prior,i}$ is the same statistic as $\hat{X}_{cand,i}$ and $\hat{X}_{ref,i}$, but assessed based on the prior distribution of the same variable X . Thus, $\text{NMAE}(\hat{X}) = 0$ means a solution as accurate as the reference solu-

tion, and $\text{NMAE}(\hat{X}) = 1$ means that the candidate inverse method is no better than to perform no
 265 inversion at all. As it cannot be excluded that some inversion method could produce results worse
 than the prior, we will use the non-linear transform from equation 3 to obtain $\text{NMAE}^* \in [0, 1]$.

2. Root mean square error (RMSE) on point-wise inversion statistics

$$\text{RMSE}(\hat{X}) = \sqrt{\frac{1}{N} \sum_{i=1}^N (\hat{X}_{cand,i} - \hat{X}_{ref,i})^2}, \quad (7)$$

with all symbols already defined above.

270 Being the (spatial) ℓ_2 norm, the RMSE penalizes individual outliers against the reference solution
 more strongly than the MAE. Again for normalization, we define:

$$\text{NRMSE}(\hat{X}) = \frac{\text{RMSE}(\hat{X})}{\text{RMSE}(\hat{X}_{prior})}, \quad (8)$$

$$\text{RMSE}(\hat{X}_{prior}) = \sqrt{\frac{1}{N} \sum_{i=1}^N (\hat{X}_{prior,i} - \hat{X}_{ref,i})^2}, \quad (9)$$

so that $\text{NRMSE} = 0$ implies a fully accurate solution and $\text{NRMSE} = 1$ again means that the solution
 275 provided by the candidate method is no better than performing no inversion at all. Again, we will
 use the bounded version, i.e. NRMSE^* .

3. Kolmogorov–Smirnov (K-S) distance D_{KS} on point-wise posterior distributions

$$D_{KS}(X_{cand,i}, X_{ref,i}) = \sup_t |F_{X,cand,i}(X) - F_{X,ref,i}(X)|, \quad (10)$$

where $F_{X,(.)}$ denotes the (empirical or theoretical) cumulative distribution function (CDF) of a variable of interest X at a specified node i of interest.

The K-S distance measures the difference between two univariate probability distributions. It assesses the similarity between the posterior univariate distribution of an inferred variable (e.g., hydraulic conductivity, hydraulic heads) at an individual node i by the candidate method ($F_{X,cand,i}(X)$) and the same by the reference solution ($F_{X,ref,i}(X)$). The K-S distance is the largest (over all possible values of a variable) difference between the two empirical or theoretical CDFs, and so is naturally bounded between zero (perfect match) and one. The latter occurs when the compared distributions allocate probabilities to entirely different value ranges of the variable under investigation.

The K-S distance can be plotted as a map (i.e. for each node i), and then spatially aggregated by taking the spatial mean across the domain. Thus, we get as the averaged K-S distance $AD_{KS}(X)$ for a quantity of interest X :

$$AD_{KS}(X) = \frac{1}{N} \sum_{i=1}^N D_{KS}(X_{cand,i}, X_{ref,i}), \quad (11)$$

which is again naturally bounded between zero (when the compared distributions are entirely identical at all averaged locations) and one.

4. Energy distance D_E for global assessment of posterior distributions

295

While we use the K-S distance from above as a univariate tool (and make it global only via averaging), we can use the energy distance for a full, joint (multivariate) assessment of the posterior distribution. It serves well for that purpose because it does not require building a multivariate (empirical) distribution as the K-S distance would. The energy distance is defined as:

$$D_E(X_{cand}, X_{ref}) = (2\mathbb{E}\|X_{cand} - X_{ref}\| - \mathbb{E}\|X_{cand} - X'_{cand}\| - \mathbb{E}\|X_{ref} - X'_{ref}\|)^{1/2}, \quad (12)$$

300

where \mathbb{E} denotes the expectation, $\|\cdot\|$ denotes the Euclidean norm (here: over the spatial domain, essentially a root mean square error), and the primed quantities are independent and identically distributed copies of the non-primed quantities. Being a proper distance, it has a lower bound of zero when the compared distributions are entirely identical. Although it has no natural upper limit, it can be easily normalized as

305

$$ND_E(X_{cand}, X_{ref}) = \left(\frac{2\mathbb{E}\|X_{cand} - X_{ref}\| - \mathbb{E}\|X_{cand} - X'_{cand}\| - \mathbb{E}\|X_{ref} - X'_{ref}\|}{2\mathbb{E}\|X_{cand} - X_{ref}\|} \right)^{1/2}. \quad (13)$$

This normalized energy distance is always between 0 and 1, therefore there is no need to use any transformation.

5. Potential scale reduction factor (PSRF) \hat{R}

The PSRF \hat{R} (Gelman et al., 1992) is defined for a set of m Markov chains, each of which has n samples. The within-chain variance (for each node separately) is estimated as

$$W = \frac{1}{m(n-1)} \sum_{j=1}^m \sum_{i=1}^n (X_j^{(i)} - \bar{X}_j)^2, \quad (14)$$

where $X_j^{(i)}$ is the i th sample of the j th chain and \bar{X}_j is the mean of the samples in the j th chain (for each node separately). The between-chain variance (for each node separately) is estimated as

$$B = \frac{n}{m-1} \sum_{j=1}^m \left(\bar{X}_j - \frac{1}{m} \sum_{j=1}^m \bar{X}_j \right)^2. \quad (15)$$

Then, the estimated variance V is a weighted average of the within-chain variance and between-chain variance:

$$V = \left(1 - \frac{1}{n}\right)W + \frac{1}{n}B. \quad (16)$$

Finally, the PSRF \hat{R} (for each node separately) is defined as

$$\hat{R} = \sqrt{\frac{V}{W}}, \quad (17)$$

and we obtain a global metric by averaging it across all spatial nodes, i.e., the average PSRF \bar{R} .

This metric serves to test a method against itself under repeated executions. It applies to methods that contain random components, such as MCMC methods. We will mainly use it to establish and discuss

the accuracy of our reference solutions. As recommended by Gelman et al. (2013) and Brooks and Gelman (1998), the potential scale reduction factor \hat{R} should be lower than 1.2 so that one can claim
325 to achieve convergence and fully explore the target posterior. One could, in principle, also use the \hat{R} to compare $m = 2$ methods rather than m chains. We will not do so because equations 14 to 17 reveal that \hat{R} is a variant of MAE, just scaled differently for a different purpose.

We refrain from including correlation maps in our set of metrics. With correlation maps, we refer to cross-covariance fields between a quantity of interest at one spatial location and some other quantity of in-
330 terest at all possible spatial locations. An example would be the cross-covariance between hydraulic heads at a pumping well location and the hydraulic log-conductivity throughout the domain. We do not include such maps, because different methods provide either prior or posterior covariances: MCMC-type methods would provide posterior covariances; QLGA-type methods would provide prior covariances (linearized about the MAP); EnKF-type methods would provide prior covariances before the first data assimilation
335 step and conditional covariances during/after assimilation, and iterative/sequential EnKF-type methods would provide intermediate iterates.

3.5 Metrics for computational effort

A high accuracy, as measured with the metrics introduced in Section 3.4, might come at high computing costs. Very accurate methods may be too computationally demanding for larger-scale problems. There-

340 fore, the trade-off between accuracy and computing costs provided by different methods is important. We
use a total of three metrics of computing cost:

1. The number of forward calls N_f in the inversion, is relatively easy to evaluate. We propose to look
at this number as an order of magnitude. For example, it could be around 100 model evaluations for
sequential self-calibration using the adjoint state method and Gauss-Newton optimization, but 1000
345 if gradient descent is used instead of Gauss-Newton. It could be 100-1000 model evaluations for
EnKFs and $\approx 10^5$ - 10^6 model evaluations for efficient MCMCs. To consider the logarithmic scale,
we use $\text{LN}_f = \log_{10}(N_f)$, and then apply equation 3 to obtain LN_f^* between zero (no computing
effort) and one (infinite computing effort).

2. The second metric is percent overhead wallclock time T_o . Wall-clock time is the actual time elapsed
350 while the code runs. We define overhead wallclock time T_o as wallclock time T_w minus the time
spent on calls to the forward model T_f . Finally, we take the fraction:

$$T_o = \frac{T_w - T_f}{T_w}, \quad (18)$$

and realize that T_o is automatically in $[0, 1]$. As wallclock time aspects can depend on the used
machine (although many machine influences would cancel out in the above normalization), technical
355 machine details have to be reported.

3. Multi-core/multi-thread speedup loss $S\%$: If one took N times the number of compute nodes, one could ideally be N times faster. With mutually waiting algorithms, real-life implementations, and real hardware, the achievable speedup factor is $K \leq N$. As speedup loss, we define:

$$L_{s\%} = 1 - \frac{K}{N}, \quad (19)$$

360 and $L_{s\%}$ is automatically between zero (for an ideal, lossless speedup at perfect scaling) and one (for absolutely no speedup although using $n \rightarrow \infty$ compute nodes). Report this metric if (and only if) you tested parallel scaling on dedicated parallel hardware. If so, comment on the technical and programming aspects of parallelization. Also, as $L_{s\%}$ usually depends on the number N of nodes used (scaling is typically not linear), N must be reported. If not, it is optional to provide information
365 about possible (future) parallelization options.

3.6 Suggested reporting and visualization

To ensure consistency in reporting and visualization, we strongly recommend that benchmarking results are reported in the same order as specified in Table 1. For user convenience, we also provide a Jupyter notebook, available for download ¹. It accesses the reference solutions as will be discussed in Section
370 5.3, and asks the user to provide access to the own candidate solution (to be benchmarked). Then, it automatically computes and plots the set of metrics for accuracy. It also offers the option to enter all other

¹<https://github.com/LS3-university-of-stuttgart/hydrological-inversion-benchmarking>

aspects discussed above, starting from *list of assumptions* in Section 3.1 up to *multi-core/multi-thread speedup loss* in Section 3.5.

We will provide our example exercise of benchmarking in Section 6 exactly in the recommended order,
375 and using our provided notebook and its output figures.

4 Benchmarking scenarios and obtaining their reference solution

4.1 Governing equations, basic domain and forward model

In our benchmarking scenarios, the forward model $M(\theta)$ is given by steady-state or transient groundwater flow in 2D confined aquifers, depending on the exact scenario definition. The governing equation for fully
380 saturated transient groundwater flow in confined aquifers is given in (Bear, 1972):

$$\nabla \cdot (K \nabla H) + W - S_s \frac{\partial H}{\partial t} = 0, \quad (20)$$

where S_s is specific storage [L^{-1}]; H is the hydraulic head [L]; t is time [T]; $\nabla \cdot$ is the divergence operator; ∇ is the gradient operator; K is the hydraulic conductivity [LT^{-1}]; and W is the volumetric injection flow rate per unit volume of aquifer [T^{-1}]. In our scenarios, K is scalar, i.e. we look at locally isotropic aquifers.

385 For steady-state flow, the third item on the left of the equation is equal to zero, and thus the steady-state ground flow equation can be written as:

$$\nabla \cdot (K \nabla H) + W = 0. \quad (21)$$

Although Eq.20 and Eq.21 are originally for 3D flow, in this work they are applied to 2D flow conditions.

Both flow regimes need boundary conditions. In all of our scenarios, we use a 5000 [L] \times 5000 [L] domain. Please note that this study employs dimensional analysis without specific units, and any coherent set of units will produce equivalent results. Its north and south boundaries are impermeable; its west and east boundaries have specified heads equal to 20 [L] and 0 [L], respectively. Scenarios with transient groundwater flow additionally need initial conditions, and we set the initial head to be uniform and equal to 20 [L] throughout the domain except for the east boundary. Regardless of the flow regime, we define four pumping wells for groundwater abstraction (Figure 1). The exact locations and pumping rates are provided in Table 2.

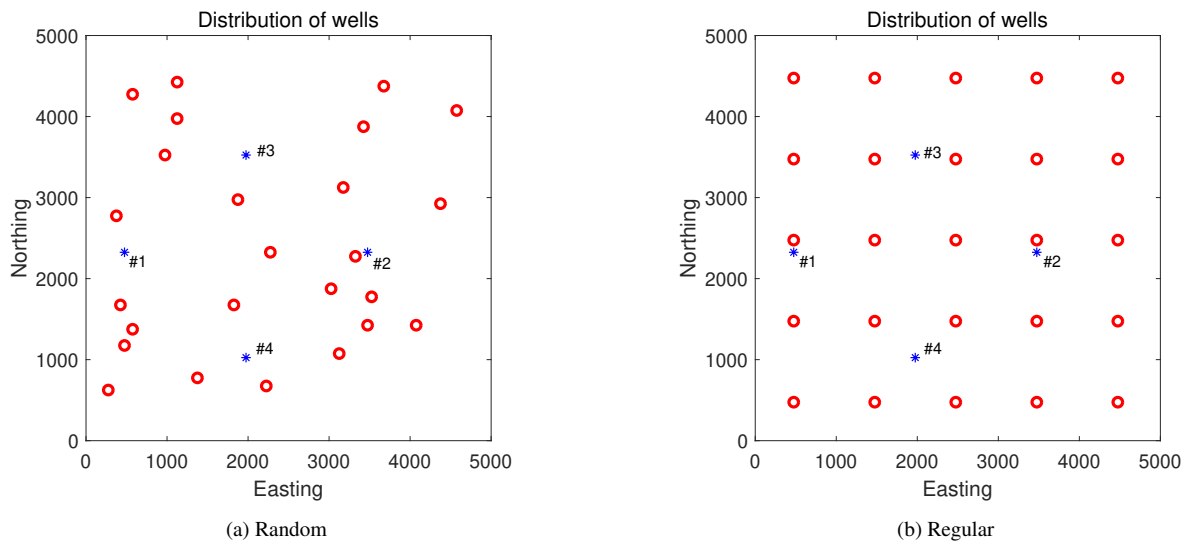


Figure 1. Distribution of pumping wells (blue asterisks) and observation wells (red circles) in the benchmarking scenarios. The left figure shows a random distribution of observation wells (scenarios S0, S2, S3, S4); the right figure shows regularly distributed observation wells (scenario S1).

Table 2. Pumping wells used in benchmarking scenarios

Well number	Grid position	Position (m, m)	Pumping rate (m^3/d)
#1	(10,47)	(500, 2350)	120
#2	(70,47)	(3500, 2350)	70
#3	(40,71)	(2000, 3550)	90
#4	(40,21)	(2000, 1050)	90

Both equations are solved by using the groundwater flow simulator MODFLOW (McDonald and Har-
 baugh, 1988). We define a synthetic aquifer as a flow domain on a grid of $100 \times 100 \times 1$ cells, where
 each cell is 50 [L] by 50 [L] by 50 [L]. For transient simulations, the total simulation time is 10000 [T],
 400 evenly discretized into 10 time steps. All model setup files are published online (Xu, 2023).

4.2 Benchmarking scenarios

Overall, we define five different benchmarking scenarios based on the basic domain described above.
 Good candidate inverse methods should be able to solve problems with different characteristics. There-
 fore, our scenarios differ according to (1) groundwater flow (steady-state versus transient), (2) the distribu-
 405 tion of observations (random versus regular), (3) the degree of heterogeneity that affects the nonlinearity
 of the inverse problem, and (4) the magnitude of measurement error, which affects the convergence re-
 quirements of candidate inverse methods.

All scenarios share a mean value for log-hydraulic conductivity $\theta = \ln K$ of $\mu_\theta = -2.5$ [$\ln(LT^{-1})$].
 Although they have different standard deviations for log-conductivity, all scenarios share the exponential
 410 covariance model with a slightly rotated anisotropy. It has correlation length parameters $\lambda_{max} = 2000L$

and $\lambda_{min} = 1500L$, and the dominant principal axis (the one for $\lambda_{max} = 2000L$) aligned from north-west to south-east. Also, across all scenarios specific storage is homogeneous and equal to $0.003 [L^{-1}]$.

The details of all scenarios are provided in Table 3. We deliberately do not include all possible combinations as scenario variations. Instead, we define a base scenario S0, and from there do "one-at-a-time"

415 variations:

– S0 is the base case. It features a relatively strong degree of heterogeneity with $\sigma_\theta = 2$, relatively accurate measurement data with $\sigma_e = 0.05 [L]$, irregularly placed observations, and steady-state groundwater flow.

420 – S1 features the regular grid of observations instead of the random one. While irregular monitoring networks are more realistic, the very close spacing of a few monitoring wells may pose a problem to some methods due to their high autocorrelation. Therefore, S1 is a fallback scenario.

– S2 is again like S0, but reduces the strength of heterogeneity from $\sigma_\theta = 2$ to $\sigma_\theta = 1$. While $\sigma_\theta = 2$ is a more realistic degree of heterogeneity, it may already be challenging for methods that are explicitly or implicitly linearization-based. Therefore, S2 is a fallback scenario.

425 – S3 is again like S0, but increases the assumed level of observational errors from $\sigma_e = 0.05 [L]$ to $\sigma_e = 0.1 [L]$. Given the overall head difference of $20 [L]$ across the domain by the boundary conditions, these values can be classified as high and medium accuracy, respectively. Iterative or sampling-based methods may have problems with the accuracy requirement posed by the large accuracy in S0. Once

Table 3. Definition of scenarios

Scenarios	Std.dev of	Std.dev of	Well distribution	Flow state
	$\ln K$ synthetic truths	measurement errors		
S0	2	0.05	Random	Steady
S1	2	0.05	Regular	Steady
S2	1	0.05	Random	Steady
S3	2	0.1	Random	Steady
S4	2	0.05	Random	Transient

again, S3 is a fallback solution. However, as posterior uncertainties will remain larger for smaller
 430 measurement accuracy, S3 may also trigger stronger non-linearities across the larger remaining post-
 calibration uncertainty ranges.

- S4 changes S0 to feature transient (instead of steady-state) groundwater flow. This is relevant for
 EnKF-type methods that work via transient data assimilation and that do not iterate.

4.3 Synthetic cases for our benchmarking scenarios

435 We use the `sgsim` code, a sequential Gaussian simulation module of the `GSLIB` software (Deutsch
 and Journel, 1998), to generate two log-conductivity fields according to our benchmarking scenarios. We
 use them as data-generating synthetic truth fields, providing synthetic measurement data for inversion.
 Therefore, we generate one realization with $\sigma_\theta = 1$ (scenario S2), and then simply scale it to obtain a
 realization for $\sigma_\theta = 2$ (scenarios S0, S1, S3, S4). The resulting synthetic fields are shown in Figure 2, and
 440 are called synthetic truth 1 (left) and synthetic truth 2 (right). All details of the parameters and covariance
 function settings are shown in Table 4. Please be aware that the goal of benchmarking is *not* to be as close

Table 4. Parameters of the random functions describing the heterogeneity of the two synthetic truth fields. λ_{max} and λ_{min} are the correlation ranges along the principal axes of orientation.

	Mean	Variogram type	λ_{max}	λ_{min}	Std. dev.	Angle
synthetic truth 1	-2.5	Exponential	2000	1500	2	135
synthetic truth 2	-2.5	Exponential	2000	1500	1	135

to the synthetic fields as possible (with a posterior uncertainty as small as possible), but to be as close to a high-end reference solution as possible (i.e. close in best estimate, posterior standard deviation and so forth).

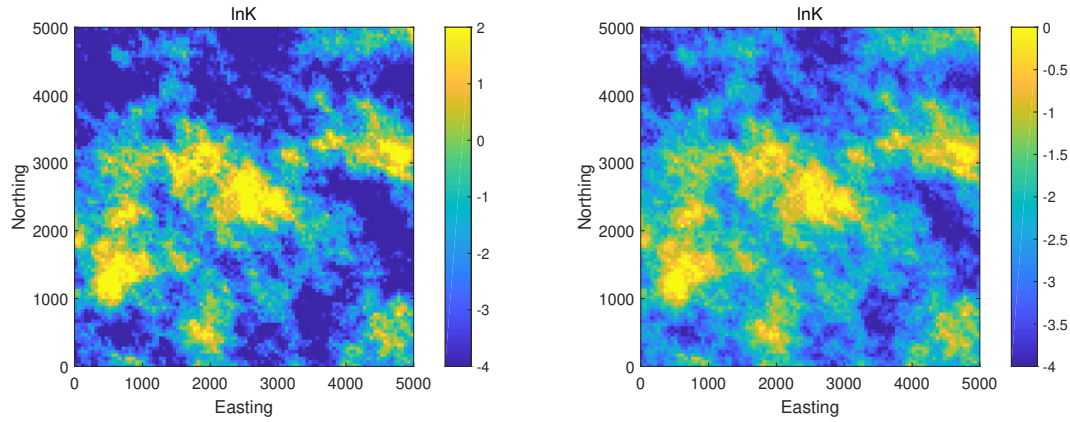


Figure 2. Synthetic truth of $\ln K$. Left: synthetic truth 1 with a standard deviation of $2 \ln(L/T)$; Right: synthetic truth 2 with a standard deviation of $1 \ln(L/T)$. Please note that to maintain the primary characteristics of the $\ln K$ fields given their diverse standard deviations, the scale for these two synthetic truths has been adjusted individually.

445 There are 25 observation wells, where we simulate measurements for providing synthetic data values of hydraulic heads. Their spatial distribution is either random (scenarios S0, S2-S4) or regular (scenario S1). For all scenarios, the measurement errors follow Gaussian distributions with mean zero. The standard deviation (std. dev.) varies between scenarios as shown in Table 3. Note that the measurement error

is given here, but in reality, the measurement error is uncertain. Although often reliable information is
450 available, for example considering instrument precision, the uncertainty of the measurement error could
also be considered in an inverse modeling approach. After simulation with MODFLOW, we add randomly
generated error values according to these distributions to obtain the synthetic data to be used for inversion.
For the steady-state scenarios (S0 to S3), this results in 25 data values, and for the transient scenario (S4),
this results in 10 time steps times 25 data values, i.e. in a total of 250 data values.

455 4.4 Algorithm used for the reference solutions: the pCN-PT

Markov chain Monte Carlo (MCMC) simulation is a widely-used sampling method to approximate the
Bayesian statistical inverse solution (Tierney, 1994; Grandis et al., 1999; Schott et al., 1999; Smith and
Marshall, 2008). In the literature, many MCMC algorithms have been proposed. The Metropolis–Hastings
algorithm (Hastings, 1970) is a widely-used MCMC algorithm for standard cases. However, it has rela-
460 tively low efficiency in reaching convergence, especially when encountering high-dimensional problems
(Haario et al., 2006). In the context of groundwater model inversion, the dimensionality relevant to MCMC
efficiency is equal to the number of discretization cells used for the random field. This is *not* to be confused
with the spatial dimension of groundwater flow.

Later, several new methods were proposed to improve the efficiency and effectiveness of MCMC algo-
465 rithms (Tierney and Mira, 1999; Haario et al., 2001, 2006; ter Braak, 2006). The preconditioned Crank
Nicholson (pCN) algorithm (Cotter et al., 2013a) is an efficient MCMC algorithm with dimension ro-

bustness. In plain words, the pCN is tailored to automatically fulfill multi-Gaussian priors, so that spatial refinement does not affect its performance. Therefore, the acceptance probability for proposed solutions only depends on the likelihood of matching with the data.

470 However, for many hydrogeological inverse problems, an additional problem is that the posterior distribution is multimodal. To effectively sample such multimodal posterior distributions, parallel tempering (PT) (Altekar et al., 2004; Earl and Deem, 2005) is a good candidate. It runs multiple chains with different temperatures in parallel. The hot chains can more easily explore the whole parameter space since the likelihood of the hotter chains is flatter and broader as the temperature increases. The cold chains
475 perform precise sampling in high-likelihood regions of the parameter space. With regular swaps between the members of hot and cold chains, the hotter chains can help the coldest chain with unit temperature (target chain) access the desired regions of the parameter space.

In this work, we use the pCN-PT algorithm by Xu et al. (2020) to get the reference solution. It combines the pCN algorithm with PT. We chose it because it is well-suited for high-dimensional and nonlinear
480 problems, even when the posterior distribution is multimodal. Xu et al. (2020) has proven its capacity to deal with both high-dimensional linear problems and high-dimensional nonlinear problems. The performance in linear problems was tested in a synthetic study, and Xu et al. (2020) could be compared to exact (analytical) reference solutions obtained by kriging. For the nonlinear cases, Xu et al. (2020) compared multiple MCMC runs to assess convergence. Again, to work with reference solutions, they compared
485 it to a solution obtained by plain rejection sampling in a case with very weakly informative data. Fi-

nally, they showed that their pCN-PT is superior to the original pCN-MCMC for Bayesian inversion of multi-Gaussian parameter fields. The algorithm for pCN-PT is provided in the appendix, and full details can be found in Xu et al. (2020). Possible extensions for multi-facies aquifers with internal (Gaussian) heterogeneity or to cases with uncertain covariance parameters exist (e.g., Xiao et al., 2021).

490 4.5 Generating the high-end reference solutions

Operating the pCN-PT requires a set of decisions to be taken. This mainly concerns tuning its parameters such as the temperature ladder, the pCN jump size parameter per temperature, and the frequency of between-chain swapping proposals. Many studies (e.g., Gelman et al., 1996; Roberts et al., 1997, 2001; Predescu et al., 2005; Laloy et al., 2016) indicated that acceptance rates for MCMC-based methods be-
495 tween 10% to 40% perform close to optimal and that the optimal acceptance swap rates for parallel tempering should range from 8% to 39%. Here, like in the study by Xu et al. (2020), we control the acceptance rate in a range from 20% to 30% and the swap acceptance rate in a range from 10% to 30% by adjusting the jumping factor and temperature ladders.

Finally, we have to decide on the length of runtime. For scenarios S0-S4, we generate 800,000 MCMC
500 realizations by the pCN-PT, saving every 20th realization. The first half of all realizations is discarded as a burn-in period. That means the reference solution for each benchmarking scenario consists of 400,000 MCMC steps, thinned out to 20,000 realizations. This thinning-out mostly serves to reduce memory requirements. It has virtually no effect on the quality of the reference solutions, as it mainly reduces the

along-chain autocorrelation of the realizations. For later assessment of convergence, we repeat each scenario four times in independent pCN-PT runs. These solutions are uploaded and made available publicly on an institutional data repository (Xu, 2023).

5 Results: high-end reference solutions for the benchmarking scenarios

5.1 Solutions

To visualize the reference solutions to the benchmarking scenarios, Figures 3 and 4 show the maps of mean and standard deviation of the $\ln K$ realizations obtained by the pCN-PT for all scenarios S0 to S4. It can be seen that the reference solutions in all scenarios capture the main features of the synthetic fields. As an additional plausibility check, comparing the results of S4 with those of scenarios S0-S3, one can see that the more observations have been assimilated, **the better the identification that can be achieved**. Also, scenario S2 (with the smaller prior standard deviation compared to S0) has a smaller posterior standard deviation, and scenario S3 (with the larger measurement error variance compared to S0) has a slightly smoother mean.

5.2 Convergence assessment

For more quantitative assessment, Figure 5 shows the root mean square error (RMSE) of $\ln K$ against the synthetic truth for scenarios S0-S4 along the runtime of the pCN-MCMC algorithm. The RMSE is calculated according to Eq.(7) while swapping the roles of "candidate" against "reference" for "reference"

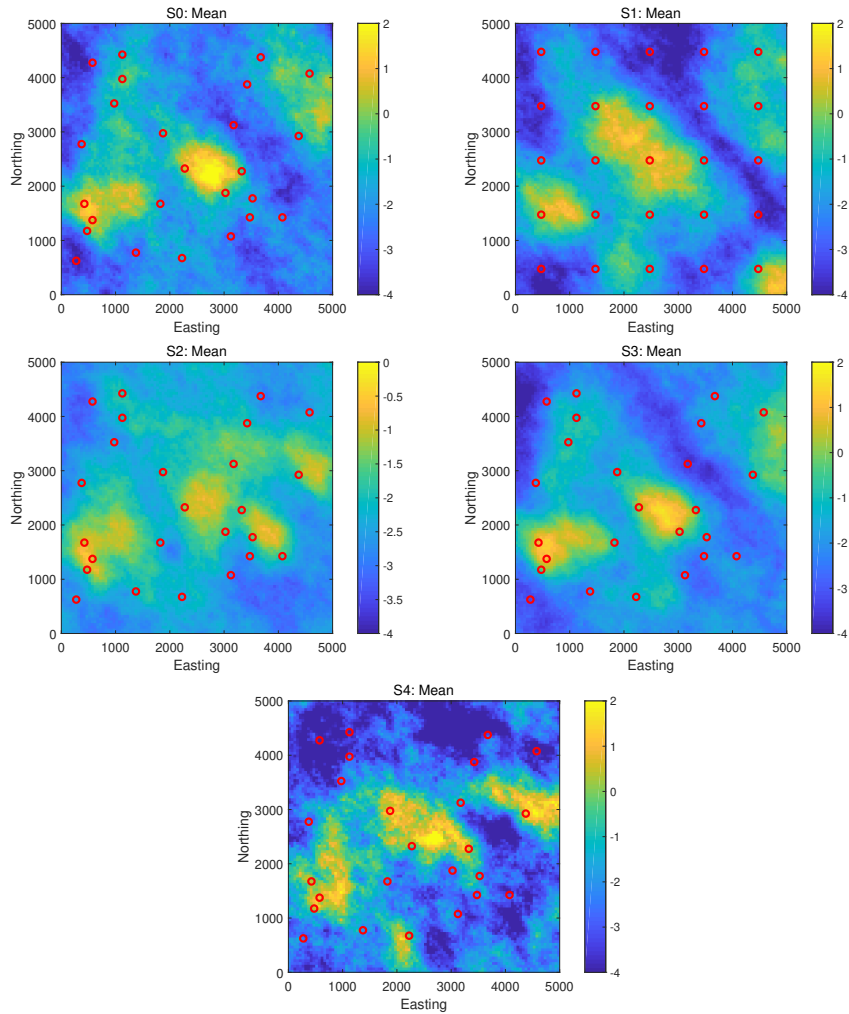


Figure 3. Scenarios S0-S4. The mean of $\ln K$ realizations obtained by the pCN-PT. The color scale used for scenario S2 is the same as that used for the synthetic truth 2 in Figure 2. **Please note that S2 exhibits the same standard deviation as synthetic truth 2, while the others exhibit the same standard deviation as synthetic truth 1. Therefore, the scale of S2 should align with that of synthetic truth 2, and the scale of other scenarios should align with that of synthetic truth 1.**

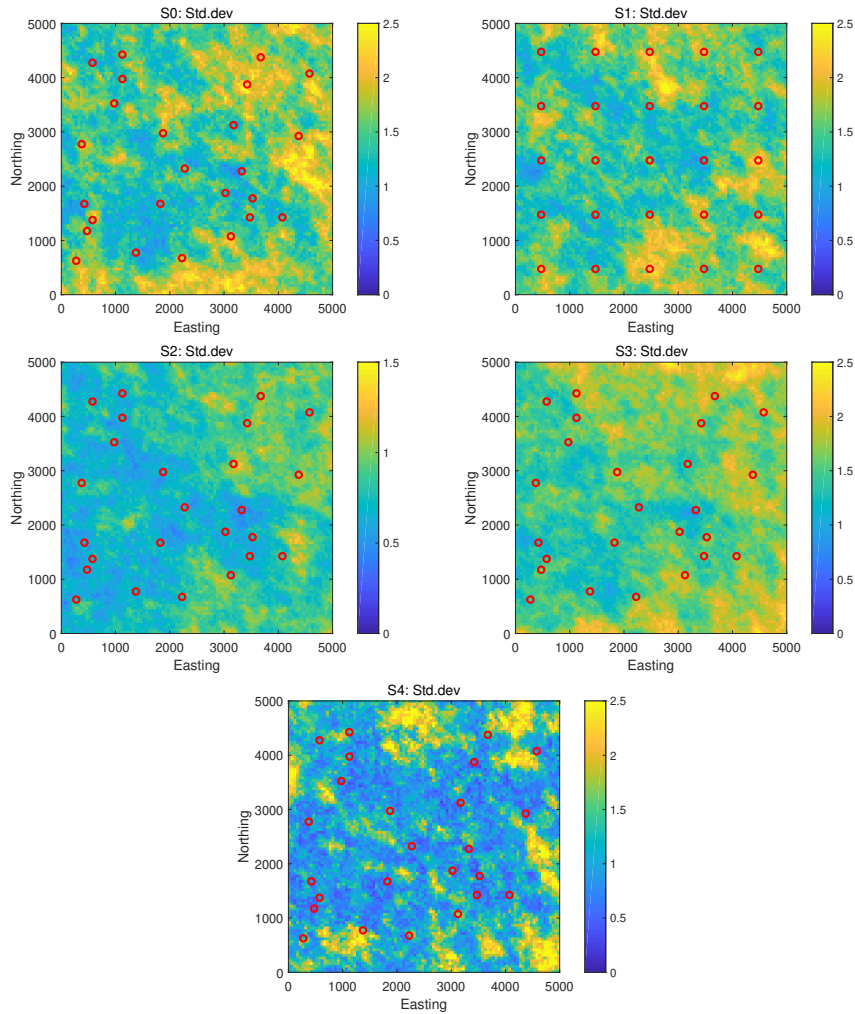


Figure 4. Scenarios S0-S4. The standard deviation of $\ln K$ realizations obtained by the pCN-PT. Scenario S2 is shown on a different color scale because it has only half the prior field variance. Please note that S2 exhibits the same standard deviation of 1 as synthetic truth 2, while the others exhibit a standard deviation of 2 similar to synthetic truth 1. Therefore, to ensure the distinct features of the figures, the scale setting for S2 is adjusted differently from the others.

against "synthetic". To obtain the shown trace plots, these RMSE values are computed and recorded for each step in the target MCMC chain. Recall that the expectation for a reference solution is *not* to yield values as small as possible here, but to strike the correct compromise between prior information and noise-affected data. We merely use the RMSE here to discuss aspects of the MCMC operation for our
525 reference solutions. It is observed that RMSE in all scenarios decreases sharply within a very short (and hence hardly visible) initial period in the plots, and then converges quickly to a stable distribution along the chains. The RMSE for scenario S2 (the one with the smaller prior standard deviation) is smaller than for all other scenarios. This is because the more narrow prior leads to a more narrow posterior closer to the data-generating synthetic truth, which is to be expected.

530 Figure 6 shows log-likelihood values in matching the synthetic data along the target MCMC chain for scenarios S0-S4. The pCN-PT converges more quickly in the steady-state scenarios (S0 to S3) than in the transient scenario (S4). The visible aspects of burn-in periods are very short in scenarios S0-S3. Due to the more informative data in S4, the posterior is much more narrow and more shifted against the prior. The more narrow posterior also requires smaller jump size factors in MCMC algorithms. Together with the
535 more offset posterior, this results in a longer visible burn-in period. After the burn-in period, all scenarios show a good exploration of realizations with a stable distribution of likelihood values.

Figures 7 and 8 show the potential scale reduction factor \hat{R} of the reference solutions for all scenarios. Specifically, Figure 7 shows the evolution of the spatial maximum and the mean of \hat{R} along the MCMC

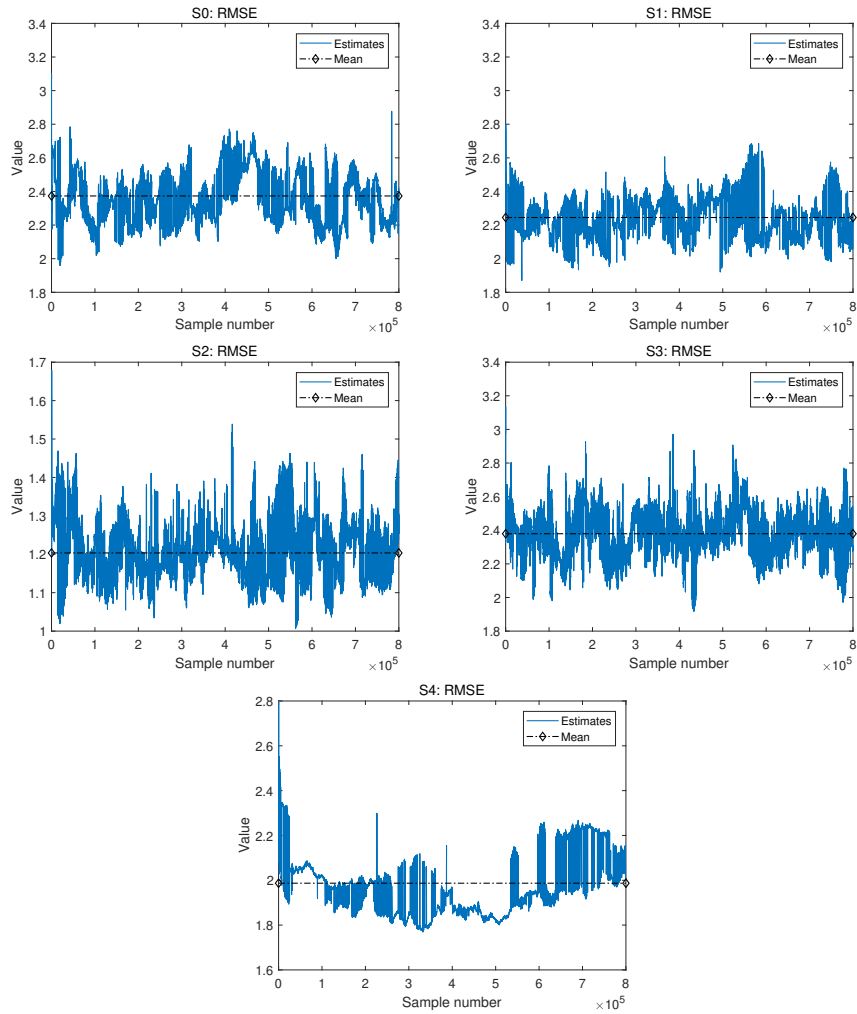


Figure 5. The RMSE error between the lnK values of Scenarios S0-S4 of the pCN-PT solution vs. the synthetic MODFLOW-based truth over all samples. The blue line and black dash-diamond line in the figure correspond to the RMSE of the updated samples, and the mean of the RMSE, respectively. **Please note that in order to maintain the primary characteristics of the evolution of the RMSE, the scale for these RMSE has been adjusted individually.**

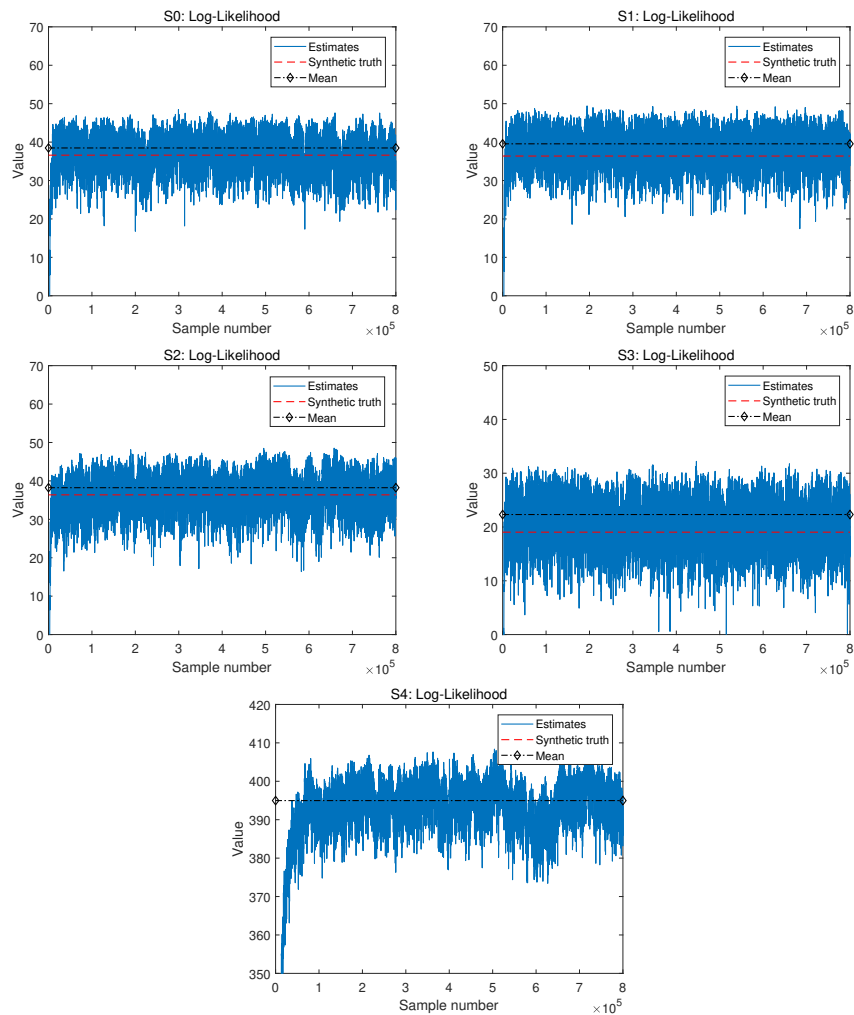


Figure 6. Scenarios S0-S4. Log-likelihood as obtained by the pCN-PT for the different cases. The blue solid line, red dashed line, and black dash-diamond line in the figure of the log-likelihood correspond to the log-likelihood of the updated samples, the reference, and the mean of the log-likelihood for the pCN-PT, respectively.

runtime, and 8 shows the spatial pattern of the final \hat{R} values at the end of MCMC runtime. Recall that the
540 recommended value for \hat{R} is 1.2 or below. The figures show that we achieve values for the spatial average
 \bar{R} below 1.2 in all scenarios. For the spatial maximum of \hat{R} , i.e. the worst single pixel on the map, we
achieve values close to 1.2 in all scenarios but in scenario S4. This scenario is the transient one. Overall,
these results confirm the conclusions from before: the reference solutions in all scenarios have an excellent
quality (with scenario S4 falling behind and showing only a plain good quality); scenario S3 with its more
545 forgiving (larger) measurement error variance is easier to handle, converges faster, and so the values of
 \hat{R} drop below the threshold value of 1.2 more quickly and in larger parts of the spatial domain; scenario
S2 with the more narrow prior is only slightly easier to handle and converges only slightly faster than the
other ones; scenario S4 with the more informative data is harder to handle and it converges more slowly.

5.3 Accessing the high-end reference solutions

550 The reference solutions are published in an online data repository (Xu, 2023). There, prefixed with "ref_",
the reference chains of the different scenarios are accessible.

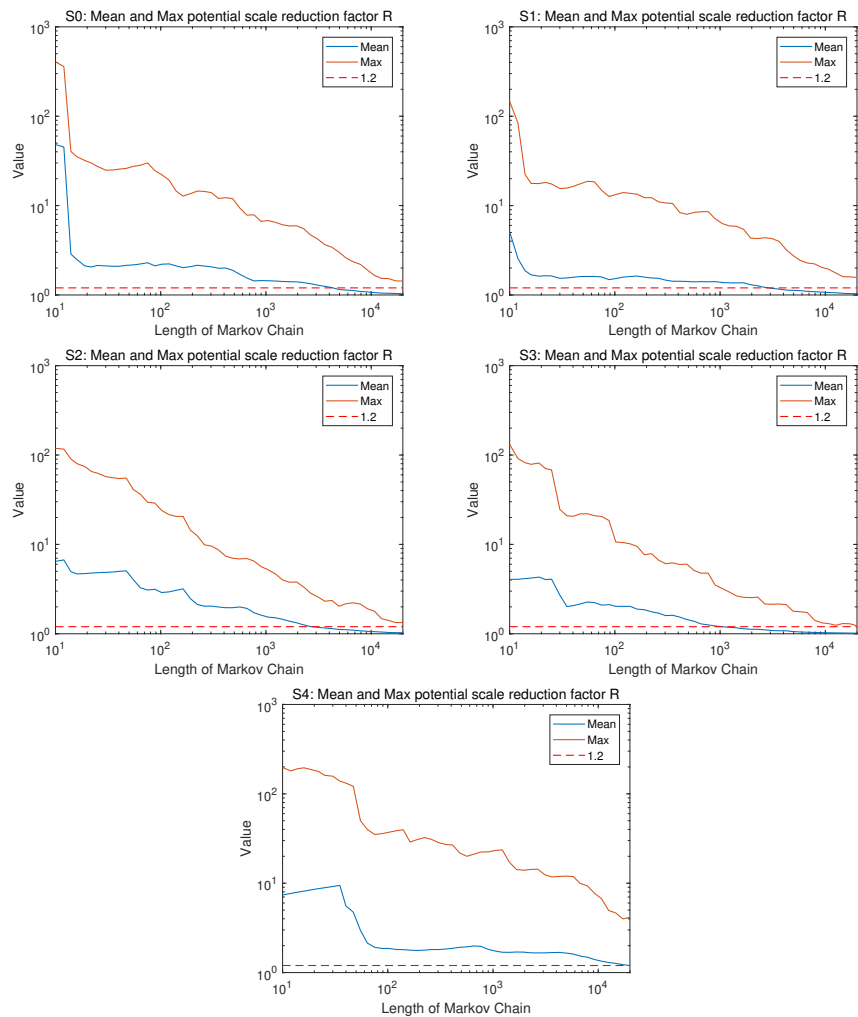


Figure 7. Scenarios S0-S4. The evolution of mean (blue) and maximum (red) potential scale reduction factor obtained by the pCN-PT. The red dashed line, the blue line, and the brown line in the evolution of mean and maximum potential scale reduction factor correspond to the value 1.2, the mean value, and the maximum value for posterior samples, respectively.

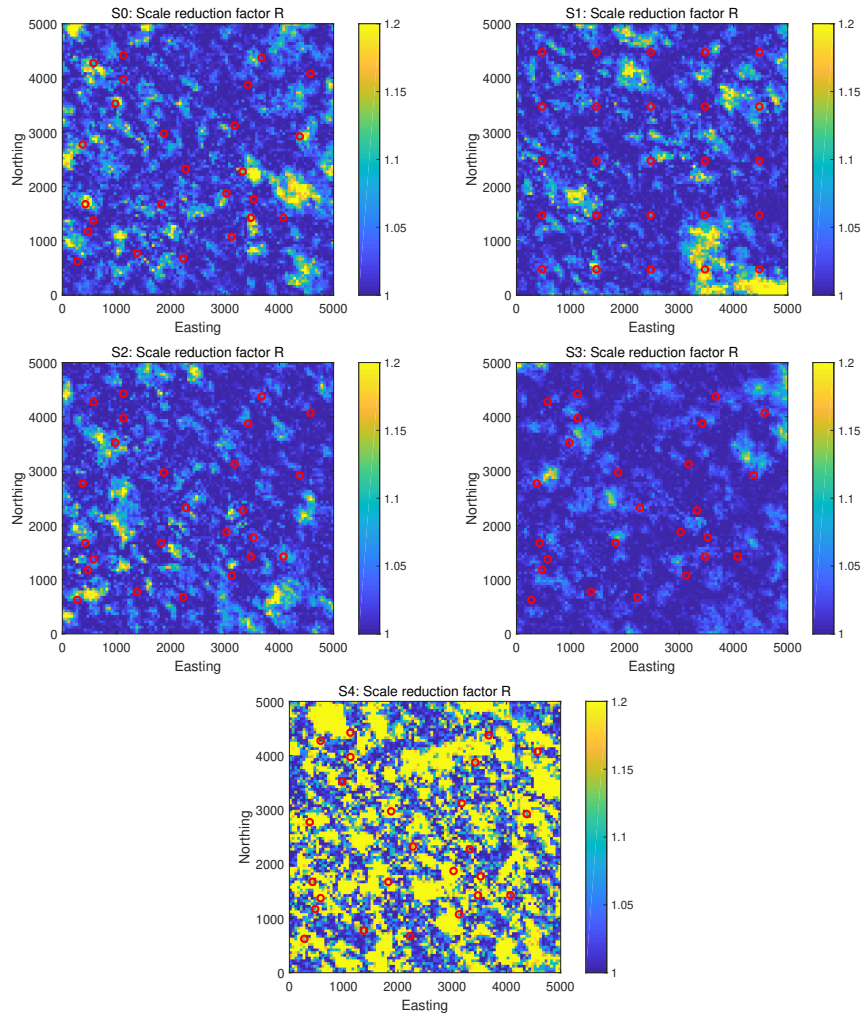


Figure 8. Scenarios S0-S4. Potential scale reduction factor field obtained by the pCN-PT.

6 Example application: testing the EnKF

6.1 EnKF: Methods and implementation

The EnKF was proposed by Evensen (1994), based on the Kalman filter (Kalman et al., 1960) and the extended Kalman filter (McElhoe, 1966), to better deal with nonlinear state-transfer functions. The Kalman filter is an efficient recursive filter but can only handle linear problems. The extended Kalman filter can handle nonlinear state-transfer functions by linearizing nonlinear systems through a Taylor expansion. Still, it fails to handle large, strongly nonlinear systems due to the large storage, time consumption, and accumulative error induced by the linearization process (Xu et al., 2013a). To tackle data assimilation in large, nonlinear systems, the EnKF was proposed, in which an ensemble of realizations is used to approximate the (cross-)covariances during the analysis step, instead of propagating the (cross-)covariances using a linear(ized) state-transfer function as in the Kalman filter. As an efficient and effective inverse modeling approach for parameter estimation, the EnKF has received lots of attention and applications in many fields (e.g., Evensen, 2003; Bertino et al., 2003; Chen and Zhang, 2006; Aanonsen et al., 2009; Hendricks Franssen and Kinzelbach, 2008, 2009; Xu et al., 2013b; Xu and Gómez-Hernández, 2018).

The EnKF used here mainly contains the following steps:

1. Initialization step. An initial ensemble of hydraulic log-conductivity fields $\ln\mathbf{K}_0$ is generated from the prior, here using sequential Gaussian simulation.

2. Forecast step. For the i^{th} realization at the t^{th} time step, the piezometric heads $\mathbf{H}_{i,t}$ are forecasted on
 570 the basis of the piezometric heads $\mathbf{H}_{i,t-1}$ and the log-conductivities $\ln\mathbf{K}_{i,t-1}$ from the $(t-1)^{th}$ time
 step through a state-transition equation $\psi(\cdot)$ (see Eq.(22)), which is the transient groundwater flow
 equation:

$$\mathbf{H}_{i,t} = \psi(\mathbf{H}_{i,t-1}, \ln\mathbf{K}_{i,t-1}) \quad (22)$$

3. Assimilation step. The log-conductivities $\ln\mathbf{K}_{i,t}^a$ (a function of the log-conductivities at the last time
 575 step $\ln\mathbf{K}_{i,t-1}^f$, the Kalman gain $\mathbf{G}_{i,t}$ and the misfit between the forecasted heads $\mathbf{H}_{i,t}^f$ and observed
 heads \mathbf{H}_t^o at observation locations) are sequentially updated by assimilating observed piezometric
 heads \mathbf{H}_t^o (Eq.(23)). The Kalman gain $\mathbf{G}_{i,t}$ is a function of the cross-covariances $\mathbf{C}_{\ln\mathbf{K}_{i,t-1}\mathbf{H}_{i,t}}$ be-
 tween log-conductivities and forecasted heads at observation locations, and auto-covariances $\mathbf{C}_{\mathbf{H}_{i,t}\mathbf{H}_{i,t}}$
 of forecasted heads at observation locations (Eq.(24)).

$$\ln\mathbf{K}_{i,t}^a = \ln\mathbf{K}_{i,t-1}^f + \mathbf{G}_{i,t}(\mathbf{H}_t^o + e_{i,t} - \mathbf{H}_{i,t}^f) \quad (23)$$

$$\mathbf{G}_{i,t} = \mathbf{C}_{\ln\mathbf{K}_{i,t-1}\mathbf{H}_{i,t}}(\mathbf{C}_{\mathbf{H}_{i,t}\mathbf{H}_{i,t}} + \mathbf{R}_{i,t})^{-1} \quad (24)$$

where $e_{i,t}$ is the observation error, which is with zero mean and covariance $\mathbf{R}_{i,t}$.

4. Go back to step 2 and repeat the processes until all the observed heads are assimilated.

585 **6.2 EnKF: Benchmark selection**

We use only Scenario S4, i.e. the transient scenario, because the EnKF in its original form is a data assimilation framework. That means it works on time series of data in transient systems by design. There exist other versions of EnKFs that were extended to work, e.g. with iteration, on steady-state problems, but these other versions are not the focus of the current benchmarking example.

590 **6.3 EnKF: Simulation validation**

Figure 9 shows the mean and the standard deviation of the updated $\ln K$ realizations obtained by the reference solution (top row) and by the EnKF (bottom row) in the featured (transient) benchmarking scenario S4. In comparison with the pCN-PT reference solutions in the top row, we find that the EnKF successfully captures the main features of the reference solution in the mean (left column); however, it visually lacks some contrast. Also, the EnKF seems to specify a larger standard deviation (right column) by visual comparison. Yet, the general shape of standard deviation, with reduced uncertainty in regions of the highest data density, is plausible.

595

6.4 EnKF: Metrics for accuracy

In this section, we compare the results obtained by the EnKF with the reference results obtained by pCN-PT based on the proposed metrics for accuracy in Section 3.4. The ensemble size of the EnKF is set as 600 1000. In Table 5, we provide the metrics of the comparison to the reference results in their original form

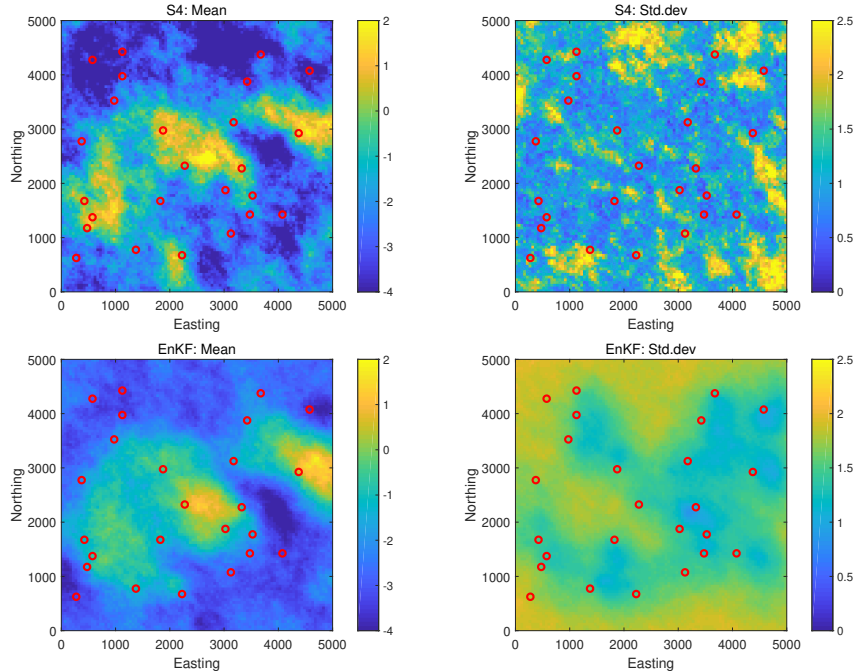


Figure 9. The mean (left column) and standard deviation (right column) of $\ln K$ realizations according to the reference solution (top row) and obtained by the EnKF (bottom row, $N = 1.000$ realizations) after the 10th (i.e. last) assimilation step in the featured (transient) benchmarking scenario S4.

(before normalization), after normalization, and transformed, according to what applies to each metric.

The shown metric values are close to each other and generally between 0.3 and 0.4. This indicates that the EnKF (with ensemble size = 1000) has some deviation compared to the reference results. In addition,

605 it also shows that the accuracy of the EnKF (ensemble size = 1000) is consistent across different metrics.

To demonstrate the impact of a potentially worse result on the metrics, we computed the metric values for EnKF using an ensemble size of 100. This is anticipated to yield higher values (lower accuracy) for all metrics. The obtained metric values are shown in Table 6. It can be seen that, with a smaller ensemble size, the metric values related to standard deviation (MAE std, RMSE std) become smaller while other

Table 5. Metrics values (original, normalized and transformed) of different versions for the EnKF with ensemble size 1000.

	Original	Normalized	Transformed
MAE mean	0.808	0.659	0.397
MAE std	0.520	0.625	0.385
RMSE mean	1.035	0.660	0.398
RMSE std	0.605	0.657	0.396
KS distance	0.341	(-) ^a	(-) ^b
Energy distance	8.073	0.379	(-) ^c

^a As the *KS* distance is automatically normalized, we provide no additional normalization.

^b As per definition $KS \in [0, 1]$, there is no need for additional transformation.

^c Upon normalization, the Energy distance is automatically $\in [0, 1]$, so there is no need for additional transformation.

Table 6. Metrics values (original, normalized and transformed) of different versions for EnKF with ensemble size 100.

	Original	Normalized	Transformed
MAE mean	1.294	1.056	0.514
MAE std	0.375	0.450	0.310
RMSE mean	1.626	1.038	0.509
RMSE std	0.480	0.521	0.343
KS distance	0.477	(-)	(-)
Energy distance	11.893	0.545	(-)

610 metric values become larger. Since EnKF is an MC-based approach, a smaller ensemble size may not fully represent the distribution and can lead to biased estimation. A look at the updated standard deviation map of $\ln K$ (not shown here) reveals problems of filter collapse, i.e. the posterior standard deviation has shrunk to become too small, which also makes the EnKF unable to continue doing productive updates in later assimilation steps.

As mentioned in Section 6.6, the compared numerical methods are evaluated in their accuracy and at what computational price the accuracy is obtained. Whereas the posterior distributions were evaluated as metrics, the computing costs are not compared, but simply reported as key performance indicators (KPIs) and allow us to compare the methods among each other.

- 620 1. For the EnKF-1000 we have: 10 Time segments each with the 1000 samples result in $10 \cdot 1000$ forward calls when counting formally; but the ten segments in a row come at the total cost of one full forward-model run. Therefore, we count $N_f = 1000$. The computational effort of step 1 (initialization) and step 3 (assimilation) is sometimes not negligible but does not require forward calls; thus they are only accounted for in the wall clock time. **Note that we use this metric although it is evident that**
- 625 **the consumed wall clock time also depends on some external poorly controllable factors not directly linked to the efficiency of the inverse modeling framework.** With $N_f = 1000$ we get $LN_f = 3.0$ and $LN_f^* = 0.75$.

The overhead wall-clock time on a Intel(R) Core(TM) i7-7700 CPU @ 3.60GHz (4 cores) is $T_o =$

$$\frac{211.129s - 115.85s}{211.129s} \approx 0.451.$$

- 630 2. For the EnKF-100 we have: 10 Time segments each with the 100 samples result in cost equivalents of $N_f = 100$ forward calls – and again the computational effort of steps 1 and step 3 are only accounted for in the time measurement. With $N_f = 100$ we get $LN_f = 2.0$ and $LN_f^* = \frac{2}{3}$.

The overhead wall-clock time is on the same computer $T_o = \frac{66.102s - 55.017s}{66.102s} \approx 0.168$.

In both cases, the calculation of step 1 was not incorporated into the calculation as this was pre-
 635 calculated. Parallelization was not tested; however, this could speed up the calculations considerably
 (Houtekamer et al., 2014; Kurtz et al., 2016).

6.6 EnKF: Metric summary

In Figure 10, we summarize the accuracy and computational effort. Note that we only plot normalized
 metrics on the right y-axis because normalization is often metric-dependent.

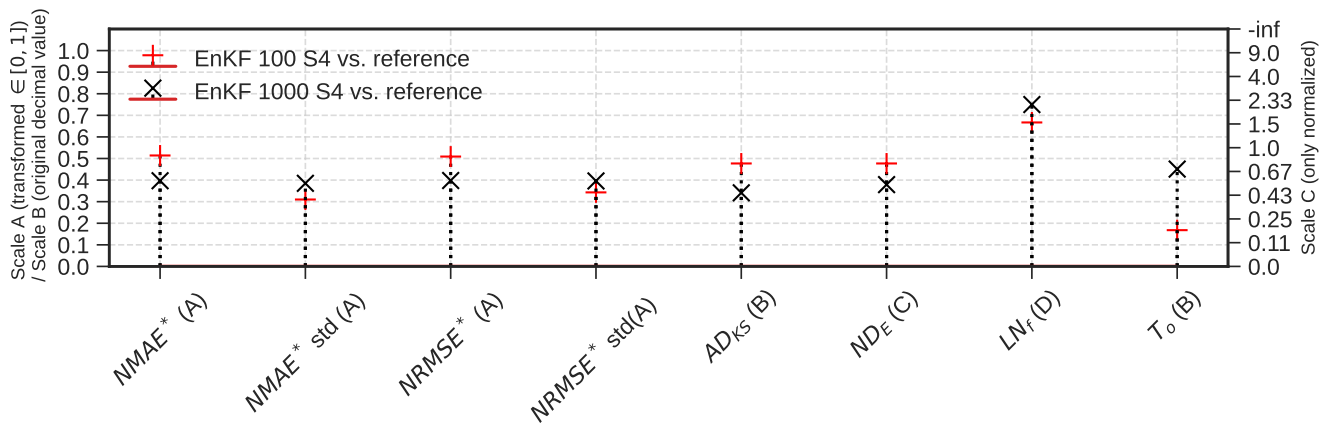


Figure 10. Comparison of the accuracy and computational effort of the EnKF with 100 and 1000 ensemble sizes to the reference results. The correct axis for each metric is given in round brackets; Scale A is the transformed value which is the value normalized and then non-linear squeezed into $[0, 1]$. Scale B corresponds to original values that were not normalized or transformed and Scale C corresponds to only normalized metrics.

640 **6.7 Discussion: performance of the EnKF evaluated through the Benchmarking metrics**

The example showed nicely that the EnKF using 1000 ensemble members had overall a higher accuracy than the EnKF with only 100 ensemble members, based on a comparison with the reference solution generated by pCN-PT. The comparison also showed that this was at the expense of increased computing costs.

645 Two of the plotted metrics showed counter-intuitive results because the posterior uncertainty (after data assimilation) would be characterized slightly better by the 100-member EnKF than the 1000-member EnKF. The posterior standard deviation for EnKF with 100 ensemble members is closer to the "true" reference standard deviation by pCN-PT than EnKF with 1000 ensemble members. This can be attributed to an overestimation of the posterior standard deviation by the EnFK-1000, which is countered by an
650 underestimation of the posterior standard deviation by EnKF-100 due to filter collapse. Therefore, by lucky cancellation of errors, this brings the EnKF with 100 realizations closer to the average standard deviation of the reference results, which causes smaller error metric values associated with the standard deviation. The price to pay is an increase in the error metrics addressing the mean.

Therefore, it is advantageous and important to evaluate the performance of a method taking into account
655 all metrics, and for MAE and RMSE it can be noticed (see Table 6) that the mean shows much larger deviations from the reference solution than the standard deviation, pointing to the underestimation of the standard deviation by the small EnKF ensemble. We conclude that the metrics perform well for the

evaluation of a candidate method, but that the metrics should be evaluated carefully in the context of each other and that their interpretation, supported by the plotted results, has to be done thoroughly.

660 7 Discussion and Conclusion

In this study, we have designed and implemented a suite of five well-defined benchmarking scenarios for groundwater flow with different levels of spatial heterogeneity, different spatial configurations of hydraulic head observations, different levels of data noise variance, and with groundwater flow at steady or transient state. We also developed highly accurate solutions for these five inversion benchmarking scenarios with the pCN-PT algorithm, which can serve as reference solutions for the community in future comparison studies.

We proposed a group of metrics to compare inverse modeling solutions with the reference solutions: metrics for accuracy of solution (MAE, RMSE, Kolmogorov-Smirnov distance, Energy distance, potential scale reduction factor), metrics for computing costs (number of forward calls, percentage overhead wallclock time, scaling efficiency) and metrics for ease of implementation and reproducibility of results.

To demonstrate and illustrate the intended application of these benchmarks, reference solutions, and metrics, we provided an example application of benchmarking at the example of a plain-vanilla EnKF (with 1000 and 100 ensemble members). The metrics that we proposed for the evaluation of candidate inverse methods performed well, with worse performance for an EnKF with a small ensemble size com-

675 pared to an EnKF with a large ensemble size. However, the example also showed that it is important to evaluate the different metrics jointly and add visual comparisons of the results.

Reflecting on our reference solutions, we found in this work that the pCN-PT needs more sampling iterations to converge if more observations are available, but a better estimation of multi-Gaussian parameters can be achieved. Convergence of the pCN-PT is also slower with smaller error variance of observations
680 and in case of stronger heterogeneity of parameter fields. In all those cases, the slower convergence is associated with more accurate results. We found for the transient case, that already a lot of computing power is needed to calculate a reference inverse solution with pCN-PT.

Reflecting back on our suggested benchmarking initiative, a logical endeavor is an extension to more realistic and more challenging cases. This would include Non-Multi-Gaussian parameter fields, which
685 are often more realistic for subsurface media than Multi-Gaussian parameter fields given the presence of fractures and fluvial deposits. It would also include the extension to flow in unsaturated porous media (or multiphase flow) and/or coupled flow-transport processes. However, for all of these extensions, it would be much more challenging to derive a reference inverse solution. It was shown that pCN-PT can also handle Non-Multi-Gaussian parameter fields, but it will be difficult to achieve convergence for a transient
690 flow case and a similar problem size as in the current study. Either a brute-force computing effort has to be undertaken to calculate reference solutions for such cases, or the pCN-PT algorithm has to be further optimized to become more efficient. As already quite a body of literature exists on solutions for Non-Multi-Gaussian flow problems, it can be expected that reference solutions for such cases are received with

interest by the inverse modeling community. A reference inverse solution for a coupled 3D unsaturated-
695 saturated flow problem will be even more challenging, given the non-linearity of the governing equation.
The challenge is then not limited to the more difficult sampling of the parameter space, but also to the
much more expensive forward model run calls. As an alternative, we think that it could be of interest for
the community to calculate reference inverse solutions with pCN-PT for 1D soil hydrological problems
considering the uncertainty of all soil hydraulic parameters.

700 It would also be interesting to evaluate the resolved scales of variability. The evaluation of inverse meth-
ods that are applied to the benchmarking cases could also consider the reproduction of scale-dependent
variability, using for example scale centric accuracy benchmarks such as discrete cosine transform coef-
ficients. It would be helpful then that benchmark solutions are calculated at a high spatial discretization
and for more complex subsurface spatial patterns but this was beyond the scope of this work, but certainly
705 an interesting future endeavor. Furthermore, it would be intriguing to undertake a comparative analysis
of various hydrogeological conditions to gain a comprehensive understanding of the efficacy of inverse
methods.

In addition to the above outcomes, this study aims to initiate a comparison study within the scientific
community based on the suite of benchmarking scenarios for stochastic inverse modeling and reference
710 solutions for the benchmarking scenarios. The (groundwater) inverse modeling community must work
with benchmarks to compare (new) inverse modeling methods more easily with existing methods. In
addition, estimates of posterior uncertainty can be better evaluated with the benchmark solutions. The

algorithms, reference cases, and datasets are freely available to the community. We very much hope that they will be used by the community, and extended with cases including Non-Multi-Gaussian groundwater
715 flow, unsaturated flow, and coupled flow and transport.

Appendix A: EnKF results for the steady-state scenario S0

Here, we show the results for scenario S0 with a steady-state flow problem and application of the EnKF.

Figure A1 displays the mean, and the standard deviation for this scenario and the application of the EnKF.

We find that the updates are not able to reproduce the main features of the reference and have a large
720 uncertainty.

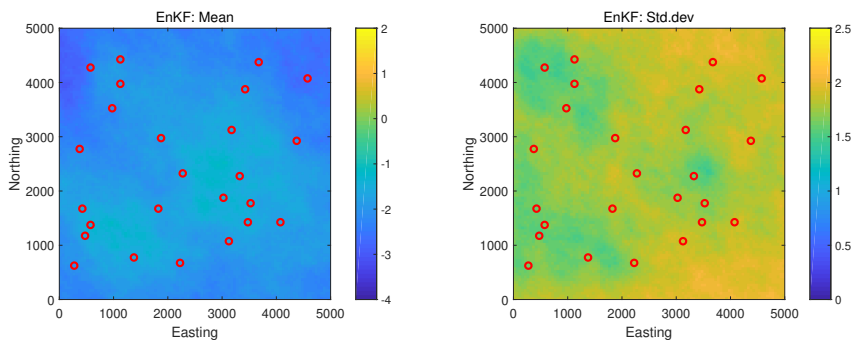


Figure A1. The mean (left upper column) and the standard deviation (right upper column) of updated lnK realizations for scenario S0 (steady-state groundwater flow problem).

Appendix B: Details on the pCN-PT MCMC algorithm used for computing the reference solutions

The pCN-PT proposed by Xu et al. (2020) is an efficient method for Bayesian Inversion of multi-Gaussian parameters. It combines the parallel tempering technique (Swendsen and Wang, 1986) with the pCN-MCMC (Cotter et al., 2013b). It employs several parallel Markov chains to sample from a series of tem-
725 pered posterior distributions, making the target Chain (also called the cold chain) efficiently explore the target distribution after swapping with hot chains. Due to the pCN, it proposes samples that automatically honor the prior multi-Gaussian distribution.

Briefly, the algorithm of the pCN-PT mainly consists of the following four steps:

1. Initialization step. An initial conductivity field u_i^0 for chain $i, i = 1, \dots, n$ is generated following the
730 multi-Gaussian distribution $u_i^0 \sim N(0, C)$, where n is the total number of chains, and C is the covariance matrix of the random field. In addition, since the pCN-PT is a combination of the parallel tempering technique and the pCN-MCMC, a temperature ladder $T_1 < T_2 < \dots < T_i < \dots < T_n$, with $T_1 = 1$, a jumping factor ladder $\beta_1 < \beta_2 < \dots < \beta_i < \dots < \beta_n$, with $\beta_n < 1$, and a swap proposal frequency d need to be designed. Here, the likelihood $L(u)$ of the hotter chains gets flattened by the
735 temperature, inducing the posterior $\pi_t(u)$ to get flattened towards the prior as well. Therefore, the posterior $\pi_t(u)$ can be rewritten as below according to the Bayesian theorem:

$$\pi_t(u) \propto L(u)^{\frac{1}{T}} p(u) \tag{B1}$$

2. Proposal step. At the k^{th} sampling iteration, a pCN proposal v_i^k for all chains $i = 1, \dots, n$ is calculated according to the proposal function, which is dependent on the sample u_i^k , the jumping factor β_i and colored noise ε (following the same distribution as the prior).

$$v_i^k = \sqrt{1 - \beta_i^2} u_i^k + \beta_i \varepsilon_i^k, \varepsilon_i^k \sim N(0, C) \quad (\text{B2})$$

3. Acceptance step. Recall that the acceptance probability $a(u_i, v_i)$ of the traditional MCMC is dependent on the ratio of the likelihood $L(v_i)$, prior $p(v_i)$, and proposal density $q(v_i, u_i)$ of the proposed sample v_i to those $L(u_i)$, $p(u_i)$, $q(u_i, v_i)$ of the previous sample u_i (see Eq.(B3)) (Xu et al., 2020). Specifically for the pCN-PT, due to the assumption of a multi-Gaussian prior, $p(v_i) * q(v_i, u_i)$ equals $p(u_i) * q(u_i, v_i)$, and the likelihood $L(u_i)$ is flatted by the temperature T_i . Therefore, for each chain i at the k^{th} sampling iteration, Eq.(B3) for the acceptance probability can be rewritten as acceptance-pCN-MCMC Eq.(B4):

$$a(u_i, v_i) = \min \left\{ 1, \frac{L(v_i) * p(v_i) * q(v_i, u_i)}{L(u_i) * p(u_i) * q(u_i, v_i)} \right\} \quad (\text{B3})$$

$$a(u_i^k, v_i^k) = \min \left\{ 1, \left[\frac{L(v_i^{k|y})}{L(u_i^{k|y})} \right]^{\frac{1}{T_i}} \right\} \quad (\text{B4})$$

where y are measured observations. Note that, when all observation errors and modeling errors follow Gaussian distributions, the log-likelihood $\phi(u) = \ln L(u | y)$ can be given as:

$$\phi(u) = \ln L(u | y) = \ln \left\{ (2\pi)^{-\frac{m}{2}} \| C_y \|^{\frac{1}{2}} \exp \left[-\frac{1}{2} (y - y^o)^T C_y^{-1} (y - y^o) \right] \right\} \quad (\text{B5})$$

with

$$755 \quad y = g(u) + \eta, \eta \sim N(0, C_n) \quad (\text{B6})$$

where y^o are simulated observations, $g(\cdot)$ denotes steady or transient groundwater flow model, η is the measurement-and-model error, and C_n is the assumed covariance matrix of these errors. Thus, Eq.(B4) can further be rewritten as:

$$a(u_i^k, v_i^k) = \min \left\{ 1, \exp \left[\frac{\phi(v_i^k) - \phi(u_i^k)}{T_i} \right] \right\} \quad (\text{B7})$$

760 After that, accept v_i^k with the acceptance probability $a(u_i^k, v_i^k)$, then $u_i^{k+1} = v_i^k$; otherwise, reject v_i^k , then $u_i^{k+1} = u_i^k$

4. Swapping step. For any pairs of chains i and j , swap values between them $u_i^k \rightleftharpoons u_j^k$ with swap acceptance probability $a_s(u_i^k, u_j^k)$ according to the swap proposal frequency d (if $\frac{k}{d} = \text{integer}$),

$$a_s(u_i^k, u_j^k) = \min \left\{ 1, \exp \left[(\phi(u_j^k) - \phi(u_i^k)) * \left(\frac{1}{T_i} - \frac{1}{T_j} \right) \right] \right\} \quad (\text{B8})$$

765 *Code and data availability.* The reference data and our replication data are published and publicly available at <https://doi.org/10.18419/darus-2382>. The benchmarking codes are published at <https://github.com/LS3-university-of-stuttgart/hydrological-inversion-benchmarking>.

Author contributions. T. Xu drafted the original manuscript, while T. Xu and S. Reuschen collaborated to design and write the pCN-PT code under the guidance of N. Wolfgang. S. Xiao and N. Wildt provided assistance in organizing the data and codes. The paper was thoroughly reviewed and edited by all co-authors.

770 *Competing interests.* At least one of the (co-)authors is a member of the editorial board of Hydrology and Earth System Sciences.

Acknowledgements. Financial support to carry out this work was received from the Deutsche Forschungsgemeinschaft (DFG, German Research Foundation) through COMPUFLOW-Projects 359880532 and Germany's Excellence Strategy-EXC-2075- 390740016. Teng Xu acknowledges the financial support from the National Natural Science Foundation of China (Grant No. 42377046).

References

- 775 Aanonsen, S., Nævdal, G., Oliver, D., Reynolds, A., and Vallès, B.: The Ensemble Kalman Filter in Reservoir Engineering—a Review, *SPE Journal*, 14, 393–412, 2009.
- Altekar, G., Dwarkadas, S., Huelsenbeck, J. P., and Ronquist, F.: Parallel Metropolis coupled Markov chain Monte Carlo for Bayesian phylogenetic inference, *Bioinformatics*, 20, 407–415, 2004.
- Bear, J.: *Dynamics of fluids in porous media.*, American Elsevier Pub. Co., New York, 764pp, 1972.
- 780 Bertino, L., Evensen, G., and Wackernagel, H.: Sequential data assimilation techniques in oceanography, *International Statistical Review*, 71, 223–241, 2003.
- Brooks, S. P. and Gelman, A.: General methods for monitoring convergence of iterative simulations, *Journal of computational and graphical statistics*, 7, 434–455, 1998.
- Cary, P. W. and Chapman, C. H.: Automatic 1-D waveform inversion of marine seismic refraction data, *Geophysical Journal*, 93, 527–546, 785 1988.
- Chen, Y. and Zhang, D.: Data assimilation for transient flow in geologic formations via ensemble Kalman filter, *Advances in Water Resources*, 29, 1107–1122, 2006.
- Congdon, P.: *Applied Bayesian Modelling*, John Wiley & Sons, Ltd., Chichester, 2003.
- Cotter, S. L., Roberts, G. O., Stuart, A. M., and White, D.: MCMC Methods for Functions: Modifying Old Algorithms to Make Them Faster, 790 *Statistical Science*, 28, 424–446, 2013a.
- Cotter, S. L., Roberts, G. O., Stuart, A. M., and White, D.: MCMC methods for functions: modifying old algorithms to make them faster, *Statistical Science*, pp. 424–446, 2013b.
- de Marsily, G.: *De l'identification des systèmes hydrogéologiques*, Ph.D. thesis, 1978.

- Deutsch, C. and Journel, A.: *GSLIB: Geostatistical software library and user's guide*, New York, 369, 1998.
- 795 Duijndam, A. J. W.: Bayesian estimation in seismic inversion. Part I: Principles, *Geophysical Prospecting*, 36, 878–898, 1988.
- Earl, D. J. and Deem, M. W.: Parallel tempering: Theory, applications, and new perspectives, *Physical Chemistry Chemical Physics*, 7, 3910–3916, 2005.
- Evensen, G.: Sequential data assimilation with a nonlinear quasi-geostrophic model using Monte Carlo methods to forecast error statistics, *J. Geophys. Res.*, 99, 143–10, 1994.
- 800 Evensen, G.: The ensemble Kalman filter: Theoretical formulation and practical implementation, *Ocean Dynamics*, 53, 343–367, 2003.
- Gelman, A., Rubin, D. B., et al.: Inference from iterative simulation using multiple sequences, *Statistical science*, 7, 457–472, 1992.
- Gelman, A., Roberts, G. O., Gilks, W. R., et al.: Efficient Metropolis jumping rules, *Bayesian statistics*, 5, 42, 1996.
- Gelman, A., Carlin, J. B., Stern, H. S., Dunson, D. B., Vehtari, A., and Rubin, D. B.: *Bayesian data analysis*, CRC press, 2013.
- Gharamti, M., Ait-El-Fquih, B., and Hoteit, I.: An iterative ensemble Kalman filter with one-step-ahead smoothing for state-parameters
805 estimation of contaminant transport models, *Journal of Hydrology*, 527, 442–457, 2015.
- Gómez-Hernández, J. J., Sahuquillo, A., and Capilla, J. E.: Stochastic simulation of transmissivity fields conditional to both transmissivity and piezometric data—1. Theory, *Journal of Hydrology*, 203, 167–174, 1997.
- Gómez-Hernández, J. J., Hendricks Franssen, H. J., and Cassiraga, E. F.: Stochastic analysis of flow response in a three-dimensional fractured rock mass block, *International Journal of Rock Mechanics and Mining Sciences*, 38, 31–44, 2001.
- 810 Grandis, H., Menvielle, M., and Roussignol, M.: Bayesian inversion with Markov chains—I. The magnetotelluric one-dimensional case, *Geophysical Journal International*, 138, 757–768, 1999.
- Haario, H., Saksman, E., and Tamminen, J.: An adaptive Metropolis algorithm, *Bernoulli*, 7, 223–242, 2001.
- Haario, H., Laine, M., Mira, A., and Saksman, E.: DRAM: Efficient adaptive MCMC, *Statistics and Computing*, 16, 339–354, 2006.

- Hastings, W. K.: Monte Carlo sampling methods using Markov chains and their applications, *Biometrika*, 57, 97–109, 1970.
- 815 Hendricks Franssen, H.-J. and Kinzelbach, W.: Real-time groundwater flow modeling with the Ensemble Kalman Filter: Joint estimation of states and parameters and the filter inbreeding problem, *Water Resources Research*, 44, W09 408, 2008.
- Hendricks Franssen, H.-J. and Kinzelbach, W.: Ensemble Kalman filtering versus sequential self-calibration for inverse modelling of dynamic groundwater flow systems, *Journal of Hydrology*, 365, 261–274, 2009.
- Hendricks Franssen, H.-J., Gómez-Hernández, J. J., Capilla, J. E., and Sahuquillo, A.: Joint simulation of transmissivity and storativity fields
820 conditional to steady-state and transient hydraulic head data, *Advances in water resources*, 23, 1–13, 1999.
- Hendricks Franssen, H.-J., Gómez-Hernández, J., and Sahuquillo, A.: Coupled inverse modelling of groundwater flow and mass transport and the worth of concentration data, *Journal of Hydrology*, 281, 281–295, 2003.
- Hendricks Franssen, H.-J., Alcolea, A., Riva, M., Bakr, M., Van der Wiel, N., Stauffer, F., and Guadagnini, A.: A comparison of seven methods for the inverse modelling of groundwater flow. Application to the characterisation of well catchments, *Advances in Water Resources*, 32,
825 851–872, 2009.
- Houtekamer, P. L., He, B., and Mitchell, H. L.: Parallel Implementation of an Ensemble Kalman Filter, *Monthly Weather Review*, 142, 1163–1182, <https://doi.org/https://doi.org/10.1175/MWR-D-13-00011.1>, 2014.
- Kalman, R. et al.: A new approach to linear filtering and prediction problems, *Journal of basic Engineering*, 82, 35–45, 1960.
- Keating, E. H., Doherty, J., Vrugt, J. A., and Kang, Q.: Optimization and uncertainty assessment of strongly nonlinear groundwater models
830 with high parameter dimensionality, *Water Resources Research*, 46, 2010.
- Keidser, A. and Rosbjerg, D.: A comparison of four inverse approaches to groundwater flow and transport parameter identification, *Water Resources Research*, 27, 2219–2232, 1991.

- Keller, J., Hendricks Franssen, H.-J., and Marquart, G.: Comparing seven variants of the ensemble Kalman filter: How many synthetic experiments are needed?, *Water Resources Research*, 54, 6299–6318, 2018.
- 835 Keller, J., Hendricks Franssen, H.-J., and Nowak, W.: Investigating the pilot point ensemble Kalman filter for geostatistical inversion and data assimilation, *Advances in Water Resources*, 155, 104 010, 2021.
- Kitanidis, P. K.: Quasi-linear geostatistical theory for inversing, *Water Resources Research*, 31, 2411–2419, 1995.
- Kuiper, L. K.: A comparison of several methods for the solution of the inverse problem in two-dimensional steady state groundwater flow modeling, *Water Resources Research*, 22, 705–714, 1986.
- 840 Kurtz, W., He, G., Kollet, S. J., Maxwell, R. M., Vereecken, H., and Hendricks Franssen, H.-J.: TerrSysMP-PDAF (version 1.0): a modular high-performance data assimilation framework for an integrated land surface–subsurface model, *Geoscientific Model Development*, 9, 1341–1360, 2016.
- Laloy, E., Rogiers, B., Vrugt, J. A., Mallants, D., and Jacques, D.: Efficient posterior exploration of a high-dimensional groundwater model from two-stage Markov chain Monte Carlo simulation and polynomial chaos expansion, *Water Resources Research*, 49, 2664–2682, 2013.
- 845 Laloy, E., Linde, N., Jacques, D., and Mariethoz, G.: Merging parallel tempering with sequential geostatistical resampling for improved posterior exploration of high-dimensional subsurface categorical fields, *Advances in water resources*, 90, 57–69, 2016.
- Lamprecht, A.-L., Garcia, L., Kuzak, M., Martinez, C., Arcila, R., Martin Del Pico, E., Dominguez Del Angel, V., Van De Sandt, S., Ison, J., Martinez, P. A., et al.: Towards FAIR principles for research software, *Data Science*, 3, 37–59, 2020.
- Li, L., Srinivasan, S., Zhou, H., and Gómez-Hernández, J. J.: Two-point or multiple-point statistics? A comparison between the ensemble
850 Kalman filtering and the ensemble pattern matching inverse methods, *Advances in Water Resources*, 86, 297–310, 2015.
- Liu, B., Gharamti, M., and Hoteit, I.: Assessing clustering strategies for Gaussian mixture filtering a subsurface contaminant model, *Journal of Hydrology*, 535, 1–21, 2016.

- Martinez, P. A., Erdmann, C., Simons, N., Otsuji, R., Labou, S., Johnson, R., Castelao, G., Boas, B. V., Lamprecht, A.-L., Ortiz, C. M., Garcia, L., Kuzak, M., Stokes, L., Honeyman, T., Wise, S., Quan, J., Peterson, S., Neeser, A., Karvovskaya, L., Lange, O., Witkowska, I., Flores, J., Bradley, F., Hettne, K., Verhaar, P., Companjen, B., Sesink, L., Schoots, F., Schultes, E., Kaliyaperumal, R., Tóth-Czifra, E., de Miranda Azevedo, R., Muurling, S., Brown, J., Chan, J., Quigley, N., Federer, L., Joubert, D., Dillman, A., Wilkins, K., Chandramouliswaran, I., Navale, V., Wright, S., Giorgio, S. D., Fasemore, M., Förstner, K., Sauerwein, T., Seidlmayer, E., Zeitlin, I., Bacon, S., Hannan, K., Ferrers, R., Russell, K., Whitmore, D., Dennis, T., Bangert, D., Peñuela, A. M., Daga, E., Ryder, G., Narayanan, A., Kuchma, I., Patron, J. M., Mehnert, A., Liffers, M., Siebes, R., Coen, G., Gregory, K., Scharnhorst, A., Cruz, M., Genova, F., Kenworthy, M., Meyers, N., Rol, E., Santander-Vela, J., Yeomans, J., Papadopoulou, E., Lazzeri, E., Mouchliadis, L., Lenaki, K., Zoupanos, S., Hristozov, D., Stoycheva, S., Leenarts, E., Grootveld, M., Huigen, F., and Fankhauser, E.: Top 10 FAIR Data & Software Things, <https://doi.org/10.5281/zenodo.3409968>, 2019.
- McDonald, M. G. and Harbaugh, A. W.: A modular three-dimensional finite-difference ground-water flow model, vol. 6, US Geological Survey Reston, VA, 1988.
- McElhoe, B. A.: An Assessment of the Navigation and Course Corrections for a Manned Flyby of Mars or Venus, in: IEEE Transactions on Aerospace and Electronic Systems, Supplement, vol. AES-2, pp. 613–623, IEEE, 1966.
- Nowak, W.: Best unbiased ensemble linearization and the quasi-linear Kalman ensemble generator, *Water Resources Research*, 45, 2009.
- Nowak, W. and Cirpka, O. A.: Geostatistical inference of hydraulic conductivity and dispersivities from hydraulic heads and tracer data, *Water Resources Research*, 42, 2006.
- Predescu, C., Predescu, M., and Ciobanu, C. V.: On the efficiency of exchange in parallel tempering Monte Carlo simulations, *The Journal of Physical Chemistry B*, 109, 4189–4196, 2005.

- RamaRao, B., LaVenue, A., De Marsily, G., and Marietta, M.: Pilot point methodology for automated calibration of an ensemble of conditionally simulated transmissivity fields: 1. Theory and computational experiments, *Water Resources Research*, 31, 475–493, 1995.
- Roberts, G. O., Gelman, A., Gilks, W. R., et al.: Weak convergence and optimal scaling of random walk Metropolis algorithms, *The annals of applied probability*, 7, 110–120, 1997.
- 875
- Roberts, G. O., Rosenthal, J. S., et al.: Optimal scaling for various Metropolis-Hastings algorithms, *Statistical science*, 16, 351–367, 2001.
- Schöniger, A., Nowak, W., and Hendricks Franssen, H.-J.: Parameter estimation by ensemble Kalman filters with transformed data: Approach and application to hydraulic tomography, *Water Resources Research*, 48, W04 502, 2012.
- Schott, J.-J., Roussignol, M., Menvielle, M., and Nomenjahanary, F. R.: Bayesian inversion with Markov chains—II. The one-dimensional DC multilayer case, *Geophysical Journal International*, 138, 769–783, 1999.
- 880
- Schoups, G. and Vrugt, J. A.: A formal likelihood function for parameter and predictive inference of hydrologic models with correlated, heteroscedastic, and non-Gaussian errors, *Water Resources Research*, 46, 2010.
- Schwede, R. L. and Cirpka, O. A.: Use of steady-state concentration measurements in geostatistical inversion, *Advances in water resources*, 32, 607–619, 2009.
- 885
- Smith, T. J. and Marshall, L. A.: Bayesian methods in hydrologic modeling: A study of recent advancements in Markov chain Monte Carlo techniques, *Water Resources Research*, 44, W00B05, 2008.
- Sun, A., Morris, A., and Mohanty, S.: Sequential updating of multimodal hydrogeologic parameter fields using localization and clustering techniques, *Water Resources Research*, 45, W07 424, 2009.
- Swendsen, R. H. and Wang, J.-S.: Replica Monte Carlo simulation of spin-glasses, *Physical review letters*, 57, 2607, 1986.
- 890
- ter Braak, C. J. F.: A Markov chain Monte Carlo version of the genetic algorithm differential evolution: Easy Bayesian computing for real parameter spaces, *Statistics and Computing*, 16, 239–249, 2006.

- Tierney, L.: Markov Chains for Exploring Posterior Distributions, *The Annals of Statistics*, 22, 1701–1728, 1994.
- Tierney, L. and Mira, A.: Some adaptive Monte Carlo methods for Bayesian inference, *Statistics in Medicine*, 18, 2507–2515, 1999.
- Van Leeuwen, P. J. and Evensen, G.: Data assimilation and inverse methods in terms of a probabilistic formulation, *Monthly Weather Review*, 124, 2898–2913, 1996.
- 895
- Wilkinson, M. D., Dumontier, M., Aalbersberg, I. J., Appleton, G., Axton, M., Baak, A., Blomberg, N., Boiten, J.-W., da Silva Santos, L. B., and Bourne, P. E. e. m.: The FAIR Guiding Principles for scientific data management and stewardship, *Scientific data*, 3, 1–9, <https://www.go-fair.org/fair-principles/>, 2016.
- www.choosealicense.com: Choose an open source license, <https://choosealicense.com/>, 2023.
- 900
- Xiao, S., Xu, T., Reuschen, S., Nowak, W., and Hendricks Franssen, H.-J.: Bayesian Inversion of Multi-Gaussian Log-Conductivity Fields With Uncertain Hyperparameters: An Extension of Preconditioned Crank-Nicolson Markov Chain Monte Carlo With Parallel Tempering, *Water Resources Research*, 57, e2021WR030313, 2021.
- Xu, T.: Benchmarking in subsurface hydrological inversion: high-fidelity reference solution and EnKF replication data, <https://doi.org/10.18419/darus-2382>, 2023.
- 905
- Xu, T. and Gómez-Hernández, J. J.: Inverse sequential simulation: A new approach for the characterization of hydraulic conductivities demonstrated on a non-Gaussian field, *Water Resources Research*, 51, 2227–2242, 2015.
- Xu, T. and Gómez-Hernández, J. J.: Simultaneous identification of a contaminant source and hydraulic conductivity via the restart normal-score ensemble Kalman filter, *Advances in Water Resources*, 112, 106–123, 2018.
- Xu, T., Gómez-Hernández, J. J., Li, L., and Zhou, H.: Parallelized ensemble Kalman filter for hydraulic conductivity characterization, *Computers & Geosciences*, 52, 42–49, 2013a.
- 910

- Xu, T., Gómez-Hernández, J. J., Zhou, H., and Li, L.: The power of transient piezometric head data in inverse modeling: an application of the localized normal-score EnKF with covariance inflation in a heterogenous bimodal hydraulic conductivity field, *Advances in Water Resources*, 54, 100–118, 2013b.
- Xu, T., Reuschen, S., Nowak, W., and Hendricks Franssen, H.-J.: Preconditioned Crank-Nicolson Markov Chain Monte Carlo Coupled With
915 Parallel Tempering: An Efficient Method for Bayesian Inversion of Multi-Gaussian Log-Hydraulic Conductivity Fields, *Water Resources Research*, 56, e2020WR027110, 2020.
- Xu, T., Gómez-Hernández, J. J., Chen, Z., and Lu, C.: A comparison between ES-MDA and restart EnKF for the purpose of the simultaneous identification of a contaminant source and hydraulic conductivity, *Journal of Hydrology*, 595, 125–141, 2021.
- Zimmerman, D., De Marsily, G., Gotway, C. A., Marietta, M. G., Axness, C. L., Beauheim, R. L., Bras, R. L., Carrera, J., Dagan, G., Davies,
920 P. B., et al.: A comparison of seven geostatistically based inverse approaches to estimate transmissivities for modeling advective transport by groundwater flow, *Water Resources Research*, 34, 1373–1413, 1998.