

Assessing deficiencies in remotely sensed actual evapotranspiration (AET): introducing AET signatures Characterising evapotranspiration signatures for improved behavioural insights

Hansini Gardiya Weligamage¹, Keirnan Fowler¹, Margarita Saft², Tim Peterson³, Dongryeol Ryu¹, and
5 Murray C Peel¹

¹Department of Infrastructure Engineering, The University of Melbourne, Parkville, Victoria, 3052, Australia

²Institute of Applied Geosciences, Technische Universität Berlin, 10587 Berlin, Deutschland, Germany

³Department of Civil Engineering, Monash University, Clayton, Victoria, 3168, Australia

10 *Correspondence to:* Hansini Gardiya Weligamage (h.gardiyaweligamage@unimelb.edu.au)

Abstract. Hydrological signatures are statistical metrics useful to quantify and infer behaviours of hydrological processes, but there has been limited use of signatures for non-streamflow variables, such as actual evapotranspiration (AET). AET signatures can assist in tasks such as evaluating remotely sensed products, diagnosing deficiencies in hydrological models, and improving understanding of hydrological processes, such as the role of AET in driving hydrological drought. [This study](#)
15 [focuses on first of these three applications. To achieve this, the study proposes eight AET signatures defined at various](#)
temporal scales from daily to annual. ~~We demonstrate the value of AET signatures by using them to assess t~~Two remotely
sensed AET (AET_{RS}) products [are assessed](#) against flux tower AET (AET_{Fluxtower}) at seventeen FluxNET sites in Australia. The
two AET_{RS} products are Moderate Resolution Imaging Spectroradiometer (MODIS, 16A2GFv06.1), and CSIRO MODIS
Reflectance-based Scaling Evapotranspiration (CMRSET). Annually, median AET_{RS} closely matches AET_{Fluxtower}, except in
20 less-arid regions. However, signatures reveal ~~AET_{RS} RS_{AET}~~ largely underestimates the variability of flux tower data at both
annual and monthly scales. Other monthly indices are better matched, such as indices of water stress and AET asynchronicity
with potential evapotranspiration. However, some metrics are better matched in one product than the other, such as the strength
and timing of seasonal fluctuations, with MODIS exhibiting a phase shift. Overall, the signatures reveal that regionally-
developed CMRSET outperformed globally-developed MOD16A2GFv061. This study, the first to systematically define AET
25 signatures, offers a way of assessing various aspects of AET dynamics across temporal scales. Furthermore, the case study
highlights specific deficiencies in AET_{RS} and may assist in selecting appropriate AET_{RS}, including for modelling studies.

1 Introduction

Hydrological signatures are statistical metrics used to quantify hydrological behaviours in catchments and can be used to
compare hydrological behaviour across space [and time](#) (Addor et al., 2018; McMillan, 2021) and to assess the behavioural
30 fidelity of hydrological model simulations against observations (Gupta et al., 2008). [This concept of hydrological signatures](#)
[to quantify hydrological behaviour was initiated in ecohydrology \(e.g., Poff et al., 1997; Richter, 1996\) to assess changes in](#)

flow regimes. Since then, their application has expanded across diverse hydrological domains because of its superiority in characterising underlying hydrological processes encoded in streamflow data, which are governed by watershed characteristics and hydroclimate, rather than being just statistical metrics (McMillan, 2021). These ~~Over the past decade or so, there has been rapid advancement in the application of hydrological~~ signatures are primarily calculated based on streamflow ~~data timeseries~~ and ~~commonly grouped into categories such as related to such categories as~~ flow magnitude, duration, frequency, timing, and rate of change (Olden & Poff, 2003). In modelling, the use of signatures contrasts with commonly used aggregate metrics (e.g., Nash Sutcliffe Efficiency (NSE) or Kling Gupta Efficiency (KGE)), which condense the information of coherence/discrepancy between two timeseries down to a single number (Kiraz et al., 2023; McMillan, 2021). ~~Because~~ ~~In contrast~~, signatures retain more detailed information on different (and ideally independent) aspects of the flow regime and may be used to quantify model performance ~~for~~ each separate aspect. Likewise, the associated hydrological processes responsible for each aspect can be separately characterised. In practice, signatures have been widely used ~~to~~ ~~in~~ ~~quantify dynamics in hydrological variables and~~ ~~in~~ modelling studies (Araki et al., 2022; Kiraz et al., 2023; McMillan, 2021; Westerberg et al., 2011), while their linking to specific hydrological processes remains an open research question, with a key challenge being the interactions among different processes to produce emergent patterns in observed data (McMillan, 2020).

Although there has been a wide range of hydrological signatures defined for streamflow (McMillan, 2021; Olden & Poff, 2003; Safeeq & Hunsaker, 2016), signatures directly calculated based on other hydrological ~~variables~~ ~~processes~~ are rare, with some notable exceptions of studies that used the soil moisture and groundwater signatures (e.g., Araki et al., 2022; Heudorfer et al., 2019). ~~Building on this foundation~~ ~~Therefore, in~~ this study ~~aims to systematically define, compile, and test, we are concerned with a list of signatures of~~ actual evapotranspiration (AET) ~~signatures. These AET signatures are intended to uncover, which underlying processes, such as hydrological and ecohydrological processes embedded within AET dynamics, which, to our knowledge, have~~ not previously been ~~done. researched to our knowledge. This lack of attention to AET signatures is surprising given the importance of AET in the overall water cycle, comprising around 60% of the global terrestrial hydrological cycle~~ ~~While~~ ~~This complements existing~~ ~~there is~~ literature ~~that investigated~~ ~~ing various aspects of AET~~ and quantifying ~~it~~ AET in different study areas, examining at different spatial scales, such as in-situ level (e.g., Rungee et al., 2019), grid level (i.e., remote sensing, e.g., Zhang et al., 2010), catchment level (e.g., Avanzi et al., 2020), and regional level (e.g., Gardiya Weligamage et al., 2023). ~~systematic and comprehensive studies focusing on AET signatures remain elusive.~~ Moreover, some studies have used streamflow-based signatures such as total runoff ratio (e.g., McMillan et al., 2014; Safeeq & Hunsaker, 2016), streamflow seasonality (e.g., Wrede et al., 2015), and diurnal cycles in streamflow (e.g., Schwab et al., 2016; Wondzell et al., 2010) to examine AET processes, although these signatures are only indirectly related to those AET processes. Furthermore, McMillan (2020) confirms that none of these streamflow-based signatures have investigated AET processes at shorter temporal scales, such as ~~the~~ event scale.

We envisage at least three potential uses for AET signatures, namely 1) assessing the quality of remotely sensed AET products, 2) diagnosing deficiencies in hydrological models, and 3) improving understanding of hydrological processes. Assessment of the quality of remotely sensed AET products is important as these products are widely used across many research areas due to

their ability to provide mostly continuous spatiotemporal data, unlike flux tower measurements (Yan et al., 2018; Zhang et al., 2016). However, their capacity to accurately predict various aspects of AET behaviour is often minimally assessed when incorporating them into a modelling study, and AET signatures can provide a more informative assessment. Secondly, AET signatures can be employed to diagnose deficiencies in hydrological models, as the poor representation of AET could significantly impact streamflow predictions, particularly under changing climatic conditions such as climate change or multiyear droughts (Araki et al., 2022; Koster & Suarez, 2001; Peterson & Fulton, 2019). Thirdly, as noted by McMillan (2020), signatures permit [the](#) extraction of “meaningful information about watershed processes”, and it is often possible to define signatures to specifically provide information about a process of interest. This is particularly relevant since AET is the second largest water balance component globally (after precipitation). Moreover, recent studies suggest that AET is a contributing cause to changes in rainfall-runoff relationship for the same streamflow under multiyear drought at both annual and seasonal scales (Gardiya Weligamage et al., 2023; Peterson et al., 2021).

Highlighting the importance of using AET signatures, in this paper, we define a set of AET signatures and demonstrate their use in one of the three specific contexts listed above, namely the evaluation of remotely sensed products of AET. We define distinct AET signatures for various temporal scales to best capture AET characteristics relevant to each timescale. Using AET signatures, two remotely sensed products are evaluated against flux tower data at several sites covering different climatic regions in Australia.

2 Material and Methods

Given that the primary purpose of this paper is to introduce a set of signatures for actual evapotranspiration, we begin this section by describing and defining the signatures themselves. This is followed by descriptions relevant to the case study, including the study area, data, and specific methods to utilise the signatures in this case.

2.1 Proposed set of signatures

We propose eight signatures to quantify AET behaviour, [as outlined in Table 1](#). We do not consider this an exhaustive list but seek a set that is reasonably representative of the variety of characteristics inherent to AET dynamics as a good starting point for future research. As with streamflow signatures, the metrics cover a wide range of timescales, and different metrics require different temporal aggregations of AET information (specifically daily, monthly, or annual) tailored to the metric in question. At the annual scale, we select two signatures, namely, the *long-term median* (\overline{AET}_{annual}) and interannual variability, expressed as the *coefficient of variation of annual AET* ($CV_{annual} = \frac{\sigma_{AET_{annual}}}{\overline{AET}_{annual}}$). We adopt *CV* rather than absolute variability measures (e.g., variance, standard deviation, or interquartile range) deliberately following streamflow signature studies such as Clausen and Biggs (2000), as it facilitates the comparison of variability across sites with different means.

95 ~~To quantify seasonal variations~~At the seasonal scale, we adopt two signatures: a measure of *periodicity* ($P_{12month} =$
Lag 12 auto correlation of monthly AET) and a measure of the *timing of the seasonal peak* ($TSP =$
month with maximum median of monthly AET) in AET. The $P_{12month}$ in this study quantifies the tendency for AET
 variation to recur with the seasonal cycle, i.e., with a period of 12 months, and as such, is calculated as the lag-12
 autocorrelation of monthly AET. This will be unity in cases where the timeseries data varies with a perfectly repeating seasonal
 100 cycle. The TSP is determined from monthly timestep data by examining the median AET for each of the 12 calendar months
 and identifying the month with the maximum median AET. Note that the selection of median over mean AET is intended to
 minimize the influence of extreme values.

At the monthly scale, the monthly variability is quantified using the *monthly CV* ($CV_{monthly} = \frac{\sigma_{AET_{month}}}{AET_{month}}$). Moreover, we
 define two signatures related to water stress, with the idea that the absence of water stress leads to AET perfectly mimicking
 105 potential evapotranspiration (PET). When AET deviates from PET, it marks a deficit in water availability, which may be
 temporary (e.g., seasonal) or prolonged (as would be seen in arid environments). Both ~~these~~ water stress indices assume that
 the user has access to a timeseries of estimated PET. The first such water stress metric, the *water stress* ($WS =$
 $\frac{PET_{month} - AET_{month}}{PET_{month}}$) is defined as the difference between average monthly PET and average monthly AET, divided by the
 average monthly PET. Thus, higher values of this water stress signature indicate less rainfall and/or high PET. Initial testing
 110 revealed this metric to be very sensitive to aridity, since it is obvious that AET will be much less than PET in arid areas. In
 non-arid areas, there might arise temporary (seasonal) water deficits that are not well characterised by the first water stress
 metric; thus, a subsequent metric was defined to these temporary fluctuations in water stress. This second water stress signature
 is purely based on the asynchronicity between normalised PET and AET, and thus is referred to as '*AET asynchronicity to*
PET' ($AAP = \frac{\int (|normPET_{month} - normAET_{month}|) dt}{\int \max(normPET_{month}, normAET_{month}) dt}$). This latter signature can be thought of as quantifying the area between
 115 the normalised curves. It is calculated as follows. PET and AET monthly timeseries are first normalised by dividing them by
 their mean monthly PET and AET values respectively. Then, the numerator is calculated by integrating the absolute difference
 between normalised monthly PET and AET ($\int (|normPET_{month} - normAET_{month}|) dt$). The denominator of the metric is
 then calculated by summing the maximum value among normalised PET and AET at each monthly time step
 ($\int \max(normPET_{month}, normAET_{month}) dt$). The rationale behind calculating the absolute difference between values is that
 120 a difference between the curves is indicative of asynchronicity, regardless of which of the curves happens to be greater at the
 given point in time.

In addition to annual, seasonal and monthly dynamics, the event scale is also important, even though it is assessable only for
 certain data types (e.g., flux tower data; simulations from daily timestep models) and not others (e.g., remotely sensed
 information provided on timesteps greater than a day). To assess AET dynamics at the event scale, we explored several options
 125 to quantify AET responsiveness to a rainfall event – in other words, the degree to which a rainfall event causes a jump in AET.
 However, the difficulty of such a metric is that rainfall events may not only influence AET on the given day but also influence

AET in the following days. If so, a standard correlation measure would be insufficient, but a lagged correlation is difficult to define since we do not know the lag a priori (and it may change over time). Seeking a generalisable metric, we select rainfall events greater than a threshold and identified the maximum daily AET value after the given rainfall event, up to a certain window duration (in days) after that event. We then apply a standard linear correlation equation to the anomalies of these ordered pairs of numbers (i.e., rainfall anomaly versus maximum AET anomaly in the window after the rainfall event). Since this formulation is different from commonly used correlation metrics, we call it simply the '*Index of AET responsiveness to a rainfall event*' ($R = \frac{\sum P_{anom_event} * AET_{anom_event}}{\sqrt{\sum P_{anom}^2 \sum AET_{anom}^2}}$). For the purposes of the demonstration, we subjectively set the rainfall threshold and window duration parameters as 5 mm/day and 10 days, respectively. It is noted that this window size is also sensitive to the gap between selected rainfall events. If two rainfall events exceeding 5mm/day occurred within the 10-day window period, the window size is restricted to the days between the two rainfall events, and the maximum AET value was chosen from that restricted window.

Table 1 summarises the proposed eight signatures.

2.2 Study Area

Relative to global averages, Australia is a dry continent with annual average precipitation below 450 mm/year (Isaac et al., 2017). However, the coastal areas from southeast Australia to northern Australia receive comparatively higher precipitation, exceeding 1000 mm/year in many areas. This study focuses on seventeen OzFlux sites in Australia (Figure 1). OzFlux, a part of the international FluxNET program, is a micrometeorological monitoring network in Australia and New Zealand equipped with eddy covariance measurements, providing information on carbon, energy, and water exchange. The seventeen sites constitute the majority of flux towers in Australia; while seven other active flux towers exist, they were excluded due to insufficient coverage (i.e., < 7 years) and considerable percentages of negative and unavailable data. The selected study sites cover a wide range of climate and ecosystem regions in Australia, as summarised in Table 2. The time period of data availability varies at each site (typically 7-20 years). Hence, different periods of data coverage are adopted in this study to perform the analysis at each site.

Table 1: AET signatures

Temporal scale	Signature	Mathematical formulation
Annual	1. Long-term Median (\overline{AET}_{annual})	<i>Median of annual AET</i>
	2. Interannual Variability (CV_{annual})	$CV_{annual} = \frac{\sigma_{AET_{annual}}}{\overline{AET}_{annual}}$

Seasonal (calculated using monthly timestep data)	3. Periodicity ($P_{12month}$)	<i>Lag 12 auto correlation of monthly AET</i>
	4. Timing of Seasonal Peak (TSP)	<i>month with maximum median of monthly AET</i>
Monthly	5. Monthly Variability ($CV_{monthly}$)	$CV_{monthly} = \frac{\sigma_{AET_{month}}}{\overline{AET}_{month}}$
	6. Water Stress (WS)	$WS = \frac{\overline{PET}_{month} - \overline{AET}_{month}}{\overline{PET}_{month}}$
	7. ^a AET asynchronicity to PET (AAP)	$AAP = \frac{\int (normPET_{month} - normAET_{month}) dt}{\int \max(normPET_{month}, normAET_{month}) dt}$
Event-scale	8. Index of AET responsiveness to a rainfall event (R)	$R = \frac{\sum P_{anom_{event}} * AET_{anom_{event}}}{\sqrt{\sum P_{anom}^2 \sum AET_{anom}^2}}$

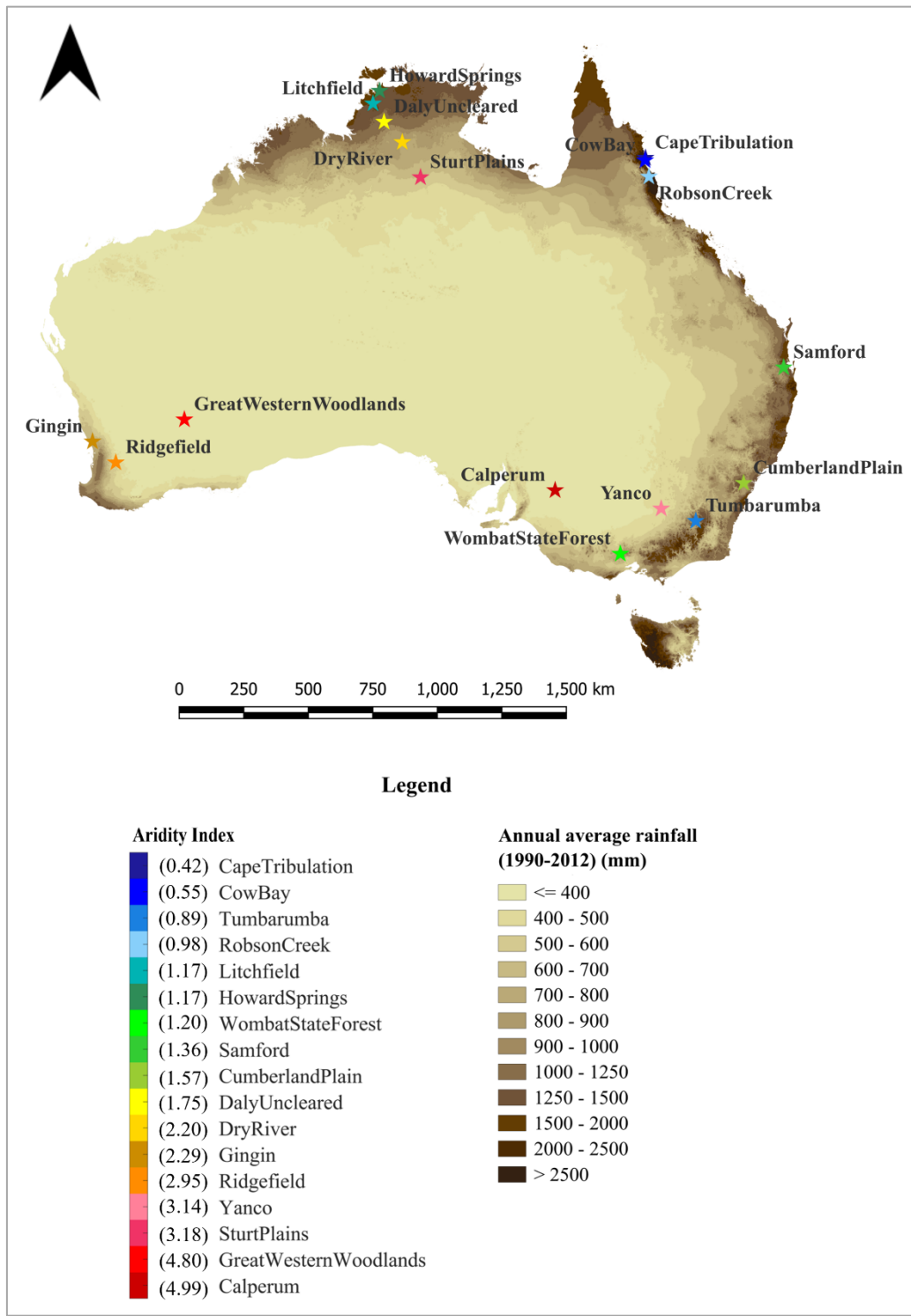
where,

$$P_{anom_{event}} = Rainfall_i - \overline{Rainfall}_i$$

$$AET_{anom_{event}} = AET_{i+j} - \overline{AET}_{i+j}$$

i is the position of the rainfall event, and j is the day with maximum AET after the rainfall event, $0 \leq j \leq 10$

^aNote that the trapezoidal integration was conducted.



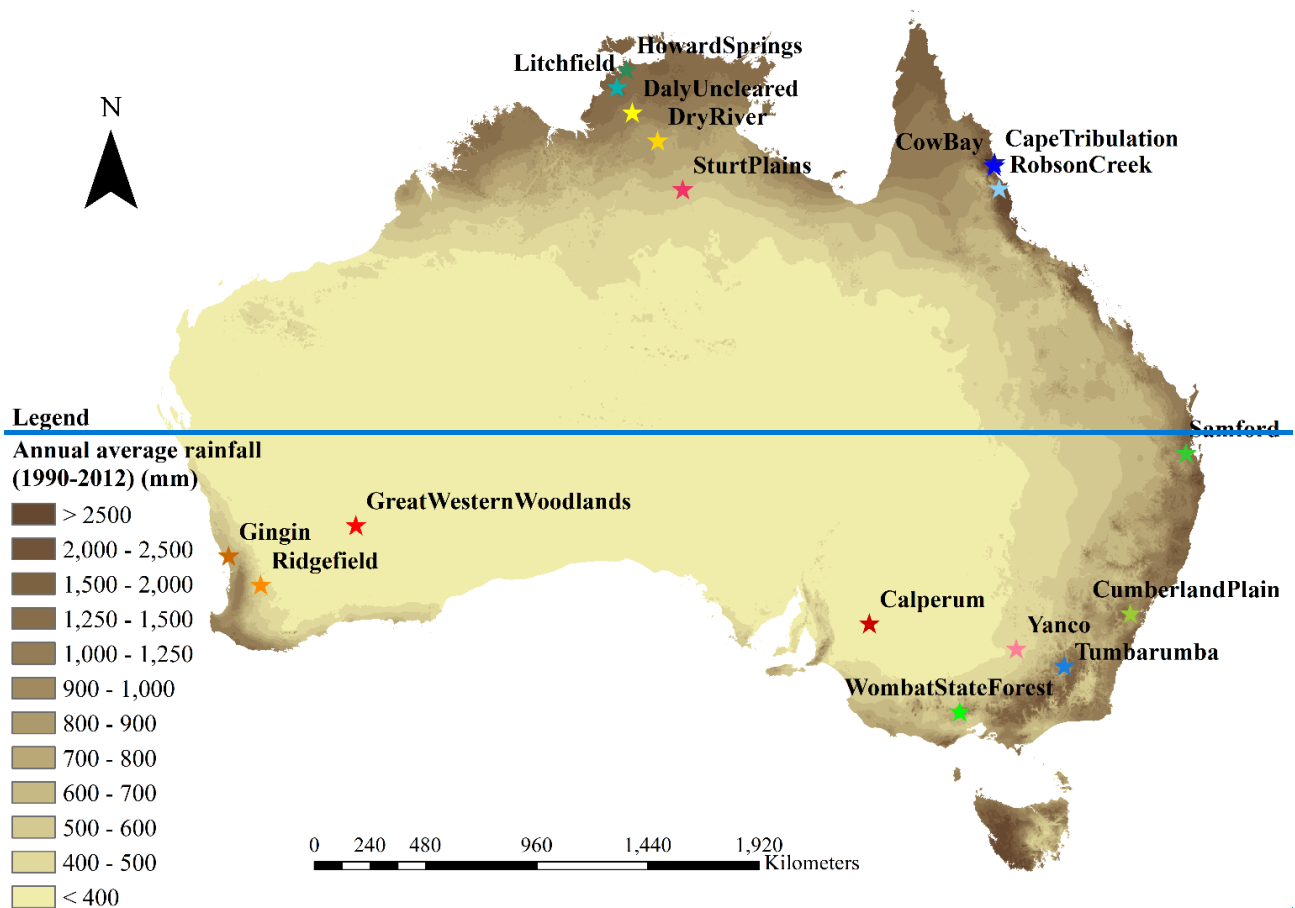


Figure 1: Locations of selected OzFlux sites in this study ([Note that the flux tower sites are marked based on the aridity index](#)).

Table 2: Summary of OzFlux sites

Site	Lon.	Lat.	Data coverage ^a	Köppen Climate ^b	Eco-region ^b	Aridity ^c	Data source
Calperum	140.587	-34.003	Jul-10 to Feb-24	Arid desert cold	Mediterranean woodlands	4.99	(Meyer et al., 2024)
Great Western Woodland	120.654	-30.191	Jan-13 to Jan-24	Arid desert hot	Mediterranean woodlands	4.80	(Macfarlane et al., 2024)
Sturt Plains	133.350	-17.150	Aug-08 to Feb-24	Arid steppe hot	Tropical grasslands	3.18	(Beringer, Hutley, et al., 2024e)

Yanco	146.290	-34.987	Jan-13 to Feb-24	Arid steppe cold	Temperate grasslands	3.14	(Beringer, Walker, et al., 2024)
Ridgefield	116.966	-32.506	Jan-16 to Feb-24	Temperate dry, hot summer	Mediterranean forests woodlands and shrub	2.95	(Beringer, Lardner, et al., 2024)
Gingin	115.713	-31.376	Oct-11 to Feb-24	Temperate, dry, hot summer	Mediterranean woodlands	2.29	(Silberstein et al., 2024)
Dry River	132.370	-15.258	Oct-09 to Feb-24	Tropical savanna	Tropical savannas	2.20	(Beringer, Hutley, et al., 2024b)
Daly Uncleared	131.388	-14.159	Jan-08 to Dec-23	Tropical savanna	Tropical savannas	1.75	(Beringer, Hutley, et al., 2024a)
Cumberland Plains	150.723	-33.615	Jan-14 to Dec-23	Temperate, no dry season, hot summer	Temperate woodlands	1.57	(Pendall et al., 2024)
Samford	152.877	-27.388	Jun-10 to Dec-17	Temperate no dry season, hot summer	Temperate broadleaf and mixed forest	1.36	(Grace et al., 2024)
Wombat State Forest	144.094	-37.422	Jan-10 to May-21	Temperate, no dry season, warm summer	Temperate broadleaf forest	1.20	(Arndt et al., 2024)
Howard Springs	131.152	-12.495	Jan-02 to Aug-22	Tropical savanna	Tropical savannas	1.17	(Beringer, Hutley, et al., 2024c)
Litchfield	130.794	-13.179	Jun-15 to Dec-23	Tropical savanna	Tropical savannas	1.17	(Beringer, Hutley, et al., 2024d)
Robson Creek	145.630	-17.117	Aug-13 to Dec-23	Temperate, dry winter, hot summer	Tropical and sub-tropical moist broadleaf forests	0.98	(Liddell & Weigand, 2024c)
Tumbarumba	148.151	-35.656	Jan-02 to Dec-22	Temperate no dry season, warm summer	Temperate broadleaf and mixed forest	0.89	(Stol & Kitchen, 2024)
Cow Bay	145.427	-16.238	Jan-09 to Jul-23	Tropical rainforest	Tropical and sub-tropical moist broadleaf forests	0.55	(Liddell & Weigand, 2024b)
Cape Tribulation	145.446	-16.103	Jan-10 to Nov-18	Tropical rainforest	Tropical and sub-tropical moist broadleaf forests	0.42	(Liddell & Weigand, 2024a)

^aThis study used version 1 of the year 2024 (2024_V1) of flux tower data from TERN data portal.

^bGuerschman et al. (2022).

^cAridity refers to the aridity index defined as the ratio of potential evapotranspiration (PET) to precipitation (P).

160 2.3 Data

2.3.1 OzFlux eddy covariance evapotranspiration data

AET data, version 1 of the year 2024 (2024_V1), were obtained from OzFlux towers through the Terrestrial Ecosystem Research Network (TERN) data portal (<https://portal.tern.org.au/>, last accessed on 30/04/2024) at daily, monthly, and annual time scales. To minimize variability among sites due to different processing steps, the data providers consistently apply
165 PyFluxPro (v3.4.17) to implement a standardized method to process data, as described in Isaac et al. (2017). Level 6 flux tower data, adopted here, undergoes quality control, gap filling, and partitioning of the net ecosystem exchange of carbon (~~NEE~~) data into gross primary production (~~GPP~~) and ecosystem respiration (~~ER~~). We conducted further data quality checks of the daily AET data and filtered out negative daily AET values. The maximum percentage of negative daily AET values among seventeen study sites was less than 2.3%.

170 2.3.2 Remotely sensed evapotranspiration data

Remotely sensed AET (AET_{RS}) products are popular due to the relative rarity of flux towers and because they provide spatially distributed data, in contrast to flux tower data, which are near-point scale. Here, we present an example of the application of AET signatures to examine two AET_{RS} products to assess their ability to capture different aspects of AET behaviours at various temporal scales. The two AET_{RS} products are 1) Pixel resolution 500 m, gap filled, 8 days composites of version 6.1 of
175 Moderate Resolution Imaging Spectroradiometer (MOD16A2GF.061) from Running et al. (2021), referred to as ‘MODIS AET’ hereafter, and 2) 30 m high-resolution, monthly composites of CSIRO MODIS Reflectance-based Scaling Evapotranspiration (CMRSET) from McVicar et al. (2022). The MODIS AET product is one of the most widely used global AET datasets in hydrological and biogeochemical studies (e.g., Baker et al., 2021; Gaona et al., 2022; Salazar-Martínez et al., 2022), while CMRSET is an Australian regional product tested and used extensively over the corresponding region (e.g.,
180 Doody et al., 2023; Guerschman et al., 2022; Xu et al., 2022). In both cases, we extracted AET timeseries from pixels that contain the flux tower sites. The 8-day composites of MODIS AET data were aggregated into monthly data through weighted temporal averaging.

2.3.3 Potential evapotranspiration data

As *water stress* and *AET asynchronicity to PET* require a timeseries of PET, they were quantified using monthly Morton’s wet
185 environment potential evapotranspiration (Morton, 1983; Eq. 1) from the SILO (Scientific Information for Land Owners) database (<https://www.longpaddock.qld.gov.au/silo/>).

$$M_{wet} = b_1 + b_2 \left(1 + \frac{\gamma_p}{\Delta_p} \right)^{-1} R_{TP} \quad (1)$$

where,

b_1, b_2 – Empirical constants

Δ_p – slope of saturation vapour pressure at equilibrium temperature (T_p)

190 R_{TP} – net radiation for land surface at T_p

2.4 Method

To characterise the performance of AET_{RS} products, the signatures described in Section 2.1 are calculated separately for flux towers AET (AET_{Fluxtower}) and AET_{RS}. Then, we investigated the deviation of AET_{RS} signatures from AET_{Fluxtower} signatures. As mentioned above, different periods have been considered at each flux tower site depending on their data coverage. For each site, the flux tower period of record determined the period of comparison between flux tower and remotely sensed information. Finally, the traditional efficiency metrics such as NSE, KGE, and components of KGE were calculated using monthly MODIS and CMRSET AET at each flux tower site. These metrics are often relied upon by authors to characterise quality of timeseries data but the downside is that they have limited capabilities of demonstrating what aspects of dynamics is deficient in the case of a low performance score. Here we demonstrate that the signatures can be used to contextualise low scores at some sites, where traditional metrics are deficient.

195
200

It is important to clarify that these efficiency metrics are calculated over time at individual sites. For instance, NSE is computed at each site across time, which differs from the use of NSE to assess the agreement of signature values across multiple sites between AET_{RS} and AET_{Fluxtower}. To avoid confusion, we refer to the former as NSE_{across time, single site}, and the latter as NSE_{MODIS} and NSE_{CMRSET}, which denote how well the remotely sensed AET signatures match the flux tower-derived signatures across sites.

205 ~~in order to assess predictive skills and the challenges associated with using these traditional metrics compared to AET signatures.~~

3 Results

The AET signature results are presented in the four main categories based on the temporal scales in the order of 1) annual, 2) seasonal, 3) monthly, and 4) event-scale. To allow better contextualisation of AET signature results, we first present some example monthly timeseries plots of AET_{Fluxtower}, AET_{RS}, SILO rainfall, and PET at six flux towers (Figure 2). These timeseries plots highlight some aspects of AET that can be observed through visual inspections, such as AET variability, periodicity, and asynchronicity between AET and PET. For example, notable variability is observed in both AET_{Fluxtower}, AET_{RS} at Wombat State Forest and Howard Springs. In Gingin, seasonal variations in AET_{Fluxtower} appear to be offset from PET, indicating

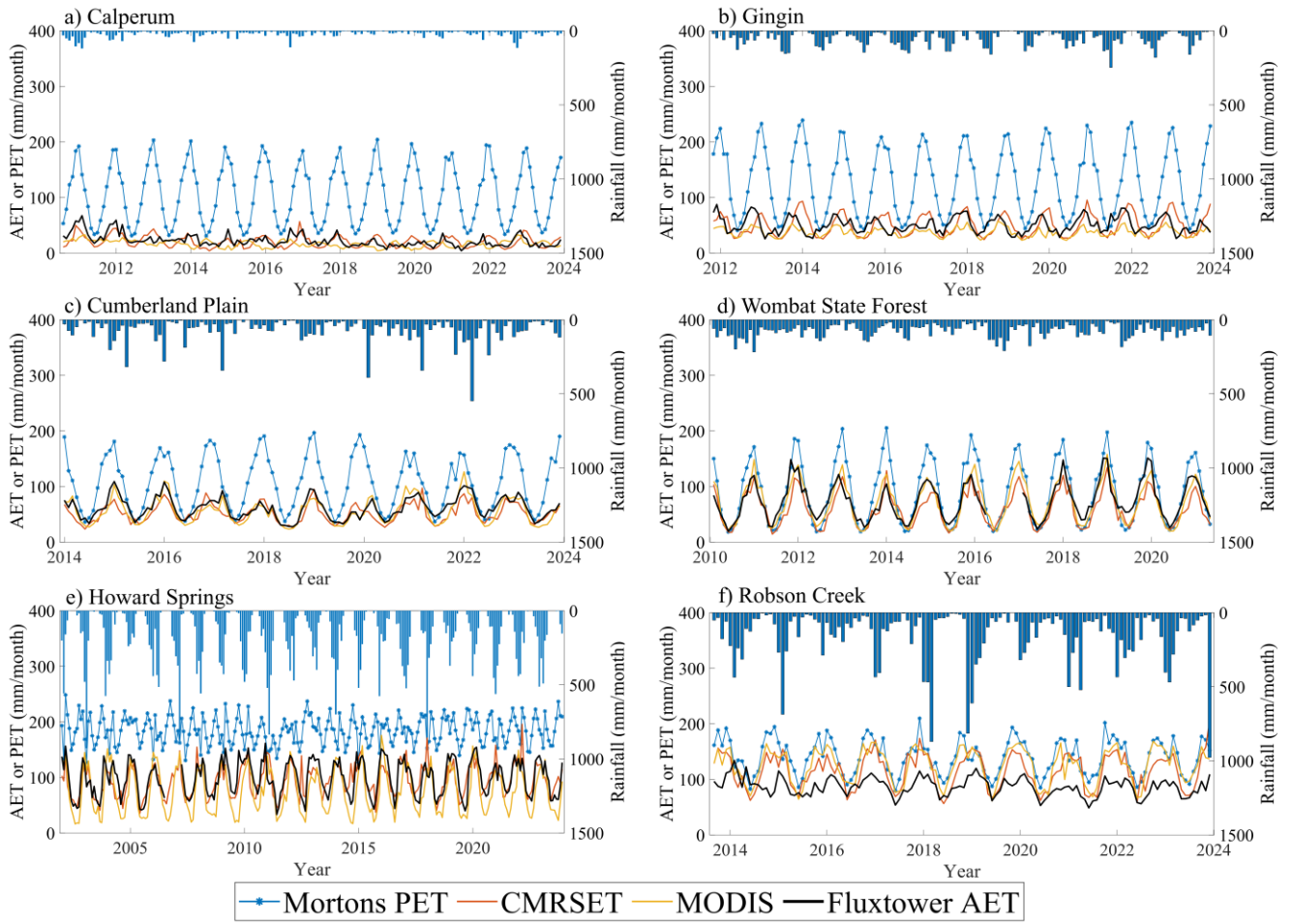
210

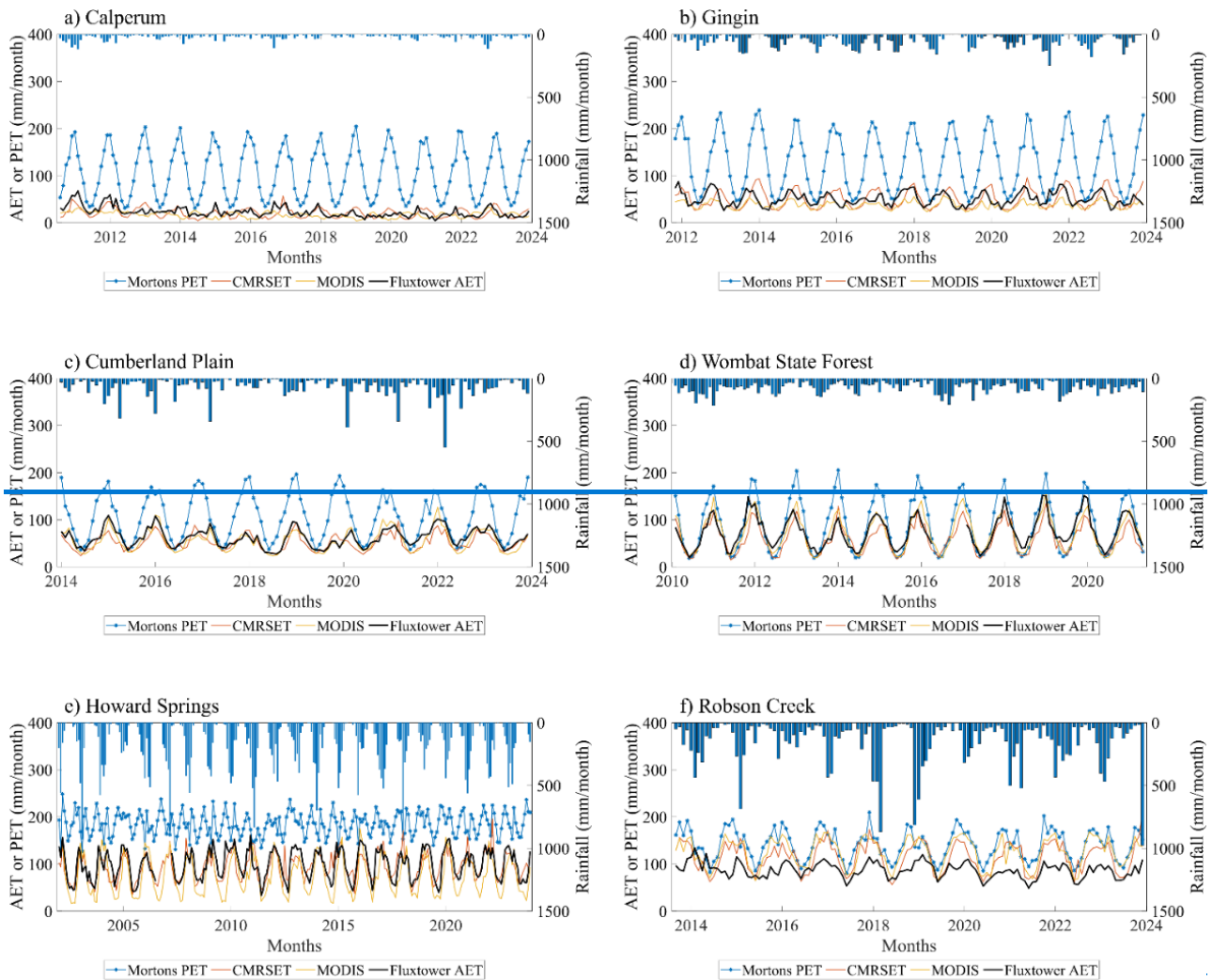
215 asynchronicity. In Robson Creek, lower temporal variability in $AET_{\text{Fluxtower}}$, is observed compared to AET_{RS} . These kinds of dynamics can be systematically examined and quantified using which can subsequently be considered in AET signature results.

3.1 Annual AET signatures

Figure 3a shows an increase in the *long-term median* ($\widetilde{AET}_{\text{annual}}$) values with decreasing aridity index, as expected. For example, less arid sites (shown in blues), such as Cape Tribulation and Cow Bay, have higher $\widetilde{AET}_{\text{annual}}$, while more arid sites (shown in reds), such as Calperum and Great Western Woodland have lower $\widetilde{AET}_{\text{annual}}$. The comparison of $\widetilde{AET}_{\text{annual}}$ between flux tower and RS products shows that all sites except for three sites (i.e., Robson Creek, Cow Bay and Cape Tribulation) in the tropical northern Queensland, the RS $\widetilde{AET}_{\text{annual}}$ aligns relatively close one to one line with flux tower $\widetilde{AET}_{\text{annual}}$ ($NSE_{\text{CMRSET}} = 0.61$ and $NSE_{\text{MODIS}} = 0.42$), although some scatter and slight underestimation are evident. In contrast, the three tropical northern Queensland sites, there is a strong overestimation of RS $\widetilde{AET}_{\text{annual}}$, despite differences in aridity among these sites. The comparison of signatures between flux tower and RS products shows that AET_{RS} products tend to underestimate $\widetilde{AET}_{\text{annual}}$, except for less arid flux sites (i.e., aridity index < 1 as in Table 2), such as Robson Creek, Cow Bay, and Cape Tribulation. Readers should bear in mind the difference in the spatial footprint of data (i.e., support), which is typically on the order of 10^2 – 10^4 meters in the case of remotely sensed data (depending on the source, except high resolution AET products developed based on AET sources such as Landsat and Sentinel 2), and approximately one order of magnitude smaller for flux towers. While some AET signatures may be relatively insensitive to this difference in the spatial footprint of data, it is reasonable to expect that the long term average or median values may be sensitive to the position of the flux tower in the landscape, and thus, some variation in Figure 3a may be directly attributable to this.

Figure 3b shows a higher *coefficient of variation of annual AET* (CV_{annual}) at arid flux tower sites such as Calperum, Sturt Plains, and Yanco, whereas other sites show lower CV_{annual} within the range of 0–0.2. CV_{annual} is lower in both MODIS and CMRSET AET compared to flux towers at almost all flux towers, and the scatter is high, implying the representation of year-to-year variability is poor in MODIS and CMRSET compared to the actual inter-annual variability as seen in flux tower data.





240 **Figure 2: Monthly timeseries plots of flux tower and remotely sensed AET, rainfall and PET at six example flux tower sites.**

3.2 Seasonal AET signatures

Figure 4a shows *periodicity* ($P_{12month}$) via the lag-12 autocorrelation. No clear relationship is observed in $P_{12month}$ with aridity. For example, weaker $P_{12month}$ values are observed at both the more arid flux tower sites (e.g., Great Western Woodlands, Yanco) and less arid flux tower sites (e.g., Cape Tribulation). This result may reflect hydroclimatic factors since strongly seasonal climates can occur in both arid and temperate environments. Remotely sensed data performs more poorly in this metric than in any other. Across all sites, the $P_{12month}$ of CMRSET monthly AET does not systematically over- or underestimate flux tower $P_{12month}$. However, there is a considerable scatter meaning some sites showing significant overestimation and others significant underestimation of CMRSET $P_{12month}$ to flux tower $P_{12month}$. shows significant scatter but

245

minimal bias. In contrast However, MODIS monthly AET shows stronger periodic behaviour than ground measurements at most of the flux tower sites.

Figure 4b compares the timing of seasonal peaks (TSP) between AET_{RS} and AET_{Fluxtower} estimates. Here, CMRSET tends to show the same timing (7 out of 17 flux towers) or closer timing (e.g., one month offset - 6 out of 17 flux towers) of TSP as flux towers at many flux tower sites, whereas those calculated using MODIS AET are significantly offset with flux tower TSP. This confirms that CMRSET tends to capture flux tower AET seasonal peaks more closely than MODIS AET. The MODIS results for these two metrics suggest that strongly periodic remote sensing estimates do not necessarily align well with the TSP in ground measurements (i.e., AET_{Fluxtower}).

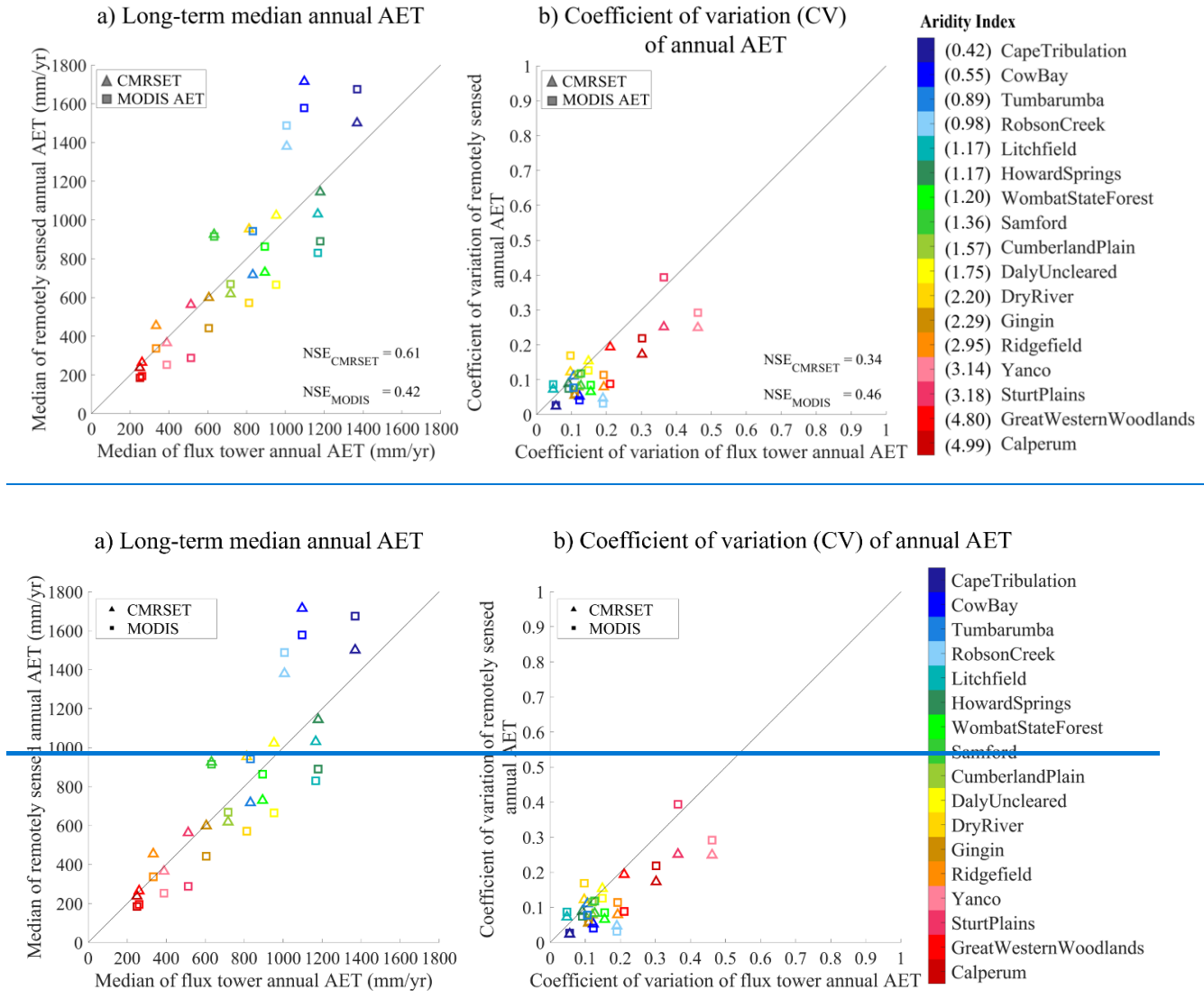
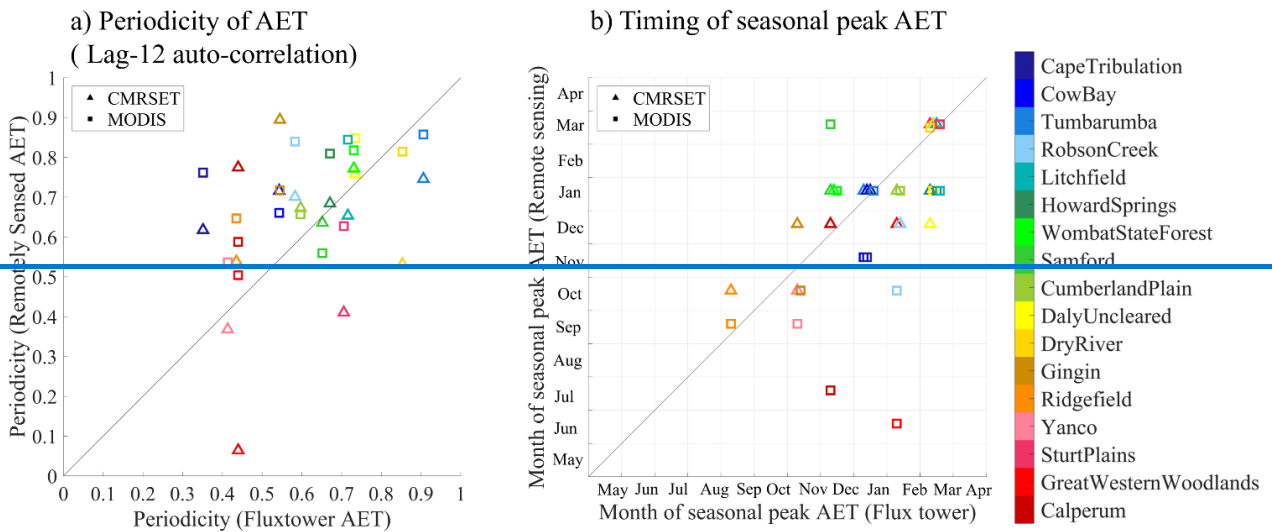
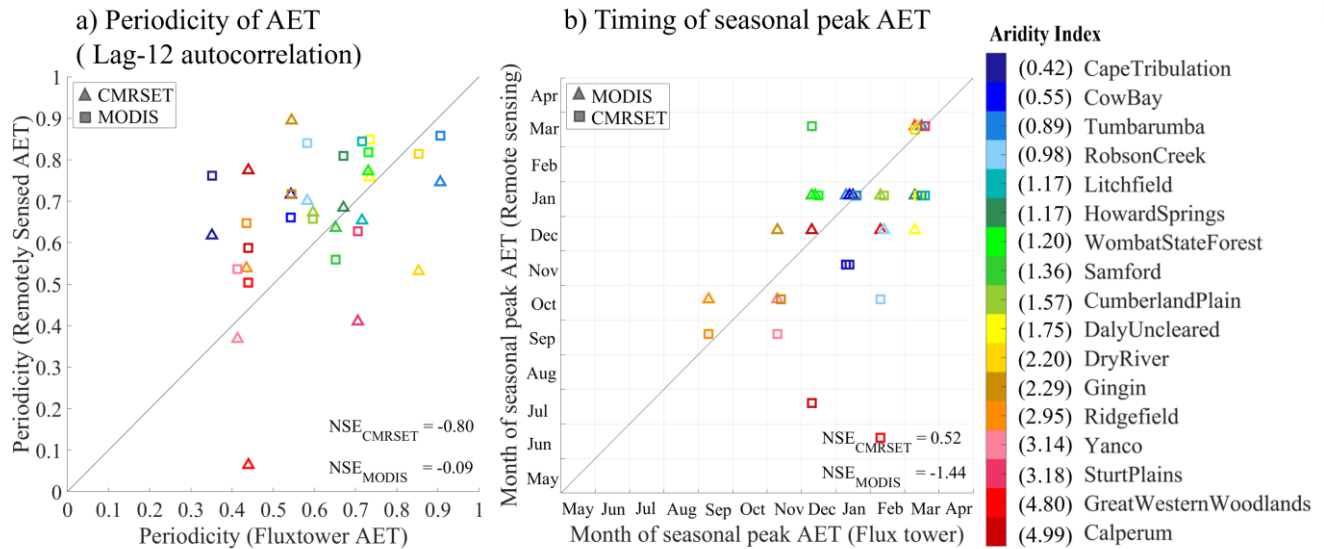


Figure 3: Comparison of annual AET signatures; a) Long-term median AET, b) Coefficient of variation (CV) of annual AET,

260 between remotely sensed AET (MODIS and CMRSET AET) and flux tower AET. (Note that the flux towers are ordered by aridity index – from Cape Tribulation (Lowest aridity) to Calperum (Highest aridity)).



265 **Figure 4: Comparison of seasonal AET signatures, a) Periodicity of AET (Lag-12 auto-correlation), b) Timing of seasonal peak, between remotely sensed AET (MODIS and CMRSET AET) and flux tower AET. Note that Figure 4b values take integer values only (i.e., either one calendar month or the next), leading to several points overlying the same plotting position; to make every point visible we subject each point to a jitter (i.e., a unique offset within the same grid cell).**

3.3 Monthly AET signatures

270 Figure 5 quantifies and compares monthly AET signatures using $AET_{Fluxtower}$ and AET_{RS} . Figure 5a shows a lower $CV_{monthly}$ at less arid flux towers such as Cape Tribulation, Cow Bay, and Robson Creek, with most other flux towers grouping tightly

between CV values of 0.3 and 0.6, while Sturt Plains is a clear outlier at 0.9. $CV_{monthly}$ from CMRSET and MODIS AET do not show much overall bias relative to $AET_{Fluxtower}$, yet the match with observed is very poor, with considerable scatter due to overestimation and underestimation of $CV_{monthly}$, depending on site.

Regarding *water stress* (WS), Figure 5b shows how WS increases with aridity, as expected. WS from CMRSET and MODIS AET is moderately well predicted except for wet flux towers, which are underestimated. ~~It is possible that this is due to errors or biases in PET (recall that Morton's Wet Environment PET was used), which may be less of an issue when PET is clearly greater than AET, whereas in cases where they are similar PET errors may be more important.~~ Figure 5c shows the *AET asynchronicity to PET* (AAP) that incorporates differences in phases between AET and PET timeseries. Results show that both $AET_{Fluxtower}$ and AET_{RS} are asynchronous with PET (i.e., $APP > 0$) for all the sites. However, at wetter sites, AET is more synchronous with PET showing smaller APP values (i.e., smaller APP indicates closer synchronicity to PET), ~~perhaps suggesting few temporal gaps in water availability,~~ but increasing with aridity index (except at Calperum and Great Western Woodlands sites). Furthermore, the results show separation between remotely sensed products, with MODIS showing more AAP while CMRSET showing lower AAP compared to flux tower AAP for sites exhibiting higher than average asynchronicity.

3.4 Event-scale AET signatures

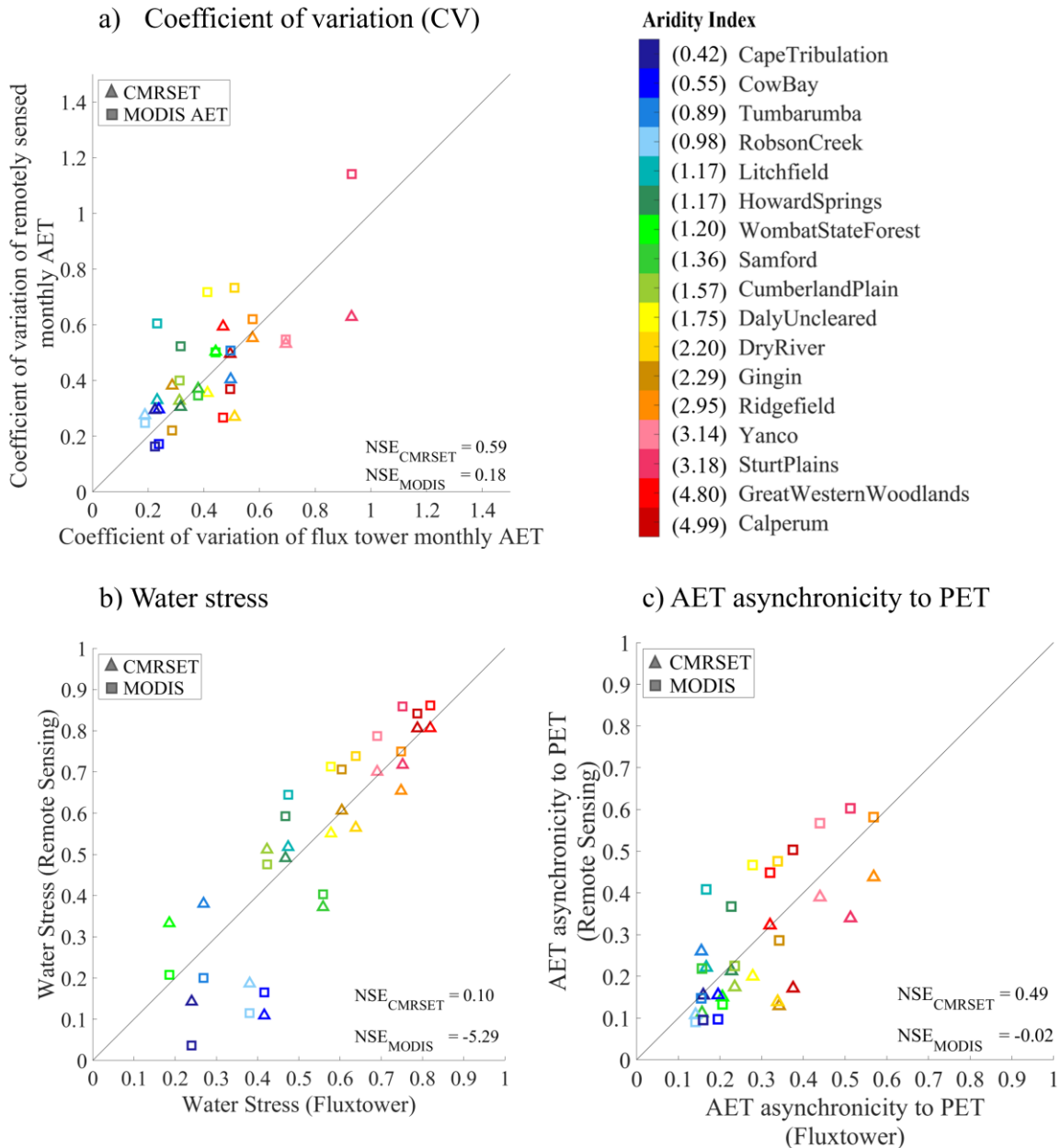
Figure 6 shows the ~~index of~~ AET responsiveness to a rainfall event (R). Recall that such information is unavailable for RS data due to its longer timestep. The R of zero indicates no correlation between rainfall event and the subsequent AET, and Figure 6 shows no discernible correlation between the magnitude of a rainfall event (i.e., $> 5\text{mm/day}$ in this example) and the subsequent AET on either the rain day or thereafter (i.e., maximum of 10 days window in this example) at the majority of the flux tower sites, and even a slightly negative correlation, perhaps suggesting that rain days might be followed by cloudy weather that suppresses AET.

3.5 Traditional efficiency metrics

Figure 7 shows a range of commonly used efficiency metrics such as NSE, KGE, and the sub-components of KGE, namely, the ratio of standard deviations (α), the ratio of means (β), and the Pearson correlation coefficient (r), calculated using monthly MODIS and CMRSET AET with flux tower AET. The distribution of NSE (median: -0.11) from MODIS AET indicates a poor prediction of $AET_{Fluxtower}$ on the monthly scale. In contrast, the distribution of NSE from CMRSET AET shows a positive, but still close to zero, median value of 0.14, implying better performance than MODIS but still overall poor performance.

For KGE, the median KGE values across flux tower sites for monthly MODIS and CMRSET AET are 0.45 and 0.53, respectively. The sub-components of KGE, such as α shows closer variability in MODIS AET (median $\alpha = 1.07$) and in CMRSET (median $\alpha = 0.94$) compared to flux tower estimates. The β component of KGE shows a lower mean in MODIS AET (median $\beta = 0.77$) and a slightly higher mean in CMRSET (median $\beta = 1.07$) compared to flux tower estimates. The r component of KGE shows a relatively similar correlation for both MODIS AET (median $r = 0.77$) and CMRSET (median $r =$

0.69) with $AET_{Fluxtower}$. Although these components of KGE provide valuable information about the ability of AET_{RS} to capture dynamics from $AET_{Fluxtower}$, this information is diluted in the final KGE value. Figure S1 in the supplementary information shows the traditional efficiency metric values at each flux tower site.



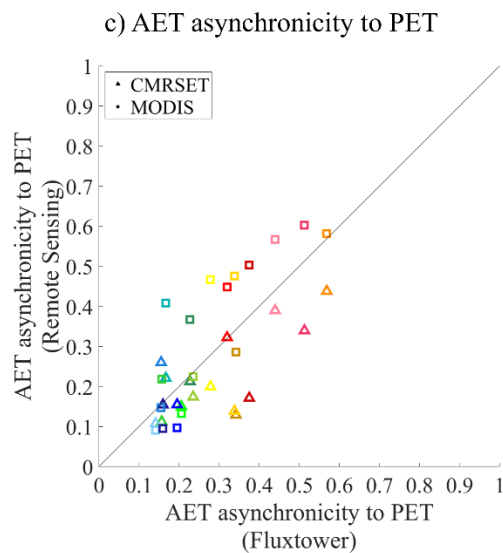
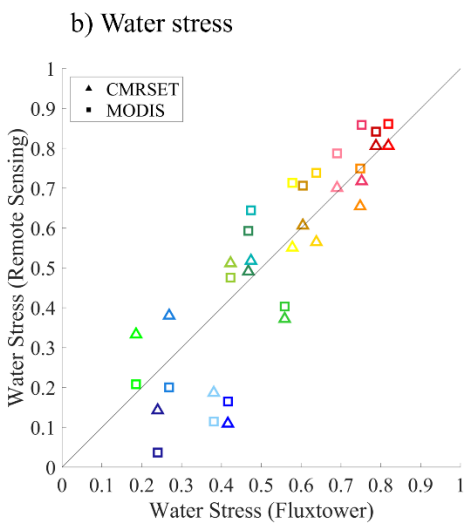
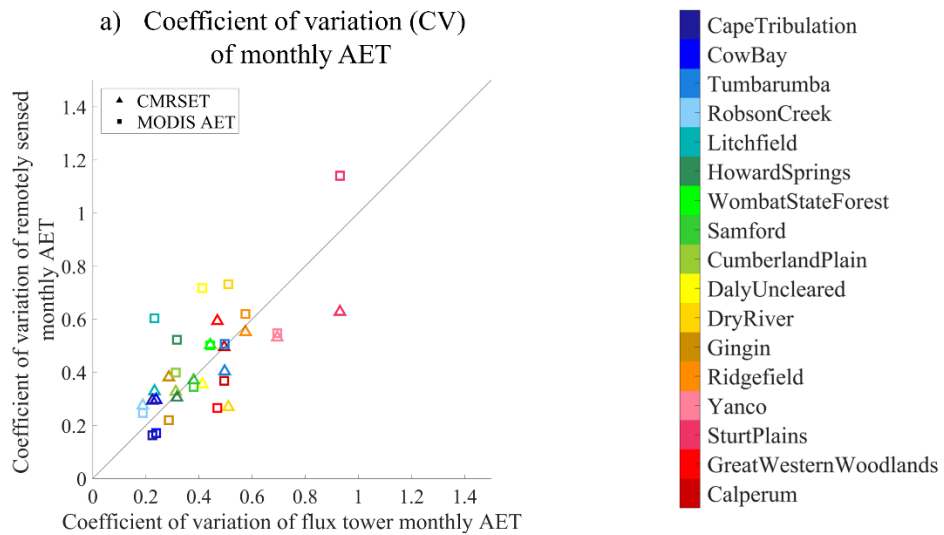
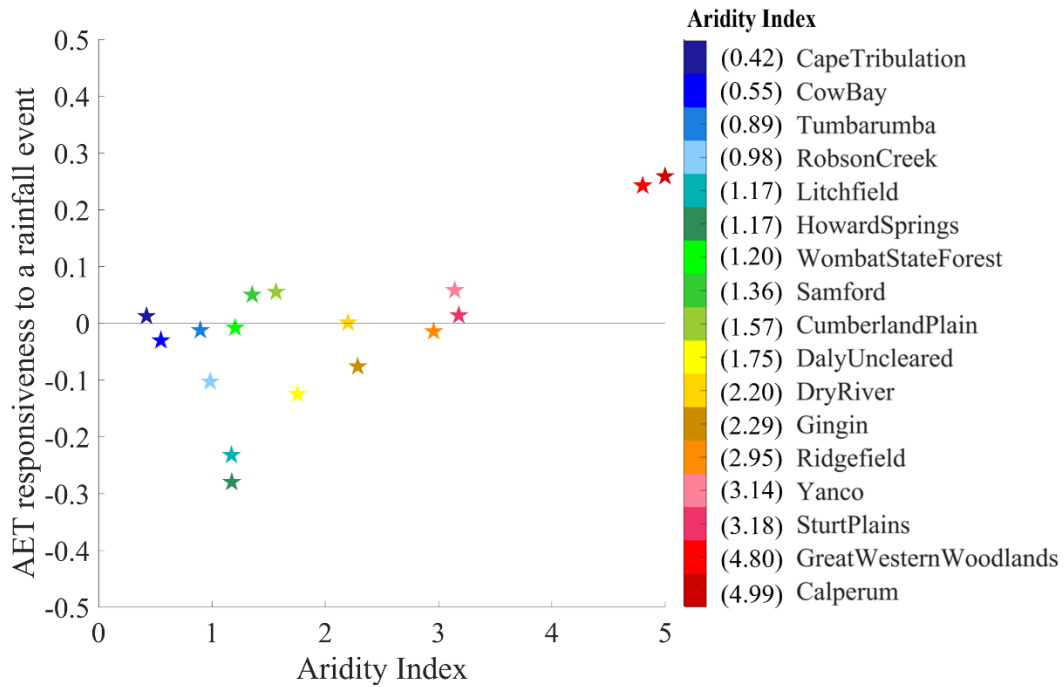


Figure 5: Comparison of monthly signatures; a) Coefficient of variation of monthly AET, b) Water stress, and c) AET asynchronicity to PET, between remotely sensed AET (MODIS and CMRSET) and flux tower AET.



310

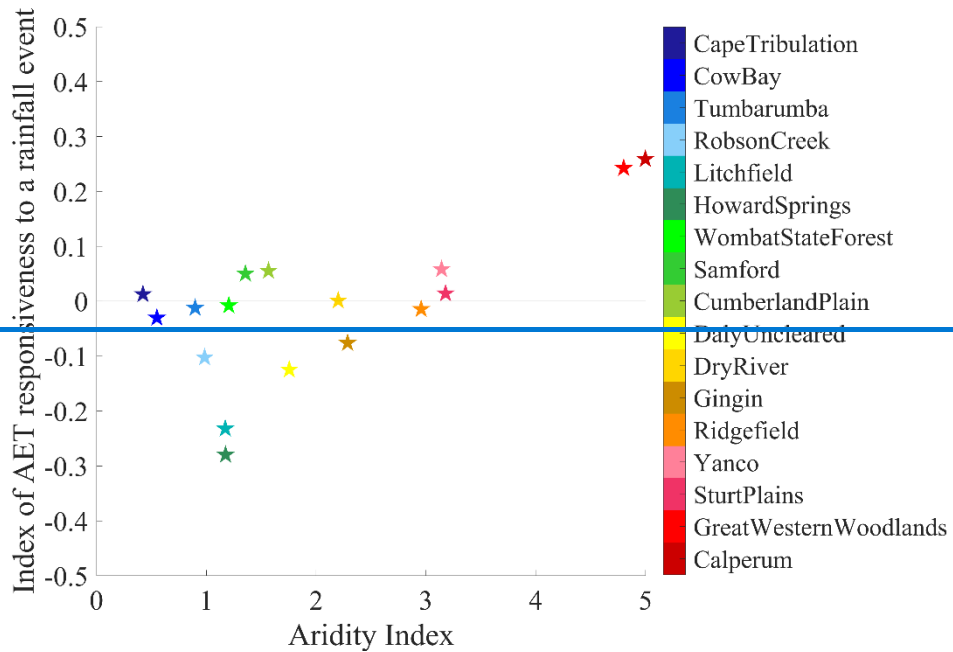
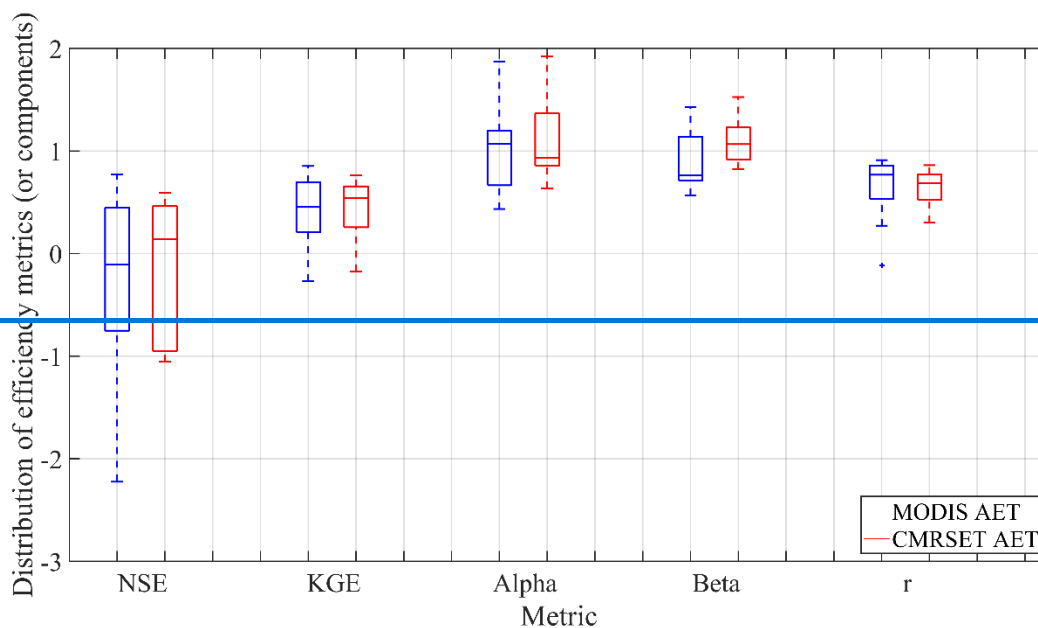
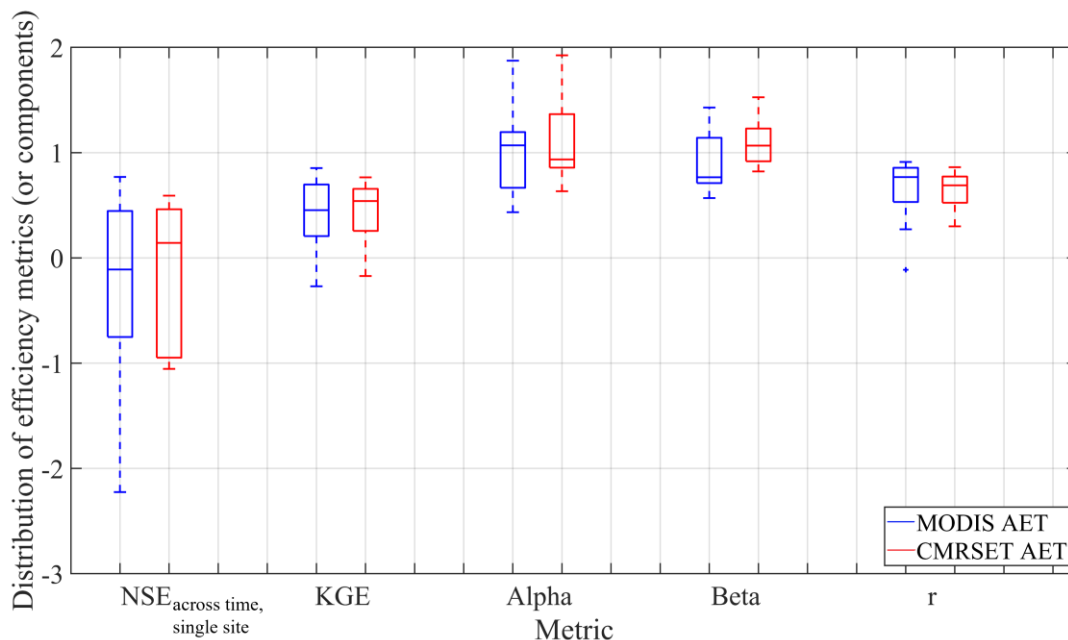


Figure 6: Index of AET responsiveness to rainfall vs. aridity index at flux tower sites. (Note that the index of zero indicates no

correlation between rainfall event and the subsequent AET).



315

Figure 7: Distribution of conventional efficiency metrics, all calculated on a monthly timestep: 1) Nash Sutcliffe efficiency ($NSE_{\text{across time, single site}}$), 2) Kling Gupta Efficiency (KGE), 3) Alpha (α – ratio of standard deviations), 4) Beta (β – ratio of means), and r (r – Pearson correlation coefficient), calculated using monthly MODIS and CMRSET AET with flux tower AET (Note that there are two outliers not shown in the NSE calculated for MODIS and CMRSET, which are lower than -3).

This study developed evapotranspiration signatures at various temporal scales and used them to evaluate remotely sensed AET information against flux towers. The study provides a basis for exploring what sort of signatures might be useful when investigating and characterising AET behaviours, with applications across other domains, such as characterising catchment processes and critiquing hydrological models.

325 4.1 Value of AET signatures over aggregate measures of performance

AET signatures introduced in this analysis offer behavioural insights into AET to complement existing suites of indices for streamflow and, to a lesser extent, groundwater. A key benefit of these signatures is their capacity to characterise different aspects of AET dynamics, allowing the quantification of nuanced aspects that can be discerned through visual inspection but, without signatures, are not easily defined numerically. Some examples are given in Table 3.

330 **Table 3: Example of aspects of AET dynamics that can be discerned via visual inspection of timeseries (Figure 2) and are subsequently reflected in signature results (Figure 4 & 5)**

Flux tower	Aspects of AET dynamics based on visual inspection	Corresponding signature results
Calperum	CMRSET closely synchronizes with PET variability	AET asynchronicity to PET(<i>AAP</i>) is low (0.17; note a value of zero would mean perfect synchronicity)
	The seasonal variation in MODIS is shifted (peaks are too early)	Timing of seasonal peaks (<i>TSP</i>) indicates earlier peak (July for MODIS compared to December for CMRSET and fluxtower)
Gingin	The seasonal variation in fluxtower AET is offset with PET	Fluxtower <i>AAP</i> is relatively higher (0.34) showing the asynchronicity with PET
	CMRSET closely synchronizes with PET variability.	CMRSET <i>AAP</i> is low (0.12)
Cumberland Plain	Clear and regular seasonal cycle is observed in fluxtower and RS AET	Periodicity (<i>P_{12month}</i>) is greater than 0.6 for fluxtower and RS AET
	Fluxtower and RS AET are mostly synchronized	<i>TSP</i> is same for MODIS and CMRSET (January) and only slightly different for fluxtower (February)
Wombat State Forest	Clear and regular seasonal cycle is observed in fluxtower and RS AET	<i>P_{12month}</i> is greater than 0.73 for fluxtower and RS AET
	Clear and somewhat high temporal variability of monthly AET is observed in fluxtower and RS AET	Coefficient of variation (<i>CV</i>) is greater than 0.44 for fluxtower and RS AET

Howard Springs	Relatively high temporal variability of monthly AET is observed in fluxtower and RS AET	CV is higher in MODIS (0.52) compared to fluxtower AET (0.32) and CMRSET (0.31)
	fluxtower and RS AET are mostly synchronized.	TSP is same for MODIS and CMRSET (January) and different for fluxtower (March)
Robson Creek	Lower temporal variability of monthly AET is observed in fluxtower AET compared to RS AET	CV is low in fluxtower AET (0.18) compared to CMRSET (0.27) and MODIS (0.24)
	RS AET is more responsive to and synchronizes with PET than fluxtower AET	Flux tower water stress (WS) is higher (0.38) compared to CMRSET (0.17) and MODIS (0.11)

[Table 3 provides examples of how observed dynamics in AET, such as variability, seasonality, and the relationship between AET and PET, can be translated into measurable indicators using AET signatures. These signatures enable more objective comparisons between \$AET_{RS}\$ and \$AET_{Fluxtower}\$, while also offering insights into the underlying processes within a given region.](#)

This capacity for nuanced characterisation in AET signatures contrasts with traditional fit/performance metrics such as NSE and KGE. As mentioned in the introduction, these commonly used performance metrics are often applied to quantify hydrological model performances, but may obscure specific behavioural information (McMillan, 2021; Wagener & Gupta, 2005). For example, the NSE calculated using monthly MODIS and CMRSET AET at some flux tower sites showed negative values, indicating bad predictive skills, whereas the KGE calculated using both the AET_{RS} tended to show some predictive skills [relative to over](#) flux tower observations. However, both of these conventional performance metrics fail to identify [what](#) [which](#) aspects of AET in remote sensing products have led to poor prediction of $AET_{Fluxtower}$. [For example, as per table 3, at the arid Calperum site, MODIS AET exhibited an earlier seasonal peak in AET compared to the flux tower, an insight captured by the \$TSP\$ signature that is unavailable using NSE or KGE. Similarly, at the wet tropical Robson Creek, \$AET_{RS}\$ products showed slightly greater monthly variability than flux tower observations, again reflected by \$CV_{monthly}\$ signature but not clear in conventional metrics.](#) -Even though the subcomponents of KGE, such as the ratio of standard deviation, the ratio of mean, and the Pearson correlation coefficient, provided valuable information about the ability of these two AET_{RS} products to capture AET dynamics compared to $AET_{Fluxtower}$, the final KGE value [obscures](#) this information.

[Given that AET signatures capture more behavioural information than traditional performance metrics, they can also be used in other applications, such as hydrological modelling for more realistic outcomes, in a similar way to using other hydrological signatures. Therefore, incorporating AET signatures into applications such as hydrological model calibration and evaluation could lead to more accurate and realistic outcomes. For example, Huynh et al. \(2021\) incorporated hydrological signatures into the calibration of a conceptual distributed hydrological model and found improved flash flood predictions, achieving higher NSE and KGE scores compared to models calibrated without signatures. Kiraz et al. \(2023\) developed a signature-based performance metric that strongly correlated with NSE and KGE, while also enabling calibration and evaluation of regionalised](#)

360 ungauged catchments. Using the AET signatures developed above, Gardiya Weligamage et al. (2025) demonstrated that incorporating AET timeseries data with streamflow information into calibration generally yields improvements in overall model performance, as indicated by NSE and KGE values. Their signature-based assessment of calibration to traditional AET metrics revealed that only the monthly variability and AET synchronicity with PET were enhanced in such calibration (relative to streamflow-only calibration).

While these signatures have many inherent strengths, challenges could remain in applying them, particularly in large sample studies, -due to data errors associated with flux tower measurements, particularly in extreme climates (McMillan et al., 2023). Therefore, readers should have a prior understanding when regionalising and interpreting any hydrological behaviours using signatures.

365 **4.2 Insights into actual evapotranspiration behaviour at Australian flux tower sites**

Ozflux observations are recognised for their high quality, with minimal data gaps and errors. Isaac et al. (2017) reported that around 80% of Ozflux sites achieved an energy balance closure ratio exceeding 0.8, indicating robust flux measurements. Moreover, these flux tower sites cover a diverse range of vegetation types, including tropical and temperate grasslands, tropical savannas, Mediterranean and temperate woodlands, and both temperate and tropical forests (Guerschman et al., 2022).

370 Given these high-quality data and broader ecological coverage, this study confirms various anticipated AET behaviours at flux tower sites in Australia across different temporal scales. For example, the \overline{AET}_{annual} increased as the aridity index decreased as expected, indicating that less arid flux towers have a higher \overline{AET}_{annual} , whereas more arid flux towers have a lower \overline{AET}_{annual} . However, the CV_{annual} across flux tower sites was low across the majority of sites (range of 0-0.2 at 14 out of 17 sites), regardless of their aridity index. This finding is consistent with the relatively constant annual AET variability over time, as reported by Gardiya Weligamage et al. (2023). The three exceptions were flux tower sites in dry regions such as Calperum, Sturt Plains, and Ridgefield, which exhibited comparatively higher CV_{annual} (ranging from 0.3-0.5). This is likely driven by high interannual rainfall variability (Liu et al., 2024; Wang et al., 2017)- and high PET (Pan et al., 2021) in dry regions. In such regions, evaporation from soil contributes more to AET than transpiration from vegetation in hot arid environments; moreover, vegetation tends to be opportunistic during rainfall events and remains dormant during dry periods (Ratzmann et al., 2016). Therefore, these factors collectively influence the high variability of AET in hot dry regions.

380 Signatures that capture short-term temporal dynamics of AET, such as $CV_{monthly}$, $P_{12month}$, and TSP exhibited wide scatter across observed flux tower sites, with no clear relationship to aridity. This decoupling is likely due to the fact that AET dynamics at shorter temporal scales are strongly influenced by local geographic, biophysical, and hydroclimatic conditions such as vegetation dynamics, soil properties, soil moisture dynamics, and inter annual rainfall variability that are not well represented by broad, long-term climate classification like aridity. In terms of $CV_{monthly}$ of flux tower AET, a higher degree of AET fluctuation was observed compared to the annual scale; however, flux towers situated in temperate climates with dry winters and hot summers (e.g., Cape Tribulation, Cow Bay, and Robson Creek) exhibited lower monthly variability. As expected, WS at flux towers largely increased with increased aridity. Regarding seasonal AET behaviour, the TSP of flux tower

AET was identified between November and March. Regarding the $P_{12month}$ of flux tower AET, no distinct relationship was found between periodicity and the aridity index. [Atindex, van Dijke et al. \(2020\)](#) reported a strong correlation between leaf area index (LAI) and latent energy (LE) in savanna and arid grassland ecosystems across FluxNet sites, including Ozflux sites. They explained that in these environments, soil water deficiency and high evaporative demand lead to a significant increase in LE even with small increases in LAI. For the evergreen broadleaf forested ecosystem, a positive correlation was also observed between LAI and energy fluxes, attributed to evaporation from canopy interception, which accounts for up to 30% of total evapotranspiration. While their study suggests that both of these vegetation types exhibit a clear relationship with energy fluxes, our analysis indicates that AET signature patterns, especially on monthly and seasonal scales, cannot be easily explained by classifying based on vegetation cover alone.

At the event scale, most flux towers did not show a discernible correlation between rainfall events and subsequent AET events. Therefore, [on first impression at this stage](#), the ‘*index of AET responsiveness to a rainfall event*’ signature does not appear to add significant value in this AET signature analysis. [However, we could subset event scale rainfall and AET timeseries data by climatic regions, season, or vegetation group to gain more detailed insights.](#) ~~Moreover~~ However, we employed this event-scale signature to evaluate commonly used conceptual rainfall-runoff model performances in a companion paper, [Gardiya Weligamage et al. \(2025\)](#), and the models were found to be very biased in this signature, [showing simulated AET that was too responsive to precipitation](#). Therefore, this event-scale signature [also](#) adds value in constraining models or exploring model deficiency. Furthermore, this event-scale signature is particularly noteworthy, as it highlights a distinct aspect of AET dynamics not previously quantified. As [McMillan \(2020\)](#) confirmed, no signature (even an indirect AET behaviour explanation using hydrological signatures) was previously identified for assessing AET at the event scale.

4.3 Implications for quality of remotely sensed actual evapotranspiration

The eight AET signatures proposed in this study are used to highlight the strengths and weaknesses of two AET_{RS} products (i.e., MODIS-AET and CMRSET) on multiple aspects by assessing their AET signatures with those obtained from flux tower observations. Given that it ~~seems is~~ increasingly common for studies (particularly modelling studies) to ~~uncritically~~ adopt AET_{RS} products, ~~these findings underscore~~ the [reported](#) deficiencies in [these](#) AET_{RS} data [seem particularly relevant.](#) ~~and pinpoint several specific aspects of failure.~~ Thus, ~~w~~We emphasize the importance of investigating AET_{RS} data prior to use in any other applications, such as rainfall-runoff modelling.

~~While the plots above suggest that~~ [More specifically, most signatures, such as monthly and seasonal \(except periodicity from MODIS monthly AET\) AET signatures, reveal that](#) AET_{RS} is generally [an](#) unbiased ~~compared to~~ estimate of AET_{Fluxtower} ~~across the entire catchment sample, the problem is the~~ ~~However, the wide scatter observed in the AET signatures underscores the challenge of reproducing the dynamics captured by flux tower data.~~ This wide scatter [indicating that estimates at individual sites may be subject to significant errors.](#) [This wide scatter](#) was seen in several signatures such as $CV_{monthly}$, AAP , $P_{12month}$, and TSP .

At the seasonal scale, notable discrepancy was observed between AET_{RS} and $AET_{Fluxtower}$, in terms of $P_{12month}$, and TSP . For example, ~~At the seasonal scale, challenges were particularly~~ more pronounced with the MODIS AET, which exhibited offsets in TSP ($NSE_{MODIS} = -1.44$, see Figure 4b), while being overly periodic but with scatter compared to flux tower data. This suggests that globally developed MODIS AET often failed to reflect AET dynamics at seasonal scale in diverse Australian environment. ~~Therefore, caution should be exercised when extracting seasonal information from MODIS AET. Conversely, the regionally developed CMRSET product tended to align comparatively better with the TSP observed by flux towers ($NSE_{CMRSET} = 0.52$, see Figure 4b) but with larger scatter. The close alignment of TSP with $AET_{Fluxtower}$ is likely because the CMRSET model was calibrated only to flux tower sites in Australia (Guerschman et al., 2022), in contrast to MODIS, which is globally calibrated and thus has less Australian focus (Mu et al., 2011). Our findings concur with Guerschman et al. (2022), who reported that the calibrated CMRSET model performs better than MODIS AET (i.e., MOD16A2). However, CMRSET exhibited greater scatter in terms of periodicity, highlighting issues with seasonal consistency~~

However, Guerschman et al. (2022) also noted that CMRSET captures less of seasonal variability at tropical sites and shows weaker correlation with flux tower AET in arid regions compared to temperate areas. They further explained that the seasonality in tropical and temperate regions is effectively captured by PET, which leads to higher correlation between $AET_{Fluxtower}$ and CMRSET in those regions than in arid sites. Our results also agree on that higher correlation (r) between both CMRSET (median $r = 0.69$) and MODIS AET (median $r = 0.77$) with flux tower AET. Furthermore, our AAP signature shows that both the AET_{RS} and $AET_{Fluxtower}$ with mostly synchronous relationship with PET at flux tower sites in temperate (i.e., flux towers at northern Australia) and tropical regions (i.e., flux towers at northern Queensland).

However, none of the information above supports explaining the differences in periodicity and offsets in seasonal peaks between AET_{RS} and $AET_{Fluxtower}$ shown in Figure 4. We assume that these discrepancies may be attributed to vegetation and surface water stress parameterisation in AET_{RS} algorithms. However, significant uncertainties related to water stress parameterisation are unlikely, as our assessment using water stress signature showed that water stress is fairly predicted by AET_{RS} , except for wet, tropical flux tower sites. This exception in the wet tropics could be due to uncertainties associated with the PET (recall that Morton's Wet Environment PET was used in Water Stress signature), which may not be directly comparable to AET_{RS} . Given this, vegetation parameterisation likely plays a vital role in these observed inconsistencies in $P_{12month}$, and TSP . This could be due to uncertainties associated with Enhanced Vegetation Index (EVI) and Global Vegetation Moisture Index (GVMI) in CMRSET and in Leaf Area Index (LAI) / Fraction of Photosynthetically Active Radiation (FPAR) in MODIS. Mu et al. (2011) discussed overestimation of LAI as a potential source of overestimation in MODIS AET. Moreover, MODIS AET applies the same set of biophysical parameters for each biome type globally (Mu et al., 2011). Since Australia has distinct biome types, MODIS AET could introduce uncertainties due to differences in plant biophysics. Gan et al., (2018) also reported MODIS AET underestimates flux tower AET at non-forested sites (e.g., Dry River, Howard Springs, Sturt Plains), but overestimates at forested sites (e.g., Tumbarumba, and Wombat State Forests). Consequently, combined uncertainties and limitations could contribute to the seasonality issues in CMRSET and MODIS AET. Therefore, caution should be exercised when extracting seasonal information from both MODIS AET and CMRSET.

460 At the annual scale, RS-derived AET signatures of \overline{AET}_{annual} largely matched with the flux tower \overline{AET}_{annual} , although some scatter and slight underestimation were observed. However, a notable overestimation of RS \overline{AET}_{annual} was shown at 3 tropical study sites in northern Queensland, namely Robson Creek, Cow Bay and Cape Tribulation. This discrepancy may reflect geographic and hydroclimatic influences specific to these coastal rainforest environments. This includes steep spatial gradients in wetness that may not be well characterised by gridded data, as supported by Guerschman et al. (2022) who also noted the near coast and strong orographic precipitation gradient in the Cow Bay and Cape Tribulation area. This highlights the need for caution when interpreting remotely sensed annual AET in similar settings. In the comparison of CMRSET and MODIS AET, Mohammadi et al. (2015) showed that MODIS AET tends to underestimate in arid floodplains in Australia, similar to several other studies (e.g., Kim et al., 2012; Tang et al., 2015), together suggesting that the underestimation may be due to limitations in MODIS AET in estimating land cover changes and water cover fraction. This finding is in line with our results at most flux tower sites. However, our study shows that both the AET_{RS} underestimate compared to flux tower AET. This could be due to the difference in spatial foot-prints between AET_{RS} and $AET_{Fluxtower}$. In addition, all CV_{annual} showed underestimation (negative bias) relative to flux towers, implying relatively poor year-to-year variability in MODIS AET and CMRSET compared to actual interannual variability as seen in flux tower data. This may also be due to uncertainties and limitations associated with vegetation parameterisation in AET_{RS} algorithms.

4.4 Limitations and future studies

475 This study serves as a proof of concept for one potential application of the proposed AET signatures in evaluating remotely sensed AET products. Our companion study, Gardiya Weligamage et al. (2025) demonstrates another application, using AET signatures to diagnose deficiencies in hydrological models. While this study is limited to Australian sites, which geographically constrains the global applicability of the findings, it establishes a foundation for the broader development and use of AET signatures. Moreover, we consider this regional focus more appropriate for a proof of concept, particularly given the findings of McMillan et al. (2023), who reported difficulties in examining signatures and underlying behaviours across large samples that include catchments affected by unusual hydroclimate or data errors.

480 A further limitation is that there are likely other aspects of evapotranspiration dynamics that we have not characterised, and we invite future studies to contribute ideas to broaden this initial set, in much the same way as has occurred for streamflow signatures (see Gnann et al. 2021). Our findings encourage the use and expansion of AET signatures over other regions and continents. While this study assessed these signatures calculated using $AET_{Fluxtower}$ estimates and compared them with those calculated using AET_{RS} estimates, there are uncertainties associated with flux measurement errors and spatial representativeness of both estimates. In this study, we assumed the $AET_{Fluxtower}$ to be robust and compared the AET signatures calculated using them with those calculated using remotely sensed products. However, these flux towers may be subjected to errors in energy closure in the eddy covariance method due to conditions such as weak turbulence or systematic flux leakage

on hillslopes (Chen et al., 2011; Wilson et al., 2002). Moreover, as mentioned, there can be differences in AET signatures due to the different spatial footprints of observation between AET_{RS} and $AET_{Fluxtower}$. Viewing this study as a starting point for the study of AET signatures, future studies could ~~an~~ further refine or adapt these signatures to better expand or modify these signatures in order to best capture AET behaviours and enhance their use in ~~including on other continents, and can be employed in~~ hydrological model calibration and evaluation to represent AET processes more realistically.

495 5. Conclusion

This study propose~~s~~d eight AET signatures to explore AET behaviours at different temporal scales, expanding upon hydrological signature studies and providing ~~key comprehensive~~ insights into AET dynamics at flux towers and two remotely sensed AET products. The AET signatures calculated from flux towers in Australia were consistent with anticipated AET behaviour, and their comparison with signatures derived from remotely sensed AET data highlights the strengths and weaknesses of RS information. In a broader context, the remotely sensed products used in this study show significant scatter around the flux tower values, signalling caution regarding their capacity to mimic observed AET behaviours accurately. Therefore, future studies are encouraged to leverage these AET signatures to evaluate remotely sensed products before they ~~are~~ adopted and to better extract and improve information for activities such as hydrological modelling.

Data availability

505 The actual evapotranspiration data extracted from Ozflux sites and remotely sensed products are available at <https://doi.org/10.5281/zenodo.14226801>, ~~<https://doi.org/10.5281/zenodo.14226802>~~.

Author contribution

Hansini Gardiya Weligamage: Conceptualization, Data curation, Formal analysis, Investigation, Methodology, Validation, Visualization, Writing – original draft preparation, Writing – review and editing.

510 Keirnan Fowler: Conceptualization, Methodology, Funding acquisition, Supervision, Writing – review and editing

Margarita Saft: Conceptualization, Methodology, Funding acquisition, Supervision, Writing – review and editing

Tim Peterson: Conceptualization, Methodology, Funding acquisition, Supervision, Project administration, Writing – review and editing

Dongryeol Ryu: Conceptualization, Methodology, Supervision, Writing – review and editing

515 Murray Peel: Conceptualization, Methodology, Funding acquisition, Supervision, Project administration, Writing – review and edit

Competing interests

The authors declare that they have no conflict of interest.

520 Acknowledgements

This research was funded by the Australian Research Council (ARC) Linkage Project (LP180100796) with partner organisations Victorian Department of Environment, Land, Water and Planning (DELWP), and Melbourne Water.

References

- Abbott, B. W., Bishop, K., Zarnetske, J. P., Minaudo, C., Chapin, F. S., Krause, S., Hannah, D. M., Conner, L., Ellison, D.,
525 Godsey, S. E., Plont, S., Marçais, J., Kolbe, T., Huebner, A., Frei, R. J., Hampton, T., Gu, S., Buhman, M., Sara Sayedi, S., ...
Pinay, G.: Human domination of the global water cycle absent from depictions and perceptions. *Nature Geoscience*, 12(7),
533–540. <https://doi.org/10.1038/s41561-019-0374-y>, 2019.
- Addor, N., Nearing, G., Prieto, C., Newman, A. J., Le Vine, N., & Clark, M. P.: A Ranking of Hydrological Signatures Based
on Their Predictability in Space. *Water Resources Research*, 54(11), 8792–8812. <https://doi.org/10.1029/2018WR022606>,
530 2018.
- Araki, R., Branger, F., Wiekenkamp, I., & McMillan, H.: A signature-based approach to quantify soil moisture dynamics under
contrasting land-uses. *Hydrological Processes*, 36(4). <https://doi.org/10.1002/hyp.14553>, 2022.
- Arndt, S., Hinko-Najera, N., & Griebel, A.: Wombat State Forest Flux Data Release 2024_v1. Version 2024_v1. Terrestrial
Ecosystem Research Network. (Dataset), 2024.
- 535 Avanzi, F., Rungee, J., Maurer, T., Bales, R., Ma, Q., Glaser, S., & Conklin, M.: Climate elasticity of evapotranspiration shifts
the water balance of Mediterranean climates during multi-year droughts. *Hydrology and Earth System Sciences*, 24(9), 4317–
4337. <https://doi.org/10.5194/hess-24-4317-2020>, 2020.
- Baker, J. C. A., Garcia-Carreras, L., Gloor, M., Marsham, J. H., Buermann, W., da Rocha, H. R., Nobre, A. D., de Araujo, A.
C., & Spracklen, D. V.: Evapotranspiration in the Amazon: spatial patterns, seasonality, and recent trends in observations,
540 reanalysis, and climate models. *Hydrology and Earth System Sciences*, 25(4), 2279–2300, <https://doi.org/10.5194/hess-25-2279-2021>, 2021.
- Beringer, J., Hutley, L., & Northwood, M.: Daly Uncleared Flux Data Release 2024_v1. Version 2024_v1. Terrestrial
Ecosystem Research Network. (Dataset), 2024a.
- Beringer, J., Hutley, L., & Northwood, M.: Dry River Flux Data Release 2024_v1. Version 2024_v1. Terrestrial Ecosystem
545 Research Network. (Dataset), 2024b.
- Beringer, J., Hutley, L., & Northwood, M.: Howard Springs Flux Data Release 2024_v1. Version 2024_v1. Terrestrial
Ecosystem Research Network. (Dataset), 2024c.

- Beringer, J., Hutley, L., & Northwood, M.: Litchfield Flux Data Release 2024_v1. Version 2024_v1. Terrestrial Ecosystem Research Network. (Dataset), 2024d.
- 550 Beringer, J., Hutley, L., & Northwood, M.: Sturt Plains Flux Data Release 2024_v1. Version 2024_v1. Terrestrial Ecosystem Research Network. (Dataset), 2024e.
- Beringer, J., Lardner, T., & Moore, C.: Ridgefield Flux Data Release 2024_v1. Terrestrial Ecosystem Research Network. (Dataset), 2024.
- Beringer, J., Walker, J., Rudiger, C., Daly, E., Dumedah, G., Monerris-Belda, A., Yee, M. S., Winston, F., Lubcke, T., & 555 Hocking, D.: Yanco Flux Data Release 2024_v1. Version 2024_v1. Terrestrial Ecosystem Research Network. (Dataset), 2024.
- Chen, B., Coops, N. C., Fu, D., Margolis, H. A., Amiro, B. D., Barr, A. G., Black, T. A., Arain, M. A., Bourque, C. P.-A., & Flanagan, L. B.: Assessing eddy-covariance flux tower location bias across the Fluxnet-Canada Research Network based on remote sensing and footprint modelling. *Agricultural and Forest Meteorology*, 151(1), 87–100, <https://doi.org/10.1016/j.agrformet.2010.09.005>, 2011.
- 560 Chu, H., Luo, X., Ouyang, Z., Chan, W. S., Dengel, S., Biraud, S. C., Torn, M. S., Metzger, S., Kumar, J., Arain, M. A., Arkebauer, T. J., Baldocchi, D., Bernacchi, C., Billesbach, D., Black, T. A., Blanken, P. D., Bohrer, G., Bracho, R., Brown, S., ... Zona, D.: Representativeness of Eddy-Covariance flux footprints for areas surrounding AmeriFlux sites. *Agricultural and Forest Meteorology*, 301–302(February). <https://doi.org/10.1016/j.agrformet.2021.108350>, 2021.
- Clausen, B., & Biggs, B. J. F.: Flow variables for ecological studies in temperate streams: groupings based on covariance. 565 *Journal of Hydrology*, 237(3–4), 184–197. [https://doi.org/10.1016/S0022-1694\(00\)00306-1](https://doi.org/10.1016/S0022-1694(00)00306-1), 2000.
- Doody, T. M., Benyon, R. G., & Gao, S.: Fine scale 20-year timeseries of plantation forest evapotranspiration for the Lower Limestone Coast. *Hydrological Processes*, 37(3), e14836, <https://doi.org/10.1002/hyp.14836>, 2023.
- Finnigan, J.: AN INTRODUCTION TO FLUX MEASUREMENTS IN DIFFICULT CONDITIONS. *Ecological Applications*, 18(6), 1340–1350. <https://doi.org/10.1890/07-2105.1>, 2008.
- 570 Gaona, J., Quintana-Seguí, P., Escorihuela, M. J., Boone, A., & Llasat, M. C.: Interactions between precipitation, evapotranspiration and soil-moisture-based indices to characterize drought with high-resolution remote sensing and land-surface model data. *Natural Hazards and Earth System Sciences*, 22(10), 3461–3485, <https://doi.org/10.5194/nhess-22-3461-2022>, 2022.
- Gardiya Weligamage, H., Fowler, K., Peterson, T. J., Saft, M., Peel, M. C., & Ryu, D.: Partitioning of Precipitation Into 575 Terrestrial Water Balance Components Under a Drying Climate. *Water Resources Research*, 59(5), e2022WR033538. <https://doi.org/10.1029/2022WR033538>, 2023.
- Gardiya Weligamage, H., Fowler, K., Saft, M., Peterson, T., Ryu, D., & Peel, M. Using evapotranspiration signatures to assess evapotranspiration realism in rainfall-runoff models. *Hydrology and Earth System Sciences*, <https://doi.org/10.5194/egusphere-2025-3373>, 2025.
- 580 Grace, P., Rowlings, D., Grace, L., & Tucker, D.: Samford Ecological Research Facility Flux Data Release 2024_v1. Terrestrial Ecosystem Research Network. (Dataset), 2024.

- Gnann, S. J., Coxon, G., Woods, R. A., Howden, N. J. K., & McMillan, H. K. (2021). TOSSH: A Toolbox for Streamflow Signatures in Hydrology. *Environmental Modelling & Software*, 138, 104983. <https://doi.org/https://doi.org/10.1016/j.envsoft.2021.104983>
- 585 Guerschman, J. P., McVicar, T. R., Vleeshouwer, J., Van Niel, T. G., Peña-Arancibia, J. L., & Chen, Y.: Estimating actual evapotranspiration at field-to-continent scales by calibrating the CMRSET algorithm with MODIS, VIIRS, Landsat and Sentinel-2 data. *Journal of Hydrology*, 605(December 2021), 127318. <https://doi.org/10.1016/j.jhydrol.2021.127318>, 2022a.
- Gupta, H. V., Wagener, T., & Liu, Y.: Reconciling theory with observations: Elements of a diagnostic approach to model evaluation. *Hydrological Processes*, 22(18), 3802–3813. <https://doi.org/10.1002/hyp.6989>, 2008.
- 590 Heudorfer, B., Haaf, E., Stahl, K., & Barthel, R.: Index-Based Characterization and Quantification of Groundwater Dynamics. *Water Resources Research*, 55(7), 5575–5592. <https://doi.org/10.1029/2018WR024418>, 2019.
- Isaac, P., Cleverly, J., McHugh, I., van Gorsel, E., Ewenz, C., & Beringer, J.: OzFlux data: network integration from collection to curation. *Biogeosciences*, 14(12), 2903–2928. <https://doi.org/10.5194/bg-14-2903-2017>, 2017.
- Kiraz, M., Coxon, G., & Wagener, T.: A Signature-Based Hydrologic Efficiency Metric for Model Calibration and Evaluation
595 in Gauged and Ungauged Catchments. *Water Resources Research*, 59(11). <https://doi.org/10.1029/2023WR035321>, 2023.
- Klemeš, V. (1983). Conceptualization and scale in hydrology. *Journal of Hydrology*, 65(1–3), 1–23.
- Koster, R. D., & Suarez, M. J.: Soil Moisture Memory in Climate Models. *Journal of Hydrometeorology*, 2(6), 558–570. [https://doi.org/10.1175/1525-7541\(2001\)002<0558:SMMICM>2.0.CO;2](https://doi.org/10.1175/1525-7541(2001)002<0558:SMMICM>2.0.CO;2), 2001.
- Liddell, M., & Weigand, N.: Cape Tribulation Flux Data Release 2024_v1. Version 2024_v1. *Terrestrial Ecosystem Research*
600 Network. (Dataset), 2024a.
- Liddell, M., & Weigand, N.: Cow Bay Flux Data Release 2024_v1. Version 2024_v1. *Terrestrial Ecosystem Research* Network. (Dataset) 2024b.
- Liddell, M., & Weigand, N.: Robson Creek Flux Data Release 2024_v1. Version 2024_v1. *Terrestrial Ecosystem Research* Network. (Dataset), 2024c.
- 605 Macfarlane, C., Prober, S., & Wiehl, G.: Great Western Woodlands Flux Data Release 2024_v1. Version 2024_v1. *Terrestrial Ecosystem Research* Network. (Dataset), 2024.
- McMillan, H.: Linking hydrologic signatures to hydrologic processes: A review. *Hydrological Processes*, 34(6), 1393–1409. <https://doi.org/10.1002/hyp.13632>, 2020.
- McMillan, H., Gueguen, M., Grimon, E., Woods, R., Clark, M., & Rupp, D. E.: Spatial variability of hydrological processes
610 and model structure diagnostics in a 50 km² catchment. *Hydrological Processes*, 28(18), 4896–4913. <https://doi.org/10.1002/hyp.9988>, 2014.
- McMillan, H. K.: A review of hydrologic signatures and their applications. *WIREs Water*, 8(1), 1–23. <https://doi.org/10.1002/wat2.1499>, 2021.
- McVicar, T., Vleeshouwer, J., Van Niel, T., & Guerschman, J.: Actual Evapotranspiration for Australia using CMRSET
615 algorithm. *Terrestrial Ecosystem Research* Network. (Dataset), 2022.

- Meyer, W., Ewenz, C., Koerber, G., & Lubcke, T.: Calperum Chowilla Flux Data Release 2024_v1. Version 2024_v1. Terrestrial Ecosystem Research Network. (Dataset), 2024.
- Morton, F. I.: Operational estimates of areal evapotranspiration and their significance to the science and practice of hydrology. *Journal of Hydrology*, 66(1-4), 1–76. [https://doi.org/10.1016/0022-1694\(83\)90177-4](https://doi.org/10.1016/0022-1694(83)90177-4), 1983.
- 620 Olden, J. D., & Poff, N. L.: Redundancy and the choice of hydrologic indices for characterizing streamflow regimes. *River Research and Applications*, 19(2), 101–121. <https://doi.org/10.1002/rra.700>, 2003.
- Pendall, E., Griebel, A., Barton, C., & Metzen, D.: Cumberland Plain Flux Data Release 2024_v1. Version 2024_v1. Terrestrial Ecosystem Research Network. (Dataset), 2024.
- Peterson, T. J., & Fulton, S.: Joint Estimation of Gross Recharge, Groundwater Usage, and Hydraulic Properties within HydroSight. *Groundwater*, 57(6), 860–876. <https://doi.org/10.1111/gwat.12946>, 2019.
- 625 Peterson, T. J., Saft, M., Peel, M. C., & John, A.: Watersheds may not recover from drought. *Science*, 372(6543), 745–749, <https://doi.org/10.1126/science.abd5085>, 2021.
- Rungee, J., Bales, R., & Goulden, M.: Evapotranspiration response to multiyear dry periods in the semiarid western United States. *Hydrological Processes*, 33(2), 182–194. <https://doi.org/10.1002/hyp.13322>, 2019.
- 630 Running, S., Mu, Q., Zhao, M., & Moreno, A.: MODIS/Terra Net Evapotranspiration Gap-Filled 8-Day L4 Global 500m SIN Grid V061 (Dataset). NASA EOSDIS Land Processes Distributed Active Archive Center, Accessed April 30, 2024. <https://doi.org/10.5067/MODIS/MOD16A2GF.061>, 2021.
- Safeeq, M., & Hunsaker, C. T.: Characterizing Runoff and Water Yield for Headwater Catchments in the Southern Sierra Nevada. *JAWRA Journal of the American Water Resources Association*, 52(6), 1327–1346. <https://doi.org/10.1111/1752-1688.12457>, 2016.
- 635 Salazar-Martínez, D., Holwerda, F., Holmes, T. R. H., Yépez, E. A., Hain, C. R., Alvarado-Barrientos, S., Ángeles-Pérez, G., Arredondo-Moreno, T., Delgado-Balbuena, J., & Figueroa-Espinoza, B.: Evaluation of remote sensing-based evapotranspiration products at low-latitude eddy covariance sites. *Journal of Hydrology*, 610, 127786, <https://doi.org/10.1016/j.jhydrol.2022.127786>, 2022.
- 640 Schwab, M., Klaus, J., Pfister, L., & Weiler, M.: Diel discharge cycles explained through viscosity fluctuations in riparian inflow. *Water Resources Research*, 52(11), 8744–8755. <https://doi.org/10.1002/2016WR018626>, 2016.
- Silberstein, R., Lambert, P., Lardner, T., & Macfarlane, C.: Gingin Flux Data Release 2024_v1. Version 2024_v1. Terrestrial Ecosystem Research Network. (Dataset), 2024.
- 645 Stol, J., & Kitchen, M.: Tumberumba Flux Data Release 2024_v1. Version 2024_v1. Terrestrial Ecosystem Research Network. (Dataset), 2024.
- Teluguntla, P., Ryu, D., George, B., & Walker, J. P.: Multidecadal Trend of Basin-Scale Evapotranspiration Estimated Using AVHRR Data in the Krishna River Basin, India. *Vadose Zone Journal*, 12(3), vzj2012.0118. <https://doi.org/10.2136/vzj2012.0118>, 2013.

- 650 Van Dijke, A. J. H., Mallick, K., Schlerf, M., MacHwitz, M., Herold, M., & Teuling, A. J.: Examining the link between
vegetation leaf area and land-atmosphere exchange of water, energy, and carbon fluxes using FLUXNET data. *Biogeosciences*,
17(17), 4443–4457. <https://doi.org/10.5194/bg-17-4443-2020>, 2020.
- Wagener, T., & Gupta, H. V.: Model identification for hydrological forecasting under uncertainty. *Stochastic Environmental
Research and Risk Assessment*, 19, 378–387, <https://doi.org/10.1007/s00477-005-0006-5>, 2005.
- 655 Westerberg, I. K., Guerrero, J. L., Younger, P. M., Beven, K. J., Seibert, J., Halldin, S., Freer, J. E., & Xu, C. Y.: Calibration
of hydrological models using flow-duration curves. *Hydrology and Earth System Sciences*, 15(7), 2205–2227.
<https://doi.org/10.5194/hess-15-2205-2011>, 2011.
- Wilson, K., Goldstein, A., Falge, E., Aubinet, M., Baldocchi, D., Berbigier, P., Bernhofer, C., Ceulemans, R., Dolman, H., &
Field, C.: Energy balance closure at FLUXNET sites. *Agricultural and Forest Meteorology*, 113(1–4), 223–243,
[https://doi.org/10.1016/S0168-1923\(02\)00109-0](https://doi.org/10.1016/S0168-1923(02)00109-0), 2002.
- 660 Wondzell, S. M., Gooseff, M. N., & McGlynn, B. L.: An analysis of alternative conceptual models relating hyporheic exchange
flow to diel fluctuations in discharge during baseflow recession. *Hydrological Processes*, 24(6), 686–694.
<https://doi.org/10.1002/hyp.7507>, 2010.
- Wrede, S., Fenicia, F., Martínez-Carreras, N., Juilleret, J., Hissler, C., Krein, A., Savenije, H. H. G., Uhlenbrook, S., Kavetski,
D., & Pfister, L.: Towards more systematic perceptual model development: a case study using 3 Luxembourgish catchments.
665 *Hydrological Processes*, 29(12), 2731–2750. <https://doi.org/10.1002/hyp.10393>, 2015.
- Xu, Z., Zhang, Y., Zhang, X., Ma, N., Tian, J., Kong, D., & Post, D.: Bushfire-Induced Water Balance Changes Detected by
a Modified Paired Catchment Method. *Water Resources Research*, 58(11), e2021WR031013,
<https://doi.org/10.1029/2021WR031013>, 2022.
- 670 Yan, N., Tian, F., Wu, B., Zhu, W., & Yu, M.: Spatiotemporal analysis of actual evapotranspiration and its causes in the Hai
Basin. *Remote Sensing*, 10(2). <https://doi.org/10.3390/rs10020332>, 2018.
- Zhang, K., Kimball, J. S., Nemani, R. R., & Running, S. W.: A continuous satellite-derived global record of land surface
evapotranspiration from 1983 to 2006. *Water Resources Research*, 46(9), 1–21. <https://doi.org/10.1029/2009WR008800>, 2010.
- Zhang, K., Kimball, J. S., & Running, S. W.: A review of remote sensing based actual evapotranspiration estimation. In *Wiley
Interdisciplinary Reviews: Water* (Vol. 3, Issue 6, pp. 834–853). John Wiley and Sons Inc. <https://doi.org/10.1002/wat2.1168>,
675 2016.