

1 **Supplementary Material for**
2 **Hyper-Resolution Land Surface Modeling for Farm-Scale Soil**
3 **Moisture in India: Enhancing Simulations with Soil Vertical**
4 **Heterogeneity**

5 Vishnu U Krishnan¹, Noemi Vergopolan⁴, Bhupendra Bahadur Singh⁵, Jayaluxmi Indu^{1,3}, Lanka Karthikeyan^{1,2*}

6 ¹Center for Climate Studies, Indian Institute of Technology Bombay, Mumbai, 400076, India

7 ²Centre of Studies in Resources Engineering, Indian Institute of Technology Bombay, Mumbai, 400076, India

8 ³Department of Civil Engineering, Indian Institute of Technology Bombay, Mumbai, 400076, India

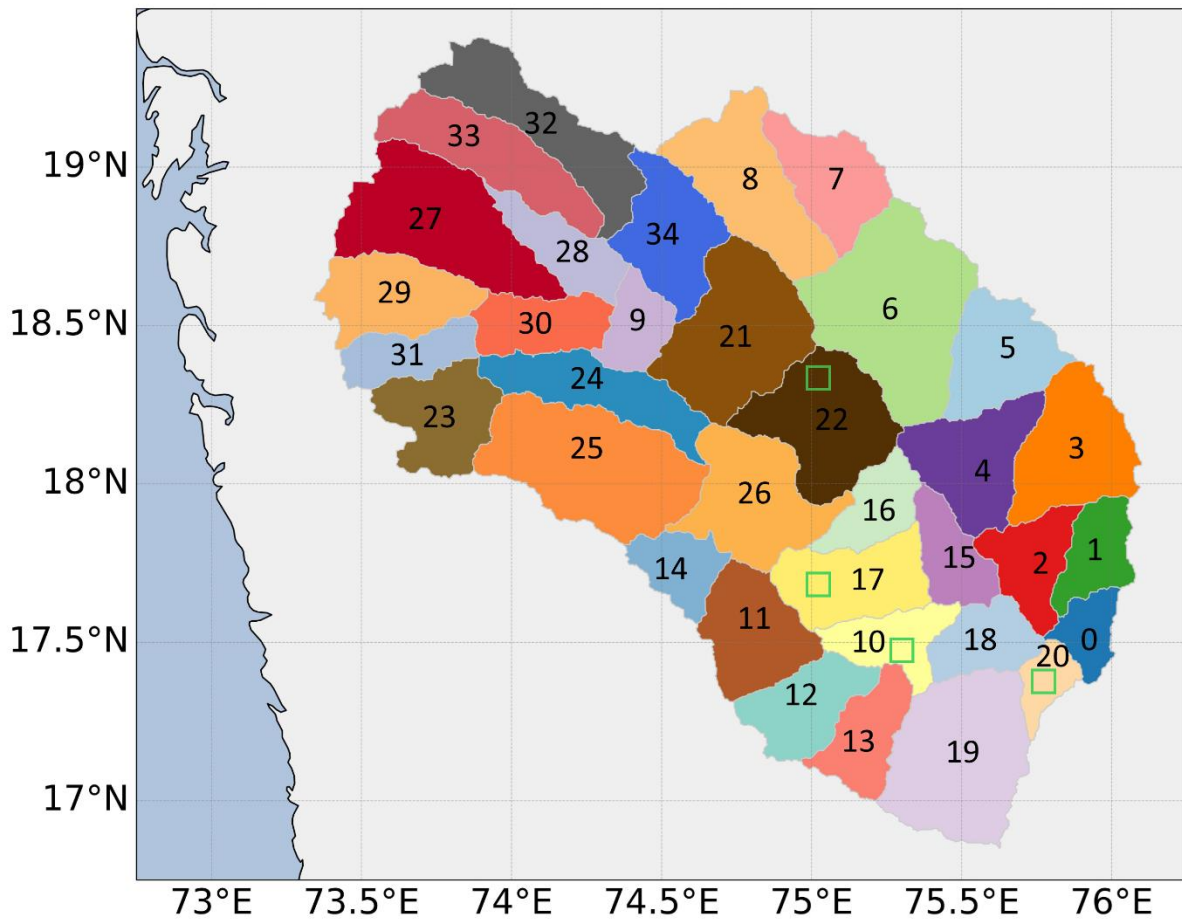
9 ⁴Rice University, Department of Earth, Environmental and Planetary Sciences, Houston, TX, USA

10 ⁵Centre for Climate Change Research, Indian Institute of Tropical Meteorology, Ministry of Earth Sciences,
11 Government of India, Pune, 411008, India

12 *Correspondance to: L. Karthikeyan (karthikl@iitb.ac.in)

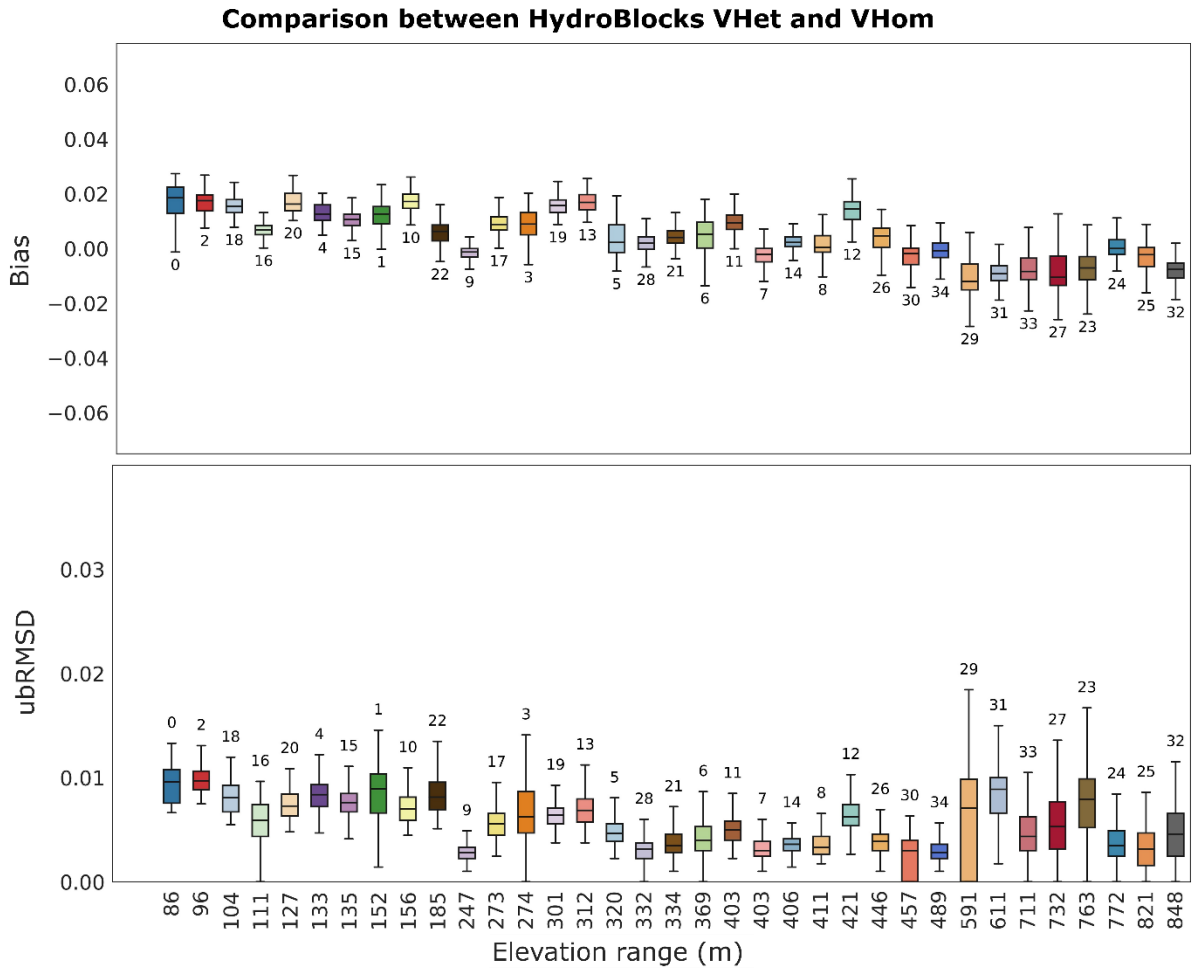
13 Contents:

14 Figures: S1-S5



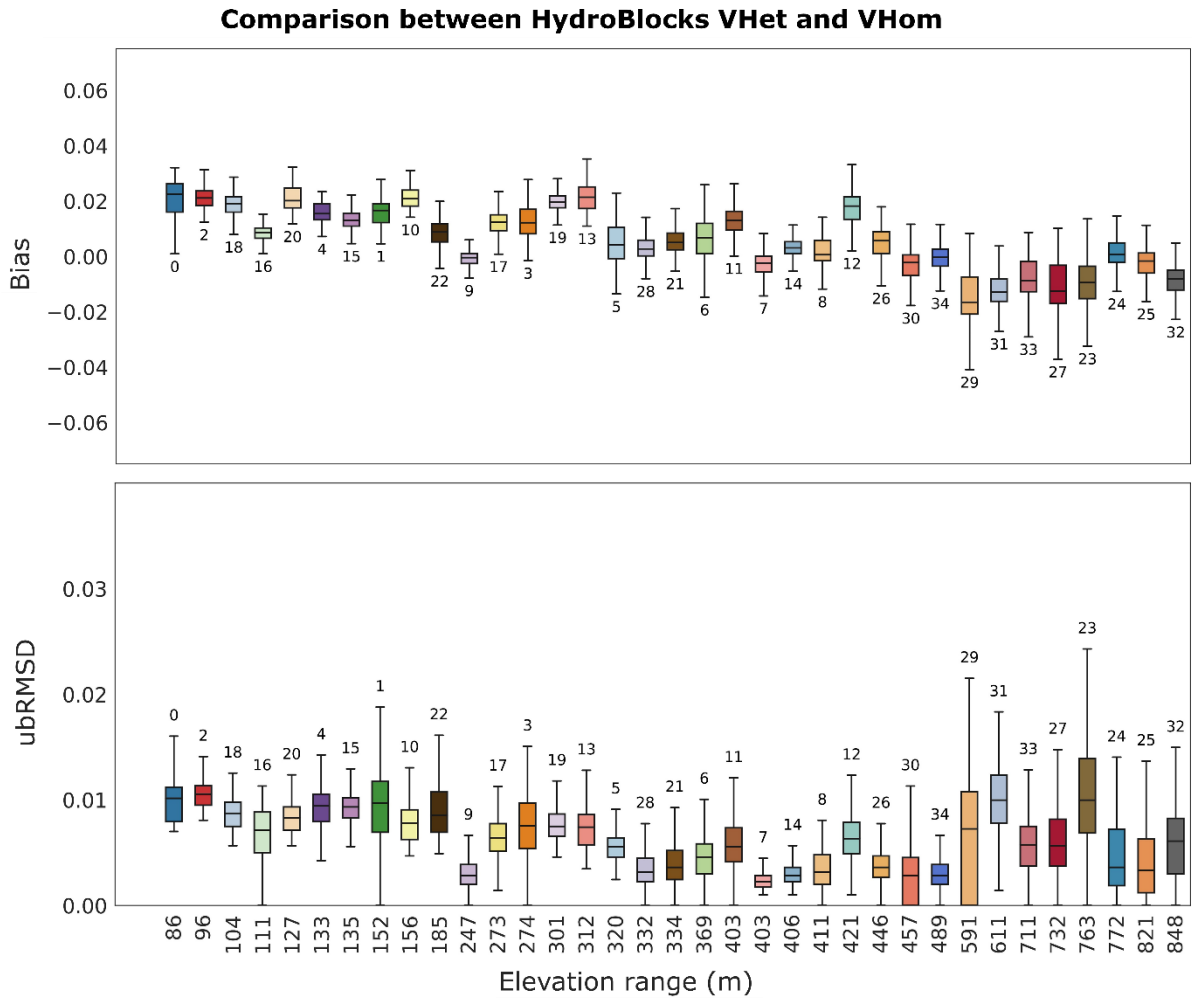
15

16 **Figure S1:** Upper Bhima basins with its watersheds. The green box in watersheds 10, 17, 20,
 17 and 22 corresponds to the location of SMAP pixels based on which soil moisture values from
 18 all datasets are considered for time series plots (Fig.3 and Fig.4). In the case of HydroBlocks,
 19 all grid cells falling within this grid cell (green box) are considered. The colour code for each
 20 watershed is also used to identify watersheds in boxplots (Fig.9-Fig.10 and Fig.S2-Fig.S5).



21

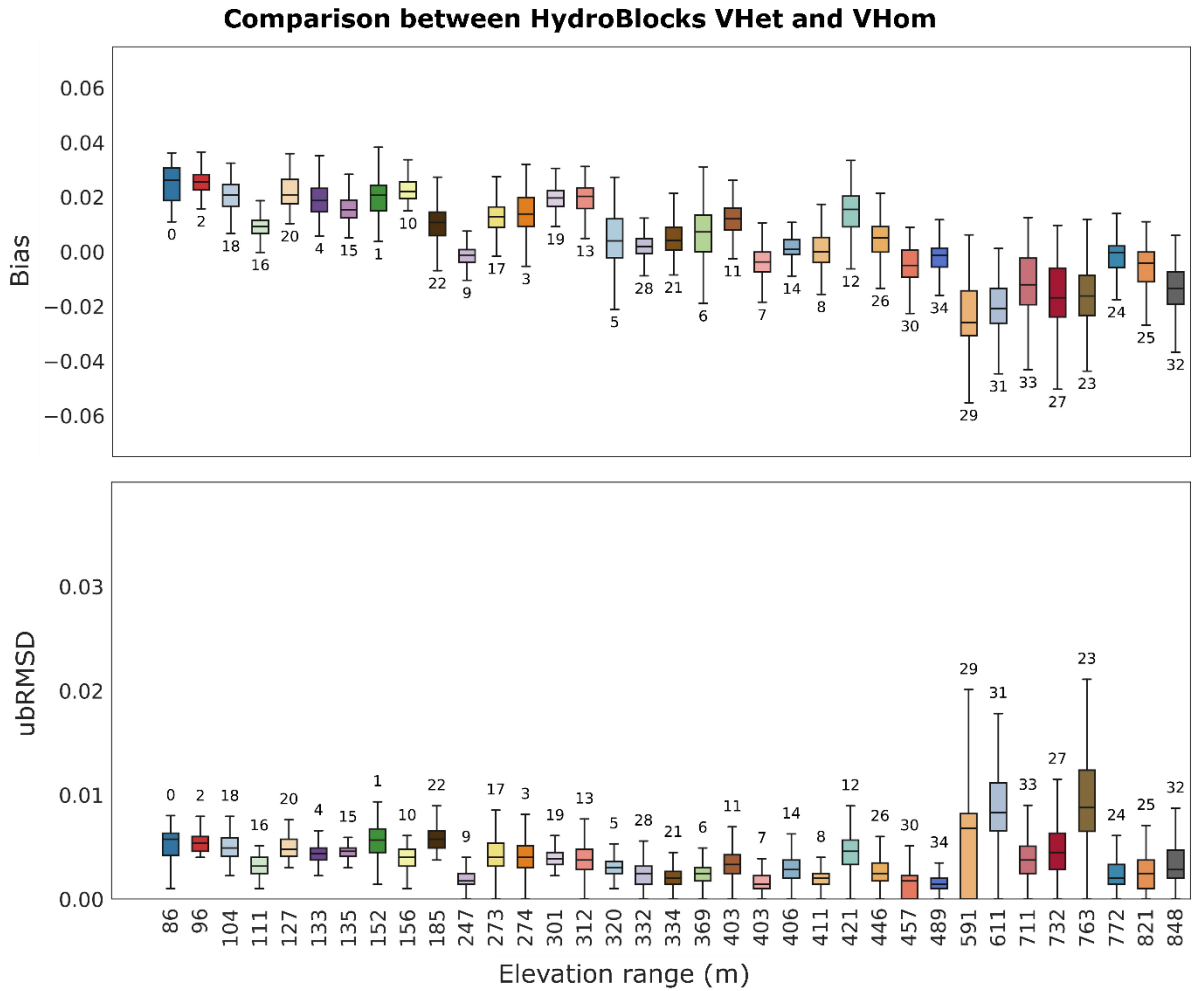
22 **Figure S2:** Box plot showing the comparison between HydroBlocks VHet and VHom model
 23 configurations in simulating soil moisture at 5-15 cm deep in terms of bias and ubRMSD



24

25 **Figure S3:** Box plot showing the comparison between HydroBlocks VHet and VHom model

26 configurations in simulating soil moisture at 15-30 cm deep in terms of bias and ubRMSD

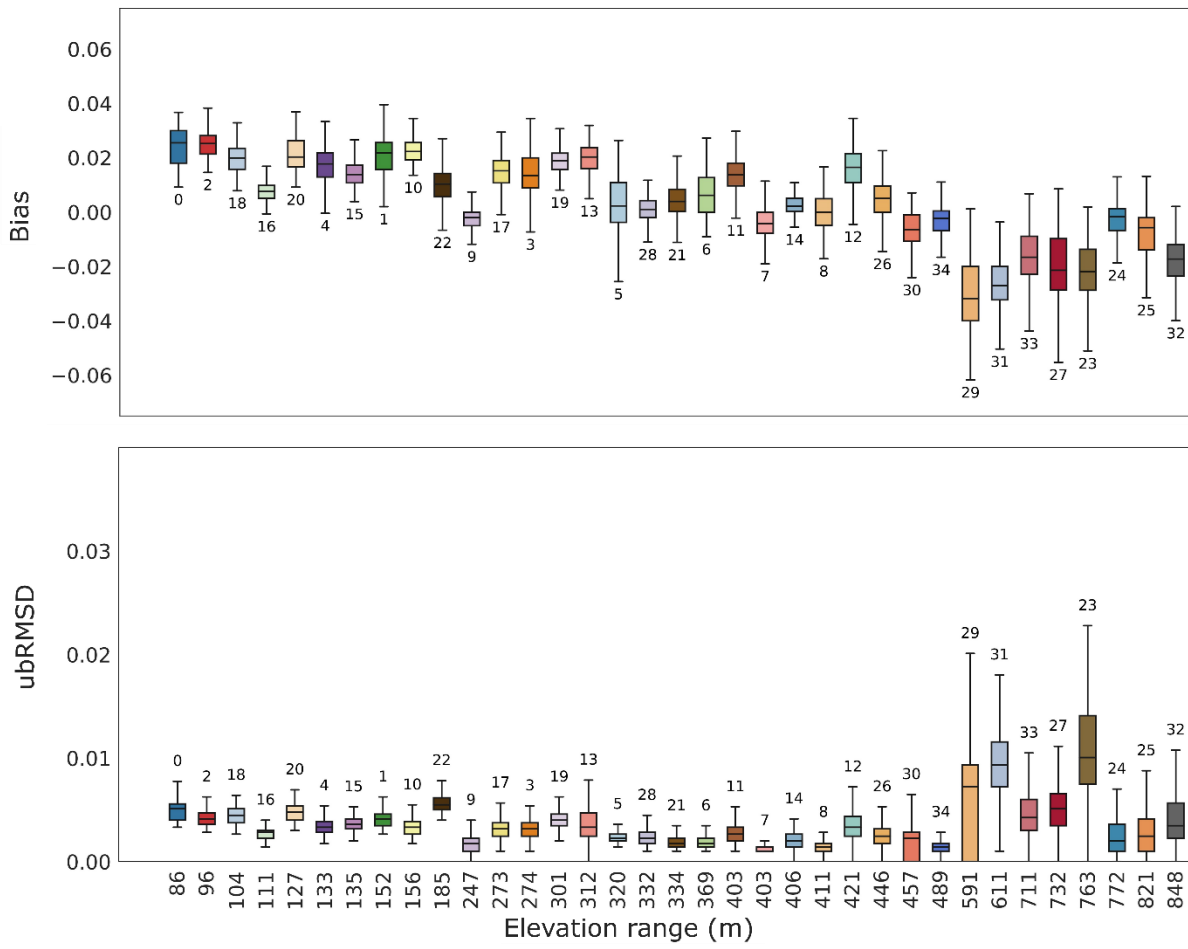


27

28 **Figure S4:** Box plot showing the comparison between HydroBlocks VHet and VHom model

29 configurations in simulating soil moisture at 30-60 cm deep in terms of bias and ubRMSD

Comparison between HydroBlocks VHet and VHom



30

31 **Figure S5:** Box plot showing the comparison between HydroBlocks VHet and VHom model

32 configurations in simulating soil moisture at 60-100 cm deep in terms of bias and ubRMSD.