

Dear Prof. Emmer,

Thank you very much for your valuable comments and suggestions, which were crucial in improving the manuscript (MS). The MS has been extensively revised based on each point of the reviewers' comments and suggestions (see point-to-point responses below), and the updated sections of the revised MS have been highlighted.

Thanks again to the reviewers for their valuable comments and suggestions. We hope you find the revised MS, revision notes in order. If you have any questions, please do not hesitate to contact us (qmm@mail.ynu.edu.cn or shiyin.liu@ynu.edu.cn). Many thanks for your time and consideration.

Response to Reviewer ,

This study approximates glacial lake volume from simplified geometric representations of 4 main sub-types of moraine-dammed lakes, considering glacier-lake relationship (connected vs. unconnected) and lake width to length ratio. The performance of this new approach is reportedly better than the performance of other methods (comparison in Table 5).

Explanation and revision: Thank you very much for your review. Over the past few months, I have been on medical leave due to health reasons and have not been able to work. First, I would like to sincerely apologize for the delay in responding to your comments.

However, this is not surprising if the authors used the dataset of 44 Himalayan lakes with measured bathymetries to determine their parameters (section 3.3), and then use the same data to compare the performance of various methods (section 4.2). I hope I understood this correctly since the validation procedure is not described clearly in methods section. If I get it correctly, such performance evaluation is weak. A proper validation would require two independent datasets (training and testing).

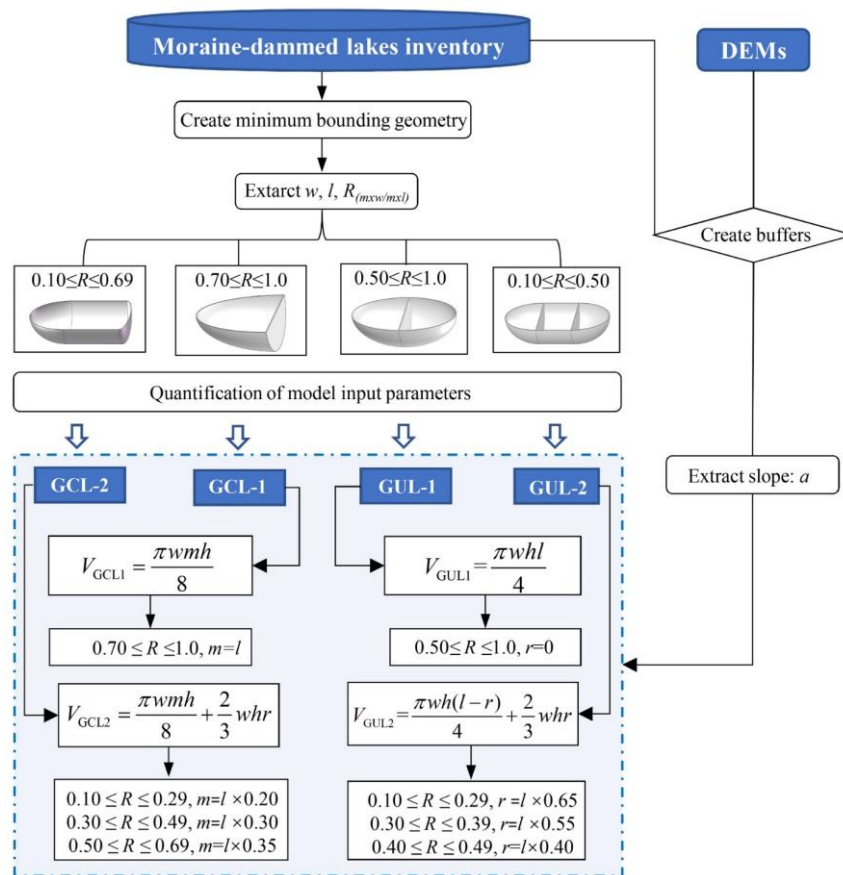
Explanation and revision: Thank you very much for your questions and suggestions. The main reason for the misunderstanding is my lack of logical clarity and precision in wording, for which I sincerely apologize for the confusion caused.

First, regarding the determination of model input parameters, we have provided a detailed explanation in Section 3.3 of the paper. The unknown parameters in the model are w , l , a , m , n , and r , all of which can be extracted from glacier lake boundaries and DEM data. For example, we measured w and l by drawing a minimum rectangle bounding box with length l encompassing the MDL (see Figure 4). To determine the slope a -value surrounding the MDL, we used a DEM with a spatial resolution of 12.5 m in the model computation. The detailed extraction steps can be found in Lines 230-238. Determining the appropriate thresholds for m , n , and r for different MDL types is challenging, as methods for extracting these parameters vary depending on the MDL types. In other words, due to the different types of glacial lakes, the values of m , n , and r vary. Additionally, these values change with the size of the glacial lake. To enable the model to automatically identify and calculate the corresponding m , n , and r for each glacial lake, we need to define a threshold. Based on the geometry of the glacial lake, we established a proportional relationship (Table 3) between m , n , r , and the glacier lake length (l). This proportional relationship is empirically defined and essentially represents a geometric segmentation of the glacial lake. The lake is divided into three sections, and the volume of each section is calculated separately. The total water storage of the lake is then obtained by summing the volumes of these three sections.

Therefore, we first used measured data from four glacial lakes to validate whether this proportional relationship was appropriate. After validation, we found that the empirically derived proportional relationship performed well. Hence, this study adopts this proportional relationship as the standard for the model's input parameters. No calibration or adjustments were made during this process. We have added the following explanation in lines 243 to 248 of the original text: "Based on the geometry

of the glacial lake, we established a proportional relationship between m , n , r , and the glacier lake length (l). This proportional relationship is empirically defined and essentially represents a geometric segmentation of the glacial lake. The lake is divided into three sections, and the volume of each section is calculated separately. The total water storage of the lake is then obtained by summing the volumes of these three sections."

To sum up, there is no parameter that needs to be trained or optimized, all parameters can be measured through the glacial lakes and their surrounding topology. The validation of the model is based on an independent dataset. The primary data and workflow for determining the parameters in the model are shown in the figure below.



Regarding the validation section you mentioned, I did not clearly explain the entire rationale and process for model validation. Therefore, based on the suggestions from

all reviewers, I have added a new subsection in the methodology section: 3.4. Model validation and application.

3.4. Model validation and application

In this study, we initially validated our parameterization using bathymetric measurements from four representative glacial lakes surveyed between 2020 and 2021. Subsequently, we combined the data from these four lakes with the remaining six glacier lakes we measured, along with water storage data from 34 MDLs obtained from relevant literature sources (see Appendix A for details). This resulted in a dataset of 44 lakes, which was used to compare and validate the performance of our model against other existing methods.

A glacier lake inventory of the High Mountain Asia region, published by Wang et al, 2020 was used as input data for the model application to assess the water storage of moraine-dammed lakes in this region. Notably, Wang's glacier lake inventory provides a detailed classification of GCL and GUL, which has been internationally recognized. It is important to note that in his dataset, GUL refers specifically to glacier lakes that do not contact glaciers, which may not necessarily all be moraine-dammed lakes. We conducted a thorough review and made revision to ensure that we retained only those GULs classified as moraine-dammed lake.

And the whole validation procedure is even more confusing since only 4 bathymetries are mentioned as input data for model validation in section 4.1. This is statistically not convincing, considering 4 sub-types of moraine-dammed lakes and number of parameters that are used. Further, a subset of 12 lakes is used in section 5.1 while 4 and 10 lakes are mentioned in Conclusions. This needs to be clarified.

Explanation and revision: Thank you very much for your review. We have added the main approach for model validation and comparison with other methods in Section 3.4 of the methodology. The four and ten lakes mentioned in the conclusion refer to the total of ten glacier lakes we measured in the field, of which four were used to validate the model's accuracy. These ten lakes, combined with 34 data points obtained

from the literature, formed a dataset used to compare and validate the effectiveness of our model against other methods.

The application section 4.3 is not linked to the methodology. It is not clear what was done and whether (and how?) all 13,166 lakes mapped by Wang et al. (2020) were classified according to the classification scheme used in this study and whether all these are moraine-dammed lakes?

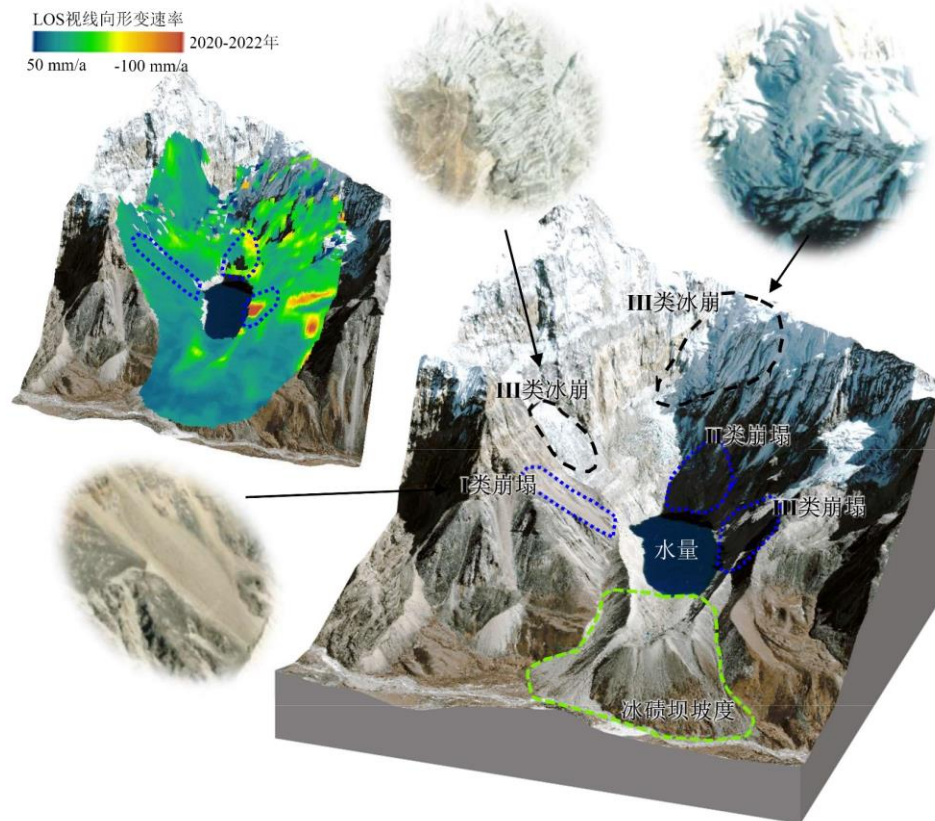
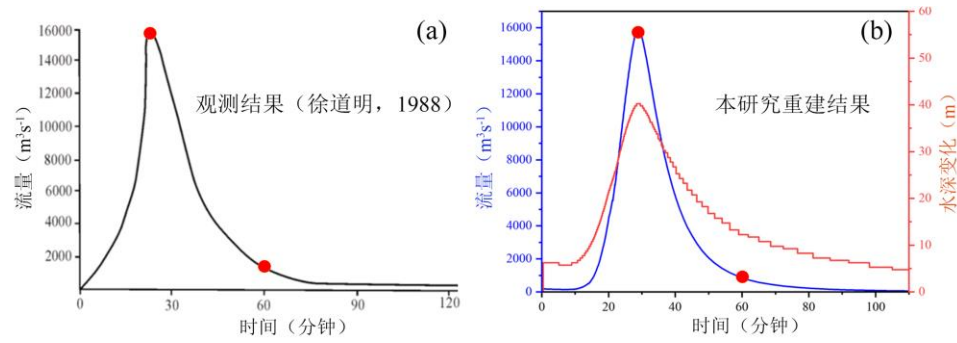
Explanation and revision: Thank you very much for your review. We have added Section 3.4 of the methodology to link model application. In this study, we used Wang's data to estimate the water storage of moraine-dammed lakes in the High Mountain Asia region. His dataset has rigorously classified GCL and GUL. It is important to note that in his dataset, GUL refers specifically to glacier lakes that do not contact glaciers, which may not necessarily all be moraine-dammed lakes. We conducted a thorough review and made revision to ensure that we retained only those GULs classified as moraine-dammed lake.

Wang, X., Guo, X., Yang, C., Liu, Q., Wei, J., Zhang, Y., Liu, S., Zhang, Y., Jiang, Z., Tang, Z., 2020. Glacial lake inventory of high-mountain Asia in 1990 and 2018 derived from Landsat images. *Earth System Science Data*, 12(3), 2169-2182.

At the end, the importance of this improvement in lake volume estimation for GLOF studies (the main justification throughout the study) is unclear unless other (and much larger) sources of uncertainties in GLOF studies (e.g, coming up with realistic scenarios of GLOF triggers and GLOF mechanism, plausible breach development and dimensions, associated shape of the outburst hydrograph curve, % of lake volume release, etc.) are addressed.

Explanation and revision: Your understanding is indeed correct, and we share the same perspective. In my doctoral dissertation, we place significant emphasis on the flow processes at the dam breach, as well as the triggering factors for moraine-dammed lake outburst floods, such as ice falls, snow avalanches, and

landslides entering the lake, which generate waves and ultimately lead to the collapse of the dam. The following figures depict the reconstructed outburst flood flow process of the Cirenma Co (which experienced an outburst in southern Tibet in 1981), as well as schematic diagrams of external triggering factors for moraine-dammed lakes, such as ice falls, snow avalanches, and landslide hazard areas.



QI Miaomiao, LIU Shiyin, GAO Yongpeng, et al. Water volume changes and assessment of potential outburst triggers for glacial lakes in the Nidu Zangbo basin,

southeastern Tibet: a case study of Tanong Co [J] . Journal of Glaciology and Geocryology, 2023, 45 (4): 1205-1219.

L39-40: this definition is artificial; moraine-dammed lakes not only trap meltwater (how about water from liquid precipitation?); debris at or near the termini of glacier doesn't necessarily need to be a moraine

Explanation and revision: Thank you very much for your explanation. We have made appropriate revisions to the sentence, as shown below:

L39-40: "Moraine-dammed glacial lakes (MDLs) trap meltwater from snow, ice and liquid precipitation within basins behind dams at or near the termini of glaciers."

L53: ice- or landslide-dammed lakes may be unstable too

Explanation and revision: We apologize for the lack of clarity in our previous statement. Here, we revised the sentence as follows:

L54-55: "MDLs are prone to sudden failure due to the instability of the dam structure, releasing parts of the impounded water storage in catastrophic floods (Westoby et al., 2014)....."

L72-74: the peak discharge is rather linked to the magnitude of triggering event than lake volume

Explanation and revision: Thank you very much for your correction, our previous wording was not precise enough. In the revised manuscript, we have made the following adjustments:

L74-77: "The peak discharge during GLOFs is a commonly used parameter for assessing flood hazards and can be derived from empirical formulas related to the lake volume."

L77: how much was that?

Explanation and revision: The Sangwang Tsho experienced disastrous outbursts on July 16, 1954, with peak discharges of approximately 10,000 m³/s and a total lake volume of 71.6×10^6 m³ (Patel et al., 2017; Veh et al., 2019). To ensure clarity, we have included specific values in the revised manuscript.

L79-81: “The Sangwang Tsho experienced disastrous outbursts in July 16, 1954, featuring one of the highest reported flood water storages (71.6×10^6 m³) and discharges ($\sim 10,000$ m³·s⁻¹) (Patel et al., 2017; Veh et al., 2019).....”

Patel, L.K., Sharma, P., Laluraj, C., Thamban, M., Singh, A., Ravindra, R., 2017. A geospatial analysis of Samudra Tapu and Gepang Gath glacial lakes in the Chandra Basin, Western Himalaya. *Nat. Hazards* 86, 1275–1290.

Veh G , Korup O , Walz A .Hazard from Himalayan Glacier Lake Outburst Floods[J].*Proceedings of the National Academy of Sciences*, 2019, 117(2).DOI:10.1073/pnas.1914898117.

L126-127: this indication is not clear since the ratio is dimensionless (really a width of 1 m?)

Explanation and revision: In our original text, the following description was provided: “According to the glacial lake inventory, the R value for glacial lakes in High Mountain Asia ranges from 0.1 to 1.0. When R is less than 0.1, it indicates the presence of glacial lakes with lengths exceeding 10 meters but widths of approximately 1 meter. **However, in reality, glacial lakes with such dimensions are practically non-existent.**”

Therefore, our intended meaning here is that, based on the glacier lake inventory data, the R-values fall between 0.1 and 1.0, which is an objective fact. Since glacier lakes with R-values less than 0.1 do not exist, the subsequent selection of thresholds for glacier lake classification based on R is set within the range of 0.1 to 1.0.

To avoid potential misunderstandings during the reading process, we have revised the sentence as follows:

L130-132: “If R is less than 0.1, it would indicate the presence of glacial lakes with lengths exceeding 10 meters but widths of approximately 1 meter. However, in reality, glacial lakes with such dimensions are practically non-existent.....”

Fig. 2: please only display parameters that are further use (remove slope beta, points f and g)

Explanation and revision: We have revised the Figure 2.

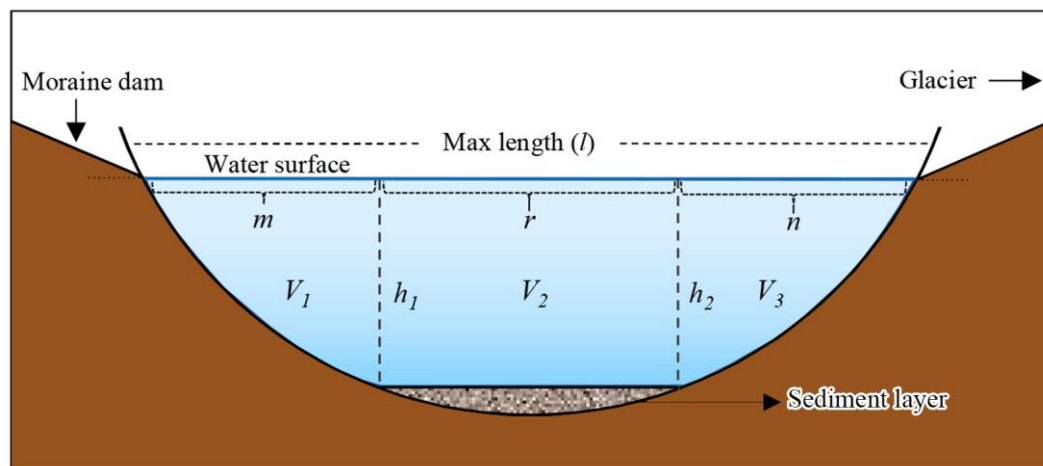


Table 2: please clarify whether alpha is mean or median slope (as mentioned in Table 3); what is the influence of DEM acquisition date on alpha estimation?

Explanation and revision: I am very sorry for the misunderstanding caused by the lack of rigor in my expression. The slope here refers to the median slope (see figure below). The date of DEM acquisition has a certain influence on the slope, and the accuracy of dem also has an influence on the slope. However, considering that the degree of such influence is relatively small and the data of the same period are used in the assumptions of the modeling in this study, the influence is classified as the error of the model itself.

Table 4: what is simulated lake depth – a mean? And what do the two values in error column refer to?

Explanation and revision: The simulated water depth here refers to the mean depth. The data on the left side of the error column has not been updated, while the right side indicates the relative error between the simulated mean and the measured mean depth. In the revised manuscript, we carefully reviewed all the data and added relevant descriptions, as shown in the updated Table 4.

Table 4 Validation results of the mathematical model.

Name	Year of survey	Type	Area (km ²)	Lake depth (m)			Water storage (10 ⁶ m ³)		
				Observed (max/mean)	Simulated (mean)	Relative error	Observed	Simulated	Error
Bienong Co	2021	GCL2	1.16	181/74	109	+47%	102.00	95.689	-6%
Maqiong Co	2021	GCL2	0.22	34/16	17	+6%	3.325	3.581	+7%
Tanong Co	2021	GUL2	0.13	29/15	17	+13%	1.821	1.915	+5%
Jialong Co	2020	GUL2	0.55	135/62	67	+8%	37.530	37.952	+1%

Table 5: some of the lakes (e.g. Imja Tsho or Jialong Co) are represented more than once. This may influence performance evaluation; the areas of Jialong Co do not match between Table 4 and 5)

Explanation and revision: Thank you very much for your thorough review; we are deeply impressed by your rigorous approach. Some lakes appear multiple times in Table 5 because they were measured by different teams in different years. We have included each instance as an independent data point in our sample set. In Tables 4 and 5, the area of Jialong Co measured by our team is 0.55 km², which I mistakenly

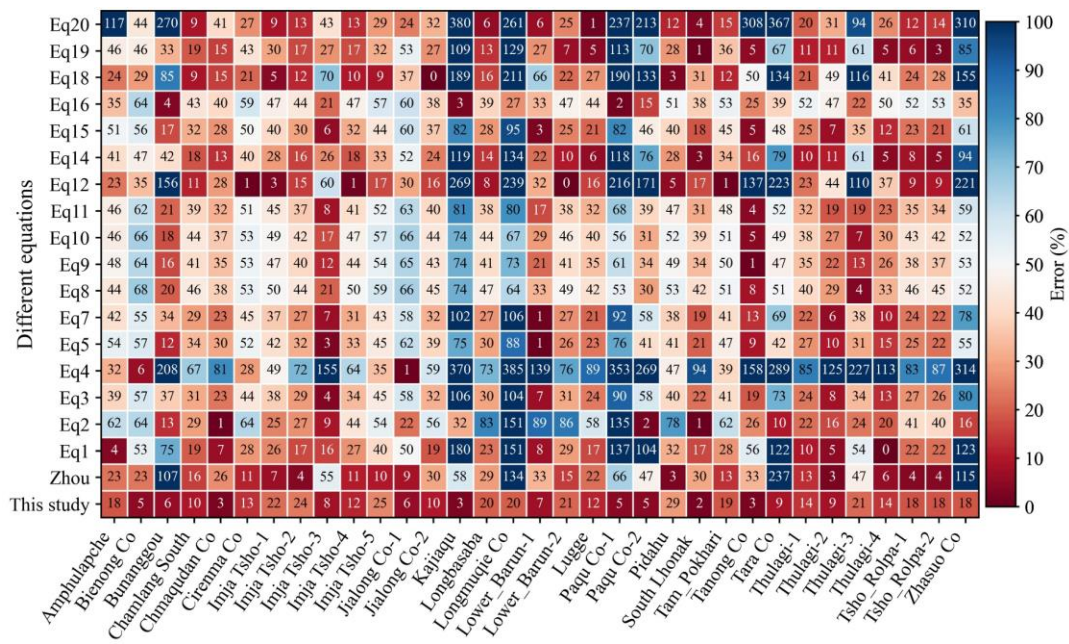
recorded due to an oversight. Thank you for pointing this out. We have made the correction and reviewed all the data.

L313-315: R^2 will always be very high (>0.95) for most of the methods

Explanation and revision: Judging solely from the goodness of fit between the model-derived data series and the measured data, the values are indeed not low. Therefore, this study employs multiple error evaluation methods to compare the accuracy of different approaches.

Figure 8: I don't understand what is the meaning of these box plots unless it is connected to measured data? The XY graph type (inset) is way more meaningful and the authors may consider showing a panel with performance of all methods in XY graphs.

Explanation and revision: I used box plots to represent the range of water storage estimates for each method, highlighting the differences between various approaches. Figure 8a shows significant variations among the methods, where it is clearly evident that some methods yield much larger estimates than our model, potentially resulting in order-of-magnitude discrepancies in the estimated water storage for individual lakes. The results from our model, by contrast, show a more concentrated distribution compared to the other methods. Figure 8b presents a comparison between our model's estimates and the measured values, specifically demonstrating the model's strong performance. We also experimented with other visualizations to compare the different methods, but overall, none were as effective as the box plot.



L339: the scaling up of the lake volume estimation procedure to the whole HMA is not properly described in methods.

Explanation and revision: We have carefully considered your suggestion and ultimately decided that no new content needs to be added to the methodology section. The main reasons are as follows: the primary focus of this study is the development of a new model, followed by validation of its accuracy using measured data, comparison with other methods, and finally, application of the new model for water volume estimation. Therefore, the estimation of water storage in glacial lakes across the High Mountain Asia region is conducted using the new model we developed. This has been explained in lines 348 to 349, as follows: "Therefore, this study employs our model to provide preliminary estimates of glacial lake water storages in the study area."

L367-376: this seems bit out of the context. Clearly, large lakes are frequently considered risky since lake area / volume is commonly used as GLOF susceptibility criteria.

Explanation and revision: Your concern has brought this issue to our attention. After considering the feedback from all reviewers, we have deleted this section in the revised manuscript to maintain coherence in the context.

~~L367-376: At least 88 MDLs had caused 122 lake outburst floods in this area before 2022 (Veh et al., 2019, 2022; Zheng et al., 2021a) (Figure 10a), constituting approximately 44% of the total GLOF count in High Mountain Asia. Zheng et al. (2021a) identified 280 MDLs within the study area with extremely high potential for outburst floods. Our model suggests that although the number of MDLs with a higher risk of outbursts is less than one fifth of the total, their total water storage in 2022 exceeds 60% of the total water storage of MDLs in the study area. Furthermore, from 1990 to 2022, the total water storage of these high-risk MDLs increased from $2,019 \pm 469 \times 10^6 \text{ m}^3$ to $5,622 \pm 596 \times 10^6 \text{ m}^3$, representing a substantial growth of 178%, with an annual expansion rate of approximately $5.6\% \cdot \text{a}^{-1}$. This result is valuable as it enables practitioners to prioritize and focus their attention on areas where the largest flood water storages are expected.~~

L375: the annual expansion rate $+5.6\% \text{ a}^{-1}$ over 32 years does not correspond to a reported growth of 178% over this period

Explanation and revision: I sincerely apologize for my imprecise wording, which caused your misunderstanding. We have revised the sentence to: “Furthermore, from 1990 to 2022, the total water storage of these high-risk MDLs increased from $2,019 \pm 469 \times 10^6 \text{ m}^3$ to $5,622 \pm 596 \times 10^6 \text{ m}^3$, representing a substantial growth of 178%, with average annual expansion rate of approximately $5.6\% \cdot \text{a}^{-1}$.”

L395: they are not flat (as documented in your Fig. 10)

Explanation and revision: Thank you for your check, which made me realize that my wording was not precise enough. What I intended to convey is that the bottom of moraine-dammed lakes is not always a smooth parabolic shape. Therefore, we have revised the sentence to: "The underwater landforms of some MDLs are not always a smooth parabolic shape."

L433: what is MDLVL?

Explanation and revision: Thank you very much for pointing out the issue. We have reviewed and revised the entire text, changing "MDLVM" to "our model."

L453: the term “outburst water storage” is not appropriate. What is estimated here is a lake volume / lake water storage. It doesn’t have much to do with outburst / outburst volume.

Explanation and revision: Thank you very much for your guidance. We have corrected the erroneous expression. Please review the revised sentence in Line : “Water storage plays a crucial role in predicting peak discharge of GLOFs.”

To sum up, this study can help to improve moraine-dammed lake volume estimates in HMA. However, especially the validation process needs to be clarified and treated in statistically convincing way. I recommend major revisions.

Explanation and revision: Thank you very much for the opportunity to revise the manuscript. I have made point-by-point revisions in accordance with all the reviewers' comments and provided detailed clarifications on the areas where you had questions. Thank you again!