

Reinforce lake water balance components estimations by integrating water isotope compositions with a hydrological model

Nariman Mahmoodi^{1,2*}, Hyoun-Tae Hwang^{3,4}, Ulrich Struck⁵, Michael Schneider¹, Christoph Merz^{1,2}

¹ Hydrogeology Group, Institute of Geological Sciences, Freie Universität Berlin, Berlin, Germany

² Lowland Hydrology and Water Management Group, Leibniz Centre for Agricultural Landscape Research (ZALF), Müncheberg, Germany

³ Aquanty, Inc., Waterloo, Ontario, Canada

⁴ Department of Earth and Environmental Sciences, University of Waterloo, Waterloo, Ontario, Canada

⁵ Museum für Naturkunde, Leibniz-Institut für Evolutions- und Biodiversitätsforschung, Berlin, Germany

*Corresponding author, email: n.mahmoodi@fu-berlin.de

Abstract:

Accurate estimation of water balance components of groundwater-fed lakes, including subsurface inflow and actual evaporation from lakes, poses a complex task for hydrologists employing hydrological models. In this study, an approach that integrates isotope analysis with hydrological modeling is used to improve the representation of groundwater-surface water interactions. While based on one year of sampling, this method provides direct observational data that can complement hydrological models and serve as a validation tool for water balance estimates. The approach, based on measurements of the stable isotopes (Oxygen-18: ^{18}O and Deuterium: ^2H) enables the quantitative estimation of the individual water flux and evapotranspiration rates. An isotope-mass-balance model was used to quantify lake water balances over a one-year sampling period. The approach is based on the global relationship between the $\delta^{18}\text{O}$ and $\delta^2\text{H}$ values of the precipitation and kinetic isotopic fractionation in the lake water during evaporation. Assuming that the lake is hydraulically connected to the groundwater the isotope mass-balance model accounts for the quantification of the evaporation rate considering the groundwater inflow compensating for the evaporation loss. The study addresses the model-based quantification of groundwater inflow and evaporation losses of a young glacial groundwater lake (Lake Gross Glienicke (GGS), southwest of Berlin in the Havel catchment), over the period from 2015 to 2023 with the integrated hydrological model HydroGeoSphere (HGS). Utilizing the isotopic mass balance model, HydroCalculator, under

steady-state hydrologic regime conditions, the evaporation-to-inflow (E/I) ratio is determined for the period of one year spanning August 2022 to September 2023. Employing the fully integrated hydrological model, calibrated and validated under monthly normal transient flow conditions from 2008 to 2023 for the lake catchment, subsurface and groundwater inflows to the lake are calculated and compared to the calculated E/I ratios based on the isotopic measurement of the lake water. Isotopic signatures confirm the lake's flow-through conditions. The calculated E/I ratio for GG Lake is around 40%. The calculated evaporation for the years 2022 and 2023, within the isotopic mass balance model framework, aligns well with the evaporation from the lake calculated by the HGS model. The change in the ratio of evaporation to inflow (E/I) leads to a significantly improved estimation of evaporation rates after correction for temperature fluctuations and inflow data from previous years (2015-2021). With a correlation coefficient of 0.81, these revised values show a high degree of agreement with the evaporation rates predicted by the HGS model for the corresponding years. Despite the uncertainties associated with the analysis of the water isotope signature, its integration into the hydrological model serves as a validation of the hydrological model calculations of the water balance components.

Keywords: Lake Water-Groundwater Exchange, Water Stable Isotopes, HydroGeoSphere, Evaporation Losses

1. Introduction

Hydrological models have undergone substantial advancements in the past decades (Singh, 2018; Herrera et al., 2022), but still face unsolved problems and uncertainties in depicting hydrological processes (Liu and Gupta, 2007; Renard et al., 2010). Recently, a wide range of monitoring and modeling techniques has emerged for investigating water fluxes at different scales (Fekete et al., 2006, Windhorst et al., 2014). However, limitations in the hydrological model parametrizations lead to the insufficient quantification of water flows, and therefore a quantitatively and qualitatively incorrect interpretation of hydrodynamic processes and, as a result, inaccurate assumptions for water management purposes (Müller Schmied et al., 2014). Improving the informative value of the models, representing complex hydrological processes is needed to enhance the applicability of the models for future estimations and scenario analyses. The optimal adaptation of hydrological models to real conditions for a precise determination of water balance components is often considered unattainable within the current

technical possibilities due to the overwhelming amount of work associated with field measurements. Particularly, the quantification of groundwater-surface water exchange using the hydrological models faces pronounced uncertainties in considering geostructural heterogeneities in different scales. To validate the model results, arduous monitoring surveys are required to measure, for example, the groundwater-surface water interactions along rivers' banks or lakes' shorelines (Partington, 2020). Hence, a combination of hydrogeological modeling, field measurements, and innovative isotopic-based studies along with appropriate linkage between these approaches will be a concrete way to achieve optimal parameterization and validation capabilities for modeling hydrological processes in complex geohydraulic systems.

Recent studies show that the stable water isotope mass balance on different water sources, together with the numerical models, improve the model performance in simulating the interactions between groundwater and surface water (e.g., Jafari et al., 2021). The isotopic insights enhance hydrogeologists' efforts to calculate water balance components such as the groundwater inflow to the surface water resources and water losses due to evaporation (Skrzypek et al., 2015; Vyse et al., 2020). This method is based on the fractionation of heavier isotopes caused by evaporation from surface water, provoking a disparity in isotopic composition between groundwater and surface water. However, a key limitation is that the stable water isotope mass balance reflects only the conditions during the sampling period, making its results non-transferable to other time periods. While the method integrates over the lake's water residence time, it may not fully capture transient groundwater-surface water exchanges, especially if the lake is stratified and not well mixed. Although water isotope analyses can track changes in water fluxes over specific time intervals (e.g., monthly), capturing spatial groundwater-surface water exchanges requires a large number of samples. The challenge lies in the sampling effort needed to sufficiently describe the spatial and temporal dynamics of the exchange. These limitations can be mitigated by integrating water isotope analyses with physically based hydrogeological models.

Water isotope data analyses are helpful techniques to evaluate the model's performance. For instance, Ala-Aho et al. (2015) assess the hydrogeological model performance by comparing the simulated groundwater inflow to lakes in the middle of Finland with calculated recharge by analysing water isotope data.

In the northeast of Germany, groundwater levels and landscape runoff have largely been in decline for over three decades (Lahmer 2003; Germer et al., 2011; Merz and Pekdeger, 2011);

regional climate studies suggest further decreases over the next decades (Gerstengarbe et al., 2003, 2013). Effective water resource management for this region requires a thorough assessment of possible adaptations and measures to mitigate severe consequences, such as declining groundwater heads and surface water levels and water quality. In particular, developing integrated management schemes for groundwater-dependent ecosystems such as lakes under climate changes, requires a more comprehensive understanding of hydrological dynamics and a better estimation of ecologically relevant water fluxes.

This study aims to address these challenges by developing an approach to capture the complex interactions within the groundwater–surface water system. The proposed approach enhances the parameterization of hydrological models and improves the validation of water balance components, ultimately contributing to more effective water resource management under changing climatic conditions.

2. Materials and methods

2.1 Study area

Lake Gross Glienicke (GGS) with an area of 0.59 km² and a maximum depth of 10 meters is located in Berlin-Brandenburg state, Germany (30–87 m.s.l., Fig. 1a). It is a young glacial lowland lake that is exclusively fed by groundwater. The lake's water levels have shown significant seasonal variability (around 0.4 m) over recent decades (Fig. 2). Since 2014, the lake's water level has faced severe drops (Fig. 2) around 1.28 meters. GGS as a seepage lake (lake without an outlet) is surrounded by low-density residences (Fig. 1). In the north and northwestern areas, grassland and farmland are the dominant surface cover, while forest covering approximately 50% of the catchment, is the predominant land cover in the catchment overall and directly overlying sandy soils. The aquifers are recharged in the Döberitzer-Heide region where fine sandy soil with a hydraulic conductivity ranging from 8×10^{-5} to 12×10^{-5} m/s can be found according to the lab analysis. The root zone depth ranges from the surface to 30 cm in grasslands and farmlands and up to 3 m in forests. Although forest roots extend deep, direct plant water uptake from groundwater is not possible due to the thick (> 5 m) unsaturated zone. The groundwater monitoring measurements illustrate a smooth hydraulic head gradient from west to east, highlighting the connections between the lake and the aquifer recharge area from the Döberitzer-Heide region (Fig. 3). On the east side of the lake catchment, a regulated river, the Havel, flows from northeast to southwest. Continuous stratigraphic units have been

delineated throughout the lakes' catchment based on the geological features information collected from 480 boreholes (Fig. 2, The Federal Institute for Geosciences and Natural Resources - BGR 2022). The geology in the study area is formed by a series of layered Pleistocene and Tertiary sediments that are approximately 150 to 200 m thick, with a lower confining bed of Oligocene marine Rupel clay. The series consists of a complex interplay of glacial deposits from the Pleistocene and permeable marine and limnic sediments of the Upper Oligocene and Miocene. The series can be divided into an upper unconfined aquifer system of shallow Weichselian and late Saalian sediments. In general, a shallow (i.e., 5 to 10 m) unconfined aquifer is separated from the lower confined aquifer by a 15 to 20 m thick layer of Saalian sediments. The confined and unconfined aquifers consist of multiple permeable sediment layers partially disconnected by layers of till, but still hydraulically connected. The hydraulic connection to the lakes is mainly controlled by these aquifer layers. Underneath these sediments is a thick confined aquifer system of the early Saalian and Elster layers, and Upper Oligocene and Miocene sediments.

The first shallow, unconfined aquifer in the catchment area is characterized by highly permeable glacial sand and gravel deposits (Holocene and Weichselian). A till layer (Weichselian age, Fig. 3) is found in the underlying layers. The till is underlain by late Warthe sandy sediments forming the second aquifer.

2.2 Available meteorological data

From 1990 to 2023, radar-based CER v2 data (The Central Europe Refined Analysis version 2, details on the data pre- and post-processing are provided by Jänicke et al., 2017) generated a mean daily temperature of 10.4 °C and average annual precipitation of 612 mm, with an average annual actual evapotranspiration (AET) of 639, 646, and 670 mm for farmland, grassland, and forest areas respectively. The annual mean humidity at Gatow station varies from 50% to 70% over the last two decades (2000-2023). During the hydrological year of the survey (August 2022 to September 2023), the mean monthly precipitation, temperature, and humidity in the study region were 51.9 mm, 12.3 °C (Potsdam weather station, DWD, 2024;), and 69 % respectively (recorded in Gatow weather station of The Berlin Measurement Network (MEVIS, Fig. 1). Precipitation data as one of the boundary conditions in the modeling work has been obtained from the Potsdam station of the German Weather Service (DWD, 2024).

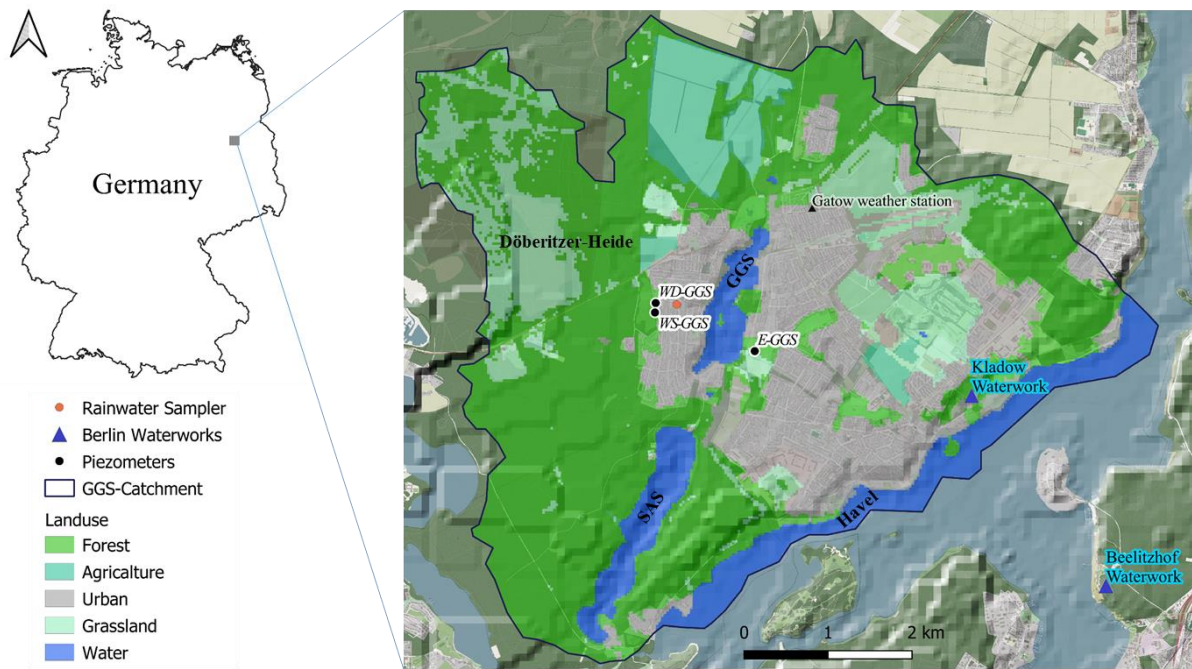


Fig. 1. Location of the study area, highlighting Lake Gross Glienicke (GGS), Lake Sacrow (SAS), Havel channel, piezometers on the east (E-GGS) and west (WD-GGS: deep piezometer and WS-GGS: shallow piezometer) side of GGS, rainwater sampler, Berlin waterworks, and land use classifications. © OpenStreetMap contributors 2023. Distributed under the Open Data Commons Open Database License (ODbL) v1.0.

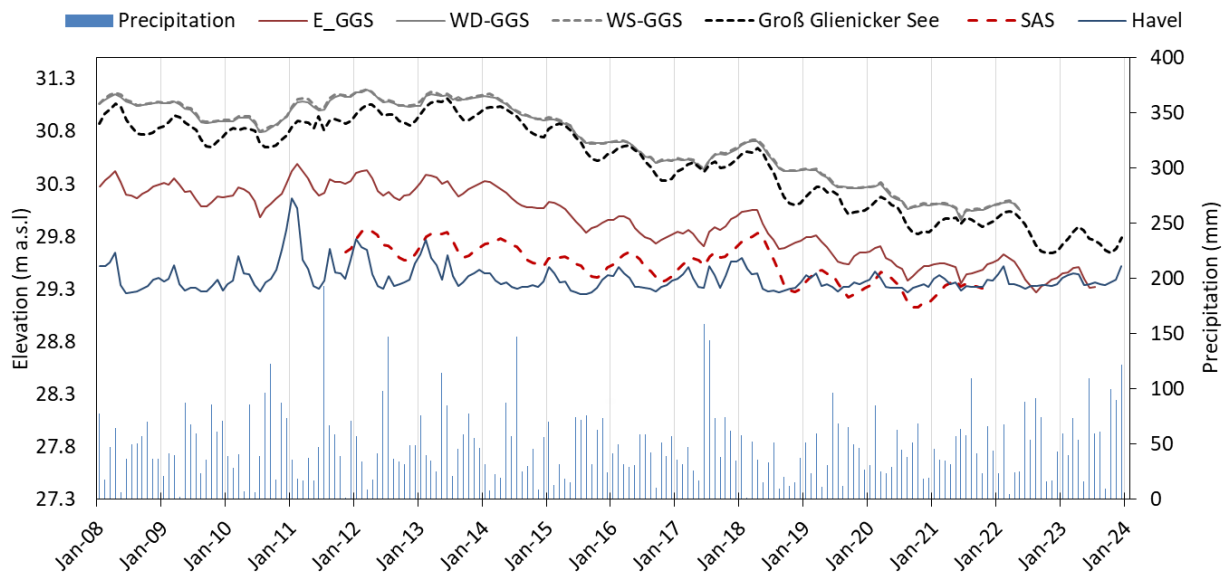


Fig. 2. Measured lake water level fluctuations and monthly precipitation variations during the period of 2008 to 2023 from Potsdam station.

30x superelevated profile
(Grund-)Wasserstände vom 8.3.23 und 9.3.23

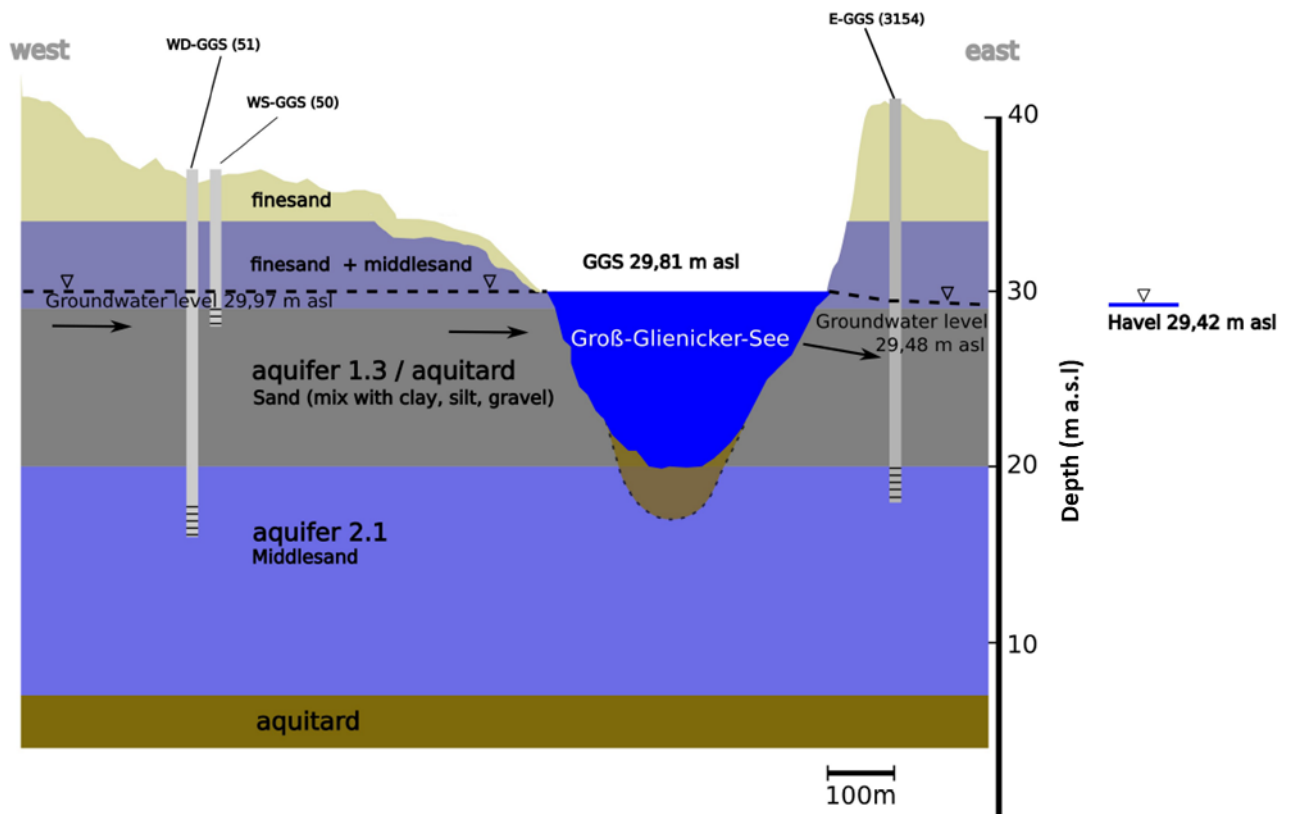


Fig. 3. Conceptual cross-section of the aquifer demonstrating the geological structure, hydraulic head, and water flow direction from the groundwater recharge area towards Lake Gross Glienicke (GGS) and the groundwater discharge area at a lower altitude. WD-GGS (deep piezometer), WS-GGS (shallow piezometer), and E-GGS are the piezometers on the west and east sides of GGS.

2.2 Stable isotope analysis

Surface water samples were collected for one year (from August 2022 to September 2023) on a monthly time interval from GGS and three piezometers installed in the first two aquifers, encompassing the lakes, and from a rainwater sampler. Before groundwater sampling, the total depth and water volume of the monitoring well were measured to determine the volume of stagnant water inside the piezometer. At least three well volumes of water were then pumped, with pumping continuing until in-situ parameters, such as temperature, electrical conductivity (EC), and pH stabilized. This ensured that the sample was representative of the aquifer rather than stagnant casing water. All water samples (bottles with polyseal conical caps) collected in clusters within two-day excursions were filtered through a membrane filter (0.2 and 0.45- μm pore) and stored at 6 °C to prevent evaporation before laboratory analysis. Stable isotope ratios

of oxygen ($^{18}\text{O}/^{16}\text{O}$) and hydrogen ($^2\text{H}/^1\text{H}$) in H_2O in water samples were measured with a PICARRO L1102-i isotope analyzer. The L1102-i is based on the WS-CRDS (wavelength-scanned cavity ring-down spectroscopy) technique (Gupta et al., 2009). Measurements were calibrated by the application of linear regression of the analyses of IAEA calibration material VSMOW, VSLAP, and GISP. The stable isotope ratios of oxygen and hydrogen are expressed in the conventional delta notation ($\delta^{18}\text{O}$, $\delta^2\text{H}$) per mil (‰) versus VSMOW. For each sample 6 replicate injections were performed and arithmetic average and standard deviations (1 sigma) were calculated. The reproducibility of replicate measurements is generally better than 0.1 ‰ for oxygen and 0.5 ‰ for hydrogen.

2.3 Isotope mass balance model

The evaporation loss from a lake such as GGS can be calculated considering the transient stable water isotope compositions of lake water, groundwater inflow and moisture in ambient air and climate data (air temperature and humidity) for the specific period of time. Steady-state hydrologic condition were adopted for the calculations (lake water level stays constant because inflow matches losses, Tweed et al. 2009; Gibson and Reid, 2010; Skrzypek et al. 2015). The isotope mass balance model (Hydrocalculator), whose capability has been verified through various field experiments globally (Skrzypek et al. 2015; Vyse et al., 2020), was applied to calculate evaporation over inflow ratio (E/I) for GGS under steady state condition. In the Hydrocalculator model, isotopic dynamics in lake water are assumed to be caused by evapoconcentration (increasing isotope ratios) or dilution from meteoric water (lowering isotope ratios). Hence, a series of time-based analyses enables the assessment of evaporation progress. Climate data from nearby weather stations (Gatow and Potsdam) were utilized to address uncertainties arising from the distance between weather station and the points of water sampling (Gibson and Reid, 2014; Skrzypek et al. 2015). The stable isotope composition of moisture in ambient air (δ_{air}) was calculated from the mean monthly weighted averages (for the months when the lake was sampled) and from the stable isotope composition of precipitation (δ_{pcp}) at the GNIP station (GNIP/Berlin (DWD, BFG, BGR & HHZM, Stumpp et al. 2014 and Schmidt et al. 2020). To ensure consistency between the GNIP dataset and local precipitation in terms of isotope composition, rainwater was sampled using an evaporation-free rain sampler on a monthly basis near the lake and analyzed in the laboratory. These analyses were conducted for verification purposes and were not used in the HydroCalculator model analyses.

218 The ratio of evaporation over inflow (E/I) can be calculated using the following reformulated
 219 equation (e.g., as by Mayr et al. (2007)) under steady-state hydrological conditions. E/I is the
 220 fraction of inflowing water evaporated from GGS:

$$221 \quad E/I = (\delta_{inflow} - \delta_{outflow}) / ((\delta^* - \delta_{inflow}) \times E_s) \quad \text{Eq. 1}$$

222 The enrichment slope (E_s) is defined by Welhan and Fritz, 1977 and Allison and Leaney, 1982
 223 accordingly:

$$224 \quad E_s = (h - (\varepsilon \times 10^{-3})) / (1 - h + (\varepsilon \times 10^{-3})) \quad \text{Eq. 2}$$

225 The enrichment of stable isotope compositions can be limited by local climate conditions.
 226 According to Gat and Levy (1978) and Gat (1981), this limitation threshold (δ^*) can be
 227 estimated by considering air humidity (h), δ_{air} , and a total enrichment factor (ε).

$$228 \quad \delta^* = (h \times \delta_{air} + \varepsilon) / (h - \varepsilon \times 10^{-3}) \quad \text{Eq. 3}$$

229 When this limitation is exceeded, further evaporation does not result in isotope enrichment.
 230 **Theoretically, the total enrichment factor represents a maximum limit and cannot be exceeded.**

231 ε is the total fractionation factor and equals the sum of the equilibrium isotope fractionation
 232 factor ε^+ plus the kinetic isotope fractionation factor ε_k (Skrzypek et al. 2015):

$$233 \quad \varepsilon = \varepsilon^+ / \alpha^+ + \varepsilon_k \quad \text{Eq. 4}$$

234 α^+ was determined experimentally by Horita and Wesolowski (1994) based on temperature and
 235 was calculated as the following in Hydrolocalculator (Skrzypek et al. 2015):

$$236 \quad \alpha^+ = 1 + (\varepsilon^+ \times 10^{-3}) \quad \text{Eq. 5}$$

237 The equilibrium isotope fractionation (ε^+) is solely temperature-dependent. The kinetic
 238 fractionation ε_k is defined as (Gat 1995):

$$239 \quad \varepsilon_k = (1 - h) \times C_k \quad \text{Eq. 6}$$

240 According to Gonfiantini, 1986 and Araguas-Araguas et al., 2000, the kinetic fractionation
 241 constant (C_k) is 12.5 percent for $\delta^2\text{H}$ and 14.2 percent for $\delta^{18}\text{O}$. Air relative humidity (h) is
 242 given as a fraction.

243 The δ_{air} is calculated based only on the rain stable isotope compositions as follows (Gibson and
 244 Reid, 2014):

$$245 \quad \delta_{air} = (\delta_{pcp} - \varepsilon^+) / (1 + \varepsilon^+ \times 10^{-3}) \quad \text{Eq. 7}$$

The model calculates the evaporative losses based on the theory behind the Craig–Gordon model (Gibson and Reid (2014)). The variables used in the Hydrocalculator model are listed in Table 1.

Table 1. The list of variables used in the Hydrocalculator model

Variable	Description	Unit
T	temperature	°C
h	air relative humidity	-
δ_{air}	stable isotope composition of moisture in ambient air	‰
δ_{pcp}	stable isotope composition of precipitation	‰
ϵ	total isotope fractionation	‰
ϵ^+	equilibrium isotope fractionation factor	‰
α^+	equilibrium isotope fractionation factor	‰
ϵ_k	kinetic isotope fractionation factor	‰
C_k	kinetic fractionation constant	
δ^*	limiting isotopic composition	‰
E/I	Evaporation over inflow ratio	‰
δ_{inflow}	stable isotope composition of inflow (groundwater)	‰
$\delta_{outflow}$	stable isotope composition of outflow (lake)	‰
E_s	enrichment slope	-

2.4 Model domain configuration and boundary conditions

2.4.1 Surface – subsurface flows

HydroGeoSphere (HGS) (Aquanty Inc, 2023) was used to simulate the hydrological processes in the GGS catchment. The HGS model allows the simulation of spatially distributed land surface processes, such as evapotranspiration, infiltration, and runoff, without requiring extensive customization. Its ability to dynamically couple surface and subsurface flow provides a more realistic representation of groundwater-fed lake systems. These features make HGS particularly suited to capturing the hydrological complexity of our study area. The HGS model is a three-dimensional (3-D), fully integrated, and physically-based model with the capacity to simulate the interwoven flow mechanisms of subsurface and surface water by coupling solutions obtained from the diffusion-wave of the two-dimensional, depth-integrated diffusion-wave of the Saint Venant equation governing surface water flow (Eq. 8, Viessman Jr. and Lewis, 1996) and the Richards' equation governing 3-D unsaturated and saturated subsurface flows (Eq. 10).

$$\frac{\partial \phi_0 h_0}{\partial t} - \frac{\partial}{\partial x} \left(d_0 K_{0x} \frac{\partial h_0}{\partial x} \right) - \frac{\partial}{\partial y} \left(d_0 K_{0y} \frac{\partial h_0}{\partial y} \right) + d_0 \Gamma_0 \pm Q_0 = 0 \quad \text{Eq. 8}$$

ϕ_0 represents the porosity (dimensionless) of the surface flow domain, which varies based on the presence of rills and obstructions. h_0 stands for the water surface elevation (L). t denotes time (T). d_0 indicates the depth of flow (L). K_{0x} and K_{0y} represent surface conductance. Γ_0 is the water exchange rate ($L^3 L^{-3} T^{-1}$) between the surface and subsurface systems. Q_0 represents external sources or sinks. In this model setup, length (L) is expressed in meters (m) and time (T) in days (d) for all input variables.

The interaction between the two flow domains is facilitated by the exchange term Γ_0 through:

$$d_0 \Gamma_0 = \frac{k_r K_{zz}}{l_{exch}} (h - h_0) \quad \text{Eq. 9}$$

k_r symbolizes the exchange's relative permeability. K_{zz} represents saturated hydraulic conductivity in the vertical direction. l_{exch} corresponds to the coupling length.

$$\nabla \cdot (W_m q) + \sum \Gamma_{ex} \pm Q = W_m \left(\frac{\partial}{\partial t} \right) (\theta_s S_w) \quad \text{Eq. 10}$$

In the given context, W_m (dimensionless) represents the volumetric porosity fraction within the porous media domain. Γ_{ex} stands for the volumetric exchange rate ($L^3 L^{-3} T^{-1}$) occurring between the porous media and other flow domains. Q denotes the source or sink term. t signifies time (T). θ_s corresponds to porosity (dimensionless). S_w refers to the degree of water saturation (dimensionless).

The flow rate, q ($L T^{-1}$), is portrayed as:

$$q = -K \cdot k_r \nabla h \quad \text{Eq. 11}$$

K signifies the hydraulic conductivity ($L T^{-1}$). k_r represents the relative permeability (dimensionless), which is dependent on water saturation. h corresponds to the hydraulic head (L), calculated as the sum of the elevation head and pressure head.

The 3-D surface-subsurface flows in porous media and saturated zones were solved using the control volume finite element method. Nonlinear equations were linearized using Newton-Raphson and solved iteratively at each time step for the entire hydrologic system (Hwang et al., 2014). The model employs Newton's method with a maximum of 12 iterations, specific convergence criteria, and an adaptive time-stepping scheme to ensure numerical stability. Overland flow is computed using the integrated finite difference method with an under-relaxation factor for enhanced stability. The initial conditions for subsurface and surface flows

were established by running the HGS model under steady-state conditions. Predefined groundwater and surface heads were used as the starting point for the transient simulation. Lateral boundaries were defined using specific node sets along the Havel River, representing flow exchange across these boundaries.

2.4.2 Evapotranspiration

The evapotranspiration process needs specific prerequisites for accurate parameterization as it is treated to play a dual role in the HGS as both a boundary condition and a distinct domain. Within this framework, the evapotranspiration fluxes encounter a restriction governed by a potential evapotranspiration flux (PET) which is defined by the modeler. The PET values are designated as a boundary condition, serving its purpose on the surface domain. With each subsequent time step, a condition emerges, if the calculated actual evapotranspiration (AET) surpasses the PET, then the PET value is employed as a flux directed toward the relevant model faces. Conversely, if the calculated AET falls short of the PET, the computed AET value itself becomes the applied flux. Additional details on the evapotranspiration process formulations within the HGS model are presented in Kristensen and Jensen (1975). The two-dimensional PET database used in this research is calculated using the energy balance method and covers the period 2000-2022. The method is a balance of the energy terms which are the net radiation, the change in the heat content of the lake, and the latent and sensible heat fluxes. The equation is based on measurements of global radiation, air and water temperature, cloud cover, and vapor pressure. The latent heat flux, which represents the energy used for evaporation, was determined by subtracting the sensible heat flux and the change in the heat content of the lake from the net radiation. The evaporation rate was then calculated by dividing the latent heat flux by the latent heat of vaporization of water. A maximum evaporation threshold of 15 mm/day was set. More details are given by Ölmez et al., 2024.

The simulation domain encompasses the entire GGS catchment (Fig. 4) which is defined based on the surface topography considering the equipotential lines derived from the lakes' levels and measurements of the hydraulic head surrounding the lakes (piezometers). The surface topography across the catchment was produced by stitching a digital elevation model (DEM) from The Shuttle Radar Topography Mission (SRTM) with a resolution of 30 m, and the bathymetry data of GGS (Wolter, 2010) and Sacrow Lake (SAS) (Lüder et al., 2006, Bluszcz et al., 2008). Due to the high vegetation density, flat elevations, and the substantial hydraulic

conductivity of the predominantly sandy soil, the absence of river formation is currently observed in the catchment. The foundational 2-D triangular mesh supporting the comprehensive 3-D triangular prism grid within the HGS model was created using AlgoMesh (Merrick, 2017). Each 2-D mesh layer encompasses a total of 2837 mesh nodes and 5300 triangular finite elements (Fig. 4). The complete 3-D model (Fig. 4) grid extends the 2-D mesh across 15 subsurface layers, broadly categorized as one soil layer, 14 Quaternary material layers, and one competent bedrock layer (Rupel clay).

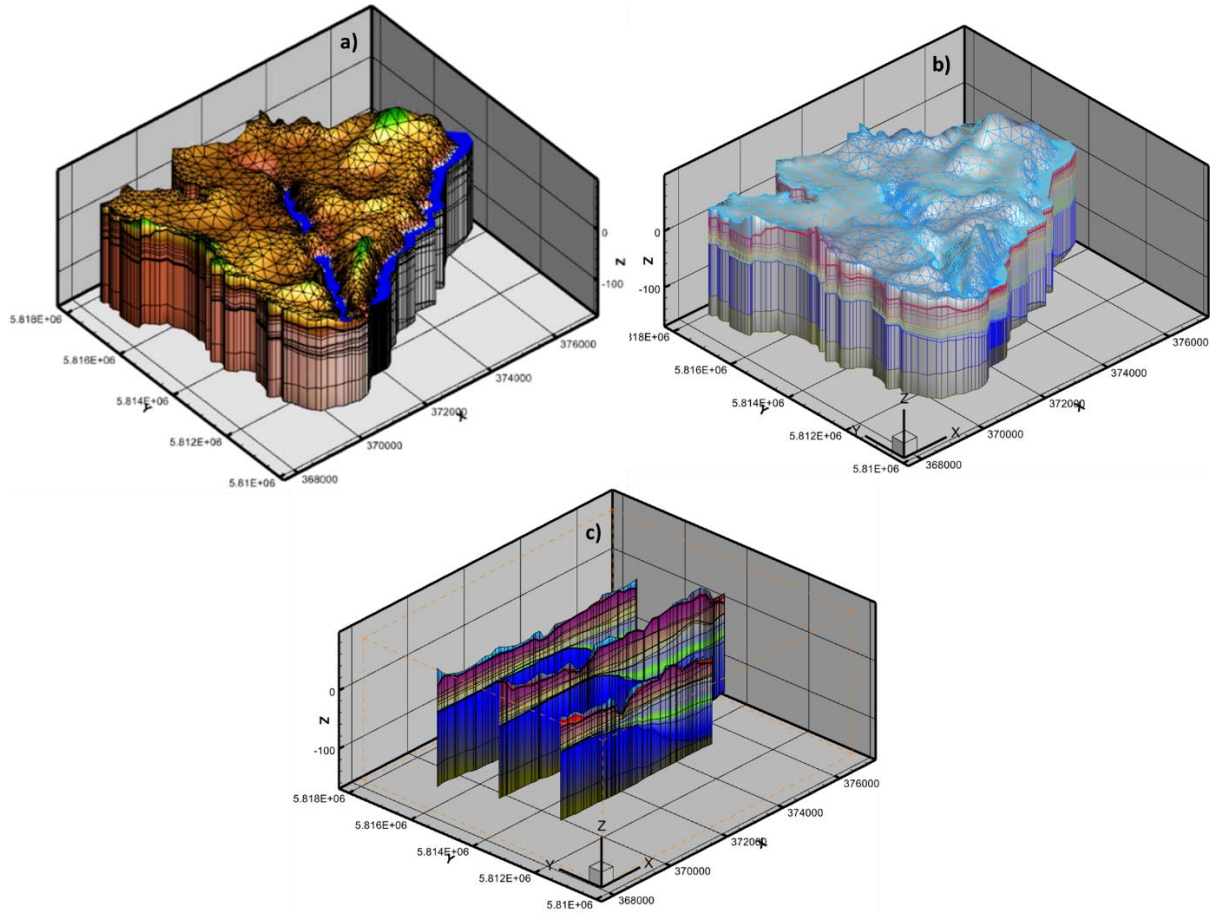


Fig. 4. The locations of Lake Gross Glienicke and the Havel River, along with an enlarged view of the mesh within the catchment, highlighting mesh quality and topography (Fig.4a); representation of the stratigraphic layers (Fig. 4b); and the zonation, illustrating different characteristics and parameterization, along with various west-east cross-sections (Fig. 4c).

Spatially distributed land cover data (Fig. 1) were utilized to capture a broad range of factors influencing evapotranspiration and overland flow, including evaporation depth, root depth, leaf area index (LAI), surface roughness, rill storage height, and obstruction storage height. Specific parameters for evapotranspiration (ET) and overland flow are tailored to each land cover type. To accurately reflect the impact of vegetation growth on water demand through

evapotranspiration, the Leaf Area Index (LAI) during winter (January) and summer (July) using the Sun Scacn device type SS1 was measured, capturing both maximum and minimum current LAI values. The measured LAI indices were then compared with data from the MCD15A2H Version 61 Moderate Resolution Imaging Spectroradiometer (MODIS), which provides a 4-day composite with a pixel size of 500 m for January and July (Myneni et al., 2021). Corrected monthly average MODIS LAI values for each land cover type, spanning from 2000 to 2023, were subsequently integrated into the HGS model. In the HGS model, ET combines plant transpiration and evaporation, affecting both surface and subsurface flows. Plant transpiration within the root zone depends on LAI, nodal moisture content (θ), and a root distribution function (RDF) applied to a defined extinction depth. Depth-dependent evaporation is modeled using a quadratic depth decay function, allowing for greater root distribution in the upper soil layers compared to the lower ones.

2.4.3 Unsaturated zone

The top subsurface layer in the 3-D mesh with spatial varying depths shows the distribution of soil materials across the catchment. The soil data were obtained from the soil map at a scale of 1:200,000 (BUEK200), which was prepared by the Federal Institute for Geosciences and Natural Resources (BGR, 2007). The soil samples were collected from various depths, extending up to 3 meters, at 10 different sites, primarily in the groundwater recharge area (Döberitzer-Heide region) and natural conservation zones. The sampling locations were selected based on soil types. The percentages of sand, silt, and clay for each soil type were determined in the laboratory to classify the soil textural types, using the United States Department of Agriculture (USDA) soil textural calculator. A set of 2 soil textural types-sand and loamy sand-has been recognized. Unsaturated soil hydraulic parameters and soil moisture retention properties required for the van Genuchten application with the HGS model were uniquely estimated for each soil type using the ROSETTA program, version 1 (Schaap et al., 2001).

To represent the topography of the subsurface in the lake catchment, relevant data were extracted from the groundwater model provided by Berliner Wasserbetriebe (BWB, Berlin Water). This model (software FEFLOW) was calibrated in 2012 and updated in 2013 (BWB, 2012 and 2013) using measured data from the year 2010. The model focuses on analyses of the waterworks at Beelitzhof, Tiefwerder, and Kladow, covering areas along both banks of the river Havel. Additional datasets from boreholes were merged into a single surficial geology dataset using the Rockware model setup for the GGS catchment. The initial hydraulic conductivity

values for each type of Quaternary material were taken from the FEFLOW model. The hydraulic properties of the unsaturated zone were adjusted during manual model calibration.

2.4.4 Groundwater – lake levels loggers

A total of 8 groundwater monitoring wells scattered within the catchments, along with two loggers set on the lakes, provide a well spatially distributed dataset of groundwater-lake level dynamics for evaluating model simulations. The groundwater monitoring wells were selected based on location, catchment area, and data availability from 2000 to 2023. GGS has been monitored since 1964. Moreover, within the study catchment, the regulated flow system of the river Havel is maintained to facilitate water conveyance. Since 1980, an established logger has been operational to meticulously monitor the water level dynamics within this river. For the presented study, particular interest lies in loggers No. 51, 52 (WD-GGS and WS-GGS), and 3154 (E-GGS). WD-GGS (50) and WS-GGS(51) belong to two different aquifers (shallow (WS-GGS) and deep aquifer (WD-GGS) and are situated on the western side of GGS (Brandenburg, Fig. 3). These loggers in the recharge area of the GGS consistently maintain water levels averaging 15-20 cm higher than the GGS. Additionally, a longer E-GGS, located close to the eastern shoreline downstream of GGS (Berlin), consistently registers water levels averaging 30-40 cm lower than GGS (Fig. 3).

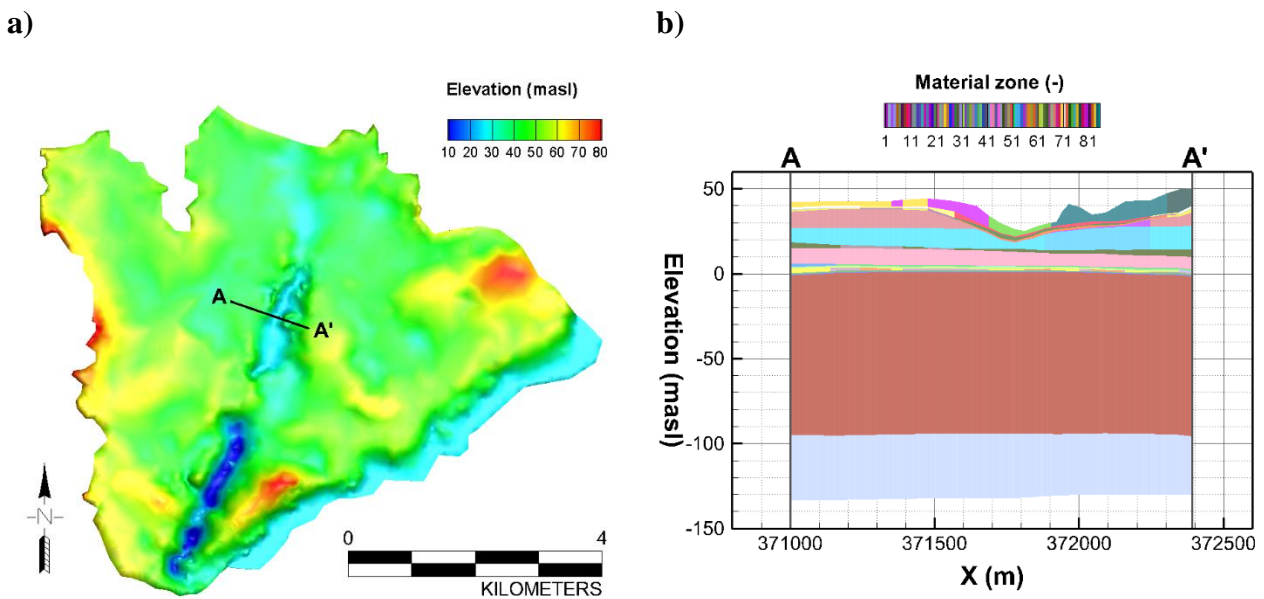
2.4.5 Groundwater abstractions

Two major drinking water supply systems, Kladow and Beelitzhof, located alongside Havel on the southwest side of Berlin have been in operation since 1888 and 1932, respectively, by BWB. Kladow comprises 16 wells up to 93 meters deep and a maximum pumping rate of 30,000 m³/day, while Beelitzhof has 85 wells up to 170 meters deep and a maximum pumping rate of 160,000 m³/day. To assess the impact of groundwater withdrawals from deeper layers, the model domain was extended to a depth of 150 meters below sea level. According to studies BWB, approximately 80-90 percent of the water extracted by Kladow originates from bank filtration along the river Havel. The remaining 10-20 percent of the extracted water originates directly from groundwater recharge as well as outflow from GGS. The Kladow waterwork has been implemented directly as well-gallery in the HGS model. As various water resources contribute to the overall drinking water production in the main waterworks in this area (Beelitzhof, located on the western side of the Havel), a detailed analysis was conducted to assess the share of the GGS catchment. The analysis involved the implementation of distinct scenarios within the hydrologic model.

408

409 2.4.6 Groundwater contribution to Lake Gross Glienicke

410 To calculate the groundwater contribution to Lake Gross Glienicke (GGS) and identify which
 411 specific geological layers (aquifers) contribute, a cross-sectional model was constructed along
 412 the A-A' line in the GGS catchment model (Fig. 5a). The cross-sectional model spans
 413 approximately 1.2 km in length and primarily covers the lake, along with its upstream and
 414 downstream peripheries. As the primary groundwater flow in the model is nearly normal to
 415 GGS, horizontal flow toward the lake (i.e., normal to GGS) was considered, while lateral flow
 416 (i.e., parallel to GGS) was limited. The GGS cross-sectional model, which measures 1,233 m \times
 417 1 m \times 175 m, depicts various subsurface material zones with relatively thin layers above 0 masl
 418 and two homogeneous zones, with thicknesses of 30 m and 100 m, below 0 masl (Fig. 5b).
 419 Regarding the discretization of the cross-sectional model, the vertical layers are the same as
 420 those in the GGS model, but the horizontal meshes were refined to a 1 m distance. The locations
 421 and material properties of the cross-sectional model exactly match those of the GGS model.



422 **Fig. 5.** a) Watershed boundary (red line); b) Land surface elevation.

423 Particle tracking simulations were performed using the cross-sectional model based on steady-
 424 state flow conditions, using the initial conditions applied in the GGS model (Fig. 6). The
 425 groundwater flow direction is from the left to the right side of the domain (Fig. 6a). Particles
 426 were initially placed 2 to 10 m below the water table horizontally, primarily within aquifers 2
 427 (Fig. 6). Additionally, particles were vertically assigned along the main material layers on the

left side of the domain, including both saturated and unsaturated zones (Fig. 6). The particle tracking simulation was performed for 400 years.

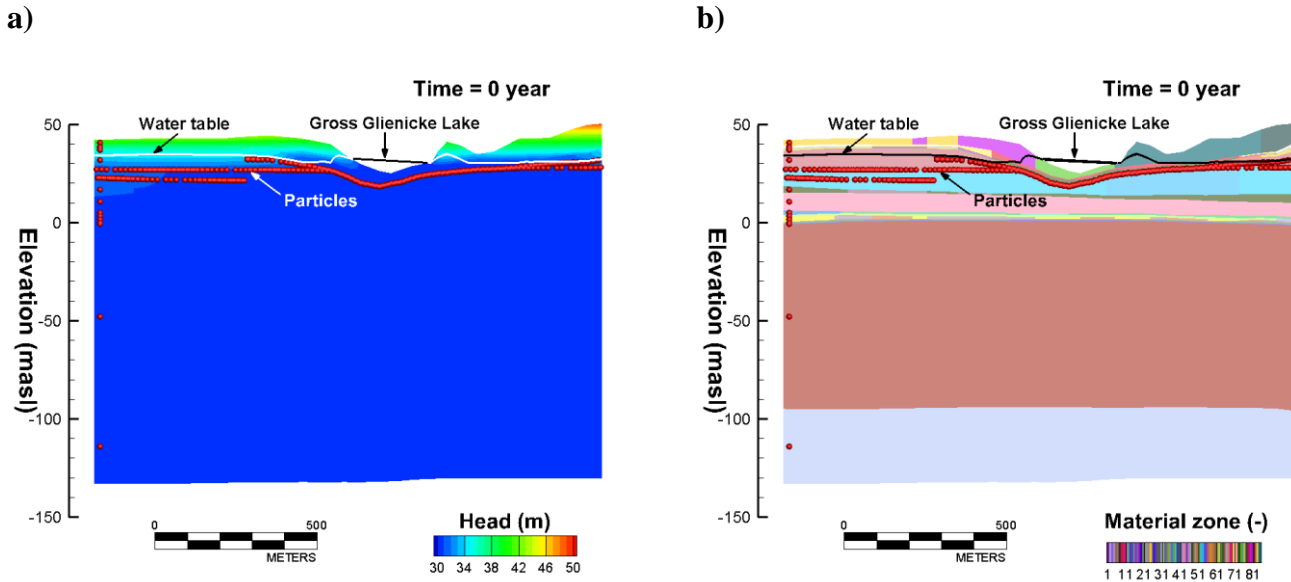


Fig. 6. Initial conditions of particle tracking simulation: a) head distribution and b) material zone distribution

2.4.7 Model evaluations

This study emphasizes the importance of a multifaceted approach to evaluate hydrological model performance, utilizing both traditional and innovative methodologies. Initially to evaluate model performance the simulated seasonal and long-term groundwater and lake level fluctuations will be compared to observed water levels of the lakes and piezometers around the lakes. The performance evaluation of hydrological models commonly relies on various metrics such as percent bias (PBIAS), root mean squared error (RMSE), and the Kling-Gupta efficiency (KGE). The KGE, introduced by Gupta et al. (2009), offers a comprehensive assessment by considering bias, correlation, and variability separately. Given the specific hydrological focus of each metric, a multi-metric approach was adopted for calibrating the HGS model parameters, as demonstrated to efficiently balance model performance by previous studies (Pfannerstill et al., 2014; Mahmoodi et al., 2020). For model assessment, PBIAS, RMSE, and KGE were employed as performance metrics on a monthly basis. Calibration runs were evaluated based on a predefined threshold for KGE (0.5) to identify the most suitable configurations. The calibration process was carried out manually due to the model's long execution time and limited

computational capacity. Emphasis was placed on calibrating model parameters of the unsaturated zone which governs water movement into the soil and subsequently into or out of the aquifer. The initial hydraulic conductivity values for each type of soil were determined from existing literature (Steidl et al 2023) and lab analysis and later manually adjusted during model calibration. The model parameterization for the saturated zone was initially derived from the FEFLOW model calibrated by the Berliner Wasserbetriebe (BWB, 2012/2013). The calibration and validation periods chosen for the simulation runs were 2008-2018 and 2019–2023, respectively, preceded by an eight-year spin-up phase before 2008 to reach quasi-steady state condition fitting to the conditions in 2008.

To evaluate the performance of the HGS model from different angles, a detailed assessment involving the simulation of the inflow to GGS (denoted as I_{HGS}) was undertaken. This parameter (I_{HGS}) was subsequently used as a testing parameter to evaluate the model's performance in calculating evaporation rates for the years 2022 and 2023 using an isotopically derived E/I ratio. The evaporation rate (E_{ISO} , in meters) can be expressed as:

$$E_{ISO} = \frac{1}{A} \times I_{HGS} \times P \quad \text{Eq. 12}$$

Where A is the area of the lake water body (m^2), I_{HGS} represents the total annual inflow to the lake (m^3) and P is the percentage of losses of inflow due to evaporation (given as fraction) derived from the isotope analysis (E/I). In this approach, seasonal variations in inflow and evaporation are not explicitly considered; instead, only the annual water balance, based on annual isotopic dynamics (dilution and enrichment), is accounted for. Figure 7 shows the methodology used to evaluate the model performance across different dimensions. The underlying assumption for this evaluation is that an accurate simulation of inflow to the lake by the HGS model (I_{HGS}) would yield evaporation rates (E_{ISO}) comparable to those calculated by the HGS model (E_{HGS}). Thus, the consistency between evaporation calculations derived from both approaches serves as a validation of the HGS model's capability to simulate other water balance components precisely.

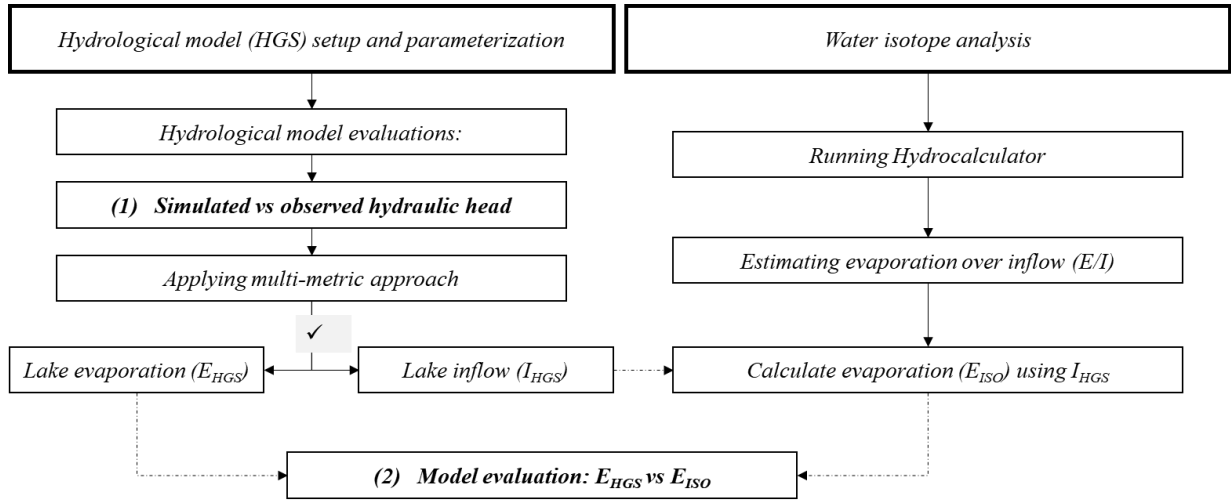


Fig. 7. Flow chart of the methodology employed to evaluate the model performance

The well-captured inflow and subsequent evaporation rates for the years 2022 and 2023 by the HGS model, allow us to extend this approach for estimating evaporation during the earlier period from 2015 to 2021. This period is crucial as it encompasses years without water isotope analyses, during which significant drops in lake and groundwater levels were observed. Since direct isotope-based evaporation calculations were only available for 2022–2023, applying the same E/I ratio to earlier years would be inaccurate due to interannual variations in temperature and inflow, which directly influence isotopic signatures through dilution and enrichment. Therefore, to extend the isotope-based method to years without measured isotope data (2015–2021), we adjusted the E/I ratio to account for these variations. This adjustment does not imply an issue with the HydroCalculator calculations but rather ensures that the E/I ratio is consistent with the specific hydrometeorological conditions of each year.

To make these adjustments, we calculated yearly temperature and inflow ratios relative to the 2022–2023 reference period. Specifically:

- The temperature ratio (T_{Yx}/T_{Y22-23}) accounts for differences in evaporation potential, where higher temperatures lead to greater evaporation and isotopic enrichment.
- The inflow ratio (I_{Y2023}/I_{Yx}) accounts for changes in dilution effects, where lower inflow results in stronger isotopic enrichment.

The adjusted E/I ratio for each year (Yx) was calculated as:

$$\frac{E}{I_{Yx}} = \frac{E}{I_{Y22-23}} \times \left(\frac{T_{Yx}}{T_{Y22-23}} \right) \times \left(\frac{I_{Y22-23}}{I_{Yx}} \right) \quad \text{Eq. 13}$$

where:

- If a year (Y_x) was warmer than 2022-2023, the higher evaporation led to greater enrichment, increasing E/I_{Y_x} .
- If inflow (I_{Y_x}) was lower than in 2022-2023, reduced dilution also led to greater enrichment, further increasing E/I_{Y_x} .

These adjusted E/I ratios were then used to calculate lake evaporation for 2015–2021, allowing comparison with the HGS model calculations. This approach ensures that evaporation calculations for years without isotope data remain physically consistent with known hydrological conditions.

3. Results

Isotopic analysis

Alterations in the mean monthly isotopic compositions of lake water and groundwater, along with air temperature and precipitation data, from August 2022 to August 2023 are presented in Figure 8. The $\delta^2\text{H}$ values for GGS (Fig. 8a), show significant variability, showing a pronounced drop in $\delta^2\text{H}$ values from around -8‰ in August 2022 to -17‰ in January 2023, followed by a gradual decrease (except February) to approximately -16‰ by June 2023, which represent a strong dilution phase. The period from July to September demonstrates enriched values of $\delta^2\text{H}$ alongside rising temperature and evaporation as a consequence. The $\delta^{18}\text{O}$ values for GGS (Fig. 8b) record a fluctuating pattern, ranging from -0.27‰ to 1.4‰, with peaks observed in August 2022 and July 2023, but experienced noticeable drops in April and May 2023. Overall, the isotopic data indicates that GGS experiences great isotopic enrichment (heavier isotopic composition) during summer when evaporation is higher (Fig. 8g).

The $\delta^2\text{H}$ values of groundwater on the east side of GGS (E-GGS, Fig. 8c) range from approximately -40‰ to -50‰, with notable fluctuations throughout the year. The isotopic composition of groundwater on the west side of GGS (W-GGS, Fig. 8c) has less variability, with $\delta^2\text{H}$ values mostly remaining between -55‰ and -60‰, suggesting a rather stable isotopic environment. Despite the fluctuations in $\delta^2\text{H}$ values, the $\delta^{18}\text{O}$ values (Fig. 8d) show less variation, indicating some degree of isotopic stability in the oxygen isotopes in the groundwater of both sides of lakes. E-GGS presents a relatively stable trend with $\delta^{18}\text{O}$ values fluctuating between -5‰ and -6‰. W-GGS, with a seasonal pattern similar to E-GGS, shows a consistent

529 range of $\delta^{18}\text{O}$ values between -8‰ and -8.5‰ with minimal fluctuations (Fig. 8d). Overall, the
530 E-GGS with heavier isotopic signatures experiences greater isotopic variability, meanwhile, the
531 W-GGS site maintains a more consistent isotopic signature, indicative of a more stable
532 hydrological regime. These observations (Fig. 8a,b,c,d) indicate that the isotopic composition
533 of both lake water and groundwater (E-GGS) was generally heavier (stronger enrichments)
534 during the summer of 2022 compared to the summer of 2023.

535 The monthly average temperature (TMP, Fig. 8e), follows a clear seasonal pattern. It drops
536 from around 20°C in August 2022 to a low of 5°C in January 2023, then rises again to about
537 20°C by July 2023. Alongside temperature, precipitation values fluctuate significantly, with
538 peaks exceeding 90 mm in August 2022 and June 2023, and lower values around 20 mm
539 observed in Oct and November 2022 and May and Septemeber 2023.

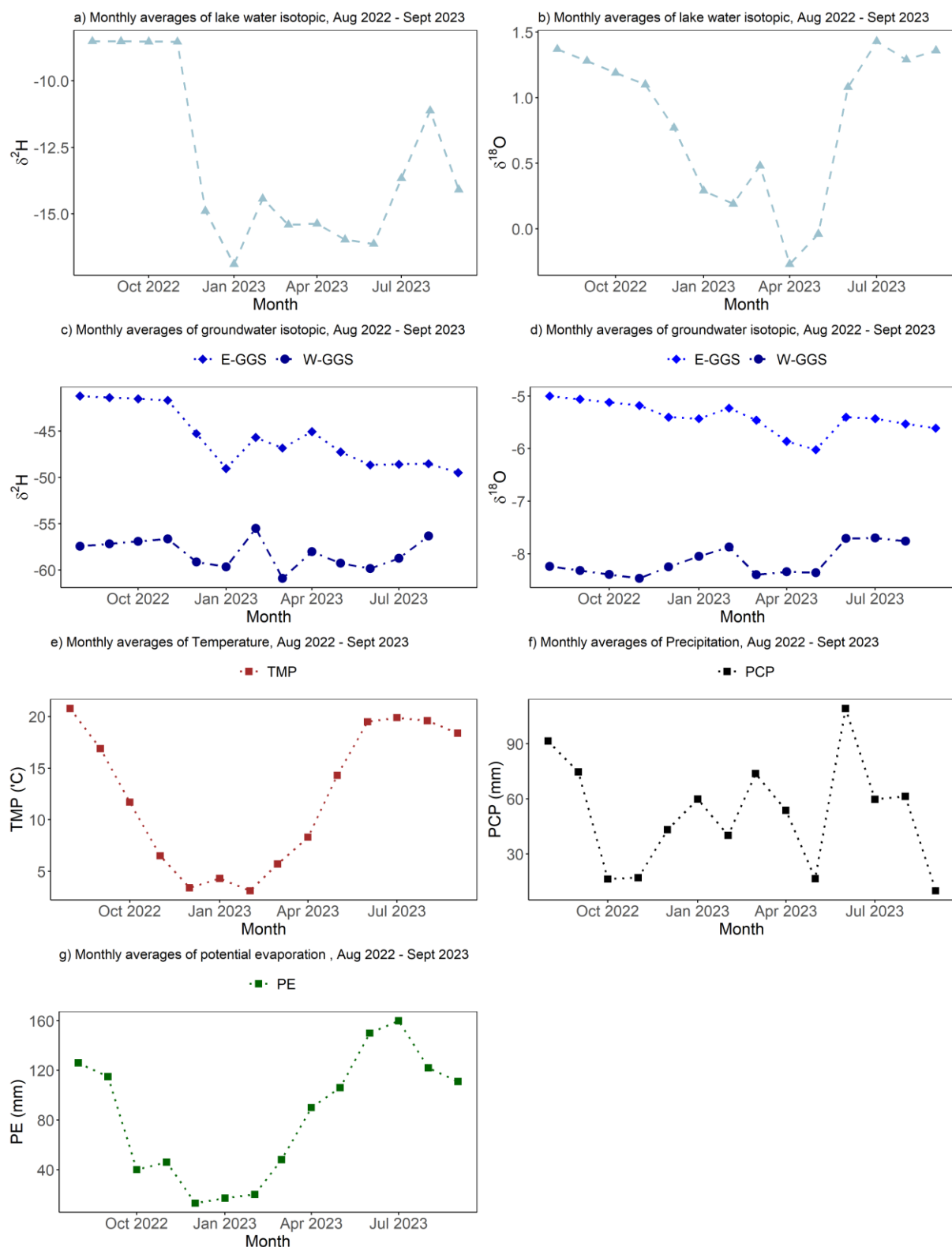


Fig. 8. Monthly averages of lake water isotopic compositions (a: $\delta^2\text{H}$ and b: $\delta^{18}\text{O}$), groundwater isotopic compositions (c: $\delta^2\text{H}$ and d: $\delta^{18}\text{O}$), temperature (e), precipitation (f), and evaporation from the lake (energy balance method) data from August 2022 to September 2023.

The relationship between $\delta^2\text{H}$ and $\delta^{18}\text{O}$ values for lake water and groundwater (WGGs and EGGs) from August 2022 to September 2023 are illustrated in Figure 9. The isotopic values

for lake water are significantly clustered, with $\delta^2\text{H}$ values between -25‰ and -5‰ and $\delta^{18}\text{O}$ values from 2‰ to -2‰ and are isotopically heavier compared to precipitation and groundwater, suggesting significant evaporative enrichment. WGS exhibits $\delta^2\text{H}$ values from -50‰ to -65‰ and $\delta^{18}\text{O}$ values from -9‰ to -7‰. EGGS $\delta^2\text{H}$ values range from approximately -50‰ to -40‰, with $\delta^{18}\text{O}$ values between -7‰ and -5‰, indicating less enrichment compared to lake water and higher enrichment compared to the groundwater on the west side.

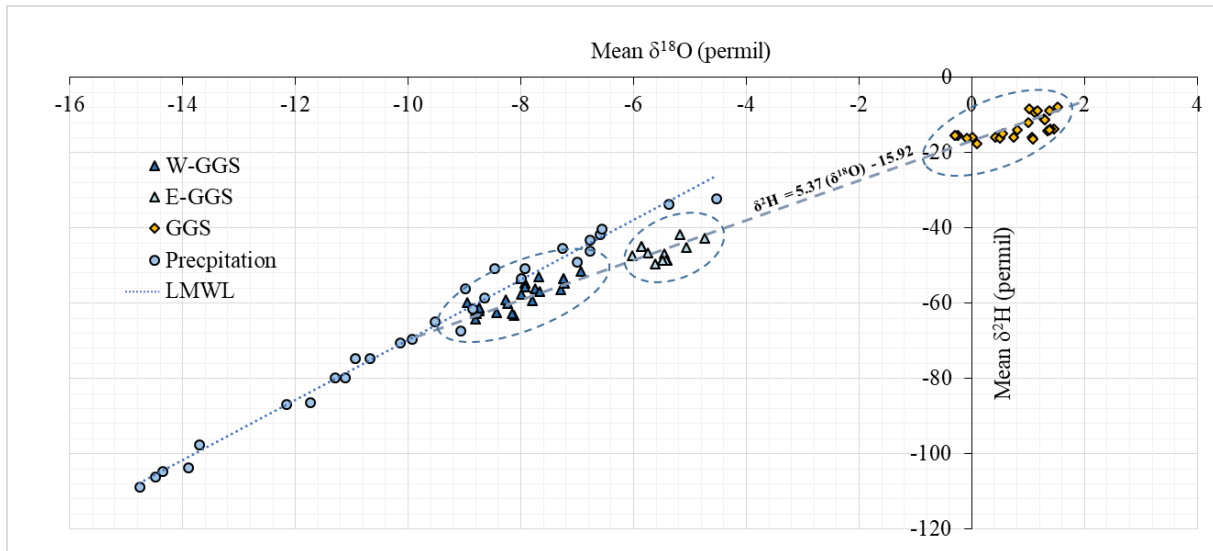


Fig. 9. Isotopic composition of lake water and groundwater measured on the west (WGS) and east (EGGS) sides of Groß Glienicke from August 2022 to September 2023. The local meteoric water line (LMWL) is driven from GNIP/Berlin (DWD, BFG, BGR & HHZM, Stumpp et al. 2014).

Variables used for the calculation of evaporative losses and evaporation to inflow ratio (E/I) calculated for GGS during the August 2022–September 2023 period are presented in Table 2. The winterwater isotopic compositions (dilution phase) served as the initial sampling point for calculating the E/I ratio in both 2022 and 2023. The δ_A -value of the ambient air moisture was calculated based on the stable isotope composition of local precipitation sampled in the Groß Glienicke region and the Lankwitz campus of the Freie University Berlin. The calculated evaporative losses over inflow were equal to 43.4% and 42.3% based on $\delta^2\text{H}$ and 30.11% and 29.4% based on $\delta^{18}\text{O}$ in 2022 and 2023 respectively. The E/I ratio calculated based on $\delta^2\text{H}$ is around 12% higher compared to the E/I based on $\delta^{18}\text{O}$. Therefore, as a mean ratio, an average of 37% will be used for further analyses.

Table 2. Variables used for calculation of evaporative losses and the ratio of total evaporation to inflow (E/I) as a function of the measured $\delta^2\text{H}$ and $\delta^{18}\text{O}$ isotope enrichments for Lake Gross Glienicke (GGS) surveyed during the August 2022–September 2023.

Parameters	Description	$\delta^2\text{H}$	$\delta^{18}\text{O}$
ϵ_k	Kinetic isotope fractionation factor [‰] (h dependent)	5	5.68
ϵ^+	Equilibrium isotope fractionation factor [‰] (T dependent)	84.355	9.778
ϵ	Total isotope fractionation [‰]	82.793	15.363
C_k	Kinetic isotope fractionation constant [‰]	12.5	14.2
α^*	Equilibrium isotope fractionation factor (T dependent)	1.0844	1.0098
δ^*	Limiting isotope composition	-0.4727	4.358
m	Enrichment slope	1.277	1.441
δ_A	Ambient air moisture	-138	-21
E/I_{Y2022}	Evaporation over inflow ratio [%] of Groß Glienicke Lake in 2022	43.37	29.63
E/I_{Y2023}	Evaporation over inflow ratio [%] of Groß Glienicke Lake in 2023	42.28	29.07

Hydrological modeling and model evaluations

Figure 10 illustrates the simulated vs. observed hydraulic heads (meters above sea level: masl) at West-GGS Piezometer (W-GGS), Lake Gross Glienicke (GGS), and East-GGS Piezometer (E-GGS) over the period from January 2008 to December 2023. The model's performance is evaluated using several metrics, including the Kling-Gupta Efficiency (KGE), Percent Bias (PBIAS), and Root Mean Square Error (RMSE), as shown in Table 3. A strong alignment is evident between simulated and observed hydraulic heads, both in terms of magnitude and seasonality.

The simulated groundwater levels on the west side of the lakes, despite some over- and underestimations, showed very good agreement with the observed data. For the calibration period (2008-2018), the performance metrics are KGE of 0.86, PBIAS of 0.0%, and RMSE of 0.13 m. During the validation period (2019-2023), the model maintained high performance with a KGE of 0.82, PBIAS of -0.1%, and RMSE of 0.07 m. Both observed and simulated data exhibit a general declining trend over the study period, with hydraulic heads decreasing from approximately 30.15 m to 30 m.

For GGS, similar to W-GGS, both observed and simulated values show a decreasing trend from around 31 m in 2008 to approximately 29.80 m in 2023. The model simulations closely follow the observed data, with minor deviations. The performance metrics for GGS during the calibration period are KGE of 0.78, PBIAS of -0.2%, and RMSE of 0.13 m. In the validation period, the metrics are KGE of 0.75, PBIAS of 0.0%, and RMSE of 0.06 m, indicating high accuracy in representing the hydraulic behavior of the lake.

The observed and simulated groundwater dynamics on the east side of GGS show good agreement. During the calibration period, the performance metrics are KGE of 0.84, PBIAS of 0.1%, and RMSE of 0.09 m. In the validation period, the metrics are KGE of 0.70, PBIAS of 0.2%, and RMSE of 0.09 m. Overall, the high-performance metrics confirm the model's reliability and accuracy in capturing both the long-term trends and seasonal variations of groundwater-surface water dynamics within the study area, providing valuable insights into groundwater-surface water interactions.

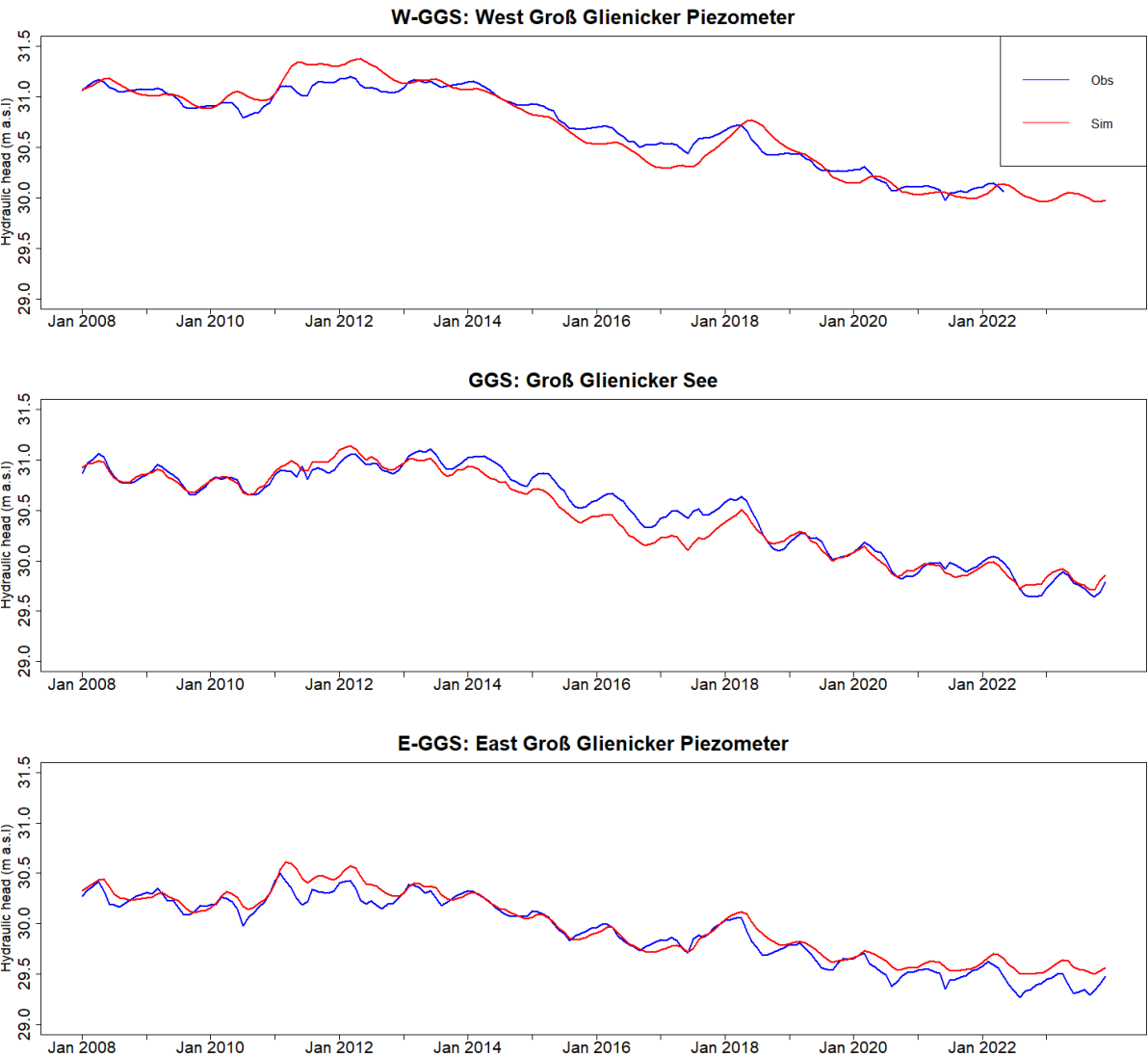


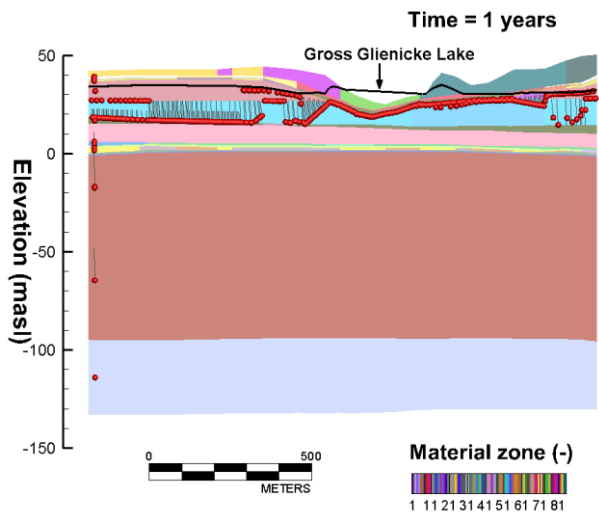
Fig. 10. Time series of observed and simulated hydraulic heads at three locations: (a) West Gross Glienicke Piezometer (W-GGS), (b) Lake Gross Glienicke (GGS), and (c) East Gross Glienicke Piezometer (E-GGS) from January 2008 to December 2023.

Table 3. Model performance evaluation using several metrics for both calibration (2008-2008) and validation (2018-2023) periods

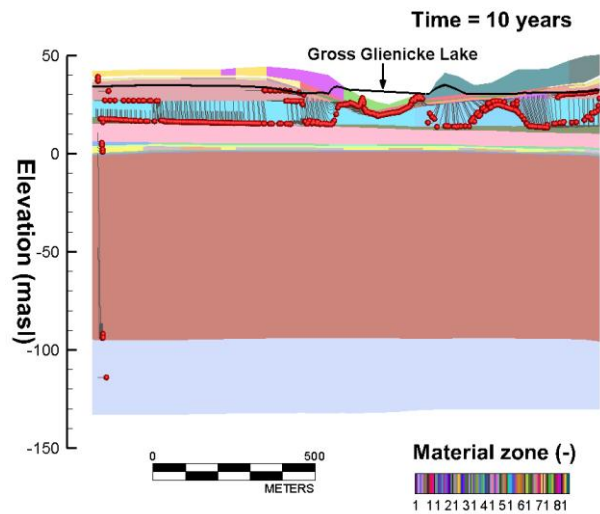
		West Gross Glienicke	East Gross Glienicke	Gross Glienicke Lake
Calibration 2008-2018	KGE	0.86	0.84	0.78
	PBIAS	0.0	0.1	-0.2
	RMSE	0.13	0.09	0.13
Validation 2019-2023	KGE	0.82	0.7	0.75
	PBIAS	-0.1	0.2	0
	RMSE	0.07	0.09	0.06

Particle tracking results indicate that groundwater-lake interactions primarily occur within the top nine geological layers, consisting of alternating aquifers and aquitards. Over 1 to 10 years, most particles near the water table move vertically, indicating a relatively highly permeable layer (Fig. 11a, b). However, particles below the lake do not exhibit similar movement patterns compared to those farther from the lake, due to the groundwater flow direction toward the lake and their location in a less conductive layer. During the simulation period from 30 to 100 years, as shown in Figs. 11c to 11e, the vertical travel distance increases, with some particles moving along the thin aquitard layers consisting of till, located around 0 to 5 masl (see Fig. 11), before continuing downward into the layers below the aquitard. From 200 to 400 years, as shown in Figs. 11f to 11h, most particles in the aquitard layer reach the lake, while the remaining particles move along the bedrock layer.

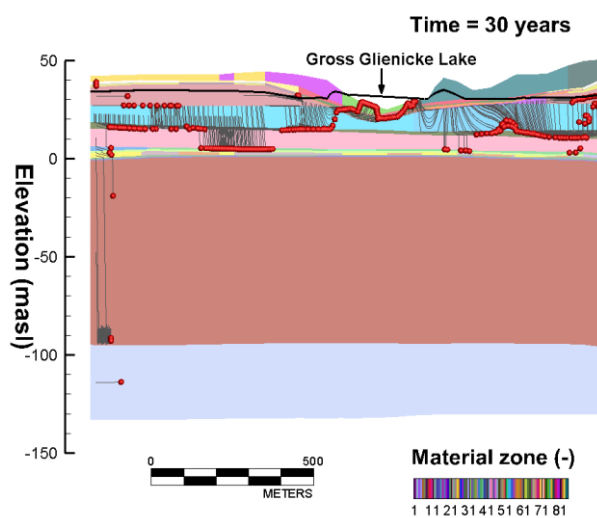
a)



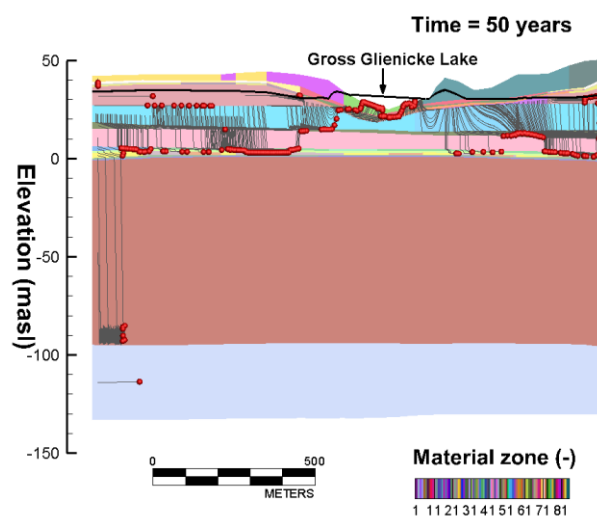
b)



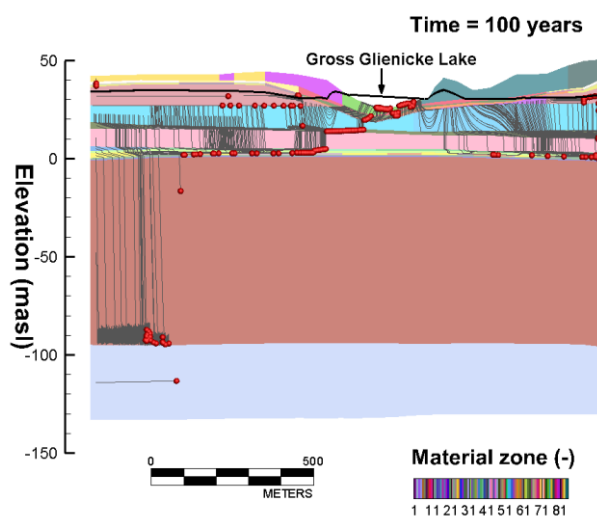
c)



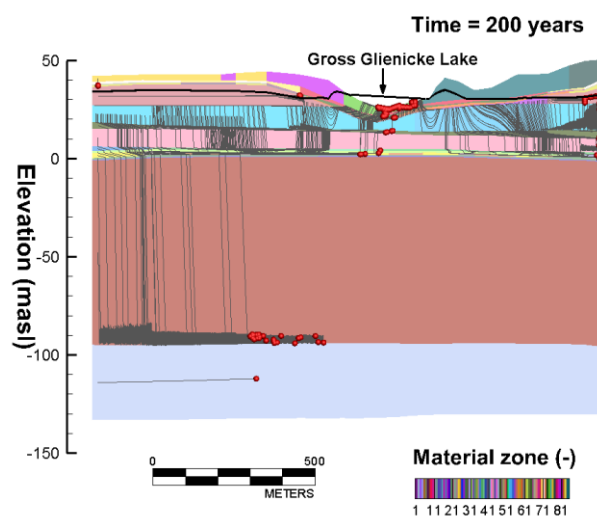
d)



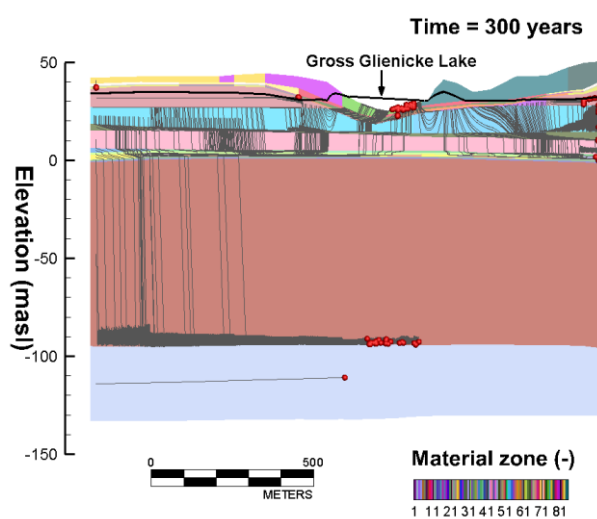
e)



f)



g)



h)

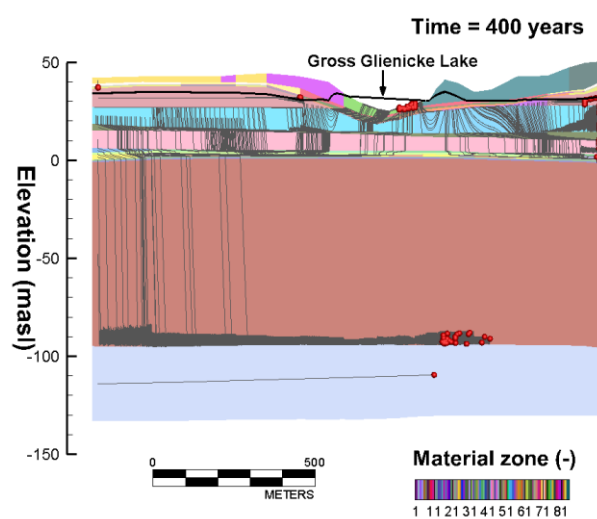


Fig. 11. Spatiotemporal locations of particle tracking simulation results: a) 1 year, b) 10 years, c) 30 years, d) 50 years, e) 100 years, f) 200 years, g) 300 years, and h) 400 years. Red circles represent particles, and dark gray lines represent trace lines of particles.

The calculated annual water exchange for GGS from 2008 to 2023, detailing the inflow to the lake, outflow from the lake, and their differences (net flow = inflow - outflow) are presented in Figure 12. The inflow to GGS demonstrates substantial annual variability. For instance, years such as 2008, 2011, 2012, and 2018 show relatively higher inflows compared to other years. Notably, there is a discernible decreasing trend in inflow from 2011 to 2021, with 2018 being an exception. This trend indicates a progressive reduction in the hydrological inputs to the lake over the decade. Simultaneously, the outflow from GGS shows significant annual variability, with the highest outflow occurring between 2012 and 2017. This increased outflow, coupled with the decreasing inflow, points to a period of significant net water loss for GGS, potentially impacting the lake's water levels. Positive net flow values in 2011, 2018, and 2022 indicate years when inflow exceeds outflow, contributing to the lake's water gain. Variation in both water gain and loss over the study period reflects the complex interplay of natural hydrological processes governing the lake's water balance.

Figure 13 illustrates the water exchange dynamics of GGS over the period from August 2022 to September 2023, highlighting seasonal patterns in inflow, outflow, and net flow. During the warmer months, particularly June and July, the inflow to the lake peaks at approximately 90,000 m³, indicating a significant increase in water input during this period. Among the summer months (July to September), August has the lowest amount of inflow, with an average of approximately 40,000 m³. In contrast, the inflow is pronouncedly lower during the months of March, April, and May, averaging around 20,000 m³. The lake experiences positive net flow, reflecting water gain, during June and July. From December to May (except February), the net flow is predominantly negative, indicating that outflow exceeds inflow. During these months, the lake loses water, with outflow reaching its highest levels.

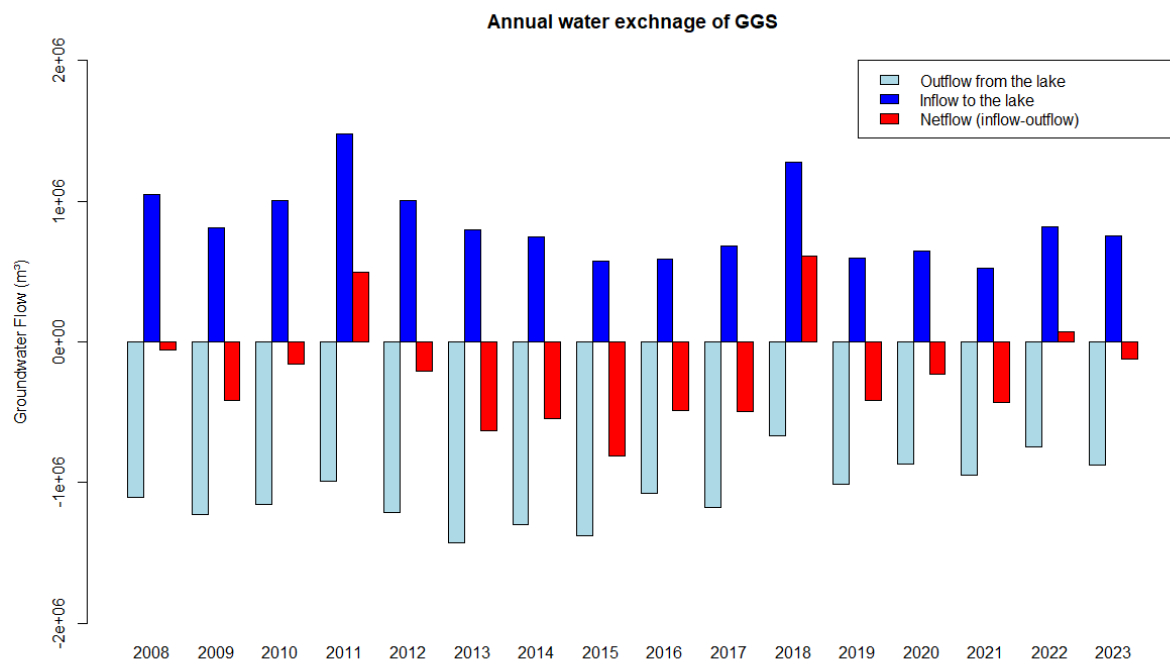


Fig. 12. Annual water exchange of Lake Groß Glienicke (GGS) from 2008 to 2023, showing the inflow to the lake, outflow from the lake, and net flow (Outflow - Inflow)

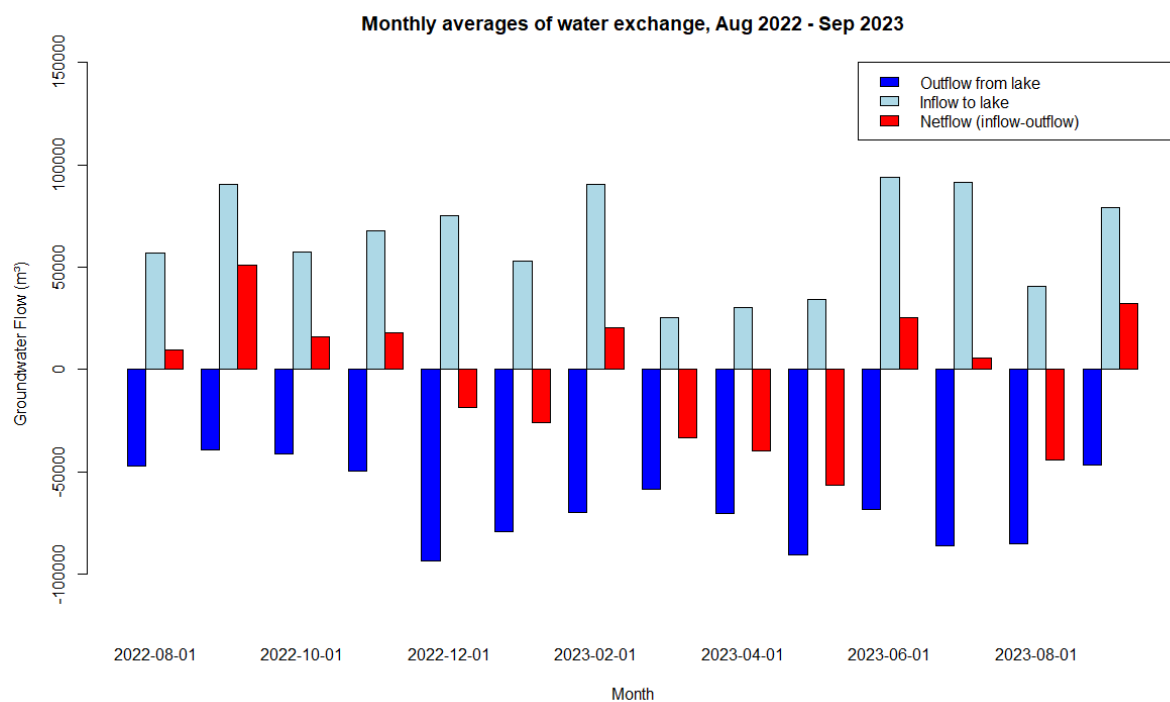


Fig. 13. Monthly water exchange of Lake Gross Glienicke (GGS) from August 2022 to September 2023

To compare the lake evaporation values calculated by the HGS model and the results of the isotopic signature of lake water actual evaporation (E) from GGS for the years 2022 and 2023 was calculated using Eq. 12, which incorporates simulated annual water inflow to GGS (I_{HGS}) from the HGS model and the E/I ratio derived from isotope analysis (mean ratio: 37%). These results were compared to the evaporation rates from GGS simulated by the HGS model (Fig. 14). The annual evaporation calculations from the isotope analysis for the years 2022 and 2023 show good agreement. The values calculated by the HGS model (E_{HGS}) are slightly lower (around 80 mm). The general agreement between the evaporation rates simulated by the HGS model and the values derived from the isotope approach indicates accurate inflow simulations by the HGS model. Transferring the E/I ratios from 2022 and 2023 to calculate evaporation for earlier years (2015-2021, Fig. 14) results in notable discrepancies, particularly evident in 2015 and 2018, where evaporation reaches 450 and 1000 mm, respectively, compared to E_{HGS} values of 590 and 614 mm for those years. However, modified isotope analysis (considering annual variations in inflow and temperature, see Eq. 13) demonstrates good agreement with the HydroGeoSphere model, emphasizing our approach of incorporating temperature and inflow data for accurate evaporation predictions for earlier years. This suggests that while the E/I ratio obtained from 2022 and 2023 can be applied to calculate evaporation in previous years, adjustments for differences in inflow and temperature between those years and 2022-2023 are crucial for enhanced estimations of evaporations in years without isotope analysis (E/I).

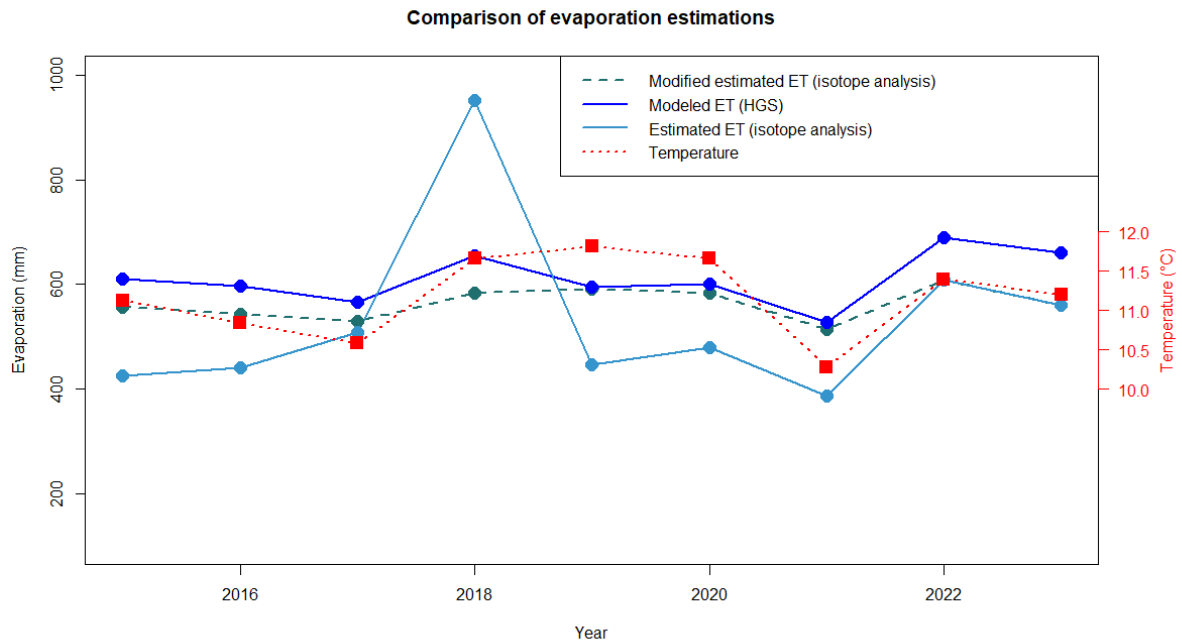


Fig. 14. Comparison of actual evaporation from Lake Gross Glienicke (GGS) calculated by HydroGeoSphere model (HGS) and isotope analyses (E/I ratio), and modification of isotope analyses (E/I ratio) considering annual temperature and inflows to the lake. Annual temperatures are indicated, corresponding to the secondary y-axis.

4. Discussion

The comparison of actual evaporation (E) from GGS for 2022 and 2023, derived from isotope analysis (E/I) and HydroGeoSphere (HGS) model calculations, demonstrates the comparability of these methods. Despite slight differences in the results, likely due to the influence of direct precipitation with lighter isotope signatures diluting the lake water, the general consistency between the methods underscores the accurate simulation of inflows by the HGS model. Seasonal variations in water isotopic compositions offer a valuable perspective for evaluating hydrological model simulations. Higher outflow observed from December 2022 to May 2023 provides insights into the dilution phase of groundwater isotopic compositions on the eastern side of GGS during these months. Notably, GGS water isotopes reached their heaviest form in August 2023, contrasting with other summer months with similar temperatures and precipitation, suggesting lower inflow during that particular month as simulated by the HGS model. This approach highlights the value of using isotopic data to evaluate model simulations, providing a complementary angle to traditional methods. Considering the higher precipitation and warmer temperatures in the summer of 2022 compared to the summer of 2023, the isotopic composition of both lake water and eastern groundwater was heavier during the summer of

2022. This indicates that isotopic “light” rainwater, which directly recharged the lakes in the summer of 2022, was insufficient to counterbalance the influence of the higher temperatures, resulting in a heavier isotopic composition in the lakes. Despite the high precipitation in summer 2022, which would typically dilute the isotopic signature of the lake, the higher temperatures (evaporation) led to an enrichment of water isotopes. This phenomenon can be attributed to the large water body of the lake (approximately 4 million m³ considering the average water depth of 6.5 m reported by Wolter and Ripl (1999) compared to the rain amount (0.05 million m³), where the relatively small volume of rainwater was not enough to significantly alter the isotopic composition of the much larger lake volume. This is in line with the findings of the study by Vyse et al. (2020) where they discovered a more significant influence of rain on shallow water bodies compared to larger water bodies in the State of Brandenburg (NE-Germany). The low impacts of rainwater on the isotope composition of the lake can also be interpreted to mean that GGS is a groundwater-dominated lake with a very good hydraulic connection to the groundwater, which keeps the lake water fresh and diluted by providing a source of isotopically-depleted water. This underlines the robustness of the isotopic approach against the variations of meteorological factors influencing the isotopic signature.

The isotopic differences between lake water and groundwater on both sides of the GGS, highlight the complex interactions and distinct hydrological processes occurring within the study area. Considering that the groundwater samples from the east and west of GGS belong to the same depth (9-10 m below surface) and the same aquifer, the isotopically-enriched groundwater in the east side can only be explained by a well-mixed interaction of lake water and groundwater in this area. This underlines that GGS is a flow-through lake, a conclusion supported by the E/I ratio being up to 37% (i.e., mean ratio) in 2022 and 2023. The E/I ratio of GGS aligns with the E/I ratio reported for wetlands and lake water bodies downstream of the Spree catchment showing similar climate conditions. In 2021, the E/I ratio in this area was up to 34% (Chen et al., 2023). Vyse et al. (2020) reported that the wetlands with lower landscape elevations located in northern Brandenburg typically possessed higher E/I ratios than the ones with higher elevations. This is due to the hydrological function of small water bodies in the Pleistocene landscape. Higher wetlands have a more recharge/flow through character, whereas lower positions show a discharge character. Moreover, Cluett and Thomas (2020) highlighted that the sensitivity of lake water isotopes to inflow and evaporation can vary significantly over time, influenced by regional hydroclimate (e.g., direct precipitation and humidity) and local hydrology (e.g., type of lake). The uncertainty in evaporative loss calculated using the code embedded in the Hydrocalculator is mainly due to uncertainties in the required inputs,

temperature, and humidity, which can cause variations of up to 2% (E/I), according to Skrzypek et al. (2015). Despite these potential measurement variations, the calculated E/I ratio for GGS provides a reliable estimate that aligns with known hydrological behaviors in similar regions.

For the period 2015-2021, evaporation calculations derived from the isotope analysis (E/I) of 2022 and 2023 generally show lower values compared to the HGS model's evaporation calculations, except 2018. This year saw a strong inflow peak due to heavy rainfall events in the summer of 2017. This suggests that using the E/I ratios from 2022 and 2023 for earlier years without adjustments can lead to significant inaccuracies. The modified isotope analysis (*E/I*), which incorporates annual variations in inflow and temperature, shows a better agreement with the HGS model evaporation calculations, especially in earlier years. This finding underscores the importance of including both temperature and inflow data for more accurate evaporation predictions. Comparing these results with previous studies, Herbst and Kappen (1999) reported evaporation from Bornhöved Lake, which covers 1.1 km² in northern Germany and has a maximum depth of 26 m, to be around 650 mm for the years 1992-1995. The evaporation calculations for GGS from both the HGS model and the modified isotope analysis fall within a similar range reported by Herbst and Kappen (1999), suggesting that despite differences in geographical and hydrological characteristics, the annual evaporation rates for German lowland lakes are comparable. These findings support the use of comprehensive, multi-faceted approaches in hydrological studies to improve the precision of evaporation calculations and enhance water resource management.

5. Conclusion

This study has addressed the challenge of accurate estimation of water balance components comprehensively through the quantification of subsurface-groundwater inflow and evaporation losses to Gross Glienicke Lake (GGS), located in northeast Germany. Through the combined use of the isotopic mass balance model, HydroCalculator, alongside the fully integrated hydrological model, HydroGeoSphere (HGS), a detailed understanding of the hydrological dynamics governing GGS was attained. The calculated evaporation rates derived from the isotopic mass balance model exhibit strong alignment with the actual evaporation rates calculated by the HGS model. This alignment underscores on one hand the reliability and efficacy of the integrated hydrologic modeling approach in predicting water balance components such as inflow to the lake in a complex hydrogeological setting. On the other hand,

incorporating evaporation rate estimations given by isotope analysis corrected by temperature variations and historical inflows leads to an improvement of the inflow results even for the years without measured isotope data. Despite inherent uncertainties associated with water isotope signature analyses, the integration of isotopic data with hydrological modeling has provided valuable validation for the estimation of water balance components. Moving forward, this integrated approach holds promise for enhancing the robustness of hydrological models and facilitating more accurate assessments of water resources and ecosystem dynamics in similar lake environments.

Data availability: All data (except the data provided by Berliner Wasserbetriebe) used to process and set up the models will be available upon request. Data provided by Berliner Wasserbetriebe can be requested through a separate usage agreement with Berliner Wasserbetriebe.

Author contributions: NM: Data collection, fieldwork, HGS model setup, and code development, model input-output analysis, writing (original draft, review, and editing). H-TH: HGS model setup, model input-output analysis, writing (review, and editing). JS: Isotopic laboratory analysis, writing (review and editing). MS: Model input-output analysis, writing (original draft, review, and editing). CM: Model input-output analysis, writing (original draft, review, and editing).

Competing interests: The authors declare that they have no conflict of interest.

Acknowledgments: This investigation was funded through the Einstein Research Unit ‘Climate and Water under Change’ from the Einstein Foundation Berlin and Berlin University Alliance (ERU-2020-609). We would like to thank Prof. Reinhard Hinkelmann, Dr. Franziska Tügel, and Can Ölmez from the Technical University of Berlin for providing potential evaporation data. We like to thank Dr. Gunnar Lorenzen and Dr. Bertram Monninkhoff (Berliner Wasserbetriebe) for providing us with the FEFLOW model as well as the actual data on the drinking water extraction rates around the Havel River. We are grateful to our colleague, Prof. Dieter Scherer from the Technical University of Berlin for providing the atmospheric dataset from CER.v2 and his rainwater sampling assistance, and Patrick Zentel for his field and laboratory assistance. We sincerely thank Dr. Renée Brooks for her thoughtful review and insightful comments, which greatly improved the quality of this manuscript. AI tools (e.g. ChatGPT) was partly used to support editing of this article.

792

793 **References**

794 Ala-aho, P., Rossi, P.M., Isokangas, E. and Kløve, B., 2015. Fully integrated surface–
795 subsurface flow modelling of groundwater–lake interaction in an esker aquifer: Model
796 verification with stable isotopes and airborne thermal imaging. *Journal of Hydrology*, 522,
797 pp.391-406.

798 Allison, G.B. and Leaney, F.W., 1982. Estimation of isotopic exchange parameters, using
799 constant-feed pans. *Journal of Hydrology*, 55(1), pp.151-161.

800 Aquanty Inc., 2023. HydroGeoSphere: A three-dimensional numerical model describing fully-
801 integrated subsurface and surface flow and solute transport. Waterloo, Ontario, Canada.
802 <https://www.aquanty.com/hgs-download>.

803 Berliner Wasserbetriebe – BWB., 2012. Assessing the waterworks of Beelitzhof, Tiefwerder,
804 and Kladow impacts on groundwater model using FEFLOW model, Unpublished.

805 Berliner Wasserbetriebe – BWB., 2013. Assessing the waterworks of Beelitzhof, Tiefwerder,
806 and Kladow impacts on groundwater model using FEFLOW model, Unpublished.

807 Bluszczyk, P., Kirilova, E., Lotter, A.F., Ohlendorf, C. and Zolitschka, B., 2008. Global radiation
808 and onset of stratification as forcing factors of seasonal carbonate and organic matter flux
809 dynamics in a hypertrophic hardwater lake (Sacrower See, Northeastern Germany). *Aquatic*
810 *Geochemistry*, 14, pp.73-98.

811 Chen, K., Tetzlaff, D., Goldammer, T., Freymueller, J., Wu, S., Smith, A.A., Schmidt, A., Liu,
812 G., Venohr, M. and Soulsby, C., 2023. Synoptic water isotope surveys to understand the
813 hydrology of large intensively managed catchments. *Journal of Hydrology*, 623, p.129817.

814 Cluett, A.A. and Thomas, E.K., 2020. Resolving combined influences of inflow and
815 evaporation on western Greenland lake water isotopes to inform paleoclimate inferences.
816 *Journal of Paleolimnology*, 63(4), pp.251-268.

817 DWD, C.D.C.C. Historical Daily Station Observations (Temperature, Pressure, Precipitation,
818 Sunshine Duration, etc.) for Germany, Version v21.3, 2021. (DWD), D.W., Ed. Offenbach,
819 2024. Available online:
820 https://opendata.dwd.de/climate_environment/CDC/observations_germany/climate/daily/
821 (accessed on January 2024).

822 Fekete, B.M., Gibson, J.J., Aggarwal, P. and Vörösmarty, C.J., 2006. Application of isotope
823 tracers in continental scale hydrological modeling. *Journal of Hydrology*, 330(3-4), pp.444-
824 456.

825 Gat, J.R. and Gat, J.R., 1978. Isotope hydrology of inland sabkhas in the Bardawil area, Sinai.
826 *Limnology and Oceanography*, 23(5), pp.841-850.

827 Gat, J.R., 1981. Properties of the isotopic species of water: the “isotope effect”. *Stable Isotope*
828 *Hydrology, Deuterium and Oxygen-18 in the Water Cycle*, IAEA Tech. Rep. Ser, (210), pp.7-
829 19.

830 Gat, J.R., 1995. Stable isotopes of fresh and saline lakes. In *Physics and chemistry of lakes* (pp.
831 139-165). Berlin, Heidelberg: Springer Berlin Heidelberg.

832 Germer, S., Kaiser, K., Bens, O. and Hüttl, R.F., 2011. Water balance changes and responses
833 of ecosystems and society in the Berlin-Brandenburg region—a review. *DIE ERDE—Journal of*
834 *the Geographical Society of Berlin*, 142(1-2), pp.65-95.

835 Gerstengarbe, F.W., Badeck, F.W., Hattermann, F., Krysanova, V., Lahmer, W., Lasch, P.,
836 Stock, M., Suckow, F., Wechsung, F. and Werner, P.C., 2003. Studie zur
837 klimatischen Entwicklung im Land Brandenburg bis 2055 und deren Auswirkungen auf den
838 Wasserhaushalt, die Forst- und Landwirtschaft sowie die Ableitung erster Perspektiven. Report
839 No. 83, Potsdam Institute for Climate Impact Research (PIK).

840 Gerstengarbe, F.W., Werner, P.C., Österle, H. and Burghoff, O., 2013. Winter storm-and
841 summer thunderstorm-related loss events with regard to climate change in Germany.
842 *Theoretical and applied climatology*, 114, pp.715-724.

843 Gibson, J.J. and Reid, R., 2010. Stable isotope fingerprint of open-water evaporation losses and
844 effective drainage area fluctuations in a subarctic shield watershed. *Journal of Hydrology*,
845 381(1-2), pp.142-150.

846 Gibson, J.J. and Reid, R., 2014. Water balance along a chain of tundra lakes: A 20-year isotopic
847 perspective. *Journal of Hydrology*, 519, pp.2148-2164.

848 Hartwich, R., Eckelmann, W., Krug, D. and Thiele, S., 2007. Bodenübersichtskarte 1: 200 000
849 (BÜK 200). Status und Perspektiven. *Mitt. Dtsch. Bodenkundl. Ges*, 110(2), pp.449-450.

850 Herbst, M. and Kappen, L., 1999. The ratio of transpiration versus evaporation in a reed belt as
851 influenced by weather conditions. *Aquatic botany*, 63(2), pp.113-125.

852 Herrera, P.A., Marazuela, M.A. and Hofmann, T., 2022. Parameter estimation and uncertainty
853 analysis in hydrological modeling. *Wiley Interdisciplinary Reviews: Water*, 9(1), p.e1569.

854 Hwang H.-T., Park Y.-J., Sudicky E.A., Forsyth P.A.: A parallel computational framework to
855 solve flow and transport in integrated surface–subsurface hydrologic systems. *Environ Model*
856 *Software*, 61, pp.39-58, 2014.

857 Jafari, T., Kiem, A.S., Javadi, S., Nakamura, T. and Nishida, K., 2021. Using insights from
858 water isotopes to improve simulation of surface water-groundwater interactions. *Science of The*
859 *Total Environment*, 798, p.149253.

860 Jänicke, B., Meier, F., Fenner, D., Fehrenbach, U., Holtmann, A., Scherer, D. (2017): Urban-
861 rural differences in near-surface air temperature as resolved by the Central Europe Refined
862 analysis (CER): sensitivity to planetary boundary layer schemes and urban canopy models. *Int.*
863 *J. Climatol.* 37 (4), 2063-2079. DOI: 10.1002/joc.4835.

864 Kristensen, K.J., Jensen, S.E., 1975. A model for estimating actual evapotranspiration from
865 potential evapotranspiration. *Hydrology Research* 1 June 1975; 6 (3): 170–188. doi:
866 <https://doi.org/10.2166/nh.1975.0012>

867 Lahmer, W. and Pfützner, B., 2003. Orts-und zeitdiskrete Ermittlung der Sickerwassermenge
868 im Land Brandenburg auf der Basis flächendeckender Wasserhaushaltsberechnungen. PIK.

869 Liu, Y. and Gupta, H.V., 2007. Uncertainty in hydrologic modeling: Toward an integrated data
870 assimilation framework. *Water resources research*, 43(7).

871 Lüder, B., Kirchner, G., Lücke, A. and Zolitschka, B., 2006. Palaeoenvironmental
872 reconstructions based on geochemical parameters from annually laminated sediments of
873 Sacrower See (northeastern Germany) since the 17th century. *Journal of Paleolimnology*, 35,
874 pp.897-912.

875 Mahmoodi, N., Kiesel, J., Wagner, P.D. and Fohrer, N., 2020. Integrating water use systems
876 and soil and water conservation measures into a hydrological model of an Iranian Wadi system.
877 *Journal of Arid Land*, 12(4), pp.545-560.

878 Mayr, C., Lücke, A., Stichler, W., Trimborn, P., Ercolano, B., Oliva, G., Ohlendorf, C., Soto,
879 J., Fey, M., Haberzettl, T. and Janssen, S., 2007. Precipitation origin and evaporation of lakes
880 in semi-arid Patagonia (Argentina) inferred from stable isotopes ($\delta^{18}\text{O}$, $\delta^2\text{H}$). *Journal of*
881 *Hydrology*, 334(1-2), pp.53-63.

882 Merrick, D., 2017. AlgoCompute Cloud-Computing Platform. Canberra, Australia:
883 HydroAlgorithmics Pty Ltd.

884 Merz, C. and Pekdeger, A., 2011. Anthropogenic changes in the landscape hydrology of the
885 Berlin-Brandenburg region. *DIE ERDE–Journal of the Geographical Society of Berlin*, 142(1-
886 2), pp.21-39.

887 Mügler, I., Sachse, D., Werner, M., Xu, B., Wu, G., Yao, T. and Gleixner, G., 2008. Effect of
888 lake evaporation on δD values of lacustrine n-alkanes: A comparison of Nam Co (Tibetan
889 Plateau) and Holzmaar (Germany). *Organic Geochemistry*, 39(6), pp.711-729.

890 Müller Schmied, H., Eisner, S., Franz, D., Wattenbach, M., Portmann, F.T., Flörke, M. and
891 Döll, P., 2014. Sensitivity of simulated global-scale freshwater fluxes and storages to input data,
892 hydrological model structure, human water use and calibration. *Hydrology and Earth System
893 Sciences*, 18(9), pp.3511-3538.

894 Myneni, R., Knyazikhin, Y. and Park, T., 2021. MODIS/Terra leaf area index/FPAR 8-day L4
895 global 500m SIN grid V061 [data set]. NASA EOSDIS Land Processes DAAC.

896 Ölmez, C., Tügel, F., & Hinkelmann, R., 2024. Sinking Water Level of Groß Glienicker See –
897 A Data-Based Model for Estimating the Water Balance. Presented at Day of Hydrology
898 conference, Berlin, Germany, 19-21 March 2024.

899 Partington, D., Knowling, M.J., Simmons, C.T., Cook, P.G., Xie, Y., Iwanaga, T. and Bouchez,
900 C., 2020. Worth of hydraulic and water chemistry observation data in terms of the reliability of
901 surface water-groundwater exchange flux predictions under varied flow conditions. *Journal of
902 Hydrology*, 590, p.125441.

903 Pfannerstill, M., Guse, B. and Fohrer, N., 2014. Smart low flow signature metrics for an
904 improved overall performance evaluation of hydrological models. *Journal of Hydrology*, 510,
905 pp.447-458.

906 Renard, B., Kavetski, D., Kuczera, G., Thyer, M. and Franks, S.W., 2010. Understanding
907 predictive uncertainty in hydrologic modeling: The challenge of identifying input and structural
908 errors. *Water Resources Research*, 46(5).

909 Schaap, M.G., Leij, F.J. and Van Genuchten, M.T., 2001. Rosetta: A computer program for
910 estimating soil hydraulic parameters with hierarchical pedotransfer functions. *Journal of
911 Hydrology*, 251(3-4), pp.163-176.

912 Schmidt, A., Frank, G., Stichler, W., Duester, L., Steinkop, T. & C. Stumpp (2020): Overview
 913 of tritium records from precipitation and surface waters in Germany. *Hydrol. Process.*, 34,
 914 1489-1493.

915 Singh, V.P., 2018. Hydrologic modeling: progress and future directions. *Geoscience letters*,
 916 5(1), pp.1-18.

917 Skrzypek, G., Mydłowski, A., Dogramaci, S., Hedley, P., Gibson, J.J. and Grierson, P.F., 2015.
 918 Estimation of evaporative loss based on the stable isotope composition of water using
 919 Hydrocalculator. *Journal of Hydrology*, 523, pp.781-789.

920 Stumpp, C., Klaus, J. and Stichler, W., 2014. Analysis of long-term stable isotopic composition
 921 in German precipitation. *Journal of Hydrology*, 517, pp.351-361.

922 Tweed, S., Leblanc, M. and Cartwright, I., 2009. Groundwater–surface water interaction and
 923 the impact of a multi-year drought on lakes conditions in South-East Australia. *Journal of*
 924 *Hydrology*, 379(1-2), pp.41-53.

925 Vyse, S.A., Taie Semiromi, M., Lischeid, G. and Merz, C., 2020. Characterizing hydrological
 926 processes within kettle holes using stable water isotopes in the Uckermark of northern
 927 Brandenburg, Germany. *Hydrological processes*, 34(8), pp.1868-1887.

928 Welhan, J.A. and Fritz, P., 1977. Evaporation pan isotopic behavior as an index of isotopic
 929 evaporation conditions. *Geochimica et Cosmochimica Acta*, 41(5), pp.682-686.

930 Windhorst, D., Kraft, P., Timbe, E., Frede, H.G. and Breuer, L., 2014. Stable water isotope
 931 tracing through hydrological models for disentangling runoff generation processes at the
 932 hillslope scale. *Hydrology and Earth System Sciences*, 18(10), pp.4113-4127.

933 Wolter, K.D. and Ripl, W., 1999. Successful restoration of Lake Gross-Glienicker (Berlin,
 934 Brandenburg) with combined iron treatment and hypolimnetic aeration. In 8th International
 935 Conference on the Conservation and Managment of Lakes. Kopenhagen, Dänemark.

936 Wolter, K.D., 2010. Restoration of eutrophic lakes by phosphorus precipitation, with a case
 937 study on Lake Gross-Glienicker. *Restoration of Lakes, Streams, Floodplains, And Bogs in*
 938 *Europe: Principles and Case Studies*, pp.85-99.

939 Zhao, G., Li, Y., Zhou, L. and Gao, H., 2022. Evaporative water loss of 1.42 million global
 940 lakes. *Nature Communications*, 13(1), p.3686.

941

