



State updating in the Xin'anjiang Model: Joint assimilating streamflow and multi-source soil moisture data via Asynchronous Ensemble Kalman Filter with enhanced Error Models

Junfu Gong^{1,2}, Xingwen Liu², Cheng Yao^{2,3*}, Zhijia Li², Albrecht H. Weerts^{4,5}, Qiaoling Li², Satish Bastola⁶, Yingchun Huang⁷, Junzeng Xu¹

¹College of Agricultural Science and Engineering, Hohai University, Nanjing, 210024, China

²College of Hydrology and Water Resources, Hohai University, Nanjing, 210024, China

³China Meteorological Administration Hydro-Meteorology Key Laboratory, Nanjing, 210024, China

⁴Deltares, Delft, 2600 MH, Netherlands

⁵Hydrology and Environmental Hydraulics Group, Wageningen University, Wageningen, 6700 HB, Netherlands

⁶Department of Civil and Environmental Engineering, University of New Orleans, New Orleans, 70148, USA

⁷College of Civil Engineering, Fuzhou University, Fuzhou, 350108, China

Correspondence to: Cheng Yao (yaocheng@hhu.edu.cn)

Abstract. Assimilating either soil moisture or streamflow individually has been well demonstrated to enhance the simulation performance of hydrological models. However, the runoff routing process may introduce a lag between soil moisture and outlet discharge, presenting challenges in simultaneously assimilating the two types of observations into a hydrological model. The Asynchronous Ensemble Kalman Filter (AEnKF), an adaptation of the Ensemble Kalman Filter (EnKF), is capable of utilizing observations from both the assimilation moment and preceding periods, thus holding potential to address this challenge. Our study first merges soil moisture data collected from field soil moisture monitoring sites with China Meteorological Administration Land Data Assimilation System (CLDAS) soil moisture data. We then employ the AEnKF, equipped with improved error models, to assimilate both observed outlet discharge and the merged soil moisture data into the Xin'anjiang model. This process updates the state variables of the model, aiming to enhance real-time flood forecasting performance. The testing on both synthetic and real-world cases demonstrates that assimilation of these two types of observations simultaneously substantially reduces the accumulation of past errors in the initial conditions at the start of the forecast, thereby aiding in elevating the accuracy of flood forecasting. Moreover, the AEnKF with the enhanced error model consistently yields greater forecasting accuracy across various lead times compared to the standard EnKF.

1 Introduction

Floods, among the most frequent natural disasters, significantly affect infrastructure and agricultural yields and may even directly endanger the lives of local residents (Johnson et al., 2020). The destructiveness of flash floods is particularly notable. In recent decades, flash floods triggered by localized torrential rains have frequently resulted in significant human casualties (Pilon, 2002). Short-term flood forecasting, a vital non-structural approach to flood mitigation, plays a crucial role in



facilitating emergency responses in flood-prone regions (Craninx et al., 2021). Hydrological models are instrumental in flood forecasting, utilizing mathematical and physical representations to analyze the various components of the catchment hydrological processes, including precipitation, evaporation, and runoff, as well as their interplay. This understanding aids in
35 comprehending catchment hydrological characteristics and trends, crucial for simulating and forecasting hydrological processes. The Xin'anjiang model, extensively applied in operational short-term flood forecasting in China, stands as one of the well-known semi-distributed hydrological models. Its broad applicability, especially in the humid and semi-humid climate zones of the Yangtze River Basin, has been substantiated by extensive studies (e.g. Fang et al., 2017; Gong et al., 2021; Zang et al., 2021).

40 However, in hydrological simulations, multiple sources of uncertainty, such as uncertainties in model inputs, structure, and parameters, can significantly affect the accuracy of the simulations (Beven, 1993; Ajami et al., 2007). In short-term flood forecasting, an additional process, often referred to as the real-time correction process, is typically employed to mitigate these uncertainties. A notable strategy in real-time correction involves the recursive adjustment of the hydrological model's state variables based on available real-time observational data. It helps reduce the error accumulation in the initial conditions
45 of hydrological model, a factor that has been identified as a primary source of uncertainty at the start of flood forecasting (Shukla and Lettenmaier, 2011; Yossef et al., 2013; Thiboult et al., 2016). This process is sometimes termed hydrological data assimilation in literature (e.g. Clark et al., 2008). The Ensemble Kalman Filter (EnKF) (Evensen, 2003), which integrates ensemble forecasting concepts with Kalman filter and employs Monte Carlo methods for error statistic prediction, effectively addresses the inability of Kalman filtering to handle nonlinear systems. Its robustness, flexibility, and ease of use
50 have led to its widespread application in hydrological data assimilation (Clark et al., 2008; Liu et al., 2012; Rakovec et al., 2012; Piazzini et al., 2021).

Data assimilation typically falls into two categories: synchronous and asynchronous methods. Synchronous methods depend solely on observational data at a specific update moment, while asynchronous methods broaden this scope by incorporating data over a time frame, including both current and preceding time steps (Sakov and Bocquet, 2018). This distinction is
55 particularly crucial in sequential assimilation, where commonly employed sequential filters like the EnKF utilize a synchronous strategy. Conversely, the asynchronous strategy is predominantly used in smoothers, such as the Ensemble Kalman Smoother (EnKS) (Evensen and Van Leeuwen, 2000). While the EnKS augments reanalysis by integrating future observational data backwards in time, its forecasting efficacy (including real-time forecasting) aligns with that of the EnKF (Evensen, 2009). The intrinsic difference between smoothers and filters is their focus: smoothers assimilate future
60 observational data, while filters process past observational data (Rakovec et al., 2015). Hence, in hydrological data assimilation with a focus on forecasting, filters are generally the preferred choice over smoothers.

In recent years, researchers have made strides in integrating asynchronous strategies into filters for sequential assimilation. This is notably evident in the development of the Four-Dimensional Ensemble Kalman Filter (4D-EnKF) (Hunt et al., 2004) and the Four-Dimensional Local Ensemble Transform Kalman Filter (4D-LETKF) (Hunt et al., 2007). The 4D-EnKF stands
65 out for its ability to synchronize the timing of observations with lower computational demands, particularly effective in



linear dynamics. In contrast, the 4D-LETKF builds upon the 4D-EnKF by prioritizing spatial localization and refining the handling of nonlinear observation operators. This enhancement renders it more effective and versatile in managing high-dimensional, chaotic systems, especially in meteorology and climatology. Building on this, Sakov et al. (2010, 2018) introduced the asynchronous ensemble Kalman filter (AEnKF). Remarkably, the AEnKF and 4D-LETKF are essentially equivalent (Sakov et al., 2010), both employing ensemble-based methods to update model states based on observational data. The 4D-LETKF processes asynchronous observations by amalgamating them and updating the state via ensemble transform matrices. Conversely, the AEnKF accomplishes this by advancing corrections along the forecast system trajectory, utilizing ensemble observations from the observation time, thereby efficiently assimilating both past and future data. AEnKF is designed to be computationally efficient, which is noted for its relative simplicity in implementation compared to 4D-LETKF. It modifies the standard EnKF by using ensemble observations from the time of observations, a straightforward change that does not significantly complicate the assimilation process. The AEnKF is recognized for its simplicity and high computational efficiency, offering significant potential in short-term flood forecasting applications. Despite its promise, the scope of research in this area is relatively limited. Among the few studies conducted, Mazzoleni et al. (2018) evaluated AEnKF assimilation in simplified flow routing models, highlighting its exceptional performance in both lumped and distributed flow routing. In addition, Rakovec et al. (2015) and our earlier study (Gong et al., 2024) applied the AEnKF to the distributed HBV-96 model and the Xin'anjiang model, respectively. These studies examined effectiveness of AEnKF in real-time correction through the assimilation of observed discharge in distributed and semi-distributed hydrological models, revealing that AEnKF outperforms the standard EnKF. However, these studies assimilate only a single type of observational data (e.g., observed discharge) using the AEnKF method, which does not take full advantage of the AEnKF.

In the context of real-time correction processes employing AEnKF, the types of observations to assimilate constitute another key factor influencing the effectiveness. Popular observation types currently assimilated include discharge, soil moisture, and snow data, among others (Gong et al., 2023). In rainfall-runoff modeling, soil moisture plays a pivotal role in driving the runoff generation process (Massari et al., 2014). A wealth of research has demonstrated that updating hydrological model states through the assimilation of soil moisture significantly enhances the precision of runoff simulations and forecasts (e.g., Wanders et al., 2014; Alvarez-Garreton et al. 2015; Chao et al., 2022). These studies typically rely on a single type of soil moisture dataset. One of the highlights of our study is that it simultaneously considers the advantages of site observation data and soil reanalysis datasets, enhancing both the timeliness and spatial accuracy of the soil moisture data. Specifically, in the real-time correction process of flood forecasting, there is a high demand for the timeliness of observational data to swiftly respond to flood events. Satellite remote sensing data and reanalysis products often suffer from delays in data release or lengthy observational intervals. In contrast, ground-based soil moisture measurements offer high accuracy and timeliness but are limited to point-scale data, failing to capture the spatial distribution of soil moisture. To overcome this limitation, the Weighted k-Nearest Neighbor (WKNN) algorithm (Pedregosa et al., 2011; Jung et al., 2017) is employed to fuse ground soil moisture measurements with reanalysis soil moisture data. This approach involves establishing a regression relationship between historical ground and reanalysis data, subsequently generating real-time, spatially distributed, fusion soil moisture



100 data from current ground observations. On the other hand, discharge observations, due to their direct relevance to flow or
water level predictions crucial in flood forecasting, are another valuable choice for assimilation. They provide a
comprehensive view of the hydrological conditions of a catchment. Discharge measurements are often more accessible and
offer more timely data than soil moisture readings, generally yielding greater reliability (Li et al., 2013). Numerous studies
have concentrated on assimilating observed discharge data to enhance flood forecasting, showcasing the substantial potential
105 and impressive effectiveness of this strategy across various regions (e.g., Clark et al., 2008; Sun et al., 2020; Gong et al.,
2023). Given that assimilating soil moisture or discharge alone can provide acceptable results, exploring the simultaneous
assimilation of both observation types warrants consideration. Previous studies have highlighted the benefits of concurrently
assimilating various observation types. Techniques such as the EnKF (Meng et al., 2017), Variational Assimilation (VAR)
(Lee et al., 2011), and Tempered Particle Filter (TPF) (García-Alén et al., 2023) have consistently shown that joint
110 assimilation generally surpasses the efficiency of single-type assimilation. Although these findings are encouraging, the
advantage of joint assimilation may not always hold. This is partly because each observation type represents a specific
hydrological process, with correlations among variables varying across different spatial and temporal scales. For instance,
soil moisture immediately responds to rainfall, while streamflow responses are inherently delayed due to the time delay in
the routing process (Meng et al., 2017). Such delays can lead to the accumulation of uncertainties in discharge predictions,
115 an aspect often overlooked in synchronized assimilation methods. Contrarily, the AEnKF method considers all observational
data within a specific time window, rather than just a single observation at the update time, effectively considering the time
delays in routing processes and offering a novel approach for the combined assimilation of diverse observation types.
However, to our knowledge, there are no existing studies on the performance of AEnKF in assimilating multiple types of
observational datasets (such as soil moisture and discharge measurements), which could significantly improve the accuracy
120 of short-term flood forecasting.

In AEnKF assimilation, ensemble dispersion is achieved by introducing pre-determined noise (commonly zero-mean
Gaussian noise) into model state variables and forcing data. The models governing these perturbations are termed ‘error
models’, and their associated parameters are known as ‘hyperparameters’ (Thiboult and Anctil, 2015). Improper handling of
these uncertainties can potentially impair the efficacy of ensemble-based Kalman filters (Crow and Van Loon, 2006;
125 Pathiraja et al., 2018). The commonly adopted practice involves setting the hyperparameters of error models based on the
empirical knowledge of hydrologists or forecasters (e.g., Weerts and El Serafy, 2006; Clark et al., 2008; Sun et al., 2020).
This approach is highly subjective, resulting in forecast results that may significantly differ among practitioners. The
Maximum a posteriori estimation (MAP) method (Li et al., 2014; Gong et al., 2023) represents a Bayesian inference
technique specifically designed for ensemble-based Kalman filters. This method leverages historical observational data to
130 objectively estimate the hyperparameters in error models, thereby substantially mitigating the subjectivity associated with
hyperparameter configuration. Notably, the strengths of MAP method, compared to alternatives like the kernel conditional
density estimation method (Pathiraja et al., 2018), include its independence from the need for sequential observations to be
independent. Furthermore, it enables concurrent estimation of hyperparameters across diverse error models, making it



particularly compatible with the error models employed in AEnKF. Another challenge in AEnKF assimilation is reducing
135 the systematic biases that arise from perturbations. When creating ensemble dispersion using error models, it is implicitly
assumed that the introduction of noise will not lead to systematic biases in the model outputs (Ryu et al., 2009). Nevertheless,
the strong non-linearity of hydrological models and the stringent physical limitations on some state variables mean that even
zero-mean Gaussian perturbations may result in systematic biases (Alvarez-Garreton et al., 2015). A case in point is soil
moisture, which must stay below saturation levels. During flooding, when soil moisture approaches saturation, perturbing
140 this variable risk breaching these physical boundaries. Subsequent corrections made by the hydrological model to align with
saturation levels may introduce truncation errors in the prediction of the background field. To counter this, our study
incorporates the Bias-corrected Gaussian Error Model (BGEM) (Ryu et al., 2009), which introduces an unperturbed model
run in parallel to the ensemble. This unperturbed model is utilized to correct the biases induced by perturbations. Our prior
research (Gong et al., 2024) has shown that the BGEM is effective in alleviating systematic biases caused by random
145 perturbations in soil moisture state variables. However, the performance of the AEnKF with these enhanced error models
when assimilating multiple types of observations has yet to be further tested.

This study developed an efficient joint data assimilation framework for real-time correction of short-term flood forecasting
based on AEnKF with improved error models. One of the main highlights of this study is the consideration of the inherent
limitations of single-source soil moisture data. By fusing ground-based soil moisture measurements with reanalysis data
150 from the China Meteorological Administration Land Data Assimilation System (CLDAS), the study generates a reliable,
real-time spatial distribution dataset of soil moisture that aligns with the 8-hour observation intervals of monitoring sites. The
second highlight is that the AEnKF with improved error models fully accounts for the time delays in routing process,
enabling effective joint assimilation of soil moisture data and discharge observations. Upon establishing the appropriate
assimilation time window for the AEnKF with improved error models, the study conducted a detailed comparison between
155 the joint assimilation scheme and individual assimilation schemes (including the separate assimilation of soil moisture or
discharge observation data) using synthetic and real-world cases. This comparison effectively underscores the superior
performance of the joint assimilation framework proposed in this study.

2 Methodology and method

2.1 Asynchronous Ensemble Kalman filter

160 The Asynchronous Ensemble Kalman Filter (AEnKF) represents a straightforward enhancement of the Ensemble Kalman
Filter (EnKF), utilizing the same assimilation framework as EnKF. Its uniqueness lies in its capability to assimilate multi-
temporal observational data, enabling it to effectively incorporate a broader temporal spectrum of observations. This feature
is particularly advantageous in capturing the dynamic nature of hydrological processes over time. We follow the notation of
Ide et al. (1997) and Vetra-Carvalho et al. (2018) as closely as possible, aiming to make our paper accessible and practical
165 for both data assimilation specialists and a broader audience interested in applying these methods. To this end, the dimension



of the state space, observation space is denoted as N_x and N_y . Further, the time index is always denoted in parentheses to the right of the variable, i.e. $(\cdot)(t_i)$. Notably, the observational data are categorized into two types: the observed discharge at the catchment outlet and soil moisture across sub-basins. During an ensemble run of the dynamic model, the assimilation process has two steps: the soil moisture observations are used to update the soil states, and the discharge observations are used to update cumulative channel flow. Consequently, for each assimilation process, the values of N_y can differ, and the same applies to N_x .

2.1.1 Ensemble Kalman filter

At a given time t_i , we define the model state vector as $\mathbf{x}(t_i) \in \mathcal{R}^{N_x}$ and the observation vector as $\mathbf{y}(t_i) \in \mathcal{R}^{N_y}$. In the EnKF framework, it is crucial to generate a set of independent model state vectors. These vectors constitute an ensemble matrix, denoted as $\mathbf{X}(t_i) \in \mathcal{R}^{N_x \times N_e}$, where N_e is the total number of the ensemble members. The initial $\mathbf{X}(0)$ is obtained by the Monte Carlo method.

The state transfer equation at the forecast step is represented by

$$\mathbf{x}_j^f(t_{i+1}) = \mathcal{M}[\mathbf{x}_j^a(t_i), \mathbf{U}(t_i)] + \boldsymbol{\eta}(t_i) \quad (1)$$

Where $\mathcal{M}[\cdot]: \mathcal{R}^{N_x} \rightarrow \mathcal{R}^{N_x}$ signifies the dynamic model, such as the Xin'anjiang model; $\mathbf{U}(t_i)$ represents the forcing data (including rainfall, evaporation, etc.); $\boldsymbol{\eta}(t_i) \in \mathcal{R}^{N_x}$ symbolizes the process or system noise characterized by a mean of zero and a covariance matrix $\mathbf{Q}(t_i)$. In addition, the subscript 'j' signifies the ensemble index, ranging from 1 to N_e . The forecasted values from the dynamic model are marked with a superscript 'f', while the analysis (updated) values from the filter are denoted by a superscript 'a'.

During the analysis step, we create a set of new observation vectors by perturbing the original observation vector $\mathbf{y}(t_i)$, as described by

$$\mathbf{y}_j^o(t_i) = \mathbf{y}(t_i) + \boldsymbol{\varepsilon}(t_i) \quad (2)$$

Where $\mathbf{y}_j^o(t_i) \in \mathcal{R}^{N_y}$ represents the perturbed observation vector for the j^{th} ensemble, and $\boldsymbol{\varepsilon}(t_i) \in \mathcal{R}^{N_y}$ is Gaussian noise characterized by covariance matrix $\mathbf{R}(t_i)$. We assume spatial independence of observation errors, thereby designating $\mathbf{R}(t_i)$ as a diagonal matrix. Furthermore, the state update equation is expressed as follows:

$$\mathbf{x}_j^a(t_i) = \mathbf{x}_j^f(t_i) + \mathbf{K}(t_i) \cdot (\mathbf{y}_j^o(t_i) - \mathcal{H}[\mathbf{x}_j^f(t_i)]) \quad (3)$$

Where $\mathcal{H}[\cdot]$ is the measurement operator that maps the state space to observation space, which is also Xin'anjiang model in this study, and $\mathbf{K}(t_i)$ is the Kalman gain matrix calculated by the following:

$$\mathbf{K}(t_i) = \mathbf{P}^f(t_i) \mathbf{H}^T [\mathbf{H} \mathbf{P}^f(t_i) \mathbf{H}^T + \mathbf{R}(t_i)]^{-1} \quad (4)$$

In scenarios where the state space dimensionality, N_x , is substantial, bypassing the direct computation of $\mathbf{P}^f(t_i)$ in favor of calculating $\mathbf{P}^f(t_i) \mathbf{H}^T$ and $\mathbf{H} \mathbf{P}^f(t_i) \mathbf{H}^T$ emerges as a strategy to enhance computational efficiency, as highlighted by Nerger and Hiller (2013).



2.1.2 Asynchronous variant

AEnKF is based on the concept of joint state-observation space, where the ensemble is replaced by a joint ensemble that
 195 combines state and observation information. Updating model states involves considering observations from both the current
 and previous time steps, controlled by the assimilation time window, t_w . This window defines the duration over which
 observations are considered for the analysis, for instance, including data from the previous five hours. Moreover, when
 assimilating only current observations ($t_w = 0$), the AEnKF reverts to standard EnKF. In the AEnKF, the observation vector
 is altered to:

$$\tilde{\mathbf{y}}(t_i) = [\mathbf{y}(t_i)^T, \mathbf{y}(t_{i-1})^T, \dots, \mathbf{y}(t_{i-t_w})^T]^T \in \mathcal{R}^{(t_w+1)*N_y} \quad (5)$$

200 Where $\tilde{\mathbf{y}}(t_i)$ is the joint observation vector, and $\tilde{\mathbf{R}}(t_i)$ denotes the covariance matrix of the associated observation noise,
 expressed as a diagonal matrix:

$$\tilde{\mathbf{R}}(t_i) = \begin{bmatrix} \mathbf{R}(t_i) & \dots & 0 \\ \vdots & \mathbf{R}(t_{i-1}) & \vdots \\ 0 & \dots & \ddots & \mathbf{R}(t_{i-t_w}) \end{bmatrix} \quad (6)$$

Similarly, the model prediction vector from the prior t_w time steps in the observation space is used to expand the state vector:

$$\tilde{\mathbf{x}}_j^f(t_i) = (\mathbf{x}_j^f(t_{i+1})^T, \mathcal{H}[\mathbf{x}_j^f(t_{i-1})]^T, \mathcal{H}[\mathbf{x}_j^f(t_{i-2})]^T, \dots, \mathcal{H}[\mathbf{x}_j^f(t_{i-t_w})]^T)^T \in \mathcal{R}^{N_x+t_w*N_y} \quad (7)$$

Furthermore, the new state definition introduces an augmented observation operator $\tilde{\mathcal{H}}(t_i)$:

$$\tilde{\mathcal{H}} = \begin{bmatrix} \mathcal{H} & \dots & 0 \\ \vdots & I_i & \vdots \\ 0 & \dots & I_{i-t_w} \end{bmatrix} \quad (8)$$

Where I , with the corresponding subscript, stands for identity elements on the diagonal, matching the dimensions in Eq. (7).

205 Following these augmented equations for $\tilde{\mathbf{x}}_j^f(t_i)$, $\tilde{\mathbf{y}}(t_i)$, $\tilde{\mathbf{R}}(t_i)$, and $\tilde{\mathcal{H}}$, we can directly apply these augmented variables in
 the EnKF process (Section 2.1.1) to implement the AEnKF assimilation. Crucially, in the joint state vector $\tilde{\mathbf{x}}_j^f(t_i)$, model
 prediction vectors within the observation space, such as $\mathcal{H}[\mathbf{x}_j^f(t_{i-1})]$ and others, are considered diagnostic variables instead
 of state variables. As a result, they are not updated during the analysis step. Specifically, in Eq. (3), only the first N_x
 elements of the vector $\tilde{\mathbf{x}}_{n,t}$ are calculated, while others are disregarded.

210 2.2 Error estimation

Both the EnKF and its variant, update model states by employing a weighted average of observational data and model
 forecasts. This process highlights the crucial role of model and observational errors in determining the effectiveness of the
 assimilation system. Particularly in rainfall-runoff modeling, where uncertainties in both model and observations are
 inherently ambiguous, generalizing these uncertainties is instrumental in acquiring refined approximations of suboptimal
 215 model states. A common technique involves adding unbiased noise to observations, model forcing and model states.



Observations involved in this study include discharge at catchment outlet and observed soil moisture. We generalize the observational errors as Gaussian perturbations related to the corresponding observed values (Weerts and El Serafy, 2006; Clark et al., 2008; Alvarez-Garreton et al., 2015). Given that rainfall serves as the most critical input information for the hydrological model, we employ log-normal multiplicative perturbations to describe the errors associated with rainfall, thereby representing the uncertainty in model forcing (McMillan et al., 2011; DeChant and Moradkhani, 2012). Moreover, we introduce a first-order autoregressive model to represent the temporal correlation within the observational errors and the forcing errors.

In the assimilation of observed discharge at catchment outlet, the key model state variable updated is cumulative channel flow. This variable represents the outflow from each sub-basin on the routing calculation unit (sub-reaches in this study), denoted as QC . As Li et al. (2014), this state variables are perturbed using a Gaussian function. When assimilating observed soil moisture, the model state variables representing soil humidity need to be updated. Specifically, this refers to the tension water storage (including upper, and lower layer tension water) and the free water storage in the Xin'anjiang model. In the Xin'anjiang model, the soil moisture state variables receive physical constraints. The free water storage (denoted as S) reflects the soil moisture in the topsoil layer, specifically the humus layer (Yao et al., 2012). Therefore, it is assumed that the free water storage can be considered to range between the saturation moisture content and the field capacity, with its upper limit controlled by the parameter SM and the lower limit set to zero. On the other hand, the tension water storage (denoted as W) represents the soil moisture throughout the entire soil profile, encompassing the whole unsaturated zone (Yao et al., 2012). Consequently, the tension water storage is considered to vary between the field capacity and the wilting point, with its upper limit governed by the parameter WM and the lower limit being zero. The WU , WL , and WD represent the upper, lower, and deep layer tension water storage, respectively, with their upper limits controlled by the parameters WUM , WLM , and WDM , and $WM = WUM + WLM + WDM$. When the variables approach the upper or lower limit, the Gaussian perturbations may cause it to violate the physical constraints. If the hydrological model corrects it, it will lead to the truncation error in the background field predictions. We introduce the Bias-corrected Gaussian Error Model (BGEM) proposed by Ryu et al. (2009), aimed at reducing biases that emerge due to adherence to physical constraints.

The aforementioned error models are controlled by parameters known as ‘hyperparameters’ (Thiboult and Anctil, 2015), such as the hyperparameters for Gaussian perturbations are mean and standard deviation. We apply the Maximum a posteriori estimation method (MAP) to identify the globally optimal values of these hyperparameters (Gong et al., 2023). The MAP method aims to maximize the probability density of the hyperparameters with given the observed historical flood events. Supplement 1 provides a comprehensive introduction to the implementation of error estimation in this study.

2.3 Hydrological model

The Xin'anjiang model, conceptualized by Zhao (1992), is a distinguished hydrological model, primarily based on a saturation excess mechanism. Renowned for its straightforward structure and explicit parameter definitions, this model excels in simulating humid catchments, making it a popular tool for flood forecasting in China. To account for spatial



variability in rainfall distribution and surface characteristics, the model typically segments a catchment into several sub-
 250 basins. These sub-basins act as computational units for runoff generation and routing.
 The Xin'anjiang model demands relatively straightforward driving data, and key inputs include the areal mean rainfall depth
 (P) and pan evaporation (EM) for each sub-basin. The model typically comprises four main components: evapotranspiration,
 runoff production, runoff separation, and flow routing, involving the calibration of 16 distinct parameters. The flow chart of
 the Xin'anjiang model is presented in Fig. 1. Soil evaporation is derived from pan evaporation data using a 'three-layer soil
 255 moisture module'. The runoff generation is based on a saturation-excess mechanism, where runoff is produced only when the
 soil moisture in the unsaturated zone reaches field capacity. The 'lag and route' method calculates the outflow from each sub-
 basin. Flow routing from the sub-basin outlets to the total basin outlet employs the Muskingum method to successive sub-
 reaches. It is implemented through dividing the channel from each sub-basin outlet to the total basin outlet into varying
 numbers of sub-reaches. These sub-reaches are based on the distance from each sub-basin outlet to the total basin outlet. In
 260 addition, the basin inflow is directly calculated to the outlet by the Muskingum method.

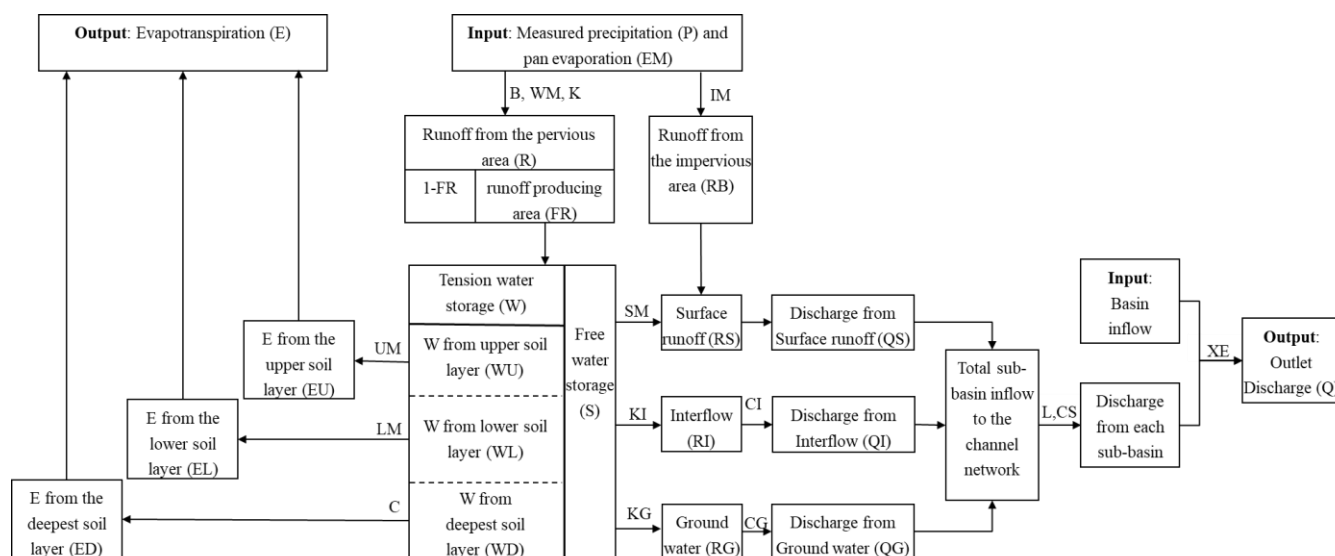


Fig. 1. Flow Chart of Xin'anjiang Model. The variables in the boxes indicate the model state, inputs and outputs, and the symbols outside the corresponding blocks are model parameters.

Zhao (1992) categorized the parameters of Xin'anjiang model into sensitive and non-sensitive groups. In real-world cases,
 265 non-sensitive parameters are assigned values based on expert judgment, while optimal values for sensitive parameters are
 derived from historical data using the Shuffled Complex Evolution (SCE-UA) method (Duan et al., 1992). For synthetic
 cases, however, parameters are taken as recommend defaults. Table 1 summarizes these parameters.

Table 1. Parameters of the Xin'anjiang model

Parameter ^a	Description	Synthetic cases	Real-world cases
K	the ratio of potential evapotranspiration to pan evaporation	1.00	0.95



Parameter ^a	Description	Synthetic cases	Real-world cases
<i>C</i>	Evapotranspiration coefficient of deeper layer	0.13	0.05
<i>WUM</i>	Averaged tension water capacity of upper layer (mm)	12.5	19.9
<i>WLM</i>	Averaged tension water capacity of lower layer (mm)	75.0	64.4
<i>B</i>	Exponent of the tension water capacity curve	0.40	0.38
<i>WM</i>	Averaged tension water capacity (mm)	125.0	119.8
<i>IM</i>	Percentage of impervious areas in the catchment	0.01	0.03
<u>SM</u>	Averaged free water storage capacity (mm)	30.0	16.7
<i>EX</i>	Exponent of the free water capacity curve	1.25	1.50
<u>KI</u>	Daily outflow coefficient of free water storage to interflow	0.35	0.02
<u>KG</u>	Daily outflow coefficient of free water storage to groundwater	0.35	0.68
<i>CI</i>	Daily recession constant of the interflow storage	0.70	0.52
<u>CG</u>	Daily recession constant of the groundwater storage	0.99	0.93
<u>CS</u>	Daily recession constants of channel network storage	0.50	0.88
<u>LAG</u>	Lag in time (h)	0	1
<i>XE</i>	Parameters of the Muskingum method	0.25	0.01

^a Parameters in bold and underline text indicate sensitive parameters.

270 2.4 Multi-source soil moisture data fusion

The soil moisture reanalysis data are sourced from the China Meteorological Administration Land Data Assimilation System (CLDAS) near-real-time dataset (<https://data.cma.cn/>). While the CLDAS dataset demonstrates a reasonable level of accuracy within China, with a regional average correlation coefficient of 0.89, a root mean square error of 0.02 m³/m³, and a bias of 0.01 m³/m³ (Wang and Li, 2020), it faces limitations due to missing values in some areas and data latency (published with a two-day lag), restricting its application in real-time flood forecasting in small and medium-sized catchments. On the other hand, ground station measurements offer high precision and timeliness (real-time data) but represent point-scale soil moisture, while the Xin'anjiang model simulates soil moisture as areal averages for sub-basin, necessitating consideration of spatial scale effects. To bridge this gap and assimilate soil moisture observations into the Xin'anjiang model, this study employs weighted *k* nearest neighbor (WKNN) algorithm (Pedregosa et al., 2011) to merge CLDAS soil moisture data (hereinafter referred to as CLDAS) with in-suit soil moisture data collected from monitoring sites (hereinafter referred to as IN-SUIT). This method generates real-time, spatially distributed soil moisture data, based on in-situ observations and the spatial distribution from the CLDAS dataset, ensuring compatibility with the tension water storage and free water storage in the Xin'anjiang model.

The Harmonized World Soil Database (HWSD) provides soil texture map for two layers: 0-30 cm (topsoil layer, T) and 30-100 cm (subsoil layer, S). Initially, using the technique by Reynolds et al. (2000), soil transfer functions (PTFs) are applied to the grid of soil texture map. This process involves estimating wilting point θ_{wp} , field capacity θ_{fc} , and saturation moisture



content θ_s for each grid layer based on its soil clay and sand percentage contents, along with USDA soil texture classification. In this study, we assume that the soil moisture constants for each sub-basin are the arithmetic average of the grid-scale soil moisture constants within the corresponding areas.

290 In the Xin'anjiang model, tension water capacity (WM), corresponding to available water capacity, is defined as the moisture content between the wilting point and field capacity, thus representing the thickness of the unsaturated zone. Free water capacity (SM) is defined as the moisture content between field capacity and saturation moisture content, relating to the thickness of the humus soil layer. Accordingly, we define a conceptual soil profile in the Xin'anjiang model, where the soil profile of tension water is divided into upper, lower, and deep layers. The capacity of each layer is calculated as:

$$\mathbf{WL} = \frac{\mathbf{WWM}}{(\theta_{fc} - \theta_{wp})} \quad (9)$$

295 Where \mathbf{WL} is the soil profile thickness matrix of tension water, $\mathbf{WL} = (WUL, WLL, WWL)$, representing the thickness of the upper, lower, and entire soil profile of tension water in mm, respectively, and $\mathbf{WWM} = (WUM, WLM, WM)$. Similarly, the thickness of the conceptual soil profile of free water is calculated as:

$$SL = \frac{SM}{(\theta_s - \theta_{fc})} \quad (10)$$

Subsequently, linear interpolation is used to adjust the IN-SITU data and CLDAS reanalysis soil moisture data, both at varying depths, to match the thickness of the conceptual soil profile. This step is followed by the calculation of tension and
 300 free water storage, derived from the transformed IN-SITU and CLDAS data. The calculation formula is as follows:

$$\begin{cases} \mathbf{WOB}_i = (\theta_{\mathbf{WL}_i} - \theta_{wp}) \times \mathbf{WL}' \\ \mathbf{WLB}_i = (\theta_{\mathbf{WL}_i} - \theta_{wp}) \times \mathbf{WL}' \end{cases} \quad (11a)$$

$$\mathbf{WLB}_i = (\theta_{\mathbf{WL}_i} - \theta_{wp}) \times \mathbf{WL}' \quad (11b)$$

Where, SOB and $\mathbf{WOB} = (WUOB, WLOB, WWOB)$ respectively represent the free water storage and tension water storage at various layers, derived from observation data. These are referred to as the observed free water storage and observed tension water storage. $\theta_{\mathbf{WL}} = (\theta_{WUL}, \theta_{WLL}, \theta_{WWL})$ and θ_{SL} indicate the soil moisture contents after linear interpolation to the respective conceptual soil profile thicknesses. The subscript i indicates different data sets, namely IN-
 305 SUIT or CLDAS.

Finally, using the WKNN method, soil moisture data from the IN-SUIT dataset is integrated with the CLDAS dataset. The specific implementation steps are as follows:

(1) Normalize the observed free water content and observed tension water content from the dataset using the min-max normalization method. Denote the normalized observation vector as \mathbf{PSM} :

$$\mathbf{PSM}_i = (\mathbf{WOB}'_i, \mathbf{SOB}'_i) \quad (12)$$



310 (2) The Minkowski distance is used to measure the proximity between the IN-SUIT data under evaluation and historical samples. A smaller distance indicates a closer match between the evaluated soil moisture content and the historical sample. The distance is calculated as follows:

$$d = \left(\sum_{j=1}^n |psm_{IN-SUIT,j}^{RTD} - psm_{IN-SUIT,j}^{HD}|^p \right)^{1/p} \quad (13)$$

Where, $psm_{IN-SUIT,j}$ represents the j th element of the vector $\mathbf{PSM}_{IN-SUIT}$; n is the dimension of $\mathbf{PSM}_{IN-SUIT}$. Superscript *RTD* stands for the data under evaluation, and *HD* denotes historical data. The distances between the data under evaluation and each historical sample are ranked in ascending order. The K nearest historical samples are then selected as reference indices based on this principle.

315 (3) The inverse distance weighting method is used to calculate the final observed free water storage and observed tension water storage based on the K nearest historical samples:

$$\omega_m = \frac{1}{d_m} / \sum_{m=1}^K \frac{1}{d_m} \quad (14a)$$

$$\mathbf{PSM}_{RGC} = \sum_{m=1}^K \omega_m \mathbf{PSM}_{CLDAS,m} \quad (14b)$$

Where, \mathbf{PSM}_{RGC} is the normalized merged observational soil moisture vector; ω represents the inverse distance weights; $\mathbf{PSM}_{CLDAS,m}$ is the normalized CLDAS observation data vector corresponding to the m -th sample. The merged observed tension water storage $\mathbf{WOB}_{RGC} = (WUOB_{RGC}, WLOB_{RGC}, WWOB_{RGC})$ and merged observed free water storage SOB_{RGC} are obtained after denormalization

In this study, the Grid Search (GS) method (Bergstra and Bengio, 2012; Alibrahim and Ludwig, 2021) is employed to optimize the hyper-parameters K and p , accompanied by a three-fold cross-validation. This approach ensures maximum R-squared and minimum root mean squared error for the test set, balancing model generalizability with accuracy (Table S2-1). For the multi-source soil moisture data fusion, 70% of the historical dataset is used as the training set for model training, while the remaining 30% serves as the test set to verify model generalization.

2.5 Evaluation metrics

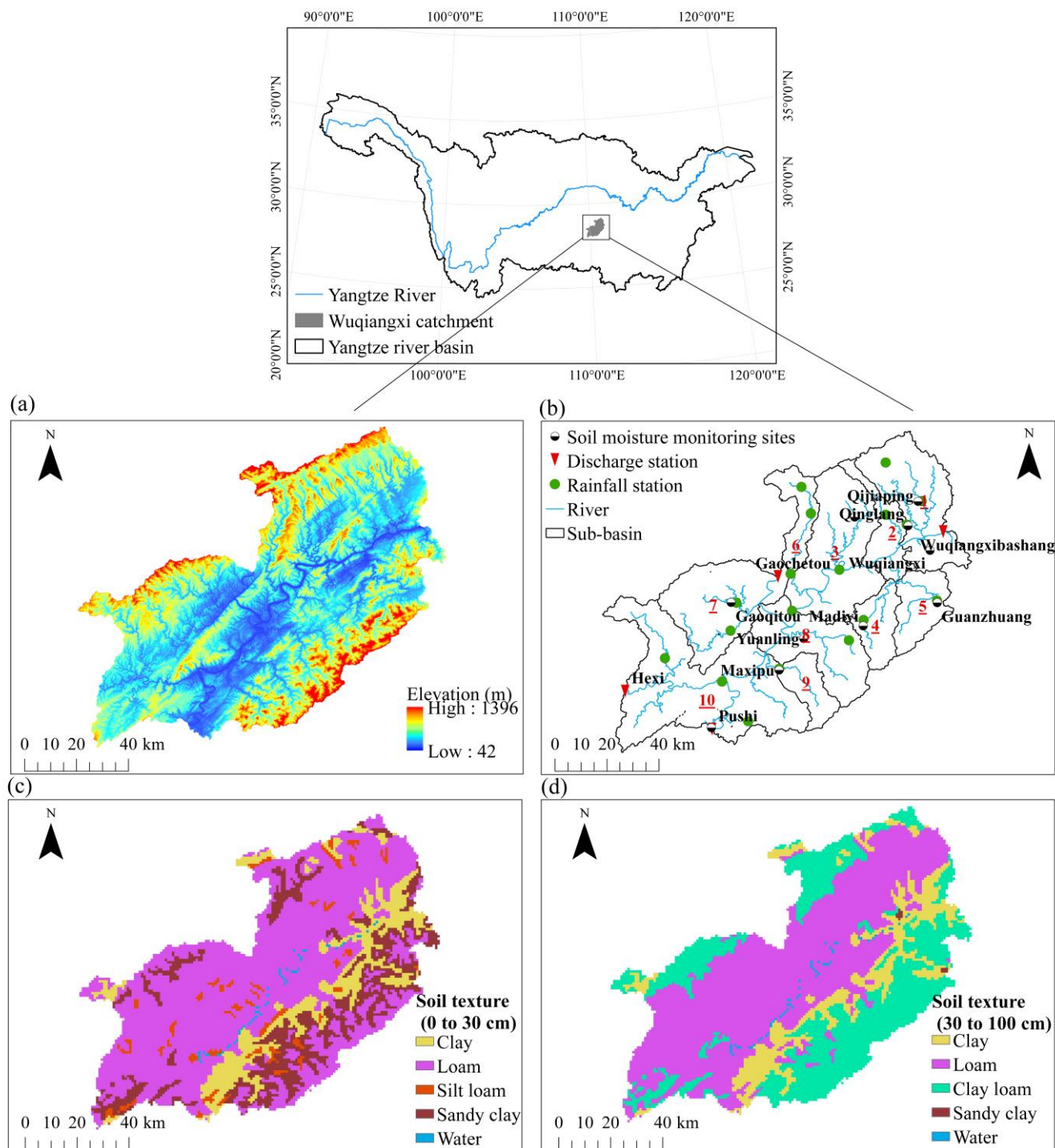
320 In this study, we use four metrics to assess the assimilation effectiveness, focusing on both optimal single-value and ensemble performances, as suggested by McInerney et al. (2020). The optimal single-value performance, indicating the highest simulation accuracy, is represented by the ensemble mean values of the simulated discharge. The ensemble performance evaluation, in contrast, examines the simulated discharge ensemble through the lens of ensemble forecasting, covering both the overall performance of ensemble and its reliability.



For quantitatively assessing the optimal single-value performance, we employ the Normalized Nash-Sutcliffe efficiency
335 coefficient (NNSE) (Nossent and Bauwens, 2012) and the root mean squared error (RMSE). The Continuous Ranked
Probability Score (CRPS), introduced by Hersbach (2000), measures the overall performance of ensemble. The reliability
component of CRPS, denoted as RELI, focuses on assessing ensemble reliability. For these metrics, we use the ratios of
AEnKF to Open Loop (ensemble run without assimilation), represented as R_{RMSE} , R_{CRPS} , and R_{RELI} . Moreover, the event-
averaged values of these ratios are denoted as MR_{RMSE} , MR_{CRPS} , and MR_{RELI} . The mean value of NNSE for multiple flood
340 events is denoted as $MNNSE$. In synthetic cases, 'synthetic true values' serve as the benchmark for all evaluation metrics,
while observed values are used in real-world cases. Additional information about these metrics can be found in Supplement
3.

3 Study areas and data

The Wuqiangxi catchment (Fig. 2), is located in the middle reaches of the Yuan River, the third-largest tributary of the
345 Yangtze River. It covers an area of approximately 8,033 km², with elevations ranging from 42 to 1,396 meters. The
geographical coordinates of the catchment extend from 109°44' E to 111°01' E and from 28°01' N to 29°07' N. Situated in
the mid-subtropical monsoon humid climate zone, Wuqiangxi catchment experiences abundant rainfall and rich water
resources. The average annual precipitation is around 1,400 mm, with uneven distribution throughout the year,
predominantly during the flood season (March to September). The catchment, located in the subtropical evergreen and
350 deciduous broadleaf forest belt, features dense vegetation, predominantly forests and grasslands. The soil texture is primarily
loamy. For this study, the Wuqiangxi Catchment is divided into 10 sub-basins, each identified by red underlined numbers in
Fig. 2b, ensuring at least one rain gauge in each sub-basin. For an overview of the data used in this study, please see
Supplement 4.



355 Fig. 2 Study catchment. (a) Digital Elevation Map (DEM); (b) Sub-basins and observation stations; (c) Soil texture (0 to 30 cm); (d) Soil texture (30 to 100 cm).



4 Experimental setup

4.1. Warming-up period

In China, hydrometeorological data are typically reported at sub-daily intervals during flood periods and on a daily basis otherwise, to support flood forecasting and water resource management. The Xin'anjiang model operates in two modes to meet these needs: it uses hourly simulations for flood forecasting and daily simulations for managing water resources. The hourly simulations require initial soil moisture for each sub-basin, which are derived from the daily simulations (Chen et al., 2023). Consequently, a daily simulation must be performed prior the hourly simulation, starting at least four months earlier to allow for a sufficient warming-up (spin-up) period. This period enables the soil moisture simulated daily, driven by observed hydrometeorological data, to gradually approaches actual soil moisture (Kim et al., 2018). As long as the warming-up period is adequately long, the influence of initial soil moisture on the simulation at the end of warming-up period, allowing soil moisture for daily simulation to be used as initial conditions for hourly simulation (Yao et al., 2012).

4.2. Synthetic cases

In the synthetic cases, the hydrological model operates on an hourly timestep with a maximum lead time of 24 hours, and ensemble simulations involve 100 members. The initial soil moisture is set to half of the maximum value. To capture peak flows even at the maximum lead time, the start of each flood event is advanced by 24 hours. However, due to the lack of hourly observations prior to the actual onset of the flood, data for these initial 24 hours are derived by interpolating from daily observations. Synthetic data are generated as follows. Firstly, historical flood events are utilized to apply the MAP method, producing an optimal hyperparameters set $\hat{\psi}$. Here, $\hat{\sigma}_{inp}$ and $\hat{\alpha}_{inp}$ control the error model of forcing data (Supplement 1.1). This introduces random perturbations into hourly rainfall observations, creating a set of random rainfall data, referred to as 'synthetic true rainfall'. Similarly, $\hat{\sigma}_{yd}$ and $\hat{\alpha}_{yd}$ manage the observation error model (Supplement 1.2), perturbing basin inflow to produce a dataset known as 'synthetic true inflow'. Subsequently, the Xin'anjiang model, driven by the 'synthetic true rainfall' and 'synthetic true inflow', along with the recommended parameters (see Table 1), outputs state variables (such as tension water storage) and discharge at the catchment outlet for each timestep. These outputs are designated as the 'synthetic true state variables' and 'synthetic true discharge'. In the final phase, optimal hyperparameter sets $(\hat{\sigma}_{ys}, \hat{\alpha}_{ys})$ and $(\hat{\sigma}_{yd}, \hat{\alpha}_{yd})$ are applied to the observation error model, respectively. This step introduces random perturbations into the 'synthetic true state variables' and 'synthetic true discharge', resulting in the creation of 'synthetic observed state variables' and 'synthetic observed discharge'. Specifically, synthetic observations of tension and free water storage are employed to update the simulated values in the Xin'anjiang model. On the other hand, synthetic discharge observation is utilized for updating cumulative channel flow. Both these assimilation processes are conducted at an hourly interval.



4.3. Real-world cases

In the real-world cases, the timestep and number of ensemble members are the same as in the synthetic cases. However, the maximum lead time is set to 8 hours to avoid missing peak flows. The observational tension water storage WOB_{RGC} and free water storage SOB_{RGC} , as introduced in Section 2.4, are used to assimilate the simulated tension and free water storage in the Xin'anjiang model, with an assimilation interval of 8 hours. Additionally, discharge observation is assimilated into the cumulative channel flow with a 1-hour interval. Note that in both the synthetic and real-world cases in this study, we use historical rainfall data as a perfect proxy for rainfall prediction with the aim of assessing temporal persistence of the assimilation effect without introducing uncertainty from numerical weather prediction. Temporal persistence refers to the duration over which the updating applied to state variables by AEnKF at the start of forecasting continue to hold in the future. By introducing the unbiased perturbations into the model forcing and states, and running the Xin'anjiang model in ensemble mode without assimilation, the operation is referred to as Open Loop (OL). In contrast, an ensemble run integrated with the AEnKF assimilation is referred to as AEnKF. To reduce the effects of random perturbations on outcomes, each flood event in our study is subjected to five repeated ensemble simulations. We then select the simulation corresponding to the median RMSE in the forecasted discharge as our final outcome.

5. Results and discussion

5.1. Synthetic Cases

5.1.1. Hyperparameter estimation for error models

Most current assimilation methods, while suboptimal for complex hydrological processes, still yield reliable outcomes within a reasonably characterized uncertainty. Our approach to error characterization, widely adopted in hydrology, involves perturbing model forcing, observations, and states from an assumed distribution. We applied the MAP method for global hyperparameter optimization, with optimal parameters detailed in Table 2. These optimized hyperparameters are used in error models for both synthetic and real-world cases. However, given the limited flood events used for calibration, the hyperparameter optimization, akin to model parameter calibration, might exhibit uncertainty and parameter equifinality, leading to multiple hyperparameter combinations may produce similar ensemble simulations.

Table 2. Hyperparameter estimated by MAP method

Hyperparameter	Optimal value
σ_{ys}	0.108
α_{ys}	0.340
σ_{yd}	0.106
α_{yd}	0.312
σ_{inp}	0.482



α_{inp}	0.456
σ_s	0.058
σ_d	0.220

5.1.2. The time window of AEnKF

The AEnKF employs observational data from both the current and preceding time periods for assimilation, with the duration of the past interval defined by the time window, ω . Determining the optimal duration for assimilating past observations is critical for the effectiveness of AEnKF. If the time window is set too narrowly, the system might fail to fully capitalize on historical data to enhance assimilation precision. On the other hand, an excessively broad time window could lead the nonlinear system to incorporate irrelevant information from distant past periods, potentially undermining assimilation performance. Therefore, we conducted tests to assess the impact of varying time windows on discharge forecast accuracy. Specifically, for soil moisture observations, we explored three different time windows: $\omega_s = 1$ hour, $\omega_s = 3$ hours, and $\omega_s = 5$ hours. Similarly, for discharge observations, we examined time windows ω_d of 1 hour, 3 hours, and 5 hours. To facilitate clarity, these assimilation time windows are denoted using dual numerical subscripts. For instance, the AEnKF utilizing $\omega_s = 1$ and $\omega_d = 3$ is designated as AEnKF₁₃, and similar nomenclature applies to other configurations.

The disparity in forecast discharge accuracy across different time windows is presented in Fig. 3. It shows the MNNSE and MR_{RMSE} metrics for forecast discharge across lead times of 1 to 24 hours under assorted time window combinations. It's observed that the performance of the AEnKF varies across these time windows. The most effective assimilation across all lead times is achieved with $\omega_s = 3$ and $\omega_d = 3$. It's important to note, however, that even with the least effective time windows ($\omega_s = 1$ and $\omega_d = 5$), performance of AEnKF still surpasses that of the EnKF. In more detail, the time windows for soil moisture and discharge have complex interactions that collectively influence the forecast results for catchment outlet discharge. For soil moisture assimilation, a 3-hour window demonstrates the most significant benefits. The 5-hour window outperforms the 1-hour in most cases, except when $\omega_d = 3$, where the reverse is true. In the assimilation of outlet discharge, the 3-hour window generally proves most effective, but with a larger soil moisture window ($\omega_s = 5$), assimilating discharge data with 1-hour window yields the best results. Almost universally, the 1-hour window performs as well as or surpasses the 5-hour window. This indicates that longer assimilation windows do not necessarily yield better results. This may be due to the nonlinearity of the hydrological model, where overly long windows can result in the system assimilating excessive noise, which negates the benefits derived from incorporating past observations. Therefore, for upcoming studies involving synthetic data cases, the AEnKF will utilize assimilation time windows of $\omega_s = 3$ hours and $\omega_d = 3$ hours.

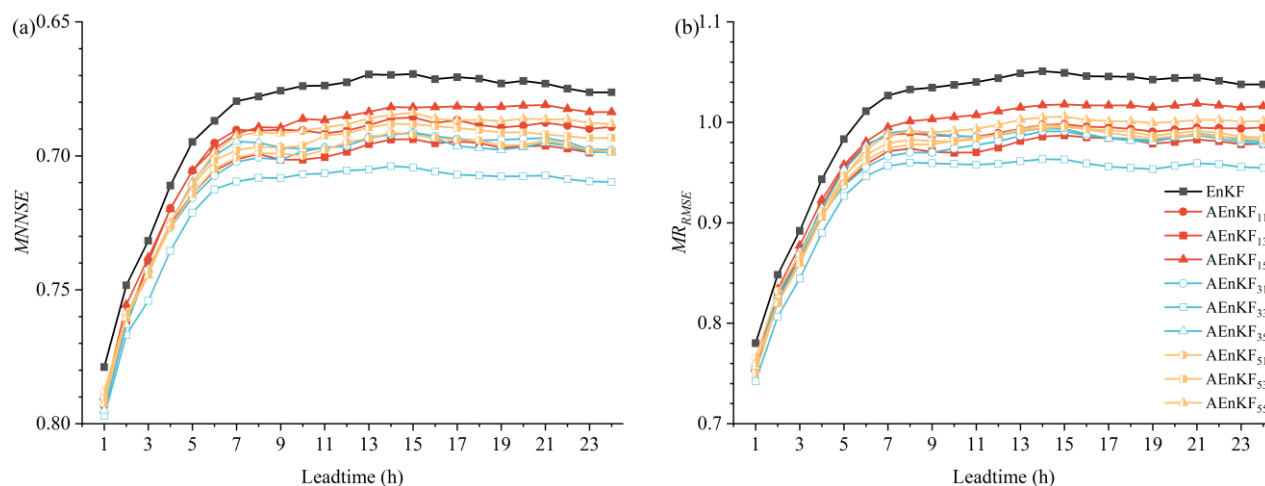


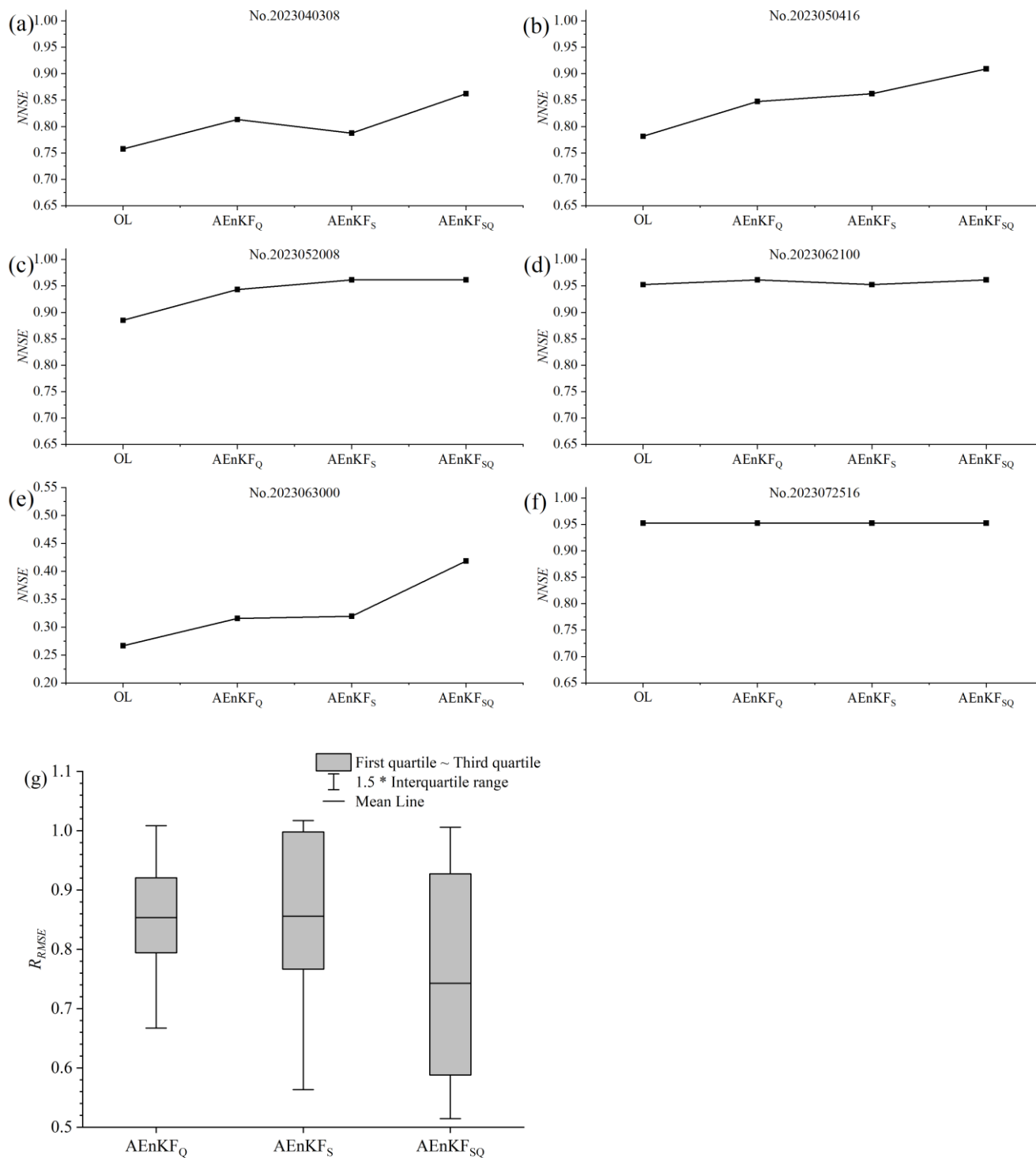
Fig. 3. The forecasted discharge accuracy under various time windows. (a)MNNSE, (b) MR_{RMSE}.

5.1.3. Multivariate observation assimilation scheme

440 Upon determining the assimilation time window, we meticulously analyzed the variances between three unique AEnKF
 assimilation strategies. These include the assimilation of solely observed soil moisture (labeled as AEnKF_S), the assimilation
 of solely observed outlet discharge (labeled as AEnKF_Q), and a joint assimilation of both two observations types (labeled as
 AEnKF_{SQ}).

One-step prediction

445 In our assessment of one-step prediction of outlet discharge, we examined the optimal single-value performance and
 ensemble efficacy of the three schemes. The evaluation of the optimal single-value performance was conducted using NNSE
 and R_{RMSE} as metrics. Fig. 4 (a-f) illustrates the NNSE values during six flood events in 2023 (refer to Table S4-1).
 Significantly, in events No.2023062100 and No.2023072516, the catchment experienced minimal rainfall (only one hour of
 rainfall exceeded 3mm), with the flood dynamics largely driven by basin inflows. Consequently, updates to soil moisture
 450 within the catchment had no influence on flood progression, and while assimilating observed discharge data slightly
 enhanced flood forecasting accuracy, the improvement was minimal and could be considered negligible. Conversely, in the
 other four events where rainfall predominantly influenced the flood dynamics, all three assimilation schemes outperformed
 the OL mode in NNSE scores, indicating improvements in one-step prediction accuracy to varying extents. Among these,
 AEnKF_{SQ}, simultaneously assimilating observed soil moisture and discharge data, notably surpassed the other two schemes.
 455 This superiority is further supported by the R_{RMSE} statistics in Fig. 4 (g), where the MR_{RMSE} for AEnKF_{SQ} showed a
 decrease of 0.12 and 0.11 compared to AEnKF_S and AEnKF_Q, respectively. Moreover, soil moisture assimilation and
 discharge assimilation exhibited comparable performances, with only a marginal reduction of 0.01 in MR_{RMSE}.



460 Fig. 4. The optimal single-value performance of three AEnKF assimilation schemes for synthetic cases. (a-f) NNSE, (g) R_{RMSE} .



Subsequently, we conducted an evaluation of the ensemble performance across six flood events, specifically examining the overall ensemble performance as measured by CRPS and the ensemble reliability as indicated by the RELI metric. In Fig. 5 (a), the distribution of R_{CRPS} values are showcased. For AEnKF_Q scheme, R_{CRPS} values fluctuated between 0.8 and 1.01, averaging at 0.89; for AEnKF_S, the range is 0.72 to 1.03 with an average of 0.91; for AEnKF_{SQ}, it varied from 0.68 to 1.01, averaging 0.81. This demonstrates an enhancement in overall ensemble performance for all schemes over the OL model, particularly for AEnKF_{SQ}, which significantly outshone AEnKF_S and AEnKF_Q. However, the difference in MR_{CRPS} between AEnKF_S and AEnKF_Q is minimal. The Fig. 5 (b) illustrates the R_{RELI} scores, showing a similar trend of improved ensemble reliability for all three schemes over OL. Here, the reliability of AEnKF_{SQ} is notably higher than that of both AEnKF_S and AEnKF_Q. On the other hand, AEnKF_Q is more reliable compared to AEnKF_S.

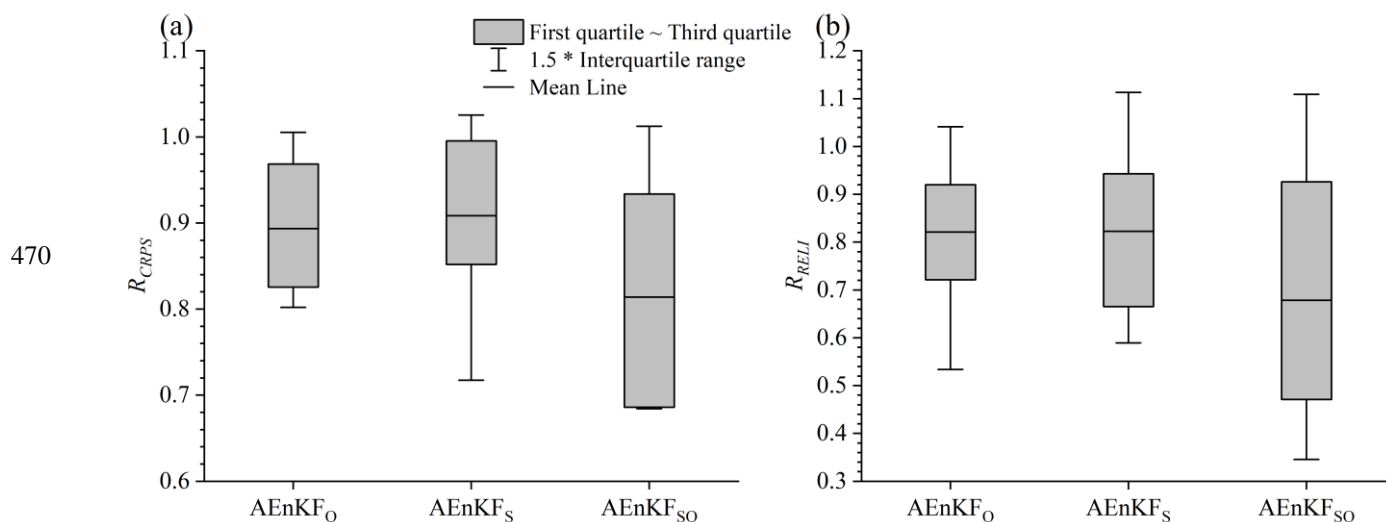


Fig. 5. The ensemble performance of three AEnKF assimilation schemes for synthetic cases. (a) R_{CRPS} , (b) R_{RELI} .

Impact on state variables

Within the context of one-step prediction, Fig. 6 presents the R_{RMSE} for updated state variables of the Xin'anjiang model under three distinct assimilation schemes, involving free water storage, tension water storage across upper, lower, and total layers, and cumulative channel flow across all sub-basins. As anticipated, in the AEnKF_Q scheme, which solely updates the cumulative channel flow without involving the runoff generation process, the state variables indicative of soil moisture (S , W , WU , WL) remain unaffected. This is reflected in Fig. 6 (a-d), where the mean R_{RMSE} values associated with the grey boxes hover around 1.0. In the context of cumulative channel flow, AEnKF_Q generally achieves a reduction in RMSE relative to the OL.

In the case of AEnKF_S, updating the soil moisture impacts both the runoff generation and the subsequent flow routing processes, leading to a response in all state variables. Significantly, AEnKF_S scheme demonstrates the most substantial corrections in free water storage (S), consistently yielding lower RMSE values than the OL scheme in all instances. When updating the total tension water storage (W), AEnKF_S usually attains lower RMSE values compared to OL. However, this



effect is less marked than that for free water storage. This is illustrated in Fig. 6 (b) where, except for Event 6, the average
485 values associated with the red boxes exceed those in Fig. 6 (a). Contrastingly, updates to the upper and lower layers of
tension water storage in the AEnKF_s scheme produced opposite outcomes, with the RMSE values for these post-updated
state variables exceeding those of the OL. This phenomenon can be attributed to the following: Firstly, the initial soil
moisture values in this study were set at half of their maximum, and during flood periods, saturation-excess runoff
generation mechanism ensures rapid saturation of both the upper and lower tension water, reaching the maximum limits
490 (*WUM* and *WLM*). Thereafter, due to the physical upper bounds of these variables, the assimilation process is hindered in
effectively updating *WU* and *WL* values. Consequently, this may lead to a systematic underestimation of these values
compared to actual measurements, and consequently higher RMSE values than OL. In contrast, free water storage, even
during flood periods, may not persistently reach its maximum (*SM*), resulting in the most advantageous update effect for it.
These results highlight the criticality of choosing appropriate state variables for updates in hydrological model state updating,
495 particularly when utilizing methods such as AEnKF.

In the case of AEnKF_{sQ}, the updates to soil moisture state variables show similarities to those in AEnKF_s. However, when it
comes to the updates of cumulative channel flow, AEnKF_{sQ} effectively integrates the strengths of both AEnKF_Q and
AEnKF_s, resulting in a more outstanding performance. This outcome suggests that the concurrent assimilation of both soil
moisture and discharge observations can efficiently utilize the advantages of each, leading to a greater assimilation accuracy
500 than the assimilation of a single observation source.

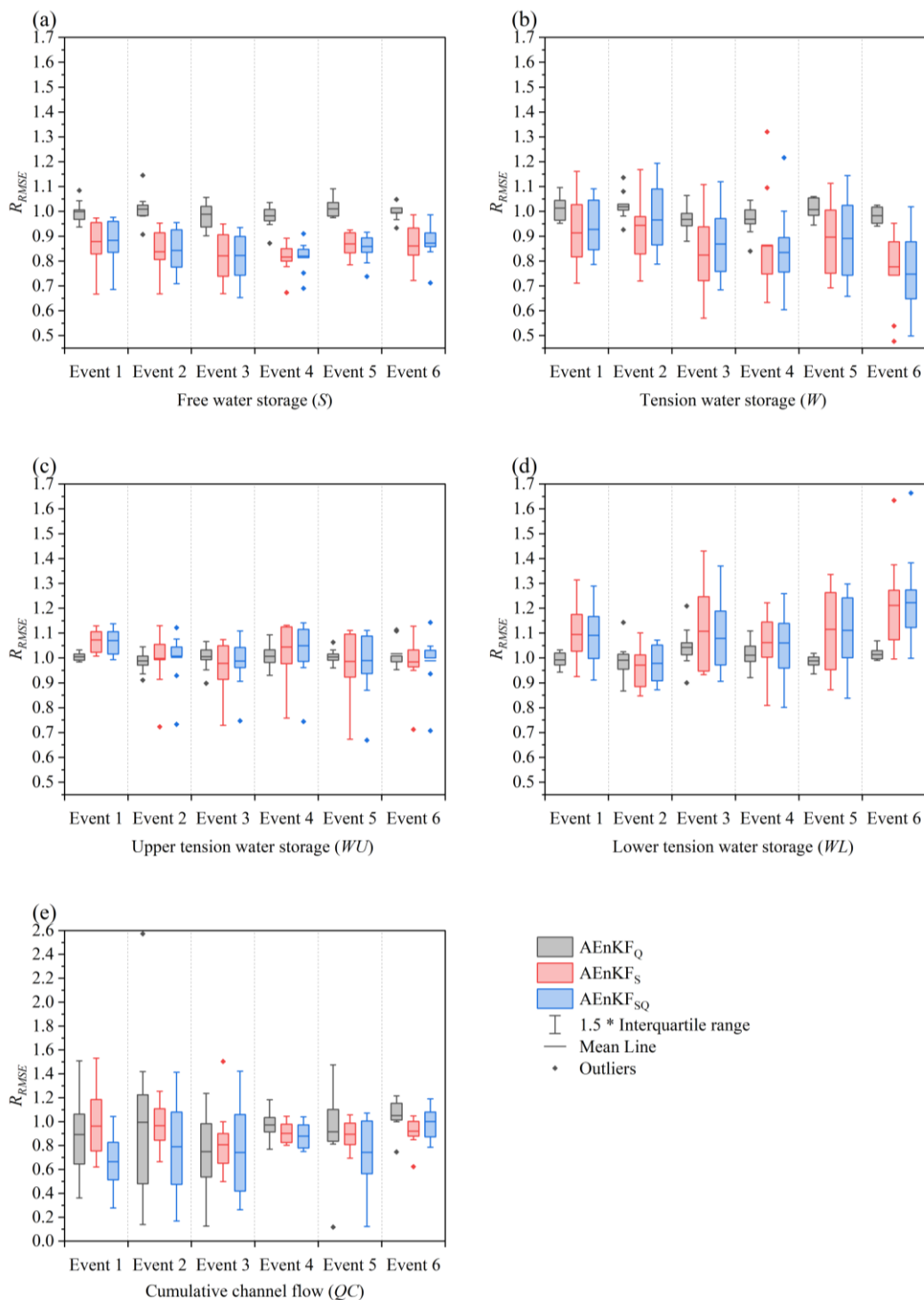


Fig. 6. Effects of three assimilation schemes on state variables. (a) Free water storage (S), (b) Tension water storage (W), (c) Upper tension water storage (WU), (d) Lower tension water storage (WL), (e) Cumulative channel flow (QC).



Discharge Forecasting

505 In our assessment, we analyzed the discharge simulation precision of three assimilation schemes over lead times ranging from 1 to 24 hours, aiming to gauge the temporal persistence of the assimilation effect. Fig. 7 (a-f) presents the NNSE for six flood events. The events identified as 2023062100 (Fig. 7 d) and 2023072516 (Fig. 7 f) were mainly driven by inflows, exhibiting only slight improvements in state updates, and therefore are not included in further discussions. For the events identified as No.2023050416 and No.2023052008, the NNSE of each assimilation scheme exceeded that of OL across all
510 lead times, indicating a consistent assimilation impact lasting up to 24 hours. For the event labeled No.2023040308, the temporal persistence for the three schemes is noted as 8, 8, and 2 hours, respectively; in the case of the event marked as No.2023063000, these durations are 5, 4, and 1 hour. Importantly It is noteworthy that even in No.2023063000, despite being the least effective, the NNSE discrepancy between AEnKF_{SQ} and OL for lead times exceeding 8 hours remains below 0.02. Furthermore, AEnKF_{SQ} demonstrated superior performance in most flood events across all lead times, compared to
515 both AEnKF_S and AEnKF_Q. The notable exception is event No.2023052008, where AEnKF_{SQ} excels within a 4-hour lead time but slightly lagged behind the other two schemes beyond this duration. Nevertheless, the variance in NNSE for AEnKF_{SQ} during this event stayed below 0.02. Fig. 7 (g) statistically illustrates the R_{RMSE} values. Notably, the MR_{RMSE} for each of the three assimilation schemes remains below 1.0 for all lead times, signifying that in terms of event averages, each scheme achieves a temporal persistence of up to 24 hours. Additionally, the discharge forecast accuracy across nearly all
520 lead times is ranked with AEnKF_{SQ} surpassing AEnKF_S, which itself exceeds AEnKF_Q.

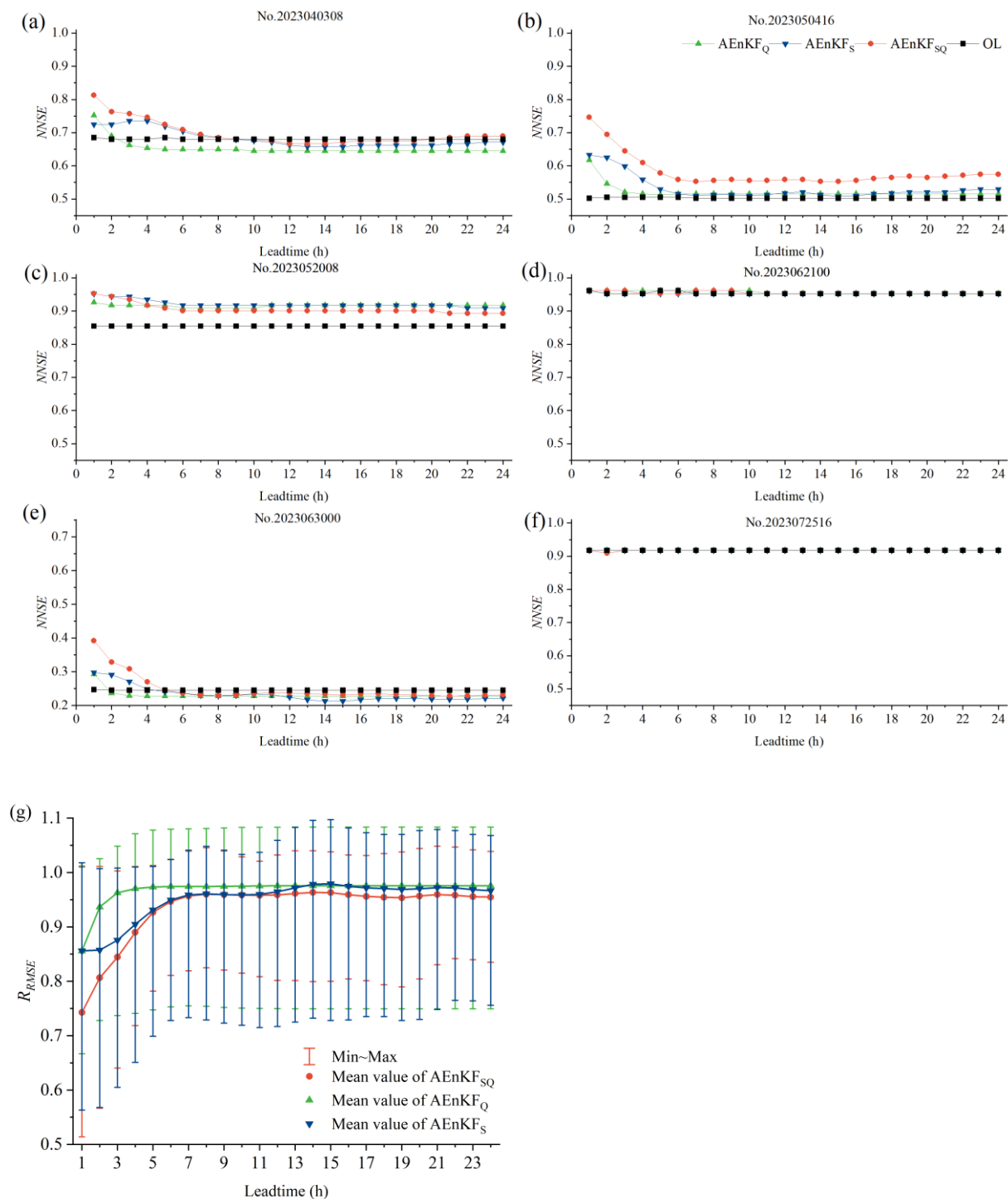


Fig. 7. Assessment of forecast discharge accuracy across three assimilation schemes during 1 to 24-hour lead times. (a-f) NNSE, (g) R_{RMSE}.



525 5.2. Real-world Cases

In real-world cases, the sensitive parameters of Xin'anjiang model are calibrated based on historical flood events. After global optimization using the SCE-UA, the Xin'anjiang model, equipped with optimally sensitive parameters, exhibited an average NSE of 0.88 for the calibration events and 0.78 for the validation events, demonstrating reliable and credible flood simulation and forecasting capabilities.

530 Considering that soil moisture observations are obtained every 8 hours in real-world cases, as opposed to hourly in synthetic cases, we have drawn on synthetic case results to establish an assimilation time window for soil moisture as close as possible to 3 hours, set at 8 hours. Therefore, ω_s is designated as 8 hours, utilizing only the observations from the current time and those from 8 hours earlier for assimilation. For the discharge assimilation, we set the time window to be consistent with the synthetic cases, i.e., $\omega_d = 3$ hours. Additionally, guided by the insights from synthetic cases, in real-world cases, we
 535 incorporate all available soil moisture observations but limit updates to the free water storage component of the Xin'anjiang model.

5.2.1. Fusion of in situ data with CLDAS soil moisture data

The soil moisture data fused using the WKNN model exhibits enhanced timeliness, with the soil moisture in each conceptual soil profile aligning closely with that of the CLDAS data (Table 3). Specifically, during the calibration set, the correlation
 540 coefficients with CLDAS data consistently exceed 0.9. Additionally, the correlation coefficients in the validation set are 0.85, 0.80, 0.84, and 0.74, respectively, indicating that the WKNN model possesses robustness and generalizability. It effectively captures the statistical relationship between point-scale and areal-scale soil moisture datasets.

Table 3. The correlation coefficient between the fused soil moisture data and CLDAS soil moisture data.

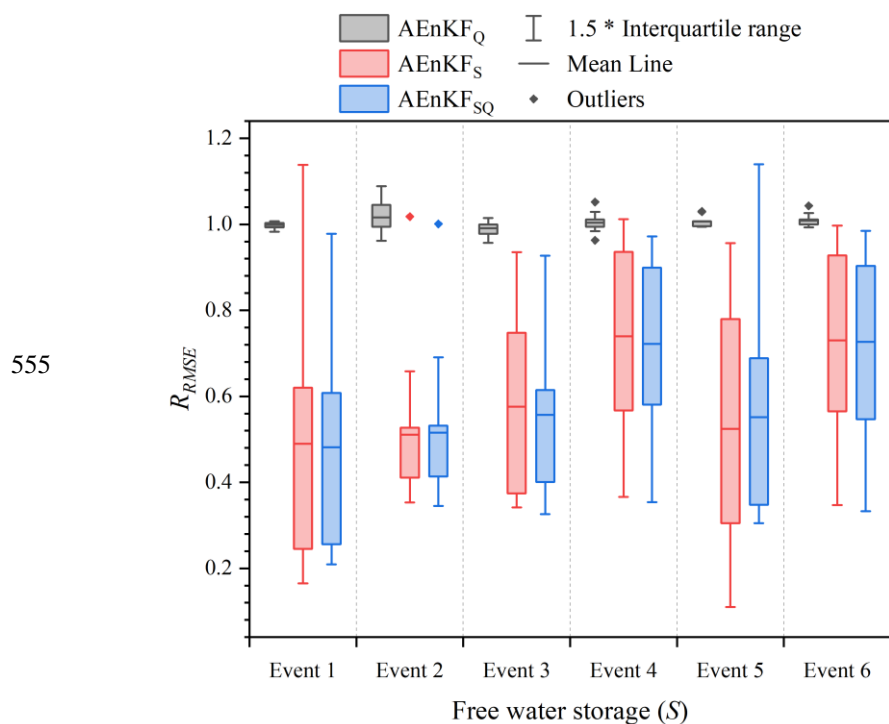
Sub-basin	$WWOB_{RGC}$		$WUOB_{RGC}$		$WLOB_{RGC}$		SOB_{RGC}	
	Calibration	Verification	Calibration	Verification	Calibration	Verification	Calibration	Verification
1	0.99	0.95	0.98	0.83	0.94	0.94	0.98	0.80
2	0.95	0.94	0.98	0.76	0.95	0.94	0.98	0.68
3	0.97	0.69	0.87	0.74	0.97	0.71	0.93	0.74
4	0.98	0.85	0.86	0.75	0.93	0.72	0.98	0.63
5	0.98	0.75	0.98	0.88	0.98	0.86	0.90	0.64
6	0.97	0.82	0.88	0.76	0.83	0.80	0.92	0.77
7	0.98	0.87	0.97	0.89	0.98	0.89	0.90	0.71
8	0.99	0.98	0.95	0.95	0.98	0.97	0.98	0.91
9	0.98	0.89	0.76	0.74	0.84	0.81	0.80	0.79
10	0.88	0.72	0.78	0.66	0.86	0.72	0.89	0.77
Average	0.97	0.85	0.90	0.80	0.93	0.84	0.93	0.74



5.2.2. Multivariate observation assimilation scheme

545 Free water storage update

Within the context of one-step prediction, Fig. 8 displays the impact of updating free water storage in three different assimilation schemes, quantified by R_{RMSE} . For the AEnKF_Q scheme, there is no update to free water storage, leading to expected R_{RMSE} values oscillating near 1.0. Conversely, both AEnKF_S and AEnKF_{SQ} successfully updated free water states, with mean values of R_{RMSE} for free water storage in flood event simulations lying between 0.48 and 0.74. This demonstrates a 26% to 52% average reduction in RMSE for free water storage across various flood events, in comparison to the OL mode. Moreover, Fig. 8 reveals that, in the vast majority of cases, the whiskers (representing 1.5 times interquartile range) of the red and blue boxes remain below 1.0. This indicates that both AEnKF_S and AEnKF_{SQ} successfully updated the free water storage in most sub-basins for most flood events. The effective updates to free water storage will further impact the discharge process at the catchment outlet, which will be discussed in detail in the subsequent sections.



555

Fig. 8. Effects of three assimilation schemes on free water storage (S).

One-step prediction

We evaluate the optimal single-value performance of AEnKF in one-step (one hour) prediction. Fig. 9 illustrates the NNSE and R_{RMSE} values achieved through three AEnKF assimilation schemes. In the OL, the mean NNSE stands at 0.76. Following assimilation with three schemes, the mean values of NNSE improve to 0.81, 0.80, and 0.83, respectively. The R_{RMSE} of AEnKF_Q fluctuates between 0.78 and 1.0, with an average of 0.88; for AEnKF_S, it ranges from 0.71 to 1.01,

560



565 averaging 0.91; and for AEnKF_{SQ}, it varies from 0.64 to 0.99, with an average of 0.84. These results show that all three AEnKF assimilation schemes enhance the optimal single-value performance, with AEnKF_{SQ} outperforming AEnKF_Q, which in turn exceeds AEnKF_S. Moreover, AEnKF_{SQ} achieves a higher improvement ceiling in certain flood events. For instance, the maximum reduction in RMSE reaches 22% for AEnKF_Q, 29% for AEnKF_S, and up to 36% for AEnKF_{SQ}.

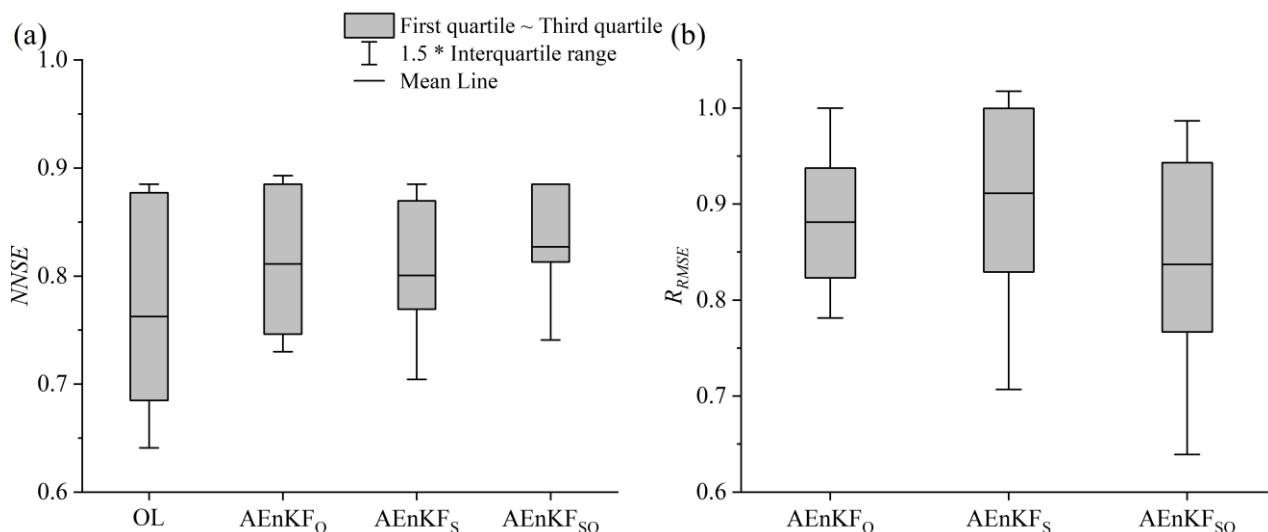


Fig. 9. The optimal single-value performance of three AEnKF assimilation schemes for real-world cases. (a) NNSE, (b) R_{RMSE}.

570 Fig. 10 utilizes R_{CRPS} and R_{RELI} metrics to evaluate overall ensemble performance and reliability. The R_{CRPS} values for AEnKF_Q are in the range of 0.81 to 1.0, averaging at 0.89; for AEnKF_S, they span from 0.71 to 1.02, averaging 0.91; and for AEnKF_{SQ}, they vary from 0.66 to 0.98, averaging 0.85. Notably, AEnKF_Q exhibits the narrowest boxplot, indicating a more focused distribution of R_{CRPS} for this scheme. The average R_{CRPS} for AEnKF_S closely aligns with that of AEnKF_Q, yet its boxplot shows greater breadth at both the top and bottom, suggesting a higher potential for improvement in overall ensemble performance but with increased instability. In contrast, the average R_{CRPS} for AEnKF_{SQ} is lower than those of the first two. While the boxplot width for AEnKF_{SQ} is similar to that of AEnKF_S, the upper boundary of the boxplot aligns more closely with AEnKF_Q, and the upper whisker is shorter than that of AEnKF_Q, indicating a comprehensive superiority of AEnKF_{SQ} in overall ensemble performance compared to both AEnKF_S and AEnKF_Q. Similar findings also emerge in the assessment of ensemble reliability. AEnKF_S and AEnKF_Q exhibit similar mean R_{RELI} values, but the boxplot for AEnKF_Q is more constricted. In contrast, AEnKF_{SQ} shows a thorough superiority in ensemble reliability compared to both AEnKF_S and AEnKF_Q.



580

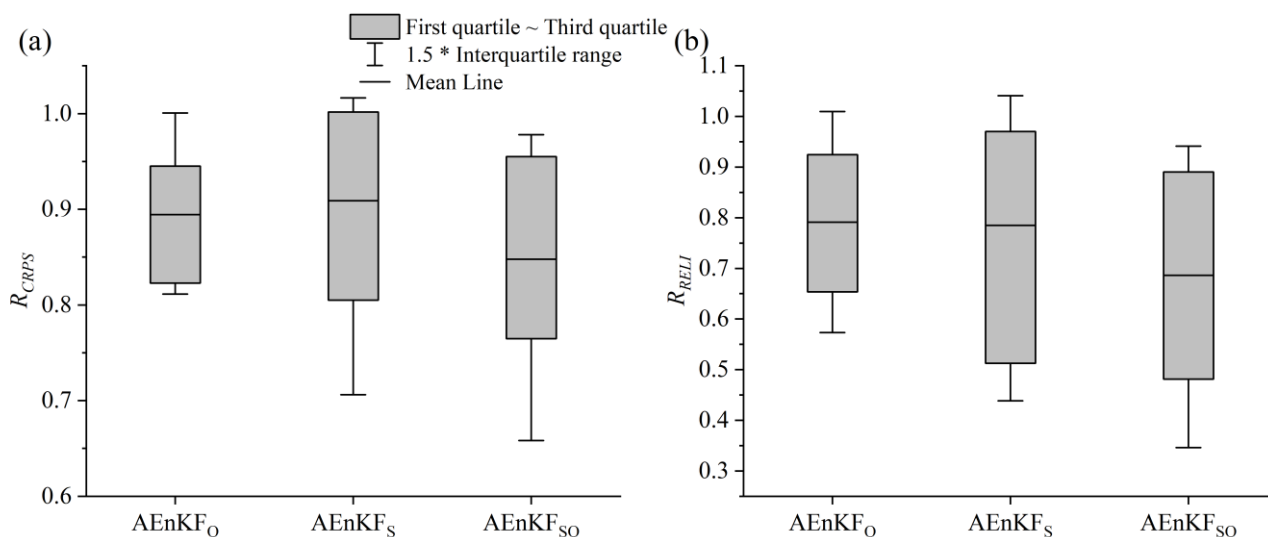


Fig. 10. The ensemble performance of three AEnKF assimilation schemes for real-world cases. (a) R_{CRPS} , (b) R_{RELI} .

Discussion of two flood events

In flood simulation and forecasting, peak flow rates are a primary focus for researchers. Using the two flood events with the most significant peak flow errors in the OL mode (No.2023040308 and No.2023052008) as case studies, we examined the variations in free water storage and discharge at the catchment outlet.

Fig. 11 display the hydrographs simulated for No.2023040308. Black lines (dots) signify observed values. Grey lines and bands represent the ensemble mean and range of the OL, respectively. Similarly, green lines and bands illustrate the ensemble mean and range for the AEnKF. In examining the time series of free water storage, it is evident that observational data points almost never fall within the grey bands of the OL scheme. This indicates a notable difference between the soil moisture levels simulated by the Xin'anjiang model and those derived from observational data. Both AEnKF_S and AEnKF_{SQ} exhibit similar update patterns, where the post-update ensemble mean values significantly shift towards observational data. Concurrently, this adjustment expands the ensemble bands, indicating an increase in ensemble simulation accuracy for AEnKF_S and AEnKF_{SQ}, along with an increased ensemble spread. In the analysis of the discharge time series, it becomes evident that the ensemble distribution from the AEnKF aligns more closely with observational data and presents a narrower bandwidth than that of the OL. This trend suggests that the ensemble accuracy with AEnKF exceeds that of the OL scheme, and also demonstrates a reduced ensemble spread. Furthermore, the ensemble distribution observed during peak periods is more expansive than during the onset and recession periods of flood. This is attributed to the error models applied. These models introduce larger perturbations in the assimilation system during peak periods, leading to a broader ensemble distribution, which, in turn, ensures a more effective assimilation during these critical periods. In examining the time series of discharge, it is noted that both AEnKF_Q and AEnKF_S significantly reduced the height of the simulated flood peak. The AEnKF_Q scheme shows effectiveness around the 20th hour, following the assimilation of approximately 20 discharge observations, achieving a relative error of 17% in the simulated flood peak (maximum instantaneous flow) compared to the

595
600



605 observed peak. AEnKF_S started effectively updating the discharge following the assimilation of the third group of soil moisture observations at the 17th hour, which led to a flood peak relative error of 13%. The AEnKF_{SQ} scheme successfully amalgamates the strengths of both, culminating in a reduced flood peak relative error of merely 8%.

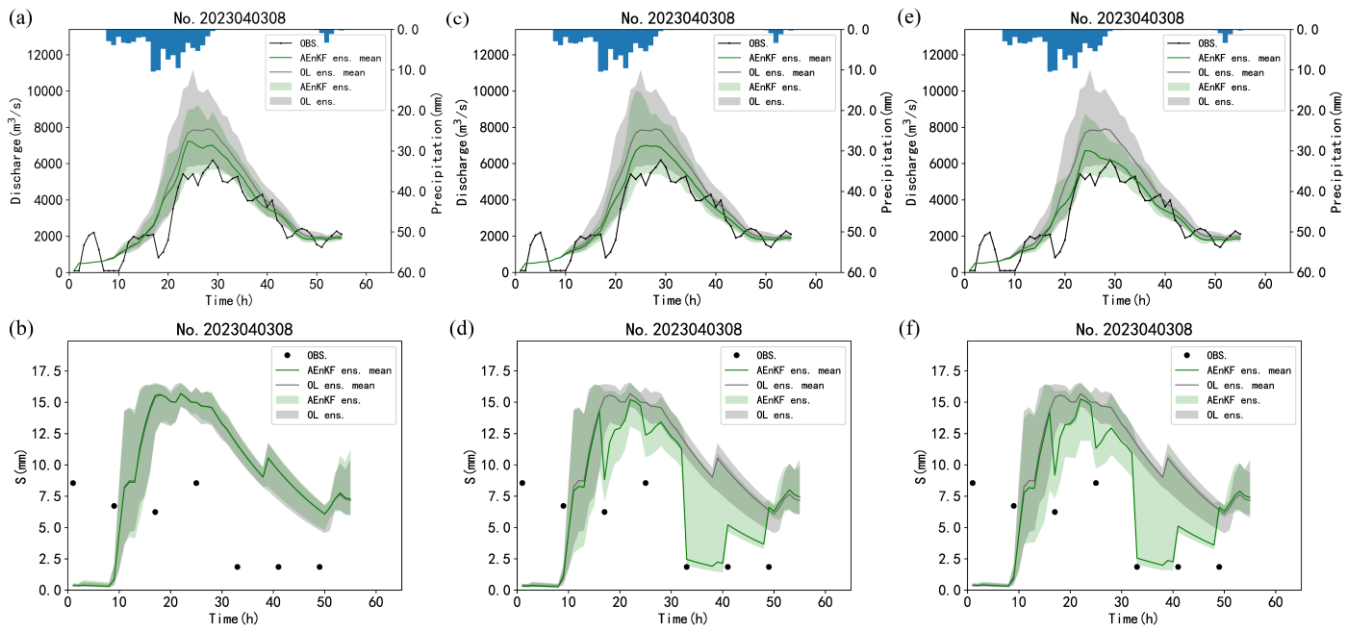
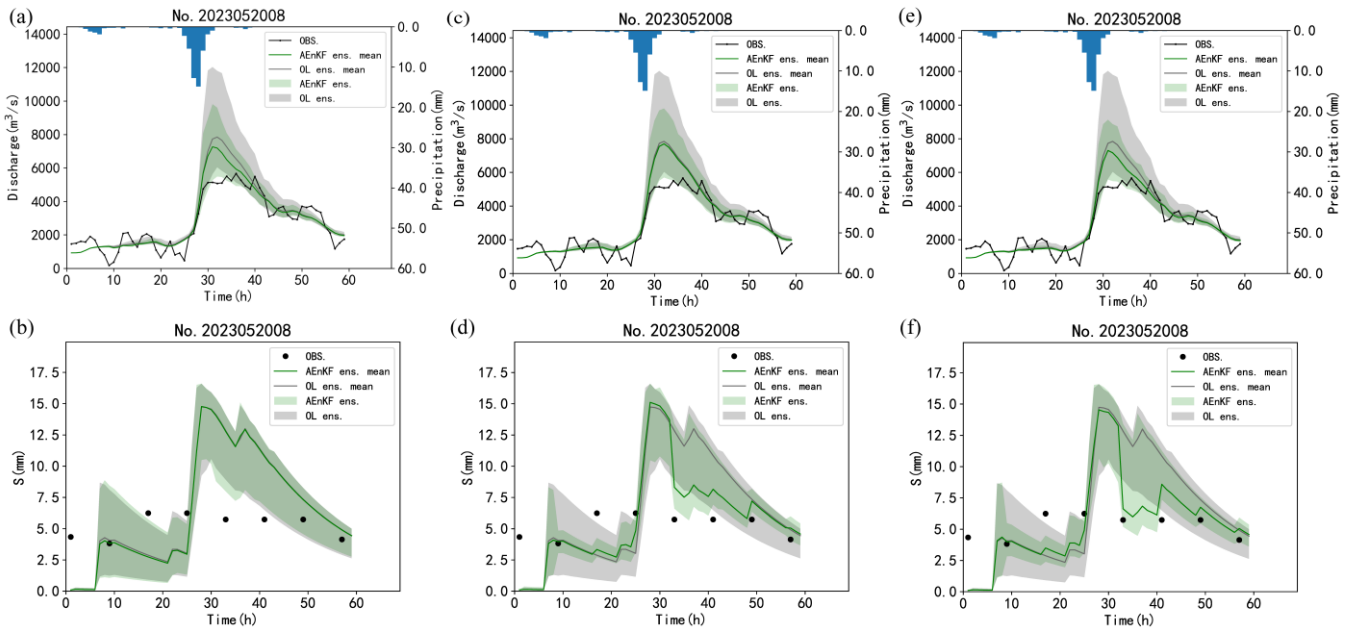


Fig. 11. Hydrograph during flood event labeled No.2023040308. (a-b) AEnKF_Q Scheme, (c-d) AEnKF_S Scheme, (e-f) AEnKF_{SQ} Scheme. The upper panel shows the discharge at the catchment outlet, and the lower panel displays the free water storage in sub-basin 1.

610 In the case of flood event labeled No.2023052008, as illustrated in Fig. 12, the time series exhibits a similar pattern to No. 2023040308. The peak flooding occurred between the 25th and 33rd hours, which corresponds to the period between the fourth and fifth sets of soil moisture observations. During this interval, there is a notable and rapid increase in free water storage. Fig. 12 (c) indicates that the AEnKF_S fails to effectively adjust the discharge volumes around the peak period. Conversely, the AEnKF_Q scheme, which focused on updating cumulative channel flow, successfully rectified the peak flooding. Owing to the ineffectiveness of free water content updates in discharge correction, the assimilation impact of AEnKF_{SQ} closely matched that of AEnKF_Q. In summary, it is apparent that AEnKF_{SQ} effectively integrates the strengths of both the AEnKF_S and AEnKF_Q schemes. Even when one of these strategies fails to update effectively, AEnKF_{SQ} still manages to enhance the precision of discharge predictions.



620 **Fig. 12. Hydrograph during flood event labeled No.2023052008. (a-b) AEnKF_Q Scheme, (c-d) AEnKF_S Scheme, (e-f) AEnKF_{SQ} Scheme. The upper panel shows the discharge at the catchment outlet, and the lower panel displays the free water storage in sub-basin 1.**

Temporal persistence of the assimilation effect

In previous analyses, the performance of three assimilation schemes in one-step prediction received attention. This section extends the examination to the temporal persistence of assimilation effects for these schemes. Fig. 13 displays discharge forecasting accuracy across various lead times, as measured by NNSE and R_{RMSE} . Within a lead time range of 1 to 8 hours, both AEnKF_S and AEnKF_{SQ} demonstrate improvements in forecasting performance: AEnKF_{SQ} exceeds AEnKF_S within a 5-hour lead time; beyond 6 hours, the accuracy of both becomes similar. AEnKF_Q shows significantly shorter temporal persistence than the other two, slightly outperforming AEnKF_S in one-step prediction but with a rapid decline in accuracy as lead time increases. Past a 5-hour lead time, the assimilation effect of AEnKF_Q vanishes, leading to accuracy slightly below OL. And at different lead times, AEnKF_{SQ} consistently outperforms AEnKF_Q. This reveals that employing AEnKF for updating cumulative channel flow may notably enhance discharge forecasting accuracy in shorter lead times. While updating free water storage may not be as effective as AEnKF_Q initially, it ensures a longer-lasting assimilation impact. The scheme of AEnKF_{SQ} merges these strengths, offering robust discharge corrections and an extended temporal persistence of assimilation effects.

635

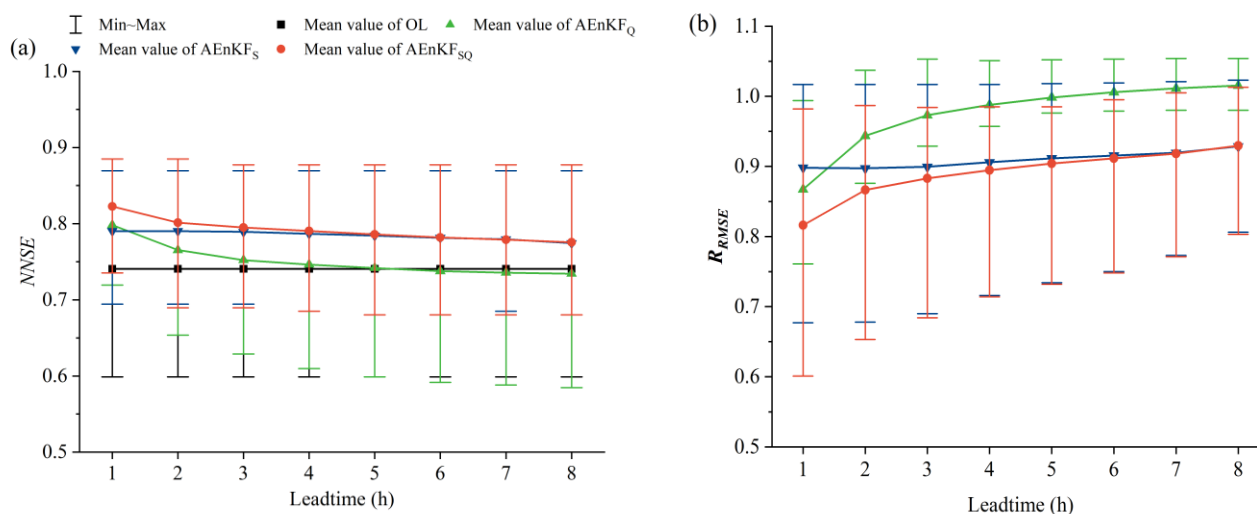


Fig. 13. The accuracy of forecasted discharge under different lead time. (a) NNSE, (b) R_{RMSE} .

6. Conclusions

This study uses the Asynchronous Ensemble Kalman Filter (AEnKF) with enhanced error models for assimilating two types
 640 of observational data into the Xin'anjiang model. The data include observed discharge at catchment outlet and soil moisture
 gathered from multiple sources. The objective is to diminish error accumulation in the initial conditions of the Xin'anjiang
 model at the start of flood forecasting, thereby enhancing initial conditions. The assimilation framework includes advanced
 error models, such as the BGEM model to reduce systematic biases from perturbed soil moisture and the MAP method for
 the objective estimation of hyperparameters in the error model. The study specifically contrasts three AEnKF assimilation
 645 strategies: (1) The AEnKF_Q scheme updates cumulative channel flow in the Xin'anjiang model by assimilating observed
 outlet discharge; (2) The AEnKF_S scheme focuses on updating soil moisture variables in the model by assimilating fused soil
 moisture observations; (3) The AEnKF_{SQ}, a joint assimilation scheme, combines both discharge and soil moisture
 assimilation processes.

Generally, the AEnKF is considered an effective approach for updating hydrological model states. It integrates a greater
 650 amount of observational data while barely increasing the computational burden, making it highly suitable for flood
 forecasting. The effectiveness of assimilation with the AEnKF relates to the assimilation time window. Results of synthetic
 data cases indicate that an appropriate setting involves a 3-hour time window for assimilating observed soil moisture and
 outlet discharge. Moreover, in lead times ranging from 1 to 24 hours, this method consistently outperforms the EnKF
 approach.

655 In synthetic case studies, while updating soil moisture state variables of the Xin'anjiang model, it is observed that effective
 updates are limited to free water storage and total tension water storage. This underscores the significance of choosing
 appropriate state variables for updates in the application of the AEnKF method. Further analysis revealed that with high-



quality, hourly available observational data, all three assimilation schemes maintained their effectiveness for up to 24-hour lead time. Notably, AEnKF_{SQ} demonstrated enhanced optimal single-value performance, overall ensemble performance, and ensemble reliability, surpassing both AEnKF_S and AEnKF_Q.

In the real-world case studies, we merged soil moisture data from in-suit monitoring sites with the near-real-time CLDAS soil moisture data. This fusion produces spatially distributed data characterized by high temporal immediacy while addressing the limitation of point-scale in in-suit soil data. Contrasting with experiments using synthetic data, extending soil moisture observation intervals to 8 hours impacts the performance of the AEnKF_S scheme. In one-step prediction, the AEnKF_{SQ} scheme exhibits the highest level of accuracy. Concurrently, the simulation precision of the AEnKF_Q scheme exceeds that observed in AEnKF_S. Variations in results are observed under different lead times. AEnKF_{SQ} and AEnKF_S consistently demonstrate an assimilation effect duration of 8 hours, in contrast to the 5-hour temporal persistence of assimilation effect of AEnKF_Q. The use of AEnKF for updating cumulative channel flow markedly enhances the accuracy of discharge forecasting in a brief lead time. In contrast, the adjustment extent of discharge by updating free water storage in a single-step forecast might be less than that achieved with AEnKF_Q. Nevertheless, it guarantees a more sustained assimilation effect. The AEnKF_{SQ} integrates the strengths of the previous two strategies, thereby improving discharge forecasting accuracy even when a particular strategy does not update effectively and prolonging the temporal persistence of the assimilation effect.

Code/Data availability

Data will be made available on request.

Author contribution

Junfu Gong: Conceptualization, Methodology, Software, Visualization, Writing - original draft, Funding acquisition. **Xingwen Liu:** Methodology, Software. **Cheng Yao:** Data curation, Software, Funding acquisition, Writing - review & editing. **Zhijia Li:** Project administration, Funding acquisition, Writing - review & editing. **Albrecht Weerts:** Conceptualization, Writing - review & editing. **Qiaoling Li:** Supervision, Writing - review & editing. **Satish Bastola:** Writing -review & editing. **Yingchun Huang:** Validation, Funding acquisition. **Junzeng Xu:** Supervision, Resources.

Competing interests

At least one of the (co-)authors is a member of the editorial board of Hydrology and Earth System Sciences.



Acknowledgements

685 This work was supported by Xinjiang Uygur Autonomous Region Key Research and Development Project (Grant No. 2023B02044-2); the Postdoctoral Fellowship Program of CPSF (Grant No. GZC20240377); the Fundamental Research Funds for the Central Universities (Grant No. B240201181 and B240203007); the National Natural Science Foundation of China [Grant numbers 52079035 and 51909059]; Anhui Provincial Natural Science Foundation (Grant No. 2208085US06). We would like to express our heartfelt gratitude to Liaofan Lin for his constructive comments and invaluable assistance in
690 enhancing the quality of this research. The hydrometeorological data were provided by the Hydrology Bureau of Hunan Province, including evaporation, precipitation and discharge. The code of AEnKF used in this study was developed from the Parallel Data Assimilation Framework (PDFA) (<http://pdaf.awi.de/trac/wiki>) and OPENDA (www.openda.org). The SCE-UA algorithm implemented via Uncertainty Quantification Python Laboratory (UQ-PYL) (<http://www.uq-pyl.com>). We thank these organizations for granting permission to use their data and software.

695 References

- Ajami, N. K., Duan, Q. Y., and Sorooshian, S.: An integrated hydrologic Bayesian multimodel combination framework: Confronting input, parameter, and model structural uncertainty in hydrologic prediction, *Water Resour. Res.*, 43, W01403, <https://doi.org/10.1029/2005wr004745>, 2007.
- Alibrahim, H. and Ludwig, S. A.: Hyperparameter optimization: Comparing genetic algorithm against grid search and bayesian optimization, 2021 IEEE Congress on Evolutionary Computation (CEC), 1551-1559, <https://doi.org/10.1109/CEC45853.2021.9504761>, 2021.
- 700 Alvarez-Garreton, C., Ryu, D., Western, A. W., Su, C. H., Crow, W. T., Robertson, D. E., and Leahy, C.: Improving operational flood ensemble prediction by the assimilation of satellite soil moisture: comparison between lumped and semi-distributed schemes, *Hydrol. Earth Syst. Sci.*, 19, 1659-1676, <https://doi.org/10.5194/hess-19-1659-2015>, 2015.
- 705 Bergstra, J. and Bengio, Y.: Random search for hyper-parameter optimization, *J. Mach. Learn. Res.*, 13, 281-305, <https://jmlr.org/papers/v13/bergstra12a.html>, 2012.
- Beven, K.: Prophecy, reality and uncertainty in distributed hydrological modelling, *Adv. Water Resour.*, 16, 41-51, [https://doi.org/10.1016/0309-1708\(93\)90028-E](https://doi.org/10.1016/0309-1708(93)90028-E), 1993.
- Chao, L. J., Zhang, K., Wang, S., Gu, Z., Xu, J. Z., and Bao, H. J.: Assimilation of surface soil moisture jointly retrieved by multiple microwave satellites into the WRF-Hydro model in ungauged regions: Towards a robust flood simulation and forecasting, *Environ. Modell. Softw.*, 154, 105421, <https://doi.org/10.1016/j.envsoft.2022.105421>, 2022.
- 710 Chen, X. Y., Zhang, K., Luo, Y. N., Zhang, Q. N., Zhou, J. Q., Fan, Y. Z., Huang, P. N., Yao, C., Chao, L. J., and Bao, H. H.: A distributed hydrological model for semi-humid watersheds with a thick unsaturated zone under strong anthropogenic impacts: A case study in Haihe River Basin, *J. Hydrol.*, 623, 129765, <https://doi.org/10.1016/j.jhydrol.2023.129765>,
715 2023.



- Clark, M. P., Rupp, D. E., Woods, R. A., Zheng, X., Ibbitt, R. P., Slater, A. G., Schmidt, J., and Uddstrom, M. J.: Hydrological data assimilation with the ensemble Kalman filter: Use of streamflow observations to update states in a distributed hydrological model, *Adv. Water Resour.*, 31, 1309-1324, <https://doi.org/10.1016/j.advwatres.2008.06.005>, 2008.
- 720 Craninx, M., Hilgersom, K., Dams, J., Vaes, G., Danckaert, T., and Bronders, J.: Flood4castRTF: A real-time urban flood forecasting model, *Sustainability-Basel*, 13, 5651, <https://doi.org/10.3390/su13105651>, 2021.
- Crow, W. T. and Van Loon, E.: Impact of incorrect model error assumptions on the sequential assimilation of remotely sensed surface soil moisture, *J. Hydrometeorol.*, 7, 421-432, <https://doi.org/10.1175/JHM499.1>, 2006.
- DeChant, C. M. and Moradkhani, H.: Examining the effectiveness and robustness of sequential data assimilation methods for quantification of uncertainty in hydrologic forecasting, *Water Resour. Res.*, 48, W04518, <https://doi.org/10.1029/2011WR011011>, 2012.
- 725 Duan, Q. Y., Sorooshian, S., and Gupta, V.: Effective and efficient global optimization for conceptual rainfall - runoff models, *Water Resour. Res.*, 28, 1015-1031, <https://doi.org/10.1029/91WR02985>, 1992.
- Evensen, G.: The ensemble Kalman filter: Theoretical formulation and practical implementation, *Ocean Dyn.*, 53, 343-367, <https://doi.org/10.1007/s10236-003-0036-9>, 2003.
- 730 Evensen, G.: Data assimilation: the ensemble Kalman filter, Springer, Berlin, <https://doi.org/10.1007/978-3-642-03711-5>, 2009.
- Evensen, G. and van Leeuwen, P. J.: An ensemble Kalman smoother for nonlinear dynamics, *Mon. Weather Rev.*, 128, 1852-1867, [https://doi.org/10.1175/1520-0493\(2000\)128<1852:AEKSFN>2.0.CO;2](https://doi.org/10.1175/1520-0493(2000)128<1852:AEKSFN>2.0.CO;2), 2000.
- 735 Fang, Y. H., Zhang, X. N., Corbari, C., Mancini, M., Niu, G. Y., and Zeng, W. Z.: Improving the Xin'anjiang hydrological model based on mass-energy balance, *Hydrol. Earth Syst. Sci.*, 21, 3359-3375, <https://doi.org/10.5194/hess-21-3359-2017>, 2017.
- García-Alén, G., Hostache, R., Cea, L., and Puertas, J.: Joint assimilation of satellite soil moisture and streamflow data for the hydrological application of a two-dimensional shallow water model, *J. Hydrol.*, 621, 129667, <https://doi.org/10.1016/j.jhydrol.2023.129667>, 2023.
- 740 Gong, J. F., Weerts, A. H., Yao, C., Li, Z. J., Huang, Y. C., Chen, Y. F., Chang, Y. F., and Huang, P. N.: State updating in a distributed hydrological model by ensemble Kalman filtering with error estimation, *J. Hydrol.*, 620, 129450, <https://doi.org/10.1016/j.jhydrol.2023.129450>, 2023.
- Gong, J. F., Yao, C., Li, Z. J., Chen, Y. F., Huang, Y. C., and Tong, B. X.: Improving the flood forecasting capability of the Xinanjiang model for small- and medium-sized ungauged catchments in South China, *Nat. Hazard.*, 106, 2077-2109, <https://doi.org/10.1007/s11069-021-04531-0>, 2021.
- 745 Gong, J. F., Yao, C., Weerts, A. H., Li, Z. J., Wang, X. Y., Xu J. Z., and Huang, Y. C.: State updating in Xin'anjiang model by Asynchronous ensemble Kalman filtering with enhanced error models. *J. Hydrol.*, in process, 2024.



- Hersbach, H.: Decomposition of the continuous ranked probability score for ensemble prediction systems, *Weather Forecast.*,
750 15, 559-570, [https://doi.org/10.1175/1520-0434\(2000\)015<0559:DOTCRP>2.0.CO;2](https://doi.org/10.1175/1520-0434(2000)015<0559:DOTCRP>2.0.CO;2), 2000.
- Hunt, B. R., Kalnay, E., Kostelich, E. J., Ott, E., Patil, D. J., Sauer, T., Szunyogh, I., Yorke, J. A., and Zimin, A. V.: Four-
dimensional ensemble Kalman filtering, *Tellus A*, 56, 273-277, <https://doi.org/10.3402/tellusa.v56i4.14424>, 2004.
- Hunt, B. R., Kostelich, E. J., and Szunyogh, I.: Efficient data assimilation for spatiotemporal chaos: A local ensemble
transform Kalman filter, *Physica D*, 230, 112-126, <https://doi.org/10.1016/j.physd.2006.11.008>, 2007.
- 755 Ide, K., Courtier, P., Ghil, M., and Lorenc, A. C.: Unified notation for data assimilation: Operational, sequential and
variational, *J. Meteorolog. Soc. Jpn.*, 75, 181-189, https://doi.org/10.2151/jmsj1965.75.1B_181, 1997.
- Johnson, K. A., Wing, O. E. J., Bates, P. D., Fargione, J., Kroeger, T., Larson, W. D., Sampson, C. C., and Smith, A. M.: A
benefit-cost analysis of floodplain land acquisition for US flood damage reduction, *Nat. Sustainability*, 3, 56-62,
<https://doi.org/10.1038/s41893-019-0437-5>, 2020.
- 760 Jung, W. H. and Lee, S. G.: An Arrhythmia Classification Method in Utilizing the Weighted KNN and the Fitness Rule,
IRBM, 38, 138-148, <https://doi.org/10.1016/j.irbm.2017.04.002>, 2017.
- Kim, K. B., Kwon, H. H., and Han, D. W.: Exploration of warm-up period in conceptual hydrological modelling, *J. Hydrol.*,
556, 194-210, <https://doi.org/10.1016/j.jhydrol.2017.11.015>, 2018.
- Lee, H., Seo, D. J., and Koren, V.: Assimilation of streamflow and in situ soil moisture data into operational distributed
765 hydrologic models: Effects of uncertainties in the data and initial model soil moisture states, *Adv. Water Resour.*, 34,
1597-1615, <https://doi.org/10.1016/j.advwatres.2011.08.012>, 2011.
- Li, Y., Ryu, D., Western, A. W., and Wang, Q. J.: Assimilation of stream discharge for flood forecasting: The benefits of
accounting for routing time lags, *Water Resour. Res.*, 49, 1887-1900, <https://doi.org/10.1002/wrcr.20169>, 2013.
- Li, Y., Ryu, D., Western, A. W., Wang, Q. J., Robertson, D. E., and Crow, W. T.: An integrated error parameter estimation
770 and lag-aware data assimilation scheme for real-time flood forecasting, *J. Hydrol.*, 519, 2722-2736,
<https://doi.org/10.1016/j.jhydrol.2014.08.009>, 2014.
- Liu, Y., Weerts, A. H., Clark, M., Franssen, H. J. H., Kumar, S., Moradkhani, H., Seo, D. J., Schwanenberg, D., Smith, P.,
van Dijk, A. I. J. M., van Velzen, N., He, M., Lee, H., Noh, S. J., Rakovec, O., and Restrepo, P.: Advancing data
assimilation in operational hydrologic forecasting: progresses, challenges, and emerging opportunities, *Hydrol. Earth*
775 *Syst. Sci.*, 16, 3863-3887, <https://doi.org/10.5194/hess-16-3863-2012>, 2012.
- Massari, C., Brocca, L., Moramarco, T., Trambly, Y., and Lescot, J. F. D.: Potential of soil moisture observations in flood
modelling: Estimating initial conditions and correcting rainfall, *Adv. Water Resour.*, 74, 44-53,
<https://doi.org/10.1016/j.advwatres.2014.08.004>, 2014.
- Mazzoleni, M., Noh, S. J., Lee, H., Liu, Y. Q., Seo, D. J., Amaranto, A., Alfonso, L., and Solomatine, D. P.: Real-time
780 assimilation of streamflow observations into a hydrological routing model: effects of model structures and updating
methods, *Hydrolog Sci J*, 63, 386-407, <https://doi.org/10.1080/02626667.2018.1430898>, 2018.



- McInerney, D., Thyer, M., Kavetski, D., Laugesen, R., Tuteja, N., and Kuczera, G.: Multi-temporal Hydrological Residual Error Modeling for Seamless Subseasonal Streamflow Forecasting, *Water Resour. Res.*, 56, e2019WR026979, <https://doi.org/10.1029/2019WR026979>, 2020.
- 785 McMillan, H., Jackson, B., Clark, M., Kavetski, D., and Woods, R.: Rainfall uncertainty in hydrological modelling: An evaluation of multiplicative error models, *J. Hydrol.*, 400, 83-94, <https://doi.org/10.1016/j.jhydrol.2011.01.026>, 2011.
- Meng, S. S., Xie, X. H., and Liang, S. L.: Assimilation of soil moisture and streamflow observations to improve flood forecasting with considering runoff routing lags, *J. Hydrol.*, 550, 568-579, <https://doi.org/10.1016/j.jhydrol.2017.05.024>, 2017.
- 790 Nerger, L. and Hiller, W.: Software for ensemble-based data assimilation systems-Implementation strategies and scalability, *Comput. Geosci.*, 55, 110-118, <https://doi.org/10.1016/j.cageo.2012.03.026>, 2013.
- Nossent, J. and Bauwens, W.: Application of a normalized Nash-Sutcliffe efficiency to improve the accuracy of the Sobol'sensitivity analysis of a hydrological model, EGU General Assembly 2012, Vienna, 22-27 April, 237, <https://ui.adsabs.harvard.edu/abs/2012EGUGA..14..237N/abstract>, 2012.
- 795 Pathiraja, S., Moradkhani, H., Marshall, L., Sharma, A., and Geenens, G.: Data-driven model uncertainty estimation in hydrologic data assimilation, *Water Resour. Res.*, 54, 1252-1280, <https://doi.org/10.1002/2018WR022627>, 2018.
- Pedregosa, F., Varoquaux, G., Gramfort, A., Michel, V., Thirion, B., Grisel, O., Blondel, M., Prettenhofer, P., Weiss, R., and Dubourg, V.: Scikit-learn: Machine learning in Python, *J. Mach. Learn. Res.*, 12, 2825-2830, <https://jmlr.csail.mit.edu/papers/v12/pedregosa11a.html>, 2011.
- 800 Piazzì, G., Thirel, G., Perrin, C., and Delaigue, O.: Sequential data assimilation for streamflow forecasting: Assessing the sensitivity to uncertainties and updated variables of a conceptual hydrological model at basin scale, *Water Resour. Res.*, 57, e2020WR028390, <https://doi.org/10.1029/2020WR028390>, 2021.
- Pilon, P. J.: Guidelines for reducing flood losses, United Nations International Strategy for Disaster Reduction (UNISDR), 2002.
- 805 Rakovec, O., Weerts, A. H., Hazenberg, P., Torfs, P. J. J. F., and Uijlenhoet, R.: State updating of a distributed hydrological model with Ensemble Kalman Filtering: effects of updating frequency and observation network density on forecast accuracy, *Hydrol. Earth Syst. Sci.*, 16, 3435-3449, <https://doi.org/10.5194/hess-16-3435-2012>, 2012.
- Rakovec, O., Weerts, A. H., Sumihar, J., and Uijlenhoet, R.: Operational aspects of asynchronous filtering for flood forecasting, *Hydrol. Earth Syst. Sci.*, 19, 2911-2924, <https://doi.org/10.5194/hess-19-2911-2015>, 2015.
- 810 Reynolds, C. A., Jackson, T. J., and Rawls, W. J.: Estimating soil water-holding capacities by linking the Food and Agriculture Organization soil map of the world with global pedon databases and continuous pedotransfer functions, *Water Resour. Res.*, 36, 3653-3662, <https://doi.org/10.1029/2000WR900130>, 2000.
- Ryu, D., Crow, W. T., Zhan, X. W., and Jackson, T. J.: Correcting Unintended Perturbation Biases in Hydrologic Data Assimilation, *J. Hydrometeorol.*, 10, 734-750, <https://doi.org/10.1175/2008JHM1038.1>, 2009.



- 815 Sakov, P. and Bocquet, M.: Asynchronous data assimilation with the EnKF in presence of additive model error, *Tellus A*, 70, 1414545, <https://doi.org/10.1080/16000870.2017.1414545>, 2018.
- Sakov, P., Evensen, G., and Bertino, L.: Asynchronous data assimilation with the EnKF, *Tellus A*, 62, 24-29, <https://doi.org/10.1111/j.1600-0870.2009.00417.x>, 2010.
- Shukla, S. and Lettenmaier, D. P.: Seasonal hydrologic prediction in the United States: understanding the role of initial hydrologic conditions and seasonal climate forecast skill, *Hydrol. Earth Syst. Sci.*, 15, 3529-3538, <https://doi.org/10.5194/hess-15-3529-2011>, 2011.
- 820 Sun, Y., Bao, W., Valk, K., Brauer, C. C., Sumihar, J., and Weerts, A. H.: Improving forecast skill of lowland hydrological models using ensemble Kalman filter and unscented Kalman filter, *Water Resour. Res.*, 56, e2020WR027468, <https://doi.org/10.1029/2020WR027468>, 2020.
- 825 Thiboult, A. and Anctil, F.: On the difficulty to optimally implement the Ensemble Kalman filter: An experiment based on many hydrological models and catchments, *J. Hydrol.*, 529, 1147-1160, <https://doi.org/10.1016/j.jhydrol.2015.09.036>, 2015.
- Thiboult, A., Anctil, F., and Boucher, M. A.: Accounting for three sources of uncertainty in ensemble hydrological forecasting, *Hydrol. Earth Syst. Sci.*, 20, 1809-1825, <https://doi.org/10.5194/hess-20-1809-2016>, 2016.
- 830 Vetra-Carvalho, S., Van Leeuwen, P. J., Neger, L., Barth, A., Altaf, M. U., Brasseur, P., Kirchgessner, P., and Beckers, J. M.: State-of-the-art stochastic data assimilation methods for high-dimensional non-Gaussian problems, *Tellus A*, 70, 1445364, <https://doi.org/10.1080/16000870.2018.1445364>, 2018.
- Wanders, N., Karssenberg, D., de Roo, A., de Jong, S. M., and Bierkens, M. F. P.: The suitability of remotely sensed soil moisture for improving operational flood forecasting, *Hydrol. Earth Syst. Sci.*, 18, 2343-2357, <https://doi.org/10.5194/hess-18-2343-2014>, 2014.
- 835 Wang, Y. Y. and Li, G. C.: Evaluation of simulated soil moisture from China Land Data Assimilation System (CLDAS) land surface models, *Remote Sens. Lett.*, 11, 1060-1069, <https://doi.org/10.1080/2150704X.2020.1820614>, 2020.
- Weerts, A. H. and El Serafy, G. Y. H.: Particle filtering and ensemble Kalman filtering for state updating with hydrological conceptual rainfall-runoff models, *Water Resour. Res.*, 42, W09403, <https://doi.org/10.1029/2005WR004093>, 2006.
- 840 Yao, C., Li, Z. J., Yu, Z. B., and Zhang, K.: A priori parameter estimates for a distributed, grid-based Xinanjiang model using geographically based information, *J. Hydrol.*, 468, 47-62, <https://doi.org/10.1016/j.jhydrol.2012.08.025>, 2012.
- Yossef, N. C., Winsemius, H., Weerts, A. H., van Beek, R., and Bierkens, M. F. P.: Skill of a global seasonal streamflow forecasting system, relative roles of initial conditions and meteorological forcing, *Water Resour. Res.*, 49, 4687-4699, <https://doi.org/10.1002/wrcr.20350>, 2013.
- 845 Zang, S. H., Li, Z. J., Zhang, K., Yao, C., Liu, Z. Y., Wang, J. F., Huang, Y. C., and Wang, S.: Improving the flood prediction capability of the Xin'anjiang model by formulating a new physics-based routing framework and a key routing parameter estimation method, *J. Hydrol.*, 603, 126867, <https://doi.org/10.1016/j.jhydrol.2021.126867>, 2021.

<https://doi.org/10.5194/hess-2024-211>
Preprint. Discussion started: 16 July 2024
© Author(s) 2024. CC BY 4.0 License.



Zhao, R. J.: The Xinanjiang model applied in China, *J. Hydrol.*, 135, 371-381, [https://doi.org/10.1016/0022-1694\(92\)90096-E](https://doi.org/10.1016/0022-1694(92)90096-E), 1992.