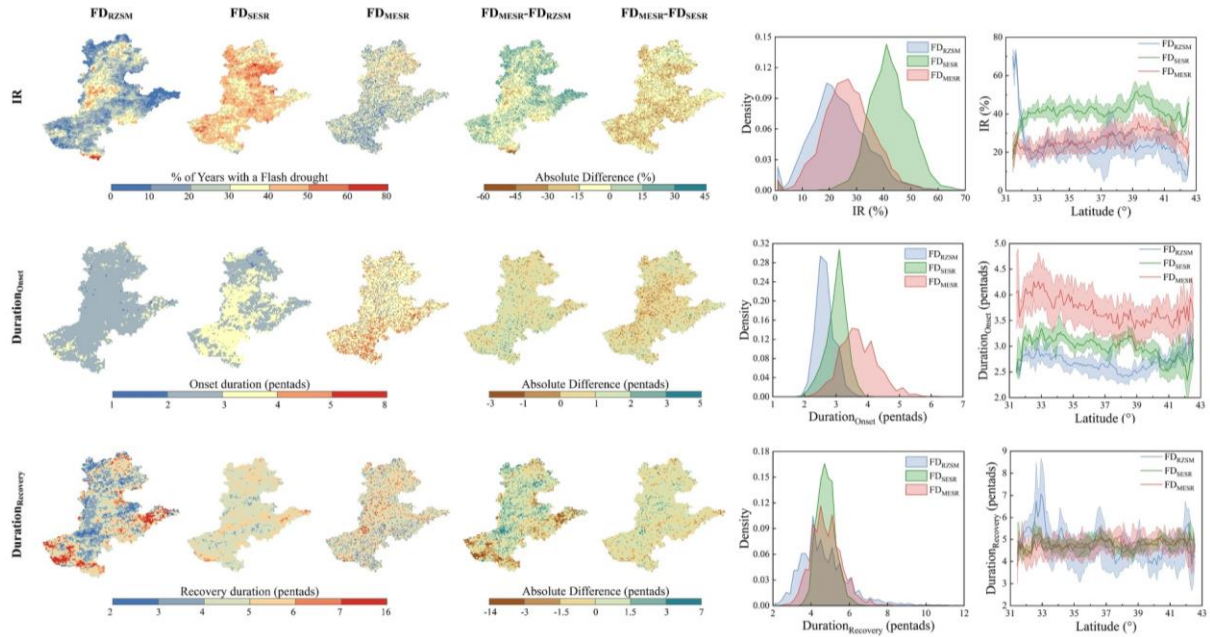
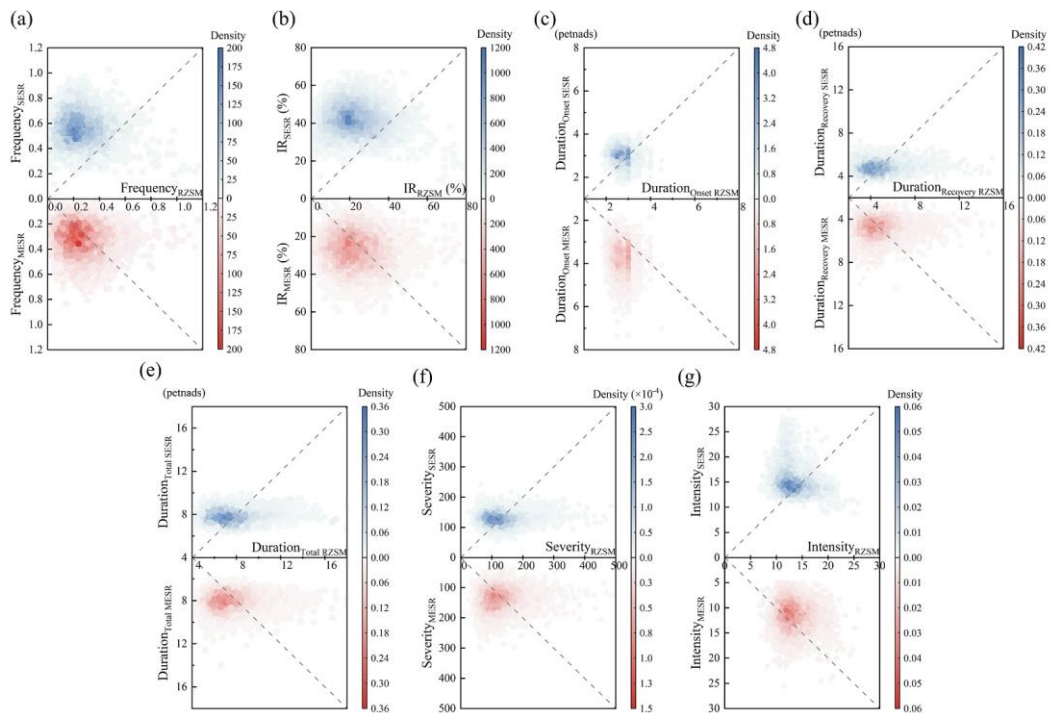


1 **Table S1 The main ranges of FD characteristics under different FD grades.**

Characteristics	Method	FD1	FD2	FD3	FD4
Duration <sub>Onset</sub>	FD <sub>RZSM</sub>	2~3.5	2~3.5	2~3.5	3~3.5
	FD <sub>SESR</sub>	2~4	2~5	3~6	3~6
	FD <sub>MESR</sub>	2~3	2~4	3~4	3~5
Duration <sub>Recovery</sub>	FD <sub>RZSM</sub>	3~11	1~5	1~3	1~3
	FD <sub>SESR</sub>	4~7	2~5	1~4	1~4
	FD <sub>MESR</sub>	4~6	2~6	2~6	2~6
Duration <sub>Total</sub>	FD <sub>RZSM</sub>	6~12	4~8	4~6	4~6
	FD <sub>SESR</sub>	7~10	6~8	6~8	6~8
	FD <sub>MESR</sub>	6~10	6~10	6~10	6~10
Severity	FD <sub>RZSM</sub>	150~350	50~150	0~100	0~50
	FD <sub>SESR</sub>	100~150	150~300	50~100	50~100
	FD <sub>MESR</sub>	50~200	50~200	50~200	50~200

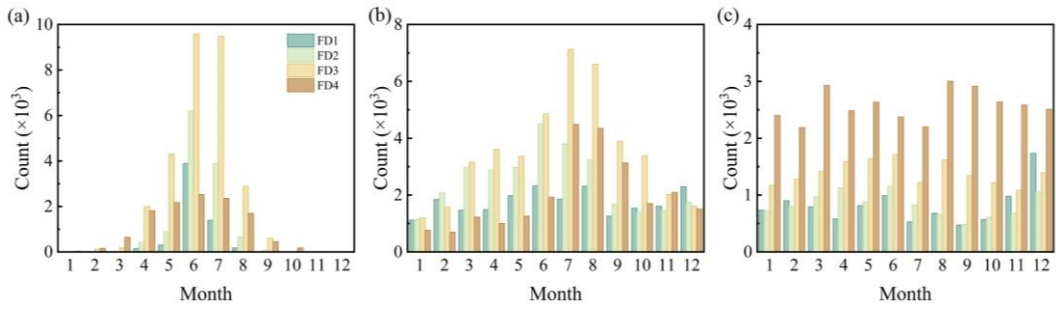


2 **Figure S1 Same as Figure 4, but for IR, duration<sub>Onset</sub> and duration<sub>Recovery</sub>.**



3 **Figure S2 Scatter densities of FD characteristics identified by RZSM, SESR, and MESR.**

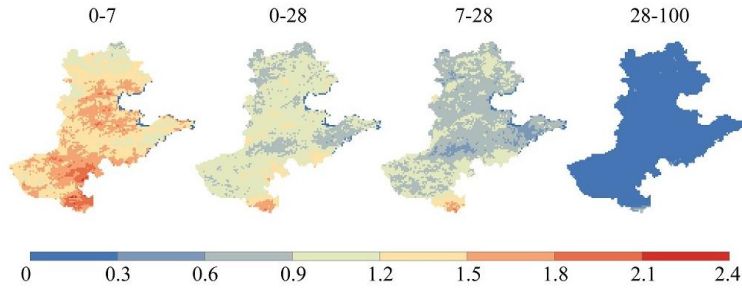
4  
5



6

7

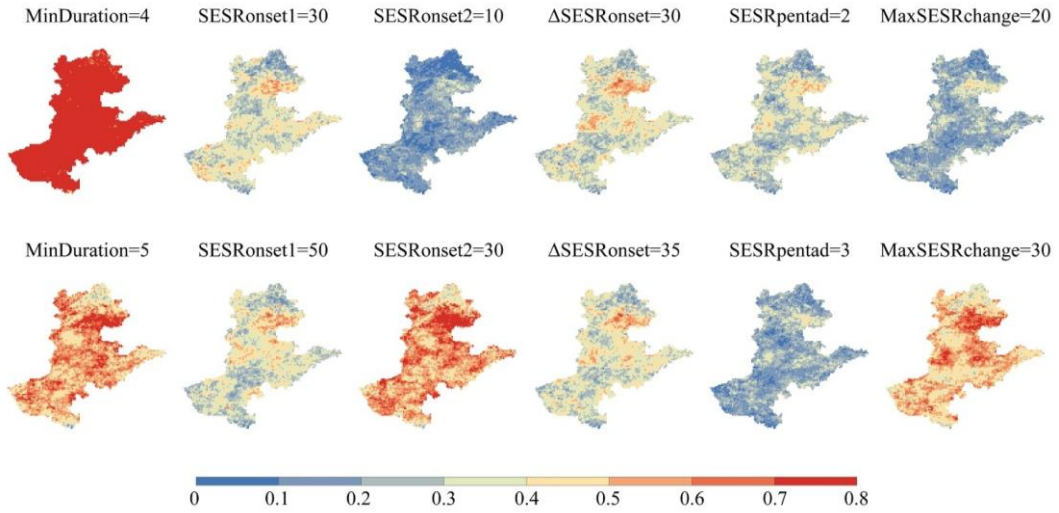
Figure S3 The amount of FD grids under different (a)  $FD_{RZSM}$ , (b)  $FD_{SER}$  and (c)  $FD_{MESR}$  grades from 1981 to 2022.



8

9

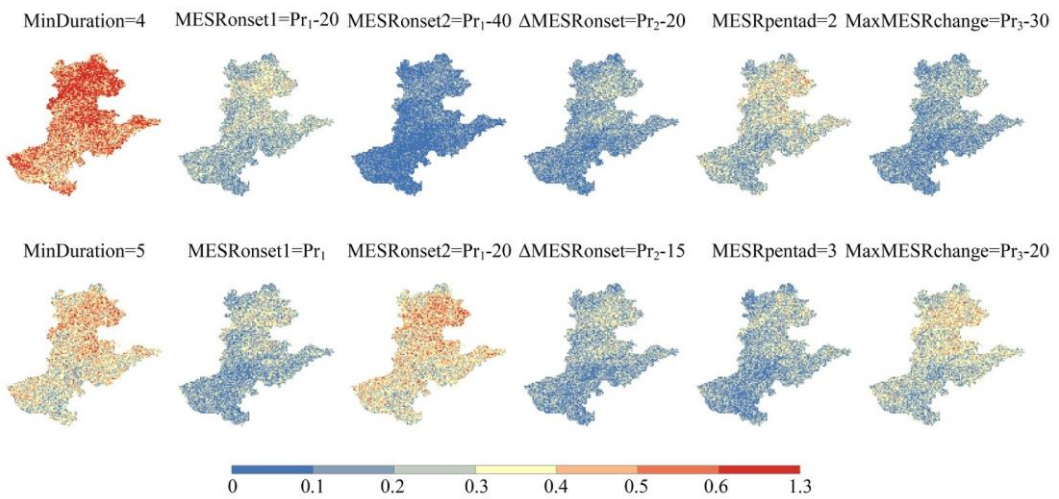
Figure S4 Frequency for  $FD_{RZSM}$  with RZSM from different soil layers.



10

11

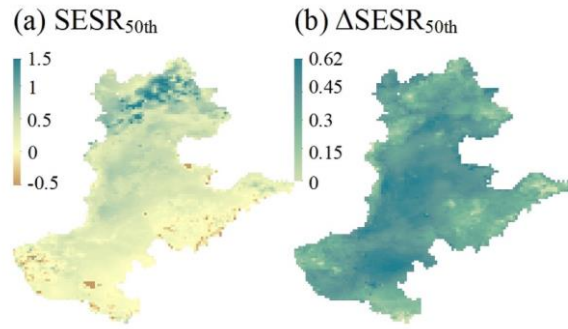
Figure S5 Same as Figure 11, but for  $FD_{SER}$ .



12

13

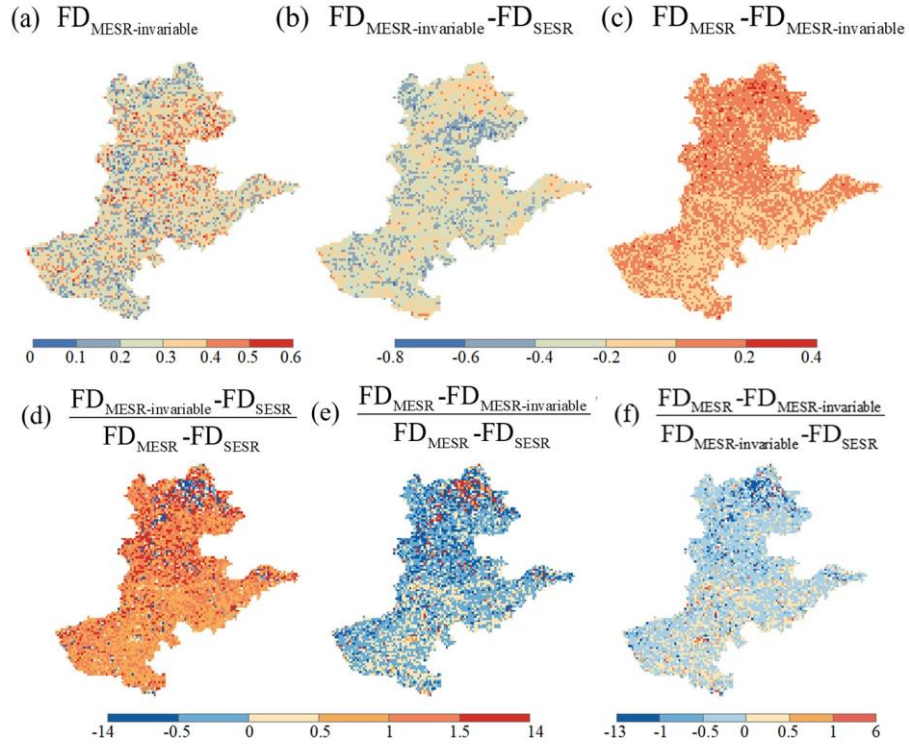
Figure S6 Same as Figure 11, but for  $FD_{MESR}$ .



14

15

**Figure S7 Distribution of the mean (a)  $SESR_{50th}$  and (b)  $\Delta SESR_{50th}$ .**



16

17

**Figure S8 Frequency of  $FD_{MESR-invariable}$  and its difference with  $FD_{MESR}$  and  $FD_{SESR}$ .**