

Supplementary information for RC2 response.

Runtimes for experiments 1a and 1b

Runs were performed on a workstation with an AMD Ryzen 5600G (CPU learning) and 32GB DDR4 RAM.

Table S2. Runtimes for experiment 1a: cluster-based temporal undersampling. The symbol '-' denotes a compromised runtime calculation.

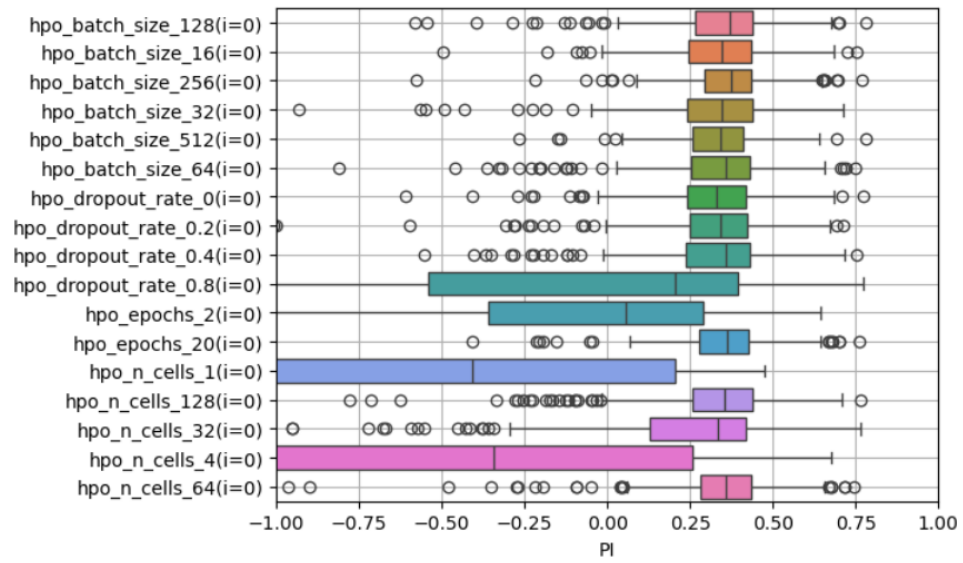
configuration	run duration (minutes)
baseline	116.37
CUS _Q (K=12, $\phi=0.50$)	-
CUS _Q (K=6, $\phi=0.25$)	37.70
CUS _Q (K=6, $\phi=0.50$)	73.33
RUS ($\phi=0.25$)	57.55
RUS ($\phi=0.50$)	62.68

Table RC2a: runtimes for experiment 2a.

Table S3. Runtimes for experiment 1b: cluster-based spatial undersampling. The symbol '-' denotes a compromised runtime calculation.

configuration	run duration (minutes)
baseline	176.65
CUS _B (K=2, B=64)	94.60
CUS _B (K=32, B=64)	76.33
CUS _B (K=32, B=96)	108.95
CUS _B (K=8, B=64)	90.75
RUS (B=64)	66.43
RUS (B=96)	-

Table RC2b: runtimes for experiment 2b.



FigureRC2a: Hyperparameter optimisation results in terms of PI performance on the validation dataset.

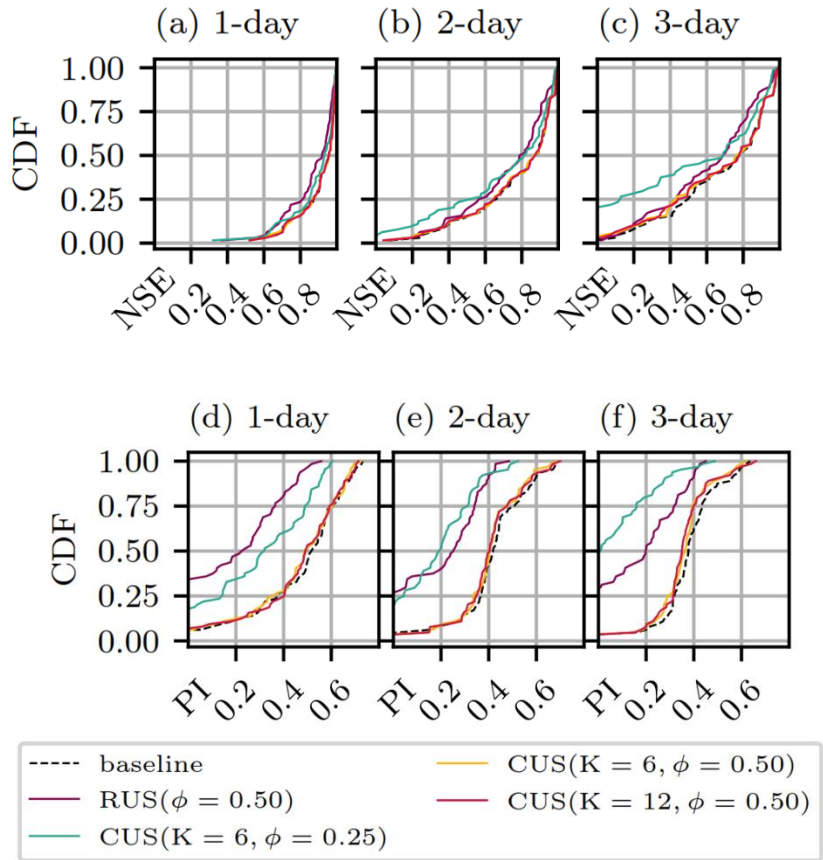


Figure RC2b: revised Figure 4 with reduced linewidths.

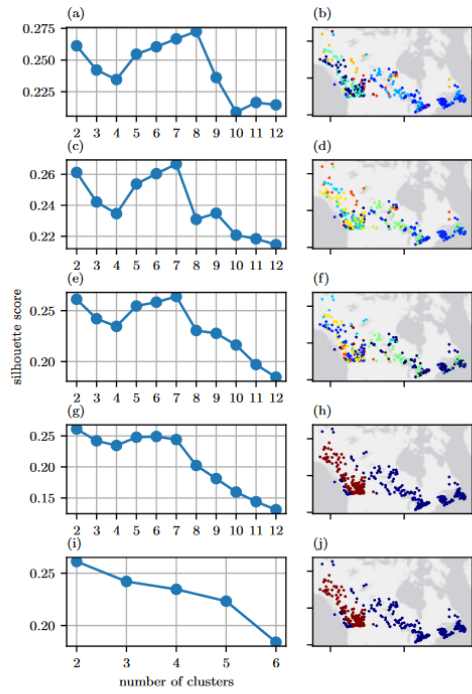


Figure S1. Silhouette scores (left) for minimum cluster sizes of 2 (a), 8 (c), 16 (e), 32 (g), and 64 (i). Respective clustering results (right) for K values (corresponding to maximum silhouette score) of 8 (b), 7 (d, f), and 2 (h, j). World Gray Canvas basemap provided by ESRI.

Figure RC2c: Relationship between silhouette score and minimum cluster size.

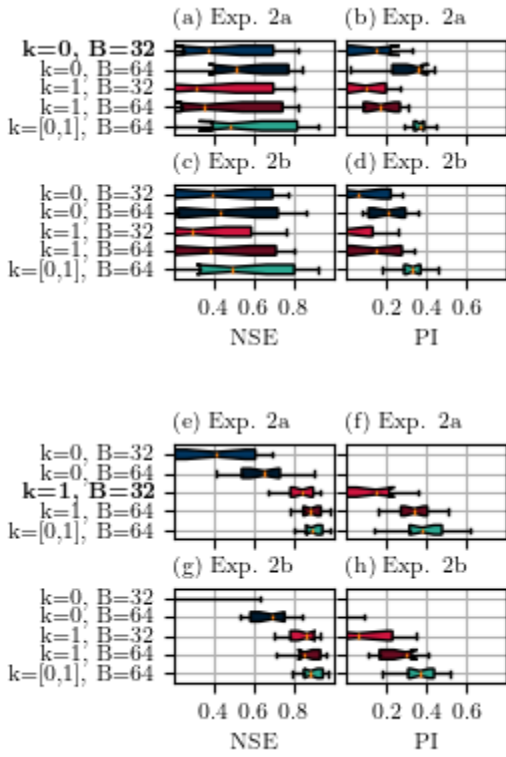


Figure RC2d: Updated Figure 10 with an increased number of subplots and detailed subplot titles.

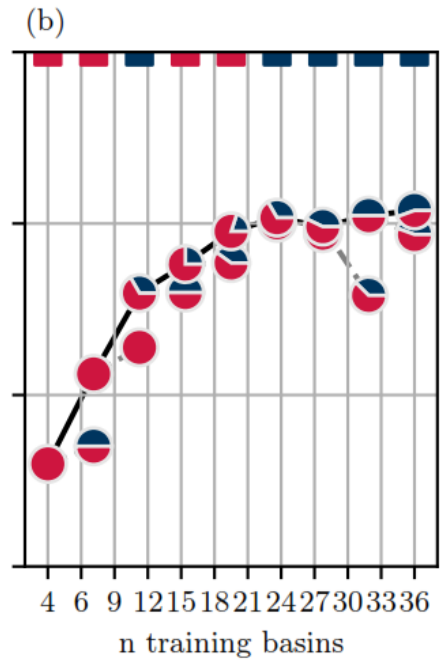
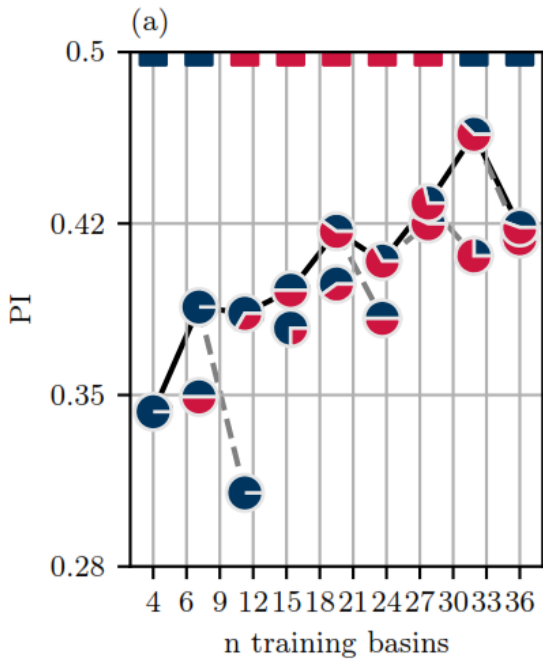


Figure RC2e: Original experimental results.

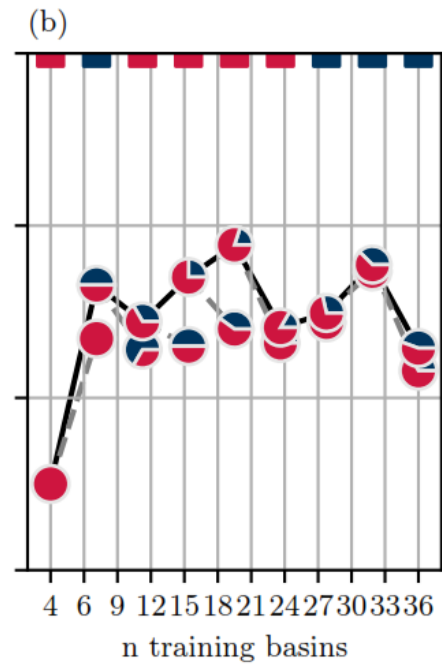
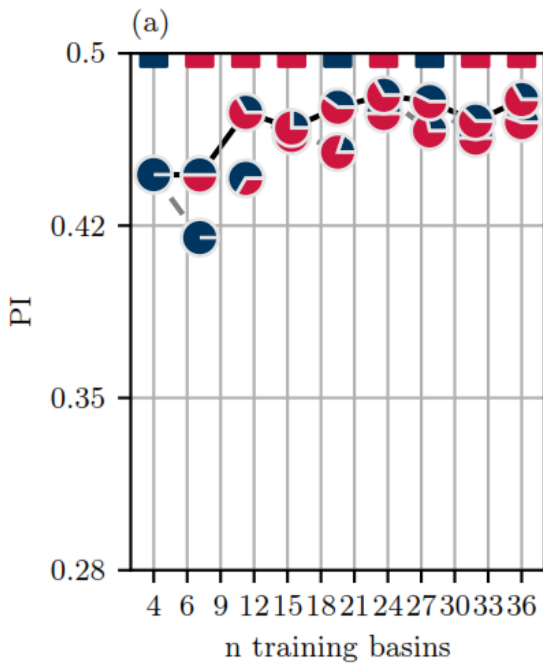


Figure RC2f: Additional experimental run on two sets of 4 different basins