

The Significance of the Leaf-Area-Index on the Evapotranspiration Estimation in SWAT-T for Characteristic Land Cover Types of Western Africa

Fabian Merk¹, Timo Schaffhauser¹, Faizan Anwar¹, Ye Tuo¹, Jean-Martial Cohard², and Markus Disse¹

¹School of Engineering and Design, Technical University of Munich, Munich, Germany

²Institute of Engineering and Management, University of Grenoble Alpes, Grenoble, France

Correspondence: Fabian Merk (fabian.merk@tum.de)

Abstract.

Evapotranspiration (ET) plays a pivotal role in the terrestrial water cycle in sub-humid and tropical regions. ~~Thereby~~In this, the contribution of plant transpiration can be distinctively greater than the soil evaporation. The seasonal dynamics of plant phenology, e.g., commonly represented as the vegetation attribute leaf-area-index (LAI), closely correlates with actual ET (AET). ~~Addressing~~Hence, addressing the reciprocal LAI-AET interaction is ~~hence~~ essential for practitioners and researchers to comprehensively quantify the hydrological processes in water resources management, particularly in the perennially vegetated regions of Western Africa. However, due to the lack of field measurements, the evaluation of the LAI-AET interaction still remains challenging. Hence, our study aims to improve the understanding of the role of LAI on the AET estimation with the investigation of characteristic regions of Western Africa. We setup eco-hydrological models (SWAT-T) for two homogeneous land cover types (forest and grassland) to guarantee the representativeness of field measurements for LAI and AET. To evaluate the LAI-AET interaction in SWAT-T, we apply different potential ET methods (Hargreaves, Penman-Monteith (PET-PM), Priestley-Taylor). Further, the parameter sensitivity for 27 relevant LAI-AET parameters is quantified with the elementary effects method. The comprehensive parameter set is then optimized using the Shuffled-Complex-Evolution algorithm. Finally, we apply a benchmark test to assess the performance of SWAT-T to simulate AET and to determine the relevance of a detailed LAI modelling. The results show that SWAT-T is capable to accurately predict LAI and AET on the footprint scale. While all three PET methods facilitate an adequate modelling of LAI and AET, PET-PM outperforms the methods for AET independent of the land cover type. Moreover, the benchmarking highlights that if an optimization process only accounts for LAI but disregards AET data, its prediction of AET still yields an adequate performance with SWAT-T for all PET methods and land cover types. Our findings demonstrate that the significance of a detailed LAI modelling on the AET estimation is more pronounced in the forested than in the grassland region.

1 Introduction

Evapotranspiration (ET) is a key hydrological process of the continental water cycle, particularly in the sub-humid and tropical regions of Western Africa where the share of ET to precipitation can be up to 70 – 80 % (Rodell et al., 2015). The high share of

ET in the water cycle inevitably necessitates the reliable estimation of ET for water resources studies on all scales in sub-humid and tropical regions. Concurrently, the accurate computation of ET remains challenging for researchers and practitioners since ET is dynamic in space and time (Michel et al., 2016; Miralles et al., 2016). ~~It varies notably dependent~~ Its variability notably depends on land cover, soil properties, water availability, vegetation state, and time of the year ~~; even in proximate regions~~ (Chu et al., 2021). In addition, plant transpiration has a decisive contribution to the total evapotranspiration (Gerten et al., 2004; Schlesinger and Jasechko, 2014; Miralles et al., 2016; Wei et al., 2017). It is directly linked to the canopy conductance which strongly correlates with the leaf-area-index (LAI) (Good et al., 2014; Wang et al., 2014). Thus in perennially vegetated regions with high transpiration rates, such as the sub-humid Western Africa, the LAI-ET interaction plays a pivotal role in the ET quantification (Schlesinger and Jasechko, 2014; Wei et al., 2017; Bright et al., 2022).

Albeit its importance, the availability of LAI and ET ground measurements is scarce. In previous ET studies, authors have used existing global monitoring networks, such as eddy covariance (EC) systems (e.g., AmeriFlux (Novick et al., 2018), AMMA-CATCH (Galle et al., 2018), or FLUXNET (Friend et al., 2007)), to inform catchment-scale hydrological models to comprehensively assess all processes of the hydrological cycle (Schneider et al., 2007; Hector et al., 2018; Ferreira et al., 2021; Jepsen et al., 2021; López-Ramírez et al., 2021). Still, the derived AET estimates from EC systems can not be extrapolated without limitations beyond the location site. ~~The usually small source area that contributes to the measured fluxes is defined as flux-footprint~~ This is mainly attribute to the small footprint, i.e., the source area of the AET fluxes. Dependent on soil and land cover properties underlying the footprints, the source area spatially limits the representativeness of the AET measurements (Chu et al., 2021). For LAI, the limited availability of field observations is commonly addressed with the exploitation of satellite-based LAI data. A favorable data set is thereby the Global Land Surface Satellite (GLASS) LAI data (Liang et al., 2021) where the widely used MODIS LAI data has been advanced with machine learning applications on the global scale (Liang et al., 2014). The validation reports of GLASS-LAI data present accurate LAI time series results, particularly in perennially vegetated regions (Liang et al., 2014) where the satellite based vegetation data can be subject to noise and cloud influences (Viovy et al., 1992; Strauch and Volk, 2013; Atkinson et al., 2012; Alemayehu et al., 2017).

In the present study, the semi-distributed, physically-based eco-hydrological Soil and Water Assessment Tool for the tropics (SWAT-T) (Alemayehu et al., 2017) is applied. The SWAT-T model is a modification of SWAT (Arnold et al., 1998) which has been introduced by Strauch and Volk (2013) and further developed by Alemayehu et al. (2017) to account for a more realistic plant growth modelling of perennial vegetation in tropical regions. The merits of SWAT-T for an improved prediction of LAI and AET have been highlighted in different tropical and sub-humid regions. It has been applied on the catchment scale in Eastern Africa (Alemayehu et al., 2017), in Colombia (Hoyos et al., 2019), in Brazil (Ferreira et al., 2021) as well as in Australia (Zhang et al., 2020) and on the micro-catchment scale in Mexico (López-Ramírez et al., 2021). Moreover, the application of SWAT-T for climate impact assessment has been presented in Peru on the catchment scale (Fernandez-Palomino et al., 2021). Remotely-sensed AET has been mostly employed to assess the model fitness of simulated AET ~~(Alemayehu et al., 2017; Zhang et al., 2020; Fernandez-Palomino et al., 2021; Ferreira et al., 2021)~~ with SWAT-T (Alemayehu et al., 2017; Zhang et al., 2020; Fernandez-Palomino et al., 2021; Ferreira et al., 2021) as well as with SWAT (Rajib et al., 2017). The latest, open-source version of SWAT called SWAT+ has also been applied in the tropics with remotely-sensed AET and

LAI data (Abitew et al., 2023). For the African continent, remotely-sensed AET products can however be limited due to un-
60 certainties in their reliability (Weerasinghe et al., 2020).

For the LAI estimation, the aforementioned SWAT-T studies relied on the application of remotely-sensed LAI from MODIS. In the past, measured LAI was used with SWAT (Park et al., 2017; Yang et al., 2018; Nantasaksiri et al., 2021) (Park et al., 2017; Yang et al.
as well as observed forest biomass production (Khanal and Parajuli, 2014) (Khanal and Parajuli, 2014; Haas et al., 2022) for
an analysis of the LAI model parameters. The number of LAI parameters thereby differ from three (Yang et al., 2018) to eight
65 (Nantasaksiri et al., 2021) ~~parameters.~~ 18 (?) parameters. For tropical regions, Alemayehu et al. (2017) suggests the calibra-
tion of 11 LAI parameters when SWAT-T is applied. LAI and AET are correlated and influence each other in SWAT/SWAT-T
(Arnold et al., 1998). For example, the water stress on plants is dependent on AET and can determine the actual plant growth in
SWAT/SWAT-T (Neitsch et al., 2011). When modelling LAI, a consideration of the relevant AET parameters is hence therefore
essential.

To the best of our knowledge, the integration of measured LAI and AET data in the evaluation of the reciprocal LAI-AET
interaction and as well as the relevance of a coupled LAI-AET parameter estimation ~~have not yet been evaluated with respect to~~
~~measured LAI and AET in with the~~ SWAT/SWAT-T. ~~The model has not yet been considered.~~ Previous studies on the influence
of LAI on AET in ~~the application of~~ SWAT/SWAT-T ~~has covered either not~~ have either not covered all relevant LAI-AET
parameters, ~~has been studied for~~ considered only heterogeneous source areas ~~for of measured~~ AET, or ~~has used only only~~
75 used remotely-sensed AET and LAI data. Hence, we address these shortcomings and focus ~~our research~~ on the comprehensive
evaluation of the significance of LAI on AET in SWAT-T with measured LAI and AET data. Further, we test the hypothesis if
a detailed plant growth model optimization (single LAI optimization regarding observed or GLASS-LAI) can still adequately
estimate AET with SWAT-T.

We evaluate the LAI-AET interaction for two typical, perennially vegetated land cover types of Western Africa using a
80 SWAT-T model on the seamless footprint scale of the EC system for each site. The sites are located in the sub-humid Bétérour
catchment in Benin. First, we highlight the relevance of a coupled LAI-AET parameter estimation for the prediction of LAI.
Then, a global sensitivity analysis with using the elementary effects ~~methods~~ method (Morris, 1991) is applied to quantify
the parameter sensitivities and to enable a ranking of the sensitivity levels. We optimize the LAI-AET parameters with LAI
data (observed and GLASS-LAI), exclude AET as a proxy in the model optimization, and eventually evaluate the AET model
85 response of the LAI optimization. For this purpose, the performance test proposed by Seibert et al. (2018) is conducted. The
test compares the best optimized model (simultaneous LAI and AET optimization as upper benchmark) ~~and the~~ with single
LAI optimization approaches (observed or GLASS-LAI). To provide a lower limit of the general LAI-AET performance of
SWAT-T, a random sampling approach of the LAI-AET parameters (lower benchmark) is applied. The LAI-AET parameter
optimization is conducted using the Shuffled-Complex-Algorithm (SCE-UA) (Duan et al., 1994).

90 2 Methods

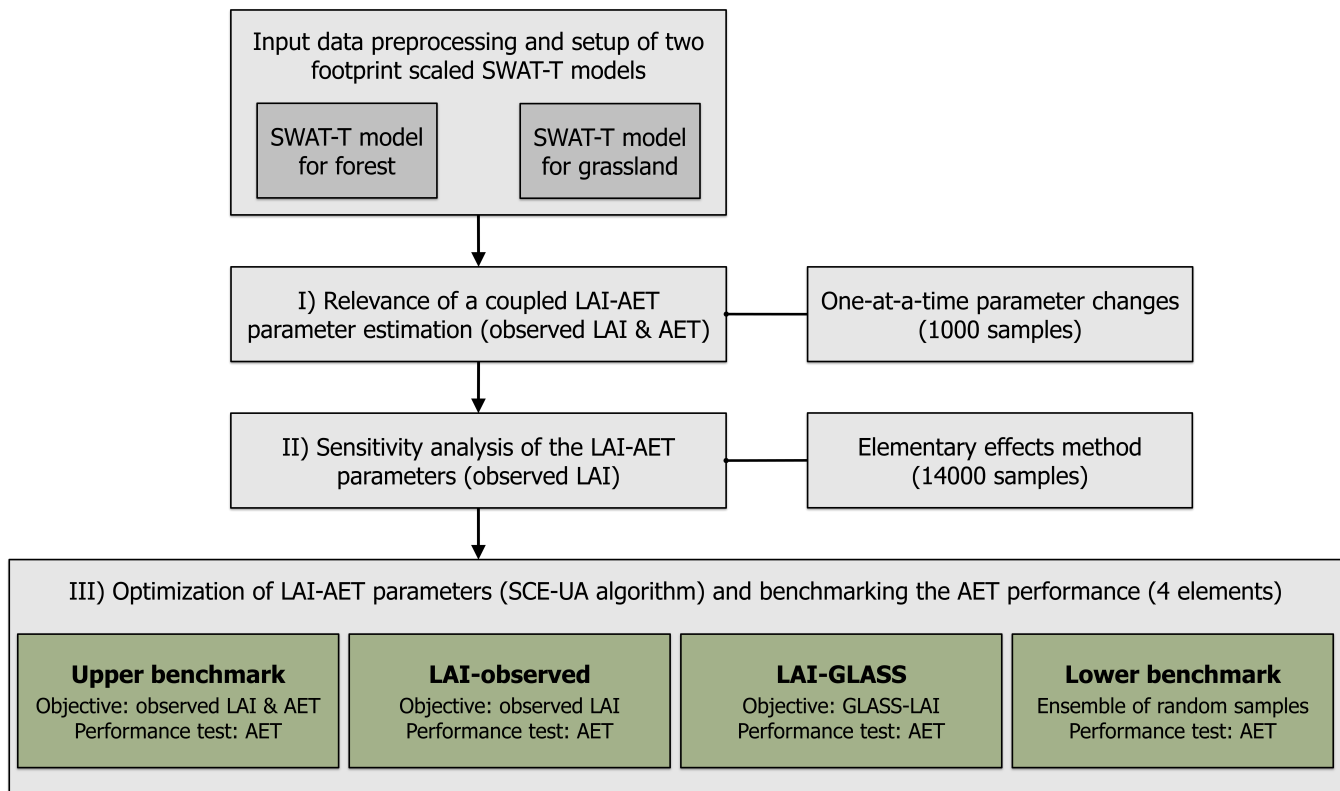


Figure 1. Methods to assess the significance of LAI on AET estimation as applied in the present study. For all three steps of the methodology, three different PET methods (Hargreaves, Priestley-Taylor, Penman-Monteith) available in SWAT-T are applied.

Fig-Figure 1 gives an overview of the methods applied in this study to evaluate the significance of LAI on the AET estimation in SWAT-T. ~~At first~~First, the input data is processed and footprint scales SWAT-T models for two characteristic, perennially vegetated regions in Western Africa are setup. ~~The Second, the~~ relevance of a coupled LAI-AET parameter estimation is investigated with one-at-a-time parameter changes and evaluated ~~regarded regarding~~ observed LAI and AET data. ~~The Third, the~~ sensitivity analysis is conducted based on the elementary effects method with respect to observed LAI. Finally, the role of LAI on the AET estimation in SWAT-T is assessed with an optimization approach (Shuffled-Complex-Evolution algorithm) and the performance to predict AET is tested with a benchmark test. ~~In the following, the steps of the methodology are explained in detail.~~

2.1 Model description and parameter selection

100 The SWAT-T model is ~~a further development an enhanced version~~ of the ecohydrological model SWAT (Arnold et al., 1998). In SWAT-T, the plant growth module has been modified to account for a more realistic perennial plant phenology in tropical regions (Alemayehu et al., 2017) which can ~~eventually~~ improve the AET prediction (Zhang et al., 2020; Fernandez-Palomino

et al., 2021; Ferreira et al., 2021; López-Ramírez et al., 2021). Apart from the plant growth module, SWAT-T and SWAT are identical. The original SWAT model has been applied worldwide in different river basins (Arnold and Fohrer, 2005; Tan et al., 2020) as well as regionally in Benin (Akoko et al., 2021). Specifically in Benin, most of the applications focused on the discharge assessment for the Ouémé river basin (Bossa et al., 2014; Poméon et al., 2018) and its tributaries (Giertz et al., 2006; Bossa et al., 2012; Duku et al., 2016, 2018; Danvi et al., 2017; Togbévi et al., 2020). In previous studies in Western Africa, remotely-sensed AET was also used as a main calibration objective to predict streamflow (Odusanya et al., 2019, 2021). To the best of our knowledge, the SWAT-T model has so far not been applied in Benin but in Eastern Africa (Alemayehu et al., 2017).

Generally, the SWAT/SWAT-T model is spatially discretized into subbasins and further subdivided in hydrological response units (HRUs). Three options are available to compute the potential ET (PET) in SWAT/SWAT-T: the temperature-based Hargreaves (PET-HG) (Hargreaves and Samani, 1985), the energy-based Priestley-Taylor (PET-PT) (Priestley and Taylor, 1972) and the combined temperature and energy-based Penman-Monteith (PET-PM) (Monteith, 1965) method. [Tab-Table 1](#) summarizes the equations how PET E_0 is computed and highlights the integral part of LAI in each approach.

Table 1. Approaches to compute potential evapotranspiration E_0 and potential transpiration T_{plant} provided in SWAT-T.

PET method	Equation for E_0	Equation for T_{plant}
PET-HG	$E_0 = \frac{0.0023 \cdot H_0}{\lambda} \cdot \sqrt{T_{mx} - T_{mn}} \cdot (T_{av} + 17.8)$	$T_{plant} = \begin{cases} LAI \cdot \frac{E_0}{3.0}, & \text{if } LAI \leq 3.0 \\ E_0, & \text{if } LAI > 3.0 \end{cases}$
PET-PT	$E_0 = \frac{\alpha_{pet} \cdot \Delta}{\lambda \cdot (\Delta + \gamma)} \cdot (H_{net} - G)$	$T_{plant} = \begin{cases} LAI \cdot \frac{E_0}{3.0}, & \text{if } LAI \leq 3.0 \\ E_0, & \text{if } LAI > 3.0 \end{cases}$
PET-PM	$E_0 = \frac{\Delta \cdot (H_{net} - G) + \rho_{air} \cdot c_p \cdot (e_z^0 - e_z)/r_a}{\lambda \cdot (\Delta + \gamma \cdot (1 + r_c/r_a))},$	$T_{plant} = \frac{\Delta \cdot (H_{net} - G) + \rho_{air} \cdot c_p \cdot (e_z^0 - e_z)/r_a}{\lambda \cdot (\Delta + \gamma \cdot (1 + r_c/r_a))},$
	with r_c, r_a from alfalfa crop reference	with r_c, r_a from actual plant (canopy height and LAI)

~~The equations in Tab. 1 are determined in which~~ [In the equations in Table 1](#) λ is the latent heat of vaporization, H_0 is the extraterrestrial radiation, T_{mx} , T_{mn} , and T_{av} are the maximal, minimal, and mean daily temperature, respectively, α_{pet} is a coefficient, Δ is the slope of the saturation vapor pressure-temperature, γ is the psychrometric constant, H_{net} is the net radiation, G is the heat flux density to the ground, ρ_{air} is the air density, c_p is the specific heat at constant pressure, e_z^0 is the saturation vapor pressure of air at height z , e_z is the water vapor pressure of air at height z , r_a is the aerodynamic resistance, and r_c is the plant canopy resistance. In PET-PM, r_a and r_c are attributed to the alfalfa crop reference for the computation of

E_0 (Neitsch et al., 2011). After the calculation of E_0 , it is ~~eventually partitioned in~~ partitioned into potential plant transpiration T_{plant} and soil evaporation E_{soil} . T_{plant} is thereby computed ~~in dependency of the value~~ depending on the values of LAI for the given day for all PET methods. For PET-HG and PET-PT, a threshold of $LAI = 3.0$ determines if T_{plant} is equal to E_0 , i.e., all potential evapotranspiration is coming only from the plant transpiration without the consideration of soil evaporation. If

125 $LAI \leq 3.0$, a share of E_0 is potentially available for T_{plant} and E_{soil} . For PET-PM, T_{plant} is computed using the equation of Penman-Monteith (~~Tab~~Table. 1) where r_a and $r_{c,c}$ are determined with respect to the actually modelled plant canopy and LAI. E_{soil} for PET-PM is then $E_{soil} = E_0 - T_{plant}$. ~~Eventually, the~~ The actual plant transpiration and soil evaporation are computed dependent on the water availability and different biophysical parameters, such as LAI or root depth, as well as soil properties, such as the field capacity. Actual plant transpiration and soil evaporation are then summed to the actual ET (AET).

130 ~~Plant growth is~~ The plant growth computation is modelled in SWAT/SWAT-T ~~with the~~ follows the approach of with the “Environmental Policy Impact Climate” (EPIC) model (Arnold et al., 1998) where LAI is a key vegetation attribute for the ~~plant~~ vegetation plant phenology (Neitsch et al., 2011). Generally, the plant growth in SWAT/SWAT-T can be divided ~~in~~ into an initial phase (start of the growing phase), a growing phase, a period of maturity (growing is halted to a constant LAI), the leaf senescence phase (natural decline of the plant and a decreasing LAI), and a dormancy period (no plant growth but constant

135 LAI). In the growing phase, the optimal leaf development in SWAT/SWAT-T is computed with:

$$fr_{LAI_{mx}} = \frac{fr_{PHU}}{fr_{PHU} + \exp(l_1 - l_2 \cdot fr_{PHU})}, \quad (1)$$

where $fr_{LAI_{mx}}$ is the fraction of the maximum leaf area index of a plant with respect to the fraction of the potential heat units for the plant, fr_{PHU} is the fraction of the potential heat units in the current day of the growth cycle, and l_1 and l_2 are shape coefficients. The plant growth continues until the maximum leaf area index is reached:

$$140 \quad \Delta LAI_i = (fr_{LAI_{mx},i} - fr_{LAI_{mx},i-1}) \cdot LAI_{mx} \cdot (1 - \exp(5 \cdot (LAI_{i-1} - LAI_{mx}))), \quad (2)$$

For perennial plants, the LAI for the given day i under optimal conditions is ~~eventually~~ computed as:

$$LAI_i = LAI_{i-1} + \Delta LAI_i. \quad (3)$$

However, the optimal plant growth can be constrained in SWAT/SWAT-T due to water, temperature, nitrogen, or phosphorous stress. The water stress $wstrs$ is thereby directly linked to the actual plant transpiration and the total water plant uptake. The

145 temperature stress $tstrs$ is computed based on the air temperature of the given day and the user defined parameters T_{base} and T_{opt} . Nitrogen and phosphorus stresses, $nstrs$ and $pstrs$ respectively, are computed to account for insufficient nutrients (see Appendix A2 for the supplementary equations). The actual plant growth is determined with a plant growth factor γ_{reg} :

$$\gamma_{reg} = 1 - \max(wstrs, tstrs, nstrs, pstrs), \quad (4)$$

and the actual leaf area added on a day i is computed as:

$$150 \quad \Delta LAI_{act,i} = \Delta LAI_i \cdot \gamma_{reg}. \quad (5)$$

The computation of LAI and AET in SWAT/SWAT-T can also be influenced by changes of carbon dioxide levels in the atmosphere (Neitsch et al., 2011). In SWAT/SWAT-T, the leaf conductance is computed based on carbon dioxide concentration for PET-PM. Concurrently, the carbon dioxide concentration is employed in the calculation of the biological efficiency (BIO_E) and impacts the radiation use efficiency of the plants. If different CO₂ levels are simulated, substantial changes in LAI and AET can be observed (Ficklin et al., 2009; Wu et al., 2012). In the present study, the carbon dioxide level is constant but variations should be further investigated in the future.

The major difference between the plant growth modelling in SWAT and SWAT-T are two features: a logarithmic decline of LAI and the automatic start of the growing phase based on a soil moisture index. In the first plant growth modification of SWAT, Strauch and Volk (2013) introduced a logarithmic decline of LAI in the leaf senescence phase for a more realistic representation of the LAI decrease and to avoid a rapid drop of LAI:

$$LAI = \frac{LAI_{max} - LAI_{min}}{1 + \exp(-t)}, \quad (6)$$

where t is defined considering the fraction of the potential heat units at which senescence become the dominant growth phase $fr_{PHU_{sen}}$ as:

$$t = 12 \cdot \left(\frac{1 - fr_{PHU}}{1 - fr_{PHU_{sen}}} - 0.5 \right) \text{ if } fr_{PHU} \geq fr_{PHU_{sen}}. \quad (7)$$

Since the plant growth in the tropics is generally governed by the water availability in the soils (Jolly and Running, 2004), Alemayehu et al. (2017) further modified the SWAT version of Strauch and Volk (2013) and implemented an automatic start of the growing phase which is triggered by the soil moisture index. For this purpose, the soil moisture index $SMI = P/E_0$ is introduced. The precipitation P is aggregated for a user defined time window (here: 5 days). A SMI threshold to start the growing has to be defined (here: $SMI = 0.5$). To avoid false starts of the new growing cycle, the end of the dry season (SOS_1 , here: October) and the beginning of the rainy season (SOS_2 , here: January) have to be specified by the user, too (Alemayehu et al., 2017). In SWAT, the start of the growing phase is linked to the number of accumulated heat units. In SWAT-T, the soil moisture index has replaced this dependency of the heat units. The heat units are mainly used in SWAT-T to define the plant growth development over the year (see Equ. 1).

27 parameters have been selected to investigate the LAI-AET interaction (Tab. Table 2). The selection of LAI parameters follows the suggestion of Alemayehu et al. (2017), whereas the AET parameters are chosen based on literature review. In the past, 27 parameters of SWAT have been were assessed for sensitivity analysis with particular focus on AET (Ha et al., 2018; Odusanya et al., 2019; Bennour et al., 2022; Koltsida and Kallioras, 2022). Parameters with a coinciding low sensitivity reported in these studies, e.g., the hydraulic conductivity in the channel (CH_K2) or groundwater baseflow delay (GW_DELAY), are not considered in the present LAI-AET parameter list to reduce the total parameter space. For the present study, the soil layer thickness (SOL_D) is given for four soil layers from field measurements (Judex and Thamm, 2008). We adjust only the depth of the lowest soil layer to not in order not to excessively shape the ground-truth observations, but to still facilitate an evaluation of the influence of the total soil thickness implies on the LAI-AET interaction in SWAT-T.

Table 2. List of parameters used to estimate LAI and AET with their description.

Parameter	Description [unit]
<i>Parameters associated with plant growth (LAI) in the plant data base of SWAT</i>	
BIO_E	Radiation-use efficiency [(kg/ha)/(MJ/m ²)]
BLAI	Maximum potential leaf area index [m ² /m ²]
FRGRW ₁	Fraction of PHU corresponding to the first point on the optimal leaf area development curve [-]
LAIMX ₁	Fraction of BLAI corresponding to the first point on the optimal leaf area development curve [-]
FRGRW ₂	Fraction of PHU corresponding to the second point on the optimal leaf area development curve [-]
LAIMX ₂	Fraction of BLAI corresponding to the second point on the optimal leaf area development curve [-]
DLAI	Fraction of total PHU when leaf area begins to decline [-]
T_OPT	Optimal temperature for plant growth [°C]
T_BASE	Minimum temperature for plant growth [°C]
ALAI_MIN	Minimum leaf area index for plant during dormant period [m ² /m ²]
PHU	Total number of heat units needed to bring plant to maturity [-]
GSI	Maximum stomatal conductance [m/s]
<i>Parameters associated with AET estimation</i>	
CAN_MX	Maximum canopy storage [mm]
ESCO	Soil evaporation compensation factor [-]
EPCO	Plant uptake compensation factor [-]
HRU_SLP	Average slope steepness [m/m]
SLSUBBSN	Average slope length [m]
CN2	Initial SCS runoff curve number [-]
SOL_AWC	Available water capacity of the soil layer [mm]
SOL_BD	Moist bulk density [g/cm ³]
SOL_CBN	Organic carbon content [% soil weight]
SOL_K	Saturated hydraulic conductivity [mm/hr]
SOL_RD	Maximum rooting depth of soil profile [mm]
SOL_D ^a	Soil layer depth [mm]
GW_REVAP	Groundwater re-evaporation coefficient [-]
RCHRG_DP	Deep aquifer percolation fraction [-]
REVAPMN	Threshold depth of water for re-evaporation to occur [mm]

^aHere: lowest soil layer depth

2.2 Study site and footprint-scaled models

The study sites Bellefougou and Naholou are located in the Western part of the Bétérou catchment ([Fig. Figure 2](#)). The climate is typical for Sub-Saharan, sub-humid Africa. The annual precipitation ~~can range~~ ranges from 1100 to 1500 mm

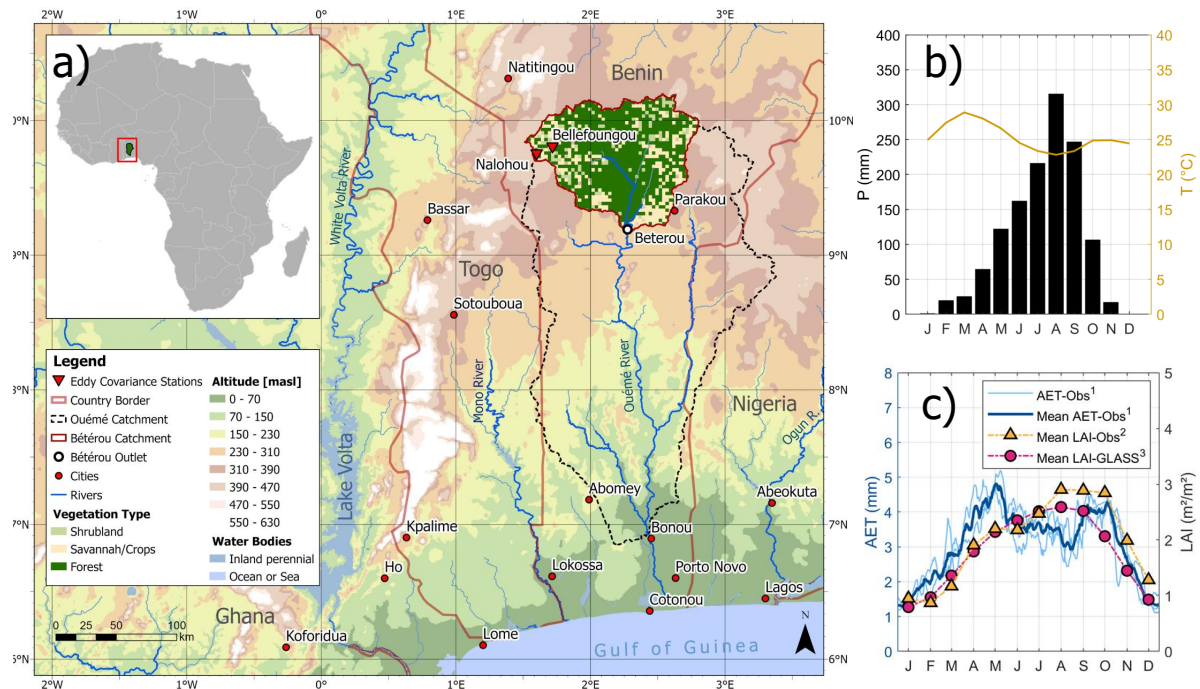


Figure 2. (a) Overview of the Bétérou catchment and the locations of the eddy covariance systems (Naholou and Bellefoungou); (b) the seasonality of precipitation and temperature in Bellefoungou; (c) and the correlation-comparison of observed AET (in greenblue) and satellite-based, mean monthly values for observed LAI (yellow), and mean monthly values for GLASS-LAI (in graypurple) in Bellefoungou. The solar radiation, wind speed, and relative humidity for the sites are illustrated in the appendix (cf. A1). References for the data used to display the map are listed in the appendix (cf. A5). The superscripts in c) denote the corresponding time periods: ¹from 01/2008 to 12/2010; ²from 07/2008 to 05/2010; ³from 01/2007 to 12/2015.

(Mamadou et al., 2016; Bliedernicht et al., 2019). The precipitation pattern is unimodal with a rainy season between April and October whereas from November to March the dry season is occurring. The annual mean daily temperature is 25°C (Galle et al., 2018). The soils in the Bétérou catchment consist of ferric soils with loamy sand present in the upper soil horizons (Giertz and Diekkrüger, 2003). Generally, the AET data follows the seasonality of LAI (Figure 2). Still, a decrease of AET in the wet season can be observed for this region. AET depends on radiation, wind speed, and humidity. The net radiation is decreasing during the wet season which automatically reduces fluxes like sensible and latent heat fluxes (cf. A1). Additionally, the atmospheric demand is reduced because of high air humidity which was observed for the vapor pressure deficit (Mamadou et al., 2016) resulting in lower AET rates in the wet season.

The forested Bellefoungou region (latitude 9.791°N, longitude 1.718°E, 445 masl) is covered with typical, widespread woodland ("clear forest") for Sub-Saharan Africa (Ago et al., 2016). The Naholou region (latitude 9.74°N, longitude 1.60°E, 449 masl) is largely covered by characteristic mixture of crops and savannah grassland and fallows (Ago et al., 2014). Due to the high share of grassland, the Naholou region is hence defined as grassland region in the following. The estimated flux

footprint extent for the grassland region is 4000 m², while for the forested region it is seasonally varying and can be up to 60000 m² (Mamadou et al., 2014). AET accounts for high shares of precipitation at both sites where the share of annual AET to precipitation is 57 % and 72 % for Naholou and Bellefougou, respectively (Mamadou et al., 2016). The evaporative fraction (EF) share of plant transpiration compared to soil evaporation is particularly high in the wet season. The share of plant transpiration to soil evaporation with values of values for the evaporative fraction are 70 ± ±2.5 % at Naholou and 75 ± ±0.7 % at Bellefougou underline the significance (Mamadou et al., 2016). These high rates of plant transpiration to AET demonstrate the strong dependency of plant growth to and AET in these regions (Mamadou et al., 2016; Hector et al., 2018). The field measurements for LAI in both sites were delineated from hemispherical photographs and the processing methodology proposed by Weiss et al. (2004). The in situ data is complemented with corrections of an ensemble of satellite-based LAI products (CYCLOPE, MODIS, SEVIRI) (Mamadou et al., 2014).

Table 3. Overview of the data sets that are applied in this study.

Variable	Resolution	Database name or source
Digital elevation model	Rastered DEM, 30 m x 30 m	Copernicus GLO-30 (Copernicus, 2022)
Soil map	Soil type clusters	IMPETUS Soil Map (Judex and Thamm, 2008)
Observed AET	Daily, pointwise	Mamadou et al. (2016)
Observed LAI	Daily, pointwise	Ago et al. (2014); Mamadou et al. (2016)
GLASS-LAI	Rastered, 250 m x 250 m	GLASS-LAI (Liang et al., 2021)
Precipitation	Daily, pointwise	AMMA-Catch network (Galle et al., 2018)
Temperature	Daily, pointwise	AMMA-Catch network (Galle et al., 2018)
Solar radiation	Daily, pointwise	AMMA-Catch network (Galle et al., 2018)
Relative humidity	Daily, pointwise	AMMA-Catch network (Galle et al., 2018)
Wind speed	Daily, pointwise	AMMA-Catch network (Galle et al., 2018)

One SWAT-T model is setup for the forested and the grassland site in the Bétérou catchment, respectively. No footprint calculations for the sites nor the necessary data to compute those is available. We thus adhere the suggestion of Chu et al. (2021) where radii of < 250 m around flux towers assure flux representativeness. The SWAT/SWAT-T models are watershed models. For the model delineation with SWAT-T, we drew circles (250 m radius) around each flux tower to guarantee the representativeness of the flux footprints. Based on the underlying DEM, the resulting watershed extents are 8500 m² and 2300 m² for the forested and grassland site, respectively. Although the footprint extent in the forested region can be larger depending on the season (Mamadou et al., 2016), we applied a constant extent following the suggestions suggestion of Chu et al. (2021). To ensure the homogeneity of land cover and soil properties, each SWAT-T model consists of a single HRU. LAI and AET are simulated on the daily time step. The data sets used in this study are listed in ~~Tab-~~Table 3. The land cover type for each site (forest, grassland) represented in the model is provided in Ago et al. (2014, 2016). We defined the land uses classes "FRSD" and "RNGE" from the SWAT crop data base to the forested and grassland region, respectively. The observed AET data for both sites is available from ~~1.1.2008 to 31.12.2010~~ 1/1/2008 to 31/12/2010 (Mamadou et al., 2016). The observed LAI data

220 for the forested region (Bellefoungou) is available from ~~1.7.2008 to 31.5.2010~~ 1/7/2008 to 31/5/2010 (Ago et al., 2016), for
the grassland region (Naholou) from ~~5.8.2007 to 2.1.2010~~ 5/8/2007 to 2/1/2010 (Ago et al., 2014). The meteorological data
provided by the AMMA-Catch network dates from 2005 to 2020 (Galle et al., 2018). The GLASS-LAI data is provided from
2000 to 2021 (Liang et al., 2021). To enable the best possible overlap of measured LAI and AET data, the study periods from
~~1.1.2008 to 31.12.2010 and from 1.1.2007 to 31.12.2010~~ for 1/1/2008 to 31/12/2010 and from 1/1/2007 to 31/12/2010 the
225 forested and grassland region are defined, respectively.

2.3 Evaluation of the coupled LAI-AET parameter estimation

We postulate that for a comprehensive plant growth modelling in SWAT-T both, the LAI and AET model parameters are deci-
sive, particularly if the accurate estimation of plant transpiration is a modelling objective. To assess the relevance of a coupled
LAI-AET parameter estimation, we apply parameter changes and compare the corresponding model responses to observed
230 AET and LAI. Each parameter from ~~Tab. Table~~ 2 is randomly sampled (1000 samples) and the model is run ~~individually for~~
~~any for each~~ sample. In each simulation, the other model parameters remain unaltered (one-at-a-time parameter changes). To
avoid influences from poorly estimated parameter values (e.g., the default settings), the optimized model parameters from the
LAI-AET optimization (cf. Section 2.5) are prescribed for the unaltered parameters. The model response of a parameter change
is evaluated in two ways: with respect to observed AET and with respect to observed LAI. ~~Eventually~~ Finally, an evaluation of
235 how LAI parameters influence the AET responses as well as how AET parameters influence the LAI responses is presented with
this approach. The analysis of the LAI-AET parameter estimation is ~~conducted for three different PET-shown~~ conducted for
three dPET methods (Hargreaves, Penman-Monteith, Priestley-Taylor) for the forested study site. The results for the grassland
region are similar but not specifically presented.

2.4 Sensitivity analysis with the Morris method

240 To address the parameter-response-complexity of the coupled LAI-AET modelling with SWAT-T, a sensitivity analysis for all
LAI-AET parameters is conducted. Sensitivity analysis is an essential, yet challenging step in the application of hydrological
models and the evaluation of reliable parameters sets, particularly with respect to model equifinality. Different approaches
exist to quantify the model responses to parameter changes. In this study, we take advantage of the elementary effects method,
or Morris method (Morris, 1991), since its computational demand is inexpensive, the parameter sensitivity is statistically
245 quantified, and non-linear model responses can be determined (Morris, 1991; Campolongo et al., 2007). Moreover, parameters
which are involved in parameter interactions and non-influential parameters can be identified.

Generally, the Morris method screens through a total sample size N where one parameter, or input factor $q = [q_i, \dots, q_k]$, is
changed while the others remain constant (one-at-a-time method). The total sample size N is generated based on r defined
levels and q selected parameters such that $N = r(q + 1)$. Based on each sample, the elementary effects d_i is calculated with:

$$250 \quad d_i(q) = \frac{f(q_i, \dots, q_{i-1}, q_i + \Delta, q_{i+1}, \dots, q_k) - f(q)}{\Delta} = \frac{f(q + \Delta e_i) - f(q)}{\Delta}, \quad (8)$$

where Δ represents the parameter step size, $q + \Delta e_i$ denotes the transformed parameter point, $q = [q_1, \dots, q_k]$ is any selected parameter of N , and e_i consists of a vector of zeros but one in the i^{th} element. The local sensitivity of parameter q is described with the value of $d_i(q)$. For the global sensitivity, the statistical moments μ_i and σ_i as mean and standard deviation from the distribution of the total sample simulation are used (Morris, 1991). We use the absolute mean μ^* as proposed by Campolongo et al. (2007) to not disregard non-monotonic model responses because of opposite signs. The statistical moments for each set j are:

$$\mu_i^*(q) = \frac{1}{r} \sum_{i=1}^r |d_i^j(q)|, \quad (9)$$

$$\sigma_i(q) = \sqrt{\frac{1}{r-1} \sum_{i=1}^r (d_i^j(q) - \mu_i)^2}. \quad (10)$$

In this study, we quantify the model performance with the Kling-Gupta efficiency (KGE) (see Appendix A2 for the supplementary equations). Moreover, we apply the Latin hypercube sampling to guarantee a widespread input space. Using $r = 500$ and $q = 27$ parameters, the total sample size is $N = 14000$. [We varied investigated all 27 parameters listed in Table 2 for the sensitivity analysis. For the application of the elementary effects method, we implemented the equations of Morris \(1991\) and Campolongo et al. \(2007\) into a set of MATLAB scripts. The code is available on demand.](#)

2.5 Coupled LAI-AET parameter optimization and benchmarking

The LAI-AET parameters are first optimized with respect to different objectives which are (i) a multi-objective optimization with respect to LAI and AET ("upper benchmark"), (ii) an optimization only with respect to observed LAI data ("LAI-obs"), and (iii) an optimization only with respect to satellite-based GLASS-LAI data ("LAI-GLASS"). The model performance is then tested based on the benchmark proposed by Seibert et al. (2018) and the different objectives are compared to each other. [Seibert et al. \(2018\) have suggested to use upper and lower model benchmarks to thoroughly evaluate the model performance of a specific modelling framework. In Seibert et al. \(2018\), the performance of the streamflow prediction is investigated. The application of a physical-based model is thereby compared to an upper \(optimized, conceptual model\) and lower benchmark \(ensemble of random samples\) \(Seibert et al., 2018\). To avoid an arbitrary good or bad model response from a single parameter set, like the default model parameters, Seibert et al. \(2018\) propose to use a random parameter samples for the lower benchmark.](#)

We apply the SCE-UA algorithm (Duan et al., 1994) for the optimization of the LAI-AET parameters.

The SCE-UA is a genetic algorithm where first, samples of the parameters are stochastically generated with respect to the lower and upper bounds of the parameter values. The parameters values are then changed to develop the samples to an optimum, i.e., to the optimal value of an objective function. Here, we use KGE to compare the simulated model output with the observed data. In the algorithm application, the initial sample is divided into several sub-samples (complexes) (Duan et al., 1994). In each complex, varying combinations of parameter values are embedded. Each complex is then used to produce offsprings using

the downhill simplex procedure (Nelder and Mead, 1965). The probability for a parameter value to be used in the next complex is proportional to its model fitness, i.e., to the objective function. Parameter values of lower fitness are replaced by the new offspring. The main advantage of the SCE-UA algorithm is the application of (i) mutation where new parameter values in the defined parameter spaces can be spontaneously generated and (ii) shuffling where a recombination of the parameter values in new complexes is conducted (Duan et al., 1994).

In this study, different objectives are defined for the LAI-AET parameter optimization (Tab. Table 4). ~~At first~~First, the LAI-AET parameters are optimized in a multi-objective way with ~~equally weighted~~equal weight with respect to observed AET and LAI ("upper benchmark"). This way, the performance potential of LAI-AET to fit both the AET and plant growth is quantified. Further, we also assess if a detailed plant growth optimization can predict AET using the single LAI optimization approaches ("LAI-obs" and "GLASS-LAI"). We use the SPOTPY toolbox (Houska et al., 2015) for the application of the SCE-UA algorithm.

Table 4. Summary of benchmark elements, their optimization approach with the corresponding optimization objectives and their evaluation. For the Lower benchmark, the median KGE of the AET performance of all 1000 random samples is used.

Benchmark element	Optimization approach	Objective(s)	Evaluation for benchmark
Upper benchmark	SCE-UA	Observed LAI & AET	AET
LAI-obs	SCE-UA	Observed LAI	AET
LAI-GLASS	SCE-UA	GLASS-LAI	AET
Lower benchmark	<i>Random sampling</i>	-	AET

All three optimization approaches are compared with each other based on the individual AET evaluation using the benchmarking ~~approach~~proposed by Seibert et al. (2018). The ~~basic idea of this benchmark is the comparison of a certain modelling framework to an upper and lower benchmark. The upper benchmark~~upper benchmark is defined to be the best potential model performance (here: "upper benchmark" in Tab. 4). ~~To avoid an arbitrary good or bad model response from a single parameter set, like the default model parameters, Seibert et al. (2018) propose to use random parameter samples. The lower benchmark is then defined to be the median objective fit of the random parameter samples (Seibert et al., 2018). Here, we generate~~Table ??). ~~For the lower benchmark, we generated~~ 1000 uniformly distributed LAI-AET parameters samples, evaluate the simulated AET with observed AET, and determine the overall median KGE performance as lower benchmark. With the upper and lower model limits, the AET prediction performance of optimizing the parameters only for LAI can be benchmarked for the footprint scaled models of the forested and grassland region. ~~The three as well as for different~~PET methods (PET-HG, PET-PT, and PET-PM)~~are thereby used to facilitate a comparison of PET methods~~. With four benchmark elements (TabTable. 4), two land cover types, and three PET methods, 24 setups are hence compared to each other to assess the LAI-AET modelling performance of SWAT-T. ~~In total, 27 parameters are considered for the sensitivity analysis. To reduce the parameter space and address the equifinality problem, 22 parameters are optimized. Five parameters are not changed but derived, e.g., from other studies in the region. The groundwater parameters (GW_REVAP, RCHRG_DP, and REVAPMN) are obtained from Duku et al. (2015) who investigated the streamflow prediction with SWAT for the Bétérou catchment. The CN_2 numbers for FRSD and RNGE~~

are derived from Alemayehu et al. (2017). The parameters HRU_SLP and SLSUBBN are catchment specific and individually derived when a SWAT/SWAT-T model is setup. We hence kept these geospatial parameters constant for the optimization.

3 Results

3.1 The relevance of a coupled LAI-AET parameter estimation

The influences of the parameter changes on both modelling objectives (LAI and AET) are displayed in Figure 3. The evaluation shows the distribution which results from each parameter change for AET and LAI. Influences on simulated LAI and AET result for changes of each of the All 27 LAI-AET parameters for all three used PET methods. Fig. 3 exemplary shows impact the simulated LAI and AET. Figure 3 shows examples of the parameters (EPCO, SOL_AWC, PHU, ALAI_MIN, DLAI, T_BASE) where the changes on both, LAI and AET, are the most significant regarding using PET-PM in the forested region. The results for PET-HG and PET-PT are illustrated in the Appendix A1.

As shown in Figure 3, the variations for the parameter changes regarding intervals of the observed value is are displayed. The AET and LAI data is clustered to 7 and 5 intervals, respectively. We used the same interval size for AET and LAI for to improve readability. Each parameter change is then classified according to the interval. Then, the difference between observed and simulated data is calculated ($\Delta Y = Obs - Sim$). The distributions are computed based on the difference within the interval. If for example, for example, the observed values for the AET interval of 0.625 to 1.25 mm are compared with the simulated values of the EPCO changes, an overall AET difference of -2.2 to 1.2 mm can be observed. The parameters EPCO and SOL_AWC are commonly associated with AET modelling. Thus, large spreads in the AET model response for the parameter changes can be observed, e.g., the influence of EPCO is particularly high for values AET < 3 mm. Still, influences of both parameters on the LAI simulation are indicated, too. For EPCO, decisive variations in the LAI response are implied-observed for values LAI > 2 m²/m². As the plant growth is close to the phase of maturity, the significance of the water uptake by the plant in SWAT-T (determined with EPCO) increases and an the importance of EPCO for LAI modelling can be observed. Generally, the EPCO parameter governs the actual transpiration which in turn influences the water stress for plants and thus affects the actual plant growth. The impact of EPCO on LAI is significant especially in the wet season when essential AET rates occur. With high AET, the plant growth stress is intensified in this period. Similarly, the available water capacity in the soil layers (SOL_AWC) influences the LAI response more the further the plant is in the growing phase (LAI > 2 m²/m²). Both, the EPCO and SOL_AWC parameter can limit and elevate the plant growth in the wet season.

Concurrently, the shown LAI parameters (PHU, ALAI_MIN, DLAI, T_BASE) can have an influence on both, AET and LAI. The variations of simulated AET regarding LAI parameters changes is particularly significant in at the end of the wet and in the dry season (AET < 3 mm). PHU determines when the plant reaches maturity based on the heat unit assumption. Similarly, the DLAI parameter defines when the LAI begins to decline and thus the start of leaf senescence. If the maturity phase is too early or not long enough, the leaf senescence phase starts too early. In these cases for PHU and DLAI, the LAI-AET interaction is impaired and influences on AET can be observed. The ALAI_MIN parameter defines the minimum LAI value for a plant type during the dormant period. If ALAI_MIN is set too small, the plant is underrepresented in the dry period which results in low

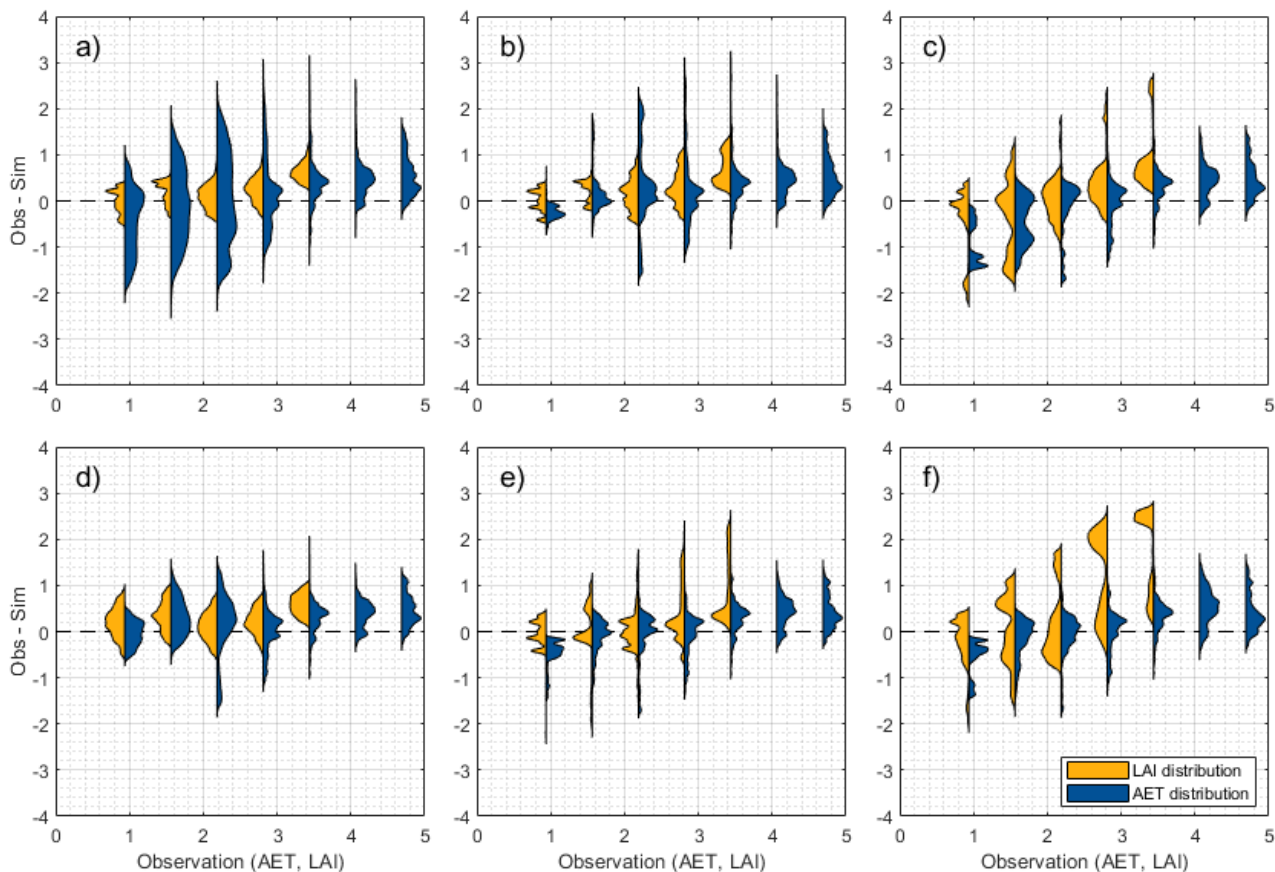


Figure 3. Distribution of variations in AET or LAI for the one-at-a-time parameter changes (1000 samples) [for parameters a\) EPCO, b\) SOL_AWC, c\) PHU, d\) ALAI_MIN, e\) DLAI, and f\) T_BASE](#). The distributions are clustered in uniform intervals (size = 0.625) of the observed time series for AET [mm] or LAI [m²/m²]. The x-axis indicates the observed AET [mm] and LAI [m²/m²]. The y-axis represents the difference between observed and simulated values with $\Delta Y = Obs - Sim$ regarding AET [mm] or LAI [m²/m²]. A perfect fit is indicated with the dashed line for $\Delta Y = 0$. Positive and negative values show an underestimation and overestimation of the simulated values, respectively. The distributions (violin plots) are created based on Karvelis (2024).

plant transpiration rates. The parameter changes for T_BASE result in the largest spread of simulated LAI values for all stages of the plant growth phase. With T_BASE, the temperature stress and hence the actual plant growth is determined in SWAT-T. The influence of the T_BASE parameter on AET is present in the wet and dry periods of the AET modelling, too. Notably, the largest spreads of AET based on T_BASE can be observed in for values $AET < 3mm$.

The one-at-a-time parameter change evaluation and the LAI-AET cross-comparison show that AET parameters, such as EPCO or SOL_AWC, ~~can be decisive~~ [are significant](#) for the AET and LAI modelling. ~~Fig.~~ [Figure 3](#) also highlights that the LAI parameters, such as PHU, ALAI_MIN, DLAI, or T_BASE, can influence the AET model response. The variations in LAI and AET resulting from changes of the remaining 21 LAI-AET parameters (cf. ~~Tab.~~ [Table 2](#)) are similar, although not shown

350 here. A Hence, a coupled LAI-AET parameter estimation is hence-essential for the reliable computation of LAI and AET, particularly for perennial land cover types in a sub-humid region in Western Africa.

3.2 LAI-AET parameter sensitivity analysis with respect to observed LAI

The sensitivities of the LAI-AET parameters are quantified using the elementary effects method regarding the observed LAI data. Fig-Figure 4 shows the statistical moments μ^* and σ for each parameter. It can be observed that nearly all parameters are located close or slightly above than the 1:1 line which defines a non-linearity for-of the parameters (Garcia Sanchez et al., 2014). Albeit some exceptions, the parameters in the forested region result in higher σ values implying that the parameter interactions are more non-linear than in the grassland region. Generally, a proximity of the parameter sensitivities for each land cover type method can be observed, e.g., the diamond symbols for forest are close to each other. Thus, differences for the PET methods and for the same land cover type are not significant which suggests a potential independence of the LAI parameter sensitivity to the PET method. Moreover, all three groundwater parameters result in values $\mu^* = 0$ and are thus insensitive for plant growth. Hence, they are excluded from the in-depth parameter analysis in the following.

360

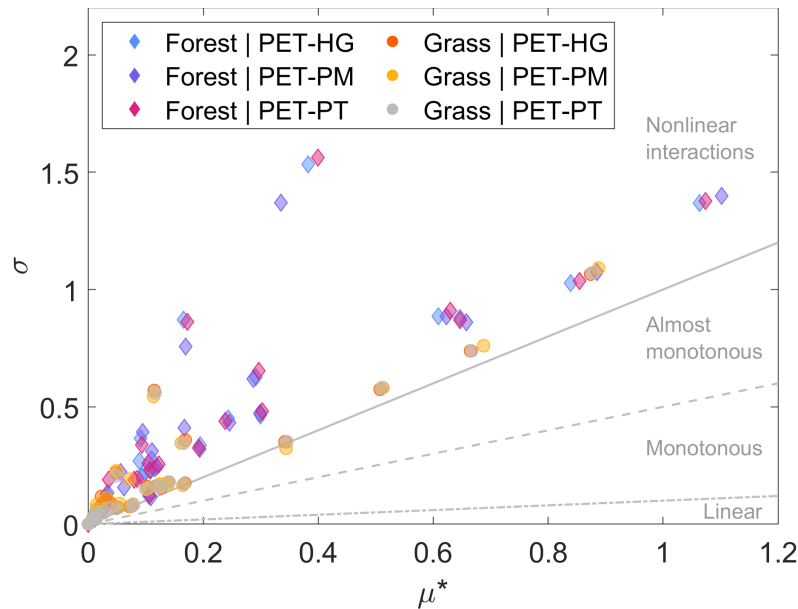


Figure 4. The statistical moments μ^* and σ of the elementary effects for the evaluation of the LAI-AET parameter sensitivity with respect to observed LAI. We use the relation of σ/μ^* to classify regions of non-linear, almost monotonous, monotonous and linear parameter behavior (Garcia Sanchez et al., 2014).

Moreover, all PET methods are clustered to compare the sensitivity of the LAI-AET parameters for different land cover types. Fig-Figure 5 shows the distribution of μ^* where all PET methods are combined in one land cover group. The parameters are ranked according to the mean μ^* values resulting from the simulations in the forested region. In Figure 5, it can be

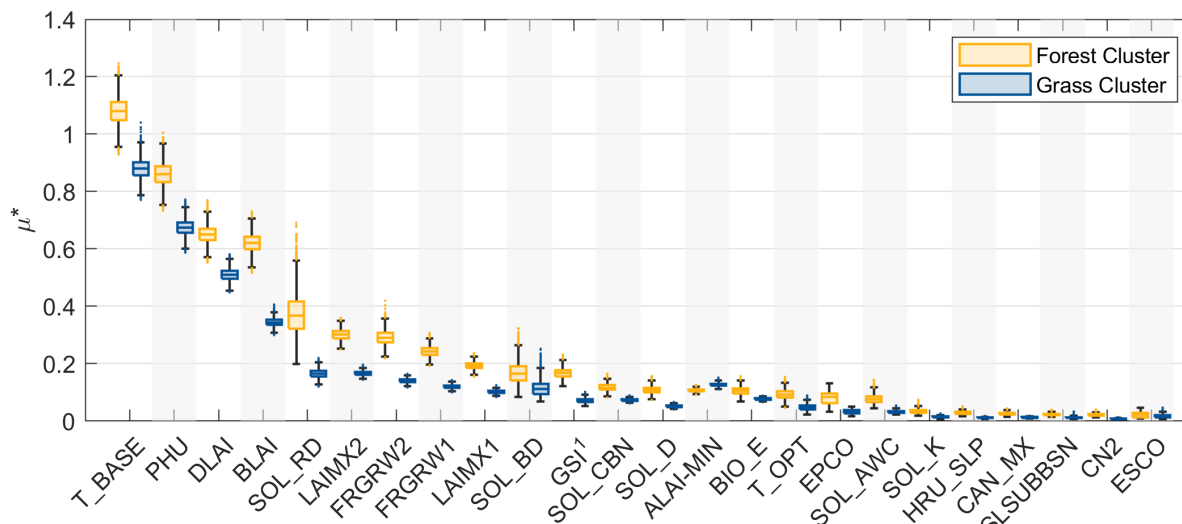


Figure 5. Clustering of the sensitivity analysis of all PET methods in the land cover types forest and grassland with respect to observed LAI. The parameters are sorted according to the mean μ^* values resulting from the forested region. ¹Parameter GSI is only accounted for when PET-PM is used.

365 observed [in Fig. 5](#) that the general parameter sensitivity patterns are similar in the forested and grassland region albeit with differences in the magnitude of μ^* for the land covers. The most sensitive parameters for both land use types are T_BASE, PHU, DLAI, BLAI, and SOL_RD. Moreover, a high boxchart (high spread of μ^* values) implies a high parameter interaction. The boxplot heights for the forest and grassland clusters are generally comparable for the same parameters. If a parameter (e.g., T_BASE) in the forest region shows meaningful interactions, [alike](#)-responses are also indicated for the same parameter in the

370 grassland region [alike](#). However, the parameters BLAI and SOL_RD appear to have higher parameter interactions in the forest than grassland region. Although the ranking is shown in [Fig. Figure 5](#) with respect to the mean μ^* values resulting from the forested region, the sensitivity hierarchy of the forested and grassland clusters are generally interchangeable.

From [Fig. Figure 5](#), a clear ranking pattern for PET methods and land use types can be observed (see also [Fig. Figure A4](#)). Variations in the ranking position for each parameter are thereby minor, albeit some exceptions for ALAI_MIN, GSI, EPCO, and ESCO. Prior in [Fig. Figure 3](#), the influence of EPCO on LAI has been qualitatively illustrated. [Now Here](#), the parameter sensitivity of EPCO on LAI is quantified with μ^* and ranked with the other parameters in [Fig. Figure 5](#). The ranking differs for EPCO, GSI, and ESCO when PET-PM is used ([Fig. Figure A4](#)). Its application implies that EPCO and ESCO are less while GSI is more [decisive-relevant](#) to the LAI model output. The stomatal conductance GSI is only accounted for in SWAT-T when PET-PM is used. Concurrently, the ALAI_MIN parameter is higher ranked for grassland than for forest. Lower LAI values in the dry

380 period of the rainy season increase the parameter ranking of ALAI_MIN. Ultimately, the plant growth parameters are generally higher ranked than the AET parameters. Still, the ranking of SOL_RD, SOL_BD, SOL_CBN, SOL_D, and EPCO indicate an observable influence of AET parameters also on LAI. The sensitivity analysis of the LAI-AET parameters highlights that a

coupled LAI-AET parameter estimation is inevitable for a comprehensive assessment of perennial plant growth of SWAT-T in sub-humid regions for all 3 PET methods.

385 3.3 Optimization and benchmark test of the LAI-AET modelling

The SCE-UA algorithm is applied to optimize the LAI-AET parameter in a multi-objective way (upper benchmark) and only with respect to observed (LAI-obs) as well as satellite-based (LAI-GLASS) LAI data. The evaluation focuses on observed AET in the following. The upper benchmark optimization results in very good modelling results for the three PET methods and two land cover types.

Table 5. Summary of final KGE values with respect to observed AET and LAI for the benchmark elements. For the lower benchmark, the median AET performance of all 1000 random samples is determined. For LAI modelling, the LAI-GLASS optimization is investigated with the GLASS-LAI. The lower benchmark LAI values are based on the parametrization of the median AET performance runs.

PET method	Upper benchmark		LAI-Obs		LAI-GLASS		Lower benchmark	
	Forest	Grassland	Forest	Grassland	Forest	Grassland	Forest	Grassland
<i>Final KGE values regarding AET performance</i>								
PET-HG	<u>0.78-0.75</u>	<u>0.85-0.87</u>	<u>0.48-0.44</u>	<u>0.56-0.69</u>	<u>0.37-0.57</u>	<u>0.53-0.71</u>	<u>0.33-0.45</u>	<u>0.60-0.73</u>
PET-PM	<u>0.86-0.84</u>	<u>0.94-0.93</u>	<u>0.85-0.77</u>	<u>0.68-0.71</u>	<u>0.86-0.49</u>	<u>0.81-0.87</u>	<u>0.51-0.46</u>	<u>0.82-0.72</u>
PET-PT	<u>0.77-0.76</u>	<u>0.88-0.90</u>	<u>0.55-0.68</u>	<u>0.66-0.82</u>	<u>0.50-0.60</u>	<u>0.65-0.71</u>	0.47	<u>0.69-0.74</u>
<i>Final KGE values regarding LAI performance</i>								
PET-HG	<u>0.94-0.84</u>	<u>0.86-0.87</u>	0.94	0.91	0.96	<u>0.94-0.88</u>	<u>0.20-0.47</u>	<u>-0.65-0.17</u>
PET-PM	<u>0.94-0.93</u>	0.89	0.94	<u>0.91-0.90</u>	<u>0.96-0.94</u>	0.94	<u>-0.26-0.04</u>	<u>0.20-0.07</u>
PET-PT	<u>0.90-0.93</u>	<u>0.87-0.89</u>	<u>0.94-0.95</u>	<u>0.91-0.90</u>	0.96	<u>0.94-0.90</u>	<u>-0.36-0.39</u>	<u>-0.76-0.02</u>

390 For all six setups, the model performance (AET) of the upper benchmark is $KGE \geq 0.77$ (~~Tab.~~ $KGE \geq 0.75$ (Table 5)). The performance of the LAI optimization to simulate AET results in values of $KGE \geq 0.48$ $KGE \geq 0.44$ (LAI-obs) and $KGE \geq 0.37$ $KGE \geq 0.49$ (LAI-GLASS). The median of the random sampling (lower benchmark) determines values of $KGE = 0.33$ to 0.82 $KGE = 0.45$ to 0.74 across all six setups for AET. In the forested region, LAI-obs and LAI-GLASS yield better predictions of AET than the lower benchmark ~~except for the PET-HG application and LAI-obs optimization.~~

395 Still, this difference is small. Hence, a single optimization with LAI (observed or GLASS-LAI) can improve the AET estimation in forested regions. ~~If an energy-based PET method (PET-PM or PET-PT) is applied for LAI optimization, an adequate performance for AET can be observed with values of $KGE \geq 0.50$. For the temperature-based PET-HG approach, the AET accuracy is moderate ($KGE = 0.48$, LAI-Obs; $KGE = 0.37$, LAI-GLASS).~~ In the grassland setups, the lower benchmark outperforms the LAI optimization (observed and GLASS-LAI), although only in small KGE differences. Con-
400 sidering that $KGE \geq 0.5$ is often accepted as a behavioral model performance (Rogelis et al., 2016; Knoben et al., 2019), the resulting KGE values for AET in the grassland setups are still satisfying. ~~For the LAI-obs setups, the variations are $\Delta KGE = 0.04$ for PET-HG, $\Delta KGE = 0.14$ for PET-PM, and $\Delta KGE = 0.03$ for PET-PT. For LAI-GLASS, the KGE~~

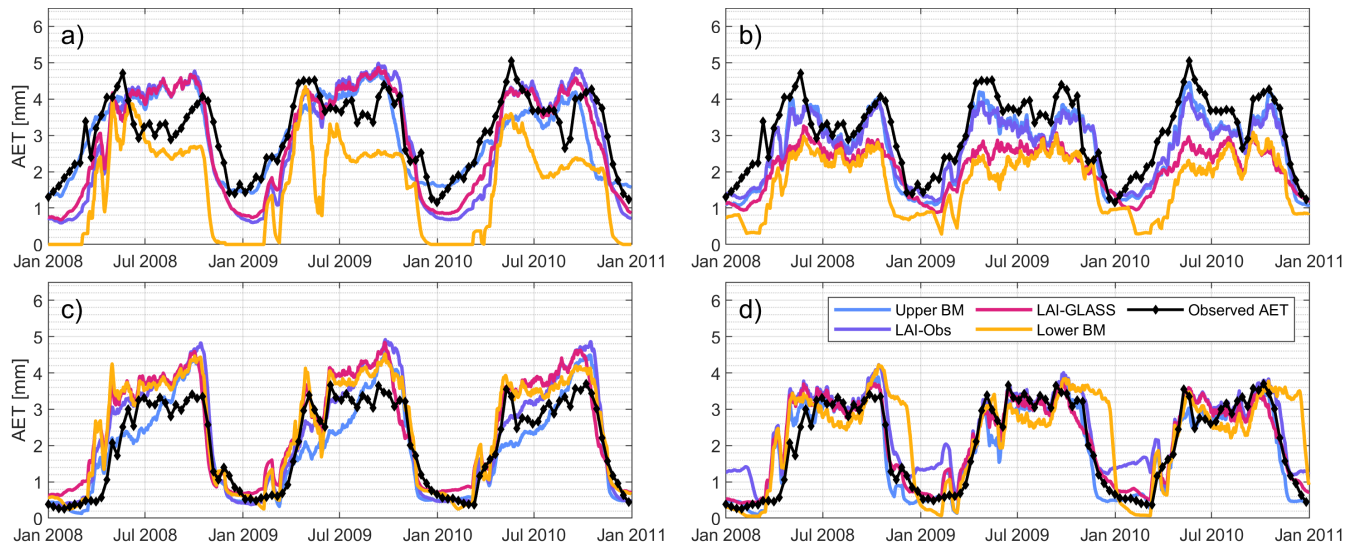


Figure 6. Time series of simulated and observed AET for the forested and grassland region. The simulated AET for the four benchmark elements are displayed for, with: a) PET-HG method in the forested region, b) PET-PM method in the forested region, c) PET-HG method in the grassland region, and d) PET-PM method in the grassland region.

differences are $\Delta KGE = 0.07$ for PET-HG, $\Delta KGE = 0.01$ for PET-PM, and $\Delta KGE = 0.04$ for PET-PT. The main reason for these differences is explained in an Figure 6 shows the corresponding time series for AET. An overestimation of AET (PET-HG and PET-PM method) particularly in the wet period in the grassland region for the LAI optimization (Fig. 6) can be observed. For the PET-PM method, an underestimation of AET in wet period is computed.

Generally, the best model performance is achieved with the application of PET-PM independent of the land cover type. The good AET fit for the LAI optimization approaches is explained with LAI being a term in the calculation of the canopy resistance in the PET-PM equation and the dynamic plant growth cycle. The LAI optimization guarantees a steady transpiration rate even in the dry period without the plant dying, i.e., LAI dropping to zero. The lower benchmark with no tailor-suited LAI modelling outputs an underestimation of AET in the dry season (Fig. Figure 6) which can be attributed to its low LAI values in this season (Fig. Figure 7). The simulated LAI and AET data for PET-PT are similar to the PET-HG results (cf. A5). Concurrently, good model performance for PET-PM are achieved for the lower benchmark, too. Although an insufficient LAI modelling ($KGE = -0.26$ for forest, $KGE = 0.20$ for grassland) can be observed results for the lower benchmarks in the grassland region, acceptable AET performance is still achieved in the grassland region (Tab. are still achieved (Table 5). Ultimately, the results show that SWAT-T is capable to predict accurate LAI and AET predictions. Moreover, the benchmark test shows that even if no AET data is available, the LAI parameter optimization with observed or satellite-based LAI facilitates an acceptable AET estimation in forest and grassland regions. The AET performance from LAI calibration is however constrained to-by the hydro-meteorological data availability for the choice of the PET method and if the application of energy-based PET methods, particularly PET-PM, is feasible.

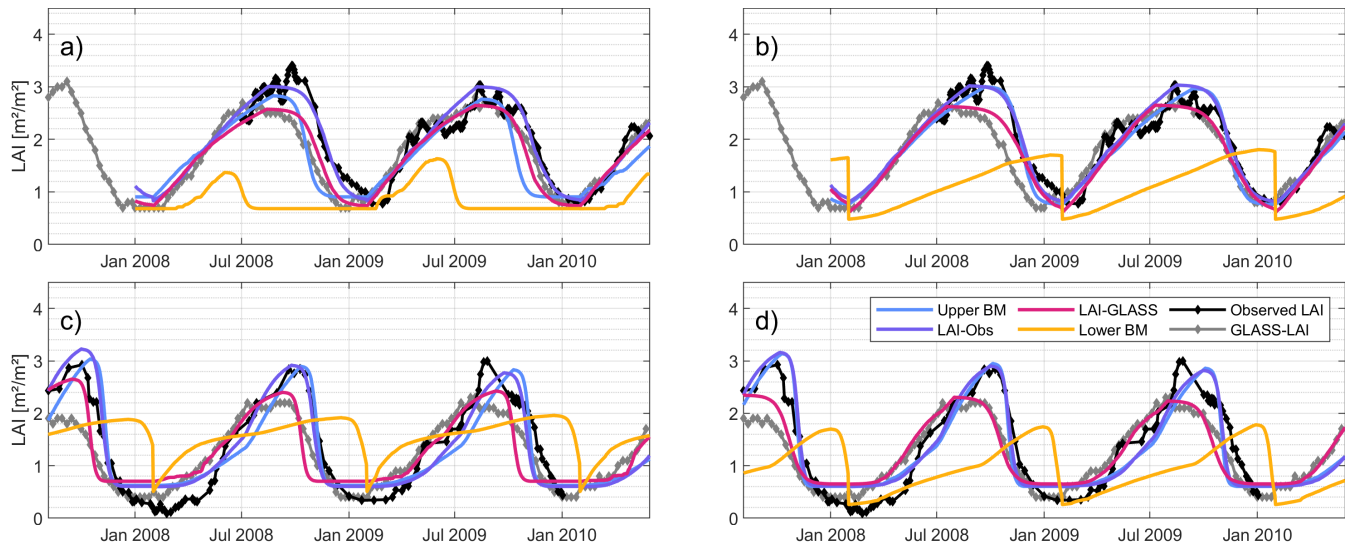


Figure 7. Time series of simulated and observed LAI for the forested and grassland region. The simulated LAI remotely sensed AET for the four benchmark elements are displayed for, with: a) PET-HG method in the forested region, b) PET-PM method in the forested region, c) PET-HG method in the grassland region, and d) PET-PM method in the grassland region.

4 Discussion and outlook

4.1 Evaluation of the LAI-AET parameters with observed and GLASS-LAI

In this study, the LAI modelling is evaluated with observed and satellite-based LAI data. Previous studies with SWAT have also employed field measurements for LAI (Park et al., 2017; Yang et al., 2018; Nantasaksiri et al., 2021) or forest biomass production (Khanal and Parajuli, 2014) (Khanal and Parajuli, 2014; Haas et al., 2022) to evaluate the LAI modelling of SWAT. Yet, the parameters differ in these studies, e.g., the total number of parameter applied ranges from three (Yang et al., 2018) to eight (Nantasaksiri et al., 2021) 18 (Haas et al., 2022). The suggested LAI parameter list for SWAT-T in Alemayehu et al. (2017) consists of 11 parameters. We applied one-at-a-time parameter changes to assess the interaction of LAI and AET parameters on both, simulated LAI and AET data. We compared the resulting model responses (LAI, AET) for each parameter change and figured a influences of LAI parameters on AET modelling and vice versa. Although the assessment of the one-at-a-time changes was based on a qualitative analysis, a clear pattern of the reciprocal influences became apparent. Hence, we extended the LAI parameter list and identified 27 LAI-AET parameters for evaluation of the significance of LAI on the AET estimation in SWAT-T.

We applied the elementary effects method to evaluate the parameter sensitivity to understand the parameter interactions in SWAT-T with observed LAI data. Previous efforts to assess the sensitivity of LAI parameters have focused on a relative sensitivity index (Khanal and Parajuli, 2014; Nantasaksiri et al., 2021). In the present study, the sensitivity of the comprehensive set of 27 LAI-AET parameters is quantified with the elementary effects method in SWAT-T for the first time. Before, the Morris

screening ~~has been~~ was used for the sensitivity analysis of SWAT model parameters only with respect to discharge (Xiang et al., 2022; Abbas et al., 2024). With the application of the Morris screening, a ranking of the sensitivity of the parameters is determined in the present study. The most influential parameters on LAI are T_BASE, PHU, DLAI, and BLAI independent of the land cover type or the PET method. Moreover, SOL_RD is the parameter with the highest influence on the other parameters. Its influence is significant because it defines the root depth within the soils which in turn determines the plant water uptake and thus the growing efficiency. The impact of SOL_RD is particularly meaningful in the forested region where the uptake of plants is high and the roots are growing deep. The sensitivities reported in Khanal and Parajuli (2014) are highest for the parameters DLAI, BIO_E, BLAI and SOL_RD. Nantasaksiri et al. (2021) identified the parameters BIO_E, HVSTI, BLAI, LAIMX₂, and DLAI to be the most sensitive. The findings in both studies are coherent with our results, albeit the missing investigation of some of the most sensitive parameters, e.g., T_BASE and PHU. Moreover, we apply a global sensitivity measure while Khanal and Parajuli (2014) and Nantasaksiri et al. (2021) have used a local measure (relative sensitivity index). Local measures are however limited if the model response is nonlinear (Saltelli et al., 2008) which is the case for the LAI-AET parameters with respect to observed LAI (~~Fig-~~ Figure 4). Thus, we were able to detect and address the non-linearity of the LAI-AET parameters with the elementary effects method in the present study.

The field measurements used in this study are derived from hemispherical photographs and satellite-based corrections. Such assorted LAI data can be subject to uncertainties (Fang et al., 2019). To address potential shortcomings of the LAI observations, we additionally evaluated the LAI estimation regarding satellite-based GLASS-LAI. For both land cover types, the performance of the LAI prediction is thereby accurate independent of the PET method. We applied the GLASS-LAI data since it is reliable in different regions worldwide (Liang et al., 2014) and robust to noise and uncertainties satellite-based vegetation can be susceptible to in tropical regions (Viovy et al., 1992; Atkinson et al., 2012). The dual consideration of both observed and GLASS-LAI data assured the comprehensive LAI evaluation in the present study.

4.2 Optimization and benchmarking of the AET modelling with observed AET on the footprint scale

The model extent of the grassland region (2300 m²) represents ~~well~~ the actual footprint size of 4000 m² estimated by Mamadou et al. (2014) well. The footprint for the forested region is seasonally varying and can be up to 60000 m² (Mamadou et al., 2014). Generally, the source area of AET in EC systems can fluctuate over the year (Kim et al., 2018) because of, for example, the wind direction where the windrose can influence the extent of the footprint (Chen et al., 2009; Chu et al., 2021). Since the model extents of SWAT-T are constant for the modelling period and the necessary data was not available, we approximated the model scale to be representative for the footprint for the whole season according to Chu et al. (2021). The main objective of the present study is the thorough evaluation of the vertical fluxes (AET) based on the LAI-AET interaction in SWAT-T. In SWAT/SWAT-T, the vertical fluxes (AET) are computed on the HRU level. Hector et al. (2018) investigated the same regions using a physically based model for the critical zone (ParFlow-CLM) and also concluded the significance of vegetation on the AET estimation which is coherent to our findings.

In the present study, we also investigated if a detailed LAI modelling disregarding AET can predict reliable AET estimates in SWAT-T. We showed that for both land cover types the LAI optimization also facilitates an adequate, behavioral modelling

of AET with acceptable KGE values. However, the evaluation of the model performance where only the values of an efficiency metrics (e.g., KGE) are considered can be misleading because the explanatory power of the model is missing (Schaeffli and Gupta, 2007; Knoben et al., 2019). The information if a modelling approach is applicable or should be rejected and the assessment of the strengths and deficiencies of the modelling approach is not covered in pure values of an efficiency metrics (e.g., KGE) (Knoben et al., 2019). To address these shortcomings of an exclusive KGE value evaluation, we applied the benchmark test proposed by Seibert et al. (2018). The comparison of modelling approaches, such as the single LAI optimization with upper and lower benchmark levels, facilitated the assessment if a detailed LAI modelling (single LAI optimization) can improve the LAI prediction in SWAT-T. Thereby, the benchmarking ~~unfolded~~ showed that the significance of a thorough LAI modelling is more pronounced in the forested than in the grassland region.

4.3 Impacts of the model structure on the AET estimation

On the daily time-step, the temporal dynamics of simulated AET fit adequately to the observed AET pattern in the dry and wet season for all three PET methods. Thereby, the application of PET-PM outperforms PET-HG and PET-PT. Generally, the PET-PM application is more physically complex than PET-HG and PET-PT but also requires more input data. The computation of PET-HG and PET-PT relies on empirically delineated coefficients, e.g., H_0 and α_{pet} , respectively. In PET-PM, terms for different properties of the land-atmosphere interaction are implemented, such as vapor pressure or the canopy r_c and aerodynamic resistance r_a . In PET-PT however, the aerodynamic term α_{pet} is modelled with a constant coefficient which is 1.28 (Neitsch et al., 2011). Moreover, the partitioning of PET into potential plant transpiration and soil evaporation is threshold based in PET-HG and PET-PT. While PET-PM estimates the potential transpiration using the PM equation where r_c and r_a are dependent on the modelled LAI modelling, the partitioning of PET implemented in PET-PT and PET-HG is based on the threshold $LAI > 3.0$. Hence, the significance of a detailed LAI modelling in these methods ~~is less impactful~~ has less impact on plant transpiration. For the forested region, the LAI modelling (single LAI optimization disregarding AET) can still predict the AET adequately. The influence of LAI estimation is less substantial in the grassland region where the lower benchmark (random sampling) outperforms the single LAI optimization (observed and GLASS-LAI). ~~The resulting median performance of the samples can yield an acceptable AET prediction where the KGE performance is better than compared to the LAI optimization. Thereby~~ However, the physical representation of ~~AET and soil evaporation is however limited. Although the resulting parameters of the corresponding median AET runs facilitate a satisfactory AET modelling, they do not account for the physical behavior of AET fluxes in the study site. For example, the ESCO parameter is determined to 0.91 in the case of grassland and PET-PM resulting in high soil evaporation rates (see Tab. A1). We also observed high interception rates (high CAN_MX values) which are modelled for PET-HG and PET-PT applications. The interception rate is translated to the eventual AET sum together with actual plant transpiration and soil evaporation. Since CAN_MX is less sensitive for LAI calibration, it has not been explicitly adjusted in the LAI-obs and LAI-GLASS optimization. The AET estimation with SWAT-T can be susceptible to interception (López-Ramírez et al., 2021) because of its simplified model implementation (Neitsch et al., 2011) . With a high values for the ESCO and CAN_MX parameters, considerable soil evaporation rates are computed in SWAT-T.~~ However in the perennially vegetated grassland study site, the greater share of plant transpiration to soil evaporation for AET

~~should be considered (Mamadou et al., 2016). the LAI-AET relationship is limited since low KGE values are computed.~~ Overall, the more simple approaches PET-HG and PET-PT can still yield adequate AET outputs (Archibald and Walter, 2014), although PET-PM offers a more physically sound depiction of the LAI-AET interaction.

In previous studies, ~~similar~~ similarly accurate AET performances for the PET-PM application ~~have been~~ were observed
510 for a forested region (Ferreira et al., 2021) as well as for a grassland region (Qiao et al., 2022) regarding a comparison with AET from EC systems. An improvement of the AET estimation with SWAT-T using EC systems has also been demonstrated for PET-HG, PET-PT, and PET-PM on the HRU scale in López-Ramírez et al. (2021) ~~.-The comparison of~~ where the annual budgets for AET fits ~~thereby~~ best for PET-HG (López-Ramírez et al., 2021). However, no coupled LAI-AET parametrization has been considered. We were able to address the relevance of the coupled LAI-AET parametrization and ~~thus~~ thereby also
515 demonstrated the best overall performance for PET-PM.

4.4 Outlook

The elementary effects were computed based on the whole period for which measured LAI data is available. SWAT-T divides the plant growth in four phases (start of growing, maturity, leaf senescence, dormancy). A time-varying sensitivity analysis of the LAI-AET parameters with respect to the plant growth phases ~~has not been conducted but~~ should be done in future work.
520 ~~Possible applications~~ Applications should explore approaches such as dynamic identifiability analysis (Wagener et al., 2003) or wavelet based methods (Chiogna et al., 2024). With these time-varying approaches, the understanding of the LAI-AET parameter interaction can be further improved ~~based on different scales and temporal periods.~~

~~Additionally, the plant growth modelling in SWAT-T also accounts for carbon dioxide levels in the atmosphere. Carbon cycles play a pivotal role in the assessment of climate change impacts on watersheds, notwithstanding their impact on the plant phenology (Gerten et al., 2004). Dynamic vegetation modelling is essential for the prediction of land-atmosphere interaction. However, dynamic vegetation modelling is not always thoroughly addressed in climate change studies (Stephens et al., 2020). On the African continent, temperature and carbon dioxide variations are predicted in the near and far future (Kusangaya et al., 2014) and their influence on the hydrological processes are widely discussed (Akoko et al., 2021; Chawanda et al., 2024). We highlighted the coupled LAI-AET relevance and ranked the most sensitive parameters, such as the T_BASE parameter in SWAT-T. Changes in temperature are hence crucial for the LAI-AET interaction and can have an essential influence on plant phenology and AET. Future work should pay attention to variations in the carbon dioxide levels and investigate their influence on the LAI-AET interaction with SWAT-T.~~

We showed that the LAI-AET modelling of SWAT-T ~~for approximated footprints is applicable for perennially vegetated regions in~~ for approximated footprints is applicable for perennially vegetated regions in Western Africa. The coupled LAI-AET
535 modelling should be transferred from the footprint to the catchment scale in future work. The water balance of the ecosystems of Western Africa are mostly characterized by a high share of AET. Hence, this study focuses on the analysis of the LAI-AET interaction and thus on the dominant vertical fluxes in these regions. Given the significance of AET in Western Africa, the LAI-AET relationship can be essential to also estimate the horizontal fluxes which are substantial for the streamflow computation on the catchment scale. The application of satellite-based LAI data, e.g., GLASS-LAI, can support the plant

540 growth and AET modelling on larger scales, too. Moreover, we focused our analysis on characteristic regions of Western Africa.
~~However the actual, time-varying footprint scales should be considered in future work to further improve the understanding of~~
~~the~~ Future work should analyze the LAI-AET interaction in SWAT-T. The studies should be extended cover multiple sites where
~~both AET and LAI data is available for other land cover types, e.g., the perennially vegetated stations of FLUXNET network~~
~~(Friend et al., 2007)~~ other regions with higher LAI values like the Congo forests or other climatic zones, such as energy-limited
545 regions.

The present study ~~mainly~~ focuses on LAI as a vegetation attribute. In SWAT/SWAT-T, the canopy height is modelled, too. The canopy height can have an impact on the PET estimation, e.g., in the application of PET-PM where the canopy resistance r_c is a function of the canopy height. Moreover, EC systems can also offer other relevant attributes of the vegetation-AET interaction, such as derivations of the aerodynamic conductance, surface conductance, water vapor and heat fluxes, or the
550 evaporative fraction (Mamadou et al., 2016). These attributes not only improve the physical understanding of the vegetation-AET interaction, but can also be valuable to inform hydrological modelling (Hector et al., 2018). We focused on the application of LAI because (i) it is a key vegetation attribute in SWAT-T and (ii) global products of LAI are available ~~making our approach transferable to other regions.~~ Since the seasonal dynamics of both, forest and grassland vegetation (LAI) is modelled accurately, we postulate that the approaches of this study can be transferred to other plant and crop types ~~and scales.~~

555 With the consideration of a coupled LAI-AET parametrization, the quantification of biomass or crop yield for other plant species can be addressed, too. Yang and Zhang (2016), for example, investigated the biomass/primary productivity with SWAT for different flux sites of the AmeriFLUX network. They identified BIO_E, BLAI, T_OPT, T_BASE, and BIO_LEAF to be the most significant parameters for biomass. Apart from the BIO_LEAF, the choice of parameters is similar to our study. Hence, we anticipate that the LAI modelling can be used as a proxy for the estimation of biomass, too. The application of satellite-based
560 LAI data, e. g., GLASS-LAI, can support the plant growth and AET modelling on larger scales, too, i. e. on the catchment scale. Still, in-depth analysis with observed biomass data is inevitable if the modelling objective is the evaluation of biomass and net primary productivity.

5 Conclusion

The broad implication of this research is the presentation of a comprehensive LAI-AET parameter evaluation to model both,
565 LAI and AET with an ecohydrological model. We highlighted the relevance of a coupled LAI-AET parameter estimation in SWAT-T. Although the impact of LAI parameters on the AET prediction can be low, substantial ~~influences~~ influence can be observed on the AET dynamics. The impact of the LAI parameters on AET is particularly high at the end of the wet season and the beginning of the dry season where the plant growth phase shifts from plant maturity to leaf senescence. Moreover, water stress on plant growth resulting from the AET estimation can be decisive and should be considered for ~~a~~ comprehensive LAI
570 modelling. We conclude that the relevance of a coupled LAI-AET parameter estimation indicates that a stepwise modelling approach (e.g., first LAI, afterwards AET) requires a careful review of the simulated LAI after the AET parameters were estimated. The analysis of the elementary effects method demonstrates that the majority of LAI parameters behave non-linearly

if compared to observed LAI data. The most sensitive parameters for LAI modelling are those associated as LAI parameters. Yet, the Morris screening also indicates a meaningful contribution of the soil parameters. The ranking further illustrates an independence of the LAI parameters to the land cover type (forest and grassland).

The multi-objective optimization with SCE-UA algorithm results in accurate estimations of both, LAI and AET for all PET-methods and land cover types. SWAT-T has been proven to be applicable also on the footprint scale in Western Africa. Although the simpler PET-HG and PET-PT methods facilitate satisfactory modelling results, the application of PET-PM method outperforms these methods for the LAI and AET estimation in the forested and grassland region. Moreover, our work demonstrates that an adequate estimation of AET can be obtained if the LAI-AET parameters are only optimized with respect to LAI data (and disregarding AET data) for forest and grassland regions. The benchmark test illustrates an enhancement of the AET prediction for ~~all three~~ the PET-methods (~~PET-HG, particularly~~ PET-PT, PET-PM) compared to the lower benchmark level. This is particularly noteworthy for data-scarce regions where no field measurements of AET are available. Even if no observed LAI data for a forested region is available, practitioners and researchers can optimize the LAI-AET parameters using remotely-sensed LAI data and still achieve reliable AET estimations. In the grassland region, the resulting AET prediction from the LAI optimization is adequate, too. However, the lower benchmark depicts a better performance for the grassland site. The good result of the lower benchmark is obtained from the median KGE performance of a large number of parameter samples (1000 runs). Single parameter changes, mean or the default model parameter values of the SWAT/SWAT-T crop data base do not necessarily facilitate a satisfactory AET prediction. Overall, the LAI-AET parameter optimization for grassland yields a sufficient AET performance. Nevertheless, its role in the AET estimation is less important than for forested regions.

Finally, we stress the importance of opting for a coupled parameter estimation to understand the LAI-AET interaction and to improve the land-atmosphere simulation in hydrological modelling. The performance comparison of modelled AET confirms that a detailed analysis of plant growth is essential. The highlighted relevance of the LAI-AET interaction is particularly meaningful for a thorough quantification of hydrological processes ~~. The proposed consideration of a coupled LAI-AET modelling is not limited to footprint modelling in Western Africa. It is transferable to other regions and hence facilitates an advancement and hence important~~ for the comprehensive assessment ~~of the terrestrial water cycle on multiple scales~~ for water resources management.

Appendix A: Appendix

A1 Appendix A1 - Figures

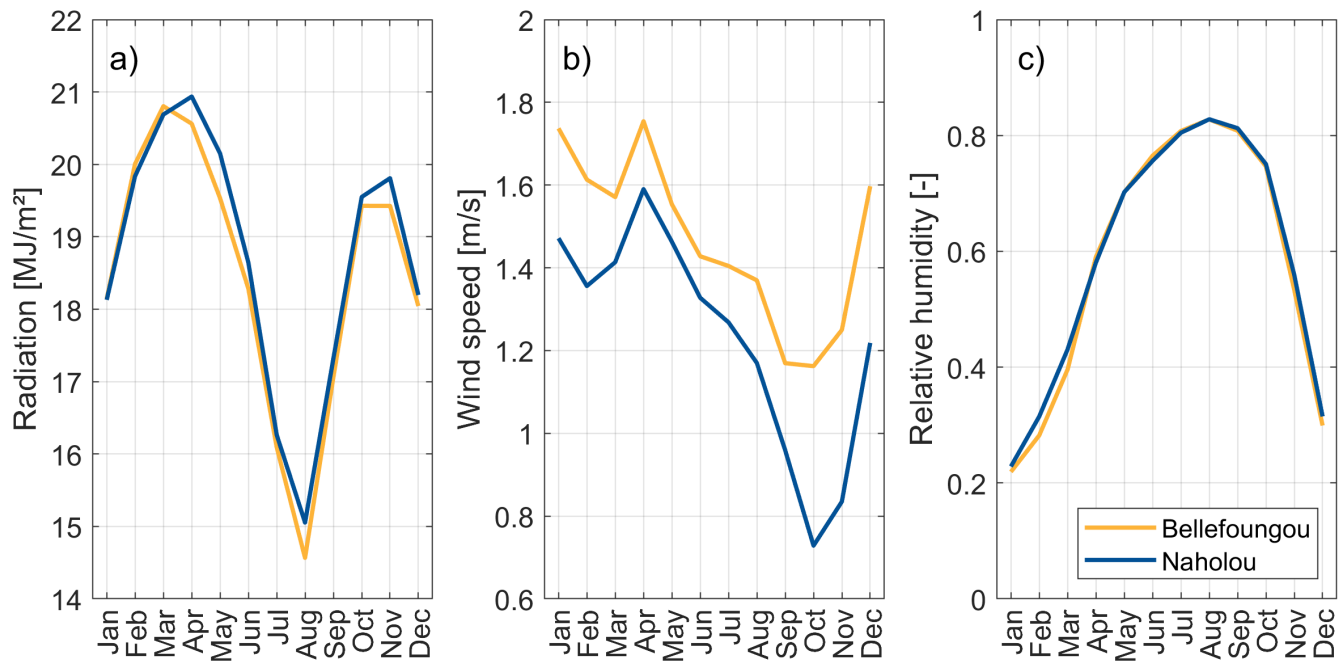


Figure A1. Distribution-Seasonality of variations in AET or LAI a) daily total solar radiation, b) wind speed, and c) relative humidity for the one-at-a-time parameter changes for PET-HG. The distributions are clustered in uniform intervals study sites Bellefoungou (size = 0.625forest) of the observed time series for AET mm and LAI m^2/m^2 . The x-axis indicates the observed AET mm and LAI m^2/m^2 values Naholou (grass). The y-axis represents the difference between observed and simulated values with $\Delta Y = Obs - Sim$ regarding AET mm or LAI m^2/m^2 . A perfect fit seasonality is indicated with the dashed line for $\Delta Y = 0$. Positive and negative values show an underestimation and overestimation derived from measurements of the simulated values, respectively each eddy covariance system. The distributions (violin plots) are created based on Karvelis (2024).

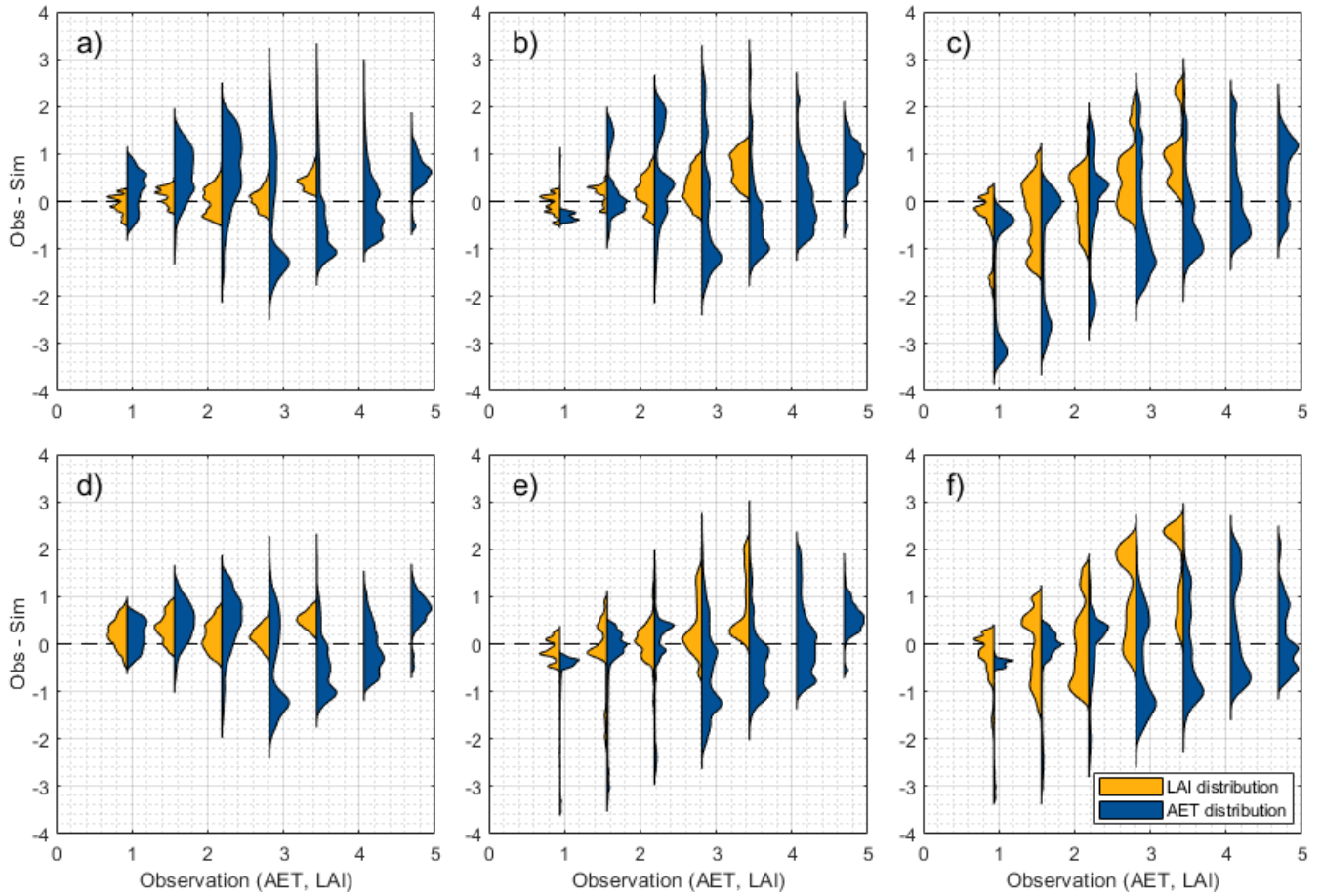


Figure A2. Distribution of variations in AET or LAI for the one-at-a-time parameter changes for PET-HG for parameters a) EPCO, b) SOL_AWC, c) PHU, d) ALAI_MIN, e) DLAI, and f) T_BASE. The distributions are clustered in uniform intervals (size = 0.625) of the observed time series for AET [mm] or LAI [m²/m²]. The x-axis indicates the observed AET [mm] and LAI [m²/m²] values. The y-axis represents the difference between observed and simulated values with $\Delta Y = Obs - Sim$ regarding AET [mm] or LAI [m²/m²]. A perfect fit is indicated with the dashed line for $\Delta Y = 0$. Positive and negative values show an underestimation and overestimation of the simulated values, respectively. The distributions (violin plots) are created based on Karvelis (2024).

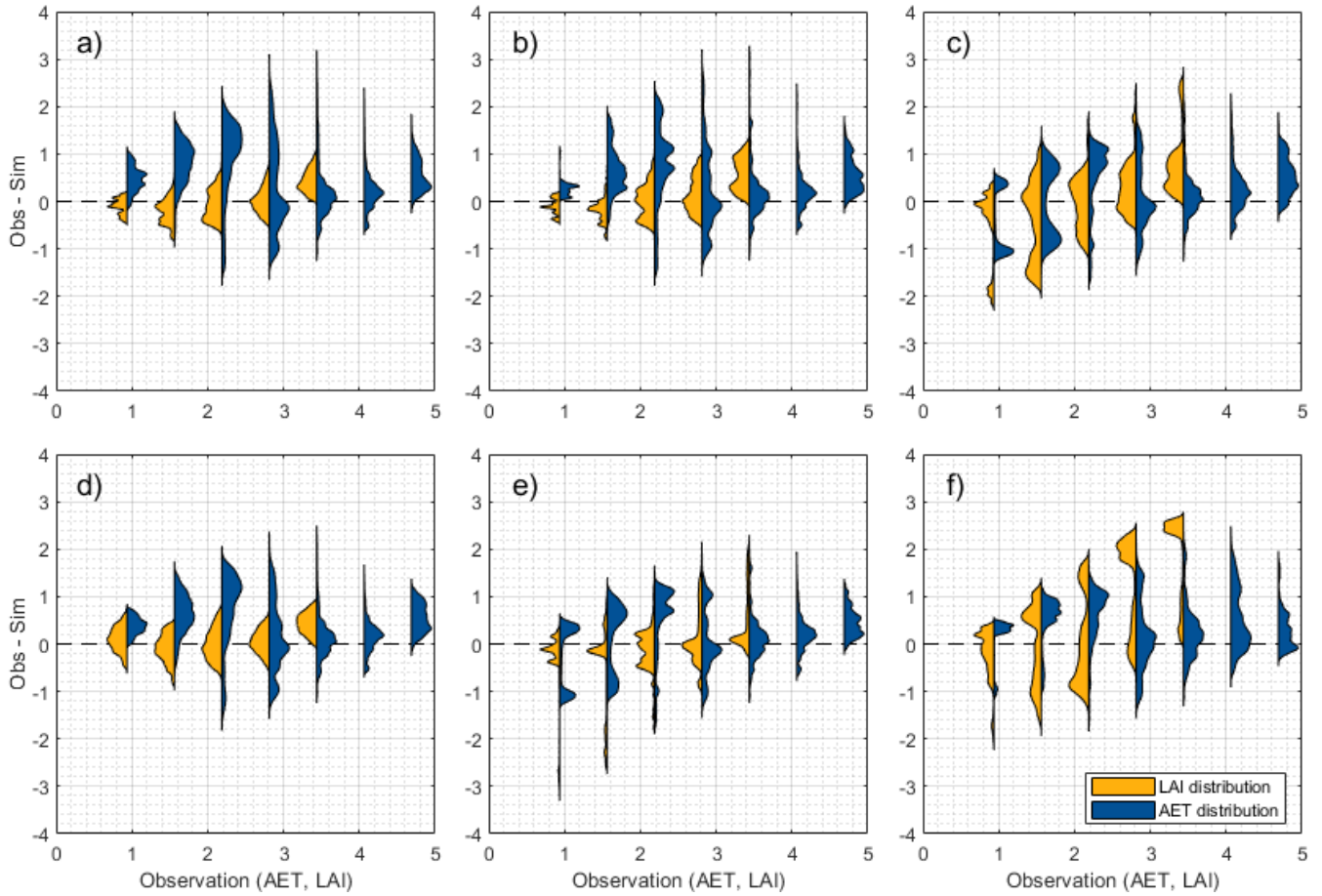


Figure A3. Distribution of variations in AET or LAI for the one-at-a-time parameter changes for PET-PT [for parameters a\) EPCO, b\) SOL_AWC, c\) PHU, d\) ALAI_MIN, e\) DLAI, and f\) T_BASE](#). The distributions are clustered in uniform intervals (size = 0.625) of the observed time series for AET [mm] or LAI [m²/m²]. The x-axis indicates the observed AET [mm] and LAI [m²/m²] values. The y-axis represents the difference between observed and simulated values with $\Delta Y = Obs - Sim$ regarding AET [mm] or LAI [m²/m²]. A perfect fit is indicated with the dashed line for $\Delta Y = 0$. Positive and negative values show an underestimation and overestimation of the simulated values, respectively. The distributions (violin plots) are created based on Karvelis (2024).

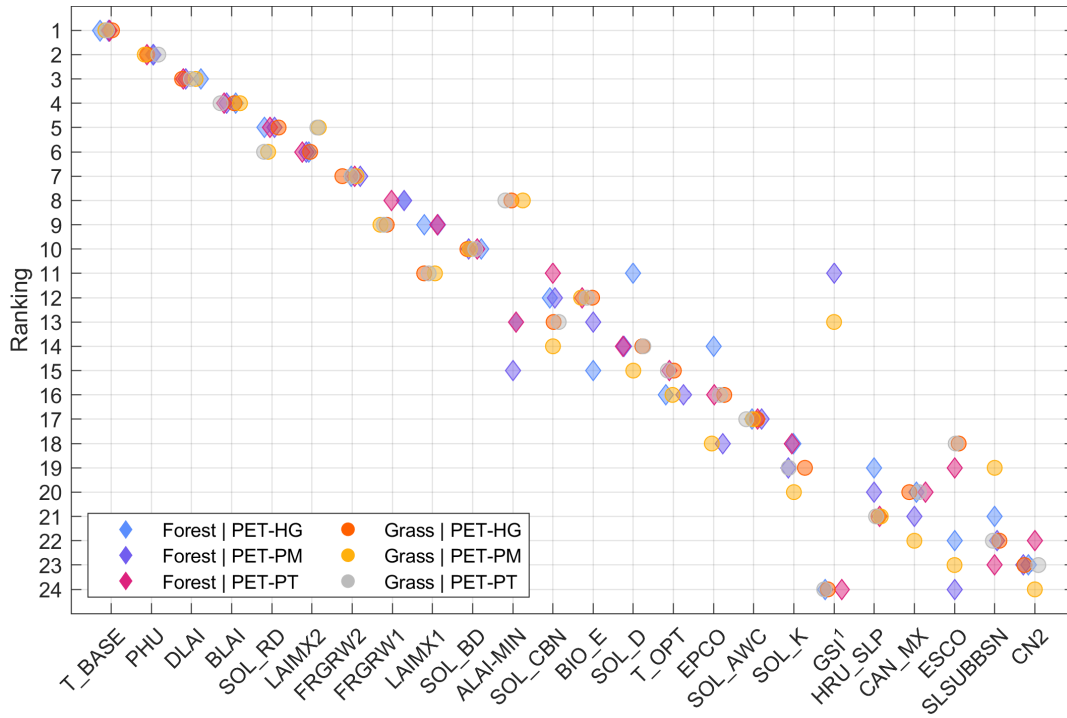


Figure A4. Ranking of the LAI-AET parameter sensitivity for the three PET methods and two land cover types with respect to observed LAI. ¹Parameter GSI is only accounted for when PET-PM is used.

600 A2 Appendix A2 - Supplementary equations

Water stress $wstrs$ is calculated as:

$$wstrs = 1 - \frac{E_{t,act}}{E_t} = 1 - \frac{w_{actualup}}{E_t}, \quad (A1)$$

where $E_{t,act}$ is the actual transpiration, E_t is the potential plant transpiration, and $w_{actualup}$ is the total water uptake. $w_{actualup}$ is computed based on the amount of water in the soil layer and the water content at the wilting point (for details refer to Neitsch

605 et al. (2011)).

Temperature stress $tstrs$ is calculated as:

$$tstrs = \begin{cases} 1, & \text{if } T_{av} \leq T_{base} \\ 1 - \exp\left(\frac{-0.1054 \cdot (T_{opt} - T_{av})^2}{(T_{av} - T_{base})^2}\right), & \text{if } T_{base} < T_{av} \leq T_{opt} \\ 1 - \exp\left(\frac{-0.1054 \cdot (T_{opt} - T_{av})^2}{(2 \cdot T_{opt} - T_{av} - T_{base})^2}\right), & \text{if } T_{opt} < T_{av} \leq 2 \cdot T_{opt} - T_{base} \\ 1, & \text{if } T_{av} > 2 \cdot T_{opt} - T_{base} \end{cases} \quad (A2)$$

where T_{av} is the mean air temperature for the day, T_{base} is the base temperature of the plant for growth, and T_{opt} is the optimal temperature of the plant for growth.

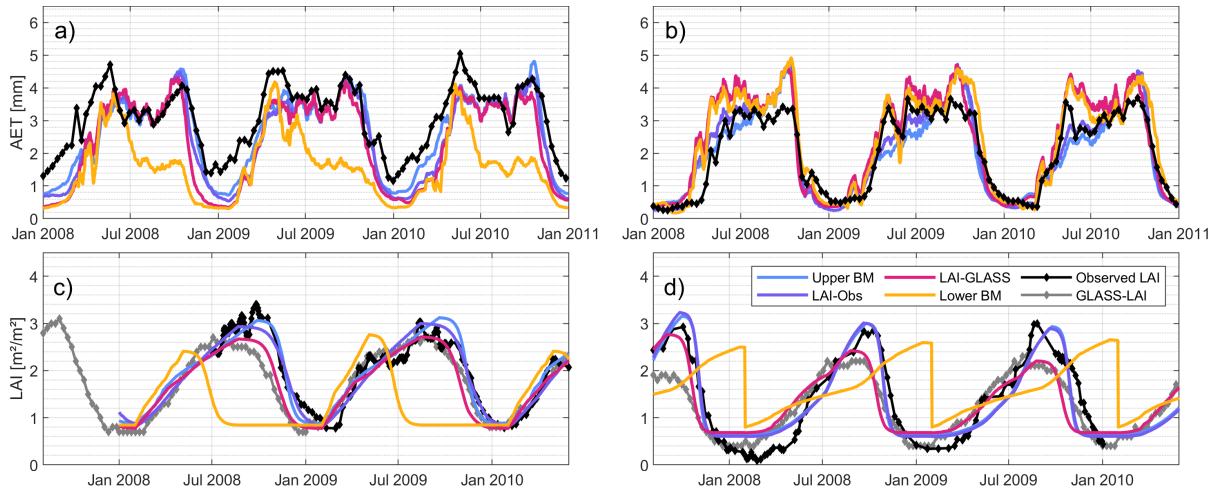


Figure A5. Time series of simulated and observed AET for the forested and grassland region. The simulated AET and LAI for the four benchmark elements are displayed for computed with the PET-PT method, with: a) AET in the forested region, b) AET in the grassland region, c) LAI in the forested region, and d) LAI in the grassland region.

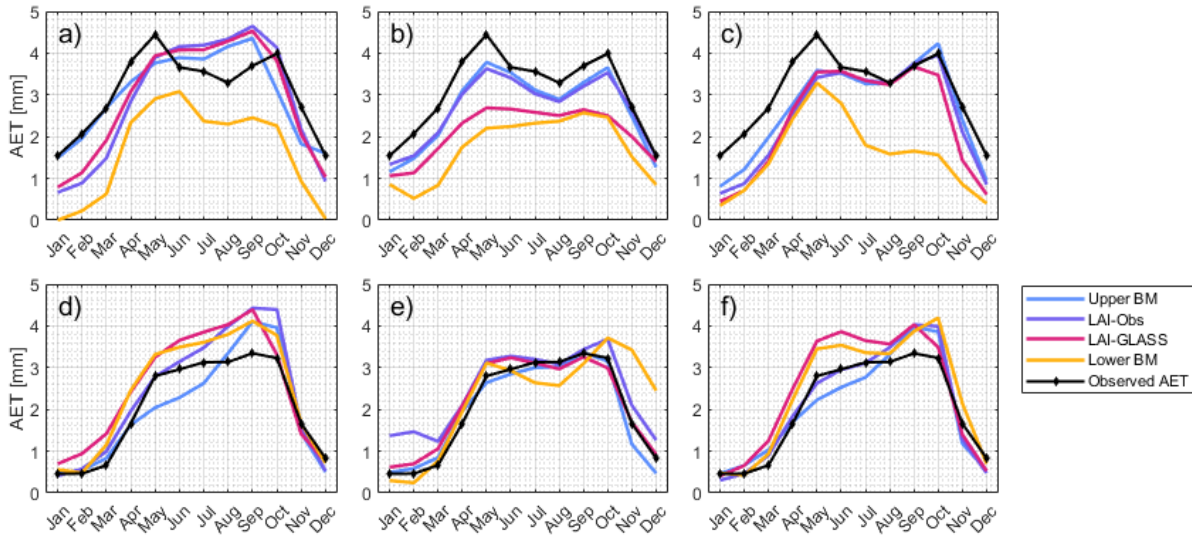


Figure A6. Seasonality of the simulated and observed AET time series. The top row (a-c) shows the AET data for the forested region for different PET-methods, with applications of a) PET-HG, b) PET-PM, and c) PET-PT. The bottom row (d-f) shows the grassland region, with applications of d) PET-HG, e) PET-PM, and f) PET-PT.

610 Nitrogen stress $nstrs$ is calculated as:

$$nstrs = 1 - \frac{\phi_n}{\phi_n + \exp(3.535 - 0.02597 \cdot \phi_n)}, \quad (A3)$$

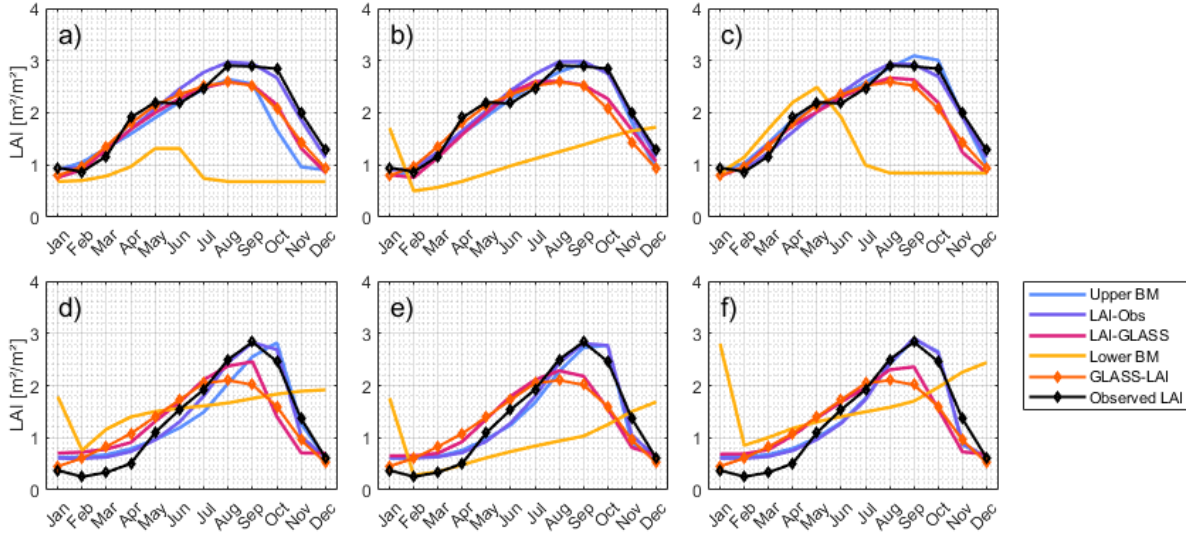


Figure A7. Seasonality of the simulated and observed LAI time series. The seasonality for LAI-obs as well as GLASS-LAI are displayed. The top row (a-c) shows the LAI data for the forested region for different PET-methods, with applications of a) PET-HG, b) PET-PM, and c) PET-PT. The bottom row (d-f) shows the grassland region, with applications of d) PET-HG, e) PET-PM, and f) PET-PT.

where ϕ_n is a scaling factor for nitrogen stress computed with the actual and optimal mass of nitrogen stored in the plant material bio_N and $bio_{N,opt}$, respectively:

$$\phi_n = 200 \cdot \left(\frac{bio_N}{bio_{N,opt}} - 0.5 \right) \quad (A4)$$

615 Phosphor stress $pstrs$ is calculated as:

$$pstrs = 1 - \frac{\phi_p}{\phi_n + \exp(3.535 - 0.02597 \cdot \phi_p)}, \quad (A5)$$

where ϕ_p is a scaling factor for phosphorous stress computed with the actual and optimal mass of phosphorus stored in the plant material bio_P and $bio_{P,opt}$, respectively:

$$\phi_p = 200 \cdot \left(\frac{bio_P}{bio_{P,opt}} - 0.5 \right). \quad (A6)$$

620 The Kling-Gupta efficiency KGE is calculated as:

$$KGE = 1 - \sqrt{(r-1)^2 + \left(\frac{\sigma_{sim}}{\sigma_{obs}} - 1 \right)^2 + \left(\frac{\mu_{sim}}{\mu_{obs}} - 1 \right)^2}, \quad (A7)$$

where r is the linear correlation between observations and simulations, σ_{sim} and σ_{obs} are the standard deviation of the simulations and observations, respectively, and μ_{sim} and μ_{obs} are the mean value for the simulations and observation, respectively.

A5 [Appendix A5 - References of the study site map](#)

Author contributions. FM, TS, FA, YT, JMC, MD reviewed and edited the manuscript; FM, TS, YT, FA, MD conceived and designed the study; FM, FA, JMC acquired the data; FM, TS performed the data analysis and model development and simulations; FM, TS, FA, YT, JMC, MD evaluated the simulations and models. FM wrote the manuscript draft.

630 *Competing interests.* The authors declare that they have no conflict of interest.

Acknowledgements. The authors want to thank the BMBF ("Bundesministerium für Bildung und Forschung") for the funding of the FURI-FLOOD research project ("Current and future risks of urban and rural flooding in West Africa", Grant No.: 01LG2086B). We would like to thank our partners involved in the FURIFLOOD project for their support. This work was further supported by the European Union's Horizon Europe research and innovation program as part of the UAWOS project ("Unmanned Airborne Water Observing System", Grant Agreement
635 No.: 101081783). We would also like to thank the team of the AMMA-CATCH network for their support and their quick responses in case of any queries.

References

- Abbas, S. A., Bailey, R. T., White, J. T., Arnold, J. G., White, M. J., Čerkasova, N., and Gao, J.: A framework for parameter estimation, sensitivity analysis, and uncertainty analysis for holistic hydrologic modeling using SWAT+, *Hydrology and Earth System Sciences*, 28, 21–48, <https://doi.org/10.5194/hess-28-21-2024>, 2024.
- 640 Abitew, T. A., Arnold, J., Jeong, J., Jones, A., and Srinivasan, R.: Innovative approach to prognostic plant growth modeling in SWAT+ for forest and perennial vegetation in tropical and Sub-Tropical climates, *Journal of Hydrology X*, 20, 100 156, <https://doi.org/10.1016/j.hydroa.2023.100156>, 2023.
- Ago, E. E., Agbossou, E. K., Galle, S., Cohard, J.-M., Heinesch, B., and Aubinet, M.: Long term observations of carbon dioxide exchange over cultivated savanna under a Sudanian climate in Benin (West Africa), *Agricultural and Forest Meteorology*, 197, 13–25, <https://doi.org/10.1016/j.agrformet.2014.06.005>, 2014.
- 645 Ago, E. E., Agbossou, E. K., Cohard, J.-M., Galle, S., and Aubinet, M.: Response of CO₂ fluxes and productivity to water availability in two contrasting ecosystems in northern Benin (West Africa), *Annals of Forest Science*, 73, 483–500, <https://doi.org/10.1007/s13595-016-0542-9>, 2016.
- 650 Akoko, G., Le, T. H., Gomi, T., and Kato, T.: A Review of SWAT Model Application in Africa, *Water*, 13, 1313, <https://doi.org/10.3390/w13091313>, 2021.
- Alemayehu, T., van Griensven, A., Woldegiorgis, B. T., and Bauwens, W.: An improved SWAT vegetation growth module and its evaluation for four tropical ecosystems, *Hydrology and Earth System Sciences*, 21, 4449–4467, <https://doi.org/10.5194/hess-21-4449-2017>, 2017.
- Archibald, J. A. and Walter, M. T.: Do Energy–Based PET Models Require More Input Data than Temperature–Based Models? — An Evaluation at Four Humid FluxNet Sites, *Journal of the American Water Resources Association*, 50, 497–508, <https://doi.org/10.1111/jawr.12137>, 2014.
- 655 Arnold, J. G. and Fohrer, N.: SWAT2000: current capabilities and research opportunities in applied watershed modelling, *Hydrological Processes*, 19, 563–572, <https://doi.org/10.1002/hyp.5611>, 2005.
- Arnold, J. G., Srinivasan, R., Mutiah, R. S., and Williams, J. R.: LARGE AREA HYDROLOGIC MODELING AND ASSESSMENT PART I: MODEL DEVELOPMENT, *Journal of the American Water Resources Association*, 34, 73–89, <https://doi.org/10.1111/j.1752-1688.1998.tb05961.x>, 1998.
- 660 Atkinson, P. M., Jegathan, C., Dash, J., and Atzberger, C.: Inter-comparison of four models for smoothing satellite sensor time-series data to estimate vegetation phenology, *Remote Sensing of Environment*, 123, 400–417, <https://doi.org/10.1016/j.rse.2012.04.001>, 2012.
- Bennour, A., Jia, L., Menenti, M., Zheng, C., Zeng, Y., Asenso Barnieh, B., and Jiang, M.: Calibration and Validation of SWAT Model by Using Hydrological Remote Sensing Observables in the Lake Chad Basin, *Remote Sensing*, 14, 1511, <https://doi.org/10.3390/rs14061511>, 2022.
- 665 Blifernicht, J., Waongo, M., Salack, S., Seidel, J., Laux, P., and Kunstmann, H.: Quality and Value of Seasonal Precipitation Forecasts Issued by the West African Regional Climate Outlook Forum, *Journal of Applied Meteorology and Climatology*, 58, 621–642, <https://doi.org/10.1175/JAMC-D-18-0066.1>, 2019.
- 670 Bossa, A., Diekkrüger, B., and Agbossou, E.: Scenario-Based Impacts of Land Use and Climate Change on Land and Water Degradation from the Meso to Regional Scale, *Water*, 6, 3152–3181, <https://doi.org/10.3390/w6103152>, 2014.
- Bossa, A. Y., Diekkrüger, B., Igué, A. M., and Gaiser, T.: Analyzing the effects of different soil databases on modeling of hydrological processes and sediment yield in Benin (West Africa), *Geoderma*, 173–174, 61–74, <https://doi.org/10.1016/j.geoderma.2012.01.012>, 2012.

- Bright, R. M., Miralles, D. G., Poyatos, R., and Eisner, S.: Simple Models Outperform More Complex Big-Leaf Models of Daily Transpiration in Forested Biomes, *Geophysical Research Letters*, 49, e2022GL100 100, <https://doi.org/10.1029/2022GL100100>, 2022.
- 675 Buchhorn, M., Smets, B., Bertels, L., de Roo, B., Lesiv, M., Tsendbazar, N., Li, L., and Tarko, A.: Copernicus Global Land Service: Land Cover 100m: version 3 Globe 2015-2019: Product User Manual, <https://doi.org/10.5281/zenodo.3938963>, 2020.
- Campolongo, F., Cariboni, J., and Saltelli, A.: An effective screening design for sensitivity analysis of large models, *Environmental Modelling & Software*, 22, 1509–1518, <https://doi.org/10.1016/j.envsoft.2006.10.004>, 2007.
- 680 Chawanda, C. J., Nkwasa, A., Thiery, W., and van Griensven, A.: Combined impacts of climate and land-use change on future water resources in Africa, *Hydrology and Earth System Sciences*, 28, 117–138, <https://doi.org/10.5194/hess-28-117-2024>, 2024.
- Chen, B., Black, T. A., Coops, N. C., Hilker, T., Trofymow, J. A., and Morgenstern, K.: Assessing Tower Flux Footprint Climatology and Scaling Between Remotely Sensed and Eddy Covariance Measurements, *Boundary-Layer Meteorology*, 130, 137–167, <https://doi.org/10.1007/s10546-008-9339-1>, 2009.
- 685 Chiogna, G., Marcolini, G., Engel, M., and Wohlmuth, B.: Sensitivity analysis in the wavelet domain: a comparison study, *Stochastic Environmental Research and Risk Assessment*, 38, 1669–1684, <https://doi.org/10.1007/s00477-023-02654-3>, 2024.
- Chu, H., Luo, X., Ouyang, Z., Chan, W. S., Dengel, S., Biraud, S. C., Torn, M. S., Metzger, S., Kumar, J., Arain, M. A., Arkebauer, T. J., Baldocchi, D., Bernacchi, C., Billesbach, D., Black, T. A., Blanken, P. D., Bohrer, G., Bracho, R., Brown, S., Brunsell, N. A., Chen, J., Chen, X., Clark, K., Desai, A. R., Duman, T., Durden, D., Fares, S., Forbrich, I., Gamon, J. A., Gough, C. M., Griffis, T., Helbig, M., Hollinger, D., Humphreys, E., Ikawa, H., Iwata, H., Ju, Y., Knowles, J. F., Knox, S. H., Kobayashi, H., Kolb, T., Law, B., Lee, X., Litvak, M., Liu, H., Mungler, J. W., Noormets, A., Novick, K., Oberbauer, S. F., Oechel, W., Oikawa, P., Papuga, S. A., Pendall, E., Prajapati, P., Prueger, J., Quinton, W. L., Richardson, A. D., Russell, E. S., Scott, R. L., Starr, G., Staebler, R., Stoy, P. C., Stuart-Haëntjens, E., Sonnentag, O., Sullivan, R. C., Suyker, A., Ueyama, M., Vargas, R., Wood, J. D., and Zona, D.: Representativeness of Eddy-Covariance flux footprints for areas surrounding AmeriFlux sites, *Agricultural and Forest Meteorology*, 301-302, 108 350, <https://doi.org/10.1016/j.agrformet.2021.108350>, 2021.
- 695 Copernicus: Copernicus DEM, <https://doi.org/10.5270/ESA-c5d3d65>, 2022.
- Danvi, A., Giertz, S., Zwart, S. J., and Diekkrüger, B.: Comparing water quantity and quality in three inland valley watersheds with different levels of agricultural development in central Benin, *Agricultural Water Management*, 192, 257–270, <https://doi.org/10.1016/j.agwat.2017.07.017>, 2017.
- 700 Duan, Q., Sorooshian, S., and Gupta, V. K.: Optimal use of the SCE-UA global optimization method for calibrating watershed models, *Journal of Hydrology*, 158, 265–284, [https://doi.org/10.1016/0022-1694\(94\)90057-4](https://doi.org/10.1016/0022-1694(94)90057-4), 1994.
- Duku, C., Rathjens, H., Zwart, S. J., and Hein, L.: Towards ecosystem accounting: a comprehensive approach to modelling multiple hydrological ecosystem services, *Hydrology and Earth System Sciences*, 19, 4377–4396, <https://doi.org/10.5194/hess-19-4377-2015>, 2015.
- Duku, C., Zwart, S. J., and Hein, L.: Modelling the forest and woodland-irrigation nexus in tropical Africa: A case study in Benin, *Agriculture, Ecosystems & Environment*, 230, 105–115, <https://doi.org/10.1016/j.agee.2016.06.001>, 2016.
- 705 Duku, C., Zwart, S. J., and Hein, L.: Impacts of climate change on cropping patterns in a tropical, sub-humid watershed, *PloS one*, 13, <https://doi.org/10.1371/journal.pone.0192642>, 2018.
- Fang, H., Baret, F., Plummer, S., and Schaepman-Strub, G.: An Overview of Global Leaf Area Index (LAI): Methods, Products, Validation, and Applications, *Reviews of Geophysics*, 57, 739–799, <https://doi.org/10.1029/2018RG000608>, 2019.

- 710 Fernandez-Palomino, C. A., Hattermann, F. F., Krysanova, V., Vega-Jácome, F., and Bronstert, A.: Towards a more consistent eco-hydrological modelling through multi-objective calibration: a case study in the Andean Vilcanota River basin, Peru, *Hydrological Sciences Journal*, 66, 59–74, <https://doi.org/10.1080/02626667.2020.1846740>, 2021.
- Ferreira, A. d. N., de Almeida, A., Koide, S., Minoti, R. T., and de Siqueira, M. B. B.: Evaluation of Evapotranspiration in Brazilian Cerrado Biome Simulated with the SWAT Model, *Water*, 13, 2037, <https://doi.org/10.3390/w13152037>, 2021.
- 715 Ficklin, D. L., Luo, Y., Luedeling, E., and Zhang, M.: Climate change sensitivity assessment of a highly agricultural watershed using SWAT, *Journal of Hydrology*, 374, 16–29, <https://doi.org/10.1016/j.jhydrol.2009.05.016>, 2009.
- Friend, A. D., Arneth, A., Kiang, N. Y., Lomas, M., Ogée, J., Rödenbeck, C., Running, S. W., Santaren, J.-D., Sitch, S., Viovy, N., Woodward, I. F., and Zaehle, S.: FLUXNET and modelling the global carbon cycle, *Global Change Biology*, 13, 610–633, <https://doi.org/10.1111/j.1365-2486.2006.01223.x>, 2007.
- 720 Galle, S., Grippa, M., Peugeot, C., Moussa, I. B., Cappelaere, B., Demarty, J., Mougin, E., Panthou, G., Adjomayi, P., Agbossou, E. K., Ba, A., Boucher, M., Cohard, J.-M., Descloitres, M., Descroix, L., Diawara, M., Dossou, M., Favreau, G., Gangneron, F., Gosset, M., Hector, B., Hiernaux, P., Issoufou, B.-A., Kergoat, L., Lawin, E., Lebel, T., Legchenko, A., Abdou, M. M., Malam-Issa, O., Mamadou, O., Nazoumou, Y., Pellarin, T., Quantin, G., Sambou, B., Seghieri, J., Séguis, L., Vandervaere, J.-P., Viscchel, T., Vouillamoz, J.-M., Zannou, A., Afouda, S., Alhassane, A., Arjounin, M., Barral, H., Biron, R., Cazenave, F., Chaffard, V., Chazarin, J.-P., Guyard, H., Koné, A.,
- 725 Mainassara, I., Mamane, A., Oi, M., Ouani, T., Soumaguel, N., Wubda, M., Ago, E. E., Alle, I. C., Allies, A., Arpin-Pont, F., Awessou, B., Cassé, C., Charvet, G., Dardel, C., Depeyre, A., Diallo, F. B., Do, T., Fatras, C., Frappart, F., Gal, L., Gascon, T., Gibon, F., Guiro, I., Ingatan, A., Kempf, J., Kotchoni, D., Lawson, F., Leauthaud, C., Louvet, S., Mason, E., Nguyen, C. C., Perrimond, B., Pierre, C., Richard, A., Robert, E., Román-Cascón, C., Velluet, C., and Wilcox, C.: AMMA-CATCH, a Critical Zone Observatory in West Africa Monitoring a Region in Transition, *Vadose Zone Journal*, 17, 1–24, <https://doi.org/10.2136/vzj2018.03.0062>, 2018.
- 730 Garcia Sanchez, D., Lacarrière, B., Musy, M., and Bourges, B.: Application of sensitivity analysis in building energy simulations: Combining first- and second-order elementary effects methods, *Energy and Buildings*, 68, 741–750, <https://doi.org/10.1016/j.enbuild.2012.08.048>, 2014.
- Gerten, D., Schaphoff, S., Haberlandt, U., Lucht, W., and Sitch, S.: Terrestrial vegetation and water balance—hydrological evaluation of a dynamic global vegetation model, *Journal of Hydrology*, 286, 249–270, <https://doi.org/10.1016/j.jhydrol.2003.09.029>, 2004.
- 735 Giertz, S. and Diekkrüger, B.: Analysis of the hydrological processes in a small headwater catchment in Benin (West Africa), *Physics and Chemistry of the Earth, Parts A/B/C*, 28, 1333–1341, <https://doi.org/10.1016/j.pce.2003.09.009>, 2003.
- Giertz, S., Diekkrüger, B., Jaeger, A., and Schopp, M.: An interdisciplinary scenario analysis to assess the water availability and water consumption in the Upper Ouémé catchment in Benin, *Advances in Geosciences*, 9, 3–13, <https://doi.org/10.5194/adgeo-9-3-2006>, 2006.
- Good, S. P., Soderberg, K., Guan, K., King, E. G., Scanlon, T. M., and Caylor, K. K.: d2 H isotopic flux partitioning of evapotranspiration over a grass field following a water pulse and subsequent dry down, *Water Resources Research*, 50, 1410–1432, <https://doi.org/10.1002/2013WR014333>, 2014.
- 740 Ha, L., Bastiaanssen, W., van Griensven, A., van Dijk, A., and Senay, G.: Calibration of Spatially Distributed Hydrological Processes and Model Parameters in SWAT Using Remote Sensing Data and an Auto-Calibration Procedure: A Case Study in a Vietnamese River Basin, *Water*, 10, 212, <https://doi.org/10.3390/w10020212>, 2018.
- 745 Haas, H., Reaver, N. G. F., Karki, R., Kalin, L., Srivastava, P., Kaplan, D. A., and Gonzalez-Benecke, C.: Improving the representation of forests in hydrological models, *The Science of the total environment*, 812, 151 425, <https://doi.org/10.1016/j.scitotenv.2021.151425>, 2022.

- Hargreaves, G. H. and Samani, Z. A.: Reference Crop Evapotranspiration from Temperature, *Applied Engineering in Agriculture*, 1, 96–99, <https://doi.org/10.13031/2013.26773>, 1985.
- Hector, B., Cohard, J.-M., Séguis, L., Galle, S., and Peugeot, C.: Hydrological functioning of western African inland valleys explored with a critical zone model, *Hydrology and Earth System Sciences*, 22, 5867–5888, <https://doi.org/10.5194/hess-22-5867-2018>, 2018.
- 750 Houska, T., Kraft, P., Chamorro-Chavez, A., and Breuer, L.: SPOTting Model Parameters Using a Ready-Made Python Package, *PloS one*, 10, <https://doi.org/10.1371/journal.pone.0145180>, 2015.
- Hoyos, N., Correa-Metrio, A., Jepsen, S. M., Wemple, B., Valencia, S., Marsik, M., Doria, R., Escobar, J., Restrepo, J. C., and Velez, M. I.: Modeling Streamflow Response to Persistent Drought in a Coastal Tropical Mountainous Watershed, *Sierra Nevada De Santa Marta, Colombia, Water*, 11, 94, <https://doi.org/10.3390/w11010094>, 2019.
- 755 Jepsen, S. M., Harmon, T. C., and Guan, B.: Analyzing the Suitability of Remotely Sensed ET for Calibrating a Watershed Model of a Mediterranean Montane Forest, *Remote Sensing*, 13, 1258, <https://doi.org/10.3390/rs13071258>, 2021.
- Jolly, W. M. and Running, S. W.: Effects of precipitation and soil water potential on drought deciduous phenology in the Kalahari, *Global Change Biology*, 10, 303–308, <https://doi.org/10.1046/j.1365-2486.2003.00701.x>, 2004.
- 760 Judex, M. and Thamm, H.-P., eds.: *Impetus Atlas Benin: Research results 2000 - 2007*, University of Bonn, Department of Geography, Bonn, 3rd edition edn., ISBN 978-3-9810311-5-7, 2008.
- Karvelis, P.: *daviolinplot - beautiful violin and raincloud plots*, <https://github.com/frank-pk/DataViz/releases/tag/v3.2.3>, 2024.
- Khanal, S. and Parajuli, P. B.: Sensitivity Analysis and Evaluation of Forest Biomass Production Potential Using SWAT Model, *Journal of Sustainable Bioenergy Systems*, 04, 136–147, <https://doi.org/10.4236/jsbs.2014.42013>, 2014.
- 765 Kim, J., Hwang, T., Schaaf, C. L., Kljun, N., and Munger, J. W.: Seasonal variation of source contributions to eddy-covariance CO₂ measurements in a mixed hardwood-conifer forest, *Agricultural and Forest Meteorology*, 253–254, 71–83, <https://doi.org/10.1016/j.agrformet.2018.02.004>, 2018.
- Knoben, W. J. M., Freer, J. E., and Woods, R. A.: Technical note: Inherent benchmark or not? Comparing Nash–Sutcliffe and Kling–Gupta efficiency scores, *Hydrology and Earth System Sciences*, 23, 4323–4331, <https://doi.org/10.5194/hess-23-4323-2019>, 2019.
- 770 Koltzida, E. and Kallioras, A.: Multi-Variable SWAT Model Calibration Using Satellite-Based Evapotranspiration Data and Streamflow, *Hydrology*, 9, 112, <https://doi.org/10.3390/hydrology9070112>, 2022.
- Kusangaya, S., Warburton, M. L., van Archer Garderen, E., and Jewitt, G. P.: Impacts of climate change on water resources in southern Africa: A review, *Physics and Chemistry of the Earth, Parts A/B/C*, 67–69, 47–54, <https://doi.org/10.1016/j.pce.2013.09.014>, 2014.
- Liang, S., Zhang, X., Xiao, Z., Cheng, J., Liu, Q., and Zhao, X.: *Global Land Surface Satellite (GLASS) Products*, Springer International Publishing, Cham, ISBN 978-3-319-02587-2, <https://doi.org/10.1007/978-3-319-02588-9>, 2014.
- 775 Liang, S., Cheng, J., Jia, K., Jiang, B., Liu, Q., Xiao, Z., Yao, Y., Yuan, W., Zhang, X., Zhao, X., and Zhou, J.: The Global Land Surface Satellite (GLASS) Product Suite, *Bulletin of the American Meteorological Society*, 102, E323–E337, <https://doi.org/10.1175/BAMS-D-18-0341.1>, 2021.
- López-Ramírez, S. M., Mayer, A., Sáenz, L., Muñoz-Villers, L. E., Holwerda, F., Looker, N., Schürz, C., Berry, Z. C., Manson, R., Asbjornsen, H., Kolka, R., Geissert, D., and Lezama, C.: A comprehensive calibration and validation of SWAT-T using local datasets, evapotranspiration and streamflow in a tropical montane cloud forest area with permeable substrate in central Veracruz, Mexico, *Journal of Hydrology*, 603, 126 781, <https://doi.org/10.1016/j.jhydrol.2021.126781>, 2021.
- 780

- Mamadou, O., Cohard, J. M., Galle, S., Awanou, C. N., Diedhiou, A., Kounouhewa, B., and Peugeot, C.: Energy fluxes and surface characteristics over a cultivated area in Benin: daily and seasonal dynamics, *Hydrology and Earth System Sciences*, 18, 893–914, <https://doi.org/10.5194/hess-18-893-2014>, 2014.
- 785 Mamadou, O., Galle, S., Cohard, J.-M., Peugeot, C., Kounouhewa, B., Biron, R., Hector, B., and Zannou, A. B.: Dynamics of water vapor and energy exchanges above two contrasting Sudanian climate ecosystems in Northern Benin (West Africa), *Journal of Geophysical Research: Atmospheres*, 121, <https://doi.org/10.1002/2016JD024749>, 2016.
- Michel, D., Jiménez, C., Miralles, D. G., Jung, M., Hirschi, M., Ershadi, A., Martens, B., McCabe, M. F., Fisher, J. B., Mu, Q., Seneviratne, S. I., Wood, E. F., and Fernández-Prieto, D.: The WACMOS-ET project – Part 1: Tower-scale evaluation of four remote-sensing-based evapotranspiration algorithms, *Hydrology and Earth System Sciences*, 20, 803–822, <https://doi.org/10.5194/hess-20-803-2016>, 2016.
- 790 Miralles, D. G., Jiménez, C., Jung, M., Michel, D., Ershadi, A., McCabe, M. F., Hirschi, M., Martens, B., Dolman, A. J., Fisher, J. B., Mu, Q., Seneviratne, S. I., Wood, E. F., and Fernández-Prieto, D.: The WACMOS-ET project – Part 2: Evaluation of global terrestrial evaporation data sets, *Hydrology and Earth System Sciences*, 20, 823–842, <https://doi.org/10.5194/hess-20-823-2016>, 2016.
- 795 Monteith, J. L.: *Evaporation and the environment*, *Symposia of the Society for Experimental Biology*, pp. 205–234, 1965.
- Morris, M. D.: *Factorial Sampling Plans for Preliminary Computational Experiments*, *Technometrics*, 33, 161–174, <https://doi.org/10.1080/00401706.1991.10484804>, 1991.
- Nantasaksiri, K., Charoen-Amornkitt, P., and Machimura, T.: Land Potential Assessment of Napier Grass Plantation for Power Generation in Thailand Using SWAT Model. Model Validation and Parameter Calibration, *Energies*, 14, 1326, <https://doi.org/10.3390/en14051326>, 2021.
- 800 Neitsch, S. L., Arnold, J. G., Kiniry, J. R., and Williams, J. R.: *Soil & Water Assessment Tool Theoretical Documentation Version 2009*, 2011.
- Nelder, J. A. and Mead, R.: A Simplex Method for Function Minimization, *The Computer Journal*, 7, 308–313, <https://doi.org/10.1093/COMJNL/7.4.308>, 1965.
- 805 Novick, K. A., Biederman, J. A., Desai, A. R., Litvak, M. E., Moore, D., Scott, R. L., and Torn, M. S.: The AmeriFlux network: A coalition of the willing, *Agricultural and Forest Meteorology*, 249, 444–456, <https://doi.org/10.1016/j.agrformet.2017.10.009>, 2018.
- Odusanya, A. E., Mehdi, B., Schürz, C., Oke, A. O., Awokola, O. S., Awomeso, J. A., Adejuwon, J. O., and Schulz, K.: Multi-site calibration and validation of SWAT with satellite-based evapotranspiration in a data-sparse catchment in southwestern Nigeria, *Hydrology and Earth System Sciences*, 23, 1113–1144, <https://doi.org/10.5194/hess-23-1113-2019>, 2019.
- 810 Odusanya, A. E., Schulz, K., Biao, E. I., Degan, B. A., and Mehdi-Schulz, B.: Evaluating the performance of streamflow simulated by an eco-hydrological model calibrated and validated with global land surface actual evapotranspiration from remote sensing at a catchment scale in West Africa, *Journal of Hydrology: Regional Studies*, 37, 100 893, <https://doi.org/10.1016/j.ejrh.2021.100893>, 2021.
- Park, J. Y., Ale, S., Teague, W. R., and Dowhower, S. L.: Simulating hydrologic responses to alternate grazing management practices at the ranch and watershed scales, *Journal of Soil and Water Conservation*, 72, 102–121, <https://doi.org/10.2489/jswc.72.2.102>, 2017.
- 815 Poméon, T., Diekkrüger, B., Springer, A., Kusche, J., and Eicker, A.: Multi-Objective Validation of SWAT for Sparsely-Gauged West African River Basins—A Remote Sensing Approach, *Water*, 10, 451, <https://doi.org/10.3390/w10040451>, 2018.
- Priestley, C. H. B. and Taylor, R. J.: On the Assessment of Surface Heat Flux and Evaporation Using Large-Scale Parameters, *Monthly Weather Review*, 100, 81–92, [https://doi.org/10.1175/1520-0493\(1972\)100<0081:OTAOSH>2.3.CO;2](https://doi.org/10.1175/1520-0493(1972)100<0081:OTAOSH>2.3.CO;2), 1972.

- Qiao, L., Will, R., Wagner, K., Zhang, T., and Zou, C.: Improvement of evapotranspiration estimates for grasslands in the southern Great
820 Plains: Comparing a biophysical model (SWAT) and remote sensing (MODIS), *Journal of Hydrology: Regional Studies*, 44, 101 275,
<https://doi.org/10.1016/j.ejrh.2022.101275>, 2022.
- Rajib, A., Merwade, V., and Yu, Z.: Rationale and Efficacy of Assimilating Remotely Sensed Potential Evapotranspiration for Reduced
Uncertainty of Hydrologic Models, *Water Resources Research*, 54, 4615–4637, <https://doi.org/10.1029/2017WR021147>, 2018.
- Rodell, M., Beaudoin, H. K., L'Ecuyer, T. S., Olson, W. S., Famiglietti, J. S., Houser, P. R., Adler, R., Bosilovich, M. G., Clayson, C. A.,
825 Chambers, D., Clark, E., Fetzer, E. J., Gao, X., Gu, G., Hilburn, K., Huffman, G. J., Lettenmaier, D. P., Liu, W. T., Robertson, F. R.,
Schlosser, C. A., Sheffield, J., and Wood, E. F.: The Observed State of the Water Cycle in the Early Twenty-First Century, *Journal of
Climate*, 28, 8289–8318, <https://doi.org/10.1175/JCLI-D-14-00555.1>, 2015.
- Rogelis, M. C., Werner, M., Obregón, N., and Wright, N.: Hydrological model assessment for flood early warning in a tropical high mountain
basin, <https://doi.org/10.5194/hess-2016-30>, 2016.
- 830 Saltelli, A., Ratto, M., Andres, T., Campolongo, F., Cariboni, J., Gatelli, D., Saisana, M., Tarantola, and Stefano: *Global sensitivity analysis:
The primer*, Wiley, Chichester, West Sussex, ISBN 978-0-470-05997-5, 2008.
- Schaefli, B. and Gupta, H. V.: Do Nash values have value?, *Hydrological Processes*, 21, 2075–2080, <https://doi.org/10.1002/hyp.6825>, 2007.
- Schlesinger, W. H. and Jasechko, S.: Transpiration in the global water cycle, *Agricultural and Forest Meteorology*, 189-190, 115–117,
<https://doi.org/10.1016/j.agrformet.2014.01.011>, 2014.
- 835 Schneider, K., Ketzer, B., Breuer, L., Vaché, K. B., Bernhofer, C., and Frede, H.-G.: Evaluation of evapotranspiration methods for model
validation in a semi-arid watershed in northern China, *Advances in Geosciences*, 11, 37–42, <https://doi.org/10.5194/adgeo-11-37-2007>,
2007.
- Seibert, J., Vis, M. J. P., Lewis, E., and van Meerveld, H. J.: Upper and lower benchmarks in hydrological modelling, *Hydrological Processes*,
32, 1120–1125, <https://doi.org/10.1002/hyp.11476>, 2018.
- 840 Stephens, C. M., Marshall, L. A., Johnson, F. M., Lin, L., Band, L. E., and Ajami, H.: Is Past Variability a Suitable Proxy for Future Change?
A Virtual Catchment Experiment, *Water Resources Research*, 56, <https://doi.org/10.1029/2019WR026275>, 2020.
- Strauch, M. and Volk, M.: SWAT plant growth modification for improved modeling of perennial vegetation in the tropics, *Ecological Mod-
elling*, 269, 98–112, <https://doi.org/10.1016/j.ecolmodel.2013.08.013>, 2013.
- Tan, M. L., Gassman, P. W., Yang, X., and Haywood, J.: A review of SWAT applications, performance and future needs for simulation of
845 hydro-climatic extremes, *Advances in Water Resources*, 143, 103 662, <https://doi.org/10.1016/j.advwatres.2020.103662>, 2020.
- Togbévi, Q. F., Bossa, A. Y., Yira, Y., Preko, K., Sintondji, L. O., and van der Ploeg, M.: A multi-model approach for analysing wa-
ter balance and water-related ecosystem services in the Ouriyori catchment (Benin), *Hydrological Sciences Journal*, 65, 2453–2465,
<https://doi.org/10.1080/02626667.2020.1811286>, 2020.
- Viovy, N., Arino, O., and Belward, A. S.: The Best Index Slope Extraction (BISE): A method for reducing noise in NDVI time-series,
850 *International Journal of Remote Sensing*, 13, 1585–1590, <https://doi.org/10.1080/01431169208904212>, 1992.
- Wagener, T., McIntyre, N., Lees, M. J., Wheeler, H. S., and Gupta, H. V.: Towards reduced uncertainty in conceptual rainfall–runoff mod-
elling: dynamic identifiability analysis, *Hydrological Processes*, 17, 455–476, <https://doi.org/10.1002/hyp.1135>, 2003.
- Wang, L., Good, S. P., and Caylor, K. K.: Global synthesis of vegetation control on evapotranspiration partitioning, *Geophysical Research
Letters*, 41, 6753–6757, <https://doi.org/10.1002/2014GL061439>, 2014.
- 855 Weerasinghe, I., Bastiaanssen, W., Mul, M., Jia, L., and van Griensven, A.: Can we trust remote sensing evapotranspiration products over
Africa?, *Hydrology and Earth System Sciences*, 24, 1565–1586, <https://doi.org/10.5194/hess-24-1565-2020>, 2020.

- Wei, Z., Yoshimura, K., Wang, L., Miralles, D. G., Jasechko, S., and Lee, X.: Revisiting the contribution of transpiration to global terrestrial evapotranspiration, *Geophysical Research Letters*, 44, 2792–2801, <https://doi.org/10.1002/2016GL072235>, 2017.
- 860 Weiss, M., Baret, F., Smith, G. J., Jonckheere, I., and Coppin, P.: Review of methods for in situ leaf area index (LAI) determination, *Agricultural and Forest Meteorology*, 121, 37–53, <https://doi.org/10.1016/j.agrformet.2003.08.001>, 2004.
- Wu, Y., Liu, S., and Abdul-Aziz, O. I.: Hydrological effects of the increased CO₂ and climate change in the Upper Mississippi River Basin using a modified SWAT, *Climatic Change*, 110, 977–1003, <https://doi.org/10.1007/s10584-011-0087-8>, 2012.
- Xiang, X., Ao, T., Xiao, Q., Li, X., Zhou, L., Chen, Y., Bi, Y., and Guo, J.: Parameter Sensitivity Analysis of SWAT Modeling in the Upper Heihe River Basin Using Four Typical Approaches, *Applied Sciences*, 12, 9862, <https://doi.org/10.3390/app12199862>, 2022.
- 865 Yang, Q. and Zhang, X.: Improving SWAT for simulating water and carbon fluxes of forest ecosystems, *The Science of the total environment*, 569–570, 1478–1488, <https://doi.org/10.1016/j.scitotenv.2016.06.238>, 2016.
- Yang, Q., Almendinger, J. E., Zhang, X., Huang, M., Chen, X., Leng, G., Zhou, Y., Zhao, K., Asrar, G. R., Srinivasan, R., and Li, X.: Enhancing SWAT simulation of forest ecosystems for water resource assessment: A case study in the St. Croix River basin, *Ecological Engineering*, 120, 422–431, <https://doi.org/10.1016/j.ecoleng.2018.06.020>, 2018.
- 870 Zhang, H., Wang, B., Liu, D. L., Zhang, M., Leslie, L. M., and Yu, Q.: Using an improved SWAT model to simulate hydrological responses to land use change: A case study of a catchment in tropical Australia, *Journal of Hydrology*, 585, 124–132, <https://doi.org/10.1016/j.jhydrol.2020.124822>, 2020.

Table A1. List of final parameters for the multi-objective (LAI & AET), observed LAI, and GLASS-LAI optimization for the forested region. The units of the parameters are excluded for readability. They are given in [Tab. Table 2](#).

Parameter	LAI & AET			Observed LAI				GLASS-LAI
	HG	PM	PT	HG	PM	PT	HG	PM
BIO_E	<u>24.13-26.2</u>	<u>21.31-19.5</u>	<u>21.45-29.3</u>	<u>16.77-20.7</u>	<u>20.14-22.2</u>	<u>19.11-21.1</u>	<u>18.78-18.4</u>	<u>17.42-10.3</u>
BLAI	<u>4.44-3.7</u>	<u>4.35-4.2</u>	<u>4.57-5.5</u>	<u>3.78-4.4</u>	<u>4.42-4.6</u>	<u>4.54-4.8</u>	<u>4.80-4.1</u>	<u>3.89-5.1</u>
FRGRW ₁	<u>0.18-0.25</u>	<u>0.15-0.14</u>	<u>0.16-0.1</u>	0.19	<u>0.15-0.12</u>	<u>0.16-0.2</u>	<u>0.12-0.17</u>	<u>0.16-0.1</u>
LAIMX ₁	<u>0.26</u>	0.18	<u>0.21-0.13</u>	<u>0.17-0.22</u>	<u>0.21-0.13</u>	<u>0.17-0.16</u>	<u>0.17-0.21</u>	<u>0.22-0.09</u>
FRGRW ₂	<u>0.81-0.51</u>	<u>0.72-0.7</u>	<u>0.72-0.81</u>	<u>0.64-0.69</u>	<u>0.68-0.71</u>	<u>0.75-0.73</u>	<u>0.75-0.69</u>	<u>0.76-0.67</u>
LAIMX ₂	<u>0.74-0.5</u>	<u>0.68-0.72</u>	<u>0.73-0.84</u>	0.74	<u>0.66-0.72</u>	<u>0.64</u>	0.61	<u>0.74-0.61</u>
DLAI	<u>0.58-0.68</u>	<u>0.63-0.67</u>	<u>0.53-0.7</u>	<u>0.57-0.54</u>	0.56	<u>0.61-0.55</u>	<u>0.58-0.56</u>	<u>0.58-0.44</u>
T_OPT	<u>40.25-22.7</u>	<u>39.93-29.7</u>	<u>39.77-30.2</u>	<u>40.12-26.4</u>	<u>38.92-29.9</u>	<u>39.19-29.6</u>	<u>38.55-29.5</u>	<u>42.24-31.3</u>
T_BASE	<u>14.03-14</u>	<u>14.46-14.6</u>	<u>15.77-13</u>	<u>14.15-15</u>	<u>15.22-15.5</u>	<u>14.75-15.2</u>	<u>15.28-15.2</u>	<u>14.70-15.3</u>
ALAI_MIN	<u>0.88-0.9</u>	<u>0.77-0.76</u>	<u>0.79-0.88</u>	<u>0.82-0.83</u>	<u>0.82-0.8</u>	<u>0.78-0.8</u>	<u>0.70-0.73</u>	<u>0.80-0.61</u>
PHU_GSI	<u>4336-0.006</u>	<u>4075-0.006</u>	<u>4087-0.001</u>	<u>4337-0.004</u>	<u>4082-0.005</u>	<u>4013-0.007</u>	<u>3776-0.004</u>	<u>3877-0.002</u>
GSI_PHU	<u>0.006-3696</u>	<u>0.005-3962</u>	<u>0.006-4427</u>	<u>0.007-4140</u>	<u>0.005-3940</u>	<u>0.007-4074</u>	<u>0.005-3872</u>	<u>0.005-4361</u>
CAN_MX								
SOL_D ^a	<u>9.0-3381</u>	<u>59.3-2914</u>	<u>37.54-3148</u>	<u>60.1-2729</u>	<u>61.0-3195</u>	<u>48.8-2980</u>	<u>29.69-2727</u>	<u>61.66-3295</u>
ESCO	<u>0.64-0.52</u>	<u>0.50-0.41</u>	<u>0.51-0.13</u>	0.55	0.54	<u>0.47-0.56</u>	<u>0.43-0.48</u>	<u>0.53-0.92</u>
EPCO	<u>0.88-0.92</u>	<u>0.47-0.32</u>	<u>0.84-0.92</u>	<u>0.59-0.39</u>	<u>0.33-0.39</u>	<u>0.53-0.71</u>	<u>0.37-0.57</u>	<u>0.43-0.79</u>
HRU_SLP								
CAN_MX	<u>0.005-4.3</u>	<u>0.006-4.9</u>	<u>0.005-0.3</u>	<u>0.005-6.4</u>	<u>0.006-3.7</u>	<u>0.005-3.9</u>	<u>0.003-5.7</u>	<u>0.003-3.8</u>
SLSUBBSN								
HRU_SLP	<u>35.19-0.022</u>	<u>28.9-0.022</u>	<u>30.06-0.022</u>	<u>33.75-0.022</u>	<u>30.11-0.022</u>	<u>30.13-0.022</u>	<u>25.12-0.022</u>	<u>39.14-0.022</u>
CN2								
SLSUBBN	<u>39.58-91.463</u>	<u>46.91-91.463</u>	<u>44.92-91.463</u>	<u>47.7-91.463</u>	<u>44.65-91.463</u>	<u>45.63-91.463</u>	<u>52.80-91.463</u>	<u>41.02-91.463</u>
SOL_AWC ^a								
CN_2	<u>1.76-38</u>	<u>1.48-38</u>	<u>1.6-38</u>	<u>1.31-38</u>	<u>0.64-38</u>	<u>0.83-38</u>	<u>1.25-38</u>	<u>0.74-38</u>
SOL_BDAWC ^{ab}	<u>0.59-1.82</u>	<u>0.69-1.11</u>	<u>0.82-1.14</u>	<u>1.13-1.35</u>	<u>0.64-1.2</u>	<u>0.83-1.07</u>	<u>1.02-1.27</u>	<u>0.46-1.8</u>
SOL_CBNBD ^{ab}	<u>0.11-0.04</u>	<u>0.41-1.08</u>	<u>0.49-0.38</u>	<u>0.73-0.51</u>	<u>0.60-1.12</u>	<u>0.33-0.74</u>	<u>0.27-0.12</u>	<u>0.63-0.58</u>
SOL_KCBN ^{ab}	<u>0.97-1.85</u>	<u>0.57-0.39</u>	<u>0.68-0.64</u>	<u>0.31-0.58</u>	<u>0.65-0.8</u>	<u>0.51-1.24</u>	<u>0.70-1.07</u>	<u>0.68-0.56</u>
SOL_RD-K ^b	<u>1583-1.43</u>	<u>1356-0.95</u>	<u>1438-1.66</u>	<u>1160-0.91</u>	<u>1446-0.82</u>	<u>1382-0.74</u>	<u>768-1.25</u>	<u>1219-0.35</u>
SOL_D ^b -RD	<u>3656-1958</u>	<u>3359-1239</u>	<u>3237-1503</u>	<u>3263-1040</u>	<u>3158-1143</u>	<u>3070-1512</u>	<u>3087-1194</u>	<u>3518-1648</u>
GW_REVAP	<u>0.12-0.18</u>	<u>0.11-0.18</u>	<u>0.12-0.18</u>	<u>0.06-0.18</u>	<u>0.10-0.18</u>	<u>0.10-0.18</u>	<u>0.11-0.18</u>	<u>0.08-0.18</u>
RCHRG_DP	<u>0.44-0.2</u>	<u>0.48-0.2</u>	<u>0.49-0.2</u>	<u>0.33-0.2</u>	<u>0.30-0.2</u>	<u>0.47-0.2</u>	<u>0.60-0.2</u>	<u>0.57-0.2</u>
REVAPMN	<u>743-500</u>	<u>999-500</u>	<u>1025-500</u>	<u>885-500</u>	<u>1155-500</u>	<u>961-500</u>	<u>646-500</u>	<u>798-500</u>

^aLowest soil layer depth; ^bRelative parameter changes: $para_{new} = para_{original} + para_{original} \cdot para_{change}$

Table A2. List of final parameters for the multi-objective (LAI & AET), observed LAI, and GLASS-LAI optimization for the grassland region. The units of the parameters are excluded for readability. They are given in [Tab-Table 2](#)

Parameter	LAI & AET			Observed LAI				GLASS-LAI
	HG	PM	PT	HG	PM	PT	HG	PM
BIO_E	<u>29.53-28</u>	<u>23.72-18.7</u>	<u>27.49-25.4</u>	<u>20.09-20.2</u>	<u>20.12-23</u>	<u>20.88-22.1</u>	<u>21.12-19.2</u>	<u>20.61-23</u>
BLAI	<u>5.01-4.5</u>	<u>4.76-4.5</u>	<u>4.77-4.4</u>	<u>4.14-4.5</u>	<u>4.34-4.4</u>	<u>4.10-4.7</u>	<u>3.95-4.5</u>	<u>4.13-5.5</u>
FRGRW ₁	<u>0.30-0.29</u>	<u>0.28-0.27</u>	0.29	<u>0.30-0.3</u>	<u>0.30-0.29</u>	<u>0.23-0.28</u>	<u>0.25-0.24</u>	<u>0.26-0.2</u>
LAIMX ₁	<u>0.08</u>	0.07	0.06	0.06	0.05	0.05	<u>0.05-0.15</u>	<u>0.11-0.1</u>
FRGRW ₂	<u>0.75-0.69</u>	<u>0.63-0.67</u>	<u>0.74-0.68</u>	<u>0.63-0.6</u>	<u>0.62-0.61</u>	<u>0.63-0.65</u>	<u>0.52</u>	0.56
LAIMX ₂	<u>0.72</u>	0.74	<u>0.78</u>	0.74	<u>0.77-0.75</u>	0.76	<u>0.77-0.75</u>	<u>0.77-0.87-0.8</u>
DLAI	<u>0.82-0.83</u>	<u>0.81-0.83</u>	<u>0.78-0.79</u>	<u>0.78-0.77</u>	<u>0.80-0.8</u>	<u>0.61-0.76</u>	<u>0.61-0.8</u>	<u>0.61-0.5</u>
T_OPT	<u>39.83-30.4</u>	<u>40.91-27.8</u>	<u>40.52-30.3</u>	<u>39.47-29.8</u>	<u>40.05-30.5</u>	<u>40.28-30.5</u>	<u>39.57-20.6</u>	<u>39.88-28</u>
T_BASE	<u>12.80-12.8</u>	<u>12.92-12.9</u>	<u>12.25-12.9</u>	<u>12.82-13</u>	<u>12.96-13</u>	<u>12.66-13</u>	<u>13.85-11.6</u>	<u>13.81-14</u>
ALAI_MIN	0.62	<u>0.62-0.6</u>	<u>0.62-0.63</u>	<u>0.60-0.6</u>	<u>0.60-0.61</u>	<u>0.60-0.6</u>	<u>0.60-0.7</u>	<u>0.60-0.6</u>
PHU_GSI	<u>4073-0.005</u>	<u>3993-0.004</u>	<u>4132-0.004</u>	<u>4120-0.005</u>	<u>4057-0.006</u>	<u>4133-0.006</u>	<u>4027-0.008</u>	<u>4074-0.0</u>
GSI_PHU	<u>0.006-4090</u>	<u>0.003-3970</u>	<u>0.006-4010</u>	<u>0.005-4087</u>	<u>0.006-4035</u>	<u>0.006-4059</u>	<u>0.005-4104</u>	<u>0.005-38</u>
CAN_MX								
SOL_D ^a	<u>0.15-3002</u>	<u>16.50-2541</u>	<u>0.05-3375</u>	<u>40.01-2883</u>	<u>39.02-2911</u>	<u>36.46-2967</u>	<u>43.36-3866</u>	<u>39.10-23</u>
ESCO	<u>0.69-0.89</u>	<u>0.63-0.54</u>	<u>0.58-0.8</u>	<u>0.53-0.49</u>	<u>0.51-0.5</u>	<u>0.48-0.59</u>	<u>0.48-0.49</u>	<u>0.61-0.5</u>
EPCO	<u>0.44-0.43</u>	<u>0.23-0.27</u>	<u>0.50-0.73</u>	<u>0.30-0.37</u>	<u>0.39-0.52</u>	<u>0.34-0.43</u>	<u>0.22-0.58</u>	<u>0.22-0.1</u>
CAN_MX	<u>4.3</u>	<u>4.9</u>	<u>0.3</u>	<u>6.4</u>	<u>3.7</u>	<u>3.9</u>	<u>5.7</u>	<u>3.8</u>
HRU_SLP	<u>0.007-0.032</u>	<u>0.005-0.032</u>	<u>0.005-0.032</u>	<u>0.005-0.032</u>	<u>0.004-0.032</u>	<u>0.005-0.032</u>	<u>0.005-0.032</u>	<u>0.005-0.0</u>
SLSUBBSN								
SLSUBBN	<u>26.80-91.463</u>	<u>29.07-91.463</u>	<u>28.85-91.463</u>	<u>30.60-91.463</u>	<u>27.70-91.463</u>	<u>26.30-91.463</u>	<u>30.13-91.463</u>	<u>30.19-91.4</u>
CN2_CN_2	<u>41.86-81</u>	<u>41.91-81</u>	<u>44.52-81</u>	<u>43.43-81</u>	<u>44.87-81</u>	<u>42.90-81</u>	<u>46.51-81</u>	<u>44.70-8</u>
SOL_AWC ^{ab}	<u>0.27-0.21</u>	<u>0.22-0.4</u>	<u>0.98-0.05</u>	<u>0.91-0.71</u>	<u>0.67-0.43</u>	<u>0.58-0.63</u>	<u>0.34-0.17</u>	<u>0.57-1.7</u>
SOL_BD ^{ab}	<u>1.14-1.08</u>	<u>0.93</u>	0.98	<u>0.90-1.03</u>	<u>0.69-0.98</u>	<u>0.77-0.93</u>	<u>0.92-1.6</u>	<u>0.73-1.9</u>
SOL_CBN ^{ab}	<u>1.18-1.47</u>	<u>1.11-1.02</u>	<u>1.09-1.59</u>	<u>0.86-0.87</u>	<u>0.95-1.6</u>	<u>1.01-1.07</u>	<u>1.48-1.25</u>	<u>1.28-1.2</u>
SOL_K ^{ab}	<u>1.26-0.46</u>	<u>0.91-0.61</u>	<u>0.71-0.44</u>	<u>0.86-0.61</u>	<u>0.91-0.7</u>	0.65	<u>0.85-0.59</u>	<u>0.80-0.3</u>
SOL_RD	<u>1166-1958</u>	<u>1189-1239</u>	<u>1503</u>	<u>1040</u>	<u>1143</u>	<u>1512</u>	<u>1194</u>	<u>1648</u>
GW_REVAP	<u>0.18</u>	<u>0.18</u>	<u>0.18</u>	<u>0.18</u>	<u>0.18</u>	<u>0.18</u>	<u>0.18</u>	<u>0.18</u>
RCHRG_DP	<u>0.2</u>	<u>0.2</u>	<u>0.2</u>	<u>0.2</u>	<u>0.2</u>	<u>0.2</u>	<u>0.2</u>	<u>0.2</u>
REVAPMN	<u>500</u>	<u>500</u>	<u>500</u>	<u>500</u>	<u>500</u>	<u>500</u>	<u>500</u>	<u>500</u>

^aLowest soil layer depth; ^bRelative parameter changes: $para_{new} = para_{original} + para_{original} \cdot para_{change}$

Table A3. Water balance components for the final runs for the forested region. All quantities listed are in (mm). ¹GW is short for groundwater. The components of the lower benchmark are shown although no calibration was applied.

Model setup	Precipitation	PET	AET	Water yield			Aquifer recharge
				Surface runoff	Lateral flow	GW ¹ flow	
<u>PET-HG, Upper BM.</u>	<u>1479.6</u>	<u>1891.1</u>	<u>1098</u>	<u>1294.12.1</u>	<u>1339.16.5</u>	<u>1341.56.2</u>	<u>139</u>
<u>PET-HG, LAI-Obs</u>	<u>1284.1479.6</u>	<u>1103.1891.1</u>	<u>1521.1049</u>	<u>905.7.8</u>	<u>720.25.6</u>	<u>75.7</u>	<u>3</u>
<u>SOL-D^b PET-HG, LAI-GLASS</u>	<u>2800.1479.6</u>	<u>2771.1891.1</u>	<u>3159.1060</u>	<u>2957.6.5</u>	<u>3013.14.3</u>	<u>3080.73.5</u>	<u>294</u>
<u>PET-HG, Lower BM.</u>	<u>3110.1479.6</u>	<u>2876.1891.1</u>	<u>2326.595.9</u>	<u>4892.18.7</u>	<u>1658.27.2</u>	<u>527.2</u>	<u>8</u>
<u>GW_REVAP PET-PM, Upper BM.</u>	<u>0.10.1479.6</u>	<u>0.12.1646.3</u>	<u>0.12.969</u>	<u>0.11.26.9</u>	<u>0.12.82.6</u>	<u>0.11.77.4</u>	<u>0.1</u>
<u>PET-PM, LAI-Obs</u>	<u>0.11.1479.6</u>	<u>0.12.1646.3</u>	<u>0.12.968.9</u>	<u>0.06.60.2</u>	<u>0.16.90.8</u>	<u>68.1</u>	<u>1</u>
<u>RCHRG_DP PET-PM, LAI-GLASS</u>	<u>0.27.1479.6</u>	<u>0.56.1646.3</u>	<u>0.50.769.3</u>	<u>0.46.78.8</u>	<u>0.47.16.3</u>	<u>0.55.267.5</u>	<u>0.46</u>
<u>PET-PM, Lower BM.</u>	<u>0.45.1479.6</u>	<u>0.53.1646.3</u>	<u>0.73.626.1</u>	<u>0.48.18.6</u>	<u>0.08.20.23</u>	<u>511.6</u>	<u>8</u>
<u>REVAPMN PET-PT, Upper BM.</u>	<u>1034.1479.6</u>	<u>977.1392.5</u>	<u>799.969</u>	<u>1084.20.6</u>	<u>1101.8.2</u>	<u>1041.139.3</u>	<u>910</u>
<u>PET-PT, LAI-Obs</u>	<u>1067.1479.6</u>	<u>1237.1392.5</u>	<u>303.911.4</u>	<u>467.22.6</u>	<u>343.36.3</u>	<u>193.3</u>	<u>4</u>
<u>PET-PT, LAI-GLASS</u>	<u>1479.6</u>	<u>1392.5</u>	<u>858.6</u>	<u>11.4</u>	<u>29.1</u>	<u>296.4</u>	<u>5</u>
<u>PET-PT, Lower BM.</u>	<u>1479.6</u>	<u>1392.5</u>	<u>572.8</u>	<u>99.7</u>	<u>13.8</u>	<u>533.5</u>	<u>7</u>

Table A4. Water balance components for the final runs for the grassland region. All quantities listed are in (mm). ¹GW is short for groundwater. The components of the lower benchmark are shown although no calibration was applied.

Model setup	Precipitation	PET	AET	Water yield			Aquifer recharge
				Surface runoff	Lateral flow	GW ¹ flow	
<u>PET-HG, Upper BM.</u>	<u>1424</u>	<u>1809.1</u>	<u>729.7</u>	<u>375.5</u>	<u>12.7</u>	<u>57.4</u>	<u>303.6</u>
<u>PET-HG, LAI-Obs</u>	<u>1424</u>	<u>1809.1</u>	<u>869.8</u>	<u>269.5</u>	<u>19.3</u>	<u>48.4</u>	<u>261.7</u>
<u>PET-HG, LAI-GLASS</u>	<u>1424</u>	<u>1809.1</u>	<u>920</u>	<u>294.6</u>	<u>19.5</u>	<u>34.7</u>	<u>186.4</u>
<u>PET-HG, Lower BM.</u>	<u>1424</u>	<u>1809.1</u>	<u>888.6</u>	<u>291.2</u>	<u>11.1</u>	<u>42.7</u>	<u>230.3</u>
<u>PET-PM, Upper BM.</u>	<u>1424</u>	<u>1623</u>	<u>718.5</u>	<u>331.3</u>	<u>12.8</u>	<u>68.8</u>	<u>358.8</u>
<u>PET-PM, LAI-Obs</u>	<u>1424</u>	<u>1623</u>	<u>899.7</u>	<u>244.8</u>	<u>19.4</u>	<u>47.6</u>	<u>253.5</u>
<u>PET-PM, LAI-GLASS</u>	<u>1424</u>	<u>1623</u>	<u>789</u>	<u>300.8</u>	<u>12</u>	<u>57.8</u>	<u>313.4</u>
<u>PET-PM, Lower BM.</u>	<u>1424</u>	<u>1623</u>	<u>824.5</u>	<u>288</u>	<u>15</u>	<u>55</u>	<u>294.5</u>
<u>PET-PT, Upper BM.</u>	<u>1424</u>	<u>1475.6</u>	<u>751.1</u>	<u>382.1</u>	<u>17.8</u>	<u>50.3</u>	<u>269.5</u>
<u>PET-PT, LAI-Obs</u>	<u>1424</u>	<u>1475.6</u>	<u>786.3</u>	<u>309.8</u>	<u>19.8</u>	<u>56.1</u>	<u>302.3</u>
<u>PET-PT, LAI-GLASS</u>	<u>1424</u>	<u>1475.6</u>	<u>883.4</u>	<u>331.8</u>	<u>25.5</u>	<u>33.2</u>	<u>179</u>
<u>PET-PT, Lower BM.</u>	<u>1424</u>	<u>1475.6</u>	<u>874.6</u>	<u>294.1</u>	<u>13.5</u>	<u>43.2</u>	<u>239.1</u>

Table A5. Overview of the data use for the study site map.

<u>Data</u>	<u>Database name or source</u>
<u>Topography</u>	<u>Copernicus GLO-30 (Copernicus, 2022)</u>
<u>Land use map</u>	<u>Copernicus Global Land Service (Buchhorn et al., 2020)</u>
<u>Water bodies</u>	<u>ArcGIS Pro 2.7.3 (ESRI)</u>
<u>Countries and cities</u>	<u>ArcGIS Pro 2.7.3 (ESRI)</u>
<u>Study site locations</u>	<u>Mamadou et al. (2016)</u>
<u>Catchment extents</u>	<u>Derived with ArcGIS Pro 2.7.3 (ESRI)</u>