

# Spatiotemporal variation of modern lake, stream, and soil water isotopes in Iceland

David J. Harning<sup>1</sup>, Jonathan H. Raberg<sup>1,2,3</sup>, Jamie M. McFarlin<sup>3</sup>, Yarrow Axford<sup>4</sup>, Christopher R. Florian<sup>1,2,5</sup>, Kristín B. Ólafsdóttir<sup>6</sup>, Sebastian Kopf<sup>7</sup>, Julio Sepúlveda<sup>1,7</sup>, Gifford H. Miller<sup>1,7</sup>, Áslaug Geirsdóttir<sup>2</sup>

<sup>1</sup>Institute of Arctic and Alpine Research, University of Colorado Boulder, 80303, USA

<sup>2</sup>Faculty of Earth Sciences, University of Iceland, 101, Iceland

<sup>3</sup>Department of Geology and Geophysics, University of Wyoming, 82071, USA

<sup>4</sup>Department of Earth and Planetary Sciences, Northwestern University, 60208, USA

10 <sup>5</sup>National Ecological Observatory Network, Battelle, 80301, USA

<sup>6</sup>Icelandic Meteorological Office, 150, Iceland

<sup>7</sup>Department of Geological Sciences, University of Colorado Boulder, 80309, USA

*Correspondence to:* David J. Harning (david.harning@colorado.edu)

**Abstract.** As global warming progresses, changes in high-latitude precipitation are expected to impart long-lasting impacts on  
15 earth systems, including glacier mass balance and ecosystem structure. Reconstructing past changes in high-latitude  
precipitation and hydroclimate from networks of continuous lake records offers one way to improve forecasts of precipitation  
and precipitation-evaporation balances, but these reconstructions are currently hindered by the incomplete understanding of  
controls on lake and soil water isotopes. Here, we study the distribution of modern water isotopes in Icelandic lakes, streams,  
and surface soils collected in 2002, 2003, 2004, 2014, 2019 and 2020 to understand the geographic, geomorphic, and  
20 environmental controls on their regional and interannual variability. We find that lake water isotopes in open-basin (through-  
flowing) lakes reflect local precipitation with biases toward the cold season, particularly in lakes with sub-annual residence  
times. Closed-basin lakes have water isotope and deuterium excess values consistent with evaporative enrichment. Interannual  
and seasonal variability of lake-water isotopes at repeatedly sampled sites are consistent with instrumental records of winter  
snowfall, summer relative humidity, and atmospheric circulation patterns, such as the North Atlantic Oscillation. Summer  
25 surface soil water isotopes span the entire range of seasonal precipitation values in Iceland and appear consistently overprinted  
by evaporative enrichment that can occur throughout the year, although the sampling depths were shallower than rooting depths  
for many plant types. This dataset provides new insight into the functionality of water isotopes in Icelandic environments and  
offers renewed possibilities for optimized site selection and proxy interpretation in future paleohydrological studies on this  
North Atlantic outpost.

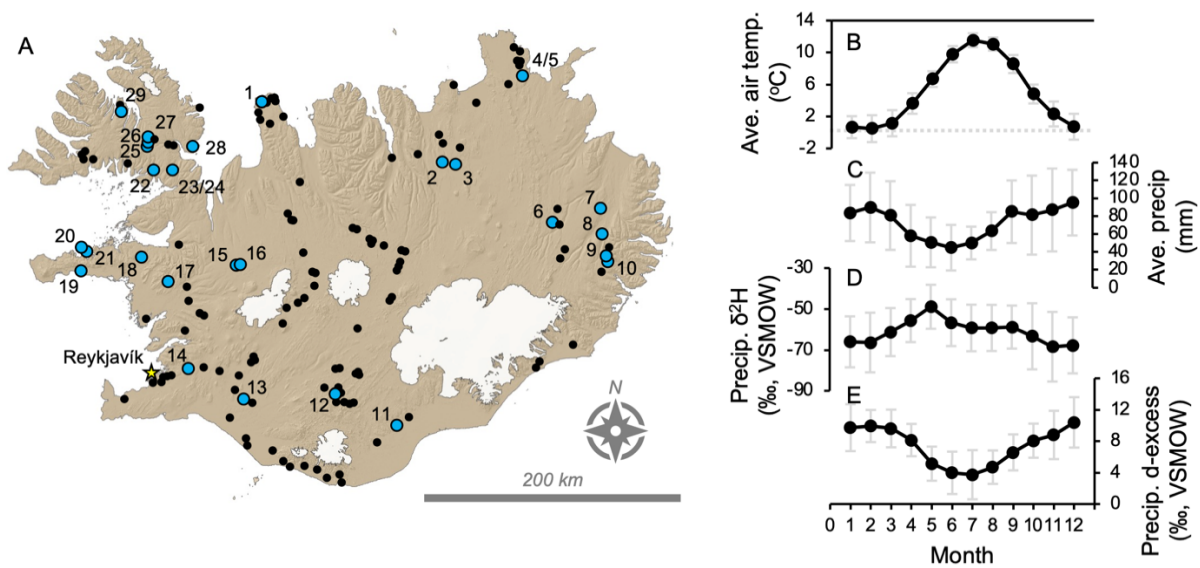
The Arctic hydrological cycle is directly tied to broad earth systems, such as the cryosphere and biosphere, and is expected to change rapidly with continued anthropogenic warming (Serreze et al., 2006). By the end of the century, Arctic precipitation in some regions is forecasted to increase up to 40% – with a progressively larger proportion as rain – due to sea ice retreat, increased local evaporation, and enhanced poleward moisture transport (Bintanja and Selten, 2014; Bintanja and Andry, 2017; 35 Bintanja et al., 2020). As a result, long-lasting impacts to hydrology, glacier mass balance, ocean circulation, ecosystem structure, and global climate system feedbacks are expected (Douville et al., 2021). However, regional-scale predictions of future precipitation changes feature large uncertainties spatially and across models owing to large decadal-scale natural variability and inter-model differences (Bintanja et al., 2020). Developing records that quantify changes in Arctic precipitation beyond the instrumental period in Earth’s history provide one means of quantifying how precipitation has changed with past 40 climate variability and can lead to more refined predictions of future precipitation and its impact on other earth systems (e.g., Linderholm et al., 2020; Konecky et al., 2023). Geologic records of past precipitation are, however, similarly limited at present because there are few ubiquitous proxies that clearly relate to specific aspects of hydrologic cycling (Sundqvist et al., 2014).

Lake sediments are a commonly used archive to reconstruct past environmental change due to their wide geographical distribution, sensitivity to local and regional perturbations, and continuous integration of environmental information at the 45 catchment scale (Adrian et al., 2009). In the Arctic, various physical (e.g., grain size, sediment accumulation rates, varves), biological (e.g., pollen, chironomids, and diatoms), and geochemical proxies (e.g., compound-specific stable isotopes) have been used to infer past patterns of precipitation from lake sediment (Linderholm et al., 2020). Of these, the hydrogen or oxygen stable isotopic composition of aquatic and terrestrial macrofossils and lipids are commonly used because they are abundant in 50 lakes and a dominant proportion of the H or O in the preserved structure is derived from plant growth water, which can then be used to estimate past water isotopes through time (Verbruggen et al., 2011; Rach et al., 2017; Holtvoeth et al., 2019). Changes in the past isotopic composition of precipitation, as recorded by water isotope proxies, can therefore yield important information on the response of regional hydrologic cycles to global changes in climate.

However, the stable isotopes signatures preserved in sedimentary archives must be carefully considered with respect to the growth habitat and reservoir of meteoric water that source organisms likely use, changes in the seasonal bias of 55 precipitation, catchment geometry, and changes in landscape dynamics (Sachse et al., 2012; Cluett and Thomas, 2020; McFarlin et al., 2023). Efforts to map the spatiotemporal variability of modern lake water isotopes in highly seasonal climates have advanced our understanding of the processes that control the isotopic composition of lake water on short and long timescales (Gibson et al., 2002; Leng and Anderson, 2003; Jonsson et al., 2006; Cluett and Thomas, 2020; Gorbey et al., 2022; Kjellman et al., 2022), yet such mapping efforts have not yet been conducted in Iceland. Furthermore, while regional studies 60 are not uncommon for lake water isotopes, similar systematic efforts are limited for soil water isotopes, meaning there is a gap in observations for the growth water utilized by terrestrial plants as it isotopically relates to precipitation. Most calibration work for compound-specific water isotope proxies (e.g., *n*-alkyl lipids) use mean annual precipitation (e.g., Sachse et al., 2012)

yet there are local observations that demonstrate Arctic soil water can be seasonally-biased (Cooper et al., 1991; Throckmorton et al., 2016; Bush et al., 2017; McFarlin et al., 2019; Muhic et al., 2023) and/or evaporatively enriched (Tetzlaff et al., 2018; Eensalu et al., 2023). It is also common to assume that terrestrial plant growth water is restricted to seasonal precipitation because Arctic plant growth is limited to late spring and summer (e.g., Balascio et al., 2013; Curtin et al., 2019; Kjellman et al., 2020; Thomas et al., 2020). These environmental distinctions are important because lake water (aquatic) and precipitation (terrestrial) proxies are often used comparatively to reconstruct hydrologic budgets through time, and differences in the isotopic composition of varying compounds have been used quantitatively to estimate changes in relative humidity (Rach et al., 2017) or seasonal precipitation amounts (Corcoran et al., 2021; Thomas et al., 2020).

In this study, we present modern lake, stream, and soil water  $\delta^2\text{H}$  and  $\delta^{18}\text{O}$  data from a network of sites across Iceland (Fig. 1A). We compare lake and soil water isotopes collected during summer and winter field seasons in 2002, 2003, 2004, 2014, 2019 and 2020 with climatological, geomorphic, and geographic parameters to assess which factors may account for the observed isotopic variability. We also present a nearly year-long timeseries of lake outflow water isotopes collected in 2002. Our data show that in general, lake water isotopes ( $\delta^2\text{H}_{\text{lake}}$ ) in Iceland reflect cold season or annual precipitation with an overprint of evaporative enrichment in closed lake basins. The interannual variability of  $\delta^2\text{H}_{\text{lake}}$  is then related to the specific hydrologic budget (i.e., winters with differing amounts of snowfall and/or years of low relative humidity) and atmospheric circulation patterns for individual years. In contrast to lake water, surface soil water isotopes ( $\delta^2\text{H}_{\text{soil}}$ ) broadly demonstrate values that align with summer-biased precipitation and annual evaporative enrichment despite that most precipitation is delivered in the autumn and winter. Collectively, these data have important implications for the interpretation of water isotope proxies in Icelandic lake sediment records and provide an objective framework within which to estimate past precipitation isotopes in local Holocene archives.



85 **Figure 1: Overview map of Iceland and modern climate. A)** Key lake and soil locations from 2014, 2019 and 2020 are shown with blue circles and numerated (see Table 1 for site information), and additional lakes, ponds and streams from 2002, 2003 and 2004 are shown in black (see Supplemental for site information). **B-E)** Mean and standard deviation of monthly climate and water isotope data from Reykjavik, Iceland for the years 1992-2018: **B)** Mean air temperature (°C) and **C)** mean precipitation (mm) from the IMO (IMO, 2023), and **D)**  $\delta^2\text{H}$  (‰, VSMOW) and **E)** d-excess (‰, VSMOW) from GNIP (IAEA/WMO, 2015).

90 **Table 1: Key sample site information.**

Site #	Site name	Lat (°)	Long (°)	Sample type	Elevation (m)	Residence time (yr)	Hydrologic connectivity	Catchment area (km <sup>2</sup> )	Lake volume (km <sup>3</sup> )
1	Torfdalsvatn	66.0605	-20.3829	Lake/soil	52	2	Closed	2.76	0.0016
2	Másvatn	65.6219	-17.2406	Lake/soil	265	9	Open	19.8	0.0427
3	Mývatn	65.5992	-17.0030	Soil	277	n/a	n/a	n/a	n/a
4	Stóra Viðarvatn	66.2369	-15.8378	Lake/soil	151	17	Open	16.6	0.0803
5	Litla Viðarvatn	66.2408	-15.8064	Lake/soil	142	0.5	Open	1.96	0.0004
6	Gripdeild	65.2070	-15.4454	Lake	562	2.5	Open	17.2	0.0091
7	Urriðavatn	65.3168	-14.4297	Lake	49	8	Open	4.10	0.0099
8	Skriðdalur	65.1271	-14.5381	Soil	119	n/a	n/a	n/a	n/a
9	Skriðuvatn	64.9509	-14.6366	Lake	168	0.1	Open	56.8	0.0049
10	Heiðarvatn	64.9023	-14.5932	Lake/soil	442	1	Open	1.53	0.0016
11	Systravatn	63.7901	-18.0667	Lake/soil	120	1	Open	2.86	0.0023
12	Frostastaðavatn	64.0146	-19.0497	Lake	572	n/a*	Closed	8.50	n/a
13	Vestra Gíslholtsvatn	63.9414	-20.5202	Lake/soil	61	5	Open	4.48	0.0135

14	Leirvogsvatn	64.2019	-21.4635	Lake/soil	212	1	Open	26.4	0.0121
15	Efra Grunnvatn	64.8768	-20.6719	Lake	419	n/a*	Open	3.87	n/a
16	Ulfsvatn	64.8878	-20.5910	Lake	440	n/a*	Open	13.4	n/a
17	Langavatn	64.7790	-21.7594	Lake	217	3	Open	81.3	0.1303
18	Svinavatn	64.9384	-22.2372	Lake/soil	138	0.5	Open	5.72	0.0017
19	Torfavatn	64.8201	-23.1642	Lake/soil	10	0.5	Open	3.10	0.0011
20	Skjaldarvatn	65.0448	-22.7919	Lake/soil	7	0.5	Closed	0.64	0.0001
21	Sauravatn	65.0149	-22.7161	Lake/soil	8	6	Open	0.71	0.0015
22	Berufjarðarvatn	65.5517	-22.1053	Lake/soil	54	0.5	Open	3.28	0.0003
23	Miðheiðarvatn East	65.5535	-21.7807	Lake/soil	382	5	Open	0.91	0.0018
24	Miðheiðarvatn West	65.5534	-21.7916	Lake/soil	390	1.5	Closed	0.52	0.0003
25	Gedduvatn	65.7159	-22.1912	Lake	470	n/a*	Open	3.20	n/a
26	Högnavatn	65.7479	-22.1709	Lake	416	0.5	Open	2.22	0.0004
27	Margrétarvatn	65.7757	-22.1865	Lake/soil	406	1	Open	1.96	0.0006
28	Bæjarvötn	65.7207	-21.4332	Lake	140	2	Open	10.6	0.0100
29	Efstadalsvatn	65.9433	-22.6668	Lake/stream	123	0.1	Open	35.9	0.0014

\*lake water depth not taken to calculate lake volume and residence time

## 2 Regional Setting

Iceland (~103,000 km<sup>2</sup>) is situated in the middle of the northern North Atlantic Ocean. Due to its location at the confluence of major oceanic and atmospheric patterns, Iceland's terrestrial climate is sensitive to variations in the strength and position of these systems (e.g., Hanna et al., 2006; Geirsdóttir et al., 2013, 2020). The southern and western coastlines of Iceland are bathed in relatively warm, saline Atlantic waters whereas the northern and occasionally eastern coastlines are influenced by cool and relatively fresh Arctic and Polar waters (Stefánsson, 1962). Iceland is also proximal to the Icelandic Low, a semi-permanent center of low atmospheric pressure that forms one dipole of the North Atlantic Oscillation (NAO), along with Azores High, and is associated with frequent cyclone activity. This pressure difference between the north and south is the dominant mechanism that controls the strength and location of westerly wind and storm tracks across the northern North Atlantic (Hurrell et al., 2003). Given the different oceanographic regimes surrounding Iceland, incoming air masses are strongly influenced by the Atlantic or Arctic waters over which they originate.

The modern climate of Iceland is generally characterized by strong winds, frequent precipitation, mild winters and cool summers (Einarsson, 1984; Hanna et al., 2004). The coldest part of Iceland is the central highlands and snowfall in winter is more common in the northern regions. The south coast of the island is warmer, wetter, and windier compared to the northern coast (Hanna et al., 2004, 2006). In Reykjavík, southwest Iceland (Fig. 1A), temperatures average near freezing in the winter months and 10°C in summer months (Fig. 1B, IMO, 2023). On monthly timescales, precipitation amount in Reykjavík is inversely related to temperature, with a greater proportion of precipitation falling during autumn and winter compared to

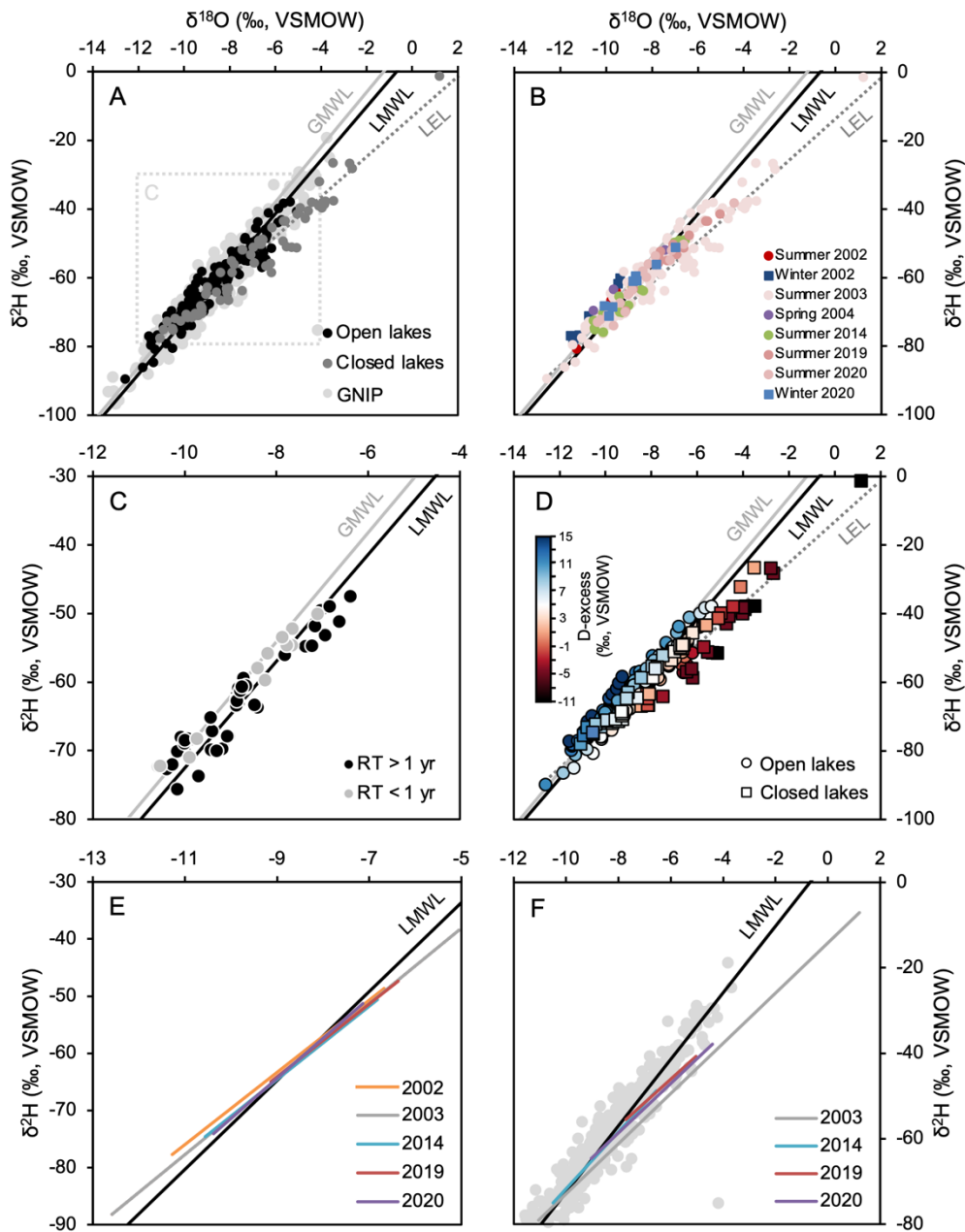
110 summer (Fig. 1C, IMO, 2023). However, on longer-term decadal timescales, precipitation amount shows a moderate positive correlation with temperature (Hanna et al., 2004). The isotopic composition of precipitation recorded at the Global Network of Isotopes in Precipitation (GNIP) station in Reykjavík is on average most depleted during the winter months and most enriched in the month of May, although there is large year-to-year variability (Fig. 1D, IAEA/WMO, 2015). This variability reflects the competing moisture sources to Iceland and likely explains a lack of correlation between  $\delta^2\text{H}$  of precipitation and  
115 air temperature (Fig. S1A). Deuterium excess (d-excess) values of precipitation are generally highest during the winter and lowest during the summer (Fig. 1E, IAEA/WMO, 2015). Reykjavík's annual Local Meteoric Water Line (LMWL, Fig. 2, IAEA/WMO, 2015) of:

$$\delta^2\text{H} = 7.78 \times \delta^{18}\text{O} + 5.29 \quad (1)$$

has a similar slope but lower d-excess than the Global Meteoric Water Line (GMWL, Craig, 1961) of:

120  $\delta^2\text{H} = 8 \times \delta^{18}\text{O} + 10 \quad (2)$

LMWLs of the different seasons (winter, DJF; spring, MAM; summer, JJA; and autumn, SON) are variable, where summer plots distinctly below the annual LMWL and winter, spring, and autumn plot closer to and typically above the LMWL (Fig. S1B). In hydrologically closed lake surface water systems, kinetic fractionation from evaporation will result in isotopically enriched water relative to precipitation and low d-excess values (Feng et al., 2016; Bowen et al., 2018). These are more  
125 appropriately described by a Local Evaporation Line (LEL, Fig. 2), which plots below the LMWL (Gat, 1996).



130

Figure 2: Lake water stable isotopes from Iceland plotted against the GMWL (Craig, 1961), LMWL (GNIP Reykjavik, IAEA/WMO, 2015), and LEL (closed lakes, this study). Samples are separated by A) hydrologic connectivity for all lakes (open/closed,  $n=223$ ), B) year and season of collection for all lakes ( $n=223$ ), C) residence time for open lakes from 2014, 2019, and 2020 (RT,  $n=61$ ), and D) d-excess values for all lakes ( $n=223$ ). Panels E and F show annual LMWLs (open lakes, E) and LELs and slopes (closed lakes, F), respectively, based on lake water isotope values in comparison to the LMWL derived from GNIP data in Reykjavik (black line). Raw GNIP data plotted as gray points.

The mountainous topography of the island, particularly in the southeast, produces a strong orographic effect on precipitation, with annual precipitation in excess of 5000 mm atop glacial summits, such as Vatnajökull and Mýrdalsjökull (Einarsson, 1984; Crochet et al., 2007). Along with southerly to southeasterly prevailing winds, precipitation amount tends to be heaviest in south and southeast Iceland with a rain shadow over the central highlands, especially north of Vatnajökull (Einarsson, 1984). This geography results in distillation of air masses as they move inland and thus progressively more depleted  $\delta^2\text{H}$  values of precipitation at higher altitudes farther from the coastline (Bödvarsson, 1962; Friedman et al., 1963; Árnason, 1976). In addition, temperature and variations in moisture source also exert strong controls on precipitation isotopes in Iceland (Bödvarsson, 1962; Friedman et al., 1963) and across the North Atlantic (Dansgaard, 1964; Jouzel et al., 2000; Bowen and Revenaugh, 2003; Sodemann, et al., 2008; Steen-Larsen et al., 2015). Moisture sources in Iceland are particularly susceptible to variation of the NAO, which impacts the strength and location of westerly winds and storm tracks on interannual to decadal cycles, particularly during winter months (Hurrell et al., 2003; Olsen et al., 2012). The impact of the NAO is apparent in the modern  $\delta^2\text{H}$  and d-excess values of precipitation in Reykjavík, which show negative ( $r = -0.37$ ) and positive correlations ( $r = 0.45$ ) with the NAO index, respectively (Baldini et al., 2008).

### 3 Methods and Materials

#### 3.1 Sample Collection

We present a compilation of water isotope data collected over multiple field campaigns in 2002, 2003, 2004, 2014, 2019, and 2020 (Fig. 1A). Between 2002 and 2004, we collected lake water samples from 135 lakes and ponds (mainly in summers, with several sites revisited in February/March, Fig. 2B), as well as geothermal streams ( $n=2$ ), non-geothermal streams and lake water outflow ( $n=8$ ), and snow meltwater ( $n=3$ ) (Fig. S3). The sample set from 2003 ( $n=148$ ) is particularly important as it contains a large number of closed lake basins that allow us to make robust estimates of the LEL (Fig. 2A-B). The sample sets from 2002 ( $n=20$ ) and 2004 ( $n=3$ ) are comparatively small (Fig. 2B) and since the same lakes were not revisited between the three years, the 2002-2004 datasets are not used to assess detailed interannual variability of lake water isotopes. For one lake in NW Iceland (Efstadalsvatn), Ragna Aðalsteinsdóttir, the farmer residing at the site, collected water samples from the lake's outflow every 2 weeks between March and November 2002. We then visited a total of 26 lakes in summer 2014 ( $n=14$ ), summer 2019 ( $n=17$ ), winter 2020 ( $n=4$ ), and summer 2020 ( $n=19$ ) (Fig. 2B and Table 1). Of lakes visited during the summer field season in 2014, 7 were revisited in summer 2019 and 2020. All lakes visited during the summer field season in 2019 were also visited during the subsequent summer field season in 2020. This repeat sampling strategy for 2014-2020 lake water forms the basis of our analysis focused on the interannual variability of lake water isotopes. During each field season, we sampled surface water from the center of each lake using Nalgene bottles. For select lakes in summer 2019 ( $n=2$ ) and winter 2020 ( $n=4$ ), we also sampled bottom water from the center of the lake using a Niskin water sampler. All water samples were immediately transferred to glass vials with no headspace, sealed with Teflon and/or electrical tape to prevent evaporation, and



refrigerated prior to isotopic analysis. Further details on sampling locations, additional proxy data, and associated water chemistry for the 2014, 2019 and 2020 datasets can be found in Florian (2016) and Raberg et al. (2021a, 2021b, 2023).

We sampled a total of 23 surface soil samples from 18 locations in summer 2019 (Fig. 1A and Table 1). Of the 18 locations, 16 are within the catchments of lakes sampled for lake water during the same field season as described above. The two remaining soil sites (Skriðdalur and Mývatn) do not have corresponding lake water samples as they were targeted to provide forested endmembers. Soil samples were collected to evenly integrate the top 10 cm of soil. Each soil sample was sampled in 50 mL Falcon tubes, which were fully filled, sealed with Teflon tape, and kept refrigerated to prevent evaporation of water before isotopic analysis. Further details on sampling locations and additional proxy data datasets can be found in Raberg et al. (2024).

175

### 3.2 Water isotope analysis

Lake water samples were analyzed in the Stable Isotope Laboratory at the Institute of Arctic and Alpine Research, University of Colorado Boulder. Samples from 2002 to 2004 were measured via mass spectrometry methods using the CO<sub>2</sub> equilibration method for oxygen isotopes (Epstein and Mayeda, 1953) and the uranium reduction method for hydrogen isotopes (Vaughn et al., 1998). For the remainder of the sample set, stable isotopes measurements ( $\delta^2\text{H}$  and  $\delta^{18}\text{O}$ ) were measured using a Picarro L2130-i Cavity Ring-Down Mass Spectrometer. Each sample was run 6 times, with the first three data points discarded to prevent memory isotope effects. Mean values were calculated using the final three measurements. A replicate was run after ~20 samples to check for reproducibility. We report data using  $\delta$  notation in per mil (‰) relative to VSMOW:

$$\delta = 1000 \times \left( \frac{R_{\text{sample}}}{R_{\text{VSMOW}}} - 1 \right) \quad (3)$$

185 where R is  $^2\text{H}/^1\text{H}$  and  $^{18}\text{O}/^{16}\text{O}$ . Samples were analyzed against a suite of secondary laboratory standards that have been vigorously calibrated to primary reference materials, VSMOW2 and SLAP. The secondary laboratory standards (Florida water, Boulder water, and Antarctic water) have  $\delta^2\text{H}/\delta^{18}\text{O}$  values of -2.82/-0.76, -111.65/-14.15, and -239.13/-30.30 ‰, and an analytical error of 1 ‰ and 0.1 ‰, respectively.

All soil samples were sent to the University of Utah Stable Isotope Research Facility for soil water vacuum line extraction and isotope measurements (see Cook et al., 2017 for methodology). Values are reported in delta notation relative to VSMOW.

Deuterium excess (d-excess) values were calculated after Dansgaard (1964) as:

$$\text{d-excess} = \delta^2\text{H} - 8 \times \delta^{18}\text{O} \quad (4)$$

Given that  $\delta^2\text{H}$  and  $\delta^{18}\text{O}$  values are generally correlative, we focus our discussion on  $\delta^2\text{H}$  and d-excess values for simplicity.

### 195 3.3 Additional site information

For each location, we compiled and computed additional information to test which environmental parameters are related to lake and soil water  $\delta^2\text{H}$  values.

For all lakes, we determined whether they were open or closed basins via the presence/absence of surface outflow in summer 2023 satellite imagery, and measured elevation (m) and closest distance from coast (km) in Google Earth. We recognize there may be some ambiguity in this binary open/closed designation as some lakes that are at times open basins can be closed in late summer or in a year of low snowpack, for example. For only lakes visited in 2014, 2019, and 2020, water depths were measured using a weighted measuring tape from the lake depocenter, and lake surface area (km<sup>2</sup>) and lake catchment area (km<sup>2</sup>) were measured in QGIS using the ÍslandsDEM (2x2m resolution, Landmælingar Íslands). A complete model of lake bathymetries is unavailable, so we estimate lake volumes (V, km<sup>3</sup>) for the 2014-2020 lakes based on half of an ellipsoid:

$$V = \frac{1}{2} \left( \frac{4}{3} \times A_{lake} \times Z \right) \quad (5)$$

where  $A_{lake}$  is the lake surface area and  $Z$  is the maximum depth of the lake. Lake water residence times (RT) were calculated after Jonsson et al. (2009):

$$RT = \frac{Lake\ volume}{Runoff} \quad (6)$$

where

$$Runoff = Catchment\ Area \times Precipitation \times \frac{R}{P} \quad (7)$$

and  $R/P$  is the runoff/precip ratio (Gibson and Edwards, 2002), where the latter is less than 1 because some precipitation that falls in a lake catchment is lost to evaporation, transpiration, sublimation, or groundwater flow. Quantitative information on these processes for Icelandic lakes is limited, so we use an  $R/P$  value of 0.5, consistent with existing Arctic lake studies elsewhere (Gibson et al., 2002; Gorbey et al., 2022). We acknowledge that the  $R/P$  value may vary spatially between sites and between years for individual lakes experiencing changes in precipitation-evaporation balance. Additionally, the role of groundwater is an important unknown. However, as we are more broadly interested in the correlation of residence time with water stable isotopes, an estimate of 0.5 is deemed sufficient to address this variable. Finally, we obtained mean annual air temperature (MAT), mean annual precipitation (MAP), as well as seasonal means from the closest weather station to lakes sampled in 2014-2020 operated by the Icelandic Meteorological Office (IMO, 2023), including the number of years preceding sample collection equivalent to individual lake residence times. As the elevation of the closest weather station often differs from the elevation of the lake site, we also scaled temperature integrations for each lake according to the global lapse rate (6 °C/km).

For soil sites, we used Google Earth-derived elevation and distance from coastline information as described above for lake sites. In addition, we measured soil water content (SWC):

$$SWC = \frac{wet\ mass - dry\ mass}{dry\ mass} \times 100 \quad (8)$$

and *in situ* soil temperatures for one year using iButton loggers deployed at 10 cm soil depth in summer 2019 and collected in summer 2020 (Raberg et al., 2021b). iButton temperatures were recorded every 3 hours, which we then used to produce mean annual and seasonally integrated values. We additionally used iButtons to measure *in situ* surface and bottom

230 water temperatures at 6-hour intervals over the same period for four lake sites (Raberg et al., 2021b). Finally, we include information on the dominant vegetation cover above each soil sample that we observed in the field during collection: forest (*Betula pubescens*), dwarf shrub (*Betula nana*), heath shrub (Ericaceae), moss/lichen/prostrate, grass, and moss. Except for Torfavatn, which is classified as a histosol (TOC > 20 %), all collected soils are classified as brown-gleyic andosols (TOC < 12 %) (Arnalds, 2004).

### 235 3.4 Statistical analyses

We computed Pearson correlation matrices and  $p$ -values to assess the relationship between water isotopes,  $d$ -excess and various environmental parameters using the open-source software R (R Core Team, 2022) and the corrrplot package (Wei and Simko, 2021). To assess the significance of lake and soil water isotope population differences and of water isotopes and environmental variable correlations, we performed student  $t$ -tests. We define significant results as those with  $p$ -values < 0.05.

240

## 4 Results

For all lakes (2002-2020), the  $\delta^2\text{H}$  of lake water ( $\delta^2\text{H}_{\text{lake}}$ ) ranges from -89.53 to -1.35 ‰ and generally falls within the natural range of meteoric water isotopes recorded at the Reykjavík GNIP station (Fig. 2). Spatially,  $\delta^2\text{H}_{\text{lake}}$  values tend to be more depleted in northern Iceland compared to the south (Fig. S2). The  $d$ -excess values of lake water range from -11 to 15.71 ‰, where open lakes are typically higher, ranging from -4.30 to 15.71 ‰ (Fig. 2D) and exhibit no clear spatial pattern (Fig. S2). The  $\delta^2\text{H}$  of stream, snowmelt and geothermal spring water values also fall within the natural range of meteoric water isotopes, ranging from -89.55 to -55.66 ‰, -79.11 to -60.13 ‰, and -79.37 to -73.93 ‰, respectively (Fig. S3), and  $d$ -excess values range from -6.58 to 14.91 ‰. In general, lake water isotopes for all open lakes plot along the LMWL, whereas water isotopes for closed lakes evolve along a LEL (Fig. 2A). Using data from all closed lakes, the LEL is described by the following relationship:

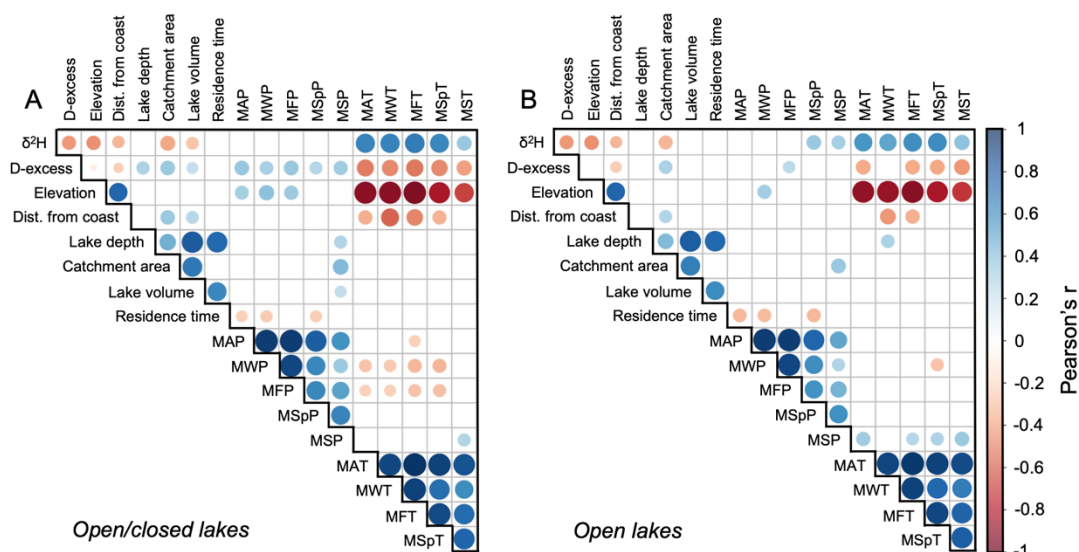
$$250 \quad \delta^2\text{H} = 5.90 \times \delta^{18}\text{O} - 13.09 \quad (r = 0.97, p < 0.05) \quad (9)$$

Using data from 2014, 2019, and 2020, open lakes that have residence times of less than one year (efficient flushing) follow the annual LMWL closely. In contrast, open lakes that have residence times over one year (less efficient flushing) feature larger deviations from the LMWL (Fig. 2C).

255 For all 2014-2020 lakes (open/closed), we find strong correlations between  $\delta^2\text{H}_{\text{lake}}$  and mean annual ( $r = 0.66, p < 0.05$ ), mean winter ( $r = 0.67, p < 0.05$ ), mean autumn ( $r = 0.69, p < 0.05$ ), and mean spring temperature ( $r = 0.64, p < 0.05$ ), and a weak but still significant correlation with mean summer temperature ( $r = 0.38, p < 0.05$ ) (Fig. 3A). However, we find no significant correlations between mean annual precipitation amount and  $\delta^2\text{H}_{\text{lake}}$  values nor any seasonal precipitation amount (Fig. 3A), which may be in part due to inherent spatial variability of precipitation and the use of weather stations with varying distances to lakes. If closed lake basins are excluded, we find similar relationships between  $\delta^2\text{H}_{\text{lake}}$  and temperature (Fig. 3B).

260

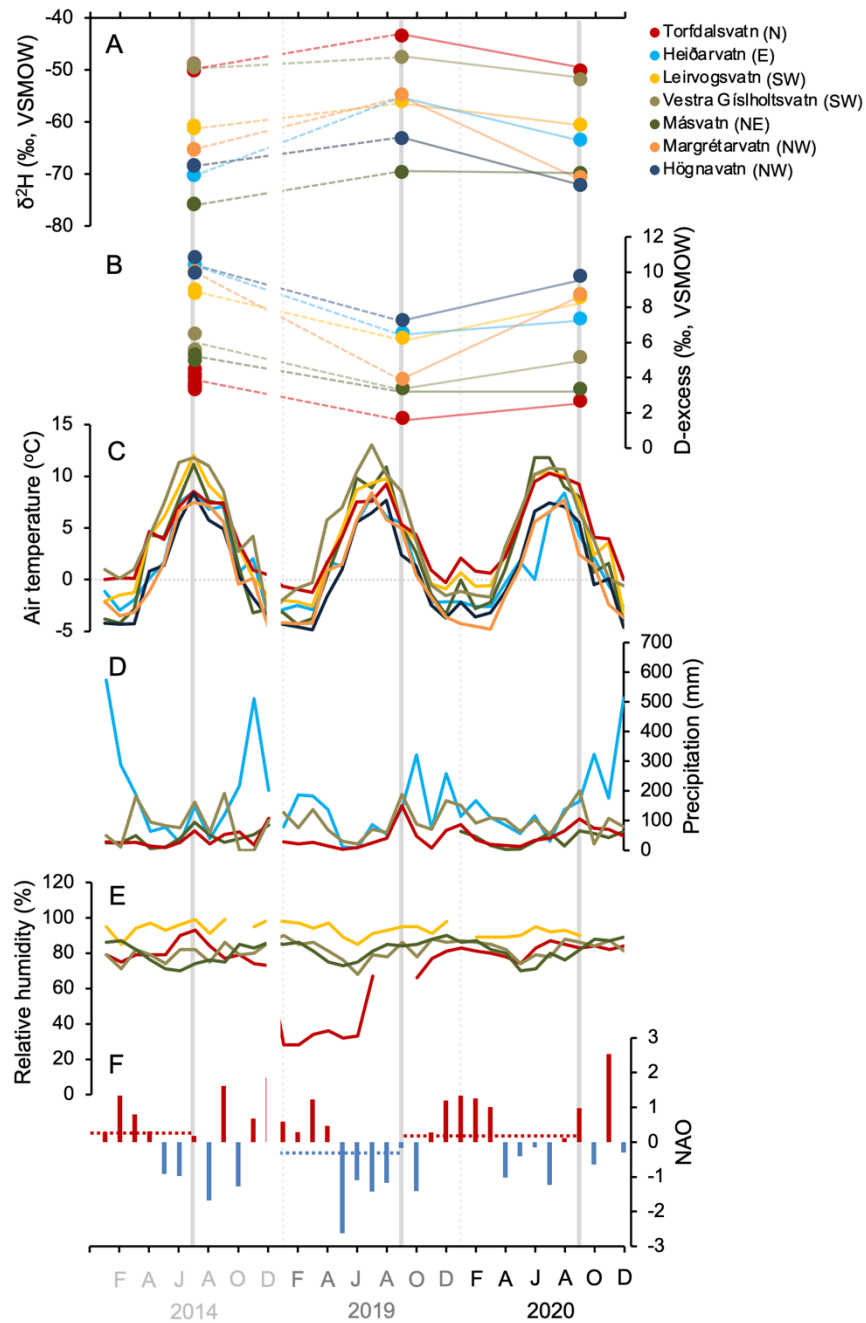
However, excluding closed lakes also reveals that open lakes are weakly correlated with mean spring ( $r = 0.37, p < 0.05$ ) and mean summer precipitation amount ( $r = 0.33, p < 0.05$ ) (Fig. 3B). Using the entire 2002-2020 lake dataset, we find a moderate correlation between  $\delta^2\text{H}_{\text{lake}}$  values and elevation ( $r = -0.46, p < 0.05$ ) and a weak correlation between  $\delta^2\text{H}_{\text{lake}}$  values and distance from coastline ( $r = -0.33, p < 0.05$ ) (Fig. 3). Lake water d-excess values show weak to moderate correlations with most variables in all lakes, including elevation, distance from coast, precipitation amount and temperature (Fig. 3A). However, when closed lakes are excluded, d-excess values are no longer correlated with precipitation amounts, except for mean autumn precipitation ( $r = -0.44, p < 0.05$ ) (Fig. 3B). For repeatedly sampled lakes, summer  $\delta^2\text{H}_{\text{lake}}$  values are relatively more enriched in 2019 than summer  $\delta^2\text{H}_{\text{lake}}$  values in 2014 and 2020 (Figs. 4A and 5). Summer d-excess values are also relatively lower in 2019 compared to 2014 and 2020 (Fig. 4B and 5). For the 4 lakes that have seasonal data from 2019 and 2020, winter surface  $\delta^2\text{H}_{\text{lake}}$  values are more depleted than summer surface  $\delta^2\text{H}_{\text{lake}}$  values, with differences ranging from -0.54 to 16.51 % (Fig. 6A). Winter lake water d-excess values are relatively higher than summer d-excess values, except one lake, Stóra Viðarvatn (Fig. 6B). For the 2002 lake outflow stream timeseries from Efstadalsvatn (Fig. 1A),  $\delta^2\text{H}$  values range from -78.75 ‰ at the end of April to -70.68 ‰ at the end of June and are generally  $^2\text{H}$ -enriched between June and August (Fig. 7A), and d-excess values range from 11.13 to 14.29 ‰ with the highest values obtained in June (Fig. 7B).



275

280

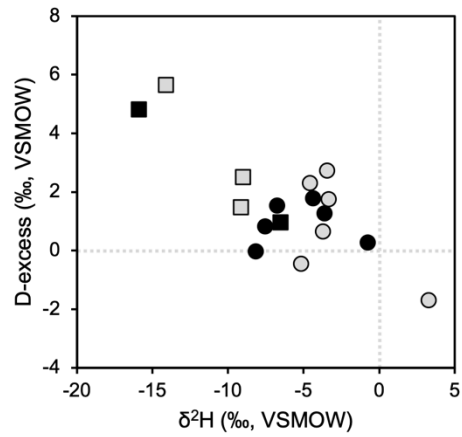
**Figure 3: Pearson correlation matrices for A) all open and closed lakes and B) only open lake water  $\delta^2\text{H}$  (‰, VSMOW), d-excess, and various climatological, geographic, and environmental parameters. Elevation and distance from coastline ( $n=223$ ); lake depth, catchment area, lake volume ( $n=80$ ); residence time and annual and seasonal precipitation amount ( $n=61$ ); and annual and seasonal temperature ( $n=80$ ). MAP, mean annual precipitation; MWP, mean winter precipitation; MFP, mean autumn precipitation; MSPP, mean spring precipitation; MSP, mean summer precipitation; MAT, mean annual temperature; MWT, mean winter temperature; MFT, mean autumn temperature; MSPT, mean spring temperature; MST, mean summer temperature. Empty boxes reflect statistically insignificant correlations ( $p > 0.05$ ). Note that lake water sampled in 2002-2004 are only used in the elevation and distance from coast regression analyses.**



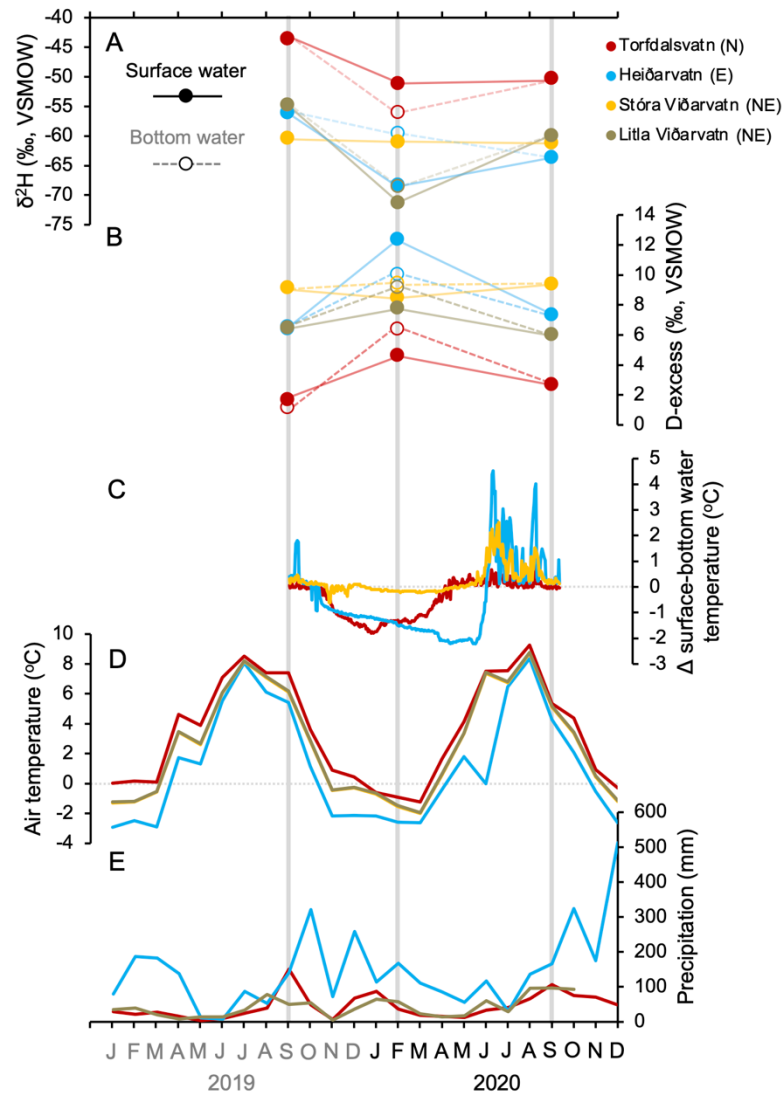
285

Figure 4: Interannual variability of lake surface water  $\delta^2\text{H}$  compared with climatological datasets. A)  $\delta^2\text{H}$  (‰, VSMOW) of surface water from 7 lakes collected in July 2014, February 2019, and September 2020, B) corresponding d-excess values (‰, VSMOW), C) mean monthly air temperature ( $^{\circ}\text{C}$ ) for each lake, D) mean monthly precipitation (mm) for 4 lakes (not available for Leirvogsvatn, Margrétarvatn and Högnavatn), E) mean monthly relative humidity (%) for 4 lakes (not available for Heiðarvatn, Margrétarvatn, and Högnavatn), and F) mean monthly NAO (NOAA National Centers for Environmental Information, 2023). For E, NAO annual means are denoted by dashed horizontal lines and calculated based on the 12 months prior to lake water sampling (red = positive, blue = negative).

290

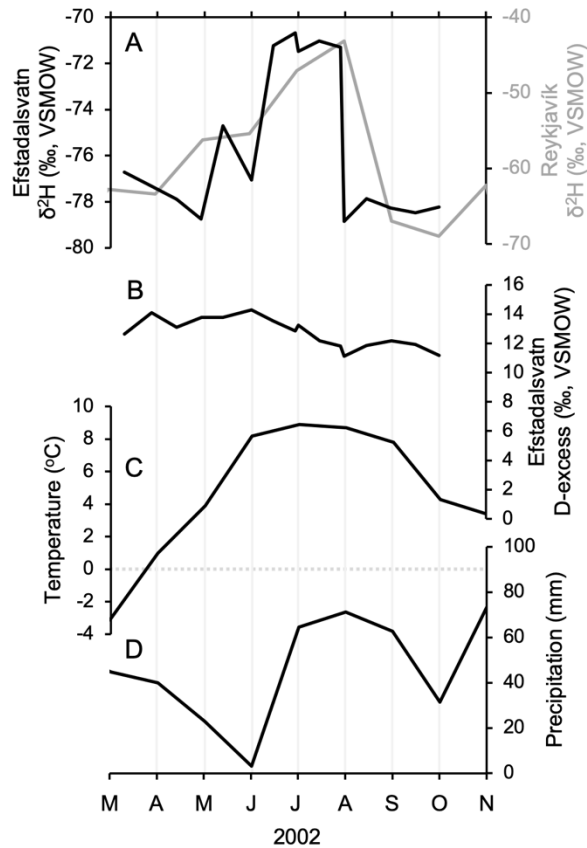


295 **Figure 5: Difference of September 2020 and 2019 lake surface water  $\delta^2\text{H}$  (‰, VSMOW) vs d-excess (‰, VSMOW) from 17 lakes. Squares denote lakes located on the NW highlands (Fig. 1), black and gray fill denote lakes with residence times >1 and <1 year, respectively.**



300 **Figure 6: Interannual variability of lake surface and bottom water  $\delta^2\text{H}$  compared with climatological datasets. A)  $\delta^2\text{H}$  (‰, VSMOW) of surface and bottom water from 4 lakes collected in September 2019, February 2020, and September 2020, B) corresponding d-excess values (‰, VSMOW), C) difference of *in situ* lake surface and bottom water temperature ( $^{\circ}\text{C}$ ) (not available for Litla Viðarvatn, Raberg et al., 2021b), D) mean monthly air temperature ( $^{\circ}\text{C}$ ) for each lake, and E) mean monthly precipitation (mm) for each lake (note Litla Viðarvatn is the same as Stóra Viðarvatn).**

305



**Figure 7: Timeseries of A) stream outflow  $\delta^2\text{H}$  (‰, VSMOW) and B) d-excess (‰, VSMOW) from Efstadalsvatn between March and October 2002 in comparison to local instrumental weather data: C) air temperature ( $^{\circ}\text{C}$ ), and D) precipitation (mm). Reykjavík GNIP precipitation  $\delta^2\text{H}$  (‰, VSMOW) is shown in panel A (gray) for comparison (IAEA/WMO, 2015).**

310

$\delta^2\text{H}$  of surface soil water ( $\delta^2\text{H}_{\text{soil}}$ ) values from 2019 range from -91.34 to -31.71 ‰ and fall within the natural range of meteoric water isotopes recorded at the Reykjavík GNIP station across all seasons (Fig. 8). Due to the small size of the  $\delta^2\text{H}_{\text{soil}}$  dataset compared to lakes, it is difficult to assess if there is any clear spatial variability (Fig. S4). Soil water d-excess values range from -5.04 to 9.84 ‰ (Fig. 8B). In general, surface soil water isotopes fall below the LMWL, although samples

315

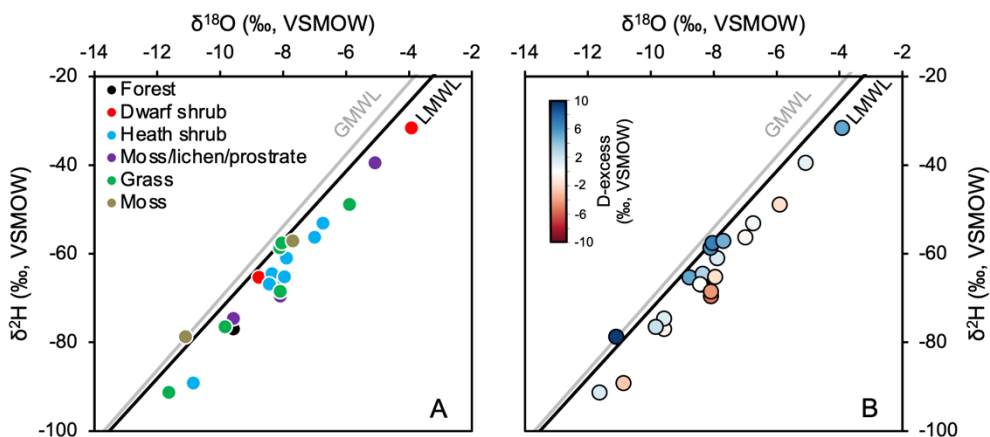
collected from beneath densely vegetated moss or grass cover plot along the LMWL (Fig. 8). Five of the sites have 2 soil samples from the same lake catchment, with the difference of  $\delta^2\text{H}_{\text{soil}}$  values ranging from 1.11 to 21.65 ‰. In general, surface soil waters are  $^2\text{H}$ -enriched compared to surface lake waters from the same year, although 4 soil water samples are  $^2\text{H}$ -depleted compared to surface lake water at the location. For temperature, we find a moderate correlation between  $\delta^2\text{H}_{\text{soil}}$  and *in situ* soil mean summer temperature ( $r = 0.51$ ,  $p < 0.05$ ) and no significant correlations between mean annual, mean winter, mean

320

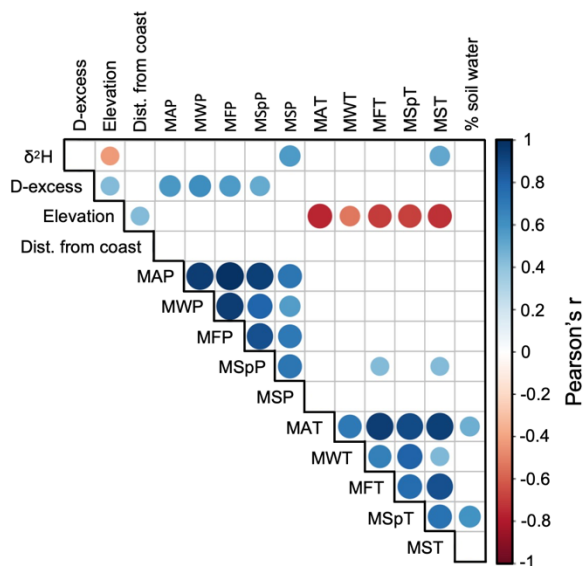
autumn, and mean spring temperature and  $\delta^2\text{H}_{\text{soil}}$  values (Fig. 9). For precipitation, we find a moderate correlation between  $\delta^2\text{H}_{\text{soil}}$  and mean summer precipitation amount ( $r = 0.56$ ,  $p < 0.05$ ) and no significant correlation between mean annual, mean



winter, mean autumn, and mean spring precipitation amount and  $\delta^2\text{H}_{\text{soil}}$  values (Fig. 9). In contrast, soil water d-excess is positively correlated with mean annual ( $r = 0.58, p < 0.05$ ), mean winter ( $r = 0.61, p < 0.05$ ), mean autumn ( $r = 0.56, p < 0.05$ ), and mean spring precipitation amount ( $r = 0.50, p < 0.05$ ), but not mean summer precipitation amount (Fig. 9). We also find weak to moderate correlations between d-excess and mean annual ( $r = 0.58, p < 0.05$ ), mean autumn ( $r = 0.57, p < 0.05$ ), mean spring ( $r = 0.50, p < 0.05$ ), and mean summer precipitation amount ( $r = 0.33, p < 0.05$ ) (Fig. 9). We find moderate correlations between  $\delta^2\text{H}_{\text{soil}}$  and elevation ( $r = -0.43, p < 0.05$ ) and d-excess and elevation ( $r = 0.43, p < 0.05$ ) and no significant correlation with distance from coast (Fig. 9). Finally, we find no significant correlation between  $\delta^2\text{H}_{\text{soil}}$  and soil water content (Fig. 9).



330 **Figure 8: Soil water stable isotopes ( $n=23$ ) plotted against the GMWL and LMWL. A) samples colored according to the overlying vegetation as described during collection in September 2019 and B) samples colored by d-excess values (‰, VSMOW).**



335 **Figure 9: Pearson correlation matrix of 2019 soil water  $\delta^2\text{H}$  (‰, VSMOW), d-excess, and various climatological, geographic, and environmental parameters ( $n=23$ ). Empty boxes reflect statistically insignificant correlations ( $p > 0.05$ ).**

Student *t*-tests for lake and soil water populations show that  $\delta^2\text{H}$  and  $\delta^{18}\text{O}$  values are not statistically different between the two groups ( $p > 0.05$ ). However, student *t*-tests for d-excess, which takes in account both  $\delta^2\text{H}$  and  $\delta^{18}\text{O}$  variables, show that lake and soil water populations are statistically different from one another ( $p < 0.05$ ). This supports the separate assessment  
340 of lake and surface soil water isotopes in Iceland.

## 5 Discussion

### 5.1 Lake water isotopes

#### 5.1.1 Environmental controls

345 Icelandic lake water isotopes from 2002 to 2020 generally plot close to or on the LMWL (estimated using GNIP data from Reykjavík, IAEA/WMO, 2015), demonstrating that most lake water in Iceland is isotopically consistent with unmodified precipitation and a low temperature/high precipitation environment. Lakes with  $\delta^2\text{H}_{\text{lake}}$  values that generally plot on the LMWL are all open lakes ( $n = 149$ , Fig. 2A) with active inflows providing recharge from meteoric water that falls in the catchment and is stored according to lake residence times (Jonsson et al., 2009). For 2014 to 2020 lakes, the strongest predictor of  $\delta^2\text{H}_{\text{lake}}$   
350 in open lakes is cold season temperatures: winter ( $r = 0.53$ ,  $p < 0.05$ ), autumn ( $r = 0.62$ ,  $p < 0.05$ ), and spring ( $r = 0.63$ ,  $p < 0.05$ ) (Fig. 3B). However, due to the lack of correlation between GNIP  $\delta^2\text{H}$  values of precipitation and air temperature (Fig. S1A), we do not interpret  $\delta^2\text{H}_{\text{lake}}$  as a function of temperature, but rather precipitation sourced from cool seasons. This is supported by the fact that open lakes with residence times of less than one year (efficient flushing) plot close to the LMWL (Fig. 2C), which was found to be biased towards the cold season in Reykjavík GNIP precipitation data (Fig. S1B) and the fact  
355 that a larger proportion of precipitation is delivered in autumn/winter (Fig. 1C). Surprisingly, we observe no relationship between precipitation amount and  $\delta^2\text{H}_{\text{lake}}$  (Fig. 3B), which may be due to the large standard deviation of seasonal precipitation amounts recorded at the Reykjavík GNIP station (Fig. 1C). Open lakes that have residence times of greater than one year (less efficient flushing) deviate from the LMWL more than lakes with residence times less than one year (Figs. 2C and S1). Following the seasonal bias of LMWLs (Fig. S1B), this indicates that the dominant proportion of precipitation falling in these  
360 lake catchments falls in the cold season (plots close to annual LMWL) as well as possibly summer (plots below annual LMWL). For the latter “summer” lakes, the low corresponding d-excess values imply there is some degree of seasonal evaporation (Fig. 2D), meaning that precipitation may still be dominantly sourced from cold seasons, but that repeated episodes of evaporation may obscure the seasonal signal in lakes with longer residence times.

Several other mechanisms also help to explain the trends observed in Icelandic lake water isotopes. First, 49 lakes in  
365 the entire dataset (2002 to 2020) are closed basins meaning that the meteoric water that falls in the catchment is contained until

it is lost through evaporation. In Iceland, the effect of evaporation (kinetic fractionation) is observed through the deviation of closed lakes' water isotope values along the LEL and relatively low d-excess values (Fig. 2D). Given the maritime and humid climate of Iceland, and that some of the evaporative lakes are located on the coast, this observation contrasts with documented lake water isotopes in the higher-latitude Arctic where evaporation is minimal in coastal lakes (Leng and Anderson, 2003; Cluett and Thomas, 2020; Kjellman et al., 2022). Compared to these other Arctic lake studies, we hypothesize that the relatively warmer temperature, low amounts of summer precipitation and high wind speeds in Iceland, particularly along the coast and in the highlands (Einarsson, 1984), may contribute to enhanced seasonal evaporation during the relatively longer open water season in these lakes (e.g., Feng et al., 2016; Gonfiantini et al., 2020). In addition, as winds are typically strongest in winter (Einarsson, 1984), a partially ice-free cool season, when the water-air temperature difference is greatest, may contribute to enhanced lake water evaporation as well. Second, we observe moderate and weak correlations between  $\delta^2\text{H}_{\text{lake}}$  in all lakes (2002 to 2020) and two geographic parameters, respectively: elevation ( $r = -0.46, p < 0.05$ ) and distance from coastline ( $r = -0.33, p < 0.05$ ) (Fig. 3A). Icelandic lakes that are farther inland tend to be at higher elevation, thus Rayleigh distillation is also a control on the spatial variability of lake water isotopes in Iceland, consistent with other surface water, near-surface groundwater, and precipitation stable isotopes studies (Bödvarsson, 1962; Friedman et al., 1963; Árnason, 1976; Stefánsson et al., 2019).

### 5.1.2 Interannual variability

LMWLs calculated from open lakes in the years 2002, 2003, 2014, 2019, and 2020 reveal similarities and differences that are likely driven by broad annual changes in climate across Iceland (Fig. 2E). First, for open lakes, we observe that 2002 stands out with a LMWL slightly above the other years, which are all similar in slope and intercept (Fig. 2E). The samples from 2002 were all collected from the Northwest peninsula, which is characterized by a cooler climate and a greater proportion of precipitation falling as snow (Einarsson, 1984). Following our seasonal LMWL analysis of Reykjavík GNIP data, the higher intercept of the 2002 lake water LMWL relative to the GNIP LMWL is consistent with this year reflecting a greater proportion of isotopically depleted winter precipitation (Fig. S1B). The lower intercepts of lake water LMWLs across the other years (2003, 2014, 2019, 2020, Fig. 2E) is consistent with spring and autumn LMWLs (Fig. S1B) and likely reflects the inclusion of lakes that receive relatively less amounts of winter snow. In any case, these data demonstrate that broadly, the seasonality of lake water isotopes is consistent with cold-season precipitation.

LELs calculated from closed lakes in the years 2003, 2014, 2019, and 2020 also reveal similarities and differences that are likely driven by broad changes in Icelandic climate (Fig. 2F). The intersection of the LEL, defined from closed lake basin water isotopes, and the LMWL of precipitation is commonly used to infer the isotopic composition of lake water input prior to evaporative enrichment (e.g., Gibson et al., 2016). The annual LELs show that 2019 has the highest LEL-LMWL intercept, followed by 2020, 2014, and 2020, all of which fall within the range of GNIP data from Reykjavík (Fig. 2F). Some high latitude studies infer such changes to reflect changes in the seasonality of precipitation, where higher (lower) LEL-LMWL intercepts reflect more summer (winter) precipitation (e.g., Kjellman et al., 2022). However, the seasonality of Reykjavík

precipitation spans the range of LEL-LMWL intercepts, and as previously noted, is better reflected in seasonal LMWLs (Fig. 400 S1B). However, we do note that the slope of the annual LELs derived from lake water isotopes varies between years, where 2019 is the shallowest ( $m=5.5$ ), followed by 2020 ( $m=5.8$ ), 2003 ( $m=5.9$ ), and 2014 ( $m=6.7$ ) (Fig. 2F). Under the assumption that LELs are predominately the result of variations in precipitation-evaporation balance and that all lakes respond similarly, the slope of LELs can be used as an indicator of relative humidity variability in high latitude lakes, where lower slopes reflect increased lake water evaporation (e.g., Leng and Anderson, 2003; Kopec et al., 2018). Hence, these data suggest that 2019 was 405 relatively dry and 2014 relatively wet compared to 2003 and 2020.

Seven lakes in Iceland were sampled for surface lake water isotopes during September 2014, 2019, and 2020, and demonstrate interannual  $\delta^2\text{H}_{\text{lake}}$  variability ranging from 0.24 (Margrétarvatn, NW Iceland) to 17.88 ‰ (Heiðarvatn, E Iceland) (Fig. 4A) and d-excess variability ranging from 1.69 (Torfdalsvatn, N Iceland) to 10.83 (Högnavatn, NW Iceland). In all seven lakes,  $\delta^2\text{H}_{\text{lake}}$  values in 2019 are relatively enriched and have lower d-excess values than from 2014 and 2020. For some lakes, 410 winter snowfall may be a factor explaining  $\delta^2\text{H}_{\text{lake}}$  values, particularly for those at higher elevations. At Heiðarvatn (442 m asl, E Iceland),  $^2\text{H}$ -depleted snow from the preceding winter may have yielded a winter-biased signal that lingered into the summer season for some years. We note that the winter preceding September 2014 featured substantially higher amounts of winter snowfall (1063 mm) than the winter preceding September 2019 (553 mm) at Heiðarvatn (Fig. 4D), consistent with the relatively  $^2\text{H}$ -depleted values in 2014 (17.88 ‰, Fig. 4A). For the low-elevation, coastal lake Torfdalsvatn (N Iceland), the amount of 415 winter precipitation did not substantially vary between 2014 and 2020 as it did for Heiðarvatn. However, local relative humidity at Torfdalsvatn was significantly lower through the winter, spring, and summer in 2019 compared to 2014 and 2020 (Fig. 4E). As Torfdalsvatn is a closed lake, the relative enrichment of  $\delta^2\text{H}_{\text{lake}}$  values and lower d-excess values in 2019 (Fig. 4A-B) are consistent with relatively dryer conditions during the same year.

Seventeen lakes were sampled in both September 2019 and 2020, and reveal interannual variability, with  $\delta^2\text{H}_{\text{lake}}$  value 420 differences between 2019 and 2020 ranging from -3.31 (Skjaldarvatn, W Iceland) to 15.89 ‰ (Margrétarvatn, NW Iceland) and d-excess value differences ranging from -1.70 (Skjaldarvatn, W Iceland) to 5.65 ‰ (Berufjarðarvatn, NW Iceland) (Fig. 5). In general, we observe lower  $\delta^2\text{H}_{\text{lake}}$  values and higher d-excess values in 2020 compared to 2019, except for one lake (Skjaldarvatn), which has higher  $\delta^2\text{H}_{\text{lake}}$  values and lower d-excess values in 2020 (Fig. 5). We predicted that lakes with residence times of less than one year (efficient flushing) would feature larger interannual variability (e.g., Gibson et al., 2002; 425 Leng and Anderson, 2003). However, lake residence time does not correlate with the magnitude of  $\delta^2\text{H}_{\text{lake}}$  value difference between 2019 and 2020 (Fig. 5). However, we do observe greater  $\delta^2\text{H}_{\text{lake}}$  and d-excess difference for lakes in the NW highlands (squares) compared to lakes elsewhere in Iceland (circles, Fig. 5). We note that during the 2020 sample collection there was fresh snow accumulation in the catchments of the NW highland lakes in September whereas we did not observe this at the same time in 2019 (Fig. S5). This is consistent with more  $^2\text{H}$ -depleted values in 2020 relative to 2019 and thus snowmelt at 430 high elevations may partially explain the relatively  $^2\text{H}$ -depleted values for NW highland lakes compared to lower elevation sites elsewhere in Iceland.

Finally, given that lake water isotope values generally reflect unmodified precipitation (Fig. 2), precipitation source also likely impacts the Icelandic  $\delta^2\text{H}_{\text{lake}}$  values. Variation of the NAO will impact the strength and location of westerly winds and storm tracks on interannual to decadal cycles. In NAO+ (strong low pressure over Iceland), the westerlies center over  
435 Iceland, resulting in warm and moist air delivered from the south. Conversely, during NAO- (weak low pressure over Iceland), the storm track shifts southward, resulting in relatively cooler and drier conditions in Iceland (Hurrell et al., 2003). Therefore, we would expect that during NAO+ (NAO-) years, lake water in Iceland may be  $^2\text{H}$ -enriched (-depleted) in through-flowing lakes due to different source regions from the south and north, respectively, which can differ isotopically by 100 ‰ (Bowen and Revenaugh, 2003; Hurrell et al., 2003). In closed lake basins, we may expect  $^2\text{H}$ -enrichment and lower d-excess values of  
440 lake water in NAO- years due to the drier conditions that promote evaporation. In 2019, the average NAO index for the 12 months preceding lake water sample collection was negative (-0.21), whereas 2014 and 2020 were positive (0.23 and 0.09, respectively, Fig. 4F, NOAA National Centers for Environmental Information, 2023). Our dataset demonstrates more  $^2\text{H}$ -enriched water isotopes with lower d-excess values in 2019 relative to 2014 and 2020 (Fig. 4A-B). For through-flowing lakes, the  $^2\text{H}$ -enrichment in 2019 may be the result of less  $^2\text{H}$ -depleted winter snowfall in a NAO- year, whereas for closed lakes  
445 (e.g., Torfdalsvatn), the  $^2\text{H}$ -enrichment and low d-excess values may additionally reflect evaporative enrichment resulting from the NAO-induced changes in relative humidity. For the latter, this is also consistent with the relatively lower LEL slope in 2019 (Fig. 2F), which has previously been shown correlate with NAO variability in West Greenland lakes (Kopeck et al., 2018). In any case, annual changes in the NAO index and the associated changes in moisture source and relative humidity are consistent with the isotopic variability of lake water in Iceland, demonstrating that precipitation source is likely a contributing  
450 influence on  $\delta^2\text{H}_{\text{lake}}$  values across Iceland on at least interannual timescales.

### 5.1.3 Seasonal variability

Four lakes were sampled for surface lake water three times in two different seasons between 2019 and 2020: September 2019, February 2020, and September 2020. In addition, we took bottom water samples from two lakes in September 2019 (Torfdalsvatn and Heiðarvatn) and all four lakes in February 2020 (Torfdalsvatn, 4.4 m depth, Heiðarvatn, 13 m depth, Stóra  
455 Viðarvatn, 19.8 m depth, and Litla Viðarvatn, 1.5 m depth) (Fig. 6A). In general, we observe more depleted surface  $\delta^2\text{H}_{\text{lake}}$  values in winter, which likely reflects the seasonal change in precipitation, where winter snow is isotopically depleted relative to rain that dominates the other seasons (Fig. 6A). In addition, winter d-excess values of surface water are higher than in summer, except in Stóra Viðarvatn, which may reflect varying degrees of summer evaporation in closed (Torfdalsvatn) and even open lakes (Heiðarvatn and Litla Viðarvatn). Compared to surface lake water, winter bottom  $\delta^2\text{H}_{\text{lake}}$  values are relatively  
460 depleted in Torfdalsvatn, relatively enriched in Heiðarvatn and Litla Viðarvatn, and equivalent in Stóra Viðarvatn (Fig. 6A). Winter bottom water d-excess values are relative higher in Torfdalsvatn, Litla Viðarvatn, and lower in Heiðarvatn, and similar in Stóra Viðarvatn (Fig. 6B). While the difference varies between lakes, the general trends likely reflect the winter stratification of the water columns. Using *in situ* daily lake water temperatures from the same depths that  $\delta^2\text{H}_{\text{lake}}$  and d-excess values are from for three of the lakes (Torfdalsvatn, Heiðarvatn, and Stóra Viðarvatn, Fig. 6C, Raberg et al., 2021b), we observe strong

465 winter water column stratification in Torfdalsvatn and Heiðarvatn but not in Stóra Viðarvatn, consistent with differences in  
surface and bottom  $\delta^2\text{H}_{\text{lake}}$  and d-excess values, where Torfdalsvatn and Heiðarvatn's  $\delta^2\text{H}_{\text{lake}}$  values differ by 4.92 and 8.62 ‰,  
respectively, and Stóra Viðarvatn only by 0.06 ‰ (Fig. 6A). For Litla Viðarvatn, in the absence of continuous bottom water  
temperature measurements, Sonde water quality measurements (i.e., lake water temperature, pH, dissolved oxygen and  
conductivity) from September 2019 and February 2020 (Raberg et al., 2023) demonstrate that this lake is also stratified during  
470 the winter (Fig. S6), consistent with a difference between surface and bottom water  $\delta^2\text{H}_{\text{lake}}$  values of 2.74 ‰ (Fig. 6A).

In addition to seasonal  $\delta^2\text{H}_{\text{lake}}$  values, we also collected bimonthly water samples from the outflow of a low-elevation  
lake in northwest Iceland (Efstadalsvatn, Fig. 7A, black) between March and November 2002. Efstadalsvatn has a short  
residence time of  $\sim 0.1$  year (Table 1), meaning that meteoric water should be efficiently recharged through the lake. Compared  
to the seasonal changes of precipitation  $\delta^2\text{H}$  values in Reykjavík for the same year (Fig. 1D), the  $\delta^2\text{H}$  values of the outflow  
475 water are relatively dampened, ranging from -78.75 ‰ at the end of April to -70.68 ‰ at the end of June (Fig. 7A, black), but  
similar in scale to the interannual and seasonal variability observed in  $\delta^2\text{H}_{\text{lake}}$  values from other lakes (Figs. 4-6). Notably, we  
observe relatively  $^2\text{H}$ -depleted values between March and April, followed by rapid (14 days)  $^2\text{H}$ -enrichment of 5.83 ‰ at the  
beginning of June, and then rapid (2 days)  $^2\text{H}$ -depletion of 7.56 ‰ at the end of August after which  $\delta^2\text{H}$  values are stable and  
low (Fig. 7A, black). The relatively  $^2\text{H}$ -depleted values in March and April may be due to the seasonal variability of  
480 precipitation  $\delta^2\text{H}$  values in Reykjavík (Fig. 7A, gray) and/or lingering snowmelt in the catchment associated with relatively  
cool seasonal air temperatures (Fig. 7C). The  $^2\text{H}$ -enrichment observed at the beginning of June occurs at the same time as an  
increase in local precipitation amount (Fig. 7D), which is likely in the form of rain (as opposed to  $^2\text{H}$ -depleted snow) due to  
above freezing air temperatures (Fig. 7C). Evaporative enrichment does not likely explain this step change as Efstadalsvatn  
has an open catchment and short residence time and d-excess values are high and inconsistent with a kinetic fractionation  
485 effect (Fig. 7B). This  $^2\text{H}$ -enrichment of lake outflow water is also superimposed over a more gradual  $^2\text{H}$ -enrichment of  
Reykjavík precipitation values (Fig. 7A). The cause of the rapid  $^2\text{H}$ -depletion at the end of August may be related to the source  
and/or seasonal variability of precipitation  $\delta^2\text{H}$  values. In Reykjavík, monthly averages show a large depletion between August  
and September (Fig. 7A, gray). As precipitation sources may differ between Reykjavík (southwest) and Efstadalsvatn  
(northwest), these similarities are difficult to confidently correlate. In any case, while there is no data for Efstadalsvatn, surface  
490 and bottom water isotopes and temperatures from Torfdalsvatn, a similarly shallow lake (3.8 m vs 5.8 m depth, respectively,  
Caseldine et al., 2003), show that it is dimictic and seasonally stratified from early April through October (Fig. 6A-C). This  
suggests that Efstadalsvatn could also be seasonally stratified resulting in August rainfall flushing through the lake surface  
without mixing with the deeper water (e.g., Boehrer and Schultze, 2008).

## 5.2 Surface soil water isotopes

495 Isotopes of surface soil water collected in summer in Iceland span the entire range of seasonal precipitation values for Iceland,  
suggesting that the seasonality of source water and/or residence time of soil water is spatially variable across the island. Values  
correlate significantly with mean summer environmental parameters, i.e., precipitation amount ( $r = 0.56$ ,  $p < 0.05$ ) and

temperature ( $r = 0.52, p < 0.05$ ) (Fig. 9), suggesting that summer is the source water season for at least some sites and that there is broadly more integration of warm-season precipitation across the soil water dataset than lake water. In contrast, d-excess values correlate with mean annual ( $r = 0.58, p < 0.05$ ), mean winter ( $r = 0.61, p < 0.05$ ), mean autumn ( $r = 0.56, p < 0.05$ ), and mean spring precipitation amount ( $r = 0.50, p < 0.05$ ) (Fig. 9) demonstrating that the input of seasonal precipitation to soils in Iceland is not clearcut. As most Icelandic surface soil water isotopes plot below the LMWL and have low to negative d-excess values (Fig. 8), the pattern of soil waters isotopes, regardless of source water seasonality, is broadly consistent with modification via evaporation. While the residence time of Icelandic soil water is unknown, the residence time of soil water in other wet, low-energy North Atlantic locations is typically controlled by soil type and overlying vegetation (Tetzlaff et al., 2014; Geris et al., 2015a, b; Sprenger et al., 2017). The andic properties of the soil types in Iceland (i.e., histosol and brown-gleyic andosol) result in relatively high water retention (Arnalds, 2004), consistent with the correlations of precipitation and d-excess values throughout the year. As soil temperatures at these sites periodically dip below freezing during winter months (Fig. S7), seasonal freezing of the ground may contribute to the integration of summer precipitation  $\delta^2\text{H}_{\text{soil}}$  values, despite lower summer precipitation amounts, by preventing the incorporation of cold season water into a frozen water-soil matrix at some sites. Alternatively, surface soil water residence time at some sites could just be short enough that by summer sampling, winter precipitation has percolated deeper into the soil profile. When soil samples are separated by the type of vegetation cover, we observe that moss- and grass-covered soil samples associated with marsh environments plot closer to the LMWL and have higher d-excess values compared to other types of vegetation cover (Fig. 8). This likely reflects the saturated marsh environment that these soils were sampled from, which have high water tables, retain water for longer than soils with efficient drainage, and are less prone to evaporation.

For 5 locations, we took 2 surface soil samples from the same lake catchments, but different locations, as measured for lake water isotopes (Heiðarvatn, Másvatn, Stóra Viðarvatn, Systravatn and Torfdalsvatn). The  $\delta^2\text{H}_{\text{soil}}$  value differences for the samples from the same lake catchments range from 1.11 (Systravatn) to 21.65 ‰ (Heiðarvatn) and corresponding d-excess value differences range from 0.54 (Systravatn) to 5.66 (Heiðarvatn). The variability observed in  $\delta^2\text{H}_{\text{soil}}$  and d-excess values from the same location suggests that additional processes beyond climate and geography contribute to soil water isotopic variability in Iceland. This heterogeneity may be one reason why correlations are weaker between  $\delta^2\text{H}_{\text{soil}}$  values and mean summer temperature ( $r = 0.52, p < 0.05$ ), precipitation amount ( $r = 0.52, p < 0.05$ ), and elevation ( $r = -0.43$ ) (Fig. 9) compared to the same correlations found with  $\delta^2\text{H}_{\text{lake}}$  values (Fig. 3). While vegetation cover may explain some spatial variability in the broader Icelandic dataset, it does not likely account for intersite variability. For example, the sites with high intersample  $\delta^2\text{H}_{\text{soil}}$  value differences (Heiðarvatn = 21.65 ‰ and Stóra Viðarvatn = 11.37 ‰) are both covered by the same vegetation type (moss and heath shrub, respectively), while the only location that had different vegetation cover (Másvatn, grass and heath shrub) had one of the lowest  $\delta^2\text{H}_{\text{soil}}$  value differences (2.04 ‰). Variations in snow cover duration may be another possible explanation for inter-site variability. However, soil temperatures (3-hour resolution) for the following year show that sites with larger  $\delta^2\text{H}_{\text{soil}}$  value differences (e.g., Heiðarvatn and Stóra Viðarvatn) have melt out differences of 3 and 8 days, respectively, whereas sites with small  $\delta^2\text{H}_{\text{soil}}$  value differences (e.g., Másvatn, Systravatn and Torfdalsvatn) show melt out differences with a larger

range from 3 days to 13 days (Fig. S7). Therefore, the parameters for which we have data, i.e., local climate parameters, fine-scale observations of vegetation cover, and *in situ* thermal regimes, do not adequately explain their site-to-site variability.

### 5.3 Implications for paleoclimate proxies

535 Lake water isotope proxies have become an increasingly common tool to infer past changes in the high-latitude hydrologic cycle, including seasonality of precipitation (e.g., Kjellman et al., 2020; Thomas et al., 2020; Corcoran et al., 2021), moisture balance (e.g., Anderson and Leng, 2004; Balascio et al., 2018), and precipitation source (e.g., Cowling et al., 2022; van der Bilt et al., 2022). Foundational to any paleohydrological study is a clear understanding of the local environmental controls behind water isotope variability. For Icelandic lake water, we find that cold season precipitation, lingering snowpack in fringe  
540 seasons, summer relative humidity, and NAO cyclicality are important modulators of  $\delta^2\text{H}_{\text{lake}}$  on interannual timescales, particularly for lakes with sub annual residence times. These are important considerations as they indicate that the seasonality of runoff may not always align with the seasonality of precipitation. Combined with the differences we observe between surface and bottom water  $\delta^2\text{H}_{\text{lake}}$ , the complexities of  $\delta^2\text{H}_{\text{lake}}$  are consistent with the poorer relationships observed between typically aquatic mid-chain plant waxes and  $\delta^2\text{H}_{\text{lake}}$  values vs. typically terrestrial long-chain plant waxes and  $\delta^2\text{H}$  of  
545 precipitation values (McFarlin et al., 2019). Surface soil water isotopes are highly variable across the island, with only some sites supportive of previous assumptions that terrestrial biomarker water isotopes reflect summer precipitation (e.g., Balascio et al., 2013; Curtin et al., 2019; Kjellman et al., 2020; Thomas et al., 2020). However, we stress that these soil water isotopes are from the *surface* (i.e., upper 10 cm of the soil), and evidence suggests that high-latitude plant roots may source water from the surface (Amin et al., 2020) as well as from below the surface layer (e.g., Eensalu et al., 2023). So, these data may or may  
550 not reflect broader plant growth water and the enrichment observed in Icelandic surface soils also may not reflect water found in deeper soils. Hence, while still valuable, the soil data currently provide a limited perspective on soil water isotope systematics needed to inform plant growth and terrestrial leaf wax water isotopes studies in Iceland.

In Iceland, there are only two Holocene records of paleoprecipitation developed from water isotopes proxies, one using aquatic invertebrates (i.e., chironomids) from a lake in northeast Iceland (Stóra Viðarvatn, Wooller et al., 2008) and  
555 another using leaf wax n-alkanes from a fjord in northwest Iceland (Moossen et al., 2015). Both records observe inconsistencies with known temperature variability, and through multi-proxy comparisons, infer that the changes in water isotope were related to precipitation. The dominant controls that we find in modern lake water isotopes support prior assumptions that chironomid  $\delta^{18}\text{O}$  values from Stóra Viðarvatn encode information about past changes in precipitation seasonality and moisture source (Wooller et al., 2008). However, we do note that Stóra Viðarvatn has one of the longest residence times in the dataset (~17  
560 years, Table 1) and the lake's modern water isotopes appear insensitive to interannual climate variability (Fig. 6). While residence time is not a strong predictor of lake water isotope variability in Iceland, the relative insensitivity of Stóra Viðarvatn to annual changes in moisture supply likely results in a decadal-averaged paleohydrological record. On the other hand, the fjord record from northwest Iceland is based on terrestrial leaf waxes that were subsequently transported to the fjord (Moossen et al., 2015), which are complicated by unknown transport and residence times as well as uncertainties in marine age model



565 reservoir corrections. The relatively limited perspective that our modern surface soil water isotopes provide on terrestrial  
biomarker water isotope proxies also makes it challenging to interpret the fjord record, although it remains likely that the fjord  
leaf wax  $\delta^2\text{H}$  values are summer biased. Looking forward, the strong linear relationship between lake water and aquatic  
invertebrates (e.g., chironomids) oxygen isotopes (Verbruggen et al., 2011) suggests their application in Icelandic lake  
570 sediment records is promising. However, further calibration of terrestrial and aquatic plant waxes, their isotopic variability,  
relationship to source waters, and relative contribution to the sedimentary pool is vital to further advance the use of biomarker-  
derived water isotope proxies in Icelandic sedimentary records (e.g., McFarlin et al., 2019; Dion-Kirchner et al., 2020; Hollister  
et al., 2022).

Our modern lake and soil water isotope dataset provides important insight into the impact that various geographic,  
geomorphic, and environmental variables have on the distribution of water isotopes across Iceland. Importantly, the data open  
575 the possibility for optimized site selection and more informed paleohydrological studies in Iceland. For example, we identify  
lakes that are sensitive to evaporative enrichment, whose sediments can be useful in reconstructing Holocene moisture balance  
and lakes that record unmodified meteoric water, which offer the possibility of reconstructing changes in precipitation  
seasonality and moisture source related to atmospheric patterns. Collectively, these paleohydrological records can help address  
open questions related to, for example, the impact of precipitation on the Holocene mass balance of Icelandic ice caps and  
580 shifts in terrestrial plant communities. As both glaciers and terrestrial plants are part of positive feedback loops in the climate  
system through changes in albedo and evapotranspiration (Serreze and Barry, 2011), understanding the paleohydrology of  
Iceland is critical to better understand the past evolution of climate, glaciers and ecology and predict future climate and  
environmental scenarios over the 21<sup>st</sup> Century.

## 585 **6 Conclusions and recommendations**

We report Icelandic lake, stream, and soil water isotopes ( $\delta^2\text{H}$  and  $\delta^{18}\text{O}$ ) measured from samples collected in 2002, 2003, 2004,  
2014, 2019 and 2020. Guided by statistical correlation analyses between  $\delta^2\text{H}$ , d-excess, and a suite of climatological,  
geomorphic, and geographic parameters, we draw the following conclusions:

- 590 • Lake water isotopes reflect local precipitation with biases toward the cold season, particularly for lakes with sub-  
annual residence times, consistent with the time of year when most precipitation is delivered. A subset of lakes, which  
are closed basins, demonstrate  $\delta^2\text{H}_{\text{lake}}$  and d-excess values affected by evaporative enrichment. This evaporation likely  
occurs during the typically open-water summer season when relative humidity is lower, lake water surface  
temperatures are elevated, and the lake surface is exposed to wind. Lake water isotopes are generally  $^2\text{H}$ -depleted at  
higher elevations and at locations farther from the coast, consistent with Rayleigh distillation.

- 595
- Interannual variability of lake water isotopes and d-excess values are consistent with observations that 2019 received less winter snowfall, was relatively dry during the summer, and was characterized by a negative NAO, all contributing to a lower LEL slope and  $^2\text{H}$ -enriched and low d-excess lake water relative to 2014 and 2020.
  - Seasonal variability of lake water isotopes shows that lake surface water is relatively  $^2\text{H}$ -depleted with higher d-excess values in February 2019 compared to September 2019 and 2020, likely due to the predominance of snow over rain in winter months. Additionally, bottom water isotopes reflect winter stratification that is independently recorded in the seasonal temperature and water chemistry cycles of the lakes.
- 600
- Isotopes and d-excess values of summer surface soil water reflect local precipitation overprinted by evaporative enrichment that can occur throughout the year. The soil water values span the seasonal range of precipitation, suggesting heterogeneity in soil water seasonality. Water isotope measurements from samples collected from just 10s
- 605
- of meters apart can show large variability, suggesting that additional factors beyond the local climate, especially topography and vegetation, which are inherently related, may be important factors.
- The collective dataset optimizes site selection for future studies in Icelandic paleohydrology focusing on changes in moisture balance, precipitation seasonality, and moisture source, and provides a process-based framework to guide downcore water isotope proxy interpretations. Specifically, sedimentary records from closed basin lakes offer the potential to reconstruct Holocene changes in precipitation-evaporation balance while sedimentary records from open basin lakes, particularly those with sub-annual residence times, may provide insight into past changes in moisture source related to winter snowfall variability and atmospheric circulation patterns. At present, the simplest sedimentary records of precipitation would be derived from aquatic invertebrate (e.g., chironomids) oxygen isotopes given the strong linear relationship observed between lake water and aquatic invertebrate oxygen isotopes. Future work is
- 610
- needed to constrain the relationship between aquatic plant waxes, their isotopic variability and relationship to lake water before secure paleohydrological studies can be developed from them. Similarly, given the complexity and uncertainty observed in Icelandic surface soil water isotopes, we urge caution in the application of terrestrial water isotope proxies, such as long-chain *n*-alkyl lipids, before further calibration studies are conducted.
- 615

## 620 **Data availability**

Water isotopes and associated metadata are archived at the Arctic Data Center (<http://doi.org/10.18739/A28W3842T>, Harning et al., 2024).

## **Competing interest**

The authors declare that they have no competing interests.

## 625 **Acknowledgements**

This study has been supported by a GSA Graduate Student Grant and Comer Science and Education Foundation funding (ÁG and YA), the Icelandic Centre for Research (Warm Times-Cold Times Grant-of-Excellence #022160-002, ÁG and GHM; ANATILS Grant-of-Excellence #130775-052, ÁG and GHM; Doctoral Student Grant #163431-053, DJH), the Doctoral Grant of the University of Iceland (CRF and JHR), and the National Science Foundation (ARCSS-1836981, GHM, ÁG, and JS; 630 EAR-1928303, SK and JMM). We thank Sædis Ólafsdóttir, Jason Briner, Ragna Aðalsteinsdóttir, Pete Langdon, Ian Holmen, Þorsteinn Jónsson, and Sveinbjörn Steinthorsson for assistance in the field.

## **Author contributions**

ÁG, GHM, JS, YA, and SK funded the research; YA, CRF, JHR, DJH, ÁG, GHM, and JS collected lake water and soil samples; KBÓ provided Icelandic meteorological data; DJH, JMM and JHR processed and interpreted the data; DJH led the 635 writing of the manuscript with contributions from all co-authors.

## **References**

- Adrian, R., O'Reilly, C. M., Zagarese, H., Baines, S. B., Hessen, D. O., Keller, W., Livingstone, D. M., Sommaruga, R., Straile, D., Van Donk, E., Weyhenmeyer, G. A., and Winder, M.: Lakes as sentinels of climate change, *Limnology and Oceanography*, 54, 2283-2297, [https://doi.org/10.4319/lo.2009.54.6\\_part\\_2.2283](https://doi.org/10.4319/lo.2009.54.6_part_2.2283), 2009.
- 640 Amin, A., Zuecco, G., Geris, J., Schwendenmann, L., McDonnell, J. J., Borga, M., and Penna, D.: Depth distribution of soil water sourced by plants at the global scale: A new direct inference approach, *Ecohydrology*, 13, e2177, <https://doi.org/10.1002/eco.2177>, 2020.
- 645 Anderson, N. J., and Leng, M. J.: Increased aridity during the early Holocene in West Greenland inferred from stable isotopes in laminated-lake sediments, *Quaternary Science Reviews*, 23, 841-849, <https://doi.org/10.1016/j.quascirev.2003.06.013>, 2004.
- Arnalds, O.: Volcanic soils of Iceland, *Catena*, 56, 3-20, <https://doi.org/10.1016/j.catena.2003.10.002>, 2004.
- 650 Árnason, B.: Groundwater systems in Iceland traced by deuterium, *Soc. Sci. Islandica*, 42, 1-236, 1976.
- Balascio, N. L., D'Andrea, W. J., Bradley, R. S., and Perren, B.: Biogeochemical evidence for hydrologic changes during the Holocene in a lake sediment record from southeast Greenland, *The Holocene*, 23, 1428-1439, <https://doi.org/10.1177/0959683613493938>, 2013.
- 655

Balascio, N. L., D'Andrea, W. J., Gjerde, M., and Bakke, J.: Hydroclimate variability of High Arctic Svalbard during the Holocene inferred from hydrogen isotopes of leaf waxes, *Quaternary Science Reviews*, 183, 177-187, <https://doi.org/10.1016/j.quascirev.2016.11.036>, 2018.

660

Baldini, L. M., McDermott, F., Foley, A. M., and Baldini, J. U. L.: Spatial variability in the European winter precipitation  $\delta^{18}\text{O}$ -NAO relationship: Implications for reconstructing NAO-mode climate variability in the Holocene, *Geographical Research Letters*, 35, L04709, <https://doi.org/10.1029/2007GL032027>, 2008.

665 Bintanja, R., and Selten, F. M.: Future increases in Arctic precipitation linked to local evaporation and sea-ice retreat, *Nature*, 509, 479-482, <https://doi.org/10.1038/nature13259>, 2014.

Bintanja, R., and Andry, O.: Towards a rain-dominated Arctic, *Nature Climate Change*, 7, 263-267, <https://doi.org/10.1038/nclimate3240>, 2017.

670

Bintanja, R., van der Wiel, K., van der Linden, E. C., Reusen, J., Bogerd, L., Krikken, F., and Selten, F. M.: Strong future increases in Arctic precipitation variability linked to poleward moisture transport, *Science Advances*, 6, 1-6, <http://doi.org/10.1126/sciadv.aax6869> 2020.

675 Bödvarsson, G.: The use of isotopes of hydrogen and oxygen for hydrological purposes in Iceland, *Jökull*, 12, 49-54, 1962.

Boehrer, B., and Schultze, M.: Stratification of lakes, *Review of Geophysics*, 46, RG2005, <https://doi.org/10.1029/2006RG000210>, 2008.

Bowen, G. J., Putman, A., Brooks, J. R., Bowling, D. R., Oerter, E. J., and Good, S. P.: Inferring the source of evaporated waters using stable H and O isotopes, *Oecologia*, 187, 1025–1039, <https://doi.org/10.1007/s00442-018-4192-5>, 2018.

680 Bowen, G. J., and Revenaugh, J.: Interpolating the isotopic composition of modern meteoric precipitation, *Water Resources Research*, 39, 1-13, <https://doi.org/10.1029/2003WR002086>, 2003.

Bush, R. T., Berke, M. A. M., and Jacobson, A.D.: Plant water  $\delta\text{D}$  and  $\delta^{18}\text{O}$  of tundra species from west Greenland, Arctic, Antarctic, and Alpine Research, 49, 341-358, <https://doi.org/10.1657/AAAR0016-025>, 2017.

685 Caseldine, C., Geirsdóttir, Á., and Langdon, P.: Efstadalsvatn – a multi-proxy study of a Holocene lacustrine sequence from NW Iceland, *Journal of Paleolimnology*, 30, 55-73, <https://doi.org/10.1023/A:1024781918181>, 2003.

- Cluett, A. A., and Thomas, E. K.: Resolving combined influences of inflow and evaporation on western Greenland lake water isotopes to inform paleoclimate inferences, *Journal of Paleolimnology*, 63, 251-268, <https://doi.org/10.1007/s10933-020-00114-4>, 2020.
- 690 Cook, C. S., Erkkila, B. R., Chakraborty, S., Tipple, B. J., Cerling, T. E., and Ehleringer, J. R.: *Stable Isotope Biogeochemistry and Ecology: Laboratory Manual*. Independently published, 173 pp., 2017.
- Cooper, L. W., Olsen, C. R., Solomon, D. K., Larsen, I. L., Cook, R. B., Grebmeier, J. M.: Stable isotopes of oxygen and natural and fallout radionuclides used for tracing runoff during snowmelt in an arctic watershed, *Water Resources Research*, 27, 2171-2179, <https://doi.org/10.1029/91WR01243>, 1991.
- 695 27, 2171-2179, <https://doi.org/10.1029/91WR01243>, 1991.
- Corcoran, M. C., Thomas, E. K., and Morrill, C.: Using a paired chironomid  $\delta^{18}\text{O}$  and aquatic leaf wax  $\delta^2\text{H}$  approach to reconstruct seasonality on western Greenland during the Holocene, *Paleoceanography and Paleoclimatology*, 36, e2020PA004169, <https://doi.org/10.1029/2020PA004169>, 2021.
- 700
- Cowling, O. C., Thomas, E. K., Svendsen, J. I., Mangerud, J., Hafliðason, H., Regnéll, C., and Brendyren, J.: Western Siberia experience rapid shifts in moisture source and summer water balance during the last deglaciation and early Holocene, *Journal of Quaternary Science*, 37, 790-804, <https://doi.org/10.1002/jqs.3386>, 2022.
- 705 Craig, H.: Isotopic variations in meteoric waters, *Science*, 133, 1702–1703, <http://doi.org/10.1126/science.133.3465.1702>, 1961.
- Crochet, P., Jóhannesson, T., Jónsson, T., Sigurðsson, O., Björnsson, H., Pálsson, F., and Barstad, I.: Estimating the spatial distribution of precipitation in Iceland using a linear model of orographic precipitation, *Journal of Hydrometeorology*, 8, 1285-1306, <https://doi.org/10.1175/2007JHM795.1>, 2007.
- 710 1306, <https://doi.org/10.1175/2007JHM795.1>, 2007.
- Curtin, L., D'Andrea, W. J., Balascio, N., Pugsley, G., de Wet, G., and Bradley, R.: Holocene and Last Interglacial climate of the Faroe Islands from sedimentary plant wax hydrogen and carbon isotopes, *Quaternary Science Reviews*, 223, 105930, <https://doi.org/10.1016/j.quascirev.2019.105930>, 2019.
- 715
- Dansgaard, W.: Stable isotopes in precipitation, *Tellus*, 16, 436-468, <https://doi.org/10.1111/j.2153-3490.1964.tb00181.x>, 1964.

- 720 Dion-Kirschner, H., McFarlin, J. M., Masterson, A. L., Axford, Y., and Osburn, M. R.: Modern constraints on the sources and  
climate signals recorded by sedimentary plant waxes in west Greenland, *Geochimica et Cosmochimica Acta*, 286, 336-  
354, <https://doi.org/10.1016/j.gca.2020.07.027>, 2020.
- 725 Douville, H., K. Raghavan, J. Renwick, R.P. Allan, P.A. Arias, M. Barlow, R. Cerezo-Mota, A. Cherchi, T.Y. Gan, J. Gergis,  
D. Jiang, A. Khan, W. Pokam Mba, D. Rosenfeld, J. Tierney, O. Zolina: Water Cycle Changes. In *Climate Change 2021: The  
Physical Science Basis. Contribution of Working Group I to the Sixth Assessment Report of the Intergovernmental Panel on  
Climate Change* [Masson-Delmotte, V., P. Zhai, A. Pirani, S.L. Connors, C. Péan, S. Berger, N. Caud, Y. Chen, L. Goldfarb,  
M.I. Gomis, M. Huang, K. Leitzell, E. Lonnoy, J.B.R. Matthews, T.K. Maycock, T. Waterfield, O. Yelekçi, R. Yu, B. Zhou  
(eds.)]. Cambridge University Press, Cambridge, United Kingdom and New York, NY, USA, pp. 1055–1210, 2021.
- 730 Eensalu, M., Nelson, D. B., Buczynska, A., Rach, O., Klein, E. S., Dodd, J. P., Poska, A., and Stansell, N. D.: Hydrogen  
isotope biogeochemistry of plant waxes in paired lake catchments, *Organic Geochemistry*, 184, 104674,  
<https://doi.org/10.1016/j.orggeochem.2023.104674>, 2023.
- 735 Einarsson, M. Á.: Climate of Iceland. – World Survey of Climatology, Vol. 15, Climate of the Oceans, H. van LOON (Ed.)  
673–697, 1984.
- Epstein, S., and Mayeda, T.: Variation of O<sup>18</sup> content of waters from natural sources, *Geochimica et Cosmochimica Acta*, 4,  
[https://doi.org/10.1016/0016-7037\(53\)90051-9](https://doi.org/10.1016/0016-7037(53)90051-9), 213-224, 1953.
- 740 Feng, X., Lauder, A. M., Posmentier, E. S., Kopec, B. G., and Virginia, R. A.: Evaporation and transport of water isotopologues  
from Greenland lakes: The lake size effect, *Quaternary Science Reviews*, 131, 302-315,  
<https://doi.org/10.1016/j.quascirev.2015.07.029>, 2016.
- 745 Florian, C. R.: Multi-proxy reconstructions of Holocene environmental change and catchment biogeochemistry using algal  
pigments and stable isotopes preserved in lake sediment from Baffin Island and Iceland, PhD thesis, University of Colorado  
Boulder and University of Iceland, p. 141, 2016.
- Friedman, I., Sigurgeirsson Th., and Gardarsson, Ö.: Deuterium in Iceland waters, *Geochimica et Cosmochimica Acta*, 27,  
553-561, [https://doi.org/10.1016/0016-7037\(63\)90012-7](https://doi.org/10.1016/0016-7037(63)90012-7), 1963.
- 750 Gat, J. R.: Oxygen and hydrogen isotopes in the hydrologic cycle, *Annual Review of Earth and Planetary Science*, 24, 225–  
262, <http://doi.org/10.1146/annurev.earth.24.1.225>, 1996.

755 Geirsdóttir, Á., Harning, D. J., Miller, G. H., Andrews, J. T., Zhong, Y., and Caseldine, C.: Holocene history of landscape  
instability in Iceland: Can we deconvolve the impacts of climate, volcanism and human activity? *Quaternary Science Reviews*,  
249, 106633, <https://doi.org/10.1016/j.quascirev.2020.106633>, 2020.

760 Geirsdóttir, Á., Miller, G. H., Larsen, D. J., Ólafsdóttir, S.: Abrupt Holocene climate transitions in the northern North Atlantic  
region recorded by synchronized lacustrine records in Iceland, *Quaternary Science Reviews*, 70, 48-  
62, <http://dx.doi.org/10.1016/j.quascirev.2013.03.010>, 2013.

765 Geris, J., Tetzlaff, D., McDonnell, J., and Soulsby, C.: The relative role of soil type and tree cover on water storage and  
transmission in northern headwater catchments, *Hydrological Processes*, 29, 1844-1860, <https://doi.org/10.1002/hyp.10289>,  
2015a.

770 Geris, J., Tetzlaff, D., McDonnell, J., Anderson, J., Paton, G., and Soulsby, C.: Ecohydrological separation in wet, low energy  
northern environments? A preliminary assessment using different soil water extraction techniques, *Hydrological Processes*,  
29, 5139-5152, <https://doi.org/10.1002/hyp.10603>, 2015b.

Gibson, J. J., Birks, S. J., & Yi, Y.: Stable isotope mass balance of lakes: a contemporary perspective, *Quaternary Science  
Reviews*, 131, 316-328. <https://doi.org/10.1016/j.quascirev.2015.04.013>, 2016.

775 Gibson, J. J., and Edwards, T. W. D.: Regional water balance trends and evaporation-transpiration partitioning from a stable  
isotope survey of lakes in northern Canada, *Global Biogeochemical Cycles*, 16, 1011–1014,  
<https://doi.org/10.1029/2001GB001839>, 2002.

Gibson, J. J., Prepas, E. E., and McEachern, P.: Quantitative comparison of lake throughflow, residency, and catchment runoff  
using stable isotopes: Modelling and results from a regional survey of Boreal lakes, *Journal of Hydrology*, 262, 128–144,  
[https://doi.org/10.1016/S0022-1694\(02\)00022-7](https://doi.org/10.1016/S0022-1694(02)00022-7), 2002.

780 Gonfiantini, R., Wassenaar, L. I., and Araguas-Araguas, L. J.: Stable isotope fractionations in the evaporation of water: The  
wind effect, *Hydrological Processes*, 34, 3596-3607, <https://doi.org/10.1002/hyp.13804>, 2020.

785 Google Earth, 12/13/2015, date accessed: 2/1/2023.

Gorbey, D. B., Thomas, E. K., Sauer, P. E., Raynolds, M. K., Miller, G. H., Corcoran, M. C., Cowling, O. C., Crump, S. E., Lovell, K., and Raberg, J. H.: Modern eastern Canadian Arctic lake water isotopes exhibit latitudinal patterns in inflow seasonality and minimal evaporative enrichment, *Paleoceanography and Paleoclimatology*, 37, 1-19, <https://doi.org/10.1029/2021PA004384>, 2022.

790

Hanna, E., Jónsson, T., and Box, J. E.: An analysis of Icelandic climate since the nineteenth century, *International Journal of Climatology*, 24, 1193-1210, <https://doi.org/10.1002/joc.1051>, 2004.

Hanna, E., Jónsson, T., Ólafsson, J., and Valdimarsson, H.: Icelandic coastal sea surface temperature records constructed: Putting the pulse on air-sea-climate interactions in the Northern North Atlantic. Part 1: Comparison with HadISST1 open-ocean surface temperatures and preliminary analysis of long-term patterns and anomalies of SSTs around Iceland, *Journal of Climate*, 19, 5652-5667, <https://doi.org/10.1175/JCLI3933.1>, 2006.

795

Harning, D., Raberg, J., McFarlin, J., Axford, Y., Florian, C., Ólafsdóttir, K., Kopf, S., Sepúlveda, J., Miller, G., and Geirsdóttir, Á.: Lake, stream, and soil water isotopes in Iceland (2002-2004, 2014, 2019-2020), Arctic Data Center [data set], <http://doi.org/10.18739/A28W3842T>, 2024.

800

Hollister, K.V., Thomas, E. K., Raynolds, M. K., Bültmann, H., Raberg, J. H., Miller, G. H., and Sepúlveda, J.: Aquatic and terrestrial plant contributions to sedimentary plant waxes in a modern Arctic lake setting, *Journal of Geophysical Research: Biogeosciences*, 127, e2022JG006903, <https://doi.org/10.1029/2022JG006903>, 2022.

805

Holtvoeth, J., Whiteside, J. H., Engels, S., Freitas, F. S., Grice, K., Greenwood, P., Johnson, S., Kendall, I., Lengger, S. K., Lücke, A., Mayr, C., Naafs, B. D. A., Rohrssen, M., and Sepúlveda, J.: The paleolimnologist's guide to compound-specific stable isotope analysis – An introduction to principles and applications of CSIA for Quaternary lake sediments, *Quaternary Science Reviews*, 207, 101-133, <https://doi.org/10.1016/j.quascirev.2019.01.001>, 2019.

810

Hurrell, J. W., Kushnir, Y., Ottersen, G., and Visbeck, M.: An overview of the North Atlantic Oscillation, *Geophysical Monograph*, 134, 1-35, <https://doi.org/10.1029/134GM01>, 2003.

IAEA/WMO: Global network of isotopes in precipitation. The GNIP Database, 2015. Retrieved from <https://nucleus.iaea.org/wiser>.

815

Icelandic Met Office (IMO): Climatological data, 2023. Retrieved from <https://en.vedur.is/climatology/data/>.



- 820 Jonsson, C. E., Leng, M. J., Rosqvist, G. C., Seibert, J., and Arrowsmith, C.: Stable oxygen and hydrogen isotopes in sub-Arctic lake waters from northern Sweden, *Journal of Hydrology*, 376, 143–151, <https://doi.org/10.1016/j.jhydrol.2009.07.021>, 2009.
- Jouzel, J., Hoffmann, G., Koster, R. D., and Masson, V.: Water isotopes in precipitation: data/model comparison for present-day and past climates, *Quaternary Science Reviews*, 19, 363-379, [https://doi.org/10.1016/S0277-3791\(99\)00069-4](https://doi.org/10.1016/S0277-3791(99)00069-4), 2000.
- 825
- Kjellman, S. E., Schomacker, A., Thomas, E. K., Håkansson, L., Duboscq, S., Cluett, A. A., Farnsworth, W. R., Allaart, L., Cowling, O. C., McKay, N. P., Brynjólfsson, S., and Ingólfsson, Ó.: Holocene precipitation seasonality in northern Svalbard: Influence of sea ice and regional ocean surface conditions, *Quaternary Science Reviews*, 240, 106388, <https://doi.org/10.1016/j.quascirev.2020.106388>, 2020.
- 830
- Kjellman, S. E., Thomas, E. K., and Schomacker, A.: Arctic and sub-Arctic lake water  $\delta^2\text{H}$  and  $\delta^{18}\text{O}$  along a coastal-inland transect: Implications for interpreting water isotope proxy records, *Journal of Hydrology*, 607, 127556, <https://doi.org/10.1016/j.jhydrol.2022.127556>, 2022.
- 835
- Konecky, B. L., McKay, N. P., Falster, G. M., Stevenson, S. L., Fischer, M. J., Atwood, A. R., Thompson, D. M., Jones, M. D., Tyler, J. J., DeLong, K. L., Martrat, B., Thomas, E. K., Conroy, J. L., Dee, S. G., Jonkers, L., Churakova (Sidorova), O. V., Kern, Z., Opel, T., Porter, T. J., Sayani, H. R., Skrzypek, G., and Iso2k Project Members: Globally coherent water cycle response to temperature change during the past two millennia, *Nature Geoscience*, 16, 997-1004, <https://doi.org/10.1038/s41561-023-01291-3>, 2023.
- 840
- Leng, M. J., Anderson, N. J.: Isotopic variation in modern lake waters from western Greenland, *The Holocene*, 13, 605-611, <https://doi.org/10.1191/0959683603hl620rr>, 2003.
- 845
- Linderholm, H. W., Nicolle, M., Francus, P., Gajewski, K., Helama, S., Korhola, A., Solomina, O., Yu, Z., Zhang, P., D’Andrea, W. J., Debret, M., Divine, D. V., Gunnarson, B. E., Loader, N. J., Massei, N., Seftigen, K., Thomas, E. K., Werner, J., Andersson, S., Berntsson, A., Luoto, T. P., Nevalainen, L., Saarni, S., and Väiliranta, M.: Arctic hydroclimate variability during the last 2000 years: current understanding and research challenges, *Climate of the Past*, 14, 473-514, <https://doi.org/10.5194/cp-14-473-2018>, 2020.
- 850
- MacDonald, A. M., Black, A. R., Dochartaigh, B. É., Everest, J., Darling, W. G., Flett, V., and Peach, D. W.: Using stable isotopes and continuous meltwater river monitoring to investigate the hydrology of a rapidly retreating Icelandic outlet glacier, *Annals of Glaciology*, 57, 151-158, <https://doi.org/10.1017/aog.2016.22>, 2016.

855 McFarlin, J. M., Axford, Y., Kusch, S., Masterson, A. L., Lasher, G. E., and Osburn, M. R.: Aquatic plant wax hydrogen and carbon isotopes in Greenland lakes record shifts in methane cycling during past Holocene warming, *Science Advances*, 9, 1-12, <http://doi.org/10.1126/sciadv.adh9704>, 2023.

860 McFarlin, J. M., Axford, Y., Masterson, A. L., and Osburn, M. R.: Calibration of modern sedimentary  $\delta^2\text{H}$  plant wax-water relationships in Greenland lakes, *Quaternary Science Reviews*, 225, 105978, <https://doi.org/10.1016/j.quascirev.2019.105978>, 2019.

865 Moossen, H., Bendle, J., Seki, O., Quillmann, U., and Kawamura, K.: North Atlantic Holocene climate evolution recorded by high-resolution terrestrial and marine biomarker records, *Quaternary Science Reviews*, 129, 111-127, <https://doi.org/10.1016/j.quascirev.2015.10.013>, 2015.

870 Muhic, F., Ala-Aho, P., Noor, K., Welker, J. M., Klöve, B., and Marttila, H.: Flushing or mixing? Stable isotopes reveal differences in arctic forest and peatland soil water seasonality, *Hydrological Processes*, 37, e14811, <https://doi.org/10.1002/hyp.14811>, 2023.

NOAA National Centers for Environmental Information: North Atlantic Oscillation (NAO), 2023. Retrieved from <https://www.ncei.noaa.gov/access/monitoring/nao/>.

875 Olsen, J., Anderson, N. J., and Knudsen, M. F.: Variability of the North Atlantic oscillation over the past 5,200 years, *Nature Geoscience*, 5, 1-14, <https://doi.org/10.1038/ngeo1589>, 2012.

Putman, A. L., Fiorella, R. P., Bowen, G. J., and Cai, Z.: A global perspective on local meteoric water lines: Meta-analytic insight into fundamental controls and practical constraints, *Water Resource Research*, 55, 6896-6910, <https://doi.org/10.1029/2019WR025181>, 2019.

880 R Core Team: *R: A Language and Environment for Statistical Computing*. R Foundation for Statistical Computing, Vienna, Austria, 2022. <https://www.R-project.org/>.

Raberg, J. H., Crump, S. E., de Wet, G., Harning, D. J., Miller, G. H., Geirsdóttir, Á., and Sepúlveda, J.: BrGDGT lipids reflect summer soil temperature and seasonal soil water chemistry. *Geochimica et Cosmochimica Acta*, 369, 111-125, <https://doi.org/10.1016/j.gca.2024.01.034>, 2024.

885

- Raberg, J. H., Harning, D. J., Crump, S. E., De Wet, G., Blumm, A., Kopf, S., Geirsdóttir, Á., Miller, G. H., and Sepúlveda, J.: Revised fractional abundances and warm-season temperatures substantially improve brGDGT calibrations in lake sediments, *Biogeosciences*, 18, 3579–3603, <https://doi.org/10.5194/bg-18-3579-2021>, 2021a.
- 890 Raberg, J., Harning, D., Geirsdóttir, Á., Sepúlveda, J., and Gifford Miller, G.H.: Soil and lake water temperatures of Iceland (2019-2021), Arctic Data Center [data set], <http://doi.org/10.18739/A2XP6V46R>, 2021b.
- Raberg, J., Harning, D., Geirsdóttir, Á., Sepúlveda, J., and Gifford Miller, G.H.: Water chemistry profiles of lakes in Iceland (2019-2021), Arctic Data Center [data set], <http://doi.org/10.18739/A26688K7F>, 2023.
- 895
- Rach, O., Kahmen, A., Brauer, A., and Sachse, D.: A dual-biomarker approach for quantification of changes in relative humidity from sedimentary lipid D/H ratios, *Climate of the Past*, 13, 741-757, <https://doi.org/10.5194/cp-13-741-2017>, 2017.
- Sachse, D., Billault, I., Bowen, G. J., Chikaraishi, Y., Dawson, T. E., Feakins, S. J., Freeman, K. H., Magill, C. R., McInerney, M. A., van der Meer, M. T. J., Polissar, P., Robins, R. J., Sachs, J. P., Schmidt, H.-L., Sessions, A. L., White, J. W. C., West, J. B., Kahmen, A.: Molecular paleohydrology: Interpreting the hydrogen-isotopic composition of lipid biomarkers from photosynthesizing organisms, *Annual Review of Earth and Planetary Sciences*, 40, 221-249, <http://doi.org/10.1146/annurev-earth-042711-105535>, 2012.
- 900
- Serreze, M. C., Barrett, A. P., Slater, A. G., Woodgate, R. A., Aagaard, K., Lammers, R. B., Steele, M., Moritz, R., Meredith, M., and Lee, C. M.: The large-scale freshwater cycle of the Arctic, *Journal of Geophysical Research: Oceans*, 111, 1-19, <https://doi.org/10.1029/2005JC003424>, 2006.
- 905
- Serreze, M. C., and Barry, R. G.: Processes and impacts of Arctic amplification: A research synthesis, *Global and Planetary Change*, 77, 85-96, <https://doi.org/10.1016/j.gloplacha.2011.03.004>, 2011.
- 910
- Sodemann, H., Masson-Delmotte, V., Schwierz, C., Vinther, B. M., and Wernli, H.: Interannual variability of Greenland winter precipitation sources: 2. Effects of North Atlantic Oscillation variability on stable isotopes in precipitation, *Journal of Geophysical Research*, 113, 1-21, <https://doi.org/10.1029/2007JD009416>, 2008.
- 915
- Sprenger, M., Tetzlaff, D., and Soulsby, C.: Soil water stable isotopes reveal evaporation dynamics at the soil-plant-atmosphere interface of the critical zone, *Hydrology and Earth System Sciences*, 21, 3839-3858, <https://doi.org/10.5194/hess-21-3839-2017>, 2017.

- 920 Steen-Larsen, H. C., Sveinbjörnsdóttir, A. E., Jonsson, Th., Ritter, F., Bonne, J.-L., Masson-Delmotte, V., Sodemann, H., Blunier, T., Dahl-Jensen, D., and Vinther, B. M.: Moisture sources and synoptic to seasonal variability of North Atlantic water vapor isotopic composition, *Journal of Geophysical Research: Atmospheres*, 120, <https://doi.org/10.1002/2015JD023234>, 5757-5774, 2015.
- 925 Stefánsson, A., Arnórsson, S., Sveinbjörnsdóttir, Á. E., Heinemeier, J., and Kristmannsdóttir, H.: Isotope ( $\delta D$ ,  $\delta^{18}O$ ,  $^3H$ ,  $\delta^{13}C$ ,  $^{14}C$ ) and chemical (B, Cl) constrains on water origin, mixing, water-rock interaction and age of low-temperature geothermal water, *Applied Geochemistry*, 108, 104380, <https://doi.org/10.1016/j.apgeochem.2019.104380>, 2019.
- Stefánsson, U.: North Icelandic Waters, *Rit Fiskideildar*, 3, 1–265, 1962
- 930 Sundqvist, H. S., Kaufman, D. S., McKay, N. P., Balascio, N. L., Briner, J. P., Cwynar, L. C., Sejrup, H. P., Seppä, H., Subetto, D. A., Andrews, J. T., Axford, Y., Bakke, J., Birks, H. J. B., Brooks, S. J., de Vernal, A., Jennings, A. E., Ljungqvist, F. C., Rühland, K. M., Saenger, C., Smol, J. P., and Viau, A. E.: Arctic Holocene proxy climate database – new approaches to assessing geochronological accuracy and encoding climate variables, *Climate of the Past*, 10, 1605-1631, 935 <https://doi.org/10.5194/cp-10-1605-2014>, 2014.
- Tetzlaff, D., Birkel, C., Dick, J., Geris, J., and Soulsby, C.: Storage dynamics in hydrogeological units control hillslope connectivity, runoff generation, and the evolution of catchment transit time distributions, *Water Resources Research*, 50, 969-985, <https://doi.org/10.1002/2013WR014147>, 2014.
- 940 Tetzlaff, D., Piovano, T., Ala-Aho, P., Smith, A., Carey, S. K., Marsh, P., Wookey, P. A., Street, L. E., and Soulsby, C.: Using stable isotopes to estimate travel times in a data-sparse Arctic catchment: Challenges and possible solutions, *Hydrological Processes*, 32, 1936-1952, <https://doi.org/10.1002/hyp.13146>, 2018.
- 945 Thomas, E. K., Hollister, K. V., Cluett, A. A., and Corcoran, M. C.: Reconstructing Arctic precipitation seasonality using aquatic leaf wax  $\delta^2H$  in lakes with contrasting residence times, *Paleoceanography and Paleoclimatology*, 35, 1-19, <https://doi.org/10.1029/2020PA003886>, 2020.
- 950 Throckmorton, H. M., Newman, B. D., Heikoop, J. M., Perkins, G. B., Feng, X., Graham, D. E., O'Malley D., Vesselinov, V. V., Young, J., Wullschleger, S. D., and Wilson, C. J.: Active layer hydrology in an arctic tundra ecosystem: quantifying water sources and cycling using water stable isotopes, *Hydrological Processes*, 30, 4972-4986, <https://doi.org/10.1002/hyp.10883>, 2016.

van der Bilt, W. G. M., D'Andrea, W. J., Oppedal, L. T., Bakke, J., Bjune, A. E., and Zwier, M.: Stable Southern Hemisphere westerly winds throughout the Holocene until intensification in the last two millennia, *Communications Earth and Environment*, 3, 186, <https://doi.org/10.1038/s43247-022-00512-8>, 2022.

Vaughn, B.H., White, J.W.C., Delmotte, M., Trolier, M., Cattani, O., and Stievenard, M.: An automated system for hydrogen isotope analysis of water, *Chemical Geology*, 152, 309, 319, [https://doi.org/10.1016/S0009-2541\(98\)00117-X](https://doi.org/10.1016/S0009-2541(98)00117-X), 1998.

960

Verbruggen, F., Heiri, O., Reichert, G. J., Blaga, C., and Lotter, A. F.: Stable oxygen isotopes in chironomid and cladoceran remains as indicators for lake-water  $\delta^{18}\text{O}$ , *Limnology and Oceanography*, 56, 2071-2079, <https://doi.org/10.4319/lo.2011.56.6.2071>, 2011.

965 Wei, T., and Simko, V.: R package 'corrplot': Visualization of a Correlation Matrix (Version 0.92), 2021. Available from <https://github.com/taiyun/corrplot>.

Wooller, M., Wang, Y., and Axford, Y.: A multiple stable isotope record of Late Quaternary limnological changes and chironomid paleoecology from northeastern Iceland, *Journal of Paleolimnology*, 40, 63-77, <https://doi.org/10.1007/s10933-007-9144-8>, 2008.

970

Zimmerman, U., Ehhalt, D., and Muennich, K. O.: Soil-water movement and evapotranspiration: Changes in the isotopic composition of the water. In *Isotopes in Hydrology*, pp. 567-585. Vienna: International Atomic Energy Agency, 1967.