

Divergent future drought projections in UK river flows and groundwater levels

Simon Parry¹, Jonathan D Mackay^{2,3}, Thomas Chitson¹, Jamie Hannaford^{1,4}, Eugene Magee¹, Maliko Tanguy¹, Victoria A Bell¹, Katie Facer-Childs, Alison Kay¹, Rosanna Lane¹, Robert J Moore¹, Stephen
5 Turner¹ & John Wallbank¹

¹ UK Centre for Ecology & Hydrology, Wallingford, OX10 8BB, UK

² British Geological Survey, Keyworth, Nottingham, NG12 5GG, UK

³ School of Geography, Earth and Environmental Sciences, University of Birmingham, Edgbaston, B15 2TT, UK

⁴ Irish Climate And Research UnitS (ICARUS), Maynooth, Co. Kildare, Ireland

10 *Correspondence to:* [Jamie Hannaford](mailto:jaha@ceh.ac.uk) (jaha@ceh.ac.uk)

Abstract. Hydrological drought is a serious issue globally which is likely to be amplified by 21st century climate change. In the UK, the impacts of changes in river flow and groundwater drought severity in a future of climate change and higher water demand are potentially severe. Recent publication of a new nationally-consistent set of river flow and groundwater level projections (the eFLaG dataset), based on state-of-the-art UKCP18 climate projections, offers a unique opportunity to
15 quantitatively assess future UK hydrological drought susceptibility. The dataset includes a transient, multi-model ensemble of hydrological projections driven by a single regional climate model (RCM), with a 12-member perturbed-parameter ensemble, for 200 catchments and 54 boreholes spanning a period from 1961 to 2080. Assessment of a baseline period (1989-2018) shows that the RCM-driven projections adequately reproduce observed river flow and groundwater level regimes, improving our confidence in using these models for assessment of future drought. Across all hydrological models
20 and most catchments, future low river flows are projected to decline consistently out to 2080. Drought durations, intensities and severities are all projected to increase in most (over 90%, pooling across different drought characteristics) of UK catchments. However, the trajectory of low groundwater levels and groundwater drought characteristics diverge from those of river flows. Whilst groundwater levels at most (>85%) boreholes are projected to decline (consistent with river flows), these declines are relatively modest (<10% reduction) in transient low groundwater levels by 2080 and, in fact, six show
25 moderate increases. Groundwater drought characteristics in the far future (2050-2079) are often similar to those of the baseline (1989-2018), with only 33% of boreholes showing an increase (towards worsening drought) of more than 10% for drought severity (48% of boreholes for drought intensity). Interestingly, for some boreholes droughts are projected to be more prolonged and severe in the near future (2020-2049) before returning to shorter durations/lower severity in the far future. A number of explanatory factors for this divergence between river flow and groundwater are discussed. The
30 sensitivity to seasonal changes in precipitation and potential evapotranspiration is proposed as a principal driver of divergence because low river flows are more influenced by shorter-term rainfall deficits in the summer half-year, whilst groundwater drought appears to be offset somewhat by the wetter winter signal in the RCM projections. Our results have

important implications for water management, demonstrating a widespread increase in river flow drought severity and diminishing low flows that could have profound societal and environmental impacts unless mitigated. Furthermore, the divergence in projections of drought in river flows and groundwater levels brings into question the balance between surface and subsurface water resources. The projected contrast in fortunes of surface and subsurface water resources identified for the UK may be replicated in other parts of the world where climate projections suggest a shift towards drier summers and wetter winters.

Keywords: Climate change; water resources; hydrology; hydrogeology; low river flows; low groundwater levels; UKCP18; climate projections

1 Introduction

River flow and groundwater drought (hereafter referred to jointly as hydrological drought) are natural phenomena which have been observed throughout the historical record in many parts of the world (Tallaksen and Van Lanen 2004). The development of hydrological drought is complex, driven in part by the atmosphere (meteorological drought) and by hydrological processes which control the propagation of drought through space and time (Van Loon 2015). Consequently, the translation of a meteorological drought to river flow and groundwater level deficits manifests differently, but both have important environmental and socio-economic consequences.

Hydrological drought impacts are generally less severe in countries with temperate climates such as the United Kingdom (UK), but they are not immune to costly consequences, particularly where water resources are managed under assumptions of plentiful precipitation. A principal challenge for UK water resources is the geographical distribution of average annual rainfall which is inversely related to patterns of population density. Folland et al. (2015) describe how the drier ‘English Lowlands’ in the south and east are densely populated, with some of the greatest water demands for public water supply, commerce and agriculture – with many catchments in this area already considered water-stressed. Hence, in this region especially, reconciling potential futures of reduced water supply under climate change and increased water demands is already being discussed (the ‘Jaws of Death’; Bevan 2022). Of key importance for water resource managers is understanding how climate change will affect both surface water and groundwater drought. Robust, nationally consistent assessments of future drought incorporating state-of-the-art climate projections have never been more crucial.

In the UK, regional water supply is made up of a mixture of groundwater and surface water; in England, groundwater comprises around a third of water supplies (and more than three quarters in the south-east, mainly from the Chalk), whereas in Scotland and Wales, groundwater contributes only around 5% to total water supply (BGS 2023). Drought is a regular feature of UK hydroclimatology (Bloomfield and Marchant 2013; Rudd et al. 2017; Barker et al. 2019). The 1975-76 drought remains the benchmark drought in observed records in the UK (Rodda and Marsh 2011), although rapid growth of the gauging station network did not commence until the 1960s. Long reconstructed river flow records provide the most

65 comprehensive record of historical droughts; the analysis of these datasets has yielded new insights into severe droughts in
the 1890s, 1900s, 1920s and 1930s which rivalled or surpassed the 1976 drought in their duration and severity (Rudd et al.
2017; Barker et al. 2019). These studies and others found that each drought episode tends to have a distinct spatial footprint
and temporal evolution, and are sufficiently large-scale to prompt assessment of their complex spatio-temporal
70 characteristics. Historical chronologies of drought and its recovery have also identified spatial coherence in response (e.g.
Parry et al. 2012; Tanguy et al. 2023), although the rate at which droughts terminate has been demonstrated to vary
considerably (Parry et al. 2016). Analysis of records of groundwater level measurements that are not significantly impacted
by abstraction using standardised metrics of groundwater drought (Bloomfield and Marchant 2013) have already provided an
insight into the spatio-temporal evolution of groundwater drought in the UK. Bloomfield et al. (2015) analysed 74
groundwater level time series from Lincolnshire and identified six broad clusters of groundwater drought behaviour with
75 homogeneous driving meteorology but contrasting hydrogeological properties. They inferred the unsaturated zone thickness
as an important control on drought duration, magnitude and intensity. More recently, Bloomfield et al. (2019) analysed long-
term changes in groundwater drought occurrence in the Chalk aquifer of the UK using two groundwater level records that
extend back to 1891. They showed that while precipitation deficits are the driver of groundwater drought formation and
propagation, long-term increases in the frequency and intensity of groundwater drought are associated with climate warming.
80 These results indicate that, even without future changes in precipitation deficits, anthropogenic warming could also serve to
increase drought severity.

Our understanding of future changes in hydrological drought remains limited, some of which is based on hydrological
projections underpinned by the older UKCP09 climate projections (e.g. Borgeomo et al. 2015; Huskova et al. 2016; Collet et
al. 2018; Visser-Quinn et al. 2019). When climate projections from the ‘weather@home’ initiative were used to drive
85 hydrological models, surface water droughts were found to increase in severity across Great Britain (Rudd et al. 2019), with
extreme droughts most notably impacted (Dobson et al. 2020). Studies that have assessed the future of the drier part of the
hydrological regime driven by newer UKCP18 climate projections (e.g. Kay et al. 2021b; Lane and Kay 2021) have focused
on low flows rather than drought characteristics. However, these studies only considered a single hydrological model. For
groundwater level, the study of Jackson et al. (2015) is the only national assessment of changes in UK groundwater levels
90 under climate change currently available. Their analysis is based on the Future Flows and Groundwater Levels dataset
(FFGWL; Prudhomme et al., 2013) which includes projections of groundwater levels at 24 boreholes in the UK’s principal
aquifers. They found that, at most of the boreholes, average summer levels are projected to fall and average winter levels are
projected to increase by the 2050s under the UKCP09 high greenhouse gas emissions scenario. However, they also noted
that local hydrogeological conditions appear to control the future response to climate and their analysis did not assess
95 drought characteristics specifically.

A number of limitations remain in our understanding of future drought severity in the UK. Firstly, none of the existing
studies have attempted to integrate analysis of river flow and groundwater level data using consistent driving data and
analysis techniques. For groundwater, no analysis of national scale groundwater drought susceptibility under climate change

has been undertaken. Secondly, most studies (and all multi-model analyses) are based on the UKCP09 climate projections which no longer represent the state-of-the-art for UK climate change science. Finally, none of the assessments to date have examined the significance of hydrological model uncertainty in assessment of hydrological drought under climate change. This is despite the fact that hydrological modelling uncertainties are important, and often comparable to climate model uncertainties for low flows (Prudhomme et al. 2011; Engin et al. 2017; Meresa and Romanowicz, 2017; Chegwidden et al. 2019; Lane et al. 2022).

The objective of this study is to use a nationally-consistent set of river flow and groundwater level projections available from the eFLaG dataset (Hannaford et al. 2022b), which are based on state-of-the-art UKCP18 RCM projections (Lowe et al. 2018), to quantitatively assess future UK hydrological drought susceptibility. Section 2 gives an overview of the eFLaG river flow and groundwater level dataset and provides details of the indicators used to evaluate changes in drought susceptibility in the future. Section 3 presents the results of this study. This comprises an initial evaluation of RCM-driven river flow and groundwater level projections against observed historical drought, followed by the future projections of river flow and groundwater level drought. Section 4 discusses the results before Section 5 concludes the study.

2 Data and Methods

2.1 eFLaG dataset

The eFLaG dataset as well as the climate data and models that underpin it has been comprehensively described in Hannaford et al. (2022a). Only a brief overview of the dataset with details relevant for the drought analysis conducted in this study are summarised below. The dataset includes simulated river flow and groundwater level time series for 200 river flow catchments and 54 groundwater level boreholes across the UK. These were generated using a combination of hydrological and groundwater models, all of which were driven by daily time series of available precipitation and potential evapotranspiration (PET). These data are grouped into ‘simobs’ and ‘simrcm’ model outputs.

120

2.1.1. simobs model outputs

The simobs outputs are observation-driven simulations, i.e. model simulations driven with observational datasets of precipitation, temperature and PET which comprise the HadUK-Grid 1km gridded rainfall and air temperature data (Hollis et al. 2019) recommended by UKCP18 and the MORECS PET dataset (Hough et al. 1997). The simobs outputs for January 1989 to December 2018 were used herein to represent a 30-year ‘baseline’ period of the past.

125

2.1.2. simrcm model outputs

The simrcm outputs were derived by driving the hydrological and groundwater models with 12km UKCP18 RCM projections (Murphy et al. 2018). These projections consist of a 12-member ensemble, created using perturbed-parameter runs of the Hadley Centre climate model and RCMs. While this ensemble provides some indication of future climate

130

uncertainty, it is important to note that all 12 ensemble members are derived from the same model structure and based on the same high emissions scenario (RCP8.5). This is a necessary constraint of the eFLaG dataset and the reasons for this and its significance are discussed by Hannaford et al. (2023). In brief, the 12km ‘Regional’ projections of UKCP18 were chosen as these are the only transient, spatially coherent projections in the UKCP18 portfolio, and these were important criteria for eFLaG. Of course, this means that only one socioeconomic scenario is featured and, as noted by Hannaford et al. (2023), it is regarded as a somewhat pessimistic one and ideally should be contextualised with other scenarios – we return to this limitation in the discussion.

Daily precipitation data were bias-corrected against the simobs climate data using monthly change factors. The simrcm data for 1983 to 2079 were used to provide continuous projections of river flows and groundwater levels. Projections were also assessed on a 30-year time slice basis using the ‘baseline’ (1989-2018), ‘near future’ (2020-2049) and ‘far future’ (2050-2079) to look at relative changes in river flow and groundwater drought characteristics.

2.1.3. Hydrological and groundwater models

An ensemble of four hydrological models was used for the river flow simulations to provide insight into the sensitivity of future projections to hydrological model, an aspect of uncertainty that has been ascertained to be at least as important as climate model uncertainty for low flows in previous studies (Chegwidden et al. 2019; Velazquez et al. 2013). These models are:

- GR4J and GR6J are lumped catchment rainfall-runoff models (Perrin et al. 2003; Pushpalatha et al. 2011) from the same ‘airGR’ family (Coron et al. 2021) with four and six parameters, respectively. They are relatively simple models with a computationally efficient automatic calibration function, making them suitable for a range of applications. They have been applied successfully in the UK on a number of occasions (e.g. Harrigan et al. 2018; Smith et al. 2019; Anglian Water Drought Plan 2021);
- The Probability Distributed Model (hereafter ‘PDM’; Moore et al. 2007; UKCEH 2021) is a configurable lumped catchment rainfall-runoff model supporting a large choice of potential configurations, several of which were trialled during model setup using an automated procedure across the set of catchments (Figure S2 of Hannaford et al. 2022a);
- Grid-to-Grid (hereafter ‘G2G’; Bell et al. 2009) is a distributed hydrological model which simulates natural river flows on a 1km resolution grid across Great Britain (Moore et al. 2006; Cole and Moore 2009; Bell et al. 2012). G2G has been applied previously for low flow and drought studies (e.g. Kay et al. 2018; Rudd et al. 2019; Lane and Kay 2021) and can be used with abstraction and discharge data to simulate observed river flows (Rameshwaran et al. 2022), though this has not been implemented for this application. G2G is setup using national gridded datasets and is parameterised accordingly, precluding the need for calibrating to observed river flows for individual

catchments. Although a key strength of G2G is its ability to provide consistent, national-scale flow estimates, only
165 G2G-simulated flows at gauging station locations are used herein.

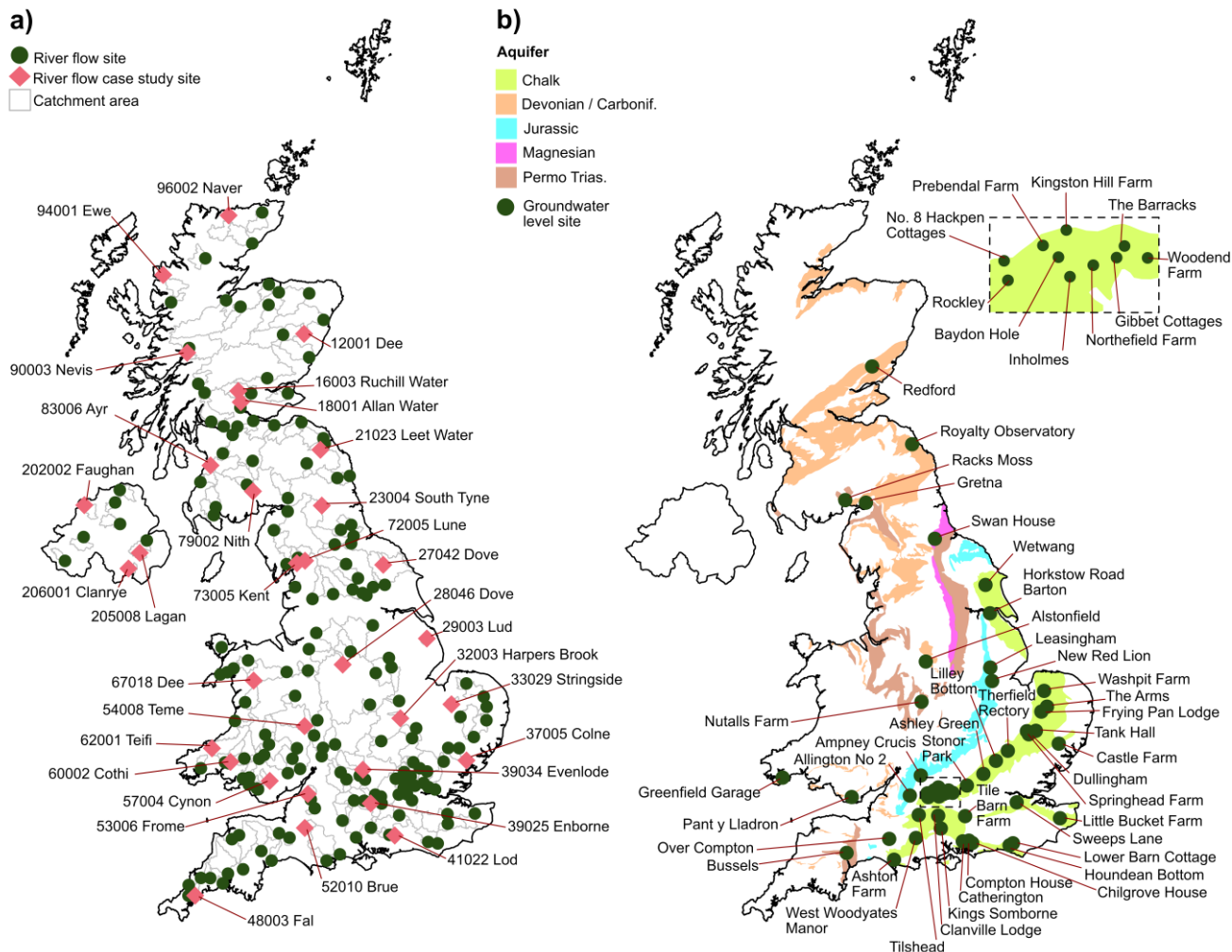
Groundwater level time series at boreholes were simulated using the lumped conceptual AquMod (Mackay et al. 2014)
groundwater model. The model has a flexible structural representation of vertical heterogeneity of the subsurface to represent
site-specific hydrological and hydrogeological properties of the groundwater catchment surrounding each borehole.
AquMod has been used in the past to assess climate change impacts on groundwater levels (Jackson et al. 2015; Ascott et al.
170 2021) and also underpins operational drought forecasting delivered by the BGS as part of the UK Hydrological Outlook
(Mackay et al. 2015; Prudhomme et al. 2017). It must be noted that only one groundwater level model is available within
eFLaG, simply given the nature of that dataset, compared with the multiple river flow models. This is important to bear in
mind when interpreting the results of this study: some indication of hydrological model uncertainty can be presented for river
flows but not for groundwater.

175 **2.2 River flow catchments and groundwater level boreholes**

The full dataset of river flow and groundwater level projections (Hannaford et al. 2022b) comprises data for 200 river flow
catchments and 54 groundwater level boreholes across the UK. Study locations were selected by considering the needs of
the research community and the water industry, as well as including many of the same sites for which projections were
available in the FFGWL dataset (Prudhomme et al. 2013). A range of additional factors were considered when determining
180 the catchment and borehole lists: inclusion in key strategic national hydrometric networks; geographical coverage;
representativeness of catchment characteristics; overall data quality, record length and completeness; and the absence of
artificial influences of an extent that confounds modelling efforts.

Results derived from the river flow projections are provided for the full dataset of 200 catchments (in the case of national-
scale mapping of future changes) or for a subset of 32 case study catchments (illustrated in Figure 1) highlighted to allow us
185 to look at projected catchment-scale drought/low flow changes in detail. These 32 catchments were selected to ensure a
reasonable geographical spread around the UK whilst also reflecting the range of hydroclimatic and hydrogeological
properties. An interactive portal (<https://eip.ceh.ac.uk/hydrology/eflag>) allows the reader to reproduce much of the analysis
presented here, including producing similar catchment-scale analysis, but for the wider set of 200 eFLaG catchments.

Results derived from the groundwater level projections are provided for all but three of the 54 boreholes: Skirwith, Llanfair
190 and Heathlanes which are situated in the Permo-Triassic sandstones. These were excluded because their hydrographs exhibit
very long (multi-year) trends that make it difficult to calculate robust metrics of groundwater drought over the selected 30-
year time slices.



195 *Figure 1 – Study catchments and boreholes: (a) 200 river flow catchments (numbers represent NRFA station numbers); and (b) 51 groundwater level boreholes. A subset of 32 catchments included in some analyses is indicated by pink diamonds*

2.3 Low flow and level metrics

200 The 90% exceedance river flows and groundwater levels (Q90 and L90, respectively) were calculated from the simrcm data to provide a first order analysis of how hydrological deficits are likely to change in future relative to the recent past. The 70th, 50th and 30th percentile exceedance flows and levels were also analysed to provide a broader context for future hydrological change. Percentage changes in flow and level quantiles were calculated for the near future and far future time slices relative to the baseline period. Note that for groundwater these percentage changes are expressed relative to the historical range of groundwater levels in the simrcm baseline period. Transient flow and level quantiles were also calculated using a 30-year moving average filter to remove the effects of internal variability.

2.4 Drought identification and characterisation

205 To identify river flow and groundwater droughts from the eFLaG simrcm data, a threshold-based approach was used which has been widely applied for drought identification (e.g. Parry et al. 2016; Rudd et al. 2017; Bloomfield et al. 2018). For a given river flow or groundwater level time series, the data were first aggregated into monthly means. Twelve thresholds (one for each month of the year, which accounts for seasonality) were then derived using a specified flow or level quantile calculated from the simrcm baseline period. The catchment is in drought for a particular month when the flow or level is
210 below the threshold for that month. A pooling procedure is applied which considers two separate events separated by a single month above the threshold to be joined together into a single drought event (provided the magnitude above the threshold does not exceed the accumulated deficit prior to this single month). A drought, as defined in this study, therefore represents a time when the river flow or groundwater level is relatively low with respect to historic norms for that time of year. Having identified individual drought events, three characteristics were assessed for each: i) duration - the number of
215 months over which a drought occurs; ii) intensity - the largest flow or level deficit relative to the drought threshold in any month of a drought; and iii) severity - the accumulated flow or level deficit across all months of a drought.

For river flows the monthly 70% exceedance flow was used to define the drought thresholds for each catchment. This may be regarded as a relatively 'high' threshold for drought, as these flows occur by definition 30% of the time, which would not be considered extreme. This threshold was chosen based on expert judgment and experimentation, to ensure multi-year
220 droughts pool together rather than being 'split' by intermittent higher flows, as occurs with lower thresholds like Q90. This is important given the importance in the UK of multi-year droughts, driven by winter deficiencies, as noted in the introduction. The threshold balances yielding a sufficient number of droughts while still being 'impactful' in highlighting major droughts episodes: it is lower than in some other UK drought studies (e.g. Rudd et al. 2017, 2019) which have shown good representation of known major historical droughts.

225 For groundwater, it is difficult to compare groundwater drought characteristics across different boreholes when using groundwater level deficits directly. This is because the contrasting hydraulic properties give rise to highly site-specific relationships between level deficit and water availability. Accordingly, a non-parametric normal scores transform of groundwater level data to standardise groundwater level time series into a Standardized Groundwater Index (SGI; Bloomfield and Marchant 2013) was used before conducting the drought analysis. Following Bloomfield et al. (2019), a SGI
230 of -1 was used as the drought threshold which corresponds to the 84th percentile exceedance level.

Bloomfield et al. (2015) showed that regional variations in the duration, intensity and severity of groundwater drought in the UK is controlled, in part, by hydrogeological catchment characteristics which influence the responsiveness of local water table variations to driving climate. For boreholes with high autocorrelation in the SGI series (slowly-responding), drought durations and magnitudes are likely to be larger. A convenient way to quantify groundwater responsiveness to climate is to
235 compare the SGI time series with an equivalent Standardized Precipitation Index (SPI). The SPI accumulation period which leads to the strongest correlation between SGI and SPI, q_{\max} , is positively correlated with SGI autocorrelation and can reach

as high as 28 months in high storage, low diffusivity aquifers such as the Permo-Triassic sandstones (Bloomfield and Marchant 2013). We calculated q_{\max} for each borehole by comparing the SGI derived from the simobs groundwater level simulations to a Standardized Recharge Index (SRI) derived from the equivalent soil drainage simulations from AquMod. Figure S1 shows that q_{\max} varies between 1 and 16 months across the boreholes. All four boreholes situated in the Carboniferous limestone are representative of rapidly-responding aquifers with $q_{\max} \leq 2$ months. For the Jurassic limestones, Chalk and Permo-Triassic sandstones, the q_{\max} range is 2-6, 3-13 and 7-17 months, respectively.

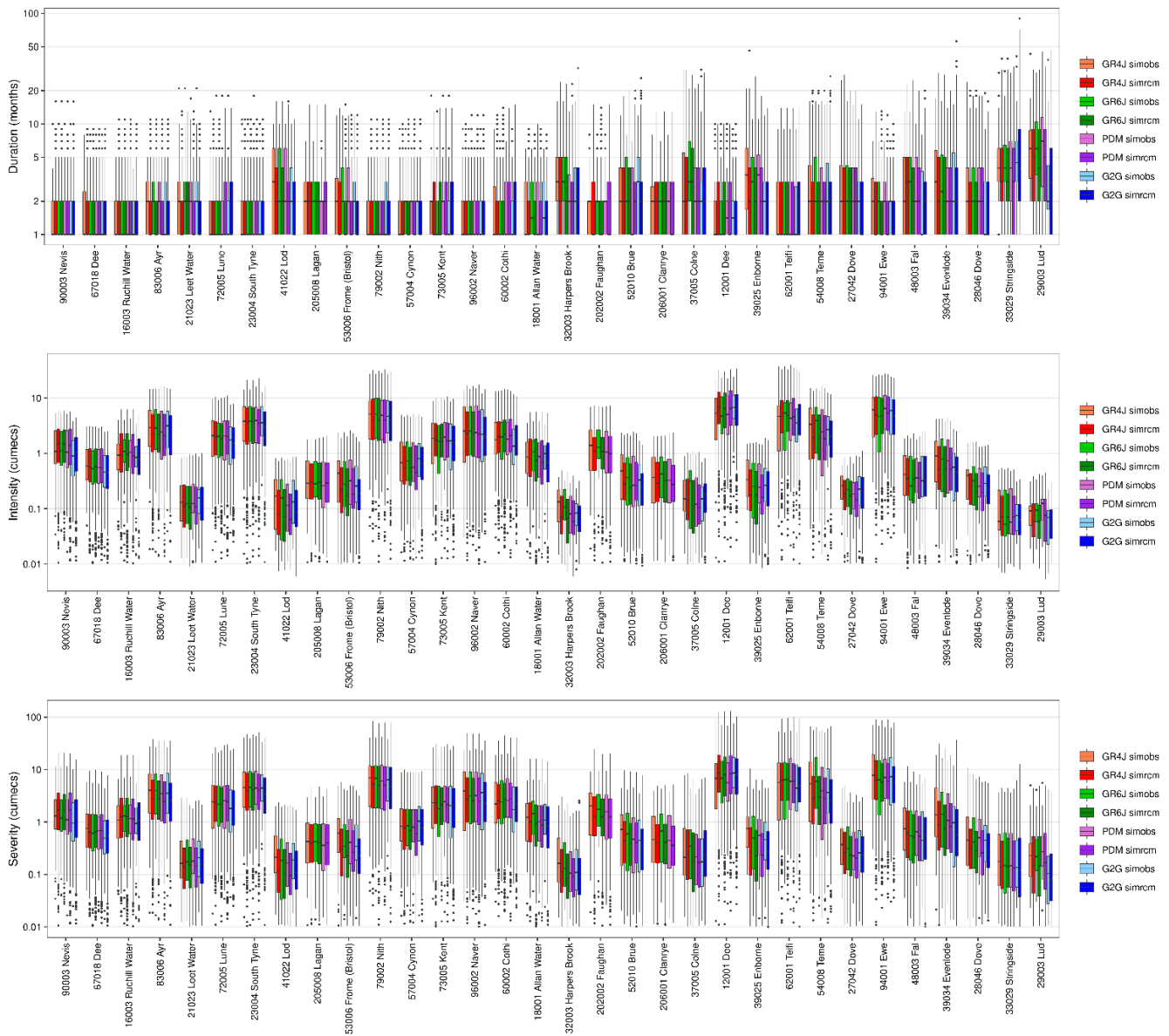
3 Results

3.1 Evaluation of simrcm runs over baseline period

The ability of the simrcm runs to represent observed river flow and groundwater drought events is assessed by comparing the characteristics of droughts extracted from the simrcm and simobs simulations over the 30-year baseline time slice (1989-2018). It should be noted that there are 12 times more data in the simrcm ensemble because for each catchment or borehole there is only one simobs time series whereas there are 12 RCM time series within the simrcm ensemble.

3.1.1 River flows

For river flows within the subset of 32 catchments, the simrcm dataset reasonably approximates to the simobs drought characteristics (Figure 2). Comparing pairs of boxplots corresponding to simobs and simrcm baseline for each of the hydrological models, the 25th, 50th and 75th percentiles of drought duration are in good agreement (particularly in catchments across the north and west of the UK), with absolute differences rarely exceeding one month (Figure 2a). Intensities in simobs are reasonably approximated by the simrcm data for most catchments, particularly with respect to the 25th, 50th and 75th percentiles (notwithstanding slight differences naturally resulting from a continuous variable like intensity compared to a discrete variable like duration). For severity (Figure 2c), there is generally good agreement between the simrcm and simobs, although differences in 25th, 50th and 75th percentile values are greater for severities than either duration or intensity. There are some larger differences between simobs and simrcm baseline in the tails of the distributions for all metrics in some catchments. For duration, this is particularly so for catchments in southern England (e.g. catchments 29003 to 52010 in Figure 2a), and across north-eastern Britain, high intensity values are overestimated whilst low intensity values are underestimated (Figure 2b). However, differences for these extreme events are likely to be influenced by the larger sample size of droughts in the simrcm data due to there being 12 RCM time series. For pairs of boxplots across all hydrological models and catchments, where there are differences the simrcm baseline is more likely to underestimate the drought characteristics.



265

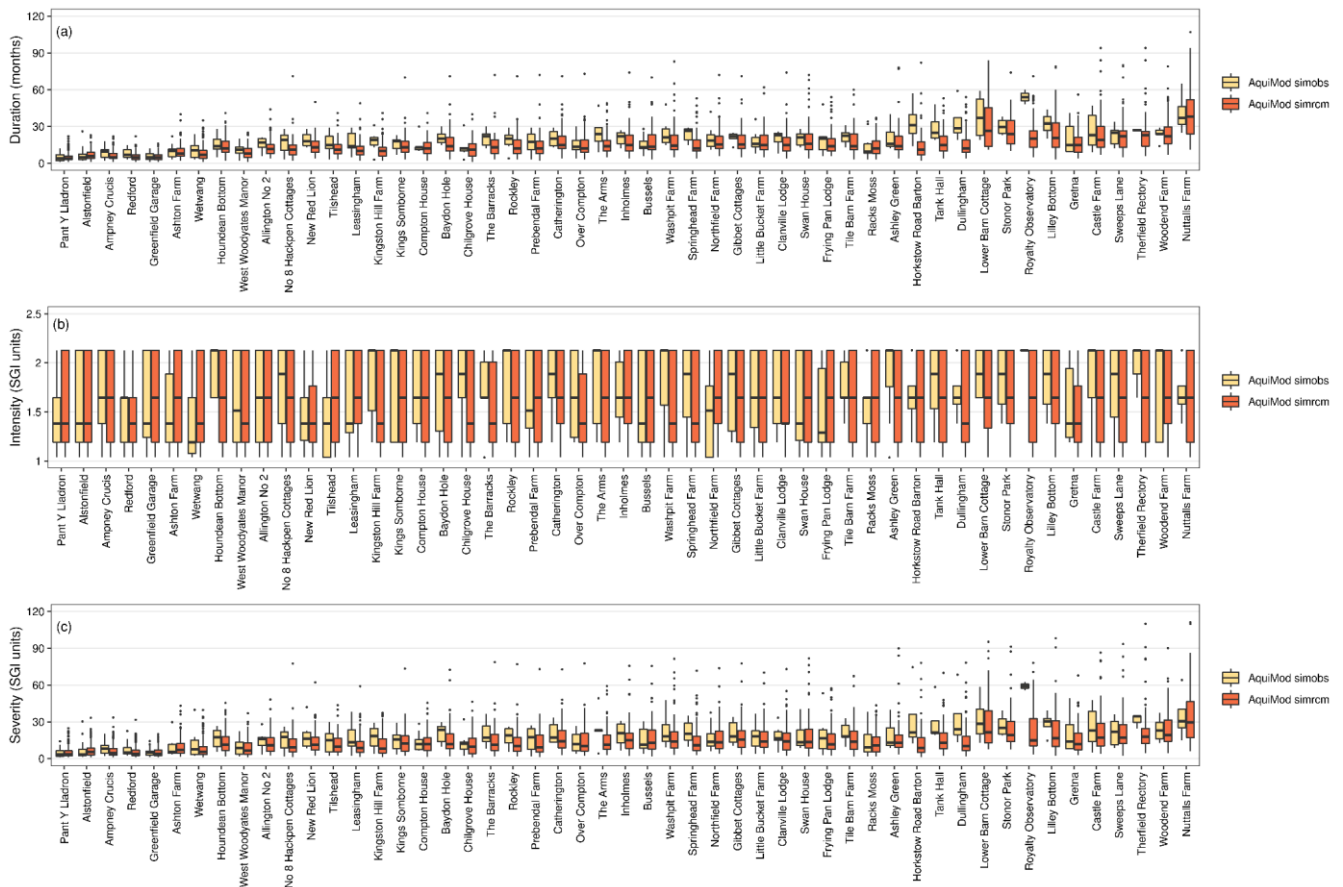
Figure 2 -- Comparison of drought characteristics for 32 catchments in simobs and simrcm for the baseline period (1989-2018). Catchments on the x-axis are ordered by increasing Base Flow Index and the y-axes are logarithmic. For each catchment, there are four pairs of boxplots, one for each hydrological model, with pairs illustrating comparison between drought characteristics in simobs and simrcm. Note that the baseline boxplots contain characteristics for all events identified across all 12 simrcm runs, whereas simobs only contain events from a single 30-year time slice. Drought characteristics presented are: (a) duration; (b) intensity; (c) severity.

270

3.1.2 Groundwater levels

A comparison of the simobs and simrcm groundwater drought characteristics is given in Figure 3. In this plot, the boreholes
275 have been ordered from left to right in order of their responsiveness (q_{\max}). The simobs runs show a trend of longer duration
and higher severity as q_{\max} increases. The median duration of drought events ranges from 4 months (Pant Y Lladron, $q_{\max}=1$)
up to 37 months (Nuttalls Farm, $q_{\max}=17$) while the median severity ranges by almost an order of magnitude between 3.6
(Pant Y Lladron) and 30.6 (Nuttalls Farm). The simrcm runs show a similar pattern of increasing duration and severity with
 q_{\max} and with similar ranges across the different boreholes. However, for some boreholes, there are large discrepancies
280 between the simobs and simrcm quantiles. There does not appear to be any regional spatial control on the magnitude of
these discrepancies that could be related to the driving climatic patterns. The largest discrepancies include boreholes from
the south-east of England (e.g. Dullingham) up to southern Scotland (Royalty Observatory). Instead, the largest deviations
between the simobs and simrcm runs are typically associated with boreholes situated in more slowly-responding
groundwater systems. There is also a systematic negative bias in the simrcm drought characteristics whereby 44 of the
285 boreholes show smaller median drought duration in the simrcm runs and 43 show smaller median severity. There are similar
biases in 25th and 75th percentiles. For some boreholes (e.g. Chilgrove House, Royalty Observatory and Therfield Rectory)
there is considerably more spread in the simrcm runs than the simobs runs.

Differences between the intensity calculated from the simobs and simrcm runs are generally small with 37 of the 51
boreholes showing differences of less than 0.4 SGI units. However, there are more significant differences for specific
290 boreholes including Kingston Hill Farm and Washpit Farm which show the largest difference of 0.7 SGI units. Unlike the
duration and severity, there does not appear to be any systematic bias in the simrcm simulations of intensity with both under-
and over-estimations shown across the boreholes.



295

Figure 3 -- Comparison of drought characteristics for 51 boreholes in simobs and simrcm for the baseline period (1989-2018). Pairs of boxplots illustrate comparison between drought characteristics in simobs and simrcm. Note that the baseline boxplots contain characteristics for all events identified across all 12 simrcm runs, whereas the simobs only contain events from a single 30-year time slice. Drought characteristics presented are: (a) duration; (b) intensity; (c) severity. The 51 boreholes along the x-axis are ordered from most responsive (left) to least responsive (right).

300

3.2 Future projections of river flow and groundwater drought

Projections of future drought from the simrcm runs are presented through comparisons of characteristics of drought events extracted from the baseline (1989-2018), near future (2020-2049) and far future (2050-2079) time slices. Within the boxplots of Figures 4 and 5, characteristics of extracted drought events from all 12 RCM ensemble runs are included to provide an appreciation of the range of possible events.

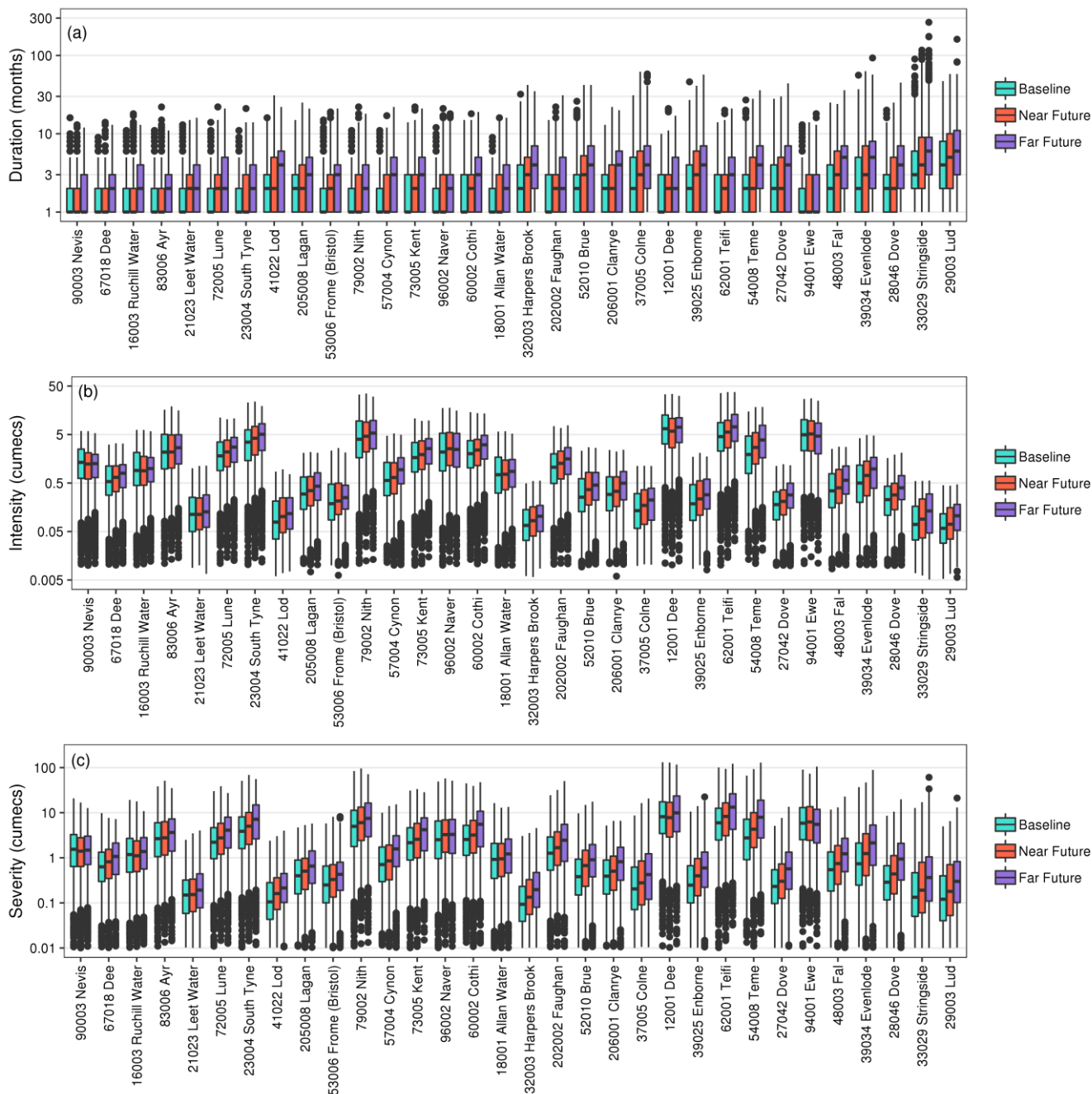
305

3.2.1 River flows

For all hydrological models and across the 32 catchments, drought durations are projected to increase in future (Figure 4a). Increases in durations are most pronounced (increases of up to six months) for catchments in the south-east of the UK (e.g. 33029, 39034, 39025, 37005) and those with the highest BFI values (further to the right of Figure 4a) which already have the most protracted durations in the baseline period (noting the logarithmic y-axis in Figures 4a and S2). Increases are most notable in some catchments in the south-east for G2G (Figure S2, e.g. 29003, 39034, 33029), which can be an outlier owing to its simulation of natural flows rather than calibration to gauged flows. Smaller increases of 1-2 months are also apparent in northern and western areas which tend to have relatively short droughts, though median durations only tend to increase to 2-4 months even in the far future. Whilst in many catchments, the 25th, 50th and 75th percentile durations are projected to increase into the future, projections of the most protracted drought events are less consistent between catchments. Across all hydrological models, whilst the longest droughts are predominantly also projected to increase in duration from baseline to near future to far future, there are some instances of the longest drought durations peaking in the near future before decreasing in the far future.

Intensities of droughts are projected to increase into the future, across most (92 – 98% depending on model) catchments and as simulated by the range of hydrological models (Figure 4b and S3), with over half increasing by more than 50%. Increases in intensities of droughts in individual catchments are most apparent in the 25th, 50th and 75th percentiles. Relative to baseline intensities, some of the largest increases occur in catchments in southern and eastern England (e.g. 29003, 33029, 39034), with catchments further north more likely to exhibit no change in median intensity (e.g. 16003, 21023, 90003, 94001). Even accounting for the logarithmic y-axis in Figures 4b and S3, for most combinations of catchment and hydrological model, there is no appreciable change in the highest intensities. Whilst these results are generally consistent across the four hydrological models, increases in median intensity are largest in G2G (Figure S3d).

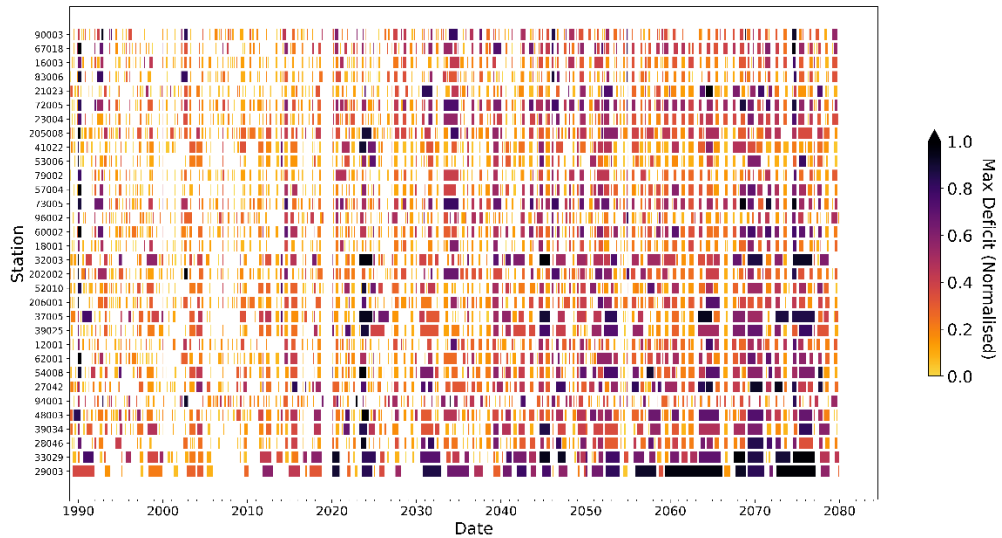
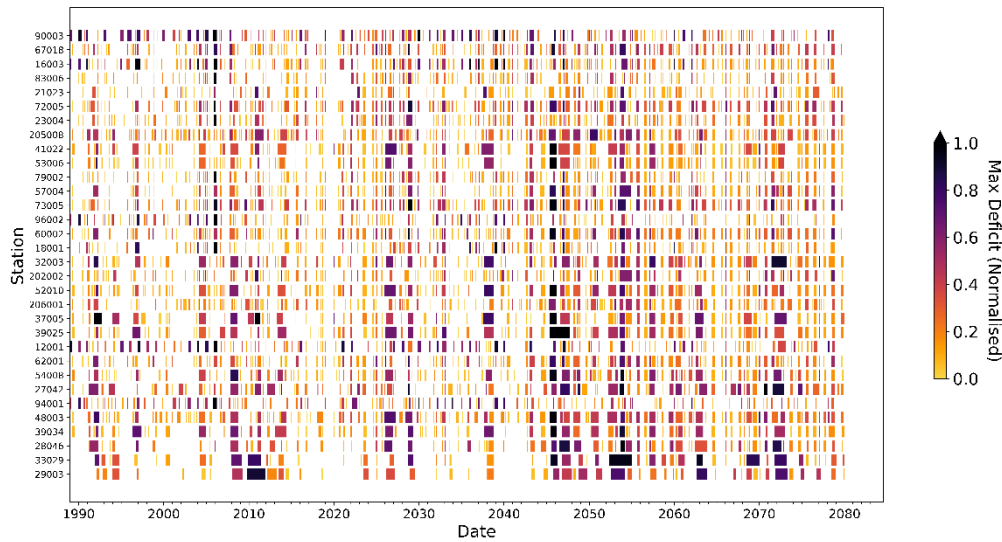
Severity of drought is projected to increase in future in nearly all catchments (>98%) and across all four hydrological models (Figure 4c and S4). This is a function of increases in both duration and intensity, with more months of increasingly low flows below the drought threshold. Catchments further south and/or east (e.g. 28046, 29003, 33029) once again exhibit the largest changes (relative to baseline), with increases both in median and 75th percentile severity. In catchments further north (e.g. 16003, 83006, 90003), future increases in severity are more modest, with median severities exhibiting minimal increase or negligible change. Away from the south-east, there are a number of catchments in which the largest severities either peak in the near future and decline thereafter (e.g. 23004, 79002, 83006) or even decline consistently from baseline to near future to far future (e.g. 16003, 67018, 90003). Amongst the hydrological models, increases in severity are once again most apparent in G2G, particularly for the highest BFI (least responsive) catchments (e.g. 28046, 29003, 33029).



340 *Figure 4 -- Drought event characteristics in simrcm for 32 catchments. Boxplots contain all drought events in the baseline (1989-2018), near future (2020-2049) and far future (2050-2079) time slices across all 12 simrcm runs for all four hydrological models (GR4J, GR6J, PDM, G2G). Results for three drought characteristics are presented: (a) duration; (b) intensity; (c) severity. The catchments along the x-axis are ordered from lowest (left) to highest (right) Base Flow Index. Note that the scales of the y-axes are logarithmic.*

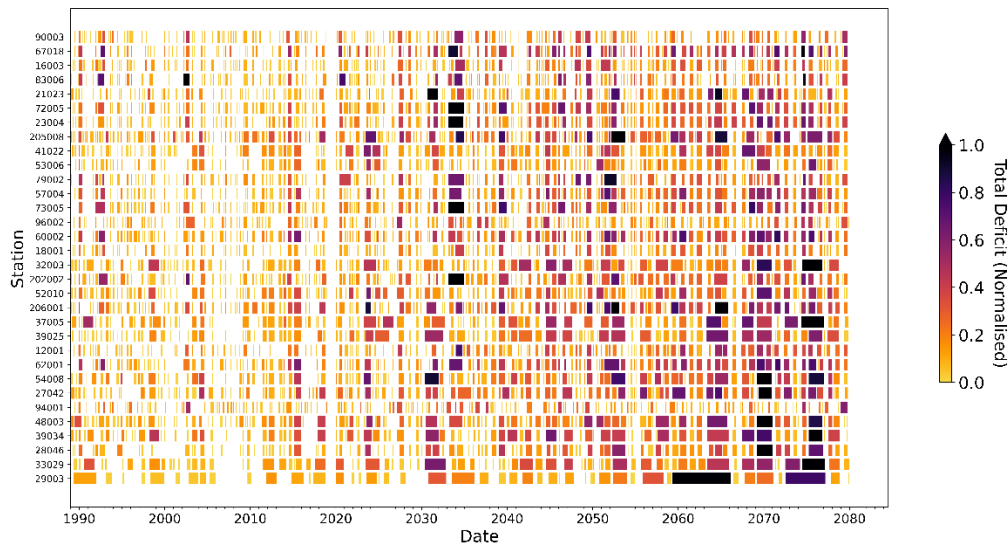
The above analysis and Figure 4 provide a comprehensive summary of future drought changes, integrating across the full range of RCM/hydrological model combinations and for all drought characteristics, across the two future time slices. To provide a more focused look at future drought changes, it is beneficial to narrow down the analysis to individual RCM/model combinations, accepting that this limits a consideration of model uncertainty. To that end, to provide an easily interpretable visualisation of transient future changes in drought, Figures 5 and Figure 6 shows the extracted droughts for one hydrological model (PDM) and two of the 12 RCMs (RCM7 and RCM13). These plots show the clear progression towards increasing drought duration, particularly for RCM13, although this is more pronounced for high-storage catchments in south-east England. The intensity and severity of droughts also increases overall, but these plots show the benefit of looking at transient projections given that these changes are non-linear, with interannual and interdecadal variability exerting a strong effect.

These plots (Figures 5 and 6) also show that drought frequency (in terms of the number of events) decreases in future in many catchments, which may seem counterintuitive given the general trends towards worsening droughts. This is a response to drought duration increasing: hence, droughts are generally less frequent but longer – so the overall proportion of time under drought increases, even if the number of events decreases. A detailed consideration of changes in drought frequency (and its interaction with other drought properties) is beyond scope for this study but is an important topic for future research.



360 *Figure 5: plots showing drought occurrence in the eFLaG projections for one hydrological model (PDM) and two RCMs: RCM7 (top) and RCM13 (Bottom). The rows correspond to individual stations (numbers according to Figure 1), arranged from low BFI (top) to high BFI (bottom), as comparable with Figure 4. Each drought is shown as a shaded bar, so drought duration is shown by the length of each bar, and the colour corresponds to the intensity (maximum deficit) according to the legend. Normalisation for maximum deficit was carried out to yield values for each catchment between 0 and 1 (min-max scaling) to help show where the deficit is greatest for each catchment*

365



370 *Figure 6: plots showing drought occurrence in the eFLaG projections for one hydrological model (PDM) and two RCMs: RCM7 (top) and RCM13 (Bottom). The rows correspond to individual stations (numbers according to Figure 1), arranged from low BFI (top) to high BFI (bottom), as comparable with Figure 4. Each drought is shown as a shaded bar, so drought duration is shown by the length of each bar, and the colour corresponds to the severity (total deficit) according to the legend. Normalisation for maximum deficit was carried out to yield values for each catchment between 0 and 1 (min-max scaling) to help show where the deficit is greatest for each catchment*

375

3.2.2 Groundwater levels

For groundwater levels, there is a range of drought trajectories across the boreholes and different drought metrics (Figure 7). For the six most responsive boreholes (q_{\max} between 1-3 months, far left of Figure 7), the duration, intensity and severity all show increases in the near and far future relative to the baseline period. However, for some of the other boreholes the direction of change is more non-linear. The median drought duration increases for 30 of the 51 boreholes in the near future relative to the baseline period, but for only 16 boreholes in the far future. Similarly, 39 of the boreholes show increases in severity in the near future relative to the baseline period, but only 24 show increases in the far future. For the intensity, approximately 85% of the boreholes show increases for the near future and the same proportion (although not necessarily the same boreholes) for the far future.

385 There seems to be some relation between the changes in the drought duration and severity over time, both in terms of the magnitude and the direction of change. The largest changes are typically associated with the less responsive (high q_{\max}) boreholes. For example, the five most responsive catchments ($q_{\max}=1-2$) show changes in near future duration of between 0-2 months and near future severity of between 0.6-2.3, relative to the baseline period. For the five least responsive catchments ($q_{\max}=11-17$), the change in near future durations ranges between 1-5 months and the change in near future

390 severity ranges between 1.9-8.8, relative to the baseline period. This relationship does not appear to hold for the intensity.

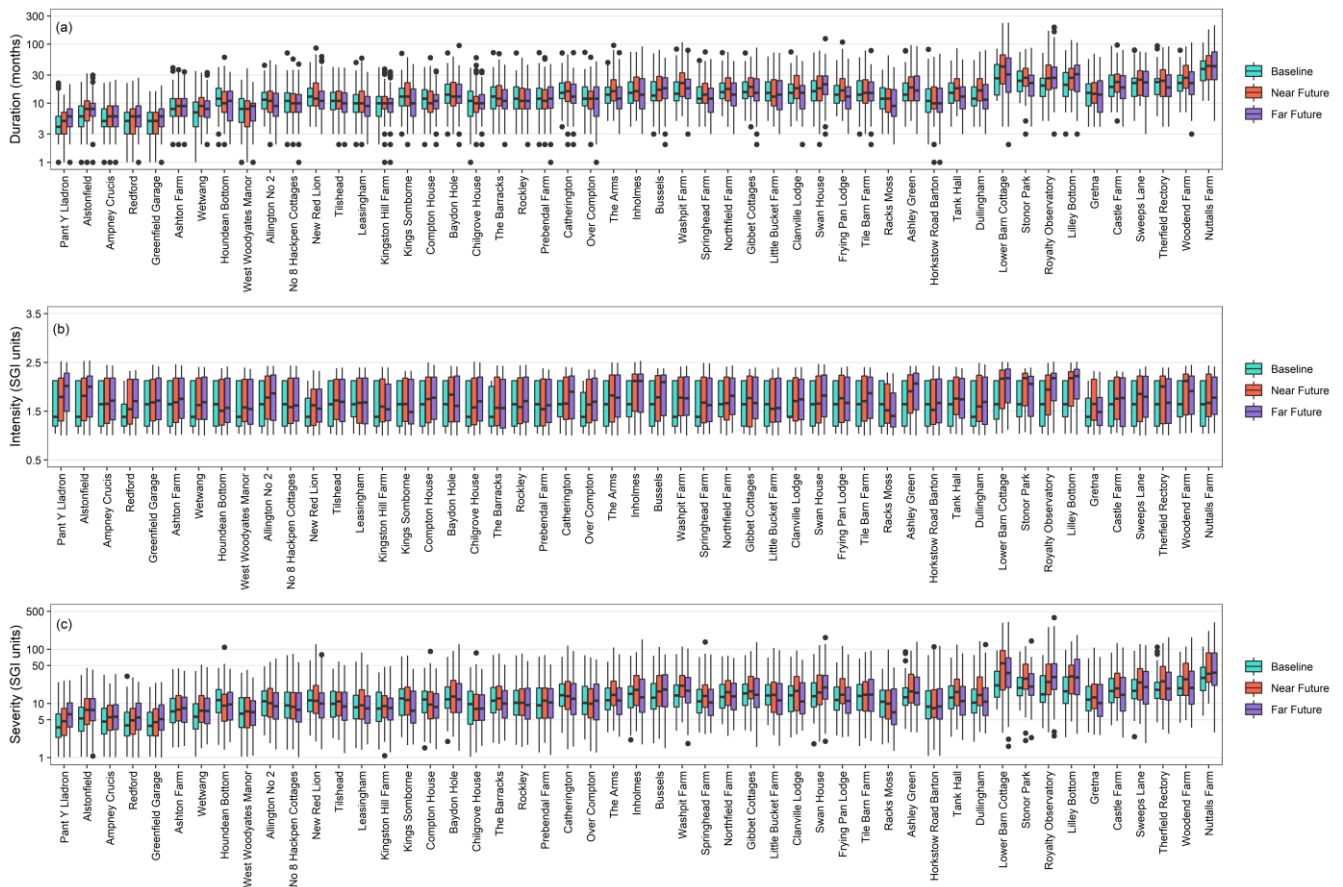


Figure 7 -- Drought event characteristics in *simrcm* for 51 boreholes. Boxplots contain all drought events in the baseline (1989-2018), near future (2020-2049) and far future (2050-2079) time slices across all 12 *simrcm* runs. Results for three drought characteristics are presented: (a) duration; (b) intensity; (c) severity. The 51 boreholes along the x-axis are ordered from most responsive (left) to least responsive (right). Note that the scales of the y-axes of (a) and (c) are logarithmic.

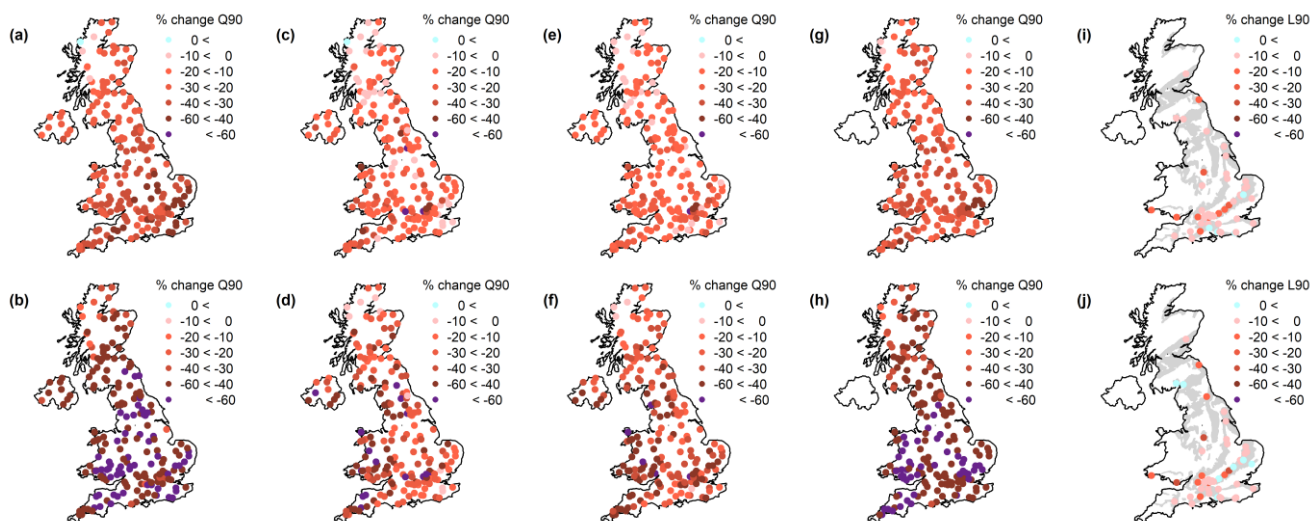
3.3 Future projections of low river flows and groundwater levels

3.3.1 River flows

Low river flows (as represented by the Q90 metric) are projected to decrease in future in almost all UK catchments (Figure 8). Percentage change in Q90 allows intercomparison of catchments across hydroclimatic and hydrogeological gradients. Over the near future timeframe (2020-2049), low river flows in catchments across the vast majority of the UK (84 – 98% of catchments, depending on model) are projected to decrease by at least 10% from baseline Q90 (1989-2018; Figure 8 upper row). For this near future timeframe, there is a particularly strong signal for decreases in Q90 across England and Wales, with catchments in the south-east exhibiting the most substantial changes. Numerous (26) catchments in central, southern

and eastern England modelled by GR4J exhibit decreases of 40-60%, a magnitude of decrease which is consistent across all models for a cluster of catchments north of London. Of the four hydrological models, projected decreases are larger for GR4J and G2G (typically >20%) than for GR6J and PDM (typically >10%). Near future flow decreases of <10% are generally confined to catchments in Scotland across all models, with some localised examples elsewhere for GR6J and PDM. Only one catchment in north-west Scotland is projected to experience increased Q90 in the near future, and even then only simulated by two of the four models.

In the far future (2050-2079), low river flows are projected to decline by even more extreme magnitudes (Figure 8 lower row). For GR6J and PDM, it is suggested that low flows will decrease by at least 30% in most catchments of the UK (away from north-west Scotland), and catchments across Wales and parts of Northern Ireland, northern England and southern England are projected to decrease by at least 40% from baseline Q90. For GR4J and G2G, the prospects for far future Q90 are even more noteworthy: decreases are projected to exceed 40% in the vast majority of UK catchments, with many catchments (58 for GR4J, 30%; 46 for G2G, 23%) in England and Wales exhibiting decreases of at least 60%.



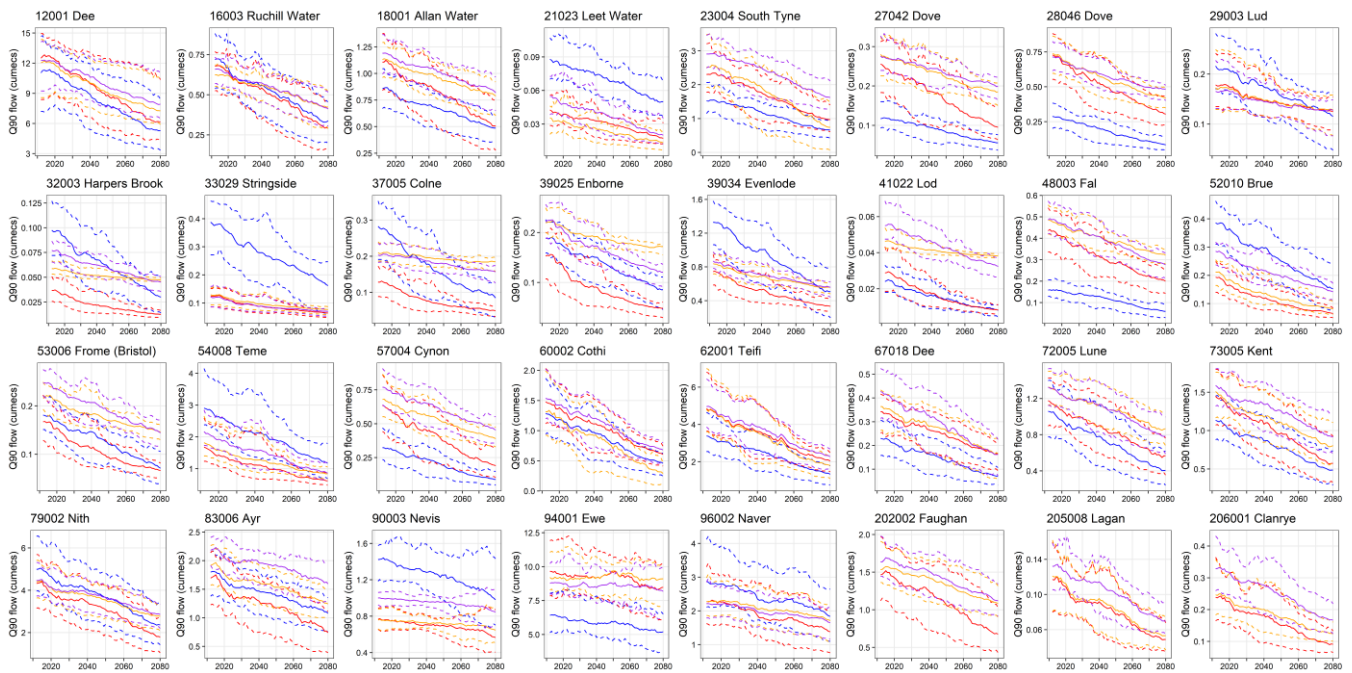
420 *Figure 8: Percent change in simrcm median Q90 river flows and L90 groundwater levels in the near future (2020-2049; top row) and far future (2050-2079; bottom row), expressed relative to baseline (1989-2018) Q90 or L90, for each of the hydrological and hydrogeological models: (a-b) GR4J; (c-d) GR6J; (e-f) PDM; (g-h) G2G; (i-j) AquiMod*

The time slice projections described above provide a snapshot of future low river flows that are consistently in decline throughout the 21st century, illustrated by transient low flows for a subset of catchments (Figure 9). Whilst the magnitude of change is different between catchments and between hydrological models within catchments, the direction of change is unequivocal. Broadly linear decreases in low flows are projected by all hydrological models in all catchments, with no suggestion that interdecadal variability will influence these patterns. This pattern is also consistent across the climate model

ensemble median, maximum and minimum scenarios, suggesting a robustness of declining low flows to uncertainty in the
430 climate model. Gradients of transient low flow declines tend to be flattest for catchments in north-west Scotland (e.g. 90003,
94001, 96002). Declines in transient low flows are often steepest for G2G than the other three hydrological models, and this
difference is most apparent in some more artificially-influenced catchments in southern and eastern England (e.g. 33029,
37005, 39034). Conversely, there is strong consistency between the four hydrological models in some more natural
catchments of northern and western Britain (e.g. 16003, 60002, 79002).

435 Although varying in magnitude of change, future projections of Q90 are consistent nationally in terms of direction of change
(i.e. decreasing into the future). For higher flow percentiles, distinct geographical patterns emerge. Future changes in Q70
in the near future and far future are comparable to those for Q90 (particularly across England and Wales; Figure S5),
although the majority of western Scotland is projected to exhibit negligible change (less than $\pm 10\%$). This pattern of
negligible change across an increasingly large swathe of the north-west continues at Q50 (Figure S6) and Q30 (Figure S7); at
440 Q30, most catchments exhibit negligible change in the near future, and in the far future all catchments in the north-west are
characterised by increases. This contrasts markedly with catchments in the south-east which are projected to experience
decreases in flows at all quantiles, though typical percentage changes in the far future reduce in magnitude from less than -
40% (Q70; Figure S5) to less than -20% (Q50; Figure S6) to less than -10% (Q30; Figure S7).

Transient Q70 river flows (Figure S8) resemble those of Q90 (Figure 9), with linear decreases throughout the 21st century
445 for all catchments (away from western Scotland, e.g. 90003, 94001, 96002). However, transient flows for Q50 (Figure S9)
and especially Q30 (Figure S10) highlight the same contrast in future projections highlighted above. Negligible change
characterises an increasing number of catchments around the UK from Q70 to Q50 to Q30, and changes are increasingly less
linear towards higher flows, with step changes and interdecadal variability apparent (e.g. 18001, 72005 in Figure S10). At
Q30, many (47 – 64% depending on model) catchments exhibit negligible change ($< 10\%$) over the 2012-2080 timeframe
450 overall (Figure S10), though this masks considerable temporal variability. Rather than simple linear changes, a number of
catchments (27 – 30% depending on model) in northern and western areas are characterised by decreasing Q30 values until
the 2050s before increasing Q30 values thereafter (e.g. 16003, 18001, 67018, 72005, 73005, 79002 in Figure S10). In
contrast, linear decreases in Q30 are projected in many (52 – 65%) catchments, predominantly in the south and east (e.g.
27042, 29003, 32003, 33029, 37005, 39025, 39034, 52010 in Figure S10), a consistent pattern exhibited across all flow
455 quantiles. Regardless of geographic location, whilst RCM ensemble median lines for the four hydrological models generally
maintain a similar range, RCM ensemble maxima and minima are increasingly divergent towards 2080, particularly in
catchments in the north and west (e.g. 67018, 72005, 94001, 96002 in Figure S9; 48003, 57004, 72005, 73005, 96002,
202002 in Figure S10).



460

Figure 9 -- The 90% exceedance flow (Q_{90} ; cumecs) over transient 30-year time slices in simrcm data, 1983-2080. Q_{90} calculated over 1983-2012 is plotted in 2012, over 1984-2013 in 2013, and so on. Ensemble median and maxima or minima calculated over the simrcm ensemble are indicated by solid and dashed lines, respectively. Results for the four different hydrological models are indicated by colour-coding (GR4J in red; GR6J in orange; PDM in purple; G2G in blue), and are presented for 32 catchments. Note that G2G is not plotted for the three catchments in Northern Ireland (202002, 205008, 206001) because Northern Ireland is not modelled by G2G

470 3.3.2 Groundwater levels

Low groundwater levels (as represented by the L90 metric) are projected to decrease in future in 47 of the 51 boreholes in the near future and 43 boreholes in the far future (Figure 8i). The near future L90 is projected to decrease by more than 10% for 11 of the boreholes relative to the baseline period. These include boreholes in the Devonian and Carboniferous limestones and Permo-Triassic sandstones in Scotland as well as a large number of boreholes in the Jurassic limestones and Chalk of north-east and southern England. Two of the boreholes show percentage changes of more than 20%. The four boreholes that show increases in L90 in the near future are all situated in the Chalk in the south of England.

475

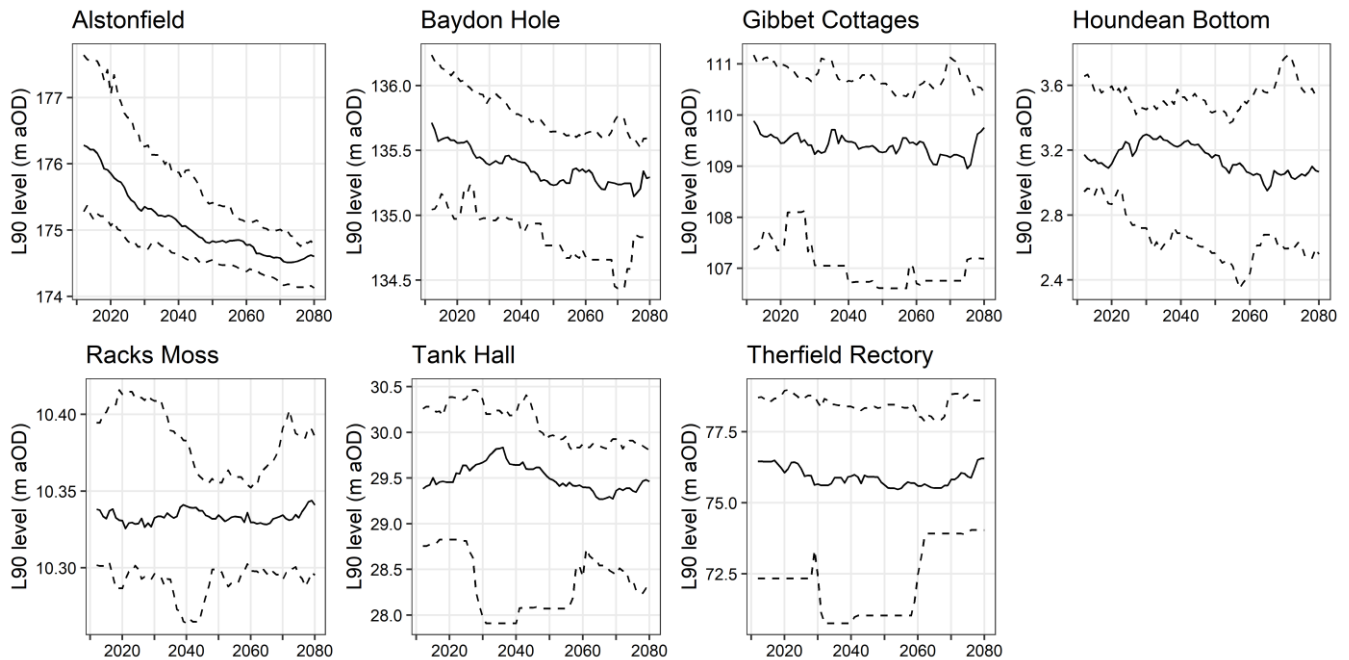
The far future L90 is projected to decrease by more than 10% for 11 of the boreholes relative to the baseline period (Figure 8j). These include one borehole in the Devonian and Carboniferous limestones in Scotland as well as a large number of boreholes in the Jurassic limestones and Chalk of north-east and southern England, respectively. Four of the boreholes show percentage changes of more than 20% whilst three boreholes show changes of more than 30%. The eight boreholes that show increases in L90 in the far future are situated in the Chalk in the south of England and in the Permo-Triassic sandstones of southern Scotland.

The transient low levels plots (Figure 10) show a range of behaviours across the boreholes (see Figures S11-14 for all transient plots). The median projections across the majority of boreholes, including at Alstonfield and Baydon Hole (Figure 8), show a decrease in L90 over time. Some boreholes exhibit a relatively stationary trajectory of L90 over time such as at Racks Moss and Gibbet Cottages (Figure 10). Others, such as Houndean Bottom and Tank Hall (Figure 10), show pronounced increases in L90 during the early to mid 21st century, which then subside thereafter. A number of boreholes show a distinct flattening or inflection of the decreasing L90 over time by the end of the 21st century including at Therfield Rectory and Racks Moss (Figure 10). For all boreholes, the median trajectory in L90 is less smooth than Q90 for river flows, often showing distinct peaks and troughs with time. While there are some intermittent spells where L90 increases, no boreholes show a consistent increase in L90 over the 21st century.

A comparison between the trajectory of L90 and the changes in drought characteristics over time shows that, in some cases, there is good correspondence between the direction of change of L90 and drought duration and severity. For example, the more responsive boreholes, such as Alstonfield, show an overall decrease in L90 over time which is consistent with the projected increase in drought duration and severity. However, others are less consistent. For example, median drought duration and severity peak in the near future (2020-2049) for at Tank Hall which is contrary to the median L90 projections which are highest during this timeframe.

The RCM-derived uncertainty around the median trajectory plots is typically large compared to the gradient of the median trajectory line. However, the relative uncertainty is smaller for more responsive boreholes such as Alstonfield ($q_{\max}=2$ months).

The maps and time series of other level percentiles are illustrated in Figures S5-S7 and S11-S14. Transient L70 groundwater levels resemble those of L90. However, percentage changes in L50 and L30 are typically smaller in magnitude than those for L90. For the far future, 14 catchments show an increase in L30 over time. These are situated in both south-west Scotland and south and south-west England and Wales. However, for those in southern England and south Wales, the increase is very small (up to 2%). In the Scottish Borders, the change is more significant (3-5%), however, the scarcity of boreholes in this area makes it difficult to draw any conclusions about regional variability in these different level percentiles.



510 *Figure 10 -- The 90% exceedance level (L90; m aOD) modelled by AquMod over transient 30-year time slices in simrcm data, 1983-2080, for 7 boreholes. L90 calculated over 1983-2012 is plotted in 2012, over 1984-2013 in 2013, and so on. Ensemble median and maxima or minima calculated over the simrcm ensemble are indicated by solid and dashed lines, respectively*

515 **4 Discussion**

4.1 Factors influencing divergent projections of future river and groundwater drought

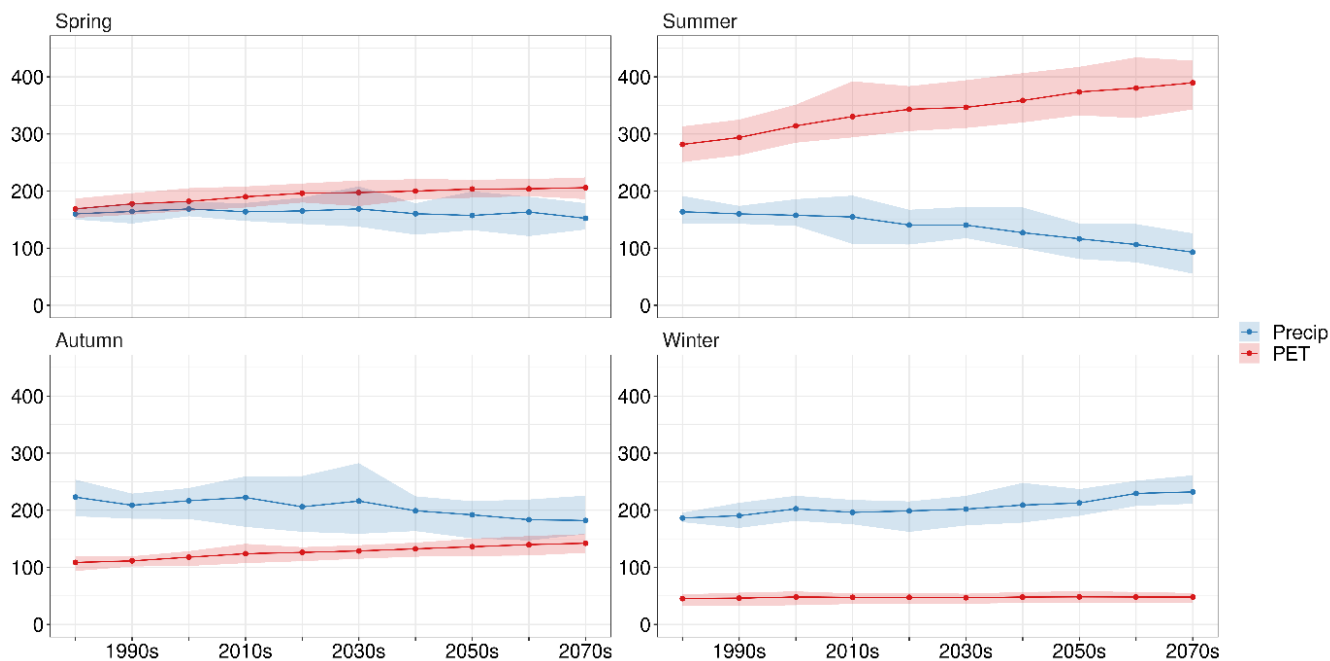
Many of the findings identified here for the UK are consistent with future projections of drought and low river flows in international studies. Global analyses have found that declining low flows and increasing drought duration and severity are anticipated for substantial parts of the world (e.g. Wanders et al. 2015; Spinoni et al. 2021; Gu et al. 2023). Regional or
 520 global analyses of future projections of groundwater drought are relatively less common, although studies of future changes in terrestrial water storage that might be considered a proxy for combined surface and subsurface storage find similar increases in drought (Pokhrel et al. 2021). Nevertheless, as with most studies in the UK, analyses are frequently undertaken on ensembles of multiple RCM members but only a single hydrological model (e.g. Wanders et al. 2015; Cammalleri et al. 2020). Where there are exceptions that consider both climate and hydrological model uncertainty, the relative balance
 525 between these sources is found to vary between catchments and climate zones (Gu et al. 2023). To the authors' best knowledge, few studies have analysed river flows and groundwater levels in parallel using consistent approaches which enable comparison of future projections. Consequently, the authors are not aware of studies which have identified

divergence in future drought prospects between surface and subsurface water resources. Discussion around divergence in projections of future drought tend to be limited to the likely increases or decreases in drought characteristics in different climate zones (e.g. in Europe; Cammalleri et al. 2020), consistent with historical variations attributed to climate change (e.g. Padron et al. 2020). Nevertheless, similar divergent projections as those identified here may emerge in other parts of the world with sufficient groundwater resources and seasonal cycles of potential evapotranspiration and/or precipitation.

Q90 flows in most UK catchments are projected to decrease through the 21st century, yielding corresponding increases in drought duration, intensity and severity. This finding is consistent with many previous studies on future projections in hydrometeorological drought in the UK (e.g. Rudd et al. 2019; Kay et al. 2021b; Chan et al. 2022). Projections of groundwater levels and groundwater drought showed more substantial variability across the study sites. Only approximately half of the boreholes indicate a steady decline in L90 levels and a smaller number still show consistent increases in drought duration (16 of the 51) and severity (24 of the 51) for the far future. In fact, more boreholes show increases in drought duration and severity relative to the baseline period in near future than the far future and for 26 (22) boreholes, the duration (severity) of droughts in the far future proves more moderate than over the baseline period. The reasons for this are undoubtedly complex. There is no simple geographical explanation for this response, such as the north-west / south-east divide which is clearly evident in future projections of Q30 river flows (Figure S7). However, there are several aspects that do provide some insight into the sources of this divergence between river flow and groundwater drought.

The first aspect to consider is the seasonality of climate change for the UK and how this is likely to influence the underlying hydrological processes that control river flows and groundwater levels. The UKCP18 climate change projections follow the long-established widely accepted ‘wetter winters and drier summers’ headline for the UK. Of course, these are just ‘headlines’ of the projections and they span a wide range of uncertainty, but this headline captures the most salient aspects, with the largest increases in winter rainfall expected during the latter half of the 21st century under RCP8.5, contrasting with generally hotter, drier summers. For river flows, apart from some exceptions, catchments of the UK are primarily driven by hydrometeorology rather than groundwater levels. Whilst the lowest flows tend to occur in the summer half-year, for river flows these are generally determined by decreasing rainfall and increasing PET in the summer, and to a lesser extent the spring. As such, projections of hotter, drier summers in the future (e.g. Figure 9) is the controlling factor in declining low flows throughout the 21st century. In contrast, the period during which groundwater stores in the UK are replenished is typically constrained to a distinct recharge season in the colder months of the year when soil moisture deficits are low and recharge pathways through the unsaturated zone are efficient. High soil moisture deficits and deeper water tables in the summer typically inhibit recharge. One can see, therefore, how wetter winters could serve to enhance annual recharge of aquifers while the impact of increased dryness in summer on annual recharge fluxes will be limited. This, of course, does not mean that groundwater drought severity should decrease universally across the UK. The picture is further complicated by regional variations in the hydrogeology; not least the responsiveness which has been shown to vary greatly between boreholes in this study, and is correlated to controls on groundwater recharge efficiency like the unsaturated zone thickness. It is telling that for the six most responsive boreholes with a q_{\max} between 1-3 months, the drought duration, intensity and

severity all follow the river flow narrative with increases in the near and far future relative to the baseline period. Local vegetation and soil characteristics are also likely to be important as these directly influence seasonal wetting and drying of soils. One must also consider local controls on groundwater discharge such as the presence of springs and rivers and the hydraulic properties (and heterogeneity) of the aquifer itself. These will all have bearing on the local groundwater level response to changes in driving climate.



570 Figure 11 – Decadal mean seasonal precipitation (mm) and potential evapotranspiration (mm) from the regional UKCP18
 575 projections for the Thames at Kingston catchment (NRFA Number: 39001). The line shows the ensemble mean across the
 12 RCMs, with the range shown as shading.

One aspect that this study does not fully consider is the potential for higher evapotranspiration rates in the summer to deplete groundwater storage directly, especially where the water table is shallow or where the capillary fringe is thick. Bloomfield et al. (2019) attribute the apparent increase in drought severity in the absence of changes in rainfall observed at two boreholes in the Chalk. It is important to note that AquMod does not explicitly represent any upward flux from the water table to atmosphere, and therefore, these projections do not account for this process.

There are also likely to be other drivers of the divergence. For example, it is reasonable to assume that the trajectory of groundwater drought will be sensitive to characteristics of rainfall at shorter timescales given the known influence of rain-day distribution on total recharge inputs. Any change in rain days and intensity, irrespective of changes in mean rainfall, are

therefore likely to manifest in changes in recharge, and these aspects of future climate are likely to be spatially variable and uncertain. Understanding these impacts will require climate simulations at a higher resolution (e.g. Kay 2022) that was beyond the scope of this research, but it remains an important avenue for future research.

585

4.2 Hydrological model uncertainty in future projections

This study includes four contrasting hydrological models to more rigorously capture the uncertainty introduced into projections of future drought by hydrological modelling. The consistency of the direction of change amongst hydrological models enhances the robustness of the conclusions that droughts are likely to be more prolonged and severe in future.

590 Nevertheless, the magnitude of change differs between hydrological models, and when summarised as transient change some different patterns emerge. These are worthy of exploration, given the important differences between the models in terms of their ability to simulate observations – this is covered in detail in the evaluation provided by Hannaford et al. (2023).

Of these variations, the most frequent occurrence are G2G-simulated flow projections that are an outlier from the other three models. This is most noticeable in certain catchments in southern and eastern England (e.g. 33029, 37005 and 39034; Figure 7). In these and other similar catchments, there are substantial artificial influences on river flows. Each of GR4J, GR6J and PDM are calibrated to gauged river flows which contain these artificial influences; as such, future projections also implicitly include artificial influence (under an assumption of stationarity of these factors). However, G2G has not been calibrated to gauged river flow data for each catchment; rather, G2G models the natural water balance of catchments, generating natural flows. G2G flows are often outliers for catchments in the densely populated south-east of the UK, the region with the most substantial disparity between gauged and natural flows. In this region, transient river flow projections are often steeper for G2G than the other three calibrated models. This is because models calibrated to observations are more likely to tend towards a minimum environmental flow, whereas G2G will not unless explicitly accounted for in the implementation (not done so herein). However, there are a number of catchments in Scotland for which G2G is also a noteworthy outlier (e.g. 90003 and 94001; Figure 7). These catchments are generally very natural and so cannot be explained by the offset between calibrated and natural flows across the hydrological models; also noting that for many natural catchments in the UK, flows from all four models are expectedly comparable (e.g. 16003, 60002 and 79002; Figure 7). Instead, further assessment indicates it is the presence of large lakes or lochs within these catchments that causes the considerable offset in flows. Lakes are not modelled by the implementation of G2G model used here, with flows routed through the landscape as if the water body is not there. Whilst application of the simpler lumped catchment models (GR4J, GR6J, PDM) also did not take account of lakes explicitly, their calibration to gauged river flows implicitly includes the damped response caused by major lakes within catchments.

605 Despite the uniqueness of G2G within the hydrological model ensemble used here, there are occasions when other models simulate similar flows, even in non-natural catchments. Most frequently, the lumped catchment model which aligns with G2G is GR4J. This is likely to be attributable to the lower number of parameters in GR4J compared to GR6J and PDM, and the details of how inter-catchment water exchange and flow routing are represented (Moore and Bell 2002; Pushpalatha et al.

615

2011; S2 of Hannaford et al. 2022a), making simulation of flows more difficult in catchments with complex hydrological processes (such as those influenced by aquifers, abstractions and water transfers).

620 Further differences between models may also arise from variations in modelling structures, calibration and validation approaches. Whilst efforts have been made to synchronise these and whilst driving input data are identical for all models, there remain some differences as outlined in Hannaford et al. (2022a), and these should be borne in mind in interpreting future drought projections. Nevertheless, despite these differences across the hydrological model ensemble, the key findings presented here around future drought are consistent in direction, if not always in magnitude, of change.

4.3 RCM uncertainty in future projections

625 The climate projections applied here are a bias-corrected version of the 12-member PPE from UKCP18 (Section 2.1.6). This dataset does not provide a comprehensive assessment of all aspects of uncertainty because ensemble members are sourced from only one climate model and one emissions scenario, and the 12 members only represent a range of boundary conditions for the climate model. Since the PPE only partially represents climate model uncertainty, the ensemble members are considered equally plausible scenarios and have been presented as such when combined within boxplots (e.g. Figures 4 and 630 5). In common with many studies based on an RCM ensemble, the climatologies provided may not be fully representative of low likelihood, high impact events, for which storyline methodologies may be more useful (Chan et al. 2022).

RCM uncertainty is represented by ensemble maxima and minima in Figures 4 and 5. For low river flows and groundwater levels in some boreholes, RCM uncertainty is projected to decrease through the 21st century. However, this is not necessarily to state that projections from the RCM ensemble become more similar to one another in the far future. As 635 transient low flows and levels decline in future, they approach lower bounds below which further decreases are physically constrained by hydrological processes. This is confirmed by the opposite pattern in Q50 and Q30 river flows in which envelopes representing RCM uncertainty increase substantially towards the far future (Figures S9-S10 and S13-S14), indicating more variability between ensemble members into the future. For the 50th and 30th exceedance percentiles of flows and levels, there are unlikely to be physical constraints inhibiting the full characterisation of RCM uncertainty. This 640 widening RCM uncertainty in the far future (rather than linearly throughout the 21st century) is likely to be related to the late emergence of changes in precipitation (both wetter winters and drier summers), which is represented to varying degrees amongst the ensemble members (Figure 11). There is also evidence that local catchment hydrogeology has important implications for the uncertainty around the trajectory of groundwater drought metrics where the relative uncertainty was smaller for more responsive boreholes such as those with lower q_{\max} values.

645 Further analysis has been undertaken with the eFLaG ensemble data in partitioning uncertainty between the RCM and hydrological model components (Aitken et al. 2023). In addition, uncertainties from the RCM ensemble were found to be larger from UKCP18 (and therefore datasets like eFLaG) than the predecessor UKCP09, despite there being fewer members in the former (Kay et al. 2020).

650 **4.4 Implications for management of water resources in the UK**

Notwithstanding the complexities and uncertainties highlighted in the previous sections, this study points to a future of diminishing low river flows and increasing severity of hydrological droughts. If realised these projections could have profound consequences for water management in the UK, resulting in substantial decreases of water available for public water supply as well as increased competition between sectoral demands for (in many cases already-scarce) water resources, especially during increasingly extreme droughts. Moreover, trends towards lower river flows will have implications for water quality and aquatic ecosystems. Previous research using the predecessor dataset of national hydrological projections FFGWL (Prudhomme et al. 2013) has shown such future impacts on water quality determinands (e.g. Bussi et al. 2016; Charlton et al. 2018; Mortazavi-Naeini et al. 2019), ecological health (e.g. Royan et al. 2015) and increasing potential for water restrictions impacting sectors such as irrigated agriculture (e.g. Salmoral et al. 2019) and energy (e.g. Bussi and Whitehead 2020). There is now a pressing need to update future impacts studies using the latest state-of-the-art river flow and groundwater level projections.

Behind such headline future changes, however, there are significant regional variations, notably a pronounced north-south divide in terms of river flow projections in the UK. In the north-west, low flows are projected to decline in future (in common with the rest of the country), whilst high flows are projected to increase through the 21st century, consistent with findings of studies using previous climate projections (e.g. Collet et al. 2018; Kay et al. 2021b). This suggests that flow variability will increase markedly in future in these already generally very flashy catchments of the north-west. These areas are sensitive to relatively short periods (e.g. a few months) of dry weather and as such the outcomes suggest some worsening of single season droughts. The corresponding increase in winter wet weather and high flows has the potential to offset water stress in those locations where there is adequate multi-season reservoir storage, provided high flows can be harnessed and utilised to maintain reservoir storage near capacity in order to buffer against drought-induced water deficiencies. More generally, however, decreased summer/low flows and increasing drought severity are likely to have severe impacts in these northern and western areas with limited storage. Recent flash droughts (e.g. 2018, Turner et al. 2021; 2022, NCIC 2022) in the summer half-year, associated with intense heatwaves, highlight the vulnerability of the north and west to such events.

Projected future changes in river flows in central, southern and eastern England are more ominous for the management of water resources. In common with the majority of the country, low flows in this region are likely to decrease substantially over the course of the 21st century. However, unlike regions further north and west, median and high flows are also projected to decrease out to the far future. This represents a wholesale downward shift in hydrological regime and therefore does not offer the same potential for high flows to buffer against an increased prevalence of low flows. The exception to this pattern might be expected to be the groundwater-dominated catchments of the south and east, in which the extremely lagged response of river flows to rainfall inputs is more akin to the fluctuations of water levels in aquifers. This has not been demonstrated in future flow projections for the most groundwater-dominated of the 200 catchments, all of which demonstrate the same consistent declines in flows exhibited by more responsive catchments. The reason why this groundwater-like behaviour is not captured in river flow projections for some catchments is likely to be related to the

hydrological models not explicitly incorporating a catchments' crucial storage dynamics within their process base. The
685 inherent biases in the model simulations, relative to observations, must also be borne in mind here. This was noted in section
4.2, that highlighted poorer performance in some groundwater-dominated catchments, and, for G2G especially, in
catchments with high levels of human disturbance – both of which are more prevalent (and interacting) features of
catchments in southeast England.

. Since such catchments are important contributors to regional water resources in the south-east of the UK, the unexpected
690 difference between projections of groundwater levels and river flows in certain groundwater-dominated catchments will
require further assessment in future studies. Nevertheless, it suggests that overall water supplies are likely to be reduced in
future (in the absence of new supply-side options such as reservoirs), rather than a seasonal shift in the overall water balance
as projected further north and west. When juxtaposed against the anticipated increase in water demands in future, the
likelihood of a 'Jaws of Death' scenario (Bevan 2022) is much more apparent. Arnell et al. (2021) found drought risk is
695 likely to increase throughout the UK in future, though by spatially-variable and catchment-specific magnitudes of change,
and Kay et al. (2021b) also identified the more populous and drier south-east as a hotspot for future decreases in river flows.
The contrasting fortunes projected for these two regions underscores the attraction of large-scale water transfer options from
the north-west to the south-east. Such options are the basis of many current long-term water resources management plans
and a number of analyses have supported their potential feasibility (e.g. Dobson et al. 2020; Murgatroyd et al. 2020;
700 Murgatroyd et al. 2022). However, future change in spatial coherence of drought events could have profound implications
for this, as demonstrated by Tanguy et al. (2023).

Groundwater resources are an additional component of the overall water resources management portfolio, but spatial patterns
of groundwater level projections are altogether more complex. A national-scale assessment is more challenging since the
location of the most productive aquifers is largely confined to central, southern and eastern England. Nevertheless,
705 projections do not necessarily follow those of river flows in this region. Overall, there is considerably more variation
between adjacent boreholes (even those very close together) than for river flow catchments. This reflects the stronger
influence of aquifer characteristics on projections than the equivalent for river flow catchments, and this precludes overly
simplistic attribution to geographical differences.

The divergence of river flow and groundwater level projections highlighted herein, and their varying spatial patterns, could
710 have profound implications for the future management of water resources in the UK. It is suggested that groundwater levels
in some locations are likely to be more robust to future climate change than river flows. This might require a re-framing of
the balance between surface water and groundwater resources for those water management regions (predominantly those in
central, southern and eastern England) in which these two resources both contribute significantly to overall water resources.
It might also mean that water companies for whom groundwater assumes a greater proportion of overall water resources may
715 be in a more favourable position than their counterparts who are more reliant on river flows. This might have important
ramifications for the direction and magnitude of inter-regional water transfers. It also suggests that options such as
reservoirs filled by pumped water from surface supplies might be a less appealing option in a future of diminishing river

flows. More generally, the findings presented herein may have an important impact on the significant investment decisions required to meet water demands over the next few decades and beyond.

720 Nevertheless, any suggestion that groundwater has the potential to assume greater significance within the overall water resources portfolio must be evaluated against a backdrop of environmental considerations within water management. Groundwater abstractions in the UK peaked in the 1980s and have since been reduced under successive programmes to protect environmental river flows and groundwater levels. Further sustainability reductions of abstractions (from a combination of groundwater and surface water resources) of up to 5-10% by 2045 are planned for all regions of England and
725 Wales (BGS 2023). Any shift in focus towards groundwater resources threatens to undermine much of this change and may have important consequences for river water quality and ecology, as well as recreational and aesthetic value of rivers, all of which have proven to be flashpoints of contention in recent years, especially in the Chalk streams of southeast England. Hence, while this research showcases the potential for a dataset like that of Hannaford et al. (2022b) to support projections of future water availability, there remains a need for ongoing work applying these data in local- to regional-scale water supply
730 system modelling studies that allow detailed conclusions to be drawn on the future for specific scales and sectors (e.g. Jenkins et al. 2021; Murgatroyd and Hall 2021).

5 Conclusions

This study presents a rigorous assessment of projected future changes in low river flows and groundwater levels and
735 hydrological drought using the latest set of climate projections for the UK. Across all RCM ensemble members, hydrological models and most catchments, river flows are very likely to be lower in future than in the recent past and streamflow droughts are likely to be more protracted and severe in future. Should such projections materialise, there would be profound consequences for water quality, in-stream ecology and recreational use of surface water bodies, amongst other impacts. This is also an ominous finding for those regions of the UK which are predominantly reliant on surface water
740 resources for public water supply. These also tend to be responsive parts of the north and west of the country which already more swiftly experience drought conditions in the face of dry weather.

The parallel assessment of river flow and groundwater level deficiencies herein has enabled comparisons to be drawn on their sometimes-contrasting fortunes in the future. Whilst some exhibit similar patterns to those of river flows, for a substantial number of boreholes future projections are less consistent and perhaps offer some cautious optimism on likely
745 future drought. Due to their reliance on recharge in winter and in the face of projected wetter winters, levels in some boreholes are projected to be relatively stationary or even increase through the 21st century. In areas of the UK that are overly reliant on subsurface water resources, there could be a stabilisation or even reduction in drought conditions towards the far future. Given these areas are some of those most vulnerable to drought at present and under the most pressure from water demands, this would be a potentially welcome development.

750 Taken together, the divergence in some projections of future hydrological drought under climate change is likely to result in complex impacts on river flows and groundwater levels, as well as upon the water resource systems that have been built to

manage their variability. Considerable effort and resources have been committed over recent decades to enhance regional and national resilience to drought in the UK, which stands the country in good stead to cope with future changes. However, it is clear that the future will pose new challenges for which novel management solutions will be required, and further research will be necessary to better understand the complex and changing interactions of drought in the UK.

Data and Code Availability

The precipitation, river flow and groundwater level projections analysed herein are archived on the UKCEH Environmental Information Data Centre and are freely available as DOI datasets. These data should be cited in full if used in any application:

<https://catalogue.ceh.ac.uk/documents/755e0369-f8db-4550-aabe-3f9c9fbc93d>

<https://catalogue.ceh.ac.uk/documents/1bb90673-ad37-4679-90b9-0126109639a9>

The analysis conducted in this study can be explored further in the eFLaG Portal, which allows users to explore similar graphics showing future projections in drought characteristics and low flows and groundwater levels. The Portal allows users to explore the full 200 eFLaG catchments rather than just the subset used here. <https://eip.ceh.ac.uk/hydrology/eflag>.

Author Contributions

SP led the research including the river flow aspects, determined the metrics used and produced graphics. JM led the groundwater level aspects. TC established computer programming scripts for the analysis of data. JH led the eFLaG project, providing overall direction and research design input. AK and RL derived the climate input to the hydrological models. VB, KF, TC, RM and JW produced the river flow projections analysed herein. MT and EM contributed towards the drought analysis and produced graphics. ST oversaw data management and produced graphics. SP, JM and JH prepared the manuscript with co-authors providing contributions. All authors helped to shape the aims and objectives of the study.

Competing Interests Statement

The authors declare that they have no conflict of interest.

Acknowledgements

The ‘eFLaG’ project that underpinned this research was funded through the Met Office-led part of the Strategic Priorities Fund Climate Resilience programme (<https://www.ukclimateresilience.org/>) under contract P107493 (CR19_4 UK Climate Resilience). The work was also supported by the NERC grant ‘Climate change in the Arctic-North Atlantic Region and Impacts on the UK’ (CANARI), Grant Number: NE/W004984/1). JM publishes with the permission of the executive director of the British Geological Survey.

References

- Aitken, G., Beevers, L., Parry, S., and Facer-Childs, K.: Partitioning Model Uncertainty in Multi-member Multi-model Ensemble River Flow Climate Change Projections, *Climatic Change* 176, 163 doi: 10.1007/s10584-023-03621-1, 2023
- 790 Anglian Water: Anglian Water DRAFT Drought Plan. <https://www.anglianwater.co.uk/siteassets/household/about-us/draft-drought-plan-2022.pdf>. Last accessed 9 June, 2021.
- Arnell, N., Kay, A., Freeman, A., Rudd, A., and Lowe, J.: Changing climate risk in the UK: A multi-sectoral analysis using policy-relevant indicators, *Climate Risk Management*, 31, 100265, doi:10.1016/j.crm.2020.100265, 2021.
- Ascott, M., Bloomfield, J., Karapanos, I., et al.: Managing groundwater supplies subject to drought: perspectives on
795 current status and future priorities from England (UK), *Hydrogeol J*, 921–924, doi: 10.1007/s10040-020-02249-0, 2021.
- Barker, L., Hannaford, J., Parry, S., Smith, K., Tanguy, M., and Prudhomme, C.: Historic hydrological droughts 1891–2015: systematic characterisation for a diverse set of catchments across the UK, *Hydrol. Earth Syst. Sci.*, 23, 4583–4602, doi:10.5194/hess-23-4583-2019, 2019.
- Bell, V., Kay, A., Jones, R., Moore, R., and Reynard, N.: Use of soil data in a grid-based hydrological model to
800 estimate spatial variation in changing flood risk across the UK, *Journal of Hydrology*, 377, 335-350, doi: 10.1016/j.jhydrol.2009.08.031, 2009.
- Bell, V., Kay, A., Cole, S., Jones, R., Moore, R., and Reynard, N.: How might climate change affect river flows across the Thames Basin? An area-wide analysis using the UKCP09 Regional Climate Model ensemble, *Journal of Hydrology*, 442–443, 89–104, doi:10.1016/j.jhydrol.2012.04.001, 2012.
- 805 Bevan, J.: Drought risk in the Anthropocene: from the jaws of death to the waters of life, *Phil. Trans. R. Soc.*, A.3802022000320220003, doi:10.1098/rsta.2022.0003, 2022.
- BGS: Groundwater resources in the UK. <https://www.bgs.ac.uk/geology-projects/groundwater-research/groundwater-resources-in-the-uk/>. Last accessed 9 February, 2023.
- Bloomfield, J., and Marchant, B.: Analysis of groundwater drought building on the standardised precipitation index
810 approach, *Hydrol. Earth Syst. Sci.*, 17, 4769–4787, doi:10.5194/hess-17-4769-2013, 2013.
- Bloomfield, J., Marchant, B., Bricker, S., and Morgan, R.: Regional analysis of groundwater droughts using hydrograph classification, *Hydrol. Earth Syst. Sci.*, 19, 4327–4344, doi:10.5194/hess-19-4327-2015, 2015.
- Bloomfield, J., Marchant, B., and McKenzie, A.: Changes in groundwater drought associated with anthropogenic warming, *Hydrol. Earth Syst. Sci.*, 23, 1393–1408, doi:10.5194/hess-23-1393-2019, 2019.
- 815 Borgomeo, E., Farmer, C., and Hall, J.: Numerical rivers: A synthetic streamflow generator for water resources vulnerability assessments, *Water Resources Research*, 51, 5382-5405, 2015.

- Bussi, G., Dadson, S., Prudhomme, C., and Whitehead, P.: Modelling the future impacts of climate and land-use change on suspended sediment transport in the River Thames (UK), *Journal of Hydrology*, 542, 357-372, doi:10.1016/j.jhydrol.2016.09.010, 2016.
- 820 Bussi, G., and Whitehead, P.: Impacts of droughts on low flows and water quality near power stations, *Hydrological Sciences Journal*, 65, 898-913, doi:10.1080/02626667.2020.1724295, 2020.
- Cammalleri, C., Naumann, G., Mentaschi, L., Bisselink, B., Gelati, E., De Roo, A., and Feyen, L.: Diverging hydrological drought traits over Europe with global warming, *Hydrol. Earth Syst. Sci.*, 24, 5919–5935, doi:10.5194/hess-24-5919-2020, 2020.
- 825 Chan, W., Shepherd, T., Facer-Childs, K., Darch, G., and Arnell, N.: Storylines of UK drought based on the 2010–2012 event, *Hydrol. Earth Syst. Sci.*, 26, 1755–1777, doi:10.5194/hess-26-1755-2022, 2022.
- Charlton, M., Bowes, M., Hutchins, M., Orr, H., Soley, R., and Davison, P.: Mapping eutrophication risk from climate change: Future phosphorus concentrations in English rivers, *Science of The Total Environment*, 613–614, 1510-1526, doi:10.1016/j.scitotenv.2017.07.218, 2018.
- 830 Chegwiddden, O, Nijssen, B., Rupp, D., Arnold, J., Clark, M., Hamman, J. et al.: How do modeling decisions affect the spread among hydrologic climate change projections? Exploring a large ensemble of simulations across a diversity of hydroclimates, *Earth's Future*, 7, 623– 637, doi:10.1029/2018EF001047, 2019.
- Cole, S., and Moore, R.: Distributed hydrological modelling using weather radar in gauged and ungauged basins, *Advances in Water Resources*, 32, 1107–1120, doi:10.1016/j.advwatres.2009.01.006, 2009.
- 835 Collet, L., Harrigan, S., Prudhomme, C., Formetta, G., and Beevers, L.: Future hot-spots for hydro-hazards in Great Britain: a probabilistic assessment. *Hydrology and Earth System Sciences*, 22, 5387-5401, 2018.
- Coron, L., Delaigue, O., Thirel, G., Dorchie, D., Perrin, C., and Michel, C.: airGR: Suite of GR Hydrological Models for Precipitation-Runoff Modelling, R package version 1.6.12, doi:10.15454/EX11NA, URL: <https://CRAN.R-project.org/package=airGR>, 2021.
- 840 Dobson, B., Coxon, G., Freer, J., Gavin, H., Mortazavi-Naeini, M., and Hall, J.: The spatial dynamics of droughts and water scarcity in England and Wales, *Water Resources Research*, 56, doi:10.1029/2020WR027187, 2020.
- Engin, B., Yücel, I., and Yilmaz, A.: Assessing different sources of uncertainty in hydrological projections of high and low flows: case study for Omerli Basin, Istanbul, Turkey, *Environmental Monitoring and Assessment*, 189, 1-9, 2017.
- Folland, C. K., Hannaford, J., Bloomfield, J. P., Kendon, M., Svensson, C., Marchant, B. P., Prior, J., & Wallace, E.
- 845 Multi-annual droughts in the English Lowlands: a review of their characteristics and climate drivers in the winter half-year. *Hydrology and Earth System Sciences*, 19(5), 2353–2375. <https://doi.org/10.5194/hess-19-2353-2015>, 2015.
- Gu, L., Yin, J., Slater, L., Chen, J., Do, H., Wang, H.-M., et al.: Intensification of global hydrological droughts under anthropogenic climate warming, *Water Resources Research*, 59, e2022WR032997, doi:10.1029/2022WR032997, 2023.

850 Hannaford, J., Mackay, J., Ascott, M., Bell, V., Chitson, T., Cole, S., Counsell, C., Durant, M., Jackson, C., Kay, A.,
Lane, R., Mansour, M., Moore, R., Parry, S., Rudd, A., Simpson, M., Smith, K., Turner, S. Wallbank, J., Wells, S., and
Wilcox, A. eFLaG: enhanced Future Flows and Groundwater. A national dataset of hydrological projections based on
UKCP18. *Earth System Science Data*, doi:10.5194/essd-2022-40, 2022a.

 Hannaford, J.; Mackay, J.; Ascot, M.; Bell, V.; Chitson, T.; Cole, S.; Counsell, C.; Durant, M.; Facer-Childs, K.;
855 Jackson, C.; Kay, A.; Lane, R.; Mansour, M.; Moore, R.; Parry, S.; Rudd, A.; Simpson, M.; Turner, S.; Wallbank, J.; Wells,
S.; and Wilcox, A.: Hydrological projections for the UK, based on UK Climate Projections 2018 (UKCP18) data, from the
Enhanced Future Flows and groundwater (eFLaG) project, NERC EDS Environmental Information Data Centre,
doi:10.5285/1bb90673-ad37-4679-90b9-0126109639a9, 2022b.

 Harrigan, S., Prudhomme, C., Parry, S., Smith, K., and Tanguy, M.: Benchmarking ensemble streamflow prediction
860 skill in the UK, *Hydrology and Earth System Sciences*, 22, 2018.

 Hollis, D., McCarthy, M., Kendon, M., Legg, T., Simpson, I.: HadUK-Grid—A new UK dataset of gridded climate
observations, *Geosci Data J.*, 6, 151–159, doi:10.1002/gdj3.78, 2019.

 Hough, M., and Jones, R.: The United Kingdom Meteorological Office rainfall and evaporation calculation system:
MORECS version 2.0 – an overview, *Hydrol. Earth Syst. Sci.* 1, 227–239, 1997.

865 Huskova, I., Matrosov, E., Harou, J., Kasprzyk, J., and Lambert, C.: Screening robust water infrastructure
investments and their trade-offs under global change: A London example, *Global Environmental Change*, 41, 216-227, 2016.

 Jackson, C., Bloomfield, J., and Mackay, J.: Evidence for changes in historic and future groundwater levels in the
UK, *Progress in Physical Geography: Earth and Environment*, 39, 49–67, doi:10.1177/0309133314550668, 2015.

 Jenkins, K., Dobson, B., Decker, C., and Hall, J.: An integrated framework for risk-based analysis of economic
870 impacts of drought and water scarcity in England and Wales, *Water Resources Research*, 57, e2020WR027715,
doi:10.1029/2020WR027715, 2021.

 Kay, A.: Differences in hydrological impacts using regional climate model and nested convection-permitting model
data, *Climatic Change*, 173, doi:10.1007/s10584-022-03405-z, 2022.

 Kay, A., Bell, V., Guillod, B., Jones, R., and Rudd, A.: National-scale analysis of low flow frequency: historical
875 trends and potential future changes, *Climatic Change*, 147, 585–599, doi:10.1007/s10584-018-2145-y, 2018.

 Kay, A., Watts, G., Wells, S., and Allen, S.: The impact of climate change on U.K. river flows: A preliminary
comparison of two generations of probabilistic climate projections, *Hydrological Processes*, 34, 1081–1088,
doi:10.1002/hyp.13644, 2020.

 Kay, A., Davies, H., Lane, R., Rudd, A., and Bell, V.: Grid-based simulation of river flows in Northern Ireland:
880 Model performance and future flow changes, *Journal of Hydrology: Regional Studies*, 38, 100967, 2021a.

 Kay, A., Griffin, A., Rudd, A., Chapman, R., Bell, V., and Arnell, N.: Climate change effects on indicators of high
and low river flow across Great Britain, *Advances in Water Resources*, 151, 103909, doi:10.1016/j.advwatres.2021.103909,
2021b.

- Lane, R., and Kay, A.: Climate change impact on the magnitude and timing of hydrological extremes across Great Britain, *Frontiers in Water*, 71, 2021.
- Lane, R., Coxon, G., Freer, J., Seibert, J., and Wagener, T.: A large-sample investigation into uncertain climate change impacts on high flows across Great Britain, *Hydrology and Earth System Sciences*, 26, 5535-5554, 2022.
- Lowe, J., Bernie, D., Bett, P., Bricheno, L., Brown, S., Calvert, D., Clark, R., Eagle, K., Edwards, T., Fosser, G. and Fung, F.: UKCP18 science overview report, Met Office Hadley Centre: Exeter, UK, 2018.
- Mackay, J., Jackson, C., and Wang, L.: A lumped conceptual model to simulate groundwater level time-series, *Environmental Modelling and Software*, 61, 229-245, doi:10.1016/j.envsoft.2014.06.003, 2014.
- Mackay, J., Jackson, C., Brookshaw, A., Scaife, A., Cook, J., and Ward, R.: Seasonal forecasting of groundwater levels in principal aquifers of the United Kingdom, *Journal of Hydrology*, 530, 815-828, doi:10.1016/j.jhydrol.2015.10.018, 2015.
- Meresa, H., and Romanowicz, R.: The critical role of uncertainty in projections of hydrological extremes, *Hydrology and Earth System Sciences*, 21, 4245-4258, 2017.
- Moore, R.: The PDM rainfall-runoff model, *Hydrol. Earth System Sci.*, 11, 483-499, 2007.
- Moore, R., and Bell, V.: Incorporation of groundwater losses and well level data in rainfall-runoff models illustrated using the PDM, *Hydrol. Earth System Sci.*, 6, 25-38, doi:10.5194/hess-6-25-2002, 2002.
- Moore, R., Cole, S., Bell, V., and Jones, D.: Issues in flood forecasting: ungauged basins, extreme floods and uncertainty, In: I. Tchiguirinskaia, K. Thein and P. Hubert (eds.), *Frontiers in Flood Research*, 8th Kovacs Colloquium, UNESCO, Paris, June/July 2006, IAHS Publ. 305, 103-122, 2006.
- Mortazavi-Naeini, M., Bussi, G., Elliott, J., Hall, J., and Whitehead, P.: Assessment of risks to public water supply from low flows and harmful water quality in a changing climate, *Water Resources Research*, 55, 10386–10404, doi:10.1029/2018WR022865, 2019.
- Murgatroyd, A., and Hall, J.: The Resilience of Inter-basin Transfers to Severe Droughts With Changing Spatial Characteristics, *Frontiers in Environmental Science*, 8, doi:10.3389/fenvs.2020.571647, 2020.
- Murgatroyd, A., and Hall, J.: Selecting indicators and optimizing decision rules for long-term water resources planning. *Water Resources Research*, 57, e2020WR028117, doi:10.1029/2020WR028117, 2021.
- Murgatroyd, A., Gavin, H., Becher, O., Coxon, G., Hunt, D., Fallon, E., Wilson, J., Cuceloglu, G., and Hall, J.: Strategic analysis of the drought resilience of water supply systems, *Phil. Trans. R. Soc. A.3802021029220210292*, doi:10.1098/rsta.2021.0292, 2022.
- Murphy J., Harris, G., Sexton, D., Kendon, E., Bett, P., Brown, S., Clark, R., Eagle, K., Fosser, G., Fung, F., Lowe, J., McDonald, R., McInnes, R., McSweeney, C., Mitchell, J., Rostron, J., Thornton, H., Tucker, S., and Yamazaki, K.: UKCP18 Land Projections: Science Report, Met Office Hadley Centre: Exeter, 2018.
- NCIC: UK seasonal weather summary Summer 2022, *Weather*, 77, 357-357, doi:10.1002/wea.4305, 2022.

- Padrón, R., Gudmundsson, L., Decharme, B. et al.: Observed changes in dry-season water availability attributed to human-induced climate change, *Nat. Geosci.*, 13, 477–481, doi:10.1038/s41561-020-0594-1, 2020.
- Parry, S., Hannaford, J., Lloyd-Hughes, B., and Prudhomme, C.: Multi-year droughts in Europe: analysis of development and causes, *Hydrology Research*, 43, 689–706, doi:10.2166/nh.2012.024, 2012.
- Parry, S., Wilby, R., Prudhomme, C., and Wood, P.: A systematic assessment of drought termination in the United Kingdom, *Hydrol. Earth Syst. Sci.*, 20, 4265–4281, doi:10.5194/hess-20-4265-2016, 2016.
- Perrin, C., Michel, C., and Andréassian, V.: Improvement of a parsimonious model for streamflow simulation, *J. Hydrol.*, 279, 275-289, doi:10.1016/S0022-1694(03)00225-7, 2003.
- Pokhrel, Y., Felfelani, F., Satoh, Y. et al.: Global terrestrial water storage and drought severity under climate change, *Nat. Clim. Chang.*, 11, 226–233, doi:10.1038/s41558-020-00972-w, 2021.
- Prudhomme, C., Parry, S., Hannaford, J., Clark, D., Hagemann, S., and Voss, F.: How Well Do Large-Scale Models Reproduce Regional Hydrological Extremes in Europe?, *Journal of Hydrometeorology*, 12, 1181-1204, 2011.
- Prudhomme, C., Haxton, T., Crooks, S., Jackson, C., Barkwith, A., Williamson, J., Kelvin, J., Mackay, J., Wang, L., Young, A., and Watts, G.: Future Flows Hydrology: an ensemble of daily river flow and monthly groundwater levels for use for climate change impact assessment across Great Britain, *Earth Syst. Sci. Data*, 5, 101–107, doi:10.5194/essd-5-101-2013, 2013.
- Prudhomme, C., Hannaford, J., Harrigan, S., Boorman, D., Knight, J., Bell, V., Jackson, C., Svensson, C., Parry, S., Bachiller-Jareno, N., and Davies, H.: Hydrological Outlook UK: an operational streamflow and groundwater level forecasting system at monthly to seasonal time scales, *Hydrological Sciences Journal*, 62, 2753-2768, 2017.
- Pushpalatha, R., Perrin, C., Le Moine, N., Mathevet, T., and Andréassian, V.: A downward structural sensitivity analysis of hydrological models to improve low-flow simulation, *Journal of Hydrology*, 411, 66-76, doi:10.1016/j.jhydrol.2011.09.034, 2011.
- Rameshwaran, P., Bell, V., Brown, M., Davies, H., Kay, A., Rudd, A., and Sefton, C.: Use of abstraction and discharge data to improve the performance of a national-scale hydrological model, *Water Resources Research*, 5, doi:10.1029/2021WR029787, 2022.
- Rodda, J., and Marsh, T.: The 1975-76 Drought - a contemporary and retrospective review. National Hydrological Monitoring Programme series, 2011.
- Royan, A., Prudhomme, C., Hannah, D., Reynolds, S., Noble, D., and Sadler, J.: Climate-induced changes in river flow regimes will alter future bird distributions, *Ecosphere* 6, 50, doi:10.1890/ES14-00245.1, 2015.
- Rudd, A., Bell, V., and Kay, A.: National-scale analysis of simulated hydrological droughts (1891–2015), *Journal of Hydrology*, 550, 368-385, doi:10.1016/j.jhydrol.2017.05.018, 2017.
- Rudd, A., Kay, A., and Bell, V.: National-scale analysis of future river flow and soil moisture droughts: potential changes in drought characteristics, *Climatic Change*, 156, 323–340, doi:10.1007/s10584-019-02528-0, 2019.

- 950 Salmoral, G., Rey, D., Rudd, A., de Margon, P., and Holman, I.: A probabilistic risk assessment of the national economic impacts of regulatory drought management on irrigated agriculture, *Earth's Future*, 7, 178–196, doi:10.1029/2018EF001092, 2019.
- Smith, K., Barker, L., Tanguy, M., Parry, S., Harrigan, S., Legg, T., and Hannaford, J.: A multi-objective ensemble approach to hydrological modelling in the UK: an application to historic drought reconstruction, *Hydrology and Earth System Sciences*, 23, 3247–3268, 2019.
- 955 Spinoni, J., Barbosa, P., Buchignani, E., Cassano, J., Cavazos, T., Cescatti, A., Christensen, J., Christensen, O., Coppola, E., Evans, J., Forzieri, G., Geyer, B., Giorgi, F., Jacob, D., Katzfey, J., Koenigk, T., Laprise, R., Lennard, C., Kurnaz, M., ... Dosio, A.: Global exposure of population and land-use to meteorological droughts under different warming levels and SSPs: A CORDEX-based study, *International Journal of Climatology*, 41, 6825–6853, doi:10.1002/joc.7302, 960 2021.
- Tallaksen, L., and Van Lanen, H., (eds.): *Hydrological drought: processes and estimation methods for streamflow and groundwater*, 2004.
- Tanguy, M., Chevturi, A., Marchant, B., MacKay, J.D., Parry, S. Hannaford, J. How will climate change affect spatial coherence of droughts in Great Britain? *Environmental Research Letters*, 18, 064048. DOI 10.1088/1748-9326/acd655, 2023.
- 965 9326/acd655, 2023. Turner, S., Barker, L., Hannaford, J., Muchan, K., Parry, S., and Sefton, C.: The 2018/2019 drought in the UK: a hydrological appraisal, *Weather*, 76, 248–253, 2021.
- UKCEH: PDM Rainfall-Runoff Model: PDM for PCs. Version 3.0, UK Centre for Ecology & Hydrology, Wallingford, UK, 2021.
- Van Loon, A.: Hydrological drought explained, *WIREs Water*, 2, 359–392, doi:10.1002/wat2.1085, 2015.
- 970 Velazquez, J., Schmid, J., Ricard, S., Muerth, M., Gauvin St-Denis, B., Minville, M., Chaumont, D., Caya, D., Ludwig, R., and Turcotte, R.: An ensemble approach to assess hydrological models' contribution to uncertainties in the analysis of climate change impact on water resources, *Hydrology and Earth System Sciences*, 17, 2, 565–578, 2013.
- Visser-Quinn, A., Beevers, L., Collet, L., Formetta, G., Smith, K., Wanders, N., Thober, S., Pan, M., and Kumar, R.: Spatio-temporal analysis of compound hydro-hazard extremes across the UK, *Advances in Water Resources*, 130, 77–90, 975 doi:10.1016/j.advwatres.2019.05.019, 2019.
- Wanders, N., Wada, Y., and Van Lanen, H.: Global hydrological droughts in the 21st century under a changing hydrological regime, *Earth Syst. Dynam.*, 6, 1–15, doi:10.5194/esd-6-1-2015, 2015.