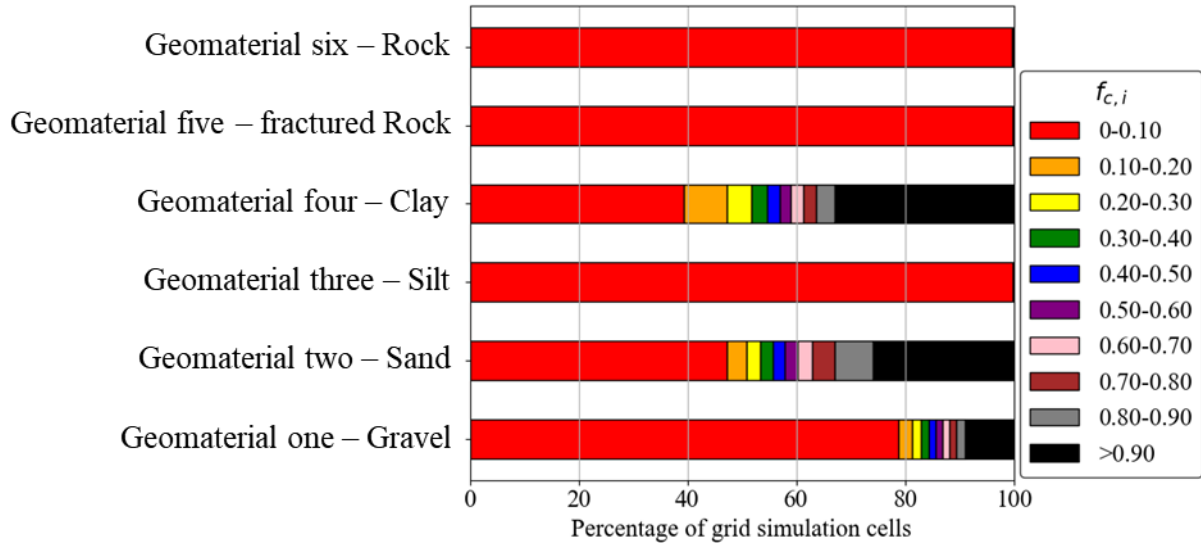


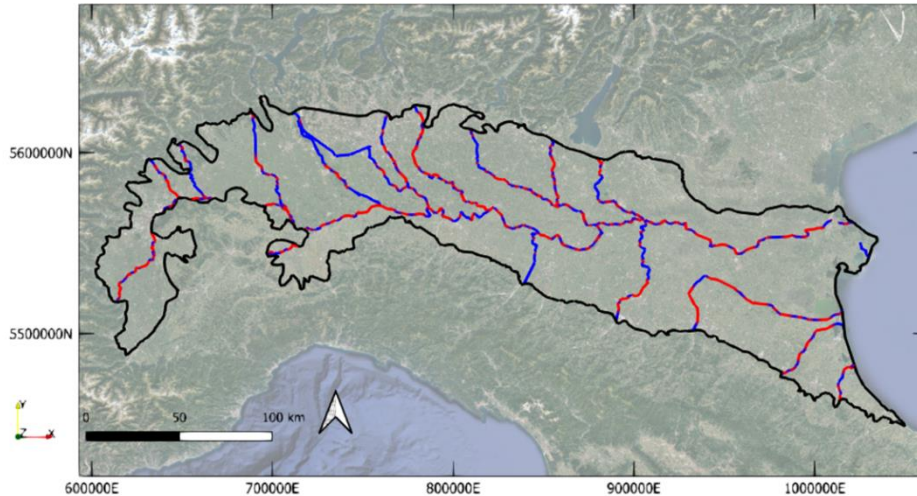
**A Comprehensive Framework for Stochastic Calibration and Sensitivity Analysis of Large-Scale Groundwater Models**

Andrea Manzoni et al.

5 Correspondence to: *Monica Riva (monica.riva@polimi.it)*



**S1: Percentage of grid simulation cells characterized by values of  $f_{c,i}$  (Eq. 2) comprised within the color-coded ranges of values for each geomaterial.**



10

**S2: Analysis of interactions between rivers and groundwater. Blue and red colors correspond to river segments that recharge and drain the aquifer, respectively. Background map from Google Satellite. Copyright © 2023 Google LLC.**