

Regional patterns and drivers of modelled water flows along environmental, functional and stand structure gradients in Spanish forests.

Jesús Sánchez-Dávila^{1*}, Miquel De Cáceres¹, Jordi Vayreda¹, Javier Retana^{1,2}

1 CREAM, E08193 Bellaterra (Cerdanyola del Valles), Spain

5 2 Universitat Autònoma de Barcelona, 08193 Bellaterra (Cerdanyola del Valles), Spain

Correspondence to: Jesús Sánchez-Dávila (jesus.sanchez.davila0@gmail.com)

Abstract

The study of the water cycle in the forest at large scales, such as countries, is challenging due to the difficulty of correctly estimating forest water flows. Hydrological models can be coupled to extensive forest data sources, such as national forest inventories, to estimate the water flow of forests over large extents, but so far the studies conducted have not analysed in detail the role of stand structure variables or the functional traits of the forest on predicted blue/green water flows. In this study, we modelled the water balance of Spanish forests using stand structure and species data from forest inventories to understand the effects of climate, stand structure, and functional groups on blue water flows. We calculated both the relative blue water (the ratio between blue water and total precipitation) and green water. The results showed that higher relative blue water is mainly concentrated in the wetter regions (Atlantic and Alpine biomes) of Spain (around 25 %) in comparison with the Mediterranean biomes (10-20%) and during the autumn-winter season. Leaf Area Index (LAI) of the forest stand is the most important predictor of relative blue water, exhibiting a negative effect until it reaches a plateau at higher levels (around 2.5-3). Deciduous forests showed a greater relative blue water content than evergreen functional groups (25-35 % and 10-25% respectively), primarily due to leaf fall during the autumn-

winter season. This study highlights how the green water is decoupled of the blue water across the forests typologies of whole Spain and it how the species functional traits (deciduous vs evergreen) can influence the blue water production.

25

1. Introduction

Forests are one of the most important ecosystems on the planet and constitute a supplier of carbon and water for the humanity (MEA, 2005). Although many studies have been done on the carbon pools and cycle in forests (Gower, 2003; Pregitzer and Euskirchen, 2004), the water cycle is more complex to study, even though water is the main determinant of vegetation worldwide (Begon and Townsend, 2021). The water cycle in forests depends on the precipitation that falls in the forest, which can be partitioned in two main flows, the green water and the blue water (Caldwell et al., 2016; Schlesinger and Jasechko, 2014). The green water is the evapotranspiration flow from the forest to the atmosphere, formed by the water transpired by plants, together with the evaporation of intercepted precipitation by vegetation and the evaporation from the soil surface (Llorens et al., 2011). Climate, specific traits, stand forest structure, and their interactions determine the partitioning of precipitation between green water and blue water. Evapotranspiration in trees is determined by local climate conditions, such as air temperature, radiation, vapour pressure deficit or soil water availability (Granier et al., 2000). Moreover, the transpiration is different among species depending on their specific traits, as leaf area, xylem traits determining the efficiency of water transport or leaf phenology (evergreen and deciduous) (Ford et al., 2011). Stand forest structure is also key in rainfall partitioning through its relationship with stand LAI (total area of leaves of the canopy per unit horizontal ground area) which is a key variable

determining transpiration (Granier et al., 2000) and/or the interception of vegetation. On the other hand, blue water can be split into two flows: the surface runoff and the surplus of groundwater by the system and available downstream. Green water reduces the amount of blue water produced at local scale but recycles the water through the evapotranspiration at global scale (Ellison et al., 2012). Green water amount is usually greater than blue water's in forests and grasslands in comparison with croplands or wetlands due to the greater transpiration of the former (Oki and Kanae, 2006). Green water represents around 40-70 % of water flow in temperate and boreal forests (Schlesinger and Jasechko, 2014), and even 90-100 % in dryer environments or years, including Mediterranean forests (Ungar et al., 2013; Campos et al., 2016; Qubaja et al., 2020). The combination of different rainfall dynamics, transpiration, stand structure, and specific life traits can modify the trade-off between green and blue water. For instance, water yield can be affected by the temporal distribution of rainfall events (seasonality and torrentiality). Relative water interception by trees decreases when rainfall increases, being greater in arid environments compared to humid forests (Levia and Frost, 2003). In Mediterranean forests the interception is greater than in temperate forests due to the smaller rainfall amount and intensity and the higher evaporation caused by the higher temperature (Limousin et al., 2008). However, evaporation of intercepted water is lower during late-summer intense convective storms since the rainfall intensity is very high and of short time (torrentiality) (Llorens and Domingo, 2007). Physiological and phenological differences among species also modulate water flows. Evergreen Mediterranean trees can reduce their transpiration in summer (water saver) but deciduous trees increase it due to higher water demand (water spender) (Baquedano and Castillo, 2006; Klein, 2014; Link et al., 2014; McDowell et al., 2008). Therefore, Mediterranean forests show transpiration seasonality, with a reduction in stomatal

conductance during the summer drought, while the transpiration in temperate forests follows leaf
65 phenology more closely (Llorens et al., 2011).

Water balance in forests has been studied mainly at local and landscape scales, like in watersheds
(Caldwell et al., 2016; Guzha et al., 2018; Schwärzel et al., 2020) or forest stands (Benyon et al., 2017;
Simonin et al., 2007). Analyses at regional scales have also been carried out (Hoek van Dijke et al.,
2022; Mastrotheodoros et al., 2020; Sun et al., 2005), analysing the water flow variation by topoclimate
70 or landscape vegetation cover with hydrological models. The study of water fluxes in forest ecosystems
is an important challenge to forest management. Ecohydrological simulations have been shown as a
valuable tool to understand water fluxes at bigger scales than only with field data (Hoek van Dijke et
al., 2022; Mastrotheodoros et al., 2020). The stand structure variables have been studied at local scale
(Benyon et al., 2017; Simonin et al., 2007), but the landscape ecohydrological simulations have been
75 carried out without incorporating the role of the stand structure variables or the differences in species
and functional composition (Hoek van Dijke et al., 2022; Mastrotheodoros et al., 2020). In our study,
we analysed the spatial pattern and trade-off of blue and green water in Spain using ecohydrological
simulations with the MEDFATE water balance model (De Cáceres et al., 2023, 2015) using detailed
field stand structure and species composition derived from forest inventory data. We simulated water
80 flows and their green and blue water components at daily resolution, and we studied the spatial
distribution of relative blue water and its seasonality. Spain is an adequate region to study the trade-off
between blue and green water, because it shows contrasting climate gradients, in terms of temperature,
rainfall amount and seasonal distribution. Importantly, it includes a contrasted climate between the
Mediterranean area —with hot temperature, low precipitation and seasonal drought— and the temperate

85 area —with warm temperature, higher rainfall amount and without seasonal drought (Rivas-Martínez et al., 2011). In addition, peninsular Spain harbours both temperate and Mediterranean forests that span a broad gradient of forest types and stand structures that can modify the trade-off between blue and green water. The questions addressed by the study are: 1) Which are the spatio-temporal patterns of the trade-off between blue and green water along the Spanish Peninsula and among climate subregions? 2) How
90 this trade-off between blue and green water varies among contrasting forest functional groups? 3) Which are the main climatic and forest structural drivers of this trade-off between blue and green water?

2. Material and Methods

2.1 Study area

95 The studied area spans the forested areas of Spain, including the Iberian Peninsula and the Balearic Islands, but excluding the Canary Islands. This encompasses two climatic domains: the temperate climate with Atlantic Sea influence, in the north and west parts of the Iberian Peninsula, and the Mediterranean climate, in the rest of the territory. The temperate climate is wetter and colder, while the Mediterranean climate is hotter and drier. We have classified the Iberian territory into six biomes
100 (see map in Figure S1) according to the Iberian climate classification of (Allué Andrade et al., 1990): (i) Arid (9.0 % of the Spanish surface), with warm winters and summers and very low precipitation (< 400 mm); (ii) Temperate Mediterranean (34.8 %), hot in winter and summer with low precipitation (400-600 mm); (iii) Continental Mediterranean (30.9 %), cold in winter and hot in summer with low precipitation (400-600 mm); (iv) Submediterranean (11.0 %); cold in winter and hot in summer with
105 wetter precipitation (about 800 mm); (v) Atlantic (10.5 %), characterized by a mild winter and summer

and high precipitation (> 1000 mm); and (vi) Alpine (3.8 %), very cold in winter and cool in summer and high precipitation (> 1000 mm).

2.2. Forest inventory data

110 We used the permanent fields plots from the Spanish national forest inventories to characterize the predominant species and stand structure variables across the study area. The Spanish national forest inventories (SFI) are distributed with a systematic survey along the forested areas with a density of ~1 plot/sq km. Specifically, we used the third inventory (SFI3) carried out in 1997-2008, which is the most recent and complete survey available to date. Spanish permanent field plots have four concentric
115 circular sub-plots with radii of 5, 10, 15 and 25 m. Trees were identified and measured within variable circular size plots (5 m radius for trees with $\text{dbh} \geq 7.5$ cm, and trees with $2.5 \leq \text{dbh} \leq 7.5$ cm are counted; 10 m radius for trees with $\text{dbh} \geq 12.5$ cm; 15 m radius for trees with $\text{dbh} \geq 22.5$ cm; and 25 m radius for trees with $\text{dbh} \geq 42.5$ cm). Moreover, the shrub species or genus within the 10-m-radius subplot were measured with their corresponding percent cover values.

120 We focused on the field plots with > 70 % of plot basal area of the most predominant tree native species (Table S1) and an overall basal area of > 3 sq m/ha (to ensure that very sparse woodlands, which can hardly be considered a forest, were excluded), resulting in a total number of plots of 32,514. Plots were classified according to the dominant species in terms of basal area, into five functional groups: temperate (e.g., *Fagus sylvatica*) and Mediterranean deciduous (e.g., *Quercus pyrenaica*),
125 temperate (e.g., *Pinus sylvestris*) and Mediterranean coniferous (e.g., *Pinus pinea*) and sclerophylls

(e.g., *Quercus ilex*) (see Figure S3 for SFI3 map of the plots selected and Table S1 for the classification of the tree species in these five groups).

2.3. Environmental variables

130 We downloaded the daily data of total precipitation and maximum, mean and minimum
temperature for the 5 years before and after the date of survey for every plot (that is, 10 years per plot)
from E-OBS data at 1 km horizontal resolution (Moreno and Hasenauer, 2016);
<ftp://palantir.boku.ac.at/Public/ClimateData>). Topographic variables of slope, aspect and altitude were
derived from a digital elevation model (DEM) at 25 sq m of the PNOA Spanish project through the IGN
135 website (downloaded on 14/02/2022; <https://centrodedescargas.cnig.es/CentroDescargas/index.jsp#>).
We used these topographic variables to obtain daily values of the relative humidity, solar radiation and
potential evapotranspiration (PET) per plot through the *meteoland* R package (De Cáceres et al., 2018).
We characterized plot-level climatic conditions using three climatic indexes; climatic moisture (mean
annual precipitation/mean annual PET), continentality (mean temperature of the hottest month - mean
140 temperature of the coldest month) and precipitation seasonality ((standard deviation of monthly
precipitation/mean of monthly precipitation) * 100).

A summary of the main stand structure and climate characteristic of the different functional
groups and biomes is shown in Table S2.

2.4. MEDFATE model

145 MEDFATE model (version 2.9.3) has been designed to simulate plant water balances and soil in
structurally- and compositionally-heterogeneous forest stands (De Cáceres et al. 2015; De Cáceres et
al., 2023). MEDFATE uses daily weather as input and most processes are simulated at daily time steps.
Aboveground stand structure is represented in terms of total crown ratio (CR), height (H) and leaf area
index (LAI) of a set of woody plant cohorts. The soil is represented by vertical layers having different
150 hydraulic properties and each cohort may have a different root distribution, specified using the depth
corresponding to cumulative 50 % and 95 % of fine roots (Z50 and Z95, respectively).

Each day, the model updates the leaf area for (semi-) deciduous vegetation based on a simple
phenological model that dictates leaf budburst and leaf drop. This model relies on the SGDD parameter,
representing the degree days needed for budburst (assuming evergreen plants maintain a consistent leaf
155 area throughout the simulation). Subsequently, the model revises the light attenuation within the
canopy, adhering to the Beer-Lambert model, as well as the canopy's water storage capacity, which
signifies the minimum water quantity required to saturate the canopy. Following the canopy status
update, the model addresses the input of water from precipitation. Prior to augmenting the soil layers'
water content, the model initially deducts the water loss from rainfall due to interception and surface
160 runoff. Rainfall interception loss is estimated using the simplified version of the Gash model (Gash et
al., 1995), while runoff is calculated according to USDA SCS curve number method (Boughton, 1989).
Processes related to lateral water transfer are omitted from consideration. Soil water storage capacity
and water potential are derived from soil texture through pedotransfer functions (Saxton et al., 1986).

When replenishing a specific soil layer, a portion of the water is assumed to directly infiltrate the layer
165 below, as determined by microporosity (Granier et al., 1999). The water percolating from the deepest
layer is presumed to be lost through deep drainage.

To assess plant transpiration, the model initially calculates a distinct estimation of the maximum
transpiration for the entire plant community—that is, without considering the soil water deficiency.
This calculation is done for each taxon and takes into account the atmospheric evaporative demand. It
170 involves two taxon-specific parameters: a_{Tmax} and b_{Tmax} . parameters. The estimation of maximum
transpiration for the entire stand ($E_{max,stand}$), excluding considerations for soil water deficit, relies on
the daily Penman's potential evapotranspiration (PET) and an empirical relationship established by
Granier et al. (1999). But MEDFATE modified the Granier equation with a_{Tmax} and b_{Tmax} : If it is
assumed that the entire leaf area of a stand corresponds to a single cohort i , the equation is:

175

$$\frac{E_{max,stand(i)}}{PET} = a_{Tmax} \cdot LAI + b_{Tmax} \cdot LAI^2,$$

where a_{Tmax} and b_{Tmax} represent species-specific parameters for cohort i . Assuming reliable species-
specific estimates are accessible for a_{Tmax} and b_{Tmax} , the equation can be applied to calculate
 $E_{max,stand(i)}$, which denotes the maximum stand transpiration when dominated by the species of
180 cohort i . Once $E_{max,stand(i)}$ is determined for each species in the stand, the portion of SWR absorbed
by a particular cohort i is employed to estimate its maximum transpiration ($E_{max(i)}$) from
 $E_{max,stand(i)}$ (Korol et al., 1995).

The actual transpiration of a cohort relies on the maximum transpiration of the stand, determined for the corresponding taxon, and the proportion of shortwave radiation absorbed by the plant cohort, as detailed by Korol et al., 1995. Moreover, the cohort's transpiration is influenced by the vertical distribution of fine roots, the soil moisture profile, and two parameters specific to the taxon: Ψ_{extract} and c_{extract} . These parameters represent the soil water potential at which 50 % of the maximum transpiration occurs, and the slope of a Weibull function that regulates the rate of transpiration decline, respectively. The plant's water status is expressed as a plant water potential, denoted as Ψ_{plant} , which is defined as an "average" of the soil water potential in the rhizosphere. The model monitors the effects of drought by assessing the proportion of hydraulic conductance lost due to stem cavitation, referred to as PLC. Increases in PLC occur whenever Ψ_{plant} decreases, following a xylem vulnerability curve characterized by the parameters VC_{stemc} and VC_{stemd} . PLC sets limits on actual transpiration rates and does not decrease even when Ψ_{plant} increases. It is worth noting that the effects of cavitation can only be reversed, i.e., PLC can be reduced, through the formation of new sapwood, as outlined by Choat et al., 2018.

2.5. Parameter estimation

Data from forest inventory plots included tree height (H) and tree diameter at breast height, which was used to obtain estimates of foliar biomass (hence leaf area after multiplying by SLA) and crown ratio (CR) via species-specific allometries (see Table S1-3 of De Cáceres et al., 2023 for more details). In the model, SLA (Specific Leaf Area (sq mm/mg)), *the ratio of leaf area to leaf dry mass*, is constant for every specie (De Cáceres et al., 2023). Leaf area index (LAI in $\text{m}^2 \cdot \text{m}^{-2}$) was calculated from the foliar biomass (in $\text{kg} \cdot \text{m}^{-2}$) by using a *specific leaf area* coefficient (SLA , in $\text{m}^2 \cdot \text{kg}^{-1}$) that is species-

specific ($LAI = \text{foliar biomass} * SLA$). Taxon-specific parameter details are shown in supplemental
205 material of De Cáceres et al., 2023. Soil data of each forest inventory plot was extracted from the
SoilGrids database (Hengl et al., 2017). For all plots four soil layers down to a total depth of 4 m were
initially considered, but the deepest layers were merged into a rocky layer (95 % of rocks) following the
depth of the R horizon. A monotonous increase in rock fragment content across soil layers from the
surface to the rocky layer was defined based on surface stoniness classes determined in SFI3 plot
210 surveys.

2.6. MEDFATE simulations

MEDFATE was run on each selected SFI3 plot using daily weather data (temperature and
precipitation, PET, radiation and relative humidity) corresponding to a 10-yr period centered on the year
215 of the SFI3 sampling (1997-2008). We calculated the blue water as the sum of the runoff and deep
water and the green water as the evapotranspiration (that included the sum of the transpiration,
interception and soil evaporation).

2.7 Model evaluation

220 MEDFATE predictions have already been evaluated at the forest stand scale in terms of soil
moisture dynamics, plant transpiration and water status in Mediterranean forest (De Cáceres et al.,
2021, 2015). Given the focus of the present work, we evaluated regional-scale patterns of green and
blue water predicted by MEDFATE against those produced by alternative methods. First, we did a

comparison between the results for average blue water of MEDFATE with the average blue water from
225 the Precipitation Runoff Integrated Model (SIMPAL acronym in Spanish) of the Spanish government.
SIMPAL model is calibrated with stations that measure stream flows across Spain and it is interpolate a
1 km² resolution for the whole country (Estrela et al., 2012). Second, we compared green water patterns
predicted by MEDFATE against those of GLEAM, which is derived from satellite data and covers the
world with a resolution of 0.25 degrees (Martens et al., 2017). We used the GLEAM v3.7a that defines
230 the evapotranspiration as the sum of transpiration (from short and tall vegetation), interception (from
tall vegetation), soil and open water evaporation and snow sublimation. The comparative indicated that
the blue water of the SIMPAL model and the green water of GLEAM followed the same regional
patterns that MEDFATE (see Figure S4 and S5). SIMPAL reaches higher values of blue water in the
Atlantic biome and lower values in west Temperate Mediterranean than MEDFATE. In opposition
235 GLEAM evapotranspiration is higher in the west Temperate Mediterranean and lower in the Atlantic
forest than MEDFATE. MEDFATE models at stand scale whereas SIMPAL and GLEAM models are at
regional scale. At stand scale the evapotranspiration is high in the Atlantic forest and then the blue
water is lower. West Temperate Mediterranean is characterized by forest of low basal area and LAI
(Table S2, Figure S6). Therefore the evapotranspiration is lower and blue water higher than surrounding
240 forest. In other words, the differences observed seem to arise from the fact that MEDFATE takes into
account the stand structural characteristics, which are difficult to represent in models based on
interpolation (SIMPAL) or remote sensing (GLEAM).

2.8. Statistical analysis

245 Our analyses focused on relative blue water, the ratio between simulated annual mean blue water and the total precipitation as response variable. The variation of relative blue water across biomes and functional groups was analysed using beta regression models (Ferrari and Cribari-Neto, 2004). We used beta regressions because the response variable was a proportion. A post-hoc Tukey's test was applied for pairwise comparisons between groups (i.e., biomes and functional groups).

250 The effect and importance of climate, topographic and stand structure variables in the trade-off of blue/green water of every functional group were analysed with XGBoost regression. XGBoost is a machine learning system that builds a sequential series of shallow regression trees with a gradient boosting technique (Chen and Guestrin, 2016). XGBoost regression was used because it allows to analyse lineal and non-lineal responses and correlated variables. A regression tree is trained by splitting
255 the input dataset into increasingly homogeneous subsets at each decision nodes and choosing the split that maximizes the distance between different terminal nodes. 14 different climatic variables calculated as the mean annual values of the 10 years of climate data for every plot (mean, maximum and minimum temperature, solar radiation, moisture and continentality indexes) and the mean of seasonal variables (precipitation of spring, winter, summer, and autumn; precipitation seasonality index) were used as
260 predictors. A topographic variable (slope) and two stand structure variables (basal area and LAI of the plot) were also included. Basal area serves as an indicator of canopy cover, as it is calculated by summing the diameters at breast height (dbh) of all trees per hectare, and higher basal area values can result in increased interception. LAI determine the transpiration of the trees through of the leaf surface. One model for each of the five functional groups was computed. The models were tuned for finding the

265 best hyperparameters and they were evaluated using a k-fold cross-validation procedure (Ten-fold with five repetitions), following a stratified random sample into k subsamples of the dataset.

A forward feature selection method for selecting the predictor variables with a spatial cross-validation (Meyer et al., 2018) was used. The models were built for each predictor pair combination and the best was selected. The remaining predictors were tested by adding them to the best combination
270 pair. This procedure continued until neither of the remaining predictors resulted in an improvement of the model. Variable importance in the retained variables was evaluated by computing the fractional contribution of each feature to the model based on the total gain of these variables splits (*Gain*), the relative number of times a feature is used in trees (*Frequency*) and the relative value of the feature observation (*Cover*). We estimated the R^2 to test the accuracy of the final models.

275 All statistical analyses were conducted with R v. 4.1.1., with the packages *xgboost* (Chen et al., 2015) and *caret* (Kuhn, 2008).

3. Results

3.1. Spatial patterns of blue water in the Spanish biomes

Forests with the highest absolute amount of blue water (> 500 mm) were mostly concentrated in
280 the coast of the Atlantic Sea and in the Pyrenees (Figure 1A). The south of the Spanish Peninsula in the Temperate Mediterranean biome and some areas inside the Continental Mediterranean biome had values between 300-500 mm. The rest of the country had lower blue water values (< 300 mm), mainly in

the eastern and Mediterranean regions. Relative blue water showed a very similar spatial pattern, with the highest values located in the coast of the Atlantic Sea and the Pyrenees (Figure 1B). In the southwest of Spain and in the Mediterranean mountain regions the relative blue water was also high (> 50 %). Forests in the eastern Mediterranean region had the lowest values. The Arid and Continental Mediterranean biomes showed a very large percentage of plots (> 70 %) with low relative blue water (< 15 %), whereas the Atlantic and Alpine biomes showed higher plots (> 50 %) with high blue water (> 30 %) (Table S3). Temperate Mediterranean and Submediterranean biomes showed more intermediate values, although the Temperate had the % of plots with highest blue water (> 60 %) among all biomes. The results of the beta regression model and post-hoc Tukey's test indicated that there were differences among biomes in the percentage of blue water (Table 1, Figure 2, see Figure S7-S8 for interception and soil evaporation differences): relative blue water was higher in the Atlantic and Alpine biomes (mean over 25 %) followed by the Temperate Mediterranean and Submediterranean biomes, with the Arid and Continental Mediterranean biomes showing the lowest values (mean of 10-15 %). The absolute values showed a similar pattern that the relative blue (see Figure S9).

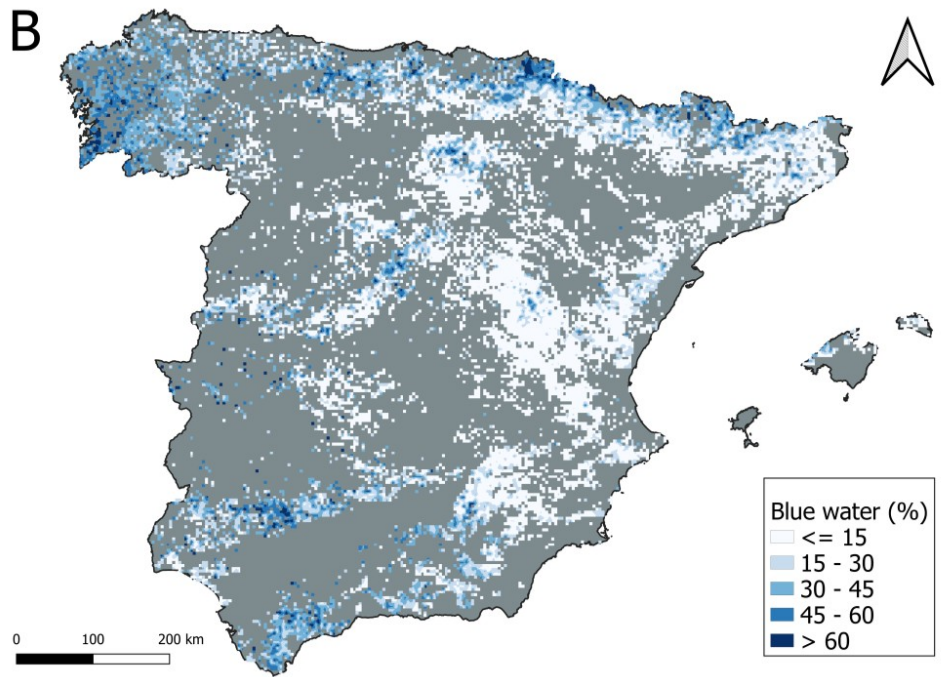
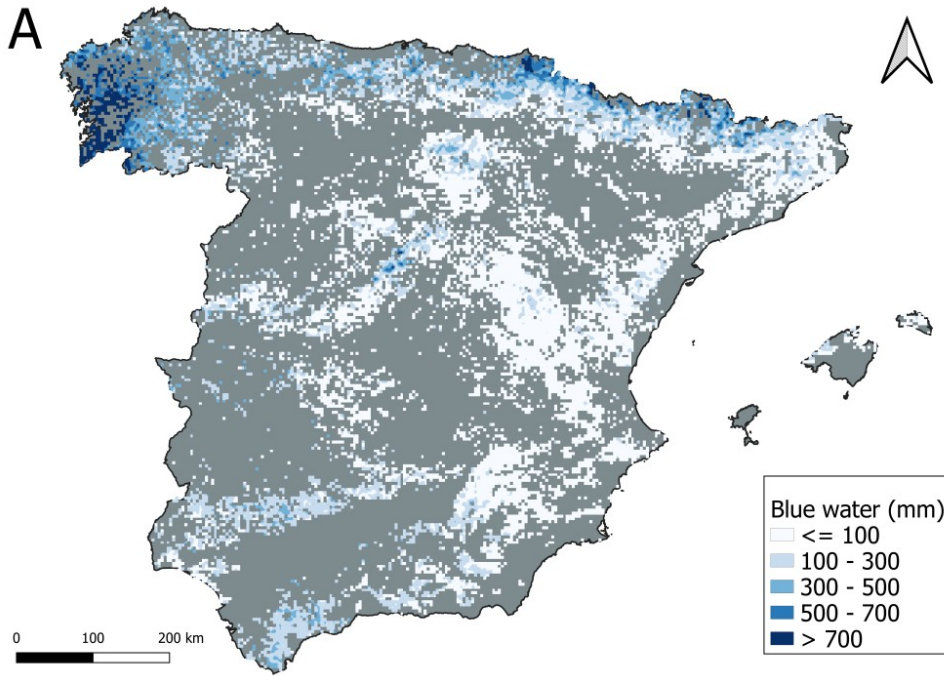


Figure 1. Total (A) and relative (B) blue water in the Spanish Peninsula and Balearic Islands. In grey,
 300 no forest covers. Maps were realized with a rasterization of the SFI3 plots results at 1 km².

Table 1. Results of the beta regression models on relative blue water (%): for the different biomes, indicating the estimate, standard deviation (SE), statistic and p-value of each of them. A positive value indicates that an increment occurred in the biome with respect to the observed values in the intercept.

Variable	Estimate	SE	Statistic	p-value
Intercept (Arid)	-1.90	0.02	-71.1	< 0.001
Temperate Mediterranean	0.49	0.02	17.6	< 0.001
Continental Mediterranean	-0.28	0.02	-10.1	< 0.001
Submediterranean	0.22	0.02	7.8	< 0.001
Atlantic	1.21	0.02	41.8	< 0.001
Alpine	1.06	0.03	33.0	< 0.001

305

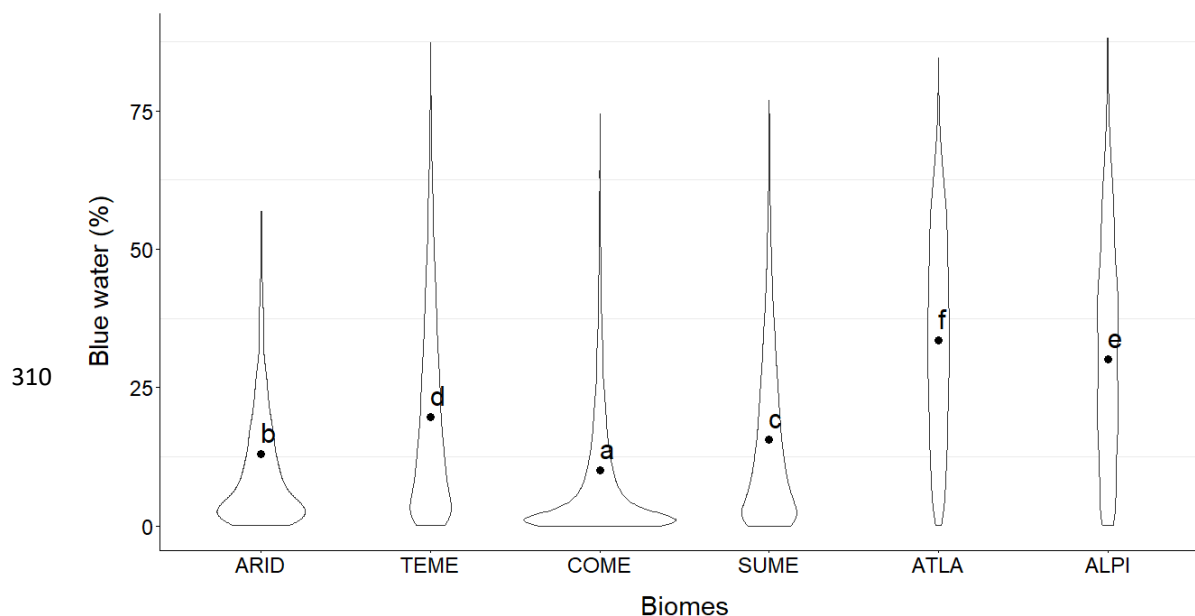


Figure 2. Percentage of blue water in the different biomes. Different letters denote significant differences among biomes ($p < 0.01$) after Tukey's test. Abbreviations of the biomes: ARID, Arid; TEME, Temperate Mediterranean; COME, Continental Mediterranean; SUME, Submediterranean; ATLA, Atlantic; ALPI, Alpine.

3.2. Patterns of blue water among forest functional groups

Beta regressions models and post-hoc Tukey's test indicated that there were also differences among functional groups in the percentage of blue water (Table 2, Figure 3, see Figure S10-11 for interception and soil evaporation differences). Relative blue water was high in temperate deciduous (35 %) followed by temperate coniferous, Mediterranean deciduous and sclerophylls (20-25 %).

Mediterranean coniferous had the lowest value (close to 10 %). The absolute values showed a similar pattern that the relative blue with the temperate deciduous with the highest values (see Figure S14).

325 Table 2. Results of the beta regression models on relative blue water (%) for the different forest functional groups, indicating the estimate, standard deviation (SE), statistic and p-value of each of them. A positive value indicates that an increment occurred in the functional group with respect to the observed values in the intercept.

Variable	Estimate	SE	Statistic	p-Value
Intercept (Temperate deciduous)	-0.47	0.01	-33.2	< 0.001
Mediterranean deciduous	-0.76	0.02	-33.7	< 0.001
Temperate coniferous	-0.93	0.02	-42.4	< 0.001
Mediterranean coniferous	-1.42	0.01	-85.7	< 0.001
Sclerophylls	-1.02	0.01	-53.8	< 0.001

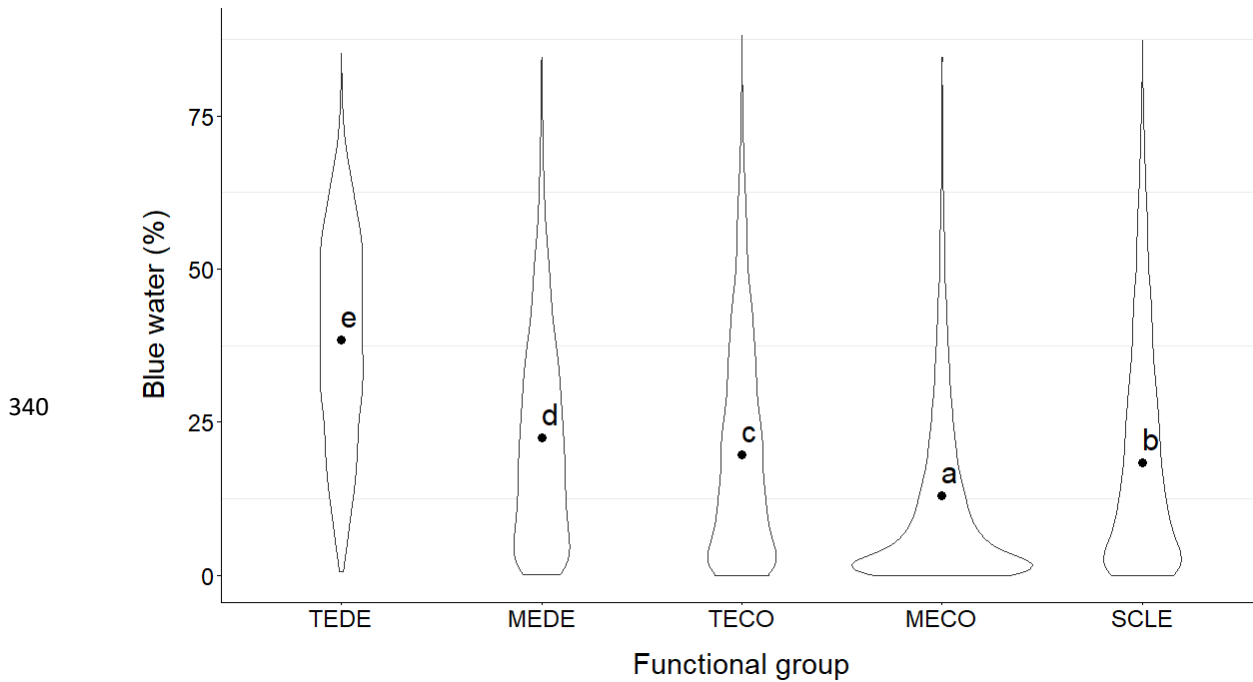
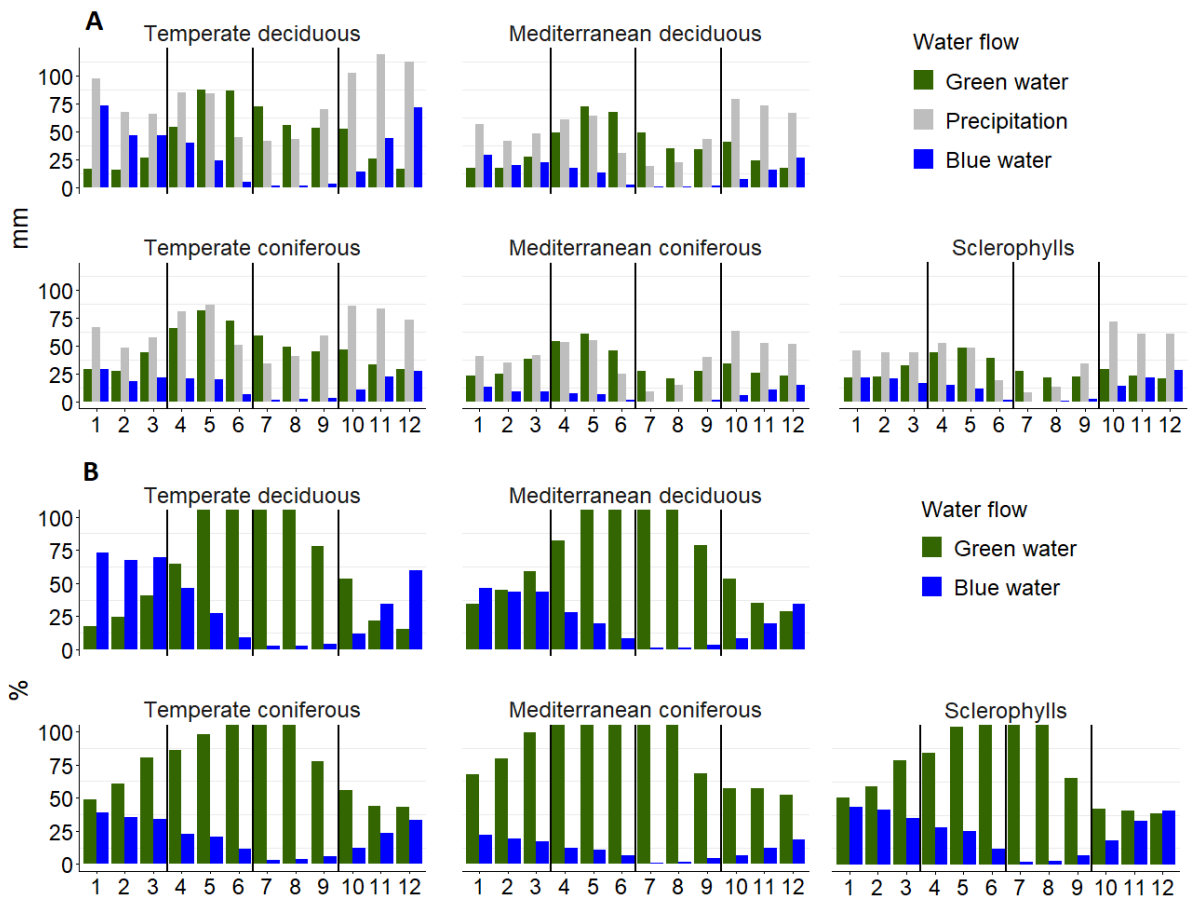


Figure 3. Percentage of blue water of the different functional groups of species. Different letters denote significant differences among forest types ($p < 0.01$) after Tukey's test. Abbreviations of the functional
 345 groups: TEDE, Temperate deciduous; MEDE, Mediterranean deciduous; TECO, Temperate coniferous; MECO, Mediterranean coniferous; SCLE, sclerophylls.

The analysis of seasonality using monthly-aggregated data showed that the amount of blue water in forests of the different functional groups strongly varied throughout the year. In the Temperate deciduous forests, total blue water was higher than total evapotranspiration in autumn and winter (Figure 4A), whereas in other functional groups, the values of the two flows were similar along the year, except in spring-summer, when the green water was higher. In the Mediterranean coniferous forests, evapotranspiration was higher than blue water all year long. Relative flows showed that blue water was minimum in the summer season in all groups and higher than evapotranspiration only in autumn-winter in temperate deciduous forests (Figure 4B).



355

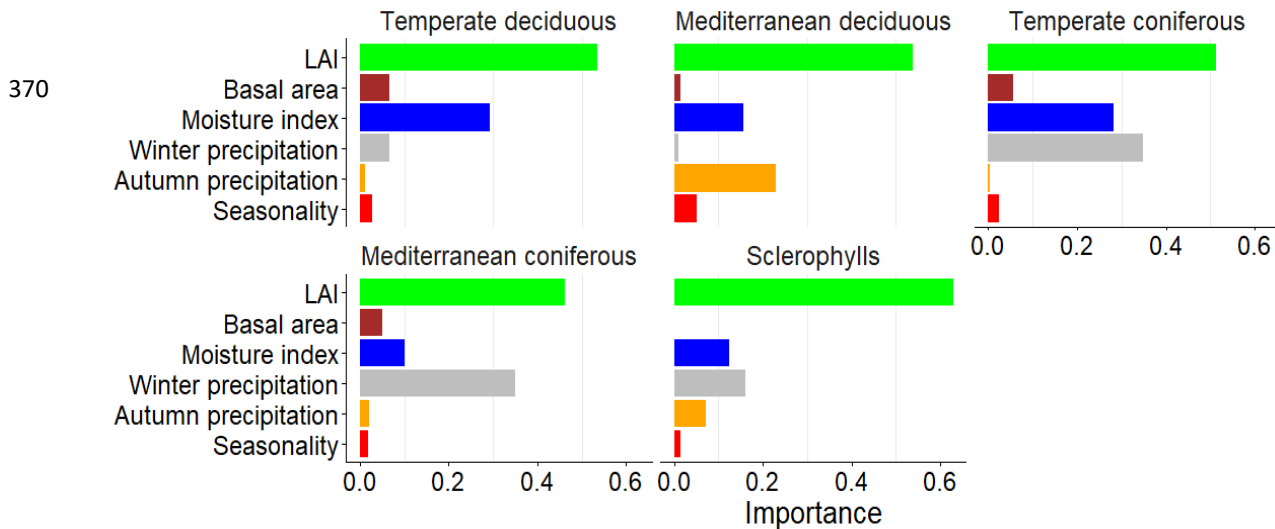
Figure 4. Total (A) and relative (B) green water and blue water, and total precipitation by different functional groups throughout the year. Note that evapotranspiration can be higher than precipitation during summer months, due to plant transpiration and bare soil evaporation of water available in the soil. Relative evapotranspiration has been truncated to 100 % of precipitation with the aim to improve the visualization of water export. A line marks the seasons in the months.

360

3.3. Main drivers of the trade-off between blue and green water

XGBoost models showed high accuracy, with $R^2 > 75\%$ in most functional groups (Table S4).

These analyses revealed that LAI was the most important predictor of relative blue water in all
365 functional groups (Figure 5). The second and third most important variables were climatic moisture
index and winter precipitation, except for Mediterranean deciduous, which was autumn precipitation
(see Figure S13-14 for spatial variation of climatic moisture and winter precipitation). The other
variables retained in the models had low significance.



375 Figure 5. Average importance from Gain, Cover and Frequency values for every predictor variable
retained in the XGBoost models for the five functional groups.

Partial dependence plots showed that LAI had a strong and negative effect on relative blue water (Figure 6). Nevertheless, this effect was different depending on the functional group. The temperate deciduous forest showed the highest percentage of blue water for the whole LAI gradient, being always with a value over 20 %. The other forest types showed similar patterns among them, with a larger drop until LAI < 3 and values around 10 % afterwards. The only exception was the group of Mediterranean conifers, which showed lower % of blue water than the other groups throughout the LAI gradient. Climatic moisture index showed a positive effect in all groups. The three angiosperm groups had similar slope and showed higher values than the two gymnosperm groups (Figure 6B). Winter precipitation had a positive effect in all functional groups except in the Mediterranean deciduous (Figure 6C). Temperate deciduous forests showed higher values through the whole winter precipitation gradient.

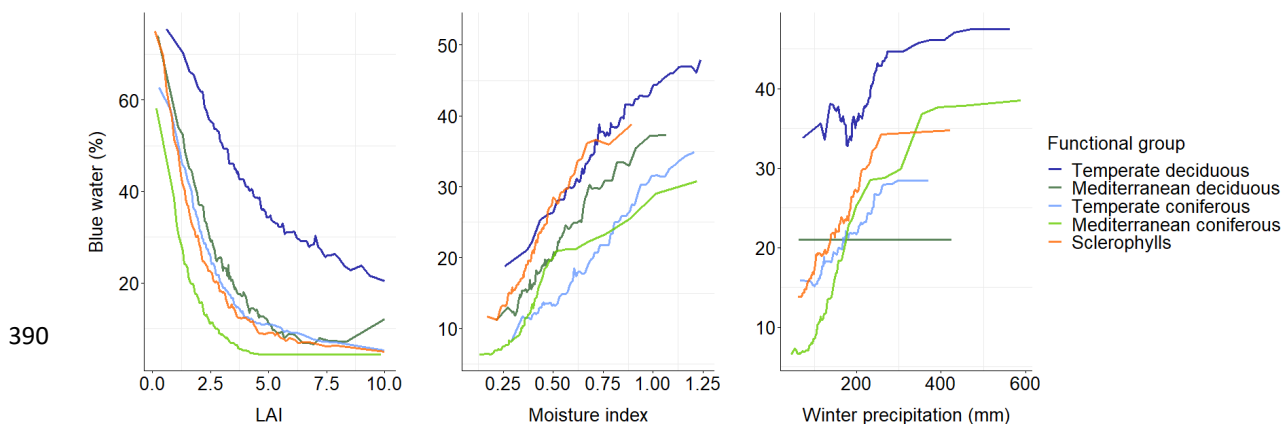


Figure 6. Partial dependence plots for the three main predictor variables (A, LAI; B, Climatic moisture index; C, Winter precipitation) and their effect on blue water percentage for the different functional groups.

4. Discussion

4.1. Spatio-temporal patterns

Blue water spatial patterns showed that most Spanish forests have a proportion of the precipitation below 15 % as blue water (Figure 2). This pattern was expected, since most of the Spanish forests are in Mediterranean climate, and in these dry environments the evaporative demand is high and the majority of water evapotranspired or intercepted by the canopy (Ungar et al., 2013). In contrast, in the Atlantic and alpine biomes, the proportion of rainfall as blue water can be higher than 25 %, because these biomes are wetter and colder than the Mediterranean and, thus, the evapotranspiration is lower and precipitation is higher (Kosugi and Katsuyama, 2007; Mastrotheodoros et al., 2020). Moreover, in some mountain areas in the continental Mediterranean biomes (e.g., Sierra Nevada, Sierra de la Demanda), the amount and proportion of blue water is also high (Figure 1A, 1B). These regions are wetter than the rest of Mediterranean biomes and an increase of precipitation determines an increase in blue water (Helman et al., 2017). Interestingly, in other areas of southern Spain, in the temperate Mediterranean biome, the proportion of blue water can also be higher than 20 % (e.g., Sierra Morena; Table S3), not because they have a higher rainfall but because this biome has very open forests, with LAI values lower than the rest of biomes (Table S1). Transpiration is the main component of the green water in arid environments and decrease in wetter regions where the interception increases their importance (see Figure S15). This result is concordant with the global patterns of green water flux where the transpiration is bigger in arid environments (Good et al., 2017).

415 The analysis of seasonal dynamics by forest type showed that, in forests of all functional groups,
there is more blue water during autumn and winter months. In contrast, the evapotranspiration was
higher in spring-summer. In Mediterranean climates there is a decoupling between rainfall and
temperature (Baldocchi and Xu, 2007), with higher rainfall in spring and autumn and higher
temperatures in summer. For this reason, plants have more photosynthetic activity and growth in spring
420 (when rainfall is high) and more transpiration in summer (when temperature is highest) (Baquedano and
Castillo, 2006; Link et al., 2014), when trees use the groundwater stored in the soil (Jost et al., 2005).
Water loss by run off or deep drainage is higher in autumn-winter because water is not fully exploited
by the forest in this lower-photosynthetic period and, thus, green water is lower than would be possible
by falling rain (Helman et al., 2017; Williams et al., 2012). According to our results (Figure 4) blue
425 water, which is the balance of these two fluxes, is concentrated in this period of lower or dormant
vegetation activity (i.e., late autumn and winter).

4.2. Differences of blue water between forest functional groups

The analysis of the percentage of blue water of the different functional groups of species showed
430 that temperate deciduous forests had the highest value, followed by Mediterranean deciduous forests
(Figure 3). The rest of forest types had lower values (Figure 3), mainly the Mediterranean coniferous,
which have shown a high green water of almost 90 % (Ungar et al., 2013). The seasonal dynamics of
these flows in the different forest types show that deciduous forests have more blue water in autumn and
winter months than evergreen forests (Figure 4). This indicates that the main factor that explains the
435 differences in relative blue water between forest types is the shedding of leaves (or its lack of shedding)

during the cold part of the year. Although deciduous trees are mainly water-spender since their evapotranspiration is higher than that of evergreens, they shed their leaves in autumn and their interception and evapotranspiration are lower than those of evergreens in autumn/winter (Figure 4). Moreover, due to their shape coniferous needles intercept more the rainfall than the deciduous ones for
440 the same area of leaves (Carlyle-Moses, 2004). Although green water is higher in deciduous than in evergreen forests in summer (Figure 4), total annual blue water seems to be more determined by leaf phenology, which conditions the destination of the autumn-winter precipitation and determines the differences between deciduous and evergreen forests. Also, climate partial plots showed that at the same level of climatic moisture index and winter precipitation, deciduous forests have greater relative blue
445 water than coniferous and sclerophylls (Figure 6B-C).

But once the differences between deciduous and evergreen forests are highlighted, the next aspect that stands out when comparing the different types of forests is that, for each category of leaf phenology, the proportion of blue water depends mainly on climate. Thus, temperate deciduous forests have more relative blue water than Mediterranean deciduous ones (Figure 3). Temperate deciduous
450 forests, which are the ones exporting most blue water in relation to their precipitation, are mainly concentrated in the Atlantic and alpine biomes, where precipitation is higher and transpiration is lower, while Mediterranean deciduous forests are concentrated in Mediterranean biomes, where precipitation is lower and transpiration is higher (Table S2). The same pattern happens in evergreen forests: temperate coniferous forests have percentage of blue water higher than Mediterranean coniferous forests because
455 precipitation in the biomes where they are more abundant is also higher than in the Mediterranean. The lowest value of blue water in Mediterranean coniferous forests is particularly relevant, because this is

the most abundant forest type in Spain, and it is predominant in the Mediterranean biomes (Table S1). Finally, sclerophyll forests produce more blue water than Mediterranean coniferous forests, although both are situated in Mediterranean biomes and are evergreen. Sclerophyll forests have higher
460 transpiration than Mediterranean coniferous ones (del Campo et al., 2019; Sánchez-Costa et al., 2015) but the total LAI of their stands is lower (Table S2), which determines the different pattern obtained (as explained in the next section).

4. 3. Differences in stand structure determining blue water

465 The analysis of the drivers affecting relative blue water showed that LAI is the most important predictor of blue water (Figure 5). In our simulations, relative blue water was often very high (> 60 %) when LAI was < 1. Transpiration and interception are higher when the LAI of the stand is higher and, therefore, the water is transpired and intercepted by leaves. But the temperate deciduous forests showed higher blue water for the same LAI values. Deciduous trees present higher evapotranspiration than
470 evergreens at the same level of LAI (Baldocchi et al., 2010) but, as described previously, LAI effect is modulated by leaf phenology, since blue water in these forests is concentrated in winter. When LAI is very low, evergreen forests can show a higher relative blue water. For instance, the temperate Mediterranean biome showed more % of plots with a higher relative blue water than Atlantic or alpine biomes (Table S3) because the mean LAI of their forests is lower than the rest of biomes (see Table S1).
475 This points out the importance of stand structure and composition, since in a drier environment, LAI values higher than 2-3 sq m/sq m can strongly reduce the relative blue water. This effect is higher if the forest is evergreen, which is the predominant type in the Mediterranean. Relative blue water of

Mediterranean deciduous forests is higher than that of evergreens, because a decrease of LAI in evergreen forests decreases tree transpiration but increases evaporation from the soil surface, which is
480 high in the Mediterranean climate even in winter (Raz-Yaseef et al., 2010). Management of blue water in forests has been focused in modifying the basal area of the stand (del Campo et al., 2014). Nevertheless, in this study basal area was a limited predictor of the blue water in comparison with LAI. LAI of the stand increases with basal area until a threshold and then it remains stable (Figure S16). Although the increase of basal area through time reduces blue water (Caldwell et al., 2016), a plateau is
485 expected in the long term, since LAI will not increase more after a maximum is reached. For this reason, blue water did not reduce excessively when LAI was higher than 3 (Figure 6A). The reduction of basal area in the forest through thinning is a recurrent way of increasing blue water (Ameztegui et al., 2017; del Campo et al., 2018; Simon and Ameztegui, 2023), but this non-linear relationship between basal area and LAI implies that only a heavy management for reducing basal area would be effective for
490 reducing the LAI of the stand and, thus, increasing blue water.

4.4. Limitations

Model simulations to estimate water flows is not the same as actually observing them and can lead to artifactual results. In this sense, it is necessary to continue improving the ecohydrological model
495 design parametrization to improve their accuracy, including the completion of traits of many species for the parameterization, a better soil database, or the inclusion of lateral water flows (in the case of MEDFATE model). Model evaluation is another key aspect to increase realism and usefulness of predictions. The model MEDFATE has been validated in Mediterranean forests at local scale with field

ground data, but it has not been validated at country scale, and it might have lower accuracy in the
500 Atlantic or alpine biome or with some tree species. Nevertheless, the comparison between MEDFATE
results and the another land surface products showed a similar regional patterns. Despite accepting these
limitations, the lack of field data at bigger scales encourages the use of models to study water flows at
country or continental scale.

505 **5. Conclusion**

Ecohydrological models like MEDFATE allow to model different species and stand structures,
improving our insights about the role of forests in water flows. Thus, we can split the fluxes of water at
stand level and understand the role of species, climate and stand structure variables in the different
water flows: transpiration, interception, runoff, etc. In this work we showed that stand structure
510 variables and functional composition play a substantial role in ecohydrological simulations. Moreover,
the incorporation of forest inventories to these models allow to do analyses at large spatial scales across
multiple climates, forest typologies and species composition. In the current context of global change,
the knowledge of water fluxes in forests is essential to be able to define strategies to improve the water
budget, and especially in dry environments like the Mediterranean, where water is scarce and the
515 previsions are in the line of increasing drought periods. Thus, in the context of global change we are
suffering (Hoerling et al., 2012; Lionello et al., 2014), the low amount and proportion of blue water in
great part of Spain is an important problem in the water supply for the agriculture or human
consumption in the region (Ellison et al., 2012). The consequences that this lack of blue water might

have on the entire silvoagropastoral system in the whole region, aggravated by the harsher conditions
520 expected in the future, should make us reflect on what kind of forest management could be more
effective in the next decades.

Code availability. The model code of MEDFATE is available at <https://github.com/emf-creaf/medfate>.
The MEDFATE model code is explained in De Cáceres et al. (2023).

525

Data availability. Spanish forest inventory data are available at
<https://www.miteco.gob.es/es/biodiversidad/temas/inventarios-nacionales/inventario-forestal-nacional/>.

Author contributions:

530 JSD, MC, JV and JR contributed to the study conception and design. JSD conducted the modelling with
the support of MC. JSD wrote the manuscript with the assistance of the rest of the authors. All authors
discussed the results and edited the manuscript.

Competing interests:

535 The authors declare that they have no conflict of interest.

Acknowledgements

The present study was supported by the Spanish Ministry of Science and Innovation project “GREEN-
RISK” (PID2020-119933RB-C21/AEI/10.13039/501100011033) and “BOMFORES” (PID2021-

540 126679OB-100/AEI/10.13039/501100011033). J. Sánchez-Dávila received a predoctoral fellowship funded by Spanish Ministry of Science and Innovation.

References

- 545 Allué Andrade, J. L., Miguel y del Angel, M. de, and Grau Corbí, J. M.: Atlas fitoclimático de España: taxonomías, 1990.
- Ameztegui, A., Cabon, A., De Cáceres, M., and Coll, L.: Managing stand density to enhance the adaptability of Scots pine stands to climate change: A modelling approach, *Ecological Modelling*, 356, 141–150, <https://doi.org/10.1016/j.ecolmodel.2017.04.006>, 2017.
- 550 Baldocchi, D. D. and Xu, L.: What limits evaporation from Mediterranean oak woodlands – The supply of moisture in the soil, physiological control by plants or the demand by the atmosphere?, *Advances in Water Resources*, 30, 2113–2122, <https://doi.org/10.1016/j.advwatres.2006.06.013>, 2007.
- Baldocchi, D. D., Ma, S., Rambal, S., Misson, L., Ourcival, J.-M., Limousin, J.-M., Pereira, J., and Papale, D.: On the differential advantages of evergreenness and deciduousness in mediterranean oak woodlands: a flux perspective, *Ecological Applications*, 20, 1583–1597, <https://doi.org/10.1890/08-2047.1>, 2010.
- 555 Baquedano, F. J. and Castillo, F. J.: Comparative ecophysiological effects of drought on seedlings of the Mediterranean water-saver *Pinus halepensis* and water-spenders *Quercus coccifera* and *Quercus ilex*, *Trees*, 20, 689–700, <https://doi.org/10.1007/s00468-006-0084-0>, 2006.
- Begon, M. and Townsend, C. R.: *Ecology: From Individuals to Ecosystems*, John Wiley & Sons, 868 pp., 2021.
- 560 Benyon, R. G., Nolan, R. H., Hawthorn, S. N. D., and Lane, P. N. J.: Stand-level variation in evapotranspiration in non-water-limited eucalypt forests, *Journal of Hydrology*, 551, 233–244, <https://doi.org/10.1016/j.jhydrol.2017.06.002>, 2017.
- Boughton, W. C.: A review of the USDA SCS curve number method, *Soil Res.*, 27, 511–523, <https://doi.org/10.1071/sr9890511>, 1989.
- 565 Caldwell, P. V., Miniati, C. F., Elliott, K. J., Swank, W. T., Brantley, S. T., and Laseter, S. H.: Declining water yield from forested mountain watersheds in response to climate change and forest mesophication, *Global Change Biology*, 22, 2997–3012, <https://doi.org/10.1111/gcb.13309>, 2016.
- del Campo, A. D., Fernandes, T. J. G., and Molina, A. J.: Hydrology-oriented (adaptive) silviculture in a semiarid pine plantation: How much can be modified the water cycle through forest management?, *Eur J Forest Res*, 133, 879–894, <https://doi.org/10.1007/s10342-014-0805-7>, 2014.

- 570 del Campo, A. D., González-Sanchis, M., Lidón, A., Ceacero, C. J., and García-Prats, A.: Rainfall partitioning after thinning in two low-biomass semiarid forests: Impact of meteorological variables and forest structure on the effectiveness of water-oriented treatments, *Journal of Hydrology*, 565, 74–86, <https://doi.org/10.1016/j.jhydrol.2018.08.013>, 2018.
- del Campo, A. D., González-Sanchis, M., García-Prats, A., Ceacero, C. J., and Lull, C.: The impact of adaptive forest management on water fluxes and growth dynamics in a water-limited low-biomass oak coppice, *Agricultural and Forest Meteorology*, 264, 266–282, <https://doi.org/10.1016/j.agrformet.2018.10.016>, 2019.
- Campos, I., González-Piqueras, J., Carrara, A., Villodre, J., and Calera, A.: Estimation of total available water in the soil layer by integrating actual evapotranspiration data in a remote sensing-driven soil water balance, *Journal of Hydrology*, 534, 427–439, <https://doi.org/10.1016/j.jhydrol.2016.01.023>, 2016.
- 580 Carlyle-Moses, D. E.: Throughfall, stemflow, and canopy interception loss fluxes in a semi-arid Sierra Madre Oriental matorral community, *Journal of Arid Environments*, 58, 181–202, [https://doi.org/10.1016/S0140-1963\(03\)00125-3](https://doi.org/10.1016/S0140-1963(03)00125-3), 2004.
- Chen, T. and Guestrin, C.: XGBoost: A Scalable Tree Boosting System, in: Proceedings of the 22nd ACM SIGKDD International Conference on Knowledge Discovery and Data Mining, New York, NY, USA, 785–794, 585 <https://doi.org/10.1145/2939672.2939785>, 2016.
- Choat, B., Brodribb, T. J., Brodersen, C. R., Duursma, R. A., López, R., and Medlyn, B. E.: Triggers of tree mortality under drought, *Nature*, 558, 531–539, <https://doi.org/10.1038/s41586-018-0240-x>, 2018.
- De Cáceres, M., Martínez-Vilalta, J., Coll, L., Llorens, P., Casals, P., Poyatos, R., Pausas, J. G., and Brotons, L.: Coupling a water balance model with forest inventory data to predict drought stress: the role of forest structural changes vs. climate changes, *Agricultural and Forest Meteorology*, 213, 77–90, 590 <https://doi.org/10.1016/j.agrformet.2015.06.012>, 2015.
- De Cáceres, M., Martin-StPaul, N., Turco, M., Cabon, A., and Granda, V.: Estimating daily meteorological data and downscaling climate models over landscapes, *Environmental Modelling & Software*, 108, 186–196, <https://doi.org/10.1016/j.envsoft.2018.08.003>, 2018.
- 595 De Cáceres, M., Mencuccini, M., Martin-StPaul, N., Limousin, J.-M., Coll, L., Poyatos, R., Cabon, A., Granda, V., Forner, A., Valladares, F., and Martínez-Vilalta, J.: Unravelling the effect of species mixing on water use and drought stress in Mediterranean forests: A modelling approach, *Agricultural and Forest Meteorology*, 296, 108233, <https://doi.org/10.1016/j.agrformet.2020.108233>, 2021.
- De Cáceres, M., Molowny-Horas, R., Cabon, A., Martínez-Vilalta, J., Mencuccini, M., García-Valdés, R., Nadal-Sala, D., Sabaté, S., Martin-StPaul, N., Morin, X., D’Adamo, F., Batllori, E., and Améztegui, A.: MEDFATE 600 2.9.3: a trait-enabled model to simulate Mediterranean forest function and dynamics at regional scales, *Geoscientific Model Development*, 16, 3165–3201, <https://doi.org/10.5194/gmd-16-3165-2023>, 2023.
- Ellison, D., N. Fitter, M., and Bishop, K.: On the forest cover–water yield debate: from demand- to supply-side thinking, *Global Change Biology*, 18, 806–820, <https://doi.org/10.1111/j.1365-2486.2011.02589.x>, 2012.

- 605 Estrela, T., Pérez-Martin, M. A., and Vargas, E.: Impacts of climate change on water resources in Spain, *Hydrological Sciences Journal*, 57, 1154–1167, <https://doi.org/10.1080/02626667.2012.702213>, 2012.
- Ferrari, S. and Cribari-Neto, F.: Beta Regression for Modelling Rates and Proportions, *Journal of Applied Statistics*, 31, 799–815, <https://doi.org/10.1080/0266476042000214501>, 2004.
- Ford, C. R., Hubbard, R. M., and Vose, J. M.: Quantifying structural and physiological controls on variation in canopy transpiration among planted pine and hardwood species in the southern Appalachians, *Ecohydrology*, 4, 183–195, <https://doi.org/10.1002/eco.136>, 2011.
- 610 Gash, J. H. C., Lloyd, C. R., and Lachaud, G.: Estimating sparse forest rainfall interception with an analytical model, *Journal of Hydrology*, 170, 79–86, [https://doi.org/10.1016/0022-1694\(95\)02697-N](https://doi.org/10.1016/0022-1694(95)02697-N), 1995.
- Good, S. P., Moore, G. W., and Miralles, D. G.: A mesic maximum in biological water use demarcates biome sensitivity to aridity shifts, *Nat Ecol Evol*, 1, 1883–1888, <https://doi.org/10.1038/s41559-017-0371-8>, 2017.
- 615 Gower, S. T.: Patterns and Mechanisms of the Forest Carbon Cycle, *Annual Review of Environment and Resources*, 1, 169–204, 2003.
- Granier, A., Bréda, N., Biron, P., and Villette, S.: A lumped water balance model to evaluate duration and intensity of drought constraints in forest stands, *Ecological Modelling*, 116, 269–283, [https://doi.org/10.1016/S0304-3800\(98\)00205-1](https://doi.org/10.1016/S0304-3800(98)00205-1), 1999.
- 620 Granier, A., Biron, P., and Lemoine, D.: Water balance, transpiration and canopy conductance in two beech stands, *Agricultural and Forest Meteorology*, 100, 291–308, [https://doi.org/10.1016/S0168-1923\(99\)00151-3](https://doi.org/10.1016/S0168-1923(99)00151-3), 2000.
- Guzha, A. C., Rufino, M. C., Okoth, S., Jacobs, S., and Nóbrega, R. L. B.: Impacts of land use and land cover change on surface runoff, discharge and low flows: Evidence from East Africa, *Journal of Hydrology: Regional Studies*, 15, 49–67, <https://doi.org/10.1016/j.ejrh.2017.11.005>, 2018.
- 625 Helman, D., Osem, Y., Yakir, D., and Lensky, I. M.: Relationships between climate, topography, water use and productivity in two key Mediterranean forest types with different water-use strategies, *Agricultural and Forest Meteorology*, 232, 319–330, <https://doi.org/10.1016/j.agrformet.2016.08.018>, 2017.
- 630 Hengl, T., Jesus, J. M. de, Heuvelink, G. B. M., Gonzalez, M. R., Kilibarda, M., Blagotić, A., Shangguan, W., Wright, M. N., Geng, X., Bauer-Marschallinger, B., Guevara, M. A., Vargas, R., MacMillan, R. A., Batjes, N. H., Leenaars, J. G. B., Ribeiro, E., Wheeler, I., Mantel, S., and Kempen, B.: SoilGrids250m: Global gridded soil information based on machine learning, *PLOS ONE*, 12, e0169748, <https://doi.org/10.1371/journal.pone.0169748>, 2017.
- 635 Hoek van Dijke, A. J., Herold, M., Mallick, K., Benedict, I., Machwitz, M., Schlerf, M., Pranindita, A., Theeuwens, J. J. E., Bastin, J.-F., and Teuling, A. J.: Shifts in regional water availability due to global tree restoration, *Nat. Geosci.*, 15, 363–368, <https://doi.org/10.1038/s41561-022-00935-0>, 2022.

- Hoerling, M., Eischeid, J., Perlwitz, J., Xiaowei, Q., Zhang, T., and Pegion, P.: On the Increased Frequency of Mediterranean Drought, *Journal of Climate*, 25, 2146–2161, 2012.
- 640 Jost, G., Heuvelink, G. B. M., and Papritz, A.: Analysing the space–time distribution of soil water storage of a forest ecosystem using spatio-temporal kriging, *Geoderma*, 128, 258–273, <https://doi.org/10.1016/j.geoderma.2005.04.008>, 2005.
- Klein, T.: The variability of stomatal sensitivity to leaf water potential across tree species indicates a continuum between isohydric and anisohydric behaviours, *Functional Ecology*, 28, 1313–1320, 645 <https://doi.org/10.1111/1365-2435.12289>, 2014.
- Korol, R. L., Running, S. W., and Milner, K. S.: Incorporating intertree competition into an ecosystem model, *Can. J. For. Res.*, 25, 413–424, <https://doi.org/10.1139/x95-046>, 1995.
- Kosugi, Y. and Katsuyama, M.: Evapotranspiration over a Japanese cypress forest. II. Comparison of the eddy covariance and water budget methods, *Journal of Hydrology*, 334, 305–311, 650 <https://doi.org/10.1016/j.jhydrol.2006.05.025>, 2007.
- Kuhn, M.: Building Predictive Models in R Using the caret Package, *Journal of Statistical Software*, 28, 1–26, <https://doi.org/10.18637/jss.v028.i05>, 2008.
- Levia, D. F. and Frost, E. E.: A review and evaluation of stemflow literature in the hydrologic and biogeochemical cycles of forested and agricultural ecosystems, *Journal of Hydrology*, 274, 1–29, 655 [https://doi.org/10.1016/S0022-1694\(02\)00399-2](https://doi.org/10.1016/S0022-1694(02)00399-2), 2003.
- Limousin, J.-M., Rambal, S., Ourcival, J.-M., and Joffre, R.: Modelling rainfall interception in a mediterranean *Quercus ilex* ecosystem: Lesson from a throughfall exclusion experiment, *Journal of Hydrology*, 357, 57–66, <https://doi.org/10.1016/j.jhydrol.2008.05.001>, 2008.
- Link, P., Simonin, K., Maness, H., Oshun, J., Dawson, T., and Fung, I.: Species differences in the seasonality of evergreen tree transpiration in a Mediterranean climate: Analysis of multiyear, half-hourly sap flow observations, 660 *Water Resources Research*, 50, 1869–1894, 2014.
- Lionello, P., Abrantes, F., Gacic, M., Planton, S., Trigo, R., and Ulbrich, U.: The climate of the Mediterranean region: research progress and climate change impacts, *Reg Environ Change*, 14, 1679–1684, <https://doi.org/10.1007/s10113-014-0666-0>, 2014.
- 665 Llorens, P. and Domingo, F.: Rainfall partitioning by vegetation under Mediterranean conditions. A review of studies in Europe, *Journal of Hydrology*, 335, 37–54, <https://doi.org/10.1016/j.jhydrol.2006.10.032>, 2007.
- Llorens, P., Latron, J., Álvarez-Cobelas, M., Martínez-Vilalta, J., and Moreno, G.: Hydrology and Biogeochemistry of Mediterranean Forests, in: *Forest Hydrology and Biogeochemistry: Synthesis of Past Research and Future Directions*, edited by: Levia, D. F., Carlyle-Moses, D., and Tanaka, T., Springer 670 Netherlands, Dordrecht, 301–319, https://doi.org/10.1007/978-94-007-1363-5_14, 2011.

- Martens, B., Miralles, D. G., Lievens, H., van der Schalie, R., de Jeu, R. A. M., Fernández-Prieto, D., Beck, H. E., Dorigo, W. A., and Verhoest, N. E. C.: GLEAM v3: satellite-based land evaporation and root-zone soil moisture, *Geoscientific Model Development*, 10, 1903–1925, <https://doi.org/10.5194/gmd-10-1903-2017>, 2017.
- 675 Mastrotheodoros, T., Pappas, C., Molnar, P., Burlando, P., Manoli, G., Parajka, J., Rigon, R., Szeles, B., Bottazzi, M., Hadjidoukas, P., and Fatichi, S.: More green and less blue water in the Alps during warmer summers, *Nat. Clim. Chang.*, 10, 155–161, <https://doi.org/10.1038/s41558-019-0676-5>, 2020.
- McDowell, N., Pockman, W. T., Allen, C. D., Breshears, D. D., Cobb, N., Kolb, T., Plaut, J., Sperry, J., West, A., Williams, D. G., and Yepez, E. A.: Mechanisms of plant survival and mortality during drought: why do some plants survive while others succumb to drought?, *New Phytologist*, 178, 719–739, <https://doi.org/10.1111/j.1469-8137.2008.02436.x>, 2008.
- 680 Meyer, H., Reudenbach, C., Hengl, T., Katurji, M., and Nauss, T.: Improving performance of spatio-temporal machine learning models using forward feature selection and target-oriented validation, *Environmental Modelling & Software*, 101, 1–9, <https://doi.org/10.1016/j.envsoft.2017.12.001>, 2018.
- Moreno, A. and Hasenauer, H.: Spatial downscaling of European climate data, *International Journal of*
685 *Climatology*, 36, 1444–1458, <https://doi.org/10.1002/joc.4436>, 2016.
- Oki, T. and Kanae, S.: Global Hydrological Cycles and World Water Resources, *Science*, 313, 1068–1072, <https://doi.org/10.1126/science.1128845>, 2006.
- Pregitzer, K. S. and Euskirchen, E. S.: Carbon cycling and storage in world forests: biome patterns related to forest age, *Global Change Biology*, 10, 2052–2077, <https://doi.org/10.1111/j.1365-2486.2004.00866.x>, 2004.
- 690 Qubaja, R., Amer, M., Tatarinov, F., Rotenberg, E., Preisler, Y., Sprintsin, M., and Yakir, D.: Partitioning evapotranspiration and its long-term evolution in a dry pine forest using measurement-based estimates of soil evaporation, *Agricultural and Forest Meteorology*, 281, 107831, <https://doi.org/10.1016/j.agrformet.2019.107831>, 2020.
- 695 Raz-Yaseef, N., Rotenberg, E., and Yakir, D.: Effects of spatial variations in soil evaporation caused by tree shading on water flux partitioning in a semi-arid pine forest, *Agricultural and Forest Meteorology*, 150, 454–462, <https://doi.org/10.1016/j.agrformet.2010.01.010>, 2010.
- Rivas-Martínez, S., Sáenz, S., and Penas, A.: Worldwide Bioclimatic Classification System, *Global Geobotany*, 1, 1-634+4 Maps, <https://doi.org/10.5616/gg110001>, 2011.
- 700 Sánchez-Costa, E., Poyatos, R., and Sabaté, S.: Contrasting growth and water use strategies in four co-occurring Mediterranean tree species revealed by concurrent measurements of sap flow and stem diameter variations, *Agricultural and Forest Meteorology*, 207, 24–37, <https://doi.org/10.1016/j.agrformet.2015.03.012>, 2015.
- Saxton, K. E., Rawls, W. J., Romberger, J. S., and Papendick, R. I.: Estimating Generalized Soil-water Characteristics from Texture, *Soil Science Society of America Journal*, 50, 1031–1036, <https://doi.org/10.2136/sssaj1986.03615995005000040039x>, 1986.

- 705 Schlesinger, W. H. and Jasechko, S.: Transpiration in the global water cycle, *Agricultural and Forest Meteorology*, 189–190, 115–117, <https://doi.org/10.1016/j.agrformet.2014.01.011>, 2014.
- Schwärzel, K., Zhang, L., Montanarella, L., Wang, Y., and Sun, G.: How afforestation affects the water cycle in drylands: A process-based comparative analysis, *Global Change Biology*, 26, 944–959, <https://doi.org/10.1111/gcb.14875>, 2020.
- 710 Simon, D.-C. and Ameztegui, A.: Modelling the influence of thinning intensity and frequency on the future provision of ecosystem services in Mediterranean mountain pine forests, *Eur J Forest Res*, 142, 521–535, <https://doi.org/10.1007/s10342-023-01539-y>, 2023.
- Simonin, K., Kolb, T. E., Montes-Helu, M., and Koch, G. W.: The influence of thinning on components of stand water balance in a ponderosa pine forest stand during and after extreme drought, *Agricultural and Forest*
715 *Meteorology*, 143, 266–276, <https://doi.org/10.1016/j.agrformet.2007.01.003>, 2007.
- Sun, G., McNulty, S. G., Lu, J., Amatya, D. M., Liang, Y., and Kolka, R. K.: Regional annual water yield from forest lands and its response to potential deforestation across the southeastern United States, *Journal of Hydrology*, 308, 258–268, <https://doi.org/10.1016/j.jhydrol.2004.11.021>, 2005.
- Ungar, E. D., Rotenberg, E., Raz-Yaseef, N., Cohen, S., Yakir, D., and Schiller, G.: Transpiration and annual
720 water balance of Aleppo pine in a semiarid region: Implications for forest management, *Forest Ecology and Management*, 298, 39–51, <https://doi.org/10.1016/j.foreco.2013.03.003>, 2013.
- Williams, C. A., Reichstein, M., Buchmann, N., Baldocchi, D., Beer, C., Schwalm, C., Wohlfahrt, G., Hasler, N., Bernhofer, C., Foken, T., Papale, D., Schymanski, S., and Schaefer, K.: Climate and vegetation controls on the surface water balance: Synthesis of evapotranspiration measured across a global network of flux towers, *Water*
725 *Resources Research*, 48, <https://doi.org/10.1029/2011WR011586>, 2012.