

# 1 **The influence of human activities on streamflow reductions during the** 2 **megadrought in Central Chile**

3 Nicolás Álamos<sup>1,2,3</sup>, Camila Alvarez-Garreton<sup>1</sup>, Ariel Muñoz<sup>1,3,4</sup>, Álvaro González-Reyes<sup>2,5,6,7</sup>

4 <sup>1</sup>Center for Climate and Resilience Research (CR2, FONDAF 1522A0001), Santiago, Chile

5 <sup>2</sup>Instituto de Ciencias de la Tierra ICT, Facultad de Ciencias, Universidad Austral de Chile

6 <sup>3</sup>Centro de Acción Climática, Pontificia Universidad Católica de Valparaíso

7 <sup>4</sup>Laboratorio de Dendrocronología y Estudios Ambientales, Instituto de Geografía, Pontificia Universidad Católica de  
8 Valparaíso, Chile

9 <sup>5</sup>Centro de Humedales río Cruces CEHUM, Universidad Austral de Chile, Chile

10 <sup>6</sup>Laboratorio de Dendrocronología y Cambio Global, Universidad Austral de Chile, Valdivia, Chile

11 <sup>7</sup>Centro de Investigación: Dinámica de Ecosistemas Marinos de Altas Latitudes - IDEAL, Chile

12 *Correspondence to:* Camila Alvarez Garreton ([calvarezgarreton@gmail.com](mailto:calvarezgarreton@gmail.com))

13 **Abstract.** Since 2010, central Chile has experienced a protracted megadrought with annual precipitation deficits ranging from  
14 25% to 70%. An intensification of drought propagation has been attributed to the effect of cumulative precipitation deficits  
15 linked to catchment memory. Yet, the influence of water extractions on drought intensification is still unclear. Our study assesses  
16 climate and water use effects on streamflow reductions during a high human influence period (1988-2020) in four major  
17 agricultural basins. We performed this attribution by contrasting observed streamflow (driven by climatic and water use) with  
18 near-natural streamflow simulations (driven mainly by climate) representing what would have occurred without water  
19 extractions. Near-natural streamflow estimations were obtained from rainfall-runoff models trained over a reference period with  
20 low human intervention (1960-1988). Annual and seasonal streamflow reductions were examined before and after the  
21 megadrought onset, and hydrological drought events were characterized for the complete evaluation period in terms of their  
22 frequency, duration and intensity.

23 Our results show that before the megadrought onset (1988-2009), the mean annual deficits in observed streamflow ranged  
24 between 2 to 20% across the study basins, and that 81 to 100% of those deficits were explained by water extractions. During the  
25 megadrought (2010-2020), the mean annual deficits in observed streamflow were 47 to 76 % among the basins. During this time,  
26 the relative contribution of precipitation deficits on streamflow reduction increased while the contribution of water extractions  
27 decreased, accounting for 27 to 51% of the streamflow reduction. Regarding drought events during the complete evaluation  
28 period, we show that human activities have amplified drought propagation, with almost double the intensity of hydrological

29 droughts in some basins, compared to those expected by precipitation deficits only. We conclude that while the primary cause  
30 of streamflow reductions during the megadrought has been the lack of precipitation, water uses have not diminished during this  
31 time, causing an exacerbation of the hydrological drought conditions and aggravating their impacts on water accessibility in  
32 rural communities and natural ecosystems.

## 33 **1 Introduction**

34 The fluxes of the water cycle vary and change in time and space, as well as the anthropic activities affecting those fluxes, leading  
35 to a co-evolving hydrosocial cycle (Linton and Budds, 2014; Budds, 2012) that defines the state of the hydrological system (Van  
36 Loon et al., 2016). Observational evidence in different regions indicates that hydrological cycles are being affected by climate  
37 change and human activities. Climate change has led to changes in precipitation patterns worldwide (Fleig et al., 2010; Kingston  
38 et al., 2015), while human activities have altered the spatiotemporal distribution of water resources (Van Loon et al., 2022). This  
39 can lead to water scarcity problems, particularly when precipitation deficits occur in regions that concentrate water consumption  
40 requirements.

41 The alterations in the water cycle may also affect the occurrence of droughts, which are defined as a deficit of water relative to  
42 normal conditions and can be identified in different components of the hydrological cycle. While meteorological droughts  
43 (precipitation deficits) are mainly controlled by regional climate, hydrological droughts (streamflow, and groundwater deficits)  
44 are also influenced by catchment characteristics and water uses. In this way, under similar meteorological conditions, the severity  
45 of hydrological droughts and their impacts on society can vary significantly within the territory (Van Lanen et al., 2013).

46 Most drought analyses consider climate variability as a main driver of drought, however, increasing focus has been given to  
47 assessing the compounding effects of climate variability and human activities on water resources and drought propagation (Van  
48 Loon et al., 2016; Wanders and Wada, 2015; Zhao et al., 2014). Anthropic activities, such as irrigation, urbanization, land use  
49 changes, and water infrastructure (e.g., reservoirs or water transfer channels) affect runoff mechanisms (Huang et al., 2016) and  
50 can lead to a higher frequency of hydrological droughts (Alvarez-Garreton et al., 2021; Ward et al., 2020). An example of this  
51 is the Yellow river basin in China, where despite no significant rainfall deficits have occurred in recent years, a hydrological  
52 drought with historical minimum streamflow levels is being observed, which has been mainly driven by anthropic activities in  
53 the basin (Huang et al., 2016; Kong et al., 2016; Li et al., 2019; Liu et al., 2016; Zhao et al., 2014).

54 Advancing our understanding of hydrological droughts as a complex process depending on the interaction between climatic,  
55 biophysical, and anthropic drivers is critical to assessing catchment's vulnerability to droughts, mitigating their occurrence, and  
56 designing adaptation plans. While all these drivers influence the propagation and impacts of droughts, water management plans  
57 mainly influence human activities and their local disturbances to the hydrological cycle. Therefore, it is critical to address the  
58 scientific challenge of understanding the influence of human activities on the hydrological cycle and quantifying their impacts.

59 To address this challenge, in this paper we focus on central Chile (29°-35°S; Fig. 1), a region where the signal of anthropic  
60 climate change is leading to an increase in mean temperature, increasing of heatwaves events, and a sustained decrease in  
61 precipitation (Boisier et al., 2018; Bozkurt et al., 2017; Garreaud et al., 2017, 2020; González-Reyes et al., 2023). The drying  
62 trend has led to the so-called megadrought, affecting the country since 2010, with annual precipitation deficits ranging between  
63 25% and 70% (Garreaud et al., 2020, 2017). This meteorological drought in central Chile has propagated across the terrestrial  
64 system, leading to hydrological droughts and water scarcity problems that vary across the territory (Alvarez-Garreton et al.,  
65 2021; Duran-Llacer et al., 2020; Muñoz et al., 2020; Barría et al., 2021b).

66 In the Petorca river basin, located in the Valparaiso region in central Chile, Muñoz et al. (2020) found that during the  
67 megadrought, streamflow and water bodies from the upper parts of the basin were less affected than the mid and low areas of  
68 the valley, where most of the agriculture is located. However, the authors did not make a formal attribution about the role of  
69 water consumption and climate on streamflow reduction. Another study was conducted on the Aculeo Lake, a natural reservoir  
70 in central Chile that dried up during the ongoing megadrought. Barría et al (2021b) performed an attribution exercise by using  
71 the Water Evaluation and Planning System (WEAP) hydrological model and concluded that climate was the primary factor  
72 explaining the lake's drying, while water demand has remained stable over the past few decades. Another study reported that  
73 basins with larger human intervention within this region exhibited lower runoff sensitivities to precipitation compared to less  
74 disturbed ones (Alvarez-Garreton et al., 2018). In that study, the authors attributed this phenomenon to the alteration of runoff  
75 generation mechanisms associated with water withdrawals and reservoirs. Furthermore, higher than expected streamflow  
76 reductions during the megadrought have also been observed in near-natural basins. Alvarez-Garreton et al. (2021) reported the  
77 effects of catchment memory in snow-dominated catchments in Central Chile, where the accumulation of the persistent  
78 precipitation deficits led to less streamflow than expected from observations during previous single-year meteorological  
79 droughts. These studies have advanced our understanding about the role of catchments and anthropic characteristics in the

80 megadrought's propagation, however, further studies are still required to robustly assess the impacts of human activities on  
81 streamflow reduction and drought conditions in the major basins of central Chile.

82 In this article, we quantify the relative effects of climate and water extractions on streamflow reduction in four major agricultural  
83 basins in central Chile. We analyse a period with high human influence within the study basins (1988-2020), and assess how the  
84 relative effects of climate and water extractions change before and after the megadrought onset. Additionally, we assess the  
85 influence of water extractions on the intensity, frequency, and duration of hydrological droughts for the complete evaluation  
86 period. To achieve this, we follow the approach proposed by Van Loon et al. (2022) and compare streamflow observations with  
87 a near-natural simulated streamflow representing the discharge that would have occurred without human influences.  
88 Hydrological droughts are identified by streamflow deficit using a threshold determined from the near- natural scenario, allowing  
89 for better identification of human impacts (Van Loon, 2016).

## 90 **2 Methods and data**

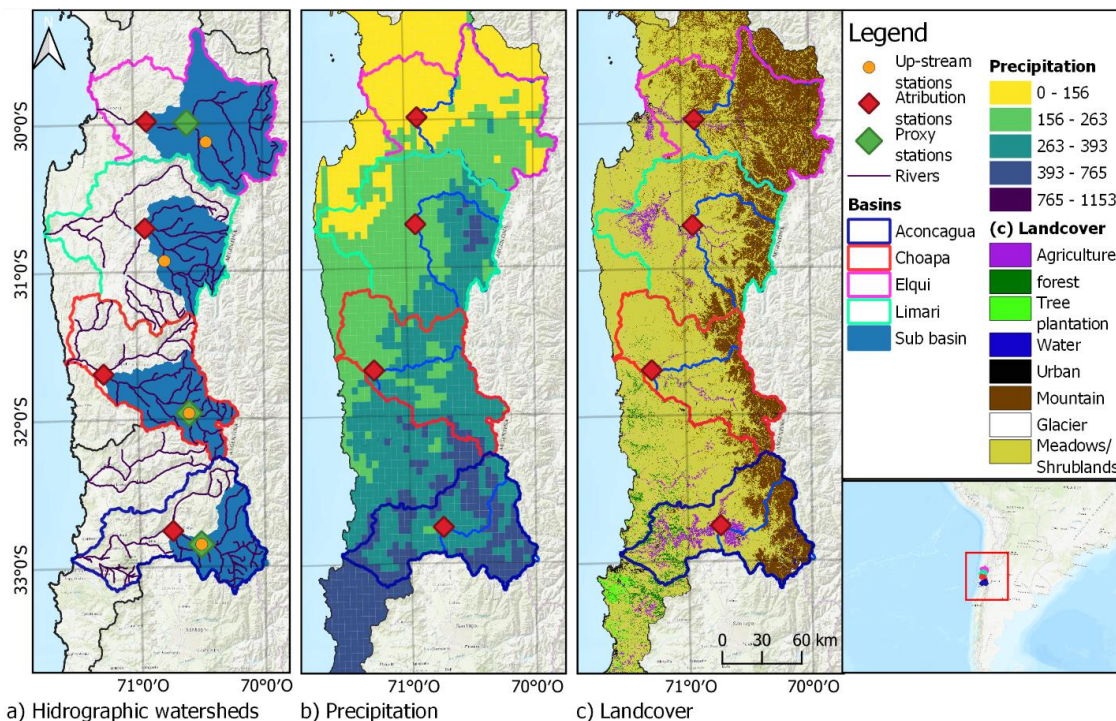
### 91 **2.1 Study area**

92 The study was conducted in four major basins located between 29° and 33°S (Fig. 1): The Elqui, Limarí, and Choapa basins in  
93 the Coquimbo region, and the Aconcagua basin in the Valparaíso region. These basins fall within semi-arid (Coquimbo region)  
94 and Mediterranean (Valparaiso region) climate zones, which are particularly vulnerable to droughts due to the majority of annual  
95 precipitation occurring during the winter season concentrated on a few storm events (Garreaud et al., 2017).

96 All catchments feature a snow-rain-fed hydrologic regime. The Aconcagua basin also has a large glacier area (192 km<sup>2</sup>) that  
97 contributes to streamflow, especially during dry summers (Crespo et al., 2020). The study basins have experienced precipitation  
98 deficits of 25-70% and streamflow deficits of up to 70% during the megadrought that has affected the region since 2010 (Alvarez-  
99 Garreton et al., 2021; Garreaud et al., 2020, 2017).

100 According to the data provided by the water security platform from the Center for Climate and Resilience Research  
101 ([www.seguridadhidrica.cl](http://www.seguridadhidrica.cl)), agriculture is the primary productive sector and the main consumer of water resources within these  
102 basins. Agricultural land cover areas of 152 km<sup>2</sup> (total catchment area of 9800 km<sup>2</sup>), 605 km<sup>2</sup> (total catchment area of 11800  
103 km<sup>2</sup>), 313 km<sup>2</sup> (total catchment area of 8124 km<sup>2</sup>), and 582 km<sup>2</sup> (total catchment area of 7200 km<sup>2</sup>), and their annual water

104 consumption at present corresponds to 3.25 m<sup>3</sup>/s, 14.3 m<sup>3</sup>/s, 6.48 m<sup>3</sup>/s, and 15.72 m<sup>3</sup>/s, in the Elqui, Limarí, Choapa, and  
 105 Aconcagua basins, respectively. Avocado and table vine species are the main consumers in the Aconcagua basin, while the  
 106 Limarí basin has a higher demand from permanent forage species, table vine, and citrus plantations.



107

108 **Figure 1. Panel a) shows the four main basins of the study area and the streamflow gauges used for the analyses. The red diamonds**  
 109 **indicate the stations used to characterise each basin; the green diamonds are the gauges used as predictors for filling in monthly**  
 110 **streamflow data (note that in the Limarí catchment, no gap-filling process was made, leading to the absence of a predictor gauge**  
 111 **station; Sect. 2.2); and the orange circles are the up-stream stations used in the rainfall-runoff ratio analysis (Sect. 2.3). The basin area**  
 112 **covered by the red diamond gauge is painted blue. Panel b) presents the mean annual precipitation (mm/yr) from the CR2MET dataset**  
 113 **for the period 1980-2010. Panel c) shows the gridded land cover dataset from Zhao et al. (2016). Base map source: Esri, 2017.**

## 114 2.2 Data

115 Catchment boundaries and times series of total monthly streamflow normalized by catchment area (in mm/month) were obtained  
 116 from the CAMELS-CL dataset (Alvarez-Garreton et al., 2018; available at: <https://camels.cr2.cl/>) for the period April 1960 –

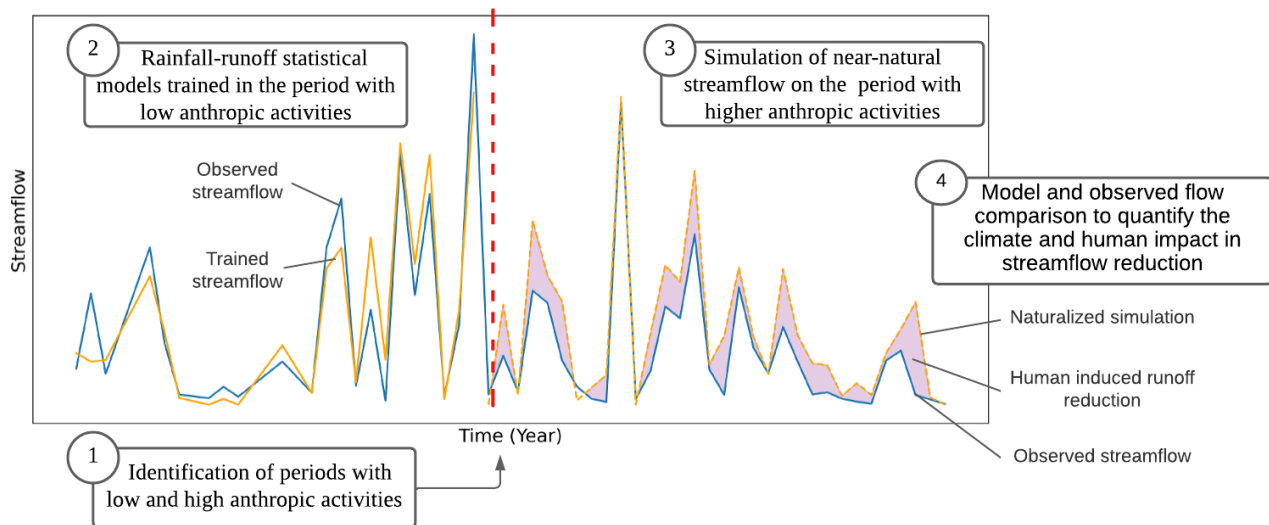
117 March 2020. Total monthly precipitation for the same period was obtained from the CR2MET dataset version 2.5 at a 5 x 5 km  
118 grid resolution (Boisier, 2023) and averaged across the basin boundaries. Catchment-scale monthly evapotranspiration (ET) was  
119 computed based on the ECMWF surface re-analysis ERA5-Land dataset, available at a horizontal resolution of 10 km (Muñoz-  
120 Sabater et al., 2021) from April 1960 to March 2020. For each study basin, we selected the most downstream streamflow gauge  
121 station having more than 80% of streamflow records for the 1960-2020 period (see Fig. 1). Gaps in monthly streamflow of  
122 downstream gauges (red diamonds in Fig. 1a) were filled based on linear regression models, using the basin's precipitation and  
123 the streamflow of an upstream gauge with a strong correlation with the considered station (green diamonds in Fig. 1a) as  
124 predictors. The linear regressions resulted in coefficients of determination larger than 0.8 in Elqui, Choapa, and Aconcagua  
125 basins.

126 Streamflow and basin-averaged precipitation and ET were computed for hydrological years (April to March in Chile) and for  
127 wet and dry seasons. The wet season is defined from April to August, while the dry season corresponds to the months between  
128 September and March. Annual (seasonal) streamflow values were computed when the 12 (6) months had valid data.

129 To account for human intervention within the basins, we analysed annual water uses from industry, energy, mining, livestock,  
130 drinking water sectors, as well as water evaporation from lakes and reservoirs for the period 1960-2020 obtained from the water  
131 security platform from the Center for Climate and Resilience Research ([www.seguridadhidrica.cl](http://www.seguridadhidrica.cl)). All variables with a different  
132 spatial resolution than the basin (whether gridded or administrative units) were calculated for the basin considering the weighted  
133 average of the variable within the basin surface.

### 134 **2.3 Near-natural streamflow modelling and attribution exercise**

135 The attribution exercise to quantify the climatic and human contributions on streamflow reductions is schematized in Fig. 2.  
136 Near-natural streamflow simulations were obtained by rainfall-runoff statistical models trained in a period when anthropic  
137 activities had low water consumption (Sharifi et al., 2021; Zhao et al., 2014).



138

139 **Figure 2. Flowchart of the steps to quantify the human contribution to streamflow reduction based on comparing a near-natural**  
 140 **simulated streamflow with the observed streamflow on a period of high anthropic activities.**

141 **2.3.1 Selection of low-influence reference periods**

142 For each basin, we identified low human intervention periods based on the regime shifts of streamflow, precipitation, and water  
 143 uses (Sect. 2.2). The non-parametric Buishand break point test (Buishand, 1982) was applied to identify these shifts. Buishand  
 144 is a statistical homogeneity test method that checks if two (or more) datasets come from the same distribution. In this way, the  
 145 test can detect breakpoints where the distribution of a dataset changes. We applied the Buishand test to each time series during  
 146 the 1960-2020 periods. To identify multiple breakpoints, we iterated the test in the sub-periods before and after the previous  
 147 breakpoint until no breakpoints with a significance level at  $p\text{-value} < 0.05$ . For the Buishand test, we used the pyHomogeneity  
 148 Python library (Shourov, 2020).

149 In order to select periods with minimal human activities, it is important to identify breakpoints in the streamflow time series that  
 150 are not primarily explained by climate shifts. To account for this, we selected a unique training period across basins based on  
 151 the identification of concurrent breaking points in both streamflow and human activities time series, while ensuring the absence  
 152 of discernible precipitation shifts. Despite the valuable information water use data could provide, uncertainties exist in inter-

153 basin water transfers and land cover changes affecting their ability to accurately capture the magnitude of anthropogenic  
154 intervention in the basins. Therefore, we opted for a comprehensive approach, considering multiple variables including  
155 streamflow, precipitation, and anthropic variables, to ensure a robust identification of breakpoints in streamflow that were not  
156 predominantly influenced by climatic variations. ~~By employing this approach, we ensure the selection of streamflow breakpoints~~  
157 ~~that are not predominantly influenced by climatic variations.~~

158 To ensure that the chosen period of analysis is not dependent on the specific statistical test employed, we conducted a sensitivity  
159 analysis using the Sequential T-test Analysis of Regime Shifts (STARS) at a monthly time scale for both precipitation and  
160 streamflow time series (Rodionov, 2004). The STARS V6.3 Excel macro application, available at  
161 <https://sites.google.com/view/regime-shift-test> was utilized to perform the STARS test.

### 162 **2.3.2 Climate and human contribution to streamflow reduction**

163 Assuming that the effects of climate and local human activities on streamflow generation are independent, the observed  
164 streamflow ( $Q_{obs}$ ) can be disaggregated as follows (Kong et al., 2016):

$$165 \quad Q_{obs} = Q_{nn} + \Delta Q_{human} \quad (1)$$

166 Where  $Q_{nn}$  corresponds to a climatic-induced streamflow, referred as near-natural streamflow in this paper, and  $\Delta Q_{human}$  is the  
167 human-induced effect on streamflow. In this study, near-natural streamflow in Eq.1 is estimated from linear rainfall-runoff  
168 regressions trained during the low-influence reference period defined in Sect. 2.3.1. To account for pluvial and snowmelt runoff  
169 generation processes, we implemented seasonal rainfall-runoff models considering the total streamflow and rainfall in the six-  
170 month periods defined in Sect 2.2 as dependent and independent variables, respectively. In several snow-dominated basins in  
171 central Chile, the winter flows continue to be fed by the snow melt from the previous hydrological year, especially when the  
172 previous year was wetter than normal (Alvarez-Garreton et al., 2021). Given this, winter flow models include winter precipitation  
173 from the previous year. The models representing near-natural summer ( $\hat{Q}_{summer}$ ) and near-natural winter streamflow  
174 ( $\hat{Q}_{winter}$ ) were defined for year  $t$  as follows:

$$175 \quad \hat{Q}_{summer}(t) = a_0 + a_1 P_{winter}(t) \quad (2)$$

$$176 \quad \hat{Q}_{winter}(t) = b_0 + b_1 P_{winter}(t) + b_2 P_{winter}(t-1) \quad (3)$$



177 The coefficients in Eq. 2 and 3 were obtained by least square errors method during the training period. Based on this, the human  
178 influence during the evaluation (high-influence) period was obtained as:

$$179 \quad \Delta Q_{human} = Q_{obs} - \hat{Q}_{nn} \pm \varepsilon \quad (4)$$

180 where  $\hat{Q}_{nn}$  is the simulated near-natural streamflow (seasonal concatenation of Eq. 2 and 3) and  $\varepsilon$  represents the uncertainty  
181 from the regression model parameters. The attribution exercises were performed by applying Eq. 4 during the evaluation period.  
182 In the results of the attribution exercise (Sect 3.3; Fig 7), hydroclimatic variables are depicted as anomalies computed as the  
183 percentage difference from their mean values during the reference period (1960-1988). Noteworthy that multiple regression  
184 equations with different functional forms (including a Box-Cox transformation to the seasonal and annual streamflow to account  
185 for potential non linearities between precipitation and streamflow) and variables (such as evapotranspiration and temperature)  
186 were tested for representing near-natural streamflow during the reference period (see Appendix A). The linear rainfall-runoff  
187 regressions from equations (2) and (3) were those with a higher  $r^2$ , and all variables were statistically significant at a p-value of  
188 0.05.

189 It should be noted that the near-natural streamflow estimations from Eq. 2 and 3 assume a stationary rainfall-runoff relationship.  
190 However, recent evidence in this region has shown that under protracted drought conditions, a non-stationary catchment response  
191 modulated by catchment memory can emerge, resulting in larger streamflow reductions than those expected from single-year  
192 precipitation deficits (Alvarez-Garreton et al., 2021). This evidence corresponds to the headwater near-natural basins located  
193 upstream of the human influenced basins selected in this study. To assess whether our analyses over the complete basins are  
194 potentially biased by non-stationary catchment responses, we compared the rainfall-runoff ratios (mean annual observed  
195 streamflow normalised by mean annual precipitation) during the evaluation period before (1988-2010) and after the megadrought  
196 onset (2010-2020), in both the upper and lower sections of each basin. These sections were defined by the streamflow gauges  
197 highlighted in orange circles and red diamonds in Fig. 1, respectively.

## 198 **2.4 Hydrological drought events characterisation**

199 To quantify the impact of human activities on hydrological droughts (schematised in Fig. 3), we compared the characteristics of  
200 the observed and the near-natural streamflow deficits during drought events, including their frequency (number of drought  
201 events), duration (average, maximum and total seasons), and intensity (i.e., deficit of volume) across the evaluation period. In

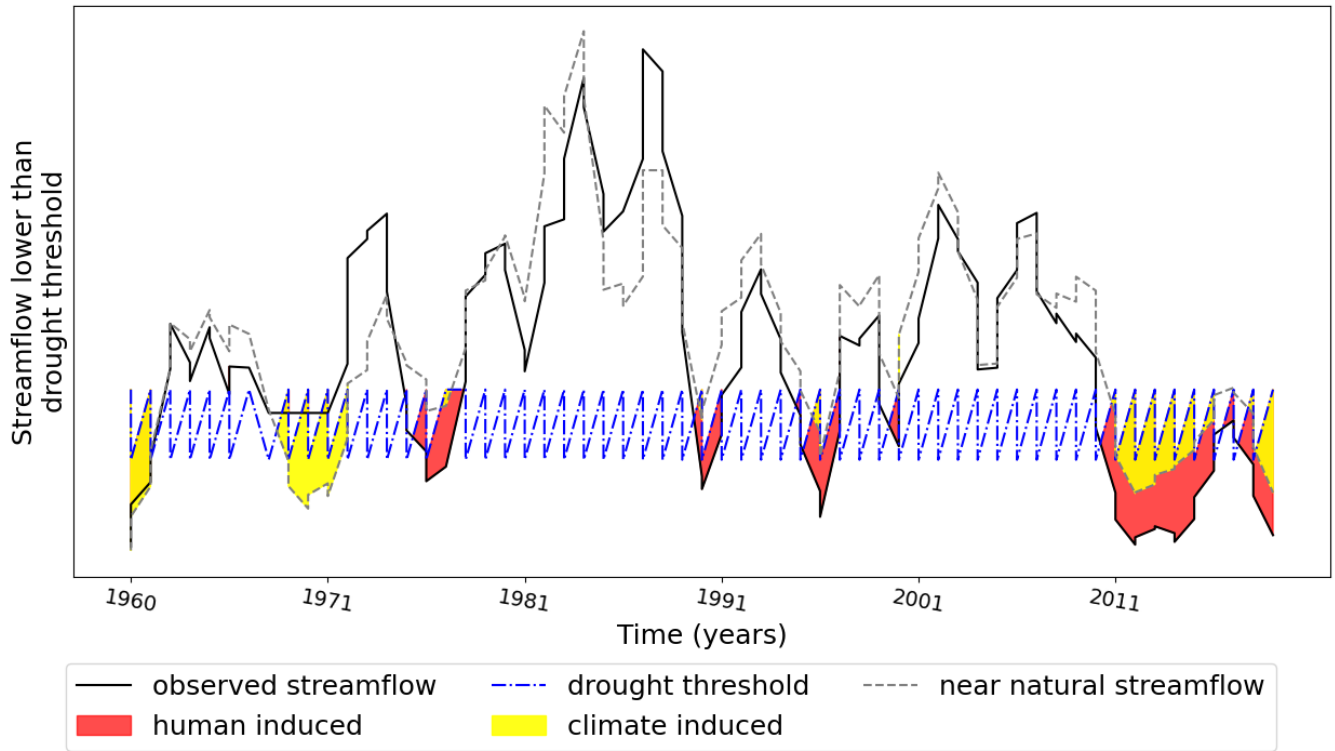
202 this way, we assessed the influence of human activities over observed hydrological droughts by calculating the relative difference  
203 in each drought characteristic (DC) in the observed and near natural scenario as indicated eq. 5

204 We opted for a seasonal scale to keep coherence with the attribution exercise and facilitate a meaningful comparison of drought  
205 events between observed and simulated scenarios rather than a monthly scale, due to the unavailability of monthly information  
206 for the modelled streamflow's and the significant challenges for accurate modelling of monthly streamflow with a regression  
207 method.

208

209

$$DC_{human} = \frac{DC_{obs} - DC_{nn}}{DC_{obs}} * 100 \quad (5)$$



211 **Figure 3. Example of drought periods with annual streamflow lower than a threshold. Three types of droughts are identified: climate-**  
212 **induced droughts, when near-natural streamflow simulations are below the threshold; human-induced droughts, where only**  
213 **observations are below the threshold; and human and natural induced, where both observations and near-natural estimations are**  
214 **below the threshold (adapted from Van Loon et al., 2016).**

215 To identify hydrological drought events, we adopted a threshold approach, which defines drought events when the streamflow  
216 is below a specific percentile of the flow duration curve. For daily or monthly time series, a recommended threshold falls between  
217 the 70th and 90th percentile (Rangecroft et al., 2019; Van Loon et al., 2016; Van Loon, 2015). In this study, we adopted the 70th  
218 percentile of the seasonal streamflow series. This lowest threshold allows for the selection of more drought events, which makes  
219 statistical analysis more robust. The threshold can be fixed or variable; we used the variable threshold to incorporate seasonality  
220 into the drought selection (Rangecroft et al., 2019; Van Loon et al., 2019).

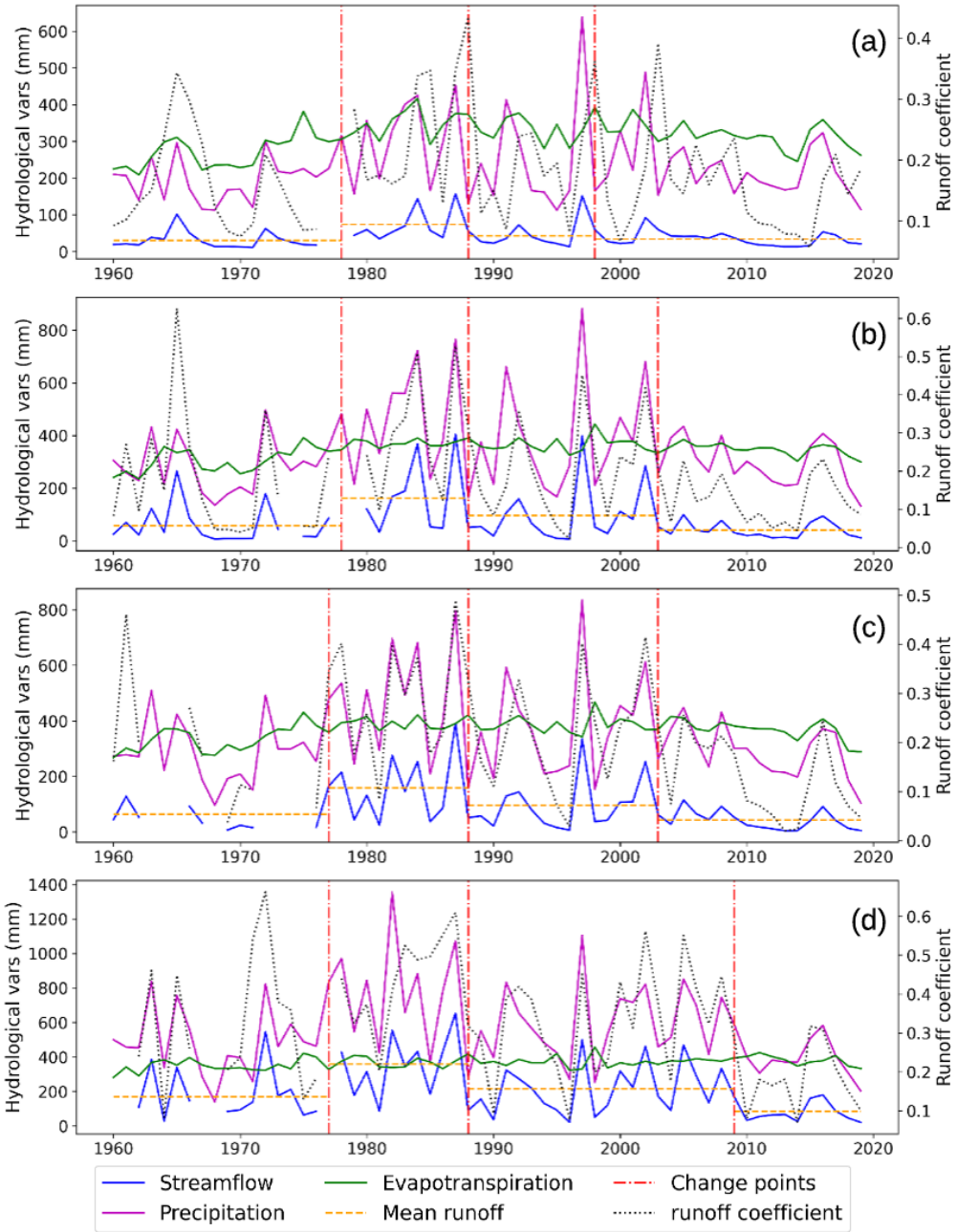
221 To allow for a strict assessment of human influence on hydrological drought, the selected threshold should not account for human  
222 activities (Rangecroft et al., 2019). If streamflow observations for the complete period were considered, human activities would  
223 be included. On the other hand, if only the training low-influence periods were used to calculate the threshold, the climate  
224 variability and drying trend of the complete period would not be represented by the threshold. Therefore, following the approach  
225 of Rangecroft et al. (2019), we defined the drought threshold using the entire period of records (1960-2020) but considering a  
226 naturalized regime. To this end, we used the near-natural simulated streamflow during the whole period to establish the 70th  
227 percentile of the seasonal threshold.

## 228 **3 Results**

### 229 **3.1 Low-influence reference period**

230 The series of annual streamflow, precipitation, total evapotranspiration (ET), and runoff coefficients (runoff normalised by  
231 precipitation) are shown in Fig. 4. The Buishand test resulted in significant change points only in streamflow and ET. Three  
232 change points were detected in all basins, the first between the years 1977-1978, the second one in 1988, and the last one between  
233 years 1998-2010 years for the streamflow in all basins (Fig. 4), while a single change point was detected in 1973-1975 for ET  
234 in all basins except Aconcagua (Fig. 4d). The STARS test detected similar three change points in streamflow in 1977-1981,  
235 1988, and 2010, with the 1988 breakpoint presenting the higher R-shift index value.

236 The streamflow breakpoint of 1977-1978 was disregarded since it is mainly due to climatic drivers, as indicated by the single  
237 ET breakpoint during that period. We can relate this to the great Pacific shift and the warm cycle of the Pacific Decadal  
238 Oscillation (PDO) between 1977 and the mid-1990s (Kayano et al., 2009; Jacques-Coper and Garreaud, 2015; González-Reyes  
239 et al., 2017). Additionally, the 2010 Aconcagua streamflow breakpoint is likely driven by the onset of the megadrought, which  
240 also affected the 2004 change points in the Limarí and Choapa Basins where lower precipitation was observed even before the  
241 megadrought.



243 **Figure 4. Annual streamflow, precipitation, evapotranspiration, and runoff coefficient during the complete period (1960-2020) for**  
 244 **Elqui (a), Limarí (b), Choapa (c), and Aconcagua (d) Basins, respectively. The vertical red line indicates the years where significant**  
 245 **change points (P value < 0.05) on streamflow distribution are detected by the Buishand test.**

246 Regarding water use, breakpoints were observed in Elqui and Limarí in 1988 and 1992, respectively, mainly associated to the  
 247 growth of the agricultural sector (Fig. 5a and b). In the Aconcagua basin, a breakpoint occurred in 1985 due to intensified water  
 248 use by the mining and agriculture sectors (Fig. 5d). Meanwhile, in the Choapa basin, a significant increase in mining water  
 249 consumption since 2000 explains the time series breakpoint observed in that year (Fig. 5c). The 1998 Elqui Basin streamflow  
 250 breakpoint may be attributed to the construction of a dam upstream from the gauge station considered in this study (Fig. 5a).  
 251 Based on these results, we used the 1988 streamflow breakpoint detected in all basins to define the low-influence period of 1960-  
 252 1988. In consequence, the evaluation period was defined between 1988 and 2020, characterised by greater anthropic intervention  
 253 and by the megadrought in its second half.

254 By comparing the hydroclimatic conditions of the study basins during the low-influence and evaluation periods, we see that the  
 255 mean annual precipitation declined between 0.04 to 15.89% during these periods (Table 1). In contrast, the mean annual  
 256 streamflow decreased by a range of 13.97 to 37.25%. If we examine summer streamflow, when agricultural water consumption  
 257 is more intense, a reduction of 24.25 to 46.1% is observed. While the Aconcagua basin features the largest decrease in  
 258 precipitation, the Choapa basin has the largest decrease in streamflow.

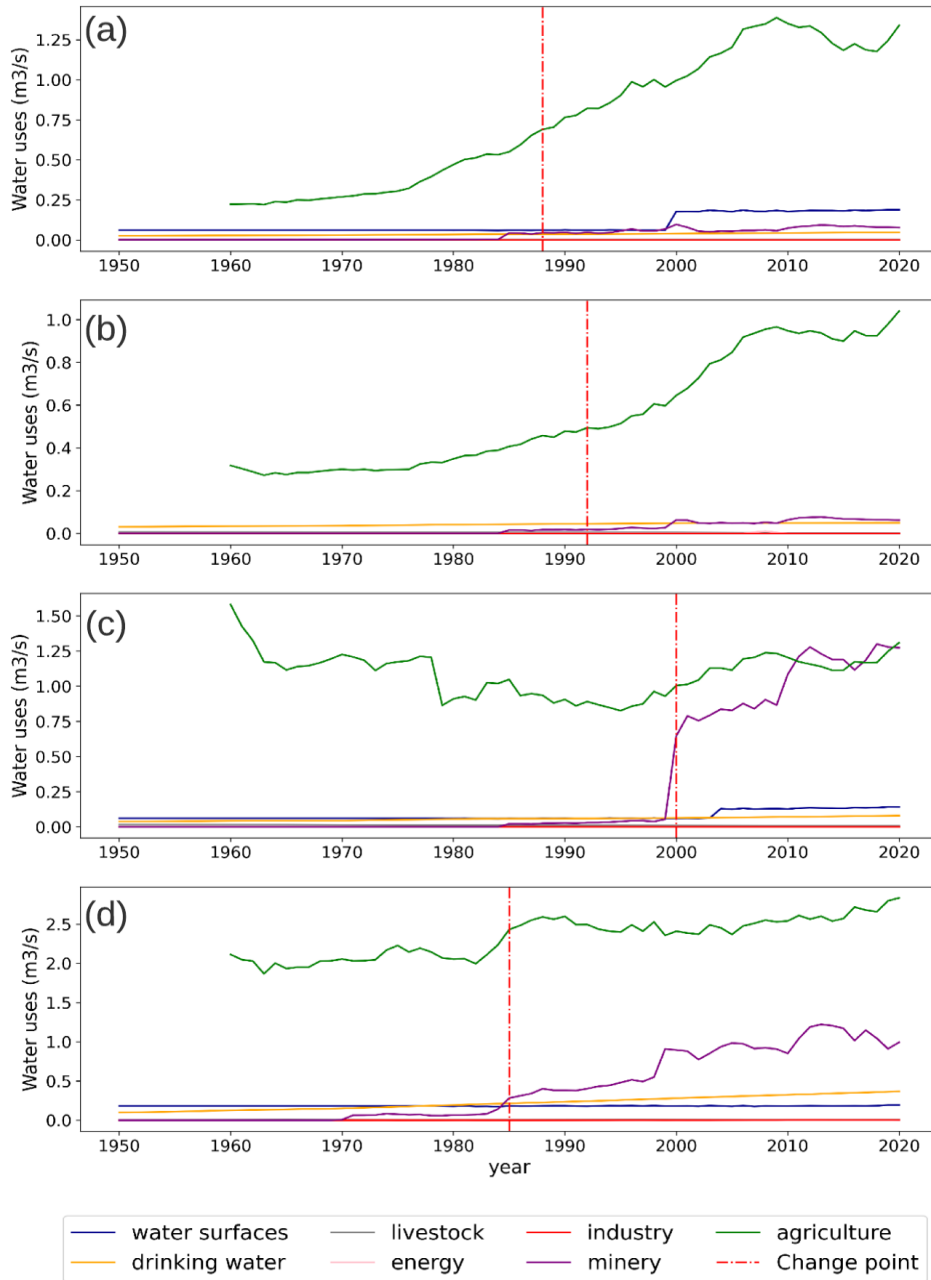
Basin	Mean annual precipitation (mm)			Mean annual streamflow(mm)			Mean summer streamflow(mm)		
	Low-influence period	Evaluation period	Difference	Low-influence period	Evaluation period	Difference %	Low-influence period	Evaluation period	Difference %
<b>Elqui</b>	<u>232.83</u> 232.83	<u>232.73</u> 232.73	<u>-0.04%</u> 0.0%	<u>45.53</u> 45.53	<u>39.17</u> 39.17	<u>-13.97%</u> -15.9%	<u>28.66</u> 28.66	<u>21.71</u> 21.71	<u>-24.25%</u> -24.3%
<b>Limarí</b>	<u>355.13</u> 355.13	<u>336.78</u> 336.78	<u>-5.17%</u> -5.2%	<u>95.91</u> 95.91	<u>66.92</u> 66.92	<u>-30.23%</u> -30.2%	<u>54.54</u> 54.54	<u>33.87</u> 33.87	<u>-37.85%</u> -37.9%
<b>Choapa</b>	<u>371.16</u> 371.16	<u>327.76</u> 327.76	<u>-11.69%</u> -11.7%	<u>106.41</u> 106.41	<u>66.77</u> 66.77	<u>-37.25%</u> -37.2%	<u>68.09</u> 68.09	<u>36.73</u> 36.73	<u>-46.10%</u> -46.1%

<b>Aconcagua</b>	<del>634.61</del> 634.61	<del>533.76</del> 533.76	<del>-15.89%</del> -16%	<del>258.42</del> 258.42	<del>173.87</del> 173.87	<del>-32.72%</del> -32.7%	<del>193.29</del> 193.29	<del>119.82</del> 119.82	<del>-38.01%</del> -38.0%
------------------	-----------------------------	-----------------------------	----------------------------	-----------------------------	-----------------------------	------------------------------	-----------------------------	-----------------------------	------------------------------

**Table 1: Average annual precipitation, average annual streamflow, and average summer season streamflow for each basin in the low-influence reference period (1960-1988) and the evaluation period (1988-2020).**

259  
260

261

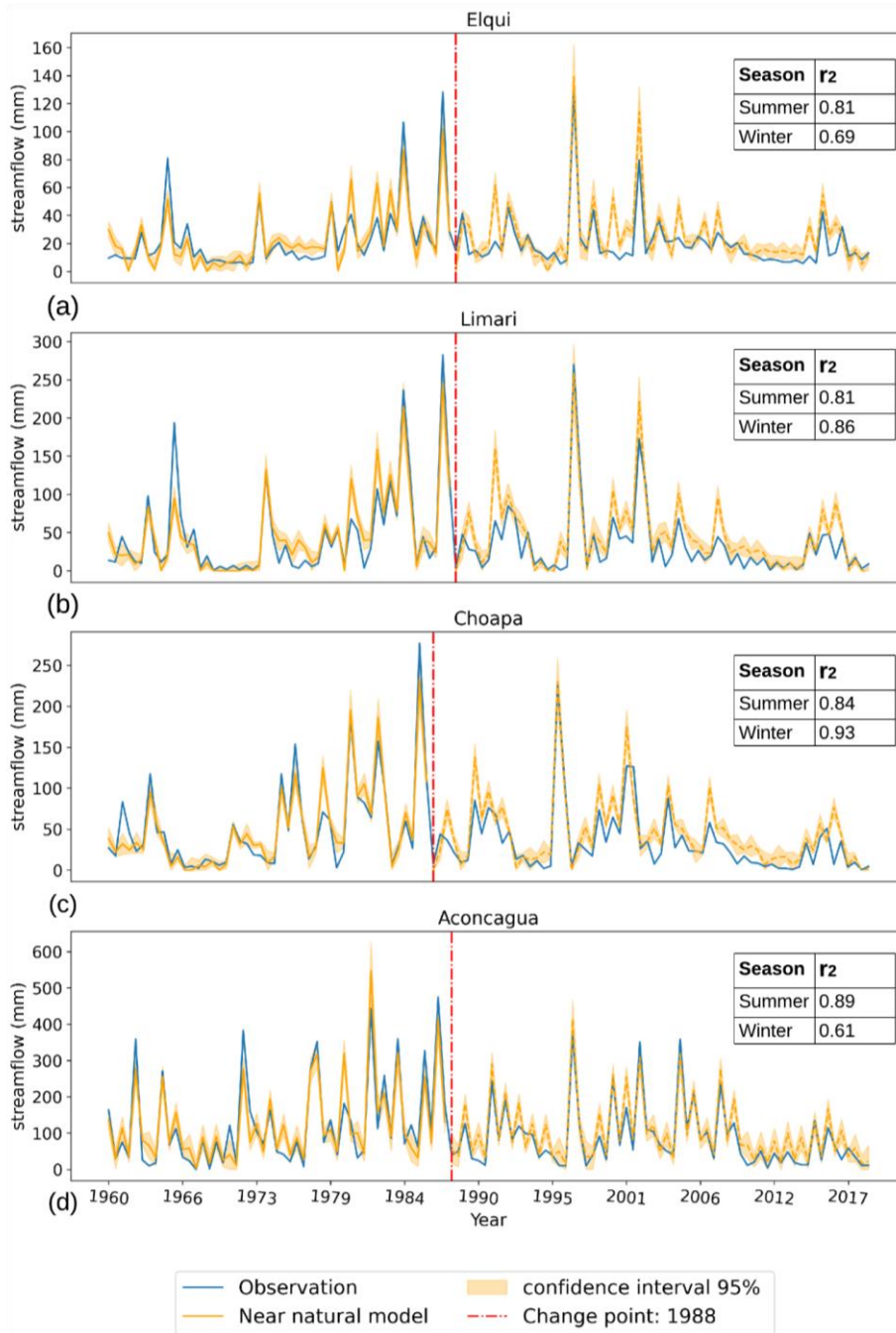




263 **Figure 5. Time series of water uses from different human activities in Elqui (a), Limarí (b), Choapa (c), and Aconcagua (d) basins,**  
264 **respectively. These time series include water uses for industrial, agriculture, mining, energy, animals, water surfaces, and drinking**  
265 **water sectors. The red line indicates a breakpoint in the total water use distribution.**

### 266 **3.2 Near-natural streamflow estimation**

267 Near-natural simulated streamflow during the low-influence and evaluation periods for each basin is presented in Fig. 6. The  
268 selected models (Sect. 2.3) were based on streamflow values without the Box-Cox transformation, since the transformed data  
269 led to a reduction in model performance across all basins (Appendix A). The summer season estimations obtained from Eq. 2  
270 had good performances during the training period, with mean biases of 0 to 5% and  $r^2$  ranging from 0.81 to 0.89 for the different  
271 basins. The winter season models resulted in lower performance, with mean biases of 0 to 0.63% and  $r^2$  ranging from 0.61 and  
272 0.93 among the study basins.



274 **Figure 6. The observed (continuous blue line) and near-natural simulated seasonal streamflow (continuous and dashed yellow line) for**  
 275 **Elqui (a), Limarí (b), Choapa (c), and Aconcagua (d) basins, respectively. The continuous yellow line represents the simulated**  
 276 **streamflow during the reference period, whose  $r^2$  is presented on the legend. The dashed yellow line is the simulated streamflow during**  
 277 **the evaluation period (defined by the change point in 1988). The yellow ban represents the 95% confidence interval of the simulated**  
 278 **streamflow.**

279 To examine the potential influence of non-stationary catchment response during the megadrought on the interpretation of our  
 280 results, Table 2 shows the rainfall-runoff ratios during the evaluation period before (1988-2010) and after the megadrought onset  
 281 (2010-2020). These results indicate that the mean rainfall-runoff ratios declined across the upper and lower sections (defined by  
 282 up-stream and attribution stations from Fig. 1a, respectively) of all basins during the megadrought, however, the reduction in the  
 283 upper sections (with low human intervention), mostly attributed to endogenous runoff mechanisms and hydrological memory,  
 284 is less significant than those observed downstream (intervened basin). The changes in downstream rainfall-runoff ratios are  
 285 nearly four times greater than the upper stream changes in the Aconcagua and Elqui basins, more than twice in Choapa, and 1.6  
 286 times greater in the Limarí basin. This indicates that while endogenous runoff mechanisms, such as hydrological memory, may  
 287 contribute to larger streamflow deficits during prolonged drought in near-natural basins, human activities in the downstream  
 288 basins are inducing a larger impact on runoff generation during the megadrought.

	Basin	Elqui		Limarí		Choapa		Aconcagua	
	Section	Upper	Lower	Upper	Lower	Upper	Lower	Upper	Lower
Period	1988 -2010	0.42	0.19	0.41	0.18	0.58	0.21	0.75	0.33
	2010 -2020	0.38	0.12	0.31	0.11	0.43	0.09	0.66	0.18
	Difference	9.03%	34.3%	25.2%	40.4%	24.94%	58.33%	11.94%	46.21%

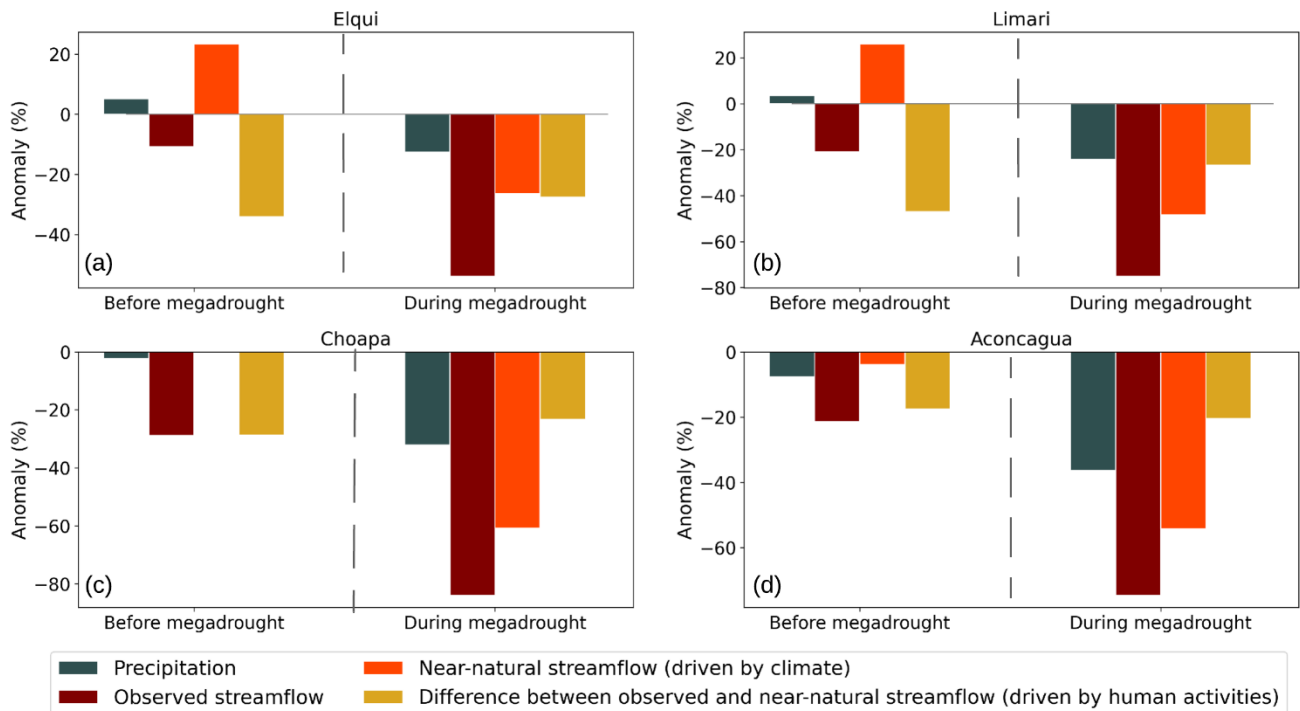
289 **Table 2: Average annual runoff coefficient during the evaluation period before the megadrought onset (1988-2010) and during the**  
 290 **megadrought (2010-2020) for the upper and lower sections of each basin. The difference between the two periods relative to 1988-2010**  
 291 **is shown in the third row.**

### 292 3.3 The impacts of climate and human activities on streamflow

293 During the complete evaluation period, the near-natural simulated streamflow is higher than the observed streamflow in all the  
 294 cases (Fig. 6) with mean differences ranging from 39.465% in the Limarí basin (near-natural annual runoff of 5593.23 mm and

295 observed annual runoff of 36,766.91 mm) to 320.79% in the Aconcagua basin (near-natural annual streamflow of 155,4210 mm  
296 and observed annual runoff of 173.8619,8 mm).

297 The relative impacts of climate and human activities on summer streamflow reductions during the evaluation period is presented  
298 in Fig. 7. This figure shows the annual anomalies of precipitation, observed and near-natural simulated summer streamflow, as  
299 well as the human-induced streamflow reduction obtained as the difference of the latter two (Eq. 4). The results for the annual  
300 fluxes are presented in Appendix B.



301  
302 **Figure 7: Anomalies in annual precipitation, observed and near-natural summer streamflow, and the difference between the latter**  
303 **two, which represent the human-induced streamflow anomaly for Elqui (a), Limarí (b), Choapa (c), and Aconcagua (d) basins. The**  
304 **anomalies are presented for the evaluation period before and after the megadrought onset (1988-2009 and 2010-2020, respectively).**

305 **For each flux, the anomalies are computed as the percentage difference with respect to their mean values during the reference period**  
306 **(1960-1988).**

307 Before the megadrought onset, annual precipitation varied between 5 to -7.6% with respect to the reference period among the  
308 study basins. The near-natural summer streamflow during that period followed the direction of the annual precipitation  
309 anomalies, with anomalies between 23 to -4% across basins. During that period, the observed summer streamflow -accounting  
310 for full climatic and human influence- decreased by 10-28%. This indicates that water uses for human activities were the main  
311 driver factor of summer streamflow reduction before the megadrought onset, causing up to 100% reduction in Elqui, Limarí and  
312 Choapa, and 82% in the Aconcagua Basin, respectively.

313 After the megadrought onset, the relative impact of precipitation deficits and human activities on streamflow depletion changed.  
314 The annual precipitation anomalies during the megadrought varied between -13 to -36% across basins, while the near-natural  
315 streamflow estimates presented anomalies between -26% to -61%. During this period, the observed summer streamflow featured  
316 anomalies of -54% to -84%. This indicates that precipitation deficits dominate the streamflow reductions, however, there is still  
317 a relevant reduction attributed to human activities, representing 51%, 29%, 27%, and 27% of the total summer streamflow  
318 reduction in Elqui, Limarí, Choapa, and Aconcagua Basin, respectively.

319 Particularly noteworthy is the Aconcagua basin case, where, in absolute terms, the human induced summer streamflow reduction  
320 during the megadrought (corresponding to an absolute value of 39.475 mm) was higher than during the period before the  
321 megadrought (33.788 mm). This has happened despite the significantly lower water availability during the megadrought, where  
322 near-natural summer streamflow was 88.61 mm, which corresponds to less than half of the near-natural summer flow before the  
323 megadrought onset (185.73 mm). This apparent contradiction may be attributed to the Aconcagua's increased total water  
324 consumption during the megadrought, led by intensified agricultural water demand (Fig. 5a).

325 Consistently with the summer seasons, near-natural annual streamflow before the megadrought followed precipitation patterns,  
326 with anomalies between 22 to -5% across basins (Fig. A1). During that period, the observed annual streamflow varied between  
327 -2 to -20% across basins. Water uses for human activities were the driver factor of streamflow reduction before the megadrought  
328 onset, causing up to 100% of reduction in Elqui, Limarí and Choapa, and 71% in the Aconcagua Basin, respectively. After the  
329 megadrought onset, the observed streamflow featured anomalies of -47 to -71%. From these streamflow deficits, a 44% to 75 %

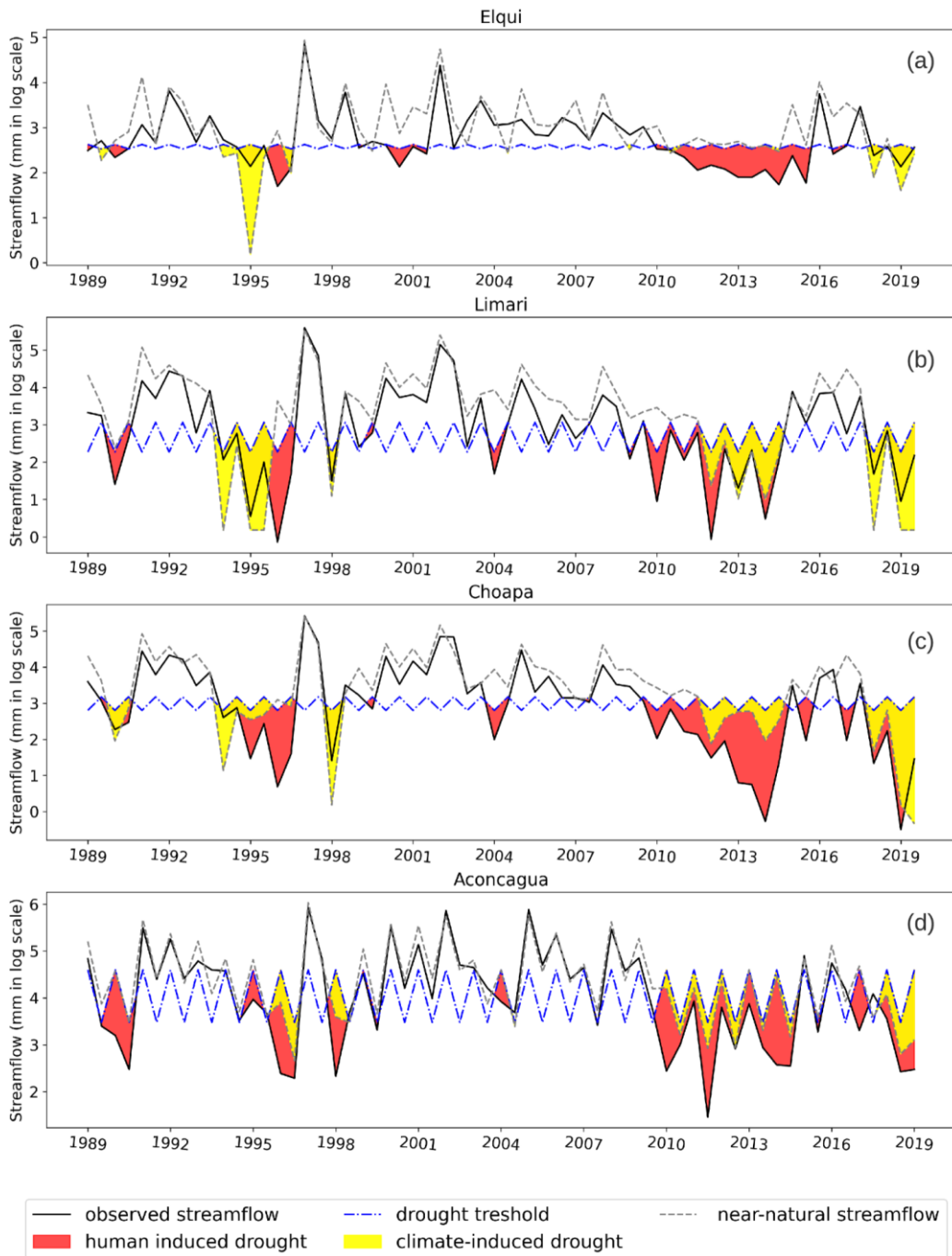
330 of the reduction is attributed to climatic-factors (i.e., anomalies represented by the near-natural simulated streamflow), while the  
331 remaining 25 to 56% is attributed to human activities.

### 332 **3.4 The impacts of human activities on hydrological drought events**

333 The selected hydrological drought events for each basin are shown in Fig. 8. By contrasting the observed and near-natural time  
334 series, the climate-induced and human-induced droughts are distinguished. The meteorological megadrought (2010-2020) is  
335 associated to several hydrological drought events, as evidenced by the observed streamflow time series. However, the  
336 megadrought does not seem to have such a persistent and intense effect on the near-natural streamflow.

337 The human impact on hydrological droughts (computed as the difference between observed and near-natural streamflow drought  
338 events) is evident in the duration and intensity of drought events (Table 3). Elqui, Limari, Choapa, and Aconcagua have 10, 13,  
339 13 and 7 extra seasons in drought duration, respectively, and close to double of streamflow deficits. In general, more drought  
340 events (Limari, Choapa and Aconcagua) with a larger average time duration (Elqui and Choapa) and average deficit (Elqui,  
341 Choapa and Aconcagua) have occurred in the observed scenario compared to the near-natural scenario. The largest drought event  
342 in each basin occurred during the megadrought. Across all basins, the human activities led to an increase in the maximum  
343 duration of hydrological droughts, with maximum values ranging between 10 to 12 seasons, in contrast to 4 to 6 seasons  
344 experienced in the near-natural cases. In particular, this translates to 5 or 6 years of continuous streamflow below the Q70  
345 threshold during the megadrought. The human influence over hydrological drought varies between the different drought  
346 characteristics, but in most cases it causes drought intensification, leading to an increase of 25.93 to 454.83% of the total drought  
347 events and an increase of 17.89 to 621.66% of the total streamflow deficit. The negative percentage difference in mean duration  
348 or mean deficit reported for Limari and Aconcagua basins is due to a greater number of shorter events. However, considering  
349 that the total number of events is larger in the observed scenario, this is not indicative of an alleviation of the drought.

350 When analyzing drought characteristics separately before and during the megadrought (Appendix C), Elqui exhibits a low human  
351 impact before the megadrought onset and it notably increases during the megadrought, contributing to 57.714% of total drought  
352 events and nearly 70.82% of the observed deficit. In contrast, Limari, Choapa, and Aconcagua show a more stable human  
353 contribution to drought characteristics before and during the megadrought, with a decrease of human contribution to total events  
354 close to 25% (all basins), a decrease in human contribution to total deficit (Limari basin) and a slight increase contribution to  
355 total deficit during the megadrought (Choapa basin).



357  
358

**Figure 8. Observed and near-natural streamflow and hydrological drought events during the evaluation period (1988–2020) for Elqui (a), Limarí (b), Choapa (c), and Aconcagua (d) basins, respectively.**

Basin	Hydrological Drought	Frequency	Duration (seasons)			Deficit (mm)		
			Total seasons	Max duration	Average duration	Total deficit	Max deficit	Average deficit
Elqui	Near- natural	10.00	16.00	4.00	1.60	51.61	20.55	5.16
	Observed	10.00	26.00	12.00	2.60	95.30	54.77	9.53
	diff %	0.00%	38.46%	66.67%	38.46%	45.84%	62.47%	45.84%
Limari	Near- natural	5.00	16.00	6.00	3.20	157.34	51.69	31.47
	Observed	10.00	29.00	10.00	2.90	191.62	77.05	19.16
	diff %	50.00%	44.83%	40.00%	-10.34%	17.89%	32.92%	-64.22%
Choapa	Near- natural	7.00	19.00	6.00	2.71	181.43	58.31	25.92
	Observed	11.00	32.00	11.00	2.91	355.70	142.27	32.34
	diff %	36.36%	40.63%	45.45%	6.70%	48.99%	59.01%	19.85%
Aconcagua	Near- natural	7.00	20.00	6.00	2.86	411.97	133.27	58.85
	Observed	12.00	27.00	10.00	2.25	1074.65	415.00	89.55
	diff %	41.67%	25.93%	40.00%	-26.98%	61.66%	67.89%	34.28%

359

360  
361  
362

**Table 3: drought characteristics for each basin considering the observed and simulated near natural streamflow during the evaluation period (1988-2020). The third row for each basin represents the human influence on drought characteristics as the percentage difference between the observed and the naturalized scenario**

363

## 4 Discussion

364

### 4.1 Impact of increased human activities on water availability

365

During the megadrought, precipitation deficits have played a more significant role on the decrease in annual streamflow than anthropic factors, however, human activities still account for approximately 27 to 29% of the streamflow reduction in the Aconcagua, Choapa, and Limarí basins and 51% in Elqui, the basin least affected by the meteorological megadrought.

366

367

368

Human activities have intensified since the 1980s, driven by rising water demand from economic activities, population growth, and land use changes (Fig. 5a), despite the precipitation deficits and streamflow reduction during the megadrought. In general,

369



370 the basins with the greatest increases in total water consumption during the evaluation period also exhibit higher human influence  
371 in the reduction of streamflow. Elqui and Limari exhibited the most significant relative increase in total water consumption,  
372 primarily driven by a substantial rise in agriculture consumption from 1989 to 2010, while Choapa almost duplicated its total  
373 water consumption during the 2000-2010 decade due to mining operations. It is noteworthy that agriculture and mining water  
374 consumption continued to rise during the megadrought.

375 This suggests that total water consumption from surface and groundwater sources has been somehow inelastic to the surface  
376 water deficits. In the Aconcagua basin, the human-induced streamflow reduction expressed as mm increased during the  
377 megadrought, while in the other three basins was slightly smaller compared to the period prior to the megadrought (Fig. 7). This  
378 finding can be explained by an initial reduction in agricultural water consumption during the first years of the megadrought,  
379 which was later reversed (Fig. 5a) by higher extractions of groundwater sources in the subsequent years (Taucare et al., 2020;  
380 Duran-Llacer et al., 2020).

381 Groundwater sources play a crucial role in streamflow within this study region, and the declines of groundwater levels caused  
382 by meteorological droughts and water extractions have critical impacts on water accessibility in rural areas (Crespo et al., 2020;  
383 Taucare et al., 2020; Alvarez-Garreton et al., 2021; 2023a; 2023b). These declines can also lead to the disconnection between  
384 surface and underground water sources, leading to a decrease in soil moisture conditions (agricultural drought) and the  
385 desiccation of rivers and lakes (Duran-Llacer et al., 2022; Muñoz et al., 2020). This exacerbates hydrological drought, delaying  
386 the recovery of catchments from drought episodes. Also, irrigation water extraction shifts from surface to groundwater sources,  
387 intended to alleviate megadrought impacts, also promotes the inelastic behaviour of water consumption rates. In fact, new surface  
388 and underground water use rights have been granted during the megadrought (Barría et al., 2021b). This has led to increases in  
389 water stress levels and reduction of groundwater reservoirs, which could ultimately lead to an absolute day zero (Alvarez-  
390 Garreton et al., 2023b).

391

392 Despite a general decrease in the impact of human influence on streamflow reductions between the pre-megadrought and  
393 megadrought periods, the Limari, Choapa, and Aconcagua basins demonstrate a relatively stable human contribution to drought  
394 characteristics before and during the megadrought, while the Elqui basin experiences a notable increase in human contribution.  
395 These observations highlight two key insights. First, they suggest that human activities have a greater influence on drought

396 ~~conditions and characteristics than the solely relative impact of human activities on total streamflow reductions. In the context~~  
397 ~~of meteorological drought, increased and inelastic human water demand exacerbates streamflow reductions, causing them to~~  
398 ~~exceed hydrological drought thresholds in terms of both magnitude and frequency. Human activities account for approximately~~  
399 ~~25% of the reduction in streamflow during the megadrought period in most basins, and their effects on hydrological droughts~~  
400 ~~have been significant. Second, the notable increase in human contribution to drought characteristics in the Elqui basin leads it to~~  
401 ~~exhibit a similar pattern of hydrological drought conditions compared to the other basins, despite experiencing lower~~  
402 ~~precipitation deficits. Despite experiencing lower precipitation deficits, the Elqui basin shows a similar pattern of hydrological~~  
403 ~~drought recurrence, total seasons, and maximum duration compared to the other basins. During the megadrought, the Elqui basin~~  
404 ~~was the most affected by increased human activities, with a 57% of drought seasons being attributable to human contributions~~  
405 ~~to streamflow reduction.~~ This suggests that ~~increased and inelastic~~ the role of human water demands are particularly relevant in  
406 semi-arid basins with limited precipitation and high interannual variability in terms of precipitation regime, such as Elqui.  
407 Consequently, highly intervened basins in semi-arid regions are more susceptible to experiencing severe hydrological droughts  
408 during periods of precipitation deficits. These findings align with the observations of Huang (2016). ~~This makes highly~~  
409 ~~intervened basins in semi-arid regions more prone to experience a more severe hydrological drought during precipitation deficits.~~  
410 This is consistent with Huang (2016), who highlighted that sustainable agricultural development is threatened in arid and semi-  
411 arid regions due to limited available water resources, and with Saft et al. (2016), who demonstrated that aridity is a crucial factor  
412 influencing streamflow sensitivity to interdecadal climate variability.

## 413 **4.2 Drought vulnerability**

414 Hydrological drought vulnerability is associated with those conditions that cause an increase in the frequency, duration, and  
415 intensity of the hydrological droughts when a precipitation deficit threat is faced. Vulnerability should be addressed by looking  
416 for sensitivity variables that come from the biophysical basin's characteristics, such as aridity, location, geomorphology,  
417 hydrological regime, natural land cover, and snow and glacier cover (Saft et al., 2015; Van Loon and Laaha, 2015), and human  
418 activities such as management and extraction of water, land use, land cover changes, urbanisation, between others (Barría et al.,  
419 2021a; Van Loon et al., 2016, 2022).

420 As discussed in Sect. 4.1, human activities have intensified streamflow deficits during the megadrought. Human activities that  
421 affect catchment vulnerability in central Chile include groundwater extractions (Taucare et al., 2020), overallocation of water  
422 use rights (Alvarez-Garreton et al., 2021; Barría et al., 2021a), and continuous land use change for agricultural purposes

423 (Madariaga et al., 2021). For example, agriculture is sometimes established on hillsides with high slopes, exacerbating water  
424 consumption problems and changing runoff mechanisms. In the entire Aconcagua basin, the water consumption of avocado  
425 plantations has increased 15% between 2014 and 2020, reaching almost 4.8 m<sup>3</sup>/s, while citrus plantations have increased 67-  
426 70% in the Elqui and Limarí basins since 2010, reaching 1.8 m<sup>3</sup>/s of water consumption in the Limarí basin. This reveals that  
427 irrigated agriculture has been inelastic to the precipitation deficits during the megadrought. Human activities in these basins are  
428 adapting to less water availability in ways that are leading to aggravated water scarcity problems, which is considered in the  
429 literature as maladaptation (Schipper, 2020).

430 Precipitation deficits and human activities including human-induced maladaptation processes have broad, complex and  
431 exacerbated impacts on society and ecosystems. For example, agricultural practices may worsen water scarcity problems and  
432 contribute to soil erosion and sediment transport (Owens, 2020), further degrading ecosystem health. The intensified streamflow  
433 deficits have disrupted watercourses and contribute to tree mortality (Miranda et al., 2020). Additionally, thousands of people  
434 have lost access to domestic water services (Muñoz et al., 2020), leading to a large spending on water cistern trucks (Alvarez-  
435 Garreton et al., 2023a). These impacts reveal that there is still a gap in understanding how human activities contribute to  
436 catchment vulnerability to hydrological droughts and how their influence on the hydrological cycle can be effectively included  
437 in drought management (Anne F. Van Loon et al., 2016). In the case of Chile, previous studies have shown that the current water  
438 management policy inadequately addresses the physical constraints of surface and groundwater availability, contributing to an  
439 inadequate prevention of water stress conditions (Alvarez-Garreton et al., 2023a). This calls for urgent modifications in the water  
440 management system to ensure sustainable water use and prevent the exacerbation of water stress conditions in the region.

#### 441 **4.3 Study limitations**

442 Our approach and insights are based on attribution exercises that compare the observed streamflow and a naturalised simulation  
443 of it, which permits to isolate the effect of human activities. In this study, the near-natural simulation was done by using  
444 regression statistical methods, which have limitations that should be considered: they do not explicitly account for the physical  
445 mechanisms of runoff generation, they rely solely on precipitation as a predictor and they consider a linear relationship between  
446 the variables. Although the attribution exercise is still consistent, this methodological limitation prevents to drawing  
447 conclusions regarding the physical mechanisms involved in streamflow reduction during droughts. To enable a physical  
448 interpretation, and likely a better representation of streamflow generation and memory effects, future studies should advance  
449 into implementing physically-based models to performed the attribution exercises.

450 Independently of the adopted model, the streamflow estimations have uncertainties that can mask some of the human influence  
451 effects in the attribution exercise. In order to visualize this potential artefact, Fig. 6 shows the streamflow estimations with a  
452 95% confidence interval. These plots, in general, show that the lowest values of naturalized streamflow are above the observed  
453 time series. Anyway, considering the lower performance of the winter models in some catchments and that the summer season  
454 concentrates most human intervention due to agricultural activities, we have primarily focused on exploring the results of this  
455 season (Fig. 7).

456 Considering the evidence of potential climate-driven non-stationarities on streamflow generation during the megadrought in  
457 Chilean catchments (Alvarez-Garreton et al., 2021), the attribution of human activities as the driving factor of the intensified  
458 streamflow reduction should then be interpreted carefully. The intensification in streamflow reduction is attributed to the  
459 combination of human activities, natural hydrological processes, and the potential effects of non-stationarity catchment  
460 response. Since the upper catchment sections have a lower human influence (but still influenced) than the downstream sections,  
461 the larger streamflow decrease during the megadrought (compared to the previous period) in these sections may be mostly (but  
462 not fully) attributed to non-stationarity in basin response during protracted droughts (consistent with Saft et al., 2015; Alvarez-  
463 Garreton et al., 2021). However, the downstream sections feature an even larger streamflow reduction during the megadrought  
464 compared to the reduction in the upper sections (Table 2). This is consistent to the added effect of human activities on  
465 streamflow reduction, which have maintained water consumption despite the reduced water availability (Fig. 5).

## 466 **5 Conclusions**

467 The megadrought in central Chile has been the longest dry period over the last centuries. The study basins featured a range of  
468 16 to 41% in mean annual precipitation deficits during this period, whereas the deficits in observed streamflow were significantly  
469 larger. The Elqui, Limarí, Choapa, and Aconcagua Basin experienced deficits in summer streamflow of 54%, 75%, 84%, and  
470 75%, respectively.

471 Our findings indicate that human activities were the main driving factor of streamflow reduction before the megadrought onset.  
472 During the megadrought, human activities still accounted for a significant portion of streamflow reduction, ranging from 27 to

473 51%. The impact of human activities on hydrological drought characteristics was substantial, leading to more than double the  
474 recurrence, duration, and intensity of droughts in some basins.

475 Human activities in these basins have shown limited adaptation to the decrease in water availability. The increase in human  
476 water demand, often inelastic to the decreased surface water availability, makes basins more vulnerable to severe hydrological  
477 droughts when precipitation deficits are faced, especially on semi-arid basins with water availability constraints.

478 This paper demonstrates that during long and persistent dry periods, human activities within the catchment amplify hydrological  
479 drought conditions by a pronounced streamflow reduction strongly influencing the intensity and duration of hydrological  
480 droughts. This highlights the importance of further research in this area to improve our understanding of the human role on  
481 drought propagations, and to inform and design more effective water management policies for countries to avoid getting into  
482 persistent and intense hydrological droughts in face of prolonged precipitation deficits.

483 It is crucial to emphasize that in order to effectively adapt to climate change and prevent maladaptive measures, we must  
484 carefully consider the intricate feedback loop between water usage, human activities, and the hydrological system. To effectively  
485 adapt to climate change and avoid maladaptation measures, it is necessary to consider the feedback between water use, anthropic  
486 activity, and the hydrological system. These considerations are particularly important not only in Chile but also in other regions  
487 worldwide in Chile and other territories worldwide, where the dry signal is consistent and expected to persist.

488

#### 489 **Data availability**

490 The CR2MET dataset were obtained from the Center for Climate and Resilience Research website at [https://www.cr2.cl/datos-](https://www.cr2.cl/datos-productos-grillados)  
491 [productos-grillados](https://www.cr2.cl/datos-productos-grillados) (last access: 20 September 2023). The water use data was obtained upon request from the Center for Climate  
492 and Resilience Research website at <https://seguridadhidrica.cr2.cl> (last access: 20 September 2023). The streamflow data were  
493 obtained from CAMELS-CL dataset (Alvarez-Garreton et al., 2018), available at the Center for Climate and Resilience Research  
494 website at <https://camels.cr2.cl> (last access: 20 September 2023).

495 **Author contributions**

496 NA, CAG and AM conceived the idea of the research. NA performed the analyses. NA and CAG wrote much of the manuscript.  
497 All the authors reviewed early manuscript drafts and the final draft.

498 **Competing interests**

499 The contact author has declared that none of the authors has any competing interests.

500 **Acknowledgements:**

501 This research has been developed within the framework of the Center for Climate and Resilience Research (CR2,  
502 ANID/FONDAP/1522A0001), the research project ANID/FSEQ210001, ANID/FONDECYT/1201714 and  
503 ANID/FONDECYT/11240924.

504 **References**

- 505 Alvarez-Garreton, C., Mendoza, P. A., Pablo Boisier, J., Addor, N., Galleguillos, M., Zambrano-Bigiarini, M., Lara, A., Puelma,  
506 C., Cortes, G., Garreaud, R., McPhee, J., and Ayala, A.: The CAMELS-CL dataset: Catchment attributes and meteorology  
507 for large sample studies-Chile dataset, *Hydrol. Earth Syst. Sci.*, 22, 5817–5846, <https://doi.org/10.5194/hess-22-5817-2018>,  
508 2018.
- 509 Alvarez-Garreton, C., Pablo Boisier, J., Garreaud, R., Seibert, J., and Vis, M.: Progressive water deficits during multiyear  
510 droughts in basins with long hydrological memory in Chile, *Hydrol. Earth Syst. Sci.*, 25, 429–446,  
511 <https://doi.org/10.5194/hess-25-429-2021>, 2021.
- 512 Alvarez-Garreton, C., Boisier, J.P., Blanco, G., Billi, M., Nicolas-Artero, C., Maillet, A., Aldunce, P., Urrutia-Jalabert, R.,  
513 Zambrano-Bigiarini, M., Guevara, G., Galleguillos, M., Muñoz, A., Christie, D., Marinao, R., & Garreaud, R.: *Seguridad*  
514 *Hídrica en Chile: Caracterización y Perspectivas de Futuro*. Centro de Ciencia del Clima y la Resiliencia CR2,  
515 (ANID/FONDAP/1522A0001), 72 pp. Disponible en [www.cr2.cl/seguridadhidrica](http://www.cr2.cl/seguridadhidrica), 2023a
- 516 Alvarez-Garreton, C., Boisier, J. P., Garreaud, R., González, J., Rondanelli, R., Gayó, E., and Zambrano-Bigiarini, M.: HESS  
517 Opinions: The unsustainable use of groundwater conceals a “Day Zero”, *Hydrol. Earth Syst. Sci. Discuss.* [preprint],

518 <https://doi.org/10.5194/hess-2023-245>, in review, 2023b.

519 Barría, P., Sandoval, I. B., Guzman, C., Chadwick, C., Alvarez-Garreton, C., Díaz-Vasconcellos, R., Ocampo-Melgar, A., and  
520 Fuster, R.: Water allocation under climate change: A diagnosis of the Chilean system, *Elementa*, 9, 1–20,  
521 <https://doi.org/10.1525/elementa.2020.00131>, 2021a.

522 Barría, P., Chadwick, C., Ocampo-Melgar, A., Galleguillos, M., Garreaud, R., Díaz-Vasconcellos, R., Poblete, D., Rubio-  
523 Álvarez, E., and Poblete-Caballero, D.: Water management or megadrought: what caused the Chilean Aculeo Lake drying?,  
524 <https://doi.org/10.1007/s10113-021-01750-w>, 2021b.

525 Boisier, J. P., Alvarez-Garreton, C., Cordero, R. R., Damiani, A., Gallardo, L., Garreaud, R. D., Lambert, F., Ramallo, C., Rojas,  
526 M., and Rondanelli, R.: Anthropogenic drying in central-southern Chile evidenced by long-term observations and climate  
527 model simulations, *Elementa*, 6, 74, <https://doi.org/10.1525/elementa.328>, 2018.

528 Bozkurt, D., Rojas, M., Boisier, J. P., and Valdivieso, J.: Climate change impacts on hydroclimatic regimes and extremes over  
529 Andean basins in central Chile, *Hydrol. Earth Syst. Sci. Discuss.*, 17, 1–29, <https://doi.org/10.5194/hess-2016-690>, 2017.

530 Budds, J.: La demanda, evaluación y asignación del agua en el contexto de escasez, *Rev. Geogr. Norte Gd.*, 52, 167–184, 2012.

531 Buishand, T. A.: Some methods for testing the homogeneity of rainfall records, *J. Hydrol.*, 58, 11–27,  
532 [https://doi.org/10.1016/0022-1694\(82\)90066-X](https://doi.org/10.1016/0022-1694(82)90066-X), 1982.

533 Chiew, F. H. S., Peel, M. C., McMahon, T. A., and Siriwardena, L. W.: Precipitation elasticity of streamflow in catchments  
534 across the world, *IAHS-AISH Publ.*, 256–262, <https://doi.org/10.3390/w12092446> 2006.

535 Crespo, S. A., Lavergne, C., Fernandoy, F., Muñoz, A. A., Cara, L., and Olfos-Vargas, S.: Where does the Chilean Aconcagua  
536 river come from? Use of natural tracers for water genesis characterization in glacial and periglacial environments, *Water*  
537 (Switzerland), 12, <https://doi.org/10.3390/w12092630>, 2020.

538 CR2MET: A high-resolution precipitation and temperature dataset for the period 1960-2021 in continental Chile:  
539 <https://doi.org/10.5281/zenodo.7529682>, last access: 10 December 2022.

540

541 Duran-Llacer, I., Munizaga, J., Arumí, J. L., Ruybal, C., Aguayo, M., Sáez-Carrillo, K., Arriagada, L., and Rojas, O.: Lessons  
542 to be learned: Groundwater depletion in Chile's Ligüé and Petorca watersheds through an interdisciplinary approach, *Water*  
543 (Switzerland), 12, <https://doi.org/10.3390/w12092446>, 2020.

544 Esri. "Topographic" [basemap]. Scale Not Given. "World Topographic Map". 2017.  
545 <https://www.arcgis.com/home/item.html?id=7dc6cea0b1764a1f9af2e679f642f0f5>. (October 24, 2023).

546 Fleig, A. K., Tallaksen, L. M., Hisdal, H., Stahl, K., and Hannah, D. M.: Inter-comparison of weather and circulation type

547 classifications for hydrological drought development, *Phys. Chem. Earth*, 35, 507–515,  
548 <https://doi.org/10.1016/j.pce.2009.11.005>, 2010.

549 Garreaud, R., Alvarez-Garretón, C., Barichivich, J., Pablo Boisier, J., Christie, D., Galleguillos, M., LeQuesne, C., McPhee, J.,  
550 and Zambrano-Bigiarini, M.: The 2010-2015 megadrought in central Chile: Impacts on regional hydroclimate and vegetation,  
551 *Hydrol. Earth Syst. Sci.*, 21, 6307–6327, <https://doi.org/10.5194/hess-21-6307-2017>, 2017.

552 Garreaud, R., Boisier, J. P., Rondanelli, R., Montecinos, A., Sepúlveda, H. H., and Veloso-Aguila, D.: The Central Chile Mega  
553 Drought (2010–2018): A climate dynamics perspective, *Int. J. Climatol.*, 40, 421–439, <https://doi.org/10.1002/joc.6219>,  
554 2020.

555 González-Reyes, Á., McPhee, J., Christie, D. A., Quesne, C. Le, Szejner, P., Masiokas, M. H., Villalba, R., Muñoz, A. A., and  
556 Crespo, S.: Spatiotemporal variations in hydroclimate across the Mediterranean Andes (30°-37°S) since the early twentieth  
557 century, *J. Hydrometeorol.*, 18, 1929–1942, <https://doi.org/10.1175/JHM-D-16-0004.1>, 2017.

558 González-Reyes, Á., Jacques-Coper, M., Bravo, C., Rojas, M., and Garreaud, R.: Evolution of heatwaves in Chile since 1980,  
559 *Weather Clim. Extrem.*, 41, 100588, <https://doi.org/10.1016/j.wace.2023.100588>, 2023.

560 Huang, S., Liu, D., Huang, Q., and Chen, Y.: Contributions of climate variability and human activities to the variation of runoff  
561 in the Wei River Basin, China, *Hydrol. Sci. J.*, 61, 1026–1039, <https://doi.org/10.1080/02626667.2014.959955>, 2016.

562 Jacques-Coper, M. and Garreaud, R. D.: Characterization of the 1970s climate shift in South America, *Int. J. Climatol.*, 35,  
563 2164–2179, <https://doi.org/10.1002/joc.4120>, 2015.

564 Kayano, M., de Oliveira, C., and Andreoli, R.: Interannual relations between South American rainfall and tropical sea surface  
565 temperature anomalies before and after 1976, *Int. J. Climatol.*, 29, <https://doi.org/10.1002/joc.1824>, 2009.

566 Kingston, D. G., Stagge, J. H., Tallaksen, L. M., and Hannah, D. M.: European-scale drought: Understanding connections  
567 between atmospheric circulation and meteorological drought indices, *J. Clim.*, 28, 505–516, <https://doi.org/10.1175/JCLI-D-14-00001.1>, 2015.

569 Kong, D., Miao, C., Wu, J., and Duan, Q.: Impact assessment of climate change and human activities on net runoff in the Yellow  
570 River Basin from 1951 to 2012, *Ecol. Eng.*, 91, 566–573, <https://doi.org/10.1016/j.ecoleng.2016.02.023>, 2016.

571 Li, J., Xie, S. P., Cook, E. R., Chen, F., Shi, J., Zhang, D. D., Fang, K., Gou, X., Li, T., Peng, J., Shi, S., and Zhao, Y.: Deciphering  
572 Human Contributions to Yellow River Flow Reductions and Downstream Drying Using Centuries-Long Tree Ring Records,  
573 *Geophys. Res. Lett.*, 46, 898–905, <https://doi.org/10.1029/2018GL081090>, 2019.

574 Linton, J. and Budds, J.: The hydrosocial cycle: Defining and mobilizing a relational-dialectical approach to water, *Geoforum*,  
575 57, 170–180, <https://doi.org/10.1016/j.geoforum.2013.10.008>, 2014.



576 Liu, Y., Ren, L., Zhu, Y., Yang, X., Yuan, F., Jiang, S., and Ma, M.: Evolution of Hydrological Drought in Human Disturbed  
577 Areas: A Case Study in the Laohahe Catchment, Northern China, *Adv. Meteorol.*, 2016,  
578 <https://doi.org/10.1155/2016/5102568>, 2016.

579 Madariaga, A., Maillet, A., and Rozas, J.: Multilevel business power in environmental politics: the avocado boom and water  
580 scarcity in Chile, *Env. Polit.*, 30, 1174–1195, <https://doi.org/10.1080/09644016.2021.1892981>, 2021.

581 Miranda, A., Lara, A., Altamirano, A., Di Bella, C., González, M. E., and Julio Camarero, J.: Forest browning trends in response  
582 to drought in a highly threatened mediterranean landscape of South America, *Ecol. Indic.*, 115, 106401,  
583 <https://doi.org/10.1016/j.ecolind.2020.106401>, 2020.

584 Muñoz-Sabater, J., Dutra, E., Agustí-Panareda, A., Albergel, C., Arduini, G., Balsamo, G., Boussetta, S., Choulga, M., Harrigan,  
585 S., Hersbach, H., Martens, B., Miralles, D. G., Piles, M., Rodríguez-Fernández, N. J., Zsoter, E., Buontempo, C., and Thépaut,  
586 J. N.: ERA5-Land: A state-of-the-art global reanalysis dataset for land applications, *Earth Syst. Sci. Data*, 13, 4349–4383,  
587 <https://doi.org/10.5194/essd-13-4349-2021>, 2021.

588 Muñoz, A. A., Klock-Barría, K., Alvarez-Garretón, C., Aguilera-Betti, I., González-Reyes, Á., Lastra, J. A., Chávez, R. O.,  
589 Barría, P., Christie, D., Rojas-Badilla, M., and Lequesne, C.: Water crisis in petorca basin, Chile: The combined effects of a  
590 mega-drought and water management, *Water (Switzerland)*, 12, <https://doi.org/10.3390/w12030648>, 2020.

591 Owens, P. N.: Soil erosion and sediment dynamics in the Anthropocene: a review of human impacts during a period of rapid  
592 global environmental change, *J. Soils Sediments*, 20, 4115–4143, <https://doi.org/10.1007/s11368-020-02815-9>, 2020.

593 Rangelcroft, S., Van Loon, A. F., Maureira, H., Verbist, K., and Hannah, D. M.: An observation-based method to quantify the  
594 human influence on hydrological drought: upstream–downstream comparison, *Hydrol. Sci. J.*, 64, 276–287,  
595 <https://doi.org/10.1080/02626667.2019.1581365>, 2019.

596 Rodionov, S. N.: A sequential algorithm for testing climate regime shifts, *Geophys. Res. Lett.*, 31, 2–5,  
597 <https://doi.org/10.1029/2004GL019448>, 2004.

598 Saft, M., Western, A. W., Zhang, L., Peel, M. C., and Potter, N. J.: The influence of multiyear drought on the annual rainfall-  
599 runoff relationship: An Australian perspective, *Water Resour. Res.*, 51, 2444–2463, <https://doi.org/10.1002/2014WR015348>,  
600 2015.

601 Schipper, E. L. F.: Maladaptation: When Adaptation to Climate Change Goes Very Wrong, *One Earth*, 3, 409–414,  
602 <https://doi.org/10.1016/j.oneear.2020.09.014>, 2020.

603 Sharifi, A., Mirabbasi, R., Ali Nasr-Esfahani, M., Torabi Haghighi, A., and Fatahi Nafchi, R.: Quantify the impacts of  
604 anthropogenic changes and climate variability on runoff changes in central plateau of Iran using nine methods, *J. Hydrol.*,

605 603, 127045, <https://doi.org/10.1016/j.jhydrol.2021.127045>, 2021.

606 Shourov, M. M. H.: mmhs013/pyHomogeneity: tag for Zenodo Release, <https://doi.org/10.5281/ZENODO.3785287>, 2020.

607 Taucare, M., Daniele, L., Viguier, B., Vallejos, A., and Arancibia, G.: Groundwater resources and recharge processes in the  
608 Western Andean Front of Central Chile, *Sci. Total Environ.*, 722, 137824, <https://doi.org/10.1016/j.scitotenv.2020.137824>,  
609 2020.

610 Van Lanen, H. A. J., Wanders, N., Tallaksen, L. M., and Van Loon, A. F.: Hydrological drought across the world: Impact of  
611 climate and physical catchment structure, *Hydrol. Earth Syst. Sci.*, 17, 1715–1732, [https://doi.org/10.5194/hess-17-1715-](https://doi.org/10.5194/hess-17-1715-2013)  
612 2013, 2013.

613 Van Loon, A. F.: Hydrological drought explained, *Wiley Interdiscip. Rev. Water*, 2, 359–392,  
614 <https://doi.org/10.1002/WAT2.1085>, 2015.

615 Van Loon, A. F. and Laaha, G.: Hydrological drought severity explained by climate and catchment characteristics, *J. Hydrol.*,  
616 526, 3–14, <https://doi.org/10.1016/j.jhydrol.2014.10.059>, 2015.

617 Van Loon, A. F., Stahl, K., Di Baldassarre, G., Clark, J., Rangelcroft, S., Wanders, N., Gleeson, T., Van Dijk, A. I. J. M.,  
618 Tallaksen, L. M., Hannaford, J., Uijlenhoet, R., Teuling, A. J., Hannah, D. M., Sheffield, J., Svoboda, M., Verbeiren, B.,  
619 Wagener, T., and Van Lanen, H. A. J.: Drought in a human-modified world: Reframing drought definitions, understanding,  
620 and analysis approaches, *Hydrol. Earth Syst. Sci.*, 20, 3631–3650, <https://doi.org/10.5194/hess-20-3631-2016>, 2016.

621 Van Loon, A. F., Rangelcroft, S., Coxon, G., Naranjo, J. A. B., Van Ogtrop, F., and Van Lanen, H. A. J.: Using paired catchments  
622 to quantify the human influence on hydrological droughts, *Hydrol. Earth Syst. Sci.*, 23, 1725–1739,  
623 <https://doi.org/10.5194/hess-23-1725-2019>, 2019.

624 Van Loon, A. F., Rangelcroft, S., Coxon, G., Werner, M., Wanders, N., Di Baldassarre, G., Tjeldeman, E., Bosman, M., Gleeson,  
625 T., Nauditt, A., Aghakouchak, A., Breña-Naranjo, J. A., Cenobio-Cruz, O., Costa, A. C., Fendekova, M., Jewitt, G., Kingston,  
626 D. G., Loft, J., Mager, S. M., Mallakpour, I., Masih, I., Maureira-Cortés, H., Toth, E., Van Oel, P., Van Ogtrop, F., Verbist,  
627 K., Vidal, J. P., Wen, L., Yu, M., Yuan, X., Zhang, M., and Van Lanen, H. A. J.: Streamflow droughts aggravated by human  
628 activities despite management, *Environ. Res. Lett.*, 17, 044059, <https://doi.org/10.1088/1748-9326/ac5def>, 2022.

629 Wanders, N. and Wada, Y.: Human and climate impacts on the 21st century hydrological drought, *J. Hydrol.*, 526, 208–220,  
630 <https://doi.org/10.1016/j.jhydrol.2014.10.047>, 2015.

631 Ward, P. J., de Ruiter, M. C., Mård, J., Schröter, K., Van Loon, A., Veldkamp, T., von Uexkull, N., Wanders, N., AghaKouchak,  
632 A., Arnbjerg-Nielsen, K., Capewell, L., Carmen Llasat, M., Day, R., Dewals, B., Di Baldassarre, G., Huning, L. S., Kreibich,  
633 H., Mazzoleni, M., Savelli, E., Teutschbein, C., van den Berg, H., van der Heijden, A., Vincken, J. M. R., Waterloo, M. J.,

634 and Wens, M.: The need to integrate flood and drought disaster risk reduction strategies, *Water Secur.*, 11,  
635 <https://doi.org/10.1016/j.wasec.2020.100070>, 2020.

636 Zhao, G., Tian, P., Mu, X., Jiao, J., Wang, F., and Gao, P.: Quantifying the impact of climate variability and human activities on  
637 streamflow in the middle reaches of the Yellow River basin, China, *J. Hydrol.*, 519, 387–398,  
638 <https://doi.org/10.1016/j.jhydrol.2014.07.014>, 2014.

639 Zhao, Y., Feng, D., Yu, L., Wang, X., Chen, Y., Bai, Y., Hernández, H. J., Galleguillos, M., Estades, C., Biging, G. S., Radke,  
640 J. D., and Gong, P.: Detailed dynamic land cover mapping of Chile: Accuracy improvement by integrating multi-temporal  
641 data, *Remote Sens. Environ.*, 183, 170–185, <https://doi.org/10.1016/j.rse.2016.05.016>, 2016.

## 642 **Appendix A.**

643 This appendix presents the outcomes of a comprehensive evaluation of various regression models, considering the seasonal  
644 runoff as a dependent variable. The objective was to identify the key climate factors influencing the streamflow response in  
645 the studied basins. Variables such as precipitation in different seasons, evapotranspiration, temperature, and the interaction  
646 between temperature and precipitation were used. Additionally, a model incorporating a Box-Cox transformation of the  
647 dependent variable (runoff) was examined to achieve a normal distribution in the variable.

648 After rigorous testing, it is noteworthy that the majority of the models demonstrated a singular dependency on precipitation  
649 (P). We chose the model with a higher  $r^2$ , and all variables were statistically significant at a p-value of 0.05 In Summer (Table  
650 A1) this condition is achieved with model 1 (eq 2 of sect 2.3.2), where the summer runoff is modelled based on the winter  
651 precipitations. In winter (table A2) the condition is achieved in model 2 (eq 3 of sect 2.3.2) where the runoff depends on the  
652 winter precipitation of the present year (t) and the annual precipitation of the previous year (t-1).

		Dependent variable: Summer runoff																			
Variables/ Models	Model 1				Model 2 (runoff Box-Cox)				Model 3				Model 4				Model 5				
	Elqui	Lim	Choap	Acon	Elqui	Lim	Choap	Acon	Elqui	Lim	Choap	Acon	Elqui	Lim	Choap	Acon	Elqui	Lim	Choap	Acon	
<b>const</b>	-19.80***	-70.05***	-56.80***	-6187**	152***	0.12	138***	3.57***	-8.89	-55.36**	-59.92***	-111.17***	8.59	-3.46	-3.18	39.82	86.77	174.87	-158.72	-218.17	
	(-5.49)	(-12.5)	-11.34	(-28.38)	(-0.17)	(-0.4)	(-0.36)	(-0.33)	(-10.11)	(-19.89)	(-18.7)	(-39.06)	(-22.99)	(-57.02)	(-59.14)	(-110.76)	(-90.18)	(-211.48)	(-186.45)	(-277.96)	
<b>P_winter(t)</b>	0.31***	0.45***	0.39***	0.49***	0.01***	0.01***	0.01***	0.01***	0.31***	0.46***	0.39***	0.47***	0.33***	0.46***	0.40***	0.49***	0.31***	0.47***	0.39***	0.47***	
	(-0.03)	(-0.04)	(-0.03)	(-0.05)	0	0	0	0	(-0.03)	(-0.04)	(-0.03)	(-0.05)	(-0.03)	(-0.04)	(-0.03)	(-0.05)	(-0.03)	(-0.04)	(-0.03)	(-0.05)	
<b>P_summer(t)</b>									-0.14	-0.24	0.07	0.56*									
									(-0.11)	(-0.25)	(-0.32)	(-0.32)									
<b>ET_summer</b>													-0.2	-0.41	-0.28	-0.57					
													(-0.16)	(-0.34)	(-0.3)	(-0.6)					
<b>T_mean_summer</b>																	-9.9	-19.78	8.55	12	
																	(-9.29)	(-18.13)	(-16.16)	(-30.65)	
<b>TxP</b>																	-0.01	-0.02	0	-0.06	
																	(-0.01)	(-0.02)	(-0.03)	(-0.04)	
<b>Observations</b>	27	27	22	26	27	27	22	26	27	27	22	26	27	27	22	26	27	27	22	26	
<b>R2</b>	0.81	0.84	0.89	0.81	0.82	0.74	0.74	0.61	0.82	0.84	0.89	0.83	0.82	0.85	0.89	0.81	0.83	0.85	0.89	0.83	
<b>Adjusted R2</b>	0.8	0.83	0.88	0.8	0.81	0.73	0.73	0.59	0.8	0.83	0.88	0.81	0.8	0.84	0.88	0.8	0.81	0.83	0.87	0.81	
<b>Residual Std. Error</b>	14.2	31.74	25.29	62.87	0.45	1.01	0.8	0.74	14.02	31.8	25.91	60.29	14.03	31.47	25.38	63	13.92	31.58	26.4	61.35	
<b>F Statistic</b>	103.34*	130.43**	156.66***	99.65***	110.49***	69.99***	57.83***	36.78***	53.80***	65.42***	74.62***	55.72***	53.75***	67.06***	78.19***	50.07***	37.05***	23.73***	18.66***	13.94***	
<b>Note:</b>	*p<0.1; **p<0.05; ***p<0.01; std_dv in ()																				

653

654  
655

**Table A1: results of multiple regression equations tested for representing near-natural streamflow during the reference period in the summer season**

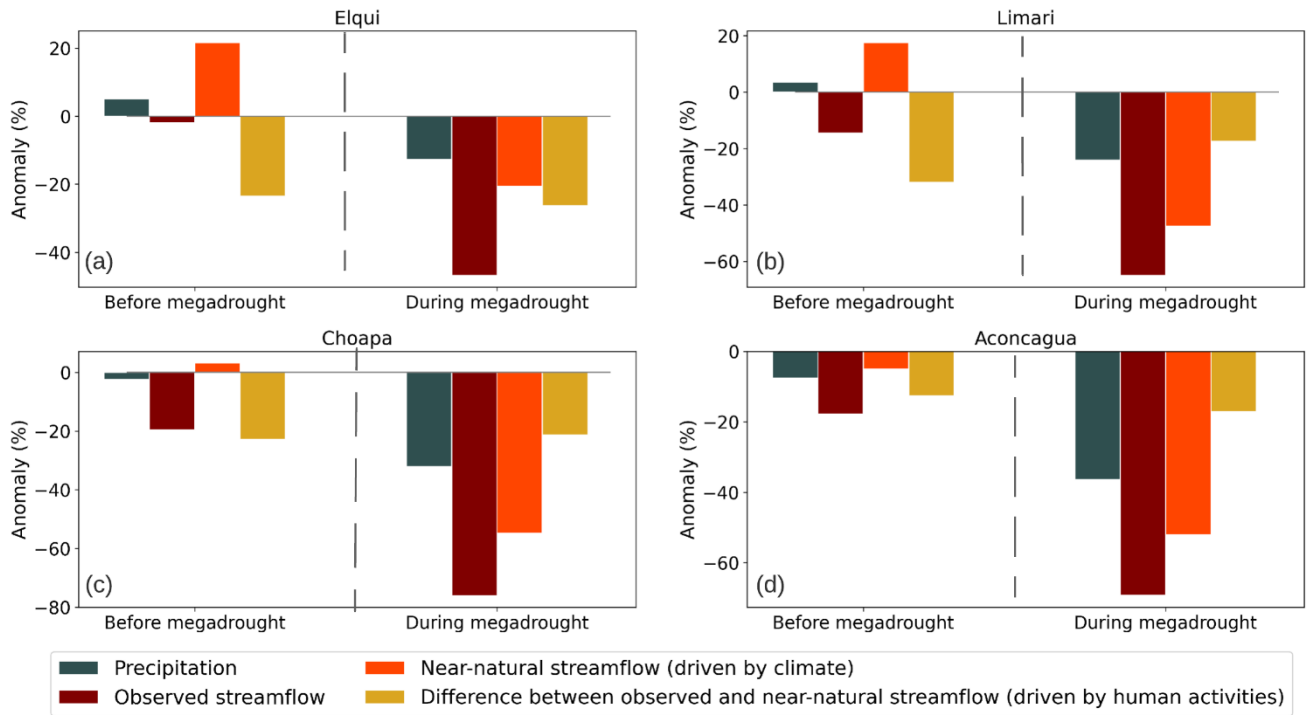
		Dependent variable: Winter runoff																			
Variables/ Models	Model 1				Model 2				Model 3 runoff (Box-Cox)				Model 4				Model 5				
	Elqui	Lim	Choap	Acon	Elqui	Lim	Choap	Acon	Elqui	Lim	Choap	Acon	Elqui	Lim	Choap	Acon	Elqui	Lim	Choap	Acon	
<b>const</b>	1190***	-15.45**	-10.53**	-11.17	-5.22	-30.94***	-20.01***	-31.44	141***	0.75	1.13**	0.16	-9.53**	-35.18***	-7.67	-16.03	-32.84	-117.70*	-45.62	-116.79	
	(-3.67)	(-6.23)	(-4.02)	(-14.14)	(-3.49)	(-6.85)	(-4.57)	(-20.08)	(-0.42)	(-0.44)	(-0.52)	(-1.31)	(-4.31)	(-12.07)	(-7.95)	(-53.56)	(-20.13)	(-58.61)	(-40.73)	(-82.56)	
<b>P_winter(t)</b>	0.04*	0.19***	0.16***	0.14***	0.02	0.17***	0.16***	0.14***	0.01***	0.01***	0.01***	0.01***	-0.01	0.17***	0.17***	0.14***	0.16	0.57***	0.23*	0.27**	
	(-0.02)	(-0.02)	(-0.01)	(-0.02)	(-0.01)	(-0.02)	(-0.01)	(-0.02)	0	0	0	0	(-0.02)	(-0.02)	(-0.01)	(-0.03)	(-0.11)	(-0.17)	(-0.11)	(-0.13)	
<b>P_winter(t-1)</b>					0.09***	0.06***	0.03***	0.03	0.01***	0.01***	0.00***	0.00***	0.07***	0.05*	0.05***	0.04	0.08***	0.05***	0.03**	0.03	
					(-0.01)	(-0.02)	(-0.01)	(-0.02)	0	0	0	0	(-0.02)	(-0.03)	(-0.01)	(-0.03)	(-0.02)	(-0.02)	(-0.01)	(-0.03)	
<b>ET_winter</b>													0.08	0.05	-0.15*	-0.12					
													(-0.05)	(-0.12)	(-0.08)	(-0.37)					
<b>T_mean_winter</b>																	6.6	15.65	4.59	32.78	
																	(-4.71)	(-9.79)	(-7.1)	(-30.42)	
<b>TxP</b>																	-0.03	-0.07**	-0.01	-0.05	
																	(-0.03)	(-0.03)	(-0.02)	(-0.05)	
<b>Observations</b>	26	26	25	25	26	26	25	25	26	26	25	25	26	26	25	25	26	26	25	25	
<b>R2</b>	0.12	0.8	0.89	0.57	0.69	0.87	0.93	0.61	0.65	0.86	0.81	0.57	0.72	0.87	0.94	0.61	0.71	0.9	0.93	0.63	
<b>Adjusted R2</b>	0.09	0.79	0.89	0.56	0.66	0.86	0.92	0.57	0.62	0.85	0.8	0.53	0.68	0.85	0.93	0.56	0.66	0.88	0.91	0.56	
<b>Residual Std. Error</b>	9.48	15.13	9.78	32.22	5.8	12.55	8.32	31.57	0.7	0.81	0.94	2.06	5.61	12.78	7.89	32.24	5.81	11.51	8.62	32.18	
<b>F Statistic</b>	3.36*	96.18***	195.83***	3106***	25.04***	75.83***	140.27***	17.14***	2100***	69.40***	47.84***	14.79***	18.72***	48.82***	104.98***	10.99***	12.99***	46.61***	65.47***	8.54***	
<b>Note:</b>	*p<0.1; **p<0.05; ***p<0.01; std_dv in ()																				

656

657  
658

**Table A2: results of multiple regression equations tested for representing near-natural streamflow during the reference period in the Winter season**

659 **Appendix B**



660

661 **Figure B1: Anomalies in annual precipitation, observed streamflow, simulated near-natural streamflow and human-induced**  
 662 **streamflow change. The anomalies are presented for the evaluation period before and after the megadrought onset (1988-2009 and**  
 663 **2010-2020, respectively). For each flux, the anomalies are computed as the percentage difference with respect to their mean values**  
 664 **during the low-influence reference period (1960-1988). The graphs show these results for Elqui (a), Limari (b), Choapa (c), and**  
 665 **Aconcagua (d) Basins, respective**

666

667 **Appendix C.**

Basin	Hydrological Drought	Frequency	Duration (seasons)			Deficit (mm)		
			Total season	Max duration	Average duration	Total deficit	Max deficit	Average deficit

<b>Elqui</b>	Near- natural	4.00	6.00	2.00	1.50	18.43	10.13	4.61
	Observed	4.00	14.00	10.00	3.50	63.15	53.09	15.79
	diff %	0.00%	57.14%	80.00%	57.14%	70.82%	80.92%	70.82%
<b>Limari</b>	Near- natural	2.00	10.00	6.00	5.00	98.39	51.69	49.20
	Observed	3.00	13.00	8.00	4.33	94.94	65.87	31.65
	diff %	33.33%	23.08%	25.00%	-15.38%	-3.64%	21.53%	-55.46%
<b>Choapa</b>	Near- natural	2.00	10.00	6.00	5.00	107.89	58.31	53.94
	Observed	4.00	14.00	8.00	3.50	212.76	123.74	53.19
	diff %	50.00%	28.57%	25.00%	-42.86%	49.29%	52.88%	-1.42%
<b>Aconcagua</b>	Near- natural	3.00	10.00	4.00	3.33	237.65	133.27	79.22
	Observed	4.00	13.00	8.00	3.25	565.61	315.06	141.40
	diff %	25.00%	23.08%	50.00%	-2.56%	57.98%	57.70%	43.98%

668  
669  
670

**Table C1: drought characteristics for each basin considering the observed and simulated near natural streamflow during the megadrought period (2010-2020). The third row for each basin represents the human influence on drought characteristics as the percentage difference between the observed and the naturalized scenario**

<b>Basin</b>	<b>Hydrological Drought</b>	<b>Frequency</b>	<b>Duration (seasons)</b>			<b>Deficit (mm)</b>		
			<b>Total season</b>	<b>Max duration</b>	<b>Average duration</b>	<b>Total deficit</b>	<b>Max deficit</b>	<b>Average deficit</b>
<b>Elqui</b>	Near- natural	7.00	10.00	4.00	1.43	44.99	20.55	6.43
	Observed	6.00	10.00	4.00	1.67	30.46	12.73	5.08
	diff %	-16.67%	0.00%	0.00%	14.29%	-47.69%	-61.49%	-26.59%
<b>Limari</b>	Near- natural	4.00	7.00	4.00	1.75	68.65	50.78	17.16
	Observed	8.00	15.00	6.00	1.88	91.61	54.26	11.45
	diff %	50.00%	53.33%	33.33%	6.67%	25.06%	6.41%	-49.87%
<b>Choapa</b>	Near- natural	6.00	10.00	4.00	1.67	90.04	34.36	15.01
	Observed	9.00	17.00	6.00	1.89	135.96	67.42	15.11
	diff %	33.33%	41.18%	33.33%	11.76%	33.78%	49.04%	0.66%
<b>Aconcagua</b>	Near- natural	5.00	9.00	2.00	1.80	180.33	67.70	36.07
	Observed	9.00	13.00	3.00	1.44	468.17	110.86	52.02
	diff %	44.44%	30.77%	33.33%	-24.62%	61.48%	38.93%	30.67%

671 **Table C2: drought characteristics for each basin considering the observed and simulated near natural streamflow before the mega**  
672 **drought period (1988-2010). The third row for each basin represents the human influence on drought characteristics as the percentage**  
673 **difference between the observed and the naturalized scenario**

674

675