

Technical note: Comparing three different methods for allocating river points to coarse-resolution hydrological modelling grid cells

Juliette Godet¹, Eric Gaume¹, Pierre Javelle², Pierre Nicolle¹, and Olivier Payrastre¹

¹GERS, Univ. Gustave Eiffel, IFSTTAR, 44344 Bouguenais, France

²RECOVER, INRAE, Université d'Aix-Marseille, 13100 Aix-en-Provence, France

Correspondence: Juliette Godet (juliette.godet@univ-eiffel.fr)

Abstract. The allocation of points in a river network to pixels of a coarse-resolution hydrological modelling grid is a well-known issue, especially for hydrologists who use measurements at gauging stations to calibrate and validate distributed hydrological models. To address this issue, the traditional approach involves examining grid cells surrounding the considered river point and selecting the best candidate, based on distance and upstream drainage area as decision criteria. However, recent studies have suggested that focusing on basin boundaries rather than basin areas could prevent many allocation errors, even though the performance gain is rarely assessed. This paper compares different allocation methods and examines their relative performance. Three methods representing various families of methods have been designed: area-based, topology-based and contour-based methods. These methods are implemented to allocate 2580 river points to a 1km hydrological modelling grid. These points are distributed along the entire hydrographic network of the French southeastern Mediterranean region, covering upstream drainage areas ranging from $5km^2$ to $3000km^2$. The results indicate that the differences between the methods can be significant, especially for small upstream catchments areas.

1 Introduction

In hydrology, rainfall-runoff models' outputs are often compared to observed discharge series at gauging stations for calibration or evaluation purposes. Vector-based hydrological models are adequate to meet these objectives, because it is straightforward to locate a gauging station along the river network. However, when using gridded models, it is necessary to allocate each gauging station to a specific cell in the model grid. In the literature, terms such as "co-registering" (Fekete et al., 2002), "co-referencing" (Döll and Lehner, 2002), and "matching" (Wang et al., 2018) are also used to describe this process. The allocation of specific river points to a coarse-resolution cell can also be necessary when connecting the output of a hydrological distributed model (providing hydrographs or peak discharges on a grid) to a hydraulic model for inundation modelling. As an example, Dottori et al. (2017) developed a European-wide flood risk assessment system, based on the European Flood Awareness System (EFAS, see Thielen et al. 2009; Bartholmes et al. 2009). The discharge output of EFAS is provided on a grid of spatial resolution of $5km$, which needed to be downscaled to a resolution of $100m$ in order to derive flood hazard maps at the pan-European scale. Dottori et al. (2015) opted for a basic method consisting in allocating the $100m$ river pixel to the $5km$ river cell containing

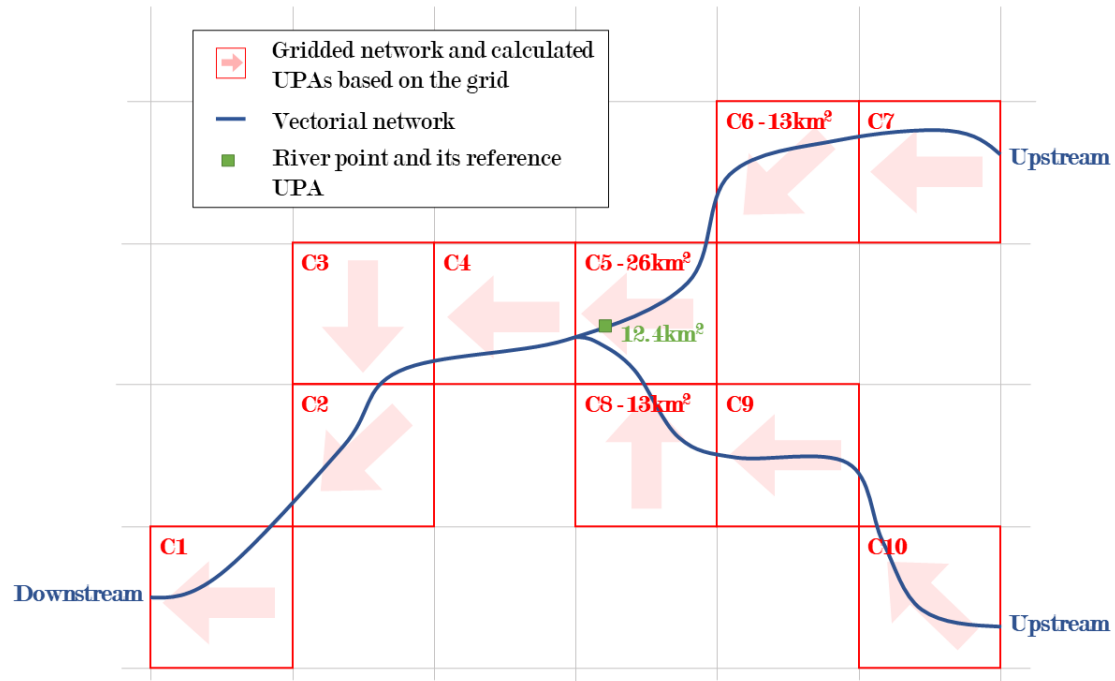


Figure 1. Example of allocation process failure when based on distance and UPA error criteria: green river point is allocated to grid cell C8 instead of grid cell C5.

25 this pixel. This approach has limitations, particularly when the two river networks defined at the 100m and 5km scales do not overlap.

30 Generally, the allocation of river points to a coarse-resolution grid for hydrological modelling relies on distance and upstream drainage area (UPA) error criteria (Döll and Lehner, 2002; Fekete et al., 2002; Lehner, 2012; Zhao et al., 2017; Sutanudjaja et al., 2018; Wang et al., 2018; Burek et al., 2020; Polcher et al., 2022). However, this process is also prone to errors, especially near confluences, where points of different branches of the river network may have similar UPAs. As a result, their allocation on the coarse-resolution grid can lead to assigning a point to the wrong hydrological grid cell and corresponding upstream watershed, based on a slightly better UPA fit or a slightly shorter distance (see figure 1 for an example).

35 Considering this possible limitation, efforts have been made to propose more effective protocols for allocating river points to hydrological grid cells. For instance, the methods proposed by Burek and Smilovic (2022); Munier and Decharme (2022) combine distance and UPA error criteria with a comparison between the gauging station's basin boundaries, delineated on the basis of a fine-resolution Digital Elevation Model (DEM), and the basin boundaries of the allocated cell based on the coarse-resolution hydrological grid. In both studies, the similarity between the watershed limits is characterized by the Intersection Over Union index (Rezatofighi et al., 2019).

The idea of comparing basin boundaries had been previously considered, although in a slightly different context, namely the evaluation of hydrological grids obtained from an upscaling algorithm (i.e., transforming a fine-resolution grid into a coarser-resolution grid). Initially, upscaling algorithms were also guided by a comparison between the UPA values of "small pixels" and the corresponding upscaled "large cells" (Reed, 2003; Paz et al., 2006; Yamazaki et al., 2008; Eilander et al., 2021). Visual inspections were performed to identify obvious inconsistencies between coarse and high-resolution river networks. To reduce these inconsistencies automatically, additional criteria have been proposed to complement the UPA criterion, such as the mean distance between river networks and the percentage within a buffer (Davies and Bell, 2009), the correctness index and the figure of merit (Li and Wong, 2010), and the watershed delineation percentages of consistency (Sousa and Paz, 2017).

In summary, numerous methods are available to achieve the objective of allocating a river point to a coarse-resolution grid cell. However, these methods have been developed in different contexts and have rarely been compared. This study aims at comparing the results obtained from three different types of methods for allocating a large number (2580) of river points to a coarse-resolution hydrological grid ($1km \times 1km$). The first method belongs to the category of area-based methods and employs distance and UPA error criteria. The third method is a contour-based approach. The second method is a topological method based on proximity along the river network. Another unique aspect of this work is that it deals with a detailed river network that includes river points with small drainage areas (minimum of $5km^2$), whereas most previous studies have been limited to the main river networks (catchments larger than $500km^2$ in Dottori et al. (2017) for instance). In this study, $1km \times 1km$ is considered as "coarse" resolution because the hydrological model is intended for the regional scale. However, the same problem could arise for hydrological modelling applied on a continental scale where the resolution will be coarser than 1km (i.e. 5 to 10 km).

The paper is structured as follows: Section 2 presents the three tested allocation methods as well as the validation metrics. Section 3 provides an overview of the case-study. Section 4 compares the results obtained with the three tested allocation methods, and Section 5 highlights the limitations of the study and summarises the key messages.

2 Allocation methods and validation metrics

In this section, we describe three methods that allow for the allocation of a river point to a coarse-resolution grid cell. The validation metrics used to compare the methods are described at the end of the section.

2.1 Method 1: area-based method

Area-based methods can be traced back to Döll and Lehner (2002), who proposed allocating river points to the coarse-resolution grid cells containing the points, provided that the relative difference between coarse and reference resolution UPAs did not exceed 5%. This criterion led, in their case, to a manual re-allocation of 35% of the points. In order to automate the allocation procedure, Lehner (2012) proposed to select the grid cell within a 5km radius search area around each river point (see Figure 2) with the lowest value of a discrepancy criterion $D = RA + 2R$, where RA stands for the relative difference between UPAs that should not exceed 50% and R for the distance between the point and the centre of the grid cell. In most other works (Zhao

70 et al., 2017; Sutanudjaja et al., 2018; Wang et al., 2018; Burek et al., 2020), RA is the only selection criterion, the radius of the search area (1-25km, depending on the spatial resolution) and the maximum acceptable RA value for a successful allocation (10-30%) varying between studies. To maximise the proportion of allocated river points and to optimise the computation times, the approach proposed herein proceeds in three possible successive steps. At step 1, the closest grid cell verifying $RA < 10\%$ and $R < 3$ cells is selected, if it exists. If it does not, the maximum RA values is increased to 20% at step 2 and 30% at step 3.

75 It can be noted that the proposed approach combines area and distance criteria. Also, if a maximum difference between UPAs of 30% is a recurrent choice in the literature, e.g (Burek et al., 2020), regardless of the studied model resolutions, the distance criterium $R < 3$ is more study-dependant. In the present study, it appeared after some tests as a good compromise providing accurate results. However when using global-scale hydrological models and coarser grids, the value of R may have to be adjusted.

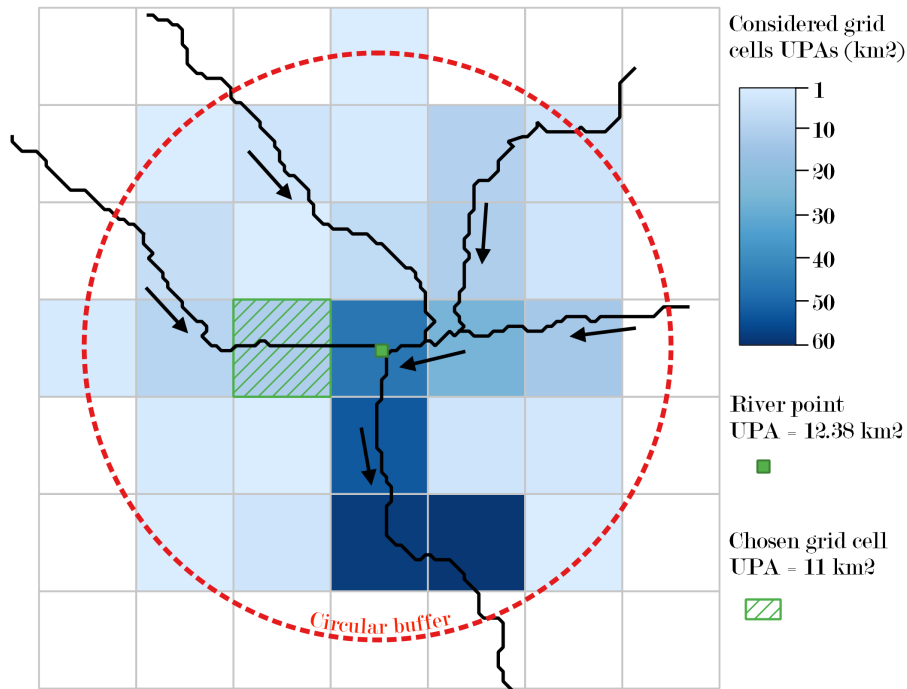


Figure 2. Illustration of Method 1: grid cells candidates for a specific river point. In this situation, the river point is allocated to the green-hatched grid cell.

80 2.2 Method 2: topology-based method

This second method requires a vector-based river network and the definition of coarse grid cells' *outlet points*. The cells' outlet points are located and selected according to the IHU upscaling method (Eilander et al., 2021), used to generate the coarse-resolution hydrological modelling grid (see section 3.2). Each river point can then be connected to the closest upstream or

85 downstream grid cell outlet point and hence allocated to the corresponding grid cell, provided that both points belong to the same river reach, i.e. are not separated by a network confluence (case of point P3 in Figure 3). With this method, river points located between two confluences within the same grid cell cannot be allocated.

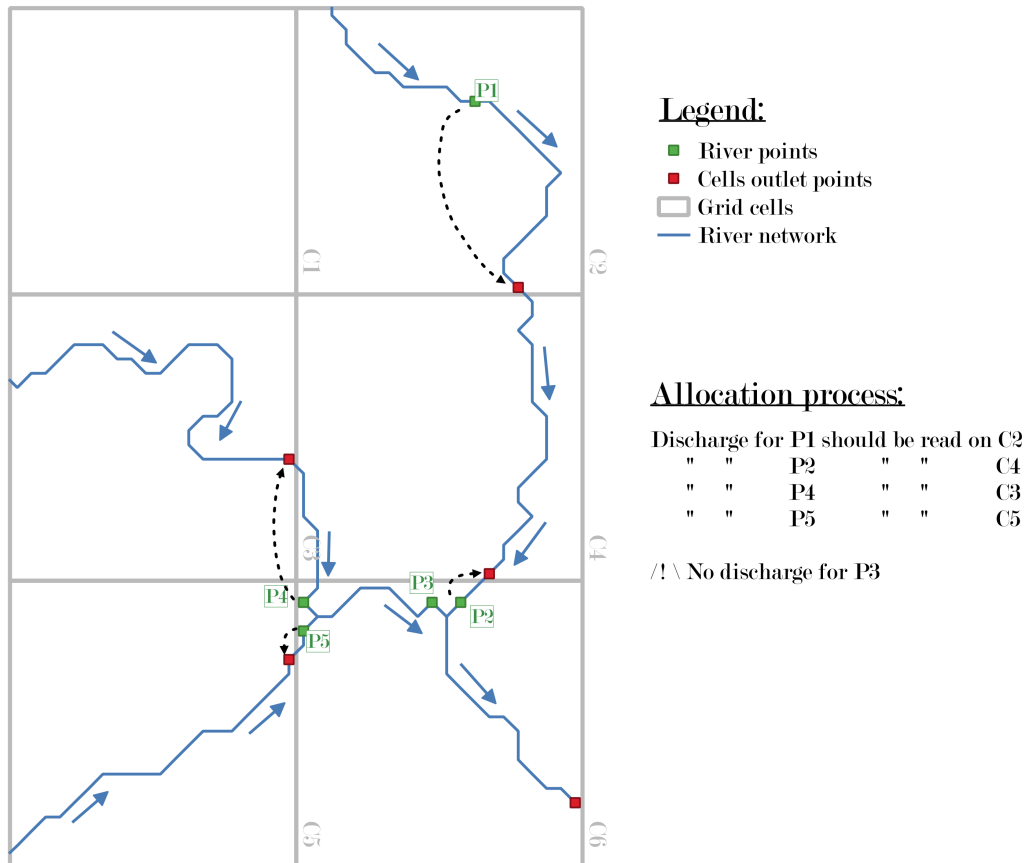


Figure 3. Illustration and limits of Method 2: connection of river points and cells outlet points (black dotted arrows) with an impossibility for point P3, located between two confluences in the same grid cell.

2.3 Method 3: contour-based method

90 Several previous works have stressed the importance of considering the consistency of watershed contours for the evaluation or optimisation of upscaling or allocation methods (Davies and Bell, 2009; Li and Wong, 2010; Sousa and Paz, 2017). Method 3 is similar to method 1, except that it is not only based on the comparison between upstream watershed surfaces, but also between upstream watershed contours. While Munier and Decharme (2022); Burek and Smilovic (2022) did propose an allocation criterion based on a combination of an area-based and a contour-based criterion, it is proposed herein to base the selection of the appropriate grid cell for each river point based on a single criterion, namely the critical success index, CSI (see eq. 1). The

CSI is a standard score to compare surfaces, often used to compare flood inundation models for instance (Fleischmann et al., 2019; Hocini et al., 2021).

$$CSI = \frac{a}{a + b + c} \quad (1)$$

Where a (HIT, see figure 4) is the overlapping area between the reference upstream watershed of the considered river point and the upstream watershed of the candidate grid cell, defined on the coarse-resolution grid using the TAUDEM library (Tarboton, 1997). "b" is the area of the reference watershed not overlapping with the coarse grid watershed (MISS) and conversely, "c" is the area of the coarse grid watershed, not overlapping with the reference watershed (FALSE ALARMS). CSI is equal to 1 in case of a perfect overlap and 0 when there is no overlap at all. It can be noted that the CSI has often been used with alternative denominations in previous studies, such as the Intersection over Union criterion (Munier and Decharme, 2022; Burek and Smilovic, 2022), the Figure of Merit (Li and Wong, 2010), or Fit Metric (Fleischmann et al., 2019).

The grid cell maximising the CSI value is selected among the 9 cells closest to the considered river point. If a minimum CSI value is not reached (i.e. 0.4 for watershed areas under 10 km^2 and 0.6 otherwise), the search area is extended to the $7 \times 7 = 49$ closest grid cells. Tests carried out prior to this choice showed that extending the research area to the $5 \times 5 = 25$ closest grid cells did not allow most of the targeted cases to be corrected. The CSI thresholds can be adjusted (see section 4.4), as well as the surface threshold and the extended research area, since they may depend on the model resolution.

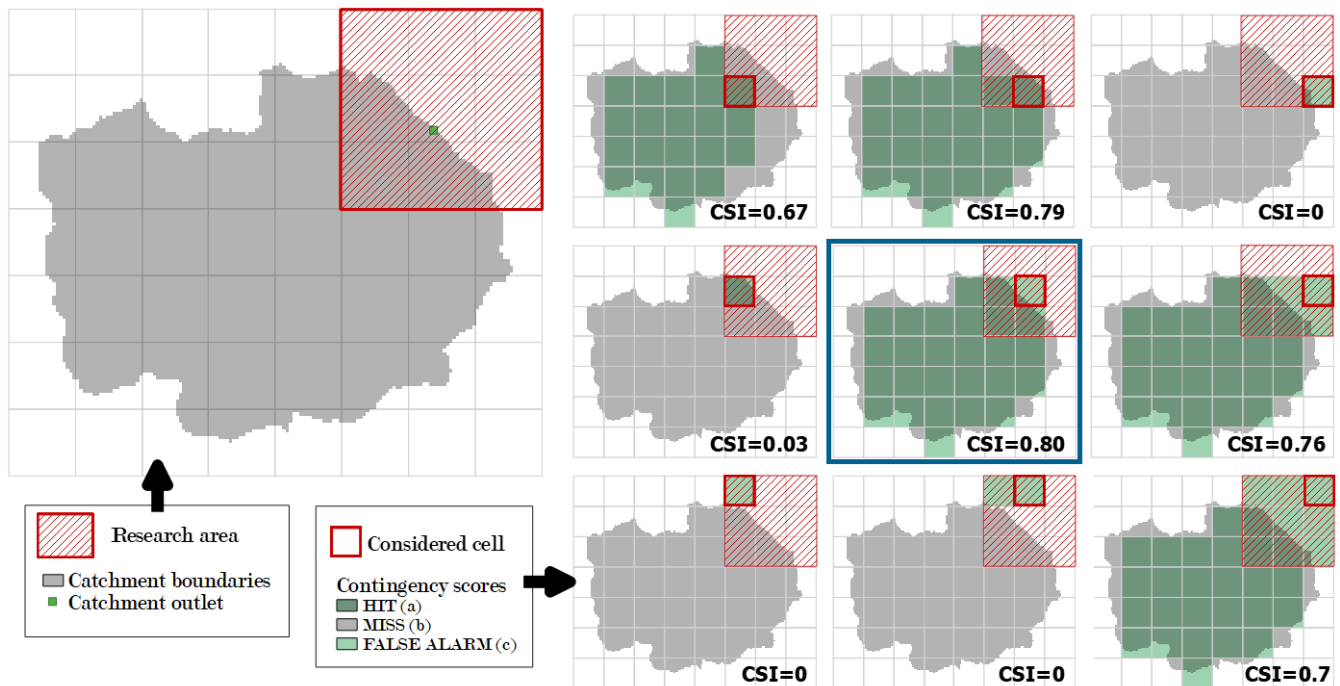


Figure 4. Illustration of Method 3: CSI calculations for the nine candidate cells. In this situation, the river point is allocated to the candidate cell of the blue box scenario, which maximises the CSI ($CSI = 0.80$).

2.4 Evaluation metrics

110 The allocation procedures aims at relating points of the river network, often corresponding to a gauging station, to coarse grid
cells of a distributed hydrological model, with the upstream watershed closest to the actual watershed, or at least closest to the
watershed delineated based on the finest available geographical data. Therefore, the CSI appears as the best suited score for
the efficiency evaluation of allocation methods and will be used hereafter. The CSI is calculated based on the low resolution
115 of a higher implementation complexity and significantly larger computation times, as will be illustrated herein. Hence, the
main question will be : "how well do methods 1 and 2 compared to method 3 ?"

3 Case study and data

The test area covers three departments in the Eastern Mediterranean region of France, with a total surface area exceeding
15,000 km^2 (figure 5). Two geographical datasets have been used to implement and compare the allocation methods: shapefiles
120 of the river points to be allocated and their reference catchments boundaries, and a raster describing the coarse-resolution grid
specifically designed for the purpose of the study.

3.1 The river points to be allocated

The BNBV (Base Nationale des Bassins Versants) is a French reference GIS layer describing the network of rivers with an
upstream catchment area larger than $5km^2$, over the whole territory of France. It was produced by Organde et al. (2013), based
125 on the processing of a hydrologically-validated 50m-resolution flow direction grid. It includes a vector description of the river
reaches and identifies approximately 15,000 points of interest along the river network across mainland France. These points
correspond to locations of gauging stations, urban areas, confluences, river mouths. Intermediate outlets were also added to
ensure comprehensive coverage of the whole river network. The upstream watershed limits and areas are associated to each
BNBV point.

130 Figure 5 displays the BNBV outlets and river reaches in the Eastern Mediterranean region. BNBV outlets located in the
étang de Berre area were excluded from our study due to the lack of meaningful flow direction in a lagoon. The region contains
2580 BNBV outlets that will be allocated to a coarse-resolution grid. The vector representation of the upstream catchment
limits serves as the reference for the evaluation and for the implementation of Method 3, while the vector description of river
reaches is essential for Method 2.

135 3.2 The coarse-resolution hydrological modelling grid

Regional gridded hydrological models are often implemented on 1km resolution grids, aligning with the typical resolution of
operational radar-based quantitative precipitation estimates. In this context, the $1km \times 1km$ hydrological modelling grid was
herein generated by upscaling the 50m flow direction grid from the BNBV database using the IHU method (Eilander et al.,

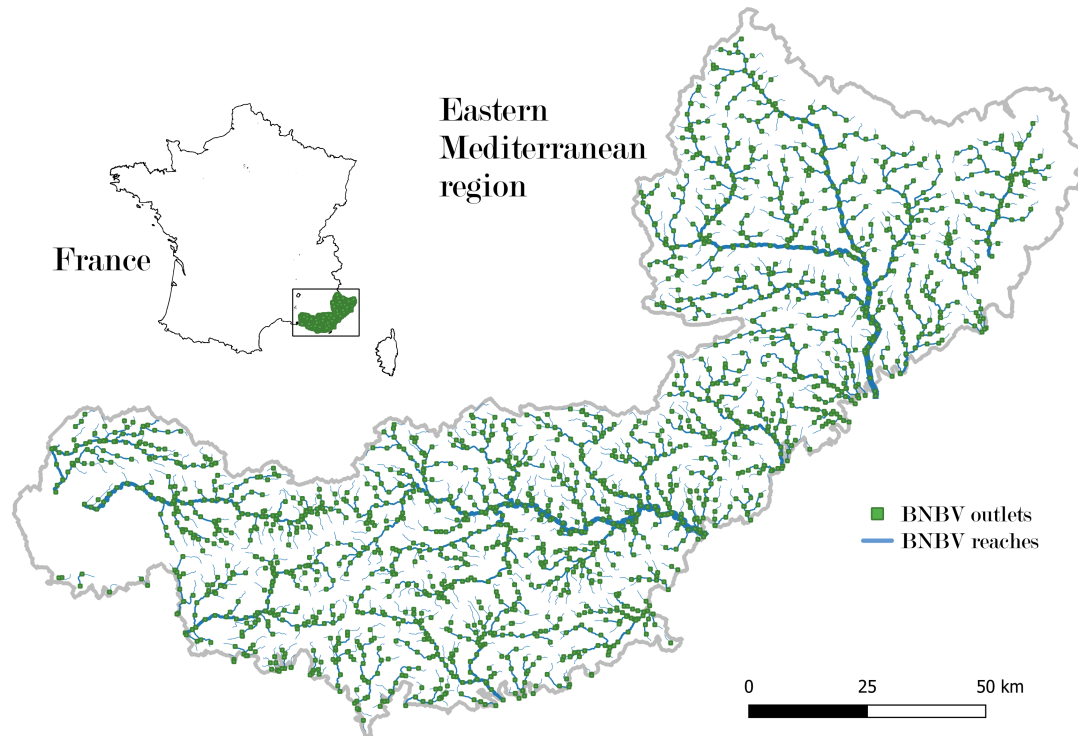


Figure 5. The 2580 BNBV outlets on the French Eastern Mediterranean region.

2021), see figure 6 to visualize the upscaling results. The IHU method incorporates principles from previous upscaling methods
 140 (Döll and Lehner, 2002; Fekete et al., 2001; Olivera et al., 2002; Paz et al., 2006; Wu et al., 2011) and has demonstrated superior
 performance compared to the benchmarks methods, e.g. DMM method (Olivera et al., 2002) and EAM method (Yamazaki et al.,
 2008). Moreover, the IHU method is the only fully automated and open-source flow direction grid upscaling method known
 to the authors. After implementing the IHU method, we made minimal manual corrections to the flow direction grid. Only a
 small number of cells, approximately a dozen out of around 14,000 cells, required adjustments. These manual corrections were
 145 primarily made along the zone's borders, particularly near the coastline.

4 Results

4.1 Advantages and disadvantages of each method

Table 1 provides an overview of the general advantages and disadvantages of each method. Method 1 and 2 demonstrate su-
 perior performance in terms of computation times. The most time-consuming stage of Method 3 is the computation of the
 upstream catchment for each candidate cell, and its comparison with the reference catchment. The duration of these processes
 150 will naturally increase with the size of the considered case study and the number of points to be allocated. However, the com-

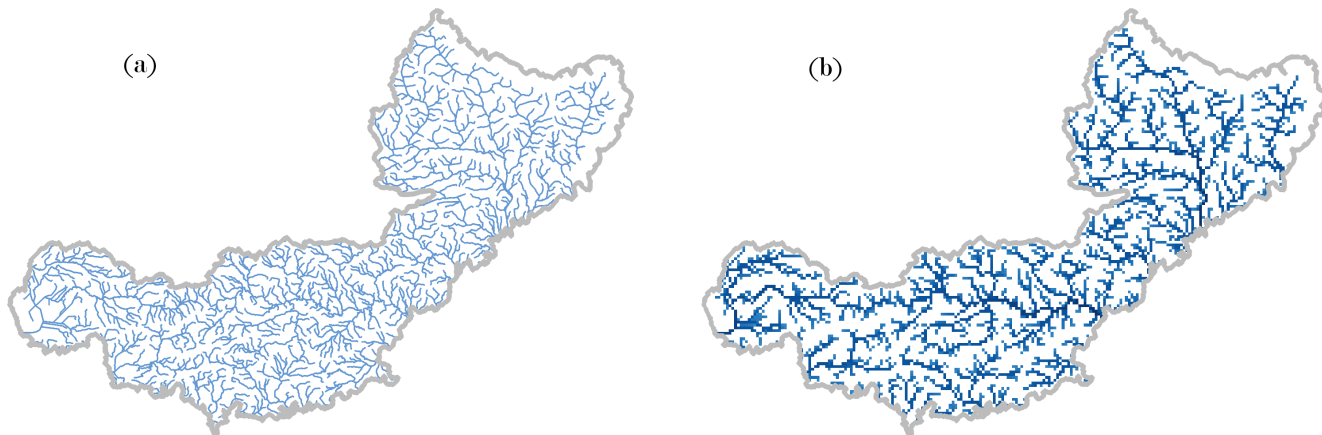


Figure 6. Initial 50m river network vectorized for $S > 5km^2$ (a) and 1km upscaled surface accumulation ($S > 5km^2$) grid (b).

putation times might not be considered as a crucial issue, since the allocation of river points to grid cells need do be performed only once, before hydrological modelling. Method replicability is probably a more important issue for this work. Method 2 is limited in its compatibility as it relies on the IHU upscaling, As a consequence, it makes this method inoperable in contexts
 155 where the coarse resolution gridded network does not coincide with the river network (i.e. both networks may come from different data sources). On the other hand, Method 3 requires reference catchment boundaries. Furthermore, the confidence level varies between the methods. Method 1 relies solely on basin area information, which means that near confluences, it may allocate a river point to a neighboring grid cell with a similar basin area but belonging to a different catchment. Method 2 ensures that the river points and chosen grid cell belong to the same river reach, while Method 3 selects the cell with the most
 160 similar upstream catchment in terms of basin contour and location.

	Method 1	Method 2	Method 3
Computation times	\simeq Second	\simeq Second	\simeq Hour
Replicability	Replicable	Requires the definition of <i>cells outlet points</i>	Replicable
Additional data	None	River network vector and cell outlet points	Reference basin limits
Confidence level	Variable	High	High
% of allocated outlets	Potentially < 100	Potentially < 100	100

Table 1. Advantages and disadvantages of each method.

Lastly, Method 3 guarantees the allocation of all river points, covering 100% of the dataset, whereas the other two methods may not achieve complete allocation. For instance, river points similar to P3 in Figure 3, i.e. points located between two confluences within the same grid cell, are not allocated with Method 2. These points represent about 2% of the total number of points to be allocated in the considered region. One potential solution could consist in selecting, among the closest upstream

165 or downstream outlets of grids, the one with the nearest upstream watershed area. Another solution would be to allocate P3 to
 both upstream cells (C3 and C5 in Figure 3), however in this paper we chose not to permit the allocation to several grid cells.
 In these cases, Method 2 detects that all allocations to a single grid cell will be imperfect, which is why it was not deemed
 essential to propose an allocation solution for these specific points, for the sake of comparison.

4.2 Comparison of allocation performances

170 In order to compare the quality of allocation among the three methods, we initially examined the CSI statistics. However, it
 should be noted that while Method 1 and Method 3 successfully allocated all 2580 considered river points (BNBV outlets in
 the Eastern Mediterranean zone), Method 2 only allocated 2532 points (98%). To ensure a fair comparison, these 48 points
 were excluded from the analysis. Figure 7 displays the histograms of CSI values for each method, along with the corresponding
 mean and median values.

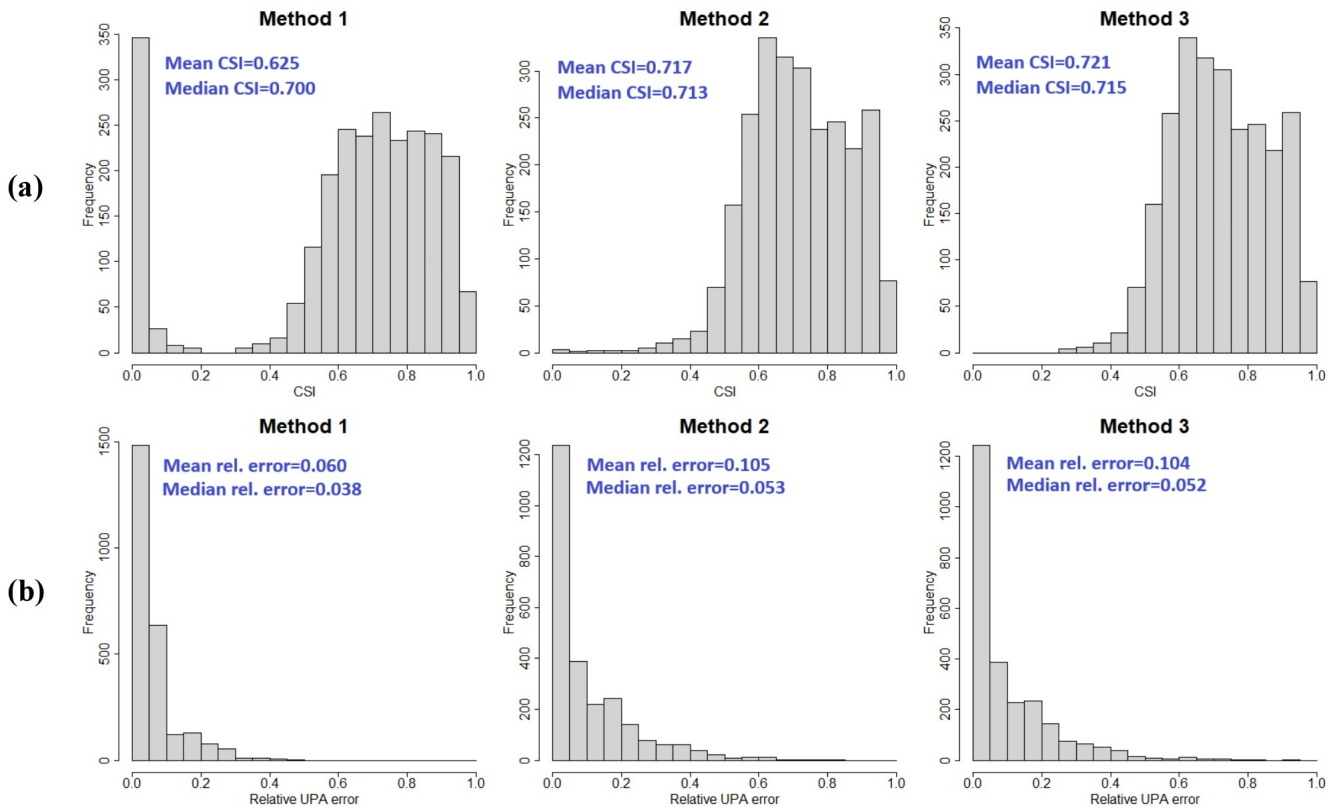


Figure 7. Histograms of (a) CSI values and (b) UPA relative error for the three allocation methods.

175 The results indicate that Method 1 has significantly lower performances compared to Methods 2 and 3. This discrepancy is primarily attributed to a high percentage of river points with very low CSI scores (less than 0.05) in Method 1. These low scores occur when a river point is allocated to a cell solely based on similar basin area, disregarding substantial differences in the shape and location of the upstream catchments (e.g. figure 1). In its state, Method 2 cannot allocate 100% of the river outlets, even though it could with a small extension (see previous section). Method 3 was able to allocate the excluded outlets
180 successfully, with a mean CSI of 0.7. Additionally, Figure 7 highlights that Method 3 consistently yields a minimum CSI of around 0.25, whereas Method 2 falls below 0.05 (with 12 river points having CSI < 0.25). Figure 8 provides a more detailed comparison of CSI scores between Method 2 and Method 3.

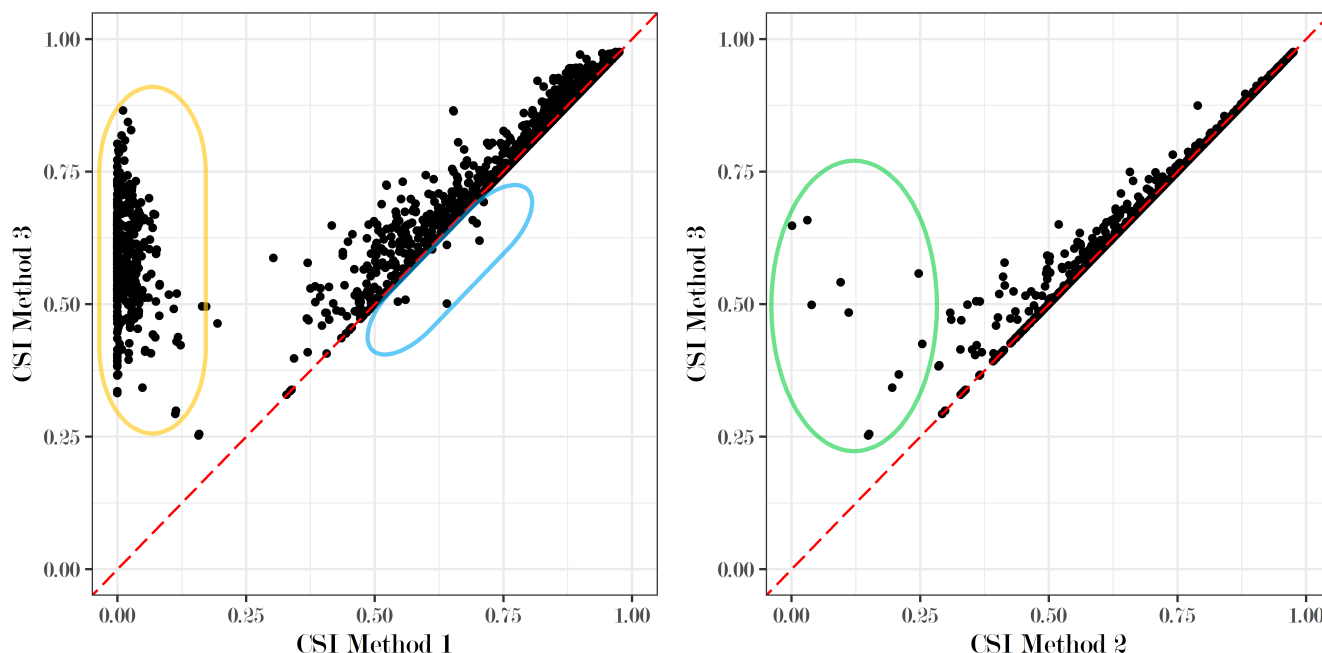


Figure 8. Comparison of CSI scores for each outlet, between Methods 3 and 1, and between Methods 3 and 2.

It clearly demonstrates the consistent superiority of Method 3 over Method 2. While the CSI differentials are generally small, the green circle in the figure highlights cases where the differential can be significant. These are characterised by river points with small upstream basin areas (less than $12km^2$) located far from the nearest cell outlet point, resulting in notable differences in UPAs. Figure 9 shows an example of these situations, which are often complex configurations where different branches of the network are in close proximity to each other, often within the same grid cell. As a consequence, the upscaled flow directions cannot represent faithfully the river network, and all candidate cells would give a mediocre allocation result. However we argue that Method 3 will give the most correct allocations in these situations. Furthermore, Figure 8 reveals that
185 Method 3 effectively corrects the allocation errors made by Method 1 (indicated by orange circles in the figure). However, it also indicates that there are surprisingly cases where Method 1 yields slightly better CSI scores than Method 3 (nine cases
190

circled in blue). This suggests that the minimum CSI values defined in section 2.3 for the two possible steps of Method 3 may not be optimal, a topic that will be further discussed in Section 4.4.

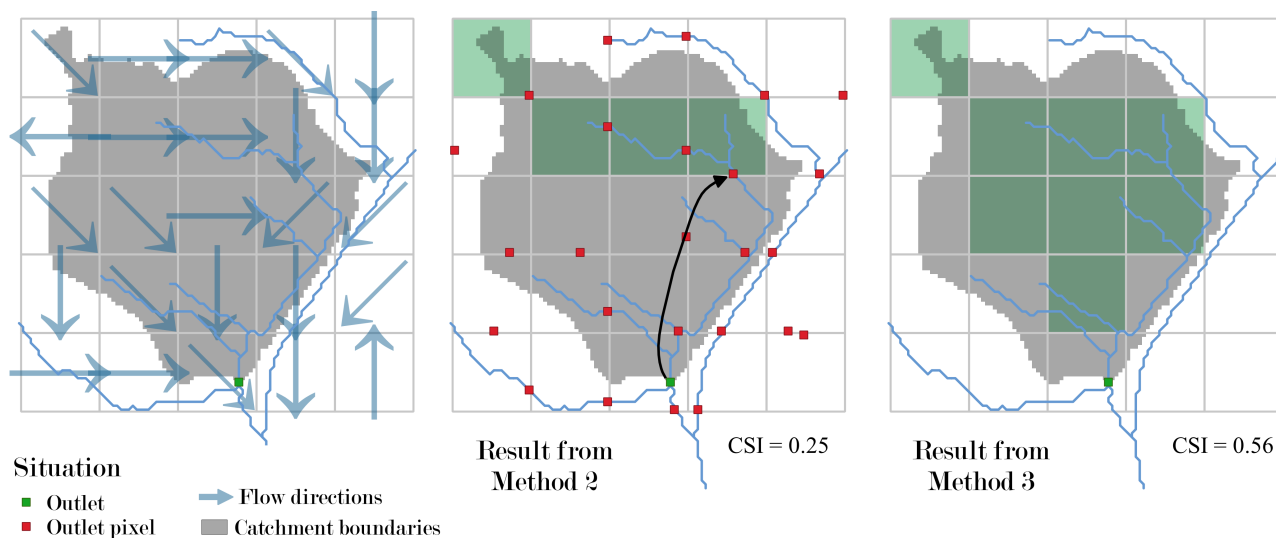


Figure 9. An example of high CSI differential between Methods 2 and 3 (basin area 12km^2). For the sake of comprehension, small ($<5\text{km}^2$) tributaries were added to the vectorial network in this figure, explaining why the river outlet can be allocated with Method 2 despite being apparently located between two confluences within the same grid cell.

195 Finally, the difference in UPAs between each reference catchment and its corresponding coarse resolution catchment was also calculated, even though we decided not to use this metric for the comparison of the three methods, in agreement with the many hydrologists (e.g. Davies and Bell, 2008) who have pointed out that an evaluation based on UPA comparison is highly uncertain. This thesis is supported by the results presented on figure 7b, which show a slightly smaller difference in upstream area for Method 1 than for Methods 2 and 3. Thus, comparing the three allocation methods based on this criterion only would be misleading, because it would not account for all the cases where a river point is allocated to a hydrological modelling cell
200 describing a different upstream catchment, if they have similar UPAs. However, these results show that the relative difference in UPAs remain limited (mostly lower than 15%) for all three methods.

4.3 The influence of the upstream basin area

The analyses performed in this study also revealed that basin area plays a significant role in explaining the largest allocation errors. Specifically, among all the river points allocated using Method 1 and having a CSI lower than 0.05, 80% have a basin area smaller than 9km^2 . Similarly, with Method 3, among all the river points with CSI scores lower than 0.6, 100% have a
205 basin area lower than 25km^2 , and 92% have a basin area lower than 10km^2 .

The boxplot comparisons in Figure 10 highlights two important observations. Firstly, Method 3 effectively prevents the largest allocation errors generated by Method 1. Secondly, these allocation errors predominantly occur for small catchment

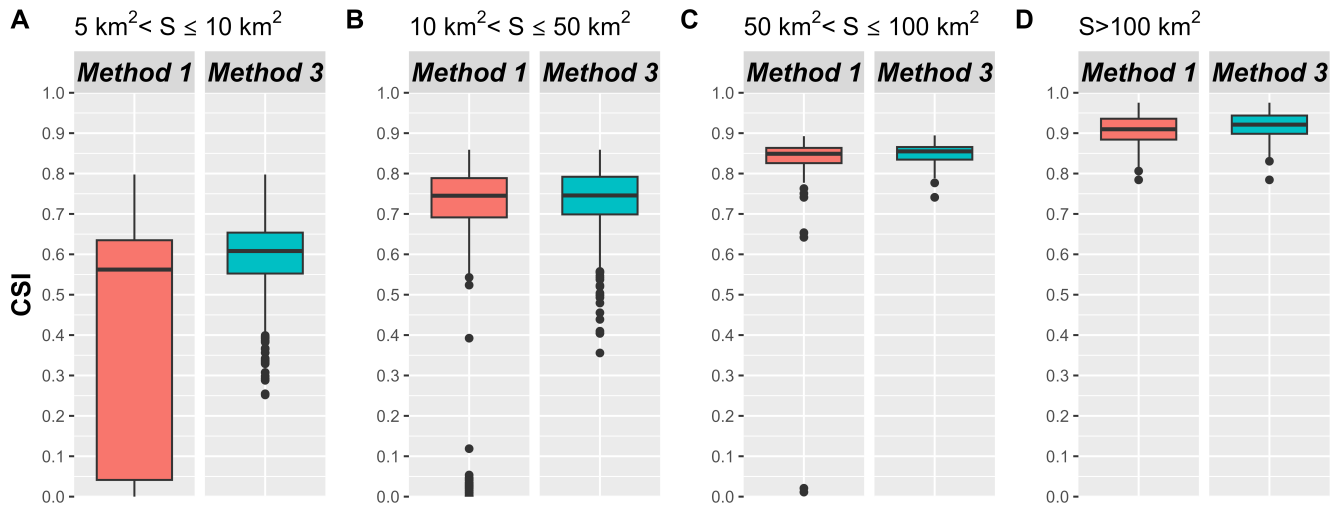


Figure 10. Boxplots of CSIs divided into classes of surfaces for Methods 1 and 3.

areas. For catchments larger than $100km^2$, CSI scores systematically exceed 0.75 for both methods. Consequently, Method 1
 210 can be considered a reliable method when applied to the main river network, which explains its widespread usage in previous
 studies : i.e. for almost all the studied watersheds, the minimum catchment size in various previous research works is between
 100 and $10,000 km^2$ (Fekete et al., 2002; Döll and Lehner, 2002; Sutanudjaja et al., 2018; Wang et al., 2018; Zhao et al., 2017;
 Burek et al., 2020; Polcher et al., 2022).

In addition, Figure 10 also confirms that, with Method 3, the lowest CSI scores are obtained for small catchments - the
 215 minimum CSI value is consistently higher than 0.7 for catchment sizes larger than $50km^2$. The low CSI values reflect the
 uncertainties affecting the boundaries of small basins defined on a 1km resolution grid, particularly pronounced for narrow
 watersheds. However, it is important to note that the impact of low CSI scores on the representation of rainfall is relatively
 minor for small catchments compared to larger ones, because of the limited variability of rainfall at scales of the order of a
 square kilometre.

220 4.4 Effect of the criterion conditioning Method 3 iteration

While Method 3 appears, without surprise, to be the most reliable method, it has also some shortcomings. One is the limited
 search zone on the coarse-resolution hydrological grid. The current implementation first considers only the nine surrounding
 pixels and then extends the search area to forty-nine surrounding pixels under certain conditions. This approach was chosen
 to reduce the computation time, which is significantly longer for Method 3 compared to the other two methods. The criterion
 225 used for the second iteration depends on the catchment size, based on the assumption that the upstream drainage area (UPA)
 would influence the allocation results.

The second iteration of Method 3, is only activated for 70 outlets out of 2580. Extending the research area in the second iteration improved the allocation for only 10 out of these 70 outlets. However, the increase in CSI for these improved allocations was quite significant, with a median increase of 133%. Moreover, it is obvious on figure 8 that Method 3 does not lead to the optimal allocation in some cases : see the 9 cases circled in blue. A visual analysis indicates that the search area composed of the 49 surrounding grid cells would have solved the problem, if the second iteration of Method 3 would have been activated. Increasing the threshold values for this activation to 0.55 (resp. 0.65) for catchment areas lower (resp. higher) than 10 km^2 , would solve the problem encountered for these 9 points in the present case study, but at the cost of higher computing times : 353 points processed in the second iteration of method 3, instead of 70 for the initial threshold values.

235 5 Discussion and conclusions

This comparative study of methods allocating river points to coarse grid cells was driven by the shift in approach from area-based methods to contour-based methods. In this work, we compared these two categories of methods and introduced a new approach based on topological proximity.

5.1 Performance and scope of each method

240 The study results revealed that contour-based methods were more relevant and satisfying from a hydrological point of view, although costly in terms of computing time. The introduced topology-based method is a good compromise because it leads to similar allocation quality than the contour-based method. However, it is inoperable when the fine and coarse resolutions river networks come from different data sources, since it requires the definition of "cells outlet points" as well as the vector-based description of the river network. Moreover, it cannot allocate as many points as the contour-based method.

245 The area-based method generated numerous allocation errors, which the contour-based method was able to address for a significant portion of them. However, upon closer examination, it was observed that the performance gap between both methods was more pronounced for small catchments, while being less significant for larger catchments (with $S > 100 \text{ km}^2$). The area-based methods thus lead to satisfying results if we only consider river points with large UPAs compared to the grid cell resolution. Based on the results obtained, we would recommend a minimum factor of 100 between a river point's UPA and
250 the resolution of the hydrological modelling grid for the application of an area-based method.

The transferability of the results outside the test area and to coarser resolutions (i.e. global hydrological models) is debatable, as there are many uncertainties and non-linearities in the representation of hydrological information at such larger scales and coarser resolutions. However, it is very likely that, with coarser resolution grids, allocation problems will increase and that errors related to area-based methods will impact larger catchments (i.e. larger than 100 km^2). Even if this needs to be verified,
255 the "contour-based" method will certainly remain more effective at coarser resolutions than the "area-based" method.

5.2 Remaining limitations of allocating river points to coarse grid cells

Even if allocation errors are reduced, some low CSI scores remain with contour-based methods, due to the inherent difficulty of representing the boundaries of small basins at a 1km resolution. The situation illustrated in figure 9 is an example of configurations where different branches of the river system are crossing the same coarse grid cell, which makes it impossible to correctly represent the river network and basin contour with coarse flow directions. However, it is important to note that these inevitable errors resulting in low CSI scores are generally found on small catchments, and are less problematic than low CSI scores on larger catchments, because of the more limited variability of rainfall at smaller spatial scales.

A possible way to reduce these remaining errors could be to allocate river points to multiple grid cells, by either taking the sum of the upstream cells, or the difference of the downstream cells, even though it could complicate the hydrological modelling at a later stage. Another approach that could circumvent the challenges faced would be to use hydrological models structured based on vectorial objects instead of regular grids. These models preserve the topology of river networks and allow seamless integration of observational data. However, vector-based modeling also introduces its own challenges related to data and computational requirements and the need for accurate input data.

Code and data availability. All data and codes used for this study are provided in an open-access format on the French public data platform Data gouv: <https://doi.org/10.57745/7GCCUN> (Godet, 2023)

Author contributions. JG performed the computational work, helped by PN, and did most of the writing. PN, OP, EG and PJ supervised this work and reviewed the paper. JG, OP and EG replied to the reviewers' comments.

Competing interests. The authors declare that they have no conflict of interest.

Acknowledgements. The BNBNV database was provided by the SCHAPI (Service central d'hydrométéorologie et d'appui à la prévision des inondations). The authors would like to thank Patrick Arnaud from INRAE Aix-en-Provence, who wrote and shared the core code used for performing the area-based method, and Nouhaila Mesbahi, who first worked on this method during her internship at Gustave Eiffel University in 2021.

Financial support. This research was performed within the framework of the MUFFINS project (ANR-21-CE04-0021-01).

References

- 280 Bartholmes, J. C., Thielen, J., Ramos, M. H., and Gentilini, S.: The european flood alert system EFAS – Part 2: Statistical skill assessment of probabilistic and deterministic operational forecasts, *Hydrology and Earth System Sciences*, 13, 141–153, <https://doi.org/10.5194/hess-13-141-2009>, publisher: Copernicus GmbH, 2009.
- Burek, P. and Smilovic, M.: The use of GRDC gauging stations for calibrating large-scale hydrological models, *Earth System Science Data Discussions*, pp. 1–18, <https://doi.org/10.5194/essd-2022-231>, publisher: Copernicus GmbH, 2022.
- 285 Burek, P., Satoh, Y., Kahil, T., Tang, T., Greve, P., Smilovic, M., Guillaumot, L., Zhao, F., and Wada, Y.: Development of the Community Water Model (CWatM v1.04) – a high-resolution hydrological model for global and regional assessment of integrated water resources management, *Geoscientific Model Development*, 13, 3267–3298, <https://doi.org/10.5194/gmd-13-3267-2020>, publisher: Copernicus GmbH, 2020.
- Davies, H. and Bell, V.: Assessment of methods for extracting low-resolution river networks from high-resolution digital data, *Hydrological Sciences Journal*, 54, 17–28, <https://doi.org/10.1623/hysj.54.1.17>, 2009.
- 290 Dottori, F., Kalas, M., Salamon, P., Bianchi, A., Thielen Del Pozo, J., and Feyen, L.: A near real-time procedure for flood hazard mapping and risk assessment in Europe, in: E-proceedings of the 36th IAHR World Congress, <http://89.31.100.18/~iahrpapers/85343.pdf>, 2015.
- Dottori, F., Kalas, M., Salamon, P., Bianchi, A., Alfieri, L., and Feyen, L.: An operational procedure for rapid flood risk assessment in Europe, *Natural Hazards and Earth System Sciences*, 17, 1111–1126, <https://doi.org/10.5194/nhess-17-1111-2017>, publisher: Copernicus GmbH,
- 295 2017.
- Döll, P. and Lehner, B.: Validation of a new global 30-min drainage direction map, *Journal of Hydrology*, 258, 214–231, [https://doi.org/10.1016/S0022-1694\(01\)00565-0](https://doi.org/10.1016/S0022-1694(01)00565-0), 2002.
- Eilander, D., van Verseveld, W., Yamazaki, D., Weerts, A., Winsemius, H. C., and Ward, P. J.: A hydrography upscaling method for scale-invariant parametrization of distributed hydrological models, *Hydrology and Earth System Sciences*, 25, 5287–5313, <https://doi.org/10.5194/hess-25-5287-2021>, publisher: Copernicus GmbH, 2021.
- 300 Fekete, B. M., Vörösmarty, C. J., and Lammers, R. B.: Scaling gridded river networks for macroscale hydrology: Development, analysis, and control of error, *Water Resources Research*, 37, 1955–1967, <https://doi.org/10.1029/2001WR900024>, 2001.
- Fekete, B. M., Vörösmarty, C. J., and Grabs, W.: High-resolution fields of global runoff combining observed river discharge and simulated water balances, *Global Biogeochemical Cycles*, 16, 15–1–15–10, <https://doi.org/10.1029/1999GB001254>, 2002.
- 305 Fleischmann, A., Paiva, R., and Collischonn, W.: Can regional to continental river hydrodynamic models be locally relevant? A cross-scale comparison, *Journal of Hydrology X*, 3, 100 027, <https://doi.org/10.1016/j.hydroa.2019.100027>, 2019.
- Godet, J.: Three methods for allocating river points to coarse resolution grid cells: R codes, case study data and results, <https://doi.org/10.57745/7GCCUN>, 2023.
- Hocini, N., Payrastre, O., Bourgin, F., Gaume, E., Davy, P., Lague, D., Poinson, L., and Pons, F.: Performance of automated methods for flash flood inundation mapping: a comparison of a digital terrain model (DTM) filling and two hydrodynamic methods, *Hydrology and Earth System Sciences*, 25, 2979–2995, <https://doi.org/10.5194/hess-25-2979-2021>, publisher: Copernicus GmbH, 2021.
- 310 Lehner, B.: Derivation of watershed boundaries for GRDC gauging stations based on the HydroSHEDS drainage network - Technical Report prepared for the GRDC, Global Runoff Data Centre, Tech. rep., McGill University Montreal, Koblenz, Germany, 2012.
- Li, J. and Wong, D. W. S.: Effects of DEM sources on hydrologic applications, *Computers, Environment and Urban Systems*, 34, 251–261, <https://doi.org/10.1016/j.compenvurbsys.2009.11.002>, 2010.
- 315

- Munier, S. and Decharme, B.: River network and hydro-geomorphological parameters at 1/12 resolution for global hydrological and climate studies, *Earth System Science Data*, 14, 2239–2258, <https://doi.org/10.5194/essd-14-2239-2022>, publisher: Copernicus GmbH, 2022.
- Olivera, F., Lear, M. S., Famiglietti, J. S., and Asante, K.: Extracting low-resolution river networks from high-resolution digital elevation models, *Water Resources Research*, 38, 13–1–13–8, <https://doi.org/10.1029/2001WR000726>, 2002.
- 320 Organde, D., Javelle, P., Ardilouze, C., and Lamblin, R.: Base nationale des bassins versants du SCHAPI, Tech. rep., HYDRIS Hydrologie, 2013.
- Paz, A. R., Collischonn, W., and Lopes da Silveira, A. L.: Improvements in large-scale drainage networks derived from digital elevation models, *Water Resources Research*, 42, <https://doi.org/10.1029/2005WR004544>, 2006.
- Polcher, J., Schrapfer, A., Dupont, E., Rinchioso, L., Zhou, X., Boucher, O., Mouche, E., Ottlé, C., and Servonnat, J.: Hydro-
 325 logical modelling on atmospheric grids; using graphs of sub-grid elements to transport energy and water, *EGUsphere*, pp. 1–34, <https://doi.org/10.5194/egusphere-2022-690>, publisher: Copernicus GmbH, 2022.
- Reed, S. M.: Deriving flow directions for coarse-resolution (1–4 km) gridded hydrologic modeling, *Water Resources Research*, 39, <https://doi.org/10.1029/2003WR001989>, 2003.
- Rezatofghi, H., Tsoi, N., Gwak, J., Sadeghian, A., Reid, I., and Savarese, S.: Generalized Intersection Over Union: A Metric and a Loss
 330 for Bounding Box Regression, in: 2019 IEEE/CVF Conference on Computer Vision and Pattern Recognition (CVPR), pp. 658–666, <https://doi.org/10.1109/CVPR.2019.00075>, iSSN: 2575-7075, 2019.
- Sousa, T. M. I. and Paz, A. R.: How to evaluate the quality of coarse-resolution DEM-derived drainage networks, *Hydrological Processes*, 31, 3379–3395, <https://doi.org/10.1002/hyp.11262>, 2017.
- Sutanudjaja, E. H., van Beek, R., Wanders, N., Wada, Y., Bosmans, J. H. C., Drost, N., van der Ent, R. J., de Graaf, I. E. M., Hoch, J. M.,
 335 de Jong, K., Karssenber, D., López López, P., Peßenteiner, S., Schmitz, O., Straatsma, M. W., Vannamete, E., Wissler, D., and Bierkens, M. F. P.: PCR-GLOBWB 2: a 5 arcmin global hydrological and water resources model, *Geoscientific Model Development*, 11, 2429–2453, <https://doi.org/10.5194/gmd-11-2429-2018>, publisher: Copernicus GmbH, 2018.
- Tarboton, D. G.: A new method for the determination of flow directions and upslope areas in grid digital elevation models, *Water Resources Research*, 33, 309–319, <https://doi.org/10.1029/96WR03137>, 1997.
- 340 Thielen, J., Bartholmes, J., Ramos, M.-H., and de Roo, A.: The European Flood Alert System – Part 1: Concept and development, *Hydrology and Earth System Sciences*, 13, 125–140, <https://doi.org/10.5194/hess-13-125-2009>, publisher: Copernicus GmbH, 2009.
- Wang, F., Polcher, J., Peylin, P., and Bastrikov, V.: Assimilation of river discharge in a land surface model to improve estimates of the continental water cycles, *Hydrology and Earth System Sciences*, 22, 3863–3882, <https://doi.org/10.5194/hess-22-3863-2018>, publisher: Copernicus GmbH, 2018.
- 345 Wu, H., Kimball, J. S., Mantua, N., and Stanford, J.: Automated upscaling of river networks for macroscale hydrological modeling, *Water Resources Research*, 47, <https://doi.org/10.1029/2009WR008871>, 2011.
- Yamazaki, D., Masutomi, Y., Oki, T., and Kanae, S.: An Improved Upscaling Method to Construct a Global River Map, in: *Proceedings of the 4th Asia-Pacific Hydrology and Water Resources (APHW) Conference*, Beijing, 2008.
- Zhao, F., Veldkamp, T. I. E., Frieler, K., Schewe, J., Ostberg, S., Willner, S., Schauburger, B., Gosling, S. N., Schmied, H. M., Portmann,
 350 F. T., Leng, G., Huang, M., Liu, X., Tang, Q., Hanasaki, N., Biemans, H., Gerten, D., Satoh, Y., Pokhrel, Y., Stacke, T., Ciais, P., Chang, J., Ducharme, A., Guimberteau, M., Wada, Y., Kim, H., and Yamazaki, D.: The critical role of the routing scheme in simulating peak river discharge in global hydrological models, *Environmental Research Letters*, 12, 075 003, <https://doi.org/10.1088/1748-9326/aa7250>, publisher: IOP Publishing, 2017.