

# Short high-accuracy tritium data time series for assessing groundwater mean transit times in the vadose and saturated zones of the Luxembourg Sandstone aquifer

Laurent Gourdol<sup>1</sup>, Michael K. Stewart<sup>2</sup>, Uwe Morgenstern<sup>2</sup>, Laurent Pfister<sup>1,3</sup>

5 <sup>1</sup>Luxembourg Institute of Science and Technology (LIST), Belvaux, Luxembourg

<sup>2</sup>GNS Science, Tritium & Water Dating Laboratory, Lower Hutt, New Zealand

<sup>3</sup>University of Luxembourg, Faculty of Science, Technology and Medicine, Belval, Luxembourg

*Correspondence to:* Laurent Gourdol (laurent.gourdol@list.lu)

**Abstract.** Among the manifold ~~of~~ environmental tracers at hand, tritium is the only one that can inform on groundwater age within the time scale of hundred years for the entire flow system, i.e. unsaturated and saturated. However, while in the Southern Hemisphere a single water sample is sufficient for tritium-based young groundwater dating, several tritium measurements spanning over multiple years are still needed in the Northern Hemisphere to disentangle the natural cosmogenic tritium input from that caused by the atmospheric thermonuclear weapon tests mainly carried out in the early 1960s. Although it is advised to focus tritium dating on sites where long chronicles of tritium data are available, we tested in this study the potential for short high-accuracy tritium data series (~4 years) to date groundwater from 35 springs draining the Luxembourg Sandstone aquifer (Central Western Europe). We determined groundwater mean transit times by using the lumped parameter model approach in a Monte Carlo uncertainty estimation framework to provide uncertainty ranges inherent to the low number of tritium data at hand and their related analytical errors. Our results show that unambiguous groundwater mean transit time assessments cannot be determined solely based on such recent short tritium time series, given that several ranges of mean transit times appeared theoretically possible. Nonetheless we succeeded in discriminating groundwater mean transit times in the vadose and saturated zones of the aquifer through a stepwise decision process guided with several supplementary data. The mean transit time required for water to cross the vadose zone was estimated to be between  $0.5 \pm 0.5$  and  $8.1 \pm 1.2$  years depending on the spring, while for water to flow through the saturated zone it varied from  $5.7 \pm 2.4$  to  $18.9 \pm 4.6$  years (median  $\pm$  semi 5-95 percentile range). Our findings are consistent with both the tritium measurements of individual springs and the hydrogeological context of the study area. We specifically corroborated the ~~obtained~~ dating results using the known hydrogeological properties of the Luxembourg Sandstone aquifer, the hydrochemistry of the studied springs as well as their discharge dynamics. When translated into water velocities (which average ~12 m/year and ~170 m/year for the vadose and the saturated zones, respectively), the tritium dating results mirrored ~~particularly well~~ the horizontal-vertical anisotropy of the aquifer's hydraulic properties caused by the bedded character of the Luxembourg Sandstone. In addition to ~~improve~~ ~~improving~~ our understanding of water transit times in the Luxembourg Sandstone aquifer, this study demonstrates ~~on a larger scale~~ how it is currently possible to use short tritium time series to date young groundwater bodies at new sites in Central Europe.

**Keywords.** Tritium, groundwater, mean transit time, Luxembourg Sandstone aquifer.

## 1. Introduction

Determining the timescales at which precipitation is percolating from a recharge area through an aquifer to where it discharges naturally (springs, streams) or is extracted from pumping wells is of key importance for a better understanding of groundwater resources and their sustainable management (Purtschert, 2008; Purtschert et al., 2008). Assessments of groundwater transit times are key to identify, model or forecast anthropogenic impacts of past and present land use practices on groundwater quality (e.g., MacDonald et al., 2003; Morgenstern and Daughney, 2012; Morgenstern et al., 2015). This is especially the case for young groundwaters—i.e., groundwater recharged during the last hundreds of years, including the time of change from low to high intensified land use—which, Young groundwaters constitute the most important component of the active hydrological cycle (Gleeson et al., 2015) and are more vulnerable and prone to surface-borne anthropogenic contamination than old groundwaters (Newman et al., 2010; Beyer et al., 2014; Jasechko, 2019).

The use of tracers – i.e., substances which can be detected in the water and allow following, or tracing, the flow of water – is particularly suitable to assess transit times of hydrological systems (Leibundgut et al., 2009; Leibundgut and Seibert, 2011). Tracers are divided into two general categories – environmental or artificial – depending on how they enter the system to be studied. While artificial tracers are purposefully injected over a limited temporal and spatial scale to infer transit times through preferential fast flow paths, environmental tracers – which, as their name implies, are present in the environment – make it possible to assess the overall and integrated response of hydrological systems (e.g., Einsiedl, 2005; Lauber and Goldscheider, 2014). The common feature of the environmental tracers used as dating tools is that they are time-dependent, whether because of variable input concentrations during recharge, chemical or physical accumulation processes in the subsurface and/or radioactive decay (Morgenstern et al., 2010).

Among the environmental tracers at hand, tritium (radioactive hydrogen isotope  $^3\text{H}$ ) is particularly interesting for young groundwater dating (Newman et al., 2010; Beyer et al., 2014; Jasechko, 2019). Produced naturally in the atmosphere by cosmic-ray spallation processes (Lal and Peters, 1967), but also introduced artificially during the atmospheric nuclear weapons testing in the 1950's and 1960's (Morishima et al., 1985), tritium enters the water cycle as so-called “tritiated” water ( $^3\text{H}^1\text{HO}$ ). Water from precipitation arriving at the ground surface thus contains tritiated water molecules in a given initial concentration, which then decreases by radioactive decay while in transit through the hydrosystem. Tritium decays with a half-life of  $12.32 \pm 0.02$  years (Lucas and Unterweger, 2000) and has the potential for dating groundwater with mean transit times up to about 100-200 years (Cook and Solomon, 1997; Morgenstern and Daughney, 2012; Beyer et al., 2014).

Alternative gaseous tracers covering a similar dating range to tritium exist (e.g.,  $^3\text{He}$ , CFCs,  $\text{SF}_6$ ,  $^{85}\text{K}$ ) but their use has certain disadvantages (Morgenstern and Daughney, 2012; Cartwright et al., 2017; Gerber et al., 2018). Indeed, tritium, as part of the water molecule itself, allows inferring transit times including travel time through the unsaturated zone, whereas gas tracers dissolved in recharge water stay in equilibrium with the atmosphere in the unsaturated zone and derived dating results reflect only transit times in the saturated zone. Besides, tritium dating can be applied where an aquifer discharges naturally (springs, streams), while the use of dissolved gas tracers at these places is thorny challenging due to the risk of sample contamination of

~~samples~~ with the surrounding air (~~rapid exchange with the atmosphere after emergence~~; Busenberg et al., 2006; Han et al., 2006).

The use of tritium within the hydrological sciences community for water dating purposes has evolved over time due to the varying origin and level of its atmospheric concentration. Even if the potential for natural-borne tritium for dating hydrological systems was suggested early on by Libby (1953), most of these pioneering applications capitalized on the considerable precipitation tritium increases inherent to the mid-20<sup>th</sup>-century nuclear weapon tests (Jasechko, 2019). These elevated values allowed ~~first to carry out~~ explicit water transit time analyses for several years past the mid-1960's bomb peak, the latter acting as a clear time marker. With the bomb tritium pulse decay observed after the 1970's, tritium dating of hydrological systems had to increasingly rely on time series with several measurements to deliver unambiguous results – eventually leading to a fading interest in tritium as a tracer of choice for water age dating (Stewart and Morgenstern, 2016; Stewart et al., 2021).

Present-day tritium activities in precipitation have recovered natural cosmogenic levels, i.e., similar to levels noted before the nuclear tests (Cauquoin et al., 2015; Terzer-Wassmuth et al., 2022). However, bomb tritium remains present in the hydrological cycle of the earth (Stewart et al., 2021). The interest in tritium water dating has recently gained new momentum (Morgenstern et al., 2010; Stewart et al., 2012). In the Southern Hemisphere, the remnant bomb tritium has indeed declined to levels lower than those found in modern rainfall (Tadros et al., 2014; Stewart et al., 2021), which allows now unambiguous dating of hydrological systems from a single sample relying on the tritium's radioactive decay (Morgenstern et al., 2010; Cartwright et al., 2020).

However, in the Northern Hemisphere the remnant bomb tritium activities have not yet decayed to below those of current rainfall, because precipitation was much more strongly affected by nuclear weapons testing (i.e., the tritium bomb peak was two to three orders of magnitude higher than in the Southern Hemisphere; Stewart et al., 2021). Time series with several tritium measurements are still needed here for an unequivocal dating of hydrological systems and it is therefore presently advised to carry out tritium water dating preferably at sites where past data are available and can be supplemented with analyses of recent samples, so that a longer time series can be obtained (Stewart and Morgenstern, 2016). Some recent studies have leveraged data from such sites (e.g., Stolp et al., 2010; Blavoux et al., 2013; Gallart et al., 2016; Jerbi et al., 2019), but the latter remain rare or even absent for most hydrological systems.

As tritium in the environment is at much lower levels at present than in the past, an important aspect that ~~nowadays must also~~ be considered ~~much more carefully~~ is the tritium measurement accuracy and its related impact on water dating results (Eastoe et al., 2012; Stewart et al., 2012; Stewart and Morgenstern, 2016). Recent methodological developments have fortunately improved the tritium detection sensitivity and measurement accuracy (Morgenstern and Taylor, 2009). The advantage of using these high-precision tritium analyses for obtaining more accurate water dating results have been documented for both the Southern Hemisphere and the Northern Hemisphere (Stewart et al., 2010, 2012; Gallart et al., 2016).

Here, we rely on the tritium dating approach to inform on young groundwater transit times in the Northern Hemisphere for new study sites, i.e., which do not have historical tritium records, but for which we can nevertheless rely on recent high-accuracy tritium data. The aim of this study is to evaluate water transit times for several springs draining the Luxembourg

100 Sandstone aquifer. Widely used for the country's drinking water supply, but also impacted by anthropogenic pollutants (e.g.,  
Bohn et al., 2011; Gourdol et al., 2013; Farlin et al., 2018, 2019), the Luxembourg Sandstone aquifer is the most valuable  
groundwater resource of Luxembourg and, as such, assessing and understanding of water transit times is of national interest.  
Following a lumped parameter model approach to assess mean transit times (Maloszewski and Zuber, 1982), we set out to  
corroborate and interpret the tritium dating results in combination with several supplementary data, i.e. the known  
105 hydrogeological properties of the aquifer, the hydrochemistry of the studied springs as well as their discharge dynamics. By  
testing the potential of short but high-accuracy recent tritium data time series, our work also provides new insights for dating  
of young groundwater bodies at new sites in Central Europe.

## 2. Study area

Located on the north-eastern boundary of the Paris sedimentary Basin, the Luxembourg Sandstone is a sandy sedimentary  
110 ensemble dating from the Lower Liassic and interposed in the normal marly-limestone Lias facies. Due to its intrinsic  
properties, structure, and positioning, it constitutes the main aquifer in Luxembourg hosting the most important groundwater  
resource of the country and its capital.

### 2.1. The Luxembourg Sandstone: geological and hydrogeological settings

The Luxembourg Sandstone (Fig. 1; li2 unit in Fig. 2), whose average total thickness is about 60-80 m, outcrops over an area  
115 of about 350 km<sup>2</sup>, edged by a cuesta escarpment (e.g., Fig. 1ab), which, in Luxembourg alone, has a length of more than 200  
km (Fig. 2; Bintz and Muller, 1965; Colbach, 2005; Kausch and Maquil, 2018). Outcropping to the northeast, beyond the  
German border, and expanding towards a broad plateau in the southern part of Luxembourg reaching out to Belgium, the  
Luxembourg Sandstone, gently dipping towards SW (<10°), dives below more recent geological strata in France. Structurally,  
as the Mesozoic sediments of Luxembourg, it is also characterized by mainly SW-NE striking horsts and grabens (main faulting  
120 direction, associated to large undulations) and affected by NW-SE conjugate faults (Berg, 1965; Colbach, 2005).

The Luxembourg Sandstone originated from offshore sandwaves which deposited on a flat shallow marine shelf. Structured  
into several sequences, these deposits have different subfacies, related to distinct evolution stages (Berners, 1983; Colbach et  
al., 2005; Schäfer and Colbach, 2021). It is worth noting that in Belgium the Luxembourg Sandstone formation is subdivided  
in different members separated by marl beds, while in Luxembourg marly interlayers exists only discontinuously and locally  
(Boulvain et al., 2000, 2001; Van den Bril and Swennen, 2009; Kausch and Maquil, 2018). Mineralogically, the bulk of the  
Luxembourg Sandstone is made of quartz grains bonded by a calcareous cement (Fig. 1c). Its average ~~chemical~~ composition  
is about 65-70% quartz and 30-35% ~~calcite~~calcium carbonate, but due to a bimodal distribution of the ~~calcium~~  
content the Luxembourg Sandstone stands as a bedded alternation of two contrasted sandstone types (Fig. 1d), namely  
sandstone (poorly cemented yellowish sandstone with less than 10% carbonate ~~matrix~~) and calcareous sandstone (grey to  
130 whitish cement-rich sandy limestones with up to 60% ~~of calcite~~carbonate), which are about equally represented in the

formation (Colbach, 2005; Kausch and Maquil, 2018). This changing carbonate content in the Luxembourg Sandstone formation has a primary syndepositional, bioclastic origin, but was also influenced by secondary diagenetic redistribution processes (Colbach, 2005; for details see Berners, 1983; Molenaar, 1998; Van den Bril and Swennen, 2009; Schäfer and Colbach, 2021). ~~It is worth noting that in Belgium the Luxembourg Sandstone formation is subdivided in different members~~

135 ~~separated by marl beds, while in Luxembourg the presence of marly interlayers exists only discontinuously and locally (Boulvain et al., 2000, 2001; Van den Bril and Swennen, 2009; Kausch and Maquil, 2018).~~

~~Colbach (2005) reports a mean formation permeability of around  $5 \times 10^{-5}$  m/s, but the permeability of the Luxembourg Sandstone is heterogeneous. Kausch and Maquil (2018) denote indeed that sandstone beds are highly permeable (up to  $10^{-2}$  m/s) while calcareous sandstone beds have a reduced permeability in comparison. The calcium carbonate content is also~~

140 ~~responsible for~~The calcium carbonate content determines the variability of the porosity of the Luxembourg Sandstone, which varies from 5% in the sandy limestones up to 40% in the poorly cemented sandstones (Colbach, 2005; Kausch and Maquil, 2018; Claes et al., 2018; Samir, 2019).

~~Colbach (2005) reports a mean hydraulic conductivity for this formation of around  $5 \times 10^{-5}$  m/s, but the hydraulic conductivity of the Luxembourg Sandstone is actually heterogeneous. Kausch and Maquil (2018) denote indeed that sandstone beds are highly permeable (hydraulic conductivity up to  $10^{-2}$  m/s) while calcareous sandstone beds are of low permeability in~~

145 ~~comparison.~~ The contrasting mechanical properties of sandstone and calcareous sandstone beds determine the crack density as well in the Luxembourg Sandstone. Owing to their high porosity, the sandstone beds are indeed much lighter and less resistant to compression than the calcareous sandstones ones. Consequently, crack density is high in the calcareous sandstones and weak in the porous sandstones (Colbach, 2005; Kausch and Maquil, 2018; Fig. 1e).

150 Independent of the small joints developed in the calcareous sandstone, large-scale fracture and joint patterns also affect the Luxembourg Sandstone (Fig. 1f). ~~Colbach, 2005; Kausch~~ Related to the regional geological structure (i.e., SW-NE and Maquil, 2018). The NW-SE fault system), the Luxembourg Sandstone ~~as a whole~~ is indeed cut by a nearly vertical, sub-orthogonal network of primary joints with a spacing of one to several meters, which define large blocks or slabs (Colbach, 2005; Kausch and Maquil, 2018) ~~Fig. 1f~~. A secondary fracture system is also associated with the ~~fault-faults (Kausch and Maquil, 2018).~~

155 These large-scale fractures and joints are moreover often opened by karstification process (i.e., solubilization of the carbonated cement by surface or subsurface weathering processes along fractures and stratification with a mechanical removal of the residual material; Kausch and Maquil 2018; Meus and Willems, 2021). Even if the degree of karstification of the Luxembourg Sandstone degree is low, it should be noted that Meus and Willems (2021) suggest, on the basis of several field observations (i.e., dismantled conduits parallel to the valley axis, subhorizontal plurimetric pipes and cavities developed out of discharge

160 fracturation, and residual crusts covering wall voids), the potential presence in the Luxembourg Sandstone of the remains of a deep karst system intersected and renewed by the surface and subsurface weathering processes.

All of these properties confer on the Luxembourg Sandstone reservoir a multiple porosity and permeability structure which controls the groundwater storage and circulation within it. Mainly supported through the pores of the sandstone beds, the storage of water also takes place in in the joint and fracture networks. Likewise, even if joints and fractures drain the aquifer,

165 the groundwater is circulating through the pores of the sandstones as well (Von Hoyer, 1971; Kausch and Maquil, 2018). As  
typically observed in bedded aquifers in general (e.g., Maier et al., 2022) and in other sandstone bedded formations in particular  
(e.g., Hitchmough et al., 2007; Clavaud et al., 2008; Goupil et al., 2022), a key feature caused by the alternation of contrasting  
sandstone types in the Luxembourg Sandstone is the anisotropy of its ability to allow groundwater to circulate: i.e., the  
170 permeability perpendicular to bedding planes (vertical permeability) is lower than horizontal permeability (parallel to bedding  
planes). Even if it is not quantified, this anisotropy was observed when tunnels were bored in the Luxembourg Sandstone (Fox  
et al., 2008). Statistical analysis of more than a hundred artificial tracer tests carried out in the Luxembourg Sandstone aquifer,  
Meus and Willems (2021) have additionally demonstrated the key role of the NE-SW fracture network on the groundwater  
drainage system in the saturated zone. It is also worth noting that observed transit times to first arrivals and concentration  
peaks for positive tracer tests led Meus and Willems (2021) to assess average velocities of 52 and 16 m/h respectively (with  
175 highest observed velocity of 350 m/h). These figures are fundamental for the understanding of the Luxembourg Sandstone  
aquifer, but nevertheless remain informative only on its fissured fast flow component. Although this fast flow component is of  
key importance for the protection of the resource (especially for bacteriological contamination from the surface or following  
localized point source accidental pollution), it is assumed not to dominate water transit times in the aquifer at large scale.  
[\(Farlin et al., 2013a\).](#)

180 Overall, the groundwater body within the aquifer in Luxembourg is unconfined to the NE, where the Luxembourg Sandstone  
outcrops in plateau position, while to the SW it becomes confined as the Luxembourg Sandstone dives below a powerful  
charge of newer and mostly impervious strata. Our study is focusing on the unconfined part of the Luxembourg Sandstone  
aquifer, which is perched on the impervious Elvange Marls (li1 unit in Fig. 2) and notched by several deep valleys. Mainly fed  
by direct infiltration from the top of the plateaus where the Luxembourg Sandstone outcrops, groundwater accumulates at the  
185 base of the sandstone reservoir (Fig. 1g). The significantly weathered state of the upper metres of the outcropping sandstone  
bedrock and the sandy nature of the overlying soils have limited the development of the river network and effective  
precipitation infiltration can be considered as the dominant process there (Cammeraat et al., 2018; Kausch and Maquil, 2018).  
Covered in places with the Strassen Marls and Limestones (li3 unit), the Luxembourg Sandstone aquifer is also fed there by  
groundwater leaking from this overlying formation. In valleys notching the Luxembourg Sandstone, where the sandstone's  
190 impermeable base lies above the valley floors, the aquifer's saturated zone outflows either diffusely or in concentrated form  
as springs. The location of the many contact springs delimiting the base of the sandstone (more than 500 in the country) is  
determined by the dip direction of the aquifer basis, which mainly controls the saturated zone groundwater flow together with  
the Luxembourg Sandstone fracture network (Colbach, 2005; Kausch and Maquil, 2018). It is worth noting that small, perched  
groundwater bodies may temporally form on top of the local marly interlayers intercalated in the Luxembourg Sandstone  
195 formation (Kausch and Maquil, 2018; Fig. 1g).

## 2.2. The springs of Luxembourg City

Most of the natural contact springs draining the Luxembourg Sandstone aquifer are tapped, representing the main groundwater resource for the country's drinking water supply (AGE, 2015). Fig. 3 sketches a typical geological cross-section illustrating the catchment facility of a spring draining the Luxembourg Sandstone unconfined aquifer and the water flow components within. Among the tapped springs, 62 are in the vicinity of Luxembourg City and provide about two-thirds of the drinking water supply of the capital's population. It is this strategic importance that has eventually stimulated research efforts on spring water transit time.

Based on the local geomorphology of the geological layer, the springs of Luxembourg City can be grouped into ~~nine~~eight main districts (Fig. 2): Birelergrund (B), Glasburen (G), Dommeldange (D), Kopstal rive droite (KRD), Kopstal rive gauche (KRG), Millebach (M), Pulvermuhle (P) and Siwebouren (S). Within a national effort for improving the protection of groundwater bodies used for drinking water supply, the recharge areas of each of these groups have been redefined recently by hydrogeology consultancy firms (RGD, 2018, 2019, 2021a, 2021b, 2022a, 2022b). Their delineation was based on water balance calculations together with constraints defined by the geological, geomorphological, and hydrogeological contexts (AGE, 2010). The mean outflowing discharge used to estimate the extension of the recharge areas (RGD, 2018, 2019, 2021a, 2021b, 2022a, 2022b) as well as the mean elevation and the surface of each recharge area are provided in Table 1. One can notice that the Luxembourg Sandstone is mostly outcropping in the study area. It is overlaid with the Strassen Marls and Limestones formation (Fig. 2) solely in the recharge areas of KRD and S groups, but in a very small part (~5%).

Hydrogeological drillings in the Luxembourg Sandstone are too sparse and poorly distributed for establishing an accurate water table map which would have enabled either to directly draw groundwater flow paths in the saturated zone or to estimate directly saturated and unsaturated zone thicknesses. However, an estimation of the average groundwater flow lengths was made for each group of springs by considering the distances between the outer limit of the recharge area and the emergence line defined by the springs. The Luxembourg Sandstone thickness was also computed by subtracting the terrain's surface topography from that of the sandstone's impermeable base (interpolated from the elevation of the known geological contact lines). These two attributes are also listed in Table 1.

Thanks to an existing borehole drilled in the KRD area, it is finally worth noting that a marly interlayer exists there in the Luxembourg Sandstone. In this location, thicknesses of 10 and 45 m were also reported for the saturated and vadose zones, respectively (Farlin et al., 2013a).

### 3. Material and methods

#### 3.1. Tritium water dating

##### 225 3.1.1. Transit time distribution and mean transit time estimation

Groundwater discharging at a spring is a mixture of water from short and long flow lines, and therefore the water in a sample does not have a single age corresponding to a unique transit time within the aquifer (i.e., related to the time elapsed since the water molecules entered the system at the recharge area, where the age is zero), but has a transit time distribution (TTD; Maloszewski and Zuber, 1982; Stewart et al., 2017). A mean transit time may however be estimated using the Lumped  
230 Parameter Model (LPM) approach. Introduced in hydrogeology by Maloszewski and Zuber (1982), LPMs are the most widely used model-based environmental tracer interpretation approach in groundwater studies (Turnadge and Smerdon, 2014). This method relates the concentration of a tracer (in our case tritium) at the outlet of a groundwater system ( $C_{out}$ ) to its input concentration ( $C_{in}$ ) using the well-known convolution integral (Maloszewski and Zuber, 1982):

$$235 \quad C_{out}(t) = \int_0^{\infty} C_{in}(t - \tau) \exp[-\lambda(\tau)] g(\tau) d\tau \quad (1)$$

where  $t$  is calendar time and the integration is carried out over the transit times  $\tau$ ,  $\lambda$  is the decay rate of the tracer ( $\lambda = 0$  for stable tracers;  $\lambda = \ln 2/T_{1/2}$  for radioactive tracers where  $T_{1/2}$  is the half-life; tritium  $T_{1/2} = 12.32$  years), and  $g(\tau)$  is a transfer function defining the TTD.

240 The TTD should be described by a conceptual flow or mixing model reflecting the average (steady-state) conditions in the groundwater system (Maloszewski and Zuber, 1982; Leray et al., 2016). Within this work we choose the exponential-piston flow model (EPM; Maloszewski and Zuber, 1982) which mimics a system with two segments of flow in series: one of exponential flow and the other of piston flow. EPM can be used especially when the time lag required for water to flow through the unsaturated zone of an unconfined aquifer cannot be neglected (Jurgens et al., 2012). This is the case for the Luxembourg  
245 Sandstone areas that feed the springs of Luxembourg City (i.e., due to the unsaturated zones being expected to be thick for some areas while they are thin for others, as well as to the low vertical permeability relative to the horizontal one). In this context, the piston flow component simulates the water flowing through the unsaturated zone, while the exponential model represents the mixing at the outlet of groundwater flowlines coming from the saturated zone. The EPM response function is given by:

250

$$g(\tau) = 0 \quad \text{for} \quad \tau < \tau_m(1 - F) \quad (2a)$$

$$g(\tau) = \left( \frac{1}{F\tau_m} \right) \exp\left( -\frac{\tau}{F\tau_m} + \frac{1}{F} - 1 \right) \quad \text{for} \quad \tau \geq \tau_m(1 - F) \quad (2b)$$

where  $\tau_m$  is the mean transit time, and  $F$  the ratio of the exponential volume to the total volume of the groundwater system.



255 While the model is fully exponential when  $F = 1$ , it completely turns to piston flow when  $F = 0$ . It is also worth noting that  $\tau_m$  can be split into two components, i.e.,  $\tau_{pf}$ , the time lag required for water to flow through the piston flow section, and  $\tau_{exp}$ , the mean transit time for water to flow through the exponential volume.  $\tau_{pf}$  and  $\tau_{exp}$  are obtained by multiplying  $\tau_m$  by  $(1 - F)$  and  $F$ , respectively.

### 3.1.2. Spring water sampling and analytical techniques

260 Spring water samples were collected from 35 of the 62 springs of Luxembourg City (Fig. 2). The spring's selection was balanced to represent the main hydrogeological districts used for the water supply of the country's capital and to reflect a rather wide variability in terms of discharge dynamics and hydrochemical signatures (see 3.2 and 3.3). Note that some "springs", namely S01, S02, S03 and P01, are old natural emergences, but which have since then been excavated and are now being exploited through pumping.

265 To make the assumption of steady-state as acceptable as possible, samples were always taken outside of recharge and rainy periods in order to avoid any potential mixing with young freshwater coming from precipitation, e.g., through preferential pathways. All springs were sampled three times: in June 2011, August 2015 and 2017 for springs K21 and K21A and in September 2013, August 2015 and 2017 for all the others. Samples were collected without filtration or preservation in a 1 L plastic bottle filled to the top.

270 Tritium activities were measured on water samples that had been vacuum distilled and electrolytically enriched 95-fold using liquid scintillation spectrometry (Morgenstern and Taylor, 2009). For all samples, the reproducibility of the enrichment was 1% and the limit of detection was 0.02 tritium units (TU; 1 TU represents a  $^3\text{H}/^1\text{H}$  ratio of  $10^{-18}$ ). The measurement uncertainty ( $1\sigma$ ), mainly due to the uncertainty of the enrichment and statistical errors of the ultra-low-level decay counting, ranges between 0.07 and 0.12 TU (1.2-1.9%), depending on the tritium concentration of the samples. These are the measurements referred to  
275 as high-precision measurements in our study.

### 3.1.3. Input time series

Monthly values of tritium in precipitation (including uncertainties) come from the GNIP (Global Network of Isotopes in Precipitation) measurement network and were obtained from the WISER database (Water Isotope System for Data Analysis, Visualization, and Electronic Retrieval; IAEA (International Atomic Energy Agency) and WMO (World Meteorological  
280 Organization), 2019; <https://nucleus.iaea.org/wiser>). The data used from 1978 to present are from the Trier station in Germany (Stumpp et al., 2014; Schmidt et al., 2019), located only 40 km away from Luxembourg City. The history of tritium in precipitation prior to 1978 has been reconstructed through a log-log linear regression ( $r^2 = 0.65$ ;  $p\text{-value} < 10^{-15}$ ) by combining records from Ottawa, Canada, from 1953 with those from Vienna, Austria, from 1961 (Jurgens et al., 2012; Stewart et al., 2017). Before 1953, the pre-bomb background concentration of tritium was estimated to be 8 TU (Jurgens et al., 2012).

285 To account for losses due to evapotranspiration (McGuire and McDonnell, 2006), the input of tritium to the ground as recharge  
 was calculated through a weighting procedure like the ones reported by Stewart et al. (2007), Ozyurt et al. (2014) or Duvert et  
 al. (2016). Here, we relied on the Thornthwaite’s method (Thornthwaite, 1948) which is a water balance of the rootzone  
 performing monthly book-keeping of precipitation, evapotranspiration, and soil moisture. This approach is widely used in  
 hydrogeology for estimating aquifer recharge (e.g., Lanini et al., 2016; Mammoliti et al., 2021). Basically, infiltration below  
 290 the root zone (i.e., precipitation in excess of that required to supply actual evapotranspiration and the soil water store: effective  
 precipitation) occurs only when the soil maximum water-holding capacity (i.e., the field capacity) is exceeded. The  
 Thornthwaite’s method also comes with an empirical potential evapotranspiration formula using only monthly mean air  
 temperature as input. Note that Pfister et al. (2017) compared Thornthwaite’s monthly potential evapotranspiration data with  
 that obtained via the Penman–Monteith (Allen et al., 1998) formula in a region encompassing our study area and found a  
 295 difference of less than ±5%.

For our study, we set the soil maximum water-holding capacity to 100 mm which corresponds to an overall mean value of soil  
 profiles covering the Luxembourg Sandstone (Hissler et al., 2015; Hissler and Gourdol, 2015). Given the relatively restricted  
 spatial extension of our study area, the monthly water balance calculation to obtain the effective precipitation was done with  
 the precipitation and temperature data recorded at a single representative location, i.e. the Findel airport WMO weather station  
 300 (WMO ID 06590; <https://www.meteolux.lu>). In operation since 1947, this meteorological station is less than 10 km away from  
 each spring of Luxembourg City (Fig. 2) and its elevation (368 m) is close to those of the spring recharge areas (Table 1). One  
 can also notice that our choice to consider the effective precipitation spatially homogeneous at this work scale is also supported  
 by Pfister et al. (2017) who described the spatial variability of the precipitation as rather small over a region otherwise even  
 wider than that containing our study area.

305 Instead of calculating single annual tritium recharge input values, a one-year sliding window was then used to obtain monthly  
 values as follows:

$$C_{in\ i} = \frac{\sum_{j=i-11}^i C_j P_{eff\ j}}{\sum_{j=i-11}^i P_{eff\ j}} \quad (3)$$

310 where  $C_{in\ i}$  is the monthly tritium recharge for the  $i^{\text{th}}$  month, and  $C_j$  and  $P_{eff\ j}$  are the monthly values of tritium in precipitation  
 and monthly effective precipitation amounts for the  $j^{\text{th}}$  month, respectively. A Tukey filter (Tukey, 1968) with coefficient 0.4  
 was applied to the moving window to avoid edge effects (Duvert et al., 2016). To obtain the respective monthly estimates,  
 note that the same weighting procedure was applied to both tritium in precipitation and their uncertainties.

### 3.1.4. Modelling strategy

315 A modelling strategy able to account for the propagation of analytical errors is advocated for transit time determinations using  
 LPMs, especially when only a limited number of samples is available (Gallart et al., 2016), as is the case for the springs of

Luxembourg City. To this end, instead of using a best-fit calibration approach, EPM parameters were investigated within this work using a Monte Carlo sampling routine in a generalised likelihood uncertainty estimation framework (GLUE; Beven and Binley, 1992, 2014).

320 The approach used follows nearly the same modelling method proposed and applied in Gallart et al. (2016). The EPM parameter space  $(\tau_m, F)$  was randomly explored until enough behavioural solutions were found (5000 within this work). The goodness of fit of the simulations was evaluated using the Nash–Sutcliffe efficiency coefficient (NSE; Nash and Sutcliffe, 1970). To propagate tritium analytical errors, input (recharge) and output (spring) normally replicated time series were generated beforehand using the means and standard errors of every tritium measurement. These replicated values served for  
325 the assessment of the goodness of fit of every simulation.

### 3.1.5. Groundwater volumes

The volume of groundwater  $V$  stored within an aquifer (also known as the turnover volume, the volume of mobile water or the effective aquifer's volume) can be related to the mean transit time  $\tau_m$  of the water leaving it and its average outflowing discharge  $Q$  (Maloszewski and Zuber, 1982; McGuire and McDonnell, 2006; Morgenstern et al., 2010; Zhou et al., 2022):

330

$$V = Q \cdot \tau_m \tag{4}$$

Calculating such  $\tau_m$  - derived volumes will be used here to ensure that EPM solutions are to some extent physically valid regarding basic geometries and properties of the studied system.

## 335 3.2. Response time of spring discharge to precipitation input

### 3.2.1. Cross-correlation analysis applied to groundwater time series

Introduced in karst hydrology by Mangin (1981a, 1981b, 1984), the use of correlation analysis applied to groundwater time series has since then widely expanded to understand the functioning of groundwater systems with varying characteristics. The cross-correlation analysis, which consists in studying the correlation between two time series (Box and Jenkins, 1970), was  
340 used in particular to assess the response of aquifer systems at springs or wells to precipitation input which is responsible for their recharge (e.g. Padilla and Pulido-Bosch, 1995; Angelini, 1997; Larocque et al, 1998; Lee and Lee, 2000; Panagopoulos and Lambrakis, 2006). Calculating the values of the cross-correlation coefficient results in a graph called a cross-correlogram that represents the correlation as a function of the time lag between the two series. A usual precipitation-groundwater time series correlogram reaches a peak of correlation after a certain time lag, the latter characterizing the response time of  
345 groundwater to the precipitation input. This response time can then be interpreted in terms of flow mechanisms. For instance, response times of unconfined aquifers derived from cross-correlation analysis have often been related to unsaturated zone

characteristics (e.g., Lee and Lee, 2000; Lee et al., 2006; Fiorillo and Doglioni, 2010; Bloomfield and Marchant, 2013; Bloomfield et al., 2015; Al-Jaf et al., 2021).

Here, we did not follow the standard cross-correlation method to define the response time of groundwater to precipitation input, but rather used the methodology originally proposed by Fiorillo and Doglioni (2010) and subsequently taken up by Bloomfield and Marchant (2013), Bloomfield et al. (2015) or Van Loon et al. (2017). Starting from the premise that groundwater response at a given time does not result from a single precipitation pulse at a previous moment, but that it depends on a previous period of precipitation, Fiorillo and Doglioni (2010) propose an alternate way to the usual precipitation-groundwater time series cross-correlation analysis. Instead of using one single input time series, they suggest exploring multiple precipitation time series data constructed over varying cumulative time windows as input and retain the one with the maximum correlation peak. The correlation peak time lag of the considered cross-correlogram, added in a second step to the extent of the cumulative precipitation time window, thus allows to estimate a minimum and a maximum response time of the groundwater system, respectively. The average of these two values is defined in this study as the mean response time MRT.

### 3.2.2. Spring discharge time series

Discharge of the springs of Luxembourg City has been measured from the mid-1990s, typically at weekly to quarterly time steps, with the aim to grasp both seasonal and multi-year temporal dynamics. These raw data were aggregated to monthly mean values. If no observations were available for a given month, then a linear interpolation was used to estimate the missing monthly discharge values. Only gaps of maximum 6-month length were filled.

Monthly discharge time series were thus created for each investigated spring, except for P01 whose water collection facility is unsuitable for discharge measurements. Note that the springs S01, S02 and S03 were not processed individually, but jointly, because only records of their cumulative discharge are available. The length of the monthly discharge chronicles is 14 years or more, except for the M01 spring for which the time series is 7 years long. In 81% of the springs, observations span over 25 years. Finally, it is worth noting that on average missing, interpolated and measure-derived monthly discharge data relate to 4, 25 and 71% of the time series, respectively.

### 3.2.3. Input time series

In line with Jemcov and Petric (2009), who have documented the value of using effective infiltration in cross-correlation analysis to assess the functioning of several springs and their aquifers, we did not select precipitation as input signal, but used instead effective precipitation. The proportion of precipitation eventually percolating to the groundwater is indeed a function of several processes linked to climatic conditions, vegetation, and soil characteristics, and prevailing in the superficial section of the system. By using precipitation as the entry signal, these processes, which usually only affect the first few tenths of centimetres of the subsoil, are not separated from the processes deeper inside the aquifer. Using effective precipitation instead can overcome this oversimplification and potentially avoid misinterpretation if one is particularly interested in the internal structure of the aquifer.

As with the weighting of the tritium input time series, the calculation of the effective precipitation relied on precipitation and temperature data recorded at the Findel airport weather station and a soil water balance following the Thornthwaite's method (Thornthwaite, 1948; see 3.1.3 for details). Ultimately, we built a data set of 60 input time series for an effective precipitation accumulation period varying from 1 to 60 months.

#### 3.2.4. Assessment of mean response times and uncertainty ranges

The cross-correlation analysis applied in groundwater studies typically considers multi-year time series data to characterize input-output relationships over the whole data period. An alternative moving window cross-correlation approach was recently proposed by Delbart et al. (2014) to assess temporal variability in response times. This increasingly used method (e.g., Cai and Offerdinger, 2016; Jeong et al., 2017; Le Duy et al., 2021) was initially set to reveal the seasonal variability of the response time of an aquifer to rainfall by using a relatively short sized moving window (Delbart et al., 2014). Here, we applied the cross-correlation in the same moving window framework, but used a larger window (i.e., 5-year long window and 3-month moving increment) to attribute to springs not only a unique MRT to precipitation input but also an uncertainty range. To do so, the cross-correlograms between the multiple effective precipitation inputs and the discharge output for a given spring were first calculated for each moving window and the related MRT was defined as per section 3.2.1. Next, the results of individual moving windows were collected as an ensemble of possible solutions and summarised using standard percentile values (i.e., 5<sup>th</sup>, 25<sup>th</sup>, median, 75<sup>th</sup> and 95<sup>th</sup>).

### 3.3. Spring hydrochemistry

The chemistry of groundwater varies because of a wide range of natural and anthropogenic processes. Some hydrochemical variations are due to time-dependent water-rock interactions inside the aquifer and can be related to groundwater transit time (Purtschert, 2008). For instance, major ion concentrations are sometimes found to increase with increasing groundwater transit time (e.g., Edmunds and Smedley, 2000; Katz et al., 2004; Zuber et al., 2005; Edmunds and Shand, 2009), although these relationships may be of complex nature (Morgenstern et al., 2010).

Since late 2004, the springs of Luxembourg City are regularly sampled for hydrochemical analyses (Bohn et al, 2011; Gourdol et al., 2013;). Among the hydrochemical parameters available, major ion concentrations ( $\text{Ca}^{2+}$ ,  $\text{Na}^+$ ,  $\text{Mg}^{2+}$ ,  $\text{K}^+$ ,  $\text{HCO}_3^-$ ,  $\text{SO}_4^{2-}$ ,  $\text{Cl}^-$ ), as well as dissolved silica ( $\text{SiO}_2$ ), electrical conductivity ( $\text{EC}_{25^\circ\text{C}}$ ), dissolved oxygen ( $\text{O}_2$ ), and pH have previously been related to water-rock interaction processes occurring inside the Luxembourg Sandstone aquifer (Von Hoyer, 1971; Gourdol et al., 2013). In this study, we thus relied on these parameters to possibly corroborate the tritium dating results and assessed as well their potential for serving as geochemical proxies of groundwater transit times that might be used at sites where no tritium data is available.

Sampling methods and analytical details related to the acquisition of these data are described in Gourdol et al. (2013). As the spatial variability of the hydrochemistry of the springs of Luxembourg City is stable over time, both year-to-year and seasonally

410 (Gourdol et al., 2013), the available data were aggregated into a single average value for each parameter of all of the 35 springs considered in this study.

## 4. Results

### 4.1. Tritium water dating

#### 4.1.1. Tritium in precipitation, recharge, and spring waters

415 Tritium analytical results for the investigated springs of Luxembourg City are reported in Table 2 and displayed in Fig. 4, together with the monthly and 1-year moving average tritium concentrations observed in precipitation at Trier, as well as the derived recharge input function.

Due to the mid-20th-century nuclear weapon tests, tritium in precipitation and recharge peaked at over 1000 TU in 1963 and then decreased progressively back to pre-bomb background level in recent years (Fig. 4a). We can notice that because  
420 precipitation is mostly effective in winter and rainfall tritium content is overall lower during this season, the tritium concentration in the estimated recharge input function is most of the time significantly below that determined for yearly mean rainfall.

Tritium concentrations in spring waters average 5.42 TU and range from 4.31 to 7.13 TU during the observation period. They display a clear general downward trend (average decrease of about 0.25 TU per year), while measured precipitation and derived  
425 recharge tritium time series have been relatively stable for a decade disregarding seasonal variation (2010-2019 mean value of 8.39 and 6.75 TU, respectively; Fig. 4b).

As shown in Fig. 4c, springs belonging to the same recharge area are generally characterized by similar tritium contents. For instance, the highest tritium concentrations are typically associated with group B springs and the lowest ones to springs from groups KRD and KRG. Note that tritium contents in group G are more heterogeneous from one spring to another.

#### 430 4.1.2. AgeMean transit time simulation of spring waters

##### 4.1.2.1. EPM parameter space exploration

The assessment of spring mean transit times using the tritium recharge input function through the EPM model was done in two stages as illustrated in Fig. 5 for one of the investigated springs.

Following previous tritium dating studies (e.g., Morgenstern et al., 2010; Stewart et al., 2010, 2012; Gallart, et al., 2016;  
435 Gusyev et al., 2016; Stewart and Morgenstern, 2016), we explored first the widest parameter space to which tritium allows access, i.e. with  $\tau_m$  ranging from 0 to 200 years and  $F$  between 0 and 1 (Fig. 5ab). An NSE threshold value of 0 was retained at this stage to define behavioural solutions. For every spring, one large subpopulation of solutions with  $\tau_m$  values greater than 35 years was easily discriminable. This subpopulation, whose mean  $\tau_m$  value varies between 64 and 98 years depending on the springs, can be confidently rejected as being unreasonably old given the characteristics of the aquifer (aquifer perched on

440 an impermeable underlying layer and split by several valleys, isolated from potential connection with deeper or more extended  
aquifer layers), the discharge of the springs of Luxembourg City and the extension of their recharge areas. These  $\tau_m$  values  
would indeed have required groundwater levels to be too close to or even above the land surface (according to Eq. (4); see  
details in 4.1.3).

The parameter space was thus narrowed in a second step with  $\tau_m$  ranging from 0 to 35 years (bounds of 0 and 1 for  $F$  were  
445 kept; Fig. 5cd). A more stringent NSE threshold value of 0.5 was also retained for this screening. Modelling results of this  
second screening are provided for each spring in the Supplement (Fig. S1-S35). Owing to the short record of tritium  
measurements for every spring and despite the reduced parameter space combined with the more severe NSE threshold, the  
5000 resulting behavioural solutions were not distributed around an unambiguous peak but spread into several subpopulations,  
most of the time overlapping, and thus leading to an ensemble with a complex multimodal character. To obtain a more coherent  
450 ensemble of solutions, we decided to keep only the most likely third of the behavioural solutions by relying on a 2D kernel  
NSE weighted density thresholding filter (Fig. 5c, Fig. S1a-S35a). In practice, using this filter allowed the multimodal  
distribution to retain the (almost) unimodal set of solutions with respect to both EPM parameters with the highest probability,  
and it provided acceptable results for all springs. For most springs, the remaining behavioural solutions were circumscribed in  
a single area of the parameter space. For cases with more than one population, we ultimately restricted the most likely  
455 behavioural solutions to the dominant one, i.e., both the best and largest subpopulation. It is worth noting that the decision to  
keep only a third of the samples was taken, after some trials, as a good compromise on the one hand to reject the least possible  
solutions and to limit cases requiring rejection of a secondary weaker subpopulation on the other hand. One can finally notice  
that in all cases an ensemble of more than 1000 behavioural solutions was retained.

#### 4.1.2.2. Dating results

460 The retained ensembles of the most likely model solutions are summarized for every spring in Table S1 of the Supplement  
using standard percentile thresholds (i.e., 5<sup>th</sup>, 25<sup>th</sup>, median, 75<sup>th</sup> and 95<sup>th</sup>) and in Fig. 6 as violin and box plots. To facilitate the  
assessment of inter-spring variability, two additional scatter plots are presented in Fig. 7, i.e., the first relating  $F$  and  $\tau_m$  values  
and the second one  $\tau_{pf}$  and  $\tau_{exp}$  values.

Ranging from 0.68 to 0.93, NSE median values of the ensembles are on average 0.86 and above 0.8 for 31 of the 35 studied  
465 springs. This indicates an overall good agreement between modelled and measured tritium concentrations in spring waters.  
Predicted EPM parameters of springs are characterized by median values ranging from 0.46 to 0.97 for  $F$  and between 7.4 and  
24 years for  $\tau_m$ . Considering the difference between their 95<sup>th</sup> and 5<sup>th</sup> percentiles bounds as a metric, the ensembles of most  
likely model solutions display a degree of uncertainty varying between 0.07 and 0.53 for  $F$  (mean 5-95<sup>th</sup> percentiles range of  
0.29) and from 3.5 to 15.8 years for  $\tau_m$  (mean 5-95<sup>th</sup> percentiles range of 8.6 years).

470 Considering the quite large overlap between ensembles in the parameter space, the predicted EPM parameters show similar values for springs belonging to the same recharge area on the one hand, while they also highlight significant differences between spring groups on the other hand (Fig. 6-7).

Springs belonging to groups S, M and D are characterized with an exponential to total flow ratio  $F$  close to 0.7 (median values between 0.64 and 0.76) and relatively low  $\tau_m$  values (median values ranging from 7.6 to 10.9 years). Group B and P springs  
475 stand out with higher median values, spanning from 0.77 to 0.97 for  $F$  and between 14.1 and 19.3 years for  $\tau_m$ . Results obtained for group G are more heterogeneous, especially with respect to the mean transit time – the group indeed includes the spring with the lowest  $\tau_m$  median value (C05, 7.4 years) and the one with the highest (C01, 24 years) – but also regarding the  $F$  parameter (spring  $F$  median values range from 0.67 to 0.83). Finally, characterized by  $\tau_m$  median values ranging from 10.7 and 15.1 years, springs of the KRD and KRG groups are distinguishable from those located in other areas with particularly  
480 low  $F$  values (median values between 0.46 and 0.67), indicating a greater importance of the EPM piston component in this region. Note that it is eventually for the KRD and KRG groups that the highest  $\tau_{pf}$  median values are observed (up to 8.1 years).

Note that  $\tau_m$  median values characterizing the retained ensembles of EPM solutions correlated positively and significantly with spring mean tritium contents ( $r = 0.62$ ;  $p$ -value  $< 10^{-4}$ ). The correlation between spring mean tritium contents and  $\tau_{exp}$   
485 median values is even stronger and more significant ( $r = 0.93$ ;  $p$ -value  $< 10^{-14}$ ).

#### 4.1.3. Groundwater volumes

The volumes of water  $V$  stored in the Luxembourg Sandstone aquifer that contribute to the discharge of spring groups have been estimated from Eq. (4) using the mean discharge values characterizing each recharge areas (Table 1) and the average of  $\tau_m$  median values (Table S1) of springs belonging to each group.

490 Considering the average of  $F$  median values (Table S1) of each group of springs, the calculated  $V$  volumes were subsequently split in  $V_{pf}$ , the part of the water volume associated with the EPM piston component ( $V_{pf} = (1 - F) * V$ ), and  $V_{exp}$ , the water volume stored in the EPM exponential section ( $V_{exp} = F * V$ ). For each recharge area  $S$  (Table 1) and assuming an overall porosity of 25% for the Luxembourg Sandstone (which was set regarding the available porosity figures values available from the literature, cf. 2.1),  $V_{pf}$  and  $V_{exp}$  have been finally converted into mean equivalent sandstone layers required for the water  
495 storage in the saturated zone (assumed to match the exponential part of the EPM model;  $H_{exp} = V_{exp}/(S * 0.25)$ ) and the vadose zone (assumed to correspond to the EPM piston segment;  $H_{pf} = V_{pf}/(S * 0.25)$ ).

The obtained results are displayed in Fig. 8 as a bar plot in which  $H_{exp}$  and  $H_{pf}$  calculated values are overlaying the mean thickness of the Luxembourg Sandstone estimated for each recharge areas (Table 1). Overall, Fig. 8 indicates that the retained EPM solutions are physically valid whatever the recharge area. In addition, the values obtained for the KRD area are consistent  
500 with the thicknesses of the vadose and saturated zones reported by Farlin et al. (2013a) in this region. It should nevertheless be noticed that results obtained for group B appear less optimal compared to those of the other spring groups. Indeed, according



to the figures, the void filling rate by water in the vadose zone would reach 65% in this area, while elsewhere it ranges more realistically between 3 and 17% (mean value of 10%).

#### 4.2. Response time of spring discharge to effective precipitation input

505 Results of the spring discharge – effective precipitation cross-correlation analysis are reported for each spring in Table S2 of the Supplement through standard percentile values and displayed in Fig. 9 as violin and boxplots.

As indicated by correlation peak values, spring discharge correlates generally well with accumulated effective precipitation regardless of the considered spring (medians of maximum cross-correlation peak values range from 0.7 to 0.9 and average 0.84; percentiles 5<sup>th</sup> and 95<sup>th</sup> are for most of the ensembles of solutions greater than 0.6 and 0.9, respectively). Whereas the  
510 maximum correlations are associated with widely varying extents of the cumulative effective precipitation window (median values of ensembles ranging from 4 to 37 months), observed correlation peak time lags are generally null or less than 4 months. The resulting MRT ensembles are characterized by median values spanning from 2 to 20 months and mean interquartile and 5-95<sup>th</sup> percentiles ranging from 8 to 18 months, respectively. The lowest MRT values are typically associated with group B springs and the highest ones to groups' KRD and KRG springs.

515 Finally, Fig. 10 compares the different spring discharge responses to the effective precipitation inputs according to their median MRT value. While springs with a median MRT lower than or equal to 10 months show a discharge dynamic characterized with a strong seasonal pattern, the ones with median MRT comprised between 10 and 15 months are characterized predominantly by interannual dynamics. The overall discharge dynamic of the springs with a median MRT equal to or greater than 15 months is even more damped and delayed compared to the monthly effective precipitation input function.

#### 520 4.3. Spring hydrochemistry

Spring mean physicochemical characteristics are provided in Table S3 of the Supplement and presented in Fig. 11 as a heat map where dark red and dark blue tones denote the highest and lowest values for each parameter, respectively.

Springs belonging to the same recharge area generally have very similar characteristics. For instance, group B springs are typically the most mineralized, while those of group KRD count among the less enriched (Fig. 11). The observed mineralization  
525 of spring waters and their hydrochemical facies are in line with previous observations (Von Hoyer, 1971; Gourdol et al., 2013) and reflect the dissolution of the calcareous cement of the Luxembourg Sandstone and its composition, the weathering of the grains of quartz of the sandstone and the oxidation of pyrite disseminated in the rock matrix.

Note that SiO<sub>2</sub>, Ca<sup>2+</sup>, HCO<sub>3</sub><sup>-</sup>, K<sup>+</sup>, total dissolved solids (TDS; sum of major ions and dissolved silica contents) concentrations and EC<sub>25°C</sub> measurements are strongly correlated with each other (minimum correlation *r* of 0.77). Due to second-order natural  
530 or anthropogenic factors (e.g., road salt inputs), Na<sup>+</sup>/Cl<sup>-</sup> and Mg<sup>2+</sup>/SO<sub>4</sub><sup>2-</sup> ratios are partly disconnected from the global enrichment of spring waters. It is finally worth considering that the observed depletion of O<sub>2</sub> and pH with increasing mineralization is also linked to the water-rock interaction (i.e., due to the pyrite oxidation).

#### 4.4. Comparison of tritium derived transit times with other spring characteristics

We tested the correlation of tritium derived transit times with other spring characteristics by applying a simple linear model.

535 Although this analysis would not identify direct causalities and does not account for possible multi-collinearities, it should nevertheless help to shed new light on potential controls of mean transit times.

The parameters involved here are  $\tau_m$ ,  $\tau_{exp}$  and  $\tau_{pf}$  median values of the ensembles of EPM solutions (Table S1), mean groundwater flow lengths and Luxembourg Sandstone thickness of the recharge areas the springs belong to (Table 1), the MRT median values characterizing the response time of spring discharge to effective precipitation input (Table S2), and the average

540 values of hydrochemical parameters (Table S3).

Results are shown in Fig. 12 as a correlation matrix which indicates the sign (blue and red tones for positive and negative correlation, respectively), the strength (the darker the tone, the stronger the correlation and vice versa), and the significance of the linear correlation between each pair of parameters (a black square –  $p < 0.05$  – denotes a significant correlation and a white circle –  $p < 0.001$  – highlights a very significant one).

545 It can be observed that  $\tau_m$  and  $\tau_{exp}$  median values are in general correlated positively with the mineralization of the spring water and negatively with  $O_2$  and pH values. However, these correlations are most of the time weak ( $|r| < 0.3$ ) and not significant ( $p > 0.05$ ). Note that the linear correlation of  $\tau_{exp}$  median values with  $HCO_3^-$  ( $r = 0.42$ ),  $Cl^-$  ( $r = 0.38$ ),  $Na^+$  ( $r = 0.37$ ) and  $SiO_2$  ( $r = 0.34$ ) is nonetheless significant ( $p < 0.05$ ). The relationship relating the mean groundwater flow lengths of the recharge areas to  $\tau_{exp}$  median values is also statistically significant ( $r = 0.38$ ,  $p < 0.05$ ), while the one with  $\tau_m$  median

550 values is not ( $r = 0.18$ ,  $p > 0.05$ ). As shown in Fig. 13a, we can further notice that the correlation between  $\tau_{exp}$  median values and the mean groundwater flow lengths at the scale of the recharge areas is characterized by an r value of 0.67.

Finally, the strongest positive and most significant correlations of tritium derived transit times with the other spring characteristics is shown in Fig. 12 for the EPM piston component. Indeed, the correlation of  $\tau_{pf}$  median values with the mean Luxembourg Sandstone thickness of the recharge areas and the MRT median values characterizing the response time of spring

555 discharge to effective precipitation input are particularly strong ( $r = 0.57$  and  $0.60$ , respectively) and very significant ( $p < 0.001$ ). At the scale of recharge areas, the correlation of  $\tau_{pf}$  median values with the mean Luxembourg Sandstone's thickness and MRT is characterized by an r value of 0.67 and 0.86, respectively (Fig. 13bc).

#### 5. Discussion

The use of LPM for tritium-based water transit time studies of hydrological systems requires several aspects to be considered

560 upfront (e.g., McGuire and McDonnell, 2006; Leray et al., 2016; Stewart and Morgenstern, 2016; Stewart et al., 2017). For instance, the use of a soil water balance model to account for the variation over time of evapotranspiration water losses, combined with the proximity of the Trier Station to our study site, allowed us to assume a suitable characterization of the tritium recharge input signal. The spring samples were also taken at selected times to best consider for the steady-state

assumption (although presuming stationarity for groundwater is in general less critical than for stream water), and their analysis  
565 was carried out with high-accuracy methods for minimizing the potential impact of tritium analytical errors on modelling  
results (Stewart et al., 2012; Gallart et al., 2016).

The tritium output data record length is of particularly critical importance to the characterization of hydrological systems in  
the Northern Hemisphere. While a single tritium sample can be sufficient in the Southern Hemisphere, the use of time series  
with several measurements remains a prerequisite in the Northern Hemisphere for an unequivocal dating of hydrological  
570 systems (Stewart and Morgenstern, 2016). This problem may be tackled by exploiting sites for which past tritium  
measurements are available (e.g., Stolp et al., 2010; Blavoux et al., 2013; Jerbi et al., 2019). Here, we have explored the  
potential for the sole use of recent high-accuracy tritium data to date groundwater. We did eventually rely on time series, but  
of minimal length (as a reminder, time series of 3 samples taken every ~2 years). In this context, we did not use a standard  
best-fit calibration approach as is most commonly done, but followed the advice of Gallart et al. (2016) to use a modelling  
575 framework combining a resampling procedure associated with the GLUE approach (Beven and Binley, 1992, 2014). This  
approach delivers dating results together with uncertainty ranges reflecting the EPM parameter identifiability issue arising  
jointly from the low number of spring samples and the tritium analytical errors. Easy to implement and conceptually simple,  
GLUE is one of the most widely used methods for uncertainty assessment of hydrological models (Moges et al., 2021).  
However, it is important to note that its subjectivity can be criticized for the choice of the behavioural threshold, the number  
580 of sample simulations and their potential impact on the results (Li et al., 2010). Other alternative techniques could have been  
used, such as a Bayesian inference framework (e.g., Thiros et al, 2023), but the results would probably have been comparable  
(e.g., Li et al., 2010; Dotto et al., 2012).

~~First of all, our~~Our findings show that the short spring tritium data time series, even though of high-accuracy, did not allow  
direct unambiguous dating results. Indeed, even after restricting the mean transit time  $\tau_m$  to 35 years maximum to rule out the  
585 unlikely oldest solutions considering the hydrogeological context of the study area, the behavioural parameter sets resulting  
from the random exploration of the focused EPM parameter space still did not define an unambiguous set of solutions, and  
this for each spring and despite the more stringent NSE threshold of 0.5. This led us to apply an additional 2D kernel NSE  
weighted density thresholding filter to conserve the *a priori* most likely solutions and tend towards what we assumed to be the  
more coherent ensembles of parameter sets. Overall, the NSE figures characterizing these ensembles of most likely solutions  
590 (i.e., NSE median values ranging from 0.68 to 0.93 and averaging 0.86) indicate a good match between modelled and observed  
tritium data. As observed in Fig. S1-S35 and summarized in Fig. 14, the simulated spring tritium concentrations are consistent  
with the tritium measurements of spring samples, their downward trends, as well as with their analytical errors. Finally, it is  
worth noting that a few older tritium data are available for the investigated springs of group KRD (Farlin et al., 2013a, 2013b,  
2017). Covering the 2008-2012 period, these data are out of the specific scope of this work because of their lower accuracy  
595 ( $1\sigma$  average analytical error of 0.52 TU), hence they were not directly used for the modelling. Included in Fig. S16-S24, we  
can nonetheless observe that they fit well with the simulation ensembles and therefore represent to some extent an additional  
consolidating argument for the consistency of the obtained tritium dating results.

Although necessary, the consistency of the results with the tritium measurements is however not sufficient as it does not guarantee their correctness, particularly if the selected model does not adequately characterize the water flow field (Leray et al., 2016; Stewart et al., 2017). Here, we opted for the EPM because of its potential to simulate for unconfined aquifers both the water flowing through the vadose zone (i.e., with the EPM piston segment), as well as the mixing of groundwater flowlines coming from the saturated zone at the outlet of the system (i.e., mimicked by the EPM exponential section; Jurgens et al., 2012). Even if assessing the validity of the LPM selection is not straightforward (Leray et al., 2016), two key aspects of the findings nevertheless support the EPM choice here. First, the dating results retained *in fine* appear overall physically plausible when translated into equivalent sandstone heights (Fig. 8) using the rational average characteristics of the Luxembourg City spring recharge areas (i.e., outflowing discharge, impluvium, sandstone thickness, porosity). Secondly, the significant and consistent correlations found between  $\tau_{pf}$  and  $\tau_{exp}$  with several other characteristics describing the vadose and saturated zone of the Luxembourg Sandstone aquifer (Fig. 12) are also strongly supporting the choice of the EPM model. Indeed, while no straightforward significant correlation of  $\tau_m$  values with the other characteristics could be observed, several did appear when  $\tau_{pf}$  and  $\tau_{exp}$  were regarded separately.

Considering the full thickness of the Luxembourg Sandstone as a proxy for the thickness of its unsaturated zone, the very significant correlation highlighted in Fig. 12 between  $\tau_{pf}$  values and the Luxembourg Sandstone thickness means estimates of each group of springs is a first element that supports the ability of the EPM piston segment to deliver plausible transit times characterizing the percolation of water through the vadose zone of the aquifer. Although the thickness of the unsaturated zone could not be directly estimated, we conjecture that it is positively correlated with the Luxembourg Sandstone thickness, assuming that the saturated zone thickness is comparable from one area to another (which is reasonable given the perched character of the aquifer and the gently subhorizontal sloping topography of its base characterizing each hydrogeological district). The Luxembourg Sandstone thickness –  $\tau_{pf}$  relationship presented at the scale of the recharge area in Fig. 13b indicates, however, that group KRD springs deviate overall from the general behaviour with particularly high  $\tau_{pf}$  values. A possible explanation for this specific behaviour is the known presence of a marly layer intercalated in the Luxembourg Sandstone formation in the KRD area (as shown by the observational borehole drilled there; Farlin et al., 2013a). A second argument that supports the EPM piston component's potential for adequately reproducing the transit times required for infiltrating water to cross the vadose zone is the highly significant correlation of  $\tau_{pf}$  values with response times of spring discharges deduced from the cross-correlation analysis (i.e., MRT values; Fig. 12 and Fig. 13c). Such cross-correlation time series analysis of response times to effective precipitation inputs have indeed been related to the characteristics of the unsaturated zone for several other unconfined aquifers (e.g. Lee and Lee, 2000; Lee et al., 2006; Fiorillo and Doglioni, 2010; Bloomfield and Marchant, 2013; Bloomfield et al., 2015; Al-Jaf et al., 2021). As shown in Fig. 15, it is worth noting that the MRT -  $\tau_{pf}$  relationship seems linear, but not one-to-one. MRT values are in general almost four times lower than  $\tau_{pf}$  ones. A potential explanation for this difference is that MRT would reflect water celerity, i.e., the speed at which the water infiltration signal is transmitted through the vadose zone to the springs, while  $\tau_{pf}$  relate to water velocity, i.e., the movement of water

molecules (McDonnell and Beven, 2014; Scaini et al., 2017; van Verseveld et al., 2017; Shao et al., 2018; Worthington and Foley, 2021).

Although none of the studied physicochemical parameters were highlighted as a direct reliable proxy of water transit times in the Luxembourg Sandstone aquifer, the global correlation pattern of  $\tau_{exp}$  with the hydrochemistry of the spring waters (Fig. 12) suggests an overall progressive mineralization of groundwater with increasing flow path length in the saturated zone. The significant correlation between  $\tau_{exp}$  values and the average groundwater flow lengths estimated for each of the recharge areas also allows the exponential component of the EPM model to be related to the saturated zone of the aquifer (Fig. 12). It should nevertheless be noticed that the average groundwater flow length characterizing the recharge area of group B seems overall relatively short compared to the relatively large  $\tau_{exp}$  values that have been calculated for the springs that drain it (Fig. 13a). This inconsistency, which has already been raised indirectly when translating the tritium dating results into equivalent sandstone heights (see 4.1.3 and Fig. 8), could however be due to an incorrect estimate of the impluvium of this group of springs and would therefore not reflect a problem with the tritium-EPM derived dating results. It is moreover worth noting that a previous study (Luxconsult, 1992) estimated the recharge area of Group B springs (shown in Gourdol et al., 2013) to be twice as large as the one newly defined (RGD, 2021b) – a discrepancy that we have not yet been able to explore further. To conclude on the reliability of the tritium dating results obtained in this study, a rough assessment of water velocities in the vadose and saturated zones of the aquifer can be undertaken. First, we can assume that the EPM piston and exponential components reflect well the water flowing through the vadose zone and the mixing of groundwater flowlines coming from the saturated zone at the outlet. Second, by dividing  $\tau_{pf}$  and  $\tau_{exp}$  values by the mean values of the vadose zone thickness and the groundwater flow length in the saturated zone respectively, we can approximately estimate water velocities in these two specific compartments of the Luxembourg Sandstone aquifer. Conducted at the scale of the recharge area (using the average of  $\tau_m$  and  $F$  median values (Table S1) of each group of springs, mean groundwater flow lengths and Luxembourg Sandstone thicknesses reported in Table 1, and  $H_{exp}$  values as defined in section 4.1.3), this assessment leads to very close figures from one area to another (excluding group B results, whose impluvium was previously questioned). Ranging from  $1.9 \times 10^{-7}$  to  $5.5 \times 10^{-7}$  m/s, the water velocity determined for the vadose zone is on average  $3.7 \times 10^{-7}$  m/s (~12 m/year). About an order of magnitude higher in all cases, the water velocity assessed for the saturated zone ranges from  $4.0 \times 10^{-6}$  to  $8.7 \times 10^{-6}$  m/s and reaches  $5.4 \times 10^{-6}$  m/s on average (~170 m/year). This tritium derived anisotropy of water velocity shared by all the studied hydrogeological areas is consistent with the well-known anisotropy of hydraulic properties characterizing bedded aquifers introduced in section 2.1. Several studies focusing on the characterization of the permeability anisotropy have in particular shown that horizontal permeability of bedded sandstone formations is greater than their vertical permeability, and this up to several orders of magnitude (e.g., Hitchmough et al., 2007; Clavaud et al., 2008; Goupil et al., 2022).

To the best of our knowledge, even if observed by Fox et al. (2008), the anisotropy of the Luxembourg Sandstone permeability has never been quantified and its characterization may require further attention in future studies. This kind of data, associated with other existing datasets (e.g., Meus and Willems, 2021), could then be used to feed a physically-based 4D model (e.g.,

Paradis et al., 2018) that would more accurately represent the multi-scale complexity of the Luxembourg Sandstone bedrock  
665 aquifer (Worthington, 2015). The comparison of the output from such a model with that resulting from this study would allow  
the predictive capacities to be assessed – for instance for pollutant contamination mitigation purposes – of the tritium based  
LPM approach used here (Eberts et al., 2012; Yager et al., 2013; Marçais et al., 2015; Balvin et al., 2021). Potential sources  
of error that remained unaddressed in this study, such as aggregation biases (Bethke and Johnson, 2008; Stewart et al., 2017)  
resulting from a multi-modal mixture of waters of different ages associated with the properties of the fissured-porous aquifer  
670 (e.g., Rajaram, 2021), could indeed be explored in this way. Additionally, employing environmental tracers typically used for  
dating old groundwaters could further aid in mitigating these concerns (Bethke and Johnson, 2008; Jasechko, 2016; Rädle et  
al., 2022).

## 6. Conclusion

We have presented a new set of 105 high-accuracy tritium analyses, carried out on water samples collected three times at  
675 intervals of ~2 years for 35 springs, each of them fed by the Luxembourg Sandstone aquifer. We leveraged these short but  
high-accuracy tritium content time series to investigate the potential of the tritium dating technique to determine young  
groundwater transit times in the Northern Hemisphere at new study sites where no historical tritium data is available.  
Groundwater mean transit times have been assessed using the LPM approach in a modelling framework, delivering uncertainty  
ranges inherent to the low number of tritium data at hand and their analytical errors.

680 Our results show first that unambiguous groundwater mean transit time estimations solely based on recent short tritium content  
time series are not possible, as several ranges of mean transit times appeared plausible. Nonetheless, we succeeded through a  
stepwise decision process to discriminate for every spring an ensemble of most likely solutions, consistent with both the tritium  
measurements and the overall hydrogeological context of our area of interest. This assessment was possible because several  
independent supplementary data was available for each spring, and because of the large number of investigated springs and  
685 their varying characteristics.

Our work has demonstrated the suitability of the EPM model to assess groundwater mean transit times (through the vadose  
and saturated zones of the Luxembourg Sandstone aquifer) from high-accuracy tritium analyses of spring water samples. When  
translated into water velocities, the obtained dating results appeared particularly consistent with the horizontal-vertical  
anisotropy of the aquifer's hydraulic properties due to its bedded character – a key feature that deserves further investigations.  
690 To conclude, this work not only advanced our knowledge of water transit times in the Luxembourg Sandstone aquifer but  
should also be considered as an example of how dating of young groundwater bodies at new sites is today feasible with short  
tritium data series in Central Europe.

## Code and data availability

695 The R (R Core Team, 2022) scripts and data used to achieve this study ~~will be archived in an online repository and the DOI will be included in the final published version of the paper.~~ are available at <https://doi.org/10.5281/zenodo.11506262> (Gourdol et al., 2024).

## Author contributions

700 LG conceptualized the study with guidance from MKS, UM and LP. LG implemented the field and modelling work, conducted the data analysis and wrote the first draft of the paper. All the co-authors (LG, MKS, UM, and LP) contributed to and edited the manuscript.

## Competing interests

A co-author is a member of the editorial board of Hydrology and Earth System Sciences journal. The peer-review process was guided by an independent editor, and the authors have also no other competing interests to declare.

## Acknowledgements

705 This research work spined of a long-term public–public collaboration between the LIST and the City of Luxembourg. We especially thank the Water Service of Luxembourg City for their continuous and highly valuable support. We thank the LIST colleagues Cyrille Tailliez and Jérôme Juilleret for their help during the field work, François Barnich for the hydrochemical analyses, Renaud Hostache and Davide Zoccatelli for fruitful discussions about the modelling aspect of this work, and the technical staff of the GNS Tritium & Water Dating Laboratory for the tritium analyses. The authors are ~~also~~ deeply grateful to  
710 Francesc Gallart for providing access to the code of the modelling framework implemented in Gallart et al. (2016). We would also like to thank the anonymous reviewers whose comments helped to improve the manuscript.

## Financial support

715 The spring discharge and hydrochemical data used in this study was jointly funded by the LIST and the City of Luxembourg, the spring tritium data was funded by the LIST.

## References

- AGE: Guidelines for the designation of groundwater protection zones (Leitfaden für die Ausweisung von Grundwasserschutzzonen), Administration de la Gestion de l'Eau (AGE; in German), <https://eau.gouvernement.lu/dam-assets/eaux-souterraines/documents/ZPS-DOC-1-Leitfaden-Schutzzonen.pdf> (last access: 28 April 2023), 2010.
- 720 AGE: Management plan for the international river basin districts Rhine and Meuse on Luxembourg territory 2015–2021 (Plan de gestion pour les parties des districts hydrographiques internationaux Rhin et Meuse situées sur territoire luxembourgeois 2015-2021), Administration de la Gestion de l'Eau (AGE; in French), [http://geoportail.eau.etat.lu/pdf/plan%20de%20gestion/FR/2e%20plan%20de%20gestion%20pour%20le%20Luxembourg%20\(2015-2021\)\\_22.12.2015.pdf](http://geoportail.eau.etat.lu/pdf/plan%20de%20gestion/FR/2e%20plan%20de%20gestion%20pour%20le%20Luxembourg%20(2015-2021)_22.12.2015.pdf) (last access: 28 April 2023), 2015.
- 725 Al-Jaf, P., Smith, M., and Gunzel, F.: Unsaturated Zone Flow Processes and Aquifer Response Time in the Chalk Aquifer, Brighton, South East England, *Groundwater*, 59, 381-395, doi.org/10.1111/gwat.13055, 2021.
- [Allen, R. G., Pereira, L. S., Raes, D., and Smith, M.: Crop evapotranspiration - Guidelines for computing crop water requirements. FAO Irrigation and Drainage Paper 56. Food and Agriculture Organization of the United Nations: Rome, Italy, https://www.fao.org/4/x0490e/x0490e00.htm \(last access: 6 June 2024\), 1998.](https://www.fao.org/4/x0490e/x0490e00.htm)
- 730 Angelini, P.: Correlation and spectral analysis of two hydrogeological systems in central Italy, *Hydrological Sciences Journal*, 4, 425-438, doi.org/10.1080/02626669709492038, 1997.
- Balvín, A., Hokr, M., Šteklová, K., and Rálek, P.: Inverse modeling of natural tracer transport in a granite massif with lumped-parameter and physically based models: case study of a tunnel in Czechia, *Hydrogeology Journal*, 29, 2633–2654, doi.org/10.1007/s10040-021-02389-x, 2021
- 735 Berg, D.: Fractures in the Paleozoic and Mesozoic deposits of Luxembourg and the western Eifel: its relations with the general tectonics and their influence on the river network (Die Klüfte im Paläozoikum und Mesozoikum von Luxemburg und der westlichen Eifel: ihre Beziehungen zur allgemeinen Tektonik und ihr Einfluß auf das Gewässernetz), *Publ. Serv. Geol., Luxemb., Luxembourg*, 89 p (in German), 1965.
- Berners, H.P.: A lower Liassic offshore bar environment, contribution to the sedimentology of the Luxembourg Sandstone, *Annales de la société Géologique de Belgique*, 10, 87–102, <https://popups.uliege.be/0037-9395/index.php?id=3104&file=1&pid=3102> (last access: 4 March 2024), 1983.
- [Bethke, C. M. and T. M. Johnson.: Groundwater Age and Groundwater Age Dating, Annual Review of Earth and Planetary Sciences, Annual Reviews, doi.org/10.1146/annurev.earth.36.031207.124210, 2008.](https://doi.org/10.1146/annurev.earth.36.031207.124210)
- Beven, K. and Binley, A.: The future of distributed models: Model calibration and uncertainty prediction, *Hydrological Processes*, 6, 279–298, doi.org/10.1002/hyp.3360060305, 1992.
- 745 Beven, K. and Binley, A.: GLUE: 20 years on, *Hydrological Processes* 28, 5897–5918, doi.org/10.1002/hyp.10082, 2014.
- Beyer, M., Morgenstern, U., Jackson, B.: Review of techniques for dating young groundwater (< 100 years) in New Zealand, *Journal of Hydrology (NZ)*, 53, 93–111, 2014.



- Bintz, J. and Muller, A.: On the representation of the Luxembourg Sandstone on the new general geological map of the Grand-Duchy (Sur la représentation du Grès de Luxembourg sur la nouvelle carte géologique générale du Grand-Duché), Arch. Inst. Grand-ducal Luxemb. Sect. Sci. Nat. Phys. Math., 31, 241-258 (in French), 1965.
- Blavoux, B., Lachassagne, P., Henriot, A., Ladouche, B., Marc, V., Beley, J.J., Nicoud, G., and Olive, P.: A fifty-year chronicle of tritium data for characterising the functioning of the Evian and Thonon (France) glacial aquifers, *Journal of Hydrology*, 494, 116-133, doi.org/10.1016/j.jhydrol.2013.04.029, 2013.
- Bloomfield, J.P. and Marchant, B.P.: Analysis of groundwater drought building on the standardised precipitation index approach, *Hydrology and Earth System Sciences*, 17, 4769–4787, doi.org/10.5194/hess-17-4769-2013, 2013.
- Bloomfield, J.P., Marchant, B.P., Bricker S.H., and Morgan, R.B.: Regional analysis of groundwater droughts using hydrograph classification, *Hydrology and Earth System Sciences*, 19, 4327-4344, doi.org/10.5194/hess-19-4327-2015, 2015.
- Bohn, T., Cocco, E., Gourdol, L., Guignard, C., and Hoffmann, L.: Determination of atrazine and degradation products in Luxembourgish drinking water: origin and fate of potential endocrine-disrupting pesticides, *Food Additives & Contaminants: Part A*, 28(8), 1041-1054, doi.org/10.1080/19440049.2011.580012, 2011.
- Boulvain, F., Belanger, I., Delsate, D., Dosquet, D., Ghysel, P., Godefroit, P., Laloux, M., Roche, M., Teerlinck, H., and Thorez, J.: New lithostratigraphical, sedimentological, mineralogical and paleontological data on the Mesozoic of the Belgian Lorraine, *Geologica Belgica*, 3, 3–33, doi.org/10.20341/gb.2014.021, 2000.
- Boulvain, F., Belanger, I., Delsate, D., Ghysel, P., Godefroit, P., Laloux, M., Monteyne, R., and Roche, M.: Triassic and Jurassic lithostratigraphic units (Belgian Lorraine), *Geologica Belgica*, 4, 113–119. doi.org/10.20341/gb.2014.048, 2001.
- Box, G. and Jenkins, G.: *Time series analysis: Forecasting and control*, Holden-Day, San Francisco, 1970.
- Busenberg, E., Plummer, L.N., Cook, P.G., Solomon, D.K., Han, L.F., Gröning, M., and Oster, H.: Sampling and analytical methods, In: *Use of Chlorofluorocarbons in Hydrology: A Guidebook* (eds IAEA, Vienna), 199-220, [http://www-pub.iaea.org/MTCD/publications/pdf/Pub1238\\_web.pdf](http://www-pub.iaea.org/MTCD/publications/pdf/Pub1238_web.pdf) (last access: 28 April 2023), 2006.
- Cai, Z. and Offerdinger, U.: Analysis of groundwater-level response to rainfall and estimation of annual recharge in fractured hard rock aquifers, NW Ireland, *Journal of Hydrology*, 535, 71-84, doi.org/10.1016/j.jhydrol.2016.01.066, 2016.
- Cammeraat, L.H., Sevink, J., Hissler, C., Juilleret, J., Jansen, B., Kooijman, A.M., Pfister, L., and Verstraten, J.M.: Soils of the Luxembourg Lias cuesta landscape, In: A.M. Kooijman et al. (Eds), *The Luxembourg Gutland Landscape*, p 107-130, doi.org/10.1007/978-3-319-65543-7\_6, 2017.
- Cartwright, I., Cendón, D., Currell, M., and Meredith, K.: A review of radioactive isotopes and other residence time tracers in understanding groundwater recharge: Possibilities, challenges, and limitations, *Journal of Hydrology*, 555, 797-811, doi.org/10.1016/j.jhydrol.2017.10.053, 2017.
- Cartwright, I., Morgenstern, U., Howcroft, W., Hofmann, H., Armit, R., Stewart, M., and Irvine, D.: The variation and controls of mean transit times in Australian headwater catchments, *Hydrological Processes*, 34(21), 4034–4048, doi.org/10.1002/hyp.13862, 2020.

- Cauquoin, A., Jean-Baptiste, P., Risi, C., Fourré, E., Stenni, B., and Landais, A.: The global distribution of natural tritium in precipitation simulated with an Atmospheric General Circulation Model and comparison with observations, *Earth and Planetary Science Letters*, 427, 160-170, doi.org/10.1016/j.epsl.2015.06.043, 2015.
- 785 Claes S., Nader F.H., and Youssef S.: Coupled experimental/numerical workflow for assessing quantitative diagenesis and dynamic porosity/permeability evolution in calcite-cemented sandstone reservoir rocks, *Oil and Gas Science and Technology*, 73, 36, doi.org/10.2516/ogst/2018027,2018.
- Clavaud, J.B., Mainault, A., Zamora, M., Rasolofosaon, P., and Schlitter, C.: Permeability anisotropy and its relations with porous medium structure, *Journal of Geophysical Research*, 113, B01202, doi.org/10.1029/2007JB005004, 2008.
- 790 Colbach, R.: Overview of the geology of the Luxembourg Sandstone(s), In: Ries, C., Krippel, Y. (Eds), *Proceedings of the 2nd International Conference on Sandstone Landscapes, Ferrantia*, 44, 155-160, <https://ps.mnhn.lu/ferrantia/publications/Ferrantia44.pdf> (last access: 28 April 2023), 2005.
- Cook, P.G. and Solomon D.K.: Recent advances in dating young groundwater: chlorofluorocarbons,  $^3\text{H}^3\text{He}$  and  $^{85}\text{Kr}$ , *Journal of Hydrology*, 191, 245-265, doi.org/10.1016/S0022-1694(96)03051-X, 1997.
- 795 Delbart, C., Valdes, D., Barbecot, F., Tognelli, A., Richon, and P., Couchoux, L.: Temporal variability of karst aquifer response time established by the sliding-windows cross-correlation method, *Journal of Hydrology*, 511, 580-588, doi.org/10.1016/j.jhydrol.2014.02.008, 2014.
- Dotto, C.B.S., Mannina, G., Kleidorfer, M., Vezzaro, L., Henrichs, M., McCarthy, D.T., Freni, G., Rauch, W., and Deletic, A.: Comparison of different uncertainty techniques in urban stormwater quantity and quality modelling, *Water Research*, 46, 800 2545-2558, doi.org/10.1016/j.watres.2012.02.009, 2012.
- Duvert, C., Stewart, M. K., Cendón, D. I., and Raiber, M.: Time series of tritium, stable isotopes and chloride reveal short-term variations in groundwater contribution to a stream, *Hydrology and Earth System Sciences*, 20, 257–277, doi.org/10.5194/hess-20-257-2016, 2016.
- Eastoe, C.J., Watts, C.J., Ploughe, M., and Wright, W.E.: Future use of tritium in mapping pre-bomb groundwater volumes, 805 *Groundwater*, 50(1), 87–93, doi.org/10.1111/j.1745-6584.2011.00806.x, 2012.
- Eberts, S.M., Böhlke, J.K., Kauffman, L.J., and Jurgens, B.C.: Comparison of particle-tracking and lumped-parameter age-distribution models for evaluating vulnerability of production wells to contamination, *Hydrogeology Journal*, 20, 263–282, doi.org/10.1007/s10040-011-0810-6, 2012.
- Edmunds, W. M. and Smedley, P. L.: Residence time indicators in groundwater: the East Midlands Triassic sandstone 810 aquifer, *Applied Geochemistry*, 15, 737-752, doi.org/10.1016/S0883-2927(99)00079-7, 2000.
- Edmunds, W.M. and Shand, P.: Natural groundwater quality - Summary and significance for water resources management, In: Edmunds, W.M., Shand, P. (Eds.), *Natural Groundwater Quality*, Blackwell, London, pp. 441-462, doi.org/10.1002/9781444300345.ch21, 2009.
- Einsiedl, F.: Flow system dynamics and water storage of a fissured-porous karst aquifer characterized by artificial and 815 environmental tracers, *Journal of Hydrology*, 312, 312-321, doi.org/10.1016/j.jhydrol.2005.03.031, 2005.

- Faber, A. and Weis, R.: The Luxembourg Sandstone. Scientific and patrimonial importance of its fossiliferous sites, In: Ries, C., Krippel, Y. (Eds), Proceedings of the 2nd International Conference on Sandstone Landscapes, Ferrantia, 44, 161-164, <https://ps.mnhn.lu/ferrantia/publications/Ferrantia44.pdf> (last access: 28 April 2023), 2005.
- 820 Farlin, J., Gallé, T., Bayerle, M., Pittois, D., Braun, C., El Khabbaz, H., Elsner, M., and Maloszewski, P.: Predicting Pesticide Attenuation in a Fractured Aquifer Using Lumped-Parameter Models, *Groundwater*, 51, 276-285, [doi.org/10.1111/j.1745-6584.2012.00964.x](https://doi.org/10.1111/j.1745-6584.2012.00964.x), 2013a.
- Farlin, J., Drouet, L., Gallé, T., Pittois, D., Bayerle, M., Braun, C., Maloszewski, P., Vandenberght, J., Elsner, M., and Kies, A.: Delineating spring recharge areas in a fractured sandstone aquifer (Luxembourg) based on pesticide mass balance, *Hydrogeology Journal*, 21, 799-812, [doi.org/10.1007/s10040-013-0964-5](https://doi.org/10.1007/s10040-013-0964-5), 2013b.
- 825 Farlin, J., Bayerle, M., Pittois, D., and Gallé, T.: Estimating Pesticide Attenuation From Water Dating and the Ratio of Metabolite to Parent Compound, *Groundwater*, 55, 550-557, [doi.org/10.1111/gwat.12499](https://doi.org/10.1111/gwat.12499), 2017.
- Farlin, J., Gallé, T., Bayerle, M., Pittois, D., Köppchen, S., Krause, M., and Hofmann, D., 2018. Breakthrough dynamics of S-Metolachlor metabolites in drinkingwater wells: transport pathways and time to trend reversal, *Journal of Contaminant Hydrology*, 213, 62–72, [doi.org/10.1016/j.jconhyd.2018.05.002](https://doi.org/10.1016/j.jconhyd.2018.05.002), 2018.
- 830 Farlin, J., Gallé, T., Pittois, D., Bayerle, M., and Schaul, T.: Groundwater quality monitoring network design and optimisation based on measured contaminant concentration and taking solute transit time into account, *Journal of Hydrology*, 573, 516-523, [doi.org/10.1016/j.jhydrol.2019.01.067](https://doi.org/10.1016/j.jhydrol.2019.01.067), 2019.
- Fiorillo F. and Doglioni A.: The relation between karst spring discharge and rainfall by cross-correlation analysis (Campania, Southern Italy), *Hydrogeology Journal*, 18, 1881-1895, [doi.org/10.1007/s10040-010-0666-1](https://doi.org/10.1007/s10040-010-0666-1), 2010.
- 835 Gallart, F., Roig-Planasdemunt, M., Stewart, M. K., Llorens, P., Morgenstern, U., Stichler, W., Pfister, P., and Latron, J.: A GLUE-based uncertainty assessment framework for tritium-inferred transit time estimations under baseflow conditions, *Hydrological Processes*, 30, 4741–4760, [doi.org/10.1002/hyp.10991](https://doi.org/10.1002/hyp.10991), 2016.
- Gerber, C., Purtschert, R., Hunkeler, D., Hug, R., and Sültenfuss, J.: Using environmental tracers to determine the relative importance of travel times in the unsaturated and saturated zones for the delay of nitrate reduction measures, *Journal of Hydrology*, 561, 250-266, [doi.org/10.1016/j.jhydrol.2018.03.043](https://doi.org/10.1016/j.jhydrol.2018.03.043), 2018.
- 840 Gleeson, T., Befus, K., Jasechko, S., Luijendijk, E., and Bayani Cardenas, M.: The global volume and distribution of modern groundwater, *Nature Geoscience*, 9, 161–167, [doi.org/10.1038/s41561-018-0164-y](https://doi.org/10.1038/s41561-018-0164-y), 2016.
- Goupil, M., Heap, M.J., and Baud, P.: Permeability anisotropy in sandstones from the Soultz-sous-Forêts geothermal reservoir (France): implications for large-scale fluid flow modelling, *Geothermal Energy*, 10, 32, [doi.org/10.1186/s40517-022-00243-1](https://doi.org/10.1186/s40517-022-00243-1), 2022.
- 845 Gourdol, L., Hissler, C., Hoffmann, L., and Pfister, L.: On the potential for the Partial Triadic Analysis to grasp the spatio-temporal variability of groundwater hydrochemistry, *Applied geochemistry*, 39, 93-107, [doi.org/10.1016/j.apgeochem.2013.10.002](https://doi.org/10.1016/j.apgeochem.2013.10.002), 2013.

- 850 [Gourdol, L., Stewart, M. K., Morgenstern, U., and Pfister, L.: Code and data for: Short high-accuracy tritium data time series for assessing groundwater mean transit times in the vadose and saturated zones of the Luxembourg Sandstone aquifer, Zenodo, doi.org/10.5281/zenodo.11506262, 2024.](#)
- 855 Gusyev, M. A., Morgenstern, U., Stewart, M. K., Yamazaki, Y., Kashiwaya, K., Nishihara, T., Kuribayashi, D., Sawano, H., and Iwami, Y.: Application of tritium in precipitation and baseflow in Japan: a case study of groundwater transit times and storage in Hokkaido watersheds, *Hydrology and Earth System Sciences*, 20, 3043–3058, doi.org/10.5194/hess-20-3043-2016, 2016.
- Han, L.F., Gröning, M., Plummer, L.N., and Solomon, D.K.: Comparison of the CFC technique with other techniques ( $^3\text{H}$ ,  $^3\text{H}/^3\text{He}$ ,  $^{85}\text{Kr}$ ), In: *Use of Chlorofluorocarbons in Hydrology: A Guidebook* (eds IAEA, Vienna), 191-198, [http://www-pub.iaea.org/MTCD/publications/pdf/Pub1238\\_web.pdf](http://www-pub.iaea.org/MTCD/publications/pdf/Pub1238_web.pdf) (last access: 28 April 2023), 2006.
- 860 Hissler, C., Gourdol, L., Juilleret, J., Marx, S., Leydet, L., and Flammang, F.: Pedotransfer functions for predicting soil hydrological characteristics in Luxembourg: literature review and reliability tests for predicting the soil maximum water-holding capacity (Fonctions de pédotransfert pour la prédiction des caractéristiques hydriques des sols au Luxembourg : analyse bibliographique et premiers tests de fiabilité pour la prédiction de la réserve utilisable maximale des sols), Report drafted on behalf of the Administration des services techniques de l’agriculture (in French), 2015.
- 865 Hissler, C. and Gourdol, L.: Assessment of soil maximum water-holding capacity in Luxembourg at national scale: a first estimate based on recent datasets (Évaluation de la réserve utile maximale en eau des sols au Luxembourg à l’échelle nationale : une première estimation basée sur des jeux de données récents), Report drafted on behalf of the Administration de la gestion de l’eau (in French), 2015.
- Hitchmough, A.M., Riley, M.S., Herbert, A.W., and Tellam, J.H.: Estimating the hydraulic properties of the fracture network in a sandstone aquifer, *Journal of Contaminant Hydrology*, 93, 38-57, doi.org/10.1016/j.jconhyd.2007.01.012, 2007.
- 870 IAEA and WMO: Global Network of Isotopes in Precipitation, The GNIP Database, <https://nucleus.iaea.org/wiser> (last access: 15 July 2021), 2019.
- Jasechko, S.: Global isotope hydrogeology—review, *Reviews of Geophysics*, 57, 835-965, doi.org/10.1029/2018RG000627, 2019.
- 875 [Jasechko, S.: Partitioning young and old groundwater with geochemical tracers, \*Chemical Geology\*, 427, 35-42, doi.org/10.1016/j.chemgeo.2016.02.012, 2016.](#)
- Jemcov, I. and Petric, M.: Measured precipitation vs effective infiltration and their influence on the assessment of karst systems based on results of the time series analysis, *Journal of Hydrology*, 379, 304-314, doi.org/10.1016/j.jhydrol.2009.10.016, 2009.
- 880 Jeong, J., Park, E., Han, W. S., Kim, K. Y., Oh, J., Ha, K., Yoon, H., and Yun, S. T.: A method of estimating sequential average unsaturated zone travel times from precipitation and water table level time series data, *Journal of Hydrology*, 554, 570-581, doi.org/10.1016/j.jhydrol.2017.09.042, 2017.

- Jerbi, H., Hamdi, M., Snoussi, M., Benabdelmalek, M., Jnoub, H., and Tarhouni, J.: Usefulness of historical measurements of tritium content in groundwater for recharge assessment in semi-arid regions: application to several aquifers in central Tunisia, *Hydrogeology Journal*, 27, 1645–1660, doi.org/10.1007/s10040-019-01937-w, 2019.
- 885 Jurgens, B.C., Bohlke, J.K., and Eberts, S.M.: TracerLPM (Version 1): An Excel®workbook for interpreting groundwater age distributions from environmental tracer data, US Geological Survey Techniques and Methods Report 4-F3, US Geological Survey, Reston, USA, 60 pp., <https://pubs.usgs.gov/tm/4-f3/pdf/tm4-F3.pdf>, (last access: 10 June 2024), 2019.
- Katz, B. G., Chelette, A. R., and Pratt, T. R.: Use of chemical and isotopic tracers to assess nitrate contamination and ground-water age, Woodville Karst Plain, USA, *Journal of hydrology*, 289(1-4), 36-61, doi.org/10.1016/j.jhydrol.2003.11.001, 2004.
- 890 Kausch, B. and Maquil, R.: Geological and geomorphological evolution of Luxembourg and its cuesta landscape, In: A.M. Kooijman et al. (Eds), *The Luxembourg Gutland Landscape*, p 1-19, doi.org/10.1007/978-3-319-65543-7\_1, 2017.
- Krombach, H.: On the chemical composition of the main types of drinking water in the Grand-Duchy of Luxembourg (Sur la composition chimique des principaux types d'eau potable du Grand-duché de Luxembourg), *Bull. Centr. Belg. Etud. Doc. Eaux*, 5/49, 315-317 (in French), 1949.
- 895 Lal, D. and Peters, B.: Cosmic ray produced radioactivity on the earth, In: Flugge S, ed. *Encyclopedia of Physics*, vol. 46. New York: Springer, 1967, 407–434, doi.org/10.1007/978-3-642-46079-1\_7, 1967.
- Lanini, S., Caballero, Y., Seguin, J.J., and Maréchal, J.C.: ESPERE – A Multiple-Method Microsoft Excel Application for Estimating Aquifer Recharge, *Groundwater*, 54, 155-156, doi.org/10.1111/gwat.12390, 2016.
- 900 Larocque, M., Mangin, A., Razack, M., and Banton O.: Contribution of correlation and spectral analyses to the regional study of a large karst aquifer (Charente, France), *Journal of Hydrology*, 205, 217-231, doi.org/10.1016/S0022-1694(97)00155-8, 1998.
- Lauber, U. and Goldscheider, N.: Use of artificial and natural tracers to assess groundwater transit-time distribution and flow systems in a high-alpine karst system (Wetterstein Mountains, Germany), *Hydrogeology Journal*, 22(8), 1807–1824, doi.org/10.1007/s10040-014-1173-6, 2014.
- 905 Le Duy, N., Nguyen, T.V.K., Nguyen, D.V., Tran, A.T., Nguyen, H.T., Heidebüchel, I., Merz, B., and Apel, H.: Groundwater dynamics in the Vietnamese Mekong Delta: Trends, memory effects, and response times, *Journal of Hydrology: Regional Studies*, 33, 100746, doi.org/10.1016/j.ejrh.2020.100746, 2021.
- Lee, J.Y. and Lee, K.K.: Use of hydrologic time series data for identification of recharge mechanism in a fractured bedrock aquifer system, *Journal of Hydrology*, 229 (3–4), 190-201, doi.org/10.1016/S0022-1694(00)00158-X, 2000.
- 910 Lee, L.J.E., Lawrence, D.S.L., and Price, M.: Analysis of water-level response to rainfall and implications for recharge pathways in the Chalk aquifer, SE England, *Journal of Hydrology*, 330(3), 604–620, doi.org/10.1016/j.jhydrol.2006.04.025, 2006.
- Leibundgut, C., Maloszewski, P., and Kull, C.: *Tracers in Hydrology*, John Wiley & Sons: New York, NY, USA, doi.org/10.1002/9780470747148, 2009.

- Leibundgut, C. and Seibert, J.: Tracer hydrology, In: *Treatise on Water Science*, ed P. Wilderer (Oxford: Elsevier), 215-236, doi.org/10.1016/B978-0-444-53199-5.00036-1, 2011.
- Li, L., Xia, J., Xu, C.Y., and Singh, V.P.: Evaluation of the subjective factors of the GLUE method and comparison with the formal Bayesian method in uncertainty assessment of hydrological models, *Journal of Hydrology*, 390, 210-221, doi.org/10.1016/j.jhydrol.2010.06.044, 2010.
- 920 Libby, W.F.: The Potential Usefulness of Natural Tritium, *Proceedings of the National Academy of Sciences*, 39, 245-247, doi.org/10.1073/pnas.39.4.245, 1953.
- Lucas, L.L. and Unterweger, M.P.: Comprehensive Review and Critical Evaluation of the Half-Life of Tritium, *Journal of research of the National Institute of Standards and Technology*, 105, 541-549, doi.org/10.6028/jres.105.043, 2000.
- 925 Luxconsult: Determination of groundwater protection zones for drinking water sources in the municipality of Luxembourg Part 6a - Birelergrund 1-10 (Festlegung der Grundwasserschutz-zonen für die Trinkwasserquellen der Gemeinde Luxembourg Teil 6a - Birelergrund 1-10), Study conducted for the General Commissariat for Soil and Water Protection of the Ministry of the Environment (in German), 1992.
- MacDonald, A.M., Darling, W.G., Ball, D.F., and Oster, H.: Identifying trends in groundwater quality using residence time indicators: an example from the Permian aquifer of Dumfries, Scotland. *Hydrogeology Journal*, 11, 504–517, doi.org/10.1007/s10040-003-0275-3, 2003.
- 930 Maier, R., Leven, C., Sánchez-León, E., Strasser, D., Stoll, M., and Cirpka, O.A.: Revealing vertical aquifer heterogeneity and hydraulic anisotropy by pumping partially penetrating wells, *Hydrogeology Journal*, 30, 463–477, doi.org/10.1007/s10040-022-02458-9, 2022.
- 935 Maloszewski, P. and Zuber, A.: Determining the turnover time of groundwater systems with the aid of environmental tracers: 1. Models and their applicability, *Journal of Hydrology*, 57, 207-231, doi.org/10.1016/0022-1694(82)90147-0, 1982.
- Mammoliti, E., Fronzi, D., Mancini, A., Valigi, D., and Tazioli, A.: WaterbalANce, a WebApp for Thornthwaite – Mather Water Balance Computation: Comparison of Applications in Two European Watersheds, *Hydrology*, 8, 34, doi.org/10.3390/hydrology8010034, 2021.
- 940 Mangin, A.: Constitution and functioning of karstic aquifers (Constitution et fonctionnement des aquifères karstiques), *Annales de Spéléologie*, 30, 21-124 (in French), 1975.
- Mangin, A.: Use of correlation and spectral analysis in the approach of hydrological systems (Utilisation des analyses corrélatoire et spectrale dans l’approche des systèmes hydrologiques), *Comptes rendus de l’Académie des Sciences, Paris, Série II*, 293, 401-404 (in French), 1981a.
- 945 Mangin, A.: Contributions of cross-correlation and spectral analysis to the knowledge of hydrological systems (Apports des analyses corrélatoire et spectrale croisées dans la connaissance des systèmes hydrologiques), *Comptes rendus de l’Académie des Sciences, Paris, Série II*, 293, 1011-1014 (in French), 1981b.

- Mangin, A.: The use of autocorrelation and spectral analyses to obtain a better understanding of hydrological systems (Pour une meilleure connaissance des systèmes hydrologiques à partir des analyses corrélatoire et spectrale), *Journal of Hydrology*, 67, 25-43, doi.org/10.1016/0022-1694(84)90230-0, 1984.
- 950 Marçais, J., de Dreuzy, J.R., Ginn, T.R., Rousseau-Gueutin, P., and Leray, S.: Inferring transit time distributions from atmospheric tracer data: Assessment of the predictive capacities of Lumped Parameter Models on a 3D crystalline aquifer model, *Journal of Hydrology*, 525, 619-631, doi.org/10.1016/j.jhydrol.2015.03.055, 2015.
- McDonnell, J.J. and Beven, K.: Debates—The future of hydrological sciences: A (common) path forward? A call to action aimed at understanding velocities, celerities, and residence time distributions of the headwater hydrograph, *Water Resources Research*, 50, 5342– 5350, doi.org/10.1002/2013WR015141, 2014.
- 955 McGuire, K.J. and McDonnell, J.J.: A review and evaluation of catchment transit time modelling, *Journal of Hydrology*, 330, 543-563, doi.org/10.1016/j.jhydrol.2006.04.020, 2006.
- Michel, R. L.: Tritium inventories of the world oceans and their implications, *Nature*, 263, 103–106, doi.org/10.1038/263103a0, 1976.
- 960 Meus, P. and Willems, L.: Tracer tests to infer the drainage of the multiple porosity aquifer of Luxembourg Sandstone (Grand-Duchy of Luxembourg): implications for drinking water protection, *Hydrogeology Journal*, 29, 461–480, doi.org /10.1007/s10040-020-02274-z, 2021.
- Molenaar, N.: Origin of Low-Permeability Calcite-Cemented Lenses in Shallow Marine Sandstones and CaCO<sub>3</sub> Cementation Mechanisms: An Example from the Lower Jurassic Luxemburg Sandstone, Luxemburg, Special Publication of the International Association of Sedimentologists, 26, 193–211, doi.org/10.1002/9781444304893.ch9, 1998.
- 965 Morgenstern, U., Stewart, M.K., and Stenger, R.: Dating of streamwater using tritium in a post nuclear bomb pulse world: continuous variation of mean transit time with streamflow, *Hydrology and Earth System Sciences*, 14, 2289-2301, doi.org/10.5194/hess-14-2289-2010, 2010.
- 970 Morgenstern, U., Daughney, C.J., Leonard, G., Gordon, D., Donath, F.M., and Reeves, R.: Using groundwater age and hydrochemistry to understand sources and dynamics of nutrient contamination through the catchment into Lake Rotorua, New Zealand, *Hydrology and Earth System Sciences*, 19, 803–822, doi.org/10.5194/hess-19-803-2015, 2015.
- Morgenstern, U. and Daughney, C.J.: Groundwater age for identification of baseline groundwater quality and impacts of land use intensification – The National Groundwater Monitoring Programme of New Zealand, *Journal of Hydrology*, 456– 975 457, 79–93, doi.org/10.1016/j.jhydrol.2012.06.010, 2012.
- Morgenstern, U. and Taylor, C.B.: Ultra Low-level tritium measurement using electrolytic enrichment and LSC, *Isotopes in Environmental and Health Studies*, 45, 96-117, doi.org/10.1080/10256010902931194, 2009.
- Morishima, H., Kawai, H., Koga, T., Niwa, T.: The Trends of Global Tritium Precipitations, *Journal of Radiation Research* 26, 283-312, doi.org/10.1269/jrr.26.283, 1985.

- 980 Newman, B.D., Osenbrück, K., Aeschbach-Hertig, W., Solomon, D.K., Cook, P., Rózański, K., and Kipfer, R.: Dating of 'young' groundwaters using environmental tracers: advantages, applications, and research needs, *Isotopes in Environmental and Health Studies*, 46:3, 259-278, doi.org/10.1080/10256016.2010.514339, 2010.
- Ozyurt, N.N., Lutz, H.O., Hunjak, T., Mance, D., and Roller-Lutz, Z.: Characterization of the Gacka River basin karst aquifer (Croatia): hydrogeochemistry stable isotopes and tritium-based mean residence times, *Science of The Total Environment*, 487, 245–254, doi.org/10.1016/j.scitotenv.2014.04.018, 2014.
- 985 Padilla, A. and Pulido-Bosch, A.: Study of hydrographs of karst aquifers by means of correlation and cross-spectral analysis, *Journal of Hydrology*, 168, 73-89, doi.org/10.1016/0022-1694(94)02648-U, 1995.
- Panagopoulos, G. and Lambrakis, N.: The contribution of time series analysis to the study of the hydrodynamic characteristics of the karst systems: application on two typical karst aquifers of Greece (Trifilia, Almyros Crete), *Journal of Hydrology*, 329, 368-376, doi.org/10.1016/j.jhydrol.2006.02.023, 2006.
- 990 Paradis, D., Ballard, J.M., Lefebvre, R., and Savard, M.M.: Multi-scale nitrate transport in a sandstone aquifer system under intensive agriculture, *Hydrogeology Journal*, 26, 511–531, doi.org/10.1007/s10040-017-1668-z, 2018.
- Pfister, L., Martínez-Carreras, N., Hissler, C., Klaus, J., Carrer, G.E., Stewart, M.K., and McDonnell, J.J.: Bedrock geology controls on catchment storage, mixing, and release: A comparative analysis of 16 nested catchments, *Hydrological Processes*, 31, 1828–1845, doi.org/10.1002/hyp.11134, 2017.
- 995 Phillips F.M. and Castro M.C.: Groundwater Dating and Residence-Time Measurements, In: *Treatise on Geochemistry* (2nd Edition), Elsevier Ltd., doi.org/10.1016/B978-0-08-095975-7.00513-1, 2014.
- Purtschert, R.: Timescales and Tracers, In: *Natural Groundwater Quality* (eds W.M. Edmunds and P. Shand), doi.org/10.1002/9781444300345.ch5a, 2008.
- 1000 Purtschert, R., Corcho Alvarado, J., and Loosli, H.H.: Dating Examples in European Reference Aquifers, In: *Natural Groundwater Quality* (eds W.M. Edmunds and P. Shand), doi.org/10.1002/9781444300345.ch5b, 2008.
- R Core Team: R: A language and environment for statistical computing, R Foundation for Statistical Computing, Vienna, Austria, <https://www.R-project.org/>, (last access: 10 June 2024), 2022.
- 1005 [Rädle, V., Kersting, A., Schmidt, M., Ringena, L., Robertz, J., Aeschbach, W., Oberthaler, M., and Müller, T.: Multi-tracer groundwater dating in Southern Oman using Bayesian modelling, \*Water Resources Research\*, 58, e2021WR031776, doi.org/10.1029/2021WR031776, 2022.](https://doi.org/10.1029/2021WR031776)
- [Rajaram, H.: Matrix diffusion as a mechanism contributing to fractal stream chemistry and long-tailed transit time distributions, \*Geophysical Research Letters\*, 48, e2021GL094292, doi.org/10.1029/2021GL094292, 2021.](https://doi.org/10.1029/2021GL094292)
- RGD: Grand-Ducal regulation of 2 October 2018 creating protection zones around the groundwater catchments of the Glasbouden, Brennerei and Dommeldange sites located on the territories of the communes of Luxembourg, Niederanven, Steinsel and Walferdange (Règlement grand-ducal du 2 octobre 2018 portant création des zones de protection autour des captages d'eau souterraine des sites Glasbouden, Brennerei et Dommeldange situées sur les territoires des communes de Luxembourg, Niederanven, Steinsel et Walferdange),



- 1015 <https://data.legilux.public.lu/filestore/eli/etat/leg/rgd/2018/10/02/a934/jo/fr/pdfa/eli-etat-leg-rgd-2018-10-02-a934-jo-fr-pdf.pdf> (last access: 28 April 2023), 2018.
- RGD: Grand-Ducal regulation of 16 May 2019 creating protection zones around the Siwebueren and Katzebuer-Millebaach groundwater catchments located on the territories of the communes of Kopstal, Luxembourg, Strassen and Walferdange (Règlement grand-ducal du 16 mai 2019 portant création des zones de protection autour des captages d'eau souterraine Siwebueren et Katzebuer-Millebaach situées sur les territoires des communes de Kopstal, Luxembourg, Strassen et
- 1020 Walferdange), <https://data.legilux.public.lu/filestore/eli/etat/leg/rgd/2019/05/16/a342/jo/fr/pdfa/eli-etat-leg-rgd-2019-05-16-a342-jo-fr-pdf.pdf> (last access: 28 April 2023), 2019.
- RGD: Grand-Ducal regulation of 25 August 2021 creating protection zones around the Pulvermühle groundwater catchment situated on the territories of the communes of Luxembourg, Niederanven and Sandweiler (Règlement grand-ducal du 25 août 2021 portant création des zones de protection autour du captage d'eau souterraine Pulvermühle situées sur les territoires des
- 1025 communes de Luxembourg, Niederanven et Sandweiler),
- <https://data.legilux.public.lu/filestore/eli/etat/leg/rgd/2021/08/25/a677/jo/fr/pdfa/eli-etat-leg-rgd-2021-08-25-a677-jo-fr-pdf.pdf> (last access: 28 April 2023), 2021a.
- RGD: Grand-Ducal regulation of 25 August 2021 creating protection zones around the Birelergronn groundwater catchment site located on the territories of the communes of Niederanven, Sandweiler and Schuttrange (Règlement grand-ducal du 25
- 1030 août 2021 portant création de zones de protection autour du site de captage d'eau souterraine Birelergronn situées sur les territoires des communes de Niederanven, Sandweiler et Schuttrange),
- <https://data.legilux.public.lu/filestore/eli/etat/leg/rgd/2021/08/25/a678/jo/fr/pdfa/eli-etat-leg-rgd-2021-08-25-a678-jo-fr-pdf.pdf> (last access: 28 April 2023), 2021b.
- RGD: Draft Grand-Ducal regulation creating protection zones around the groundwater catchments of the Kopstal catchment site (west side) and located on the territories of the municipalities of Kehlen and Kopstal (Projet de règlement grand-ducal portant création des zones de protection autour des captages d'eau souterraine du site de captage Kopstal (côté Ouest) et situées sur les territoires des communes de Kehlen et Kopstal),
- 1035 [http://geoportail.eau.etat.lu/pdf/eaux%20souterraines/ZPS/RGD/PRGD%20ZPS%20Kopstal\\_coteOuest.pdf](http://geoportail.eau.etat.lu/pdf/eaux%20souterraines/ZPS/RGD/PRGD%20ZPS%20Kopstal_coteOuest.pdf) (last access: 28 April 2023), 2022a.
- 1040 RGD: Draft Grand-Ducal regulation creating protection zones around the groundwater catchments of the Kopstal catchment site (East side) and located on the territories of the municipalities of Kopstal, Lorentzweiler and Steinsel (Projet de règlement grand-ducal portant création des zones de protection autour des captages d'eau souterraine du site de captage Kopstal (côté Est) et situées sur les territoires des communes de Kopstal, Lorentzweiler et Steinsel),
- [http://geoportail.eau.etat.lu/pdf/eaux%20souterraines/ZPS/RGD/PRGD%20ZPS%20Kopstal\\_coteEst.pdf](http://geoportail.eau.etat.lu/pdf/eaux%20souterraines/ZPS/RGD/PRGD%20ZPS%20Kopstal_coteEst.pdf) (last access: 28
- 1045 April 2023), 2022b.

- Ries, C. and Krippel, Y.: Sandstone Landscapes in Europe - Past, Present and Future, Proceedings of the 2nd International Conference on Sandstone Landscapes (Vianden, Luxembourg, 25-28/05/2005), MNHN, Ries, C., Krippel, Y. (Eds), Ferrantia, 44, 256p., <https://ps.mnhn.lu/ferrantia/publications/Ferrantia44.pdf> (last access: 28 April 2023), 2005.
- 1050 Samir, M.: Fracture roughness analysis in Luxembourg Sandstone, Master's Thesis in Geology, Université Libre de Bruxelles (ULB), Faculty of Sciences, Department of Geosciences, Environment and Society (DGES), <https://ulb.academia.edu/samirmohammad> (last access: 28 April 2023), 2019.
- Scaini, A., Audebert, M., Hissler, C., Fenicia, F., Gourdol, L., Pfister, L., and Beven, K. J.: Velocity and celerity dynamics at plot scale inferred from artificial tracing experiments and time-lapse ERT, *Journal of Hydrology*, 546, 28–43, [doi.org/10.1016/j.jhydrol.2016.12.035](https://doi.org/10.1016/j.jhydrol.2016.12.035), 2017.
- 1055 Schäfer, A. and Colbach, R.: The Early Liassic Luxembourg Sandstone – Depositional environments and the interpretation of stratigraphic sequences in the Trier-Luxembourg Basin, *Zeitschrift der Deutschen Gesellschaft für Geowissenschaften*, 172, 99–125, [doi.org/10.1127/zdgg/2021/0268](https://doi.org/10.1127/zdgg/2021/0268), 2021.
- Schmidt, A., Frank, G., Stichler, W., Duester, L., Steinkopff, T., and Stumpp, C.: Overview of tritium records from precipitation and surface waters in Germany, *Hydrological Processes*, 34, 1489–1493, [doi.org/10.1002/hyp.13691](https://doi.org/10.1002/hyp.13691), 2020.
- 1060 Shao, W., Su, Y., Yang, Z., Ma, X., and Langhammer, J.: Quantify the Pore Water Velocity Distribution by a Celerity Function, *Geofluids* 2018, 1054730, [doi.org/10.1155/2018/1054730](https://doi.org/10.1155/2018/1054730), 2018.
- Stewart, M. K., Mehlhorn, J., and Elliott, S.: Hydrometric and natural tracer (oxygen-18, silica, tritium and sulphur hexafluoride) evidence for a dominant groundwater contribution to Pukemanga Stream, New Zealand, *Hydrological Processes*, 21, 3340–3356, [doi.org/10.1002/hyp.6557](https://doi.org/10.1002/hyp.6557), 2007.
- 1065 Stewart, M.K., Morgenstern, U., and McDonnell, J.J.: Truncation of stream residence time: how the use of stable isotopes has skewed our concept of streamwater age and origin, *Hydrological Processes*, 24, 1646–1659, [doi.org/10.1002/hyp.7576](https://doi.org/10.1002/hyp.7576), 2010.
- Stewart, M. K., Morgenstern, U., McDonnell, J. J., and Pfister, L.: The “hidden streamflow” challenge in catchment hydrology: A call to action for streamwater transit time analysis, *Hydrological Processes*, 26, 2061–2066, [doi.org/10.1002/hyp.9262](https://doi.org/10.1002/hyp.9262), 2012.
- 1070 Stewart, M.K., Morgenstern, U., Gusyevev, M.A., and Maloszewski, P.: Aggregation effects on tritium-based mean transit times and young water fractions in spatially heterogeneous catchments and groundwater systems, *Hydrology and Earth System Sciences*, 21, 4615–4627, [doi.org/10.5194/hess-21-4615-2017](https://doi.org/10.5194/hess-21-4615-2017), 2017.
- Stewart, M. K. and Morgenstern, U.: Importance of tritium-based transit times in hydrological systems, *Wiley Interdisciplinary Reviews Water*, 3, 145–154, [doi.org/10.1002/wat2.1134](https://doi.org/10.1002/wat2.1134), 2016.
- 1075 Stewart, M.K., Morgenstern, U., and Cartwright, I.: Comment on “A comparison of catchment travel times and storage deduced from deuterium and tritium tracers using StorAge Selection functions” by Rodriguez et al. (2021). *Hydrology and Earth System Sciences* 25, 6333–6338, [doi.org/10.5194/hess-25-6333-2021](https://doi.org/10.5194/hess-25-6333-2021), 2021.

- 1080 Stolp, B.J., Solomon, D.K., Suckow, A., Vitvar, T., Rank, D., Aggarwal, P.K., and Han, L.F.: Age dating base flow at springs and gaining streams using helium-3 and tritium: Fischa-Dagnitz system, southern Vienna Basin, Austria, *Water Resources Research*, 46, W07503, doi.org/10.1029/2009WR008006, 2010.
- Stumpp, C., Klaus, J., and Stichler, W.: Analysis of long-term stable isotopic composition in German precipitation, *Journal of Hydrology*, 517, 351–361, doi.org/10.1016/j.jhydrol.2014.05.034, 2014.
- 1085 Tadros, C. V., Hughes, C. E., Crawford, J., Hollins, S. E., and Chisari, R.: Tritium in Australian precipitation: A 50 year record, *Journal of Hydrology*, 513, 262–273, doi.org/10.1016/j.jhydrol.2014.03.031, 2014.
- Terzer-Wassmuth, S., Araguás-Araguás, L.J., Copia, L., and Wassenaar, L.A.: High spatial resolution prediction of tritium (3H) in contemporary global precipitation, *Scientific Reports*, 12, 10271, doi.org/10.1038/s41598-022-14227-5, 2022.
- 1090 Thiros, N.E., Siirila-Woodburn, E.R., Dennedy-Frank, P.J., Williams, K.H., and Gardner, W.P.: Constraining bedrock groundwater residence times in a mountain system with environmental tracer observations and Bayesian uncertainty quantification, *Water Resources Research*, 59, e2022WR033282, doi.org/10.1029/2022WR033282, 2023.
- Thornthwaite, C.W.: An approach toward a rational classification of climate. *Geographical Review*, 38:55-94, 1948.
- Tukey, J.: An introduction to the calculations of numerical spectrum analysis, In: *Spectral Analysis of Time Series*, edited by Harris, B., 25–46, Wiley, New York, USA, 1968.
- 1095 Turnadge, C. and Smerdon, B.D.: A review of methods for modelling environmental tracers in groundwater: Advantages of tracer concentration simulation, *Journal of Hydrology*, 519, 3674-3689, doi.org/10.1016/j.jhydrol.2014.10.056, 2014.
- Van den Bril, K. and Swennen, R.: Sedimentological control on carbonate cementation in the Luxembourg Sandstone Formation, *Geologica Belgica*, 12, 3–23, <https://popups.uliege.be/1374-8505/index.php?id=2634&file=1&pid=2629> (last access: 4 March 2024), 2009.
- 1100 Van Loon A.F., Kumar R., and Mishra V.: Testing the use of standardised indices and GRACE satellite data to estimate the European 2015 groundwater drought in near real time, *Hydrology and Earth System Sciences*, 21,1947-1971, doi.org/10.5194/hess-21-1947-2017, 2017.
- 1105 Van Verseveld, W. J., Barnard, H. R., Graham, C. B., McDonnell, J. J., Brooks, J. R., and Weiler, M.: A sprinkling experiment to quantify celerity–velocity differences at the hillslope scale, *Hydrology and Earth System Sciences* 21, 5891–5910, doi.org/10.5194/hess-21-5891-2017, 2017.
- Von Hoyer, M.: Hydrogeological and hydrochemical investigations in the Luxembourg Sandstone (Hydrogeologische und hydrochemische Untersuchungen im Luxemburger Sandstein), *Publ. Serv. Geol. Luxemb., Luxembourg*, 61 p (in German), 1971.
- 1110 Worthington, S.R.H.: Diagnostic tests for conceptualizing transport in bedrock aquifers, *Journal of Hydrology*, 529, 365-372, doi.org/10.1016/j.jhydrol.2015.08.002, 2015.
- Worthington, S.R.H. and Foley, A.E.: Deriving celerity from monitoring data in carbonate aquifers, *Journal of Hydrology*, 598, 126451, doi.org/10.1016/j.jhydrol.2021.126451, 2021.

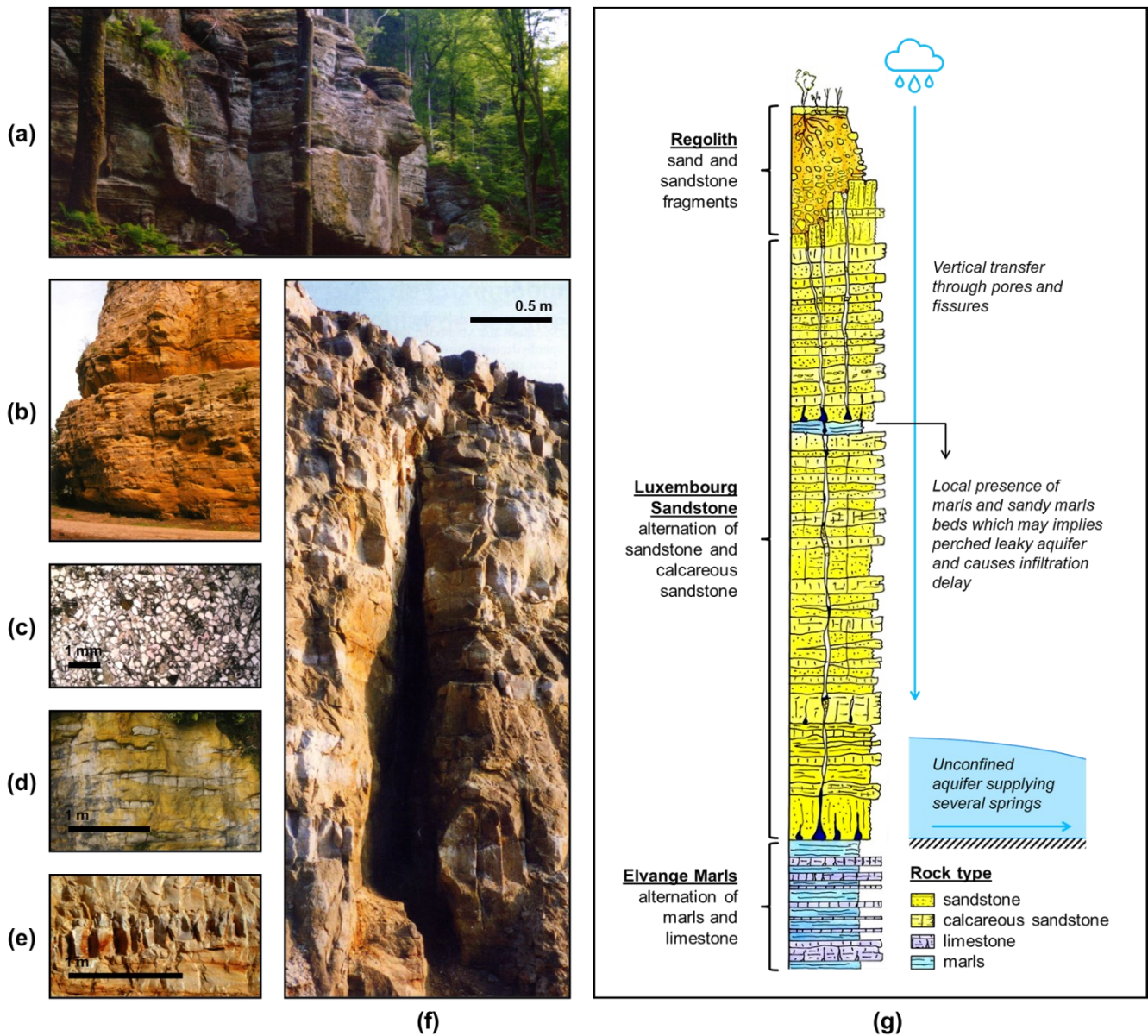
- Yager, R.M., Plummer, L.N., Kauffman, L.J., Doctor, D.H., Nelms, D.L., and Schlosser, P.: Comparison of age distributions estimated from environmental tracers by using binary-dilution and numerical models of fractured and folded karst: Shenandoah Valley of Virginia and West Virginia, USA, *Hydrogeology Journal*, 21, 1193–1217, doi.org/10.1007/s10040-013-0997-9, 2013.
- 1115 Zhou, Z., Cartwright, I., and Morgenstern, U., 2022: Sources and mean transit times of stream water in an intermittent river system: the upper Wimmera River, southeast Australia, *Hydrology and Earth System Sciences*, 26, 4497-4513, doi.org/10.5194/hess-26-4497-2022, 2022.
- 1120 Zuber, A., Witczak, S., Róžański, K., Śliwka, I., Opoka, M., Mochalski, P., Kuc, T., Karlikowska, J., Kania, J., Jackowicz-Korczyński, M., and Duliński, M.: Groundwater dating with  $^3\text{H}$  and  $\text{SF}_6$  in relation to mixing patterns, transport modelling and hydrochemistry, *Hydrological Processes* 19(11), 2247-2275, doi.org/10.1002/hyp.5669, 2005.

1125 **Table 1.** Recharge area attributes.

Recharge area	Area (km <sup>2</sup> )	Mean discharge (m <sup>3</sup> /day)	Mean elevation (m)	Mean flow length estimation (m)	Mean Luxembourg Sandstone thickness (m)
B	4.00	2900	363.9	1363	18.2
D	0.83	400	373.6	951	48.8
G	7.18	4500	376.5	1261	36.5
KRD	3.89	2700	341.7	944	43.5
KRG	3.01	2900	347.3	1190	68.1
M	2.01	800	340.7	989	35.6
S	7.17	5000	335.5	1896	49.3
P	4.41	3000	327.6	2388	49.6

**Table 2.** Tritium analytical results for the investigated springs of Luxembourg City.

Spring	Recharge area	10/06/2011 $^3\text{H} \pm 1\sigma$ (TU $\pm$ TU)	06/09/2013 $^3\text{H} \pm 1\sigma$ (TU $\pm$ TU)	17/08/2015 $^3\text{H} \pm 1\sigma$ (TU $\pm$ TU)	18/08/2015 $^3\text{H} \pm 1\sigma$ (TU $\pm$ TU)	21/08/2017 $^3\text{H} \pm 1\sigma$ (TU $\pm$ TU)	22/08/2017 $^3\text{H} \pm 1\sigma$ (TU $\pm$ TU)
B01	B	-	6.624 $\pm$ 0.094	6.098 $\pm$ 0.102	-	5.550 $\pm$ 0.090	-
B02	B	-	6.092 $\pm$ 0.101	5.627 $\pm$ 0.095	-	5.177 $\pm$ 0.082	-
B03	B	-	6.382 $\pm$ 0.095	5.702 $\pm$ 0.093	-	5.391 $\pm$ 0.083	-
B06	B	-	6.321 $\pm$ 0.104	5.582 $\pm$ 0.091	-	5.100 $\pm$ 0.088	-
B07	B	-	6.281 $\pm$ 0.104	5.879 $\pm$ 0.094	-	5.568 $\pm$ 0.075	-
B09	B	-	6.575 $\pm$ 0.116	5.791 $\pm$ 0.094	-	5.751 $\pm$ 0.079	-
B10	B	-	6.383 $\pm$ 0.094	5.759 $\pm$ 0.093	-	5.366 $\pm$ 0.092	-
C01	G	-	7.124 $\pm$ 0.097	6.196 $\pm$ 0.100	-	5.741 $\pm$ 0.090	-
C03	G	-	6.322 $\pm$ 0.110	5.436 $\pm$ 0.096	-	4.991 $\pm$ 0.087	-
C04	G	-	6.005 $\pm$ 0.087	5.329 $\pm$ 0.087	-	5.017 $\pm$ 0.079	-
C05	G	-	5.579 $\pm$ 0.066	5.416 $\pm$ 0.089	-	4.960 $\pm$ 0.080	-
C07	G	-	6.153 $\pm$ 0.094	5.458 $\pm$ 0.090	-	5.070 $\pm$ 0.090	-
C09	G	-	5.965 $\pm$ 0.101	5.360 $\pm$ 0.088	-	5.080 $\pm$ 0.080	-
C10	G	-	5.819 $\pm$ 0.104	5.275 $\pm$ 0.093	-	4.900 $\pm$ 0.090	-
D01	D	-	5.928 $\pm$ 0.085	5.269 $\pm$ 0.096	-	5.020 $\pm$ 0.090	-
K01	KRD	-	5.426 $\pm$ 0.084	-	5.162 $\pm$ 0.095	-	4.847 $\pm$ 0.088
K02	KRD	-	5.277 $\pm$ 0.090	-	4.859 $\pm$ 0.091	-	4.684 $\pm$ 0.087
K03	KRD	-	5.410 $\pm$ 0.097	-	5.212 $\pm$ 0.092	-	4.589 $\pm$ 0.085
K07	KRD	-	5.671 $\pm$ 0.081	-	4.906 $\pm$ 0.091	-	4.618 $\pm$ 0.085
K13	KRD	-	5.812 $\pm$ 0.083	-	4.908 $\pm$ 0.091	-	4.592 $\pm$ 0.085
K17	KRD	-	5.479 $\pm$ 0.095	-	4.873 $\pm$ 0.092	-	4.429 $\pm$ 0.082
K19	KRD	-	5.732 $\pm$ 0.099	-	5.071 $\pm$ 0.095	-	4.711 $\pm$ 0.087
K21	KRD	7.125 $\pm$ 0.090	-	-	5.175 $\pm$ 0.097	-	4.681 $\pm$ 0.086
K21A	KRD	6.080 $\pm$ 0.090	-	-	4.695 $\pm$ 0.089	-	4.310 $\pm$ 0.081
K22	KRG	-	5.694 $\pm$ 0.082	-	5.067 $\pm$ 0.095	-	4.719 $\pm$ 0.080
K24	KRG	-	5.405 $\pm$ 0.087	-	4.987 $\pm$ 0.094	-	4.763 $\pm$ 0.072
K26	KRG	-	5.508 $\pm$ 0.096	-	4.928 $\pm$ 0.082	-	4.708 $\pm$ 0.090
K28	KRG	-	5.587 $\pm$ 0.097	-	5.033 $\pm$ 0.084	-	4.700 $\pm$ 0.085
K31	KRG	-	5.724 $\pm$ 0.081	-	5.051 $\pm$ 0.085	-	4.738 $\pm$ 0.084
K32	KRG	-	5.570 $\pm$ 0.082	-	5.158 $\pm$ 0.086	-	4.591 $\pm$ 0.084
M01	M	-	5.794 $\pm$ 0.100	5.462 $\pm$ 0.099	-	4.960 $\pm$ 0.090	-
P01	P	-	6.729 $\pm$ 0.113	5.843 $\pm$ 0.104	-	5.330 $\pm$ 0.090	-
S01	S	-	5.763 $\pm$ 0.099	5.302 $\pm$ 0.098	-	4.870 $\pm$ 0.080	-
S02	S	-	6.098 $\pm$ 0.107	5.452 $\pm$ 0.096	-	4.810 $\pm$ 0.080	-
S03	S	-	5.953 $\pm$ 0.102	5.342 $\pm$ 0.097	-	4.670 $\pm$ 0.080	-

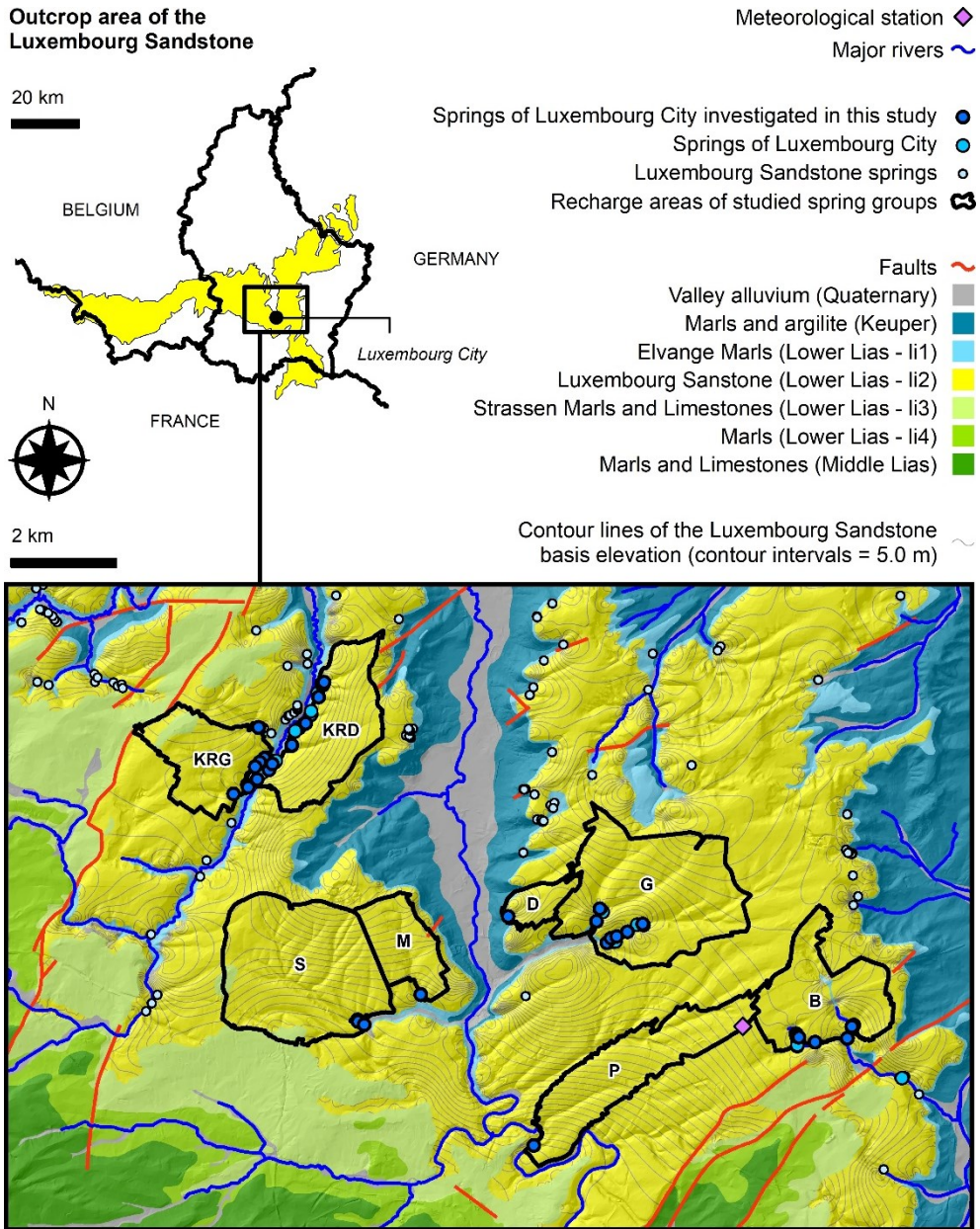


**Figure 1.** Overview of the Luxembourg Sandstone (a-f) in pictures (modified from the proceedings of the 2nd international conference on sandstone landscapes, Vianden, Luxembourg, 25-28/05/2005 (Ries and Krippel, 2005) with (a) sandstone outcrop in the Mullerthal area (photo taken by Jiri Adamovic during the pre-conference excursion), (b) sandstone outcrop in the Pétrusse valley in Luxembourg City (Faber and Weis, 2005), (c) optical microscope image of a well cemented sandstone sample under natural light (Colbach, 2005), (d) outcrop showing an alternation of carbonate rich, whitish, sandy limestone and carbonate poor, yellowish sandstone (Colbach, 2005), (e) fresh roadcut showing a closely fractured carbonate-rich bed (Colbach, 2005), and (f) roadcut showing a wide open fracture (Colbach, 2005)) and (g) through a typical lithological log (adapted from a sketch drawn in 2001 by Robert Maquil from *Administration des ponts et chaussées, Service géologique de l'Etat, Luxembourg*).

1135

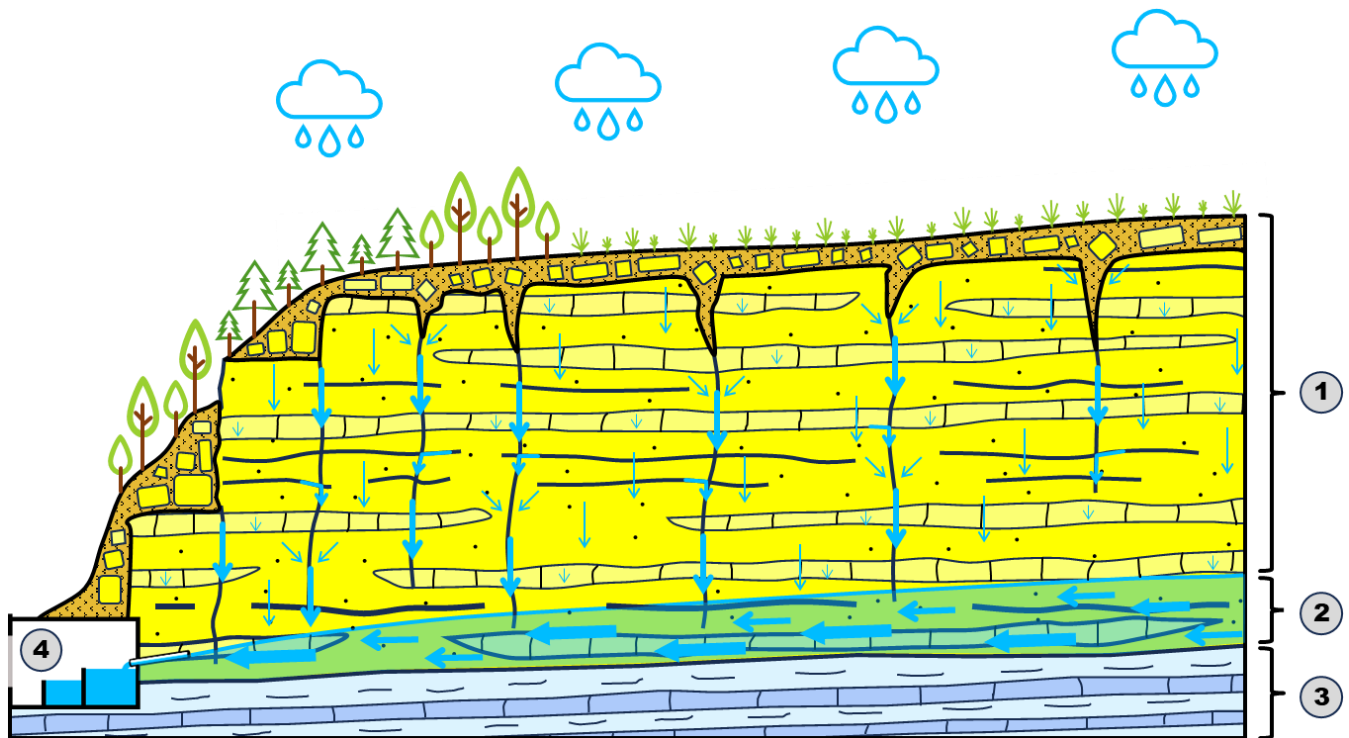
1140

**Outcrop area of the Luxembourg Sandstone**



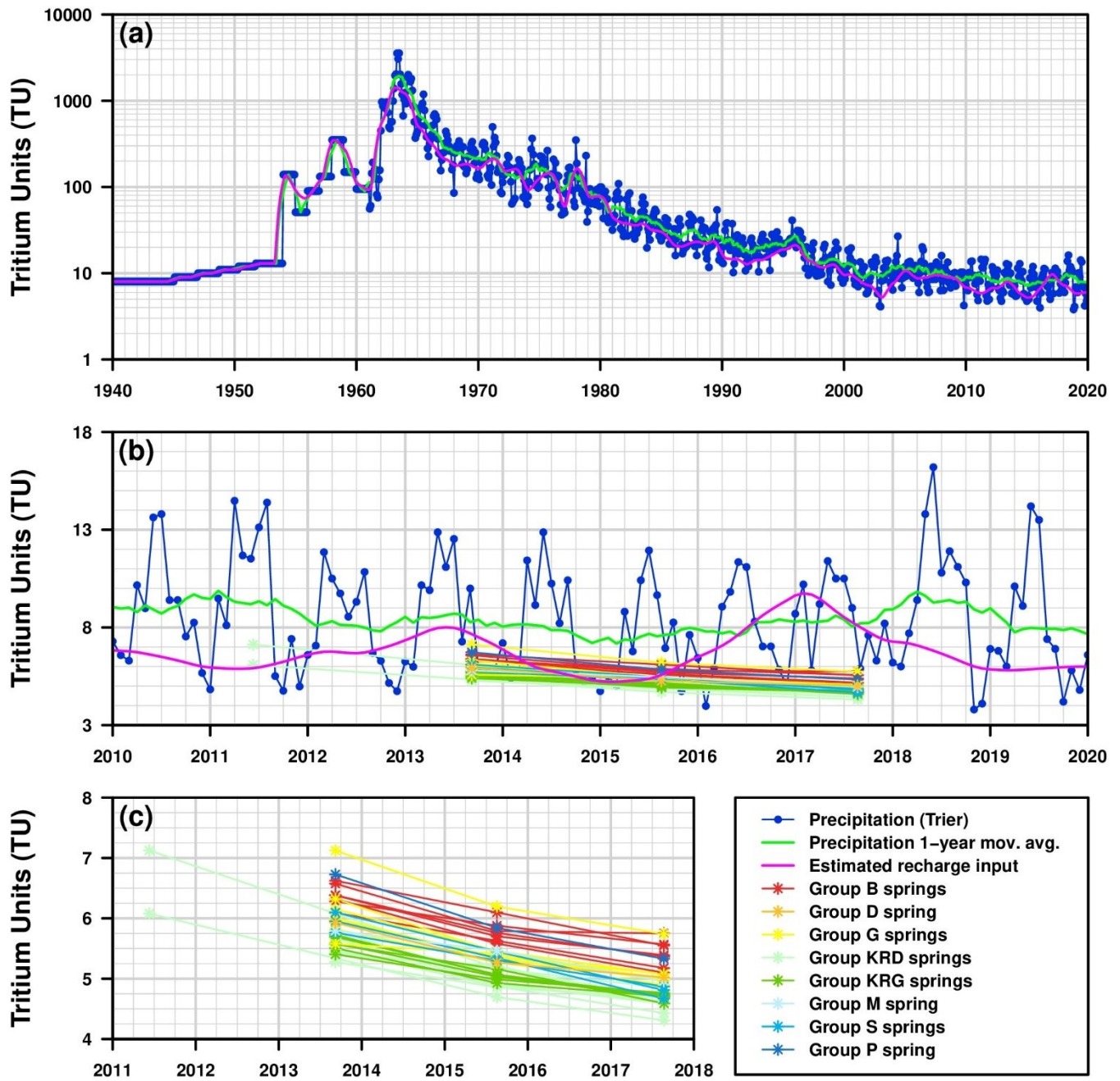
1145 **Figure 2.** Geological and hydrogeological settings of the study area (the geological units delineation comes from the Luxembourg  
 harmonized geological map from *Administration des ponts et chaussées, Service géologique de l'État, Luxembourg*; the springs of  
 Luxembourg City are contact springs located at the boundary between the Luxembourg Sandstone and the underlying Elvange Marls; the 35  
 springs of Luxembourg City investigated in this study are B01, B02, B03, B06, B07, B09, B10 for group B, C01, C03, C04, C05, C07, C09,  
 C10 for group G, D01 for group D, K01, K02, K03, K07, K13, K17, K19, K21, K21A for group KR D, K22, K24, K26, K28, K31, K32 for  
 1150 group KRG, M01 for group M, P01 for group P, and S01, S02, S03 for group S).





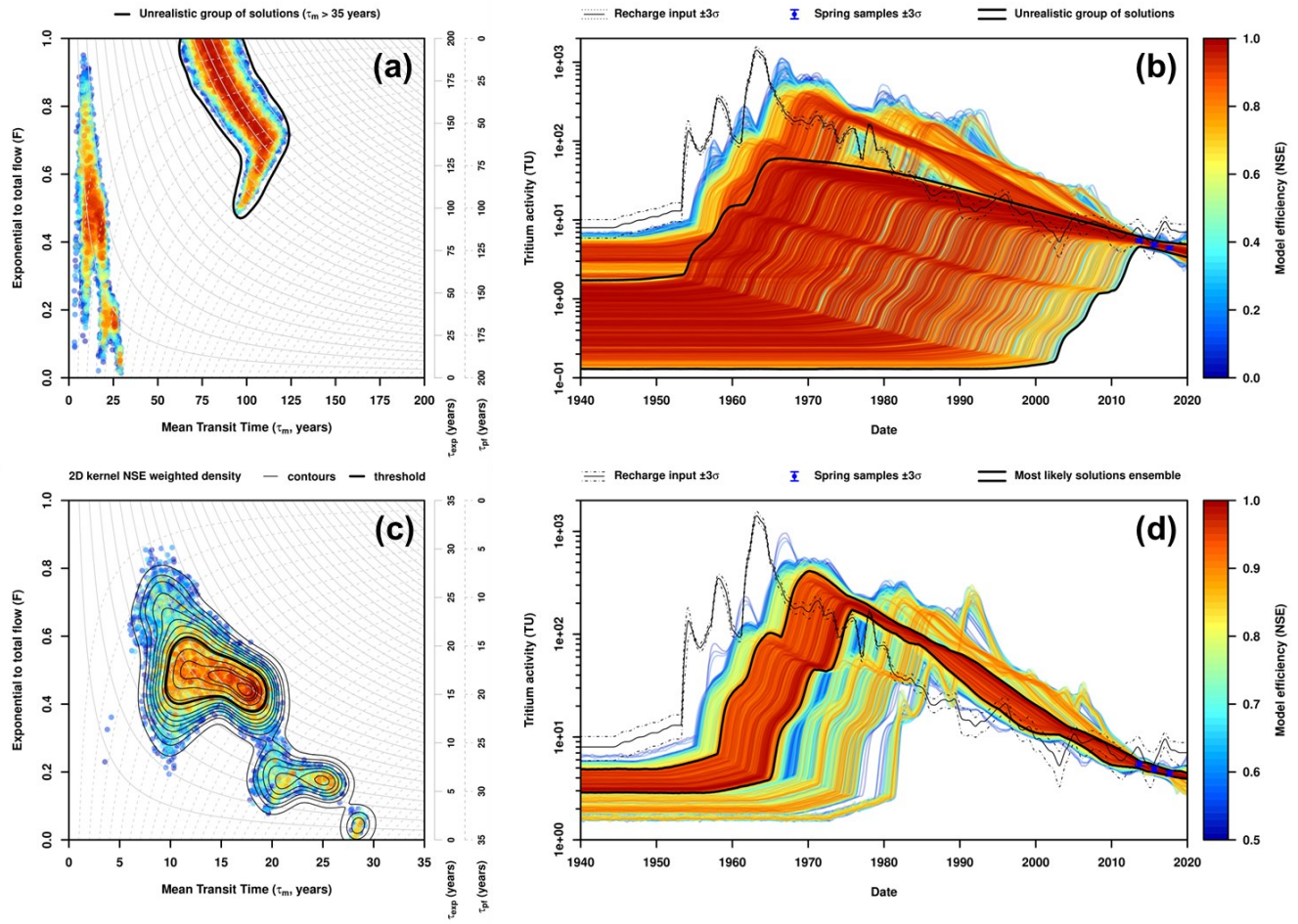
1155

**Figure 3.** Synthetic geological cross-section illustrating the catchment facility of a spring draining the Luxembourg Sandstone aquifer and the water flow components within the bedrock (the thickness of arrows is proportional to flow velocity; 1: slow and fast vertical transfer of water in the unsaturated zone through pores and fractures, respectively; 2: subhorizontal water flows in the saturated zone with fastest flows in main fractures; 3: Elvange Marls impervious unit constituting the base of the aquifer; 4: spring catchment facility; one can note that Strassen Marls and Limestones are absent in this case; adapted from Meus and Willems, 2021).

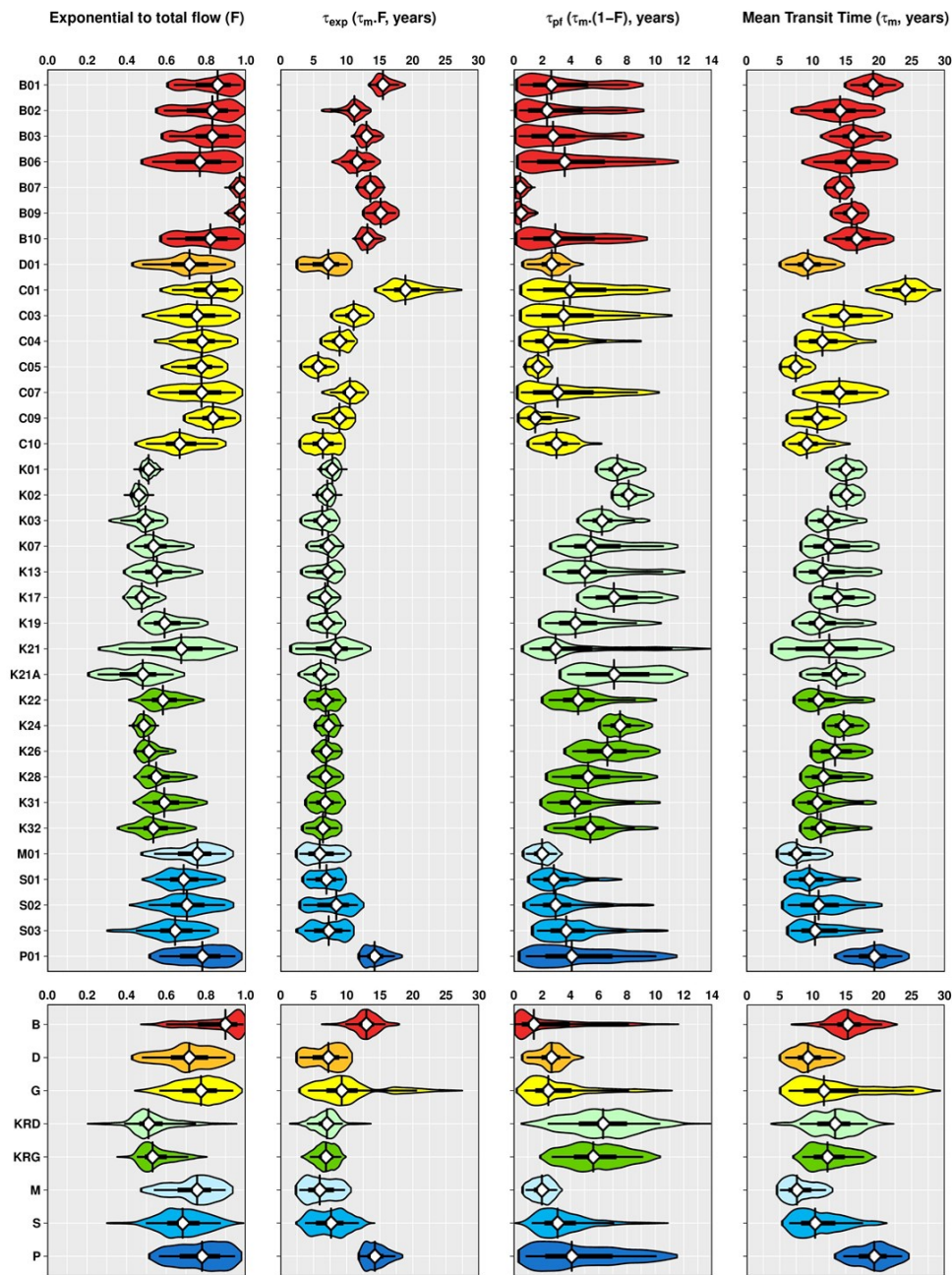


1160

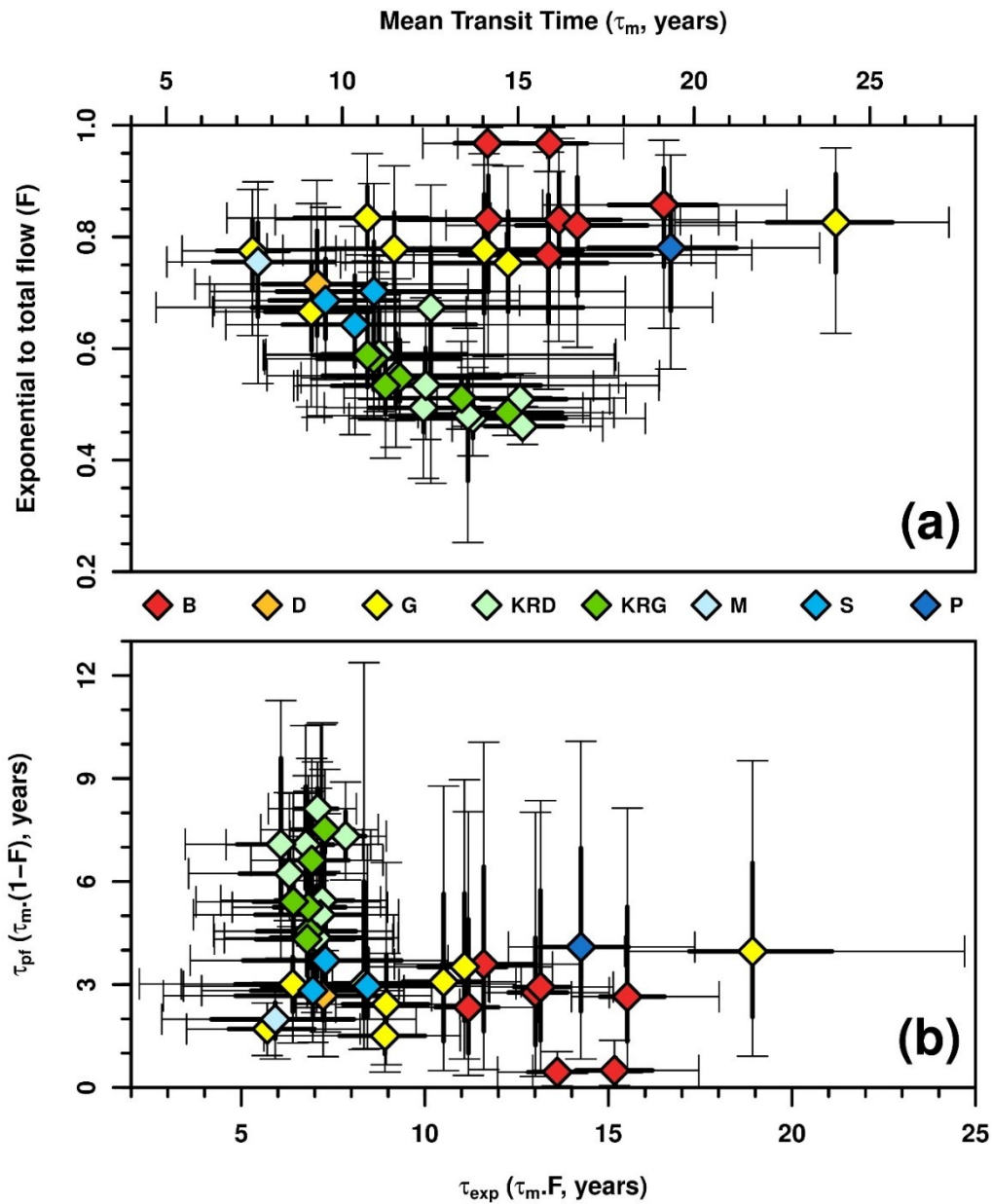
**Figure 4.** Tritium concentration in (a, b) precipitation, recharge, and (b, c) investigated springs of Luxembourg City (a) from 1940 to 2020 with a log scale, and (b) from 2010 to 2020 and (c) 2011 to 2018 with a linear scale.



**Figure 5.** Modelling results of spring K17 in the EPM parameter space (a, c) and associated modelled tritium time series (b, d) for the first (a, b) and the second (c, d) screening stages.

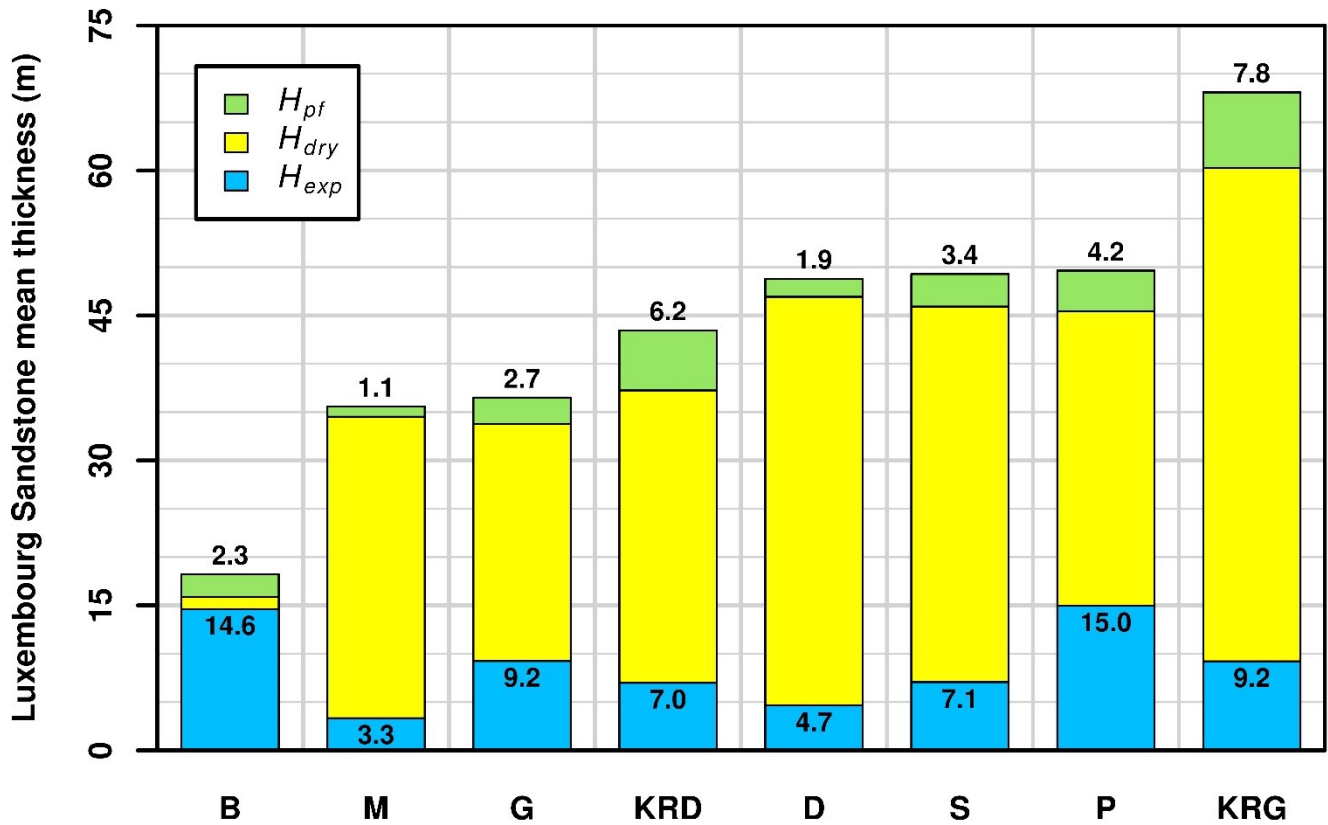


**Figure 6.** Violin plot with boxplot overlay representation of the ensembles of most likely EPM model solutions retained for each spring (upper panels) and by group of springs from the same recharge area (lower panels). The violin plot lines correspond to a kernel density of the distribution (i.e., a smoothed histogram). The violin plot fill colors allow to discriminate the different groups of springs. The white diamond shape with the vertical line indicates the median of the distribution. The horizontal thick and thin lines represent the interquartile and 5-95<sup>th</sup> percentile ranges of the distribution, respectively.

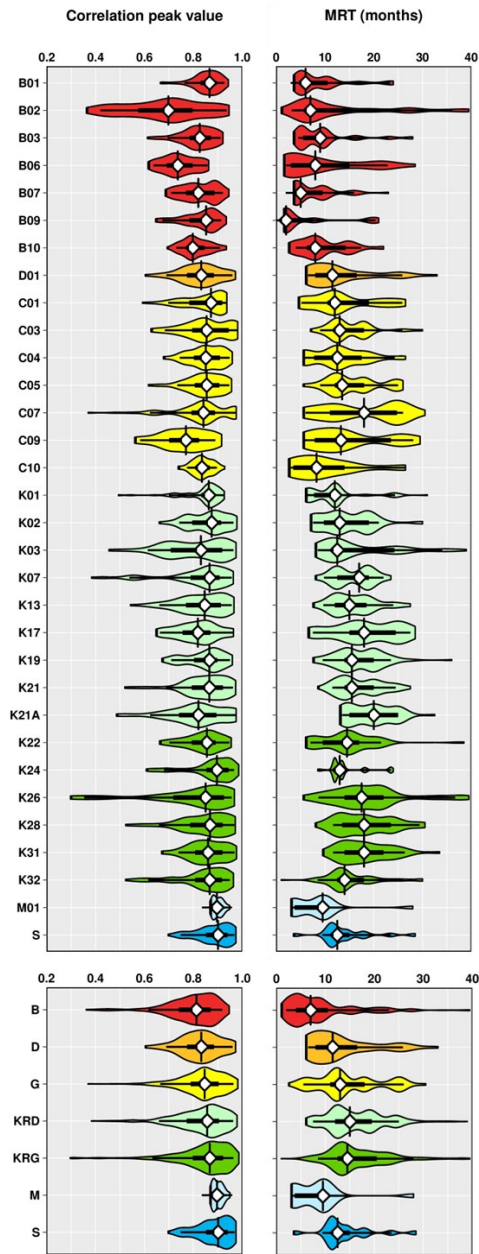


1180

**Figure 7.** Scatter plots relating (a)  $F$  to  $\tau_m$  and (b)  $\tau_{pf}$  to  $\tau_{exp}$  values of the ensembles of most likely EPM model solutions retained for each spring. The diamond shape indicates the median of the distribution. The diamond shape fill colors allow to discriminate the different groups of springs. The thick lines and bounded thin lines represent the interquartile and 5-95<sup>th</sup> percentile ranges of the distribution, respectively.

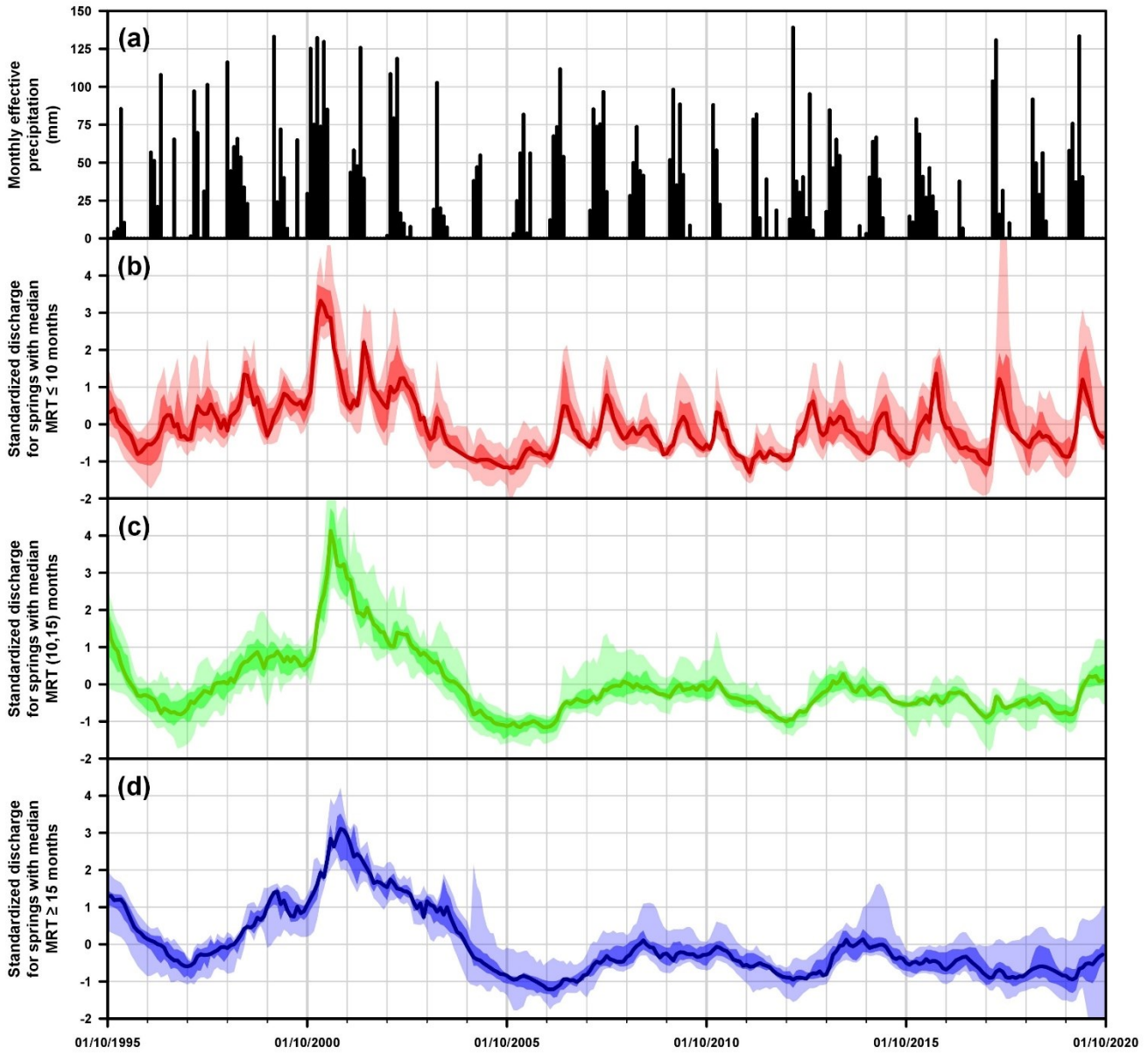


**Figure 8.** Transit time derived mean sandstone layers required for the water storage in the saturated zone (assumed to match the exponential part of the EPM model;  $H_{exp}$ ) and the vadose zone (assumed to correspond to the EPM piston segment;  $H_{pf}$ ) overlaid to the mean thickness of the Luxembourg Sandstone estimated for each recharge areas.  $H_{dry}$  stands for the mean sandstone equivalent dry layer and is equal to the mean thickness of the Luxembourg Sandstone minus the sum of  $H_{pf}$  and  $H_{exp}$  values for each recharge areas.



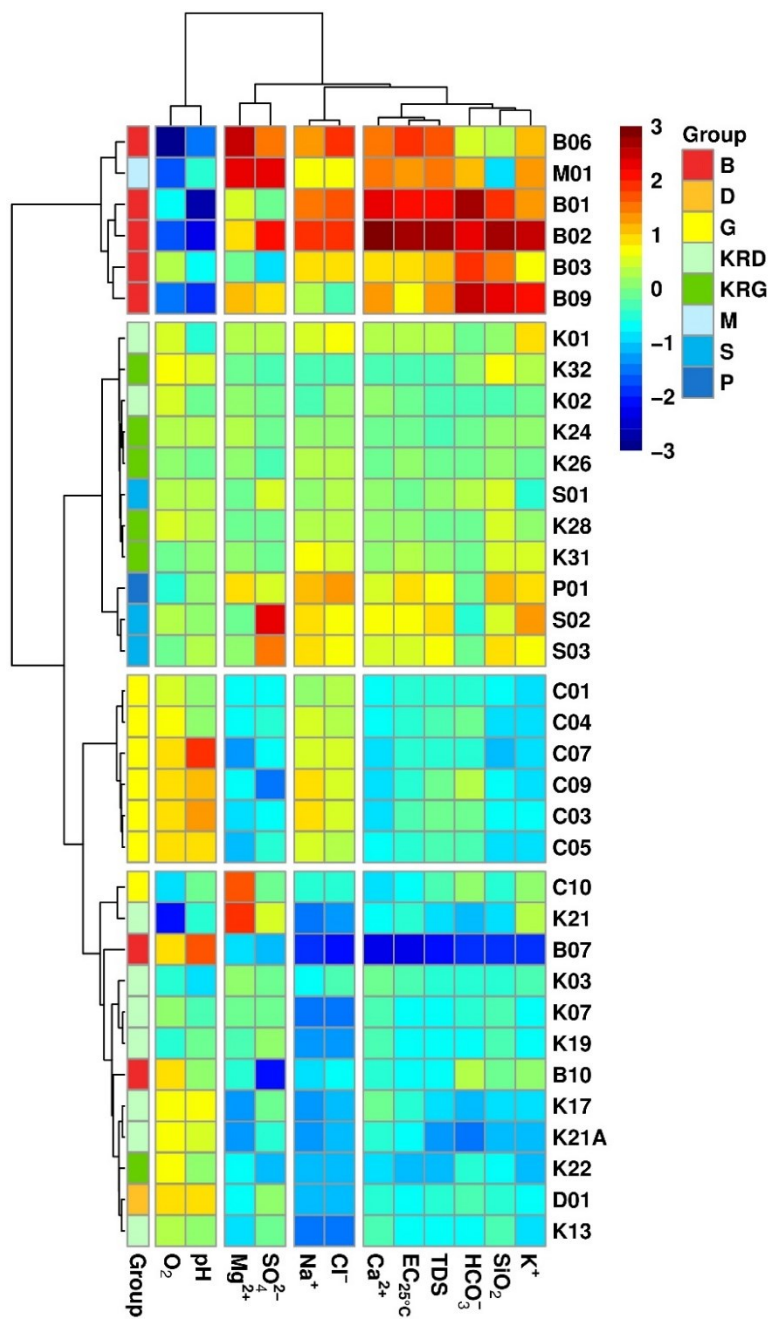
1195 **Figure 9.** Violin plot with boxplot overlay representation of the ensembles of solutions resulting from the spring discharge – effective precipitation cross-correlation analysis for each spring (upper panels) and by group of springs from the same recharge area (lower panels). The violin plot lines correspond to a kernel density of the distribution (i.e., a smoothed histogram). The violin plot fill colors allow to discriminate the different groups of springs. The white diamond shape with the vertical line indicates the median of the distribution. The horizontal thick and thin lines represent the interquartile and 5-95<sup>th</sup> percentile ranges of the distribution, respectively.

1200

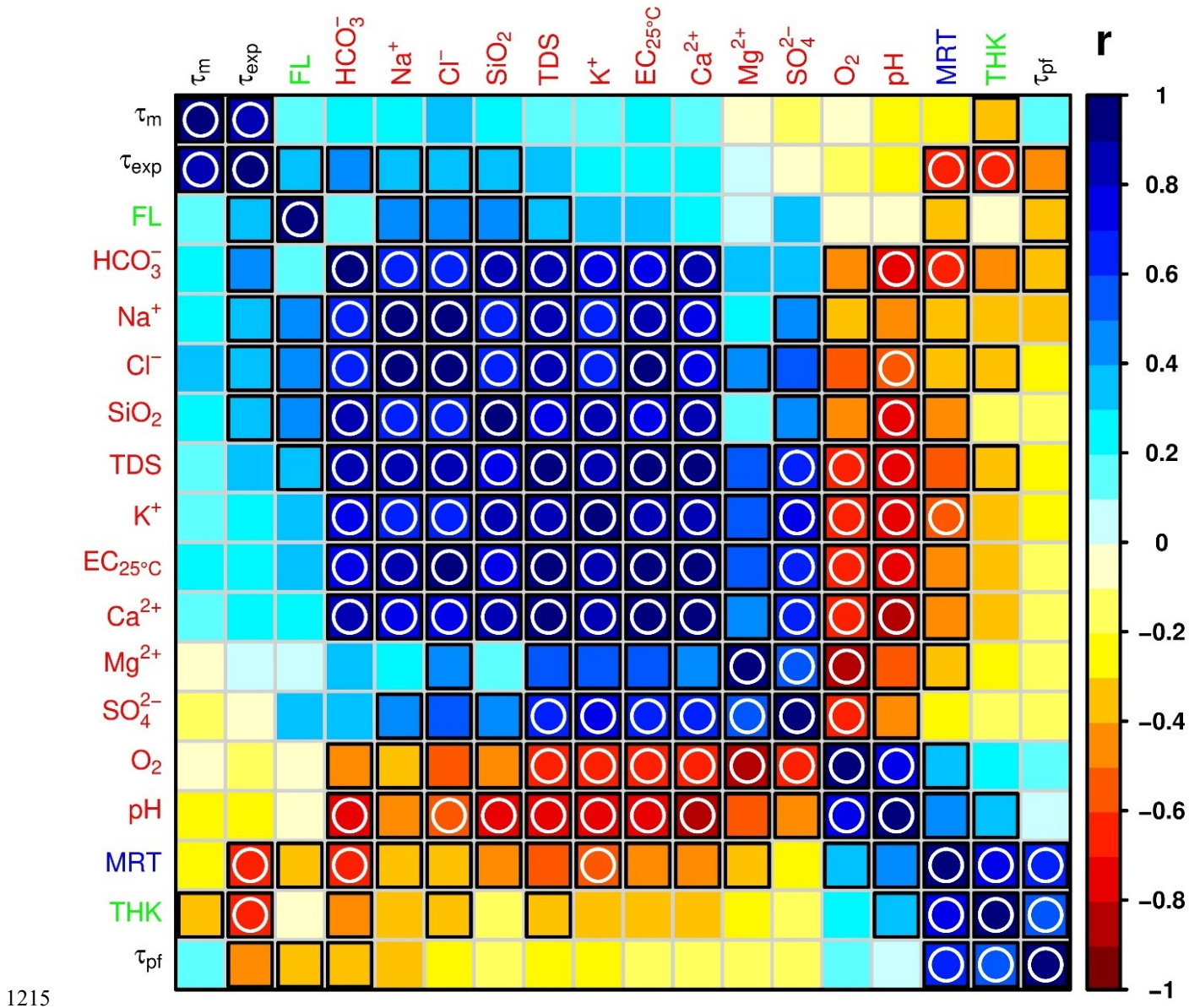


1205 **Figure 10.** Effective precipitation and spring discharge dynamics with (a) monthly effective precipitation, and (b) standardized discharge time series for springs with a median MRT less than or equal to 10 months, (c) in between 10 and 15 months and (d) greater than or equal to 15 months. In (b-d) the colored thick solid line correspond to the median value of the ensemble of spring discharge time series, while darker and lighter colored shaded area correspond to their interquartile and 5-95<sup>th</sup> percentile envelopes, respectively.

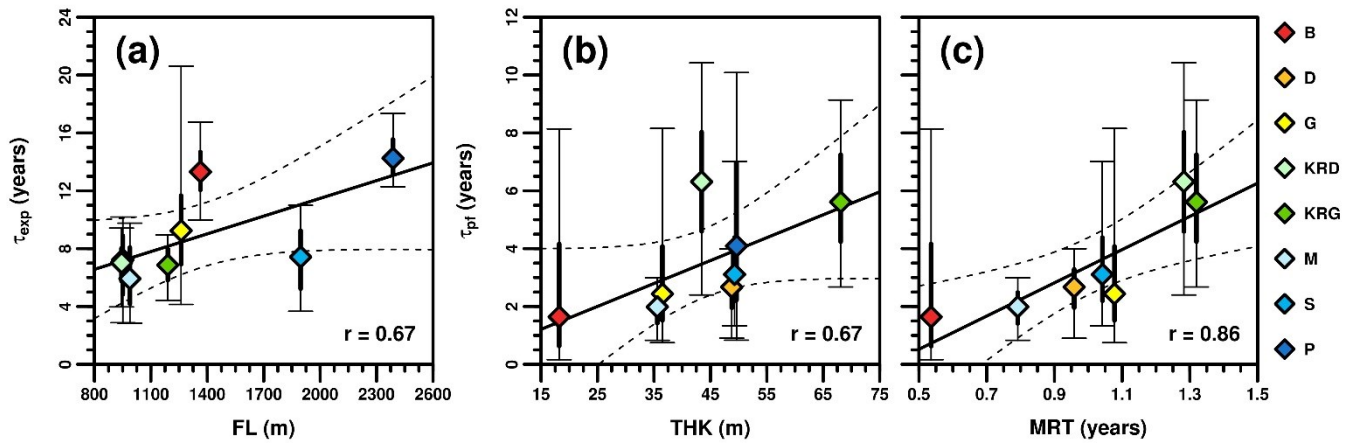




1210 **Figure 11.** Heat map of the average physicochemical characteristics for the investigated springs. Springs and parameters were classified and grouped using a hierarchical cluster analysis (distance measure: Euclidean distance, linkage rule: Ward's method). Prior to the analysis, data were first log-transformed and then each parameter was standardized. According to the dendrograms and the visual inspection of the heat map, 4 clusters of springs and 4 clusters of parameters were emphasized in the figure.

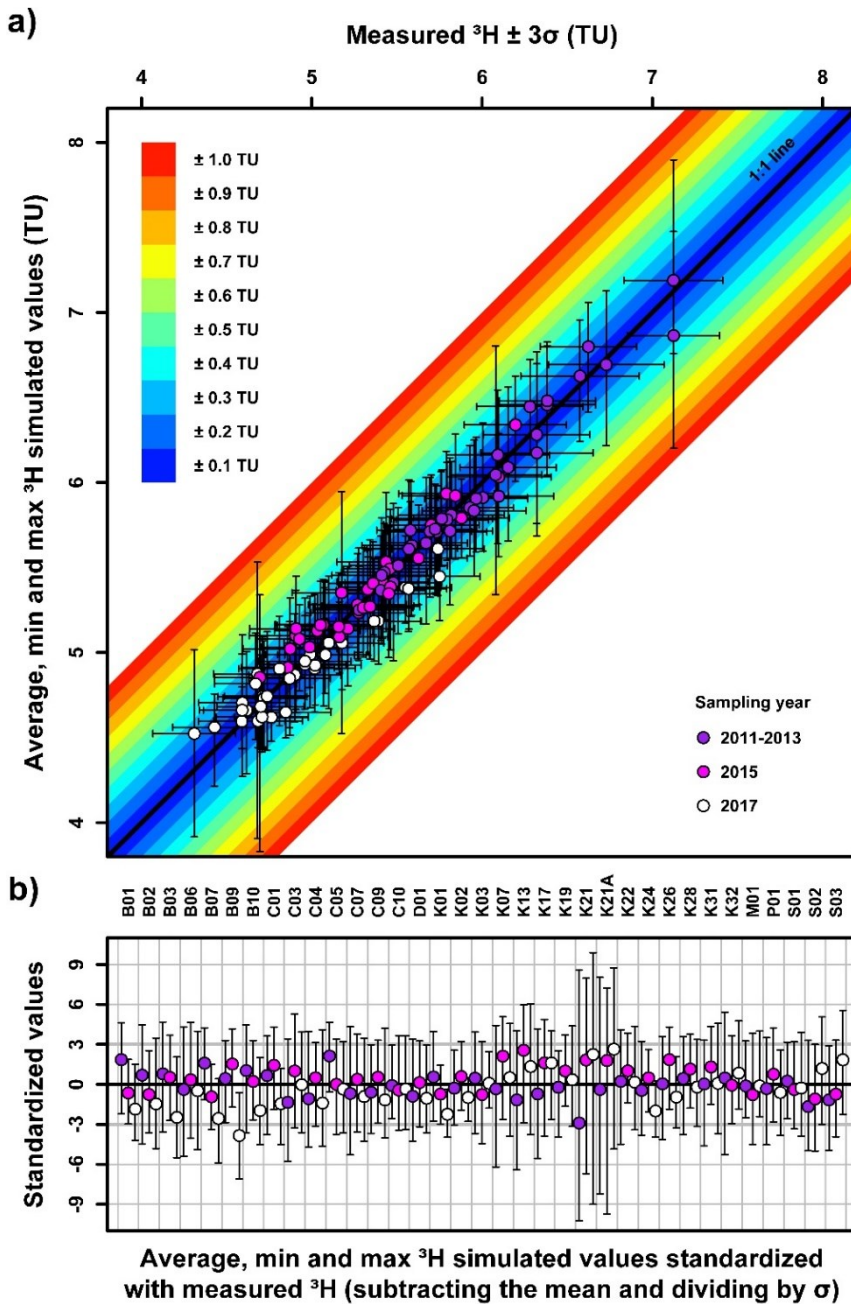


**Figure 12.** Linear correlation (Pearson's  $r$ ) of tritium derived transit times ( $\tau_m$ ,  $\tau_{exp}$  and  $\tau_{pf}$  median values of the ensembles of EPM solutions; black labels) with the other springs characteristics, i.e. the hydrochemical parameters average values (red labels), the estimated mean groundwater flow lengths (FL) and the mean Luxembourg Sandstone thickness (THK) of the recharge areas (green labels), and the MRT median values characterizing the response time of spring discharge to effective precipitation input (blue label). A black square denotes a significant correlation ( $p$ -value  $< 0.05$ ), while a white circle highlights a very significant one ( $p$ -value  $< 0.001$ ).

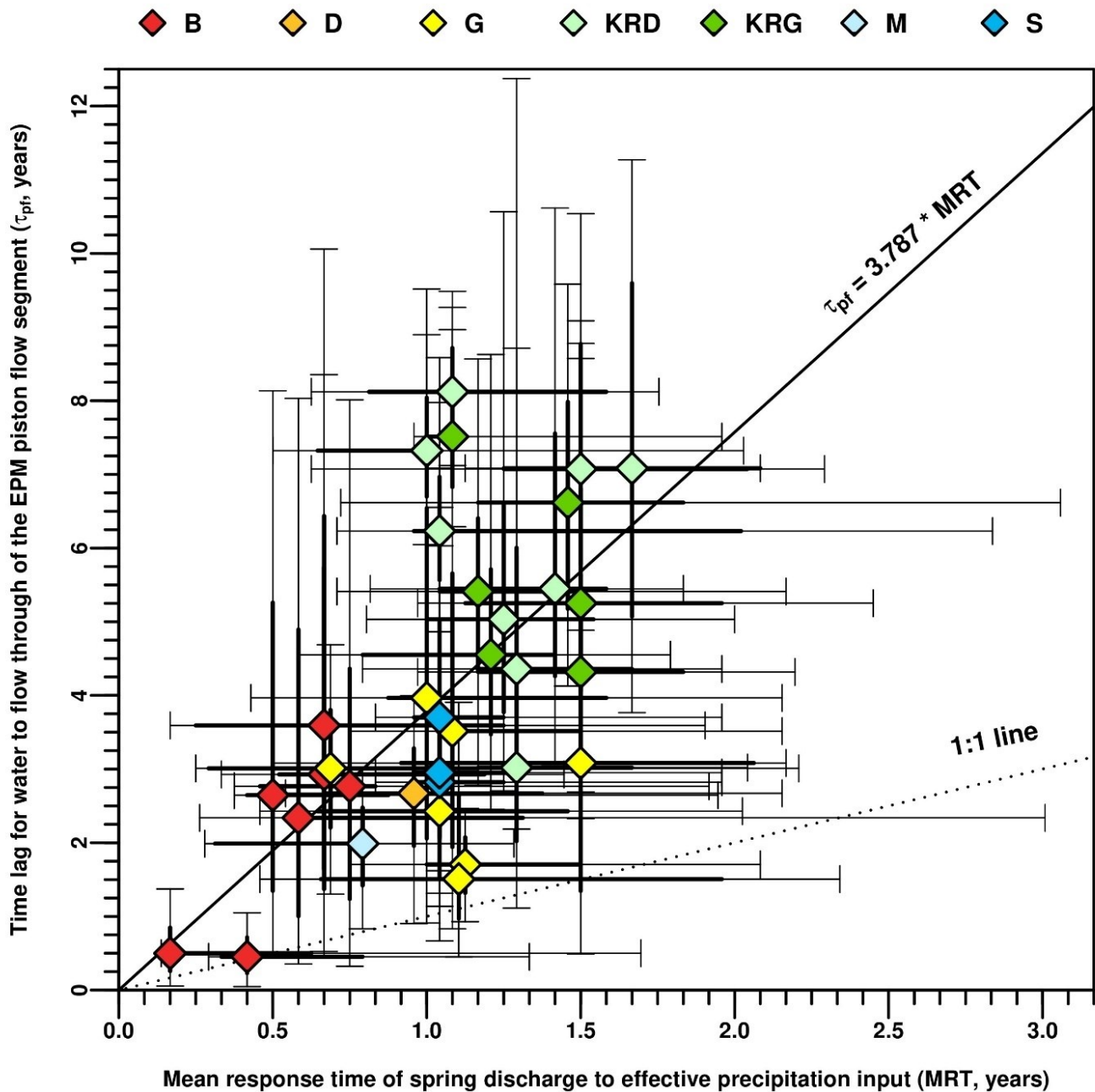


1225 **Figure 13.** Scatter plots relating at the recharge area scale (a)  $\tau_{exp}$  median values of the EPM ensembles to the groundwater flow length (FL),  $\tau_{pf}$  median values of the EPM ensembles to (b) the mean Luxembourg Sandstone thickness (THK) and (c) the average of the MRT median values characterizing the response time of spring discharge to effective precipitation input. The dashed lines represent the 95% confidence intervals of the regression thick lines. The vertical thick and bounded thin lines represent the interquartile and 5-95<sup>th</sup> percentile ranges of  $\tau_{exp}$  or  $\tau_{pf}$  values distributions, respectively.

1230



1235 **Figure 14.** Comparison between observed and EPM simulated concentrations in tritium for the 35 investigated springs of Luxembourg City (N samples = 105) as a) a scatter plot and b) standardized values. The root-mean-square error between the observed and average simulated concentrations (colored circles) is 0.11 TU. The min-max range of the simulated concentrations (vertical bounded thin lines) and the  $\pm 3\sigma$  range of the measured concentrations (horizontal bounded thin lines) average 0.69 and 0.54 TU, respectively.



1240 **Figure 15.** Scatter plot relating for each spring  $\tau_{pf}$  values of the ensembles of most likely EPM model solutions to MRT values of the ensembles resulting from the effective precipitation – spring discharge cross-correlation analyses. The diamond shapes indicate the medians of the distributions, and their fill colors allow to discriminate the different groups of springs. The thick lines and bounded thin lines represent the interquartile and 5-95<sup>th</sup> percentile ranges of the distributions, respectively.