

Short high-accuracy tritium data time series for assessing groundwater mean transit times in the vadose and saturated zones of the Luxembourg Sandstone aquifer

Laurent Gourdol¹, Michael K. Stewart², Uwe Morgenstern², Laurent Pfister^{1,3}

5 ¹Luxembourg Institute of Science and Technology (LIST), Belvaux, Luxembourg

²GNS Science, Tritium & Water Dating Laboratory, Lower Hutt, New Zealand

³University of Luxembourg, Faculty of Science, Technology and ~~Communication~~ Medicine, Belval, Luxembourg

Correspondence to: Laurent Gourdol (laurent.gourdol@list.lu)

10 **Abstract.** ~~While~~ Among the manifold environmental tracers at hand, tritium is the only one that can inform on groundwater age within the time scale of hundred years for the entire flow system, i.e. unsaturated and saturated. However, while in the ~~southern~~ Southern Hemisphere a single water sample ~~can be~~ is sufficient for tritium-based young groundwater dating, several tritium measurements spanning over multiple years are still needed in the ~~northern~~ Northern Hemisphere. ~~to disentangle the natural cosmogenic tritium input from that caused by the atmospheric thermonuclear weapon tests mainly carried out in the~~ early 1960s. Although it is advised to focus tritium ~~based groundwater age~~ dating on sites where long chronicles of tritium data are available, we tested in this study the potential for short high-accuracy tritium data series (~4 years) to date groundwater from 35 springs draining the Luxembourg Sandstone aquifer (Central Western Europe). We determined groundwater mean transit times by using the lumped parameter model approach in a Monte Carlo uncertainty estimation framework to provide uncertainty ranges inherent to the low number of tritium data at hand and their related analytical errors. Our results show that

15 unambiguous groundwater mean transit time assessments cannot be determined solely based on such recent short tritium time series, given that several ranges of mean transit times appeared theoretically possible. Nonetheless we succeeded in discriminating groundwater mean transit times in the vadose and saturated zones of the aquifer through a stepwise decision process guided with several supplementary data. The mean transit time required for water to cross the vadose zone was estimated to be between 0.5±0.5 and 8.1±1.2 years depending on the spring, while for water to flow through the saturated zone it varied from 5.7±2.4 to 18.9±4.6 years (median ± semi 5-95 percentile range). Our findings are consistent with both the tritium measurements of individual springs and the hydrogeological context of the study area. ~~We have been able to improve our understanding of the water transit times in the Luxembourg Sandstone aquifer. We particularly highlighted a horizontal-vertical water velocity anisotropy in the Luxembourg Sandstone—a key feature that deserves to be explored further~~ We specifically corroborated the obtained dating results using the known hydrogeological properties of the Luxembourg Sandstone

20 aquifer, the hydrochemistry of the studied springs as well as their discharge dynamics. When translated into water velocities (which average ~12 m/year and ~170 m/year for the vadose and the saturated zones, respectively), the tritium dating results mirrored particularly well the horizontal-vertical anisotropy of the aquifer’s hydraulic properties caused by the bedded

25

30

35 character of the Luxembourg Sandstone. In addition to improve our understanding of water transit times in the Luxembourg Sandstone aquifer, this study demonstrates on a larger scale how it is currently possible to use short tritium time series to date young groundwater bodies at new sites in Central Europe.

Keywords. Tritium, groundwater, mean transit time, Luxembourg Sandstone aquifer.

1. Introduction

Determining the timescales at which precipitation is percolating from a recharge area through an aquifer to where it discharges naturally (springs, streams) or is extracted from pumping wells is of key importance for a better understanding of groundwater resources and their sustainable management (Purtschert, 2008; Purtschert et al., 2008). Assessments of groundwater transit times are key to identify, model or forecast anthropogenic impacts of past and present land use practices on groundwater quality (e.g., MacDonald et al., 2003; Morgenstern and Daughney, 2012; Morgenstern et al., 2015). This is especially the case for young groundwaters – i.e., groundwater recharged during the last hundreds of years, including the time of change from low to high intensified land use – which constitute ~~by far~~ the most important component of the active hydrological cycle (Gleeson et al., 2015) and are ~~obviously~~ more vulnerable and prone to surface-borne anthropogenic contamination than old groundwaters (Newman et al., 2010; Beyer et al., 2014; Jasechko, 2019).

The use of tracers – i.e., substances which can be detected in the water and allow following, or tracing, the flow of water – is particularly suitable to assess transit times of hydrological systems (Leibundgut et al., 2009; Leibundgut and Seibert, 2011). Tracers are divided into two general categories – environmental or artificial – depending on how they enter the system to be studied. While artificial tracers are purposefully injected over a limited temporal and spatial scale to infer transit times through preferential fast flow paths, environmental tracers – which, as their name implies, are present in the environment – make it possible to assess the overall and integrated response of hydrological systems (e.g., Einsiedl, 2005; Lauber and Goldscheider, 2014). The common feature of the environmental tracers used as dating tools is that they are time-dependent, whether because of variable input concentrations during recharge, chemical or physical accumulation processes in the subsurface and/or radioactive decay (Morgenstern et al., 2010).

Among the environmental tracers at hand, tritium (radioactive hydrogen isotope ^3H) is particularly interesting for young groundwater dating (Newman et al., 2010; Beyer et al., 2014; Jasechko, 2019). Produced naturally in the atmosphere by cosmic-ray spallation processes (Lal and Peters, 1967), but also introduced artificially during the atmospheric nuclear weapons testing in the 1950's and 1960's (Morishima et al., 1985), tritium enters the water cycle as so-called “tritiated” water ($^3\text{H}^1\text{HO}$). Water from precipitation arriving at the ground surface thus contains tritiated water molecules in a given initial concentration, which then decreases by radioactive decay while in transit through the hydrosystem. Tritium decays with a half-life of

12.32±0.02 years (Lucas and Unterweger, 2000) and has the potential for dating groundwater with mean transit times ~~that~~ ~~exceed~~up to about 100-200 years (Cook and Solomon, 1997; Morgenstern and Daughney, 2012; Beyer et al., 2014).

65 Alternative gaseous tracers covering a similar dating range to tritium exist (e.g., ³He, CFCs, SF₆, ⁸⁵K) but their use has certain disadvantages (Morgenstern and Daughney, 2012; Cartwright et al., 2017; Gerber et al., 2018). Indeed, tritium, as part of the water molecule itself, allows inferring transit times including travel time through the unsaturated zone, whereas gas tracers dissolved in recharge water stay in equilibrium with the atmosphere in the unsaturated zone and derived dating results reflect only transit times in the saturated zone. Besides, tritium dating can be applied where an aquifer discharges naturally (springs, streams), while the use of dissolved gas tracers at these places is thorny due to the risk of contamination of samples with the surrounding air (rapid exchange with the atmosphere after emergence; Busenberg et al., 2006; Han et al., 2006).

70 The use of tritium within the hydrological sciences community for water dating purposes has evolved over time due to the varying origin and level of its atmospheric concentration. Even if the potential for natural-borne tritium for dating hydrological systems was suggested early on by Libby (1953), most of these pioneering applications capitalized on the considerable precipitation tritium increases inherent to the mid-20th-century nuclear weapon tests (Jasechko, 2019). These elevated values allowed first to carry out explicit water transit time analyses for several years past the mid-1960's bomb peak, the latter acting as a clear time marker. With the bomb tritium pulse decay observed after the 1970's, tritium dating of hydrological systems had to increasingly rely on time series with several measurements to deliver unambiguous results – eventually leading to a fading interest in tritium as a tracer of choice for water age dating (Stewart and Morgenstern, 2016; Stewart et al., 2021).

80 Present-day tritium activities in precipitation have recovered natural cosmogenic levels, i.e., similar to levels noted before the nuclear tests (Cauquoin et al., 2015; Terzer-Wassmuth et al., 2022). However, bomb tritium remains present in the hydrological cycle of the earth (Stewart et al., 2021). The interest in tritium water dating has recently gained new momentum (Morgenstern et al., 2010; Stewart et al., 2012). In the ~~southern~~Southern Hemisphere, the remnant bomb tritium has indeed declined to levels lower than those found in modern rainfall (Tadros et al., 2014; Stewart et al., 2021), which allows now unambiguous dating of hydrological systems from a single sample relying on the tritium's radioactive decay (Morgenstern et al., 2010; Cartwright et al., 2020).

90 However, in the Northern Hemisphere the remnant bomb tritium activities have not yet decayed to below those of current rainfall, because precipitation was much more strongly affected by nuclear weapons testing (i.e., the tritium bomb peak was two to three orders of magnitude higher than in the Southern Hemisphere; Stewart et al., 2021). Time series with several tritium measurements are still needed here for an unequivocal dating of hydrological systems and it is therefore presently advised to carry out tritium water dating preferably at sites where past data are available and can be supplemented with analyses of recent samples, so that a longer time series can be obtained (Stewart and Morgenstern, 2016). Some recent studies have leveraged data from such sites (e.g., Stolp et al., 2010; Blavoux et al., 2013; Gallart et al., 2016; Jerbi et al., 2019), but the latter remain rare or even absent for most hydrological systems.

95 As tritium in the environment is at much lower levels at present than in the past, an important aspect that nowadays must also be considered much more carefully is the tritium measurement accuracy and its related impact on water dating results (Eastoe

et al., 2012; Stewart et al., 2012; Stewart and Morgenstern, 2016). Recent methodological developments have fortunately improved the tritium detection sensitivity and measurement accuracy (Morgenstern and Taylor, 2009). The advantage of using these high-precision tritium analyses for obtaining more accurate water dating results have been documented for both the Southern Hemisphere (Stewart et al., 2012) and the Northern Hemisphere (Stewart et al., 2010, 2012; Gallart et al., 2016).

Here, we rely on the tritium dating approach to inform on young groundwater transit times in the Northern Hemisphere for new study sites, i.e., which do not have historical tritium records, but for which we can nevertheless rely on recent high-accuracy tritium data. The aim of this study is to evaluate water transit times for several springs draining the Luxembourg Sandstone aquifer. Widely used for the country's drinking water supply, but also impacted by anthropogenic pollutants (e.g., Bohn et al., 2011; Gourdol et al., 2013; Farlin et al., 2018, 2019), the Luxembourg Sandstone aquifer is ~~by far~~ the most valuable groundwater resource of Luxembourg and, as such, assessing and understanding of water transit times is of national interest. Following a lumped parameter model approach to assess mean transit times (Maloszewski and Zuber, 1982), we set out to corroborate and interpret the tritium dating results in combination with several supplementary data, i.e. the known hydrogeological properties of the aquifer, the hydrochemistry of the studied springs as well as their discharge dynamics. By testing the potential of ~~rather~~-short but high-accuracy recent tritium data time series, our work ~~has pioneering character~~ also provides new insights for ~~the~~-dating of young groundwater bodies at new sites in Central Europe.

2. Study area

Located on the north-eastern boundary of the Paris sedimentary Basin, the Luxembourg Sandstone is a sandy ~~formation~~ sedimentary ensemble dating from the Lower Liassic and interposed in the normal marly-limestone Lias facies. Due to its intrinsic properties, structure, and positioning, it constitutes the main aquifer in Luxembourg hosting the most important groundwater resource of the country and its capital.

2.1. The Luxembourg Sandstone: geological and hydrogeological settings

The Luxembourg Sandstone (Fig. 1) ~~is composed of grains of quartz SiO_2 bonded by a calcareous cement CaCO_3 . Its average chemical composition is about 65-70% SiO_2 and 30-35% of CaCO_3 (Lucius, 1949; Van den Bril, 2008). The Luxembourg Sandstone is in general very homogeneous but may be locally crossed by beds of sandy marls (Lucius, 1948). It is also characterized by a network of mainly NW and NE striking fractures (Berg, 1965). Vertically discontinuous and relatively short, fractures are often limited to one bed with a decametric spacing (fracture density increases with the carbonate content; Colbach, 2005). Some fractured zones exist, sometimes cutting through the whole formation. These zones can consist of intensely weathered, friable and densely fractured sandstone where spacing of several meters exist, but also by one main, up to one-meter wide fracture (Colbach, 2005). All of these properties confer on the Luxembourg Sandstone reservoir a dual porosity characteristic, where its capacitive function (storage of water) is mainly supported through the pores of the sandstone and its dynamic function (transfer of water) is provided primarily by the fracture network (Von Hoyer, 1971; li2 unit in Fig. 2).~~

whose average total thickness is about 60-80 m, outcrops over an area of about 350 km², edged by a cuesta escarpment (e.g., Fig. 1ab), which, in Luxembourg alone, has a length of more than 200 km (Fig. 2; Bintz and Muller, 1965; Colbach, 2005; Kausch and Maquil, 2018). Outcropping to the northeast, beyond the German border, and expanding towards a broad plateau in the southern part of Luxembourg reaching out to Belgium, the Luxembourg Sandstone, gently dipping towards SW (<10°), dives below more recent geological strata in France. Structurally, as the Mesozoic sediments of Luxembourg, it is also characterized by mainly SW-NE striking horsts and grabens (main faulting direction, associated to large undulations) and affected by NW-SE conjugate faults (Berg, 1965; Colbach, 2005).

The Luxembourg Sandstone permeability is about 5×10^{-5} m/s (Von Hoyer, 1971). Its matrix porosity ranges from 5 to 40 % depending on the degree of dissolution of the calcareous cement. Its fracture porosity is estimated to be approximately 1% (Gronemeier, 1976; Colbach 2005; Claes et al., 2018; Samir, 2019). More than a hundred artificial tracer tests were done in the Luxembourg Sandstone aquifer and have been compiled in a recent study (Meus and Willems, 2021). The statistical analysis of this dataset confirms the key role of the fissure network on the preferential pathways of groundwater in the saturated zone.

Mineralogically, the bulk of the Luxembourg Sandstone is made of quartz grains bonded by a calcareous cement (Fig. 1c). Its average chemical composition is about 65-70% quartz and 30-35% calcite, but due to a bimodal distribution of the calcium carbonate content the Luxembourg Sandstone stands as a bedded alternation of two contrasted sandstone types (Fig. 1d), namely sandstone (poorly cemented yellowish sandstone with less than 10% carbonate matrix) and calcareous sandstone (grey to whitish cement-rich sandy limestones with up to 60% of calcite), which are about equally represented in the formation (Colbach, 2005; Kausch and Maquil, 2018). This changing carbonate content in the Luxembourg Sandstone formation has a primary synsedimentary, bioclastic origin, but was also influenced by secondary diagenetic redistribution processes (Colbach, 2005; for details see Berners, 1983; Molenaar, 1998; Van den Bril and Swennen, 2009; Schäfer and Colbach, 2021). It is worth noting that in Belgium the Luxembourg Sandstone formation is subdivided in different members separated by marl beds, while in Luxembourg the presence of marly interlayers exists only discontinuously and locally (Boulvain et al., 2000, 2001; Van den Bril and Swennen, 2009; Kausch and Maquil, 2018).

Colbach (2005) reports a mean formation permeability of around 5×10^{-5} m/s, but the permeability of the Luxembourg Sandstone is heterogeneous. Kausch and Maquil (2018) denote indeed that sandstone beds are highly permeable (up to 10^{-2} m/s) while calcareous sandstone beds have a reduced permeability in comparison. The calcium carbonate content is also responsible for the variability of the porosity of the Luxembourg Sandstone, which varies from 5% in the sandy limestones up to 40% in the poorly cemented sandstones (Colbach, 2005; Kausch and Maquil, 2018; Claes et al., 2018; Samir, 2019). The contrasting mechanical properties of sandstone and calcareous sandstone beds determine the crack density as well in the Luxembourg Sandstone. Owing to their high porosity, the sandstone beds are indeed much lighter and less resistant to compression than the calcareous sandstones ones. Consequently, crack density is high in the calcareous sandstones and weak in the porous sandstones (Colbach, 2005; Kausch and Maquil, 2018; Fig. 1e).

Independent of the small joints developed in the calcareous sandstone, large-scale fracture and joint patterns also affect the Luxembourg Sandstone (Colbach, 2005; Kausch and Maquil, 2018). The Luxembourg Sandstone as a whole is indeed cut by

a nearly vertical, sub-orthogonal network of primary joints with a spacing of one to several meters, which define large blocks or slabs (Fig. 1f). A secondary fracture system is also associated with the fault. These large-scale fractures and joints are moreover often opened by karstification process (i.e., solubilization of the carbonated cement by surface or subsurface weathering processes along fractures and stratification with a mechanical removal of the residual material; Kausch and Maquil 2018; Meus and Willems, 2021). Even if the degree of karstification of the Luxembourg Sandstone degree is low, it should be noted that Meus and Willems (2021) suggest, on the basis of several field observations (i.e., dismantled conduits parallel to the valley axis, subhorizontal plurimetric pipes and cavities developed out of discharge fracturation, and residual crusts covering wall voids), the potential presence in the Luxembourg Sandstone of the remains of a deep karst system intersected and renewed by the surface and subsurface weathering processes.

All of these properties confer on the Luxembourg Sandstone reservoir a multiple porosity and permeability structure which controls the groundwater storage and circulation within it. Mainly supported through the pores of the sandstone beds, the storage of water also takes place in in the joint and fracture networks. Likewise, even if joints and fractures drain the aquifer, the groundwater is circulating through the pores of the sandstones as well (Von Hoyer, 1971; Kausch and Maquil, 2018). As typically observed in bedded aquifers in general (e.g., Maier et al., 2022) and in other sandstone bedded formations in particular (e.g., Hitchmough et al., 2007; Clavaud et al., 2008; Goupil et al., 2022), a key feature caused by the alternation of contrasting sandstone types in the Luxembourg Sandstone is the anisotropy of its ability to allow groundwater to circulate: i.e., the permeability perpendicular to bedding planes (vertical permeability) is lower than horizontal permeability (parallel to bedding planes). Even if it is not quantified, this anisotropy was observed when tunnels were bored in the Luxembourg Sandstone (Fox et al., 2008). Statistical analysis of more than a hundred artificial tracer tests carried out in the Luxembourg Sandstone aquifer, Meus and Willems (2021) have additionally demonstrated the key role of the NE-SW fracture network on the groundwater drainage system in the saturated zone. It is also worth noting that observed transit times to first arrivals and concentration peaks for positive tracer tests led Meus and Willems (2021) to assess average velocities of 52 and 16 m/h respectively (with highest observed velocity of 350 m/h). These figures are fundamental for the understanding of the Luxembourg Sandstone aquifer, but nevertheless remain informative only on its fissured fast flow component. Although this fast flow component is of key importance for the protection of the resource (especially for bacteriological contamination from the surface or following localized point source accidental pollution), it is assumed not to dominate water transit times in the aquifer at large scale.

Structurally, Overall, the groundwater body within the aquifer in Luxembourg is unconfined to the NE, where the Luxembourg Sandstone, whose average total thickness is about 60-80 m, is characterized by mainly SW-NE striking horsts and grabens, associated to large undulations (Lucius, 1948; Bintz and Muller, 1965). Its slight dip (<10° towards the southwest) and its resistance to erosion have generated cuestas, which, in Luxembourg alone, have a length of more than 200 km (Lucius, 1948; Berg, 1965; Colbach, 2005; Kausch and Maquil, 2018). Its outcrop area widens to the northeast, beyond the German border, and expands towards a broad outcrops in plateau in position, while to the southern part of Luxembourg reaching out to Belgium (~350 km²; Fig. 2). Because of its general dip, SW it becomes confined as the Luxembourg Sandstone dives below more recent geological strata in France. Overall, the Luxembourg Sandstone aquifer forms consequently a broad trough perched in the East

~~(unconfined aquifer part, Luxembourg Sandstone plateau), covered with a powerful charge of newer and mostly impervious strata to the west (confined aquifer part) and draining groundwater to.~~ Our study is focusing on the unconfined part of the Luxembourg Sandstone aquifer, which is perched on the SW (Lucius, 1949). The outcrop area of impervious Elvange Marls (li1 unit in Fig. 2) and notched by several deep valleys. Mainly fed by direct infiltration from the top of the plateaus where the Luxembourg Sandstone ~~constitutes the aquifer recharge zone-outcrops,~~ groundwater accumulates at the base of the sandstone reservoir (Fig. 1g). The significantly weathered state of the upper metres of the outcropping sandstone bedrock and the sandy nature of the overlying soils have limited the development of the river network and effective precipitation infiltration can be considered as the dominant process (~~Lucius, 1939; there~~ (Cammeraat et al., 2018; 2018; Kausch and Maquil, 2018). Covered in places with the Strassen Marls and Limestones (li3 unit), the Luxembourg Sandstone aquifer is also fed there by groundwater ~~leaking from this overlying formation.~~ In valleys notching the Luxembourg Sandstone, where the sandstone's impermeable base lies above the valley floors, the aquifer's saturated zone outflows either diffusely or in concentrated form as springs. The location of the many contact springs delimiting the base of the sandstone (more than 500 in the country) is determined by the dip direction of the aquifer basis, which mainly controls the saturated zone groundwater flow together with the Luxembourg Sandstone fracture network (Colbach, 2005; Kausch and Maquil, 2018). It is worth noting that small, perched groundwater ~~bodies may temporally form on top of the local marly interlayers intercalated in the Luxembourg Sandstone formation (Kausch and Maquil, 2018; Fig. 1g).~~

2.2. The springs of Luxembourg City

~~In large parts of the country, the Luxembourg Sandstone plateau is notched by deep valleys and consequently is perched on its impervious base. Where the sandstone's impermeable base lies above the valley floors, many natural contact springs (more than 500 in the country) leave the aquifer according to the topography of the impervious base, which mainly controls the groundwater flow together with the Luxembourg Sandstone fracture network (Fig. 3). Most of these springs~~Most of the natural contact springs draining the Luxembourg Sandstone aquifer are tapped, representing the main groundwater resource for the country's drinking water supply (AGE, 2015). ~~Among them, 62 key springs~~Fig. 3 sketches a typical geological cross-section illustrating the catchment facility of a spring draining the Luxembourg Sandstone unconfined aquifer and the water flow ~~components within. Among the tapped springs, 62~~ are in the vicinity of Luxembourg City and provide about two-thirds of the drinking water supply of the capital's population. It is this strategic importance that has eventually stimulated research efforts on spring water transit time.

Based on the local geomorphology of the geological layer (~~Fig. 2~~), the springs of Luxembourg City ~~have been~~can be grouped into nine main districts (~~Lucius, 1939~~Fig. 2): Birelergrund (B), Glasburen (G), Dommeldange (D), Kopstal rive droite (KRD), Kopstal rive gauche (KRG), Millebach (M), Pulvermuhle (P) and Siwebouren (S). ~~The~~Within a national effort for improving the protection of groundwater bodies used for drinking water supply, the recharge areas of each of these groups have been redefined ~~very~~recently by hydrogeology consultancy firms (RGD, 2018, 2019, 2021a, 2021b, 2022a, 2022b). Their delineation was based on water balance calculations together with constraints defined by the geological, geomorphological, and

hydrogeological contexts (AGE, 2010). ~~An estimation of the average groundwater flow lengths was made for each~~ The mean
230 outflowing discharge used to estimate the extension of the recharge areas ~~As (RGD, 2018, 2019, 2021a, 2021b, 2022a, 2022b)~~
as well as the borehole density across ~~mean elevation and the surface of each recharge area are provided in Table 1. One can~~
notice that the Luxembourg Sandstone is insufficient ~~mostly outcropping in the study area. It is overlaid with the Strassen Marls~~
and Limestones formation (Fig. 2) solely in the recharge areas of KR and S groups, but in a very small part (~5%).
235 Hydrogeological drillings in the Luxembourg Sandstone are too sparse and poorly distributed ~~for establishing an accurate~~
water table map, a rough estimate was made which would have enabled either to directly draw groundwater flow paths in the
saturated zone or to estimate directly saturated and unsaturated zone thicknesses. However, an estimation of the average
groundwater flow lengths was made for each group of springs ~~by considering the distances between the outer limits~~ limit ~~of the~~
recharge areas ~~area~~ and the emergence lines ~~line~~ defined by the springs. The Luxembourg Sandstone thickness was also
computed by subtracting the terrain's surface topography from that of the sandstone's impermeable base (interpolated from the
240 elevation of the known geological contact lines). These attributes, together with mean elevation and surface of each recharge
area, are listed in Table 1. The mean outflowing discharge used to estimate the extension of the recharge areas (RGD, 2018,
2019, 2021a, 2021b, 2022a, 2022b) are also provided ~~These two attributes are also listed in Table 1.~~
Thanks to an existing borehole drilled in the KR area, it is finally worth noting that a marly interlayer exists there in the
Luxembourg Sandstone. In this location, thicknesses of 10 and 45 m were also reported for the saturated and vadose zones,
245 respectively (Farlin et al., 2013a).

3. Material and methods

3.1. Tritium water dating

3.1.1. Transit time distribution and mean transit time estimation

Groundwater discharging at a spring is a mixture of water from short and long flow lines, and therefore the water in a sample
250 does not have a single age corresponding to a unique transit time within the aquifer (i.e., related to the time elapsed since the
water molecules entered the system at the recharge area, where the age is zero), but has a transit time distribution (TTD;
Maloszewski and Zuber, 1982; Stewart et al., 2017). A mean transit time may however be estimated using the Lumped
Parameter Model (LPM) approach. Introduced in hydrogeology by Maloszewski and Zuber (1982), LPMs are the most widely
used model-based environmental tracer interpretation approach in groundwater studies (Turnadge and Smerdon, 2014). This
255 method relates the concentration of a tracer (in our case tritium) at the outlet of a groundwater system (C_{out}) to its input
concentration (C_{in}) using the well-known convolution integral (Maloszewski and Zuber, 1982):

$$C_{out}(t) = \int_0^{\infty} C_{in}(t - \tau) \exp[-\lambda(\tau)] g(\tau) d\tau \quad (1)$$

260 where t is calendar time and the integration is carried out over the transit times τ , λ is the decay rate of the tracer ($\lambda = 0$ for stable tracers; $\lambda = \ln 2/T_{1/2}$ for radioactive tracers where $T_{1/2}$ is the half-life; tritium $T_{1/2} = 12.32$ years), and $g(\tau)$ is a transfer function defining the TTD.

The TTD should be described by a conceptual flow or mixing model reflecting the average (steady-state) conditions in the groundwater system (Maloszewski and Zuber, 1982; Leray et al., 2016). Within this work we choose the exponential-piston
 265 flow model (EPM; Maloszewski and Zuber, 1982) which mimics a system with two segments of flow in series: one of exponential flow and the other of piston flow. EPM can be used especially when the time lag required for water to flow through the unsaturated zone of an unconfined aquifer cannot be neglected (Jurgens et al., 2012). This is the case for the Luxembourg Sandstone areas that feed the springs of Luxembourg City- (i.e., due to the unsaturated zones being expected to be thick for some areas while they are thin for others, as well as to the low vertical permeability relative to the horizontal one). In this
 270 context, the piston flow component simulates the water flowing through the unsaturated zone, while the exponential model represents the mixing at the outlet of groundwater flowlines coming from the saturated zone. The EPM response function is given by:

$$g(\tau) = 0 \quad \text{for} \quad \tau < \tau_m(1 - F) \quad (2a)$$

$$275 \quad g(\tau) = \left(\frac{1}{F\tau_m}\right) \exp\left(-\frac{\tau}{F\tau_m} + \frac{1}{F} - 1\right) \quad \text{for} \quad \tau \geq \tau_m(1 - F) \quad (2b)$$

where τ_m is the mean transit time, and F the ratio of the exponential volume to the total volume of the groundwater system. While the model is fully exponential when $F = 1$, it completely turns to piston flow when $F = 0$. It is also worth noting that τ_m can be split into two components, i.e., τ_{pf} , the time lag required for water to flow through the piston flow section, and
 280 τ_{exp} , the mean transit time for water to flow through the exponential volume. τ_{pf} and τ_{exp} are obtained by multiplying τ_m by $(1 - F)$ and F , respectively.

3.1.2. Spring water sampling and analytical techniques

Spring water samples were collected from 35 of the 62 springs of Luxembourg City (Fig. 2). The spring's selection was balanced to represent the main hydrogeological districts used for the water supply of the country's capital and to reflect a rather
 285 wide variability in terms of discharge dynamics and hydrochemical signatures (see 3.2 and 3.3). Note that some "springs", namely S01, S02, S03 and P01, are old natural emergences, but which have since then been excavated and are now being exploited through pumping.

To make the assumption of steady-state as acceptable as possible, samples were always taken outside of recharge and rainy periods in order to avoid any potential mixing with young freshwater coming from precipitation, e.g., through preferential
 290 pathways. All springs were sampled three times: in June 2011, August 2015 and 2017 for springs K21 and K21A and in

September 2013, August 2015 and 2017 for all the others. Samples were collected without filtration or preservation in a 1 L plastic bottle filled to the top.

Tritium activities were measured on water samples that had been vacuum distilled and electrolytically enriched 95-fold using liquid scintillation spectrometry (Morgenstern and Taylor, 2009). For all samples, the reproducibility of the enrichment was 1 % and the limit of detection was 0.02 tritium units (TU; 1 TU represents a $^3\text{H}/^1\text{H}$ ratio of 10^{-18}). The measurement uncertainty (1σ), mainly due to the uncertainty of the enrichment and statistical errors of the ultra-low-level decay counting, ranges between 0.07 and 0.12 TU (1.2-1.9%), depending on the tritium concentration of the samples. These are the measurements referred to as high-precision measurements in our study.

3.1.3. Input time series

Monthly values of tritium in precipitation (including uncertainties) come from the GNIP (Global Network of Isotopes in Precipitation) measurement network, ~~initiated in 1958 by the IAEA (International Atomic Energy Agency) and the WMO (World Meteorological Organization),~~ and were obtained from the WISER database (Water Isotope System for Data Analysis, Visualization, and Electronic Retrieval; IAEA (International Atomic Energy Agency) and WMO, (World Meteorological Organization), 2019; <https://nucleus.iaea.org/wiser>). The data used from 1978 to present are from the Trier station in Germany (Stumpp et al., 2014; Schmidt et al., 2019), located only 40 km away from Luxembourg City. The history of tritium in precipitation prior to 1978 has been reconstructed through a log-log linear regression ($r^2 = 0.65$; $p\text{-value} < 10^{-15}$) by combining records from Ottawa, Canada, from 1953 with those from Vienna, Austria, from 1961 (Jurgens et al., 2012; Stewart et al., 2017). Before 1953, the pre-bomb background concentration of tritium was estimated to be 8 TU (Jurgens et al., 2012).

To account for losses due to evapotranspiration (McGuire and McDonnell, 2006), the input of tritium to the ground as recharge was calculated through a weighting procedure like the ones reported by Stewart et al. (2007), Ozyurt et al. (2014) or Duvert et al. (2016). ~~Here, we considered a soil model with a maximum water holding capacity of 100 mm to assess the amount of precipitation that infiltrates~~ Here, we relied on the Thornthwaite's method (Thornthwaite, 1948) which is a water balance of the rootzone performing monthly book-keeping of precipitation, evapotranspiration, and soil moisture. This approach is widely used in hydrogeology for estimating aquifer recharge (e.g., Lanini et al., 2016; Mammoliti et al., 2021). Basically, infiltration below the root zone (i.e., precipitation in excess of that required to supply actual evapotranspiration and the soil water store: effective precipitation). ~~Through this model, a) occurs only when the soil maximum water-holding capacity (i.e., the field capacity) is exceeded. The Thornthwaite's method also comes with an empirical potential evapotranspiration formula using only monthly mean air temperature as input.~~

For our study, we set the soil maximum water-holding capacity to 100 mm which corresponds to an overall mean value of soil profiles covering the Luxembourg Sandstone (Hissler et al., 2015; Hissler and Gourdol, 2015). Given the relatively restricted spatial extension of our study area, the monthly water balance calculation to obtain the effective precipitation was done with the precipitation and temperature data recorded at a single representative location, i.e. the Findel airport WMO weather station, ~~in operation since 1947~~ (WMO ID 06590; Fig. 2; <https://www.meteolux.lu>). ~~Potential evapotranspiration was obtained~~

325 operation since 1947, this meteorological station is less than 10 km away from the temperature data following Thornthwaite
(1948). Each spring of Luxembourg City (Fig. 2) and its elevation (368 m) is close to those of the spring recharge areas (Table
1). One can also notice that our choice to consider the effective precipitation spatially homogeneous at this work scale is also
supported by Pfister et al. (2017) who described the spatial variability of the precipitation as rather small over a region
otherwise even wider than that containing our study area.

330 Instead of calculating single annual tritium recharge input values, a one-year sliding window was then used to obtain monthly
values as follows:

$$C_{in\ i} = \frac{\sum_{j=i-11}^i C_j P_{eff\ j}}{\sum_{j=i-11}^i P_{eff\ j}} \quad (3)$$

where $C_{in\ i}$ is the monthly tritium recharge for the i^{th} month, and C_j and $P_{eff\ j}$ are the monthly values of tritium in precipitation
335 and monthly effective precipitation amounts for the j^{th} month, respectively. A Tukey filter (Tukey, 1968) with coefficient 0.4
was applied to the moving window to avoid edge effects (Duvert et al., 2016). To obtain the respective monthly estimates,
note that the same weighting procedure was applied to both tritium in precipitation and their uncertainties.

3.1.4. Modelling strategy

A modelling strategy able to account for the propagation of analytical errors is advocated for transit time determinations using
340 LPMs, especially when only a limited number of samples is available (Gallart et al., 2016), as is the case for the springs of
Luxembourg City. To this end, instead of using a best-fit calibration approach, EPM parameters were investigated within this
work using a Monte Carlo sampling routine in a generalised likelihood uncertainty estimation framework (GLUE; Beven and
Binley, 1992, 2014).

The approach used follows nearly the same modelling method proposed and applied in Gallart et al. (2016). The EPM
345 parameter space (τ_m, F) was randomly explored until enough behavioural solutions were found (5000 within this work). The
goodness of fit of the simulations was evaluated using the Nash–Sutcliffe efficiency coefficient (NSE; Nash and Sutcliffe,
1970). To propagate tritium analytical errors, input (recharge) and output (spring) normally replicated time series were
generated beforehand using the means and standard errors of every tritium measurement. These replicated values served for
the assessment of the goodness of fit of every simulation.

350 3.1.5. Groundwater volumes

The volume of groundwater V stored within an aquifer (also known as the turnover volume, the volume of mobile water or the
effective aquifer's volume) can be related to the mean transit time τ_m of the water leaving it and its average outflowing
discharge Q (Maloszewski and Zuber, 1982; McGuire and McDonnell, 2006; Morgenstern et al., 2010; Zhou et al., 2022):

Calculating such τ_m - derived volumes will be used here to ensure that EPM solutions are to some extent physically valid regarding basic geometries and properties of the studied system.

3.2. Response time of spring discharge to precipitation input

360 3.2.1. Cross-correlation analysis applied to groundwater time series

Introduced in karst hydrology by Mangin (1981a, 1981b, 1984), the use of correlation analysis applied to groundwater time series has since then widely expanded to understand the functioning of groundwater systems with varying characteristics. The cross-correlation analysis, which consists in studying the correlation between two time series (Box and Jenkins, 1970), was used in particular to assess the response of aquifer systems at springs or wells to precipitation input which is responsible for
365 their recharge (e.g. Padilla and Pulido-Bosch, 1995; Angelini, 1997; Larocque et al, 1998; Lee and Lee, 2000; Panagopoulos and Lambrakis, 2006). Calculating the values of the cross-correlation coefficient results in a graph called a cross-correlogram that represents the correlation as a function of the time lag between the two series. A usual precipitation-groundwater time series correlogram reaches a peak of correlation after a certain time lag, the latter characterizing the response time of groundwater to the precipitation input. This response time can then be interpreted in terms of flow mechanisms. For instance,
370 response times of unconfined aquifers derived from cross-correlation analysis have often been related to unsaturated zone characteristics (e.g., Lee and Lee, 2000; Lee et al., 2006; Fiorillo and Doglioni, 2010; Bloomfield and Marchant, 2013; Bloomfield et al., 2015; Al-Jaf et al., 2021).

Here, we did not follow the standard cross-correlation method to define the response time of groundwater to precipitation input, but rather used the methodology originally proposed by Fiorillo and Doglioni (2010) and subsequently taken up by
375 Bloomfield and Marchant (2013), Bloomfield et al. (2015) or Van Loon et al. (2017). Starting from the premise that groundwater response at a given time does not result from a single precipitation pulse at a previous moment, but that it depends on a previous period of precipitation, Fiorillo and Doglioni (2010) propose an alternate way to the usual precipitation-groundwater time series cross-correlation analysis. Instead of using one single input time series, they suggest exploring multiple precipitation time series data constructed over varying cumulative time windows as input and retain the one with the
380 maximum correlation peak. The correlation peak time lag of the considered cross-correlogram, added in a second step to the extent of the cumulative precipitation time window, thus allows to estimate a minimum and a maximum response time of the groundwater system, respectively. The average of these two values is defined in this study as the mean response time MRT.

3.2.2. Spring discharge time series

Discharge of the springs of Luxembourg City has been measured from the mid-1990s, typically at weekly to quarterly time
385 steps, with the aim to grasp both seasonal and multi-year temporal dynamics. These raw data were aggregated to monthly

mean values. If no observations were available for a given month, then a linear interpolation was used to estimate the missing monthly discharge values. Only gaps of maximum 6-month length were filled.

390 Monthly discharge time series were thus created for each investigated spring, except for P01 whose water collection facility is unsuitable for discharge measurements. Note that the springs S01, S02 and S03 were not processed individually, but jointly, because only records of their cumulative discharge are available. The length of the monthly discharge chronicles is 14 years or more, except for the M01 spring for which the time series is 7 years long. In 81-% of the springs, observations span over 25 years. Finally, it is worth noting that on average missing, interpolated and measure-derived monthly discharge data relate to 4, 25 and 71-% of the time series, respectively.

3.2.3. Input time series

395 In line with Jemcov and Petric (2009), who have documented the value of using effective infiltration in cross-correlation analysis to assess the functioning of ~~karst~~several springs and their aquifers, we did not select precipitation as input signal, but used instead effective precipitation. The proportion of precipitation eventually percolating to the groundwater is indeed a function of several processes linked to climatic conditions, vegetation, and soil characteristics, and prevailing in the superficial section of the system. By using precipitation as the entry signal, these processes, which usually only affect the first few tenths of centimetres of the subsoil, are not separated from the processes deeper inside the aquifer. Using effective precipitation instead can overcome this oversimplification and potentially avoid misinterpretation if one is particularly interested in the internal structure of the aquifer.

~~The effective precipitation was considered homogeneous for the entire study area whose spatial extension is relatively restricted. As with the weighting of the tritium input time series (see 3.1.3), their, the calculation of the effective precipitation~~
405 ~~relied on precipitation and temperature data recorded at the Findel airport weather station, which is less than 10 km away from each spring of Luxembourg City and whose elevation (368 m) is close to those of the spring recharge areas (see Fig. 2 and Table 1). As a reminder, the a soil water balance leading to the effective precipitation calculation considers a soil model with a maximum water holding capacity of 100 mm and following the Thornthwaite's method (Thornthwaite, 1948) for estimating the potential evapotranspiration; see 3.1.3 for details).~~ Ultimately, we built a data set of 60 input time series for an effective
410 precipitation accumulation period varying from 1 to 60 months.

3.2.4. Assessment of mean response times and uncertainty ranges

The cross-correlation analysis applied in groundwater studies typically considers multi-year time series data to characterize input-output relationships over the whole data period. An alternative moving window cross-correlation approach was recently proposed by Delbart et al. (2014) to assess temporal variability in response times. This increasingly used method (e.g., Cai and Offerdinger, 2016; Jeong et al., 2017; Le Duy et al., 2021) was initially set to reveal the seasonal variability of the response time of an aquifer to rainfall by using a relatively short sized moving window (Delbart et al., 2014). Here, we applied the cross-correlation in the same moving window framework, but used a larger window (i.e., 5-year long window and 3-month moving

increment) to attribute to springs not only a unique MRT to precipitation input but also an uncertainty range. To do so, the cross-correlograms between the multiple effective precipitation inputs and the discharge output for a given spring were first
420 calculated for each moving window and the related MRT was defined as per section 3.2.1. Next, the results of individual moving windows were collected as an ensemble of possible solutions and summarised using standard percentile values (i.e., 5th, 25th, median, 75th and 95th).

3.3. Spring hydrochemistry

The chemistry of groundwater varies because of a wide range of natural and anthropogenic processes. Some hydrochemical
425 variations are due to time-dependent water-rock interactions inside the aquifer and can be related to groundwater transit time (Purtschert, 2008). For instance, major ion concentrations are sometimes found to increase with increasing groundwater transit time (e.g., Edmunds and Smedley, 2000; Katz et al., 2004; Zuber et al., 2005; Edmunds and Shand, 2009), although these relationships may be of complex nature (Morgenstern et al., 2010).

Since late 2004, the springs of Luxembourg City are regularly sampled for hydrochemical analyses (Bohn et al, 2011; Gourdol
430 et al., 2013;). Among the hydrochemical parameters available, major ion concentrations (Ca^{2+} , Na^+ , Mg^{2+} , K^+ , HCO_3^- , SO_4^{2-} , Cl^-), as well as dissolved silica (SiO_2), electrical conductivity ($\text{EC}_{25^\circ\text{C}}$), dissolved oxygen (O_2), and pH have previously been related to water-rock interaction processes occurring inside the Luxembourg Sandstone aquifer (Von Hoyer, 1971; Gourdol et al., 2013). In this study, we thus relied on these parameters to possibly corroborate the tritium dating results and assessed ~~the~~
as well their potential ~~of these parameters~~ for serving as geochemical proxies of groundwater transit times that might be used
435 at sites where no tritium data is available.

Sampling methods and analytical details related to the acquisition of these data are described in Gourdol et al. (2013). As the spatial variability of the hydrochemistry of the springs of Luxembourg City is stable over time, both year-to-year and seasonally
(Gourdol et al., 2013), the available data were aggregated into a single average value for each parameter ~~and every of all~~ of the
35 springs considered in this study.

440 4. Results

4.1. Tritium water dating

4.1.1. Tritium in precipitation, recharge, and spring waters

Tritium analytical results for the investigated springs of Luxembourg City are reported in Table 2 and displayed in Fig. 4,
together with the monthly and 1-year moving average tritium concentrations observed in precipitation at Trier, as well ~~with~~
445 as the derived recharge input function.

Due to the mid-20th-century nuclear weapon tests, tritium in precipitation and recharge peaked at over 1000 TU in 1963 and then decreased progressively back to pre-bomb background level in recent years (Fig. 4a). We can notice that because

precipitation is mostly effective in winter and rainfall tritium content is overall lower during this season, the tritium concentration in the estimated recharge input function is most of the time significantly below that determined for yearly mean rainfall.

Tritium concentrations in spring waters average 5.42 TU and range from 4.31 to 7.13 TU during the observation period. They display a clear general downward trend (average decrease of about 0.25 TU per year), while measured precipitation and derived recharge tritium time series have been relatively stable for a decade disregarding seasonal variation (2010-2019 mean value of 8.39 and 6.75 TU, respectively; Fig. 4b), ~~emphasizing the presence of bomb tritium in the Luxembourg Sandstone aquifer (4b).~~ As shown in Fig. 4c, springs belonging to the same recharge area are generally characterized by similar tritium contents. For instance, the highest tritium concentrations are typically associated with group B springs and the lowest ones to springs from groups KRD and KRG. Note that tritium contents in group G are more heterogeneous from one spring to another.

4.1.2. Age simulation of spring waters

4.1.2.1. EPM parameter space exploration

The assessment of spring mean transit times using the tritium recharge input function through the EPM model was done in two stages as illustrated in Fig. 5 for one of the investigated springs.

~~In a first step, a wide parameter space was explored~~ Following previous tritium dating studies (e.g., Morgenstern et al., 2010; Stewart et al., 2010, 2012; Gallart, et al., 2016; Gusyev et al., 2016; Stewart and Morgenstern, 2016), we explored first the widest parameter space to which tritium allows access, i.e. with τ_m ranging from 0 to 200 years and F between 0 and 1 (Fig. 5ab). An NSE threshold value of 0 was retained at this stage to define behavioural solutions. For every spring, one large subpopulation of solutions with τ_m values greater than 35 years was easily discriminable. This subpopulation, whose mean τ_m value varies between 64 and 98 years depending on the springs, can be confidently rejected as being unreasonably old given the characteristics of the aquifer; ~~(aquifer perched on an impermeable underlying layer and split by several valleys, isolated from potential connection with deeper or more extended aquifer layers),~~ the discharge of the springs of Luxembourg City and the extension of their recharge areas. These τ_m values would indeed have required groundwater levels to be too close to or even above the land surface (according to Eq. (4); see details in 4.1.3).

The parameter space was thus narrowed in a second step with τ_m ranging from 0 to 35 years (bounds of 0 and 1 for F were kept; Fig. 5cd). A more stringent NSE threshold value of 0.5 was also retained for this screening. Modelling results of this second screening are provided for each spring in the Supplement (Fig. S1-S35). Owing to the short record of tritium measurements for every spring and despite the reduced parameter space combined with the more severe NSE threshold, the 5000 resulting behavioural solutions were not distributed around an unambiguous peak but spread into several ~~overlapping subpopulations~~ subpopulations, most of the time overlapping, and thus leading to an ensemble with a complex multimodal character. To obtain a more coherent ensemble of solutions, we decided to keep only the most likely third of the behavioural solutions by relying on a 2D kernel NSE weighted density thresholding filter (Fig. 5c, Fig. S1a-S35a). In practice, using this

480 filter allowed the multimodal distribution to retain the (almost) unimodal set of solutions with respect to both EPM parameters
with the highest probability, and it provided acceptable results for all springs. For most springs, the remaining behavioural
solutions were circumscribed in a single area of the parameter space. For cases with more than one population, we ultimately
restricted the most likely behavioural solutions to the dominant one, i.e., both the best and largest subpopulation. ~~It is worth~~
~~noting that in any case~~It is worth noting that the decision to keep only a third of the samples was taken, after some trials, as a
485 good compromise on the one hand to reject the least possible solutions and to limit cases requiring rejection of a secondary
weaker subpopulation on the other hand. One can finally notice that in all cases an ensemble of more than 1000 behavioural
solutions was retained.

4.1.2.2. Dating results

The retained ensembles of the most likely model solutions are summarized for every spring in Table S1 of the Supplement
490 using standard percentile thresholds (i.e., 5th, 25th, median, 75th and 95th) and in Fig. 6 as violin and box plots. To facilitate the
assessment of inter-spring variability, two additional scatter plots are presented in Fig. 7, i.e., the first relating F and τ_m values
and the second one τ_{pf} and τ_{exp} values.

Ranging from 0.68 to 0.93, NSE median values of the ensembles are on average 0.86 and above 0.8 for 31 of the 35 studied
springs. This indicates an overall good agreement between modelled and measured tritium concentrations in spring waters.
495 Predicted EPM parameters of springs are characterized by median values ranging from 0.46 to 0.97 for F and between 7.4 and
24 years for τ_m . Considering the difference between their 95th and 5th percentiles bounds as a metric, the ensembles of most
likely model solutions display a degree of uncertainty varying between 0.07 and 0.53 for F (mean 5-95th percentiles range of
0.29) and from 3.5 to 15.8 years for τ_m (mean 5-95th percentiles range of 8.6 years).

Considering the quite large overlap between ensembles in the parameter space, the predicted EPM parameters show similar
500 values for springs belonging to the same recharge area on the one hand, while they also highlight significant differences
between spring groups on the other hand (Fig. 6-7).

Springs belonging to groups S, M and D are characterized with an exponential to total flow ratio F close to 0.7 (median values
between 0.64 and 0.76) and relatively low τ_m values (median values ranging from 7.6 to 10.9 years). Group B and P springs
stand out with higher median values, spanning from 0.77 to 0.97 for F and between 14.1 and 19.3 years for τ_m . Results
505 obtained for group G are more heterogeneous, especially with respect to the mean transit time – the group indeed includes the
spring with the lowest τ_m median value (C05, 7.4 years) and the one with the highest (C01, 24 years) – but also regarding the
 F parameter (spring F median values range from 0.67 to 0.83). Finally, characterized by τ_m median values ranging from 10.7
and 15.1 years, springs of the KRD and KRG groups are distinguishable from those located in other areas with particularly
low F values (median values between 0.46 and 0.67), indicating a greater importance of the EPM piston component in this
510 region. Note that it is eventually for the KRD and KRG groups that the highest τ_{pf} median values are observed (up to 8.1
years).

Note that τ_m median values characterizing the retained ensembles of EPM solutions correlated positively and significantly with spring mean tritium contents ($r = 0.62$; $p\text{-value} < 10^{-4}$). The correlation between spring mean tritium contents and τ_{exp} median values is even stronger and more significant ($r = 0.93$; $p\text{-value} < 10^{-14}$).

515 4.1.3. Groundwater volumes

The volumes of water V stored in the Luxembourg Sandstone aquifer that ~~contributes~~contribute to the discharge of spring groups have been estimated from Eq. (4) using the mean discharge values characterizing each recharge areas (Table 1) and the average of τ_m median values (Table S1) of springs belonging to each group.

Considering the average of F median values (Table S1) of each group of springs, the calculated V volumes were subsequently split in V_{pf} , the part of the water volume associated ~~to~~with the EPM piston component ($V_{pf} = (1 - F) * V$), and V_{exp} , the water volume stored in the EPM exponential section ($V_{exp} = F * V$). For each recharge area S (Table 1) and assuming an overall porosity of 25-% for the Luxembourg Sandstone (which was set regarding the available porosity figures values available from the literature, cf. 2.1), V_{pf} and V_{exp} have been finally converted into mean equivalent sandstone layers required for the water storage in the saturated zone (assumed to match the exponential part of the EPM model; $H_{exp} = V_{exp}/(S * 0.25)$) and
525 the vadose zone (assumed to correspond to the EPM piston segment; $H_{pf} = V_{pf}/(S * 0.25)$).

The obtained results are displayed in Fig. 8 as a bar plot in which H_{exp} and H_{pf} calculated values are overlaying the mean thickness of the Luxembourg Sandstone estimated for each recharge areas (Table 1). Overall, Fig. 8 indicates that the retained EPM solutions are physically valid whatever the recharge area. In addition, the values obtained for the KRD area are consistent with the thicknesses of the vadose and saturated zones reported by Farlin et al. (2013a) in this region. It should nevertheless
530 be noticed that results obtained for group B appear less optimal compared to those of the other spring groups. Indeed, according to the figures, the void filling rate by water in the vadose zone would reach 65-% in this area, while elsewhere it ranges more realistically between 3 and 17-% (mean value of 10-%).

4.2. Response time of spring discharge to effective precipitation input

Results of the spring discharge – effective precipitation cross-correlation analysis are reported for each spring in Table S2 of
535 the Supplement through standard percentile values and displayed in Fig. 9 as violin and boxplots.

As indicated by correlation peak values, spring discharge correlates generally well with accumulated effective precipitation regardless of the considered spring (medians of maximum cross-correlation peak values range from 0.7 to 0.9 and average 0.84; percentiles 5th and 95th are for most of the ensembles of solutions greater than 0.6 and 0.9, respectively). Whereas the maximum correlations are associated with widely varying extents of the cumulative effective precipitation window (median
540 values of ensembles ranging from 4 to 37 months), observed correlation peak time lags are generally null or less than 4 months. The resulting MRT ensembles are characterized by median values spanning from 2 to 20 months and mean interquartile and

5-95th percentiles ranging from 8 to 18 months, respectively. The lowest MRT values are typically associated with group B springs and the highest ones to groups' KR D and KR G springs.

Finally, Fig. 10 compares the different spring discharge responses to the effective precipitation inputs according to their median
545 MRT value. While springs with a median MRT lower than or equal to 10 months show a discharge dynamic characterized with a strong seasonal pattern, the ones with median MRT comprised between 10 and 15 months are characterized predominantly by interannual dynamics. The overall discharge dynamic of the springs with a median MRT equal to or greater than 15 months is even more damped and delayed compared to the monthly effective precipitation input function.

4.3. Spring hydrochemistry

550 Spring mean physicochemical characteristics are provided in Table S3 of the Supplement and presented in Fig. 11 as a heat map where dark red and dark blue tones denote the highest and lowest values for each parameter, respectively.

Springs belonging to the same recharge area generally have very similar characteristics. For instance, group B springs are typically the most mineralized, while those of group KR D count among the less enriched (Fig. 11). The observed mineralization of spring waters and their hydrochemical facies are in line with previous observations (Von Hoyer, 1971; Gourdol et al., 2013)
555 and reflect the dissolution of the calcareous cement of the Luxembourg Sandstone and its composition, the weathering of the grains of quartz of the sandstone and the oxidation of pyrite disseminated in the rock matrix.

Note that SiO₂, Ca²⁺, HCO₃⁻, K⁺, total dissolved solids (TDS; sum of major ions and dissolved silica contents) concentrations and EC_{25°C} measurements are strongly correlated with each other (minimum correlation r of 0.77). Due to second-order natural or anthropogenic factors (e.g., road salt inputs), Na⁺/Cl⁻ and Mg²⁺/SO₄²⁻ ratios are partly disconnected from the global
560 enrichment of spring waters. It is finally worth considering that the observed depletion of O₂ and pH with increasing mineralization is also linked to the water-rock interaction (i.e., due to the pyrite oxidation).

4.4. Comparison of tritium derived transit times with other spring characteristics

We tested the correlation of tritium derived transit times with other spring characteristics by applying a simple linear model. Although this analysis would not identify direct causalities and does not account for possible multi-collinearities, it should
565 nevertheless help to shed new light on potential controls of mean transit times.

The parameters involved here are τ_m , τ_{exp} and τ_{pf} median values of the ensembles of EPM solutions (Table S1), mean groundwater flow lengths and Luxembourg Sandstone thickness of the recharge areas the springs ~~are belonging~~ belong to (Table 1), the MRT median values characterizing the response time of spring discharge to effective precipitation input (Table S2), and the average values of hydrochemical parameters (Table S3).

570 Results are shown in Fig. 12 as a correlation matrix which indicates the sign (blue and red tones for positive and negative correlation, respectively), the strength (the darker the tone, the stronger the correlation and vice versa), and the significance of the linear correlation between each pair of parameters (a black square – $p < 0.05$ – denotes a significant correlation and a white circle – $p < 0.001$ – highlights a very significant one).

It can be observed that τ_m and τ_{exp} median values are in general correlated positively with the mineralization of the spring water and negatively with O_2 and pH values. However, these correlations are most of the time weak ($|r| < 0.3$) and not significant ($p > 0.05$). Note that the linear correlation of τ_{exp} median values with HCO_3^- ($r = 0.42$), Cl^- ($r = 0.38$), Na^+ ($r = 0.37$) and SiO_2 ($r = 0.34$) is nonetheless significant ($p < 0.05$). The relationship relating the mean groundwater flow lengths of the recharge areas to τ_{exp} median values is also statistically significant ($r = 0.38$, $p < 0.05$), while the one with τ_m median values is not ($r = 0.18$, $p > 0.05$). As shown in Fig. 13a, we can further notice that the correlation between τ_{exp} median values and the mean groundwater flow lengths at the scale of the recharge areas is characterized by an r value of 0.67. Finally, the strongest positive and ~~more~~most significant correlations of tritium derived transit times with the other spring characteristics is shown in Fig. 12 for the EPM piston component. Indeed, the correlation of τ_{pff} median values with the mean Luxembourg Sandstone thickness of the recharge areas and the MRT median values characterizing the response time of spring discharge to effective precipitation input are particularly strong ($r = 0.57$ and 0.60 , respectively) and very significant ($p < 0.001$). At the scale of recharge areas, the correlation of τ_{pff} median values with the mean Luxembourg Sandstone's thickness and MRT is characterized by an r value of 0.67 and 0.86, respectively (Fig. 13bc).

5. Discussion

The use of LPM for tritium-based water transit time studies of hydrological systems requires several aspects to be considered upfront (e.g., McGuire and McDonnell, 2006; Leray et al., 2016; Stewart and Morgenstern, 2016; Stewart et al., 2017). ~~As described in section 3.1, we have pondered several methodological choices.~~ For instance, the use of a soil water balance model to account for the variation over time of evapotranspiration water losses, combined with the proximity of the Trier Station to our study site, allowed us to assume a suitable characterization of the tritium recharge input signal. The spring samples were also taken at selected times to best consider for the steady-state assumption (although presuming stationarity for groundwater is in general less critical than for stream water), and their analysis was carried out with high-accuracy methods for minimizing the potential impact of tritium analytical errors on modelling results (Stewart et al., 2012; Gallart et al., 2016). The tritium output data record length is of particularly critical importance to the characterization of hydrological systems in the Northern Hemisphere. While a single tritium sample can be sufficient in the Southern Hemisphere, the use of time series with several measurements remains a prerequisite in the Northern ~~hemisphere~~Hemisphere for an unequivocal dating of hydrological systems (Stewart and Morgenstern, 2016). This problem may be tackled by ~~valuing~~exploiting sites for which past tritium measurements are available (e.g., Stolp et al., 2010; Blavoux et al., 2013; Jerbi et al., 2019). Here, we have explored the potential for the sole use of recent high-accuracy tritium data to date groundwater. We did eventually rely on time series, but of minimal length (as a reminder, time series of 3 samples taken every ~ 2 years). In this context, we did not use a standard best-fit calibration approach as is most commonly done, but followed the advice of Gallart et al. (2016) to use a modelling framework combining a resampling procedure associated with the GLUE approach (Beven and Binley, 1992, 2014). This

605 approach delivers dating results together with uncertainty ranges reflecting the EPM parameter identifiability issue arising jointly from the low number of spring samples and the tritium analytical errors. Easy to implement and conceptually simple, GLUE is one of the most widely used methods for uncertainty assessment of hydrological models (Moges et al., 2021). However, it is important to note that its subjectivity can be criticized for the choice of the behavioural threshold, the number of sample simulations and their potential impact on the results (Li et al., 2010). Other alternative techniques could have been
610 used, such as a Bayesian inference framework (e.g., Thiros et al, 2023), but the results would probably have been comparable (e.g., Li et al., 2010; Dotto et al., 2012).

First of all, our findings show that the short spring tritium data time series, even though of high-accuracy, did not allow direct unambiguous dating results. Indeed, even after restricting the mean transit time τ_m to 35 years maximum to rule out the unlikely oldest solutions considering the hydrogeological context of the study area, the behavioural parameter sets resulting
615 from the random exploration of the focused EPM parameter space still did not define an unambiguous set of solutions, and this for each spring and despite the more stringent NSE threshold of 0.5. This led us to apply an additional 2D kernel NSE weighted density thresholding filter to conserve the *a priori* most likely solutions and tend towards what we assumed to be the more coherent ensembles of parameter sets. Overall, the NSE figures characterizing these ensembles of most likely solutions (i.e., NSE median values ranging from 0.68 to 0.93 and averaging 0.86) indicate a good match between modelled and observed
620 tritium data. As observed in Fig. S1-S35 and summarized in Fig. 14, the simulated spring tritium concentrations are consistent with the tritium measurements of spring samples, their downward trends, as well as with their analytical errors. Finally, it is worth noting that a few older tritium data are available for the investigated springs of group KRD (Farlin et al., 2013a, 2013b, 2017). Covering the 2008-2012 period, these data are out of the specific scope of this work because of their lower accuracy (1σ average analytical error of 0.52 TU), hence they were not directly used for the modelling. Included in Fig. S16-S24, we
625 can nonetheless observe that they fit well with the simulation ensembles and therefore represent to some extent an additional consolidating argument for the consistency of the obtained tritium dating results.

Although necessary, the consistency of the results with the tritium measurements is however not sufficient as it does not guarantee their correctness, particularly if the selected model does not adequately characterize the water flow field (Leray et al., 2016; Stewart et al., 2017). Here, we opted for the EPM because of its potential to simulate for unconfined aquifers both
630 the water flowing through the vadose zone (i.e., with the EPM piston segment), as well as the mixing of groundwater flowlines coming from the saturated zone at the outlet of the system (i.e., mimicked by the EPM exponential section; Jurgens et al., 2012). Even if assessing the validity of the LPM selection is not straightforward (Leray et al., 2016), two key aspects of the findings nevertheless support the EPM choice here. First, the dating results retained *in fine* appear overall physically plausible when translated into equivalent sandstone heights (Fig. 8) using the rational average characteristics of the Luxembourg City
635 spring recharge areas (i.e., outflowing discharge, impluvium, sandstone thickness, porosity). Secondly, the significant and consistent τ correlations found between τ_{pf} and τ_{exp} with several other characteristics describing the vadose and saturated zone of the Luxembourg Sandstone aquifer (Fig. 12) are also strongly supporting the choice of the EPM model. Indeed, while no

straightforward significant correlation of τ_m values with the other characteristics could be observed, several did appear when τ_{pf} and τ_{exp} were regarded separately.

640 Considering the full thickness of the Luxembourg Sandstone as a proxy for the thickness of its unsaturated zone, the very significant correlation highlighted in Fig. 12 between τ_{pf} values and the Luxembourg Sandstone thickness means estimates of each group of springs is a first element that supports the ability of the EPM piston segment to deliver plausible transit times characterizing the percolation of water through the vadose zone of the aquifer. Although the thickness of the unsaturated zone could not be directly estimated, we conjecture that it is positively correlated with the Luxembourg Sandstone thickness, assuming that the saturated zone thickness is comparable from one area to another (which is reasonable given the perched character of the aquifer and the gently subhorizontal sloping topography of its base characterizing each hydrogeological district). The Luxembourg Sandstone thickness – τ_{pf} relationship presented at the scale of the recharge area in Fig. 13b indicates, however, that group KRD springs deviate overall from the general behaviour with particularly high τ_{pf} values. A possible explanation for this specific behaviour is the known presence of a marly layer intercalated in the Luxembourg Sandstone formation in the KRD area (~~thanks to~~ as shown by the observational borehole drilled there; Farlin et al., 2013a). A second argument that supports the EPM piston component's potential for adequately reproducing the transit times required for infiltrating water to cross the vadose zone is the highly significant correlation of τ_{pf} values with response times of spring dischargedischarges deduced from the cross-correlation analysis (i.e., MRT values; Fig. 12 and Fig. 13c). Such cross-correlation time series analysis of response times to effective precipitation inputs have indeed been related to the characteristics of the unsaturated zone for several other unconfined aquifers (e.g. Lee and Lee, 2000; Lee et al., 2006; Fiorillo and Doglioni, 2010; Bloomfield and Marchant, 2013; Bloomfield et al., 2015; Al-Jaf et al., 2021). As shown in Fig. 15, it is worth noting that the MRT - τ_{pf} relationship seems linear, but not one-to-one. MRT values are in general almost four times lower than τ_{pf} ones. A potential explanation for this difference is that MRT would reflect water celerity, i.e., the speed at which the water infiltration signal is transmitted through the vadose zone to the springs, while τ_{pf} relate to water velocity, i.e., the movement of water molecules (McDonnell and Beven, 2014; Scaini et al., 2017; van Verseveld et al., 2017; Shao et al., 2018; Worthington and Foley, 2021).

Although none of the studied physicochemical parameters were highlighted as a direct reliable proxy of water transit times in the Luxembourg Sandstone aquifer, the global correlation pattern of τ_{exp} with the hydrochemistry of the spring waters (Fig. 12) suggests an overall progressive mineralization of groundwater with increasing flow path length in the saturated zone. The significant correlation between τ_{exp} values and the average groundwater flow lengths estimated for each of the recharge areas also allows the exponential component of the EPM model to be related to the saturated zone of the aquifer (Fig. 12). It should nevertheless be noticed that the average groundwater flow length characterizing the recharge area of group B seems overall relatively short compared to the relatively large τ_{exp} values that have been calculated for the springs that drain it (Fig. 13a). This inconsistency, which has already been raised indirectly when translating the tritium dating results into equivalent sandstone heights (see 4.1.3 and Fig. 8), could however be due to an incorrect estimate of the impluvium of this group of

springs and would therefore not reflect a problem with the tritium-EPM derived dating results. It is moreover worth noting that a previous study (Luxconsult, 1992) estimated the recharge area of Group B springs (shown in Gourdol et al., 2013) to be twice as large as the one newly defined (RGD, 2021b) – a discrepancy that we have not yet been able to explore further.

To conclude on the reliability of the tritium dating results obtained in this study, a rough assessment of water velocities in the vadose and saturated zones of the aquifer can be undertaken. First, we can assume that the EPM piston and exponential components reflect well the water flowing through the vadose zone and the mixing of groundwater flowlines coming from the saturated zone at the outlet. Second, by dividing τ_{pf} and τ_{exp} values by the mean values of the vadose zone thickness and the groundwater flow length in the saturated zone respectively, we can ~~approach~~approximately estimate water velocities in these two specific compartments of the Luxembourg Sandstone aquifer. Conducted at the scale of the recharge area (using the average of τ_m and F median values (Table S1) of each group of springs, mean groundwater flow lengths and Luxembourg Sandstone thicknesses reported in Table 1, and H_{exp} values as defined in section 4.1.3), this assessment leads to very close figures from one area to another (excluding group B results, whose impluvium was previously questioned). Ranging from 1.9×10^{-7} to 5.5×10^{-7} m/s, the water velocity determined for the vadose zone is on average 3.7×10^{-7} m/s- (~12 m/year). About an order of magnitude higher in all cases, the water velocity assessed for the saturated zone ranges from 4.0×10^{-6} to 8.7×10^{-6} m/s and reaches 5.4×10^{-6} m/s on average. ~~While one might have expected an inverse relationship between vadose and saturated zone velocities for an isotropic aquifer, this~~ (~170 m/year). This tritium derived ~~ratio~~anisotropy of water velocity shared by all the studied hydrogeological areas is ~~also~~ consistent with the well-known anisotropy of hydraulic properties characterizing ~~sandstones-bedded aquifers introduced in section 2.1~~. Several studies focusing on the characterization of the permeability anisotropy have ~~indeed~~in particular shown that horizontal permeability of ~~sandstones bedded sandstone formations~~ is greater than their vertical permeability, and this up to several orders of magnitude (e.g., Hitchmough et al., 2007; Clavaud et al., 2008; Goupil et al., 2022). ~~The characterization~~To the best of the horizontal-vertical our knowledge, even if observed by Fox et al. (2008), the anisotropy of the ~~hydraulic properties of the~~ Luxembourg Sandstone permeability has never been quantified and its characterization may require further attention in future studies. This kind of data, associated with other existing datasets (e.g., Meus and Willems, 2021), could then be used to feed a physically-based ~~3D4D~~ model (e.g., Paradis et al., 2018) that would more accurately represent the multi-scale complexity of the Luxembourg Sandstone bedrock aquifer (Worthington, 2015). The comparison of the output from such a model with that resulting from this study would allow ~~to assess~~ the predictive capacities to be assessed – for instance for pollutant contamination mitigation purposes – of the tritium based LPM approach used here (Eberts et al., 2012; Yager et al., 2013; Marçais et al., 2015; Balvin et al., 2021).

6. Conclusion

We have presented a new set of 105 high-accuracy tritium analyses, carried out on water samples collected three times at intervals of ~2 years for 35 springs, each of them fed by the Luxembourg Sandstone aquifer. We leveraged these short but high-accuracy tritium content time series to investigate the potential of the tritium dating technique to ~~inform on~~determine

young groundwater transit times in the Northern Hemisphere at new study sites where no historical tritium data is available. Groundwater mean transit times have been assessed using the LPM approach in a modelling framework, delivering uncertainty ranges inherent to the low number of tritium data at hand and their analytical errors.

Our results show first that unambiguous groundwater mean transit time estimations solely based on recent short tritium content time series are not possible, as several ranges of mean transit times appeared as plausible. Nonetheless, we succeeded through a stepwise decision process to discriminate for every spring an ensemble of most likely solutions, consistent with both the tritium measurements and the overall hydrogeological context of our area of interest. This assessment was possible ~~thanks~~ ~~to~~ ~~because~~ several independent supplementary data, ~~as well as~~ was available for each spring, and because of the large number of investigated springs and their varying characteristics.

Our work has demonstrated the suitability of the EPM model to assess groundwater mean transit times (through the vadose and saturated zones of the Luxembourg Sandstone aquifer) from high-accuracy tritium analyses of spring water samples. ~~Our understanding of the~~ ~~When translated into~~ water transit times in the Luxembourg Sandstone aquifer has ultimately been improved. ~~Furthermore, our~~ ~~velocities, the obtained dating~~ results suggest a key role of the ~~appeared particularly consistent with the~~ horizontal-vertical ~~permeability of the sandstone~~ anisotropy of the aquifer's hydraulic properties due to its bedded character – a key feature that deserves further investigations ~~in the near future~~.

To conclude, this work not only advanced our knowledge of water transit times in the Luxembourg Sandstone aquifer but should also be considered as an example of how dating of young groundwater bodies at new sites is today feasible with short tritium data series in Central Europe.

Code and data availability

The R (R Core Team, 2022) scripts and data used to achieve this study will be archived in an online repository and the DOI will be included in the final published version of the paper.

Author contributions

LG conceptualized the study with guidance from MKS, UM and LP. LG implemented the field and modelling work, conducted the data analysis and wrote the first draft of the paper. All the co-authors (LG, MKS, UM, and LP) contributed to and edited the manuscript.

Competing interests

A co-author is a member of the editorial board of Hydrology and Earth System Sciences journal. The peer-review process was guided by an independent editor, and the authors have also no other competing interests to declare.

Acknowledgements

This research work is based on a long-term public–public collaboration between the LIST and the City of Luxembourg. We especially thank the Water Service of Luxembourg City for their continuous and highly valuable support. We thank the LIST colleagues Cyrille Tailliez and Jérôme Juilleret for their help during the field work, François Barnich for the hydrochemical analyses, Renaud Hostache and Davide Zoccatelli for fruitful discussions about the modelling aspect of this work, and the technical staff of the GNS Tritium & Water Dating Laboratory for the tritium analyses. The authors are also deeply grateful to Francesc Gallart for providing access to the code of the modelling framework implemented in Gallart et al. (2016).

Financial support

The spring discharge and hydrochemical data used in this study was jointly funded by the LIST and the City of Luxembourg, the spring tritium data was funded by the LIST.

References

- 745 AGE: Guidelines for the designation of groundwater protection zones (Leitfaden für die Ausweisung von Grundwasserschutz-zonen), Administration de la Gestion de l'Eau (AGE; in German), [https://eau.gouvernement.lu/dam-](https://eau.gouvernement.lu/dam-assets/eaux-souterraines/documents/ZPS-DOC-1-Leitfaden-Schutz-zonen.pdf)
assets/eaux-souterraines/documents/ZPS-DOC-1-Leitfaden-Schutz-zonen.pdf (last access: 28 April 2023), 2010.
- AGE: Management plan for the international river basin districts Rhine and Meuse on Luxembourg territory 2015–2021 (Plan de gestion pour les parties des districts hydrographiques internationaux Rhin et Meuse situées sur territoire luxembourgeois 2015-2021), Administration de la Gestion de l'Eau (AGE; in French),
750 [http://geoportail.eau.etat.lu/pdf/plan%20de%20gestion/FR/2e%20plan%20de%20gestion%20pour%20le%20Luxembourg%](http://geoportail.eau.etat.lu/pdf/plan%20de%20gestion/FR/2e%20plan%20de%20gestion%20pour%20le%20Luxembourg%20(2015-2021)_22.12.2015.pdf)
20(2015-2021)_22.12.2015.pdf (last access: 28 April 2023), 2015.
- Al-Jaf, P., Smith, M., and Gunzel, F.: Unsaturated Zone Flow Processes and Aquifer Response Time in the Chalk Aquifer, Brighton, South East England, *Groundwater*, 59, 381-395, doi.org/10.1111/gwat.13055, 2021.
- Angelini, P.: Correlation and spectral analysis of two hydrogeological systems in central Italy, *Hydrological Sciences Journal*, 4, 425-438, doi.org/10.1080/02626669709492038, 1997.
- 755 Balvín, A., Hokr, M., Šteklová, K., and Rálek, P.: Inverse modeling of natural tracer transport in a granite massif with lumped-parameter and physically based models: case study of a tunnel in Czechia, *Hydrogeology Journal*, 29, 2633–2654, doi.org/10.1007/s10040-021-02389-x, 2021
- Berg, D.: Fractures in the Paleozoic and Mesozoic deposits of Luxembourg and the western Eifel: its relations with the general tectonics and their influence on the river network (Die Klüfte im Paläozoikum und Mesozoikum von Luxemburg und
760 der westlichen Eifel: ihre Beziehungen zur allgemeinen Tektonik und ihr Einfluß auf das Gewässernetz), *Publ. Serv. Geol., Luxemb., Luxembourg*, 89 p (in German), 1965.
- [Berners, H.P.: A lower Liassic offshore bar environment, contribution to the sedimentology of the Luxembourg Sandstone, Annales de la société Géologique de Belgique, 10, 87–102, https://popups.uliege.be/0037-9395/index.php?id=3104&file=1&pid=3102 \(last access: 4 March 2024\), 1983.](https://popups.uliege.be/0037-9395/index.php?id=3104&file=1&pid=3102)
- 765 Beven, K. and Binley, A.: The future of distributed models: Model calibration and uncertainty prediction, *Hydrological Processes*, 6, 279–298, doi.org/10.1002/hyp.3360060305, 1992.
- Beven, K. and Binley, A.: GLUE: 20 years on, *Hydrological Processes* 28, 5897–5918, doi.org/10.1002/hyp.10082, 2014.
- Beyer, M., Morgenstern, U., Jackson, B.: Review of techniques for dating young groundwater (< 100 years) in New Zealand, *Journal of Hydrology (NZ)*, 53, 93–111, 2014.
- 770 Bintz, J. and Muller, A.: On the representation of the Luxembourg Sandstone on the new general geological map of the Grand-Duchy (Sur la représentation du Grès de Luxembourg sur la nouvelle carte géologique générale du Grand-Duché), *Arch. Inst. Grand-ducal Luxemb. Sect. Sci. Nat. Phys. Math.*, 31, 241-258 (in French), 1965.

- Blavoux, B., Lachassagne, P., Henriot, A., Ladouche, B., Marc, V., Beley, J.J., Nicoud, G., and Olive, P.: A fifty-year chronicle of tritium data for characterising the functioning of the Evian and Thonon (France) glacial aquifers, *Journal of Hydrology*, 494, 116-133, doi.org/10.1016/j.jhydrol.2013.04.029, 2013.
- 775 Bloomfield, J.P. and Marchant, B.P.: Analysis of groundwater drought building on the standardised precipitation index approach, *Hydrology and Earth System Sciences*, 17, 4769–4787, doi.org/10.5194/hess-17-4769-2013, 2013.
- Bloomfield, J.P., Marchant, B.P., Bricker S.H., and Morgan, R.B.: Regional analysis of groundwater droughts using hydrograph classification, *Hydrology and Earth System Sciences*, 19, 4327-4344, doi.org/10.5194/hess-19-4327-2015, 2015.
- 780 Bohn, T., Cocco, E., Gourdol, L., Guignard, C., and Hoffmann, L.: Determination of atrazine and degradation products in Luxembourgish drinking water: origin and fate of potential endocrine-disrupting pesticides, *Food Additives & Contaminants: Part A*, 28(8), 1041-1054, doi.org/10.1080/19440049.2011.580012, 2011.
- [Boulvain, F., Belanger, I., Delsate, D., Dosquet, D., Ghysel, P., Godefroit, P., Laloux, M., Roche, M., Teerlinck, H., and Thorez, J.: New lithostratigraphical, sedimentological, mineralogical and paleontological data on the Mesozoic of the Belgian Lorraine, *Geologica Belgica*, 3, 3–33, doi.org/10.20341/gb.2014.021, 2000.](#)
- 785 [Boulvain, F., Belanger, I., Delsate, D., Ghysel, P., Godefroit, P., Laloux, M., Monteyne, R., and Roche, M.: Triassic and Jurassic lithostratigraphic units \(Belgian Lorraine\), *Geologica Belgica*, 4, 113–119, doi.org/10.20341/gb.2014.048, 2001.](#)
- Box, G. and Jenkins, G.: *Time series analysis: Forecasting and control*, Holden-Day, San Francisco, 1970.
- Busenberg, E., Plummer, L.N., Cook, P.G., Solomon, D.K., Han, L.F., Gröning, M., and Oster, H.: Sampling and analytical methods, In: *Use of Chlorofluorocarbons in Hydrology: A Guidebook* (eds IAEA, Vienna), 199-220, http://www-pub.iaea.org/MTCD/publications/pdf/Pub1238_web.pdf (last access: 28 April 2023), 2006.
- 790 Cai, Z. and Offerdinger, U.: Analysis of groundwater-level response to rainfall and estimation of annual recharge in fractured hard rock aquifers, NW Ireland, *Journal of Hydrology*, 535, 71-84, doi.org/10.1016/j.jhydrol.2016.01.066, 2016.
- 795 Cammeraat, L.H., Sevink, J., Hissler, C., Juilleret, J., Jansen, B., Kooijman, A.M., Pfister, L., and Verstraten, J.M.: Soils of the Luxembourg Lias cuesta landscape, In: A.M. Kooijman et al. (Eds), *The Luxembourg Gutland Landscape*, p 107-130, doi.org/10.1007/978-3-319-65543-7_6, 2017.
- Cartwright, I., Cendón, D., Currell, M., and Meredith, K.: A review of radioactive isotopes and other residence time tracers in understanding groundwater recharge: Possibilities, challenges, and limitations, *Journal of Hydrology*, 555, 797-811, doi.org/10.1016/j.jhydrol.2017.10.053, 2017.
- 800 Cartwright, I., Morgenstern, U., Howcroft, W., Hofmann, H., Armit, R., Stewart, M., and Irvine, D.: The variation and controls of mean transit times in Australian headwater catchments, *Hydrological Processes*, 34(21), 4034–4048, doi.org/10.1002/hyp.13862, 2020.
- Cauquoin, A., Jean-Baptiste, P., Risi, C., Fourré, E., Stenni, B., and Landais, A.: The global distribution of natural tritium in precipitation simulated with an Atmospheric General Circulation Model and comparison with observations, *Earth and Planetary Science Letters*, 427, 160-170, doi.org/10.1016/j.epsl.2015.06.043, 2015.
- 805

- Claes S., Nader F.H., and Youssef S.: Coupled experimental/numerical workflow for assessing quantitative diagenesis and dynamic porosity/permeability evolution in calcite-cemented sandstone reservoir rocks, *Oil and Gas Science and Technology*, 73, 36, doi.org/10.2516/ogst/2018027,2018.
- 810 Clavaud, J.B., Maineult, A., Zamora, M., Rasolofosaon, P., and Schlitter, C.: Permeability anisotropy and its relations with porous medium structure, *Journal of Geophysical Research*, 113, B01202, doi.org/10.1029/2007JB005004, 2008.
- Colbach, R.: Overview of the geology of the Luxembourg Sandstone(s), In: Ries, C., Krippel, Y. (Eds), *Proceedings of the 2nd International Conference on Sandstone Landscapes, Ferrantia*, 44, 155-160, <https://ps.mnhn.lu/ferrantia/publications/Ferrantia44.pdf> (last access: 28 April 2023), 2005.
- 815 Cook, P.G. and Solomon D.K.: Recent advances in dating young groundwater: chlorofluorocarbons, $^3\text{H}^3\text{He}$ and ^{85}Kr , *Journal of Hydrology*, 191, 245-265, doi.org/10.1016/S0022-1694(96)03051-X, 1997.
- Delbart, C., Valdes, D., Barbecot, F., Tognelli, A., Richon, and P., Couchoux, L.: Temporal variability of karst aquifer response time established by the sliding-windows cross-correlation method, *Journal of Hydrology*, 511, 580-588, doi.org/10.1016/j.jhydrol.2014.02.008, 2014.
- 820 Dotto, C.B.S., Mannina, G., Kleidorfer, M., Vezzaro, L., Henrichs, M., McCarthy, D.T., Freni, G., Rauch, W., and Deletic, A.: Comparison of different uncertainty techniques in urban stormwater quantity and quality modelling, *Water Research*, 46, 2545-2558, doi.org/10.1016/j.watres.2012.02.009, 2012.
- Duvert, C., Stewart, M. K., Cendón, D. I., and Raiber, M.: Time series of tritium, stable isotopes and chloride reveal short-term variations in groundwater contribution to a stream, *Hydrology and Earth System Sciences*, 20, 257–277, doi.org/10.5194/hess-20-257-2016, 2016.
- 825 Eastoe, C.J., Watts, C.J., Ploughe, M., and Wright, W.E.: Future use of tritium in mapping pre-bomb groundwater volumes, *Groundwater*, 50(1), 87–93, doi.org/10.1111/j.1745-6584.2011.00806.x, 2012.
- Eberts, S.M., Böhlke, J.K., Kauffman, L.J., and Jurgens, B.C.: Comparison of particle-tracking and lumped-parameter age-distribution models for evaluating vulnerability of production wells to contamination, *Hydrogeology Journal*, 20, 263–282, doi.org/10.1007/s10040-011-0810-6, 2012.
- 830 Edmunds, W. M. and Smedley, P. L.: Residence time indicators in groundwater: the East Midlands Triassic sandstone aquifer, *Applied Geochemistry*, 15, 737-752, doi.org/10.1016/S0883-2927(99)00079-7, 2000.
- Edmunds, W.M. and Shand, P.: Natural groundwater quality - Summary and significance for water resources management, In: Edmunds, W.M., Shand, P. (Eds.), *Natural Groundwater Quality*, Blackwell, London, pp. 441-462, doi.org/10.1002/9781444300345.ch21, 2009.
- 835 Einsiedl, F.: Flow system dynamics and water storage of a fissured-porous karst aquifer characterized by artificial and environmental tracers, *Journal of Hydrology*, 312, 312-321, doi.org/10.1016/j.jhydrol.2005.03.031, 2005.

- Faber, A. and Weis, R.: The Luxembourg Sandstone. Scientific and patrimonial importance of its fossiliferous sites, In: Ries, C., Krippel, Y. (Eds), Proceedings of the 2nd International Conference on Sandstone Landscapes, Ferrantia, 44, 161-164, <https://ps.mnhn.lu/ferrantia/publications/Ferrantia44.pdf> (last access: 28 April 2023), 2005.
- 840 Farlin, J., Gallé, T., Bayerle, M., Pittois, D., Braun, C., El Khabbaz, H., Elsner, M., and Maloszewski, P.: Predicting Pesticide Attenuation in a Fractured Aquifer Using Lumped-Parameter Models, *Groundwater*, 51, 276-285, doi.org/10.1111/j.1745-6584.2012.00964.x, 2013a.
- 845 Farlin, J., Drouet, L., Gallé, T., Pittois, D., Bayerle, M., Braun, C., Maloszewski, P., Vandenberght, J., Elsner, M., and Kies, A.: Delineating spring recharge areas in a fractured sandstone aquifer (Luxembourg) based on pesticide mass balance, *Hydrogeology Journal*, 21, 799-812, doi.org/10.1007/s10040-013-0964-5, 2013b.
- Farlin, J., Bayerle, M., Pittois, D., and Gallé, T.: Estimating Pesticide Attenuation From Water Dating and the Ratio of Metabolite to Parent Compound, *Groundwater*, 55, 550-557, doi.org/10.1111/gwat.12499, 2017.
- 850 Farlin, J., Gallé, T., Bayerle, M., Pittois, D., Köppchen, S., Krause, M., and Hofmann, D., 2018. Breakthrough dynamics of S-Metolachlor metabolites in drinkingwater wells: transport pathways and time to trend reversal, *Journal of Contaminant Hydrology*, 213, 62–72, doi.org/10.1016/j.jconhyd.2018.05.002, 2018.
- Farlin, J., Gallé, T., Pittois, D., Bayerle, M., and Schaul, T.: Groundwater quality monitoring network design and optimisation based on measured contaminant concentration and taking solute transit time into account, *Journal of Hydrology*, 573, 516-523, doi.org/10.1016/j.jhydrol.2019.01.067, 2019.
- 855 Fiorillo F. and Doglioni A.: The relation between karst spring discharge and rainfall by cross-correlation analysis (Campania, Southern Italy), *Hydrogeology Journal*, 18, 1881-1895, doi.org/10.1007/s10040-010-0666-1, 2010.
- Gallart, F., Roig-Planasdemunt, M., Stewart, M. K., Llorens, P., Morgenstern, U., Stichler, W., Pfister, P., and Latron, J.: A GLUE-based uncertainty assessment framework for tritium-inferred transit time estimations under baseflow conditions, *Hydrological Processes*, 30, 4741–4760, doi.org/10.1002/hyp.10991, 2016.
- 860 Gerber, C., Purtschert, R., Hunkeler, D., Hug, R., and Sültenfuss, J.: Using environmental tracers to determine the relative importance of travel times in the unsaturated and saturated zones for the delay of nitrate reduction measures, *Journal of Hydrology*, 561, 250-266, doi.org/10.1016/j.jhydrol.2018.03.043, 2018.
- Gleeson, T., Befus, K., Jasechko, S., Luijendijk, E., and Bayani Cardenas, M.: The global volume and distribution of modern groundwater, *Nature Geoscience*, 9, 161–167, doi.org/10.1038/s41561-018-0164-y, 2016.
- 865 Goupil, M., Heap, M.J., and Baud, P.: Permeability anisotropy in sandstones from the Soultz-sous-Forêts geothermal reservoir (France): implications for large-scale fluid flow modelling, *Geothermal Energy*, 10, 32, doi.org/10.1186/s40517-022-00243-1, 2022.
- Gourdol, L., Hissler, C., Hoffmann, L., and Pfister, L.: On the potential for the Partial Triadic Analysis to grasp the spatio-temporal variability of groundwater hydrochemistry, *Applied geochemistry*, 39, 93-107, doi.org/10.1016/j.apgeochem.2013.10.002, 2013.
- 870

- Gronemeier, K.U.: The groundwater in the Luxembourg Sandstone: geology, hydrology and environmental impact examples from three major test areas (Das Grundwasser im Luxemburger Sandstein: Geologie, Wasserhaushalt und Umweltbelastung am Beispiel von drei Grosstestflächen), PhD thesis, Johannes Gutenberg Universität, Mainz, Germany, 195 p (in German), 1976.
- 875 [Gusyev, M. A., Morgenstern, U., Stewart, M. K., Yamazaki, Y., Kashiwaya, K., Nishihara, T., Kuribayashi, D., Sawano, H., and Iwami, Y.: Application of tritium in precipitation and baseflow in Japan: a case study of groundwater transit times and storage in Hokkaido watersheds, *Hydrology and Earth System Sciences*, 20, 3043–3058, doi.org/10.5194/hess-20-3043-2016, 2016.](#)
- Han, L.F., Gröning, M., Plummer, L.N., and Solomon, D.K.: Comparison of the CFC technique with other techniques (^3H , $^3\text{H}/^3\text{He}$, ^{85}Kr), In: Use of Chlorofluorocarbons in Hydrology: A Guidebook (eds IAEA, Vienna), 191-198, http://www-pub.iaea.org/MTCD/publications/pdf/Pub1238_web.pdf (last access: 28 April 2023), 2006.
- 880 [Hissler, C., Gourdol, L., Juilleret, J., Marx, S., Leydet, L., and Flammang, F.: Pedotransfer functions for predicting soil hydrological characteristics in Luxembourg: literature review and reliability tests for predicting the soil maximum water-holding capacity \(Fonctions de pédotransfert pour la prédiction des caractéristiques hydriques des sols au Luxembourg : analyse bibliographique et premiers tests de fiabilité pour la prédiction de la réserve utilisable maximale des sols\), Report drafted on behalf of the Administration des services techniques de l'agriculture \(in French\), 2015.](#)
- 885 [Hissler, C. and Gourdol, L.: Assessment of soil maximum water-holding capacity in Luxembourg at national scale: a first estimate based on recent datasets \(Évaluation de la réserve utile maximale en eau des sols au Luxembourg à l'échelle nationale : une première estimation basée sur des jeux de données récents\), Report drafted on behalf of the Administration de la gestion de l'eau \(in French\), 2015.](#)
- 890 Hitchmough, A.M., Riley, M.S., Herbert, A.W., and Tellam, J.H.: Estimating the hydraulic properties of the fracture network in a sandstone aquifer, *Journal of Contaminant Hydrology*, 93, 38-57, doi.org/10.1016/j.jconhyd.2007.01.012, 2007.
- IAEA and WMO: Global Network of Isotopes in Precipitation, The GNIP Database, <https://nucleus.iaea.org/wiser> (last access: 15 July 2021), 2019.
- 895 Jasechko, S.: Global isotope hydrogeology—review, *Reviews of Geophysics*, 57, 835-965, doi.org/10.1029/2018RG000627, 2019.
- Jemcov, I. and Petric, M.: Measured precipitation vs effective infiltration and their influence on the assessment of karst systems based on results of the time series analysis, *Journal of Hydrology*, 379, 304-314, doi.org/10.1016/j.jhydrol.2009.10.016, 2009.
- 900 Jeong, J., Park, E., Han, W. S., Kim, K. Y., Oh, J., Ha, K., Yoon, H., and Yun, S. T.: A method of estimating sequential average unsaturated zone travel times from precipitation and water table level time series data, *Journal of Hydrology*, 554, 570-581, doi.org/10.1016/j.jhydrol.2017.09.042, 2017.

- Jerbi, H., Hamdi, M., Snoussi, M., Benabdelmalek, M., Jnoub, H., and Tarhouni, J.: Usefulness of historical measurements of tritium content in groundwater for recharge assessment in semi-arid regions: application to several aquifers in central Tunisia, *Hydrogeology Journal*, 27, 1645–1660, doi.org/10.1007/s10040-019-01937-w, 2019.
- 905 Jurgens, B.C., Bohlke, J.K., and Eberts, S.M.: TracerLPM (Version 1): An Excel®workbook for interpreting groundwater age distributions from environmental tracer data, US Geological Survey Techniques and Methods Report 4-F3, US Geological Survey, Reston, USA, 60 pp., <https://pubs.usgs.gov/tm/4-f3/pdf/tm4-F3.pdf>, 2019.
- Katz, B. G., Chelette, A. R., and Pratt, T. R.: Use of chemical and isotopic tracers to assess nitrate contamination and ground-water age, Woodville Karst Plain, USA, *Journal of hydrology*, 289(1-4), 36-61, doi.org/10.1016/j.jhydrol.2003.11.001, 2004.
- 910 Kausch, B. and Maquil, R.: Geological and geomorphological evolution of Luxembourg and its cuesta landscape, In: A.M. Kooijman et al. (Eds), *The Luxembourg Gutland Landscape*, p 1-19, doi.org/10.1007/978-3-319-65543-7_1, 2017.
- Krombach, H.: On the chemical composition of the main types of drinking water in the Grand-Duchy of Luxembourg (Sur la composition chimique des principaux types d'eau potable du Grand-duché de Luxembourg), *Bull. Centr. Belg. Etud. Doc. Eaux*, 5/49, 315-317 (in French), 1949.
- 915 Lal, D. and Peters, B.: Cosmic ray produced radioactivity on the earth, In: Flugge S, ed. *Encyclopedia of Physics*, vol. 46. New York: Springer, 1967, 407–434, doi.org/10.1007/978-3-642-46079-1_7, 1967.
- [Lanini, S., Caballero, Y., Seguin, J.J., and Maréchal, J.C.: ESPERE – A Multiple-Method Microsoft Excel Application for Estimating Aquifer Recharge, Groundwater, 54, 155-156, doi.org/10.1111/gwat.12390, 2016.](#)
- 920 Larocque, M., Mangin, A., Razack, M., and Banton O.: Contribution of correlation and spectral analyses to the regional study of a large karst aquifer (Charente, France), *Journal of Hydrology*, 205, 217-231, doi.org/10.1016/S0022-1694(97)00155-8, 1998.
- Lauber, U. and Goldscheider, N.: Use of artificial and natural tracers to assess groundwater transit-time distribution and flow systems in a high-alpine karst system (Wetterstein Mountains, Germany), *Hydrogeology Journal*, 22(8), 1807–1824, doi.org/10.1007/s10040-014-1173-6, 2014.
- 925 Le Duy, N., Nguyen, T.V.K., Nguyen, D.V., Tran, A.T., Nguyen, H.T., Heidebüchel, I., Merz, B., and Apel, H.: Groundwater dynamics in the Vietnamese Mekong Delta: Trends, memory effects, and response times, *Journal of Hydrology: Regional Studies*, 33, 100746, doi.org/10.1016/j.ejrh.2020.100746, 2021.
- 930 Lee, J.Y. and Lee, K.K.: Use of hydrologic time series data for identification of recharge mechanism in a fractured bedrock aquifer system, *Journal of Hydrology*, 229 (3–4), 190-201, doi.org/10.1016/S0022-1694(00)00158-X, 2000.
- Lee, L.J.E., Lawrence, D.S.L., and Price, M.: Analysis of water-level response to rainfall and implications for recharge pathways in the Chalk aquifer, SE England, *Journal of Hydrology*, 330(3), 604–620, doi.org/10.1016/j.jhydrol.2006.04.025, 2006.
- 935 Leibundgut, C., Maloszewski, P., and Kull, C.: *Tracers in Hydrology*, John Wiley & Sons: New York, NY, USA, doi.org/10.1002/9780470747148, 2009.

- Leibundgut, C. and Seibert, J.: Tracer hydrology, In: Treatise on Water Science, ed P. Wilderer (Oxford: Elsevier), 215-236, doi.org/10.1016/B978-0-444-53199-5.00036-1, 2011.
- Li, L., Xia, J., Xu, C.Y., and Singh, V.P.: Evaluation of the subjective factors of the GLUE method and comparison with the formal Bayesian method in uncertainty assessment of hydrological models, *Journal of Hydrology*, 390, 210-221, doi.org/10.1016/j.jhydrol.2010.06.044, 2010.
- Libby, W.F.: The Potential Usefulness of Natural Tritium, *Proceedings of the National Academy of Sciences*, 39, 245-247, doi.org/10.1073/pnas.39.4.245, 1953.
- Lucas, L.L. and Unterweger, M.P.: Comprehensive Review and Critical Evaluation of the Half-Life of Tritium, *Journal of research of the National Institute of Standards and Technology*, 105, 541-549, doi.org/10.6028/jres.105.043, 2000.
- ~~Lucius, M.: The hydrogeological basin of the Gutland region (Le Bassin Hydrogéologique du Gutland), *Rev. Tech. Luxemb.*, 6/39, 133-143 (in French), 1939.~~
- ~~Lucius, M.: Notes on the geological map of Luxembourg—the Gutland (Erläuterungen zur geologischen Spezialkarte Luxemburgs—Das Gutland), *Publ. Serv. Geol. Luxemb.*, Luxembourg, 408 p (in German), 1948.~~
- ~~Lucius, M.: The groundwaters of Luxembourg and their rational use (Les nappes d'eau souterraines du Luxembourg et leur utilisation rationnelle), *Rev. Tech. Luxemb.*, 4/49, 227-237 (in French), 1949.~~
- Luxconsult: Determination of groundwater protection zones for drinking water sources in the municipality of Luxembourg Part 6a - Birelergrund 1-10 (Festlegung der Grundwasserschutz-zonen für die Trinkwasserquellen der Gemeinde Luxembourg Teil 6a - Birelergrund 1-10), Study conducted for the General Commissariat for Soil and Water Protection of the Ministry of the Environment (in German), 1992.
- MacDonald, A.M., Darling, W.G., Ball, D.F., and Oster, H.: Identifying trends in groundwater quality using residence time indicators: an example from the Permian aquifer of Dumfries, Scotland. *Hydrogeology Journal*, 11, 504–517, doi.org/10.1007/s10040-003-0275-3, 2003.
- ~~Maier, R., Leven, C., Sánchez-León, E., Strasser, D., Stoll, M., and Cirpka, O.A.: Revealing vertical aquifer heterogeneity and hydraulic anisotropy by pumping partially penetrating wells, *Hydrogeology Journal*, 30, 463–477, doi.org/10.1007/s10040-022-02458-9, 2022.~~
- Maloszewski, P. and Zuber, A.: Determining the turnover time of groundwater systems with the aid of environmental tracers: 1. Models and their applicability, *Journal of Hydrology*, 57, 207-231, doi.org/10.1016/0022-1694(82)90147-0, 1982.
- ~~Mammoliti, E., Fronzi, D., Mancini, A., Valigi, D., and Tazioli, A.: WaterbalANce, a WebApp for Thornthwaite – Mather Water Balance Computation: Comparison of Applications in Two European Watersheds, *Hydrology*, 8, 34, doi.org/10.3390/hydrology8010034, 2021.~~
- Mangin, A.: Constitution and functioning of karstic aquifers (Constitution et fonctionnement des aquifères karstiques), *Annales de Spéléologie*, 30, 21-124 (in French), 1975.

- Mangin, A.: Use of correlation and spectral analysis in the approach of hydrological systems (Utilisation des analyses corrélatrice et spectrale dans l'approche des systèmes hydrologiques), *Comptes rendus de l'Académie des Sciences, Paris, Série II*, 293, 401-404 (in French), 1981a.
- 970 Mangin, A.: Contributions of cross-correlation and spectral analysis to the knowledge of hydrological systems (Apports des analyses corrélatrice et spectrale croisées dans la connaissance des systèmes hydrologiques), *Comptes rendus de l'Académie des Sciences, Paris, Série II*, 293, 1011-1014 (in French), 1981b.
- 975 Mangin, A.: The use of autocorrelation and spectral analyses to obtain a better understanding of hydrological systems (Pour une meilleure connaissance des systèmes hydrologiques à partir des analyses corrélatrice et spectrale), *Journal of Hydrology*, 67, 25-43, doi.org/10.1016/0022-1694(84)90230-0, 1984.
- Marçais, J., de Dreuzy, J.R., Ginn, T.R., Rousseau-Gueutin, P., and Leray, S.: Inferring transit time distributions from atmospheric tracer data: Assessment of the predictive capacities of Lumped Parameter Models on a 3D crystalline aquifer model, *Journal of Hydrology*, 525, 619-631, doi.org/10.1016/j.jhydrol.2015.03.055, 2015.
- 980 McDonnell, J.J. and Beven, K.: Debates—The future of hydrological sciences: A (common) path forward? A call to action aimed at understanding velocities, celerities, and residence time distributions of the headwater hydrograph, *Water Resources Research*, 50, 5342–5350, doi.org/10.1002/2013WR015141, 2014.
- McGuire, K.J. and McDonnell, J.J.: A review and evaluation of catchment transit time modelling, *Journal of Hydrology*, 985 330, 543-563, doi.org/10.1016/j.jhydrol.2006.04.020, 2006.
- Michel, R. L.: Tritium inventories of the world oceans and their implications, *Nature*, 263, 103–106, doi.org/10.1038/263103a0, 1976.
- [Meus, P. and Willems, L.: Tracer tests to infer the drainage of the multiple porosity aquifer of Luxembourg Sandstone \(Grand-Duchy of Luxembourg\): implications for drinking water protection, *Hydrogeology Journal*, 29, 461–480, doi.org/10.1007/s10040-020-02274-z, 2021.](#)
- 990 [Molenaar, N.: Origin of Low-Permeability Calcite-Cemented Lenses in Shallow Marine Sandstones and CaCO₃ Cementation Mechanisms: An Example from the Lower Jurassic Luxemburg Sandstone, Luxemburg, Special Publication of the International Association of Sedimentologists, 26, 193–211, doi.org/10.1002/9781444304893.ch9, 1998.](#)
- Morgenstern, U., Stewart, M.K., and Stenger, R.: Dating of streamwater using tritium in a post nuclear bomb pulse world: continuous variation of mean transit time with streamflow, *Hydrology and Earth System Sciences*, 14, 2289-2301, doi.org/10.5194/hess-14-2289-2010, 2010.
- 995 Morgenstern, U., Daughney, C.J., Leonard, G., Gordon, D., Donath, F.M., and Reeves, R.: Using groundwater age and hydrochemistry to understand sources and dynamics of nutrient contamination through the catchment into Lake Rotorua, New Zealand, *Hydrology and Earth System Sciences*, 19, 803–822, doi.org/10.5194/hess-19-803-2015, 2015.
- 1000 Morgenstern, U. and Daughney, C.J.: Groundwater age for identification of baseline groundwater quality and impacts of land use intensification – The National Groundwater Monitoring Programme of New Zealand, *Journal of Hydrology*, 456–457, 79–93, doi.org/10.1016/j.jhydrol.2012.06.010, 2012.

- Morgenstern, U. and Taylor, C.B.: Ultra Low-level tritium measurement using electrolytic enrichment and LSC, *Isotopes in Environmental and Health Studies*, 45, 96-117, doi.org/10.1080/10256010902931194, 2009.
- 1005 Morishima, H., Kawai, H., Koga, T., Niwa, T.: The Trends of Global Tritium Precipitations, *Journal of Radiation Research* 26, 283-312, doi.org/10.1269/jrr.26.283, 1985.
- Newman, B.D., Osenbrück, K., Aeschbach-Hertig, W., Solomon, D.K., Cook, P., Rózański, K., and Kipfer, R.: Dating of 'young' groundwaters using environmental tracers: advantages, applications, and research needs, *Isotopes in Environmental and Health Studies*, 46:3, 259-278, doi.org/10.1080/10256016.2010.514339, 2010.
- 1010 Ozyurt, N.N., Lutz, H.O., Hunjak, T., Mance, D., and Roller-Lutz, Z.: Characterization of the Gacka River basin karst aquifer (Croatia): hydrogeochemistry stable isotopes and tritium-based mean residence times, *Science of The Total Environment*, 487, 245–254, doi.org/10.1016/j.scitotenv.2014.04.018, 2014.
- Padilla, A. and Pulido-Bosch, A.: Study of hydrographs of karst aquifers by means of correlation and cross-spectral analysis, *Journal of Hydrology*, 168, 73-89, doi.org/10.1016/0022-1694(94)02648-U, 1995.
- 1015 Panagopoulos, G. and Lambrakis, N.: The contribution of time series analysis to the study of the hydrodynamic characteristics of the karst systems: application on two typical karst aquifers of Greece (Trifilia, Almyros Crete), *Journal of Hydrology*, 329, 368-376, doi.org/10.1016/j.jhydrol.2006.02.023, 2006.
- Paradis, D., Ballard, JM., Lefebvre, R., and Savard, M.M.: Multi-scale nitrate transport in a sandstone aquifer system under intensive agriculture, *Hydrogeology Journal*, 26, 511–531, doi.org/10.1007/s10040-017-1668-z, 2018.
- 1020 [Pfister, L., Martínez-Carreras, N., Hissler, C., Klaus, J., Carrer, G.E., Stewart, M.K., and McDonnell, J.J.: Bedrock geology controls on catchment storage, mixing, and release: A comparative analysis of 16 nested catchments, *Hydrological Processes*, 31, 1828–1845, doi.org/10.1002/hyp.11134, 2017.](#)
- Phillips F.M. and Castro M.C.: Groundwater Dating and Residence-Time Measurements, In: *Treatise on Geochemistry* (2nd Edition), Elsevier Ltd., doi.org/10.1016/B978-0-08-095975-7.00513-1, 2014.
- 1025 Purtschert, R.: Timescales and Tracers, In: *Natural Groundwater Quality* (eds W.M. Edmunds and P. Shand), doi.org/10.1002/9781444300345.ch5a, 2008.
- Purtschert, R., Corcho Alvarado, J., and Loosli, H.H.: Dating Examples in European Reference Aquifers, In: *Natural Groundwater Quality* (eds W.M. Edmunds and P. Shand), doi.org/10.1002/9781444300345.ch5b, 2008.
- R Core Team: R: A language and environment for statistical computing, R Foundation for Statistical Computing, Vienna, Austria, <https://www.R-project.org>, 2022.
- 1030 RGD: Grand-Ducal regulation of 2 October 2018 creating protection zones around the groundwater catchments of the Glasbouren, Brennerei and Dommeldange sites located on the territories of the communes of Luxembourg, Niederanven, Steinsel and Walferdange (Règlement grand-ducal du 2 octobre 2018 portant création des zones de protection autour des captages d'eau souterraine des sites Glasbouren, Brennerei et Dommeldange situées sur les territoires des communes de Luxembourg, Niederanven, Steinsel et Walferdange),

- <https://data.legilux.public.lu/filestore/eli/etat/leg/rgd/2018/10/02/a934/jo/fr/pdfa/eli-etat-leg-rgd-2018-10-02-a934-jo-fr-pdf.pdf> (last access: 28 April 2023), 2018.
- 1040 RGD: Grand-Ducal regulation of 16 May 2019 creating protection zones around the Siwebueren and Katzebuer-Millebaach groundwater catchments located on the territories of the communes of Kopstal, Luxembourg, Strassen and Walferdange (Règlement grand-ducal du 16 mai 2019 portant création des zones de protection autour des captages d'eau souterraine Siwebueren et Katzebuer-Millebaach situées sur les territoires des communes de Kopstal, Luxembourg, Strassen et Walferdange), <https://data.legilux.public.lu/filestore/eli/etat/leg/rgd/2019/05/16/a342/jo/fr/pdfa/eli-etat-leg-rgd-2019-05-16-a342-jo-fr-pdf.pdf> (last access: 28 April 2023), 2019.
- 1045 RGD: Grand-Ducal regulation of 25 August 2021 creating protection zones around the Pulvermühle groundwater catchment situated on the territories of the communes of Luxembourg, Niederanven and Sandweiler (Règlement grand-ducal du 25 août 2021 portant création des zones de protection autour du captage d'eau souterraine Pulvermühle situées sur les territoires des communes de Luxembourg, Niederanven et Sandweiler), <https://data.legilux.public.lu/filestore/eli/etat/leg/rgd/2021/08/25/a677/jo/fr/pdfa/eli-etat-leg-rgd-2021-08-25-a677-jo-fr-pdf.pdf> (last access: 28 April 2023), 2021a.
- 1050 RGD: Grand-Ducal regulation of 25 August 2021 creating protection zones around the Birelergronn groundwater catchment site located on the territories of the communes of Niederanven, Sandweiler and Schuttrange (Règlement grand-ducal du 25 août 2021 portant création de zones de protection autour du site de captage d'eau souterraine Birelergronn situées sur les territoires des communes de Niederanven, Sandweiler et Schuttrange), <https://data.legilux.public.lu/filestore/eli/etat/leg/rgd/2021/08/25/a678/jo/fr/pdfa/eli-etat-leg-rgd-2021-08-25-a678-jo-fr-pdf.pdf> (last access: 28 April 2023), 2021b.
- 1055 RGD: Draft Grand-Ducal regulation creating protection zones around the groundwater catchments of the Kopstal catchment site (west side) and located on the territories of the municipalities of Kehlen and Kopstal (Projet de règlement grand-ducal portant création des zones de protection autour des captages d'eau souterraine du site de captage Kopstal (côté Ouest) et situées sur les territoires des communes de Kehlen et Kopstal),
- 1060 http://geoportail.eau.etat.lu/pdf/eaux%20souterraines/ZPS/RGD/PRGD%20ZPS%20Kopstal_coteOuest.pdf (last access: 28 April 2023), 2022a.
- 1065 RGD: Draft Grand-Ducal regulation creating protection zones around the groundwater catchments of the Kopstal catchment site (East side) and located on the territories of the municipalities of Kopstal, Lorentzweiler and Steinsel (Projet de règlement grand-ducal portant création des zones de protection autour des captages d'eau souterraine du site de captage Kopstal (côté Est) et situées sur les territoires des communes de Kopstal, Lorentzweiler et Steinsel), http://geoportail.eau.etat.lu/pdf/eaux%20souterraines/ZPS/RGD/PRGD%20ZPS%20Kopstal_coteEst.pdf (last access: 28 April 2023), 2022b.

- Ries, C. and Krippel, Y.: Sandstone Landscapes in Europe - Past, Present and Future, Proceedings of the 2nd International Conference on Sandstone Landscapes (Vianden, Luxembourg, 25-28/05/2005), MNHN, Ries, C., Krippel, Y. (Eds),
1070 Ferrantia, 44, 256p., <https://ps.mnhn.lu/ferrantia/publications/Ferrantia44.pdf> (last access: 28 April 2023), 2005.
- Samir, M.: Fracture roughness analysis in Luxembourg Sandstone, Master's Thesis in Geology, Université Libre de Bruxelles (ULB), Faculty of Sciences, Department of Geosciences, Environment and Society (DGES),
<https://ulb.academia.edu/samirmohammad> (last access: 28 April 2023), 2019.
- Scaini, A., Audebert, M., Hissler, C., Fenicia, F., Gourdol, L., Pfister, L., and Beven, K. J.: Velocity and celerity dynamics at
1075 plot scale inferred from artificial tracing experiments and time-lapse ERT, *Journal of Hydrology*, 546, 28–43,
doi.org/10.1016/j.jhydrol.2016.12.035, 2017.
- [Schäfer, A. and Colbach, R.: The Early Liassic Luxembourg Sandstone – Depositional environments and the interpretation of stratigraphic sequences in the Trier-Luxembourg Basin. *Zeitschrift der Deutschen Gesellschaft für Geowissenschaften*, 172, 99–125, doi.org/10.1127/zdgg/2021/0268, 2021.](#)
- 1080 Schmidt, A., Frank, G., Stichler, W., Duester, L., Steinkopff, T., and Stumpp, C.: Overview of tritium records from
precipitation and surface waters in Germany, *Hydrological Processes*, 34, 1489–1493, doi.org/10.1002/hyp.13691, 2020.
- Shao, W., Su, Y., Yang, Z., Ma, X., and Langhammer, J.: Quantify the Pore Water Velocity Distribution by a Celerity
Function, *Geofluids* 2018, 1054730, doi.org/10.1155/2018/1054730, 2018.
- Stewart, M. K., Mehlhorn, J., and Elliott, S.: Hydrometric and natural tracer (oxygen-18, silica, tritium and sulphur
1085 hexafluoride) evidence for a dominant groundwater contribution to Pukemanga Stream, New Zealand, *Hydrological
Processes*, 21, 3340–3356, doi.org/10.1002/hyp.6557, 2007.
- [Stewart, M.K., Morgenstern, U., and McDonnell, J.J.: Truncation of stream residence time: how the use of stable isotopes has skewed our concept of streamwater age and origin, *Hydrological Processes*, 24, 1646-1659, doi.org/10.1002/hyp.7576, 2010.](#)
- 1090 Stewart, M. K., Morgenstern, U., McDonnell, J. J., and Pfister, L.: The “hidden streamflow” challenge in catchment
hydrology: A call to action for streamwater transit time analysis, *Hydrological Processes*, 26, 2061–2066,
doi.org/10.1002/hyp.9262, 2012.
- Stewart, M.K., Morgenstern, U., Gusyev, M.A., and Maloszewski, P.: Aggregation effects on tritium-based mean transit
times and young water fractions in spatially heterogeneous catchments and groundwater systems, *Hydrology and Earth
1095 System Sciences*, 21, 4615-4627, doi.org/10.5194/hess-21-4615-2017, 2017.
- Stewart, M. K. and Morgenstern, U.: Importance of tritium-based transit times in hydrological systems, *Wiley
Interdisciplinary Reviews Water*, 3, 145–154, doi.org/10.1002/wat2.1134, 2016.
- Stewart, M.K., Morgenstern, U., and Cartwright, I.: Comment on “A comparison of catchment travel times and storage
deduced from deuterium and tritium tracers using StorAge Selection functions” by Rodriguez et al. (2021). *Hydrology and
1100 Earth System Sciences* 25, 6333–6338, doi.org/10.5194/hess-25-6333-2021, 2021.

- Stolp, B.J., Solomon, D.K., Suckow, A., Vitvar, T., Rank, D., Aggarwal, P.K., and Han, L.F.: Age dating base flow at springs and gaining streams using helium-3 and tritium: Fische-Dagnitz system, southern Vienna Basin, Austria, *Water Resources Research*, 46, W07503, doi.org/10.1029/2009WR008006, 2010.
- 1105 Stumpp, C., Klaus, J., and Stichler, W.: Analysis of long-term stable isotopic composition in German precipitation, *Journal of Hydrology*, 517, 351–361, doi.org/10.1016/j.jhydrol.2014.05.034, 2014.
- Tadros, C. V., Hughes, C. E., Crawford, J., Hollins, S. E., and Chisari, R.: Tritium in Australian precipitation: A 50 year record, *Journal of Hydrology*, 513, 262–273, doi.org/10.1016/j.jhydrol.2014.03.031, 2014.
- Terzer-Wassmuth, S., Araguás-Araguás, L.J., Copia, L., and Wassenaar, L.A.: High spatial resolution prediction of tritium (3H) in contemporary global precipitation, *Scientific Reports*, 12, 10271, doi.org/10.1038/s41598-022-14227-5, 2022.
- 1110 Thiros, N.E., Siirila-Woodburn, E.R., Denny-Frank, P.J., Williams, K.H., and Gardner, W.P.: Constraining bedrock groundwater residence times in a mountain system with environmental tracer observations and Bayesian uncertainty quantification, *Water Resources Research*, 59, e2022WR033282, doi.org/10.1029/2022WR033282, 2023.
- Thornthwaite, C.W.: An approach toward a rational classification of climate. *Geographical Review*, 38:55-94, 1948.
- Tukey, J.: An introduction to the calculations of numerical spectrum analysis, In: *Spectral Analysis of Time Series*, edited by Harris, B., 25–46, Wiley, New York, USA, 1968.
- 1115 Turnadge, C. and Smerdon, B.D.: A review of methods for modelling environmental tracers in groundwater: Advantages of tracer concentration simulation, *Journal of Hydrology*, 519, 3674-3689, doi.org/10.1016/j.jhydrol.2014.10.056, 2014.
- 1120 ~~Van den Bril, K.: *Carbonate*, and Swennen, R.: *Sedimentological control on carbonate* cementation in *shallow marine sandstones. Evaluation of controlling parameters in the Jurassic Luxembourg Sandstone Formation and Grès de la Crèche*, PhD thesis, Katholieke Universiteit Leuven, Leuven, Belgium, 226 p., *Geologica Belgica*, 12, 3–23, https://kuleuven.limo.libispopups.uliege.be/permalink/32KUL_KUL/1eqcup2/lirias19299011374-8505/index.php?id=2634&file=1&pid=2629 (last access: 28 April 2023), 20084 March 2024), 2009.~~
- 1125 Van Loon A.F., Kumar R., and Mishra V.: Testing the use of standardised indices and GRACE satellite data to estimate the European 2015 groundwater drought in near real time, *Hydrology and Earth System Sciences*, 21,1947-1971, doi.org/10.5194/hess-21-1947-2017, 2017.
- ~~Von Hoyer, M.: *Hydrogeological and hydrochemical investigations in the Luxembourg Sandstone (Hydrogeologische und hydrochemische Untersuchungen im Luxemburger Sandstein)*, Publ. Serv. Geol. Luxemb., Luxembourg, 61 p (in German), 1971.~~
- 1130 Van Verseveld, W. J., Barnard, H. R., Graham, C. B., McDonnell, J. J., Brooks, J. R., and Weiler, M.: A sprinkling experiment to quantify celerity–velocity differences at the hillslope scale, *Hydrology and Earth System Sciences* 21, 5891–5910, doi.org/10.5194/hess-21-5891-2017, 2017.

Von Hoyer, M.: Hydrogeological and hydrochemical investigations in the Luxembourg Sandstone (Hydrogeologische und hydrochemische Untersuchungen im Luxemburger Sandstein), Publ. Serv. Geol. Luxemb., Luxembourg, 61 p (in German), 1971.

135

Worthington, S.R.H.: Diagnostic tests for conceptualizing transport in bedrock aquifers, *Journal of Hydrology*, 529, 365-372, doi.org/10.1016/j.jhydrol.2015.08.002, 2015.

Worthington, S.R.H. and Foley, A.E.: Deriving celerity from monitoring data in carbonate aquifers, *Journal of Hydrology*, 598, 126451, doi.org/10.1016/j.jhydrol.2021.126451, 2021.

1140

Yager, R.M., Plummer, L.N., Kauffman, L.J., Doctor, D.H., Nelms, D.L., and Schlosser, P.: Comparison of age distributions estimated from environmental tracers by using binary-dilution and numerical models of fractured and folded karst: Shenandoah Valley of Virginia and West Virginia, USA, *Hydrogeology Journal*, 21, 1193–1217, doi.org/10.1007/s10040-013-0997-9, 2013.

1145

Zhou, Z., Cartwright, I., and Morgenstern, U., 2022: Sources and mean transit times of stream water in an intermittent river system: the upper Wimmera River, southeast Australia, *Hydrology and Earth System Sciences*, 26, 4497-4513, doi.org/10.5194/hess-26-4497-2022, 2022.

Zuber, A., Witczak, S., Róžański, K., Śliwka, I., Opoka, M., Mochalski, P., Kuc, T., Karlikowska, J., Kania, J., Jackowicz-Korczyński, M., and Duliński, M.: Groundwater dating with ^3H and SF_6 in relation to mixing patterns, transport modelling and hydrochemistry, *Hydrological Processes* 19(11), 2247-2275, doi.org/10.1002/hyp.5669, 2005.

1150

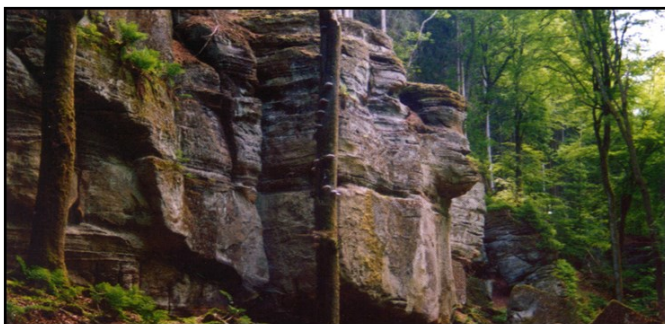
Table 1. Recharge area attributes.

Recharge area	Area (km ²)	Mean discharge (m ³ /day)	Mean elevation (m)	Mean flow length estimation (m)	Mean Luxembourg Sandstone thickness (m)
B	4.00	2900	363.9	1363	18.2
D	0.83	400	373.6	951	48.8
G	7.18	4500	376.5	1261	36.5
KRD	3.89	2700	341.7	944	43.5
KRG	3.01	2900	347.3	1190	68.1
M	2.01	800	340.7	989	35.6
S	7.17	5000	335.5	1896	49.3
P	4.41	3000	327.6	2388	49.6

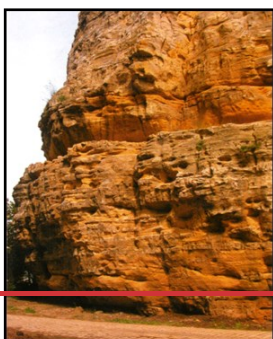
1155 **Table 2.** Tritium analytical results for the investigated springs of Luxembourg City.

Spring	Recharge area	10/06/2011 $^3\text{H} \pm 1\sigma$ (TU \pm TU)	06/09/2013 $^3\text{H} \pm 1\sigma$ (TU \pm TU)	17/08/2015 $^3\text{H} \pm 1\sigma$ (TU \pm TU)	18/08/2015 $^3\text{H} \pm 1\sigma$ (TU \pm TU)	21/08/2017 $^3\text{H} \pm 1\sigma$ (TU \pm TU)	22/08/2017 $^3\text{H} \pm 1\sigma$ (TU \pm TU)
B01	B	-	6.624 \pm 0.094	6.098 \pm 0.102	-	5.550 \pm 0.090	-
B02	B	-	6.092 \pm 0.101	5.627 \pm 0.095	-	5.177 \pm 0.082	-
B03	B	-	6.382 \pm 0.095	5.702 \pm 0.093	-	5.391 \pm 0.083	-
B06	B	-	6.321 \pm 0.104	5.582 \pm 0.091	-	5.100 \pm 0.088	-
B07	B	-	6.281 \pm 0.104	5.879 \pm 0.094	-	5.568 \pm 0.075	-
B09	B	-	6.575 \pm 0.116	5.791 \pm 0.094	-	5.751 \pm 0.079	-
B10	B	-	6.383 \pm 0.094	5.759 \pm 0.093	-	5.366 \pm 0.092	-
C01	G	-	7.124 \pm 0.097	6.196 \pm 0.100	-	5.741 \pm 0.090	-
C03	G	-	6.322 \pm 0.110	5.436 \pm 0.096	-	4.991 \pm 0.087	-
C04	G	-	6.005 \pm 0.087	5.329 \pm 0.087	-	5.017 \pm 0.079	-
C05	G	-	5.579 \pm 0.066	5.416 \pm 0.089	-	4.960 \pm 0.080	-
C07	G	-	6.153 \pm 0.094	5.458 \pm 0.090	-	5.070 \pm 0.090	-
C09	G	-	5.965 \pm 0.101	5.360 \pm 0.088	-	5.080 \pm 0.080	-
C10	G	-	5.819 \pm 0.104	5.275 \pm 0.093	-	4.900 \pm 0.090	-
D01	D	-	5.928 \pm 0.085	5.269 \pm 0.096	-	5.020 \pm 0.090	-
K01	KRD	-	5.426 \pm 0.084	-	5.162 \pm 0.095	-	4.847 \pm 0.088
K02	KRD	-	5.277 \pm 0.090	-	4.859 \pm 0.091	-	4.684 \pm 0.087
K03	KRD	-	5.410 \pm 0.097	-	5.212 \pm 0.092	-	4.589 \pm 0.085
K07	KRD	-	5.671 \pm 0.081	-	4.906 \pm 0.091	-	4.618 \pm 0.085
K13	KRD	-	5.812 \pm 0.083	-	4.908 \pm 0.091	-	4.592 \pm 0.085
K17	KRD	-	5.479 \pm 0.095	-	4.873 \pm 0.092	-	4.429 \pm 0.082
K19	KRD	-	5.732 \pm 0.099	-	5.071 \pm 0.095	-	4.711 \pm 0.087
K21	KRD	7.125 \pm 0.090	-	-	5.175 \pm 0.097	-	4.681 \pm 0.086
K21A	KRD	6.080 \pm 0.090	-	-	4.695 \pm 0.089	-	4.310 \pm 0.081
K22	KRG	-	5.694 \pm 0.082	-	5.067 \pm 0.095	-	4.719 \pm 0.080
K24	KRG	-	5.405 \pm 0.087	-	4.987 \pm 0.094	-	4.763 \pm 0.072
K26	KRG	-	5.508 \pm 0.096	-	4.928 \pm 0.082	-	4.708 \pm 0.090
K28	KRG	-	5.587 \pm 0.097	-	5.033 \pm 0.084	-	4.700 \pm 0.085
K31	KRG	-	5.724 \pm 0.081	-	5.051 \pm 0.085	-	4.738 \pm 0.084
K32	KRG	-	5.570 \pm 0.082	-	5.158 \pm 0.086	-	4.591 \pm 0.084
M01	M	-	5.794 \pm 0.100	5.462 \pm 0.099	-	4.960 \pm 0.090	-
P01	P	-	6.729 \pm 0.113	5.843 \pm 0.104	-	5.330 \pm 0.090	-
S01	S	-	5.763 \pm 0.099	5.302 \pm 0.098	-	4.870 \pm 0.080	-
S02	S	-	6.098 \pm 0.107	5.452 \pm 0.096	-	4.810 \pm 0.080	-
S03	S	-	5.953 \pm 0.102	5.342 \pm 0.097	-	4.670 \pm 0.080	-

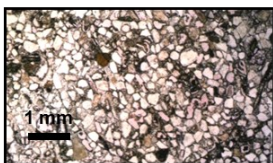
(a)



(b)



(c)



(d)

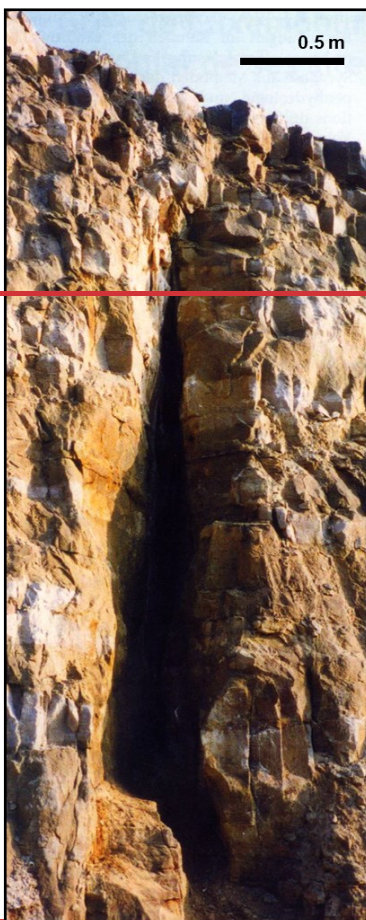


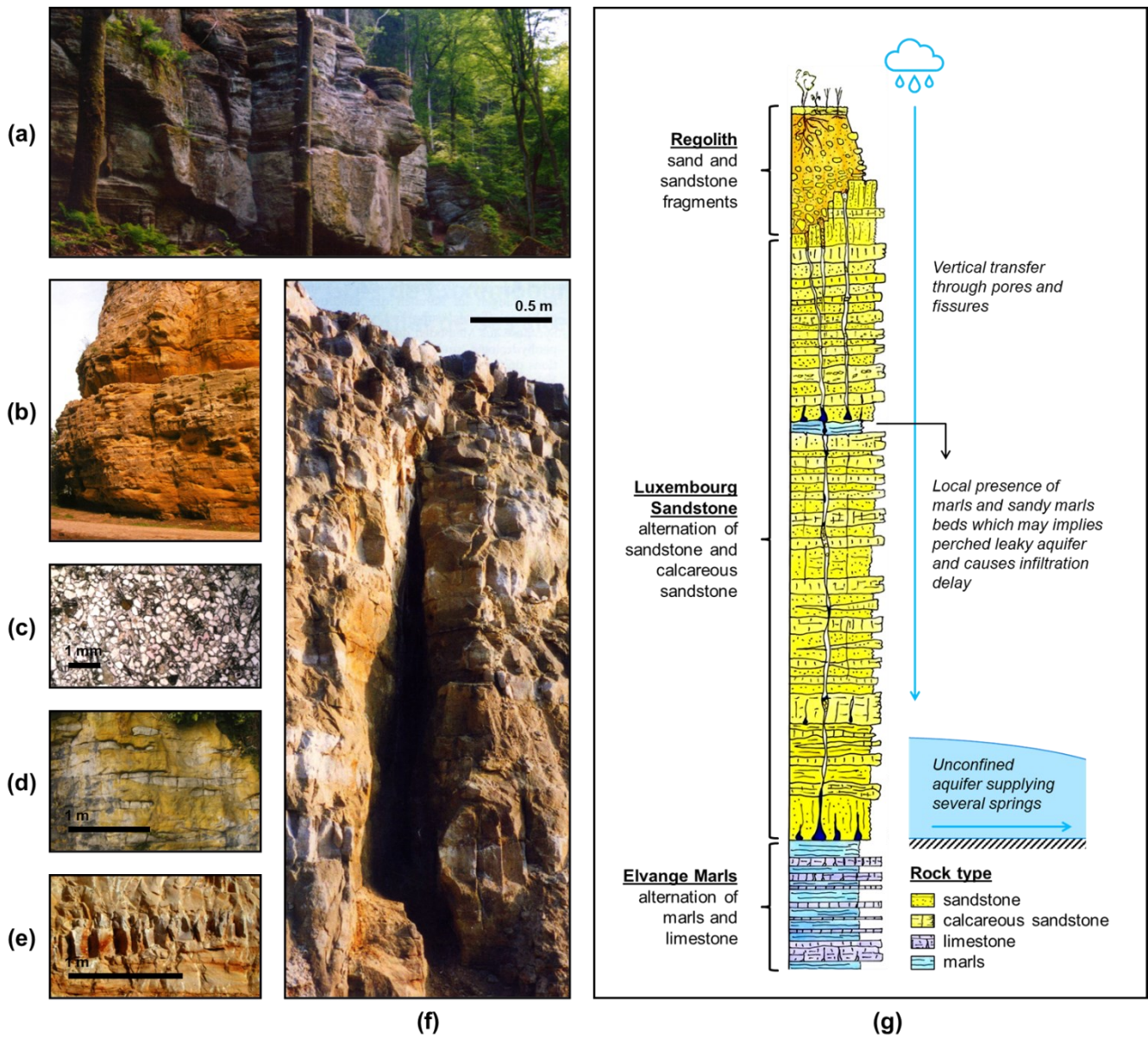
(e)



0.5 m

(f)





1160

1165

1170

Figure 1. [Pictures Overview](#) of the Luxembourg Sandstone [\(a-f\) in pictures](#) (modified from the proceedings of the 2nd international conference on sandstone landscapes, Vianden, Luxembourg, 25-28/05/2005; [Ries and Krippel, 2005](#)) with (a) sandstone outcrop in the Mullerthal area (photo taken by Jiri Adamovic during the pre-conference excursion), (b) sandstone outcrop in the Pétrusse valley in Luxembourg City (Faber and Weis, 2005), (c) optical microscope image of a well cemented sandstone sample under natural light (Colbach, 2005), (d) outcrop showing an alternation of carbonate rich, whitish, sandy limestone and carbonate poor, yellowish sandstone (Colbach, 2005), (e) fresh roadcut showing a closely fractured carbonate-rich bed (Colbach, 2005), [and](#) (f) roadcut showing a wide open fracture (Colbach, 2005) [and](#) (g) [through a typical lithological log](#) (adapted from a sketch drawn in 2001 by Robert Maquil from *Administration des ponts et chaussées, Service géologique de l'État, Luxembourg*).

Outcrop area of the Luxembourg Sandstone

20 km



BELGIUM

GERMANY



FRANCE

Luxembourg City

Study area

2 km



- Meteorological station
- Major rivers

Hydrogeological context

- Luxembourg Sandstone springs
- Springs of Luxembourg City
- Investigated springs
- Approximative recharge areas

Faults

- Alluvial material
- Marls and limestones
- Luxembourg Sandstone
- Marls, clay and sandy marls

Elevation of the base of the Luxembourg Sandstone aquifer (m)

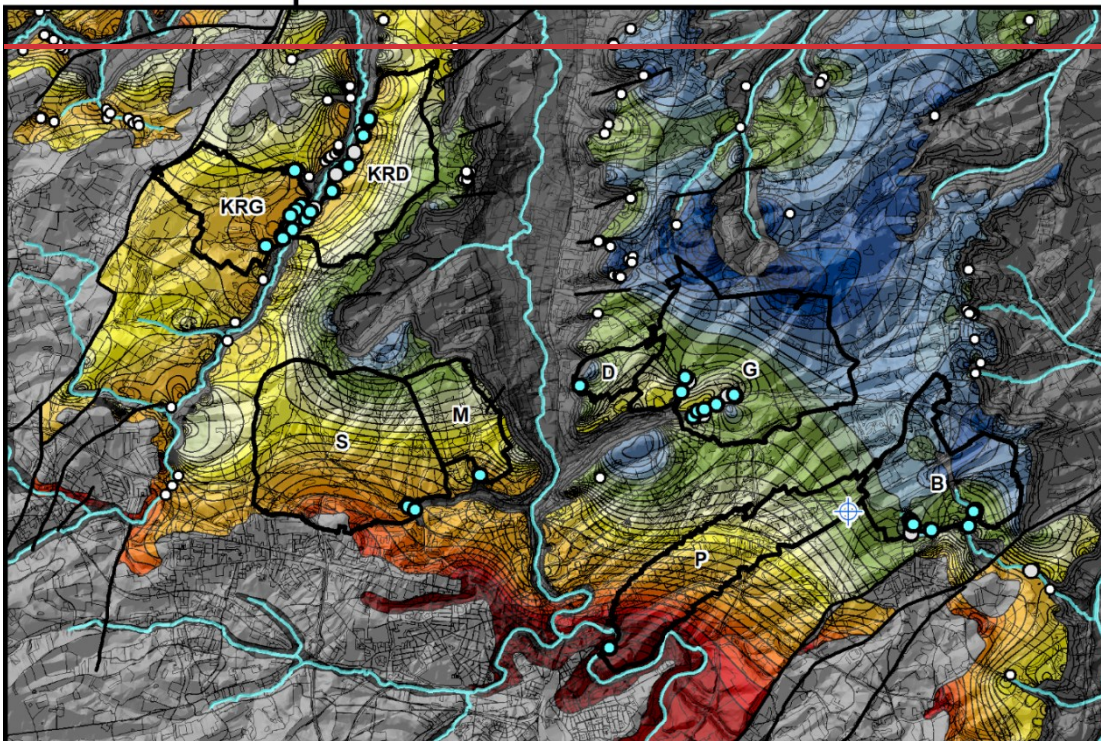
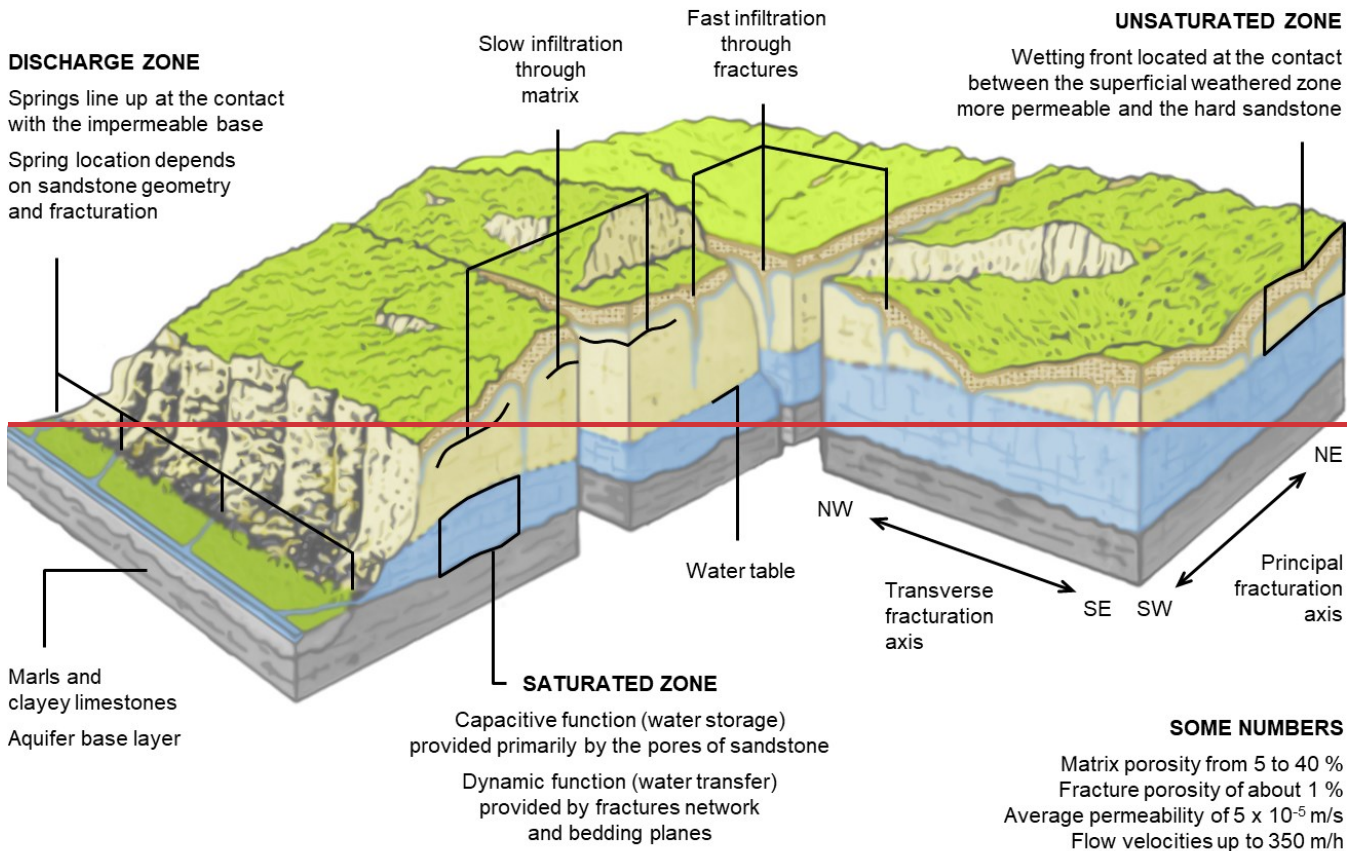


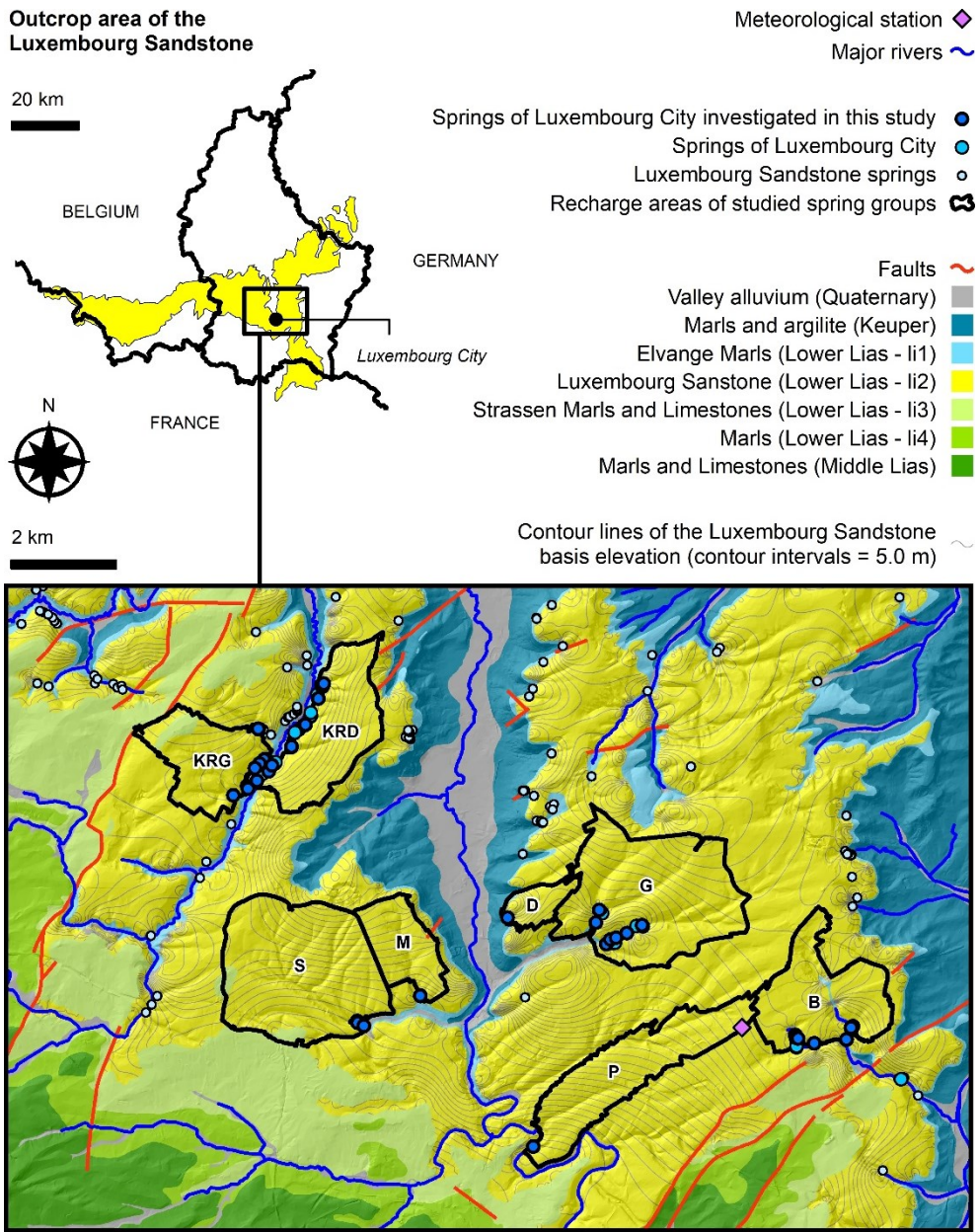
Figure 2. Geological and hydrogeological settings of the study area.



175

Figure 3. Conceptual diagram of the functioning of the Luxembourg Sandstone unconfined aquifer summarizing bibliography-derived information (adapted from a sketch of Raymond Rouch representing a karstic aquifer published in Mangin, 1975).

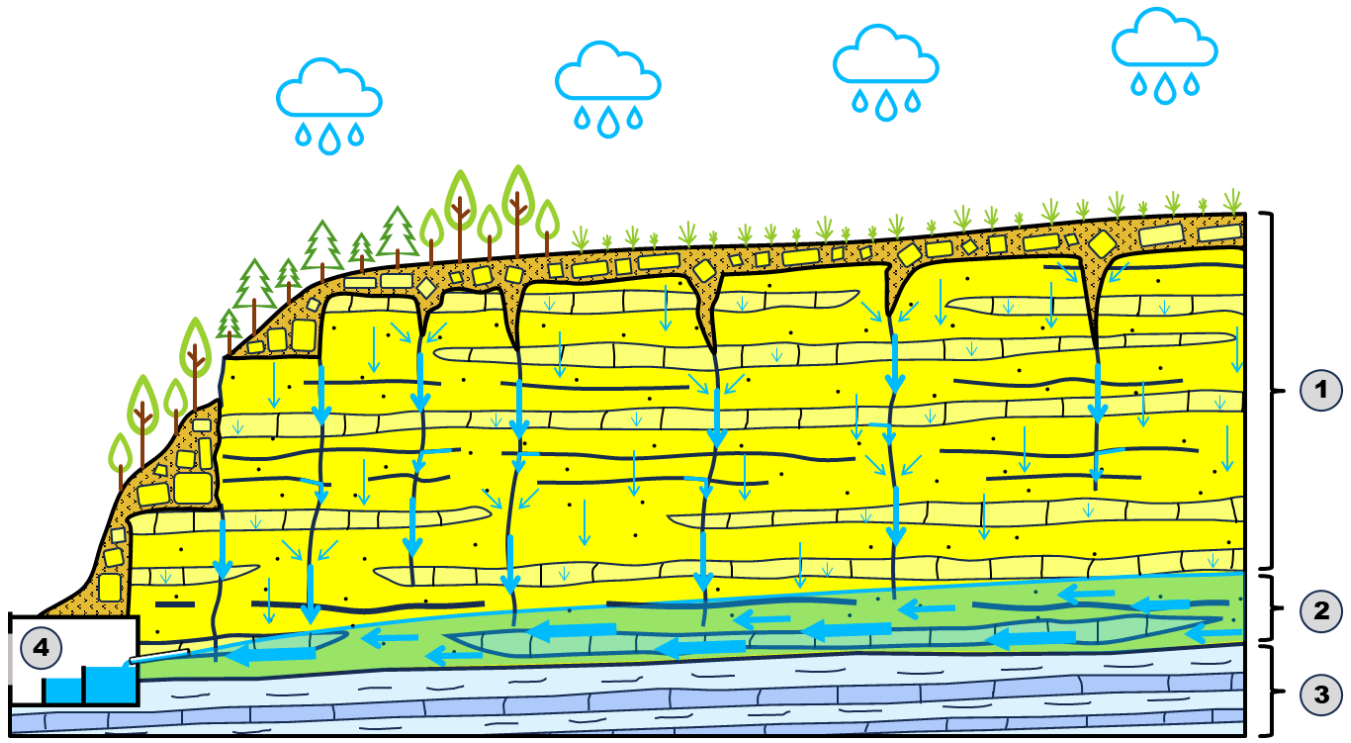
Outcrop area of the Luxembourg Sandstone



180

Figure 2. Geological and hydrogeological settings of the study area (the geological units delineation comes from the Luxembourg harmonized geological map from *Administration des ponts et chaussées, Service géologique de l'État, Luxembourg*; the springs of Luxembourg City are contact springs located at the boundary between the Luxembourg Sandstone and the underlying Elvange Marls; the 35 springs of Luxembourg City investigated in this study are B01, B02, B03, B06, B07, B09, B10 for group B, C01, C03, C04, C05, C07, C09, C10 for group G, D01 for group D, K01, K02, K03, K07, K13, K17, K19, K21, K21A for group KRD, K22, K24, K26, K28, K31, K32 for group KRG, M01 for group M, P01 for group P, and S01, S02, S03 for group S).

185



190 **Figure 3.** Synthetic geological cross-section illustrating the catchment facility of a spring draining the Luxembourg Sandstone aquifer and
 the water flow components within the bedrock (the thickness of arrows is proportional to flow velocity; 1: slow and fast vertical transfer of
 water in the unsaturated zone through pores and fractures, respectively; 2: subhorizontal water flows in the saturated zone with fastest flows
 in main fractures; 3: Elvange Marls impervious unit constituting the base of the aquifer; 4: spring catchment facility; one can note that
 Strassen Marls and Limestones are absent in this case; adapted from Meus and Willems, 2021).

1195

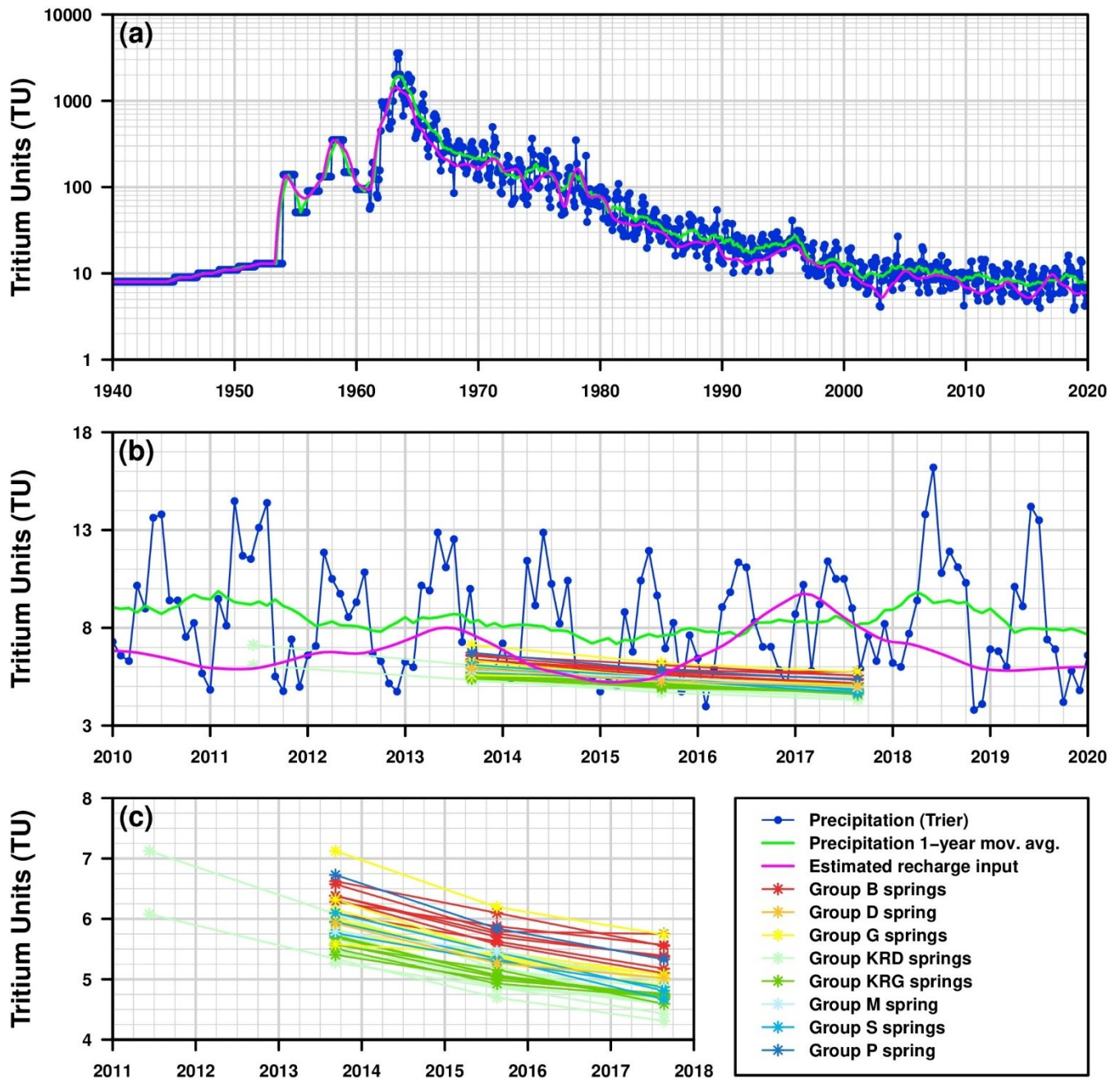


Figure 4. Tritium concentration in (a, b) precipitation, recharge, and (b, c) investigated springs of Luxembourg City (a) from 1940 to 2020 with a log scale, and (b) from 2010 to 2020 and (c) 2011 to 2018 with a linear scale.

Figure 5

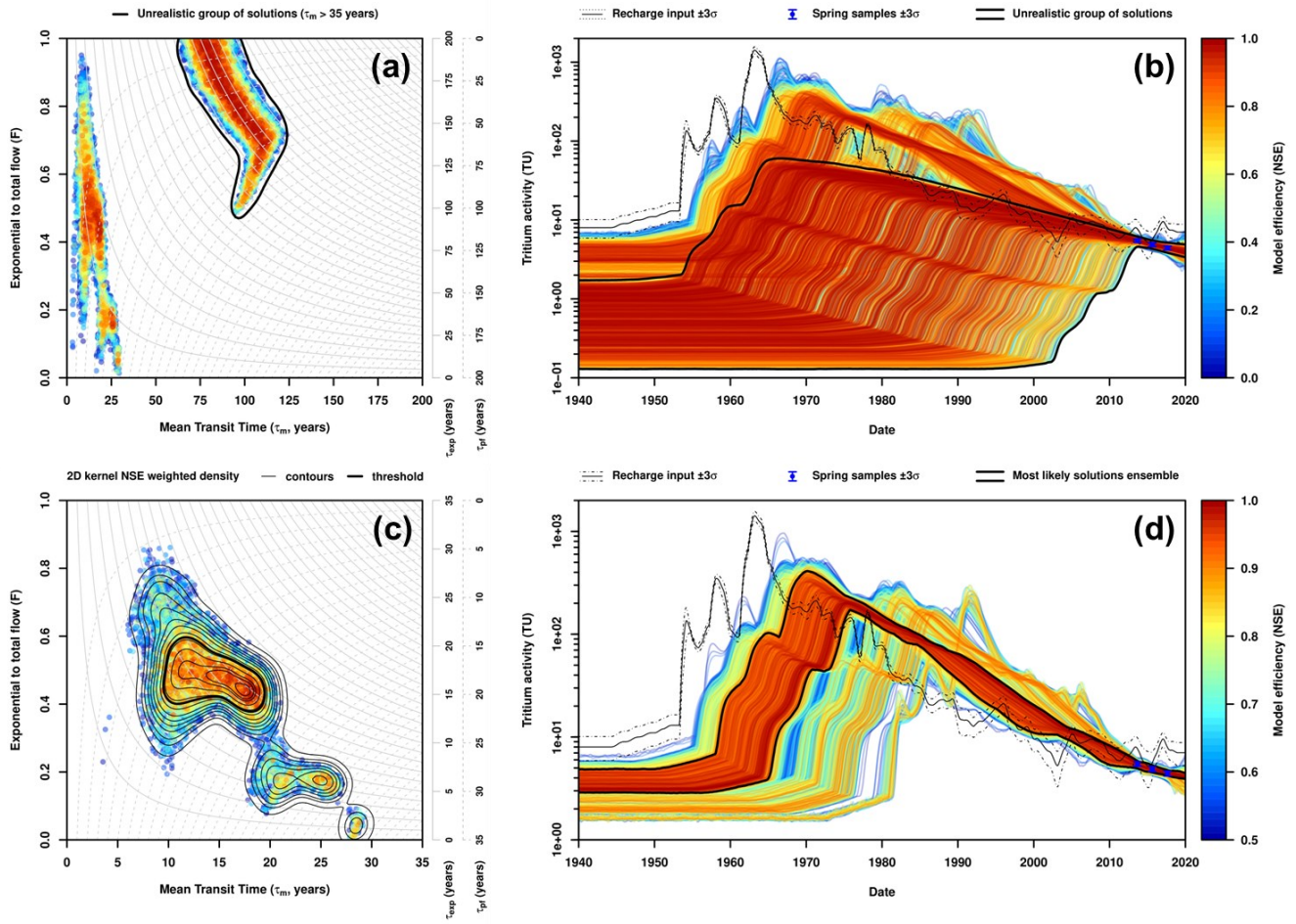
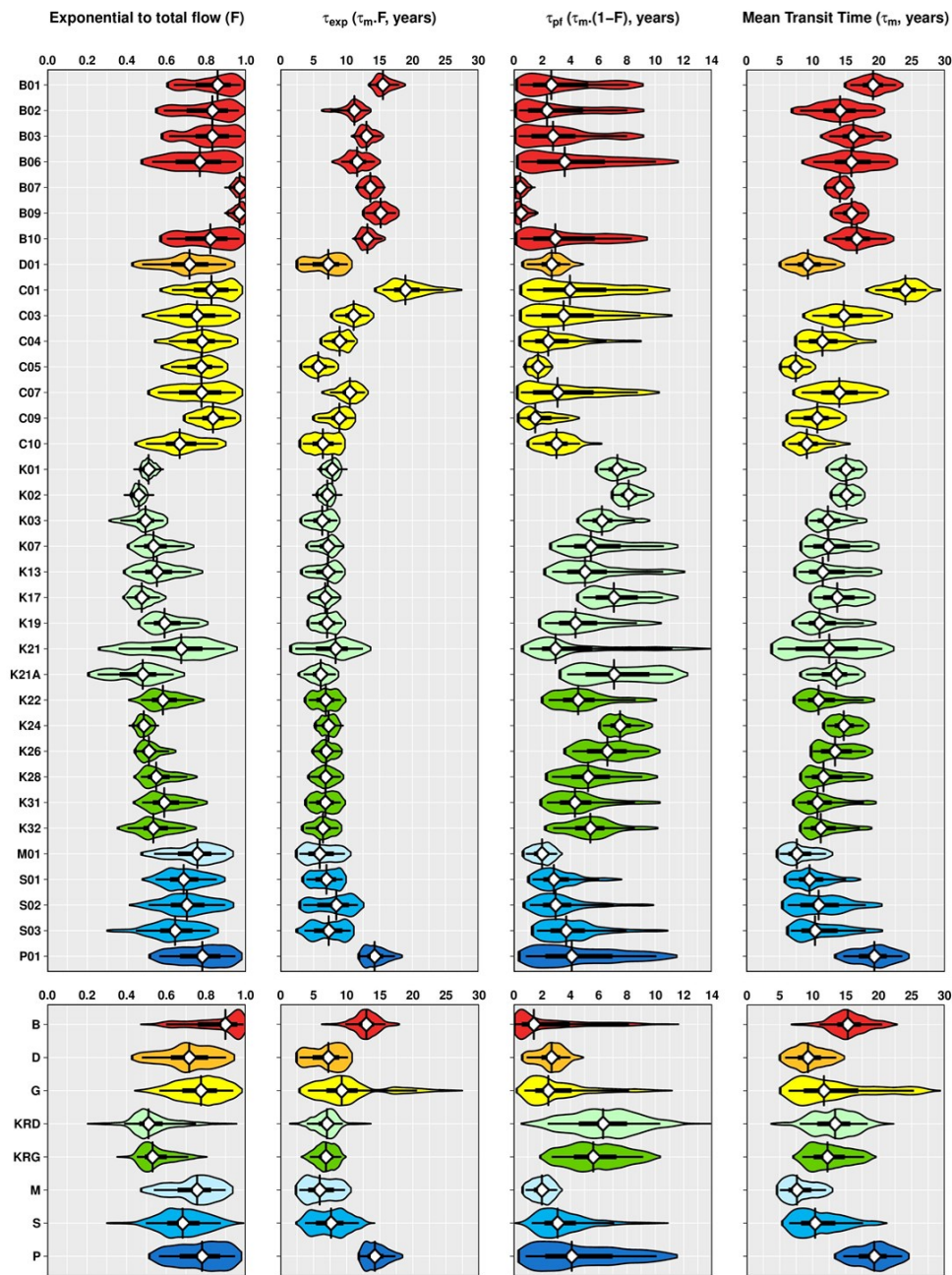
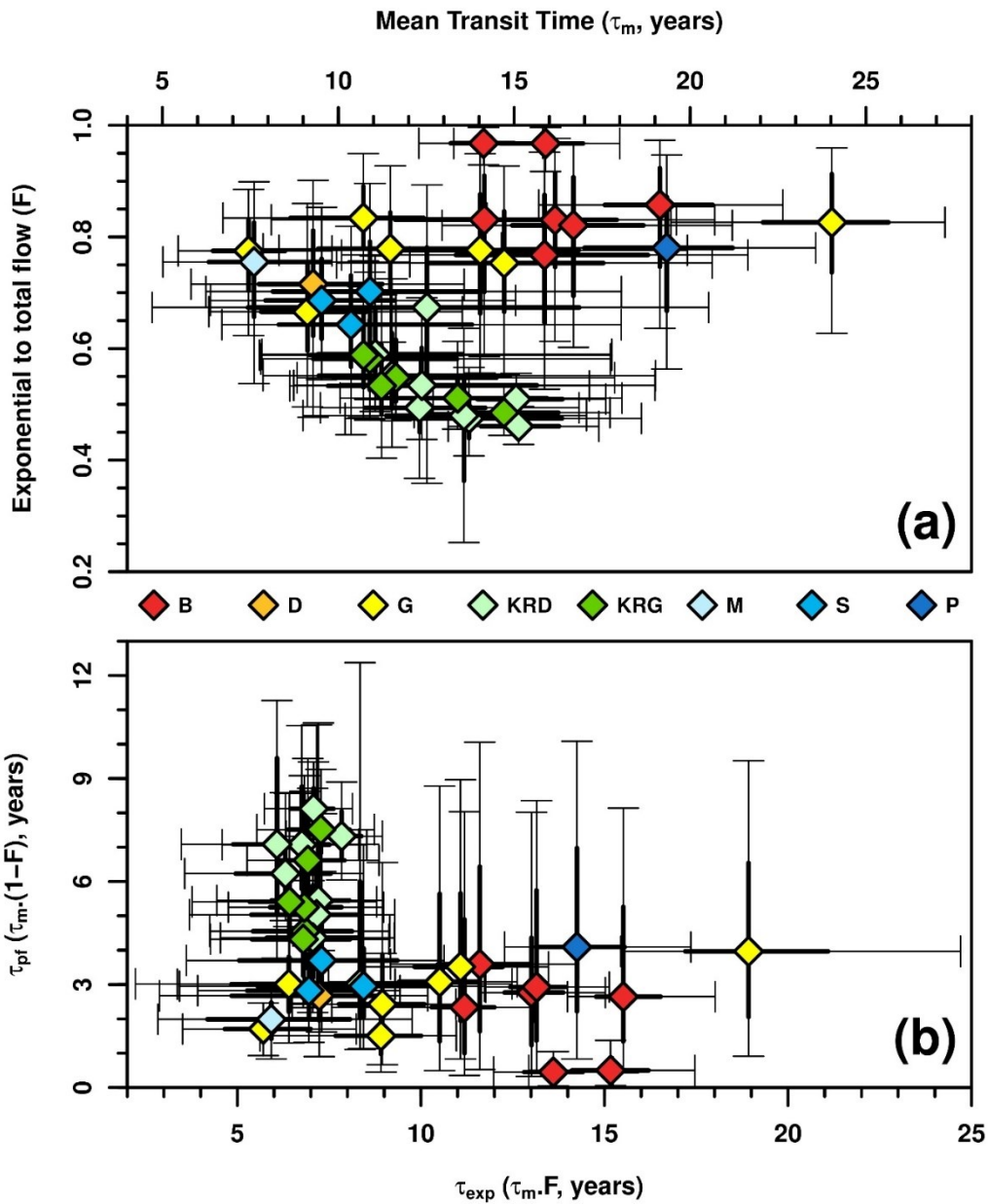


Figure 5. Modelling results of spring K17 in the EPM parameter space (a, c) and associated modelled tritium time series (b, d) for the first (a, b) and the second (c, d) screening stages.

1205



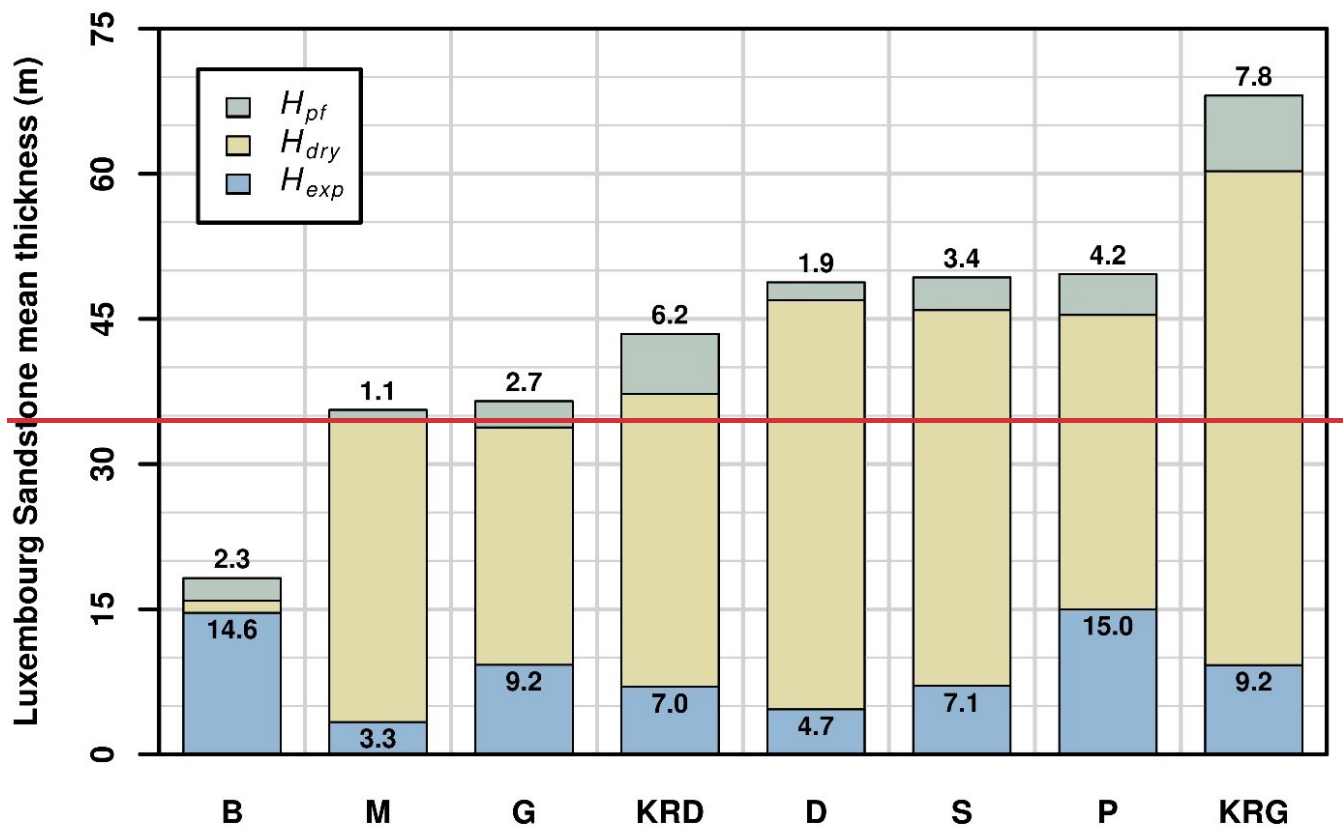
1210 **Figure 6.** Violin plot with boxplot overlay representation of the ensembles of most likely EPM model solutions retained for each spring (upper panels) and by group of springs from the same recharge area (lower panels). The violin plot lines correspond to a kernel density of the distribution (i.e., a smoothed histogram). The violin plot fill colors allow to discriminate the different groups of springs. The white diamond shape with the vertical line indicates the median of the distribution. The horizontal thick and thin lines represent the interquartile and 5-95th percentile ranges of the distribution, respectively.

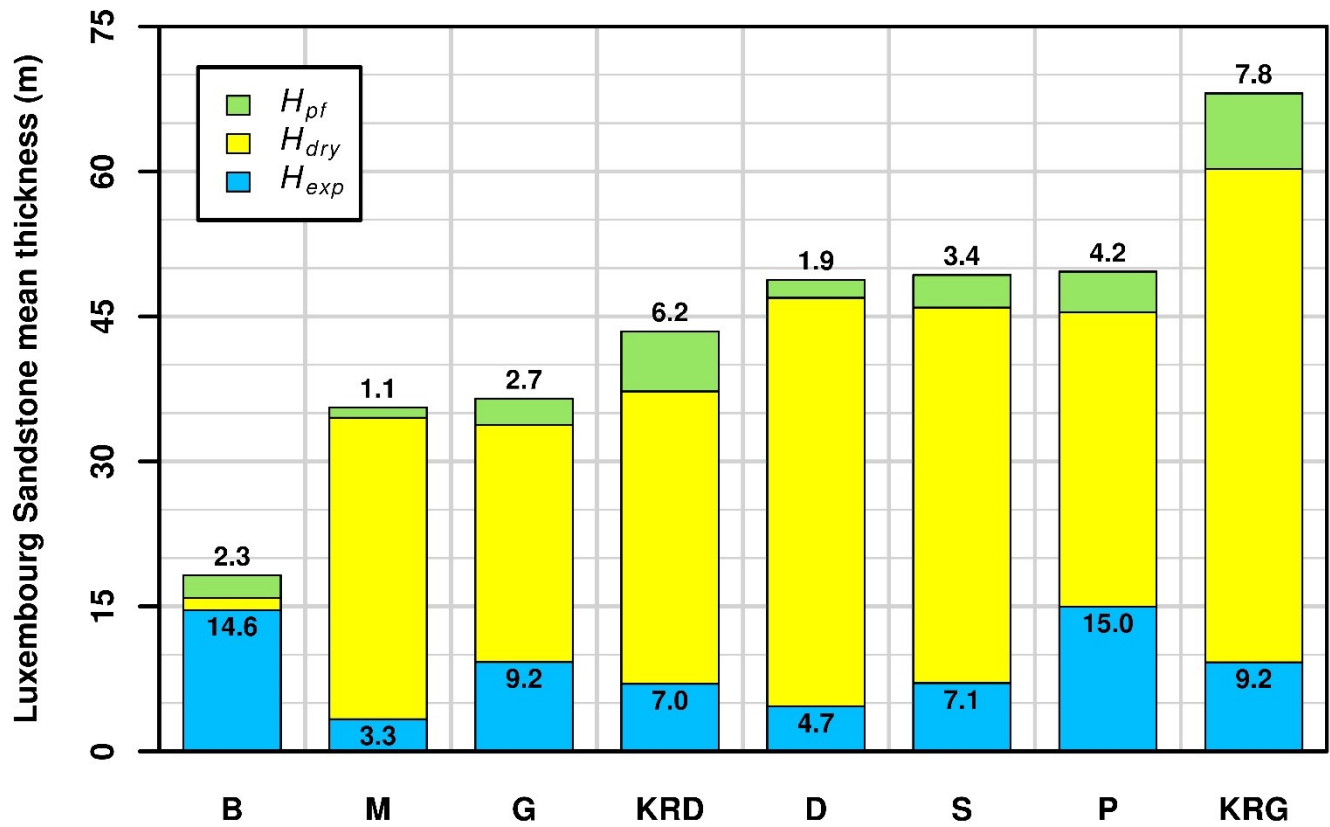


1215

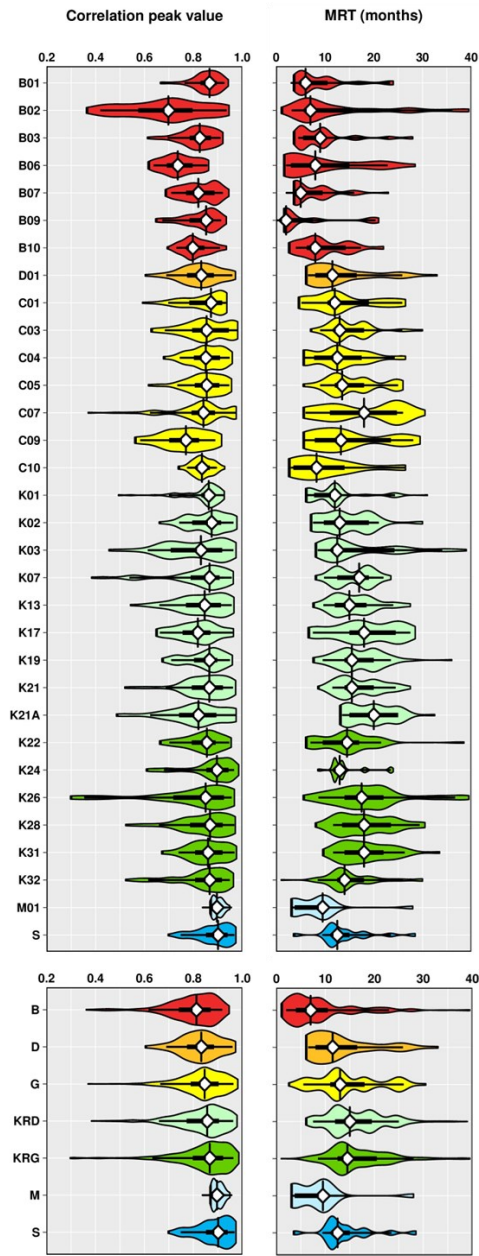
Figure 7. Scatter plots relating (a) F to τ_m and (b) τ_{pf} to τ_{exp} values of the ensembles of most likely EPM model solutions retained for each spring. The diamond shape indicates the median of the distribution. The diamond shape fill colors allow to discriminate the different groups of springs. The thick lines and bounded thin lines represent the interquartile and 5-95th percentile ranges of the distribution, respectively.

1220





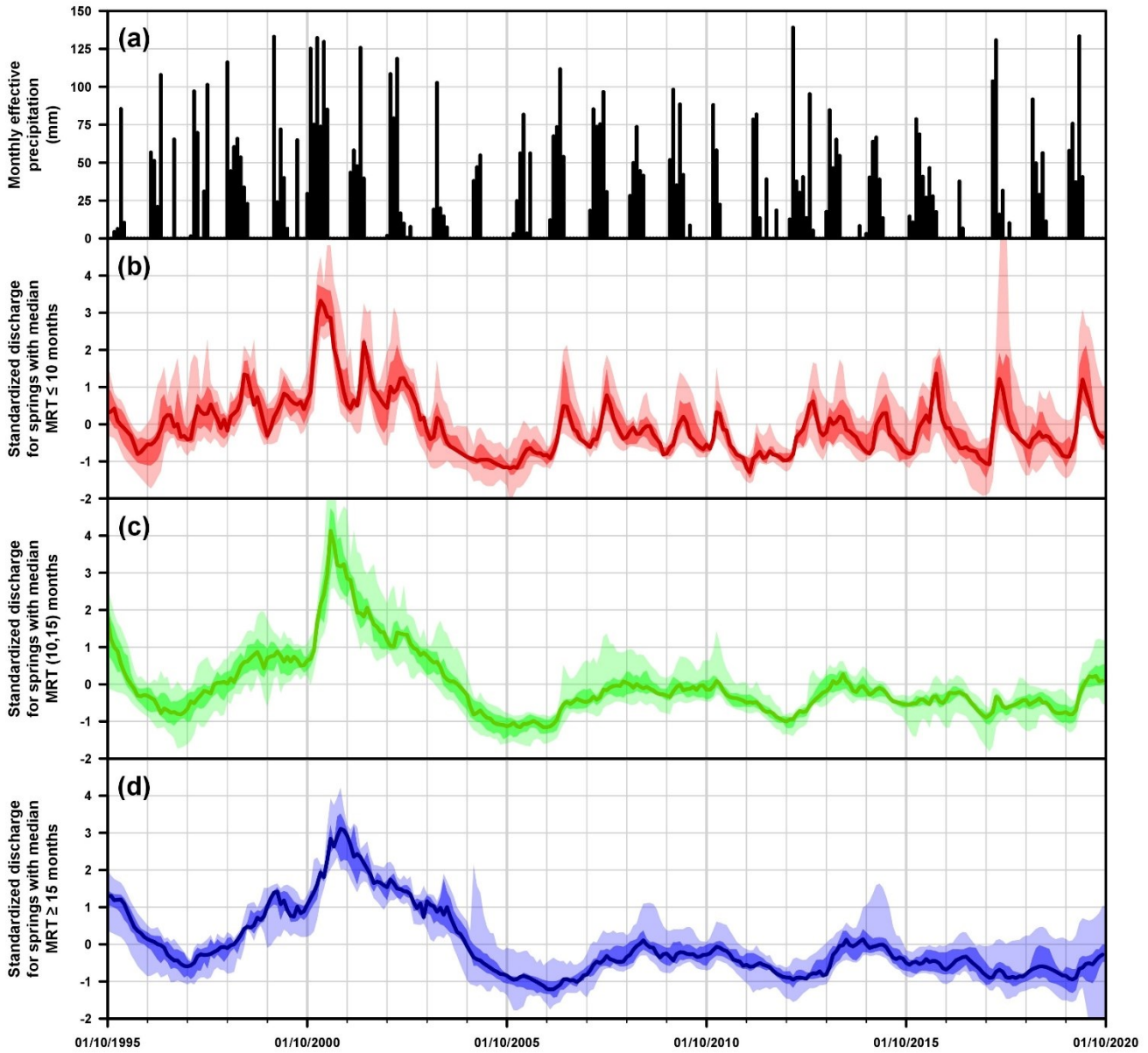
1225 **Figure 8.** Transit time derived mean sandstone layers required for the water storage in the saturated zone (assumed to match the exponential part of the EPM model; H_{exp}) and the vadose zone (assumed to correspond to the EPM piston segment; H_{pf}) overlaid overlaid to the mean thickness of the Luxembourg Sandstone estimated for each recharge areas.



1230

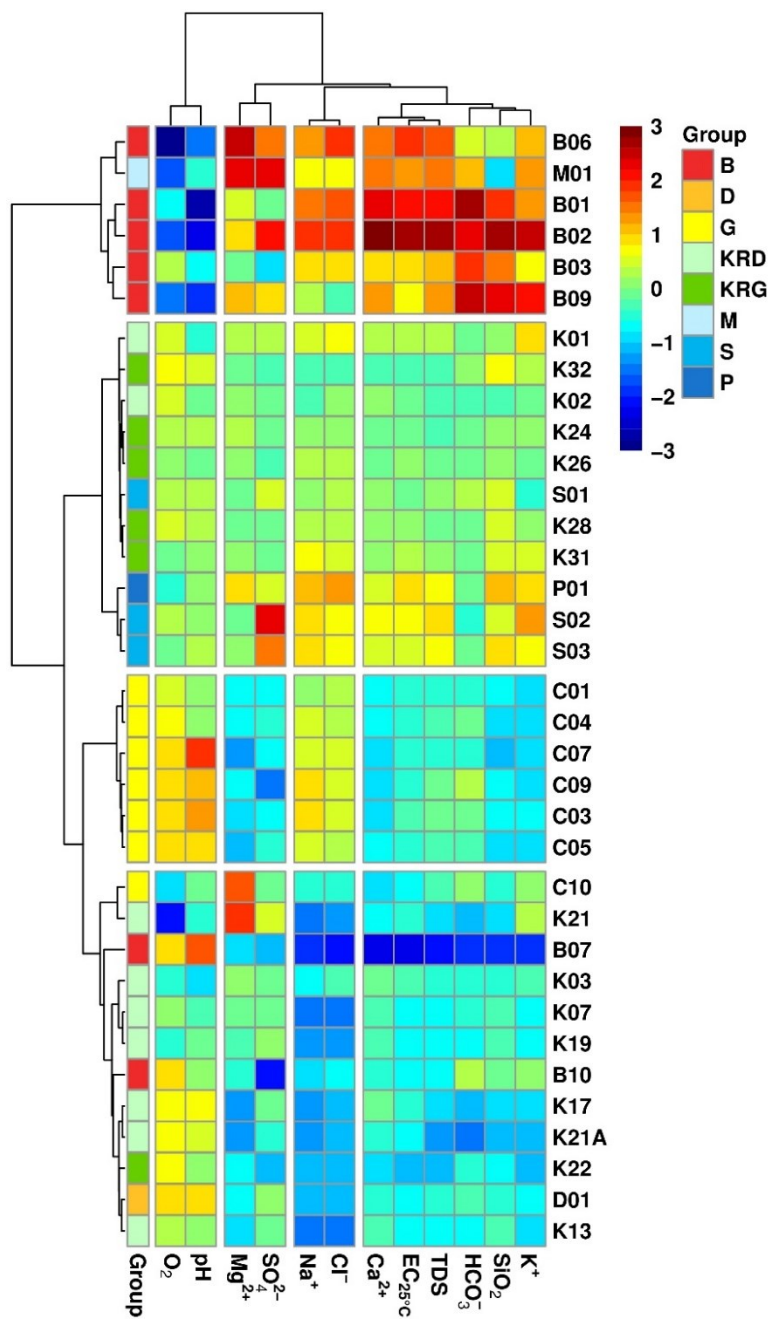
Figure 9. Violin plot with boxplot overlay representation of the ensembles of solutions resulting from the spring discharge – effective precipitation cross-correlation analysis for each spring (upper panels) and by group of springs from the same recharge area (lower panels). The violin plot lines correspond to a kernel density of the distribution (i.e., a smoothed histogram). The violin plot fill colors allow to discriminate the different groups of springs. The white diamond shape with the vertical line indicates the median of the distribution. The horizontal thick and thin lines represent the interquartile and 5-95th percentile ranges of the distribution, respectively.

1235



1240

Figure 10. Effective precipitation and spring discharge dynamics with (a) monthly effective precipitation, and (b) standardized discharge time series for springs with a median MRT less than or equal to 10 months, (c) in between 10 and 15 months and (d) greater than or equal to 15 months. In (b-d) the colored thick solid line correspond to the median value of the ensemble of spring discharge time series, while darker and lighter colored shaded area correspond to their interquartile and 5-95th percentile envelopes, respectively.



1245

Figure 11. Heat map of the average physicochemical characteristics for the investigated springs. Springs and parameters were classified and grouped using a hierarchical cluster analysis (distance measure: Euclidean distance, linkage rule: Ward's method). Prior to the analysis, data were first log-transformed and then each parameter was standardized. According to the dendrograms and the visual inspection of the heat map, 4 clusters of springs and 4 clusters of parameters were emphasized in the figure.

1250

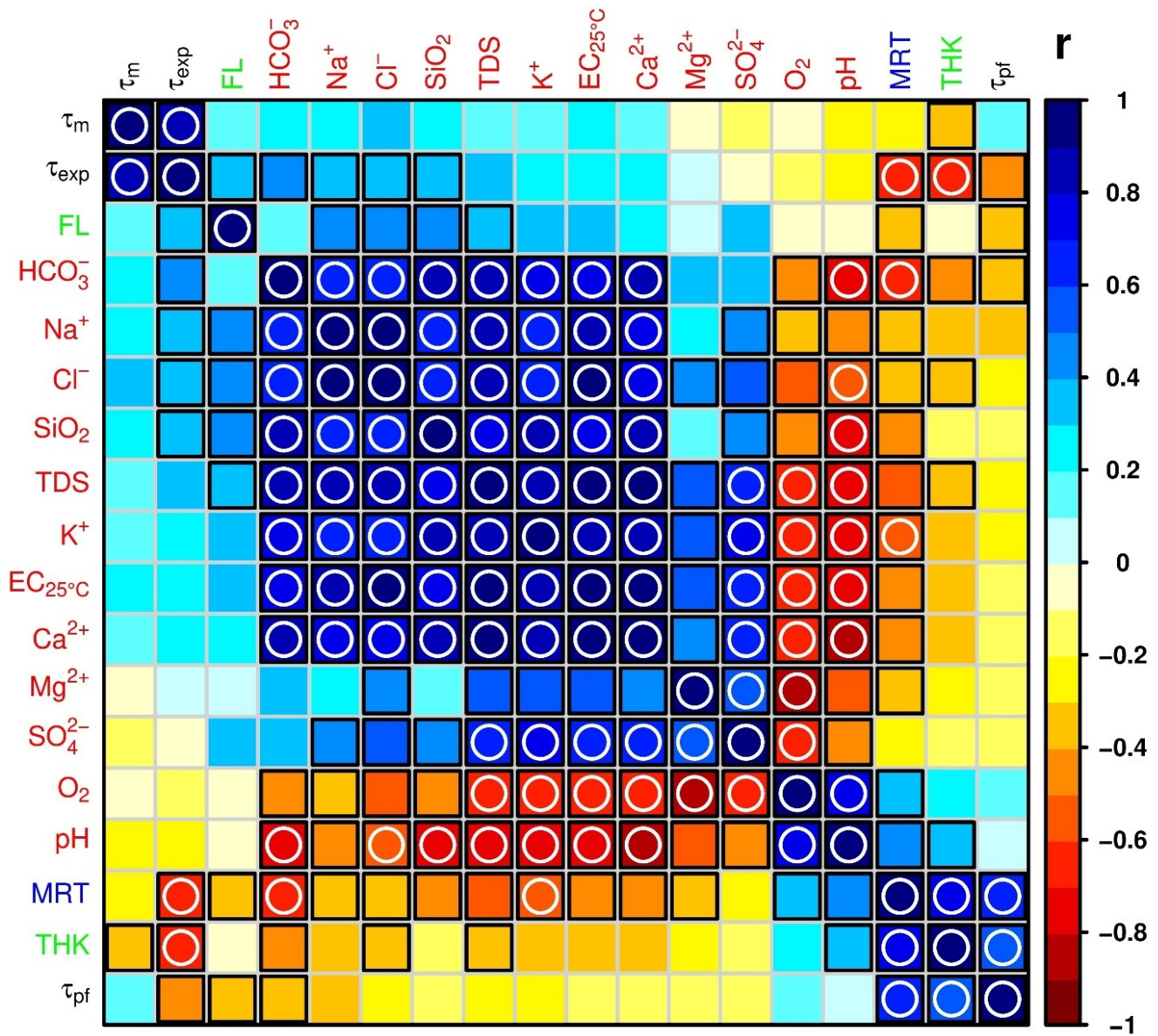
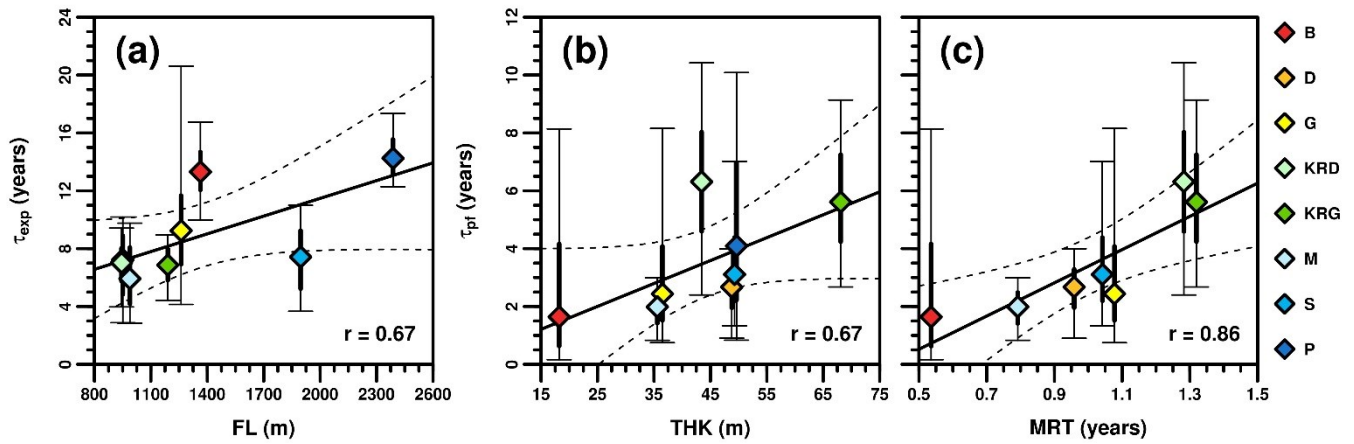


Figure 12. Linear correlation (Pearson's r) of tritium derived transit times (τ_m , τ_{exp} and τ_{pf} median values of the ensembles of EPM solutions; black labels) with the other springs characteristics, i.e. the hydrochemical parameters average values (red labels), the estimated mean groundwater flow lengths (FL) and the mean Luxembourg Sandstone thickness (THK) of the recharge areas (green labels), and the MRT median values characterizing the response time of spring discharge to effective precipitation input (blue label). A black square denotes a significant correlation (p -value < 0.05), while a white circle highlights a very significant one (p -value < 0.001).

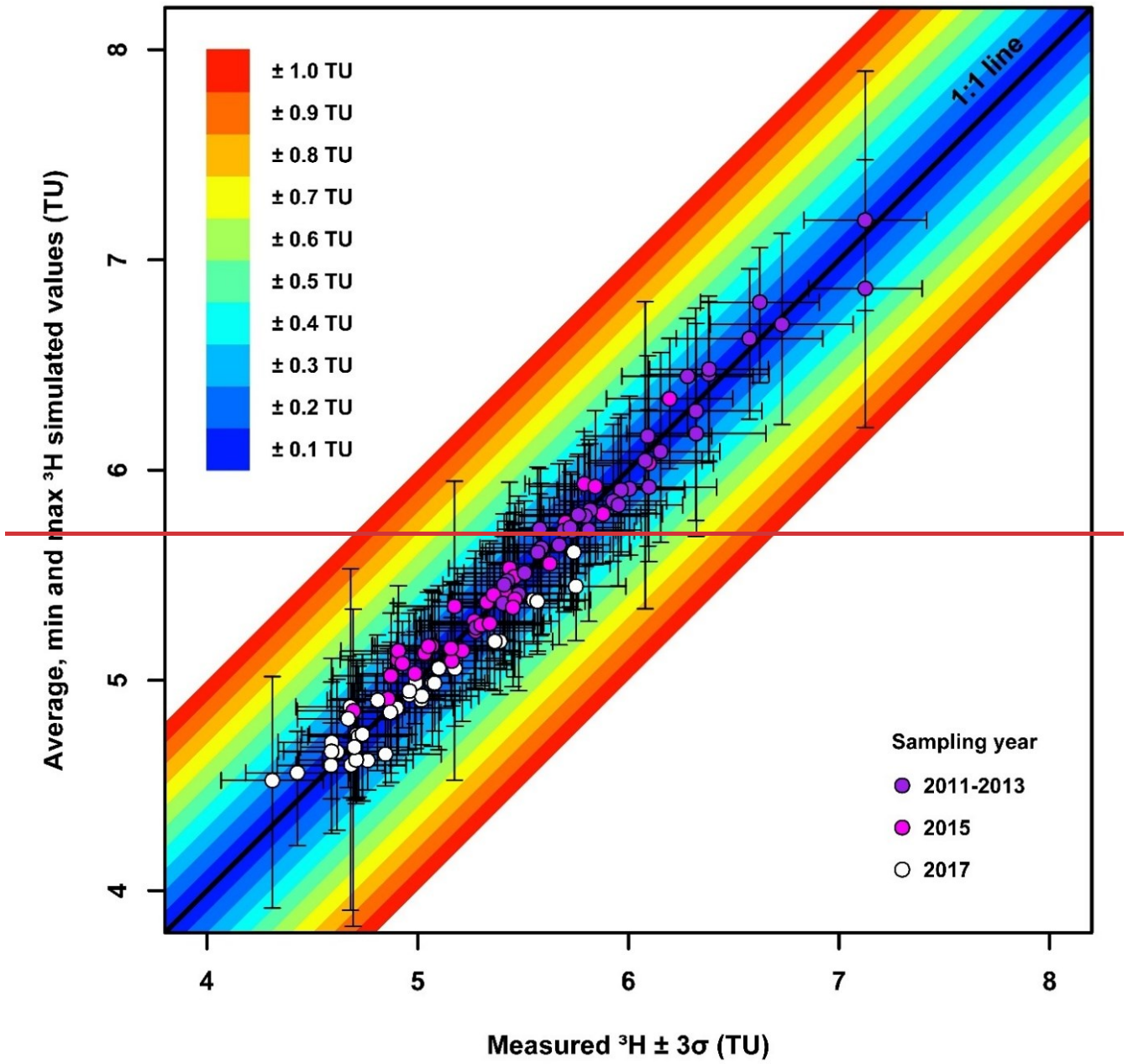
1255

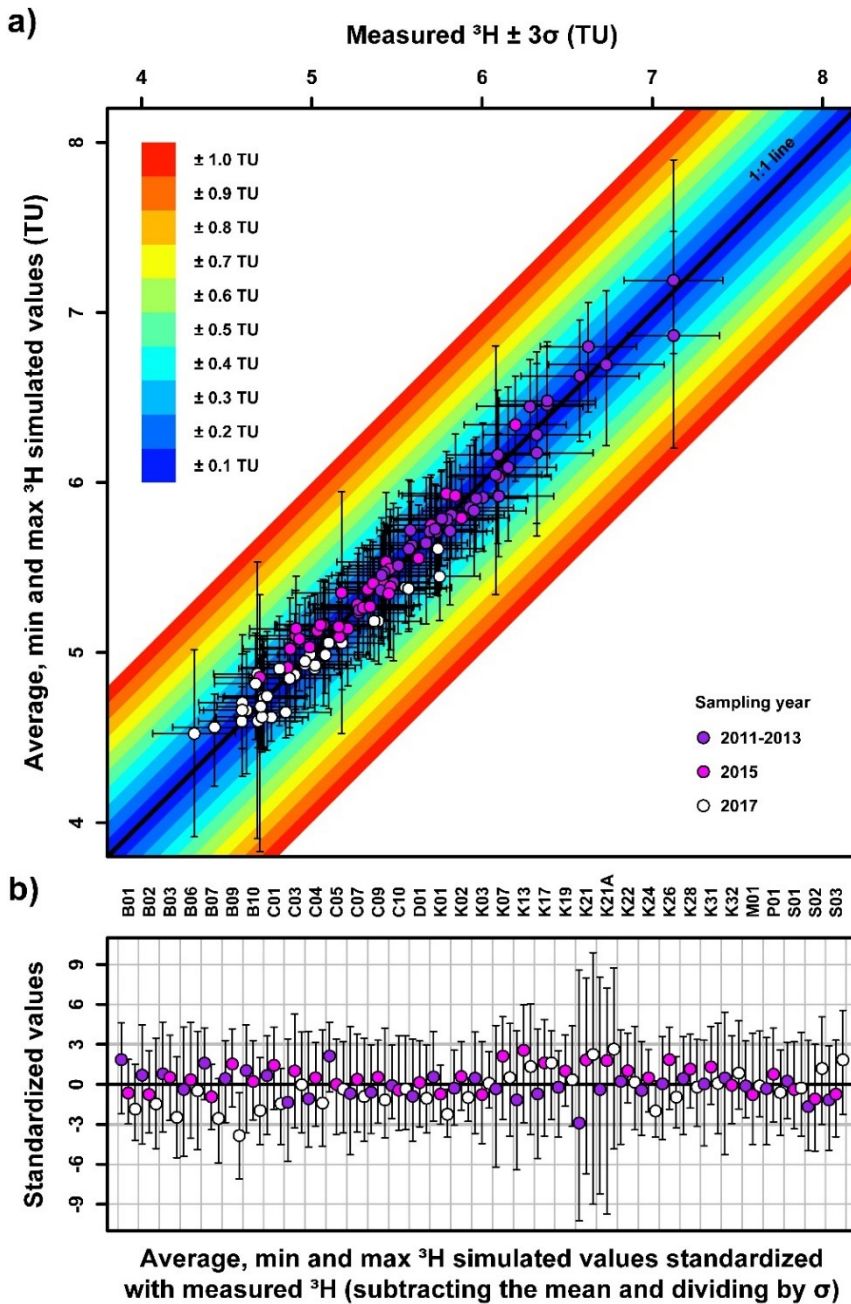


1260

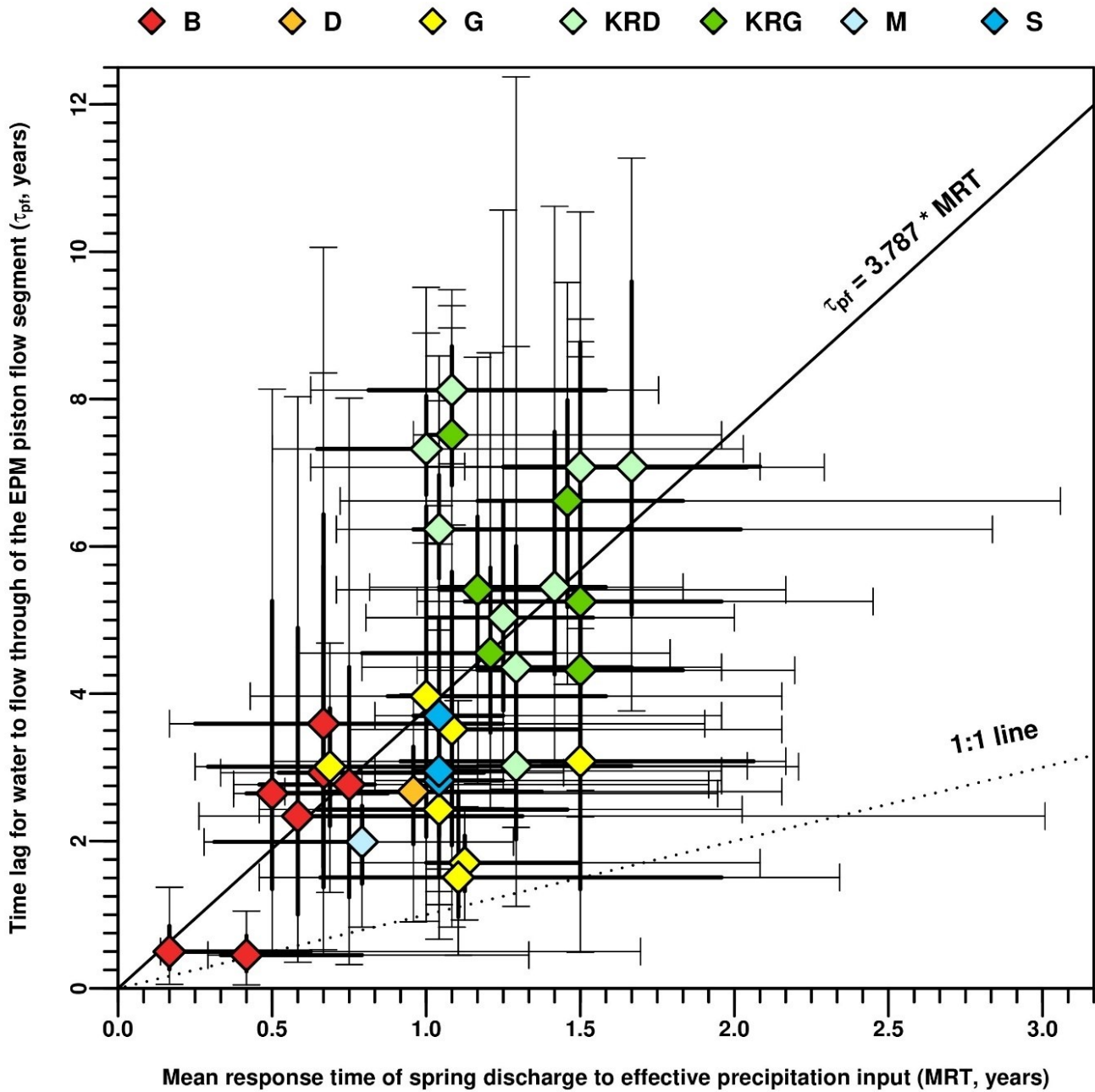
Figure 13. Scatter plots relating at the recharge area scale (a) τ_{exp} median values of the EPM ensembles to the groundwater flow length (FL), τ_{pf} median values of the EPM ensembles to (b) the mean Luxembourg Sandstone thickness (THK) and (c) the average of the MRT median values characterizing the response time of spring discharge to effective precipitation input. The dashed lines represent the 95% confidence intervals of the regression thick lines. The vertical thick and bounded thin lines represent the interquartile and 5-95th percentile ranges of τ_{exp} or τ_{pf} values distributions, respectively.

1265





1270 **Figure 14.** Comparison between observed and EPM simulated concentrations in tritium for the 35 investigated springs of Luxembourg City (N samples = 105) as a) a scatter plot and b) standardized values. The root-mean-square error between the observed and average simulated concentrations (colored circles) is 0.11 TU. The min-max range of the simulated concentrations (vertical bounded thin lines) and the $\pm 3\sigma$ range of the measured concentrations (horizontal bounded thin lines) average 0.69 and 0.54 TU, respectively.



1275

1280

Figure 15. Scatter plot relating for each spring τ_{pif} values of the ensembles of most likely EPM model solutions to MRT values of the ensembles resulting from the effective precipitation – spring discharge cross-correlation analyses. The diamond shapes indicate the medians of the distributions, and their fill colors allow to discriminate the different groups of springs. The thick lines and bounded thin lines represent the interquartile and 5-95th percentile ranges of the distributions, respectively.