

On optimization of calibrations of a distributed hydrological model with spatially distributed information on snow

Dipti Tiwari¹, Mélanie Trudel¹, and Robert Leconte¹

¹Université de Sherbrooke, Département de génie civil et de génie du bâtiment, 2500 Bd de l'Université, Sherbrooke, QC J1K 2R1, Canada

Correspondence: Dipti Tiwari (dipti.tiwari@usherbrooke.ca)

Abstract. In northern cold-temperate countries, a large portion of annual streamflow is produced by spring snowmelt, which often triggers floods. It is important to have spatial information about snow variables such as snow water equivalent (SWE), which can be incorporated into hydrological models, making them more efficient tools for improved decision-making. The present research implements a unique spatial pattern metric in a multi-objective framework for calibration of hydrological models and attempts to determine whether raw SNODAS (SNOW Data Assimilation System) data can be utilized for hydrological model calibration. The SPATIAL Efficiency (SPAEF) metric is explored for spatially calibrating SWE. Different calibration experiments are performed combining Nash-Sutcliffe efficiency (NSE) for streamflow and root-mean-square error (RMSE), and SPAEF for SWE, using the Dynamically Dimensioned Search (DDS) and Pareto Archived multi-objective optimization (PADDS) algorithms. Results of the study demonstrate that multi-objective calibration outperforms sequential calibration in terms of model performance (SWE and discharge simulations). Traditional model calibration involving only streamflow produced slightly higher NSE values; however, the spatial distribution of SWE could not be adequately maintained. This study indicates that utilizing SPAEF for spatial calibration of snow parameters improved streamflow prediction compared to the conventional practice of using RMSE for calibration. SPAEF is further implied to be a more effective metric than RMSE for both sequential and multi-objective calibration. During validation, the calibration experiment incorporating multi-objective SPAEF exhibits enhanced performance in terms of NSE and Kling-Gupta Efficiency (KGE) compared to calibration experiment solely based on NSE. This observation supports the notion that incorporating SPAEF computed on raw SNODAS data within the calibration framework results in a more robust hydrological model. The novelty of this study is the implementation of SPAEF with respect to spatially distributed SWE for calibrating a distributed hydrological model.

1 Introduction

Cold temperate countries like Canada are characterized by substantial spring runoff, where streamflow is generated or amplified by snowmelt. Indeed, spring snowmelt is one of the predominant hydrological events influencing the annual water budget of high latitude watersheds (DeWalle and Rango, 2008; Buttle et al., 2016). Rapid melting of snow can result from a combination of high temperatures and rainfall over frozen ground resulting in heavy runoff, which will exacerbate flooding. A reliable flow forecast system, therefore, should provide inflow forecasts using hydrological models that can simulate the complex processes

25 occurring in the watershed. These models can mimic the relationship between inflow and outflow in a watershed provided that they have adequate meteorological data (precipitation, temperature, relative humidity, wind speed and direction) and geographical data (digital elevation model, land cover and soil maps) (Singh and Woolhiser, 2002). Distributed hydrological models are capable of representing the spatial variability of hydrological processes and state variables within a watershed, which cannot be obtained by lumped models (Markhali et al., 2022).

30 Snow distribution, together with the frequency, duration and intensity of spring snowmelt, influences extreme runoff events (Marsh et al., 2008), soil water storage capacity, subsurface flow (Roach et al., 2011; Frampton et al., 2013; Jafarov et al., 2018) and groundwater recharge (Mohammed et al., 2019; Ala-Aho et al., 2021). Owing to the dominant control of snow on the water balance during the snow-melt season, typically from March to May, the spatial distribution of snow has received much attention (Hiemstra et al., 2002; Woo and Young, 2004). Spatial variability of snow cover results from various processes that
35 occur across different spatial scales (Clark et al., 2011). At the watershed scale, it is affected by meteorological variables (e.g., temperature, precipitation, evaporation) and by elevation, topography and vegetation, while at the hillslope-scale it is governed by processes such as drifting, trapping of snow, and the nonuniform snow unloading by the forest canopy (Hojatimalekshah et al., 2021). Methods that are available for analyzing spatial variation of the snowpack have their limitations and incorporating them into hydrological models is difficult. For example, interpolation techniques (Harshburger et al., 2010) for generating
40 snow water equivalent (SWE) maps at the watershed scale require a surface network of ground SWE measurements, which are frequently limited in number or are absent. Passive micro-wave sensors provide appropriate information on snow in areas with simple topography, but they do not work properly in higher elevations, typically underestimating SWE (Wrzesien et al., 2017). Moreover, their low spatial resolution requires appropriate downscaling approaches to bring the information to the watershed scale. GlobSnow (Luo et al., 2020), which is currently available as a global snow monitoring system, integrates passive
45 microwave remote sensing data from multiple satellites to provide near-real-time information on snow cover extent at a global scale. This valuable resource offers insights into the spatial distribution of snow cover across diverse regions. On one hand, and despite its easy accessibility, GlobSnow exhibits relatively coarse resolution (25 km * 25 km), thereby limiting its ability to capture fine-scale details. On the other hand, SNODAS (SNOW Data Assimilation System) (NOHRSC, 2004) represents a subsequent advancement that integrates passive microwave remote sensing data, ground measurements and weather data to
50 generate gridded snow data sets at a finer resolution (1 km* 1 km). The incorporation of various data sources and assimilation techniques into SNODAS enhances the quality and reliability of snow data, enabling more accurate hydrological modelling and facilitating rigorous scientific investigation.

SNODAS is a modelling and data assimilation system that had been developed by NOHRSC (National Operational Hydrologic Remote Sensing Center). It uses a physically-based mass and energy balance snow model that assimilates automated
55 ground, airborne measurements and satellite data (Zahmatkesh et al., 2019) to provide accurate estimates of snow cover and associated variables for hydrological modelling and analysis. The dataset includes snowpack properties such as depth and SWE, covering variables such as liquid precipitation, snowmelt runoff, temperature, and more (Barrett, 2003). It has provided daily, gridded data at a 1 km x 1 km spatial resolution for the USA since 2004 and for southern Canada since 2009.

60 Researchers used bias-corrected SNODAS SWE data in hydrological modelling, given that it provides more accurate and
reliable input data for the models whereas raw SNODAS data may contain errors and biases Zahmatkesh et al. (2019); King
et al. (2020). These errors and biases can adversely affect the accuracy of hydrological models that rely upon SNODAS data
as input. A study by Clow et al. (2012) concluded that SNODAS provides reasonably true estimates of SWE in forested
areas and can be used as observed data to calibrate hydrological models for moderate- to large-watersheds and for estimating
runoff forecasts. Zahmatkesh et al. (2019) demonstrated that bias-correcting SNODAS SWE products, which align with the
65 cumulative distribution function of interpolated SWE, improved the accuracy of the SNODAS products and enhanced model
performance in simulating peak values during hydrological modelling and streamflow simulation. Despite the high uncertainty
that is associated with SNODAS estimates in eastern Canadian watersheds, they remain valuable in regions with limited snow
stations. Bias correction of SNODAS data may not be possible in situations where there is a lack of ground-based measurements
or observations with which to compare the SNODAS data. Given the unavailability of observed SWE data in the study area,
70 Leach et al. (2018) applied a bias correction technique, which was originally used for SNODAS snow depth data, to adjust the
SNODAS SWE dataset, assuming a comparable level of relative bias between snow depth and SWE based upon their close
relationship with the observations. This paucity of data compels researchers to explore new methods that allow the use of
SNODAS data without relying upon traditional bias correction techniques.

This study addresses the need to investigate the feasibility and efficiency of employing raw SNODAS data for calibrating
75 hydrological models without bias correction, utilizing diverse objective functions, and evaluating the adequacy of the uncor-
rected SNODAS data in generating satisfactory results. The current research aims to bridge this gap by examining potential
approaches that would enhance the reliability and accuracy of model outputs when working with raw SNODAS data, thereby
contributing to the advancement of hydrological modelling techniques.

Distributed hydrological models, despite their capacity to mimic the spatial distribution of hydrological state variables and
80 fluxes, continue to be used mainly for their temporal characteristics of the aggregated streamflow variable (Demirel et al.,
2013; Schumann et al., 2013). Snow significantly influences the seasonal characteristics of streamflow, thereby affecting other
hydrological processes, such as erosion, water supply, and flood forecast. Given the importance of accurately representing snow
processes in snow-dominated watersheds, hydrological model calibration should not solely focus on streamflow but should
also account for snow dynamics (Troin and Caya, 2014; Hanzer et al., 2016; Tuo et al., 2018). Snow-related observations
85 are frequently utilized to improve hydrological model performance through calibration experiments (Roy et al., 2010; Parajka
and Blöschl, 2008; Di Marco et al., 2021). Hydrological model calibration in snow dominated regions is complex because
calibration based on snow variables does not necessarily lead to optimal parameters for streamflow and vice versa . Commonly
used hydrological models can accurately replicate streamflow observations by calibrating them with respect to streamflow
alone. However, they might struggle to properly capture state variables, particularly related to the snowpack (Duethmann
90 et al., 2014; Casson et al., 2018; Liu et al., 2020; Thornton et al., 2021). For example, the models are usually calibrated using
streamflow as the sole hydrological variable that is being simulated by the models, leaving other state variables, such as snow
and soil moisture unused in the calibration procedure. This is because spatially distributed observations traditionally have been
difficult to obtain. To improve the reliability of hydrological models, it is critical to assess the simulated patterns of model state

variables against spatially distributed observations. It is also important to ensure that the models can accurately reproduce the spatio-temporal dynamics of all relevant hydrological processes, leading to accurate streamflow forecasts (Kirchner, 2006).

The increased availability of remotely sensed observations has opened new doors in hydrological model calibration (e.g., snow cover, Terink et al. (2015); land surface temperature, Stisen et al. (2021)). The objective of this research is to investigate strategies that include distributed snow information in the calibration of a distributed hydrological model, with a specific focus upon understanding the influence of different objective functions on the calibration process. The selection of an appropriate set of objective functions is crucial, as it introduces trade-offs among model parameters that influence overall calibration performance and model accuracy.

A number of temporal metrics are available for comparing simulated versus observed hydrographs, but spatial distribution comparison is occasionally used (Rees, 2008; Koch et al., 2018). Moreover, the spatial information that is contained in the observed data is not optimally utilized, given that the model parameters are constrained against spatial observations. Spatial metrics generally assess grid-to-grid correlation, and deviations such as bias and Pearson's correlation coefficient R . Demirel et al. (2018) developed a new SPAtial EFficiency metric (SPAEF) with histogram matching to compare raster maps. The metric was later modified to include three different components, i.e., histogram intersection, variance and correlation, which offer bias-insensitive pattern information.

The primary objective in this study is to introduce spatial calibration with SWE data using newly developed metric SPAEF for the calibration of the HYDROTEL hydrological model. We applied SPAEF in combination with other traditionally used objective functions. We conducted seven distinct calibration experiments, each employing a unique combination of objective functions. This allowed us to assess the trade-offs and robustness of these various calibration scenarios by evaluating their performance in terms of both streamflow and spatial SWE patterns. Notably, while SPAEF has been previously applied in studies involving evapotranspiration (Demirel et al., 2018) and soil moisture (Eini et al., 2023), this study uses SPAEF with SWE for the first time.

2 Experimental Setup

2.1 Study site:

The Au Saumon watershed covers an area about 1120 km^2 and is located in the *Éstrie* region of Québec (eastern Canada). It is a snow-dominated watershed that is subject to different climate conditions (summers tend to be warm and humid, with heavy rainfall; winters are cold and snowy; spring is the snowmelt season, with frequent rainfall; and autumn is drier with cooler temperatures). The watershed has mostly a rolling topography. Elevation ranges from 240 m at the watershed outlet, further rising up to 1100 m in the southern and eastern portions due to presence of Mont Mégantic (Figure-1). This variation in elevation affects the spatial distribution of snow during winter, given that it affects temperatures. While rising to higher elevations, the temperature drops gradually, causing different patterns of melting and freezing in flat terrain and higher elevations. Vegetation cover in the watershed consists mainly of forests, i.e., 7% conifer, 32% deciduous, and 45% mixed forest. The remaining land cover consists of 9% crop lands, 2% urban, and about 5% wetlands, shrub lands and grasslands (Figure-1). Winter climate

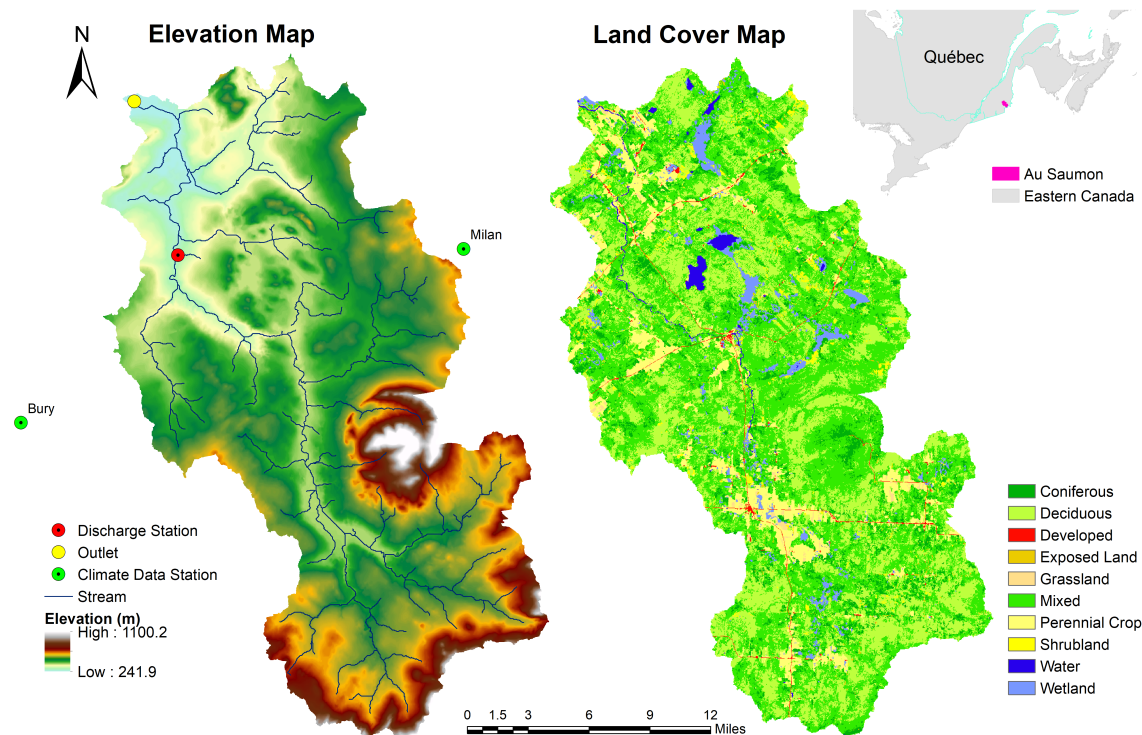


Figure 1. Au Saumon Watershed location, elevation, stream network, streamflow outlet and land cover

dominates this watershed with snow cover usually forming in late November or early December and ending in April. Average minimum and maximum air temperatures during winter are $-12\text{ }^{\circ}\text{C}$ and $-5\text{ }^{\circ}\text{C}$, respectively. Annual precipitation ranges from 1000 mm to 1200 mm (https://climate.weather.gc.ca/index_e.html), with about one-third falling as snow (Bergeron et al., 2014).

130 The parent material yields sandstone, limestone, and shale types of soils (silty-loams) (<https://sis.agr.gc.ca/cansis/>) (Seiller et al., 2012). There is one streamflow station (030282) as shown in Figure (1) (https://www.cehq.gouv.qc.ca/hydrometrie/historique_donnees/), with a drainage area of 769 km². There are no SWE data observation stations within the watershed; however, stations at Milan (station number:302060) and Bury (station number:302100) are located in close proximity to the watershed. These stations provide point data for SWE measurements (info-climat MELCCFP, 2020).

135 2.2 HYDROTEL Model:

The model that is selected for this study is a process-based, continuous, distributed hydrological model HYDROTEL, which was developed by Fortin et al. (1995). The model has been used in a number of watersheds to study different hydrological processes, including variation of SWE (Turcotte et al., 2007; Oreiller et al., 2014; Fossey et al., 2016; Augas et al., 2020) and flow forecasting (Turcotte et al., 2004; Abaza et al., 2014, 2015). HYDROTEL serves as the base model for Quebec's
 140 operational flow forecasting system. This model discretizes the watershed in several simulation units that are referred to as

Table 1. Lower and Upper Bounds of the parameters and Initial parameter values of base model

Parameters and their upper and lower bound (DDS/PADDS Algorithm)				Base Model
Parameter Name	Lower Bound	Initial value	Upper Bound	Parameter Value
1. Base refreezing temperature (mm/d)	-3	-1.65	2	-0.88
2. Temperature threshold for melt- Coniferous (°C)	-4	0.1	4	0.61
3. Temperature threshold for melt- Deciduous (°C)	-4	0.48	4	-0.08
4. Temperature threshold for melt- Open (°C)	-4	0.78	4	2.00
5. Melt factor for coniferous forests (mm/d per °C)	2	9.62	15	7.83
6. Melt factor for deciduous forests (mm/d per °C)	2	8.27	15	9.69
7. Melt factor for open areas (mm/d per °C)	2	11.42	15	5.00
8. Multiplication factor for PET	0.7	0.93	1.5	1.16
9. Depth of the first soil layer (m.)	0.01	0.11	0.2	0.02
10. Depth of the second soil layer (m.)	0.1	0.45	1.5	0.42
11. Depth of the third soil layer (m.)	1	4.97	7	1.00

relatively homogeneous hydrological units (RHHUs) and river reaches (Turcotte et al., 2001). The characteristics of each RHHU depend upon land cover, soil types and topography (Rousseau et al., 2011). HYDROTEL can be simulated on a daily basis (opted for this study) or in 3-hour time steps. In our study, the Au Saumon Watershed is subdivided into 205 RHHUs based upon the spatial distribution of land use, land cover, soil properties, slope and elevation. The mean surface area of the RHHUs is 4.5 km^2 .

HYDROTEL is composed of different modules, which run consecutively. The snow module uses a single-layer structure and is based upon a mixed degree-day / energy balance hybrid approach. Snowpack characteristics (water equivalent, thickness, mean density, liquid water content, thermal deficit, temperature) are simulated using a modified energy budget approach that was developed by Riley et al. (1972). Empirical relationships are used to produce air-snow and ground-snow interface melt, albedo evolution, compaction, and the liquid water that is retained by the snow cover (Turcotte et al., 2007). The modules selected in this study are the Thiessen polygon method for interpolation of meteorological variables (with vertical precipitation gradient of 1mm/100m and vertical temperature gradient of $-1^\circ\text{C}/100\text{m}$), the Rankine method for soil temperature, the Thornthwaite equation for potential evapotranspiration and a three-layer model (BV3C) for the vertical water budget in the soil column. The output flow is simulated using the kinematic wave equation, and the model is simulated on a daily basis.

Of all parameters that are available in different modules, a subset of 11 parameters was selected for model calibration, as listed in Table-1. They include seven snow-related parameters, three parameters for soil layer thickness of the 3-layer soil column, and one parameter for converting potential evapotranspiration (PET) into actual evapotranspiration. The snow-related parameters affect the variation of SWE in each RHHU, while the other parameters affect runoff that is generated by the model. These parameters are selected based on sensitivity analyses done in previous studies on different watersheds (Bouda et al., 2014; Huot et al., 2019; Lucas-Picher et al., 2020).

2.3 Meteorological and streamflow data

For this study, HYDROTEL is forced with spatially distributed meteorological precipitation and minimum and maximum temperature data. For precipitation, the data that are used are from MSWEP (Multi-Source Weighted-Ensemble Precipitation), which is a reanalysis product combining satellite data, gauge data and numerical weather model output. MSWEP is available globally on daily and 3-hour bases from 1979 until today (<http://www.gloh2o.org/mswep/>). Grid cell resolution of the data is 0.1 degrees, which is about 10 km at the equator. Overall, MSWEP offers superior performance compared to other data sets (e.g., ERA-5 interim, ERA-5, CHIRP, and others) (Beck et al., 2017; Xiang et al., 2021). ERA5-Land dataset is used for maximum and minimum air temperature. ERA5-Land has been produced by numerical integrations of the global high-resolution ECMWF land surface model with ERA5 climate reanalysis with elevation correction (Muñoz-Sabater et al., 2021) with grid cell resolution of 0.1 degrees (about 9 km native). The gridded data for both MSWEP precipitation data and ERA5-Land temperature data that were used in our study range from October 2000 to September 2020 and cover 45°10' N to 45°50' N and 71° W to 71°30' W. Observed daily streamflow data that were used for model calibration originate from the Ministère de l'Environnement, de la Lutte contre les changements climatiques, de la Faune et des Parcs station 030282 (NAD83; 45° 34' 48" // -71° 23' 6"). The streamflow station is Au Saumon (030282), which is located 1.9 km upstream from the watershed outlet (see Figure-1). The streamflow data is available on a daily basis from 1974 and onward.

SWE data from SNODAS are used as observed data for model calibration. Figure 2 represents the spatial distribution of average SWE for the month of March for the period 2015-2020 as obtained from SNODAS, together with the temporal maximum, minimum and average of SWE across the Au Saumon Watershed. It is clearly indicated in the figure that the spatial distribution varies from year to year, even when the spatially averaged values of SWE are in close agreement with each other. This is the case for years 2017 and 2018 and for years 2019 and 2020, where a difference of about 10 mm in average SWE in March is observed. In this study, average SWE of March is selected for the spatial calibration experiment (SPAEF calculation) as it is the month of maximum snow and maximum snow variability (transition from winter to spring, an important period when snowmelt processes are distinct). For our study, model calibration was performed for the period spanning 2014 to 2020, given that SNODAS data for the Au Saumon region are available from 2014 onwards, while model validation of streamflow only was conducted for the period ranging from 2001 to 2013.

3 Methodology

Hydrological models are typically calibrated using a single objective function, which focuses on only one aspect of the hydrological features, i.e., streamflow (Tolson and Shoemaker, 2007). As hydrological models have multiple outputs, this draws attention towards using a multi-objective approach to explore the various hydrological information that is stored in hydrological data and, thus, moving toward a multi-objective model calibration. Several studies conducted in the past suggest that optimizing two or more objective functions simultaneously may provides a better overall calibrated hydrological model (Efstratiadis and Koutsoyiannis, 2010; Adeyeri et al., 2020; Budhathoki et al., 2020). To evaluate the added-value of calibration taking into account spatial variation of the snow, different calibration experiments are performed using search algorithms,

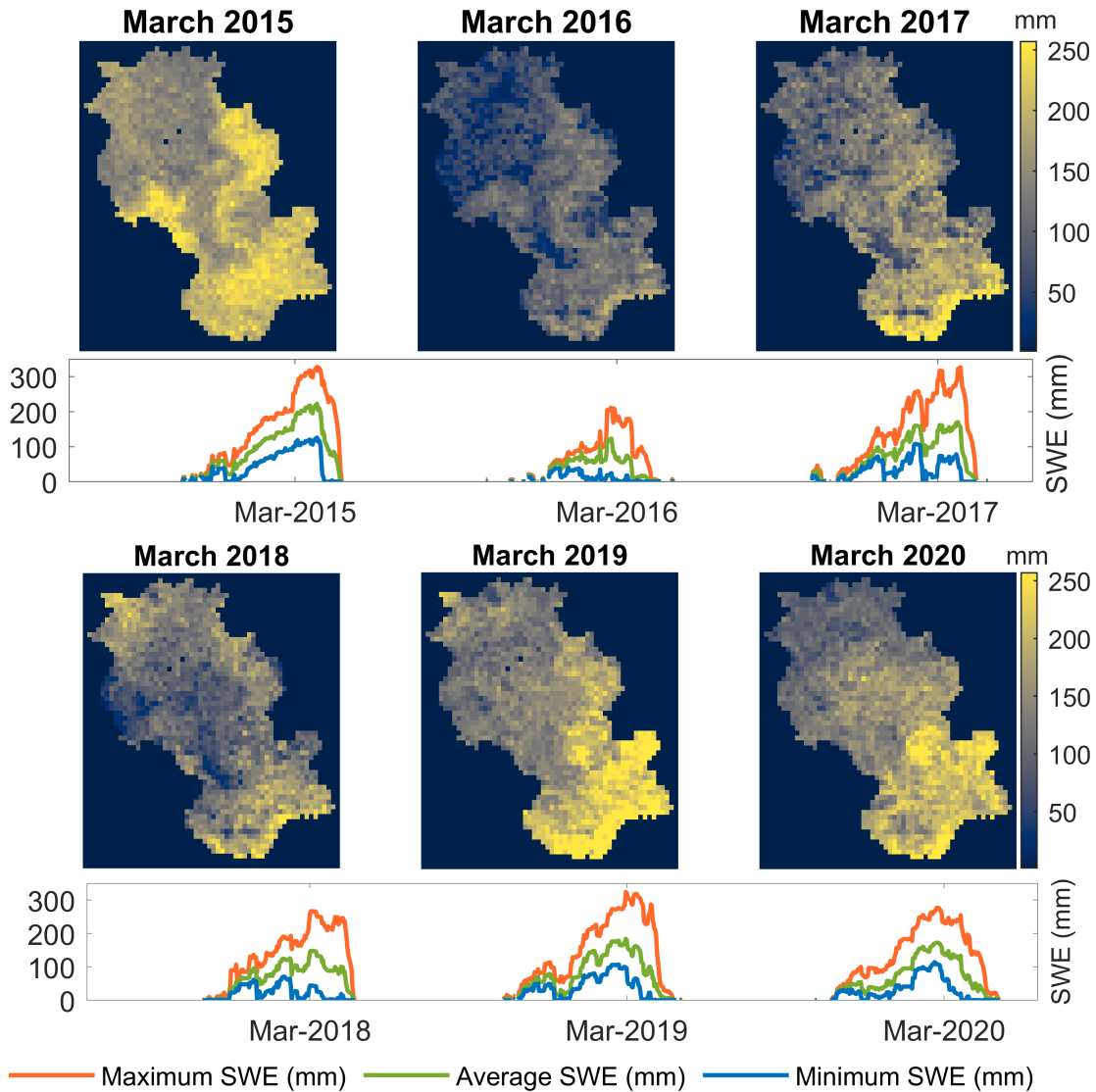


Figure 2. Spatially distributed average SWE for March, together with maximum, minimum and mean SWE for years 2015 to 2020

DDS (Dynamically Dimensioned Search) (Tolson and Shoemaker, 2007) for single objective function, and PADDs (Pareto
 195 Archived Dynamically Dimensioned Search) (Asadzadeh and Tolson, 2013) for multi-objective functions, with the distributed
 hydrological model HYDROTEL (Fortin et al., 2001) to optimize model performance. DDS is a global optimization algorithm
 for automatic calibration of hydrological models (Tolson and Shoemaker, 2007), which optimizes one objective function at
 a time without requiring algorithm parameter tuning. In contrast, PADDs is a multi-objective dynamic algorithm that uses
 DDS as a search engine to optimize multiple objective functions by perturbing one non-dominated solution every iteration
 200 and archiving all non-dominated solutions throughout the search. PADDs algorithm offers multiple selection metrics function

for example Random selection, Crowding distance (CD), Hypervolume Contribution (HVC) and Convex Hull Contribution (CHC). To learn more about these metrics please refer to Jahanpour et al. (2018) and Tolson and Jahanpour (2018). In this study, the HVC selection metric was chosen for the PADDs multiobjective calibration method. The effectiveness of this metric has been demonstrated in previous research (Asadzadeh and Tolson, 2013). When used with multi-objective functions the HVC
205 measures the increase in hypervolume achieved by adding a solution to an existing set and explores the Pareto front, which represents a range of optimal trade-off solutions, by dynamically adjusting the dimensionality of the search space. Solutions with higher HVC values are prioritized to improve the coverage of the Pareto front, enhancing the overall quality of the calibration process. In this study, DDS is used when only one objective function is used at a time for calibration, i.e., first three experiments, while PADDs is used to optimize the model with two or more objective functions simultaneously. This article
210 focuses on utilizing the spatially distributed snow information to calibrate the model to achieve better model performance with respect to both SWE and streamflow. A total of 1000 iterations were conducted for both DDS and PADDs to optimize parameter values. The objective functions that are used during calibration are NSE (Nash-Sutcliffe Efficiency) for streamflow, RMSE (Root-Mean-Square Error) for optimization of SWE over each RHHUs (relatively homogeneous hydrological units), and SPAEF (spatial efficiency metric) for spatially distributed optimization of SWE. As NSE cannot be spatialized but can only
215 be calculated on the average SWE over the watershed, here we preferred RMSE as an objective function to calibrate SWE, because it can be applied to each RHHU (spatially) and not only on the average SWE. In addition, Kling-Gupta Efficiency (KGE) is utilized for validation purposes. The supplementary material of this article presents a thorough analysis of the trade-offs between different objectives: NSE_Q and $RMSE_{SWE}$, and NSE_Q and $SPAEF_{SWE}$. Readers are encouraged to refer to the supplementary section for an in-depth exploration of these trade-offs and gain valuable insights about the performance of the
220 algorithm with respect to the mentioned objectives.

The objective functions selected for this study and the optimization algorithms are now presented in the next section.

3.1 Objective Functions used in the study

In this study, the NSE, RMSE and SPAEF are employed as objective functions for calibration, while the KGE is used for validation of the model. By using these three objective functions, various calibration experiments were designed to assess the
225 strengths and weaknesses of each experiment in evaluating overall model performance.

NSE (Equation-1) is used to evaluate the predictive skill of hydrological models. It basically compares error variance of the simulated time-series, which are typically flow data, with the magnitude of the observed time-series.

$$NSE = 1 - \frac{\sum_{t=1}^T (Q_o^t - Q_m^t)^2}{\sum_{t=1}^T (Q_o^t - \bar{Q}_o)^2} \quad (1)$$

where Q_o is observed discharge, \bar{Q}_o is the mean of observed discharges, and Q_m is modeled discharge.

230 The efficiency ranges from $-\infty$ to 1. The value of NSE is maximized during model calibration. In this study, the NSE is calculated between the observed flow at discharge station and the simulated flow at the corresponding RHHU.

RMSE (Equation- 2) is the standard deviation of prediction errors.

$$RMSE = \sqrt{\sum_t^N \sum_i^{RHHU} \frac{(SWE_HYDROTEL_{RHHU,t} - SWE_SNODAS_{RHHU,t})^2}{N \cdot RHHU}} \quad (2)$$

Where t is the time step, and N is the number of time steps when HYDROTEL or SNODAS have a non-zero SWE value. $SWE_HYDROTEL$ is the SWE computed by HYDROTEL for each RHHU and time step, and SWE_SNODAS is the average SWE of SNODAS over the RHHU for each time step. In this study, the RMSE is calculated for each of the 205 RHHUs within the Au Saumon watershed. The spatial RMSE values are calculated by comparing the SNODAS SWE and the simulated Hydrotel SWE. Subsequently, the RMSE is minimized to enhance the model's performance.

SPAEF (Equation-3) is a metric that is used to assess the spatial performance of a model, as opposed to NSE and RMSE, which are used to evaluate temporal model performance. SPAEF has been developed to calibrate distributed hydrological models so as to better represent the spatial variability of hydrological processes (Demirel et al., 2018; Koch et al., 2018; Demirel, 2020). In our study, SPAEF is used for assessing spatial patterns of SWE. SPAEF is calculated according to the following equation:

$$SPAEF = 1 - \sqrt{(A - 1)^2 + (B - 1)^2 + (C - 1)^2} \quad (3)$$

where

$$A = \rho(\text{obs}, \text{sim}) \quad B = \left(\frac{\sigma_{\text{sim}}}{\mu_{\text{sim}}} \right) / \left(\frac{\sigma_{\text{obs}}}{\mu_{\text{obs}}} \right) \quad C = \frac{\sum_{j=1}^n \min(K_j, L_j)}{\sum_{j=1}^n K_j}$$

A is the Pearson correlation coefficient between the observed and simulated pattern, B is the fraction of the coefficient of variation representing spatial variability, C is the histogram intersection for the histogram L of the simulated pattern and the given histogram K of the observed pattern, each containing n bins. The value of SPAEF ranges between $-\infty$ and 1. A SPAEF value equal to 1 means that the simulated pattern perfectly matches the observed pattern, while a value of 0 means that there is no agreement between the predicted pattern and the observed pattern, which indicates that the model's predictions are entirely inaccurate and do not align with the observed data. An advantage of SPAEF is that it equally balances three distinct individual metrics (A , B and C above) that individually would not appropriately characterize spatial patterns. For example, Koch et al. (2018) show good correlations may occur between observed and simulated patterns, while a visual interpretation of the patterns suggests this is not the case. Using a multiple-component metric, such as SPAEF, helps disentangling such inconsistencies. Koch et al. (2018) used SPAEF to calibrate the meso-scale Hydrological Model (mHM) for spatial distributions of actual evapotranspiration (AET). The study highlighted the importance of incorporating spatial observations in model calibration, since different ET patterns were obtained for similar simulated streamflow time-series, depending upon the objective function that was used in the calibration process.

SPAEF formulation is inspired by Kling–Gupta efficiency (Equation-4) that is characterized by equally weighted components of variability, correlation and bias (Gupta et al., 2009), and is used frequently to evaluate streamflow simulations. In this study,

SPAEF is used for calibrating the HYDROTEL model with respect to the spatial distribution of SWE. Given that Au Saumon is a snow-dominated watershed during winters and the maximum snow that is accumulated during the month of March, it was selected for spatial calibration. While calibrating the model using SPAEF, spatial grid is utilized. The SWE values from SNODAS are in a 60*58 grid for Au Saumon watershed. For spatial calibration, the mean SWE of each grid for the month of March are taken into account. This resulted in 60*58 spatially distributed SWE values for each calibration year. Subsequently, the SWE simulated by HYDROTEL for the same month (March) is transformed to match the same 60*58 spatial distribution of SWE values. These spatial patterns, representing SWE, are then calibrated using the SPAEF

Other metric used in this study: One other metric KGE (Kling–Gupta efficiency) is computed for all the calibration experiments. It has been used to assess overall model performance for the various calibration scenarios that were investigated in this study.

$$KGE = 1 - \sqrt{(R - 1)^2 + \left(\frac{\sigma_{sim}}{\sigma_{obs}} - 1\right)^2 + \left(\frac{\mu_{sim}}{\mu_{obs}} - 1\right)^2} \quad (4)$$

KGE is calculated as Equation-4, where R is the Pearson correlation coefficient between observed and simulated streamflow time-series, σ_{obs} is the standard deviation in observations, σ_{sim} the standard deviation in simulations, μ_{sim} is the simulated mean streamflow, and μ_{obs} is the observed mean streamflow.

3.2 Proposed Calibration approach

Seven different experiments were set up, with each experiment being characterized by a unique combination of objective functions and calibration strategy (see Table 2). All calibration experiments were performed on the base model, which is defined as model that was run with some random value without prior knowledge based upon previous studies done on similar catchments. Initial parameter values of HYDROTEL (the base model) are presented in Table 1. HYDROTEL was calibrated over a 6-year period, from October 2014 to September 2020. Prior to model calibration, a 2-year warm-up period was set up to avoid any effects of initial model conditions on its results during calibration. Validation extends from 2001 to 2014. In addition to data availability, one important aspect for choosing the calibration period was to include winter seasons that were characterized by low, average and high SWE values. Winters in 2019 and 2020 especially were considered as high- and low-winter seasons, with corresponding basin-averaged SNODAS SWE values of 156.05 mm and 86.26 mm, respectively, at the onset of the spring melt season. The number of iterations also was fixed (1000) for each calibration for comparison. Lower and upper bounds of the parameters that were used in all calibration experiments are presented in Table 1.

Table 2 presents all calibration experiments that were performed in this research. The first calibration experiment, hereafter denoted as the Standard Experiment, refers to the traditional calibration process that was based upon maximizing NSE_Q , which was calculated with simulated and observed streamflow time-series. In this experiment, all 11 parameters that are listed in Table 1 are optimized using the DDS algorithm. Experiments 2 and 3 consist of adding SWE information during the calibration procedure. This is done by sequentially calibrating HYDROTEL, first by adjusting the snow-related parameters (parameters 1 to 7, see Table 1) to minimize $RMSE_{SWE}$ (Experiment 2) or to maximize $SPAEF_{SWE}$ (Experiment 3) using DDS, after which

Table 2. Calibration experiments with their corresponding objective functions that were used

Objective Function used →	NSE_Q	$RMSE_{SWE}$	$SPAEF_{SWE}$
Calibrated Variables →	Streamflow	Average SWE	Spatial SWE
Experiment- 1 (Standard)	✓		
Experiment- 2 (Sequential)	✓*	✓*	
Experiment- 3 (Sequential)	✓*		✓*
Experiment- 4 (Pareto)	✓	✓	
Experiment- 5 (Pareto)	✓		✓
Experiment-6 (Pareto sequential)	✓*	✓*	✓*
Experiment- 7 (Pareto Front)	✓	✓	✓
✓* Streamflow is calibrated with NSE_Q sequentially after optimizing SWE with either $RMSE_{SWE}$ or $SPAEF_{SWE}$.			

the runoff-related parameters (8 to 11) are adjusted with NSE_Q for streamflow, again using DDS, while the snow parameters are left unchanged. Experiment 4 and 5 consists of adding both streamflow and SWE information once with average information of SWE (Experiment 4) and once with spatial information of SWE (Experiment 5) in the calibration procedure. This was achieved by maximizing NSE_Q and minimizing $RMSE_{SWE}$ at once (Experiment 4), and by maximizing both NSE_Q and $SPAEF_{SWE}$ (Experiment 5) using PADDs. Experiment 6 consists of adding both spatial and average SWE information in the calibration procedure. This is done by sequentially calibrating HYDROTEL, first by adjusting the snow-related parameters to minimize $RMSE_{SWE}$ and maximize $SPAEF_{SWE}$ together using PADDs, after which NSE_Q for streamflow was maximized while the snow parameters are left unaltered. In Experiment 7, all 11 parameters are optimized while maximizing NSE_Q for streamflow and $SPAEF_{SWE}$ for spatial information of SWE and minimizing $RMSE_{SWE}$ for average information of snow.

4 Results

Values of the objective functions for each of the calibration/validation experiments are summarized in Table 3. The values of objective functions NSE_Q , $RMSE_{SWE}$ and KGE_Q corresponding to the base model are 0.630, 48.83 mm and 0.806, respectively. Using the same base model would be helpful in evaluating whether the calibration performed is adequate for the model's performance. When the model is calibrated with respect to SWE (for both average and spatial calibration), parameters from 1 to 7 are calibrated; when calibrating with respect to streamflow, all the 11 parameters are considered.

The first experiment is standard practice for calibrating hydrological models. The simulated streamflow in the Standard Experiment generally follows the same temporal pattern for all calibrated years as does the observed streamflow, but the model has some difficulties in capturing peak streamflow (Figure 3). More specifically, the model generated more streamflow during winter 2020 (Jan to April 2020). The observed discrepancy between the simulated and observed streamflow during different seasons indicates potential inadequacy of the model in effectively representing the complex hydrological processes occurring during various seasons, including snowmelt and spring runoff. For the study period, rain-on-snow events are identified based

Table 3. All Calibration Experiments with their corresponding parameters and objective function values

Parameters	Calibration Experiments (2014-2020)						
	DDS			PADDS			
	1.	2.	3.	4.	5.	6.	7.
	NSE_Q	$RMSE_{SWE}$	$SPAEF_{SWE}$	NSE_Q , $RMSE_{SWE}$	NSE_Q , $SPAEF_{SWE}$	$RMSE_{SWE}$, $SPAEF_{SWE}$	NSE_Q , $RMSE_{SWE}$, $SPAEF_{SWE}$
1. Base refreezing temperature (mm/d)	-1.049	-1.138	-1.879	-2.174	-1.737	-1.782	-1.896
2. Temperature threshold for melt- Coniferous (°C)	0.827	-4	3.374	0.695	2.817	2.483	1.806
3. Temperature threshold for melt- Deciduous (°C)	0.241	4	-1.797	-0.838	-3.391	-3.116	-1.778
4. Temperature threshold for melt- Open (°C)	-1.28	4	-2.224	-2.767	-2.987	-3.913	0.542
5. Melt factor for coniferous forests (mm/d per °C)	13.591	15	13.732	5.515	11.443	13.055	9.445
6. Melt factor for deciduous forests (mm/d per °C)	3.913	15	11.465	10.350	6.312	7.859	10.916
7. Melt factor for open areas (mm/d per °C)	9.841	15	13.395	9.891	4.929	13.950	13.340
8. Multiplication factor for PET	1.031	1.166*	1.039*	1.047	1.034	1.322*	1.086
9. Depth of the first soil layer (m.)	0.003	0.003*	0.003*	0.003	0.003	0.003*	0.001
10. Depth of the second soil layer (m.)	0.501	0.474*	0.339*	0.251	0.261	0.401*	0.433
11. Depth of the third soil layer (m.)	2.095	3.932*	1.000*	1.068	1.000	3.175*	7.000
NSE_Q	0.762	0.575	0.737	0.721	0.750	0.687	0.754
$RMSE_{SWE}$ (mm)	45.35	35.74	39.38	39.09	40.53	38.89	40.15
$SPAEF_{SWE}$	0.192	0.072	0.232	0.091	0.229	0.244	0.216
KGQ	0.772	0.658	0.764	0.721	0.775	0.820	0.805
* These values are obtained after sequential calibration with NSE							
Validation (2001-2013)							
NSE_Q	0.735	0.595	0.726	0.719	0.749	0.679	0.741
KGQ	0.684	0.504	0.708	0.687	0.766	0.659	0.676

Table 4. SPAEF_{SWE} values for each year from each experiment with best value of 0.437 (Exp 1-2017) and worst value of -0.270 (Exp 2-2020)

Year	Base Model	Exp- 1	Exp- 2	Exp- 3	Exp- 4	Exp- 5	Exp-6	Exp- 7
2015	0.298	0.262	0.175	0.240	-0.071	0.232	0.231	0.137
2016	0.255	0.317	0.000	0.300	0.205	0.332	0.345	0.324
2017	0.313	0.437	0.170	0.323	0.389	0.391	0.389	0.413
2018	-0.037	0.051	0.080	0.138	0.093	0.062	0.130	0.081
2019	0.100	0.116	0.275	0.252	0.147	0.223	0.278	0.217
2020	-0.057	-0.030	-0.270	0.137	-0.216	0.134	0.091	0.123

315 upon the occurrence of precipitation during winter months, along with a decrease in snow depth, coupled with a maximum
temperature that exceeds 0°C. Within this experiment, the model demonstrates the capability to identify melting patterns during
rain-on-snow events. However, it exhibits limitations in accurately capturing both high and low peaks of SWE (Figure 4). As
rain-on-snow events during winter produce runoff, the model tends to interpret these as streamflow. Simulated streamflow is
relatively similar to the observed streamflow after the events. For the calibration period, values of 0.762 and 0.772 are obtained
320 in this experiment for NSE_Q and KGE_Q , respectively. When compared with the base model, the NSE_Q value is improved (from
0.630 to 0.762), which is expected given that NSE_Q is the objective function. The KGE_Q value slightly declined from 0.806
to 0.772, suggesting a slight decrease in hydrological model simulation accuracy, indicating a potential mismatch between
observed and simulated hydrographs. The model is validated for the 2001-2013 period, and the NSE_Q value that was obtained
is 0.735, thereby indicating good agreement between observed and simulated streamflow values. The KGE_Q value that was
325 obtained is 0.684, which suggests moderate agreement during the validation period. The spatially averaged $RMSE_{SWE}$ value of
SWE for the watershed with respect to SNODAS-SWE is 45.35 mm. Figure 4 indicates that HYDROTEL tends to overestimate
SWE compared to SNODAS, except for year 2020. During this year, the model generates notably higher streamflow in winter
(Figure 3) compared to the observed data. Either insufficient winter precipitation in the hydrological model or inaccurate
temperature data for the year 2020 could be contributing factors to this issue. Upon comparing precipitation data for 2020
330 with precipitation that was obtained from meteorological stations, discrepancies were observed in the MSWEP precipitation
data, particularly some missing peaks during the winter season. These discrepancies in the precipitation data could potentially
contribute to the unusual output that was observed in the study. Through the comparative analysis of SWE data that were
collected from the Milan (elevation: 496 m) and Bury (elevation: 340 m) stations, it suggests that the calibrated model exhibits
a tendency to closely correspond with the values that were obtained from Milan, a station that was characterized by a higher
335 elevation. This response suggests the substantial influence of the elevation factor on the model simulations. SPAEF is computed
for SWE for the month of March for each year of the calibration period and varies from -0.030 for 2020 to 0.437 for 2017
(Table 4), indicating that the success at simulating the spatial SWE patterns by HYDROTEL is highly variable from year to
year.

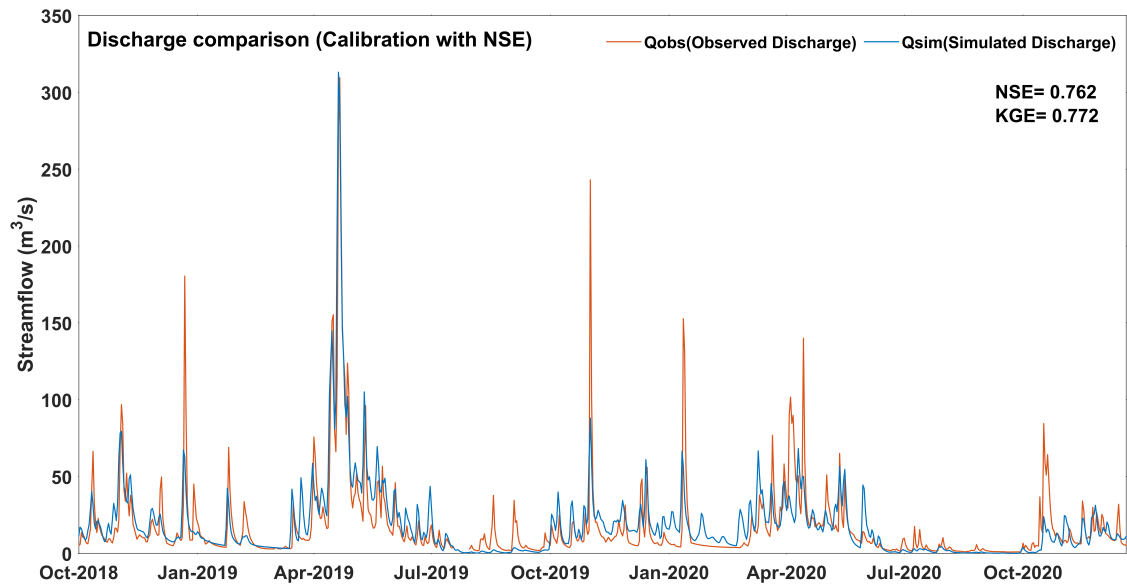


Figure 3. Comparison of observed streamflow with simulated streamflow for Experiment 1

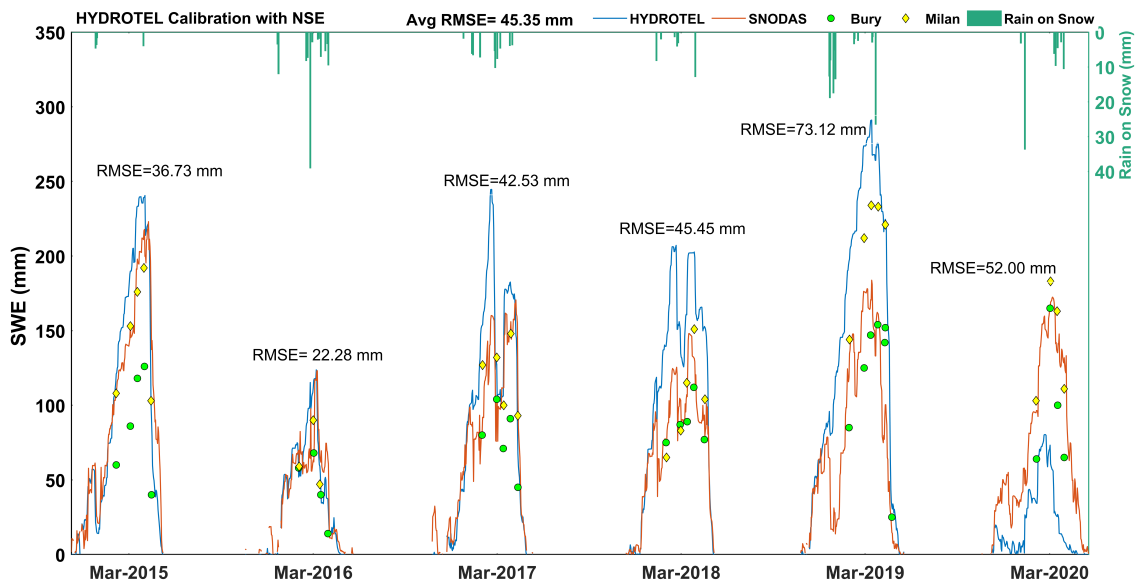


Figure 4. Comparison of SNODAS SWE with simulated SWE for Experiment 1 along with station data

In Experiment 2, all snow-related parameters are first calibrated using $RMSE_{SWE}$ with spatially averaged (considering the SWE values for each RHHUs for whole calibration period then averaging), modelled and SNODAS SWE followed by calibration of the remaining parameters with NSE_Q applied to streamflow. The average $RMSE_{SWE}$ value after calibration is

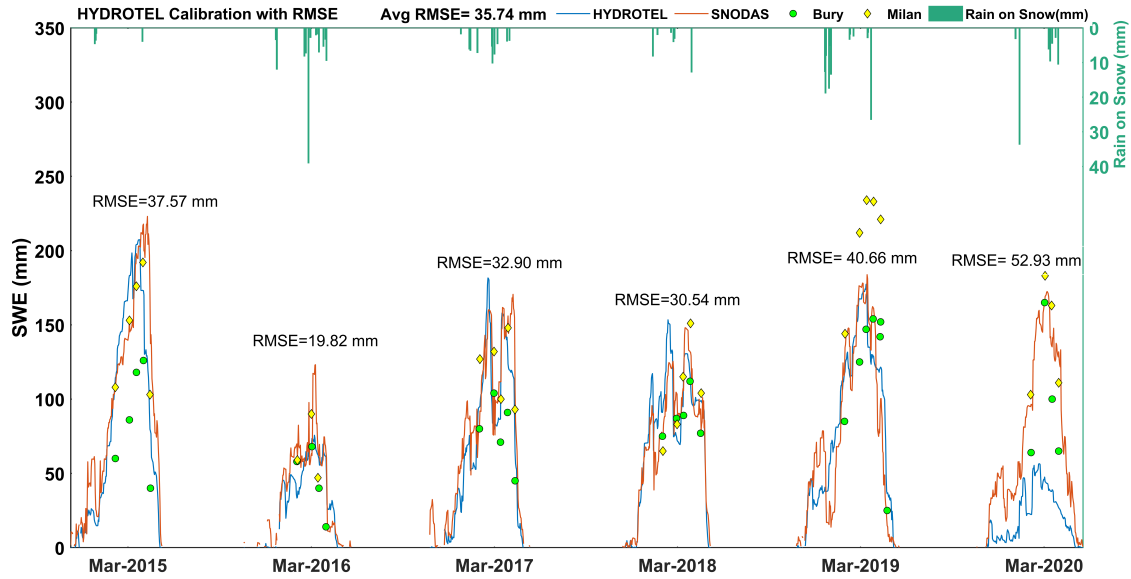


Figure 5. Comparison of SNODAS SWE with simulated SWE for Experiment 2 along with station data

35.74 mm, which is considerably improved compared with the Standard Calibration experiment. Indeed, Figure 5 effectively shows that simulated SWE more closely matches SNODAS SWE compared to the Standard Experiment. Note that for both experiments, HYDROTEL significantly underestimates snow accumulation for winter 2020. The cause for this discrepancy remains consistent with the previously discussed reasons. NSE_Q for streamflow after sequential calibration is 0.575 and KGE_Q value is 0.658, which are considerably lower than corresponding values for the Standard Experiment. The model was thus able to improve simulated basin average SWE, but at the expense of a deterioration of the simulated streamflow. During rain on snow events in winter, the model is able to produce the peaks of SWE, but it is unable to capture accurately the associated melting patterns. Moreover, spatial distribution values of SWE varied from -0.270 (for March 2020) to 0.275 (for March 2019) (Table 4). The average $SPAEF_{SWE}$ value is much lower compared to values obtained with the Standard Experiment. In other words, spatial heterogeneity of the snowpack deteriorates when calibration is performed with the average SWE value.

Instead of trying to preserve the best temporal dynamics of basin-averaged SWE, Experiment 3 attempts to maintain its spatial distribution at the end of the snow-accumulation season using SNODAS-SWE. This is accomplished by incorporating $SPAEF_{SWE}$ as the objective function for SWE for calibrating snow-related parameters, followed NSE_Q for streamflow to adjust the remaining parameters. Unsurprisingly, the March $SPAEF_{SWE}$ value averaged over years 2015-2020 increased to 0.232, when compared to 0.192 and 0.072 for experiments 1 and 2, respectively (Table 3). Figure 6 depicts the relationship between the spatial distribution of SNODAS and HYDROTEL and the corresponding $SPAEF_{SWE}$ value. The results indicate that a greater spatial difference between SNODAS and HYDROTEL leads to a negative $SPAEF_{SWE}$ value. Conversely, when the spatial distribution of both datasets is similar, $SPAEF_{SWE}$ approaches 1. The figure displays the maximum 0.437 (year-

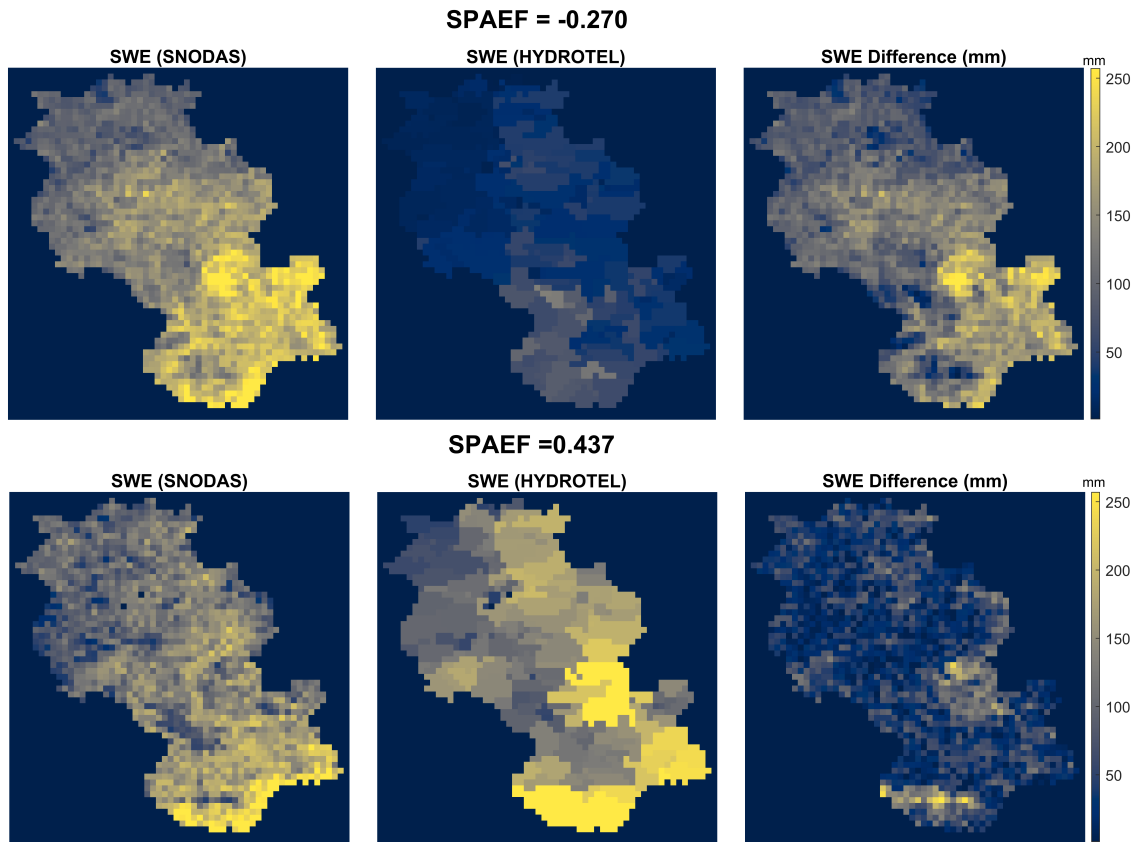


Figure 6. Spatially distributed SWE values of SNODAS and HYDROTEL, along with corresponding SWE differences for minimum (-0.270 Experiment- 2 year 2020) and maximum (0.437 Experiment- 1 year 2017) SPAEF_{SWE} values for Au Saumon Watershed.

360 2017- Experiment 1) and minimum -0.270 (year-2020- Experiment 2) values of SPAEF_{SWE} that were obtained during the calibration experiment.

Overall, calibrating HYDROTEL using SPAEF_{SWE} helped preserve SWE spatial heterogeneity that was simulated by the model. Also, year-to year variability in SPAEF_{SWE} is reduced, as SPAEF_{SWE} varied from 0.137 (Mar 2020) to 0.323 (March 2017). A year-to-year comparison of spatial SWE reveals that calibrating the model with SPAEF_{SWE} degraded SWE distribution in some years, e.g., 0.300 (March 2016) and 0.240 (March 2015). This means that spatial integrity of the SWE value is
 365 occasionally compromised using the calibration strategy. A detrimental effect of calibrating the model with SPAEF_{SWE} is that average SWE value is overestimated by model as compared to observed average value (Figure 7). Correspondingly, average RMSE_{SWE} is 39.38 mm, which is higher than the value that is obtained when the model is calibrated using RMSE_{SWE} as the objective function. The sequential calibration with NSE_Q yields a value of 0.737. The KGE_Q value is 0.764, which is better
 370 than what is achieved in Experiment 2. This suggests that using spatial distribution to calibrate snow parameters apparently provides better results for streamflow than using average SWE value to calibrate snow parameters. Interestingly, both experiments

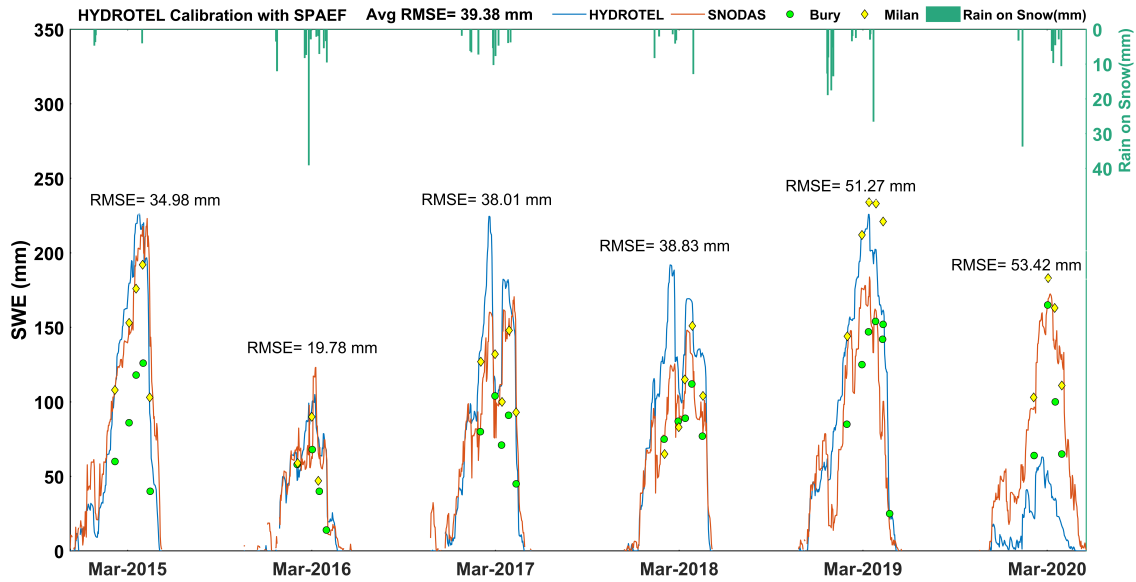


Figure 7. Comparison of SNODAS SWE with simulated SWE for Experiment 3 along with station data

1 and 3 overestimated spatially averaged SWE, but the sequential calibration strategy provided a good match between simulated versus observed flows, given that NSE_Q and KGE_Q values for experiments 3 and 1 are comparable. From an experimental perspective, it is worth noting that in Experiment 3, the spatial distribution of SWE, i.e., the $SPAEF_{SWE}$ value, exhibits better improvement when compared to the standard practice. Although the temporal dynamics of spatially averaged SWE are well preserved in Experiment 2, the flow-related model parameters could not be properly calibrated to obtain a good fit between observed and simulated flows. Perhaps this is due to the spatial invariance of these parameters, to the sequential modelling strategy, or both. In order to investigate the latter, experiments were performed in which NSE_Q , $RMSE_{SWE}$ or $SPAEF_{SWE}$ are

380 In Experiment 4, NSE_Q for streamflow and $RMSE_{SWE}$ for SWE are optimized together using PADDs. The maximum value of NSE_Q is 0.721, while $RMSE_{SWE}$ is 39.09 mm, which shows improvement compared to the Standard Experiment (Experiment 1) in terms of $RMSE_{SWE}$. Upon comparison with the sequentially calibrated Experiment 2, an improvement was observed in the NSE_Q and $SPAEF_{SWE}$ values, coupled with a decrease in $RMSE_{SWE}$. Surprisingly, the comparison between Experiment 3 and 4 suggests that sequential calibration of the hydrological model using $SPAEF_{SWE}$ results in better model

385 performance in terms of NSE_Q , $SPAEF_{SWE}$, and KGE_Q , in contrast to multi-objective calibration with NSE_Q and $RMSE_{SWE}$. $SPAEF_{SWE}$ of SWE varied from -0.216 (for March 2020) to 0.389 (for March 2017), with an average 0.091 for all calibrated years, which is higher than the value that was obtained using $RMSE_{SWE}$ and NSE_Q in a sequential calibration strategy (0.072). In other words, opting for a simultaneous $RMSE_{SWE}$ - NSE_Q calibration improved the spatial SWE distribution compared to a sequential calibration strategy. The value remains below that obtained in Experiment 3 (0.232).

390 In Experiment 5, NSE_Q is used to optimize streamflow and $SPAEF_{SWE}$ for spatial SWE together. The optimized solution yields NSE_Q of 0.750 and a KGE_Q of 0.775. Spatial distribution of SWE varied from 0.062 (for March 2018) to 0.391 (for March 2017). The average $SPAEF_{SWE}$ value that was obtained for all calibrated years is 0.229. When compared with standard calibration (Experiment 1), the spatial distribution of SWE is improved (from 0.192 to 0.229), together with $RMSE_{SWE}$ (from 45.35 mm to 40.53 mm), while NSE_Q of Experiment 5 is comparable with standard calibration with an improved KGE_Q value.

395 Upon comparing experiments 5 and 3, where $SPAEF_{SWE}$ is calibrated followed sequentially by NSE_Q , a slight improvement in NSE_Q is noted. Yet, $SPAEF_{SWE}$ and $RMSE_{SWE}$ appear to be compromised. Here, sequential calibration using $SPAEF_{SWE}$ results in superior performance for $RMSE_{SWE}$ and $SPAEF_{SWE}$, whereas multi-objective calibration jointly yields a better performance measure for NSE_Q . Comparing the results to Experiment 4, where NSE_Q is calibrated with $RMSE_{SWE}$, it is observed that NSE_Q , KGE_Q and $SPAEF_{SWE}$ are improved in Experiment 5, while $RMSE_{SWE}$ results are comparable. This

400 again suggests that using $SPAEF_{SWE}$ to calibrate spatially distributed SWE is more advantageous than using $RMSE_{SWE}$ to calibrate spatially averaged SWE when employing multi-objective functions with NSE_Q .

In Experiment 6, both $RMSE_{SWE}$ for spatially averaged SWE and $SPAEF_{SWE}$ for spatial distributed SWE are first optimized simultaneously using PADDs to calibrate HYDROTEL's snow-related parameters, followed by maximizing NSE_Q for streamflow to calibrate the remaining flow-related parameters. After calibration, the best value for $RMSE_{SWE}$ is 38.89 mm,

405 while $SPAEF_{SWE}$ values ranged from 0.091 (for March 2020) to 0.389 (for March 2017), with an average value of 0.244. Sequential calibration with NSE_Q provided NSE_Q value of 0.687 for streamflow and a KGE_Q value of 0.820. In comparison to experiments 4 and 5, NSE_Q has decreased substantially while the KGE_Q value has increased substantially. This suggests that model performance has improved in terms of capturing the overall pattern of the observed data, although the accuracy in fitting individual data points may have declined slightly. In Experiment 6, a significant improvement is noted for $SPAEF_{SWE}$, with a

410 slight decrease in $RMSE_{SWE}$ compared to Experiment 4. This suggests that by sequentially calibrating both $SPAEF_{SWE}$ and $RMSE_{SWE}$ followed by NSE_Q , the model is able to capture the spatial distribution of both SWE and streamflow. Yet, it should be noted that model's fitness to individual data points might not be captured accurately. In Experiment 6, slight improvement in $SPAEF_{SWE}$ was noted, with a slight decrease in $RMSE_{SWE}$, but a significant reduction in NSE_Q as compared to Experiment 5. This implies that calibrating $SPAEF_{SWE}$ and NSE_Q together is a better approach than sequential calibration of $SPAEF_{SWE}$

415 and $RMSE_{SWE}$, followed by NSE_Q under the considered model setting.

As the last step in calibration trial, all objective functions were calibrated together using the PADDs algorithm. NSE_Q after optimization is 0.754, KGE_Q is 0.805, and $RMSE_{SWE}$ is 40.15 mm. Spatial distribution of SWE varied from 0.081 (for March 2018) to 0.413 (for March 2017). The average $SPAEF_{SWE}$ value for all calibrated years is 0.216. When compared to the standard experiment, Experiment 7 outperforms in terms of $RMSE_{SWE}$, $SPAEF_{SWE}$ and KGE_Q , while NSE_Q remains

420 comparable in both cases. Among other experiments, Experiment 7 shows better performance when compared to experiments 2 and 4, while results from experiment, 3 and 5 are comparable to Experiment 7. By comparing Experiment 6 where NSE_Q is sequentially calibrated with $RMSE_{SWE}$ and $SPAEF_{SWE}$, and Experiment 7 where all three functions are calibrated together, we conclude that calibrating together provides better results for NSE_Q and comparable results for other objective functions.

In comparing all calibration strategies during validation, NSE_Q values for the experiments could be ordered: 5, 7, 1, 3, 4, 6, and 2. KGE values > 0.75 are generally considered to be indicative of good model performance, as noted in previous studies (Towner et al., 2019). Upon analyzing the results in calibration experiments, most are found to have KGE values greater than 0.75 for the calibration period; the exceptions are the second (calibration with $RMSE_{SWE}$ and sequential NSE_Q) and fourth (calibration with $RMSE_{SWE}$ and NSE_Q simultaneously) experiments. This suggests that calibration in these experiments is satisfactory, and the model is expected to perform well. The validation results from the years 2001-2013 were analyzed for the best model performance with respect to KGE_Q . Experiment 5 had the highest KGE_Q indicating the best model performance. Experiment 3 followed closely behind, while experiments 1, 4 and 7 produced nearly identical results. In contrast, experiments 2 and 6 had poor performance in terms of KGE_Q . A noticeable feature of $SPAEF_{SWE}$ is the amount of time that is required for calibration, together with the number of iterations to reach the best value. In this study, iterations were set at same number to maintain comparable scenarios, while the duration of spatial calibration was twice as long as the remaining experiments.

5 Discussion

Analysis of parameter variations following calibration revealed consistent values for the base refreezing temperature, the PET parameter, and depth of the first two soil layers across multiple calibrations. Yet, variation was observed in the temperature thresholds for melt, melt factor, and thickness of the third soil layer among experiments, particularly for Experiment 2. In the initial phase of calibration experiments, several trial and error runs were conducted to determine parameter boundaries, while simultaneously reviewing relevant literature, which enhanced understanding and accuracy through comprehensive parameter exploration. Experiment 2, which used $RMSE_{SWE}$ and NSE_Q sequentially, consistently reached the parameter bounds for temperature thresholds and melt factors. Depending upon the land use, temperature threshold values also show opposite values, i.e., $-4\text{ }^\circ\text{C}$ for conifers versus $4\text{ }^\circ\text{C}$ for deciduous and open areas. This means that there are areas with a lot of snow and others with very little snow in the watershed based on land use, which does not represent the accurate spatial distribution of snow for this watershed. The watershed exhibits a significant predominance of coniferous vegetation, leading to a lower temperature threshold in Experiment 2 compared to the other experiments. Experiment 1 overestimates SWE compared to SNODAS. By decreasing the temperature at which melting begins for a large portion of the watershed, Experiment 2 decreases the overall quantity of snow to levels closer to SNODAS values. Yet, the spatial distribution of snow is not respected. Therefore, it is not recommended that parameters using $RMSE_{SWE}$ and NSE_Q be calibrated sequentially.

As the research objective, this study evaluated the practicality of using raw SNODAS data for hydrological model calibration. A number of researches have been done previously using bias corrected SNODAS and raw SNODAS information. King et al. (2020) revealed a significant enhancement in area melt estimates during the spring melt when utilizing bias-corrected SNODAS-SWE data compared to raw SNODAS estimates, which exhibited unrealistic melt volumes. The study's comparisons with in situ SWE measurements demonstrated that nonlinear bias-correction techniques notably improve the accuracy of SNODAS SWE estimates. Zahmatkesh et al. (2019) showcased that bias-correcting SNODAS SWE significantly enhanced the accuracy of lumped models, contrasting with raw SNODAS SWE, which resulted in overestimated streamflow and peak

flow values. A significant limitation in bias correcting SNODAS data lies in the absence of substantial data (Zahmatkesh et al., 2019). Given its specific focus, bias correction of the SNODAS data was not within the scope of the study. As a result, raw SNODAS data were employed for analysis of SWE, and both RMSE and SPAEF were utilized as objective functions to calibrate SWE in the model. In Experiment 2, $RMSE_{SWE}$ can drive the parameters to extreme values, given that it treats all data points equally irrespective of their location in the distribution. If there are extreme values in the observed data, the model can be calibrated to fit those values, even if they do not represent the overall distribution. This can lead to poor model performance when applied to new data or different conditions. The sensitivity of RMSE to outliers is a common concern while using it in calibration. Outliers can significantly impact RMSE calculations, and their likelihood of occurrence aligns with the normal distribution that underlies RMSE (Chai and Draxler, 2014). When model biases are pronounced, it may be necessary to address these systematic errors before calculating RMSE. However, the bias insensitivity of SPAEF offers a valuable solution to this challenge (Koch et al., 2018). SPAEF mitigates the impact of uncertainties in observations, providing a more robust and stable approach to model calibration and evaluation. In such situations, SPAEF may be a more reasonable option to achieve good calibration of SWE when bias correction of data is not feasible.

Our study focuses to incorporate snow spatial information for hydrological model calibration. A novel spatial efficiency metric called SPAEF was utilized in conjunction with other objective functions, i.e., RMSE and NSE. NSE was employed as an objective function for streamflow. It enables direct evaluation of model performance against the inherent benchmark of $NSE = 0$, which corresponds to the mean flow. Alongside other metrics, KGE was computed for both calibration and validation. Knoben et al. (2019) suggested that KGE values falling within the range of $-0.41 < KGE \leq 1$ can be considered reasonable for hydrological modelling. This indicated a satisfactory representation of the observed data, taking into account the limitations and uncertainties that were associated with the model and data. Consequently, KGE was utilized as a performance metric to compare validation results, with Table 3 summarizing the corresponding parameter values for each calibration experiment. Based upon the comparison of validation results using KGE_Q , it is evident that incorporating spatial calibration with $SPAEF_{SWE}$ in conjunction with NSE_Q (in both simultaneous and sequential calibrations) yields better outcomes compared to utilizing $RMSE_{SWE}$ as one of the objective functions or using NSE_Q as only objective function.

Looking at first three experiments, it can be inferred that the sequential calibration of NSE following the calibration of spatially distributed SWE with $SPAEF_{SWE}$ yields outcomes that exhibit better acceptability as the overall model performance is enhanced. The reason for this is that calibrating SWE captures the spatial variability of the snowpack, which is a crucial factor in hydrological processes. Calibrating NSE_Q subsequently ensures that the model can capture temporal variation of the flow. Therefore, the sequential calibration approach leads to better results that are acceptable in terms of overall model performance. When comparing results of calibration with $RMSE_{SWE}$ and calibration with $SPAEF_{SWE}$, followed by sequential NSE_Q calibration, it is evident that $SPAEF_{SWE}$ yields better results than $RMSE_{SWE}$. The distribution of snow is not uniform everywhere; therefore, spatially distributed SWE calibration captures the heterogeneity of the snow distribution within the basin, whereas spatially averaged snow calibration assumes that snow is uniformly distributed throughout the basin, which is not always the case in mountainous terrain where snow can accumulate in complex patterns. Thus, spatially distributed

SWE calibration provides a more accurate estimate of the actual snow distribution in the basin, which leads to better model performance in predicting streamflow.

In a comparative analysis of hydrological model calibration procedures, (Tuo et al., 2018) examined the effectiveness of different calibration approaches. Their study focused upon the multi-objective calibration method, specifically incorporating the optimization of sub-basin average snow water equivalent (SWE) and streamflow. The results demonstrated that this multi-objective approach outperformed single-objective procedures in accurately simulating snow dynamics, which aligns with our study. Building upon these findings, our study extended the calibration process by further incorporating both spatially averaged and spatially distributed data for SWE. Notably, our results highlighted the superiority of calibrating the model using spatially distributed information rather than relying solely upon average information. Considering the spatial distribution of SWE data leads to improved model performance and more accurate simulations.

Focusing upon multi-objective calibrations, experiments 4 and 5 also backs up the aforementioned argument that using SPAEF_{SWE} with NSE_Q yields better results than using RMSE_{SWE} with NSE_Q. Based upon the comparisons made between experiments 2 vs. 4, 3 vs. 5, and 6 vs. 7, it is evident that calibrating the objective functions simultaneously yields superior model performance compared to the sequential calibration of the objectives. Specifically, experiments 4, 5 and 7, which employ the simultaneous calibration of objective functions that were considered, exhibit improved model performance when compared to experiments 2, 3 and 6, which adopt a sequential calibration approach. The study that was conducted by Finger et al. (2015) showcased the benefits of calibrating a hydrological model using multiple data sets, thereby leading to improved estimation of runoff contribution. This finding is consistent with the current study, which highlights calibrating both SWE and streamflow as yielding superior results. From our study, it can be concluded that simultaneous calibration of objective functions is a superior approach to sequential calibration, given that sequential calibration can lead to overfitting of the model to the specific objective function being calibrated. In turn, this can result in poor model performance when evaluating other objective functions. Furthermore, sequential calibration may result in a trade-off between objective functions, which may not be optimal for overall model performance. When all objective functions are calibrated simultaneously, it allows for a more balanced calibration and can provide better overall model performance. It also helps avoiding overfitting to any single objective function and provides a more comprehensive understanding of the model's behaviour.

For this study, March was selected for SPAEF calibration as it is the month with the highest SWE. Our objective was to leverage the maximum SWE information available during this period. However, we recognize that March, despite having the highest SWE, also overlaps with the snow melting period, which could potentially influence the calibration of our analysis. We performed additional analyses using data from January and February, and the results demonstrated that SPAEF performs well with data from both these months. We believe that further research is necessary, with different watersheds and periods used to compute SPAEF, to more accurately understand SPAEF's performance during the onset of snow accumulation and the snowmelt period. The detailed results of these additional calibrations can be found in the supplementary material, providing a comprehensive view of the model's performance.

6 Conclusions

525 Hydrological models are subject to continuous development, becoming more sophisticated over time, as a result of advancements in computational resources, and a better understanding of hydrological processes. These models are not merely tools for estimating runoff; rather, they encompass simulation of complex processes that involve state variables contributing to the generation of runoff. The satellite input data, which is used to drive these models, is available at high temporal (ranging from daily to hourly) and spatial resolutions (up to a kilometer scale). Integration of comprehensive spatial data that are acquired
530 from remote sensing platforms offers tremendous opportunities for further advancements in hydrological modelling.

This article analyzes different calibration experiments of the HYDROTEL distributed hydrological model for the Au Saumon Watershed. HYDROTEL includes modules that permit high-resolution discretization of the basin, river streams, lake inflow, river flow, and gridded observed meteorological data, making it a suitable model for the calibration experiment. The key aspect of this calibration experiment is the incorporation of the spatial efficiency metric SPAEF as an objective function. The study
535 explored this newly developed spatial distribution metric in the calibration and validation of distributed hydrological models and compared results with previously used calibration strategies. SPAEF has been used previously with evapotranspiration in various studies, but this study introduces SPAEF with SWE for the first time. The comparison of different calibration strategies on the Au Saumon Watershed highlights these important findings.

- Calibrating only streamflow is not ideal for distributed hydrological model. It is recommended that snow variables
540 such as snow water equivalent (SWE) also be calibrated, especially in areas where snow accumulation can be spatially heterogeneous.
- Sequential calibration of objective functions (e.g., calibrating using NSE after calibrating with SPAEF) may not always result in better model performance compared to calibrating all objective functions simultaneously, especially when considering multiple objective functions. Sequential calibration of objective functions is not recommended, as it may result
545 in sub-optimal model performance.
- Spatially distributed SWE calibration is preferred over spatially averaged calibration, given that the former captures heterogeneity of snow distribution in different land covers and provides more accurate estimates of SWE across the basin.
- Raw SNODAS data has the potential for enhancing the model's accuracy and reliability by incorporating the spatial
550 variability of snow distribution.

The present experiments demonstrate that although researchers tend to focus upon obtaining decent model output by optimizing a single objective function, this approach may not provide entirely reliable results. Therefore, using multiple objective functions to optimize different processes simultaneously can lead to better results. In this study, the importance of incorporating the spatial calibration metric SPAEF is highlighted. Spatial calibration of snow variables provides better results when
555 compared to averaging the variables. To further understand the spatial metric, it is necessary to investigate spatial variability

and SPAEF by applying and comparing it to other catchments or models. Calibrating a distributed model and increasing its spatial predictability requires more than just an appropriate spatial performance indicator. It necessitates the use of a flexible model structure and parameterization in conjunction with other metrics to enable simulated patterns to be modified meaningfully. Achieving this requires reliable geographic measurements at an appropriate scale, thorough assessment of catchment morphology, and high-quality forcing data.

Based upon our findings, it is evident that spatial calibration of a distributed hydrological model, HYDROTEL, yields satisfactory results and enhances its robustness and coherence with other hydrological processes. Our study aims to encourage the modelling community to reconsider their methodologies by focusing upon relevant metrics that emphasize spatial patterns characterizing hydrological processes during calibration or validation studies. The upcoming Terrestrial Snow Mass Mission (TSMM) satellite mission (low-cost, low-mass, spaceborne Ku-band SAR system that is being developed by the Canadian Space Agency (Derksen et al., 2021)) seeks to offer high-resolution and spatially distributed information on SWE. Consequently, to optimize hydrological model performance, calibration procedures that account for both conventional streamflow and spatial SWE should be considered.

The study, while conducted for a single watershed, contributes in our understanding of SPAEF's performance in hydrological modeling of snow-dominated watershed. However, it also reveals the need for further research. The utilization of different precipitation and temperature datasets as input data can significantly impact the performance of hydrological models. Variations in these datasets, which may arise from differences in data collection methods, spatial resolution, and temporal coverage, can affect the reliability and accuracy of hydrological predictions. The distinct characteristics of each watershed, including size, slope, altitude and land used can have a substantial impact on the snow accumulation and melt processes. Therefore, it is essential to broaden this research to include different watersheds and various input data to validate and generalize our findings. Moreover, snow accumulation and melt do not occur uniformly throughout the year but happen in distinct periods. Our study focused on the month of maximum SWE (March), but the accumulation and melt periods of the snow season are both important. Future studies should consider different snow periods to gain a better understanding of SPAEF's performance. Finally, the choice of input data (precipitation and temperature) can have impact of the spatial distribution of snow variables simulated by the model.

Code and data availability. The SPAEF code that is used in this study for spatial performance metrics is available at <https://github.com/cuneyd/spaef>. The data that are used in this study are openly available for download from the respective websites: <https://cds.climate.copernicus.eu>, <https://www.gloh2o.org/mswep/>, and <https://nsidc.org/data/g02158/versions/1>.

Author contributions. Dipti Tiwari (DT), Mélanie Trudel (MT) and Robert Leconte (RL) designed the study. DT collected data, performed the calibration and validation study and drafted the manuscript. MT and RL assisted in structuring the article. The editing of the article, as well as the discussion and interpretation of the findings, were all co-authored.

Competing interests. The authors declare that they have no conflicts of interest.

Acknowledgements. The authors would like to thank our industrial partners Hydro-Québec, Brookfield and Ville de Sherbrooke and express their gratitude to Info-Climat for providing station data for SWE. Funding for this work was provided by the Natural Sciences and Engineering
590 Research Council of Canada (NSERC). The authors acknowledge the editor and two anonymous reviewers for their valuable and constructive feedback.

References

- Abaza, M., Anctil, F., Fortin, V., and Turcotte, R.: Sequential streamflow assimilation for short-term hydrological ensemble forecasting, *Journal of Hydrology*, 519, 2692–2706, 2014.
- 595 Abaza, M., Anctil, F., Fortin, V., and Turcotte, R.: Exploration of sequential streamflow assimilation in snow dominated watersheds, *Advances in water resources*, 86, 414–424, 2015.
- Adeyeri, O., Laux, P., Arnault, J., Lawin, A., and Kunstmann, H.: Conceptual hydrological model calibration using multi-objective optimization techniques over the transboundary Komadugu-Yobe basin, Lake Chad Area, West Africa, *Journal of Hydrology: Regional Studies*, 27, 100 655, 2020.
- 600 Ala-Aho, P., Autio, A., Bhattacharjee, J., Isokangas, E., Kujala, K., Marttila, H., Menberu, M., Meriö, L., Postila, H., Rauhala, A., et al.: What conditions favor the influence of seasonally frozen ground on hydrological partitioning? A systematic review, *Environmental Research Letters*, 16, 043 008, 2021.
- Asadzadeh, M. and Tolson, B.: Pareto archived dynamically dimensioned search with hypervolume-based selection for multi-objective optimization, *Engineering Optimization*, 45, 1489–1509, 2013.
- 605 Augas, J., Abbasnezhadi, K., Rousseau, A. N., and Baraer, M.: What is the trade-off between snowpack stratification and simulated snow water equivalent in a physically-based snow model?, *Water*, 12, 3449, 2020.
- Barrett, A. P.: National Operational Hydrologic Remote Sensing Center SNOW Data Assimilation System (SNODAS) products at NSIDC, National Snow and Ice Data Center, Cooperative Institute for Research in Environmental Sciences, University of Colorado, Boulder, Colorado, USA, 2003.
- 610 Beck, H. E., Vergopolan, N., Pan, M., Levizzani, V., Van Dijk, A. I., Weedon, G. P., Brocca, L., Pappenberger, F., Huffman, G. J., and Wood, E. F.: Global-scale evaluation of 22 precipitation datasets using gauge observations and hydrological modeling, *Hydrology and Earth System Sciences*, 21, 6201–6217, 2017.
- Bergeron, J., Royer, A., Turcotte, R., and Roy, A.: Snow cover estimation using blended MODIS and AMSR-E data for improved watershed-scale spring streamflow simulation in Quebec, Canada, *Hydrological Processes*, 28, 4626–4639, 2014.
- 615 Bouda, M., Rousseau, A. N., Gumiere, S. J., Gagnon, P., Konan, B., and Moussa, R.: Implementation of an automatic calibration procedure for HYDROTEL based on prior OAT sensitivity and complementary identifiability analysis, *Hydrological Processes*, 28, 3947–3961, 2014.
- Budhathoki, S., Rokaya, P., Lindenschmidt, K.-E., and Davison, B.: A multi-objective calibration approach using in-situ soil moisture data for improved hydrological simulation of the Prairies, *Hydrological Sciences Journal*, 65, 638–649, 2020.
- 620 Buttle, J. M., Allen, D. M., Caissie, D., Davison, B., Hayashi, M., Peters, D. L., Pomeroy, J. W., Simonovic, S., St-Hilaire, A., and Whitfield, P. H.: Flood processes in Canada: Regional and special aspects, *Canadian Water Resources Journal/Revue canadienne des ressources hydriques*, 41, 7–30, 2016.
- Casson, D. R., Werner, M., Weerts, A., and Solomatine, D.: Global re-analysis datasets to improve hydrological assessment and snow water equivalent estimation in a sub-Arctic watershed, *Hydrology and Earth System Sciences*, 22, 4685–4697, 2018.
- 625 Chai, T. and Draxler, R. R.: Root mean square error (RMSE) or mean absolute error (MAE)?—Arguments against avoiding RMSE in the literature, *Geoscientific model development*, 7, 1247–1250, 2014.
- Clark, M. P., Hendrikx, J., Slater, A. G., Kavetski, D., Anderson, B., Cullen, N. J., Kerr, T., Örn Hreinsson, E., and Woods, R. A.: Representing spatial variability of snow water equivalent in hydrologic and land-surface models: A review, *Water Resources Research*, 47, 2011.

- Clow, D. W., Nanus, L., Verdin, K. L., and Schmidt, J.: Evaluation of SNODAS snow depth and snow water equivalent estimates for the Colorado Rocky Mountains, USA, *Hydrological Processes*, 26, 2583–2591, 2012.
- Demirel, M. C.: SPAEF version 2.0, GitHub. GEUS, Copenhagen, Denmark, <https://doi.org/10.5281/zenodo.5861253>, 2020.
- Demirel, M. C., Booij, M. J., and Hoekstra, A. Y.: Effect of different uncertainty sources on the skill of 10 day ensemble low flow forecasts for two hydrological models, *Water Resources Research*, 49, 4035–4053, 2013.
- Demirel, M. C., Mai, J., Mendiguren, G., Koch, J., Samaniego, L., and Stisen, S.: Combining satellite data and appropriate objective functions for improved spatial pattern performance of a distributed hydrologic model, *Hydrology and Earth System Sciences*, 22, 1299–1315, 2018.
- Derksen, C., King, J., Belair, S., Garnaud, C., Vionnet, V., Fortin, V., Lemmetyinen, J., Crevier, Y., Plourde, P., Lawrence, B., et al.: Development of the terrestrial snow mass mission, in: 2021 IEEE International Geoscience and Remote Sensing Symposium IGARSS, pp. 614–617, IEEE, 2021.
- DeWalle, D. R. and Rango, A.: *Principles of Snow Hydrology*, Cambridge University Press, 2008.
- Di Marco, N., Avesani, D., Righetti, M., Zaramella, M., Majone, B., and Borga, M.: Reducing hydrological modelling uncertainty by using MODIS snow cover data and a topography-based distribution function snowmelt model, *Journal of Hydrology*, 599, 126 020, 2021.
- Duethmann, D., Peters, J., Blume, T., Vorogushyn, S., and Güntner, A.: The value of satellite-derived snow cover images for calibrating a hydrological model in snow-dominated catchments in Central Asia, *Water resources research*, 50, 2002–2021, 2014.
- Efstratiadis, A. and Koutsoyiannis, D.: One decade of multi-objective calibration approaches in hydrological modelling: a review, *Hydrological Sciences Journal–Journal Des Sciences Hydrologiques*, 55, 58–78, 2010.
- Eini, M. R., Massari, C., and Piniewski, M.: Satellite-based soil moisture enhances the reliability of agro-hydrological modeling in large transboundary river basins, *Science of the Total Environment*, 873, 162 396, 2023.
- Finger, D., Vis, M., Huss, M., and Seibert, J.: The value of multiple data set calibration versus model complexity for improving the performance of hydrological models in mountain catchments, *Water Resources Research*, 51, 1939–1958, 2015.
- Fortin, J.-P., Moussa, R., Bocquillon, C., and Villeneuve, J.-P.: Hydrotel, un modèle hydrologique distribué pouvant bénéficier des données fournies par la télédétection et les systèmes d’information géographique, *Revue des sciences de l’eau*, 8, 97–124, 1995.
- Fortin, J.-P., Turcotte, R., Massicotte, S., Moussa, R., Fitzback, J., and Villeneuve, J.-P.: Distributed watershed model compatible with remote sensing and GIS data. I: Description of model, *Journal of Hydrologic Engineering*, 6, 91–99, 2001.
- Fossey, M., Rousseau, A. N., and Savary, S.: Assessment of the impact of spatio-temporal attributes of wetlands on stream flows using a hydrological modelling framework: a theoretical case study of a watershed under temperate climatic conditions, *Hydrological Processes*, 30, 1768–1781, 2016.
- Frampton, A., Painter, S. L., and Destouni, G.: Permafrost degradation and subsurface-flow changes caused by surface warming trends, *Hydrogeology Journal*, 21, 271, 2013.
- Gupta, H. V., Kling, H., Yilmaz, K. K., and Martinez, G. F.: Decomposition of the mean squared error and NSE performance criteria: Implications for improving hydrological modelling, *Journal of Hydrology*, 377, 80–91, 2009.
- Hanzer, F., Helfricht, K., Marke, T., and Strasser, U.: Multilevel spatiotemporal validation of snow/ice mass balance and runoff modeling in glacierized catchments, *The Cryosphere*, 10, 1859–1881, 2016.
- Harshburger, B. J., Humes, K. S., Walden, V. P., Blandford, T. R., Moore, B. C., and Dezzani, R. J.: Spatial interpolation of snow water equivalency using surface observations and remotely sensed images of snow-covered area, *Hydrological Processes: an International Journal*, 24, 1285–1295, 2010.

- Hiemstra, C. A., Liston, G. E., and Reiners, W. A.: Snow redistribution by wind and interactions with vegetation at upper treeline in the Medicine Bow Mountains, Wyoming, USA, *Arctic, Antarctic, and Alpine Research*, 34, 262–273, 2002.
- Hojatimalekshah, A., Uhlmann, Z., Glenn, N. F., Hiemstra, C. A., Tennant, C. J., Graham, J. D., Spaete, L., Gelvin, A., Marshall, H.-P., McNamara, J. P., et al.: Tree canopy and snow depth relationships at fine scales with terrestrial laser scanning, *The Cryosphere*, 15, 2187–2209, 2021.
- 670 Huot, P.-L., Poulin, A., Audet, C., and Alarie, S.: A hybrid optimization approach for efficient calibration of computationally intensive hydrological models, *Hydrological Sciences Journal*, 64, 1204–1222, 2019.
- info-climat MELCCFP: Ministère de l'Environnement et de la Lutte contre les changements climatiques, Données du Réseau de surveillance du climat du Québec, Direction de la qualité de l'air et du climat, Québec., <https://www.environnement.gouv.qc.ca/climat/surveillance/index.asp>, accessed: Date you accessed the webpage, 2020.
- 675 Jafarov, E. E., Coon, E. T., Harp, D. R., Wilson, C. J., Painter, S. L., Atchley, A. L., and Romanovsky, V. E.: Modeling the role of preferential snow accumulation in through talik development and hillslope groundwater flow in a transitional permafrost landscape, *Environmental Research Letters*, 13, 105 006, 2018.
- Jahanpour, M., Tolson, B. A., and Mai, J.: PADDIS algorithm assessment for biobjective water distribution system benchmark design problems, *Journal of Water Resources Planning and Management*, 144, 04017 099, 2018.
- 680 King, F., Erler, A. R., Frey, S. K., and Fletcher, C. G.: Application of machine learning techniques for regional bias correction of snow water equivalent estimates in Ontario, Canada, *Hydrology and Earth System Sciences*, 24, 4887–4902, 2020.
- Kirchner, J. W.: Getting the right answers for the right reasons: Linking measurements, analyses, and models to advance the science of hydrology, *Water resources research*, 42, 2006.
- 685 Knoben, W. J., Freer, J. E., and Woods, R. A.: Inherent benchmark or not? Comparing Nash–Sutcliffe and Kling–Gupta efficiency scores, *Hydrology and Earth System Sciences*, 23, 4323–4331, 2019.
- Koch, J., Demirel, M. C., and Stisen, S.: The SPAtial Efficiency metric (SPAEF): Multiple-component evaluation of spatial patterns for optimization of hydrological models, *Geoscientific Model Development*, 11, 1873–1886, 2018.
- Leach, J. M., Kornelsen, K. C., and Coulibaly, P.: Assimilation of near-real time data products into models of an urban basin, *Journal of Hydrology*, 563, 51–64, 2018.
- 690 Liu, Z., Yin, J., and E. Dahlke, H.: Enhancing Soil and Water Assessment Tool Snow Prediction Reliability with Remote-Sensing-Based Snow Water Equivalent Reconstruction Product for Upland Watersheds in a Multi-Objective Calibration Process, *Water*, 12, 3190, 2020.
- Lucas-Picher, P., Arsenault, R., Poulin, A., Ricard, S., Lachance-Cloutier, S., and Turcotte, R.: Application of a High-Resolution Distributed Hydrological Model on a US-Canada Transboundary Basin: Simulation of the Multiyear Mean Annual Hydrograph and 2011 Flood of the Richelieu River Basin, *Journal of Advances in Modeling Earth Systems*, 12, e2019MS001 709, 2020.
- 695 Luoju, K., Pulliainen, J., Takala, M., Lemmetyinen, J., and Moisaner, M.: GlobSnow v3.0 snow water equivalent (SWE), <https://doi.org/10.1594/PANGAEA.911944>, 2020.
- Markhali, S. P., Poulin, A., and Boucher, M.-A.: Spatio-temporal discretization uncertainty of distributed hydrological models, *Hydrological Processes*, 36, e14 635, 2022.
- 700 Marsh, P., Pomeroy, J., Pohl, S., Quinton, W., Onclin, C., Russell, M., Neumann, N., Pietroniro, A., Davison, B., and McCartney, S.: Snowmelt processes and runoff at the arctic treeline: ten years of MAGS research, *Cold Region Atmospheric and Hydrologic Studies. The Mackenzie GEWEX Experience: Volume 2: Hydrologic Processes*, pp. 97–123, 2008.

- Mohammed, A. A., Pavlovskii, I., Cey, E. E., and Hayashi, M.: Effects of preferential flow on snowmelt partitioning and groundwater recharge in frozen soils, *Hydrology and Earth System Sciences*, 23, 5017–5031, 2019.
- 705 Muñoz-Sabater, J., Dutra, E., Agustí-Panareda, A., Albergel, C., Arduini, G., Balsamo, G., Boussetta, S., Choulga, M., Harrigan, S., Hersbach, H., et al.: ERA5-Land: A state-of-the-art global reanalysis dataset for land applications, *Earth System Science Data*, 13, 4349–4383, 2021.
- NOHRSC: SNODAS (Snow Data Assimilation System)- Data Products at National Operational Hydrologic Remote Sensing Center, National Snow and Ice Data Center, Version 1, <https://doi.org/10.7265/N5TB14TC>, 2004.
- 710 Oreiller, M., Nadeau, D. F., Minville, M., and Rousseau, A. N.: Modelling snow water equivalent and spring runoff in a boreal watershed, James Bay, Canada, *Hydrological processes*, 28, 5991–6005, 2014.
- Parajka, J. and Blöschl, G.: The value of MODIS snow cover data in validating and calibrating conceptual hydrologic models, *Journal of hydrology*, 358, 240–258, 2008.
- Rees, W.: Comparing the spatial content of thematic maps, *International Journal of Remote Sensing*, 29, 3833–3844, 2008.
- 715 Riley, J. P., EK, I., and KO, E.: Some approaches to snowmelt prediction., in: *The Role of snow and ice in hydrology: proceedings of the Banff Symposia*, vol. 2, pp. 956–971, 1972.
- Roach, J., Griffith, B., Verbyla, D., and Jones, J.: Mechanisms influencing changes in lake area in Alaskan boreal forest, *Global Change Biology*, 17, 2567–2583, 2011.
- Rousseau, A. N., Fortin, J.-P., Turcotte, R., Royer, A., Savary, S., Quévy, F., Noël, P., and Paniconi, C.: PHYSITEL, a specialized GIS
720 for supporting the implementation of distributed hydrological models, *Water News-Official Magazine of the Canadian Water Resources Association*, 31, 18–20, 2011.
- Roy, A., Royer, A., and Turcotte, R.: Improvement of springtime streamflow simulations in a boreal environment by incorporating snow-covered area derived from remote sensing data, *Journal of hydrology*, 390, 35–44, 2010.
- Schumann, G.-P., Neal, J. C., Voisin, N., Andreadis, K. M., Pappenberger, F., Phanthuwongpakdee, N., Hall, A. C., and Bates, P. D.: A first
725 large-scale flood inundation forecasting model, *Water Resources Research*, 49, 6248–6257, 2013.
- Seiller, G., Anctil, F., and Perrin, C.: Multimodel evaluation of twenty lumped hydrological models under contrasted climate conditions, *Hydrology and Earth System Sciences*, 16, 1171–1189, 2012.
- Singh, V. P. and Woolhiser, D. A.: Mathematical modeling of watershed hydrology, *Journal of Hydrologic Engineering*, 7, 270–292, 2002.
- Stisen, S., Soltani, M., Mendiguren, G., Langkilde, H., Garcia, M., and Koch, J.: Spatial patterns in actual evapotranspiration climatologies
730 for Europe, *Remote Sensing*, 13, 2410, 2021.
- Terink, W., Lutz, A. F., Simons, G. W. H., Immerzeel, W. W., and Droogers, P.: SPHY v2. 0: Spatial processes in hydrology, *Geoscientific Model Development*, 8, 2009–2034, 2015.
- Thornton, J. M., Brauchli, T., Mariethoz, G., and Brunner, P.: Efficient multi-objective calibration and uncertainty analysis of distributed snow simulations in rugged alpine terrain, *Journal of Hydrology*, 598, 126 241, 2021.
- 735 Tolson, B. A. and Jahanpour, M.: Incorporating Decision-Maker Preferences into the PADDs Multi-Objective Optimization Algorithm for the Design of Water Distribution Systems:(179), in: *WDSA/CCWI Joint Conference Proceedings*, vol. 1, 2018.
- Tolson, B. A. and Shoemaker, C. A.: Dynamically dimensioned search algorithm for computationally efficient watershed model calibration, *Water Resources Research*, 43, 2007.

- 740 Towner, J., Cloke, H. L., Zsoter, E., Flamig, Z., Hoch, J. M., Bazo, J., Coughlan de Perez, E., and Stephens, E. M.: Assessing the performance of global hydrological models for capturing peak river flows in the Amazon Basin, *Hydrology and Earth System Sciences*, 23, 3057–3080, 2019.
- Troin, M. and Caya, D.: Evaluating the SWAT's snow hydrology over a Northern Quebec watershed, *Hydrological Processes*, 28, 1858–1873, 2014.
- 745 Tuo, Y., Marcolini, G., Disse, M., and Chiogna, G.: A multi-objective approach to improve SWAT model calibration in alpine catchments, *Journal of Hydrology*, 559, 347–360, 2018.
- Turcotte, R., Fortin, J.-P., Rousseau, A. N., Massicotte, S., and Villeneuve, J.-P.: Determination of the drainage structure of a watershed using a digital elevation model and a digital river and lake network, *Journal of hydrology*, 240, 225–242, 2001.
- Turcotte, R., Lacombe, P., Dimnik, C., and Villeneuve, J.-P.: Pr evision hydrologique distribu ee pour la gestion des barrages publics du Qu ebec, *Canadian Journal of Civil Engineering*, 31, 308–320, 2004.
- 750 Turcotte, R., Fortin, L.-G., Fortin, V., Fortin, J.-P., and Villeneuve, J.-P.: Operational analysis of the spatial distribution and the temporal evolution of the snowpack water equivalent in southern Qu ebec, Canada, *Hydrology Research*, 38, 211–234, 2007.
- Woo, M.-k. and Young, K. L.: Modeling arctic snow distribution and melt at the 1 km grid scale, *Hydrology Research*, 35, 295–307, 2004.
- Wrzesien, M. L., Durand, M. T., Pavelsky, T. M., Howat, I. M., Margulis, S. A., and Huning, L. S.: Comparison of methods to estimate snow water equivalent at the mountain range scale: A case study of the California Sierra Nevada, *Journal of Hydrometeorology*, 18, 1101–1119, 755 2017.
- Xiang, Y., Chen, J., Li, L., Peng, T., and Yin, Z.: Evaluation of eight global precipitation datasets in hydrological modeling, *Remote Sensing*, 13, 2831, 2021.
- Zahmatkesh, Z., Tapsoba, D., Leach, J., and Coulibaly, P.: Evaluation and bias correction of SNODAS snow water equivalent (SWE) for streamflow simulation in eastern Canadian basins, *Hydrological Sciences Journal*, 64, 1541–1555, 2019.