

Simulating sub-hourly rainfall data for current and future periods using two statistical disaggregation models - case studies from Germany and South Korea

Ivan Vorobeuskii¹, Jeongha Park², Dongkyun Kim², Klemens Barfus¹, Rico Kronenberg¹

5

¹ Faculty of Environmental Sciences, Department of Hydrosociences, Institute of Hydrology and Meteorology, Chair of Meteorology, Technische Universität Dresden, Tharandt, 01737, Germany

² Department of Civil and Environmental Engineering, Hongik University, Seoul, 04066, Korea

Correspondence to: Ivan Vorobeuskii (ivan.vorobeuskii@tu-dresden.de) & Jeongha Park (parkjungha1121@gmail.com)

10 **Abstract.** Simulation of fast reacting hydrological systems often requires sub-hourly precipitation data to develop appropriate climate adaptation strategies and tools, i.e. upgrading drainage systems and reducing flood risks. However, this sub-hourly data is typically not provided by measurements and atmospheric models, and many statistical disaggregation tools are applicable only up to an hourly resolution.

15 Here two different models for disaggregation of precipitation data from daily to sub-hourly scale are presented. The first one is a conditional disaggregation model based on first-order Markov Chains and Copulas (WayDown), which keeps the input daily precipitation sums consistent within disaggregated time-series. The second one is an unconditional rain generator model based on a double Poisson process (LetItRain), which does not reproduce the input daily values, but generates time-series with consistent rainfall statistics. Both approaches aim to reproduce observed precipitation statistics over different time scales.

20 The developed models were validated using 10-min radar data representing 10 climate stations in Germany and South Korea, thus covering various climate zones and precipitation systems. Various statistics were compared including mean, variance, autocorrelation, transition probabilities, and proportion of wet period. Additionally, extremes were examined, including the frequencies of different thresholds, extreme quantiles and annual maxima. To account for models' uncertainties, the 1000-year-equivalent ensembles were generated by both models for each study site. While both models successfully reproduced the observed statistics, WayDown was better than LetItRain at reproducing the ensemble median showing strength in precisely
25 refining the coarse input data. In the meantime, LetItRain produced rainfall with greater ensemble variability capturing a variety of scenarios that may happen in reality. Both methods reproduced extremes in a similar manner: overestimation until a certain threshold of rainfall thereafter underestimation.

30 Finally, the models were applied to climate projection data. The change factors for various statistics and extremes were computed and compared between historical (radar) and the climate projections on a daily and 10-min scale. Both methods showed similar results for the respective stations and RCP scenarios. Several consistent trends jointly confirmed by

disaggregated and daily data were found for mean, variance, autocorrelation and proportion of wet periods. Further, they presented similar behavior of annual maxima for the majority of the stations for both RCP scenarios in comparison to the daily scale, namely a similar systematic underestimation.

Introduction

35 Urban hydrological systems are characterised by large impervious surface areas and dense underground drainage networks, so their response to rainfall is direct and fast (Meierdiercks et al., 2010; Sohn et al., 2020). In such systems rainfall events with different fine-scale temporal variability may lead to significant different patterns of flooding (Oh et al., 2016; Dao et al., 2020a, b, 2022; Park et al., 2021) and the associated disasters such as landslides, degradation of water quality and ecosystem, and risks to public health and safety. Therefore, the acquisition of fine-scale rainfall data is critical for accurate estimations, 40 understanding the causes and impacts of floods (Berne et al., 2004; Vorobevskii et al., 2020), thus enabling the design of sustainable and resilient urban drainage systems that can adapt to changing climate conditions.

However, fine-scale (e.g. 10-minutes or finer) rainfall data suitable for urban flood analysis are often unavailable. In-situ gauge data are usually measured at hourly or daily intervals due to the issues of initial cost, maintenance, data quality and applicability, or time series are still not long enough for reliable statistics. In addition, most future rainfall projection data 45 produced by recent global (e.g. daily) and regional (e.g. hourly) climate models for downscaling have coarse temporal resolution (Dyrddal et al., 2018; Iles et al., 2020) making it difficult to precisely analyse urban flood risks associated with climate change. Although recent climate models allowing for explicit modelling of deep convection (Prein et al., 2015) can simulate 5 minute precipitation fields (Meredith et al., 2020), these products will not be available on a large scale in the near future due to computational and data storage limitations (Schär et al., 2020).

50 The lack of fine-scale precipitation data can be tackled by rainfall downscaling techniques (Maraun et al., 2010). Two main approaches can be distinguished as conditional and unconditional models. Conditional disaggregation models (Müller-Thomy et al., 2018) refine the temporal resolution of the original rainfall time series. Therefore, the sum of the disaggregated fine-scale rainfall contained in the original coarse time step is similar to (canonical models) or precisely the same as (micro-canonical models) the original coarse rainfall value. Unconditional models (often referred as rainfall generators) on the other 55 side aim to reproduce statistics of the original rainfall time series rather than actual daily sums. They employ techniques such as linear regression, probability density function fitting, and machine learning to characterise rainfall processes (e.g. event depth, event duration, inter-event time, etc.), based on which variables comprising rainfall processes are produced and superposed on an empty time axis to synthesise fine-scale rainfall time series. Therefore, unconditional models do not preserve the rainfall records of the original coarse data, but can generate an infinite length of synthetic time series, thus are mainly used 60 as the input data of the uncertainty analysis of disaster risks based on the Monte-Carlo simulation. Like unconditional models exclusively being of stochastic nature, conditional models also can include stochastic components.

While many conditional (Koutsoyiannis and Onof, 2001; Kossieris et al., 2018; Lombardo et al., 2017; Müller and Haberlandt, 2015; Müller-Thomy, 2020) and unconditional models (De Luca and Petroselli, 2021; Fatichi et al., 2011; Papalexiou, 2018; Pidoto and Haberlandt, 2023; Peleg et al., 2017; Semenov and Barrow, 1997; Verdin et al., 2018) have been developed, only very few studies address models that can produce fine-scale (e.g. finer than 30-minutes) rainfall data. Licznar et al., 2011 developed a conditional model based on a random cascade. They introduced a unique scale-dependent cascade coefficient to produce fine-scale (5-minute) to improve the performance in reproducing fine-scale rainfall depth distribution as well as key statistics such as the mean and standard deviation of the annual rainfall maxima. Lombardo et al., 2017 proposed a conditional model that simulates rainfall time series with given dependence structure, wet/dry probability, and marginal distribution at a finer time scale, preserving full consistency with variables at a parent coarser time scale. The suggested model was tested on 30-minute rainfall data of Viterbo, Italy and accurately reproduced the marginal distributions of the characteristic variables of both fine and coarser scale rainfall time series as well as correlation structure, intermittency, and clustering. The conditional model of Kossieris et al., 2018 combines Bartlett-Lewis process to generate rainfall events along with adjusting procedures to modify the low resolution variables (i.e. hourly) so as to be consistent with the high-resolution ones (i.e. sub-hourly). The suggested model successfully replicated important statistical properties up to 5-min scale at a wide range of time scales including improved fit for intensity-duration dependent internal rainfall structure, skewness, extremes, and dry proportions compared to its predecessor (Koutsoyiannis and Onof, 2001). Another conditional model of Müller and Haberlandt, 2018 combined tri-furcation and bifurcation random cascade method to obtain the 5-minute rainfall time series. The method was tested on the 24 gauges of Lower Saxony of Germany and showed an improved performance in reproducing regular statistics and extremes as well as sewage system behavior compared to the conventional bifurcation-based cascade models. (Park et al., 2021) suggested an unconditional model that is also based on the Bartlett-Lewis process. They modified the original model structure that assumes the rectangular shape of the rain cell to the sinusoidal shape so the model can produce 5-minute rainfall given hourly rainfall. The 5-minute rainfall synthesised by the modified model contained more realistic extreme rainfall values as well as flooding behaviour in urban environments compared to the model assuming rectangular rain cell structure.

In spite of this progressive evolution of the fine-scale rainfall downscaling models, most studies have focused on development of a single model or on validating existing models of the same kind at multiple study sites (Kim et al., 2013, 2016a, 2017; Takhellambam et al., 2022; Wang et al., 2021). Only a few studies performed comparative analysis of multiple disaggregation models as this study. Pui et al., 2012 compare three typical types of conditional models (random multiplicative cascade model, point process model, and resampling model) that disaggregates daily rainfall to hourly resolution. The comparison was performed at four point locations in Australia with different climatic regimes. They discovered that all the models are found to simulate reasonably well the commonly used statistical measures of rainfall at the hourly time step while the microcanonical cascade model overestimated the hourly rainfall variance; and that extreme rainfall values were under- or over-estimated by the cascade models. However, no studies have yet compared disaggregation models of conditional and unconditional types at

the fine timescale (10-minutes) critical for urban system analysis as well as for a variety of rainfall characteristics under
95 different climatic systems.

This study aims to utilise promising techniques for temporal fine-scale downscaling of future rainfall by applying models, which do not have many statistical requirements regarding correlations of process driving variables and which are not depending on many input datasets. Furthermore, the model application should be simple, mostly automatically and fast.

In this view, the first aim of this study is to compare newly developed conditional and unconditional models for the task of
100 fine-resolution rainfall downscaling. The conditional model of this study is composed of a unique new combination of Markov Chain for simulating binary sub-daily events alignment and copula-based sampling of actual precipitation values, which to our knowledge has not been attempted in our field yet. The unconditional model of this study is an advanced version of the Poisson cluster rainfall generation model (Kaczmarska et al., 2014; Kim and Onof, 2020). It can synthesise future rainfall under climate change given a change factor (ratio of mean of future to current rainfall) that can be easily obtained from climate change
105 rainfall products. The model has a unique structure to obtain parameters for future rainfall generation that to our knowledge has not been tried by other studies. In addition, two focus regions of this study covers a wide range of climate and rainfall characteristics: while both Germany and Korea have temperate climates, Germany has a more moderate and stable rainfall pattern with less regional variation (600-1800 mm/year), while Korea is characterised by more regional variation in its rainfall patterns and amounts (1200-2000 mm/year) and is subject to long-lasting heavy frontal rainfall during the summer months and
110 intense typhoons. Therefore, the validation of these models for this variety of rainfall characteristics should reveal the suitability and limitations of model application in general and provides some insight into transferability to other regions.

One of the novelties of this study is due to the use of radar rainfall data instead of gauge data. As opposed to gauges that can accurately observe rainfall depth at a point location, weather radar observes rainfall in a fine granular format over a wide
115 spatial coverage. Thus, the radar data could be more suitable in understanding regional climate and its non-stationarity as well as in the applications of the climate projection data. In addition, the chronic issue of radar rainfall measurement accuracy has been constantly addressed through various methods of the Z-R relationship improvement (Alfieri et al., 2010; Kim et al., 2021; Kirsch et al., 2019) and radar-gauge merging (Goudenhoofdt and Delobbe, 2009; Han et al., 2021; Ochoa-Rodriguez et al., 2019; Sinclair and Pegram, 2005). Consequently radar rainfall products are being actively adopted by many studies on understanding of hydrologic systems (Ghimire et al., 2022; Wijayarathne et al., 2020, 2021) as well as operational flood
120 warning systems (Ramly et al., 2020; Liu et al., 2021). However, to our knowledge, there is only one study of Jasper-Tönnies et al., 2012 who applied 5 min radar data and used a relatively simple methodic of 'objective weather types' to pick an observed radar event with similar daily sum to downscale climate projection data. No other studies have investigated the applicability of the recent radar data with improved quality (Park et al., 2014; Winterrath et al., 2018) for rainfall downscaling, especially based on two unique methods with contrasting traits. Further aim of the study is to test the described models on climate
125 projection data. Therefore, after being calibrated and validated for the current period, both models were employed to produce

5-minute rainfall data corresponding to the RCP scenarios of 2.6 and 8.5. The fine-scale data produced by each of the methods were compared in terms of change factors of various statistics and annual maximum rainfall values.

The research questions discussed in this article are as follows: (1) How well do two different fine-scale rainfall disaggregation models produce data? Are they suitable for reproducing important rainfall statistics as well as extreme values? (2) What are the differences and similarities between the presented types of disaggregation models? (3) How might future fine-scale rainfall change according to the respective models?

The paper is organised as follows: Section 2 provides a detailed description of the models, study areas, and data sources, including both radar data and future projection data. Section 3 presents the results of our analysis, including a comparison of the two models and an assessment of their accuracy. Finally, in Section 4, we summarise our findings and discuss their implications for future research and revenue opportunities in the field of rainfall disaggregation.

Methods and Data

WayDown

WayDown is an automated conditional precipitation disaggregation model, which was developed at the Chair of Meteorology of Technische Universität Dresden. It is wrapped in an R-package and is available on GitHub (<https://github.com/hydrovorobey/WayDown>) along with a test dataset.

The principle scheme is presented in Figure 1. WayDown disaggregates daily precipitation by iterating over each day and keeping the daily sums consistent. This could be station or climate projection datasets. In the first step, a precipitation event is selected using the high-resolution reference data for the desired month. For that, all reference events with daily sums similar to the input value are subsetted. The Markov Chain's two-state transition matrix is estimated from these events, which is then used to sample binary ('rain' / 'not rain') 5-minute precipitation time-series for a given day. Thereafter, the actual precipitation heights are sampled for respective intervals with binary precipitation, which can be either single or consecutive sub events. The first value for the sub-event is directly sampled (with empirical probability weights) from the observed data accounting for a daily value and the respective month of occurrence. The second and following time steps with precipitation are selected based on a 2D empirical beta copula (Segers et al., 2017) constructed from the reference high-resolution data set in a way that the subsequent precipitation height depends on the previous one, thus representing the lag-1 autocorrelation model. Afterwards, the sum of the obtained disaggregated time-series is compared to the original daily input value. If the absolute difference is less than an assumed threshold (i.e. 10%, which was found suitable with regard to computation time for the study sites and might be changed for other datasets) then a proportional correction is applied. Higher values receive a proportionally larger correction than smaller values. For small daily precipitation sums (e.g. less than 1 mm) a higher threshold can be allowed (i.e. 100%) to reduce computational time. Otherwise, the disaggregation process is repeated again until the convergence error value less than threshold is reached: first, the new values are sampled for the same binary time-series and after 30 unsuccessful

attempts (default number that can be changed); a new binary time-series for a given day is sampled. Finally, the framework considers day-to-day event transition, taking into account the last precipitation value from the disaggregated time-series of a previous day to create a consistent event for the current day (Figure 2) which is sampled from the obtained transition matrix using a starting value of one for a newly created binary time-series.

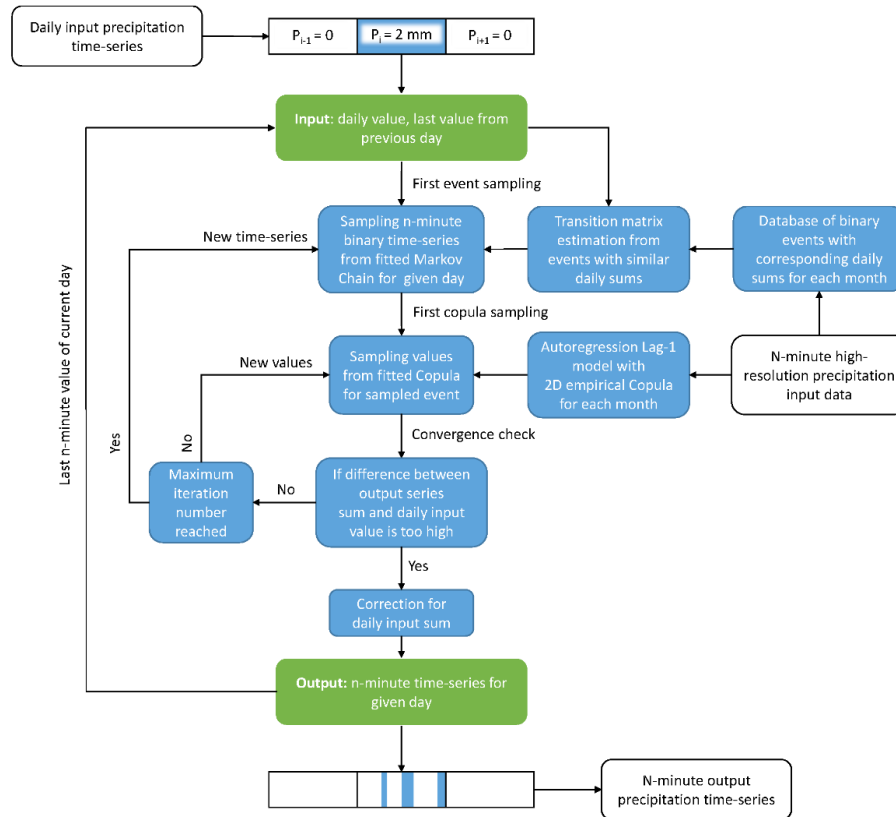


Figure 1. WayDown framework algorithm

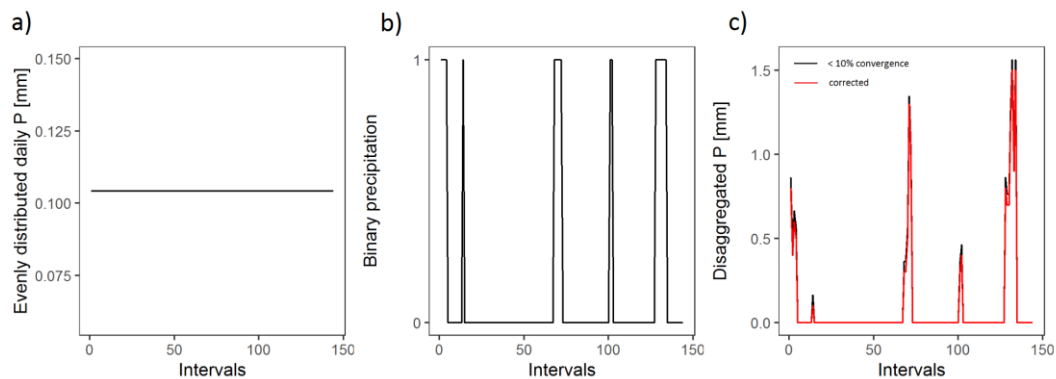


Figure 2. WayDown disaggregation example of 1-day precipitation (daily value of 15 mm, last-interval value from yesterday 0.5 mm) for Leipzig (Germany) in July using 10 min resolution radar data (144 intervals). (a) Uniformly distributed daily value (evenly

disaggregated for all intervals). (b) Binary precipitation event sample considering month and daily value. (c) Sampled precipitation values for each interval and their correction to obtain required daily sum (convergence error 8%)

WayDown was tested with the reference input data resolutions from 1, 5, 10 and 30 minutes. The model does not require substantial resources regarding computational power, time and memory. For example, on a 3.4 GHz 16 GB RAM PC, the model takes approximately 1 hour to disaggregate 80 years of data to 10 min time-scale using 20 years of reference radar data (see the test dataset with data for Leipzig provided along with the R-package).

LetItRain

LetItRain represents a unconditional rainfall generation model and (Kim and Onof, 2020) is an upgraded version of the Poisson cluster model (Kaczmarek et al., 2014; Rodriguez-Iturbe et al., 1988). The model was developed at Hongik University's Hydrology Innovation Laboratory and is available on the lab's webpage (<https://sites.google.com/site/hihydrology/projects>). LetItRain simulates synthetic rainfall time series based on the assumption that storms arrive following a Poisson process along with different probability distribution functions, which define the duration of storms and the properties (arrival, duration, and intensity) of rain cells. Existing Poisson cluster rainfall generation models tend to underestimate rainfall extremes, which is why the LetItRain model incorporates the following model improvements. It accounts for the fitting of the first- to third-order moments of observed rainfall. Then, the model inversely relates the rain cell duration to intensity for reproducing short-term extreme rainfall events. Further, LetItRain assumes the gamma distribution for the intensity of the rain cell. Finally, the model applies two shuffling algorithms to reproduce the autocorrelation of storm and long-lasting rainfall. With these improvements, the model is capable of reproducing observed statistical properties as well as extremes over a wide range of time scales.

The LetItRain application to simulate future sub-hourly rainfall time series is described in Figure 3. Firstly, rainfall statistics for each calendar month are calculated from the high-resolution reference data (i.e. radar rainfall). These statistics include mean, variance, covariance, skewness, and proportion of wet periods for the aggregation interval of 10, 30, 60, 120, 240, 480, and 960 minutes. Here, the whole time series (i.e. including dry periods) are considered. Then, regressions between obtained statistics specified in Figure 4 (upper panel) are derived. One of them is a standard first-order linear regression, which is used for estimating the relationship between mean and variance as well as between mean and proportion of wet periods. The other is the same type of regression, but without intercept, which is used for variances at different aggregation intervals (i.e. 10-minute variance vs. 30-minute variance). The same procedure is repeated for the wet periods of different aggregation intervals. Secondly, the change factor for the mean value is calculated for a daily scale. It is defined as the ratio of means between historical and future periods and is used to adjust future 10-minute precipitation mean. The change factor approach is e.g. also used by the LARS-WG (Semenov et al., 1998) to generate future daily time series for impact modelling. Thirdly, future rainfall statistics are estimated using the output of previous two steps (Figure 4). The mean value for the future 10-minute rainfall is defined by multiplying the observed 10-minute mean and the change factor. Future mean values for other aggregation intervals are derived by multiplying 10-minute mean with a fixed factor. Afterwards, variance and proportion of wet periods for the future period are estimated using obtained regressions for historical data and future mean values. Future statistics for

covariance and skewness are assigned directly from the reference high-resolution input dataset since here no suitable
200 relationship between rainfall statistics was found and sensitivity of simulations to the variation of those statistics is weak
(Fatichi et al., 2011). Though some indications exist that higher-order moments of precipitation characteristics will change in
future (Chan et al., 2016), detailed information from models are missing and thus we adopt higher-order moments from the
current climate.

Estimated rainfall statistics for the future period (mean, variance, covariance, skewness, and proportion of wet periods for
205 different aggregation intervals) are used to calibrate the model. Finally, the future sub-hourly rainfall time series are generated
using the derived model parameters. A procedure of model calibration and the calibration results are presented in the
Supplementary (Vorobevsii, 2023).

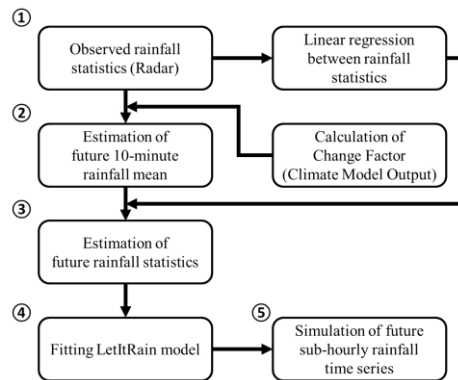
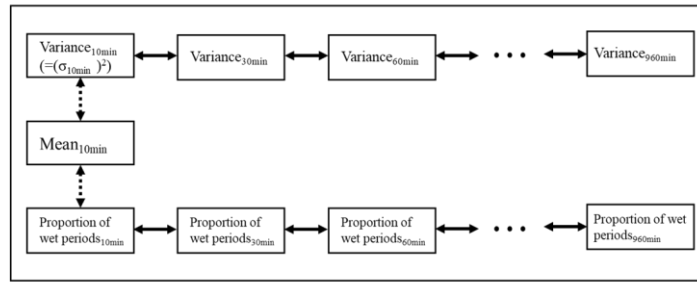
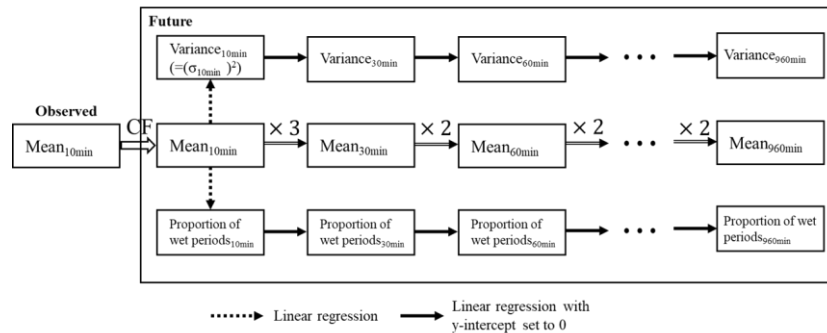


Figure 3. The procedure for simulation of future sub-hourly rainfall time series using LettRain model

- Estimation of relationship between Statistics (Observed)



- Estimation of future rainfall statistics

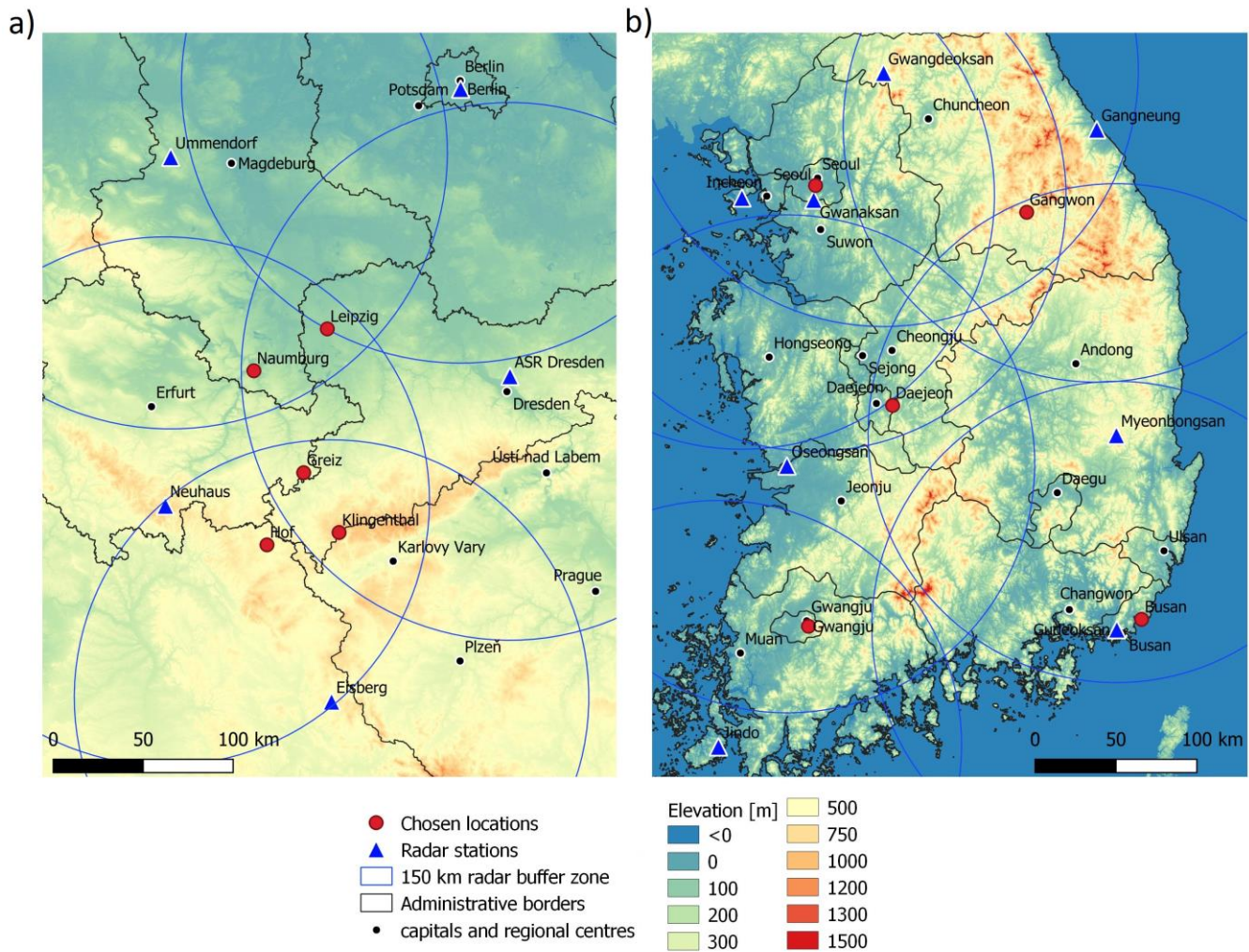


210

Figure 4. Rainfall statistics for the estimation of the linear regression relationship (upper part). The procedure for the estimation of future rainfall statistics is shown (lower part).

Precipitation data

For the case study, five locations in Germany and five locations in South Korea were chosen (Figure 5). German sites (Leipzig, Naumburg, Greiz, Hof and Klingenthal) are located in plains and low mountain ranges (middle-eastern part of Germany). They are characterised by continental climate (Dfb - humid continental, warm summer subtype (Kottek et al., 2006)) with annual precipitation sums of around 600-1000 mm. 50-80% of annual precipitation falls in June-September and consists of both convective and stratiform events, while in winter the total amounts are much smaller and are mainly of cyclonic origin (Jung and Schindler, 2019). The Korean sites (Seoul, Gangwon, Daejeon, Gwangju, Busan) are characterised by continental climate (Dwa and Dfa - humid continental, hot summer subtype) with annual precipitation sums of between 1200 and 2000 mm. More than half of this amount falls during the typhoon season (June-September) when a stationary front lingers for about a month in summer. The winter precipitation is typically less than 10% of the annual sums.



225 **Fig 5. Overview map of the chosen locations and corresponding radar stations for Germany (a) and South Korea (b). Elevation background mas was created using SRTM30 satellite data (NASA, 2013)**

Radar data was utilised as a high-resolution reference dataset. For the German sites, Radar-based Precipitation Climatology Version 2017.002 dataset (available at https://opendata.dwd.de/climate_environment/CDC/help/landing_pages/doi_landingpage_RADKLIM_RW_V2017.002-en.html) was used (Winterrath et al., 2018). The dataset is as composite available on a 1x1 km grid for the time period of 2001-230 2020 and temporal resolution of 5 min. It represents a product of the RADOLAN method, where the precipitation sums from the radar-based precipitation estimates are adjusted using measurements from conventional gauges (Winterrath et al., 2017). Thus, for the chosen locations, data from five overlapping radar stations are merged (Berlin, Dresden, Eisberg, Neuhaus and Ummendorf). For the South Korea sites, the composite radar rainfall product CM1 (available at <https://data.kma.go.kr/data/rmt/rmtList.do?code=11&pgmNo=62>) from the Korea Meteorological Administration (KMA) was

235 used. The dataset merges observations from 11 radar stations and has a 1x1 km grid with temporal resolution of 10 minutes
covering the period from 2009 to 2019. Observed reflectivity data is passed at first through the Gaussian Model Adaptive
Processing (GMAP) filter (Siggia and Passarelli, 2004), which corrects for echoes caused by the surrounding terrain, such as
i.e. beam blockage. Then, another quality control algorithm was applied, which detects non-precipitation echoes thereafter
removing them based on the criterion related to the difference of reflectivity at the upper and lower side from a certain altitude
240 (Park et al., 2014).

For the German sites CanESM2 projections for RCP2.6 and 8.5 scenarios downscaled with the EPISODES model were used
for the period 2020 to 2100. The Canadian Earth System Model (second generation) with a T63 (~1.9°) resolution consists of
the physically coupled atmosphere-ocean model CanCM4 coupled to terrestrial carbon and ocean carbon models (Arora et al.,
2011). EPISODES is an empirical-statistical downscaling method (Kreienkamp et al., 2019). It implements a two-step
245 procedure. The first part provides day-by-day meteorological information on regional scales, which are used as an input to the
second part producing synthetic time series via a weather generator. The target grid corresponds to the EURO-CORDEX
resolution of 0.11° (~12 km). Original climate projection data with daily resolution were bias-corrected using monthly
quantile-mapping on the 1x1 km interpolated station-based RaKliDa dataset (Kronenberg and Bernhofer, 2015).

For the Korean sites, high-resolution data from the Korea Meteorological Administration with SSP1-2.6 and SSP5-8.5
250 scenarios covering a period from 2020 to 2100 was chosen (available at
http://www.climate.go.kr/home/CCS/contents_2021/Kma_climate_RCP.html). The dataset is based on the UKESM1 global
and a set of dynamic and statistical downscaling models. UKESM1 from Met Office Hadley Center is based on the HadGEM3-
GC3.1 model (atmosphere-land-ocean-sea ice) combined with the JULES terrestrial and the MEDUSA ocean biogeochemical
models (Sellar et al., 2019). This global model has 135 km resolution which is dynamically downscaled to 25 km through
255 ensemble mean (Kim et al., 2022) of the 5 regional climate models (HadGEM3-RA, RegCM4, SNURCM, GRIMs, and WRF)
participating in the CORDEX-EA II project. Finally, the regional climate model was downscaled to 1 km grid by the PRIDE
model (Kim et al., 2016b) using ground observation data and the Barnes approach (Barnes, 1964).

For all sites the nearest grid cell to the study sites were taken from the respective datasets. For the sake of consistency between
German and Korean radar datasets, the German one was aggregated to 10 min resolution. Comparability between different
260 climate projection generations (CMIP5 and CMIP6) and thus between respective RCP and SSP concepts is also preserved
(O'Neill et al., 2016): RCP-2.6 and SSP1-2.6, RCP-8.5 and SSP5-8.5.

Model validation and evaluation of climate projections

Validation of both methods was done by comparison of disaggregated and original radar datasets, where the first was produced
using original radar values aggregated to a daily scale. Although both methods are of stochastic nature, the straightforward
265 comparison of the disaggregated time-series between both is not possible, as LetItRain acts as Monte-Carlo precipitation
simulator, while WayDown keeps daily precipitation sums consistent with the input data, however implying a stochastic

component. Thus, the following statistics were chosen to compare models on monthly and annual scale for the whole and non-zero time-series: mean, variance, transition probabilities of Markov Chain, autocorrelation function values, proportion of wet period, frequency and quantiles of extreme events of various magnitude and annual maxima. Furthermore, for each station the 1000-year time-series were generated to test the possible variability of model simulation statistics. For that, WayDown model was run 50 times for German and 91 for Korean stations with the same daily radar input for each station, so that the total length of n-times run was equivalent to 1000 years. Thus, the differences between runs are introduced by the model event-values generation process. For LetItRain case, the model was calibrated to station data and then 1000 years time-series were directly simulated as it is a generator model type.

Disaggregated time-series of the future climate projections were evaluated with regard to change factors and annual extremes. Change factors were calculated as a simple ratio between future and historical period for the following precipitation statistics: mean, variance, autocorrelation function, proportion of wet period and 99% extreme quantile. For both disaggregation models, the same precipitation datasets were applied for each country respectively. Thus, 10-min Radar dataset was used as a training-data to disaggregate climate projections (two selected RCPs).

Results and discussion

Validation of the methods with radar data

Visual inspection of observed and disaggregated model events

A direct comparison of observed radar and disaggregated precipitation events using standard methods like e.g. time-series overlap plots or correlation coefficient is not reasonable due to the stochastic nature of the models. However, a qualitative visual mapping is possible. For that, 5 random daily events from typical winter (February) and summer (July) months were selected, with daily sums close to respective daily mean values (Figure 6 and 7, left panels). Corresponding disaggregated events were randomly picked from the generated time-series considering same (for LetItRain - close) daily sums and similar daily maxima with previously chosen radar events (Figure 6 and 7, middle and right panels).

For Leipzig, a typical winter event has a sum of 2.8 mm and a maximum intensity of 0.2-0.6 mm/10-min (Figure 6, upper subplot for Radar). In the summer time higher values are normally observed - 5.2 mm daily mean and maxima of 0.5-2 mm/10-min (Figure 7, upper subplot for Radar). For Seoul, however, the difference between February and July is more prominent and events are generally more autocorrelated. Typical means are 4.1 and 18.9 mm for winter and summer months, respectively, and typical maxima range from 0.2-0.7 mm/10-min in February to 1-8 mm/10-min in July (Figure 6 and 7, lower subplots for Radar).

From visual inspection both models show satisfactory results in replicating 10 min radar for both cities capturing typical magnitudes, variability and alignment of sub-daily rain events, especially considering the variability in precipitation regime, seasonality and radar precision (Figure 6 and 7, middle and right subplots for WayDown and LetItRain respectively).

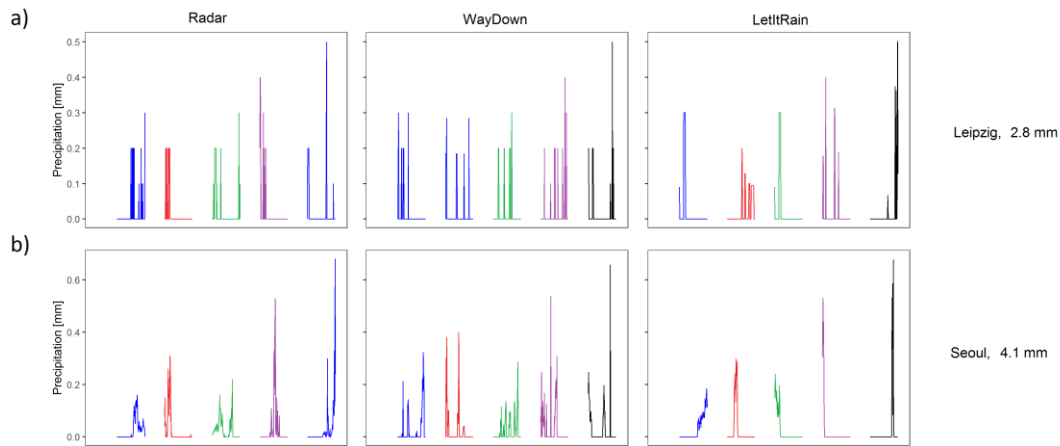


Fig 6. Five sample days with rain in winter (February) with typical daily sums for Leipzig, Germany (a) and Seoul, South Korea (b). Different colors represent separate days

300

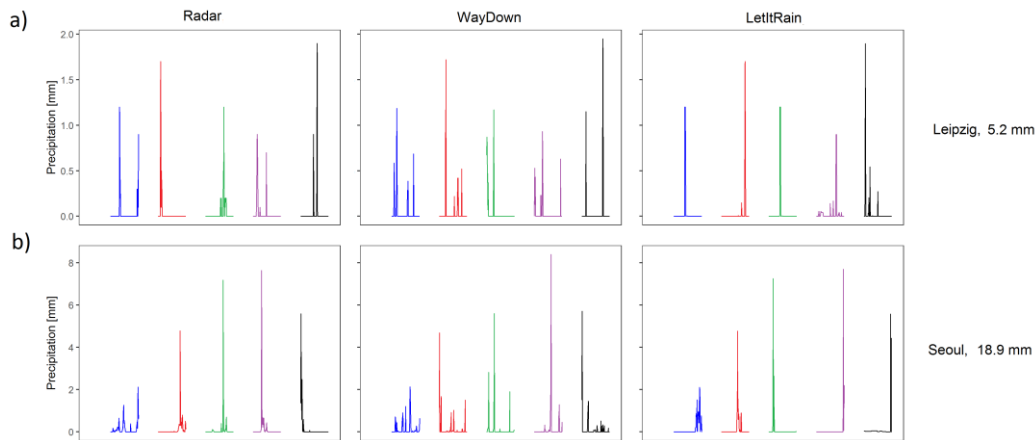


Fig 7. Five sample days with rain in summer (July) with typical daily sums for Leipzig, Germany (a) and Seoul, South Korea (b). Different colors represent separate days

Comparison of main statistics

305 Validation results are presented with monthly statistics plots for Leipzig and Seoul (Figure 8, for other stations see Appendix A1) and annual statistics for all stations (Table 1). According to radar data, mean and variance (Figure 8a-d) for Korean stations were found to be 2-10 times higher than for German stations (0.011 and 0.039 mm for mean and 0.010 and 0.074 mm² for variance, respectively). Transition probabilities from 'dry' to 'wet' conditions (Figure 8e) are similar for both countries (0.01-0.05), while 'wet-wet' persistence probabilities (Figure 8f) for Korean locations (0.75-0.90) are slightly higher than for German stations (0.60-0.70). Autocorrelation function values (Figure 8g-j) were also found to be higher for Korean sites. For example, for 10 and 60 min lag, monthly variance between autocorrelation values was found to be 0.5-0.75 and 0.15-0.35, respectively, for Germany and 0.60-0.80 and 0.20-0.50, respectively, for South Korea. Typical proportions of wet periods (Figure 8k) for

310

Korean stations lie between 13% and 19%, while German stations showed much lower values (3-4 %) which is in line with the differences of frontal precipitation behaviour for two countries.

315 Statistical moments of the first and second order for the full time-series length were well represented by both LetItRain and
WayDown. This includes not only the values of annual mean and variance, but also replicating the pronounced seasonal cycle.
Only minor deviations for both models were observed mostly for the summer months. A perfect match of precipitation mean
values for radar and WayDown can be explained by the nature of the method as it keeps the daily sums consistent. However,
for the non-zero time series, the difference between models' behaviour is noticeable. WayDown overestimated non-zero mean
320 for both countries by 0.05-0.4 mm especially in summer months (Figure 8b). It is consistent with the simultaneous
underestimation of dry-wet period proportions while keeping the daily sums preserved and can be explained by two reasons.
The first reason is the systematic overestimations of sampling from the fitted 2D empirical copulas, which apparently do not
possess a good representation of the real precipitation behaviour. Secondly, the assumed 10% convergence to the daily sum of
the disaggregated values used for the final adjustment procedure could be probably too high and needs to be reduced for more
325 precise estimations. This will lead however to considerable increase of computation time. LetItRain on the other hand,
generally underestimated non-zero mean by 0.05-0.1 mm for both countries. This can be explained by the model fitting process,
which is trained to replicate the mean of observed rainfall and does not consider non-zero mean statistics. Non-zero variance
on the other hand was better represented by both methods than non-zero means however with the same general behaviour for
both methods.

330 Monthly variations of Markov Chain transition probabilities from dry to wet and persistence of wet states were better modelled
by WayDown, which was expected, since transition matrices are directly incorporated in the method for the binary time-series
sampling. However, systematic underestimations of 5-10% for dry-wet and wet-wet states probabilities were found for all
stations. This is probably due to the shortcomings and assumptions of the radar sub-daily events subset procedure (which is
used to fit the Markov Chain) in WayDown based on a certain daily precipitation sum and month. Namely, the number and
335 representativity of this subset is directly limited by the radar time-series length and thus has a significant influence on the
accuracy of transition matrix estimations. LetItRain performed multidirectional and in general did not replicate this statistic
well including seasonality. It showed significant underestimations of dry-wet transitions and overestimations of persistence
probabilities for almost all stations. Especially huge mismatch was found for persistence probabilities. Although dry-dry and
wet-wet transition probabilities are included in the Poisson cluster rainfall model (Cowpertwait et al., 1996), they are estimated
340 with analytical equations based on the proportion of dry periods at several aggregation intervals. In this study, however, this
parameter was not calibrated.

Autocorrelation function values of different lags were simulated by both methods with different qualities for both countries.
WayDown showed a good match for 10 min lag for non-zero time series (Figure 8h), while with larger lags the correlations
were underestimated, which is especially noticeable for Korean sites. This is due to incorporation of only 2D rather than higher-
345 dimensional copulas for precipitation sampling which indirectly affects autocorrelation of higher orders. Systematic

underestimation on autocorrelation for the full time series (0.1-0.3) in WayDown (Figure 8g,i) probably originates from the underestimation of zero precipitation intervals (proportion of wet period). LetItRain, on the other hand, depicted better for the full time-series and higher lags, while overestimating (for German stations) or missing the annual cycle (for Korean stations) the lag-1 autocorrelation values. As LetItRain directly incorporates autocorrelation parameters of several lags in the model setup, it explains the better model match. The model, however, could not be fitted perfectly for that statistics since the greater weight is set to mean and variance rather than autocorrelation (see Supplementary). Non-zero autocorrelation followed the full time series values with slightly worse performance for both models.

Proportion of wet periods for South Korea was underestimated by WayDown (approximately by 5%) while LetItRain showed a good agreement. For the German stations, WayDown showed minor underestimations (< 1%), while LetItRain, on the other hand, generally overestimates the proportion by 1-3%. For WayDown, the systematic errors are connected to the problem of binary time-series sampling discussed above and directly explained by minor underestimations of dry-wet transition probabilities, which were also slightly higher for the Korean sites. In the case of LetItRain, the minor deviation occurred because the model was not calibrated to perfectly reproduce the proportion of wet periods.

Overall, based on the variety of analysed statistical characteristics, it could be concluded that LetItRain delivers much higher variability for all variables compared to WayDown, especially for Korean stations. Since LetItRain represents a rain generator, rather than a conditional disaggregation model as WayDown, it naturally shows a wider ensemble variability. Furthermore, as the model requires fitting of multiple statistical parameters, it was found that the calibration procedure struggled to find optimal parameters for a few stations and months (i.e. see non-zero mean value and proportion of wet periods for June in Leipzig), probably due to the high precipitation variability and shortage of reference radar time-series.

Table 1. Summary of annual statistics for disaggregated and original radar data.

		Greiz	Hof	Klingenthal	Leipzig	Naumburg	Busan	Daejeon	Gangwon	Gwangju	Seoul
Mean [mm]	Radar	0.010	0.010	0.011	0.012	0.011	0.038	0.040	0.026	0.048	0.043
	WayDown	0.010	0.010	0.011	0.012	0.011	0.038	0.040	0.026	0.048	0.043
	LetItRain	0.010	0.009	0.010	0.012	0.010	0.037	0.042	0.031	0.049	0.040
Variance [mm ²]	Radar	0.009	0.008	0.010	0.012	0.009	0.069	0.074	0.036	0.092	0.099
	WayDown	0.009	0.008	0.009	0.012	0.009	0.073	0.066	0.035	0.093	0.092
	LetItRain	0.008	0.007	0.010	0.010	0.008	0.062	0.075	0.042	0.089	0.085
ACF lag 10 min [-]	Radar	0.66	0.66	0.62	0.66	0.64	0.72	0.73	0.74	0.68	0.73
	WayDown	0.56	0.58	0.55	0.57	0.55	0.73	0.73	0.72	0.71	0.73
	LetItRain	0.75	0.75	0.75	0.79	0.67	0.77	0.86	0.80	0.77	0.81

Wet period proportion [-]	Radar	0.034	0.031	0.035	0.038	0.034	0.14	0.19	0.13	0.19	0.19
	WayDown	0.027	0.025	0.028	0.030	0.028	0.095	0.128	0.079	0.12	0.13
	LetItRain	0.041	0.036	0.038	0.047	0.043	0.14	0.275	0.171	0.24	0.23

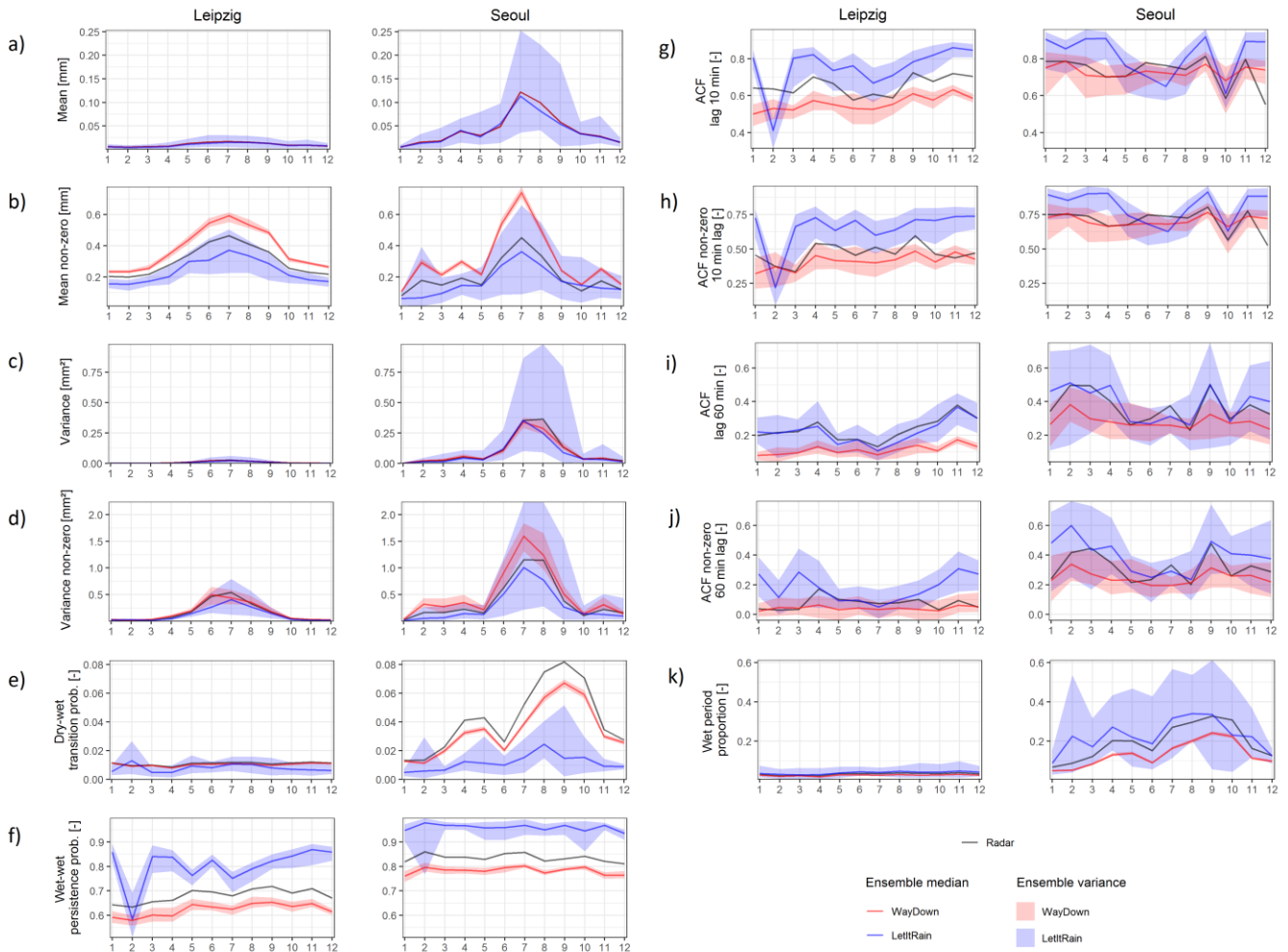


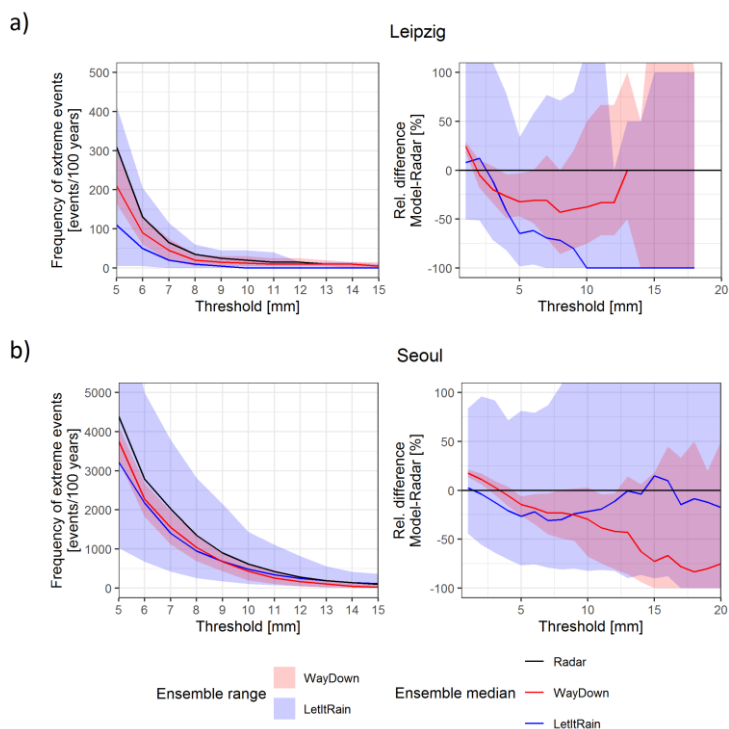
Fig 8. Comparison of monthly statistics between disaggregated and original radar data for Leipzig and Seoul.

Representation of extremes

370 Along with the replication of monthly and annual statistics, it is also important for downscaling models to keep consistency of extreme precipitation frequencies and magnitudes. Here we did not account for event separation, thus both characteristics of extremes (frequencies and quantiles) were calculated from the whole time series length (for both radar and disaggregated data). This approach is also commonly met in the literature with regard to disaggregation models validation, along with event-separation and peak-over-threshold extreme analysis (e.g. Takhellambam et al., 2022, Kossieris et al., 2018). Another reason

375 for not splitting the time-series using i.e. event-based maxima or peak-over-threshold is the limited length of observation time-series. Application of these methods to estimate extreme quantiles can lead to even higher uncertainty.

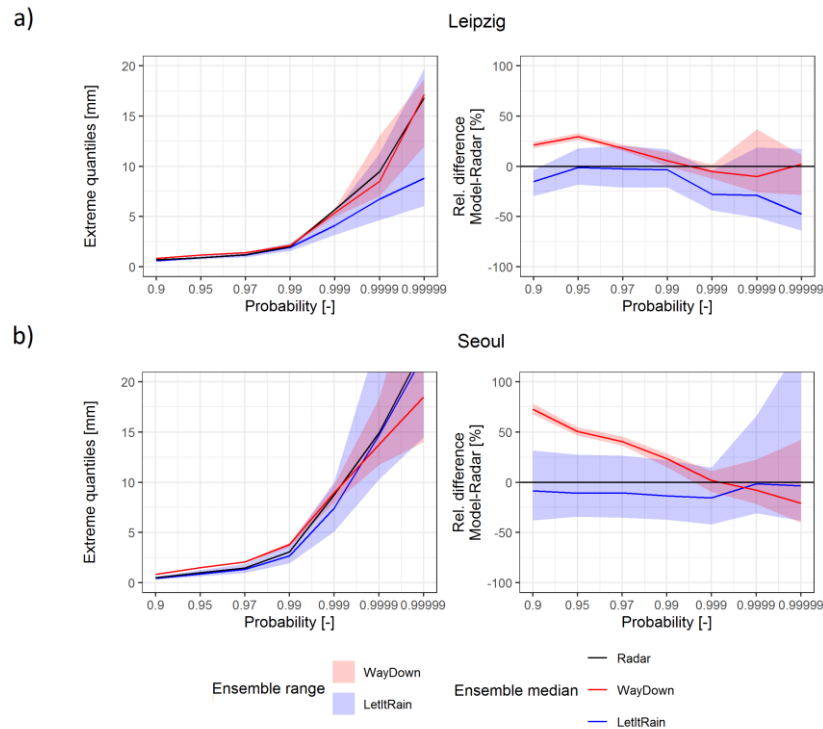
Absolute frequencies of 10-min precipitation extremes for reference radar and disaggregated datasets in Leipzig and Seoul, normalised to the number of overshooting events per 100 years, are presented in Figure 9 (left panels). A normalisation to 100 years here does not anyhow refer to the return period, rather than it was done to normalise the calculated frequencies for two countries due to different time-series length, thus allowing us to compare the results. Due to the differences in climate, extreme frequencies in the intensity interval from 5 to 15 mm in Seoul are 5-50 times higher than for Leipzig. For example, the estimated frequency of 10 mm / 10 min events for German sites is in the range of 15-35 per 100 years, while for South Korea sites it yields 155-620 (Appendix A2). For all the German sites, both models behaved in a similar way. The ensemble median of frequencies until 2-3 mm / 10 min is overestimated up to 20%, while for higher thresholds frequencies are underestimated, with increased magnitude towards higher values. Noteworthy, although LetItRain showed slightly higher underestimation of the frequencies for the median, its ensemble bandwidth covered zero relative difference with radar data for all German stations and intervals (Figure 9, right panels, Appendix A2). For the Korean stations, WayDown showed a similar over-underestimation of extremes around the threshold of 2-5 mm / 10 min. LetItRain behaved for each Korean site differently, however generally depicting lower deviations from radar data than WayDown.



390

Fig 9. Absolute and relative difference in frequency of extreme precipitation for original and disaggregated radar data for Leipzig (a) and Seoul (b).

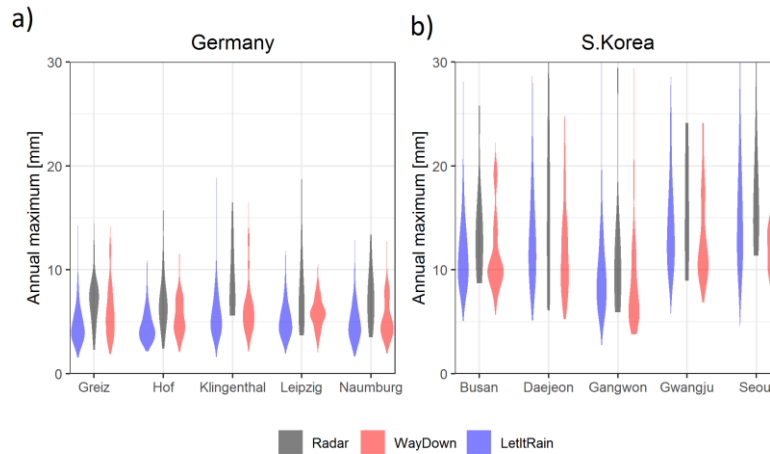
Extreme precipitation quantiles (0.99 to 0.99999) for reference radar and disaggregated datasets for Leipzig and Seoul are presented on Figure 10 (left panels) and for the other stations in Appendix A3. For example, estimated empirical 10-min
 395 quantiles with 0.99 probability for German and Korean sites lie in approximately the same range of 1.8-2 and 2.1-3.1 mm, respectively (Appendix A3). Results look plausible with regard to the difference in climate and time-series lengths. For the German stations, WayDown overestimated extreme quantiles until 0.99-0.999 probabilities, thereafter producing slight underestimations with deviations of approximately 20% from the observed data. LetItRain, on the other hand, showed good fit on extreme quantiles up to the 0.99 percentile and underestimations for the higher ones. For the stations in South Korea,
 400 WayDown possesses overestimation of extremes up to the 0.999 percentile, underestimating them further up to 40%. LetItRain showed slight underestimation of quantiles except for Busan. Similarly to extreme frequencies, LetItRain showed much wider ensemble bandwidth with errors up to hundred percent for rare events (Figure 10, right panels).



405 **Fig 10. Absolute and relative difference in extreme precipitation quantiles for original and disaggregated radar data for Leipzig (a) and Seoul (b).**

Variability of annual maximum precipitation for reference radar and disaggregated datasets for all stations is shown in Figure 11. According to radar data, median annual maximum values for German sites are 6.3-7.5 mm / 10 min, while for the Korean locations typical maximum values are almost twice higher (10.9-15.0 mm / 10 min). For all German stations, plots show for both models systematic underestimation of annual maxima. The distributions for all 1000-year-equivalent time-series depict
 410 higher positive skewness and median values of 4.9-5.9 mm / 10min for WayDown and 4.3-5.5 mm / 10 min for LetItRain were

found. On the other hand, for the stations in South Korea, no systematic underestimation was noticed. Simulations from LetItRain were closer to radar data with median values of 10.0-16.8 mm / 10 min, while WayDown showed deficient agreement (median 7.7-12.8 mm / 10 min).



415 **Fig 11. Violin plots with annual 10-minute precipitation maxima for original and disaggregated radar data for Germany (a) and**
South Korea (b).

Problems of the WayDown approach shown above regarding representation of the extremes (over and underestimation of frequencies and quantiles around certain thresholds and underestimation of annual maxima) originate from the precipitation sampler which is based on 2D empirical copula. While serving as a simple and not site-specific universal method, which does not require calibration, it showed satisfactory and robust results regarding main statistics but naturally reveals a number of shortcomings one of which is inaccuracy in extreme precipitation representation. The issue (in addition to the ones mentioned in the previous section) can be solved by the application of an improved copula sampling. Nesting copulas might improve autocorrelation, while application of parametric copulas will provide a better fit for extremes. This however will lead not only to an increase of computation time, but also to the challenges of a better copula family choice and fitting procedures, which are so far tricky to implement in an automatic way without user intervention and control.

The mismatch for the extremes in the LettItRain results can be explained by the shuffling algorithm of the model. The model first simulates rainfall using a Poisson cluster-based rainfall model, and then uses an algorithm to rearrange the rainstorms (see Supplementary (Vorobevskii, 2023)). It takes into account the correlation between the rainstorms in the observed rainfall and accordingly calibrates the ‘deg’ parameter. It means that storms are more likely to be rearranged in that storms with greater rainfall amount flock together in a 1000-year simulation. As we segmented the generated time-series into several ensembles, the storms with large extreme values are likely to belong to only a few ensemble members, therefore leading to an imbalanced distribution of extremes between the ensembles.

Change factors between radar and climate projections

Change factors for the main statistics between climate projections and radar data for two scales are presented in Figure 12.

435 Change factors for the German stations on a daily scale showed mostly positive trends for both RCP scenarios, except for Leipzig and Naumburg, where trends were multidirectional. Korean stations, on the other hand, were mainly characterised by negative trends, except for autocorrelation, where change factors were found to be positive for all sites.

It might be expected that the change factors from disaggregated time-series of climate projections will follow a similar trend as for a daily scale. They are based on basically the same input data used for calculations of daily factors (upscaled radar and 440 disaggregated climate projections). Moreover, the LetItRain method directly incorporates daily-scaled change factors for the application to climate projections (although only for the mean). It was found that the difference in change factors between scales is much higher, than between the two RCP scenarios (for the same model). Furthermore, the agreement between both 10-min datasets is higher than for the daily scale data. Nevertheless, the direction of trend for the daily scale was in a better agreement with 10 min data for Korean, compared to German stations simulated with both models, especially when analysing 445 mean, variance and proportion of the wet periods. Only three German sites showed similarities between scales and only for few statistics (autocorrelation and proportion of the wet periods).

For all German stations, both models resulted in a non-existing or negative trend for mean and variance (both full and non-zero time-series), while showing mostly positive trends for autocorrelation and proportion of wet periods. Further, extreme precipitation of 99% was simulated differently by the methods. For Korean stations models ended up with negative trends for 450 mean and variance and proportion of the wet period, while change factors for non-zero mean and variance, as well as extreme precipitation increased for the future period. Trends for the autocorrelation did not agree between the methods. Finally, it was found that WayDown delivered lower change factors than LetItRain especially for German locations. It should be noticed, that different results from the studied disaggregation methods for two countries could be also driven by the difference in the input daily climate projection data, due to different disaggregation schemes of global to regional climate datasets.

455 Cross-analysis of the disagreement between two scales of change factors and problems of both methods revealed and discussed in the validation section does not show clear patterns either in the context of countries or statistics. Thus, the identified trend differences between daily and 10-min scales could not be solely explained by the shortcomings of the methods. Furthermore, as for most of the sites and statistics both models showed similar behaviour of change factors, both can express the possible reality of the future precipitation changes for the finer scale.

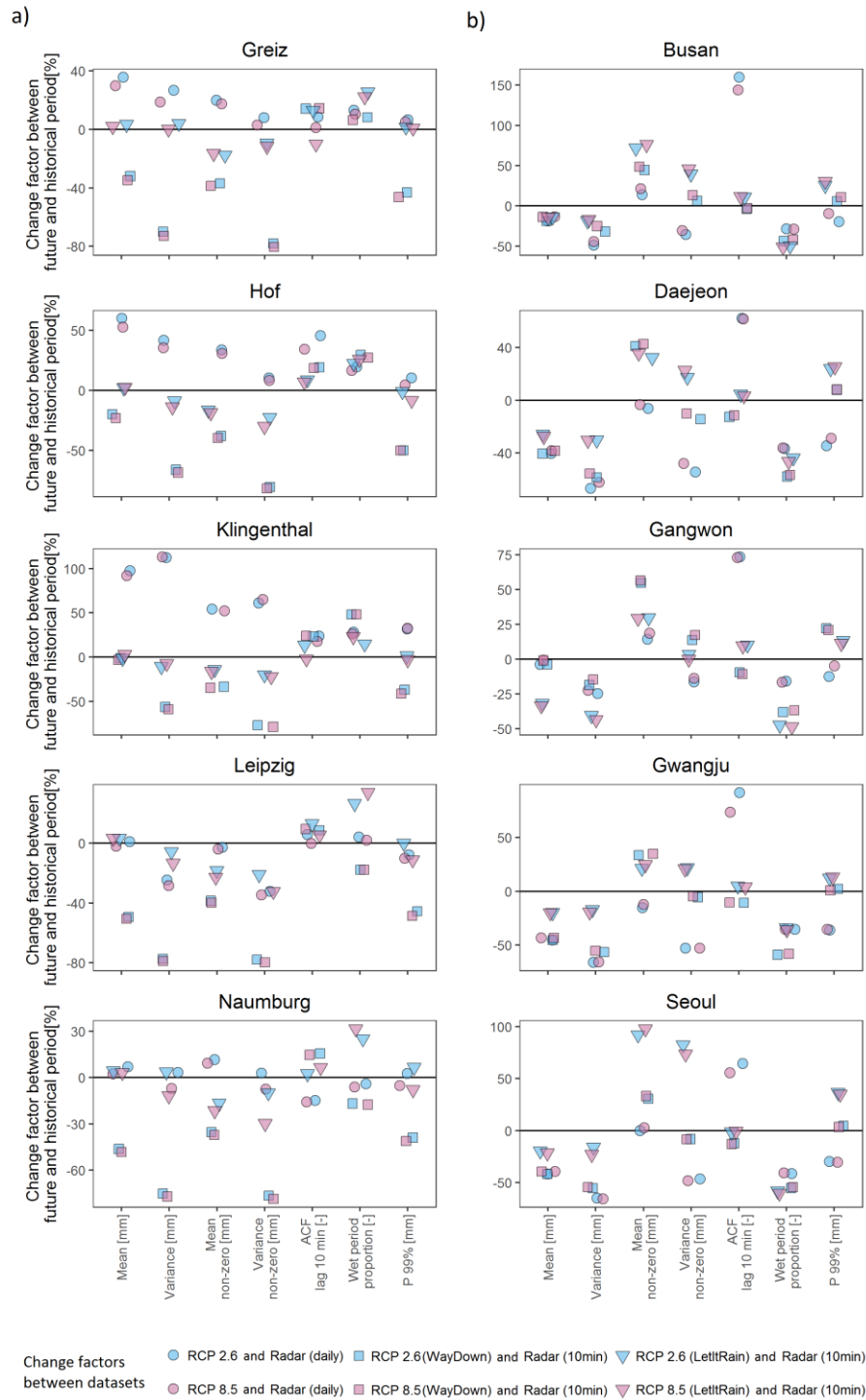


Fig 12. Change factors for the main statistics between climate projections and radar data on daily and 10 min scale for Germany (a) and South Korea (b).

Extremes in climate projections

We compared the behaviour of annual maxima for all stations on daily (Fig. 13, upper panel) and 10-min scale (Fig. 13, lower panel) to check indirectly the plausibility of the extremes in the generated time series for the climate projections. For that, the whole length of available time-series was used (80 years for climate projection data and 20 / 11 years for radar data for German and Korean stations respectively) As the in-depth discussion on the trustworthiness and quality of input precipitation climate model data is not the topic of the study, we just state here that on the daily scale radar showed significantly higher maxima than both climate model outputs for all Korean and two German stations (Leipzig and Naumburg). Hence, the differences in extreme statistics between two countries could be introduced not only by the climate differences, but also due to the various data lengths. The differences between the two scenarios are in general minor: seven out of ten stations deliver a slightly higher median of annual maxima for RCP 8.5 scenario and for the rest three the values are similar. Variability of maxima, expressed in the distance between main quartiles (25-50%), for the radar data is up to 3 times (1.5 for German sites) higher than for the climate projections. Between two scenarios, RCP 8.5 possesses higher inter-quartile variability for the majority of stations.

For the 10 min scale, median annual maxima from radar datasets exceeded the ones from climate projections for all stations except Gwangju and Seoul, where medians from RCP 8.5 scenarios have similar values. It is mainly driven by underestimation of extremes in the original daily climate projection data. Except for a few cases, both LetItRain and WayDown showed similar behaviour regarding relative differences between radar data and RCP scenarios of disaggregated climate projections (median, variance) compared to daily data. Comparison between RCP scenarios for the same disaggregation model did not show systematic patterns, e.g. that RCP 8.5 will deliver higher annual maxima, which agrees with the results for a daily scale. Comparing the two models, LetItRain delivered higher variability and noticeably absolute values for six stations (four Korean and two German), which could not be referred to as a systematic disagreement between two methods. This difference also needs to be backed up by the fact that LetItRain acts as a rain generator model and already showed much higher variability between model realisations in the validation part. Thus, it could demonstrate the same feature for 80-year long climate projection time-series and taking an ensemble rather than one realisation can narrow the inconsistency in annual maxima representation between two methods.

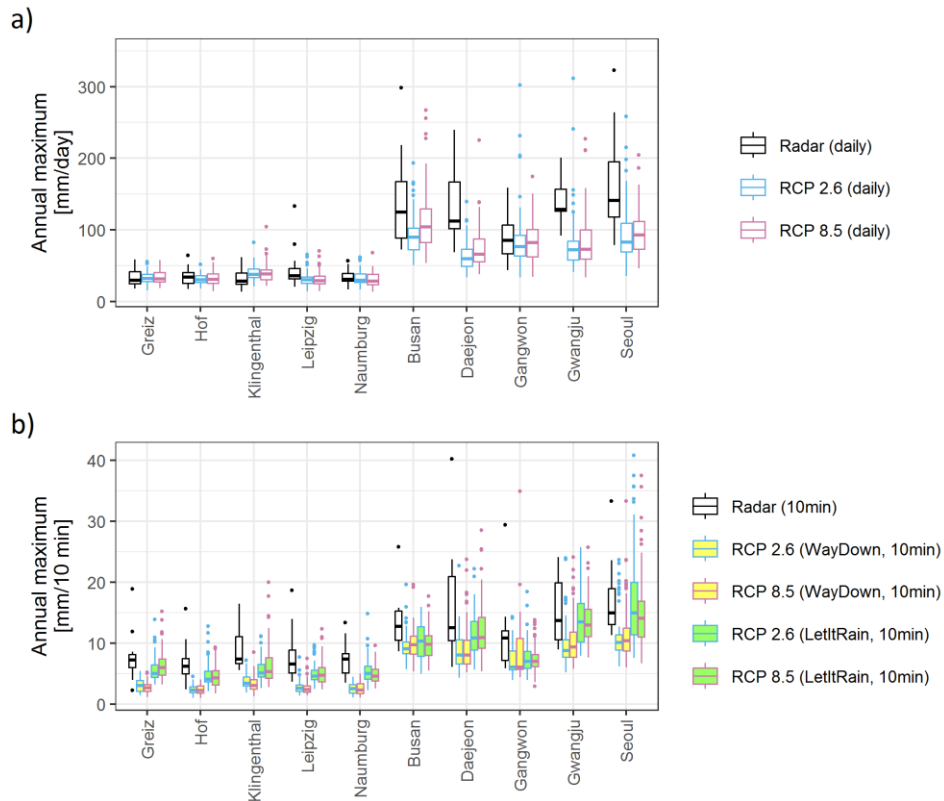


Fig 13. Annual maxima of climate projections and radar data on daily (a) and 10 min (b) scale for Germany and South Korea.

Conclusions and outlook

490 In this study, we presented and discussed two different methods to disaggregate the daily output of projected precipitation data
to sub-hourly scale. Although both of them are rainfall disaggregation models, the first is a conditional model which keeps
daily sums consistent (WayDown), while the second represents a unconditional model (rain generator), which mainly focuses
on the replication of time-series statistics (LetItRain). Indeed, no studies have undertaken testing of different types of
disaggregation models at fine temporal scales, specifically at the 10-minute interval. The outcome of such a comparative
495 analysis provides valuable insights into selecting of an appropriate rainfall disaggregation model.

We validated both models using radar data from 10 stations located in Germany and South Korea. It should be mentioned
however, that both models are not limited to this resolution and can reproduce statistics up to 1 min, if respective reference
data is provided. The success of the validation was evaluated by the matching of multiple statistics calculated from the original
10 min radar data and disaggregated time-series, where the same upscaled daily radar data was used as model input. To account
500 for possible model uncertainty, the disaggregation procedure was replicated several times in order to get a 1000-year equivalent
ensemble output. With regard to ensemble median, WayDown showed better results for monthly mean and variance (including

non-zero time series), transition probabilities of the Markov Chain, 1-lag autocorrelation and proportion of wet period, sometimes over- or underestimating the absolute values, but following the sub-annual cycle. LetItRain better replicated autocorrelation values of higher lags (up to 60 min) and depicted good results for mean and variance. Although some other characteristics on the annual scale proved to be properly simulated, the model struggled to fit the seasonal course for many statistics. Furthermore, ensemble variations of LetItRain were found several times higher than for WayDown. Both methods showed better results for German rather than for Korean stations. The frequency of extremes was generally underestimated by the models for thresholds of 2-3 mm and 2-5 mm for German and Korean sites, respectively. For the German stations, WayDown overestimated extreme quantiles up to 0.99-0.999 probabilities, afterwards it showed slight underestimations, while LetItRain demonstrated underestimation of all percentiles. For the stations in South Korea, both methods overestimated extremes up to the 0.999 percentile, thereafter underestimating them.

Further, we applied the models to climate projection data and compared change factors and extremes to radar data between two time scales. For the majority of the cases, change factors for daily and 10 min resolutions do not follow each other. In fact, they depicted similar values for the same model and RCP scenario. Consistent positive and negative trends confirmed jointly by models and daily data were found for three stations in Germany (for autocorrelation and proportion of wet periods) and five stations in South Korea (for mean, variance and proportion of wet periods), respectively. Both models showed similar quantile values of annual maxima for the majority of the stations for both RCP scenarios in comparison to daily scale. A systematic underestimation of annual 10 min maxima was found for both methods compared to radar data. Mainly, this is due to their underestimation in the original daily climate projection data. Finally, the application of the disaggregation models on the climate projection data should be done with caution, especially for the case when statistics of the current period are preserved and assumed for the future. Although some indications of the possible changes in sub-daily statistics exist (Meredith et al., 2019), there is still not enough consistent knowledge to prove it (e.g. high time resolution climate projection simulations).

The comparison of two methods clearly revealed both similarities and differences that can provide crucial information in the choice of disaggregation model type for producing fine-scale future rainfall, which few studies have yet addressed. Moreover, as it was shown and discussed in the validation and application part, that the presented models have potential for improvements which most likely will result in a higher quality of the disaggregation. For WayDown this includes incorporation of parametric nested copulas in the precipitation sampler and accounting for change factors between radar data and climate projections on a daily scale to apply these trends in the disaggregation process. For LetItRain additional statistics can be included in the calibration procedure (e.g. transition probability). Further, the effect of skewness at a fine time scale in the calibration procedure should be investigated more deeply for accurate replication of extreme rainfall. Moreover, a proper relationship between high-order moments of rainfall was not presented. Thus, current (historical) statistics for covariance and skewness were directly used as future statistics for model calibration. Nonlinear models such as neural networks could be a solution for developing the relationship thus leading to the development of a model that accounts for a change in high-order moments of precipitation characteristics in the future. Moreover, future high-resolution climate model projections will be able to generate

535 data, allowing deducing and incorporating higher-order moment statistics into the presented disaggregation models. Finally, integration of the methods, which account for spatial correlation and thus allowing shifting from point to spatial scale, will be beneficial as well. Lastly, in order to prove the utility of simulation approaches, a downstream application of simulated data in urban hydrological models would be beneficial, too.

Data and Code availability

540 Authors fully support open-source and reproducible research. WayDown is available on GitHub <https://github.com/hydrovorobey/WayDown> repository (CC BY-NC-ND 4.0). LetItRain is available on the Hongik University's Hydrology Innovation Laboratory web page (<https://sites.google.com/site/hihydrology/projects>). Locations of the stations, input datasets, simulation results, and R-scripts to reproduce figures and tables for the manuscript are available under the following HydroShare composite resource <https://doi.org/10.4211/hs.9322e1ef25e04822a759c515795642e1> (Vorobevskii, 545 2023).

Author contribution

Conceptualization VI, KD, KR; data curation VI and PJ, formal analysis VI, methodology VI and PJ; visualisation VI; writing: original draft preparation VI, PJ, KD, BK, review KR. VI and PJ have the equal contribution to the paper.

Competing interests

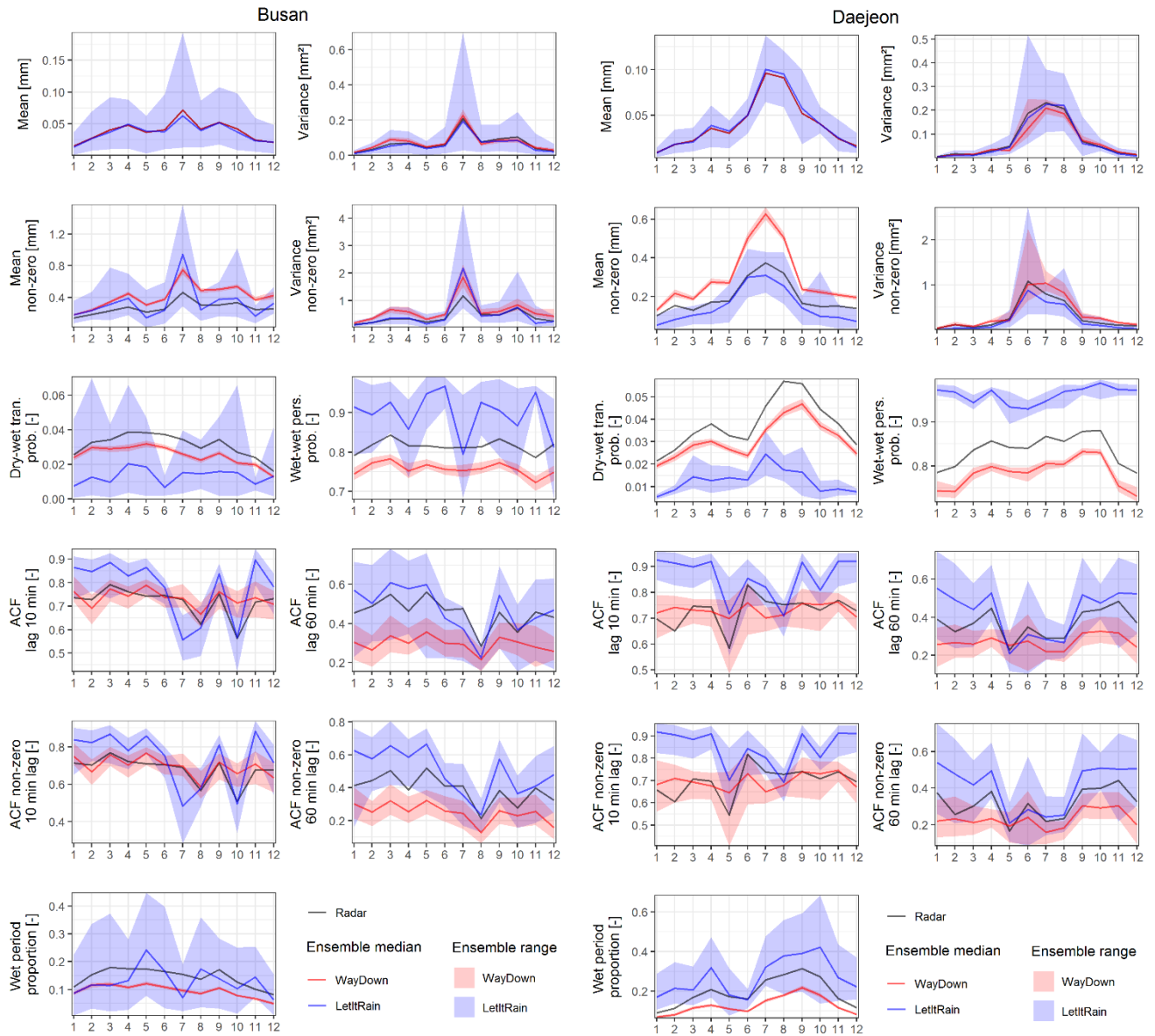
550 The authors declare that they have no conflict of interest.

Funding

This research was supported by the DAAD with funds from the German Federal Foreign Office; This research was supported by the Basic Research Laboratory Program (Grant Number: 2022R1A4A3032838) through the National Research Foundation of Korea (NRF) funded by the Ministry of Science and ICT; This work was supported under the framework of international 555 cooperation program managed by the National Research Foundation of Korea (NRF-2021K2A9A2A15000179, FY2021).

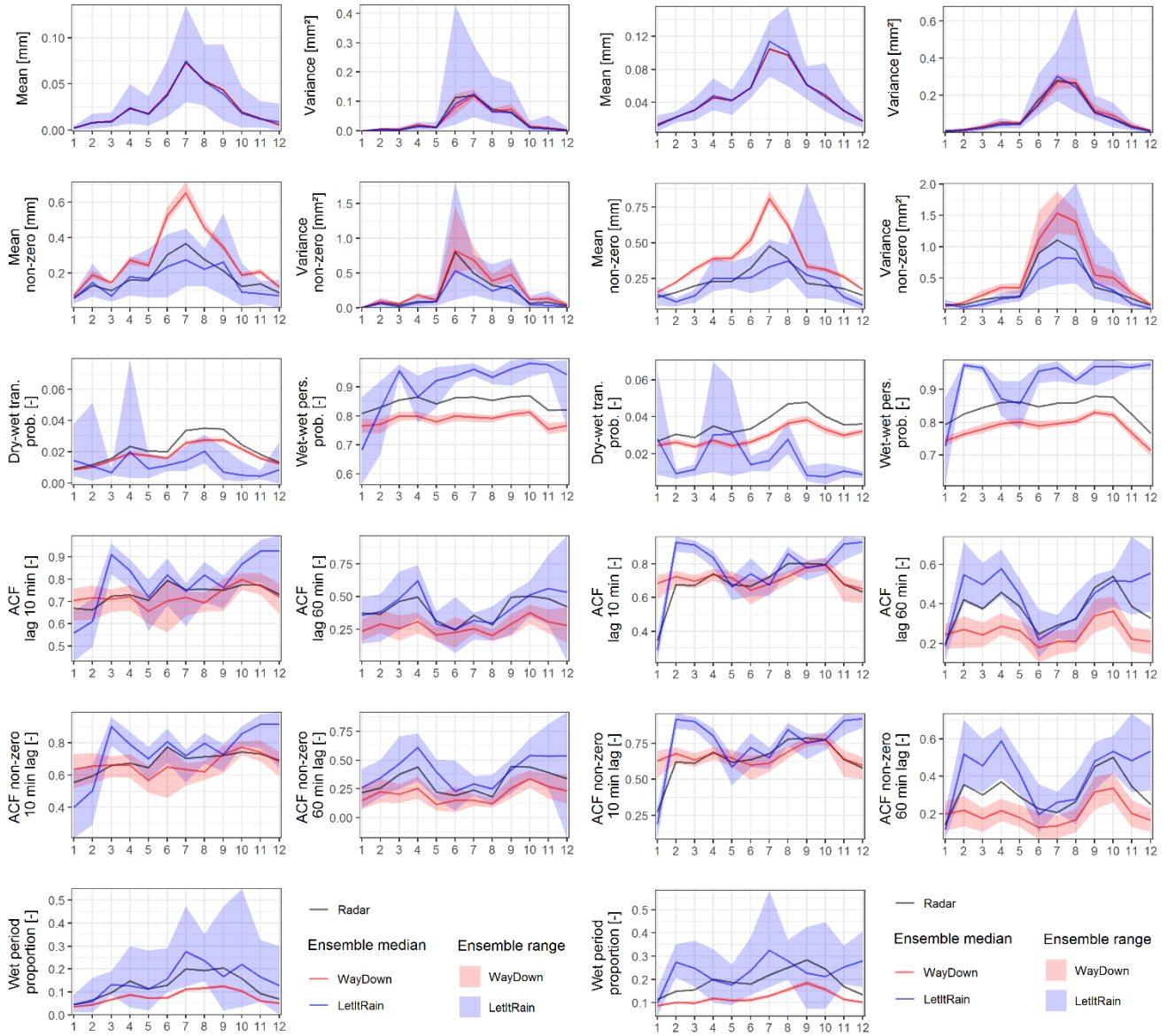
Appendix

A1. Comparison of monthly statistics between disaggregated and original radar data (remaining stations)

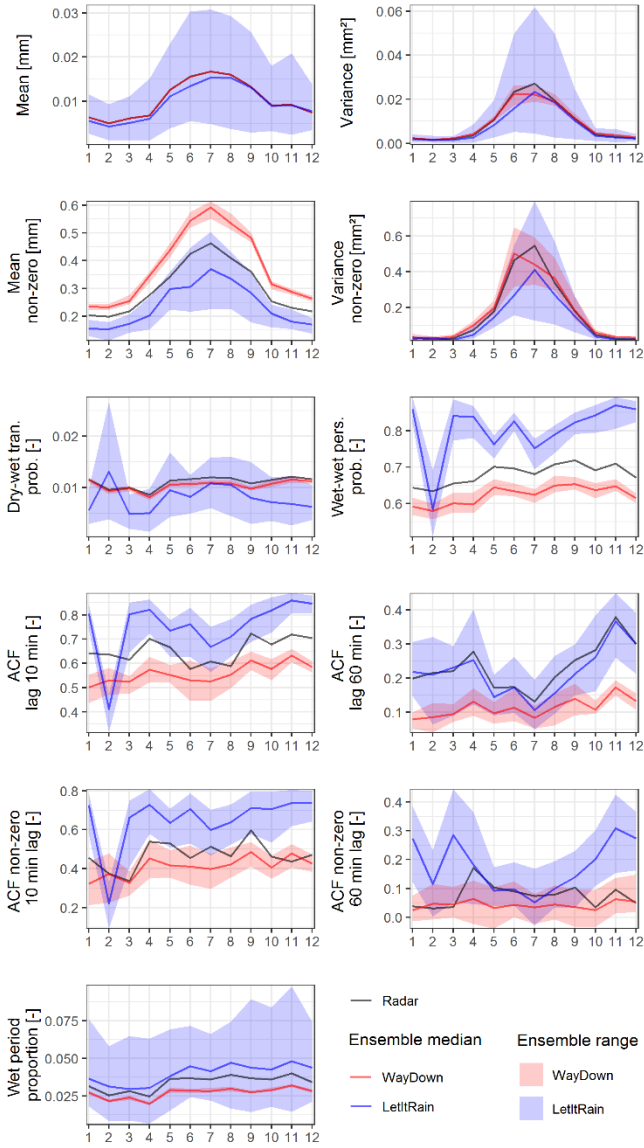


Gangwon

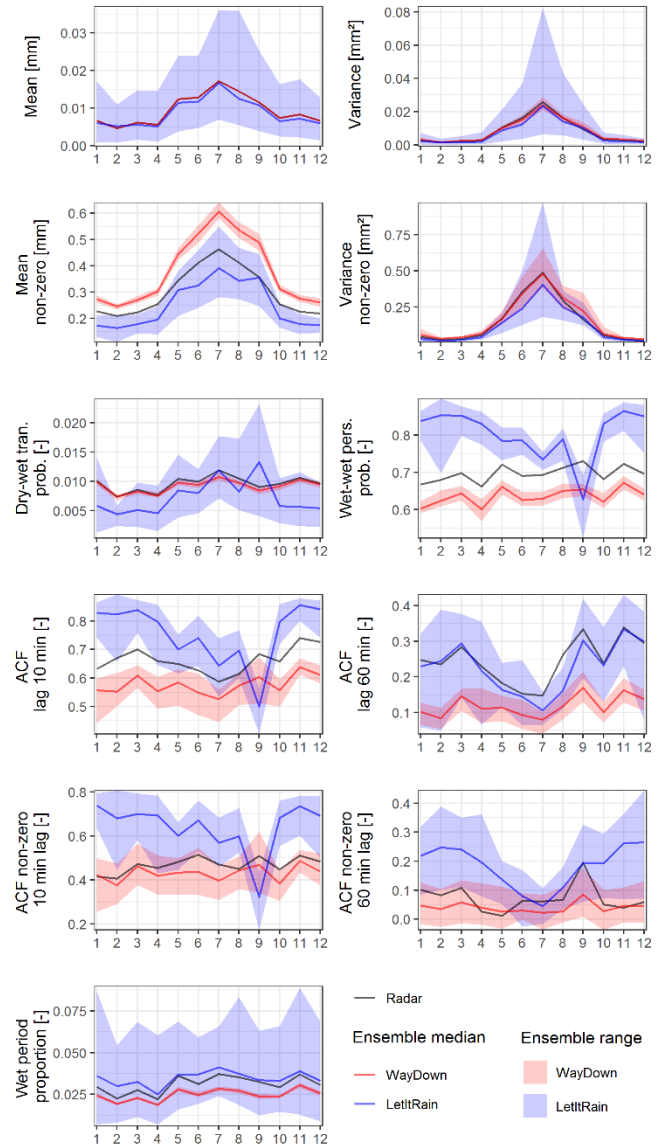
Gwangju



Greiz

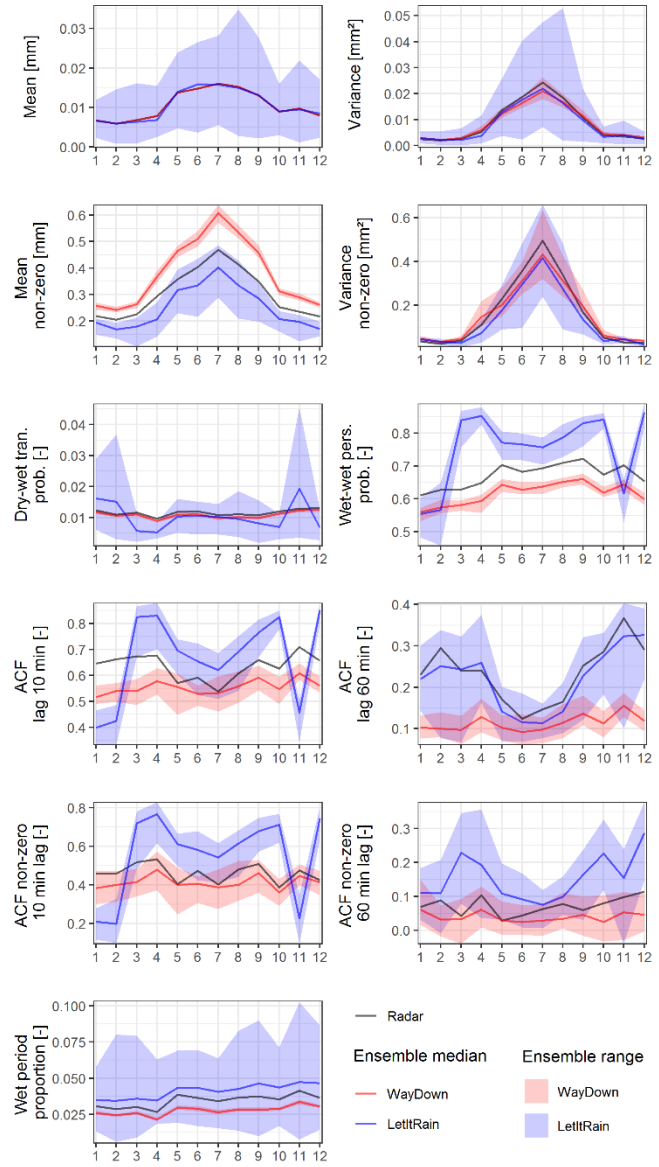
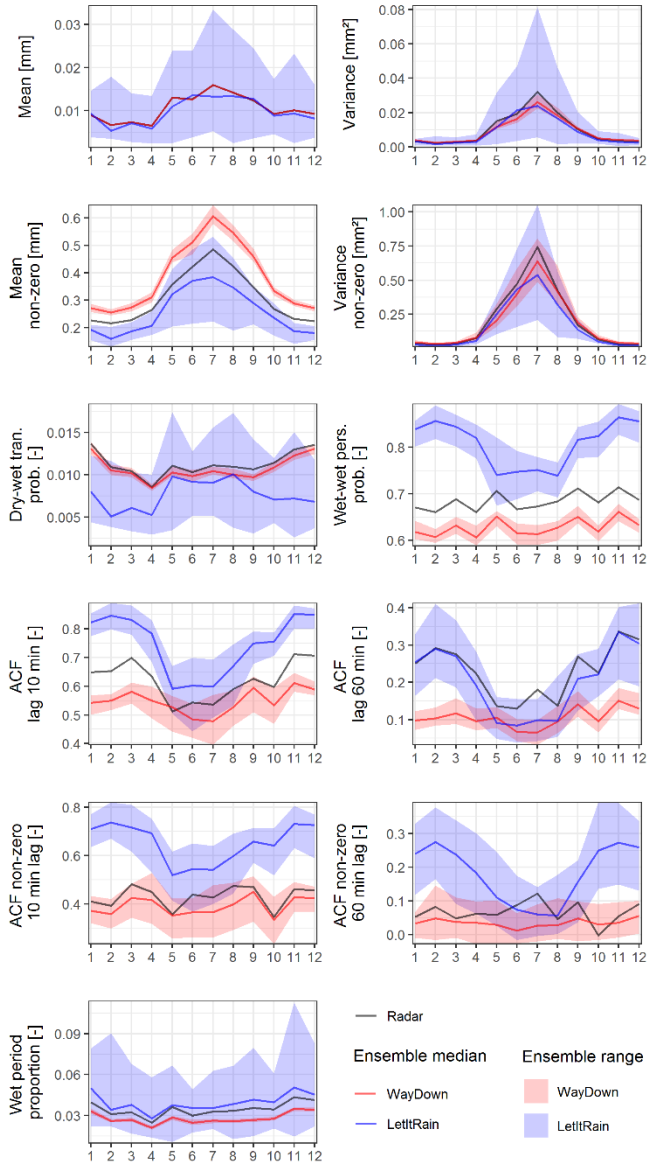


Hof

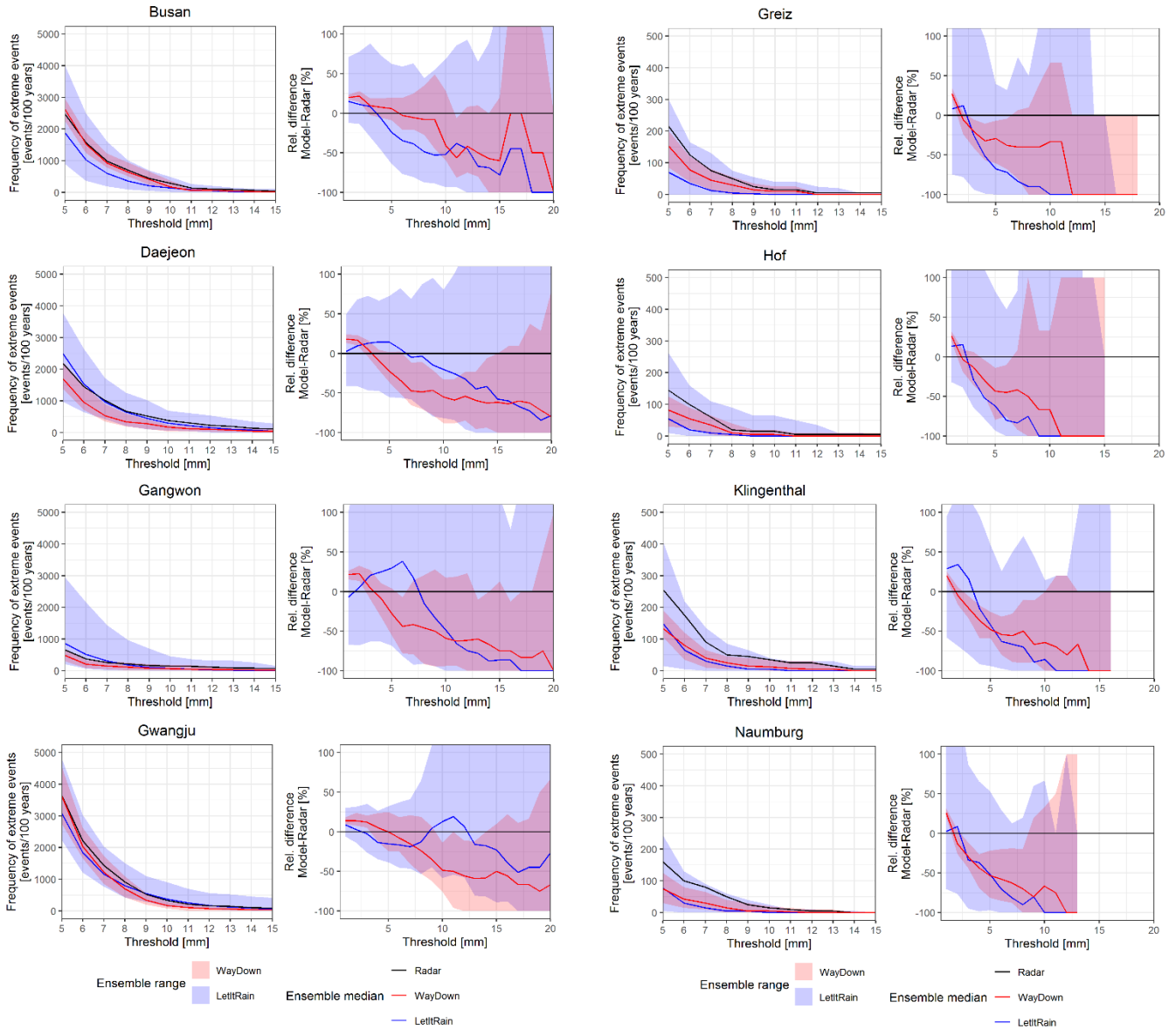


Klingenthal

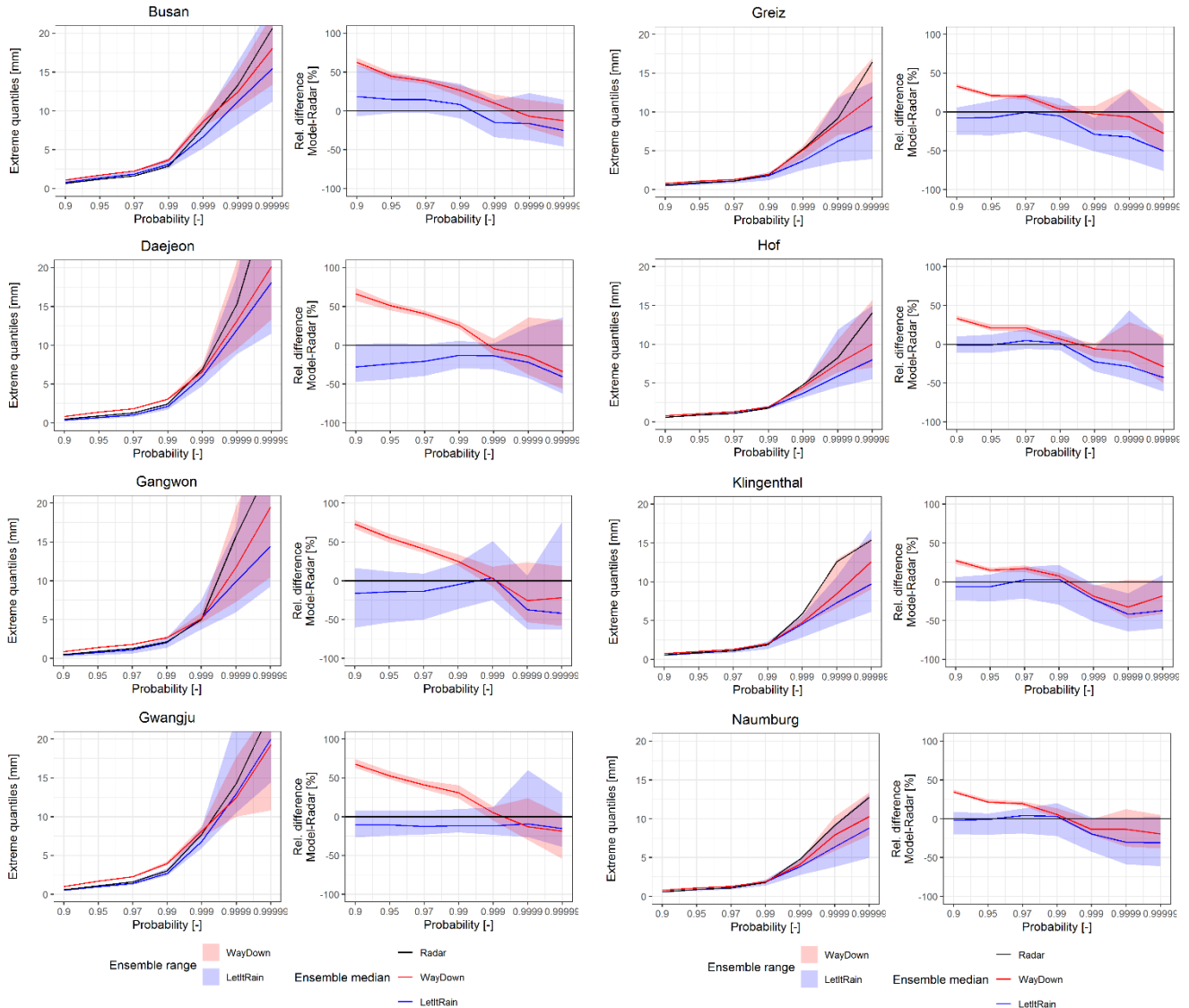
Naumburg



A2. Absolute and relative difference in frequency of extreme precipitation for original and disaggregated radar data (remaining stations)



A3. Absolute and relative difference in extreme precipitation quantiles for original and disaggregated radar data (remaining stations)



References

Alfieri, L., Claps, P., and Laio, F.: Time-dependent Z-R relationships for estimating rainfall fields from radar measurements, *Natural Hazards and Earth System Sciences*, 10, 149–158, <https://doi.org/10.5194/nhess-10-149-2010>, 2010.

Arora, V. K., Scinocca, J. F., Boer, G. J., Christian, J. R., Denman, K. L., Flato, G. M., Kharin, V. V., Lee, W. G., and Merryfield, W. J.: Carbon emission limits required to satisfy future representative concentration pathways of greenhouse gases, *Geophysical Research Letters*, 38, <https://doi.org/10.1029/2010GL046270>, 2011.

- 585 Barnes, S. L.: A Technique for Maximizing Details in Numerical Weather Map Analysis, *Journal of Applied Meteorology and Climatology*, 3, 396–409, [https://doi.org/10.1175/1520-0450\(1964\)003<0396:ATFMDI>2.0.CO;2](https://doi.org/10.1175/1520-0450(1964)003<0396:ATFMDI>2.0.CO;2), 1964.
- Berne, A., Delrieu, G., Creutin, J.-D., and Obled, C.: Temporal and spatial resolution of rainfall measurements required for urban hydrology, *Journal of Hydrology*, 299, 166–179, <https://doi.org/10.1016/j.jhydrol.2004.08.002>, 2004.
- 590 Chan, S. C., Kendon, E. J., Roberts, N. M., Fowler, H. J., and Blenkinsop, S.: The characteristics of summer sub-hourly rainfall over the southern UK in a high-resolution convective permitting model, *Environmental Research Letters*, 11, <https://doi.org/10.1088/1748-9326/11/9/094024>, 2016.
- Cowpertwait, P. S. P., O’Connell, P. E., Metcalfe, A. V., and Mawdsley, J. A.: Stochastic point process modelling of rainfall. I. Single-site fitting and validation, *Journal of Hydrology*, 175, 17–46, [https://doi.org/10.1016/S0022-1694\(96\)80004-7](https://doi.org/10.1016/S0022-1694(96)80004-7), 1996.
- 595 Dao, D. A., Kim, D., Kim, S., and Park, J.: Determination of flood-inducing rainfall and runoff for highly urbanized area based on high-resolution radar-gauge composite rainfall data and flooded area GIS data, *Journal of Hydrology*, 584, <https://doi.org/10.1016/j.jhydrol.2020.124704>, 2020a.
- Dao, D. A., Kim, D., Park, J., and Kim, T.: Precipitation threshold for urban flood warning - an analysis using the satellite-based flooded area and radar-gauge composite rainfall data, *Journal of Hydro-environment Research*, 32, 48–61, <https://doi.org/10.1016/j.jher.2020.08.001>, 2020b.
- 600 Dao, D. A., Kim, D., and Tran, D. H. H.: Estimation of rainfall threshold for flood warning for small urban watersheds based on the 1D–2D drainage model simulation, *Stochastic Environmental Research and Risk Assessment*, 36, 735–752, <https://doi.org/10.1007/s00477-021-02049-2>, 2022.
- De Luca, D. L. and Petroselli, A.: STORAGE (STOchastic RAInfall GEnerator): A User-Friendly Software for Generating Long and High-Resolution Rainfall Time Series, *Hydrology*, 8, <https://doi.org/10.3390/hydrology8020076>, 2021.
- 605 Dyrddal, A. V., Stordal, F., and Lussana, C.: Evaluation of summer precipitation from EURO-CORDEX fine-scale RCM simulations over Norway, *International Journal of Climatology*, 38, 1661–1677, <https://doi.org/10.1002/joc.5287>, 2018.
- Fatichi, S., Ivanov, V. Y., and Caporali, E.: Simulation of future climate scenarios with a weather generator, *Advances in Water Resources*, 34, 448–467, <https://doi.org/10.1016/j.advwatres.2010.12.013>, 2011.
- 610 Ghimire, G. R., Krajewski, W. F., Ayalew, T. B., and Goska, R.: Hydrologic investigations of radar-rainfall error propagation to rainfall-runoff model hydrographs, *Advances in Water Resources*, 161, 104–145, <https://doi.org/10.1016/j.advwatres.2022.104145>, 2022.
- Goudenhoofdt, E. and Delobbe, L.: Evaluation of radar-gauge merging methods for quantitative precipitation estimates, *Hydrology and Earth System Sciences*, 13, 195–203, <https://doi.org/10.5194/hess-13-195-2009>, 2009.
- Han, J., Olivera, F., and Kim, D.: An Algorithm of Spatial Composition of Hourly Rainfall Fields for Improved High Rainfall Value Estimation, *KSCE Journal of Civil Engineering*, 25, 356–368, <https://doi.org/10.1007/s12205-020-0526-z>, 2021.
- 615 Iles, C. E., Vautard, R., Strachan, J., Joussaume, S., Eggen, B. R., and Hewitt, C. D.: The benefits of increasing resolution in global and regional climate simulations for European climate extremes, *Geoscientific Model Development*, 13, 5583–5607, <https://doi.org/10.5194/gmd-13-5583-2020>, 2020.

- 620 Jasper-Tönnies, J., Einfalt, T., Quirnbach, M., and Jessen, M.: Statistical downscaling of CLM precipitation using adjusted radar data and objective weather types, in: Urban Challenges in Rainfall Analysis, 9 th International workshop of precipitation in urban areas, St. Moritz, Switzerland, <https://core.ac.uk/download/pdf/33811876.pdf>, 2012.
- Jung, C. and Schindler, D.: Precipitation Atlas for Germany (GePrA), Atmosphere, 10, <https://doi.org/10.3390/atmos10120737>, 2019.
- Kaczmarska, J., Isham, V., and Onof, C.: Point process models for fine-resolution rainfall, Hydrological Sciences Journal, 59, 1972–1991, <https://doi.org/10.1080/02626667.2014.925558>, 2014.
- 625 Kim, D. and Onof, C.: A stochastic rainfall model that can reproduce important rainfall properties across the timescales from several minutes to a decade, Journal of Hydrology, 589, 125–150, <https://doi.org/10.1016/j.jhydrol.2020.125150>, 2020.
- Kim, D., Olivera, F., Cho, H., and Socolofsky, S. A.: Regionalization of the modified Bartlett-Lewis rectangular pulse stochastic rainfall model, Terr. Atmos. Ocean. Sci., 24, 421, [https://doi.org/10.3319/TAO.2012.11.12.01\(Hy\)](https://doi.org/10.3319/TAO.2012.11.12.01(Hy)), 2013.
- 630 Kim, D., Kwon, H.-H., Lee, S.-O., and Kim, S.: Regionalization of the Modified Bartlett–Lewis rectangular pulse stochastic rainfall model across the Korean Peninsula, Journal of Hydro-environment Research, 11, 123–137, <https://doi.org/10.1016/j.jher.2014.10.004>, 2016a.
- Kim, D., Cho, H., Onof, C., and Choi, M.: Let-It-Rain: a web application for stochastic point rainfall generation at ungaged basins and its applicability in runoff and flood modeling, Stochastic Environmental Research and Risk Assessment, 31, 1023–1043, <https://doi.org/10.1007/s00477-016-1234-6>, 2017.
- 635 Kim, J.-U., Kim, T.-J., Kim, D.-H., Byun, Y.-H., Chang, E.-C., Cha, D.-H., Ahn, J.-B., and Min, S.-K.: Performance evaluation and future projection of east Asian climate using SSP scenario-based CORDEX-east Asia phase 2 multi-RCM simulations, J. Clim. Chang. Res., 13, 339–354, <https://doi.org/10.15531/KSCCR.2022.13.3.339>, 2022.
- 640 Kim, M.-K., Kim, S., Kim, J., Heo, J., Park, J.-S., Kwon, W.-T., and Suh, M.-S.: Statistical downscaling for daily precipitation in Korea using combined PRISM, RCM, and quantile mapping: Part 1, methodology and evaluation in historical simulation, Asia-Pacific Journal of Atmospheric Sciences, 52, 79–89, <https://doi.org/10.1007/s13143-016-0010-3>, 2016b.
- Kim, T.-J., Kwon, H.-H., and Kim, K. B.: Calibration of the reflectivity-rainfall rate (Z-R) relationship using long-term radar reflectivity factor over the entire South Korea region in a Bayesian perspective, Journal of Hydrology, 593, <https://doi.org/10.1016/j.jhydrol.2020.125790>, 2021.
- 645 Kirsch, B., Clemens, M., and Ament, F.: Stratiform and Convective Radar Reflectivity–Rain Rate Relationships and Their Potential to Improve Radar Rainfall Estimates, Journal of Applied Meteorology and Climatology, 58, 2259–2271, <https://doi.org/10.1175/JAMC-D-19-0077.1>, 2019.
- Kossieris, P., Makropoulos, C., Onof, C., and Koutsoyiannis, D.: A rainfall disaggregation scheme for sub-hourly time scales: Coupling a Bartlett-Lewis based model with adjusting procedures, Journal of Hydrology, 556, 980–992, <https://doi.org/10.1016/j.jhydrol.2016.07.015>, 2018.
- 650 Kottek, M., Grieser, J., Beck, C., Rudolf, B., and Rubel, F.: World Map of the Köppen-Geiger climate classification updated, Meteorologische Zeitschrift, 15, 259–263, <https://doi.org/10.1127/0941-2948/2006/0130>, 2006.
- Koutsoyiannis, D. and Onof, C.: Rainfall disaggregation using adjusting procedures on a Poisson cluster model, Journal of Hydrology, 246, 109–122, [https://doi.org/10.1016/S0022-1694\(01\)00363-8](https://doi.org/10.1016/S0022-1694(01)00363-8), 2001.

- 655 Kreienkamp, F., Paxian, A., Früh, B., Lorenz, P., and Matulla, C.: Evaluation of the empirical–statistical downscaling method EPISODES, *Climate Dynamics*, 52, 991–1026, <https://doi.org/10.1007/s00382-018-4276-2>, 2019.
- Kronenberg, R. and Bernhofer, C.: A method to adapt radar-derived precipitation fields for climatological applications, *Meteorological Applications*, 22, 636–649, <https://doi.org/10.1002/met.1498>, 2015.
- 660 Licznar, P., Łomotowski, J., and Rupp, D. E.: Random cascade driven rainfall disaggregation for urban hydrology: An evaluation of six models and a new generator, *Atmospheric Research*, 99, 563–578, <https://doi.org/10.1016/j.atmosres.2010.12.014>, 2011.
- Liu, Y., Wang, H., Lei, X., and Wang, H.: Real-time forecasting of river water level in urban based on radar rainfall: A case study in Fuzhou City, *Journal of Hydrology*, 603, <https://doi.org/10.1016/j.jhydrol.2021.126820>, 2021.
- 665 Lombardo, F., Volpi, E., Koutsoyiannis, D., and Serinaldi, F.: A theoretically consistent stochastic cascade for temporal disaggregation of intermittent rainfall, *Water Resources Research*, 53, 4586–4605, <https://doi.org/10.1002/2017WR020529>, 2017.
- Maraun, D., Wetterhall, F., Ireson, A. M., Chandler, R. E., Kendon, E. J., Widmann, M., Brienen, S., Rust, H. W., Sauter, T., Themeßl, M., Venema, V. K. C., Chun, K. P., Goodess, C. M., Jones, R. G., Onof, C., Vrac, M., and Thiele-Eich, I.: Precipitation downscaling under climate change: Recent developments to bridge the gap between dynamical models and the end user, *Reviews of Geophysics*, 48, <https://doi.org/10.1029/2009RG000314>, 2010.
- 670 Meierdiercks, K. L., Smith, J. A., Baeck, M. L., and Miller, A. J.: Analyses of Urban Drainage Network Structure and its Impact on Hydrologic Response1, *JAWRA Journal of the American Water Resources Association*, 46, 932–943, <https://doi.org/10.1111/j.1752-1688.2010.00465.x>, 2010.
- Meredith, E. P., Ulbrich, U., and Rust, H. W.: The Diurnal Nature of Future Extreme Precipitation Intensification, *Geophysical Research Letters*, 46, 7680–7689, <https://doi.org/10.1029/2019GL082385>, 2019.
- 675 Meredith, E. P., Ulbrich, U., and Rust, H. W.: Subhourly rainfall in a convection-permitting model, *Environmental Research Letters*, 15, <https://doi.org/10.1088/1748-9326/ab6787>, 2020.
- Müller, H. and Haberlandt, U.: Temporal Rainfall Disaggregation with a Cascade Model: From Single-Station Disaggregation to Spatial Rainfall, *Journal of Hydrologic Engineering*, 20, [https://doi.org/10.1061/\(ASCE\)HE.1943-5584.0001195](https://doi.org/10.1061/(ASCE)HE.1943-5584.0001195), 2015.
- 680 Müller, H. and Haberlandt, U.: Temporal rainfall disaggregation using a multiplicative cascade model for spatial application in urban hydrology, *Journal of Hydrology*, 556, 847–864, <https://doi.org/10.1016/j.jhydrol.2016.01.031>, 2018.
- Müller-Thomy, H.: Temporal rainfall disaggregation using a micro-canonical cascade model: possibilities to improve the autocorrelation, *Hydrology and Earth System Sciences*, 24, 169–188, <https://doi.org/10.5194/hess-24-169-2020>, 2020.
- Müller-Thomy, H., Wallner, M., and Förster, K.: Rainfall disaggregation for hydrological modeling: is there a need for spatial consistence?, *Hydrology and Earth System Sciences*, 22, 5259–5280, <https://doi.org/10.5194/hess-22-5259-2018>, 2018.
- 685 NASA JPL: NASA Shuttle Radar Topography Mission Global 1 arc second [Data set]. NASA EOSDIS Land Processes Distributed Active Archive Center. Accessed 2023-10-18 from <https://doi.org/10.5067/MEaSURES/SRTM/SRTMGL1.003>, 2013

- Ochoa-Rodriguez, S., Wang, L.-P., Willems, P., and Onof, C.: A Review of Radar-Rain Gauge Data Merging Methods and Their Potential for Urban Hydrological Applications, *Water Resources Research*, 55, 6356–6391, 690 <https://doi.org/10.1029/2018WR023332>, 2019.
- Oh, M., Lee, D.-R., Kwon, H., and Kim, D.: Development of flood inundation area GIS database for Samsung-1 drainage sector, Seoul, Korea, *Journal of Korea Water Resources Association*, 49, 981–993, <https://doi.org/10.3741/JKWRA.2016.49.12.981>, 2016.
- O’Neill, B. C., Tebaldi, C., van Vuuren, D. P., Eyring, V., Friedlingstein, P., Hurtt, G., Knutti, R., Kriegler, E., Lamarque, J.-F., Lowe, J., Meehl, G. A., Moss, R., Riahi, K., and Sanderson, B. M.: The Scenario Model Intercomparison Project (ScenarioMIP) for CMIP6, *Geoscientific Model Development*, 9, 3461–3482, <https://doi.org/10.5194/gmd-9-3461-2016>, 695 2016.
- Papalexiou, S. M.: Unified theory for stochastic modelling of hydroclimatic processes: Preserving marginal distributions, correlation structures, and intermittency, *Advances in Water Resources*, 115, 234–252, 700 <https://doi.org/10.1016/j.advwatres.2018.02.013>, 2018.
- Park, J., Cross, D., Onof, C., Chen, Y., and Kim, D.: A simple scheme to adjust Poisson cluster rectangular pulse rainfall models for improved performance at sub-hourly timescales, *Journal of Hydrology*, 598, <https://doi.org/10.1016/j.jhydrol.2021.126296>, 2021.
- Park, Sora, Kim, Heon-Ae, Cha, Joo Wan, Park, Jong-Seo, and Han, Hye-Young: Analysis of Quality Control Technique Characteristics on Single Polarization Radar Data, *Atmosphere*, 24, 77–87, <https://doi.org/10.14191/Atmos.2014.24.1.077>, 705 2014.
- Peleg, N., Faticchi, S., Paschalis, A., Molnar, P., and Burlando, P.: An advanced stochastic weather generator for simulating 2-D high-resolution climate variables, *Journal of Advances in Modeling Earth Systems*, 9, 1595–1627, <https://doi.org/10.1002/2016MS000854>, 2017.
- Pidoto, R. and Haberlandt, U.: A semi-parametric hourly space-time weather generator, *Hydrology and Earth System Sciences Discussions*, 2023, 1–28, <https://doi.org/10.5194/hess-2023-45>, 2023. 710
- Prein, A. F., Langhans, W., Fosser, G., Ferrone, A., Ban, N., Goergen, K., Keller, M., Tölle, M., Gutjahr, O., Feser, F., Brisson, E., Kollet, S., Schmidli, J., van Lipzig, N. P. M., and Leung, R.: A review on regional convection-permitting climate modeling: Demonstrations, prospects, and challenges, *Reviews of Geophysics*, 53, 323–361, <https://doi.org/10.1002/2014RG000475>, 715 2015.
- Pui, A., Sharma, A., Mehrotra, R., Sivakumar, B., and Jeremiah, E.: A comparison of alternatives for daily to sub-daily rainfall disaggregation, *Journal of Hydrology*, 470–471, 138–157, <https://doi.org/10.1016/j.jhydrol.2012.08.041>, 2012.
- Ramly, S., Tahir, W., Abdullah, J., Jani, J., Ramli, S., and Asmat, A.: Flood Estimation for SMART Control Operation Using Integrated Radar Rainfall Input with the HEC-HMS Model, *Water Resources Management*, 34, 3113–3127, 720 <https://doi.org/10.1007/s11269-020-02595-4>, 2020.
- Rodriguez-Iturbe, I., Cox, D. R., and Isham, V.: A point process model for rainfall: further developments, *Proceedings of the Royal Society of London. A. Mathematical and Physical Sciences*, 417, 283–298, <https://doi.org/10.1098/rspa.1988.0061>, 1988.
- Schär, C., Fuhrer, O., Arteaga, A., Ban, N., Charpillot, C., Girolamo, S. D., Hentgen, L., Hoefler, T., Lapillonne, X., Leutwyler, D., Osterried, K., Panosetti, D., Rüdüsühli, S., Schlemmer, L., Schulthess, T. C., Sprenger, M., Ubbiali, S., and 725

- Wernli, H.: Kilometer-Scale Climate Models: Prospects and Challenges, *Bulletin of the American Meteorological Society*, 101, 567–587, <https://doi.org/10.1175/BAMS-D-18-0167.1>, 2020.
- Segers, J., Sibuya, M., and Tsukahara, H.: The empirical beta copula, *Journal of Multivariate Analysis*, 155, 35–51, <https://doi.org/10.1016/j.jmva.2016.11.010>, 2017.
- 730 Sellar, A. A., Jones, C. G., Mulcahy, J. P., Tang, Y., Yool, A., Wiltshire, A., O’Connor, F. M., Stringer, M., Hill, R., Palmieri, J., Woodward, S., de Mora, L., Kuhlbrodt, T., Rumbold, S. T., Kelley, D. I., Ellis, R., Johnson, C. E., Walton, J., Abraham, N. L., Andrews, M. B., Andrews, T., Archibald, A. T., Berthou, S., Burke, E., Blockley, E., Carslaw, K., Dalvi, M., Edwards, J., Folberth, G. A., Gedney, N., Griffiths, P. T., Harper, A. B., Hendry, M. A., Hewitt, A. J., Johnson, B., Jones, A., Jones, C. D., Keeble, J., Liddicoat, S., Morgenstern, O., Parker, R. J., Predoi, V., Robertson, E., Siahahaan, A., Smith, R. S., Swaminathan,
- 735 R., Woodhouse, M. T., Zeng, G., and Zerroukat, M.: UKESM1: Description and Evaluation of the U.K. Earth System Model, *Journal of Advances in Modeling Earth Systems*, 11, 4513–4558, <https://doi.org/10.1029/2019MS001739>, 2019.
- Semenov, M. and Barrow, E.: Use of stochastic weather generator in the development of climate change scenarios, *Climatic Change*, 35, 397–414, <https://doi.org/10.1023/A:1005342632279>, 1997.
- 740 Semenov, M. A., Brooks, R. J., Barrow, E. M., and Richardson, C. W.: Comparison of the WGEN and LARS-WG stochastic weather generators for diverse climates, *Climate Research*, 10, 95–107, 1998.
- Siggia, A. D., & Passarelli, R. E. Gaussian model adaptive processing (GMAP) for improved ground clutter cancellation and moment calculation. In *Proc. ERAD (Vol. 2, pp. 421-424)*, 2004.
- Sinclair, S. and Pegram, G.: Combining radar and rain gauge rainfall estimates using conditional merging, *Atmospheric Science Letters*, 6, 19–22, <https://doi.org/10.1002/asl.85>, 2005.
- 745 Sohn, W., Kim, J.-H., Li, M.-H., Brown, R. D., and Jaber, F. H.: How does increasing impervious surfaces affect urban flooding in response to climate variability?, *Ecological Indicators*, 118, <https://doi.org/10.1016/j.ecolind.2020.106774>, 2020.
- Takhellambam, B. S., Srivastava, P., Lamba, J., McGehee, R. P., Kumar, H., and Tian, D.: Temporal disaggregation of hourly precipitation under changing climate over the Southeast United States, *Scientific Data*, 9, <https://doi.org/10.1038/s41597-022-01304-7>, 2022.
- 750 Verdin, A., Rajagopalan, B., Kleiber, W., Podestá, G., and Bert, F.: A conditional stochastic weather generator for seasonal to multi-decadal simulations, *Journal of Hydrology*, 556, 835–846, <https://doi.org/10.1016/j.jhydrol.2015.12.036>, 2018.
- Vorobevskii, I.: Supplement materials for publication: Simulating sub-hourly rainfall data for current and future periods using two statistical disaggregation models - case studies from Germany and South Korea, <https://www.hydroshare.org/resource/9322e1ef25e04822a759c515795642e1>, 2023.
- 755 Vorobevskii, I., Al Janabi, F., Schneebeck, F., Bellera, J., and Krebs, P.: Urban Floods: Linking the Overloading of a Storm Water Sewer System to Precipitation Parameters, *Hydrology*, 7, <https://doi.org/10.3390/hydrology7020035>, 2020.
- Wang, W., Yin, S., Yu, B., and Wang, S.: CLIGEN parameter regionalization for mainland China, *Earth System Science Data*, 13, 2945–2962, <https://doi.org/10.5194/essd-13-2945-2021>, 2021.
- 760 Wijayarathne, D., Boodoo, S., Coulibaly, P., and Sills, D.: Evaluation of Radar Quantitative Precipitation Estimates (QPEs) as an Input of Hydrological Models for Hydrometeorological Applications, *Journal of Hydrometeorology*, 21, 1847–1864, <https://doi.org/10.1175/JHM-D-20-0033.1>, 2020.

Wijayarathne, D., Coulibaly, P., Boodoo, S., and Sills, D.: Use of Radar Quantitative Precipitation Estimates (QPEs) for Improved Hydrological Model Calibration and Flood Forecasting, *Journal of Hydrometeorology*, 22, 2033–2053, <https://doi.org/10.1175/JHM-D-20-0267.1>, 2021.

765 Winterrath, T., Brendel, C., Hafer, M., Junghänel, T., Klameth, A., Lengfeld, K., Walawender, E., Weigl, E., and Becker, A.: Erstellung einer radargestützten Niederschlagsklimatologie, Deutscher Wetterdienst, Offenbach am Main, https://www.dwd.de/DE/leistungen/pfb_verlag_berichte/pdf_einzelbaende/251_pdf.pdf?__blob=publicationFile&v=2, 2017.

770 Winterrath, T., Brendel, C., Hafer, M., Junghänel, T., Klameth, A., Lengfeld, K., Walawender, E., Weigl, E., and Becker, A.: RADKLIM Version 2017.002: Reprocessed quasi gauge-adjusted radar data, 5-minute precipitation sums (YW), http://dx.doi.org/10.5676/DWD/RADKLIM_YW_V2017.002, 2018.