

~~Climate and cryosphere cause water yield~~ Significant regime shifts of historical water yield in the Upper Brahmaputra River basin

Hao Li^{1,2}, Baoying Shan^{3,2}, Liu Liu¹, Lei Wang⁴, Akash Koppa², Feng Zhong^{5,2}, Dongfeng Li⁶, Xuanxuan Wang¹, Wenfeng Liu¹, Xiuping Li⁴, and Zongxue Xu⁷

¹Center for Agricultural Water Research in China, China Agricultural University, Beijing, China

²Hydro-Climate Extremes Lab, Ghent University, Ghent, Belgium

³Research Unit Knowledge-based Systems, Ghent University, Ghent, Belgium

⁴Institute of Tibetan Plateau Research, Chinese Academy of China, Beijing, China

⁵College of Hydrology and Water Resources, Hohai University, Nanjing, China

⁶Department of Geography, National University of Singapore, Singapore

⁷College of Water Sciences, Beijing Normal University, Beijing, China

Correspondence: Liu Liu (liuliu@cau.edu.cn)

Abstract. Although evidence of hydrological ~~responses to climate~~ response of watersheds to climate change is abundant, the reliable assessments of water yield (WY) over mountainous regions, such as the Upper Brahmaputra River (UBR) basin, remain unclear ~~due to intensified cryospheric changes. Based on multi-station runoff observations. Here,~~ we examine long-term WY changes during 1982–2013 in the UBR basin, ~~and based on multi-station runoff observations. We~~ find that there are ~~in-general hydrological regime shifts~~ significant shifts in hydrological regimes in the late 1990s; ~~magnitude increases in WY range from WY increases in the range of~~ ~10% to ~80%, while ~~its the~~ directions reverse from the increase to decrease. ~~Then~~ Additionally, the double mass curve (DMC) technique is used to assess the effects of climate, vegetation, and cryosphere on WY changes. Results show that ~~climate and cryosphere~~ cryosphere and climate together contribute to over 80% of ~~magnitude increases of WY in the increase in WY across~~ the entire UBR basin, ~~in which while~~ the role of vegetation is ~~nearly~~ negligible. The combined effects, however, are either offsetting or additive, ~~thus~~ leading to slight or substantial magnitude increases, respectively. ~~Climate change, mainly decreased precipitation, leads to the~~ The downward WY trend ~~is primarily regulated by decreased precipitation~~ in recent years, ~~while melt waters under global warming. However, we find that melt waters~~ may alleviate the ~~resulting~~ water shortage in some basins. Therefore, the combined effects of climate and cryosphere on WY should be considered in future water resources management over mountainous basins, particularly involving co-benefits between upstream and downstream regions.

1 Introduction

Water yield (or runoff depth, WY) in mountainous watersheds is crucial for sustaining fragile ecosystems in headwaters, supplying valuable freshwater resources to downstream lowlands, and balancing co-benefits between upstream and downstream areas, especially ~~for in~~ large transboundary river systems (Viviroli et al., 2011). In mountainous watersheds, WY changes have been ~~commonly, but separately,~~ attributed to climate variability (Dierauer et al., 2018; Song et al., 2021), vegetation greening

or browning (Goulden and Bales, 2014; Zhou et al., 2021), and glaciers and snow melting (Huss and Hock, 2018; Biemans et al., 2019). These changes are expected to alter the spatial and temporal distribution of water resources (Tang et al., 2019) and further threaten water supply and food security downstream (Biemans et al., 2019). The Qinghai-Tibet Plateau (QTP, see Figure 1a), ~~which is~~ also known as the “Asian Water Tower”, supplies water ~~resources for to~~ major rivers in Asia, such as the Brahmaputra, Salween, Mekong, Yangtze, Yellow, and Indus Rivers (Kang et al., 2010; Yao et al., 2010, 2019). ~~As such~~ Therefore, WY changes over this region significantly affect ~~the use of water resources, prevention of natural disasters, and protection of aquatic functions for water availability, terrestrial and aquatic ecosystems which are vital for sustaining~~ the livelihoods of approximately two billion people (Immerzeel et al., 2010). ~~While~~ Despite some in-situ observations and estimates from state-of-the-art remote sensing (Wang et al., 2021), total river runoff has never been reliably assessed in this region, and its ~~responses~~ response to global warming ~~remain unclear, despite some in-situ observations and runoff estimates from state-of-the-art remote sensing technology~~ (Wang et al., 2021) remains unclear. Therefore, comprehensively assessing long-term changes of WY, particularly magnitude and direction, is of great importance for the sustainable development of water resources in the QTP (Yao et al., 2019).

In recent years, WY has been significantly affected by multiply multiple factors in the QTP. For example, Fan and He (2015) highlighted the important role of precipitation (P) in WY increases in the Salween and Mekong River basins. Li et al. (2020) found that elevated precipitation and melt waters both contributed to substantial WY increases in the Tuotuo River basin. Similarly, Lutz et al. (2014) projected that the increased precipitation near the Salween and Mekong Rivers and the accelerated meltwater near the Indus River caused significant WY changes. Vegetation changes have also ~~been~~ proven to be vital for mountainous water resources; Li et al. (2017) showed that evaporation (E), mostly due to grassland restoration, decreased WY in the Yangtze River basin; ~~while~~. Further, Li et al. (2021) suggested that vegetation greening may change the seasonality of water resources and increase WY during the dry season in the UBR basin.

Although a growing body of evidence has shown that WY is experiencing significant changes significantly changing in the QTP, most previous studies focus on individual basins, which may not fully reveal the spatial ~~variabilities~~ variability in WY. Of specific interest is the Upper Brahmaputra River (UBR, see Figure 1b) basin, which covers an area of over 198,636 km² and has large gradients in elevation, ~~thus leading to the elevation dependent~~ which has influenced climate and vegetation ~~pattern~~ patterns (Li et al., 2019b; Gao et al., 2018). Hence, it is imperative to provide a comprehensive, spatially differentiated study on long-term WY changes in this region. ~~Studies of WY changes~~ Such studies in the UBR basin, however, are significantly hindered by the sparse network of hydrological observation stations (Li et al., 2019b; Wang et al., 2021; Yao et al., 2019), which leads to large uncertainties in river flow ~~forecasts~~ predictions, and thus water resources assessments. Also, current precipitation estimates are highly uncertain owing to the complex topography of this region, which limits the ability to accurately model the relationships between precipitation and runoff (Sun and Su, 2020). Lastly, the ~~present current~~ inadequate understanding of hydrological responses to complex interactions among multi-spheres limits the application of hydrological models in these mountainous watersheds (Pellicciotti et al., 2012). ~~While~~ In this regard, long-term observed runoff records and recent high-resolution precipitation data in the UBR basin provide a valuable opportunity to estimate runoff responses to warming by using statistical methods.

Therefore, this study use ~~This study uses~~ the Double Mass Curve (DMC) technique to jointly assess historical WY responses to climate warming and associated environmental changes in the UBR basin. To do this, we collect multi-station runoff observations and detect long-term WY changes during 1982–2013. And then, we use ~~the~~ DMC method to estimate the effects of climate ~~that is indicated~~ ~~(represented~~ by effective precipitation (~~P-E~~, ~~P-E or eP~~), vegetation (represented by Leaf Area Index, LAI), and cryosphere (e.g. melt waters from glaciers and snow) on ~~the~~ magnitude and direction changes in WY (See Data and Methods). This study is expected to provide essential information for water resources management in the UBR basin and other mountainous watersheds.

2 Data and Methods

2.1 Study area

The Brahmaputra River (known as the Yarlung Zangbo River, or YZR, in China), a transboundary river in the southern QTP, originates in the Gyama Langdzom Glacier and flows across China, India, and Bangladesh, before emptying into the Indian Ocean. The UBR basin is located above the Nuxia hydrological station (Figure 1), and its river flow has significant implications on freshwater resources of South Asia. Here, we divide the UBR basin into the headstream (HZR), upstream (UYZR), mid-stream (MYZR), downstream (LYZR), Nianchu River (NCR), and Lhasa River (LSR) basins by the locations of hydrological stations (Table 1 and Figure 1b).

The elevation gradient and the distance to the ocean in the UBR basin together contribute to a large spatial variability in climate (Sang et al., 2016). The annual precipitation in the HYZR basin is less than 400 mm, while that in the LYZR basin is nearly 1000 mm, ~~and similarly~~. ~~Similarly~~, the annual evaporation increases gradually from upstream to downstream areas (Figure S1a+b). Meanwhile, water and energy availability modulate vegetation conditions (Li et al., 2019a); vegetation cover increases dramatically from the HYZR to the LYZR basin (Figure S1c). Additionally, cryospheric meltwater due to atmospheric warming has substantially altered ~~hydrology~~ ~~hydrological~~ conditions in this region (Cuo et al., 2019; Yao et al., 2010; Wang et al., 2021).

2.2 Data

Here, we collect multi-station annual runoff observations from 1982 to 2013 and convert the river flow (m^3/s) into runoff depth (mm). ~~Also~~ ~~In addition~~, we acquire high-resolution climate and vegetation data ~~in-over~~ the same time ~~range~~ ~~period~~, and further aggregate these gridded ~~data into regional annual values~~ ~~datasets into annual values regionally~~ by considering area-weighted effects (their temporal changes are shown in Figure S2).

2.2.1 Runoff data

Annual runoff observations between 1982 and 2013 used here come from six hydrological stations along the mainstream and major branches in the UBR basin. WY in the HYZR is equal to runoff depth at Lhatse station, while WY in other basins is

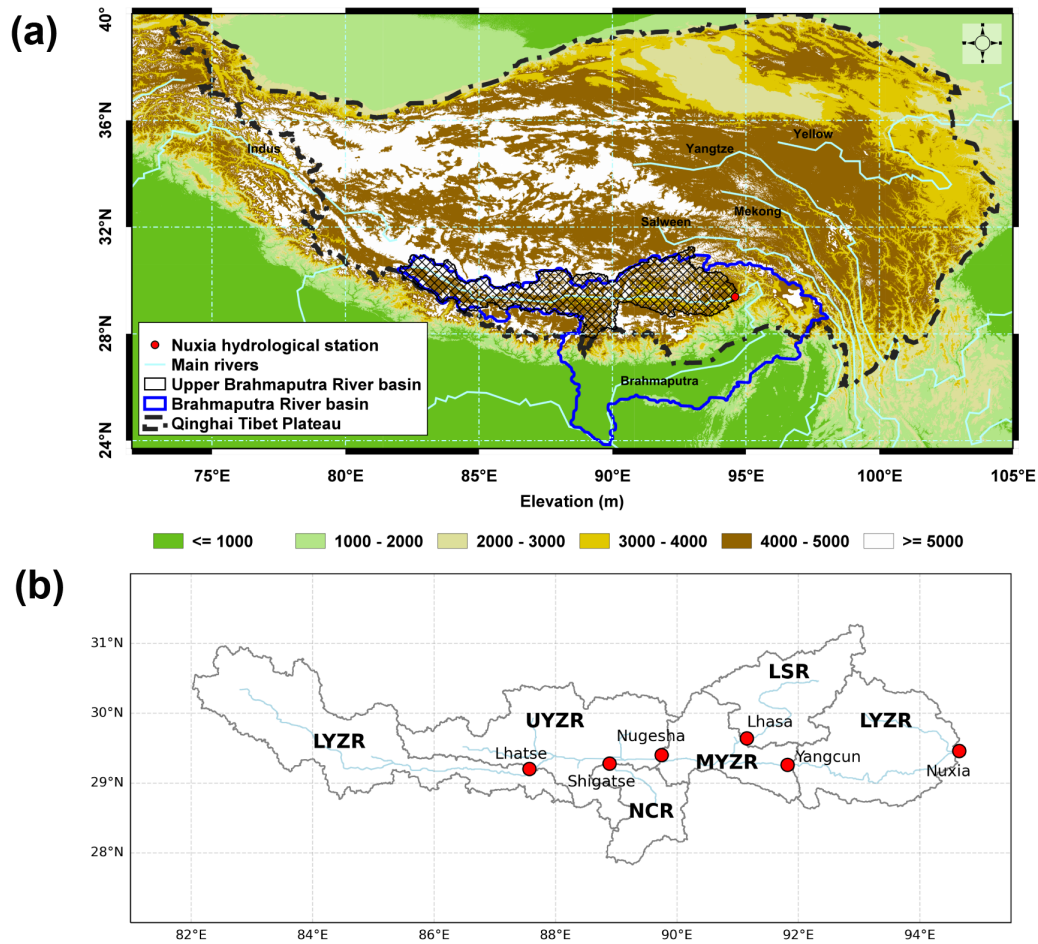


Figure 1. Location of (a) the Upper Brahmaputra River (UBR) basin in the Qinghai Tibet Plateau (QTP), which is from Li et al. (2021), and (b) six basins divided by Lhatse, Nugesha, Shigatse, Yangcun, Lhasa, and Nuxia hydrological stations.

calculated by the difference between runoff depth from the downstream station and that from the upstream and branch stations. For example, WY in the MYZR basin is equal to the difference between runoff depth in Yangcun station and that in Lhasa and Nugesha stations (Figure 1b).

2.2.2 Climate data

90 The most recent 10 km gridded daily precipitation data, combining topographic and linear correction approaches based on 262 rain-gauge observations, is developed for the UBR basin by Sun and Su (2020) and here used to estimate regional annual precipitation (P). The maximum 2 m air temperature is obtained from China Meteorological Forcing Dataset (He et al., 2020). The evaporation (E) with a 0.25° spatial resolution is acquired from Global Land Evaporation Amsterdam Model (GLEAM)

version 3.5a (Martens et al., 2017). GLEAM evaporation has been validated in different biome types in China and showed high
95 correlations with in-situ eddy covariance E (Yang et al., 2017).

2.2.3 Vegetation data

Leaf Area Index (LAI) used in this study is obtained from Global Inventory Monitoring and Modelling System (GIMMS)
LAI3g with a spatial resolution of 8 km (Zhu et al., 2013). The product is generated using an artificial neural network trained
on the Collection Terra Moderate Resolution Imaging Spectroradiometer (MODIS) LAI product and the latest version of
100 GIMMS NDVI3g data for the same period, which has been proven to have an improved multi-sensor record harmonization
scheme compared to other global LAI products (Forzieri et al., 2020; Gonsamo et al., 2021; Zhu et al., 2016).

2.2.4 Land use and cover

The land use and cover in 2000 with a spatial resolution of 1 km is used to represent the land cover types in the UBR basin.
The data is acquired from Resource and Environmental Science Data Center, and is here divided into seven primary land use
105 types, including cultivated land, forestland, grassland, water body, urban land, unused land, and glaciers and snow (Figure S3).

2.3 Methodology

2.3.1 Trend and ~~abruption~~-turning point analysis

In this study, we use the non-parametric Mann–Kendall test (Kendall, 1938; Mann, 1945) to identify the trend in WY, and Pettitt
~~abrupt change~~ detection (Pettitt, 1979) to identify the turning point (Tp) in WY, where the level of significance is set at 0.05.
110 The Pettitt method has the advantages of ~~the being~~ non-parametric, rank-based and distribution-free for finding the ~~abrupt~~
~~variation~~-turning point in a time series. We then compare the averages of WY before and after Tp to reflect the ~~magnitude~~
~~changes~~-changes in magnitude, and compare the trends in ~~the~~ two periods to ~~reflect~~-represent the direction changes.

2.3.2 Double mass curve technique

The DMC used here is a plot of the cumulative data of one variable versus the cumulative data of another related variable in a
115 concurrent period. It has previously been used to assess the individual effect of climate (Gao et al., 2011), forest disturbance
(Wei and Zhang, 2010), wildfire (Hallema et al., 2018), and cryosphere (Brahney et al., 2017) on water resources. For the
large and pristine UBR and other mountainous basins, climate, vegetation, and cryosphere (melt waters from glaciers and snow
under warming, see Biemans et al. 2019; Huss and Hock 2018) play important roles in ~~hydrology~~the water cycle, and these
three ~~parts must be together considered~~components must be considered together to accurately estimate ~~hydrological responses~~
120 the hydrological response to warming. It is ~~considerably hard~~-difficult to directly calculate the supply of melt waters to WY
due to the lack of long-term glacier monitoring, ~~while~~, On the other hand, runoff observations and high-resolution climate
and vegetation data make it possible to use the DMC technique, a data-driven statistical method, to estimate cryospheric
contributions to WY.

The Appropriate selection of climate and vegetation indices used in the DMC technique is an important issue of great
 125 importance. Previous studies have shown that effective precipitation (P-E, eP) can reflect more information adequately represent
the impact of climate on WY compared with individual to individual estimates of P or E, and be regarded as a reliable proxy
to climate (Wei and Zhang, 2010; Zhang et al., 2019). LAI quantifies the amount of leaf area in an ecosystem and becomes
is an important variable reflecting vegetation structures and biophysical processes (Forzieri et al., 2020), and Li et al. (2021)
 130 has used LAI to investigate vegetation effects on seasonal hydrology in the UBR basin. Hence, we consider eP and LAI as the
 indices of climate and vegetation respectively, and use their time series as the inputs in the DMC model.

To obtain cryospheric contributions to WY, we firstly build two types of DMC plots (see Figure S4) to assess the contribu-
 tions of climate (eP) and vegetation(LAI)and vegetation, and then subtract the sum of estimated contributions from total WY
 deviations as cryospheric effects (results are shown in Figure S5). The mathematical formulas, relevant descriptions and an
 example (Figure 2) are shown as follows:

135 First, the averaged-average WY before Tp (\overline{WY}_{ob} , horizontal black line in Figure 2b) is defined as:

$$\overline{WY}_{ob} = \frac{\sum_{t=1982}^{t=Tp} WY_o(t)}{Tp - 1982 + 1} \quad (1)$$

Next, the total WY deviation ($\Delta WY_s(t)$, black diamond in Figure 2c) can be calculated as the difference between WY
 observations after Tp ($WY_o(t)$, red point in Figure 2b) and the averaged-average WY before Tp (\overline{WY}_{ob}), as follows:

$$\Delta WY_s(t) = WY_o(t) - \overline{WY}_{ob}, \quad t = Tp + 1, Tp + 2, \dots, 2013 \quad (2)$$

140 Second, the regression equation (left panel in Figure 2a) between the cumulative eP ($\sum eP$) and cumulative WY ($\sum WY$)
 before Tp can be constructed as follows:

$$\sum WY = a_1 \sum eP + b_1 \quad (3)$$

Similarly, the regression equation (right panel in Figure 2a) between the-cumulative LAI ($\sum LAI$) and cumulative water
 yield ($\sum WY$) before a-Tp can be constructed as follows:

$$145 \sum WY = a_2 \sum LAI + b_2 \quad (4)$$

Third, WY driven by climate ($WY_c(t)$, blue line in Figure 2b) can be calculated by inputting-using the cumulative eP after
 Tp as input into Equation 3 that is built based on which is built using the cumulative data of WY and eP before Tp. Therefore,
 WY deviations caused by climate change ($\Delta WY_c(t)$, blue bar in Figure 2c) can be calculated as follows:

$$\Delta WY_c(t) = WY_c(t) - \overline{WY}_{ob}, \quad t = Tp + 1, Tp + 2, \dots, 2013 \quad (5)$$

150 Similarly, WY driven by vegetation ($WY_v(t)$, tan line in Figure 2b) can be calculated via Equation 4, and WY deviation
 caused by vegetation (ΔWY_v , tan bar in Figure 2c) can be calculated as follows:

$$\Delta WY_v(t) = WY_v(t) - \overline{WY}_{ob}, \quad t = Tp + 1, Tp + 2, \dots, 2013 \quad (6)$$

Finally, WY deviation caused by cryosphere (ΔWY_g , red bar in Figure 2c) can be calculated as:

$$\Delta WY_g(t) = \Delta WY_s(t) - \Delta WY_c(t) - \Delta WY_v(t) \quad (7)$$

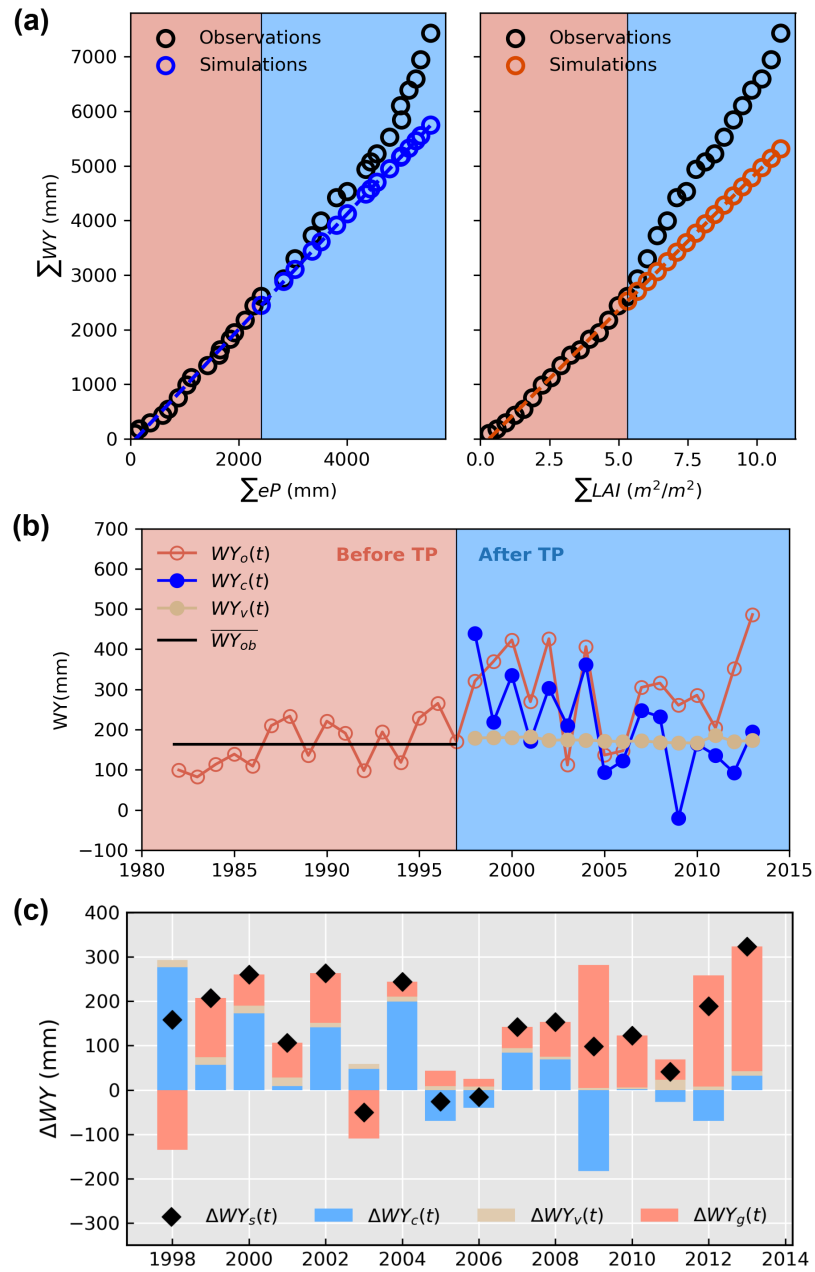


Figure 2. The example showing how to estimate the effects of climate, vegetation, and cryosphere on water yield in the MYZR basin (see details in Methodology), where T_p is 1997.

The average contributions of climate, vegetation, and cryosphere to WY magnitude changes are calculated as follows:

$$\begin{aligned}\overline{\Delta WY_c} &= \frac{\sum_{t=Tp+1}^{t=2013} \Delta WY_c(t)}{2013 - Tp} \\ \overline{\Delta WY_v} &= \frac{\sum_{t=Tp+1}^{t=2013} \Delta WY_v(t)}{2013 - Tp} \\ \overline{\Delta WY_g} &= \frac{\sum_{t=Tp+1}^{t=2013} \Delta WY_g(t)}{2013 - Tp}\end{aligned}\quad (8)$$

The relative contribution (RC), ranging from 0 to 1, of climate, vegetation, and cryosphere can be calculated as follows:

$$\begin{aligned}RC_c &= \frac{|\overline{\Delta WY_c}|}{|\overline{\Delta WY_c}| + |\overline{\Delta WY_v}| + |\overline{\Delta WY_g}|} \\ RC_v &= \frac{|\overline{\Delta WY_v}|}{|\overline{\Delta WY_c}| + |\overline{\Delta WY_v}| + |\overline{\Delta WY_g}|} \\ RC_g &= \frac{|\overline{\Delta WY_g}|}{|\overline{\Delta WY_c}| + |\overline{\Delta WY_v}| + |\overline{\Delta WY_g}|}\end{aligned}\quad (9)$$

160 Additionally, we use the Pearson correlation coefficient (r) to quantify the relationships between total WY deviation ($\Delta WY_s(t)$) and its components: WY deviation caused by climate ($\Delta WY_c(t)$), vegetation ($\Delta WY_v(t)$) and cryosphere ($\Delta WY_g(t)$). The Student's t-test with the Bonferroni correction (Bonferroni, 1935) is used to detect the statistical significance of the correlation coefficient at the level of 0.05.

3 Results

165 3.1 Long-term changes in historical water yield

The detection of long-term WY changes in the UBR basin from 1982 to ~~2013 in the entire UBR basin~~ 2013 is illustrated in Figure 3. There is a ~~great high degree of~~ spatial variability in WY (Figure 3a) ~~-.The mean across the entire basin. The average~~ WY is the highest in the LYZR basin (over 600 mm), followed by that in the LSR basin (nearly 400 mm). However, the ~~mean~~ average WY in the HYZR and NCR basins is less than 100 mm. This spatial variability is consistent with that of precipitation (Figure S6), which is mainly determined by elevation and distance to the ocean (Sang et al., 2016). In addition, WY generally increases during the period, as shown by the positive slope in Figure 3b, ~~although even though~~ the significant trend is only detected in the UYZR and MYZR basins (hatched areas in Figure 3b). Tp mainly occurs during the late 1990s (Figure 3c), but the abrupt change detected in some basins is not statistically significant (Table 1). Similarly, the cumulative anomaly curve (Figure 3d) shows that WY decreases prior to the late 1990s and then increases in the entire UBR basin, which further supports 175 the results obtained from the Pettitt method.

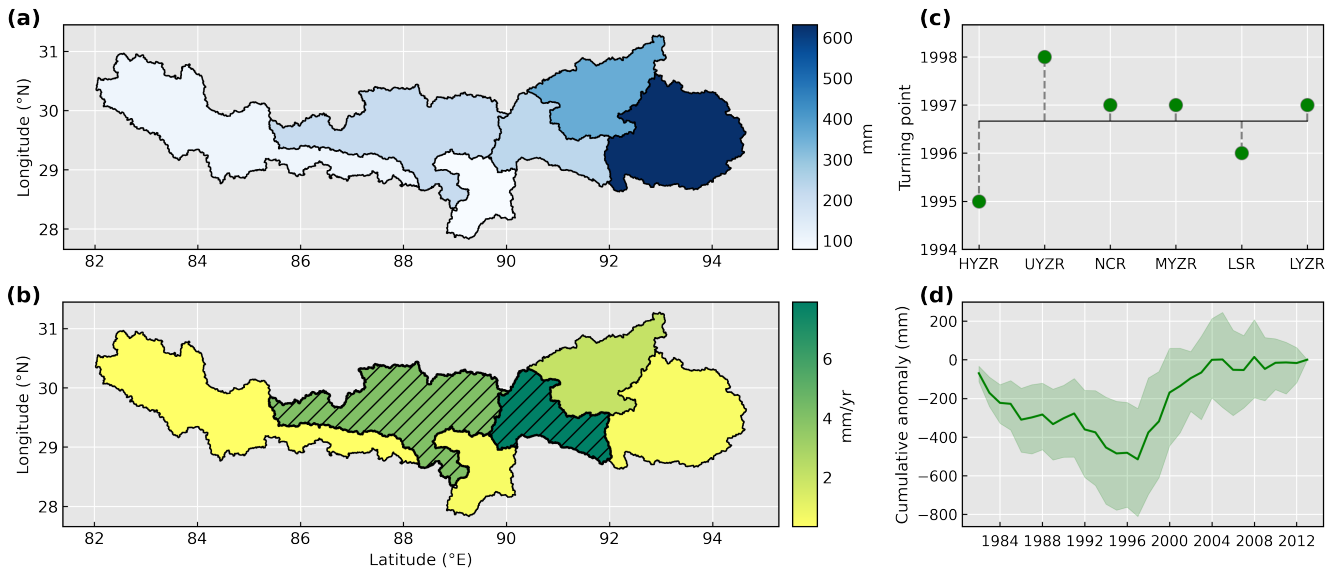


Figure 3. Long-term water yield changes in the entire UBR basin. (a) The **mean**-annual values **calculated** by averaging water yield from 1982 to 2013. (b) The temporal trends detected by the Mann-Kendall Sen's slope method. The black hatching represents statistically significant ($p < 0.05$) trends. (c) The turning points detected by the Pettitt method. (d) The cumulative anomaly curve of water yield. The solid green line represents the ensemble expectation of cumulative anomaly curves of water yield **for-in** the entire UBR basin (green shading).

3.2 Regime shifts in historical water yield

Based on the results of the abrupt detection, we divide the period from 1982 to 2013 into before and after T_p period, and analyze the magnitude and direction **changes-in-WY-of-WY-changes** in the entire UBR basin. Figure 4a shows that WY increases from 9.5 to 130.9 mm, with a high spatial variability. The slight increase observed in the HYZR and LYZR basins accounts for less than 10% of the mean WY before T_p , while a substantial WY increase of 61.6% and 80.5% is found in the UYZR and MYZR basins, respectively. In addition, **a-higher-variation-higher-variability** is detected after T_p , suggesting a more dramatic **variability-variation** in recent years.

For-the-direction-changes-With respect to the direction of change in WY, we find that the trend is positive before T_p , but becomes negative afterward in most basins (Figure 4b and S2). The significantly decreasing trend is detected in the UYZR, NCR, and LSR basins. In contrast, although the WY in the MYZR basin increases during two periods, the rate has slowed, **as-** the positive trend after T_p (3.64 mm yr^{-1} , $p > 0.05$) is less than that before T_p (8.95 mm yr^{-1} , $p < 0.05$). Overall, WY regime shifts occur in the late 1990s in the entire UBR basin; the magnitude generally increases, but the direction of WY has reversed or slowed.

3.3 Attribution analysis **on-of** magnitude increases in water yield

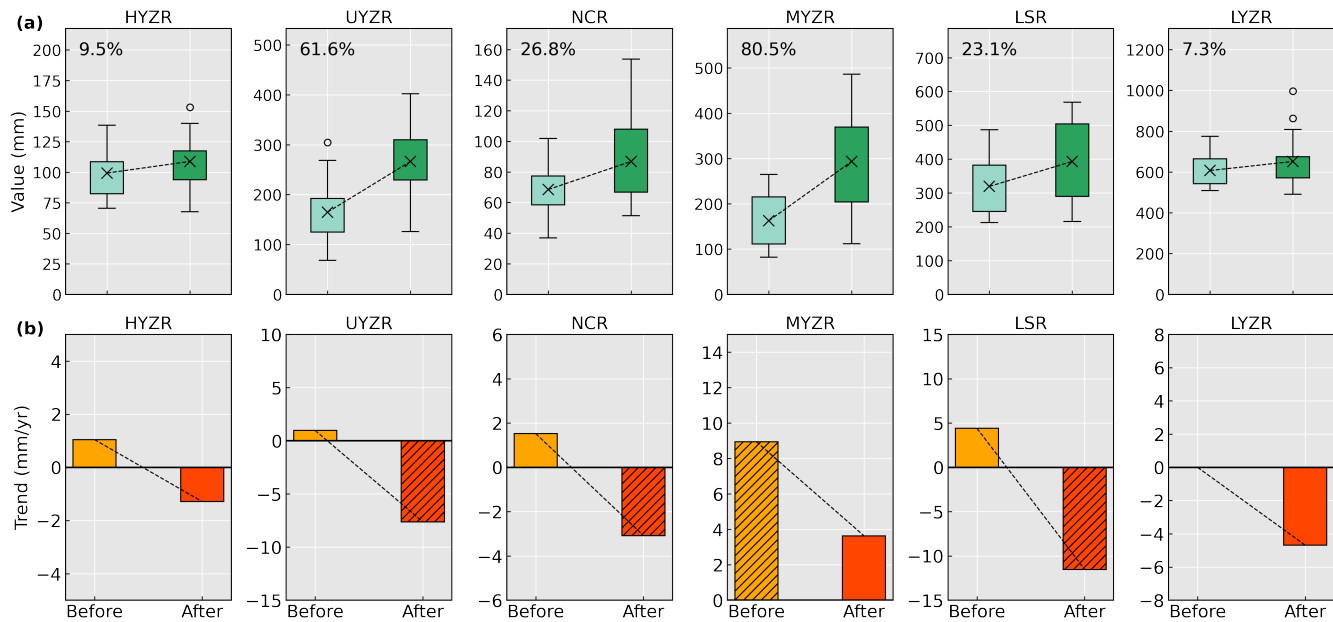


Figure 4. Water yield regime shifts in the entire UBR basin. (a) Magnitude of water yield changes. ~~Black~~The black "x" signal shows the mean of water yield, and the relative change is labeled in number (%) in each boxplot. (b) Direction of water yield changes. The black hatching represents the statistically significant trend ($p < 0.05$). The color of boxes represents before (light color) and after (dark color) Tp period.

190 ~~As shown in~~In Figure 5, we quantify the contributions from climate (eP), vegetation (LAI), and cryosphere on WY magnitude increases in the entire UBR basin. We find that cryosphere changes, on average, contribute to over half of WY increases in the HYZR, UYZR, NCR, and MYZR basins. However, climate plays a more important role in WY magnitude increases in the LSR and LYZR basins, with average relative contributions of 55.4% and 46.0%, respectively. In contrast to the dominant roles of climate and cryosphere, vegetation has a consistently positive contribution to WY increases, although its relative contribution
 195 is much less than those from climate and cryosphere.

Climate and cryosphere – two important factors affecting WY – together contribute to over 80% ~~average magnitude increases of WY in of the average increases in WY magnitudes over~~ the entire UBR basin; ~~however~~. However, they play ~~both either~~ additive or offsetting roles in different basins (Figure 5) and thus result in slight or substantial WY increases (Figure 4a). For example, although cryospheric changes contribute to ~~average increases of 28.3 mm and 30.3 mm an increase in WY~~ in the
 200 HYZR (28.3 mm) and NCR basins (30.3 mm) (black "x" signal in Figure 5a+c), the negative contributions from climate offset a considerable part of these increases, leading to ~~slight increases only slight increase in WY~~ after Tp in these regions. Similarly, the positive contribution from climate offsets the negative contribution from cryosphere in the LSR and LYZR basins, which also results in a slight WY increase. In addition, the additive effects from climate and cryosphere lead to substantial increases in WY from 162.6 mm to 293.5 mm in the MYZR basin and from 164.9 mm to 266.5 mm in the UYZR basin (Figure 4a).

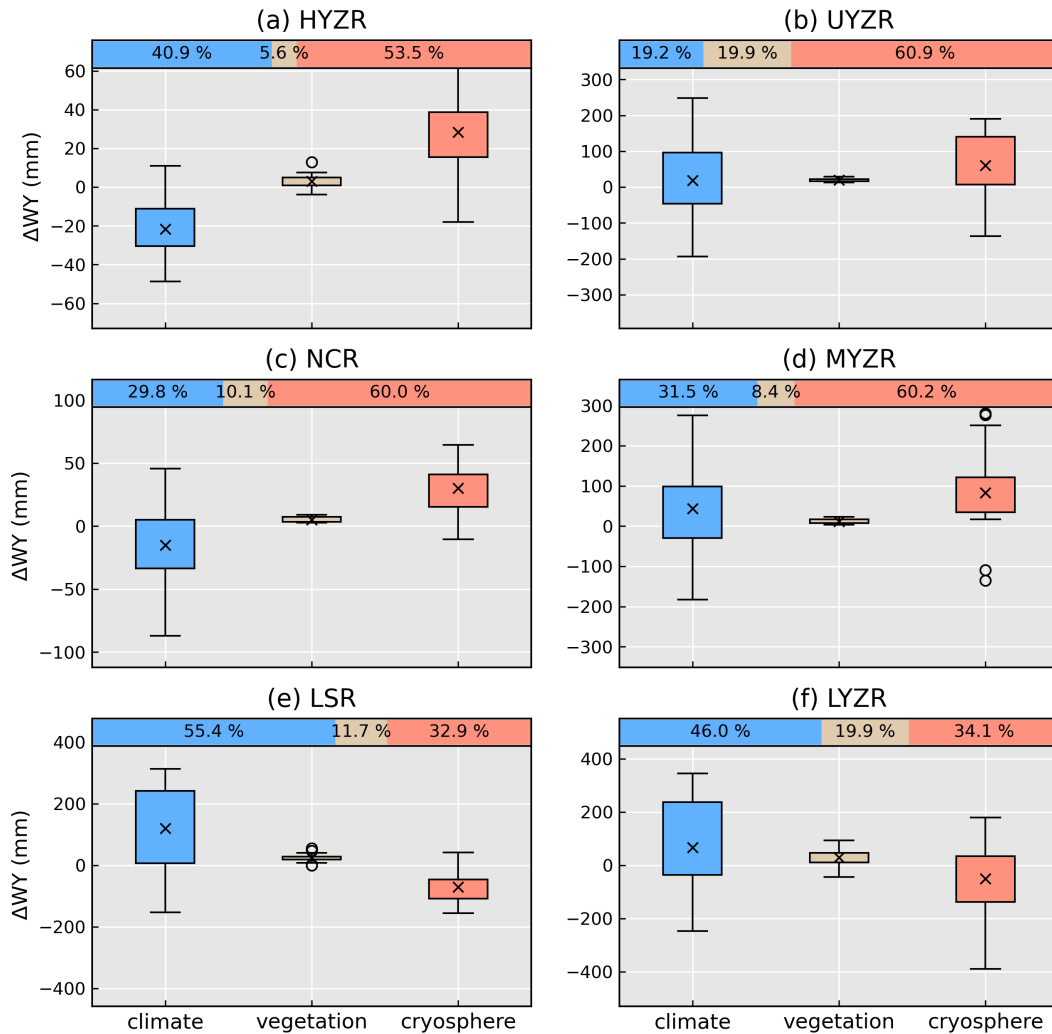


Figure 5. Attribution analysis of magnitude increases in water yield due to climate (ΔWY_c , blue box), vegetation (ΔWY_v , tan box), and cryosphere (ΔWY_g , red box), and their relative contributions (the bar with colors on the top) in each basin. The black "x" signal shows the mean-average of water yield deviations (see Figure S5) in each boxplot.

205 3.4 Attribution analysis on of direction shifts in water yield

Pearson correlation coefficient is applied to determine the role of climate, vegetation, and cryosphere in the reversed or slowed reversal or slowing of WY trends after Tp, as shown in Figure 4b. Results in Figure 6 show that, although the correlation varies greatly across basins ranging from 0.11 to 0.93 after Tp, climate typically is positively associated with total WY, in which the correlation is significant in half of the basins ($p < 0.05$), again revealing the major role of climate in influencing the hydrological trends in-across the entire UBR basin. Further analysis shows that $\bar{\tau}$ -precipitation is much more important $\bar{\tau}$ -because it exhibits

210

the stronger reverse a stronger reversal in trend compared with that the trend in evaporation (Figure S7), which is also similar with direction to directional changes in WY (Figure 4b). Additionally, despite the weak contribution of vegetation (Figure 5), its positive role in WY changes is more apparent in the drier basins (such as the HYZR, UYZR and NCR basins), while the correlation is negative in the relatively humid LYZR basin.

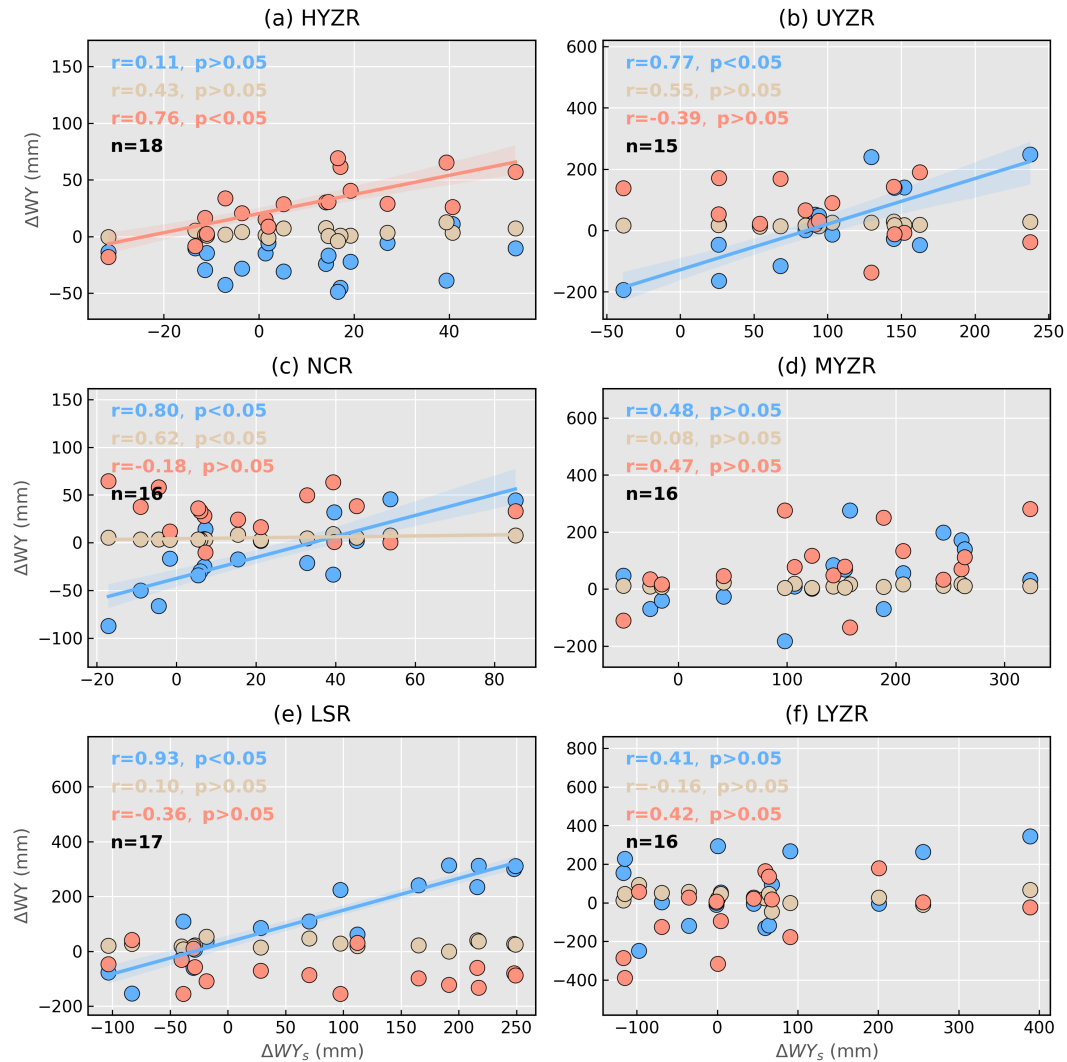


Figure 6. The correlation between time series of total water yield deviation ($\Delta WY_s(t)$, x-axis) and its components (y-axis) caused by climate ($\Delta WY_c(t)$, blue point), vegetation ($\Delta WY_v(t)$, tan point), and cryosphere ($\Delta WY_g(t)$, red point), respectively. The fitting line and its 95% confidence interval are shown only when p value < 0.05 . n indicates the number of years after T_p , which is determined by the Pettitt method (See Table 1 and Figure 3c).

215 In contrast to positive contributions of climate, we find that WY caused by cryosphere exhibits a negative association with reduced total WY deviations in recent years in the UYZR ($r = -0.39$, $p > 0.05$) and LSR ($r = -0.36$, $p > 0.05$) basins. The negative but weak relationship indicates that melt waters from cryospheric loss may compensate for low flow, and even mitigate water shortage risks. Also, the compensating effect from cryosphere is ~~much~~ stronger in the MYZR ($r = 0.47$, $p > 0.05$), and together with climate contributions, contributes to the increasing WY trend (Figure 4). ~~Different from~~ In contrast to other regions, however, the HYZR basin shows a significantly positive relationship between cryospheric contributions and total WY deviations ($r = 0.76$, $p < 0.05$), indicating that the cryosphere instead of climate leads to the downward trend in headwaters. This signifies that in this region, cryospheric contributions may have already passed ~~a maximum~~ its potential for supplying to river flow, due to decreased glaciers and snow under continuous warming. This is further verified by the relationship of cryospheric contributions to total WY (RC_g) with temperature (Figure S8a); cryospheric contribution to WY increases with temperature ~~firstly in the beginning~~ until a maximum is reached, and then begins to decrease. In addition, the compensating effect of melt waters can be seen in the UYZR, MYZR and LSR basins, i.e., WY caused by cryospheric changes keeps a positive relationship with the increase ~~of in~~ temperature, further supporting the observed higher correlation in these basins (Figure 6).

4 Discussion

4.1 Climate and cryosphere cause water yield regime shifts

230 Previous studies have ~~indicated~~ reported the increasing WY trend in the LSR (Lin et al., 2020), LYZR (Zhang et al., 2011), and UBR ~~basins~~ basin (Li et al., 2021). Here, we not only provide further evidence on the long-term trend of WY changes in the above regions, but also conduct trend ~~analysis~~ analyses in other regions that have received less attention ~~in the present~~. As such, the study comprehensively indicates a general increase in WY (Figure 3a) in the entire UBR basin. Further, we find that ~~WY regime shifts~~ regime shifts of WY occur during the late 1990s in the entire UBR basin – the magnitude in WY increases (Figure 4a), but the direction has reversed or slowed after T_p (Figure 4b). The result agrees with climate shifts (Figure S2), drought changes (Li et al., 2019b) ~~in the UBR basin~~, and lake area changes ~~in the Tibetan Plateau (Zhang et al., 2017)~~ (Zhang et al., 2017) in this region.

Attribution analysis ~~on of~~ WY magnitude shifts ~~gives an emphasis on~~ highlights the dependency of spatial gradients of climate and cryosphere accounting for WY changes. ~~That is, climate~~ Climate explains a greater increase in WY in downstream regions, while melt water is more important in upstream regions (Figure 5). This may be attributed to divergent water supply sources; Biemans et al. (2019) indicates that melt waters supply over 40% of river flow in the upper regions, but the contribution is less than 30% in the downstream in regions of the UBR basin (Figure S9). Vegetation ~~here~~ does not significantly affect total river flow in the UBR (Figure 5), despite its remarkable role in seasonal runoff detected by Li et al. (2021).

Climate, especially precipitation, still controls the declining WY trend after T_p in most regions (Figure 6 and S7), and may ~~become an important factor in occurrence of turning points (Figure 3c+d)~~. This suggests the importance of precipitation and its projections on future hydrological process in mountainous watersheds (Lutz et al., 2014). Cryospheric contribution is also important for water yield regime shifts – melt waters from glaciers and snow can alleviate water resources shortages, mainly

caused by decreased precipitation in recent years (Figure 6 ~~and~~ S7). This finding is also supported by observed glacier runoff data (Yao et al., 2010) and several modeling studies (Lutz et al., 2014; Zhang et al., 2020; Wang et al., 2021). However, after
250 glacier runoff reaches a maximum ~~;~~ (defined as "peak water" (Gleick and Palaniappan, 2010)), cryospheric mass loss cannot sustain the rising melt waters with atmospheric warming (e.g. the HYZR basin in Figure S8), which is in agreement with Huss and Hock (2018).

4.2 Uncertainties and limitations

This study has some limitations ~~regarding~~ ~~pertaining to~~ the DMC model ~~to partition~~ ~~used for partitioning~~ the effects of climatic
255 and cryospheric changes on the hydrological regime shifts in the UBR basin. The DMC method is a useful ~~alternative statistical method~~ ~~statistical alternative~~ to physical modeling approaches, especially in alpine river basins (e.g. UBR basin) where there is ~~less knowledge on~~ ~~inadequate knowledge of~~ the complex hydrological mechanisms. ~~While~~ ~~However~~, the method is still dependent on our prior understanding of hydrological responses to warming and related environmental changes, such as glaciers melting and vegetation changes. For the UBR basin, besides climate change, cryosphere (Biemans et al., 2019; Yao et al.,
260 2019) and vegetation (Li et al., 2021, 2019a) are two major factors ~~for hydrological changes, and the cryospheric contributions can be regarded as the deviations~~ ~~which drive hydrological changes~~. Here, the cryospheric contribution is estimated as the ~~deviation~~ between total water yield and ~~the~~ climate and vegetation ~~contributions~~ ~~contribution~~ estimated by the DMC method. ~~While~~ ~~However~~, in some ~~other~~ mountainous basins, human activities ~~;~~ such as urbanization, dam regulation and irrigation ~~;~~ ~~may consume severely~~ ~~may consume a significant portion of~~ water resources or ~~change~~ ~~induce changes in~~ seasonal runoff
265 patterns; ~~thus~~. ~~Therefore~~, it is necessary to ~~consider~~ ~~account for~~ anthropogenic impacts when ~~assess~~ ~~assessing~~ river flow changes via the statistical models in these regions, ~~in addition to the factors considered in this study~~. In addition, the DMC method ~~applies the linear assumption~~ ~~assumes a linear relationship~~ between two variables, and thus it may fail to capture ~~some nonlinear process~~ ~~nonlinear interactions~~ among water, vegetation and cryospheric melting. For example, the role of vegetation in ~~hydrological process~~ ~~influencing hydrological responses~~ is expected to be complex due to biophysical (e.g., via
270 transpiration and albedo changes) and biochemical (e.g., via CO₂ uptake and release) feedbacks (Bonan 2008; Krich et al. 2022; Bonan 2008; Krich et al. 2022; Li et al. 2021). Thus, with the availability of long-term in-situ observations and high-resolution remote sensing datasets in the UBR basin (Wang et al., 2022), other powerful statistical models ~~considering which account for~~ nonlinear and casual ~~structures~~ ~~relationships~~ should be applied to identify the causes of water yield changes (Runge et al., 2019).

275 The data used in the study ~~may also give rise to some uncertainties for~~ ~~is another source of uncertainty in~~ our results. The precipitation ~~product dataset~~ used here is generated by topographical and linear corrections based on observations. As Sun and Su (2020) ~~pointed~~ ~~have pointed out~~, the results of the linear correction approach ~~highly vary with the~~ ~~vary significantly with~~ station density. For example, ~~the increased numbers~~ ~~increasing the number of stations~~ from 4 to 10 ~~stations~~ in the basin ~~will decrease~~ ~~results in a decrease of~~ the mean annual precipitation ~~estimate~~ by about 20 mm. Hence, the reconstruction of
280 ~~the~~ precipitation dataset will rely on the density of the observed stations. Besides the topographic correction, the effects of ~~the~~ basin size and climate seasonality should be considered in the work of precipitation reconstruction in the UBR basin due

to ~~the-its~~ complex climate and environment (Sun et al., 2019). Compared with precipitation, the estimation of evaporation may be much more challenging in high mountains. Although GLEAM evaporation shows ~~the~~ good agreement with in-situ eddy covariance records (Yang et al., 2017), its model structure does not include wind speed and solar radiation, which may affect the estimation of sublimation, and thus total evaporation (Li et al., 2019c). In addition, the coarse spatial resolution ~~with a~~ (0.25° ~~spatial-resolution-in-~~) ~~of~~ GLEAM may be insufficient to estimate regional evaporation in the UBR basin. GIMMS LAI has the advantage of capturing ecosystem structure, and thus is widely used to assess vegetation conditions and their effects on hydrological changes (Zhu et al., 2016; Forzieri et al., 2020; Gonsamo et al., 2021). ~~While~~ ~~However~~, LAI ignores ~~the~~ vegetation's ~~physiology-process~~ (Fang et al., 2019); ~~Hu et al. (2022) indicates~~ ~~physiological process~~ (Fang et al., 2019). ~~Hu et al. (2022) have indicated~~ that LAI can cope with hydro-climatic fluctuations in arid environments, ~~while-but~~ the tradeoff between ecosystem structure (LAI) and physiology (photosynthesis per unit leaf area) ~~becomes-is~~ stronger in humid climates. Thus, using LAI products in energy-limited regions may result in some biased assessments of vegetation effects on water yield. ~~Although-uncertainties-in-terms-of-the-method~~ ~~Inspite of the uncertainties in the methods~~ and data used here, this study provides ~~the~~ essential information for water resource management in the UBR basin ~~and-the-downstream-based-on-the~~ ~~based on~~ multi-station runoff observations. With the help of the Second Tibetan Plateau Scientific Expedition and Research, the observation networks in meteorology, cryosphere, and hydrology will be ~~built, which is expected to better understand hydrological process~~ ~~expanded, which can potentially lead to better understanding of the hydrological processes~~ in this region, and make developing physically-based cryosphere-hydrological modeling possible (Wang et al., 2022).

4.3 Broad Implications for mountainous water management

Understanding the hydrological regime shifts and their causes in high ~~mountains-are~~ ~~mountain regions is~~ especially important in managing water resources, ~~especially~~. ~~Of specific importance is~~ balancing the co-benefits between mountains and downstream lowlands (Viviroli et al., 2011). In ~~the-this~~ study, the combined (~~offsetting-or-both offsetting and~~ additive) effects ~~from-of~~ climate and cryosphere are detected (Figure 5), ~~and~~. ~~They~~ further lead to either slight or substantial increases in WY ~~in-across~~ the entire UBR basin (Figure 4a). The combined effects often hinder the ~~roles-role~~ of each driver in ~~influencing~~ hydrological changes (Wei et al., 2018; Zhang and Wei, 2021), ~~which-and thus~~ should be considered when designing water management strategies in ~~the~~ large transboundary river ~~system-systems~~. For example, the additive effect may be beneficial for mitigating droughts and water shortage during droughts, but it may exacerbate ~~the~~ flood risks due to increased precipitation and accelerated melting of the cryosphere in the future (Immerzeel et al., 2013). In addition, in the headwaters, WY resulting from ~~the-cryosphere-cryosphere~~ ~~melting~~ continues to increase with temperature until a maximum is reached, beyond which cryospheric contribution to total WY begins to decrease (Figure S8a), ~~which may show~~. ~~This shows~~ that the melt waters from glaciers ~~may~~ have already surpassed the "peak water" ~~.The-time~~. ~~Such~~ hydrological changes will substantially affect future water resources management, and thus ~~the-accurate~~ projections of the occurrence time of "peak water" will be important in managing mountainous water resources.

5 Conclusions

315 In this study, regime shifts in historical WY are detected during the late 1990s in the UBR basin. The WY magnitude generally increases, but its direction has reversed or slowed in recent years. Attribution analysis based on the DMC method shows that ~~r~~the combined effects of climate and cryosphere are either offsetting or additive, leading to slight or substantial WY increases, while the role of vegetation is much weaker. The declining or slowing WY trend after Tp is mainly driven by ~~climate~~ precipitation in most regions, while melt waters may alleviate drought and water shortage. In headwaters, however, cryospheric
320 contributions to WY have declined due to reduced glaciers under warming. These findings suggest that the combined effects of climate and cryosphere should be considered in the sustainable development of water resources, especially involving co-benefits in upstream and downstream regions.

Code availability. Python scripts used to extract data, analyze data, and create figures are available via <https://doi.org/10.5281/zenodo.7315564>.

325 *Data availability.* Annual runoff data during 1982 and 2013 from six hydrological stations are provided by the Hydrology and Water Resources Survey Bureau of the Tibet Autonomous Region. The 10 km gridded daily precipitation dataset is accessed throughout <https://www.tpd.cn/>. The GLEAM evaporation is accessed from <https://www.gleam.eu/>. The maximum 2 m air temperature is acquired via <https://www.tpd.cn/>. The map of land use types in 2000 is accessed from <https://www.resdc.cn/>.

Author contributions. H.L. led the effort to design, conduct, analyze and write this manuscript. Other authors analyzed and commented on
330 the results.

Competing interests. All authors have declared that neither they have any competing interests.

Acknowledgements. This work is jointly supported by the China Scholarship Council (Grant No. 202006350051), ~~and~~ the National Natural Science Foundation of China (Grant No. 51961145104, 52079138, and 91647202), and the 2115 Talent Development Program of China Agricultural University (00109019). H.L. thanks the China Scholarship Council for providing financial support to pursue his PhD in Belgium.
335 We thank Dr. Florian Ulrich Jehn and two anonymous reviewers for their contribution to the peer review of this work.

References

- Biemans, H., Siderius, C., Lutz, A., Nepal, S., Ahmad, B., Hassan, T., von Bloh, W., Wijngaard, R., Wester, P., Shrestha, A., et al.: Importance of snow and glacier meltwater for agriculture on the Indo-Gangetic Plain, *Nature Sustainability*, 2, 594–601, 2019.
- Bonan, G. B.: Forests and climate change: forcings, feedbacks, and the climate benefits of forests, *science*, 320, 1444–1449, 2008.
- 340 Bonferroni, C. E.: Il calcolo delle assicurazioni su gruppi di teste, *Studi in onore del professore salvatore ortu carboni*, pp. 13–60, 1935.
- Brahney, J., Menounos, B., Wei, X., and Curtis, P. J.: Determining annual cryosphere storage contributions to streamflow using historical hydrometric records, *Hydrological Processes*, 31, 1590–1601, 2017.
- Cuo, L., Li, N., Liu, Z., Ding, J., Liang, L., Zhang, Y., and Gong, T.: Warming and human activities induced changes in the Yarlung Tsangpo basin of the Tibetan plateau and their influences on streamflow, *Journal of Hydrology: Regional Studies*, 25, 100 625, 2019.
- 345 Dierauer, J. R., Whitfield, P. H., and Allen, D. M.: Climate controls on runoff and low flows in mountain catchments of Western North America, *Water Resources Research*, 54, 7495–7510, 2018.
- Fan, H. and He, D.: Temperature and precipitation variability and its effects on streamflow in the upstream regions of the Lancang–Mekong and Nu–Salween Rivers, *Journal of Hydrometeorology*, 16, 2248–2263, 2015.
- Fang, H., Baret, F., Plummer, S., and Schaepman-Strub, G.: An overview of global leaf area index (LAI): Methods, products, validation, and applications, *Reviews of Geophysics*, 57, 739–799, 2019.
- 350 Forzieri, G., Miralles, D. G., Ciais, P., Alkama, R., Ryu, Y., Duveiller, G., Zhang, K., Robertson, E., Kautz, M., Martens, B., et al.: Increased control of vegetation on global terrestrial energy fluxes, *Nature Climate Change*, 10, 356–362, 2020.
- Gao, P., Mu, X.-M., Wang, F., and Li, R.: Changes in streamflow and sediment discharge and the response to human activities in the middle reaches of the Yellow River, *Hydrology and Earth System Sciences*, 15, 1–10, 2011.
- 355 Gao, Y., Chen, F., Lettenmaier, D. P., Xu, J., Xiao, L., and Li, X.: Does elevation-dependent warming hold true above 5000 m elevation? Lessons from the Tibetan Plateau, *npj Climate and Atmospheric Science*, 1, 1–7, 2018.
- Gleick, P. H. and Palaniappan, M.: Peak water limits to freshwater withdrawal and use, *Proceedings of the National Academy of Sciences*, 107, 11 155–11 162, 2010.
- Gonsamo, A., Ciais, P., Miralles, D. G., Sitch, S., Dorigo, W., Lombardozzi, D., Friedlingstein, P., Nabel, J. E., Goll, D. S., O’Sullivan, M., et al.: Greening drylands despite warming consistent with carbon dioxide fertilization effect, *Global Change Biology*, 27, 3336–3349, 2021.
- 360 Gouliden, M. L. and Bales, R. C.: Mountain runoff vulnerability to increased evapotranspiration with vegetation expansion, *Proceedings of the National Academy of Sciences*, 111, 14 071–14 075, 2014.
- Hallema, D. W., Sun, G., Caldwell, P. V., Norman, S. P., Cohen, E. C., Liu, Y., Bladon, K. D., and McNulty, S. G.: Burned forests impact water supplies, *Nature Communications*, 9, 1–8, 2018.
- 365 He, J., Yang, K., Tang, W., Lu, H., Qin, J., Chen, Y., and Li, X.: The first high-resolution meteorological forcing dataset for land process studies over China, *Scientific Data*, 7, 1–11, 2020.
- Hu, Z., Piao, S., Knapp, A. K., Wang, X., Peng, S., Yuan, W., Running, S., Mao, J., Shi, X., Ciais, P., et al.: Decoupling of greenness and gross primary productivity as aridity decreases, *Remote Sensing of Environment*, 279, 113 120, 2022.
- 370 Huss, M. and Hock, R.: Global-scale hydrological response to future glacier mass loss, *Nature Climate Change*, 8, 135–140, 2018.
- Immerzeel, W. W., Van Beek, L. P., and Bierkens, M. F.: Climate change will affect the Asian water towers, *Science*, 328, 1382–1385, 2010.

- Immerzeel, W. W., Pellicciotti, F., and Bierkens, M. F. P.: Rising river flows throughout the twenty-first century in two Himalayan glacierized watersheds, *Nature Geoscience*, 6, 742–745, 2013.
- 375 Kang, S., Xu, Y., You, Q., Flügel, W.-A., Pepin, N., and Yao, T.: Review of climate and cryospheric change in the Tibetan Plateau, *Environmental Research Letters*, 5, 015 101, 2010.
- Kendall, M. G.: A new measure of rank correlation, *Biometrika*, 30, 81–93, 1938.
- Krich, C., Mahecha, M. D., Migliavacca, M., De Kauwe, M. G., Griebel, A., Runge, J., and Miralles, D. G.: Decoupling between ecosystem photosynthesis and transpiration: a last resort against overheating, *Environmental Research Letters*, 17, 044 013, 2022.
- Li, D., Li, Z., Zhou, Y., and Lu, X.: Substantial increases in the water and sediment fluxes in the headwater region of the Tibetan Plateau in response to global warming, *Geophysical Research Letters*, 47, e2020GL087 745, 2020.
- 380 Li, H., Liu, L., Liu, X., Li, X., and Xu, Z.: Greening implication inferred from vegetation dynamics interacted with climate change and human activities over the Southeast Qinghai–Tibet Plateau, *Remote Sensing*, 11, 2421, 2019a.
- Li, H., Liu, L., Shan, B., Xu, Z., Niu, Q., Cheng, L., Liu, X., and Xu, Z.: Spatiotemporal variation of drought and associated multi-scale response to climate change over the Yarlung Zangbo River Basin of Qinghai–Tibet Plateau, China, *Remote Sensing*, 11, 1596, 2019b.
- 385 Li, H., Liu, L., Koppa, A., Shan, B., Liu, X., Li, X., Niu, Q., Cheng, L., and Miralles, D.: Vegetation greening concurs with increases in dry season water yield over the Upper Brahmaputra River basin, *Journal of Hydrology*, 603, 126–981, 2021.
- Li, J., Liu, D., Wang, T., Li, Y., Wang, S., Yang, Y., Wang, X., Guo, H., Peng, S., Ding, J., et al.: Grassland restoration reduces water yield in the headstream region of Yangtze River, *Scientific Reports*, 7, 1–9, 2017.
- Li, X., Long, D., Han, Z., Scanlon, B. R., Sun, Z., Han, P., and Hou, A.: Evapotranspiration estimation for Tibetan Plateau headwaters using conjoint terrestrial and atmospheric water balances and multisource remote sensing, *Water Resources Research*, 55, 8608–8630, 2019c.
- 390 Lin, L., Gao, M., Liu, J., Wang, J., Wang, S., Chen, X., and Liu, H.: Understanding the effects of climate warming on streamflow and active groundwater storage in an alpine catchment: the upper Lhasa River, *Hydrology and Earth System Sciences*, 24, 1145–1157, 2020.
- Lutz, A., Immerzeel, W., Shrestha, A., and Bierkens, M.: Consistent increase in High Asia’s runoff due to increasing glacier melt and precipitation, *Nature Climate Change*, 4, 587–592, 2014.
- 395 Mann, H. B.: Nonparametric tests against trend, *Econometrica: Journal of the Econometric Society*, pp. 245–259, 1945.
- Martens, B., Miralles, D. G., Lievens, H., Van Der Schalie, R., De Jeu, R. A., Fernández-Prieto, D., Beck, H. E., Dorigo, W. A., and Verhoest, N. E.: GLEAM v3: Satellite-based land evaporation and root-zone soil moisture, *Geoscientific Model Development*, 10, 1903–1925, 2017.
- Pellicciotti, F., Buergi, C., Immerzeel, W. W., Konz, M., and Shrestha, A. B.: Challenges and uncertainties in hydrological modeling of remote Hindu Kush–Karakoram–Himalayan (HKH) basins: suggestions for calibration strategies, *Mountain Research and Development*, 400 32, 39–50, 2012.
- Pettitt, A. N.: A non-parametric approach to the change-point problem, *Journal of the Royal Statistical Society: Series C (Applied Statistics)*, 28, 126–135, 1979.
- Runge, J., Bathiany, S., Bollt, E., Camps-Valls, G., Coumou, D., Deyle, E., Glymour, C., Kretschmer, M., Mahecha, M. D., Muñoz-Marí, J., et al.: Inferring causation from time series in Earth system sciences, *Nature communications*, 10, 1–13, 2019.
- 405 Sang, Y., Singh, V. P., Gong, T., Xu, K., Sun, F., Liu, C., Liu, W., and Chen, R.: Precipitation variability and response to changing climatic condition in the Yarlung Tsangpo River basin, China, *Journal of Geophysical Research: Atmospheres*, 121, 8820–8831, 2016.
- Song, C., Wang, G., Sun, X., and Hu, Z.: River runoff components change variably and respond differently to climate change in the Eurasian Arctic and Qinghai–Tibet Plateau permafrost regions, *Journal of Hydrology*, 601, 126 653, 2021.

- Sun, H. and Su, F.: Precipitation correction and reconstruction for streamflow simulation based on 262 rain gauges in the upper Brahmaputra
410 of southern Tibetan Plateau, *Journal of Hydrology*, 590, 125–148, 2020.
- Sun, H., Su, F., Huang, J., Yao, T., Luo, Y., and Chen, D.: Contrasting precipitation gradient characteristics between westerlies and monsoon
dominated upstream river basins in the Third Pole, *Chinese Science Bulletin*, 65, 91–104, 2019.
- Tang, Q., Lan, C., Su, F., Liu, X., Sun, H., Ding, J., Wang, L., Leng, G., Zhang, Y., Sang, Y., et al.: Streamflow change on the Qinghai-Tibet
Plateau and its impacts, *Chinese Science Bulletin*, 64, 2807–2821, 2019.
- 415 Viviroli, D., Archer, D. R., Buytaert, W., Fowler, H. J., Greenwood, G. B., Hamlet, A. F., Huang, Y., Koboltschnig, G., Litaor, M., López-
Moreno, J. I., et al.: Climate change and mountain water resources: overview and recommendations for research, management and policy,
Hydrology and Earth System Sciences, 15, 471–504, 2011.
- Wang, L., Yao, T., Chai, C., Cuo, L., Su, F., Zhang, F., Yao, Z., Zhang, Y., Li, X., Qi, J., et al.: TP-River: Monitoring and quantifying total
river runoff from the Third Pole, *Bulletin of the American Meteorological Society*, 102, E948–E965, 2021.
- 420 Wang, L., Cuo, L., Luo, D., Su, F., Ye, Q., Yao, T., Zhou, J., Li, X., Li, N., Sun, H., et al.: Observing multi-sphere hydrological changes in
the largest river basin of the Tibetan Plateau, *Bulletin of the American Meteorological Society*, 2022.
- Wei, X. and Zhang, M.: Quantifying streamflow change caused by forest disturbance at a large spatial scale: A single watershed study, *Water
Resources Research*, 46, 2010.
- Wei, X., Li, Q., Zhang, M., Giles-Hansen, K., Liu, W., Fan, H., Wang, Y., Zhou, G., Piao, S., and Liu, S.: Vegetation cover—another dominant
425 factor in determining global water resources in forested regions, *Global Change Biology*, 24, 786–795, 2018.
- Yang, X., Yong, B., Ren, L., Zhang, Y., and Long, D.: Multi-scale validation of GLEAM evapotranspiration products over China via Chi-
naFLUX ET measurements, *International Journal of Remote Sensing*, 38, 5688–5709, 2017.
- Yao, T., Li, Z., Yang, W., Guo, X., Zhu, L., Kang, S., Wu, Y., and Yu, W.: Glacial distribution and mass balance in the Yarlung Zangbo River
and its influence on lakes, *Chinese Science Bulletin*, 55, 2072–2078, 2010.
- 430 Yao, T., Xue, Y., Chen, D., Chen, F., Thompson, L., Cui, P., Koike, T., Lau, W. K.-M., Lettenmaier, D., Mosbrugger, V., et al.: Recent third
pole’s rapid warming accompanies cryospheric melt and water cycle intensification and interactions between monsoon and environment:
Multidisciplinary approach with observations, modeling, and analysis, *Bulletin of the American Meteorological Society*, 100, 423–444,
2019.
- Zhang, G., Yao, T., Piao, S., Bolch, T., Xie, H., Chen, D., Gao, Y., O’Reilly, C. M., Shum, C. K., Yang, K., Yi, S., Lei, Y., Wang, W., He, Y.,
435 Shang, K., Yang, X., and Zhang, H.: Extensive and drastically different alpine lake changes on Asia’s high plateaus during the past four
decades, *Geophysical Research Letters*, 44, 252–260, 2017.
- Zhang, L., Nan, Z., Wang, W., Ren, D., Zhao, Y., and Wu, X.: Separating climate change and human contributions to variations in streamflow
and its components using eight time-trend methods, *Hydrological Processes*, 33, 383–394, 2019.
- Zhang, M. and Wei, X.: Deforestation, forestation, and water supply, *Science*, 371, 990–991, 2021.
- 440 Zhang, M., Ren, Q., Wei, X., Wang, J., Yang, X., and Jiang, Z.: Climate change, glacier melting and streamflow in the Niyang River Basin,
Southeast Tibet, China, *Ecohydrology*, 4, 288–298, 2011.
- Zhang, Y., Xu, C., Hao, Z., Zhang, L., Ju, Q., and Lai, X.: Variation of Melt Water and Rainfall Runoff and Their Impacts on Streamflow
Changes during Recent Decades in Two Tibetan Plateau Basins, *Water*, 12, 3112, 2020.
- Zhou, X., Zhang, Y., Beck, H. E., and Yang, Y.: Divergent negative spring vegetation and summer runoff patterns and their driving mecha-
445 nisms in natural ecosystems of northern latitudes, *Journal of Hydrology*, 592, 125–148, 2021.

- Zhu, Z., Bi, J., Pan, Y., Ganguly, S., Anav, A., Xu, L., Samanta, A., Piao, S., Nemani, R. R., and Myneni, R. B.: Global data sets of vegetation leaf area index (LAI) 3g and fraction of photosynthetically active radiation (FPAR) 3g derived from global inventory modeling and mapping studies (GIMMS) normalized difference vegetation index (NDVI3g) for the period 1981 to 2011, *Remote Sensing*, 5, 927–948, 2013.
- 450 Zhu, Z., Piao, S., Myneni, R. B., Huang, M., Zeng, Z., Canadell, J. G., Ciais, P., Sitch, S., Friedlingstein, P., Arneeth, A., et al.: Greening of the Earth and its drivers, *Nature climate change*, 6, 791–795, 2016.

Table 1. Information of six basins divided ~~by~~ according to the locations of hydrological stations. The column "Tp" indicates the turning point calculated using the Pettitt method, in which a significant turning point is labeled with "*". Glaciers and snow coverage is ~~acquired~~ derived from the land use and cover data in 2000 (see Data). The unit of area is km², and the unit of elevation is m.

Abbreviation	Full names	Station	Total area	Mean elevation	Glaciers and snow		Tp
					area	percent	
HYZR	Headstream	Lhatse	49,739	5,061	853	1.71	1995
UYZR	Upstream	Nugesha	43,916	4,985	175	0.40	1998*
NCR	Nianchu River	Shigatse	14,359	4,733	282	1.96	1997*
MYZR	Midstream	Yangcun	20,004	4,681	360	1.80	1997*
LSR	Lhasa River	Lhasa	25,601	4,879	185	0.72	1996
LYZR	Downstream	Nuxia	38,419	4,586	963	2.51	1997