

Relationship of seasonal variations in drip water $\delta^{13}\text{C}_{\text{DIC}}$, $\delta^{18}\text{O}$ and trace elements with surface and physical cave conditions of La Vallina Cave, NW Spain

Oliver Kost¹, Saul González-Lemos², Laura Rodríguez-Rodríguez³, Jakub Sliwinski⁴, Laura Endres¹,
Negar Haghypour^{1,5} and Heather Stoll¹

¹ Geological Institute, ETH Zürich, Sonneggstrasse 5, 8092 Zurich, Switzerland

² ASCIEM Consulting SLP; C/ Gutiérrez Herrero 52, 33402 Avilés, Spain

³ Departamento Geología Universidad de Oviedo, C/ Jesús Arias de Velasco s/n, 33005 Oviedo, Spain

⁴ School of Earth and Environmental Sciences, University of St Andrews, Queen's Terrace, KY16 9AJ, St Andrews,
Scotland

⁵ Ion beam Physics, ETH Zürich, Otto-Stern-Weg 5, 8093 Zurich, Switzerland

Correspondence to: Heather Stoll (heather.stoll@erdw.ethz.ch)

Abstract. Cave monitoring studies clarify the climatic, surface vegetation, and karst processes affecting the cave system and lay the foundation to interpreting geochemical stalagmite records. Here we report monitoring of cave air, bedrock chemistry, and drip water $\delta^{13}\text{C}_{\text{DIC}}$, $\delta^{18}\text{O}$ and δD as well as 16 trace elements covering a full annual cycle spanning 16 months between November 2019 and March 2021 in La Vallina cave in the Northwest Iberian Peninsula. While decreased rainfall and increased evapotranspiration in summer months lead to a strong reduction in drip rates, there is little seasonal variation of $\delta^{18}\text{O}$ and δD in a given drip, likely reflecting discrete moderately- to well-mixed karst water reservoirs. Small differences in $\delta^{18}\text{O}$ and δD between drip sites are attributed to variable evaporation intensity and/or transit times. The carbon isotope signature of dissolved inorganic carbon of drip water ($\delta^{13}\text{C}_{\text{DIC}}$) is likely driven by seasonal changes in temperature controlling biological processes (vegetation and microbial soil activity) resulting in minimum $\delta^{13}\text{C}_{\text{DIC}}$ in summer and autumn months. Increased bedrock dissolution due to higher soil pCO_2 in summer and autumn results in increased trace element concentrations of congruently dissolved elements. Cave air measurements (pCO_2 , $\delta^{13}\text{C}_{\text{air}}$ and temperature) indicate seasonal ventilation (winter) and stagnation (summer) of cave air. The opposite effects of reduced cave air pCO_2 , seasonally variable biological activity and increased drip rate limit the extent of seasonal variation of degassing and prior calcite precipitation (PCP) supported by trace elements (Sr/Ca-index). Estimated stalagmite growth rates using monitoring data suggest biannual phases of potential calcite precipitation in summer and winter and growth cessation during spring and fall depending on cave and drip water conditions and the location within the cave, which has important implications on proxy interpretation of stalagmite records.

1. Introduction

30 While speleothems represent long-lasting paleoclimate archives with a host of potential elemental and isotopic proxies for climate, the interpretation of these proxies depends on the understanding of complex physical, chemical and biological processes. Because of ongoing improvements in the sensitivity of inductively coupled plasma mass spectrometry (ICP-MS), and *in situ* techniques such as laser ablation (LA)-ICP-MS, a wider range of trace elements can be analyzed at unprecedented precision and spatial resolution, shedding light on seasonal and sub-annual variations in trace element abundance in stalagmites
35 (e.g. Faraji et al., 2021; Sliwinski and Stoll, 2021). For this reason, the limiting factor in interpreting trace element signals in speleothems is no longer analytical instrumentation, but rather our understanding of underlying physical processes. Cave monitoring studies provide one important approach for improving the understanding of speleothem proxies, because measurements of elemental or isotopic composition of drip water can be compared with instrumental measurements of seasonal or interannual variations in parameters of climatic interest, such as infiltration rate, rainfall amount and origin, and temperature
40 (e.g. Breitenbach et al., 2015; Hartland et al., 2012; Riechelmann et al., 2011; Spötl et al., 2005). Cave drip waters represent a unique window on the flow rates and biogeochemistry of infiltrating groundwater in karst regions, providing information on parts of the system which are otherwise difficult to sample.

Speleothem studies have traditionally relied heavily on the interpretation of $\delta^{18}\text{O}$, and global monitoring comparisons have confirmed that drip water $\delta^{18}\text{O}$ generally follows rainwater compositions (Baker et al., 2019). However, seasonal changes in
45 rainwater $\delta^{18}\text{O}$ can appear with significant lag and attenuation by the karst reservoir (e.g. Moreno et al., 2014; Markowska et al., 2016). Evaporative fractionation of karst water in the vadose zone affects the water isotopic composition and can even exceed the rainwater imprint (Baker et al., 2019; Markowska et al., 2016). ~~The potential for differences~~Differences in the importance of recharge from different seasons ~~leads~~may contribute to $\delta^{18}\text{O}$ differences among coeval stalagmites (e.g. Bradley et al., 2010) in ~~contrast~~addition to evaporative and degassing effects ~~by~~of Prior Calcite Precipitation (PCP; Deininger et al.,
50 2021) and remains to be resolved through further monitoring studies.

Varying trace element ratios in speleothems have most commonly been attributed to the effects of PCP for divalent cations like Mg, Sr, and Ba (e.g. Fairchild and Treble, 2009; Sinclair et al., 2012), and on the effect of organic chelation on the colloidal transport of some insoluble metals (e.g. Cu, Ni, Zn; Hartland et al., 2012; Borsato et al., 2007). Drip water monitoring has demonstrated PCP processes in several cave systems (e.g. Fairchild et al., 2000; Riechelmann et al., 2011; Sinclair et al., 2012)
55 and shown that seasonal cave ventilation, as well as drip rate, can regulate the degree of PCP occurring in drip waters (~~Mattey et al., 2010~~)(Mattey et al., 2010). However, while many monitored drip waters often show covariation in Mg/Ca, Sr/Ca, and Ba/Ca expected from PCP, these ratios often do not covary in coeval stalagmites in ways expected from PCP (Sinclair et al., 2012; Stoll et al., 2012). Such deviations may be due to variations in partitioning coefficients of some trace elements (e.g. Stoll et al., 2012; Wassenburg et al., 2020) or may reflect heterogeneity in Mg content and solubility of different phases in the host
60 rock (e.g. Tremaine et al., 2016). Drip water monitoring can be used to ascertain the significance of this latter process.

Transition metals, P and Y are increasingly reported in speleothems, and typically related to colloidal transport processes, but the very low concentrations of these elements in drip waters has meant that very few studies have reported monitoring data (Baldini et al., 2012; Hartland et al., 2012). Seasonal peaks in Y in stalagmites have been attributed to periods of high discharge at the end of the growing season in autumn (Borsato et al., 2007), yet a high-resolution drip water monitoring study found highest Y concentrations in dry late summer months, potentially due to significant dry dust deposition in the collection vials residing in the cave (Baldini et al., 2012). Therefore, it remains uncertain if speleothem content of these insoluble elements is controlled exclusively by drip water deposition, and if flux in water is dependent only on hydrological factors or also on the factors regulating biological production of chelating ligands.

Carbon isotopic ratios are measured in stalagmite samples synchronously with $\delta^{18}\text{O}$ but have been less frequently interpreted as a proxy because they are affected by both soil/vegetation processes and degassing of drip waters prior to and during speleothem deposition. Their effect on $\delta^{13}\text{C}$ can thus be difficult to deconvolve (e.g. Fohlmeister et al., 2020; Frisia et al., 2011; Lyu et al., 2020). Monitoring the $\delta^{13}\text{C}$ of dissolved inorganic carbon ($\delta^{13}\text{C}_{\text{DIC}}$) in drip water would be useful to evaluate these processes but has been limited (e.g. Fohlmeister et al., 2020; Frisia et al., 2011; Spötl et al., 2005) and may be affected by variable and extensive degassing during sample collection. Some studies report analyses of $\delta^{13}\text{C}_{\text{DIC}}$ on samples which have resided for weeks to months in the cave and therefore been subject to very long exchange and degassing times and may not be representative of the $\delta^{13}\text{C}_{\text{DIC}}$ involved in speleothem deposition. Most carbon isotope interpretation is therefore based on theoretical models (Deininger and Scholz, 2019) with limited observational comparison.

Here we evaluate the response of drip water stable isotopes and trace elements to variations in ventilation, temperature, hydrological variability and local vegetation activity through a 16 month monitoring study in La Vallina Cave, NW Spain.

This cave is the site of a number of paleoclimatic records reconstructed from stalagmites (e.g. Sliwinski and Stoll, 2021; Stoll et al., 2015; Stoll et al., 2013), and features seasonal climate cycles and cave ventilation dynamics which are expected to be representative of many midlatitude systems. We demonstrate that $\delta^{13}\text{C}_{\text{DIC}}$ of drip water varies seasonally and is tightly linked to variations in vegetation and soil respiration processes primarily controlled by ambient temperature. Cave air CO_2 data help to understand cave ventilation processes and can constrain the $\delta^{13}\text{C}$ of the respired soil endmember. Further, we document seasonal differences in the intensity of bedrock dissolution driven by seasonally changing water acidity controlled by soil pCO_2 .

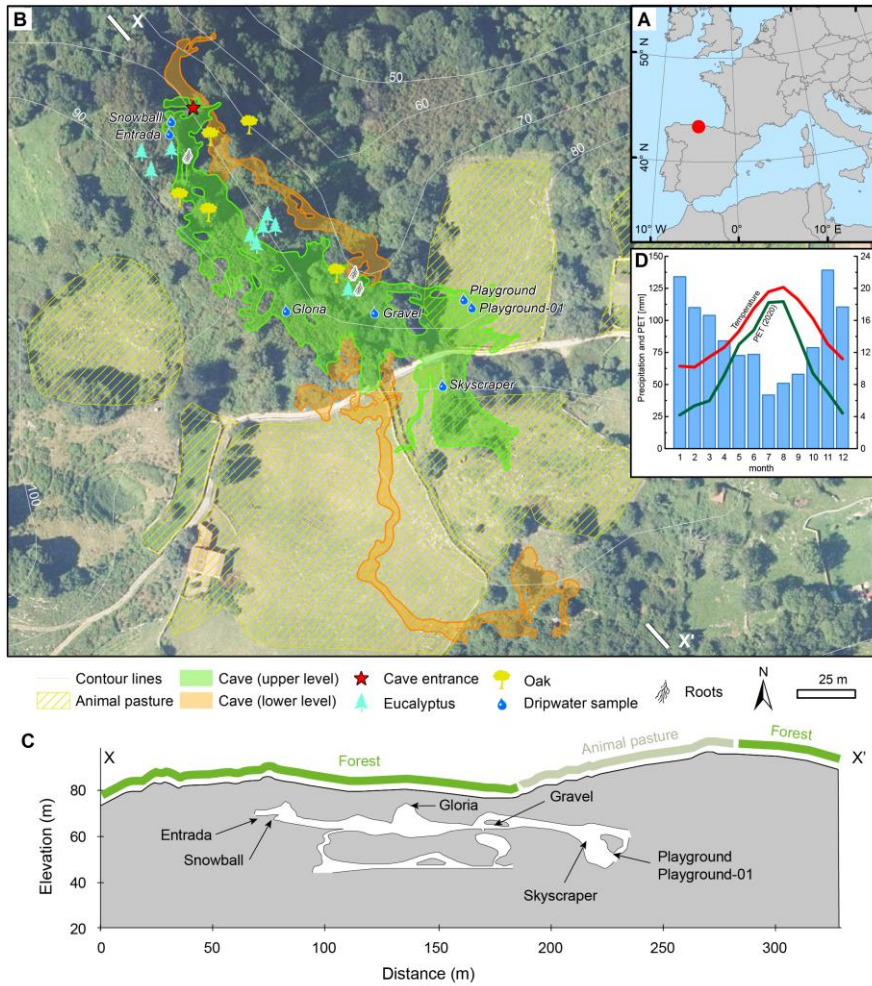
In this study we ~~analyzed/discuss varying concentrations of 16 elements which are brought into perspective with and the relationship to bedrock dissolution but also other sources are discussed. Furthermore, trace element data help to constrain when prior calcite precipitation (PCP) occurs, and drip rate.~~ Oxygen isotope data suggest multiple discrete moderately- to well-mixed drip water reservoirs fed by rain water, ~~with site specific differences controlled by evaporation effects. This can affect the interpretation of stalagmite $\delta^{18}\text{O}$ signals, suggesting that $\delta^{18}\text{O}$ differences in coeval stalagmites do not have to be attributed to kinetic effects during calcite formation, but rather isotopic variability in the drip water source.~~ Such cave monitoring data sets can help to constrain process models like CaveCalc (Owen et al., 2018) or I-STAL (Stoll et al., 2012). ~~For example, as we illustrate by modeling seasons of maximum stalagmite growth based on cave air and drip water chemistry data, phases of theoretical stalagmite growth can be modeled.~~

95 **2. Cave and sampling sites**

La Vallina Cave (43°24'36''N, 4°48'24''W; 70 m asl) is situated in the Carboniferous limestone (Barcaliente Formation; Gibbons and Moreno, 2002; Álvarez et al., 2019) and belongs to the North Iberia Speleothem Archive (NISA) (Stoll et al., 2015; Stoll et al., 2013) (Fig. 1A). The entrance is situated 70 m above sea level on a northward facing hill slope at a distance of 2.5 km from the coast, and typical rock thickness above the cave is about 5-30 m (Fig. 1C; Table 1). The vegetation covering the cave varies from oak trees to recently grown eucalyptus and shrub/grass land (Fig. 1B, C). There are also patches used for stock farming (cows, horses and sheep), while sporadic dolines indicate karstification of the hostrock. La Vallina cave consists of two major galleries on top of one another (Fig. 1B & C).

100 The nearby weather station of Llanes (43°25'13''N, 4°44'53''W; 10 m asl) 4.75 km northeast from the cave provides weather and climate data with daily and monthly average precipitation and temperature varying between 40-140 mm month⁻¹ and 10-20°C respectively (based on years 2000-2020; Fig. 1D; Aemet, 2021). According to the Köppen-Geiger classification, La Vallina cave is situated in a Cfb type climate (Peel et al., 2007). Thus, the NW Iberian Peninsula is characterized as a temperate oceanic climate with mild winters. Regarding the annual precipitation, there is a water deficit in summer when potential evapotranspiration overcomes precipitation (Fig. 1D). Nevertheless, the aridity index based on the ratio of precipitation to potential evapotranspiration (P/PET) is equal to 2.1, classifying NISA as “humid” according to the UNEP classification (Unep, 1997). The monitored period 2019-2021 was 16% wetter compared to the 20 year average precipitation.

110 Drip site Gloria is situated 12.8 m beneath shrubby and ferny vegetation cover (Fig. 1 B, C). The drip water samples were taken from a soda straw on the cave ceiling. Gravel is a zone highly decorated with helictites and eccentric soda straws at the cave ceiling 6.8 m beneath shrubby vegetation cover and nearby trees (oak and eucalyptus) whose roots reach the cave. The location takes its name from evidence of a gravely filled vertical shaft in the overlying bedrock. The sampled soda straw for 115 Gravel was changed over the course of the monitoring period with less than 0.3 m since the originally chosen soda straw dried out and another one broke off. Playground and Playground-01 (starting end of October 2020) are situated a few meters apart and covered by 24.1 m of bedrock situated beneath grassland used as animal pasture for part of the year. The exceptional drip site Skyscraper is a stalactite with very high flow rate (shower like) suggesting joint flow from a wider area focusing at this stalactite hanging a few meters above ground. ~~Therefore, DIC sampling was not possible since~~ Since the ceiling was not 120 reachable, ~~DIC sampling was not undertaken on most monitoring days~~. Skyscraper is situated at the transition between grassland and bushes with a single oak tree and overlain by 30.7 m of bedrock. Entrada (starting September 2020) and Snowball (from January 2021) were added to the sampling sites later in the study to capture drip water from a more tree-covered area and thinner (ca. 7.0 m) bedrock cover. These latter locations are nearer to the cave entrance and rapidly exchange cave air with atmosphere.



125

Fig. 1: The monitoring site situation. A) Northern Iberian Speleothem Archive (NISA), B) La Vallina Cave with two cave galleries shown on an aerial image and a digital elevation model (DEM) from 2017 (Instituto Geográfico Nacional, 2017) C) Cross section (X-X') of La Vallina Cave with projected sampling sites, D) climogram from Llanes weather station with 20 year (2000-2020; data from Aemet, 2021) average temperature (red), precipitation (blue bars) and monthly potential evapotranspiration (PET, green) for 2020.

130

3. Methods

Over the course of 16 months (November 2019 until March 2021) a complete seasonal cycle was monitored at the four locations (named Gloria, Gravel, Playground and Skyscraper), except that no samples could be taken between February 24th 2020 and May 5th 2020 due to lockdown restrictions of the COVID-19 pandemic. In the second half of the monitoring period, additional locations were added (Entrada, Playground-01, Snowball; see sample description). In autumn 2020, a biweekly routine was intended to catch the onset of the rainy season accompanied with colder temperatures affecting cave air stability. All samples were collected instantaneously in a single 1-30 minute period, so that variations in conditions between sampling days is not reflected in the drip water chemistry. This strategy, rather than aggregate bottle collection of water samples, was adopted to obtain optimal geochemical data on parameters which evolve during long collection periods in the cave such as $\delta^{13}\text{C}_{\text{DIC}}$ (degassing) and Ca concentration (calcite precipitation) or dust deposition. All water samples reflect collection from the same soda straw drip source, except at the location Gravel, where the same soda straw was not always active and was substituted for an adjacent one on different samplings. Cave temperature and relative humidity were recorded at each sampling site (Table 1). Cave air samples were collected for pCO_2 and $\delta^{13}\text{C}_{\text{air}}$, aliquots of drip water were sampled for geochemical analysis ($\delta^{13}\text{C}_{\text{DIC}}$, δD and $\delta^{18}\text{O}$ and trace elements), and drip rates were recorded by counting drips to constrain hydrological variation. Meteorological data (temperature, precipitation) were obtained from the nearby meteorological station in Llanes (Aemet, 2021), but no weather station data from Llanes are available between July and October 2019, so we have limited context of conditions just prior to the start of the monitoring period.

Cave ~~conditions~~ (temperature and humidity) were measured with a Vaisala HUMICAP HM 70 hand-held meter equipped with a HMP75 probe from June 2020 to March 2021. Measurement accuracy for relative humidity (RH) is $\pm 1\%$ and temperature value accuracy is $\pm 0.2^\circ\text{C}$ at $+20^\circ\text{C}$. Cave air was collected using a 200 mL syringe (human breath influence avoided) and injected into 0.6 L SupelTM-Inert Multi-Layer Foil aluminum gas sampling bags. The carbon isotopic composition and pCO_2 of cave air was measured on a cavity ringdown spectrometer (CRDS) Picarro G2131-i Isotopic CO_2 instrument at ETH Zürich. To apply an offline calibration two concentration reference gasses (399.6 ppmV and 2,000 ppmV CO_2 in synthetic air) and two additional isotope reference gasses ($\delta^{13}\text{C} = -27.8$ and -2.8‰ VPDB) were used. Measurement uncertainty (2SD) for pCO_2 is $< 5\%$ of the measured value. Measurement uncertainty (2SD) for $\delta^{13}\text{C}$ is typically 0.3‰. At low pCO_2 concentrations the isotopic uncertainty can be higher due to lower instrument sensitivity (up to 1‰ at Forest samples).

For drip water $\delta^{13}\text{C}_{\text{DIC}}$ measurements, drip water was collected directly from soda straw stalactites on the cave ceiling using a 1 mL syringe to minimize degassing effects. Additionally, to evaluate the degassing and equilibration evolution of drip water exposed to cave air a few samples along the flow path on a flowstone were collected. The sampled water was injected into He flushed glass vials (Labco Exetainers[®]) prepared with 150 μL pure phosphoric acid following the procedure of Spötl et al. (2005) Spötl et al. (2005). Samples were shipped to ETH Zürich and measured within a week of collection on a Thermo Fisher Scientific Gas Bench II, equipped with a CTC autosampler and coupled to a ConFlo IV interface and a Delta V Plus mass spectrometer. The $\delta^{13}\text{C}_{\text{DIC}}$ measurement uncertainty (1 SD) was typically in a range of $\pm 0.18\text{‰}$ or lower. Two in-house

calibrated sodium bicarbonate powders (-4.66 and -7.94‰ VPDB) were used for standardization. Linearity and signal intensity effects were considered.

A handful of several drip waters were analyzed for radiocarbon with the Micadas gas ion source at ETH Zürich (Ruff et al., 2007). Samples were purged with He (99.96% purity) under a flow of 80 mbar min⁻¹. Then, 200 µl of H₃PO₄ (85%) was added to the Labco vials and the CO₂ was introduced to the gas ion source using a carbonate handling system (CHS). The IAEA C1 (¹⁴C dead carbonate standard) was used as blank material and NIST SRM 4990C oxalic acid (OXAI) was used for standard normalization and to check the stability of the measurement. A coral standard (F¹⁴C = 0.9447) was used as reference material. If we assume that the freshly respired soil carbon has F¹⁴C = 1 (fully modern), then the dead carbon fraction (DCF) can be estimated by:

$$DCF = 1 - F^{14}C$$

Since after percolating through the karst and dissolution of bedrock containing dead carbon the F¹⁴C of drip water is reduced resulting in a higher DCF. We evaluate this assumption further in the discussion.

The oxygen and hydrogen isotope composition of drip water was determined from drip water aliquots directly sampled in 3.5 mL Labco vials. By recording the time until the vial was filled, a drip rate (mL min⁻¹) was determined; a normalized drip rate was derived by comparing the drip rate at each site to the maximal drip rate for that site. The samples were measured on a Picarro L2130-I Isotopic H₂O vaporization instrument at ETH Zürich. A sample-standard bracketing method was applied using three in-house water standards (Mediterranean Sea water: 11.8‰ δD, 2.01‰ δ¹⁸O; Lake Zürich water: -76.4‰ δD, -10.94‰ δ¹⁸O; Siberian water: -264.7‰ δD, -33.95‰ δ¹⁸O) which were calibrated relative to IAEA certified standards (SLAP2, GISP and VSMOW2). Seven replicates were measured for each sample, where only the last four were used to determine the isotopic composition to minimize memory effects. Measurement uncertainty (1 SD) is lower than 0.10‰ for δ¹⁸O and 1.15‰ for δD. We compare drip water variation with published rain isotope analyses for previous years (Moreno et al., 2021), since no GNIP monitoring at nearby stations is available for the interval of our drip water monitoring.

For elemental analysis, drip water was collected directly in 2 mL Eppendorf tubes which were previously cleaned in a 5% HNO₃ acid bath and rinsed several times with Milli-Q®-water to minimize vial contamination. To avoid contamination from metal syringes used in DIC sampling, water for these samples was allowed to drip from the soda straw directly into the tube. Unlike the DIC sample, the water therefore experienced some PCP at the tip of the soda straw. To avoid in-vial calcite precipitation, tubes were filled in the cave with no headspace and sealed. In the lab, drip water was centrifuged to separate any particulate matter, after which 500 µL of supernatant were transferred into Teflon vials and acidified with 15 µL high purity (double distilled) 65% HNO₃ to bring the sample to match the matrix of the standards (2% HNO₃). This reduces clogging of the ICP-MS nebulizer related to water surface tension and prevents any in-vial calcite precipitation.

In-house trace element standards were prepared using certified mono-element standards (ISO 17034 CRM by INORGANIC VENTURES) mixed in a 2% HNO₃ matrix to yield multi-element calibration standards covering the range of drip water chemistry. Drip water trace elements were measured on an Agilent 8800 QQQ-ICP-MS at ETH Zürich. The following list of 16 elements are well above the level of quantification (LOQ): Li, Na, Mg, Al, Si, S, K, Ca, Cr, Mn, Cu, As, Sr, Y, Ba and U

(Table A1). Although K is seldom reported in trace element studies due to tailing of the ICP carrier gas (^{40}Ar) on ^{39}K and interference with $^{38}\text{Ar}^1\text{H}$, analysis in collision mode with H_2 reduces the Ar tailing so that measured ^{39}K intensities are stable and several orders of magnitude above LOQ. Likewise, intensities of ^{25}Mg and ^{55}Mn are measured in H^2 collision mode to improve measurement stability and to avoid $^{40}\text{Ar}^{15}\text{N}^+$ interferences, respectively. Helium collision mode gives most stable measurements for ^{23}Na by reducing the $^{46}\text{Ca}^{++}$ interference. ^{32}S and ^{29}Si are mass shifted in O_2 reaction mode (+16 mass units) to reduce interferences by O_2 and N_2 , respectively. Other elements are measured without any collision/reaction gasses. Measurement uncertainties are typically in the range of a few percent relative standard deviation (RSD; three replicates). The range of elemental concentrations spans from low pptV ($\mu\text{g g}^{-1}$) levels (e.g. Y, Cr or Cu) up to tens of ppmV ($\mu\text{g g}^{-1}$) levels (Na, S, Mg, Si or Ca). In figures (e.g. Fig. 4), we illustrate TE data above LOQ (Table A1).

Rock samples were collected from fallen blocks of limestone on the floor throughout the cave and in some locations from the cave wall (Table A2). From each hand specimen, powder was extracted with a 1 mm dental drill and homogenized before dissolution in 2% HNO_3 to analyze trace elements with an Agilent 8800 QQQ-ICP-MS at ETH Zürich using intensity ratio calibration (De Villiers et al., 2002) and in-house multi-element standards of varying trace element-to-Ca ratios, but with Ca concentrations matched to samples (400 ppmV). Aliquots of the rock powder were measured for stable isotopes ($\delta^{13}\text{C}$ and $\delta^{18}\text{O}$) on a Thermo Fisher Scientific Gas Bench II, equipped with a CTC autosampler and coupled to a ConFlo IV interface and a Delta V Plus mass spectrometer. Isolab B and MS2 (carbonate reference material) were used for standardization yielding uncertainties typically less than 0.1%.

Principal component analysis (PCA) was applied using MATLAB after applying a z-score normalization to elemental concentrations of individual drip sites. Elements yielding sub-LOQ values were defined as zero to compute the PCA. This multi-dimensional correlation analysis approach identifies common modes (principal components: PC 1, PC 2, ..., PC n) controlling the chemical signal and allows the grouping of elements with similar behaviour. Similar analysis has previously been used in speleothem studies (e.g. Borsato et al., 2007; Fairchild et al., 2010; Treble et al., 2016).

We estimate relative variations in PCP in each drip site prior to our drip water collection using the Sr/Ca ratio, since we infer that both elements (Sr and Ca) are primarily bedrock dissolution controlled. To avoid potential influence of marine salt contributions in this ocean proximal cave we intentionally do not use the more commonly used Mg/Ca ratio as a PCP proxy. Assuming congruent dissolution, the Sr/Ca ratio increases with increasing Ca loss due to PCP. As a relative index of PCP, we calculate the following Sr/Ca-index:

$$\text{Sr/Ca-index} = (\text{Sr/Ca})_{\text{min}} / (\text{Sr/Ca})$$

$(\text{Sr/Ca})_{\text{min}}$ of each specific drip site is the least affected by PCP and is defined as having a Sr/Ca-index of one. ~~Thus, and~~ the Sr/Ca-index describes the ~~inverse of the PCP effect or namely the~~ percentage of residual Ca. For example, a value of 0.8 means that 80% of the reference Ca remains in solution and 20% is lost to PCP.

We employ the CaveCalc model (Owen et al., 2018) to explore the processes responsible for $\delta^{13}\text{C}_{\text{DIC}}$ control. By comparing simulations and monitored data we can rule out potential drivers controlling $\delta^{13}\text{C}_{\text{DIC}}$. Furthermore, we applied the I-STAL

model (Stoll et al., 2012) using drip water Ca concentrations, cave air conditions (pCO₂ and temperature) and drip intervals to simulate a full annual cycle of stalagmite growth at the perennially monitored sites. I-STAL simulates stalagmite growth using the kinetic model of Dreybrodt (1999), which is based on the oversaturation defined by the difference between measured Ca concentration and the Ca concentration at equilibrium with CaCO₃ at cave temperature and atmosphere. The resulting average deposition rate of calcite was converted into an instantaneous vertical growth rate (μm yr⁻¹).

4. Results

4.1 Cave air

During the monitored period, the relative humidity is always higher than 90% (Table 1). ~~Close to the cave entrance (Entrada) exchange with ambient air can affect both humidity and temperature.~~ The cave temperature shows very limited seasonal variation (Fig. 2a). ~~At monitored locations deep in the cave the temperature varies 2a), varying~~ less than 1°C at a mean temperature of 13.9°C ~~deep in the cave~~ (Table 1); ~~which~~. This is slightly colder than the 20-year average temperature of Llanes weather station (14.7°C). Closer to the cave entrance, where exchange with outside air is greater (Entrada, Snowball and Gloria), temperature ranges from 13.5 to 15.2°C. ~~Temperature was only recorded from June 2020 to March 2021, but we assume similar stable cave temperatures from the start of the monitoring period in all locations except Entrada (dashed line in Fig. 2a).~~

Cave air CO₂ concentration (pCO₂) ~~varies seasonally, increasing~~ increases in spring, and ~~remaining~~ remains high in summer and autumn months before dropping to ambient air levels in winter. ~~The first pCO₂ decrease in both years coincides with outside air temperatures dropping below cave air temperature (Fig. 2a and d).~~ Stratified cave air conditions are observed during summer months when outside temperature is warmer than cave air. When the atmospheric air temperature is similar or lower than cave air temperature, ~~the cave air is exchanged with outside air due to temperature controlled and density differences.~~ The cave air drive exchange in autumn differs among the two years in some sites. At Gravel and Skyscraper, CO₂ increased and reached its highest pCO₂ in November and December 2020 following an initial drop in September and October 2020 of cave air. Coincident with differing external air temperature evolution, the cold season pCO₂ decline was earlier in 2019 than 2020 but in both years coincides with outside air temperatures dropping below cave air temperature (Fig. 2a and d). ~~In 2019, for example, pCO₂ reached maximal values of 1,320 ppmV in November compared to >5,000 ppmV in November 2020. Between December 2019 to February 2020 and December 2020 to January 2021, the cave air pCO₂ dropped to almost outside air conditions (black line in Fig. 2d, sampled in the surrounding forest). Unfortunately, the weather station at Llanes did not generate any data between July and October 2019, which would allow to bring cave pCO₂ into context with outside air temperature before the start of the monitoring period. Different maximal pCO₂ levels are observed at various elevations within the cave. However, contrasting seasonal temperature changes in autumn led to different seasonal CO₂ patterns in some sites. At Gravel and Skyscraper, CO₂ increased and reached its highest pCO₂ in November and December 2020 (>5,000 ppmV) following an initial drop in September and October 2020, whereas in November 2019 pCO₂ reached only 1,320 ppmV.~~

265 Topographically lower positions in the cave accumulate CO₂ and concentrations reach 4,000-5,400 ppmV (Skyscraper and
 Playground). Topographically higher portions of the cave feature maximal pCO₂ of 1,500-2,500 ppmV (Gravel, Gloria and
 Entrada).

A seasonal structure is also evident in the carbon isotopic composition of cave CO₂ ($\delta^{13}\text{C}_{\text{air}}$; to distinguish from $\delta^{13}\text{C}_{\text{DIC}}$). While
 the measured air outside the cave remains fairly constant over the year (average of -11.6‰, black line), cave air evolves to
 very negative $\delta^{13}\text{C}$ values in spring and remains very negative during summer months. The most negative $\delta^{13}\text{C}_{\text{air}}$ values are
 270 reached at locations with high pCO₂ deeper in the cave (Skyscraper: -26.0‰ in May 2020). The $\delta^{13}\text{C}_{\text{air}}$ approaches outside air
 conditions between December and February (2020) or January (2021) in both monitored winters, ~~in line~~ coincident with the
 cave air CO₂ concentration decrease. The timing of the autumn transition differs among the sites ~~with only Gloria and Entrada~~
~~indicating an intermediate shift closer to atmospheric values at the end of October (2020) and other sites diverging from~~
~~atmospheric $\delta^{13}\text{C}_{\text{air}}$ composition to reach another extreme in negative composition (e.g. Gravel, Skyscraper).~~

275 4.2 Dissolved inorganic carbon (DIC) of drip water

~~Drip water from within soda straws growing on the cave ceiling were sampled regularly to measure the changes in carbon
 isotopic composition of drip water DIC ($\delta^{13}\text{C}_{\text{DIC}}$) over time. Substantial seasonal variations in the $\delta^{13}\text{C}_{\text{DIC}}$ measurements are
 observed. The drip water $\delta^{13}\text{C}_{\text{DIC}}$ varies seasonally, with the most negative values (-17.0‰) observed in summer and autumn
 months. In winter, the $\delta^{13}\text{C}_{\text{DIC}}$ generally increases (to -8.4‰ at Playground) (Table 1, Fig. 2b), and the maximum
 280 difference between the two extreme values can reach 8.6‰ seasonal contrast can exceed 7‰ (Playground; 8.6‰; red in Fig. 2).
 Large seasonal variations (7.7‰) are also observed for Gravel (7.7‰ green) with the most negative values in late autumn
 (mid November). Smaller variations between summer and winter are recorded at Gloria (blue) where $\delta^{13}\text{C}_{\text{DIC}}$ varies within
 a Fig. 2), whereas the seasonal range of is modest at other sites (4.0‰ (-15.5 to -11.5‰) at Gloria).~~

285 **Table 1: Cave environment measurements at monitoring locations giving ranges (min-max) or mean values and variations (%-RSD).
 The full data set of temperature, cave air parameters (pCO₂ and $\delta^{13}\text{C}_{\text{air}}$) and drip water DIC measurements ($\delta^{13}\text{C}_{\text{DIC}}$) are plotted in
 Fig. 2. The full time series of drip rate and $\delta^{18}\text{O}$ are plotted in Fig. 3.**

Location	Bedrock thickness [m]	Rel. humidity [%]	Temperature [°C]		pCO ₂ [ppmV]		$\delta^{13}\text{C}_{\text{air}}$ [‰ VPDB]		Drip rate [mL min ⁻¹]		$\delta^{13}\text{C}_{\text{DIC}}$ [‰ VPDB]		$\delta^{18}\text{O}$ [‰ VSMOW]	
		Min	Min	Max	Min	Max	Min	Max	Mean	%-RSD	Min	Max	Min	Max
Gloria	12.8	>92.4	14.1	14.9	569	1582	-21.2	-14.1	0.27	54	-15.5	-11.5	-6.7	-5.6
Gravel	6.8	>92.7	13.5	14.0	509	2416	-23.0	-14.1	0.67	50	-16.2	-8.5	-6.5	-5.1
Playground (Playground-01*)	24.1	>90.9	13.5	14.0	525	4199	-24.4	-15.4	1.48 (0.33)	54 (21)	-17.0	-8.4	-6.5 (-6.3)	-5.8 (-5.4)
Skyscraper	30.7	>94.5	13.6	14.2	510	5390	-25.6	-14.0	91.72	30	-	-	-6.7	-5.8
Entrada* (Snowball*)	7.0	>91.5	13.5	15.2	461	1496	-21.0	-12.1	0.38 (0.36)	46 (83)	-16.6 (-13.8)	-14.0 (-12.9)	-7.1 (-6.8)	-5.2 (-5.6)

*Not complete seasonal cycle

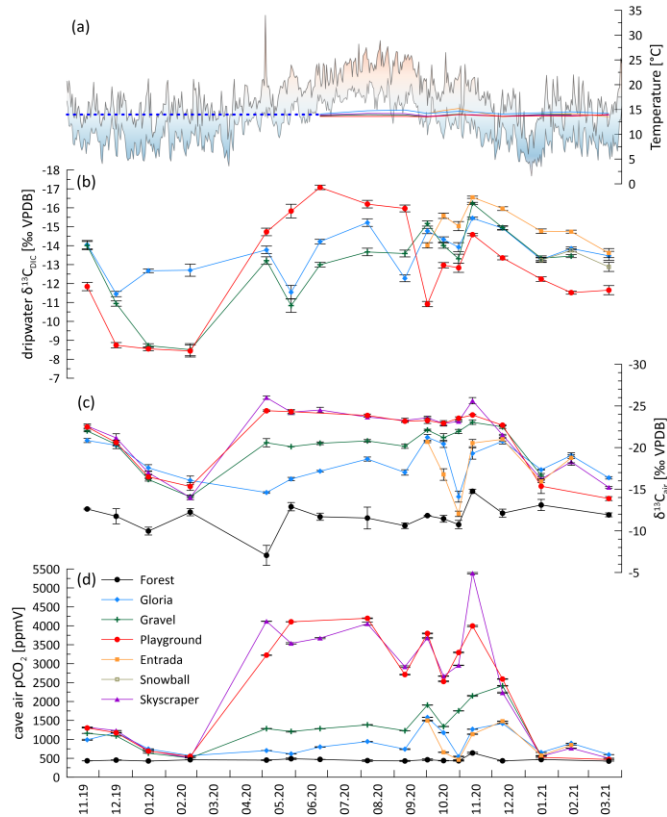


Fig. 2: Cave air conditions and drip water DIC over time. a) Daily outside temperature range (min-max) in Llanes (Aemet, 2021) and cave air temperature. The blue dashed line extrapolates the constant cave air temperature. b) drip water $\delta^{13}C_{DIC}$, c) cave air $\delta^{13}C_{air}$ and d) cave air pCO_2 . Note the reversed y-axes for B and C.

4.3 Hydrological conditions

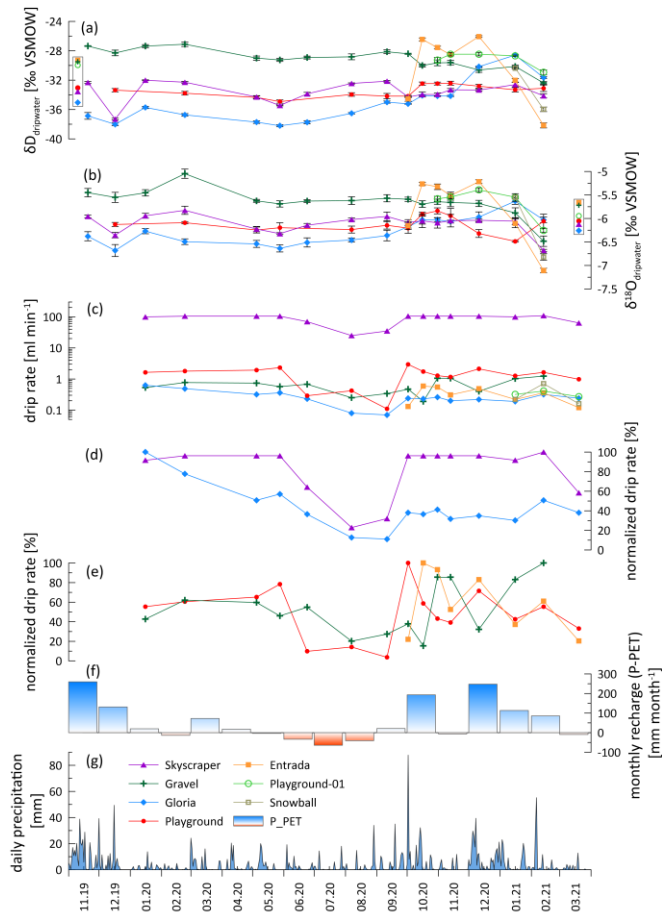
The drip rate of all the monitored sites varies seasonally, though Although there are large differences (several orders of magnitude) in the absolute drip rates across the various drip sites (Table 1, Fig. 3d). Therefore, all sites exhibit a normalization was applied to directly compare similar seasonal pattern of variation and a similar fractional reduction in drip rate in the different flow conditions compared to the maximal observed individual flow dry season (Fig. 3d, e). In summer, most drip sites drop to 10-25% of its highest discharge recorded in the wet season, consistent, coincident with the lower rainfall (P) and higher

temperatures which maximize potential and actual evapotranspiration (PET; Fig. 1d). ~~We note that~~ While the calculated PET may overestimate the actual evapotranspiration (AET) and therefore could underestimate actual water balance. ~~Our purpose is, it nonetheless serves~~ to illustrate the trend in seasonal variation in water balance ~~rather than a quantitative calculation of water balance; for this purpose PET is suitable~~ and avoids the uncertainties of assigning a single crop coefficient over a landscape of heterogeneous vegetation cover. ~~as required for AET~~. Recharge of the water reservoir potentially only occurs when water balance is positive (Fig. 3e). However, persistent drip rates suggest that the water reservoir never dries out (Fig. 3d). ~~Nevertheless, comparison of Fig. 3e and 3f suggests~~ There may be different timescales of response to recharge (P-PET). ~~For example, among sites:~~ Playground and Skyscraper (red and purple respectively) appear to respond more rapidly, while than Gravel (green) suggests a time-lagged drip rate response. However, no statistically significant relationship is found; Fig. 3e and 3f).

4.4 Isotopic composition of the drip water

Both the oxygen ($\delta^{18}\text{O}$) and hydrogen (δD) isotopic compositions of drip water were measured (Fig. 3a and b). The time series of $\delta^{18}\text{O}$ shows a fairly stable composition limited variation for most individual drip sites (Fig. 3b). All sampling sites (except Playground) follow a trend towards more negative values in the last two months of the monitoring period. At Skyscraper and Playground do not show substantial seasonal trends and record minor, $\delta^{18}\text{O}$ variability within a range of $\pm 0.9\text{‰}$ (-5.8 to -6.7‰) and $\pm 0.7\text{‰}$ (-5.8 to -6.5‰) respectively. Larger variations appear with no further seasonal pattern. Contrasting temporal patterns in other drip sites: $\delta^{18}\text{O}$ and δD occur at Gloria varies by $\pm 1.1\text{‰}$ in a range between -5.6 to -6.7‰ with more, which features most negative values at the beginning of the monitoring period. On the other hand, in winter 19/20, and Gravel reveals an opposing trend with variations between -5.1 to -6.5‰ , where the most which features more negative values are recorded later in the monitoring period in winter (20/21). Between At the start of monitoring, Gravel and $\delta^{18}\text{O}$ is 1.5‰ more positive than Gloria, a maximum $\delta^{18}\text{O}$ offset of 1.5‰ is observed at the beginning of but the drip water at the monitoring phase and two sites converges towards the end. Thus, drip site specific differences in the water pool $\delta^{18}\text{O}$ are inferred. A similar trend is observed in δD measurements: Gloria features more positive values in winter 20/21 (-29‰) while Gravel reaches the most negative values during the same winter season (-32‰) of monitoring.

The short time series of Entrada reveals stronger amplitude variability in both isotopic ratios (-5.2 to -7.1‰ $\delta^{18}\text{O}$; -26 to -38‰ δD). Similarly, Within the short data sets of Playground-01 and Snowball do not allow the discussion of seasonal, we observe contrasting trend and higher variability, but they can nevertheless be used to compare the isotopic composition relative to the longer monitored drip sites. Playground-01 behaves differently compared to the nearby Playground drip site (opposite trend in $\delta^{18}\text{O}$ and δD ; Fig. 3a, b). Hence, Playground-01 is rather comparable to Entrada and reveals high variability suggesting more focused hydrological flow conditions. In general, relatively constant isotope values are observed through the 3a, b). In general, $\delta^{18}\text{O}$ and δD are more stable during the dry season at individual sites, suggesting no change of the individual water reservoir by recharge. All sampling sites (except Playground) follow a trend towards more negative values in the last two months of the monitoring period.



335 **Fig. 3: Hydrological conditions and water chemistry.** a) hydrogen isotopic drip water composition ($\delta D_{\text{dripwater}}$), b) oxygen isotopic drip water composition ($\delta^{18}O_{\text{dripwater}}$), c) absolute drip rate (log-scale) d) normalized drip rate of less responsive drip sites (Skyscraper and Gloria), e) normalized drip rate of strongly responsive drip sites with different lags to recharge (Playground, Gravel, Entrada), f) monthly recharge calculated by subtracting potential evapotranspiration (PET) from precipitation (P) and g) daily precipitation recorded in Llanes (Aemet, 2021). In a) and b) Data points in a box next to the y-axis represent amount weighted average values of each drip site.

4.5 Trace elements in drip water and bedrock and temporal variation in PCP

~~The set of the 16 trace elements (TE) analyzed and reported in this study gives a broad view of the seasonal and site specific variability of elemental concentrations in drip water. Fig. 4 only shows TE data above LOQ (Table A1). The elements, P, Fe, Co, Ni, Zn, Cd and Pb did not yield sufficient detectability (mostly below LOQ), hence cannot be treated and are not discussed further in this study. Drip site specific concentration offsets are observed for some elements (e.g. Mg, S, Na, U etc.). Many. At a given drip site, concentrations of many elements show seasonal variability (e.g. Ca, Si, Sr etc.) whereas others feature event scale peaks (e.g. Mn, Y, Cu etc.) independent of the seasonal cycle. The absolute concentration range of elements Mg, S, Na, U differ significantly among different drip sites.~~

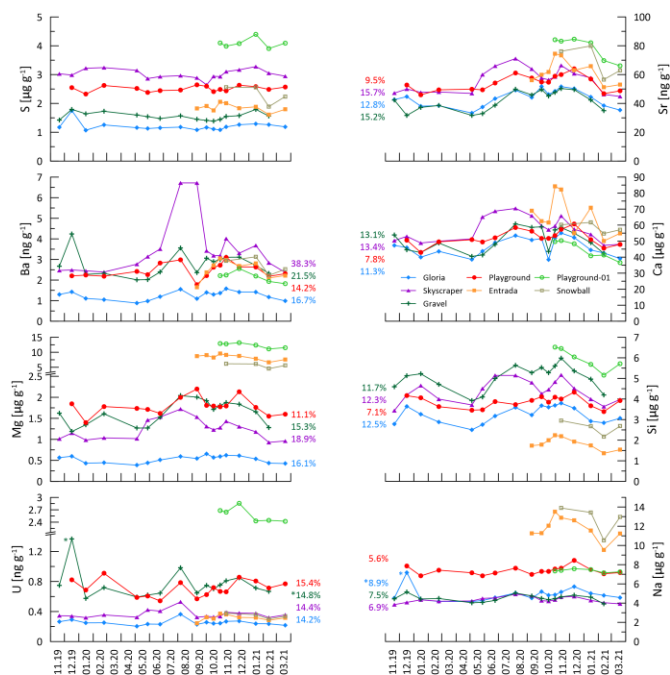
~~Principal components analysis (PCA) allows for a more structured analysis of the covariations among the large number of trace elements analyzed in this study. A PCA was performed for each of the four main drip water monitoring sites (Gravel, Gloria, Skyscraper and Playground), wherein the first three principal components (PC 1-3) explain at least 60% of the signal variation (up to 75% for Gravel) and comprise similar elemental loadings (Fig. 5). PC 1-3 coefficients are controlled by similar groups of elements with a consistency that suggests they are controlled by the same environmental factors (Fig. 5). Elements Na, Mg, Si, Ca, Sr, Ba and U are strongly controlled by PC 1 (28-40% of total variation). PC 2 explains about a fifth (18-22%) of the trace element signal variation and is controlled by elements such as Li, Al, K, Cr, Mn, Cu, As and Y. The third component (PC 3) accounts for 10-18% of the elemental concentrations, and is most associated with S, Cr, Cu and As. While there are exceptions to these trends (e.g. poor associations of PC 2 with Li at Skyscraper, PC 2 with Cu at Gravel and PC 3 with Cu at Gloria and Skyscraper), and discussing every single element at individual drip sites would go beyond the scope of this study, we nevertheless attempt to provide a general interpretation so we focus on interpretations where at least two drip sites show strong element specific PC's.~~

Increased PCP, indicated by a lower Sr/Ca-index, occurs in autumn and early winter (Fig. 6b). Gravel and Gloria exhibit the strongest variation in the degree of PCP with Sr/Ca-index values decreasing down to 0.60 indicating 40% loss of Ca relative to the reference. Playground and Skyscraper reveal detectable Ca loss up to 15% in autumn and early winter. Frequently, higher PCP has been attributed to slower drip rate which allows the drip water to degas longer and precipitate while hanging on the cave ceiling (stalactite formation). However, in our drip water dataset, no relationship between the drip rate and the Sr/Ca-index is found, and the months with the lowest Sr/Ca-index paradoxically happen to be months with increased drip rates (Fig. A2a-c). PCP also does not increase during negative P-PET so is not driven by an increase in air filled voids in karst system caused by the seasonal water deficit. Fig. A1 indicates a close relationship between Mg/Ca and Sr/Ca suggesting both elements are affected by PCP. If using Mg/Ca-index instead of Sr/Ca-index a similar temporal pattern and amplitude of Ca loss is revealed.

Potential stalagmite growth rate simulated with I-STAL using measured cave conditions suggests a seasonally biased growth in summer and winter with intervals of reduced or inhibited growth in spring and autumn (Fig. 6a). Growth inhibition in autumn coincides with increased PCP as suggested by a decreased Sr/Ca-index (blue shading in Fig. 6). Stalagmite growth

simulated in I-STAL can reach up to $100 \mu\text{m yr}^{-1}$, and occasionally shows negative growth rates suggesting growth cessation or potentially dissolution (undersaturation). This results in a temporal hiatus in a stalagmite or even the dissolution of calcite. In the case of Playground, simulations indicate growth was only simulated for in winter 2020/2021, as simulations of the previous but not winter suggest no stalagmite growth 2019/2020 (Fig. 6a).

375 In bedrock sampled from fallen blocks throughout the cave, some elements exhibit a very high degree of spatial variation, at times exceeding an order of magnitude (Table A2). To compare drip water and bedrock, we use the TE/Sr ratio which is relatively insensitive to the degree of PCP and/or additional sources (e.g. marine). Direct comparison of TE/Sr ratios of bedrock and drip water shows that some elements feature overlapping ranges in the bedrock and drip water (U, Ca, Li, Cu; Fig. 7). Other elements such as Na, Si and S have much higher ratios in drip water compared to bedrock, while Mg, Ba, As, K and Cr are moderately enriched. Elements such as Al, Y, and Mn have much lower ratios in drip water than in the sampled bedrock.



385 **Fig. 4: Analyzed elemental concentration.** In the first part of this figure (PC 1 elements and sulfur) colored numbers give the %-RSD of variation to give an impression of how much the seasonal amplitude changes. Numbers with an asterisk are outlier cleared (outliers: >25% higher than 2nd highest concentration). The second part of the figure (next page) contains the spikier elements controlled by PC 2 and PC 3. Note that concentrations can be given in ppmV ($\mu\text{g g}^{-1}$) or in ppbV (ng g^{-1}). Missing data points denote points below LOQ.

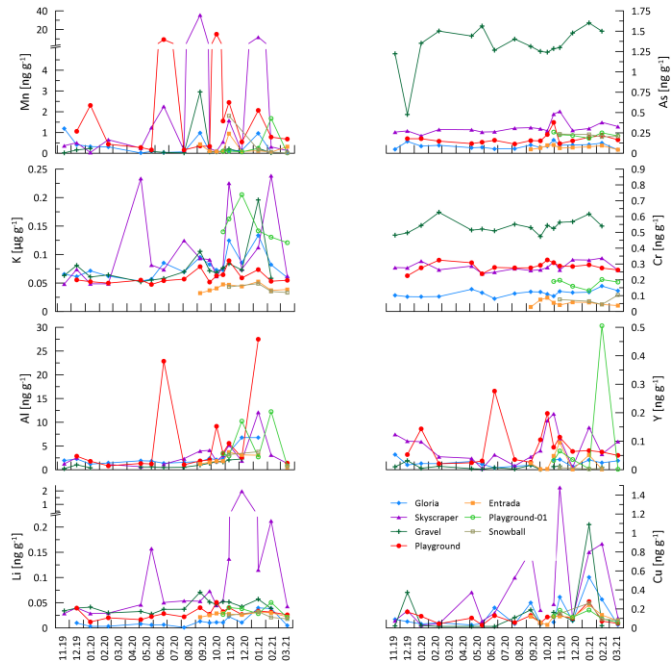
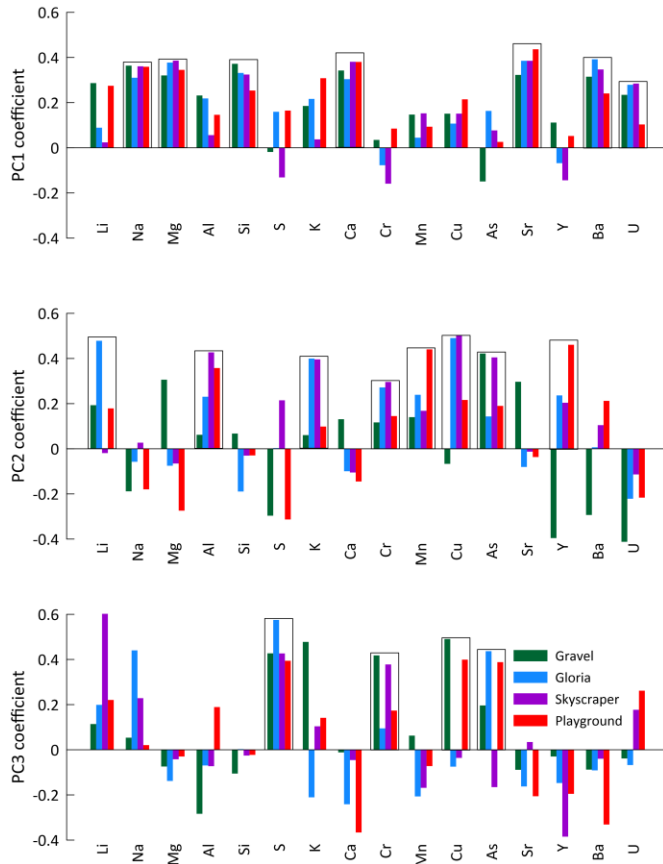


Fig. 4 (continued)



390 Fig. 5: First three principal components (PC 1-3) of the principal component analysis (PCA) applied on the element concentration of drip water from individual drip sites. Boxes indicate elements of generally similar behavior controlled by specific PCs.

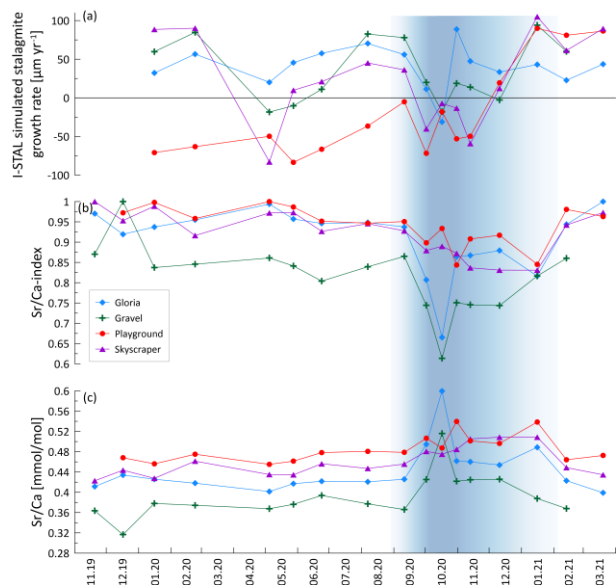


Fig. 6: Prior Calcite Precipitation (PCP) indicated by Sr/Ca and its impact on growth rate. a) I-STAL simulated stalagmite growth rate, b) Sr/Ca-index and c) Sr/Ca ratio of measured drip water. The blue band indicates a phase of intensified PCP in some drip locations likely contributing to reduced stalagmite growth.

395

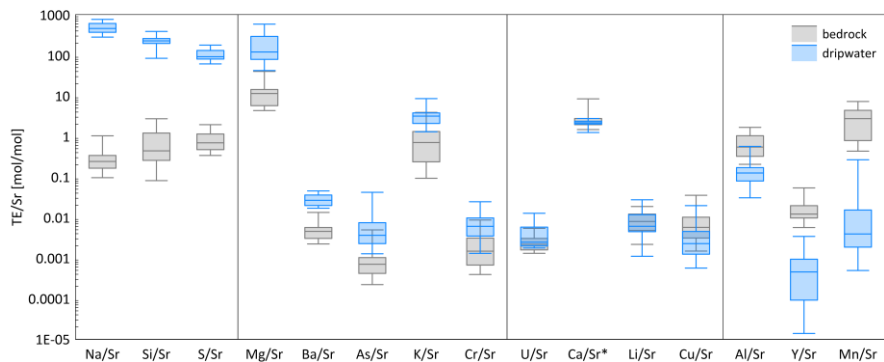


Fig. 7: Box-and-Whisker diagram comparing measured ranges of bedrock and drip water TE/Sr ordered by difference of median between bedrock and drip water from left to right: enriched elements relative to bedrock (Na, Si and S), moderately enriched elements (Mg, Ba, As, K and Cr), congruent elements (U, Ca, Li and Cu) and depleted elements (Al, Y and Mn). *Note that Ca/Sr is given in mol/mmol.

400

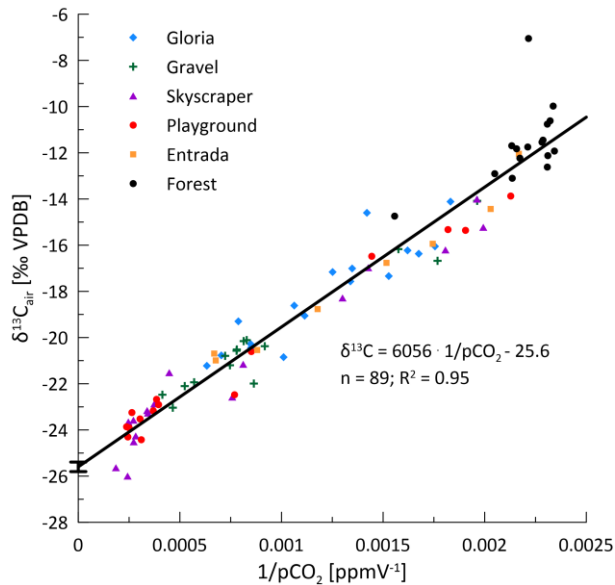
5. Discussion

5.1 Seasonal evolution of cave air composition and estimation of $\delta^{13}\text{C}$ of the respired endmember

The maximum cave air pCO_2 in summer and minimum in winter is consistent with seasonal ventilation of the cave controlled by the density contrast between cave and outside air, a process common to many caves in regions with significant seasonal temperature contrast (James et al., 2015). The cave pCO_2 approaches exterior values during periods when exterior temperature drops below cave temperature, triggering inflow of external air through the cave entrance. In warm periods, when outside air is warmer than the cave, advection through the entrance is limited, and the cave air composition approaches that of the overlying soil and karst. Although the monitoring resolution is low, it suggests that the ventilation regime responds quickly to exterior temperature, typically within a few days to a week. We also see evidence of variations in the efficiency of ventilation within the cave due to cave morphology. In the warm periods, high CO_2 preferentially accumulates in the lower, more isolated locations like Skyscraper and Playground. At the onset of ventilation (Nov-Dec 2020), decreasing CO_2 concentrations are first attained in these lower galleries (higher level locations remain high in pCO_2), where dense air inflow from the exterior concentrates in the lower portions of the cave. These differences within the cave affect the degree of drip water oversaturation and the seasonality of speleothem growth in different cave sectors (see section 5.4.2).

In addition to the ventilation effect, the CO_2 in the cave may also be affected by variations in the CO_2 concentration of the soil which may not always covary with exterior temperature. Although soil respiration rates generally are highest at higher temperatures, heterotrophic respiration also depends on the supply of labile organic matter and soil moisture (Krishna and Mohan, 2017). High cave pCO_2 concentrations in mid November 2020, despite exterior temperatures near the ventilation threshold, suggest a high CO_2 supply from the soil/karst which may reflect high rate of microbial degradation of recently fallen leaf litter as well as optimal moisture conditions and mild temperatures for soil respiration (Krishna and Mohan, 2017). Detailed soil air sampling studies have the potential to elucidate the seasonal concentration and isotopic variations of this endmember, but are beyond the scope of the present study.

As a result of the changing ventilation regime, $\delta^{13}\text{C}_{\text{air}}$ of cave CO_2 varies along a mixing line defined by the exterior atmosphere and the respired CO_2 source in the soil and karst (Fig. 8). Using the measured forest values to define the local exterior endmember (-11.6‰), our data suggest an isotopic value for the respired endmember of -25.6‰, consistent with the range of recent C3 ecosystems (range: -24 to -32‰; e.g. Matthey et al., 2016; O'leary, 1988; Pataki et al., 2003). The large range of pCO_2 and $\delta^{13}\text{C}_{\text{air}}$ values places tight constraints on the Keeling plot and the uncertainty of the intercept (SD of y-intercept = 0.21) is relatively small compared to other Keeling plot applications (Frisia et al., 2011; Pataki et al., 2003; Riechelmann et al., 2011). Unlike some other cave systems (Frisia et al., 2011; Waring et al., 2017), our cave air samples define a single line typical of a two component mixture, and do not show evidence of degassing of drip water as a significant influence on the isotopic ratio of cave pCO_2 . That is, while the influence of drip water CO_2 degassing is likely low in summer due to low drip rates and high cave pCO_2 , we do not see any evidence for a change in slope in winter due to higher drip rates and lower pCO_2 . The active cave ventilation in winter further dilutes and removes the degassed CO_2 .



435 Fig. 8: Keeling plot based on cave air measurements. The mixing line (black line) suggests a mixture between the two endmembers of respired soil air (-25.6‰) and atmospheric air (-11.6‰).

5.2 Meteoric water recharge and hydrology

On a seasonal scale, drip rate is controlled by precipitation and potential evapotranspiration (P-PET), ~~while the water reservoir feeding the drip sites recharges in the wet season (October-April) primarily by rainfall. In summer months, recharge is limited because rain events are sporadic and compensated by the higher evapotranspiration.~~ Recently published hydrological models from semi-arid caves suggest a recharge threshold has to be overcome (saturated soil and epikarst) to contribute to the deeper water reservoir feeding the cave drip water (Markowska et al., 2016; Baker et al., 2021), consistent with rainfall triggered recharge of the water reservoir feeding the drip sites in our wet season (October-April).

Drip rates of Entrada and Playground mirror the structure of the monthly recharge (P-PET) suggesting a close relationship with potential recharge (Fig. -3). Hence, when (P-PET) is negative in summer, any rain is likely evaporated and does not recharge the water reservoir. Even with a lower actual evapotranspiration (AET) summer recharge is reduced. However, the active drips in summer suggest a large water reservoir, in line with the well-mixed reservoir discussed below, which does not dry out during summer and keeps drips active even if recharge is minimal. ~~The temporal point sampling resolution in this study makes it impossible to precisely quantify the lag behavior and response on rain events affecting the drip rates at monitored sites. Continuous hydrographs recording drip rates or tracer experiments would be necessary to determine the response time~~

Formatiert: Englisch (Vereinigte Staaten)

of rain events and to define thresholds of rainfall amount affecting drip sites individually (Markowska et al., 2016). The proposed 7-day antecedent cumulative rainfall method (Baker et al., 2020; Baker et al., 2021) does not yield any better relationship between recharge and drip rate. No statistically significant relationship between drip rate and rainfall is found as suggested by other studies (Baker et al., 2020; Baker et al., 2021). Nonlinear relationship between rain and drip rate can result from passing the precipitation vs. evapotranspiration threshold (Fairchild and Baker, 2012) or when water storage reservoirs overflow (Bradley et al., 2010). However, the long median interval between drip rate measurements in this study (28 days) complicates efforts to derive relationships between drip rate and rainfall or precipitation-evapotranspiration, and precludes the use of quantitative flow models such as bucket models to derive recharge thresholds and overflow capacity (Baker et al., 2020; Baker et al., 2021) since we cannot ascertain if our single estimation of drip rate reflects peak discharge or rising or falling limb of discharge after a precipitation event. For example, we did not identify a relationship between 7-day antecedent cumulative rainfall and drip rate, found in studies featuring higher resolution drip rate data (Baker et al., 2020; Baker et al., 2021). Nevertheless, continuous hydrographs recording drip rates or tracer experiments would be necessary to determine the response time to rain events and to define thresholds of rainfall amount affecting drip sites individually (Markowska et al., 2016; Baker et al., 2020; Baker et al., 2021).

Despite the long intervals between sampling, our data suggest there may be some site specific response behaviors at the onset of the rainy season are observed. Despite thickest overlying bedrock, Skyscraper and Playground respond quickly to the onset of the rainy season (likely related to the “piston effect” pushing water through the reservoir), while Gravel and Entrada react in a delayed fashion. Although rainfall amounts were similar during the two monitored wet seasons, drip rates of Entrada and Playground mirror the structure of the monthly recharge (P-PET) suggesting a close relationship with potential recharge (Fig. 3). Despite similar total rainfall amounts during the two monitored wet seasons, drip rate differences are observed between drip sites (e.g. Gloria). This might be associated with the hydrological history or size of the discrete stores. Alternatively, a change in flow path routing could explain this (Markowska et al., 2016). For example, Gloria has higher drip rates during the 2019-2020 wet season than the 2020-2021, which could reflect higher evapotranspiration during the warmer 2020-2021 winter, differences in recharge prior to the start of monitoring and size of the discrete stores, or a change in flow path routing (Markowska et al., 2016). However, Gravel exhibits the opposite behavior which may reflect complexities in hydrological routing at this site such as overflow reservoirs (Bradley et al., 2010) which are consistent with the variation of which soda straw hosts drip at this location.

The δD and $\delta^{18}O$ of drip waters provide some further constraint on the hydrological behavior. We describe first the behavior of individual drips. The several permil variations between While amount weighted $\delta^{18}O_{rain}$ of successive months varies by several permil in some years (Moreno et al., 2021) is not manifest as, there are no seasonal cycles in $\delta^{18}O_{dripwater}$ (Fig. 3 and Fig. A3). Non change in the drip water isotopic composition over the onset of the wet season is observed. The (Fig. 3 and Fig. A3). Although precipitation events span over 10%, the majority of our sampled drip locations feature very limited (<1.1‰) range in $\delta^{18}O$ across the monitored period, although precipitation events span over 10% (Fig. 9). Within a given drip location, the narrow limited variation in $\delta^{18}O$ suggests mixing of individual recharge events within the flow and storage system of that

Feldfunktion geändert

Formatiert: Englisch (Vereinigte Staaten)

Formatiert: Englisch (Vereinigte Staaten)

Feldfunktion geändert

Formatiert: Englisch (Vereinigte Staaten)

Feldfunktion geändert

Formatiert: Englisch (Vereinigte Staaten)

Formatiert: Englisch (Vereinigte Staaten)

Feldfunktion geändert

Formatiert: Englisch (Vereinigte Staaten)

485 drip, so that the isotopic signatures of individual precipitation events are attenuated. Similar attenuation of event scale
variability has been described previously (e.g. Riechelmann et al., 2011; Feng et al., 2014; Tadros et al., 2016). In a region
with similar widespread range in $\delta^{18}\text{O}$ of precipitation events, such attenuation of annual drip waters with an attenuated
range has classified drips with of 1‰ variability have been classified as well-mixed cave waters characterizing diffuse flows
(Domínguez-Villar et al., 2021). In our monitoring, the drip site exhibiting the largest range (1.9‰) was Entrada. Such a level
490 of variance (e.g. up to 3‰) has been described to result from partially-well mixed waters which are fed by preferential drainage
routes (Domínguez-Villar et al., 2021). We note that Entrada features a small bedrock thickness (7m), and also large trees with
root penetration into the cave. Root channels have been observed to provide preferential flow routes in some karst systems
(Dasgupta et al., 2006). The Gravel location also features slightly greater (1.4‰) variation than other locations and also is near
root systems and is inferred to reflect a sediment filled chimney which may also have altered flow pathways compared to
495 limestone. Despite the overall high attenuation of individual events, at the end of the monitoring, δD and $\delta^{18}\text{O}$ at all drip sites
(except Playground) shifts negative, suggesting a change in the water composition of those discrete reservoirs. We hypothesize
a rain event with strongly negative isotopic compositions in early February to cause such a shift. Strongly negative rainfall
events of substantial volume are possible, as seen in Fig. 9, which could recharge the reservoir during conditions with high
recharge.

500 The spatial variations in average $\delta^{18}\text{O}$ of drip waters suggest that there is not a single well-mixed reservoir that supplies all
drip locations throughout the cave. Prior studies have shown that nearby drip sites can undergo very different routing in the
unsaturated zone undergoing different evaporative fractionation (Treble et al., 2022; Markowska et al., 2016). The
heterogenous coverage by deep rooted trees such as Eucalyptus may contribute to lateral variations in evaporative
fractionation, because they can increase evaporation from the upper soil horizons via the hydraulic redistribution of deep
groundwater to the upper soil (Brooksbank et al., 2011). The spatial differences may also reflect variation in the dominance of
505 diffuse and preferential flow routes and differing transit times. From our dataset, we are unable to quantify the water transit
time, because rain $\delta^{18}\text{O}$ monitoring does not cover the year of drip sampling nor the prior year. Thus, we cannot rule out the
possibility that inter site differences may reflect varying average transit times among drips, so that the amount weighted drip
water $\delta^{18}\text{O}$ of different drips would converge over a suitably long time period which averaged interannual differences in amount
510 weighted $\delta^{18}\text{O}$ of precipitation. If significant differences in mean transit times existed among drip sites, and the amount
weighted average precipitation in the year prior to monitoring were more positive than that during the monitored season, then
drips with slower average transit times might be offset to the previous year's value. Interannual variation of about 1.25‰ in
the yearly precipitation amount weighted average $\delta^{18}\text{O}$ is seen among the available precipitation data (Fig. 9) which includes
15 years from GNIP station Santander in the period 2000-2015 (no recent data available; Iaea/Wmo, 2022) and individual rain
515 events monitored near Oviedo from February 2015 to February 2016 (Moreno et al., 2021). In the 2015-2016 series,
considering the amount weighted average of months with P-PET > 0 (months with recharge; brown cross), the $\delta^{18}\text{O}$ is 0.3‰
more negative compared to the full annual rain (Fig. 9; green cross) (Moreno et al., 2021). We observe that at drip sites located
under the same bedrock thickness and vegetation, such as Playground and Playground-01 (located 3 m apart in the same

gallery), the slower drip rate (Playground-01) features a more positive average $\delta^{18}\text{O}$ and δD , which could be compatible with a slower average transit time.

Additionally, the flow pathways can also affect which precipitation events recharge the aquifer. In some settings dominated by diffuse recharge through the soil, summer rainfall might not contribute to the water reservoir if the recharge threshold is not exceeded. However, this effect is suggested to be minor in caves with P/PET higher than 1.5 (Baker et al., 2019). In our setting (P/PET 2.4), the amount weighted $\delta^{18}\text{O}$ during months of positive water balance is only 0.3 ‰ lower in $\delta^{18}\text{O}$.

Nonetheless, preferential flow routes may allow recharge even in months of negative water balance, which in some sites may result in recharge from the less negative precipitation events which characterize the summer months (Dominguez-Villar et al., 2021). Sites like Entrada with proximity to root systems entering the cave and facilitating preferential flow, feature a higher average $\delta^{18}\text{O}$ and δD than sites with comparable or greater drip rate but no large trees or roots, like Gloria or Playground. The spatially variable vegetation, with variable transpiration water demand, may also affect the recharge threshold. Finally, isotopic fractionation of rainwater by evaporation in the soil and the unsaturated zone before entering the discrete water reservoir could contribute to the slight shallowing of the drip water meteoric water line (DMWL) relative to the local meteoric water line (LMWL), and variable influence of evaporation could contribute to the spatial pattern in mean drip water ($\delta^{18}\text{O}$), similar to Baker et al. (2019) and Bradley et al. (2010).

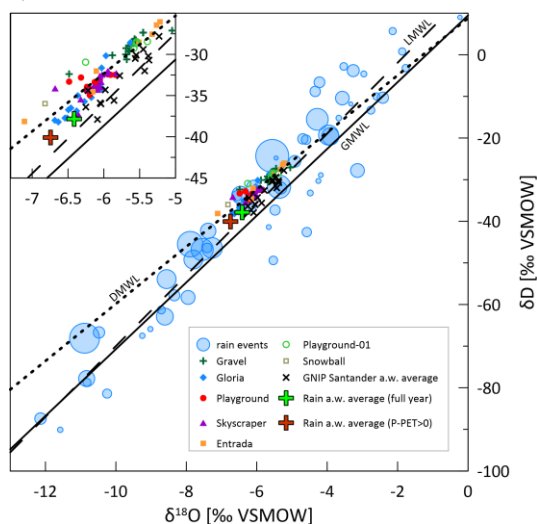


Fig. 9: Meteoric water lines of drip water and local rain events. The size of the blue bubbles indicates the rain amount of individual rain events between February 2015 to February 2016 (Moreno et al., 2021). The green cross represents the full annual amount weighted average of local precipitation. The brown cross accounts for positive P-PET months only (recharge). Black crosses reveal the interannual variability of rainfall represented by amount weighted annual average of GNIIP station Santander for 2000-2015. For the 2019-2021 cave monitoring, drip water DMWL: $\delta\text{D} = 7.01 \delta^{18}\text{O} + 9.72$, where $R^2=0.83$; stippled. Local rainwater LMWL δD

540 = $8.5 \delta^{18}\text{O} + 15.1$, where $R^2=0.92$; dashed (data from Moreno et al. (2021)) and global meteoric water line (GMWL) $\delta\text{D} = 8.0 \delta^{18}\text{O} + 10$ (Craig, 1961). The MWL for GNP Santander 2000-2015 (not shown) is fairly similar to the dashed line.

These findings of a moderately- to well-mixed water reservoir, likely recording a mean annual amount weighted $\delta^{18}\text{O}$ signal and buffered against individual rain water recharge events (especially during the dry season when (P-PET) is negative; Fig. 3), is crucial when interpreting stalagmite $\delta^{18}\text{O}$ records. Site specific evaporative effects on $\delta^{18}\text{O}_{\text{dripwater}}$ can lead to offsets in coeval speleothems from the same cave. These effects may be more extreme now due to spatially variable vegetation and extreme evapotranspiration of perennially green Eucalyptus (Brooksbank et al., 2011), compared to native deciduous oaks. Nonetheless, sites of slow drip rate could in some cases be characterized by more positive $\delta^{18}\text{O}$ of drip water and therefore calcite, than sites of more rapid drip flow due to stronger or weaker evaporative effects along the drip water flow path respectively. This may be consistent with observations of slowly growing stalagmites having higher $\delta^{18}\text{O}$ (Stoll et al., 2015), if slow growth were in part caused by slow drip rates and potentially concomitant high levels of PCP. Thus, disequilibrium effects in $\delta^{18}\text{O}$ incorporation into speleothem calcite may not be required to explain differences in $\delta^{18}\text{O}$ in coeval speleothems in the same cave. Stalagmites from cave sectors with thinner overlying bedrock thickness may result in a less well-mixed water reservoir and thus reflect seasonal changes in rainwater $\delta^{18}\text{O}$ recharge.

5.3 Controls of $\delta^{13}\text{C}_{\text{DIC}}$

555 Several factors may potentially contribute to the strong seasonality in drip water $\delta^{13}\text{C}_{\text{DIC}}$ marked by higher $\delta^{13}\text{C}_{\text{DIC}}$ in the winter season. A decrease in soil pCO_2 in colder seasons could produce this trend because the $\delta^{13}\text{C}$ of soil CO_2 is expected to fall on the mixing line between atmosphere and a respired endmember (similar to Fig. 8), so that periods of higher soil pCO_2 are characterized by lower $\delta^{13}\text{C}$ of the soil CO_2 and therefore the DIC in drip waters. Although we have no direct soil CO_2 measurements, soil pCO_2 in similar climates is elevated in the warm season, and can be enhanced by greater soil moisture (Borsato et al., 2015; Frisia et al., 2011; Hasenmueller et al., 2015; Hodges et al., 2019). A shift to more closed system dissolution in the colder and wetter season could also contribute to the trend of higher $\delta^{13}\text{C}_{\text{DIC}}$ in the colder seasons. Additionally, equilibration of the drip water with cave air could also lead to a seasonal trend because of the higher $\delta^{13}\text{C}_{\text{air}}$ of cave air in the ventilated winter season. Finally, if PCP were more extensive in the winter season it would also increase $\delta^{13}\text{C}_{\text{DIC}}$ due to preferential degassing of light ^{12}C carbon isotopes when cave air pCO_2 is low. To evaluate these processes, we consider the indicators of PCP and degree of bedrock dissolution as well as calculations generated by the CaveCalc model (Owen et al., 2018).

Our data on PCP suggest that PCP cannot be the main driver of seasonal variations in the $\delta^{13}\text{C}_{\text{DIC}}$ in any of our three sites with full 16 month monitoring data. The range in PCP in most sites is small and is modeled to have only a limited effect on the $\delta^{13}\text{C}_{\text{DIC}}$, and the samples of high $\delta^{13}\text{C}_{\text{DIC}}$ do not correspond to the samples of highest PCP (Fig. 10). Variations in soil pCO_2 with concomitant variations in $\delta^{13}\text{C}$ of soil CO_2 defined by a mixing line between atmospheric CO_2 and respired CO_2 (Fig. 8) could explain the observed covariation of Ca and $\delta^{13}\text{C}_{\text{DIC}}$ in some sites (e.g. Gloria), which reflects the greater degree of bedrock

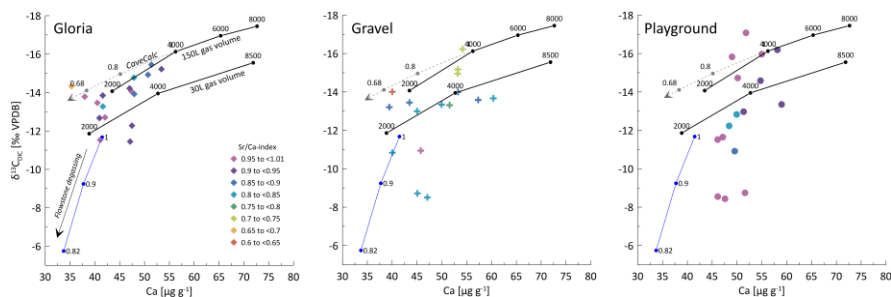
dissolution accompanying higher soil pCO₂ (increased Ca concentration). However, the very large range of δ¹³C_{DIC} at constant Ca and PCP, especially in Playground (and Gravel) is not consistent with variation in soil pCO₂ as the only process.

575 Previous speleothem based studies of the ¹⁴C dead carbon fraction (DCF) in stalagmites in La Vallina and nearby caves show average DCF values from 3-12% (Lechleitner et al., 2021) which suggests mostly open system dissolution. Nonetheless, a shift from very open (3% DCF) to moderately open (12% DCF) would be accompanied by a 0.75‰ increase in the δ¹³C_{DIC}, which is minor compared to the seasonal variations of several permillepermil (Fig. 2). In tropical settings, DCF has been shown to increase with higher water flow (Noronha et al., 2014). Thus, periods of higher drip rates in the cold season could, in principle, lead to lower gas exchange volumes and more closed system dissolution, contributing to the seasonal increase in δ¹³C_{DIC}. The similarity of F¹⁴C in drip water of multiple seasons, equivalent to a DCF of 5-8%, if respired carbon has F¹⁴C=1, suggests that seasonal variation in DCF is not large enough to explain the large observed shift in δ¹³C_{DIC} (Fig. A4).

585 Two additional processes not explorable with these CaveCalc simulations are (1) a decrease in the δ¹³C of the respired endmember in soils, and (2) kinetically enhanced degassing and exchange with cave air. A change in the δ¹³C of the respired endmember, driving a change in δ¹³C_{DIC} without concomitant change in Ca, is difficult to detect in our cave air monitoring because the cave air in the coldest times samples ventilated atmosphere air not soil and karst air. Such a change could occur if there were a change in the relative importance of root vs heterotrophic respiration or the importance of soil vs bedrock organic matter (OM) sources if these featured OM of contrasting δ¹³C. We find strong seasonal variations at Playground (8.6‰ δ¹³C_{DIC} range) which is covered by pasture, whereas other monitoring sites are located beneath bushes or trees and undergo less variability in δ¹³C_{DIC}. Deeper roots of larger plants could maintain higher autotrophic respiration in winter in these sites, compared to shallow rooted grasses, especially since the temperature range in the surface soil occupied by grass roots is much larger than that at depths of a few meters spanned by tree roots (Benzaama et al., 2018). Local changes in δ¹³C of soil CO₂ could further be controlled by vegetation cover since microbial degradation of fallen leaves in autumn and winter might contribute substantially to the negative δ¹³C_{DIC} imprint in late autumn.

595 Kinetically enhanced degassing and exchange with cave air potentially influences the δ¹³C_{DIC} at some drip sites (e.g. Playground or Gravel) since PCP and DCF alone did not explain the variations in δ¹³C_{DIC}. Here, δ¹³C_{DIC} is hypothesized to be affected not only by the source δ¹³C of the soil, but also the degree of drip water degassing (i.e. increased degassing leads to more positive δ¹³C_{DIC} due to preferential loss of ¹²C). A cave experiment where drip water was sampled along a flowstone to track the degassing and CaCO₃ precipitation evolution likely due to cave air exchange results in a steeper slope (blue line in Fig. 10) compared to the CaveCalc modeled degassing line (grey dashed line in Fig. 10). This suggests that kinetically enhanced exchange with cave air might be important since δ¹³C_{DIC} changes by almost 6‰ without losing appreciable Ca and comparable Sr/Ca-index ranges (numbers along blue line) compared to the CaveCalc degassing line (dashed). For Gravel and Playground, a statistically significant correlation between cave air δ¹³C_{air} and drip water δ¹³C_{DIC} emerges suggesting exchange with cave air (Fig. A5a). Additionally, the modest inverse correlation between drip water δ¹³C_{DIC} and cave air pCO₂ in these sites is consistent with greater extent of degassing (and potentially PCP) during periods of low cave air pCO₂ (Supplementary Fig A5b). Such a correlation with cave air δ¹³C could be a causal mechanism (equilibration) or an accidental correlation

because cave air $\delta^{13}\text{C}$ and drip water $\delta^{13}\text{C}_{\text{DIC}}$ are both controlled by temperature. The slope of the in-cave derived degassing line (blue line) appears parallel to the drip water samples (e.g. Playground) with least negative $\delta^{13}\text{C}_{\text{DIC}}$ values and no substantial loss in Ca, and therefore high Sr/Ca-index.



610 **Fig. 10:** CaveCalc simulations compared with monitoring data of three individual sites (Gloria, Gravel and Playground) color coded by Sr/Ca-index ranges. Black markings show CaveCalc simulations (Owen et al., 2018) with different gas volume (150L and 30L) representing more open and closed system, respectively. Along the black line the soil pCO₂ (labels) is changing using a respired endmember $\delta^{13}\text{C}$ found by the Keeling plot (Fig. 8). The dashed line projects the modeled evolution of degassing starting with a 4,000 ppmV soil pCO₂ labeled with the fraction of Ca remaining (Sr/Ca-index). The blue line marks a degassing evolution along a flowstone measured during the monitoring campaign, where labels indicate remaining Ca fraction (Sr/Ca-index).

615

These results indicate strong variations in $\delta^{13}\text{C}_{\text{DIC}}$ which reflect both a temperature control on biomass (respired endmember) and potential controls by kinetic degassing (PCP) or equilibration with cave air. No evidence for a substantial dead carbon contribution from dissolved bedrock is found (Fig. A4). Our results are consistent with the long-term suggestion of strong temperature control of speleothem $\delta^{13}\text{C}$ (e.g. Genty et al., 2006; Lechleitner et al., 2021; Moreno et al., 2010). Significant seasonality in drip water $\delta^{13}\text{C}_{\text{DIC}}$ means that interpretation of speleothem $\delta^{13}\text{C}$ may need to account for seasonality of calcite deposition where calcite deposition is not year-round (further discussion in section 5.4.2).

620

5.4 Seasonal variation in bedrock dissolution and saturation state

5.4.1 Seasonal cycle in bedrock dissolution

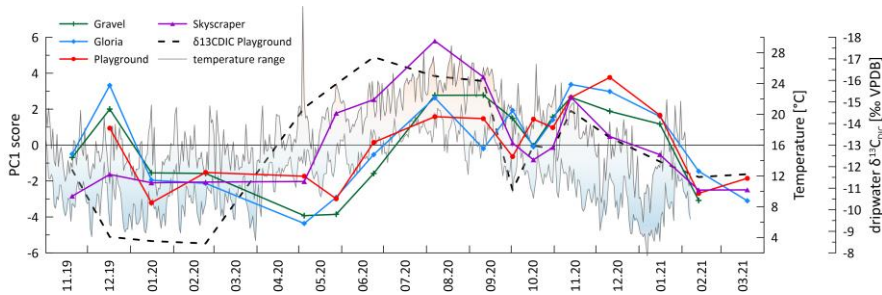
Elements dissolved congruently from limestone, including Ca and Sr (and other PC 1 elements), follow a seasonal cycle with a similar amplitude as shown in Fig. 4 (indicated by the %-RSD of element concentration). The cycle is interpreted to result from changing bedrock dissolution intensity (colored lines in Fig. 11) driven by temperature (shaded range in Fig. 11) with higher dissolution in summer and autumn months due to higher soil CO₂ concentration and lower in winter and early spring (represented by dashed line in Fig. 11). While PCP could in principle affect the concentration of Ca, it has a very limited effect on the concentration of elements with partitioning coefficients much lower than 1, as is the case for Sr (Wassenburg et al., 2020) and U (Weremeichik et al., 2017). Therefore, the similar amplitude variation of Ca, Sr, and U suggests that the seasonal cycle in Ca concentration is also predominantly controlled by bedrock dissolution intensity. Seasonal summer and autumn

625

630

maxima in soil pCO₂ was interpreted from changes in δ¹³C_{DIC} (dashed line in Fig. 11), which would result in stronger bedrock dissolution because of the higher CO₂ acidifying the percolating water. The inverse relationship between Sr concentration and δ¹³C_{DIC} supports this finding (Fig. A6). The effect of higher soil pCO₂ may also be amplified by more open system dissolution conditions which would enhance the degree of bedrock dissolution as CO₂ is continuously supplied and maintains the acidity of percolating waters.

635



640 **Fig. 11:** The temporal evolution of the score of PC 1 (colored curves) suggests stronger bedrock dissolution in summer and early autumn as well as winter likely due to higher soil pCO₂. A clear relationship with temperature (daily min-max with color shading) and δ¹³C_{DIC} (dashed line, note inverted y-scale) emerges suggesting an interrelationship.

5.4.2 Drivers of temporal variations in PCP and growth rate

PCP is expected to be maximized by slow drip rates (long exposure), high drip water oversaturation due to high initial Ca from bedrock dissolution and low cave pCO₂ from cold season ventilation. Because the former factor is maximized in summer season, but the ventilation works to increase the latter effect in the cold season, PCP shows little seasonal variation in many sites (e.g. Playground and Skyscraper; Fig. 6). At sites with pronounced variation in PCP in October 2020 (Gravel and Gloria), the minimum in the Sr/Ca-index occurs when drip rate just starts increasing (Fig. A2c does not indicate strong correlation).

650 ~~Hardly any Ca loss would be expected for rapid flow rate of drip site Skyscraper, which limits the timescale of degassing as the water is replaced and mixed immediately with calcite oversaturated drip water. However, a substantial loss of 17% is observed at Skyscraper. One explanation may be that the drip rate results from convergent flow and that the opportunity for PCP occurred at higher levels in the karst system. Alternatively, in other settings, PCP seasonality has been attributed to seasonal cave ventilation cycles which increase drip water oversaturation (Mattey et al., 2016).~~

In La Vallina, the cave starts to ventilate around the time when the Sr/Ca-index indicates increased PCP (Figs. 2 & 6). Consequently, the stronger CO₂ gradient between enriched drip water and ventilated cave air enhances degassing and favors PCP, as described previously for other cave systems (Mattey et al., 2016). Direct comparison of the drip site specific Sr/Ca-index with the local cave air pCO₂ does not show a strong relationship (Fig. A2b). However, Gravel and Gloria indicate substantial Ca loss in October likely related to a strong CO₂ gradient due to a ventilation event while Skyscraper and Playground do not show such a significant PCP imprint because the cave air CO₂ is still relatively high deeper in the cave. The CO₂ gradient can also be strengthened by a higher drip water carbonate concentration when soil pCO₂ increases. Indeed, stronger bedrock dissolution represented by higher Sr concentration anticorrelates with Sr/Ca-index suggesting increased PCP with higher soil pCO₂ (Fig. A2a). Non-linear relationships of driving parameters likely complicate this interpretation. Nevertheless, a seasonal maximum in the extent of PCP is likely conditioned by multiple variables including low cave pCO₂, high soil pCO₂, and potentially low drip rate, which could be explored by further modeling. We suggest that the seasonal PCP

regulation in La Vallina is complex because the effect of lower summer drip rate is counteracted by the effect of higher summer cave pCO₂. ~~Systems, differing from systems~~ with coincident low summer drip rate and low summer cave pCO₂, such as in Gibraltar (Mattey et al., 2016), have shown a strong seasonal control of PCP. ~~Further modeling and proxy data analysis could constrain the mechanisms controlling PCP. Even rapidly dripping Skyscraper features some seasonal PCP (17% suggested by Sr/Ca), which may indicate that the rapid drip rate results from convergent flow and that the opportunity for PCP occurred at higher levels in the karst system.~~

~~It is crucial to understand under what conditions and season~~

~~Seasonal variation in the deposition rate of stalagmites effectively grow when interpreting their can influence the proxy signals interpretation.~~ Using monthly monitoring drip rate, Ca concentration, and cave pCO₂ data as input parameters, stalagmite growth can be simulated with I-STAL (Stoll et al., 2012). ~~A seasonal structure with growth phases in summer and winter interrupted by growth cessations in spring and autumn driven by cave conditions (cave air and hydrology), cave processes (PCP) as well as drip water geochemistry (carbonate saturation) emerges (Fig. 6). The simulated growth rates match observations from La Vallina cave with annual growth rates ranging from a few micrometers up to 100 μm yr⁻¹ (Stoll et al., 2015; Stoll et al., 2013). Future studies comparing simulated stalagmite growth with natural samples formed beneath the same drip would provide an opportunity to validate model output. Modeling results demonstrate that there is~~For most drip sites, simulated growth phases occur in summer and winter interrupted by growth cessations in spring and autumn (Fig. 6), due to a

complex interplay between Ca concentration and CO₂ in drip water relative to the cave environment (pCO₂ and drip interval) at a constant temperature, as well as increased PCP inhibiting stalagmite growth in autumn. In the case of Gravel, Skyscraper and Gloria, reduction of drip water supersaturation due to PCP is sufficient to cause growth cessation in ~~this season. Nevertheless, autumn, but the~~ lower cave air pCO₂ in these two locations leads to pronounced significant growth rates in these sites during winter months. An exception is Playground, which is simulated to only grow during the last few months of the monitoring period. Stalagmites growing all season during multiple seasons with only short phases of inhibited growth (e.g. Gloria) might exhibit different geochemical signals than seasonally biased stalagmites (e.g. like Playground only growing in winter), which should be accounted for when interpreting analyses derived from micromilling techniques which most often do not resolve subannual changes but are averaging longer multiyear periods (~~several years~~). Furthermore, periods without growth or with reduced growth can alter the seasonal pattern of TE (Borsato et al., 2007) or subannual stable isotopes (Johnson et al., 2006), and therefore impact the interpretation of stalagmite geochemical analysis from microscale measurements (e.g. seasonal layers in fluorescence images or LA-ICP-MS tracks). The annual simulated growth rates are in the range of active stalagmites from La Vallina cave (Sliwinski et al., 2023).

5.4.3 Other sources for enriched elements compared to bedrock

Elements with high PC 1 loading coefficients (Na, Si, Mg and Ba) show a similar seasonal pattern as Ca, Sr, and U which were primarily controlled by bedrock dissolution (section 5.4.1). However, drip water ratios of Na/Sr, Si/Sr, Mg/Sr, and Ba/Sr are

significantly higher than those of the measured bedrock samples (Fig. 7), suggesting these elements have additional sources beyond congruent dissolution of the limestone bedrock which we sampled or incongruent dissolution takes place.

The temporal variations in drip water Na concentrations are only about 50 to 80% of the amplitude of those of Ca (%-RSD in Fig. 4), an attenuation which is consistent with dual sources of Na to drip waters. That is, if limestone dissolution is seasonally variable but the non-limestone Na source were constant or its delivery buffered by cation exchange in soils (Tadros et al., 2019), this would lead to attenuation of the seasonal pattern of variation in the limestone sourced Na. One likely contributor to Na in drip water is wet and dry deposition of marine aerosols on the land surface above the cave, due to the proximity of the cave to the Atlantic Ocean coastline (Tremaine et al., 2016). No clear relationship is found between Na concentration and proximity of trees (which would act as aerosol traps). Pastures capture marine aerosols less efficiently, however, at monitoring sites beneath pasture Na concentrations are elevated (Playground and Playground-01). This might be related to salt added to animal feed or excrements of animals containing salts (Hamamoto and Uchida, 2015). Direct advection of marine aerosols into the cave by aeolian input may be significant near the cave entrance where Na concentrations are generally higher (Entrada, Snowball; Dredge et al., 2013). Since Na is dominated by marine and potentially anthropogenic sources, no evidence for cation exchange with clay minerals in the soil or karst acting as hydrologically controlled sink/source is found as observed in clay rich settings such as in SE Australia (Tadros et al., 2019).

Assuming marine aerosol contribution for Na, similar trends should be visible in Mg and S as well. The inferred direct marine aerosol deposition near the entrance at Entrada could contribute to the correlation of Mg/Sr with Na/Sr which is only observed at Entrada (Fig. A7). Fittingly, this site also has slightly higher variability in Mg/Sr at Entrada (9.0% RSD; Fig. 12). However, marine contribution alone cannot be the only cause for the elevated Mg and S concentrations at the different drip sites. Notably, Playground-01, Entrada and Snowball have substantially higher Mg concentrations decoupled from Na (Fig. 4). We suggest that variations in the Mg (and S) concentration in different bedrock zones drives this variation. The presence of minor dolomite phases in some sectors of the host rock would be an important source of higher Mg (Tremaine and Froelich, 2013). Our analyzed bedrock samples do not yield the high Mg concentrations expected from pure dolomite. However, our collection may not sample the full range of bedrock compositions, and bedrock exposures in some locations show textures typical of weathering residue of dolomite. Within the flow route of a given drip water site, lower solubility of dolomitic components of host rock can lead to higher drip water Mg content with longer water-rock interaction times (Fairchild and Baker, 2012). At all monitored sites, the Mg/Sr ratio of drip water varies by less than 10% despite order of magnitude changes in drip rate (Fig. 12). This suggests constant background Mg contribution and congruent bedrock dissolution over the monitored timescale. Nonetheless, changes in flow paths over long time scales could potentially cause infiltrating water to interact with bedrock of a different composition, a factor which may need to be considered in interpretation of long-term stalagmite trace element records.

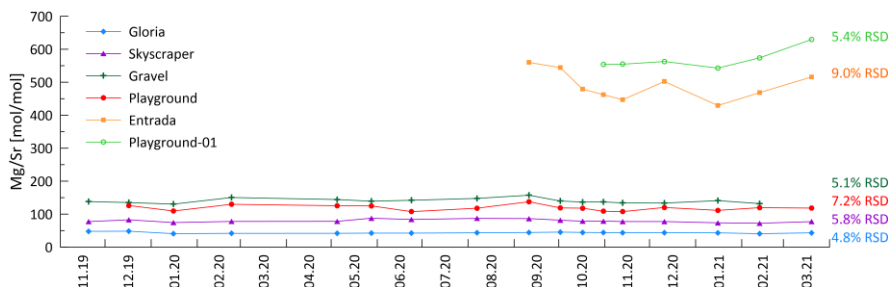


Fig. 12: Constant Mg/Sr ratio over monitoring period indicates congruent bedrock dissolution. Higher RSD is recorded at Entrada (orange) which might be influenced by aeolian marine aerosols input near the cave entrance (Fig. A7). Mg contributed from dolomitized zones might contribute to substantially higher Mg/Sr at sites like Entrada and Playground-01.

Elements like Si and Ba, which are also observed to be substantially enriched relative to congruent dissolution of sampled bedrock, might be enhanced by leaching from silicate phases such as quartz rich sands which are present as infills in both levels of the cave or from clay minerals (Eylem et al., 1990). Ba can also be released by desorption from hydrous ferric oxides when pH is changing (Mishra and Tiwary, 1999). Calculations performed with PHREEQC (Parkhurst and Appelo, 2013) suggest that at cave conditions the highest measured drip water Si concentrations are close to saturation relative to quartz, which may explain the low amplitude variations of the concentrations (Fig. 4). Longer water-rock contact times in summer may explain the slight increase in concentrations in summer.

5.5 Episodic delivery of colloidal elements

The seasonal scale variation observed in the major cations does not apply universally. Transition metals, Al, Y as well as Li and K, show different patterns of variation, and are most strongly represented by PC 2 (PC 2 elements: Li, Al, K, Cr, Mn, Cu, As and Y; Fig. 5). Of these, Li, Al, K, Mn, Cu, and Y feature high amplitude short term variations, at least in some drip sites (Fig. 4). Insoluble elements such as Al, Mn, Cu and Y have previously been attributed to detrital and colloidal phases, rather than dissolved transport, with colloids strongly associated with organic macromolecules (e.g. Hartland et al., 2012; Hartland et al., 2014). The variations reflected in PC 2 indicate that high concentrations of these elements occur predominantly in the wet season (Fig. A8) although no relationships between hydrology and any elements emerges. As discussed earlier (section 5.2) the sampling resolution is poorly suited to test relationships between rainfall and drip rate, and therefore complicates interpretation of hydrological control on drip water chemistry. Aggregate monthly collections between sampling days would potentially be necessary to show better correlations between recharge and colloidally delivered elements. ~~Since the present study targeted to acquire high fidelity geochemical data (as opposed to aggregate drip water chemistry), the protocol is not set up to test this.~~

Some transition metals (Cu, Cr and As) which might be expected to be colloidally transported exhibit a temporal variation different from Al, Mn, and Y (PC 3; Fig. A8), suggesting additional controlling processes. For instance, ligand binding

755 efficiency may be different for some of these elements or they may be in different sizes of colloidal fractions (Hartland et al., 2012; Hartland et al., 2014). Biomass take up and release could be another possibility complicating the interpretation of these elements. Sulfur is dominantly controlled by PC 3 and is related to Cu, Cr and As (Fig. 5). Sulfur could potentially be affected by variations in bedrock pyrite oxidation. Other possibilities include redox changes and oxygen exposure related to the hydrology and contact with reducing materials (affecting the speciation of some of these elements) or the release of biologically bound elements when vegetation degrades at the end of the growing season (e.g. As, Cu, Cr; Kabata-Pendias and Pendias, 2000).

760 In many stalagmites, elements like Cr, Mn, Cu or Y covary seasonally (Borsato et al., 2007; Sliwinski and Stoll, 2021). Similar observations were made in drip water studies by (Baldini et al., 2012), but drip waters in the present study demonstrate that typical “colloidal” elements show high frequency “events” (spiky signals in Fig. 4) and are independent of each other (Table A3). Consequently, our data from this system are not consistent with synchronous enrichment in these elements in drip water as a cause for synchronous enrichment in speleothem (e.g. Borsato et al., 2007). Nevertheless, more events of colloidal element
765 spikes during the wet season are observed which could also be related to the decomposition of biomass producing more organic colloids (Baldini et al., 2012). However, drip water might not be the main contributor of those elements, and they may be more controlled by deposition of particulates by air transport (e.g. dust during ventilation events, in-cave activity or block fall; Fairchild et al., 2010). Particulates could be trapped by the wet stalagmite surface and become incorporated into the stalagmite with calcite precipitation. ~~Alternatively, in stalagmites with slow growth, a concentrating effect could enrich these elements.~~
770 ~~Alternatively, in stalagmites with slow growth, a concentrating effect could enrich these elements as has been described for Y (Sliwinski et al., 2023).~~ Although we do not study farmed calcite samples here, we propose that the calcite growth rate (or growth cessations) in relation to the drip water (or dust) derived deposition can influence element incorporation in the stalagmite. During growth cessations those TE accumulate (sticking) on the surface of a stalagmite and are incorporated into calcite when stalagmite growth restarts. A synchronous enriched layer emerges when analyzing TE in stalagmites (e.g. by
775 LA-ICP-MS methods; Sliwinski and Stoll, 2021; Borsato et al., 2007). Future investigations combining colloidal TE in drip water and farmed calcite would improve the understanding of the calcite incorporation of such elements.

6. Conclusion

780 Over 16 months, monitoring of La Vallina cave sampled cave air ($p\text{CO}_2$ and $\delta^{13}\text{C}_{\text{air}}$) and cave conditions (temperature, drip rates) as well as drip water chemistry ($\delta^{13}\text{C}_{\text{DIC}}$, $\delta^{18}\text{O}$ and δD , 16 trace elements) and bedrock chemistry. The main findings include:

1. Although drip rates in the summer season of low rainfall and high evapotranspiration dropped to about 20% of the maximum winter season drip rate, the limited temporal variation in drip water $\delta^{18}\text{O}$ and δD suggests a moderately- to well-mixed karst water reservoir in nearly all sites averaged by rainfall composition during recharge phases (positive

P-PET). Isotopic offsets among sites are attributed to varying significance of evaporation in the soil and karst prior to entering the discrete water reservoir and different transit times of water through the discrete reservoirs.

2. The carbon isotopic ratio of drip water ($\delta^{13}\text{C}_{\text{DIC}}$) is lowest in summer and autumn and is likely controlled by biological processes of the covering vegetation and soil (root respiration, microbial activity). Temperature may be the dominant driver of vegetation, soil pCO_2 and $\delta^{13}\text{C}_{\text{DIC}}$ on the seasonal scale, but additional factors such as soil moisture and degradation of leaf matter in autumn enhancing microbial activity may also contribute to $\delta^{13}\text{C}_{\text{DIC}}$ variation. We do not find evidence for significant changes in the degree of open vs. closed system dissolution on the basis of ^{14}C drip water measurements. Potential equilibration with cave air cannot be excluded.
3. Elements congruently dissolved from the host bedrock suggest higher degrees of bedrock dissolution in summer and autumn months of higher soil pCO_2 . We find limited significance of PCP in most drip water locations, because the season of lowest cave pCO_2 is also the season of highest drip rate, so two key drivers of PCP feature opposing seasonal trends. Estimation of speleothem growth rate using monitoring data suggests that some drip sites may precipitate CaCO_3 in only one part of the year, whereas other locations may feature more continuous growth.
4. Other sources of elements substantially enriched compared to bedrock composition are discussed. We do not find a synchronous autumnal peak in concentration of insoluble (colloidal and detrital) trace elements nor a correlation between their concentration and drip rate, although maximum concentrations in many of these elements generally occur in the wetter season. Synchronous peaks in such elements in stalagmites may therefore reflect other processes related to seasonal minima in speleothem growth or additional deposition from directly advected aerosols.

The combination of monitoring cave conditions, hydrology and drip water chemistry clarifies processes significant to interpretation of speleothem records in this and other seasonally ventilating midlatitude cave systems.

805 **Data availability**

Additional information is provided in the Appendix to this manuscript.

Author contribution

OK, JS and HS conceived and designed the research; HS supervised the study; OK, SG, LR and HS collected the samples; OK, LE and NH performed the lab analysis; OK, JS and HS wrote and edited the paper, all co-authors reviewed the manuscript.

810 **Competing interests**

The authors declare that they have no conflict of interest.

Acknowledgements

This work was supported by ETH Zürich [grant number ETH-1318-1]. We thank Madalina Jaggi for analytical support of $\delta^{13}\text{C}_{\text{DIC}}$ and $\delta^{18}\text{O}_{\text{dripwater}}$. We thank Pauline Treble and Jasper Wassenburg for valuable inputs improving the manuscript.

815

Appendix

Table A1: Limit of quantification (LOQ) of elements measured on an Agilent 8800 QQQ-ICP-MS at ETH Zürich. To detect the LOQ a series of dilutions of a standard solution was measured. Elements of samples not yielding sufficient signal above LOQ are listed in italics. Fig. 6 in the manuscript shows data only above LOQ.

Limit of quantification (LOQ)	Mass/mode	$\mu\text{g g}^{-1}$
Li	7 / No Gas	$<1*10^{-6}$
Na	23 / He	$<1*10^{-3}$
Mg	25 / H ₂	$<1*10^{-3}$
Al	27 / No gas	$1*10^{-4}$
Si	28 (44*) / O ₂	$1*10^{-2}$
<i>P</i>	<i>31 (47*) / O₂</i>	<i>1*10⁻²</i>
S	32 (48*) / O ₂	$2.5*10^{-2}$
K	39 / H ₂	$<1*10^{-3}$
Ca	43 / No gas	$<1*10^{-2}$
Cr	53 / No gas	$1*10^{-5}$
Mn	55 / H ₂	$<1*10^{-5}$
<i>Fe</i>	<i>56 / H₂</i>	<i>1*10⁻³</i>
<i>Co</i>	<i>59 / H₂</i>	<i><1*10⁻⁵</i>
<i>Ni</i>	<i>62 / No gas</i>	<i>1*10⁻⁴</i>
Cu	65 / No gas	$<1*10^{-5}$
<i>Zn</i>	<i>66 / No gas</i>	<i>Not detected</i>
As	75 / No gas	$2.5*10^{-5}$
Sr	86 / No gas	$<1*10^{-4}$
Y	89 / No gas	$<1*10^{-6}$
<i>Cd</i>	<i>111 / No gas</i>	<i>1*10⁻⁵</i>
Ba	138 / No gas	$2.5*10^{-4}$
U	238 / No gas	$<1*10^{-6}$

820 *mass shift (+16) of second quadrupole after reaction with ¹⁶O in reaction cell

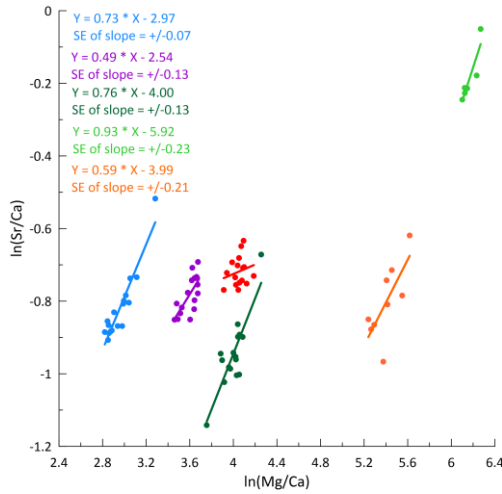


Fig. A1: Sinclair plot showing a clear relationship between Mg/Ca and Sr/Ca affected by PCP. The data set of Playground does not yield a statistically significant (p-value too large) slope to be reported. Slope error (SE) is also given and often overlaps with the proposed slopes (Sinclair et al., 2012; Wassenburg et al., 2020). Additionally, varying partitioning coefficients affect the slopes.

825

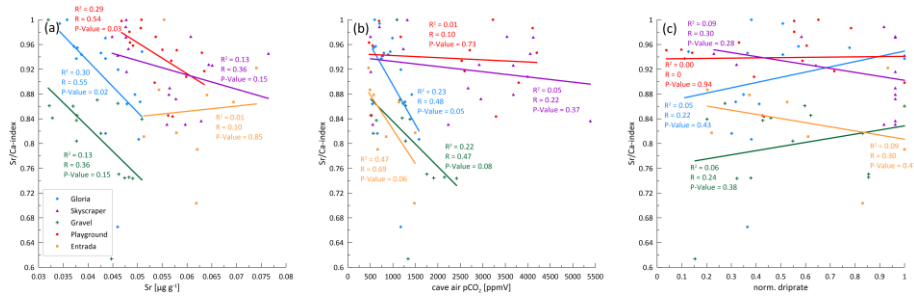


Fig. A2: Checking potential driver of PCP indicated by Sr/Ca-index. Weak relationships between Sr/Ca-index and a) the Sr concentration (representing soil CO₂) and b) cave air pCO₂ (Gloria and Gravel) emerge. However, c) drip rate is hardly related to the Sr/Ca index. A stronger CO₂ gradient between drip water and air in contact with drip water increases PCP potential. Also, longer exposure time at slower drip rates might increase degassing, thus favor PCP.

830

Table A2: TE/Ca ratios of bedrock samples from La Vallina Cave. Note that Mg/Ca and Mn/Ca are given in mmol/mol whereas all other elements are given in $\mu\text{mol/mol}$.

	Li/Ca	Na/Ca	Mg/Ca	Al/Ca	Si/Ca	S/Ca	K/Ca	Cr/Ca	Mn/Ca	Cu/Ca	As/Ca	V/Ca	Ba/Ca	U/Ca	Sr/Ca
	$[\mu\text{mol/mol}]$	$[\mu\text{mol/mol}]$	$[\text{mmol/mol}]$	$[\mu\text{mol/mol}]$	$[\mu\text{mol/mol}]$	$[\mu\text{mol/mol}]$	$[\mu\text{mol/mol}]$	$[\mu\text{mol/mol}]$	$[\text{mmol/mol}]$	$[\mu\text{mol/mol}]$	$[\mu\text{mol/mol}]$	$[\mu\text{mol/mol}]$	$[\mu\text{mol/mol}]$	$[\mu\text{mol/mol}]$	$[\mu\text{mol/mol}]$
La Vallina 1	2.92	53.49	3.25	135.21	113.31	196.70	57.44	0.26	0.54	0.95	0.17	4.53	1.41	0.86	431.95
La Vallina 2	7.66	124.44	6.49	164.23	103.68	547.67	174.24	0.18	0.29	2.34	0.44	3.56	1.67	0.97	328.20
La Vallina 3	1.81	48.62	4.10	301.28	257.12	183.67	266.25	0.18	0.39	2.15	0.50	3.67	2.14	0.54	375.51
La Vallina 4	4.94	142.41	5.92	264.49	209.49	424.63	169.22	0.47	0.29	2.26	0.32	4.10	1.74	0.65	368.09
La Vallina 5	4.93	129.37	5.30	272.33	108.10	293.10	98.96	1.05	0.33	1.33	0.37	4.07	1.59	0.92	419.64
La Vallina 6	4.37	103.84	6.03	143.72	62.03	248.80	119.88	0.24	0.25	1.53	0.42	8.22	0.77	0.79	417.75
La Vallina 7	8.51	197.90	6.92	741.52	904.02	371.72	91.40	0.41	0.17	1.49	0.10	3.50	4.24	1.60	1090.95
La Vallina 8	7.58	144.47	6.27	277.57	72.99	330.28	65.87	0.34	0.31	1.59	0.33	6.78	1.47	0.81	507.75
La Vallina 9	3.57	69.76	6.10	131.62	73.60	217.24	91.03	0.30	0.34	2.30	0.38	8.37	1.41	1.06	459.47
La Vallina 10	3.97	144.57	5.19	628.81	1142.11	245.40	101.72	0.25	0.34	2.23	0.31	10.00	1.53	0.65	424.82
La Vallina 11	4.57	556.62	5.20	337.39	357.75	398.32	2822.13	0.94	0.37	10.43	0.33	5.29	1.42	0.70	294.05
La Vallina 12	6.66	130.59	5.30	176.52	46.67	353.34	220.38	0.20	0.40	1.02	0.08	3.64	3.16	2.23	650.99
La Vallina 13	6.90	134.62	5.72	332.14	183.58	307.65	80.88	0.75	0.30	1.03	0.20	9.63	1.28	0.96	498.33
La Vallina 14	1.66	91.72	37.38	148.38	150.18	179.31	346.91	0.87	1.12	3.28	1.18	7.70	1.43	0.70	88.30
La Vallina 15	4.34	115.88	5.11	322.70	314.12	393.50	428.13	0.97	1.25	4.28	0.24	16.71	2.00	1.67	309.57
La Vallina 16	5.20	60.03	5.24	387.53	485.96	539.30	275.88	1.96	1.83	3.71	0.99	19.54	5.86	1.92	362.93
La Vallina 17	2.31	71.37	4.01	162.99	129.30	291.31	277.49	1.14	1.39	3.62	0.40	9.47	1.61	1.21	360.33
La Vallina 18	3.47	44.51	5.44	186.74	131.41	426.59	109.53	1.30	1.39	1.24	0.38	10.89	1.36	1.19	462.13
La Vallina 19	6.22	157.43	6.33	152.84	97.07	580.71	595.02	1.16	1.87	4.67	0.19	12.51	2.63	1.04	352.99
La Vallina 20	0.06	25.56	2.25	47.76	10.17	11.21	99.95	0.07	0.00	1.18	0.04	0.75	0.41	0.09	35.91
La Vallina 21	5.36	144.38	6.56	138.71	87.94	556.32	582.05	0.88	1.34	3.97	0.30	5.27	2.20	2.22	423.48
La Vallina 22	3.75	287.48	2.68	157.90	146.49	230.80	1380.08	1.80	2.40	15.80	0.15	5.44	6.52	1.47	486.78
La Vallina 23	1.83	95.17	2.26	238.06	234.60	441.57	473.19	0.94	2.87	5.37	0.24	4.09	1.66	1.06	392.96
La Vallina 24	4.30	89.27	4.54	116.73	409.53	420.07	337.29	0.45	1.06	4.04	0.24	4.50	1.38	1.22	368.05
La Vallina 25	2.50	72.15	2.50	125.90	89.50	250.21	417.33	1.01	2.22	1.79	0.13	3.18	0.90	1.10	346.26
La Vallina 26	0.74	40.08	6.76	91.87	78.63	205.23	219.66	0.36	1.02	21.15	0.39	3.68	0.82	0.51	167.60
La Vallina 27	2.03	42.13	2.91	254.22	342.34	251.77	231.77	1.86	1.76	2.30	0.45	4.76	1.62	1.37	253.82
La Vallina 28	2.61	64.21	3.35	199.76	199.41	258.28	271.88	0.90	1.70	2.89	0.42	4.80	3.07	1.77	631.91
La Vallina 29	1.83	108.66	2.43	286.90	349.23	250.79	516.00	1.24	1.89	8.61	0.34	6.05	1.97	1.82	383.90
La Vallina 30	1.05	33.05	1.85	204.01	215.94	134.20	238.86	0.62	2.86	2.75	0.33	5.46	3.55	1.18	483.73
La Vallina 31	5.42	78.64	9.02	146.10	33.11	230.19	26.67	0.40	0.33	0.66	0.17	3.94	1.47	1.09	656.69
La Vallina 32	6.53	106.20	10.00	184.81	53.89	279.69	98.23	0.61	0.29	0.98	0.22	4.02	1.71	1.14	660.10
La Vallina 33	3.02	156.97	2.58	430.44	1192.56	265.52	344.14	1.42	0.40	1.56	0.11	4.66	1.78	0.70	509.78
La Vallina 34	2.99	177.67	2.32	1580.78	2637.75	292.56	1057.53	4.62	1.47	4.71	2.64	6.49	2.66	0.78	531.51
La Vallina 35	9.69	570.39	4.22	540.79	763.64	1233.64	2087.39	0.51	0.27	6.86	0.30	8.93	1.78	0.54	378.38
La Vallina 36	5.93	369.99	3.03	749.58	111.95	809.85	909.20	0.84	0.44	3.29	0.24	6.42	1.31	0.79	552.70
La Vallina 37	5.77	157.85	2.97	1243.14	1924.64	478.18	559.88	5.33	0.77	2.84	3.06	7.00	4.26	0.77	582.26
La Vallina 38	3.57	105.65	4.09	713.44	1284.40	333.68	162.19	1.70	1.98	3.43	0.53	4.53	2.18	0.91	477.62
La Vallina 39	-	26.21	4.68	61.73	53.26	114.56	115.52	0.09	1.07	1.15	0.07	2.76	1.37	0.15	120.41
La Vallina 40	2.10	123.09	2.97	382.28	653.75	257.92	217.61	0.36	1.63	2.73	0.43	7.81	1.19	1.12	609.93
La Vallina 41	2.23	40.08	2.40	103.55	85.13	354.44	58.84	0.41	1.96	1.14	0.21	4.79	1.15	0.85	503.04
La Vallina 42	1.32	96.81	2.50	113.94	128.07	222.60	564.04	0.24	2.37	1.72	0.14	3.42	2.23	0.69	602.16
La Vallina 43	4.12	45.95	4.77	99.63	52.28	660.60	31.46	0.50	1.49	1.87	0.18	4.69	0.89	1.83	337.71
La Vallina 44	5.67	113.76	6.01	722.82	1345.36	399.21	59.29	0.39	1.56	1.43	0.12	5.15	3.54	0.78	491.30
La Vallina 45	1.86	195.87	2.67	98.18	92.14	205.73	736.68	0.60	1.86	3.89	0.26	10.34	1.91	1.09	555.85
Mean	4.04	130.86	5.28	317.80	411.52	348.40	404.20	0.91	1.12	3.55	0.42	6.34	2.05	1.06	438.83
2 SD	4.38	228.03	10.36	607.04	1101.51	400.11	1060.13	2.01	1.59	7.63	1.13	7.08	2.46	0.95	346.31
RSD [%]	54.76	88.11	99.17	96.58	135.35	58.07	132.62	111.26	71.95	108.80	134.93	56.50	60.68	45.72	39.90

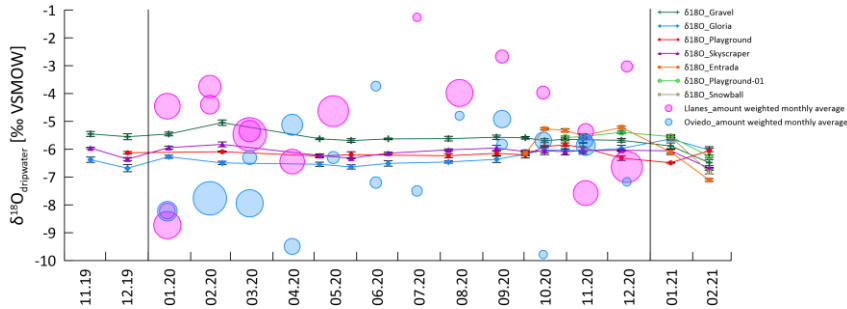


Fig. A3: Drip water $\delta^{18}\text{O}$ compared with two independent rainfall monitoring studies from NW Spain (Moreno et al., 2021; Stoll et al., 2015). The bubble size represents rain amount and the $\delta^{18}\text{O}$ values are rainfall amount weighted monthly averages. Because these monitorings were performed in other years (2006-2009 and 2015-2016) the monthly averages are plotted on top of the year 2020 (marked with vertical lines). A seasonal trend is visible in rainfall with less negative $\delta^{18}\text{O}$ values in summer months (and less rain) although variations are big between different years and months. The drip water $\delta^{18}\text{O}$ signal supports the statement of a rather well-mixed drip water recharge reservoir. There can be multiple circles (pink and blue) because these rain monitorings were sampled for more than one seasonal cycle.

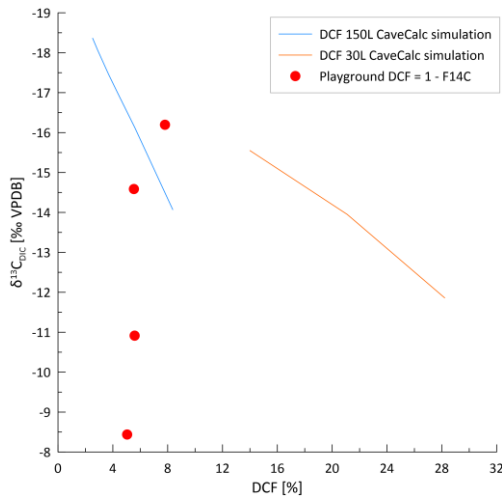


Fig. A4: DCF calculated from fraction modern ($F^{14}\text{C}$) (red dots) in contrast to CaveCalc simulations with different gas volumes representing different open (150L) vs. closed (30L) system conditions. Consequently, the measured range of DCF (5-8%) does not explain the range in $\delta^{13}\text{C}_{\text{DIC}}$.

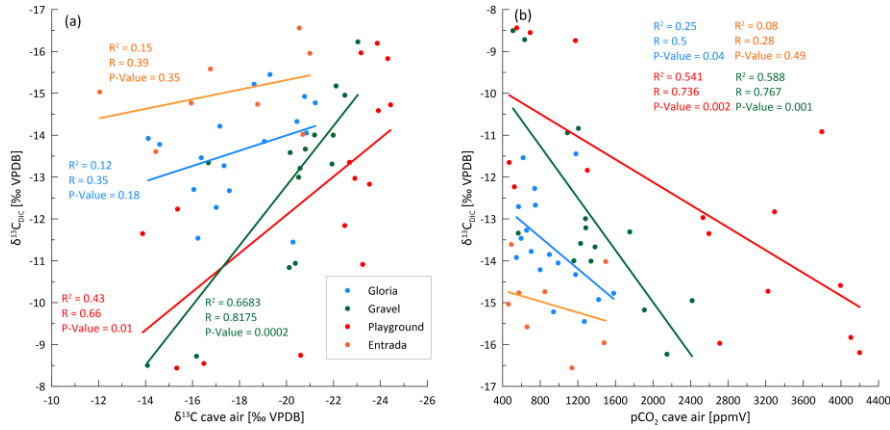


Fig. A5: a) Correlation of drip water $\delta^{13}\text{C}_{\text{DIC}}$ and cave air $\delta^{13}\text{C}_{\text{air}}$ to test potential gas exchange with cave air. Pearson correlation coefficient (R), R^2 and p-value suggest reasonable correlations for Playground and Gravel but not for Entrada and Gloria; b) modest inverse correlation of pCO_2 and $\delta^{13}\text{C}_{\text{DIC}}$ suggests degassing during periods of low cave air pCO_2 . Significant correlation are found for Playground and Gravel.

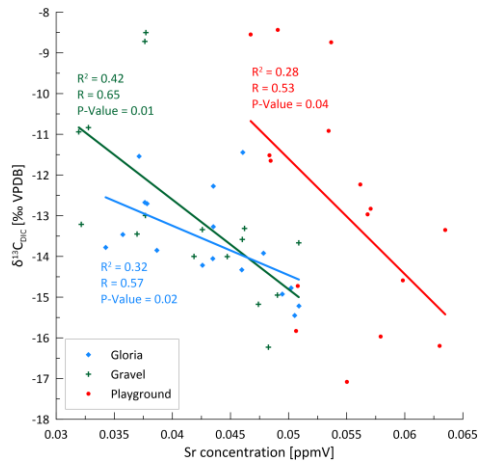


Fig. A6: Sr concentration is inversely correlated with $\delta^{13}\text{C}_{\text{DIC}}$. This is interpreted as a bedrock dissolution signal since higher soil pCO_2 with microbial (negative) imprint driven by temperature results in stronger dissolution.

860

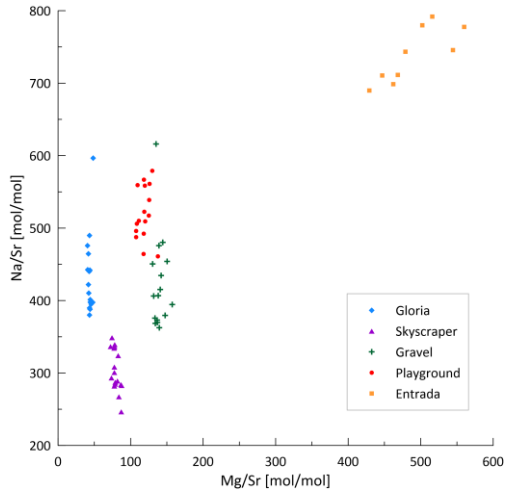
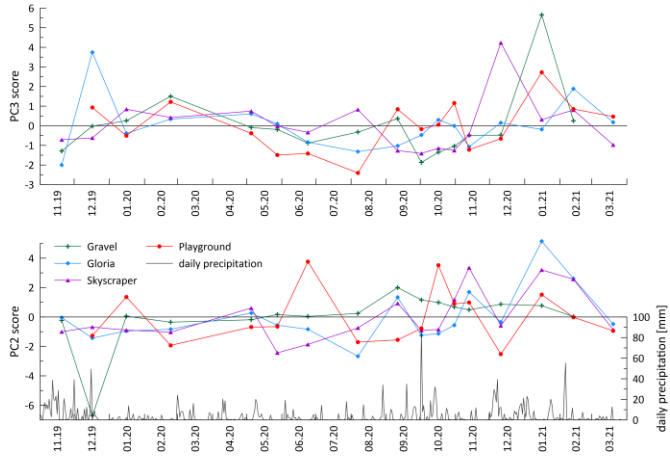


Fig. A7: Mg/Sr vs. Na/Sr scatter plot highlighting the likely marine aerosol contribution at Entrada as a positive correlation emerges. Drip sites deeper in the cave do not indicate a relationship between Na and Mg, thus are not affected by marine aerosols.

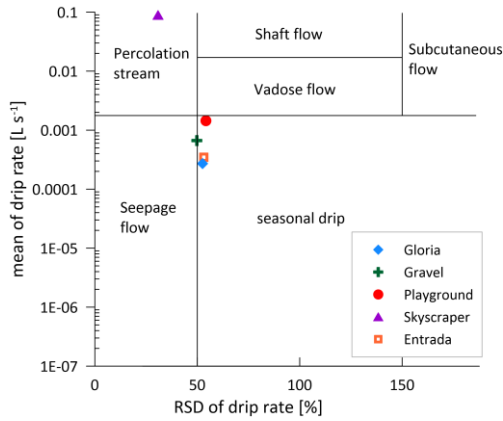


865 Fig. A8: Temporal evolution of PC 2 and PC 3 score. PC 2 might be related to wash-in events (plotted with daily precipitation) since PC 2 elements are mostly spiky on event time scales (Fig. 6).

870

Table A3: Correlation table of typical "colloidal" elements with Y (another colloidal element) to show that no clear correlation emerges. Pearson coefficients are statistically insignificant for numbers in italics (p-value > 0.05) whereas normal numbers are statistically significant (p-value < 0.05). However, in drip water correlations are weak and no trends are observed what contradicts the findings in stalagmites with synchronous change and high correlation.

Correlation with Y	Li	Al	K	Cr	Mn	Cu	As
Gravel	0.08	0.01	-0.03	-0.19	<i>0.27</i>	0.07	-0.78
Gloria	0.15	0.06	0.10	0.12	0.45	0.27	0.05
Skyscraper	-0.35	0.36	-0.18	0.27	<i>-0.07</i>	0.02	0.36
Playground	0.25	0.55	0.03	0.18	0.82	<i>0.20</i>	0.16
Entrada	<i>0.32</i>	0.63	0.62	-0.30	0.71	0.49	0.03



875

Fig. A9: Drip classification after Baker et al. (1997). Most drips are seasonal close to the border to seepage flow. Only Skyscraper (behaving like a shower) is behaves like a percolation stream. Since point sampling only allowed to determine the instantaneous drip rate on the day of sampling a higher RSD is possible (minimum and maximum might not be recorded).

References

- State Meteorological Agency of Spain, AEMET OpenData: <http://www.aemet.es/en/portada>, last access: 13.09.2021.
- 880 Álvarez, R., Ordóñez, A., Canteli, P., and De Miguel, E.: Unconventional gas resources in the Cantabrian Zone (NW Spain): A comprehensive preliminary assessment, *Geological Journal*, 54, 2608-2620, <https://doi.org/10.1002/gj.3314>, 2019.
- Baker, A., Barnes, W. L., and Smart, P. L.: Variations in the discharge and organic matter content of stalagmite drip waters in Lower Cave, Bristol, *Hydrological Processes*, 11, 1541-1555, [https://doi.org/10.1002/\(SICI\)1099-1085\(199709\)11:11<1541::AID-HYP484>3.0.CO;2-Z](https://doi.org/10.1002/(SICI)1099-1085(199709)11:11<1541::AID-HYP484>3.0.CO;2-Z), 1997.
- 885 Baker, A., Berthelin, R., Cuthbert, M. O., Treble, P. C., Hartmann, A., and Kss Cave Studies Team, t.: Rainfall recharge thresholds in a subtropical climate determined using a regional cave drip water monitoring network, *Journal of Hydrology*, 587, 125001, <https://doi.org/10.1016/j.jhydrol.2020.125001>, 2020.
- Baker, A., Scheller, M., Oriani, F., Mariethoz, G., Hartmann, A., Wang, Z., and Cuthbert, M. O.: Quantifying temporal variability and spatial heterogeneity in rainfall recharge thresholds in a montane karst environment, *Journal of Hydrology*, 594, 125965, <https://doi.org/10.1016/j.jhydrol.2021.125965>, 2021.
- 890 Baker, A., Hartmann, A., Duan, W., Hankin, S., Comas-Bru, L., Cuthbert, M. O., Treble, P. C., Banner, J., Genty, D., Baldini, L. M., Bartolomé, M., Moreno, A., Pérez-Mejías, C., and Werner, M.: Global analysis reveals climatic controls on the oxygen isotope composition of cave drip water, *Nature Communications*, 10, 2984, [10.1038/s41467-019-11027-w](https://doi.org/10.1038/s41467-019-11027-w), 2019.
- Baldini, J. U. L., McDermott, F., Baldini, L. M., Otley, C. J., Linge, K. L., Clipson, N., and Jarvis, K. E.: Identifying short-term and seasonal trends in cave drip water trace element concentrations based on a daily-scale automatically collected drip water dataset, *Chemical Geology*, 330-331, 1-16, <https://doi.org/10.1016/j.chemgeo.2012.08.009>, 2012.
- 895 Benzaama, M. H., Menhouj, S., Kontoleon, K. J., Mokhtari, A. M., and Lekhal, M. C.: Investigation of the thermal behavior of a combined geothermal system for cooling with regards to Algeria's climate, *Sustainable Cities and Society*, 43, 121-133, <https://doi.org/10.1016/j.scs.2018.08.016>, 2018.
- 900 Borsato, A., Frisia, S., and Miorandi, R.: Carbon dioxide concentration in temperate climate caves and parent soils over an altitudinal gradient and its influence on speleothem growth and fabrics, *Earth Surface Processes and Landforms*, 40, 1158-1170, <https://doi.org/10.1002/esp.3706>, 2015.
- Borsato, A., Frisia, S., Fairchild, I. J., Somogyi, A., and Susini, J.: Trace element distribution in annual stalagmite laminae mapped by micrometer-resolution X-ray fluorescence: Implications for incorporation of environmentally significant species, *Geochimica et Cosmochimica Acta*, 71, 1494-1512, <https://doi.org/10.1016/j.gca.2006.12.016>, 2007.
- 905 Bradley, C., Baker, A., Jex, C. N., and Leng, M. J.: Hydrological uncertainties in the modelling of cave drip-water $\delta^{18}\text{O}$ and the implications for stalagmite palaeoclimate reconstructions, *Quaternary Science Reviews*, 29, 2201-2214, <https://doi.org/10.1016/j.quascirev.2010.05.017>, 2010.
- Breitenbach, S. F. M., Lechleitner, F. A., Meyer, H., Diengdoh, G., Matthey, D., and Marwan, N.: Cave ventilation and rainfall signals in dripwater in a monsoonal setting – a monitoring study from NE India, *Chemical Geology*, 402, 111-124, <https://doi.org/10.1016/j.chemgeo.2015.03.011>, 2015.
- Brooksbank, K., Veneklaas, E. J., White, D. A., and Carter, J. L.: The fate of hydraulically redistributed water in a semi-arid zone eucalyptus species, *Tree Physiology*, 31, 649-658, [10.1093/treephys/tpr052](https://doi.org/10.1093/treephys/tpr052), 2011.
- 915 Craig, H.: Isotopic Variations in Meteoric Waters, *Science*, 133, 1702-1703, [10.1126/science.133.3465.1702](https://doi.org/10.1126/science.133.3465.1702), 1961.
- Dasgupta, S., Mohanty, B. P., and Köhne, J. M.: Impacts of Juniper Vegetation and Karst Geology on Subsurface Flow Processes in the Edwards Plateau, Texas, *Vadose Zone Journal*, 5, 1076-1085, [10.2136/vzj2005.0073](https://doi.org/10.2136/vzj2005.0073), 2006.
- de Villiers, S., Greaves, M., and Elderfield, H.: An intensity ratio calibration method for the accurate determination of Mg/Ca and Sr/Ca of marine carbonates by ICP-AES, *Geochemistry, Geophysics, Geosystems*, 3, <https://doi.org/10.1029/2001GC000169>, 2002.
- 920 Deininger, M. and Scholz, D.: ISOLUTION 1.0: an ISOTOPE evOLUTION model describing the stable oxygen ($\delta^{18}\text{O}$) and carbon ($\delta^{13}\text{C}$) isotope values of speleothems, *International Journal of Speleology*, 48, 21-32, 2019.
- Deininger, M., Hansen, M., Fohlmeister, J., Schröder-Ritzrau, A., Burstyn, Y., and Scholz, D.: Are oxygen isotope fractionation factors between calcite and water derived from speleothems systematically biased due to prior calcite precipitation (PCP)?, *Geochimica et Cosmochimica Acta*, 305, 212-227, <https://doi.org/10.1016/j.gca.2021.03.026>, 2021.
- 925 Domínguez-Villar, D., Krklec, K., Boomer, I., and Fairchild, I. J.: ISODRIP, a model to transfer the $\delta^{18}\text{O}$ signal of precipitation to drip water — Implementation of the model for Eagle Cave (central Spain), *Sci Total Environ*, 797, 149188, <https://doi.org/10.1016/j.scitotenv.2021.149188>, 2021.
- Dredge, J., Fairchild, I. J., Harrison, R. M., Fernandez-Cortes, A., Sanchez-Moral, S., Jurado, V., Gunn, J., Smith, A., Spötl, C., Matthey, D., Wynn, P. M., and Grassineau, N.: Cave aerosols: distribution and contribution to speleothem geochemistry, *Quaternary Science Reviews*, 63, 23-41, <https://doi.org/10.1016/j.quascirev.2012.11.016>, 2013.
- 930 Dreybrodt, W.: Chemical kinetics, speleothem growth and climate, *Boreas*, 28, 347-356, <https://doi.org/10.1111/j.1502-3885.1999.tb00224.x>, 1999.

- Eylem, C., Erten, H. N., and Gökürk, H.: Sorption-desorption behaviour of barium on clays, *Journal of Environmental Radioactivity*, 11, 183-200, [https://doi.org/10.1016/0265-931X\(90\)90061-Y](https://doi.org/10.1016/0265-931X(90)90061-Y), 1990.
- 935 Fairchild and Baker, I. a. A.: *Speleothem Science: from process to past environments*, Blackwell Quaternary Geoscience Series, Wiley-Blackwell 2012.
- Fairchild, I. J. and Treble, P. C.: Trace elements in speleothems as recorders of environmental change, *Quaternary Science Reviews*, 28, 449-468, <https://doi.org/10.1016/j.quascirev.2008.11.007>, 2009.
- Fairchild, I. J., Borsato, A., Tooth, A. F., Frisia, S., Hawkesworth, C. J., Huang, Y., McDermott, F., and Spiro, B.: Controls on trace element (Sr-Mg) compositions of carbonate cave waters: implications for speleothem climatic records, *Chemical Geology*, 166, 255-269, [https://doi.org/10.1016/S0009-2541\(99\)00216-8](https://doi.org/10.1016/S0009-2541(99)00216-8), 2000.
- 940 Fairchild, I. J., Spötl, C., Frisia, S., Borsato, A., Susini, J., Wynn, P. M., Cauzid, J., EIMF, Pedley, H. M., and Rogerson, M.: Petrology and geochemistry of annually laminated stalagmites from an Alpine cave (Obir, Austria): seasonal cave physiology, in: *Tufas and Speleothems: Unravelling the Microbial and Physical Controls*, Geological Society of London, 0, 10.1144/sp336.16, 2010.
- 945 Faraji, M., Borsato, A., Frisia, S., Hellstrom, J. C., Lorrey, A., Hartland, A., Greig, A., and Mathey, D. P.: Accurate dating of stalagmites from low seasonal contrast tropical Pacific climate using Sr 2D maps, fabrics and annual hydrological cycles, *Scientific Reports*, 11, 2178, 10.1038/s41598-021-81941-x, 2021.
- Feng, W., Casteel, R. C., Banner, J. L., and Heinze-Fry, A.: Oxygen isotope variations in rainfall, drip-water and speleothem calcite from a well-ventilated cave in Texas, USA: Assessing a new speleothem temperature proxy, *Geochimica et Cosmochimica Acta*, 127, 233-250, <https://doi.org/10.1016/j.gca.2013.11.039>, 2014.
- 950 Fohlmeister, J., Voarintsoa, N. R., Lechleitner, F., Boyd, M., Brandstätter, S., Jacobson, M., and Oster, J.: Main Controls on the Stable Carbon Isotope Composition of Speleothems, *Geochimica et Cosmochimica Acta*, 279, 10.1016/j.gca.2020.03.042, 2020.
- Frisia, S., Fairchild, I. J., Fohlmeister, J., Miorandi, R., Spötl, C., and Borsato, A.: Carbon mass-balance modelling and carbon isotope exchange processes in dynamic caves, *Geochimica et Cosmochimica Acta*, 75, 380-400, 2011.
- 955 Genty, D., Blamart, D., Ghaleb, B., Plagnes, V., Causse, C., Bakalowicz, M., Zouari, K., Chkir, N., Hellstrom, J., Wainer, K., and Bourges, F.: Timing and dynamics of the last deglaciation from European and North African $\delta^{13}\text{C}$ stalagmite profiles—comparison with Chinese and South Hemisphere stalagmites, *Quaternary Science Reviews*, 25, 2118-2142, <https://doi.org/10.1016/j.quascirev.2006.01.030>, 2006.
- Gibbons, W. and Moreno, T.: *The geology of Spain*, The Geological Society, London, 649 S. pp.2002.
- Hamamoto, T. and Uchida, Y.: Sodium Contents in Dairy Cow Urine and Soil Aggregate Sizes Influence the Amount of Nitrogen Lost from Soil, *Applied and Environmental Soil Science*, 2015, 275985, 10.1155/2015/275985, 2015.
- 960 Hartland, A., Fairchild, I. J., Müller, W., and Dominguez-Villar, D.: Preservation of NOM-metal complexes in a modern hyperalkaline stalagmite: Implications for speleothem trace element geochemistry, *Geochimica et Cosmochimica Acta*, 128, 29-43, <https://doi.org/10.1016/j.gca.2013.12.005>, 2014.
- Hartland, A., Fairchild, I. J., Lead, J. R., Borsato, A., Baker, A., Frisia, S., and Baalousha, M.: From soil to cave: Transport of trace metals by natural organic matter in karst dripwaters, *Chemical Geology*, 304-305, 68-82, <https://doi.org/10.1016/j.chemgeo.2012.01.032>, 2012.
- 965 Hasenmueller, E. A., Jin, L., Stinchcomb, G. E., Lin, H., Brantley, S. L., and Kaye, J. P.: Topographic controls on the depth distribution of soil CO₂ in a small temperate watershed, *Applied Geochemistry*, 63, 58-69, <https://doi.org/10.1016/j.apgeochem.2015.07.005>, 2015.
- Hodges, C., Kim, H., Brantley, S. L., and Kaye, J.: Soil CO₂ and O₂ Concentrations Illuminate the Relative Importance of Weathering and Respiration to Seasonal Soil Gas Fluctuations, *Soil Science Society of America Journal*, 83, 1167-1180, <https://doi.org/10.2136/sssaj2019.02.0049>, 2019.
- 970 IAEA/WMO: *Global Network of Isotopes in Precipitation*. The GNIP Database., -2022.
- Instituto Geográfico Nacional, *Plan Nacional Ortofotografía Aérea - PNOA of Spanish IGN*: <https://centrodedescargas.cnig.es/CentroDescargas/index.jsp>, last access: 24.11.2022.
- James, E. W., Banner, J. L., and Hardt, B.: A global model for cave ventilation and seasonal bias in speleothem paleoclimate records, *Geochemistry, Geophysics, Geosystems*, 16, 1044-1051, <https://doi.org/10.1002/2014GC005658>, 2015.
- 975 Johnson, K. R., Hu, C., Belshaw, N. S., and Henderson, G. M.: Seasonal trace-element and stable-isotope variations in a Chinese speleothem: The potential for high-resolution paleomonsoon reconstruction, *Earth and Planetary Science Letters*, 244, 394-407, <https://doi.org/10.1016/j.epsl.2006.01.064>, 2006.
- Kabata-Pendias, A. and Pendias, H.: *Trace elements in soils and plants*, 3rd. CRC Press LLC. Boca Raton, Florida, 331 pp.2000.
- 980 Krishna, M. P. and Mohan, M.: Litter decomposition in forest ecosystems: a review, *Energy, Ecology and Environment*, 2, 236-249, 10.1007/s40974-017-0064-9, 2017.
- Lechleitner, F. A., Day, C. C., Kost, O., Wilhelm, M., Haghipour, N., Henderson, G. M., and Stoll, H. M.: Stalagmite carbon isotopes suggest deglacial increase in soil respiration in Western Europe driven by temperature change, *Clim. Past Discuss.*, 2021, 1-25, 10.5194/cp-2021-3, 2021.
- 985 Lyu, Y., Luo, W., Wang, Y., Zeng, G., Wang, Y., Cheng, A., Zhang, L., Chen, J., Cai, X., Zhang, R., and Wang, S.: Impacts of cave ventilation on drip water $\delta^{13}\text{C}_{\text{DIC}}$ and its paleoclimate implication, *Quaternary International*, 547, 7-21, <https://doi.org/10.1016/j.quaint.2020.03.050>, 2020.

- Markowska, M., Baker, A., Andersen, M. S., Jex, C. N., Cuthbert, M. O., Rau, G. C., Graham, P. W., Rutledge, H., Mariethoz, G., Marjo, C. E., Treble, P. C., and Edwards, N.: Semi-arid zone caves: Evaporation and hydrological controls on $\delta^{18}\text{O}$ drip water composition and implications for speleothem paleoclimate reconstructions, *Quaternary Science Reviews*, 131, 285-301, <https://doi.org/10.1016/j.quascirev.2015.10.024>, 2016.
- 990 Mathey, D. P., Fairchild, I. J., Atkinson, T. C., Latin, J.-P., Ainsworth, M., and Durrell, R.: Seasonal microclimate control of calcite fabrics, stable isotopes and trace elements in modern speleothem from St Michaels Cave, Gibraltar, Geological Society, London, Special Publications, 336, 323-344, 2010.
- 995 Mathey, D. P., Atkinson, T. C., Barker, J. A., Fisher, R., Latin, J. P., Durrell, R., and Ainsworth, M.: Carbon dioxide, ground air and carbon cycling in Gibraltar karst, *Geochimica et Cosmochimica Acta*, 184, 88-113, <https://doi.org/10.1016/j.gca.2016.01.041>, 2016.
- Mishra, S. P. and Tiwary, D.: Ion exchangers in radioactive waste management. Part XI. Removal of barium and strontium ions from aqueous solutions by hydrous ferric oxide, *Applied Radiation and Isotopes*, 51, 359-366, [https://doi.org/10.1016/S0969-8043\(99\)00065-2](https://doi.org/10.1016/S0969-8043(99)00065-2), 1999.
- 1000 Moreno, A., Stoll, H., Jiménez-Sánchez, M., Cacho, I., Valero-Garcés, B., Ito, E., and Edwards, R. L.: A speleothem record of glacial (25–11.6kyr BP) rapid climatic changes from northern Iberian Peninsula, *Global and Planetary Change*, 71, 218-231, <https://doi.org/10.1016/j.gloplacha.2009.10.002>, 2010.
- Moreno, A., Sancho, C., Bartolomé, M., Oliva-Urcia, B., Delgado-Huertas, A., Estrela, M. J., Corell, D., López-Moreno, J. I., and Cacho, I.: Climate controls on rainfall isotopes and their effects on cave drip water and speleothem growth: the case of Molinos cave (Teruel, NE Spain), *Climate Dynamics*, 43, 221-241, [10.1007/s00382-014-2140-6](https://doi.org/10.1007/s00382-014-2140-6), 2014.
- 1005 Moreno, A., Iglesias, M., Azorin-Molina, C., Pérez-Mejías, C., Bartolomé, M., Sancho, C., Stoll, H., Cacho, I., Frigola, J., Osácar, C., Muñoz, A., Delgado-Huertas, A., Bladé, I., and Vimeux, F.: Measurement report: Spatial variability of northern Iberian rainfall stable isotope values – investigating atmospheric controls on daily and monthly timescales, *Atmos. Chem. Phys.*, 21, 10159-10177, [10.5194/acp-21-10159-2021](https://doi.org/10.5194/acp-21-10159-2021), 2021.
- Noronha, A. L., Johnson, K. R., Hu, C., Ruan, J., Southon, J. R., and Ferguson, J. E.: Assessing influences on speleothem dead carbon variability over the Holocene: Implications for speleothem-based radiocarbon calibration, *Earth and Planetary Science Letters*, 394, 20-29, <https://doi.org/10.1016/j.epsl.2014.03.015>, 2014.
- 1010 O'Leary, M. H.: Carbon Isotopes in Photosynthesis: Fractionation techniques may reveal new aspects of carbon dynamics in plants, *BioScience*, 38, 328-336, [10.2307/1310735](https://doi.org/10.2307/1310735), 1988.
- Owen, R., Day, C. C., and Henderson, G. M.: CaveCalc: A new model for speleothem chemistry & isotopes, *Computers & Geosciences*, 119, 115-122, <https://doi.org/10.1016/j.cageo.2018.06.011>, 2018.
- 1015 Parkhurst, D. L. and Appelo, C. A. J.: Description of input and examples for PHREEQC version 3—A computer program for speciation, batch-reaction, one-dimensional transport, and inverse geochemical calculations, U.S. Geological Survey Techniques and Methods, book 6, chap. A43, 497 p, 2013.
- Pataki, D. E., Bowling, D. R., and Ehleringer, J. R.: Seasonal cycle of carbon dioxide and its isotopic composition in an urban atmosphere: Anthropogenic and biogenic effects, *Journal of Geophysical Research: Atmospheres*, 108, <https://doi.org/10.1029/2003JD003865>, 2003.
- 1020 Peel, M. C., Finlayson, B. L., and McMahon, T. A.: Updated world map of the Köppen-Geiger climate classification, *Hydrol. Earth Syst. Sci.*, 11, 1633-1644, [10.5194/hess-11-1633-2007](https://doi.org/10.5194/hess-11-1633-2007), 2007.
- Riechelmann, D. F. C., Schröder-Ritzrau, A., Scholz, D., Fohlmeister, J., Spötl, C., Richter, D. K., and Mangini, A.: Monitoring Bunker Cave (NW Germany): A prerequisite to interpret geochemical proxy data of speleothems from this site, *Journal of Hydrology*, 409, 682-695, <https://doi.org/10.1016/j.jhydrol.2011.08.068>, 2011.
- 1025 Ruff, M., Wacker, L., Gäggeler, H. W., Suter, M., Synal, H. A., and Szidat, S.: A Gas Ion Source for Radiocarbon Measurements at 200 kV, *Radiocarbon*, 49, 307-314, [10.1017/S003822200042235](https://doi.org/10.1017/S003822200042235), 2007.
- Sinclair, D. J., Banner, J. L., Taylor, F. W., Partin, J., Jenson, J., Mylroie, J., Goddard, E., Quinn, T., Jocson, J., and Miklavčič, B.: Magnesium and strontium systematics in tropical speleothems from the Western Pacific, *Chemical Geology*, 294-295, 1-17, <https://doi.org/10.1016/j.chemgeo.2011.10.008>, 2012.
- 1030 Sliwinski, J. T. and Stoll, H. M.: Combined fluorescence imaging and LA-ICP-MS trace element mapping of stalagmites: Microfabric identification and interpretation, *Chemical Geology*, 581, 120397, <https://doi.org/10.1016/j.chemgeo.2021.120397>, 2021. Kost, O., Endres, L., Iglesias, M., Haghypour, N., González-Lemos, S., and Stoll, H.: Exploring soluble and colloidal transported trace elements in stalagmites: The strontium-yttrium connection, *Geochimica et Cosmochimica Acta*, 343, 64-83, 2023.
- 1035 Sliwinski, J. T. and Stoll, H. M.: Combined fluorescence imaging and LA-ICP-MS trace element mapping of stalagmites: Microfabric identification and interpretation, *Chemical Geology*, 581, 120397, <https://doi.org/10.1016/j.chemgeo.2021.120397>, 2021.
- Spötl, C., Fairchild, I. J., and Tooth, A. F.: Cave air control on dripwater geochemistry, Obir Caves (Austria): Implications for speleothem deposition in dynamically ventilated caves, *Geochimica et Cosmochimica Acta*, 69, 2451-2468, <https://doi.org/10.1016/j.gca.2004.12.009>, 2005.
- 1040 Stoll, H., Mendez-Vicente, A., Gonzalez-Lemos, S., Moreno, A., Cacho, I., Cheng, H., and Edwards, R. L.: Interpretation of orbital scale variability in mid-latitude speleothem $\delta^{18}\text{O}$: Significance of growth rate controlled kinetic fractionation effects, *Quaternary Science Reviews*, 127, 215-228, <https://doi.org/10.1016/j.quascirev.2015.08.025>, 2015.

- Stoll, H. M., Müller, W., and Prieto, M.: I-STAL, a model for interpretation of Mg/Ca, Sr/Ca and Ba/Ca variations in speleothems and its forward and inverse application on seasonal to millennial scales, *Geochemistry, Geophysics, Geosystems*, 13, <https://doi.org/10.1029/2012GC004183>, 2012.
- 1045 Stoll, H. M., Moreno, A., Mendez-Vicente, A., Gonzalez-Lemos, S., Jimenez-Sanchez, M., Dominguez-Cuesta, M. J., Edwards, R. L., Cheng, H., and Wang, X.: Paleoclimate and growth rates of speleothems in the northwestern Iberian Peninsula over the last two glacial cycles, *Quaternary Research*, 80, 284-290, <https://doi.org/10.1016/j.yqres.2013.05.002>, <http://dx.doi.org/10.1016/j.yqres.2013.05.002>, 2013.
- Tadros, C. V., Treble, P. C., Baker, A., Hankin, S., and Roach, R.: Cave drip water solutes in south-eastern Australia: Constraining sources, sinks and processes, *Sci Total Environ*, 651, 2175-2186, <https://doi.org/10.1016/j.scitotenv.2018.10.035>, 2019.
- 1050 Tadros, C. V., Treble, P. C., Baker, A., Fairchild, I., Hankin, S., Roach, R., Markowska, M., and McDonald, J.: ENSO-cave drip water hydrochemical relationship: a 7-year dataset from south-eastern Australia, *Hydrol. Earth Syst. Sci.*, 20, 4625-4640, [10.5194/hess-20-4625-2016](https://doi.org/10.5194/hess-20-4625-2016), 2016.
- Treble, P. C., Fairchild, I. J., Baker, A., Meredith, K. T., Andersen, M. S., Salmon, S. U., Bradley, C., Wynn, P. M., Hankin, S. I., Wood, A., and McGuire, E.: Roles of forest bioproductivity, transpiration and fire in a nine-year record of cave dripwater chemistry from southwest Australia, *Geochimica et Cosmochimica Acta*, 184, 132-150, <https://doi.org/10.1016/j.gca.2016.04.017>, 2016.
- 1055 Treble, P. C., Baker, A., Abram, N. J., Hellstrom, J. C., Crawford, J., Gagan, M. K., Borsato, A., Griffiths, A. D., Bajo, P., Markowska, M., Priestley, S. C., Hankin, S., and Paterson, D.: Ubiquitous karst hydrological control on speleothem oxygen isotope variability in a global study, *Communications Earth & Environment*, 3, 29, [10.1038/s43247-022-00347-3](https://doi.org/10.1038/s43247-022-00347-3), 2022.
- Tremaine, D. M. and Froelich, P. N.: Speleothem trace element signatures: A hydrologic geochemical study of modern cave dripwaters and farmed calcite, *Geochimica et Cosmochimica Acta*, 121, 522-545, <https://doi.org/10.1016/j.gca.2013.07.026>, 2013.
- 1060 Tremaine, D. M., Sinclair, D. J., Stoll, H. M., Lagerström, M., Carvajal, C. P., and Sherrell, R. M.: A two-year automated dripwater chemistry study in a remote cave in the tropical south Pacific: Using [Cl⁻] as a conservative tracer for seasalt contribution of major cations, *Geochimica et Cosmochimica Acta*, 184, 289-310, <https://doi.org/10.1016/j.gca.2016.03.029>, 2016.
- UNEP: World atlas of desertification 2ED, -1997.
- 1065 Waring, C. L., Hankin, S. I., Griffith, D. W. T., Kertesz, M. A., Kobylski, V., Wilson, N. L., Coleman, N. V., Kettlewell, G., Zlot, R., Bosse, M., and Bell, G.: Seasonal total methane depletion in limestone caves, *Scientific Reports*, 7, 8314, [10.1038/s41598-017-07769-6](https://doi.org/10.1038/s41598-017-07769-6), 2017.
- Wassenburg, J. A., Riechelmann, S., Schröder-Ritzrau, A., Riechelmann, D. F. C., Richter, D. K., Immenhauser, A., Terente, M., Constantin, S., Hachenberg, A., Hansen, M., and Scholz, D.: Calcite Mg and Sr partition coefficients in cave environments: Implications for interpreting prior calcite precipitation in speleothems, *Geochimica et Cosmochimica Acta*, 269, 581-596, <https://doi.org/10.1016/j.gca.2019.11.011>, 2020.
- 1070 Weremeichik, J. M., Gabitov, R. I., Thien, B. M. J., and Sadekov, A.: The effect of growth rate on uranium partitioning between individual calcite crystals and fluid, *Chemical Geology*, 450, 145-153, <https://doi.org/10.1016/j.chemgeo.2016.12.026>, 2017.