

# Phenophase-based comparison of field observations to satellite-based actual evaporation estimates of a natural woodland: miombo woodland, southern Africa

\*Henry Zimba<sup>1,2</sup>, Miriam Coenders-Gerrits<sup>1</sup>, Kawawa Banda<sup>3</sup>, Bart Schilperoort<sup>1</sup>, Nick van de Giesen<sup>1</sup>, Imasiku Nyambe<sup>3</sup>, Hubert. H. G. Savenije<sup>1</sup>.

<sup>1</sup> Delft University of Technology, Water Resources Section, Building 23 (Faculty of Civil Engineering and Geosciences) 2628 CN Delft, P.O Box 5048 2600 GA Delft, The Netherlands.

<sup>2</sup> Ministry of Agriculture, Department of Agriculture, P.O Box 50595, Mulungushi House, Independence Avenue, Lusaka, Zambia.

<sup>3</sup> University of Zambia, Integrated Water Resources Management Centre, Department of Geology, School of Mines, Great East Road Campus, Lusaka, Zambia.

\*Corresponding author: h.m.zimba@tudelft.nl

15 The trend and magnitude of actual evaporation across the phenophases of miombo woodland are unknown. This is because estimating evaporation in African woodland ecosystems continues to be a challenge as flux observation towers are scant, if not completely lacking in most ecosystems. Furthermore, significant phenophases-based discrepancies in both trend and magnitude exists among the satellite-based evaporation estimates (i.e., GLEAM, MOD16, SSEBop and WaPOR) making it difficult to ascertain which of the estimates are close to field conditions. Despite the many limitations with estimation of evaporation in woodlands the development and application of the distributed temperature system (DTS) is providing deepened insights and improved accuracy in woodland energy partitioning for evaporation assessment. In this study the Bowen ratio distributed temperature sensing (BR-DTS) approach is used to partition available energy and estimate actual evaporation across three canopy phenophases of the miombo woodland covering the entire 2021 dry season (May – October) and early rain season (November – December) at a representative site in Mpika in Zambia, southern Africa. To compliment the field experiment four satellite-based evaporation estimates are compared to the field observations. Our results show that actual evaporation of the miombo woodland appears to follow the trend of the net radiation with the lowest values observed during the phenophase with the lowest net radiation in the cool-dry season and the highest values during the phenophase with peak net radiation in the early rainy season. It appears the continued transpiration during the driest period in the dormant phenophase (with lowest canopy cover and photosynthetic activities) may be influenced by the species dependent adapted physiological attributes such as access to moisture in deep soils (i.e., due to deep rooting), plant water storage and the simultaneous leaf fall and leaf flush among miombo plants. Of the four satellite-based evaporation estimates only the WaPOR has a similar trend to the field observations across the three phenophases. However, all four satellite-based estimates underestimate the actual evaporation during the dormant and green-up phenophases. Large coefficients of variation in actual evaporation estimates among the satellite-based estimates exists in the dormant and green-up phenophases and are indicative of the difficulty in estimating actual evaporation in these phenophases. The differences between field observations and satellite-based evaporation estimates can be attributed to the model structure, processes and inputs.

## 1 Introduction

45 Global terrestrial evaporation is about 60 percent of the total incoming precipitation (Miralles *et al.*, 2011; Van Der Ent *et al.*, 2014). Evaporation in Africa, Asia and South America accounts for

78 percent of this terrestrial evaporation (Miralles *et al.*, 2011). A general paucity of evaporation flux observation towers exists across the vast spectrum of ecosystems. As a consequence, in most cases several satellite-based evaporation estimates (e.g., GLEAM, MODIS, SSEBop) are used in hydrological modelling and water resources management without validation with field observations from the African ecosystems. In the face of climate change, accurate information on evaporation dynamics in major ecosystems, like the miombo woodland in southern Africa is important in the management of scarce water resources. Some studies have been conducted to validate satellite-based evaporation estimates in Africa (e.g., Blatchford *et al.*, 2020; Dile *et al.*, 2020; Weerasinghe *et al.*, 2020; Ramoelo *et al.*, 2014). However, none of these studies used field observations based on the miombo woodland evaporation.

In southern Africa, the miombo woodland is the largest dry forest formation (Fuller, 1999; Frost, 1996) and the characteristic vegetation cover for many river basins, including the Zambezi Basin. The miombo woodland unique phenology (Chidumayo, 2001; Fuller, 1999, Frost, 1996) and plant-water interactions that are different from other ecosystems in Africa (Tian *et al.*, 2018; Vinya *et al.*, 2018). For instance, Fuller (1996) conducted an assessment of miombo canopy phenology, i.e., leaf display and canopy closure, in the Luangwa Basin in Zambia. The plots for the assessment included the Mopane woodland and the miombo woodland. Both wet miombo (i.e., plateau miombo in Mpika) and dry miombo (i.e., valley areas) in the Luangwa Basin) were assessed. The assessment involved field estimates of the normalised vegetation index (NDVI) for leaf display and the upward pointing photographs were used for canopy closure observations. The results showed the plateau miombo with the lowest seasonality in the tree layer with mean range of 40 - 60 % closure over one season. The canopy closure values among the miombo plots ranged between a minimum of 2 % for the scrub miombo to a maximum of 70 % for the plateau miombo. For the plateau miombo, compared to other miombo plots (i.e., scrub and valley miombo) it was observed that there is net zero change in the increase in the canopy closure due to simultaneous leaf fall and leaf flush in the dry season before the commencement of the rains. The leaf fall, leaf flush and the accompanying change in leaf colour occur during what is normally termed the transition period in the dry season (May – October) (Fuller, 1999; Frost, 1996; White, 1983). The leaf fall and leaf flush are species dependent, occurring at different times for each species in the dry season. The flushing of new leaves, weeks to months or more, before commencement of seasonal rainfall is a unique feature of the miombo woodland (Frost, 1996). Depending on rainfall received in the preceding rain season, the leaf fall and leaf flush processes may start early in the cool dry season (i.e., in case of low rainfall received) or late (in case of high rainfall received) and may extend into November in the early rainy season (i.e., in the case of high rainfall received) (Fuller, 1999; Frost, 1996; White, 1983). The new young flushed leaves have high leaf water content of about 66% which declines to around 51% as the leaves harden until they are shed in the next season. The osmotic pressure in the flushed leaves in the dry season increases as the leaves harden but declines after the onset of the rains reaching minimum levels in February (Ernst and Walker 1973). Most miombo species are broad leaved with capacity to intercept more radiation than other vegetation types such as the mopane species (Fuller, 1999). Wet miombo woodland canopies intercept between 18-20 % of incoming rainfall annually (i.e., Alexandre, 1977). Most miombo species are deep rooting, beyond 5 metres, with access to deep soil moisture (Savory, 1963). The moisture in miombo woodland soils increases with depth (Chidumayo, 1994; Jeffers and Boaler 1966; Savory, 1963). Miombo species also have a plant water storage mechanism (i.e., Vinya *et al.*, 2018; Ernst and Walker 1973) that helps to buffer dry season water limitations. The highlighted unique phenological attributes of the miombo species suggests that the miombo

woodland gives evaporation feedback incomparable to other ecosystems.

95 The evaporation dynamics of the miombo woodland and its relationship with the above highlighted phenological characteristics have not been studied. However, given the need for assessing the limited water resources in the ecosystem, there is a clear need for a detailed understanding of the phenophase-based evaporation of the miombo woodland. Yet, estimating evaporation over natural vegetation such as the miombo woodland in Southern Africa remains a challenge.

100 Limitations can be found in all available conventional approaches, such as the eddy covariance (EC) system (Foken, Aubinet, and Leuning, 2012; Jarmain *et al.*, 2009; Savage *et al.*, 1997, lysimeters (Sutanto, Wenninger, and Uhlenbrook, 2012; Teuling, 2018), scintillometry (Dzikiti *et al.*, 2014; Jarmain *et al.*, 2009) and the conventional Bowen ratio (Everson, 2001; Savage *et al.*, 1997; Bowen, 1926). For instance, inability to account for energy fluxes near the observation tower causes energy closure problems in the EC-systems. Site heterogeneities introduces horizontal and vertical advective terms that are impossible to resolve by single point flux tower measurements (Liu *et al.*, 2006). Furthermore, if the optical path is obscured, such as occurs in wet conditions, the EC's optical open-path sensors do not work properly and if the open-path analyzer is wet the evaporation which occurs shortly after a rainfall event is not observed (Coenders-Gerrits, Schilperoort, and Jiménez-Rodríguez, 2020; Hirschi *et al.*, 2017). In the case of the two vertical sensor-based Bowen ratio, each sensor has its own errors which are propagated to the Bowen ratio. Additionally, it is difficult to ensure that the two sensors are correctly aligned with each other which results in incorrect Bowen ratio estimates (Angus and Watts, 1984; Spittlehouse and Black, 1980). Jarmain *et al.* (2009) assessed and reported on various conventional methods for estimating evaporation in different land surfaces in south Africa. However, recent advances in the distributed temperature sensing system has expanded possibilities for improved accuracy in energy partitioning and the application of the Bowen ratio for evaporation flux assessment in forests (Euser *et al.*, 2014; Schilperoort *et al.*, 2020; Schilperoort *et al.*, 2018). In contrast to the conventional Bowen ratio approach, the Distributed Temperature Sensing Bowen ratio technique (BR-DTS) makes use of several vertical high resolution temperature measurements made with a single fibre optic cable. This eliminates the need for the conventional configuration with two individual sensors at different locations and the associated errors with this type of set up. One section of the fibre optic cable measures the air temperature profile, while a second section, covered in a constantly wetted cloth, measures the wet-bulb temperature profile. The vapour pressure profile can be derived through the psychrometer principle. The DTS technique enables that wet and dry bulb temperature measurements can cover the entire vertical profile through a forest stand: above the canopy, within the canopy, and under the canopy. This is conducted simultaneously along a single fibre optic cable, thereby facilitating a deepened understanding of the energy partitioning in a forest (Schilperoort *et al.*, 2020; Schilperoort *et al.*, 2018; Euser *et al.*, 2014). Coenders-Gerrits *et al.* (2020) have suggested that the DTS technique offers opportunities to assess forest energy storage components that are not normally captured when using conventional approaches. The BR-DTS approach provides an avenue for enhanced understanding and increased accuracy in the estimation of forest evaporation. This is notwithstanding the challenges associated with the BR-DTS approach such as the requirement for sufficient ventilation and constant wetting of the fibre optic cable. Despite the highlighted advantages of the BR-DTS approach its major limitation is that it is a point measurement. Furthermore, compared to the EC method the BR-DTS approach tends to minimally overestimate diurnal latent heat flux ( $LE$ ) by a mean difference of  $18.7 \text{ Wm}^{-2}$  (Schilperoort *et al.*, 2018).

140 For the miombo woodland, the need for field-based actual evapotranspiration estimates is highlighted by the discrepancies in satellite-based evaporation estimates (Zimba *et al.*, 2023 under review). Due to a lack of field-based observations of actual evaporation of the miombo woodland the satellite-based evaporation estimate(s) that are close to field conditions are unknown. Therefore, this study is focused on providing an independent estimation of actual evaporation of the wet miombo woodland that can be used to validate satellite-based evaporation estimates.

145 In this study field observations were compared to four commonly-used free satellite-based actual evaporation estimates: GLEAM (Martens *et al.*, 2017), MOD16 (Mu *et al.*, 2011), SSEBop (Savoca *et al.*, 2013) and WaPOR (FAO, 2018). The satellite-based estimates were selected because they can be obtained free of cost, have comparatively high spatial-temporal resolution, and good spatial coverage (i.e., global in the case of GLEAM, MODIS, SSEBop and continental in the case of WaPOR), and are ready-to-use products with no further processing required. Hence, the focus of our study was on characterising the miombo woodland actual evaporation using the BR-DTS approach, and comparing the field observations to the satellite-based evaporation estimates. Consequently, objectives of this study were to:

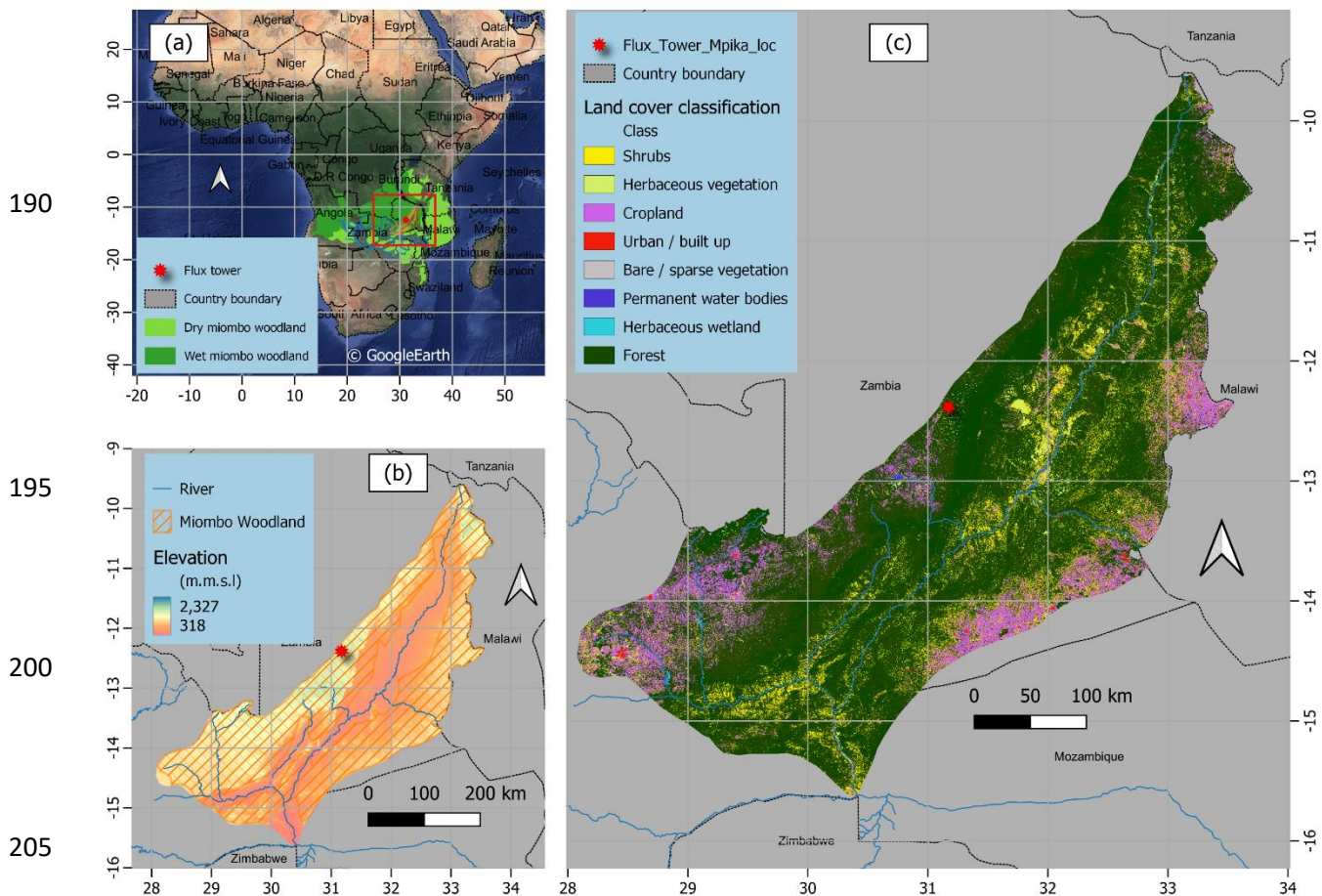
- 155 (i) Estimate the actual evaporation of the wet miombo woodland across difference canopy/leaf phenophases to help understand the flux trend and magnitude in the ecosystem,
- (ii) Compare free satellite-based evaporation estimates to the field-based estimates at point scale across the different canopy/leaf phenophases of the miombo woodland.

## 2 Materials and methods

### 160 2.1 Study site

The study was centred on a miombo woodland at the Nsanzala and Mutinondo conservancy areas (lat:  $-12.38^{\circ}$  S, long:  $31.17^{\circ}$  E) in the Mpika District, northern Zambia in southern Africa (Fig. 1). Zambia was selected because it is considered to have the largest diversity in miombo woodland species composition (Frost, 1996; White, 1983). The site in Mpika was chosen because it represents a large area of undisturbed miombo woodland with high heterogeneity in species typical of miombo woodland. The site is also situated in the largest miombo ecosystem component of the wetter central Zambebian miombo (Olson *et al.*, 2001; White, 1983), in the north-western part of the Luangwa Basin (Fig. 1). At the study site, species identification and counts within a 250m-by-250m sample plot showed that over 95 percent of the dominant miombo species is semi-deciduous and include: *Brachystegia floribunda*, *Brachystegia longifolia*, *Brachystegia boehmii*, *Brachystegia speciformis*, *Jubenerdia paninculata*, *Uapaca kirkiana*, *Pericopsis angolensis*, *Bauhinia petersenia* and *Uapaca sansibarica*. These are typical miombo species, especially the *Brachystegia floribunda*, found in the wetter Zambebian miombo woodland (Fuller, 1999; White, 1983). The typical characteristics of the miombo species at the site are that they shed off leaves (leaf fall) and also leaf flush during what is termed as the transition period in the dry season (May – October). Frost (1996) indicated that, based on the amounts of rainfall received in the preceding rain season, the leaf-fall and leaf flush processes may start early (i.e., in case of low rainfall received) or late (in case of high rainfall received) and may extend up to November (i.e., in the case of high rainfall received). Elevation ranges between 318 m and 2327 m above sea level (Fig. 1 b). The study site has a mean annual rainfall of 1200 mm year<sup>-1</sup> and mean annual temperature of 26 °C. Rainfall is a result of the movement of the intertropical convergence zone (ITCZ) over Zambia. Rainfall period is between October and April while the dry season is between May and

185 October (Hachigonta and Reason, 2006; Chidumayo, 2001). The woodland at the study site is undisturbed by anthropogenic activities due to the site being a conservancy. The major activities in the area are controlled cattle ranching and tourism.



190  
195  
200  
205  
**Figure 1.** Location and extent of the miombo woodland in Africa (a), elevation characterisation in the Luangwa Basin and at the study site in Mpika (b) and land cover classification of the Luangwa Basin (c). The ASTER Digital elevation model was used to depict elevation while the 2019 Copernicus Land cover for Africa was used for land cover characterization.

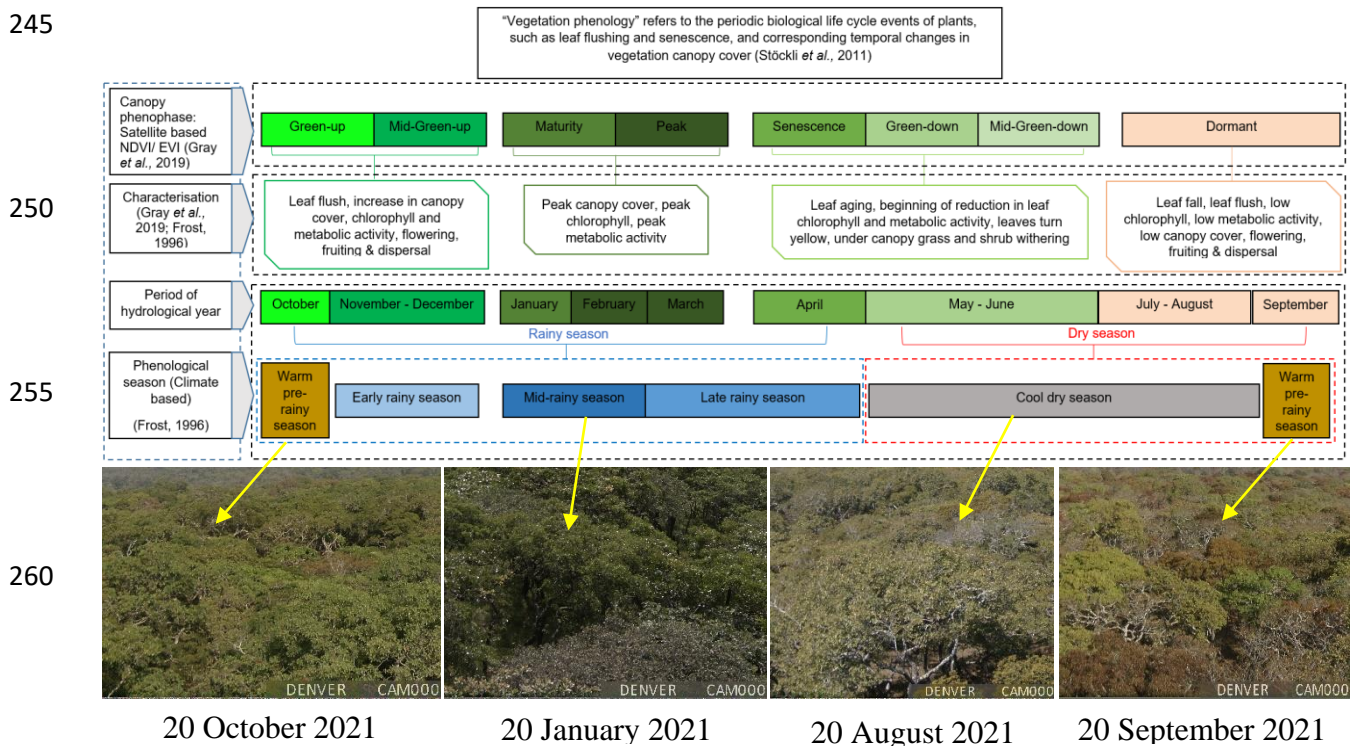
210 Controlled burns at the study site are normally conducted in August when the Dambos (wetlands) are dry, and are mainly conducted in the dambo grassland for livestock grazing purposes. The non-burning of the study site ensured the evaporation observations were not influenced by fire activity especially burning of the canopy leaves.

## 2.2 Study approach

### 2.2.1 characterisation of phenophases at the study site

220 This study compared estimates of actual evaporation by the BR-DTS method with the Penman-Monteith reference evaporation (Allen *et al.*, 1998) and to four satellite-based evaporation estimates at point scale in the miombo woodland. The observations were conducted for the period

225 May to December 2021. The study period facilitated assessment of evaporation during the dry  
 230 season and early rainy season across three different phenophases of the miombo woodland. The  
 phenophases were characterised using satellite-based data (Gray *et al.*, 2019; Zimba *et al.*, 2020)  
 and the climate (rainfall and temperature) and soil moisture-based classification by Chidumayo  
 and Frost (1996). Satellite-based classification uses the changes in canopy greenness to  
 characterise the canopy phenophases (Gray *et al.*, 2019). In this study the Collection 6 MODIS  
 Land Cover Dynamics (MCD12Q2) Product (Gray *et al.*, 2019) was used to identify the satellite-  
 based phenophases. For the year 2021 eight phenophases were identified using the satellite-based  
 data MCD12Q2 (Fig. 2), NDVI, leaf rea index (LAI) and photographs from a digital camera  
 (Denver WCT-8010) installed on the flux tower at the study site (see Fig. 9 in section 3.6). For  
 the climate and soil moisture-based classification Chidumayo and Frost (1996) observed five  
 phenological seasons: warm pre-rainy season, early rain season, mid-rainy season, late rainy  
 season and the cool dry season (Fig. 2). Within these phenological seasons the phenology of  
 miombo species transition through various stages i.e., from leaf fall/leaf flush, growth of stems,  
 flowering to mortality of seed (Chidumayo and Frost,1996). The satellite-based phenophases can  
 be identified within the climate-based phenological seasons (Fig. 2). Based on the period for this  
 study, May – December, five satellite-based phenophases were identified within three climate-  
 based phenological seasons (Fig. 2). The identified phenophases based on satellite data were the  
 green-down, mid-green down, dormant, green-up and the mid-green up (Fig. 2). For easy of  
 analysis some satellite-based phenophases were merged based on the dominant activity.



265 **Figure 2:** Characterisation of canopy phenophases of the miombo woodland in relation to seasonality at the study site. Photographs show the changes in the canopy cover on selected days across phenophases for the year 2021.

270 For instance, the green-down and mid-green-down were merged together into one green-  
 down phenophase while the green-up and mid-green-up were merged into one green-up  
 phenophase. The established satellite-based phenophases green-down (may-June), dormant (July  
 – September) and green-up (October – December) were in the cool-dry season, warm pre-rainy  
 275 season and early-rainy season phenological seasons (Fig. 2). The detailed characterisation of the  
 phenology of the miombo woodland, particularly in Zambia, can be found in Chidumayo (2001),  
 Fuller (1999), Chidumayo and Frost (1996) and Fuller *et al.* (1996).

### 2.3 Estimating potential evaporation

280 The Penman-Monteith (PM) equation (i.e., Eq. 6 in Allen *et al.*, 1998) was used to estimate  
 reference evaporation ( $E_o$ ) from which potential evaporation for the miombo woodland was  
 calculated using Eq. (1). All required inputs for the PM equation were obtained at the study site.  
 To obtain potential evaporation for the miombo woodland the crop coefficient ( $K_c$ ) value of 0.8  
 was used. The  $K_c$  value used was obtained from literature (Hunink *et al.*, 2015). The  $K_c$  value was  
 285 estimated based on the miombo woodland in Mahele, Tanzania. The  $K_c$  value for the Mahele region  
 in Tanzania was utilised because it is situated in the wet miombo region receiving rainfall of about  
 1000 mm year<sup>-1</sup>, with similar seasonality as the study site in Mpika, Zambia in which rainfall starts  
 late October and ends early May (Hunink *et al.*, 2015). Furthermore, despite its vast expanse there  
 is unexpectedly little variation in miombo woodland species diversity (Chidumayo and Gumbo,  
 2010). In this study the same  $K_c$  value was applied for the dry and the rainy season.

$$290 \quad E_{c(PM)} = K_c \cdot E_o \quad (1)$$

### 2.4 Conventional Bowen ratio energy balance method

295 The Bowen ratio is the proportion of the sensible ( $H$ ) to the latent heat flux ( $LE$ ) of a  
 surface. In simple form the Bowen ratio can be determined by multiplying the psychrometric  
 constant by the ratio of the temperature and vapour pressure gradients as expressed in Eq. (2):

$$\beta \approx \gamma \cdot \Delta T_a / \Delta e_a \quad (2)$$

300 where  $\gamma$  is the psychrometric constant (kPaK<sup>-1</sup>) (Eq. 3),  $\Delta T_a$  is the difference in temperature (K)  
 between two heights and  $\Delta e_a$  is the difference in the actual vapor pressure (kPa) between the same  
 two heights. The psychrometric constant is obtained using the relationship between air pressure  
 and ventilation of the psychrometer as given by Allen *et al.* (1998) in Eq. (3):

$$\gamma = 0.0665 \times 10^3 \cdot P \quad (3)$$

where,  $P$  is the atmospheric air pressure (kPa).

305 Despite the simplicity of the approach, the energy balance Bowen ratio method needs to  
 meet several conditions in its application for results to be reliable. For instance, the two levels at  
 which the temperature and vapor pressure are measured must be within the boundary layer of the  
 air flow, which has adjusted to that particular land surface. The measurement site therefore requires  
 extensive fetch in the upwind direction for the airflow over the land surface, in this case the forest  
 310 canopy. A fetch of at least 100 times the maximum height of measurement is typically suggested  
 for such measurements (Angus and Watts, 1984).

## 2.5 BR-DTS energy balance approach

The BR-DTS method measures air temperature gradients directly and the vapour pressure gradients are estimated via the wet bulb temperatures using Eq. (4):

$$e_{a(T_a)} = e_{s(T_w)} - \gamma(T_a - T_w) \quad (4)$$

where  $e_{a(T_a)}$  is the actual vapour pressure,  $e_{s(T_w)}$  is the saturated vapour pressure,  $\gamma$  is the psychrometric constant,  $T_a$  and  $T_w$  are the dry bulb and wet bulb temperature. Details on this calculation can be found in Schilperoort *et al.* (2018).

In contrast to the conventional Bowen Ratio Energy Balance, where only the temperature and vapour pressure at two heights are used, the BR-DTS method uses all measuring points between two heights. All dry and wet bulb temperatures within this segment are used to determine the gradients according to a natural logarithmic of the height (Eqs. 5 and 6):

$$T_{a_{fit}} = a \cdot \ln(z) + b \quad (5)$$

$$e_{a_{fit}} = c \cdot \ln(z) + d \quad (6)$$

The fitted DTS temperature and actual vapour pressure at 11 m (bottom) and 15.5 m (top) heights above the forest canopy were used to estimate the Bowen ratio following Eqs. (7) – (9):

$$\beta = \gamma \cdot \frac{\Delta T_{a_{fit}} / \Delta z}{\Delta e_{a_{fit}} / \Delta z} \quad (7)$$

in which;

$$\Delta T_{a_{fit}} / \Delta z = T_{a_{fit}}(z=\text{top}) - T_{a_{fit}}(z=\text{bottom}) / (z=\text{top} - z=\text{bottom}) + \Gamma(z) \quad (8)$$

and

$$\frac{\Delta e_{a_{fit}}}{\Delta z} = \frac{e_{a_{fit}}(z=\text{top}) - e_{a_{fit}}(z=\text{bottom})}{z=\text{top} - z=\text{bottom}} \quad (9)$$

where  $\Delta T_{a_{fit}}$  is the difference in air temperature (K) of the fitted curve between the bottom and top of the height range used for the Bowen ratio,  $\Delta e_{a_{fit}}$  is the difference in actual vapor pressure (kPa) of the fitted curve over the same height as in temperature,  $\Delta z$  is the difference in height (m) between the two points and  $\Gamma$  is the adiabatic lapse rate (normally around  $0.01 \text{ Km}^{-1}$ ). During dry and unsaturated conditions, very small temperature and vapor pressure gradients could result in errors in the Bowen ratio estimates. The use of the lapse rate is recommended in such circumstances (Schilperoort *et al.*, 2018; Barr *et al.*, 1994). In this study the lapse rate was applied throughout the study period following Schilperoort *et al.* (2018). Before fitting the raw DTS data was calibrated following the approach by des Tombe *et al.* (2020).

## 2.6 DTS data quality control

The quality control process followed the demonstration by Schilperoort *et al.* (2018) as shown in Eqs. (10) and (11). Only diurnal temperature and actual vapour pressure data (i.e., obtained between 06AM and 18PM were considered). This is because night time actual evaporation was not estimated, as it was assumed to be negligible. The correlation coefficient of determination ( $r^2$ ) values for fitted vapour pressure were used for quality control. The fitted actual



vapour pressure with  $r^2$  values below 0.2 and Bowen ratio values approaching -1.1 and -0.9 were removed from the data and gaps filled by the regression method. The coefficients ( $r^2$ ) for dry and wet bulb temperature were not considered because the high uncertainty in temperature is propagated in vapour pressure.

$$\text{Flag 1: } r^2_{ea,z} > 0.20, \quad (10)$$

$$\text{Flag 2: } \beta < -1.1 \text{ or } \beta > -0.9. \quad (11)$$

355

## 2.7 Actual evaporation estimation

Several studies (i.e., Buttar *et al.*, 2018; Euser *et al.*, 2014; Xing *et al.*, 2008; Spittlehouse and Black, 1980) demonstrated the use of the Bowen ratio in combination with the energy balance to assess the latent heat flux. In combination with other energy terms the Bowen ratio energy balance estimate of evaporation ( $E_\beta$ ) can be performed using Eq. (12):

$$E_\beta = (R_n - M - G_s)/L(1 + \beta) \quad (12)$$

where  $R_n$  is the net radiation flux ( $\text{Wm}^{-2}$ ),  $L$  being the latent heat of vaporization of water ( $2.45 \text{ MJkg}^{-1}$ ),  $G_s$  is the ground heat flux ( $\text{Wm}^{-2}$ ) and the  $M$  is the change in energy storage in the system canopy storage ( $\text{Wm}^{-2}$ ). The ground heat flux in this study was estimated from the net radiation at hourly intervals. For the Penman-Monteith model (Allen *et al.*, 1998), the ground heat flux for hourly ( $G_{hr}$ ) or shorter periods for reference/growing crop, can be estimated from net radiation ( $R_n$ ) using Eq. (13) during daylight and Eq. (14) during night-time periods. However, the  $G_s$  for woodlands is different from that of grass or growing crop. Some studies, in different woodlands, found  $G_s$  to be between 5 – 24 percent of  $R_n$  (i.e., Ma *et al.*, 2017; Van Der Meulen and Klaassen, 1996; McCaughey, 1982). With reference to observed  $G_s$  in different woodlands, this study selected 10 percent of  $R_n$  for hourly daytime  $G_s$ . The 10 percent was selected because the wet miombo woodland at the study site, at any period of the year, has about 70 percent canopy closure (Fuller, 1999; Frost, 1996). Furthermore, during the dry season (May-October) top soil (0 - 30 cm) moisture, was not expected to vary significantly.

$$G_{hr} = 0.1R_n \quad (13)$$

$$G_{hr} = 0.5R_n \quad (14)$$

We follow Schilperoort *et al.* (2018) in their observation that the change in canopy storage ( $M$ ) can be ignored. The  $E_\beta$  was estimated at hourly intervals and then summed up into daily and 10-day values.

380

## 2.8 Comparison of satellite-based evaporation estimates to field observations

For comparison to satellite-based evaporation estimates, field actual evaporation estimates were aggregated into 10-day and monthly data sets to align with the satellite-based evaporation estimates temporal scales. The native spatial resolutions (Table 1) of the satellite-based evaporation estimates were used because these products are mostly applied or used in their native resolution configuration. All satellite-based estimates used in this study can be obtained free of cost and are readily available. In Africa, financial constraints are a resource limitation. Therefore,

385

390 to have access to free of cost satellite evaporation products has significant advantage. Furthermore,  
 in the context of this study, sufficient historical data was available and all products are  
 continuously being processed which assures, to a large extent, future availability of data for  
 continued monitoring. Except for the WaPOR, which had a continental spatial extent, the rest of  
 the satellite-based evaporation estimates had global spatial extent. However, all four products  
 395 adequately covered the extent of the miombo woodland, which was the focus of this study. All  
 four satellite-based estimates were accessed online from different platforms as indicated in Table  
 1. Details of the methods for each satellite-based evaporation estimate can be found in the specific  
 documents cited in Table 1.

## 2.9 Statistical analysis

400 The field observations and satellite-based evaporation estimates were compared using the  
 Kendall and Pearson correlation coefficients, correlation coefficients of determination ( $R^2$ ) (Eq.  
 15), Root Mean Square Error (RMSE) (Eq. 16) and the mean bias error (MBE) (Eq. 17). These are  
 some of the commonly used techniques for comparing pairs of variables and assessing  
 performance of hydrological models (Helsel *et al.*, 2020). The coefficient of determination  
 405 measures the strength of relationship between the observed with the modelled values. The  
 relationship between variables is strongest as the  $R^2$  value approaches 1. The RMSE quantifies the  
 deviation of the predicted values from the observed values. The model predictions are more  
 accurate as the RMSE value approaches zero. The mean bias error is the measure of the extent to  
 which modelled values deviate from observed values and indicates whether there is under or  
 410 overestimation. The smaller the mean bias error value the less the deviation of the predicted values  
 from the observed values (Helsel *et al.*, 2020). Negative value indicates underestimation while a  
 positive value indicates overestimation.

$$R^2 = 1 - \frac{\sum_i (O_i - P_i)^2}{\sum_i (O_i - \bar{O})^2} \quad (15)$$

415

$$RMSE = \sqrt{\frac{1}{n} \sum_{i=1}^n (p_i - o_i)^2} \quad (16)$$

$$MBE = \frac{1}{n} \sum_{i=1}^n (p_i - o_i) \quad (17)$$

420

where,  $O_i$  is the flux tower observed evaporation,  $\bar{O}$  is the mean of the observed evaporation,  $P_i$  is  
 the modelled evaporation and  $n$  is the number of observations.

425

Table 1 Characteristics of satellite evaporation products used in this study

Evaporation product	Spatial coverage	Temporal resolution	Spatial resolution	Estimation approach	Source of input data	Reference	Source of data
SSEBop	Global	Decadal	1000 m	P-M equation, ET fractions from $T_s$ estimates	MODIS	(Savoca et al., 2013).	Climate engine
Access: <a href="https://clim-engine.appspot.com/ClimateEngine">https://clim-engine.appspot.com/ClimateEngine</a> (Accessed 2020)							
WaPOR v2.	Continental	Decadal	250 m	P-M Equation, calculates E, T and I separately	MODIS		WaPOR Portal
Access: <a href="https://wapor.apps.fao.org/home/WAPOR_2/1?theme=L1_AFTI_D&amp;dim=DEKAD:%255B2020-08-11%252C2020-08-21">https://wapor.apps.fao.org/home/WAPOR_2/1?theme=L1_AFTI_D&amp;dim=DEKAD:%255B2020-08-11%252C2020-08-21</a>							
GLEAM (v3.6a and v3.6b)	Global	Daily	27000 m	P-T equation, soil stress factor	AMSR-E, LPRM, MSWEP+MSWX	(Martens et al., 2017); (Miralles et al., 2011)	FTP server
Access: <a href="https://www.gleam.eu/">https://www.gleam.eu/</a>							
MOD16	Global	8-day	500 m	P-M equation, surface conductance model	MODIS	(Mu et al., 2011)	Global subsets tool: MODIS/VIRS Land Products
Access: <a href="https://modis.ornl.gov/globalsubset/">https://modis.ornl.gov/globalsubset/</a>							

430

435

440

445

450

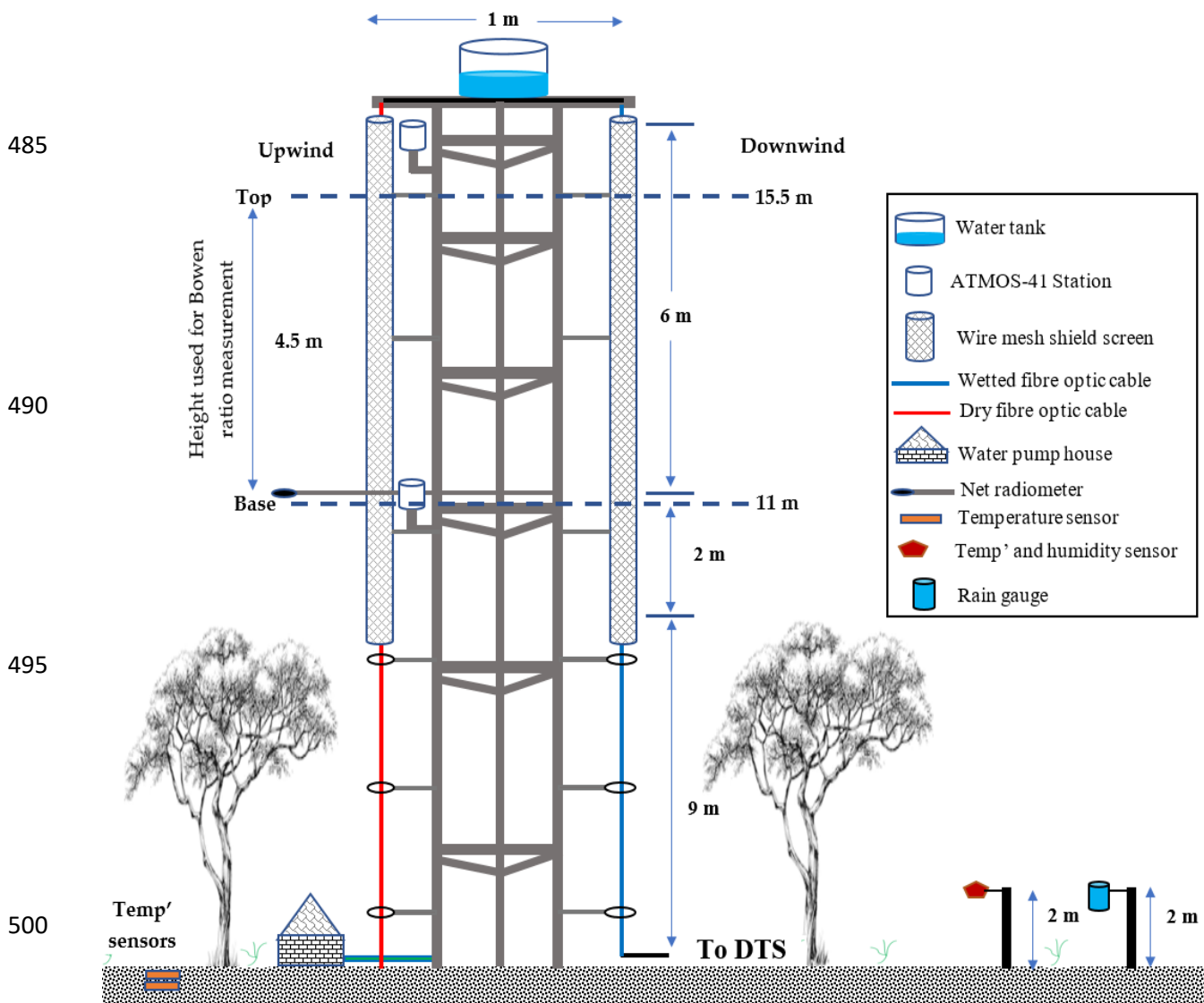
455

460

465

## 2.10 Flux observation tower setup

Temperature was measured using a single 3 mm 1 km long white jacket duplex single tube fibre optic cable connected to the DTS machine. The cable's ends were spliced together to loop the signal back making a double ended configuration. Double ended configuration was explained in (van de Giesen *et al.*, 2012). The DTS machine used is the Silixa XT-DTS (Silixa Ltd, 2016) with sensing capabilities as shown in Table A1 in the appendices. A calibration bath was set up in which 10 m of the fibre cable from the DTS was placed in water together with 2 x 2 PT-100 probes for the entire period of the measurements. The DTS was set to take temperature measurements at a 5 minutes interval. The fibre optic cable was firmly secured on a 17.25 m vertical tower (illustrated in Figs. 3 and 4) following the techniques demonstrated by Euser *et al.* (2014) and Schilperoord *et al.* (2018). One section of the fibre cable (blue line in Fig. 3) from the DTS machine was wrapped in cotton cloth (Fig. 4 a) starting at the base up to the top of the tower and was always kept wet for estimation of what is known as wet bulb temperature.



**Figure 3.** Schematic drawing (not to scale) of the field set-up of the observation tower at the study site in Mpika, Zambia.



**Figure 4.** Optic fibre cable wrapped in the wet cloth (a) for collecting the wet bulb temperature and (b) optic fibre cable not wrapped in cloth for estimating the dry bulb temperature on the observation tower at Mpika site, Zambia. Under canopy view without screens.

505

510

515

520

525

530

535

540

545 Separated by a 1 m gap the other section of the fibre cable (red cable in Fig. 3) was not wrapped  
(Fig.4 b) in a cotton cloth and was designated to measure the air temperature. The cloth on the  
designated wet cable was kept constantly wet by the water that was pumped to the 65-litre tank  
placed at the top of the tower. The water flow from the water tank to the fibre cable was regulated  
(roughly 20 litres per day) to ensure a smooth and constant wetting of the cotton cloth. As  
550 recommended by Euser *et al.* (2014) the wet cable was placed on the downwind side while the dry  
cable was placed on the upwind side of the tower. The type of cables arrangement prevented water  
from the wetted cotton cloth for the wet cable from splashing onto the dry cable. This set up of  
cables ensured that the dry bulb temperature measurements were not affected. Furthermore, a gap  
of 1 m also contributed to ensuring that the dry cable was not affected by the water from the wetted  
555 cotton cloth. Following the recommendation by Schilperoort *et al.* (2018) both the wet and dry  
cables were shielded from direct sunlight by 8-meter long two layered wire mesh screens placed  
above the canopy (Fig. 3).

A portion of data, within 2 m of the top of the tower, was not included in the assessment  
because it was assumed to influence the wet clothe/wet cable temperature as the water from the  
560 tank above the tower was at a temperature slightly higher than the air temperature. The 2 m length  
was considered a sufficient length for the temperature of the water from the tank to be uniform  
with the environment and suitable for measurement of wet bulb temperature. For this study the  
tower height was 17.25 m and the fetch was beyond 1.7 km. The fetch covered an area with more  
than 20 km of uninterrupted miombo woodland with typical sporadic small seasonal wet grasslands  
565 (Fig. A1 b in the appendices). Furthermore, Spittlehouse and Black (1980) showed that greater  
accuracy in the Bowen ratio measurements could be attained by increasing the separation between,  
and interchanging the psychrometers. In this study it was ensured that more than 4 metres  
separation were between the two levels at which the temperature and actual vapour pressure were  
selected above the canopy.

570 To obtain the net radiation ( $R_n$ ,  $Wm^{-2}$ ) the NR Lite 2 net radiometer (Kipp & Zonen CNR4)  
was installed at about 2 m above the canopy (that is 11 meters from the ground) (Fig. 3). The net  
radiation was logged at an hourly interval using the Campbell CR10X data logger. With reference  
to estimates in other ecosystems (i.e., Ma *et al.*, 2017; Van Der Meulen and Klaassen, 1996;  
McCaughey, 1982) an hourly ground heat flux ( $G_o$ ,  $Wm^{-2}$ ) was estimated at 10 percent of the  
575 hourly net radiation. The soil moisture was obtained using two HOBOnet ECH2O™ EC-5 soil  
moisture sensors placed at 5 cm and 30 cm in the soil sub-surface. The Onset HOBO S-THB-  
M002 smart sensors were used to measure under-canopy air temperature and relative humidity at  
2 m above the ground and logged at a 5-minutes interval. Using the Onset HOBO RG2-M –  
raingauge rainfall was measured at the flux tower site 2 m above ground and away from tree  
580 canopies (Fig. 3). The rain gauge was logged at a 5-minutes interval.

The air temperature and actual vapour pressure to compare with the DTS measurements  
were obtained using the METER Group Em60G ATMOS-41 all-in-one weather station sensors.  
The ATMOS-41 sensors meet standards for the World Meteorological organization (WMO). The  
accuracy of the ATMOS-41 is  $\pm 0.6$  °C for air temperature at below 40 °C and  $\pm 3\%$  for relative  
585 humidity. Details on the capabilities of the ATMOS-41 sensors can be found in the manual (Meter  
Group AG, 2020). Characteristics of selected ATMOS-41 sensors are given in Table A2 in the  
appendices. Two ATMOS 41 stations were used, placed at 2 m above the canopy (11 meters from  
the ground) and at 8 meters above the canopy (16.5 meters from the ground) (Fig. 3). The ATMOS-  
41 station sensors were logged at a 5-minutes interval same as the DTS.

## 590 **3 Results and discussion**

### **3.1 Evaporation flux footprint/Fetch analysis**

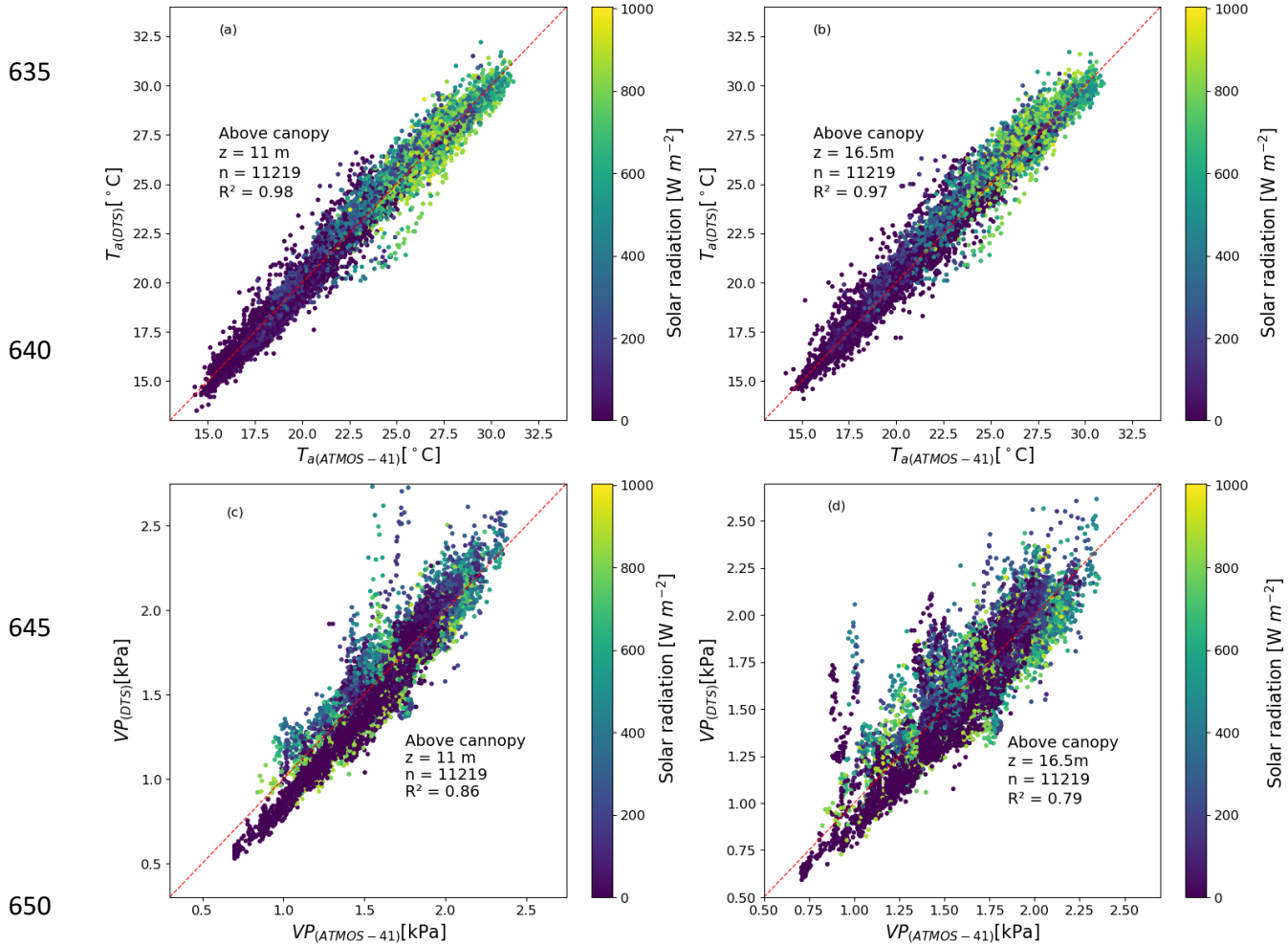
An analysis of the evaporation flux footprint was performed using the wind rose (Fig. A1 in the appendices). The wind rose was used to obtain the most frequent and consistent wind direction to help determine which part of the study site had the greatest influence on the evaporation flux. The wind was predominantly coming from the eastern direction with wind speed ranging between 2 – 6 m s<sup>-1</sup>. The use of the wind direction guided the selection of pixels of satellite-based evaporation estimates for comparison with BR-DTS evaporation estimates  $E_{a(DTS)}$ . Using the identified predominant wind direction, the fetch/flux footprint equal to 100 times the height (17.25 m) of the observation tower was designed. Thus, the fetch/flux footprint was designed to cover a 1.725 by 1.725 km area (approximately 2 km by 2 km grid).

### **3.2 DTS data quality control**

The DTS measurements were conducted from 1 May to 25 December, 2021. Following the quality control processes by Schilperoort *et al.* (2018), DTS data for seven days (2 in June, 2 in August, 2 in September and 1 in October) did not pass the quality test. These data were collected on the days when challenges of keeping the entire wet fibre cable cloth constantly wet were experienced. The data were removed and gaps filled by the linear regression method. Due to challenges with power supply for the DTS machine, six days in December (26th to 31st) were not available for analysis.

### **3.3 Comparison of DTS-based estimates with the ATMOS-41 estimates**

DTS estimates of air temperature and actual vapour pressure were compared with the ATMOS41 estimates at 11 m and 16.5 m heights above the forest canopy on the tower (Fig. 3). At height 16.5 m the DTS-based estimates and the ATMOS-41-based estimates showed relatively lower correlation ( $R^2 = 0.97$ ; 0.79 for air temperature and actual vapour pressure respectively). However, at 11 m the correlation coefficients ( $R^2 = 0.98$ ; 0.86 for air temperature and actual vapour pressure respectively) were relatively higher (Fig. 5 a - d). The lower correlation coefficients at 16.5 m may be explained by the installation of the ATMOS-41 weather stations above the forest canopy that exposed the temperature sensors to direct sunlight in early morning and late afternoon. This influenced the temperature measurements and resulted in deviations in ATMOS-41 air temperature for the two periods. Additionally, the water from the tank on the tower did not always reach the wet bulb temperature at the 16.5 m height resulting the overestimation of the DTS-based actual vapour pressure. Overall, the DTS and ATMOS-41-based estimates, at both heights, showed good agreement, sufficient for this study. The accuracy properties of the ATMOS-41 are shown in Table A2 in the appendices.



**Figure 5.** Comparison of DTS temperature ( $T_{a(DTS)}$ ) and actual vapour ( $VP_{(DTS)}$ ) measurements with the *ATMOs-41* ( $T_{a(ATMOs-41)}$  and  $VP_{(ATMOs-41)}$ ) measurements at 11 m and 16.5 m above the forest canopy.

655

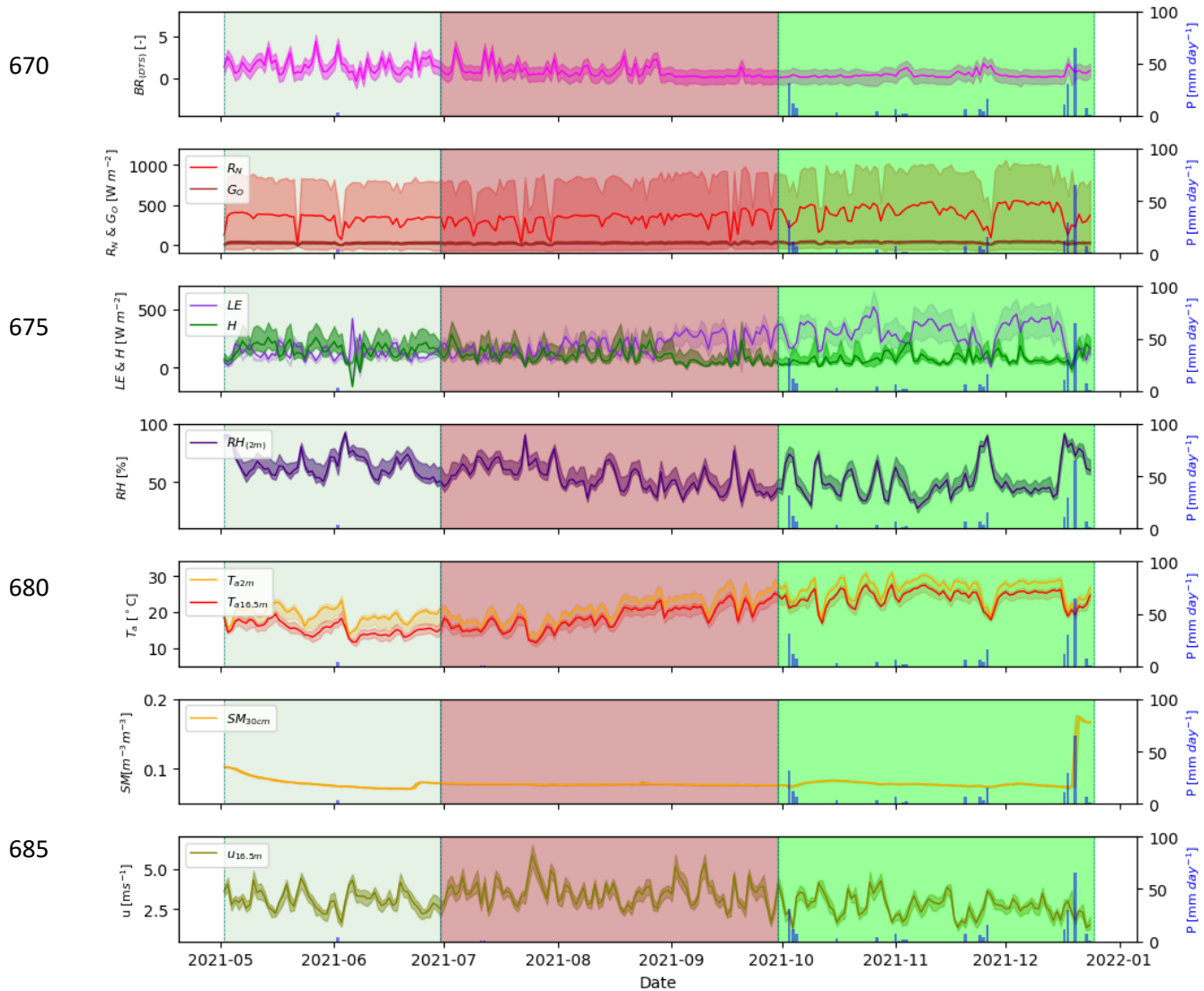
### 3.4 Meteorological conditions

The wind direction was mainly between the North-East and South-East direction (approx. 50 – 110 degrees) (Fig. A1 in the appendices). Wind speed ( $u$ ) ranged between 0.7 - 8  $m s^{-1}$  with relatively higher speeds observed in the dry season between July and September during the dormant phenophase (Figs. 5 and 6). Minimum and maximum net radiation ( $R_N$ ) were observed during the dry season and wet season respectively. The drop in air temperature ( $T_a$ ) and relative humidity ( $RH$ ) coincided with reduced soil moisture (SM) in the dormant phenophase in the dry season (Fig. 6).  $T_a$  ranged between 7 – 32° C. Relative humidity negatively co-varied with  $T_a$  and  $R_N$ .

665

Using the DTS-based Bowen ratio ( $BR_{DTS}$ ), available energy was partitioned into sensible ( $H$ ) and latent heat ( $LE$ ) fluxes (Fig. 6 and Fig. A2 in the appendices). The  $H$  and  $LE$  co-varied with latent heat predominantly exceeding sensible heat across phenophases. On days with precipitation ( $P$ ) the  $H$  and  $LE$  appeared to be equally partitioned.



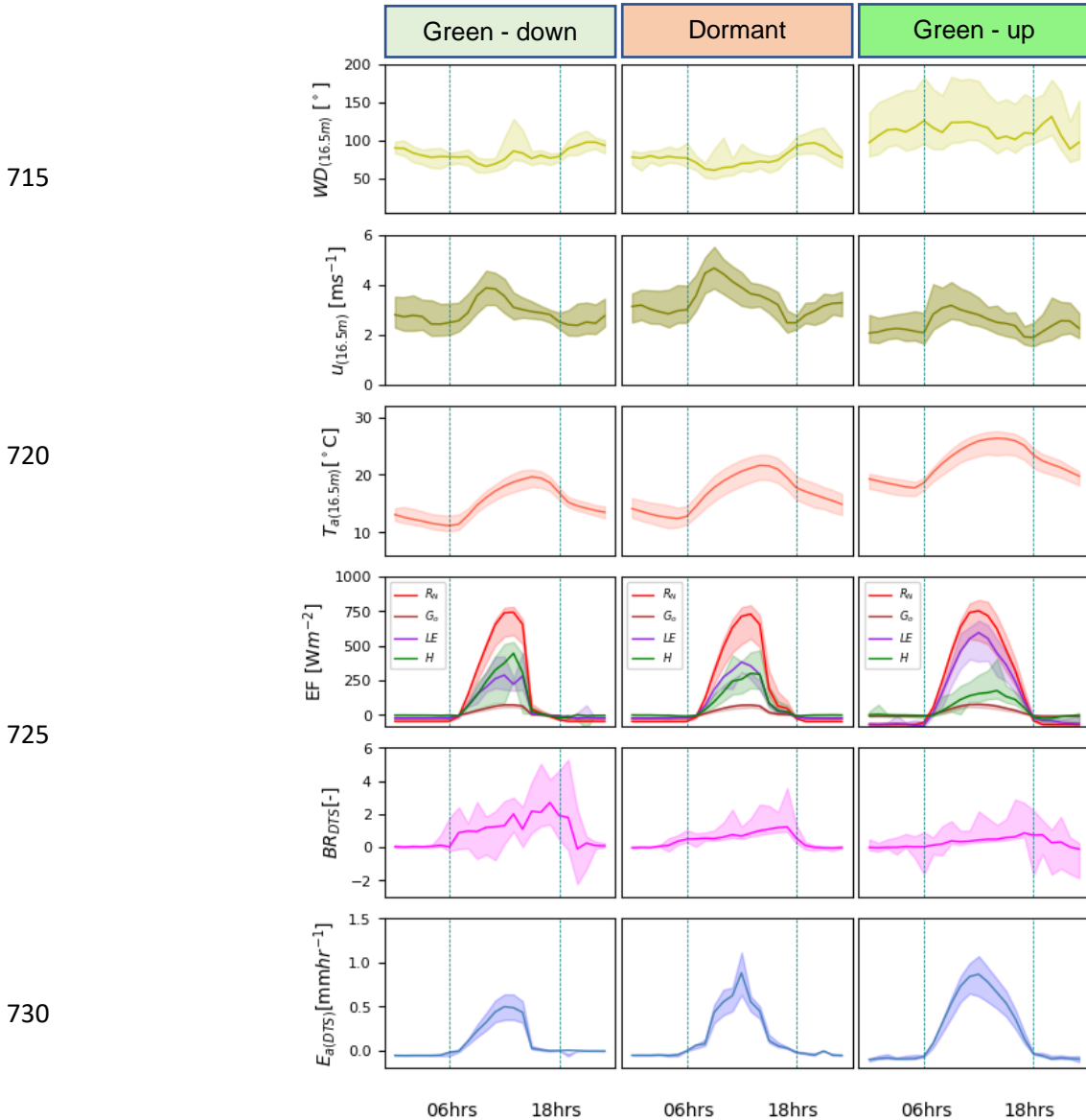


**Figure 6.** Daily diurnal meteorological conditions at the Mpika study site in the Luangwa Basin for the period May 2021 – December 2021. Shaded area for variables is the standard deviation. Shaded area May-June is the canopy green-down phenophase, July-September is the dormant phenophase and October-December is the green-up phenophase.

### 3.5 Canopy phenophase based Bowen ratio and evaporation trend

During the green-down phenophase the Bowen ratio was highest while air temperature was lowest in a relatively lower net radiation and vapour pressure environment. During the dormant and green-up phenophases the Bowen ratio was lowest while the temperature was highest in relatively higher net radiation and lower relative humidity conditions (Figs. 6, 7 and Fig. A2 in the appendices). The green-down phenophase (i.e., May-June) showed the lowest air temperature and net radiation (Figs. 6 and 7) and exhibited the highest mean diurnal Bowen ratio (BR) (i.e., diurnal mean BR  $\approx 1.3$ ) indicative of the energy being largely expended as sensible heat compared to the dormant (i.e., diurnal mean BR  $\approx 0.27$ ) and green-up (i.e., diurnal mean BR  $\approx 0.35$ ) phenophases

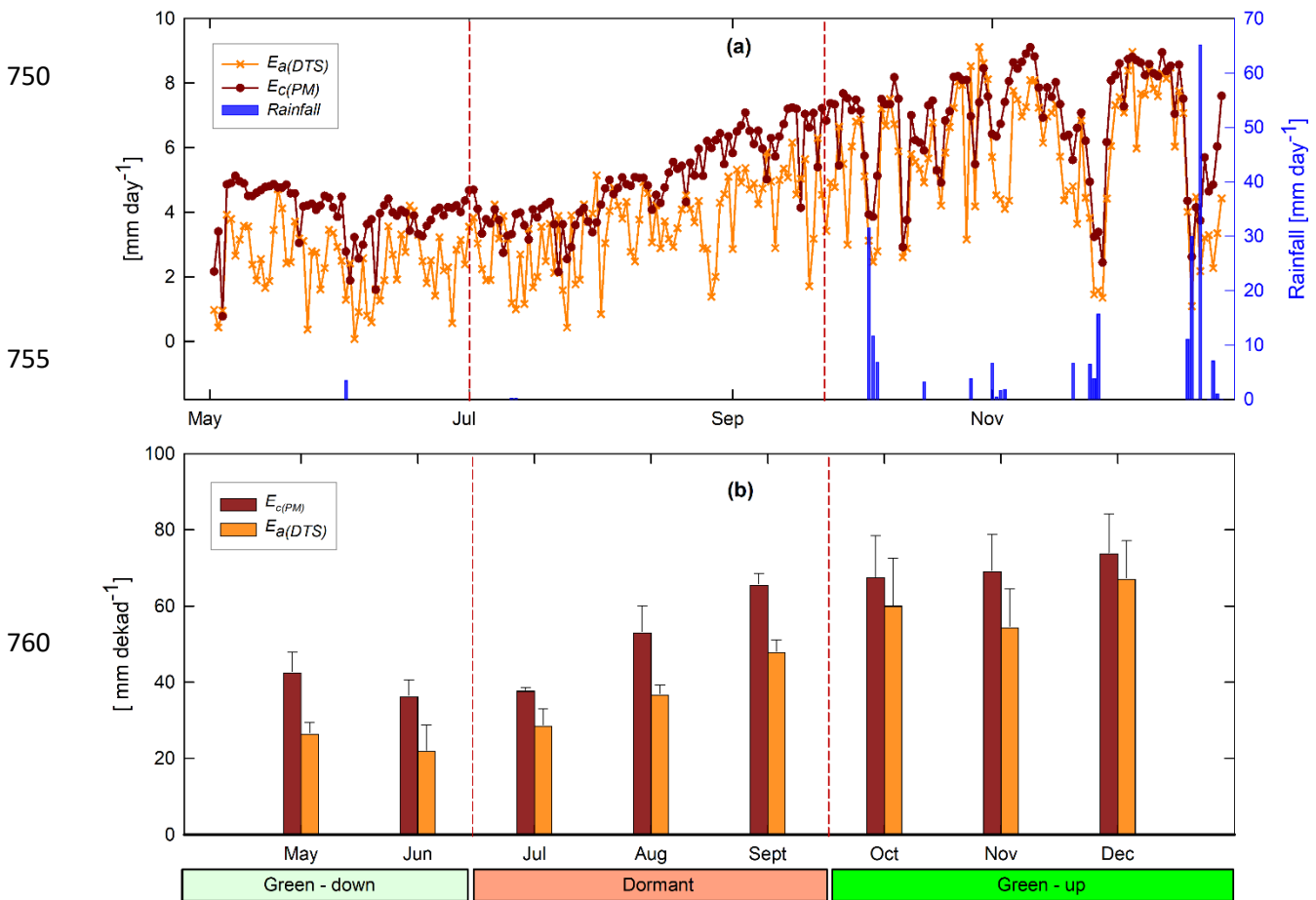
705 with raised air temperature and net radiation when the energy was mainly expended as latent heat (i.e., diurnal mean  $BR < 0.4$ ) (Figs. 6 and 7). Alternating energy partitioning was detected across the phenophases as can be seen through the mean Bowen ratio, sensible and latent heat fluxes (Figs. 6 and 7). Diurnal energy partitioning interchange, across the three phenophases, occurred round 06 AM and 6PM (Fig. 7). The study site is situated in a warmer miombo region (Chidumayo and Gumbo, 2010). The observed alternating energy partitioning (i.e., Bowen ratio) pattern is similar to what has been observed in warm ecosystems and climates (i.e., Cho *et al.*, 2012) such as the miombo ecosystem. Consequently, diurnal evaporation pattern at the study site is dependent on daily energy partitioning, increasing with net radiation and air temperature (Figs. 6 and 7).



735 **Figure 7.** Canopy phenophase based hourly averages of wind direction ( $WD$ ), wind speed ( $u$ ), Energy flux ( $EF$ ) (net radiation ( $R_N$ ), ground heat flux ( $G_o$ ), latent heat flux ( $LE$ ) and sensible heat flux ( $H$ )), Bowen ratio ( $BR_{DTS}$ ) and actual evaporation ( $E_{a(DTS)}$ ). Shaded area is the standard deviation.

### 3.6 Comparison of potential evaporation and actual evaporation

$E_{a(DTS)}$  was estimated at diurnal (06 AM – 6 PM) hourly interval and then summed up into daily and dekadal estimates. Overall, daily  $E_{c(PM)}$  was higher than  $E_{a(DTS)}$  by an average of 17 percent (Fig. 8 a). However, under low temperature conditions (i.e., June – July) on some days the  $E_{a(DTS)}$  was higher than the  $E_{c(PM)}$  (Fig. 8 a). In higher air temperature and low canopy cover (i.e., in the dormant phenophase August and September),  $E_{c(PM)}$  was higher than  $E_{a(DTS)}$ . The soil water limitations and changes in leaf colour (Fig. 9 and Fig. A3 in the appendices) may have resulted in significantly higher  $E_{c(PM)}$  compared to  $E_{a(DTS)}$ . The  $E_{a(DTS)}$  and  $E_{c(PM)}$  showed similar behaviour (i.e., trend and magnitude) across canopy phenophases with strong correlation ( $r = 0.95$ ) at dekadal scale (Fig. 8 b and Table A4 in the appendices). For both  $E_{a(DTS)}$  and  $E_{c(PM)}$ , significant variations (i.e., coefficients of variations and standard deviations) in evaporation estimates were observed in the green-up phenophases (i.e., October – December) (Fig. 8 b, Table A3 in the appendices).



**Figure 8.** (a) May – December 2021 daily (6AM - 6PM) estimates of evaporation  $E_{a(DTS)}$  using the *BR-DTS* and  $E_{c(PM)}$  using the *PM*. (b) Comparison of dekadal evaporation estimates between  $E_{a(DTS)}$  estimates and  $E_{c(PM)}$  ( $E_c = K_c \cdot E_o$ ). The  $E_{a(DTS)}$  and  $E_{c(PM)}$  show good agreement in both dry and rainy seasons as well as across canopy phenophases. Overall, at dekadal scale the  $E_{c(PM)}$  is relatively higher than  $E_{a(DTS)}$  (b). Phenophases classification: May-June is the green-down phenophase, July-September is the Dormant phenophase and October-December is the green-up phenophase.

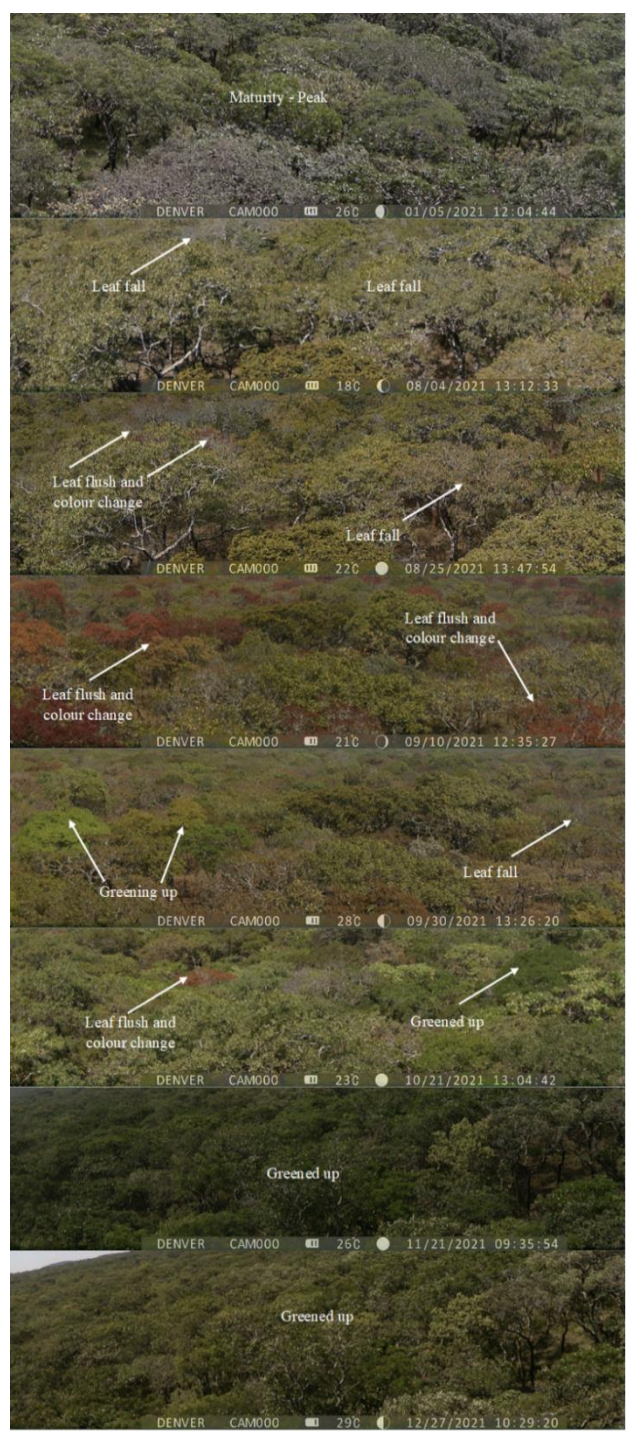
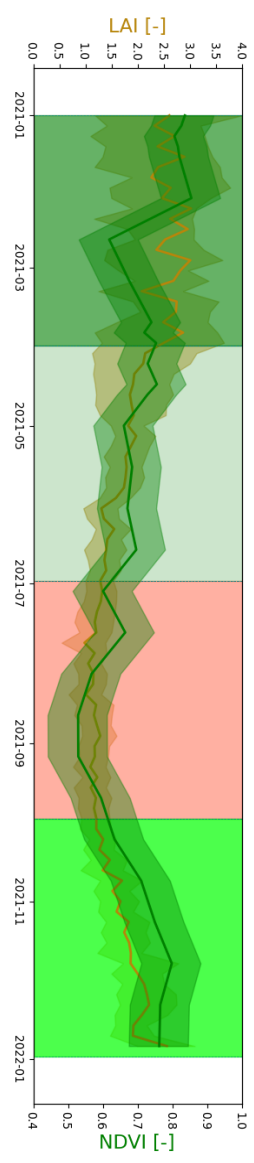
775

780

785

790

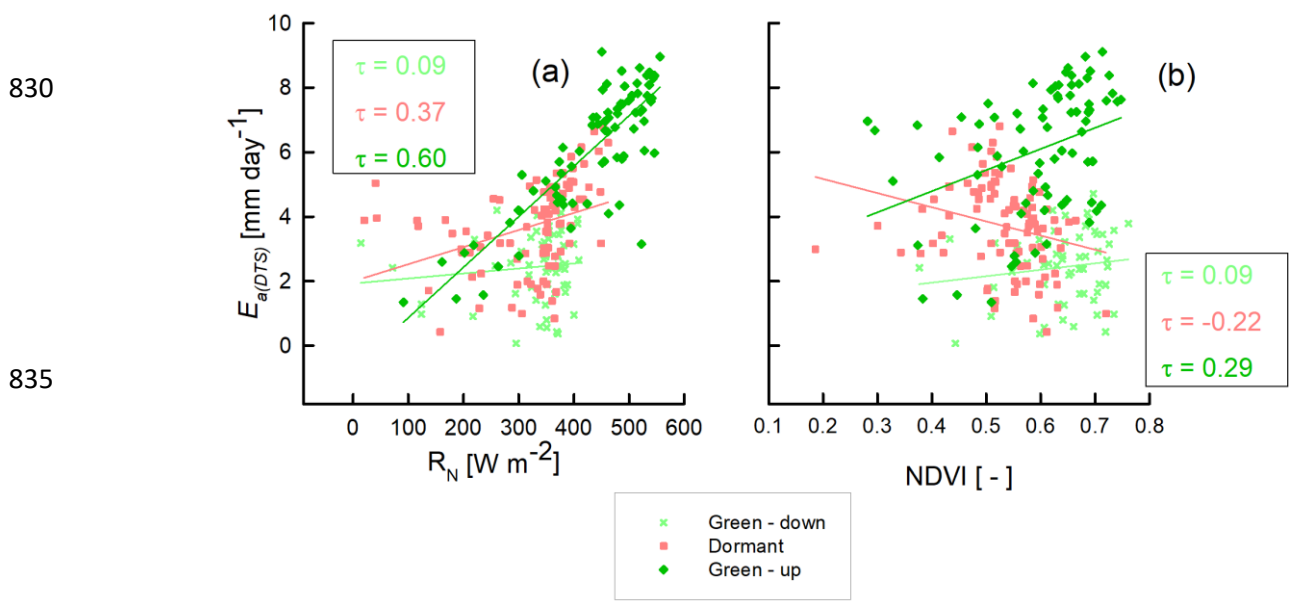
795



**Figure 9.** Selected aerial view images of the upwind direction (East direction) above the canopy from the flux tower across phenophases from January-December 2021. Shaded boxes are the phenophases: Peak/maturity (January-March), senescence\green-down (April-June), dormant (July – September) and green-up (October – December). The satellite-based *NDVI* and *LAI* appear to agree with the changes in the canopy cover. Shading in variables *LAI* and *NDVI* is the minimum and maximum values.

805 The high coefficients of variations in the magnitude of actual evaporation in the dormant and green-up phenophases could have been caused by changes in both meteorological conditions and forest canopy cover characteristics such as leaf fall, leaf flush and leaf colour (i.e., Figs. 6 and 9).

The  $E_{a(DTS)}$  appeared to follow the trend of available energy (i.e., net radiation, air temperature) (i.e., Kendall's tau ( $\tau$ ) from 0.09 to 0.6) instead of the changes in forest canopy cover (i.e., Kendall's tau ( $\tau$ ) from 0.09 to 0.2) (Figs. 6 and 10). For instance, the lowest  $E_{a(DTS)}$  was observed during the lowest net radiation and air temperature in June while the highest  $E_{a(DTS)}$  was observed during the period with highest net radiation in the green-up phenophase. In the dormant phenophase, the  $E_{a(DTS)}$  increased as NDVI reduced ( $\tau = -0.22$ ). The upward trend in the dormant  $E_{a(DTS)}$  even when forest canopy cover (i.e., NDVI) reduced may have been caused by the access to deep soil moisture and vegetative water storage (Tian *et al.*, 2018; Vinya *et al.*, 2018) by plants that had either not started the leaf fall or those that already acquired new leaves and had greened up (Fig. 9. The leaf fall and leaf colour transitions (i.e., Fig. 9 and Fig. A3 in the appendices) in some miombo species, at any given time, across the three phenophases, is compensated by the leaf flush and greening up process in other species, which ensures that about 70% evaporative surface (i.e., canopy cover) (Fuller, 1999, Frost, 1996 and Fig. 9) is available at any period of the year. 820 The canopy cover percentage increases as the phenophases transition from dormant to the peak phenophase (i.e., Fig. 9 and Fig. A3 in the appendices). Zimba *et al.* (2020) showed that August/September and not June, had the highest plant water stress (i.e., lowest NDII (Sriwongsitanon *et al.*, 2015)). June showed the lowest net radiation and air temperature (Fig. 6). However,  $E_{a(DTS)}$  for August/September was higher than that for June. This  $E_{a(DTS)}$  trend and 825 magnitude of actual evaporation demonstrates available energy, coupled with adapted physiological processes, as the possible main driver (s) of the evaporation of the miombo woodland during the dormant phenophase (in the cool dry season and warm pre-rainy season).



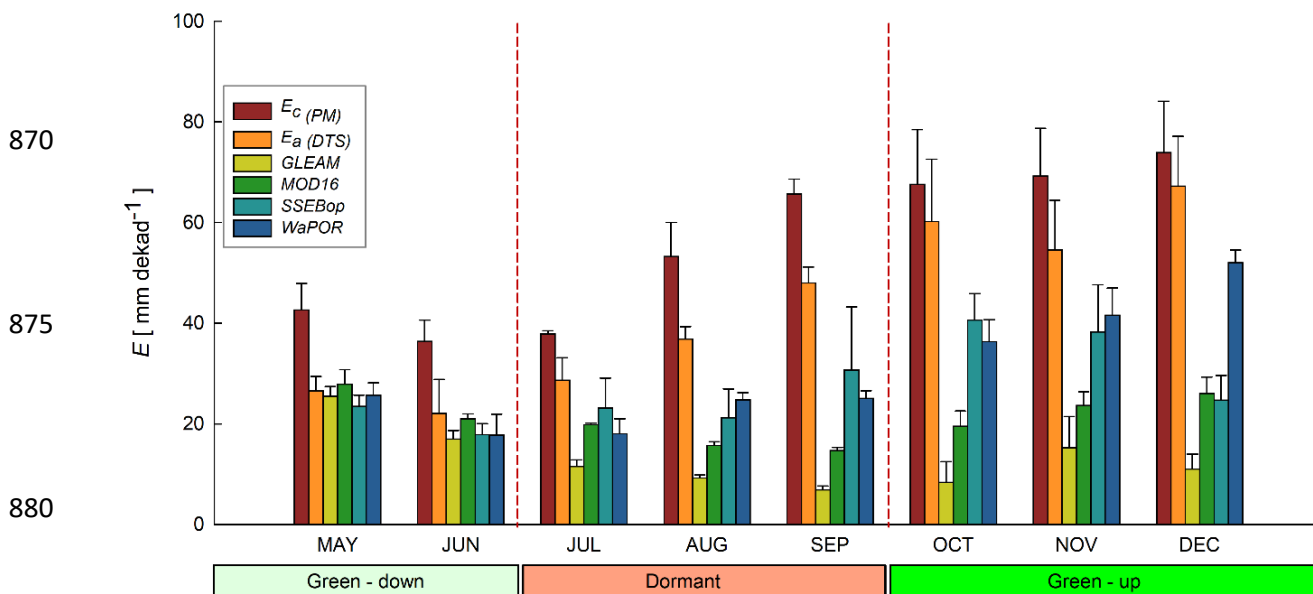
840 **Figure 10.** Kendall correlation of  $E_{a(DTS)}$  with  $R_N$  and  $NDVI$  in the Green-down, Dormant and Green-up phenophases of the miombo woodland at Mpika site, Zambia.

845 In the green-up phenophase,  $E_a(DTS)$  increased with increase in net radiation and NDVI ( $\tau$   
 = 0.60; 0.29 respectively) (Fig. 10). The highest net radiation and air temperature were observed  
 in the green-up phenophase (Fig. 6). The NDII values (i.e., vegetation water content) started to  
 rise in September (Zimba *et al.*, 2020). The increase in the  $E_a(DTS)$  from July was sustained through  
 850 October to December (green-up phenophase) (Fig. 8), before the commencement of stable rains.  
 The NDII trend (Zimba *et al.*, 2020) in the green-up phenophase may have been as a result of the  
 increased canopy cover as proxied by the LAI and NDVI (Fig. 9) facilitated by the plants access  
 to deep soil moisture/ground water after the leaf flush. The  $E_a(DTS)$  green-up phenophase trend  
 855 could have been caused by increased canopy cover, access to deep soil moisture and high available  
 energy. The marginal drop of  $E_a(DTS)$ , in November, at the start of the rain season, could be  
 attributed to the drop in net radiation and air temperature (Fig. 6) influenced by cloud cover and  
 rainfall activity (Fig. 8a). During increased rainfall activity, atmospheric water demand may have  
 been lowered as relative humidity increased while net radiation reduced (Fig. 6). The same  
 explanation holds for the  $E_a(DTS)$  estimates in December.

### 3.7 Comparison of satellite-based evaporation estimates to field observations

#### 3.7.1 Comparison of temporal trend and magnitude

860 Among the four satellite-based evaporation estimates, only the WaPOR showed similar  
 trend to field observations across the three phenophases from May to December with strong  
 correlation coefficients ( $r = 0.85, 0.83$  with  $E_a(DTS)$  and  $E_c(PM)$  respectively) (Fig. 11 and Table A4  
 in the appendices). This was followed by SSEBop ( $r = 0.51, 0.58$  with  $E_a(DTS)$  and  $E_c(PM)$   
 respectively), while MOD16 showed the weakest correlation ( $r = 0.01, -0.01$  with  $E_a(DTS)$  and  $E_c(PM)$   
 865 respectively).



885 **Figure 11.** Bar graphs with standard deviation error bars comparing dekadal averages of  $E_a(DTS)$   
 and  $E_c(PM)$  with satellite-based evaporation estimates from May – December 2021. The WaPOR  
 shows a similar trend to both  $E_a(DTS)$  and  $E_c(PM)$ .

In contrast, GLEAM showed a negative correlation with both  $E_{a(DTS)}$  and  $E_{c(PM)}$  observations ( $r = -0.53, -0.48$  with  $E_{a(DTS)}$  and  $E_{c(PM)}$  respectively) (Fig. 11 and Table A4 in the appendices). With an exception of WaPOR, diversion from observed  $E_{a(DTS)}$  and  $E_{c(PM)}$  begun in July at the commencement of the rise in air temperature and net radiation, increased wind speed and the beginning of the dormant phenophase (i.e., typified by leaf fall, leaf flush and leaf colour change activities (Figs. 6, 9 and 11). Surprisingly, GLEAM appeared to substantially underestimate actual evaporation during the dormant and green-up phenophases (in the cool-dry season and warm pre-rainy season) (Fig. 2 and Fig. 11).

890

### 895 3.7.2 Phenophase-based cumulative estimates and coefficients of variations of estimates

Between 1<sup>st</sup> May to 20<sup>th</sup> December, 2021, observed actual evaporation  $E_{a(DTS)}$  was about 24 percent lower than the estimated potential evaporation  $E_{c(PM)}$  (Table 2). The largest difference (approximately 130 mm) between  $E_{c(PM)}$  and  $E_{a(DTS)}$  was in the water limited dormant phenophase in the dry season proper.

900

Table 2. Comparison of the 2021 monthly cumulative evaporation at Mpika miombo woodland site

Product	Phenophase mean actual evaporation estimate (mm phenophase <sup>-1</sup> )				Satellite-based estimate % lower than $E_{a(DTS)}$	Satellite-based estimate % lower than $E_{c(PM)}$
	Green-down	Dormant	Green-up	Total		
$E_{a(DTS)}$	146.62	341.75	479.47	967.83		
$E_{c(PM)}$	237.86	471.32	558.88	1268.06		
GLEAM	128.22	84.69	94.25	307.16	68.26	75.78
MOD16	147.44	152.14	182.75	482.33	50.16	61.96
SSEBop	124.99	226.72	287.05	638.76	34.00	49.63
WaPOR	131.40	204.93	338.64	674.97	30.26	46.77

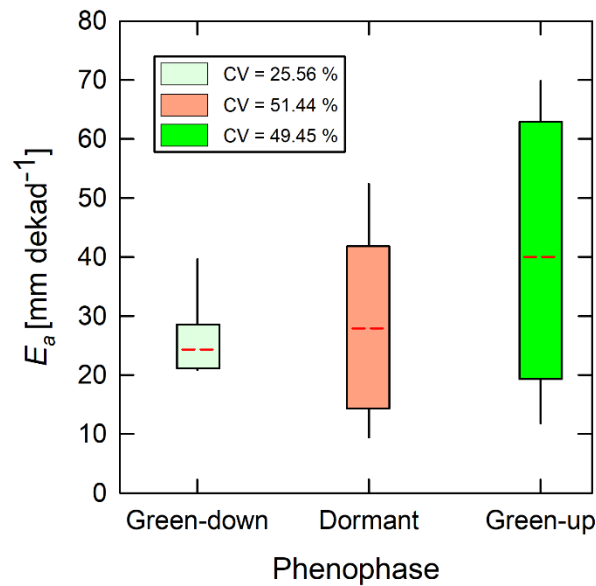
905 Over the same period, cumulative average GLEAM actual evaporation was about 76 percent lower than potential evaporation and 68 percent lower than  $E_{a(DTS)}$ . MOD16 was about 62 percent lower than potential evaporation and 50 percent lower than actual evaporation  $E_{a(DTS)}$ . The SSEBop was about 50 percent lower than potential evaporation and 34 percent lower than actual evaporation  $E_{a(DTS)}$ . WaPOR was about 46 percent lower than potential evaporation and 30 percent lower than actual evaporation  $E_{a(DTS)}$  (Table 2). The green-down phenophase showed the least differences between satellite-based evaporation estimates and field observations (Table 2). Overall, the four satellite-based estimates underestimated actual evaporation across the forest canopy phenophases (Fig. 11 and Table 2). However, in the green-down all four satellite-based estimates showed similar behaviour (i.e., trend and magnitude) with the  $E_{a(DTS)}$  (Fig. 11 and Table 2).

910

915 The green-down phenophase showed the lowest coefficient of variation among the four satellite-based evaporation estimates (Fig. 12). The low coefficient of variation coupled with the low underestimation in the green-down phenophase showed that satellite-based estimates are closer to miombo woodland actual evaporation in conditions of high forest canopy cover and high soil moisture content in the sub-surface. The dormant and green-up phenophases showed large underestimation and large coefficients of variation among the satellite-based estimates (Table 2

920

and Fig. 12). The underestimation during the green-up phenophase may be caused by difficulty of modelling interception, especially in October and November at the beginning of the rain season. The significant variations in dormant phenophase actual evaporation estimates showed that satellite-based evaporation estimates have difficulty estimating evaporation of the miombo woodland in conditions with low canopy cover (with associated changes in leaf display characteristics), both high and low available energy, and low soil moisture content in the upper layers of the soil. If canopy transpiration is not coupled with access to deep soil moisture beyond 250 cm, as is the case with GLEAM (as explained in section 4.1), satellite-based estimates are likely to underestimate actual evaporation in the dormant phenophase of the miombo woodland.

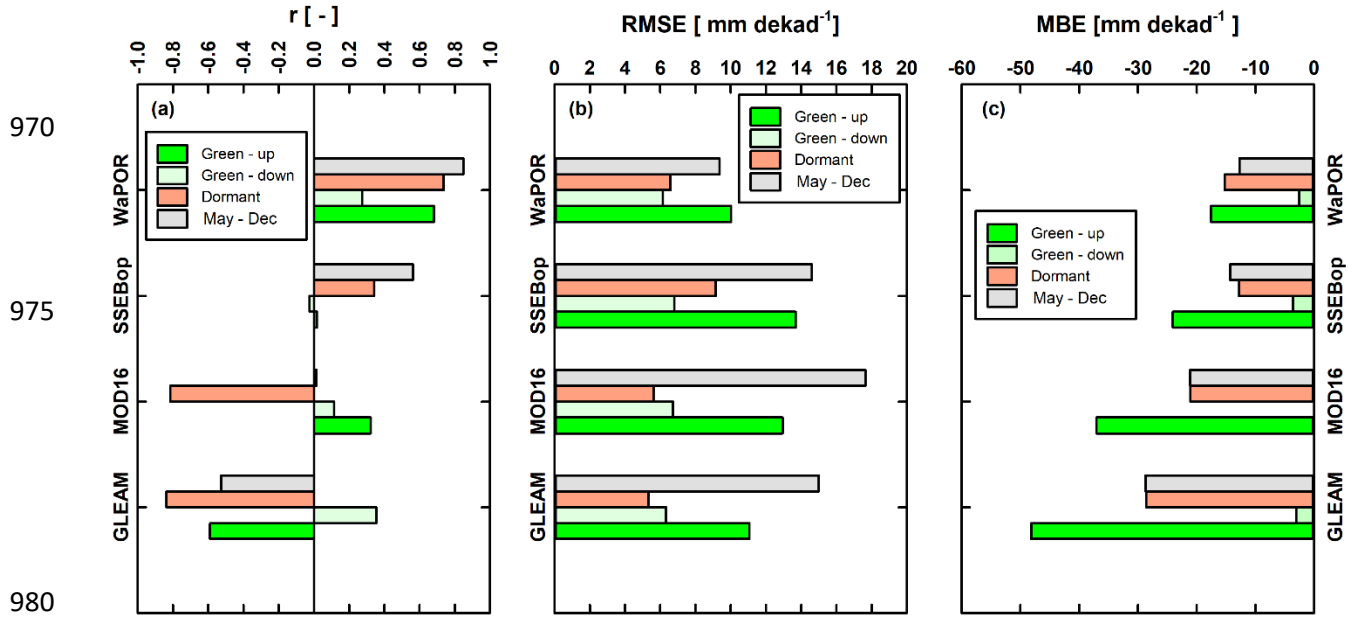


**Figure 12:** Box plots showing variations in satellite-based evaporation estimates at dekad scale across phenophases. Dotted red line is the mean for each phenophase. Coefficients of variation (CV) of satellite-based evaporation estimates were largest during the dormant and green-up phenophases.

### 3.7.3 Performance statistics of satellite-based estimates with reference to BR-DTS estimates

Overall, for the eight-month period, the WaPOR showed the lowest underestimation (i.e., MBE), had the highest correlation coefficient and lowest RMSE. The WaPOR was followed by the SSEBop and then MOD16. The GLEAM showed the lowest estimates, high RMSE and largest MBE. Only the WaPOR consistently showed positive correlation ( $r$ ) with field observations across the three phenophases (Fig. 13 a). The underestimations were mainly associated with the dormant and green-up phenophase (Fig. 11), as can be seen from the uncertainty RMSE and MBE values in Fig. 13 b, c. Therefore, for satellite-based estimates, it appears the dormant and green-up phenophases are the most difficult to assess. The SSEBop and WaPOR estimates appeared closer to dry season miombo woodland actual evaporation than the MOD16 and GLEAM. The behaviour, in terms of trend and magnitude, of satellite-based evaporation estimates in relation to field observations of the miombo woodland actual evaporation may be attributed to individual satellite product characteristics.





**Figure 13:** (a) statistics of the correlation of  $E_{a(DTS)}$  with satellite-based estimates and (b, c) statistics of uncertainty in satellite-based evaporation estimates with reference to  $E_{a(DTS)}$  for each phenophase and for the entire study period May-December, 2021.

#### 985 4 Potential causes of the discrepancies between $E_a(DTS)$ and satellite-based estimates

##### 985 4.1 Global Land Evaporation Amsterdam Model (GLEAM)

985 GLEAM has four modules that are used to obtain actual evaporation. The modules include the potential evaporation, rainfall interception, soil and stress modules. The potential evaporation module uses the Priestly and Taylor equation, and is driven by observed surface meteorology. The interception module is based on the Gash analytical model, and is driven by observed precipitation. The soil module is a multi-layer model driven by observed precipitation and satellite surface soil moisture. The stress module is based on semi-empirical relation to root zone soil moisture and the vegetation optical depth (VOD) (Martens *et al.*, 2017).

990  
 995 GLEAM's green-down phenophase behaviour was similar to both field observations and other satellite-based evaporation estimates. However, GLEAM's behaviour, in low soil moisture and low forest canopy cover dormant phenophase, was different, both in terms of trend and magnitude. This showed GLEAM's sensitivity to changes in the sub-surface moisture dynamics. GLEAM soil module only takes into account 250 cm of the sub-surface soil moisture that is linked to observed precipitation. GLEAM drainage algorithm does not take into account horizontal and upward moisture fluxes beyond 250 cm depth. This implies that GLEAM is fully based on net precipitation, thereby not taking into account the groundwater fluxes that are not related to precipitation. At the study site, and the miombo woodland in general, the green down and dormant phenophases occurs in the dry season. The soil moisture (i.e., at 30 cm) begins to decline in March at the end of the rain season but stays relatively unchanged throughout the dry season (Fig. 6).  
 1000  
 1005 However, the moisture residue at 30 cm subsurface is higher during the green-down phenophase as compared to the dormant and start of the green-up phenophases (Fig. 6 and Chidumayo, 2001). Studies (e.g., Gumbo *et al.* 2018; Tian *et al.*, 2018; Vinya *et al.*, 2018; Guan *et al.*, 2014; Frost, 1996; Savory, 1963) showed that miombo species have vegetative water storage mechanisms as

1010 well as deep (beyond 5 m depth in some species) and extensive lateral rooting system providing  
accessing to ground water resources. This explains the behaviour of field observations which  
showed a rise in evaporation during the dormant and green-up phenophases in the dry season. The  
rise in GLEAM actual evaporation in October could be attributed to the interception, due to rainfall  
activity, and the sporadic rise in soil moisture in October (Fig. 6). This validates GLEAM's  
dependence on net precipitation for actual evaporation assessment. In increased solar radiation and  
1015 canopy cover (i.e., leaf area index (LAI)) conditions, i.e., in October at the study site, a small  
amount of precipitation is likely to result in high interception, and only begins to reduce as  
precipitation increases. This shows that the GLEAM interception module, aided by the use of good  
quality rainfall product, i.e., Multi-Source Weighted-Ensemble Precipitation (MSWEP), is  
responsive in the miombo woodland.

1020 The overall driving factor of GLEAM's actual evaporation estimates, with reference to the  
 $E_{a(DTS)}$  in this study, might be the accuracy of the vegetation fraction product used in GLEAM, in  
this case the Global Vegetation Continuous Fields product (MOD44B). Since the evaporative flux  
components (i.e., interception loss, soil evaporation and transpiration as well as potential  
evaporation estimates) are all based on the vegetation fraction cover, the accuracy of the vegetation  
1025 fraction product is a key factor in the overall accuracy (in relation to the miombo ecosystem) of  
the estimated actual evaporation for each land cover. The GLEAM is based on four land cover  
classifications that include bare soil, low vegetation (i.e., grass), tall vegetation (i.e., trees), and  
open water (i.e., lakes). Misclassification of the land cover type will have a cascaded effect on  
several components of the model, including the interception loss estimation and the multiplicative  
1030 stress factor which influences the estimation of the various evaporation components in the model.  
Additionally, the coarse spatial resolution (Table 1) could have contributed to the magnitude of  
GLEAM actual evaporation estimates as shown in section 4.5 of this study. It is also possible that  
the Priestley-Taylor equation used in GLEAM underestimates evaporation for the miombo  
woodland in the cool-dry season and warm pre-rainy season. This is because the other satellite-  
1035 based evaporation estimates which uses the Penman-Monteith equation (Table 1) appear to  
underestimate less compared to GLEAM during these two periods.

#### 4.2 MODERate resolution Imaging Spectroradiometer (MOD16)

1040 The MOD16 evaporation algorithm is based on the Penman-Monteith equation (Monteith,  
1965). The model computes actual evaporation as a summation of plant evaporation (canopy  
interception and transpiration) and soil evaporation utilising both remote sensing and  
meteorological inputs (Mu *et al.*, 2011). In the green-down phenophase MOD16 showed similar  
behaviour, in terms of trend and magnitude, with  $E_{a(DTS)}$ . However, in the dormant phenophase  
MOD16 had a different trend from  $E_{a(DTS)}$  and underestimated actual evaporation. In the green-up  
1045 phenophase MOD16 showed a trend similar to  $E_{a(DTS)}$  but underestimated evaporation. Potential  
evaporation ( $E_c(PM)$ ) and actual evaporation ( $E_{a(DTS)}$ ) showed lowest evaporation estimates in June  
(Figs. 8 and 11). In contrast, the MOD16 showed September with the lowest estimates of actual  
evaporation (Fig. 11). This was two months delay. During the dormant phenophase (i.e., dry season  
proper) miombo woodland actual evaporation is through the transpiration process. At Mpika's  
1050 miombo woodland site, Zimba *et al.* (2020) showed lowest LAI and NDVI values in August and  
September respectively. The MOD16 actual evaporation trend agreed with the vegetation indices,  
LAI and NDVI. However, net radiation and air temperature started to increase in July (Fig. 6). At  
the Mpika miombo woodland, Zimba *et al.* (2020) showed long-term average, 2009-2020, NDVI

of about 0.5 in July. The July NDVI value was indicative of presence of green health vegetation. Furthermore, the normalised difference infrared index (NDII) indicated that lowest soil moisture and maximum plant water stress was reached in August/September (i.e., Sriwongsitanon *et al.*, 2015; Zimba *et al.*, 2020). Additionally, miombo species dry season plant water interactions have been sufficiently highlighted (e.g., Gumbo *et al.* 2018; Tian *et al.* 2018; Vinya *et al.* 2018; Frost 1996, Savory, 1963). Therefore, the start in increase in air temperature and net radiation (indicative of available energy) in July is before the plants are highly water stressed, and might be the correct start in rise in actual evaporation as depicted by  $E_a(DTS)$ , SSEBop and WaPOR. Consequently, if the MOD16 energy balance module is not well adjusted for the miombo woodland it may be the reason for downward dormant phenophase trend of evaporation estimates.

The key MOD16 component during the dormant and early green-up phenophase is the plant transpiration module driven by land cover/LAI, net radiation, air pressure, air temperature and relative humidity. The canopy/stomata conductance thresholds are the link between the highlighted drivers and the assessed plant transpiration. The MOD16 energy balance module and canopy conductance may not be appropriately configured for the miombo ecosystem. This could explain why the MOD16 trend and magnitude of actual evaporation estimates differed from field observations. Additionally, daily MOD16 evaporation is a summation of both day and night evaporation.  $E_a(DTS)$  was estimated at hourly scale between 06AM and 6PM. Actual evaporation ( $E_a(DTS)$ ) values for day time only (about 12 hours) were different from 24-hour averages for MOD16.

### 1075 **4.3 Operational Simplified Surface Energy Balance (SSEBop)**

The SSEBop is based on the energy balance, distinguishing between hot and cold pixels to estimate evaporation. The SSEBop actual evaporation is calculated using an evaporation fraction that is based on the hot/dry and cold limiting conditions. To obtain actual evaporation the evaporation fraction is multiplied with the crop coefficient ( $K_c$ ) and potential evaporation ( $E_o$ ) (Savoca *et al.*, 2013). The SSEBop appeared to have a similar behaviour, both trend and magnitude, with  $E_a(DTS)$  during the green-down phenophase but these differed during the dormant and green-up phenophases in August and December.

The SSEBop is sensitive to solar radiation/temperature and thus, effectively responded to the changes in these variables (i.e., net radiation and air temperature) as they started to rise in July. The marginal drop in evaporation in August could be due to the leaf shedding processes that exposed the dry leaf and grass covered forest floor to more interaction with radiation resulting in increased temperature. The increased soil surface temperature was interpreted by SSEBop as non-evaporative surface. Furthermore, the drop in the SSEBop actual evaporation in August could have been caused by the relatively (i.e., compared to the MOD16 and the WaPOR) coarser spatial resolution (i.e., 1 km), the heterogeneity in the leaf fall and leaf flush trend, and the bush burns that normally occur during this period (Gumbo *et al.*, 2018; Frost, 1996). The SSEBop underestimation of actual evaporation in December could be attributed to two factors; cloud cover and the uncertainties associated with estimating land surface temperature (LST) in hot humid conditions (Dash *et al.*, 2002). There is increased cloud cover and rainfall activity in December that affects the quality of the satellite LST product. The SSEBop is based on clear sky net radiation balance principle (Savoca *et al.*, 2013). Zimba *et al.* (2020) indicated that the quality pass for the satellite-based MODIS LST product at the study site was below 80 percent during the rainy season (i.e., December).

With reference to the  $E_a(DTS)$  the underestimation by the SSEBop could be attributed to

1100 several factors, including the quality of the satellite LST product used and the overpass time of the  
MODIS satellite over the study site. The SSEBop daily evaporation estimates includes the night  
time.  $E_a(DTS)$  estimates were between 6AM and 6 PM. The differences in the time intervals results  
1105 in different daily actual evaporation averages contributing to the observed discrepancy. This is  
even more important when the 10AM and 1 PM overpass time for MODIS Terra and Aqua is  
considered. The overpass time affects the minimum and maximum LST estimation which  
influences estimated SSEBop actual evaporation.

#### 4.4 Water Productivity through Open access Remotely sensed derived data (WaPOR)

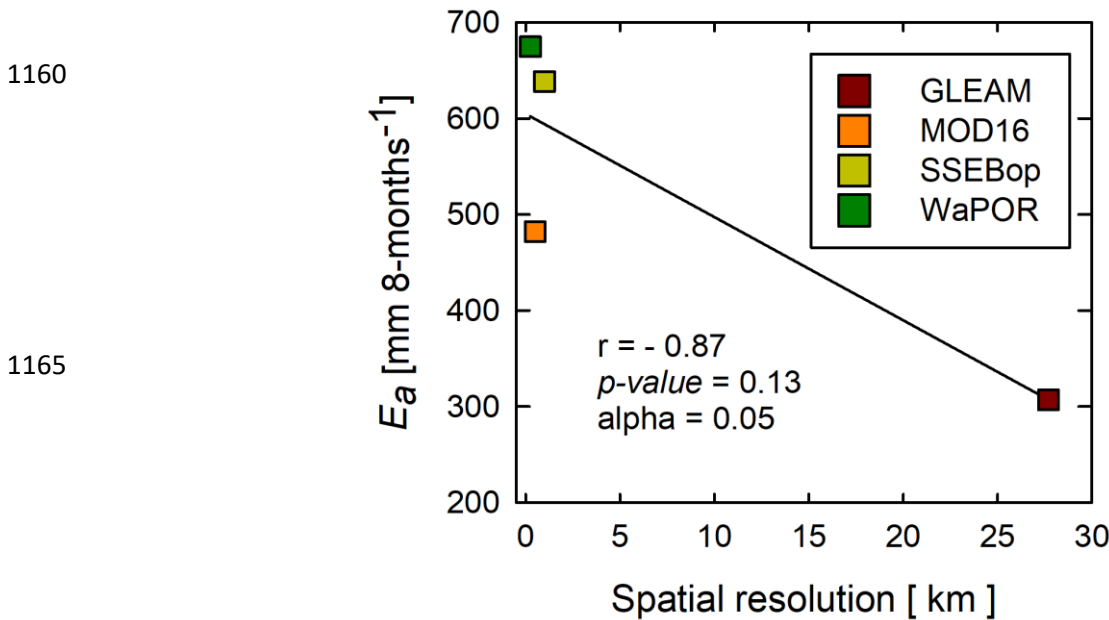
The WaPOR is the only one of the four satellite-based evaporation estimates which showed  
1110 similar trend with  $E_a(DTS)$  across phenophases and had very strong correlation ( $r = 0.85$ ) (Fig. 11  
and Table A4 in the appendices). However, WaPOR substantially underestimated actual  
evaporation in the dormant and green-up phenophases. WaPOR is based on satellite estimates from  
the modified Penman-Monteith (P-M) ETLook model which has been adapted to remote sensing  
1115 data components which include precipitation, surface albedo, solar radiation, NDVI, soil moisture  
stress, land cover and weather data. The WaPOR actual evaporation is a summation of interception,  
soil evaporation and canopy transpiration. In the WaPOR transpiration is coupled via the root zone  
soil moisture content while soil evaporation is coupled via the top soil moisture content. The Net  
radiation is split into soil and canopy net radiation. This implies that increase in LAI exponentially  
1120 reduces available soil net radiation and increases canopy net radiation. The LAI is derived from  
the NDVI. The WaPOR estimates canopy resistance and establishes the coupled response of soil  
moisture and LAI on transpiration. The land cover data is used to generate vegetation type  
dependent stomata conductance thresholds. In the WaPOR, the classes in the land cover data are  
used to estimate soil and canopy roughness, while the NDVI is used to account for seasonal  
1125 variations during the growing season (Blatchford *et al.*, 2020). In estimating the soil and canopy  
aerodynamic resistance, the WaPOR includes buoyance turbulence using the Monin-Obukhovi  
similarity theory. The accuracy of the land cover product used influences the thresholds for stomata  
conductance and other land cover type related components of the model. The use of relatively high  
spatial resolution Copernicus land cover product in the WaPOR, which has high forest  
1130 classification accuracy, contributes to its ability to capture the vegetation type, which coupled with  
appropriate parameterisation of the stomata conductance and other vegetation related variables,  
appeared to correctly model the trend of the actual evaporation of the miombo woodland.

Unlike GLEAM, the WaPOR is not a product of a full net precipitation-based model. The  
ETLook model takes into account the vegetation type interaction with the sub-soil moisture  
1135 content. The soil moisture stress module appeared to correctly model the miombo species  
interactions with soil moisture across the three phenophases. Most importantly, WaPOR correctly  
characterised actual evaporation trend in the dormant phenophase, which the other three satellite-  
based estimates did not. Both  $E_a(DTS)$  and WaPOR are dependent on correctly partitioning available  
energy into sensible and latent heat fluxes. Therefore, the WaPOR energy balance module  
1140 correctly partitioned energy fluxes in the miombo woodland across the three phenophases. The  
various inputs and processes in the WaPOR, as described above, may explain why it showed the  
same trend as the field observation and had lower underestimation of actual evaporation. Just like  
in GLEAM, MOD16 and SSEBop the underestimation by WaPOR could have been partly due to  
the differences in the daily time intervals for the estimation of actual evaporation, as well as the

1145 quality of the net radiation product used in the model. The WaPOR is estimated over a 24-hour  
(day) period while  $E_{a(DTS)}$  was estimated between 06AM and 6 PM.

#### 4.5 Possible causes of the $E_{a(DTS)}$ overestimation

1150 It appeared that the spatial resolution of satellite-based estimates was of influence, as the  
underestimation was clearly observable, with reference to each satellite-based evaporation  
estimate's spatial scale. The correlation coefficient of -0.87 (Fig. 14) implies that the finer the  
spatial resolution the higher the actual evaporation estimates. Therefore, the finer the spatial  
1155 resolution the lower the underestimation (Fig. 12 and Table 2). This indicates that at finer spatial  
resolutions, higher than the WaPOR's 250 m, the underestimation of actual evaporation is likely  
to be reduced. However, the results are statistically insignificant since the p-value > 0.05 and,  
SSEBop's higher estimates than the MOD16 may suggest that other factors other than the spatial  
resolution were of greater influence on the estimated evaporation.



1170 **Figure 14.** Point scale-based correlation of spatial resolution with estimates of actual evaporation  
of satellite-based evaporation estimates.

Furthermore, the ground heat flux ( $G_o$ ) used in the  $E_{a(DTS)}$  estimates was taken as 10 percent  
of the diurnal net radiation, based estimates found in other forests (i.e., Ma *et al.*, 2017; Van Der  
1175 Meulen and Klaassen, 1996; McCaughey, 1982). The miombo woodland phenology is different  
from other ecosystems. It is possible that the  $G_o$  was underestimated, and may have contributed to  
the higher  $E_{a(DTS)}$ , as compared to the satellite-based evaporation estimates of the GLEAM,  
MOD16, SSEBop and WaPOR.

Another source of overestimation by the  $E_{a(DTS)}$  could be the overestimation of the latent  
1180 heat flux ( $LE$ ) due to difficulties in flux tower instrumentation. Diurnal high temperature in the dry

season (i.e., the dormant and green-up phenophases), coupled with the challenge of the constant wetting of the fibre cable for attaining wet bulb temperature, could have resulted in overestimation of the actual vapour pressure, and consequently underestimated the Bowen ratio. Underestimating the Bowen ratio could have resulted in overestimating diurnal latent heat flux, therefore, overestimating the diurnal hourly actual evaporation. This suggestion agrees with the observation by Schilperoort *et al.* (2018) which showed that, compared to the EC approach, the BR-DTS method slightly overestimated diurnal *LE* by a mean difference of  $18.7 \text{ Wm}^{-2}$ .

However, using the water balance approach, Zimba *et al.* (2023 under review) showed that satellite-based estimates generally underestimated actual evaporation in the largely miombo woodland covered Luangwa Basin. Therefore, the outcome of this study's comparison of point-based field observations with satellite-based estimates, agreed with the larger picture at the Luangwa Basin scale. Consequently, the trend and magnitude of satellite-based evaporation estimates, across various miombo strata, are likely to be the same as what this current study has observed. Nevertheless, to consolidate the observations of this study, further studies, such as this one, are needed in the different miombo woodland stratifications in Africa.

## 5 Conclusions and recommendations

The study characterised evaporation across three forest canopy phenophases of the miombo woodland at point scale using the BR-DTS approach. Consequently, four satellite-based evaporation estimates were compared to the field observations. Major conclusions from our study are that:

Despite the dry season challenge with consistently wetting the fibre optic cable, the BR-DTS approach can be used to successfully estimate actual evaporation across different canopy phenophases of the miombo woodland.

The actual evaporation trends appeared to be rather more closely associated with the available energy for evaporation than the changes in the characteristic canopy cover dynamics during the three phenophases. This is because across the three phenophases analysed, actual evaporation had higher correlation with the net radiation trend than the changes in canopy cover (proxied by the NDVI). The three phenophases are likely to be more representative of the evaporation of the miombo woodland plant. For instance, the total NDVI/LAI during the dormant and green-up phenophases in the cool-dry season and warm pre-rainy season can largely be attributed to miombo plants. However, for a comprehensive analysis it is important that evaporation for the period with the highest LAI and NDVI (January – March) is assessed.

Coupling the canopy transpiration with the root zone storage, taking into account the vertical upward (beyond 2.5 m) and horizontal soil moisture flux is likely to improve satellite-based dry season actual evaporation estimates of the miombo woodland. This is because during the dry season, i.e., dormant phenophase in the cool dry and warm pre-rainy seasons, field-based actual evaporation estimates were higher than satellite-based evaporation estimates. The trend and magnitude of the actual evaporation of the miombo woodland in the dry season is linked to the developed dry season water stress buffering mechanism (i.e., leaf fall, leaf flush and access to ground water or plant water storage).

Phenology plays a role in satellite-based actual evaporation estimates of the miombo woodland. This is evidenced by the phenophase dependent variations (i.e., coefficients of variation) in satellite-based evaporation estimates. Some phenophases (i.e., dormant and green-up) had higher coefficients of variation in actual evaporation estimates compared to the green-down

phenophase.

1230 Compared to field observations ( $E_{a(DTS)}$ ) all satellite-based evaporation estimates underestimated actual evaporation. However, this result could have been influenced by the  $E_{a(DTS)}$  assessment time intervals, errors in flux tower instrumentation, spatial resolution of satellite-based estimates, and the ground heat flux used in the  $E_{a(DTS)}$  estimates.

1235 Consequently, of the four satellite products considered in this study, only the WaPOR showed the same trend as field observations of the actual evaporation of the miombo woodland across the three phenophases. The WaPOR also showed the least underestimation. For the wet miombo woodland, as was represented by this study site, and limited to the four satellite-based estimates assessed, the WaPOR represents a better choice for use across the assessed miombo phenophases. With inference based on the WaPOR, it appears that satellite-based estimates made at a scale that takes into account the local variations in the input variables might give better results.

1240 There is need for observations, such as found in the current study, to be conducted in the drier miombo landscapes and to compare the results. This is because this study was conducted in the wet miombo woodland; therefore, it is possible that the phenological response to changes in hydrological regimes in the drier miombo woodland will differ from the observations at the Mpika site.

#### Author contribution

1245 Conceptualization, H.Z.; formal analysis, H.Z., B.S; resources, H.S.; supervision, M.C.-G. and B.K.; writing—original draft, H.Z.; writing—review and editing, M.C.-G., B.K., H.S., B.S., I.N., and N.V. All authors have read and agree to the published version of the manuscript.

#### Funding

1250 This study was conducted with the financial support of the Dutch Research Council (NWO) under the project number W 07.303.102.

#### Acknowledgements

1255 This study is part of the ZAMSECUR Project, which focuses on observing and understanding the remote water resources for enhancing water, food, and energy security in Lower Zambezi Basin. We wish to thank the Water Resources Management Authority (WARMA) in Zambia for the field discharge data used in this study.

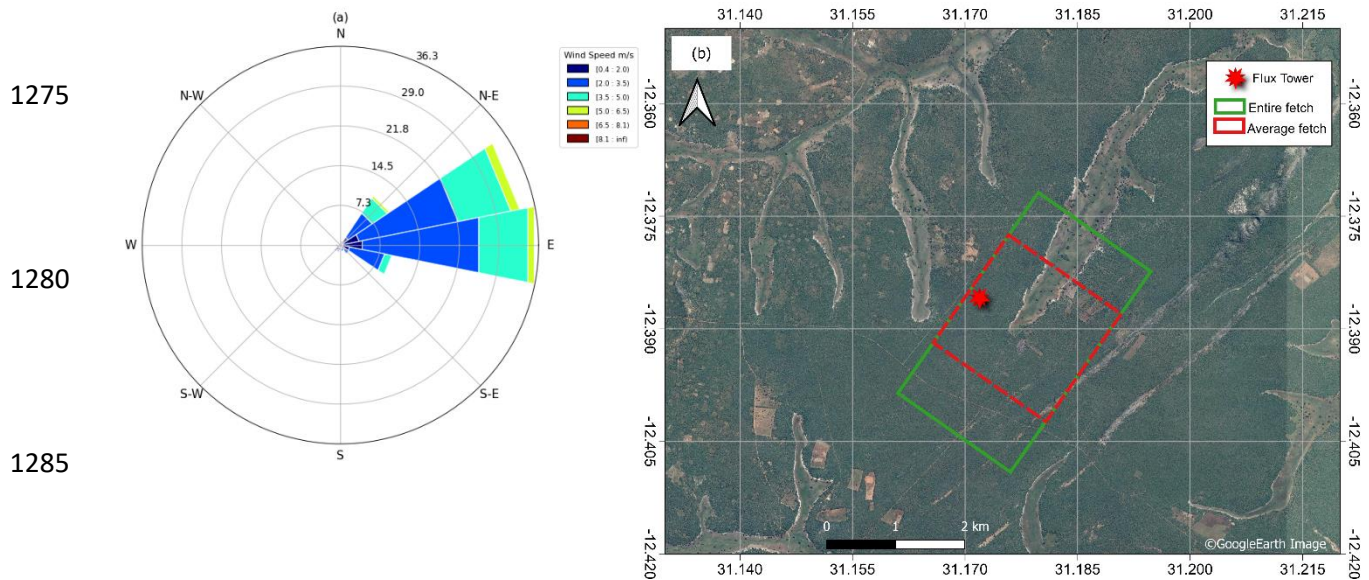
1260 The authors wish to thank Nsasala Conservancy in Mpika, Zambia for hosting the research throughout the study period. We wish to thank the Manager for the valuable contribution in local plant species identification and for maintaining the study site and equipment. This study would not have been possible without the input of the conservancy.

#### Conflict of interest:

1265 At least one of the (co-)authors is a member of the editorial board of Hydrology and Earth System Sciences.

1270

## Appendices



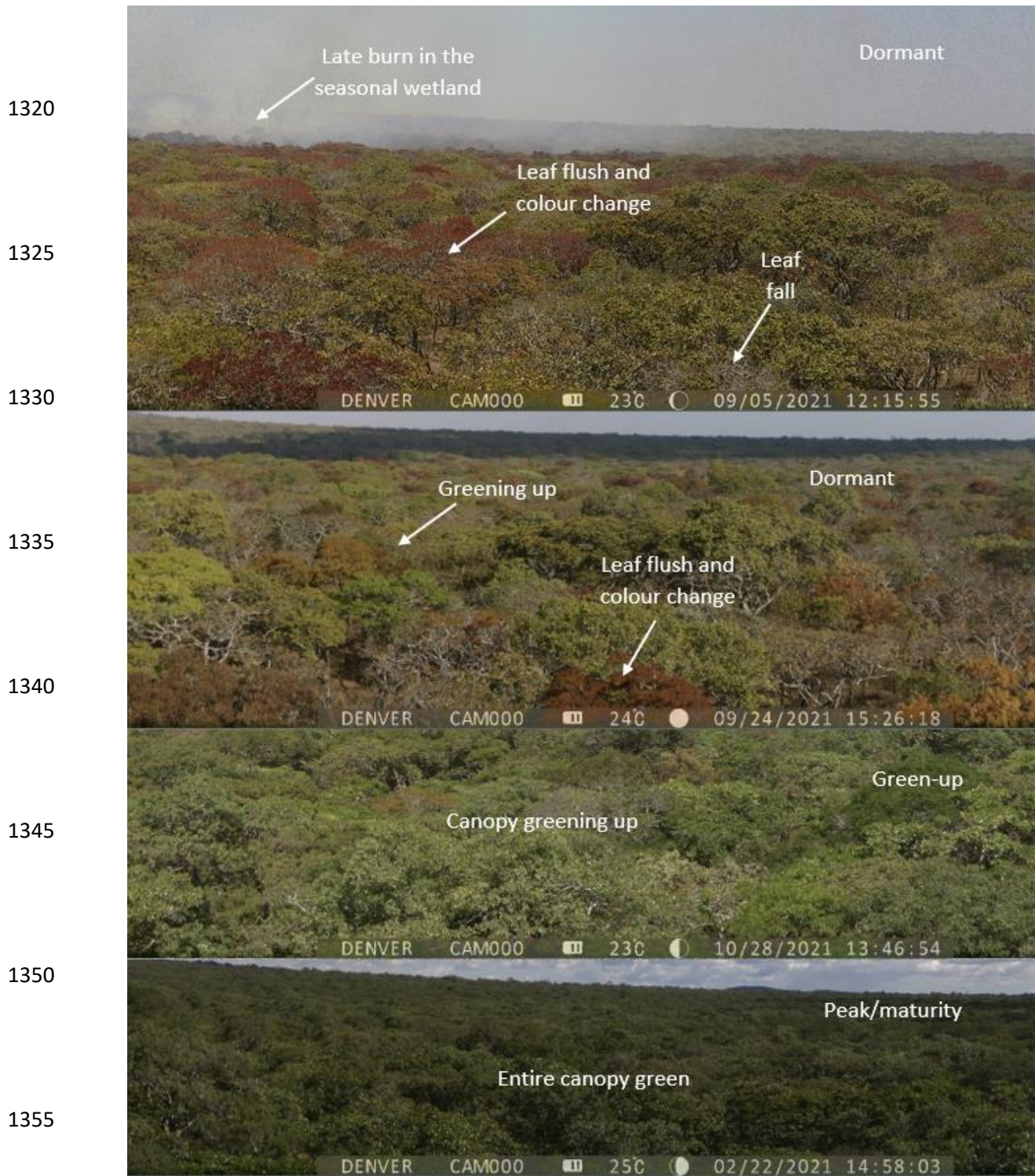
**Figure A1.** Analysis of the wind direction and wind speed using the wind rose (a) and the extent of the fetch for the DTS observations (b) based on the wind rose results.



**Figure A2.** Estimated daily diurnal (6AM – 6PM) Bowen ratio for May to December, 2021 at the Mpika miombo woodland study site. The shaded area for Bowen ratio is the standard deviation. The shaded area for dates is the phenophase (**Senescence/Green-down:** May-June; **Dormant:** July – September; **Green-up:** October – December)

1315





1360 **Figure A3.** Photographs of the top of the forest canopy at Mpika site showing changes in canopy leaf cover in the dormant and green-up phenophases.

**Table A1.** Sensing capabilities of the Silixa XT-DTS used in the study

Range	Channels	Resolution			Measurement time	Fiber type	Referencing
		Sampling	Temperature	Spatial			
0 – 10 km	4	25 cm	0.01°C	60 cm	≥ 5 sec	50/125µm multimode	X2 PT-100 probes

1365

**Table A2.** Selected ATMOS 41 sensor specifications

Attribute	Air temperature (°C)	Actual vapour pressure (kPa)	Relative humidity (%)	Wind speed (m/s)	Barometric pressure (kPa)
Range	-50 to 60	0 - 47	0–100% RH (0.00–1.00)	0–30 m/s	50 - 110
Resolution	0.1	0.01	0.1% RH	0.01 m/s	0.01
Accuracy	± 0.6	± 0.2 typical below 40°C (varies with temperature and humidity)	Varies with temperature and humidity, ±3% RH typical	The greater of 0.3 m/s or 3% of measurement	± 0.1 kPa from -10 to 50 °C ± 0.5 kPa from -40 to 60 °C

**Table A3.** Descriptive statistics of evaporation products at phenophase scale

Phenophase	Product	No. of obs	Minimum	Maximum	Sum	Mean	SD	CV
Green - down	$E_{a(DTS)}$	6	14.01	30.17	146.62	24.44	6.06	22.62
	$E_{c(PM)}$	6	30.86	47.20	237.86	39.64	6.11	14.07
	GLEAM	6	15.06	27.98	128.22	21.37	4.99	21.30
	MOD16	6	20.16	31.60	147.44	24.57	4.37	16.22
	SSEBop	6	15.92	25.34	124.99	20.83	3.77	16.53
	WaPOR	6	14.70	28.91	131.40	21.90	5.61	23.40
Dormant	$E_{a(DTS)}$	9	22.86	51.95	341.75	37.97	9.10	22.60
	$E_{c(PM)}$	9	37.34	69.46	471.32	52.37	12.84	23.12
	GLEAM	9	6.55	13.30	84.69	9.41	2.16	21.67
	MOD16	9	14.22	20.15	152.14	16.90	2.40	13.39
	SSEBop	9	15.66	46.13	226.72	25.19	9.99	37.40
	WaPOR	9	15.20	27.15	204.93	22.77	4.00	16.57
Green - up	$E_{a(DTS)}$	8	40.91	77.42	479.47	59.93	12.67	19.78
	$E_{c(PM)}$	8	56.39	84.11	558.88	69.86	11.16	14.94
	GLEAM	8	5.40	21.95	94.25	11.78	5.88	46.67
	MOD16	8	16.66	29.28	182.75	22.84	4.11	16.85
	SSEBop	8	20.09	47.33	287.05	35.88	10.11	26.36
	WaPOR	8	33.06	54.52	338.64	42.33	7.97	17.60

1370

**Table A4.** Pearson r correlation coefficient of the comparison of evaporation products

Phenophase	Product	$E_{a(DTS)}$	$E_{c(PM)}$	GLEAM	MOD16	SSEBop	WaPOR
Green - down	$E_{a(DTS)}$	<b>1.00</b>					
	$E_{c(PM)}$	0.77	<b>1.00</b>				
	GLEAM	0.35	0.56	<b>1.00</b>			
	MOD16	0.11	0.14	0.78	<b>1.00</b>		
	SSEBop	-0.02	0.12	0.69	0.75	<b>1.00</b>	
	WaPOR	0.27	0.66	0.67	0.63	0.48	<b>1.00</b>
Dormant	$E_{a(DTS)}$	<b>1.00</b>					
	$E_{c(PM)}$	<b>0.91</b>	<b>1.00</b>				
	GLEAM	<b>-0.84</b>	<b>-0.91</b>	<b>1.00</b>			
	MOD16	<b>-0.82</b>	<b>-0.86</b>	<b>0.87</b>	<b>1.00</b>		
	SSEBop	0.34	0.30	-0.29	-0.31	<b>1.00</b>	
	WaPOR	<b>0.74</b>	<b>0.81</b>	-0.61	<b>-0.82</b>	0.29	<b>1.00</b>
Green - up	$E_{a(DTS)}$	<b>1.00</b>					
	$E_{c(PM)}$	<b>0.93</b>	<b>1.00</b>				
	GLEAM	-0.59	-0.37	<b>1.00</b>			
	MOD16	0.32	0.36	0.11	<b>1.00</b>		
	SSEBop	0.02	0.12	-0.07	<b>-0.76</b>	<b>1.00</b>	
	WaPOR	0.68	<b>0.72</b>	-0.09	0.55	-0.31	<b>1.00</b>
May - December	$E_{a(DTS)}$	<b>1</b>					
	$E_{c(PM)}$	<b>0.95</b>	<b>1.00</b>				
	GLEAM	<b>-0.53</b>	<b>-0.48</b>	<b>1.00</b>			
	MOD16	0.01	-0.05	<b>0.62</b>	<b>1.00</b>		
	SSEBop	<b>0.56</b>	<b>0.56</b>	-0.23	-0.14	<b>1.00</b>	
	WaPOR	<b>0.85</b>	<b>0.83</b>	-0.16	0.35	<b>0.48</b>	<b>1.00</b>

Values in bold are different from 0 with a significance level  $\alpha=0.05$

1375 **Reference**

Allen, R. G., Pereira, L. S., Raes, D., & Smith, M.: *FAO Irrigation and Drainage Paper No. 56 - Crop Evapotranspiration*. 56, 1998.

Alexandre, J. Le bilan de l'eau dans le miombo (forêt claire tropicale). *Bulletin de la Société Géographie du Liège* 13, 107-126, 1977.

1380

Angus, D. E., & Watts, P. J.: Evapotranspiration - How good is the Bowen ratio method? *Agricultural Water Management*, 8(1-3), 133-150. doi: 10.1016/0378-3774(84)90050-7, 1984.

1385

Barr, A. G., King, K. M., Gillespie, T. J., Den Hartog, G. & Neumann, H. H.: A comparison of bowen ratio and eddy correlation sensible and latent heat flux measurements above deciduous forest. *Boundary-Layer Meteorol.* **71**, 21-41, 1994.

- Blatchford, M. L., Mannaerts, C. M., Njuki, S. M., Nouri, H., Zeng, Y., Pelgrum, H., Wonink, S., & Karimi, P.: Evaluation of WaPOR V2 evapotranspiration products across Africa. *Hydrological Processes*, 34(15), 3200–3221. doi: 10.1002/hyp.13791, 2020.
- 1390
- Bowen, I. S.: The ratio of heat losses by conduction and by evaporation from any water surface. *Physical Review*, 27(6), 779–787. doi: 10.1103/PhysRev.27.779, 1926.
- Buttar, N. A., Yongguang, H., Shabbir, A., Lakhiar, I. A., Ullah, I., Ali, A., Aleem, M., & Yasin, M. A. (2018). Estimation of evapotranspiration using Bowen ratio method. *IFAC-PapersOnLine*, 51(17), 807–810. doi: 10.1016/j.ifacol.2018.08.096, 2018.
- 1395
- Chidumayo, E. N.: Climate and Phenology of Savanna Vegetation in Southern Africa. *Journal of Vegetation Science*, 12(3), 347. doi: 10.2307/3236848, 2001.
- Chidumayo, E. N., & Gumbo, D. J.: The dry forests and woodlands of Africa: Managing for products and services. In *The Dry Forests and woodlands of Africa: Managing for Products and Services* (Issue September). doi: 10.4324/9781849776547, 2010.
- 1400
- Chidumayo, E. N., & Frost, P.: Population biology of miombo trees. In *The miombo in transition: woodlands and welfare in Africa*, Campbell, B. (ed.). Bogor (Indonesia): CIFOR, ISBN 979-8764-07-2, 1996.
- 1405
- Cho, J., Oki, T., Yeh, P. J. F., Kim, W., Kanae, S., & Otsuki, K.: On the relationship between the Bowen ratio and the near-surface air temperature. *Theoretical and Applied Climatology*, 108(1–2), 135–145. doi: 10.1007/s00704-011-0520-y, 2012.
- Coenders-Gerrits, M., Schilperoort, B., & Jiménez-Rodríguez, C.: Evaporative Processes on Vegetation: An Inside Look. In J. T. Van Stan II, E. Gutmann, & J. Friesen (Eds.), *Precipitation Partitioning by Vegetation: A Global Synthesis* (pp. 35–48). Cham: Springer International Publishing. doi: 10.1007/978-3-030-29702-2\_3, 2020.
- 1410
- Dash, P., Göttsche, F. M., Olesen, F. S., & Fischer, H.: Land surface temperature and emissivity estimation from passive sensor data: Theory and practice-current trends. *International Journal of Remote Sensing*, 23(13), 2563–2594. doi: 10.1080/01431160110115041, 2002.
- 1415
- Dzikiti, S., Jovanovic, N. Z., Bugan, R., Israel, S., & Le Maitre, D. C.: Measurement and modelling of evapotranspiration in three fynbos vegetation types. *Water SA*, 40(2), 189–198. doi: 10.4314/wsa.v40i2.1., 2014.
- Ernst, W. and Walker, B.H.: Studies on the hydrature of trees in miombo woodland in South Central Africa. *Journal of Ecology* 61, 667-673, 1973.
- 1420
- Euser, T., Luxemburg, W. M. J., Everson, C. S., Mengistu, M. G., Clulow, A. D., & Bastiaanssen, W. G. M.: A new method to measure Bowen ratios using high-resolution vertical dry and wet bulb temperature profiles. *Hydrology and Earth System Sciences*, 18(6), 2021–2032. doi: 10.5194/hess-18-2021-2014, 2014.
- 1425
- Everson, C. S.: The water balance of a first order catchment in the montane grasslands of South Africa. *Journal of Hydrology*, 241(1–2), 110–123. doi: 10.1016/S0022-1694(00)00376-0, 2001.

- 1430 FAO.:WaPOR Database Methodology: Level 1 Data. In Remote Sensing for Water Productivity Technical Report: Methodology Series. (Issue September). Retrieved from [http://www.fao.org/fileadmin/user\\_upload/faoweb/RS-WP/pdf\\_files/Web\\_WaPOR-beta\\_Methodology\\_document\\_Level1.pdf](http://www.fao.org/fileadmin/user_upload/faoweb/RS-WP/pdf_files/Web_WaPOR-beta_Methodology_document_Level1.pdf), 2018.
- 1435 Foken, T., Aubinet, M., & Leuning, R.: Eddy Covariance. *Eddy Covariance*. doi: 10.1007/978-94-007-2351-1, 2012.
- Frost, P.: The Ecology of miombo woodlands. In The miombo in Transition: woodlands and Welfare in Africa. Retrieved from <http://books.google.com/books?hl=nl&lr=&id=rpildJJVdU4C&pgis=1>, 1996.
- 1440 Fuller, Douglas O., 1999. “Canopy Phenology of Some Mopane and miombo woodlands in Eastern Zambia.” *Global Ecology and Biogeography* 8 (3–4): 199–209. <https://doi.org/10.1046/j.1365-2699.1999.00130.x>.
- Gray, J., Sulla-Menashe, D., & Friedl, M. A.: MODIS Land Cover Dynamics (MCD12Q2) Product. *User Guide Collection 6*, 6, 8. Retrieved from [https://modis-land.gsfc.nasa.gov/pdf/MCD12Q2\\_Collection6\\_UserGuide.pdf](https://modis-land.gsfc.nasa.gov/pdf/MCD12Q2_Collection6_UserGuide.pdf), 2019.
- 1445 Guan, K., Eric F. Wood, D. Medvigy, John. Kimball, Ming. Pan, K.K. Caylor, J. Sheffield, Xiangtao. Xu, and O.M. Jones.: “Phenology of African Savannas and woodlands” 119: 1652–69. <https://doi.org/10.1002/2013JG002572>, 2014.
- 1450 Gumbo, D. J., Dumas-Johansen, M., Muir, G., Boerstler, F., & Xia, Z.: Sustainable management of miombo woodlands-Food security, nutrition and wood energy. In Food security, nutrition and wood energy. (Issue March). Retrieved from [www.fao.org/publications](http://www.fao.org/publications), 2018.
- Hachigonta, S., & Reason, C. J. C.: Interannual variability in dry and wet spell characteristics over Zambia. *Handbook of Environmental Chemistry, Volume 5: Water Pollution*, 32(1), 49–62. doi: 10.3354/cr032049, 2006.
- 1455 Helsel, D. R., Hirsch, R. M., Ryberg, K. R., Archfield, S. A., & Gilroy, E. J.: Statistical Methods in Water Resources Techniques and Methods 4 – A3. *USGS Techniques and Methods*, 2020.
- 1460 Hirschi M, Michel D, Lehner I, Seneviratne SI. A site-level comparison of lysimeter and eddy covariance flux measurements of evapotranspiration. *Hydrol Earth Syst Sci* 21(3):1809–1825. <https://doi.org/10.5194/hess-21-1809-2017>, 2017.
- Hunink, J.E. , Terink, W, Contreras, S, D. P.: *Scoping Assessment of Erosion Levels for the Mahale region, Lake Tanganyika, Tanzania* (Vol. 31, Issue August). Retrieved from [www.futurewater.nl](http://www.futurewater.nl), 2015.
- 1465 Jarmain, C., Everson, C. S., Savage, M. J., Mengistu, M. G., Clulow, A. D., Walker, S., & Gush, M. B.: *Refining tools for evaporation monitoring in support of water resources management, SA Water Research Commission, Report No. 1567/1/08*, (Issue 1567)., 2009.

- Jeffers, J. N., & Boaler, S. B., 1966. Ecology of a miombo site. Lupa North Woodland Reserve, Tanzania. I. Weather and plant growth , 1962–64'. *Ecology*, 54, 447–463.
- 1470 Liu H., Randerson J.T., Lindfors J., Massman W.J., Foken T.: Consequences of incomplete surface energy balance closure for CO<sub>2</sub> fluxes from open-path CO<sub>2</sub>/H<sub>2</sub>O infrared gas analysers. *Boundary-Layer Meteorol* 120, 65-85, 2006.
- 1475 Ma, X., Feng, Q., Su, Y., Yu, T., & Jin, H.: Forest Evapotranspiration and Energy Flux Partitioning Based on Eddy Covariance Methods in an Arid Desert Region of Northwest China. *Advances in Meteorology*, 2017. doi: 10.1155/2017/1619047, 2017.
- 1480 Martens, B., Miralles, D. G., Lievens, H., Van Der Schalie, R., De Jeu, R. A. M., Fernández-Prieto, D., Beck, H. E., Dorigo, W. A., & Verhoest, N. E. C. (2017). GLEAM v3: Satellite-based land evaporation and root-zone soil moisture. *Geoscientific Model Development*, 10(5), 1903–1925. doi: 10.5194/gmd-10-1903-2017
- McCaughey, H. J.: Spatial Variability of Net Radiation and Soil Heat Flux Density on Two Logged Sites at Montmorency, Quebec. *Journal of Applied Meteorology*, 21, 777–787. Retrieved from <https://www.ptonline.com/articles/how-to-get-better-mfi-results>, 1982.
- 1485 Meter Group AG.: Atmos 41. In Manual (Issues 207–2022). München. Retrieved from [http://library.metergroup.com/Manuals/20635\\_ATMOS41\\_Manual\\_Web.pdf](http://library.metergroup.com/Manuals/20635_ATMOS41_Manual_Web.pdf), 2020.
- Miralles, D. G., R. A.M. De Jeu, J. H. Gash, T. R.H. Holmes, and A. J. Dolman.: “Magnitude and Variability of Land Evaporation and Its Components at the Global Scale.” *Hydrology and Earth System Sciences* 15 (3): 967–81. <https://doi.org/10.5194/hess-15-967-2011>, 2011.
- 1490 Monteith, J. L.: Evaporation and environment. *Symposia of the Society for Experimental Biology*, 19, 205, 1965.
- Mu, Q., Zhao, M., & Running, S. W.: Improvements to a MODIS global terrestrial evapotranspiration algorithm. *Remote Sensing of Environment*, 115(8), 1781–1800. doi: 10.1016/j.rse.2011.02.019, 2011.
- 1495 Olson, D. M., Dinerstein, E., Wikramanayake, E. D., Burgess, N. D., Powell, G. V. N., Underwood, E. C., D’Amico, J. A., Itoua, I., Strand, H. E., Morrison, J. C., Loucks, C. J., Allnutt, T. F., Ricketts, T. H., Kura, Y., Lamoreux, J. F., Wettengel, W. W., Hedao, P., & Kassem, K. R.; Terrestrial ecoregions of the world: A new map of life on Earth. *BioScience*, 51(11), 933–938. doi: 10.1641/0006-3568(2001)051[0933:TEOTWA]2.0.CO;2, 2001.
- 1500 Ramoelo, A., Dzikiti, S., Van Deventer, H., Maherry, A., Cho, M. A., & Gush, M.: Potential to monitor plant stress using remote sensing tools. *Journal of Arid Environments*, 113, 134–144. doi: 10.1016/j.jaridenv.2014.09.003, 2015.
- 1505 Savage, M.J., Everson, C.S., Metelerkamp, B.R.: Evaporation measurement above vegetated surfaces using micrometeorological techniques, SA Water Research Commission, Report No. 349/1/97, 1997
- Savoca, M. E., Senay, G. B., Maupin, M. A., Kenny, J. F., & Perry, C. A.: Actual Evapotranspiration Modeling Using the Operational Simplified Surface Energy Balance (

SSEBop ) Approach. *U.S Geological Survey Scientific Investigations Report 2013–5126*, January, 16 p. Retrieved from <http://pubs.usgs.gov/sir/2013/5126>, 2013.

- 1510 Savory B. M.: “Rooting Habits of Important miombo Species.” Ndola, 1963.
- Schilperoort, B., Coenders-Gerrits, M., Jiménez Rodríguez, C., van der Tol, C., van de Wiel, B., & Savenije, H.: Decoupling of a Douglas fir canopy: a look into the subcanopy with continuous vertical temperature profiles. *Biogeosciences*, 17(24), 6423–6439. doi: 10.5194/bg-17-6423-2020, 2020.
- 1515 Schilperoort, B., Coenders-gerrits, M., Luxemburg, W., Rodríguez, C. J., Vaca, C. C., Savenije, H., Rica, T. D. C., Forestal, E. D. I., & Rica, C.: *Technical note : Using distributed temperature sensing for Bowen ratio evaporation measurements*. 819–830, 2018.
- Silixa Ltd.: *Silixa XT-DTS Hardware Manual Version 1.3*. Retrieved from [www.silixa.com](http://www.silixa.com), 2016.
- 1520 Spittlehouse, D. L., & Black, T. A.: Evaluation of the bowen ratio/energy balance method for determining forest evapotranspiration. *Atmosphere - Ocean*, 18(2), 98–116. doi: 10.1080/07055900.1980.9649081, 1980.
- Sriwongsitanon, N., Gao, H., Savenije, H. H. G., Maekan, E., Saengsawang, S., & Thianpopirug, S.: The Normalized Difference Infrared Index (NDII) as a proxy for soil moisture storage in hydrological modelling. *Hydrology and Earth System Sciences Discussions*, 12(8), 8419–8457. doi: 10.5194/hessd-12-8419-2015, 2015.
- 1525 Sutanto, S. J., Wenninger, J., & Uhlenbrook, S.: Partitioning of evaporation into transpiration, soil evaporation and interception: a combination of hydrometric measurements and stable isotope analyses. *Hydrology and Earth System Sciences Discussions*, 9(3), 3657–3690. doi: 10.5194/hessd-9-3657-2012, 2012.
- 1530 Teuling, A. J.: A Forest Evapotranspiration Paradox Investigated Using Lysimeter Data. *Vadose Zone Journal*, 17(1), 170031. doi: 10.2136/vzj2017.01.0031, 2018.
- Tian, F., Wigneron, J. P., Ciais, P., Chave, J., Ogée, J., Peñuelas, J., Ræbild, A., Domec, J. C., Tong, X., Brandt, M., Mialon, A., Rodriguez-Fernandez, N., Tagesson, T., Al-Yaari, A., Kerr, Y., Chen, C., Myneni, R. B., Zhang, W., Ardö, J., & Fensholt, R.: Coupling of ecosystem-scale plant water storage and leaf phenology observed by satellite. *Nature Ecology and Evolution*, 2(9), 1428–1435. doi: 10.1038/s41559-018-0630-3, 2018.
- 1535 Tombe, B. des, Schilperoort, B. and Bakker, M.: ‘Estimation of temperature and associated uncertainty from fiber-optic raman-spectrum distributed temperature sensing’, *Sensors (Switzerland)*, 20(8). doi: 10.3390/s20082235, 2020.
- van de Giesen, N., Steele-Dunne, S. C., Jansen, J., Hoes, O., Hausner, M. B., Tyler, S., & Selker, J.: Double-ended calibration of fiber-optic raman spectra distributed temperature sensing data. *Sensors (Switzerland)*, 12(5), 5471–5485. doi: 10.3390/s120505471, 2012.
- 1545 Van Der Ent, R. J., Wang-Erlandsson, L., Keys, P. W., & Savenije, H. H. G.: Contrasting roles of interception and transpiration in the hydrological cycle &ndash; Part 2: Moisture recycling. *Earth System Dynamics*, 5(2), 471–489. doi: 10.5194/esd-5-471-2014, 2014.

- 1550 Van Der Meulen, M. W. J., & Klaassen, W.: Soil heat flux measurements in an open forest. *Physics and Chemistry of the Earth*, 21(3 SPEC. ISS.), 101–105. doi: 10.1016/S0079-1946(97)85568-1, 1996.
- Vinya, R., Malhi, Y., Brown, N. D., Fisher, J. B., Brodribb, T., & Aragão, L. E. O. C.: *Seasonal changes in plant – water relations in fl uence patterns of leaf display in miombo woodlands : evidence of water conservative strategies. Fuller 1999*, 104–112. doi: 10.1093/treephys/tpy062, 2018.
- 1555 Weerasinghe, I, Bastiaanssen,W., Mul, M., Jia, L., and Griensven, A.: “Can We Trust Remote Sensing Evapotranspiration Products over Africa.” *Hydrology and Earth System Sciences* 24 (3): 1565–86. <https://doi.org/10.5194/hess-24-1565-2020>, 2020.
- White, F.: *The vegetation of Africa*. Paris: UNESCO, 1983.
- 1560 Xing, Zisheng, Lien Chow, Fan-Rui Meng, Herb W. Rees, Lionel Steve, and J. M.: Validating Evapotranspiration Equations Using Bowen Ratio in New Brunswick, Maritime, Canada. *Sensors*, 1, 412-428. Retrieved from <https://doi.org/10.3390/s8010412>, 2008.
- 1565 Zimba, H., Coenders-Gerrits, M., Banda, K., Hulsman, P., van de Giesen, N., Nyambe, I., and Savenije, H. H. G.: On the importance of phenology in the evaporative process of the Miombo Woodland: Could it be why satellite-based evaporation estimates differ?, *Hydrol. Earth Syst. Sci. Discuss.* [preprint], <https://doi.org/10.5194/hess-2023-39>, in review, 2023.
- 1570 Zimba, Henry, Coenders-Gerrits, M., Kawawa, B., Savenije, H., Nyambe, I., & Winsemius, H.: Variations in canopy cover and its relationship with canopy water and temperature in the miombo woodland based on satellite data. *Hydrology*, 7(3). doi: 10.3390/HYDROLOGY7030058, 2020.
- 1575
- 1580