

A principal component based strategy for regionalisation of precipitation intensity-duration-frequency (IDF) statistics

Kajsa M. Parding¹, Rasmus E. Benestad¹, Anita Verpe Dyrørdal¹, and Julia Lutz¹

¹Norwegian Meteorological Institute

Correspondence: Kajsa M. Parding (kajsa.parding@met.no)

Abstract. Intensity-duration-frequency (IDF) statistics describing extreme rainfall intensities in Norway were analysed with the purpose of investigating how the shape of the curves is influenced by geographical conditions and local climate characteristics. To this end, principal component analysis (PCA) was used to quantify salient information about the IDF curves and a Bayesian linear regression was used to study the dependency of the shapes on climatological and geographical information. Our analysis indicated that the shapes of IDF curves in Norway are influenced by both geographical conditions and 24-hr precipitation statistics. Based on this analysis, an empirical model was constructed to predict IDF curves in locations with insufficient sub-hourly rain gauge data ~~and for the future using downscaled data from global climate models~~. Our new method was also compared with a recently proposed formula for estimating sub-daily rainfall intensity based on 24-hr rain gauge data. We found that a Bayesian inference of a PCA representation of IDF curves provides a promising strategy for estimating sub-daily return levels for rainfall.

1 Introduction

Climate change caused by an increased greenhouse effect is expected to be associated with changes in the hydrological cycle and an increase in precipitation and more extreme rainfall (Field et al., 2012; Stocker and Qin, 2013; Solomon et al., 2007; IPCC, 2021). There are several physics-based explanations for the increased rainfall amounts. Higher surface temperature gives higher rates of evaporation and strengthens the moisture-holding capacity of air. The air moisture is part of the global hydrological cycle where it condenses to form clouds and returns to Earth's surface through precipitation. Furthermore, a recent analysis of the satellite-based Tropical Rainfall Measuring Mission (TRMM) suggests that there has been a change in the global rainfall area over the recent decades that may also imply changes in the mean rainfall intensity (Benestad, 2018) and there are similar indications in recent state-of-the-art reanalyses (Benestad et al., 2022). There is also a possibility that some rain-producing phenomena become more prevalent under warmer conditions, such as convective systems. These theoretical aspects are underscored by trend analyses of the probability of heavy rainfall pointing to more extreme rainfall amounts (Benestad et al., 2019b, 2021; Westra et al., 2014; Donat et al., 2016; Sorteberg et al., 2018; Dyrørdal et al., 2021; Olsson et al., 2022). Extreme rainfall is a disruptive and damaging hazard but can to some extent be managed through a proper risk analysis. For example, precipitation intensity-duration-frequency (IDF) curves are commonly used tools in water resource management and planning (Koutsoyiannis et al., 1998; Mailhot et al., 2007; Burn, 2014; Dyrørdal et al., 2015).

One problem associated with IDF curves is that rain gauge data have limited geographical coverage, making it difficult to analyse the risk of extreme rainfall everywhere. The Intergovernmental Panel on Climate Change's sixth assessment report also noted that the exact levels of regional IDF characteristics may depend on the method as well as the resolution of downscaling when derived from climate model simulations (IPCC, 2021). Furthermore, short time series imply limited knowledge of extremes and challenges the extrapolation to long return periods. These caveats are particularly problematic for IDF statistics for short-duration rainfall (3 hours or less), which are useful for the design of urban infrastructure and urban flood prevention. Short-duration rainfall is often a result of local convective activity and hence highly variable, but sub-hourly precipitation observations are relatively sparse. One way to circumvent this issue is by using systematic dependencies between IDF curves and climatological and geographical factors to regionalise the IDF curves from gauged to un-gauged stations. A similar principle may be used to expand IDF curves from the current period (gauged or ungauged) to the future (Lima et al., 2018; Fadhel et al., 2017). While each precipitation event typically has low predictability, the statistical nature of such events, such as their probability, frequency or typical intensity, may still be highly predictable. Dyrddal et al. (2015) developed a method for estimating return levels for sub-daily rainfall intensity over Norway based on high-resolution gridded climate observations and Bayesian hierarchical modelling. Remote sensing (radar and satellite) products of high spatial resolution can also be a complementary source of precipitation measurements in regionalisation to ungauged locations (Eldardiry et al., 2015; Marra et al., 2017; Gado et al., 2017; Panziera et al., 2018). While radar products have been shown to often underestimate precipitation and in particular high intensity rainfall (Eldardiry et al., 2015; Kreklow et al., 2020), the inherent bias can be locally adjusted with rain gauge measurements (Panziera et al., 2018). One caveat with ~~using~~ gridded data is that ~~it is they are~~ not optimal for analysing extreme values due to spatial ~~inhomogeneity resulting from the way the data is sampled~~ inhomogeneities on sub-gridbox scales (Schilcher et al. (2017); Richard Chandler, private communications). ~~It is also impractical and computationally expensive to calculate IDF curves for each grid point. Using a statistical model that utilises geographical and meteorological information from gridded products, but is tuned to local data, may be a more efficient approach. A similar principle may in addition be used to expand IDF curves from the current period (gauged or ungauged) to the future and hence provide added value in terms of increased versatility.~~ While useful for regionalisation purposes in conjunction with rain gauge measurements, one should be careful estimating the frequency of heavy precipitation events directly from gridded products.

Another problem is that IDF curves may be inconsistent across durations. Roksvåg et al. (2021) proposed two post-processing approaches to deal with such inconsistencies. Another approach may involve a sort of 'temporal downscaling' of sub-daily rainfall intensity based on 24-hr precipitation statistics (Benestad et al., 2021). In a similar vein, Rodríguez et al. (2014) estimated future hourly extreme rainfall using temporal downscaling based on scaling properties of rainfall for a case study of Barcelona and the SRES A1B, A2 and B2 climate scenarios. Fauer et al. (2021) used a different approach, proposing a flexible and consistent quantile estimation method for IDF curves that explored how to improve the estimation by adjusting parameters representing curvature, multi-scaling and flatness. Their approach involved using a duration-dependent formulation of the generalised extreme value (GEV) distribution to fit IDF models with a range of durations simultaneously. The degree of uncertainty associated with estimating IDF curves is substantial, and Chandra et al. (2015) attempted to quantify uncertainties

connected to both insufficient quantity and quality of data, leading to parameter uncertainty due to the distribution fitted to the data, and uncertainty as a result of using multiple global climate models (GCMs) from the CMIP5 ensemble (RCP 2.6, 4.5, 6.0 and 8.5 scenarios). They used a Bayesian approach and a case study of Bangalore city in India and found that the uncertainty is larger for shorter than for longer durations for the rainfall return levels, and also that parameter uncertainty was greater than
65 the model uncertainty.

In this study, we test an empirical statistical modelling approach to estimate the shape of the IDF curves, rather than the return values for each duration and return period. This approach is based on Principal Component Analysis (PCA) and Bayesian inference. Using PCA reduced the return values of all stations and return periods to a set of principal components (PCs) in the form of spatial patterns, with accompanying IDF shapes and eigenvalues. The leading PC spatial patterns were subjected to
70 Bayesian linear regression and subsequently expanded to new stations based on climatological and geographical information. The analysis is included in its entirety in the R-markdown document provided in the Supplement. Predicting the shape of the IDF curves of all return periods simultaneously through PCA is a novel strategy which to our knowledge has not been done before in this context. The motivation for this approach was the observation and expectation that the curves have simple and smooth shapes with regional similarities. In other words, the return values for rainfall intensities over different durations are
75 related to each other, and the IDF curves are associated with a substantial degree of redundant information that can be utilised through the application of PCA. The estimated return values were compared with the simple formula for estimating approximate values of return levels for sub-daily rainfall based on 24-hour rain gauge data presented in Benestad et al. (2021). A strategy that involved using a weighted set of polynomials to represent the IDF shapes was also pursued but abandoned as it provided a poor representation of the return values. The purpose of the statistical modelling was i) to explore the influence of
80 meteorological and geographical conditions on the IDF curves; ii) to establish an empirical model to be used for regionalisation where sub-daily precipitation data are not available, ~~iii) for statistical downscaling purposes, to be used in combination with future projections of meteorological quantities to estimate changes in return values, and iv) and iii)~~ compare different and independent strategies for estimating sub-daily rainfall intensity.

2 Materials and Methods

85 2.1 Data

We used new IDF statistics from 74 Norwegian stations, consisting of return values for a range of durations (1, 2, 3, 5, 10, 15, 30, and 45 minutes, and 1, 1.5, 2, 3, 6, 12, and 24 hours) and return intervals (2, 5, 10, 20, 25, 50, 100, and 200 years), depicted in Figure 1. The return values were calculated using the method described in Lutz et al. (2020) and post-processed with the quantile selection algorithm from Roksvåg et al. (2021). The Roksvåg et al. post-processing was only applied to stations
90 where the IDF curves were not consistent (21 out of the stations). In the calibration, statistical properties based on rainfall and temperature observations were used to represent local climatological conditions in addition to coordinates, elevation and distance to the ocean. In this study, only stations where the IDF statistics were calculated based on at least 10 seasons of precipitation data were considered. Eight stations with IDF statistics based on long precipitation records from different parts

of Norway were selected to display results visually (Figure 2). ~~The~~ IDF curves for all return periods for ~~these~~ the stations are displayed in ~~Figure S4 of the Supplementary material~~ panels a–h and a map of their locations in panel i.

Daily mean precipitation (*pr*) and air temperature at 2m (*t2m*) data were downloaded from the Norwegian Meteorological Institute (<https://frost.met.no>), from the same or closest available stations as the IDF data. Only stations with at least 10 years of data within the period 1970–2020 were included in the analysis. The availability of daily precipitation and temperature data are shown in the supplementary material (Figure S1). All IDF stations had daily precipitation data, but only 17 of the 74 stations had available temperature data. At the stations that did not, the distance to the nearest station with temperature data was on average 6.3 km and at most 25 km. Due to limited spatial coverage of the observational network, the same temperature data were in some cases assigned to multiple IDF stations (12 stations were assigned to multiple IDF stations, 46 were used only once). The multiple assignments occurred primarily in the more densely populated parts of the country (around Oslo, Trondheim and Stavanger) where there are many observational stations in a relatively small area.

105 2.2 Principal Component Analysis of the IDF curves

Principal component analysis (PCA) was applied to the IDF curves through Singular Value Decomposition (SVD) (Jolliffe, 1986; Jolliffe and Cadima, 2016; Trefethen and Bau, 1997). This framework was based on the expression

$$X = U\Lambda V^T, \tag{1}$$

where the matrix X contains the IDF curves, i.e. return values for various return periods and durations at each location, U is a matrix holding eigenvectors which can be interpreted as shapes of IDF curves, Λ is a diagonal matrix holding the eigenvalues, and V represents the principal components (PCs) containing weights for the different geographical locations.

The purpose of the PCA was to reduce the complexity of the IDF data while preserving as much variability as possible. The procedure finds new variables that are linear functions of the original data, where the new variables (PCs) are uncorrelated with each other and the variance is successively maximised, meaning that the leading PC describes the dominant pattern and each successive mode represents a smaller and smaller portion of the variance. The original IDF curves can thus be reproduced by combining a few of the leading PCs, eigenvectors and eigenvalues with little loss of information.

We consider several criteria for assessing the number m of PCs that needs to be retained in order to represent most of the information:

- i) Set m to the smallest value for which the total cumulative explained variance exceeds a given percentage, e.g. 80% or 90%. (The explained variance can be calculated from the eigenvalues λ .)
- ii) Using a Scree diagram where the eigenvalues are plotted against their rank, identify an 'elbow' (a bend in the curve where the slope goes from steep to shallow) and retain the eigenvalues to the left of this point (Cattell, 1966).
- iii) An approach suggested by Ali et al. (1985) is to calculate the correlation between the original variables and the PCs and set m to one less than the first PC for which there are no correlation coefficients that are statistically significantly different from

125 zero. In our case, the "original variables" are the return values, which for each station was compared with the IDF shapes U_i
 for $i \in [1,10]$ (Equation 1).

There are other more objective but also computationally demanding methods of selecting the number of PCs to retain, e.g.
 based on cross-validation or bootstrapping, but these were not deemed necessary for our purposes. Based on the criteria above,
 we focused primarily only on the two leading PCs in most of the analysis and statistical modelling of this study (see discussion
 130 in Section 3.1).

2.3 Statistical modelling

Statistical relationships were established between the two leading PCs of the IDF curves, which represent the dominant spa-
 tial patterns of the data, and a set of geographical and meteorological predictors: the wet-day mean precipitation in the warm
 season (April - September) and cold season (October - March), μ_{warm} and μ_{cold} , the wet-day frequency in the warm season
 135 and cold season, f_{warm} and f_{cold} , the temperature in the summer season (June - August), $t2m_{JJA}$, as well as the latitude,
 altitude, and minimum distance to the coast (d_{ocean}). These predictors describe both the cold season precipitation regime in
 Norway, primarily dominated by stratiform precipitation associated with low-pressure systems, and the warm season precipi-
 tation regime, which to a larger degree is regulated by convective processes. The summer temperature was included because it
 is closely linked to the convective environment.

140 The statistical model can be described as follows:

$$\hat{V}_i(lon, lat) = c_{0,i} + c_{1,i}p_1(lon, lat) + c_{2,i}p_2(lon, lat) + \dots + c_{N,i}p_N(lon, lat), \quad (2)$$

where V_i is the i :th spatial pattern obtained by PCA analysis of the IDF curves (Equation 1), $c_{0,i}$ is the intercept and $c_{1,i}$, $c_{2,i}$,
 ..., $c_{N,i}$ are the coefficients associated with the predictors p_1 , p_2 , ..., p_N for principal component $i \in [1,2]$.

The estimated principal components were then combined with the corresponding eigenvectors and eigenvalues:

$$145 \hat{X} = U_{1,2}\Lambda_{1,2}\hat{V}_{1,2}^T, \quad (3)$$

where the matrix \hat{X} contains the estimated IDF curves, $\hat{V}_{1,2}$ is a matrix with the estimated eigenvectors \hat{V}_1 and \hat{V}_2 (Equation 2),
 and $U_{1,2}$ and $\Lambda_{1,2}$ are matrices holding the first two leading eigenvectors and eigenvalues, respectively (a subset of U and Λ
 from Equation 1).

Model fitting was performed by Bayesian linear regression, using the R-package 'BAS' (see Clyde et al., 2011, 2018,
 150 Chapters 6-8). A Markov Chain Monte Carlo (MCMC) resampling method was used for stochastic exploration of the model
 space. The number of predictors was reduced by applying the Median Probability Model (MPM) rule: including only variables
 with a marginal posterior inclusion probability (pip) of at least 0.5 (Barbieri and Berger, 2004).

2.4 Evaluation of results

2.4.1 Cross-validation

155 To evaluate model skill, a leave-one-out cross-validation was performed in which the predictand and predictor data of one station were excluded from model calibration. The statistical model was subsequently applied to the climatological and geographical data of the excluded station to estimate return values. This procedure was repeated so that independent estimates of the return values were obtained for all stations. The root-mean-square error (RMSE) and relative RMSE between the original return values and independent estimates obtained through cross-validation were then calculated as described in Appendix A.

160 2.4.2 Confidence intervals

Confidence intervals of the estimated return values, \hat{X} , were calculated based on the standard errors of the estimated PCs, \hat{V}_1 and \hat{V}_2 , which were provided as output of the Bayesian linear regression function. Since the principal components are orthogonal, the error propagation equation for linear combinations (Ku, 1966) simplifies to:

$$\sigma_{\hat{X}} = \sqrt{\sum_i^2 \left(\frac{\partial X}{\partial V_i} \right)^2 \sigma_{V_i}^2} = \sqrt{\sum_i^2 (\Lambda_i U_i)^2 \sigma_{V_i}^2} \quad (4)$$

165 where $\sigma_{\hat{X}}$ is the total error of the estimated return values \hat{X} , σ_{V_i} is the standard errors of the i :th principal component, V_i , and U_i and Λ_i are the i :th eigenvector and eigenvalue, respectively (see Equations 1 and 3).

2.5 Comparison with other methods

The IDF curves estimated with Bayesian inference of principal components, as described above, were compared with the simple approximate formula for estimating return values derived by Benestad et al. (2021):

$$170 \quad X_L = \alpha \mu \left(\frac{L}{24} \right)^\zeta \ln f_w \tau, \quad (5)$$

where X_L is the return value (unit: mm) for the duration L (unit: hours), μ (unit: mm/day) and f_w (unit: fraction of days) are the wet-day mean precipitation and wet-day frequency, respectively, calculated from daily precipitation observations, and α and ζ are empirical correction factors that vary with the return period τ (unit: years). The value of α varies linearly with the logarithm of the return period according to $\alpha = 1.256 + 0.064 \ln(\tau)$. Values of ζ have been fitted for a range of return periods
175 (0.4251593, 0.4185929, 0.4161947, 0.4147515, 0.4144257, 0.4137387, 0.4134449, 0.4134594 for 2, 5, 10, 20, 25, 50, 100, 200 year return periods) and are obtained by interpolation for other values of τ . Equation 5 has been implemented in the R-package 'esd' (Benestad et al., 2015) where it is available as the function `day2IDF()`.

3 Results

3.1 PCA analysis of the IDF curves

180 As mentioned earlier, Principal Component Analysis was applied to the IDF statistics as described in Section 2.2 with the purpose of reducing the dimensionality of the data. The five leading principal components explained 74 %, 9 %, 3 %, 3 %, and 2 % of the variability of the IDF statistics, respectively. At least two PCs need to be retained in order to explain 80% of the variance or five PCs for the cumulative explained variance to exceed 90%. In the Scree diagram (Figure ~~??3a~~), an elbow was identified between V_2 and V_3 , suggesting that the two leading PCs represent the most relevant information. However, based on
185 the comparison between the IDF shapes U_i and the original return values, statistically significant correlations (with $p < 0.01$) were found for $i \in [1,4]$, suggesting that the leading four PCs all hold information of some importance.

The spatial pattern associated with the first principal component, V_1 , was characterised by a west-east and south-north gradient, with a strong contrast between the western and southern coasts of Norway on the one hand, and the inland and mid-to-northern Norway on the other hand (~~not shown here, see Figure S8 in the Supplementary material~~Figure 3c). The values
190 of V_1 were of the same sign (negative) at all stations, meaning that it described a pattern with positive correlations among all stations. The second principal component, V_2 , ranged both positive and negative values and displayed a gradient from the inland region, where $V_2 < 0$ at most stations, to the western and southern coast, where $V_2 > 0$ (Figure 3d). The higher-order spatial patterns had less coherent spatial structures, also spanning positive and negative values (Figure 3e and f).

A reconstruction of the IDF statistics (Figure ~~S9-S8~~ in the Supplementary material) from only the first PC showed that it
195 determined the basic slope and level of the IDF curves. The second PC altered the curvature: in the stations where $V_2 > 0$, the second PC made the IDF curve more convex, i.e. decreased return values for short to intermediate durations and increased them for long durations. In stations where $V_2 < 0$, PC_2 had the opposite influence, making the curve more flat or concave instead. ~~Higher-order PCs~~ This can also be understood by looking directly at the IDF shapes (U in Equation 1) associated with the leading principal components, displayed in Figure 3b. For U_1 , the curves decreased smoothly with increasing duration and return period, which makes sense as V_1 was negative at all stations. For U_2 , there was a maximum at 24 hours duration and a minimum around 1-2 hours duration. This explains why positive values of V_2 give a more convex shapes and positive values more concave. The higher order modes (U_3 and U_4) had shapes with local minima and maxima at various durations, but because of their small eigenvalues (Figure 1a) they had little visible influence on the IDF curves and only slightly tweaked, only slightly tweaking their shapes.

200

205 3.2 Statistical modelling

Statistical models were fitted for the first two principal components of the IDF statistics, V_1 and V_2 , using Bayesian linear regression as described in Section 2.3. The posterior inclusion probability of the coefficients (~~Table 1~~) suggested that the most important predictors for V_1 were μ_{warm} and d_{ocean} , and for V_2 , μ_{cold} and $t2m_{JJA}$ (Table 1; Figures ~~S10-S11~~ S9-S10 in the Supplementary material). An attempt was made to fit a model for V_3 , but no predictors could be identified that gave a better
210 prediction than a model consisting of only the intercept (Figure ~~S12~~ S11). As no model could be found for V_3 and previous

analysis indicated that it had a limited influence on the IDF shapes, it was excluded from further statistical modelling and analysis. The models for V_1 and V_2 were refitted with the selected predictors to keep the size of the predictor set small and reduce the risk of over-fitting (Wilks, 1995).

215 ~~Figure 4 demonstrates~~ Figures 4 and S13 (Supplementary material) demonstrate the effect of the predictor variables on the estimated 200-year return values for station Hamar II. Similar results were seen at other stations and for other return periods. The two predictors included in the model of V_1 (μ_{warm} and d_{ocean}) had the most notable influence on the basic shape and level of the IDF curves. An increase in μ_{warm} or decrease in d_{ocean} gave an overall increase in return values, but more for long durations than short durations, hence increasing the slope of the IDF curves (Figures 4a and b). A decrease in μ_{warm} or increase in d_{ocean} had the opposite effect, decreasing return levels and the slope of the curves. The predictor variables that
220 were involved in the model of V_2 (μ_{cold} , and $t2m_{JJA}$) altered the curvature of the estimated IDF curves. An increase in μ_{cold} or decrease in $t2m_{JJA}$ lowered return values for low to intermediate durations (< 6 hours) and increased return values for long durations (> 6 hours), resulting in a more concave upwards curve (Figures 4c and d). A decrease in μ_{cold} or increase in $t2m_{JJA}$ had the opposite effect, resulting in a more convex downward curve.

A new set of IDF curves was constructed by combining the predicted principal components \hat{V}_1 and \hat{V}_2 with the corresponding
225 eigenvectors and eigenvalues (Equation 3). Cross-validation (Section 2.4.1) showed that the estimated return values were robust in the sense that they were very similar whether a station was included in model fitting or not: Comparing return values estimated by models tuned with all data and by cross-validation, the RMSE was only 0.9 mm, or 3 % in relative terms (see examples in Figure S14 in the Supplementary material). At the eight example stations, the confidence intervals of the original IDF statistics and of the estimated return values overlapped for all durations and return periods (Figure 5). The deviation
230 between estimated and original return values was generally larger in stations with more steep and curved slopes (i.e. large differences between short and long durations as in panels c, d, and e in Figure 5) compared to the stations with flatter IDF curves.

A comparison between the original return values and values estimated from the two leading original PCs (Figures 6a and b) showed that there was some loss of information from discarding higher-order modes of variability, but the RMSE was rather
235 low (2.3 mm or in relative terms, 9 %) and the PCA analysis added no bias. The Bayesian statistical modelling of the two leading PCs (Figure 6b) added uncertainty to the return value estimates (RMSE = 5.9 mm, 23 %) but was still more precise than the simple equation by Benestad (RMSE = 9 mm; 35 %) (Figure 6c; Figure [S17S19](#)). There was no obvious spatial pattern in the RMSE of the return values obtained by the Bayesian approach (not shown here, see Figure [S19S20](#)). For the simple formula, the largest biases occurred for short return periods, for which there was a tendency to overestimate the return values,
240 while there was little bias for longer return periods. For the Bayesian modelling of the first two PCs, there was a tendency to underestimate high return values and the bias was similar for all return periods. The Bayesian modelling approach was notably better for low to medium return values (< 100mm) but the discrepancies associated with the two methods were of similar magnitude for higher return values. The improved representation of the IDF statistics by the Bayesian modelling was not surprising since it involved an optimisation process that found the best slope and curvature of the IDF shapes, whereas
245 the estimates based on the simple formula only used the two parameters μ and f_w . In the simple formula, the shapes of the

IDF curves were fixed in terms of a fractal describing inter-scalar dependencies. Nevertheless, the two different strategies gave somewhat similar results, albeit with substantial scatter.

250 New IDF curves were generated by applying the statistical models to meteorological and geographical data for 240 stations in Norway, including Svalbard and Jan Mayen (Figure 7). Many of these stations lack long time series of high-quality sub-daily precipitation data, and thus IDF curves cannot be calculated by ordinary measures.

255 Comparing the original return values (Figures 1 and [S2-S3](#) in the Supplementary material) to the estimated values (Figures 7 and [S21-S22](#)), the estimated IDF curves are smoother than the original curves. There are obvious regional differences in the shapes of the IDF curves: Towards the west coast, the IDF curves reach the highest values and the curvature tends to be strong (i.e., a large difference between the intensity of short and long durations) compared to stations inland and up north. At northern locations, the IDF curves are lower with a moderate slope. These regional differences were more emphasised in the estimated return values. Most notably, in the southeast region (south of 62 °N, east of 9 °E), the range of estimated return values was considerably more narrow compared to the original IDF data, even though the estimated values represent more stations covering a larger area.

4 Discussion

260 The regression results presented in Table 1 and Figure 4 indicated that the mean precipitation intensity in the warm season is connected to increased intensity over all timescales examined, whereas a similar increase in the cold season suggested reduced short-term intensity but increased long-term intensity. A similar increase over all timescales in the warm season is consistent with Equation 5 ($\delta x_\tau = \alpha(L/24)^\zeta \ln(f_w \tau) \delta \mu$) assuming a constant value for ζ , but the deviation from this in winter may suggest that ζ is not necessarily constant. The difference in seasonal response is likely related to the dominance of different precipitation-generating processes: stratiform in winter and convective in summer. It could also possibly be connected to the warm and cold initiation of precipitation (Rogers and Yau, 1989). The locations with intense winter precipitation, which tend to have high return values for long durations and relatively low return values for shorter durations, are found along the west coast (Figures 1 and 7, Figures [S2 and S24-S3](#) and [S22](#) of the Supplementary material). The climate of this region is characterised by the North Atlantic storm tracks bringing a steady stream of cyclones that often meet land here in fall and winter, giving rise to long and heavy precipitation events, and a relatively cold climate in summer which is not conducive to convection. Further inland, the heavy precipitation events often occur in summer as a result of convection, which is in line with the relatively high return values for shorter durations. Furthermore, there is a degree of orographically forced precipitation along the mountain ranges. The influence of the distance to the ocean and temperature in summer (Figure 4) also supports this picture, with the curvature of the IDF curves decreasing with increasing $t2m_{JJA}$ and d_{ocean} .

275 An advantage of the proposed method, applying PCA to the IDF data, is that all durations and return periods are considered together. This is not only computationally efficient but also reduces the influence of uncertain or erroneous individual return levels. There are also some potential pitfalls with this approach. First of all, only the first two PCs could be modeled which could have too much of a smoothing effect on the IDF curves. There could also be nonlinear effects that were not captured

by the linear models which could result in underestimated variations in the estimated PCs. The quality of the estimated return
280 levels was limited by the quality of the IDF data that they were based on. A different set of IDF statistics would likely result
in statistical models with similar predictors and coefficients, but the PCA and ultimately the estimated IDF curves would be
defined by the shape of the IDF data.

IDF statistics tend to have large uncertainties attached to them, as illustrated by the confidence intervals in Figure 5. It can
therefore be difficult to evaluate what constitutes a skillful estimation of return values. Although the IDF statistics used in this
285 paper (Lutz et al., 2020) are referred to as the "original" return values, they too were estimated and not directly observed. Is it
enough that the confidence intervals of the two estimates overlap? If so, the regionalisation approach presented here is "good
enough". On the other hand, the confidence intervals of the PCA-based estimates are for sure underestimated because they
represent only the distribution of the Bayesian regression coefficients, without taking into account the uncertainties of the IDF
statistics or climatological information that went into the modelling.

290 A more direct evaluation of model skill might be between the original return values (that were also obtained as median
values of a distribution, see Lutz et al. (2020)) and the confidence intervals of the estimated return values. Using this metric,
the statistical modeling was successful at most but not all stations. For the 24-hour duration and 200-year return period, which
is where the largest discrepancies occurred (Figure 6b), there were five stations at which the original return values were outside
of the confidence interval of the estimated return values (Figure S15 in the Supplementary material): four stations along the
295 southern coast of Norway, at which the return values were underestimated compared to the original values, and one station
on the west coast where the return value is overestimated instead. A closer examination revealed that at two of the stations
where the return values were underestimated (Grimstad - Hia and Time - Lye), the problem could be traced to the discarding of
higher-order PCs, as PC4 had a notable influence on the shape of the IDF curves (not shown). At the other stations with large
discrepancies, the explanation was not as easy to find but likely connected to the Bayesian regression.

300 Expanding IDF curves from gauged to ungauged locations or from current to future periods leans on the assumption that
the transfer functions are stationary and the climate data that go into the analyses are representative of the location/period that
they are associated with. This is not always true. If the reference period is shorter than the relevant cycles of natural climate
variability or if there is a trend or large interannual variability, the outcome will likely be sensitive to the precise period of the
input data. Dyrddal et al. (2021) found significant changes in heavy precipitation in the Nordic-Baltic region and concluded that
305 return level calculations were sensitive to the time period of available data. One strategy, suggested by Fadhel et al. (2017), is
to investigate and quantify the uncertainty related to this issue by repeating the analyses with input data from varying periods.
To test the robustness of the proposed method, we applied the statistical models to climatological data from two different
periods (1970-1995 and 1995-2020) at 26 stations with long, complete observational records. The results (Figure S24 in the
Supplementary material) showed that for long durations, the estimated return values could differ as much as 10-20 mm at some
310 stations depending on the reference period. This uncertainty should ideally have been included in the confidence intervals of the
estimated IDF curves, but short observational records made it difficult to do this at most locations. In future studies, additional
sources of information such as high resolution gridded products may be helpful to fill in the gaps of the observational network
in space and time.

Given that the IDF statistics in Norway are estimated for each duration separately and often based on short time series (Lutz et al., 2020), the smoother shapes of the IDF curves estimated by PCA-based Bayesian regression may, at some stations, be more representative of the precipitation climate than the original return values which they are based on. Hence, the PCA-based approach with Bayesian inference can be regarded as another 'tool' together with the traditional approach for estimating IDFs and the simple formula proposed by Benestad et al. (2021). They are based on different assumptions, have different strengths and weaknesses, and together they can capture salient information and smooth over errors from single sites, as the different approaches to predicting IDF curves are based on independent methods, e.g. modelling the return values Dyrddal et al. (2015), estimating future IDF curves based on changes in the precipitation intensity Zhu et al. (2012), and downscaling rainfall intensity with respect to timescale Rodríguez et al. (2014); Benestad et al. (2021).

As an alternative to PCA, we tried using a weighted set of polynomials to represent the shapes of the IDF curves, fitting return values against time intervals (Figure S6 in the Supplementary material). This method was not successful. First and second-order polynomials were not a good fit and higher-order polynomials, while fitting the data reasonably well for the time intervals for which return value data were available, had wiggly shapes with local minima and maxima that did not make sense as IDF curves.

One interesting question is how to use the IDF modelling approach presented here in the context of climate change projections. For the case of Norway, the key variables expected to change are μ_{warm} , μ_{cold} , and $t2m_{JJA}$. By downscaling them, statistically or dynamically, we may be able to infer changes in the IDF through predicting new values for the PCs, assuming that their shapes will be valid in a future climate and the calibrated dependency holds. One limitation is our ability to get reliable estimates for the wet-day mean precipitation in the future, which can be challenging in the case of empirical-statistically downscaling. We can also use this approach to provide hypothetical IDF curves for stress-testing (Benestad et al., 2019a). Other caveats may be that these results only apply to Norway and that similar analyses for different regions may find that different factors are important for the shape of the IDF curves. We expect that the shapes of the IDF curves depend on physical aspects such as mesoscale convection, synoptic frontal systems and cyclones, orographic precipitation, and atmospheric rivers and that they will be sensitive to changes in their occurrence relative to each other.

5 Conclusions

We obtained predictions of the shape of IDF curves in Norway with Bayesian inference applied to a PCA representation of the IDF data and conclude that it provides a useful strategy that can be utilised for regionalisation and downscaling of future climate projections.

Code and data availability. The data code used to carry out this analysis is available in an R-markdown document provided in the Supplementary material. The daily precipitation and temperature data used in this paper are publicly available and the IDF statistics are available on request from the authors.

345 **Appendix A: Skill statistics**

Statistical measures of the discrepancy between original return values x and fitted values y were calculated as follows:

$$RMSE = \frac{1}{N} \sum_{i=1}^N \sqrt{(y_i - x_i)^2} \quad (\text{A1})$$

$$RMSE_{rel} = \frac{RMSE}{\bar{x}} \quad (\text{A2})$$

Author contributions. Kajsa Parding and Rasmus Benestad contributed to the data analysis. Julia Lutz supplied the IDF data. All authors
350 participated in writing the manuscript.

Competing interests. No competing interests are present.

Acknowledgements. This work was supported by the Norwegian Meteorological Institute and the KlimaDigital project (Norwegian Research Council grant: 281059).

References

- 355 Ali, A., Clarke, G. M., and Trustrum, K.: Principal component analysis applied to some data from fruit nutrition experiments, *Statistician*, 34, 365–369, 1985.
- Barbieri, M. M. and Berger, J. O.: Optimal predictive model selection, *The Annals of Statistics*, 32, 870–897, 2004.
- Benestad, R., Parding, K., Mezghani, A., Dobler, A., Landgren, O., Erlandsen, H., Lutz, J., and Haugen, J.: Stress Testing for Climate Impacts with “Synthetic Storms”, *Eos*, 100, <https://doi.org/10.1029/2019EO113311>, 2019a.
- 360 Benestad, R. E.: Implications of a decrease in the precipitation area for the past and the future, *Environmental Research Letters*, 13, 044 022, <https://doi.org/10.1088/1748-9326/aab375>, 2018.
- Benestad, R. E., Abdelakder Mezghani, and Parding, K. M.: *Esd V1.0*, <https://doi.org/10.5281/ZENODO.29385>, 2015.
- Benestad, R. E., Parding, K. M., Erlandsen, H. B., and Mezghani, A.: A simple equation to study changes in rainfall statistics, *Environmental Research Letters*, 14, 084 017, <https://doi.org/10.1088/1748-9326/ab2bb2>, 2019b.
- 365 Benestad, R. E., Lutz, J., Dyrørdal, A. V., Haugen, J. E., Parding, K. M., and Dobler, A.: Testing a simple formula for calculating approximate intensity-duration-frequency curves, *Environmental Research Letters*, 16, 044 009, <https://doi.org/10.1088/1748-9326/abd4ab>, 2021.
- Benestad, R. E., Lussana, C., Lutz, J., Dobler, A., Landgren, O., Haugen, J. E., Mezghani, A., Casati, B., and Parding, K. M.: Global hydro-climatological indicators and changes in the global hydrological cycle and rainfall patterns, *PLOS Climate*, 1, e0000 029, <https://doi.org/10.1371/journal.pclm.0000029>, 2022.
- 370 Burn, D. H.: A framework for regional estimation of intensity-duration-frequency (IDF) curves: REGIONAL ESTIMATION OF INTENSITY-DURATION-FREQUENCY (IDF) CURVES, *Hydrological Processes*, 28, 4209–4218, <https://doi.org/10.1002/hyp.10231>, 2014.
- Cattell, R. B.: The Scree Plot Test for the Number of Factors, *Multivariate Behavioral Research*, 1, 140–161, https://doi.org/10.1207/s15327906mbr0102_10, 1966.
- 375 Chandra, R., Saha, U., and Mujumdar, P.: Model and parameter uncertainty in IDF relationships under climate change, *Advances in Water Resources*, 79, 127–139, <https://doi.org/10.1016/j.advwatres.2015.02.011>, 2015.
- Clyde, M., Ghosh, J., and Littman, M. L.: Bayesian Adaptive Sampling for Variable Selection and Model Averaging, *Journal of Computational and Graphical Statistics*, 20, 80–101, <https://doi.org/10.1198/jcgs.2010.09049>, 2011.
- Clyde, M., Çetinkaya Rundel, M., Rundel, C., Banks, D., and Huang, L.: *An Introduction to Bayesian Thinking, A Companion to the*
- 380 *Statistics with R Course*, self published, last built on 2021-02-19 edn., <https://statswithr.github.io/book/>, 2018.
- Donat, M. G., Alexander, L. V., Herold, N., and Dittus, A. J.: Temperature and precipitation extremes in century-long gridded observations, reanalyses, and atmospheric model simulations, *Journal of Geophysical Research: Atmospheres*, 121, <https://doi.org/10.1002/2016JD025480>, 2016.
- Dyrørdal, A. V., Lenkoski, A., Thorarinsdóttir, T. L., and Stordal, F.: Bayesian hierarchical modeling of extreme hourly precipitation in Norway: MODELING EXTREME HOURLY PRECIPITATION IN NORWAY, *Environmetrics*, 26, 89–106, <https://doi.org/10.1002/env.2301>, 2015.
- 385 Dyrørdal, A. V., Olsson, J., Médus, E., Arnbjerg-Nielsen, K., Post, P., Aņiskeviča, S., Thorndahl, S., Førland, E., Wern, L., Mačiulytė, V., and Mäkelä, A.: Observed changes in heavy daily precipitation over the Nordic-Baltic region, *Journal of Hydrology: Regional Studies*, 38, 100 965, <https://doi.org/10.1016/j.ejrh.2021.100965>, 2021.

- 390 Eldardiry, H., Habib, E., and Zhang, Y.: On the use of radar-based quantitative precipitation estimates for precipitation frequency analysis, *Journal of Hydrology*, 531, 441–453, <https://doi.org/10.1016/j.jhydrol.2015.05.016>, 2015.
- Fadhel, S., Rico-Ramirez, M. A., and Han, D.: Uncertainty of Intensity–Duration–Frequency (IDF) curves due to varied climate baseline periods, *Journal of Hydrology*, 547, 600–612, <https://doi.org/10.1016/j.jhydrol.2017.02.013>, 2017.
- Fauer, F. S., Ulrich, J., Jurado, O. E., and Rust, H. W.: Flexible and Consistent Quantile Estimation for Intensity-Duration-Frequency Curves, preprint, *Hydrometeorology/Modelling approaches*, <https://doi.org/10.5194/hess-2021-334>, 2021.
- 395 Field, C., Barros, V., Stocker, T. F., Qin, D., Dokken, D. J., Ebi, K. L., Mastrandrea, M. D., Mach, K. J., Plattner, G.-K., Allen, S. K., Tignor, M., and Midgley, P. M., eds.: *Managing the Risks of Extreme Events and Disasters to Advance Climate Change Adaptation. A Special Report of Working Groups I and II of the Intergovernmental Panel on Climate Change*, Cambridge University Press, Cambridge, UK, and New York, NY, USA, 2012.
- 400 Gado, T. A., Hsu, K., and Sorooshian, S.: Rainfall frequency analysis for ungauged sites using satellite precipitation products, *Journal of Hydrology*, 554, 646–655, <https://doi.org/10.1016/j.jhydrol.2017.09.043>, 2017.
- IPCC: *Climate Change 2021: The Physical Science Basis. Contribution of Working Group I to the Sixth Assessment Report of the Intergovernmental Panel on Climate Change*, Cambridge University Press., <https://www.ipcc.ch/report/ar6/wg1/>, 2021.
- Jolliffe, I. T.: *Principal Component Analysis*, Springer Series in Statistics, Springer, 1986.
- 405 Jolliffe, I. T. and Cadima, J.: Principal component analysis: a review and recent developments, *Philosophical Transactions of the Royal Society A: Mathematical, Physical and Engineering Sciences*, 374, 20150202, <https://doi.org/10.1098/rsta.2015.0202>, <https://royalsocietypublishing.org/doi/pdf/10.1098/rsta.2015.0202>, 2016.
- Koutsoyiannis, D., Kozonis, D., and Manetas, A.: A mathematical framework for studying rainfall intensity-duration-frequency relationships, *Journal of Hydrology*, 206, 118–135, [https://doi.org/10.1016/S0022-1694\(98\)00097-3](https://doi.org/10.1016/S0022-1694(98)00097-3), 1998.
- 410 Kreklow, J., Tetzlaff, B., Burkhard, B., and Kuhnt, G.: Radar-Based Precipitation Climatology in Germany—Developments, Uncertainties and Potentials, *Atmosphere*, 11, 217, <https://doi.org/10.3390/atmos11020217>, 2020.
- Ku, H. H.: Notes on the use of propagation of error formulas, *Journal of Research of the National Bureau of Standards. Section C: Engineering and Instrumentation*, 70C, 263–237, <https://doi.org/10.6028/jres.070C.025>, 1966.
- Lima, C. H., Kwon, H.-H., and Kim, Y.-T.: A local-regional scaling-invariant Bayesian GEV model for estimating rainfall IDF curves in a future climate, *Journal of Hydrology*, 566, 73–88, <https://doi.org/10.1016/j.jhydrol.2018.08.075>, 2018.
- 415 Lutz, J., Grinde, L., and Dyrddal, A. V.: Estimating Rainfall Design Values for the City of Oslo, Norway—Comparison of Methods and Quantification of Uncertainty, *Water*, 12, 1735, <https://doi.org/10.3390/w12061735>, 2020.
- Mailhot, A., Duchesne, S., Caya, D., and Talbot, G.: Assessment of future change in intensity–duration–frequency (IDF) curves for Southern Quebec using the Canadian Regional Climate Model (CRCM), *Journal of Hydrology*, 347, 197–210, <https://doi.org/10.1016/j.jhydrol.2007.09.019>, 2007.
- 420 Marra, F., Morin, E., Peleg, N., Mei, Y., and Anagnostou, E. N.: Intensity–duration–frequency curves from remote sensing rainfall estimates: comparing satellite and weather radar over the eastern Mediterranean, *Hydrology and Earth System Sciences*, 21, 2389–2404, <https://doi.org/10.5194/hess-21-2389-2017>, 2017.
- Olsson, J., Dyrddal, A. V., Médus, E., Södling, J., Aniskeviča, S., Arnbjerg-Nielsen, K., Førland, E., Mačiulytė, V., Mäkelä, A., Post, P., Thorndahl, S. L., and Wern, L.: Sub-daily rainfall extremes in the Nordic–Baltic region, *Hydrology Research*, p. nh2022119, <https://doi.org/10.2166/nh.2022.119>, 2022.
- 425

- Panziera, L., Gabella, M., Germann, U., and Martius, O.: A 12-year radar-based climatology of daily and sub-daily extreme precipitation over the Swiss Alps, *International Journal of Climatology*, 38, 3749–3769, <https://doi.org/10.1002/joc.5528>, 2018.
- 430 Rodríguez, R., Navarro, X., Casas, M. C., Ribalaygua, J., Russo, B., Pouget, L., and Redaño, A.: Influence of climate change on IDF curves for the metropolitan area of Barcelona (Spain): INFLUENCE OF CLIMATE CHANGE ON IDF CURVES OF BARCELONA (SPAIN), *International Journal of Climatology*, 34, 643–654, <https://doi.org/10.1002/joc.3712>, 2014.
- Rogers, R. R. and Yau, M. K.: *A Short Course in Cloud Physics*, Pergamon Press, Oxford, 3 edn., 1989.
- Roksvåg, T., Lutz, J., Grinde, L., Dyrørdal, A. V., and Thorarinsdóttir, T. L.: Consistent intensity-duration-frequency curves by post-processing of estimated Bayesian posterior quantiles, *Journal of Hydrology*, 603, 127 000, <https://doi.org/10.1016/j.jhydrol.2021.127000>, 2021.
- 435 Schilcher, U., Brandner, G., and Bettstetter, C.: Quantifying inhomogeneity of spatial point patterns, *Computer Networks*, 115, 65–81, <https://doi.org/10.1016/j.comnet.2016.12.018>, 2017.
- Solomon, S., Qin, D., Manning, M., Chen, Z., Marquis, M., Averyt, K. B., Tignor, M., and Miller, H. L., eds.: *Climate Change: The Physical Science Basis. Contribution of Working Group I to the Fourth Assessment Report of the Intergovernmental Panel on Climate Change*, Cambridge University Press, United Kingdom and New York, NY, USA, 2007.
- 440 Sorteberg, A., Lawrence, D., Dyrørdal, A. V., Mayer, S., and Engeland, K.: Climatic changes in short duration extreme precipitation and rapid onset flooding - implications for design values, NCCS report 1/2018, Norwegian Climate Change Services, Oslo, Norway, 2018.
- Stocker, T. and Qin, D., eds.: *Climate change 2013: the physical science basis: summary for policymakers, a report of working group I of the IPCC: technical summary, a report accepted by working group I of the IPCC but not approved in detail: and frequently asked questions: part of the working group I contribution to the fifth assessment report of the intergovernmental panel on climate change*, WMO, UNEP, s.l., 2013.
- 445 Trefethen, L. N. and Bau, D.: *Numerical Linear Algebra*, Society for Industrial and Applied Mathematics, 1 edn., 1997.
- Westra, S., Fowler, H. J., Evans, J. P., Alexander, L. V., Berg, P., Johnson, F., Kendon, E. J., Lenderink, G., and Roberts, N. M.: Future changes to the intensity and frequency of short-duration extreme rainfall: FUTURE INTENSITY OF SUB-DAILY RAINFALL, *Reviews of Geophysics*, 52, 522–555, <https://doi.org/10.1002/2014RG000464>, 2014.
- 450 Wilks, D. S.: *Statistical Methods in the Atmospheric Sciences*, Academic Press, Orlando, Florida, USA, 1995.
- Zhu, J., Stone, M. C., and Forsee, W.: Analysis of potential impacts of climate change on intensity–duration–frequency (IDF) relationships for six regions in the United States, *Journal of Water and Climate Change*, 3, 185–196, <https://doi.org/10.2166/wcc.2012.045>, 2012.

Table 1. Marginal posterior inclusion probability (pip) of the coefficients for different predictor variables in the statistical models for the three leading principal components of the IDF curves, V_1 , V_2 and V_3 . A pip higher than 0.5 (shown in bold font) indicates that the coefficient is included in the Median Probability Model (MPM), which is the model selection approach used in this study. The included predictor variables are the wet-day mean precipitation in the warm and cold season (μ_{warm} , μ_{cold}), the wet-day frequency in the warm and cold season (f_{warm} , f_{cold}), the mean summer temperature ($t2m_{JJA}$), and the latitude, altitude and distance to the ocean (d_{ocean}).

Predictor	pip V_1	pip V_2	pip V_3
Intercept	1.0000	1.0000	1.0000
μ_{warm}	1.0000	0.1089	0.0220
μ_{cold}	0.1638	1.0000	0.0221
f_{warm}	0.1114	0.0830	0.0617
f_{cold}	0.1533	0.0796	0.0870
$t2m_{JJA}$	0.1621	0.9756	0.0285
latitude	0.2854	0.0815	0.0223
altitude	0.1225	0.1108	0.0252
d_{ocean}	0.8426	0.0850	0.0542

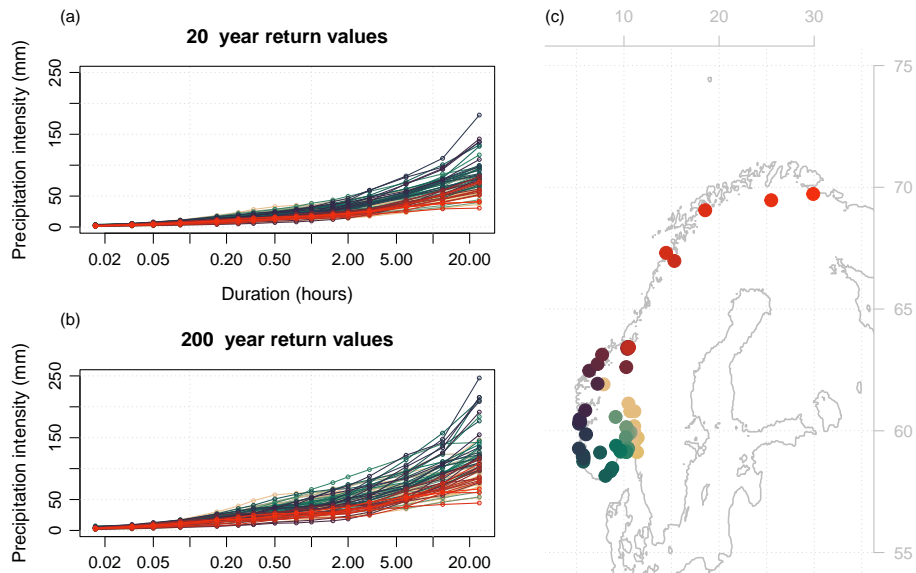


Figure 1. Return values for 74 Norwegian stations for the (a) 20 and (b) 200-year return periods. The colours represent different locations shown in the map (c).

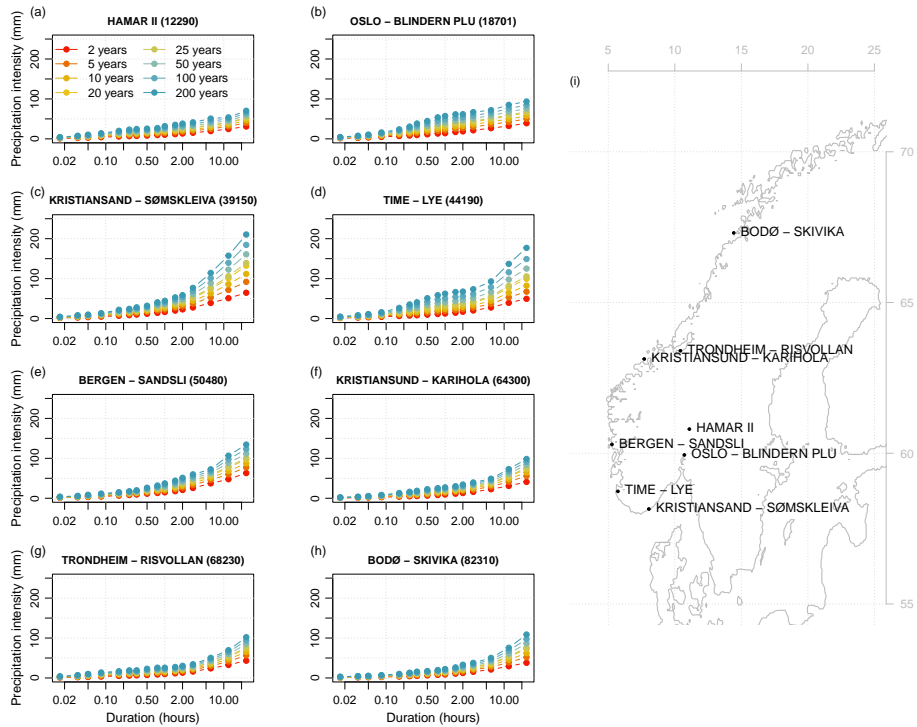


Figure 2. Map showing the location-IDF curves for (a) Hamar II, (b) Oslo - Blindern PLU, (c) Kristiansand - Sømskleiva, (d) Time - Lye, (e) Bergen - Sandsli, (f) Kristiansund - Karihola, (g) Trondheim - Risvollan, and (h) Bodø - Skivika. The locations of the example-stations for visualisation are shown on a map in this paper panel i. The color scale represents the various return periods, from 2 to 200 years, as described in the legend in panel a.

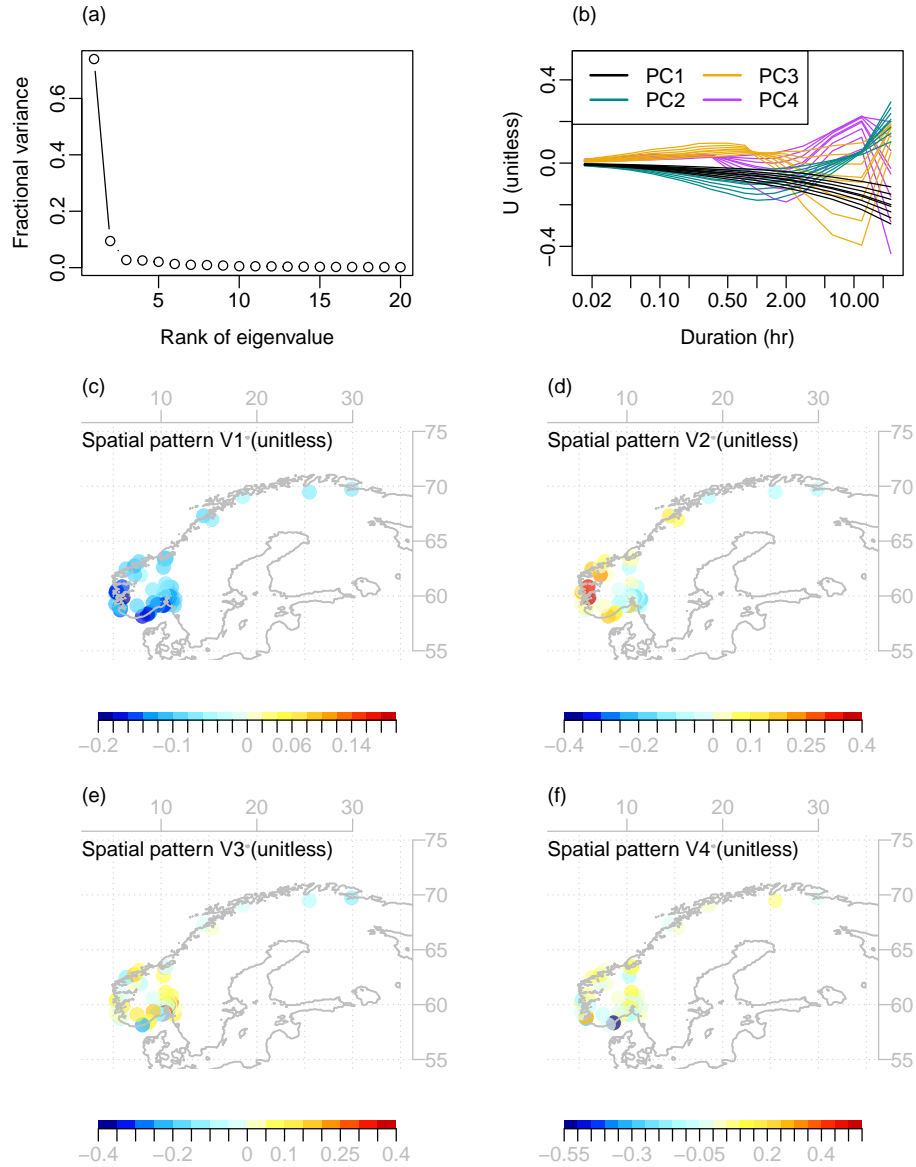


Figure 3. Serec diagram Summary figure describing different aspects of the principal components PCA analysis of the IDF statistics curves. The figure Panel (a) shows a Scree diagram with the rank of the eigenvalues (abscissa) plotted against the explained variance (ordinate). Panel (b) displays the IDF shapes (U in Equation 1) associated with the leading four principal components, and (c, d, e, f) show the associated spatial patterns (V in Equation 1) for PC1, PC2, PC3, and PC4, respectively.

200 year return values for HAMAR II

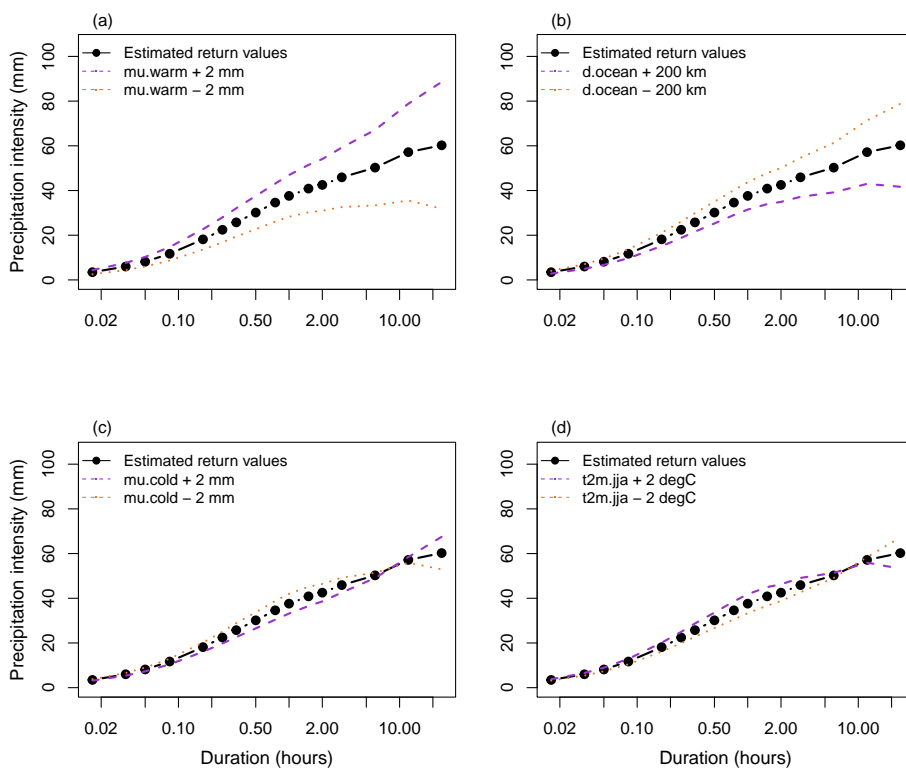


Figure 4. Demonstration of the effect of the model parameters (a) μ_{warm} , (b) d_{ocean} , (c) μ_{cold} , and (d) $t2m_{JJA}$ on the estimated 200-year return values for the station Hamar II. The plots show return values estimated with parameter values from observations (black lines and dots), as well as with increased (purple dashed lines) and decreased (orange dotted lines) parameter values.

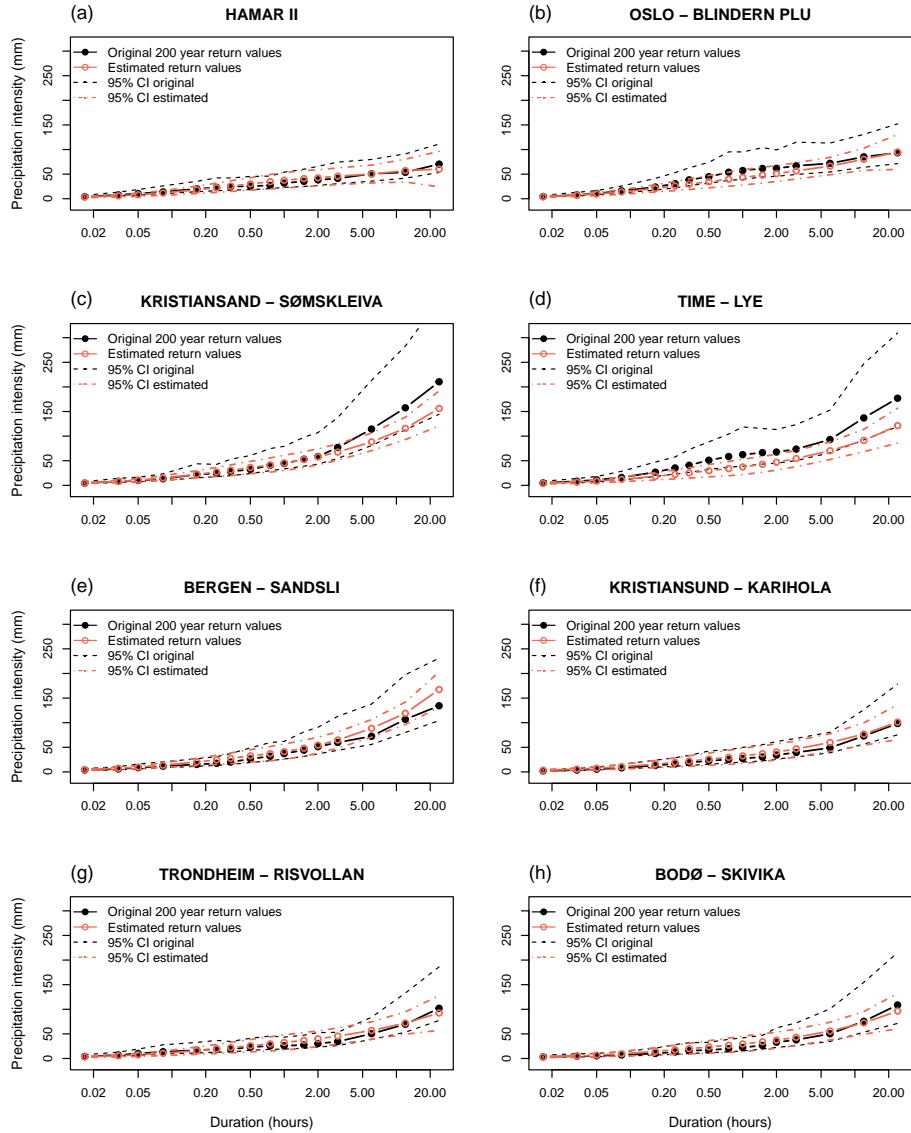


Figure 5. Estimated 200-year return values for eight example stations: (a) Hamar II, (b) Oslo - Blindern Plu, (c) Kristiansand - Sømshleiva, (d) Time - Lye, (e) Bergen - Sandsli, (f) Kristiansund - Karihola. and (g) Bodø - Skivika. The plots show the original IDF curves (black) as well as return values estimated by Bayesian inference as described in this paper (coral). Dashed lines show the confidence interval (2 standard errors) of the original (dashed black) and estimated (dashed coral) IDF curves.

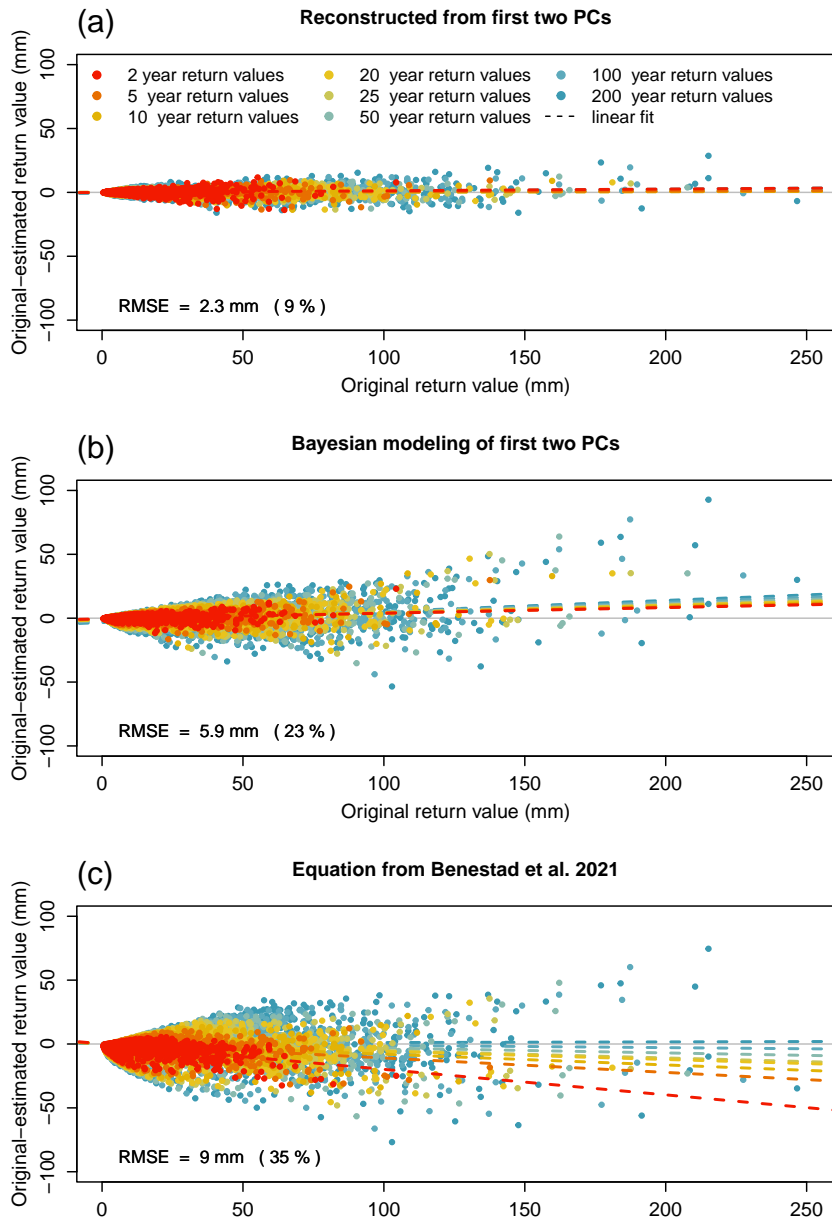


Figure 6. Original return values plotted against the error of the estimated return values (original - estimated) calculated (a) from the two leading PCs of the original return values, (b) by Bayesian modelling of the two leading PCs of the return values, and (c) using the equation presented in Benestad et al. (2021). The colours represent different return periods (see legend in panel a), points show individual return values and dashed lines show linear regressions for each return period. The RMSE and relative RMSE of the estimated and original return values are displayed in the lower left corner of each panel.

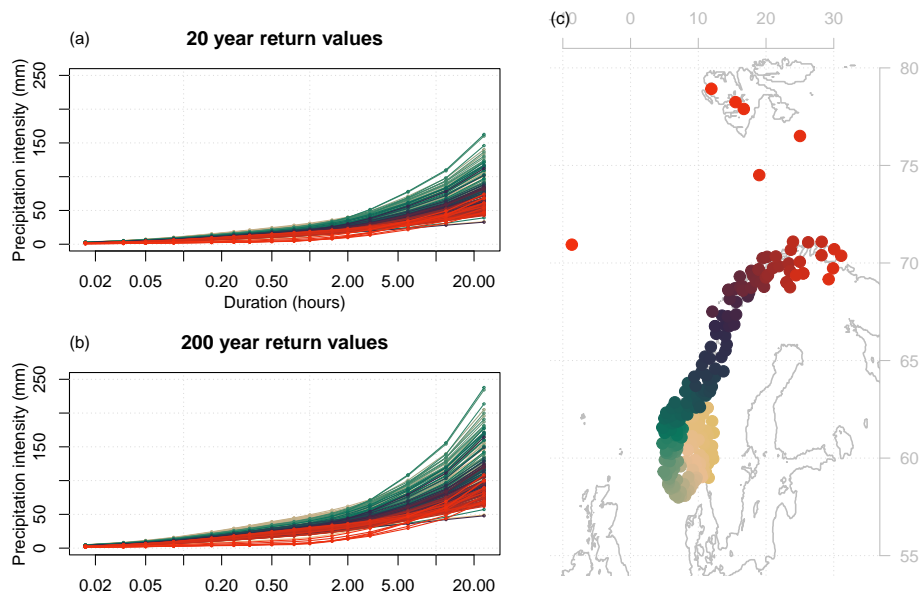


Figure 7. Estimated return values for 240 Norwegian stations for the (a) 20-year and (b) 200-year return period, calculated using statistical models applied to temperature and precipitation data that were not used for model calibration. The map (c) shows which locations the colours in the return value plots represent.