

Correction to our reply to referee #2:

Referee comment: *Figure 6 – It is difficult to relate the z positions to the model volume (no z axis or magnitudes shown in the very small cuboid reference diagram). Also it is difficult to read aperture magnitudes with the increment labeling on the shading scale. The text refers to east positioning (L255), so direction labels are needed here, and also in Fig 1. Enlarging the reference diagram would be helpful.*

In our previous reply, we misunderstood your comment concerning the aperture “labeling on the shading scale”. We interpreted your comment as recommendation to use another colormap. However, the labeling was in fact wrong. We generated the figures for different cross sections with the program Paraview. When we inserted them to Figure 6 of our paper we relabeled the colorbar to provide the figure (especially the numbers) in a high quality where we made the mistake.

Please find the corrected version of Figure 6 of our paper and the input as generated with Paraview below.

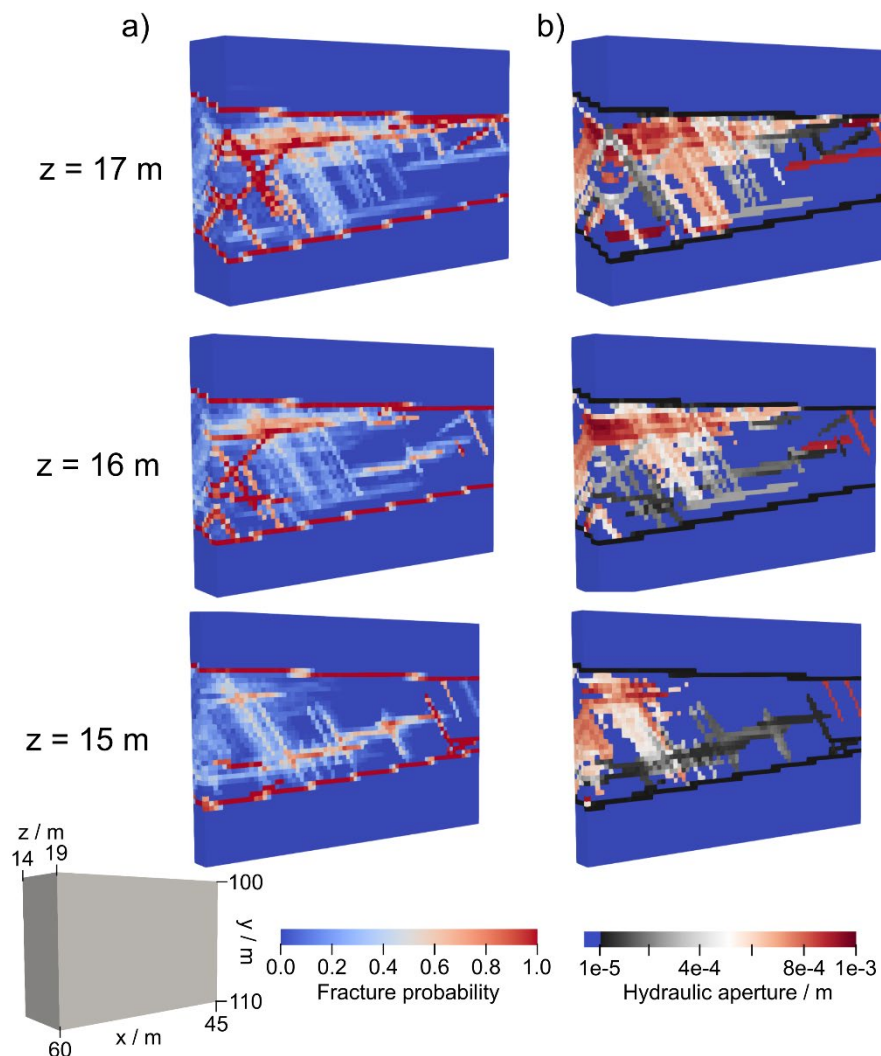


Figure 1: Corrected version of Figure 6 of our paper.

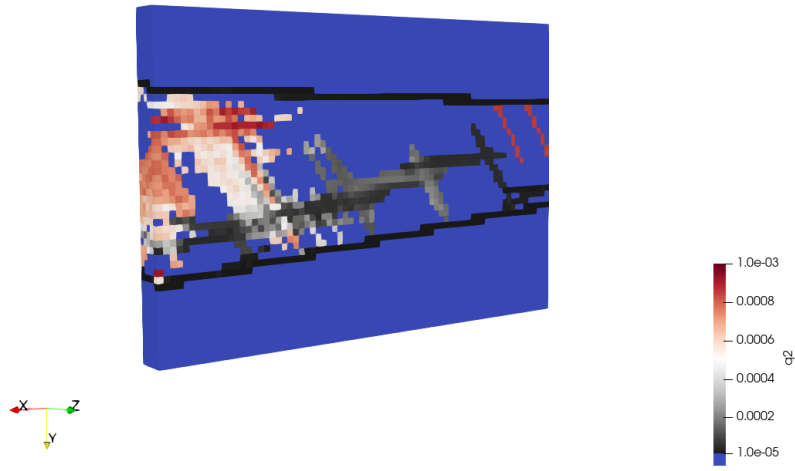


Figure 2: Original figure generated with Paraview for  $z = 15\text{m}$

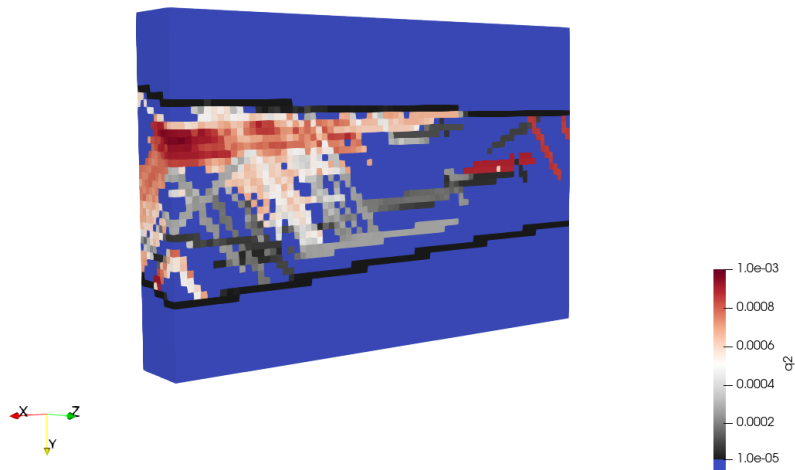


Figure 3: Original figure generated with Paraview for  $z = 16\text{m}$

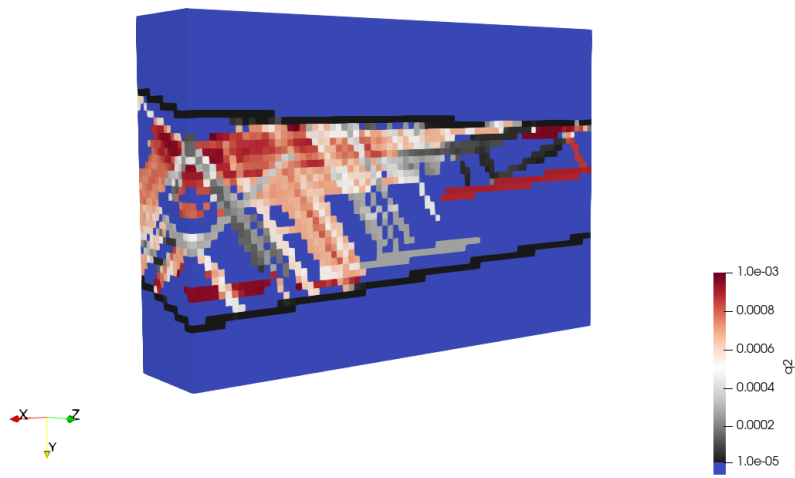


Figure 4: Original figure generated with Paraview for  $z = 17m$