

Estimating leaf moisture content at global scale from passive microwave satellite observations of vegetation optical depth

Matthias Forkel¹, Luisa Schmidt¹, Ruxandra-Maria Zotta², Wouter Dorigo², and Marta Yebra^{3,4}

5 ¹ Technische Universität Dresden, Faculty of Environmental Sciences, Institute of Photogrammetry and Remote Sensing, 01062 Dresden, Germany

² Technische Universität Wien, Department of Geodesy and Geoinformation, 1040 Vienna, Austria

³ Fenner School of Environment and Society, Australian National University, ACT 2601, Australia

⁴ School of Engineering, Australian National University, ACT 2601, Australia

10 *Correspondence to:* Matthias Forkel (matthias.forkel@tu-dresden.de)

Abstract. The moisture content of vegetation canopies controls various ecosystem processes such as plant productivity, transpiration, mortality and flammability. Leaf moisture content (here defined as the ratio of leaf water mass to leaf dry biomass, or live-fuel moisture content, LFMC) is a vegetation property that is frequently used to estimate flammability and the danger of fire occurrence and spread and is widely measured at field sites around the globe. LFMC can be retrieved from satellite observations in the visible and infrared domain of the electromagnetic spectrum, which is however hampered by frequent cloud cover or low sun elevation angles. As an alternative, vegetation water content can be estimated from satellite observations in the microwave domain. For example, studies at local and regional scales have demonstrated the link between LFMC and vegetation optical depth (VOD) from passive microwave satellite observations. VOD describes the attenuation of microwaves in the vegetation layer. However, neither were the relations between VOD and LFMC investigated at large or global scales nor has VOD been used to estimate LFMC. Here we aim to estimate LFMC from VOD at large scales, i.e. at coarse spatial resolution, globally, and at daily time steps over past decadal time scales. Therefore, our objectives are 1) to investigate the relation between VOD from different frequencies and LFMC derived from optical sensors and a global database of LFMC site measurements; 2) to test different model structures to estimate LFMC from VOD; and 3) to apply the best-performing model to estimate LFMC at global scales. Our results show that VOD is medium to highly correlated with LFMC in areas with medium to high coverage of short vegetation (grasslands, croplands, shrublands). Forested areas show on average weak correlations but the variability in correlations is high. A logistic regression model that uses VOD and additionally leaf area index as predictor to account for canopy biomass reaches the highest performance in estimating LFMC. Applying this model to global VOD and LAI observations allows estimating LFMC globally over decadal time series at daily temporal sampling. The derived estimates of LFMC can be used to assess large-scale patterns and temporal changes in vegetation water status, drought conditions and fire dynamics.

15
20
25
30

1 Introduction

Changes in water availability and the occurrence and severity of droughts affect various processes in land ecosystems and vegetation (Konings et al., 2021a; Sippel et al., 2018). For example, soil moisture and atmospheric water demand affect plant water uptake, the water potential and water content of vegetation, stomatal conductance and transpiration (Jarvis, 1976; Bonan, 2015). The regulation of plant water content and stomatal conductance controls the exchange of water, carbon and energy between the ecosystem and atmosphere. Hence soil moisture and atmospheric water demand are strong controls on plant productivity, growth and mortality (Li et al., 2021a; McDowell, 2011; DeSoto et al., 2020). Furthermore, the water content of living or dead vegetation material controls the occurrence and intensity of disturbances such as fires. A low water content of the fuel is associated with higher flammability or a higher risk of fire occurrence and spread (Chuvieco et al., 2010). Hence fuel moisture content (FMC) is a key variable to estimate daily to long-term changes in fire danger (Stocks et al., 1998; Jolly et al., 2015). FMC is defined as the ratio of the mass of water to the dry biomass of a material and can be directly measured from determining the fresh and dry mass m of a vegetation sample (Yebra et al., 2013):

$$FMC = \frac{m_{\text{fresh}} - m_{\text{dry}}}{m_{\text{dry}}} \quad (1)$$

FMC is frequently expressed as a percentage number ($FMC \times 100\%$). FMC can be determined for living vegetation components such as green grasses and leaves (i.e. live-fuel moisture content, LFMC) or for dead vegetation components such as litter and woody debris (dead-fuel moisture content, DFMC) (Matthews, 2014; Yebra et al., 2013; Viney, 1991). FMC is measured frequently at various locations in grasslands, shrublands or forest ecosystems in several countries to validate or calibrate satellite retrieval algorithms and ultimately to support fire danger forecasting. LFMC measurements from various countries have been compiled in the Globe-LFMC database which provides observations from 1383 sites over the period 1977 to 2018 but with different length and frequency of observations among different sites (Yebra et al., 2019). Site-level measurements of LFMC provide an accurate estimate of the plant water status; however, their limited spatial coverage is a constraint for spatial-explicit estimates of the role of fuel moisture for fire danger.

In order to complement site observations of LFMC, satellite observations can be used to estimate LFMC over large areas (Yebra et al., 2013). Thereby, especially satellite observations in the visible and infrared domain of the electromagnetic spectrum have been used to estimate LFMC. For example, spectral information from the short-wave and near-infrared bands from Landsat are correlated with LFMC (Chuvieco et al., 2002; Bowyer and Danson, 2004). This is because leaf water content has a strong effect on the absorption of near and shortwave infrared radiation. Hence LFMC can be computed by using empirical models or visible-infrared leaf and canopy radiative transfer models by estimating equivalent water thickness (EWT, i.e. leaf water column per unit area) and the leaf dry matter content (Danson and Bowyer, 2004; Riano et al., 2005). Medium and coarse resolution visible-infrared satellite instruments are most commonly used to estimate LFMC as they provide a frequent temporal coverage (García et al., 2008; Yebra et al., 2008). For example, observations from the Moderate Resolution Imaging Spectroradiometer (MODIS) are the main input for recently developed algorithms to estimate LFMC at continental or global scales (Yebra et al., 2018; Quan et al., 2021; Zhu et al., 2021). Despite the direct biophysical relations between

surface reflectance and LFMC and their implementation in visible-infrared radiative transfer models, the occurrence of cloud
65 cover, smoke or low sun elevation angles hinder the retrieval of LFMC time series with high temporal frequency from visible-
infrared satellite sensors.

Microwaves can largely penetrate clouds and smoke, are independent of the illumination by the sun, and hence provide an
alternative to derive information about the land surface. Microwave observations from either active Radar instruments or from
passive microwave radiometers are sensitive to the moisture content of soil and vegetation (Ulaby et al., 1979; Jackson et al.,
70 1982) and hence also to FMC (Konings et al., 2019). For example, early studies have shown that fuel moisture conditions are
related to the Radar backscatter of C-band (5.3 GHz frequency \approx 5.6 cm wavelength) Synthetic Aperture Radar (SAR)
observations from the ERS-1 and RADARSAT-1 satellites (Leblon et al., 2002; Abbott et al., 2007). Also observations from
modern C-band SAR satellites such as Sentinel-1 allow to estimate LFMC (Wang et al., 2019; Rao et al., 2020). SAR
observations are generally sensitive to the above-ground biomass and moisture content of vegetation, whereby the sensitivity
75 to certain vegetation components such as crown and stem changes with the used microwave wavelength. While short
microwave wavelengths at C-band, X-band (\approx 3 cm wavelength), and Ku-band (\approx 1.6 – 2.5 cm) are mostly sensitive to the top
of the canopy, L-band (\approx 23 cm) is sensitive to the crown, and P-band (\approx 70 cm) to the stem (Saatchi and Moghaddam, 2000).
Similar relations between the microwave signal and vegetation water content are valid for observations from passive
microwave instruments that measure naturally emitted microwaves from the Earth surface. Passive microwaves are emitted by
80 the soil and vegetation and are then attenuated in the vegetation layer (Jackson et al., 1982; Mo et al., 1982). Passive microwave
instruments are commonly used to estimate surface soil moisture (Njoku and Entekhabi, 1996; Njoku et al., 2003; Wigneron
et al., 1998; Dorigo et al., 2017; Wigneron et al., 2021). Recently, surface soil moisture datasets from passive microwave
sensors have also been used as a proxy to estimate LFMC (Jia et al., 2019; Lu and Wei, 2021). However, passive microwaves
are also directly related to LFMC. The attenuation of the passive microwave signal in the vegetation layer is commonly
85 described by the opacity or optical thickness of the vegetation (VOD, vegetation optical depth) (Jackson and Schmugge, 1991;
Frappart et al., 2020). VOD is proportional to vegetation water content (VWC, i.e. mass of water per unit area) and hence to
the dry biomass (m_{dry}) and LFMC (Konings et al., 2019):

$$VOD = b \times VWC = b \times m_{dry} \times LFMC \quad (2)$$

where b is a parameter that depends on vegetation type and wavelength. Using this relation, VWC can be estimated from
90 passive microwave observations of VOD (Jackson and Schmugge, 1991; Sawada et al., 2016, 2017). However, those studies
were mainly based on measurements of VWC and VOD in grasslands and for different crop types and only few observations
for the relation between VOD and vegetation water are available for forests (Holtzman et al., 2021; Momen et al., 2017).
Thereby, the observed relationship between VOD and above-ground biomass (Rodríguez-Fernández et al., 2018; Mialon et
al., 2020; Frappart et al., 2020) suggests that the relationship in equation 2 is also valid for forest ecosystems but is modulated
95 by wavelength (Holtzman et al., 2021). The parameter b exponentially declines with increasing wavelength, which implies
that longer wavelengths have a lower VOD and are less attenuated by the vegetation layer than shorter wavelengths (Jackson
and Schmugge, 1991). As longer microwave wavelengths can penetrate deeper in the vegetation layer, VOD from L-band

instruments (L-VOD) is more related to the biomass and water content of woody components than VOD from instruments with shorter wavelengths (e.g. Ku-, X- and C-VOD) which are more related to leaf cover (Tian et al., 2016; Chaparro et al., 2019; Li et al., 2021b). Hence we assume that Ku-, X- and C-VOD show a stronger relation with LFMC than L-VOD which should be more sensitive to changes in the moisture content of woody components (Konings et al., 2021b). Fan et al. (2018) compared LFMC from site measurements with passive and active microwave satellite datasets of VOD, soil moisture and Radar backscatter ratios, and spectral indices from visible-infrared sensors over France. They showed that X-VOD showed the highest correlation (median $r = 0.43$ across sites) with LFMC among all microwave-derived properties but that spectral indices from the visible-infrared domain were higher correlated with LFMC than all microwave-derived properties (Fan et al., 2018). However, the relation in equation 2 (Jackson and Schmugge, 1991) and the results from Fan et al. (2018) and Sawada et al. (2016) suggest that LFMC can be directly estimated from passive-microwave VOD.

Despite this direct theoretical relationship between LFMC and VOD, which has been established from field observations, there is currently no study that verified this relationship at large (i.e. continental to global) scale. This implies that no method is existing that would allow to estimate LFMC from VOD at large scales. However, the use of novel VOD datasets with almost daily temporal coverage and data available partly since 1987 (Moesinger et al., 2020; Wang et al., 2021) offers the opportunity to estimate LFMC globally with high temporal resolution and over decadal time scales. In comparison to visible-infrared satellite observations, the main disadvantage of using VOD to estimate LFMC is the coarser spatial resolution of passive microwave data (usually $0.25^\circ \times 0.25^\circ$). However, the same disadvantage applies for soil moisture datasets from passive microwave satellites, which nevertheless experience a wide use for the investigation of land surface processes or to constrain land surface models at large scale (Dorigo et al., 2017; Wigneron et al., 2021; Scholze et al., 2017).

Here we aim to estimate LFMC from VOD at large scales, i.e. globally at coarse spatial resolution and at decadal time scales. Therefore, we will use VOD from short wavelengths from the VOD Climate Archive (VODCA) dataset, which provides consistent time series of Ku-VOD, X-VOD and C-VOD harmonized from VOD retrievals from different passive microwave satellites (Moesinger et al., 2020). We first investigate the relation between VOD and LFMC by comparing VOD with a LFMC dataset from MODIS (Yebra et al., 2018) and with the Globe-LFMC database of site observations (Yebra et al., 2019). In the second step, we develop different model structures to compute LFMC from VOD and we calibrate each model against site-level observations from the Globe-LFMC database. Finally, we apply the best-performing model globally to estimate and analyse LFMC at large scales.

125 **2 Data and methods**

An overview of the properties of all used datasets is provided in Table 1.

Table 1: Properties of the used datasets.

Dataset	Variable	Spatial resolution and coverage	Temporal resolution and coverage	Reference
VODCA v01.0	Ku-VOD X-VOD C-VOD	0.25 x 0.25° Global	Daily Ku-VOD: 1987-2017 X-VOD: 1997-2018 C-VOD: 2002-2018	(Moesinger et al., 2020)
MODIS-LFMC	LFMC (%)	500 x 500 m Australia, Europe including the EU, the UK and Turkey	8-daily (Europe) 4-daily (Australia) 2000-2019	(Yebra et al., 2018)
Globe-LFMC	LFMC (%)	Site measurements (1383 sites) Globally distributed	Irregular sampling, some stations since 1980s	(Yebra et al., 2019)
MOD15A2H v006	LAI	500 x 500 m Global	8-daily 2000-2019	(Myneni et al., 2015)
AVHRR tree and short vegetation cover	Tree cover (%) Short vegetation cover (%)	1 x 1 km Global	Annual 1982-2016	(Song et al., 2018)
ESA CCI Land cover V2.0.7	Land cover classes converted into fractional coverage	300 x 300 m Global	Annual 1992-2015	(Li et al., 2016)
Worldclim 2.5 bioclimatic variables	Mean annual temperature, annual total precipitation	10' x 10' Global	Average for the period 1970-2000	(Fick and Hijmans, 2017)
CGIAR CSI SRTM	Digital elevation model	90 x 90 m Global	2000	(Jarvis et al., 2008)
Global Drought Observatory Standardized Precipitation Index	12-monthly Standardized Precipitation Index (SPI-12)	1 x 1° Global	Monthly Since 1981	(Global Drought Observatory - JRC European Commission, 2022)

U.S. Drought Monitor	U.S. Drought Severity and Coverage Index (DSCI)	Per US state, downloaded for California	Weekly Since 2000	(U.S. Drought Monitor, 2022)
----------------------	---	---	-------------------	------------------------------

2.1 Vegetation Optical Depth Climate Archive (VODCA) dataset

VOD was taken from the VODCA dataset (Moesinger et al., 2020). VODCA provides VOD at $0.25^\circ \times 0.25^\circ$ spatial resolution in three separate wavelength bands with different temporal coverage, namely Ku-VOD (1987-2017), X-VOD (1997-2018) and C-VOD (2002-2018). The dataset is a merge of VOD retrievals from several passive microwave instruments that were derived with the Land Parameter Retrieval Model (LPRM) (Owe et al., 2001; van der Schalie et al., 2017). The merging uses a cumulative distribution function matching of the individual VOD retrievals into a joint long-term time series. Thereby VOD retrieved from the AMSR-E sensor is used as scaling reference (Moesinger et al., 2020).

The VODCA dataset has a daily temporal sampling but observations are not available for each day dependent on time period and latitude. The VODCA dataset was masked for artefacts because of Radio Frequency Interference (RFI), for land surface temperature $< 0^\circ\text{C}$, and for negative VOD values and, therefore, has mainly gaps in the winter months in northern latitudes. We did not perform any gap-filling or other further processing of the VODCA dataset. However, we excluded grid cells from further analysis that were either not vegetated or that have a higher coverage of ocean or inland water bodies (see section 2.5).

Spatial patterns, seasonal dynamics, and long-term trends in the VODCA dataset have been intensively compared with datasets of leaf area index, gross primary production and vegetation cover and show that VODCA reflects common patterns of large-scale vegetation changes (Moesinger et al., 2020; Li et al., 2021b; Wild et al., 2022).

2.2 Live Fuel Moisture Content datasets

LFMC was taken from two datasets, namely from the Globe-LFMC database of site observations (Yebra et al., 2019) and from LFMC data retrieved from MODIS satellite observations by applying the methodology of Yebra et al. (2018) (in the following MODIS-LFMC). The Globe-LFMC measurements are the primary dataset for the comparison with VOD and to develop and calibrate the models to estimate LFMC from VOD. However, as there is severe scale mismatch between site measurements of LFMC and the coarse spatial resolution of VOD ($0.25^\circ \times 0.25^\circ$), we additionally used LFMC retrievals from MODIS to make comparisons at the same spatial scale and to assess if the obtained results are comparable.

Globe-LFMC provides LFMC field measurements from 1383 sites in 11 countries, mainly in the USA (963 sites), China (229 sites), Spain (76 sites) and Australia (42 sites). However, each site has a different temporal coverage and sampling frequency of measurements and different plant species are sampled (Yebra et al., 2019). For example, all sites in China have only one LFMC measurement while the site “Reader Ranch” in California has 1291 measurements. At most sites, only one plant species is sampled throughout the time but at other sites, several plant species are sampled. LFMC values vary at many sites between species. In order to simplify the comparison of LFMC measurements from different species with VOD, we grouped each species according to their genus into a typical growth form. We considered the following growth forms: broad-leaved trees

(TreeB), needle-leaved trees (TreeN), shrubs, grass (i.e. herbaceous graminoid), and forbs (i.e. herbaceous non-graminoid). As some plant genera can grow as tree or shrub, we decided for one or the other based on the land cover type (forest or shrubland) at the site and based on the site photos that come with the Globe-LFMC database.

160 MODIS-LFMC is based on an inversion (using look-up tables) of different radiative transfer models for grass/shrubs (PROSAILH) and trees (PROGeoSAIL) to estimate LFMC from surface reflectance observations of MODIS (Yebra et al., 2018). The method and dataset were initially developed for Australia. Additionally, we used retrievals for Europe based on the same method. The dataset provides LFMC at 500 m spatial resolution for the period 2000 to 2019 at 4-daily (Australia) and 8-daily (Europe) time steps. The dataset comes in tiles based on the original sinusoidal grid of MODIS observations. We first
165 merged all tiles within Europe or Australia and then reprojected the data to a longitude/latitude projection (WGS84) using nearest neighbour resampling in GDAL. We then aggregated the dataset to $0.25^\circ \times 0.25^\circ$ spatial resolution of the VODCA dataset using spatial averaging.

2.3 Leaf area index – MODIS

As the relationship between VOD and LFMC also depends on leaf or canopy biomass, we additionally used leaf area index (LAI) retrievals from MODIS as a proxy for total leaf biomass. The MOD15A2H collection 6 product provides LAI globally
170 on 500 m spatial resolution and 8-daily time steps (Myneni et al., 2015). We only used retrievals that were flagged as good quality in the dataset. Like the MODIS-LFMC data, the LAI data was projected to geographical coordinates and then aggregated to $0.25^\circ \times 0.25^\circ$ spatial resolution by spatial averaging. The 8-daily MODIS LAI data obtains a clear temporal variability within months which despite the use of good quality observations might be still related to atmospheric effects or
175 possibly other changes in leaf and canopy properties (e.g. water content) that were not considered during the retrieval of LAI. As we here intend to use LAI only as a proxy for the temporal changes in canopy biomass, we averaged the 8-daily LAI values to monthly values to suppress the intra-monthly variability.

2.4 Vegetation cover and ancillary data

The cover of trees and short vegetation was used to stratify the comparison between LFMC and VOD with land cover
180 information and to account for land cover in the models to calculate LFMC from VOD. For this purpose, we used the dataset from Song et al. (2018), which provides the percentage of tree cover, short vegetation and bare ground within grid cells of 1 km x 1 km resolution. The dataset was estimated based on observations from AVHRR and provides annual maps for the years 1982 to 2016.

We additionally used information about ocean and inland water cover from the ESA CCI land cover map (version 2.0.7) (Li
185 et al., 2016). We aggregated the land cover information from the original spatial resolution to the fractional coverage of different plant functional types at $0.25^\circ \times 0.25^\circ$ by using the cross-walking approach (Poulter et al., 2015). We then used the fractional cover of water (> 50%) in grid cells to mask VOD data in global analyses (see section 2.5).

Global maps of mean annual temperature and annual precipitation from the Worldclim 2.5 dataset (Fick and Hijmans, 2017) and the CGIAR SRTM digital elevation model (Jarvis et al., 2008) were used to stratify analyses with ancillary information (Figure A 4).

Time series of the 12-monthly Standardized Precipitation Index (SPI-12) and the U.S. Drought Severity and Coverage Index (DSCI) were used in a case study to compare the large-scale estimates of LFMC with drought conditions in the western United States and in California. ~~SPI-12 data was taken from the Global Drought Observatory (Global Drought Observatory—JRC European Commission, 2022)~~ SPI-12 data was taken from the Global Drought Observatory (Global Drought Observatory - JRC European Commission, 2022) and DSCI data from the U.S. Drought Monitor ~~(U.S. Drought Monitor, 2022)~~ (U.S. Drought Monitor, 2022).

2.5 Combination and comparisons of VOD and LFMC data

We combined the VOD and LFMC data in four different data combinations for our comparisons. Each combination of VOD and LFMC data had a different purpose and used a different masking or temporal sampling of data. The four combinations enable to 1) compare satellite retrievals from MODIS-LFMC with the different bands of VOD; 2) compare site measurements of LFMC from Globe-LFMC with VOD; 3) calibrate and test models to estimate LFMC from VOD using LFMC site measurements; and 4) to apply the best performing model to global VOD data to estimate LFMC globally.

The first data combination (D1) uses MODIS-LFMC for Australia and Europe to compare the temporal dynamic of LFMC with Ku-, X- and C-VOD. In order to make a comparison of VOD and LFMC time series per grid cell and to assess the differences between the different VOD wavelengths, we only used observations from dates that occur in all four datasets (i.e. MODIS-LFMC, Ku-VOD, X-VOD and C-VOD). These are for Australia 1,390 time steps between 2002-06-22 and 2017-07-28 and for Europe 900 time steps between 2002-06-26 and 2017-07-31. We then computed the Spearman rank correlation between LFMC and the different VOD bands per grid cell and stratified the result for tree and short vegetation cover.

The second data combination (D2) is used to compare site measurements from Globe-LFMC with VOD. For this comparison, we used VOD data from the same days when LFMC measurements were available. As each site has a different temporal sampling of LFMC, the number of joint pairs of LFMC and VOD observations is on average per site 80, 72 and 42 for Ku-, X- and C-VOD, respectively, whereby the differences between the number of observations for each band are caused by the longer temporal coverage of Ku-VOD than for X- or C-VOD. Single sites have up to 827 pairs of Ku-VOD/LFMC observations. For this comparison we only matched LFMC with the dates of each individual VOD band but did not match additionally the dates of the three VOD bands because this would decrease the availability of LFMC/VOD pairs further. We then computed the Spearman rank-correlation between VOD and all LFMC measurements for each site (regardless of the sampled plant species) and also for each individual species at a site. We calculated the correlation for all sites/site-species with at least 10 pairs of LFMC/VOD observations. Based on this criterion, correlations were computed for 910 sites. We then assessed how a difference in the land cover distribution at the site and at the corresponding $0.25^\circ \times 0.25^\circ$ grid cell affects the correlation between LFMC and VOD. Therefore, we extracted for the coordinate of each site the percentage of tree and short

vegetation cover from the original resolution (1 x 1 km) and the aggregated resolution (0.25° x 0.25°) of the vegetation cover dataset. The use of both resolutions allows assessing if the local land cover distribution at the site is comparable with the land cover distribution of the 0.25° x 0.25° grid cell of the VOD data. The difference in land cover between the 1 km spatial resolution at the local site and the coarse 0.25° resolution of the corresponding grid cell was computed based on the Euclidean distance:

$$D = \sqrt{(TC_{25} - TC_1)^2 + (SV_{25} - SV_1)^2} \quad (3)$$

whereby TC and SV are tree cover and short vegetation, respectively and the subscripts 1 and 25 denote the 1 km and 0.25° spatial resolution. As TC and SV are percentages, the difference D is in percent.

The third data combination (D3) used Globe-LFMC site measurements to calibrate and evaluate models to estimate LFMC from VOD. We found from data combination D2 that the correlation between site measurements of LFMC and VOD decreases if the land cover distribution at 1 x 1 km around the site increasingly differs from the land cover distribution at the 0.25° x 0.25° grid cell of the VOD data (see results in section 3.1). Therefore, we aimed to select only sites for the calibration and evaluation of models that are homogenous and representative for the coarse resolution of the VOD data. The Globe-LFMC database provides for each site a spatial coefficient of variation of the normalised difference vegetation index to quantify the homogeneity of vegetation cover at each site (Yebara et al., 2019). We used sites with a low coefficient of variation ($CV < 0.26$). Additionally, we used the land cover difference D (equation 3) to quantify the representativeness of the land cover at the site for the coarse spatial resolution of the VOD data. We selected only sites with $D < 10\%$, i.e. with a similar land cover distribution at 1 km and 0.25° spatial resolution. We further selected sites for model calibration that have at least 15 pairs of VOD and LFMC observations and that showed a positive correlation ($r > 0.2$) between VOD and LFMC. These selection criteria were leaving 216 combinations of sites and plant species at 163 sites to calibrate and test models (Figure A 4).

The fourth data combination (D4) uses daily-sampled VODCA Ku-VOD and monthly-averaged MODIS LAI to estimate daily LFMC globally with the best performing model for the overlapping period of both datasets (2000-02-01 to 2017-07-31). We applied the model to all grid cells at 0.25° x 0.25° spatial resolution that have on average at least 5% vegetation cover ($TC + SV \geq 5\%$) and that have less than 50% water cover.

2.6 Models to estimate LFMC from VOD

We developed and tested four different models to estimate daily LFMC from daily values of VOD. All models were developed in this study either by assuming non-linear regressions between LFMC and VOD or by adopting known relations between LFMC, VOD, VWC and dry biomass from previous studies (Jackson and Schmugge, 1991; Sawada et al., 2016; Frappart et al., 2020). Specifically, in models A and B we assume a positive relationship between VOD and LFMC and use logistic regression (S-shaped curve) to estimate LFMC from VOD. We use logistic regression because LFMC cannot be smaller than 0% and LFMC values higher than 200% are rare (the 95-percentile of LFMC is 193%, the maximum is 549% in the Globe-LFMC database). In models C and D, we adopt the relationships between LFMC, VWC and dry biomass (equation 1) and between VOD and VWC (equation 2) to calculate LFMC. The four models are described with more detail in the following

paragraphs. Each model has up to four model parameters. Prior ranges and values of those model parameters were manually
 255 selected in order to always obtain a positive relationship between VOD and LFMC and to obtain typical LFMC values (Table
 2).

In **Model A**, we assume that LFMC is directly proportional to VOD by using a logistic regression:

$$LFMC = \frac{LFMC_{max}}{1 + e^{-sl \times (VOD - VOD_0)}} \quad (4)$$

Where $LFMC_{max}$ is the maximum possible LFMC value (in %) and sl is the slope of the curve. VOD_0 is the inflection point of
 260 the logistic curve, i.e. the VOD value at which half of the LFMC between 0% and $LFMC_{max}$ is reached. The parameters
 $LFMC_{max}$, sl and VOD_0 were calibrated for each site.

In **Model B**, we additionally assume that LFMC depends on seasonal changes in canopy structure. Therefore, we additionally
 include monthly-averaged LAI as predictor. We assume that LFMC can be expressed based on a weighted combination x of
 daily VOD and monthly-averaged LAI. Like in model A, we use a logistic regression in order to limit LFMC between 0% and
 265 $LFMC_{max}$:

$$x = f \times VOD + (1 - f) \times LAI \quad (5)$$

$$LFMC = \frac{LFMC_{max}}{1 + e^{-sl \times (x - x_0)}} \quad (6)$$

Where f is a fraction between zero and one that regulates if VOD ($f = 1$) or LAI ($f = 0$) contributes more to the calculation of
 x and hence to LFMC. sl and x_0 are the slope and inflection point of the logistic curve. Note that we kept the parameter
 270 $LFMC_{max}$ constant at 400% in model B (corresponding to the 99.99%-ile of LFMC in the Globe-LFMC database) throughout
 all analyses because the calibration results from model A have shown that any high value for $LFMC_{max}$ is not sensitive for the
 performance of the estimated LFMC.

For **Model C** we directly made use of the VOD-LFMC relationship presented in equation 2 (Jackson and Schmutge, 1991;
 Konings et al., 2019) and compute LFMC by solving this equation for LFMC:

$$275 \quad LFMC = \frac{VOD}{b \times m_{dry}} \times 100\% \quad (7)$$

To account for dry biomass of the canopy, we assume a linear relation with monthly-averaged LAI:

$$m_{dry} = a \times LAI + c \quad (8)$$

For the parameter b in equation 7, a prior value of 1.5 with a range between 0.1 and 4 was taken based on the values presented
 in Jackson and Schmutge (1991). The parameter a was varied between 0.01 and 100 as dry canopy biomass should positively
 280 scale with LAI. The parameter c is the intercept of this linear regression and was chosen around zero (between -10 and 10).
 Note that the parameters a and b are directly positively correlated in model C and could indeed be represented by a combined
 product. However, as we have both prior information on the values of b (i.e. VOD-VWC relation) and a (i.e. the relation
 between leaf mass and leaf area) but not on their combined product, we decided to keep the two factors separated.

We developed **Model D** by using the basic definition of FMC (equation 1) and compute LFMC as the ratio between VWC and
 285 dry biomass:

$$LFMC = \frac{VWC}{m_{dry}} \times 100\% \quad (9)$$

Thereby, we compute VWC based on a exponential relationship between LAI and VWC (Paloscia and Pampaloni, 1988; Sawada et al., 2016) and compute dry biomass by assuming a positive relationship between VOD and biomass (e.g. Frappart et al., 2020). Following Sawada et al. (2016), VWC is computed based on an exponential relationship with LAI:

$$290 \quad VWC = e^{\frac{LAI}{k}} - 1 \quad (10)$$

Where the parameter k defines the shape of the exponential relationship. As we have no prior information about the value of k , we sampled k over a large range (0.1 - 100). The computation of dry biomass is based on a linear relation with VOD which is based on the assumption that VOD at short wavelengths is proportional to canopy biomass (Frappart et al., 2020):

$$m_{dry} = a \times VOD + c \quad (11)$$

295 The parameters a and c define like in model C the relation with dry biomass.

Table 2: Overview about prior parameter values and results after site-level calibration for the four models.

Model	Parameter	Prior parameter (prior, minimum and maximum)	Parameter after site-level calibration (median and percentiles 5% and 95% across all sites with the same growth form)			
			Forb or Grass	Shrub	Broad-leaved tree	Needle-leaved tree
Model A (equation 4)	LFMC _{max} (%)	360 [315, 600]	375 [315, 592]	420 [315, 554]	476 [343, 599]	389 [315, 579]
	sl	10 [3, 50]	10.34 [4.2, 23.8]	4.9 [3.2, 8.6]	5.6 [3, 12]	3.9 [3, 6]
	VOD ₀	0.8 [0.1, 1.4]	0.78 [0.62, 1.1]	1 [0.76, 1.2]	0.95 [0.79, 1.14]	1.02 [0.84, 1.22]
Model B (equations 5-6)	LFMC _{max} (%)	fixed at 400	--	--	--	--
	f	0.5 [0, 1]	0.53 [0.01, 0.85]	0.55 [0.08, 0.91]	0.75 [0.39, 1]	0.7 [0, 0.96]
	sl	10 [1, 50]	7.2 [2.4, 14.7]	2.8 [1.1, 7.4]	4.1 [1.3, 12.6]	2.8 [1.4, 5.3]
	x ₀	0.5 [0.1, 2]	0.77 [0.43, 1.24]	1.26 [0.7, 1.87]	1.07 [0.76, 1.68]	1.13 [0.78, 1.73]
Model C (equations 7-8)	a	1 [0.01, 100]	0.02 [0.01, 24]	0.01 [0.01, 28]	0.01 [0.01, 6.29]	0.01 [0.01, 25]
	b	1.5 [0.1, 4]	0.19 [0.1, 1.64]	0.22 [0.1, 4]	0.33 [0.1, 3.79]	0.21 [0.1, 3.98]
	c	0.1 [-10, 10]	3.1 [-8.3, 8.7]	4.1 [-9.1, 9.4]	0.78 [-7.1, 6.3]	1.0 [-8.63, 7.45]
Model D (equations 9-11)	a	0.1 [0.01, 100]	0.66 [0.01, 50.1]	0.58 [0.01, 55.4]	0.41 [0.01, 9.57]	0.69 [0.01, 41.9]
	c	0.1 [-10, 10]	0.33 [-9.9, 9.05]	0.57 [-9, 6.9]	0.61 [-7, 5.3]	0.07 [-9.4, 6.1]
	k	1 [0.1, 100]	0.39 [0.16, 1.92]	0.78 [0.34, 12.9]	0.92 [0.33, 15.7]	0.72 [0.21, 18.9]

2.7 Site-level calibration and evaluation

300 The parameters of the models A to D were calibrated separately for each species at each site from the data combination D3. For the calibration, we used a genetic optimization algorithm together with a cost function that is sensitive to the statistical

distribution of LFMC and the temporal correlation. We initially tested several common model performance measures as cost functions like the root-mean squared error (RMSE), modelling efficiency and the Kling-Gupta efficiency (KGE) (Gupta et al., 2009) to calibrate the model parameters but we found that based on those cost functions the variance of the observed LFMC was underestimated in most cases. As an alternative, we developed a cost function that aims to fit the observed variance by minimizing the differences in the percentiles of the statistical distribution of LFMC. The used cost function J adopts the basic definition of the Euclidean distance like in the Kling-Gupta efficiency and is here defined as the Euclidean distance in a multivariate space of performance measures based on the Pearson correlation r between estimated and observed LFMC and the ratios of the 5%, 50% and 95% percentiles p :

$$J = \sqrt{3 \times (r - 1)^2 + \left(\frac{S_{p=5}}{O_{p=5}} - 1\right)^2 + \left(\frac{S_{p=50}}{O_{p=50}} - 1\right)^2 + \left(\frac{S_{p=95}}{O_{p=95}} - 1\right)^2} \quad (12)$$

Where S and O are the percentiles of simulated and observed LFMC, respectively. The individual terms in the cost function are zero in case of a perfect model-data agreement and can go to infinite. The correlation-related term was multiplied with 3 to give the temporal correlation the same weight like the three distribution-based ratios.

The cost function was minimized for each model and for each plant species at each site by using the Genetic Optimization using Derivatives (GENOUD) algorithm (R package rgenoud, version 5.8-3) (Mebane and Sekhon, 2011). GENOUD is a global optimization algorithm that additionally uses a local search algorithm. We used GENOUD with 100 parameter sets per generation and computed it for ten generations. The local search algorithm was used only after the third generation to avoid a too fast convergence of the algorithm to a local minimum. Prior ranges of each parameter (Table 2) were provided as search domains to the optimization algorithm. As a measure for parameter uncertainty, we then selected the best-performing parameter sets from the optimization results, which have a cost J less than or equal to the 25%-ile of all parameter sets in an optimization run. As a result, we obtained for each species at each site a sample of best-performing parameters for each model. The median and the percentiles 5% and 95% of each parameter from the best-performing parameter sets are listed for different growth forms in Table 2.

Additionally to the used cost function, we used the Pearson correlation coefficient r , the RMSE and the KGE performance measures to evaluate the optimization results. The KGE allows associating the lack of model performance to a mismatch between observed and estimated mean values (bias component), to a mismatch between observed and estimated variance (variance component) and to a lack of correlation (correlation component) (Gupta et al., 2009). We used the KGE and its three components to diagnose the model performance.

Please note that we did not perform for the site-level calibrations any evaluation with independent test data. We used at each site all available pairs of LFMC/VOD observations for model calibration because a split of the available LFMC observations would further reduce the available data and sites for model calibration as many sites have few observations. However, we built a random forest model to predict the parameters of the best performing model in space and we applied spatial cross validation to evaluate the performance of the predicted LFMC (section 2.8).

2.8 Spatial model application, evaluation and uncertainty assessment

335 The calibration of model parameters was performed for each species at each site and allows evaluating and comparing the performance of the four models at site level. However, in order to apply the best-performing model globally, the model parameters need to be estimated for each grid cell of the global $0.25^\circ \times 0.25^\circ$ raster. We therefore tested different regression approaches to predict single model parameters from percentage tree cover or from other model parameters. We initially tested different regression approaches to estimate the model parameters, namely linear regression, 2nd- and 3rd-order polynomials, 340 generalized additive models (GAM), and random forest (RF). While 3rd-order polynomials, GAM and RF resulted in similar performance in training, only RF had plausible results in cross validation. Hence, we decided to use RF to estimate the parameters of model B in space. Thereby we followed a step-wise application of RF: In the first RF model, we predicted the parameter $x0$ of model B from percentage tree cover. In the second RF model, we then predicted the parameter sl from tree cover and the parameter $x0$. In the third RF model, we predicted the parameter f from tree cover, and the parameters $x0$ and sl . 345 The parameter $LFMC_{max}$ was held constant at 400%. We applied RF in the same way for the parameters of the other models by first always predicting the parameter that had the highest correlation with tree cover. We used the randomForest package version 4.6-14 (Liaw and Wiener, 2002) in R with 200 decision trees per RF and a node size of 15. A higher number of decision trees did not result in better performance. The node size describes the number of samples in the terminal nodes of each decision trees that are averaged to provide the regression result. Note that we here used based on our experience with RF a higher node 350 size of 15 than the default value of 5 in order to reduce the risk of overfitting when using RF with only one to three predictors and only 216 sites. In summary, to predict the parameters of model B for one grid cell, a nested set of three RF models is needed (one RF for each parameter).

In order to train and evaluate the set of three RF models, we applied a 20-fold spatial cross validation procedure. Therefore, we spatially clustered all Globe-LFMC sites from the data collection D4 based on their coordinates using a k-means clustering 355 with 20 clusters. We then used the optimized model parameters from all sites within 19 clusters to train the set of three RF models and applied the trained set of RF to the 20th cluster to predict and evaluate the parameters of model B. Model B was then applied with the predicted parameters to estimate LFMC and to cross-validate LFMC. The procedure was repeated 20 times so that each spatial cluster was once not included in the training of the RF models but used for cross-validation.

During this spatial training and cross-validation procedure, we also attempted to propagate the uncertainty of the optimized 360 model parameters. Therefore, we randomly sampled from each Globe-LFMC site in the training set five out of the best-performing parameter sets from the site-level calibration. Hence, in each of the 20 folds a different combination of best-performing parameter sets was used to train the set of RF models.

The spatial training and cross-validation resulted in 20 sets of RF models that allow estimating model B parameters for any grid cell based on percentage tree cover. Each of the 20 sets of RF models varies based on the spatial distribution of the used 365 Globe-LFMC sites in training and based on the uncertainty of the best-performing model parameters after site-level calibration. To estimate LFMC globally, we applied all 20 sets of RF models to all global vegetated grid cells. Therefore, we excluded

grid cells with less than 5% vegetation cover (tree cover + short vegetation cover) and grid cells with more than 50% water cover. For each grid cell we then obtained the model parameters from the set of RF models and used model B to predict 20 realisations of LFMC. We then computed from the predicted LFMC values the median, minimum and maximum values as
370 measures of the uncertainty. In the results, we display this uncertainty estimate as relative uncertainty (i.e. (maximum LFMC – minimum LFMC) / median LFMC).

2.9 Global random forest model as alternative to models A-D

As described in the previous section, we used RF to estimate parameters of models A-D in space and then apply those models to estimate LFMC. As an alternative, RF could be used directly to estimate LFMC globally, which would not require any
375 assumptions about the type of relationships like in models A-D and allows a higher flexibility in including predictor variables. In order to assess the performance of the spatially-applied models A-D against a more flexible global RF model, we trained a global RF model directly against LFMC measurements from all sites within the 20 spatial folds and by using the same set of predictors that we used for model B (i.e. daily Ku-VOD, monthly LAI, and tree cover). The global training of the RF was performed with the same spatial cross-validation procedure like for the other models, i.e. with the same set of 20 folds of
380 spatially-clustered LFMC sites.

3 Results and discussion

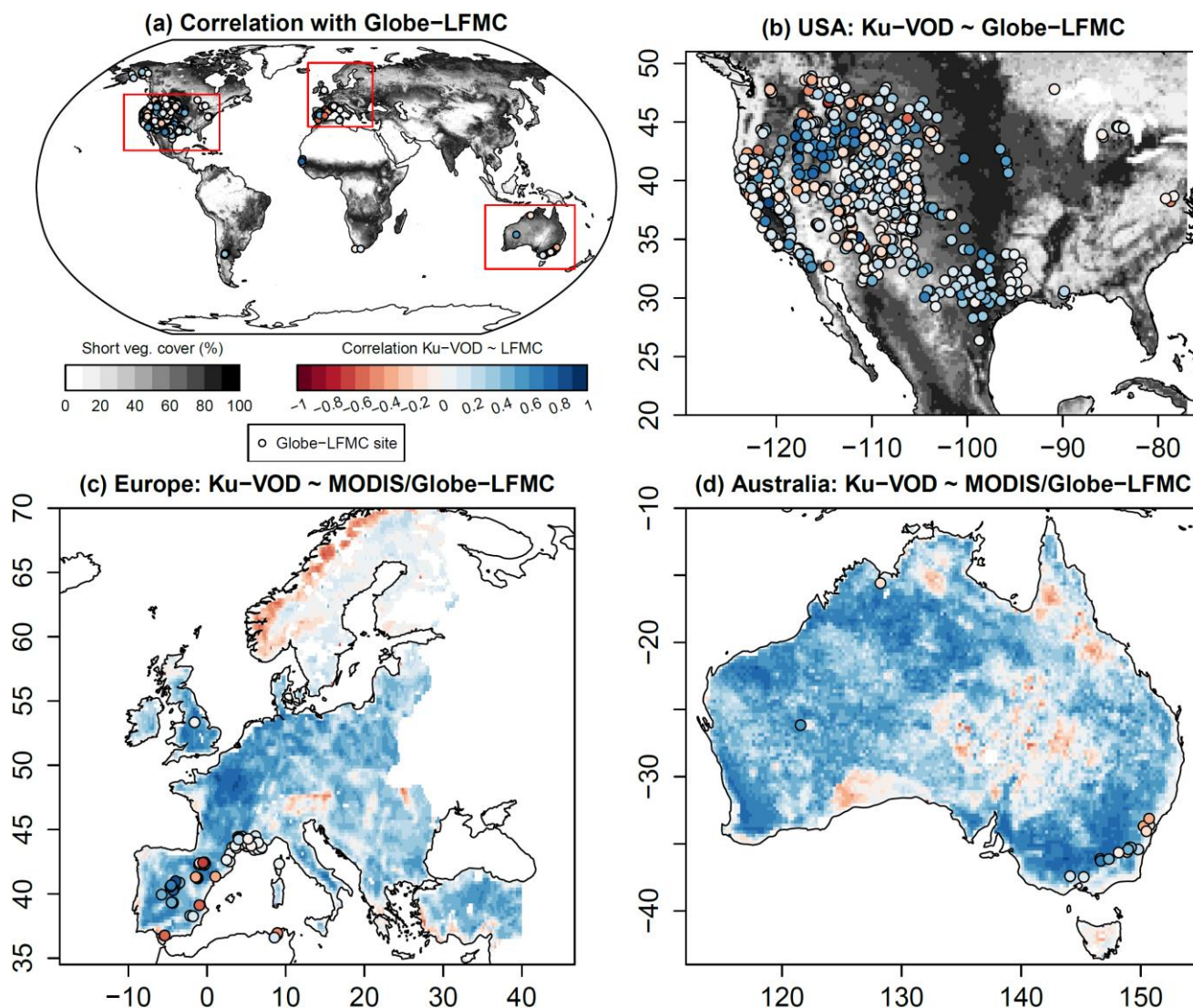
3.1 Correlation between VOD and LFMC

3.1.1 Temporal and spatial correlations

The comparison of VOD and LFMC time series from ground measurements and MODIS retrievals shows widespread positive
385 temporal correlations (Figure 1). Across the 910 Globe-LFMC sites with ≥ 10 pairs of VOD/LFMC observations, the median temporal correlation between LFMC and VOD is 0.10 for Ku- and X-VOD, and 0.06 for C-VOD. The maximum correlation is 0.88 for Ku-VOD, 0.79 for X-VOD, and 0.80 for C-VOD. Globally, 633 sites show positive correlations and 277 sites show negative correlations with Ku-VOD. For X- and C-VOD, 632 and 395 sites show positive correlations, respectively. The comparison with MODIS-LFMC shows median correlations of 0.30 for Ku-VOD, 0.26 for X-VOD and 0.28 for C-VOD in
390 Europe and 0.39 for Ku-VOD, 0.37 for X-VOD and 0.35 for C-VOD in Australia. These results show that correlations between VOD and LFMC from site measurements and MODIS retrievals are in the majority of sites or grid cells positive and similar for the different VOD bands but that Ku-VOD shows slightly higher correlations.

The spatial pattern of temporal correlations between LFMC and Ku-VOD indicate spatial clusters with medium to high positive correlation and clusters with low or negative correlation (Figure 1). In the USA, sites with low correlation ($r < 0.1$) are in many
395 cases distributed along the mountain ranges of the Rocky Mountains, Coast Range or Sierra Nevada (Figure 1 b). This association of low correlations with mountain ranges is also confirmed by the comparison with MODIS-LFMC in Europe,

where positive correlations between LFMC and Ku-VOD are widespread but negative correlations occur in the Alps, the Carpathians and the Scandinavian mountains (Figure 1 c). Additionally, the flatter areas of central and eastern Scandinavia show generally very low correlations between Ku-VOD and MODIS-LFMC. In Australia, positive correlations between LFMC and Ku-VOD dominate but negative correlations occur in parts of the northern Great Dividing Range, and in parts of the Simpson Desert and the Nullabor Plain (Figure 1 d). These spatial patterns of correlations with MODIS-LFMC are nearly identical in all three VOD bands.



405 **Figure 1: Temporal correlations between Ku-VOD and LFM. Correlations of Ku-VOD with Globe-LFMC sites are plotted as point symbols and with MODIS-LFMC as coloured back ground raster (in c and d). The greyscale raster in (a) and (b) shows percentage short vegetation cover.**

410 All global spatio-temporal pairs of VOD and LFM site measurements together show a weak positive correlation but a large bi-variate scatter (Figure 2 a-c). This scatter between globally distributed VOD and LFM indicates that a unique global VOD-LFM relation does not exist or that such a relationship is modified by other surface and land cover properties or by the scale mismatch between VOD grid cells and LFM site measurements.

The medium to high positive correlations between VOD and LFM in the majority of sites support earlier studies that identified
 415 a relationship between VOD and VWC or LFM (Jackson and Schmugge, 1991; Konings et al., 2019). Despite the strong

similarity in correlations between LFMC and the different VOD bands, contaminations by residual effects of RFI could explain the slightly lower correlation for C-VOD. The VODCA dataset uses the RFI flagging in LPRM version 6.0, which is based on the method proposed by de Nijs et al. (2015). Main contamination areas in AMSR2 in both the C1- (6.9 GHz) and C2- (7.3 GHz) bands include North America and Europe (de Nijs et al., 2015), where also the majority of Globe-LFMC sites is located.

420 We observed that some residual RFI can still be observed in these areas, which was not covered by the masking used in VODCA (Figure A 1). As the D2 data combination uses VOD from the same days as Globe-LFMC without any smoothing, it is likely that the lower correlation between C-VOD and LFMC is affected by residual RFI.

3.1.2 Effect of land cover differences between scales

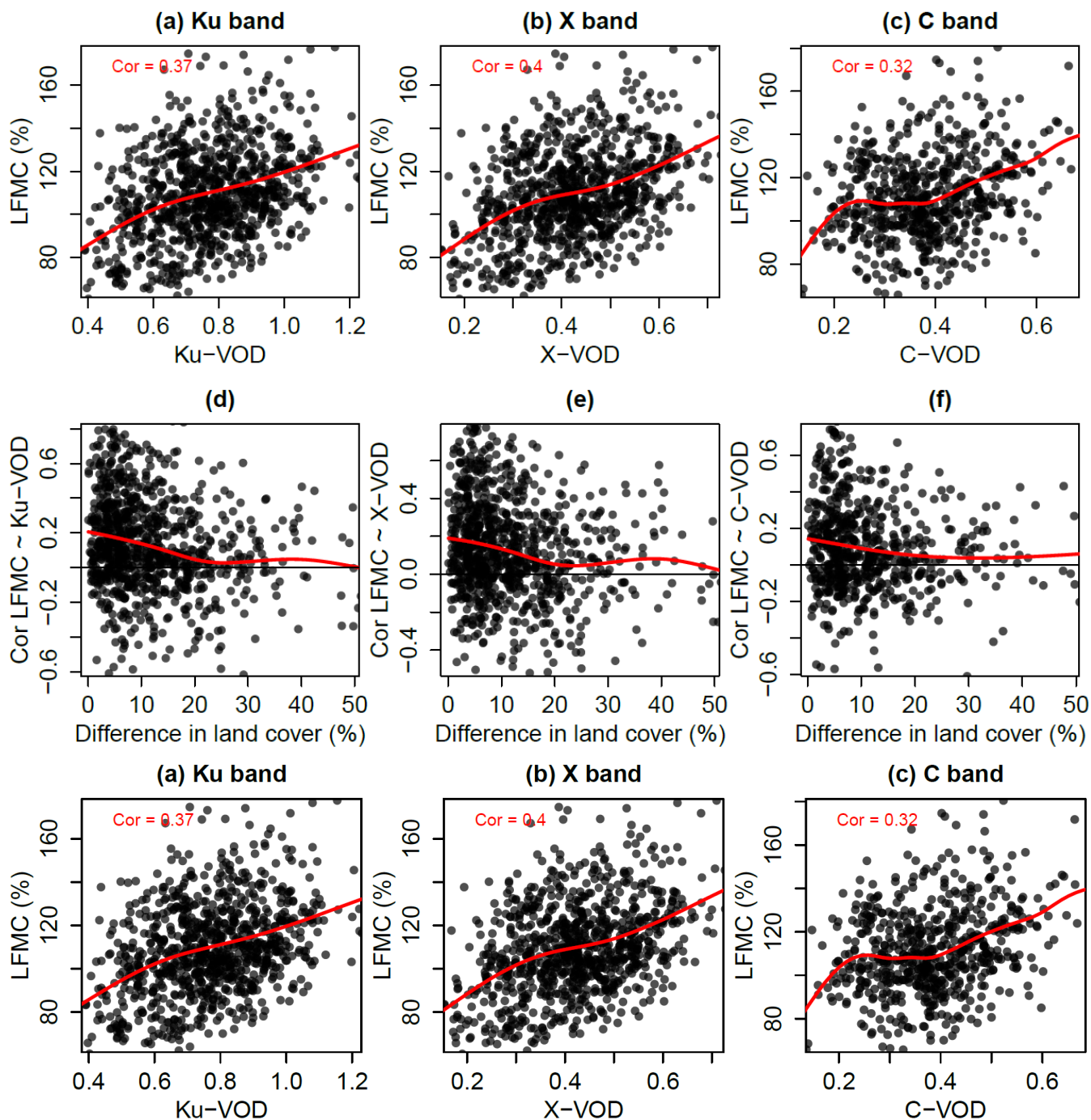
The site measurements of LFMC and the $0.25^\circ \times 0.25^\circ$ grid cells of the VOD data are representative for very different scales.

425 Therefore, we further investigated how a difference in land cover at a site (here defined as the 1 km grid cell in which the site is located) and at the 0.25° grid cell affects the temporal correlations between LFMC and VOD. Despite a large variability of temporal correlations, on average we found decreasing correlations with increasing dissimilarity in land cover distribution between the site-scale and the VOD-grid (Figure 2 d-f). For example, the correlation between Globe-LFMC and Ku-VOD increased by 0.07 (to median $r = 0.17$) if the land cover difference is less than 10%. In this case, 126 sites had negative

430 correlations and 365 sites had positive correlations. Hence, the difference in land cover at a LFMC measurement site and in the coarse VOD grid cell can explain a small decrease in the correlation between VOD and LFMC.

Although this analysis allowed to quantify how the correlation between site measurements of LFMC and coarse-resolution grid cells of VOD are affected by the land cover differences between both scales, it does not allow to resolve this scale mismatch. Only local measurements of passive microwave emissions and derived estimates of VOD in conjunction with LFMC

435 samples allow to factor out the scale mismatch for the analysis of relations between LFMC and VOD. However, such measurements are rare (Momen et al., 2017). Our results demonstrate the need to better understand the effect of the local to regional heterogeneity in land cover on coarse-scale VOD estimates in order to make better use of VOD in estimating LFMC.



440
445 **Figure 2: (a-c) Global scatterplots and correlation of LFMF from the Globe-LFMF database against Ku-, X- and C-VOD. (d-f) Scatterplots of the temporal correlation between LFMF and Ku-VOD (d), X-VOD (e) and C-VOD (f) at each site against the difference in land cover between 1 km (at site) and 0.25° spatial resolution (VOD grid cell) (equation 3). The red lines are smoothing spline fits between the values at the x- and y-axes.**

3.1.3 Effect of vegetation type

Furthermore, we investigated if the correlations between VOD and LFMC are associated to vegetation type (Figure 3). The comparison of VOD with Globe-LFMC shows higher correlations at higher short vegetation cover within the VOD-grid cell.

450 For example, the median correlation between LFMC and Ku-VOD is 0.30 if the short vegetation cover is $\geq 80\%$ and is 0.09 if the short vegetation cover is $< 80\%$ (Figure 3a). However, despite this average increase in correlation with increasing short vegetation cover, several sites with low short vegetation cover also have correlations > 0.5 . The increase of correlation with short vegetation cover are mirrored by a decrease of correlation with increasing tree cover. For example, the median correlation between Globe-LFMC and Ku-VOD is 0.15 for tree cover $< 20\%$ and is 0.05 for tree cover $\geq 20\%$. The changes in correlation

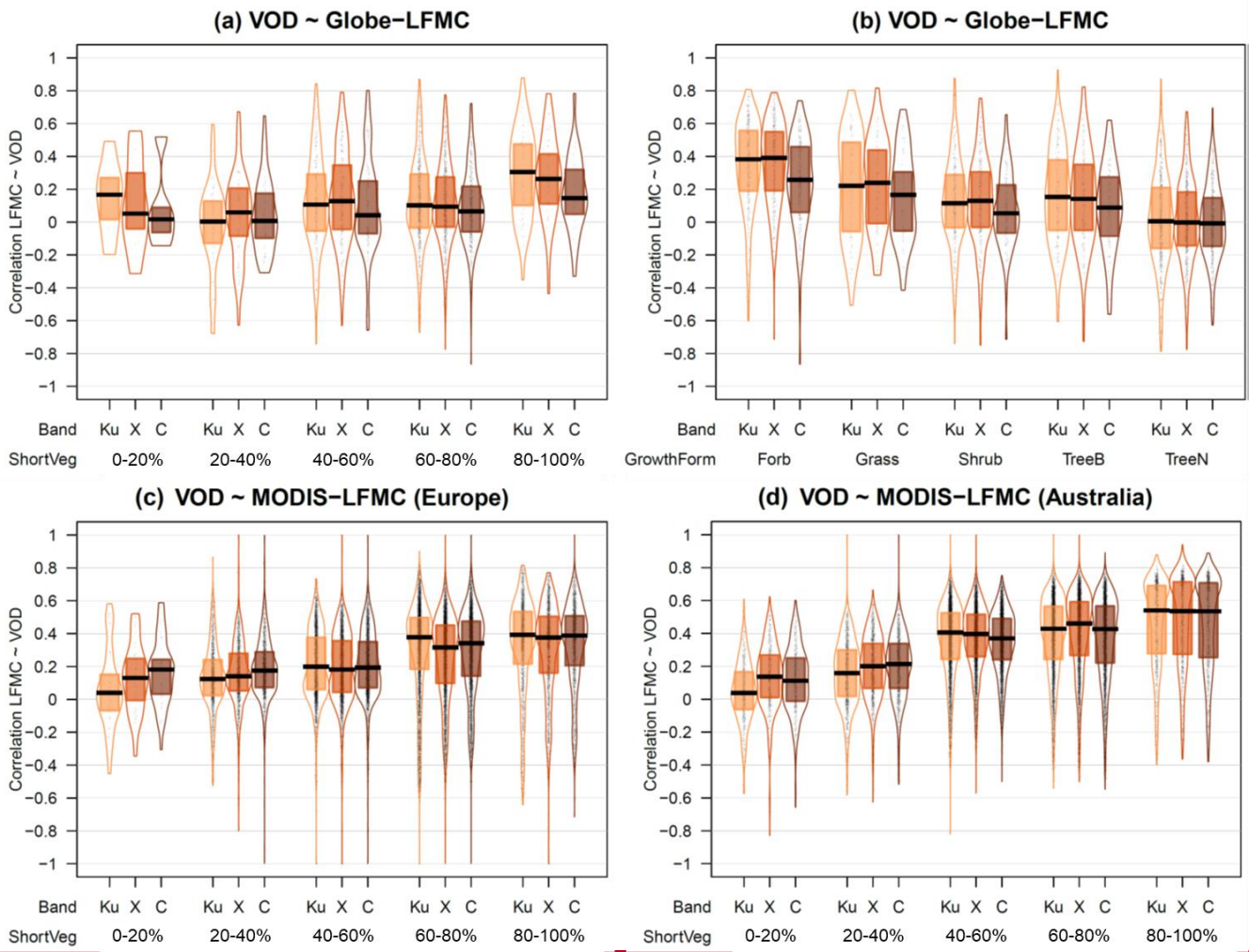
455 with short vegetation or tree cover are similar for all three VOD bands but Ku-VOD shows in the majority of vegetation cover fractions higher correlations than the other two bands. The dependency of the correlation between LFMC and VOD on vegetation type is more pronounced if we use MODIS-LFMC instead of Globe-LFMC site measurements. Thereby we find for all VOD bands and both in Australia and Europe a general increase of the correlation with increasing short vegetation cover (or decreasing tree cover) (Figure 3c-d).

460 The dependency on vegetation composition becomes clearer when we compute the correlation between VOD and LFMC separately for each sampled plant species at each site and then grouped the plant species in growth forms (Figure 3b). We find the highest correlation for forbs (median $r = 0.38$ for Ku-VOD), followed by grass ($r = 0.22$), broad-leaved trees ($r = 0.15$), shrubs ($r = 0.11$), and finally needle-leaved trees ($r = 0$). The order of median correlations is the same for X- and C-VOD. However, the results show that despite low median correlations for some growth form classes, also high correlations are

465 possible at some sites for all growth forms. For example, the percentile 90% of the correlation between LFMC and Ku-VOD is 0.7 for forbs, 0.65 for grass, 0.55 for shrubs, 0.61 for broadleaved trees and 0.40 for needle-leaved trees. These results demonstrate that especially Ku-VOD is related to LFMC and that the relationship is closest for short vegetation types such as forbs, grasses and shrubs.

~~These~~The results are in agreement with earlier studies that established the relation between VOD and VWC or LFMC based on observations from crops and grasses (Jackson and Schmugge, 1991; Konings et al., 2019). The more homogenous canopies of short vegetation than of forest canopies might cause the generally higher correlations between VOD and LFMC at many herbaceous sites than at forest sites. However, based on the additional high 90% percentiles of correlations at some tree-dominated sites, we assume that coarse-resolution VOD data is also sensitive to LFMC at forest sites but that the relationship is in many cases masked by the mismatch between land cover at the local site and the coarse VOD grid cell. This assumption

475 is also supported by the findings of Holtzman et al. (2021) who report a correlation of $r = 0.76$ between L-VOD and leaf water potential as measured locally in a deciduous forest and by Momen et al. (2017) who were able to model X-VOD from measurements of leaf water potential and LAI for two mixed deciduous forests.



480

The higher correlation for Ku- and X-VOD with LFM than for C-VOD might be confounded by an effect of rain on the atmospheric transmissivity of those wavelengths. Although microwaves are generally assumed largely independent of atmospheric conditions, thick water clouds and rain reduce the transmissivity of the atmosphere especially for shorter wavelength microwaves. For example, the atmospheric transmissivity is between 60 and 80% in the case of water clouds and between 20 and 70% in the case of rain for Ku-band (Ulaby et al., 1981, p.2–3). However, effects of rain on the retrievals of Ku- and X-VOD in the VODCA product are not known. Overall, the quality of the Ku-band VOD is comparable to X- and C-VOD (Moesinger et al., 2020): Ku-VOD correlates higher (global average $r = 0.39$) with MODIS LAI than C-VOD ($r = 0.37$) but a bit weaker than X-VOD ($r = 0.42$). The effect of RFI on C-VOD is not present in Ku-VOD. Moreover, Ku-VOD has a larger data coverage because the CDF matching approach used in the VODCA dataset was more often successful for Ku-VOD than for the X- or C-VOD data. Multi-year trends in Ku-VOD agree with trends in X and C-VOD. Hence, the higher correlation

485

490

of Ku-VOD with LFM and the quality and overall similarity of the Ku-VOD data with X- and C-VOD, suggests using Ku-VOD to estimate LFM.

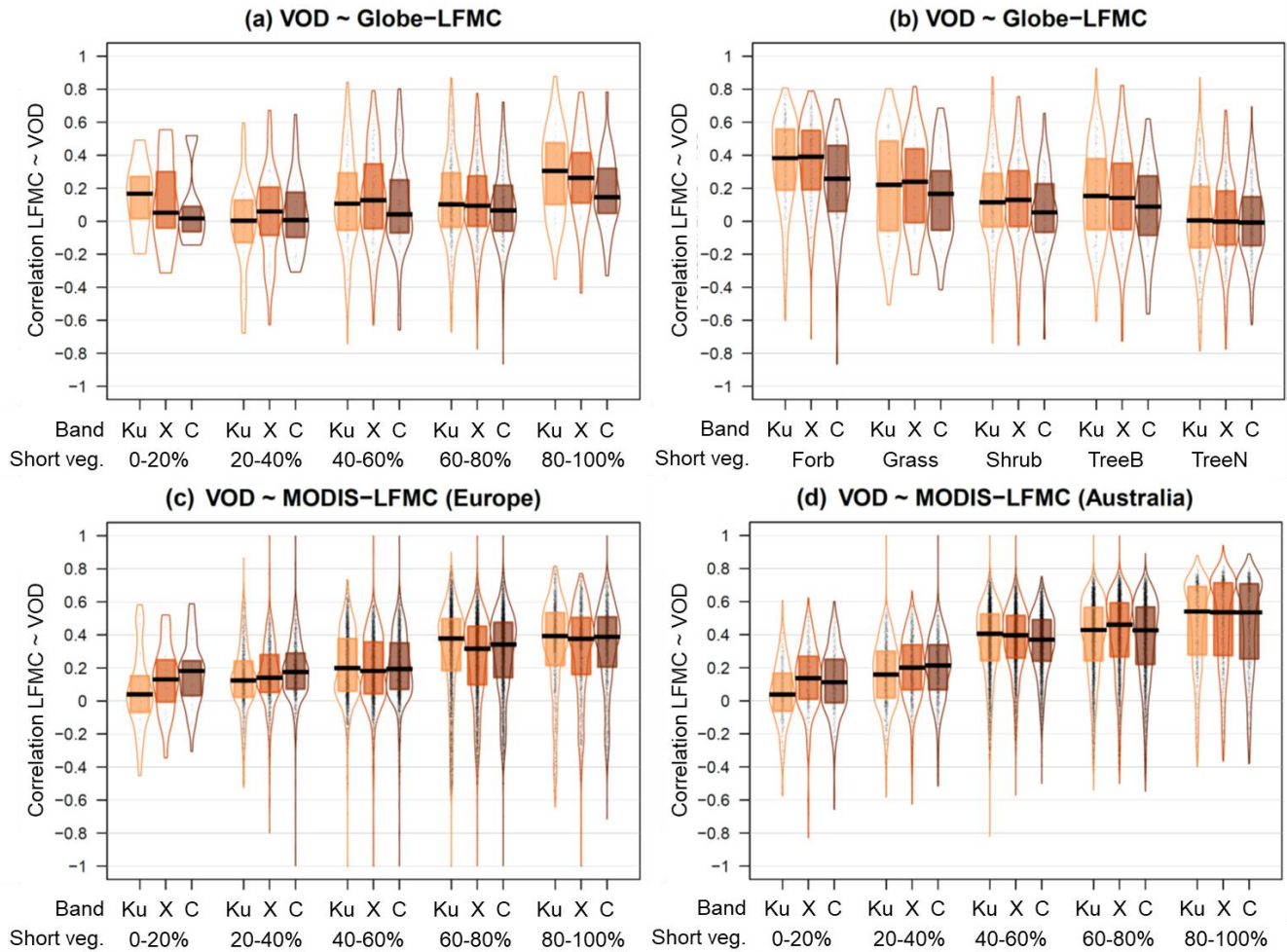


Figure 3: Statistical distributions of the temporal correlation between VOD and LFM stratified by vegetation type. (a and b) Correlation with measurements from the Globe-LFMC database stratified by (a) the percentage cover of short vegetation and (b) by the growth form of the sampled plant. (c and d) Correlation with MODIS-LFMC in (d) Australia and (d) Europe stratified by the percentage cover of short vegetation.

495

500

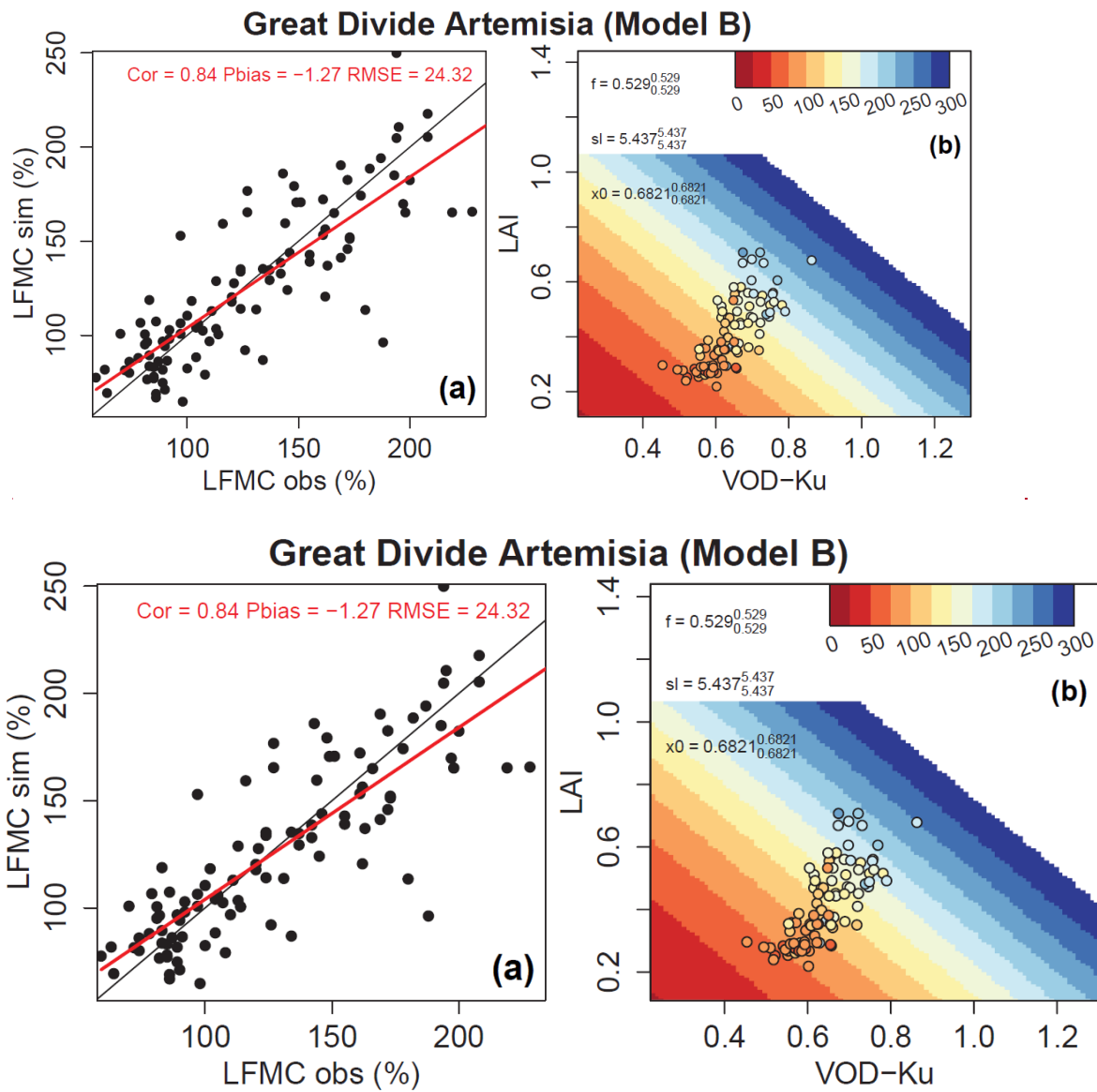
3.2 Estimating LFMC at site-level

3.2.1 Performance of models A-D in site-level calibration

Based on the finding that Ku-VOD shows slightly higher correlations with LFMC than X- or C-VOD and given the longer temporal overlap of Ku-VOD with Globe-LFMC observations, we used Ku-VOD as input to four different models to estimate LFMC. We separately calibrated each model at each of 216 Globe-LFMC sites that were selected based on the criteria for the data collection D3 (section 2.5). An example of the calibration of model B for one species at one site is shown in Figure 4. The example demonstrates a very good fit between observed and estimated LFMC (correlation $r = 0.84$). This example corresponds approximately to the 90%-ile highest correlation between observed and estimated LFMC from model B and is therefore among the best results of all sites. The model response function shows that the estimated LFMC increases with both daily Ku-VOD and monthly LAI, which is supported by the observed LFMC (Figure 4 b). In this model, the performance of the estimated LFMC is most strongly influenced by the parameter sl (e.g., $r = 0.95$ between sl and RMSE) while also the parameter $x0$ has a strong effect on the model performance (e.g., $r = -0.65$ between $x0$ and RMSE). This example shows that LFMC from site-level observations can be estimated from coarse resolution Ku-VOD (and LAI) observations.

Across all sites and vegetation types, the estimated LFMC from model B shows a better fit against the observed LFMC than the estimates from the other three models (Figure 5). Model B achieves correlations of $0.64_{0.36}^{0.86}$ (median and 5% and 95%-percentiles), followed by model D with $0.54_{0.66}^{0.83}$, model A with $0.45_{0.16}^{0.75}$, and finally model C with $0.41_{0.06}^{0.75}$. Also for the RMSE, model B shows the lowest error with $RMSE = 29_{11.5}^{60.7}\%$ -LFMC. The other three models show higher RMSE with model C having the highest error ($RMSE = 44.9_{10.1}^{64.3707}\%$ -LFMC). Please note the high 95%-ile of the RMSE for model C, which indicates that it was not possible to successfully fit model C at some sites.

By investigating the model performance for different vegetation growth forms, we generally found that model B performed best and that the ranking of model performance for the other three models is similar for all vegetation types (Figure 5). We found the highest correlation between estimated and observed LFMC for shrubs ($0.73_{0.46}^{0.87}$, model B), followed by forbs and grasses ($0.67_{0.44}^{0.83}$), broad-leaved trees ($0.55_{0.32}^{0.86}$), and needle-leaved trees ($0.50_{0.28}^{0.70}$). The lowest median correlation was found for model C for broad-leaved trees ($0.35_{0.14}^{0.62}$). While the models A, B and D resulted in only positive correlations between observed and estimated LFMC, model C produced at five sites negative correlations. In terms of the RMSE, needle-leaved trees had the lowest error with $RMSE = 15\%$ -LFMC (median for model B), followed by shrubs ($RMSE = 19\%$), broad-leaved deciduous trees ($RMSE = 35\%$) and forbs and grasses ($RMSE = 39\%$). The results indicate that the performance of the models to estimate LFMC from Ku-VOD depends on vegetation type. Thereby the temporal correlation can be well estimated for all vegetation types using model B. The absolute values of estimated LFMC show low to medium errors for most vegetation types except for broad-leaved evergreen trees.



535 **Figure 4: Example of the fit of model B using daily Ku-VOD and monthly LAI for *Artemisia tridentata ssp.* at the site Great Divide, Colorado (40.76°N, 107.85°W). (a) Scatterplot of estimated against observed LFMIC. (b) Distribution of observed LFMIC (points) and estimated LFMIC (coloured background) in relation to daily Ku-VOD and monthly LAI.**

3.2.2 Suitability of model structures

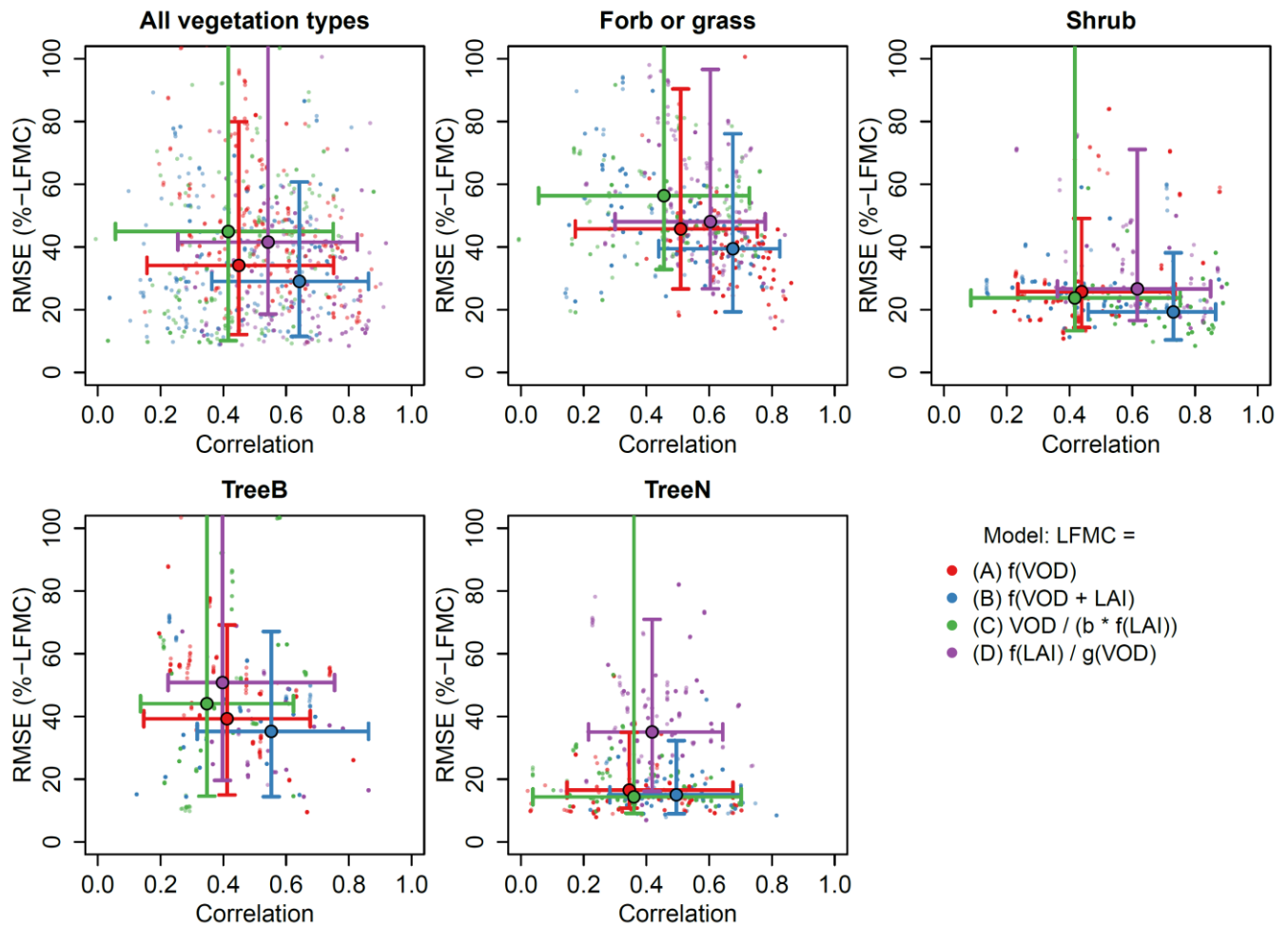
The logistic regression model B based on daily VOD and mean monthly LAI outperforms other model structures. The improved
 540 performance of model B (using VOD and monthly LAI) over model A (only using VOD) demonstrates that the dynamics in

LAI needs to be considered in order to provide good estimates of LFMC. The parameter f in model B defines the relative contribution of VOD or LAI to the estimated LFMC. The higher values of f for trees than for grasses and forbs (Table 2) shows that VOD needs to be higher weighted to predict the LFMC of forest sites while a lower weight of VOD (and higher relative contribution of monthly LAI) is necessary to predict the LFMC of grasses and forbs. The higher weighting of VOD to predict LFMC of trees corresponds to the findings of Zhang et al. (2019) who found that canopy biomass has a stronger effect on short-wavelength VOD than leaf water potential in temperate forests.

Model C adapted the relationship between VOD and LFMC as proposed by Jackson and Schmugge (1991) and Konings et al. (2019) (i.e. equation 2). Hence, this model used VOD to account for VWC and used LAI to account for canopy biomass. Model C resulted on average in low correlations and high errors between estimated and observed LFMC. While this model could not be fitted successfully at some sites, it also reached good performances at others. These results suggest that the relationship between VOD and LFMC as denoted in equation 2 is valid for some sites but it might not be valid for all sites or is overly sensitive to scale mismatches in the local measurements and the coarse-scale VOD and LAI data.

Model D adapted the relationship between VWC and LAI as suggested by Sawada et al. (2016) and estimated canopy biomass based on VOD. As this model resulted in better performance than model C, it indicates that VOD is indeed a valuable predictor for canopy biomass and VWC can be indeed estimated from LAI at many sites. Model D achieved on average higher correlations between estimated and observed LFMC than model A (only using VOD), which shows that LAI is required to predict temporal dynamics in LFMC. However, model D had higher errors than model A, which indicates that using VOD only as predictor for canopy biomass is not sufficient but that the VOD information in model A provides information of absolute values (and hence reduces errors) of LFMC.

Models A, C and D with lower performance have a low flexibility in how they use VOD and LAI to estimate LFMC: model A only uses VOD; model C uses VOD to account for VWC and LAI to account for biomass; and model D uses LAI to account for VWC and VOD to account for biomass. On the other hand, model B allowed to combine daily VOD and monthly LAI in a flexible way to estimate LFMC and reached highest performance. These results demonstrate that flexible model structures are needed in order to estimate LFMC from VOD and LAI. This finding is supported by several studies that identified that the relative contributions of changes in biomass and vegetation water content (or leaf water potential) depends on land cover type (Momen et al., 2017; Zhang et al., 2019; Konings et al., 2021b).



570 **Figure 5:** Performance of the models A-D using daily Ku-VOD (and monthly LAI in models C-D) after calibrating each model at each site. Shown is the root mean squared error (RMSE) and correlation coefficient between estimated and measured LFMC. Small dots are results from different parameter sets at each site, big dots and bars are the median and range from the 5 to 95%-iles across all sites, respectively.

3.3 Estimating LFMC spatially using spatial cross-validation

575 In a next step, we investigated the applicability of the four models in space, which requires an estimate of the model parameters for each of the 0.25° VOD-grid cells. Therefore, we first analysed the correlation of the estimated parameters of each model with land cover properties of the VOD-grid cell (e.g. shown for model B in Figure A 2). We found that some of the optimized model parameters are highly correlated with land cover information while other parameters can be estimated based on the covariation between parameters. For example, in model B the parameter $x0$ had the strongest correlation with the percentage tree cover ($r = 0.74$), the parameter sl with the parameter $x0$ ($r = -0.74$) and then with tree cover ($r = -0.32$), and the parameter

580

f with the parameter sl ($r = 0.3$) (Figure A 2). Based on those findings, we used random forest to predict first for each VOD-grid cell the parameter $x0$ from percentage tree cover and then the parameter sl from tree cover and the parameter $x0$. Finally, we predicted the parameter f from tree cover and the parameters $x0$ and sl . We performed the same step-wise approach to predict the parameters with random forest for the other models and then applied each model to the 0.25° grid cell by using the predicted parameters to estimate LFMC. We applied this approach within a 20-fold spatial cross validation to evaluate the performance of the estimated LFMC in space. Additionally, we uF to estimate the spatial-teporal dynamics of LFMC directly.

3.3.1 Model performance in spatial cross-validation

As expected, the performance of all models slightly decreased in cross validation in comparison to the site-level calibration results (Figure 6). However, the ranking in model performance remained the same with model B showing the best performance. For example, model B had correlations of $0.58_{0.30}^{0.84}$ in spatial cross validation samples ($0.64_{0.36}^{0.86}$ in site-level calibration, see section 3.2), which corresponds to a decrease of 0.06 of the median correlation in comparison to the calibration against the site data. The RMSE in spatial cross validation was $48.8_{17.9}^{11.8}\%$ -LFMC for model B (RMSE = $29_{11.5}^{60.7}\%$ -LFMC in site-level calibration). Like model B, also models A and D experienced small decreases in correlation and increases in RMSE in spatial cross validation (Figure 6). However, model C experienced strong decreases in correlation from median $r = 0.42$ in site-level calibration to $r = 0.22$ in spatial cross validation, which shows the parameters of model C could not be reliably estimated in space in order to obtain a sufficient performance in estimating LFMC.

The global RF model achieved comparable performances like the other models with correlations of $0.50_{0.18}^{0.77}$ and RMSE of $40_{21.9}^{79.5}\%$ -LFMC in spatial cross validation between observed and estimated LFMC. Hence, the RF performed in average slightly better than the best-performing model B in terms of RMSE but worse than model B and D in terms of correlation. These results demonstrate that especially model B can be applied in space and results in a comparable performance in estimated LFMC between site-level calibration and spatial cross validation.

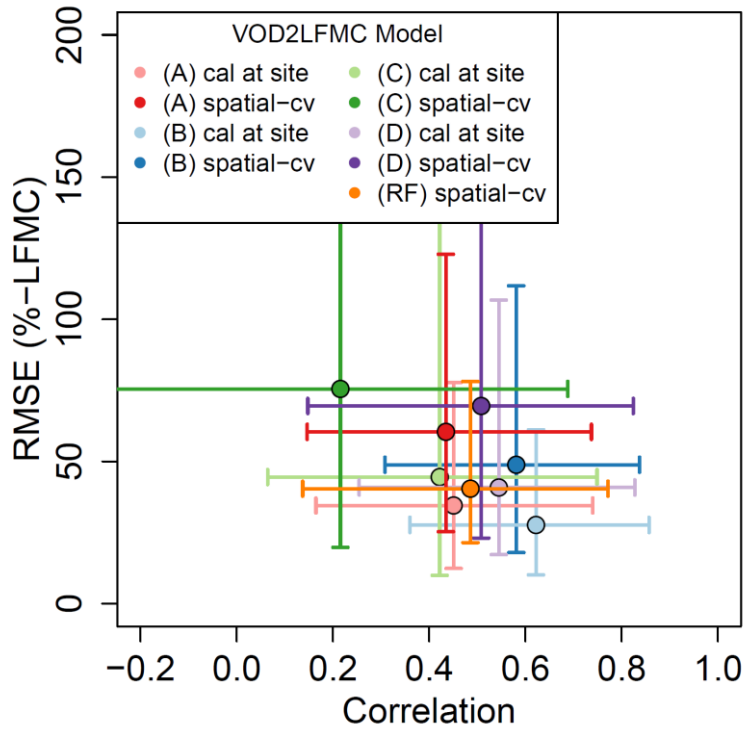
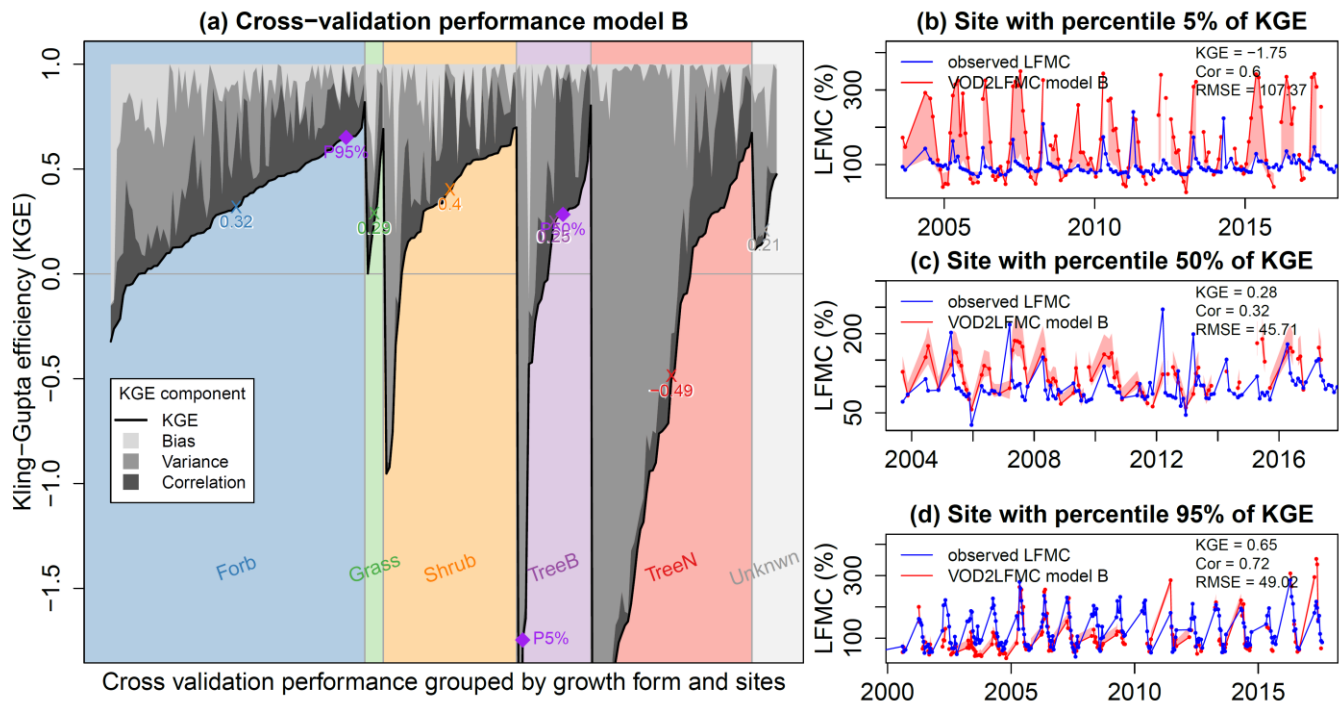


Figure 6: Performance of the models A-D using Ku-VOD after calibrating each model for each species at each site (cal at site) and after using sites as test data in spatial cross validation after the application of random forest to predict model parameters (spatial-cv). The global RF model (shown in orange) was directly trained against LFMC measurements from multiple sites. Shown is the root mean squared error (RMSE) and correlation coefficient between estimated and measured LFMC. Dots and bars are the median and range from the 5 to 95%-iles across all sites, respectively.

605

610



615 **Figure 7: Performance of model B using Ku-VOD in spatial cross validation at each site grouped by the sampled vegetation growth form of LFM measurements. (a) Kling-Gupta efficiency with its components caused by bias, variance and correlation. Purple dots represent the 5%, 50% and 95%-iles of the KGE across all sites. The time series of the sites corresponding to those percentiles are shown in panels (b, 5% = site with low performance, broad-leaved tree site), (c, 50% = site with medium performance, broad-leaved tree site) and (d, 95% = site with -good performance, forb site).**

We then performed a more detailed evaluation of the cross validation results of the best-performing model B by investigating the Kling-Gupta efficiency (KGE) and its components for each site and each vegetation growth form (Figure 7). We found the highest KGE in cross validation for shrubs (median KGE = 0.4) and forbs (median KGE = 0.32). Grasslands (median KGE = 0.29) and broad-leaved trees (median KGE = 0.25) had lower performance and needle-leaved trees had overall low performance (median KGE = -0.49). However, the variability in KGE was high within all vegetation types. All grass sites and 88% of the forb and shrub sites had positive KGE but only 38% of the needle-leaved sites had positive KGE. In most sites with low KGE, KGE is dominated by a mismatch between the observed and estimated variance of LFM. This can be seen for example in the LFM time series in Figure 7 b, which is representative for a broadleaved tree site with low KGE and corresponds to the percentile 5% of the KGE across all sites. However, the correlation between observed and estimated LFM is still moderate at such sites, which indicates that the temporal dynamic of the estimated LFM has still a moderate agreement with the observed LFM. For sites with medium and high KGE (Figure 7 c and d), the error is in most cases a mixture of a mismatch in mean values (bias), variance or not-perfect correlation. For example, the time series in Figure 7 c and d demonstrate that the model B fits well the mean, variance and correlation of the observed LFM.

620
625
630

3.3.2 Spatial applicability of model structures

The ranking in performance of the four models in spatial cross validation resembles the ranking of the performance in site-level calibrations. On the one hand, the large variability in performance at site-level calibration and the strong decrease in performance in spatial cross validation for model C demonstrates that this model cannot be successfully applied and transferred to estimate LFMC globally. On the other hand, the results demonstrate that model B can be successfully used to estimate the spatial-temporal dynamics of LFMC, whereby the parameters of model B can be estimated from observed tree cover using random forest. Medium to high performance of the estimated LFMC can be expected for herbaceous vegetation, shrublands and for most broad-leaved trees. On average, a low performance and underestimation of the observed variance can be expected for needle-leaved trees, but this is not the case for all sites with needle-leaved trees.

The application of model B in estimating LFMC results in performances (i.e. median RMSE = 48.8% in global spatial cross-validation) that are comparable with other studies that estimated LFMC based on optical satellite observations. For example, estimated LFMC reached errors of 40% (Yebra et al., 2018), 45% (Caccamo et al., 2011) and 44% (Nolan et al., 2016) across validation sites in Australia (Yebra et al., 2018) and approx. 34% in a global study with MODIS data (Quan et al., 2021). Rao et al. (2020) used Landsat-8 and Sentinel-1 Radar backscatter to estimate LFMC for the western US using a neural network model and obtained RMSE of 25% across vegetation types. They obtained the lowest errors for mixed and needle-leaved forests (RMSE = 20% and 22%) and the highest errors for grasslands (RMSE = 31%). While our results are similar for site-level calibrations of model B (i.e. RMSE = 15% for needle-leaved trees and 39% for grasslands), we found much lower performance for needle-leaved trees in spatial cross validation.

The lower performance of model B for needle-leaved trees in spatial cross-validation than at site-level calibration indicates that the calibrated parameters from each site cannot be well estimated in space. We assume that this is caused by the spatial representativeness of the used LFMC sites with needle-leaved trees. All of the used sites with needle-leaved trees are located in the western US and most of the sites are located in regions with low tree cover. Only a few sites are located in regions with higher tree cover and those sites are distributed across different spatial clusters for cross-validation. Hence, needle-leaved trees are included in 11 out of 20 spatial clusters and six of the spatial clusters include less than three sites with needle-leaved trees. This implies that in such cases the training of model parameters is mostly based on sites without needle-leaved trees and from other regions, which will result in a low performance for needle-leaved forests. Those results suggest that still all vegetation types should be considered in spatial cross-validation in order to obtain realistic results for under-represented vegetation types. Overall, our estimates of LFMC from coarse-resolution VOD and LAI data reach medium to high performances for most vegetation types that are comparable with other studies that use more data with higher spatial resolution or data from optical satellite systems for which the physical relations between LFMC and surface reflectance are established for several years (Yebra et al., 2013).

3.4 Global LFMC estimates

3.4.1 Global spatial-temporal patterns

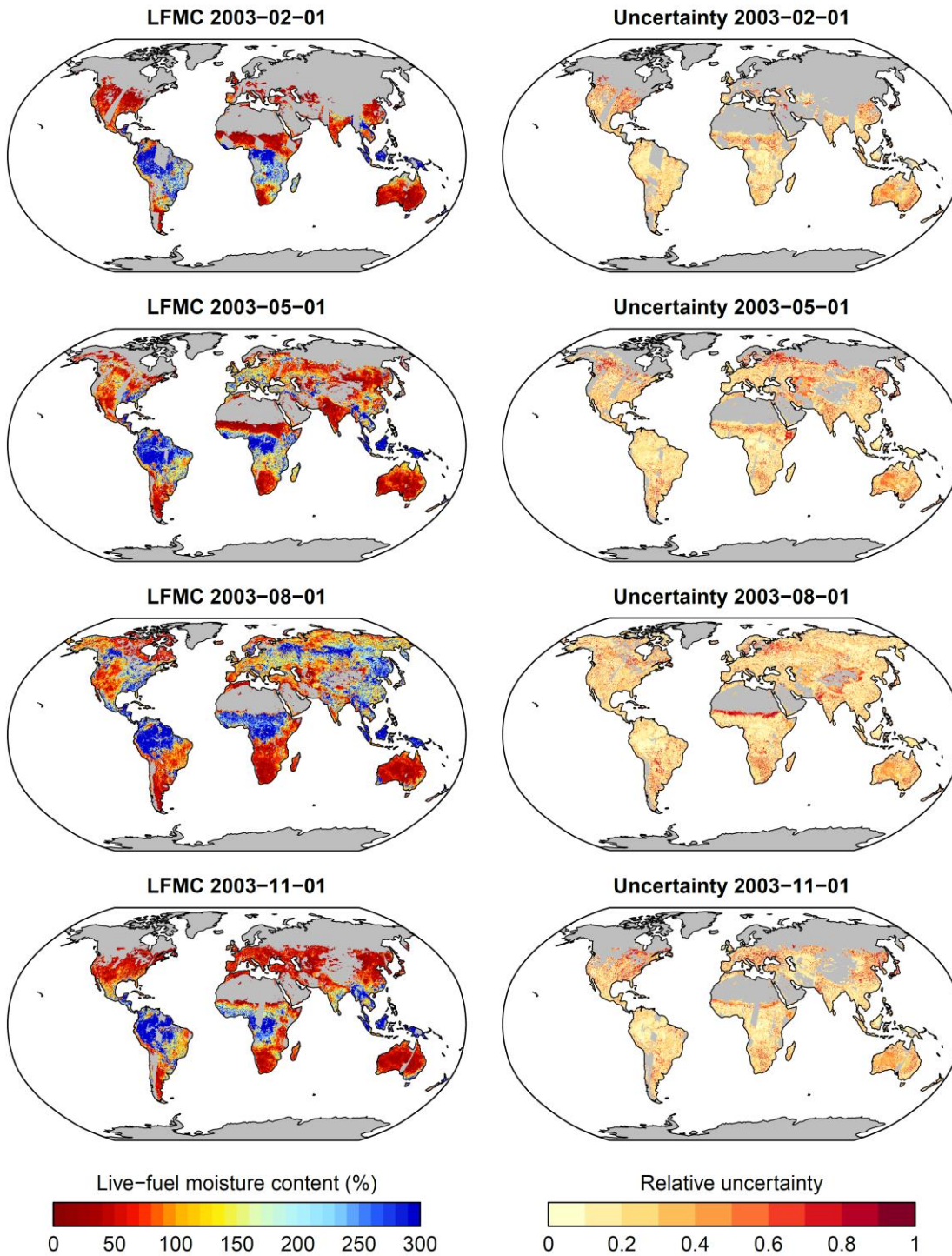
Finally, we applied model B and the associated RF-based parameters to global data of Ku-VOD, LAI and tree cover to estimate LFMC globally at $0.25 \times 0.25^\circ$ spatial resolution and at daily sampling for the period February 2000 to July 2017 (overlapping period of Ku-VOD and MODIS LAI). As an example, we show global estimates for four days in the year 2003 (Figure 8). The four days cover the different seasons in northern ecosystems as well as wet and dry seasons in tropical Africa. The four maps show generally high LFMC in wet tropical regions (Amazon and Congo basins, SE Asia), medium LFMC in many sub-tropical and temperate regions and low LFMC in Savannah and desert regions. Seasonal changes in LFMC generally follow wet and dry seasons in semi-arid regions and the course of the phenological development as commonly seen in other vegetation properties (i.e. LAI or productivity). For example, the Sahel in northern Africa shows high LFMC in August (wet season) and low LFMC in February (dry season). Similar seasonal changes between wet and dry seasons can be seen in South America, the southern United States, the Mediterranean, India, eastern Asia and Australia. The seasonal changes in LFMC are also visible in the Hovmöller diagram (Hovmöller, 1949) shown in Figure 9. Thereby, equatorial regions show continuously high LFMC with a very weak seasonality. Northern subtropical regions between 5 and 18°N show prolonged dry seasons with low LFMC towards northern latitudes. Northern mid and high latitudes ($> 30^\circ\text{N}$) show higher LFMC during the summer months than during spring and autumn.

The large similarity of the global seasonal changes in LFMC with similar changes found in other vegetation properties such as LAI or gross primary productivity might seem astonishing at first view because LFMC represents a relative property of moisture content and not an absolute property of vegetation cover or biomass (like LAI). However, seasonal changes in leaf cover are highly correlated with LFMC, especially in short vegetation regions. For example, MODIS LAI has an across-site median temporal correlation with measurements of the Globe-LFMC dataset between $r = 0.30$ and $r = 0.50$ for regions with short vegetation cover $> 80\%$ (Figure A 5). Hence the Globe-LFMC site-level data shows indeed a strong coupling between LFMC and LAI, which is then also reflected in our global estimates of LFMC. This suggests a close coupling of LFMC increases with leaf development and of LFMC decreases with leaf cavitation and shedding.

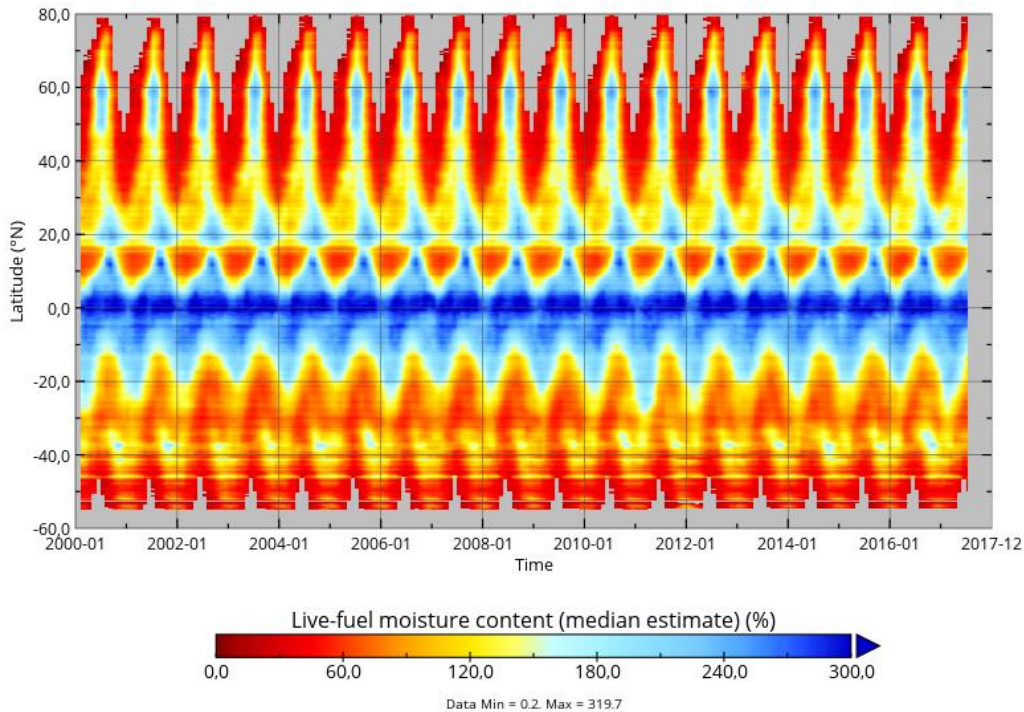
Areas without estimates of LFMC (grey areas in Figure 8 and 9) occur because of several reasons. 1) Missing data in deserts and ice-covered regions are because the model was not applied to grid cells with less than 5% vegetation cover. 2) Missing data in northern latitudes in winter months are either because of months without LAI observations because of low solar zenith angles, snow or cloud cover, or because Ku-VOD observations were not available over frozen soils. 3) Other days with missing observations in some regions are because of missing coverage of passive microwave sensors or were masked in the VODCA dataset because of RFI.

We also compared the estimated LFMC from model B with MODIS-LFMC for Australia and Europe to assess the similarity of both datasets. However, as the VOD-based LFMC uses monthly LAI from MODIS as input, which is derived from the same spectral bands like MODIS-LFMC, both LFMC datasets are not independent of each other and a high correlation can be

695 expected. Indeed both the VOD-based LFMC and MODIS-LFMC are highly correlated (Figure A 3). The spatial patterns of correlation between the VOD-based LFMC and MODIS-LFMC show similar regions where already Ku-VOD had high and low correlations with MODIS-LFMC, respectively (Figure 1). The correlation between VOD-based LFMC and MODIS-LFMC is higher than between Ku-VOD and MODIS-LFMC in many regions, which is likely due to the additional use of MODIS-LAI in model B. The low correlation in parts of northern Europe and the Alps was already present in the correlation
700 between MODIS-LFMC and Ku-VOD. The low correlation between VOD-based LFMC and MODIS-LFMC in northern Europe can be additionally caused by the low performance of the estimates in needle-leaved forests, which are widespread in those regions. However, the very high correlation between VOD-based LFMC and MODIS-LFMC demonstrates in many regions and in most fire-prone regions a good comparability of the two datasets.



705 **Figure 8:** Example of global patterns of LFMC and associated uncertainties as estimated with model B for four selected days in 2003, representing typical days during the northern seasons and the wet and dry seasons in Africa. Grey areas (missing data) is because of missing vegetation cover or gaps in the LAI or VOD data.



710 **Figure 9: Hovmoeller diagram of monthly LFMC as estimated from model B using daily Ku-VOD and monthly LAI.**

3.4.2 Uncertainties and observational support

The uncertainty estimates of the global LFMC estimates are on average low (global mean relative uncertainty = 0.28) and do not show distinct spatial patterns (Figure 8, right column). Larger relative uncertainties tend to occur at low LFMC, i.e. at
 715 seasonally dry conditions or in transitions areas to deserts (e.g. the Sahel, border of Sahara, Central Asia, parts of Australia) and in the boreal forest regions in Russia and Canada. The higher uncertainty over boreal forests corresponds to the lower correlations between LFMC and Ku-VOD and between estimated and observed LFMC after site-level calibration, and to the lower performance in spatial cross-validation for sites with needle-leaved trees.

The analysis of the estimated global patterns of LFMC needs to be compared with the number of observations that are
 720 supporting the global estimates. The majority of pairs of Ku-VOD and Globe-LFMC observations come from the western US and from sites in the Mediterranean, western Africa and southern Australia (Figure A 4a). The available Globe-LFMC observations cover mean annual temperatures between -0.3 and 27°C and annual total precipitation between 202 and 1465 mm (Figure A 4c). This indicates that boreal and polar regions and very wet tropical regions are generally not supported by Globe-LFMC observations. Likewise, the observations cover tree coverages between 0 and 79% but no observations are available at
 725 high tree cover with high mean annual temperature > 20°C (i.e. in tropical forests) (Figure A 4d).

We additionally estimated the number of supporting observations in space as a function of mean annual temperature, tree cover, maximum Ku-VOD and maximum LAI (Figure A 4b). Therefore a random forest regression was fitted to the number of observations per site in the Globe-LFMC database and by using mean annual temperature, tree cover, mean annual maximum Ku-VOD, and mean annual maximum LAI as predictors. The fitted random forest model was then applied to each 0.25 x 0.25° grid cell to provide an estimate of how many observations are actually supporting a LFMC estimate in a grid cell. We found that the global LFMC estimates are not supported by any site-level LFMC observations with similar conditions in most of the tropical forests and in the boreal forests in Eurasia. However, most temperate and semi-arid regions are supported by Globe-LFMC observations. In addition, large areas of high northern latitudes (including most of the polar Tundra regions) are supported by Globe-LFMC observations because they have similar conditions of low tree cover, LAI and Ku-VOD like some sites in mountainous areas in the western US or the existing sites in Alaska. However, as many sites in mountainous regions have low correlations between VOD and LFMC (Figure 1), the plausibility of LFMC estimates in northern latitudes is questionable. However, the global estimates of LFMC have strong observational support by site-level observations in many fire-prone regions such as in western Canada, the western US and Mexico, in southern South America, in the Mediterranean, central Asia, parts of China, southern and eastern Africa, and southern and eastern Australia. This provides confidence that the LFMC estimates can be used as a predictor for fire dynamics in most fire-prone ecosystems.

3.5 Applicability of the LFMC estimates and future directions

The aim of this study was to investigate the VOD-LFMC relationship and to develop and test model approaches to estimate LFMC globally. We also generated a daily LFMC dataset for past conditions, whereby the daily information originates from the Ku-VOD data. Although the presented LFMC dataset has a much coarser spatial resolution than MODIS-LFMC datasets (Yebra et al., 2018; Quan et al., 2021; Zhu et al., 2021)(Yebra et al., 2018; Quan et al., 2021; Zhu et al., 2021), the advantages are the daily coverage because VOD is cloud- and illumination-independent and the long time span of VOD data (e.g. Ku-VOD starting in 1987), which potentially allows to produce long-term estimates of LFMC in future studies. Hence, the described methodology to estimate LFMC from VOD can complement LFMC retrievals from optical sensors by providing a higher temporal frequency and potentially a longer temporal coverage.

We envision several applications of the global Ku-VOD-based estimates of leaf moisture content (expressed as LFMC) but also want to raise attention to the limitations of the dataset in other applications. The VOD-based LFMC estimates are suitable to investigate large-scale patterns of vegetation responses to drought, to assess fire danger and to estimate fire emissions, or to benchmark global ecohydrological and fire-enabled vegetation models.

3.5.1 Application of the LFMC estimates as drought indicator

Several remotely sensed vegetation properties such as spectral vegetation indices, LAI, sun-induced fluorescence or derived variables of plant productivity are frequently used to monitor drought effects on vegetation (e.g. Jiao et al., 2021; Crocetti et

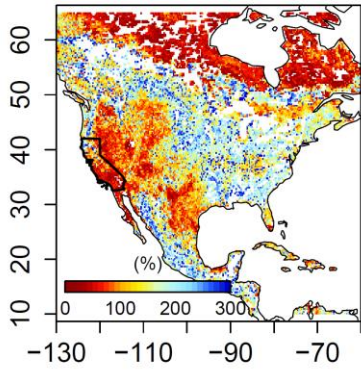
al., 2020) or to investigate the effects of water availability on vegetation growth. The VOD-based LFMC estimates can complement such analyses by providing information on large-scale changes in leaf moisture content.

760 As a case study, we compared the VOD-based LFMC with drought conditions in North America and specifically in California by using the 12-monthly Standardized Precipitation Index (SPI-12) and the U.S. Drought Severity and Coverage Index (DSCI) (Figure 10). August 2014 was one of the most severe drought months in the western U.S. The VOD-based LFMC estimates show wide-spread patterns of very low LFMC over the western U.S. during this month (Figure 10 a). This corresponds to a lack in precipitation as indicated by the negative SPI-12 (Figure 10 b). Also large regions in northern Canada show precipitation deficit with low SPI-12 in northern Canada, which also corresponds to patterns of low LFMC.

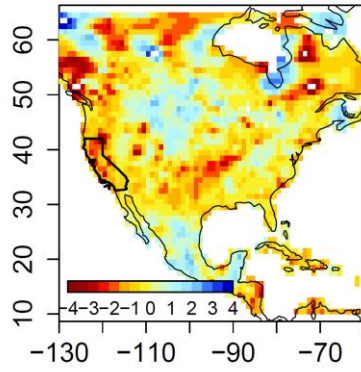
765 To investigate multi-year drought events, we also compared LFMC, SPI-12 and DSCI time series averaged for the state of California (Figure 10 c). Both SPI-12 and the DSCI show the multi-year drought between 2013 and 2016. The LFMC time series is dominated by the strong seasonal signal. Therefore, we decomposed the LFMC time series for California into a seasonal, trend and remainder component using the seasonal decomposition of time series by Loess (STL) method (Cleveland et al., 1990). The LFMC trend shows a long period of low values between 2013 and 2016, which corresponds to the drought period. Likewise the wet period between 2005 and 2007 with higher precipitation (i.e. high SPI-12) and no drought conditions (i.e. DSCI close to 0) corresponds to high LFMC values. The LFMC trend component is medium correlated with SPI-12 ($r = 0.495$) and DSCI ($r = -0.515$) and hence reflects well the inter-annual variability of drought and wet conditions. This continental/regional case study demonstrates the potential to investigate effects of multi-year drought conditions and climate variability on vegetation moisture with the VOD-based LFMC estimates.

775

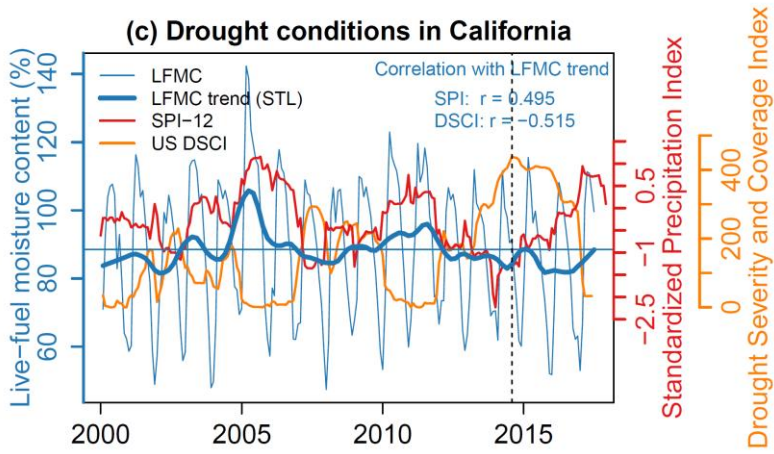
(a) LFMFC (2014-08-01)

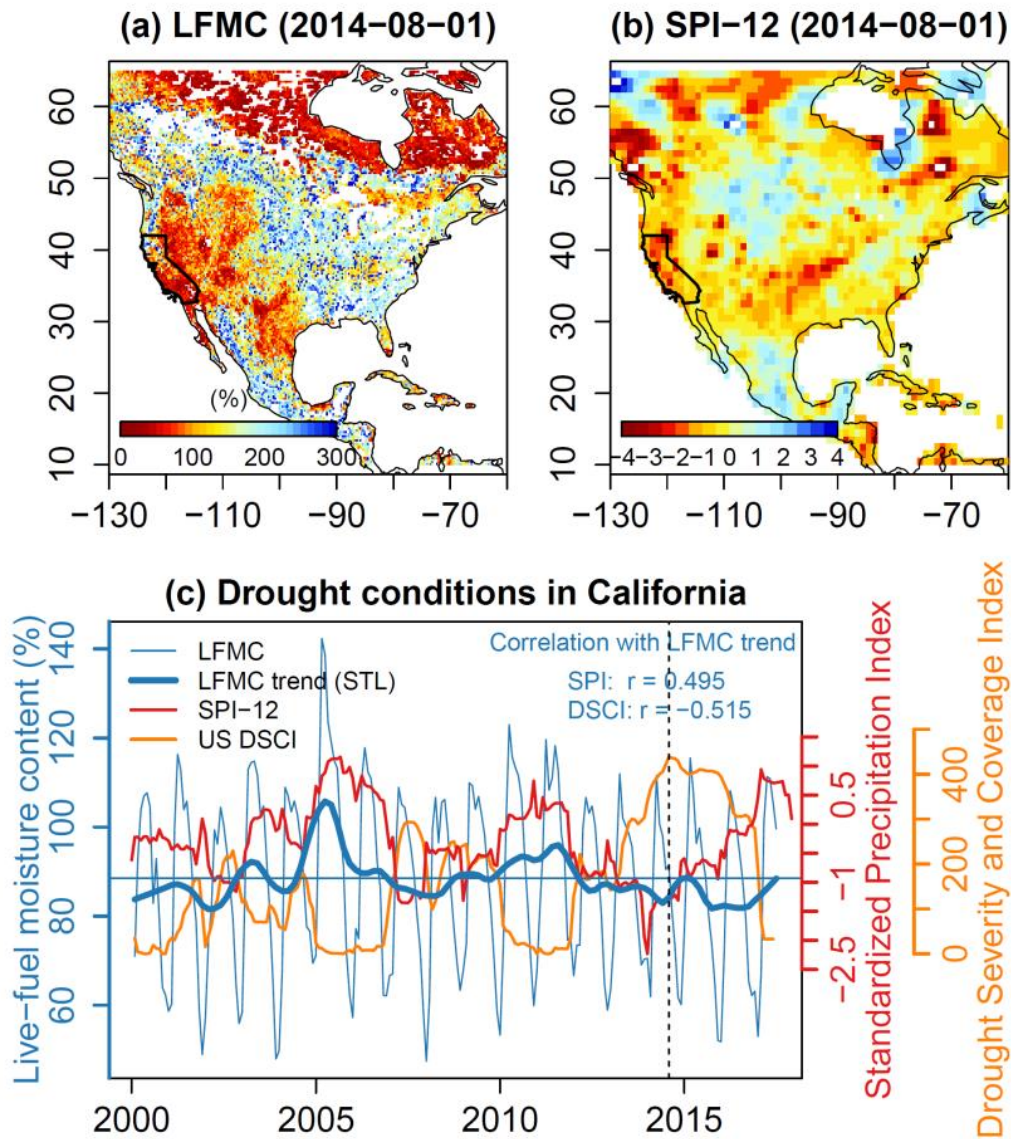


(b) SPI-12 (2014-08-01)



(c) Drought conditions in California





780 **Figure 10: Comparison of LFMF as estimated from model B with drought conditions in North America and California. (a) Map of**
mean monthly LFMF for August 2014, a month with severe drought in the western United States. The state of California is
highlighted in the map. (b) Map of the Standardized Precipitation Index for 12-monthly accumulation periods (SPI-12) for August
2014. SPI-12 data is taken from GDO (2021). (c) Comparison of LFMF, SPI-12 and the US Drought Severity and Coverage Index
(DSCI) for California. A severe drought started in California (and in the western US) in 2013 and lasted until end 2016 as shown by
negative SPI-12 values, very high DSCI values, and low LFMF. The dashed vertical line corresponds to August 2014, which is shown
as map in panels (a) and (b).

785

3.5.2 Applications for large-scale fire science

Generally, the main application of LFMC data is the assessment of fire risks (Chuvieco et al., 2010). The high temporal frequency and long period of the VOD-based LFMC dataset allow investigating short-term to long-term changes in fuel moisture and hence fire risk at a large scale. Previously, VOD datasets have been used as proxies for fuel conditions in global empirical models of burned area (Forkel et al., 2017; Kuhn-Régnier et al., 2021) and helped to explain how trends in climate conditions and vegetation affect large-scale trends in burned area (Forkel et al., 2019). However, the interpretation of VOD effects on the prediction of burned area was hampered in those studies by the unclear role of VOD as a proxy for fuel loads (biomass) or fuel moisture content. The VOD-based LFMC estimates overcome this problem by translating VOD into LFMC. Besides in empirical models for large-scale burned area, the VOD-based LFMC estimates can be used to investigate changes in fire radiative energy or fire emissions, which both depend on fuel moisture content. Further investigations could assess the predictive performance of the VOD-based LFMC data within large-scale empirical modelling studies to predict burned area or other properties of fire dynamics.

However, the coarse spatial resolution of the VOD-based LFMC data ($0.25^\circ \times 0.25^\circ$) prevents applications in regional and local fire risk assessment. At a small scale, differences in vegetation structure and topography are the main controls on fire ignitions and propagation (Chuvieco et al., 2010), which are not accounted for in the VOD-based LFMC dataset. Hence, an application of the VOD-based LFMC estimates for regional fire risk assessment should be tested with caution, especially in heterogeneous landscapes or mountainous regions. However, our cross-validation results suggest that the LFMC estimates can be applied in large homogenous landscapes with short vegetation types.

Furthermore, the VOD-based LFMC estimates can contribute to the evaluation and improvement of moisture simulations in global ecohydrological and fire-enabled vegetation models such as from the fire-model inter-comparison project (FireMIP) (Rabin et al., 2017). FireMIP models simulate live and dead fuel moisture either based on fire danger indices (e.g. the Nesterov index, Thonicke et al. (2010)) or based on empirical functions with soil moisture or relative humidity (Rabin et al., 2017). FireMIP models have been intensively evaluated for simulations of burned area, fire emissions, LAI, plant productivity and biomass (Hantson et al., 2020) and the simulated fuel moisture has a strong effect on simulations of burned area and fire emissions (Li et al., 2019). However, fuel moisture has not yet been evaluated in those models. Hence, we propose that the VOD-based LFMC estimates or other global products (Quan et al., 2021) can be used in benchmarking activities of global fire-enabled vegetation models.

3.5.3 Future developments

Finally, we propose several further developments of the VOD-based LFMC datasets:

- The calibration and evaluation of the applied models used only 163 sites out of 1384 sites in the Globe-LFMC database according to the selection criteria described in section 2.5. This is mainly caused by the joint availability of pairs of LFMC/VOD observations. Additionally, our selection criteria also prevented us from using the measurements

from all 229 sites in China, where each site has only one measurement. Future developments can apply different approaches to make use of more observations in model training. While sites with single measurements cannot be used to calibrate models at site level, they could be still used in training the spatial random forest model to estimate model parameters. At other sites, a filling of short temporal gaps in VOD time series could increase the availability of LFMC/VOD pairs and would increase the number of sites that can be used for model calibration.

- An estimation of LFMC for different vegetation types within a VOD-grid cell can be explored as the site-level model calibration was performed for different vegetation growth forms reported in the Globe-LFMC database.
- LAI data at their original spatial resolution within the VOD-based models could be used to provide LFMC estimates at higher spatial resolution.
- One advantage of our methodology is the long time span of VOD data (e.g. Ku-VOD starting in 1987), which potentially allows to produce long-term estimates of LFMC in future studies. Hence, the temporal coverage of the LFMC estimates can be extended back to 1987 by using longer LAI time series than provided by MODIS. Such an extension would also allow the use of older LFMC field data in model calibration. Such long time series of LFMC can facilitate climatological studies on the variability and LFMC and the potential effects on fire.
- The prediction of fire risks requires the availability of satellite products shortly after the observation. Our methodology could be applied to estimate LFMC in near-real time, however, this requires the availability of near-real time VOD products.

835 4 Conclusions

This study assessed the relationship between short-wavelength VOD from passive microwave satellite observations and leaf moisture content (expressed as LFMC) globally and successfully developed and applied a method to estimate LFMC from VOD globally at $0.25^\circ \times 0.25^\circ$ spatial resolution, at daily time steps and for the period from February 2000 to July 2017. We achieved our three objectives as follows:

- 840 1) We investigated the relationship between VOD and LFMC. VOD and LFMC are in the majority of sites or grid cells positively correlated, whereby Ku-band VOD has slightly higher correlations than X- or C-VOD. The correlation between VOD and LFMC is on average higher for short vegetation types such as forbs, grasses and shrubs than for trees but also several forest sites show high correlations. Broad-leaved forests show higher correlations than needle-leaved forest. These results confirm earlier studies about the VOD-LFMC relation and demonstrate additionally that coarse-scale VOD is sensitive to LFMC at forest sites if the land cover distribution locally is similar to the coarse grid cell.
- 845 2) We tested different model structures to estimate LFMC from VOD. A logistic regression model that uses daily Ku-VOD and monthly LAI as predictors for LFMC outperformed alternative model structures in site-level calibration and spatial cross-validation. The comparison of model structures demonstrates that LAI is needed in addition to VOD as a proxy for either canopy biomass or vegetation water content to reach acceptable model performances.

850 3) We applied spatial cross validation to assess the transferability of model structures in space and applied the best-
performing model to estimate LFMC globally. The obtained model performances are comparable with results from
previous studies that estimated LFMC based on visible/near-infrared satellite observations. Medium to high performance
of the VOD-based LFMC estimates can be expected for herbaceous vegetation, shrublands and for most broad-leaved
855 trees in many fire-prone regions such as in western Canada, the western US and Mexico, in southern South America, in
the Mediterranean, central Asia, parts of China, southern and eastern Africa, and southern and eastern Australia. Large
variability in performance and high uncertainties can be expected in needle-leaved forests, whereby especially estimates
in boreal forest have low observational support.

We propose to use VOD-based estimates of LFMC to investigate effects of drought and climate variability on vegetation leaf
moisture at large scale, for large-scale assessments and empirical modelling of fire dynamics, or to benchmark global fire-
860 enabled vegetation models.

Data availability. The global daily LFMC results of model B for the period February 2000 to July 2017 are available at zenodo:
<https://doi.org/10.5281/zenodo.6545571>

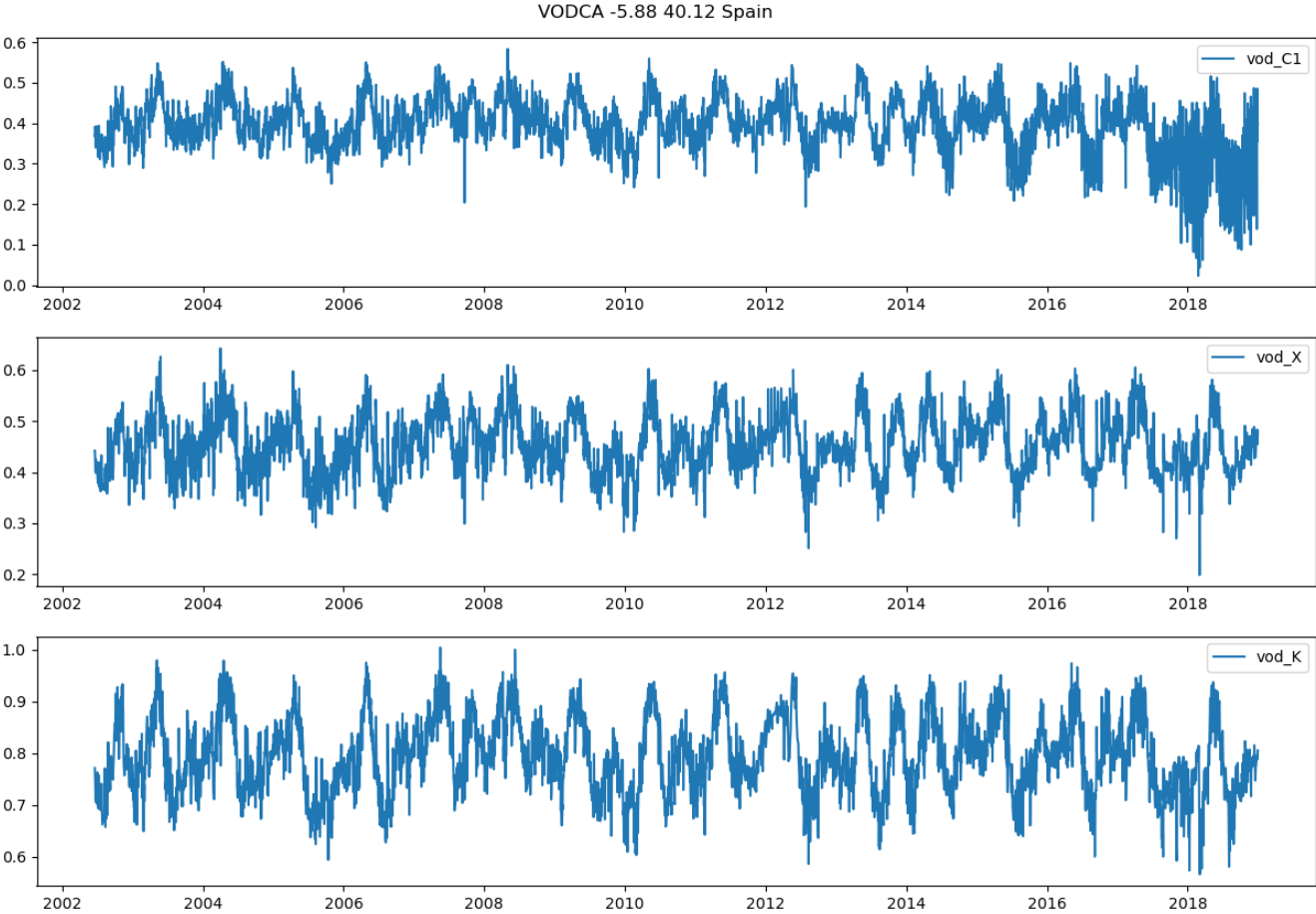


Figure A 1: Example time series of C-, X- and Ku-VOD over a grid cell in Spain (5.88°W, 40.12°N), where the C-VOD time series shows a high level of noise likely caused by RFI in the later years.

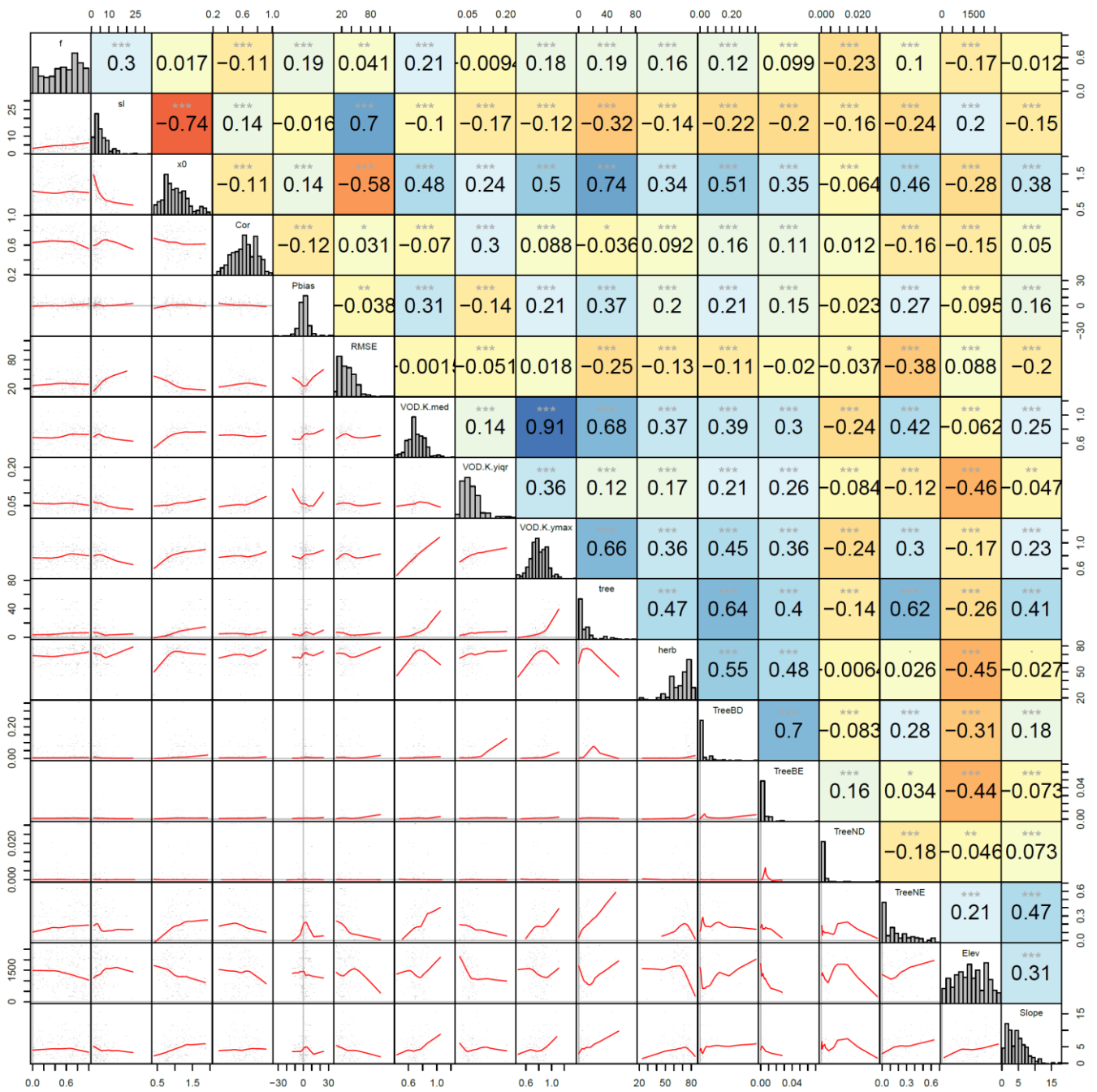
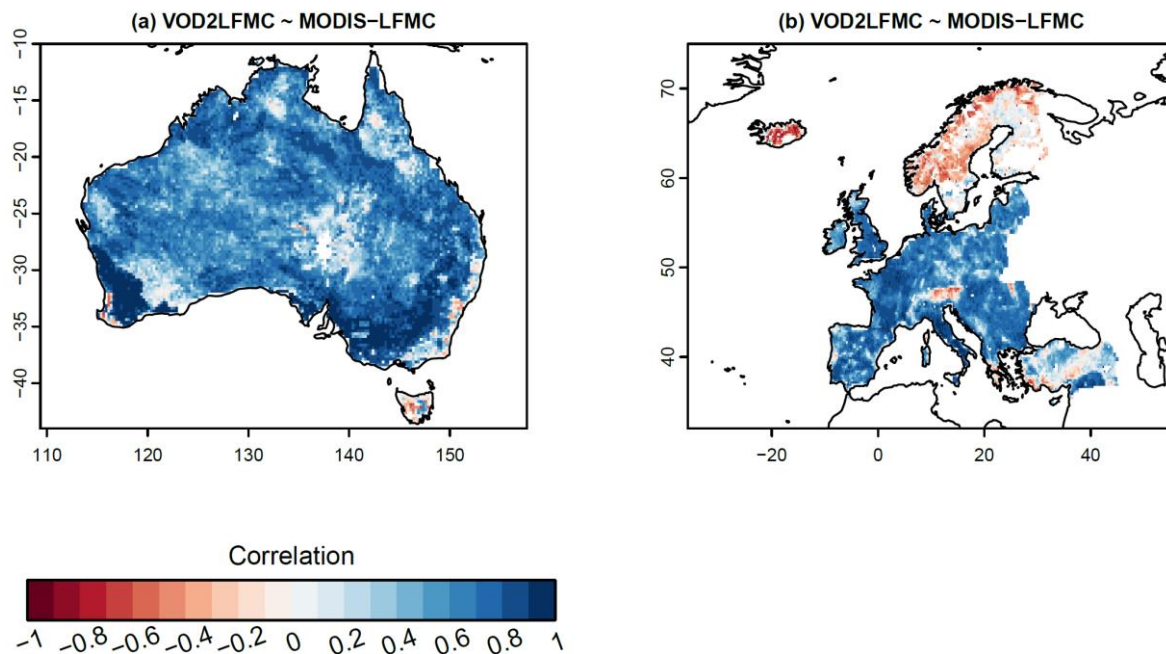


Figure A 2: Across-site correlations between the site-optimized parameters f , sl , and $x0$ of model B with model performance measures and land cover properties of the corresponding 0.25° grid cells. Numbers and blue to red colours in the upper triangle display Spearman correlation coefficients. Red lines in the lower triangle are loess-fits between x- and y-values. Grey bars along the diagonal are histograms of each variable. Correlation (Cor), percent bias (Pbias) and RMSE of predicted and observed LFMCI; temporal median of Ku-VOD (VOD.K.med); multi-year mean of the annual inter-quartile range of Ku-VOD (VOD.K.yiqr); multi-year mean of annual maximum Ku-VOD (VOD.K.ymax); tree and short vegetation cover from Song et al. (2018); tree cover of broad-leaved

870

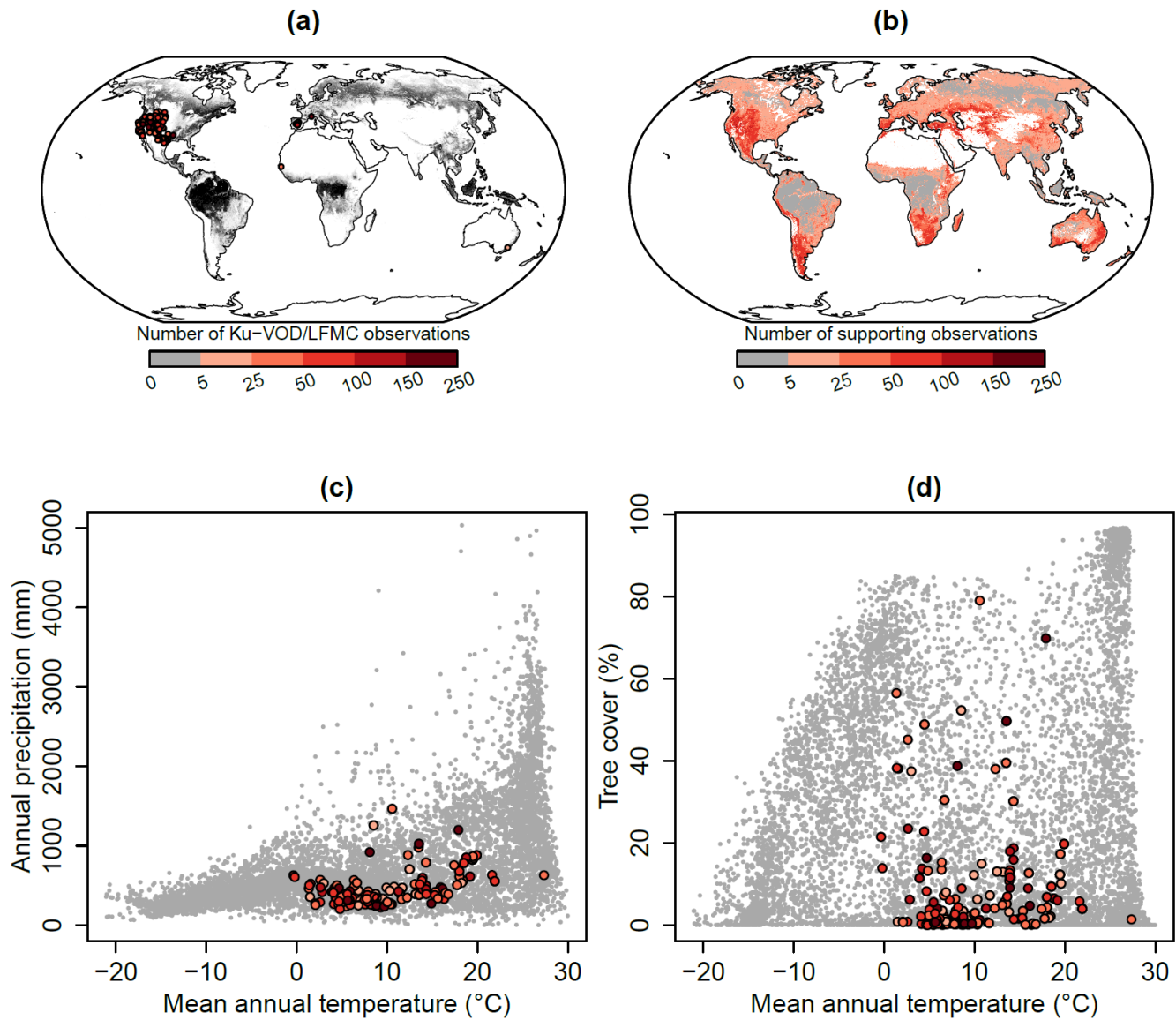
875

deciduous (TreeBD), broad-leaved evergreen (TreeBE), needle-leaved deciduous (TreeND), and needle-leaved evergreen (TreeNE) trees (ESA CCI Land cover V2.0.7 dataset); elevation (Elev) and slope from the CGIAR CSI SRTM digital elevation model.

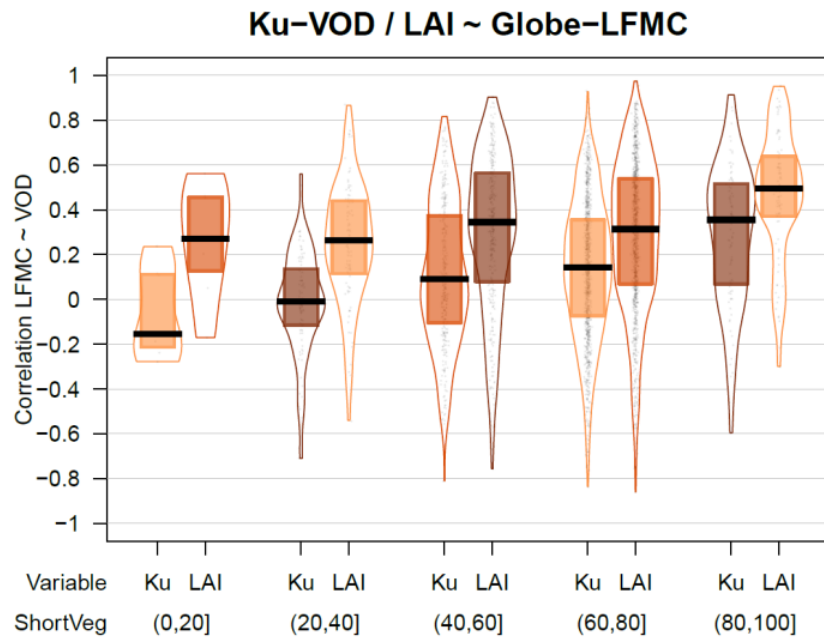
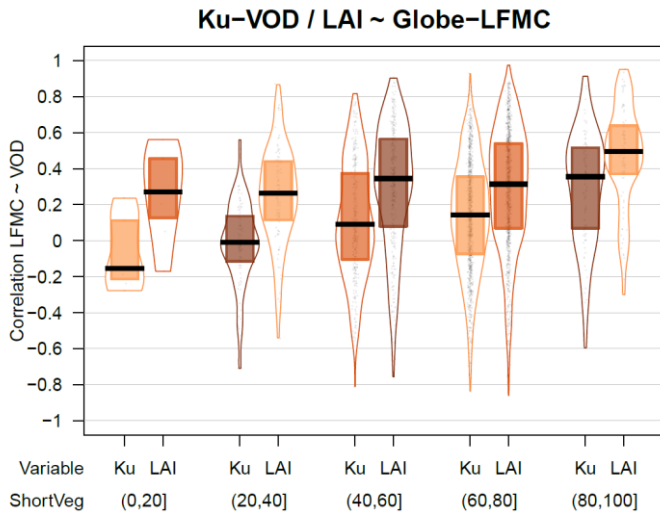


880

Figure A 3: Pearson correlation between the VOD-based LFMF from model B and MODIS-LFMF for Australia and Europe for the time period February 2000 to July 2017.



885 **Figure A 4: Distribution of the number of joint observations of Ku-VOD and Globe-LFMC measurements. (a) Distribution of Globe-**
LFMC sites overlaid over the percentage tree cover. (b) Spatial estimate of the number of supporting observations that indicates
how many pairs of Ku-VOD/Globe-LFMC observation are available with similar mean annual temperature and vegetation
conditions (i.e. LAI, tree cover, Ku-VOD). To create this map a random forest regression was fitted to the number of observations
shown in (a) and by using mean annual temperature, tree cover, mean annual maximum Ku-VOD, and mean annual maximum
890 **LAI as predictors. The fitted random forest model was then applied to each 0.25° grid cell to provide an estimate of how many**
observations are actually supporting a LFMC estimate in a grid cell. (c and d) Number of observation within the global feature space
of mean annual temperature and annual total precipitation (c) and mean annual temperature and tree cover (d).



895

Figure A 5: Statistical distributions of the temporal correlation between Ku-VOD or LAI and measurements from the Globe-LFMC database stratified by the percentage cover of short vegetation.

900

Author contributions. Conceptualization: MF and WD; Data curation: MF, LS and MY; Formal analysis: MF, LS and RMZ; Methodology: MF; Implementation: MF; Visualization: MF and RMZ; Writing of the original draft: MF; Review and editing: all co-authors.

905 *Competing interests.* MF is guest editor of the special issue “Microwave remote sensing for improved understanding of vegetation–water interactions”. The peer-review process was guided by an independent editor, and the authors have also no other competing interests to declare.

Disclaimer

Special issue statement:

Acknowledgements: We thank Niels Andela and Sandy Harrison for comments on early developments of this work. MF and LS acknowledge funding from TU Dresden and from the H2020 project FirEUrisk (101003890).

910 **References**

- Abbott, K. N., Leblon, B., Staples, G. C., Maclean, D. A., and Alexander, M. E.: Fire danger monitoring using RADARSAT-1 over northern boreal forests, *Int. J. Remote Sens.*, 28, 1317–1338, <https://doi.org/10.1080/01431160600904956>, 2007.
- Bonan, G.: *Ecological Climatology: Concepts and Applications*, 3rd ed., Cambridge University Press, Cambridge, <https://doi.org/10.1017/CBO9781107339200>, 2015.
- 915 Bowyer, P. and Danson, F. M.: Sensitivity of spectral reflectance to variation in live fuel moisture content at leaf and canopy level, *Remote Sens. Environ.*, 92, 297–308, <https://doi.org/10.1016/j.rse.2004.05.020>, 2004.
- Caccamo, G., Chisholm, L. A., Bradstock, R. A., Puotinen, M. L., Pippen, B. G., Caccamo, G., Chisholm, L. A., Bradstock, R. A., Puotinen, M. L., and Pippen, B. G.: Monitoring live fuel moisture content of heathland, shrubland and sclerophyll forest in south-eastern Australia using MODIS data, *Int. J. Wildland Fire*, 21, 257–269, <https://doi.org/10.1071/WF11024>, 2011.
- 920 Chaparro, D., Duveiller, G., Piles, M., Cescatti, A., Vall-llossera, M., Camps, A., and Entekhabi, D.: Sensitivity of L-band vegetation optical depth to carbon stocks in tropical forests: a comparison to higher frequencies and optical indices, *Remote Sens. Environ.*, 232, 111303, <https://doi.org/10.1016/j.rse.2019.111303>, 2019.
- Chuvieco, E., Riaño, D., Aguado, I., and Cocero, D.: Estimation of fuel moisture content from multitemporal analysis of Landsat Thematic Mapper reflectance data: Applications in fire danger assessment, *Int. J. Remote Sens.*, 23, 2145–2162, 925 <https://doi.org/10.1080/01431160110069818>, 2002.
- Chuvieco, E., Aguado, I., Yebra, M., Nieto, H., Salas, J., Martín, M. P., Vilar, L., Martínez, J., Martín, S., Ibarra, P., de la Riva, J., Baeza, J., Rodríguez, F., Molina, J. R., Herrera, M. A., and Zamora, R.: Development of a framework for fire risk assessment using remote sensing and geographic information system technologies, *Ecol. Model.*, 221, 46–58, <https://doi.org/10.1016/j.ecolmodel.2008.11.017>, 2010.
- 930 Cleveland, R. B., Cleveland, W. S., McRae, J. E., and Terpenning, I.: STL: A Seasonal-Trend Decomposition Procedure Based on Loess, *J. Off. Stat.*, 6, 3–73, 1990.
- Crocetti, L., Forkel, M., Fischer, M., Jurečka, F., Grlj, A., Salentinig, A., Trnka, M., Anderson, M., Ng, W.-T., Kokalj, Ž., Bucur, A., and Dorigo, W.: Earth Observation for agricultural drought monitoring in the Pannonian Basin (southeastern Europe): current state and future directions, *Reg. Environ. Change*, 20, 123, <https://doi.org/10.1007/s10113-020-01710-w>, 935 2020.

Danson, F. M. and Bowyer, P.: Estimating live fuel moisture content from remotely sensed reflectance, *Remote Sens. Environ.*, 92, 309–321, <https://doi.org/10.1016/j.rse.2004.03.017>, 2004.

Global Drought Observatory - JRC European Commission: <https://edo.jrc.ec.europa.eu/gdo/php/index.php?id=2112>, last access: 18 July 2022.

- 940 DeSoto, L., Cailleret, M., Sterck, F., Jansen, S., Kramer, K., Robert, E. M. R., Aakala, T., Amoroso, M. M., Bigler, C., Camarero, J. J., Čufar, K., Gea-Izquierdo, G., Gillner, S., Haavik, L. J., Hereş, A.-M., Kane, J. M., Kharuk, V. I., Kitzberger, T., Klein, T., Levanič, T., Linares, J. C., Mäkinen, H., Oberhuber, W., Papadopoulos, A., Rohner, B., Sangüesa-Barreda, G., Stojanovic, D. B., Suárez, M. L., Villalba, R., and Martínez-Vilalta, J.: Low growth resilience to drought is related to future mortality risk in trees, *Nat. Commun.*, 11, 1–9, <https://doi.org/10.1038/s41467-020-14300-5>, 2020.
- 945 Dorigo, W., Wagner, W., Albergel, C., Albrecht, F., Balsamo, G., Brocca, L., Chung, D., Ertl, M., Forkel, M., Gruber, A., Haas, E., Hamer, P. D., Hirschi, M., Ikonen, J., de Jeu, R., Kidd, R., Lahoz, W., Liu, Y. Y., Miralles, D., Mistelbauer, T., Nicolai-Shaw, N., Parinussa, R., Pratola, C., Reimer, C., van der Schalie, R., Seneviratne, S. I., Smolander, T., and Lecomte, P.: ESA CCI Soil Moisture for improved Earth system understanding: State-of-the art and future directions, *Remote Sens. Environ.*, 203, 185–215, <https://doi.org/10.1016/j.rse.2017.07.001>, 2017.
- 950 Fan, L., Wigneron, J.-P., Xiao, Q., Al-Yaari, A., Wen, J., Martin-StPaul, N., Dupuy, J.-L., Pimont, F., Al Bitar, A., Fernandez-Moran, R., and Kerr, Y. H.: Evaluation of microwave remote sensing for monitoring live fuel moisture content in the Mediterranean region, *Remote Sens. Environ.*, 205, 210–223, <https://doi.org/10.1016/j.rse.2017.11.020>, 2018.
- Fick, S. E. and Hijmans, R. J.: WorldClim 2: new 1-km spatial resolution climate surfaces for global land areas, *Int. J. Climatol.*, 37, 4302–4315, <https://doi.org/10.1002/joc.5086>, 2017.
- 955 Forkel, M., Dorigo, W., Lasslop, G., Teubner, I., Chuvieco, E., and Thonicke, K.: A data-driven approach to identify controls on global fire activity from satellite and climate observations (SOFIA V1), *Geosci. Model Dev.*, 10, 4443–4476, <https://doi.org/10.5194/gmd-10-4443-2017>, 2017.
- Forkel, M., Dorigo, W. A., Lasslop, G., Chuvieco, E., Hantson, S., Heil, A., Teubner, I., Thonicke, K., and Harrison, S. P.: Recent global and regional trends in burned area and their compensating environmental controls, *Environ. Res. Commun.*, 960 <https://doi.org/10.1088/2515-7620/ab25d2>, 2019.
- Frappart, F., Wigneron, J.-P., Li, X., Liu, X., Al-Yaari, A., Fan, L., Wang, M., Moisy, C., Le Masson, E., Aoulad Lafkih, Z., Vallé, C., Ygorra, B., and Baghdadi, N.: Global Monitoring of the Vegetation Dynamics from the Vegetation Optical Depth (VOD): A Review, *Remote Sens.*, 12, 2915, <https://doi.org/10.3390/rs12182915>, 2020.
- García, M., Chuvieco, E., Nieto, H., and Aguado, I.: Combining AVHRR and meteorological data for estimating live fuel moisture content, *Remote Sens. Environ.*, 112, 3618–3627, <https://doi.org/10.1016/j.rse.2008.05.002>, 2008.
- Gupta, H. V., Kling, H., Yilmaz, K. K., and Martinez, G. F.: Decomposition of the mean squared error and NSE performance criteria: Implications for improving hydrological modelling, *J. Hydrol.*, 377, 80–91, <https://doi.org/10.1016/j.jhydrol.2009.08.003>, 2009.
- 970 Hantson, S., Kelley, D. I., Arneith, A., Harrison, S. P., Archibald, S., Bachelet, D., Forrest, M., Hickler, T., Lasslop, G., Li, F., Mangeon, S., Melton, J. R., Nieradzick, L., Rabin, S. S., Prentice, I. C., Sheehan, T., Sitch, S., Teckentrup, L., Voulgarakis, A., and Yue, C.: Quantitative assessment of fire and vegetation properties in simulations with fire-enabled vegetation models from the Fire Model Intercomparison Project, *Geosci. Model Dev.*, 13, 3299–3318, <https://doi.org/10.5194/gmd-13-3299-2020>, 2020.

- 975 Holtzman, N. M., Anderegg, L. D. L., Kraatz, S., Mavrovic, A., Sonnentag, O., Pappas, C., Cosh, M. H., Langlois, A., Lakhankar, T., Tesser, D., Steiner, N., Colliander, A., Roy, A., and Konings, A. G.: L-band vegetation optical depth as an indicator of plant water potential in a temperate deciduous forest stand, *Biogeosciences*, 18, 739–753, <https://doi.org/10.5194/bg-18-739-2021>, 2021.
- Hovmöller, E.: The Trough-and-Ridge diagram, *Tellus*, 1, 62–66, <https://doi.org/10.3402/tellusa.v1i2.8498>, 1949.
- 980 Jackson, T. J. and Schmugge, T. J.: Vegetation effects on the microwave emission of soils, *Remote Sens. Environ.*, 36, 203–212, [https://doi.org/10.1016/0034-4257\(91\)90057-D](https://doi.org/10.1016/0034-4257(91)90057-D), 1991.
- Jackson, T. J., Schmugge, T. J., and Wang, J. R.: Passive microwave sensing of soil moisture under vegetation canopies, *Water Resour. Res.*, 18, 1137–1142, <https://doi.org/10.1029/WR018i004p01137>, 1982.
- Jarvis, A., Reuter, H. I., Nelson, A., and Guevara, E.: Hole-filled seamless SRTM data V4, International Centre for Tropical Agriculture (CIAT), 2008.
- 985 Jarvis, P. G.: The interpretation of the variations in leaf water potential and stomatal conductance found in canopies in the field, *Philos. Trans. R. Soc. Lond. B Biol. Sci.*, 273, 593–610, <https://doi.org/10.1098/rstb.1976.0035>, 1976.
- Jia, S., Kim, S. H., Nghiem, S. V., and Kafatos, M.: Estimating Live Fuel Moisture Using SMAP L-Band Radiometer Soil Moisture for Southern California, USA, *Remote Sens.*, 11, 1575, <https://doi.org/10.3390/rs11131575>, 2019.
- 990 Jiao, W., Wang, L., and McCabe, M. F.: Multi-sensor remote sensing for drought characterization: current status, opportunities and a roadmap for the future, *Remote Sens. Environ.*, 256, 112313, <https://doi.org/10.1016/j.rse.2021.112313>, 2021.
- Jolly, W. M., Cochrane, M. A., Freeborn, P. H., Holden, Z. A., Brown, T. J., Williamson, G. J., and Bowman, D. M. J. S.: Climate-induced variations in global wildfire danger from 1979 to 2013, *Nat. Commun.*, 6, 7537, <https://doi.org/10.1038/ncomms8537>, 2015.
- 995 Konings, A. G., Rao, K., and Steele-Dunne, S. C.: Macro to micro: microwave remote sensing of plant water content for physiology and ecology, *New Phytol.*, 223, 1166–1172, <https://doi.org/10.1111/nph.15808>, 2019.
- 1000 Konings, A. G., Saatchi, S. S., Frankenberg, C., Keller, M., Leshyk, V., Anderegg, W. R. L., Humphrey, V., Matheny, A. M., Trugman, A., Sack, L., Agee, E., Barnes, M. L., Binks, O., Cawse-Nicholson, K., Christoffersen, B. O., Entekhabi, D., Gentine, P., Holtzman, N. M., Katul, G. G., Liu, Y., Longo, M., Martinez-Vilalta, J., McDowell, N., Meir, P., Mencuccini, M., Mrad, A., Novick, K. A., Oliveira, R. S., Siqueira, P., Steele-Dunne, S. C., Thompson, D. R., Wang, Y., Wehr, R., Wood, J. D., Xu, X., and Zuidema, P. A.: Detecting forest response to droughts with global observations of vegetation water content, *Glob. Change Biol.*, 27, 6005–6024, <https://doi.org/10.1111/gcb.15872>, 2021a.
- Konings, A. G., Holtzman, N. M., Rao, K., Xu, L., and Saatchi, S. S.: Interannual Variations of Vegetation Optical Depth are Due to Both Water Stress and Biomass Changes, *Geophys. Res. Lett.*, 48, e2021GL095267, <https://doi.org/10.1029/2021GL095267>, 2021b.
- 1005 Kuhn-Régnier, A., Voulgarakis, A., Nowack, P., Forkel, M., Prentice, I. C., and Harrison, S. P.: The importance of antecedent vegetation and drought conditions as global drivers of burnt area, *Biogeosciences*, 18, 3861–3879, <https://doi.org/10.5194/bg-18-3861-2021>, 2021.
- Leblon, B., Kasischke, E., Alexander, M., Doyle, M., and Abbott, M.: Fire Danger Monitoring Using ERS-1 SAR Images in the Case of Northern Boreal Forests, *Nat. Hazards*, 27, 231–255, <https://doi.org/10.1023/A:1020375721520>, 2002.

- 1010 Li, F., Val Martin, M., Andreae, M. O., Arneth, A., Hantson, S., Kaiser, J. W., Lasslop, G., Yue, C., Bachelet, D., Forrester, M., Kluzek, E., Liu, X., Mangeon, S., Melton, J. R., Ward, D. S., Darmenov, A., Hickler, T., Ichoku, C., Magi, B. I., Sitch, S., van der Werf, G. R., Wiedinmyer, C., and Rabin, S. S.: Historical (1700–2012) global multi-model estimates of the fire emissions from the Fire Modeling Intercomparison Project (FireMIP), *Atmospheric Chem. Phys.*, 19, 12545–12567, <https://doi.org/10.5194/acp-19-12545-2019>, 2019.
- 1015 Li, W., Ciais, P., MacBean, N., Peng, S., Defourny, P., and Bontemps, S.: Major forest changes and land cover transitions based on plant functional types derived from the ESA CCI Land Cover product, *Int. J. Appl. Earth Obs. Geoinformation*, 47, 30–39, <https://doi.org/10.1016/j.jag.2015.12.006>, 2016.
- Li, W., Migliavacca, M., Forkel, M., Walther, S., Reichstein, M., and Orth, R.: Revisiting Global Vegetation Controls Using Multi-Layer Soil Moisture, *Geophys. Res. Lett.*, 48, e2021GL092856, <https://doi.org/10.1029/2021GL092856>, 2021a.
- 1020 Li, X., Wigneron, J.-P., Frappart, F., Fan, L., Ciais, P., Fensholt, R., Entekhabi, D., Brandt, M., Konings, A. G., Liu, X., Wang, M., Al-Yaari, A., and Moisy, C.: Global-scale assessment and inter-comparison of recently developed/reprocessed microwave satellite vegetation optical depth products, *Remote Sens. Environ.*, 253, 112208, <https://doi.org/10.1016/j.rse.2020.112208>, 2021b.
- Liaw, A. and Wiener, M.: Classification and Regression by randomForest, *R News*, 2, 18–22, 2002.
- 1025 Lu, Y. and Wei, C.: Evaluation of microwave soil moisture data for monitoring live fuel moisture content (LFMC) over the coterminous United States, *Sci. Total Environ.*, 771, 145410, <https://doi.org/10.1016/j.scitotenv.2021.145410>, 2021.
- Matthews, S.: Dead fuel moisture research: 1991–2012, *Int. J. Wildland Fire*, 23, 78–92, 2014.
- McDowell, N. G.: Mechanisms Linking Drought, Hydraulics, Carbon Metabolism, and Vegetation Mortality, *Plant Physiol.*, 155, 1051–1059, <https://doi.org/10.1104/pp.110.170704>, 2011.
- 1030 Mebane, W. R. and Sekhon, J. S.: Genetic Optimization Using Derivatives: The rgenoud Package for R, *J. Stat. Softw.*, 42, <https://doi.org/10.18637/jss.v042.i11>, 2011.
- Mialon, A., Rodríguez-Fernández, N. J., Santoro, M., Saatchi, S., Mermoz, S., Bousquet, E., and Kerr, Y. H.: Evaluation of the Sensitivity of SMOS L-VOD to Forest Above-Ground Biomass at Global Scale, *Remote Sens.*, 12, 1450, <https://doi.org/10.3390/rs12091450>, 2020.
- 1035 Mo, T., Choudhury, B. J., Schmugge, T. J., Wang, J. R., and Jackson, T. J.: A model for microwave emission from vegetation-covered fields, *J. Geophys. Res. Oceans*, 87, 11229–11237, <https://doi.org/10.1029/JC087iC13p11229>, 1982.
- Moesinger, L., Dorigo, W., Jeu, R. de, Schalie, R. van der, Scanlon, T., Teubner, I., and Forkel, M.: The global long-term microwave Vegetation Optical Depth Climate Archive (VODCA), *Earth Syst. Sci. Data*, 12, 177–196, <https://doi.org/10.5194/essd-12-177-2020>, 2020.
- 1040 Momen, M., Wood, J. D., Novick, K. A., Pangle, R., Pockman, W. T., McDowell, N. G., and Konings, A. G.: Interacting Effects of Leaf Water Potential and Biomass on Vegetation Optical Depth, *J. Geophys. Res. Biogeosciences*, 122, 3031–3046, <https://doi.org/10.1002/2017JG004145>, 2017.
- Myneni, R. B., Knyazikhin, Y., and Park, T.: MOD15A2 MODIS/Terra Leaf Area Index/FPAR 8-Day L4 Global 1km SIN Grid, Boston University and MODAPS SIPS, NASA, 2015.

- 1045 de Nijs, A. H. A., Parinussa, R. M., de Jeu, R. A. M., Schellekens, J., and Holmes, T. R. H.: A Methodology to Determine Radio-Frequency Interference in AMSR2 Observations, *IEEE Trans. Geosci. Remote Sens.*, 53, 5148–5159, <https://doi.org/10.1109/TGRS.2015.2417653>, 2015.
- Njoku, E., Jackson, T. J., Lakshmi, V., Chan, T. K., and Nghiem, S. V.: Soil moisture retrieval from AMSR-E, *IEEE Trans. Geosci. Remote Sens.*, 41, 215–229, 2003.
- 1050 Njoku, E. G. and Entekhabi, D.: Passive microwave remote sensing of soil moisture, *J. Hydrol.*, 184, 101–129, [https://doi.org/10.1016/0022-1694\(95\)02970-2](https://doi.org/10.1016/0022-1694(95)02970-2), 1996.
- Nolan, R. H., Boer, M. M., Resco de Dios, V., Caccamo, G., and Bradstock, R. A.: Large-scale, dynamic transformations in fuel moisture drive wildfire activity across southeastern Australia, *Geophys. Res. Lett.*, 43, 2016GL068614, <https://doi.org/10.1002/2016GL068614>, 2016.
- 1055 Owe, M., Jeu, R. de, and Walker, J.: A methodology for surface soil moisture and vegetation optical depth retrieval using the microwave polarization difference index, *IEEE Trans. Geosci. Remote Sens.*, 39, 1643–1654, <https://doi.org/10.1109/36.942542>, 2001.
- Paloscia, S. and Pampaloni, P.: Microwave polarization index for monitoring vegetation growth, *IEEE Trans. Geosci. Remote Sens.*, 26, 617–621, <https://doi.org/10.1109/36.7687>, 1988.
- 1060 Poulter, B., MacBean, N., Hartley, A., Khlystova, I., Arino, O., Betts, R., Bontemps, S., Boettcher, M., Brockmann, C., Defourny, P., Hagemann, S., Herold, M., Kirches, G., Lamarche, C., Lederer, D., Ottlé, C., Peters, M., and Peylin, P.: Plant functional type classification for earth system models: results from the European Space Agency’s Land Cover Climate Change Initiative, *Geosci Model Dev*, 8, 2315–2328, <https://doi.org/10.5194/gmd-8-2315-2015>, 2015.
- Quan, X., Yebra, M., Riaño, D., He, B., Lai, G., and Liu, X.: Global fuel moisture content mapping from MODIS, *Int. J. Appl. Earth Obs. Geoinformation*, 101, 102354, <https://doi.org/10.1016/j.jag.2021.102354>, 2021.
- 1075 Rabin, S. S., Melton, J. R., Lasslop, G., Bachelet, D., Forrest, M., Hantson, S., Kaplan, J. O., Li, F., Mangeon, S., Ward, D. S., Yue, C., Arora, V. K., Hickler, T., Kloster, S., Knorr, W., Nieradzick, L., Spessa, A., Folberth, G. A., Sheehan, T., Voulgarakis, A., Kelley, D. I., Prentice, I. C., Sitch, S., Harrison, S., and Arneth, A.: The Fire Modeling Intercomparison Project (FireMIP), phase 1: experimental and analytical protocols with detailed model descriptions, *Geosci Model Dev*, 10, 1175–1197, <https://doi.org/10.5194/gmd-10-1175-2017>, 2017.
- Rao, K., Williams, A. P., Fiefl, J. F., and Konings, A. G.: SAR-enhanced mapping of live fuel moisture content, *Remote Sens. Environ.*, 245, 111797, <https://doi.org/10.1016/j.rse.2020.111797>, 2020.
- Riano, D., Vaughan, P., Chuvieco, E., Zarco-Tejada, P. J., and Ustin, S. L.: Estimation of fuel moisture content by inversion of radiative transfer models to simulate equivalent water thickness and dry matter content: analysis at leaf and canopy level, *IEEE Trans. Geosci. Remote Sens.*, 43, 819–826, <https://doi.org/10.1109/TGRS.2005.843316>, 2005.
- 1075 Rodríguez-Fernández, N. J., Mialon, A., Mermoz, S., Bouvet, A., Richaume, P., Bitar, A. A., Al-Yaari, A., Brandt, M., Kaminski, T., Toan, T. L., Kerr, Y. H., and Wigneron, J.-P.: An evaluation of SMOS L-band vegetation optical depth (L-VOD) data sets: high sensitivity of L-VOD to above-ground biomass in Africa, *Biogeosciences*, 15, 4627–4645, <https://doi.org/10.5194/bg-15-4627-2018>, 2018.
- 1080 Saatchi, S. S. and Moghaddam, M.: Estimation of crown and stem water content and biomass of boreal forest using polarimetric SAR imagery, *IEEE Trans. Geosci. Remote Sens.*, 38, 697–709, <https://doi.org/10.1109/36.841999>, 2000.

- Sawada, Y., Tsutsui, H., Koike, T., Rasmy, M., Seto, R., and Fujii, H.: A Field Verification of an Algorithm for Retrieving Vegetation Water Content From Passive Microwave Observations, *IEEE Trans. Geosci. Remote Sens.*, 54, 2082–2095, <https://doi.org/10.1109/TGRS.2015.2495365>, 2016.
- 1085 Sawada, Y., Koike, T., Aida, K., Toride, K., and Walker, J. P.: Fusing Microwave and Optical Satellite Observations to Simultaneously Retrieve Surface Soil Moisture, Vegetation Water Content, and Surface Soil Roughness, *IEEE Trans. Geosci. Remote Sens.*, 55, 6195–6206, <https://doi.org/10.1109/TGRS.2017.2722468>, 2017.
- van der Schalie, R., de Jeu, R. A. M., Kerr, Y. H., Wigneron, J. P., Rodríguez-Fernández, N. J., Al-Yaari, A., Parinussa, R. M., Mecklenburg, S., and Drusch, M.: The merging of radiative transfer based surface soil moisture data from SMOS and AMSR-E, *Remote Sens. Environ.*, 189, 180–193, <https://doi.org/10.1016/j.rse.2016.11.026>, 2017.
- 1090 Scholze, M., Buchwitz, M., Dorigo, W., Guanter, L., and Quegan, S.: Reviews and syntheses: Systematic Earth observations for use in terrestrial carbon cycle data assimilation systems, *Biogeosciences*, 14, 3401–3429, <https://doi.org/10.5194/bg-14-3401-2017>, 2017.
- Sippel, S., Reichstein, M., Ma, X., Mahecha, M. D., Lange, H., Flach, M., and Frank, D.: Drought, Heat, and the Carbon Cycle: a Review, *Curr. Clim. Change Rep.*, <https://doi.org/10.1007/s40641-018-0103-4>, 2018.
- 1095 Song, X.-P., Hansen, M. C., Stehman, S. V., Potapov, P. V., Tyukavina, A., Vermote, E. F., and Townshend, J. R.: Global land change from 1982 to 2016, *Nature*, 560, 639, <https://doi.org/10.1038/s41586-018-0411-9>, 2018.
- Stocks, B. J., Fosberg, M. A., Lynham, T. J., Mearns, L., Wotton, M., Yang, Q., Jin, J. Z., Lawrence, K., Hartley, G. R., Mason, J. A., and McKenney, D. W.: Climate Change and Forest Fire Potential in Russian and Canadian Boreal Forests, *Clim. Change*, 38, 1–13, <https://doi.org/10.1023/a:1005306001055>, 1998.
- 1100 Thonicke, K., Spessa, A., Prentice, I. C., Harrison, S. P., Dong, L., and Carmona-Moreno, C.: The influence of vegetation, fire spread and fire behaviour on biomass burning and trace gas emissions: results from a process-based model, *Biogeosciences*, 7, 1991–2011, 2010.
- Tian, F., Brandt, M., Liu, Y. Y., Verger, A., Tagesson, T., Diouf, A. A., Rasmussen, K., Mbow, C., Wang, Y., and Fensholt, R.: Remote sensing of vegetation dynamics in drylands: Evaluating vegetation optical depth (VOD) using AVHRR NDVI and in situ green biomass data over West African Sahel, *Remote Sens. Environ.*, 177, 265–276, <https://doi.org/10.1016/j.rse.2016.02.056>, 2016.
- 1105 Ulaby, F., Bradley, G. A., and Dobson, M.: Microwave Backscatter Dependence on Surface Roughness, Soil Moisture, and Soil Texture: Part II-Vegetation-Covered Soil, *IEEE Trans. Geosci. Electron.*, <https://doi.org/10.1109/TGE.1979.294626>, 1979.
- 1110 [Ulaby, F. T., Moore, R. K., and Fung, A. K.: Microwave remote sensing: Active and passive. Volume 1 - Microwave remote sensing fundamentals and radiometry, 1981.](#)
- U.S. Drought Monitor: <https://droughtmonitor.unl.edu/DmData/DataDownload/DSCI.aspx>, last access: 18 July 2022.
- Viney, N.: A Review of Fine Fuel Moisture Modelling, *Int. J. Wildland Fire - INT J WILDLAND FIRE*, 1, <https://doi.org/10.1071/WF9910215>, 1991.
- 1115 Wang, L., Quan, X., He, B., Yebra, M., Xing, M., and Liu, X.: Assessment of the Dual Polarimetric Sentinel-1A Data for Forest Fuel Moisture Content Estimation, *Remote Sens.*, 11, 1568, <https://doi.org/10.3390/rs11131568>, 2019.

- 1120 Wang, M., Wigneron, J.-P., Sun, R., Fan, L., Frappart, F., Tao, S., Chai, L., Li, X., Liu, X., Ma, H., Moisy, C., and Ciais, P.: A consistent record of vegetation optical depth retrieved from the AMSR-E and AMSR2 X-band observations, *Int. J. Appl. Earth Obs. Geoinformation*, 105, 102609, <https://doi.org/10.1016/j.jag.2021.102609>, 2021.
- Wigneron, J.-P., Schmugge, T., Chanzy, A., Calvet, J.-C., and Kerr, Y.: Use of passive microwave remote sensing to monitor soil moisture, *Agronomie*, 18, 27–43, <https://doi.org/10.1051/agro:19980102>, 1998.
- 1125 Wigneron, J.-P., Li, X., Frappart, F., Fan, L., Al-Yaari, A., De Lannoy, G., Liu, X., Wang, M., Le Masson, E., and Moisy, C.: SMOS-IC data record of soil moisture and L-VOD: Historical development, applications and perspectives, *Remote Sens. Environ.*, 254, 112238, <https://doi.org/10.1016/j.rse.2020.112238>, 2021.
- Wild, B., Teubner, I., Moesinger, L., Zotta, R.-M., Forkel, M., van der Schalie, R., Sitch, S., and Dorigo, W.: VODCA2GPP – a new, global, long-term (1988–2020) gross primary production dataset from microwave remote sensing, *Earth Syst. Sci. Data*, 14, 1063–1085, <https://doi.org/10.5194/essd-14-1063-2022>, 2022.
- 1130 Yebra, M., Chuvieco, E., and Riaño, D.: Estimation of live fuel moisture content from MODIS images for fire risk assessment, *Agric. For. Meteorol.*, 148, 523–536, <https://doi.org/10.1016/j.agrformet.2007.12.005>, 2008.
- Yebra, M., Dennison, P. E., Chuvieco, E., Riaño, D., Zylstra, P., Hunt Jr., E. R., Danson, F. M., Qi, Y., and Jurdao, S.: A global review of remote sensing of live fuel moisture content for fire danger assessment: Moving towards operational products, *Remote Sens. Environ.*, 136, 455–468, <https://doi.org/10.1016/j.rse.2013.05.029>, 2013.
- 1135 Yebra, M., Quan, X., Riaño, D., Rozas Larraondo, P., van Dijk, A. I. J. M., and Cary, G. J.: A fuel moisture content and flammability monitoring methodology for continental Australia based on optical remote sensing, *Remote Sens. Environ.*, 212, 260–272, <https://doi.org/10.1016/j.rse.2018.04.053>, 2018.
- Yebra, M., Scortechini, G., Badi, A., Beget, M. E., Boer, M. M., Bradstock, R., Chuvieco, E., Danson, F. M., Dennison, P., Dios, V. R. de, Bella, C. M. D., Forsyth, G., Frost, P., Garcia, M., Hamdi, A., He, B., Jolly, M., Kraaij, T., Martín, M. P., Mouillot, F., Newnham, G., Nolan, R. H., Pellizzaro, G., Qi, Y., Quan, X., Riaño, D., Roberts, D., Sow, M., and Ustin, S.: Globe-LFMC, a global plant water status database for vegetation ecophysiology and wildfire applications, *Sci. Data*, 6, 1–8, <https://doi.org/10.1038/s41597-019-0164-9>, 2019.
- 1140 Zhang, Y., Zhou, S., Gentine, P., and Xiao, X.: Can vegetation optical depth reflect changes in leaf water potential during soil moisture dry-down events?, *Remote Sens. Environ.*, 234, 111451, <https://doi.org/10.1016/j.rse.2019.111451>, 2019.
- 1145 Zhu, L., Webb, G. I., Yebra, M., Scortechini, G., Miller, L., and Petitjean, F.: Live fuel moisture content estimation from MODIS: A deep learning approach, *ISPRS J. Photogramm. Remote Sens.*, 179, 81–91, <https://doi.org/10.1016/j.isprsjprs.2021.07.010>, 2021.