

~~Simulation of long-term spatiotemporal variations in regional-scale groundwater recharge: Contributions of a water budget approach in southern Quebec~~Simulation of long-term spatiotemporal variations in regional-scale groundwater recharge: Contributions of a water budget approach in cold and humid climates

Emmanuel Dubois¹, Marie Larocque^{1,2}, Sylvain Gagné¹, Guillaume Meyzonnat¹

¹Université du Québec à Montréal, Département des sciences de la Terre et de l'atmosphère and GEOTOP Research Center, Pavillon Président-Kennedy, local PK-6151 C.P. 8888, Succursale Centre-Ville, Montréal (Quebec) H3C 3P8 Canada

²GRIL Research Center, Département de sciences biologiques, Université de Montréal, Campus MIL, C.P. 6128, Succ. Centre-ville, Montréal (Quebec) H3C 3J7 Canada

Correspondence to: Emmanuel Dubois (dubois.emmanuel@courrier.uqam.ca)

Abstract. Groundwater recharge (GWR) is ~~recognized to be~~ a strategic hydrologic variable ~~and its estimate is~~, necessary to ~~estimate when implementing~~ sustainable groundwater management. ~~This is~~ especially true in within a global change context a global warming context that highly impacts key winter conditions in cold and humid climates. For this reason, long-term simulations are particularly useful to understand past changes in GWR associated with changing climatic conditions. However, ~~its GWR~~ simulation at the regional scale and for long-term conditions is challenging, especially due to the limited availability of spatially-distributed calibration data and to ~~the rather generally~~ short observed time series. The objective of this study is to demonstrate the relevance of using a water budget model to understand long-term transient and regional-scale GWR in cold and humid climates where groundwater observations are scarce. ~~the use of a superficial water budget model to estimate recharge and using~~ is appropriate for this task. A reliable regional scale estimate of GWR that can be updated relatively easily using widely available data is essential for the implementation of long term water use policies and is clearly lacking in southern Quebec (Canada; 36,000 km²). This study aims to test the ability of a spatially distributed water budget model, automatically calibrated with river flow rates and baseflow estimates, to simulate GWR at a regional scale from 1961 to 2017 in southern Quebec (monthly time step, 500 x 500 m spatial resolution). The novelty of this work lies in the simulation of the first regional-scale GWR estimate for southern Quebec and in the development of a robust approach to implement a superficial water budget model at the regional scale and for a long period. The HydroBudget model was specifically developed for regional-scale simulations ~~and in cold and humid~~ climate conditions, ~~and The model~~ uses parsimonious input commonly available data such as (distributed precipitation, temperature, and runoff curve numbers) to describe the study area, precipitation and temperature time series to run the model, and river flow rates and baseflow estimates for its automatic calibration. A typical case study is presented for the southern portion of the Province of Quebec (Canada, 36 000 km²). With the model simultaneously calibrated

on 51 gauging stations, the first GWR estimate for the region was simulated between 1961 and 2017 with very little uncertainty (< 10 mm/yr). The model was regionally calibrated with river flows and baseflows (recursive filter on river flow data), and the automatic calibration procedure of the R-package *caRamel* allowed a satisfying calibration quality ($KGE = 0.72$) to be reached.

35 Across the study area and based on the exceptionally long spatialized time series, the The simulated water budget was divided into 41% runoff (444 mm/yr), 47% ~~actual~~ evapotranspiration (501 mm/yr), and 12% ~~potential groundwater recharge~~ GWR (139 mm/yr), with preferential GWR periods during spring and winter (44% and 32% of the annual GWR respectively), values that are typical of other cold and humid climates. Snowpack evolution and soil frost were shown to be a key feature for GWR simulation in these environments. One of the contributions of the study was to show that the model sensitivity to its parameters

40 was correlated to the average air temperature with colder watersheds more sensitive to snow-related parameters than warmer watersheds. This partitioning was influenced by precipitation, temperature, soil texture, land cover, and topography. Groundwater recharge peaked during spring (44% of annual recharge) and winter (32% of annual recharge). A novel and particularly useful result from this work was to show that the seasonality of recharge was driven by the regional temperature gradient, with decreasing temperatures from west to east, and that winter GWR presented a statistically significant increasing

45 trend since 1961 due to increased precipitation and warming temperatures. Interestingly, the results showed that the significant increase of precipitation and temperature since the early 1960s did not lead to significant changes in the annual GWR but resulted in increased runoff and evapotranspiration. In contrast to previous studies of past GWR trends in cold and humid climates, this work has shown that changes in past climatic conditions have not yet produced significant changes in annual GWR. Another original contribution of this work was to show that at the regional scale, water budget models, such as

50 HydroBudget, can be easily calibrated with river flow measurements and baseflows, and therefore represent a good option with which to acquire knowledge about regional hydrological dynamics. Being accessible, they are a Because of their relative ease of use, water budget models are a useful approach for scientists, modellers, and stakeholders alike to understand regional-scale groundwater renewal rates in cold and humid climates, especially if they can be easily adapted to specific study needs and environments.

55

1 Introduction

Groundwater recharge (GWR) generally refers to the portion of precipitation that infiltrates into the ground and eventually reaches the water table (Doble and Crosbie, 2017; Scanlon et al., 2002). It linking-links meteorological events to subsequent aquifer responses and usually defining-defines aquifer-renewal rates of the unconfined aquifers in cold and humid climates

60 (Gleeson et al., 2011; Kløve et al., 2017; Meyzonnat et al., 2018; Rivera, 2014). GWR is influenced by climate, land cover, vegetation, topography, as well as soil type (Douville et al., 2013; Fu et al., 2019; Jasechko et al., 2014). It is recognized as one of the most strategic hydrologic variables to be estimated for sustainable groundwater management (Foster and Ait-Kadi, 2012; Wada et al., 2010). This is especially true in a global change context, where climate, land cover, and water use are

evolving (Green et al., 2011; Kløve et al., 2014). Consequently, spatiotemporal GWR estimates at the regional scale and
65 analysis of past changes and trends linked to climate variations or climate changes are particularly important for water resource
managers (Ashaolu et al., 2020; Brunner et al., 2004; Larocque et al., 2018). This is especially true in cold and humid climates
where warming temperature specifically impact key winter conditions (Aygün et al., 2020; Grinevskiy et al., 2021; Nygren et
al., 2020).

Models are among the most common ways to estimate GWR, and are usually developed for specific climate and
70 hydrogeological conditions (Healy and Scanlon, 2010; Scanlon et al., 2002). ~~These models~~ Their complexity vary-varies widely
~~in complexity, from with the use of~~ few (<10) to numerous (>100) parameters; and ~~with the need to provide from~~ simple input
data, ~~such as (e.g., precipitation and temperature time series,)~~ to detailed input data (e.g., ~~spatialized climate~~
~~observations~~ spatially distributed time series of precipitation, temperature, solar radiation, wind, relative humidity, normalized
difference vegetation index, soil water content, groundwater levels, river flow rates, ~~remote sensing data, etc.~~) (Brunner et al.,
75 2004; Crosbie et al., 2015). ~~as well as in~~ Spatiotemporal resolutions is also highly variable between GWR models (Abdollahi
et al., 2017; ~~Brunner et al., 2004; Chung et al., 2010; Crosbie et al., 2015;~~ Döll and Fiedler, 2008; Hu et al., 2019; Portoghesi
et al., 2005). GWR assessment based on water budget approaches are widely used, providing useful results and insights on
GWR dynamics for an array of local (field scale) to regional studies (several 1 000 km²), and for a wide range of climatic
conditions (Abdollahi et al., 2017; ~~Ashaolu et al., 2020; Beigi and Tsai, 2014; Croteau et al., 2010;~~ Dripps and Bradbury, 2007;
80 Dyer, 2019; Portoghesi et al., 2005; Zomlot et al., 2015).

Nevertheless, water budget models have strong limitations. In such models, GWR is dependent on other terms of the water
budget, namely evapotranspiration and runoff (Crosbie et al., 2015; Jasechko et al., 2014; Scanlon et al., 2002), which can be
highly uncertain, ~~thus~~ Thus making error propagation can be significant, especially where GWR rates are particularly low,
such as in arid ~~to and~~ semi-arid areas ~~(Crosbie et al., 2015; Scanlon et al., 2002)~~. However, water budget approaches can be
85 appropriate in cold and humid climates, where more water is available for infiltration and groundwater and surface water are
usually closely connected (Gleeson et al., 2011; Meyzonnat et al., 2018; Rivera, 2014). In these conditions, the substantial
~~amounts-volumes~~ of water ~~are~~ stored in the snowpack through winter and then quickly become rapidly available for infiltration
during ~~the thaw periods~~ spring snowmelt, ~~and the relatively simple water budget models have been shown to provide results~~
representative of those obtained with more complex numerical models. For example, similar monthly and annual GWR
90 estimates were obtained in cold and humid climates with the Soil Water Balance model (SWB) and the GFLOW analytical
model (Hunt et al., 1998) by Dripps and Bradbury (2007) in Wisconsin (U.S.A) or with the HELP water budget model
(Schroeder et al., 1994) and the fully coupled CATHY model (Comporese et al., 2010) by Guay et al. (2013) in Quebec
(Canada). ~~Dripps and Bradbury (2007) acknowledge the lack of representativeness of the daily results of the Soil Water~~
~~Balance model (SWB; Westenbroek et al., 2010) while showing that the monthly and annual results for a site in Wisconsin~~
95 ~~(U.S.A — cold and humid climate) are comparable to results obtained from a 2D analytic element groundwater flow model~~
~~(GFLOW, Hunt et al., 1998). Guay et al. (2013) reached a similar conclusion, finding similar annual GWR estimates and~~

matching patterns of seasonal variations from a fully distributed model (CATHY, Comporese et al., 2010) as from a water budget model (HELP, Schroeder et al., 1994) at the field scale (0.2 km²) in Quebec (Canada—cold and humid climate).

In southern Quebec (Canada), GWR has been estimated in various studies (Carrier et al., 2013; Chemingui et al., 2015; Croteau et al., 2010; Gagné et al., 2018; Guay et al., 2013; Larocque and Pharand, 2010; Larocque et al., 2013, 2015b, 2018; Lavigne et al., 2010; Lefebvre et al., 2015; Levison et al., 2014, 2016; McCormack and Therrien, 2014; Nastev et al., 2008; Rivard et al., 2009, 2014; Saby et al., 2016; Talbot-Poutin et al., 2013). Interannual GWR rates estimated from these studies range from 50 to more than 450 mm/year throughout southern Quebec. The studies generally agree in identifying preferential GWR areas (mostly dependent on the nature and the architecture of the unconsolidated quaternary deposits) and periods (spring and fall, linked to snowmelt and to low evapotranspiration rates). However, for a given area, GWR rates and temporal trends can be highly variable from one study to another. This may be due to the different periods of observation (baseflows, groundwater levels) used as a proxy for GWR or as calibration data for GWR simulations (Rivard et al., 2009), or to the different spatial scales involved. The use of different models can also explain the different results obtained under similar conditions (Larocque et al., 2019; Velázquez et al., 2013). The association of regional-scale changes in GWR to changing climatic conditions in cold and humid climates in the last decades helped developing a better picture of the potential impacts of climate change on regional hydrology. In the northern part of western Russia, Grinevskiy et al. (2021) found that the warming temperature monitored between the 1965-1988 and the 1989-2018 periods led to an increase of simulated GWR up to +60 mm/yr (1D unsaturated zone Hydrus model, Simunek et al., 2009) due to more snowmelt and rainfall during winter. Inversely, Nygren et al. (2020) used time series of groundwater levels in Sweden and Finland to show that GWR decreased between the 1980-1989 and the 2001-2010 periods due to a switch from snowmelt to rain-dominated recharge events. Meanwhile, GWR has been estimated in various studies in the cold and humid climate of southern Quebec (Canada), but they did not identify obvious trends (Benoit et al., 2014; Chemingui et al., 2015; Croteau et al., 2010; Gagné et al., 2018; Guay et al., 2013; Larocque and Pharand, 2010; Lavigne et al., 2010; Levison et al., 2014, 2016; Nastev et al., 2008; Rivard et al., 2009; Rivera, 2014; Saby et al., 2016). This may be due to the relative short duration of the time series of the variables used as a proxy for GWR (baseflows, groundwater levels; Rivard et al., 2009) and to the fact that very different models were used in areas of contrasted sizes (Larocque et al., 2019).

Establishing an overview of groundwater renewal rates for water resource management and land management based on these data can be quite challenging, especially for non-experts. This is especially true when computational times are long and the pre-treatment of the calibration data necessary to produce reliable results is burdensome. There is clearly a need for reliable regional-scale estimates of GWR that can be updated relatively easily using data widely available for southern Quebec. This is essential for the implementation of long-term water use policies aimed at adapting to climate and land use change. Considering the spatial scale involved (tens of thousands of km²), the meteorological and river flow rate data available since the 1960s, the lack of groundwater level measurements covering that time span, and the cold and humid climate conditions, a spatialized transient state water budget that considers water storage in the snowpack and soil frost appears to be the most appropriate approach for simulating GWR for cold and humid regions (Scanlon et al., 2002). This study aims to test the ability

of a regional scale spatially distributed water budget model, automatically calibrated with river flow rates and baseflow estimates, to simulate GWR over several decades in southern Quebec. The novelty of this work lies in the development of the first regional scale GWR estimate for southern Quebec and in the development of a robust approach to implement a superficial water budget model at the regional scale and for a long period.

The objective of this study was to demonstrate the relevance of using a water budget model to understand long-term transient and regional-scale GWR in cold and humid climates where groundwater observations are scarce. The HydroBudget (HB) model (Dubois et al., 2021) was used to simulate the first long-term (57 years) and regional-scale (36 000 km²) GWR estimates for watersheds of the St. Lawrence River in southern Quebec (Canada) in a typical cold and humid climate case study. HydroBudget (HB) is a parsimonious water budget model, capable of handling large amounts of data to simulate spatially-distributed recharge. It was used here with a robust automatic calibration approach using river flow rates and baseflow estimates, along with a complete estimate of model sensitivity and uncertainty of the simulated variables.

~~HydroBudget (HB) is a parsimonious water budget model, capable of handling large amounts of data to simulate spatially-distributed recharge. It was used here to estimate GWR from 1961 to 2017 for watersheds of the St. Lawrence River in southern Quebec (Canada; 36,000 km²). The study area is first presented, followed by a brief description of the model. The results for southern Quebec are described and discussed in terms of regional and temporal dynamics, and the contributions to existing knowledge and limitations of the approach are discussed.~~

2 Study area

The study area is located in the province of Quebec (humid continental climate), between the St. Lawrence River and the Canada-USA border, and between the Quebec-Ontario border and Quebec City (35,800 km²) (Fig. 1). It is comprised of the watersheds of eight main tributaries of the St. Lawrence River (numbered 1 to 8 from west to east, and with areas ranging from 460 km² to more than 9,000 km²). Watersheds W1 (Châteaugay River), W2 (Richelieu River), and W4 (Saint François River) are partially located in the USA (42, 83, and 15% of their total areas respectively).

Topography varies between 0 and 1,100 m above sea level (masl) (Table 1), with flat, low elevation areas close to the St. Lawrence River (W1, W2, W3, and W7) and higher elevations in the Appalachian mountain range (W4, W5, W6, and W8) associated with steeper slopes. Land cover includes agriculture (ranging from 23% in W8 to 62% in W1), forest (ranging from 26% in W1 to 66% in W8), wetlands (ranging from 3% in W2 and W3, to 14% in W7), urban uses (ranging from 3% in W5, W6, W7, and W8, to 11% in W2), and surface water (ranging from 1% in W1, W3, W5, W6, and W8, to 4% in W4) (Fig. 2a). Agriculture dominates in the watersheds located in the St. Lawrence Platform (W1, W2, and W3), while forest occupies most of the Appalachian watersheds (W4, W6, and W8). Wetlands are more abundant in W7 (Table 1). The case study area is located in the province of Quebec (humid and cold climate), between the St. Lawrence River and the Canada-USA border, and between the Quebec-Ontario border and Quebec City (35 800 km²) (Fig. 1). It is comprised of the watersheds of eight main tributaries of the St. Lawrence River (numbered 1 to 8 from west to east) (Table 1). Watersheds W1 (Châteaugay River), W2 (Richelieu

River), and W4 (Saint-François River) are partially located in the USA (42%, 83%, and 15% of their total areas respectively). Topography is flat with low elevation areas close to the St. Lawrence River and higher elevations in the Appalachian Mountain range, associated with steeper slopes. Land cover includes agriculture, forest, wetlands, urban uses, and surface water (Fig. 2a). Agriculture dominates in the watersheds located in the St. Lawrence Platform, while forest occupies most of the Appalachian watersheds.

Bergeron (2016) used 251 climate stations located in the study area to produce spatially-interpolated temperature and precipitation data with a daily time step for the 1961-2017 period on a 10 km-resolution grid. The high density of measurements during this period generated minimal error on the interpolated data, with a root mean square error (RMSE) of 3 mm/d for precipitation (mean bias of +0.1 mm/d), 2.5°C for minimal temperature (mean bias of -0.5°C), and 1.5°C for maximal temperature (mean bias of +0.1°C; Bergeron, 2016). Based on these data, average annual precipitation for the study area is 1,090 mm (Table 1), including 275 mm falling as snow during winter (November to March). Precipitation is distributed relatively evenly throughout the year, and although total precipitation is similar for all of the watersheds, it is higher in the mountainous zones than in the lowlands (Fig. 2c). The average annual temperature is 5°C (Table 1), with average monthly temperature varying between -15°C (in January and February) and 20°C (in July and August). Regionally, temperatures decrease from the southwest to the northeast (Fig. 2d).

The study area includes two main geological units: the sedimentary basin of the St. Lawrence Platform and the Appalachian mountain range (metasedimentary) (Malo, 2018; Fig. 2c). The bedrock of the St. Lawrence Platform is composed of slightly deformed Cambro-Ordovician fractured bedrock consisting of limestone, shale, and mixed shale and fine sandstone. The bedrock of the Appalachians is composed of highly deformed schist, quartzite, and phyllades (Thériault and Malo, 2018).

The bedrock is unevenly covered with unconsolidated Quaternary sediments from the last glaciation-deglaciation cycle, mainly composed of glacial, marine, fluvial, and lacustrine deposits. In this area, sediment depositional modes determine the geological nature of the superficial materials and the pedology (Fig. 2b). Thin (<5 m) and relatively coarse superficial deposits (aeolian sands, till, and various glacial deposits) are found over the bedrock in the uphill areas. These deposits get thicker (5 to 20 m) in the valleys and in topographic depressions, with a wider mix of grain sizes resulting from the different depositional modes (fluvial, lacustrine, and marine). Closer to the St. Lawrence River, the thickness of the Quaternary deposits can reach several tens of meters, where silty clays from the Champlain Sea are covered with sandy materials (IRDA, 2008).

Regional fractured bedrock aquifers flow from the Appalachians to the St. Lawrence River (south/southeast to north/northwest). The aquifers are moderately productive and shallow, with the water table 3 to 5 m from the surface (Meyzonnat et al., 2018). They are in unconfined conditions upstream, where bedrock outcrops or under coarse superficial deposits, and reach semi-confined to confined conditions once the bedrock is covered by finer sediments in the valleys and close to the St. Lawrence lowlands (Carrier et al., 2013; Larocque et al., 2013, 2015b; Lefebvre et al., 2015; McCormack and Therrien, 2014; Rivard et al., 2014; Talbot-Poulin et al., 2013; Rivera, 2014). Limited-extent shallow aquifers have been identified in the local superficial coarse deposits. Previous local or watershed-scale recharge studies have identified recharge areas upstream, mostly on the outcropping bedrock and in coarse glacial sediments, while the St. Lawrence tributaries drain

groundwater over most of the study area. Gagné et al. (2018) showed that in the main GWR zones, the hydrogeological system has a rapid response and most of the GWR rapidly reaches the nearby drainage system. The overall configuration corresponds to topographic-driven water tables (Gleeson et al., 2011), with hydrogeological watersheds matching superficial watersheds, and can reasonably be considered to have a closed watershed water budget.

Daily flow rates are available from 51 gauging stations spread throughout the eight main tributary watersheds (CEHQ, 2019; Fig. 1), with watershed areas ranging from 30 to 3,000 km². Data missing for up to five consecutive days were linearly interpolated to optimize the length of the available time series. These 51 stations all have full-year measurements for more than three consecutive years, and the presence of ice most likely affects winter flow measurements.

3 Method

3.1 HydroBudget

HydroBudget (HB) is a spatially-distributed GWR model that computes a superficial water budget on grid cells of regional-scale watersheds with outputs aggregated into monthly time steps. The model uses commonly available meteorological data (daily precipitation and temperature, spatialized if possible) and spatially-distributed data (pedology, land cover, and slopes).

It is based on simplified process representations and is driven by eight parameters that need to be calibrated. These parameters are held constant for all the grid cells and through time (Table 2). Coded in R, HB uses a conceptual lumped reservoir to compute the soil water budget on a daily time step. For each grid cell and each time step, the calculation distributes precipitation as runoff (R), evapotranspiration (ET), and infiltration that ~~can-could~~ reach the saturated zone ~~if geological conditions below the soil allow deep percolation to occur~~ (potential GWR), with a monthly time step (Fig. 3; Dubois et al., 2021).

Calculations begin with the vertical processes, by first determining the available liquid water (vertical inflow, VI), which is the sum of rain and snowmelt, with a 0°C air temperature threshold for rain or snow ~~precipitation~~ and a two parameter (T_M and C_M) degree-days approach (Massmann, 2019). If the soil is frozen (two parameters, TT_F and F_T), the entire VI will produce R directly. Otherwise, VI can runoff, infiltrate, evapotranspire, and eventually percolate as potential GWR.

Runoff is calculated using the runoff curve number (RCN) method (USDA-NRCS, 2004; 2007) on a cell-by-cell basis (two parameters, t_{API} and f_{runoff}), similar to what is done in SWAT (Arnold et al., 2012; Neitsch et al., 2002). The remaining water (Vertical inflow that has not VI – runoff) is considered to be infiltration (I) reaching a soil reservoir for which storage capacity is driven by one parameter (sw_m). If I exceeds available storage, saturation excess is added to R. Otherwise, actual evapotranspiration (AET) is calculated as the minimum of PET (calculated using the formula of Oudin et al. (2005)) and the available water in the soil reservoir. The residual soil water is mobilized as potential GWR (one parameter, f_{inf}) or stored for the next time step.

HydroBudget thus calculates potential GWR, the recharge that could reach the aquifer) if 1) the geological material below the soil horizon allows deep percolation to occur, 2) no additional storage or losses occur in the unsaturated zone below the soil,

and 3) no significant groundwater evapotranspiration occurs (Doble and Crosbie, 2017). Actual GWR corresponds to the part of potential GWR that would ~~actually~~ reach the water table, and potential GWR is therefore a maximum.

3.2 Calibration strategy

~~The HydroBudget model is calibrated on superficial watersheds, based on the hypotheses that: 1) surface watersheds match hydrogeological watersheds, 2) the rivers drain unconfined aquifers, and 3) the watershed response time is shorter than one month, thus compensating for the absence of water routing. Under these conditions, for any given watershed, monthly potential GWR should be similar to monthly river baseflow at the outlet, and the sum of monthly runoff and monthly potential GWR should be equal to the total flow at the outlet (although monthly flows are considered, daily time steps are used in the calculations).~~ The HydroBudget model is calibrated on superficial watersheds, based on the hypotheses that: 1) surface watersheds match hydrogeological watersheds, 2) the rivers drain unconfined aquifers. Under these conditions, for any given watershed, potential GWR should be similar to river baseflow at the outlet, and the sum of runoff and potential GWR should be equal to the total flow at the outlet. Dripps and Bradbury (2007), and Guay et al. (2013) have shown that results of GWR water budget models (SWB and HELP, respectively), compared better to groundwater flow models (GFLOW and CATHY, respectively) at the monthly time step than at a daily time step. Thus, runoff, AET, and potential GWR were computed with HB with a daily time step, and the results were aggregated on monthly time steps. Calibration and validation of the model and analysis of the results were all performed on the monthly aggregated results. As well, the calibration and validation of the model were performed under the hypothesis that no major land use change occurred during the simulation period (*i.e.* land use was held constant).

The daily river flow rates ~~used for calibration at the outlets~~ were those from ~~the~~ 51 gauging stations (Fig. 1). Baseflows were estimated from the flow rate time series following the proposition of Ladson et al. (2013) ~~of a standard approach of with~~ the Lyne and Hollick filter (Lyne and Hollick, 1979), ~~and~~ using a stochastic calibration and 30 filter passes. ~~To compare the effects of the baseflow filters on GWR simulation, baseflows were also estimated with the Eckhardt (2005) and Chapman (1991) filters for the gauging stations of W6. As aquifers generally discharge into superficial water bodies in southern Quebec, baseflows estimated with recursive filters are considered an acceptable proxy of GWR dynamics.~~ Total flows and baseflows were divided by the area of the given watershed to provide flow values in mm/yr, and thus facilitate the comparison of calibration results between watersheds of very different sizes.

The model was simultaneously calibrated for all the gauging stations using the automatic calibration procedure of the R package *caRamel* (Monteil et al., 2020) to obtain a regionalized set of parameters. The eight HB parameters were optimized for each gauging station, grouped by river watershed to save computational time (from 51 individual optimizations to eight grouped optimizations), and averaged over the study area, regionalized, using the normalized density of stations per group (number of stations per km²) as weights. Up to 5,000 model calls were used per station group, with several successive optimizations to confirm the reproducibility of the results, as recommended by the algorithm's authors. Model performance was assessed using the Kling–Gupta Efficiency (KGE) calculated for monthly measured river flows and simulated total flow

(KGE_{qtot}), as well as monthly baseflow and monthly potential GWR (KGE_{qbase}). The KGE is preferred here because it better represents the low flow period than the Nash-Sutcliffe Efficiency (Gupta et al., 2009). Each river flow time series was divided into a calibration period (first two thirds) and a validation period (last third), therefore allowing the objective functions to be computed per period.

265 The *caRamel* algorithm (Monteil et al., 2020), a combination of the multi-objective evolutionary annealing simplex algorithm (MEAS; Efstratiadis and Koutsoyiannis, 2008) and the non-dominated sorting genetic algorithm II (ϵ -NSGA-II; Reed and Deviredy, 2004), automatically calibrated the eight HB parameters to maximize KGE_{qtot} and KGE_{qbase} values. The algorithm produces an ensemble of parameter sets (called *generation*) to run the model, downscales the generation to the parameter sets that optimize the objective functions, and creates a new set of parameters that produces better results. To produce new
270 generations and ensure that the optimization tends toward a global maximum, the algorithm samples the parameter sets that individually maximizes the two objective functions, KGE_{qtot} and KGE_{qbase} , samples the parameter sets that maximizes the minimum values of the two objective functions, and increases the variance of each parameter. Finally, the best compromise for each group of gauging stations was chosen by identifying the highest mean KGE value (KGE_{mean}):

$$KGE_{mean} = 0.4 \times KGE_{qtot} + 0.6 \times KGE_{qbase} \quad (1)$$

275 The weights attributed to each objective function in KGE_{mean} were arbitrarily chosen to select the calibrated parameter set that maximizes the reproduction quality of the baseflows, considered to be the proxy for GWR (KGE_{qbase}), without losing the benefits of the multi-objective optimization ([Supplementary Table A. 1](#)). ~~The impact of the chosen weights was tested for the gauging stations of W6. The 100 best compromises of each group of gauging stations were used to produce the 100 best regionalized parameter sets and the HB model was run with these parameters, estimating uncertainty from the standard deviation.~~
280 ~~deviation.~~

3.3 Model sensitivity

Using the R package *Sensitivity* (<https://CRAN.R-project.org/package=sensitivity>), the Morris global sensitivity approach (Morris, 1991), enhanced by Campolongo et al. (2007), was ~~tested for the W6 (Béancour)~~performed for the eight groups of
285 gauging stations and for the two objective functions, KGE_{qtot} and KGE_{qbase} . The analysis consists of randomly and individually changing the eight calibration parameters of the model (one model call per change) until all have been changed and starting again from a new combination of random values to measure the individual effects of the tested parameters, known as the elementary effects. A repetition represents one model call for an initial set of parameters followed by eight model calls, one for each parameter. A large number of repetitions (>20) limits the convergence of the sensitivity measurement toward a local
290 maximum. The n number of repetitions produces n number of elementary effects per parameter, the absolute values of which are averaged (μ^*) to sort the parameters from most (highest μ^* value) to least sensitive (lowest μ^* value). ~~The standard deviation of the elementary effects per parameter (σ) is used to estimate the linearity (limited σ value) or non-linearity/probable interactions of the parameter with other parameters (when σ increases; Iooss and Lemaître, 2015).~~

4 Results

4.1 Model sensitivity and model calibration

The per parameter sensitivity for the W6 (Bécancour) group of gauging stations was obtained with 60 repetitions of the design (540 model runs). The μ^* (mean of the absolute values of the elementary effects) of both objective functions (Table 2) shows that total flow, related to KGE_{qtoe} , is mainly sensitive to the snow melting temperature and the snowmelt coefficient (T_M and C_M), and to a lesser extent to the runoff correction factor (f_{runoff}). Potential GWR is more sensitive to parameter variations, with the runoff correction factor (influencing the partitioning of runoff and infiltration into the soil reservoir— f_{runoff}) being the most sensitive parameter, followed by percolation from the reservoir into the unsaturated zone (f_{inf}), the soil freezing temperature (TT_F), the evolution from wet to dry soil conditions (t_{AD}), and the soil water content capacity (sw_m). Based on their relatively high σ values (the standard deviation of the elementary effects), these parameters might have non-linear effects and interactions on the simulated potential GWR and total flow. The time to freeze the soil (F_T) was found to have a negligible effect on the model outputs, and could therefore be set to a fixed value (16.4 days; the mean of the calibrated values from the first set of optimizations before it was removed from the calibration procedure) for the final sets of calibration.

The model sensitivity was obtained with 60 repetitions of the design for the eight groups of gauging stations, representing 540 model calls for each group. The relative sensitivity of the model varied markedly between the groups of gauging stations for the simulated river flow rates (Fig. 4a) but appears to be more constant for the simulated potential GWR (Fig. 4b). Flow rates were mostly sensitive to the snow-related parameters (T_M and C_M), except for the western watersheds where the f_{runoff} was more important. The simulated potential GWR was most sensitive to f_{runoff} and least sensitive to snowmelt parameters (T_M and C_M) for all the watersheds. The ranking from the second to the fifth-highest sensitivity of potential GWR only slightly varied between groups of gauging stations. River flow rates and potential GWR clearly showed limited sensitivity to the soil freezing time (F_T) with only a slightly higher sensitivity for the eastern watersheds W7 and W8. Overall, the potential GWR was more sensitive to parameter variations than river flow since all the μ^* for the river flow were lower by a factor 2 to 10 than for the potential GWR (values not presented here).

In a preliminary step, the calibration process was performed with the W6 (Bécancour) group of stations. Up to 5 000 model runs were performed to calibrate the W6 (Bécancour) group of stations, and the 25 best compromises following Eq. 1 were extracted to compare the equifinality in the solutions. The KGE_{mean} (before regionalization) for this watershed varies within a range of ± 0.005 in calibration and ± 0.02 in validation (supplementary Table A.1). Furthermore, the variability of the optimized parameters of the 25 best compromises was very limited, therefore allowing to assume that the optimization per gauging station group converged and is complete. Although HB-eCalibration for a given group of stations this watershed was relatively short straightforward because of the relatively short simulation time (e.g., 10–5 min for a 6,750–380 km² watershed, 500 m resolution grid (27,000–13 500 cells), for 58–57 years with 15 cores and 50 Go of RAM) and convergence was repeatedly attained before 1 000 model runs, based on the convergence quickly obtained for W6 (before 1,000 model runs), and the reproducibility of the results found by restarting the optimization several times, calibration of the rest of the gauging station groups were

undertaken with 1,500 model runs in order to save computational time. The objective functions, the calibrated parameters, and the interannual potential GWR values showed very limited sensitivity to the weights chosen for the computation of the KGE_{mean} (supplementary Table A. 1). As the absolute value of baseflow changed with the filter method, the interannual GWR varied in consequence. The calibrated parameters with the different baseflow estimates slightly varied but remained in the parameter ranges described in Table 2. The objective functions were similar, between 0.7 and 0.8, except for KGE_{qbase} in validation, which was slightly lower with the Eckhardt (2005) and Chapman (1991) filters than for Lyne and Hollick (1979) filter. In light of these results, calibration of the rest of the gauging station groups was thus undertaken with 1 500 model runs in order to save computational time. As well, the stochastic calibration and 30 passes of the Lyne and Hollick (1979) filter developed by Ladson et al. (2013) was retained for the baseflow estimate and weights of 0.4 and 0.6 were associated to KGE_{qtot} and KGE_{qbase} respectively for the computation of KGE_{mean} . Following regionalization, a satisfactory fit was observed between the calibrated model and measured flow rates and baseflows for all gauging station groups (Table 3). The KGE_{mean} varied between 0.64 and 0.82 (average = 0.72) for the calibration period and between 0.62 and 0.77 (average = 0.69) for the validation period. The objective functions were very similar between the two periods, confirming the satisfactory calibration of the model and its capacity to reproduce the water budget over a long period, considering that calibration and validation span 1961 to 2017, and for the entire study area. The mean bias on simulated river flow rates and potential GWR varied between - 9 mm/month and 5 mm/month (Table 3). The uncertainty computed with the 100 best regionalized parameter sets was ≤ 10 mm/yr for the three simulated variables (Table 4).

4.2 Simulated potential groundwater recharge for 1961-2017

The calibrated HB model was used to simulate potential GWR for the entire study area on a 500 m x 500 m grid for the 1961-2017 period. Examples of the resulting monthly vertical inflows, river flow rates, baseflows, potential GWR, and AET are illustrated in Fig. 4 for the downgradient station in W8 for the 2000-2010 (validation) period. The simulated maximum monthly total flow rates were close to the observed maximum values (observed = 140-277 mm/month, simulated = 139-356 mm/month), and these occurred simultaneously every year in the spring month(s) of maximum VI. The model generally reproduced lower river flow rates during summer, as a result of high evaporation. Observed and simulated summer/fall and winter river low flows were of similar amplitudes (August, September, and October observed = 4-28 mm/month, simulated = 0.7-37 mm/month; January and February observed = 4-34 mm/month, simulated = 4.5-30 mm/month) and occurred simultaneously. In most years, river flow increased again in November and the model again reproduced this behaviour (observed = 12-91 mm/month, simulated = 26-85 mm/month). Simulated AET was null in the winter until the spring thaw, after which it quickly reached its highest value (98-122 mm/month) in July and decreased at the end of August, reaching null values again in November. The simulated potential GWR compared favorably with baseflows estimated using the Lyne and Hollick (1979) digital filter, with maximum values reached simultaneously in April (observed = 21-64 mm/month, simulated = 12-45 mm/month), lowest values in August-September (observed = 2-10 mm/month, simulated = 0.2-6.1 mm/month) and

February (observed = 3.18 mm/month, simulated = 4.418 mm/month). A second and usually less important baseflow and GWR peak was observed and simulated in November-December of most years. Similar results were obtained for the other gauging stations and for the rest of the study period for this gauging station (not presented here).

The calibrated HB model was used to simulate potential GWR for the entire study area on a 500 m x 500 m grid for the 1961-2017 period. Examples of the simulated monthly baseflows (Lyne and Hollick filter) and potential GWR are illustrated in Fig. 5 for the downstream stations in W3, W7, and W8. The simulated potential GWR compared favorably with baseflows estimated using the Lyne and Hollick (1979) digital filter. Maximum values were reached simultaneously in April, during the spring month(s) of maximum VI. A second baseflow and GWR peak was observed and simulated in November-December of most years. Lowest values were reached in July to September (high AET rates) and February (minimum VI). Similar matching results in timing and amplitude were obtained for the river flow (not presented here). Simulated AET was null in the winter until the spring thaw, after which it quickly reached its highest value (> 100 mm/month) in July and decreased at the end of August, reaching null values again in November. Comparable results were obtained for the other gauging stations (not shown).

The distribution of GWR rates showed a zone of low GWR rates (< 140 mm/yr) in the western part of the study area (flat and clayey St. Lawrence Platform), mainly in W1, W2 (except for its southeast part), the central and northwestern part of W3, and the northern part of W4, W5, W6, and W7 (Fig. 6a). A zone with higher GWR rates (140 mm/yr to 280 mm/yr, locally > 280 mm/yr) covered the southern part of W3, W4, W5, W6, and W8 (Appalachians). Areas of high GWR rates in the central part of the study area (W2, W3, W4, W5, and W6) also corresponded to the zones of higher precipitation (Fig. 2c). The regional GWR/precipitation ratio (Fig. 6b) identified the areas of preferential recharge with ratios higher than 0.15, corresponding to areas of potential GWR rates higher than 140 mm/yr mainly located in the Appalachians (southern part of W2 and W3, and W4 to W8). In the St. Lawrence Lowlands (W7 and lower portions of W4, W5, W6 and W8) and on the Appalachians Piedmont (central portions of W3), the ratios above 0.2 were associated with superficial coarse materials disconnected from the regional water table, meaning that the simulated potential GWR probably did not reach the fractured bedrock aquifer.

4.3 Partitioning and seasonality of the water budget

Across the study area, the average simulated runoff was 444 mm/year, varying between watersheds from 368 mm/yr (W1) to 485 mm/yr (W4). The average simulated AET was 501 mm/yr, ranging between 482 mm/yr (W1) and 512 mm/yr (W4), while the average potential GWR was 139 mm/year, ranging between 109 mm/yr (W1) and 154 mm/yr (W7) (Table 4, Fig. 6). On a watershed basis, simulated runoff corresponded to 41% of the total precipitation on average (39% in W1 to 42% in W4, W6, W8), AET corresponded to 47% of precipitation on average (45% in W4, W6, and W8 to 50% in W1), and GWR recharge accounted for 12% of precipitation on average (11% in W1 and W2 to 13% in W4, W5, W6, W7, and W8) (Fig. 6). Across the study area, the average simulated runoff was 444 mm/yr (41% of total precipitation), the average simulated AET was 501 mm/yr (47% of total precipitation), and the average simulated potential GWR was 139 mm/yr (12% of total precipitation). Mean annual GWR rates accounted for less than 140 mm/yr in watersheds mainly located in the St. Lawrence Platform

(W1, W2, and W3 to a certain extent) and for more than 140 mm/yr for the watersheds mainly located in the Appalachians (W4 to W8), according to the two zones of high and low GWR rates previously described.

The seasonality of the water budget showed clear differences between the eight watersheds (Table 4). Seasonal runoff was divided into 10% during winter (west east decrease from 13% for W1 to 6% for W7), 51% during spring (snowmelt effect, west east increase 47% for W1 to 56% for W7), 17% during summer, and 23% during fall (variations of 1 to 2% for both). Winter AET accounted for 1% of annual AET ($\leq 2\%$ for all watersheds), the proportion of spring AET decreased from west to east (between 30% in W1 and 24% in W8), while the proportion of summer AET increased from west to east (between 48% in W1 and 57% in W8) and fall AET was between 18 and 20% for all watersheds. A similar pattern was observed for potential GWR, with west east gradients: winter GWR decreased from west to east, from 38% (W1) to 26% (W7); spring GWR remained relatively constant (44% on average), and both summer and fall GWR increased from west to east, from 3% (W1) to 10% (W8) and from 14% to 21% (W6 and W8) respectively. The seasonality of the water budget varied with more important winter runoff and potential GWR (and higher spring AET rates) in the western watersheds than in the eastern watersheds (). Summer and fall AET and potential GWR were less important in the western watersheds than in the eastern. Runoff and potential GWR clearly peaked during spring (51% and 44% of the annual value respectively) due to the snowmelt event in all watersheds. These variations in seasonal proportions of each variable were driven by the regional temperature gradient (decreasing temperature from west to east).

Partitioning of runoff, AET, and potential GWR according to soil type showed maximum runoff rates for organic deposits, often associated with wetlands, and minimum rates over clay (Fig. 7a). The highest AET rates occurred over coarse sediment and the lowest rates over clay, while the highest potential GWR rates were found in coarse deposits and the lowest for clayey areas. Steepening slopes produced more runoff and a slight increase of potential GWR (not for slopes $> 8\%$) (Fig. 7b). The increase in GWR rates associated with steeper slopes can be linked to the presence of coarser material usually corresponding to glacial deposits on hillsides (high infiltration rates). Low runoff rates were associated with the flat and clayey areas of the St. Lawrence Platform, where annual precipitation is the lowest of the study area (Fig. 2c). A clear contrast was visible in the effect of land cover on the water budget (Fig. 7c), with the highest runoff rates over wetlands and lowest in forested areas. The highest AET rates were found for wetlands, while the lowest were found for urban areas. The highest potential GWR rates were associated with forested areas, and the lowest with wetlands.

4.4 Temporal evolution of the simulated water budget since the 1960s

HydroBudget simulated the temporal evolution of the water budget in the study area since the 1960s, thus producing an exceptionally long simulated time series of runoff, AET, and potential GWR for the area (Fig. 8). Annual rainfall varied between 845 mm/yr (1968) and 1,330 mm/yr (1990), while average air temperature varied between 3.9°C (1972) and 7.1°C (2012) (Fig. 8a). The effect of interannual variability in precipitation was clear in the simulated runoff, which varied between 273 mm/yr (1980) and 630 mm/yr (2011), with minimum runoff rates of < 350 mm/yr for some of the driest years (i.e., 1961, 1964, 1965, 1967, 1968, 1970, 1980, and 1988) and > 550 mm/yr for some of the wettest years (i.e., 1973, 1976 1990, 1996,

425 2005, 2006, 2008, and 2011) (Fig. 8b). The simulated AET varied between 453 mm/yr (1978) and 563 mm/yr (2006), with
minimum AET rates < 465 mm/yr (1965, 1968, 1975, 1978, 1982, and 1989) and maximum AET rates > 540 mm/yr (1976,
1981, 2006, 2008, and 2013) (Fig. 8c). The average potential GWR varied between 89 mm/yr (1968) and 198 mm/yr (1983),
with low rates (< 110 mm/yr) in 1961, 1964, 1968, 1982, 1987, 2001, 2012, and 2015 and high rates (> 180 mm/yr) in 1983,
1990, 1993, and 2006. The potential GWR appears to be more highly influenced by precipitation than by temperature variations
430 (Fig. 8e).

HydroBudget simulated the temporal evolution of the water budget in the study area from 1961 to 2017, thus producing an
exceptionally long simulated time series of runoff, AET, and potential GWR for the area (). The effect of interannual variability
in precipitation appeared clearly in the simulated runoff with low runoff rates (< 350 mm/yr) produced during the driest year
and high runoff rates (> 550 mm/yr) produced during the wettest year (a, c). The simulated AET varied less than runoff, mainly
435 between 450 mm/yr and 560 mm/yr (d). Interannual variations of potential GWR were relatively high, comprised between
90 mm/yr and 200 mm/yr, and seemed more influenced by precipitation than by temperature variations (e).

The simulation period was split into three 19-year periods (1961-1979, 1980-1998 and 1999-2017) to look for significant
changes in input variables (precipitation and temperature) and simulated variables (Tukey test, $p < 0.05$) (). Significant
changes were found in the input variables between the 1961-1979 and the 1999-2017 periods, with an increase of temperature
440 for all watersheds and increase of precipitation in five watersheds. These changes produced a significant increase of AET for
all watersheds except W1, and an increase in runoff for three watersheds (W3, W6 and W8). However, these changes in
precipitation and temperature did not impact the annual potential GWR for which significant increases were simulated between
the 1961-1979 and the 1980-1998 periods only for W4, W6 and W8.

Significant VI increase ($p < 0.05$ on Mann-Kendall test) was observed during winter for all the watersheds (from December to
445 February), in the summer (from June to August) for almost all of them (except W1 and W7), and annually for all except W5
and W7 (Table A. 2 in Supplementary Material). Significant seasonal temperature increases were also observed for all seasons
in all watersheds, translating into a global interannual warming trend. Significant annual and seasonal precipitation trends,
observed for the entire study area, produced significant positive trends in simulated runoff in the model (Table A. 2 in
Supplementary Material), except in the spring and fall, when a few positive trends that do not exist in rainfall were measured
450 for simulated runoff. Significant positive annual and seasonal temperature trends (in the winter and in the spring) correspond
to the annual and seasonal trends in simulated AET, while the positive trends in summer and fall did not transmit to the AET.
The significant trends in winter precipitation and temperature led to positive trends in simulated winter potential GWR
throughout the study area. When considering the entire period (1961-2017), VI significantly increased (Mann-Kendall test,
 $p < 0.05$) annually for all watersheds except W5 and W7 and during winter (December to February) and summer (June to
455 August) for all watersheds except W1 and W7 during summer (supplementary Table A. 2). Significant annual and seasonal
temperature increases were also observed for all watersheds and for all seasons except W5 and W6 during spring. Similar to
VI, runoff significantly increased annually for all watersheds except W5 and W7 and during winter and summer for all
watersheds except W1 during summer. Significant increases in AET were also simulated for annual values and during winter

and spring, and unlike temperature, summer and fall AET showed no significant trend except for W6 and W8 during summer. Significant increases in potential GWR were simulated only for winter values for all watersheds except W1. It is interesting to note that Interestingly, although rising temperatures increasing runoff and AET were observed throughout the simulation period (1961-2017), no decreasing trends were simulated for either runoff, AET, or in potential GWR.

5 Discussion

5.1 Regional groundwater recharge dynamic in cold and humid climates

Although river flows are well monitored by an extensive gauging station network ~~with over~~ long periods ~~of measurement~~, groundwater level monitoring has been initiated in the Province of Quebec only at the turn of the century (MELCC, 2020). Recharge estimates from these time series are yet to be produced. Moreover, a regional-scale lysimeter network still needs to be implemented. Local Ground-ground truthing of HB simulation results is thus limited by the lack of spatially-distributed GWR estimates from alternative field-based measurements, restricting the verification of model results to comparisons with local field and modeling studies.

The average simulated Potential-potential GWR ~~in for~~ the study area (139 mm/yr; 12% of annual precipitation) is comparable to ~~that values~~ found in previous studies in the region (~~Table A. 3 in Supplementary Material~~). For example, Chemingui et al. (2015) used the CATHY integrated hydrological model in W1 to estimate GWR to be 200 mm/yr. Although this value is ~~somewhat much~~ higher than the ~~one at~~ obtained using HB in the same area (109 mm/yr), ~~but~~ the resulting preferential recharge areas located close to the Canada-USA border are similar with both approaches (i.e., 70 ~~mm/yr to~~ 250 mm/yr in Chemingui et al. (2015) and 70 ~~mm/yr to~~ 280 mm/yr with HB). ~~In the same area, Levison et al. (2014) calibrated GWR at between 0 mm/yr (clay deposits) and 329 mm/yr (fractured bedrock) for use in a groundwater flow model. These values span a larger range than those found with HB (70 to 280 mm/yr).~~

~~In the Appalachian Piedmont region of W3, Larocque and Pharand (2010) used a spatialized soil water budget (AgriFlux; Banton et al., 1993) to estimate an average GWR of 215 mm/yr, with high spatial differences (between 0 mm/yr in clay to >300 mm/yr in fractured bedrock). These values are higher than the average GWR simulated using HB (~150 mm/yr) for the same area, but are coherent with the highly variable simulated rates (<140 mm/yr in the St. Lawrence Lowlands to 140 to >210 mm/yr in the Appalachians).~~

The average recharge rates simulated using the HELP model, also calibrated using flow rates and baseflow estimates, ~~in some watersheds of the study area~~ are similar to the HB-simulated potential GWR rates ~~from this study in two watersheds of the study area~~: 86 mm/yr for W1 (Croteau et al., 2010) ~~compared to 109 mm/yr with HB; and 185 mm/yr for W8 (Benoit et al., 2014) compared to 109 mm/yr and 145 mm/yr with HB respectively. 100 mm/yr for W2 and W3 (Carrier et al., 2013) compared to 119 and 139 mm/yr with HB; 166 mm/yr for W8 (Lefebvre et al., 2015; and 150 mm/yr for the lower part of W8 (Talbot Poutin et al., 2013)) compared to 145 mm/yr with HB.~~ Using the WaterGAP Global Hydrology Model (WGHM;

Döll et al., 2003) and a 0.5° spatial resolution, Döll and Fiedler (2008) found GWR rates ranging from 100 mm/yr to 300 mm/yr in southern Quebec, thus generally matching the range of HB-simulated GWR. Wada et al. (2010) simulated much higher GWR rates over the study area (300 mm/yr to 1,000 mm/yr) with the global hydrological model PCR-GLOBWB (Bierkens and van Beek, 2009) at a 0.5° spatial resolution, ~~which. These values~~ do not match HB estimates, nor do they match any other results for the study area.

The spatially-distributed potential GWR values show a clear difference between areas in the St. Lawrence Platform (GWR < 140 mm/yr) and areas in the Appalachian geological units (GWR > 140 mm/yr). Higher recharge occurs when soils are coarser or in outcropping bedrock areas, which are mostly located in the Appalachians and upgradient-upstream in the watersheds, in accordance with what has been found in previous studies (Carrier et al., 2013; Benoit et al., 2014; Croteau et al., 2010; Levison et al., 2014; Larocque et al. 2013, 2015b; Lefebvre et al., 2015; Talbot Poutin et al., 2013). Spatial variations in GWR also correlate well with land use, with preferential infiltration zones in forested areas and lower infiltration rates over wetlands and urban areas. ~~When associating GWR with land cover in Belgium (oceanic climate), Zomlot et al. (2015) showed that recharge preferentially occurs in shrublands and forests (with a classification for different forest types), while the lowest GWR is expected over urban land cover (city center, build up, and industry) and agricultural zones (except for land cultivated for maize and tubers). Similar results were obtained in the current study.~~ Overall, local superficial surface conditions, such as soil type and land use, mostly influence GWR rates. Similar results of factors influencing GWR are reported by Batelaan and De Smedt (2007) and Zomlot et al. (2015) in Belgium (oceanic climate), and by Nielsen and Westenbroek (2019) in Maine (USA – cold and humid climate).

~~The annual variability in potential GWR is closely linked to that of total precipitation, with maximum variation between the average annual rates of 100 mm/yr, between 89 mm/yr (1968) and 198 mm/yr (1983). Within the study area, Potential-potential GWR occurs mainly in the spring (44%) and winter (27-38%), while almost no GWR occurs in the summer (3-10%), and a moderate contribution to yearly recharge occurs in the fall (14-21%). Differences between watersheds in this seasonal dynamic seem to be driven by the southwest-northeast decrease in temperatures, with higher winter GWR rates obtained in the warmer western watersheds and higher summer and fall GWR obtained in the colder eastern watersheds. Similar observations can be made for runoff and inversely for AET.~~

This spatiotemporal link between GWR and precipitation and temperature patterns ~~one of the novel contribution of this work,~~ is coherent with that reported in other studies, ~~both in similar and different climate and geological environments (Abdollahi et al., 2017; Ashaolu et al., 2020; Chemingui et al., 2015; Fu et al., 2019; Hayashi and Farrow, 2014; Hu et al., 2019).~~ For example, Dierauer et al. (2018) used river flow observations of 63 streams in the Rocky Mountains (Canada and USA, snow-dominated hydrology), to link winter conditions to GWR. The proportion of total precipitation occurring in winter and winter temperature were identified as important variables for the variability of winter and summer low flows. The seasonality of GWR is well documented in the humid conditions of northern Europe as well, with an increase of the importance of winter events (rain-dominated GWR) at the expense of the spring snowmelt (snow-dominated GWR) with the increase of average temperature from north to south (Kløve et al., 2017; Nygren et al., 2020).

525 Simulated GWR from the current study is inversely correlated with AET, occurring preferentially when AET is low, immediately following snowmelt and before the onset of soil frost. ~~Other studies in the region also found spring to be the main recharge period in most years. Larocque and Pharand (2010) showed that 75% of recharge occurs in April in W3, while studies using the HELP model showed that recharge events in the spring and fall account for more than 70% of the annual recharge (Carrier et al., 2013; Croteau et al., 2010; Guay et al., 2013; Lefebvre et al., 2015; Talbot-Poutin et al., 2013). A similar~~ Similar results are reported from other cold and humid climates (Grinevskiy et al., 2021; Kløve et al., 2017; Okkonen and Kløve, 2011, Nyren et al., 2020). The importance of snowmelt-related recharge evidenced by the simulations has also been observed using field data. Using isotopic analyses, Jasechko et al. (2017) have shown that high proportions of winter-total GWR occurring during winter were associated with the amount of winter precipitation and with the preferential spring recharge period have been identified by Jasechko et al. (2017) in central Canada based on isotopic analyses, and worldwide with preferential infiltration periods during the cold months (Jasechko et al., 2014). Wright and Novakowski (2020) have linked increases of groundwater levels from observation wells to GWR events in the neighboring Province of Ontario (Canada) during rain-on-snow and partial thaw events, despite the presence of a frozen soil. They underline the importance of winter recharge events in seasonally frozen environments and their potentially increased importance in a warming climate.

540 ~~Actual GWR is most likely lower than potential GWR, especially where superficial deposits are thick and have low hydraulic conductivity, or where impermeable sediments are present at depth and may induce confined conditions for underlying aquifers. To overcome this, Rivard et al. (2013) and Gagné et al. (2018) applied a 40% reduction coefficient in the semi-confined areas of W5 to estimate actual GWR from potential GWR and assumed that no recharge occurred over confined aquifers.~~

545 **5.2 Temporal patterns of groundwater recharge Trends in groundwater recharge in cold and humid climates in the past decades**

The increasing trends in simulated winter potential GWR are most likely related to that of winter temperature and precipitation between 1961 and 2017. An original contribution of this work is to show that the absence of decreasing trends in GWR despite the overall statistically significant increases in temperature and AET indicates that the increase in precipitation (vertical inflows in Table A. 2) is large enough to compensate for the increases in AET. As a result, GWR probably increased in southern Quebec over the 1961-2017 period. However, this cannot be verified with *in situ* data because a reliable and continuous groundwater level observation network was only implemented in southern Quebec around the turn of the century. Similar results were obtained with a groundwater flow model in the upper W1 by Levison et al. (2016), who found a non-significant positive trend for simulated baseflows for the 1966-2010 period. However, Rivard et al. (2009) found no significant temporal trends in mean baseflows for southern Quebec for the 1956-2005 period, but rather some decreasing trends in minimum baseflows. Warming temperature were recorded in the cold and humid climates of the northern hemisphere since the middle of the 20th century. Mean annual temperature has increased by +2°C to +3°C between 1954 and 2003, and this increase has

been more marked between December and February (up to +4°C for the same period) (Arctic Climate Impact Assessment, 2004). In eastern Canada, temperature warming up to +1°C to +3°C has been identified for the 1948-2016 period (Vincent et al., 2018), leading to important changes in the seasonal distribution, and particularly to an increase in winter precipitation and a decrease of accumulated snow during the cold season (Kong and Wang, 2017). This work has shown that although the simulated potential GWR was not impacted by the long-term increases in precipitation or temperature on an annual time-step for the 1961-2017 period, these changes produced significant increases in annual runoff and AET and may not have been sufficient yet to propagate to potential GWR. As observed with past data for winter trends in potential GWR, under changing climate conditions, seasonal and monthly GWR could increase during periods with more available liquid water and low AET rates (late fall, winter, early spring). Inversely, GWR could decrease for periods of enhanced AET rates (warmer temperature) such as late spring, summer, and early fall.

In Canada, other authors have looked for trends in observed time series of groundwater levels for the snow-dominated region of British-Columbia (Allen et al., 2014) or across the country (Rivard et al., 2009), but each time, no coherent pattern could be identified. This could be due to short time series or insufficient data coverage. In western Russia, Grinevskiy et al. (2021) simulated an increase of GWR between the 1965-1988 and 1989-2018 periods with a surface energy balance coupled to the Hydrus unsaturated zone model. The GWR increase was due to warmer winter leading to a decrease of soil frost depth and an increase of the winter soil-water storage. Interestingly, the warming temperatures did not produce AET increases which was interpreted to be due to a sharp decrease in wind speed. Inversely, Nygren et al. (2020) identified a significant decrease in groundwater depth time series across Finland and Sweden between the 1980–1989 and 2001–2010 periods. These authors showed that the deeper groundwater levels were linked to decreasing GWR pattern associated with shorter snowmelt periods and longer periods of intensive evapotranspiration. In comparison, the temperature increase observed in southern Quebec over the 1961-2017 period was probably not large enough to produce such a change.

An outcome of this work was to show that the regional long-term potential GWR simulations with a water budget allowed identifying the impacts of a changing climate on the past GWR conditions by positioning the trends (or absence of significant trends) in the globally changing hydrologic dynamic. As well, it reminded the high responsivity of the hydrologic dynamic of the cold months to the climate changes in the cold and humid climates.

5.3 Implications for water management

This study has shown that the use of a GWR water budget model relatively easily produced long-term spatially-distributed GWR values at the regional scale, with an acceptable spatial resolution and monthly time steps. The average GWR rate for the region, based on the new regional estimate, is 139 mm/yr, with lower aquifer renewal rates in the St. Lawrence Platform (<140 mm/yr) than in the Appalachians (>140 mm/yr). Preferential infiltration areas correspond to forested areas (170 mm/yr) and areas covered by coarse sediments (180 mm/yr) or outcropping bedrock (150 mm/yr). The decreasing temperature from west to east impacts the intra-annual GWR dynamic, imposing higher winter GWR in the warmer watersheds, from 38% of

annual recharge in W1 to 27% in W8. Inversely, summer and fall GWR rates are lower in the western watersheds (3% and 14% respectively in W1) than in the eastern watersheds (10% and 21% respectively in W8). Furthermore, the warming temperatures since 1961 have not negatively affected GWR until 2017, due to a simultaneous increase in precipitation and higher winter GWR, compensating for the increase in AET. However, with more intense and faster climate change, this dynamic could change in the near future if temperature warming was to exceed precipitation increase.

Based on the study results, GWR maps should be included in land management planning to avoid impacting areas of preferential recharge, such as forests, areas covered by coarse material, and zones of outcropping bedrock. Although the GWR/precipitation ratio in eastern North America seems to be 0.25 and higher (Jasechko et al, 2014, based on the global simulation of Wada et al. (2010)), areas of preferential recharge can be identified in the study area based on a GWR/precipitation ratio higher than 0.15 (the worldwide mean in Jasechko et al., 2014). These represent essential areas for the quantitative replenishment of groundwater resources, and therefore the most vulnerable areas in terms of water quality of southern Quebec. Forested areas should be prioritized for future preservation, and forest conservation policies implemented for groundwater resource protection. Although it has been shown that wetlands are often connected to the water table in southern Quebec (Bourgault et al., 2014) they are not considered to be preferential infiltration areas in HB. Separate studies will be necessary to investigate their role in regional groundwater flow. Considering the substantial influence of winter on the regional hydrology, one of the novel outcome of this study, and that changes in the winter dynamic could highly influence the entire hydrologic dynamic of cold regions (Jasechko et al., 2014, 2017), additional winter-related research should target gauging of winter river flows, soil frost modelling, enhancing the vertical inflow and snowpack modeling, and would probably require the development of the winter monitoring network.

It is important to underline that Actual GWR is most likely lower than potential GWR, especially where superficial deposits are thick and have low hydraulic conductivity, or where impermeable sediments are present at depth and may induce confined conditions for underlying aquifers. To overcome this, Rivard et al. (2013) and Gagné et al. (2018) applied a 40% reduction coefficient in the semi-confined areas of W5 to estimate actual GWR from potential GWR and assumed that no recharge occurred over confined aquifers.

5.4 Contributions to and limitations of water budget models in groundwater recharge simulation

HydroBudget was specifically developed to simulate spatial and temporal variations in potential GWR at the regional scale, for long periods, and for regions where winter largely affects the intra-annual hydrologic dynamic. The model can reasonably be used where hydrogeological and superficial watersheds are similar, where regional groundwater flow converges to rivers, and when a monthly resolution is sufficient. Although the model does not compute water routing, groundwater-surface water feedback, or evapotranspiration from groundwater, and produces potential GWR, the ~~good~~-satisfying simulation results found in this work justify the water budget calculation scheme used in HB, resulting in an easy-to-use and computationally efficient model. Furthermore, the uncertainty analysis showed that the calibration method provides an interestingly small uncertainty

for the simulated variables, and a mean bias similar to that of the input data. Similar to WetSpa, which has been applied in different climate and geological environments (Abdollahi et al., 2017—West Africa, semiarid to sub-humid climates; Zomlot et al., 2015—Belgium, oceanic climate), or HELP (Croteau et al., 2010—Quebec, continental climate Toews and Allen, 2009—British Columbia, arid climate), HB could probably be adapted for use in different environments than that presented here. The impact of long and cold winters was included in HB through the widely used degree-days method that represents snowpack evolution (Massmann, 2019) and the representation of freezing soil conditions with a threshold temperature and a duration of the threshold temperature to freeze the soil (TT_F and F_T respectively). The sensitivity analysis shows that TT_F is one of the key parameters in potential GWR simulation, while F_T was found not to be sensitive in model calibration (Table 2). This result underlines the importance of including soil freezing in GWR modeling for cold regions, and more specific observation data could further enhance it. The impact of long and cold winters was included in HB through the widely used degree-days method that represents snowpack evolution (Massmann, 2019), and through the representation of freezing soil conditions with a threshold temperature and a duration of the threshold temperature to freeze the soil (TT_F and F_T respectively). The results showed that the simulated potential GWR was sensitive to TT_F , while both flow rates and potential GWR had limited sensitivity to F_T (Fig. 4). The colder watersheds were more sensitive to these parameters while the simulations of river flows in the warmer watersheds were less sensitive to the snow-related parameters. These results underline the importance of including soil freezing in GWR modeling for cold regions, as did other studies in cold and humid climates (Grinevskiy et al., 2021; Nemri and Kinnard, 2020; Okkonen and Kløve, 2011). This work pinpoints the need for more research on winter recharge to better understand the processes involved.

Among the simplifications included in sSeveral existing water budget models (HELP; HydroBudget; SWB; water balance GIS tool; Huet et al., 2016) is the calculation of runoff using the RCN curve number method (USDA-NRCS, 2004) as a simplification for runoff calculation. This method, developed specifically for the US context, has been criticized for its empirical basis, developed specifically for the US context (Ogden et al., 2017). However, it is continuously adapted and used for new environments and different size areas and is well-documented and easy to use (Bartlett et al., 2016; Lal et al., 2019; Miliani et al., 2011; Ross et al., 2018). Notably, it is used to estimate runoff in the SWAT hydrological model (Neitsch et al., 2002), and is calibrated specifically in the Quebec climate and geological context (Gagné et al., 2013; Monfet, 1979). In water budget models, the RCN method drives the partitioning of the simulated water budget into runoff and water available for AET and GWR, therefore making the related parameters (t_{API} and f_{runoff}) particularly sensitive in their simulation (e.g., f_{runoff} is the most sensitive parameter for potential GWR in HB; Fig. 4Table 2). Because it is based on land cover, topography, soil types, and seasonal humidity, the RCN method reflects the spatial variability of the large study area, which probably contributes to the ability of HB to simulate the surficial water budget and discriminate its partitioning depending on the superficial conditions (superficial geology, land cover).

The AET corresponded to 47% of the annual precipitation (501 mm/yr), similar to a result similar to those reported in previous studies work in the study area (Carrier et al., 2013; Benoit et al., 2014; Croteau et al., 2010; Guay et al., 2013Larocque et al., 2015b; Meyzonnat, 2012; Table A. 3). Considering the vegetation cover of southern Quebec (45% of the area of forest and

6% of wetlands), ~~the its relatively large~~ water availability, with an average of 1,090 mm/yr of precipitation evenly distributed throughout the year, the topography-driven water table, and the shallow depth of the aquifers, groundwater-vegetation-atmosphere exchanges are probably intensive (Koirala et al., 2017; Xu and Liu, 2017). The ~~model~~-configuration of the HB model, with a soil lumped reservoir for AET-potential GWR partitioning, is therefore conceptually suitable (Cuthbert et al., 2019). AET computation is driven by two parameters, i.e. the runoff factor (f_{runoff}), influencing the partitioning between runoff and infiltration into the soil reservoir, and the soil reservoir parameter (s_{wm}), determining the reservoir capacity. Evapotranspiration calibration data would be useful to better constrain these two parameters, but measured values are rarely available for this variable.

The simulated transient GWR was calibrated with baseflows computed using regressive filters from river flow rate time series. Although Partington et al. (2012) showed that the association between baseflows and GWR is not always satisfactory and different baseflow separation methods can lead to differences in volumes and timing (Gonzales et al., 2009; Zhang et al., 2017), ~~baseflows are generally considered to be an acceptable proxy for GWR in Canada~~ (Chemingui et al., 2015; Rivard et al., 2009) and widely used for the calibration of GWR simulation (Batelaan and De Smedt, 2007; Croteau et al., 2010; Dripps and Bradbury, 2007; Gagné et al., 2018; Rivard et al., 2013). ~~Large differences in volumes and timing have been shown using different baseflow separation methods~~ (Gonzales et al., 2009; Zhang et al., 2017). ~~The choice of the baseflow separation method will therefore influence the proportion of baseflow in the river flow and impact the parameter calibration, the simulated potential GWR, and consequently the water budget partitioning. However, the structure of water budget models makes them compute GWR as the residual of the water budget, thus propagating the computational error from the other terms of the water budget, namely runoff, interception, evapotranspiration, subsurface runoff (depending on the model complexity) onto GWR estimation~~ (Crosbie et al., 2015; Scanlon et al., 2002). ~~For this reason, using baseflows as explicit calibration data for GWR simulation limits the modeling error of GWR rates, while making it dependant on the baseflow separation method.~~ baseflows are generally considered an acceptable proxy for GWR in cold and humid climates (Chemingui et al., 2015; Dierauer et al., 2018; Rivard et al., 2009). They are widely used for the calibration of GWR simulations (Batelaan and De Smedt, 2007; Croteau et al., 2010; Dripps and Bradbury, 2007; Gagné et al., 2018; Rivard et al., 2013). In this work, using baseflow estimated with the Lyne and Hollick (1979), Eckhardt (2005), and Chapman (1991) filters influenced the proportion of baseflow in total river flow, and consequently led to variations in simulated potential GWR (Supplementary Table A. 1). However, the quality of the simulations was comparable due to parameter variations that remained in the possible range of the parameters (Table 2).

Having a model that is fully coded in an open-source language leaves the option of reshaping its structure and conceptual model to specific study needs and environments. Changes to the model could include, for example, changing the PET calculation to a formula considered to be more suitable for a specific local context, defining a different runoff computation method that would better represent local conditions, modifying the representation of the soil reservoir by spatializing it, or using other calibration data, such as observation of AET or other baseflow filters. However, it should be kept in mind that increasing the complexity of the process representation would increase the number of parameters to be calibrated and most

likely increase computation time as well. An original contribution of this ~~word-work~~ was to show that the tested calibration method combined with a regionalized parameter set offers a very acceptable solution that is highly reproducible and could be applied in less monitored regions. Apart from being relatively simple to use, the HB model has high potential for non-
695 hydrogeologist users, especially if the computational time is limited and the update of observation data and the automatic calibration procedure are easy tasks. Hydrogeologist modellers might be interested in including HB as a complementary tool for comparative purposes when using integrated models or when in need of GWR estimates for groundwater flow models.

6 Conclusion

Groundwater recharge is ~~recognized as~~ a strategic hydrologic variable that needs to be estimated for sustainable groundwater management, especially within ~~a global change~~ the global warming context that highly impacts winter conditions the cold and humid climates regions., ~~but It is a challenge to simulate groundwater recharge is challenging to simulate~~ at the regional scale and for long-term conditions because of long computational times and the large number of calibration data required to produce reliable results, especially that groundwater observations often remains too scarce for such spatio-temporal scales. ~~Such knowledge is key to the implementation of long term water management and land use policies.~~ The objective of this ~~work~~ study was to demonstrate the relevance of using a water budget model to understand long-term transient and regional-scale GWR in cold and humid climates where groundwater observations are scarce. As a typical case study, test the ability of the HydroBudget ~~water budget~~ model was automatically calibrated with river flow rates and baseflow estimates, to simulate long-term regional-scale GWR in the cold and humid climatic conditions. ~~The model is used in of~~ southern Quebec, ~~where the hydrological dynamic is highly linked to harsh winters.~~ With the model simultaneously calibrated on 51 gauging stations ~~(river flows and baseflow estimates),~~ GWR was reliably simulated between 1961 and 2017 at the regional scale (36,000 km²) with very little uncertainty (<10 mm/yr). GWR estimates at this scale, including eight tributary watersheds of the St. Lawrence River with a monthly time step and 500 x 500 m resolution was not available until now. ~~Water budget partitioning has proven to be highly useful to provide this information with spatiotemporal patterns and trends for regional GWR in southern Quebec.~~ The study demonstrated that ~~The influence of winter on the regional hydrologic dynamic, and especially~~ the ability of the HB
715 model to simulate snowpack evolution and soil frost appears to be a key feature for GWR simulation. ~~of this promising approach.~~ Another outcome of this work was to show that the model sensitivity to its parameters is correlated to the average air temperature of the watershed, making the simulated water budget in watersheds with lower temeprature more sensitive to snow-related parameters than the warmer watersheds. Nevertheless, additional research focusing on snow melting and freezing soil processes would help to better constrain the model for the winter and spring periods, consequently helping better anticipate
720 future changes.

Water budget partitioning has proven to be highly useful to link changing climatic conditions to trends and evolution in regional GWR in the last six decades. ~~useful to provide this information with spatiotemporal patterns and trends for regional GWR in southern Quebec.~~ ~~A particular and especially useful outcome of this work is t~~ The water budget is partitioning partitioned into

runoff (41%, 444 mm/yr), AET (47%, 501 mm/yr), and potential GWR (12%, 139 mm/yr). This study shows that groundwater recharge peaks in the spring (44% of annual recharge) and is high during winter (32% of annual recharge), ~~while the seasonal GWR distribution varies markedly between watersheds and is linked to annual temperatures.~~ Interestingly, the long simulation period made it possible to identify a statistically significant increasing trend of GWR during winter and no decreasing trends ~~in the during~~ summer, despite warmer temperatures. ~~This is~~ most likely ~~because the resulting increases~~ in AET ~~is are~~ compensated by ~~a significant increases~~ in precipitation. In contrast to previous studies of past GWR trends in cold and humid climates, this work has shown that changes in past climatic conditions have not (yet) produced significant changes in annual potential GWR but have impacted runoff and AET. However, considering the intense and fast climate change expected in future decades, the water budget partitioning and the regional GWR could decrease if temperature warming were to exceed the increase in precipitation.

Besides ~~being very useful for acquiring knowledge providing essential long-term and regional-scale data~~ on regional GWR, a regional water budget model with a relative ease of use, such as HB, and that can be calibrated regionally with available data can be extremely useful for non-hydrogeologist users from that can easily be updated is extremely useful for water management and environmental agencies. It can be used to implement water resource conservation policies, ~~identify additional research required, and~~ anticipate the impacts of climate change, and identify additional research required. ~~Water budget models that are easily regionally calibrated with river flow measurements and baseflows have a high potential for non-hydrogeologist users, especially if they can easily be adapted to specific study needs and environments.~~

Table A. 1: Best compromises and optimized parameters obtained using the best compromise for the gauging stations of W6 and ranges obtained with the 25 best compromises (before regionalization).

-	Calibration			Validation		
	KGE _{mean}	KGE _{qtot}	KGE _{qbase}	KGE _{mean}	KGE _{qtot}	KGE _{qbase}
Best compromise	0.76 ₄	0.80 ₇	0.72 ₉	0.70 ₉	0.71 ₉	0.70 ₂
25 best compromises	0.75 ₈ -0.76 ₁	0.78 ₁ -0.82 ₀	0.71 ₈ -0.74 ₅	0.69 ₇ -0.71 ₆	0.70 ₆ -0.73 ₉	0.67 ₃ -0.72 ₁

Optimized parameters*								
-	T _M (°C)	C _M (mm/°/d)	TT _F (°C)	t _{API} (d)	f _{runoff} (-)	sw _m (mm)	f _{inf} (-)	
Best compromise	0.5	4.0	-17.9	3.8	0.54	308	0.05	
25 best compromises	0.2-0.8	3.5-4.4	-20-14.4	3.0-4.0	0.52-0.56	227-439	0.04-0.06	

*F_T is held constant at the nominal value of 16.4 d

Table A. 1: Best compromises, interannual potential GWR, and optimized parameters obtained with the best compromises for the gauging stations of W6 and ranges obtained with the 25 best compromises (before regionalization) using different calibration weights and different baseflow separation methods.

-	<u>Calibration</u>			<u>Validation</u>			<u>Interannual pot. GWR (mm/yr)</u>
	<u>KGE_{mean}</u>	<u>KGE_{qtot}</u>	<u>KGE_{qbase}</u>	<u>KGE_{mean}</u>	<u>KGE_{qtot}</u>	<u>KGE_{qbase}</u>	
<u>Lyne and Hollick - KGE_{mean} = 0.4 x KGE_{qtot} + 0.6 x KGE_{qbase}</u>							
<u>Best compromise</u>	<u>0.76₁</u>	<u>0.80₇</u>	<u>0.72₉</u>	<u>0.70₉</u>	<u>0.71₉</u>	<u>0.70₂</u>	<u>186</u>
<u>25 best compromises</u>	<u>0.75₈ - 0.76₁</u>	<u>0.78₁ - 0.82₀</u>	<u>0.71₈ - 0.74₅</u>	<u>0.69₇ - 0.71₆</u>	<u>0.70₆ - 0.73₉</u>	<u>0.67₃ - 0.72₁</u>	<u>181 - 194</u>
<u>Lyne and Hollick - KGE_{mean} = 0.5 x KGE_{qtot} + 0.5 x KGE_{qbase}</u>							
<u>Best compromise</u>	<u>0.77₂</u>	<u>0.81₉</u>	<u>0.72₅</u>	<u>0.70₃</u>	<u>0.71₄</u>	<u>0.69₂</u>	<u>184</u>
<u>25 best compromises</u>	<u>0.77₀ - 0.77₂</u>	<u>0.80₅ - 0.82₅</u>	<u>0.71₈ - 0.73₇</u>	<u>0.69₈ - 0.70₆</u>	<u>0.70₄ - 0.71₅</u>	<u>0.68₂ - 0.70₄</u>	<u>181 - 188</u>
<u>Lyne and Hollick - KGE_{mean} = 0.6 x KGE_{qtot} + 0.4 x KGE_{qbase}</u>							
<u>Best compromise</u>	<u>0.78₂</u>	<u>0.82₅</u>	<u>0.71₉</u>	<u>0.70₂</u>	<u>0.71₃</u>	<u>0.69₄</u>	<u>181</u>
<u>25 best compromises</u>	<u>0.78₀ - 0.78₂</u>	<u>0.81₄ - 0.83₅</u>	<u>0.69₉ - 0.73₀</u>	<u>0.69₅ - 0.70₈</u>	<u>0.70₉ - 0.73₅</u>	<u>0.64₆ - 0.70₁</u>	<u>176 - 188</u>
<u>Eckhardt - KGE_{mean} = 0.4 x KGE_{qtot} + 0.6 x KGE_{qbase}</u>							
<u>Best compromise</u>	<u>0.81₁</u>	<u>0.87₀</u>	<u>0.77₂</u>	<u>0.68₆</u>	<u>0.79₀</u>	<u>0.61₇</u>	<u>248</u>
<u>25 best compromises</u>	<u>0.81₀ - 0.81₁</u>	<u>0.86₇ - 0.87₂</u>	<u>0.76₉ - 0.77₂</u>	<u>0.68₀ - 0.68₆</u>	<u>0.78₆ - 0.79₀</u>	<u>0.60₈ - 0.61₈</u>	<u>248 - 252</u>
<u>Chapman- KGE_{mean} = 0.4 x KGE_{qtot} + 0.6 x KGE_{qbase}</u>							
<u>Best compromise</u>	<u>0.80₁</u>	<u>0.87₀</u>	<u>0.75₆</u>	<u>0.69₅</u>	<u>0.76₂</u>	<u>0.65₀</u>	<u>208</u>
<u>25 best compromises</u>	<u>0.79₈ - 0.80₁</u>	<u>0.86₉ - 0.87₅</u>	<u>0.74₈ - 0.75₆</u>	<u>0.68₉ - 0.69₉</u>	<u>0.76₁ - 0.77₄</u>	<u>0.63₅ - 0.65₄</u>	<u>208-215</u>

Optimized parameters

	<u>T_M (°C)</u>	<u>C_M (mm/°/d)</u>	<u>TT_F (°C)</u>	<u>F_T (d)</u>	<u>t_{API} (d)</u>	<u>f_{runoff} (-)</u>	<u>sw_m (mm)</u>	<u>f_{inf} (d⁻¹)</u>
<u>Lyne and Hollick - KGE_{mean} = 0.4 x KGE_{qtot} + 0.6 x KGE_{qbase}</u>								
<u>Best compromise</u>	<u>0.5</u>	<u>4.0</u>	<u>-17.9</u>	<u>20.0</u>	<u>3.8</u>	<u>0.54</u>	<u>308</u>	<u>0.05</u>
<u>25 best compromises</u>	<u>0.2 - 0.8</u>	<u>3.5 - 4.4</u>	<u>-20.0 - -14.4</u>	<u>5.0 - 28.4</u>	<u>3.0 - 4.0</u>	<u>0.52 - 0.56</u>	<u>227 - 439</u>	<u>0.04 - 0.06</u>
<u>Lyne and Hollick - KGE_{mean} = 0.5 x KGE_{qtot} + 0.5 x KGE_{qbase}</u>								
<u>Best compromise</u>	<u>1.0</u>	<u>4.5</u>	<u>-19.0</u>	<u>28.4</u>	<u>3.0</u>	<u>0.54</u>	<u>300</u>	<u>0.05</u>
<u>25 best compromises</u>	<u>0.6 - 1.0</u>	<u>4.2 - 4.5</u>	<u>-19.0--14.8</u>	<u>13.7 - 28.4</u>	<u>3.0 - 3.3</u>	<u>0.51 - 0.56</u>	<u>252 - 366</u>	<u>0.05 - 0.06</u>
<u>Lyne and Hollick - KGE_{mean} = 0.6 x KGE_{qtot} + 0.4 x KGE_{qbase}</u>								
<u>Best compromise</u>	<u>1.0</u>	<u>4.5</u>	<u>-19.0</u>	<u>28.4</u>	<u>3.0</u>	<u>0.55</u>	<u>262</u>	<u>0.05</u>
<u>25 best compromises</u>	<u>0.5 - 1</u>	<u>3.5 - 4.5</u>	<u>-19.0 - -15.1</u>	<u>13.1-30.0</u>	<u>3.0 - 3.4</u>	<u>0.53 - 0.58</u>	<u>200 - 333</u>	<u>0.04 - 0.07</u>
<u>Eckhardt - KGE_{mean} = 0.4 x KGE_{qtot} + 0.6 x KGE_{qbase}</u>								
<u>Best compromise</u>	<u>0.0</u>	<u>3.0</u>	<u>-17.5</u>	<u>5.0</u>	<u>2.9</u>	<u>0.50</u>	<u>238</u>	<u>0.08</u>
<u>25 best compromises</u>	<u>-0.2 - 0.2</u>	<u>3.0</u>	<u>-20.0 - -10.9</u>	<u>5.0 - 13.5</u>	<u>2.4 - 3.0</u>	<u>0.50</u>	<u>173 - 238</u>	<u>0.07 - 0.09</u>
<u>Chapman - KGE_{mean} = 0.4 x KGE_{qtot} + 0.6 x KGE_{qbase}</u>								
<u>Best compromise</u>	<u>-0.3</u>	<u>3.0</u>	<u>-20.0</u>	<u>19.0</u>	<u>5.0</u>	<u>0.50</u>	<u>345</u>	<u>0.30</u>
<u>25 best compromises</u>	<u>-0.4 - -0.2</u>	<u>3.0 - 3.2</u>	<u>-20.0 - -11.9</u>	<u>8.1 - 28.1</u>	<u>5.0</u>	<u>0.50 - 0.60</u>	<u>93 - 488</u>	<u>0.10 - 0.30</u>

Table A. 2: Annual and seasonal trends for vertical inflows (rain plus estimated snowmelt), observed temperatures, simulated runoff, simulated actual evapotranspiration (AET), and simulated potential groundwater recharge (GWR) for the 1961-2017 period for the eight watersheds (Man-Kendall test; only p-values > 0.05 are presented, otherwise a “-“ is used; all trends are positive).

Vertical inflow						Temperature				
	Year	Win.	Spr.	Sum.	Fall	Year	Win.	Spr.	Sum.	Fall
W1*	0.041	0.006	-	-	-	0.000	0.001	0.029	0.002	0.001
W2*	0.003	0.001	-	0.020	-	0.000	0.001	0.019	0.001	0.002
W3	0.004	0.001	-	0.021	-	0.000	0.003	0.038	0.000	0.001
W4*	0.004	0.000	-	0.036	-	0.000	0.002	0.038	0.001	0.002
W5	-	0.000	-	0.006	-	0.000	0.003	-	0.002	0.002
W6	0.001	0.000	-	0.031	-	0.000	0.002	-	0.001	0.001
W7	-	0.001	-	-	-	0.000	0.001	0.024	0.000	0.000
W8	0.000	0.001	-	0.016	-	0.000	0.001	0.024	0.000	0.001

Simulated runoff						Simulated AET					Simulated pot. GWR				
	Year	Win.	Spr.	Sum.	Fall	Year	Win.	Spr.	Sum.	Fall	Year	Win.	Spr.	Sum.	Fall
W1*	0.031	0.023	-	-	-	0.020	0.000	0.001	-	-	-	-	-	-	-
W2*	0.012	0.001	-	0.009	0.017	0.006	0.001	0.000	-	-	-	0.050	-	-	-
W3	0.007	0.003	-	0.009	0.031	0.002	0.001	0.000	-	-	-	0.009	-	-	-
W4*	0.009	0.000	-	0.008	-	0.000	0.001	0.001	-	-	-	0.001	-	-	-
W5	-	0.003	0.013	0.001	-	0.012	0.002	0.002	-	-	-	0.018	-	-	-
W6	0.003	0.001	-	0.003	-	0.001	0.000	0.001	0.042	-	-	0.002	-	-	-
W7	-	0.002	-	0.045	-	0.001	0.000	0.000	-	-	-	0.012	-	-	-
W8	0.000	0.001	-	0.001	0.014	0.000	0.000	0.001	0.028	-	-	0.000	-	-	-

*Part of the watershed is located in the USA - the presented values are only for the Quebec part

Table A. 3: Summary of GWR modeling studies considered in this work.

Geographic area	Reference	Runoff (mm/yr)	AET (mm/yr)	GWR (mm/yr)	Model	Seasonality (% of annual GWR)	Temporal evolution	Influential factors
In the study area								
W1. Châteaugay*	Chemingui et al. (2015)	-	-	200	CATHY (Camporese et al., 2010)	Spring = 35 % Fall = 15 %	-	-
	Croteau et al. (2010)	371	487	86	HELP (Schroeder et al., 1994)	Spring and fall = GWR peak	no significant trend found for 1963-2001	Soil texture, low correlation GWR/precipitation
	Guay et al. (2013)	267 (-)	556	214 (233)	HELP (CATHY)	-	-	-
	Levison et al. (2016)	-	-	113	MODFLOW	-	Significant positive trend for ET for 1900 - 2010 Significant negative trend on GWR and baseflow for 1900 - 2010 non significant trend on GWR for 1966 - 2010	-
	Levison et al. (2014)	-	-	136	MODFLOW	Spring = 64 % Fall = 34 %	-	Soil texture
	Nastev et al. (2008)	224	546	186	HELP (Schroeder et al., 1994)	-	-	Soil texture
W3. Yamaska	Carrier et al. (2013)	476	539	98	HELP (Schroeder et al., 1994)	-	-	-
	Larocque and Pharand (2010)	301	-	215	AgriFlux (Banton et al., 1993)	Spring = 75 % Fall = 18 %	-	-
W5. Nicolet	Larocque et al. (2015b)	444	467	153	HydroBudget	Winter = 25 %, spring = 40%, fall = 33 %	-	GWR slightly impacted by precipitation variations - AET relatively constant
W6. Bécancour	Larocque et al. (2013)	600	291	159	HydroBudget	Winter = 12 %, spring = 26 %, fall = 26 %	GWR relatively constant through the years (1990-2010)	GWR slightly impacted by precipitation variations - AET relatively constant
	Meyzonnat (2012)	505	488	139	MOHYSE (Fortin and Turcotte, 2007)	Winter = 15 %, spring = 38%, fall = 30 %	-	GWR slightly impacted by precipitation variations - AET relatively constant
W8. Chaudière	Benoit et al. (2014)	478	447	185	HELP (Schroeder et al., 1994)	-	-	-
	Lefebvre et al. (2015)	450	543	166	HELP (Schroeder et al., 1994)	-	-	-
Bordering the study area								
Vaudreuil Soulanges	Larocque et al. (2015a)	540	381	48	HydroBudget	Spring = 38 % Fall = 44 %	-	GWR slightly impacted by precipitation variations and not by temperature variation - AET relatively constant
Québec city	Talbot Poulin et al. (2013)	350	550	445	HELP (Schroeder et al., 1994)	Spring = 39 % Fall = 20 %	-	Soil texture
U.S.A. (Maine)	Nielsen and Westenbroek (2019)	-	-	178	SWB (Westenbroek et al., 2010)	-	-	Precipitation, soil texture, and land cover
Elsewhere in Canada								
Ontario (Grand River)	Jyrkama and Sykes (2007)	-	-	200	HELP (Schroeder et al., 1994)	-	-	-
New Brunswick (Otter Brook)	Kurylyk and MacQuarrie (2013)	-	-	550	HELP (Schroeder et al., 1994)	Spring = 60 % Fall = 22 %	-	-
Nova Scotia (Annapolis)	Rivard et al. (2013)	373	519	165 (115)	HELP (FEEFLOW)	-	-	Soil texture
British Columbia (Grand Forks)	Allen et al. (2004)	58	283	135	HELP (steady state)	-	-	-
Outside of Canada								
Belgium	Batelaan and De Smedt (2007)	49	465	251	WetSpass	Winter > 90 %	-	Soil texture and land cover
	Zomlot et al. (2015)	-	-	235	WetSpass (Batelaan and De Smedt, 2007)	Winter = 92 % Summer = 8 %	-	Precipitation, soil texture, and vegetation cover
West Africa	Abdollahi et al. (2017)	20.3%*	65.7%*	13.9%*	WetSpass (Batelaan and De Smedt, 2007)	All the water budget = 100 % rain season	-	rainfall, leaf area index, and PET
China (Chinese Loess Plateau)	Hu et al. (2019)	-	-	18	HYDRUS-1D (Simunek et al., 2009)	-	Significant negative trend on GWR (1981-2010)	Soil water retention, spatio-temporal precipitation patterns, soil properties, and PET and leaf area index to a certain extent
Worldwide	Döll and Fidler (2008)	500 - 1,000**	-	100 - 300**	WGHM (Döll et al., 2003)	-	-	-
	Wada et al. (2010)	-	-	300 - 1,000*	PCR-GLOBWB (Bierkens and van Beek,	-	-	-

* In percentage of the yearly precipitation

** Values extracted for the study area only

8 Code availability

The code of the HydroBudget model is open source and can be obtained by direct request to the authors

9 Author contribution

ED, ML, and SG contributed to developing the approach and all authors contributed to writing the paper. ED and SG developed the HB script in R, based on the model created by GM, which was implemented in java script. Data management, simulations, and figure preparation were done by ED. ML obtained the research grant and supervised the research.

10 Competing interests

The authors declare that they have no conflict of interest.

9 Acknowledgements

This project was funded by the Quebec Ministry of Environment and Climate Change (*Ministère de l'Environnement et de la Lutte contre les changements climatiques - MELCC*), who also provided the interpolated meteorological data.

10 References

Abdollahi, K., Bashir, I., Verbeiren, B., Harouna, M. R., Van Griensven, A., Huysmans, M. and Batelaan, O.: A distributed monthly water balance model: formulation and application on Black Volta Basin, Environmental Earth Sciences, 76:198(5), 18, <https://doi.org/10.1007/s12665-017-6512-1>, 2017.

[Allen, D. M., Stahl, K., Whitfield, P. H., and Moore, R. D.: Trends in groundwater levels in British Columbia, 39, 15–31, <https://doi.org/10.1080/07011784.2014.885677>, 2014.](#)

~~[Allen, D. M., Mackie, D. C. and Wei, M.: Groundwater and climate change: a sensitivity analysis for the Grand Forks aquifer, southern British Columbia, Canada, Hydrogeology Journal, 12\(3\), 270–290, <https://doi.org/10.1007/s10040-003-0261-9>, 2004.](#)~~

[Arctic Climate Impact Assessment: Impacts of a warming Arctic, Cambridge University Press, Cambridge, U.K. ; New York, N.Y., 139 pp., 2004.](#)

Arnold, J. G., Kiniry, J. R., Srinivasan, R., Williams, J. R., Haney, E. B. and Neitsch, S. L.: Soil Water Assessment Tool - Input/Output documentation - Version 2012, Texas Water Resources Institute., 2012.

- Ashaolu, E. D., Olorunfemi, J. F., Ifabiyi, I. P., Abdollahi, K. and Batelaan, O.: Spatial and temporal recharge estimation of the basement complex in Nigeria, West Africa, *Journal of Hydrology: Regional Studies*, 27, 100658, <https://doi.org/10.1016/j.ejrh.2019.100658>, 2020.
- 790 ~~Aygiin, O., Kinnard, C., and Campeau, S.: Impacts of climate change on the hydrology of northern midlatitude cold regions. *Progress in Physical Geography: Earth and Environment*, 44, 338–375, <https://doi.org/10.1177/0309133319878123>, 2020.~~
- ~~Banton, O., Larocque, M., Surateau, F. and Villeneuve, J. P.: Évaluation des pertes de composés azotés dans les eaux souterraines lors de l'épandage de fumiers et de lisiers. Développement d'un outil d'évaluation — logiciel AgriFlux, manuel d'utilisateur (Evaluation of nitrogen compound losses to groundwater when spreading manure. Evaluation tool development — AgriFlux software), Scientific report, INRS Eau, Quebec City (Canada). <http://espace.inrs.ca/600/1/R000380.pdf>, 1993.~~
- 795 Bartlett, M. S., Parolari, A. J., McDonnell, J. J. and Porporato, A.: Beyond the SCS-CN method: A theoretical framework for spatially lumped rainfall-runoff response, *Water Resources Research*, 52(6), 4608–4627, <https://doi.org/10.1002/2015WR018439>, 2016.
- Batelaan, O. and De Smedt, F.: GIS-based recharge estimation by coupling surface–subsurface water balances, *Journal of Hydrology*, 337(3), 337–355, <https://doi.org/10.1016/j.jhydrol.2007.02.001>, 2007.
- 800 ~~Beigi, E. and Tsai, F. T. C.: GIS Based Water Budget Framework for High Resolution Groundwater Recharge Estimation of Large Scale Humid Regions, *Journal of Hydrologic Engineering*, 19(8), 05014004, [https://doi.org/10.1061/\(ASCE\)HE.1943-5584.0000993](https://doi.org/10.1061/(ASCE)HE.1943-5584.0000993), 2014.~~
- Benoit, N., Nastev, M., Blanchette, D. and Molson, J.: Hydrogeology and hydrogeochemistry of the Chaudière River watershed aquifers, Québec, Canada, *Canadian Water Resources Journal / Revue canadienne des ressources hydriques*, 39(1), 32–48, <https://doi.org/10.1080/07011784.2014.881589>, 2014.
- 805 Bergeron, O.: Guide d'utilisation 2016 - Grilles climatiques quotidiennes du Programme de surveillance du climat du Québec, version 2 (User guide 2016 – Daily climate grids from the Quebec Climate monitoring program, version 2), ministère du Développement durable, de l'Environnement et de la Lutte contre les changements climatiques, Direction du suivi de l'état de l'environnement, Quebec City (Canada)., 2016.
- 810 Bierkens, M. F. P. and van Beek, L. P. H.: Seasonal Predictability of European Discharge: NAO and Hydrological Response Time, *J. Hydrometeor.*, 10(4), 953–968, <https://doi.org/10.1175/2009JHM1034.1>, 2009.
- Bissonnette, J., Demers, A. and Lavoie, S.: Utilisation du territoire. Méthodologie et description de la couche d'information géographique (Land use. Methodology and overview of the GIS layer), Gouvernement du Québec, Ministère du Développement durable, de l'Environnement et de la Lutte contre les changements climatiques, Quebec City (Canada)., 2016.
- 815 Bourgault, M. A., Larocque, M. and Roy, M.: Simulation of aquifer-peatland-river interactions under climate change, *Hydrology Research*, 45(3), 425–440, <https://doi.org/10.2166/nh.2013.228>, 2014.
- Brunner, P., Bauer, P., Eugster, M. and Kinzelbach, W.: Using remote sensing to regionalize local precipitation recharge rates obtained from the Chloride Method, *Journal of Hydrology*, 294(4), 241–250, <https://doi.org/10.1016/j.jhydrol.2004.02.023>, 2004.

- 820 Campolongo, F., Cariboni, J. and Saltelli, A.: An effective screening design for sensitivity analysis of large models, *Environmental Modelling & Software*, 22(10), 1509–1518, <https://doi.org/10.1016/j.envsoft.2006.10.004>, 2007.
- Camporese, M., Paniconi, C., Putti, M. and Orlandini, S.: Surface-subsurface flow modeling with path-based runoff routing, boundary condition-based coupling, and assimilation of multisource observation data, *Water Resources Research*, 46(2), <https://doi.org/10.1029/2008WR007536>, 2010.
- 825 ~~Carrier, M. A., Lefebvre, R., Rivard, C., Parent, M., Ballard, J. M., Benoit, N., Vigneault, H., Beaudry, C., Malet, X., Laurencelle, M., Gosselin, J. S., Ladeveze, P., Thériault, R., Beaudin, I., Michaud, A., Pugin, A., Morin, R., Crow, H., Gloaguen, E., Bleser, J., Martin, A. and Lavoie, D.: Portrait des ressources en eau souterraine en Montérégie Est, Québec, Canada (Overview of groundwater resources of eastern Monteregrie, Quebec, Canada, Quebec Groundwater Knowledge Acquisition Program report), Rapport PACES, INRS, CGC, OBV Yamaska, IRDA, Ministère du Développement durable, de~~
- 830 ~~l'Environnement, de la Faune et des Pares, Quebec City (Canada)., 2013.~~
- CEHQ (Centre d'expertise hydrique du Québec): cehq.gouv.qc.ca website accessed in December 2019, 2019.
- ~~Chapman, T. G.: Comment on "Evaluation of automated techniques for base flow and recession analyses" by R. J. Nathan and T. A. McMahon, 27, 1783–1784, https://doi.org/10.1029/91WR01007, 1991.~~
- Chemingui, A., Sulis, M. and Paniconi, C.: An assessment of recharge estimates from stream and well data and from a coupled
- 835 surface-water/groundwater model for the des Anglais catchment, Quebec (Canada), *Hydrogeol J*, 23(8), 1731–1743, <https://doi.org/10.1007/s10040-015-1299-1>, 2015.
- ~~Chung, I. M., Kim, N. W., Lee, J. and Sophocleous, M.: Assessing distributed groundwater recharge rate using integrated surface water groundwater modelling: application to Mihocheon watershed, South Korea, Hydrogeol J, 18(5), 1253–1264, https://doi.org/10.1007/s10040-010-0593-1, 2010.~~
- 840 Crosbie, R. S., Davies, P., Harrington, N. and Lamontagne, S.: Ground truthing groundwater-recharge estimates derived from remotely sensed evapotranspiration: a case in South Australia, *Hydrogeol J*, 23(2), 335–350, <https://doi.org/10.1007/s10040-014-1200-7>, 2015.
- Croteau, A., Nastev, M. and Lefebvre, R.: Groundwater Recharge Assessment in the Chateauguay River Watershed, *Canadian Water Resources Journal*, 35(4), 451–468, <https://doi.org/10.4296/cwrj3504451>, 2010.
- 845 Cuthbert, M. O., Gleeson, T., Moosdorf, N., Befus, K. M., Schneider, A., Hartmann, J. and Lehner, B.: Global patterns and dynamics of climate–groundwater interactions, *Nature Climate Change*, 9(2), 137–141, <https://doi.org/10.1038/s41558-018-0386-4>, 2019.
- ~~Dierauer, J. R., Whitfield, P. H., and Allen, D. M.: Climate Controls on Runoff and Low Flows in Mountain Catchments of Western North America, 54, 7495–7510, https://doi.org/10.1029/2018WR023087, 2018.~~
- 850 ~~De Vries, J. J. and Simmers, I.: Groundwater recharge: an overview of processes and challenges, Hydrogeology Journal, 10(1), 5–17, https://doi.org/10.1007/s10040-001-0171-7, 2002.~~
- Doble, R. C. and Crosbie, R. S.: Review: Current and emerging methods for catchment-scale modelling of recharge and evapotranspiration from shallow groundwater, *Hydrogeol J*, 25(1), 3–23, <https://doi.org/10.1007/s10040-016-1470-3>, 2017.

- Döll, P. and Fiedler, K.: Global-scale modeling of groundwater recharge, *Hydrology and Earth System Sciences*, 12(3), 863–885, <https://doi.org/10.5194/hess-12-863-2008>, 2008.
- Döll, P., Kaspar, F. and Lehner, B.: A global hydrological model for deriving water availability indicators: model tuning and validation, *Journal of Hydrology*, 270(1), 105–134, [https://doi.org/10.1016/S0022-1694\(02\)00283-4](https://doi.org/10.1016/S0022-1694(02)00283-4), 2003.
- Douville, H., Ribes, A., Decharme, B., Alkama, R. and Sheffield, J.: Anthropogenic influence on multidecadal changes in reconstructed global evapotranspiration, *Nature Clim Change*, 3(1), 59–62, <https://doi.org/10.1038/nclimate1632>, 2013.
- 860 Dripps, W. R. and Bradbury, K. R.: A simple daily soil–water balance model for estimating the spatial and temporal distribution of groundwater recharge in temperate humid areas, *Hydrogeol J*, 15(3), 433–444, <https://doi.org/10.1007/s10040-007-0160-6>, 2007.
- Dubois, E., Larocque, M., Gagné, S. and Meyzonnat, G.: HydroBudget User Guide – Version 1.0, Université du Québec à Montréal, Montreal (Canada). <https://archipel.uqam.ca/14075/>, 2021.
- 865 Dyer, J. M.: A GIS-Based Water Balance Approach Using a LiDAR-Derived DEM Captures Fine-Scale Vegetation Patterns, *Remote Sensing*, 11(20), 2385, <https://doi.org/10.3390/rs11202385>, 2019.
- [Eckhardt, K.: How to construct recursive digital filters for baseflow separation, 19, 507–515, https://doi.org/10.1002/hyp.5675, 2005.](https://doi.org/10.1002/hyp.5675)
- Efstratiadis, A. and Koutsoyiannis, D.: Fitting Hydrological Models on Multiple Responses Using the Multiobjective Evolutionary Annealing-Simplex Approach, in *Practical Hydroinformatics: Computational Intelligence and Technological Developments in Water Applications*, edited by R. J. Abrahart, L. M. See, and D. P. Solomatine, pp. 259–273, Springer, Berlin, Heidelberg, https://doi.org/10.1007/978-3-540-79881-1_19, 2008.
- Foster, S. and Ait-Kadi, M.: Integrated Water Resources Management (IWRM): How does groundwater fit in?, *Hydrogeol J*, 20(3), 415–418, <https://doi.org/10.1007/s10040-012-0831-9>, 2012.
- 875 Fu, G., Crosbie, R. S., Barron, O., Charles, S. P., Dawes, W., Shi, X., Van Niel, T. and Li, C.: Attributing variations of temporal and spatial groundwater recharge: A statistical analysis of climatic and non-climatic factors, *Journal of Hydrology*, 568, 816–834, <https://doi.org/10.1016/j.jhydrol.2018.11.022>, 2019.
- Gagné, G., Beaudin, I., Leblanc, M., Drouin, A., Veilleux, G., Sylvain, J.-D. and Michaud, A.: Classement des séries de sols minéraux du Québec selon les groupes hydrologiques (Classification of Quebec mineral soil types by hydrologic groups, final report), Rapport final, IRDA, Quebec City (Canada). https://www.irda.qc.ca/assets/documents/Publications/documents/gagne-et-al-2013_rapport_classement_sols_mineraux_groupes_hydro.pdf, 2013.
- 880 Gagné, S., Larocque, M., Pinti, D. L., Saby, M., Meyzonnat, G. and Méjean, P.: Benefits and limitations of using isotope-derived groundwater travel times and major ion chemistry to validate a regional groundwater flow model: example from the Centre-du-Québec region, Canada, *Canadian Water Resources Journal / Revue canadienne des ressources hydriques*, 43(2), 195–213, <https://doi.org/10.1080/07011784.2017.1394801>, 2018.
- Gleeson, T., Marklund, L., Smith, L. and Manning, A. H.: Classifying the water table at regional to continental scales, *Geophysical Research Letters*, 38(5), 6, <https://doi.org/10.1029/2010GL046427>, 2011.

- Gonzales, A. L., Nonner, J., Heijkers, J. and Uhlenbrook, S.: Comparison of different base flow separation methods in a lowland catchment, *Hydrology and Earth System Sciences*, 13(11), 2055–2068, <https://doi.org/10.5194/hess-13-2055-2009>, 2009.
- ~~Grinevskiy, S. O., Pozdniakov, S. P., and Dedulina, E. A.: Regional-Scale Model Analysis of Climate Changes Impact on the Water Budget of the Critical Zone and Groundwater Recharge in the European Part of Russia, 13, 428, <https://doi.org/10.3390/w13040428>, 2021.~~
- ~~Green, T. R., Taniguchi, M., Kooi, H., Gurdak, J. J., Allen, D. M., Hiscock, K. M., Treidel, H. and Aureli, A.: Beneath the surface of global change: Impacts of climate change on groundwater, *Journal of Hydrology*, 405(3–4), 532–560, <https://doi.org/10.1016/j.jhydrol.2011.05.002>, 2011.~~
- Guay, C., Nastev, M., Paniconi, C. and Sulis, M.: Comparison of two modeling approaches for groundwater–surface water interactions, *Hydrol. Process.*, 27(16), 2258–2270, <https://doi.org/10.1002/hyp.9323>, 2013.
- Gupta, H. V., Kling, H., Yilmaz, K. K. and Martinez, G. F.: Decomposition of the mean squared error and NSE performance criteria: Implications for improving hydrological modelling, *Journal of Hydrology*, 377(1), 80–91, <https://doi.org/10.1016/j.jhydrol.2009.08.003>, 2009.
- Hayashi, M. and Farrow, C. R.: Watershed-scale response of groundwater recharge to inter-annual and inter-decadal variability in precipitation (Alberta, Canada), *Hydrogeology Journal*, 22(8), 1825–1839, <https://doi.org/10.1007/s10040-014-1176-3>, 2014.
- Healy, R. W. and Scanlon, B. R.: *Estimating Groundwater Recharge*, Cambridge University Press., United Kingdom., 2010.
- Henry, H. A. L.: Soil freeze–thaw cycle experiments: Trends, methodological weaknesses and suggested improvements, *Soil Biology and Biochemistry*, 39(5), 977–986, <https://doi.org/10.1016/j.soilbio.2006.11.017>, 2007.
- Hu, W., Wang, Y. Q., Li, H. J., Huang, M. B., Hou, M. T., Li, Z., She, D. L. and Si, B. C.: Dominant role of climate in determining spatio-temporal distribution of potential groundwater recharge at a regional scale, *Journal of Hydrology*, 578, 124042, <https://doi.org/10.1016/j.jhydrol.2019.124042>, 2019.
- Huet, M., Chesnaux, R., Boucher, M.-A. and Poirier, C.: Comparing various approaches for assessing groundwater recharge at a regional scale in the Canadian Shield, *Hydrological Sciences Journal*, 61(12), 2267–2283, <https://doi.org/10.1080/02626667.2015.1106544>, 2016.
- Hunt, R. J., Anderson, M. P. and Kelson, V. A.: Improving a Complex Finite-Difference Ground Water Flow Model Through the Use of an Analytic Element Screening Model, *Groundwater*, 36(6), 1011–1017, <https://doi.org/10.1111/j.1745-6584.1998.tb02108.x>, 1998.
- Institut de recherche et développement en agroenvironnement (IRDA): Feuilles pédologiques numériques (Numeric pedology maps), 2008.
- ~~Iooss, B. and Lemaître, P.: A Review on Global Sensitivity Analysis Methods, in *Uncertainty Management in Simulation-Optimization of Complex Systems: Algorithms and Applications*, edited by G. Dellino and C. Meloni, pp. 101–122, Springer US, Boston, MA, https://doi.org/10.1007/978-1-4899-7547-8_5, 2015.~~

- Jasechko, S., Birks, S. J., Gleeson, T., Wada, Y., Fawcett, P. J., Sharp, Z. D., McDonnell, J. J. and Welker, J. M.: The pronounced seasonality of global groundwater recharge, *Water Resour. Res.*, 50(11), 8845–8867, <https://doi.org/10.1002/2014WR015809>, 2014.
- 925 Jasechko, S., Wassenaar, L. I. and Mayer, B.: Isotopic evidence for widespread cold-season-biased groundwater recharge and young streamflow across central Canada, *Hydrological Processes*, 31(12), 2196–2209, <https://doi.org/10.1002/hyp.11175>, 2017.
- ~~Kløve, B., Kvitsand, H. M. L., Pitkänen, T., Gunnarsdottir, M. J., Gaut, S., Gardarsson, S. M., Rossi, P. M., and Miettinen, I.: Overview of groundwater sources and water-supply systems, and associated microbial pollution, in Finland, Norway and~~
- 930 ~~Iceland, *Hydrogeol J.*, 25, 1033–1044, <https://doi.org/10.1007/s10040-017-1552-x>, 2017.~~
- ~~Kløve, B., Ala-Aho, P., Bertrand, G., Gurdak, J. J., Kupfersberger, H., Kværner, J., Muotka, T., Mykrä, H., Preda, E., Rossi, P., Uvo, C. B., Velasco, E. and Pulido-Velazquez, M.: Climate change impacts on groundwater and dependent ecosystems, *Journal of Hydrology*, 518, 250–266, <https://doi.org/10.1016/j.jhydrol.2013.06.037>, 2014.~~
- Koirala, S., Jung, M., Reichstein, M., Graaf, I. E. M. de, Camps-Valls, G., Ichii, K., Papale, D., Ráduly, B., Schwalm, C. R.,
- 935 Tramontana, G. and Carvalhais, N.: Global distribution of groundwater-vegetation spatial covariation, *Geophysical Research Letters*, 44(9), 4134–4142, <https://doi.org/10.1002/2017GL072885>, 2017.
- ~~Kurylyk, B. L. and Macquarrie, K. T. B.: The uncertainty associated with estimating future groundwater recharge: A summary of recent research and an example from a small unconfined aquifer in a northern humid continental climate, *Journal of hydrology*, 492, 244–253, 2013.~~
- 940 ~~Kong, Y. and Wang, C.-H.: Responses and changes in the permafrost and snow water equivalent in the Northern Hemisphere under a scenario of 1.5 °C warming, 8, 235–244, <https://doi.org/10.1016/j.accre.2017.07.002>, 2017.~~
- Ladson, A. R., Brown, R., Neal, B. and Nathan, R.: A Standard Approach to Baseflow Separation Using The Lyne and Hollick Filter, *Australasian Journal of Water Resources*, 17(1), 25–34, <https://doi.org/10.7158/13241583.2013.11465417>, 2013.
- Lal, M., Mishra, S. K. and Pandey, A.: Physical verification of the effect of land features and antecedent moisture on runoff
- 945 curve number, *CATENA*, 133, 318–327, <https://doi.org/10.1016/j.catena.2015.06.001>, 2015.
- Larocque, M. and Pharand, M.-C.: Dynamique de l'écoulement souterrain et vulnérabilité d'un aquifère du piémont appalachien (Québec, Canada) (Groundwater flow dynamics and aquifer vulnerability in the Appalachian foothills (Quebec, Canada)), *rseau*, 23(1), 73–88, <https://doi.org/10.7202/038926ar>, 2010.
- ~~Larocque, M., Gagné, S., Tremblay, L. and Meyzonnat, G.: Projet de connaissances des eaux souterraines du bassin versant de la rivière Bécancour et de la MRC de Bécancour – Rapport final (Quebec groundwater knowledge acquisition program of the Bécancour River watershed and the Bécancour municipality, final report), Rapport PACES, Université du Québec à Montréal – Département des sciences de la Terre et de l'atmosphère, Ministère du Développement durable, de l'Environnement, de la Faune et des Pares, Quebec City (Canada)., 2013.~~
- ~~Larocque, M., Meyzonnat, G., Ouellet, M. A., Graveline, M. H., Gagne, S., Barneteche, D. and Dorner, S.: Projet de~~
- 955 ~~connaissance des eaux souterraines de la zone de Vaudreuil Soulanges – Rapport final (Quebec groundwater knowledge~~

- acquisition program of Vaudreuil Soulanges area, final report), Rapport PACES, Université du Québec à Montréal—
Département des sciences de la Terre et de l'atmosphère, Ministère du Développement durable, de l'Environnement et de la
Lutte contre les Changements Climatiques, Quebec City (Canada)., 2015a.
- 960 Larocque, M., Gagné, S., Barnette, D., Meyzonnat, G., Graveline, M. H. and Ouellet, M. A.: ~~Projet de connaissance des eaux
souterraines du bassin versant de la zone Nicolet et de la partie basse de la zone Saint François—Rapport final (Quebec
groundwater knowledge acquisition program of the Nicolet area and the lower Saint François area, final report), Rapport
PACES, Université du Québec à Montréal—Département des sciences de la Terre et de l'atmosphère, Ministère du
Développement durable, de l'Environnement, de la Faune et des Pares, Quebec City (Canada)., 2015b.~~
- Larocque, M., Cloutier, V., Levison, J. and Rosa, E.: Results from the Quebec Groundwater Knowledge Acquisition Program,
965 Canadian Water Resources Journal / Revue canadienne des ressources hydriques, 43(2), 69–74,
<https://doi.org/10.1080/07011784.2018.1472040>, 2018.
- Larocque, M., Levison, J., Martin, A. and Chaumont, D.: A review of simulated climate change impacts on groundwater
resources in Eastern Canada, Canadian Water Resources Journal / Revue canadienne des ressources hydriques, 44(1), 22–41,
<https://doi.org/10.1080/07011784.2018.1503066>, 2019.
- 970 Lavigne, M.-A., Nastev, M. and Lefebvre, R.: Numerical Simulation of Groundwater Flow in the Chateauguay River Aquifers,
Canadian Water Resources Journal / Revue canadienne des ressources hydriques, 35(4), 469–486,
<https://doi.org/10.4296/cwrj3504469>, 2010.
- ~~Lefebvre, R., Ballard, J. M., Carrier, M. A., Vigneault, H., Beaudry, C., Bertholt, L., Légaré Couture, G., Parent, M.,
Laurencelle, M., Malet, X., Therrien, A., Michaud, A., Desjardins, J., Drouin, A., Cloutier, M. H., Grenier, J., Bourgault, M.
975 A., Larocque, M., Pellerin, S., Graveline, M. H., Janos, D. and Molson, J.: Portrait des ressources en eau souterraine en
Chaudière Appalaches, Québec, Canada—Rapport final (version révisée) (Overview of Chaudière—Appalachians groundwater
resources, Quebec groundwater knowledge acquisition program, final report, corrected version), Rapport PACES, Institut
National de la Recherche Scientifique (INRS), Institut de Recherche et Développement en Agroenvironnement (IRDA),
Regroupement des organismes de bassins versants de la Chaudière Appalaches, Ministère du Développement durable, de
980 l'Environnement et de la Lutte contre les Changements Climatiques, Quebec City (Canada)., 2015.~~
- Levison, J., Larocque, M., Fournier, V., Gagné, S., Pellerin, S. and Ouellet, M.-A.: Dynamics of a headwater system and
peatland under current conditions and with climate change, Hydrol. Process., 28(17), 4808–4822,
<https://doi.org/10.1002/hyp.9978>, 2014.
- Levison, J., Larocque, M., Ouellet, M.-A., Ferland, O. and Poirier, C.: Long-term trends in groundwater recharge and discharge
985 in a fractured bedrock aquifer – past and future conditions, Canadian Water Resources Journal / Revue canadienne des
ressources hydriques, 41(4), 500–514, <https://doi.org/10.1080/07011784.2015.1037795>, 2016.
- Lyne, V. and Hollick, M.: Stochastic time-variable rainfall-runoff modelling, vol. 1979, pp. 89–93, Institute of Engineers
Australia National Conference, Perth, 1979.

- Malo, M.: La diversité géologique du Québec (Geological diversity of Quebec), *Géologues - Revue officielle de la Société Géologique de France*, (198), 4–6, 2018.
- Massmann, C.: Modelling Snowmelt in Ungauged Catchments, *Water*, 11(2), 301, <https://doi.org/10.3390/w11020301>, 2019.
- McCormack, R. and Therrien, R.: Chapter 13-St. Lawrence Lowlands region, in *Canada's groundwater resources*, pp. 500–539, Markham, ON, 2014.
- MELCC (Ministère de l'Environnement et de la Lutte contre les changements climatiques - Quebec Ministry of Environment and Climate Change): www.environnement.gouv.qc.ca/eau/piezo/ website accessed in December 2020., 2020.
- ~~Meyzonnat, G.: Estimation de la vulnérabilité de l'aquifère au roc de la zone Bécancour (Centre du Québec) (Estimate of the Bécancour (Central Quebec) bedrock aquifer vulnerability), Master thesis, Université du Québec à Montréal (UQAM), 2012.~~
- Meyzonnat, G., Barbecot, F., Alazard, M. and McCormack, R.: La richesse de la ressource en eau du Québec (Richness of Quebec's water ressource), *Géologues - Revue officielle de la Société Géologique de France*, (198), 69–75, 2018.
- Miliani, F., Ravazzani, G. and Mancini, M.: Adaptation of Precipitation Index for the Estimation of Antecedent Moisture Condition in Large Mountainous Basins, *Journal of Hydrologic Engineering*, 16(3), 218–227, [https://doi.org/10.1061/\(ASCE\)HE.1943-5584.0000307](https://doi.org/10.1061/(ASCE)HE.1943-5584.0000307), 2011.
- Monfet, J.: Evaluation du coefficient de ruissellement à l'aide de la méthode SCS modifiée (Evaluation of the runoff coefficient computation with the modified SCS method), *Bibliothèque nationale du Québec*, Quebec City (Canada)., 1979.
- Monteil, C., Zaoui, F., Moine, N. L. and Hendrickx, F.: Multi-objective calibration by combination of stochastic and gradient-like parameter generation rules – the caRamel algorithm, *Hydrology and Earth System Sciences*, 24(6), 3189–3209, <https://doi.org/10.5194/hess-24-3189-2020>, 2020.
- Morris, M. D.: Factorial Sampling Plans for Preliminary Computational Experiments, *Technometrics*, 33(2), 161–174, <https://doi.org/10.2307/1269043>, 1991.
- Nastev, M., Morin, R., Godin, R. and Rouleau, A.: Developing conceptual hydrogeological model for Potsdam sandstones in southwestern Quebec, Canada, *Hydrogeology Journal*, 16(2), 373–388, <https://doi.org/10.1007/s10040-007-0267-9>, 2008.
- Neitsch, S. L., Arnold, J. G., Kiniry, J. R., Williams, J. R. and King, K. W.: *Soil Water Assessment Tool - Theoretical documentation - Version 2000*, Texas Water Resources Institute, College Station, Texas., 2002.
- ~~Nemri, S. and Kinnard, C.: Comparing calibration strategies of a conceptual snow hydrology model and their impact on model performance and parameter identifiability, *Journal of Hydrology*, 582, 124474, <https://doi.org/10.1016/j.jhydrol.2019.124474>, 2020.~~
- Nielsen, M. G. and Westenbroek, S. M.: Groundwater recharge estimates for Maine using a Soil-Water-Balance model—25-year average, range, and uncertainty, 1991 to 2015, *USGS Numbered Series*, U.S. Geological Survey, Reston, VA. <http://pubs.er.usgs.gov/publication/sir20195125>, 2019.
- ~~Nygren, M., Giese, M., Kløve, B., Haaf, E., Rossi, P. M., and Barthel, R.: Changes in seasonality of groundwater level fluctuations in a temperate-cold climate transition zone, *Journal of Hydrology* X, 8, 100062, <https://doi.org/10.1016/j.hydroa.2020.100062>, 2020.~~

- Ogden, F. L., Hawkins, R. P., Walter, M. T. and Goodrich, D. C.: Comment on “Beyond the SCS-CN method: A theoretical framework for spatially lumped rainfall-runoff response” by M. S. Bartlett et al., *Water Resources Research*, 53(7), 6345–6350, <https://doi.org/10.1002/2016WR020176>, 2017.
- Okkonen, J. and Kløve, B.: A sequential modelling approach to assess groundwater–surface water resources in a snow dominated region of Finland, *Journal of Hydrology*, 411, 91–107, <https://doi.org/10.1016/j.jhydrol.2011.09.038>, 2011.
- Oudin, L., Hervieu, F., Michel, C., Perrin, C., Andréassian, V., Anctil, F. and Loumagne, C.: Which potential evapotranspiration input for a lumped rainfall–runoff model? Part 2—Towards a simple and efficient potential evapotranspiration model for rainfall–runoff modelling, *Journal of Hydrology*, 303(1), 290–306, <https://doi.org/10.1016/j.jhydrol.2004.08.026>, 2005.
- Partington, D., Brunner, P., Simmons, C. T., Werner, A. D., Therrien, R., Maier, H. R. and Dandy, G. C.: Evaluation of outputs from automated baseflow separation methods against simulated baseflow from a physically based, surface water-groundwater flow model, *Journal of Hydrology*, 458–459, 28–39, <https://doi.org/10.1016/j.jhydrol.2012.06.029>, 2012.
- Portoghese, I., Uricchio, V. and Vurro, M.: A GIS tool for hydrogeological water balance evaluation on a regional scale in semi-arid environments, *Computers & Geosciences*, 31(1), 15–27, <https://doi.org/10.1016/j.cageo.2004.09.001>, 2005.
- Reed, P. and Devireddy, V.: Groundwater monitoring design: a case study combining epsilon dominance archiving and automatic parameterization for the nsga-ii, in *Applications of Multi-Objective Evolutionary Algorithms*, vol. Volume 1, pp. 79–100, WORLD SCIENTIFIC, https://doi.org/10.1142/9789812567796_0004, , 2004.
- Rivard, C., Vigneault, H., Piggott, A. R., Larocque, M. and Anctil, F.: Groundwater recharge trends in Canada, *Canadian Journal of Earth Sciences*, 46(11), 841–854, <https://doi.org/10.1139/E09-056>, 2009.
- Rivard, C., Lefebvre, R. and Paradis, D.: Regional recharge estimation using multiple methods: An application in the Annapolis Valley, Nova Scotia (Canada), *Environmental earth sciences*, 71, 1389–1408, <https://doi.org/10.1007/s12665-013-2545-2>, 2013.
- Rivera, A.: Canada’s groundwater resources, Fitzhenry & Whiteside, Markham, ON, 803 pp., 2014.
- ~~Rivard, C., Parent, M., Lavoie, D., Cousineau, P., MacQuarrie, K. T. B., Somers, G., Lamontagne, C., Drage, J. and Daigle, A.: Chapter 14 Appalachians, in Canada’s groundwater resources, pp. 540–595, Markham, ON, 2014.~~
- Ross, C. W., Prihodko, L., Anchang, J., Kumar, S., Ji, W. and Hanan, N. P.: HYSOGs250m, global gridded hydrologic soil groups for curve-number-based runoff modeling, *Sci Data*, 5(1), 1–9, <https://doi.org/10.1038/sdata.2018.91>, 2018.
- Saby, M., Larocque, M., Pinti, D. L., Barbecot, F., Sano, Y. and Castro, M. C.: Linking groundwater quality to residence times and regional geology in the St. Lawrence Lowlands, southern Quebec, Canada, *Applied Geochemistry*, 65(Supplement C), 1–13, <https://doi.org/10.1016/j.apgeochem.2015.10.011>, 2016.
- Scanlon, B. R., Healy, R. W. and Cook, P. G.: Choosing appropriate techniques for quantifying groundwater recharge, *Hydrogeology Journal*, 10(1), 18–39, <https://doi.org/10.1007/s10040-001-0176-2>, 2002.

- 1055 Schroeder, P. R., Aziz, N. M., Lloyd, C. M. and Zappi, P. A.: The Hydrologic Evaluation of Landfill Performance (HELP) model: User's guide for version 3, U.S. Environmental Protection Agency Office of Research and Development, Washington, DC., 1994.
- Simunek, J., Van Genuchten, M. T. and Sejna, M.: The HYDRUS-1D software package for simulating the one-dimensional movement of water, heat, and multiple solutes in variably-saturated media, Research report, University of California, Riverside, California. <https://www.ars.usda.gov/research/publications/publication/?seqNo115=189969>, 2009.
- 1060 ~~Talbot Poulin, M. C., Comeau, G., Tremblay, Y., Therrien, R., Nadeau, M. M., Lemieux, J. M., Molson, J., Fortier, R., Lamarche, L., Donati Daoust, F. and Bérubé, S.: Projet d'acquisition de connaissances sur les eaux souterraines du territoire de la Communauté métropolitaine de Québec (PACES CMQ) — Rapport final (Quebec groundwater knowledge acquisition program for the Quebec City metropolitan community, final report), Rapport PACES, Université Laval — Département de géologie et de génie géologique, Ministère du Développement durable, de l'Environnement et de la Lutte contre les changements climatiques, Quebec City (Canada)., 2013.~~
- 1065 ~~Thériault, R. and Malo, M.: La plate-forme du Saint-Laurent et les Appalaches (St. Lawrence Platform and Appalachians), Géologues - Revue officielle de la Société Géologique de France, 198, 24–29, 2018.~~
- ~~Toews, M. W. and Allen, D. M.: Evaluating different GCMs for predicting spatial recharge in an irrigated arid region, Journal of Hydrology, 374(3), 265–281, <https://doi.org/10.1016/j.jhydrol.2009.06.022>, 2009.~~
- 1070 ~~USDA-NRCS: Chapter 9 Hydrologic Soil-Cover Complexes, United State Department of Agriculture-Natural Ressources Conservation Service. https://www.nrcs.usda.gov/Internet/FSE_DOCUMENTS/stelprdb1043088.pdf, 2004.~~
- ~~USDA-NRCS: Chapter 7 Hydrologic Soil Groups, 2009th ed., United State Department of Agriculture-Natural Ressources Conservation Service. <https://directives.sc.egov.usda.gov/OpenNonWebContent.aspx?content=22526.wba>, 2007.~~
- 1075 ~~Velázquez, J. A., Schmid, J., Ricard, S., Muerth, M. J., Gauvin St Denis, B., Minville, M., Chaumont, D., Caya, D., Ludwig, R. and Turcotte, R.: An ensemble approach to assess hydrological models' contribution to uncertainties in the analysis of climate change impact on water resources, Hydrology and Earth System Sciences, 17(2), 565–578, <https://doi.org/10.5194/hess-17-565-2013>, 2013.~~
- ~~Vincent, L. A., Zhang, X., Mekis, É., Wan, H., and Bush, E. J.: Changes in Canada's Climate: Trends in Indices Based on Daily Temperature and Precipitation Data, 56, 332–349, <https://doi.org/10.1080/07055900.2018.1514579>, 2018.~~
- 1080 ~~Wada, Y., Beek, L. P. H. van, Kempen, C. M. van, Reckman, J. W. T. M., Vasak, S. and Bierkens, M. F. P.: Global depletion of groundwater resources, Geophysical Research Letters, 37(20), 5, <https://doi.org/10.1029/2010GL044571>, 2010.~~
- ~~Westenbroek, S. M., Kelson, V. A., Dripps, W. R., Hunt, R. J. and Bradbury, K. R.: SWB — A Modified Thornthwaite-Mather Soil Water Balance Code for Estimating Groundwater Recharge, in Techniques and Methods, vol. Book 6, p. 60, U.S. Geological Survey, Reston, Virginia, <https://pubs.usgs.gov/tm/tm6-a31/>, 2010.~~
- 1085 ~~Xu, X. and Liu, W.: The global distribution of Earth's critical zone and its controlling factors, Geophysical Research Letters, 44(7), 3201–3208, <https://doi.org/10.1002/2017GL072760>, 2017.~~

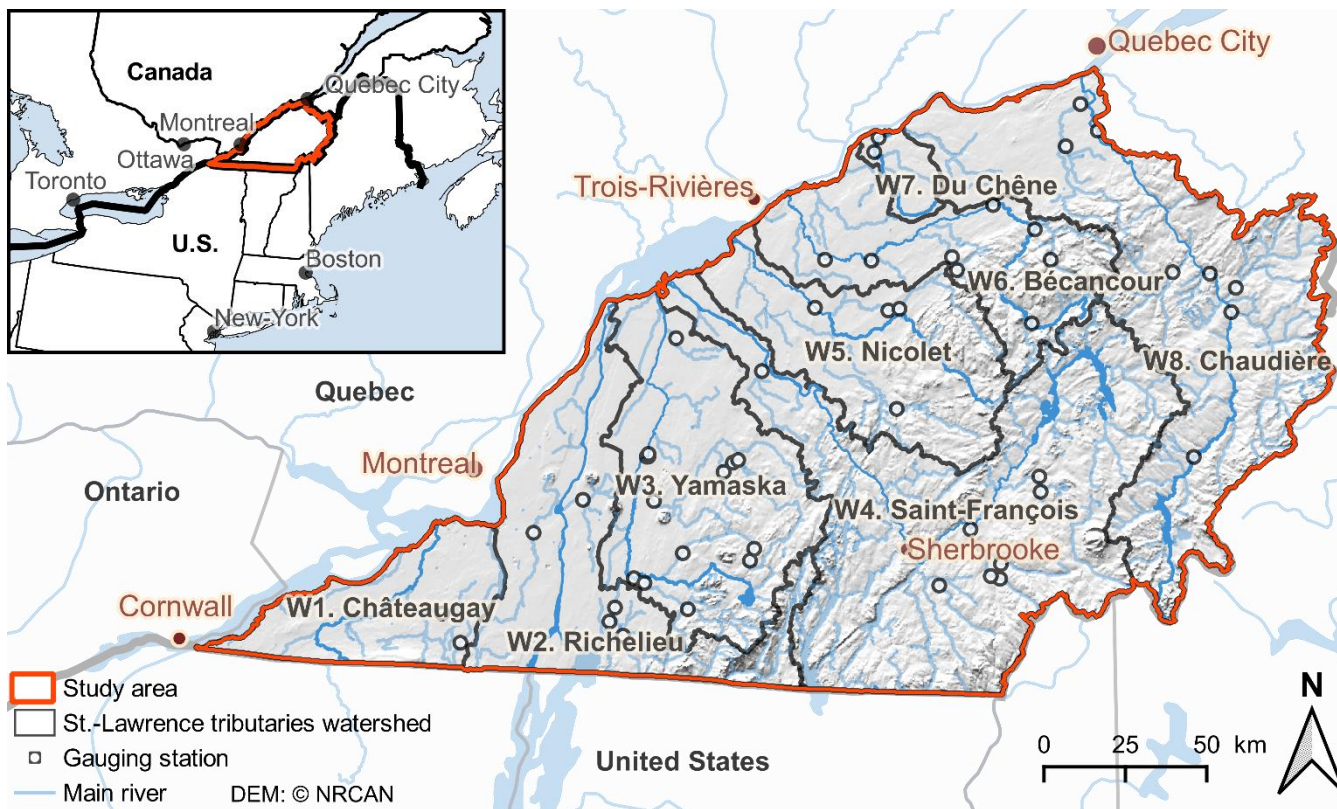
Zhang, J., Zhang, Y., Song, J. and Cheng, L.: Evaluating relative merits of four baseflow separation methods in Eastern Australia, *Journal of Hydrology*, 549, 252–263, <https://doi.org/10.1016/j.jhydrol.2017.04.004>, 2017.

~~Zhou, Y.: A critical review of groundwater budget myth, safe yield and sustainability, *Journal of Hydrology*, 370(1), 207–213, <https://doi.org/10.1016/j.jhydrol.2009.03.009>, 2009.~~

Zomlot, Z., Verbeiren, B., Huysmans, M. and Batelaan, O.: Spatial distribution of groundwater recharge and base flow: Assessment of controlling factors, *Journal of Hydrology: Regional Studies*, 4, 349–368, <https://doi.org/10.1016/j.ejrh.2015.07.005>, 2015.

11 Figures and tables





1100 **Fig. 1: Location of the study area and watersheds.**

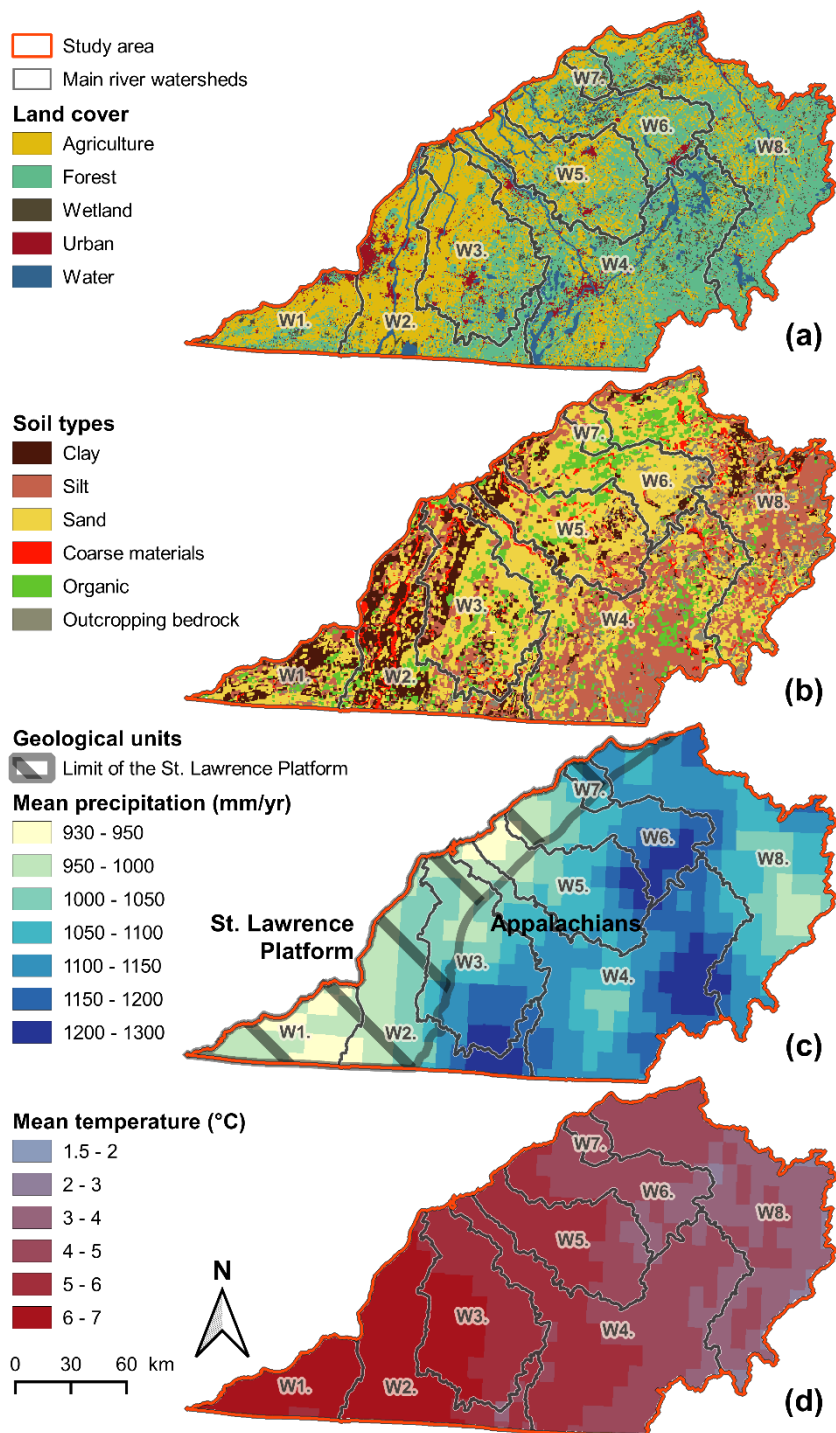


Fig. 2: (a) Land cover (reclassified from Bissonnette et al., 2016), (b) soil types (IRDA, 2008), (c) mean precipitation (1961-2017), as well as the areas of the St. Lawrence Platform (hatched) and the Appalachians, and (d) mean temperature (1961-2017) (Bergeron, 2016).

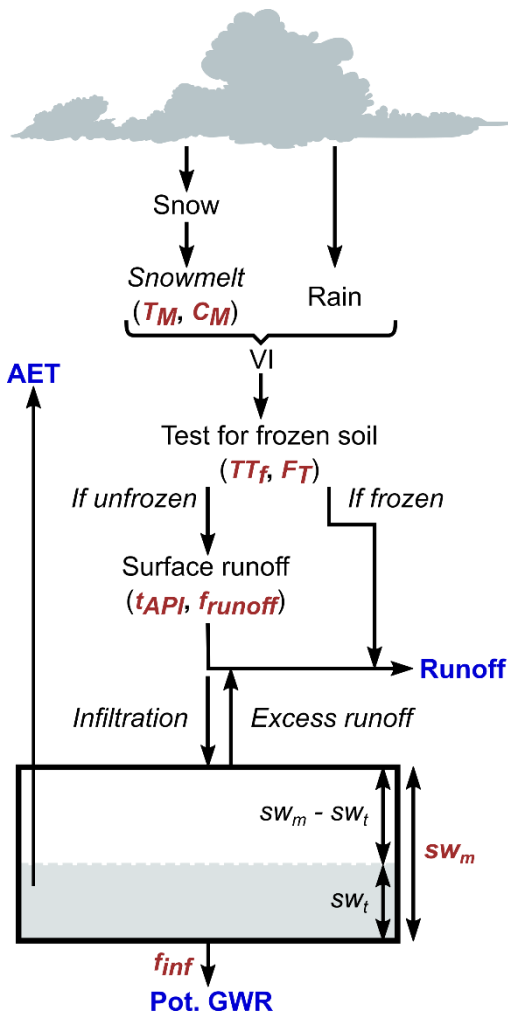


Fig. 3: HydroBudget processes, including the eight calibrated parameters in red.

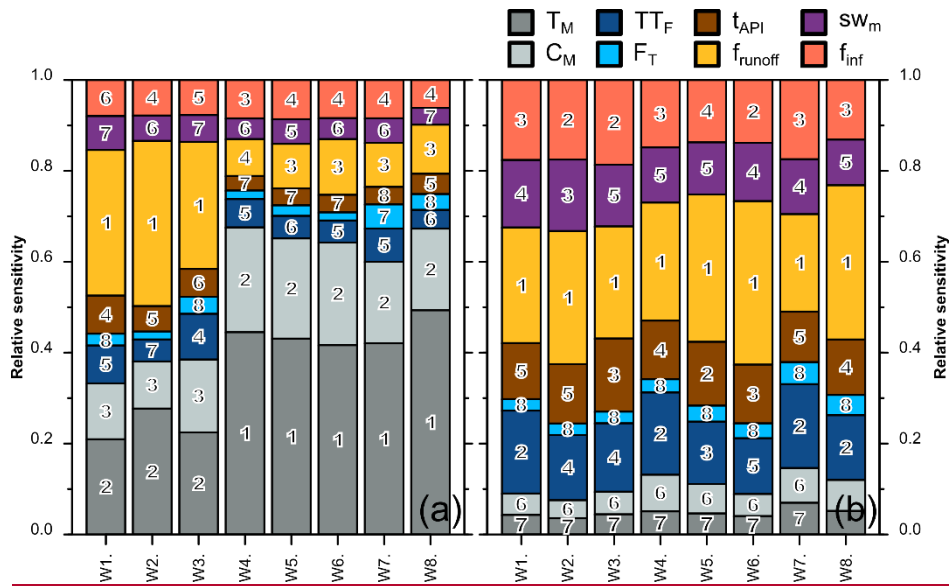


Fig. 4: Relative sensitivity of the eight model parameters on the simulated river flow rates (a) and on the simulated potential groundwater recharge (b) for the eight groups of gauging stations. The relative parameter ranking is reported in the bars from the most sensitive, 1, to the least, 8.

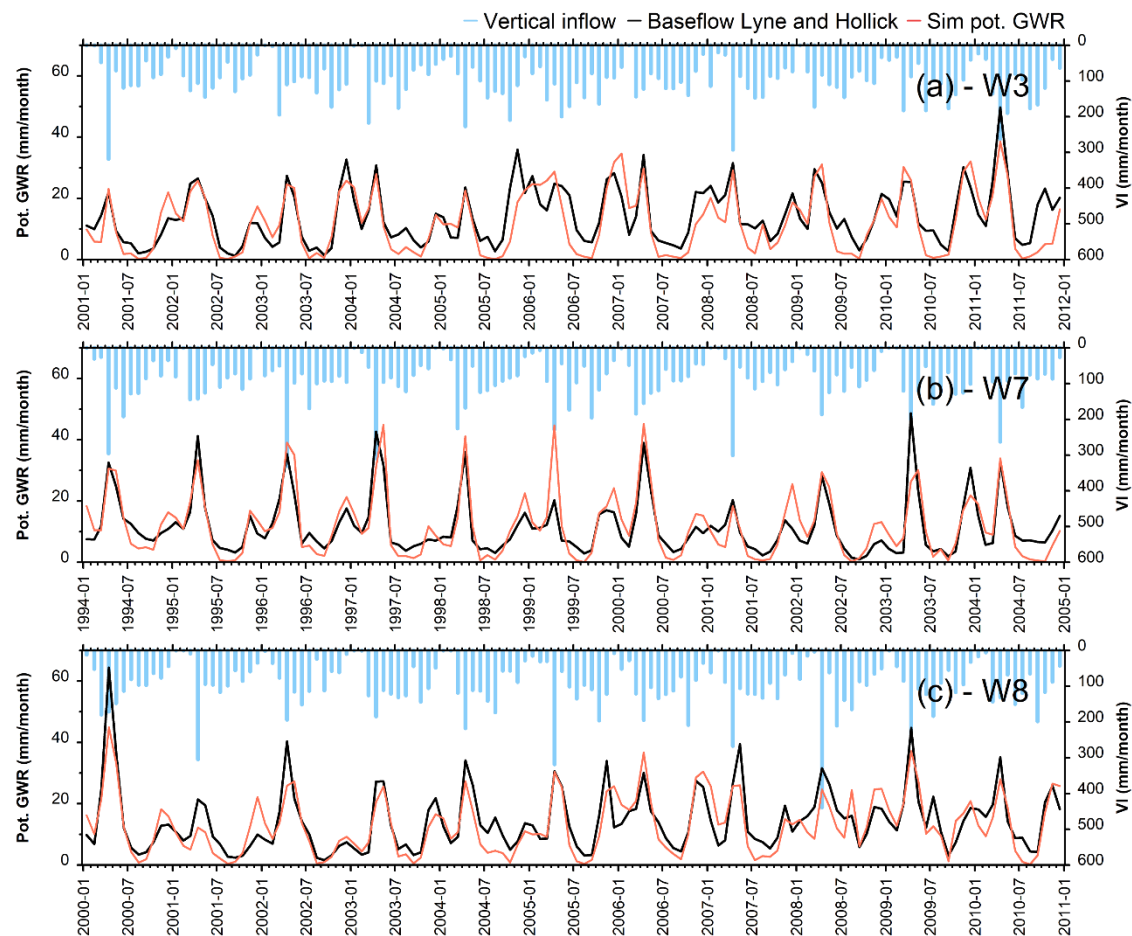
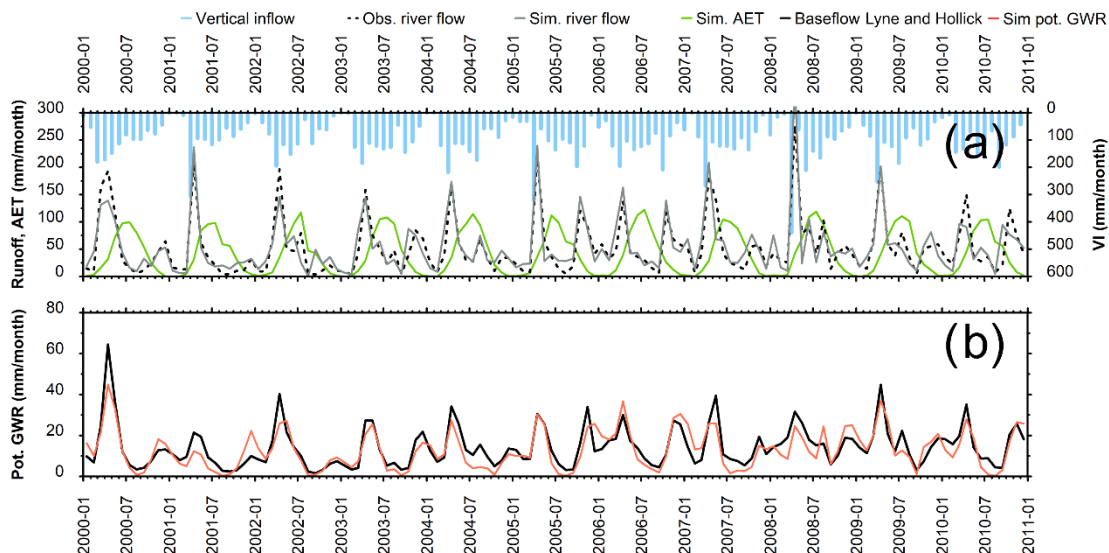


Fig. 4: Example of a simulated water budget for the 2000-2010 period (validation period) for the downgradient station on the Chaudière River (W8) with (a) vertical inflow (VI), observed and simulated river flow rates, and simulated actual evapotranspiration (AET), and (b) baseflow (Lyne and Hollick, 1979) and simulated potential GWR.

Fig. 5: Examples of simulated monthly potential groundwater recharge (GWR) and baseflows estimated with the Lyne and Hollick (1979) filter for the downstream gauging stations of W3 (a), W7 (b), and W8 (c).

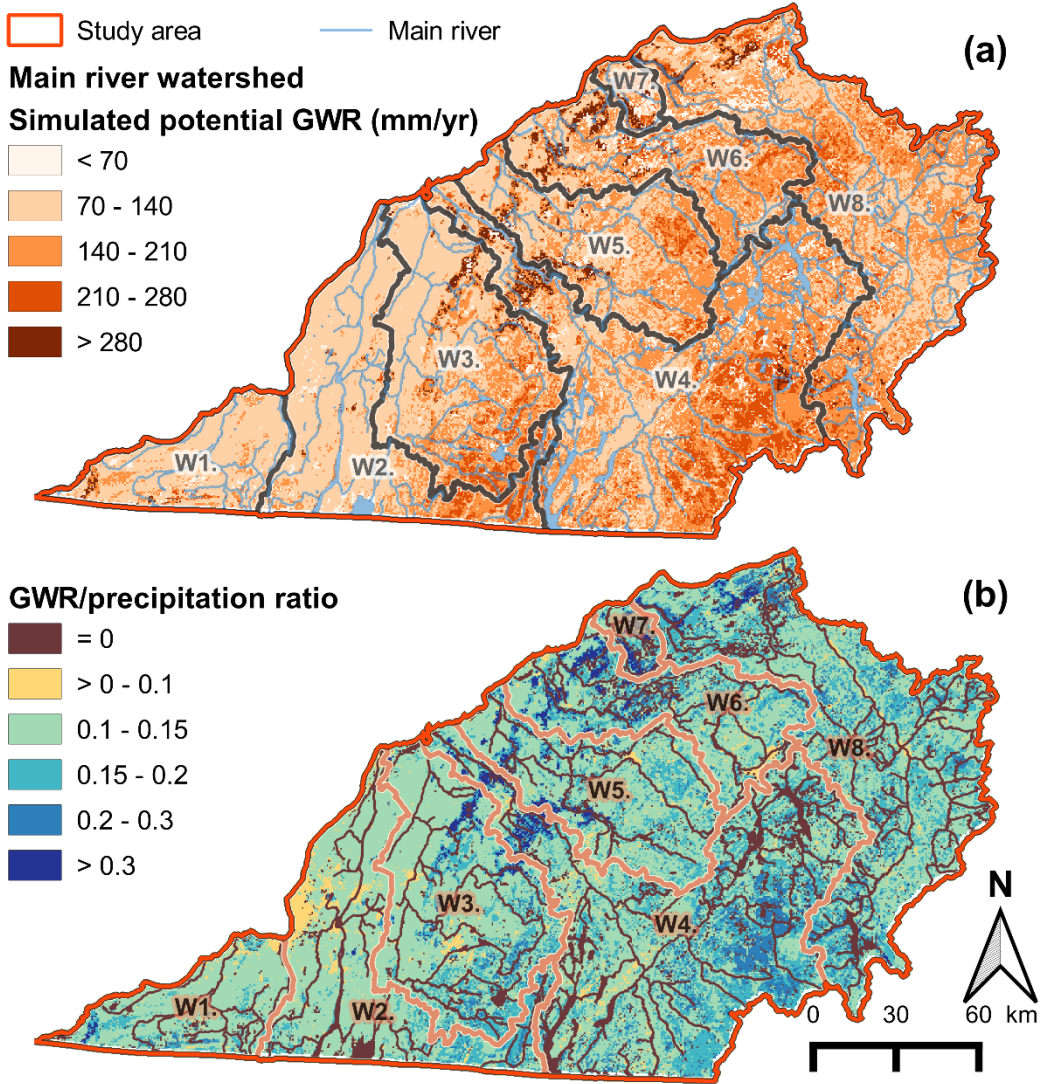


Fig. 6: (a) Average potential groundwater recharge (GWR) simulated using the HydroBudget model for the study area between 1961 and 2017 and (b) GWR/precipitation ratio for the same period.

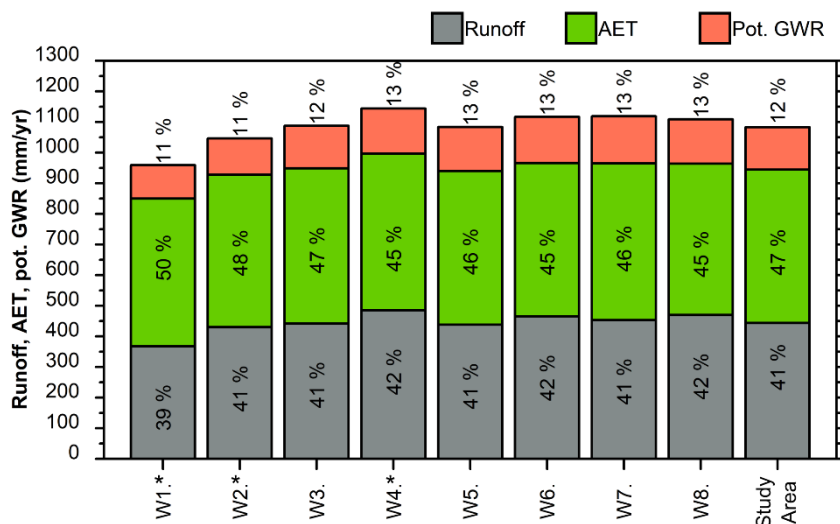


Fig. 6: Average proportions of annual runoff, actual evapotranspiration (AET), and potential groundwater recharge (GWR) for the eight watersheds (W1 to W8) and mean water budget for the study area between 1961 and 2017. Watersheds with * are partially located in the USA (values are for the Quebec part only).

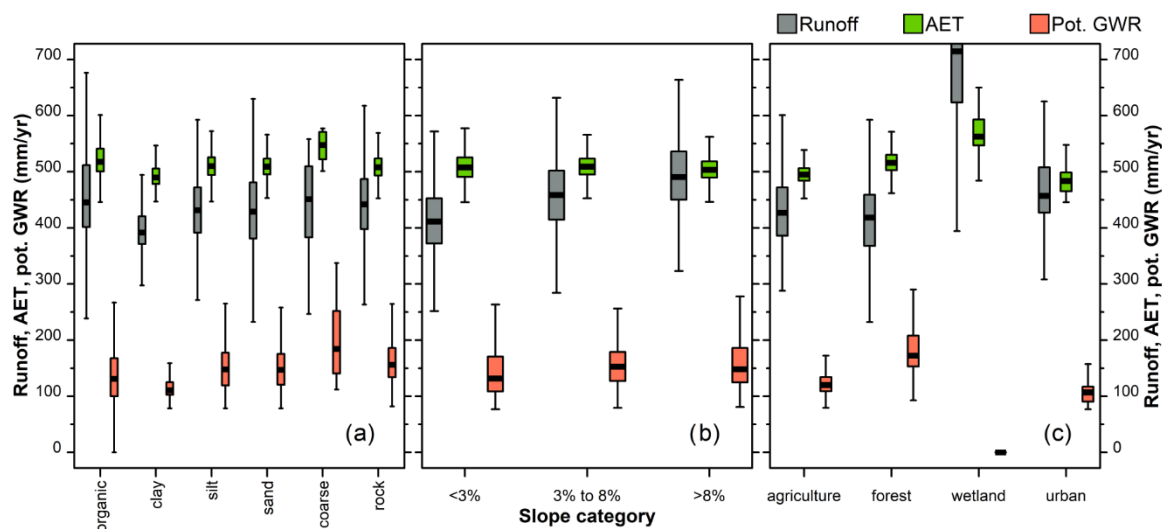
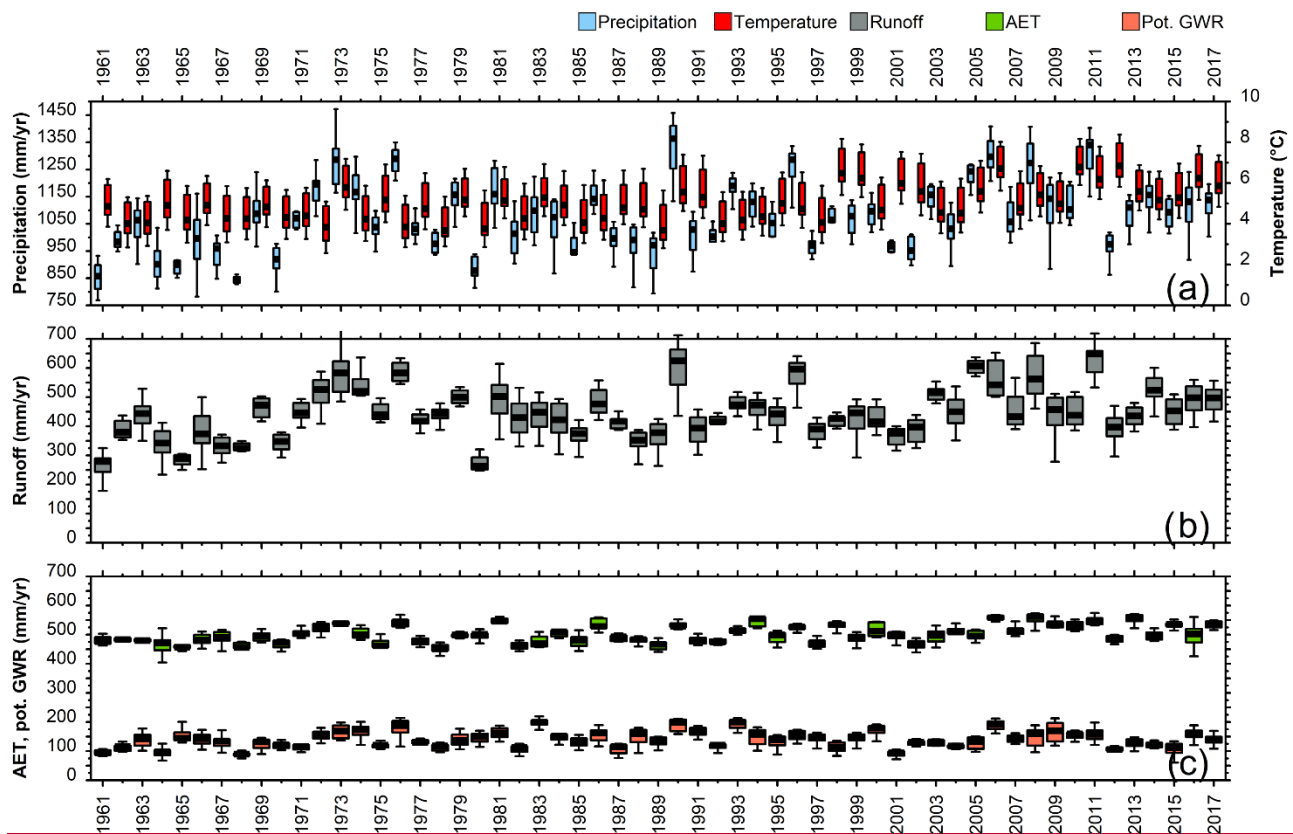


Fig. 7: Median, 25th and 75th percentiles, minimum, and maximum values for annual runoff, actual evapotranspiration (AET), and potential groundwater recharge (GWR) throughout the study area between 1961 and 2017, classified as a function of (a) soil type, (b) slope, and (c) land cover.



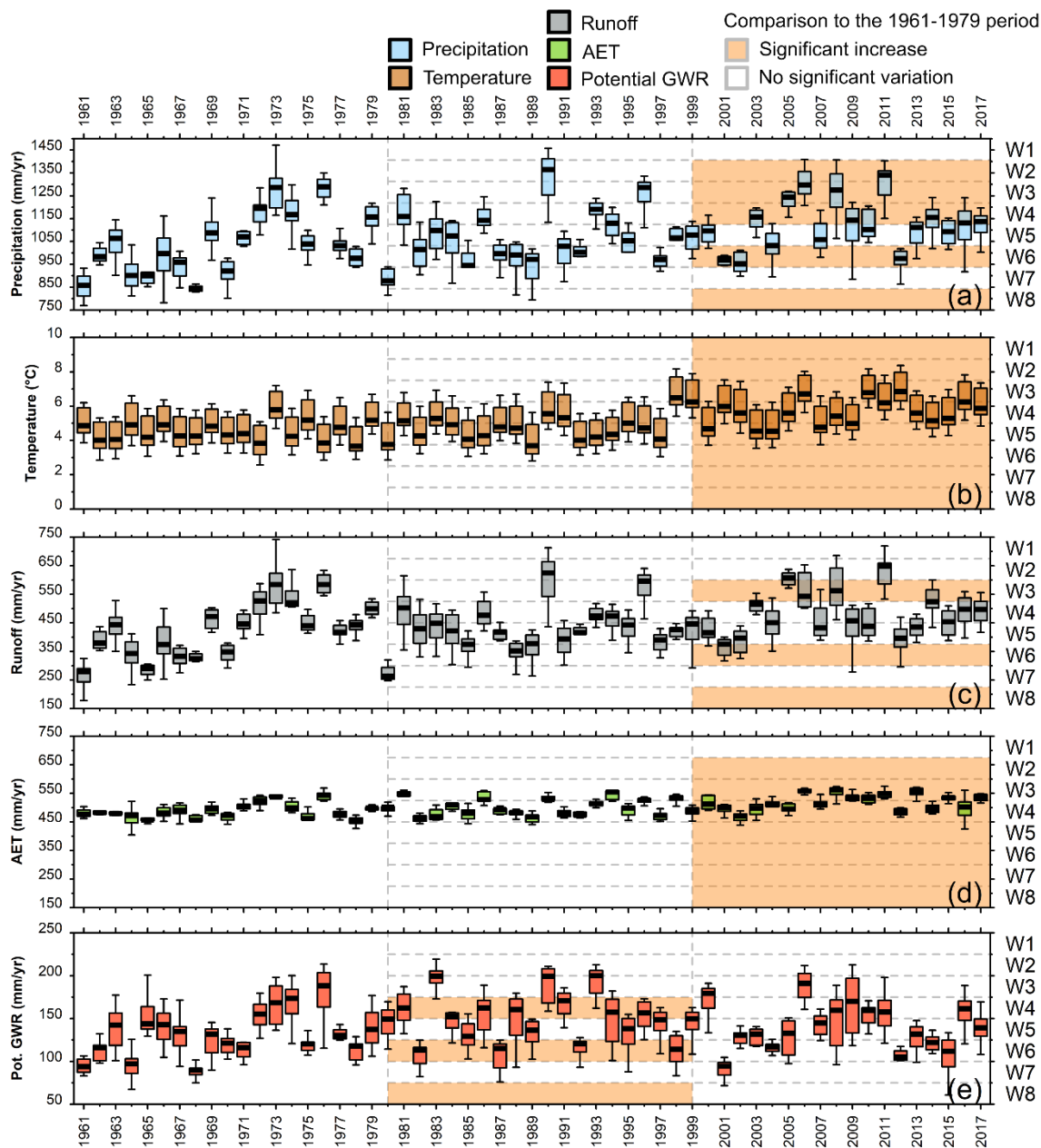


Fig. 8: Median, 25th and 75th percentiles, minimum, and maximum fluxes of (a) temperature and precipitation, (b) simulated runoff, and (c) simulated actual evapotranspiration (AET) and potential groundwater recharge (GWR) between 1961 and 2017 for the eight watersheds.

Fig. 8: Median, 25th and 75th percentiles, and minimum and maximum fluxes of (a) temperature, (b) precipitation, (c) simulated runoff, (d) simulated actual evapotranspiration (AET), (e) simulated potential groundwater recharge (GWR), and significant changes (Tukey test, $p < 0.05$) between the 1961-1979 period and the 1980-1998 and 1999-2017 periods for the eight watersheds (orange colour).

Table 1: Characteristics of the studied watersheds.

	Elevation (m asl)			Area (km ²)	Land cover (% of total area)					Temp. (°C)	Precip. (mm/yr)
	Median	Min	Max		Agriculture	Forest	Wetland	Urban	Water		
W1. Châteaugay*	51	0	330	2,219	62	26	5	6	1	6.5	952
W2. Richelieu*	40	7	865	4,414	55	28	3	11	3	6.3	1,039
W3. Yamaska	80	6	757	4,792	57	34	3	5	1	5.9	1,080
W4. Saint-François*	312	4	1,044	9,068	23	62	7	4	4	4.8	1,123
W5. Nicolet	150	2	585	3,591	48	44	4	3	1	5.1	1,076
W6. Bécancour	140	4	652	3,380	36	53	7	3	1	4.5	1,103
W7. Du Chêne	90	15	130	461	36	45	14	3	2	4.5	1,092
W8. Chaudière	340	10	1,108	7,879	23	66	7	3	1	3.9	1,092

*Part of the watershed is located in the USA - the presented values are for the Quebec part only

Table 2: Description of the eight HydroBudget parameters and sensitivity analysis results for W6.

		Parameter	Value range from literature	Sensitivity (W6)			
				KGE _{qtot}		KGE _{qbase}	
				μ*	σ	μ*	σ
Degree-days snowmelt model	Melting temperature – T_M (°C)	Air temperature treshold for snowmelt	-2 to 2 (Massmann, 2019)	0.21	0.16	0.08	0.10
	Melting coefficient – C_M (mm/°C/d)	Melting rate of the snowpack	2 to 12 (Massmann, 2019)	0.17	0.11	0.13	0.20
Freezing soil conditions	Threshold temperature for soil frost – TT_F (°C)	Air temperature treshold for soil frost	-20 to 0 (Henry, 2007)	0.03	0.03	0.33	0.31
	Freezing time – F_F (d)	Duration of air temperature treshold to freeze the soil	5 to 30 (Henry, 2007)	0.01	0.02	0.06	0.09
Runoff	Antecedant precipitation index time – t_{APR} (d)	Time constant to consider the soil in dry or wet conditions based on previous precipitation event	1 to 5 (Lal et al., 2015)	0.04	0.04	0.29	0.34
Lumped soil reservoir	Runoff factor – f_{runoff} (–)	Partitioning between runoff computed with the RCN method and infiltration into the soil reservoir	→ 1 (Neitsch et al., 2002)	0.12	0.09	0.64	0.61
	Maximum soil water content – sw_m (mm)	Soil reservoir storage capacity, maximum height of water stored in a 1 m soil profile	50 to 900 (Croteau et al., 2010)	0.03	0.04	0.29	0.37
	Infiltration factor – f_{inf} (→)	Fraction of soil water that produces deep percolation at each daily time step	<0.1 to 1 (Croteau et al., 2010)	0.04	0.07	0.34	0.48

Parameter			Value range from literature
Degree-days snowmelt model	Melting temperature - T_M (°C)	Air temperature treshold for snowmelt	-2 to 2 (Massmann, 2019)
	Melting coefficient - C_M (mm/°C/d)	Melting rate of the snowpack	2 to 12 (Massmann, 2019)
Freezing soil conditions	Threshold temperature for soil frost - TT_F (°C)	Air temperature treshold for soil frost	-20 to 0 (Henry, 2007)
	Freezing time - F_T (d)	Duration of air temperature treshold to freeze the soil	5 to 30 (Henry, 2007)
Runoff	Antecedant precipitation index time - t_{API} (d)	Time constant to consider the soil in dry or wet conditions based on previous precipitation event	1 to 5 (Lal et al., 2015)
	Runoff factor - f_{runoff} (-)	<u>Correction factor for runoff computed with the RCN method for the partitioning between runoff and infiltration into the soil reservoir</u>	→1 (Neitsch et al., 2002)
Lumped soil reservoir	Maximum soil water content - sw_m (mm)	Soil reservoir storage capacity, maximum height of water stored in a 1 m soil profile	50 to 900 (Croteau et al., 2010)
	<u>Infiltration factor - f_{inf} (d⁻¹)</u>	Fraction of soil water that produces deep percolation at each daily time step	<0.1 to 1 (Croteau et al., 2010)

Table 3: Objective functions for the simulated outputs, for calibration and validation periods.

Gauging stations			Calibration			Validation		
Number	Measur. period		$KGE_{q_{tot}}$	$KGE_{q_{base}}$	KGE_{mean}	$KGE_{q_{tot}}$	$KGE_{q_{base}}$	KGE_{mean}
W1*	2	1980-2013	0.80	0.65	0.71	0.79	0.63	0.70
W2*	5	1973-2017	0.76	0.56	0.64	0.75	0.53	0.62
W3	14	1965-2017	0.76	0.64	0.69	0.79	0.57	0.66
W4*	8	1961-2009	0.81	0.71	0.75	0.85	0.71	0.77
W5	4	1961-2017	0.77	0.75	0.76	0.76	0.59	0.66
W6	8	1961-2017	0.84	0.61	0.70	0.71	0.63	0.66
W7	2	1993-2017	0.92	0.75	0.82	0.86	0.72	0.77
W8	8	1961-2015	0.80	0.67	0.72	0.77	0.64	0.69

**the presented values are for the stations of which the watershed is completely located in Quebec*

Table 3: Objective functions for the simulated outputs, for calibration and validation periods, and mean bias over the entire period of measurement

<u>Gauging stations</u>			<u>Calibration</u>			<u>Validation</u>			<u>Mean bias (all period - mm/month)</u>	
<u>Number</u>		<u>Measur. period</u>	<u>KGE_{gtot}</u>	<u>KGE_{gbase}</u>	<u>KGE_{mean}</u>	<u>KGE_{gtot}</u>	<u>KGE_{gbase}</u>	<u>KGE_{mean}</u>	<u>River flow</u>	<u>Pot. GWR</u>
<u>W1*</u>	<u>2</u>	<u>1980-2013</u>	<u>0.80</u>	<u>0.65</u>	<u>0.71</u>	<u>0.79</u>	<u>0.63</u>	<u>0.70</u>	<u>3</u>	<u>-1</u>
<u>W2*</u>	<u>5</u>	<u>1973-2017</u>	<u>0.76</u>	<u>0.56</u>	<u>0.64</u>	<u>0.75</u>	<u>0.53</u>	<u>0.62</u>	<u>5</u>	<u>1</u>
<u>W3</u>	<u>14</u>	<u>1965-2017</u>	<u>0.76</u>	<u>0.64</u>	<u>0.69</u>	<u>0.79</u>	<u>0.57</u>	<u>0.66</u>	<u>5</u>	<u>0</u>
<u>W4*</u>	<u>8</u>	<u>1961-2009</u>	<u>0.81</u>	<u>0.71</u>	<u>0.75</u>	<u>0.85</u>	<u>0.71</u>	<u>0.77</u>	<u>-4</u>	<u>1</u>
<u>W5</u>	<u>4</u>	<u>1961-2017</u>	<u>0.77</u>	<u>0.75</u>	<u>0.76</u>	<u>0.76</u>	<u>0.59</u>	<u>0.66</u>	<u>-9</u>	<u>-3</u>
<u>W6</u>	<u>8</u>	<u>1961-2017</u>	<u>0.84</u>	<u>0.61</u>	<u>0.70</u>	<u>0.71</u>	<u>0.63</u>	<u>0.66</u>	<u>-2</u>	<u>-5</u>
<u>W7</u>	<u>2</u>	<u>1993-2017</u>	<u>0.92</u>	<u>0.75</u>	<u>0.82</u>	<u>0.86</u>	<u>0.72</u>	<u>0.77</u>	<u>2</u>	<u>0</u>
<u>W8</u>	<u>8</u>	<u>1961-2015</u>	<u>0.80</u>	<u>0.67</u>	<u>0.72</u>	<u>0.77</u>	<u>0.64</u>	<u>0.69</u>	<u>-4</u>	<u>-3</u>

**The presented values are for the stations of which the watershed are completely located in Quebec*

Table 4: Simulated runoff, actual evapotranspiration (AET), and potential groundwater recharge (GWR) for the study area between 1961 and 2017, in mm/year and in percentage for winter, spring, summer and fall, and for the eight watersheds (W1 to W8).

	<u>Runoff</u>					<u>AET</u>					<u>Potential GWR</u>				
	<u>mm/yr</u>	<u>Win.</u>	<u>Spr.</u>	<u>Sum.</u>	<u>Fall</u>	<u>mm/yr</u>	<u>Win.</u>	<u>Spr.</u>	<u>Sum.</u>	<u>Fall</u>	<u>mm/yr</u>	<u>Win.</u>	<u>Spr.</u>	<u>Sum.</u>	<u>Fall</u>
<u>W1*</u>	368	13%	47%	16%	24%	482	2%	30%	48%	20%	109	38%	46%	3%	14%
<u>W2*</u>	430	12%	48%	16%	24%	498	1%	29%	50%	19%	119	36%	45%	4%	15%
<u>W3</u>	442	12%	48%	17%	24%	507	1%	28%	52%	19%	139	35%	44%	4%	17%
<u>W4*</u>	485	11%	50%	17%	22%	512	1%	25%	55%	18%	147	31%	42%	8%	19%
<u>W5</u>	438	10%	50%	17%	23%	502	1%	26%	54%	19%	144	32%	43%	6%	19%
<u>W6</u>	465	8%	53%	16%	23%	501	1%	25%	56%	18%	151	28%	44%	7%	21%
<u>W7</u>	453	6%	56%	15%	23%	512	1%	25%	56%	18%	154	26%	46%	8%	20%
<u>W8</u>	470	7%	53%	18%	23%	494	1%	24%	57%	18%	145	27%	42%	10%	21%

**Part of the watershed is located in the USA – the presented values are for the Quebec part only*

Winter: December, January, February; spring: March, April, May; summer: June, July, August; fall: September, October, November

Table 4: Simulated runoff, actual evapotranspiration (AET), and potential groundwater recharge (GWR) and uncertainty for the study area between 1961 and 2017 for annual values, winter, spring, summer, and fall, and for the eight watersheds (W1 to W8).

	<u>Runoff</u>					<u>AET</u>					<u>Pot. GWR</u>				
	<u>mm/yr</u>	<u>Win.</u>	<u>Spr.</u>	<u>Sum.</u>	<u>Fall</u>	<u>mm/yr</u>	<u>Win.</u>	<u>Spr.</u>	<u>Sum.</u>	<u>Fall</u>	<u>mm/yr</u>	<u>Win.</u>	<u>Spr.</u>	<u>Sum.</u>	<u>Fall</u>
<u>W1*</u>	368 ± 8	13%	47%	16%	24%	482 ± 5	2%	30%	48%	20%	109 ± 4	38%	46%	3%	14%
<u>W2*</u>	430 ± 9	12%	48%	16%	24%	498 ± 5	1%	29%	50%	19%	119 ± 5	36%	45%	4%	15%
<u>W3</u>	442 ± 10	12%	48%	17%	24%	507 ± 5	1%	28%	52%	19%	139 ± 5	35%	44%	4%	17%
<u>W4*</u>	485 ± 9	11%	50%	17%	22%	512 ± 4	1%	25%	55%	18%	147 ± 6	31%	42%	8%	19%
<u>W5</u>	438 ± 10	10%	50%	17%	23%	502 ± 5	1%	26%	54%	19%	144 ± 6	32%	43%	6%	19%
<u>W6</u>	465 ± 9	8%	53%	16%	23%	501 ± 4	1%	25%	56%	18%	151 ± 6	28%	44%	7%	21%
<u>W7</u>	453 ± 8	6%	56%	15%	23%	512 ± 4	1%	25%	56%	18%	154 ± 5	26%	46%	8%	20%
<u>W8</u>	470 ± 10	7%	53%	18%	23%	494 ± 4	1%	24%	57%	18%	145 ± 6	27%	42%	10%	21%

**Part of the watershed is located in the USA - the presented values are for the Quebec part only*

Winter: December, January, February; spring: March, April, May; summer: June, July, August; fall: September, October, November