

Long-term water clarity patterns of lakes across China using Landsat series imagery from 1985 to 2020

Xidong Chen¹, Liangyun Liu^{2,3,4*}, Xiao Zhang^{2,3}, Junsheng Li^{2,3,4}, Shenglei Wang^{2,3}, Yuan Gao⁵, Jun Mi^{2,3,4}

¹North China University of Water Resources and Electric Power, Zhengzhou, 450046, China

5 ²International Research Center of Big Data for Sustainable Development Goals, Beijing 100094, China

³Key Laboratory of Digital Earth Science, Aerospace Information Research Institute, Chinese Academy of Sciences, Beijing, 100094, China

⁴University of Chinese Academy of Sciences, Beijing, 100049, China

⁵Beijing Normal University, Beijing, 100091, China

10 *Correspondence to:* Liangyun Liu (liuly@radi.ac.cn)

Abstract. Monitoring the water clarity of lakes is essential for the sustainable development of human society. However, existing water clarity assessments in China have mostly focused on lakes with areas $> 1 \text{ km}^2$, and the monitoring periods were mainly in the 21st century. In order to improve the understanding of spatiotemporal variations in lake clarity across China, based on the Google Earth Engine cloud platform, a 30 m long-term LAke Water Secchi Depth (SD) dataset (LAWSD30) of
15 China (1985–2020) was first developed using Landsat series imagery and a robust water-color-parameter-based SD model. The LAWSD30 dataset exhibited a good performance compared with concurrent in situ SD datasets, with an R^2 of 0.86 and a root-mean-square error of 0.225 m. Then, based on our LAWSD30 dataset, long-term spatiotemporal variations in SD for lakes $> 0.01 \text{ km}^2$ ($N = 40,973$) across China were evaluated. The results show that the SD of lakes with areas $\leq 1 \text{ km}^2$ exhibited a significant downward trend in the period 1985–2020, but the decline rate began to slow down and stabilized after 2001. In
20 addition, the SD of lakes with an area $> 1 \text{ km}^2$ showed a significant downward trend before 2001, and began to increase significantly afterwards. Moreover, in terms of the spatial patterns, the proportion of small lakes (area $\leq 1 \text{ km}^2$) showing a decreasing SD trend was the largest in the Mongolian–Xinjiang Plateau Region (MXR) (about 30.0%), and the smallest in the Eastern Plain Region (EPR) (2.6%). In contrast, for lakes $> 1 \text{ km}^2$, this proportion was the highest in MXR (about 23.0%), and the lowest in the Northeast Mountain Plain Region (NER) (16.1%). The LAWSD30 dataset and the spatiotemporal patterns of
25 lake water clarity in our research can provide effective guidance for the protection and management of lake environment in China.

1 Introduction

Lakes are invaluable resources for human societies, providing value in terms of water supply, energy production, commerce, food production, and human health (Bastviken et al., 2011; Palmer et al., 2015). However, like many other ecosystems, lakes
30 are sensitive to multiple co-occurring environmental pressures, notably climate change, nutrient enrichment, organic and

inorganic pollution, and human activities (Brönmark and Hansson, 2002). Nowadays, with the rapid development of the economy and the growth of the population in China, the intensification of human activities and pollution from industry and agricultural production have caused severe damage to lakes (Ma et al., 2014; Wang and Yang, 2019; Zhou et al., 2019). According to recent research and national survey reports (Barnes, 2014; Wang and Yang, 2019; Ministry of Ecology and Environment of the People's Republic of China, 2020), approximately 70% of inland water in China is polluted, 28% of the assessed lakes are eutrophic, and about 140 million people depend on getting water from unsafe open sources. The deterioration of the lake ecosystem has threatened public health and the safety of both humans and aquatic organisms (Guo, 2007). Therefore, effective monitoring and evaluation of the environment of lakes across China is necessary.

Water clarity is one of the most intuitive, popular, and important parameters for describing the optical components of water bodies (Carlson, 1977; Liu et al., 2020), and is generally measured in terms of Secchi Depth (SD) (Odermatt et al., 2012; Carlson, 1977). Since water clarity is co-determined by the suspended matter, planktonic algae, and colored dissolved organic matter in the water column, it is usually adopted as a practical comprehensive metric for water quality assessment (Kloiber et al., 2002; Mccullough et al., 2012). Although a variety of physical, biological, and chemical parameters have been proposed to analyze the condition of water, water clarity has been utilized for a century as an effective and simple metric (Cuffney et al., 2000; Lee et al., 2018). Recently, water clarity was also recognized as an important parameter in support of the United Nations Sustainable Development Goal SDG 6.3.2 evaluation reports (Shen et al., 2020). Therefore, water clarity is a significant indicator that can be used to monitor and evaluate the comprehensive conditions of water.

Today, with the development of remote sensing technology, significant numbers of satellite images are continuously being acquired. Taking into account the high-frequency revisits, large area of coverage, and the historical archive of remote sensing data available, increasing attention has been paid to the applications of remote sensing datasets in water clarity assessments (Li et al., 2020a; Liu et al., 2019; Xue et al., 2019). The evaluation of water clarity from a variety of ocean color satellite sensors has been performed (Li et al., 2020a; Feng et al., 2019; Wang et al., 2018; Shi et al., 2018). For example, Shen et al. (2020) used Sentinel-3 data to evaluate the water clarity of 86 lakes ($> 30 \text{ km}^2$) in eastern China; Liu et al. (2021a) estimated the SD (water clarity) trends of lakes with an area $> 50 \text{ km}^2$ in the Tibetan Plateau using MODIS data between 2000 and 2019. However, due to the coarse spatial resolution and the relatively short-term historical archives of these ocean color sensors, their applications were limited to large lakes and reservoirs, and the study periods were concentrated in the past two decades (Li et al., 2020a). The statistics on lakes with an area $\leq 1 \text{ km}^2$ are scant, and understanding of the variations in SD before the 21st century is limited (Downing et al., 2012; Biggs et al., 2017; Li et al., 2020b). In order to improve the water environment monitoring capability, 30 m Landsat series data have recently been used for SD evaluation (Page et al., 2019; Dona et al., 2014). Because of the fine spatial resolution (30 m), long historical archives (> 35 years), and suitability for water clarity assessment, Landsat series data are considered to be "ideal" for the long-term and fine spatial resolution monitoring of lake SD (Olmanson et al., 2008; Olmanson et al., 2016; Li et al., 2020a; Zhang et al., 2021b). For example, Li et al. (2020a) utilized the Landsat series of images to monitor the SD trends in the Xin'anjiang Reservoir between 1986 and 2016; Yin et al. (2021) tracked the SD changes in Taihu from 1984 to 2018 based on Landsat 5 and 8 images. Recently, in order to conduct the first

65 high-spatial-resolution investigation of lake SD across China, significant amounts of Landsat 8 data from 2014–2017 were used in the work of Song et al. (2020). However, these studies were limited to individual areas or periods. Due to the requirement for huge amounts of computation and large storage capabilities, as well as the need for a robust uniform SD model, there are very few examples of national-scale long-term SD estimations using Landsat imagery (Yin et al., 2021; Kloiber et al., 2002; Page et al., 2019).

70 Fortunately, with the emergence of the Google Earth Engine (GEE) cloud computing platform (Gorelick et al., 2017), its high-performance, intrinsically parallel computing services can easily meet the requirements for very large computational resources (Zhang et al., 2020; Liu et al., 2021b). Additionally, because the GEE platform integrates multipetabyte analysis-ready Landsat surface reflectance data, and these data are intercalibrated between different Landsat sensors, it presents an opportunity to conduct long-term land surface analyses at the pixel level (Racotin et al., 2020; Zhang et al., 2021b). Accordingly, a robust SD
75 model is the only requirement for fine-resolution, long-term SD evaluation across China. Lately, some studies have found that the SD is well correlated with water color parameters (e.g., hue angle and the Forel–Ule Index (FUI)) (Wang et al., 2021; Chen et al., 2021; Van Der Woerd and Wernand, 2018). Since water color parameters can be retrieved at the global scale and over long time spans (Wang et al., 2021; Wang et al., 2018), it is possible to retrieve long-term water clarity over large areas based on these parameters (Wang et al., 2021; Wang et al., 2020). For example, Wang et al. (2020) recently developed a robust SD
80 model based on water color parameters, and the model was successfully applied to MODIS data to develop a nationwide 500 m long-term SD dataset between 2000 and 2017. Accordingly, a feasible solution for high-spatial-resolution and long-term SD estimation across China could be provided by incorporating the GEE cloud platform and the water-color-parameter-based SD model.

Therefore, in order to provide a comprehensive understanding of nationwide spatiotemporal variations in lake water clarity,
85 we first developed a long-term 30 m LAke Water SD dataset of China from 1985 to 2020 (LAWSD30) using Landsat series data and a water-color-parameter-based SD algorithm with the assistance of the GEE cloud platform. Then, the LAWSD30 dataset was employed to evaluate and recognize the spatiotemporal variations in SD for lakes with areas $> 0.01 \text{ km}^2$ ($N = 40,973$) across China in the period 1985–2020. Our results can provide effective data support for the management and protection of lake water environment.

90 **2 Introduction**

2.1 Landsat series satellite datasets

Taking into account the frequent contamination of cloud and cloud shadow, it is hard to develop a spatially continuous application ready data product throughout China with only one year of Landsat images (Zhang et al., 2019a). Therefore, we used images from ± 1 year of the target year to generate each product, and a total of 12 SD products with a three-year time
95 step were developed for 1985–2020. All available Landsat series Level-1 precision terrain (L1TP) surface reflectance datasets (about 46 terabytes of data), including Landsat 5 Thematic Mapper (TM), Landsat 7 Enhanced Thematic Mapper-plus (ETM+),

and Landsat 8 Operational Land Imager (OLI) imagery, acquired in the summer (June 1–September 30) from 1985 to 2020, were used via the GEE cloud computing platform. The summer months were chosen because the lake water is abundant and deep, and the water clarity is more stable with fewer short-term variables in summer than in other seasons when there are no climatic events (i.e. heavy rainfall, storm events) (Olmanson et al., 2008; Chen et al., 2021; Song et al., 2020; Singh and Singh, 2015). Additionally, summer is also the period with the most abundance public in-situ water quality data (Mccullough et al., 2012). Therefore, it is suitable for mapping with remote sensing imagery (Kloiber et al., 2002; Singh and Singh, 2015; Song et al., 2020). In addition, since the Landsat L1TP data were intercalibrated across different Landsat series sensors, the collected L1TP data were consistent and suitable for pixel-level time series analysis (Racotin et al., 2020). However, since the Landsat 7 scan line corrector (SLC) failed in 2003, the Landsat 7 images acquired thereafter exhibited wedge-shaped scan gaps (referred to as SLC-off images) (Usgs, 2003). Therefore, except for 2012–2014, only Landsat 7 data before 2003 were used for the development of our SD products (Fig. 1b). Since Landsat 5 retired in 2011 and Landsat 8 data were only available after 2013, the valid Landsat observations from 2012 to 2014 were insufficient (Fig. 1a). Therefore, a few Landsat 7 SLC-off images from 2012 to 2014 were used as substitutes to fill the gaps between 2012 and 2014. Fig. 1b shows the final number of Landsat series images used to generate the SD product for each nominal year.

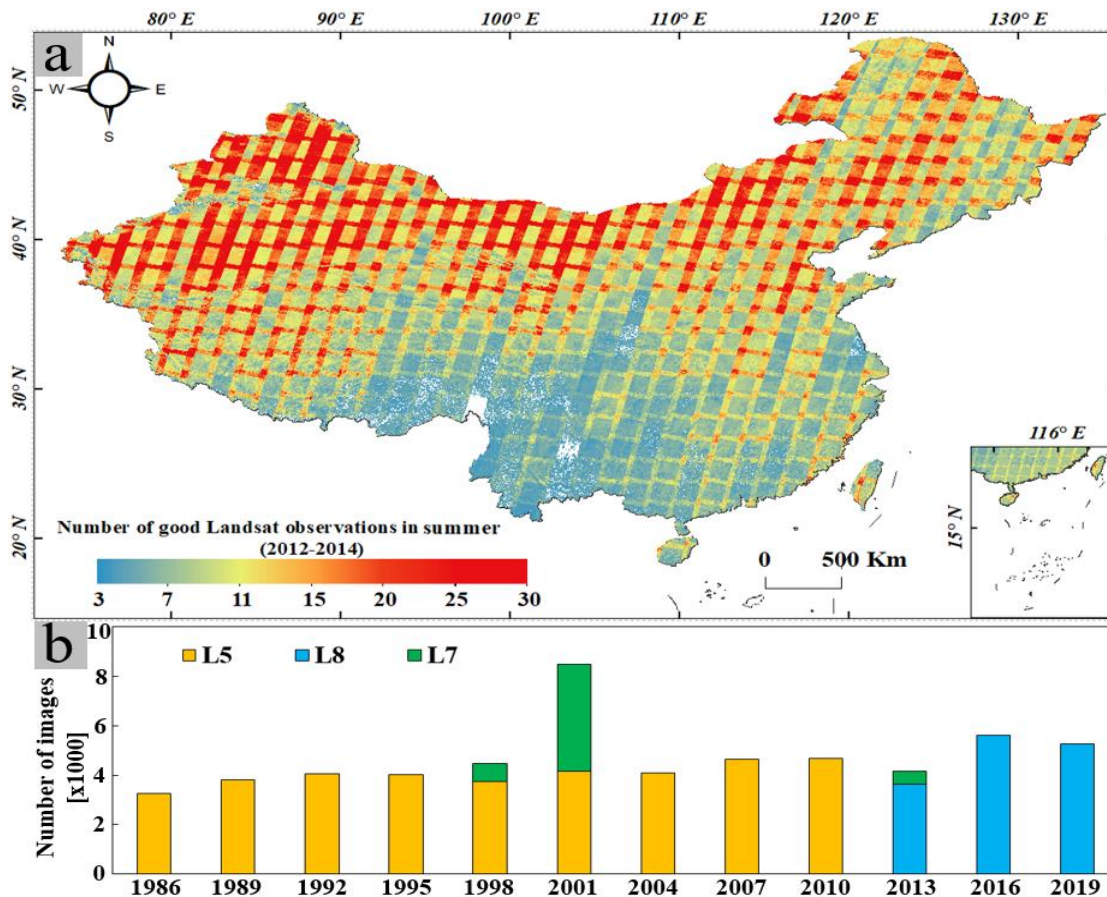


Figure 1: Valid Landsat 5 and 8 observations in China from 2012 to 2014 (a) and statistics of Landsat images used to develop the product for each nominal year (b). Note: L8., Landsat 8; L7., Landsat 7; L5., Landsat 5.

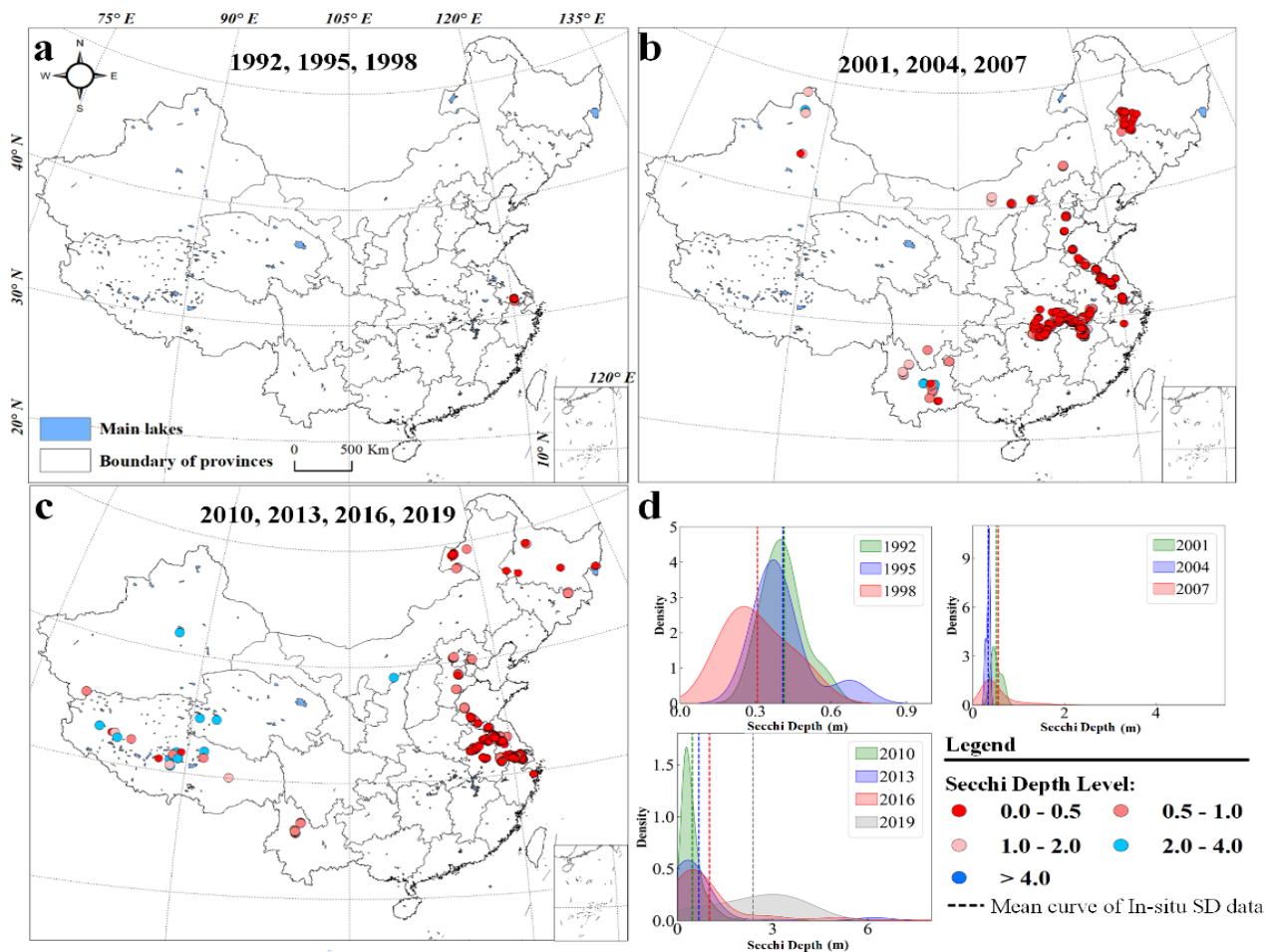
2.2 Auxiliary inland water products

115 The annual 30 m Joint Research Centre Global Surface Water (JRC-GSW) database was used to extract water body regions
for each SD product (Pekel et al., 2016). The JRC-GSW was developed based on multiple classification criteria and time-
series Landsat 5, 7, and 8 data from 1984 to 2019, and archived to the GEE platform. The water pixels in the JRC-GSW were
labeled as permanent and seasonal water pixels based on the frequency of being detected as water bodies (Pekel et al., 2016).
The overall commission and omission accuracies for permanent water were 99.6% and 98.6%, respectively, versus 98.6% and
120 75.4% for seasonal water (Pekel et al., 2016). Following Chen et al. (2021), in this study, only the pixels marked as permanent
waters in the JRC-GSW were utilized to extract water regions to reduce the disturbance from aquatic vegetation in seasonal
waters.

Additionally, the existing Chinese lake inventories (Ma et al., 2011; Song et al., 2020; Chen et al., 2021) and the Reservoirs
and Dams vector database (Song et al., 2018) were also collected and used to extract lakes for each SD product.

125 2.3 In situ SD datasets

In order to quantitatively evaluate the performance of the LAWS30 dataset, a total of 1349 in situ SD measurements of 208
lakes between 1992 and 2019 were collected from the China Lake Scientific Database (<http://www.lakesci.csdb.cn>), the
National Earth System Science Data Center, National Science & Technology Infrastructure of China (<http://lake.geodata.cn>),
and work by Wang et al. (2020) and Liu et al. (2020). The collected in-situ SD data were all measured on sunny days. Due to
130 the scarcity of field-measured SD records before the 1990s, only SD products after 1992 were validated. Since in situ SD
measurements within seven days of satellite overpasses were suitable for the validation of the remote-sensing-derived SD
product (Song et al., 2020), the collected SD measurements were coincident with the Landsat data used in our study within a
window of ± 7 days. The distributions of the in situ SD records collected to validate products for different nominal years are
shown in Fig. 2a–c. The probability density of the collected SD measurements used for each SD product was calculated and is
135 exhibited in Fig. 2d. It can be seen that the collected SD measurements cover a variety of water clarity conditions and are
distributed throughout China (Fig. 2). The values of our collected SD data range from 0 to 7 m, covering lakes from clear to
eutrophic. Therefore, the collected in situ data can provide a reliable accuracy examination for our LAWS30 dataset.



140 **Figure 2: Details of the in situ measured SD datasets. (a–c) The geographical distributions of SD samples used to validate the accuracies of the corresponding SD products; (d) the probability density of the collected SD measurements used for each target SD product, used to show the SD range where the collected in situ SDs are mainly concentrated.**

3 Methodology

145 In order to assess the long-term trends of SD in Chinese lakes, four steps were taken in our study (Fig. 3). First, based on the time-series Landsat images and the JRC-GSW water products archived in GEE, a summer cloud-free composite image was generated between 1985 and 2020 with an interval of three years using the best-available-pixel (BAP) compositing method. Then, based on the generated cloud-free composite images, the long-term LAWS30 dataset from 1985 to 2020 (including 12 products, representing 1986, 1989, 1992, 1995, 1998, 2001, 2004, 2007, 2010, 2013, 2016, and 2019) were developed using a robust SD model based on water color parameters. Next, the accuracy of our developed LAWS30 dataset was evaluated using the collected concurrent in situ datasets. Finally, with the assistance of the existing Chinese lake and reservoir datasets

150 and high-resolution images in Google Earth, the assessment of the long-term SD trends for lakes $> 0.01 \text{ km}^2$ across China was conducted using the developed SD products.

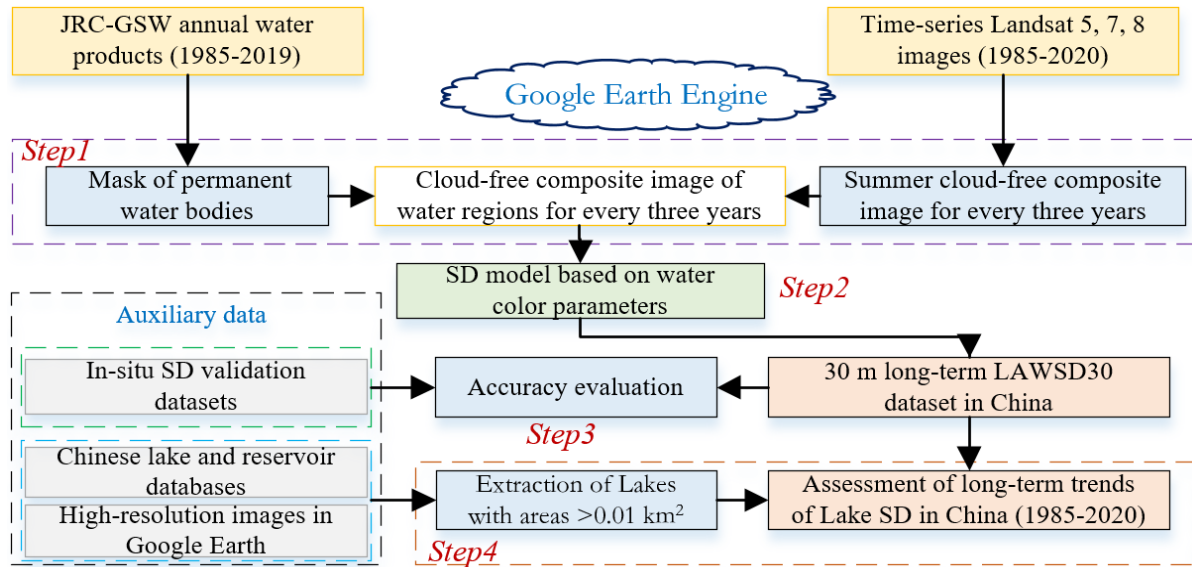


Figure 3: A flowchart of the long-term LAWS30 dataset development steps and the long-term SD trend assessment of lakes in China. Note: LAWS30., 30 m LAKE Water SD dataset of China.

155 3.1 Generation of cloud-free composites using best-available-pixel (BAP) composition method

Since summer is suitable for SD mapping with remote sensing imagery (McCullough et al., 2012; Singh and Singh, 2015; Song et al., 2020), cloud-free summer composites of Landsat data for 12 three-year time steps were compiled from 1985 to 2010. Generally, the median and mean composite methods were used to generate cloud-free images in the SD assessing studies (Li et al., 2020a; Wang et al., 2020; Liu et al., 2020). However, since multisource sensors (TM, ETM+, and OLI) were used in this study, the different band settings between these sensors made the parameters of the algorithm specific to each sensor (Li et al., 2020a; Garnesson et al., 2019). Because the median and mean composite methods will change the original radiation value of the pixel (Xie et al., 2019; Griffiths et al., 2014), the composite pixels derived from these general methods are difficult to trace back to the sensor from which they originated. Therefore, these methods are not well suitable for our research. Recently, White et al. (2014) proposed a BAP method to generate cloudless composites on a large area. Since BAP compiles cloud-free images by selecting the best available observation based on user-defined criteria (Gomez et al., 2016; Griffiths et al., 2013), the BAP composites can retain the source image information from which they came. In addition, since BAP can ensure phenological consistency between multitemporal BAP composites by setting the acquisition day-of-year (DOY) criteria (Griffiths et al., 2014; Chen et al., 2021), it is suitable for multiyear change detection and assessment (Griffiths et al., 2014; Gomez et al., 2016; Hermosilla et al., 2015; Zhang et al., 2021a). Accordingly, the BAP method was used to generate cloud-free composites. Our team recently used BAP to develop summer composites for water color mapping (Chen et al., 2021). Following Chen et al. (2021), the DOY criteria (Eq. (A1)), the cloud and cloud shadow criteria (Eq. (A2)), and the atmospheric

opacity criteria (Eq. (A3)) were selected to generate the BAP composites (the details of the criteria are presented in the Appendix A). The score for each criterion was summed, and the observation with the highest score was selected as the BAP composite. The parameter values for the criteria used were obtained from Chen et al. (2021). However, since floods and rainfall in summer will bring suspended particles into water bodies, making the SD of water bodies much lower than usual (Murshed et al., 2014; Liu et al., 2021a), it is also necessary to reduce the impact of these climatic events on the BAP composites to ensure the reliability of the long-term SD trend assessment. Here, the normalized difference turbidity index (NDTI) (Lacaux et al., 2007) was used to indicate the turbidity of the water (Eq. (1)). As the SD of water decreases, the NDTI of water increases (Islam, 2006; Lacaux et al., 2007). Therefore, the interference of floods and rainfall was restricted by only using the observations with NDTI less than the 80th quantile of their NDTI stack for BAP compositing.

$$NDTI = (Red - Green)/(Red + Green) , \quad (1)$$

Finally, based on the intra-annual permanent water pixels detected in the JRC-GSW, water regions were extracted from the BAP composites.

3.2 Inversion model of water SD

Previous studies have demonstrated that FUI and hue angle (α) are useful water color parameters for assessing the SD of inland waters (Wang et al., 2020; Chen et al., 2021; Garaba et al., 2015). Recently, these two watercolor parameters were further demonstrated to be robust parameters for retrieving SD over large areas and long-term spans (Wang et al., 2020; Pitarch et al., 2019). Therefore, the SD of the extracted permanent water regions was retrieved using a robust SD model based on FUI and α (Wang et al., 2020). The SD model showed good performance and adaptability over a variety of water clarity ranges, with a mean relative difference of 27.4% and a mean absolute difference of 0.37 m (Wang et al., 2020). There are three main steps in the SD model:

(1) *Calculation of the hue angle (α)*: The α is the angle of the line drawn anti-clockwise from the positive x-axis at $y = 1/3$ in the Commission on Illumination's (CIE) chromaticity diagram (Wang et al., 2018). In order to derive the angle α , the CIE primary color tristimulus (X, Y, Z) was calculated from the reflectance in the visible bands of Landsat images first (Wang et al., 2020; Chen et al., 2021). Since ETM+/TM has only three bands in the visible range, the tristimulus of Landsat ETM+/TM was calculated using the RGB conversion method (Wang, 2018; Cie, 1932) (Eqs. (2)-(4)):

$$X = 1.1302 R(485) + 1.7517 R(565) + 2.7689 R(660) \quad (2)$$

$$Y = 0.0601 R(485) + 4.5907 R(565) + 1.0000 R(660) \quad (3)$$

$$Z = 5.5943 R(485) + 0.0560 R(565), \quad (4)$$

where R represents the band reflectance. Since OLI has four visible bands, the X, Y, and Z of Landsat OLI data were calculated using the linear weighted summation method as per Chen et al. (2021) (Eqs. (5)–(7)):

$$X = 11.053 R(443) + 6.950 R(482) + 51.135 R(561) + 34.457 R(655) \quad (5)$$

$$Y = 1.320 R(443) + 21.053 R(482) + 66.023 R(561) + 18.034 R(655) \quad (6)$$

$$Z = 58.038 R(443) + 34.931 R(482) + 2.606 R(561) + 0.016 R(655). \quad (7)$$

Once the tristimulus was calculated, the chromaticity coordinates (x, y) were then acquired from the X, Y, and Z (Wang et al., 2021) (Eq. (8)). Afterwards, the hue angle α was derived based on x and y (Van Der Woerd and Wernand, 2018) (Eq. (9)).

200 However, because of the band settings of sensors, there is an offset ($\Delta\alpha$) of the sensor-derived hue angle (Van Der Woerd and Wernand, 2015). Following the ideas in Van Der Woerd and Wernand (2015), Wang (2018) recently developed polynomial deviation delta corrections for multiple sensors (Eq. (10)). Accordingly, the angle α was finally corrected using $\alpha + \Delta\alpha$.

$$x = X/(X + Y + Z), \quad y = Y/(X + Y + Z) \quad (8)$$

$$\alpha = \text{ARCTAN2}\left(\left(y - \frac{1}{3}\right) / \left(x - \frac{1}{3}\right)\right) * 180/\pi \quad (9)$$

$$\Delta\alpha = a(\alpha/100)^5 + b(\alpha/100)^4 + c(\alpha/100)^3 + d(\alpha/100)^2 + e\left(\frac{\alpha}{100}\right) + f, \quad (10)$$

where a–f are coefficients of the deviation delta correction, and the correction coefficients of OLI/ETM+/TM are shown in Table 1.

205 (2) *Calculation of the FUI*: The FUI for pixels in Landsat were derived from the corrected angle α based on the FUI lookup table (Novoa et al., 2013) (Table 2). Each FUI corresponds to a range of angle α .

(3) *Calculation of the SD*: Based on the calculated FUI and α , the SD was obtained following the algorithm proposed in Wang et al. (2020) (Eqs. (11)–(12)). This model had been demonstrated to be suitable for large-area and long-term SD monitoring (Wang et al., 2020).

$$\text{FUI} < 8, \text{SD} = 794630.86 \cdot \alpha^{-1.66} \quad (11)$$

$$\text{FUI} \geq 8, \text{SD} = 30380 \cdot \text{FUI}^{-2.621}. \quad (12)$$

210 **Table 1: Polynomial coefficients for the Landsat-OLI/TM/ETM+ hue angle correction (Wang, 2018).**

Sensor	a	b	c	d	e	f
Landsat-TM	25.851	-177.4	476.69	-653.3	463.33	-94.41
Landsat-ETM+	30.473	-203.4	498.8	-570.9	324.73	-56.72
Landsat-OLI	21.355	-199.29	703.3	-1132.2	801.6	-201.34

Table 2: The 21-class FUI indices and the corresponding range of hue angle α (Wang et al., 2018; Chen et al., 2021).

FUI	α range (°)	FUI	α range (°)	FUI	α range (°)
1	(35.00, 42.83)	8	(160.97, 175.98)	15	(219.34, 224.87)
2	(42.83, 49.02)	9	(175.98, 186.67)	16	(224.87, 230.23)

3	(49.02, 60.01)	10	(186.67, 195.44)	17	(230.23, 235.09)
4	(60.01, 79.23)	11	(195.44, 202.05)	18	(235.09, 239.56)
5	(79.23, 106.94)	12	(202.05, 207.82)	19	(239.56, 243.66)
6	(106.94, 137.03)	13	(207.82, 213.57)	20	(243.66, 247.25)
7	(137.03, 160.97)	14	(213.57, 219.34)	21	(247.25, 252.00)

3.3 Assessment of long-term SD trends in China's Lakes

In order to comprehensively evaluate the long-term trends in SD of natural lakes across China, lakes with areas $> 0.01 \text{ km}^2$ (more than 10 pixels) were manually extracted by referring to the Chinese lake inventories (Chen et al., 2021; Song et al., 2020), the Chinese reservoir and dam database (Song et al., 2018), and high-resolution images from Google Earth. Since previous water investigations were mainly based on MODIS and Sentinel-3 images, and focused on lakes with an area $> 1 \text{ km}^2$, the knowledge of lakes $< 1 \text{ km}^2$ was limited (Zhang et al., 2021b; Chen et al., 2021). Therefore, in our study, the extracted lakes were divided into two groups, lakes with an area $> 1 \text{ km}^2$ and lakes with an area $\leq 1 \text{ km}^2$, to explore the SD trends in the two different areas. In order to reduce the impact of aquatic vegetation, algae bloom areas, and shallow nearshore on the lake SD assessment, the mean SD of each lake was calculated following the method in Chen et al. (2021). Specifically, the floating algae index (FAI) (Eq. (13)) (Dai et al., 2021; Hu, 2009) was first used to mask algae bloom and aquatic vegetation areas with a threshold of -0.02 (Chen et al., 2021). Then, shallow near-shore pixels were excluded by setting the corresponding threshold value for each lake (Chen et al., 2021). Pixels whose SD was less than the SD value of 80% of the pixels in a given lake were regarded as shallow near-shore pixels and excluded. After the above steps, the remaining pixels in each lake region were used to calculate the mean SD of that lake as follows:

$$\text{FAI} = \text{NIR} - (\text{Red} + (\text{SWIR} - \text{Red}) \times (\lambda_{\text{NIR}} - \lambda_{\text{Red}}) / (\lambda_{\text{SWIR}} - \lambda_{\text{Red}})), \quad (13)$$

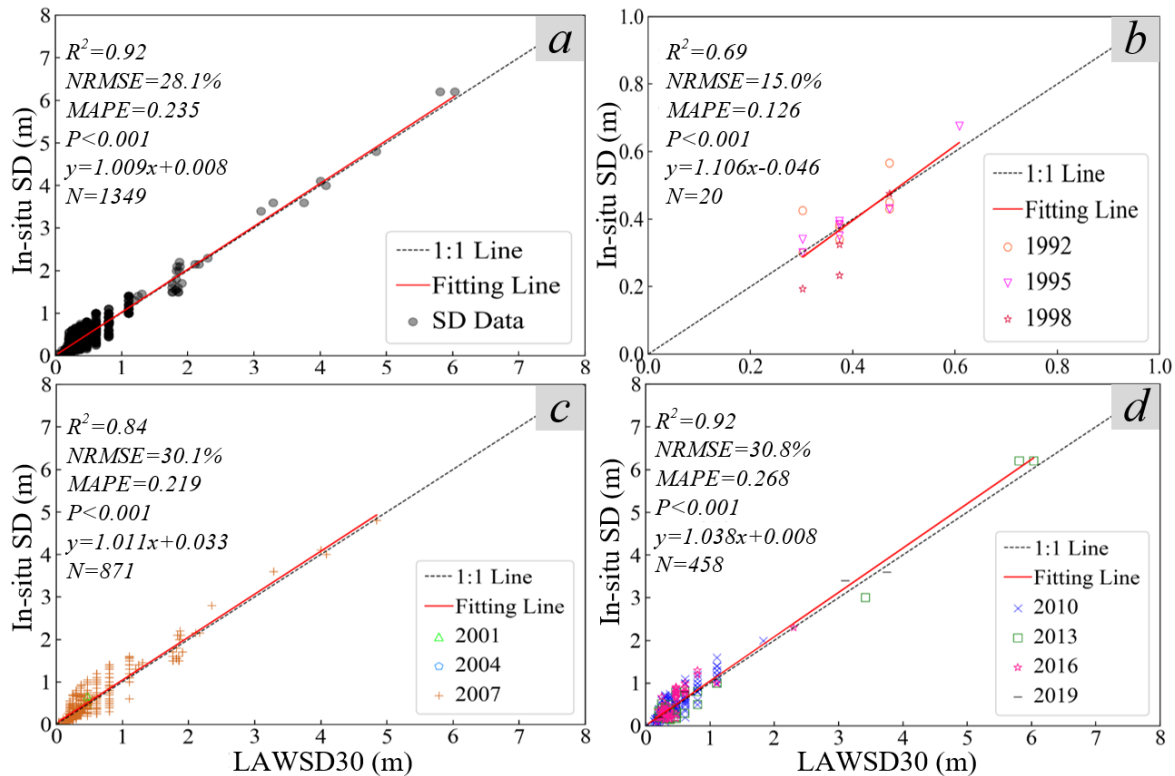
where Red, NIR, and SWIR represent the reflectance of red, near-infrared (NIR), and shortwave infrared (SWIR) bands, and λ_{NIR} , λ_{Red} , and λ_{SWIR} are the center wavelengths of NIR, red, and SWIR bands.

The nonparametric Loess regression method (Steyerberg, 2016) was employed to delineate the long-term SD trend for each lake, and the widely used Mann–Kendall (MK) test (Yuan et al., 2018; Kendall, 1990; Mann, 1945) was applied to indicate the monotonicity of the long-term SD trend. Specifically, the MK indicated the monotonic trend by using a standardized MK statistic Z (Yuan et al., 2018). $Z > 0$ indicated an upward trend, while $Z < 0$ indicated a downward trend. The indicated trend was regarded as significant only when $P \leq 0.05$ (Li et al., 2020a). Since the reliability of the long-term trend analysis relied on the observation number of time series data (Li et al., 2020a; Wang et al., 2020), only the lakes that existed in at least 10 SD products were retained for our long-term SD assessment. Using the above criteria, a total of 40,973 lakes were used for time series SD analysis.

4 Results

4.1 Accuracy evaluation of the 30 m long-term LAWS30 dataset

The accuracy of our LAWS30 dataset was evaluated with the collected concurrent in situ SD datasets, as illustrated in Fig. 4. From Fig. 4a, our LAWS30 dataset exhibited a significant correlation with all collected in situ SD data, with an R^2 of 0.92, a Root Mean Square Error ($NRMSE$) of 28.1%, and a Mean Absolute Percentage Error ($MAPE$) of 0.235. Most of the scatter points were distributed close to the 1:1 line. Specifically, from the validation results in the 2010s, our LAWS30 showed good performance, with an R^2 of 0.92, a $NRMSE$ of 30.8%, and a $MAPE$ of 0.268. In addition, a stable performance was also shown in the results for the 2000s, with R^2 reaching 0.84, $NRMSE$ reaching 30.1%, and $MAPE$ reaching 0.219. Furthermore, a good performance was also seen before the 2000s, with an R^2 of 0.69, a $NRMSE$ of 15.0%, and a $MAPE$ of 0.126 in the 1990s. The validation results for these different decades demonstrated the stable performance of our LAWS30 in different periods. Although some of the measured SD records had some deviations from LAWS30 and resulted in vertical lines, it was found that these deviations were mainly due to differences between the dates of the SD measurements and the LAWS30 dataset. Moreover, for most regions, the deviation between the measured SD and LAWS30 was small. It is concluded, therefore, that our LAWS30 can be a reliable dataset for the long-term SD trend assessment of lakes in China.

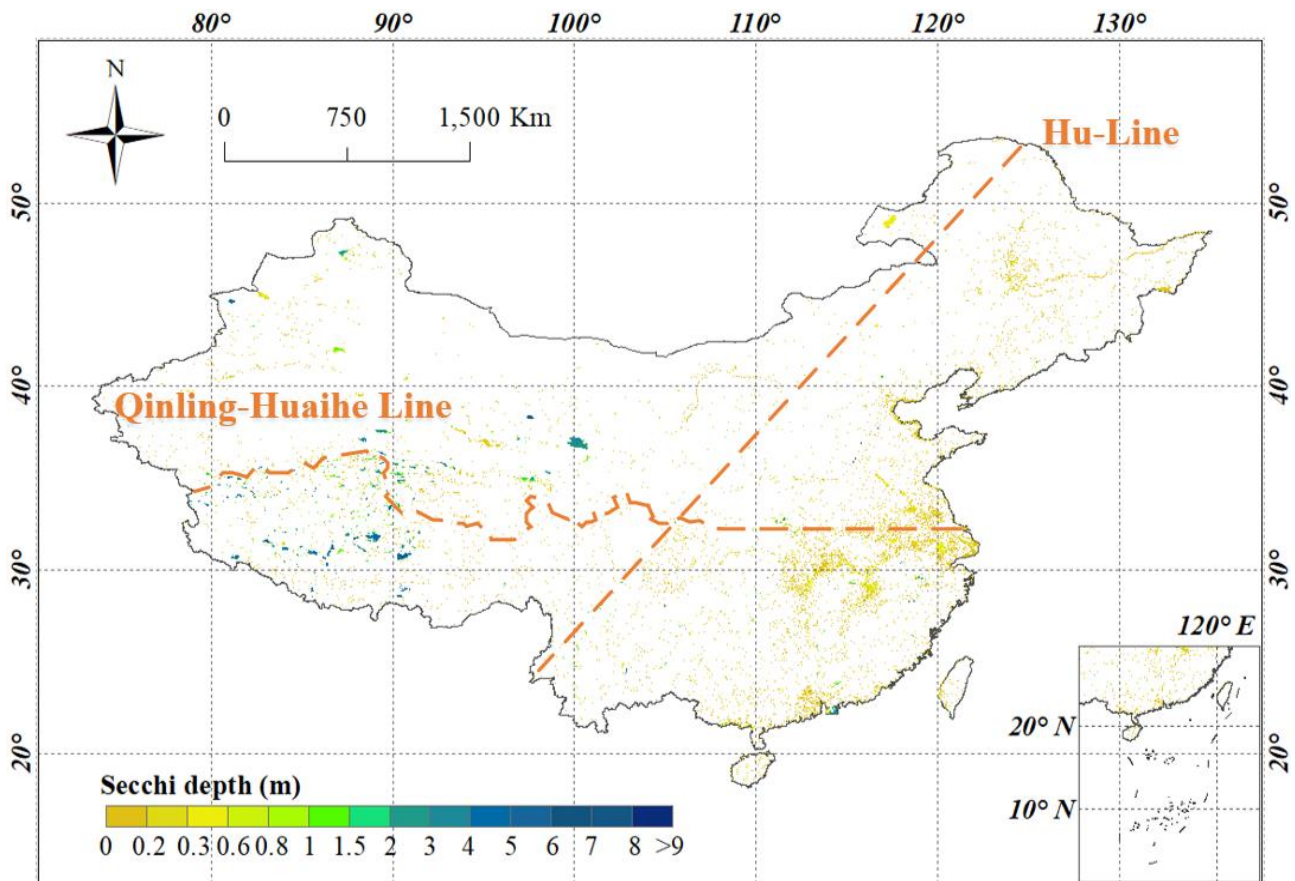


250

Figure 4: Scatterplots of the in situ measured SD data and our LAWS30 dataset. (a) An overall scatterplot of our LAWS30 dataset and all the collected in-situ SD data; (b–d) scatterplots of our LAWS30 dataset and the corresponding in situ SD data in the 1990s (1992, 1995, and 1998), 2000s (2001, 2004, and 2007), and 2010s (2010, 2013, 2016 and 2019), respectively.

4.2 The LAWS30 dataset in China

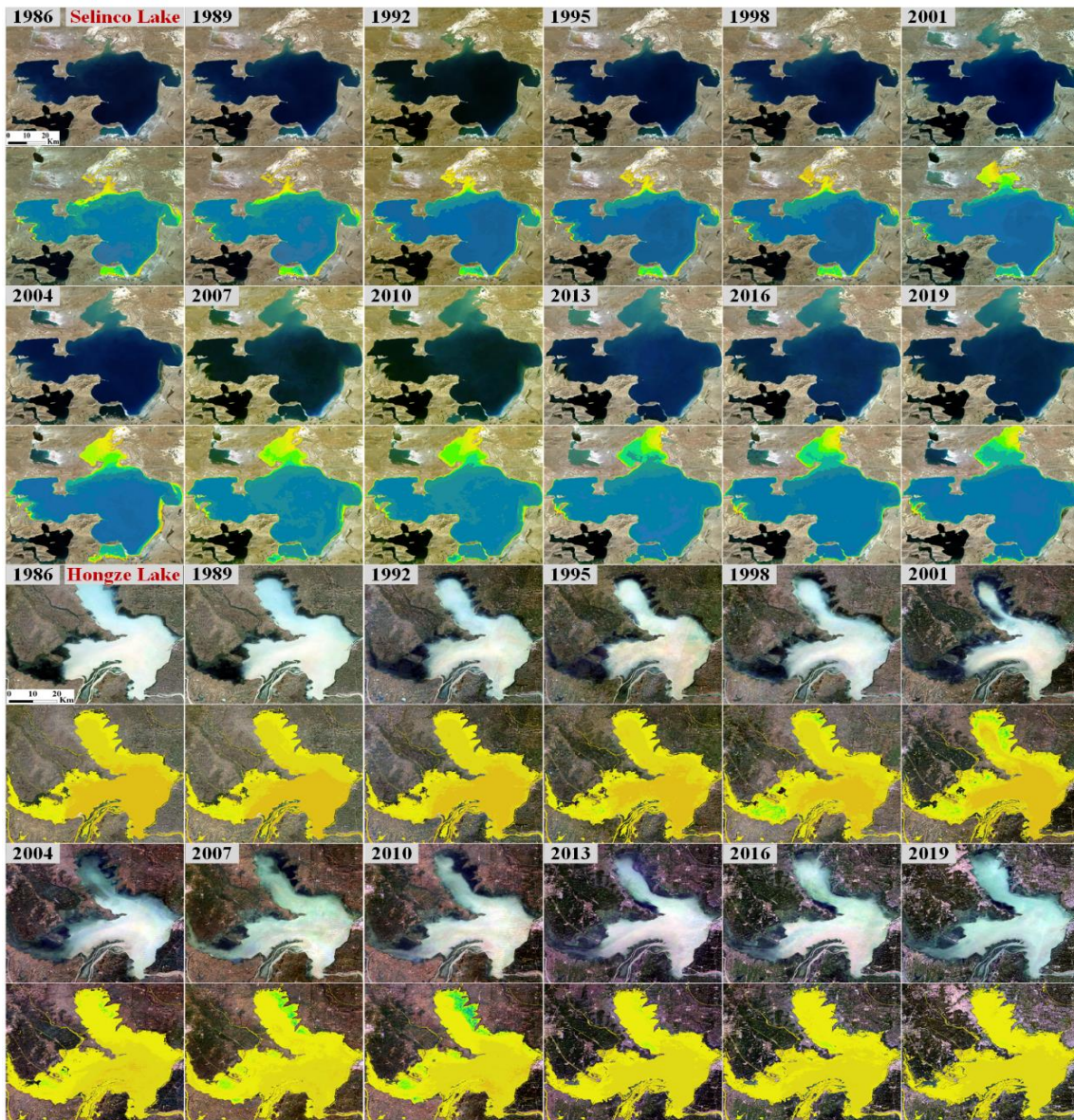
255 Our developed long-term LAWS30 dataset includes 12 SD products of the corresponding nominal years, now available at <https://doi.org/10.5281/zenodo.5734071>. Here, the SD product in 2019 is shown in Fig. 5. It can be found that the water bodies in our LAWS30 dataset showed a wide range of SD values (0.1 m to more than 9 m), indicating a great diversity of Chinese inland waters. Taking the famous Hu line (Hu, 1990) as the boundary, the SD of water bodies showed an obvious pattern of “high west and low east” across China. The average SD of the water bodies to the west of the Hu line was approximately 1.7 m, while the average SD of the eastern water bodies was about 0.4 m. Furthermore, regarding the famous Qinlin–Huaihe line (Liu et al., 2015), the dividing line between the north and south of China, a significant latitudinal pattern of “high in the south and low in the north” was exhibited across China. The average SD of the water bodies distributed to the north of the Qinlin–Huaihe line was about 0.72, whereas the average SD reached about 1.16 for the water bodies south of this line. The above SD patterns observed across China were in good agreement with other studies (Wang et al., 2020; Zhang et al., 2021b).



265

Figure 5: The 30 m SD product in China in 2019. Note: the north–south dashed line is the Hu line, inherited from (Hu, 1990); the east–west dashed line is the Qinling–Huaihe Line, inherited from (Liu et al., 2015).

Moreover, in order to illustrate the ability of our long-term LAWS30 dataset to monitor the spatiotemporal pattern of SD in water bodies, the time-series SD results for two important lakes, Selinco Lake and Hongze Lake, are displayed and used as case studies (Fig. 6). These two lakes were chosen because they are distributed in western and eastern China, respectively, which can be used to illustrate the ability of our LAWS30 dataset in assessing the SD trends of lakes in different environments. Additionally, since the water environment of the two lakes have been widely concerned and studied (Liu et al., 2021a; Cao et al., 2017; Xue et al., 2019), it is convenient to compare the conclusions of our study with the previous studies. The long-term mean SD of the two lakes is shown in Fig. 7. From the perspective of the spatial pattern, it can be seen that the water area in the northern part of Selinco Lake has been increasing, and the SD of the north is generally lower than that of the central and southern areas of the lake. A significant pattern of “high center and low north” was found from the SD results for Selinco Lake. Additionally, an obvious clarity gradient with high values on the northern side and lower values on the central area and southern side could be found in Hongze Lake. These results are in good agreement with previous studies (Wang et al., 2020; Xue et al., 2019; Liu et al., 2021a). Furthermore, we can see that the clarity of water in the northern part of Selinco Lake has improved in recent years, and the SD in the central and southern regions of Hongze Lake has also increased compared with 35 years ago (Fig. 6). Moreover, in terms of the SD trends, the mean SD of Selinco Lake exhibited a decreasing but insignificant trend ($Z < 0$, $P > 0.05$) in the period 1985–2020, while Hongze Lake has shown a significant, increasing SD trend ($Z > 0$, $P < 0.05$) over the past 35 years (Fig. 7). Specifically, the SD curve of Selinco Lake first showed an upward trend before the 2000s, and then exhibited a decreasing trend after 2001. As for Hongze Lake, it was found to have an increasing SD trend before 2010, but the SD began to decrease after that. Similarly, other studies found the same SD change patterns in the two lakes (Liu et al., 2021a; Li et al., 2016; Wang et al., 2020; Cao et al., 2017; Li et al., 2019). Therefore, our long-term SD dataset can provide an opportunity to quickly evaluate the temporal dynamics of SD in water bodies at low cost, which is of great significance for large-scale water quality monitoring.



290 **Figure 6: The long-term SD results of Selinco Lake and Hongze Lake between 1985 and 2020. Note: the color bar is the same as that in Fig. 5. The time-series background imagery of Selinco Lake and Hongze Lake come from the United States Geological Survey (<https://earthexplorer.usgs.gov/>).**

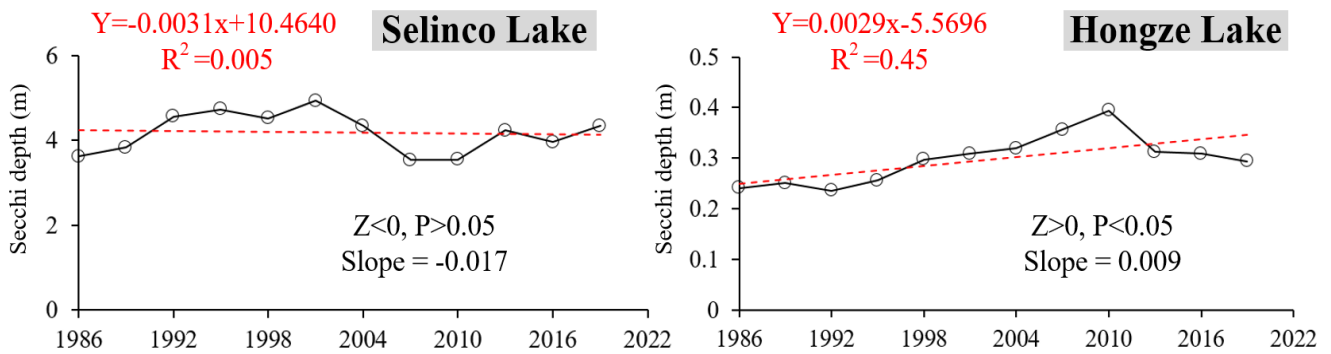


Figure 7: The long-term SD curves of Selinco Lake and Hongze Lake.

295 4.3 Long-term SD trend of lakes across China in the period 1985–2020

The long-term variations in SD for lakes with an area $> 0.01 \text{ km}^2$ ($N = 40,973$) across China from 1985 to 2020 were first evaluated and recognized using our LAUSD30 products (Fig. 8). First, for lakes with an area $\leq 1 \text{ km}^2$ (Fig. 8a), the mean SD of the lakes showed a significant downward trend since 1985 ($Z < 0, P < 0.05$), with a rate of -0.055 m/year . However, it can be seen that the decline rate of SD began to slow down and stabilized after 2001 (with a rate of -0.026 m/year after 2001). In addition, regarding lakes with areas $> 1 \text{ km}^2$ (Fig. 8b), the mean SD of the lakes around 2020 was basically the same as that in 1985, and the long-term SD of the lakes has not shown a significant downward trend since 1985 ($Z < 0, P > 0.05$). However, by carefully observing the time series SD curve of these lakes (Fig. 8b), an obvious turning point could be found around 2001. The SD of the lakes showed a significant downward trend ($Z < 0, P < 0.05$) before 2001, and began to increase significantly ($Z > 0, P < 0.05$) afterward. The above results demonstrate that the water clarity of lakes in China has continued to improve since the 21st century, but the SD of lakes with an area $\leq 1 \text{ km}^2$ is still low.

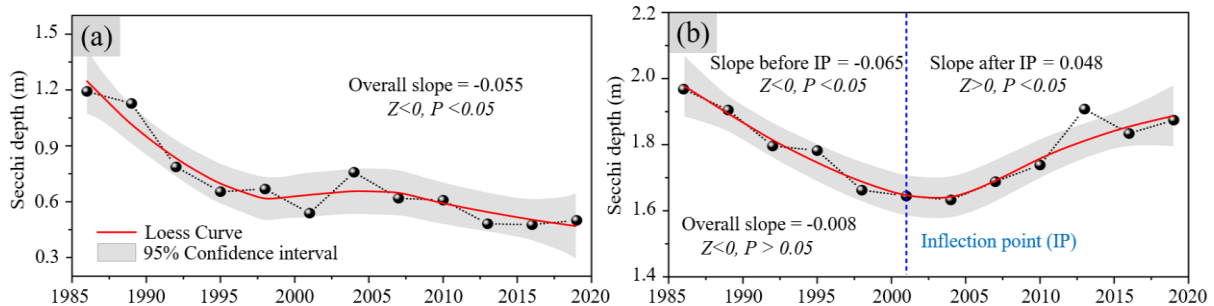


Figure 8: The long-term trend in SD for lakes with an area $> 0.01 \text{ km}^2$ ($N = 40,973$) across China from 1985 to 2020. (a) The mean SD of lakes $\leq 1 \text{ km}^2$ across China; (b) the mean SD of lakes $> 1 \text{ km}^2$ across China. Note: IP., inflection point.

In order to further evaluate the long-term SD trends of lakes in different geographic regions, China was divided into five limnetic regions (Ma et al., 2011; Chen et al., 2021), i.e., the Northeast Mountain Plain Region (NER), Eastern Plain Region (EPR), Yunnan–Guizhou Plateau Region (YGR), Qinghai–Tibet Plateau Region (QTR), and Mongolian–Xinjiang Plateau Region (MXR) (Fig. 9). The statistics of lakes with an area $> 1 \text{ km}^2$ and an area $\leq 1 \text{ km}^2$ are shown in Fig. 9b and Fig. 9c,

respectively. It can be seen that the number of lakes with an area $\leq 1 \text{ km}^2$ in each region was far greater than that of lakes with an area $> 1 \text{ km}^2$, but their accumulation area was much smaller than that of lakes with an area $> 1 \text{ km}^2$. Furthermore, the number and area of lakes in QTR were the highest, while those in YGR were the lowest.

Fig. 10 gives the long-term SD trend of lakes in each limnetic region. For lakes $\leq 1 \text{ km}^2$ (Fig. 10a–e), it can be seen that, except for MXR and QTR, the SD of the lakes in other regions did not show a significant decreasing trend ($P > 0.05$) during the entire analysis period. Moreover, the SD of small lakes (area $\leq 1 \text{ km}^2$) in EPR and NER showed obvious increases ($Z > 0$, $P < 0.05$) since 1985, with average change rates of 0.015 m/year and 0.005 m/year, respectively. Although the SD of small lakes in MXR and QTR experienced significant downward trends over the past 35 years, the decline rates slowed down after the beginning of the 21st century (with rates of 0.001 m/year in MXR and -0.045 m/year in QTR after 2001), and the decrease trend had not been significant since 2001 ($Z < 0$, $P > 0.05$). Secondly, as for lakes $> 1 \text{ km}^2$, there were no dramatic decreases in SD in any of the five regions from 1985 to 2020. Moreover, the lakes with an area $> 1 \text{ km}^2$ in NER experienced a significant upward trend in water clarity ($Z > 0$, $P < 0.05$) over the past 35 years. Additionally, we can also see that the water clarity of lakes $> 1 \text{ km}^2$ in MXR and QTR significantly improved since the beginning of the 21st century. The SD of lakes $> 1 \text{ km}^2$ in YGR in 2020 was also higher than that in 1985. However, it should be noted that, although the SD of lakes $> 1 \text{ km}^2$ in 2020 was also greater than that in 1985 in EPR, the SD of these lakes was characterized by a significant decrease, with a rate of -0.021 m/year after 2001.

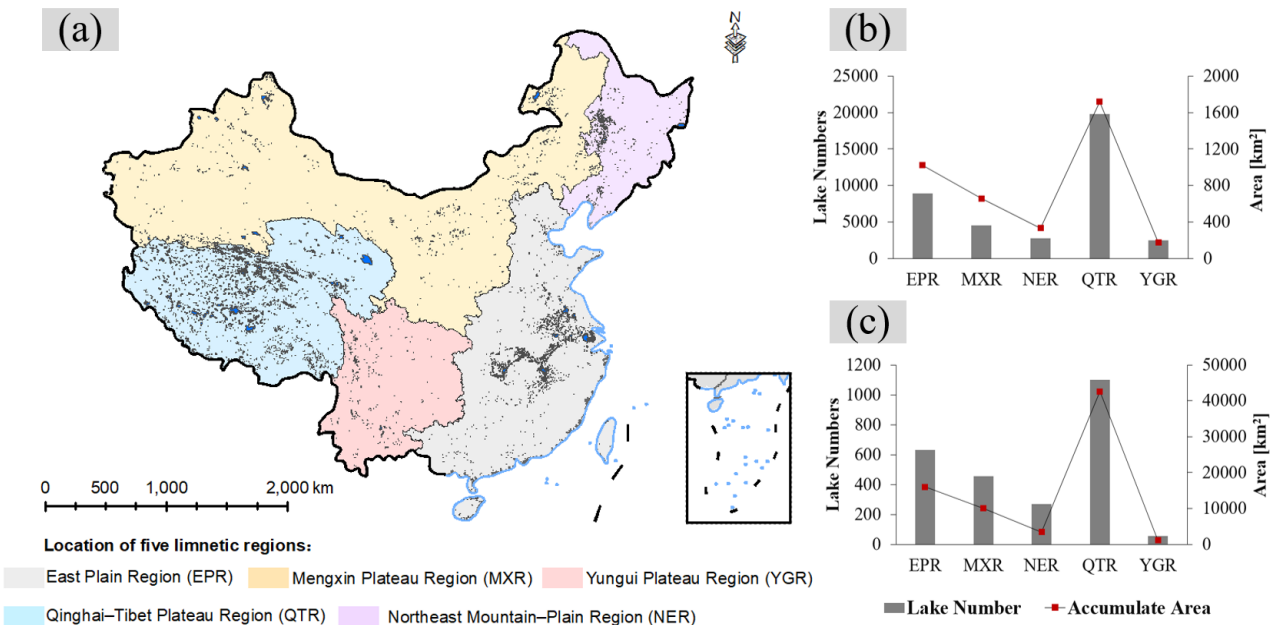
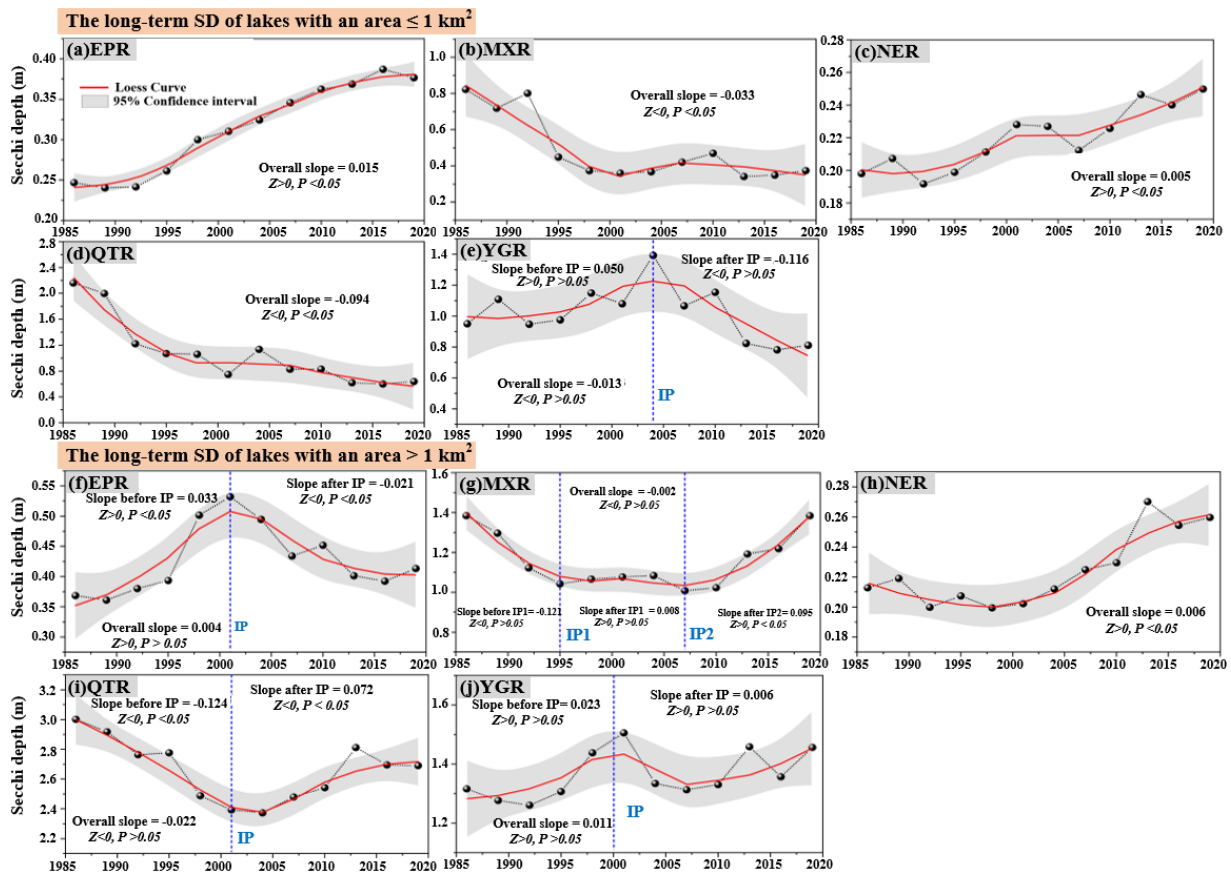


Figure 9: The location of the five limnetic regions and the lake statistics in each limnetic region. (a) The location of the five limnetic regions; (b) statistics of lakes with areas $\leq 1 \text{ km}^2$ in each region; (c) statistics of lakes with areas $> 1 \text{ km}^2$ in each region. The location of the five limnetic regions comes from (Ma et al., 2011; Chen et al., 2021).

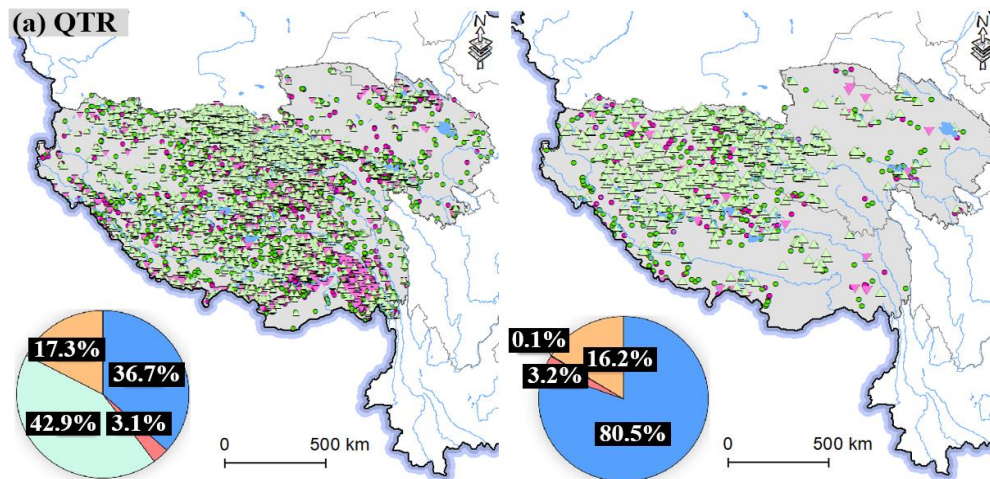


335 **Figure 10:** The long-term SD trend of lakes in each limnetic region from 1985 to 2020. (a–e) The long-term SD trend of lakes with an area $\leq 1 \text{ km}^2$ in each region; (f–j) the long-term SD trend of lakes with an area $> 1 \text{ km}^2$ in each region. Note: EPR., Eastern Plain Region; MXR., Mongolian–Xinjiang Plateau Region; NER., Northeast Mountain Plain Region; QTR., Qinghai–Tibet Plateau Region; YGR., Yunnan–Guizhou Plateau Region; IP., inflection point.

4.4 Spatiotemporal patterns of water clarity in lakes over China

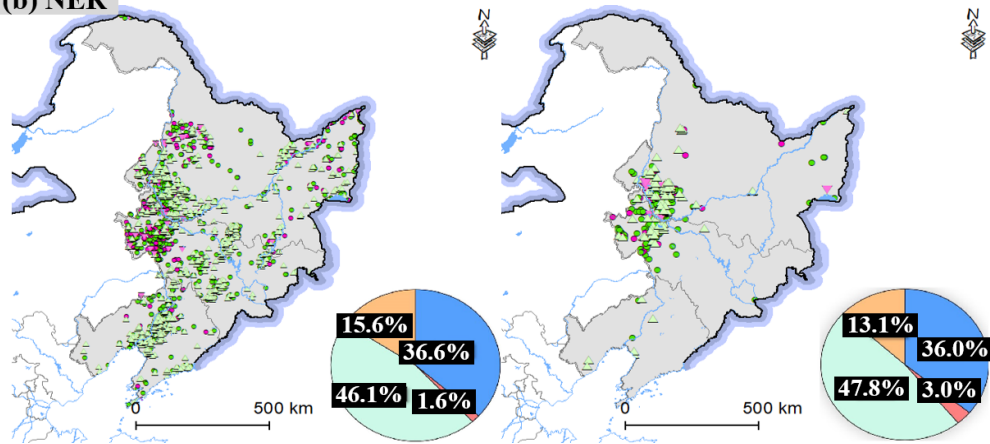
The spatiotemporal patterns of SD in lakes in the five limnetic regions from 1985 to 2020 are shown in Fig. 11. Overall, for
 340 lakes with an area $\leq 1 \text{ km}^2$ and $> 1 \text{ km}^2$, the average proportions of lakes with an increasing SD trend were about 76.1% and 81.3%, respectively, in the five limnetic regions. In addition, the region with the lowest percentage of lakes tending to become clear (with an increasing trend) was still about 70.0%. The above results indicate that most lakes in China exhibited a tendency to become clear in the period 1985–2020. Specifically, as for lakes with areas $\leq 1 \text{ km}^2$ (hereinafter referred to as small lakes), the minimum proportion of small lakes whose SD was characterized by an increasing trend was in the MXR (about 70.0%), while the maximum proportion appeared in the EPR (about 97.4%). In addition, for lakes with areas $> 1 \text{ km}^2$ (hereinafter referred to as large lakes), the smallest and largest proportions of large lakes that had increasing trends were also in the MXR
 345 (about 77.0%) and the EPR (about 84.3%), respectively.

Focusing on the detailed spatial–temporal SD patterns in each limnetic region, there were basically no small lakes with a decreasing trend in SD (2.6%) in the EPR. The individual small lakes that experienced downward trends in EPR were mainly located at the northernmost regions and at the junction of Hubei and Hunan Provinces. Moreover, as for the large lakes in the EPR, these were mainly distributed along the Yangtze River, and the lakes showing decreasing SD trends were mainly located in the middle reaches of the Yangtze River. Secondly, the MXR was the region with the minimum percentage of lakes that had an increasing trend among the five limnetic regions. Specifically, small lakes that exhibited decreasing trends were mainly located in the northeast and northwest of MXR, while large lakes that had decreasing trends were mainly distributed in the northeast areas of MXR. Additionally, in the NER, large and small lakes with decreasing SD were mainly distributed in the west and northeast of NER, accounting for 17.2% of small lakes and 16.1% of large lakes, respectively. Furthermore, in the QTR, most lakes were located in the north, center, and southeast. Among these lakes, most of the small lakes with a tendency to become turbid were located in the center, northeast, and southeast of QTR. In addition, the large lakes that were characterized by decreasing trends were mainly distributed in the central and northeast parts of the QTR. Lastly, as for the lakes in YGR, the small lakes that had a decreasing trend were mainly located in the northwest and southeast of YGR. In contrast, the number of large lakes in the YGR was relatively small ($N = 53$), and the lakes with a decreasing trend were mainly distributed in the southeast and west of YGR. Therefore, although most lakes had a tendency to become clearer from 1985 to 2020, there was still a considerable proportion of lakes whose SD experienced a downward trend over the past few decades, which suggests that effective water management is still required in many regions.

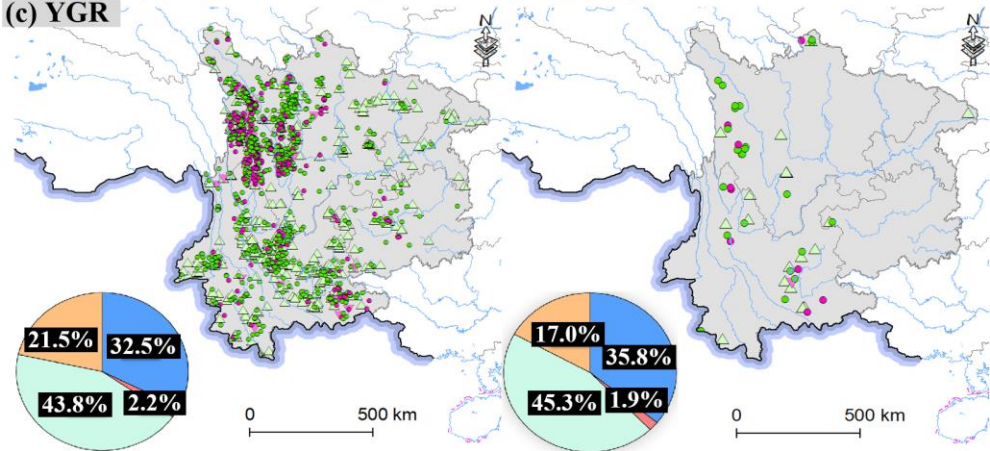


365

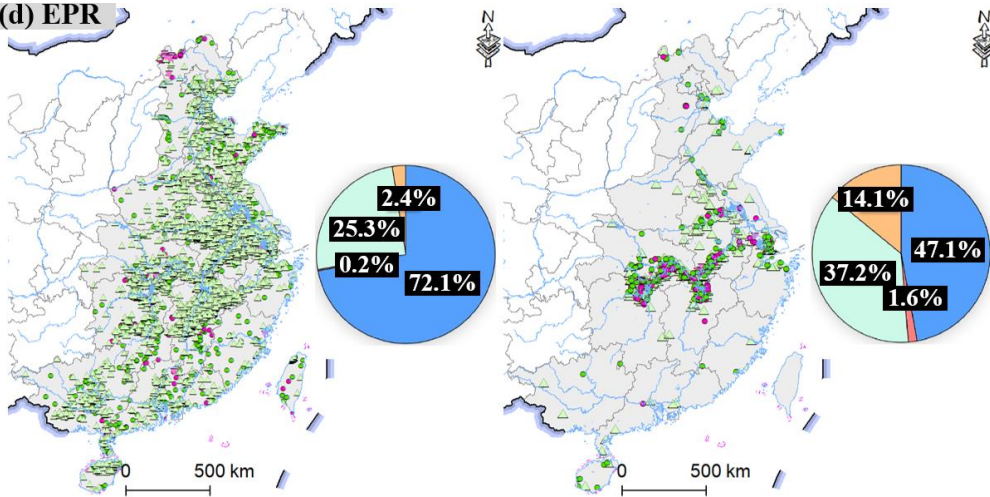
(b) NER

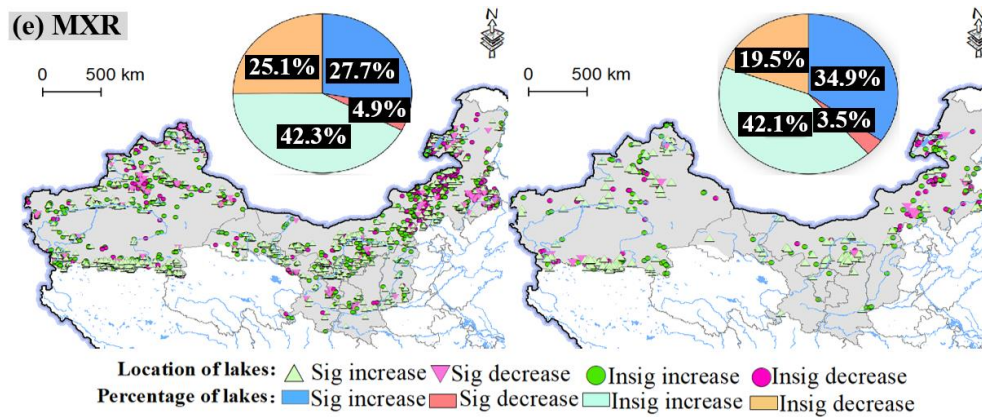


(c) YGR



(d) EPR





370 **Figure 11: The spatiotemporal patterns of SD in lakes in the five limnetic regions from 1985 to 2020 (from left to right are the**
spatiotemporal patterns of lakes with an area ≤ 1 km², and the spatiotemporal patterns of lakes with an area > 1 km²). Note: Sig.,
significant; Insig., insignificant.

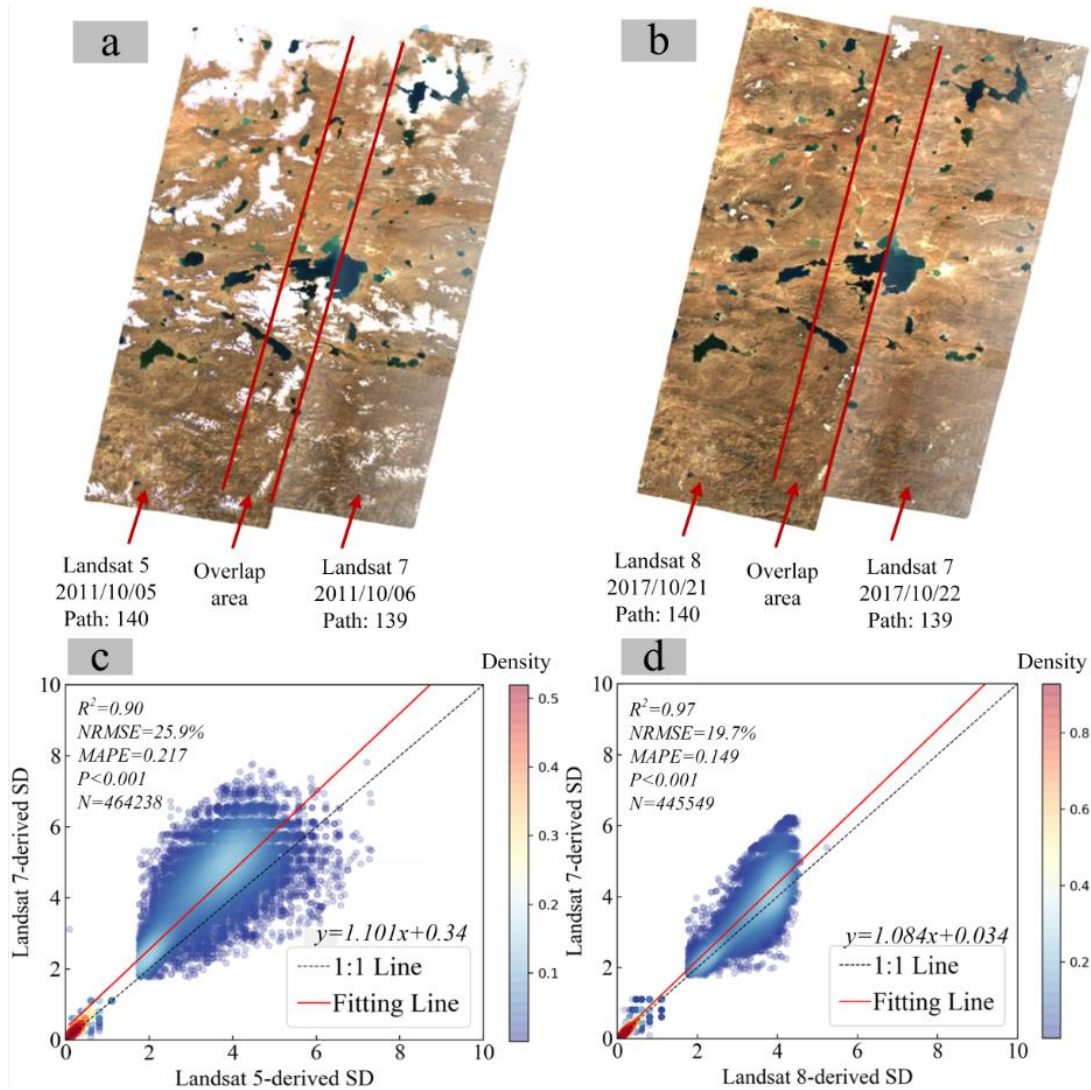
5 Discussion

5.1 Consistency between the Landsat estimation SD results

375 Recently, many studies have demonstrated the feasibility of using long-term Landsat series data from GEE to assess the
 changes in lake clarity (Zhang et al., 2021b; Yin et al., 2021). In order to evaluate the comparability of our LAWS30 dataset
 in monitoring long-term SD variations, the Landsat 5, 7, and 8 data for two adjacent tracks with overlapping areas were first
 selected to test the consistency between the Landsat estimation SD results (Fig. 12). The images of paths 139 and 140 were
 chosen because the lakes in this place are hardly affected by human activities, and thus the SD of lakes can remain stable
 380 within a few days under stable weather conditions (Zhang et al., 2019b). The Landsat 5 images were taken on October 5, 2011,
 the Landsat 8 images were taken on October 21, 2017, and the Landsat 7 ETM + images were taken on October 6, 2011 and
 October 22, 2017. Since the compared images were quasi-synchronized with each other in one day, the SD of water bodies
 was assumed to be the same for both images. Fig. 12c,d show scatterplots of the SD results for the overlapping regions. It can
 be seen that, although the model coefficients of the three sensors were different in our calculation (Section 3.2), there was still
 385 strong consistency between the SD results of Landsat 5, 7, and 8, with an R^2 of 0.90 for Landsat 5 vs. 7 and an R^2 of 0.97 for
 Landsat 8 vs. 7 (Fig. 12). In addition, the $NRMSE$ and $MAPE$ for Landsat 5 vs. 7 and Landsat 8 vs. 7 were both lower than 26%
 and 0.22, respectively. The above results demonstrate that the estimated SD results from Landsat 5, 7, and 8 data are highly
 consistent.

Moreover, since SD changes over time, and our LAWS30 dataset was calculated based on the BAP composites, it was also
 390 necessary to test the phenological consistency between the time-series summer BAP composites. The mean DOY of each pixel
 in the BAP composites from 1985 to 2020 was calculated and is shown in Fig. 13a. In addition, the maximum DOY difference
 of each pixel location in the BAP composites from 1985 to 2020 was calculated and displayed in Fig. 13b. From Fig. 13a,
 most areas of China were composites based on images around DOY 214, and the mean standard deviation was only 7.5 days.

Therefore, the developed BAP composites can effectively ensure the consistency of phenology between different regions across China. In addition, from Fig. 13b, the mean value of the maximum DOY difference across China was only 16.5 days, and the maximum DOY differences for most pixels across China (about 94%) were within 32 days. Although the maximum DOY difference in parts of southern China exceeded 32 days due to the influence of clouds, most of these areas were mountainous with few lakes. In addition, since the phenology of these regions were in summer, and the SD is relatively stable during this season (McCullough et al., 2012; Kloiber et al., 2002), the consistency of water clarity in these areas can thus be considered not to have much impact on the final result. Therefore, the results displayed in Figs. 12 and 13 confirm the reliability of our LAWS30 dataset for evaluating the long-term SD across China.



405 **Figure 12: Overlapping regions of Landsat 5 and 7 data (a) and Landsat 8 and 7 data (b); lake SD comparison for the Landsat 7 vs. Landsat 5 data (c) and the Landsat 7 vs. Landsat 8 data (d) for the lakes from the overlap. The Landsat imagery for (a) and (b) come from the United States Geological Survey (<https://earthexplorer.usgs.gov/>).**

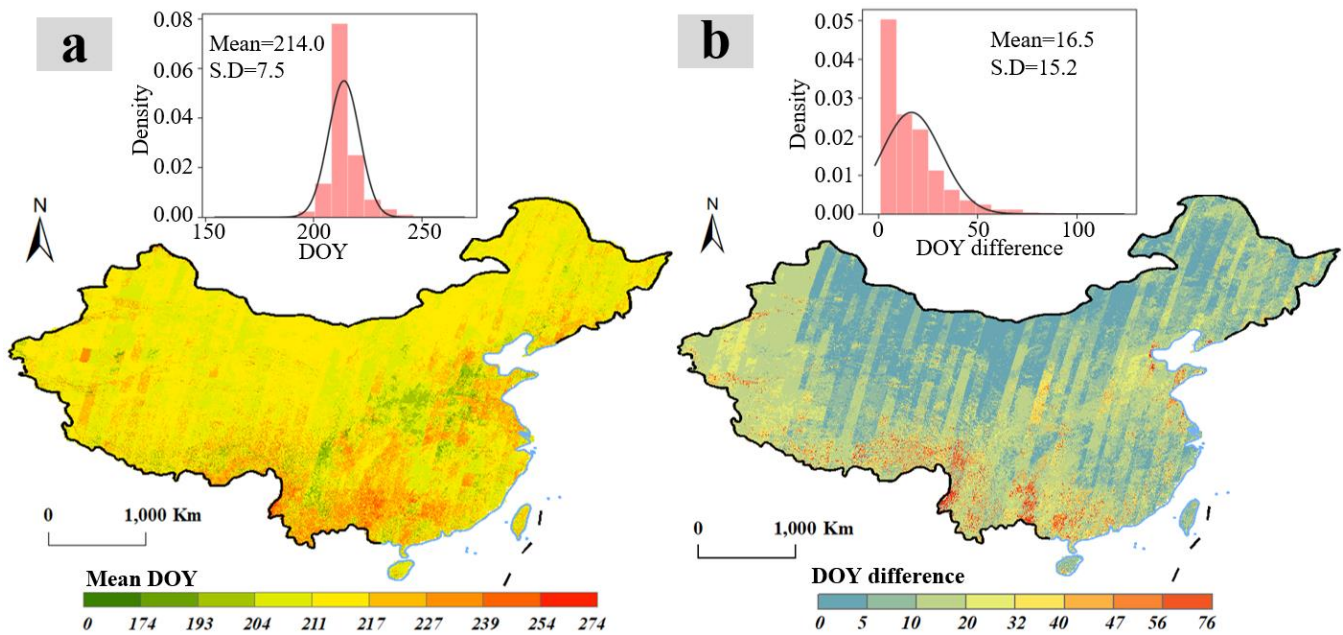
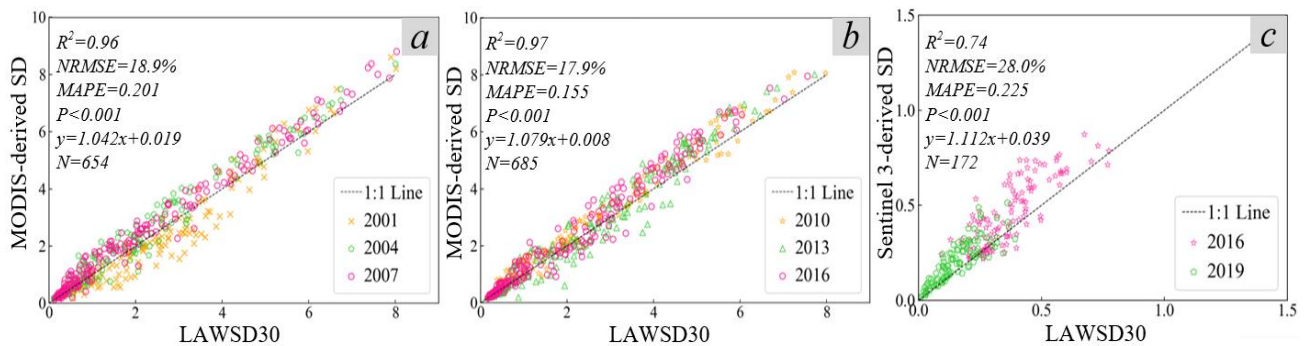


Figure 13: The mean DOY of each pixel in the BAP composites from 1985 to 2020 (a) and the maximum DOY difference of each pixel location in the BAP composites from 1985 to 2020 (b). Note: S.D., standard deviation.

5.2 Cross-comparison with existing water clarity monitoring studies

410 To date, some past studies have also evaluated the water clarity of specific lakes in China (Shen et al., 2020; Wang et al., 2020).
 In order to further analyze the reliability of our estimated SD results across China, the results of this study were assessed
 against other existing water clarity monitoring studies. However, since most of the existing investigations focused on the
 annual average SD (Zhang et al., 2021b; Li et al., 2020a; Yin et al., 2021), and our LAWS30 dataset is a summer SD dataset,
 it is a challenge to compare our results with other studies due to the different periods of interest. Fortunately, Wang et al. (2020)
 415 recently generated a time-series summer SD dataset (for the period 2000–2017) for lakes > 25 km² in China using water color
 parameters and MODIS data. Additionally, Shen et al. (2020) developed a multiyear monthly SD dataset (2016–2020) for 86
 lakes in eastern China using Sentinel 3 images and a random forest regression SD model. Since both of the studies included
 SD results in summer, we had a unique opportunity to compare our SD estimates with them. The summer mean SD for each
 lake in the MODIS and the Sentinel 3-derived SD datasets was calculated and compared with our LAWS30 dataset. As
 420 shown in Fig. 14, our LAWS30 agreed well with both the MODIS and Sentinel 3-derived SD results. An average R^2 of 0.96
 was achieved when compared with the MODIS-derived results, and the average $NMRSE$ and $MAPE$ were only 18.4% and
 0.178, respectively (Fig. 14a,b). In addition, an R^2 of 0.74, a $NMRSE$ of 28.0%, and a $MAPE$ of 0.225 were shown in the
 comparison between the Sentinel 3-derived SD and our LAWS30 dataset (Fig. 14c). Thus, the above results confirm the
 reliability of our long-term LAWS30 dataset.



425

Figure 14: (a,b) Scatterplots of our LAWS30 data and the corresponding MODIS-derived SD data (Wang et al., 2020) in the 2000s (2001, 2004, and 2007) and 2010s (in 2010, 2013, and 2016), respectively; (c) scatterplot of our LAWS30 data and the corresponding Sentinel 3-derived SD data (Shen et al., 2020) in 2016 and 2019.

5.3 limitations and suggestions for future work

430

First, due to the relative long revisit period of Landsat series data and the interference from clouds, our study is not suitable for the evaluation of the intra-annual changes in water clarity. The long-term intra-annual and seasonal SD changes of lakes across China still need to be evaluated. In the future, more efforts will be devoted to the use of more multi-source data to increase the number of valid observations, so as to conduct more analysis on SD at seasonal scale.

435

Second, because this study is mainly focused on monitoring the long-term SD changes in lakes across China, the comprehensive analysis of the relationship between variation of lake water clarity and environmental factors was not investigated. Since the discharge of agricultural fertilizers, industrial sewage, and livestock excrement within the lake drainage area, as well as the spatial-temporal variations of land use and land cover can affect the clarity of the water bodies (Li et al., 2020a), data on related factors should be collected and analyzed. In addition, the topographic conditions of the lake basin, such as the slope of the lake shoreline and the size of recharge river, and the extreme weather and climate events (i.e. drought and heat event) (Liu et al., 2021a; Yu and Zhai, 2020), may also have important impact on the lake clarity. In future work, we will do more investigations to analyze the above potential driver factors of SD changes.

440

6 Conclusions

445

Water clarity is one of the most intuitive and important indicators of water quality. In order to improve our understanding of the long-term spatiotemporal patterns of lake water clarity in China, a long-term LAWS30 dataset with a three-year temporal interval was first developed for the period 1985–2020 using Landsat series data and the GEE platform. The dataset exhibited good performance when compared with concurrent in situ SD measurements (with an R^2 of 0.86 and a RMSE of 0.225 m), thus confirming the reliability of our LAWS30 dataset.

Subsequently, based on the generated LAWS30 dataset, the national-scale long-term SD estimations of lakes in China ($N = 40,973$) over the past 35 years were analyzed. It was found that the SD of lakes with an area $\leq 1 \text{ km}^2$ showed a significant

450 decreasing trend during the period 1985–2020, but the decline rate began to slow down and stabilized after 2001. Regarding the SD of the lakes with an area > 1 km², a significant downward trend was seen before 2001, and it began to increase significantly afterwards. In addition, in terms of the spatial patterns, the small lakes showing a decreasing SD trend during 1985–2020 accounted for the largest proportion in MXR (about 30.0%), followed by YGR (23.8%), QTR (20.4%), NER (17.2%), and EPR (2.6%). Additionally, for large lakes, this proportion was the largest in MXR (about 23.0%), followed by
 455 QTR (19.4%), YGR (18.9%), EPR (17.7%), and NER (16.1%). The above results indicate that, although the clarity of lakes in China has shown an improving trend since the 21st century, there has still been a considerable proportion of lakes experiencing a downward SD trend over the past few decades. This study can give an effective guidance for the management and restoration of lake water environment.

Appendix A

460 In order to generate the BAP composites, three criteria (i.e., the DOY criteria (Eq. (A1)), the cloud and cloud shadow criteria (Eq. (A2)), and the atmospheric opacity criteria (Eq. (A3)) were selected:

$$\text{Score}_{DOY} = \frac{1}{\sigma\sqrt{2\pi}} e^{-\frac{1}{2}\left(\frac{x_j - \mu}{\sigma}\right)^2} \quad (\text{A1})$$

$$\text{Score}_{CloudDistance} = \frac{1}{1 + e^{(-0.2(\min(D_i, D_{req}) - \frac{D_{req}}{2}))}} \quad (\text{A2})$$

$$\text{Score}_{Opacity} = 1 - \frac{1}{1 + e^{(-0.2(\min(O_i, O_{max}) - (\frac{O_{max} - O_{min}}{2})))}} \quad (\text{A3})$$

where μ and σ represent the target DOY and the standard deviation of the DOY, respectively, and x_j is the DOY for image j . The target DOY μ and the standard deviation of the DOY was set to August 1 and 60, respectively. D_i is the distance from pixel i to cloud or cloud shadow, and D_{req} is the minimum required distance, which was set to 50 here. O_i is the opacity of
 465 pixel i , while O_{max} and O_{min} are the minimum opacity value, respectively. O_{max} was set to 0.3 and O_{min} was set to 0.2. All parameters for the three criteria were set according to Chen et al. (2021). The BAP score was then derived as followed:

$$\text{Score}_{BAP} = \text{Score}_{DOY} + \text{Score}_{CloudDistance} + \text{Score}_{Opacity} \quad (\text{A4})$$

Author contributions. **Xidong Chen:** Conceptualization, Methodology, Validation, Formal analysis, Investigation, Writing - original draft. **Liangyun Liu:** Conceptualization, Investigation, Writing - review & editing. **Xiao Zhang:** Methodology, Writing - review & editing. **Junsheng Li:** Resources, Writing - review & editing. **Shenglei Wang:** Resources, Validation,
 470 Writing - review & editing. **Yuan Gao:** Validation, data curation. **Jun Mi:** Validation, data curation.

Data availability. Our long-term LAWS30 dataset and the lake vector dataset generated for lakes with an area > 0.01 km² are now available at <https://doi.org/10.5281/zenodo.5734071> and <https://doi.org/10.5281/zenodo.5734166>, respectively. Additionally, our validation datasets can be download at <http://lake.geodata.cn>.

Competing interests. The authors declare that they have no conflict of interest.

475 *Acknowledgments.* The authors gratefully acknowledge the data support from “National Earth System Science Data Center, National Science & Technology Infrastructure of China (<http://www.geodata.cn>)”, and the financial support provided for this research by the National Natural Science Foundation of China (grant nos. 41825002, 41971318, 41901272) and the Strategic Priority Research Program of the Chinese Academy of Sciences (grant no. XDA19090125).

References

- 480 Barnes, A.: Muddy Waters: The Public Health Risks and Sustainability of Bottled Water in China, *Vermont law review*, 38, 971-1024, 2014.
- Bastviken, D., Tranvik, L. J., Downing, J. A., Crill, P. M., and Enrich-Prast, A.: Freshwater Methane Emissions Offset the Continental Carbon Sink, *Science*, 331, 50, 10.1126/science.1196808, 2011.
- Biggs, J., von Fumetti, S., and Kelly-Quinn, M.: The importance of small waterbodies for biodiversity and ecosystem services: 485 implications for policy makers, *Hydrobiologia*, 793, 3-39, 10.1007/s10750-016-3007-0, 2017.
- Brönmark, C. and Hansson, L.: Environmental issues in lakes and ponds: current state and perspectives, *Environmental Conservation*, 29(3), 290-306, 2002.
- Carlson, R. E.: TROPHIC STATE INDEX FOR LAKES, *Limnology and Oceanography*, 22, 361-369, 10.4319/lo.1977.22.2.0361, 1977.
- 490 Chen, X., Liu, L., Zhang, X., Li, J., and Song, K.: An assessment of water color for inland water in China using a Landsat 8-derived Forel-Ule index and the Google Earth Engine platform, *IEEE Journal of Selected Topics in Applied Earth Observations and Remote Sensing*, PP(99), 1-1, 10.1109/JSTARS.2021.3085411, 2021.
- CIE: Commission Internationale de l'Éclairage Proceedings, Cambridge University Press: Cambridge, UK 1932.
- Cuffney, T. F., Meador, M. R., Porter, S. D., and Gurtz, M. E.: Responses of Physical, Chemical, and Biological Indicators of 495 Water Quality to a Gradient of Agricultural Land Use in the Yakima River Basin, Washington, *Environmental Monitoring Assessment*, 64, 259-270, 10.1023/A:1006473106407, 2000.
- Dai, Y., Feng, L., Hou, X., and Tang, J.: An automatic classification algorithm for submerged aquatic vegetation in shallow lakes using Landsat imagery, *Remote Sensing of Environment*, 260, 10.1016/j.rse.2021.112459, 2021.
- Dona, C., Sanchez, J. M., Caselles, V., Dominguez, J. A., and Camacho, A.: Empirical Relationships for Monitoring Water 500 Quality of Lakes and Reservoirs Through Multispectral Images, *IEEE Journal of Selected Topics in Applied Earth Observations and Remote Sensing*, 7, 1632-1641, 10.1109/JSTARS.2014.2301295, 2014.
- Downing, J. A., Cole, J. J., Duarte, C. M., Middelburg, J. J., Melack, J. M., Prairie, Y. T., Kortelainen, P., Striegl, R. G., McDowell, W. H., and Tranvik, L. J.: Global abundance and size distribution of streams and rivers, *Inland Waters*, 2, 229-236, 10.5268/iw-2.4.502, 2012.

- 505 Feng, L., Hou, X., and Zheng, Y.: Monitoring and understanding the water transparency changes of fifty large lakes on the Yangtze Plain based on long-term MODIS observations, *Remote Sensing of Environment*, 221, 675-686, 10.1016/j.rse.2018.12.007, 2019.
- Garaba, S., Friedrichs, A., Voß D., and Zielinski, O.: Classifying Natural Waters with the Forel-Ule Colour Index System: Results, Applications, Correlations and Crowdsourcing, *International Journal of Environmental Research Public Health*, 12, 510 16096-16109, 10.3390/ijerph121215044, 2015.
- Garnesson, P., Mangin, A., D'Andon, O. F., Demaria, J., and Bretagnon, M.: The CMEMS GlobColour chlorophyll a product based on satellite observation: multi-sensor merging and flagging strategies, *Ocean Science*, 15, 819-830, 10.5194/os-15-819-2019, 2019.
- Gomez, C., White, J. C., and Wulder, M. A.: Optical remotely sensed time series data for land cover classification: A review, 515 *ISPRS Journal of Photogrammetry and Remote Sensing*, 116, 55-72, 10.1016/j.isprsjprs.2016.03.008, 2016.
- Gorelick, N., Hancher, M., Dixon, M., Ilyushchenko, S., Thau, D., and Moore, R.: Google Earth Engine: Planetary-scale geospatial analysis for everyone, *Remote Sensing of Environment*, 202, 18-27, 10.1016/j.rse.2017.06.031, 2017.
- Griffiths, P., van der Linden, S., Kuemmerle, T., and Hostert, P.: Pixel-Based Landsat Compositing Algorithm for Large Area Land Cover Mapping, *IEEE Journal of Selected Topics in Applied Earth Observations and Remote Sensing*, 6, 2088-2101, 520 10.1109/jstars.2012.2228167, 2013.
- Griffiths, P., Kuemmerle, T., Baumann, M., Radeloff, V. C., Abrudan, I. V., Lieskovsky, J., Munteanu, C., Ostapowicz, K., and Hostert, P.: Forest disturbances, forest recovery, and changes in forest types across the Carpathian ecoregion from 1985 to 2010 based on Landsat image composites, *Remote Sensing of Environment*, 151, 72-88, 10.1016/j.rse.2013.04.022, 2014.
- Guo, L.: Ecology - Doing battle with the green monster of Taihu Lake, *Science*, 317, 1166-1166, 525 10.1126/science.317.5842.1166, 2007.
- Hermosilla, T., Wulder, M. A., White, J. C., Coops, N. C., and Hobart, G. W.: An integrated Landsat time series protocol for change detection and generation of annual gap-free surface reflectance composites, *Remote Sensing of Environment*, 158, 220-234, 10.1016/j.rse.2014.11.005, 2015.
- Hu, C.: A novel ocean color index to detect floating algae in the global oceans, *Remote Sensing of Environment*, 113, 2118- 530 2129, 10.1016/j.rse.2009.05.012, 2009.
- Hu, H.: Population distribution, regionalization, and prospects in China, *Acta Geographica Sinica*, 45, 139-145, 1990.
- Islam, M. M.: Analyses of ASTER and Spectroradiometer Data with in Situ Measurements for Turbidity and Transparency Study of Lake Abashiri, *International Journal of Geoinformatics*, 87, 76-77, 2006.
- Kendall, M. G.: Rank Correlation Methods, *British Journal of Psychology*, 25, 86-91, 10.1111/j.2044-8295.1934.tb00727.x, 535 1990.
- Kloiber, S. N., Brezonik, P. L., Olmanson, L. G., and Bauer, M. E.: A procedure for regional lake water clarity assessment using Landsat multispectral data, *Remote Sensing of Environment*, 82, 38-47, 10.1016/s0034-4257(02)00022-6, 2002.

- Lacaux, J. P., Tourre, Y. M., Vignolles, C., Ndione, J. A., and Lafaye, M.: Classification of ponds from high-spatial resolution remote sensing: Application to Rift Valley Fever epidemics in Senegal, *Remote Sensing of Environment*, 106, 66-74, 10.1016/j.rse.2006.07.012, 2007.
- Lee, Z., Arnone, R., Boyce, D., Franz, B., and Wilson, C.: Global Water Clarity: Continuing a Century-Long Monitoring, 10.1029/2018EO097251, 2018.
- Li, J., Wang, S., Wu, Y., Zhang, B., Chen, X., Zhang, F., Shen, Q., Peng, D., and Tian, L.: MODIS observations of water color of the largest 10 lakes in China between 2000 and 2012, *International Journal of Digital Earth*, 9, 788-805, 10.1080/17538947.2016.1139637, 2016.
- Li, N., Shi, K., Zhang, Y., Gong, Z., Peng, K., Zhang, Y., and Zha, Y.: Decline in Transparency of Lake Hongze from Long-Term MODIS Observations: Possible Causes and Potential Significance, *Remote Sensing*, 11, 10.3390/rs11020177, 2019.
- Li, Y., Shi, K., Zhang, Y., Zhu, G., Zhang, Y., Wu, Z., Liu, M., Guo, Y., and Li, N.: Analysis of water clarity decrease in Xin'anjiang Reservoir, China, from 30-Year Landsat TM, ETM plus , and OLI observations, *Journal of Hydrology*, 590, 10.1016/j.jhydrol.2020.125476, 2020a.
- Li, Z., Cao, Y., Tang, J., Wang, Y., Duan, Y., Jiang, Z., and Qu, Y.: Relationships between Temporal and Spatial Changes in Lakes and Climate Change in the Saline-Alkali Concentrated Distribution Area in the Southwest of Songnen Plain, Northeast China, from 1985 to 2015, *Water*, 12(12), 3557, 10.3390/w12123557, 2020b.
- Liangyun Liu, Xiao Zhang, Yuan Gao, Xidong Chen, Xie Shuai, and Mi, J.: Finer-Resolution Mapping of Global Land Cover: Recent Developments, Consistency Analysis, and Prospects, *Journal of Remote Sensing*, 2021, 38, 10.34133/2021/5289697, 2021.
- Liu, C., Zhu, L., Li, J., Wang, J., Ju, J., Qiao, B., Ma, Q., and Wang, S.: The increasing water clarity of Tibetan lakes over last 20 years according to MODIS data, *Remote Sensing of Environment*, 253, 10.1016/j.rse.2020.112199, 2021.
- Liu, D., Duan, H., Loiselle, S., Hu, C., Zhang, G., Li, J., Yang, H., Thompson, J. R., Cao, Z., Shen, M., Ma, R., Zhang, M., and Han, W.: Observations of water transparency in China's lakes from space, *International Journal of Applied Earth Observations and Geoinformation*, 92, <https://doi.org/10.1016/j.rse.2020.111950> 2020.
- Liu, X., Lee, Z., Zhang, Y., Lin, J., and Sun, Z.: Remote Sensing of Secchi Depth in Highly Turbid Lake Waters and Its Application with MERIS Data, *Remote Sensing*, 11, 2226-, 10.3390/rs11192226, 2019.
- Liu, Y., Chen, C., and Li, Y.: Differentiation regularity of urban-rural equalized development at prefecture-level city in China, *Journal of Geographical Sciences*, 25, 1075-1088, 10.1007/s11442-015-1220-9, 2015.
- Ma, H., Xu, J., and Wang, P.: Water Resource Utilization and China's Urbanization, *Resources Science*, 36, 334-341, 1007-7588(2014)02-0334-08, 2014.
- Ma, R., Yang, G., Duan, H., Jiang, J., Wang, S., Feng, X., Li, A., Kong, F., Xue, B., Wu, J., and Li, S.: China's lakes at present: Number, area and spatial distribution, *Science China-Earth Sciences*, 54, 283-289, 10.1007/s11430-010-4052-6, 2011.
- Mann, H. B.: Non-parametric tests against trend, *Econometrica*, 13(3), 245-259, 10.2307/1907187, 1945.

- McCullough, I. M., Loftin, C. S., and Sader, S. A.: Combining lake and watershed characteristics with Landsat TM data for remote estimation of regional lake clarity, *Remote Sensing of Environment*, 123, 109-115, 10.1016/j.rse.2012.03.006, 2012.
- Report on the State of the Ecology and Environment in China 2019: <http://english.mee.gov.cn/Resources/Reports/>, last access: 30 December 2020.
- 575 Murshed, M. F., Aslam, Z., Lewis, R., Chow, C., Wang, D., Drikas, M., and Leeuwen, J. V.: Changes in the quality of river water before, during and after a major flood event associated with a La Nia cycle and treatment for drinking purposes, *Journal of Environmental Sciences*, 26, 1985-1993, 10.1016/j.jes.2014.08.001, 2014.
- Novoa, S., Wernand, M. R., and van der Woerd, H. J.: The Forel-Ule scale revisited spectrally: preparation protocol, transmission measurements and chromaticity, *Journal of the European Optical Society-Rapid Publications*, 8, 10.2971/jeos.2013.13057, 2013.
- 580 Odermatt, D., Gitelson, A., Brando, V. E., and Schaepman, M.: Review of constituent retrieval in optically deep and complex waters from satellite imagery, *Remote sensing of environment*, 118, 0-126, 10.1016/j.rse.2011.11.013, 2012.
- Olmanson, L., Bauer, M., and Brezonik, P.: A 20-year Landsat water clarity census of Minnesota's 10,000 lakes, *Remote Sensing of Environment*, 112(11), 4086-4097, 10.1016/j.rse.2007.12.013, 2008.
- 585 Olmanson, L. G., Brezonik, P. L., Finlay, J. C., and Bauer, M. E.: Comparison of Landsat 8 and Landsat 7 for regional measurements of CDOM and water clarity in lakes, *Remote Sensing of Environment*, 185, 119–128, <https://doi.org/10.1016/j.rse.2016.01.007>, 2016.
- Page, B. P., Olmanson, L. G., and Mishra, D. R.: A harmonized image processing workflow using Sentinel-2/MSI and Landsat-8/OLI for mapping water clarity in optically variable lake systems, *Remote Sensing of Environment*, 231, 111284, 10.1016/j.rse.2019.111284, 2019.
- 590 Palmer, S. C. J., Kutser, T., and Hunter, P. D.: Remote sensing of inland waters: Challenges, progress and future directions, *Remote Sensing of Environment*, 157, 1-8, 10.1016/j.rse.2014.09.021, 2015.
- Pekel, J. F., Cottam, A., Gorelick, N., and Belward, A. S.: High-resolution mapping of global surface water and its long-term changes, *Nature*, 540, 418-422, 10.1038/nature20584, 2016.
- 595 Pitarch, J., van der Woerd, H. J., Brewin, R. J. W., and Zielinski, O.: Optical properties of Forel-Ule water types deduced from 15 years of global satellite ocean color observations, *Remote Sensing of Environment*, 231, 10.1016/j.rse.2019.111249, 2019.
- Racetin, I., Krtalic, A., Srzic, V., and Zovko, M.: Characterization of short-term salinity fluctuations in the Neretva River Delta situated in the southern Adriatic Croatia using Landsat-5 TM, *Ecological Indicators*, 110, 10.1016/j.ecolind.2019.105924, 2020.
- 600 Shen, M., Duan, H., Cao, Z., Xue, K., Qi, T., Ma, J., Liu, D., Song, K., Huang, C., and Song, X.: Sentinel-3 OLCI observations of water clarity in large lakes in eastern China: Implications for SDG 6.3.2 evaluation, *Remote Sensing of Environment*, 247, 10.1016/j.rse.2020.111950, 2020.

- Shi, K., Zhang, Y., Zhu, G., Qin, B., and Pan, D.: Deteriorating water clarity in shallow waters: Evidence from long term MODIS and in-situ observations, *International Journal of Applied Earth Observation and Geoinformation*, 68, 287-297, 10.1016/j.jag.2017.12.015, 2018.
- Singh, S. P. and Singh, P.: Effect of temperature and light on the growth of algae species: A review, *Renewable & Sustainable Energy Reviews*, 50, 431-444, 10.1016/j.rser.2015.05.024, 2015.
- Song, K., Liu, G., Wang, Q., Wen, Z., Lyu, L., Du, Y., Sha, L., and Fang, C.: Quantification of lake clarity in China using Landsat OLI imagery data, *Remote Sensing of Environment*, 243, 10.1016/j.rse.2020.111800, 2020.
- Song, K., Wen, Z., Xu, Y., Yang, H., Lyu, L., Zhao, Y., Fang, C., Shang, Y., and Du, J.: Dissolved carbon in a large variety of lakes across five limnetic regions in China, *Journal of Hydrology*, 563, 143-154, 10.1016/j.jhydrol.2018.05.072, 2018.
- Steyerberg, E. W.: *Regression Modeling Strategies: With Applications, to Linear Models, Logistic and Ordinal Regression, and Survival Analysis*, *Biometrics*, 72, 1006-1007, 10.1007/978-3-319-19425-7, 2016.
- Preliminary Assessment of the Value of Landsat 7 ETM+ Data Following Scan Line Corrector Malfunction: Available online at: http://Landsat.usgs.gov/data_products/slc_off_data_products/documents/SLC_off_Scientific_Usability.pdf. Accessed 12 April 2006, last
- van der Woerd, H. J. and Wernand, M. R.: True Colour Classification of Natural Waters with Medium-Spectral Resolution Satellites: SeaWiFS, MODIS, MERIS and OLCI, *Sensors*, 15, 25663-25680, 10.3390/s151025663, 2015.
- van der Woerd, H. J. and Wernand, M. R.: Hue-Angle Product for Low to Medium Spatial Resolution Optical Satellite Sensors, *Remote Sensing*, 10, 10.3390/rs10020180, 2018.
- Wang, S.: *Large-scale and Long-time Water Quality Remote Sensing Monitoring over Lakes Based on Water Color Index*, University of Chinese Academy of Sciences, Beijing, 2018.
- Wang, S., Li, J., Zhang, W., Cao, C., and Zhang, B.: A dataset of remote-sensed Forel-Ule Index for global inland waters during 2000–2018, *Scientific Data*, 8, 10.1038/s41597-021-00807-z, 2021.
- Wang, S., Li, J., Zhang, B., Spyrakos, E., Tyler, A. N., Shen, Q., Zhang, F., Kutser, T., Lehmann, M. K., Wu, Y., and Peng, D.: Trophic state assessment of global inland waters using a MODIS-derived Forel-Ule index, *Remote Sensing of Environment*, 217, 444-460, 10.1016/j.rse.2018.08.026, 2018.
- Wang, S., Li, J., Zhang, B., Lee, Z., Spyrakos, E., Feng, L., Liu, C., Zhao, H., Wu, Y., Zhu, L., Jia, L., Wan, W., Zhang, F., Shen, Q., Tyler, A. N., and Zhang, X.: Changes of water clarity in large lakes and reservoirs across China observed from long-term MODIS, *Remote Sensing of Environment*, 247, 10.1016/j.rse.2020.111949, 2020.
- Wang, X. and Yang, W.: Water quality monitoring and evaluation using remote-sensing techniques in China: A systematic review, *Ecosystem Health and Sustainability*, 5, 47-56, 10.1080/20964129.2019.1571443, 2019.
- White, J. C., Wulder, M. A., Hobart, G. W., Luther, J. E., Hermosilla, T., Griffiths, P., Coops, N. C., Hall, R. J., Hostert, P., Dyk, A., and Guindon, L.: Pixel-Based Image Compositing for Large-Area Dense Time Series Applications and Science, *Canadian Journal of Remote Sensing*, 40, 192-212, 10.1080/07038992.2014.945827, 2014.

- Xie, S., Liu, L., Zhang, X., Yang, J., Chen, X., and Gao, Y.: Automatic Land-Cover Mapping using Landsat Time-Series Data based on Google Earth Engine, *Remote Sensing*, 11, 10.3390/rs11243023, 2019.
- Xue, K., Ma, R., Duan, H., Shen, M., Boss, E., and Cao, Z.: Inversion of inherent optical properties in optically complex waters using sentinel-3A/OLCI images: A case study using China's three largest freshwater lakes, *Remote Sensing of Environment*, 640 225, 328-346, 10.1016/j.rse.2019.03.006, 2019.
- Yin, Z., Li, J., Liu, Y., Xie, Y., and Zhang, B.: Water clarity changes in Lake Taihu over 36 years based on Landsat TM and OLI observations, *International Journal of Applied Earth Observation Geoinformation*, 102, 102457, 10.1016/j.jag.2021.102457, 2021.
- Yuan, Z., Liang, C., and Li, D.: Urban stormwater management based on an analysis of climate change: A case study of the Hebei and Guangdong provinces, *Landscape and Urban Planning*, 177, 217-226, 10.1016/j.landurbplan.2018.04.003, 2018.
- Zhang, G., Yao, T., Chen, W., Zheng, G., Shum, C. K., Yang, K., Piao, S., Sheng, Y., Yi, S., Li, J., O'Reilly, C. M., Qi, S., Shen, S. S. P., Zhang, H., and Jia, Y.: Regional differences of lake evolution across China during 1960s-2015 and its natural and anthropogenic causes, *Remote Sensing of Environment*, 221, 386-404, 10.1016/j.rse.2018.11.038, 2019a.
- Zhang, G. Q., Yao, T. D., Chen, W. F., Zheng, G. X., Shum, C., Yang, K., Piao, S. L., Sheng, Y. W., Yi, S., and Li, J. L.: 650 Regional differences of lake evolution across China during 1960s–2015 and its natural and anthropogenic causes, *Remote Sensing of Environment*, 221, 386-404, <https://doi.org/10.1016/j.rse.2018.11.038>, 2019b.
- Zhang, X., Liu, L., Chen, X., Gao, Y., and Jiang, M.: Automatically Monitoring Impervious Surfaces Using Spectral Generalization and Time Series Landsat Imagery from 1985 to 2020 in the Yangtze River Delta, *Journal of Remote Sensing*, 2021, 9873816, 10.34133/2021/9873816, 2021a.
- 655 Zhang, X., Liu, L., Wu, C., Chen, X., Gao, Y., Xie, S., and Zhang, B.: Development of a global 30m impervious surface map using multisource and multitemporal remote sensing datasets with the Google Earth Engine platform, *Earth System Science Data*, 12, 1625-1648, 10.5194/essd-12-1625-2020, 2020.
- Zhang, Y., Zhang, Y., Shi, K., Zhou, Y., and Li, N.: Remote sensing estimation of water clarity for various lakes in China, *Water Research*, 192, 116844, <https://doi.org/10.1016/j.watres.2021.116844>, 2021b.
- 660 Zhigang, C., Hongtao, D., Lian, F., Ronghua, M., and Kun, X.: Climate- and human-induced changes in suspended particulate matter over Lake Hongze on short and long timescales, *Remote Sensing of Environment*, <https://doi.org/10.1016/j.rse.2017.02.007>, 2017.
- Zhou, Q. C., Wang, W. L., Huang, L. C., Zhang, Y. L., Qin, J., Li, K. D., and Chen, L.: Spatial and temporal variability in water transparency in Yunnan Plateau lakes, China, *Aquatic Sciences*, 81, 10.1007/s00027-019-0632-5, 2019.

665