

# Water level variation at a beaver pond significantly impacts net CO<sub>2</sub> uptake of a continental bog

Hongxing He<sup>1</sup>, Tim Moore<sup>1</sup>, Elyn R Humphreys<sup>2</sup>, Peter M Lafleur<sup>3</sup>, and Nigel T Roulet<sup>1</sup>

<sup>1</sup>Department of Geography, McGill University, Montreal, Quebec H3A 0B9, Canada

<sup>2</sup>Geography and Environmental Studies, Carleton University, Ottawa, ON, Canada

<sup>3</sup>School of Environment, Trent University, Peterborough, ON, Canada

Correspondence to: Hongxing He ([hongxing-he@hotmail.com](mailto:hongxing-he@hotmail.com))

**Abstract.** The carbon (C) dynamics of northern peatlands are sensitive to hydrological changes owing to ecohydrological feedbacks. We quantified and evaluated the impact of water level variations in a beaver pond (BP) on the CO<sub>2</sub> flux dynamics of an adjacent, raised *Sphagnum* – shrub-dominated bog in southern Canada. We applied the CoupModel to the Mer Bleue bog, where the hydrological, energy and CO<sub>2</sub> fluxes have been measured continuously for over 20 years. The lateral flow of water from the bog to the BP was estimated by the hydraulic gradient between the peatland and the BP's water level and the vertical profile of peat hydraulic conductivity. The model outputs were compared with the measured hydrological components, CO<sub>2</sub> flux and energy flux data (1998-2019). CoupModel was able to reproduce the measured data well. The simulation shows that variation in the BP water level (naturally occurring or due to management) influenced the bog net ecosystem exchange of CO<sub>2</sub> (NEE). Over 1998-2004, the BP water level was 0.75 to 1.0 m lower than during 2017-2019. Simulated net CO<sub>2</sub> uptake was 55 g C m<sup>-2</sup> yr<sup>-1</sup> lower during 1998-2004 compared to 2017-2019 when there was no BP disturbance, which was similar to the differences in measured NEE between those periods. Peatland annual NEE was well correlated with water table depth within the bog, and NEE also shows a linear relation with the water level at the BP, with a slope of -120 g CO<sub>2</sub>-C m<sup>-2</sup> yr<sup>-1</sup> m<sup>-1</sup>. The current modelling predicts the bog may switch from CO<sub>2</sub> sink to source when the BP water levels drop lower than ~ 1.7 m below the peat surface at the eddy covariance tower, located on the bog surface 250 m from the BP. This study highlights the importance of natural and human disturbances to adjacent water bodies in regulating net CO<sub>2</sub> uptake function of northern peatlands.

## 1 Introduction

Northern peatlands cover only 3% of the global land area but contain ~ 30% of the soil carbon (C) (Yu et al., 2014). Pristine peatlands, characterized by waterlogged situations, accumulate CO<sub>2</sub> from the atmosphere as partially decayed vegetation, owing to the anoxic and cool conditions constraining the decomposition of organic matter (Gorham, 1991). Multi-year field measurements indicate that northern peatlands are currently sinks for CO<sub>2</sub> with a net uptake rate between 0 to ~2080 g CO<sub>2</sub>-C m<sup>-2</sup> yr<sup>-1</sup> (~ 0.1 to 0.5 Pg C yr<sup>-1</sup> globally) (Roulet et al., 2007; Nilsson et al., 2008; Dinsmore et al., 2010; Helfter et al., 2015; Lu et al., 2017; Flanagan and Syed, 2011). However, drying of peatlands by natural or anthropogenic disturbance could potentially weaken the sink strength or release the historically stored peat back into the atmosphere (Wu and Roulet, 2014; Qiu et al., 2020).

The net ecosystem exchange (NEE) of peatlands depends on the balance between CO<sub>2</sub> uptake through photosynthesis and losses through respiration, both of which are closely regulated by hydrology (Hilbert et al., 2000; Silvola et al., 1996; Wallén et al., 1988). In general, hydraulic conductivity is high in the upper aerobic

Formatted: Subscript

layer of the peat (i.e., acrotelm), but decreases as the plant material becomes more decomposed in the lower layer that is permanently saturated (i.e., catotelm) (Ingram, 1978; Clymo, 1992). When water storage decreases, the water table falls, lateral flow and mass inputs decrease, so the peat surface drops relative to the water table (Belyea and Baird, 2006). Conversely, when water storage increases, the water table rises, increasing the difference between net primary production and decomposition, so the mass input and peatland height increase. This feedback between the C dynamics and water storage is key to peatland self-regulation (Eppinga et al., 2009; Frohling et al., 2010). However, external disturbance, for example changing hydrological boundary conditions, can potentially push the peatland outside its limits for self-regulation (Harris et al., 2020).

In North America, boreal peatlands are often associated with streams and beaver ponds (BP) (Rosell et al., 2005; Rebertus, 1986; Loisel et al., 2017). Beavers (*Castor canadensis* in North America and *C. fiber* in Eurasia) have been residing in such environments for thousands of years (Naiman et al., 1988). Identified as a keystone species and ecosystem engineers, beavers can modify the hydrological boundary surrounding a peatland by constructing dams in channels and maintaining higher water levels at the peatland margins. Beaver activities are shown to affect hydrological processes such as flow path alteration (Naiman et al., 1988), water storage-runoff relations (Tardif et al., 2009) and peatland water table dynamics (Karran et al., 2018). Consequently, the integrity of beaver dams and their ability to regulate water levels and peatland hydrology (Westbrook et al., 2020) may impact the C dynamics of the adjacent peatlands. Despite the extent of beavers in peatland regions and their profound impact on hydrology, the effect of altering the hydrological boundary conditions as BP water levels on the NEE of adjacent peatlands has not, to our knowledge, been quantified.

Mer Bleue is a ~~shrub~~ raised-~~shrub~~ bog located in southern Canada that has been studied extensively for C gas exchanges and biogeochemistry (e.g., Lafleur et al. (2003); Roulet et al. (2007); Moore and Bubier (2019)). In the early years of work at Mer Bleue, the beaver numbers and beaver ponds surrounding the bog were managed by the landowner (the National Capital Commission, NCC), which ~~resulted in~~ lowering the water level at the BP. However, after 2005 the NCC abandoned their beaver management program resulting in BP water level rises. These events provide an opportunity to examine whether changing boundaries conditions alter the CO<sub>2</sub> dynamics at the ecosystem scale.

This study aims to evaluate and quantify the effect of changes in peatland water storage due to water level variations (i.e., changing lateral boundary conditions) in the BP adjacent to Mer Bleue bog. To link the varying boundary conditions and the associated CO<sub>2</sub> dynamics ~~the~~ a process-based ~~model~~, CoupModel, was used. We chose CoupModel (Jansson, 2012; He et al., 2021) because it includes detailed soil physics, hydrology, photosynthesis, and ecosystem respiration that can simulate the association of the peatland C dynamics with vertical and lateral hydrology flow (He et al., 2016). Furthermore, past studies have shown the model can successfully simulate the C dynamics and the energy and water balance of managed European treeless peatlands (Metzger et al., 2015), but as it has not been applied to continental bogs. This study aims to evaluate CoupModel for continental bog conditions using a long (~ 21 year) continuous dataset of hydrology and flux observations at Mer Bleue. The model outputs were first compared with the measured data, and the validated model was then used to analyze the effect of BP water levels on the peatland's CO<sub>2</sub> fluxes.

## 2 Site and Methods

### 2.1 Site description

Mer Bleue is a raised, ombrotrophic bog located 10 km east of Ottawa, Canada (45.41°N, 75.48°W). The climate of the region is cool temperate continental, with a mean annual temperature of  $6.2 \pm 0.8$  °C and annual precipitation of  $955 \pm 159$  mm (235 mm fell as snow) during the studied period 1998-2019. These values were similar to the 30 year (1971-2000) mean of 6.0 °C and 943 mm in the region, respectively. The peatland is slightly domed with peat depths varying from 5 to 6 m near the center decreasing to  $< 0.3$  m at the margin with a narrow band of beaver ponds surrounding the bog (Fig. 1). The part of Mer Bleue in the footprint area of the eddy covariance (EC) tower has an average peat thickness of  $\sim 3.4$  m. The studied area is locally flat with hummock – hollow microtopographic differences of  $\sim 0.25$  m (Wilson, 2012). Hummocks cover  $\sim 70\%$  of the surface area. There is a slight downward slope (0.08%) from the center of the peatland to the margins. The average elevation of the peat surface is 69.7 AMSL.

Vegetation on hummocks is dominated by evergreen (*Chamaedaphne calyculata*, *Rhododendron groenlandicum*, *Kalmia angustifolia*), and sparse deciduous (*Vaccinium myrtilloides*) shrubs. The shrubs have an average height of 0.2-0.3 m and leaf area index (LAI) of  $\sim 1.3$  (Moore et al., 2002). Both hummocks and hollows are covered by a continuous mat of Sphagnum mosses (*S. capillifolium*, *S. magellanicum*), with the capitulum area cover (LAI)  $\sim 1.0$ . Total aboveground and belowground biomass for vascular plants, measured in 1999 averaged  $356 \pm 100$  g m<sup>-2</sup> and  $1820 \pm 660$  g m<sup>-2</sup>, respectively, and Sphagnum capitulum biomass was  $144 \pm 30$  g m<sup>-2</sup> (Moore et al., 2002).

The beaver ponds on the southern edge of the peatland are  $\sim 250$  m from the water table loggers at the peatland flux tower site (Fig. 1). Energy, water, and CO<sub>2</sub> fluxes have been continuously measured at Mer Bleue over the last 20 years. Roulet et al. (2007) provide an overview of measurements of C exchanges of the site including CO<sub>2</sub>, CH<sub>4</sub> and dissolved C. Fraser et al. (2001a) presented the details of the peatland groundwater flow and runoff hydrology. For details of vegetation composition and biomass measurements, see Moore et al. (2002) and Bubier et al. (2006).

## 2.2 Beaver pond water level measurement and disturbance history

The water level at the BP was measured *circa* weekly from April to November using manual stage height recordings, starting from 2004 to 2019 (Fig. 2). Fraser et al. (2001a) measured the water level at the BP (i.e., P<sub>1</sub> well) for a complete year, 1998-1999. Unfortunately, only periodic measurements were taken during 1999-2003 (2 to 3 times during the annual summer season), when the beavers were removed and the beaver dams were not maintained, so we generated a random water level series based on the mean and standard deviation value of the available BP water level over 1999 to 2003. BP water level under different assumptions over this period were assessed in Fig. S1 (Supplement Section A).

Two additional beaver dam disturbances occurred at Mer Bleue: one in the fall of 2012 and the other in May 2018. A beaver baffle, a long perforated PVC pipe, was installed through the beaver dam in the fall of 2012 in an attempt to implement a controlled experiment to lower the BP water level. However, the experiment failed due to the industriousness of the beavers. At a local scale, Goud et al. (2017) conducted a study *induring* 2012-2013 *during using* the time window when the water level briefly lowered *between periods* after the researchers cleared the pipes and *subsequently* the beavers *re*-blocked them. In 2018 the beaver dam was partially opened by the NCC to alleviate water pooling at a nearby road *due to* and repeated blockage of a road culvert, resulting in the partial

115 drainage of the BP during May 2018, but after ~ 1 month renewed beaver activity returned the BP to the pre-  
drainage water levels.

### 2.3 Brief model description

120 The CoupModel platform (coupled heat and mass transfer model for soil–plant–atmosphere systems) is a process-  
based model designed to simulate water and heat fluxes, along with the C cycle, in terrestrial ecosystems (Jansson,  
2012). The main structure is a one-dimensional, vertical model, with one or two layers of vegetation (for example  
125 a shrub and moss layer as in this application) on a multi-layered soil profile. In this application, we used the most  
recent model version (v.6) from He et al. (2021), but without nitrogen and phosphorus cycles. The model is driven  
by measured climatic data – precipitation, air temperature, relative humidity, wind speed, and global radiation.  
Vegetation is described using the "multiple-big leaves" concept with two vegetation layers (shrubs and mosses)  
130 simulated taking into account mutual competition for light interception and water uptake (Jansson and Karlberg,  
2011). The model and technical description are available at [www.coupmodel.com](http://www.coupmodel.com). The model structure and  
process description of CoupModel used for fen peatland conditions are described in Metzger et al. (2015). The  
key model concepts, surface energy fluxes and partitioning (eq. S1-2), evapotranspiration and aerodynamic  
resistance (eq. S3-5), plant water uptake (eq. S6), soil heat (eq. S7), and photosynthesis and respiration (eq. S8-9)  
and their parameterizations are described in detail in Supplement Sections B and C. Below, we only describe the  
setup relevant to Mer Bleue bog, which is lateral flow to the BP and peat hydrology.

Field Code Changed

### 2.4 Simulation design, initial and boundary conditions

CoupModel was used to simulate the C balance and linked hydrology, energy fluxes of Mer Bleue at hourly  
resolution from September 1, 1998 to January 1, 2020.

135 We divided the peat soil profile into 16 layers: from 0.04 m per layer in the top to 0.60 m per layer in the bottom.  
Overall, 3.4 m peat was simulated with eight layers for the acrotelm (peat surface to ~ 0.4 m peat depth) and eight  
layers for the catotelm. The initial conditions for the plant cover and its compartments were derived from measured  
data (Moore et al., 2002). The model conceptually divides the shrubs into leaf, stem, coarse root, and fine root.  
For Sphagnum mosses, the capitulum was conceptually viewed as leaf and the rest as stem in the model. Initial  
140 conditions for soil C were taken from measured soil profile data (Blodau and Moore, 2002; Frohling et al., 2002;  
Dimitrov et al., 2010). This study used three soil organic matter pools, which differed in substrate quality and  
decomposition rate (Table S1 in Supplement Section C), to simulate the soil C dynamics: the shrub litter, moss  
litter, and refractory organic matter. Decomposition of the shrub and moss litter would add to the refractory  
organic matter, while the decomposition of refractory organic matter only released CO<sub>2</sub> into the atmosphere. As  
145 in Metzger et al. (2015), we partitioned the initial soil pools by Mer Bleue measured C/N ratio as an indicator of  
the organic matter quality. The measured C/N ratio data of plant litter was 75 for shrub litter, 55 for moss litter,  
and 30 for the refractory organic matter (Moore and Bubier, 2019; Wang et al., 2014).

150 Measurements show a mineral substrate beneath Mer Bleue with very low hydraulic conductivity  $\ll 10^{-10}$  m s<sup>-1</sup>  
(Fraser et al., 2001b) so we assumed a no-flow boundary at 3.4 m depth. A geothermal heat flow was assumed for  
the lower boundary condition. To account for the hummock-hollow microtopography, we adopted the parameter  
upscaling approach (Wu et al., 2011). This means the model did not account for the microtopography explicitly  
but used the integrated parameter values that weighted for the percentage coverage of hummock and hollow

155 instead. The model parameter values were mostly obtained from Mer Bleue measured data, and if not, literature values from previous model applications were used [in the reference run](#) (Table S1). [An uncertainty analysis of the key model parameters using the generalised likelihood uncertainty estimation \(GLUE\) approach](#) (Beven, 1992 #148) [was further conducted and reported in detail under Supplement Section F.](#) To account for the continuous accumulation of peat, the annual organic matter increases in all the layers (except the last soil layer) was moved from one layer to the layer below at the end of each year. The amount moved is the annual accumulation of the peat C, similar to the Clymo (1984) model. This results in a constant peat surface, which is the reference elevation for the soil physical property, hydrology calculations, and the surface – atmospheric exchanges. In other words, 160 the peat increases in mass without an actual change in physical height.

## 2.5 Model description of hydrology and lateral flow to the beaver pond

Water flow in the peat soil was assumed to be laminar and thus follows Darcy's law as generalized for unsaturated flow by the 1-D Richards's equation (Richards, 1931). The change of unsaturated conductivity with water content was modeled following Mualem (1976). The relationship between water tension and soil water content was 165 approximated by the van Genuchten (1980) approach. Coefficients of the van Genuchten function (Table S1) were obtained from the synthesized empirical data of peat soil from Weiss et al. (1998) and Letts et al. (2000), with the residual water content set to 0% and the wilting point to 10% (vol.) for all the layers (Schwärzel et al., 2006). The vertical saturated hydraulic conductivity profile was derived from the mean of the measured data of Fraser et al. (2001b). The horizontal hydraulic conductivity,  $k_{sat}$  for acrotelm ranged from  $10^{-7}$  to  $10^{-3}$  (average  $\sim 10^{-5}$ )  $m\ s^{-1}$  and increased toward the peat surface. The  $k_{sat}$  for catotelm peat ranged from  $10^{-8}$  to  $10^{-6}$   $m\ s^{-1}$  (eq.1, Table S1). 170 [According to Fraser et al. \(2001a\),](#) ~~studied the groundwater flow in Mer Bleue is . They suggested that groundwater flowed~~ perpendicular to the BP and can be reasonably described by the Dupuit-Forchheimer assumptions. Thus, in our study the BP was conceptually viewed as a dynamic stressor: an open channel with a varying water level into which the lateral flow in Mer Bleue drains. The lateral subsurface flow (seepage flow) 175 was assumed to be driven by the hydraulic gradient of the water level at the peatland tower site and the BP. Water flow occurred when the simulated groundwater table in the peatlands,  $z_{sat}$ , was above the water table level in the BP, with flow occurring horizontally from a peat layer to BP when the soil was saturated (eq.1). The subsurface flow rate,  $q_{sub}$  was assumed proportional to the hydraulic gradient  $(z_{sat} - z_{bp})/d_p$ , the thickness,  $d_z$ , and saturated hydraulic conductivity of each soil layer,  $k_{sat}$ :

$$180 \quad q_{sub} = \int_{z_{bp}}^{z_{sat}} k_{sat} \frac{(z_{sat} - z_{bp})}{d_u d_p} dz \quad (\text{eq.1})$$

The  $d_u$  was the unit length of the horizontal element – i.e., 1 m.  $z_{bp}$  was the water level at the BP.

During over-saturated periods, such as snowmelt and heavy rainfall, the flow of water in the upper soil layer can be directed upwards and added to the surface runoff to the BP. Briefly, the model formed a pool of water on the soil surface, when the throughfall exceeded the infiltration capacity of the first soil layer. Water in the surface 185 pool could either infiltrate with a delay into the soil profile or be lost as surface runoff, as overland flow.

## 2.6 Data used for model evaluation

The model was evaluated against hydrological and CO<sub>2</sub> flux data from Mer Bleue. Due to the strong coupling of hydrological components to energy fluxes in the CoupModel, we further evaluated the model output against observed energy fluxes. Overall, the dataset used for evaluation consisted: 1) hydrological variables including evapotranspiration measured by the [EC eddy-covariance system \(EC\)](#) (1998-2018), water table depth (1998-2019), snow depth (1998-2014), and total runoff measured at the outlet of the catchment (2011-2014); 2) CO<sub>2</sub> fluxes (1998-2018) including gap-filled NEE, derived gross primary production (GPP), and ecosystem respiration (ER); and 3) energy flux data (1998-2018) including radiation fluxes, turbulent energy fluxes, and peat soil temperature profile. Details of NEE exchange measurements and data processing [from 1998-2004](#) were described in Lafleur et al. (2001; 2003) and Roulet et al. (2007). [Brief descriptions of the 2005-2018 EC data processing, gap filling and its associated uncertainties \(used to define accepted model simulations in the GLUE analysis\) are given in Supplement Section E.](#) The evaluation was conducted using time series and goodness of fit quantified by the linear regression coefficient of determination ( $R^2$ ) and mean values of simulated and measured data.

### 3 Results

#### 3.1 Lateral flow to the beaver pond and hydrological fluxes

The measured BP water level ranged from 68.2 to 69.4 AMSL over the 21 years, [whereas](#) beaver trapping and dam breaking altered the pond water level significantly (Fig. 2). We classified the BP water level into three distinct periods according to the measured change in water level: 1) high disturbance period (1998-2004), where water levels were ~ 1 m lower than the present-day average (2017-2019); 2) moderate disturbance period (2012-2016) with water level ~ 0.30 m lower than the present; and 3) no disturbance period over 2004-2012 and 2017-2019 when higher water levels were maintained by an intact beaver dam. As described above, a disturbance in May 2018 lowered the water level by < 0.1 m, but the water levels quickly returned to pre-drainage levels in ~1 month (Fig. 2). In this study, we included the May 2018 event in the 'no disturbance' period.

The hydraulic head difference between the peatland and the BP, a distance of 250 m (Fig. 1), ranged from 1.2 to ~0 m over 1998-2019 (Fig. 2), which gave a lateral hydraulic gradient, from 0.0045 to ~0. Using the measured vertical saturated hydraulic conductivity from Fraser et al. (2001a), the hydraulic gradient (eq. 1) led to a simulated mean annual integrated subsurface flow of  $327 \pm 162 \text{ mm yr}^{-1}$ , ~ one-third of annual precipitation over 1998 to 2019. Flow mainly occurred during the spring, autumn, and winter seasons (Fig. 3b). The ratio of annual subsurface flow to precipitation was  $0.4 \pm 0.1$ ,  $0.23 \pm 0.06$ , and  $0.35 \pm 0.1$  during the high, moderate, and no disturbance periods, respectively. The ratio during high disturbance was significantly greater ( $p < 0.0001$ ) than for the other two periods, which were not significantly different.

Simulated evapotranspiration agreed well with the measured data (coefficient of determination,  $R^2 = 0.73$ ) (Fig. 3a, b). Over 1998-2018, the simulated average evapotranspiration was  $430 \pm 34 \text{ mm yr}^{-1}$ , which was similar to the measured  $490 \pm 42 \text{ mm yr}^{-1}$  (Fig. 3a, b; Fig. S3a in Supplement Section D). Using the measured data, the ratio of evapotranspiration/precipitation was  $0.50 \pm 0.09$ , while the simulated value was  $0.44 \pm 0.08$ . [The d](#)Disturbance level did not show a clear impact on the ratio.

Simulated water table depth (WTD) in the peatland showed reasonable agreement with the measured data (Fig. 3c; Fig. S3c). The  $R^2$  values were 0.33, 0.40, and 0.50 for the high, moderate, and no disturbance periods, respectively, thus there was slightly better agreement with decreasing disturbance levels. The model simulated a

225 ~ 0.05 m shallower WTD than the measured over the growing season (Fig. S3c), which was probably caused by  
underestimating evapotranspiration during the same period (Fig. S3a). The mean measured WTD was  $-0.44 \pm$   
 $0.04$  m (simulated:  $-0.45 \pm 0.05$  m),  $-0.36 \pm 0.06$  m (simulated:  $-0.38 \pm 0.09$  m),  $-0.32 \pm 0.05$  m (simulated:  $-0.32$   
 $\pm 0.07$  m) during the high, moderate, and no disturbance periods, respectively. The peatland WTD during the high  
230 disturbance period was ~ 0.1 m deeper ( $p < 0.0001$ ) than for the other two periods. Overall, a higher disturbance  
level led to deeper WTDs in both the measured and simulated data.

The model generally overestimated the snow depth up to 50% compared to the measured data (Fig. S3b). The  
overestimation also partly contributed to the underestimation in the simulated WTD during the winter periods  
(Fig. S3c). Over the snow-melting season (Fig. 3b), the model predicted an average surface runoff rate of  $220 \pm$   
 $102$  mm yr<sup>-1</sup>. This probably represents an overestimation due to a simulated larger snow depth. The simulated  
235 total runoff, combining surface runoff and subsurface lateral flow, was  $545 \pm 205$  mm yr<sup>-1</sup>, similar to  $462 \pm 163$   
mm yr<sup>-1</sup>, the annual total runoff measured at the outlet of the catchment (2011-2014) (Fig. 3a). The measured and  
simulated total runoff/precipitation ratio was  $0.54 \pm 0.07$  and  $0.61 \pm 0.09$ , respectively. The simulated ratio of  
subsurface flow [to](#) total runoff was  $0.69 \pm 0.1$ ,  $0.45 \pm 0.08$ , and  $0.6 \pm 0.07$  during the high, moderate, and no  
240 disturbance periods, respectively. The ratio during the high disturbance period was greater ( $p < 0.0001$ ) than for  
the other two periods.

### 3.2 Carbon fluxes

The simulated CO<sub>2</sub> fluxes including GPP, ER and NEE reproduced the measured data well, with  $R^2$  values 0.73,  
0.91 and 0.51, respectively (Fig. 4). The lower  $R^2$  of NEE is due to it being the net result of GPP and ER, so carries  
the errors of both. The measured annual GPP, ER and NEE over 1998-2018 were,  $-658 \pm 103$ ,  $568 \pm 80$  g C m<sup>-2</sup>  
245 yr<sup>-1</sup> and  $-90 \pm 39$  (negative means net CO<sub>2</sub> uptake by the ecosystem), respectively. The corresponding simulated  
fluxes were  $-670 \pm 46$ ,  $599 \pm 74$  g C m<sup>-2</sup> yr<sup>-1</sup>, [and](#)  $-71 \pm 61$ .

The model simulation showed that the shrubs dominated the GPP uptake, ~ 80% of the total GPP, [with and](#) the  
mosses contribut[ing](#) ~ 20%. Over 1998-2019, the simulated average net primary production (NPP) was  $272 \pm$   
 $30$  g C m<sup>-2</sup> yr<sup>-1</sup> and  $82 \pm 9$  g C m<sup>-2</sup> yr<sup>-1</sup> for the shrubs and mosses, respectively. Thus, mosses contributed 23% of  
250 the total NPP. The simulated heterotrophic respiration and soil respiration (i.e., heterotrophic respiration and  
autotrophic respiration of shrub roots) were  $283 \pm 69$  and  $476 \pm 76$  g C m<sup>-2</sup> yr<sup>-1</sup>, respectively. The heterotrophic  
peat respiration thus accounted for 59% of the soil respiration or 49% of total ER. This agrees well with the  
available measurements from Mer Bleue showing heterotrophic respiration accounted for 30-63% of the total ER  
(Stewart, 2006; Rankin et al., 2022).

255 The model-data agreement for NEE was better during the mid-to-late-summer, autumn, and winter seasons than  
in the spring and early summer (Fig. 4c), probably due to model uncertainty in representing the shrub phenology.  
In spring (April and May), the model generally showed a larger uptake than that measured by the EC (Fig. 4c),  
caused either by the earlier and stronger recovery of photosynthesis in the model (Fig. 4b) or by a slower increase  
of modeled respiration (Fig. 4c). The current ER underestimation (Fig. 4b) can be partly explained by the  
260 simulated shallower WTD (Fig. S3c), despite a slight overestimation of soil temperature (Fig. S4; Fig. S3d).

The variations in BP water levels showed clear impacts on the peatland CO<sub>2</sub> uptake and the bog mean WTD during  
the growing season (May to October) both in the measured and simulated data (Fig. 5). The measured mean  
growing season WTD became shallower with decreasing disturbance level, ranging from  $0.44 \pm 0.05$  m (simulated:

0.45 ± 0.08 m), 0.41 ± 0.06 m (simulated: 0.42 ± 0.04 m), and 0.38 ± 0.04 m (simulated: 0.33 ± 0.03 m) for the high, moderate, and no disturbance periods, respectively (Fig. 5a). Accordingly, the measured mean NEE generally decreased (i.e., greater net uptake of CO<sub>2</sub>) from -44 ± 45 g C m<sup>-2</sup> yr<sup>-1</sup> (simulated: -55 ± 89), -102 ± 40 g C m<sup>-2</sup> yr<sup>-1</sup> (simulated: -67 ± 51), and -115 ± 33 g C m<sup>-2</sup> yr<sup>-1</sup> (simulated: -90 ± 35) with decreasing disturbance level (Fig. 5b).

### 3.3 Surface energy fluxes and partitioning

CoupModel reproduced the measured seasonal pattern and the magnitude of the radiation fluxes ( $R_{n,tot}$ ,  $LW_{in}$ ,  $LW_{out}$ ) very well (Fig. S1a, b, c). However, the model underestimated the sensible flux ( $H$ ) by 10-20% over the year, except spring (Fig. S1d), and showed a 30% underestimation of latent heat (LE) during the peak growing season with slightly overestimated winter LE (Fig. S1e). Underestimation of the turbulence fluxes further explained the higher simulated soil temperature in the peat soil profile (Fig. S3d, Fig. S4). The measured and simulated Bowen ratio ( $B=H/LE$ ) showed high agreement over the growing season, both ranging from ~1 to ~0.5. However, relatively high biases were found in the spring and winter seasons, probably because the biases in simulating the snow further influence the energy partitioning during the frozen period. Interestingly, CoupModel simulated greater evaporation over winter than was observed using the EC technique (Fig. S3a). In the model, there was no photosynthesis activity of shrubs during the winter, but mosses still grew when the air temperature was above 0 °C since the model did not account for burial of moss by snow. The winter LE bias could be due to the simulation of higher evaporation from the moss layer given the high availability of water, with a thicker than measured snow cover on the soil surface (Fig. S3b).

### 3.4 Impacts of beaver pond water level variation on peatland CO<sub>2</sub> fluxes

The validated model (hereinafter referred to as the 'reference run') was ~~then~~ used to analyze the influence of variations in the BP water levels on the peatland CO<sub>2</sub> exchange. First, we addressed what the peatland net CO<sub>2</sub> uptake would be if there were no variations in BP water level. In this experiment, we maintained a constant BP water level, 68.9 AMSL – the mean level for 1998-2019 (Fig. 2), for the simulation hereinafter referred to as constant BP water level run. The simulated annual net CO<sub>2</sub> uptake over 1998-2019 was ~ 30 g C m<sup>-2</sup> yr<sup>-1</sup> higher than the reference run (Fig. 6), despite the simulated average peatland WTD being identical for both runs. Smoothing out the variation of BP water level reduced the annual variation of the simulated NEE (Fig. 6, box plot), which, in turn, suggests its influence on NEE. For the high disturbance period, the constant BP water level run predicted a ~ 0.1 m shallower peatland WTD and an average 55 g C m<sup>-2</sup> yr<sup>-1</sup> higher net CO<sub>2</sub> uptake, compared to the reference run (Fig. 6). Given that the measured NEE uptake was 44 ± 45 g C m<sup>-2</sup> yr<sup>-1</sup> (Fig. 5), the constant BP water level run suggests the NEE uptake within this period would have been ~ 99 g C m<sup>-2</sup> yr<sup>-1</sup> without the disturbance. This updated number was close to the measured 21-year average of C uptake in Mer Bleue, 90 ± 39 g C m<sup>-2</sup> yr<sup>-1</sup> (110 ± 37 for 2005-2018).

The GLUE analysis of selected model parameters shows the simulated NEE was mostly sensitive to the decomposition coefficient of shrub litter ( $k_{l,shrub}$  eq. S9, Table S2). The simulated WTD was mostly sensitive to the stomata conductance parameter ( $g_{max}$  eq. S4, Table S2) regulating evapotranspiration and the saturated hydraulic conductivity parameter ( $k_{sat}$ ) regulating lateral drainage. (Fig. S5, Table S3). The parameter uncertainties do not change the finding that WTD is a significant control on the NEE (Fig. S6 in Supplement Section F). We



further conducted a sensitivity analysis of the BP water level, i.e., examining the influence of varying boundary conditions for the hydrology setting of the system, on the simulated CO<sub>2</sub> fluxes. For this analysis, the BP water level was kept constant throughout each run, but there was still variability in the peatland WTD due to differences in inputs and outputs, though however, the gradient between the peatland WTD and BP was constant through each simulation. The BP water level was varied from 67.9 AMSL (a dry pond) to the highest possible water level, 69.37 AMSL (the average measured WTD at the peatland) when flow would reverse from the pond to the peatland. This range in BP water level changed the lateral hydraulic gradient between 0.005 and ~ 0.0005. The CO<sub>2</sub> uptake showed a close-to-linear relationship with the lateral hydraulic gradient and the BP water level (67.9-69.2 AMSL) (Fig. 7). The slope of the linear regression was ~ -120 g C m<sup>-2</sup> yr<sup>-1</sup> m<sup>-1</sup>. Thus, a one-meter drop in BP water level would lower the average peatland WTD by ~ 0.15 m, and this produced a ~ 120 g C m<sup>-2</sup> yr<sup>-1</sup> reduction of the simulated peatland net CO<sub>2</sub> uptake (Fig. 7). The decreased net CO<sub>2</sub> uptake was attributed to a greater increase in ER than GPP with a decrease in BP water level (Fig. 7). However, the linear relationship breaks down when the BP water level gets closer to the WTD in the peatland (69.2-69.4 AMSL, Fig. 2; Fig. 3c).

Overall, Fig. 7 also shows that the current model could simulate the complex self-regulating behavior of the bog. The model also suggests that there is a tipping point around a BP water level of ~ 68.1 AMSL, or 1.7 m below the average peat surface, which represents the lower end of the self-regulation for the bog system. At water levels below this tipping point, NEE becomes positive. This means that to ensure the Mer Bleue peatland continues to function as a C sink, the beaver pond (i.e., the boundary for hydrological setting), must operate in the threshold range of above ~ 68.1 AMSL. Within this range, the bog's net CO<sub>2</sub> uptake is resilient to variations in BP water levels.

## 4 Discussion

### 4.1 Model evaluation for the continental bog system

Current model evaluation with a detailed dataset from the Mer Bleue peatland shows CoupModel can simulate the ecosystem energy, water and CO<sub>2</sub> fluxes well with varying hydrological boundary conditions. However, the results show the CoupModel simulates a higher NEE uptake in the spring than was observed (Fig. 4c). We believe this bias most likely originates from the poor representation of phenology of the evergreen shrubs (i.e., *Chamaedaphne calyculata*). In the model, the shrub phenology (onset and end of photosynthesis) is calculated based on a simple air temperature and degree day function. Once the growing season starts in the model, full photosynthetic capacity, regulated by light, air temperature, soil water (eq. S6) is assumed. However, data from the onsite phenology camera and satellite-based products all show a gradual spring recovery, from April to May, of the shrub's greenness (Kross et al., 2014; Arroyo-Mora et al., 2018). Previous studies also show spring recovery of the shrubs is dependent on their roots becoming thawed and recovery of leaf nitrogen and chlorophyll concentrations (Moore et al., 2006). Imposing a more gradual shrub greening of 25% greenness in April to 100% by late May (Sonnentag et al., 2007), reduces simulated spring CO<sub>2</sub> uptake and reduces annual GPP by ~ 10% (data not shown). The relationship between peatland NEE and the lateral hydraulic gradient between the BP and the peatland still exists regardless of spring phenology, since the annual NEE is dominated by summer and autumn uptake at Mer Bleue (Lafleur et al., 2003) with a relatively small contribution from the spring recovery (Moore et al., 2006). However, the model evaluation highlights the potential importance of spring phenology and indicates

340 a need to refine the current algorithm describing when and how the rate of plant production increases, particularly  
if CoupModel were to be used to simulate the effect of climate change on Mer Bleue or similar continental bog  
systems. Metzger et al. (2015) evaluated CoupModel with multiple peat sites in Europe and found different  
descriptions of plant phenology were not needed to simulate peatland CO<sub>2</sub> dynamics. The differences in the  
sensitivity of NEE to the parameterization of spring phenology in our study versus Metzger et al. (2015) may arise  
345 because Metzger et al. examined poor fens, or a restored bog with high nutrient conditions with a moderated  
climate, both of which differ from conditions at Mer Bleue. The continental climate at Mer Bleue with cold winters  
and warm summers might further explain the more pronounced phenology compared to the European sites.  
Our evaluation shows that the plant biomass (data not shown) of Mer Bleue is quite resilient to changes in  
hydrological conditions. At the lowest simulated BP water level (67.9 AMSL, WTD to ~ -0.6 m, Fig. 7), the LAI  
350 of the shrubs only increases 15%, while the mosses decrease by 4%. More than 20 years of observation in a bog  
in Connecticut, USA showed little change in the bog shrub and moss biomass under changing hydrological  
conditions (Mitchell and Niering, 1993; McMaster and McMaster, 2001). A 15- year modest drawdown of the  
water table in a peatland complex of southern Finland also shows a small effect on bog vegetation cover, compared  
to the larger changes (increase in vascular cover) in poor and rich fen sites (Kokkonen et al., 2019).

#### 355 4.2 Peatland C fluxes response to hydrological boundary changes and implications

Our study shows that variations of the water level in the BP adjacent to a peatland can influence the peatland's  
WTD 250 m away, primarily by altering the lateral hydraulic gradient and the subsurface flow. ~~(Letts et al.,  
2000)~~ Lafleur et al. (2005) analyzed the evapotranspiration data from Mer Bleue and found that the maximum  
rooting depth of the shrubs (~0.65 m) is a critical control of the evapotranspiration. At WTD above -0.65 m mean  
360 evapotranspiration did not change with decreasing WTD. In this study, mean WTD analyzed under various  
disturbance levels ranged from -0.3 to -0.6 m and did not result in significant changes of evapotranspiration (Fig.  
3).

Fraser et al. (2001b) measured the total runoff and the runoff from snowmelt (corresponding to the modeled  
surface runoff) at the catchment outlet over 1998-1999, and showed that snowmelt accounted for ~53% of the  
365 total runoff. The simulation generated a similar ratio of snowmelt runoff to total runoff, 60%. This agrees with  
observations from many other boreal peatlands that runoff response under high flow rate conditions, such as  
snowmelt, are rapid (Holden, 2005; Verry et al., 1988). CoupModel estimates one-third of the precipitation was  
drained to the BP in the studied period. This might represent a higher end of the lateral subsurface flow due to the  
BP disturbance at Mer Bleue. Assuming our subsurface lateral flow/total runoff ratio during the no BP disturbance  
370 period (~ 50%) applies ~~to for the~~ pristine bog conditions of northern peatlands and given the total runoff in those  
bogs normally ranges 120-500 mm yr<sup>-1</sup> (Fraser et al., 2001b), annual water flow to the adjacent BP under no  
disturbance conditions accounts for ~ 60-250 mm yr<sup>-1</sup>. Therefore, the BP plays an important role in regulating the  
hydrology of Mer Bleue and probably other northern peatlands (Westbrook et al., 2020; Woo and Waddington,  
1990).

375 Variations in BP water levels are shown to influence the net CO<sub>2</sub> uptake of Mer Bleue. The effect on CO<sub>2</sub> fluxes  
is dependent on the intensity and direction of the BP water level variation (Figs. 5 and 7). Moreover, the saturated  
hydraulic conductivity  $k_{sat}$  can also influence how far away a marginal stressor can effectively influence the bog  
CO<sub>2</sub> uptake. The average  $k_{sat}$  at Mer Bleue is c.a. five times higher than the reported median value of a typical

Formatted: Subscript

380 [peat bog,  \$\sim 2.0 \times 10^{-6} \text{ m s}^{-1}\$  \(Letts et al., 2000\). Assuming the same hydraulic gradient as in Mer Bleue, the effective drainage distance would be much shorter,  \$\sim 50 \text{ m}\$  in other bogs.](#) Goud et al. (2017) measured the  $\text{CO}_2$  fluxes at a local scale over a transect from the hummock, hollow, bog margin to pond margin ( $\sim 50\text{-}100 \text{ m}$  away from the BP) of Mer Bleue during the moderate disturbance period, and found that the measured GPP, ER from the four microsites were all reduced by half and the  $\text{CO}_2$  uptake at the bog margin and pond margin were significantly reduced after the BP disturbance, which corroborates our findings at the ecosystem scale. [Interestingly, an earlier Mer Bleue study focused on the high disturbance period somehow show small effect of WTD on ER \(Lafleur et al., 2005-#1034\).](#) In that study, Mer Bleue had deep WTD in late summer, (60-70 cm below surface). At this depth the peat is relatively well decomposed and changes in WTD do not mean pronounced aerobic-anaerobic transitions as the much wider ranges covers in our study here. The present high BP disturbance has greater influence in regulating NEE than climate variations, as demonstrated by model simulations showing  $\text{CO}_2$  uptake of the bog is reduced by  $55 \text{ g C m}^{-2} \text{ yr}^{-1}$  when a constant BP water level was assumed (Fig. 5c), which was greater than the observed annual variations in NEE,  $37 \text{ g C m}^{-2} \text{ yr}^{-1}$ , derived from the 14-year eddy covariance data (2005-2018). The heightened role of disturbance is also reflected by the weak correlations between NEE and measured bioclimatic variables (data not shown). But the annual NEE shows a significant negative correlation with the mean WTD over the growing season (Fig. 8). Similar control of WTD on NEE variability between years was also found 395 for a boreal ombrotrophic bog in the James Bay region (Strachan et al., 2015). Humphreys et al. (2014) conducted two-year NEE flux measurements at two ombrotrophic bogs in Hudson Bay lowlands, where the annual flux is closely linked to the lowering of WTD during summer. Recently, Zhang et al. (2020) reconstructed the historical peatland C uptake over a millennial-scale of two dwarf shrub bogs in Finland and found a strong correlation between the C uptake and water conditions. [Data from three mire sites show the 2018 drought in Europe switches the peatlands from  \$\text{CO}\_2\$  sinks to sources due to the WTD drawdown \(Rinne et al., 2020\).](#) Hence, WTD is likely a significant driver for NEE fluxes in boreal bogs. Lower water tables due to climate change are predicted for boreal peatlands. Currently, peatland models generally predict a reduced  $\text{CO}_2$  sink strength for boreal bogs by the end of the 21<sup>st</sup> Century (Qiu et al., 2020). Wu and Roulet (2014) predicted the  $\text{CO}_2$  uptake of the Mer Bleue bog will decrease by  $16\text{-}45 \text{ g C m}^{-2} \text{ yr}^{-1}$  compared to current climate reference runs. The long-term C accumulation rate for boreal peatlands is estimated to be  $10\text{-}50 \text{ g C m}^{-2} \text{ yr}^{-1}$  (Loisel et al., 2014), and C accumulation rate is predicted to reduce by  $\sim 27 \text{ g C m}^{-2} \text{ yr}^{-1}$  for the RCP 8.5 scenario and  $\sim 11 \text{ g C m}^{-2} \text{ yr}^{-1}$  for the RCP 2.6 scenario (Chaudhary et al., 2017). Simulations of peatlands with climate change do not yet capture the self-regulating aspect of peatland C dynamics. Our simulations show that the variations in water levels connected to BP disturbance could potentially influence the peatland  $\text{CO}_2$  uptake of a similar magnitude or even greater than that projected in climate change scenarios. (Rinne et al., 2020) 410

Theoretical studies have argued that bogs are complex adaptive systems based on the tight feedbacks among plant production, decomposition, and water storage represented by WTD (Eppinga et al., 2009; Frolking et al., 2010; Morris et al., 2012). While the relationship between water storage and peat accumulation is well established in raised bogs, previous all the studies have concentrated only on referred to deal with the role of self-regulation. In our study, we highlight the role that the adjacent boundary conditions might play. The empirical observations and our simulations suggest links between water storage in a peatland, the stresses to which the lateral flow responds, and the ecosystem level NEE. Water level changes due to land-use changes adjacent to peatlands can have a similar effect on changing lateral hydraulic gradient and the peatland NEE. Studies have emphasized the 415

hydrological role of lags surrounding bogs to bog ecology and function (Howie and Meerveld, 2011). Others  
420 have shown the impact of bog hydrology through large regional water table drawdown (Regan et al., 2019).  
The relationship between beaver ponds and bog C dynamics has potentially much broader implications as the  
beaver populations in North America have substantially increased over the last 100 years (Naiman et al., 1988;  
Nisbet, 1989) and beaver populations are growing in Europe as well (Halley et al., 2012). With climate change,  
the beaver habitat and species density may further increase (Jarema et al., 2009; Tape et al., 2018). Previous  
425 studies have shown that beaver ponds are sources of CH<sub>4</sub> and CO<sub>2</sub> emissions (Roulet et al., 1997; Dinsmore et al.,  
2009; Huttunen et al., 2002). A rising water level associated with the increased beaver population will increase  
the area of the ponds as well as the emissions from the ponds to the atmosphere. However, we also expect a rising  
water level at the ponds will decrease the lateral hydraulic gradient to adjacent bogs, increasing bog wetness, thus  
increasing net CO<sub>2</sub> uptake and CH<sub>4</sub> emissions from the bog (Moore et al., 2011). Colonization of beavers will  
430 typically increase the water level at the ponds by ~1 m, e.g. (Rosell et al., 2005; Karran et al., 2017), increasing  
the bog NEE uptake by 60-160 g C m<sup>-2</sup> yr<sup>-1</sup> (Fig. 7) in our study and based on seasonal WTD-CH<sub>4</sub> relationships  
at Mer Bleue (Moore et al., 2011), the increased WTD will lead to an increase of 1-3 g CH<sub>4</sub>-C m<sup>-2</sup> yr<sup>-1</sup> emissions  
at the bog. Methane emissions from the beaver ponds range from 1 to 57 g CH<sub>4</sub>-C m<sup>-2</sup> yr<sup>-1</sup>, with an average of ~  
15 g CH<sub>4</sub>-C m<sup>-2</sup> yr<sup>-1</sup> (Whitfield et al., 2015) and the CO<sub>2</sub> emissions between 20 and 200 g C m<sup>-2</sup> yr<sup>-1</sup>, average ~  
435 100 g CO<sub>2</sub>-C m<sup>-2</sup> yr<sup>-1</sup> (Roulet et al., 1997; Huttunen et al., 2002). We approximate the peatland and pond areas by  
assuming a rectangle with length from the drainage divide in the center of the Mer Bleue and the width of the BP  
(Fraser et al., 2001a). This gives the percentage cover of the pond over the adjacent peatland bog from 2% to 10%.  
At the landscape level, the total increased emissions based on C mass due to beaver pond (CH<sub>4</sub> from pond and  
bog, CO<sub>2</sub> from pond) offset 4 to 12% of the increased net CO<sub>2</sub> sink of the adjacent bog. Applying the 100-year  
440 global warming potential as an example (1 g CH<sub>4</sub> = 28 g CO<sub>2</sub> equivalent, Myhre et al. (2013)), the total increased  
emissions in terms of CO<sub>2</sub> equivalent will offset 26 to 42% of the increased C sink of the bog. Although the current  
calculation has a modest uncertainty, the key message is that even in the extreme-case scenario, with maximum  
range and using global warming potential rather than radiative forcing (Frolking et al., 2006), the increased bog  
CO<sub>2</sub> uptake can still offset the increased CH<sub>4</sub> emissions by a considerable margin. Globally, the resurgence of  
445 native beavers and their introduction in other regions were estimated to increase CH<sub>4</sub> emissions by 0.18-0.80 Tg  
CH<sub>4</sub> yr<sup>-1</sup> (Whitfield et al., 2015). Our results suggest that the increased CO<sub>2</sub> sink in the bogs adjacent to BP could  
largely offset the high emissions from the pond itself, thus the climate impact of beavers may be smaller than  
previously thought (Nisbet, 1989; Whitfield et al., 2015).

## 5 Conclusion

450 This study applies the CoupModel to quantify the impact of water table variations in a beaver pond adjacent to a  
mid-continental bog on ecosystem CO<sub>2</sub> dynamics. We conclude:

- 1) CoupModel can describe the coupled hydrology, energy and CO<sub>2</sub> dynamics for a continental bog system  
with varying disturbance intensity induced by beaver management.
- 2) Beaver removal and breaking the integrity of the dams to reduce flooding decreases WT in the pond,  
455 which increases the lateral subsurface flow from the bog lowering the peatland water table depth.
- 3) Peatland water table depth is a primary control of the annual NEE at Mer Bleue bog and the CO<sub>2</sub> uptake  
shows a close to linear relation with the water level at the beaver pond.

- 4) The current modeling exercise predicts that the BP water level reaches a tipping point at ~ 1.7 m below the peat surface where further drop in the water level would cause the bog system to no longer be resilient to water table variations and no longer function as a net CO<sub>2</sub> sink.

460

*Code and data availability.* The data that support the findings of this study will be openly available in Zenodo. The model source code used for this study is openly available in Zenodo at <https://doi.org/10.5281/zenodo.3547628>. The simulation files will be openly available in Zenodo after the paper is accepted. Much of the flux data from the Mer Bleue is available from the FLUXNET dataset ([FLUXNET Canada Research Network - Canadian Carbon Program Data Collection, 1993-2014 \(ornl.gov\)](#)) and the executed CoupModel file is available at [www.coupmodel.com](http://www.coupmodel.com).

465

*Author contributions.* HH and NR conceptualized the work, EH, PL, TM, and NR contributed with measurement data; HH performed the modelling and analyzed the data with help of NR; HH and NR drafted the manuscript with all authors ~~contributed~~ contributing to the paper reviewing and editing.

470

*Competing interests.* The authors declare that they have no conflict of interest.

*Disclaimer.* Publisher's note: Copernicus Publications remains neutral with regard to jurisdictional claims in published maps and institutional affiliations.

*Acknowledgments.* H. He has been supported by a Canadian NSERC Discovery grant and a grant from the Trotter Institute for Science and Public Policy to N.T. Roulet. The long-term measurements at Mer Bleue have been supported by various grants to N.T. Roulet, E. Humphreys, T. Moore, and P. Lafleur (NSERC research network grants and strategic partnerships, FLUXNET Canada and the Canadian Carbon Program, BIOCAP Canada, and the Ontario Ministry of Environment and Climate Change). We thank Mike Dalva for collecting the beaver pond data at Mer Bleue bog and the National Capital Commission for permission to work at Mer Bleue.

475

## References

Arroyo-Mora, J. P., Kalacska, M., Soffer, R., Ifimov, G., Leblanc, G., Schaaf, E. S., and Lucanus, O.: Evaluation of phenospectral dynamics with Sentinel-2A using a bottom-up approach in a northern ombrotrophic peatland, *Remote Sensing of Environment*, 216, 544-560, 10.1016/j.rse.2018.07.021, 2018.

Belyea, L. R. and Baird, A. J.: Beyond "the limits to peat bog growth": cross-scale feedback in peatland development, *Ecological Monographs*, 76, 299-322, 2006.

485

Blodau, C. and Moore, T. R.: Macroporosity affects water movement and pore water sampling in peat soils, *Soil science*, 167, 98-109, 2002.

Bubier, J. L., Moore, T. R., and Crosby, G.: Fine-scale vegetation distribution in a cool temperate peatland, *Canadian Journal of Botany*, 84, 910-923, 10.1139/b06-044, 2006.

Field Code Changed

Formatted: English (United States)

490 Chaudhary, N., Miller, P. A., and Smith, B.: Modelling Holocene peatland dynamics with an individual-based  
dynamic vegetation model, *Biogeosciences*, 14, 2571-2596, 10.5194/bg-14-2571-2017, 2017.

Clymo, R. S.: The limits to peat bog growth, *Phil. Trans. R. Soc. Lond. B*, 303, 605-654, 1984.

Clymo, R. S.: Models of peat growth, *Suo*, 43, 127-136, 1992.

Dimitrov, D. D., Grant, R. F., Lafleur, P. M., and Humphreys, E. R.: Modeling the effects of hydrology on  
ecosystem respiration at Mer Bleue bog, *Journal of Geophysical Research*, 115, 10.1029/2010jg001312, 2010.

495 Dinsmore, K. J., Billett, M. F., and Moore, T. R.: Transfer of carbon dioxide and methane through the soil-water-  
atmosphere system at Mer Bleue peatland, Canada, *Hydrological Processes*, 23, 330-341, 10.1002/hyp.7158, 2009.

Dinsmore, K. J., Billett, M. F., Skiba, U. M., Rees, R. M., Drewer, J., and Helfter, C.: Role of the aquatic pathway  
in the carbon and greenhouse gas budgets of a peatland catchment, *Global Change Biology*, 16, 2750-2762,  
10.1111/j.1365-2486.2009.02119.x, 2010.

500 Eppinga, Maarten B., de Ruiter, Peter C., Wassen, Martin J., and Rietkerk, M.: Nutrients and Hydrology Indicate  
the Driving Mechanisms of Peatland Surface Patterning, *The American Naturalist*, 173, 803-818, 10.1086/598487,  
2009.

Flanagan, L. B. and Syed, K. H.: Stimulation of both photosynthesis and respiration in response to warmer and  
drier conditions in a boreal peatland ecosystem, *Global Change Biology*, 17, 2271-2287, 10.1111/j.1365-  
505 2486.2010.02378.x, 2011.

Fraser, C. J. D., Roulet, N. T., and Lafleur, P. M.: Groundwater flow pattern in a large peatland, *Journal of  
Hydrology*, 246, 142-154, 2001a.

Fraser, C. J. D., Roulet, N. T., and Moore, T. R.: Hydrology and dissolved organic carbon biogeochemistry in an  
ombrotrophic bog, *Hydrological Processes*, 15, 3151-3166, 10.1002/hyp.322, 2001b.

510 Frolking, S., Roulet, N., and Fuglested, J.: How northern peatlands influence the Earth's radiative budget:  
Sustained methane emission versus sustained carbon sequestration, *Journal of Geophysical Research*, 111,  
10.1029/2005jg000091, 2006.

Frolking, S., Roulet, N. T., Moore, T. R., Lafleur, P. M., Bubier, J. L., and Crill, P. M.: Modeling seasonal to  
annual carbon balance of Mer Bleue Bog, Ontario, Canada, *Global Biogeochemical Cycles*, 16, 4-1-4-21,  
515 10.1029/2001gb001457, 2002.

Frolking, S., Roulet, N. T., Tuittila, E., Bubier, J. L., Quillet, A., Talbot, J., and Richard, P. J. H.: A new model  
of Holocene peatland net primary production, decomposition, water balance, and peat accumulation, *Earth System  
Dynamics Discussions*, 1, 115-167, 10.5194/esdd-1-115-2010, 2010.

Gorham, E.: Northern Peatlands - Role in the carbon-cycle and probable responses to climatic warming,  
520 *Ecological Applications*, 1, 182-195, 10.2307/1941811, 1991.

Goud, E. M., Moore, T. R., and Roulet, N. T.: Predicting peatland carbon fluxes from non-destructive plant traits,  
*Functional Ecology*, 31, 1824-1833, 10.1111/1365-2435.12891, 2017.

Halley, D., Rosell, F., and Saveljev, A.: Population and distribution of Eurasian Beaver (*Castor fiber*), *Baltic  
Forestry*, 18, 168-175, 2012.

525 Harris, L. I., Roulet, N. T., and Moore, T. R.: Drainage reduces the resilience of a boreal peatland, *Environmental  
Research Communications*, 2, 10.1088/2515-7620/ab9895, 2020.

Formatted: French (Canada)

Formatted: English (United States)

He, H., Jansson, P.-E., and Gärdenäs, A.: CoupModel (v6.0): an ecosystem model for coupled phosphorus, nitrogen, and carbon dynamics – evaluated against empirical data from a climatic and fertility gradient in Sweden, *Geosci. Model Dev.*, 14, 735-761, 10.5194/gmd-14-735-2021, 2021.

530 He, H., Jansson, P.-E., Svensson, M., Meyer, A., Klemetsson, L., and Kasimir, Å.: Factors controlling Nitrous Oxide emission from a spruce forest ecosystem on drained organic soil, derived using the CoupModel, *Ecological Modelling*, 321, 46-63, 10.1016/j.ecolmodel.2015.10.030, 2016.

Helfter, C., Campbell, C., Dinsmore, K. J., Drewer, J., Coyle, M., Anderson, M., Skiba, U., Nemitz, E., Billett, M. F., and Sutton, M. A.: Drivers of long-term variability in CO<sub>2</sub> net ecosystem exchange in a temperate peatland, *Biogeosciences*, 12, 1799-1811, 10.5194/bg-12-1799-2015, 2015.

535 Hilbert, D. W., Roulet, N. T., and Moore, T.: Modelling and analysis of peatlands as dynamical systems, *Journal of Ecology*, 88, 230-242, 10.1046/j.1365-2745.2000.00438.x, 2000.

Holden, J.: Peatland hydrology and carbon release: why small-scale process matters, *Philos Trans A Math Phys Eng Sci*, 363, 2891-2913, 10.1098/rsta.2005.1671, 2005.

540 Howie, S. A. and Meerveld, I. T.-v.: The Essential Role of the Lagg in Raised Bog Function and Restoration: A Review, *Wetlands*, 31, 613-622, 10.1007/s13157-011-0168-5, 2011.

Humphreys, E. R., Charron, C., Brown, M., and Jones, R.: Two Bogs in the Canadian Hudson Bay Lowlands and a Temperate Bog Reveal Similar Annual Net Ecosystem Exchange of CO<sub>2</sub>, *Arctic, Antarctic, and Alpine Research*, 46, 103-113, 10.1657/1938-4246.46.1.103, 2014.

545 Hutchins, K.: Water balance and solute export in a South-East Ontario ombrotrophic peatland, Department of Geography, McGill University, Montreal, 51 pp., 2018.

Huttunen, J. T., Väisänen, T. S., Heikkinen, M., Hellsten, S., Nykänen, H., Nenonen, O., and Martikainen, P. J.: Exchange of CO<sub>2</sub>, CH<sub>4</sub> and N<sub>2</sub>O between the atmosphere and two northern boreal ponds with catchments dominated by peatlands or forests, *Plant and Soil*, 242, 137-146, <https://doi.org/10.1023/A:1019606410655>,

550 2002.

Ingram, H. A. P.: Soil layers in mires: function and terminology, *Journal of Soil Science*, 29, 224-227, 1978.

Jansson, P.-E.: CoupModel: model use, calibration, and validation, *Transactions of the ASABE*, 55, 1335-1344, 2012.

Jansson, P.-E. and Karlberg, L.: User manual of Coupled heat and mass transfer model for soil-plant-atmosphere systems, Royal institute of technology, Department of land and water resources, Stockholm 2011.

555 Jarema, S. I., Samson, J., McGill, B. J., and Humphries, M. M.: Variation in abundance across a species' range predicts climate change responses in the range interior will exceed those at the edge: a case study with North American beaver, *Global Change Biology*, 15, 508-522, 10.1111/j.1365-2486.2008.01732.x, 2009.

Karran, D. J., Westbrook, C. J., and Bedard-Haughn, A.: Beaver-mediated water table dynamics in a Rocky Mountain fen, *Ecohydrology*, 11, 10.1002/eco.1923, 2018.

560 Karran, D. J., Westbrook, C. J., Wheaton, J. M., Johnston, C. A., and Bedard-Haughn, A.: Rapid surface-water volume estimations in beaver ponds, *Hydrology and Earth System Sciences*, 21, 1039-1050, 10.5194/hess-21-1039-2017, 2017.

Kokkonen, N. A. K., Laine, A. M., Laine, J., Vasander, H., Kurki, K., Gong, J., and Tuittila, E.-S.: Responses of peatland vegetation to 15-year water level drawdown as mediated by fertility level, *Journal of Vegetation Science*, 30, 1206-1216, doi.org/10.1111/jvs.12794, 2019.

565

Formatted: English (United States)

Formatted: English (United States)

Field Code Changed

- Kross, A. S. E., Roulet, N. T., Moore, T. R., Lafleur, P. M., Humphreys, E. R., Seaquist, J. W., Flanagan, L. B., and Aurela, M.: Phenology and its role in carbon dioxide exchange processes in northern peatlands, *Journal of Geophysical Research: Biogeosciences*, 119, 1370-1384, 10.1002/2014jg002666, 2014.
- 570 Lafleur, P. M., Roulet, N. T., and Admiral, S. W.: Annual cycle of CO<sub>2</sub> exchange at a bog peatland, *Journal of Geophysical Research: Atmospheres*, 106, 3071-3081, 10.1029/2000jd900588, 2001.
- Lafleur, P. M., Hember, R. A., Admiral, S. W., and Roulet, N. T.: Annual and seasonal variability in evapotranspiration and water table at a shrub-covered bog in southern Ontario, Canada, *Hydrological Processes*, 19, 3533-3550, 10.1002/hyp.5842, 2005.
- 575 Lafleur, P. M., Roulet, N. T., Bubier, J. L., Frolking, S., and Moore, T. R.: Interannual variability in the peatland-atmosphere carbon dioxide exchange at an ombrotrophic bog, *Global Biogeochemical Cycles*, 17, n/a-n/a, 10.1029/2002gb001983, 2003.
- Letts, G. M., Roulet, N. T., and Comer, N. T.: Parametrization of peatland hydraulic properties for the Canadian land surface scheme, *Atmosphere Ocean*, 38, 141-160, 2000.
- 580 Loisel, J., van Bellen, S., Pelletier, L., Talbot, J., Hugelius, G., Karran, D., Yu, Z., Nichols, J., and Holmquist, J.: Insights and issues with estimating northern peatland carbon stocks and fluxes since the Last Glacial Maximum, *Earth-Science Reviews*, 165, 59-80, 10.1016/j.earscirev.2016.12.001, 2017.
- Loisel, J., Yu, Z., Beilman, D. W., Camill, P., Alm, J., Amesbury, M. J., Anderson, D., Andersson, S., Bochicchio, C., Barber, K., Belyea, L. R., Bunbury, J., Chambers, F. M., Charman, D. J., De Vleeschouwer, F., Fialkiewicz-Koziel, B., Finkelstein, S. A., Galka, M., Garneau, M., Hammarlund, D., Hinchcliffe, W., Holmquist, J., Hughes, P., Jones, M. C., Klein, E. S., Kokfelt, U., Korhola, A., Kuhry, P., Lamarre, A., Lamentowicz, M., Large, D., Lavoie, M., MacDonald, G., Magnan, G., Mäkilä, M., Mallon, G., Mathijssen, P., Mauquoy, D., McCarroll, J., Moore, T. R., Nichols, J., O'Reilly, B., Oksanen, P., Packalen, M., Peteet, D., Richard, P. J., Robinson, S., Ronkainen, T., Rundgren, M., Sannel, A. B. K., Tarnocai, C., Thom, T., Tuittila, E.-S., Turetsky, M., Väiranta, M., van der Linden, M., van Geel, B., van Bellen, S., Vitt, D., Zhao, Y., and Zhou, W.: A database and synthesis of northern peatland soil properties and Holocene carbon and nitrogen accumulation, 24, 1028-1042, 10.1177/0959683614538073, 2014.
- 590 Lu, W., Xiao, J., Liu, F., Zhang, Y., Liu, C., and Lin, G.: Contrasting ecosystem CO<sub>2</sub> fluxes of inland and coastal wetlands: a meta-analysis of eddy covariance data, *Glob Chang Biol*, 23, 1180-1198, 10.1111/gcb.13424, 2017.
- 595 McMaster, R. and McMaster, N. D.: Composition, structure, and dynamics of vegetation in fifteen beaver-impacted wetlands in western Massachusetts, *Rhodora*, 103, 293-320, 2001.
- Metzger, C., Jansson, P. E., Lohila, A., Aurela, M., Eickenscheidt, T., Belelli-Marchesini, L., Dinsmore, K. J., Drewer, J., van Huissteden, J., and Drösler, M.: CO<sub>2</sub> fluxes and ecosystem dynamics at five European treeless peatlands – merging data and process oriented modeling, *Biogeosciences*, 12, 125-146, 10.5194/bg-12-125-2015, 2015.
- 600 Mitchell, C. C. and Niering, W. A.: Vegetation change in a topogenic bog following beaver flooding, *Bulletin of the Torrey Botanical Club*, 120, 136-147, 1993.
- Moore, T., Bubier, J., Frolking, S., Lafleur, P. M., and Roulet, N. T.: Plant biomass and production and CO<sub>2</sub> exchange in an ombrotrophic bog, *Journal of Ecology*, 90, 25-36, 2002.
- 605 Moore, T. R. and Bubier, J. L.: Plant and Soil Nitrogen in an Ombrotrophic Peatland, Southern Canada, *Ecosystems*, 23, 98-110, 10.1007/s10021-019-00390-w, 2019.



- Moore, T. R., De Young, A., Bubier, J. L., Humphreys, E. R., Lafleur, P. M., and Roulet, N. T.: A Multi-Year Record of Methane Flux at the Mer Bleue Bog, Southern Canada, *Ecosystems*, 14, 646-657, 10.1007/s10021-011-9435-9, 2011.
- 610 Moore, T. R., Lafleur, P. M., Poon, D. M. I., Heumann, B. W., Seaquist, J. W., and Roulet, N. T.: Spring photosynthesis in a cool temperate bog, *Global Change Biology*, 12, 2323-2335, 10.1111/j.1365-2486.2006.01247.x, 2006.
- Morris, P. J., Baird, A. J., and Belyea, L. R.: The DigiBog peatland development model 2: ecohydrological simulations in 2D, *Ecohydrology*, 5, 256-268, 10.1002/eco.229, 2012.
- 615 Mualem, Y.: A new model for predicting the hydraulic conductivity of unsaturated porous media, *Water Resources Research*, 12, 513-522, 1976.
- Myhre, G., Shindell, D., Bréon, F.-M., Collins, W., Fuglestedt, J., Huang, J., Koch, D., Lamarque, J.-F., Lee, D., Mendoza, B., Nakajima, T., Robock, A., Stephens, G., Takemura, T., and Zhang, H.: *Anthropogenic and Natural Radiative Forcing*, New York, NY, USA, Report of the Intergovernmental Panel on Climate Change, 2013.
- 620 Naiman, R. J., Johnston, C. A., and Kelley, J. C.: Alteration of North American streams by Beaver, *BioScience*, 38, 753-762, 1988.
- Nilsson, M., Sagerfors, J., Buffam, I., Laudon, H., Eriksson, T., Grelle, A., Klemetsson, L., Weslien, P. E. R., and Lindroth, A.: Contemporary carbon accumulation in a boreal oligotrophic minerogenic mire - a significant sink after accounting for all C-fluxes, *Global Change Biology*, 14, 2317-2332, 10.1111/j.1365-2486.2008.01654.x, 2008.
- 625 Nisbet, E. G.: Some northern sources of atmospheric methane: production, history, and future implications, *Canadian Journal of Earth Sciences*, 26, 1603-1611, 1989.
- Qiu, C., Zhu, D., Ciais, P., Guenet, B., Peng, S., and Xu, X.: The role of northern peatlands in the global carbon cycle for the 21st century, *Global Ecology and Biogeography*, 29, 956-973, 10.1111/geb.13081, 2020.
- 630 Rankin, T., Roulet, N., and Moore, T.: Controls on autotrophic and heterotrophic respiration in an ombrotrophic bog, *Biogeosciences*, 19, 3285-3303, 10.5194/bg-19-3285-2022, 2022.
- Rebertus, A. J.: Bogs as beaver habitat in North-Central Minnesota, *The American Midland Naturalist*, 116, 240-245, 1986.
- Regan, S., Flynn, R., Gill, L., Naughton, O., and Johnston, P.: Impacts of Groundwater Drainage on Peatland Subsidence and Its Ecological Implications on an Atlantic Raised Bog, *Water Resources Research*, 55, 6153-6168, 10.1029/2019wr024937, 2019.
- 635 Richards, L. A.: Capillary conduction of liquids in porous mediums, *Physics*, 1, 318-333, 1931.
- Rinne, J., Tuovinen, J. P., Klemetsson, L., Aurela, M., Holst, J., Lohila, A., Weslien, P., Vestin, P., Lakomiec, P., Peichl, M., Tuittila, E. S., Heiskanen, L., Laurila, T., Li, X., Alekseychik, P., Mammarella, I., Strom, L., Crill, P., and Nilsson, M. B.: Effect of the 2018 European drought on methane and carbon dioxide exchange of northern mire ecosystems, *Philos Trans R Soc Lond B Biol Sci*, 375, 20190517, 10.1098/rstb.2019.0517, 2020.
- 640 Rosell, F., Bozser, O., Collen, P., and Parker, H.: Ecological impacts of beavers *Castor fiber* and *Castor canadensis* and their ability to modify ecosystems, *Mammal Rev.*, 35, 248-276, 2005.
- Roulet, N. T., Crill, P. M., Comer, N. T., Dove, A., and Boubonniere, R. A.: CO<sub>2</sub> and CH<sub>4</sub> flux between a boreal beaver pond and the atmosphere, *Journal of Geophysical Research*, 102, 29313-29319, 1997.
- 645

- Roulet, N. T., Lafleur, P. M., Richard, P. J. H., Moore, T. R., Humphreys, E. R., and Bubier, J.: Contemporary carbon balance and late Holocene carbon accumulation in a northern peatland, *Global Change Biology*, 13, 397-411, 10.1111/j.1365-2486.2006.01292.x, 2007.
- 650 Schwärzel, K., Šimůnek, J., Stoffregen, H., Wessolek, G., and van Genuchten, M. T.: Estimation of the Unsaturated Hydraulic Conductivity of Peat Soils, *Vadose Zone Journal*, 5, 628, 10.2136/vzj2005.0061, 2006.
- Silvola, J., Alm, J., Ahlholm, U., Hykänen, H., and Martikainen, P. J.: CO<sub>2</sub> fluxes from peat in boreal mires under varying temperature and moisture conditions, *Journal of Ecology*, 84, 219-228, 1996.
- Sonntag, O., Chen, J. M., Roberts, D. A., Talbot, J., Halligan, K. Q., and Govind, A.: Mapping tree and shrub leaf area indices in an ombrotrophic peatland through multiple endmember spectral unmixing, *Remote Sensing of Environment*, 109, 342-360, 10.1016/j.rse.2007.01.010, 2007.
- 655 Stewart, H.: Partitioning belowground respiration in a northern peatland, Department of Geography, McGill University, Montréal, 115 pp., 2006.
- Strachan, I. B., Pelletier, L., and Bonneville, M.-C.: Inter-annual variability in water table depth controls net ecosystem carbon dioxide exchange in a boreal bog, *Biogeochemistry*, 127, 99-111, 10.1007/s10533-015-0170-8, 2015.
- 660 Tape, K. D., Jones, B. M., Arp, C. D., Nitze, I., and Grosse, G.: Tundra be damned: Beaver colonization of the Arctic, *Glob Chang Biol*, 24, 4478-4488, 10.1111/gcb.14332, 2018.
- Tardif, S., St-Hilaire, A., Roy, R., Bernier, M., and Payette, S.: Statistical Properties of Hydrographs in Minerotrophic Fens and Small Lakes in Mid-Latitude Québec, Canada, *Canadian Water Resource Journal*, 34, 365-380, 2009.
- 665 van Genuchten, M. T.: A closed-form equation for predicting the hydraulic conductivity of unsaturated soils, *Soil Sci. Soc. AM. J.*, 44, 892-898, 1980.
- Very, E. S., Brooks, K. N., and Barten, P. K.: Streamflow response from an ombrotrophic mire, The international symposium on the hydrology of wetlands in temperate and cold regions, Joensuu, Finland, 52-59,
- 670 Wallén, B., Falkengren-Grerup, U., and Malmer, N.: Biomass, productivity and relative rate of photosynthesis of Sphagnum at different water levels on a South Swedish peat bog, *Ecography*, 11, 70-76, 10.1111/j.1600-0587.1988.tb00782.x, 1988.
- Wang, M., Moore, T. R., Talbot, J., and Richard, P. J. H.: The cascade of C:N:P stoichiometry in an ombrotrophic peatland: from plants to peat, *Environmental Research Letters*, 9, 10.1088/1748-9326/9/2/024003, 2014.
- 675 Weiss, R., Alm, J., Laiho, R., and Laine, J.: Modeling Moisture Retention in Peat Soils, *Soil Sci. Soc. Am. J.*, 62, 305-313, 10.2136/sssaj1998.03615995006200020002x, 1998.
- Westbrook, C. J., Ronnquist, A., and Bedard-Haughn, A.: Hydrological functioning of a beaver dam sequence and regional dam persistence during an extreme rainstorm, *Hydrological Processes*, 34, 3726-3737, 10.1002/hyp.13828, 2020.
- 680 Whitfield, C. J., Baulch, H. M., Chun, K. P., and Westbrook, C. J.: Beaver-mediated methane emission: The effects of population growth in Eurasia and the Americas, *Ambio*, 44, 7-15, 10.1007/s13280-014-0575-y, 2015.
- Wilson, P. G.: The relationship among micro-topographic variation, water table depth and biogeochemistry in an ombrotrophic bog, Department of Geography, McGill University, Montreal, Quebec, 111 pp., 2012.
- Woo, M.-k. and Waddington, J. M.: Effects of beaver dams on subarctic wetland hydrology, *Arctic*, 43, 223-230, 685 1990.

Wu, J. and Roulet, N. T.: Climate change reduces the capacity of northern peatlands to absorb the atmospheric carbon dioxide: The different responses of bogs and fens, *Global Biogeochemical Cycles*, 28, 1005-1024, 10.1002/2014gb004845, 2014.

690 Wu, J., Roulet, N. T., Moore, T. R., Lafleur, P., and Humphreys, E.: Dealing with microtopography of an ombrotrophic bog for simulating ecosystem-level CO<sub>2</sub> exchanges, *Ecological Modelling*, 222, 1038-1047, 10.1016/j.ecolmodel.2010.07.015, 2011.

Yu, Z., Loisel, J., Charman, D. J., Beilman, D. W., and Camill, P.: Holocene peatland carbon dynamics in the circum-Arctic region: An introduction, *The Holocene*, 24, 1021-1027, 10.1177/0959683614540730, 2014.

695 Zhang, H., Valiranta, M., Piilo, S., Amesbury, M. J., Aquino-Lopez, M. A., Roland, T. P., Salminen-Paatero, S., Paatero, J., Lohila, A., and Tuittila, E. S.: Decreased carbon accumulation feedback driven by climate-induced drying of two southern boreal bogs over recent centuries, *Glob Chang Biology*, 26, 2435-2448, 10.1111/gcb.15005, 2020.



700

Figure 1: Oblique photograph of Northeast portion of Mer Bleue bog. Arrows indicating the location of the beaver pond and its dam (left) and the tower (right) (Photo courtesy of Professor Margaret Kalacska, photo credit Olivier Lucanus).

705

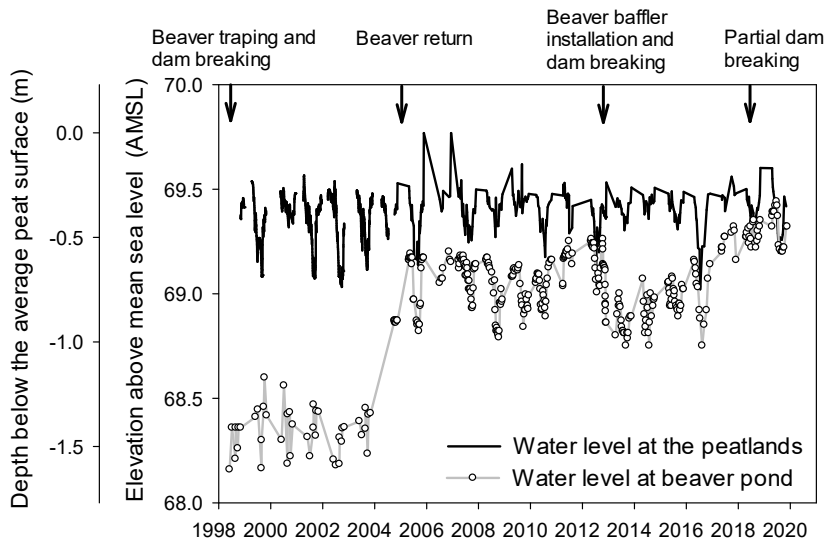
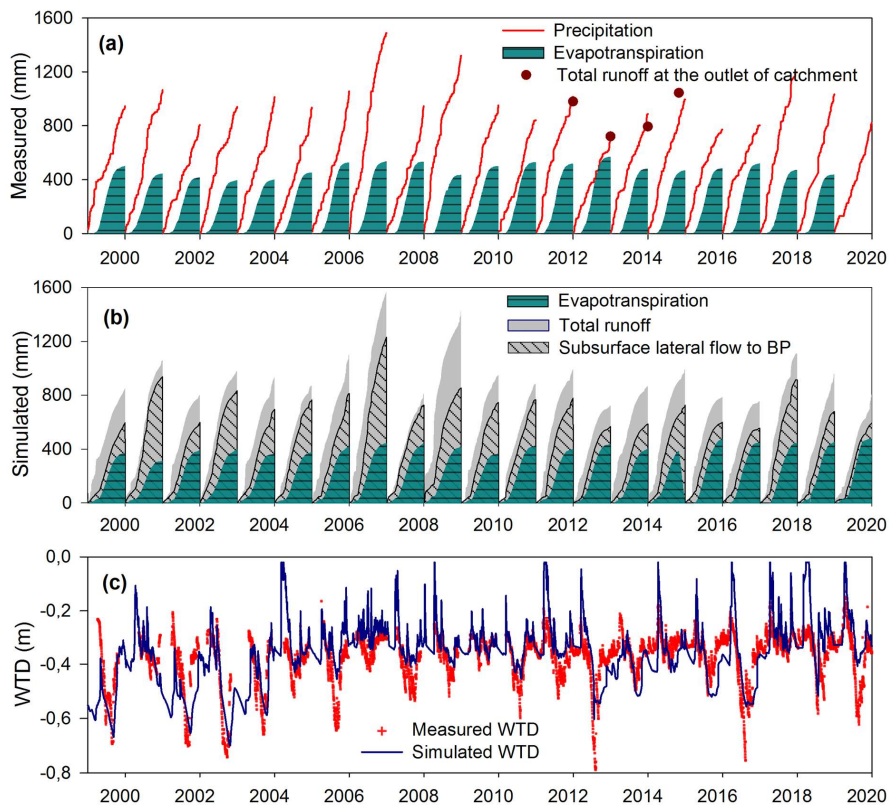
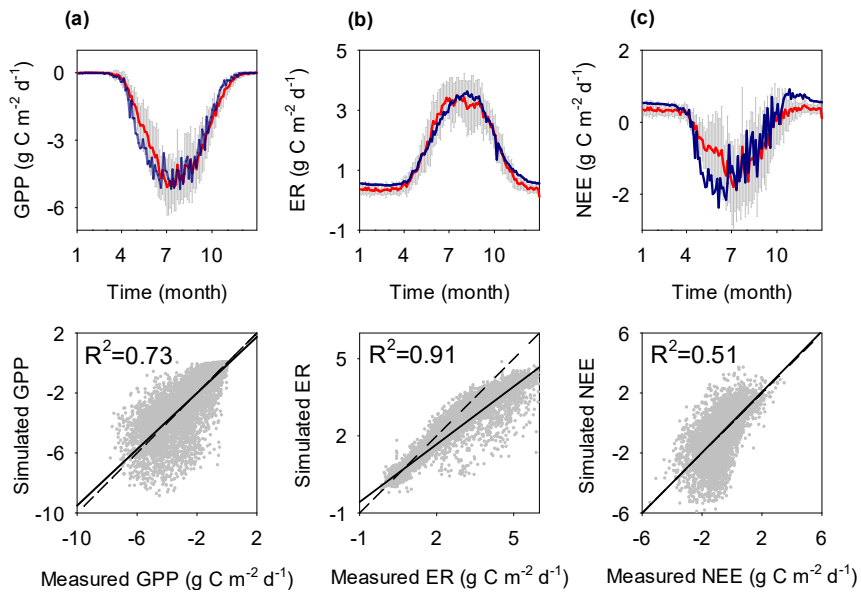


Figure 2: Measured water level at the peatlands and the BP over 1998-2019. The arrow indicates the disturbance of the BP dam by human management (personal communication from Eva Katic, NCC). Note part of the 1999-2003 BP water level data is generated by using available measured data, more details see supplementary section A



715 **Figure 3: (a) Simulated and (b) measured annual accumulated hydrological components: precipitation, evapotranspiration, total runoff, and the lateral subsurface flow, (c) peatland water table depth, and WTD. The measured evapotranspiration data was from the eddy covariance flux tower. Total runoff measured at the catchment outlet is taken from unpublished data Hutchins (2018).**



720

725

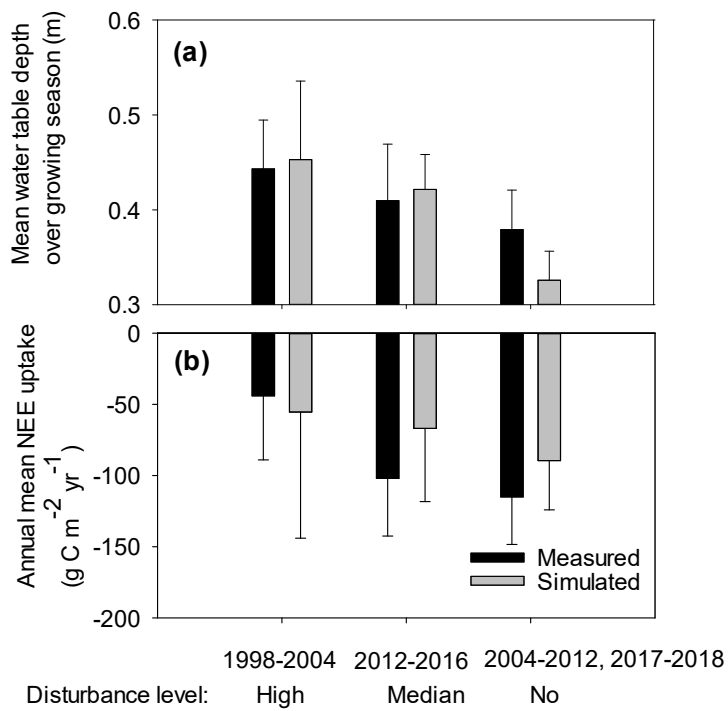


Figure 5: Simulated and measured (a) average mean water table depth over the growing season (May to October), plotted as positive and (b) annual NEE uptake for the different disturbance levels.



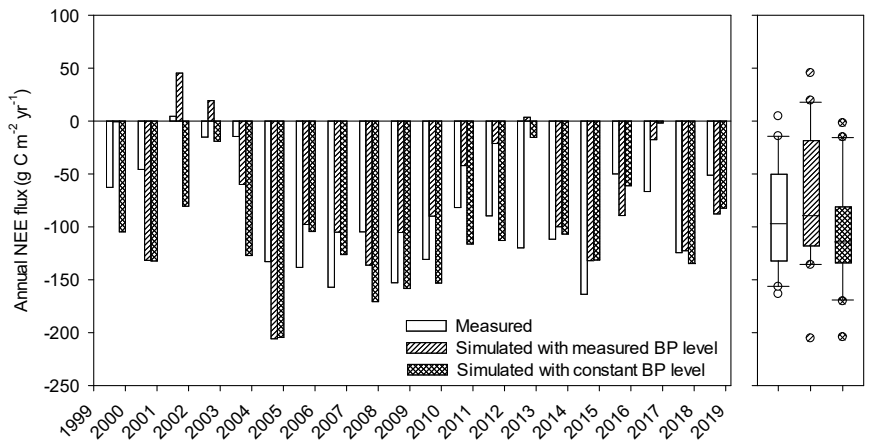
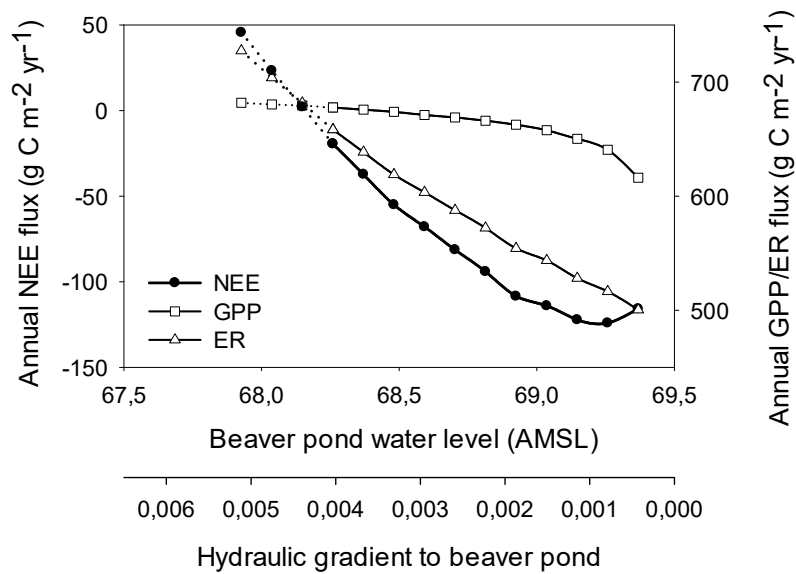


Figure 6: Simulated and measured annual NEE fluxes in the reference run (simulated with measured BP level) and the constant BP water level run (simulated with constant BP level).



735

Figure 7: Sensitivity of annual mean NEE, GPP, ER to the varying beaver pond water level (thus lateral hydraulic gradient) for each 0.1 m bin of the pond level over 1998-2019. The constant BP water level ranged from 67.9 AMSL (a dry pond) to the highest possible water level, 69.37 AMSL (the average measured WTD at the peatland) when flow would reverse from the pond to the peatland. The solid line indicates the measured BP water table range. Note the sign of NEE follows the atmospheric convention, negative meaning uptake, and GPP and ER are both plotted as positive.

740

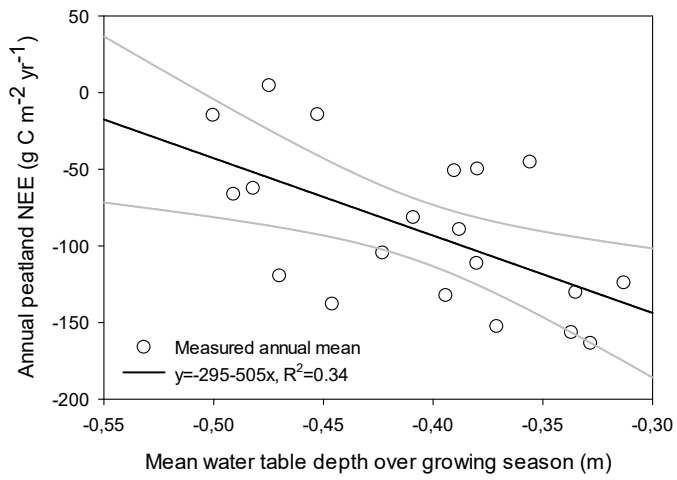


Figure 8: Relationship between annual NEE and peatland water table depth over growing season (May to Oct) using the measured annual data 1998 to 2018.

745