

The Effects of Spatial and Temporal Resolution of Gridded Meteorological Forcing on Watershed Hydrological Responses

Pin Shuai¹, Xingyuan Chen¹, Utkarsh Mital², Ethan T. Coon³, and Dipankar Dwivedi²

¹Pacific Northwest National Laboratory, Richland, WA 99352

²Lawrence Berkeley National Laboratory, Berkeley, CA 94720

³Climate Change Science Institute & Environmental Sciences Division, Oak Ridge National Laboratory, Oak Ridge, TN, 37830

Correspondence: Pin Shuai (pin.shuai@pnnl.gov)

Abstract. Meteorological forcing plays a critical role in accurately simulating the watershed hydrological cycle. With the advancement of high-performance computing and the development of integrated watershed models, simulating the watershed hydrological cycle at high temporal (hourly to daily) and spatial resolution (10s of meters) has become efficient and computationally affordable. These hyperresolution watershed models require high resolution of meteorological forcing as model input to ensure the fidelity and accuracy of simulated responses. In this study, we utilized the Advanced Terrestrial Simulator (ATS), an integrated watershed model, to simulate surface and subsurface flow and land surface processes using unstructured meshes at the Coal Creek Watershed near Crested Butte (Colorado). We compared simulated watershed hydrologic responses including streamflow, and distributed variables such as evapotranspiration, snow water equivalent (SWE), and groundwater table driven by three publicly available, gridded meteorological forcings (GMFs) – Daily Surface Weather and Climatological Summaries (Daymet), Parameter-elevation Regressions on Independent Slopes Model (PRISM), and North American Land Data Assimilation System (NLDAS). By comparing various spatial resolutions (ranging from 400 m to 4 km) of PRISM, the simulated streamflow only becomes marginally worse when spatial resolution of meteorological forcing is coarsened to 4 km (or 30% of the watershed area). However, the 4 km resolution has much worse performance than finer resolution in spatially distributed variables such as SWE. Using temporally disaggregated PRISM, we compared models forced by different temporal resolutions (hourly to daily), sub-daily resolution preserves the dynamic watershed responses (e.g., diurnal fluctuation of streamflow) that are absent in results forced by daily resolution. Conversely, the simulated streamflow shows better performance using daily resolution compared to that using sub-daily resolution. Our findings suggest that the choice of GMF and its spatiotemporal resolution depends on the quantity of interest and its spatial and temporal scale, which may have important implications on model calibration and watershed management decisions.

20 1 Introduction

The accuracy of meteorological forcings such as precipitation plays a crucial role in simulating watershed hydrological cycle. With the advancement of high-performance computing and the development of integrated hydrologic models (e.g., Amanzi-Advanced Terrestrial Simulator (ATS) (Coon et al., 2019), ParFlow (Kollet and Maxwell, 2006), and HydroGeo-

Sphere (Aquanty, 2015)), simulating watershed hydrological cycle at high temporal and spatial resolution has become possible
25 (Wood et al., 2011). These models often require gridded meteorological forcing (GMF), which is typically fused from various
sources, including ground-based gages, radar, satellite remote sensing, as well as regional and global climate models. Due to
different interpolation methods and data sources, GMF is available at different spatial and temporal resolutions and contains
considerable uncertainties (Schreiner-McGraw and Ajami, 2020).

Recently, GMF products, notably Daily Surface Weather and Climatological Summaries (Daymet) (Thornton et al., 1997, 2021),
30 Parameter-elevation Regressions on Independent Slopes Model (PRISM) (Daly et al., 2008) and North American Land Data
Assimilation System (NLDAS) (Mitchell, 2004; Xia et al., 2012)), have become popular for hydrologic modeling within the
conterminous United States (CONUS) owing to their temporally and spatially complete coverage and relatively high spatiotem-
poral resolution. Past studies have compared and evaluated the performance of GMF against weather stations (Behnke et al.,
2016; Daly et al., 2008; Muche et al., 2020). Daly et al. (2008) presented a detailed comparison between PRISM and Daymet
35 and found that, for the products available in 2008, PRISM outperforms Daymet, especially in mountainous and coastal areas of
the western U.S. Behnke et al. (2016) compared eight widely used meteorological forcing datasets including Daymet, PRISM,
and NLDAS against Global Historical Climatology Network-Daily (GHCN-D) stations across the CONUS. They found that
different interpolation methods affected the accuracy of downscaled meteorological data and care should be taken when se-
lecting meteorological forcing for a given region. In a similar study, Muche et al. (2020) compared four GMFs (i.e., Daymet,
40 PRISM, NLDAS, and Global Land Data Assimilation System (GLDAS)) as precipitation data sources, and evaluated the pre-
cipitation estimates at GHCN-D stations within the Delaware Watershed at Perry Lake in eastern Kansas. They showed that
precipitation from Daymet and PRISM were more closely matched with precipitation collected at GHCN-D than that from
NLDAS and GLDAS.

Understanding the bias and fidelity of each meteorological forcing and the effects of meteorological forcing spatiotemporal
45 resolution on simulated watershed responses is important for accurate simulations of watershed processes. Previous studies
have evaluated the impact of different GMF on model simulated surface runoff and streamflow (Muche et al., 2020; Behnke
et al., 2016; Gao et al., 2017; Elsner et al., 2014). Using the Soil and Water Assessment Tool (SWAT), Muche et al. (2020) evalu-
ated model performance on simulated streamflow against observation under different GMFs. They found that the simulated
streamflows yielded a higher correlation when driven by PRISM and Daymet than those by NLDAS and GLDAS. Eum et al.
50 (2014) evaluated hydrologic responses using the Variable Infiltration Capacity (VIC) model forced by three GMFs available in
Canada. They found notable differences in simulated surface runoff during the snow-melt period, but not so much during the
snowfall period. However, these studies mostly focused on meteorological forcing effects on surface runoff and ignored other
relevant hydrological processes (e.g., snowmelt, evapotranspiration (ET), and subsurface flow). In addition, these studies used
either semi-distributed models (e.g., SWAT) or coarse regional-scale land surface models (e.g., VIC), which do not fully utilize
55 the GMF at their finest resolutions.

Compared to semi-distributed models, fully-distributed, integrated hydrologic models are favorable in simulating watershed
hydrologic responses to changes in climate forcing as they can preserve the spatial heterogeneity of inputs from GMF and
provide a spatially distributed representation of both surface and subsurface flow processes. Recently, Maina et al. (2020)

used ParFlow-Community Land Model (CLM), a fully distributed, processes-based watershed model, to study the effect of spatial resolution of meteorological forcing (0.5 to 40.5 km) generated from the WRF model on spatially resolved hydrologic responses, including snow water equivalent (SWE), ET, infiltration, surface ponded depth and groundwater table. Using the Cosumnes Watershed as a testbed, they found that most hydrologic variables were seasonally and spatially dependent on the different spatial resolutions of the meteorological forcing. Although climate models such as WRF provide alternative GMF at any given spatiotemporal resolution, they require extensive expert knowledge in setting up and running the models and thus are less popular compared to publicly available GMF (e.g., Daymet, PRISM, and NLDAS). To our knowledge, few, if any, studies have utilized the common GMFs to investigate the impact of spatial resolution of meteorological forcing on both watershed cumulative variables (e.g., streamflow) and distributed variables (e.g., SWE, ET, and groundwater level).

The temporal resolution of meteorological forcing, especially precipitation, plays an important role in the timing of runoff generation. It is particularly important for flood volume modeling (Ficchi et al., 2016), flood forecasting (Wetterhall et al., 2011), and hydrodynamic modeling in urban catchment (Ochoa-Rodriguez et al., 2015; Bruni et al., 2015). The temporal resolution of rainfall inputs has shown to affect the simulation of surface runoff more strongly than variations in spatial resolution during storm events (Ochoa-Rodriguez et al., 2015). High temporal resolution is also important for studying watershed biogeochemical cycling since sub-daily meteorological forcing could induce diurnal snowmelt that produces regular infiltration of cold, chemically distinct snow water into the soil which alters the soil temperature and chemical composition of soil and groundwater (Petroni et al., 2007; Woelber et al., 2018). Despite the importance of the temporal resolution of input forcing, the impact of GMF temporal resolution on watershed hydrodynamics has largely been overlooked. For example, a daily timestep is used routinely in watershed hydrologic modeling and the simulated daily streamflow is generally used to compare with observed daily streamflow even though sub-daily streamflow measurement is collected in most United States Geological Survey (USGS) stream gages.

The objective of this study is to intercompare three widely available GMFs (i.e., PRISM, Daymet, and NLDAS) and to evaluate the impact of meteorological forcing spatial and temporal resolution on simulated watershed hydrologic responses including streamflow, ET, SWE, soil moisture, ponded surface water depth, and groundwater table. We choose ATS as the integrated watershed model to couple surface and subsurface flows with land surface processes (Coon et al., 2019). The model can fully resolve the meteorological forcing on a much finer resolution (≤ 100 m) using unstructured triangular grids. We seek to understand the impact of meteorological forcing by comparing model simulations with field observations including GHCN-D stations, USGS stream gages, and remote sensing products. We aim to answer the following questions: (1) How would different GMF in their native resolution impact the simulated streamflow, distributed variables such as SWE? (2) What are the effects of spatial and temporal resolution of GMF on simulated streamflow and spatially distributed variables? and (3) Is spatial resolution more important than temporal resolution of the GMF for watershed simulations? To address these questions, we perform different numerical experiments using ATS by forcing the model with various spatial and temporal resolutions of GMFs. We choose a mountainous watershed due to its complex terrain and heterogeneous weather conditions, which provides an ideal testbed for studying the impact of meteorological forcing spatiotemporal resolution on watershed dynamic responses. The findings from this study are relevant for the use of GMF dataset on watershed hydrologic simulations using fully distributed

watershed models in mountainous watersheds. It also provides important implications on watershed calibration using inverse
 95 modeling.

2 Methods

2.1 Study site

Our study site is located in the Coal Creek Watershed (Hydrologic Unit Code (HUC): 140200010204) with an area of 53.2 km^2
 located within the larger East Taylor Watershed (HUC: 14020001) near Crested Butte, in southwestern Colorado (Figure 1).
 100 The Coal Creek Watershed is a high alpine, snow-dominated catchment, characterized as warm summer, humid continental
 climate on the Koppen classification system (Koppen and Geiger, 1930). It receives ~ 850 mm of precipitation annually, with
 ~ 530 mm as snowfall which was estimated from long-term Daymet forcing dataset (Thornton et al., 2021). The primary land
 cover types are evergreen forest (62.6%) and shrub (20.5%). This watershed has strong variations in topography and land cover,
 which is representative of many headwater, mountainous watersheds in the western U.S.

105 2.2 ATS model setup

ATS is an integrated, distributed hydrologic code that solves the diffusion wave approximation of the St. Venant equations
 for surface flow coupled to Richards equation for flow in variably saturated porous media in the subsurface (Coon et al.,
 2019, 2020). The Richards equation is described as:

$$\frac{\partial}{\partial x}(\phi s) + \nabla \cdot \mathbf{q} = 0 \quad (1)$$

110 with:

$$\mathbf{q} = -\frac{1}{\mu} k_r \kappa (\nabla p + \rho g) \quad (2)$$

where ϕ is the effective porosity [-], s is the saturation [-], \mathbf{q} is Darcy flux [m/s], μ is the dynamic viscosity [$Pa \cdot s$], k_r is
 relative permeability [-], κ is the saturated hydraulic permeability [m^2], p is water pressure [Pa], and g is the gravitational
 constant [m/s^2].

115 The diffusive wave approximation to overland flow is described as:

$$\frac{\partial h}{\partial t} + \nabla \cdot (h\mathbf{v}) = Q_w + Q_{ss} \quad (3)$$

with:

$$\mathbf{v} = -\frac{h^{2/3}}{n \cdot \max(\epsilon, \sqrt{\nabla z})} \nabla(z + h) \quad (4)$$

where h is the depth of ponded water [m], \mathbf{v} is the surface flow velocity [m/s], Q_w is all external source/sink term [m/s],
 120 Q_{ss} is the exchange flux between surface and subsurface systems [m/s], n is the Manning's coefficient [$s/m^{1/3}$], z is surface
 elevation [m], and ϵ is a small positive regularization to keep the equations non-singular in places with zero bed slope [m].

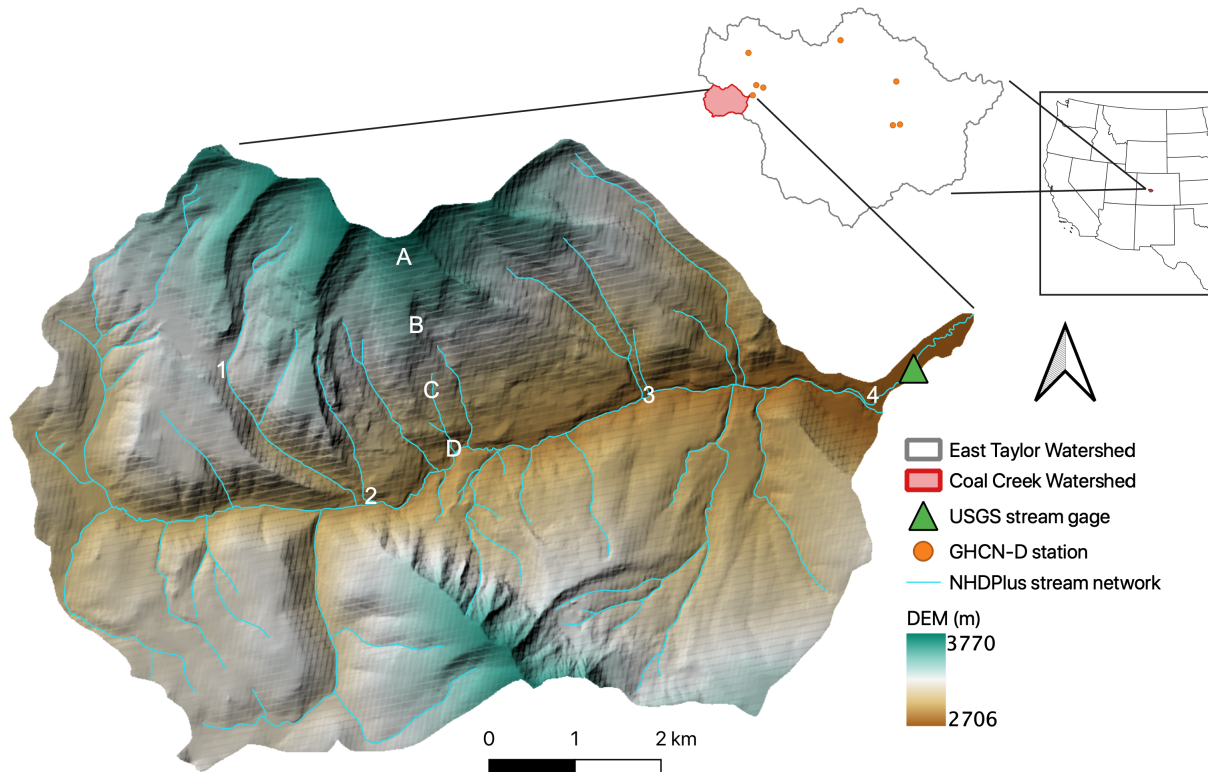


Figure 1. Map of Coal Creek Watershed in relation to the larger East Taylor Watershed as well as its relative location in the western US (red dot). Also shown are the location of GHCN-D stations, USGS stream gage, National Hydrography Dataset Plus (NHDPlus) stream network, and Digital Elevation Model (DEM). The marked points (A-D) and (1-4) are point locations used to observe groundwater table and surface ponded depth, respectively.

The ATS meshes including surface land covers and subsurface structures and properties were developed using the Watershed Workflow package (Coon and Shuai, 2021), which brings together a variety of data streams, delineates the catchment, and generates a variable resolution mesh with refined resolution at the stream network. Resolutions ranged from typical triangle areas of $5,000 \text{ m}^2$ near the stream network to $50,000 \text{ m}^2$ away from the stream network. This triangular surficial mesh was then elevated using Digital Elevation Model (DEM) from the USGS National Elevation Dataset (NED) 30 m resolution dataset.

On the surface, 14 land cover types were delineated from the National Land Cover Database (NLCD 2016) product for the CONUS. The Leaf Area Index (LAI) seasonal variations for each land cover type were retrieved from MODIS (<https://modis.gsfc.nasa.gov/data>). Some of the plant functional type and their properties such as rooting profile and photosynthetic parameters were adopted from parameters used in the CLM 4.5 technical notes (Oleson et al., 2013).

In the subsurface, the model was discretized into 19 terrain-following layers with a total thickness of ~ 28 m. A total of 6 soil layers encompassed the top 2 m of the domain. The depth to bedrock (DTB) was determined from SoilGrids (Shangguan et al., 2017) that varies from 3 m at the shallowest to 26 m at the deepest. The geologic layers were sandwiched between the soil and bedrock layers. The vertical resolution of the mesh gradually increased from 5 cm at the surface to 2 m at the 2 m
135 depth, and it remained constant at 2 m until the bottom of the model domain at a depth of 28 m. The total number of cells is 171,760.

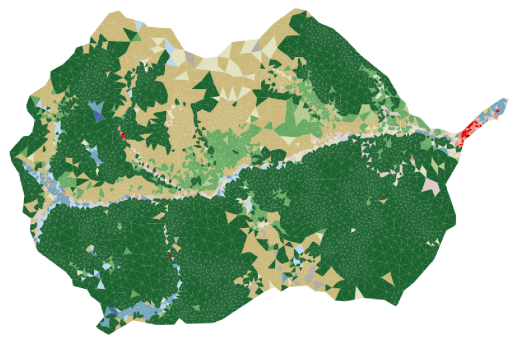
Based on the National Resources Conservation Service (NRCS) Soil Survey Geographic (SSURGO) soils database, 22 soil types were identified and mapped within the soil layer. Due to the edge-matching issues in the SSURGO soil database (Gatzke et al., 2011), the 22 soil types were regrouped into 9 types to remove the discontinuity of a soil type across soil survey area
140 boundaries. Using a global surface geology dataset from GLobal HYdrogeology MaPS (GLHYMPS) 2.0 (Huscroft et al., 2018), 11 geologic material types were identified and mapped within the geologic layer. The spatial distribution of the soil and geological layers was shown in Figure 2. The permeability and porosity for each soil type were retrieved from the SSURGO database, and the van Genuchten parameters were determined using Rosseta v3, a pedotransfer function that relates sand, silt, and clay percentage to van Genuchten parameters (Zhang and Schaap, 2017). The permeability and porosity for each geology
145 type were retrieved from the GLHYMPS database. Bedrock functions as a confining layer and is assumed to have a very small permeability of $1 \times 10^{-17} \text{ m}^2$.

The model was first run for 1,000 years with constant precipitation ($\sim 850 \text{ mm/yr}$) as the cold-spinup that resulted in steady-state model outputs at the final timestep, which was then used as the initial condition for a 10-year (October 1, 2004 - October 1, 2014) transient simulation (i.e., warm-spinup) driven by the Daymet forcing. Model state at the end of the 10-year
150 run was used as the initial condition for a 4-year transient run (October 1, 2015 - October 1, 2019) driven by various GMFs. The water year 2015 was treated as a second warm-spinup and was discarded from the analysis to avoid any influence from previous spinup runs. The study period features a high snow year ($\sim 709 \text{ mm}$ in water year 2017) and a low snow year ($\sim 296 \text{ mm}$ in water year 2018), allowing us to demonstrate how different meteorological forcing impact watershed responses under various weather conditions. ATS runs were taken at sub-hourly timestep determined by the model while outputting streamflow and
155 watershed averaged variables at hourly timestep. Due to large file size, spatially distributed variables such as SWE and ET were output at daily timesteps. Each run took $\sim 17 \text{ hours}$ wallclock time using 64 processors on the Cori clusters at the National Energy Research Scientific Computing Center (NERSC). The models were not calibrated because the focus of this study was to evaluate the effect of meteorological forcings on model simulation instead of estimating the optimal parameters used in ATS.

160 2.3 Gridded meteorological forcing

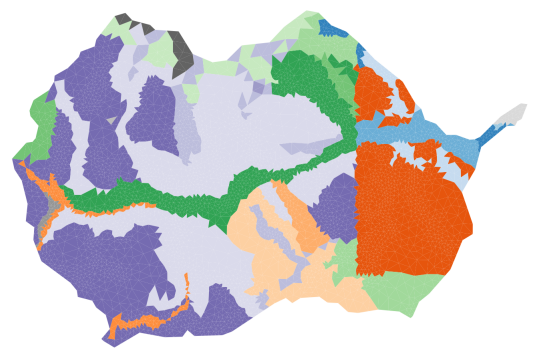
For this comparison, three widely used GMF were considered: PRISM (Daly et al., 2008), NLDAS-2, (Xia et al., 2012)), and Daymet v4 (Thornton et al., 1997, 2021). NLDAS-2 and Daymet v4 are hereafter referred to as NLDAS and Daymet, respectively. The detailed comparison between each meteorological dataset can be found in Table 1.

(a) Land Cover

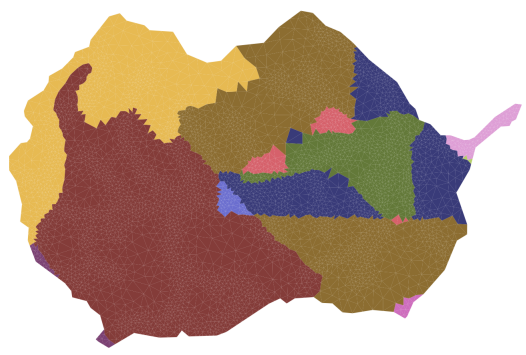


- Emergent Herbaceous Wetlands
- Woody Wetlands
- Pasture/Hay
- Grassland/Herbaceous
- Shrub/Scrub
- Mixed Forest
- Evergreen Forest
- Deciduous Forest
- Barren Land
- Developed, High Intensity
- Developed, Medium Intensity
- Developed, Low Intensity
- Developed, Open Space
- Open Water

(b) Soil Map



(c) Geology Map



(d) ATS model

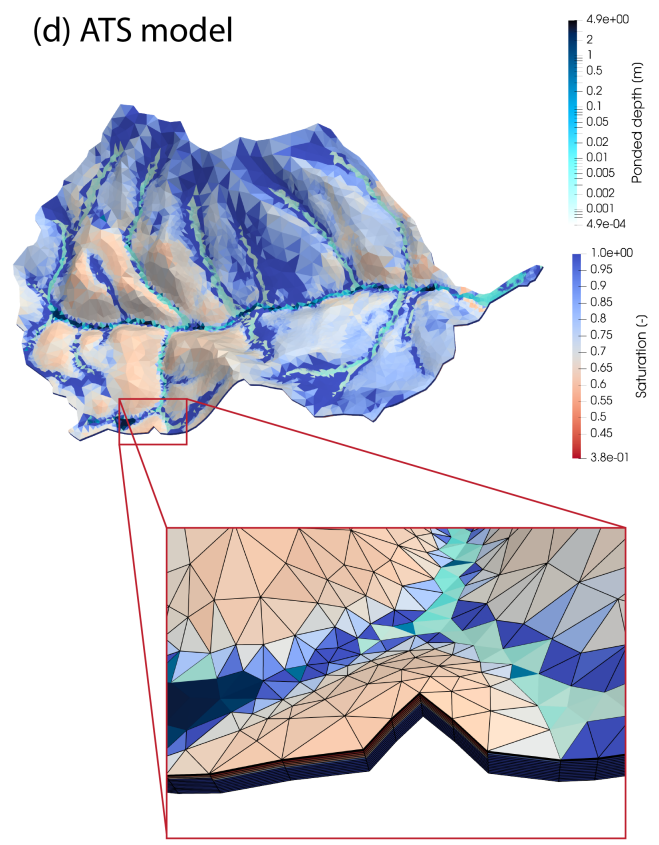


Figure 2. (a) Land cover, (b) soil map, (c) geology map of Coal Creek Watershed that are generated from Watershed Workflow. (d) ATS simulated surface ponded depth and soil saturation on October 1, 2018. The zoomed in plot shows the 3D unstructured triangular mesh.

Table 1. Meteorological datasets comparison

Name	Primary variables	Derived/Secondary variables	Spatial resolution	Temporal resolution	Spatial coverage	Temporal coverage	Data source	Interpolation method
Daymet	Tmin, Tmax, Prcp	Srad, VP, SWE, Dayl	1 – km	daily	North America, Hawaii, and Puerto Rico ^a	1980-present	GHCN-D stations	geographically weighted regression (Thornton et al., 1997)
PRISM	Tmin, Tmax, Prcp, Tdmean, Vpdmin, Vpdmax	Tmean, VP	800 m^b	daily	CONUS	1981-present	GHCN-D and local/state meteorological stations	geographically and elevation-weighted regression, station weighting by topography, distance to coast, and atmospheric factors (Daly et al., 2008)
NLDAS	Tmean, Prcp, Srad, Lrad, SH, WS, VP	pET	1/8th deg – $\sim 12 - km$	hourly	North America	1979-present	National Centers for Environmental Prediction (NCEP) data assimilation fields and meteorological stations	bilinear interpolation of NCEP North America Regional Reanalysis (NARR) adjusted for elevation using PRISM methodology, temporally disaggregated to one hour (Cosgrove et al., 2003)

Abbreviations: Tmin: minimum temperature, Tmax: maximum temperature, Tmean: mean temperature, Prcp: precipitation, Srad: shortwave radiation, Lrad: longwave radiation, VP: vapor pressure, SWE: snow water equivalent, Dayl: day length, Tdmean: mean dew point temperature, Vpdmin: minimum vapor pressure deficit, Vpdmax: maximum vapor pressure deficit, SH: specific humidity, WS: wind speed, pET: potential evaporation.

^a Puerto Rico has Daymet since 1950.

^b this native resolution is not free.

The Daymet climate forcing is a gridded, daily product with a spatial resolution of 1-km, covering continental North America, Puerto Rico, and Hawaii. It assimilates data from weather stations (primarily GHCN-D stations) and accounts for elevation, prevailing winds, storm tracks, and proximity to large water bodies (Thornton et al., 1997). Here, the latest Daymet version 4 product is used because this product has gone through significant bias corrections in station observations and the gridded product shows a better match with weather stations compared to the earlier versions (Thornton et al., 2021).

The PRISM forcing is developed by the PRISM climate group at the Oregon State University and is recognized as the official climate dataset for the U.S. Department of Agriculture. It utilizes a wide range of monitoring networks including GHCN-D stations and local/state weather stations to generate daily, spatially continuous climate data for the CONUS. The PRISM provides a native grid resolution of 30-arcsec (~ 800 m) for a fee, but also provides a coarsened 4 km resolution free of charge. We used the native 30-arcsec resolution and downscaled (upscaled) the dataset to obtain finer (coarser) spatial resolutions.

The NLDAS dataset is a gridded, hourly product with a spatial resolution of 1/8th degree (~ 12 km at the study site) for the entire North American region. The non-precipitation forcing variables are primarily derived from the North American Regional Reanalysis (NARR) by spatially interpolating data from the 32-km resolution NARR grid to the 1/8th degree NLDAS grid while temporally disaggregated from 3-hourly to hourly frequency (Cosgrove et al., 2003). The precipitation is a product of a temporal disaggregation of a gage-only Climate Prediction Center (CPC) analysis of daily precipitation into hourly frequency, performed directly on the NLDAS grid and including an orographic adjustment based on the widely-applied PRISM climatology.

All three datasets provide temperature and precipitation as the primary forcing with a few secondary forcing variables. In addition to temperature and precipitation, ATS requires solar radiation (both incoming shortwave radiation (Srad) and longwave radiation (Lrad)), relative humidity, and wind speed as forcing inputs. Relative humidity can be estimated based on vapor pressure and mean temperature (Bolton, 1980). Lrad can be estimated from Srad and relative humidity. Because PRISM does not provide Srad and Lrad, we used solar radiation from Daymet instead. Wind speed was assumed to be constant (i.e., 4 m/s) for both Daymet and PRISM. Compared to PRISM and Daymet, NLDAS provides the most complete set of variables to drive ATS simulations.

Different meteorological forcings have different definitions for a calendar day and they are often different from the local time used in the observation data (see Table A1 in the Appendix). Time zone adjustment and lag corrections have been applied to account for the time lag difference between meteorological forcing and local gages. For example, PRISM lags Daymet by one day, so PRISM has been shifted forward one day to be consistent with Daymet. Both model simulation and gage observation have been converted to Coordinated Universal Time (UTC) timezone for hourly streamflow comparison. For consistency, all simulated streamflow are in hourly resolution and are compared to hourly USGS streamflow in Section 3.

To study the effect of spatial resolution of meteorological forcing, precipitation, and temperature from 800m PRISM and 1 km Daymet have been downscaled (upscaled) into finer (coarser) spatial resolutions. The downscaling of 800 m PRISM or 1 km Daymet into 400 m used a data-driven downscaling approach. Specifically, Random Forests (Breiman, 2001) were used to extract the relationships between precipitation (or average temperature) and topography. These relationships were developed at 800 m (for PRISM) and 1 km (for Daymet) resolutions and were used as-is to generate the 400 m downscaled estimates. The downscaled precipitation grids were additionally filtered to ensure a smooth field in low-gradient areas without

affecting high-gradient areas (Daly et al., 2008). The topographic variables considered were elevation, slope, aspect, latitude, and longitude. These variables were extracted from the NED 10 m resolution product and upscaled to 400 m and 800 m (for PRISM) via bilinear interpolation. Upscaling of topographic variables was done in maximum increments of 2x (e.g., 10 m – > 20 m – > 40 m and so on).

For consistency, spatial upscaling of 800 m PRISM into 1600 m and 4000 m was performed using a coarsen function from python package `xarray` (<http://xarray.pydata.org>) by applying moving average based on a 2x2 window size. The same approach was used for spatial upscaling of 1 km Daymet to 2 km and 4 km. To study the effect of temporal resolution of meteorological forcing, the daily PRISM dataset was disaggregated into hourly resolution using the temporal pattern of NLDAS. The hourly PRISM dataset was then aggregated into 12-hourly temporal resolution by taking the mean (for temperature) or sum (for precipitation) for the aggregated period.

In ATS, meteorological forcing is distributed linearly across its temporal resolution, and each model surface cell gets its meteorological forcing through spatially bilinear interpolation. For example, both Daymet and PRISM apply their meteorological forcing at the daily time scale, whereas NLDAS applies its meteorological forcing at an hourly time scale.

2.4 Observation data

Instantaneous streamflow data (every 15 minutes) are available from April 1st through November 15th every year since 2014 at a USGS gage (station number: 09111250), located at the watershed outlet. The 15-min streamflow was aggregated to hourly streamflow which was used to compare against model simulations in the Results Section. Past Airborne Snow Observatory (ASO) survey has four flights covering this watershed in 2018 and 2019 to survey the snow depth and SWE. Remote sensing products such as the Moderate Resolution Imaging Spectroradiometer (MODIS) 8-day composite ET is available at a 500 m resolution since 2000. Groundwater measurements and field observed soil moisture data are not available within the study site.

To compare the accuracy of each meteorological forcing against field observations, all three meteorological forcings in their native resolutions were compared against GHCN-D weather stations within the East Taylor Watershed. In total, there were seven stations with long-term precipitation records and four stations with long-term temperature records (see GHCN-D station locations in Figure 1). Both precipitation and temperature time series were extracted at each GHCN-D gage location from the GMF.

2.5 Model evaluation metrics

Model simulated outputs were compared against observation data including hourly streamflow from a USGS gage and spatially distributed SWE from the ASO survey. The modified Kling-Gupta efficiency (KGE) and its three components (r , γ , β) were used to evaluate the model performance (Kling et al., 2012) in addition to the standard Nash-Sutcliffe Efficiency (NSE). The theoretical version of the KGE metric is

$$KGE = 1 - \sqrt{(r - 1)^2 + (\gamma - 1)^2 + (\beta - 1)^2} \quad (5)$$

$$r = \frac{cov(S, O)}{\sigma_s \sigma_o} \quad (6)$$

$$\gamma = \frac{\sigma_s / \mu_s}{\sigma_o / \mu_o} \quad (7)$$

$$\beta = \frac{\mu_s}{\mu_o} \quad (8)$$

where S and O represents simulated and observed values, respectively, r is correlation coefficient, γ is variability ratio, β is the bias ratio, $cov(S, O)$ is the covariance between simulated and observed values, σ is the standard deviation, μ is the mean.

Using the modified KGE avoids the effect of input bias on the variability indicator which has an advantage over the original KGE (Gupta et al., 2009; Kling et al., 2012), and it also allows diagnostic interpretation of the performance score. KGE decomposes model performance into correlation (r), variability (γ) and bias (β) term. For example, the correlation measures the temporal dynamics of streamflow (i.e., timing) while the variability and bias measure the flow duration curve (i.e., magnitude). The KGE ranges from $-\infty$ (poorest model skill) to 1 (perfect) when all three terms reach unity. Similarly, the NSE ranges from $-\infty$ (poorest model skill) to 1 (perfect).

Taylor Diagram is used to show how close a set of patterns (e.g., meteorological forcing) match observations (Taylor, 2001). On each Taylor Diagram, performance metrics such as standard deviation and Pearson's correlation coefficient (r) are shown together. The azimuthal angle represents correlation, and the radial distance represents the standard deviation. Also can be shown is the centered Root Mean Square Error ($RMSE$) between simulation and observation. The relationship between these statistics was shown below:

$$E^2 = \sigma_s^2 + \sigma_o^2 - 2\sigma_s \sigma_o r \quad (9)$$

where E is the centered $RMSE$, which is also measured by the geometric distance between simulation and observation data points on the Taylor Diagram (unit is the same as standard deviation). In cases where more than one observation point are plotted on the same diagram, the centered $RMSE$ is omitted. Note that the centered $RMSE$ is a mean-removed $RMSE$, and thus any bias in the data is not shown.

The closer the distance between simulation and observation data point on a Taylor Diagram, the smaller the centered $RMSE$ (observation data point has centered $RMSE = 0$), the more similarity they show in terms of standard deviation, and the higher the correlation coefficient (observation data point has $r = 1$).

3.1 Comparison between meteorological forcing and weather stations

Taylor Diagram was used to compare the similarity in precipitation and temperature patterns between meteorological forcing and GHCN-D stations (Figure 3). Compared to temperature, precipitation showed stronger spatial heterogeneity among stations indicated by the larger difference in standard deviation and correlation. The close clustering of temperature data points indicated that the difference between different stations in temperature patterns was small. For precipitation, PRISM showed a strong correlation ($r > 0.9$) with GHCN-D at three stations, whereas Daymet only showed a strong correlation at one location and all NLDAS sites showed a relatively weak correlation ($0.5 < r < 0.85$). For temperature, all three meteorological forcings showed a very strong correlation ($r > 0.95$) with GHCN-D, though Daymet was slightly better than PRISM and NLDAS. Previous studies also reported similar findings at different watersheds that Daymet and PRISM showed better agreement with ground-based observational data than NLDAS (Muche et al., 2020), and the temperature was more accurately represented than precipitation (Behnke et al., 2016).

Triple Collocation Analysis (TCA) was performed for precipitation and temperature using three GMFs over the East-Taylor watershed (see details in Appendix A2). Both precipitation and temperature showed strong spatial heterogeneity of the noise standard error in all three GMFs. On average, Daymet and PRISM showed less error compared to NLDAS for both precipitation and temperature, though the temperature error in some locations of Daymet were higher than those of PRISM and NLDAS.

3.2 ATS simulations driven by different meteorological forcing products

To compare the effects of different GMF products on the ATS simulations, precipitation and temperature from each GMF were used as the primary forcing variables with the same other variables (e.g., solar radiation, humidity, and etc.) from Daymet. To further isolate the impact of different meteorological forcing variables, precipitation and temperature from each GMF was systematically varied. For example, different precipitation from each GMF were used while keeping temperature the same in each simulation, and vice versa.

Using different precipitation and temperature, simulated hourly streamflow forced by Daymet (1 km, daily) showed better performance against USGS hourly streamflow, followed by PRISM (800 m, daily) and NLDAS (12 km, hourly) during a three year simulation period (Figure 4). In their native resolutions, Daymet outperformed PRISM and NLDAS with the largest KGE (0.62) and NSE (0.54) against observed streamflow (also see the statistical summary in Table 2). The high agreement between observed and simulated streamflow forced by Daymet is remarkable given that the ATS model has not been calibrated. In general, all three models underestimated discharge ($\beta < 1$) while showing slightly more variability ($\gamma > 1$), especially in 2018 and 2019. As expected, models using hourly NLDAS showed larger variability ($\gamma = 1.54$) due to the highly dynamic flow variations in simulated streamflow compared to those using daily Daymet or PRISM. Daymet underestimated peak flows but it showed larger flow variability during low flows and early spring.

Not surprisingly, precipitation played a more important role than temperature in driving the simulated watershed responses. Using different precipitation source alone had similar performance than using both precipitation and temperature from each

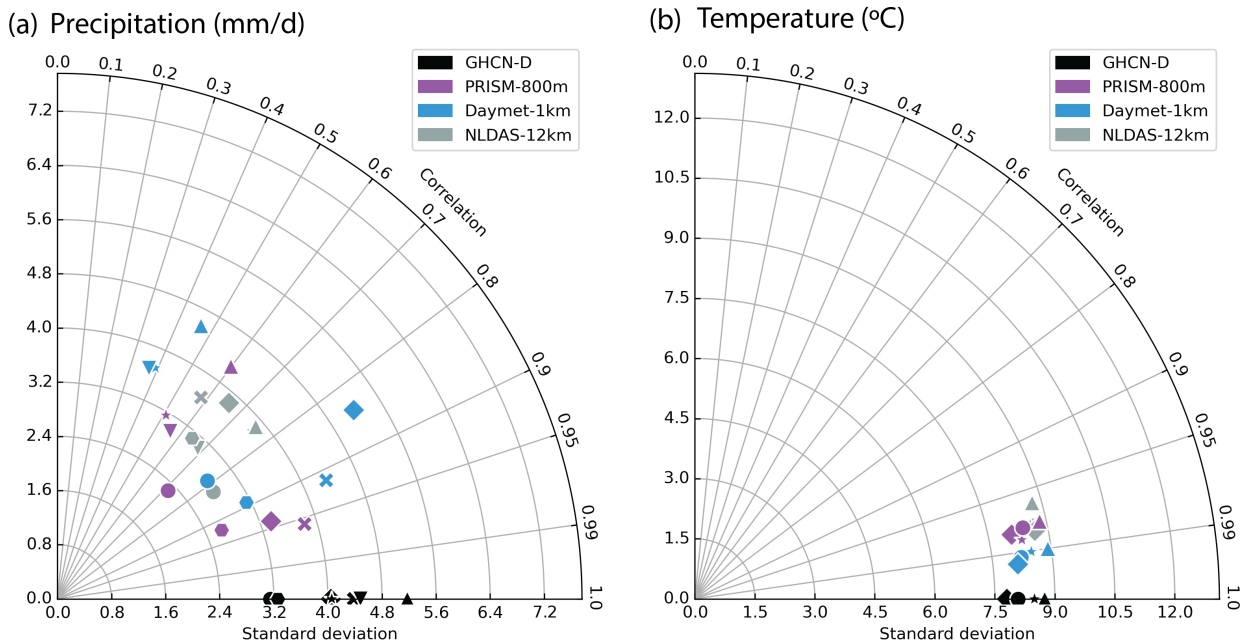


Figure 3. Taylor Diagram showing the correlation coefficients and standard deviations between meteorological forcing and GHCN-D gages (black) for (a) precipitation and (b) temperature. The azimuthal angle represents correlation, and the radial distance represents the standard deviation. Each marker symbol represents a different GHCN-D station location.

GMF. In both cases, Daymet outperformed PRISM and NLDAS in simulated streamflow (Figure 5). The KGE and NSE metrics from Daymet and PRISM were much higher than those from NLDAS (Table 2). However, using different temperature source
 290 alone had little effect on the simulated streamflow (Figure 6). Both KGE and NSE metrics were very similar among different GMFs (Table 2).

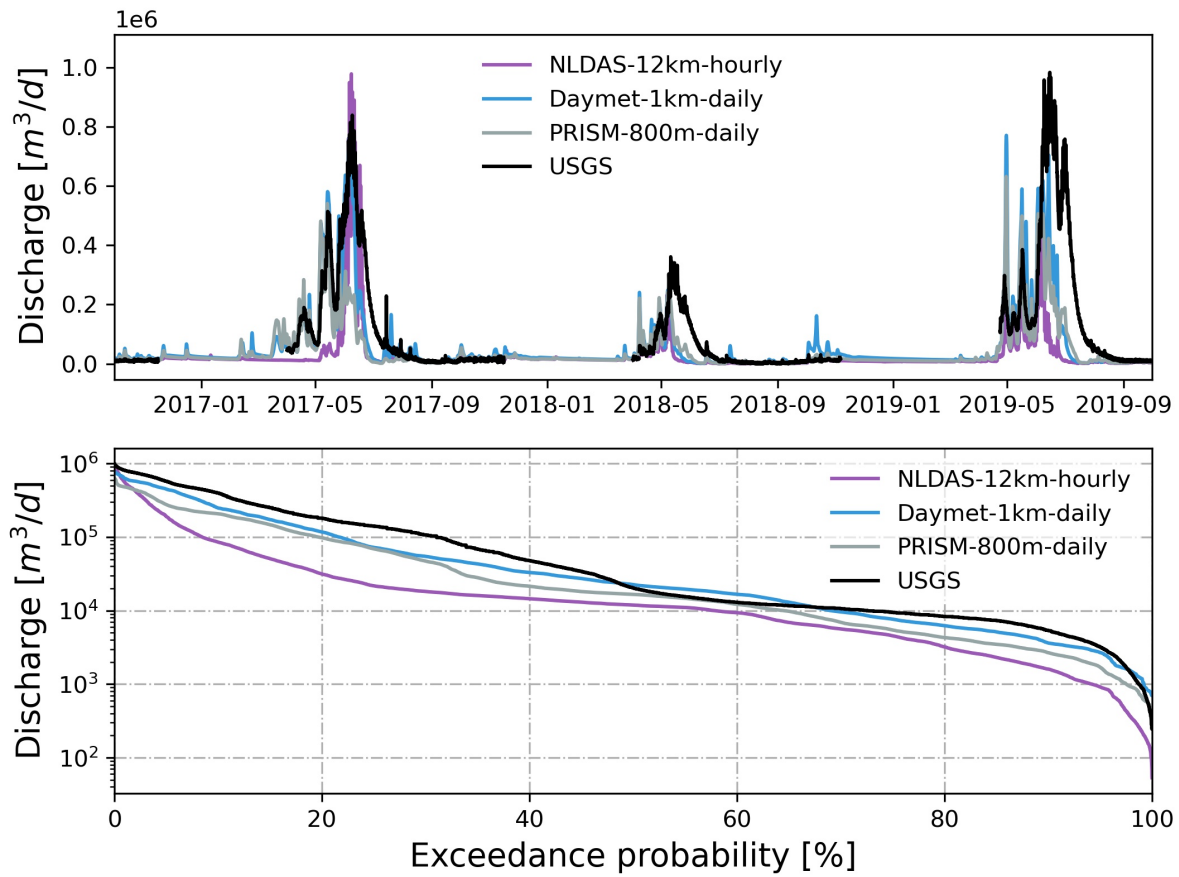


Figure 4. Simulated hourly discharge at watershed outlet compared with USGS hourly streamflow forced by different precipitation and temperature from each GMF. Also shown is the flow duration curve comparison.

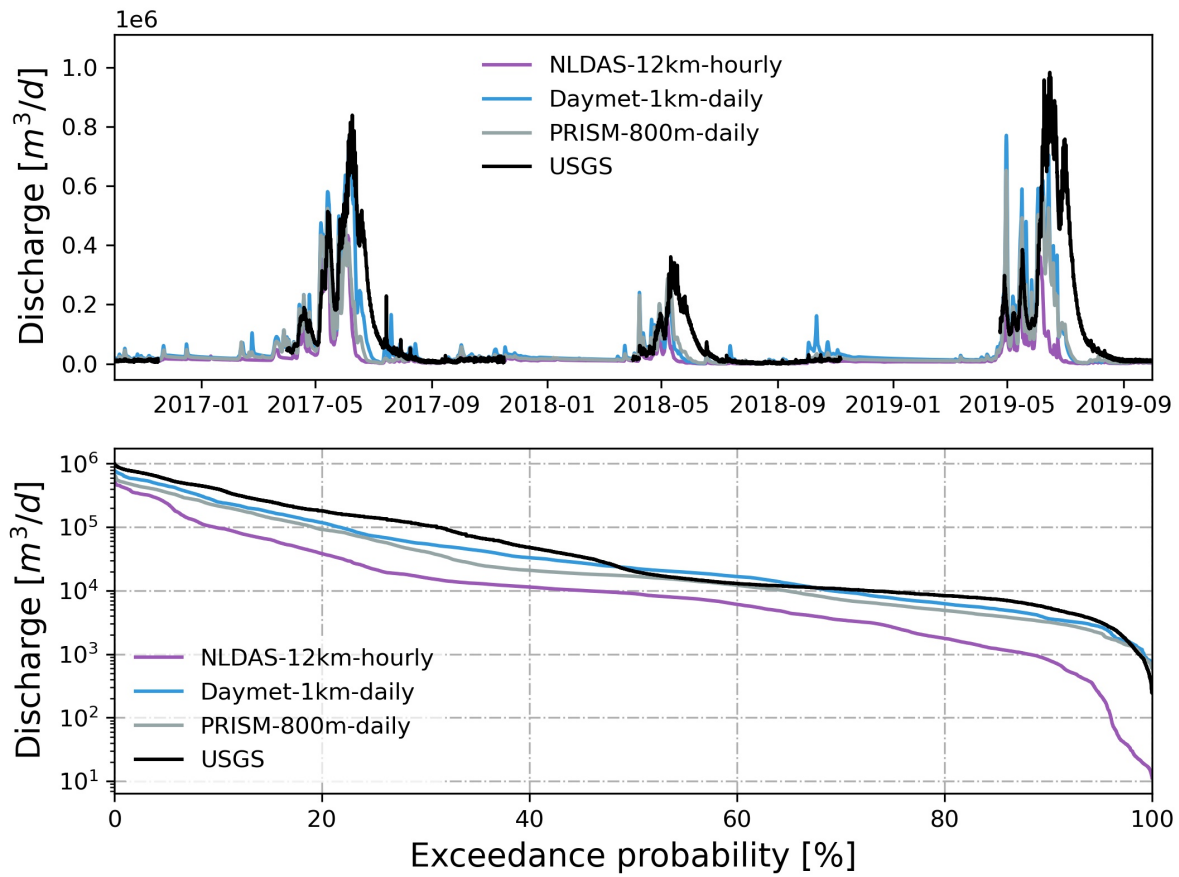


Figure 5. Simulated hourly discharge at watershed outlet compared with USGS hourly streamflow forced by different precipitation from each GMF. Also shown is the flow duration curve comparison.

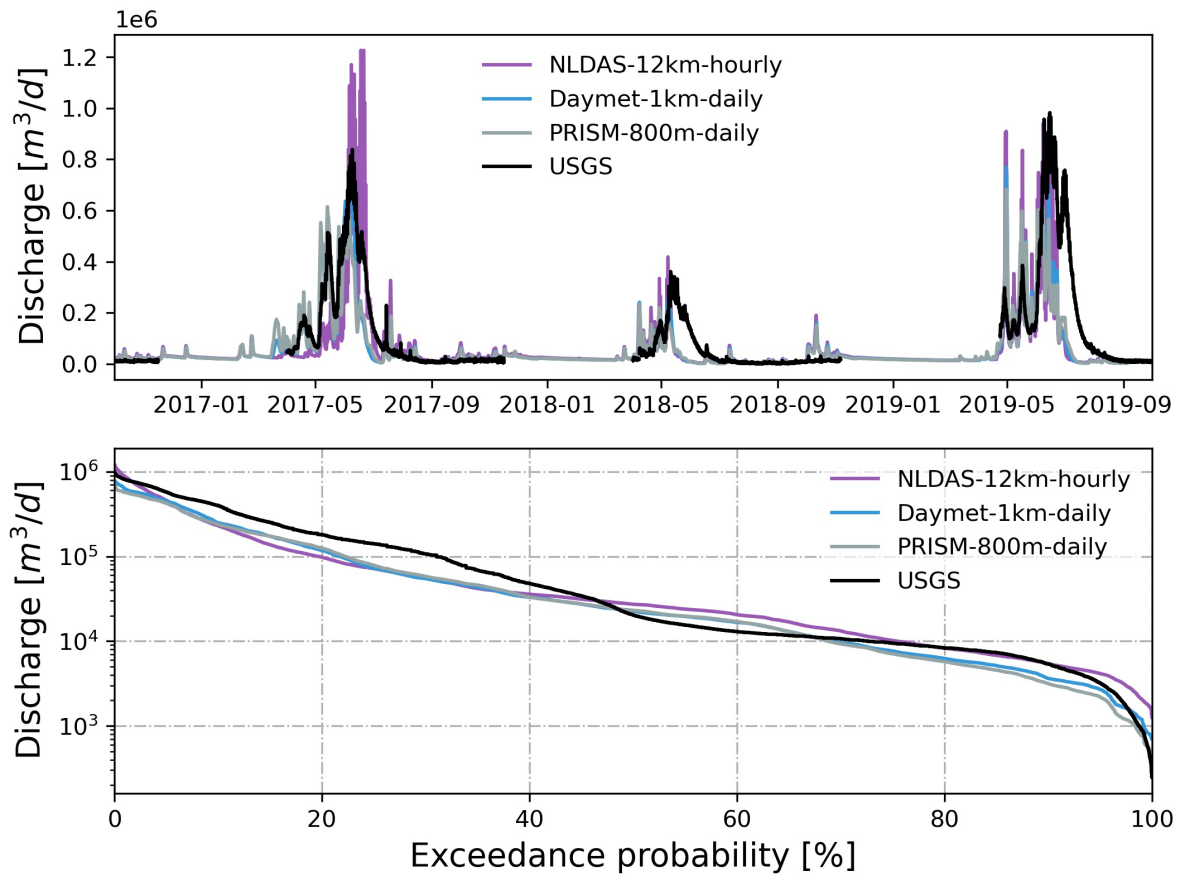


Figure 6. Simulated hourly discharge at watershed outlet compared with USGS hourly streamflow forced by different temperature from each GMF. Also shown is the flow duration curve comparison.

Table 2. Summary of statistical metrics for evaluation of streamflow at watershed outlet using precipitation and/or temperature from different meteorological forcing

Forcing variable	Source	r	γ	β	KGE	NSE
Prpc & Temp	PRISM	0.69	1.02	0.54	0.45	0.38
	Daymet	0.75	1.05	0.72	0.62	0.54
	NLDAS	0.60	1.54	0.35	0.06	0.20
Prpc	PRISM	0.72	1.06	0.57	0.48	0.43
	Daymet	0.75	1.05	0.72	0.62	0.54
	NLDAS	0.51	1.34	0.32	0.10	0.08
Temp	PRISM	0.73	1.00	0.69	0.59	0.49
	Daymet	0.75	1.05	0.72	0.62	0.54
	NLDAS	0.72	1.18	0.75	0.58	0.46

Table 3. Summary of statistical metrics for evaluation of streamflow at watershed outlet under different meteorological forcing spatial and temporal resolutions

Meteorological forcing	Spatial resolution	Temporal resolution	r	γ	β	KGE	NSE
PRISM	400 m	daily	0.70	1.01	0.53	0.44	0.38
	800 m	hourly	0.43	1.12	0.45	0.20	0.07
	800 m	12-hourly	0.61	1.07	0.49	0.35	0.26
	800 m	daily	0.69	1.02	0.54	0.45	0.38
	1600 m	daily	0.68	1.08	0.55	0.44	0.37
	4000 m	daily	0.64	1.20	0.56	0.40	0.33
Daymet	400 m	daily	0.76	1.04	0.71	0.63	0.55
	1 km	daily	0.75	1.05	0.72	0.62	0.54
	2 km	daily	0.73	1.10	0.72	0.60	0.50
	4 km	daily	0.73	1.14	0.73	0.59	0.49
NLDAS	12 km	hourly	0.60	1.54	0.35	0.06	0.20

Table 4. Summary of statistical metrics used for evaluation of spatially distributed SWE under different meteorological forcing at different times compared to observed SWE from ASO

Date	Meteorological forcing	Spatial resolution	Temporal resolution	r	γ	β	KGE	NSE
March 31, 2018	PRISM	400 m	daily	0.51	1.04	0.00	-0.12	-8.20
	PRISM	800 m	daily	0.50	1.04	0.00	-0.12	-8.20
	PRISM	1600 m	daily	0.46	0.94	0.00	-0.13	-8.20
	PRISM	4000 m	daily	0.37	0.86	0.00	-0.18	-8.20
	Daymet	1 km	daily	0.47	1.11	0.00	-0.14	-8.20
	NLDAS	12 km	hourly	0.15	1.00	0.00	-0.31	-8.20
May 24, 2018	PRISM	400 m	daily	0.55	1.53	0.00	-0.22	-0.12
	PRISM	800 m	daily	0.51	1.54	0.00	-0.24	-0.12
	PRISM	1600 m	daily	0.47	1.77	0.00	-0.37	-0.12
	PRISM	4000 m	daily	0.28	2.92	0.00	-1.28	-0.12
	Daymet	1 km	daily	0.35	3.41	0.00	-1.69	-0.12
	NLDAS	12 km	hourly	-0.01	1.14	0.00	-0.43	-0.12
April 7, 2019	PRISM	400 m	daily	0.55	0.62	0.00	-0.16	-11.30
	PRISM	800 m	daily	0.53	0.61	0.00	-0.17	-11.31
	PRISM	1600 m	daily	0.50	0.57	0.00	-0.20	-11.31
	PRISM	4000 m	daily	0.37	0.48	0.00	-0.29	-11.31
	Daymet	1 km	daily	0.47	0.58	0.00	-0.21	-11.31
	NLDAS	12 km	hourly	-0.04	0.49	0.00	-0.53	-11.31
June 10, 2019	PRISM	400 m	daily	0.76	1.62	0.00	-0.20	-1.16
	PRISM	800 m	daily	0.71	1.61	0.00	-0.21	-1.16
	PRISM	1600 m	daily	0.66	1.48	0.00	-0.16	-1.16
	PRISM	4000 m	daily	0.50	0.82	0.00	-0.13	-1.16
	Daymet	1 km	daily	0.73	1.23	0.00	-0.06	-1.16
	NLDAS	12 km	hourly	-0.13	1.75	0.00	-0.69	-1.16

Average SWE across the watershed showed large differences between different meteorological forcings (Figure 7). Daymet had the largest simulated SWE on average, while NLDAS had the smallest simulated SWE. PRISM produced a similar SWE pattern with Daymet, and their magnitude was very close except for the year 2017. The accumulation of SWE started around the same time for all three meteorological forcing, though SWE disappeared early for NLDAS in the last two years.

Spatially, all meteorological forcing significantly underestimated SWE ($\beta \approx 0$) when compared to SWE from ASO (Table 4), and the difference becomes larger in higher elevation with more accumulated snow (Figure 9). The large difference may

be attributed to the higher spatial resolution (50 m) used in the ASO snow survey than the spatial resolution of the GMF. Simulated SWE by the three models showed a larger variability ($\gamma > 1$) than the observed SWE, except on April 7, 2019 when
300 variability was smaller than the observed SWE. Interestingly, the largest variability occurred on May 24, 2018 when little snow was accumulated on the surface. Most of the time, PRISM showed a higher correlation between simulated and observed SWE than that from Daymet and NLDAS. In contrast, NLDAS showed the poorest correlation ($r < 0.2$) with observation.

All three GMFs showed similar ET dynamics because they used the same solar radiation from Daymet (Figure 7 and Figure 8). Compared to the remote sensed 8-day composite ET from MODIS, all three meteorological forcing showed a consistent
305 seasonal trend with the MODIS with underestimated ET in the spring. Additionally, the simulated 8-day composite ET by Daymet and PRISM was higher than that from NLDAS in the peak growing season in 2017 and 2019.

3.3 Effects of meteorological forcing spatial resolution

To evaluate the effects of spatial resolution of meteorological forcing, precipitation and temperature from different spatial resolutions of PRISM and Daymet were used to drive the model. Because the findings from both PRISM and Daymet were
310 similar, only results from PRISM were summarized below (see Appendix A3 for Daymet comparison Figure A3 and A4). As the spatial resolution became finer, the spatial pattern of precipitation and temperature became more heterogeneous and were more strongly associated with local topography, land use, and land cover. On the contrary, coarser-resolution meteorological forcing produced more homogeneous and smoother spatial patterns with less accuracy (Figure A8 and A9). In addition to precipitation and temperature, the effect of spatial resolution of solar radiation (i.e., Srad) was tested and was found to have
315 little impact on watershed hydrologic variables (see Appendix A4).

The simulated discharge showed similar performance in terms of KGE and NSE compared to the observation when meteorological forcing spatial resolution was ≤ 1600 m (Table 2). In fact, the KGE and NSE of 400 m, 800 m, and 1600 m resolution were almost identical. All four resolution showed higher variability ($\gamma > 1$) with relatively high correlation ($r > 0.6$) in simulated streamflow than the observation. The variability became larger ($\gamma = 1.20$) and the correlation became weaker ($r = 0.64$)
320 as meteorological forcing spatial resolution reached 4 km (Figure 10). The simulated SWE and total water storage changes were almost identical for all spatial resolutions except during the snowmelt period when the 4 km spatial resolution shows faster snowmelt in early summer across all three years (Figure A10). The spatial distribution of SWE when compared with ASO SWE showed significantly large bias ($\beta \approx 0$) and thus negative KGE and NSE for all spatial resolution at all time (Figure 11 and Table 4). Generally, the 4 km resolution had the worst performance and became most obvious on May 24, 2018. PRISM
325 at 400 m and 800 m showed a similar spatial pattern thus a similar correlation with ASO SWE.

Soil moisture at the top 5 cm layer showed similar pattern when spatial resolution was ≤ 1600 m (Figure A11). The differences between 4 km resolution and finer resolution became obvious during the snowmelt period (May 24, 2018 and June 10, 2019) when soil becomes saturated. For example, soil in the northwest region from the 4 km resolution was wetter on May 24, 2018, whereas soil close to the outlet from the 4 km resolution was wetter on June 10, 2019. Similarly, spatially distributed
330 ET did not show a significant difference until meteorological forcing resolution reached 4 km (Figure A12).

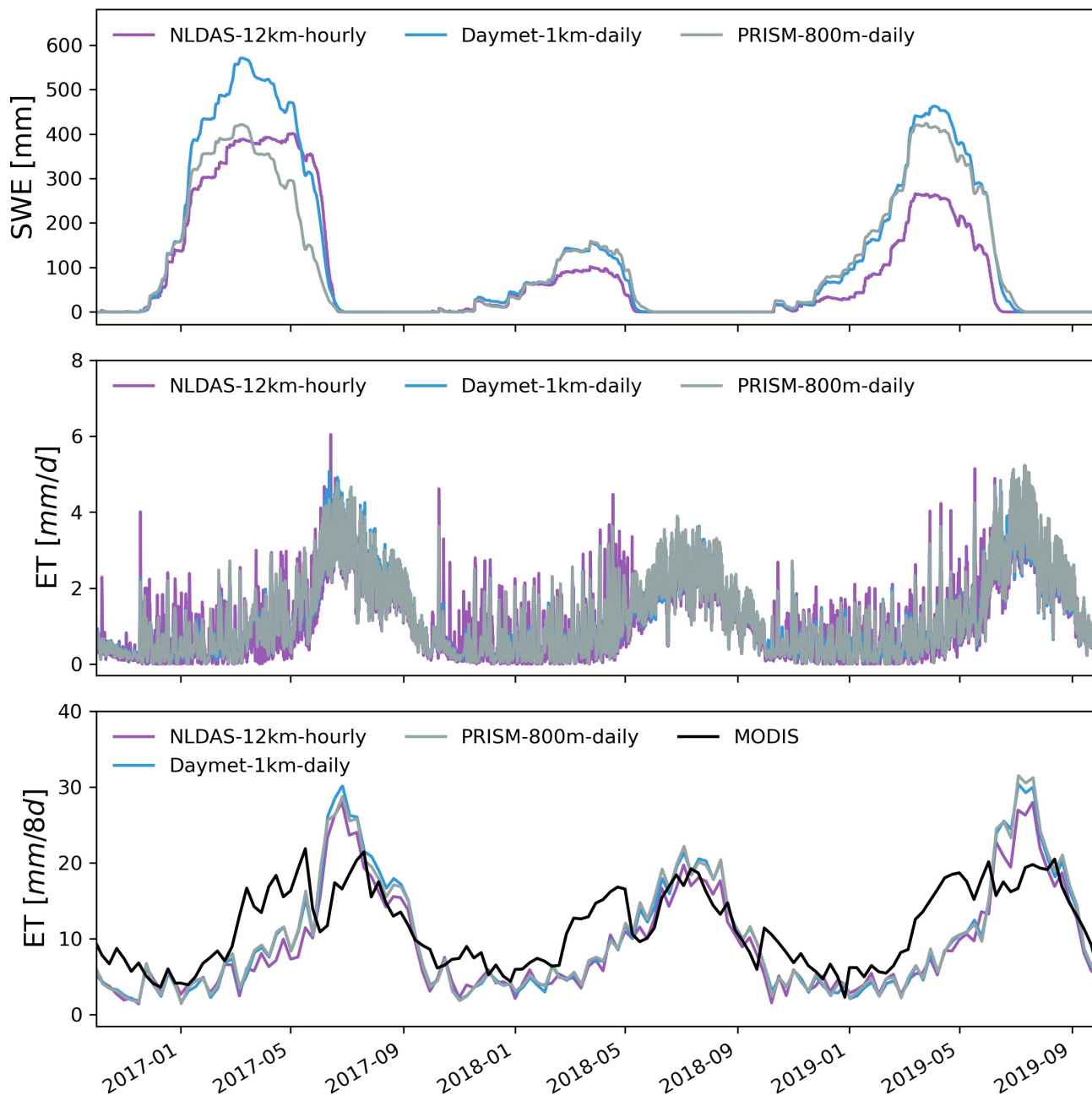


Figure 7. Simulated hourly watershed average SWE and ET under different meteorological forcing. Also shown is the comparison between MODIS and simulated 8-day composite ET.

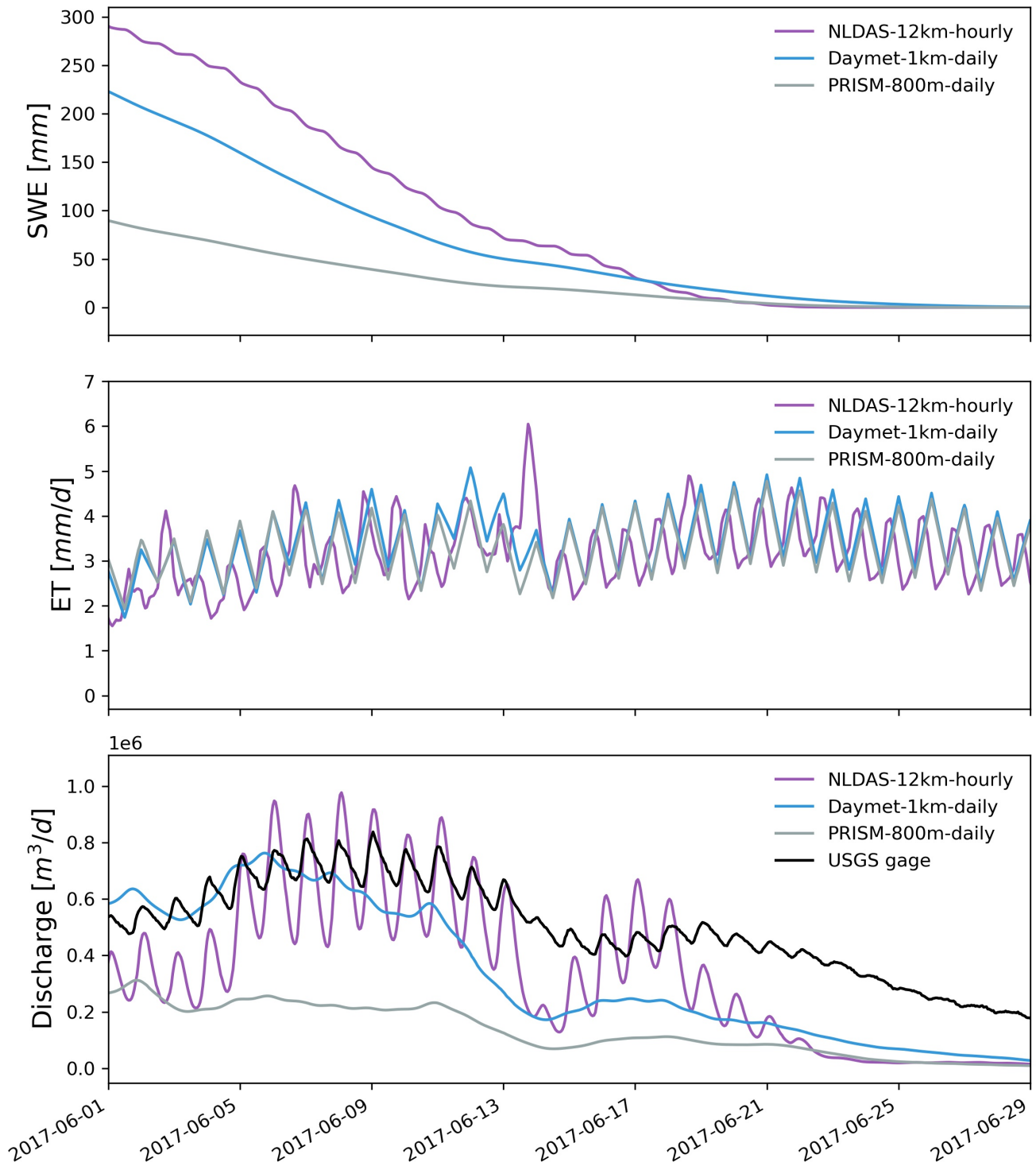


Figure 8. Zoomed in plot showing simulated hourly watershed average SWE, ET and discharge under different meteorological forcing from June 1st, 2017 to June 29th, 2017.

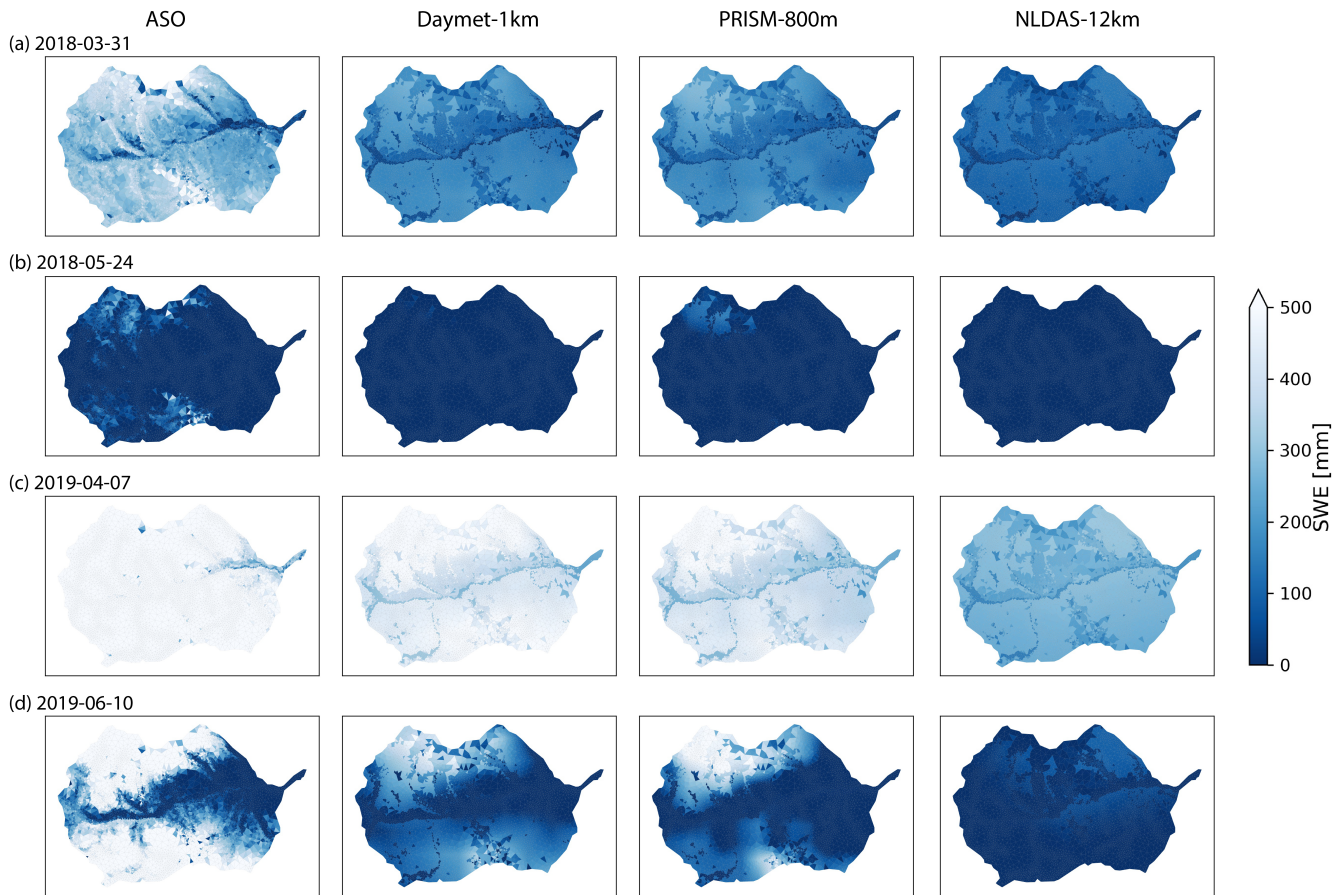


Figure 9. Spatial distribution of SWE under different meteorological forcing, and their comparison with ASO SWE data at four different survey times.

Surface ponded depth showed very little difference between different spatial resolutions. Four locations (labeled as 1-4 in Figure 1) were selected across the watershed to show the ponded depth variations (Figure 12). One was located at the upstream branch and the other three were located along the Coal Creek main stem. Similar to the watershed discharge, ponded depth only differed when the spatial resolution was coarsened to 4 km. The 4 km resolution had a faster recession during peak flows compared to results from other finer resolutions, and the 4 km resolution was also less responsive to rainfall. On average, surface ponded depth varied less than 0.2 m during peak flows.

A transect was selected running from mountain top to river valley bottom with four selected observation locations (labeled as A-D in Figure 1) and groundwater table time series was plotted in Figure 13. In general, groundwater rose during snowmelt (April to June) and rainfall events and fell in the dry period (July to September). Location A was at the mountain top and the groundwater table was ~ 4 m below the land surface except during the snowmelt period when the groundwater table rose to the

345 surface. Since location A was dominated by snow and receives less rainfall, the rise in the groundwater table was mainly due to snowmelt. Location B and C showed similar trends in groundwater table fluctuations, however, they showed more peaks since they were influenced by both snowmelt and rainfall. The groundwater table at location D was mostly close to the surface except during the dry season when groundwater started to decline. The 4 km resolution behaved very differently from the other finer resolutions at location A, where the groundwater table peaked earlier due to earlier infiltration from snow. In a dry year in 2018, the groundwater table did not even rise during the snowmelt period at location A. In general, the coarser the meteorological forcing resolution, the larger the bias in precipitation, and the more the groundwater table buffered from snowmelt and rainfall.

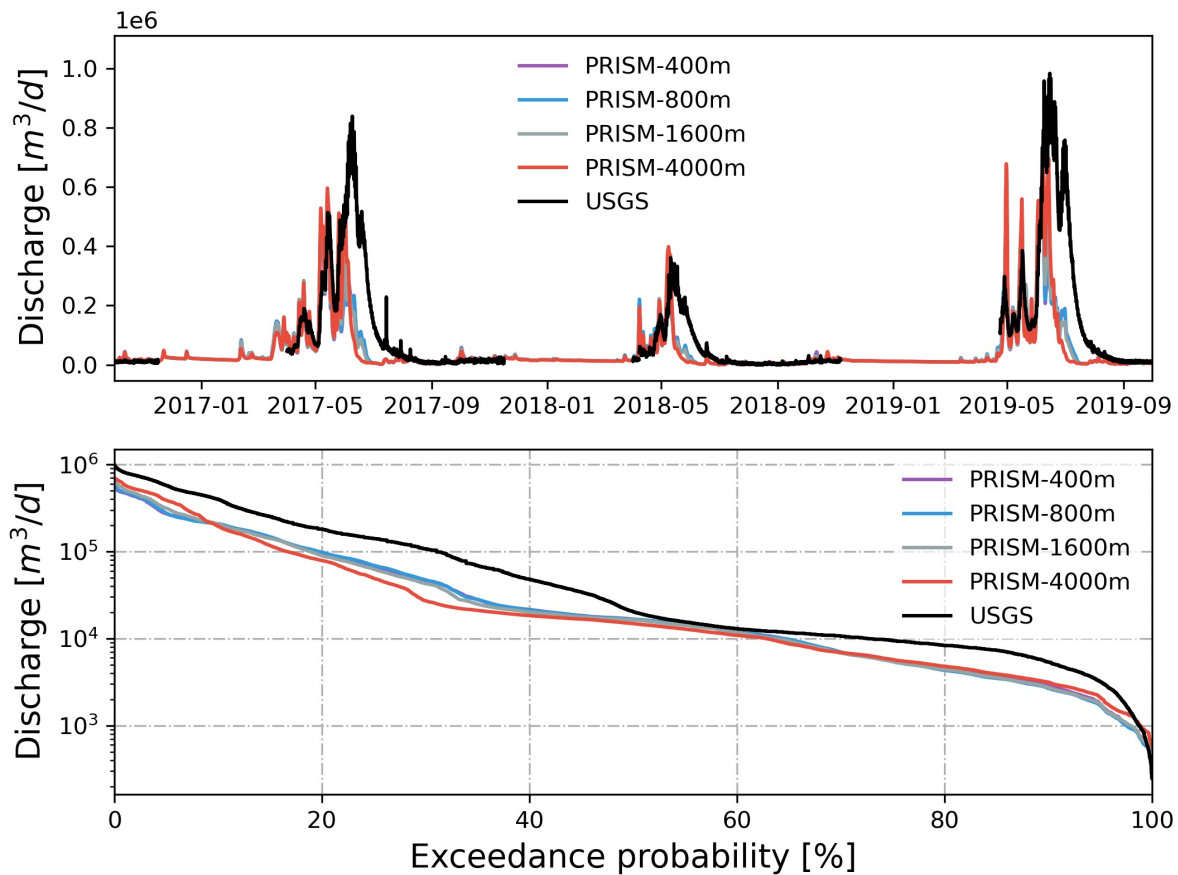


Figure 10. Simulated discharge at watershed outlet compared with USGS gage under different spatial resolution of PRISM. Also shown is the flow duration curve comparison.

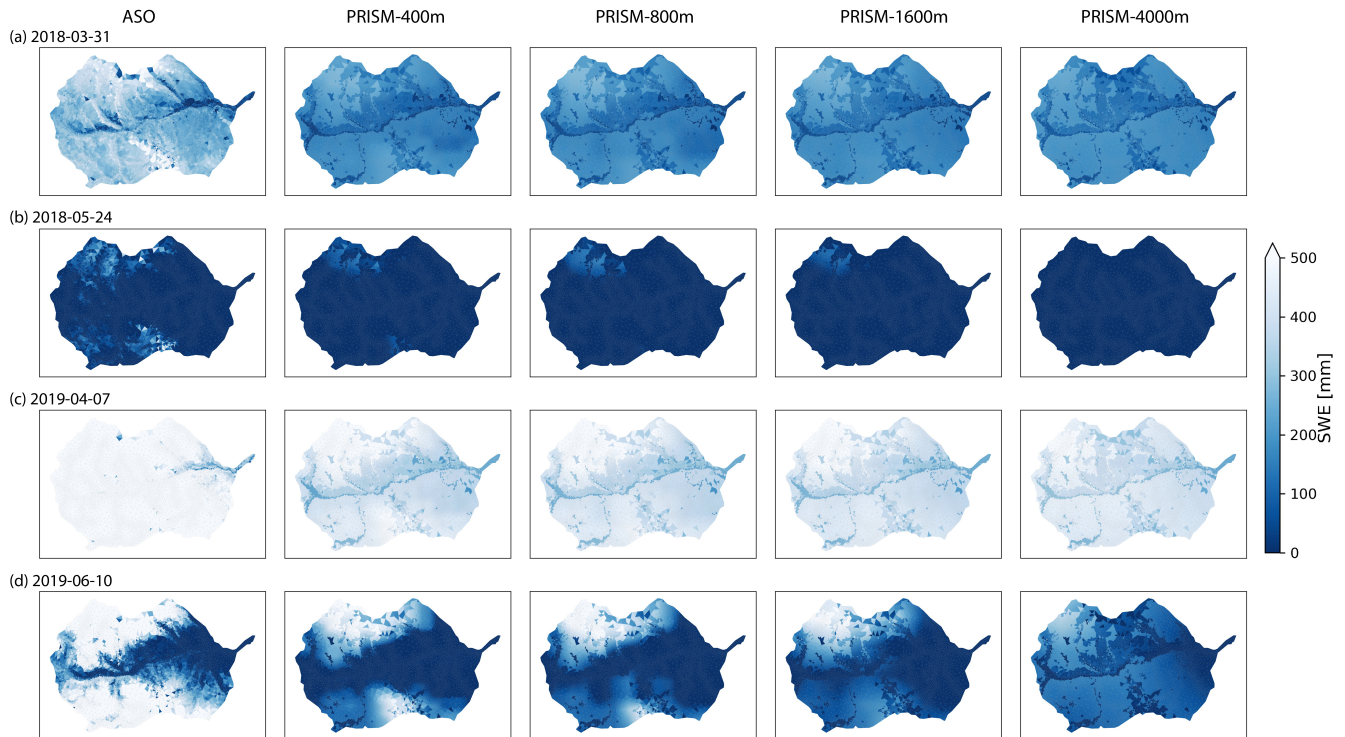


Figure 11. Spatial distribution of SWE under different spatial resolution of PRISM, and their comparison with ASO SWE data at four different survey times.

3.4 Effects of meteorological forcing temporal resolution

The effect of meteorological forcing (i.e., precipitation and temperature) temporal resolution on watershed hydrologic simulations was evaluated by using hourly, 12-hourly, and daily PRISM datasets. All resolutions outputted hydrological variables in hourly timestep and were compared with hourly observed streamflow. In addition to precipitation and temperature, the effect of temporal resolution of solar radiation (i.e., Srad) was tested. The temporal resolution of solar radiation slightly changed the dynamics of streamflow, but overall the impact on watershed hydrologic variables was negligible (see Appendix A4).

The match between simulated and observed hourly discharge in terms of KGE was better with daily resolution than hourly and 12-hourly temporal resolution (see Figure 14 and Table 3). The low performance ($KGE = 0.20$) under hourly resolution was mainly due to the relatively lower correlation ($r = 0.43$) and higher variability ($\gamma = 1.12$) between simulated and observed streamflow. This is not surprising since hourly meteorological forcing has a more dynamic forcing pattern including hourly temperature and precipitation, and thus it yielded a more dynamic overland flow pattern that can be quite different from field observations. To investigate the hydrograph in more detail, discharge time series were zoomed into the high flow season in 2017 (Figure 15). It was clear that models driven by hourly and 12-hourly PRISM contained sub-daily flow fluctuations that

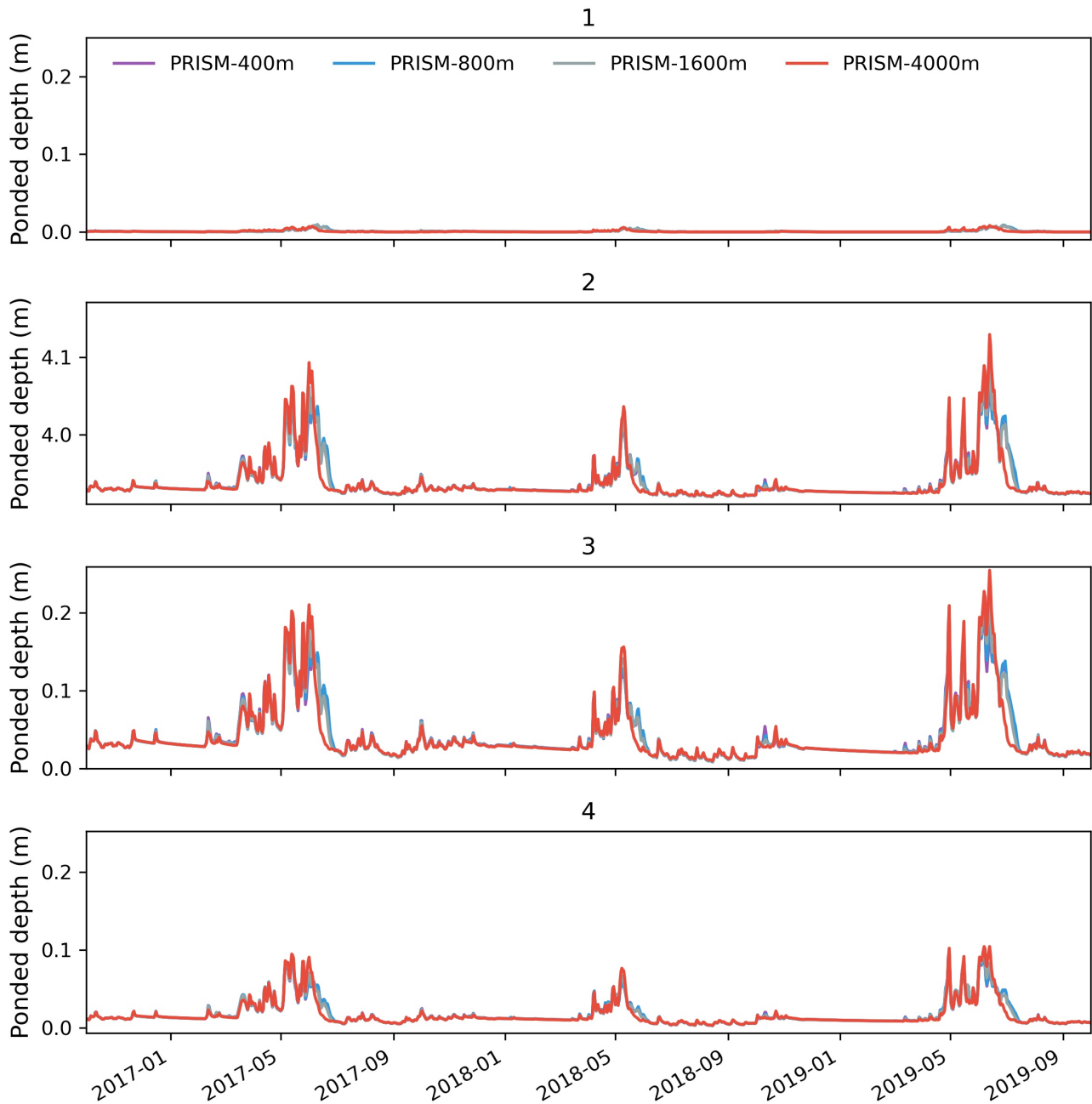


Figure 12. Simulated surface ponded depth at four selected locations under different spatial resolution of PRISM.

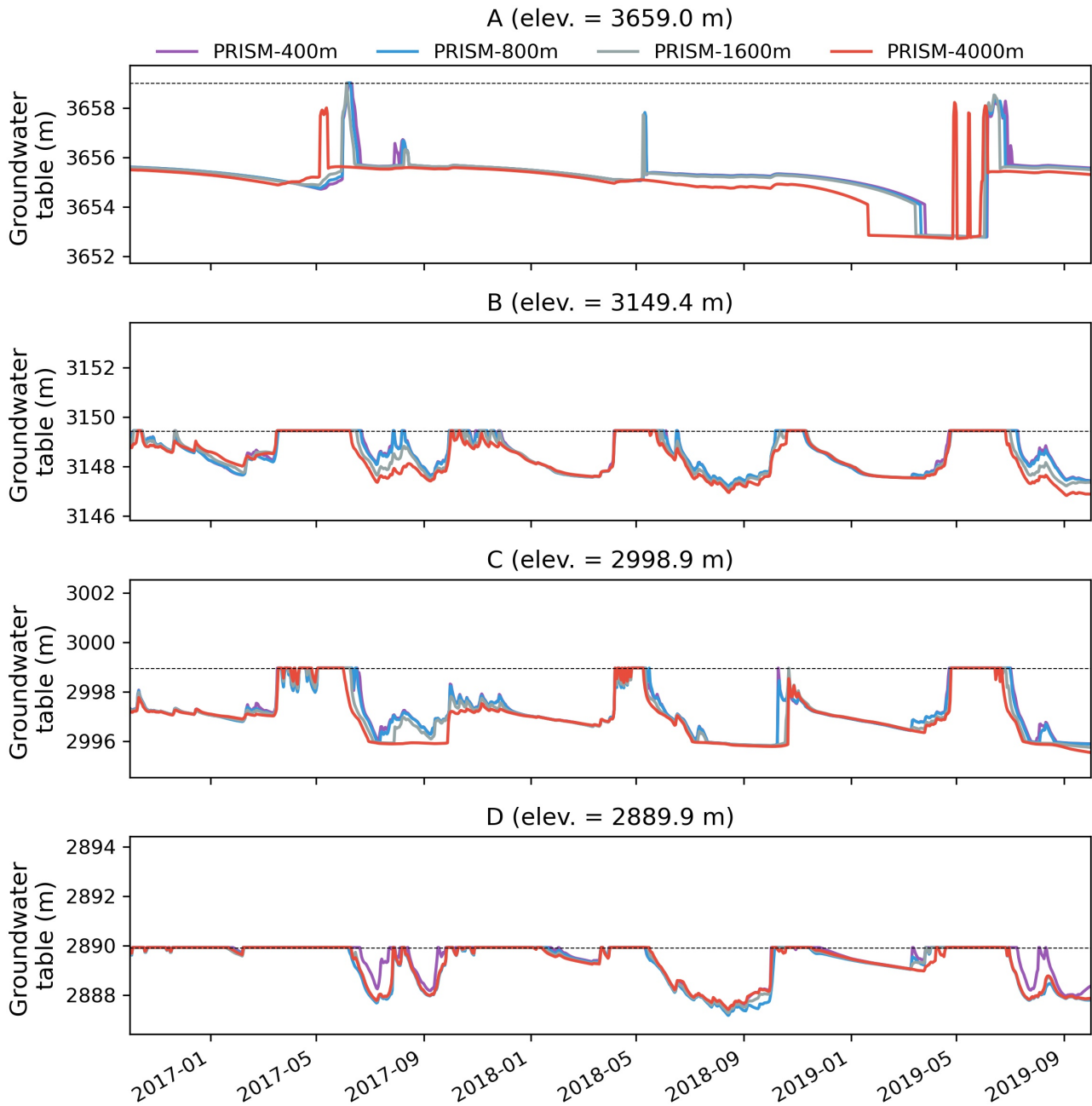


Figure 13. Simulated groundwater table at four selected locations (A-D) under different spatial resolution of PRISM. Dashed line indicates the surface elevation. Also see Figure 1 for location detail.

would be absent in models driven by daily PRISM. Models driven by 12-hourly PRISM had a weaker diurnal flow pattern in terms of magnitude. This is because hourly PRISM retains the diurnal signal of air temperature and thus the diurnal snowmelt pattern, whereas 12-hourly PRISM had a weaker diurnal signal due to only changing air temperature every 12 hours (Figure 15). On the other hand, daily PRISM assumes uniform air temperature throughout a day, and thus produced streamflow that
365 was much smoother without diurnal fluctuations. In general, discharge from the hourly PRISM peaked earlier and had less steep recession limb compared to that from 12-hourly and daily PRISM.

Hourly PRISM had the largest snowmelt and ET variations, followed by 12-hourly and daily PRISM (Figure 15). Compared to the remote sensed 8-day composite ET from MODIS, the simulated 8-day composite ET forced by the different temporal resolution of PRISM showed a consistent seasonal trend with the MODIS (Figure 16). However, significant model underesti-
370 mation was observed in the spring. All three PRISM resolutions showed similar trends of seasonal snowpack accumulation. However, there was a large difference in peak SWE. Hourly PRISM reached a smaller SWE peak and the snow melted earlier compared to 12-hourly and daily PRISM, which might be the combined effects of faster snowmelt and slightly larger ET.

4 Discussions

4.1 The choice of gridded meteorological forcing for integrated watershed simulation

375 We compared three GMFs at their native resolution, Daymet (daily, 1 km), PRISM (daily, 800 m) and NLDAS (hourly, ~ 12 km), in driving watershed responses including watershed outlet discharge and spatially distributed variables such as SWE and ET. Can we choose the "best" meteorological forcing for integrated watershed modeling based on discharge comparison alone? What are the strengths and weaknesses of each GMF?

In surface hydrologic modeling, hydrologists often judge the performance of a numerical model by the ability to match the
380 streamflow at the watershed outlet (Staudinger et al., 2019). However, streamflow alone is not good enough for evaluating the performance in meteorological forcing because discharge at the watershed outlet has limited information on the spatial distribution of model outputs (e.g., SWE). Even though simulated streamflow from Daymet has the best match (i.e., highest *KGE*) against observation, the spatially distributed SWE from Daymet has a weaker correlation with the observed SWE from ASO survey than that from PRISM. Both Daymet and PRISM perform better than NLDAS in simulating discharge and spatial
385 SWE due to their relatively fine spatial resolution. As shown in Figure 9, NLDAS hardly captures the spatial heterogeneity of SWE when comparing to ASO SWE. The entire watershed area ($\sim 53.2 \text{ km}^2$) is smaller than the size of one pixel of the NLDAS grid ($\sim 12 \times 12 \text{ km}$ or $\sim 144 \text{ km}^2$), making the meteorological forcing almost homogeneous at the watershed scale.

For a watershed simulation that usually has a mesh resolution $< 1 \text{ km}$, Daymet or PRISM provides the best spatial resolution available across the CONUS. However, they do not have the complete forcing dataset that could be directly applied to water-
390 shed models without filling in the missing dataset. Daymet has most of the forcing variables except wind speed and longwave radiation. PRISM is missing both wind speed and solar radiation (both short- and long- wave radiation), which is important for calculating surface energy balance and estimating ET. A common approach is to fill in the missing variables using a different source. For example, Mourtzinis et al. (2017) used solar radiation from the National Aeronautics and Space Administration's

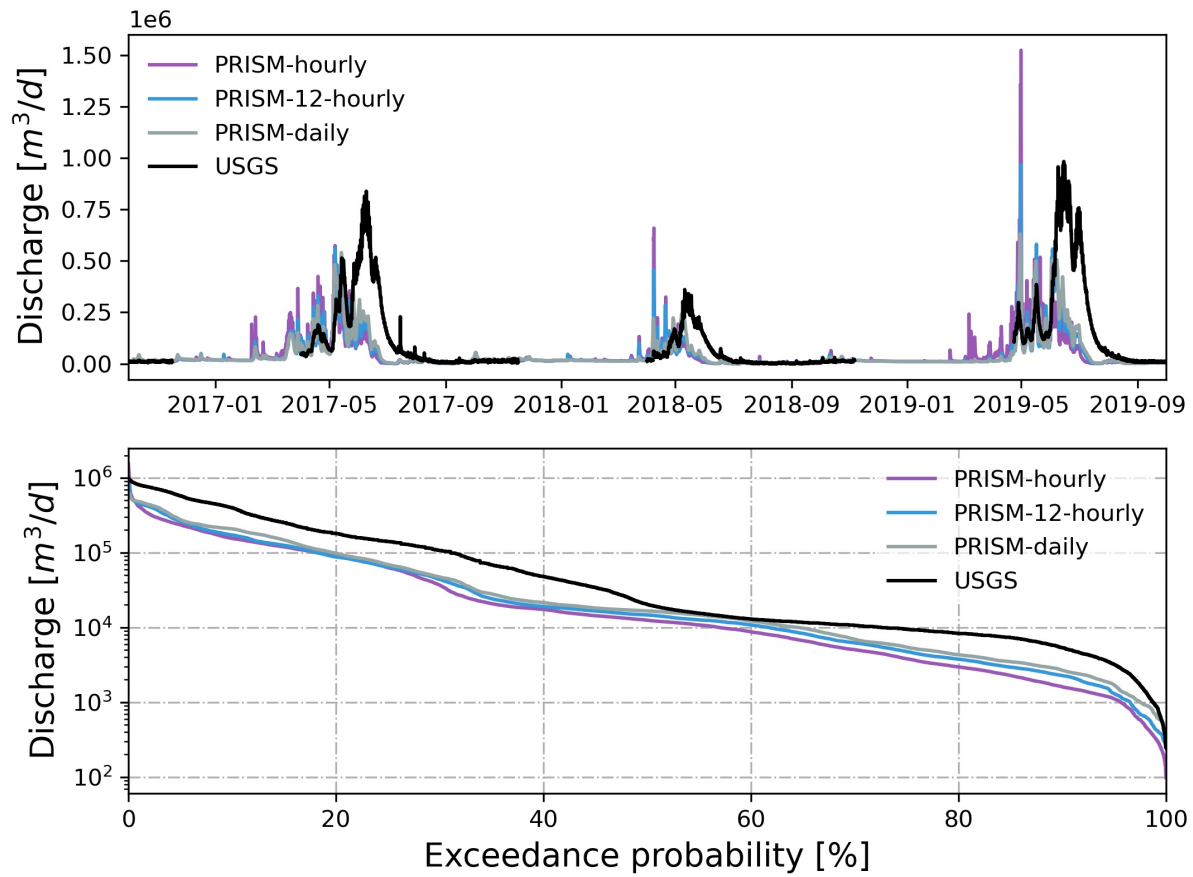


Figure 14. Simulated hourly discharge at watershed outlet compared with hourly USGS streamflow under different temporal resolution of PRISM. Also shown is the flow duration curve comparison.

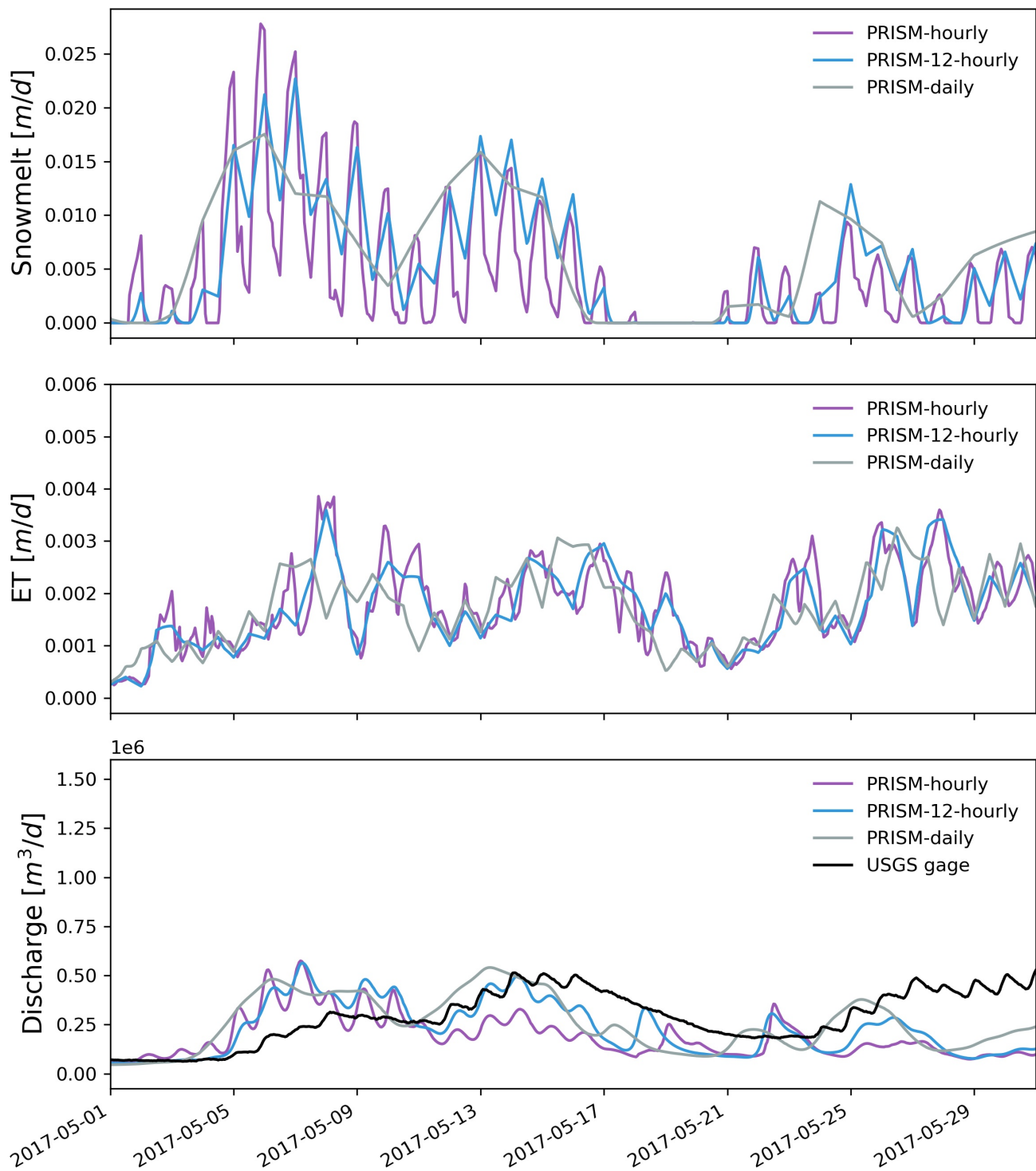


Figure 15. Zoomed in plots showing hourly simulated snowmelt, ET, and discharge under different temporal resolution of PRISM in May, 2017.

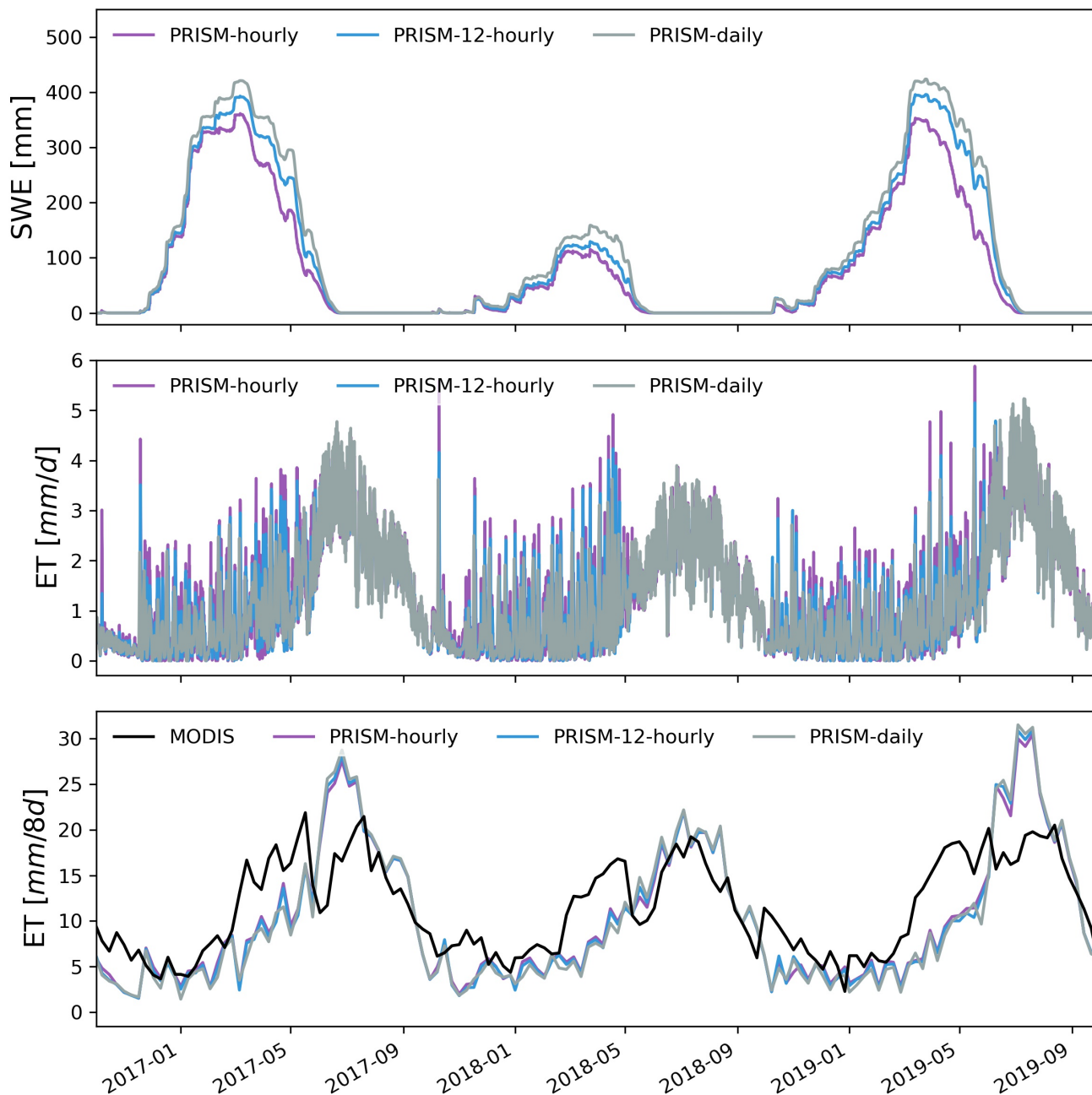


Figure 16. Simulated watershed average SWE and ET under different temporal resolution of PRISM. Also shown is the comparison between MODIS and simulated 8-day composite ET.

POWER (NASA-POWER) database ($12,000 \text{ km}^2$ resolution) combined with PRISM's temperature and precipitation to simulate a crop model. In our study, we used Daymet as a source of solar radiation for PRISM, and the model was able to simulate streamflow reasonably well ($KGE = 0.45$) (Table 2) while capturing the spatial heterogeneity of distributed variables.

On the other hand, NLDAS provides the most complete forcing dataset with hourly resolution but comes with a spatial resolution of $\sim 12 \text{ km}$ which is too coarse for watershed simulation, especially watershed with complex terrain. The spatial resolution may become less important as model resolution becomes coarser and the focus is on system-scale water budget. For example, NLDAS at its native resolution has been applied at the continental scale to study transpiration partitioning using ParFlow-CLM at 1 km resolution (Maxwell and Condon, 2016). Past studies have also attempted downscaling of NLDAS to much finer spatial resolution (Ko et al., 2019; Pan et al., 2016). For example, Ko et al. (2019) downscaled the meteorological forcing variables from the 12-km resolution of NLDAS to 1-km resolution using high-resolution terrain information at the Río Sonora Basin. There has been other attempt to merge the high-spatial resolution of PRISM dataset with the NLDAS dataset which produced a complete forcing dataset of daily, 4 km resolution covering the CONUS (Abatzoglou, 2013).

Ideally, the GMF with a finer spatiotemporal resolution while providing the most complete forcing is desirable. However, none of the three GMFs are perfect. An alternative approach is to use meteorological forcing outputted from climate models such as WRF. It has the flexibility of generating much finer spatial and temporal resolution output while providing all available meteorological forcing. Maina et al. (2020) used the nested-domain configuration of WRF to dynamically generate meteorological forcing variables at various spatial resolutions (from 0.5 km to 13.5 km) for use with ParFlow-CLM. Although forcing generated by WRF provides a viable option for meteorological input in the hydrologic model, it requires additional expertise and effort to setup and run the WRF model which is more challenging than directly using the publicly available gridded forcing (e.g., Daymet).

4.2 Spatial vs temporal resolution: which one is more important?

Is there an optimal spatiotemporal resolution of meteorological forcing for driving watershed simulation while producing realistic results? Should we choose finer spatial resolution over finer temporal resolution? Depending on the quantity of interest and the spatial and temporal scale of the study, the choice may differ. In this study, watershed outlet discharge is shown to be less sensitive to both the spatial and temporal resolution of meteorological forcing because it is an accumulative quantity. The simulated discharge is almost identical between PRISM 400 m, 800 m, and 1600 m resolution. The simulated discharge only becomes noticeably worse when the spatial resolution of meteorological forcing is coarsened to 4000 m (or 30% of the watershed area). Similarly, the watershed average SWE, ET, total water storage do not show significant differences between different spatial resolutions of PRISM.

The spatial resolution becomes more important if the quantity of interests are the spatial distributed hydrologic variables. For example, the SWE distribution under 400 m and 800 m PRISM resembles more closely with ASO SWE than results under much coarser spatial resolution. Maina et al. (2020) also found the SWE distribution to be sensitive to the spatial resolution of meteorological forcing, with the finer resolution being able to accurately reproduce SWE spatial distribution as well as total SWE volume. In addition, a higher spatial resolution of forcing would preserve the spatial heterogeneity of distributed

variables better and may provide better estimates of variables at point locations (e.g., SWE at the NRCS's Snowpack Telemetry (SNOTEL) stations and groundwater table at wells). For example, the groundwater table at high elevations can be quite different
430 under different spatial resolutions of meteorological forcing (Figure 13).

Temporal resolution becomes more important than spatial resolution if simulating storm events or flash floods that happen within several hours, resulting in a sharp increase of stream discharge (Ochoa-Rodriguez et al., 2015). The regular, periodic streamflow fluctuations induced by sub-daily snowmelt or ET could also impact the hyporheic exchange between surface water and groundwater (Loheide and Lundquist, 2009), which in turn impact nutrient cycling in the stream and hyporheic
435 zone biogeochemical processes (Shuai et al., 2017; Song et al., 2018). On the contrary, it is challenging to match the simulated variable from high temporal resolution with field observation. For example, the performance in simulated discharge deteriorates when temporal resolution increases from daily to hourly using PRISM (Figure 14). Additionally, hourly meteorological forcing is difficult to obtain and may be subject to large bias and errors. There are also sparse weather stations that collect hourly or higher frequency data. Thus it is impossible to obtain sub-daily resolution by direct interpolation across weather stations.
440 The current available hourly meteorological forcing is usually disaggregated from coarse temporal resolution. For example, the hourly NLDAS is disaggregated from NARR 3-hourly frequency. Previous studies have shown that NLDAS had large discrepancies towards SWE in higher elevation where lower SWE was simulated (Sheffield et al., 2003; Maxwell and Condon, 2016). Air temperature has also been shown to be systematically colder in winter and warmer in the spring months compared to the observations (Pan et al., 2003). These biases could be attributed to the ~ 12 km spatial resolution that greatly smoothed
445 the local topographic variability.

4.3 Limitations, implications, and transferability of current study

There is a lack of high-resolution observation data to compare with the simulated variables. For example, the snow survey from ASO has only been conducted a total of four times at this watershed and misses the temporal dynamics of snow depth. There is also not a single SNOTEL station within the watershed that we can use to compare simulated SWE at point location with
450 the observed SWE. In addition to snow, we also do not have high-resolution ET data. Although MODIS provides an 8-day composite ET, it is relatively coarse compared to the temporal resolution examined in the study. In the subsurface, there is no observed groundwater table depth or soil moisture data that can be used for the comparison. The remote sensed soil moisture product (9 to 36 km resolution) from Soil Moisture Active Passive (SMAP) is likely to be too coarse to have any meaningful comparison.

455 Uncertainty in the meteorological forcing has not been quantified. There is undoubtedly uncertainty in each GMF that may impact the simulated watershed responses, however, this is not the focus of this study. Precipitation collected from ground-based gages often has measurement uncertainty, which could lead to large uncertainty in interpolated gridded data sets especially in the mountainous region where the gage network is sparse (Schreiner-McGraw and Ajami, 2020). In general, PRISM is assumed to perform better in matching gage observation in the mountainous regions compared to Daymet because of the relatively
460 complex interpolation method (Daly et al., 2008). However, PRISM does not outperform Daymet in all gages (see Figure 3). Further, in areas where the terrain is flat and the gage network is dense, Daymet might perform better than, if not equally

well as, PRISM. Therefore, it is important to put the results into context when comparing different meteorological forcing in a watershed setting.

465 Uncertainty in model parameterization has not been investigated, however, it does not change the conclusions of this study as
all simulations use the same set of model parameters except for meteorological forcing. It is well known that model parameters
such as subsurface structure and properties impact surface and subsurface flows and consequently ET and water storage. As
shown in this study, models using different meteorological forcing may produce dramatically different watershed responses
including streamflow. This has important implications on model calibration when the objective is to minimize the differences
between simulated and observed streamflow, which is true for most watershed hydrologic model calibration studies (Cromwell
470 et al., 2021). The choice of GMF affects the simulated streamflow, and in turn, the optimal parameters that are calibrated using
the simulated streamflow. Elsner et al. (2014) showed that there were substantial differences in calibrated model parameters
and simulated water balance using four different meteorological forcing for the same watershed. As a result, the choice of
meteorological forcing plays a critical role in model calibration and thus long-term planning and watershed management using
such calibrated model. Studying the impact of different meteorological forcing on model calibration is the focus of our future
475 work.

In this study, we choose Coal Creek as an illustrative example to show the effects of meteorological forcing spatiotemporal
resolution on watershed simulations. The study site has strong variations in topography and land cover, which is an ideal site
for testing heterogeneous spatial and temporal pattern of meteorological forcing. Our conclusions would hold for other moun-
tainous headwater watersheds that are dominated by snow because we did not make any site-specific assumptions. However,
480 additional studies are needed to evaluate the GMF in other areas that are not dominated by snow.

5 Conclusions

This study aimed to compare three widely available GMFs (i.e., Daymet, PRISM, and NLDAS) and evaluate the impacts
of spatiotemporal resolution of meteorological forcing on simulated streamflow, ET, SWE, soil moisture, surface ponded
depth, and groundwater table in a snow-dominated mountainous watershed. The different spatial and temporal resolutions
485 were generated by either downscaling or upscaling the native meteorological forcing resolution. The resulting meteorological
forcing was then applied as input to drive a fully-distributed, integrated watershed model (i.e., ATS).

To evaluate the performance of meteorological forcing, one should compare all aspects of watershed hydrologic responses.
Daymet has the best match in simulated streamflow, however, the simulated spatially distributed SWE has a weaker correlation
with the observed ASO SWE compared to that from PRISM. NLDAS performs the worst in both simulated streamflow and
490 spatially distributed SWE due to its coarsest grid resolution. By systematically varying precipitation and temperature from
each GMF, streamflow is found to be more sensitive to precipitation than temperature. Overall, NLDAS provides the most
comprehensive dataset with the highest temporal resolution (hourly) but comes with a spatial resolution of ~ 12 km that is too
coarse for watershed simulation, especially areas with complex terrain. On the contrary, both PRISM (800 m) and Daymet (1
km) provide finer spatial resolution, capable of simulating watershed hydrological variables at high resolution, though PRISM

495 is missing the important solar radiation. Using precipitation and temperature from PRISM along with solar radiation from Daymet provides an alternative to drive watershed simulation with relatively high accuracy.

Using different spatial resolutions of PRISM ranging from 400 m to 4 km, the simulated discharge shows a minor difference when spatial resolution is $< 4 \text{ km}$ (or the grid area is $< 30\%$ of the watershed area). Similarly, the watershed average SWE, ET, total water storage do not show significant differences between different spatial resolutions. Spatial resolution becomes
500 more important when simulating spatially distributed hydrologic variables such as SWE and groundwater table.

Using a different temporal resolution of PRISM (hourly to daily), the simulated discharge showed better performance with daily resolution compared to that forced by 12-hourly and hourly resolution. However, models forced by the sub-daily resolution preserve the dynamic watershed responses (e.g., diurnal fluctuation of streamflow) that are absent in results forced by daily resolution. This may have important implications on watershed biogeochemical reactions that often happen at sub-daily
505 time scales.

It is difficult to choose the "best" meteorological forcing dataset because each dataset has its strengths and weaknesses, and what is best depends on the quantity of interest and its spatial and temporal scale. Ideally, we want to choose the GMF with the finest spatiotemporal resolution while providing the most complete forcing. None of the three GMFs are perfect. An alternative approach is to use meteorological forcing outputted from climate models such as WRF, which has the flexibility of generating
510 much finer spatial and temporal resolution output while providing all available meteorological forcing datasets.

The choice of GMF affects the simulated streamflow and thus has an important implication on model calibration when the objective is to minimize the differences between simulated and observed streamflow. The findings of the effects of meteorological forcing spatiotemporal resolution on watershed simulations could be transferable to other mountainous watersheds that are snow-dominated.

515 *Code and data availability.* The datasets and scripts used in this study can be found on ESS-Dive: <https://data.ess-dive.lbl.gov/datasets/doi:10.15485/1861432>. The downscaled PRISM/Daymet at 400 m resolution is available at <https://data.ess-dive.lbl.gov/view/doi:10.15485/1822259>.

Appendix A

A1 Calendar day definition used in meteorological datasets

Table A1. Calendar day as defined in meteorological datasets and USGS gage

Meteorological forcing	Calendar day in local timezone [UTC-05]	Calendar day in UTC
PRISM	07:00 D^{-1} to 06:59 D	12:00 D^{-1} to 11:59 D
Daymet v4	07:00 D to 06:59 D^{+1}	12:00 D to 11:59 D^{+1}
NLDAS-2	19:00 D^{-1} to 18:59 D	00:00 D to 23:59 D^{+1}
USGS gage	00:00 D to 23:59 D	05:00 D to 04:59 D^{+1}

Abbreviations: D^{-1} : previous day; D : current day; D^{+1} : next day.

520 A2 Triple Collocation Analysis (TCA) of meteorological forcing

Triple Collocation Analysis (TCA) was used to characterize the uncertainties (e.g., error variance and signal to noise ratio) in each of the GMF without knowing the ground truth. Here, we applied TCA to precipitation and temperature product, respectively using the three GMFs over the larger East-Taylor watershed. The PRISM and Daymet product have been upsampled to a 12-km grid to be consistent with the spatial resolution of the NLDAS product. The aggregated daily NLDAS was used to be consistent with the temporal resolution of PRISM and Daymet. The major assumption for TCA is that the error models are linear and independent between different sources, which is not appropriate for precipitation data (Kratzert et al., 2021). Instead, we chose a multiplicative error model for precipitation source following the methodology of Alemohammad et al. (2015). Because log-transformed precipitation values were used in the multiplicative model, the daily precipitation was temporally aggregated to weekly values to avoid zero precipitation values. As a result, the total number of sample size across the temporal domain was significantly reduced, which could pose challenge for the TCA when sample size was small. The missing values in Figure A1 and A2 (white pixels) were the result of having too few samples.

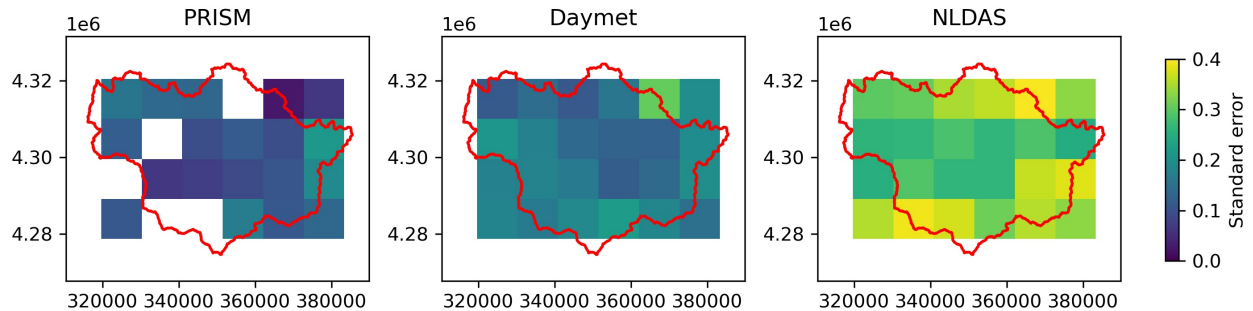


Figure A1. TCA results for precipitation data in the three GMFs. The colormap shows the standard error (the lower the better) for each pixel region.

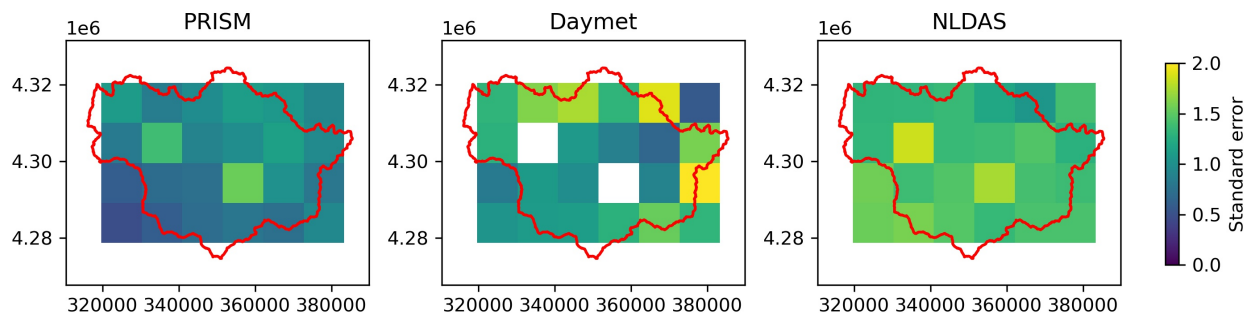


Figure A2. TCA results for temperature data in the three GMFs. The colormap shows the standard error (the lower the better) for each pixel region.

A3 Comparison of model outputs from different spatial resolution of Daymet

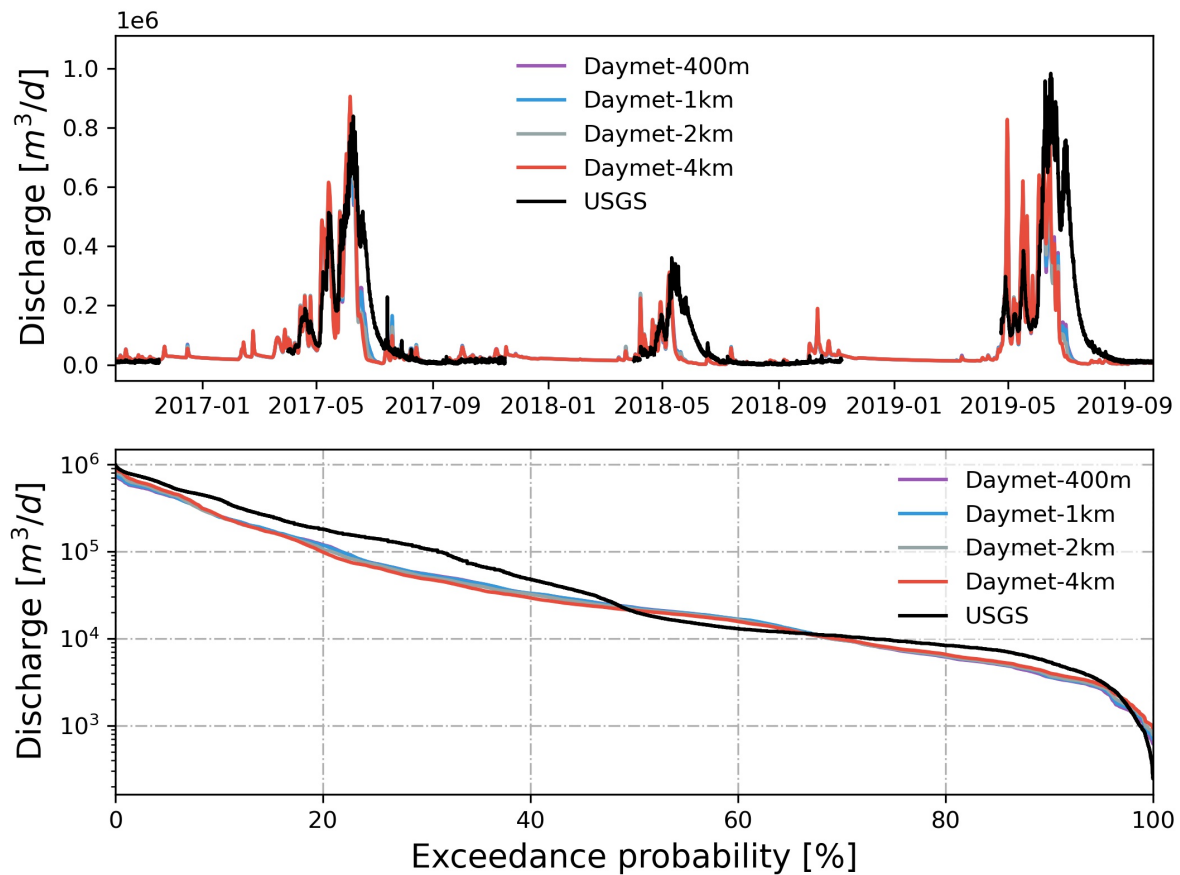


Figure A3. Simulated discharge at watershed outlet compared with USGS gage under different spatial resolution of Daymet. Also shown is the flow duration curve comparison.

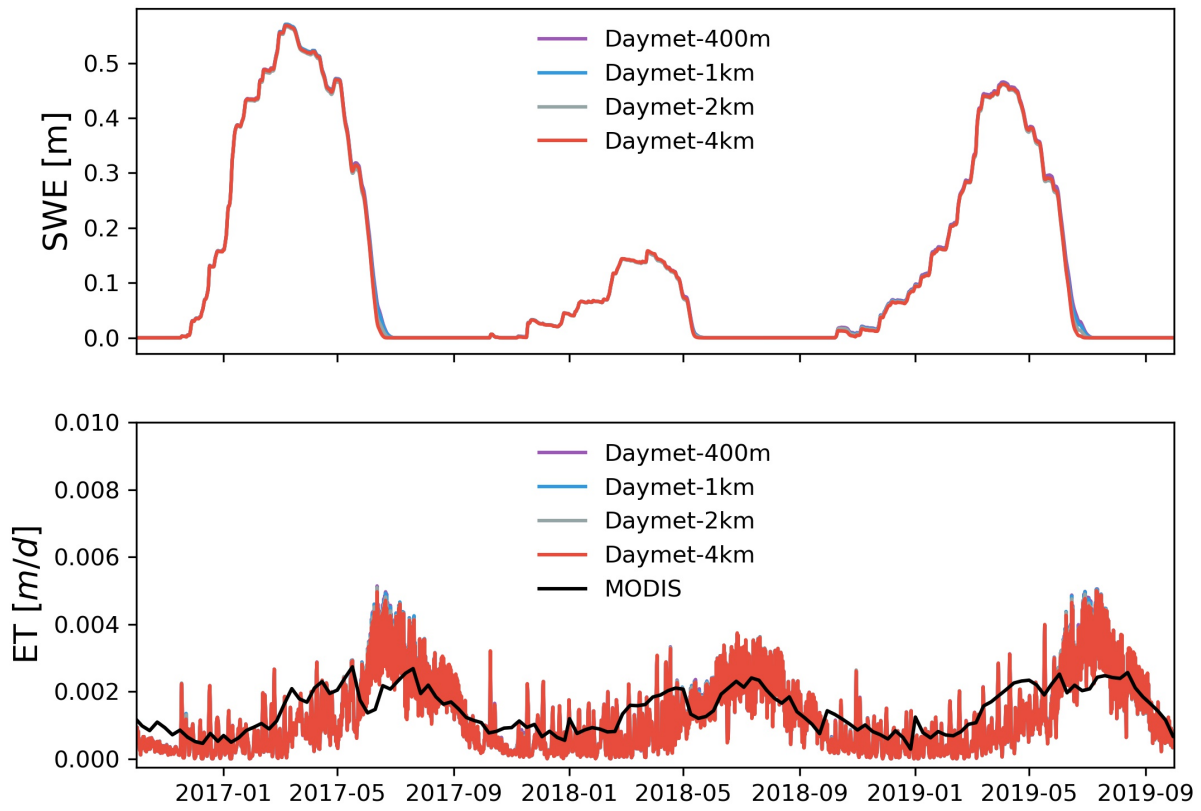


Figure A4. Simulated watershed average SWE and ET under different spatial resolution of Daymet.

A4 Impact of spatial and temporal resolution of solar radiation

535 The effect of solar radiation (i.e., Srad) spatial resolution was tested using Daymet shortwave radiation at 1km, 2km and 4km resolution while keeping the other forcing variables the same. The effect of solar radiation temporal resolution was tested using NLDAS shortwave radiation at hourly, 12-hourly and daily resolution while keeping other forcings the same. By comparing ET and streamflow, the spatial resolution of shortwave radiation has little impact on ET and streamflow, whereas the temporal resolution of shortwave radiation slightly changed the dynamics of ET and streamflow. Overall watershed responses are less sensitive to solar radiation than precipitation and temperature.

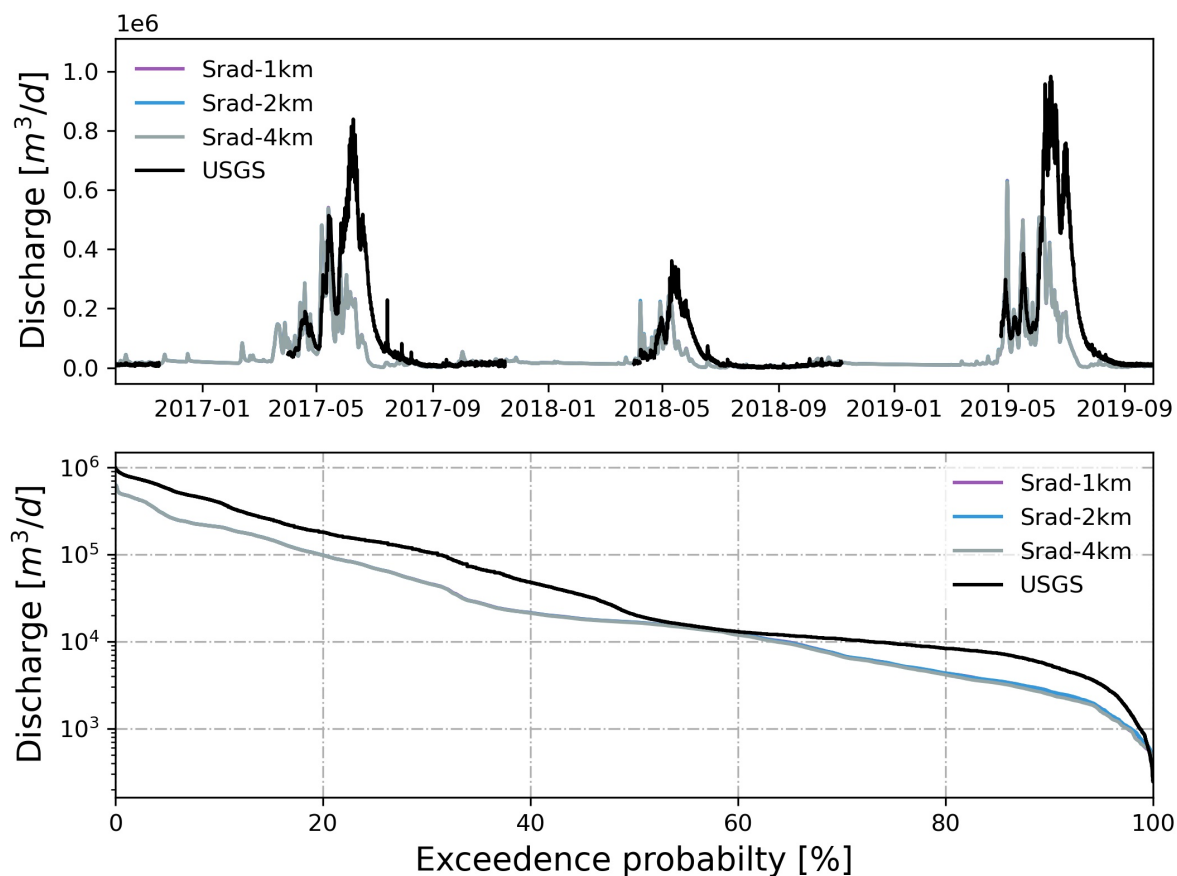


Figure A5. Simulated watershed outlet discharge under different spatial resolution of Srad. Also shown is the flow duration curve comparison.

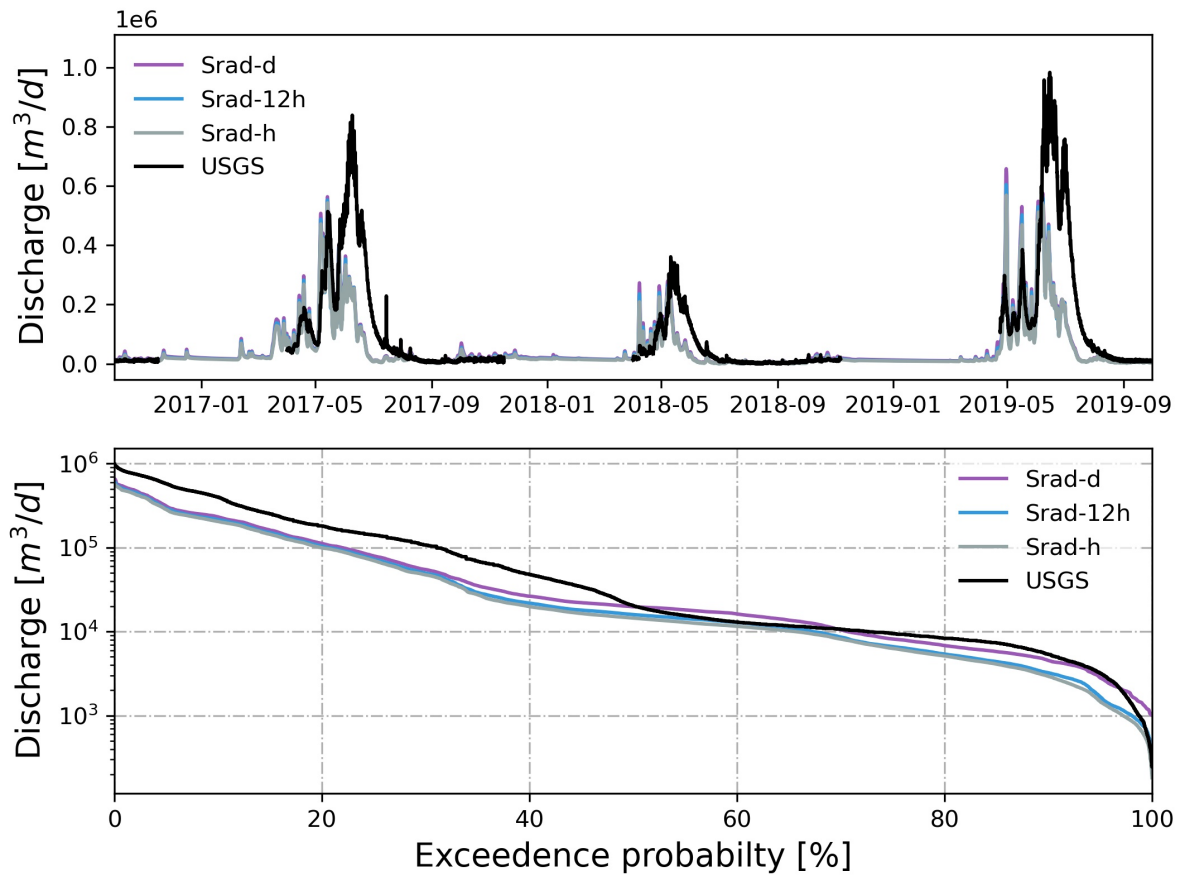


Figure A6. Simulated watershed outlet discharge under different temporal resolution of Srad. Also shown is the flow duration curve comparison.

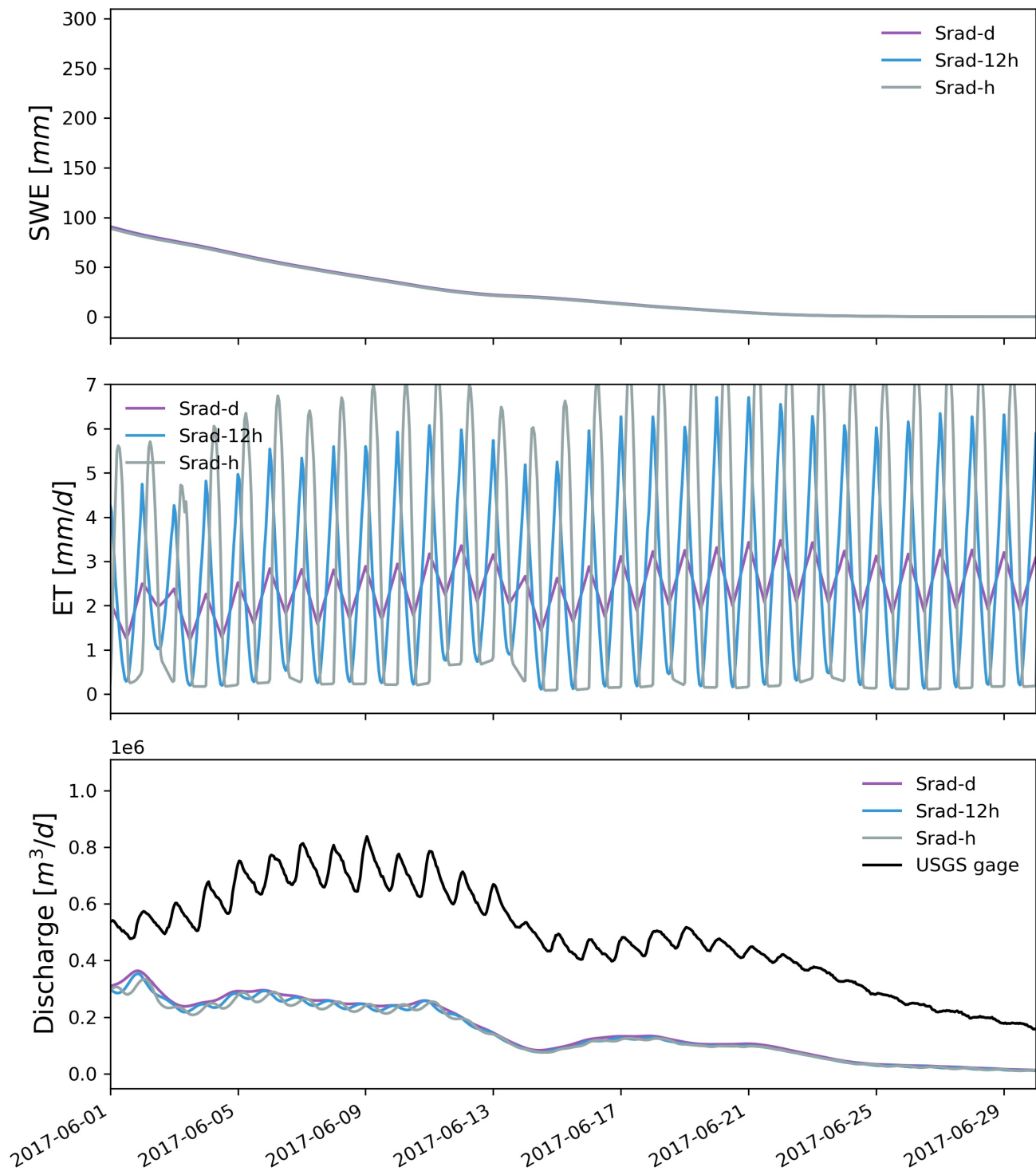


Figure A7. Zoomed in plots showing simulated SWE, ET, and watershed outlet discharge under different temporal resolution of Srad.

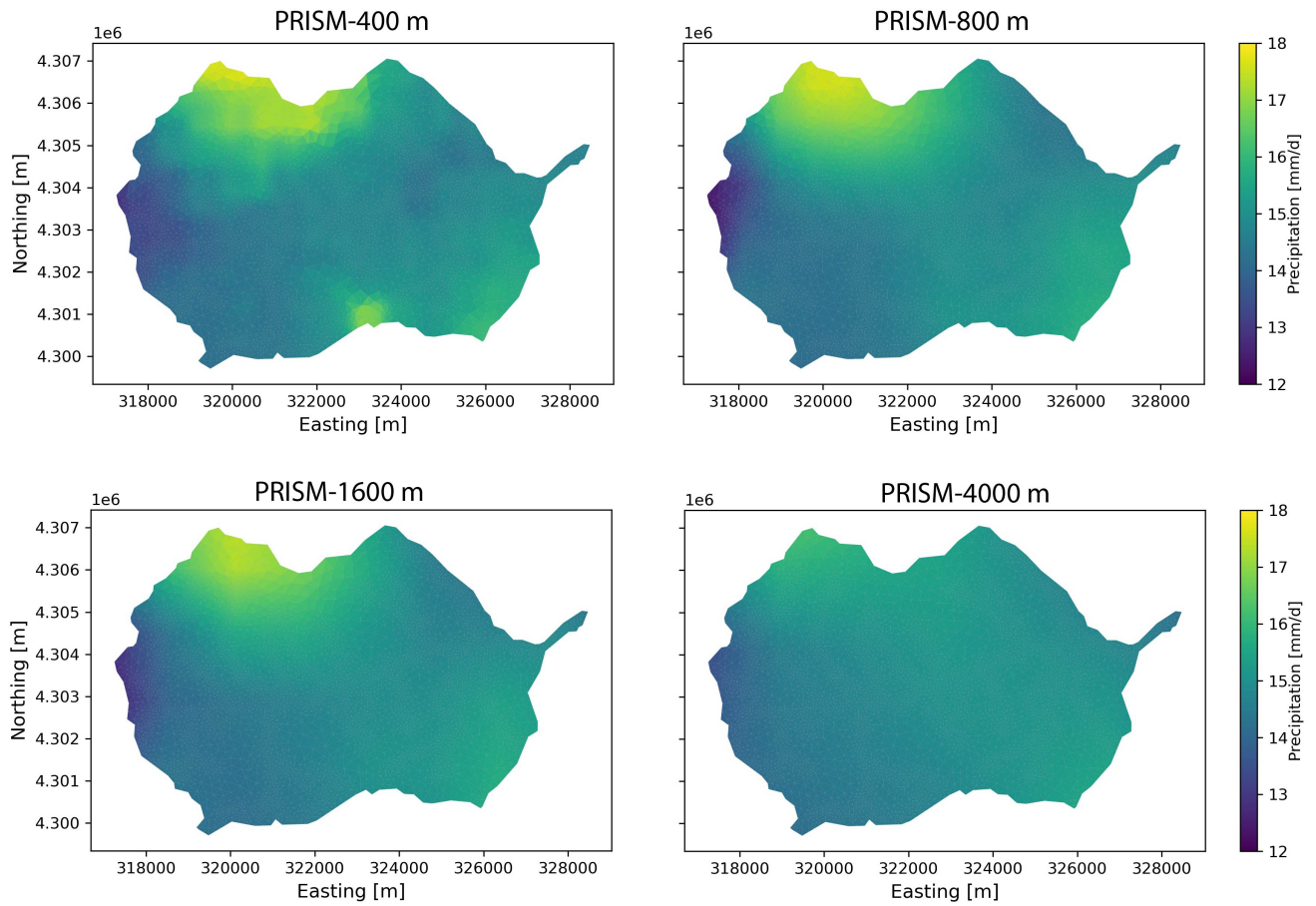


Figure A8. Spatial distribution of precipitation under different spatial resolution of PRISM at April 27, 2019.

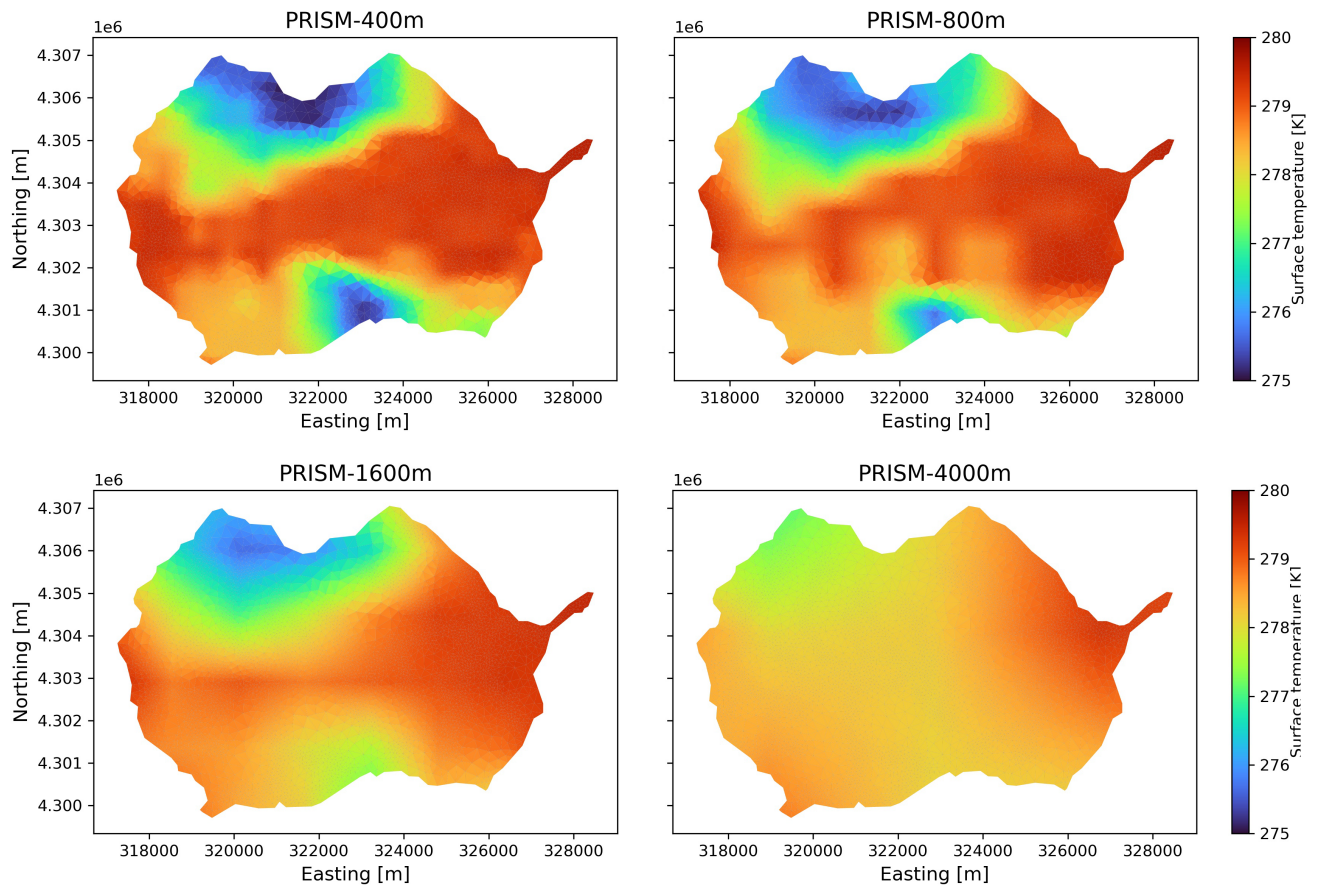


Figure A9. Spatial distribution of air temperature under different spatial resolution of PRISM at April 27, 2019.

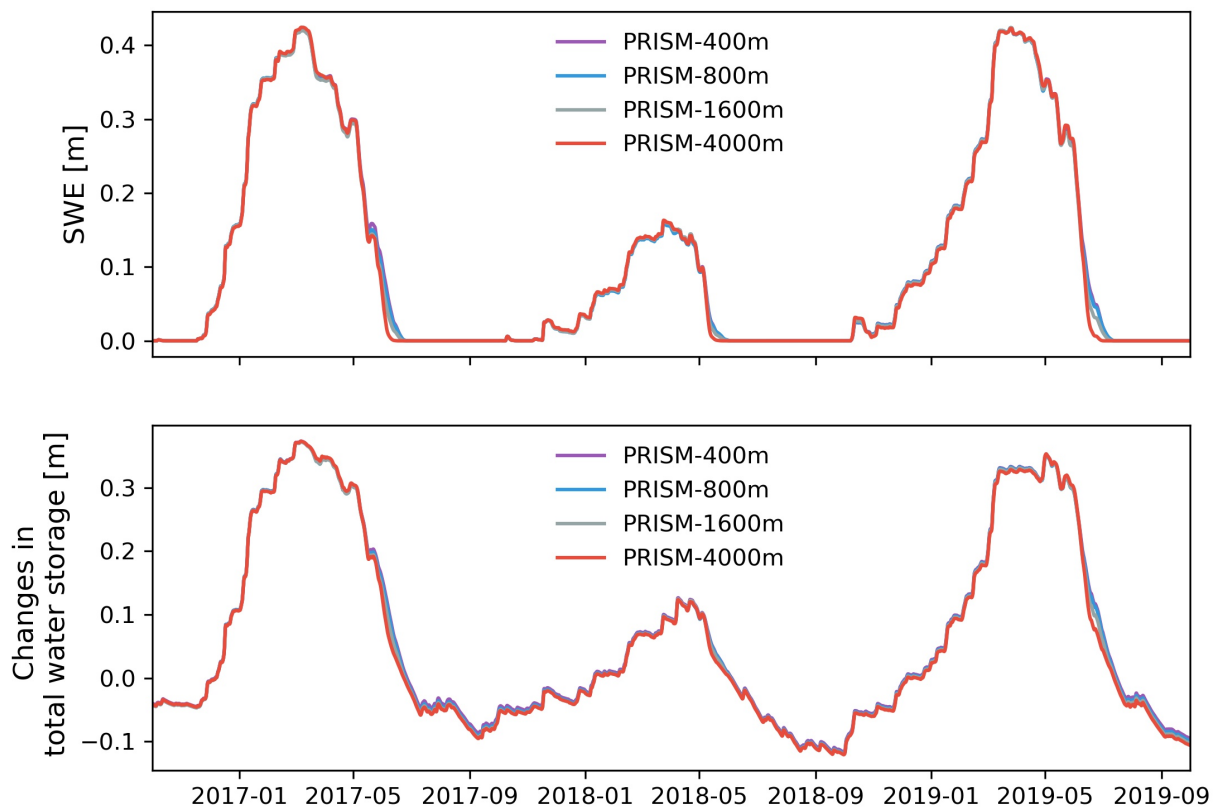


Figure A10. Simulated watershed average SWE and changes in total water storage under different spatial resolution of PRISM.

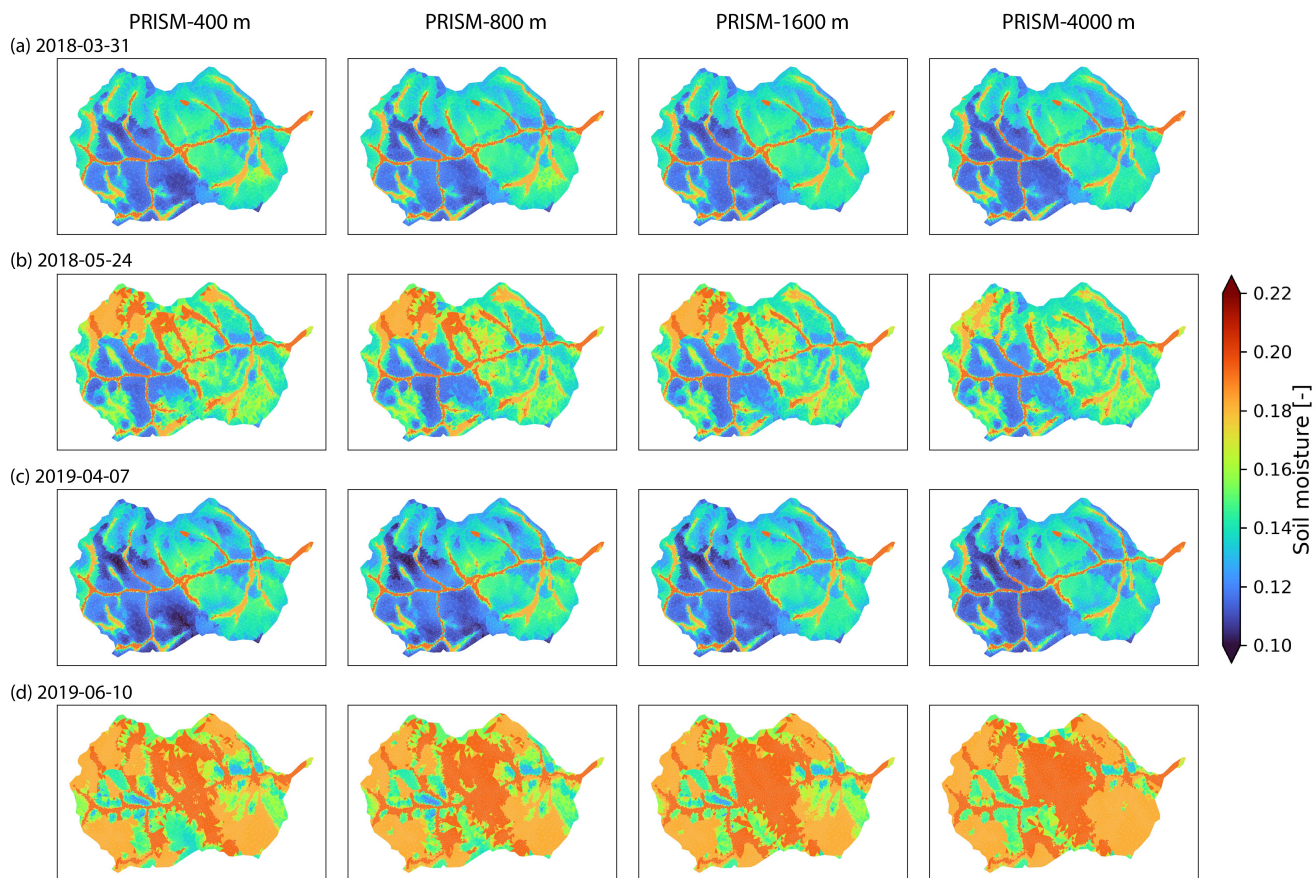


Figure A11. Spatial distribution of soil moisture under different spatial resolution of PRISM at four different times.

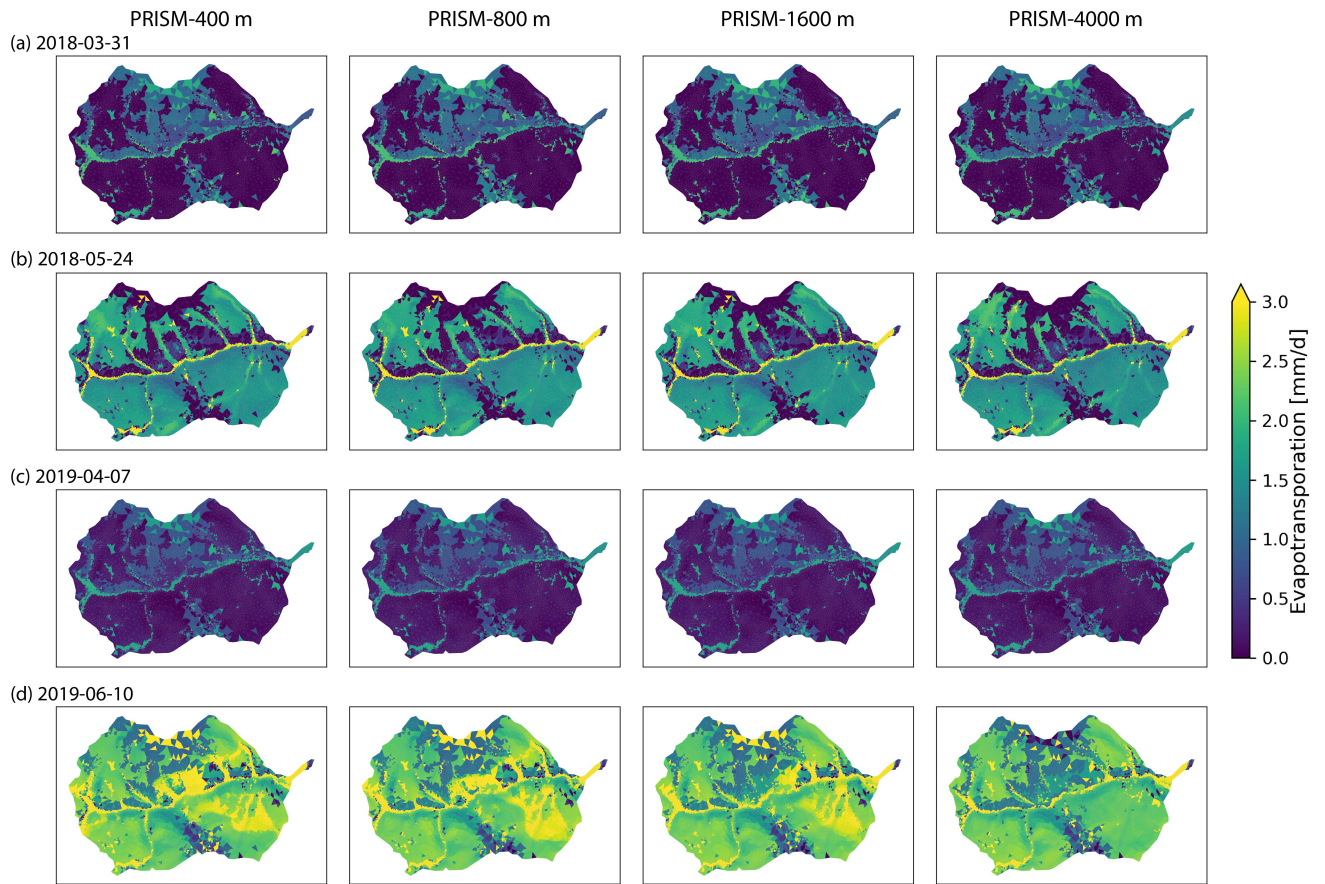


Figure A12. Spatial distribution of ET under different spatial resolution of PRISM at four different times.

Author contributions. PS designed the numerical experiments and performed the simulations with inputs from XC. UM and DD provided the PRISM 800-m product and UM performed the downscaling of meteorological forcing using machine learning. PS prepared the manuscript with contributions from all co-authors. All authors provided critical feedback and inputs to the manuscript.

Competing interests. The authors declare that they have no conflict of interest.

545 *Acknowledgements.* This research used resources of the National Energy Research Scientific Computing Center (NERSC), a DOE Office of Science User Facility supported by the Office of Science of the United States Department of Energy under contract DE-AC02-05CH11231. The proprietary PRISM data (800 m resolution) was purchased with funding from the Watershed Function Scientific Focus Area funded by the U.S. Department of Energy, Office of Science, Office of Biological and Environmental Research under Award no. DE-AC02-05CH11231. Pacific Northwest National Laboratory is operated for the DOE by Battelle Memorial Institute under contract DE-AC05-550 76RL01830. Oak Ridge National Laboratory is managed by UT- Battelle, LLC for the U.S. Department of Energy under Contract Number DE-AC05-00OR22725. This paper describes objective technical results and analysis. Any subjective views or opinions that might be expressed in the paper do not necessarily represent the views of the United States Department of Energy or the United States Government. This manuscript has been co-authored by UT- Battelle, LLC under Contract No. DE-AC05-00OR22725 with the U.S. Department of Energy. The United States Government retains and the publisher, by accepting the article for publication, acknowledges that the United States Government 555 retains a non- exclusive, paidup, irrevocable, world-wide license to publish, or reproduce the published form of this manuscript, or allow others to do so, for United States Government purposes. The Department of Energy will provide public access to these results of federally sponsored research in accordance with the DOE Public Access Plan (<http://energy.gov/downloads/doe-public-access-plan>).

References

- Abatzoglou, J. T.: Development of gridded surface meteorological data for ecological applications and modelling, *International Journal of Climatology*, 33, 121–131, <https://doi.org/10.1002/joc.3413>, 2013.
- 560 Alemohammad, S. H., McColl, K. A., Konings, A. G., Entekhabi, D., and Stoffelen, A.: Characterization of precipitation product errors across the United States using multiplicative triple collocation, *Hydrology and Earth System Sciences*, 19, 3489–3503, <https://doi.org/10.5194/hess-19-3489-2015>, 2015.
- Aquanty, I.: *HydroGeoSphere User Manual*, Waterloo, Ontario, 2015.
- 565 Behnke, R., Vavrus, S., Allstadt, A., Albright, T., Thogmartin, W. E., and Radeloff, V. C.: Evaluation of downscaled, gridded climate data for the conterminous United States, *Ecological Applications*, 26, 1338–1351, <https://doi.org/10.1002/15-1061>, 2016.
- Bolton, D.: The Computation of Equivalent Potential Temperature, *Monthly Weather Review*, 108, 1046–1053, [https://doi.org/10.1175/1520-0493\(1980\)108<1046:TCOEPT>2.0.CO;2](https://doi.org/10.1175/1520-0493(1980)108<1046:TCOEPT>2.0.CO;2), 1980.
- Breiman, L.: Random forests, *Machine learning*, 45, 5–32, 2001.
- 570 Bruni, G., Reinoso, R., Van De Giesen, N. C., Clemens, F. H., and Ten Veldhuis, J. A.: On the sensitivity of urban hydrodynamic modelling to rainfall spatial and temporal resolution, *Hydrology and Earth System Sciences*, 19, 691–709, <https://doi.org/10.5194/hess-19-691-2015>, 2015.
- Coon, E. T. and Shuai, P.: *Watershed Workflow*, [Computer Software] <https://doi.org/10.11578/dc.20211008.1>, <https://doi.org/10.11578/dc.20211008.1>, 2021.
- 575 Coon, E. T., Svyatskiy, D., Jan, A., Kikinzon, E., Berndt, M., Atchley, A. L., Harp, D. R., Manzini, G., Shelef, E., Lipnikov, K., Garimella, R., Xu, C., Moulton, J. D., Karra, S., Painter, S. L., Jafarov, E., and Molins, S.: Advanced Terrestrial Simulator (ATS), US DOE Office of Science (SC), Biological and Environmental Research (BER), <https://doi.org/10.11578/dc.20190911.1>, 2019.
- Coon, E. T., Moulton, J. D., Kikinzon, E., Berndt, M., Manzini, G., Garimella, R., Lipnikov, K., and Painter, S. L.: Coupling surface flow and subsurface flow in complex soil structures using mimetic finite differences, *Advances in Water Resources*, 144, 103 701, <https://doi.org/10.1016/j.advwatres.2020.103701>, 2020.
- 580 Cosgrove, B. A., Lohmann, D., Mitchell, K. E., Houser, P. R., Wood, E. F., Schaake, J. C., Robock, A., Marshall, C., Sheffield, J., Duan, Q., Luo, L., Higgins, R. W., Pinker, R. T., Tarpley, J. D., and Meng, J.: Real-time and retrospective forcing in the North American Land Data Assimilation System (NLDAS) project, *Journal of Geophysical Research: Atmospheres*, 108, <https://doi.org/10.1029/2002jd003118>, 2003.
- 585 Cromwell, E., Shuai, P., Jiang, P., Coon, E. T., Painter, S. L., Moulton, J. D., Lin, Y., and Chen, X.: Estimating Watershed Subsurface Permeability From Stream Discharge Data Using Deep Neural Networks, *Frontiers in Earth Science*, 9, 1–13, <https://doi.org/10.3389/feart.2021.613011>, 2021.
- Daly, C., Halbleib, M., Smith, J. I., Gibson, W. P., Doggett, M. K., Taylor, G. H., Curtis, J., and Pasteris, P. P.: Physiographically sensitive mapping of climatological temperature and precipitation across the conterminous United States, *International Journal of Climatology*, 28, 2031–2064, <https://doi.org/10.1002/joc.1688>, 2008.
- 590 Elsner, M. M., Gangopadhyay, S., Pruitt, T., Brekke, L. D., Mizukami, N., and Clark, M. P.: How Does the Choice of Distributed Meteorological Data Affect Hydrologic Model Calibration and Streamflow Simulations?, *Journal of Hydrometeorology*, 15, 1384–1403, <https://doi.org/10.1175/jhm-d-13-083.1>, 2014.

- Eum, H. I., Dibike, Y., Prowse, T., and Bonsal, B.: Inter-comparison of high-resolution gridded climate data sets and their im-
595 plication on hydrological model simulation over the Athabasca Watershed, Canada, *Hydrological Processes*, 28, 4250–4271,
<https://doi.org/10.1002/hyp.10236>, 2014.
- Ficchi, A., Perrin, C., and Andréassian, V.: Impact of temporal resolution of inputs on hydrological model performance: An analysis based
on 2400 flood events, *Journal of Hydrology*, 538, 454–470, <https://doi.org/10.1016/j.jhydrol.2016.04.016>, 2016.
- Gao, J., Sheshukov, A. Y., Yen, H., and White, M. J.: Impacts of alternative climate information on hydrologic processes with SWAT: A
600 comparison of NCDC, PRISM and NEXRAD datasets, *Catena*, 156, 353–364, <https://doi.org/10.1016/j.catena.2017.04.010>, 2017.
- Gatzke, S. E., Beaudette, D. E., Ficklin, D. L., Luo, Y., O’Geen, A. T., and Zhang, M.: Aggregation Strategies for SSURGO
Data: Effects on SWAT Soil Inputs and Hydrologic Outputs, *Soil Science Society of America Journal*, 75, 1908–1921,
<https://doi.org/10.2136/sssaj2010.0418>, 2011.
- Gupta, H. V., Kling, H., Yilmaz, K. K., and Martinez, G. F.: Decomposition of the mean squared error and NSE performance criteria: Impli-
605 cations for improving hydrological modelling, *Journal of Hydrology*, 377, 80–91, <https://doi.org/10.1016/j.jhydrol.2009.08.003>, 2009.
- Huscroft, J., Gleeson, T., Hartmann, J., and Börker, J.: Compiling and Mapping Global Permeability of the Unconsolidated
and Consolidated Earth: GLobal HYdrogeology MaPS 2.0 (GLHYMPS 2.0), *Geophysical Research Letters*, 45, 1897–1904,
<https://doi.org/10.1002/2017GL075860>, 2018.
- Kling, H., Fuchs, M., and Paulin, M.: Runoff conditions in the upper Danube basin under an ensemble of climate change scenarios, *Journal*
610 *of Hydrology*, 424–425, 264–277, <https://doi.org/10.1016/j.jhydrol.2012.01.011>, 2012.
- Ko, A., Mascaro, G., and Vivoni, E. R.: Strategies to Improve and Evaluate Physics-Based Hyperresolution Hydrologic Simulations at
Regional Basin Scales, *Water Resources Research*, pp. 1129–1152, <https://doi.org/10.1029/2018WR023521>, 2019.
- Kollet, S. J. and Maxwell, R. M.: Integrated surface–groundwater flow modeling: A free-surface overland flow boundary condition in a
parallel groundwater flow model, *Advances in Water Resources*, 29, 945–958, <https://doi.org/10.1016/j.advwatres.2005.08.006>, 2006.
- 615 Koppen, W. and Geiger, R.: *Handbook of climatology*, vol. 1, Gebruder Borntraeger Berlin, 1930.
- Kratzert, F., Klotz, D., Hochreiter, S., and Nearing, G. S.: A note on leveraging synergy in multiple meteorological data sets with deep
learning for rainfall–runoff modeling, *Hydrology and Earth System Sciences*, 25, 2685–2703, <https://doi.org/10.5194/hess-25-2685-2021>,
2021.
- Loheide, S. P. and Lundquist, J. D.: Snowmelt-induced diel fluxes through the hyporheic zone, *Water Resources Research*, 45, W07 404,
620 <https://doi.org/10.1029/2008WR007329>, 2009.
- Maina, F. Z., Siirila-Woodburn, E. R., and Vahmani, P.: Sensitivity of meteorological-forcing resolution on hydrologic variables, *Hydrology*
and *Earth System Sciences*, 24, 3451–3474, <https://doi.org/10.5194/hess-24-3451-2020>, 2020.
- Maxwell, R. M. and Condon, L. E.: Connections between groundwater flow and transpiration partitioning, *Science*, 353, 377–380,
<https://doi.org/10.1126/science.aaf7891>, 2016.
- 625 Mitchell, K. E.: The multi-institution North American Land Data Assimilation System (NLDAS): Utilizing multiple GCIP prod-
ucts and partners in a continental distributed hydrological modeling system, *Journal of Geophysical Research*, 109, D07S90,
<https://doi.org/10.1029/2003JD003823>, 2004.
- Mourtzinis, S., Rattalino Edreira, J. I., Conley, S. P., and Grassini, P.: From grid to field: Assessing quality of gridded weather data for
agricultural applications, *European Journal of Agronomy*, 82, 163–172, <https://doi.org/10.1016/j.eja.2016.10.013>, 2017.

- 630 Muche, M. E., Sinnathamby, S., Parmar, R., Knightes, C. D., Johnston, J. M., Wolfe, K., Purucker, S. T., Cyterski, M. J., and Smith, D.: Comparison and Evaluation of Gridded Precipitation Datasets in a Kansas Agricultural Watershed Using SWAT, *JAWRA Journal of the American Water Resources Association*, 56, 486–506, <https://doi.org/10.1111/1752-1688.12819>, 2020.
- Ochoa-Rodriguez, S., Wang, L. P., Gires, A., Pina, R. D., Reinoso-Rondinel, R., Bruni, G., Ichiba, A., Gaitan, S., Cristiano, E., Van Assel, J., Kroll, S., Murlà-Tuyls, D., Tisserand, B., Schertzer, D., Tchiguirinskaia, I., Onof, C., Willems, P., and Ten Veldhuis, M. C.: Impact of
635 spatial and temporal resolution of rainfall inputs on urban hydrodynamic modelling outputs: A multi-catchment investigation, *Journal of Hydrology*, 531, 389–407, <https://doi.org/10.1016/j.jhydrol.2015.05.035>, 2015.
- Oleson, K., Lawrence, D., Bonan, G., Drewniak, B., Huang, M., Koven, C., Levis, S., Li, F., Riley, W., Subin, Z., et al.: Technical description of version 4.5 of the Community Land Model (CLM), No. NCAR/TN-503+STR, p. D6RR1W7M, <https://doi.org/10.5065/D6RR1W7M>, 2013.
- 640 Pan, M., Sheffield, J., Wood, E. F., Mitchell, K. E., Houser, P. R., Schaake, J. C., Robock, A., Lohmann, D., Cosgrove, B., Duan, Q., Luo, L., Higgins, R. W., Pinker, R. T., and Tarpley, J. D.: Snow process modeling in the North American Land Data Assimilation System (NLDAS): 1. Evaluation of model simulated snow water equivalent, *Journal of Geophysical Research D: Atmospheres*, 108, 1–14, <https://doi.org/10.1029/2003jd003994>, 2003.
- Pan, M., Cai, X., Chaney, N. W., Entekhabi, D., and Wood, E. F.: An initial assessment of SMAP soil moisture retrievals using high-resolution
645 model simulations and in situ observations, *Geophysical Research Letters*, 43, 9662–9668, <https://doi.org/10.1002/2016GL069964>, 2016.
- Petrone, K., Buffam, I., and Laudon, H.: Hydrologic and biotic control of nitrogen export during snowmelt: A combined conservative and reactive tracer approach, *Water Resources Research*, 43, 1–13, <https://doi.org/10.1029/2006WR005286>, 2007.
- Schreiner-McGraw, A. P. and Ajami, H.: Impact of Uncertainty in Precipitation Forcing Data Sets on the Hydrologic Budget of an Integrated Hydrologic Model in Mountainous Terrain, *Water Resources Research*, 56, 1–21, <https://doi.org/10.1029/2020WR027639>, 2020.
- 650 Shanguan, W., Hengl, T., Mendes de Jesus, J., Yuan, H., and Dai, Y.: Mapping the global depth to bedrock for land surface modeling, *Journal of Advances in Modeling Earth Systems*, 9, 65–88, <https://doi.org/10.1002/2016MS000686>, 2017.
- Sheffield, J., Pan, M., Wood, E. F., Mitchell, K. E., Houser, P. R., Schaake, J. C., Robock, A., Lohmann, D., Cosgrove, B., Duan, Q., Luo, L., Higgins, R. W., Pinker, R. T., Tarpley, J. D., and Ramsay, B. H.: Snow process modeling in the North American Land Data Assimilation System (NLDAS): 1. Evaluation of model-simulated snow cover extent, *Journal of Geophysical Research: Atmospheres*, 108, 1–13,
655 <https://doi.org/10.1029/2002jd003274>, 2003.
- Shuai, P., Cardenas, M. B., Knappett, P. S. K., Bennett, P. C., and Neilson, B. T.: Denitrification in the banks of fluctuating rivers: The effects of river stage amplitude, sediment hydraulic conductivity and dispersivity, and ambient groundwater flow, *Water Resources Research*, 53, 7951–7967, <https://doi.org/10.1002/2017WR020610>, 2017.
- Song, X., Chen, X., Stegen, J., Hammond, G., Song, H.-S., Dai, H., Graham, E., and Zachara, J. M.: Drought Conditions Maximize the
660 Impact of High-Frequency Flow Variations on Thermal Regimes and Biogeochemical Function in the Hyporheic Zone, *Water Resources Research*, 54, 7361–7382, <https://doi.org/10.1029/2018WR022586>, 2018.
- Staudinger, M., Stoelzle, M., Cochand, F., Seibert, J., Weiler, M., and Hunkeler, D.: Your work is my boundary condition!: Challenges and approaches for a closer collaboration between hydrologists and hydrogeologists, *Journal of Hydrology*, 571, 235–243, <https://doi.org/10.1016/j.jhydrol.2019.01.058>, 2019.
- 665 Taylor, K. E.: Summarizing multiple aspects of model performance in a single diagram, *Journal of Geophysical Research: Atmospheres*, 106, 7183–7192, <https://doi.org/10.1029/2000JD900719>, 2001.

- Thornton, P. E., Running, S. W., and White, M. A.: Generating surfaces of daily meteorological variables over large regions of complex terrain, *Journal of Hydrology*, 190, 214–251, [https://doi.org/10.1016/S0022-1694\(96\)03128-9](https://doi.org/10.1016/S0022-1694(96)03128-9), 1997.
- 670 Thornton, P. E., Shrestha, R., Thornton, M., Kao, S.-C., Wei, Y., and Wilson, B. E.: Gridded daily weather data for North America with comprehensive uncertainty quantification, *Scientific Data*, 8, 1–17, <https://doi.org/10.1038/s41597-021-00973-0>, 2021.
- Wetterhall, F., He, Y., Cloke, H., and Pappenberger, F.: Effects of temporal resolution of input precipitation on the performance of hydrological forecasting, *Advances in Geosciences*, 29, 21–25, <https://doi.org/10.5194/adgeo-29-21-2011>, 2011.
- Wolber, B., Maneta, M. P., Harper, J., Jencso, K. G., Payton Gardner, W., Wilcox, A. C., and López-Moreno, I.: The influence of diurnal snowmelt and transpiration on hillslope throughflow and stream response, *Hydrology and Earth System Sciences*, 22, 4295–4310, 675 <https://doi.org/10.5194/hess-22-4295-2018>, 2018.
- Wood, E. F., Roundy, J. K., Troy, T. J., van Beek, L. P. H., Bierkens, M. F. P., Blyth, E., de Roo, A., Döll, P., Ek, M., Famiglietti, J., Gochis, D., van de Giesen, N., Houser, P., Jaffé, P. R., Kollet, S., Lehner, B., Lettenmaier, D. P., Peters-Lidard, C., Sivapalan, M., Sheffield, J., Wade, A., and Whitehead, P.: Hyperresolution Global Land Surface Modeling: Meeting a Grand Challenge for Monitoring Earth’s Terrestrial Water, *Water Resources Research*, 47, <https://doi.org/10.1029/2010WR010090>, 2011.
- 680 Xia, Y., Mitchell, K., Ek, M., Cosgrove, B., Sheffield, J., Luo, L., Alonge, C., Wei, H., Meng, J., Livneh, B., Duan, Q., and Lohmann, D.: Continental-scale water and energy flux analysis and validation for North American Land Data Assimilation System project phase 2 (NLDAS-2): 2. Validation of model-simulated streamflow, *Journal of Geophysical Research: Atmospheres*, 117, n/a–n/a, <https://doi.org/10.1029/2011JD016051>, 2012.
- Zhang, Y. and Schaap, M. G.: Weighted Recalibration of the Rosetta Pedotransfer Model with Improved Estimates of Hydraulic Parameter 685 Distributions and Summary Statistics (Rosetta3), *Journal of Hydrology*, 547, 39–53, <https://doi.org/10.1016/j.jhydrol.2017.01.004>, 2017.