

Supplementary Material

Reconstructing climate trends adds skills to seasonal reference crop evapotranspiration forecasting

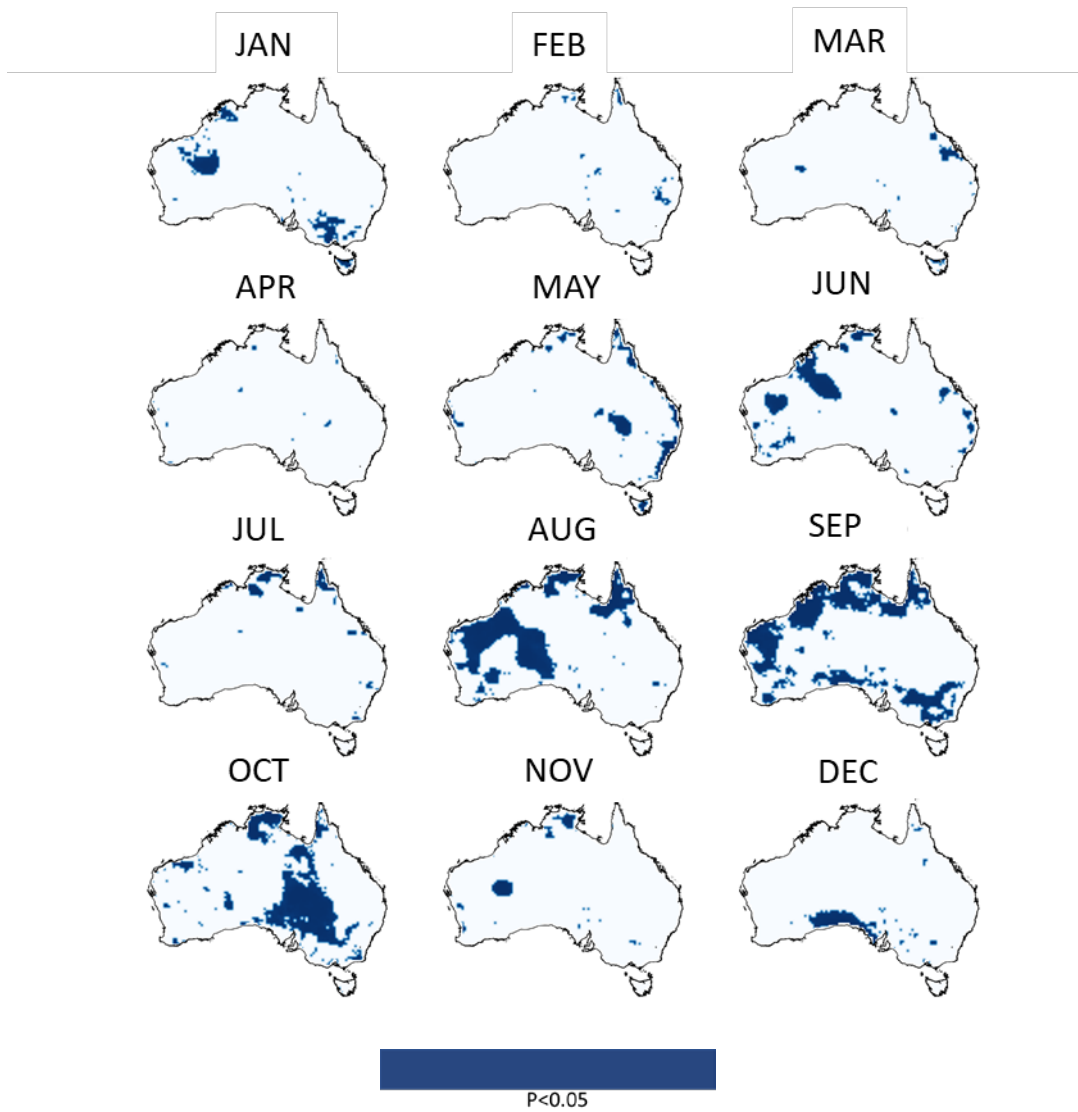
Qichun Yang^a *, Quan J Wang^a, Andrew Western^a, Wenyan Wu^a,
Yawen Shao^a, and Kirsti Hakala^a

a. Department of Infrastructure Engineering, The University of Melbourne, Parkville 3010,
Australia

* Corresponding author

E-mail address: qichun.yang@unimelb.edu.au

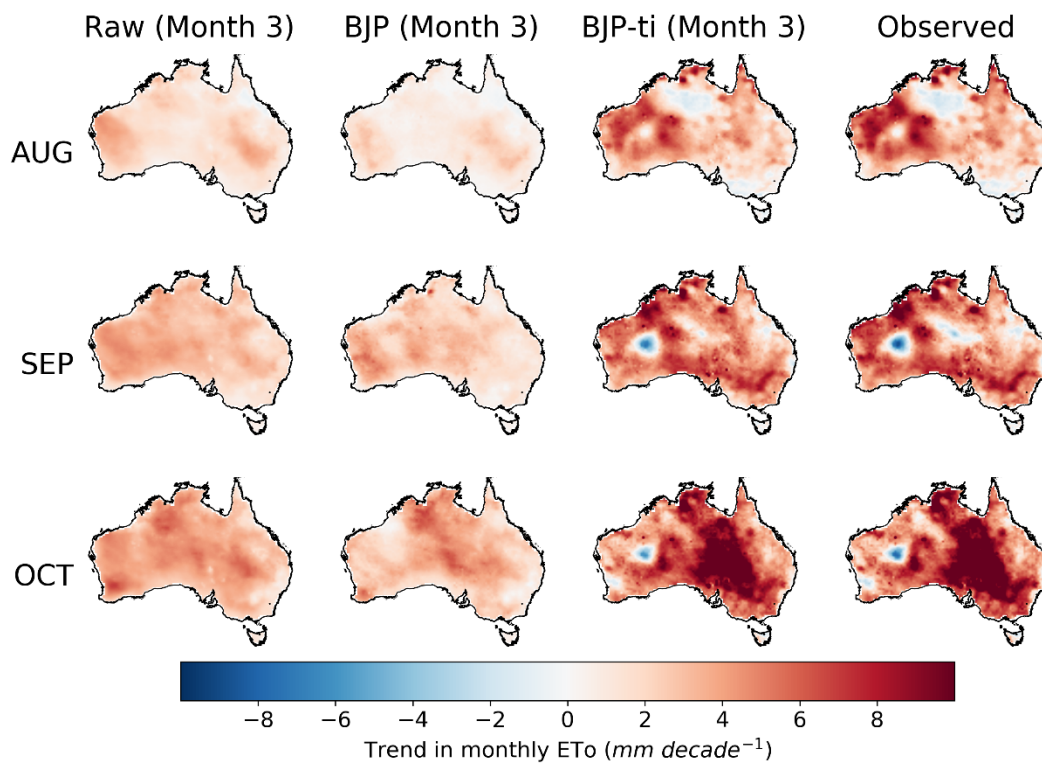
Telephone number: +61 0411359526



18

19

20 Fig. S1. Significance of trends in transformed ET_0 observations by month. Dark blue shows regions with
 21 statistically significant trends (at the 95% confidence interval).



22

23

24

25

26

27

Fig. S2. Trends in raw forecasts, BJP calibrated forecasts, BJP-ti calibrated forecasts for month 3, and observed ET_o for three selected months

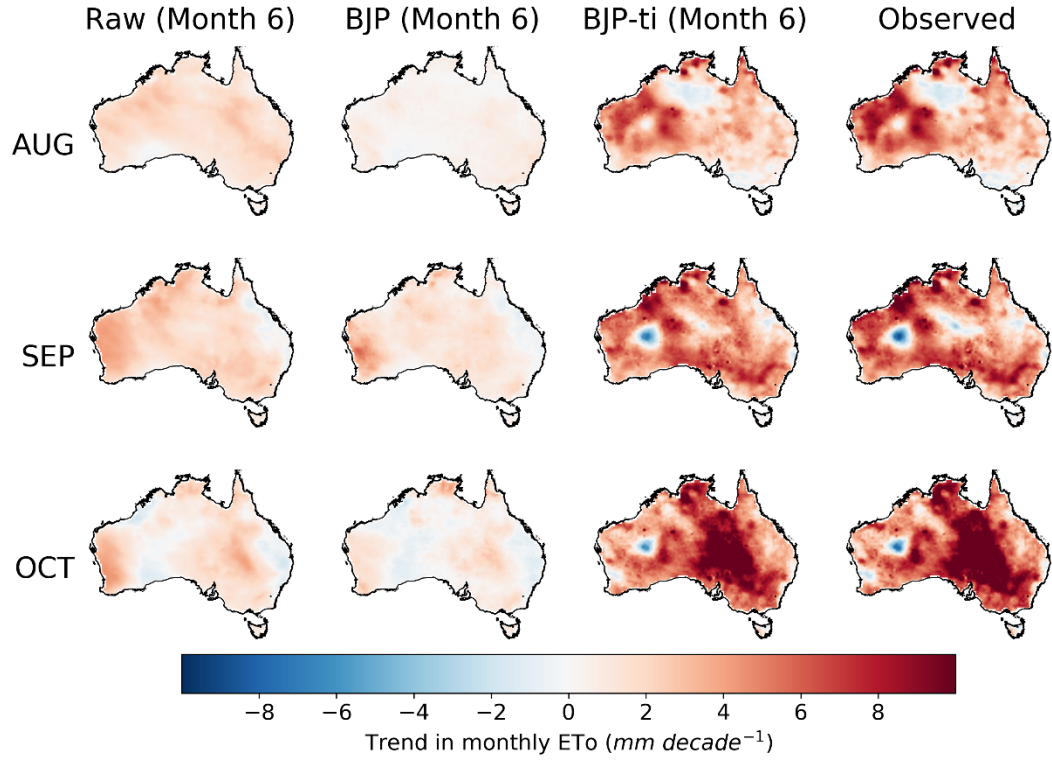
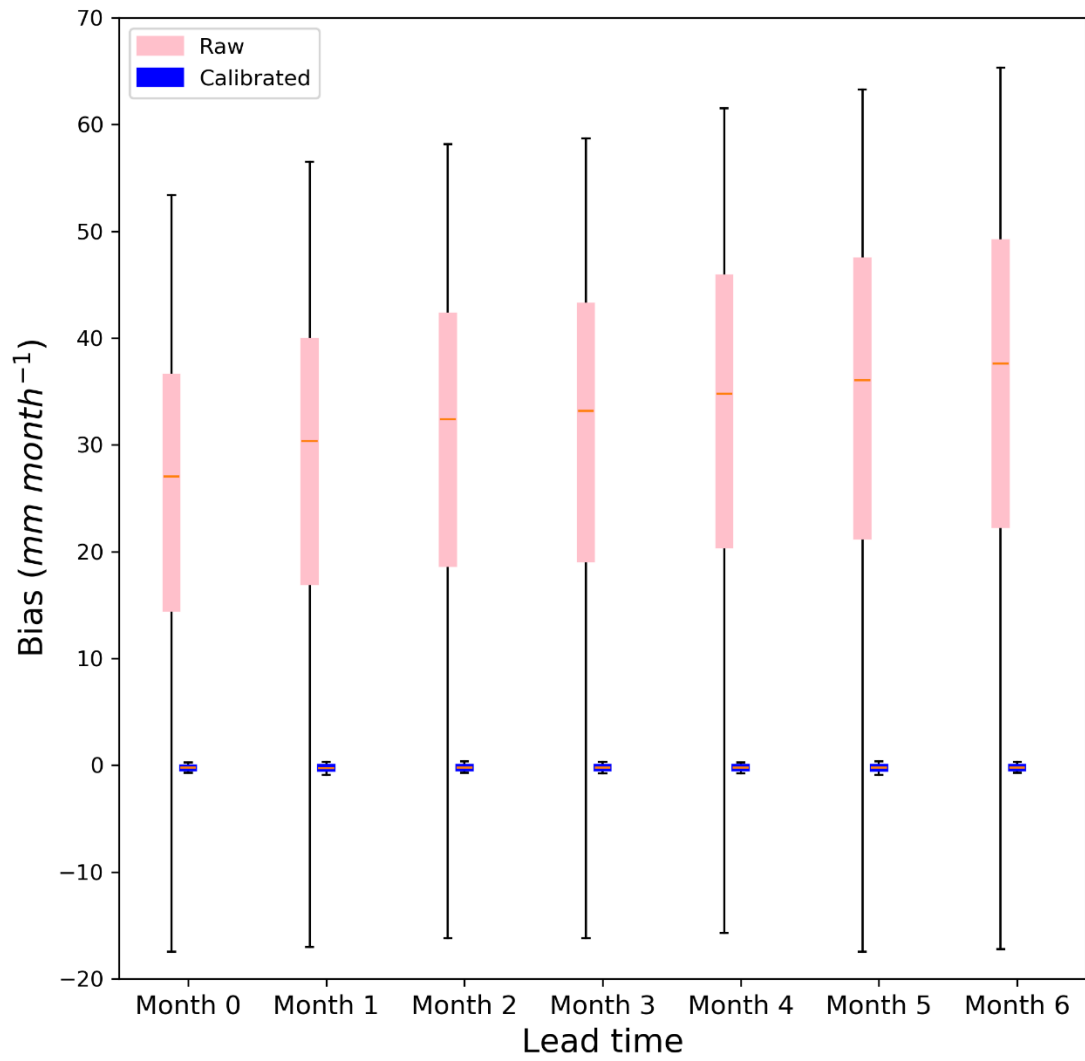


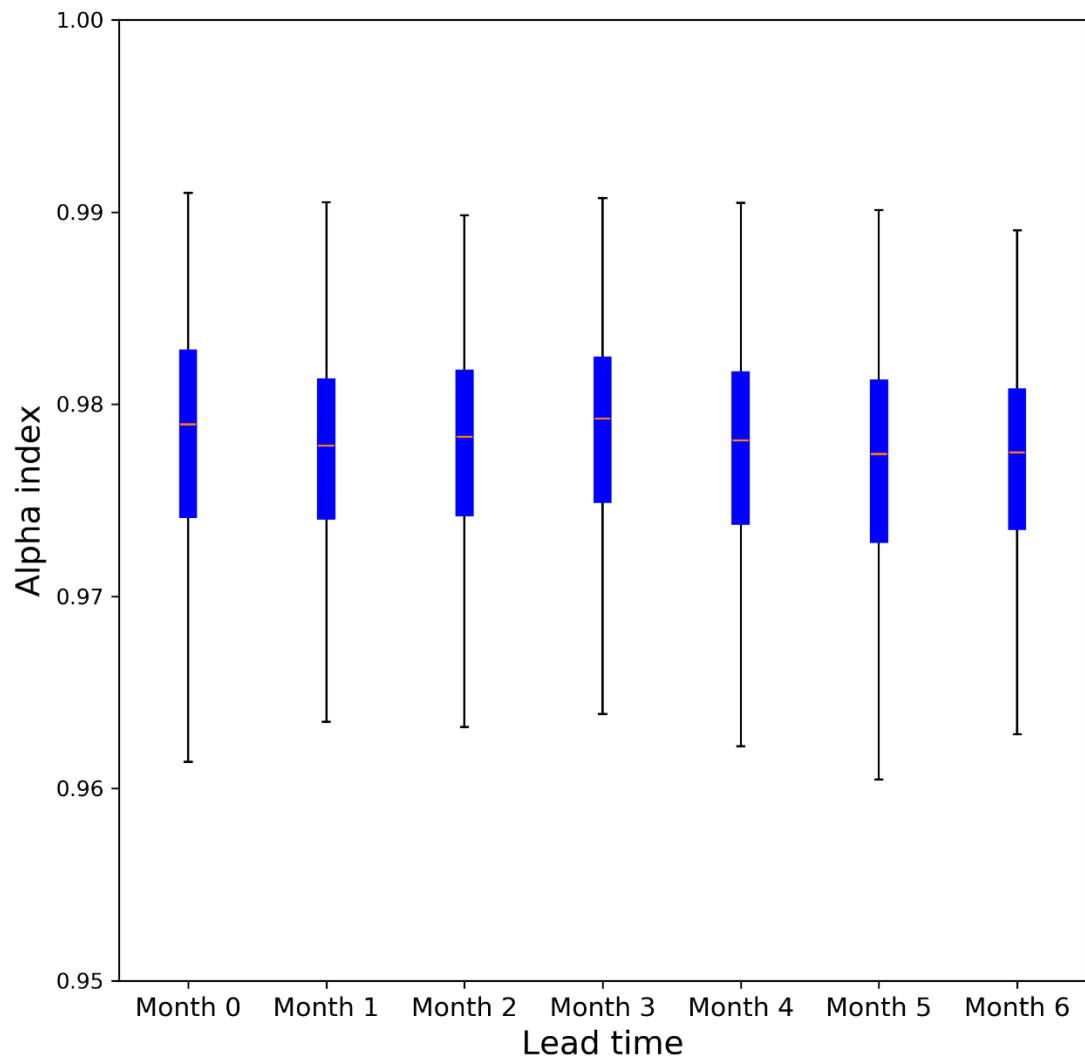
Fig. S3. Trends in raw forecasts, BJP calibrated forecasts, BJP-ti calibrated forecasts for month 6, and observed ET₀ for three selected months

28
 29
 30
 31
 32
 33
 34
 35
 36
 37
 38
 39
 40
 41
 42
 43
 44
 45
 46
 47
 48
 49



50
51
52

Fig. S4. Boxplot of bias in raw and BJP-ti calibrated forecasts across seven lead times



53
54
55
56
57
58
59
60

Fig. S5. Boxplot of α -index of BJP-ti calibrated forecasts across seven lead times