

December 6, 2021

MS. Ref. No. hess-2021-491

“A new large-scale suspended sediment model and its application over the United States”

Dear editor and reviewers,

The authors would like to thank the reviewers for your time and constructive comments. We have carefully addressed the comments, and revised our manuscript correspondingly. Below we provide our point-to-point responses (in blue color) to each of the comments (in black color). Please note that the line numbers we provide are for the version with changes tracked (see attached).

**Reviewer #1:**

<https://doi.org/10.5194/hess-2021-491-RC1>.

This study developed a new process-based suspended sediment module based on MOSART within E3SM. The new model, MOSART-sediment, consists of an existing soil erosion module, a new riverine sediment module and a new reservoir module with both reservoir trapping and regulation mechanisms incorporated. It is then applied to CONUS for long-term average suspended sediment discharge simulations. The historical data are reasonably captured, and the reservoir effects are well analyzed. Overall, the manuscript is of a high quality considering that 1) two study objectives are clearly stated and well achieved; 2) model implementations and results are clearly described; 3) model uncertainty and reservoir effects are also discussed.

My main comment is on section 2.2.1, where I think the authors should describe the ELM-erosion model even more briefly and focus more on how it is applied/manipulated in this study. For example, how did this study 'refine the MMF'? Another obvious place needs improvement is the description of the paper outline at around Line 145; I have highlighted it in the manuscript. I also provided some comments/edit suggestions in the attached pdf file. I believe the manuscript is ready to be published once these are addressed. I am happy to take another round of review but I don't think it is necessary.

Response: We thank Reviewer #1 for the constructive comments. We have revised Section 2.2.1 per Reviewer's suggestion, now in Line 183-216. The paper outline description was also revised in Line 116-119. We have also incorporated the other minor comments/edits from the pdf file that Reviewer #1 provided. Please see attached our revised manuscript with changes tracked.

**Reviewer #2:**

<https://doi.org/10.5194/hess-2021-491-RC2>.

This manuscript describes a refinement of an Earth Systems Model that constitutes an early step in incorporating more physically realistic processes for sediment movement in a model framework that by necessity is largely empirical. Delivery of sediment from hillslopes into the channel system is largely empirical. Routing that sediment through the channel system is amenable to more physics-based treatments; however, the large scale of model application necessitates substantial simplifications. I believe the authors have done a good job of incorporating the most essential processes of suspended sediment transport in the channel system, while leaving open the possibility of greater refinement in the future. The manuscript is well-written, clear, and the objectives they pursue in their modeling are novel and of interest to the scientific community.

I don't have any comments that would require major revision of the paper. Therefore, my "major issues" below, are only major in a relative sense – it is just a matter of clarifying some points. The "minor issues" are just some recommended changes in wording.

[Response: We thank Reviewer #2 for the positive and insightful comments. The attached document include 1\) our point-to-point responses and 2\) our revised manuscript with changes tracked.](#)

**Major issues:**

Most of my major issues pertain to the treatment of reservoirs; if I interpret the paper properly, the wash load effectively gets routed along with the water through the channels, and its only alteration in the channel system is its entrapment in reservoirs. Therefore, the treatment of the reservoirs is exceedingly important. Some of the issues raised below may be clarified in the section where you describe Mosart-water; some of them would be best addressed in the Mosart-sediment sections; and some of them might be better left to the Conclusions, where you describe potential future refinements to the model.

[Response: The reviewer is spot-on that the treatment of reservoirs is exceedingly important. We feel that each of the comments below regarding the treatment of reservoirs is valuable, and have incorporated them carefully.](#)

1. You use the effective storage capacity of the reservoir in Eq. (11). Some additional clarification would be useful regarding what this represents. It is common for reservoirs in the western U.S. to have a "normal" pool stage, and above that level a flood storage volume that is infrequently occupied. Is the reservoir capacity the capacity up to the normal pool, or does it include the full capacity including flood storage? Or is it the volume stored at a particular time interval of the simulation?

Response: The effective storage capacity is based on the full capacity including flood storage. It is a fixed value. That said, MOSART-water does simulate the change of reservoir storage with time.

2. Does reservoir volume change during the simulation? I'm sure you don't have enough information to incorporate detailed stage-volume relationships, but protracted high flow periods or low flow periods and the associated volume changes could yield quite different reservoir residence times that would go into Eq. (11).

Response: Yes in our model reservoir volume does change with time. Incorporating the detailed state-volume relationships and how they may change with sediment deposition and dredging is a future direction we would like to pursue. Similarly, reservoir trapping mechanisms (i.e., residence time etc.) should be different from high-flow periods to low-flow periods, as pointed out by Lewis et al. (2013). Another future work can be to improve Eq. (11) and the intra- or inter-annual variations in the reservoir trapping efficiency over multiple reservoirs at the regional or global scales. We have included both of these in Section 5 (Line 656-659) where discussing future directions to improve.

3. How is suspended sediment routed through the reservoirs? Assuming a particle of wash load follows a parcel of water, there could be a substantial lag time from the time the particle of wash load enters the reservoir and the time it exits the reservoir. The method of routing of suspended load through the reservoir needs to be described – even if it is highly simplistic.

Response: We did not explicitly simulate routing of suspended sediment through reservoirs in MOSART-sediment since we do not simulate routing of water through reservoirs in MOSART-water. This is mainly because that, for simplicity, we consider each reservoir only as a point along a river and therefore do not track water or sediment routing within the reservoir. At this stage, we believe it is a reasonable simplification mainly due to lack of detailed reservoir geometry information over hundreds of reservoirs that we simulate here. We have added one sentence to clarify this simplification in Line 306-307.

4. The issue of what constitutes a reservoir is something that will require some thought for future model refinements. The upper Mississippi River, Illinois River, Ohio River, and other large navigable waters in the middle and eastern U.S. have a series of navigation dams that create pools that step the river down in discrete drops at the dams. From your discussion of Illinois River, indicating only a few reservoirs, most likely the navigation pools were not treated as reservoirs. And this is reasonable. However, in representing the hydraulics and sediment routing through these large rivers, these pools are a first-order effect and cover 100's of kms of rivers. The friction slope that is driving the boundary shear stress is commonly dropped by an order of magnitude relative to the mean stream-bed slope in such pools. Not only does this alter the suspended bed material load, but the mean velocity is lower, and routing of wash load would consequently be altered as well.

Response: This is certainly a very interesting thought. We have revised Line 657 to incorporate it into our future model refinements.

The only other issue I had pertains to flood flows. If I understand the paper correctly, the channels are treated as rectangular cross sections. This is a good conceptualization, up until the point when flows go overbank. As a large amount of the annual sediment load is delivered during flood, being able to more realistically capture conditions during flood would be quite important – at least for the big rivers like the Mississippi and Missouri Rivers. If the discharge was twice the bankfull flow, in reality it would engage the floodplain, and temper further increases in the boundary shear stresses experienced by the channel. However, if the flood was carried entirely in a rectangular channel, the depth, velocity, and boundary shear stress would increase dramatically and would certainly overestimate the amount of suspended bed material load. A future refinement that would account for a simple compound channel for the dynamic wave routing could largely alleviate this issue; but of course, it will also take a lot of effort.

Response: We fully agree with the reviewer. We have developed a MOSART-inundation module where we allow for realistic representation of water exchanges between channel and floodplain once floods occur, i.e., channel water depth exceeding bankfull depth. In MOSART-inundation, a diffusion wave routing method has been implemented. It is actually an ongoing, separate effort to account for the changes in riverine hydraulic dynamics, riverine sediment processes and sediment exchanges between channel and floodplain during flooding events. Hopefully we will be able to report this separate effort in near future. We have added one sentence about this model refinement in Line 658-659.

**Minor issues:**

Line 166: replace “kinematic” with “kinetic”

Response: replaced.

Line 214: replace “pebbles and bounders” with “cobbles and boulders”

Response: replaced.

Line 235: It should be noted that the Engelund-Hansen relationship is based on their own treatment of  $C_f$ , which is not the one used in Eq. (3). The Engelund-Hansen  $C_f$  is calculated by taking into account the relative effects of skin friction and form drag that varies with  $\tau^*$ . Your simplification is warranted given the extra computational expense associated with the shear partitioning process, but it should be explicitly stated.

Response: The reviewer is correct that the Engelund-Hansen relation considers total resistance coefficient,  $C_f$ , as the sum of skin friction and form drag. By doing so, one can use the hydraulic resistance relation of Engelund-Hansen to compute for water depth/water surface elevation and then  $C_f$ , given water discharge, channel slope, and median grain size  $D_{50}$ . The computational procedure will require an iterative technique such as Newton-Raphson. More details can be found in Garcia (2008). However, we used the Manning’s friction to compute  $C_f$  in order to avoid the extra computational expense and keep consistency with routing computation in MOSART-water. We have added this clarification in Line 281-284.

Line 244: Here you describe how you calculate the variable  $Sh$ , but you don’t state what the variable is. (It is the friction slope or slope of the energy grade line).

Response: It is the slope of energy grade line. We have added its definition in Line 263.

Line 261: Define the variable  $D$ ; (I assume that it is not synonymous with  $D_{50}$  in Cheng's formula)

Response: In this study, we use it the same as  $D_{50}$ . We have clarified it in Eq. (8).

Line 261-262: I recommend using a different variable than  $\nu_t$  for kinematic viscosity. That is so commonly used to indicate the turbulent eddy viscosity, that it could cause confusion.

Response: Done. Please see Eq. (9).

Line 320: U.S. Army Corps of Engineers

Response: Revised.

5

# A new large-scale suspended sediment model and its application over the United States

Hong-Yi Li<sup>1\*</sup>, Zeli Tan<sup>2</sup>, Hongbo Ma<sup>3</sup>, Zhenduo Zhu<sup>4</sup>, Guta Wakbulcho Abeshu<sup>1</sup>, Senlin Zhu<sup>1,5</sup>, Sagy Cohen<sup>6</sup>, Tian Zhou<sup>2</sup>, Donghui Xu<sup>2</sup>, and L. Ruby Leung<sup>2</sup>

<sup>1</sup>Department of Civil and Environmental Engineering, University of Houston, Houston, Texas, USA

<sup>2</sup>Pacific Northwest National Laboratory, Richland, Washington, USA

<sup>3</sup>Department of Civil and Environmental Engineering, University of California Irvine, Irvine, California, USA

10 <sup>4</sup>Department of Civil, Structural and Environmental Engineering, University at Buffalo, The State University of New York, Buffalo, New York, USA

<sup>5</sup>Currently at Yangzhou University, Yangzhou, China

<sup>6</sup>Department of Geography, University of Alabama, Tuscaloosa, Alabama, USA

\*Correspondence to: Hong-Yi Li ([hongyili.jadison@gmail.com](mailto:hongyili.jadison@gmail.com))

25 **Abstract.** Suspended sediment plays a vital role in the regional and global cycling of carbon and nutrients by carrying carbon  
and nutrients from headwaters into lowland rivers and the oceans. Sediment transport through river systems is often  
fundamentally modified by human activities ~~like-such as~~ reservoir management. However, a physically based representation  
of sediment transport is still missing in most existing ~~earth-Earth system-System models-Models~~ (ESMs), which are essential  
tools for modeling and predicting earth system changes. Here, we introduce a multi-process river sediment module for ESMs,  
30 which includes: 1) hillslope soil erosion and sediment discharge into streams; 2) sediment transport processes through river  
networks; 3) reservoir operation based on the inflows from upstream areas and water demand from downstream areas; and 4)  
sediment trapping by reservoirs. All model parameters are estimated a priori without calibration. We apply this new sediment  
modeling framework to the contiguous United States and validate it against historical observations of monthly streamflow and  
sediment discharges at 35 river gauges. The model reasonably well captures the long-term balance and seasonal variations of  
35 suspended sediment in large river systems. Furthermore, our model results show that suspended sediment discharge in managed  
rivers is affected more by reservoirs' direct trapping of sediment particles than by their flow regulation. This new sediment  
module enables future modeling of the transportation and transformation of carbon and nutrients carried by the fine sediment  
along the river-ocean continuum to close the global carbon and nutrients cycles.

40

45

50

55

## 1. Introduction

Fluvial suspended sediment (referred to as suspended sediment) is fine-grained particles that may be diffused throughout the vertical column of rivers via turbulence and transported along rivers (Garcia (Ed.), 2008). It typically consists of fine sand, silt, and clay, which can absorb carbon and nutrients. Recently, increasing evidence showed that suspended sediment transport plays a vital role in regional and global carbon and nutrient cycling (Berhe et al., 2018; Lal, 2003, 2004; Ludwig & Probst, 1996; Maavara et al., 2020; Van Oost et al., 2007) by carrying carbon and nutrients from soil storage pools into rivers and eventually oceans or lakes. For instance, suspended sediment is a major source of carbon and nutrients sustaining coastal wetlands and deltas (Kirwan & Megonigal, 2013; Nienhuis et al., 2020). While understanding the global carbon and nutrient cycling has been one of the primary goals of Earth System Models (ESMs), few ESMs have incorporated the representation of suspended sediment and the associated carbon and nutrient fluxes, e.g., particulate organic and inorganic carbon, nitrogen, and phosphorous.

In the field of Earth system modeling, there are two primary reasons for the lack of suspended sediment in current ESMs. First, most ESMs have been developed with a conventional assumption that the lateral carbon fluxes through the land-river-ocean continuum are not significant, compared to the carbon dynamics within the larger carbon pool in the atmosphere, land, and ocean or to the vertical carbon fluxes between the atmosphere and the underlying land and ocean. This assumption has now been refuted by data-based empirical studies (Berhe et al., 2018; Lal, 2003, 2004; Ludwig & Probst, 1996; Maavara et al., 2020; Van Oost et al., 2007). Second, process-based representations of hydrological fluxes, such as overland flow generation and routing, channel routing, and reservoir operations that drive the suspended sediment fluxes, are not included in many ESMs. The recent development of a physically-based large-scale surface flow routing model, Model for Scale Adaptive River Transport (MOSART) (Li et al., 2013; Li, Leung, Getirana, et al., 2015; Li, Leung, Tesfa, et al., 2015; Voisin, Li, et al., 2013; Voisin, Liu, et al., 2013) is one of the few attempts to overcome this obstacle. MOSART explicitly incorporates the processes of overland flow routing across hillslopes, channel routing through tributaries and main channel networks, and water management such as reservoir regulation and surface water withdrawal, thus providing a solid physical basis to represent suspended sediment dynamics in both natural and managed rivers. Therefore, building on the MOSART framework, our first objective is to advance Earth system modeling by introducing a new suspended sediment module in ESMs.

In the field of sediment modeling, there have been several large-scale models of suspended sediment accounting for the spatiotemporal heterogeneity in sediment supply and transport processes (Czuba et al., 2017; Ferguson et al., 2015; Patil et al., 2012; Pelletier, 2012; Schmitt et al., 2016, 2018; Tsuruta et al., 2018; White et al., 2014). However, few have been designed for regional or global applications with explicit accounting for the effects of reservoirs prevalent in most river systems (Nilsson et al., 2005). Among the exceptions are BQART (Syvitski et al., 2003, 2005) and WBMsed (Cohen et al., 2013, 2014; Moragoda & Cohen, 2020). In BQART, a multivariable regression relationship has been established for each basin between the long-term suspended sediment load (hereafter, "load" refers to sediment discharge/flux) at the basin outlet and several parameters accounting for the average climate, lithology, and anthropogenic conditions at the basin scale (Syvitski et al., 2003,



2005). WBMsed is a grid-based implementation of BQART running at the daily time step. In WBMsed, each grid is assumed to be the outlet of its upstream drainage area. A BQART-type regression relationship is used to simulate long-term suspended sediment load from the upstream drainage area to the downstream through the grid. A stochastic model is then used to resolve suspended sediment discharge at daily timescale from the long-term suspended sediment discharge (Cohen et al., 2013, 2014).

Despite the pioneering work in developing BQART and WBMsed, these models are not ready to be incorporated into ESMs as their soil erosion and riverine sediment processes are lumped rather than separately represented. Moreover, the inherent empiricism of BQART/WBMsed limits its scalability (from large to small rivers) and, in its current formulation, the models do not explicitly account for erosion processes on the landscape and within the channel systems. This empiricism is thus a hurdle to studying the individual impacts of the first-order processes and their driving factors such as the various human activities like such as land and water management. Moreover, although WBMsed includes a temporally and spatially explicit sediment trapping algorithm, it does not explicitly simulate sediment movement from grid-cell to grid-cell. Compared to more physically-based models, this limitation will likely constrain its capabilities in sediment prediction in a changing environment. Hence our second objective is to advance large-scale sediment modeling by designing a physically-based, flexible modeling framework that allows for explicit and separate representation of the first-order processes and their driving factors.

To achieve the two objectives, we propose a new process-based suspended sediment module within MOSART, denoted as MOSART-sediment hereafter. MOSART-sediment consists of 1) hillslope soil erosion and sediment discharge into streams; 2) sediment transport processes through river networks; 3) reservoir effects on riverine sediment fluxes. MOSART has been adopted as the riverine component of the Energy Exascale Earth System Model (E3SM) (Caldwell et al., 2019; Golaz et al., 2019) and the Community Earth System Model (CESM) (Lawrence et al., 2019). MOSART-sediment is thus, by design, part of the earth system modeling framework for applications at the regional or global scales. Importantly, MOSART-sediment is designed to only capture the first-order suspended sediment processes for two reasons: 1) to be consistent and compatible with the complexity, resolution, and computational requirement of regional or global ESMs, parsimonious parameterizations are more desirable. 2) Sediment-relevant data at the regional or larger scales has limited availability compared to those supporting reach-scale or watershed-scale modeling studies (Abeshu et al., 2021), hence prohibiting extensive parameter calibration that is often needed in modeling complex processes and their interactions.

The MOSART-sediment development and testing reported in this study are conducted within E3SM. However, MOSART-sediment is designed in a modular fashion so it can be easily implemented in other ESMs. The rest of this paper is organized as follows. Section 2 introduces provides the details of MOSART-sediment. Section 3 describes introduces the study area, data and numerical experiment design. Section 4 describes the model application, validation, and additional analysis over the contiguous United States (CONUS). Section 5 summarizes the conclusions and discusses the limitations and future directions.

## 120 2. Modeling Framework

As shown in Figure 1, MOSART-sediment is developed on top of the water module of MOSART (denoted as MOSART-water). Here we provide a detailed description of MOSART-sediment, but only a summary description of MOSART-water for completeness since more details of the latter can be found in our previous publications (Li et al., 2013; Li, Leung, Getirana, et al., 2015; Li, Leung, Tesfa, et al., 2015; Voisin, Li, et al., 2013; Voisin, Liu, et al., 2013).

### 125 2.1 MOSART-water

MOSART-water is a spatially distributed model which takes surface and subsurface runoff time series generated from a land model as inputs and performs runoff routing across hillslopes (overland flow routing) and through channels (channel routing) (Li et al., 2013). The fundamental spatial units of MOSART-water can be regular latitude/longitude grid cells or watersheds, and the former is used in this study. Within each spatial unit, surface runoff is first routed across hillslopes and then discharged along with subsurface runoff into a "tributary sub-network" channel before entering the main channel. The spatial units are thus linked via routing through the main channel network, which is constructed in a scale-consistent way across different spatial resolutions based on the hierarchical river tracing method (H. Wu et al., 2011, 2012). The overland flow routing is modeled using the kinematic wave method, while the channel routing can be simulated using either the kinematic wave method or the diffusion wave method. All model parameters are physically based and available globally as described in our previous studies (Li et al., 2013; Li, Leung, Getirana, et al., 2015; Li, Leung, Tesfa, et al., 2015). In these applications of MOSART-water at the regional to global scales, no parameter calibration was conducted.

MOSART-water includes a water management module applied at regional and continental scales (Li, Leung, Tesfa, et al., 2015; Voisin, Liu, et al., 2013). The water management module represents two typical water management activities: reservoir regulation/operation, and local water extraction/diversion. The focus of our reservoir regulation module is not on any individual reservoir but on hundreds to thousands of reservoirs and their impacts on regional to global processes for earth-Earth system modeling. It is almost impossible to obtain the actual operation rules of all the reservoirs. Nevertheless, some critical information of large reservoirs (e.g., storage capacity no less than  $0.1\text{km}^3$ ), such as the storage capacity and primary operating purposes, is available in some global datasets (Lehner et al., 2011). These large reservoirs can be classified into different categories based on their purposes, such as irrigation, flood-control, navigation, etc. For each reservoir category, we followed a generic algorithm to derive an operation rule for each reservoir based on the hydroclimate conditions in the upstream areas and the water demand in the downstream areas (Li, Leung, Tesfa, et al., 2015; Voisin, Liu, et al., 2013). For example, for flood control purpose, reservoir release should follow a flat curve; ~~for~~ For irrigation purpose, reservoir release should follow the seasonal variation of irrigation water demand.

## 2.2 MOSART-sediment

Riverine sediment load can be divided into two components: bed-material load and wash load (Biedenharn et al., 2006). Wash load is the fraction of the moving sediment that cannot be found in the bed material with an appropriate fraction (Einstein et al., 1940; Lane, 1947) whereas bed-material load is the part that can be found substantially in the bed material. In other words, the bed material load is from the bed material and controlled by the local hydrodynamics and the bed material grain size. Wash load follows the fluid flow well without much exchange with the bed material and is thus controlled by the upstream supply. The bed-material load can be further divided into bedload and suspended part of bed-material load (suspended bed-material load) (Garcia (Ed.), 2008). Bedload refers to the coarse particles being transported in the vicinity of the river bed. Suspended bed-material load refers to particles being transported in suspension within the vertical column of the river flow and they interact with river beds usually after a relatively long suspended path in the fluid flow. Wash load often refers to the very fine particles, i.e., grain size less than 0.062 mm (Lane, 1947), which are usually in suspension, well mixed with water, and rarely reside on the river bed. Therefore, total suspended load consists of suspended bed-material load and wash load. This study focuses on total suspended load.

Because of the difference in their sources, bed-material load and wash load are modelled separately, and then the bed-material load is further divided into suspended bed-material load and bedload. In most rivers, particularly those large rivers, bed-material load consists of sand and gravel particles typically sourced from riverbeds. Wash load consists of silt and clay particles usually sourced from surface erosion at hillslopes. The transport processes of bed-material load and wash load are distinct and thus can be treated separately. Bed-material load is controlled by local hydraulic conditions and sediment particle size. Wash load is not constrained by local hydraulic conditions since channel flow usually has sufficient turbulent kinetic energy to suspend and transport wash load particles (silt and clay) (Garcia (Ed.), 2008; Moodie et al., 2020)..

Three primary components thus underpin MOSART-sediment: 1) a recently developed soil erosion module (Tan et al., 2018, 2020, 2021) for wash load supplied from hillslopes driven by overland flow, 2) a new riverine sediment module that treats wash load and bed-material load processes separately, and 3) a new reservoir module for reservoir effects on sediment transport. Next, we briefly describe the soil erosion module and provide details for the riverine and reservoir modules.

### 2.2.1 Hillslope Sediment Processes

The soil erosion module in the E3SM land model (ELM-Erosion) deals with two major processes: 1) detachment of soil particles (clay, silt, and sand) from topsoil (or soil erosion) by raindrops or overland flow, and 2) delivery of the detached soil particles along with overland flow from its location of detachment to rivers, during which the sand particles may deposit back to soil surface due to the limited transport capacity of overland flow. Here we only provide a brief description of these two processes and refer to more details in Tan et al. (2018).

The ELM-Erosion sediment yield model was developed based on the simple Morgan-Morgan-Finney (MMF) model (Morgan, 2001; Morgan & Duzant, 2008), which is better suited for capturing the heterogeneous sediment yield at spatial and temporal scales relevant to ESMs (several to hundreds of square kilometers in space and tens of minutes to hours in time) than

other well-known models (Tan et al., 2018). This choice was made by applying and comparing the eight most extensively used sediment yield models, such as the Water Erosion Prediction Project (WEPP) model, at 454 small catchments in diverse environments across the United States, Canada, Puerto Rico, U.S. Virgin Islands and Guam. In our test that each sediment yield model was deployed at the same hydrological, vegetation and soil conditions, the MMF model outperformed the other models in a simulation representing 53% of the spatial variability of sediment yield over these catchments, which is much better than the other seven models, such as the Water Erosion Prediction Project (WEPP) model. Our test also showed that the ELM-Erosion model could the MMF model reproduced the observed daily sediment yield at six cropland-dominated catchments, with a relative error as low as 10% (Tan et al., 2018). By implementing the MMF model in ELM as ELM-Erosion and driving it by ELM simulated throughfall, leaf drainage, overland flow, leaf and ground cover, canopy height, and soil cohesion, we further tested its performance at the continental scale. Furthermore, as shown in Tan et al. (2020), the model can be found to well capture the spatial variability of soil erosion and sediment yield among the U.S. states and large river basins (Tan et al., 2020). The ELM-Erosion model can account for the impacts of rainfall and runoff fluxes at the event scale and the impacts of vegetation dynamics such as changing leaf area index and canopy heights at the monthly or longer temporal scales. The ELM-Erosion has three parameters for calibration: a scaling factor parameter for rainfall-driven erosion, a scaling factor parameter for runoff-driven erosion, and a scaling factor parameter for sediment transport capacity. Following Tan et al. (2020), in this study, the ELM-Erosion model is run at the 1/8-th degree spatial resolution and the 30-min time step. For each grid cell, the ELM-Erosion has three parameters for calibration: a scaling factor parameter for rainfall-driven erosion, a scaling factor parameter for runoff-driven erosion, and a scaling factor parameter for sediment transport capacity. The calibration is conducted in two steps: 1) the two erosion related parameters are calibrated at the state level over the conterminous U.S. using the National Resources Inventory (NRI) soil erosion benchmark data (the grid cells in the same state would have the same parameter values); and 2) with soil erosion constrained, the transport capability parameter is calibrated at the basin scale using the pre-dam sediment yield data of large river basins.

Following the original MMF model (Morgan, 2001), note that in the ELM-Erosion model does not calculate sediment yield for different, the distribution of soil particle size, such as clay, silt and sand particles, as done in the revised MMF model is not considered. (Morgan & Duzant, 2008) revised the original MMF model (Morgan, 2001) to account for the sediment yield for clay, silt and sand particles, respectively. But it is because we found that in their comparison that this modification did not improve the model performance over the continental scale while introducing additional complexity and computational cost (Tan et al., 2018). Therefore, we chose to refine the MMF model directly for our sediment yield modeling. In this study, we assume that sediment yield to rivers caused by soil erosion mainly consists of silt and clay particles, or in other words in the form of wash load (Garcia (Ed.), 2008; Patil et al., 2012). This assumption is reasonable because during a storm event, even through detachment could happen to either clay, silt, or sand soil particles, the transport capacity of overland flow for the detached soil particles across hillslopes decreases exponentially with increasing soil particle size (Morgan & Duzant, 2008) and a majority of detached sand particles will thus deposit back to the topsoil instead of entering the rivers. Therefore, it is

Field Code Changed

reasonable to assume that wash load (silt and clay particles) is mainly from soil erosion at hillslopes (Garcia (Ed.), 2008; Patil et al., 2012).

### 2.2.2 Riverine Sediment Processes

The riverine sediment module focuses on total suspended load and simulates suspended sediment process on top of the hydraulic conditions simulated by MOSART-water as aforementioned. The suspended load consists of the wash load and suspended bed-material load, which are treated separately.

Wash load is primarily carried by channel flow. For the sake of simplicity, we consider that the net sediment exchange between channel and floodplain is secondary as comparing to the riverine sediment discharge and thus negligible. The effects of reservoir processes on wash load are however nontrivial since reservoirs fundamentally slow down river flow in their immediate upstream channels. We detail the reservoir effects in Section 2.2.3.

Existing sediment transport formulas derived in sedimentology are mainly applicable to bed-material load depending on the river bed conditions and do not account for wash load (Garcia (Ed.), 2008). Most rivers can be roughly classified as gravel-bedded or sand-bedded rivers (Garcia (Ed.), 2008). Gravel-bedded rivers are usually located in mountainous headwater areas, where gravel and coarser material (e.g., cobbles and boulders ~~pebbles and boulders~~) prevail in bed-material load and move mostly in bedload mode. Sand-bedded rivers are mostly in the lowland regions where the bed-material load is dominated by sand and finer particles, i.e., suspended bed-material load (Lamb & Venditti, 2016).

Since this study focuses on suspended sediment, we mainly consider sand-bedded rivers and choose the sediment transport formula from those more suitable for sand-bedded rivers. The classic Engelund-Hansen equation (Engelund & Hansen, 1967; Ma et al., 2020) is typically applicable over sand-bedded rivers and can be further extended to finer-grained rivers (Ma et al., 2017, 2020). It is one of the simplest formulas of bed-material load (Brownlie, 1983), and is relatively easy to estimate its parameters a priori, which is critically important for sediment simulation in an Earth system model setting at the regional or larger scales. Despite its simplicity, the Engelund-Hansen equation is one of the most accurate sediment transport formulas based on extensive validation against both laboratory and field observations (Brownlie, 1983; Church & Ferguson, 2015; Crosato et al., 2011; Crosato & Mosselman, 2009; Darby et al., 2002; Geleynse et al., 2011; Kleinhans et al., 2008; Lee et al., 1997; Ma et al., 2020; Mosselman, 1998; Nicholas, 2013; Schuurman et al., 2013; Simon & Darby, 1997; Van Der Wegen & Roelvink, 2008; Wiele et al., 1996). We therefore adopt the classic Engelund-Hansen equation as the governing equation for riverine bed-material sediment transport. Its implementation within MOSART-sediment is outlined below.

The total bed-material rate  $Q_{sand,total}$  [kg/s] is given as

$$Q_{sand,total} = \rho_{sed} B q_{s,total}^* \sqrt{RgD_{50}} D_{50} \quad (1)$$

~~Where~~ where  $\rho_{sed} = 2650 \text{ kg/m}^3$  is the density of sediment,  $B$  is the channel width [m],  $R$  is submerged specific gravity for quartz in water ( $R=1.65$ ),  $g$  is the gravity acceleration rate [ $\text{m/s}^2$ ], and  $D_{50}$  is the median grain size of bed-material sediment particles [m].  $q_{s,total}^*$  is the dimensionless total sediment flux per unit width (denoted as the Einstein number) for bed-material load, expressed as

$$q_{s,total}^* = \frac{0.05}{C_f} (\tau^*)^{2.5} \quad (2)$$

where  $C_f$  is the total resistance coefficient [-]. The Engelund-Hansen relation considers  $C_f$  as the sum of skin friction and form drag. One can use the hydraulic resistance relation of Engelund-Hansen to compute for water depth and then  $C_f$ , given water discharge, channel slope, and  $D_{50}$ . However, the computational procedure will require an iterative technique such as Newton-Raphson. More details can be found in Garcia (2008). However, here we used the Manning's friction to compute  $C_f$  in order to avoid the extra computational expense and keep consistency with the routing computation in MOSART-water. As such,  $C_f$  can be calculated from channel Manning's roughness coefficient,  $n_r$  [-s/m<sup>1/3</sup>], and channel hydraulic radius (in this study approximated as channel water depth  $h$ ),

$$C_f = \frac{\tau_b}{\rho v^2} = \frac{g n_r^2}{h^{1/3}} \quad (3)$$

where  $\rho$  is the density of water [10<sup>3</sup> kg/m<sup>3</sup>];  $\tau_b$  is the bed shear stress [Pa] and  $\tau_b = \rho g h S_r$  in steady and uniform flows;  $S_r$  is the local channel bed slope [-].

$\tau^*$  is the dimensionless shear stress (the Shields number), given as

$$\tau^* = \frac{\tau_b}{\rho R g D_{50}} = \frac{C_f v^2}{R g D_{50}} \quad (4)$$

where  $v$  is the channel velocity [m/s], and is estimated using Manning's equation (Manning, 1891).

$$v = \frac{h^{2/3} S_r^{1/2}}{n_r} \quad (5)$$

where  $S_h$  is the slope of the energy grade line or energy gradient [-]. In the kinematic wave routing method,  $S_h$  is taken as the local channel slope  $S_r$ . In the diffusion wave routing method,  $S_h$  is estimated based on the difference in the simulated water surface elevations between the current and downstream channels.

Note that the Engelund-Hansen equation estimates the bed-material load that is the sum of bedload and suspended bed-material load. We adopt the transport-mode-parameter approach (Greimann et al., 2008) to separate the suspended bed-material load from the bed-material load computed by the Engelund-Hansen equation. The transport-mode-parameter approach specifies how much of a sediment size class is transported as bedload, suspended bed-material load, or mixed load following the "allocation coefficient" concept (Holly & Rahuel, 1990). Using this approach, the portion of suspended sediment in the bed-material load is given as:

$$f = \min(1, 2.5e^{-Z}) \quad (6)$$

where  $f$  ( $0 \leq f \leq 1$ ) is the transport-mode-parameter, i.e., the portion of suspended sediment in the bed-material load.  $Z$  is the suspension parameter and can be calculated as

$$Z = \frac{\omega}{k u_t} \quad (7)$$

where  $\omega$  is sediment settling velocity [m/s],  $u_t = \sqrt{g h S_r}$  is the frictional shear velocity [m/s], and  $k$  is the von Kármán constant (0.41) [-].

Several formulas are available for sediment settling velocity, such as those named after Stokes (Zhang & Xie, 1993), Zhang (Zhang & Xie, 1993), Van Rijn (Rijn, 1989), and Cheng (Cheng, 1997), respectively. Cheng (1997) evaluated these formulas and suggested that Cheng's formula has the highest degree of prediction accuracy. It applies to a wide range of Reynolds numbers from the Stokes flow to the turbulent regime (Cheng, 1997). Wu and Wang (W. Wu & Wang, 2006) proposed a new formula and suggested that this new formula has a highest accuracy among several formula, followed by Cheng's formula. However, Cheng's formula is mathematically much simpler than that of Wu and Wang, and more suitable for large-scale applications. Thus, Cheng's formula is adopted in this study.

$$\omega = \frac{\nu_{H_2O}}{D_{50}^2} (\sqrt{25 + 1.2d_*^2} - 5)^{1.5} \quad (8)$$

where  $\frac{\nu_{H_2O}}{D_{50}^2}$  is the kinematic viscosity of water at 20 °C ( $=1.036 \times 10^{-6} \text{ m}^2 \text{ s}^{-1}$ ), and  $d_*$  is a dimensionless particle diameter, which is defined as:

$$d_* = \left( \frac{gR}{\nu_{H_2O}^2} \right)^{1/3} D_{50} \quad (9)$$

The Engelund-Hansen equation assumes that sediment transport is always on capacity (equilibrium transport) (An et al., 2018, 2021; Engelund & Hansen, 1967; Naito et al., 2019). This simplification is not unreasonable for large-scale river modeling since the travel distance from one reservoir to another is typically more than 10km. Such a spatial scale enables the sediment-laden flow to sufficiently interact with channel bed to reach transport capacity (An et al., 2018).

For comparison with the Engelund-Hansen equation, we also use another widely used formula to directly estimate the suspended sediment discharge rate, named after Wu (W. Wu et al., 2000) and well verified in multiple studies (Fang et al., 2017; Rousseau et al., 2016; Su et al., 2013; Sun et al., 2015; W. Wu et al., 2005). Wu's equation is given as:

$$q_s^* = 0.0000262 \left[ \left( \frac{\tau^*}{\tau_c^*} - 1 \right) \frac{\nu}{\omega} \right]^{1.74} \quad \text{when } \tau^* > \tau_c^* \quad (10)$$

where  $q_s^*$  is the dimensionless sediment flux for suspended load;  $\tau_c^*$  is the dimensionless critical shear stress above which sediment is mobilized (the default value is 0.0386).

### 2.2.3 Reservoir Sediment Processes

The reservoir sediment module incorporates both direct and indirect reservoir effects on sediment. The direct effect is the trapping of sediment within the reservoirs, preventing it from moving downstream. It applies to both wash load and bed-material load. The indirect effect is mainly through the reservoir regulation function simulated by MOSART-water, which modifies the hydraulic conditions, i.e., flow velocity, depth, and surface hydraulic gradient, in the downstream rivers of reservoirs. Therefore, it affects only bed-material load. Note that in this study we do not explicitly account for routing of water or suspended sediment within reservoirs for simplicity.

Reservoir trapping of sediment is mainly through fundamentally slowing down of the river flow upstream of dams. The slowing down of river flow in the reservoir essentially sets the transport capacity of sediment to near zero, leading to the

Formatted: Indent: First line: 0"

Formatted: Font: Italic

Formatted: Indent: First line: 0"

310 settling of suspended sediment in the water column. Thus, the deposition rate (trapping rate) of suspended sediment is largely dependent on the settling time of suspended sediment in the reservoir. To this end, Brune (1953) developed an empirical formula for reservoir trapping efficiency and validated it for the U.S. reservoirs. It was later adopted globally (Syvitski et al., 2003, 2005; Vörösmarty et al., 2003). Here we also adopt Brune's formula to estimate individual reservoir trapping efficiency,  $e_{trap}$ :

315 
$$e_{trap} = 1 - \frac{0.05}{\Delta T_{local}^{0.5}} \quad (11)$$

where  $\Delta T_{local}$  is the increase of local water residence time due to the reservoir [years], estimated as the effective reservoir storage capacity divided by the mean annual inflow from the reservoir's upstream. Other empirical formulas for reservoir trapping efficiency, e.g., Lewis et al. (2013), were also proposed with more complexity but have not been tested at the regional or global scales. It is worth noting that the sediment trapping in the reservoir resulted from the settling of suspended sediment in a nearly-still water body, and it is thus applied to all the suspended sediment regardless of particle size. Brune (1953) and Lewis et al. (2013) assumed that wash load (silt and clay particles) and the suspended bed-material load (fine sand particles) were trapped by reservoirs in a similar way and did not differentiate them. Here we adopt the same assumption for simplicity.  $e_{trap}$  gives the fraction of suspended load that is trapped in a reservoir, and the rest is released to downstream along with water.

325 The reservoir regulation effect on sediment is mainly by regulating river discharge, e.g., reducing high flow during a wet season and increasing low flow during a dry season. This flow regulation will modify riverine hydraulic conditions such as flow velocity and channel water depth, thus changing bed-material load transport capacity. Besides reservoir regulation, another water management activity represented in MOSART-water is surface water withdrawal which diverts channel water to somewhere else via artificial channels or pipes. For simplicity, we assume that surface water withdrawal reduces only water storage in channels but not sediment.

### 3. Study Area, Data and Numerical Experiments

#### 3.1 Study Area

MOSART-sediment is designed to be applicable at the regional to global scales. In this study, we apply it over the contiguous United States (CONUS) for demonstration and validation, as shown in Figure 2. This study area is smaller than our previous study (Li, Leung, Tesfa, et al., 2015), where we applied ELM-MOSART driven by the atmospheric forcing data from the North American Land Data Assimilation System Data Phase 2 (NLDAS2) over central North America (Mitchell et al., 2004).

#### 3.2 Inputs and Parameters

To support the MOSART-sediment application, we have derived several new parameters a priori over CONUS that are most critical to sediment transport, including sediment particle size, Manning's roughness coefficient, and channel geometry.

Formatted: Indent: First line: 0"



These new parameters are meaningful mostly within CONUS since they have been derived based on various national databases. It is for this reason that our sediment modeling and analysis focus on CONUS. Note that, although the sediment modeling analysis focuses on CONUS, MOSART-water is still applied over the same larger domain as our previous study (Li, Leung, Tesfa, et al., 2015), which includes the Canadian portion of the Columbia River basin. Thus other MOSART-water parameters and inputs are adopted from this previous study.

The median bed-material sediment particle size,  $D_{50}$ , is the most important parameter for the Engelund-Hansen formula. In an earlier study (Abeshu et al., 2021), we derived a national map of the median bed-material sediment particle size ( $D_{50}$ ) over CONUS based on: 1) the observed sediment particle size data from USGS and the U.S. Army Corps of Engineering Engineers, 2) the comprehensive channel and catchment attributes from the National Hydrography Dataset Plus (NHDplus) (McKay et al., 2012; Schwarz et al., 2018), and 3) a predictive model established using state-of-the-art machine learning techniques (Chen & Guestrin, 2016). The  $D_{50}$  map from Abeshu et al. (2021) is in a vector format, i.e., each flowline in NHDplus is assigned a value of the median bed-material sediment particle size. In this study, the vector-format map is converted to the grid-based format at the  $1/8^{\text{th}}$ -degree resolution to be consistent with the other parameters, as shown in Figure 2a.

The channel geometry data, such as bankfull channel width and depth, are shown in Figures 2b and 2c. They are derived following a data-driven hydraulic geometry study (Bieger et al., 2015), which provided the empirical formulas for the whole contiguous U.S. CONUS. Manning's roughness coefficient for river bed is derived based on an empirical formula estimating Manning's roughness coefficient as a linear function of channel water depth distribution within a river basin (Getirana et al., 2014; Luo et al., 2017), as shown in Figure 2d. Channel bed slope (Figure 2e) is essentially from the medium resolution NHDplus. In NHDplus, each flowline represents one river segment and is provided a channel slope value (along with many other channel attributes). We convert these NHDplus channel slope values from a vector format to a grid-based format here. First, the NHDplus flowlines are georeferenced to the MOSART lat/lon grids at the  $1/8^{\text{th}}$ -degree resolution in two steps: 1) local matching and 2) neighborhood matching. For the local matching, we adjust the geographic locations of the downstream ends of the NHDplus flowlines to the MOSART grids center. The drainage areas associated with the NHDplus flowlines (in a vector-based river network) are then compared against those associated with the corresponding MOSART grids (in a grid-based river network). The neighborhood matching is performed only for those grids where the margin of error is significant ( $>20\%$  of NHDplus drainage area). Neighborhood matching is to re-adjust the flowlines from the current MOSART grid cell to one of the 8-neighboring cells where the NHDplus-MOSART drainage area difference is minimal. Then we associate each MOSART-water grid with a single NHDplus flowline. Hence, in the case of multiple flowlines per grid, which is very common, we choose the flowline that has a drainage area closest to the MOSART grid. After the above procedure, each MOSART grid is associated with a flow line. The channel slope of each MOSART grid is then taken as the channel slope value from the corresponding flow line. Reservoir storage capacity (Figure 2f) is already available from our previous study (Li, Leung, Tesfa, et al., 2015) but also critical for sediment modeling, so we display them here for completeness.

The observed monthly suspended sediment discharge and streamflow from the United States Geological Survey (USGS) river gauges are used to validate the model performance. We choose to validate the model at the monthly scale instead of finer scales due to two considerations: 1) The biases in the streamflow simulations by ESMs and even other land surface models are already noticeable at the monthly scale (Getirana et al., 2014, 2021; Li, Leung, Getirana, et al., 2015; Mizukami et al., 2021). 2) The sampling of riverine sediment by USGS is not continuous like the streamflow measurement (taken automatically at an hourly or even shorter time step), but rather infrequently due to the required field visits and subsequent sample analysis (Groten & Johnson, 2018). There is thus considerable uncertainty in the daily suspended sediment data from USGS. Figure 3a shows the locations of 35 selected USGS river gauges along with the river networks (displayed in the form of accumulated upstream drainage area at 1/8<sup>th</sup>-degree resolution). Table 1 also provides more details of these selected gauges. These 35 USGS gauges are selected based on three criteria: 1) a no-more-than-20% difference between the actual upstream drainage area (reported by USGS) and the area represented within a grid-based river network, 2) at least five years of both monthly streamflow and suspended sediment observations in our study period 1990-2012 (see Section 4.1 for the reasons of choosing this period), and 3) relative bias of MOSART-water streamflow simulation (using the full modeling capacity) no more than 50% in 1990-2012. The last criterion is to control the impacts of runoff and streamflow simulation uncertainty to a certain level. There are 63 gauges meeting the first two criteria. When considering the third criterion, the number drops from 63 to 35, suggesting that there is still large uncertainty in the runoff and streamflow simulation in E3SM. In fact, the uncertainty in runoff and streamflow simulation remains a challenge in Earth System modeling (Lawrence et al., 2019) and fully addressing it is beyond the scope of this study. Among the selected gauges, their upstream drainage areas vary between 1225km<sup>2</sup> to 1850000km<sup>2</sup>, covering a range of spatial scales.

Three representative USGS gauges (shown as the red stars in Figure 3b) are chosen out of the 35 gauges for more detailed analysis, including USGS05586100 Illinois River at Valley City in Illinois (ILV), USGS06807000 Missouri River at Nebraska City in Nebraska (MON), and USGS07022000 Mississippi River at Thebes in Illinois (MST). The choice of these three gauges is based on two considerations: 1) these gauges are subject to different levels of reservoir effects, and 2) the drainage areas of these gauges are relatively larger than the others, hence more representing large rivers. The upstream drainage areas for ILV, MON, and MST are  $6.93 \times 10^5 \text{ km}^2$ ,  $1.06 \times 10^6 \text{ km}^2$ , and  $1.85 \times 10^6 \text{ km}^2$ , respectively. In this study, we use  $\Delta T_{basin}$ , the increase of average river water residence time due to all the reservoirs in the upstream areas of a lat/lon grid, to approximate the total reservoir effects including flow regulation and trapping, i.e., the larger the  $\Delta T_{basin}$  value, the stronger the reservoir effects. Note that  $\Delta T_{basin}$  is different from  $\Delta T_{local}$  in Eqn. (11). For any lat/lon grid,  $\Delta T_{basin}$  is calculated as ratio of the sum of storage capacity of all the reservoirs in its upstream areas over the long-term average inflow to this grid.  $\Delta T_{basin}$  closely corresponds to the reservoir regulation index, the ratio of total upstream reservoir storage capacity to the annual streamflow volume (annual mean flow multiplied by the time of a year), which has been used as an indicator of reservoir flow regulation effects (Wang et al., 2017). As shown in Figure 3b, MON and ILV are subject to strong and weak reservoir effects, respectively. MST is downstream of MON and ILV and subject to moderate reservoir effects.

### 3.3 Numerical Experiments

The simulation period is 1979-2012 due to the availability of model inputs, particularly the monthly water demand data that were derived in our previous study (Li, Leung, Tesfa, et al., 2015). ELM-Erosion is applied to 1979-2012 driven by the NLDAS2 atmospheric forcing at the 1/8<sup>th</sup>-degree resolution to generate both daily sediment yield and daily runoff time series at each 1/8<sup>th</sup>-degree grid as the inputs for MOSART-sediment. All the soil erosion parameters are adopted from Tan et al. (2021). Note that Tan et al. (2021) accounted for both climate and land-use change impacts on soil erosion. In this study, we do not consider land-use change, i.e., assuming static landuse. Using the daily inputs from ELM-Erosion, we run MOSART-sediment in 1979-2012 at a daily time step and a 1/8<sup>th</sup>-degree spatial resolution. We consider 1979-1989 as the model spin-up period and carry out the model validation and analysis in 1990-2012.

To isolate the relative contributions of reservoir regulation and trapping processes to suspended sediment transport, three major numerical simulations are designed: 1) *sim\_nat*, MOSART-sediment is run under natural river conditions only, i.e., no reservoir regulation or trapping; 2) *sim\_wm\_only*, MOSART-sediment is run with the water management option, but turning off reservoir trapping; 3) *sim\_wm\_trapping*, MOSART-sediment is run with the water management option to include both flow regulation and reservoir trapping effects. The individual effects of reservoir regulation and trapping can be estimated by comparing *sim\_nat* with *sim\_wm\_only* and comparing the *sim\_wm\_only* and *sim\_wm\_trapping*, respectively. Each simulation is driven by the same sediment yield time series for the period of 1979-2012. Note that the suspended bed-material load in these three major experiments is estimated using the Engelund-Hansen equation, and main channel routing is simulated using the diffusion wave routing method.

We also perform additional numerical experiments to understand the sensitivity of modeling results to the key model parameters, compare the Engelund-Hansen equation with the Wu formula, and compare the diffusion wave routing method with the kinematic wave routing method. More details of these additional numerical experiments will be provided later. Note that in all these numerical experiments, no parameter calibration is conducted for the riverine component. All related parameters have been estimated a priori.

## 4. Modeling Results

### 4.1 Model Validation

MOSART-sediment captures the significant spatial heterogeneity in total suspended load, wash load, and suspended bed-material load, respectively, as shown in Figure 4 where the maps are generated from the *sim\_wm\_trapping* simulation results. The spatial patterns of total suspended load are determined by the patterns of wash load, suspended bed-material load, and their relative dominance at different locations. It appears that suspended bed-material load dominates in the western U.S., e.g., the Columbia and Colorado River basins. Wash load dominates in east of the Rocky Mountains, e.g., the Mississippi River basin, and coastal areas of northeastern U.S. We use the percentage of wash load in the total suspended load to illustrate the relative dominance of wash load at each lat/lon grid, as shown in Figure 4e. In this study, the model simulated spatial average

of the wash load percentage is 62.2%, with higher values in the central and eastern U.S. and coastal western U.S. The dominance of wash load in the simulated suspended load is consistent with previous data-driven studies. For example, Sadeghi and Singh (2017) analyzed the observed suspended load at 24 USGS gauges distributed throughout CONUS and suggested that wash load dominate in the majority of these gauges, i.e., the percentage of wash load in the total suspended load is  $79.085 \pm 11.343\%$  over these gauges.

The spatial heterogeneity of simulated wash load is controlled mainly by that of sediment yield and the spatial distribution of reservoirs. More sediment yield can be from more humid or mountainous areas since it is triggered primarily by surface runoff and raindrops. Reservoir trapping significantly reduces the amount of wash load carried to the rivers downstream of reservoirs. The supply of sand sediment is mostly from the in-channel process, as a function of grain size, channel geometry, and hydraulic conditions such as the shear stress and channel velocity. Roughly, the sand discharge is large when the channel water depth is deep, the channel bed slope is steep, or Manning's roughness coefficient is small. Reservoir regulation reduces the high flow during the wet season and then reduces suspended bed-material load by reducing channel water depth and velocity in the rivers downstream of reservoirs. However it enhances the low flow during the dry season and increases suspended bed-material load in the rivers downstream of reservoirs, which is consistent with the findings reported from literature (Naito et al., 2019; Nittrouer & Viparelli, 2014). Reservoir trapping appears to have little effect on the simulated suspended bed-material load. Reservoirs prevent the upstream suspended bed-material load from going downstream. But the reduced suspended bed-material load is supplemented by the local channel erosion in downstream rivers. Recall the assumption underpinning the Engelund-Hansen equation that the local supply of suspended bed-material load is unlimited.

MOSART-sediment reasonably well captures the long-term average suspended sediment discharge values across CONUS, as shown in Figure 5 for comparison between the model simulated and observed annual mean values in 1990-2012 at multiple USGS gauges. Here the comparison is also shown between the *sim\_nat* and *sim\_wm\_trapping* simulations. The model performs very well in simulating the long-term streamflow over the selected 35 gauges. The difference in streamflow between *sim\_nat* and *sim\_wm\_trapping* is negligible, which is reasonable because 1) reservoir trapping does not affect streamflow at all and 2) reservoir regulation changes mostly intra-annual variability of streamflow and sometimes inter-annual variability, but the long-term mean streamflow is largely unaffected. For suspended sediment, the simulated annual mean values are overall close to those observed, as indicated by the close alignment of the dots with the 1:1 line, particularly for *sim\_wm\_trapping*. Fitted lines are included in Figure 5 to help visualize the overall patterns. The  $R^2$  values between the simulations and observations are 1.0 for the streamflow from both *sim\_nat* and *sim\_wm\_trapping*, and 0.6 for the suspended sediment from both *sim\_nat* and *sim\_wm\_trapping* respectively. WBMsed was validated over CONUS at 11 USGS gauges in 1997-2007 with an overall satisfactory performance (see Fig. 7 in Cohen et al., 2013). WBMsed nevertheless overestimated the long-term average suspended load over the four largest gauges on the Mississippi River (here "largest" means the gauges with the largest suspended load observations), whilst our model seems to have less overestimation over the largest gauges, e.g., Mississippi River at Thebes (USGS ID 07022000). Comparing Fig. 7 in Cohen et al. (2013) with Fig. 5 in this study, one can infer that our model performance is comparable to WBMsed.

We further use the Kling-Gupta coefficient (KGE) (Gupta et al., 2009) and the normalized-root-mean-square (NRMSE) to evaluate the model simulated long-term average across multiple gauges. KGE is a comprehensive metric that integrates the effectiveness of previous extensively used metrics such as root-mean-square-error and the Nash-Sutcliffe coefficient (NSE). It thus captures both the magnitude and timing (or phase) difference between two temporal or spatial series. KGE ranges from negative infinity to 1.0, with 1.0 indicating perfect model performance (Gupta et al., 2009). It has been suggested that a KGE value higher than -0.41 implies that a model performs better than the long-term mean benchmark, i.e., equivalent to NSE=0 (Knoben et al., 2019). NRMSE is calculated as the ratio of RMSE over the long-term mean of a temporal or spatial series. For streamflow, KGE increases from 0.89 to 0.96 and NRMSE decreases from 0.24 to 0.12 by including the reservoir effects, i.e., from *sim\_nat* to *sim\_wm\_trapping*. For suspended sediment, KGE increases from -0.40 to 0.69, and NRMSE decreases from 2.35 to 0.74 by including the reservoir effects. Overall, Figure 5 suggests a very good model performance in capturing the long-term suspended sediment balance across different spatial scales. It also suggests that adding the reservoir effects improves the simulated long-term suspended sediment loads more significantly than the simulated long-term streamflow over the selected gauges.

We further evaluate the model performance at the monthly scale using the KGE values between the simulated and observed monthly time series. We roughly classify the KGE values at the 35 gauges into three categories: Category I,  $KGE \leq -0.41$ , poor model performance; Category II,  $-0.41 < KGE \leq 0$ , decent model performance; Category III,  $KGE > 0$ , good model performance. Figure 6 displays the spatial distribution of the KGE values based on the *sim\_wm\_trapping* simulation. For streamflow, 0, 1, and 34 of the 35 USGS gauges have KGE values in Category I, II, and III, respectively. For suspended sediment, 10, 7, and 18 gauges have KGE values in Category I, II, and III, respectively. Table 1 lists the specific KGE and NRMSE values between the monthly simulated and observed streamflow and suspended sediment time series at each gauge based on the *sim\_wm\_trapping* simulation. Note that the availability of monthly observations varies between different gauges. Overall, MOSART-sediment has a decent or good performance at over 25 of the 35 gauges, indicating that the model is able to capture reasonably well the intra-annual variability of suspended sediment in large river systems.

Compared to streamflow, model biases in the suspended sediment are noticeably larger. Figure 5 suggests that MOSART-sediment overall overestimates annual mean suspended sediment load in many gauges. Figure 6 also suggests poor model performance at some gauges. There are several possible reasons for these biases: 1) We have only included ~1800 large reservoirs (storage capacity no less than  $0.1 \text{ km}^3$ ) with critical information (storage capacity, location, major purposes, etc.) publicly available from the Global Reservoir and Dam Database (GRaND) (Lehner et al., 2011). Relatively small reservoirs in CONUS are not included in the model inputs due to a lack of necessary information, which will be addressed in future work. 2) There are noticeable biases already in the runoff and streamflow simulation at the monthly or shorter time scales, as shown in Figure 7, which propagate to the suspended sediment simulations. 3) There are uncertainties in the model structure and model parameters such as sediment particle size, channel slope, etc., which we will discuss next.

505 **4.2 Uncertainty Analysis**

**4.2.1 Model Structure Uncertainty**

MOSART-sediment simulates hillslope, riverine, and reservoir processes. Here we focus on the riverine and reservoir processes. Uncertainties in the hillslope process (e.g., soil erosion) were discussed in previous studies (Tan et al., 2018, 2021).

510 For the simulated riverine processes, we mainly analyze the uncertainties in the sediment governing equations and routing methods. The accuracy of suspended sediment simulation could be affected by the choice of sediment transport equations and simulation of riverine hydraulic conditions. Many sediment transport equations, ~~like such as~~ Engelund-Hansen and Wu's equations, are well-established in the laboratory or single-reach scale. The implementations of such sediment transport equations at a regional scale for morphology simulation purposes are also well established (Naito et al., 2019; Nittrouer et al., 2012). Their applications in *simulating* suspended sediment at the continental scale are nevertheless rarely reported. Note our  
515 previous major experiment, *sim\_wm\_trapping*, uses the diffusion wave routing method and Engelund-Hansen equation. To compare the performance of Engelund-Hansen and Wu's equations in combination with different routing methods, we have conducted three additional numerical experiments. These three additional experiments all include the reservoir regulation and trapping effects. One of them uses the diffusion wave routing method and Wu's formula. The other two use the kinematic wave routing method, but Engelund-Hansen and Wu's formulas, respectively.

520 Figure 7 shows the KGE and NRMSE values of the simulated monthly suspended sediment load over the selected gauges. Note that Figure 7a only displays the gauges with their KGE values within -1.0~1.0 for clarity. For other gauges, uncertainties in the governing equations and routing methods are secondary to other sources of uncertainties, i.e., in the runoff scheme, channel geometry and other parameters. Figure 7b includes all of the 35 gauges. Over some gauges, the Engelund-Hansen equation (plus the transport-mode-parameter approach) performs better than Wu's formula, particularly as indicated by the  
525 significantly decreased KGE and increased NRMSE values over some gauges. The long-term KGE and NRMSE values between the simulated and observed suspended load over the selected gauges are 0.29 and 1.76 respectively when using Wu's formula and diffusion wave method, both are worse than those using the Engelund-Hansen equation and diffusion wave method. Therefore, the Engelund-Hansen equation (plus the transport-mode-parameter approach) overall outperforms Wu's formula.

530 As for the routing methods, it appears that the difference between the sediment simulations using the diffusion wave routing method and those using the kinematic wave routing method is overall less than the difference between the Engelund-Hansen and Wu's formulas. The difference between the monthly streamflow simulations using different routing methods is even more negligible (Figure not shown). At the 35 selected stations located mostly upstream of river outlets, the backwater effects are likely not dominant. In flat locations such as close to the river mouths, however, the backwater effects are expected  
535 to be significant, and as such using the diffusion wave routing method should lead to better performance in not only the streamflow but also the sediment simulations.

For the reservoir process, we analyze the uncertainties in the reservoir regulation and trapping processes. Figure 8 illustrates the total impacts of the two reservoir processes by contrasting the *sim\_nat* and *sim\_wm\_trapping* simulations results at the three representative gauges subject to different levels of reservoir effects. At ILV, whose upstream drainage area is subject to relatively small reservoir effects, there is a negligible difference between the simulated streamflow from *sim\_nat* and *sim\_wm\_trapping*, indicating relatively minor water management activities in the upstream areas due to a relatively smaller number of reservoirs and low water demand. At MON, its upstream drainage area is subject to strong reservoir effects. The simulated streamflow is significantly reduced from *sim\_nat* to *sim\_wm\_trapping* particularly over the high-flow periods in the summer, mainly due to the intensive surface water extraction in the upstream drainage area and the strong reservoir regulation effect. At MST, whose upstream drainage area is subject to moderate reservoir effects, the simulated streamflow is also noticeably reduced from *sim\_nat* to *sim\_wm\_trapping* during the high-flow periods. At all these gauges, the simulated suspended load is significantly reduced from *sim\_nat* to *sim\_wm\_trapping* by reservoir trapping. In the upstream area of ILV, there are only a few reservoirs simulated. These reservoirs, however, can still trap a large portion of suspended sediment, suggesting that the effects of reservoirs on suspended sediment discharge are likely more significant than those on streamflow.

Figure 9 displays the change of KGE for the monthly streamflow and suspended load at all selected USGS gauges from *sim\_nat* to *sim\_wm\_trapping*. After adding the reservoir effects (*sim\_wm\_trapping*), the model performance is significantly improved (KGE increases more than 0.05) at 5 and 23 of the 35 USGS gauges for streamflow and suspended load simulations, respectively, and worsened at 12 and 2 USGS gauges, respectively. For the remaining gauges, the change of model performance is negligible. For streamflow, the model performance is already quite good even for *sim\_nat* in terms of the monthly streamflow simulation (see Fig. 5 and Table 1). The uncertainties in the runoff generation, routing structures and parameters appear to overshadow the benefits of adding water management, hence leading to worsened model performance at 12 gauges. The improvement of sediment simulation by adding both reservoir regulation (as part of water management) and trapping is obviously more dominant. Figures 8 and 9 only show the combined effects of reservoir regulation and trapping, as interpreting their individual effects is not straightforward.

The net effects of reservoir regulation and trapping are further examined in Figure 10 by comparing the mean monthly streamflow and suspended sediment discharges among the *sim\_nat* (blue lines), *sim\_wm\_only* (green lines), *sim\_wm\_trapping* (black lines) simulations. By comparing the blue and green lines, one can see the effects of flow regulation caused by water management. Overall, the net effects of reservoir operations on streamflow are to reduce the high-flow in the wet season (May to August) and increase the low-flow in the dry season, and these effects are relatively minor on the flow discharge at ILV, significant at MON, and moderate at MST. Reservoir regulation also reduces the suspended sediment discharge, but the effects are only noticeable during the high-flow period and negligible over the low-flow period when the sediment load is already low. By comparing the green and black lines in Figure 10, one can see the net effects of reservoir trapping. Reservoir trapping largely reduces the magnitude of suspended sediment discharge across all three gauges, including ILV where the reservoir regulation effect seems minor. After adding reservoir trapping, the simulated sediment discharge is much closer to the observations at all three gauges.

The effect of reservoir regulation on streamflow can be propagated from one reservoir to another downstream in a cascading manner. This is because reservoirs do not store water in the long term but only hold it for a short period (i.e., a few months) and then release it downstream. The effects of reservoir trapping may propagate from upstream to downstream for wash load but not for suspended bed-material load. For wash load, reservoirs intercept and keep most of it without releasing it to the downstream reservoirs. Hence, the trapping effect propagates downstream. For suspended bed-material load, even if reservoirs trap most of it from upstream inflow, the downstream river channel beds and in-channel bars will be eroded to supply suspended bed-material load to maintain a dynamic equilibrium state between the in-channel erosion and deposition. This way, the transport rate of bed-material load in the river downstream of a reservoir is only limited by the local hydraulic conditions, i.e., according to the Engelund-Hansen equation.

Although including reservoir trapping improves the simulation of suspended sediment discharge, there are still some discrepancies between the simulations and observations, such as the underestimation of sediment discharge in January-April (at ILV and MST) and overestimation in July-October (at all three gauges). These discrepancies between the simulated and observed seasonal variations in the suspended sediment discharge are likely not due to the streamflow biases. Besides possible uncertainties in the sediment model parameters, another probable cause of the model biases in sediment discharge is that the Brune formula adopted in this study estimates the long-term average reservoir trapping coefficient without explicitly accounting for the seasonal variation in the trapping efficiency (Brune, 1953).

#### 4.2.2 Model Parameter Uncertainty

Here we present model parameter uncertainty analysis focusing on three important and representative parameters: median bed-material sediment particle size,  $D_{50}$ , channel slope,  $S_r$ , and Manning's Roughness coefficient for channels,  $n_r$ .  $D$  is involved in multiple riverine sediment processes (e.g., Eqn. (1), (4), (8), and (9)).  $S_r$  and  $n_r$  affect the sediment processes both directly and indirectly (e.g., Eqn. (3)-(5)). Other parameters are not included here for simplicity.

Figure 11 shows the changes in the simulated long-term average suspended load in 1990-2012 (based on *sim\_wm\_trapping*) after increasing or decreasing  $D$ ,  $S_r$ , and  $n_r$  by 10% respectively. The spatial patterns of these changes are largely controlled by the spatial patterns of the simulated wash load and suspended bed-material load (see Figure 4).  $D$ ,  $S_r$ , and  $n_r$  are mostly affecting the riverine hydraulic conditions and not much wash load transport. The changes in the total suspended load are thus only significant over places dominated by the suspended bed-material load. For places dominated by wash load, the changes in the total suspended load are overall small or even negligible. In fact, the median percentage changes in the suspended load are mainly in the range of -2%~2% for all three parameters (Figure 13). Comparing among the three parameters, the simulation of the suspended bed-material load is most sensitive to the changes in  $S_r$ , followed by  $D$ , and least sensitive to the changes in  $n_r$ .

#### 4.3 Impacts of reservoirs on suspended sediment discharge to the coasts

Despite the uncertainties, MOSART-sediment is a useful tool to shed light on some interesting questions. For example, how will reservoirs affect fresh water and suspended sediment discharges to the coasts? Figure 13 shows the model-simulated



605 impacts of water management on freshwater discharge (Figure 13a) and the effects of reservoirs on suspended sediment discharge (Figure 13b) to the coasts. Note that in Figure 13b, we focus on wash load only instead of total suspended load, i.e., excluding the suspended bed-material load. There are three reasons: 1) Wash load consists of very fine particles and is a major carrier of carbon and nutrients from land into rivers and then to the coasts. 2) Wash load is dominant in most rivers. 3) Wash load is subject to the impacts of both upstream drainage areas (e.g., land use change, water management, precipitation) and local channel conditions (e.g., channel slope and,  $D_{50}$ ), whilst suspended bed-material load is mostly dominated by the local channel conditions.

610 According to our simulations, water management moderately reduces the freshwater discharge to the coasts, particularly for the smaller rivers on the southwest coasts (Figure 13a). The major cause of reduction in freshwater discharge is surface water extraction (which is mainly controlled by water demand intensity) since reservoir regulation normally does not reduce streamflow on a decadal scale (e.g., in the period of 1990-2012). The reduction of freshwater discharge to the southwest coasts is thus consistent with the high irrigation water demand over the western U.S., e.g., in the Colorado River basin.

615 The delivery of suspended sediment from the continental U.S. to the coasts is reduced more significantly than streamflow (Figure 13b). According to our simulation results, the reduction of suspended load by reservoirs is high (e.g., over 95%) in some river basins such as Colorado and Brazos River but medium or low in other rivers such as the Mississippi and Columbia River. The former rivers have a large proportion of wash load relative to the total suspended load (indicated by the colors of the circles). As such, the reservoir trapping effect plays a vital role. In many small rivers close to the coasts but not subject to reservoir effects, most of their suspended sediment discharge is delivered to the coasts without being trapped during the transport. We do not find any notable relationship between the percentage reductions in streamflow vs. those in suspended sediment discharge at the river mouths. For the former, surface water extraction is the major cause; whilst for the latter, reservoir trapping is the major cause. These two major causes do not directly interact with each other, suggesting that the reduction of suspended sediment discharge may not be closely linked to the reduction of streamflow. These inferences, however, are made based on the simulation results, and further investigations using more comprehensive observational datasets and modeling approaches are needed in the future. Moreover, we caution that the wash load estimates (with *sim\_wm\_trapping*) do not account for the effects of small reservoirs, and are likely higher than the real conditions.

625 Nevertheless, our estimates of wash load from large rivers to the coasts are comparable with previously reported numbers. Within the conterminous United States, the greatest amount of sediment is transported by rivers within the Gulf of Mexico drainage system. Meade and Moody (2010) reported that in 1987-2003, the Mississippi River system on average discharged 172 Million-tons/year total suspended load to the coast, which is moderately less than our wash load estimation of 228.23 Million-tons/year from *sim\_wm\_trapping* (used in all the comparisons below unless stated otherwise). Holeman (1968) estimated that the Columbia River discharged about 9 Million tons of total suspended load per year to the Pacific Ocean, and 635 15 years later, this magnitude was reported to be reduced to 8 Million tons/year (Meade & Milliman, 1983). Wise et al. (2007) also estimated 5.1 Million tons of suspended sediment delivery during an average water year. Our wash load estimate for the period 1990-2012 is 6.34 Million-tons/year from the Columbia River to the Pacific coast. For other river systems, our estimates

for the period of 1990-2012 are less than the reported suspended load estimates which were made decades ago. For the Brazos River, one of the largest rivers after the Mississippi River in terms of sediment load delivered to the Gulf of Mexico, Holeman (1968) estimated 32 Million tons/year of the total suspended load. A decade later, Milliman and Meade (1983) estimated it to be 16 Million-tons/year, a much-reduced value. Our wash load estimate is 1.55 Million-tons/year, even further reduced, which is possible given that there has been a decreasing trend of suspended sediment discharge in the U.S. river systems over the past few decades due to improved soil erosion controls (Meade & Moody, 2010).

## 5. Summary and Conclusion

In this study, a new large-scale suspended sediment module has been developed on top of MOSART within E3SM. Both reservoir trapping and regulation mechanisms have been incorporated. Validation of the model simulations against the observations from 35 USGS gauges located across the contiguous United States shows reasonable skill in simulating the long-term average suspended sediment discharge ( $KGE=0.69$ ,  $NRMSE=0.74$ ) and monthly suspended load ( $KGE>0$  in 18 of the 35 gauges). We show that adding the reservoir effects improves the model simulations, particularly at the annual and monthly scales. As such, our model performance is comparable to WBMsed without any calibration. We carry out the model uncertainty analysis in terms of the model structure and parameter uncertainties. We further show that reservoir trapping exerts dominant effects (over reservoir regulation) on suspended sediment discharge through large river systems to the coasts.

The analyses help identify several opportunities to further advance large-scale suspended sediment modeling, including but not limited to: (1) improving the runoff and streamflow simulation within the Earth system modeling framework; (2) effectively accounting for the intra- or inter-annual variations in the reservoir trapping efficiency over multiple reservoirs at the regional or global scales; (3) accounting for more realistic reservoir stage-volume relationships and their impacts on reservoir trapping; (4) including the effects of small or navigational reservoirs on streamflow and sediment simulations; (5) improving the accuracy of channel bed slope estimation; (6) accounting for sediment exchanges between channel and floodplain more realistically. Moreover, our separate treatment of wash load and bed-material load will make it easier to isolate various climate and human impacts on riverine sediment. For instance, water management such as local channel water withdrawal and reservoir operation will primarily affect bed-material load by modifying hydraulic conditions. Land management such as land-use change and farming activities will affect wash load by changing topsoil erosional conditions. Lastly, for the sediment particle size, we have developed adopted a spatial map of median bed-material sediment particle size to support the parameterization of the sediment governing equations but there is still room to enhance the accuracy and availability of the sediment particle data through improved understanding and more data collection. Each of these opportunities above requires a chain of efforts to achieve and is thus beyond the scope of this work.

While future opportunities exist to further improve MOSART-sediment, this study presents a new process-based sediment modeling framework from a coupled ~~earth~~Earth-human system perspective. It has the potential to enable investigations that were not possible on the suspended sediment delivery to the coasts under various disturbances induced by variability and changes in climate and human activities. For example, the models can be used to explore how extreme events such as floods

and droughts and their long term changes may influence sediment delivery to the coast and hence the biogeochemistry of the coastal ecosystem, and the role of soil erosion and sediment transport in atmospheric CO<sub>2</sub> through changes in the terrestrial, riverine, and ocean biogeochemistry. Finally and importantly, the new sediment module lays the foundation for modeling transportation and transformation of particulate C, N, and P through the river-ocean continuum to help close the global C, N, and P cycles within Earth system models.

**Code Availability**

The source code developed in this study is available through the E3SM GitHub repository (<https://github.com/E3SM-Project/E3SM/tree/hongyili/mosart/mosart-sediment-v2>).

**Data Availability**

The data used in this study will be available upon request to the corresponding author.

**Author Contribution**

HL developed the code, carried out the simulations and wrote the manuscript draft. HL, ZT, HM, ZZ, SZ, SC all contributed to the methodology. HL, ZZ and LRL performed the analysis. GA, TZ and DX helped with the model inputs and observational data processing. HL and GA prepared the figures. All authors contributed to the writing and discussion.

**Competing Interest**

The authors declare that they have no conflict of interest.

**Acknowledgment**

This research is supported by the Office of Science of the U.S. Department of Energy as part of the Earth System Model Development program area through the Energy Exascale Earth System Model (E3SM) project. The Pacific Northwest National Laboratory is operated by Battelle for the U.S. Department of Energy under Contract DE-AC05-76RLO1830. The source code from this study will be publicly available through the E3SM GitHub repository (<https://github.com/E3SM-Project/E3SM>).

700

705

## References

- Abeshu, G. W., Li, H.-Y., Zhu, Z., & Leung, L. R. (2021). Median bed-material sediment particle size across rivers in the contiguous U.S. *Earth Syst. Sci. Data Discuss.* <https://doi.org/10.5194/essd-2021-201>
- An, C., Gong, Z., Naito, K., Parker, G., Hassan, M. A., Ma, H., & Fu, X. (2021). Grain Size-Specific Engelund-Hansen Type Relation for Bed Material Load in Sand-Bed Rivers, With Application to the Mississippi River. *Water Resources Research*, 57(2). <https://doi.org/10.1029/2020WR027517>
- An, C., Moodie, A. J., Ma, H., Fu, X., Zhang, Y., Naito, K., & Parker, G. (2018). Morphodynamic model of the lower Yellow River: Flux or entrainment form for sediment mass conservation? *Earth Surface Dynamics*, 6(4), 989–1010. <https://doi.org/10.5194/esurf-6-989-2018>
- Berhe, A. A., Barnes, R. T., Six, J., & Marín-Spiotta, E. (2018). Role of Soil Erosion in Biogeochemical Cycling of Essential Elements: Carbon, Nitrogen, and Phosphorus. *Annual Review of Earth and Planetary Sciences*, 46(March), 521–548. <https://doi.org/10.1146/annurev-earth-082517-010018>
- Biedenharn, D. S., Thorne, C. R., & Watson, C. C. (2006). Wash Load/Bed material load concept in regional sediment management. *Eighth Federal Interagency Sedimentation Conference*.
- Bieger, K., Rathjens, H., Allen, P. M., & Arnold, J. G. (2015). Development and Evaluation of Bankfull Hydraulic Geometry Relationships for the Physiographic Regions of the United States. *Journal of the American Water Resources Association*, 51(3). <https://doi.org/10.1111/jawr.12282>
- Brownlie, W. R. (1983). Flow Depth in Sand-Bed Channels. *Journal of Hydraulic Engineering*, 109(7). [https://doi.org/10.1061/\(asce\)0733-9429\(1983\)109:7\(959\)](https://doi.org/10.1061/(asce)0733-9429(1983)109:7(959))
- Brune, G. M. (1953). Trap efficiency of reservoirs. *Eos, Transactions American Geophysical Union*, 34(3). <https://doi.org/10.1029/TR034i003p00407>
- Caldwell, P. M., Mametjanov, A., Tang, Q., Van Roekel, L. P., Golaz, J.-C., Lin, W., Bader, D. C., Keen, N. D., Feng, Y., Jacob, R., Maltrud, M. E., Roberts, A. F., Taylor, M. A., Veneziani, M., Wang, H., Wolfe, J. D., Balaguru, K., Cameron-Smith, P., Dong, L., ... Zhou, T. (2019). The DOE E3SM Coupled Model Version 1: Description and Results at High Resolution. *Journal of Advances in Modeling Earth Systems*, 11(12). <https://doi.org/10.1029/2019MS001870>
- Chen, T., & Guestrin, C. (2016). XGBoost: A Scalable Tree Boosting System. Proceedings of the 22nd ACM SIGKDD International Conference on Knowledge Discovery and Data Mining. *San Francisco, California*.
- Cheng, N.-S. (1997). Simplified Settling Velocity Formula for Sediment Particle. *Journal of Hydraulic Engineering*, 123(2). [https://doi.org/10.1061/\(asce\)0733-9429\(1997\)123:2\(149\)](https://doi.org/10.1061/(asce)0733-9429(1997)123:2(149))
- Church, M., & Ferguson, R. I. (2015). Morphodynamics: Rivers beyond steady state. *Water Resources Research*, 51(4). <https://doi.org/10.1002/2014WR016862>
- Cohen, S., Kettner, A. J., & Syvitski, J. P. M. (2014). Global suspended sediment and water discharge dynamics between 1960

and 2010: Continental trends and intra-basin sensitivity. *Global and Planetary Change*, 115, 44–58. <https://doi.org/10.1016/j.gloplacha.2014.01.011>

- 740 Cohen, S., Kettner, A. J., Syvitski, J. P. M., & Fekete, B. M. (2013). WBMsed, a distributed global-scale riverine sediment flux model: Model description and validation. *Computers and Geosciences*, 53, 80–93. <https://doi.org/10.1016/j.cageo.2011.08.011>
- Crosato, A., & Mosselman, E. (2009). Simple physics-based predictor for the number of river bars and the transition between meandering and braiding. *Water Resources Research*, 45(3). <https://doi.org/10.1029/2008WR007242>
- 745 Crosato, A., Mosselman, E., Beidmariam Desta, F., & Uijttewaai, W. S. J. (2011). Experimental and numerical evidence for intrinsic nonmigrating bars in alluvial channels. *Water Resources Research*, 47(3). <https://doi.org/10.1029/2010WR009714>
- Czuba, J. A., Foufoula-Georgiou, E., Gran, K. B., Belmont, P., & Wilcock, P. R. (2017). Interplay between spatially explicit sediment sourcing, hierarchical river-network structure, and in-channel bed material sediment transport and storage dynamics. *Journal of Geophysical Research: Earth Surface*, 122(5). <https://doi.org/10.1002/2016JF003965>
- 750 Darby, S. E., Alabyan, A. M., & Van de Wiel, M. J. (2002). Numerical simulation of bank erosion and channel migration in meandering rivers. *Water Resources Research*, 38(9). <https://doi.org/10.1029/2001wr000602>
- Einstein, H. A., Anderson, A. G., & Johnson, J. W. (1940). A distinction between bed-load and suspended load in natural streams. *Eos, Transactions American Geophysical Union*, 21(2). <https://doi.org/10.1029/TR021i002p00628>
- 755 Engelund, F., & Hansen, E. (1967). A monograph on sediment transport in alluvial streams. *Monografia*.
- Fang, H. W., Lai, H. J., Cheng, W., Huang, L., & He, G. J. (2017). Modeling sediment transport with an integrated view of the biofilm effects. *Water Resources Research*, 53(9). <https://doi.org/10.1002/2017WR020628>
- Ferguson, R. I., Church, M., Rennie, C. D., & Venditti, J. G. (2015). Reconstructing a sediment pulse: Modeling the effect of placer mining on Fraser River, Canada. *Journal of Geophysical Research F: Earth Surface*, 120(7). <https://doi.org/10.1002/2015JF003491>
- 760 Garcia (Ed.), M. H. (2008). Sedimentation Engineering: Processes, Measurements, Modeling, and Practice. In M. H. Garcia (Ed.), *American Society of Civil Engineers*. American Society of Civil Engineers.
- Geleynse, N., Storms, J. E. A., Walstra, D. J. R., Jagers, H. R. A., Wang, Z. B., & Stive, M. J. F. (2011). Controls on river delta formation; insights from numerical modelling. *Earth and Planetary Science Letters*, 302(1–2). <https://doi.org/10.1016/j.epsl.2010.12.013>
- 765 Getirana, A., Dutra, E., Guimberteau, M., Kam, J., Li, H. Y., Decharme, B., Zhang, Z., Ducharne, A., Boone, A., Balsamo, G., Rodell, M., Toure, A. M., Xue, Y., Peters-Lidard, C. D., Kumar, S. V., Arsenault, K., Drapeau, G., Leung, L. R., Ronchail, J., & Sheffield, J. (2014). Water balance in the amazon basin from a land surface model ensemble. *Journal of Hydrometeorology*, 15(6), 2586–2614. <https://doi.org/10.1175/JHM-D-14-0068.1>
- 770 Getirana, A., Kumar, S. V., Konapala, G., & Ndehedehe, C. E. (2021). Impacts of Fully Coupling Land Surface and Flood Models on the Simulation of Large Wetlands' Water Dynamics: The Case of the Inner Niger Delta. *Journal of Advances in Modeling Earth Systems*, 13(5). <https://doi.org/10.1029/2021MS002463>
- Golaz, J. C., Caldwell, P. M., Van Roekel, L. P., Petersen, M. R., Tang, Q., Wolfe, J. D., Abeshu, G., Anantharaj, V., Asay-Davis, X. S., Bader, D. C., Baldwin, S. A., Bisht, G., Bogenschutz, P. A., Branstetter, M., Brunke, M. A., Brus, S. R., Burrows, S. M., Cameron-Smith, P. J., Donahue, A. S., ... Zhu, Q. (2019). The DOE E3SM Coupled Model Version 1: Overview and Evaluation at Standard Resolution. *Journal of Advances in Modeling Earth Systems*, 11(7), 2089–2129. <https://doi.org/10.1029/2018MS001603>
- 775 Greimann, B., Lai, Y., & Huang, J. (2008). Two-Dimensional Total Sediment Load Model Equations. *Journal of Hydraulic Engineering*, 134(8), 1142–1146. [https://doi.org/10.1061/\(asce\)0733-9429\(2008\)134:8\(1142\)](https://doi.org/10.1061/(asce)0733-9429(2008)134:8(1142))

- 780 Groten, J. T., & Johnson, G. D. (2018). *Comparability of River Suspended Sediment Sampling and Laboratory Analysis Methods*.
- Gupta, H. V., Kling, H., Yilmaz, K. K., & Martinez, G. F. (2009). Decomposition of the mean squared error and NSE performance criteria: Implications for improving hydrological modelling. *Journal of Hydrology*, 377(1–2). <https://doi.org/10.1016/j.jhydrol.2009.08.003>
- 785 Holeman, J. N. (1968). The Sediment Yield of Major Rivers of the World. *Water Resources Research*, 4(4). <https://doi.org/10.1029/WR004i004p00737>
- Holly, F. M., & Rahuel, J.-L. (1990). New numerical/physical framework for mobile-bed modelling. *Journal of Hydraulic Research*, 28(4). <https://doi.org/10.1080/00221689009499057>
- Kirwan, M. L., & Megonigal, J. P. (2013). Tidal wetland stability in the face of human impacts and sea-level rise. In *Nature* (Vol. 504, Issue 7478). <https://doi.org/10.1038/nature12856>
- 790 Kleinhans, M. G., Jagers, H. R. A., Mosselman, E., & Sloff, C. J. (2008). Bifurcation dynamics and avulsion duration in meandering rivers by one-dimensional and three-dimensional models. *Water Resources Research*, 44(8). <https://doi.org/10.1029/2007WR005912>
- Knoben, W. J. M., Freer, J. E., & Woods, R. A. (2019). Technical note: Inherent benchmark or not? Comparing Nash-Sutcliffe and Kling-Gupta efficiency scores. *Hydrology and Earth System Sciences*, 23(10). <https://doi.org/10.5194/hess-23-4323-2019>
- 795 Lal, R. (2003). Soil erosion and the global carbon budget. In *Environment International* (Vol. 29, Issue 4). [https://doi.org/10.1016/S0160-4120\(02\)00192-7](https://doi.org/10.1016/S0160-4120(02)00192-7)
- Lal, R. (2004). Soil carbon sequestration impacts on global climate change and food security. In *Science* (Vol. 304, Issue 5677). <https://doi.org/10.1126/science.1097396>
- 800 Lamb, M. P., & Venditti, J. G. (2016). The grain size gap and abrupt gravel-sand transitions in rivers due to suspension fallout. *Geophysical Research Letters*, 43(8), 3777–3785. <https://doi.org/10.1002/2016GL068713>
- Lane, E. W. (1947). Report of the Subcommittee on Sediment Terminology. *Eos, Transactions American Geophysical Union*, 28(6). <https://doi.org/10.1029/TR028i006p00936>
- 805 Lawrence, D. M., Fisher, R. A., Koven, C. D., Oleson, K. W., Swenson, S. C., Bonan, G., Collier, N., Ghimire, B., Kampenhout, L., Kennedy, D., Kluzek, E., Lawrence, P. J., Li, F., Li, H., Lombardozzi, D., Riley, W. J., Sacks, W. J., Shi, M., Vertenstein, M., ... Zeng, X. (2019). The Community Land Model version 5: Description of new features, benchmarking, and impact of forcing uncertainty. *Journal of Advances in Modeling Earth Systems*, 2, 1–43. <https://doi.org/10.1029/2018ms001583>
- 810 Lee, H.-Y., Hsieh, H.-M., Yang, J.-C., & Yang, C. T. (1997). Quasi-Two-Dimensional Simulation of Scour and Deposition in Alluvial Channels. *Journal of Hydraulic Engineering*, 123(7). [https://doi.org/10.1061/\(asce\)0733-9429\(1997\)123:7\(600\)](https://doi.org/10.1061/(asce)0733-9429(1997)123:7(600))
- Lehner, B., Liermann, C. R., Revenga, C., Vörösmarty, C., Fekete, B., Crouzet, P., Döll, P., Endejan, M., Frenken, K., Magome, J., Nilsson, C., Robertson, J. C., Rödel, R., Sindorf, N., & Wisser, D. (2011). High-resolution mapping of the world's reservoirs and dams for sustainable river-flow management. In *Frontiers in Ecology and the Environment* (Vol. 9, Issue 9). <https://doi.org/10.1890/100125>
- 815 Lewis, S. E., Bainbridge, Z. T., Kuhnert, P. M., Sherman, B. S., Henderson, B., Dougall, C., Cooper, M., & Brodie, J. E. (2013). Calculating sediment trapping efficiencies for reservoirs in tropical settings: A case study from the Burdekin Falls Dam, NE Australia. *Water Resources Research*, 49(2), 1017–1029. <https://doi.org/10.1002/wrcr.20117>
- 820 Li, H.-Y., Leung, L. R., Getirana, A., Huang, M., Wu, H., Xu, Y., Guo, J., & Voisin, N. (2015). Evaluating global streamflow simulations by a physically based routing model coupled with the community land model. *Journal of Hydrometeorology*, 16(2), 948–971. <https://doi.org/10.1175/JHM-D-14-0079.1>

- Li, H.-Y., Leung, R. L., Tesfa, T., Voisin, N., Hejazi, M., Liu, L., Liu, Y., Rice, J., Wu, H., & Yang, X. (2015). Modeling stream temperature in the Anthropocene: An earth system modeling approach. *Journal of Advances in Modeling Earth Systems*, 7(4), 1661–1679. <https://doi.org/10.1002/2015MS000471>
- Li, H.-Y., Wigmosta, M. S., Wu, H., Huang, M., Ke, Y., Coleman, A. M., & Leung, L. R. (2013). A physically based runoff routing model for land surface and earth system models. *Journal of Hydrometeorology*, 14(3), 808–828.
- Ludwig, W., & Probst, J. L. (1996). A global modelling of the climatic, morphological, and lithological control of river sediment discharges to the oceans. *IAHS-AISH Publication*, 236(236), 21–28.
- Luo, X., Li, H. Y., Ruby Leung, L., Tesfa, T. K., Getirana, A., Papa, F., & Hess, L. L. (2017). Modeling surface water dynamics in the Amazon Basin using MOSART-Inundation v1.0: Impacts of geomorphological parameters and river flow representation. *Geoscientific Model Development*, 10(3). <https://doi.org/10.5194/gmd-10-1233-2017>
- Ma, H., Nittrouer, J. A., Naito, K., Fu, X., Zhang, Y., Moodie, A. J., Wang, Y., Wu, B., & Parker, G. (2017). The exceptional sediment load of fine-grained dispersal systems: Example of the Yellow River, China. *Science Advances*, 3(5). <https://doi.org/10.1126/sciadv.1603114>
- Ma, H., Nittrouer, J. A., Wu, B., Lamb, M. P., Zhang, Y., Mohrig, D., Fu, X., Naito, K., Wang, Y., Moodie, A. J., Wang, G., Hu, C., & Parker, G. (2020). Universal relation with regime transition for sediment transport in fine-grained rivers. *Proceedings of the National Academy of Sciences of the United States of America*, 117(1). <https://doi.org/10.1073/pnas.1911225116>
- Maavara, T., Chen, Q., Van Meter, K., Brown, L. E., Zhang, J., Ni, J., & Zarfl, C. (2020). River dam impacts on biogeochemical cycling. In *Nature Reviews Earth and Environment* (Vol. 1, Issue 2). <https://doi.org/10.1038/s43017-019-0019-0>
- Manning, R. (1891). On the flow of water in open channels and pipes. *Trans. Inst. Civil Eng. Ireland*, 20.
- McKay, L., Bondelid, T., Dewald, T., Johnston, J., Moore, R., and Rea, A. (2012). *NHDPlus Version 2: User Guide*.
- Meade, R. H., & Milliman, J. D. (1983). World-Wide Delivery of River Sediment to the Oceans. *Journal of Geology*, 91(1).
- Meade, R. H., & Moody, J. A. (2010). Causes for the decline of suspended-sediment discharge in the Mississippi River system, 1940-2007. *Hydrological Processes*, 24(1). <https://doi.org/10.1002/hyp.7477>
- Mitchell, K. E., Lohmann, D., Houser, P. R., Wood, E. F., Schaake, J. C., Robock, A., Cosgrove, B. A., Sheffield, J., Duan, Q., Luo, L., Higgins, R. W., Pinker, R. T., Tarpley, J. D., Lettenmaier, D. P., Marshall, C. H., Entin, J. K., Pan, M., Shi, W., Koren, V., ... Bailey, A. A. (2004). The multi-institution North American Land Data Assimilation System (NLDAS): Utilizing multiple GCIIP products and partners in a continental distributed hydrological modeling system. *Journal of Geophysical Research: Atmospheres*, 109(7). <https://doi.org/10.1029/2003jd003823>
- Mizukami, N., Clark, M. P., Gharari, S., Kluzek, E., Pan, M., Lin, P., Beck, H. E., & Yamazaki, D. (2021). A Vector-Based River Routing Model for Earth System Models: Parallelization and Global Applications. *Journal of Advances in Modeling Earth Systems*, 13(6). <https://doi.org/10.1029/2020MS002434>
- Moodie, A. J., Nittrouer, J. A., Ma, H., Carlson, B. N., Wang, Y., Lamb, M. P., & Parker, G. (2020). Suspended-sediment induced stratification inferred from concentration and velocity profile measurements in the lower Yellow River, China. *Water Resources Research*. <https://doi.org/10.1029/2020wr027192>
- Moragoda, N., & Cohen, S. (2020). Climate-induced trends in global riverine water discharge and suspended sediment dynamics in the 21st century. *Global and Planetary Change*, 191. <https://doi.org/10.1016/j.gloplacha.2020.103199>
- Morgan, R. P. C. (2001). A simple approach to soil loss prediction: A revised Morgan-Morgan-Finney model. *Catena*, 44(4). [https://doi.org/10.1016/S0341-8162\(00\)00171-5](https://doi.org/10.1016/S0341-8162(00)00171-5)
- Morgan, R. P. C., & Duzant, J. H. (2008). Modified MMF (Morgan-Morgan-Finney) model for evaluating effects of crops and vegetation cover on soil erosion. *Earth Surface Processes and Landforms*, 33(1). <https://doi.org/10.1002/esp.1530>
- Mosselman, E. (1998). Morphological modelling of rivers with erodible banks. *Hydrological Processes*, 12(8).

- 865 [https://doi.org/10.1002/\(SICI\)1099-1085\(19980630\)12:8<1357::AID-HYP619>3.0.CO;2-7](https://doi.org/10.1002/(SICI)1099-1085(19980630)12:8<1357::AID-HYP619>3.0.CO;2-7)
- Naito, K., Ma, H., Nittrouer, J. A., Zhang, Y., Wu, B., Wang, Y., Fu, X., & Parker, G. (2019). Extended Engelund–Hansen type sediment transport relation for mixtures based on the sand-silt-bed Lower Yellow River, China. *Journal of Hydraulic Research*, 57(6). <https://doi.org/10.1080/00221686.2018.1555554>
- 870 Nicholas, A. P. (2013). Modelling the continuum of river channel patterns. In *Earth Surface Processes and Landforms* (Vol. 38, Issue 10). <https://doi.org/10.1002/esp.3431>
- Nienhuis, J. H., Ashton, A. D., Edmonds, D. A., Hoitink, A. J. F., Kettner, A. J., Rowland, J. C., & Törnqvist, T. E. (2020). Global-scale human impact on delta morphology has led to net land area gain. *Nature*, 577(7791). <https://doi.org/10.1038/s41586-019-1905-9>
- 875 Nilsson, C., Reidy, C. A., Dynesius, M., & Revenga, C. (2005). Fragmentation and flow regulation of the world's large river systems. In *Science* (Vol. 308, Issue 5720). <https://doi.org/10.1126/science.1107887>
- Nittrouer, J. A., Shaw, J., Lamb, M. P., & Mohrig, D. (2012). Spatial and temporal trends for water-flow velocity and bed-material sediment transport in the lower Mississippi River. *Bulletin of the Geological Society of America*, 124(3–4). <https://doi.org/10.1130/B30497.1>
- 880 Nittrouer, J. A., & Viparelli, E. (2014). Sand as a stable and sustainable resource for nourishing the Mississippi River delta. *Nature Geoscience*, 7(5). <https://doi.org/10.1038/ngeo2142>
- Patil, S., Sivapalan, M., Hassan, M. A., Ye, S., Harman, C. J., & Xu, X. (2012). A network model for prediction and diagnosis of sediment dynamics at the watershed scale. *Journal of Geophysical Research F: Earth Surface*, 117(4), 1–17. <https://doi.org/10.1029/2012JF002400>
- 885 Pelletier, J. D. (2012). A spatially distributed model for the long-term suspended sediment discharge and delivery ratio of drainage basins. *Journal of Geophysical Research: Earth Surface*, 117(2). <https://doi.org/10.1029/2011JF002129>
- Rijn, L. C. van. (1989). *Handbook Sediment Transport by Currents and Wave*. Delft Hydraulics.
- Rousseau, Y. Y., Biron, P. M., & Van de Wiel, M. J. (2016). Sensitivity of simulated flow fields and bathymetries in meandering channels to the choice of a morphodynamic model. *Earth Surface Processes and Landforms*, 41(9). <https://doi.org/10.1002/esp.3885>
- 890 Sadeghi, S. H., & Singh, V. P. (2017). Dynamics of suspended sediment concentration, flow discharge and sediment particle size interdependency to identify sediment source. *Journal of Hydrology*, 554. <https://doi.org/10.1016/j.jhydrol.2017.09.006>
- Schmitt, R. J. P., Bizzi, S., & Castelletti, A. (2016). Tracking multiple sediment cascades at the river network scale identifies controls and emerging patterns of sediment connectivity. *Water Resources Research*, 52(5). <https://doi.org/10.1002/2015WR018097>
- 895 Schmitt, R. J. P., Bizzi, S., Castelletti, A., & Kondolf, G. M. (2018). Improved trade-offs of hydropower and sand connectivity by strategic dam planning in the Mekong. *Nature Sustainability*, 1(2). <https://doi.org/10.1038/s41893-018-0022-3>
- Schuurman, F., Marra, W. A., & Kleinans, M. G. (2013). Physics-based modeling of large braided sand-bed rivers: Bar pattern formation, dynamics, and sensitivity. *Journal of Geophysical Research: Earth Surface*, 118(4). <https://doi.org/10.1002/2013JF002896>
- 900 Schwarz, G. E., Jackson, S. E., & Wieczorek, M. E. (2018). Select Attributes for NHDPlus Version 2.1 Reach Catchments and Modified Network Routed Upstream Watersheds for the Conterminous United States. *United States Geological Survey*.
- Simon, A., & Darby, S. E. (1997). Process-form interactions in unstable sand-bed river channels: A numerical modeling approach. *Geomorphology*, 21(2). [https://doi.org/10.1016/S0169-555X\(97\)00043-3](https://doi.org/10.1016/S0169-555X(97)00043-3)
- 905 Su, C. C., Lu, J. Y., & Hong, J. H. (2013). A field investigation of the sediment transport characteristics of a high sediment load intermittent river in Taiwan. *Hydrological Processes*, 27(26). <https://doi.org/10.1002/hyp.9517>



- Sun, J., Lin, B., & Yang, H. (2015). Development and application of a braided river model with non-uniform sediment transport. *Advances in Water Resources*, 81. <https://doi.org/10.1016/j.advwatres.2014.12.012>
- 910 Syvitski, J. P. M., Peckham, S. D., Hilberman, R., & Mulder, T. (2003). Predicting the terrestrial flux of sediment to the global ocean: A planetary perspective. *Sedimentary Geology*, 162(1–2), 5–24. [https://doi.org/10.1016/S0037-0738\(03\)00232-X](https://doi.org/10.1016/S0037-0738(03)00232-X)
- Syvitski, J. P. M., Vörösmarty, C. J., Kettner, A. J., & Green, P. (2005). Impact of humans on the flux of terrestrial sediment to the global coastal ocean. *Science*, 308(5720), 376–380. <https://doi.org/10.1126/science.1109454>
- 915 Tan, Z., Leung, L. R., Li, H.-Y., & Tesfa, T. (2018). Modeling sediment yield in land surface and Earth system models: Model comparison, development, and evaluation. *Journal of Advances in Modeling Earth Systems*, 10(9), 2192–2213.
- Tan, Z., Leung, L. R., Li, H. Y., Tesfa, T., Zhu, Q., Yang, X., Liu, Y., & Huang, M. (2021). Increased extreme rains intensify erosional nitrogen and phosphorus fluxes to the northern Gulf of Mexico in recent decades. *Environmental Research Letters*, 16(5). <https://doi.org/10.1088/1748-9326/abf006>
- 920 Tan, Z., Leung, R. L., Li, H.-Y., Tesfa, T., Zhu, Q., & Huang, M. (2020). A substantial role of soil erosion in the land carbon sink and its future changes. *Global Change Biology*, 26(4). <https://doi.org/10.1111/gcb.14982>
- Tsuruta, K., Hassan, M. A., Donner, S. D., & Alila, Y. (2018). Development and Application of a Large-Scale, Physically Based, Distributed Suspended Sediment Transport Model on the Fraser River Basin, British Columbia, Canada. *Journal of Geophysical Research: Earth Surface*, 123(10), 2481–2508. <https://doi.org/10.1029/2017JF004578>
- 925 Van Der Wegen, M., & Roelvink, J. A. (2008). Long-term morphodynamic evolution of a tidal embayment using a two-dimensional, process-based model. *Journal of Geophysical Research: Oceans*, 113(3). <https://doi.org/10.1029/2006JC003983>
- Van Oost, K., Quine, T. A., Govers, G., De Gryze, S., Six, J., Harden, J. W., Ritchie, J. C., McCarty, G. W., Heckrath, G., Kosmas, C., Giraldez, J. V., Marques Da Silva, J. R., & Merckx, R. (2007). The impact of agricultural soil erosion on the global carbon cycle. *Science*, 318(5850). <https://doi.org/10.1126/science.1145724>
- 930 Voisin, N., Li, H., Ward, D., Huang, M., Wigmosta, M., & Leung, L. R. (2013). On an improved sub-regional water resources management representation for integration into earth system models. *Hydrology and Earth System Sciences*, 17(9), 3605–3622.
- Voisin, N., Liu, L., Hejazi, M., Tesfa, T., Li, H., Huang, M., Liu, Y., & Leung, L. R. (2013). One-way coupling of an integrated assessment model and a water resources model: evaluation and implications of future changes over the US Midwest. *Hydrology and Earth System Sciences*, 17(11), 4555–4575.
- 935 Vörösmarty, C. J., Meybeck, M., Fekete, B., Sharma, K., Green, P., & Syvitski, J. P. M. (2003). Anthropogenic sediment retention: Major global impact from registered river impoundments. *Global and Planetary Change*, 39(1–2), 169–190. [https://doi.org/10.1016/S0921-8181\(03\)00023-7](https://doi.org/10.1016/S0921-8181(03)00023-7)
- 940 Wang, W., Li, H.-Y., Leung, L. R., Yigzaw, W., Zhao, J., Lu, H., Deng, Z., Demisie, Y., & Blöschl, G. (2017). Nonlinear Filtering Effects of Reservoirs on Flood Frequency Curves at the Regional Scale. *Water Resources Research*, 53(10). <https://doi.org/10.1002/2017WR020871>
- White, M. J., Santhi, C., Kannan, N., Arnold, J. G., Harmel, D., Norfleet, L., Allen, P., DiLuzio, M., Wang, X., Atwood, J., Haney, E., & Johnson, M. V. (2014). Nutrient delivery from the Mississippi River to the Gulf of Mexico and effects of cropland conservation. *Journal of Soil and Water Conservation*, 69(1). <https://doi.org/10.2489/jswc.69.1.26>
- 945 Wiele, S. M., Graf, J. B., & Smith, J. D. (1996). Sand deposition in the Colorado River in the Grand Canyon from flooding of the Little Colorado River. *Water Resources Research*, 32(12). <https://doi.org/10.1029/96WR02842>
- Wise, D. R., III, F. A. R., Rinella, J. F., Fuhrer, G. J., Clark, S. S. E. G. M., Schwarz, G. E., & Sobieszczyk, S. (2007). *Nutrient and Suspended-Sediment Transport and Trends in the Columbia River and Puget Sound Basins, 1993–2003*. <https://pubs.usgs.gov/sir/2007/5186/>

950 Wu, H., Kimball, J. S., Li, H.-Y., Huang, M., Leung, L. R., & Adler, R. F. (2012). A new global river network database for  
macroscale hydrologic modeling. *Water Resources Research*, 48(9). <https://doi.org/10.1029/2012WR012313>

Wu, H., Kimball, J. S., Mantua, N., & Stanford, J. (2011). Automated upscaling of river networks for macroscale hydrological  
modeling. *Water Resources Research*, 47(3). <https://doi.org/10.1029/2009WR008871>

955 Wu, W., Shields, F. D., Bennett, S. J., & Wang, S. S. Y. (2005). A depth-averaged two-dimensional model for flow, sediment  
transport, and bed topography in curved channels with riparian vegetation. *Water Resources Research*, 41(3).  
<https://doi.org/10.1029/2004WR003730>

Wu, W., & Wang, S. S. Y. (2006). Formulas for Sediment Porosity and Settling Velocity. *Journal of Hydraulic Engineering*,  
132(8). [https://doi.org/10.1061/\(asce\)0733-9429\(2006\)132:8\(858\)](https://doi.org/10.1061/(asce)0733-9429(2006)132:8(858))

960 Wu, W., Wang, S. S. Y., & Jia, Y. (2000). Nonuniform sediment transport in alluvial rivers. *Journal of Hydraulic Research*,  
38(6). <https://doi.org/10.1080/00221680009498296>

Zhang, R., & Xie, J. (1993). *Sedimentation Research in China: Systematic Selections*. China Water and Power Press.

Formatted: Indent: Left: 0", Hanging: 0.33", Space Before: 6 pt, Line spacing: single, No widow/orphan control, Don't adjust space between Latin and Asian text, Don't adjust space between Asian text and numbers

List of Tables

Table 1. List of selected USGS gauges and model performance

USGS ID	Area (km2)	Number of months with observations	Sim nat				Sim wm trapping			
			Streamflow		Suspended sediment		Streamflow		Suspended sediment	
			KGE	nrmse	KGE	nrmse	KGE	nrmse	KGE	nrmse
07022000	1850000	276	0.79	0.36	-0.22	1.73	0.81	0.26	0.45	1.06
07020500	1840000	275	0.79	0.35	0.06	1.48	0.82	0.25	0.46	1.00
07010000	1810000	275	0.80	0.34	0.05	1.53	0.82	0.24	0.47	1.03
06807000	1060000	255	-0.20	0.98	-0.98	2.48	0.36	0.64	0.62	0.88
06610000	836000	194	0.16	0.80	-0.97	2.32	0.19	0.68	0.50	0.84
06486000	815000	218	0.00	1.04	-5.46	7.30	0.11	0.83	-0.92	2.43
05587455	444000	183	0.77	0.33	-1.44	2.83	0.71	0.34	-0.69	2.12
05389500	175000	176	0.82	0.34	-18.46	19.09	0.76	0.35	-14.83	15.61
05586100	69264	260	0.69	0.41	0.28	1.18	0.64	0.44	0.35	0.99
05288500	49469	80	0.74	0.40	-5.27	7.30	0.64	0.38	-3.51	5.42
05325000	38591	276	0.64	0.63	0.58	1.40	0.55	0.68	0.54	1.23
05465500	32375	224	0.85	0.39	0.29	1.58	0.81	0.40	0.52	1.30
06452000	25680	276	0.41	1.24	-0.36	1.78	0.51	1.14	-0.34	1.77
05543500	21391	79	0.44	0.57	0.25	1.52	0.39	0.61	0.46	1.21
04193500	16395	164	0.36	0.77	-0.33	1.51	0.35	0.77	-0.35	1.52
12340500	15594	269	0.66	0.73	-24.85	47.98	0.71	0.68	-22.33	43.86
05481650	15128	176	0.60	0.67	-2.92	6.25	0.57	0.68	-2.25	5.21
06918070	14012	96	0.58	0.73	-0.44	1.87	0.50	0.78	0.07	1.39
05594100	11378	92	0.69	0.62	-0.04	1.49	0.59	0.66	0.58	0.97
05474000	11168	276	0.69	0.81	0.00	1.68	0.69	0.78	0.01	1.67
01331095	9772	135	0.62	0.51	-541.42	773.46	0.56	0.40	-232.26	284.84
12334550	9472	272	0.03	1.11	-9.73	18.44	0.15	0.99	-6.91	14.03
01357500	8936	99	0.82	0.39	-39.38	44.14	0.75	0.39	-33.69	37.95



01331095	9772	135	0.62	0.51	-541.42	773.46	0.56	0.40	-232.26	284.84
12334550	9472	272	0.03	1.11	-9.73	18.44	0.15	0.99	-6.91	14.03
01357500	8936	99	0.82	0.39	-39.38	44.14	0.75	0.39	-33.69	37.95
05552500	6843	78	0.66	0.63	0.21	1.85	0.67	0.61	0.27	1.78
12340000	5923	156	0.47	1.02	0.26	2.62	0.48	1.01	0.28	2.61
05599500	5618	92	0.37	1.15	-1.92	3.53	0.38	0.92	-0.25	1.81
05570000	4237	153	0.63	0.75	0.17	1.49	0.63	0.73	0.15	1.49
06921760	3289	96	0.51	1.02	0.03	1.91	0.49	1.03	0.33	1.60
04198000	3240	152	0.37	0.82	-0.26	1.40	0.37	0.82	-0.26	1.40
04208000	1831	152	0.43	0.55	-0.09	1.18	0.33	0.61	-0.25	1.28
07036100	1720	80	0.29	0.91	0.28	1.53	0.29	0.91	0.28	1.53
05532500	1632	120	0.77	0.46	-0.31	1.71	0.67	0.51	-0.30	1.71
03230500	1383	69	0.33	0.75	-0.31	2.32	-0.04	0.95	0.33	1.36
14242580	1285	275	0.80	0.32	-0.38	2.73	0.84	0.33	-0.43	2.78
05591200	1225	92	0.50	0.88	-0.16	2.09	0.51	0.87	-0.16	2.09

1000

1005

1010

1015

1020

1025

**List of Figures**

1030

- Fig. 1 Modeling framework of MOSART-sediment.
- Fig. 2 Important parameters over the study domain.
- Fig. 3 a. River network displayed using upstream drainage area and 35 selected USGS gauges (black stars) and 3 representative gauges (red stars) along the river networks (approximated). b. change of local channel water residence time due to reservoirs.
- Fig. 4 Spatial maps of simulated streamflow, total suspended load, wash load and suspended bed-material load averaged in 1990-2012.
- Fig. 5 Simulated versus observed annual mean discharge of water and total suspended load in 1990-2012. Each dot represents one USGS gauge.
- Fig. 6 Evaluation of simulated monthly streamflow and suspended sediment at the selected USGS stations in 1990-2012. The river network is displayed as a background in terms of the accumulated upstream drainage areas at each grid (in different tones of blue).
- Fig. 7 Comparison of model structure in terms of KGE and NRMSE between the simulated and observed monthly time series at different USGS gauges. EH and Wu stand for the Engelund-Hansen and Wu’s formulas respectively. DW and KW stand for the diffusion and kinematic wave routing methods respectively.
- Fig. 8 Simulated and observed monthly streamflow and suspended sediment discharge at three USGS gauges representative of different levels of flow regulation. For clarity, only the *sim\_nat* and *sim\_wm\_trapping* results are displayed here.
- Fig. 9 Change of KGE from *sim\_nat* to *sim\_wm\_trapping* for monthly streamflow and suspended sediment at the selected USGS stations in 1990-2012. The river network is displayed as a background in terms of the accumulated upstream drainage areas at each grid (in different tones of blue).
- Fig. 10 Simulated and observed mean monthly streamflow (left) and suspended sediment discharge (right) at three USGS gauges representative of different levels of flow regulation.

1040

1045

1050

Fig. 11 Spatial patterns of sensitivity of median bed-material size (*d50*) (a, b), channel slope (*rslp*) (c, d), and Manning’s roughness for channels (*nr*) (e, f). At each grid, the percentage change of suspended load is calculated as  $100\% \cdot (S_1 - S_0) / S_0$ , where  $S_1$  and  $S_0$  are the average suspended load 1990-2012 simulated with the parameter changing by 10%, and the average suspended load simulated with the original parameters, respectively.

1055 Fig. 12 Boxplot of the changes in total suspended load when changing the parameters.

Fig. 13 Impacts of reservoirs on (a) streamflow and (b) wash load to the coasts. Each dot in Figure 13 represents the lat/lon grid at the river mouth of a river system. The larger the dot size, the larger the freshwater or suspended sediment discharge simulated with *Sim\_wm\_trapping*. The color of each dot represents the percentage of freshwater or suspended sediment discharge that is reduced by water management or reservoirs, i.e.,  $(sim\_nat - Sim\_wm\_trapping) / sim\_nat$ .

1060  
1065  
1070  
1075

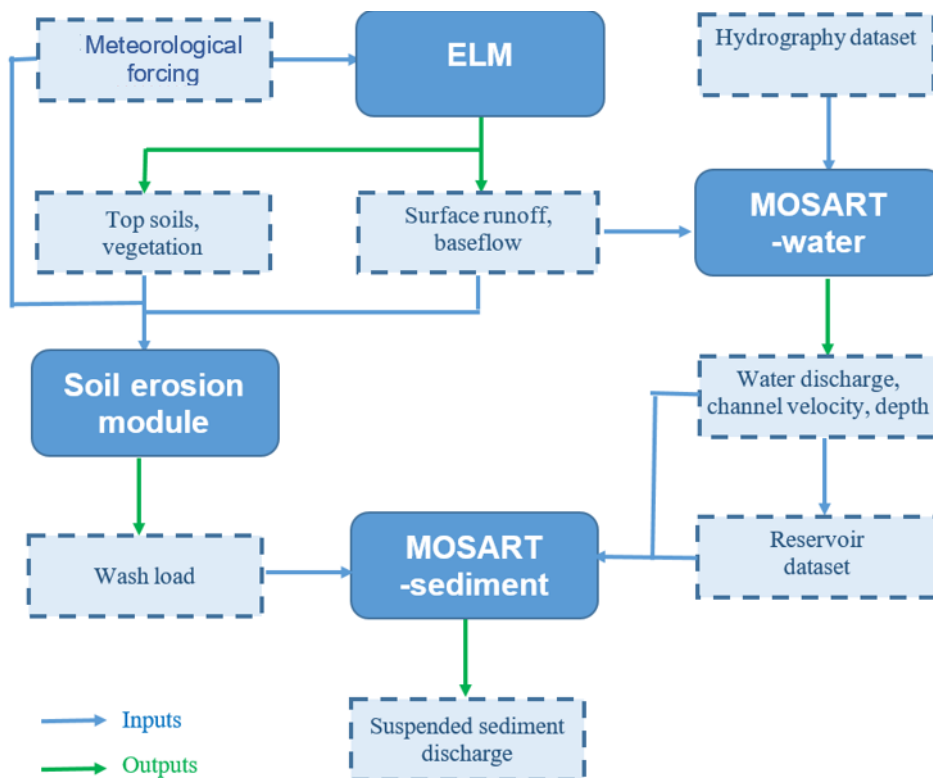
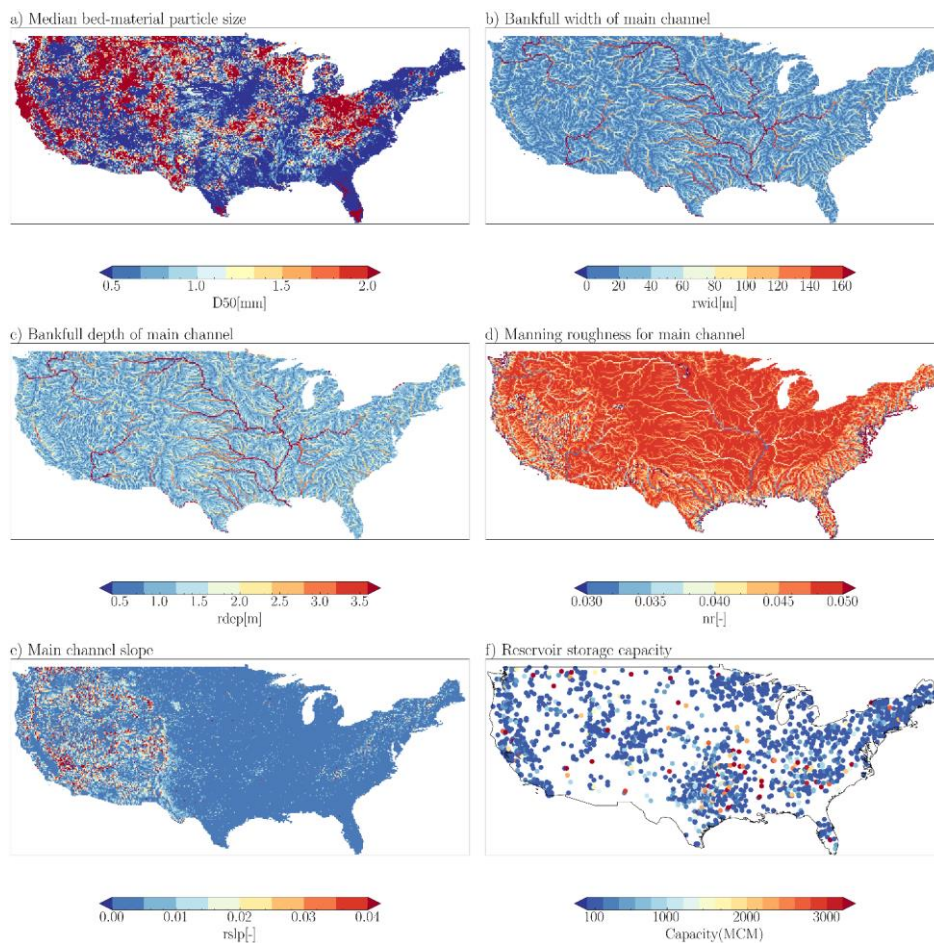


Figure 1: Modeling framework of MOSART-sediment.

1080

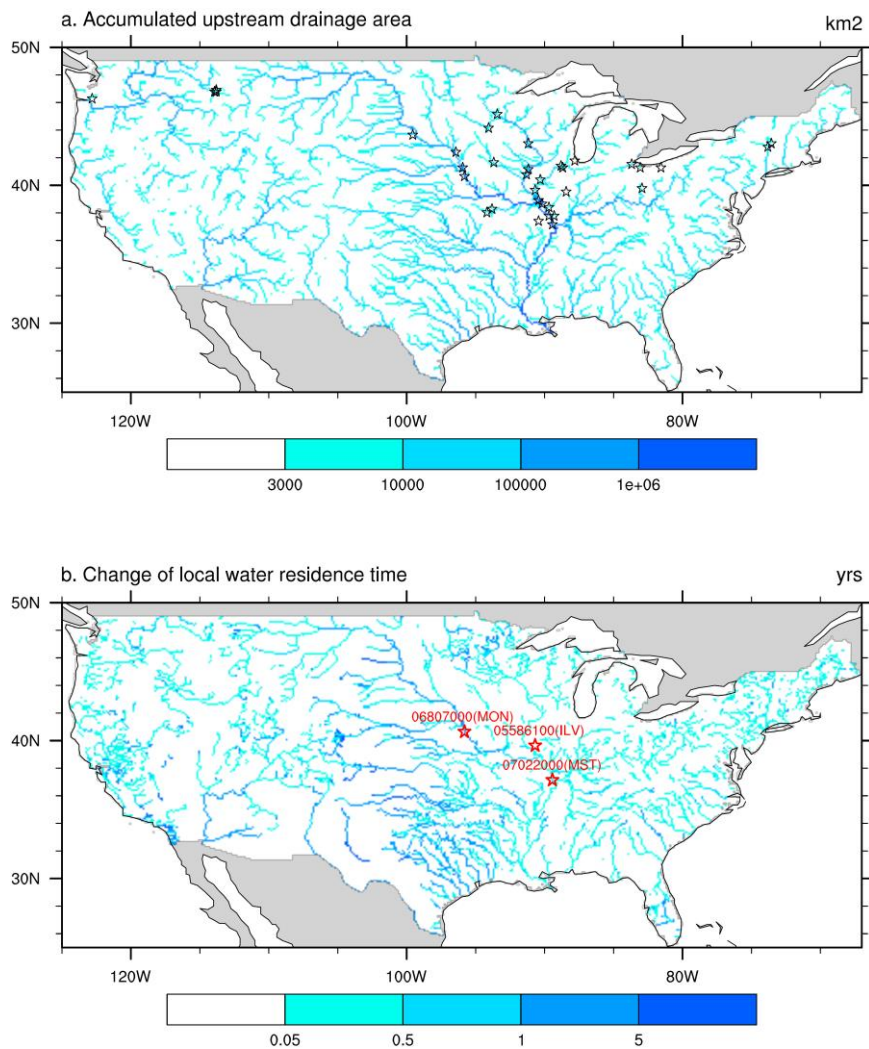
1085



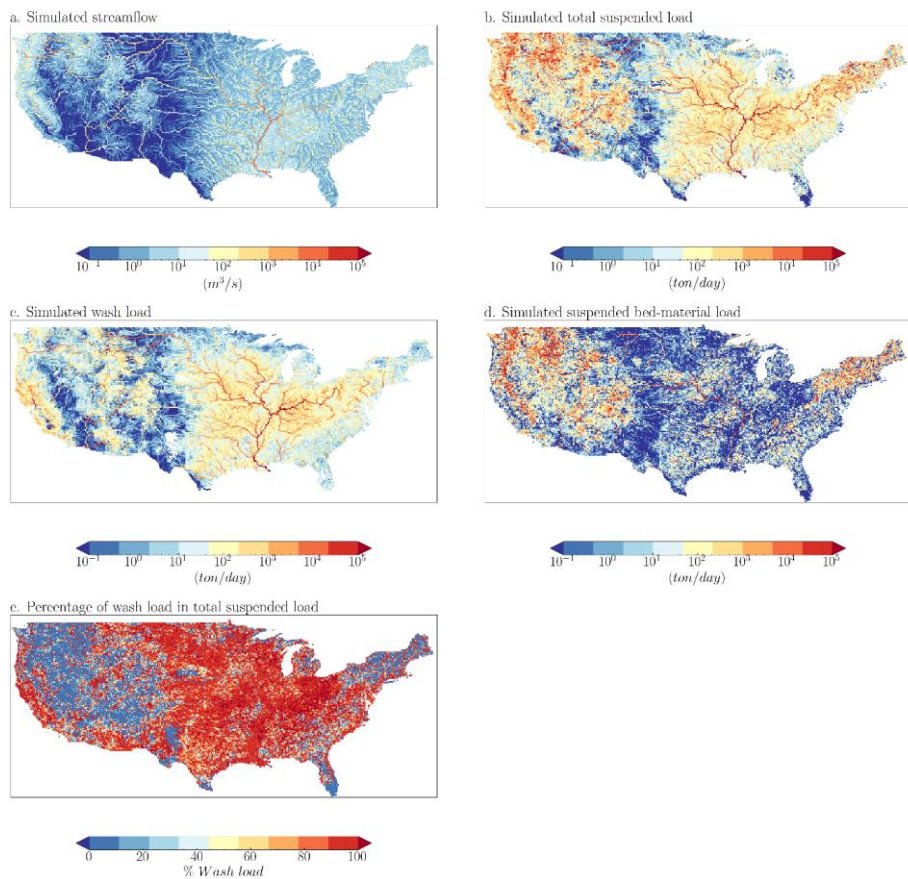


1090 **Figure 2: Important parameters over the study domain.**

1095



**Figure 3: a. River network displayed using upstream drainage area and 35 selected USGS stations (black stars) along the river networks (approximated). b. change of channel water residence time due to upstream reservoirs and 3 representative stations (red stars).**



**Figure 4: Spatial maps of simulated streamflow, total suspended load, wash load and suspended bed-material load averaged in 1990-2012.**

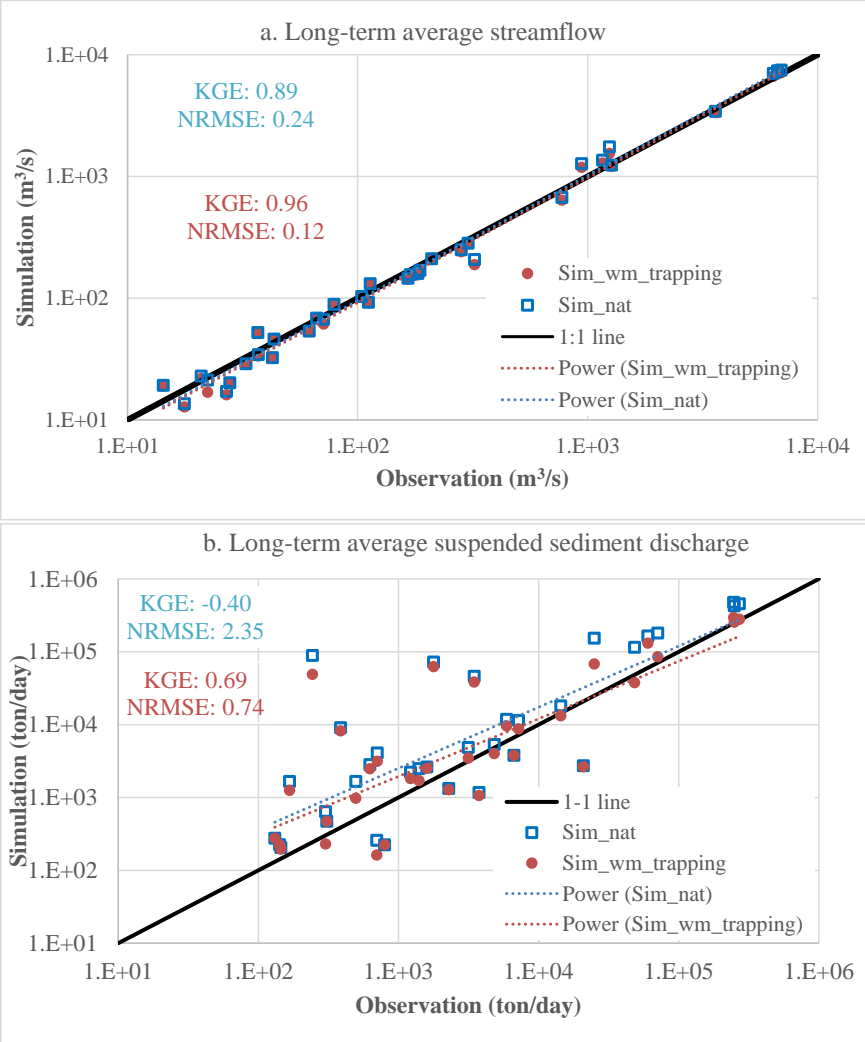
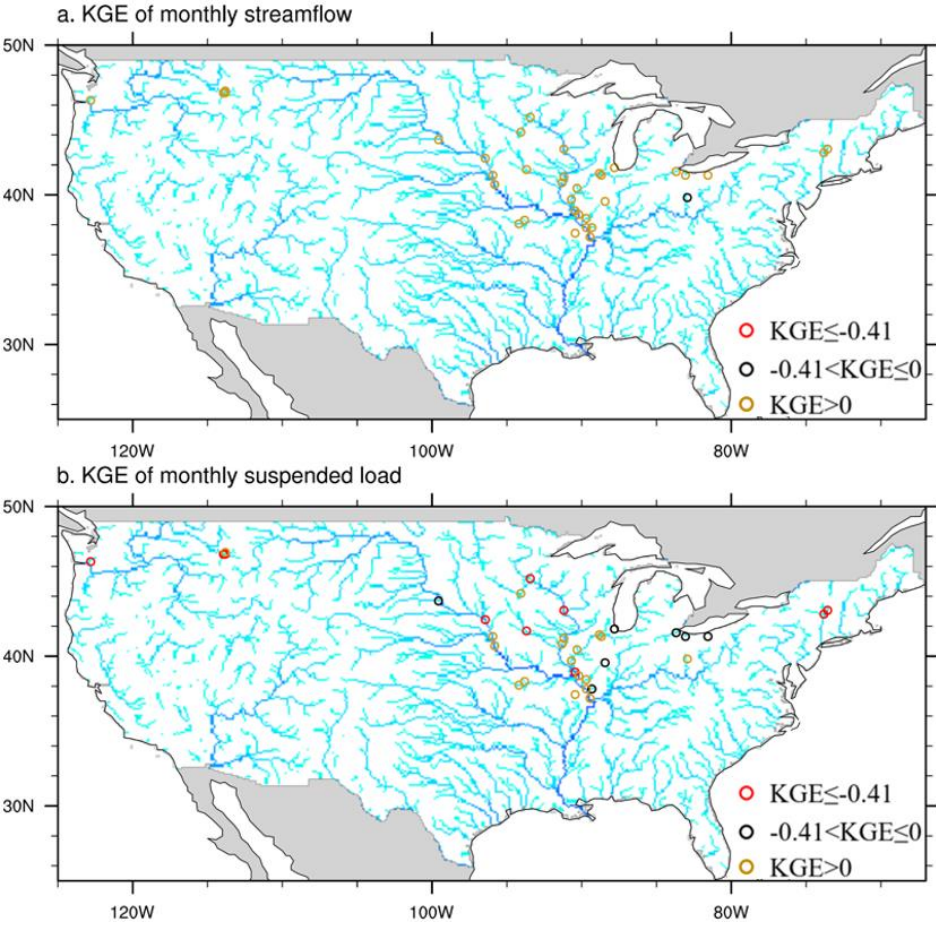


Figure 5: Simulated versus observed annual mean discharge of water and total suspended load in 1990-2012. Each dot represents one USGS station.

1115



**Figure 6:** Evaluation of simulated monthly streamflow and suspended sediment at the selected USGS stations in 1990-2012. The river network is displayed as a background in terms of the accumulated upstream drainage areas at each grid (in different tones of blue).

1120

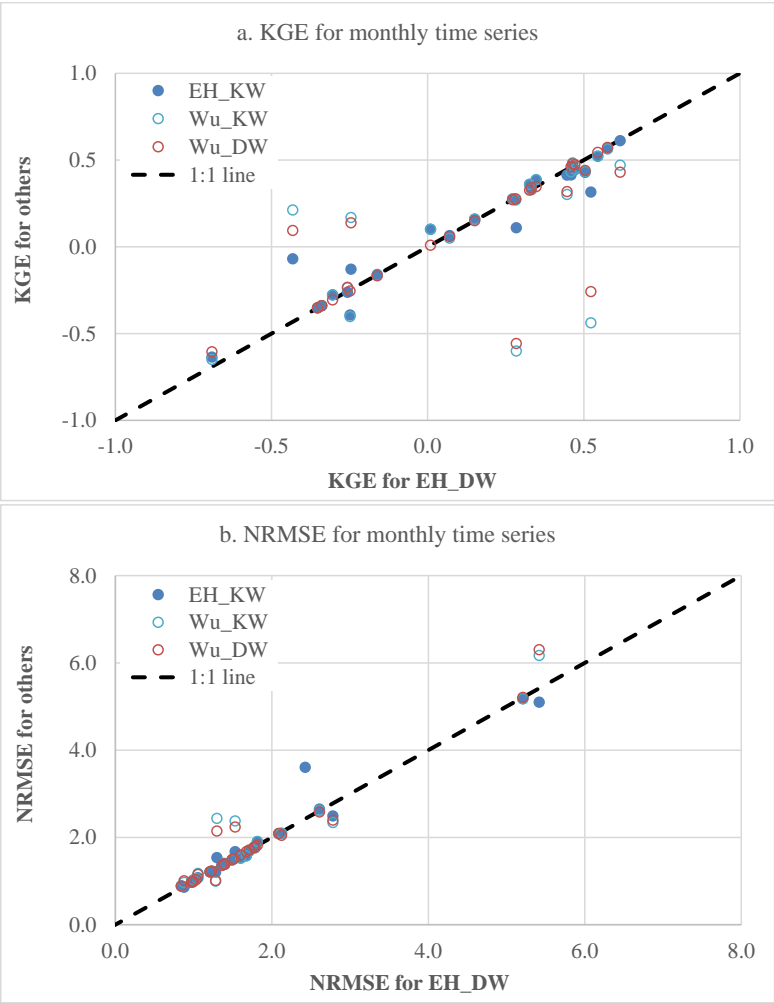
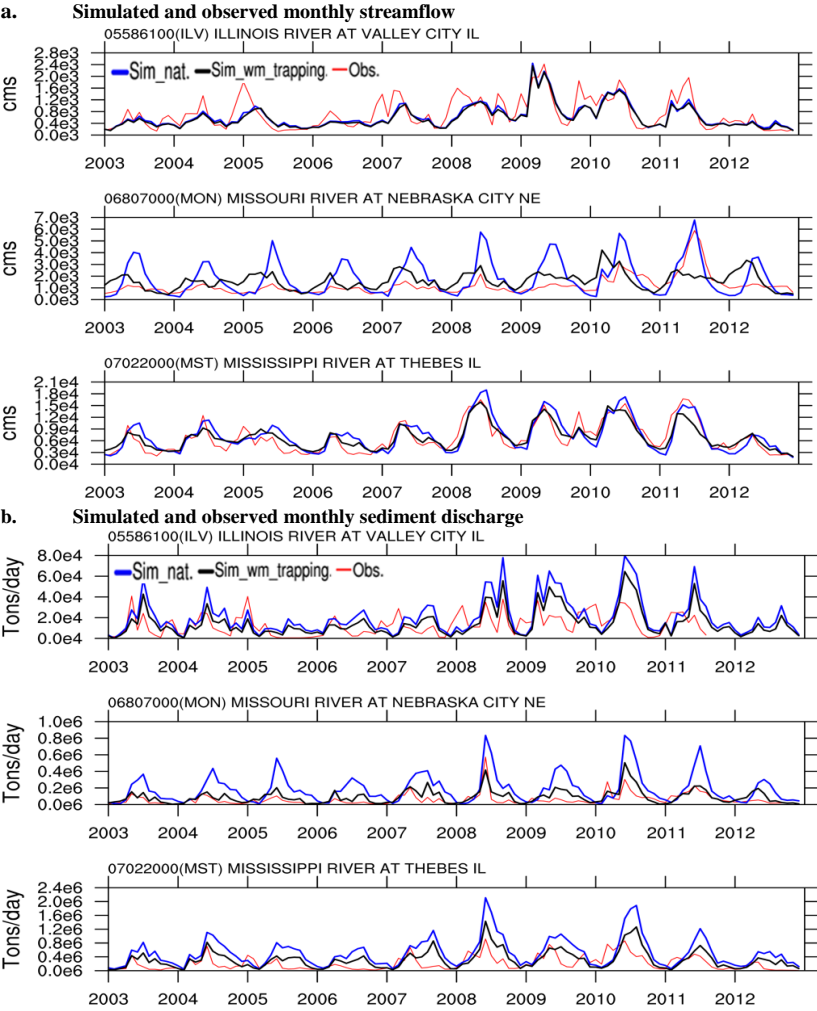
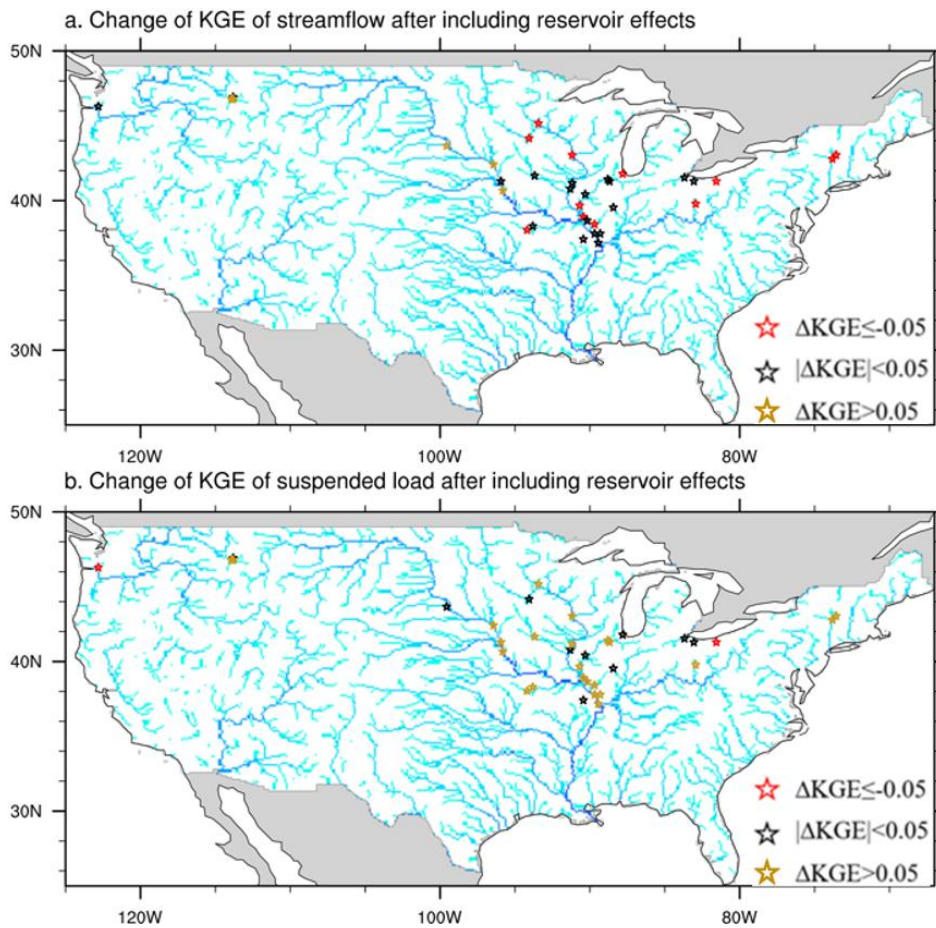


Figure 7: Comparison of model structure in terms of KGE and NRMSE between the simulated and observed monthly time series at different USGS gauges. EH and Wu stand for the Engelund-Hansen and Wu's formulas respectively. DW and KW stand for the diffusion and kinematic wave routing methods respectively.



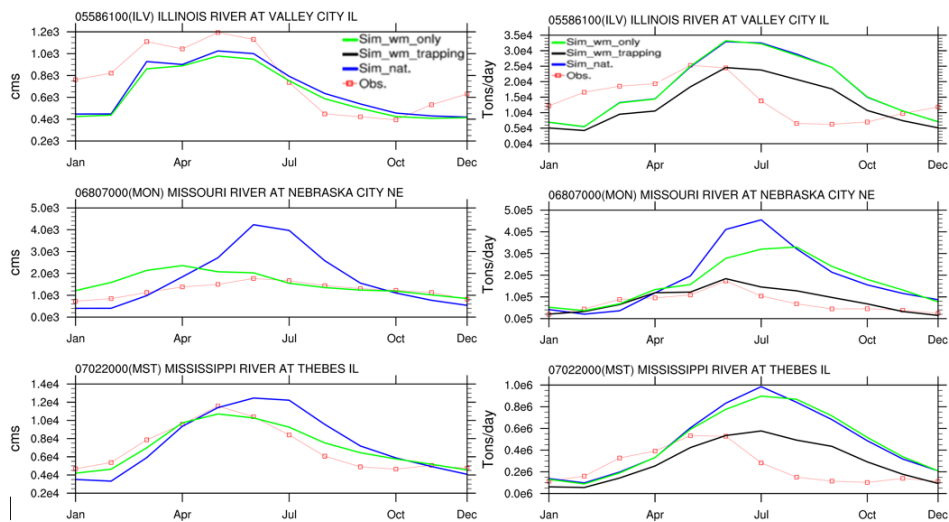


**Figure 8: Simulated and observed monthly streamflow and suspended sediment discharge at three USGS gauges representative of different levels of flow regulation. For clarity, only the *sim\_nat* and *sim\_wm\_trapping* results are displayed here.**



**Figure 9:** Change of KGE from *sim\_nat* to *sim\_wm\_trapping* for monthly streamflow and suspended sediment at the selected USGS stations in 1990-2012. The river network is displayed as a background in terms of the accumulated upstream drainage areas at each grid (in different tones of blue).





**Figure 10: Simulated and observed mean monthly streamflow (left) and suspended sediment discharge (right) at three USGS gauges representative of different levels of flow regulation.**

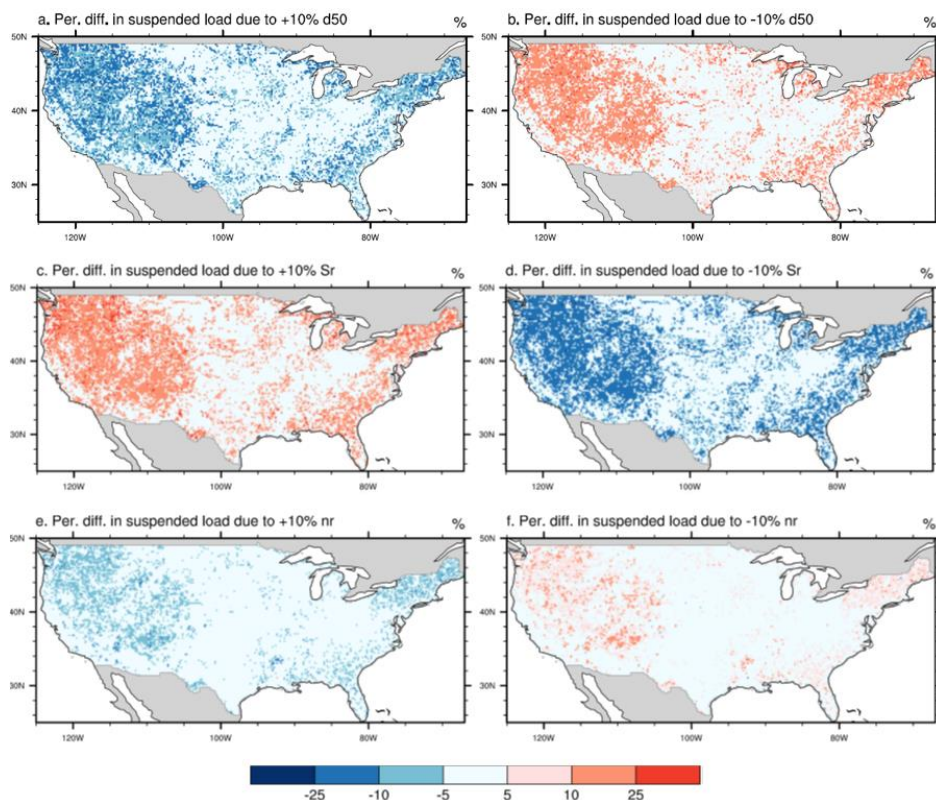


Figure 11: Spatial patterns of sensitivity of median bed-material size ( $d_{50}$ ) (a, b), channel slope ( $rs/p$ ) (c, d), and Manning's roughness for channels ( $nr$ ) (e, f). At each grid, the percentage change of suspended load is calculated as  $100\% \cdot (S_1 - S_0) / S_0$ , where  $S_1$  and  $S_0$  are the average suspended load 1990-2012 simulated with the parameter changing by 10%, and the average suspended load simulated with the original parameters, respectively.

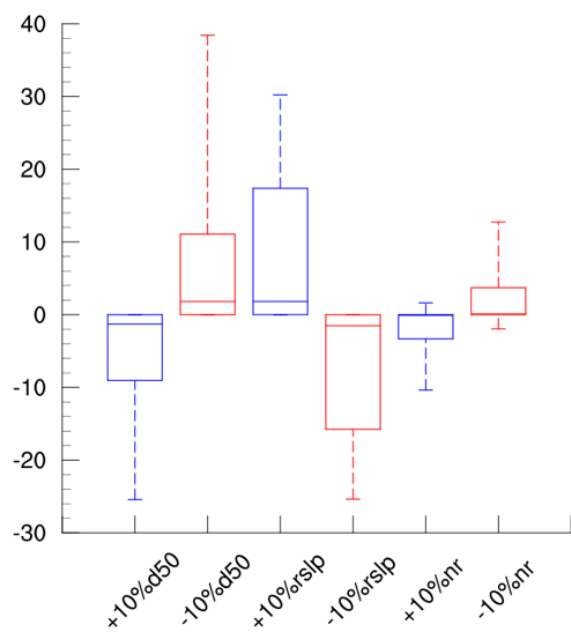


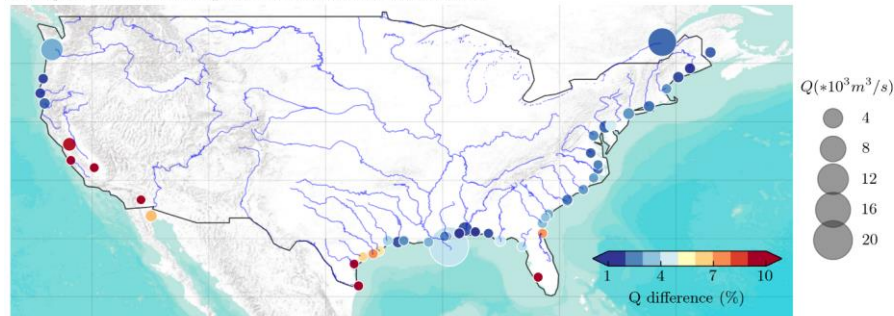
Figure 12: Boxplot of the changes in total suspended load when changing the parameters.

1180

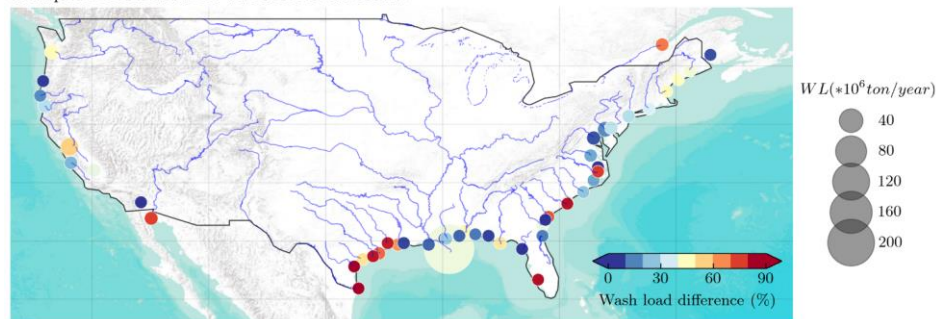
1185

1190

a. Impacts of water management on streamflow to the coasts



b. Impacts of reservoirs on wash load to the coasts



**Figure 13: Impacts of reservoirs on (a) streamflow and (b) wash load to the coasts. Each dot in Figure 13 represents the lat/lon grid at the river mouth of a river system. The larger the dot size, the larger the freshwater or suspended sediment discharge simulated with *Sim\_wm\_trapping*. The color of each dot represents the percentage of freshwater or suspended sediment discharge that is reduced by water management or reservoirs, i.e.,  $(sim_{nat} - Sim_{wm\_trapping})/sim_{nat}$ .**