

Hydrological modeling using the SWAT Model in urban and peri-urban environments: The case of Kifissos experimental sub-basin (Athens, Greece)

5 Evgenia Koltsida¹, Nikos Mamassis², Andreas Kallioras¹

¹Laboratory of Engineering Geology and Hydrogeology, School of Mining and Metallurgical Engineering, National Technical University of Athens, Heron Polytechniou Str. 9, 15780 Zografou, Athens, Greece

²Laboratory of Hydrology and Water Resources Development, School of Civil Engineering, National Technical University of Athens, Heron Polytechniou Str. 9, 157 80 Zographou, Greece

10 *Correspondence to:* Evgenia Koltsida (evita.koltsida@gmail.com)

Abstract. SWAT (Soil and Water Assessment Tool) is a continuous time, semi-distributed river basin model ~~that has been~~ widely used to evaluate the effects of alternative management decisions on water resources. This study examines the application of ~~the~~ SWAT model for streamflow simulation in an experimental basin with mixed-land-use characteristics (i.e., urban/peri-urban) using daily and hourly rainfall observations. The main objective of the present study was to investigate the influence of rainfall resolution on model performance ~~in order~~ to analyze the mechanisms governing surface runoff at the catchment scale. The model was calibrated for 2018 and validated for 2019 using the SUFI-2 algorithm in the SWAT-CUP program. Daily surface runoff was estimated using the Curve Number method, and hourly surface runoff was estimated using the Green and Ampt Mein Larson method. A sensitivity analysis conducted in this study showed that the parameters related to groundwater flow were more sensitive for daily time intervals and channel routing parameters were more influential for hourly time intervals. Model performance statistics and graphical techniques indicated that the daily model performed better than the sub-daily model (daily model: NSE = 0.86, R² = 0.87, PBIAS = 4.2%, sub-daily model: NSE = 0.6, R² = 0.63, PBIAS = 11.7%). The Curve Number method produced higher discharge peaks than the Green and Ampt Mein Larson method and estimated better the observed values. Overall, the general agreement between observations and simulations in both models suggests that the SWAT model appears to be a reliable tool to predict discharge in a mixed-land-use basin with high complexity and spatial distribution of input data.

1 Introduction

Water resource problems, including the effects of urban development, alternative management decisions, and future climate oscillation on streamflow and water quality, require a deep understanding and accurate modeling of earth surface processes at the catchment scale to be addressed (Gassman et al., 2014). In order to understand catchment processes, it is necessary to obtain detailed weather data and catchment observations related to runoff, water stage, erosion, soil moisture, and water quality. Experimental catchments are properly designed and well-monitored catchments that aim to provide databases of

long-term historical hydrological data, which help analyze the mechanisms governing surface runoff (Goodrich et al., 2020).

In addition, experimental catchments contribute ~~in-to~~ the development and validation of numerous watershed models and can be used as validation sites for satellite sensors (Tauro et al., 2018). Furthermore, experimental catchments monitor groundwater and river water quality with the use of tracer experiments which can estimate the residence and travel times of water in different components of the hydrological cycle (Hrachowitz et al., 2016; Stockinger et al., 2016). Bogena et al. 2018 presented an extensive overview of hydrological observatories ~~that are~~ presently operated worldwide ~~with-under~~ various environmental conditions. Among those, the US Department of Agriculture-Agricultural Research Service's (ARS) Experimental Watershed Network has operated over 600 watersheds in its history and currently operates more than 120 experimental hydrological watersheds (Goodrich et al., 2020).

Hydrological and water quality models have been widely used to assess water resource problems and to investigate hydrological processes, land use and climate change impacts, and best management practices (Daggupati et al., 2015). In recent decades, various watershed-scale models (i.e., SWAT, APEX, HSPF, WAM, KINEROS, and MIKE-SHE) have been developed to operate with different levels of input data and model structure complexity (Arnold et al., 2015; Moriasi et al., 2007). Among the above watershed-scale models, the SWAT program (Soil and Water Assessment Tool) (Arnold et al., 2012) was selected for this study. SWAT is a physically based, semi-distributed, continuous time river basin model and has five main official versions, SWAT2000, SWAT2005, SWAT2009, SWAT2012, and SWAT+. It was selected because ~~it~~ is an open source code, has a wide range of online documentation and literature database, and has been applied to catchments of various sizes and ~~to~~ several temporal scales (e.g., monthly, daily, and sub-daily time steps) (Gassman et al., 2007, 2014; Tan et al., 2020). Furthermore, it can be linked to QGIS, ~~an~~ also a free and open-source platform, and has the ability to visualize the results, which can be helpful for the interpretation of the many SWAT outputs- (Dile et al., 2016).

SWAT has two methods for the estimation of surface runoff; the SCS Curve Number (CN) method (Soil Conservation Service, 1972) for daily rainfall and the Green and Ampt Mein Larson infiltration (GAML) method (Mein and Larson, 1973) for sub-daily rainfall. The CN method has been used more often than the GAML method, in SWAT model applications, mainly due to the absence of high temporal resolution data needed for the sub-daily module (Bauwe et al., 2016; Brighenti et al., 2019; Gassman et al., 2014). The few available studies suggest that the calibrated streamflow results are more accurate using the CN approach when compared to the GAML approach (Bauwe et al., 2016; Cheng et al., 2016; Ficklin and Zhang, 2013; Kannan et al., 2007). In particular, in the study where CN improved the results, Kannan et al. (2007) identified a suitable combination of evapotranspiration and runoff generation methods and reported that the CN method performed better than the GAML method. In contrast, three studies reported that the GAML method simulated better the peak flows during the flood season ~~than~~ the CN method (Li and DeLiberty, 2020; Maharjan et al., 2013; Yang et al., 2016). Some studies have pointed out that both approaches have limitations and that the improvement depends on the part of the hydrograph that is analyzed (e.g., high, medium, or low flows) and the time scale (e.g., daily, monthly, or annually) (Han et al., 2012; King et al., 1999). Furthermore, several sub-daily applications have been conducted, such as land use and management impacts on flood events (Golmohammadi et al., 2017; Campbell et al., 2018), the use of high temporal resolution data for the

improvement of the model (Bauwe et al., 2017; Boithias et al., 2017) and modeling of rainfall-runoff events (Jeong et al., 2010; Yu et al., 2018). The authors generally found that finer temporal resolution time steps do not always improve model performance but depend on the basin scale and the characteristics of the watershed. A detailed description of the model history and applications can be obtained in Gassman et al. (2007), Douglas-Mankin et al. (2010), Brighenti et al. (2019), and Tan et al. (2020).

The selected study area has been severely urbanized from 1990 till today, at the expense of forests and agricultural areas. During this period, the artificial surfaces increased by 69.93%, and the agricultural areas and the forests decreased by 54.14% and 14.34%, respectively (Corine Land Cover, CLC 1990-2018). The area is portrayed as an urban/peri-urban system with about 51% of artificial surfaces, 13% of agricultural areas, and 36% of forests and semi-natural areas. The interaction between different land uses (e.g., urban and rural characteristics) contributes to the formation of a complex environment characterized by high variability in management practices, rapid response, and diverse hydrological processes, which may increase problems of model uncertainties (Boithias et al., 2017). Land use maps and soil maps may not capture this complex environment precisely, enhancing the SWAT model's difficulty in representing and simulating the actual conditions of the basin, which can affect water discharge. In addition, the study area is a typical Mediterranean catchment, vulnerable to natural hazards (i.e., flash floods and forest fires). In order to interpret the behavior of such a complex environment, the SWAT 2012 hydrological model (rev 681) was used for its realistic representation. The available studies that used the sub-daily option of the SWAT model refer mainly to agricultural (Bauwe et al., 2016; Boithias et al., 2017; Cheng et al., 2016; Ficklin and Zhang, 2013; Golmohammadi et al., 2017; Maharjan et al., 2013; Yang et al., 2016; Yu et al., 2018) or small urban catchments (Campbell et al., 2018; Jeong et al., 2010; Li and DeLiberty, 2020) and rarely in peri-urban catchments. Thus, the suitability of the sub-daily option of the SWAT model to simulate discharge in a peri-urban catchment has not been extensively tested. The main objectives were (i) to investigate which parameters are more sensitive under different temporal time steps in a mixed-land-use basin (i.e., blended combinations of land use, management practices, and hydrological processes), (ii) to compare the results of the hourly time-step simulation (Green and Ampt Mein Larson method) to those obtained from daily time-step simulation (Curve Number method) and (iii) evaluate the sub-daily option of the SWAT model for discharge simulation by examining peak discharges and time of the peak of selected rainfall events. The calibration methodology developed in this catchment can be applied to areas with similar hydrological-meteorological and geomorphological attributes (i.e., Mediterranean peri-urban areas). This study provides essential hydrological knowledge and contributes to understanding the critical processes of an urban/peri-urban system to analyze the mechanisms governing surface runoff at the catchment scale. The outcomes will establish a basis for further modeling applications, which will be helpful for local planners to use in future regional urban development strategies. The study area information, methodology, and data input are presented in Section 2, results and discussions are detailed in Section 3, and conclusion is provided in Section 4.

~~In this study, the SWAT 2012 model (rev 681) in the QSWAT interface was used to simulate streamflow in an experimental basin using daily and sub-daily (hourly) rainfall observations. The main objectives were to (i) calibrate and validate the~~

Formatted: Font: Italic, English (U.S.)

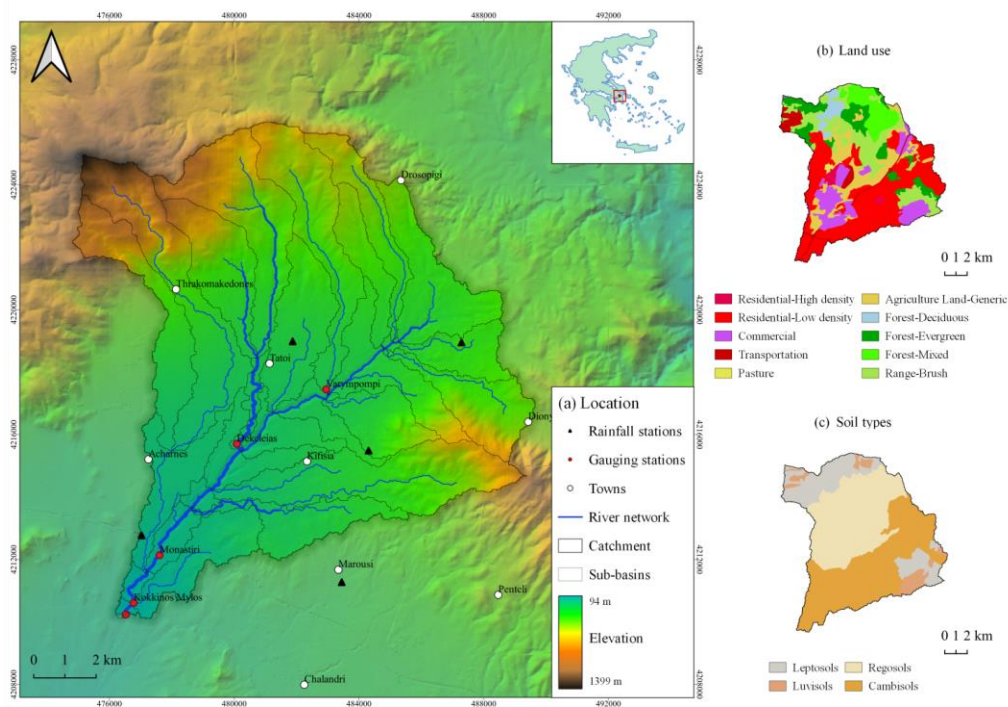
100 SWAT model using streamflow data, (ii) examine which parameters are more sensitive in different time steps, (iii) estimate
the influence of rainfall resolution on model performance, (iv) compare the Curve Number method and Green and Ampt
Mein-Larson method for runoff simulation, (v) examine the accuracy of the sub-daily model and compare the peak
105 discharges and time of peak of the two models in selected rainfall events, and (vi) investigate the suitability of the SWAT
model for hourly simulation in a mixed land-use basin (i.e., blended combinations of land use, management practices and
hydrological processes). Hence, this study will provide essential hydrological knowledge and contribute to the understanding
of the earth-surface processes of an urban/peri-urban hydrological system with complex land use in order to analyze the
mechanisms governing surface runoff at the catchment scale. The information of the study area, methodology and data input
is presented in Section 2, results and discussions are detailed in Section 3 and conclusion is provided in Section 4.

2 Materials and methods

110 2.1 Study area

The study area includes the upper part (NW sub-basin) of the Kifissos River basin, located in Athens, Greece (Fig. 1a). The
Kifissos River basin occupies an area of 380 km². Kifissos River route is approximately 22 km, of which at least 14 km are
within an urban area. The elevation ranges from 94 m to 1399 m, with plains in the south and hills in the north part of the
basin. The mean annual temperature is 16.4 °C, and the mean annual rainfall across the basin is 577.2 mm.

115 The study area is characterized as an urban/peri-urban area, with residential areas, shrubland, and agriculture accounting
for 34.1, 15.9 and 12.4 % of its land use coverage, respectively (Fig. 1b). It includes mainly four soil types, Cambisols,
Regosols, Leptosols and Luvisols (Fig. 1c). The dominant soil formations are characterized by good soil permeability and
high contents of clay and sand.



120

Figure 1. Geographical location of the study area (a) and spatial distribution of land use (b) and soil (c).

2.2 Experimental Catchment of Athens Metropolitan Area

The study area includes four water level monitoring stations that provide continuous recordings of the river stage at pre-selected time-intervals (15mins time-step) (Fig. 1). The stations were installed at the end of 2017 under the supervision of the School of Mining of National Technical University of Athens (NTUA). The network was developed under the EU H2020 RIA Program SCENT (Smart Toolbox for Engaging Citizens in a People-Centric Observation Web). The station ~~which is~~ located at the outlet of the study area was selected as the most suitable for further analysis in this study; because the three upstream stations experienced some mechanical problems that affected the calibration and validation process. The monitoring stations are part of the Open Hydrosystem Information Network (OpenHi.net), which is a national integrated information infrastructure for the collection, management and free dissemination of hydrological data (OpenHi.net) in Greece.

130

2.3 Data sources

The input data for the construction of the SWAT model include a digital elevation model (DEM), a land use map, a soil map, and meteorological data (i.e., rainfall, temperature, wind speed, relative humidity, and solar radiation). Table 1 summarizes the input data ~~along with~~ and their sources, used in this study.

The digital elevation model (DEM) at 30 m spatial resolution was downloaded from the website of the US Geological Survey (USGS). The land use map was derived from the 100 m 2018 Corine Land Cover map (CLC, 2018) and was modified according to SWAT land use categories (Table 2). The soil map was created from data ~~of from~~ the Food and Agriculture Organization (FAO) Digital Soil Map of the World (FAO et al., 2012). In addition, rainfall data, relative humidity, wind speed, and the minimum and maximum air temperature were obtained from ~~the~~ National Observatory of Athens (NOA). Solar radiation data were simulated by WGEN, a weather generator developed by SWAT to fill the missing meteorological data ~~by the use of~~ monthly statistics. A rain gauge network consisting of 5 gauges is distributed throughout the study area, as illustrated in Fig. 1. Daily and hourly ($\Delta t = 1\text{h}$) rainfall data were retrieved from 2017 to 2019, with coverage during the entire year. The daily and sub-daily observed streamflow data at the ~~outlet of the basin~~ outlet (Fig. 1) from 2017 to 2019 were acquired from Open Hydrosystem Information Network (OpenHi.net).

Table 1. SWAT model input data and sources.

Data type	Resolution	Source	Description
DEM	30 m × 30 m	Shuttle Radar Topography Mission https://earthexplorer.usgs.gov/	Digital elevation model
Land use	100 m × 100 m	Corine Land Cover https://land.copernicus.eu/	Land use map
Soil	30 arcseconds (1:5,000,000)	Food and Agriculture Organization, http://www.fao.org/	Soil map
Weather data	5 gauges	National Observatory of Athens, https://www.meteo.gr/	Daily data for 2017-2019, sub-daily data for 2017-2019, minimum and maximum air temperatures, relative humidity, wind speed
Observed streamflow	1 gauge	Open Hydrosystem Information Network, https://openhi.net/	Daily data for 2017-2019, sub-daily data for 2017-2019

Table 2. Land use classification of the Kifissos basin and the corresponding SWAT land use category.

CLC code	Corine description	SWAT code	SWAT description	(%) Watershed
121	Industrial or commercial units	UCOM	Commercial	11.43
112	Discontinuous urban fabric	URLD	Residential-Low Density	34.11
122	Road and rail networks and associated land	UTRN	Transportation	4.07
111	Continuous urban fabric	URHD	Residential-High Density	1.54
231	Pastures	PAST	Pasture	0.31
243	Land principally occupied by agriculture, with significant areas of natural vegetation	AGRL	Agricultural Land-Generic	12.39
311	Broad-leaved forest	FRSD	Forest-Deciduous	3.11
312	Coniferous forest	FRSE	Forest-Evergreen	9.59
313	Mixed forest	FRST	Forest-Mixed	7.51
323	Sclerophyllous vegetation	RNGB	Range-Brush	15.94

155

2.4 Soil Water Assessment Tool (SWAT)

The SWAT (Soil and Water Assessment Tool) program is a semi-distributed, continuous-time, process-based model (Arnold et al., 1998, 2012). The model operates on a daily time step, and it has been recently updated to sub-daily time step computations (Jeong et al., 2010). SWAT has been developed to evaluate the impact of management practices on water, sediment, and agricultural chemical yields in large river basins over long time periods. The main components of SWAT are hydrology, weather, soil properties, land use, crop growth, sediments, nutrients, pesticides, bacteria, and pathogens.

In SWAT, a watershed is divided into multiple sub-basins, which are then subdivided into hydrologic response units (HRUs) based on unique soil, slope, and land use attributes. Hydrologic response units (HRUs) enable the model to represent differences in evapotranspiration for various types of vegetation and soil types. Simulation of the hydrology of a watershed can be separated into the land phase, which determines the loadings of water, sediment, nutrients, and pesticides to the main channel, and the routing phase, which is the movement of the loadings through the streams of the subbasins to the outlets (Neitsch et al., 2011).

Hydrological processes are simulated separately for each HRU, including canopy storage, surface runoff, partitioning of the precipitation, infiltration, redistribution of water within the soil profile, evapotranspiration, lateral subsurface flow from the soil profile, and return flow from shallow aquifers (Gassman et al., 2007). SWAT uses a single plant growth model to simulate all types of vegetation and is capable to can differentiate between annual and perennial plants. The plant growth model estimates the amount of water and nutrients removed from the root zone, transpiration, and biomass/ yield production.

The main difference between the daily and sub-daily simulations in SWAT occurs in the estimation of surface runoff estimation. The SCS Curve Number (CN) method (Soil Conservation Service, 1972) is used for daily simulations, and the

175 Green and Ampt Mein Larson infiltration (GAML) method (Mein and Larson, 1973) is used for sub-daily simulations. The
CN method is an empirical ~~model~~, widely used model, and requires land use, soil, elevation, and daily rainfall data as input.
The GAML method is a physically based model, uses the same spatial coverages as the CN method, and requires more
detailed soil information and sub-daily rainfall records as input. ~~More~~ details on model theory, equations, and processes can
be found in Arnold et al. (1998), ~~in~~ Gassman et al. (2007), and in Neitsch et al. (2011).

180 2.5 Model setup

The latest version of the SWAT 2012 hydrological model was used in this study. The QSWAT plugin (Dile et al., 2016)
embedded in the QGIS platform was used for the setup and the parameterization of the model. The watershed delineation,
stream parameterization, and overlay of soil, land use, and slope were automatically completed within the interface. A
drainage area of 3.6 km² was chosen to discretize the study area. The area was delineated into 25 sub-basins, which were
185 then divided into 175 hydrological response units (HRUs).

The SWAT models for the Kifissos basin include daily and sub-daily (hourly) rainfall observations. Potential
evapotranspiration was calculated by the Penman-Monteith method, surface runoff was estimated using the CN method for
the daily model and the GAML method for the hourly model, and the variable storage coefficient method was used to
calculate the channel routing. The simulation period was from 2017 to 2019, and the first year was used as a warm-up period
190 ~~in order~~ to mitigate the unknown initial conditions. The model was calibrated from 01/01/2018 to 31/12/2018 and validated
from 01/01/2019 to 31/12/2019 for discharge, using the SUFI-2 program ~~in~~ SWAT-CUP software (Abbaspour et al., 2004,
2007).

2.6 Sensitivity Analysis, Model Calibration and Validation

Watershed models are characterized by ~~large~~ significant uncertainties related to conceptual design, input data, and
195 parameters (Abbaspour et al., 2015). The model calibration, validation, and uncertainty analysis were achieved with the use
of the SUFI-2 algorithm in the SWAT-CUP software (Abbaspour et al., 2004, 2007). In SUFI-2, uncertainties in parameters
(e.g., uncertainty in input data, conceptual model, parameters, and measured data) are expressed as ranges or uniform
distributions. The concept behind this algorithm is to collect most of the observed data within a narrow uncertainty band.
The initial ranges of the calibrating parameters are set, based on literature and sensitivity analyses. Then, parameter sets are
200 generated using Latin hypercube sampling, and the objective function is estimated for each parameter set. The uncertainties
are calculated at the 2.5% and 97.5% levels of the cumulative distribution of all output variables, and it is referred to as the
95% prediction uncertainty (95PPU). The goodness of model performance and output uncertainty ~~is~~ assessed using the P-
factor and the R-factor (Abbaspour et al., 2004). The P-factor is the percentage of measured data bracketed by the 95PPU
band, and it ranges from 0 to 1, where 1 means all of the measured data are within model prediction uncertainty. The R-
205 factor is the ratio of the average width of the 95PPU band and the standard deviation of the measured data. The values of the
R-factor range from 0 to infinity, where a value near 0 reflects an ideal situation. ~~The~~ spatial scale of the project and the

accuracy of the observed data affect the values of the P-factor and the R-factor (Abbaspour et al., 2015). In this study, the Nash-Sutcliffe model efficiency (NS) was used as an objective function for both daily and sub-daily calibration and validation. The sensitivities of the parameters were estimated using the following equation (Eq. 1) (Abbaspour et al., 2015):

$$g = a + \sum_{i=1}^m \beta_i b_i, \quad (1)$$

where g is the goal function and b_i 's are the parameters selected for calibration. The sensitivities are calculated as average changes in the objective function which result from changes in each parameter, while all other parameters are changing. A t-test is then conducted to evaluate the significance of each parameter b_i . Parameters with large t-stat and small P-value were characterized as sensitive parameters.

Model validation was achieved using the calibrated parameter ranges without any further changes, and the model performance of the calibration period was compared to the model performance of the validation period. ~~The year 2017 was set as a warm up period, the streamflow data from the year 2018 were used for calibration and the streamflow data from the year 2019 were used for validation.~~ The ~~statistics on~~ annual precipitation and daily discharge ~~statistics~~ were calculated for each period to overcome biases in discharge patterns. Annual precipitation for 2018 was 566 mm, and annual precipitation for 2019 was 735 mm. ~~The m~~Mean and standard deviation of discharge for 2018 were 1.25 and 0.46 and for 2019 were 1.42 and 0.74, respectively. These statistics ensure that the selected periods represent both wet and dry conditions. In the calibration and validation process, 18 parameters (Table 3) were used. About 600 simulations per iteration were conducted, and up to three iterations, until the results of ~~the~~ P-factor and R-factor were satisfying.

Further evaluation of the model performance was achieved ~~with the use of using~~ graphical and statistical techniques (Daggupati et al., 2015b; Harmel et al., 2014; Moriasi et al., 2007, 2015). ~~The m~~Most commonly used statistical techniques are Nash-Sutcliffe efficiency (NSE) (Nash and Sutcliffe, 1970), coefficient of determination (R^2) (Moriasi et al., 2007), and percent bias (PBIAS) (Gupta et al., 1999), as shown in Eqs. (2), (3), and (4). Most commonly graphical techniques are time series charts, scatter plots, bar charts, maps, and percent exceedance probability curves. The statistics were calculated for both models, and then their performance was discussed according to guidelines ~~given by~~ (Moriasi et al., 2007, 2015).

$$R^2 = \frac{[\sum_{i=1}^n (Q_{obs}(i) - \bar{Q}_{obs})(Q_{sim}(i) - \bar{Q}_{sim})]^2}{\sum_{i=1}^n (Q_{obs}(i) - \bar{Q}_{obs})^2 \sum_{i=1}^n (Q_{sim}(i) - \bar{Q}_{sim})^2}, \quad (2)$$

$$NS = 1 - \left[\frac{\sum_{i=1}^n (Q_{obs}(i) - Q_{sim}(i))^2}{\sum_{i=1}^n (Q_{obs}(i) - \bar{Q}_{obs})^2} \right], \quad (3)$$

$$PBIAS = \left[\frac{\sum_{i=1}^n (Q_{obs}(i) - Q_{sim}(i)) * 100}{\sum_{i=1}^n Q_{obs}(i)} \right], \quad (4)$$

where Q_{obs} is the observed discharge, Q_{sim} is the simulated discharge on day i , \overline{Q}_{obs} is the mean of observed discharge and \overline{Q}_{sim} is the mean of simulated discharge. R^2 is a measure of how well the variance of measured data is replicated by the model. R^2 can range from 0 to 1, where 0 means no correlation and 1 indicates a perfect correlation and less-minor error variance. NSE is a measure of how well the simulated values match the observed values. NSE can range from $-\infty$ to 1, where values ≤ 0 show that the observed data mean is a more accurate predictor than the simulated values, and 1 is a perfect fit between simulated and observed values. Finally, PBIAS, measures the average tendency of the simulated values to be larger or smaller than the observed values. The optimum value is 0; positive values show model underestimation, and negative values show model overestimation. More information about the strengths, weaknesses, and usage of the commonly used measures is presented in Moriasi et al. (2015). The SWAT-CUP software is designed mainly for daily, monthly, or annually time steps. In order to calibrate the sub-daily model, the SUFI-2 files required minor modifications.

Table 3. Daily and sub-daily SWAT calibrated parameters. The method “r” indicates that the parameter value is multiplied by (1 + a given value), the method “v” indicates that the parameter value is going to be replaced and the method “a” indicates that the parameter is to be added by a given value (Abbaspour et al., 2007).

	Parameter	File Ext	Method	Description
Surface runoff	CN2	.mgt	r Relative	Curve number
	SURLAG	.bsn	v Replace	Surface runoff lag time
Groundwater/Baseflow	ALPHA_BF	.gw	v Replace	Baseflow alpha factor
	GW_DELAY	.gw	a Absolute	Groundwater delay
	RCHRG_DP	.gw	v Replace	Deep aquifer percolation fraction
	REVAPMN	.gw	v Replace	Threshold depth of water in the shallow aquifer for “revap” to occur
	GW_REVAP	.gw	v Replace	Groundwater “revap” coefficient
	GWQMN	.gw	v Replace	Threshold depth of water in the shallow aquifer required for return flow to occur
Lateral flow	LAT_TTIME	.hru	v Replace	Lateral flow travel time
	HRU_SLP	.hru	r Relative	Average slope steepness
Channel	OV_N	.hru	r Relative	Manning’s “n” value for overland flow
	SLSUBBSN	.hru	r Relative	Average slope length
	CH_N2	.rte	v Replace	Manning’s “n” value for the main channel
	CH_K2	.rte	v Replace	Effective hydraulic conductivity in main channel alluvium
Soil	ESCO	.bsn	v Replace	Soil evaporation compensation factor
	SOL_K	.sol	r Relative	Saturated hydraulic conductivity of the soil layer
	SOL_BD	.sol	r Relative	Moist bulk density
	SOL_AWC	.sol	r Relative	Available water capacity of the soil layer

3 Results and Discussion

3.1 Parameter’s sensitivity analysis and calibration

The most sensitive parameters obtained in daily and hourly simulations are presented in Table 4. Sensitive parameters are characterized by large t-Test and small p-Value. The parameters were characterized as significantly sensitive when the p-value was less than 0.03. In the daily model, the most sensitive parameters were deep aquifer percolation fraction (RCHRG_DP), groundwater delay time (GW_DELAY), lateral flow travel time (LAT_TTIME), average slope steepness (HRU_SLP), and moist bulk density (SOL_BD). These parameters were connected to groundwater flow, runoff generation, and channel routing. In the sub-daily model, the significantly sensitive parameters were average slope steepness (HRU_SLP), Manning’s “n” value for the main channel (CH_N2), effective hydraulic conductivity in the main channel alluvium (CH_K2), and lateral flow travel time (LAT_TTIME). These were all related to channel routing.

Formatted: Heading 2

265 The differences in the sensitivity of the calibrated parameters of the two models reflect the impact of the operational time
step on model performance (Boithias et al., 2017; Jeong et al., 2010). In particular, the hourly model is characterized by
larger GWQMN and GW_REVAP values than the daily model. GWQMN is the threshold depth of water in the shallow
aquifer required for return flow to occur, and GW_REVAP controls the water movement from the shallow aquifer into the
overlying unsaturated soil layers. As these parameters increase, the rate of evaporation increases up to the rate of potential
evapotranspiration, resulting in a corresponding decrease of in the baseflow. Furthermore, the fitted value of CH_N2 in the
270 hourly simulation was $0.11(m^{-1/3}s)$ and was larger than $0.08(m^{-1/3}s)$ in the daily simulation. The CH_N2 parameter
affects the rate and the ~~velocity of flow~~ flow velocity (Boithias et al., 2017). Therefore, the larger CH_N2 value was
connected to a smaller flow velocity. According to Boithias et al. (2017), the CH_N2 parameter is more sensitive at the
hourly time step rather than the daily time step, because, at the daily time step, the flow peak is influenced by other processes
decreasing the sensitivity of the CH_N2. In addition, the value range for CN2 was smaller for the sub-daily model, leading
275 thereby to lower peak flows. Other differences were average slope steepness (HRU_SLP), average slope length
(SLSUBBSN), groundwater delay time (GW_DELAY), and Manning's "n" value for overland flow (OV_N). Their values
were all smaller in sub-daily simulation. Overall, the differences between the two models lay mostly-mainly in the different
runoff estimation methods used by the two models.

280 It is worth noting that the observations, procedures, and assumptions made for this study may affect the results of this study.
The values of the calibrated parameters and their sensitivities are influenced by the type and quality of input data, the
conceptual model, the choice of the objective function, and inaccuracies in measured input data used for calibration and
validation (Abbaspour et al., 2015; Arnold et al., 2012; Polanco et al., 2017).

Table 4. Daily and sub-daily SWAT calibrated parameters and their sensitivities.

Parameters	Initial ranges		Daily model				Sub-Daily model			
	Min	Max	t-Test	p-Value	Calibrated ranges		t-Test	p-Value	Calibrated ranges	
					Min	Max			Min	Max
CN2	-0.10	0.10	0.38	0.70	-0.04	0.10	-0.09	0.93	0.00	0.10
SURLAG	0.00	10.00	0.40	0.69	0.00	10.00	-0.36	0.72	4.00	9.00
ALPHA_BF	0.00	1.00	-0.15	0.88	0.05	0.69	-0.23	0.82	0.50	1.00
GW_DELAY	-30.00	90.00	4.78	0.00	10.00	95.00	0.51	0.61	10.00	80.00
RCHRG_DP	0.00	0.50	3.44	0.00	0.00	0.50	0.14	0.89	0.11	0.40
REVAPMN	1000.00	2000.00	1.51	0.13	990.00	1800.00	0.49	0.62	800.00	1800.00
GW_REVAP	0.02	0.20	-1.37	0.17	0.02	0.20	-0.16	0.87	0.06	0.21
GWQMN	0.00	500.00	0.69	0.49	100.00	500.00	0.38	0.71	150.00	500.00
LAT_TTIME	0.00	180.00	15.23	0.00	0.00	170.00	14.59	0.00	0.00	170.00
HRU_SLP	-0.50	3.00	-3.87	0.00	-0.01	3.00	-3.71	0.00	0.20	2.30
OV_N	-0.50	3.00	-0.94	0.35	-0.30	3.00	-0.73	0.47	-0.05	2.00

285

SLSUBBSN	-0.20	0.20	2.11	0.04	-0.10	0.20	0.89	0.37	-0.06	0.20
CH_N2	0.01	0.30	0.09	0.93	0.01	0.20	6.52	0.00	0.03	0.20
CH_K2	0.00	127.00	-0.83	0.41	0.00	80.00	3.52	0.00	0.00	50.00
ESCO	0.50	0.95	-0.43	0.67	0.50	0.95	-1.35	0.18	0.50	0.95
SOL_K	-0.80	0.80	-0.94	0.35	-0.20	0.80	-1.98	0.05	-0.10	0.68
SOL_BD	-0.30	0.30	-5.69	0.00	-0.10	0.30	-1.31	0.19	-0.01	0.27
SOL_AWC	-0.05	0.05	-1.53	0.13	-0.03	0.03	-0.90	0.37	-0.03	0.02

3.2 Daily and sub-daily model performances

Quantitative statistics and criteria recommended by Moriasi et al. (2007, 2015) were used to evaluate the model performance. In order to investigate the influence of rainfall on model performance and compare daily outputs to hourly outputs, the hourly outputs were aggregated to daily averages. Figure 2a and Figure 2b shows the temporal dynamics of the hydrographs reproduced by both [infiltration-runoff estimation](#) methods. The high flow season is observed during winter and spring. The low flow season is observed in summer and early fall due to high evapotranspiration. Figure 3-2c shows the observed versus the simulated daily discharge aggregated from hourly outputs during the calibration and validation processes. Figure 34 presents the flow duration curves of the models, indicating good agreement between observed and simulated values. Generally, in the sub-daily model, the simulated discharge peaks did not always match the observed values and were sometimes considerably lower.

The performance statistics are illustrated in Table 5 and indicate reasonable calibrated models for both [infiltration approaches methods](#). Model performance [of the daily model](#) using the CN method showed better results than the [hourly model using the](#) GAML method. In particular, the NSE and R^2 indices for the daily model were 0.84 and 0.79 for the calibration period and 0.87 and 0.86 for the validation period. For the sub-daily model, the NSE and R^2 indices were 0.53-49 and 0.49-53 for the calibration period and 0.63 and 0.63 for the validation period, respectively. In addition, when the hourly outputs were aggregated to daily averages, the NSE was improved [comparing the NSE of compared to](#) the sub-daily model (e.g., sub-daily model: $NSE_{\text{calibration}} = 0.49$ and $NSE_{\text{validation}} = 0.6$, daily averages: $NSE_{\text{calibration}} = 0.66$ and $NSE_{\text{validation}} = 0.78$). However, the daily model outperformed the daily aggregated discharge during both calibration and validation periods. Furthermore, the daily model showed smaller modeling uncertainties with P-factor 0.79 and R-factor 1.58 (compared to 0.83 and 1.71, respectively, for the sub-daily model).

Overall, the general agreement between the observed and the simulated values during the calibration and the validation period indicates that the choice of the calibration and validation periods was relevant. According to Moriasi et al. (2015), model performance can be evaluated as “satisfactory” for flow simulations -if daily, monthly, or annual $R^2 > 0.60$, $NSE > 0.50$, and $PBIAS \leq \pm 15\%$ for watershed-scale models. These ratings should be modified to be more or less strict based on [the](#) evaluation time step. Typically, model simulations are poorer for shorter time steps than for longer time steps (e.g., daily

versus monthly or yearly) (Engel et al., 2007). Considering these guidelines, the daily and sub-daily models showed satisfactory performance for both calibration and validation periods.²²

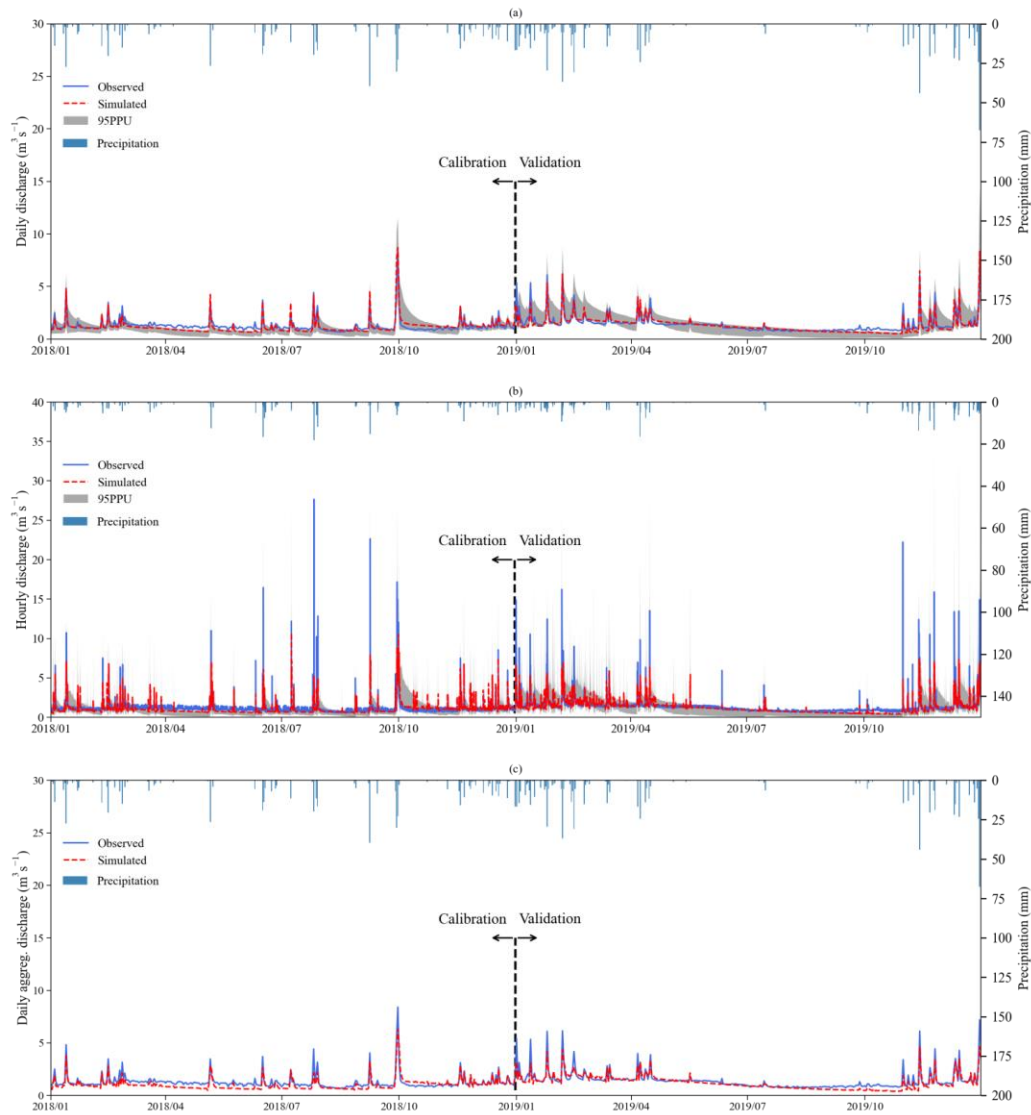


Figure 2. Observed and simulated discharge (m^3s^{-1}) during calibration and validation periods: daily time step (a), hourly time step (b), and daily time step aggregated from hourly outputs (c). The CN method with daily rainfall observations was used for the daily model and the GAML method with hourly rainfall observations was used for the hourly model.

Formatted: Centered, Keep with next

Formatted: Caption, Centered

Formatted: Superscript

Formatted: Superscript

Field Code Changed

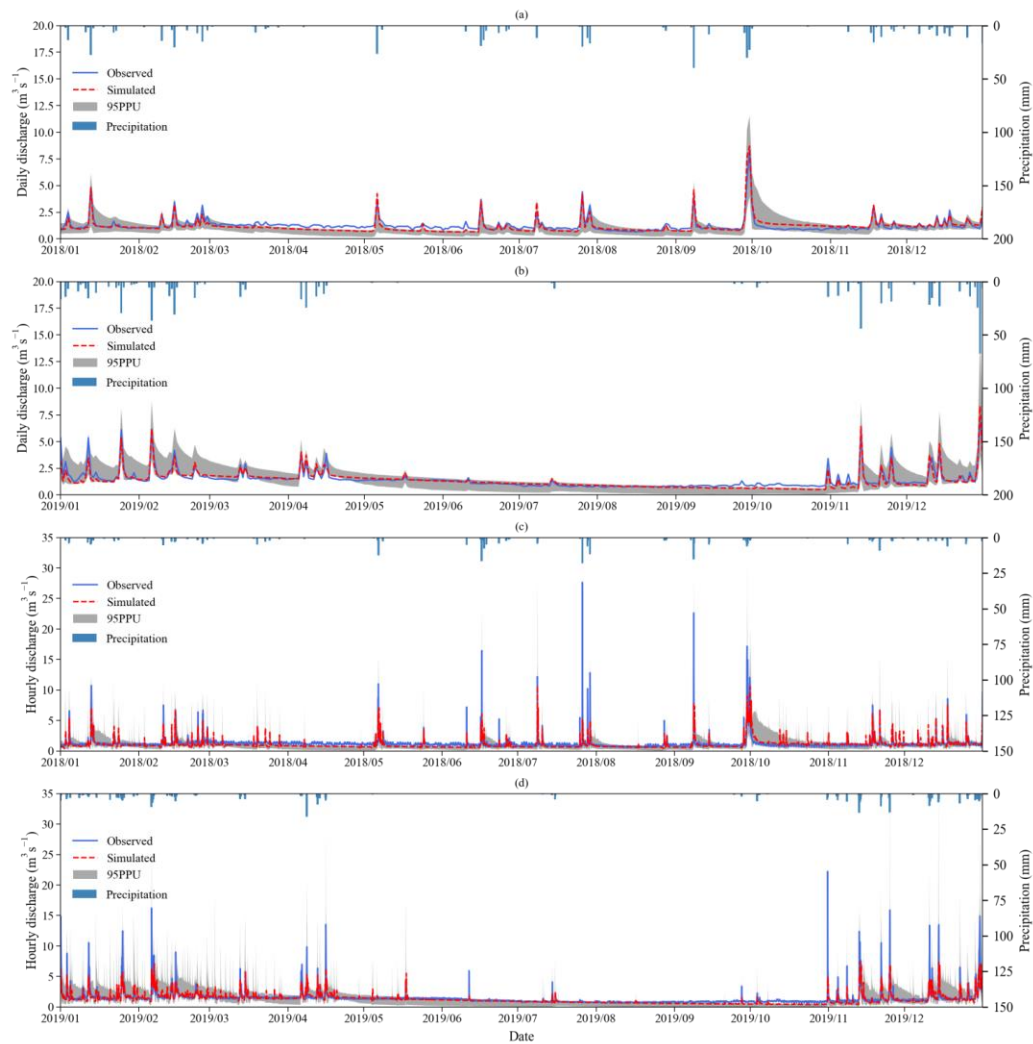


Figure 2. Observed and simulated discharge ($\text{m}^3 \text{s}^{-1}$) at the daily time step (a, b) and at the hourly time step (c, d).

Formatted: Superscript

Formatted: Superscript

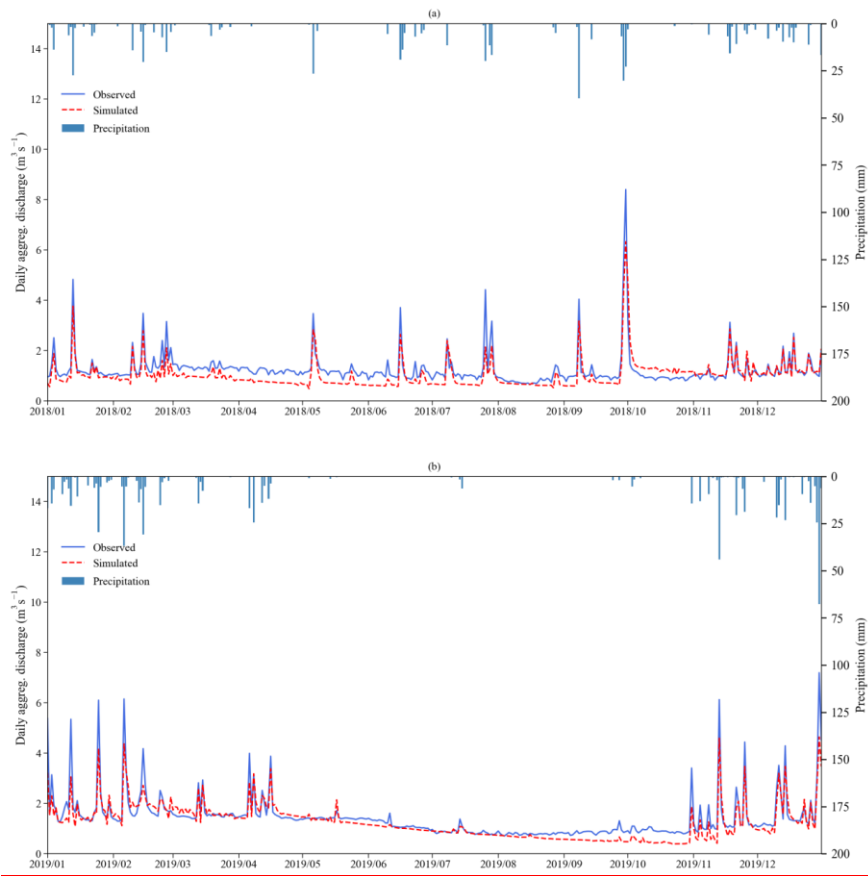


Figure 3. Observed and simulated daily discharge ($\text{m}^3 \text{s}^{-1}$) aggregated from hourly outputs: calibration period (a) and validation period (b).

Formatted: Superscript

Formatted: Superscript

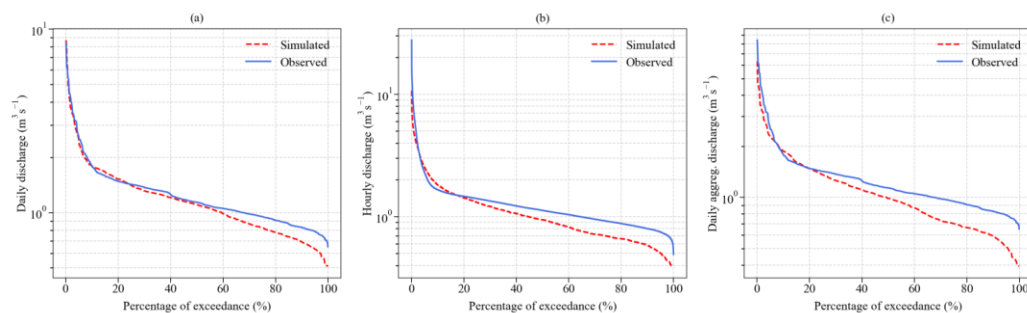


Figure 34. Observed and simulated flow duration curves (m³ s⁻¹) at the daily time step (a), at the hourly time step (b), and at the daily discharge aggregated from hourly outputs time step (c).

Table 5. Model evaluation statistics of the daily, sub-daily and daily aggregated from hourly outputs SWAT models for the calibration and validation periods.

Time-step	Period	p-Factor	r-Factor	R ²	NSE	PBIAS(%)
Daily	Calibration	0.74	1.41	0.84	0.79	6.4
	Validation	0.79	1.58	0.87	0.86	4.2
Sub-Daily	Calibration	0.72	1.33	0.53	0.49	16.9
	Validation	0.83	1.71	0.63	0.6	11.7
Daily averages	Calibration	-	-	0.76	0.66	16.8
	Validation	-	-	0.82	0.78	11.6

3.3 Comparison of selected rainfall events

Figure 5-4 shows the hydrographs of selected high rainfall events that occurred in the years 2018 and 2019 (Tatoi station, Lagouvardos et al., 2017). According to the study area's intensity-duration-frequency (IDF) curves of the study area the approximate return period of the selected episodes was ten years (T=10 years). These events were investigated in order to examine the accuracy of the sub-daily model and to compare the peak discharges and time of the peak of the two models. Table 6 displays the rainfall characteristics of each event (i.e., peak discharge, time of peak, and average discharge).

Generally, the hourly model underestimated the peak flows with values much lower than the observations for the majority of the events. These results confirm that the daily model using the CN method estimated better the observed values than the hourly model using the GAML method and was able to estimate with greater accuracy the peak discharge in most of the events. In addition, Figure 4 (a-c) shows that the discharge simulation improved after the main peak discharge event, especially in the last peaks. The improvement of the simulation as the rainfall events progressed indicates that the simulation

345 requires time to adapt to the hydrological processes and conditions of the catchment (e.g., antecedent soil moisture conditions). These outcomes are similar to those of previous studies, which concluded that the best sub-daily performance for streamflow simulation appeared in wet antecedent soil moisture conditions and suggested that the GAML method needs to improve the equation for infiltration routine (Jeong et al., 2010; Kannan et al., 2007; Meaurio et al., 2021).

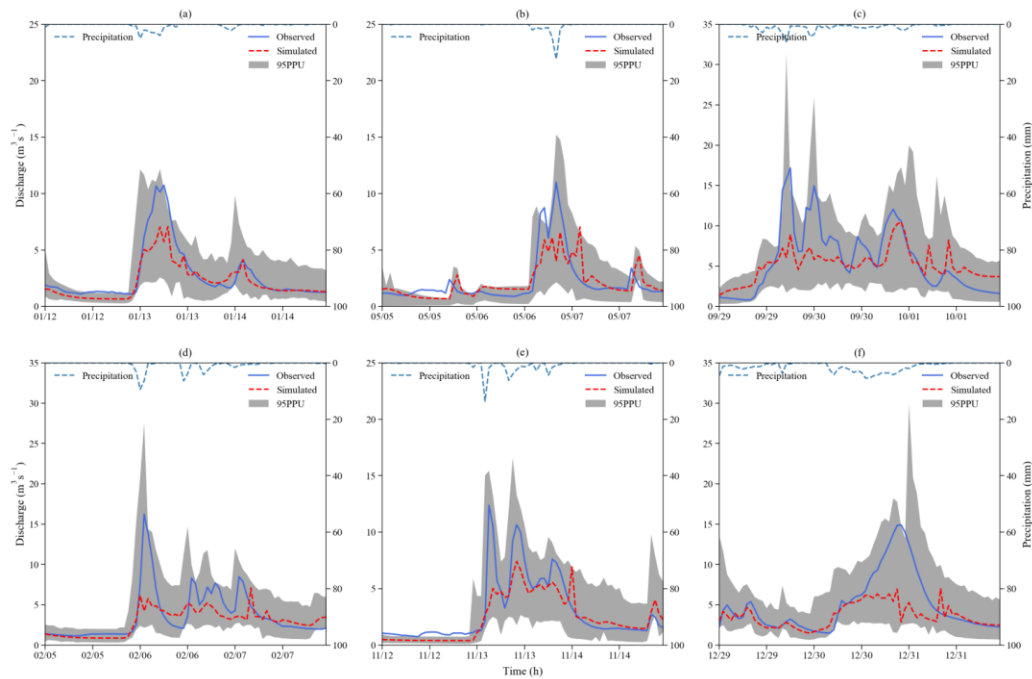
The better performance of the CN method ~~in comparison~~ compared to the GAML method in this study is consistent with the results of other studies (Bauwe et al., 2016; Ficklin and Zhang, 2013; Kannan et al., 2007; King et al., 1999). Bauwe et al. 350 (2016) evaluated both CN and GAML methods and highlighted that the CN method performed slightly better than the GAML method. Ficklin and Zhang (2013) generally suggested that for daily simulations, the CN method predicted ~~more accurately~~ streamflow ~~as compared to~~ more accurately than the GAML model. Kannan et al. (2007) identified a suitable combination of ET runoff generation methods and reported that the CN method performed better than the GAML method. Kannan et al. (2007) conducted a sensitivity analysis to identify the best combination of evapotranspiration and runoff 355 method for hydrological modeling and concluded that the CN method performed better than the GAML method for streamflow because the GAML method tends to hold more water in the soil profile and predict a lower peak runoff rate. King et al. (1999) concluded that the GAML method appeared to have more limitations in accounting for seasonal variability than the CN method.

~~In this study, the daily model produced higher discharge peaks than the hourly model and generally estimated better the observed values. These results could be due to drawbacks of the GAML method, such as the requirement for detailed soil information and high resolution rainfall data in a sub-daily time step (King et al., 1999). The GAML method assumes that the soil profile is characterized by homogeneity and that the previous soil moisture is distributed uniformly in the soil profile (Jeong et al., 2010). Therefore, the uncertainty in the resolution of the rainfall data, the heterogeneity of the soil formations and the upcoming difficulty in determining the parameters' values for parameterization could affect the method's efficiency. The selection of sub-daily precipitation input time step as well as the resolution of the precipitation data have a great impact on model results when using the GAML method and it should be based on the scale and characteristics of the watershed (Bauwe et al., 2016; Jeong et al., 2010; Kannan et al., 2007). Furthermore, observational errors in the model input data (i.e., weather, soil and land use data) include inaccuracies in the estimation of channel and hillslope velocities and channel geometry, in the nature of the sensor, environmental conditions and data collection (Guzman et al., 2015). These errors can generate variability, lead to undesired trends, and influence the model calibration and validation results (Kamali et al., 2017). In addition, the complex land use characteristics and processes of an urban/peri-urban environment and assumptions made during the model structure/parameterization process (e.g., selection of parameters for calibration, objective function, and conceptual simplifications) increase the uncertainty of the results. Hydrological calibration includes uncertainties due to conceptual simplification, processes not incorporated in the model, and unknown processes to the modeler which interfere with the natural behavior of the system (Abbaspour et al., 2015). In this study, the sources of uncertainty can be explained by:~~

375

- (i) The characteristics of an urban/peri-urban catchment. The study area is a hybrid landscape in which urban and rural characteristics coexist and interact. The different and changing land uses create a complex system with high variability in management practices and diverse hydrological processes (Becker et al., 2019). Furthermore, these systems are characterized by man-made interventions (e.g., unidentified discharges, agricultural activities, and dumping of construction materials), which are not well known to the modeler and increase uncertainty (Immerzeel and Droogers, 2008).
- (ii) The inaccuracies in the quality of input and observed data. The interaction between the urban environment and agricultural activities may not be captured by the resolution of the soil and land use maps. This could increase the difficulty for the SWAT model to represent the actual conditions of the study area and further affect the results. The spatial variability of precipitation and discharge were not also captured accurately by the monitoring stations of the study area, which could have contributed to the simulation uncertainty. In addition, inaccuracies in the estimation of channel and hillslope velocities and channel geometry, in the nature of the sensor, environmental conditions, and data collection can generate variability, lead to undesired trends, and influence the model results (Guzman et al., 2015; Kamali et al., 2017).
- (iii) The differences behind the mechanisms of the CN method and the GAML method for surface runoff estimation. In this study, the daily model produced higher discharge peaks than the hourly model and generally estimated better the observed values. These results could be explained by the disadvantages of the GAML method. The CN method requires minimum land use, soil, elevation, and daily rainfall data as input. On the other hand, the GAML method requires detailed soil information and high-resolution rainfall data in a sub-daily time step as input which can be challenging and difficult to obtain (King et al., 1999). The GAML method also assumes that the soil profile is characterized by homogeneity and that the previous soil moisture is distributed uniformly in the soil profile (Jeong et al., 2010). In addition, according to the GAML method, when the precipitation rate is less than the infiltration rate, all precipitation will infiltrate the soil profile (Ficklin and Zhang, 2013; King et al., 1999). Figure 2 reflects the assumption of the GAML method that surface runoff is estimated only when the precipitation rate is greater than the infiltration rate. Hence, the uncertainty in the resolution of the rainfall data, the heterogeneity of the soil formations, the size of the catchment, and the upcoming difficulty in determining the parameters' values for parameterization could affect the method's efficiency (Jeong et al., 2010). The selection of sub-daily precipitation input time step as well as the resolution of the precipitation data have a significant impact on model results when using the GAML method, and it should be based on the scale and characteristics of the watershed (Bauwe et al., 2016; Kannan et al., 2007).
- (iv) The conceptual simplifications made during the model parameterization process. The initial ranges of the calibrating parameters were set according to literature and sensitivity analysis. Then, based on the performance of the default model, specific parameters were parameterized using calibration protocols (Abbaspour et al., 2015). The ranges of the calibrating parameters should be kept within reasonable limits using quantitative

statistics and graphical comparisons to ensure that hydrological processes represent the characteristic of the study area (Daggupati et al., 2015b). The choice of the objective function and the selection of the values of the parameters that influence surface runoff, groundwater, channel routing, and evapotranspiration is a critical point in model calibration which can increase the uncertainty of the results (Polanco et al., 2017).



420 | **Figure 45.** Observed and simulated hourly discharge ($\text{m}^3 \text{s}^{-1}$) using the GAML method for the heavy rainfall events that occurred in 2018 and 2019: (a) event from 12/01-14/01/2018; (b) event from 05/05-07/05/2018; (c) event from 29/09-01/10/2018; (d) event from 05/02-07/02/2019; (e) event from 12/11-14/11/2019; (f) event from 29/12-31/12/2019.

Table 6. Rainfall characteristics of selected events for the years 2018 and 2019.

Events	Observed			Simulated		
	Average discharge (m^3/s)	Peak discharge (m^3/s)	Time of peak (UTC)	Average discharge (m^3/s)	Peak discharge (m^3/s)	Time of peak (UTC)

12/01-14/01/2018	2.6	10.7	6:00	2.2	7.1	5:00
05/05-07/05/2018	2.2	11.1	20:00	2.1	6.6	21:00
29/09-01/10/2018	5.7	17.2	18:00	5.2	8.9	18:00
05/02-07/02/2019	3.6	16.2	1:00	2.9	6.2	00:00
12/11-14/11/2019	2.9	12.3	3:00	2.4	3.5	3:00
29/12-31/12/2019	4.9	14.8	21:00	3.6	6.9	21:00

425 4 Conclusions

Experimental catchments provide long-term time series of hydrological data, which are essential for improved application of best management practices and the development and validation of watershed models. In this study, discharge was monitored for three years (2017-2019) in an experimental basin with mixed-land-use characteristics (i.e., urban/peri-urban), located in Athens, Greece. Discharge simulation, calibration, and validation were achieved with the application of SWAT model, which has been increasingly used to support decisions on various environmental issues and policy directions. Daily and hourly rainfall observations were used as inputs to investigate the influence of rainfall resolution on model performance in order to analyze the mechanisms governing surface runoff at the catchment scale. Surface runoff was estimated using the CN method for the daily model and the GAML method for the hourly model.

A sensitivity analysis conducted in this study showed that the parameters related to groundwater flow were more sensitive for daily time intervals and channel routing parameters were more influential for hourly time intervals. These findings indicate that the model operational time step affects parameters' sensitivity to the model output, thus demonstrating the need for a different model strategy for the simulation of sub-daily hydrological processes.

Quantitative statistics of the observed and the simulated records indicate that the calibration and validation processes produced acceptable results for both infiltration-runoff estimation methods. Additionally, graphical techniques at the outlet station show that both models succeed in capturing the majority of seasonality and peak discharge. Generally, the daily model performed better than the sub-daily model in simulating runoff. The CN method produced higher discharge peaks than the GAML method and estimated better the observed values. In particular, from the comparison of the selected rainfall events, it is also evident the critical role of the antecedent soil moisture conditions of the catchment and their impact on sub-daily performance, indicating the need for improvement of the SWAT sub-daily option for soil moisture estimation. The differences in the calibrated values of the two models lay mostly in the different runoff estimation methods used by the two models. In addition, errors in the quality of input data, diverse management practices and hydrological processes the complex land use characteristics of an urban/peri-urban environment, unknown processes to the modeler, and assumptions conceptual simplifications made during the model structure/calibration process may increase the uncertainty of the outputs.

Overall, the general agreement between observations and simulations in both models suggests that the SWAT model appears to be a reliable tool to predict for predicting discharge in a mixed-land-use basin with high complexity and spatial distribution of input data. Furthermore, this study contributed to the understanding of the mechanisms controlling surface runoff and

the parameters that influence the hydrological processes that take place in an urban/peri-urban hydrological environment. Furthermore, the results of this study could help planners and managers to decide which time step is more useful regarding their goals and will provide a calibrated tool to assess potential hydrological impacts of future planning and development activities. However, it should be noted that several factors such as data limitation, observational errors in input data, complexities of spatial and temporal scales, and inaccuracies in model structure may lead to uncertainty in model outputs. In the future, emphasis will be placed on the investigation of a correlation between antecedent moisture conditions and hourly model performance when more data becomes available and on the quantification of quantifying the parameter uncertainty by including more observed variables in the calibration process, such as evapotranspiration and soil moisture satellite data.

Code availability. The source codes of the SWAT model are available at the website <http://swat.tamu.edu/> (USDA Agricultural Research Service and Texas A&M AgriLife Research)

Data availability. The DEM data were downloaded from the website <https://earthexplorer.usgs.gov/> (Shuttle Radar Topography Mission, SRTM). The land use data were downloaded from the website <https://land.copernicus.eu/> (Corine Land Cover, CLC 2018). The soil data were downloaded from the website <http://www.fao.org/> (Food and Agriculture Organization, FAO). The weather data were downloaded from the website <https://www.meteo.gr/> (National Observatory of Athens, NOA). The discharge data were downloaded from the website <https://openhi.net/> (Open Hydrosystem Information Network).

Author contributions. EK performed the simulations, analyzed the results and prepared the manuscript with contributions from all the co-authors. NM and AK contributed to the conception and methodology of this study. AK was the supervisor of the research project and provided the funding that led to this publication.

Competing interests. The authors declare that they have no conflict of interest.

Acknowledgements. The research work was supported by the Hellenic Foundation for Research and Innovation (HFRI) under the HFRI PhD Fellowship grant (Fellowship Number: 1586). The authors are grateful to Nancy Sammons, Information Technology Specialist of the SWAT team and Chris George, Software Engineer of the SWAT team for their help with the SWAT software.

References

Abbaspour, K. C., Johnson, C. A. and van Genuchten, M. T.: Estimating Uncertain Flow and Transport Parameters Using a Sequential Uncertainty Fitting Procedure, *Vadose Zone Journal*, 3(4), 1340–1352, doi:10.2113/3.4.1340, 2004.

Abbaspour, K. C., Yang, J., Maximov, I., Siber, R., Bogner, K., Mieleitner, J., Zobrist, J. and Srinivasan, R.: Modelling hydrology and water quality in the pre-alpine/alpine Thur watershed using SWAT, *Journal of Hydrology*, 333(2–4), 413–430, doi:10.1016/j.jhydrol.2006.09.014, 2007.

- Abbaspour, K. C., Rouholahnejad, E., Vaghefi, S., Srinivasan, R., Yang, H. and Kløve, B.: A continental-scale hydrology and water quality model for Europe: Calibration and uncertainty of a high-resolution large-scale SWAT model, *Journal of Hydrology*, 524(May), 733–752, doi:10.1016/j.jhydrol.2015.03.027, 2015.
- Arnold, J. G., Srinivasan, R., Mutiah, R. S. and Williams, J. R.: Large Area Hydrologic Modeling and Assessment Part I: Model Development, *Journal of the American Water Resources Association*, 34(1), 73–89, doi:10.1111/j.1752-1688.1998.tb05961.x, 1998.
- Arnold, J. G., Moriasi, D. N., Gassman, P. W., Abbaspour, K. C., White, M. J., Srinivasan, R., Santhi, C., Harmel, R. D., Van Griensven, A., Van Liew, M. W., Kannan, N. and Jha, M. K.: SWAT: Model Use, Calibration, and Validation, *Transactions of the ASABE*, 55(4coper), 1491–1508, doi:10.13031/2013.42256, 2012.
- 495 Arnold, J. G., Youssef, M. A., Yen, H., White, M. J., Sheshukov, A. Y., Sadeghi, A. M., Moriasi, D. N., Steiner, J. L., Amatya, D. M., Skaggs, R. W., Haney, E. B., Jeong, J., Arabi, M. and Gowda, P. H.: Hydrological Processes and Model Representation: Impact of Soft Data on Calibration, *Transactions of the ASABE*, 58(6), 1637–1660, doi:10.13031/trans.58.10726, 2015.
- Bauwe, A., Kahle, P. and Lennartz, B.: Hydrologic evaluation of the curve number and Green and Ampt infiltration methods by applying Hooghoudt and Kirkham tile drain equations using SWAT, *Journal of Hydrology*, 537, 311–321, 500 doi:10.1016/j.jhydrol.2016.03.054, 2016.
- Bauwe, A., Tiedemann, S., Kahle, P. and Lennartz, B.: Does the Temporal Resolution of Precipitation Input Influence the Simulated Hydrological Components Employing the SWAT Model?, *Journal of the American Water Resources Association*, 53(5), 997–1007, doi:10.1111/1752-1688.12560, 2017.
- 505 Becker, R., Koppa, A., Schulz, S., Usman, M., aus der Beek, T. and Schüth, C.: Spatially distributed model calibration of a highly managed hydrological system using remote sensing-derived ET data, *Journal of Hydrology*, 577(June), 123944, doi:10.1016/j.jhydrol.2019.123944, 2019.
- Bogena, H. R., White, T., Bour, O., Li, X. and Jensen, K. H.: Toward Better Understanding of Terrestrial Processes through Long-Term Hydrological Observatories, *Vadose Zone Journal*, 17(1), 180194, doi:10.2136/vzj2018.10.0194, 2018.
- 510 Boithias, L., Sauvage, S., Lenica, A., Roux, H., Abbaspour, K., Larnier, K., Dartus, D. and Sánchez-Pérez, J.: Simulating Flash Floods at Hourly Time-Step Using the SWAT Model, *Water*, 9(12), 929, doi:10.3390/w9120929, 2017.
- Brighenti, T. M., Bonumá, N. B., Srinivasan, R. and Chaffe, P. L. B.: Simulating sub-daily hydrological process with SWAT: a review, *Hydrological Sciences Journal*, 64(12), 1415–1423, doi:10.1080/02626667.2019.1642477, 2019.
- Campbell, A., Pradhanang, S. M., Kouhi Anbaran, S., Sargent, J., Palmer, Z. and Audette, M.: Assessing the impact of 515 urbanization on flood risk and severity for the Pawtuxet watershed, Rhode Island, *Lake and Reservoir Management*, 34(1), 74–87, doi:10.1080/10402381.2017.1390016, 2018.
- Cheng, Q. B., Reinhardt-Imjela, C., Chen, X., Schulte, A., Ji, X. and Li, F. L.: Improvement and comparison of the rainfall–runoff methods in SWAT at the monsoonal watershed of Baocun, Eastern China, *Hydrological Sciences Journal*, 61(8), 1460–1476, doi:10.1080/02626667.2015.1051485, 2016.

- 520 Corine Land Cover, (CLC): Land use data, [online] Available from: <https://land.copernicus.eu/> (Accessed 15 December 2020), 2018.
- Daggupati, P., Yen, H., White, M. J., Srinivasan, R., Arnold, J. G., Keitzer, C. S. and Sowa, S. P.: Impact of model development, calibration and validation decisions on hydrological simulations in West Lake Erie Basin, *Hydrological Processes*, 29(26), 5307–5320, doi:10.1002/hyp.10536, 2015a.
- 525 Daggupati, P., Yen, H., White, M. J., Srinivasan, R., Arnold, J. G., Keitzer, C. S. and Sowa, S. P.: Impact of model development, calibration and validation decisions on hydrological simulations in West Lake Erie Basin, *Hydrological Processes*, 29(26), 5307–5320, doi:10.1002/hyp.10536, 2015b.
- Dile, Y. T., Daggupati, P., George, C., Srinivasan, R. and Arnold, J.: Introducing a new open source GIS user interface for the SWAT model, *Environmental Modelling and Software*, 85, 129–138, doi:10.1016/j.envsoft.2016.08.004, 2016.
- 530 Douglas-Mankin, K. R., Srinivasan, R. and Arnold, J. G.: Soil and Water Assessment Tool (SWAT) Model: Current Developments and Applications, *Transactions of the ASABE*, 53(5), 1423–1431, doi:10.13031/2013.34915, 2010.
- Engel, B., Storm, D., White, M., Arnold, J. and Arabi, M.: A Hydrologic/Water Quality Model Application, *Journal of the American Water Resources Association*, 43(5), 1223–1236, doi:10.1111/j.1752-1688.2007.00105.x, 2007.
- FAO, IIASA, ISRIC and ISSCAS: Harmonized World Soil Database Version 1.2, Food & Agriculture Organization of the UN, Rome, Italy, and International Institute for Applied Systems Analysis, Laxenburg, Austria., 2012.
- 535 Ficklin, D. L. and Zhang, M.: A Comparison of the Curve Number and Green-Ampt Models in an Agricultural Watershed, *Transactions of the ASABE*, 56(1), 61–69, doi:10.13031/2013.42590, 2013.
- Food and Agriculture Organization, (FAO): HWSD soil data, [online] Available from: www.fao.org (Accessed 10 December 2020), 2012.
- 540 Gassman, P. W., Reyes, M. R., Green, C. H. and Arnold, J. G.: The Soil and Water Assessment Tool: Historical Development, Applications, and Future Research Directions, *Transactions of the ASABE*, 50(4), 1211–1250, doi:10.13031/2013.23637, 2007.
- Gassman, P. W., Sadeghi, A. M. and Srinivasan, R.: Applications of the SWAT Model Special Section: Overview and Insights, *Journal of Environmental Quality*, 43(1), 1–8, doi:10.2134/jeq2013.11.0466, 2014.
- 545 Golmohammadi, G., Rudra, R., Dickinson, T., Goel, P. and Veliz, M.: Predicting the temporal variation of flow contributing areas using SWAT, *Journal of Hydrology*, 547, 375–386, doi:10.1016/j.jhydrol.2017.02.008, 2017.
- Goodrich, D. C., Heilman, P., Anderson, M., Baffaut, C., Bonta, J., Bosch, D., Bryant, R., Cosh, M., Endale, D., Veith, T. L., Havens, S. C., Hedrick, A., Kleinman, P. J., Langendoen, E. J., McCarty, G., Moorman, T., Marks, D., Pierson, F., Rigby, J. R., Schomberg, H., Starks, P., Steiner, J., Strickland, T. and Tsegaye, T.: The USDA-ARS Experimental Watershed Network: Evolution, Lessons Learned, Societal Benefits, and Moving Forward, *Water Resources Research*, 57(2), 0–3, doi:10.1029/2019WR026473, 2020.
- Gupta, H. V., Sorooshian, S. and Yapo, P. O.: Status of Automatic Calibration for Hydrologic Models: Comparison with Multilevel Expert Calibration, *Journal of Hydrologic Engineering*, 4(2), 135–143, doi:10.1061/(asce)1084-

- 0699(1999)4:2(135), 1999.
- 555 Guzman, J. A., Shirmohammadi, A., Sadeghi, A. M., Wang, X., Chu, M. L., Jha, M. K., Parajuli, P. B., Harmel, R. D., Khare, Y. P. and Hernandez, J. E.: Uncertainty considerations in calibration and validation of hydrologic and water quality models, *Transactions of the ASABE*, 58(6), 1745–1762, doi:10.13031/trans.58.10710, 2015.
- Han, E., Merwade, V. and Heathman, G. C.: Implementation of surface soil moisture data assimilation with watershed scale distributed hydrological model, *Journal of Hydrology*, 416–417, 98–117, doi:10.1016/j.jhydrol.2011.11.039, 2012.
- 560 Harmel, R. D., Smith, P. K., Migliaccio, K. W., Chaubey, I., Douglas-Mankin, K. R., Benham, B., Shukla, S., Muñoz-Carpena, R. and Robson, B. J.: Evaluating, interpreting, and communicating performance of hydrologic/water quality models considering intended use : A review and recommendations, *Environmental Modelling & Software*, 21, 40–51, 2014.
- Hrachowitz, M., Benettin, P., van Breukelen, B. M., Fovet, O., Howden, N. J. K., Ruiz, L., van der Velde, Y. and Wade, A. J.: Transit times—the link between hydrology and water quality at the catchment scale, *Wiley Interdisciplinary Reviews: Water*, 3(5), 629–657, doi:10.1002/wat2.1155, 2016.
- 565 Immerzeel, W. W. and Droogers, P.: Calibration of a distributed hydrological model based on satellite evapotranspiration, *Journal of Hydrology*, 349(3–4), 411–424, doi:10.1016/j.jhydrol.2007.11.017, 2008.
- Jeong, J., Kannan, N., Arnold, J., Glick, R., Gosselink, L. and Srinivasan, R.: Development and Integration of Sub-hourly Rainfall-Runoff Modeling Capability Within a Watershed Model, *Water Resources Management*, 24(15), 4505–4527, doi:10.1007/s11269-010-9670-4, 2010.
- 570 Kamali, B., Abbaspour, K. C. and Yang, H.: Assessing the uncertainty of multiple input datasets in the prediction of water resource components, *Water (Switzerland)*, 9(9), doi:10.3390/w9090709, 2017.
- Kannan, N., White, S. M., Worrall, F. and Whelan, M. J.: Sensitivity analysis and identification of the best evapotranspiration and runoff options for hydrological modelling in SWAT-2000, *Journal of Hydrology*, 332(3–4), 456–466, doi:10.1016/j.jhydrol.2006.08.001, 2007.
- 575 King, K. W., Arnold, J. G. and Bingner, R. L.: Comparison of Green-Ampt and curve number methods on Goodwin Creek Watershed using SWAT, *Transactions of the American Society of Agricultural Engineers*, 42(4), 919–925, doi:10.13031/2013.13272, 1999.
- Kouchi, D. H., Esmaili, K., Faridhosseini, A., Sanaeinejad, S. H., Khalili, D. and Abbaspour, K. C.: Sensitivity of calibrated parameters and water resource estimates on different objective functions and optimization algorithms, *Water (Switzerland)*, 9(6), 1–16, doi:10.3390/w9060384, 2017.
- 580 Li, Y. and DeLiberty, T.: Evaluating hourly SWAT streamflow simulations for urbanized and forest watersheds across northwestern Delaware, US, *Stochastic Environmental Research and Risk Assessment*, 0123456789, doi:10.1007/s00477-020-01904-y, 2020.
- 585 Maharjan, G. R., Park, Y. S., Kim, N. W., Shin, D. S., Choi, J. W., Hyun, G. W., Jeon, J. H., Ok, Y. S. and Lim, K. J.: Evaluation of SWAT sub-daily runoff estimation at small agricultural watershed in Korea, *Frontiers of Environmental Science and Engineering in China*, 7(1), 109–119, doi:10.1007/s11783-012-0418-7, 2013.

- Meaurio, M., Zabaleta, A., Srinivasan, R., Sauvage, S., Sánchez-Pérez, J.-M., Lechuga-Crespo, J. L. and Antiguada, I.: Long-term and event-scale sub-daily streamflow and sediment simulation in a small forested catchment, *Hydrological Sciences Journal*, 66(5), 862–873, doi:10.1080/02626667.2021.1883620, 2021.
- 590 Mein, R.G. and Larson, C. L.: Modeling Infiltration during a Steady Rain, *Water Resources Research*, 9(2), 384–394, 1973.
- Moriasi, D. N., Arnold, J. G., Van Liew, M. W., Bingner, R. L., Harmel, R. D. and Veith, T. L.: Model Evaluation Guidelines for Systematic Quantification of Accuracy in Watershed Simulations, *Transactions of the ASABE*, 50(3), 885–900, doi:10.13031/2013.23153, 2007.
- 595 Moriasi, D. N., Gitau, M. W., Pai, N. and Daggupati, P.: Hydrologic and water quality models: Performance measures and evaluation criteria, *Transactions of the ASABE*, 58(6), 1763–1785, doi:10.13031/trans.58.10715, 2015.
- Nash, J. E. and Sutcliffe, J. V.: River flow forecasting through conceptual models part I - A discussion of principles, *Journal of Hydrology*, 10(3), 282–290, doi:10.1016/0022-1694(70)90255-6, 1970.
- National Observatory of Athens, (NOA): Weather data, [online] Available from: <https://www.meteo.gr/> (Accessed 10
600 December 2020).
- Neitsch, S. L., Arnold, J. G., Kiniry, J. R. and Williams, J. R.: Soil & Water Assessment Tool Theoretical Documentation Version 2009, Texas Water Resources Institute Technical Report No. 406, Texas, USA., 2011.
- Open Hydrosystem Information Network, (OpenHi.net): Observed streamflow data, [online] Available from: <https://openhi.net/> (Accessed 20 December 2020).
- 605 Polanco, E. I., Fleifle, A., Ludwig, R. and Disse, M.: Improving SWAT model performance in the upper Blue Nile Basin using meteorological data integration and subcatchment discretization, *Hydrology and Earth System Sciences*, 21(9), 4907–4926, doi:10.5194/hess-21-4907-2017, 2017.
- Smart Toolbox for Engaging Citizens in a People-Centric Observation Web, (SCENT): Discharge stations, [online] Available from: <https://scent-project.eu/> (Accessed 20 December 2020), n.d.
- 610 Soil Conservation Service, S.: National Engineering Handbook, Section 4, Hydrology, Department of Agriculture, Washington DC, USA., 1972.
- Stockinger, M. P., Bogena, H. R., Lücke, A., Diekkrüger, B., Cornelissen, T. and Vereecken, H.: Tracer sampling frequency influences estimates of young water fraction and streamwater transit time distribution, *Journal of Hydrology*, 541, 952–964, doi:10.1016/j.jhydrol.2016.08.007, 2016.
- 615 Tan, M. L., Gassman, P. W., Yang, X. and Haywood, J.: A review of SWAT applications, performance and future needs for simulation of hydro-climatic extremes, *Advances in Water Resources*, 143(June), 103662, doi:10.1016/j.advwatres.2020.103662, 2020.
- Tauro, F., Selker, J., van de Giesen, N., Abrate, T., Uijlenhoet, R., Porfiri, M., Manfreda, S., Caylor, K., Moramarco, T., Benveniste, J., Ciraolo, G., Estes, L., Domeneghetti, A., Perks, M. T., Corbari, C., Rabiei, E., Ravazzani, G., Bogena, H., Harfouche, A., Brocca, L., Maltese, A., Wickert, A., Tarpanelli, A., Good, S., Lopez Alcalá, J. M., Petroselli, A., Cudennec, C., Blume, T., Hut, R. and Grimaldi, S.: Measurements and Observations in the XXI century (MOXXI): innovation and

multi-disciplinarity to sense the hydrological cycle, *Hydrological Sciences Journal*, 63(2), 169–196, doi:10.1080/02626667.2017.1420191, 2018.

625 U.S. Geological Survey, (USGS): Shuttle Radar Topography Mission (SRTM), DEM data, [online] Available from:
<https://earthexplorer.usgs.gov/> (Accessed 5 December 2020).

Yang, X., Liu, Q., He, Y., Luo, X. and Zhang, X.: Comparison of daily and sub-daily SWAT models for daily streamflow simulation in the Upper Huai River Basin of China, *Stochastic Environmental Research and Risk Assessment*, 30(3), 959–972, doi:10.1007/s00477-015-1099-0, 2016.

630 Yu, D., Xie, P., Dong, X., Hu, X., Liu, J., Li, Y., Peng, T., Ma, H., Wang, K. and Xu, S.: Improvement of the SWAT model for event-based flood simulation on a sub-daily timescale, *Hydrology and Earth System Sciences*, 22(9), 5001–5019, doi:10.5194/hess-22-5001-2018, 2018.