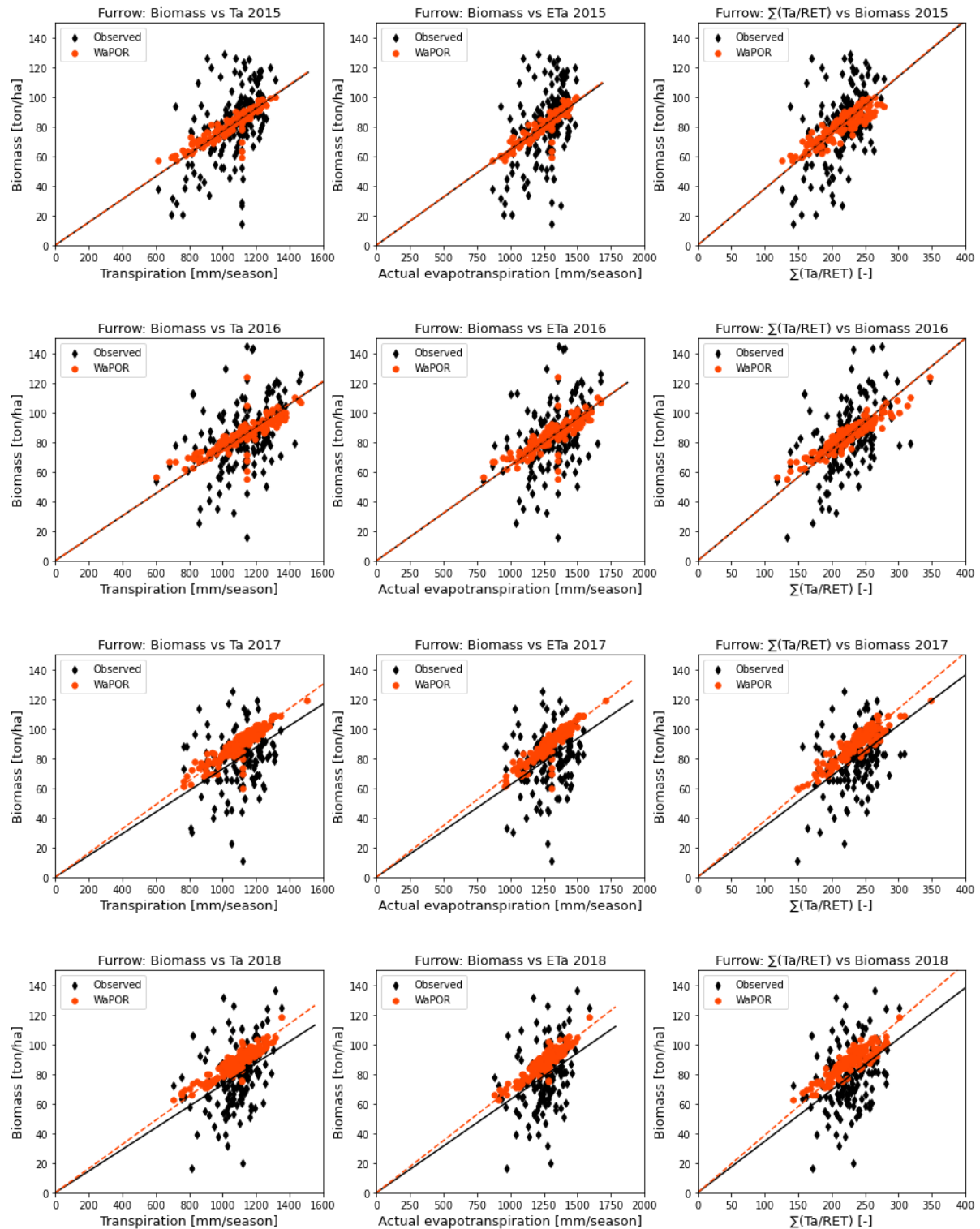
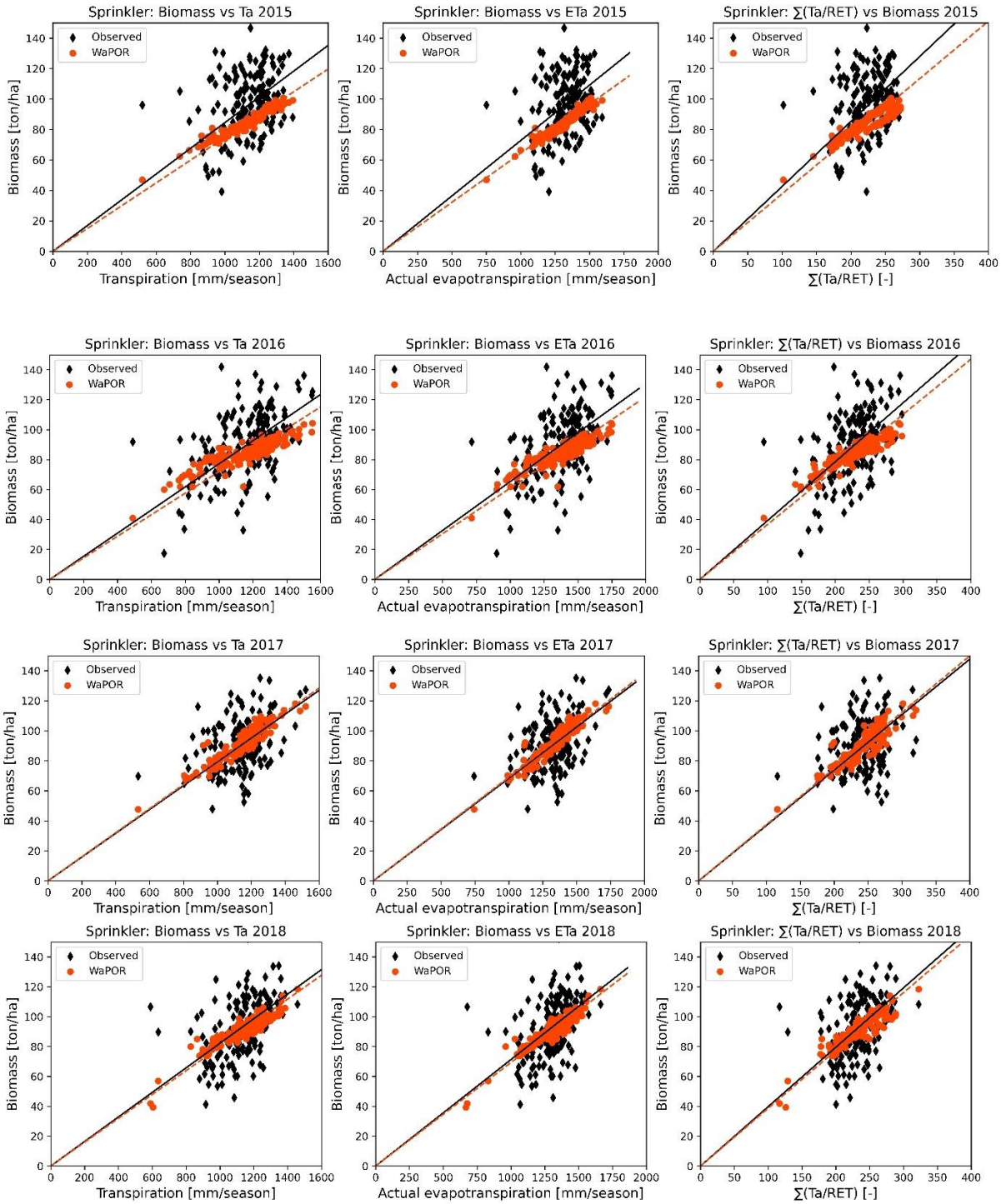


Supplementary Material

Figure S1. The relationship between biomass and transpiration, biomass and evapotranspiration and biomass and normalized transpiration of furrow, sprinkler and centre pivot irrigated fields at Xinavane in 2015-2018.





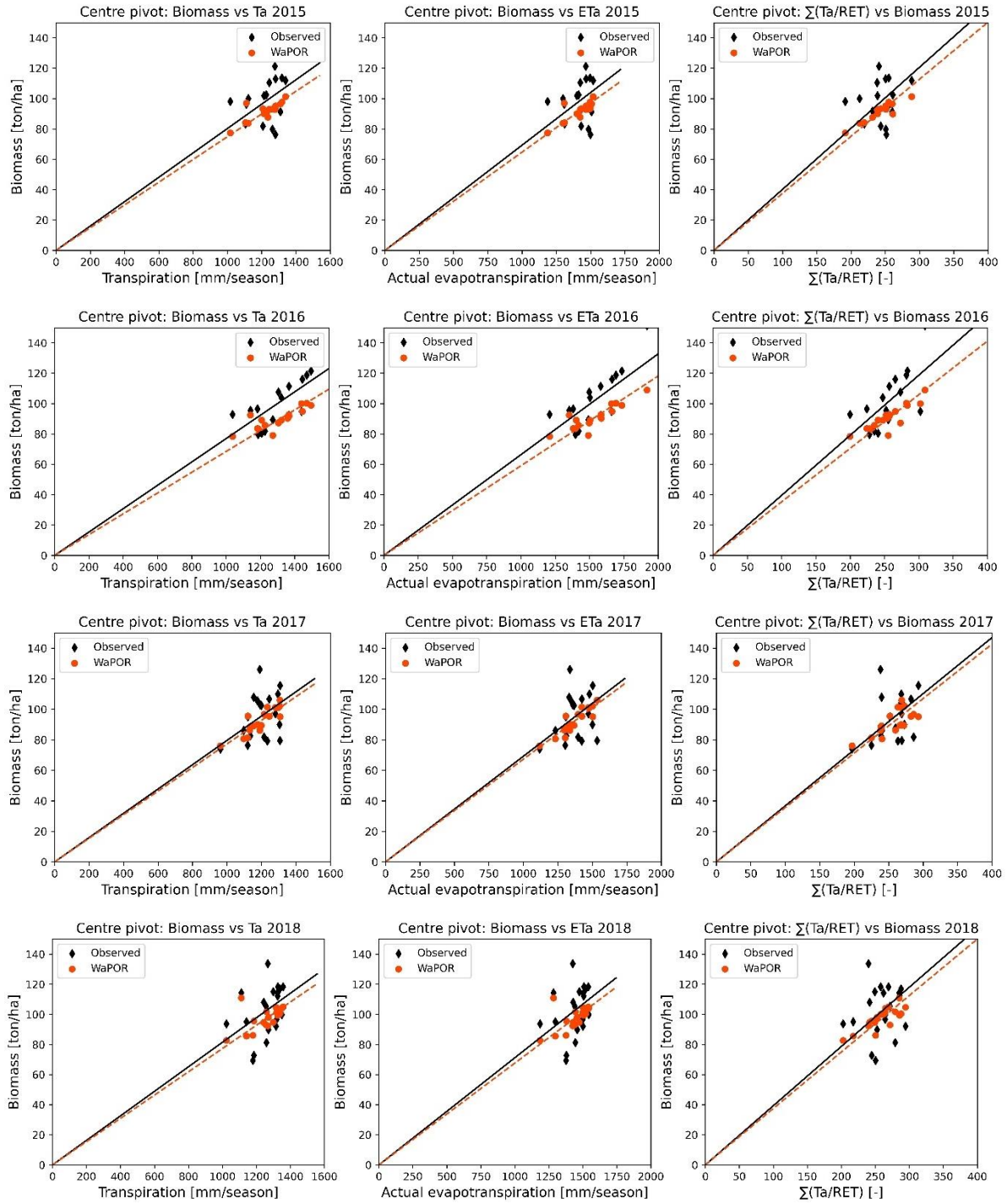


Table S1. The statistical parameters of the relationship between biomass and water consumption of furrow, sprinkler and centre pivot irrigated fields from 2015 to 2018.

Furrow irrigated fields

Line	Regression parameters	2015 (n=175)	2016 (n=153)	2017 (n=152)	2018 (n=149)
B vs. T_a	Slope of the regression line	0.077	0.076	0.081	0.081
	intercept	0.0	0.0	0.0	0.0
	r^2	0.828	0.617	0.79	0.802
B vs. ET_a	Slope of the regression line	0.065	0.064	0.069	0.07
	Intercept	0.0	0.0	0.0	0.0
	r^2	0.856	0.641	0.815	0.833
B vs. $\sum T/ET_{ref}$	Slope of the regression line	0.0.38	0.376	0.379	0.387
	Intercept	0.0	0.0	0.0	0.0
	r^2	0.739	0.78	0.806	0.711

Sprinkler irrigated fields

Line	Regression parameters	2015 (n=160)	2016 (n=180)	2017 (n=161)	2018 (n=149)
B vs. T_a	Slope of the regression line	0.075	0.072	0.08	0.08
	intercept	0.0	0.0	0.0	0.0
	r^2	0.87	0.427	0.86	0.813
B vs. ET_a	Slope of the regression line	0.064	0.061	0.069	0.069
	Intercept	0.0	0.0	0.0	0.0
	r^2	0.939	0.651	0.884	0.87
B vs. $\sum T/ET_{ref}$	Slope of the regression line	0.0.378	0.376	0.375	0.387
	Intercept	0.0	0.0	0.0	0.0
	r^2	0.737	0.658	0.808	0.772

Centre pivot irrigated fields

Line	Regression parameters	2015 (n=16)	2016 (n=17)	2017 (n=19)	2018 (n=19)
<i>B</i> vs. T_a	Slope of the regression line	0.075	0.068	0.077	0.077
	intercept	0.0	0.0	0.0	0.0
	r^2	0.538	0.558	0.757	0.123
<i>B</i> vs. ET_a	Slope of the regression line	0.065	0.059	0.067	0.068
	Intercept	0.0	0.0	0.0	0.0
	r^2	0.606	0.608	0.817	0.2
<i>B</i> vs. $\sum T/ET_{ref}$	Slope of the regression line	0.376	0.353	0.357	0.375
	Intercept	0.0	0.0	0.0	0.0
	r^2	0.643	0.621	0.444	0.486