

# Coastal and orographic effects on extreme precipitation revealed by weather radar observations

Francesco Marra<sup>1</sup>, Moshe Armon<sup>2,3</sup>, Efrat Morin<sup>2</sup>

<sup>1</sup>National Research Council of Italy, Institute of Atmospheric Sciences and Climate (CNR-ISAC), Bologna, 40129, Italy

<sup>2</sup>The Fredy & Nadine Herrmann Institute of Earth Sciences, the Hebrew University of Jerusalem, Jerusalem, Israel

<sup>3</sup>[Institute for Atmospheric and Climate Science, ETH Zurich, Zurich, Switzerland](#)

Correspondence to: F. Marra ([f.marra@isac.cnr.it](mailto:f.marra@isac.cnr.it)), Via Gobetti, 101, 40129, Bologna, Italy, Phone: +39 0516398084

**Abstract.** The yearly exceedance probability of extreme precipitation of multiple durations is crucial for infrastructure design, risk management and policymaking. Local extremes emerge from the interaction of weather systems with local terrain features such as coastlines and orography, however multi-duration extremes do not follow exactly the patterns of cumulative precipitation and are still not well understood. High-resolution information from weather radars could help us better quantifying their patterns, but traditional extreme-value analyses based on radar records were found too inaccurate for quantifying the extreme intensities required for impact studies. Here, we propose a novel methodology for extreme precipitation frequency analysis based on relatively short weather radar records, and we use it to investigate coastal and orographic effects on extreme precipitation of durations between 10 minutes and 24 hours. Combining 11 years of radar data with 10-minute rain gauge data in the southeastern Mediterranean, we obtain estimates of the 1 in 100 years precipitation intensities with ~26% standard error, which is lower than those obtained using traditional approaches on rain gauge data. We identify three distinct regimes, which respond differently to coastal and orographic forcing: short durations (~10 minutes), related to peak convective rain rates; hourly durations (~1 hours), related to the yield of individual convective cells; and long durations (~6-24 hours), related to the accumulation of multiple convective cells and to stratiform processes. At short and hourly durations, extreme return levels peak at the coastline, while at longer durations they peak corresponding to the orographic barriers. The distributions tail heaviness is rather uniform above the sea and rapidly changes in presence of orography, with opposing directions at short (decreasing tail heaviness, with a peak at hourly durations) and long (increasing) durations. These distinct effects suggest that short-scale hazards such as urban pluvial floods could be more of concern for the coastal regions, while longer-scale hazards such as flash floods could be more relevant in mountainous areas.

## 1 Introduction

Knowledge of the yearly exceedance probability of extreme precipitation intensities at multiple spatiotemporal scales is crucial for infrastructure design, weather-risk management and policymaking (Chow et al., 1988; Kleindorfer and Kunreuther, 1999). Typically, statistical models are fitted to the observed extremes and used to extrapolate design precipitation intensities corresponding to low yearly exceedance probabilities, which cannot be empirically quantified from observations. For example,

the 100-year return levels are intensities characterized by 1% yearly exceedance probability, and thus exceeded on average once in 100 years (Katz et al., 2002). This task usually requires specific approaches to decrease the stochastic uncertainties characterizing the observation of extremes (e.g., Koutsoyiannis et al. 1988; Buishand, 1991; Burlando and Rosso, 1996) and simplified conceptual models to account for the multiple spatiotemporal scales required by many impact studies (Sivapalan and Blöschl, 1998; Svensson and Jones, 2010).

Local precipitation climatology emerges from the interaction between weather systems and local terrain features. For instance, mountains constrain the flow of air masses inducing vertical motions which affect precipitation (Haiden et al., 1992; Houze et al., 2001; Roe, 2005). Similarly, sea-land interfaces and lakes may alter the precipitation characteristics due to the interaction of synoptic-scale winds with meso-scale features such as sea/land breeze, the frictional-induced convergence associated with deceleration of wind speeds when air is blowing from sea inland, and the contribution of the coastal shape to convergence, with effects which can propagate far inland (Bergeron, 1949; Neumann, 1951; Bummer et al., 1995; Niziol et al., 1995; Colle and Yuter, 2007; Heiblum et al., 2011; Warner et al., 2012; Li and Carbone, 2015; Minder et al., 2015). While these phenomena are relatively well understood in terms of average precipitation yield, less is known about their impact on extreme precipitation intensities.

Extreme precipitation intensity does not follow exactly the patterns of cumulative precipitation. For example, the typical orographic enhancement of total precipitation was found reversed for extreme hourly precipitation (the “reverse orographic effect”), meaning that the hourly extremes tend to decrease with elevation (Allamano et al., 2009; Avanzi et al., 2015). The only study available so far on the orographic impact on sub-hourly design precipitation focused on the case of Mediterranean cyclones in the southeastern Mediterranean, and found that orography tends to decrease the tail heaviness of precipitation intensity distribution, with a stronger effect at hourly durations with respect to sub-hourly or multi-hour (Marra et al., 2021b). As for the sea-land interfaces, extreme precipitation was found to be higher along narrow coastal regions (Mapes et al., 2003; Wu et al. 2009). For the southeastern Mediterranean, rain amounts defining the highest precipitation percentiles at sub-storm durations were found to be higher along the coastline, extending few kilometers inland (Sharon and Kutiel, 1986; Karklinsky and Morin, 2006; Peleg and Morin, 2012; Armon et al., 2020). Nevertheless, with the exception of coarse-scale climatology from satellite-borne sensors, which however did not directly address the issue (Marra et al., 2017; Demirdjian et al., 2018; Courty et al., 2019), not much is known about the sea-land interactions in terms of extreme return levels, mostly due the obvious lack of in-situ observations over the sea.

The interest in these questions is enhanced by the ongoing climate change, which affects the hydrological cycle in yet unclear manners (Blöschl et al., 2019) and may result in non-linear response to natural hazards triggered by hydroclimatic extremes, such as urban floods (Arnbjerg-Nielsen et al., 2013), flash-floods (Hicks et al., 2005; Amponsah et al., 2018), slope failures (Marchi et al., 2009; Paranunzio et al., 2019), forest disturbances (Ulbrich et al., 2001; Forzieri et al., 2020), and coastal flooding (Wahl et al., 2015; Bevacqua et al., 2019). An improved understanding of the interaction of weather systems with local terrain features and its effects on design precipitation intensities could help us better representing present and future extremes in impact studies (e.g., Attema and Lenderink, 2014; Peleg et al., 2020). However, information from in-situ

65 observations is often limited due to the large extension of ungauged regions worldwide (Kidd et al., 2017) and to the sparse  
representativeness of rain gauge sampling, particularly important in the case of short duration extremes (Villarini et al., 2018;  
Peleg et al., 2018; Marra and Morin, 2018; Lengfeld et al., 2020).

Weather radars monitor regional-scales over both land and sea with high spatial and temporal resolutions, providing fine-scale  
information on the spatial gradients of extreme intensities ranging from sub-hourly to sub-daily and daily durations (Collier et  
70 al., 1989; Saltikoff et al., 2019). They represent a unique opportunity to examine these local effects on the statistics of extreme  
precipitation, as they cover orographic regions more homogeneously than the typical rain gauge networks, as well as offshore  
sea areas up to hundreds of kilometers from the coast (Kidd et al., 2017). The use of radar records for precipitation frequency  
analysis currently suffers from important uncertainties, mostly related to measurement errors (Eldardiry et al., 2015; Marra et  
al., 2015; McGraw et al., 2019) and to the use of statistical methods inadequate for the characteristics of weather radar records  
75 (Marra et al., 2019a). Most of the efforts so far focused on the reduction of these uncertainties (Overeem et al., 2009; Wright  
et al., 2013; Goudenhoofd et al., 2017), so that climatological analyses were only seldom attempted (Panziera et al., 2016;  
Marra et al., 2017).

Recent advances in the statistical description of extreme precipitation showed promising advantages over traditional  
approaches in estimating design precipitation intensities in presence of problems typical of radar monitoring, such as short  
80 data records and measurement errors (Marani and Ignaccolo, 2015; Zorzetto et al., 2016; Marra et al., 2018). These novel  
methods were tested on satellite data with encouraging results (Zorzetto and Marani, 2019; Zorzetto and Marani, 2020; Hu et  
al., 2020; Mekonnen et al., 2021) but, to the best of our knowledge, no weather radar application is available so far, with the  
exception of a single storm study case (Rinat et al., 2021).

Here, we exploit these novel statistical methods for precipitation frequency analysis to combine an 11-year weather radar  
85 archive covering the southeastern Mediterranean with data from a long recording rain gauge network. We use this adjusted  
dataset to investigate the statistical characteristics of extreme precipitation emerging from the interaction of weather systems  
with coastal and orographic features. Specifically, we (a) devise and test a novel methodology to adjust radar-derived statistics  
based on in-situ observations, and we use it to (b) investigate the coastal and orographic effects on the statistics of design  
extremes at multiple sub-daily durations. Using the new methodology, we find a notable impact of the coast on precipitation  
90 extremes, and characterize differential orographic effects on extreme precipitation over sub-hourly to daily durations.

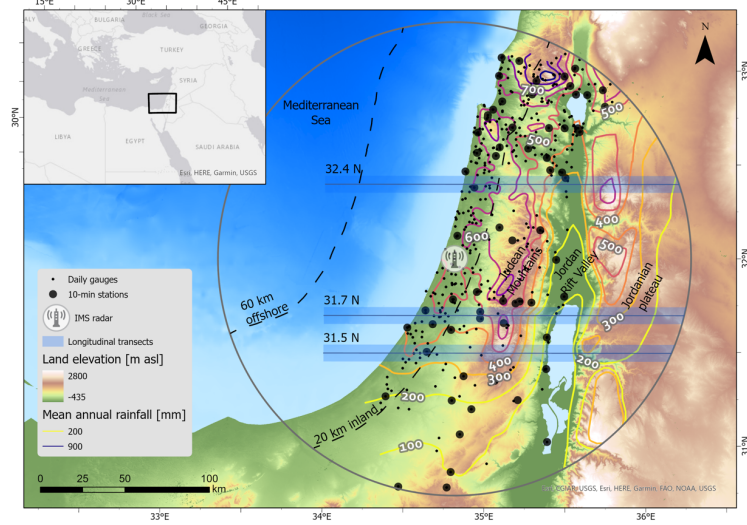
## 2 Study area and data

### 2.1 Study area

This study focuses on the region covered by the C-band weather radar of the Israeli Meteorological Service (IMS), located at  
Bet Dagan, Israel (Fig. 1). The region shows a longitudinally-organized physiography that, moving east from the  
95 Mediterranean Sea, encounters a coastal plain, an orographic barrier (Judean mountains, ~1000 m a.s.l.), a deep rift valley  
(Jordan rift valley, ~400 m below sea level), and a second orographic barrier (Jordanian plateau, >1000 m a.s.l.). Weather

systems strongly interact with these rather regular orographic features generating steep gradients in precipitation climatology, which include drops in the mean annual amounts as high as  $\sim 500 \text{ mm yr}^{-1}$  within a distance of 25 km. Overall, precipitation amounts tend to increase with latitude and elevation and decrease with distance from the coast (Alpert and Shafir, 1989; Goldreich, 1994).

Deleted: 1



**Figure 1:** Map of the study area showing: terrain elevation; location of the weather radar; 140-km range of the instrument; location of the daily rain gauges; location of the 10-minute rain gauges; location of the three transects shown in Fig. 6 and Fig. 7. Mean annual rainfall is based on 1961-1990 rain gauge data (Enzel et al., 2003).

105

Precipitation is mostly brought by (i) Mediterranean cyclones (Ziv et al. 2015; Kushnir et al. 2017), (ii) low-pressure systems extending from the south (Red Sea troughs; de Vries et al., 2013) and (iii) more rarely by conveyor belts of moisture of tropical origin (tropical plumes; Rubin et al., 2007; Tubi and Dayan, 2014). Although these systems are characterized by distinct spatial and temporal scales and all potentially cause extreme precipitation (Marra et al., 2019b), Mediterranean cyclones are the dominant systems both in terms of number of wet days and total precipitation yield ( $\sim 75\text{-}90\%$  of total amounts), with the exception of the southern and eastern portions of the domain in which Red Sea troughs can contribute almost equally (Belachsen et al., 2017; Armon et al., 2018; Marra et al., 2019b). Mediterranean cyclones typically bring westerly winds from the Mediterranean Sea inland, and thus interact with the coastal and orographic features of the area in a rather systematic way. Heavy precipitation processes are generally convective and characterized by high spatiotemporal variability, so that rain gauge monitoring is often insufficient (Yakir and Morin, 2011; Peleg et al., 2013; Marra and Morin, 2018). Climate models project

115

substantial changes in both the intensity and the occurrence of these systems (Hochman et al., 2018; Zappa et al., 2015), with complicated effects on compound extremes (Marra et al., 2019b; Marra et al., 2021a).

## 2.2 Rain gauge data

120 Rain gauge data were provided by the IMS and organized into two archives: (i) daily archive, containing precipitation amounts measured every day at 6UTC, used for the calibration and validation of the weather radar archive and for the definition of storms (see below); (ii) 10-minute archive from automatic stations, containing data at 10 min temporal intervals and 0.1 mm tip resolution, used for the adjustment of radar-derived statistics at multiple temporal scales. All the data were quality-controlled by the IMS; in addition, stations located in regions with low weather radar data quality (e.g., residual contamination  
125 by ground clutters and blockages) were removed to avoid negative impacts on the adjustments. In total, 437 daily stations and 65 10-minute stations are used in the analyses (Fig. 1). Hydrological years (September 1 to August 31) with more than 10% missing data were removed to ensure accurate quantification of the precipitation statistics (see Marra et al., 2020).

## 2.3 Weather radar data

A full re-elaboration of the weather radar archive was carried out to obtain a high-quality and homogeneous archive for the  
130 period 2007-2008 to 2017-2018. Physics-based corrections and empirical adjustments are combined in a procedure optimized for long-term radar archives and high-intensity convective storms (Marra et al., 2014; Marra and Morin, 2015; Marra and Morin, 2018). Non-precipitating echoes (i.e., ground clutters) are removed using a reparameterization of the filter by Jacobi et al. (2014) (details in Marra and Morin, 2018). Beam blockage due to orography is corrected (up to 70% power loss, Marra et al. 2014) using numerical simulations of the beam propagation in a digital elevation model (Pellarin et al., 2002). Non-  
135 orographic blockages are identified from the systematic power loss in long-term (yearly) observations and corrected by interpolation with nearby non-blocked beams. Beam attenuation in heavy rain is corrected with a modified Hitschfeld and Bordan (1954) algorithm using an upper limit of 10 dBZ to the correction factor (Marra and Morin, 2015); coefficients for convective environment are derived from Delrieu et al. (2000). Vertical variations of reflectivity are corrected based on spatially-averaged profiles observed during two-hour windows using the procedure in Marra and Morin (2015). Reflectivity is  
140 saturated at 59.5 dBZ to avoid contamination by hail. A fixed power law relation in the form  $Z = 316 \cdot R^{1.5}$ , which was shown to be adequate for the convective precipitation of the region, is used to compute rain intensity (Morin and Gabella, 2007). Rain rate at the ground is obtained averaging the two highest intensities along the vertical dimension for elevations up to 5°, and is converted to 500-meter Cartesian grid. Bias adjustment is performed using the daily rain gauge archive and consists of two steps: range-dependent adjustment based on yearly accumulations (Morin and Gabella, 2007); event-based mean-field  
145 adjustment (Marra and Morin, 2015), with events defined as consecutive wet days ( $\geq 5$  stations recording  $\geq 0.1$  mm, more details in Sect. 3.1).

Leave-one-out cross-validation of the archive at the daily scale shows a median fractional standard error (FSE, that is the root mean square error normalized over the average rain gauge amount, computed as:  $FSE = \frac{\sqrt{1/N \sum_i (r_i - g_i)^2}}{1/N \sum_i g_i}$ , where  $g_{i=1 \dots N}$  are the rain gauge observations and  $r_{i=1 \dots N}$  the radar estimates for the corresponding pixel, as in Marra and Morin, 2015) of 1.07, and a median correlation coefficient of 0.76 (see additional details in Figure S1 in the Supporting Information). These metrics imply that the root mean square error of the daily amounts is 107% of the average rain gauge daily amount in wet days ( $\geq 0.1$  mm), and that  $\sim 42\%$  of the variance is to be imputable to measurement errors. These results represent a large improvement over the previous radar archive available for the region, which had correlation coefficient below 0.5 and FSE between 1.5 and 2 (Marra and Morin, 2015, personal communication). These improvements are attributable to the more recent radar instrument and to the updated elaboration procedures, and which motivate our choice of exploiting this shorter but more accurate archive in our study. The instrument was sometimes turned off so that the archive cannot be considered complete. Despite the evaluation metrics, some issues still remain in the final estimates, which could decrease the quantitative accuracy of the estimated return levels: ground clutters in the first orographic range east of the radar can appear due to anomalous beam propagation; some blocked beams could be not completely recovered or they were over-filled by the correction, especially west of the instrument (e.g., see Fig S1 and Fig. S2); in eastern portion of the domain, the radar sample volumes are quite high in the atmosphere (due to the presence of the first orographic barrier) and no rain gauge is available for adjustment, leading to potential underestimation due to overshooting of the precipitation. Pixels located within 10 km from the instrument have been removed from the subsequent analyses to avoid the artifacts related to the suppression of side-lobe ground echoes. Underestimation due to range effects is also visible in the northern and southern portions of the domain for areas farther than  $\sim 100$  km from the radar.

### 3 Methods

#### 3.1 Extreme value analysis

Design precipitation intensities are here quantified as return levels corresponding to low yearly exceedance probabilities. We use the framework for sub-daily precipitation frequency analysis based on the concept of ordinary events presented in Marra et al. (2020), and we rely on the simplified Metastatistical extreme value (SMEV) method (Marra et al., 2019) for the estimation of extreme return levels. Ordinary events are defined as all the independent realizations of a process of interest. Once the cumulative distribution function describing their tail, here termed “intensity distribution”, is known, it is possible to compute an extreme value distribution to quantify intensities associated with rare yearly exceedance probabilities by explicitly considering their yearly occurrence frequency (Zorzetto et al., 2016). This approach is equivalent to ordinary statistics of  $n$ -sized block maxima under independence for which the tail behavior is known (Serinaldi et al., 2020). We define here the ordinary events’ tail as the largest 45% of the events, following the results in Marra et al. (2019b) which showed that values between 45% and 20% provide virtually indistinguishable results. We use a stretched-exponential model (Weibull, as proposed

Deleted: framework

180 by Wilson and Tuomi, 2005) for their tail, which was shown to be optimal for the region (Marra et al., 2020; Marra et al., 2021b). This means that the largest 45% of the ordinary events is approximated using a cumulative distribution function in the

form  $F(x; \lambda, \kappa) = 1 - e^{-\left(\frac{x}{\lambda}\right)^\kappa}$ , where  $\lambda$  is a scale parameter which scales all the intensities by a common factor, and  $\kappa$  is a shape parameter which affects the distribution tail heaviness as follows:  $\kappa = 1$  implies that exceedance probability decreases exponentially with intensity,  $\kappa > 1$  implies a faster decrease (light tail) and  $\kappa < 1$  a slower decrease (heavy tail).

185 Extreme return levels are computed using SMEV (Marra et al., 2019; Marra et al., 2020). This approach is well suited for our study case because it is less sensitive than traditional extreme value approaches (i) to measurement errors typical of radar estimates (Marra et al., 2018), and (ii) to the use of short records (Zorzetto et al., 2016; Marra et al., 2018; Hu et al., 2020), and because (iii) it correctly represents the tail of sub-daily precipitation intensities (Marra et al., 2020; Wang et al., 2020). For these reasons, it allows to accurately compute at-site parameters and return levels without the need for spatial homogeneity and/or scaling assumptions, thus allowing to examine the spatial and temporal patterns directly from observations. The method proceeds as follows:

- 190 1. Storms are defined at the regional scale as consecutive wet periods of the same weather type separated by 1-day dry periods or by the change to a different weather type. For both rain gauge and radar analyses, storms are defined based on the daily rain gauge archive as consecutive wet days ( $\geq 5$  stations recording  $\geq 0.1$  mm). Weather types are defined according to the classification presented in Marra et al. (2021a), which is a simplification of the semi-objective classification by Alpert et al. (2004) and classifies wet days into two types: (i) Mediterranean cyclones, (ii) other types (mostly active Red Sea troughs, see Sec. 2.1). It is worth noting that, although the framework allows to separately consider different weather types, the use of a unique weather type is not crucial for the accurate estimation of return levels in the study area (see Marra et al. 2019); separate consideration of the 2 weather types is here included to grant compatibility with future studies involving climate projections, for which the distinct use of weather types is crucial (e.g., Marra et al., 2021a).
- 200 2. Ordinary events are defined at each station/pixel as maximum intensities observed within each storm using moving windows (10-min steps) of durations between 10 minutes and 24 hours (10, 20, 30 minutes, 1, 2, 3, 6, 12, 24 hours). Ordinary events are computed at-site from both weather radar estimates (each radar pixel) and 10-minute rain gauges (65 stations). Sensitivity analyses based on 1-minute rain gauge data in the region showed that using 10-minute data to quantify annual maximum intensities may lead to an average  $\sim 10\%$  underestimation of the 10-minute maximal intensities, which sharply decrease to  $< 6\%$  for 20-minute and  $< 2\%$  for hourly intensities (Marra and Morin, 2015); as we rely on ordinary events rather than annual maxima, we expect our analyses to be even less affected by this issue;
- 205 3. Parameters  $\lambda_D$  and  $\kappa_D$  of the intensity distribution are estimated, for each station/pixel and duration  $D$ , by left-censoring the lowest 55% of the ordinary events (that is retaining their weight in probability but censoring their magnitude) and using a least-square regression in Weibull-transformed coordinates (Marani and Ignaccolo, 2015); the parameter  $n$  (average yearly number of storms, and thus of ordinary events; Fig S2) is computed as the total number of storms which
- 210

Deleted: the

Deleted: framework

are locally wet (i.e.,  $\geq 0.1$  mm storm accumulation, and length of the storm  $\geq 30$  minutes) divided by the number of years in the record, and is thus the same at all durations (Marra et al., 2020);

- 215 4. Extreme return levels  $x$  corresponding to the yearly non-exceedance probability  $\zeta$  are computed each station/pixel inverting the SMEV distribution  $\zeta(x) = F(x; \lambda_D, \kappa_D)^n = \left[ 1 - e^{-\left(\frac{x}{\lambda_D}\right)^{\kappa_D}} \right]^n$ , where  $\zeta$  is the sought yearly exceedance probability (e.g. 1% for the 100-year events),  $n$  the average yearly number of storms, and the parameters  $\lambda_D$  and  $\kappa_D$  depend on the examined duration  $D$ .

Deleted: provability

### 3.2 Application to weather radar record

220 In order to reduce the impact of the systematic biases and random errors previously found to dominate radar-derived frequency analyses (e.g. Eldardiry et al., 2015, Marra and Morin, 2015) and to account for the potential missing of storms in our radar archive, we devised a framework to integrate weather radar and rain gauge information in the SMEV methodology. The idea is to adjust the radar estimates within the SMEV parameter-space. This would allow to fully exploit the quantitative accuracy of rain gauges as well as the spatial information from the weather radar. Our approach relies on two assumptions: (i) rain gauge records are good representations of the local statistics of extreme precipitation; (ii) the periods in which the radar was turned off are independent of the ordinary events intensity (i.e., the intensity distribution of the sampled ordinary events can be considered the same as the intensity distribution of all ordinary events). The adjustment proceeds as follows:

- 225
1. The SMEV parameters ( $\lambda, \kappa, n$ ) for each duration are estimated for all radar pixels and for all the 10-minute rain gauges;
  2. In order to account for possible missing storms in the radar archive, the radar-derived parameter  $n$  (i.e., the average number of yearly storms, which is the same for all durations) is estimated by dividing the number of storms which are locally wet (i.e., on the pixel) by the fraction of storms (as defined in section 3.1) which are available in the radar record;
  - 230 3. At each rain gauge  $j$ , the local multiplicative bias (of the radar pixel above the gauge compared to the gauge) in the three SMEV parameters is calculated as:  $\text{bias}_j = \frac{z_j^{\text{radar}}}{z_j^{\text{gauge}}}$ , where  $z$  is the examined parameter:  $\lambda, \kappa$ , or  $n$ ;
  - 235 4. The biases are interpolated using an inverse distance weighted method, which simultaneously considers horizontal and vertical distances to produce maps of parameters bias on the whole radar grid. Inverse distance weighting was chosen because it allows to easily consider vertical distance, an important explanatory variable for weather radar bias (e.g., Andrieu et al. 1997) and SMEV parameters (Marra et al., 2021b; Mekonnen et al., 2021), and it was reported to outperform other interpolation methods in estimating extreme return levels using SMEV (Miniussi and Marra, in review). The distance from a generic rain gauge  $j$  is thus computed as:  $d_j = [x^2 + y^2 + (W \cdot z)^2]^{\frac{1}{2}}$ . Vertical distances are over-weighted by a factor  $W = 150$ , meaning that 100 m in vertical distance are weighted as much as 15 km in horizontal distance. This factor is roughly two times the typical orographic gradients in the area, and was defined after sensitivity analyses which showed that roughly analogous results are obtained for  $100 \lesssim W \lesssim 200$ , while significantly different results are obtained
- 240

Formatted: Font: Italic



245 for weights  $W \approx 0$  (vertical distance is neglected) and  $W \gtrsim 500$  (terrain elevation becomes the dominant predictor). Due to the sparse distribution of 10-minute rain gauges in high terrain elevations (Fig. 1), it was not possible to further optimize this factor. Weights were then computed as the third power of the inverse distance  $w_j = d_j^{-3}$  and normalized over their sum; at each point we used up to 25 neighboring rain gauges;

5. At each pixel, the three SMEV parameters are adjusted by dividing the radar-derived value by the corresponding interpolated biases;
- 250 6. Adjusted return levels are computed by inverting the SMEV distribution.

This empirical procedure implicitly corrects biases due to the spatial mismatch between the rain gauge scale and the radar sampling volume (e.g., see Peleg et al., 2018), such as the ones explicitly addressed in Zorzetto and Marani (2019), so that the resulting return levels represent the “point” scale of rain gauge measurements. Since the SMEV model is not linear, the adjustment we apply in the parameter space is to be considered an approximation, whose accuracy will decrease with increasing  
255 distance from the stations.

Deleted: the framework by

### 3.3 Validation

Quality of the radar-derived return levels is quantified using a bootstrap procedure in which 50% of the stations are randomly removed from the adjustment and used for validation:

1. Half (50%) of the stations are randomly selected as validation stations;
- 260 2. The radar statistics are adjusted using the remaining 50% of the stations (see above) and the 100-year return levels are calculated;
3. Points 1-2 are iterated  $10^3$  times and the fractional standard error (FSE, see section 2.3) corresponding to the 100-year return levels is computed.

In order to quantify the quality of the return levels estimated using SMEV on the relatively short weather radar archive (11  
265 years), we compared the FSE with the ones associated to (i) the uncertainty in the reference, i.e. the long-term 10-minute rain gauge records, and to (ii) the use of traditional approaches.

Traditional methods are here constructed using the block-maxima approach: series of annual maximum values are extracted from the full rain gauge records; parameters of the fitting Generalized Extreme Value (GEV) distribution are estimated using the method of the L-moments (Hosking et al., 1990)

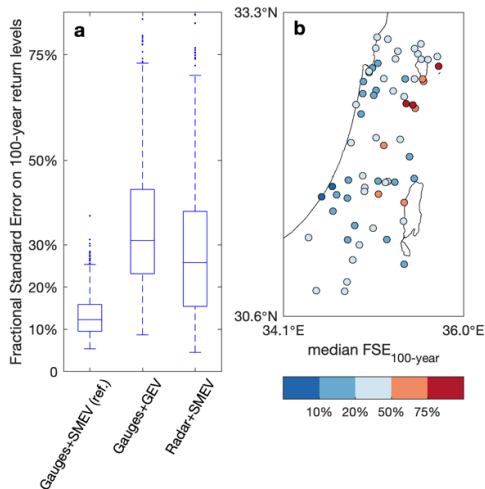
## 270 4 Results

### 4.1 Validation of the radar-derived return levels

The methodological uncertainty in extreme return levels estimated using SMEV from the 10-minute rain gauges full record is rather low (FSEs for 100-year return levels are generally <20%, median across stations and durations is ~12%, Fig. 2a,

275 Gauges+SMEV) despite the length of the 10-minute station records ( $17.9 \pm 6.6$  years). In contrast, traditional extreme-value  
 methods applied to the full rain gauge records lead to FSE of 20-50% (median across stations and durations ~31%, Fig. 2a,  
 Gauges+GEV). This confirms the robustness of the SMEV approach for analyzing these relatively short sub-daily records.  
 When estimating return levels combining weather radar and rain gauges as proposed here, a typical FSE on the 100-year return  
 levels of 15-40% (median across stations and durations ~26%, Fig. 2a, Radar+SMEV) is revealed. Out of the 65 validation  
 280 points, only nine show FSE exceeding 50% of which three exceed 75% (Fig. 2b; see Fig. S3 for more details). These errors in  
 the radar-derived values are somewhat larger than the uncertainties characterizing our reference, but are lower than the typical  
 errors obtained using traditional extreme-value approaches on rain gauge data.

Deleted: 1



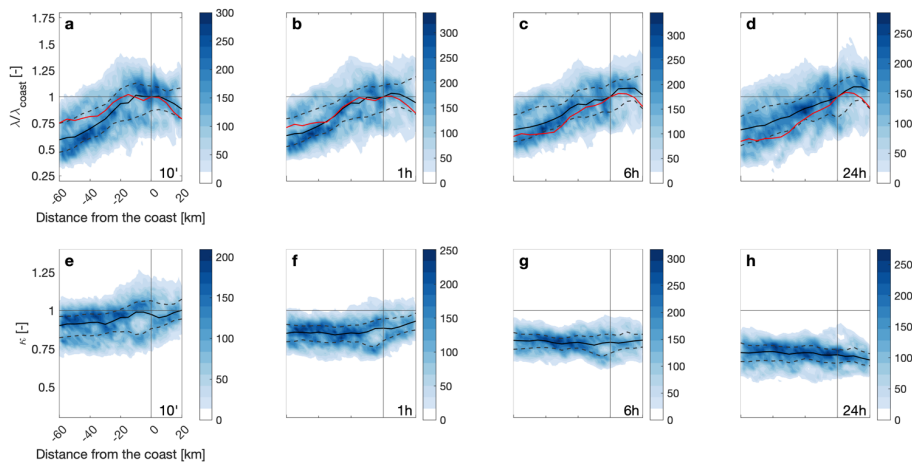
285 **Figure 2: Validation of the radar-derived extreme return levels. (a) Fractional Standard Error (FSE) associated to the estimated 100-year return levels from i) the reference, i.e. application of SMEV to the gauge full records (Gauges+SMEV), ii) traditional extreme-value approaches on the gauge full records (Gauges+GEV), and iii) radar-derived return levels (Radar+SMEV); all durations are considered. (b) Spatial distribution of the median (across all durations) FSE for the 100-year return levels estimated using SMEV on the radar archive.**

#### 4.2 Coastal effect on design precipitation intensities

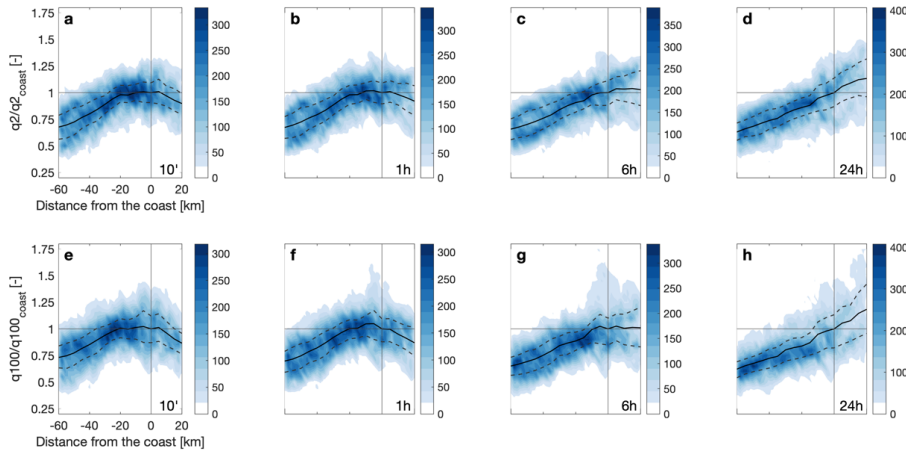
290 The impact of the coastline on extreme precipitation statistics is explored using density plots of the parameters of the intensity distributions (Fig. 3) and of return levels (Fig. 4) as a function of the distance from the coastline (see Fig. 1). Of course, this could not be achieved using rain gauges, since there are no systematic rainfall observations over the sea. Over the

295 Mediterranean Sea (negative distances), the scale parameter tends to be lower, and increases while approaching the coast. The  
 offshore dependence of the scale parameter on the distance from the coastline seems rather independent on duration. In the  
 first 20 km inland, the scale parameter seems to decrease for short durations and to weakly increase for long durations. Since  
 the offshore distance from the coast is somehow correlated to the distance from the radar and no rain gauges are available over  
 the sea for the adjustment procedure, one could claim these low offshore values could be caused by radar range effects. To  
 ensure this is not the case, we compared them with the results from a convection-permitting weather model, which is obviously  
 300 not impacted by the radar observation geometry. The red solid lines superimposed on Fig. 3a-d show the normalized maximum  
 intensities averaged over 41 heavy precipitation events derived from a convection-permitting Weather Research and  
 Forecasting (WRF) model of spatial resolution similar to the radar (1 km<sup>2</sup>; see details in Armon et al., 2020). The weather  
 model shows the same behavior as the radar, confirming that this is indeed a climatic signal.

Deleted: ¶



305 **Figure 3.** Density plots of the scale (a-d) and shape parameters (e-h) as a function of the distance from the coastline (see dashed lines  
 in Fig. 1) for durations of 10 minutes, 1 hour, 6 hours and 24 hours. Color shading represents the number of radar pixels in bins of  
 2 km by 0.05 (a-d) and 2 km by 0.01 (e-h). Negative distances represent offshore areas. The median and 25<sup>th</sup>-75<sup>th</sup> quantiles of the  
 distribution along 5-km bins are shown as solid black lines and dashed black lines, respectively. In order to have comparable values  
 across durations, scale parameters (a-d) are normalized over the median value at the coast. For comparison, solid red lines show the  
 310 median of the normalized maximum intensities (which can be considered as a proxy for the scale parameter) from convection-  
 permitting Weather Research and Forecasting (WRF) model simulations of 41 heavy precipitation events in the region (details in  
 Armon et al., 2020). This confirms the decrease offshore is a climatic signal and not an artifact due to distance from the radar and  
 lack of rain gauges for the adjustment (see Sect. 5).



320 **Figure 4. Density plots of the 2-year (a-d) and 100-year return levels (e-h) as a function of the distance from the coastline (see dashed lines in Fig. 1) for durations of 10 minutes, 1 hour, 6 hours and 24 hours. Color shading represents the number of pixels in bins of 2 km by 0.05. Negative distances represent offshore areas. The median and 25<sup>th</sup>-75<sup>th</sup> quantiles of the distribution along 5-km bins are shown as solid black lines and dashed black lines, respectively. In order to have comparable values across durations, return levels are normalized over the median value at the coast.**

No appreciable variation of the shape parameter as a function of the distance from the coastline is observed offshore (Fig. 3e-h), except a mild increase approaching the coast at short durations and a mild decrease at long durations (both not statistically significant). This implies that no significant change in the heaviness of the intensity distribution tail is observed offshore. In general, the shape parameter offshore is slightly lower than 1 at 10-minute duration (50% of the pixels have shape values of 0.8-1) and systematically decreases to  $\sim 0.75$  at 24-hour duration. Inland, the shape tends to increase at short durations (decreasing tail heaviness) and to decrease at long durations (increasing tail heaviness). The average yearly number of storms (parameter  $n$ ), presented in Fig. S2 shows no significant coastal pattern.

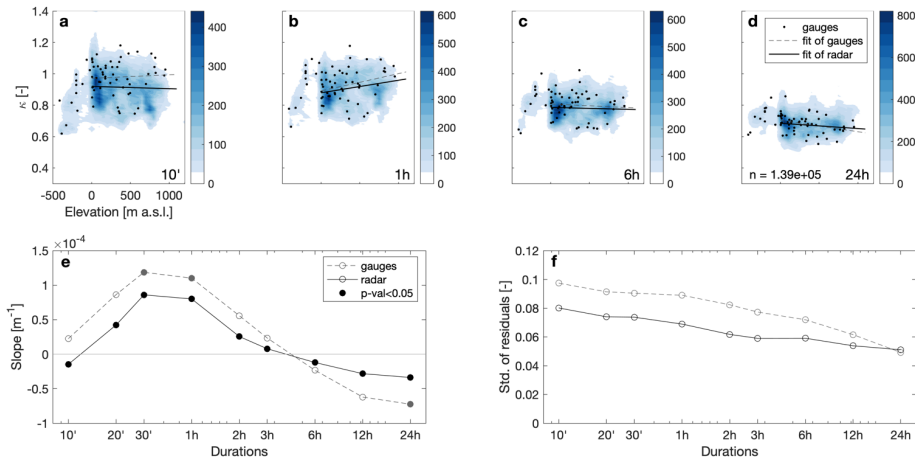
330 Figure 4 shows the dependence of 2-year return levels (which correspond to the median annual maximum value) and 100-year return levels (1% yearly exceedance probability) on the distance from the coastline. At all durations, low values are observed over the offshore areas in the Mediterranean Sea, which increase towards the coast. As return levels directly respond to the SMEV parameters and no variations on the shape parameters were found offshore, this is mostly related to the scale parameter patterns highlighted above. Conversely, drastically different effects between short and long durations are observed inland.

335 Extreme return levels of short-duration (up to ~1 hour) tend to peak at or around the coastline, while multi-hour return levels  
tend to further increase inland, an effect which is more important for more severe return levels. This comes as a response to  
the combined increase in both the scale parameter and the tail heaviness (Fig. 3).

#### 4.3 Orographic effect on design precipitation intensities

Orography in the area is weakly related to the distance from the radar, and higher terrain may require the need of higher radar  
sample volumes to avoid ground echoes and blockages. In particular, due to the lack of rain gauge data and to the high elevation  
of the radar beam above the second orographic barrier, radar estimates of the scale parameter are here expected to be biased.  
Therefore, the orographic effect on extreme precipitation statistics is here examined focusing on the tail heaviness of the  
intensity distribution (i.e., the shape parameter), which is not expected to be impacted by systematic biases (see also Sect. 4.4).  
Density plots of the estimated shape parameters as a function of the local terrain elevation are presented in Fig. 5a-d, together  
with the corresponding estimates based on the rain gauge full records. The quantitative behavior reported by the radar is  
consistent with the one from the stations, with significant decreases in tail heaviness at short durations (30 minute and 1 hour)  
and significant increases at long durations (24 hours) (Fig. 5e). In particular, opposing responses emerge at sub-hourly  
(increasing tail heaviness with elevation), hourly (decreasing) and daily (increasing) time scales. At very short durations (10-  
minute), radar estimates show a statistically significant increase of tail heaviness with elevation (negative slope of the  
regression in Fig. 5e) while rain gauges show a non-significant decrease. This slight difference can be explained by the fact  
that no rain gauge is available on the rather large and high-elevation Jordanian plateau (east-most portion of the radar domain;  
Fig. 1). The spatially dense radar sampling increases the statistical significance of the derived slopes, allowing an improved  
appreciation of these relations. Notably, in the rift valley where terrain elevation is below the sea level, the shape parameter  
increases with elevation at all durations, although achieving a quantification of the effect is here difficult due to the small size  
of the region and to the small number of available rain gauges.

The spatial variability of the shape parameter also depends on duration for both rain gauges and weather radar, as shown by  
the residuals from the regression lines (Fig. 5). The standard deviation of the residuals (Fig. 5f) decreases by ~45% between  
10 minutes (~0.09) and 24 hours (~0.05) durations; this decrease seems to be mostly occurring between hourly and daily  
durations. This implies that larger-scale patterns characterize the statistics of longer-duration extremes and that larger  
variability could be related to shorter-duration extremes dominated by convective processes.



365 **Figure 5.** (a-d) Density plots of the shape parameter (representing the intensity distribution tail heaviness) as a function of terrain elevation for durations of 10 minutes, 1 hour, 6 hours and 24 hours. Color shading represents the number of pixels in bins of 50 m by 0.01. Shape parameters estimated from the 10-minute rain gauges are shown as black dots. Regression lines computed for all the positive elevations (i.e., excluding the rift valley area depression, which shows a different behavior, and including slopes on both the east and west side of the Judean mountains) from weather radar (solid black lines) and 10-minute rain gauges (dashed grey lines) are shown. (e) Slope of the shape-elevation regressions computed from weather radar (solid black lines) and gauges (dashed grey lines) as a function of duration. Statistically significant slopes ( $p < 0.05$ ) are displayed with filled circles. Negative slopes imply an increase in tail-heaviness with height, and vice versa. (f) Standard deviation of the residuals around the regressions for weather radar (solid black lines) and gauges (dashed grey lines) as a function of duration.

370

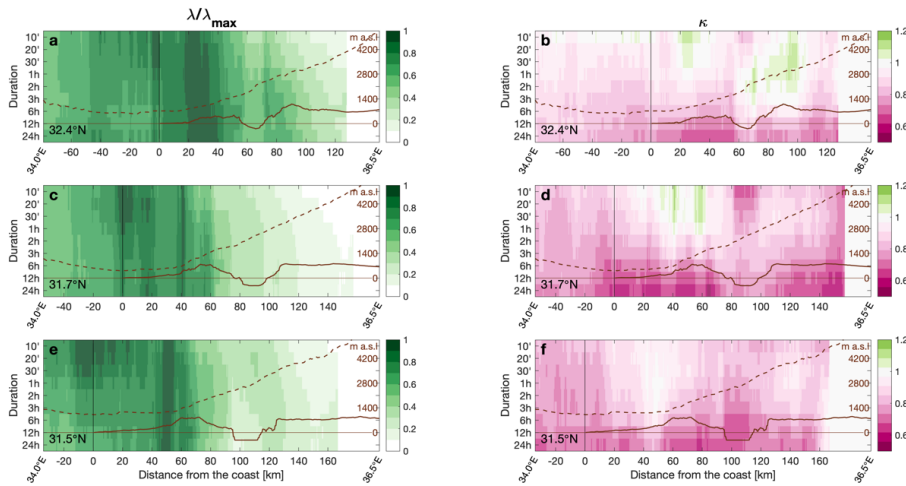
#### 4.4 Intensity distribution parameters and return levels across longitudinal transects

375 Longitudinal variations of the intensity distribution parameters (Fig. 6) and of return levels (Fig. 7) are further examined analyzing the three longitudinal transects characterized from west to east by a sea-land boundary, a mountain range, a major valley and another mountain range. The location of these transects is chosen based on radar visibility and on the presence of regular orographic profiles. The transects are obtained averaging the values over a 10-km region surrounding the latitudes (32.4, 31.7 and 31.5°N, see Fig. 1). In order to appreciate variations at multiple durations, scale parameter and return levels are normalized, at each duration, over the maximum value along the longitudinal direction.

380 At shorter durations, the scale parameter peaks in the coastal region between few km offshore and 20-30 km inland, and then decreases, roughly in correspondence of orography (Fig 6a, c, e). Conversely, as duration increases, the peak of the scale

parameter tends to become wider and to shift inland along the orographic ascent to the first orographic barrier. The rift valley appears as a band with decreased scale parameter, especially at very short and long durations. For hourly and multi-hour durations the scale parameter seems to increase again around the second orographic barrier (the Jordanian mountains), although here the high elevation of the radar beam (brown dashed lines) and the absence of 10-minute rain gauges to be used for adjusting the radar parameters prevent a good quantitative assessment.

385



**Figure 6. Longitudinal variations of the scale (a, c, e) and shape (b, d, f) parameters along the three transects (see Fig. 1) as a function of the distance from the coastline (x-axis) and of duration (y-axis). Transects are obtained averaging the 10-km region surrounding the three latitudes. The terrain profile and the sampling height of the lowest non-blocked radar beam are superimposed as solid and dashed lines, respectively (see right hand-side y-axis). In order to have comparable values, the scale parameter (a, c, e) at each duration is normalized over the maximum value along longitude.**

390

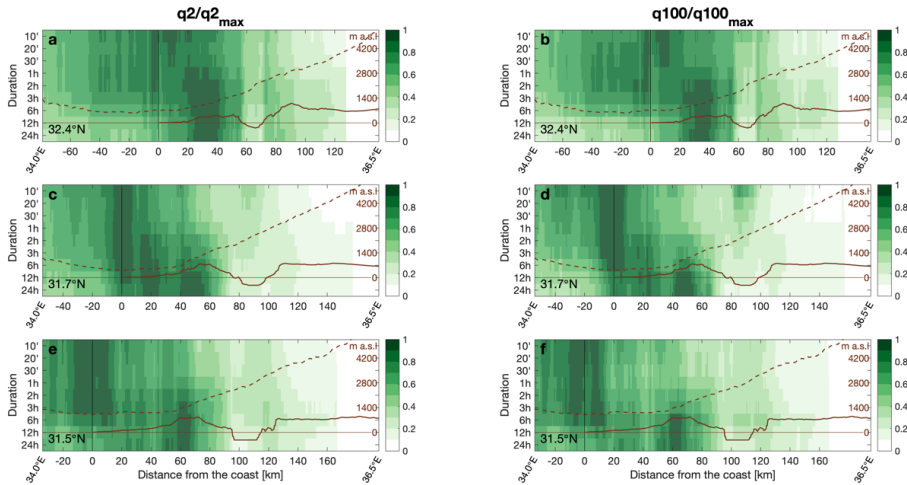
395

Overall, the shape parameter tends to decrease with increasing duration, implying an increasing tail heaviness (Fig 6b, d, f).  
400 More specifically, exponential tails (shape parameters close to 1, white colors) and even lighter (higher than 1, green colors)  
are observed at 10-minute durations, while shape parameters as low as 0.6-0.7 (heavy tails, pink colors) are typically observed  
at 12-24-hour durations, especially in the middle transect. Orography seems to induce lighter tails at short durations ( $\leq 2$  hours),  
with cases of light tails (green colors) corresponding to the first (Judean mountains, Fig. 6d) and second (Jordanian plateau,  
east of the mountaintops, Fig. 6b, f) orographic barriers, although this behavior appears less systematic from the transects  
405 alone.

Extreme return levels directly reflect the spatial variability of the parameters (Fig. 7). The 2-year and 100-year return levels  
examined here show qualitatively similar behaviors, although quantitative differences exist due to the variability of the tail  
heaviness (shape parameter, Fig. 6b, d, e) and of average yearly number of storms (Fig. S2). At short durations, return levels  
peak within a ~20-40 km strip around the coastline. Increasing the duration, the peak gradually moves inland, generally around  
410 the first orographic barrier where the largest daily amounts are found. In all cases, the signature of the rift valley depression at  
hourly and multi-hour durations is clear, with largely decreased values. However, in response to the sharp increase in tail  
heaviness, 100-year return levels at sub-hourly duration seem to be higher in the rift than in the surrounding areas. This  
behavior, already reported in previous studies based on traditional methods (Marra and Morin, 2015; Marra et al., 2017), is  
also found in the 2-year return levels over the central transect, where the sharpest orographic gradient between the Judean  
415 mountains and the rift valley bottom is found. The impact of the second orographic barrier largely resembles the one of the  
first orographic barrier (decrease of short duration return levels, increase of long duration return levels), although the numbers  
are here smaller, at least partially due to the underestimation of the scale parameter discussed above. This impact is most  
pronounced over the northern transect, where the Jordanian plateau mountaintops are highest, and in all cases is evident over  
the upslope part of the mountains.

420





425 **Figure 7. Longitudinal variations of the 2-year (a, c, e) and 100-year (b, d, f) return levels along the three transects (see Fig. 1) as a function of the distance from the coastline (x-axis) and of duration (y-axis). Transects are obtained averaging the 10-km region surrounding the three latitudes. The orographic profile and the sampling height of the lowest non-blocked radar beam are superimposed as solid and dashed lines, respectively (see right-hand side y-axis). In order to have comparable values, the return levels at each duration are normalized over the maximum value along longitude.**

## 5 Discussion

The objective of this study is to examine and quantify the relative impacts of coast-land interface and orography on extreme precipitation statistics and design precipitation intensities. While no direct quantification of the return levels is sought here, 430 the proposed method proved skillful in deriving precipitation intensities as high as the 1 in 100 years event. Estimates of 100-year return levels obtained combining 11 years of weather radar data and 10-minute rain gauges using the here-proposed approach show a median fractional standard error of ~26%. This is lower than the fractional standard error of daily amounts in the weather radar archive (Fig. S1). Combining remotely sensed precipitation estimates with rain gauges using the here-proposed framework can thus provide spatially-distributed estimates of extreme return levels which are more accurate than the 435 ones obtained using traditional extreme-value methods directly on point-scale rain gauge records (median fractional standard error ~31%). Nevertheless, given the low methodological uncertainty, the errors in the radar-derived return levels are to be mostly associated to radar errors.

Deleted: SMEV

### 5.1 Coastal and orographic effects on design precipitation intensities

440 A schematic of the observed coastal and orographic effects on extreme precipitation intensities is presented in Fig. 8. Consistently across the study region, we find an increase in tail heaviness with increasing duration. This was previously reported by Marra et al. (2020) and Marra et al. (2021b) and contrasts with previous studies examining the tail of sub-daily intensities (Papalexiou et al., 2018). Nevertheless, as discussed in Marra et al. (2020), the contrast is only apparent and is explained by the different definition of the intensities examined here (ordinary events, that are storm maximal intensities), and

445 in previous studies (all non-zero intensities, which come with drastically different number of events at different durations). Exponential tails (shape parameters close to 1, white colors in Fig 6b, d, f) and even lighter (higher than 1, green colors) are observed at 10-minute durations, while shape parameters as low as 0.6-0.7 (heavy tails, pink colors) are typically observed at 12-24-hour durations, especially in the northern transect. These observations agree with the theoretical calculations by Wilson and Tuomi (2005) which, under idealized conditions, predict a stretched exponential distribution with shape parameter equal

450 to 2/3 for extreme storm accumulations (and therefore long-duration intensities). An exception to this behavior is the rift valley, which represent a downwind depression to incoming storms from any direction.

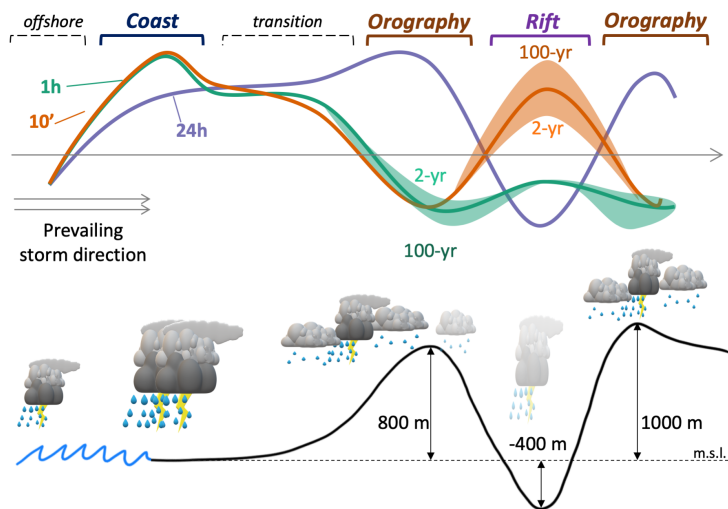
Return levels tend to be much smaller offshore than along the coast (median values 60 km offshore are ~60-75% of the values at the coastline). This comes as a consequence of the decreased scale parameter of the ordinary events distribution. To ensure this is not related to systematic underestimation due to radar range degradation, we compared it with results from convection-

455 permitting WRF model runs of 41 heavy precipitation events in the area (see Armon et al., 2020), which are obviously not impacted by the radar observation geometry. The weather model (red solid lines in Fig. 3a-d) shows the same behavior as the radar, confirming that this is a climatic signal. Lower offshore return levels, although affected by large noise, were also found using traditional extreme-value methods with both radar and satellite observations (Marra et al., 2017).

Short duration return levels in the region tend to peak in a 20-40 km band around the coastline and in the rift valley, while long

460 duration return levels tend to peak around orographic barriers. The regime shift occurs between durations of 1-12 hours, and is more pronounced over the northern portion of the domain (Fig. 6, 7). In contrast, over the southern portion of the domain the effect is mostly observed over durations >6 h, with the coastline exhibiting the largest return levels over durations from 10 minutes to 6 hours (Fig. 6, 7). In general, opposing responses to orography are observed at sub-hourly (increasing tail heaviness with elevation), hourly (decreasing) and daily (increasing) time scales (Fig. 8). The orographic impact on tail heaviness peaks

465 around hourly durations, as previously reported in Marra et al. (2021b) for the specific case of Mediterranean cyclones. Our results show that this behavior is maintained also when the combined effect of Mediterranean cyclones and other weather systems is considered, although it should be recalled that Mediterranean cyclones account for the majority of storms in most of the examined domain.



470 Figure 8. Schematic representation of the coastal and orographic effect on extreme precipitation. The qualitative impact of local terrain features (sea-land interface, orographic barriers, rift valley depression - displayed on the bottom with a black line) on extreme precipitation return levels of 10 minutes (orange line), 1 hour (green) and 24 hours (purple) is summarized. The different response of mild (2-year, i.e. 50% yearly exceedance probability) and extremely severe (100-year, i.e. 1% yearly exceedance probability) return levels of short-duration (10 minutes, 1 hour) to orographic features, which comes as a consequence of the response of the shape parameter of the ordinary events distribution, is displayed using color shades. In the bottom portion of the figure, regions where short-duration convective processes dominate extreme precipitation are indicated with thunderstorms, while regions in which stratiform-like processes and the aggregation of many rain cells dominate extreme precipitation are indicated with thinner precipitating clouds surrounding the thunderstorms. Semi-transparent clouds in the rift indicate that the local occurrence frequency of precipitation events is lower.

475

480

## 5.2 Potential physical mechanisms governing the relation of extreme precipitation with coastline and orography

The shifting of extreme rainfall peak from the coastline towards the mountains with increased duration may be attributed to the different mechanisms involved in the generation of extreme intensity rainfall at different durations. While a detailed meteorological-climatological analysis for the different mechanisms is out of the scope of this paper, there is still a place to mention possible and known causes for these differences. At very short durations, the main driver of high intensity rainfall is instantaneous rain intensity within convective rain cells. This intensity is affected by the amount of moisture in the air and its ascent rate. While moisture for most rain events in the area arrives from the Mediterranean Sea (e.g., Alpert and Shay-El, 1994;

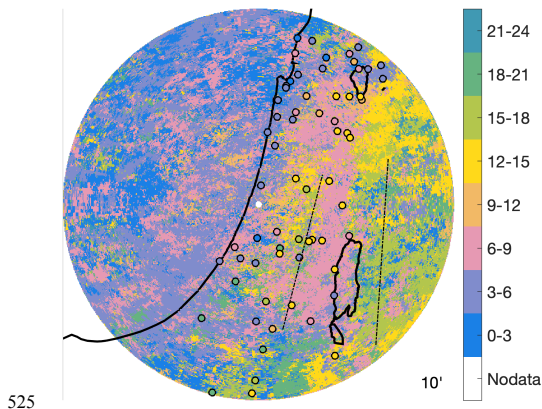
485

Armon et al., 2019) and would cause higher rain rates over the sea, low level convergence that increases air ascent rates are apparently rather constant over the sea, and increase approaching the coastline. This increase is presumably related to two  
490 main factors: (i) the abrupt increase in drag coefficient at the coast, and (ii) the interaction of mesoscale and synoptic winds in presence of a curved coastline (e.g., Colle et al., 2002). The increase in drag coefficient, caused by larger roughness of the land versus the sea, slows down landward winds and triggers a low-level velocity convergence (e.g., Bergeron, 1949; Roeloffzen et al., 1986; Colle and Yuter, 2007). Neglecting friction, one can commonly think of large-scale atmospheric horizontal wind flows as a balance between the Coriolis, the centrifugal and the pressure gradient forces. This approximation, called the  
495 gradient flow, is violated close to the ground, where friction plays a larger role (chapter 4 in Holton, 2004). When increased friction is added upon a “balanced” gradient flow, such as in proximity of the coastline, a secondary circulation regime is initiated, in which winds in a cyclonic flow tend to flow inward towards the low-level center (chapter 5 in Holton, 2004). This change in wind direction may increase wind curvature and thus increase low-level air ascent. Similarly, the interaction of meso-scale winds such as land-sea breeze with the synoptic wind, especially in the presence of a curved coastline, may enhance  
500 instantaneous rain rates because of meso-scale convergence between the two sources of wind (e.g., Neumann, 1951; Andersson, and Gustafsson, 1994; Brummer et al., 1995).

Examination of the time of the day in which the highest short-duration intensities (i.e., the ordinary events in the distribution tail, defined here as the largest 45%) are observed (Fig. 9) shows that the highest offshore intensities tend to occur in the early morning (0:00-6:00 local time) or morning (6:00-12:00) and they shift to mostly morning (6:00-12:00) at the coastline and near inland. This supports the above proposed mechanism, in which the convergence created by the superposition of the westerly winds typical of Mediterranean cyclones with land breeze, which is expected to peak in the early morning hours when the sea is the warmest compared to the land, could be a contributing factor for the short-duration intensity peak around the coastline. High short-duration intensities in regions where orographic lifting typically dominates (the west side of the Judean mountains and the Jordanian plateau) tend to peak in the afternoon (12:00-18:00), suggesting that the diurnal-thermal  
510 instability driven by the heating of the ground, could here interact with orographic lifting enhancing the convective vertical motions. Conversely, on the lee-side of the Judean mountains, short-duration intensities seem to peak in the morning hours (6:00-9:00), although this signal is not confirmed by the in-situ rain gauges (Fig. 9), which show peaks more concentrated in the early afternoon (12:00-15:00). This mismatch might be caused by the large elevation difference between the radar sampling volumes (here ~3000 m a.s.l. and above, see profiles in Fig. 5 and Fig. 6) and the terrain elevation where rain gauges measure  
515 (even 400 m below the mean sea level): the radar might systematically overshoot the core of shallow convection and, in addition, the stronger convection captured by the radar might be overestimated due to evaporation of the hydrometeors along their falling path.

Farther away from the radar, in both the eastern and southern areas where climate is drier (Fig. 1), short-duration afternoon-to-night peaks are prevailing (north, east, and south of the Dead Sea). This may reflect the higher impact of local thunderstorms,  
520 which rely on the diurnal heating to bring air ascent to high-enough elevations independent of orography (Sharon and Kutiel, 1986; Dayan et al., 2001; Armon et al., 2019; Dayan et al., 2021; Rinat et al., 2021). This might explain the reversed behavior

with regions affected by orography, as well as the heavier tails previously observed in these arid areas (Marra et al., 2015; Marra et al., 2017).



525

**Figure 9. Time of the day in which the highest 45% of the ordinary events (i.e., the storm maximal intensities defining the tail of the intensity distribution) at 10-minute duration are typically observed. Circles colored with the same color scheme show the corresponding values obtained from the 10-minute rain gauges. Dot-dashed lines show the approximate location of the peaks of the two main orographic barriers.**

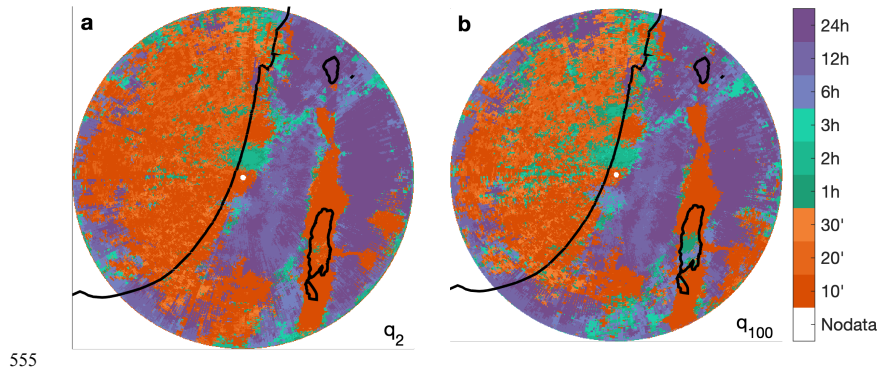
530

In contrast to short duration rainfall, high multi-hour intensities in the region are mainly a result of the aggregation of multiple rain cells over a specific location and to the shift of extremes towards more stratiform-like processes. They are thus less dependent on the instantaneous rain rates, and are expected to increase in regions where spatial and temporal rainfall coherence is enhanced. The mountain range causes extreme rain cells to get surrounded by regions with lower-intensity stratiform-like precipitation, and to cover a larger area with lower rain rates (Peleg and Morin, 2012; Marra et al, 2021b). Additionally, the orographic lifting tends to squeeze more efficiently the remaining moisture from the air to provide more rainfall in total (Houze et al., 2001; Roe, 2005). Indeed, previous studies in the region found that the area of rain cells is increased inland (Karklinski and Morin, 2006; Peleg and Morin, 2012) and that the temporal autocorrelation of rainfall is larger over the mountains compared to the coastal region (Marra et al, 2021b).

540

Figure 10 presents for each pixel the duration at which the relative rank (among all pixels) of its 2-year and 100-year return level is the highest. Short duration (10-20 minute) intensities dominate offshore and inland in proximity of the shoreline, over the rift valley, and in the southern portion of the domain, while long durations (6-24 hours) dominate in the inland areas, where orography is more pronounced. This pattern resembles the results seen previously (e.g., Fig. 8), highlighting the governing

545 hydrometeorological patterns. Namely, short-duration high-intensity convective processes are the main reason for heavy  
precipitation close to the coastline where moisture is plentiful, which makes the short duration events (orange colors) being  
ranked first in this region. On the other side, longer duration processes require the climbing of air parcels over the mountains  
(e.g., Alpert, 1986; Roe 2005), which causes a reorganization of the convective processes (with differential responses at 10-  
minute and 1-hour scales), and leads to orographic rainfall, with long-lasting stratiform-like processes. This causes  
mountainous regions to be characterized by long duration extremes ranking first (purple regions in Fig. 10). Descending from  
550 the mountaintops (Fig. 1 and Fig. 9) air parcels dry and precipitation is inhibited. In these regions, where conditions are more  
arid, and along the desert at the southern part of the region, rainfall is spottier and more local (e.g., Sharon and Kutiel, 1986),  
and its extremes are generally related to rare but sometimes violent convection, which is translated into orange colors in Fig  
10. Similar patterns are also observed in the northern shoreline, where mountain reliefs are close to the coastline, possibly due  
to the simultaneous impact of coastal and orographic effects.



**Figure 10. Durations at which the local 2-year (a) and 100-year (b) return levels are the strongest: at each duration, intensities are ranked among all pixels, so to associate 1 to the largest value over the region and 0 to the smallest; the maps display the duration which, at each pixel, has the largest rank.**

### 5.3 Implications for risk management

560 Roughly 50% of the population in the region is concentrated in the coastal plains, mainly in cities within 10-20 km from the  
coastline (CBS, 2016; Bitan and Zviely, 2019). Population growth and migration are expected to disproportionately increase  
the population density in these coastal cities (Neumann et al., 2015; UN-DESA 2018). Short-duration precipitation intensities  
are crucial triggers of pluvial urban flooding, which cause casualties and important losses every year (Cristiano et al., 2017;  
Villarini et al., 2010). Our results, made possible by the use of distributed rainfall estimates from a weather radar, show that  
565 these intensities are stronger in the highly-populated coastal areas (orange colors in Fig. 10) of the region, with important

implications for urban flood risk management. Moreover, future projections show an increase in the short duration extreme precipitation intensities in the area (Armon et al., 2022). Given the alarming projections in terms of sea-level rise, explicit consideration of the compound impact of extreme rain intensities and storm surges under future scenarios should be specifically addressed in future planning of coastal cities (Zscheischler et al., 2018).

Deleted: 2021

570 Considering flash flood generation and watershed response, it is interesting to note that short durations (10-20 minutes, orange colors in Fig. 8 and Fig. 10) intensities tend to dominate extremes offshore, over the coastal regions and in the rift, while longer durations (6-24 hours, purple colors in Fig. 8 and Fig. 10) tend to dominate extremes inland and over the orographic regions. These spatial patterns coincide in some cases with the characteristic response time of watersheds. As mentioned above, short durations extremes can lead to urban flooding over the vast built area near the shore, but also in arid watersheds in the rift and

575 in the south of the region (see areas with mean annual rainfall  $< 200 \text{ mm yr}^{-1}$ , Fig. 1), due to the typical fast hydrological response of these areas (e.g., Morin et al., 2001; Zoccatelli et al., 2019). Conversely, watersheds draining inland regions north and west of the Judean mountains are typically covered by agricultural areas, forests or other natural land uses and would typically show few-hours characteristic time scales (Zoccatelli et al., 2019); for example, time of concentration of watersheds with  $\sim 50 \text{ km}$  length and  $\sim 600 \text{ m}$  height (numbers in the range of the watersheds west of the Judean mountains) is  $\sim 3.5$  hours

580 based on Johnstone and Cross (1949).

## 6 Summary and conclusions

We propose and test a novel methodology for extreme precipitation frequency analysis that allows to adjust relatively-short archives of weather radar precipitation estimates using rain gauges as a reference. The approach is based on the simplified Metastatistical extreme value (SMEV) formulation and relies on the adjustment of the remotely sensed information in the

585 SMEV parameter-space. The methodology provides spatially-distributed, high-resolution statistical descriptions of extremes which accurately reflect the statistics of in-situ observational records. Combining 11 years of weather radar data with 10-minute rain gauge data in the southeastern Mediterranean, we obtain estimates of 100-year return levels characterized by standard errors in the order of  $\sim 26\%$ , which is lower than the standard errors obtained using traditional approaches on rain gauge data. We then used the obtained spatially-distributed, high-resolution statistical descriptions of extremes to describe and

590 quantify the distinct signature of coastlines and orography on extreme precipitation statistics and design precipitation intensities at multiple sub-daily durations.

Deleted: (Marani et al., 2015; Marra et al., 2019; Marra et al., 2020)

Deleted: 22

The scale parameter of the rain intensity distributions tends to be lower offshore and to increase approaching the coast at all durations (10 min to 24 hours). At short and hourly durations, the scale parameter peaks at the coastline, while at longer durations it tends to peak a few kilometers inland corresponding to the orographic barriers. The distributions tail heaviness is rather uniform above the sea and rapidly changes inland, with opposing directions at short (decreasing tail heaviness) and long (increasing tail heaviness) durations. The orographic impact on the intensity distributions shows a decrease of tail heaviness at short durations, which peaks at hourly durations, and an increase in tail heaviness at long durations; this confirms previous

Deleted: The SMEV formulation allows to examine the statistics of extremes based on two main parameters, a scale parameter, which describes the scale of the whole intensity distribution, and a shape parameter, which describes the tail heaviness, that is the proportion between extreme and mild events.

610 results based on the systematic interaction of Mediterranean cyclones with a regular orographic barrier (Marra et al., 2021b), and suggests this could be a more general behavior not strictly related to the physical processes typical of Mediterranean cyclones in the region. The overall impact results in increasing return levels moving offshore towards the coastline and in opposing behaviors at different durations inland, with decreasing extremes at short and hourly durations and increasing extremes at long durations. Short- and hourly-duration return levels tend to peak in proximity of the coastline; long-duration return levels tend to peak inland corresponding to orographic ascents and mountaintops.

615 We identify three main regimes which respond differently to coastal and orographic forcing: (i) very short durations (~10 minutes), mainly related to the peak intensity of convective rain cells (intensity-dominated regime); (ii) hourly durations, related to the rainfall yield (and thus to the spatiotemporal organization) of individual convective cells; (iii) long durations (~6-24 hours), related to the accumulation of multiple convective cells as well as to long-lasting stratiform processes (Fig. 8). These regimes have been recently observed also in the orographic impact on extreme precipitation in the Alps (Formetta et al., 2022). Convective processes are accounted for higher extremes near the coastline; this is presumably related to increased drag coefficient and to interactions of the synoptic and mesoscale systems, as suggested by the early-morning timing of coastal extremes. Conversely, the short-duration extremes in orography-dominated regions tend to peak in the afternoon, suggesting a contribution from the diurnal thermal instability. Long-duration extremes are higher in regions where spatial and temporal rainfall coherence is enhanced, such as orographic regions where orographic lifting smooths the precipitation field. The distinct coastal and orographic effects at different durations are expected to modulate the temporal scales of the most relevant local impacts; short-scale hazards (e.g., urban floods, debris flows) are more of concern for the coastal and rift regions, while longer-scale hazards (e.g., flash floods) could be more relevant over mountainous areas.

625 Given the relatively flexible requirements in terms of availability and record length of weather radar and rain gauge data, the here presented methodology is deemed suitable for extreme multi-duration precipitation frequency analyses in many other regions worldwide. Specifically, it could help (i) improving the quantification of local return levels without the need for homogeneity and/or temporal scaling assumptions and (ii) increasing the understanding of the local climatology of extreme multi-duration precipitation. In addition, (iii) it could be combined with information from climate models and local constraints to derive observationally-sound projections of future extreme return levels for climate change impact studies.

Deleted: on extreme return levels

Deleted: (Fig. 8)

Deleted: very

Deleted: (Fig. 9)

Deleted: (Fig. 10)

Deleted: (e.g., Marra et al., 2021a)

Deleted: of interest

### Acknowledgements

635 This study was funded by the Israel Science Foundation (grant no. 1069/18), is a contribution to the HyMeX program, and is based upon work from COST Action CA19109 “MedCyclones” supported by COST - European Cooperation in Science and Technology (www.cost.eu). FM thanks the Institute of Atmospheric Sciences and Climate (ISAC) of the National Research Council of Italy (CNR) for the support. The authors thank Uri Dayan for the fruitful discussions and the two anonymous reviewers for the constructive comments.



645 **Author contributions**

Conceptualization: FM, MA, EM; Formal analyses: FM, MA; Data curation: FM, MA; Paper writing: FM; Paper review and editing: FM, MA, EM

**Data availability**

650 Rain gauge data were provided and preprocessed by the Israel Meteorological Service and freely available at: <https://ims.data.gov.il/> (Hebrew only). Original weather radar data was provided by the Israel Meteorological Service (<https://ims.gov.il/en>). Corrected and gauge-adjusted radar data are available upon request to the head of the Hydrometeorology lab at the Hebrew University of Jerusalem, Efrat Morin ([efrat.morin@mail.huji.ac.il](mailto:efrat.morin@mail.huji.ac.il)). Codes used for the estimation of SMEV and GEV parameters and return levels are freely available at <https://doi.org/10.5281/zenodo.3971558> (Marra et al., 2020).

**Competing interests**

655 The authors declare no conflict of interests.

**References**

- Alpert, P., 1986. Mesoscale indexing of the distribution of orographic precipitation over high mountains. *J. Clim. Appl. Meteorol.* 25, 532–545, [https://doi.org/10.1175/1520-0450\(1986\)025<0532:MIOTDO>2.0.CO;2](https://doi.org/10.1175/1520-0450(1986)025<0532:MIOTDO>2.0.CO;2)
- 660 Alpert, P., Shafir, H., 1989. Meso c-scale distribution of orographic precipitation: numerical study and comparison with precipitation derived from radar measurements. *J. Appl. Meteor.* 28, 1105–1117. [http://doi.org/10.1175/1520-0450\(1989\)028<1105:MSDOOP>2.0.CO;2](http://doi.org/10.1175/1520-0450(1989)028<1105:MSDOOP>2.0.CO;2)
- Alpert, P., Shay-El, Y., 1994. The moisture source for the winter cyclones in the EM. *Israel Meteorological Research Papers* 5, 20–27, available at [https://www.researchgate.net/profile/Pinhas-Alpert/publication/283745573\\_The\\_moisture\\_source\\_for\\_the\\_winter\\_cyclones\\_in\\_the\\_Eastern\\_Mediterranean/links/564c3fb208ae3374e5de31ce/The-moisture-source-for-the-winter-cyclones-in-the-Eastern-Mediterranean.pdf](https://www.researchgate.net/profile/Pinhas-Alpert/publication/283745573_The_moisture_source_for_the_winter_cyclones_in_the_Eastern_Mediterranean/links/564c3fb208ae3374e5de31ce/The-moisture-source-for-the-winter-cyclones-in-the-Eastern-Mediterranean.pdf)
- 665 Amponsah W, PA Ayrál, B Boudevillain, C Bouvier, I Braud, P Brunet, G Delrieu, JF Didon-Lescot, E Gaume, L Lebouc, L Marchi, F Marra, E Morin, G Nord, O Payastre, D Zoccatelli, M Borga, 2018. Integrated high-resolution dataset of high intensity European and Mediterranean flash floods. *Earth Syst. Sci. Data*, 10, 1783–1794, <https://doi.org/10.5194/essd-10-1783-2018>
- 670 Andersson, T. and Gustafsson, N., 1994. Coast of departure and coast of arrival: two important concepts for the formation and structure of convective snowbands over seas and lakes. *Mon. Weather Rev.*, 122(6), 1036–1049, [https://doi.org/10.1175/1520-0493\(1994\)122<1036:CODACO>2.0.CO;2](https://doi.org/10.1175/1520-0493(1994)122<1036:CODACO>2.0.CO;2)

- Andrieu, H., Creutin, J.D., Delrieu, G., Faure, D., 1997. Use of a weather radar for the hydrology of a mountainous area. Part I: radar measurement interpretation. *J. Hydrol.*, 193, 1-4, 1-25, [https://doi.org/10.1016/S0022-1694\(96\)03202-7](https://doi.org/10.1016/S0022-1694(96)03202-7)
- 675 Armon, M., Dente, E., Smith, J.A., Enzel, Y., Morin, E., 2018. Synoptic-scale control over modern rainfall and flood patterns in the levant drylands with implications for past climates. *J. Hydrometeorol.* 19, 1077–1096. <https://doi.org/10.1175/JHM-D-18-0013.s1>
- Armon, M., Morin, E., Enzel, Y., 2019. Overview of modern atmospheric patterns controlling rainfall and floods into the Dead Sea: Implications for the lake's sedimentology and paleohydrology. *Quaternary Science Reviews*, 216, 58e73, <https://doi.org/10.1016/j.quascirev.2019.06.005>
- 680 Armon, M., Marra, F., Enzel, Y., Rostkier-Edelstein, D., and Morin, E., 2020. Radar-based characterisation of heavy precipitation in the eastern Mediterranean and its representation in a convection-permitting model, *Hydrol. Earth Syst. Sci.*, 24, 1227–1249, <https://doi.org/10.5194/hess-24-1227-2020>
- Armon, M., Marra, F., Garfinkel, C., Rostkier-Edelstein, D., Adam, O., Dayan, U., Enzel, Y., and Morin, E., ~~2021~~ **2022**. **Reduced rainfall in future heavy precipitation events related to contracted rain area despite increased rain rate. *Earth's Future*, 9, e2021EF002397. <https://doi.org/10.1029/2021EF002397>**
- 685 ~~Arnbjerg-Nielsen, K., Willems, P., Olsson, J., Beecham, S., Pathirana, A., Gregersen, I. B., Madsen, H., and Nguyen, V. T. V., 2013. Impacts of climate change on rainfall extremes and urban drainage systems: a review, *Water Science and Technology*, 68, 16-28, <https://doi.org/10.2166/wst.2013.251>~~
- 690 Attema, J. J., and Lenderink, G., 2014. The influence of the North Sea on coastal precipitation in the Netherlands in the present-day and future climate. *Clim. Dyn.*, 42, 505-519, <https://doi.org/10.1007/s00382-013-1665-4>
- Avanzi, F., De Michele, C., Gabriele, S., Ghezzi, A., and Rosso, R., 2015. Orographic Signature on Extreme Precipitation of Short Durations. *J. Hydrometeorol.*, 16, 278-294, <https://doi.org/10.1175/JHM-D-14-0063.1>
- Belachsen, I., F. Marra, N. Peleg, and E. Morin, 2017: Convective rainfall in a dry climate: Relations with synoptic systems and flash-flood generation in the Dead Sea region. *Hydrol. Earth Syst. Sci.*, 21, 5165–5180, <https://doi.org/10.5194/hess-21-5165-2017>
- Bergeron, T. 1949. The Problem of Artificial Control of Rainfall on the Globe! : II. The Coastal Orographic Maxima of Precipitation in Autumn and Winter. *Tellus*, 1: 15-32. <https://doi.org/10.1111/j.2153-3490.1949.tb01264.x>
- Bevacqua, E., Maraun, D., Vousdoukas, M. I., Voukouvalas, M. I., Mentaschi, L., Widmann, M., 2029. Higher probability of compound flooding from precipitation and storm surge in Europe under anthropogenic climate change. *Science Advances*, 5, 9, <https://doi.org/10.1126/sciadv.aaw5531>
- Bitan, M., Zviely, D., 2019. Lost value assessment of bathing beaches due to sea level rise: a case study of the Mediterranean coast of Israel. *Journal of Coastal Conservation*, 23, 773–783, <https://doi.org/10.1007/s11852-018-0660-7>
- Blöschl, G., et al., 2019. Twenty-three unsolved problems in hydrology (UPH) – a community perspective. *Hydrol. Sci. J.* 64(10), 1141–1158, <https://doi.org/10.1080/02626667.2019.1620507>
- 705

**Deleted:** 2021

**Deleted:** Global warming decreases rainfall but increases short-duration rain-rates during heavy precipitation events in the eastern Mediterranean, EGU General Assembly 2021, online, 19–30 Apr 2021, EGU21-1573, <https://doi.org/10.5194/egusphere-egu21-1573>

**Deleted:** 1

**Field Code Changed**

- Bummer, B., Hennemuth, B., Rhodin, A., Thiemann, S., 1995. Interaction of a cold front with a sea-breeze front Observations. *Tellus A*, 47: 383-402. <https://doi.org/10.1034/j.1600-0870.1995.t01-2-00001.x>
- 715 Burlando, P., and Rosso, R. (1996), Scaling and multiscaling models of depth-duration-frequency curves for storm precipitation. *Journal of Hydrology*, 187, 45-64. [https://doi.org/10.1016/S0022-1694\(96\)03086-7](https://doi.org/10.1016/S0022-1694(96)03086-7)
- Buishand, T.A., 1991. Extreme rainfall estimation by combining data from several sites. *Hydrol. Sci. J.* 36 (4), 345–365. <https://doi.org/10.1080/02626669109492519>
- Central Bureau of Statistics (CBS) (2016) Population and demography, State of Israel
- Chow, V.T., Maidment, D.R., Mays, L.W., 1988. *Applied Hydrology*. McGraw-Hill.
- 720 Colle, B. A., Smull, B. F. and Yang, M. J., 2002. Numerical simulations of a landfalling cold front observed during COAST: Rapid evolution and responsible mechanisms, *Mon. Weather Rev.*, 130(8), 1945–1966, [https://doi.org/10.1175/1520-0493\(2002\)130<1945:NSOALC>2.0.CO;2](https://doi.org/10.1175/1520-0493(2002)130<1945:NSOALC>2.0.CO;2)
- Colle, B. A., Yuter, S. E., 2007. The Impact of Coastal Boundaries and Small Hills on the Precipitation Distribution across Southern Connecticut and Long Island, New York. *Monthly Weather Review*, 135, 933-954, <https://doi.org/10.1175/MWR3320.1>
- 725 Collier, C. G., 1989. *Applications of Weather Radar Systems: A Guide to Uses of Radar Data in Meteorology and Hydrology*, Wiley, West Sussex, U. K.
- Courty, L. G., Wilby, R. L., Hillier J. K., Slater, L., 2019. Intensity-duration-frequency curves at the global scale. *Environ. Res. Lett.*, 14, 084045, <https://doi.org/10.1088/1748-9326/ab370a>
- 730 Cristiano, E., ten Veldhuis, M.-C., van de Giesen, N., 2017. Spatial and temporal variability of rainfall and their effects on hydrological response in urban areas – a review. *Hydrol. Earth Syst. Sci.* <http://doi.org/10.5194/hess-21-3859-2017>
- Dayan, U., Ziv, B., Margalit, A., Morin, E., Sharon, D., 2001. A severe autumn storm over the middle-east: synoptic and mesoscale convection analysis. *Theor. Appl. Climatol.*, 69, 103–122, <https://doi.org/10.1007/s007040170038>
- Dayan, U., Lensky, I. M., Ziv, B., Khain, P., 2021. Atmospheric conditions leading to an exceptional fatal flash flood in the Negev Desert, Israel. *Nat. Hazards Earth Syst. Sci.*, 21, 1583–1597, <https://doi.org/10.5194/nhess-21-1583-2021>
- 735 Demirdjian, L., Zhou, Y., Huffman, G., 2018. Statistical modelling of extreme precipitation with TRMM data, *J. Appl. Meteorol. Clim.* 57, 15-30, <https://doi.org/10.1175/JAMC-D-17-0023.1>
- de Vries, A.J., Tyrlis, E., Edry, D., Krichak, S.O., Steil, B., Lelieveld, J., 2013. Extreme precipitation events in the Middle East: dynamics of the Active Red Sea Trough. *J. Geophys. Res. Atmos.* 118, 7087–7108. <http://doi.org/10.1002/jgrd.50569>
- 740 Eldardiry, H., Habib, E., Zhang, Y., 2015. On the Use of Radar-Based Quantitative Precipitation Estimates for Precipitation Frequency Analysis. *J. Hydrol.*, 531, 441–453, <https://doi.org/10.1016/j.jhydrol.2015.05.016>
- Enzel, Y., Bookman, R., Sharon, D., Gvirtzman, H., Dayan, U., Ziv, B., Stein, M., 2003. Late Holocene climates of the Near East deduced from Dead Sea level variations and modern regional winter rainfall. *Quat. Res.* 60, 263–273, <https://doi.org/10.1016/j.yqres.2003.07.011>

Field Code Changed

- 745 Formetta, G., Marra, F., Dallan, E., Zaramella, M., Borga, M., 2022. Differential orographic impact on sub-hourly, hourly, and daily extreme precipitation. *Adv. Water Resour.*, 149, 104085. <https://doi.org/10.1016/j.advwatres.2021.104085>
- Forzieri, G., Pecchi, M., Girardello, M., Mauri, A., Klaus, M., Nikolov, C., Rüetschi, M., Gardiner, B., Tomaštk, J., Small, D., Nistor, C., Jonikavicius, D., Spinoni, J., Feyen, L., Giannetti, F., Comino, R., Wolynski, A., Pirotti, F., Maistrelli, F., Savulescu, I., Wurpillot-Lucas, S., Karlsson, S., Zieba-Kulawik, K., Strejczek-Jazwinska, P., Mokroš, M., Franz, S., Krejci, L., Haidu, I., Nilsson, M., Wezyk, P., Catani, F., Chen, Y.-Y., Luysaert, S., Chirici, G., Cescatti, A., and Beck, P. S. A., 2020. A spatially explicit database of wind disturbances in European forests over the period 2000–2018, *Earth Syst. Sci. Data*, 12, 257–276, <https://doi.org/10.5194/essd-12-257-2020>
- Goldreich, Y., 1994. The spatial distribution of annual rainfall in Israel – a review. *Theor. Appl. Climatol.* 50, 45–59. <http://doi.org/10.1007/BF00864902>
- 755 Goudenhoofd, E., Delobbe, L., Willems, P., 2017. Regional frequency analysis of extreme rainfall in Belgium based on radar estimates. *Hydrol. Earth Syst. Sci.*, 21, 5385–5399, <https://doi.org/10.5194/hess-21-5385-2017>
- Haiden, T., Kerschbaum, M., Kahlig, P., Nobilis, F., 1992. A refined model of the influence of orography on the mesoscale distribution of extreme precipitation. *Hydrological Sciences Journal*, 37, 5, 417–427, <https://doi.org/10.1080/02626669209492609>
- 760 Heiblum, R. H., Koren, I., and Altaratz, O., 2011. Analyzing coastal precipitation using TRMM observations, *Atmos. Chem. Phys.*, 11, 13201–13217, <https://doi.org/10.5194/acp-11-13201-2011>
- Hicks, N.S., Smith, J.A., Miller, A.J., Nelson, P.A., 2005. Catastrophic flooding from an orographic thunderstorm in the central Appalachians. *Water Resour. Res.* 41, W12428. <https://doi.org/10.1029/2005WR004129>
- Hitschfeld, W., Bordan, J., 1954. Errors inherent in the radar measurement of rainfall at attenuation wavelengths. *J. Meteorol.* 11, 5867. [http://doi.org/10.1175/1520-0469\(1954\)011<0058:EIITRM>2.0.CO;2](http://doi.org/10.1175/1520-0469(1954)011<0058:EIITRM>2.0.CO;2)
- 765 Hochman, A., Harpaz, T., Saaronia, H., Alpert, P., 2018. Synoptic classification in 21st century CMIP5 predictions over the Eastern Mediterranean with focus on cyclones. *Int. J. Climatol* 38, 1476–1483. <https://doi.org/10.1002/joc.5260>
- Holton, J. R., 2004. An introduction to Dynamic Meteorology, Chapter 5.4. Elsevier, <https://doi.org/10.1017/CBO9781107415324.004>
- 770 Hosking, J. R. M., 1990. L-moments: Analysis and estimation of distributions using linear combinations of order statistics. *Journal of the Royal Statistical Society, Series B (Methodological)*, 52(1), 105–124
- Houze, R. A., Jr, James, C. N., and Medina, S., 2001. Radar observations of precipitation and airflow on the Mediterranean side of the Alps: Autumn 1998 and 1999. *Q. J. R. Meteorol. Soc.*, 127, 2537–2558. <https://doi.org/10.1002/qj.49712757804>
- Hu, L., Nikolopoulos, E. I., Marra, F., Morin, E., Marani, M., Anagnostou, E. N., 2020. Evaluation of MEVD-based precipitation frequency analyses from quasi-global precipitation datasets against dense rain gauge networks. *J. Hydrol.*, 590, 12564, <https://doi.org/10.1016/j.jhydrol.2020.125564>
- 775 Jacobi, S., Bronstert, A., Heistermann, M., 2014. Rain rate retrieval of partially blocked beams from single-polarized weather radar data. *ERAD2014*, 218, available at:

Field Code Changed

- [https://www.researchgate.net/publication/309737854\\_Rain\\_rate\\_retrieval\\_of\\_partially\\_blocked\\_beams\\_from\\_single-polarized\\_weather\\_radar\\_data](https://www.researchgate.net/publication/309737854_Rain_rate_retrieval_of_partially_blocked_beams_from_single-polarized_weather_radar_data)
- 780 Johnstone, D., Cross, W.P., 1949. Elements of Applied Hydrology. Ronald Press, New York.
- Karklinsky, M. and Morin, E., 2006. Spatial characteristics of radar-derived convective rain cells over southern Israel, *Meteorol. Z.*, 15, 513–520, <https://doi.org/10.1127/0941-2948/2006/0153>
- Katz, R. W., Parlange, M. B., and Naveau, P., 2002. Statistics of extremes in hydrology, *Adv. Water Resour.*, 25, 1287–1304, 785 [https://doi.org/10.1016/S0309-1708\(02\)00056-8](https://doi.org/10.1016/S0309-1708(02)00056-8)
- Kidd, C., Becker, A., Huffman, G.J., Muller, C.L., Joe, P., Skofronick-Jackson, G., Kirschbaum, D., 2017. So, how much of the Earth’s surface is covered by rain gauges?, *Bull. Am. Meteorol. Soc.*, Jan 2017, 69-78, <https://doi.org/10.1175/BAMS-D-14-00283.1>
- Kleindorfer, P., Kunreuther, H., 1999. Challenges facing the insurance industry in managing catastrophic risks. In: Froot, 790 Kenneth A. (Ed.), *The Financing of Catastrophe Risk*. University of Chicago Press.
- Koutsoyiannis, D., Kozonis, D., Manetas, A., 1998. A mathematical framework for studying rainfall intensity-duration-frequency relationships. *J. Hydrol.*, (1-2) 118-135, [https://doi.org/10.1016/S0022-1694\(98\)00097-3](https://doi.org/10.1016/S0022-1694(98)00097-3)
- Kushnir, Y., U. Dayan, B. Ziv, E. Morin, and Y. Enzel, 2017: Climate of the Levant: Phenomena and mechanisms. *Quaternary of the Levant: Environments, Climate Change, and Humans*, Y. Enzel and B.-Y. Ofer, Eds., Cambridge University Press, 795 31–44.
- Lengfeld, K., Kirstetter, P.-E., Fowler, H. J., Yu, J., Becker, A., Flamig, Z., Gourley, J. J., 2020. Use of radar data for characterizing extreme precipitation at fine scales and short durations. *Environ. Res. Lett.*, 15, 8, <https://doi.org/10.1088/1748-9326/ab98b4>
- Li, Y., and Carbone, R. E., 2015. Offshore propagation of coastal precipitation
- 800 Marani, M., Ignaccolo, M., 2015. A metastatistical approach to rainfall extremes, *Adv. Water Resour.*, 79, 121–126, <https://doi.org/10.1016/j.advwatres.2015.03.001>
- Marchi, L., Cavalli, M., Sangati, M., Borga, M., 2009. Hydrometeorological controls and erosive response of an extreme alpine debris flow. *Hydrol. Process.* 23, 19, <https://doi.org/10.1002/hyp.7362>
- Marra, F., Morin, E., 2015. Use of radar QPE for the derivation of Intensity–Duration–Frequency curves in a range of climatic 805 regimes. *J. Hydrol.*, 531, 427–440, <https://doi.org/10.1016/j.jhydrol.2015.08.064>
- Marra, F., Morin, E., 2018. Autocorrelation structure of convective rainfall in semiarid-arid climate derived from high-resolution X-Band radar estimates, *Atmos. Res.*, 200, 126-138, <http://doi.org/10.1016/j.atmosres.2017.09.020>
- Marra, F., Nikolopoulos, E.I., Creutin, J.D., Borga, M., 2014. Radar rainfall estimation for the identification of debris-flow occurrence thresholds. *J. Hydrol.*, 519, 1607–1619. <http://doi.org/10.1016/j.jhydrol.2014.09.039>
- 810 Marra, F., Morin, E., Peleg, N., Mei, Y., Anagnostou, E. N., 2017. Intensity–duration–frequency curves from remote sensing rainfall estimates: comparing satellite and weather radar over the eastern Mediterranean, *Hydrol. Earth Syst. Sci.*, 21, 2389–2404, <http://doi.org/10.5194/hess-21-2389-2017>

Field Code Changed

Field Code Changed

- Marra, F., Nikolopoulos, E.I., Anagnostou, E.N., Morin, E., 2018. Metastatistical Extreme Value analysis of hourly rainfall from short records: estimation of high quantiles and impact of measurement errors. *Adv. Water Resour.*, 117, 27-39, <https://doi.org/10.1016/j.advwatres.2018.05.001>
- 815
- Marra, F., Nikolopoulos, E. I., Anagnostou, E. N., Bárdossy, A., Morin, E., 2019a. Precipitation frequency analysis from remotely sensed datasets: A focused review., *J. Hydrol.* 574, 699-705, <https://doi.org/10.1016/j.jhydrol.2019.04.081>
- Marra, F., Zoccatelli, D., Armon, M., Morin, E., 2019b. A simplified MEV formulation to model extremes emerging from multiple nonstationary underlying processes. *Adv. Water Resour.*, 127, 280-290, <https://doi.org/10.1016/j.advwatres.2019.04.002>
- 820
- Marra, F., Borga, M., Morin, E., 2020. A unified framework for extreme sub-daily precipitation frequency analyses based on ordinary events. *Geophys. Res. Lett.*, 47, 18, e2020GL090209. <https://doi.org/10.1029/2020GL090209>
- Marra, F., Armon, M., Adam, O., Zoccatelli, D., Gazal, O., Garfinkel, C. I., Rostkier-Edelstein, D., Dayan, U., Enzel, Y., and Morin, E., 2021a. Towards narrowing uncertainty in future projections of local extreme precipitation. *Geophys. Res. Lett.*, 48, e2020GL091823, <https://doi.org/10.1029/2020GL091823>
- 825
- Marra, F., Armon, M., Borga, M., and Morin, E., 2021b. Orographic effect on extreme precipitation statistics peaks at hourly time scales. *Geophys. Res. Lett.*, e2020GL091498, <https://doi.org/10.1029/2020GL091498>
- Mapes, B. E., Warner, T. T., Xu, M., Negri, A. J., 2003. Diurnal patterns of rainfall in northwestern South America. Part I: Observations and context. *Monthly Weather Review* 131, 799–812
- 830
- McGraw, D., Nikolopoulos, E. I., Marra, F., Anagnostou, E. N., 2019. Precipitation frequency analyses based on radar estimates: An evaluation over the contiguous United States. *J. Hydrol.*, 573, 299-310, <https://doi.org/10.1016/j.jhydrol.2019.03.032>
- Mekonnen, K., Melesse, A. M., Woldesenbet, T. A., 2021. Effect of temporal sampling mismatches between satellite rainfall estimates and rain gauge observations on modelling extreme rainfall in the Upper Awash Basin, Ethiopia. *J. Hydrol.*, 598, 126467, <https://doi.org/10.1016/j.jhydrol.2021.126467>
- 835
- Michaelides, S., Levizzani, V., Anagnostou, E.N., Bauer, P., Kasparis, T., Lane, J.E., 2009. Precipitation: Measurement, remote sensing, climatology and modeling. *Atm. Res.*, 94(4), 512–533, <https://doi.org/10.1016/j.atmosres.2009.08.017>
- Miniussi, A., Marra, F., Estimation of extreme daily precipitation return levels at-site and in ungauged locations using the simplified MEV approach. *J. Hydrol.*, 603, 126946, <https://doi.org/10.1016/j.jhydrol.2021.126946>
- 840
- Morin, E., Enzel, Y., Shamir, U., Garti, R., 2001. The characteristic time scale for basin hydrological response using radar data. *J. Hydrol.*, 252, 1-4, [https://doi.org/10.1016/S0022-1694\(01\)00451-6](https://doi.org/10.1016/S0022-1694(01)00451-6)
- Morin, E., Gabella, M., 2007. Radar-based quantitative precipitation estimation over Mediterranean and dry climate regimes. *J. Geophys. Res.* 112, D20108. <http://doi.org/10.1029/2006JD008206>
- Neumann, J. (1951). Land breezes and nocturnal thunderstorms. *J. Atmos. Sci.*, 8(1), 60-67

Formatted: Italian

Formatted: Italian

Field Code Changed

Formatted: Italian

Field Code Changed

- 845 Neumann B, Vafeidis AT, Zimmermann J, Nicholls RJ, 2015. Future Coastal Population Growth and Exposure to Sea-Level Rise and Coastal Flooding - A Global Assessment. *PLOS ONE* 10(3): e0118571. <https://doi.org/10.1371/journal.pone.0118571>
- Nykanen, D. K., and Harris, D., 2003. Orographic influences on the multiscale statistical properties of precipitation, *J. Geophys. Res.*, 108(D8), 8381, <https://doi.org/10.1029/2001JD001518>
- 850 Niziol, T.A., Snyder, W.R., and Waldstreicher, J.S., 1995. Winter weather forecasting throughout the Eastern United States. Part IV: Lake effect snow. *Weather and Forecasting*, 10, 1. [https://doi.org/10.1175/1520-0434\(1995\)010<0061:WWFTTE>2.0.CO;2](https://doi.org/10.1175/1520-0434(1995)010<0061:WWFTTE>2.0.CO;2)
- Overeem, A., Buishand, T.A., Holleman, I., 2009. Extreme rainfall analysis and estimation of depth-duration-frequency curves using weather radar. *Water Res. Res.*, 45(10), 1–15, <https://doi.org/10.1029/2009WR007869>
- 855 Panziera, L., Gabella, M., Zanini, S., Hering, A., Germann, U., Berne, A., 2016. A radar-based regional extreme rainfall analysis to derive the thresholds for a novel automatic alert system in Switzerland, *Hydrol. Earth Syst. Sci.*, 20, 2317-2332, <https://doi.org/10.5194/hess-20-2317-2016>
- Papalexiou, S. M., AghaKouchak, A., & Foufoula-Georgiou, E. (2018). A diagnostic framework for understanding climatology of tails of hourly precipitation extremes in the United States. *Water Resources Research*, 54, 6725–6738. <https://doi.org/10.1029/2018WR022732>
- 860 <https://doi.org/10.1029/2018WR022732>
- Paranunzio, R., Chiarle, M., Laio, F., Nigrelli, G., Turconi, L., Luino, F., 2019. New insights in the relation between climate and slope failures at high-elevation sites. *Theoretical and Applied Climatology* (2019) 137:1765–1784 <https://doi.org/10.1007/s00704-018-2673-4>
- Peleg, N., Ben-Asher, M., Morin, E., 2013. Radar subpixel-scale rainfall variability and uncertainty: lessons learned from observations of a dense rain-gauge network. *Hydrol. Earth Syst. Sci.* 17, 2195–2208. <http://doi.org/10.5194/hess-17-2195-2013>
- 865 Peleg, N., Marra, F., Fatichi, S., Paschalis, A., Molnar, P., Burlando, P., 2018: Spatial variability of rainfall at radar subpixel scale. *J. Hydrol.*, 556, 922-933, <http://doi.org/10.1016/j.jhydrol.2016.05.033>
- Peleg, N., E. Morin, 2012. Convective rain cells: Radar-derived spatiotemporal characteristics and synoptic patterns over the eastern Mediterranean, *J. Geophys. Res.*, 117, D15116, <https://doi.org/10.1029/2011JD017353>
- 870 Peleg, N., S. Sinclair, S. Fatichi, P. Burlando, 2020. Downscaling climate projections over large and data sparse regions: Methodological application in the Zambezi River Basin. *Int. J. Climatol.*, 40, 6242-6264, <https://doi.org/10.1002/joc.6578>
- Pellarin, T., Delrieu, G., Saulnier, G.-M., 2002. Hydrologic visibility of weather radar systems operating in mountainous regions: case study for the Ardèche catchment (France). *J. Hydrometeorol.* 3, 539–555. [http://doi.org/10.1175/1525-7541\(2002\)003<0539:HVOWRS>2.0.CO;2](http://doi.org/10.1175/1525-7541(2002)003<0539:HVOWRS>2.0.CO;2)
- 875 Rinat, Y., Marra, F., Armon, M., Metzger, A., Levi, Y., Khain, P., Vadislavsky, E., Rosensaft, M., and Morin, E. (2021). Hydrometeorological analysis and forecasting of a 3-day flash-flood-triggering desert rainstorm, *Nat. Hazards Earth Syst. Sci.*, 21, 917-939, <https://doi.org/10.5194/nhess-21-917-2021>

Field Code Changed

Field Code Changed

- Roe, G. H. (2005), Orographic precipitation. *Annu. Rev. Earth Planet. Sci.*, 33, 645–71,  
880 <https://doi.org/10.1146/annurev.earth.33.092203.122541>
- Roeloffzen, J. C., Van Den Berg, W. D. and Oerlemans, J., 1986. Frictional convergence at coastlines., *Tellus, Ser. A*, 38 A(5),  
397–411, <https://doi.org/10.3402/tellusa.v38i5.11727>
- Rosenfeld, D., Wolff D. B., Amitai, E. 1994. The Window Probability Matching Method for Rainfall Measurements with  
Radar. *J. Appl. Meteorol. Climatol.*, 33, 6, 682-693, [https://doi.org/10.1175/1520-](https://doi.org/10.1175/1520-0450(1994)033<0682:TWPMMF>2.0.CO;2)  
885 [0450\(1994\)033<0682:TWPMMF>2.0.CO;2](https://doi.org/10.1175/1520-0450(1994)033<0682:TWPMMF>2.0.CO;2)
- Rossi, M. W., Anderson, R. S., Anderson, S. P., and Tucker, G. E., 2020. Orographic controls on subdaily rainfall statistics  
and flood frequency in the Colorado Front Range, USA. *Geophysical Research Letters*, 47, e2019GL085086,  
<https://doi.org/10.1029/2019GL085086>
- Rubin, S., B. Ziv, and N. Paldor, 2007: Tropical plumes over eastern North Africa as a source of rain in the Middle East. *Mon.*  
890 *Wea. Rev.*, 135, 4135–4148, <https://doi.org/10.1175/2007MWR1919.1>
- Saltikoff, E., Friedrich, K., Soderholm, J., Lengfeld, K., Nelson, B., Becker, A., Hollmann, R., Urban, B., Heistermann, M.,  
Tassone, C., 2019. An Overview of Using Weather Radar for Climatological Studies: Successes, Challenges, and Potential.  
*Bull. Am. Meteorol. Soc.*, 100, 9, 1793-1752, <https://doi.org/10.1175/BAMS-D-18-0166.1>
- Serinaldi, F., Lombardo, F., Kilsby, C.G., 2020. All in order: distribution of serially correlated order statistics with applications  
905 to hydrological extremes. *Adv. Wat. Res.* 144, 103686. <https://doi.org/10.1016/j.advwatres.2020.103686>
- Sharon, D. and Kutiel, H., 1986. The distribution of rainfall intensity in Israel, its regional and seasonal variations and its  
climatological evaluation, *J. Climatol.*, 6, 277–291, <https://doi.org/10.1002/joc.3370060304>
- Sivapalan M., Blöschl, G., 1998. Transformation of point rainfall to areal rainfall: Intensity-duration-frequency curves. *J.*  
*Hydrol.*, 204, 10-167. [https://doi.org/10.1016/S0022-1694\(97\)00117-0](https://doi.org/10.1016/S0022-1694(97)00117-0)
- 900 Svensson, C., Jones, D.A., 2010. Review of methods for deriving areal reduction factors. *J. Flood Risk Management*, 3(3),  
232–245, <https://doi.org/10.1111/j.1753-318X.2010.01075.x>
- Toreti, A., Xoplaki, E., Maraun, D., Kuglitsch, F. G., Wanner, H., and Luterbacher, J., 2010. Characterisation of extreme  
winter precipitation in Mediterranean coastal sites and associated anomalous atmospheric circulation patterns, *Nat. Hazards*  
*Earth Syst. Sci.*, 10, 1037–1050, <https://doi.org/10.5194/nhess-10-1037-2010>
- 905 Tubi, A., and U. Dayan, 2014: Tropical plumes over the Middle East: Climatology and synoptic conditions. *Atmos. Res.*, 145–  
146, 168–181, <https://doi.org/10.1016/j.atmosres.2014.03.028>
- Ulbrich, U., Fink, A. H., Klawa, M., Pinto, J. G., 2001. Three extreme storms over Europe in December 1999. *Weather*, 56,  
<https://doi.org/10.1002/j.1477-8696.2001.tb06540.x>
- UN-DESA: World Urbanization Prospects: The 2018 Revision, United Nations, Department of Economic and Social Affairs,  
910 Population Division, New York, 22, 2018
- Villarini, G., Mandapaka, P.V., Krajewski, W.F., Moore, R.J., 2008. Rainfall and sampling uncertainties: a rain gauge  
perspective. *J. Geophys. Res. Atmos.* 113 (11), 1–12. <http://doi.org/10.1029/2007JD009214>



- Villarini, G., Smith, J. A., Lynn Baeck, M., Sturdevant-Rees, P., and Krajewski, W. F., 2010. Radar analyses of extreme rainfall and flooding in urban drainage basins, *Journal of Hydrology*, 381, 266-286, <https://doi.org/10.1016/j.jhydrol.2009.11.048>
- 915 Wahl, T., Jain, S., Bender, J., Meyers, S. D., and Luther, M. E., 2015. Increasing risk of compound flooding from storm surge and rainfall for major US cities. *Nature Climate Change*, 5, 1093–1097, <https://doi.org/10.1038/nclimate2736>
- Wang, L., Marra, F., Onof, C. (2020). Modelling sub-hourly rainfall extremes with short records – a comparison of MEV, Simplified MEV and point process methods. European Geosci. Union (EGU) General Assembly 2020 (Online).
- 920 [https://presentations.copernicus.org/EGU2020/EGU2020-6061\\_presentation.pdf](https://presentations.copernicus.org/EGU2020/EGU2020-6061_presentation.pdf)
- Warner, D. M., Mass, C. F., Salathe Jr., E. P., 2012. Wintertime Extreme Precipitation Events along the Pacific Northwest Coast: Climatology and Synoptic Evolution. *Monthly Weather Review*. 140, 7, 2021-2043, <https://doi.org/10.1175/MWR-D-11-00197.1>
- Wilson, P., Tuomi, R., 2005. A fundamental probability distribution for heavy rainfall. *Geophys. Res. Lett.* 32, L14812.
- 925 <https://doi.org/10.1029/2005GL022465>
- Wright, D.B., Smith, J.A., Villarini, G., Baeck, M.L., 2013. Estimating the Frequency of Extreme Rainfall Using Weather Radar and Stochastic Storm Transposition. *J. Hydrol.* 488, 150–65. <http://doi.org/10.1016/j.jhydrol.2013.03.003>
- Wu, P., Hara, M., Hamada, J.-I., Yamanaka, M. D., Kimura, F., 2009. Why a large amount of rain falls over the sea in the vicinity of western Sumatra Island during nighttime. *Journal of Applied Meteorology and Climatology* 48, 1345–1361
- 930 Yakir, H., Morin, E., 2011. Hydrologic response of a semi-arid watershed to spatial and temporal characteristics of convective rain cells. *Hydrol. Earth Syst. Sci.* 15 (1), 393–404. <http://dx.doi.org/10.5194/hess-15-393-2011>
- Zappa, G., Harcroft, M. K., Shaffrey, L., Black, E., Brayshaw, D. J., 2015, Extratropical cyclones and the projected decline of winter Mediterranean precipitation in the CMIP5 models. *Clim. Dyn.* 45(7–8), 1727–1738, <https://doi.org/10.1007/s00382-014-2426-8>
- 935 Ziv, B., T. Harpaz, H. Saaroni, and R. Blender, 2015: A new methodology for identifying daughter cyclogenesis: application for the Mediterranean basin. *Int. J. Climatol.*, 35, 3847–3861, <https://doi.org/10.1002/joc.4250>
- Zoccatelli, D., Marra, F., Armon, M., Rinat, Y., Smith, J. A., Morin, E., 2019. Contrasting rainfall-runoff characteristics of floods in desert and Mediterranean basins, *Hydrol. Earth Syst. Sci.*, 23, 2665–2678, <https://doi.org/10.5194/hess-23-2665-2019>
- 940 Zorzetto, E., Botter, G., Marani, M., 2016. On the emergence of rainfall extremes from ordinary events, *Geophys. Res. Lett.* 43, 8076–8082, <https://doi.org/10.1002/2016GL069445>
- Zorzetto, E., Marani, M., 2019. Downscaling of rainfall extremes from satellite observations. *Water Resour. Res.*, 55, <https://doi.org/10.1029/2018WR02295>
- Zorzetto, E., and Marani, M., 2020. Extreme value metastatistical analysis of remotely sensed rainfall in ungauged areas: Spatial downscaling and error modelling. *Adv. Water Resour.*, 15, 103483, <https://doi.org/10.1016/j.advwatres.2019.103483>
- 945

Formatted: English (US)

Field Code Changed

Zscheischler, J., Westra, S., van den Hurk, B. J. J. M., Seneviratne, S. I., Ward, P. J., Pitman, A., AghaKouchak, A., Bresch, D. N., Leonard, M., Wahl, T., and Zhang, X.. 2018. Future climate risk from compound events, *Nature Climate Change*, 8, 469-477, <https://doi.org/10.1038/s41558-018-0156-3>