

# Groundwater flow paths drive longitudinal patterns of stream DOC concentrations in boreal landscapes

Anna Lupon<sup>1\*</sup>, Stefan Willem Ploum<sup>2\*</sup>, Jason Andrew Leach<sup>3,4</sup>, Lenka Kuglerová<sup>2</sup>, Hjalmar Laudon<sup>2</sup>

5

<sup>1</sup>Integrative Freshwater Ecology Group, Centre for Advanced Studies of Blanes (CEAB-CSIC), Blanes, Spain

<sup>2</sup>Department of Forest Ecology and Management, Swedish University of Agricultural Sciences, Umeå, Sweden

<sup>3</sup>Natural Resources Canada, Canadian Forest Service, Sault Ste. Marie, ON, Canada

<sup>4</sup>Environment and Life Sciences Graduate Program, Trent University, Peterborough, ON, Canada

10 \*Equal contribution

Correspondence to: Stefan Willem Ploum ([swploum@gmail.com](mailto:swploum@gmail.com))

## Abstract

15 Preferential groundwater flow paths can influence dissolved organic carbon (DOC) concentration and export in the fluvial network because they facilitate the inflow of terrestrial DOC from large upslope contributing areas to discrete sections of the stream, referred to as *discrete riparian inflow points* (DRIPs). However, the mechanisms by which DRIPs influence longitudinal patterns of stream DOC concentrations is still poorly understood. In this study, we ask how DRIPs affect longitudinal patterns of stream DOC concentrations under different hydrologic conditions, as they can simultaneously act as major sources of terrestrial DOC and important locations for in-stream processes. To answer this question, we tested four model structures that account for different representations of hydrology (distributed inflows of DRIPs vs diffuse groundwater inflow) and in-stream processes (no DOC uptake vs in-stream DOC uptake downstream of DRIPs) to simulate stream DOC concentrations along a 1.5 km headwater reach for 14 sampling campaigns with flow conditions ranging from droughts to floods. Despite the magnitude and longitudinal patterns of stream DOC concentration varying across campaigns, at least one model structure was able to capture longitudinal trends during each campaign. Specifically, our results showed that during snow melt period or high flow conditions (>50 l/s), accounting for distributed inputs of DRIPs improved simulations of stream DOC concentrations along the reach, because groundwater inputs from DRIPs diluted the DOC in transport. Moreover, accounting for in-stream DOC uptake immediately downstream of DRIPs improved simulations during five sampling campaigns that were performed during spring and summer, indicating that these locations served as a resource of DOC for aquatic biota. These results show that the role of DRIPs on modulating DOC concentration, cycling, and export varies over time and depends strongly on catchment hydrology. Therefore, accounting for DRIPs can improve stream biogeochemistry frameworks and help inform management of riparian areas under current and future climatic conditions.

20

25

30

## 1 Introduction

35 Streams and rivers play a critical role in the global carbon (C) cycle because they transport, store and process large amounts of dissolved organic carbon (DOC) (Ciais et al., 2013). Accounting for spatial patterns of stream DOC concentrations within stream networks is vital for understanding net in-stream C retention along rivers (Alexander et al., 2007; Bernal et al., 2018) and catchment-integrated evasion of C (Wallin et al., 2013), as well as for assessing and managing the brownification of large water bodies and coastal ecosystems (Kritzberg et al., 2020). Yet the main drivers controlling spatial variations in DOC  
40 concentrations remain unclear, partly because processes occurring at various scales interact in complex ways to influence the concentration and export of DOC to downstream aquatic ecosystems (Laudon and Sponseller, 2018).

In boreal regions, landscape features such as wetlands, headwater lakes and riparian zones are major controls of the spatial variability in stream DOC concentrations (Frost et al., 2006; Laudon et al., 2011; Lottig et al., 2013; Kothawala et al., 2015). In peat-rich riparian soils, typical for boreal forest catchments, the combination of wet soil conditions and organic matter  
45 accumulation can result in elevated DOC concentration in subsurface water (Grabs et al., 2012). The organization of groundwater flow paths can also regulate spatial patterns of stream DOC concentration by conveying substantial fluxes of water from large upslope contributing areas through wet corridors to discrete sections of the stream (Jencso et al., 2010; McGlynn and McDonnell, 2003), referred to as *discrete riparian inflow points* (DRIPs; Ploum et al., 2019). DRIPs have been shown to have high groundwater concentrations of DOC associated with sustained water saturated conditions, moss-dominated  
50 vegetation and organic matter accumulation (Demars et al., 2020; Ploum et al., 2021). Further, the strong connectivity between DRIPs and adjacent streams makes DRIPs important sources of DOC that can be adsorbed, photodegraded or mineralized by aquatic microbial communities (Berggren et al., 2009; Mineau et al., 2016). This processing happens quickly and over relatively short distances (Demars, 2019), thereby generating hot spots of in-stream uptake immediately downstream DRIPs (Lupon et al., 2022). To integrate the role of DRIPs as both suppliers of terrestrial DOC and hot spots of DOC uptake in aquatic  
55 ecosystems, we need to combine source-transport hydrochemical and in-stream C cycling frameworks (Li et al., 2020). While there are hydrological frameworks that account for flow path convergence (Jencso et al., 2009; Seibert et al., 2009), these features are often not explicitly considered in biogeochemical studies and monitoring strategies (Briggs and Hare, 2018). As a result, the extent to which DRIPs can affect stream DOC concentrations, cycling, and overall C exports at different spatial scales remains largely unknown.

60 The relative contribution of DRIPs on shaping downstream DOC concentrations and processing likely depends on catchment hydrology. During base flow conditions and small rain events, DRIPs are major contributors of water to stream flow (Leach et al., 2017; Ploum et al., 2019); and hence, they could drive spatial variation in stream DOC concentrations by acting as sources of DOC along streams, as observed for C gases (Duvert et al., 2018; Lupon et al., 2019). In contrast, the relevance of these flow paths as primary drivers of stream DOC concentrations might be less important during extreme hydrological events  
65 (i.e. droughts and floods), when the DRIP-stream hydrological connectivity is low or overwhelmed by either upstream fluxes or diffuse lateral inflows (Leach et al., 2017; Gómez-Gener et al., 2020). Further, catchment hydrology also affects the potential for aquatic biota to act upon the DOC in transport (pulse-shunt concept; Raymond et al., 2016). Large residence times during low and moderate flows can promote in-stream DOC mineralization (Casas-Ruiz et al., 2017), while elevated water velocities might overwhelm in-stream DOC uptake during high flows (Bernal et al., 2019). Since the hydrology of many boreal  
70 landscapes is rapidly changing due to global change (Laudon et al., 2020), it is important to understand where and when DRIPs hydrologically connect to headwaters, as well as their broader effects on stream C cycling and overall catchment C export under current and future climatic scenarios.

In this study, we assessed the relevance of DRIPs as primary drivers of spatial patterns of stream DOC concentrations along boreal headwater streams. Specifically, we aimed to disentangle the role of DRIPs as terrestrial DOC suppliers vs. hot spots for in-stream DOC uptake during different flow conditions. To do so, we tested four different models to simulate stream DOC concentrations along a 1.5 km headwater reach, for 14 campaigns with flow conditions ranging from droughts to floods. Models accounted for two types of transport mechanisms. We assumed either (i) uniform, diffuse inflow of groundwater along the reach or (ii) the existence of DRIPs by weighting groundwater inflow relative to their upslope contributing area (UCA). These two assumptions on groundwater inflow were combined with the assumption that stream biota do not take up the supplied DOC (i.e. pulse-shunt concept), or that in-stream DOC uptake takes place directly downstream of DRIPs (i.e. hot spot concept; Table 1).

## 2 Methods

### 2.1 Study area

We conducted our study in the Krycklan catchment in northern Sweden (64°14' N, 19°46' E), along a 1.5 km stream reach located between the gauging stations C5 and C6 (Fig. 1) (Laudon et al., 2013). The gauging station C5 is the outlet of lake Stortjärn (4.2 ha) and has a catchment area of 65 ha. The gauging station C6 is situated 1.5 km downstream of C5 and has a catchment area of 110 ha. The catchment contributing to the C5-C6 reach consists of pine-dominated forest, mostly underlain by post-glacial till soil (72%). Iron podzols and thin soils can be found in the upland areas, while the shallow subsurface soils of the riparian zone (< 1.2-meter-deep) are dominated by peat. Furthermore, soil wetness and flow accumulation maps based on 2x2 metre Digital Elevation Models identify seven wet corridors of 1-10 ha contributing area that extend from upland areas to the stream (Ågren et al., 2014). From those, five are considered DRIPs based on previous field-validation using vegetation surveys and thermal and isotopic tracing (Kuglerová et al., 2014; Leach et al., 2017). The five DRIPs collectively account for approximately 60% of the lateral groundwater inflows along the reach, while the remaining lateral inflow is diffuse (Leach et al., 2017). No tributaries are present along the stream reach and deep groundwater inflows are minimal in this catchment (Tiwari et al., 2017).

The average annual temperature in Krycklan is 1.8 °C (period 1081-2010; Laudon and Ottosson-Löfvenius, 2016) and the average annual precipitation is 614 mm, of which 35-50% fall as snow (Laudon et al., 2013). Approximately 50% of the annual precipitation translates to streamflow. The hydrological regime at the C5-C6 reach is dominated by the annual snowmelt peak, occurring around May (100-200 l/s). In summer and autumn, low flows (< 10 l/s) alternate with medium to high flows (25-75 l/s) in response to rain events. During winter, the stream is snow and ice covered, with flows < 3 l/s. At C5, streamflow is mostly driven by lake level variations. As a result, peak flow events are dampened and recession limbs decline gradually (Leach and Laudon, 2019; Fig. 2). At C6 (1.5 km downstream), streamflow responds much faster to hydrological events compared to C5 and is characterized by steep rising limbs (Fig 2; Ploum et al., 2018).

### 2.2 Study design, field measurements and laboratory analysis

Field measurements were collected between May 2017 and May 2019. In total, we conducted 14 sampling campaigns with different streamflow conditions, which ranged from drought to peak flows conditions (Fig. 2). Nine sampling campaigns were centred around the snowmelt periods of 2017-2019, and five around a lake damming experiment in summer 2017. In this experiment, the upstream lake was blocked and, after a period of artificial drought, a series of controlled flows were released using a pump. During the course of the artificial drought, the strength of DRIP-stream hydrological connections declined, generating a patchy distribution of lateral DOC inputs similar to those occurring under natural droughts (Gómez-Gener et al.,

2020). For each sampling campaign, stream water was collected along the stream reach at approximately 50 meter intervals over 1200 meters, dividing the stream reach into 25 sections (Lupon et al., 2019). Five of the 25 sections had a DRIP discharging into it, while the other 20 sections were fed by small diffuse groundwater inputs (Fig. 1, Fig. 3). For 10 of those sections, we sampled riparian groundwater inputs from a well network setup, which included five pairs of DRIP and non-DRIP wells located 1-5 m from the stream edge (Ploum et al., 2020). Therefore, we sampled the phreatic groundwater of all DRIPs, but not all the diffuse groundwater inputs discharging into 15 reaches. The PVC wells (30 mm diameter) had a mean depth of 95 cm ( $\sigma = 37$  cm) below the soil surface and were fully screened every 5 cm.

Stream water was collected from the thalweg with acid-washed high-density polyethylene bottles. Groundwater was sampled from PVC wells using suction cup lysimeters and evacuated glass bottles, or by using a peristaltic pump to fill acid-washed high-density polyethylene bottles. The wells were pre-pumped to ensure we did not sample stagnant water. Bottles for both stream water and groundwater were rinsed three times before filling with minimal headspace. Within 24 hours, all samples were filtered (0.45  $\mu\text{m}$  MCE syringe filters, Millipore®) and kept refrigerated at 4 °C until analysis (< 7 days after filtering). DOC analysis consisted of acidification of the sample for removing inorganic carbon, followed by combustion using a Shimadzu TOC-V<sub>CPH</sub> (analytical error: 2%; Laudon et al., 2011). The analysis was repeated at least three times per sample resulting in a DOC concentration in mg/l and a percent standard deviation.

### 2.3 Model framework and data input

We used a mixing model that considered the stream DOC concentration at location  $i$  to be a result of upstream DOC flux (location  $i-1$ ) and the net lateral riparian groundwater flux that is gained along the stream section between locations  $i-1$  and  $i$ . In addition, we considered that riparian DOC inputs were subjected to in-stream uptake (eq. 1).

$$130 \quad DOC_{sw,i} = \frac{(DOC_{sw,i-1} \times Q_{i-1}) + DOC_{gw,i} \times (Q_i - Q_{i-1}) - uptake_i}{Q_i} \quad (1)$$

where  $DOC_{sw,i}$  and  $DOC_{sw,i-1}$  are the stream DOC concentration measured at location  $i$  and  $i-1$ , respectively;  $Q_i$  and  $Q_{i-1}$  are the estimated stream flows at location  $i$  and  $i-1$ , respectively; the difference ( $Q_i - Q_{i-1}$ ) is the net groundwater inflow for that stream section;  $DOC_{gw,i}$  is the estimated groundwater DOC concentration between locations  $i-1$  and  $i$ ; and  $uptake_i$  is the in-stream DOC uptake associated with lateral groundwater labile DOC inputs (see below).

135 We modified the abovementioned model (eq. 1) to represent different assumptions of catchment hydrology (diffuse vs. distributed groundwater inputs) and in-stream DOC uptake (no uptake vs. in-stream uptake downstream DRIPs), resulting in four different models (Table 1). The model “Diff” assumed diffuse groundwater inputs and no in-stream DOC uptake. The model “Diff-Bio” also assumed diffuse groundwater inputs, but accounted for in-stream DOC uptake downstream from DRIPs. The model “UCA” assumed that groundwater inputs were distributed proportional to their UCA and no in-stream DOC uptake. 140 Finally, the model “UCA-Bio” assumed groundwater inputs proportional to UCA and accounted for in-stream DOC uptake downstream from DRIPs. Below, we outline the approaches used for estimating riparian groundwater DOC concentrations, groundwater inputs and in-stream uptake.

#### 2.3.1 Estimates of riparian groundwater DOC concentrations

For each date, we used direct measurements of groundwater DOC concentrations from wells to estimate  $DOC_{gw}$  for 10 sections (i.e. 5 sections with DRIPs and 5 sections without DRIPs). For the remaining 15 sections, we assumed that  $DOC_{gw}$  equaled the average of the non-DRIP wells. For all instances where we did not have direct measurements of

$DOC_{gw}$  and used estimates based on the means of the non-DRIP observations, we also computed the standard deviation of the mean as a measure of uncertainty in the mixing model framework.

### 2.3.2 Estimates of streamflow and lateral groundwater inputs

150 Streamflow at each location ( $Q_i$ ) was represented in the model in two ways. Both approaches assume that all net gain in streamflow between the two hydrological stations C5 and C6 is a result of lateral groundwater input from the riparian zone. One scenario assumed that the local gains in streamflow were driven by diffuse groundwater inflow (hereafter referred as “Diff”, Fig. 3), where the net gain in streamflow is distributed evenly along the C5-C6 reach:

$$Q_{diff,i} = (Q_{C6} - Q_{C5}) * \frac{(L_i - L_{i-1})}{L_{total}} \quad (2)$$

155 where  $Q_{C5}$  and  $Q_{C6}$  are streamflow at the gauging stations C5 and C6, respectively (both in l/s);  $L_i$  and  $L_{i-1}$  are the distance between the gauging station C5 and the sampling locations  $i$  and  $i-1$  (both in m), respectively; and  $L_{total}$  is the total length of the C5-C6 stream reach (1200 m).

The other scenario (hereafter referred as “UCA”, Fig. 3) was based on Leach et al. (2017), in which lateral groundwater inputs were distributed proportional to the gain in upslope contributing area at each stream reach:

$$160 \quad Q_{uca,i} = (Q_{C6} - Q_{C5}) * \frac{A_i - A_{i-1}}{A_{C6} - A_{C5}} \quad (3)$$

where  $Q_{C5}$  and  $Q_{C6}$  are streamflow at the gauging stations C5 and C6, respectively (both in l/s);  $A_i$  and  $A_{i-1}$  are the catchment area at locations  $i$  and  $i-1$ , respectively (both in ha); and the difference  $A_{C6} - A_{C5}$  is the total gain in catchment area between the gauging stations C5 and C6 (55 ha). This approach emphasized the hydrological contributions of DRIPs, because of their large contributing areas relative to the rest of the riparian zone.

### 165 2.3.3 Estimates of in-stream DOC uptake

We considered two different scenarios regarding in-stream DOC uptake. One model assumed that all terrestrial DOC inputs were transported to downstream ecosystems (i.e., pulse-shunt concept; no in-stream DOC uptake), while the other model assumed that stream biota rapidly take up the DOC coming from lateral groundwater inputs (i.e., hot spot concept). We did not consider the scenario that DOC coming from the upstream lake was taken up along the stream, as previous studies in the  
 170 Krycklan catchment have suggested that this DOC is highly recalcitrant and rarely used by stream biota (Tiwari et al., 2014; Kothawala et al., 2015).

At each location ( $i$ ), in-stream DOC uptake of lateral groundwater DOC inputs ( $uptake_i$ , in mg C/s) was estimated as follows:

$$uptake_i = DOC_{gw,i} * V_f / 60 * width_i * length_i \quad (4)$$

where  $DOC_{gw,i}$  is the DOC concentration of riparian groundwater (in mg/l);  $V_f$  is the DOC uptake velocity (in mm/min) associated with riparian carbon; and  $width_i$  and  $length_i$  are the mean channel width and the reaction path length of each section, respectively (both in m). Based on previous work at this particular study reach, we assumed that in-stream DOC uptake mostly occurred immediately downstream of DRIPs (Lupon et al., 2019). We accounted for this by setting the  $length$  of all sections to zero, except for those where a DRIP was located (Fig. 3). At these sections,  $length_i$  was the distance between DRIPs and the location  $i$ , instead of the total length between  $i-1$  and  $i$ . This prevented overestimations of reaction times and  
 180 path lengths over which in-stream uptake took place. For in-stream DOC uptake from riparian groundwater, we used a  $V_f = 0.6 \pm 0.06$  mm/min. This value is the median  $V_f$  for DOC reported in the literature and has been shown to realistically simulate

in-stream DOC uptake at whole river network (Mineau et al., 2016). Because  $V_f$  depends on temperature, streamflow, DOC composition, and microbial assemblages, we tested values for  $V_f$  ranging between 0.25 and 1.11 mm/min. These values yielded similar model results for the simulations that considered in-stream DOC uptake.

## 185 2.4 Model uncertainty and performance criteria

For each model, we accounted for uncertainty in modelled stream DOC concentrations (eq. 1) by incorporating errors in  $Q$  observations, water sample analysis, and estimates of both  $DOC_{gw}$  and DOC  $V_f$ . We assumed normally distributed errors for  $Q_{c5}$  and  $Q_{c6}$  ( $\pm 10\%$ , based on repeat streamflow gauging; Karlsen et al., 2016),  $DOC_{gw}$  (either  $\pm 2\%$  for sites with measurements based on laboratory analytical precision or  $\pm 1$  standard deviation of the mean for sections that rely on estimates), and  $V_f$  ( $\pm 10\%$ , based on Mineau et al., 2016). For each date, each model was run 10000 times using random values selected from these parameter distributions. Error estimates in  $DOC_{sw,i}$  were tracked downstream since the values become  $DOC_{sw,i-1}$  in the computation for the next stream reach.

We evaluated the simulation of each run using two goodness of fit metrics, computed using the “hydroGOF” R-package (Zambrano-Bigiarini, 2020). First, we computed the percent bias (PBias, in %), which measures the average tendency of the simulated values to be larger (PBias > 0%) or smaller (PBias < 0%) than their observed ones. We considered that a model successfully simulated the magnitude of stream DOC concentrations if the median value of all runs was within -5% and +5% bias. Second, we calculated the Spearman correlation (R), which shows if the longitudinal patterns of simulated DOC concentrations mimicked the observed ones. In this case, we considered that a model was capturing the general direction of stream DOC concentrations if the median R of all runs was higher than 0.70.

## 200 3 Results

### 3.1 Stream hydrology

Across the 14 sampling campaigns, hourly  $Q$  ranged from 0 to 116 l/s and from 2 to 152 l/s at C5 and C6, respectively, which were comparable to the range of flows observed throughout the whole ice-free period (C5: 0-150 l/s, C6: 2-200 l/s; Fig. 2). At both gauging stations, maximum  $Q$  occurred during the snowmelt, whereas minimum  $Q$  was observed during the artificial drought in summer 2017. As a result, the net gain in streamflow along the C5-C6 reach ranged from 8% (artificial flood, event G) to 90% (artificial drought, event H) (Fig. 2). During the other sampling campaigns, the net gain in streamflow along the reach was between 20% and 50%, with a mean of 37% (Fig. 2).

### 3.2 Stream DOC concentrations

During the study period, stream DOC concentration ranged from 15 mg/l to 32 mg/l and varied over time as well as along the stream reach (Fig. 4). Seasonally, average DOC concentration decreased as the snowmelt period progressed during each year (events A-E [2017], J-L [2018], and N-M [2019]). In summer 2017, stream DOC concentrations were relatively constant at C5 (19-20 mg/l), whereas they decreased during the same period at C6 (from 28 to 18 mg/l) (events F-I). Spatially, stream DOC concentrations generally decreased along the C5-C6 reach (8 out of 14 sampling campaigns) (Fig. 4). However, stream DOC concentrations clearly increased along the reach for the increasing limb of snowmelt 2017 (event B), the summer storm event (event F) and the artificial drought (event G). During the recession limb of the snowmelt peak 2017 (event D) and the lake flooding experiment (events H and I), stream DOC concentrations were relatively constant along the reach.

Abrupt changes in stream DOC concentrations occur in those sections affected by DRIPs (Fig. 4). During most snowmelt campaigns (events A-C, J-N) and summer base flow conditions (event E), stream DOC concentrations sharply decreased in sections fed by DRIPs. The only exception was the section affected by the last DRIP, from which stream DOC concentrations tended to increase. Peaks in DOC concentrations immediately downstream DRIPs also occurred during the summer rain event and the experimental drought (events F-G). For the other sampling campaigns (events D, H and I), both increases and decreases in DOC concentrations occurred at DRIP locations.

### 3.3 Model simulations

The ability of the models to simulate the magnitude and longitudinal patterns of stream DOC concentrations varied across sampling campaigns (Fig. 4). For most sampling campaigns performed during the snow melt period, at least one of the models was able to capture either the magnitude or spatial variations in stream DOC concentrations (Fig. 4). For six events (B-D, K, and M-N), all models captured the magnitude of stream DOC concentrations (median PBias from -5 to 5%; Fig. 5), yet only for event K were all of them also able to simulate their longitudinal patterns (median  $R > 0.80$ ; Fig. 6). Indeed, none of the models captured spatial patterns for the events B, D and M (median  $R < 0.50$ ), although the model Diff-Bio tended to perform better than the others (Fig. 6). For event C, spatial patterns were captured by both the models Diff-Bio and UCA-Bio (median  $R \sim 0.75$ ; Fig. 6), whereas models UCA and UCA-Bio were able to simulate patterns of stream DOC concentrations for event N (median  $R \sim 0.70$ , Fig. 6). For the three other field campaigns performed during the snow melt period (events A, J and L), the magnitude of stream DOC concentrations was only successfully captured by the models UCA and/or UCA-Bio (median PBias  $\sim 0\%$ , Fig. 5), despite all models being able to simulate the spatial patterns of DOC concentrations ( $R > 0.70$ ; Fig. 6).

For the sampling campaigns performed during summer 2017 (events E-I), there were large inconsistencies across models (Fig. 4). For summer base flow conditions (event E), the models Diff-Bio and UCA-Bio successfully simulated both the magnitude (PBias  $< 3\%$ ) and spatial patterns ( $R > 0.90$ ) of stream DOC concentrations (Fig. 5, Fig. 6). For the natural rain event (event F), all models underestimated stream DOC concentrations (PBias  $< -5\%$ ) and also failed to predict their spatial variation (median  $R < 0.35$ ). Yet the model UCA performed better than the others (Fig. 5, Fig. 6). None of the models were also able to capture spatial patterns during the lake flooding (event H,  $R < 0.5$ ), even though all the models captured the overall magnitude of DOC concentrations (Fig 5, Fig 6). For the experimental drought (event G), Diff and UCA models successfully simulated spatial patterns of stream DOC concentrations ( $R > 0.70$ ; Fig. 5), yet only the Diff model accurately captured their magnitude (median PBias = 1%; Fig. 6). Similarly, only the model Diff was able to simulate both the magnitude and spatial pattern of stream DOC concentrations for the post flooding campaign (event I; Fig. 4-6).

## 4 Discussion

### 4.1 Modelling spatial patterns of stream DOC concentration

DRIPs are an important, and often primary, source of water and C to headwaters (Briggs and Hare, 2018; Demars et al., 2018) and play a major role in regulating spatial variation in stream DOC concentration, processing and export. Our spatially explicit surveys revealed that longitudinal patterns of stream DOC concentrations varied across flow conditions. In general, DOC concentrations tended to decrease along the C5-C6 reach, indicating that DOC was generally diluted or taken up along the stream segment. However, we observed step changes in stream DOC concentrations at DRIPs, indicating that these locations play a key role for stream C export. Similar patterns have been observed in boreal headwaters (Duvert et al., 2018; Lupon et al., 2019), yet our study is the first to reveal the mechanisms by which DRIPs shape spatial patterns of DOC concentrations and fluxes in these streams.

255 Our results show that accounting for spatial variability in lateral groundwater inflows in the models (i.e., UCA) improved simulations of stream DOC concentrations for five out of the nine sampling campaigns performed during the snow melt period (events A, C, J, L and N), when groundwater inputs were high (> 20 l/s) and/or contributed significantly (>40%) to streamflow. During these events, sharp decreases in DOC concentrations were observed in sections fed by DRIPs, suggesting that these preferential groundwater flow paths mostly diluted the DOC concentrations in the stream. Further, UCA improved the simulations of stream DOC concentrations during the summer rain (event F), when the net gain in streamflow along the reach was 46%. In this case, however, DOC concentrations increased in most DRIP locations, indicating that these flow paths were acting as important sources of C to the stream. Previous studies have observed that high groundwater tables associated with rain events often increase groundwater DOC concentrations by activating the dominant source layer (Ledesma et al., 2018), which might explain the observed increase in DOC concentrations along the reach observed for the event F. Regardless of the process (i.e. DOC delivery or dilution), these findings corroborate that the spatial variability in groundwater flow paths related to landscape topography has a major influence on stream C patterns when streams are mostly fed by groundwater flow (Covino et al., 2021; Dupas et al., 2021; Rocher-Ros et al., 2019).

Accounting for spatial variability in groundwater inflow was important during some, but not all, events. Representing UCA did not improve model simulations for the sampling campaigns close to a snowmelt peak (events B, K and M) despite groundwater inputs being elevated (25-36 l/s). Our explanation is that during these events, increases in the groundwater level might homogenize groundwater inflows along the reach, potentially generating overland flow because of soil frost causing impervious conditions (Ploum et al., 2020). Similarly, a potential homogenization of overland flow during the snowmelt can explain the decline in DOC concentrations during events K and M (Ploum et al., 2018; Laudon et al., 2011). In any case, from our work it is evident that model frameworks that integrate the spatial arrangement of groundwater flow paths (i.e. DRIPs) can help represent the variability in the hydrological connectivity along the stream.

Model simulations also revealed that accounting for in-stream uptake downstream of DRIPs improved predictions of longitudinal patterns of stream DOC concentration for the five sampling campaigns occurring from May to August (events C-E, H and M), but especially during summer low flow conditions (event E). It is likely that these results are explained by the seasonal pattern of microbial activity in boreal streams, which often mirror the temporal variation in water temperature (Burrows et al., 2017). However, in-stream uptake did not improve model simulations during those dates in summer characterized by very low (event G) or high flows (event I). These results concur with other recent studies (Lupon et al., 2019; Seybold and McGlynn, 2018; Demars, 2019), and suggest that aquatic biological activity is enhanced at the transition between low and high flows due to increases in labile DOC supply from terrestrial systems. Conversely, in-stream DOC uptake may be minimal during low flows due to C limitation (Burrows et al., 2017) or overwhelmed by high water velocities during rain events (pulse shunt concept; Raymond et al., 2016). Most importantly, our findings support the idea that spatial patterns of DOC concentrations along headwaters are associated with aquatic biological activity and stream water permanence driven by terrestrial flow path organization (Hale and Godsey, 2019). Collectively, these results suggest that DRIPs are important hot spots of DOC uptake and thus, the capacity for processing DOC of boreal headwater streams is closely tied to the spatial arrangement of lateral inputs of DOC from riparian zones.

## 290 **4.2 Limitations of the model**

Our model framework represented the source of lateral DOC inputs based on groundwater samples from a riparian well network that compared DRIP and non-DRIP groundwater chemistry (Ploum et al., 2020). This allowed us to distinguish between the spatial variability in riparian groundwater chemistry associated with different soil wetness regimes (Vidon, 2017). For example, during the experimental drought (event G), the model Diff provided better simulations of both the magnitude



295 and spatial patterns of stream DOC concentrations compared to the assumption of uniform inputs along the reach, suggesting that the representation of spatial variability in groundwater DOC concentrations was more important than hydrology or in-stream uptake. Hence, under these conditions, stream DOC patterns might not be directly related to groundwater fluxes, but rather to the thermal and chemical conditions that groundwater discharge creates at the local level (Briggs and Hare, 2018). However, there are also limitations in our groundwater sampling approach. For example, our groundwater sampling was not  
300 able to represent temporal DOC dynamics associated with variability in groundwater travel times (Heidbüchel et al., 2020), event scale variability in riparian DOC mobilization (Werner et al., 2019), or the activation of DOC from different soil layers (Ledesma et al., 2018).

Apart from the limitations of our groundwater sampling, we identified some limitations in the hydrological and biogeochemical components of the model as well. The sampling campaign of the summer rain event (event F) is a clear example of mismatch  
305 between our simulations and the observations. During this event, stream DOC concentrations increased along the reach but most of our models simulated a decreasing pattern. Similarly, none of the models properly simulated the longitudinal patterns for two sampling campaigns performed around the snow melt peak (events B and M). These examples suggest that the model framework has some limitations representing the complex hydrologic and biogeochemical dynamics occurring in headwater streams (Ambroise, 2004; Klaus and Jackson, 2018). For instance, our models do not account for local conditions affecting  
310 snow melt rates on hillslopes (i.e., shading, sun exposure) nor local variations in precipitation, interception or infiltration that are relevant during rain events (Laudon et al., 2004; Lyon et al., 2010). For the biogeochemical component of our model, we did not take into account processes that produce (i.e., resuspension) or remove (i.e., photodegradation, sorption, flocculation) DOC from the water column (Droppo et al., 1998; Kaiser and Kalbitz, 2012). Further, in-stream DOC uptake was assumed to occur only downstream of DRIPs and at a uniform rate across flow conditions. Previous studies have shown that uptake rates  
315 can vary over time as a function of temperature, DOC composition, and microbial assemblages (Berggren et al., 2009; Mineau et al., 2016). While the use of other values for  $V_f$  resulted in similar model output (Fig. S1), we cannot rule out the idea that  $V_f$  varied among DRIPs and/or over time due to changes in groundwater DOC composition and temperature. To better understand the role of DRIPs on stream hydrology and biogeochemistry, future empirical studies testing how DRIPs affect specific processes are needed. Nevertheless, our study, even with its limitations, demonstrated that both lateral discrete and  
320 diffused inputs as well as biological activity are essential components of the DOC patterns in boreal streams. These findings shed a new light on the understanding of C dynamics across boreal aquatic-terrestrial interface.

Another major limitation of our models is their large uncertainty, especially during events with large groundwater contributions such as event B. For six events (A-C, G, J and L), all models showed large inconsistencies among runs, resulting in simulated DOC concentrations at C6 that vary over 10 mg/l. Moreover, the uncertainty in groundwater DOC concentrations was large,  
325 because not all stream sections were sampled and groundwater inputs of DOC had to be estimated based on means of the available DOC concentrations from non-DRIP wells. For future studies, we have identified two more directions that can be useful to improve the simulations of stream DOC dynamics along boreal headwaters. For the representation of the spatial heterogeneity in riparian hydrochemistry, the hydrological representation of lateral groundwater inputs through the distinction of DRIP and non-DRIP riparian zones can be further developed. For this matter, integrative hydrochemical frameworks that  
330 represent fluxes from various soil layers would be useful to include, especially at non-DRIPs, because here groundwater levels are more dynamic compared to DRIPs (Seibert et al., 2009; Ploum et al., 2020). Furthermore, it can be of interest to downscale the number riparian groundwater chemistry samples to understand what minimum set of samples is required to represent the spatial heterogeneity in sources of lateral DOC inputs from riparian zones to streams. A preliminary analysis indicated that the most optimal strategy to reduce model uncertainty was to monitor DRIPs individually, while averaging DOC concentrations  
335 at non-DRIPs (Ploum, 2021). However, given that non-DRIP groundwater chemistry changes with groundwater table

fluctuations (Ledesma et al., 2015; Ploum et al., 2020), it is likely that optimizing groundwater sampling campaigns requires careful consideration of the antecedent groundwater conditions.

## 5 Conclusions

This study provides new insight into the role of DRIPs on stream DOC concentrations in boreal headwater catchments. We showed that DRIPs influence longitudinal patterns of stream DOC concentrations at small spatial scales (few meters) by controlling both the hydrology and the biogeochemistry of the streams they feed. However, our study also shows that the role of DRIPs can change over time depending on hydrologic conditions. During high flows, DRIPs control DOC concentrations by diluting upstream DOC. In contrast, in late-spring and summer, DRIPs can be important sources of C for stream biota, delivering labile resources from their upstream contributing areas (UCA) and promoting local hot spots of in-stream DOC uptake downstream confluences. These results suggest that future changes in catchment hydrology associated with global change can affect DOC exports from boreal fluvial networks by shifting the dominant mechanisms by which DRIPs drive spatial patterns of DOC concentrations and processing along headwater streams. Thus, the identification and characterization of DRIPs is essential to understand the current and future mechanisms behind C fluxes from boreal fluvial networks.

## Data availability

All Krycklan data, including the data used in this manuscript, is openly available through the Svartberget database (<https://franklin.vfp.slu.se/>).

## Author contributions

AL and SP are shared first-authors. AL contributed to study concept, data collection, model framework, result interpretation and writing. SP was responsible for study concept, data collection and analysis, model framework, figure compilation, result interpretation, and writing. JL and HL contributed to model framework, result interpretation and writing. LK designed GW well infrastructure and contributed to result interpretation and writing.

## Competing interests

The authors declare that the research was conducted without commercial or financial support that could be construed as potential conflict of interest.

## Acknowledgements

This study was funded by Oscar and Lili Lamm Foundation and Svenska Forskningsrådet Formas. The Krycklan catchment is also supported by SITES (VR), SKB, KAW and the Kempe Foundation. AL was supported by the program Beatriu de Pinós, funded by the Government of Catalonia and the Horizon 2020 research and innovation program (BP-2018-00082). We acknowledge Andrés Peralta-Tapia for well installations, and the staff at Svartberget research station and Laura Coulson for

365 assisting with sample collection. We thank Kelly Hondula for support with RStudio troubleshooting during analysis and figure compilation.

## References

- Alexander, R. B., Boyer, E. W., Smith, R. A., Schwarz, G. E. and Moore, R. B.: The role of headwater streams in downstream water quality 1, *JAWRA Journal of the American Water Resources Association*, 43(1), 41–59, 2007.
- 370 Ambroise, B.: Variable “active” versus “contributing” areas or periods: a necessary distinction, *Hydrological Processes*, 18(6), 1149–1155, doi:10.1002/hyp.5536, 2004.
- Antonelli, M., Glaser, B., Teuling, A. J., Klaus, J. and Pfister, L.: Saturated areas through the lens: 1. Spatio-temporal variability of surface saturation documented through thermal infrared imagery, *Hydrological Processes*, 34(6), 1310–1332, doi:10.1002/hyp.13698, 2020.
- 375 Barclay, J. R., Starn, J. J., Briggs, M. A. and Helton, A. M.: Improved Prediction of Management-Relevant Groundwater Discharge Characteristics Throughout River Networks, *Water Resources Research*, 56(10), doi:10.1029/2020wr028027, 2020.
- Berggren, M., Laudon, H., Haei, M., Ström, L. and Jansson, M.: Efficient aquatic bacterial metabolism of dissolved low-molecular-weight compounds from terrestrial sources, *The ISME Journal*, 4(3), 408–416, doi:10.1038/ismej.2009.120, 2009.
- 380 Bernal, S., Lupon, A., Catalán, N., Castelar, S. and Martt, E.: Decoupling of dissolved organic matter patterns between stream and riparian groundwater in a headwater forested catchment, *Hydrol. Earth Syst. Sci*, 22, 1897–1910, 2018.
- Briggs, M. A. and Hare, D. K.: Explicit consideration of preferential groundwater discharges as surface water ecosystem control points, *Hydrological Processes*, 32(15), 2435–2440, 2018.
- Briggs, M. A., Dawson, C. B., Holmquist-Johnson, C., Williams, K. H. and Lane Jr, J. W.: Efficient hydrogeological characterization of remote stream corridors using drones, *Hydrological Processes*, 33(2), 316–319, 2019.
- 385 Casas-Ruiz, J. P., Catalán, N., Gómez-Gener, L., Schiller, D. von, Obrador, B., Kothawala, D. N., López, P., Sabater, S. and Marcé, R.: A tale of pipes and reactors: Controls on the in-stream dynamics of dissolved organic matter in rivers, *Limnology and Oceanography*, 62(S1), S85–S94, 2017.
- Cole, J., Prairie, Y., Caraco, N., McDowell, W., Tranvik, L., Striegl, R., Duarte, C., Kortelainen, P., Downing, J., Middelburg, J. and others: Plumbing the global carbon cycle: integrating inland waters into the terrestrial carbon budget, *Ecosystems*, 10(1), 172–185, 2007.
- 390 Covino, T., Riveros-Iregui, D. A. and Schneider, C. L.: Geomorphology Imparts Spatial Organization on Hydrological and Biogeochemical Fluxes, in *Reference Module in Earth Systems and Environmental Sciences*, Elsevier., 2021.
- Creed, I. F., McKnight, D. M., Pellerin, B. A., Green, M. B., Bergamaschi, B. A., Aiken, G. R., Burns, D. A., Findlay, S. E. G., Shanley, J. B., Striegl, R. G., Aulenbach, B. T., Clow, D. W., Laudon, H., McGlynn, B. L., McGuire, K. J., Smith, R. A. and Stackpoole, S. M.: The river as a chemostat: fresh perspectives on dissolved organic matter flowing down the river continuum, edited by R. Smith, *Canadian Journal of Fisheries and Aquatic Sciences*, 72(8), 1272–1285, doi:10.1139/cjfas-2014-0400, 2015.
- 395 Demars, B. O. (2019). Hydrological pulses and burning of dissolved organic carbon by stream respiration. *Limnology and Oceanography*, 64(1), 406-421.
- 400 Demars, B. O., Friberg, N., & Thornton, B. (2020). Pulse of dissolved organic matter alters reciprocal carbon subsidies between autotrophs and bacteria in stream food webs. *Ecological Monographs*, 90(1), e01399.
- Droppo, I.G., Jeffries, D., Jaskot, C., Backus, S., 1998. The prevalence of freshwater flocculation in cold regions: A case study from the Mackenzie River Delta, Northwest Territories, Canada. *Arctic* 51, 155–164. Dupas, R., Causse, J., Jaffrezic, A., Aquilina, L. and Durand, P.: Flowpath controls on high-spatial-resolution water-chemistry profiles in headwater streams, *Hydrological Processes*, doi:10.1002/hyp.14247, 2021.
- 405

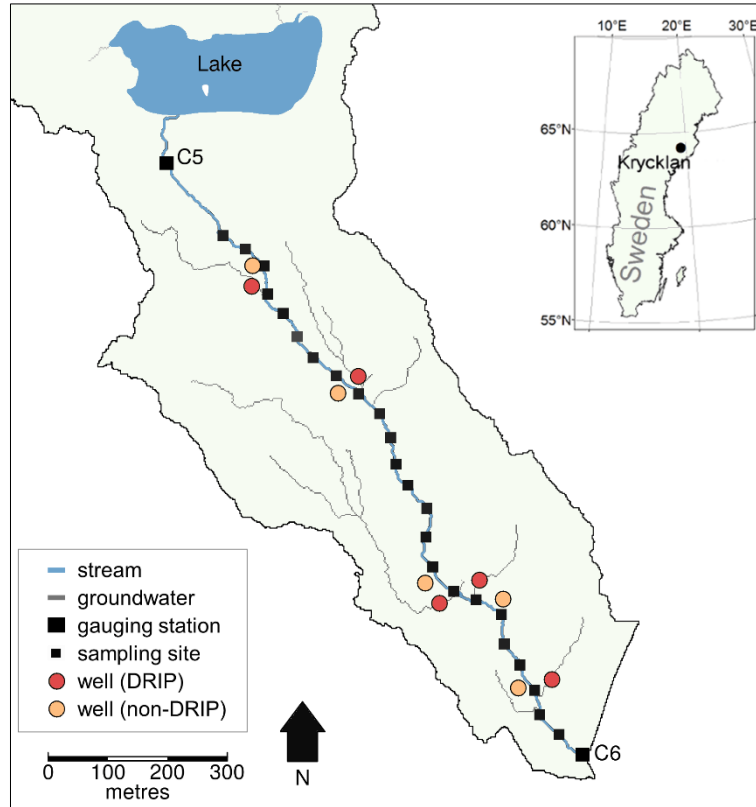
- Futter, M. N., Butterfield, D., Cosby, B. J., Dillon, P. J., Wade, A. J. and Whitehead, P. G.: Modeling the mechanisms that control in-stream dissolved organic carbon dynamics in upland and forested catchments, *Water Resources Research*, 43(2), doi:10.1029/2006wr004960, 2007.
- 415 Gómez-Gener, L., Lupon, A., Laudon, H. and Sponseller, R. A.: Drought alters the biogeochemistry of boreal stream networks, *Nature communications*, 11(1), 1–11, 2020.
- Grabs, T., Bishop, K., Laudon, H., Lyon, S. W. and Seibert, J.: Riparian zone hydrology and soil water total organic carbon (TOC): implications for spatial variability and upscaling of lateral riparian TOC exports, *Biogeosciences*, 9(10), 3901–3916, 2012.
- 415 Hale, R. L. and Godsey, S. E.: Dynamic stream network intermittence explains emergent dissolved organic carbon chemostasis in headwaters, *Hydrological Processes*, doi:10.1002/hyp.13455, 2019.
- Heidbüchel, I., Yang, J., Musolff, A., Troch, P., Ferré, T. and Fleckenstein, J. H.: On the shape of forward transit time distributions in low-order catchments, *Hydrology and Earth System Sciences*, 24(6), 2895–2920, doi:10.5194/hess-24-2895-2020, 2020.
- 420 Hotchkiss, E., Hall Jr, R., Sponseller, R., Butman, D., Klaminder, J., Laudon, H., Rosvall, M. and Karlsson, J.: Sources of and processes controlling CO<sub>2</sub> emissions change with the size of streams and rivers, *Nature Geoscience*, 8(9), 696, 2015.
- Jencso, K. G., McGlynn, B. L., Gooseff, M. N., Wondzell, S. M., Bencala, K. E. and Marshall, L. A.: Hydrologic connectivity between landscapes and streams: Transferring reach-and plot-scale understanding to the catchment scale, *Water Resources Research*, 45(4), 2009.
- 425 Jencso, K. G., McGlynn, B. L., Gooseff, M. N., Bencala, K. E. and Wondzell, S. M.: Hillslope hydrologic connectivity controls riparian groundwater turnover: Implications of catchment structure for riparian buffering and stream water sources, *Water Resources Research*, 46(10), 2010.
- Kaiser, K., Kalbitz, K., 2012. Cycling downwards – dissolved organic matter in soils. *Soil Biol. Biochem.* 52, 29–32. doi:10.1016/j.soilbio.2012.04.002
- 430 Kiewiet, L., Freyberg, J. von and Meerveld, H. van: Spatiotemporal variability in hydrochemistry of shallow groundwater in a small pre-alpine catchment: the importance of landscape elements, *Hydrological Processes*, 2019.
- Klaus, J. and Jackson, C. R.: Interflow Is Not Binary: A Continuous Shallow Perched Layer Does Not Imply Continuous Connectivity, *Water Resources Research*, 54(9), 5921–5932, 2018.
- 435 Kothawala, D. N., Ji, X., Laudon, H., Ågren, A. M., Futter, M. N., Köhler, S. J. and Tranvik, L. J.: The relative influence of land cover, hydrology, and in-stream processing on the composition of dissolved organic matter in boreal streams, *Journal of Geophysical Research: Biogeosciences*, 120(8), 1491–1505, doi:10.1002/2015jg002946, 2015.
- Kritzberg, E. S., Hasselquist, E. M., Škerlep, M., Löfgren, S., Olsson, O., Stadmark, J., Valinia, S., Hansson, L.-A. and Laudon, H.: Browning of freshwaters: Consequences to ecosystem services, underlying drivers, and potential mitigation measures, *Ambio*, 49(2), 375–390, 2020.
- 440 Laudon, H. and Ottosson Löfvenius, M.: Adding snow to the picture—providing complementary winter precipitation data to the Krycklan catchment study database, *Hydrological Processes*, 30(13), 2413–2416, 2016.
- Laudon, H., Seibert, J., Köhler, S. and Bishop, K.: Hydrological flow paths during snowmelt: Congruence between hydrometric measurements and oxygen 18 in meltwater, soil water, and runoff, *Water resources research*, 40(3), 2004.
- 445 Laudon, H., Taberman, I., Ågren, A., Futter, M., Ottosson-Löfvenius, M. and Bishop, K.: The Krycklan Catchment Study—a flagship infrastructure for hydrology, biogeochemistry, and climate research in the boreal landscape, *Water Resources Research*, 49(10), 7154–7158, 2013.
- Laudon, H., Hasselquist, E. M., Peichl, M., Lindgren, K., Sponseller, R., Lidman, F., Kuglerová, L., Hasselquist, N. J., Bishop, K., Nilsson, M. B. and Ågren, A. M.: Northern landscapes in transition: Evidence, approach and ways forward using the Krycklan Catchment Study, *Hydrological Processes*, 35(4), doi:10.1002/hyp.14170, 2021.
- 450 Leach, J., Lidberg, W., Kuglerová, L., Peralta-Tapia, A., Ågren, A. and Laudon, H.: Evaluating topography-based predictions of shallow lateral groundwater discharge zones for a boreal lake-stream system, *Water Resources Research*, 53(7), 5420–5437, 2017.

- Leach, J. A. and Laudon, H.: Headwater lakes and their influence on downstream discharge, *Limnology and Oceanography Letters*, 4(4), 105–112, 2019.
- 455 Ledesma, J. L., Grabs, T., Bishop, K. H., Schiff, S. L. and Köhler, S. J.: Potential for long-term transfer of dissolved organic carbon from riparian zones to streams in boreal catchments, *Global change biology*, 21(8), 2963–2979, 2015.
- Ledesma, J. L., Futter, M. N., Blackburn, M., Lidman, F., Grabs, T., Sponseller, R. A., Laudon, H., Bishop, K. H. and Köhler, S. J.: Towards an improved conceptualization of riparian zones in boreal forest headwaters, *Ecosystems*, 21(2), 297–315, 2018.
- 460 Li, L., Sullivan, P. L., Benettin, P., Cirpka, O. A., Bishop, K., Brantley, S. L., Knapp, J. L. A., Meerveld, I., Rinaldo, A., Seibert, J., Wen, H. and Kirchner, J. W.: Toward catchment hydro-biogeochemical theories, *WIREs Water*, 8(1), doi:10.1002/wat2.1495, 2020.
- Lidberg, W., Nilsson, M. and Ågren, A.: Using machine learning to generate high-resolution wet area maps for planning forest management: A study in a boreal forest landscape, *Ambio*, 1–12, 2019.
- Lupon, A., Denfeld, B. A., Laudon, H., Leach, J., Karlsson, J. and Sponseller, R. A.: Groundwater inflows control patterns and sources of greenhouse gas emissions from streams, *Limnology and Oceanography*, 2019.
- 465 Lyon, S. W., Laudon, H., Seibert, J., Mörth, M., Tetzlaff, D. and Bishop, K. H.: Controls on snowmelt water mean transit times in northern boreal catchments, *Hydrological processes*, 24(12), 1672–1684, 2010.
- McGlynn, B. L. and McDonnell, J. J.: Quantifying the relative contributions of riparian and hillslope zones to catchment runoff, *Water Resources Research*, 39(11), 2003.
- 470 Mineau, M. M., Wollheim, W. M., Buffam, I., Findlay, S. E. G., Hall, R. O., Hotchkiss, E. R., Koenig, L. E., McDowell, W. H. and Parr, T. B.: Dissolved organic carbon uptake in streams: A review and assessment of reach-scale measurements, *Journal of Geophysical Research: Biogeosciences*, 121(8), 2019–2029, doi:10.1002/2015jg003204, 2016.
- Ploum, S.: Groundwater connections between the boreal landscape and its headwater streams: the role of discrete riparian inflow points (DRIPs), Department of Forest Ecology and Management, Swedish University of Agricultural Sciences. [online] Available from: <http://urn.kb.se/resolve?urn=urn:nbn:se:slu:epsilon-p-111341>, 2021.
- 475 Ploum, S. W., Leach, J. A., Kuglerová, L. and Laudon, H.: Thermal detection of discrete riparian inflow points (DRIPs) during contrasting hydrological events, *Hydrological Processes*, 32(19), 3049–3050, 2018.
- Ploum, S. W., Laudon, H., Peralta-Tapia, A. and Kuglerová, L.: Are dissolved organic carbon concentrations in riparian groundwater linked to hydrological pathways in the boreal forest?, *Hydrology and Earth System Sciences*, 24(4), 1709–1720, 2020.
- 480 Raymond, P. A., Saiers, J. E. and Sobczak, W. V.: Hydrological and biogeochemical controls on watershed dissolved organic matter transport: Pulse-shunt concept, *Ecology*, 97(1), 5–16, 2016.
- Rinderer, M., Meerveld, H. J. and McGlynn, B. L.: From Points to Patterns: Using Groundwater Time Series Clustering to Investigate Subsurface Hydrological Connectivity and Runoff Source Area Dynamics, *Water Resources Research*, 55(7), 5784–5806, doi:10.1029/2018wr023886, 2019.
- 485 Rocher-Ros, G., Sponseller, R. A., Lidberg, W., Mörth, C.-M. and Giesler, R.: Landscape process domains drive patterns of CO<sub>2</sub> evasion from river networks, *Limnology and Oceanography Letters*, 2019.
- Rosenberry, D. O., Briggs, M. A., Delin, G. and Hare, D. K.: Combined use of thermal methods and seepage meters to efficiently locate, quantify, and monitor focused groundwater discharge to a sand-bed stream, *Water Resources Research*, 52(6), 4486–4503, 2016.
- 490 Seibert, J., Grabs, T., Köhler, S., Laudon, H., Winterdahl, M. and Bishop, K.: Linking soil-and stream-water chemistry based on a Riparian Flow-Concentration Integration Model, *Hydrology and earth system sciences*, 13(12), 2287–2297, 2009.
- Selker, J., Giesen, N. van de, Westhoff, M., Luxemburg, W. and Parlange, M. B.: Fiber optics opens window on stream dynamics, *Geophysical Research Letters*, 33(24), 2006.
- 495 Seybold, E. and McGlynn, B.: Hydrologic and biogeochemical drivers of dissolved organic carbon and nitrate uptake in a headwater stream network, *Biogeochemistry*, 138(1), 23–48, doi:10.1007/s10533-018-0426-1, 2018.

- Talbot, C. J., Bennett, E. M., Cassell, K., Hanes, D. M., Minor, E. C., Paerl, H., Raymond, P. A., Vargas, R., Vidon, P. G., Wollheim, W. and Xenopoulos, M. A.: The impact of flooding on aquatic ecosystem services, *Biogeochemistry*, 141(3), 439–461, doi:10.1007/s10533-018-0449-7, 2018.
- 500 Tiwari, T., Laudon, H., Beven, K. and Ågren, A. M.: Downstream changes in DOC: Inferring contributions in the face of model uncertainties, *Water Resources Research*, 50(1), 514–525, doi:10.1002/2013wr014275, 2014.
- Tiwari T, Buffam I, Sponseller RA, and Laudon H. Inferring scale-dependent processes influencing stream water chemistry from headwater to sea. *Limnology and Oceanography* 2017. <https://doi.org/10.1002/lno.10738>.
- Vidon, P. G.: Not all riparian zones are wetlands: Understanding the limitation of the “wetland bias” problem, *Hydrological Processes*, 31(11), 2125–2127, 2017.
- 505 Wallin, M. B., Grabs, T., Buffam, I., Laudon, H., Ågren, A., Öquist, M. G. and Bishop, K.: Evasion of CO<sub>2</sub> from streams—The dominant component of the carbon export through the aquatic conduit in a boreal landscape, *Global Change Biology*, 19(3), 785–797, 2013.
- Werner, B. J., Musolff, A., Lechtenfeld, O. J., Rooij, G. H. de, Oosterwoud, M. R. and Fleckenstein, J. H.: High-frequency measurements of dissolved organic carbon quantity and quality in a headwater catchment, *Biogeosciences Discussions*, 2019.
- 510 Wollheim, W. M., Stewart, R. J., Aiken, G. R., Butler, K. D., Morse, N. B. and Salisbury, J.: Removal of terrestrial DOC in aquatic ecosystems of a temperate river network, *Geophysical Research Letters*, 42(16), 6671–6679, doi:10.1002/2015gl064647, 2015.
- 515 Wollheim, W. M., Bernal, S., Burns, D. A., Czuba, J. A., Driscoll, C. T., Hansen, A. T., Hensley, R. T., Hosen, J. D., Inamdar, S., Kaushal, S. S., Koenig, L. E., Lu, Y. H., Marzadri, A., Raymond, P. A., Scott, D., Stewart, R. J., Vidon, P. G. and Wohl, E.: River network saturation concept: factors influencing the balance of biogeochemical supply and demand of river networks, *Biogeochemistry*, 141(3), 503–521, doi:10.1007/s10533-018-0488-0, 2018.
- Zambrano-Bigiarini, M.: Package ‘hydroGOF, Goodness-of-fit Functions for Comparison of Simulated and Observed, 2020.

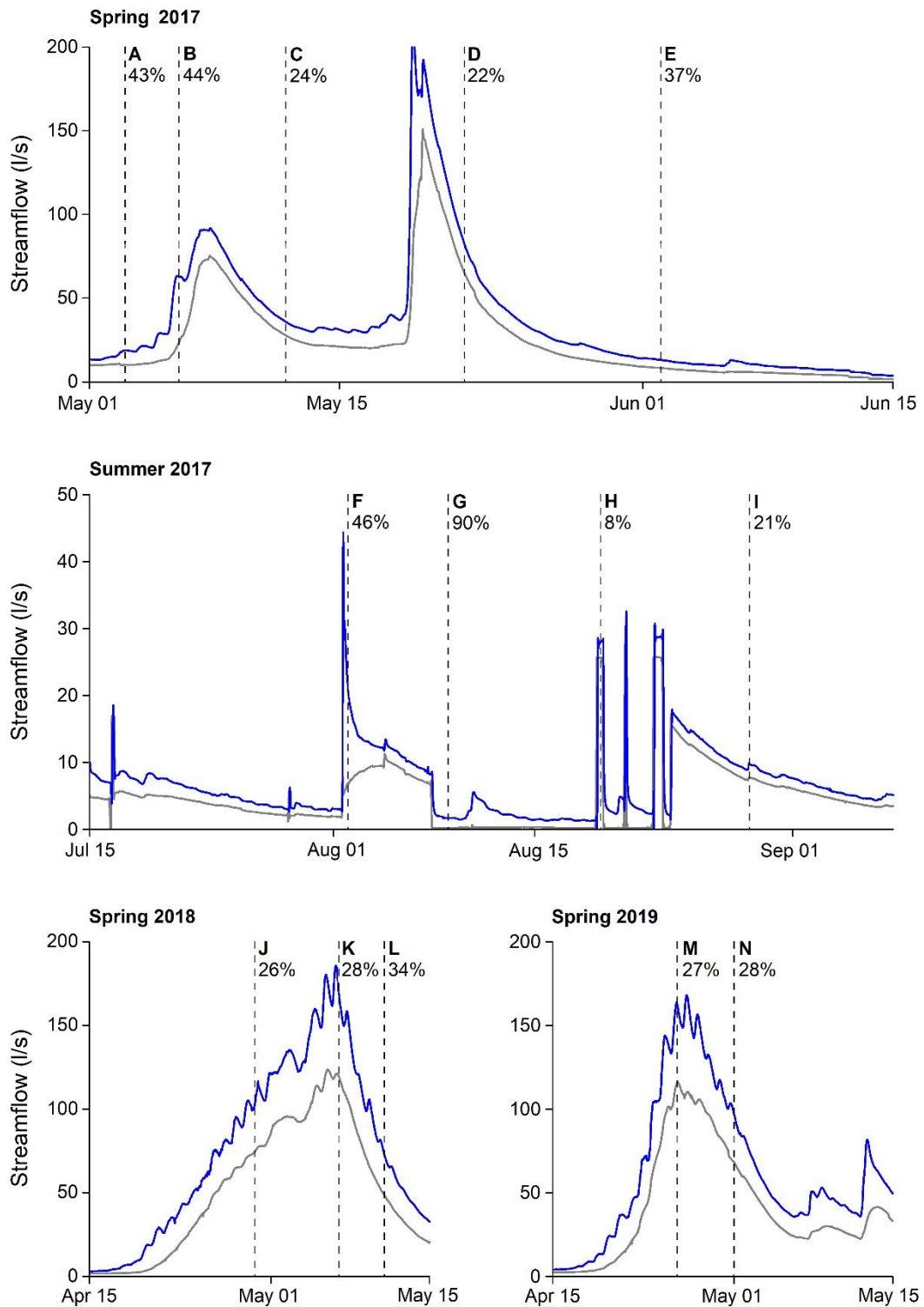
**Table 1.** Overview of the different model assumptions. First column indicates model name. Second column indicates whether streamflow is represented as a uniform diffuse rate along the reach, or distributed based on upslope contributing area. The third column indicates whether in-stream uptake of dissolved organic carbon (DOC) by biota is included.

<b>Model Name</b>	<b>Hydrology</b>	<b>Biology</b>
Diff	Diffuse	No in-stream uptake
Diff-Bio	Diffuse	Uptake downstream DRIPS
UCA	Upslope contributing area	No in-stream uptake
UCA-Bio	Upslope contributing area	Uptake downstream DRIPS

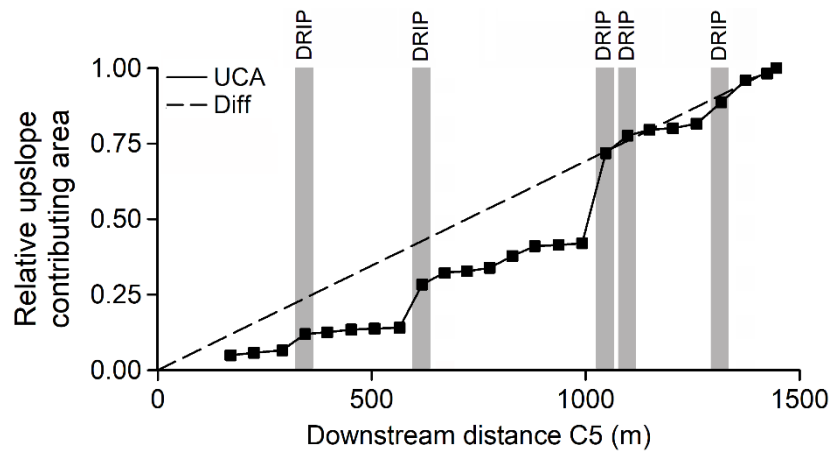


**Figure 1.** The Stortjärnsbacken catchment in Krycklan, Sweden. The stream reach (blue line) starts at the outlet of lake Stortjärn (gauging station C5) and ends at the downstream gauging station C6. Stream sampling sites at approximately 50 meter increments are indicated with small black squares. Groundwater wells along the reach are indicated with red circles (DRIPs) and orange circles (non-DRIPs). At DRIPs, groundwater flow paths (grey lines) converge in the riparian zone.

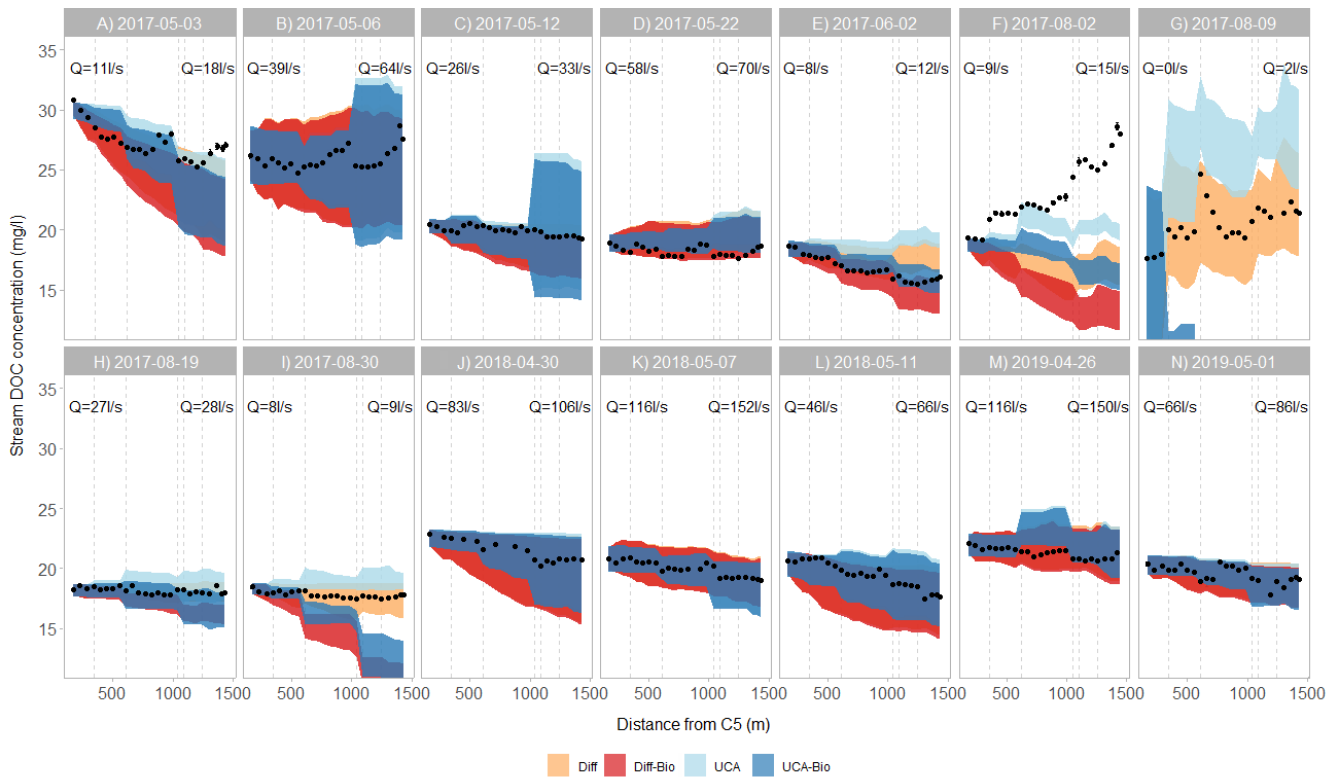




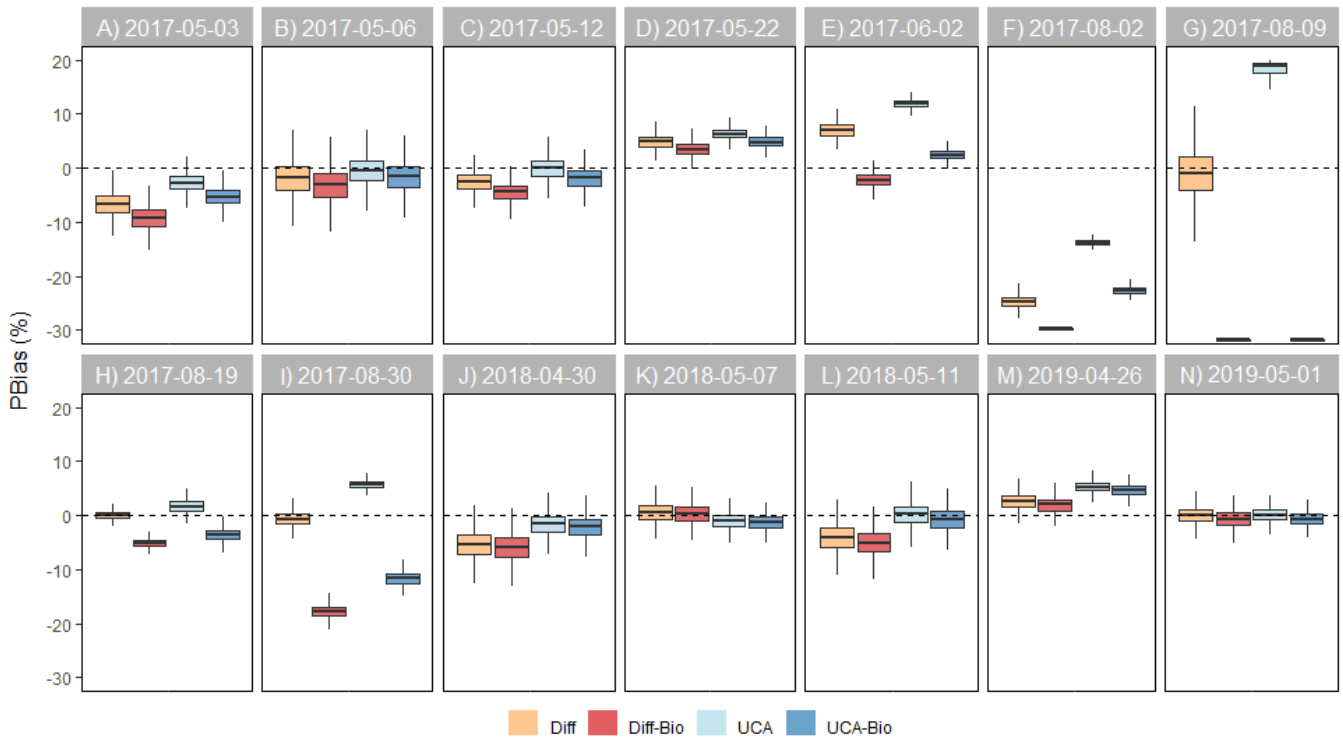
**Figure 2.** Hydrographs of the gauging stations C5 (grey) and C6 (blue) during the study period (spring 2017, summer 2017, 535 spring 2018 and spring 2019). The vertical dashed lines and letters correspond to the 14 sampling campaigns. The percentages indicate the net gain in streamflow between the gauging stations C5 and C6.



**Figure 3.** Relative upslope contributing area along the stream reach. The solid line represents the UCA model, which assumes that the net gain in streamflow is proportional to the gain in upslope contributing area (UCA) between sampling sites (squares). The dashed line represents the Diff model, which assumes uniform, diffuse inflow of groundwater along the entire reach. Grey vertical bars indicate the location of discrete riparian inflow points (DRIP) along the stream reach, for which we sampled dissolved organic carbon (DOC) concentrations during the study period and in-stream DOC uptake was considered.

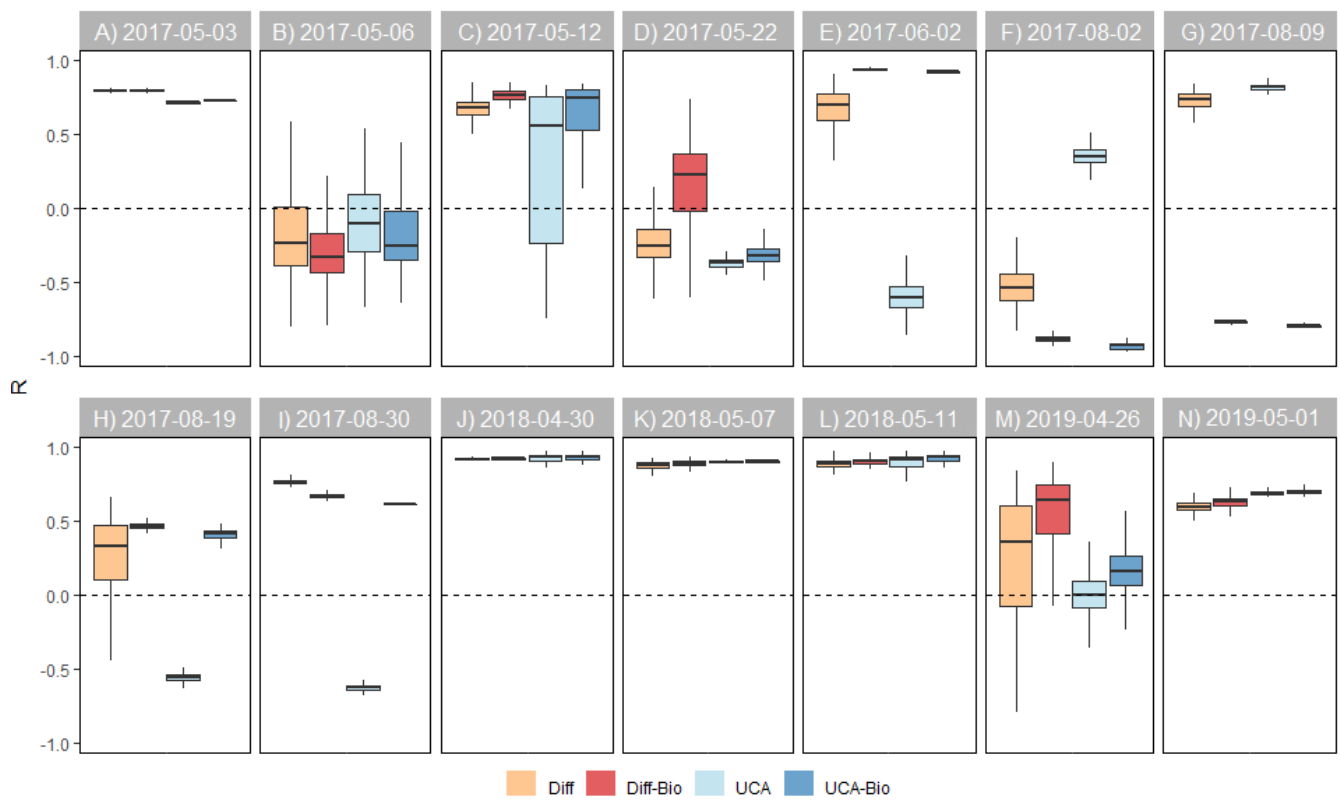


**Figure 4.** Longitudinal patterns of dissolved organic carbon (DOC) concentrations along the C5-C6 reach. Each panel, indicated by label and date, shows one sampling campaign. The black dots are the observed stream DOC concentrations. The coloured bands show the simulations of the four models. The vertical grey lines show the locations of DRIPs with wells (solid) and without wells (dashed). The streamflow (Q) at gauging stations C5 and C6 are shown for each sampling campaign.



555

**Figure 5.** Relative bias (PBias) by model and sampling campaign. For each model, boxplots show the median, 25th and 75th percentiles, and whiskers extend to 10<sup>th</sup> and 90<sup>th</sup> percentiles of the 10,000 runs. Values close to 0 indicate that the model successfully simulate the magnitude of stream DOC concentrations. The horizontal line at PBias = 0 is shown as a reference.



560

**Figure 6.** Spearman regression ( $R$ ) by model and sampling campaign. For each model, boxplots show the median, 25th and 75th percentiles, and whiskers extend to 10<sup>th</sup> and 90<sup>th</sup> percentiles of the 10,000 runs. Values close to 1 indicate that the model successfully simulate the magnitude of stream DOC concentrations. The horizontal line at  $R = 0$  is shown as a reference.

565