

RESPONSE TO REVIEWERS

Review of Manuscript No.: hess-2021-352

Title: "Rainfall-runoff relationships at event scale in western Mediterranean ephemeral streams

Authors: Roberto Serrano-Notivoli, Alberto Martínez-Salvador, Rafael García-Lorenzo, David Espín-Sánchez, and Carmelo Conesa-García

We are grateful to the Reviewers for their thoughtful and constructive feedback, and the Editor for considering a revision. In this Response to the Reviewers' files, we provide complete documentation of the changes that have been made in response to the reviewers' suggestions and comments. The original comments are shown in **bold text** and the author responses are shown indented in plain text. Quotations from the revised manuscript are shown in *italic text*. Line numbers in the author responses refer to locations in the revised manuscript.

Referee #1

This paper aims at better understanding rainfall-runoff relationships through statistical modelling in two ephemeral streams in Spain (with a focus on rainfall events triggering runoff). The paper is well structured. The objectives are also clearly presented.

Evapotranspiration is probably another driver (see L180) – depending when extreme events occur, response in terms of runoff may differ with the stage of plant growth. Why have you not introduced ET0 data (e.g. <https://essd.copernicus.org/articles/11/1917/2019/>) in your analyses? e.g. considering P- ET0 as explanatory variable.

Thank you for your suggestion. We, indeed, considered the inclusion of ET0 which we are sure that could work as one of the drivers mentioned all along the manuscript. However, the inclusion of ET0 data for each of rainfall events is not possible due to the isolation. The SPETO data considers the division of a month in 4 periods, always 29 days (29/30/31) in the 4th week depending on the month. The weekly aggregation, and the fact that we aggregate rainfall events by week, is not applicable to our study, where we aggregate rainfall events by week. The dataset ends in 2014, meaning that the last 6 years of our period of analysis are not available.

Why do you not have any other data set?
Could you at least say why you cannot use ET0?
How do you plan to mention this in the manuscript?

I have some doubts about the method used for the frequency analysis: obviously, all the episodes have been kept (more than one value sampled each year) and the peak over threshold approach should be carried out to derive return levels. The generalized Pareto distribution is the most suited distribution (instead of GEV adapted for the block maxima method). For example, the empirical return period of the observed maximum and the length of the time series should be in the same order while Figure 8 suggests return periods > 100 years. Consequently, the rainfall events triggering runoff are probably more frequent than those derived from the frequency analysis. The authors have applied the block maxima approach to data resulting from the selection of over-threshold values (threshold = 0). The method and the discussion should both be revised.

Thank you for your useful comments. Your argument is right, and we have changed the method to calculate return periods through a *peak-over-threshold* approach. As we now state in methods section (L143-150), this is the most suitable approach due to continuous series of rainfall events are available for both watersheds:

“To contextualize the different thresholds of the RE for different probabilities of generating flow in both watersheds, we estimated the return levels of the RE using the generalized Pareto distribution (GPD) for extreme events using the peak-over-threshold (POT) approach. POT is most suitable when complete time series (as RE) are available due to all values exceeding a certain threshold can serve as basis for model fitting (Coles, 2001). We used four different estimators to fit the POT data to a GPD (Maximum Likelihood Estimation (MLE); Unbiased Probability Weighted Moments (PWMU); Moments (MOM); and Likelihood Moment (LME)) to establish proper and wide confidence levels in the estimate of maximum rainfall per RE. Thresholds for the

asymptotic approximation by a GPD in both watersheds were manually selected through the graphical representation of Mean Residual Life, the Dispersion index and the scale and shape parameters (see Figure S1 and S2).”

Coles, S.: *An Introduction to Statistical Modeling of Extreme Values*, Springer Series in Statistics, 208 pp., Springer, London, G. B., 2001.

We added a couple new figures in supplementary material to show the POT threshold selection

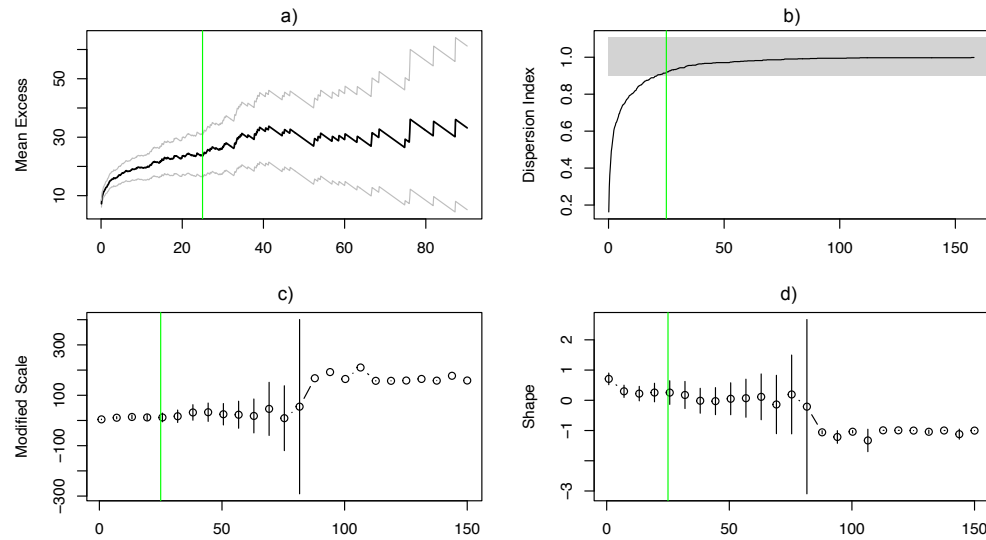


Figure S1: Graphical summary of RE threshold (μ) selection in Algeciras: a) Mean Residual Life; b) Dispersion Index; c) and d) scale and shape parameters estimates from the GPD for a range of values of μ . Green line represents the μ (25 mm) selected, implying a higher variability of its exceeding values in a), c) and d), and posing a limit in b) from which dispersion index estimates are near the theoretical value 1.

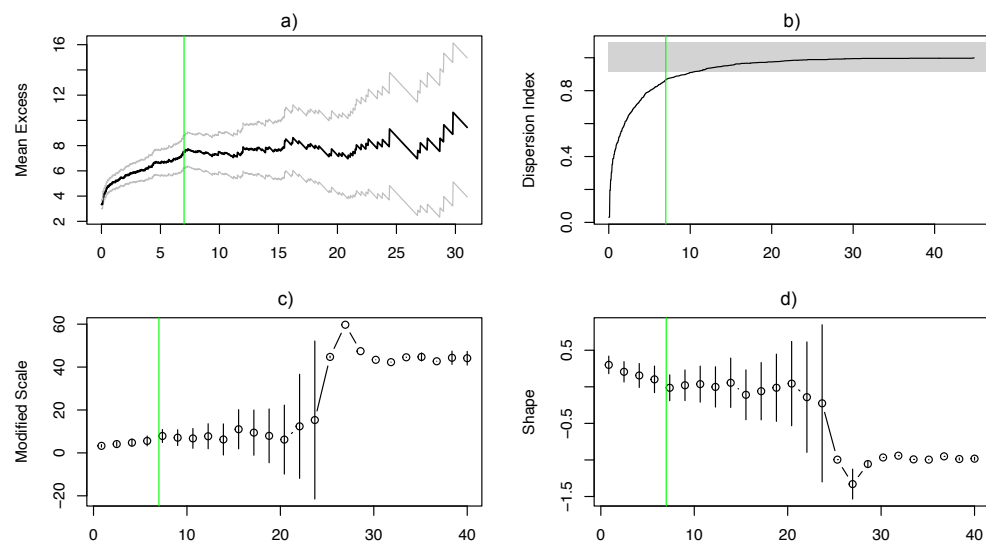


Figure S2: Graphical summary of RE threshold (μ) selection in Algeciras: a) Mean Residual Life; b) Dispersion Index; c) and d) scale and shape parameters estimates from the GPD for a range of values of μ . Green line represents the μ (7 mm) selected, implying a higher variability of its exceeding values in a), c) and d), and posing a limit in b) from which dispersion index estimates are near the theoretical value 1.

Section 3.4 has been rewritten as well as Figure 8 has been changed according to the new method for frequency analysis:

“We calculated the return levels of magnitude of the RE in Algeciras and of cumulated hourly maximums in Mula for different return periods (Figure 8). We used the POT values of RE exceeding a particular threshold (see Figure S1 and S2 for threshold selection) to adjust them to

a GPD. Thresholds were 25 mm for Algeciras and 7 mm for Mula that, based on the GAM models, represent the 95.9% and 96.4% probabilities of flow generation, respectively. Based on the fitted models, the most probable situation in which flow could be generated in Algeciras (99.5% probability) required a magnitude of 158.3 mm, which is approximately a 50-to-100-year return period. However, the return period is dramatically reduced with probabilities, meaning that high-magnitude episodes (e.g., higher than 50 mm) are rare but of key importance to ensure flow generation. The required 3.8 mm of cumulated hourly maximums in Upper Mula to ensure the flow generation at 95% probability are below the selected threshold. However, the great variability of this model increased the probabilities until 98.8% with a maximum of 44.6 mm, which represents a return period higher than 150 years. This large difference reveals the extreme irregularity of flows in Mula and the high uncertainty in prediction based only on the RE.”

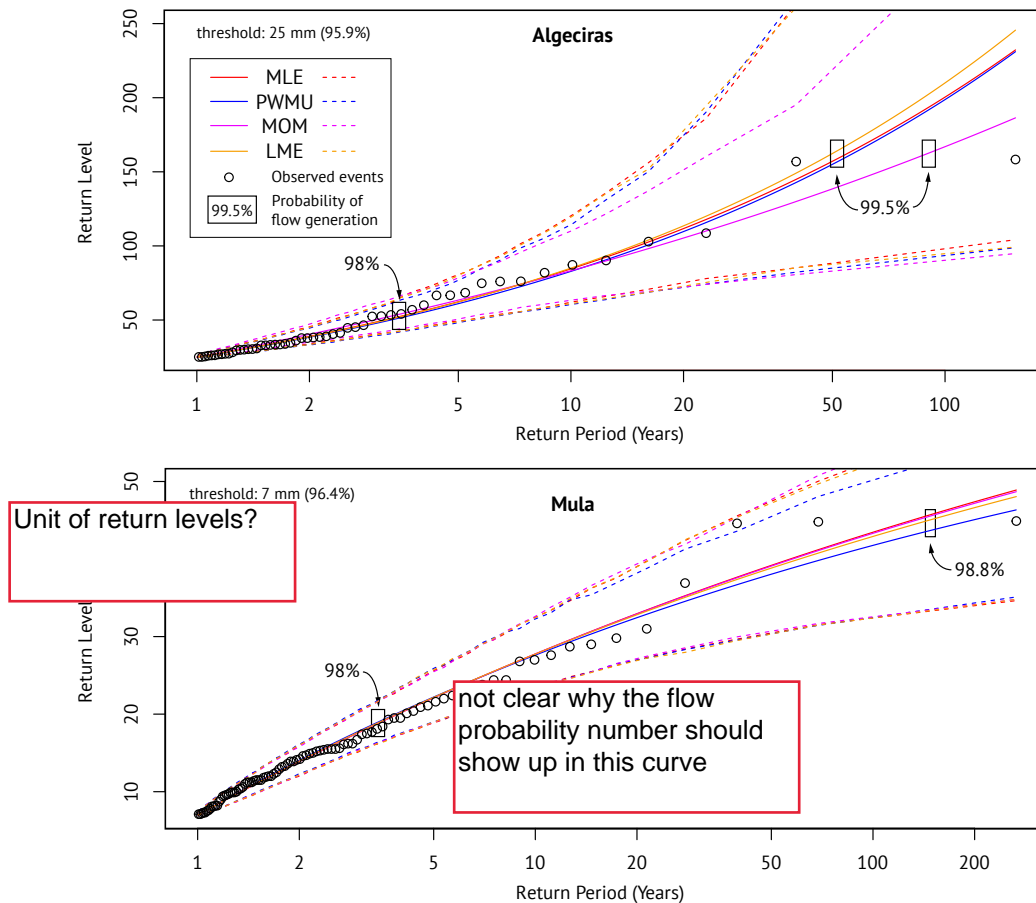


Figure 8: Return levels (RL) of magnitude of the events in Algeciras (top) and cumulated hourly maximums in Mula (bottom). Solid lines show the RL estimated for different return periods with four different methods: Maximum Likelihood Estimation (MLE); Unbiased Probability Weighted Moments (PWMU); Moments (MOM); and Likelihood Moment (LME). Dashed lines show the confidence intervals. Dots are the observed magnitude and maximums of Algeciras and Mula, respectively. RL of 98% and maximum probabilities of flow generation are indicated.

References regarding frequency analysis in the discussion have been also updated (L405-408).

“[...] Additionally, the POT approach implies an assumption of stationarity referred to the fixed character of parameters over time, and climatic series are not stationary. A non-stationary POT approach would be more appropriate, as made in previous works (e.g. Beguería et al., 2010; Agilan et al., 2021), but longer data series are needed to build reliable fittings of distributions.”

Agilan, V., Unamanesh, N.V., Mujumdar, P.P.: Influence of threshold selection in modeling peaks over threshold based nonstationary extreme rainfall series. *J. Hydrol.*, 593, 125625, <https://doi.org/10.1016/j.jhydrol.2020.125625>, 2021.

Beguería, S., Angulo, M., Vicente-Serrano, S.M., López-Moreno, J.I., El-Kenawy, A.: Assessing trends in extreme precipitation events intensity and magnitude using non-stationary peaks-over-threshold analysis: a

case study in northeast Spain from 1930 to 2006. *Int. J. Climatol.*, 31(14), 2102-2114, <https://doi.org/10.1002/joc.2218>, 2010.

There are many studies on rainfall-runoff relationships in ephemeral streams. The authors should develop more the peculiarities of their findings for the two catchments regarding these relationships.

Thank you for your suggestion. We included several more references to improve the discussion of the results (L359-363; L373-376)

“[...] For instance, Camarasa (2021) showed that runoff is more dependent on rainfall intensity in the Mediterranean area, and Gutiérrez-Jurado et al. (2019) demonstrated that soil type has the greatest influence on flow generation, as well as Bull et al. (2000) mentioned in a study of a watershed near to our study area. In addition, anthropic interventions such as irrigation, industrial uses, roads, or any water resources change at large scale, can modify rainfall-runoff dynamics, leading to increased consequences of flooding (Conesa-García et al., 2016; Betancourt-Suárez et al., 2021).”

“However, a change in the seasonality of flows is expected under these changing conditions of precipitation, leading to potential alterations that could intensify wet and dry periods (Pumo et al., 2016). In Algeciras and Upper Mula watersheds, climate change scenarios also depict a decrease in water resources caused by the changing seasonality, due to an increased evapotranspiration situation (Martínez-Salvador, et al., 2021).”

Betancourt-Suárez, V., García-Botella, E., Ramón-Morte, A.: Flood mapping proposal in small watersheds: A case study of the rebollos and miranda ephemeral streams (cartagena, Spain). *Water*, 13(1), 102, <https://doi.org/10.3390/w13010102>, 2021.

Bull, L.J., Kirkby, M.J., Shannon, J., Hooke, J.M.: The impact of rainstorms on floods in ephemeral channels in southeast Spain. *Catena*, 38(3), 191-209, [https://doi.org/10.1016/S0341-8162\(99\)00071-5](https://doi.org/10.1016/S0341-8162(99)00071-5), 2000.

Camarasa, A.: Flash-flooding of ephemeral streams in the context of climate change. *Geog. Res. Lett.*, 47(1), 121-142, <https://doi.org/10.18172/cig.4838>, 2021.

Conesa-García, C., García-Lorenzo, R., Pérez-Cutillas, P.: Flood hazards at ford stream crossings on ephemeral channels (south-east coast of Spain). *Hydrol. Process.*, 31(3), 731-749, <https://doi.org/10.1002/hyp.11082>, 2016.

Gutiérrez-Jurado, K.Y., Partington, D., Batelaan, O., Cook, P., Shanafield, M.: What Triggers Streamflow for Intermittent Rivers and Ephemeral Streams in Low-Gradient Catchments in Mediterranean Climates. *Water Resour. Res.*, 55(11), 9926-9946, <https://doi.org/10.1029/2019WR02504>, 2019.

Pumo, D., Caracciolo, D., Viola, F., Noto, L.V.: Climate change effects on the hydrological regime of small non-perennial river basins. *Sci. Total Environ.*, 512(A), 76-92, <https://doi.org/10.1016/j.scitotenv.2015.10.109>, 2016.

Details:

L35: There is an inversion between first name and last name in the reference « Thibault et al. 2017 ». => Datry et al. is the correct reference.

Modified as suggested.

L40: a reference regarding sediment transport: <https://doi.org/10.1016/j.catena.2020.104865>

Reference added.

Fig. 1: we do not see the main river network. Please add the location of the two reservoirs, even if we guess that they are the mouths of the two catchments and point out the stations used to compute the precipitation time series.

Modified as suggested.

L102-106: The authors used long time series to perform a stationarity analysis. Are gridded and local data consistent during the concomitant period (correlation, mean, etc.)? This is important to assess the representativeness of the gridded data for the two catchments.

The SPREAD dataset, referenced work as Serrano-Notivoli et al. (2017), spans the period from 1950 to 2012. It was extended until 2020 in the study area using the same data series as used in the rest of the analysis, through the method described in Serrano-Notivoli et al. (2017b) to ensure

the reliability of the data. We have added this reference to make clear this point in the methodological section (L110-112).

“[...] we used the SPREAD dataset (Serrano-Notivoli et al., 2017), a daily gridded precipitation dataset covering the whole Spanish territory at a 5x5 km spatial resolution, to analyse long-term trends of annual precipitation of the two watersheds by extending its period coverage until 2020 following Serrano-Notivoli et al. (2017b).”

Serrano-Notivoli, R., de Luis, M. and Beguería, S.: An R package for daily precipitation climate series reconstruction. *Environ. Modell. Softw.*, 89, 190-195, <http://dx.doi.org/10.1016/j.envsoft.2016.11.005>, 2017b.

L218-219 & S2: Some criteria have been computed, but not commented (please add some comments or delete the values).

Thank you for your comments. We moved the table to supplementary material and referenced in the text the table with the GAM summaries for both watersheds.

Figs 6, 7 and 8: Please use semi-log plots with the y-axis on a logarithmic scale to make the reading easier.

Thank you for your suggestion. Figure 6 has been changed to show all variables in logarithmic scale. As this action increased some Pearson values, corresponding texts in the manuscript have been adapted to the new results. Figure 7 and (new figure) 8 are already in a semi-log scale.

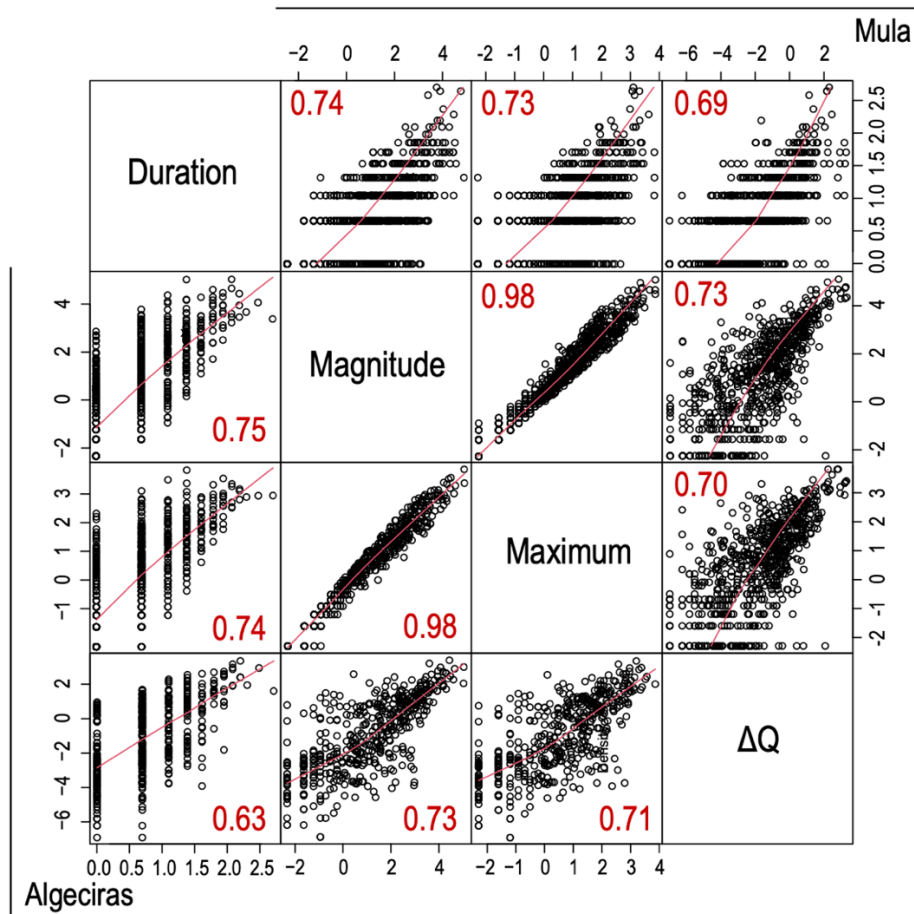


Figure 6: Values of precipitation variables and flow contribution (ΔQ) of all events in Algeciras (bottom left side) and Mula (top right side). Magnitude and maximum variables are in logarithmic scale. Pearson correlations are shown in red (all correlations are significant at $\alpha < 0.01$)

Referee #2

The authors propose a study that analyze the transformation rainfall-runoff in semi-arid catchments of Southern Spain, where the ephemeral regime of rivers and the climatic stress may lead to hazardous floods or, on the contrary, to dramatic droughts. The study is quite novel and gives significant insight about precipitation depths and return intervals, which may determine water and sediment flows in the channels. The statistical analysis is fine and suitable for the study aims. The results are presented with clearness and synthesis. Although the study is of good quality, I have three suggestions that may improve the MS:

- several methodological sentences are reported in the results sections, and this may confuse the reader. I ask the authors to revise both parts.

Thank you for your suggestion. We moved the methodological descriptions in results section to methodology (see detailed lines and paragraphs at the end of this document).

- although literature about the flow regime in ephemeral channels is not abundant, some other cross-comparisons with similar studies may further valorize the study results

Thank you. We added several new references to improve the discussion in all the addressed aspects and to compare our work with similar research in nearby areas and in similar terms (L359-363)

“[...] For instance, Camarasa (2021) showed that runoff is more dependent on rainfall intensity in the Mediterranean area, and Gutiérrez-Jurado et al. (2019) demonstrated that soil type has the greatest influence on flow generation, as well as Bull et al. (2000) mentioned in a study of a watershed near to our study area. In addition, anthropic interventions such as irrigation, industrial uses, roads, or any water resources change at large scale, can modify rainfall-runoff dynamics, leading to increased consequences of flooding (Conesa-García et al., 2016; Betancourt-Suárez et al., 2021).”

Betancourt-Suárez, V., García-Botella, E., Ramón-Morte, A.: Flood mapping proposal in small watersheds: A case study of the rebollos and miranda ephemeral streams (cartagena, Spain). *Water*, 13(1), 102, <https://doi.org/10.3390/w13010102>, 2021.

Bull, L.J., Kirkby, M.J., Shannon, J., Hooke, J.M.: The impact of rainstorms on floods in ephemeral channels in southeast Spain. *Catena*, 38(3), 191-209, [https://doi.org/10.1016/S0341-8162\(99\)00071-5](https://doi.org/10.1016/S0341-8162(99)00071-5), 2000.

Camarasa, A.: Flash-flooding of ephemeral streams in the context of climate change. *Geog. Res. Lett.*, 47(1), 121-142, <https://doi.org/10.18172/cig.4838>, 2021.

Conesa-García, C., García-Lorenzo, R., Pérez-Cutillas, P.: Flood hazards at ford stream crossings on ephemeral channels (south-east coast of Spain). *Hydrol. Process.*, 31(3), 731-749, <https://doi.org/10.1002/hyp.11082>, 2016.

Gutiérrez-Jurado, K.Y., Partington, D., Batelaan, O., Cook, P., Shanafield, M.: What Triggers Streamflow for Intermittent Rivers and Ephemeral Streams in Low-Gradient Catchments in Mediterranean Climates. *Water Resour. Res.*, 55(11), 9926-9946, <https://doi.org/10.1029/2019WR02504>, 2019.

- some expectations about the future trends of rainfall-runoff transformation under the forecasted climate change scenarios (higher mean temperature and lower precipitation amounts) in the studied area may be reported on the authors' knowledge and experience.

Regarding future trends, we added a few lines relating the rainfall-runoff potential changes in both watersheds to the expected decrease in precipitation and increase in temperature, leading to a higher evapotranspiration. As stated in previous works, this scenario, depending on the emissions development, has high probabilities of produce changes in seasonality of flows, increasing risks of floods and droughts. Despite we do not explicitly address climate change scenarios in our study, we appreciate your comment and agree that it deserves to be mentioned (L373-376).

“However, a change in the seasonality of flows is expected under these changing conditions of precipitation, leading to potential alterations that could intensify wet and dry periods (Pumo et al., 2016). In Algeciras and Upper Mula watersheds, climate change scenarios also depict a decrease in water resources caused by the changing seasonality, due to an increased evapotranspiration situation (Martínez-Salvador, et al., 2021).”

Martínez-Salvador, A., Millares, A., Eekhout, J.P.C. and Conesa-García, C.: Assessment of Streamflow from EURO-CORDEX Regional Climate Simulations in Semi-Arid Catchments Using the SWAT Model. *Sustainability*, 13(13), 7120, <https://doi.org/10.3390/su13137120>, 2021.

Pumo, D., Caracciolo, D., Viola, F., Noto, L.V.: Climate change effects on the hydrological regime of small non-perennial river basins. *Sci. Total Environ.*, 512(A), 76-92, <https://doi.org/10.1016/j.scitotenv.2015.10.109>, 2016.

Some other minor suggestions are reported in the commented MS in attachment.

Thank you, we addressed all your suggestions, point by point:

L44: Here, I suggest adding shortly the main results of these studies. Added a short summary of results of those studies (L44-46)

“These studies highlight that, in the current Spanish Mediterranean scenario of decrease of total amounts of precipitation but increase in intensity (Serrano-Notivoli et al., 2018), hydrological connectivity is more dependent on rain intensity.”

Serrano-Notivoli, R., Beguería, S., Saz, M.A., de Luis, M.: Recent trends reveal decreasing intensity of daily precipitation in Spain. Int. J. Climatol., 38(11), 4211-4224, <https://doi.org/10.1002/joc.5562>, 2018.

L49: Could you express a research hypothesis? Thank you for the suggestion. Now, the research hypothesis is stated in a few lines, closing the introduction section. (L51-53)

“Based on the watershed physical and climatic characteristics, we hypothesise that rainfall-runoff relationships are based in the intensity and magnitude of singular events, strongly dependent on seasonality of precipitation.”

L93: What do you mean for "reliable"? Please be more specific. Thank you. We agree that the term can be confusing and we have removed it without changing the meaning of the sentence.

L96: How do you ensure this reliability? We replaced “reliable” by “average”.

L113: Not clear why you summed the hourly maximums. We added an explanation to make clear the reason of summing hourly maximums. (L120)

“to be representative of the amount of precipitation corresponding to the hours of maximum rainfall”

L128: Or "return interval"? We computed the “return levels” for different “recurrence intervals” (or “return periods”). This paragraph was completely rewritten due to a change in the method of frequency analysis proposed by Referee #1.

To contextualize the different thresholds of the RE for different probabilities of generating flow in both watersheds, we estimated the return levels of the RE using the generalized Pareto distribution (GPD) for extreme events using the peak-over-threshold (POT) approach. POT is most suitable when complete time series (as RE) are available due to all values exceeding a certain threshold can serve as basis for model fitting (Coles, 2001). We used four different estimators to fit the POT data to a GPD (Maximum Likelihood Estimation (MLE); Unbiased Probability Weighted Moments (PWMU); Moments (MOM); and Likelihood Moment (LME)) to establish proper and wide confidence levels in the estimate of maximum rainfall per RE. Thresholds for the asymptotic approximation by a GPD in both watersheds were manually selected through the graphical representation of Mean Residual Life, the Dispersion index and the scale and shape parameters (see Figure S1 and S2).

L159: Significantly? Modified as suggested.

Figure 4: Better "Study period". Modified as suggested.

L171: Please use a more technical term. Perhaps "quicker" or "higher"? The expression was changed by the term “faster”.

L201: "the majority" Modified as suggested.

L215-220: All this part is methodological and should be moved in that section. Thank you for your suggestion. Indeed, this part better fits in methodological section, and we moved it accordingly.

L233-234: I ask the authors to reconsider whether this part may be moved to the methodological section. Thank you. We moved this part to the methodological section.

Figure 8: Better to reduce the labels on y-axis. This figure completely changed to show the results based on a different method of frequency analysis calculation based on a suggestion from Referee #1. Now, labels in Y-axis are better readable.

L299-302: The location of this part may be also reconsidered. Thank you for your suggestion. Instead of moving this part of the text, which fits in the linear–non-linear comments of the discussion section, we rewrote it to promote a more fluid reading (L379-380).

“For this reason, we used a GAM approach, that takes advantage of non-linear relationships, which are highly representative of the great irregularity of precipitation in the Mediterranean area. This approach represents an advantage among the wide variety of methods that has been previously used to model these thresholds in ephemeral or low-yield streams such as multivariate regressions, machine learning approaches, etc. (e.g., Kaplan et al., 2020; Kampf et al., 2018; Shortridge et al., 2016). Furthermore, GAMs allow for avoiding stationarity assumptions in rainfall-runoff relationships (Tian et al., 2020) in comparison with the abovementioned methods.”

L308: Please reconsider the form of this sentence. Thank you. Based on the new explanations of the POT method now used for frequency analysis, this part of the text has been slightly changed. Now, the sentence is clearer and more informative (L396-398):

“Low return periods were shown for events generating new flow at 95% probability, but they dramatically increased when probabilities were increased until maximum (99.5% in Algeciras and 98.8% in Mula). However, the analysis has some limitations to consider.”

Rainfall-runoff relationships at event scale in western Mediterranean ephemeral streams

Roberto Serrano-Notivoli¹, Alberto Martínez-Salvador², Rafael García Lorenzo², David Espín-Sánchez², Carmelo Conesa-García²

¹Department of Geography, Autonomous University of Madrid, Madrid, 28049, Spain

²Department of Geography, University of Murcia, Murcia, 30001, Spain

Correspondence to: Roberto Serrano-Notivoli (roberto.serrano@uam.es)

Abstract. Ephemeral streams are highly dependent on rainfall and terrain characteristics and, therefore, very sensitive to minor changes in these environments. Western Mediterranean area exhibits a highly irregular precipitation regime with a great variety of rainfall events driving the flow generation on intermittent watercourses, and future climate change scenarios depict a lower magnitude and higher intensity of precipitation in this area, potentially leading to severe changes in flows. We explored the rainfall-runoff relationships in two semiarid watersheds in southern Spain (Algeciras and Upper Mula) to model the different types of rainfall events required to generate new flow in both intermittent streams. We used a nonlinear approach through Generalized Additive Models at event scale in terms of magnitude, duration, and intensity, contextualizing resulting thresholds in a long-term perspective through the calculation of return periods. Results showed that the average ~1.2-day and <1.5 mm event was not enough to create new flows. At least a 4-day event ranging from 4 to 20 mm, depending on the watershed was needed to ensure new flow at a high probability (95%). While these thresholds represented low return periods, the great irregularity of annual precipitation and rainfall characteristics, makes prediction highly uncertain. Almost a third part of the rainfall events resulted in similar or lower flow than previous day, emphasizing the importance of lithological and terrain characteristics that lead to differences in flow generation between the watersheds.

Eliminado: (from 4 to 10 years)

1 Introduction

Precipitation plays a paramount role on drainage of the watersheds, especially in those depending on rainfall for the persistence of the flows, considered intermittent streams. These types of watercourses, occasionally dry, are already a large-scale phenomenon (Acuña et al., 2005; Larned et al., 2010; Datry et al., 2014) and could be potentially increased under climate change conditions (Nabih et al., 2021; Brunner et al., 2020; Skoulikidis et al., 2017; Brooks, 2009). Thus, intensity and magnitude of rainfall events are a key part of hydrological models for simulation and prediction of floods in these watersheds (Gioia et al., 2008; Kirkby et al., 2005) and knowing the thresholds required to generate new flows helps to tackle with natural hazards from a hydrological modelling perspective (Kampf et al., 2018).

Ephemeral streams are drainage networks remaining completely dry during a variable period of the year and, owing to rainfall events of certain magnitude, they can discharge relatively high flows (Donglioni et al., 2015) that can persist for some time. Western Mediterranean area is especially prone to accommodate watersheds with these types of streams because of the high irregularity of precipitation, both in space and time (Tockner et al., 2009; [Datry et al., 2017](#)). In ephemeral streams, this irregularity turns into a great uncertainty in flow generation affecting not only the stream but also to other parts of the system. For example, the fickleness of flows alters the actual ecological functioning of the watershed at variable scales and, of course, affects the agricultural systems covering lowlands, that usually require infrastructures to retain water. Understanding how these watersheds react to precipitation is fundamental for prediction and forecasting of droughts and floods (Döll and Schmied, 2012; Arnone et al., 2020), but also for erosion potentiality depending on the type of lithology under the soil and the type of vegetation or land cover at surface, [and for sediment transport assessment \(Fortesa et al., 2021\)](#). Previous research in ephemeral watersheds on Western Mediterranean (e.g., Camarasa and Tilford, 2002; Camarasa, 2016) showed that rainfall-runoff relationships drive hydrological [mechanisms](#) and the dynamics of the rest of the system at basin scale, and that they can be modelled to forecast flows based on the rainfall events of different magnitude. [These studies highlight that, in the current Spanish Mediterranean scenario of decrease of total amounts of precipitation but increase in intensity \(Serrano-Notivoli et al., 2018\), hydrological connectivity is more dependent on rain intensity](#). In this work, we explore the rainfall-runoff relationships in two watersheds with ephemeral streams in southeastern Spain: Algeciras (44.9 km²) and Mula (169.4 km²). Daily precipitation and flows from 17 and 24 years, respectively, were analysed at event scale to model the influence of rainfall events in the generation of new runoff in both watersheds. Due to the great irregularity of precipitation, we used a nonlinear approach through Generalized Additive Models, and we compared the results in a wider temporal perspective through the calculation of return levels for several return periods. [Based on the watershed physical and climatic characteristics, we hypothesise that rainfall-runoff relationships are based in the intensity and magnitude of singular events, strongly dependent on seasonality of precipitation.](#)

Eliminado: Thibault

Eliminado: .

2 Study site

The watersheds of Algeciras and Upper Mula are located within the semiarid climate characterizing the southeastern area of the Iberian Peninsula (Figure 1). Annual precipitation, with a manifest equinoctial regime (maximums in March-April and September-October) rarely exceeds 300 mm (Serrano-Notivoli et al., 2017), depicting the driest place in continental Europe. Average temperatures range from 10 to 26 °C, however, temperatures above 30 °C are common during summertime and absolute values higher than 40 °C are not an exception (Serrano-Notivoli et al., 2019). With more than 100 days above 25 °C, the evapotranspiration rate is among the highest in Spain (Tomás-Burguera et al., 2020), [leading to a negative water balance in the whole region that persists all over the year.](#) This water balance is sometimes aggravated by [types of soil with high rates of infiltration](#), hampering runoff during most of the year

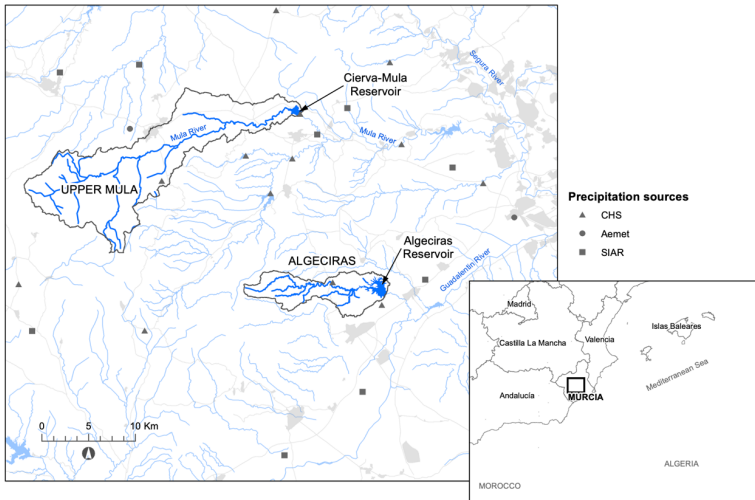
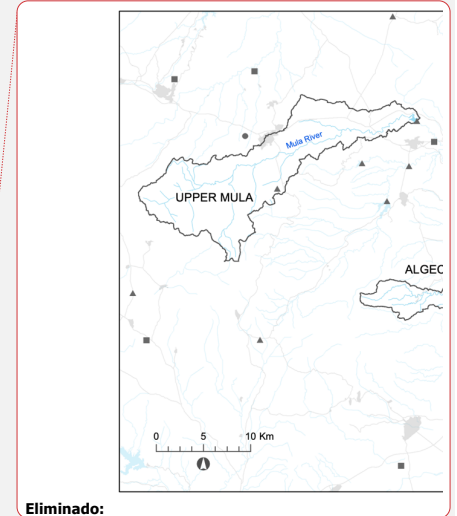


Figure 1: Location of the watersheds and precipitation gauges



The Upper Mula stream is an intermittent tributary at headwaters of the Mula River, which directly flows into the Segura River. Algeciras stream is an ephemeral watercourse draining into the Guadalentín River, the main tributary of the Segura River. Both basins belong to the geomorphological Betic and Subbetic domain. Limestone and dolomites, sandstones, siliceous marls, and detrital limestones predominate in their headwaters. However, their middle and lower parts are lithologically quite contrasted: marls and alluvial sediments are abundant in the Algeciras watershed, promoting a badlands landscape, while sandstone, conglomerates and detrital limestones predominate in the Upper Mula basin (Figure 2a and 2b). The land cover in the Algeciras is mainly composed of forest (28%), bare soil (25%) and scrubland (24%), while forest (39%), agricultural row crop (25%) and shrubland (20%) are dominant in the Upper Mula catchment (Figure 2c and 2d). Lowlands of the watersheds are occupied by two reservoirs: Cierva-Mula (1929) and Algeciras (1995), both with a defensive function against floods and for irrigation control.

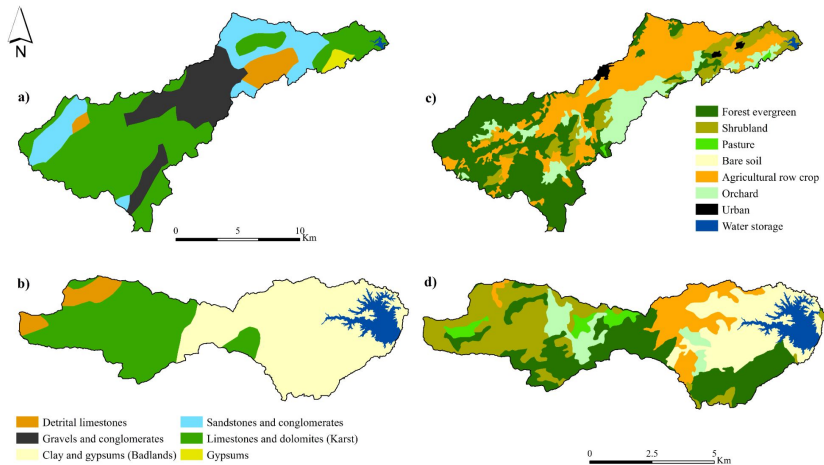


Figure 2: Rock types and land use in the Upper Mula (a, c) and Algeciras watersheds (b, d).

2 Data and methods

2.1 Data

The data series of flows were obtained from the gauging reports supplied by the Center for Public Works Studies and Experimentation (CEDEX) for the Segura basin. We used the data series of the daily average flow (m^3/s) corresponding to periods 2003–2020 (Algeciras) and 1996–2020 (Upper Mula). Although Algeciras and Mula watersheds are ungauged and there are not direct measures of water discharge, the daily flow series were calculated from the difference between the volume of water stored in the reservoirs and the output of the previous day (Eq. 1).

$$E = (R - R_1) + S \quad (1)$$

where E is the inflow into the reservoir (m^3); R , the reserve of the current day (m^3); R_1 , the reserve of the previous day (m^3); and S , the output flow of the previous day (m^3). While resulting daily series are not a direct measure of the streamflow, they provide the only representation of daily flow variations.

In order to provide single daily precipitation (P) series for each watershed, we created two regional series based on the information of meteorological stations (13 for Algeciras and 14 for Mula) from the Spanish meteorological agency (Aemet), the Agroclimatic Information System (SIAR) of the Spanish Ministry of Agrifood and Fisheries, and the Segura

Hydrographic Confederation (CHS) (Figure 1). These sources provided daily sums of precipitation and their hourly maximums. Both series (sums and maximums) were averaged for Algeciras and Mula for all days in which daily flows data series were available (2003-2020 in Algeciras and 1996-2020 in Mula). The original data series of the meteorological stations provided a representation of the real magnitude of precipitation events. Although the use of a spatial interpolation scheme had been useful to look for precipitation differences in a different situation (e.g., larger spatial domain, longer temporal period), the small extent of the study area (approx. 50x50 km) and the watersheds, along with the sizeable number of available observations, made the mean daily precipitation an average representation of the precipitation regime at event scale. In addition, the availability of single flow data series for each watershed constrained the analysis to a comparison with unique precipitation series. The complete process resulted in 2 series of daily precipitation and 2 series of hourly maximums in the same period of flows data series. Due to the reduced study area, most of the stations have a similar behaviour regarding precipitation occurrence, however, we considered as dry days those averaging a value lower than the minimum registered by the precipitation gauges (0.1 mm). The series of hourly maximums were built by averaging, for each day in all stations, the maximum precipitation cumulated in one hour. Despite the potential difference between stations, this measure represents the average intensity of daily precipitation. Lastly, we used the SPREAD dataset (Serrano-Notivoli et al., 2017), a daily gridded precipitation dataset covering the whole Spanish territory at a 5x5 km spatial resolution, to analyse long-term trends of annual precipitation of the two watersheds by extending its period coverage until 2020 following Serrano-Notivoli et al. (2017b). This analysis helped to study the low-frequency climatic signal of a broader spatial domain, by contextualizing the study period of each watershed since mid-20th century.

Eliminado: reliable

Eliminado: reliable

Eliminado: since 1950 to

Eliminado: of the two watersheds

2.2 Statistical analyses at event scale

Instead of relating daily precipitation (P) with daily flows (Q), we opted to work at event scale due to consecutive wet days ($P > \theta$) can have a different and more persistent impact on flow generation than single wet days. Rainfall events (RE) were detected from daily data series for the whole period, in both watersheds, by grouping consecutive wet days. We then calculated 4 variables for each event: duration (number of days); magnitude (sum of precipitation of all days); maximum (sum of hourly maximums of all days, to be representative of the amount of precipitation corresponding to the hours of maximum rainfall); and flow contribution (ΔQ , difference between the cumulated flow during the RE and flow of the day before the RE).

We performed, using all events, a simple linear correlation analysis between the four variables for an overview of the general linkage between each other. However, ephemeral streams involve highly nonlinear relationships between rainfall and runoff (Ye et al., 1997) and, for this reason, we used Generalized Additive Models (GAMs) to detect further responses of the flows to rainfall at event scale. GAMs allowed for assessing simultaneous smooth relationships that can be linear or nonlinear as demonstrated in previous research (e.g., van Ogtrop et al., 2011). As the objective was to find out what type of event was necessary to generate flow in both basins, we used as dependent variable the ΔQ codified as a binomial variable (Q_{bin} , $\Delta Q > 0$: 1; $\Delta Q \leq 0$: 0) and duration, magnitude and maximum were treated as smooth predictor variables, specified using shrinkage smoothers (thin plate regression spline). GAMs were used with the logit link and the three variables were included in the model

35 to predict Q_{bin} , first individually, and then in combination with each other. All the models were compared, and the basis dimension of each smooth term was checked and increased when necessary. With the aim of evaluating the model accuracy with the selection of the best combination of variables for each watershed, we compared different models using from one to all variables through several estimate errors (see Table A1) AIC (Akaike Information Criterion), logLik (log-likelihood), deviance (Residual deviance), and UBRE (Un-Biased Risk Estimator), Concurvity (the analogue of multi-collinearity in GAMs) was tested in the final model (Table A2). To evaluate the hit rate of the models, we used a random sample of 75% of the RE in each watershed to set up the models. Then, predictions were computed for the remaining 25% and classified as probabilities from 0 to 1 as $P < 0.5: 0$ and $P \geq 0.5: 1$ to be compared with the observations. A contingency table summarizing the hit rate helped to assess the model performance.

40 To contextualize the different thresholds of the RE for different probabilities of generating flow in both watersheds, we estimated the return levels of the RE using the generalized Pareto distribution (GPD) for extreme events using the peak-over-threshold (POT) approach. POT is most suitable when complete time series (as RE) are available due to all values exceeding a certain threshold can serve as basis for model fitting (Coles, 2001). We used four different estimators to fit the POT data to a GPD (Maximum Likelihood Estimation (MLE); Unbiased Probability Weighted Moments (PWMU); Moments (MOM); and Likelihood Moment (LME)) to establish proper and wide confidence levels in the estimate of maximum rainfall per RE. Thresholds for the asymptotic approximation by a GPD in both watersheds were manually selected through the graphical representation of Mean Residual Life, the Dispersion index and the scale and shape parameters (see Figure A1 and A2).

3 Results

3.1 Characteristics of flows and precipitation

55 Average daily flows (Q) in Algeciras and Mula were relatively low in both watersheds (0.29 and 0.15 m³/s, respectively) and these values were distant from the median of each month (Figure 3), denoting their great irregularity. However, the specific flow, that considers the size of the watershed, is 6.5 l/s/km² in Algeciras and 0.9 l/s/km² in Upper Mula (Table 1). Both watersheds had a similar precipitation regime, with a clear minimum in summer, especially in July, and maximums in spring and autumn (March and September are the rainiest months, respectively). However, their flows did not respond in the same way to precipitation. While Mula had a more direct response to incident rainfall, Algeciras showed a different behaviour with their maximums at the end of summer and the beginning of autumn, associated to very high precipitation events. Also, the middle and lower parts of the Algeciras watershed are mainly covered with marls and alluvial sediments, creating an arid landscape consisting of a predominance of badlands and bare soil, where the rates of saturated hydraulic conductivity and hydraulic conductivity of the main channel are very low. Additionally, Algeciras show a higher curve number and slope than Upper Mula and shorter concentration and lag times (Table 1). Thus, terrain characteristics play a key role on rainfall-runoff relationships, but also to the amount of Q per month. For instance, Mula have an average 30% more days per month with $Q > 0$ than Algeciras, reaching almost 50% in summertime.

Eliminado: The final model was selected, for each watershed, based on the Akaike Information Criterion (AIC).

Eliminado: S1

Eliminado: for up to 400 years

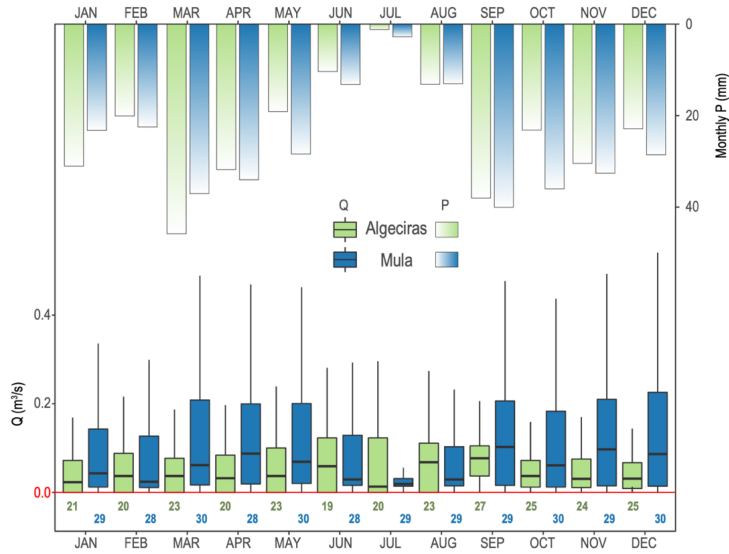
Eliminado: extreme value (GEV)

Eliminado: block maxima

Eliminado: methods

Eliminado: Generalized MLE (GMLE); Bayesian estimation (BPE)

Eliminado: L-moments estimation (LMOM)



75

Figure 3: Frequency of daily flows (Q) by month indicating low and high quantiles. Boxes show 25th to 75th percentiles with median as a bold horizontal line. Vertical lines reach 95th percentile (outliers are not shown). Bottom numbers show the mean number of days with $Q > 0$. Bars from top indicate mean monthly precipitation (P).

Table 1: Geometric data of Algeciras and Mula watersheds.

	Area	Longest stream	Stream slope	Watershed slope	Curve Number	Concentration time–Kirpich	Lag time	Specific flow
Algeciras	44.9 km ²	25.1 km	4.2%	35.6%	86.4	3.75 h	2.25 h	6.5 l/s/km ²
Mula	169.4 km ²	45.5 km	1.7%	22.2%	81.6	9.38 h	5.63 h	0.9 l/s/km ²

80

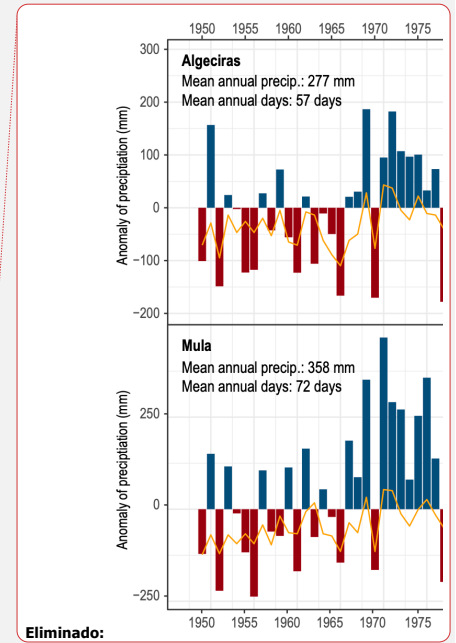
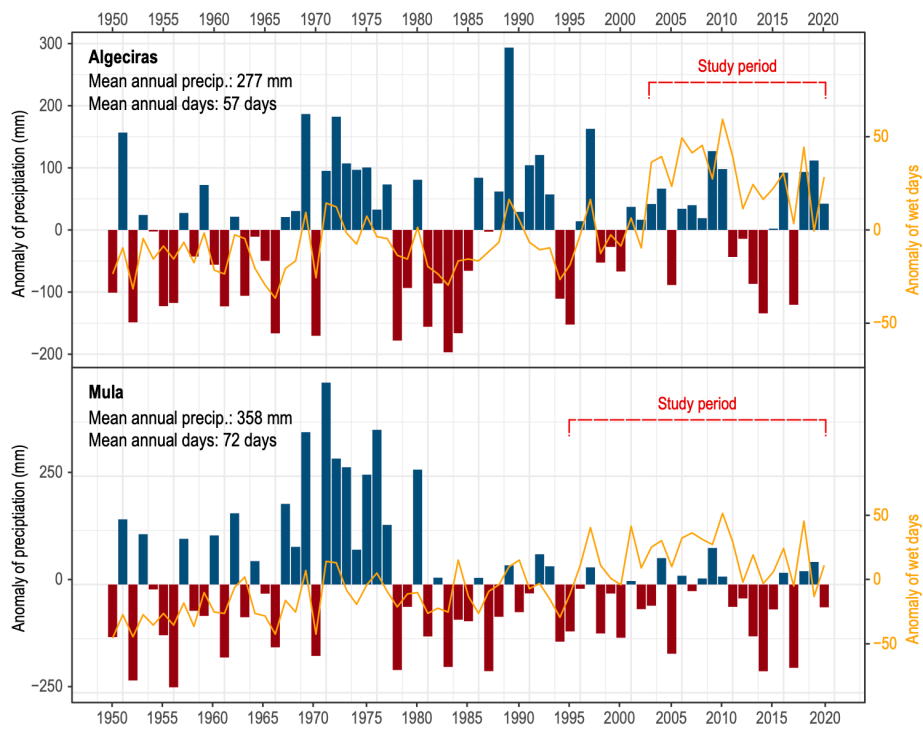
3.1.1 Rainfall events (RE) over time

The long-term analysis of annual precipitation showed different behaviours of the watersheds in the first two decades of 21st century (Figure 4) than in previous periods, coinciding with the period of study (when available flow data series). Algeciras showed a higher frequency of drier years until the end of 1980s' decade. Then, this pattern changed and 13 of the first 20 years of 21st century were wetter than the average, concurring a positive anomaly of the number of precipitation days. Linear trend indicated a non-significant increase of 7.2 mm/decade of annual precipitation and a significant increase of 7.1 days/decade of number of wet days per year. In summary, Algeciras experienced an increase of precipitation events with an uncertain increase

85

of their magnitude. However, precipitation amounts in 2000-2020 period were significantly lower than the three previous decades.

The irregularity of annual precipitation in Mula provided an also irregular depiction of its anomalies through time. While 1950-1970 period showed a rotation of wet and dry years, the decade of 1970 was the wettest and, since then, most of the years were below the average precipitation. The anomaly of wet days showed a regular behaviour from 1960 to 2000, when they increased until 2020. Precipitation amounts showed a negative and non-significant trend of 8.6 mm/decade and a positive significant trend of number of wet days of 7.8 days/decade.



Eliminado:

Figure 4: Annual precipitation anomalies (bars) and annual anomaly of the number of wet days ($P>0$) (lines). 1950-2020 was used as base period. Dashed lines indicate the period of data used for the analysis, coinciding with flows data availability.

When analysing the study periods at event scale (Figure 5), both watersheds showed most of the highest magnitudes of precipitation in 2019 and 2020. While Algeciras showed a more regular response of flow contribution (ΔQ) to RE throughout the study period, Mula experienced high ΔQ in high magnitude events until 2000. Then, the response was faster, with similar (or higher) magnitude events and lower ΔQ than in the previous period. The duration of RE was varied in both watersheds, and not always long event resulted in a high magnitude of precipitation and a high ΔQ . In fact, the frequency of high-magnitude events was higher from 2016 in Algeciras and Mula, but it was not accompanied by longer durations.

A non-negligible proportion of RE produced a zero (14% in Algeciras and 3% in Mula) or negative (22% and 23%) ΔQ , meaning that the flow contributed resulted in a similar or lower value than the previous day of the event, respectively. These RE, that were very similar in both watersheds, were short and small in terms of amount of rainfall. With a mean magnitude between 0.5 and 1.5 mm and a mean duration from 1.2 to 1.3 days, the generation of new flow is difficult. The reason of why these RE did not produced any flow contribution are related to the flow and precipitation regimes of the watersheds. For instance, a large proportion of non-contributing RE were from June to August (Table 1), the months with lowest precipitation, the lowest number of days with $Q > 0$ (Figure 2), and the highest evapotranspiration (Tomás-Burguera et al., 2020). Algeciras showed 10 months with proportions higher than 30%, a large difference compared to Mula (4 months), and this is also explained by the higher intermittency of Algeciras stream. Also, the geomorphological characteristics of the watersheds play a fundamental role on the ΔQ : small RE in combination with unsealed and fragile soils favour the infiltration (limestone lithologies prevail in Mula) and, especially in summer, evaporation, which necessarily leads to the absence of new flows.

Eliminado: less direct

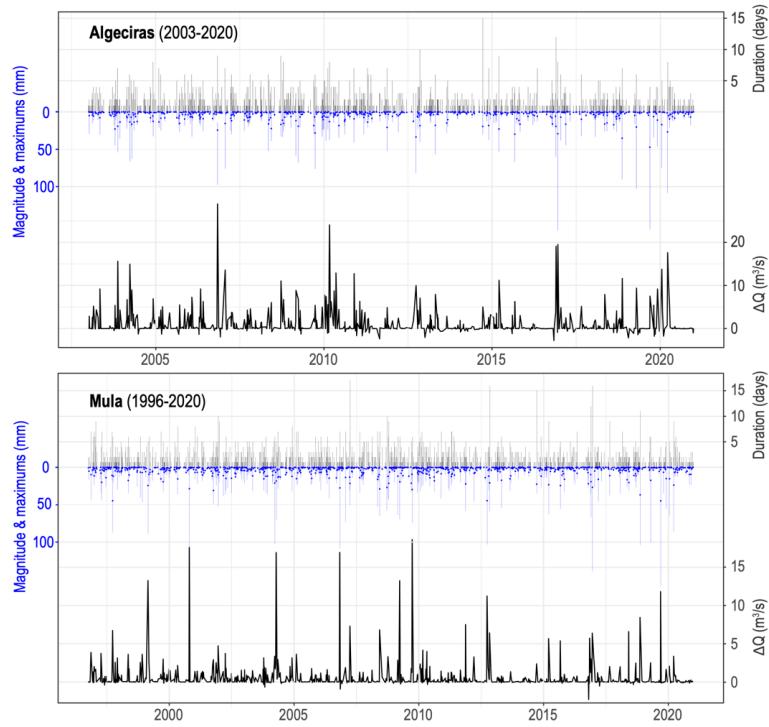


Figure 5: Rainfall events (*RE*) in Algeciras (upper row) and Mula (lower row) showing the magnitude of the *RE* (blue bars), the sum of hourly maximums (blue dots), the duration of the *RE* (narrow black bars over magnitudes) and the flow contributed by the *RE* (thick continuous black lines).

20

Table 2: Monthly percentage of non-contributing RE (rainfall events producing zero or negative ΔQ).

	J	F	M	A	M	J	J	A	S	O	N	D
Algeciras	38.3	37.0	32.8	26.8	36.9	46.3	58.6	44.0	35.5	38.7	24.6	34.4
Mula	29.7	23.9	25.0	22.4	27.1	33.8	40.0	33.8	22.4	30.1	17.9	26.3

3.2 Linear rainfall-runoff relationships

25 The linear correlation between the parameters of the RE and their corresponding ΔQ showed the general agreement between precipitation and flow contribution. As expected, the parameters derived from the RE, duration, magnitude and hourly maximums were highly positively correlated (Figure 6). An increase in the duration of the events usually led to higher magnitudes of cumulated precipitation (Pearson 0.75 and 0.74 in Algeciras and Mula, respectively), but was the relationship between magnitudes and cumulated hourly maximums the most direct with Pearson correlations of 0.98. These positive relationships between the parameters, which are almost identical in both watersheds, showed that the majority of the events are torrential (hourly maximums represent a higher proportion of the magnitudes) and of short duration (most of them occur between 1 and 5 days). However, the relationship between the RE parameters and ΔQ was very similar between watersheds. Both showed positive correlations, Algeciras revealed values from 0.63 to 0.75, with a more direct response to the duration of RE and a slightly lower, and very similar, to the magnitude and maximums. In a lesser intensity, Mula showed a similar overall pattern but with slightly higher Pearson value in relation to duration of the events (0.69). These results indicated that the flow reaction to the RE was different between both watersheds in terms of the intensity of the relationship and that the linear association is not enough to derive conclusions about it.

Eliminado: 68

Eliminado: 66

Eliminado: most

Eliminado: different

Eliminado: but

Eliminado: higher

Eliminado: ,

Eliminado: 53

Eliminado: 68

Eliminado: lower

Eliminado: values

Eliminado: from 0.44 to

Eliminado: 49

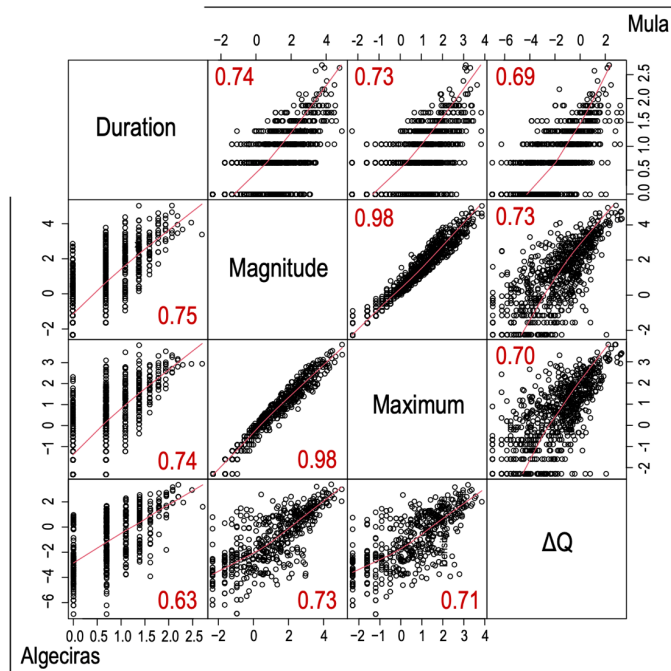
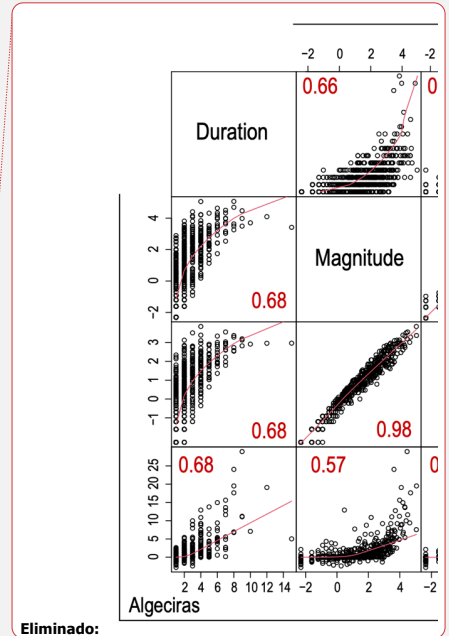


Figure 6: Values of precipitation variables and flow contribution (ΔQ) of all events in Algeciras (bottom left side) and Mula (top right side). Magnitude and maximum variables are in logarithmic scale. Pearson correlations are shown in red (all correlations are significant at $\alpha < 0.01$)

3.3 Nonlinear rainfall-runoff relationships

Results (Table A1) showed that the model with duration and magnitude (M04) of RE got the lowest AIC in Algeciras. Despite the rest of the estimate errors were not the lowest, M04 was the best combination in which all predictors were significant. Mula watershed showed a similar behaviour but in this case the combination of duration and the cumulated hourly maximums (M05) got the best values with all their predictors significant. Duration was revealed as the key variable for both watersheds and the total amount of precipitation was more important in Algeciras than in Mula, where the intensity of the RE (maximums) played a fundamental role on the flow generation. **GAM models were finally calculated with duration and magnitude for Algeciras and with duration and cumulated hourly maximums for Mula (see Table A3).**



Eliminado:

Eliminado: In order to assess the nonlinear relationships between the ΔQ and precipitation to extract the required parameters to generate new flow by a RE, we modelled $Q_{bin}(\Delta Q)$ as a binomial variable where 1 represents new generation of flow by the RE) through a GAM approach. With the aim of evaluating the model accuracy with the selection of the best combination of variables for each watershed, we compared different models using from one to all variables through the estimate errors AIC (Akaike Information Criterion), logLik (log-likelihood), deviance (Residual deviance), and UBRE (Un-Biased Risk Estimator).[†]

Eliminado: 3

Eliminado: Table 3: Accuracy assessment of the models for Algeciras (regular text) and Upper Mula (italic text). Goodness-of-fit measures: AIC (Akaike information criterion), logLik (log-likelihood), deviance (Residual deviance), UBRE (Un-Biased Risk Estimator) and number of significant predictors. Bold text indicates the values of the selected model.[†]

... [11]

.85 Contingency table (Table 2) showed a general success rate (positive and neagtive) of 75.97% in Algeciras and 77.77% in Mula. True positives were 76.3 and 77.9% for Algeciras and Mula, respectively, representing the correctly predicted RE with flow generation. False negatives (wrongly predicted *Qbin*) were 24.5 and 22.6% of the cases. True negatives, indicating the correctly predicted non-contributing RE were 75.5 and 77.4% and false positives (wrongly predicted contributing RE) were 23.7 and 22.1%.

.90 While success rates are relatively high in both watersheds, results suggest other variables driving flow generation in RE different than precipitation. Again, topographical and soil characteristics probably play an important role that is difficult to integrate in these types of models.

Eliminado: 4

.95 **Table 3: Contingency table of observed (Obs) and predicted (Pred) *Qbin* for Algeciras (regular text) and Mula (italic text) with number of cases and percentage (in brackets) of true and false positives and negatives.**

	Obs = 0	Obs = 1
Pred = 0	197 (75.5%) 205 (77.4%)	64 (24.5%) 60 (22.6%)
Pred = 1	109 (23.7%) 159 (22.1%)	350 (76.3%) 561 (77.9%)

Eliminado: 4

.00 Diagnostic plots of the partial effects (Figure 7) showed the probability of flow generation by a RE as long as the rest of the partial effects remain in their average values. For instance, Algeciras showed that an event of 5 days duration guarantees the flow contribution at a 95% probability (Figure 7a), but the 2-day RE already sum a probability of 50%. On the other hand, in a RE of average duration (1.9 days), the magnitude required to reach 95% probability of flow contribution is 20.7 mm (heavy rainfall), but the 50% probability is reached (Figure 7b) with 0.1 mm, meaning any precipitation record. The maximum probability of flow contribution is 99.5% with 158.3 mm. By comparison, Mula requires a 4-day RE to ensure new flow generation with a 95% probability. However, considering an average duration event (2.1 days), the cumulated hourly maximums needed to fulfil with that probability is 3.8 (not very intense precipitation), being reduced to 0.1 for a 50% probability.

.05 Overall, these results indicate that, despite the new flow generation similarly reacts to RE in Algeciras and Mula, in both watersheds the duration of the event is a critical factor. However, the total amount of precipitation is more important in Algeciras than Mula, where cumulated hourly maximums, ultimately, the intensity of the RE has a more direct relationship.

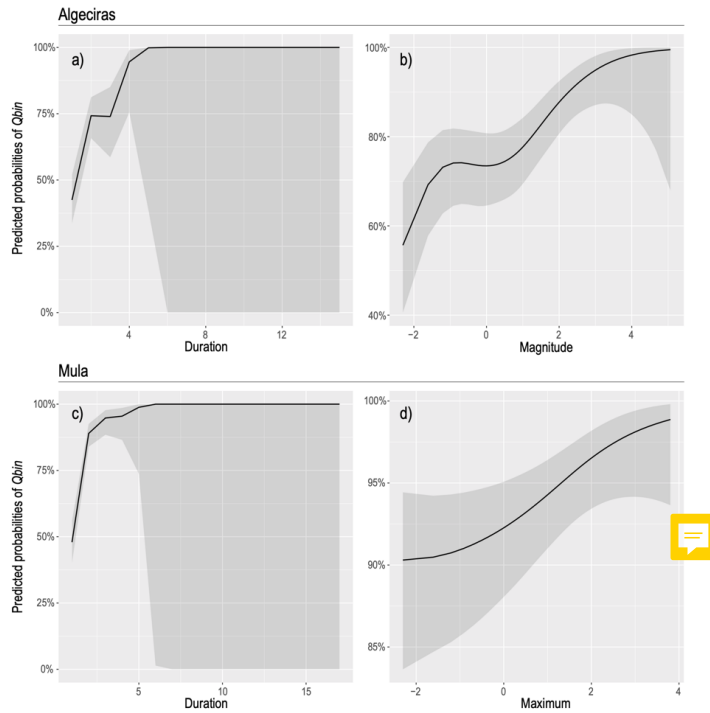


Figure 7: Predicted probabilities of partial effects of individual smooths for Algeciras (a, b) and Mula (c, d). Shaded areas show the 95% confidence intervals. Magnitudes and maximums are in logarithmic scale.

3.4 Return periods of RE

15 We calculated the return levels of magnitude of the RE in Algeciras and of cumulated hourly maximums in Mula for different return periods (Figure 8). We used the POT values of RE exceeding a particular threshold (see Figure A1 and A2 for threshold selection) to adjust them to a GPD. Thresholds were 25 mm for Algeciras and 7 mm for Mula that, based on the GAM models, represent the 95.9% and 96.4% probabilities of flow generation, respectively. Based on the fitted models, the most probable situation in which flow could be generated in Algeciras (99.5% probability) required a magnitude of 158.3 mm, which is approximately a 50-to-100-year return period. However, the return period is dramatically reduced with probabilities, meaning that high-magnitude episodes (e.g., higher than 50 mm) are rare but of key importance to ensure flow generation. The required

20

Eliminado: from 1 to 400 years

Eliminado: 20.7

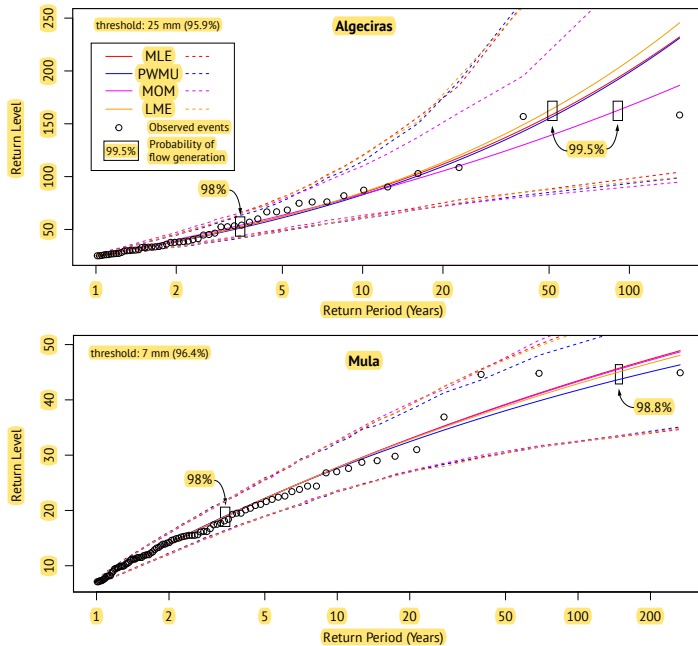
Eliminado: 10

Eliminado: While not-being a very usual magnitude in the watershed, it does not represent a rare value, meaning that flow generation in Algeciras is relatively easy. A 4-year

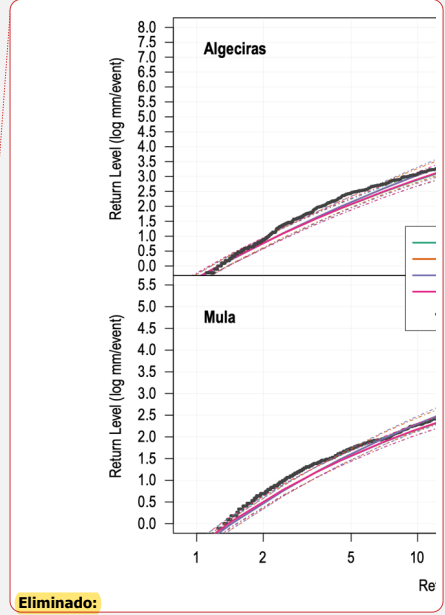
Eliminado: was obtained for the 3.8 mm

30

3.8 mm of cumulated hourly maximums in Upper Mula to ensure the flow generation at 95% probability are below the selected threshold. However, the great variability of this model increased the probabilities until 98.8% with a maximum of 44.6 mm, which represents a return period higher than 150 years. This large difference reveals the extreme irregularity of flows in Mula and the high uncertainty in prediction based only on the RE.



Eliminado: .
 Eliminado: from 100 to more
 Eliminado: 100



Eliminado:
 Eliminado: MLE (
 Eliminado:), LMOM (L-moments), GMLE (Generalized MLE),
 Eliminado: BPE (Bayesian).

35

Figure 8: Return levels (RL) of magnitude of the events in Algeciras (top) and cumulated hourly maximums in Mula (bottom). Solid lines show the RL estimated for different return periods with four different methods: Maximum Likelihood Estimation (MLE); Unbiased Probability Weighted Moments (PWMU); Moments (MOM); and Likelihood Moment (LME). Dashed lines show the confidence intervals. Dots are the observed magnitude and maximums of Algeciras and Mula, respectively. RL of 98% and maximum probabilities of flow generation are indicated.

4 Discussion

40

Rainfall-runoff relationships at event scale in Upper Mula and Algeciras showed very different flow dynamics. Although they are located near each other and precipitation regimes are relatively similar, the response to RE in terms of flow generation had

50 in common the responsibility of the duration of the event but the magnitude and the intensity played a different role depending
on the watershed. Differences in the lithological setting also explain these dissimilarities, agreeing with previous works in
similar environments (e.g., Huza et al., 2014; Merheb et al., 2016; Fortesa et al., 2020; Martínez-Salvador and Conesa-García,
2020). Constrained to the study area of our research, Martínez-Salvador et al. (2021) noted that flows in Upper Mula source
from lateral flow and from base flow storage, due to the permeable materials. Conversely, the ephemeral stream in Algeciras
55 is caused by the low values of the saturated hydraulic conductivity, the hydraulic conductivity of the main channel, and the
coefficient of roughness for overland flow, since a large part of the basin is dominated by clayey materials, emphasizing the
importance of lateral flow within the kinematic storage model. Thus, the way in which the watersheds receive rainfall drives
the flow generation, which always depends on the lithological and terrain configuration (van Dijk, 2010), and changes in
seasonal precipitation regimes (Fakir et al., 2021) or in RE duration, intensity, and magnitude, have a high probability of
60 changing the available flow. For instance, Camarasa (2021) showed that runoff is more dependent on rainfall intensity in the
Mediterranean area, and Gutiérrez-Jurado et al. (2019) demonstrated that soil type has the greatest influence on flow
generation, as well as Bull et al. (2000) mentioned in a study of a watershed near to our study area. In addition, anthropic
interventions such as irrigation, industrial uses, roads, or any water resources change at large scale, can modify rainfall-runoff
dynamics, leading to increased consequences of flooding (Conesa-García et al., 2016; Betancourt-Suárez et al., 2021).
Precipitation behaviour over the last decades in both watersheds was slightly different than the rest of the Iberian Peninsula,
65 where a decrease in the intensity prevailed (Serrano-Notivoli et al., 2018). However, the Mediterranean Spanish coast, and
especially the southeast area where Algeciras and Upper Mula are located, experimented a moderate increase of high and very
high precipitation events from mid-20th century as well as a remarkable increase in the number of wet days, agreeing with
temporal patterns of both watersheds (Figure 3). While the precipitation totals decrease is an already well-known trend
(Gonzalez-Hidalgo et al., 2011; Homar et al., 2010; Ruiz-Sinoga et al., 2010), southeastern Spain tended to a more intense
70 precipitation (Mosmann et al., 2004) and more concentrated in time (De Luis et al., 2011; Serrano-Notivoli et al., 2017c). This
scenario increases the chances of flow generation in ephemeral streams of Algeciras and Mula, but the high irregularity and
the negative trend of precipitation totals do not envisage a significant change on flow dynamics to less intermittent streams.
However, a change in the seasonality of flows is expected under these changing conditions of precipitation, leading to potential
alterations that could intensify wet and dry periods (Pumo et al., 2016). In Algeciras and Upper Mula watersheds, climate
75 change scenarios also depict a decrease in water resources caused by the changing seasonality, due to an increased
evapotranspiration situation (Martínez-Salvador, et al., 2021).

Linear rainfall-runoff relationships were clearly uninformative due to the great irregularity of the RE and they did not provide
a valid approach to derive rainfall thresholds (T) for flow generation. For this reason, we used a GAM approach, that takes
80 advantage of non-linear relationships, which are highly representative of the great irregularity of precipitation in the
Mediterranean area. This approach represents an advantage among the wide variety of methods that has been previously used
to model these thresholds in ephemeral or low-yield streams such as multivariate regressions, machine learning approaches,
etc. (e.g., Kaplan et al., 2020; Kampf et al., 2018; Shortridge et al., 2016). Furthermore, GAMs allow for avoiding stationarity

Eliminado: In this regard, p

Eliminado: Among

Eliminado: , we used a GAM approach that allows for avoiding stationarity assumptions in rainfall-runoff relationships (Tian et al., 2020)...

assumptions in rainfall-runoff relationships (Tian et al., 2020) in comparison with the abovementioned methods. Using nonparametric smoothed functions as a response curve for each variable has been demonstrated to reinforce the capture of non-linearity between dependent variable (*Q_{bin}* in our case) and covariates (RE parameters) in hydrological models (Rahman et al., 2018). However, the accuracy of GAMs models is highly dependent on the data since the predictability is jeopardized when the smoothed variables contain outliers, which is precisely the case of the great variability of the RE parameters. The own nature of GAMs, being accurate in the data range, can lead to overfitting and a loss of predictability in uneven data sets. Yet, obtained thresholds for Algeciras and Mula are similar to those exposed by Hooke (2016) in a near watershed (Guadalentín basin).

Low return periods were shown for events generating new flow at 95% probability, but they dramatically increased when probabilities were increased until maximum (99.5% in Algeciras and 98.8% in Mula). However, the analysis has some limitations to consider. First, we only considered one variable (magnitude or maximum) for each basin when, in fact, they also depend on duration. This means that the return periods could be higher because the degree of reliability provided by the model only considers the situation in which those variables occur in a RE of average duration (1.9 and 2.1 days, respectively). In this regard, further investigation is needed to set more accurate return periods because univariate approaches might lead to inadequate estimation of the risk of a RE (Brunner et al., 2016). It should be also considered that we only used the data of the RE in periods when flow was available (18 years for Algeciras and 25 years for Upper Mula) because hourly maximums were not available out of the considered periods, meaning that the obtained return periods could be lower if including long-term data series. Additionally, the POT approach implies an assumption of stationarity referred to the fixed character of parameters over time, and climatic series are not stationary. A non-stationary POT approach would be more appropriate, as made in previous works (e.g. Beguería et al., 2010; Agilan et al., 2021), but longer data series are needed to build reliable fittings of distributions.

Lastly, the nonlinear analysis of RE helped to understand the type of events required to generate new flow in both watersheds.

Prediction models in hydrology are a useful tool to improve water resources management in ephemeral streams through a deeper knowledge of their rainfall-runoff dynamics, especially in vulnerable areas to the potential effects of climate change and the accelerated degradation of their ecosystems.

5 Conclusions

We analysed rainfall-runoff relationships of two intermittent streams located in two medium-sized watersheds in southern mainland Spain: Algeciras (2003-2020) and Upper Mula (1996-2020), with the aim of modelling the type of rainfall event required to generate new flow. While a linear relationship was insufficient to derive robust conclusions about flow production and rainfall, a nonlinear analysis using GAMs helped to understand that most of the new flow is driven by a similar duration of the rainfall events (4-5 days to ensure a 95% probability) in both watersheds. However, the magnitude of the event (cumulated precipitation) was a more significant predictor in Algeciras (20.7 mm) than Upper Mula, where maximums

Eliminado: ,

Eliminado: the

Eliminado: have

Eliminado: 10-year

Eliminado: for Algeciras or the 2-year for Mula

Eliminado: that we used for the RE frequency analysis was the block maxima (BM) instead of the peaks-over-threshold (POT). One drawback of BM series is that they use only one event per year, thus, the second highest, for instance, may be greater than several events of other years (Mkhandi et al., 2005), leading to a loss of information. However, BM method is preferable when observations are not exactly independent and identically distributed (Ferreira and de Haan, 2015).

(cumulated hourly maximums of each day) showed a higher **significance (3.8 mm)**. These differences could be due to the different orographic and lithological configuration. For example, Algeciras is smaller, with a higher average slope than Upper Mula and less permeable materials prevailing across the watershed, in comparison to Upper Mula where groundwater plays an important role on water management from rainfall events and producing a different response than Algeciras. Results show that the precipitation regime is very irregular, and an **average event of 1.2 days and less than 1.5 mm is clearly insufficient to generate new flow**. Almost a third part of the rainfall events are non-contributing for flow generation (flows are similar or lower than previous day to the rainfall event). A long-term analysis through the calculation of return levels showed that **low return periods are enough to produce a contributing rainfall event with a 95%, rapidly increasing when raising probabilities**. These results agree with the long-term (70 years) precipitation patterns, that showed a highly variable annual water availability alongside a significant increase of wet days, with different behaviour among watersheds. Within the study period, Upper Mula showed 16 of 25 years below average precipitation, while Algeciras remained with the same frequency as previous decades but a higher rate of wet days. A future drier scenario as considered in western Mediterranean climate projections could lead to increase the return periods for the required magnitude of rainfall events to generate flows.

Eliminado: a 10-year

Eliminado: for Algeciras and a 4-year for Upper Mula

Data availability

Daily and hourly precipitation data belong to different institutions in Spain (see section 2) and can be accessed through formal requests. The SPREAD gridded daily precipitation dataset is described and provided in Serrano-Notivoli et al. (2017). Daily flow data series source from CEDEX (<https://ceh.cedex.es/anuarioaforos/default.asp>).

Author contribution

RSN and CCG developed the research idea and were responsible for conceptualization. RSN, AMS, RGL and DES processed the data, designed the visualizations, and validated results. RSN developed the statistical analysis and prepared the manuscript with the contribution from all the co-authors.

Competing interests

The authors declare that they have no conflict of interest.

Acknowledgments

This work has been financed by ERDF (FEDER) funds / Spanish Ministry of Science, Innovation and Universities - State Research Agency (AEI) / Project CGL2017-84625-C2-1-R (CCAMICEM); State Program for Research, Development and Innovation focused on the Challenges of Society. We also would like to extend our thanks to the State Meteorology Agency

(AEMET), in Spain, for providing meteorological data, and to the Segura River Hydrographic Confederation Center (SHC), Government of Spain, for its collaboration. RSN is supported by the Government of Aragón through the “Program of research groups” (group H09_20R, “Climate, Water, Global Change, and Natural Systems”).

65 **References**

Acuña V, Muñoz I, Giorgi A, Omella M, Sabater F and Sabater S.: Drought and postdrought recovery cycles in an intermittent Mediterranean stream: structural and functional aspects. *J. North Am. Benthol. Soc.*, 24, 919–933, <https://doi.org/10.1899/04-078.1>, 2005.

70 [Agilan, V., Unamanesh, N.V., Mujumdar, P.P.: Influence of threshold selection in modeling peaks over threshold based nonstationary extreme rainfall series. *J. Hydrol.*, 593, 125625. <https://doi.org/10.1016/j.jhydrol.2020.125625>, 2021.](#)

Arnone, E., Cucchi, M., Gesso, S.D., Petitta, M. and Calmanti, S.: Droughts Prediction: a Methodology Based on Climate Seasonal Forecasts. *Water Resour. Manage.*, 34, 4313–4328, <https://doi.org/10.1007/s11269-020-02623-3>, 2020.

75 [Beguería, S., Angulo, M., Vicente-Serrano, S.M., López-Moreno, J.I., El-Kenawy, A.: Assessing trends in extreme precipitation events intensity and magnitude using non-stationary peaks-over-threshold analysis: a case study in northeast Spain from 1930 to 2006. *Int. J. Climatol.*, 31\(14\), 2102-2114. <https://doi.org/10.1002/joc.2218>, 2010.](#)

[Betancourt-Suárez, V., García-Botella, E., Ramón-Morte, A.: Flood mapping proposal in small watersheds: A case study of the rebollos and miranda ephemeral streams \(cartagena, Spain\). *Water*, 13\(1\), 102. <https://doi.org/10.3390/w13010102>, 2021.](#)

Brunner, M.I., Seibert, J. and Favre, A-C.: Bivariate return periods and their importance for flood peak and volume estimation. *WIREs Water*, 3(6), 819-833, <https://doi.org/10.1002/wat2.1173>, 2016.

80 Brunner, M. I., Melsen, L. A., Newman, A. J., Wood, A. W., and Clark, M. P.: Future streamflow regime changes in the United States: assessment using functional classification, *Hydrol. Earth Syst. Sci.*, 24, 3951–3966, <https://doi.org/10.5194/hess-24-3951-2020>, 2020.

Brooks, R.T.: Potential impacts of global climate change on the hydrology and ecology of ephemeral freshwater systems of the forests of the northeastern United States. *Climatic Change* 95, 469–483, <https://doi.org/10.1007/s10584-008-9531-9>, 2009.

85 [Bull, L.J., Kirkby, M.J., Shannon, J., Hooke, J.M.: The impact of rainstorms on floods in ephemeral channels in southeast Spain. *Catena*, 38\(3\), 191-209. \[https://doi.org/10.1016/S0341-8162\\(99\\)00071-5\]\(https://doi.org/10.1016/S0341-8162\(99\)00071-5\), 2000.](#)

[Camarasa, A.: Flash-flooding of ephemeral streams in the context of climate change. *Geog. Res. Lett.*, 47\(1\), 121-142. <https://doi.org/10.18172/cig.4838>, 2021.](#)

90 Camarasa, A.: Flash floods in Mediterranean ephemeral streams in Valencia Region (Spain). *J. Hydrol.*, 541, 99–115, <https://doi.org/10.1016/j.jhydrol.2016.03.019>, 2016.

Camarasa, A. and Tilford, K.: Rainfall–runoff modelling of ephemeral streams in the Valencia region (eastern Spain). *Hydrol. Process.*, 16, 3329–3344, <https://doi.org/10.1002/hyp.1103>, 2002.

Con formato: Inglés (americano)

Con formato: Inglés (americano)

95 [Coles, S.: An Introduction to Statistical Modeling of Extreme Values, Springer Series in Statistics, 208 pp., Springer, London, G. B., 2001.](#)

[Conesa-García, C., García-Lorenzo, R., Pérez-Cutillas, P.: Flood hazards at ford stream crossings on ephemeral channels \(south-east coast of Spain\). Hydrol. Processes., 31\(3\), 731-749, <https://doi.org/10.1002/hyp.11082>, 2016.](#)

Datry, T., Larned, S.T. and Tockner, K.: Intermittent rivers: A challenge for freshwater ecology. *BioScience*, 64, 229–235, <https://doi.org/10.1093/biosci/bit027>, 2014.

00 [Datry, T., Bonada, N. and Boulton, A.J.: General Introduction, in: Intermittent Rivers and Ephemeral Streams: Ecology and Management, edited by Datry, T., Bonada, N., Boulton, A.J. Elsevier, 1–20, <https://doi.org/10.1016/C2015-0-00459-2>, 2017.](#)

De Luis, M., González-Hidalgo, J. C., Brunetti, M., and Longares, L. A.: Precipitation concentration changes in Spain 1946–2005, *Nat. Hazards Earth Syst. Sci.*, 11, 1259–1265, <https://doi.org/10.5194/nhess-11-1259-2011>, 2011.

Dogliani A., Galeandro A. and Simeone V.: The Generation of Runoff Through Ephemeral Streams. In: Lollino G., Arattano M., Rinaldi M., Giustolisi O., Marechal JC., Grant G. (eds) *Engineering Geology for Society and Territory - Volume 3*. Springer, Cham, https://doi.org/10.1007/978-3-319-09054-2_36, 2015

05 Döll, P. and Schmied, H.M.: How is the impact of climate change on river flow regimes related to the impact on mean annual runoff? A global-scale analysis. *Environ. Res. Lett.*, 7, 1–11, <https://doi.org/10.1088/1748-9326/7/1/014037>, 2012.

[Fakir, Y., Bouioumouass, H., Constantz, J.: Seasonality in Intermittent Streamflow Losses Beneath a Semiarid Mediterranean Wadi. Water Resour. Res., 57\(6\), e2021WR029743, <https://doi.org/10.1029/2021WR029743>, 2021.](#)

10 [Fortesa, J., Latron, J., García-Comendador, J., Tomás-Burguera, M., Company, J., Calsamiglia, A. and Estrany, J.: Multiple Temporal Scales Assessment in the Hydrological Response of Small Mediterranean-Climate Catchments. Water, 12\(1\), 299, <https://doi.org/10.3390/w12010299>, 2020.](#)

[Fortesa, J., Ricci, G.F., García-Comendador, J., Gentile, F., Estrany, J., Sauquet, E., Datry, T., De Girolamo, A.M.: Analysing hydrological and sediment transport regime in two Mediterranean intermittent rivers. Catena, 196, 104865, <https://doi.org/10.1016/j.catena.2020.104865>, 2021.](#)

15 Gioia, A., Iacobellis, V., Manfreda, S., and Fiorentino, M.: Runoff thresholds in derived flood frequency distributions. *Hydrol. Earth Syst. Sci.*, 12(6), 1295–1307, <https://doi.org/10.5194/hess-12-1295-2008>, 2008.

González-Hidalgo, J.C., Brunetti, M. and De Luis, M.: A new tool for monthly precipitation analysis in Spain: MOPREDAS database (monthly precipitation trends December 1945–November 2005). *Int. J. Climatol.*, 31(5), 715–731, <https://doi.org/10.1002/joc.2115>, 2011.

20 [Gutiérrez-Jurado, K.Y., Partington, D., Batelaan, O., Cook, P., Shanafield, M.: What Triggers Streamflow for Intermittent Rivers and Ephemeral Streams in Low-Gradient Catchments in Mediterranean Climates. Water Resour. Res., 55\(11\), 9926-9946, <https://doi.org/10.1029/2019WR02504>, 2019.](#)

Homar, V., Ramis, C., Romero, R. and Alonso, S.: Recent trends in temperature and precipitation over the Balearic Islands (Spain). *Clim. Change*, 98, 199–211, <https://doi.org/10.1007/s10584-009-9664-5>, 2010.

25

Movido (inserción)[1]

Eliminado: Ferreira, A. and de Haan, L.: On the block maxima method in extreme value theory: PWM estimators. *Ann. Statist.*, 43(1), 276–298, <https://doi.org/10.1214/14-AOS1280>, 2015.*

- 30 [Hooke, J.M.: Morphological impacts of flow events of varying magnitude on ephemeral channels in a semiarid region. *Geomorphology*, 252, 128-143, <https://doi.org/10.1016/j.geomorph.2015.07.014>, 2016.](#)
- Huza, J., Teuling, A.J., Braud, I., Grazioli, J., Melsen, L.A., Nord, G., Raupach, T.H., Uijlenhoet, R.: Precipitation, soil moisture and runoff variability in a small river catchment (Ardeche, France) during HyMeX Special Observation Period 1. *J. Hydrol.*, 516, 330–342. <https://doi.org/10.1016/j.jhydrol.2014.01.041>, 2014.
- 35 [Kampf, S.K., Faulconer, J., Shaw, J.R., Lefsky, M. Wagenbrenner, J.W. and Cooper, D.J.: Rainfall Thresholds for Flow Generation in Desert Ephemeral Streams. *Water Resour. Res.*, 54, 9935–9950, <https://doi.org/10.1029/2018WR023714>, 2018.](#)
- [Kaplan, N. H., Blume, T., and Weiler, M.: Predicting probabilities of streamflow intermittency across a temperate mesoscale catchment, *Hydrol. Earth Syst. Sci.*, 24, 5453–5472, <https://doi.org/10.5194/hess-24-5453-2020>, 2020.](#)
- [Kirkby, M. J., Bracken, L. J., and Shannon, J. The influence of rainfall distribution and morphological factors on runoff delivery from dryland catchments in SE Spain. *Catena*, 62\(2-3\), 136–156, <https://doi.org/10.1016/j.catena.2005.05.002>, 2005.](#)
- 40 [Larned, S.T., Detry, T., Arscott, D.B. and Tockner, K.: Emerging concepts in temporary-river ecology. *Freshwater Biol.*, 55, 717–738, <https://doi.org/10.1111/j.1365-2427.2009.02322.x>, 2010.](#)
- [Martínez-Salvador, A. and Conesa-García, C.: Suitability of the SWAT Model for Simulating Water Discharge and Sediment Load in a Karst Watershed of the Semiarid Mediterranean Basin. *Water Resour Manage*, 34, 785–802, <https://doi.org/10.1007/s11269-019-02477-4>, 2020.](#)
- 45 [Martínez-Salvador, A., Millares, A., Eekhout, J.P.C. and Conesa-García, C.: Assessment of Streamflow from EURO-CORDEX Regional Climate Simulations in Semi-Arid Catchments Using the SWAT Model. *Sustainability*, 13\(13\), 7120, <https://doi.org/10.3390/su13137120>, 2021.](#)
- [Merheb, M., Moussa, R., Abdallah, C., Colin, F., Perrin, C. and Baghdadi, N.: Hydrological response characteristics of Mediterranean catchments at different time scales: A meta-analysis. *Hydrol. Sci. J.*, 61, 2520–2539, <https://doi.org/10.1080/02626667.2016.1140174>, 2016.](#)
- 50 [Mosmann, V., Castro, A., Fraile, R., Dessens, J., Sánchez, J.L.: Detection of statistically significant trends in the summer precipitation of mainland Spain. *Atm. Res.*, 70\(1\), 43–53, <https://doi.org/10.1016/j.atmosres.2003.11.002>, 2004.](#)
- [Nabih, S., Tzoraki, O., Zanis, P., Tsikerdekis, T., Akritidis, D., Kontogeorgos, I., and Benaabidate, L.: Alteration of the Ecohydrological Status of the Intermittent Flow Rivers and Ephemeral Streams due to the Climate Change Impact \(Case Study: Tsiknias River\). *Hydrology*, 8\(1\), 43, <http://dx.doi.org/10.3390/hydrology8010043>, 2021.](#)
- 55 [Pumo, D., Caracciolo, D., Viola, F., Noto, L.V.: Climate change effects on the hydrological regime of small non-perennial river basins. *Sci. Total Environ.*, 512\(A\), 76-92, <https://doi.org/10.1016/j.scitotenv.2015.10.109>, 2016.](#)
- [Rahman, A., Charron, C., Ouarda, T.B.M.J. and Chebana, F.: Development of regional flood frequency analysis techniques using generalized additive models for Australia. *Stoch. Environ. Res. Risk Assess.*, 32, 123–139, <https://doi.org/10.1007/s00477-017-1384-1>, 2018.](#)
- 60 [Ruiz-Sinoga, J.D., García-Marín, R., Martínez-Murillo, J.F., Gabarrón, M.A.: Precipitation dynamics in southern Spain: trends and cycles. *Int. J. Climatol.*, 31\(15\), 2281–2289, <https://doi.org/10.1002/joc.2235>, 2010.](#)

Eliminado: Mkhandi, S., Opere, A. and Willems, P.: Comparison between annual maximum and peaks over threshold models for flood frequency prediction. International Conference of UNESCO Flanders FIT FRIEND/Nile Project - 'Towards a better cooperation', Date: 2005/11/12 - 2005/11/14, Location: Sharm El-Sheikh, Egypt, 2005.†

Serrano-Notivoli, R., Beguería, S., Saz, M. A., Longares, L. A. and de Luis, M.: SPREAD: a high-resolution daily gridded precipitation dataset for Spain – an extreme events frequency and intensity overview, *Earth Syst. Sci. Data*, 9, 721–738, <https://doi.org/10.5194/essd-9-721-2017>, 2017.

Serrano-Notivoli, R., Martín-Vide, J., Saz, M.A., Longares, L. A., Beguería, S., Sarricolea, P., Meseguer-Ruiz, O. and de Luis, [Serrano-Notivoli, R., de Luis, M. and Beguería, S.: An R package for daily precipitation climate series reconstruction. *Environ. Modell. Softw.*, 89, 190-195, <http://dx.doi.org/10.1016/j.envsoft.2016.11.005>, 2017b.](#)

M.: Spatio-temporal variability of daily precipitation concentration in Spain based on a high-resolution gridded data set. *Int. J. Climatol.*, 38(S1), e518–e530, <https://doi.org/10.1002/joc.5387>. 2017c.

[Serrano-Notivoli, R., Beguería, S., Saz, M.A., de Luis, M.: Recent trends reveal decreasing intensity of daily precipitation in Spain. *Int. J. Climatol.*, 38\(11\), 4211-4224, <https://doi.org/10.1002/joc.5562>, 2018.](#)

Serrano-Notivoli, R., Beguería, S. and de Luis, M.: STEAD: a high-resolution daily gridded temperature dataset for Spain, *Earth Syst. Sci. Data*, 11, 1171–1188, <https://doi.org/10.5194/essd-11-1171-2019>, 2019.

Tockner, K., Uehlinger, U., Robinson, C.T., Tonolla, D., Siber, R. and Peter, F.D.: Introduction to European rivers, in: *Rivers of Europe*, edited by Tockner, K., Uehlinger, U., Robinson, C.T. London: Academic Press, 1–23, <https://doi.org/10.1016/B978-0-12-369449-2.X0001-X>, 2009.

Ye, W., Bates, B.C., Viney, N.R., Sivapalan, M. and Jakeman, A.: Performance of conceptual rainfall-runoff models in low-yielding ephemeral catchments, *Water Resour. Res.*, 33(1), 153–166, 1997.

Shortridge, J.E., Guikema, S.D. and Zaitchik, B.F.: Machine learning methods for empirical streamflow simulation: a comparison of model accuracy, interpretability, and uncertainty in seasonal watersheds. *Hydrol. Earth Syst. Sci.*, 20, 2611–2628, <https://doi.org/10.5194/hess-20-2611-2016>, 2016.

Skoulikidis, N., Sabater, S., Datry, T., Morais, M.M., Buffagni, A., Dörflinger, G., Zogaris, S., Sánchez-Montoya, M., Bonada, N., Kalogianni, E., Rosado, J., Vardakas, L., De Girolamo, A.M., Tockner, K.: Non-perennial Mediterranean rivers in Europe: Status, pressures, and challenges for research and management, *Sci Tot Environ*, 577, 1-18, <https://doi.org/10.1016/j.scitotenv.2016.10.147>, 2017.

Tian, W., Bai, P., Wang, K., Liang, K and Liu, C.: Simulating the change of precipitation-runoff relationship during drought years in the eastern monsoon region of China. *Sci. Total Environ.*, 723, 138172, <https://doi.org/10.1016/j.scitotenv.2020.138172>, 2020.

Tomás-Burguera, M., Beguería, S. and Vicente-Serrano, S.M.: Climatology and trends of reference evapotranspiration in Spain. *Int. J. Climatol.*, 41(S1), E1860-E1874, <https://doi.org/10.1002/joc.6817>. 2020.

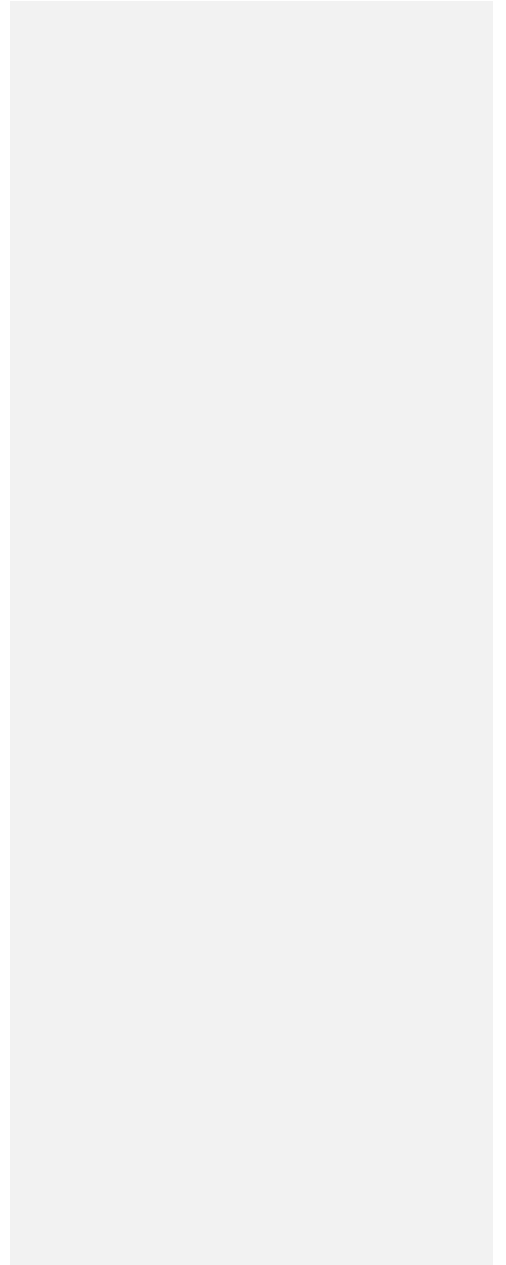
van Ogtrop, F. F., Vervoort, R. W., Heller, G. Z., Stasinopoulos, D. M., and Rigby, R. A.: Long-range forecasting of intermittent streamflow, *Hydrol. Earth Syst. Sci.*, 15, 3343–3354, <https://doi.org/10.5194/hess-15-3343-2011>, 2011

van Dijk, A. I. J. M.: Climate and terrain factors explaining streamflow response and recession in Australian catchments, *Hydrol. Earth Syst. Sci.*, 14, 159–169, <https://doi.org/10.5194/hess-14-159-2010>, 2010

Eliminado: Thibault, D., Bonada, N. and Boulton, A.J.: General Introduction, in: *Intermittent Rivers and Ephemeral Streams: Ecology and Management*, edited by Thibault, D

Movido hacia arriba[1]: Bonada, N., Boulton, A.J. Elsevier, 1–20, <https://doi.org/10.1016/C2015-0-00459-2>, 2017.

Eliminado:



Appendix A

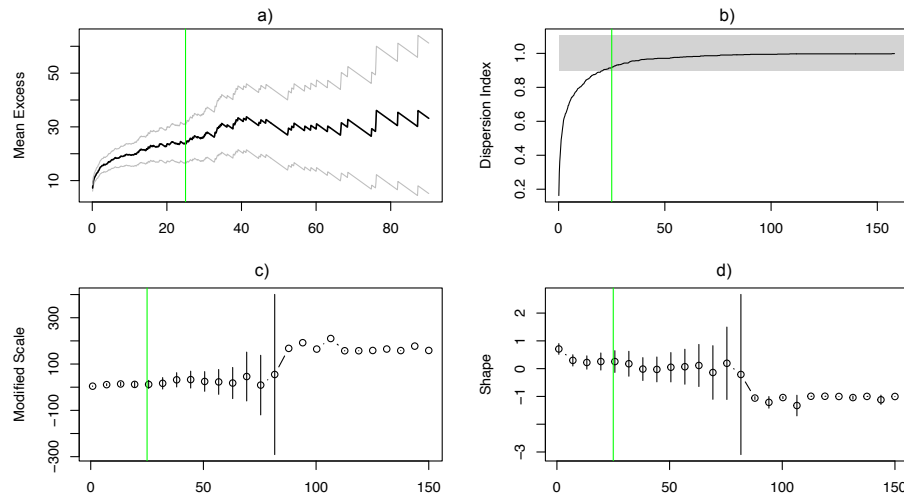


Figure A1: Graphical summary of RE threshold (μ) selection in Algeciras: a) Mean Residual Life; b) Dispersion Index; c) and d) scale and shape parameters estimates from the GPD for a range of values of μ . Green line represents the μ (25 mm) selected, implying a higher variability of its exceeding values in a), c) and d), and posing a limit in b) from which dispersion index estimates are near the theoretical value 1.

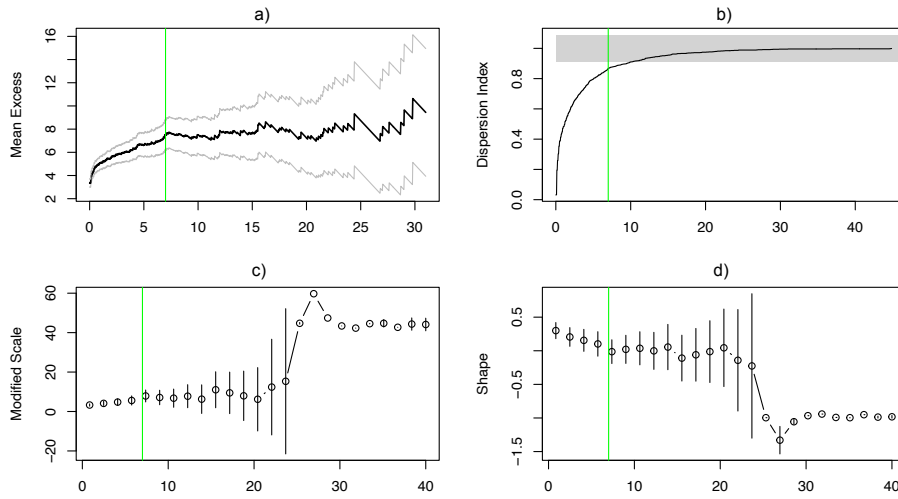


Figure A2: Graphical summary of RE threshold (μ) selection in Algeciras: a) Mean Residual Life; b) Dispersion Index; c) and d) scale and shape parameters estimates from the GPD for a range of values of μ . Green line represents the μ (7 mm) selected, implying a higher variability of its exceeding values in a), c) and d), and posing a limit in b) from which dispersion index estimates are near the theoretical value 1.

25

Table A1: Accuracy assessment of the models for Algeciras (regular text) and Upper Mula (italic text). Goodness-of-fit measures: AIC (Akaike information criterion), logLik (log-likelihood), deviance (Residual deviance), UBRE (Un-Biased Risk Estimator) and number of significant predictors. Bold text indicates the values of the selected model.

Model	Variables	AIC	logLik	deviance	UBRE	Signif. preds.
M01	Duration	715.955	-354.058	708.117	-0.00562	1/1
		<i>818.246</i>	<i>-404.761</i>	<i>809.521</i>	<i>-0.16929</i>	<i>1/1</i>
M02	Magnitude	738.640	-364.67	729.341	0.02589	1/1
		<i>939.895</i>	<i>-467.102</i>	<i>934.203</i>	<i>-0.04579</i>	<i>1/1</i>
M03	Maximum	755.445	-373.294	746.589	0.04923	1/1
		<i>944.966</i>	<i>-467.762</i>	<i>935.524</i>	<i>-0.04064</i>	<i>1/1</i>
M04	Duration+Magnitude	687.151	-336.282	672.564	-0.04562	2/2
		<i>811.434</i>	<i>-399.792</i>	<i>799.584</i>	<i>-0.17621</i>	<i>2/2</i>
M05	Duration+Maximum	694.739	-340.1	680.2	-0.03508	2/2
		810.325	-398.818	797.636	-0.17734	2/2
M06	Magnitude+Maximum	688.426	-363.667	727.334	0.02761	1/2
		<i>940.335</i>	<i>-464.357</i>	<i>928.713</i>	<i>-0.04535</i>	<i>1/2</i>
M07	Duration+ Magnitude+Maximum	688.426	-335.622	671.244	-0.04385	2/3
		<i>812.278</i>	<i>-398.779</i>	<i>797.559</i>	<i>-0.17535</i>	<i>1/3</i>

30

Table A2: Concurrency between smooth functions of the predictors in the GAM analysing flow contribution by the RE (Qbin) for Algeciras (regular text) and Mula (italic text). Zero means no concurrency among covariates, one means complete concurrency.

	para	s(duration) s(duration)	s(magnitude) s(maximum)
worst	0	0.59	0.59
	<i>0</i>	<i>0.55</i>	<i>0.55</i>
observed	0	0.39	0.57
	<i>0</i>	<i>0.33</i>	<i>0.53</i>
estimate	0	0.38	0.22
	<i>0</i>	<i>0.37</i>	<i>0.22</i>

Eliminado: S1

35

Table A3: GAM summaries for both watersheds.

Algeciras				
Parametric coefficients:				
	Estimate	Std. Error	z value	Pr(> z)
(Intercept)	1.998	1.517	1.317	0.188
Approximate significance of smooth terms:				
	edf	Ref.df	Chi.sq	p-value
s(duration)	2.908	3.106	40.64	< 2e-16

Eliminado: S2

s(magnitude)	3.385	4.025	28.33	1.17e-05
R-sq.(adj) = 0.312	Dev. expl. = 28.7%	UBRE = -0.045623	n = 720	
Upper Mula				
Parametric coefficients:				
	Estimate	Std. Error	z value	Pr(> z)
(Intercept)	3.174	2.123	1.496	0.135
Approximate significance of smooth terms:				
	edf	Ref.df	Chi.sq	p-value
s(duration)	3.302	3.599	108.55	<2e-16
s(maximum)	2.042	2.495	10.27	0.0108
R-sq.(adj) = 0.312	Dev. expl. = 30.5%	UBRE = -0.17734	n = 985	

