

A large-sample investigation into uncertain climate change impacts on high flows across Great Britain

Rosanna A Lane^{1,2}, Gemma Coxon^{1,3}, Jim Freer^{1,3,4}, Jan Seibert⁵, Thorsten Wagener^{3,6,7}

¹School of Geographical Sciences, University of Bristol, Bristol, BS8 1SS, UK

²Currently at: UK Centre for Ecology & Hydrology, Wallingford, OX10 8BB, UK

³Cabot Institute, University of Bristol, Bristol, BS8 1UJ, UK

⁴University of Saskatchewan, Centre for Hydrology, Canmore, Alberta, T1W 3G1, CANADA

⁵Department of Geography, University of Zurich, Zurich, Switzerland

⁶Department of Civil Engineering, University of Bristol, Bristol, BS8 1TR, UK

⁷Institute of Environmental Science and Geography, University of Potsdam, 14476 Potsdam, Germany

Correspondence to: Rosanna A. Lane (roslan@ceh.ac.uk)

Abstract. Climate change may significantly increase flood risk across Great Britain (GB), but there are large uncertainties in both future climatic changes and how these propagate into changing river flows. Here, the impact of climate change on the magnitude and frequency of high flows is modelled for 346 larger (>144km²) catchments across GB using the latest UK Climate Projections (UKCP18) and the DECIPHeR hydrological modelling framework. This study provides the first spatially consistent GB projections including both climate ensembles and hydrological model parameter uncertainties. Generally, results indicated an increase in the magnitude and frequency of high flows (Q10, Q1 and annual maximum) along the west coast of GB in the future (2050-2075), with increases in annual maximum flows of up to 65% for west Scotland. In contrast, median flows (Q50) were projected to decrease across GB. All flow projections contained large uncertainties, and while the RCMs were the largest source of uncertainty overall, hydrological modelling uncertainties were considerable in east and south-east England. Regional variation in flow projections were found to relate to i) differences in climatic change and ii) catchment conditions during the baseline period as characterised by the runoff coefficient (mean discharge divided by mean precipitation). Importantly, increased heavy-precipitation events (defined by an increase in 99th percentile precipitation) did not always result in increased flood flows for catchments with low runoff coefficients, highlighting the varying factors leading to changes in high flows.

28 These results provide a national overview of climate change impacts on high flows across GB, which will inform climate
29 change adaptation, while also highlighting the need to account for uncertainty sources when modelling climate change impact
30 on high flows.
31

32 **1 Introduction**

33 Climate change will likely significantly alter hydrological regimes in many parts of the world, with vast implications for water
34 resource planning and policy (Brown et al., 2015; IPCC, 2014; Wagener et al., 2010). Projections indicate an intensification
35 of the hydrological cycle, with a warmer climate leading to more rain falling in high-intensity events (Eicker et al., 2016;
36 Huntington, 2006; IPCC, 2014; Trenberth, 2011). This increase in the frequency and severity of extreme rainfall events is
37 likely to increase flood risk in many regions. However, the conversion of rainfall to runoff is not straightforward, as changes
38 in river flows result from complex and non-linear interactions between changing precipitation and evapotranspiration, and the
39 influence of basin properties (Arnell, 2011; Laizé and Hannah, 2010; Sawicz et al., 2014). There are also many uncertainties
40 surrounding future climate projections. While climate models show general agreement on rising temperatures and increasing
41 extreme precipitation throughout the 21st century, they differ in the magnitude and spatial patterns of change (Fowler and
42 Ekström, 2009; Met Office, 2019; Nikulin et al., 2011). To guide water-related policy and decision making and to ensure
43 adequate adaptation to future changes in flooding, we therefore need hydrological modelling studies to help understand and
44 quantify climate change impacts on the hydrological regime, and the uncertainties surrounding these projections (Reynard et
45 al., 2017).
46

47 Hydrological climate change impact studies often use information from global climate models or regional climate models (e.g.,
48 rainfall and temperature projections) to drive hydrological models. Throughout this modelling chain there are many
49 uncertainties, which cascade from one step through to another. These include uncertainties in global climate model (GCM)
50 structure and sub-grid parameterisations, uncertainties in regional climate model (RCM) structure and parameterisations,
51 uncertainties in the chosen downscaling and bias correction techniques, and uncertainties in the selection of hydrological model
52 structures and their parameters (Clark et al., 2016; Kundzewicz et al., 2018). Many studies have attempted to quantify the
53 impact of these uncertainties by using multiple GCMs/RCMs, bias correction techniques, hydrological model structures and/or
54 hydrological model parameter sets and propagating these uncertainties through the modelling chain. However, these studies
55 are often focused on small catchment samples as the large numbers of simulations needed are computationally demanding
56 (e.g., Bosshard et al., 2013; De Niel et al., 2019; Kay et al., 2009; Smith et al., 2014; Wilby & Harris, 2006). Studies generally
57 agree that modelling of the future climate presents the largest source of uncertainty (Engin et al., 2017; Kay et al., 2009; Meresa
58 and Romanowicz, 2017; De Niel et al., 2019). However, hydrological modelling uncertainties are not negligible. The relative
59 contribution of hydrological modelling uncertainties to total uncertainty has been shown to vary depending on catchment

characteristics (Addor et al., 2014) and for different aspects of the flow regime (Meresa and Romanowicz, 2017). Understanding and communicating modelling uncertainties has been widely recognised as important to inform robust decision-making (Clark et al., 2016; Reynard et al., 2017).

Many water-related policy decisions are made at the regional to national scale. For example, England has a national flood and coastal erosion risk management strategy (Environment Agency, 2020b). To inform these regional to national policy decisions, hydrological modelling studies which apply a consistent methodology across a large domain / large sample of catchments are most valuable, as they (i) provide a broad overview of future changes, (ii) provide locally relevant information, in contrast to global impact studies, and (iii) enable direct comparison between catchments to identify regions that will experience the most significant climate change impacts (Watts et al., 2015). Using a large sample of catchments also ensures a more robust evaluation of the relationship between climate change impacts and hydrological response.

Over the last decade, large-scale studies evaluating climate change impacts on hydrology have emerged, facilitated by the increased availability of data and computational resources. For example, Köplin et al. (2014) evaluated the changing seasonality and magnitude of floods for 189 catchments covering Switzerland, Thober et al. (2018) modelled changing river floods across Europe, Wang et al. (2012) evaluated changing water resources using the distributed VIC model across China, and a national grid-based model has been applied to explore climate change impact on floods and droughts across Great Britain (Bell et al., 2007, 2012, 2016; Kay & Crooks, 2014; Lane & Kay, in review; Rudd et al., 2019). While the use of a GCM/RCM ensemble to evaluate climate uncertainties has become increasingly common (e.g., Bell et al., 2016; Prudhomme et al., 2012; Rudd et al., 2019), the inclusion of hydrological model parameter uncertainties at the national scale is still rare for Great Britain. A notable exception is Christerson et al. (2012), who modelled the impact of changing climate for 70 catchments across the UK using two different hydrological model structures and ensembles of model parameters. However, this study was based on probabilistic climate projections which were not spatially coherent (i.e., projected variables were not consistent over space, and rainfall and precipitation products were not produced from the same simulation), and therefore did not present possible GB-wide changes but rather individual scenarios for each catchment. Incorporating hydrological model parameter uncertainties is important, as it has been shown that very different projections for future catchment behaviour can be provided by parameter sets with similar performance over a baseline period (Mendoza et al., 2015; Singh et al., 2014). However, there are currently no studies providing spatially coherent projections of future changes in flooding across entire Great Britain, which include both RCM and hydrological model parameter uncertainties.

An updated set of national climate projections has recently been released for the UK, UKCP18 (Lowe et al., 2019; Murphy et al., 2018). These have advanced upon previously available national projections (UKCP09) through (1) increased resolution of global climate model from ~300km to ~60km providing better representation of synoptic-scale weather systems, mountains and coastlines, (2) increased resolution of regional climate model from 25km to 12km, which may improve the representation

94 of extreme precipitation, (3) updated atmosphere model and improved parameterisations of many sub-grid scale processes,
95 and (4) improved representation of dynamical influences on regional climate variability such as improvements in predictions
96 of the winter North Atlantic Oscillation (NAO) (Murphy et al., 2018). Preliminary analysis has shown that probabilistic
97 projections produced as part of UKCP18 result in greater uncertainty ranges than the comparable UKCP09 projections (Kay
98 et al., 2020). The UKCP18 projections include a perturbed physics ensemble of regional climate model (RCM) projections at
99 12km resolution, providing 12 possible climate futures varying due to RCM parameter uncertainties. The implications of these
100 new climate simulations for river flows are of great interest, as the improved simulation of precipitation may improve
101 projections of future flooding.

102

103 This paper aims to explore the impact of the new UKCP18 climate projections for high flows across Great Britain (GB). A
104 climate-hydrological model cascade was employed, with output from an ensemble of 12 RCM projections used to drive a
105 nationally applied hydrological model with 30 distributed parameter fields. The resulting 360 future flow scenarios were
106 analysed to answer the following research questions:

- 107 1. What is the range in potential changes to median and higher flows (including median flows (Q50), high flow quantiles
108 (Q10 and Q1), annual maximum flows (AMAX) and number of peaks over threshold) across GB, due to parameter
109 uncertainties in climate and hydrological modelling?
- 110 2. How will changes in the magnitude and frequency of high flows vary spatially and by region?
- 111 3. What is the relationship between changing climate (precipitation and potential evapotranspiration) and high flow
112 response, and how does this vary by region?

113 Our study presents the first consistent climate change projections for high flows across GB (i.e., using spatially coherent
114 climate projections) to include both climate model and hydrological model parameter uncertainties. The incorporation of a
115 large sample of catchments also enabled robust and generalisable analysis on the relationship between climate forcing,
116 catchment characteristics and hydrological response, which will be relevant to future studies in GB and elsewhere.

117

118 **2 Methods and data**

119 **2.1 Overview**

120 This paper uses a climate-hydrological modelling chain to assess the implications of the UKCP18 climate projections for river
121 high flows across 346 catchments covering GB (see section 2.2 for catchment selection). An ensemble of 12 spatially coherent
122 regional climate model (RCM) projections are first bias-corrected (see section 2.3), and then used directly as inputs to the
123 DECIPHeR hydrological modelling framework to produce flow projections (see section 2.4). For each RCM ensemble
124 member, DECIPHeR simulations are carried out using 30 nationally consistent hydrological model parameter fields (see

section 2.4). The use of 12 RCMs and 30 hydrological model parameter sets results in 360 national simulations, representing uncertainty due to RCM and hydrological model parameterisation.

To explore climate change impacts on high flows, flow metrics were selected to assess median flows (Q50), high flow quantiles (Q10 and Q1), the magnitude of peak flows (AMAX), and the frequency of peak flows (see section 2.5). The skill of the climate-hydrological modelling chain was first evaluated relative to observed flow metrics, and then changes in flow metrics between the baseline (1985 –2010) and future (2050 –2075) periods were evaluated.

2.2 Catchment selection

A large sample of 346 catchments covering GB was selected for this study. This sample provides a dense coverage across GB, with catchments in all river basin districts, as shown in Figure 1. Gauging stations were selected from the UK National River Flow Archive (NRFA) Service Level Agreement (SLA) Network (Centre for Ecology and Hydrology, 2016; Dixon et al., 2013). This network of 715 gauges forms a subset of strategically valuable NRFA catchments, where additional validation and quality testing procedures have been carried out (Dixon et al., 2013). As hydrometeorological data were available on 12km grids at daily resolution, we chose to exclude catchments that were smaller than 144km² (i.e., one RCM grid), because for these small catchments local variation in precipitation could be problematic for the RCM ensemble scale, and for small flashy catchments sub-daily data would be required to capture high flow and peak responses effectively.

2.3 Climate model data

Climate scenarios representing changes in precipitation and potential evapotranspiration (PET) were derived from the UKCP18 regional climate projections (Murphy et al., 2018). These comprised a perturbed-physics ensemble of 12 regional climate model simulations, run at 12km resolution with daily output from 1981 to 2080 (Met Office Hadley Centre, 2019). These projections were chosen because they have many advantages over other available products for UK impact assessments, including 1) they were the highest resolution (12km) RCM climate model outputs available for a continuous run period over GB, 2) they were specifically developed for the UK and form the basis of UK climate policy (Murphy et al., 2018), 3) they included a measure of climate uncertainty through the use of an RCM ensemble, 4) they are UK specific climate projection tools designed to help decision-makers assess their risk exposure to climate and thus will for the first time inform important discussions of the uncertainty within climate impacts across GB-, 5) they were the newest national climate projections for GB, including the latest developments in climate modelling capability and scientific understanding, and therefore have not yet been comprehensively analysed in other impact studies. A key advantage of the RCM data over other UKCP18 products is that it has full spatial and temporal coherence and therefore allows for the assessment of interactions between changes in precipitation and PET as well as providing a nationally consistent picture of future changes (Met Office, 2020).

The 12 RCM projections were all driven by the same GCM (GC3.05), and ~~for the only the~~ RCP8.5 emissions scenario ~~was provided. We considered this to be the most important emissions scenario to look at for two reasons: 1) it shows the ‘worst case’ and so will most likely show the largest expected changes, and 2) the emissions in RCP8.5 are in close agreement with historical total cumulative CO₂ emissions and are therefore increasingly looking like a plausible future~~ (Schwalm et al., 2020). The ~~is~~ GC3.05 GCM has been shown to sample the warmer range of global outcomes (Lowe et al., 2019), and so combined with a single emissions scenario, ~~it is important to note that~~ we only sample the warmer range of possible climate outcomes. ~~A key advantage of this data over other UKCP18 products is that it has full spatial and temporal coherence and therefore allows for the assessment of interactions between changes in precipitation and PET as well as providing a nationally consistent picture of future changes (Met Office, 2020).~~

While precipitation data were available as an RCM output variable, PET time series needed to be derived from other relevant UKCP18 model outputs. There are many possible approaches to calculating PET from climate model data, with the choice of PET equation shown to impact the subsequent changes in PET over time (Kay & Davies, 2008; Prudhomme & Williamson, 2013). Here, PET was calculated to be consistent with the CHES-PE dataset used for hydrological model parameterisation (Robinson et al., 2015). The CHES-PE dataset uses the Penman-Monteith equation, calculating PET as a function of air temperature, specific humidity, wind speed, shortwave radiation, longwave radiation, and air pressure. These variables were all available as UKCP18 output apart from air pressure, which was calculated using the integral of the hypsometric equation with modelled temperature as an input (Shuttleworth, 2012)

Bias correction of climate model output data is often required for hydrological impact studies due to the occurrence of considerable biases in hydrologically relevant variables (Addor and Seibert, 2014; Cloke et al., 2013; Ning et al., 2012; Teutschbein and Seibert, 2012). An analysis of biases in the UKCP18 regional projections identified systematic biases in the model output precipitation and model-derived PET data (see Supplement S1 for more information). For precipitation, RCM biases included overpredictions of mean annual precipitation across GB by up to 50%, underpredictions of rainfall in wetter areas along the west coast, and an increased number of wet days (an average of around 15% more rainy days per year than observations). RCMs tend to overpredict the variance in PET, resulting in overestimations of PET in the south-east, where observed PET is high, and underestimations in Scotland as well as an incorrect seasonal variation with overestimations in summer (up to around +40%) and underestimations in winter (up to -100%). A bias correction method was required to reduce these biases in RCM precipitation and PET, so that they were suitable for hydrological modelling.

The choice of bias correction has been shown to impact the magnitude and spread of projected changes in flood-producing flows (Cloke et al., 2013; Smith et al., 2014), and should, therefore, be carefully considered. Techniques to directly adjust RCM simulations range from relatively simple linear scaling to more complex approaches such as quantile mapping (Teutschbein and Seibert, 2012). The delta change method, which modifies historical time series based on RCM-simulated

changes, is commonly applied (e.g., Veijalainen et al., 2010). However, this method cannot change the temporal sequencing of events, so it cannot evaluate changes in flood timing. The quantile mapping bias-correction approach was selected here for both precipitation and PET (this method has also been referred to as distribution mapping, probability mapping, model output statistics, or histogram equalisation). The quantile mapping approach accounts for errors in the variability of PET, and ensures that heavy precipitation events important for high flows were appropriately corrected as well as mean precipitation. It also corrected for biases in the number of wet days in the RCM data.

Observed precipitation and PET data used for bias correction came from the CEH-GEAR (Keller et al., 2015; Tanguy et al., 2014) and CHES-PE (Robinson et al., 2015) datasets respectively. For each grid-cell and month for precipitation the following steps were performed:

1. Empirical Cumulative Distribution Functions (CDFs) were calculated for the observed precipitation, and RCM simulated precipitation for the control/baseline period (all dates where observed and simulated precipitation were available).
2. The fractional change in precipitation between the observed and control/baseline simulated was calculated for each cumulative probability.
3. The whole simulated precipitation series was then bias-corrected. The cumulative probability of each precipitation value was calculated, and the value was modified by the fractional change for that cumulative probability.

The same method was carried out for PET, with a minor modification. It was found that for some Scottish catchments, fractional changes could become very large when PET values were low ($<0.1\text{mm/day}$) as a result of dividing by values close to 0. To prevent unrealistic spikes in future PET at low cumulative probabilities, a check was added to ensure that PET values at a low cumulative probability were always smaller than values at a higher cumulative probability. This bias correction methodology successfully reduced biases in RCM data over the observational period (see Supplement S1 for more information). However, it is important to note that bias correction assumes that (i) despite biases in hydrometeorological variables, the RCM output is still meaningful and changes in hydrometeorological variables are well simulated, and (ii) biases in RCM output are stationary and so methods of bias correcting baseline data also hold into the future, (iii) the observed data used in bias correction is not erroneous. The quantile mapping bias correction approach is also limited because there will be few observations to constrain the CDF at the extreme high end of observations (e.g., exceptionally heavy rainfall events), and therefore bias correction is likely to be less robust for the rarest events. Whilst potentially another interesting avenue of research in bias correction, namely wet/dry persistence bias, we decided not to pursue this analyses. Because we feel the matter is complex and requires a more dedicated paper on these issues and potential impacts, for example Moon et al. (2019) showed more wet/dry persistence biases between observed gridded rainfall products than between those and climate model outputs.

The bias-corrected RCM data was used directly as hydrological model input, with no further downscaling. This was possible due to the size of the catchments we have chosen to analyse coupled with the high resolution (12km) of the RCM data, which is a key advantage of the UKCP18 climate product over previous climate projections.

2.4 Hydrological modelling

The DECIPHeR hydrological modelling framework was selected to transform precipitation and PET into river flows (Coxon et al., 2019). DECIPHeR is a semi-distributed hydrological modelling framework which discretises the modelling domain into hydrological response units (HRUs). Here, the model was configured to be consistent with the 12km UKCP18 data, with HRUs defined by splitting the landscape into 12km input grids which were further sub-divided by accumulated area classes, slope classes and sub-catchment boundaries to capture topographic and catchment attribute controls in hydrological processes. This HRU-based approach enabled representation of the spatial variation of input time series, while being computationally efficient to facilitate the use of multiple hydrological and RCM parameter sets across the large sample of catchments. Here, we have selected the default model structure, which is based on the widely used TOPMODEL, and has previously been shown to perform well across GB and selected catchments (Coxon et al., 2019; Lane et al., in review). This model structure does not include a snow module, as snow processes were assumed not to substantially impact many GB catchments (95% of the catchments included in this study have less than 6% of precipitation falling as snow).

National fields of model parameters have been generated using the multiscale parameter regionalisation technique (Samaniego et al., 2010), as described in (Lane et al., in review.; Lane, 2021). This method relates model parameters to spatial catchment attribute data (including soil texture, land-use, and hydrogeology) via transfer functions. The coefficients of the transfer functions were then constrained simultaneously on a large sample of 437 British catchments, instead of directly constraining model parameters. Over 3500 possible parameter fields were produced, and of these, the top 30 parameter fields were selected for this study to explore the uncertainty due to model parameter selection. These parameter fields were selected as they produced non-parametric KGE scores (Pool et al., 2018) above 0.8, when taking the average value across the large sample of catchments in GB (Lane et al., in review). Using catchment attribute data to define the spatial distribution of model parameters means that parameter fields are spatially coherent with no artificial discontinuities (Mizukami et al., 2017; Samaniego et al., 2017). This is advantageous when modelling climate impacts for larger regions or entire countries, as it has been shown that artificial discontinuities in parameter fields can lead to discontinuities in modelled variables (Mizukami et al., 2017).

The DECIPHeR framework requires inputs of precipitation and PET, as well as spatial catchment attribute data for parameterisation. The model was driven continuously with climate data over the period 01/01/1981 – 30/12/2075, with 01/09/1985 – 30/8/2010 extracted as the baseline period and 01/09/2050 – 30/08/2075 being used as the future period in all further analysis. These 25-year baseline and future periods were selected to allow the maximum distance between the baseline and future. The choice to start the baseline period in 1985 was due to the need for a long hydrological model spin-up period

(1981-1985), which is required for some catchments in the south-east of England. Starting the baseline in 1985 gave over four years for a hydrological model warm-up period. Hydrological simulations were also carried out using observed data over the period 01/01/1981 – 30/08/2010, to provide a benchmark of model performance which the RCM-driven simulations could be compared against over the baseline. For these simulations, potential evapotranspiration data from the CHESS-PE dataset (Robinson et al., 2015) and precipitation data from CEH-GEAR (Keller et al., 2015) were re-gridded to match the UKCP18 12km data. All observed river flow data were from the UK National River Flow Archive (NRFA) (Centre for Ecology and Hydrology, 2016).

2.5 Hydrological indicators

To explore changes in the magnitude of high flows, we calculated the percentage changes in four different flow metrics between the baseline (1985-2010) and future (2050-2075) periods. Flow metrics calculated were 1) the average annual maximum (AMAX) flow, 2) Q1, the flow value exceeded 1% of the time, 3) Q10, the flow value exceeded 10% of the time, and 4) Q50, the median flow or flow value exceeded 50% of the time. These were selected to give a broad overview of future higher flow changes, ranging from flood flows (AMAX and Q1) to medianaverage-flows (Q50).

To analyse changes in the frequency of high flows, a peaks-over-threshold (POT) analysis was carried out. Thresholds were defined for each catchment to extract an average of three peaks per year over the baseline period. To ensure flood events were independent, no peak was selected within seven days of a larger peak. This selection was consistent with previous studies, for example, Svensson et al. (2005) used a five-day window for catchments smaller than 45,000 km² (the largest catchments in the UK are ~10,000 km²), while Petrow & Merz, (2009) used ten days for catchments across Germany. Having found a POT threshold for each catchment over the baseline that resulted in an average of 3 peaks per year, the number of peaks exceeding this threshold in the future period was counted. The percentage change between the count of 75 peaks total gained in the baseline and peaks gained in the future was then calculated as an indication of changes in the frequency of flood events.

3 Results

3.1 Meteorological changes

Median precipitation is projected to decrease almost everywhere. GB-average median precipitation is projected to decrease by 31-61% between the different RCMs, with the only exception being in west Scotland (Figure 3a). This decreasing median precipitation contrasts with very high precipitation (99th percentile), which is expected to increase across most of GB, by an average of 5-20%. The 90th percentile precipitation shows a more mixed picture, with GB-average changes of -9% to +6%. Generally, increases were simulated for areas along the west coast and in western Scotland, while decreases can be seen across southern England and Wales.

286

287 All RCMs indicate increasing PET over the modelled period (Figure 3b-c). These broadly align with observed PET across GB
288 between 1980-2010, although it is difficult to distinguish an upward trend in the observed PET data over such a short period.
289 GB-average PET values show increases of 23-38% between the baseline and future period, with the largest PET increases (33-
290 50%) seen in the south, and the smallest PET increases (11-19%) simulated for north-west Scotland. Note that these increases
291 in PET are likely linked to the fact that the UKCP18 projections sample the warmer range of possible climate outcomes (Lowe
292 et al., 2019).

293 3.2 Evaluation of climate-hydrological modelling chain

294 Overall, the simulations of the climate-hydrological modelling chain across GB bounded the observations (Figure 2). Our
295 evaluation focused on the performance for hydrological indicators relevant for higher flows, namely flow quantiles Q50, Q10,
296 and Q1 and AMAX flows. Catchments ~~wherewith~~ storage reservoirs and regulated flow regimes ~~impacted runoff-~~ were
297 removed for the model performance evaluation, as these processes are not included in the model meaning any errors in these
298 catchments would not be due to the driving data. However, the presence of reservoirs was not found to lead to a reduction in
299 model performance (see Supplement S2). The maps ~~in~~ (Figure 2a) show biases in the highest (i.e., wettest) and lowest (i.e.,
300 driest) simulation for each individual catchment from the ensemble of 12 RCMs and 30 hydrological model parameter sets
301 compared to observed flows. For catchments which are well represented by the modelling chain, we would expect simulated
302 flows to bound the observations. Therefore the highest simulation would show a small positive bias, and the lowest simulation
303 would show a small negative bias. For the majority of catchments (75% for Q50, 64% for Q10 and 65% for Q1) the model
304 simulations bound observed discharge. The model tends to underestimate AMAX flows in north-west England and Wales, and
305 overestimate in the south-east, with only 47% of simulations bounding the observed AMAX. For at least 70% of catchments
306 median biases are less than 30% for Q50, Q10 and Q1, and less than 36% for AMAX flows. However, the modelling chain
307 overestimated flows in the south-east across all high flow metrics. The difficulties of modelling catchments in south-east
308 England has been documented in previous studies (Coxon et al., 2019; Lane et al., 2019; Seibert et al., 2018), and is likely due
309 to complex aquifer systems facilitating inter-catchment groundwater flow. These catchments should, therefore, be treated with
310 caution when interpreting the results.

311

312 Model performances are shown in more detail for a selection of catchments covering a variety of error characteristics (Figure
313 2b). Here, error (i.e., bias) in modelled flow driven by RCM output (green) is compared to modelled flows driven by
314 observations (yellow) using the same 30 hydrological model parameter sets. For most gauges, simulated flows bound the
315 observations, even when driven by the RCM meteorological data. This result was expected as the RCM data has been bias-
316 corrected against observations, and therefore the RCM data will be similar to observations in magnitude, albeit with different
317 sequencing of events. There is no consistent relationship between model biases and flow percentiles, with gauge 9002 showing

an increased tendency to overestimate higher flows, while gauge 83013 showed a decreased tendency to overestimate higher flows.

3.3 Spatial changes in high flows across GB

Maps showing the spatial pattern of changes in high flow magnitude and frequency are presented for three example simulations in Figure 4. As the spatial pattern was similar between the ensemble members, we have focused on RCMs 13, 8 and 4 which represent low, average, and high GB-average projections respectively (calculated based on GB-average Q10 changes). These projections were selected to indicate the range in flow changes across GB, but plots for a larger number of scenarios, and showing absolute changes as well as percentage changes, are given in Supplement S32. It is important to note that the maps in Figure 4 are spatially coherent futures from single RCM ensemble projections and a single hydrological model parameter set. Therefore they do not reflect the full range of flow changes for each individual catchment that would be obtained by evaluating the entire RCM ensemble driven by all hydrological model parameter sets. Plots showing the ensemble range for each catchment are therefore also given in Supplement S32.

Despite differences between the example projections, there is a clear east/west divide for high flow magnitude metrics (AMAX, Q1 and Q10) with increased flows for catchments in the west and decreasing flows in the east. The largest percentage decreases in high flows are in eastern England, particularly in the Anglian river basin district, while the largest increases in flow are along the west coast. It is important to note that the large percentage changes in flows for the south-east could be due to the low baseline flow values, so small absolute changes will result in larger percentage changes (see Supplement S32 for presentation of absolute and percentage change maps). Median flow (Q50) projections indicate reductions in flow almost everywhere, but these reductions are generally lower for catchments in western Scotland. The frequency of high flow events, represented by changes to the number of peaks over threshold events, also shows general increases in the west and reductions in the south-east. The spatial pattern is very similar to the changes to high flow magnitude, indicating that western catchments could experience larger annual maximum floods combined with more frequent high flow events.

3.4 Regional changes and uncertainties

Changes for the hydrological indices for the different RCMs and across regions were visualized by heatmaps to enable easy comparison (Figure 5). These heatmaps present the median flow values from the sample of hydrological model parameters for each flow statistic, with the full range of regional projections presented in Table 1. They highlight similarities between RCM members: most RCM ensembles result in increasing AMAX flows in Scotland, northern England, and west Wales, and decreasing AMAX flows in the Anglian river basin district. Most RCM ensembles also result in decreasing Q50 flows everywhere except for the Argyll and West Highland districts in west Scotland. However, there are also important differences between the different RCM projections, including; i) differences in the spatial variation of changes across GB, for example

RCM 15 shows relatively little variation between regions (range of 28% between AMAX projections) while RCM 11 shows a large variation (range of 104%), ii) differences in the magnitude of projected changes for each region, for example NW England projections for Q10 range from -16% to +20% between RCMs, and iii) the tendency for some RCMs to simulate increases in flow (e.g., RCM 04) while others tend towards decreases (e.g., RCM 13) which relates to relative change in 99th percentile precipitation (see Figure 3). These differences demonstrate the importance of considering multiple RCMs, to show a more complete picture of potential future changes.

RCM parameters were a larger source of uncertainty in median and high flow changes than hydrological model parameters (see Figure 6). This finding agrees with previous studies that have investigated high flows, which generally find climate models to be the largest source of uncertainty in hydrological climate impact assessments (Addor et al., 2014; Bosshard et al., 2013; Kay et al., 2009). However, hydrological model parameters selection is a large source of uncertainty in the south-east, especially in the Anglian river basin region. This region receives relatively little precipitation compared to the rest of GB. Previous studies have shown that drier catchments are more sensitive to parameter selection, with fewer good parameter sets for drier than for wet catchments (Lane et al., 2019). It is however possible that high percentage differences in the south-east are due to the lower river flow values magnifying the percentage value of any changes.

3.5 Relationship between climate changes, flow changes and catchment characteristics

The relationship between precipitation change (95th precipitation percentile) and change in flood flows (Q1) across all catchments, and RCMs is presented in Figure 7. Additional plots showing this relationship for other precipitation change metrics, flow change metrics and hydrological model parameter selections are given in Supplement S4. This shows that there is a strong positive correlation between precipitation change and flood response, albeit with a large variation between catchments. The non-linearity between changing precipitation and changing Q1 flows can be seen, with a 25% increase in precipitation leading to a 20-50% increase in Q1. Surprisingly, for some catchments, heavy precipitation increases yet there is a reduction in Q1 flows (i.e., catchments in the bottom right quadrant of Figure 7). This flow reduction could be due to the contrasting effect of increasing PET, resulting in generally drier ~~antecedent~~antecedent conditions for catchments and thus reduced flows due to the increases in soil moisture storage deficits.

The relationship between change in 95th percentile precipitation, total PET and Q1 is given in Figure 8; other variations of precipitation, PET and flow changes produced similar results (but are not shown). There is a clear relationship between climate forcing and hydrological response. Increased heavy precipitation tends to lead to increased Q1, while decreased or unchanged heavy precipitation, combined with increasing PET, leads to reduced Q1 flows. The range in climatic changes is different for each region (see Figure 8b), which is a key reason for the regional differences in Q1 changes. However, the hydrological response differed between regions for the same climate forcing. For example, a 6% decrease in 95th percentile precipitation and over 45% increase in total PET leads to an average 53% reduction in Q1 in the Anglian river basin district, but only an

average 15% decrease in Q1 in the Thames region in the South-east. These results highlight the importance of how multiple climatic factors impact regional flow responses differently due to the non-linearity within the hydrological processes.

The observed runoff coefficient (runoff divided by precipitation) helped to explain these regional differences in catchment flow response to climatic change inputs. Figure 9 shows the relationship between 95th precipitation, PET and Q1 changes, with catchments grouped by Runoff Coefficient classes. Catchments with relatively low runoff coefficients tend to show a higher sensitivity to the increasing PET. They are therefore more likely to see decreasing Q1 flows even with small (<5%) increases in heavy precipitation. These catchments are often drier catchments, and so heavy precipitation events may fill storage deficits rather than result in increased river flow. Other catchment properties, such as deep soils or permeable geology may also contribute to water being retained in the catchment. By contrast, catchments with high runoff coefficients show more sensitivity to changes in heavy precipitation, and very small (5%) increases in precipitation can lead to increases in Q1 of up to 25%. These are often wetter catchments, or catchments with other properties such as steep slopes or impermeable soils, where increases in heavy rainfall will directly result in increases in flood flows.

4 Discussion

4.1 Future changes to high flows across GB

Despite large uncertainties, some clear patterns of climate change impact on flooding across GB emerged. Projections indicated decreasing median flows (Q50) across all regions except for the Clyde and West Highland river basin regions where Q50 changes ranged between -42% to +19%. The overall decrease in Q50 was likely due to reduced average precipitation and nationwide increases in PET projected by all the RCMs.

Increased flood flow magnitudes (AMAX) and frequency were projected for all RCMs along the west coast (excluding the south-west) and across most of Scotland, while decreasing flood flows were projected for the Anglian river basin region in east England using the median of all hydrological model parameter sets. These results are consistent with Collet et al. (2018), who found that hydro-hazard hotspots were likely to develop along the west coast and north-eastern Scotland. Kay et al. (2014) also modelled large increases to flood peaks in north-west Scotland. However, our results contrast with Bell et al. (2016) and Kay, et al. (2014), which both found relatively large increases in flood flows in the south-east and Anglian in particular. This contrast could be due to the different metric studied (Bell et al. (2016) and Kay, et al. (2014) both showed percentage changes in 20-year return period floods, while we show changes in AMAX floods), or other methodological differences such as hydrological model or climate projections. However, we found hydrological modelling studies to be particularly large for the Anglian region and therefore increases in AMAX flows were within the total uncertainty range of a -74% to +19% change, in line with these previous studies.

Our modelled changes in AMAX and high flow magnitudes (Table 1) will be useful to inform climate change adaptation, for example in ensuring correct allowances are made for changing fluvial flood risk in new developments. To account for the potential impact of changing flood risk, the national planning policy for England requires that developments are safe from flood risk throughout their lifetime by applying an allowance for the potential impact of climate change (Reynard et al., 2017). These have evolved from a simple 20% allowance applied nationally, to a range of allowances for each river basin district that represent the central (50th percentile), the higher central (70th percentile), the upper end (90th percentile) and the H++ (highest) projections of changes to peak river flows (Environment Agency, 2020a). Our highest regional projections are within the H++ government allowances for southern and central England, but our highest projections exceed the government H++ peak flow allowances for northern England (Solway, Tweed, Northumbria and North-west England river basin districts). In particular, the H++ allowance for peak flow changes in the Tweed river basin is 35% for the 2050s (Environment Agency, 2020a), but our projections include peak flow changes of up to 59%. Therefore, our projections indicate that current guidance could be underestimating the potential risks from climate change for northern England. However, the use of different time-periods (we modelled changes by 2050-2075 whereas the government allowances cover the period 2040-2069) restricts the comparability of these results.

4.2 Relationship between climate changes and hydrological response

It is often assumed that increases in extreme precipitation will lead to increases in flood flows (Sharma et al., 2018). However, while there is observational evidence of increasing precipitation extremes, there is no compelling evidence for any systematic increases in flooding which can be attributed to climate change (Hannaford, 2015; Watts et al., 2015). Understanding the link between changing precipitation and changing floods has, therefore, been highlighted as an important challenge for the hydrologic community (Sharma et al., 2018). Here we found that while there was a strong positive relationship between changes in heavy precipitation (as characterised by changes in the 95th percentile precipitation) and changes in high flows (Q1), there were catchments where precipitation was increasing yet modelled flood flows were decreasing. These catchments were found to have large increases in PET – and therefore the impact of drier soils and increased storage deficits could have moderated the impact of increased heavy precipitation on river flows.

We found that the relationship between changes in heavy precipitation, total PET and changes to flood flows varied between river basin regions. The catchment runoff coefficient (average river flow divided by average precipitation) helped to explain this variation; for catchments with high runoff coefficients precipitation increases most directly related to increased flood flows, while catchments with low runoff coefficients showed a greater response to increasing PET. This in part relates to previous studies finding that there is a more direct link between heavy rainfall and high flows in wetter catchments (Charlton and Arnell, 2014; Ivancic and Shaw, 2015), as there is a general relationship between the runoff coefficient and catchment wetness. It's important to realise that the interplay between general runoff co-efficients of different catchment typologies and the amount they are impacted by changes in both evaporation and precipitation to Q1 high flow sensitivity is not consistent,

as shown in Figure 9. Therefore we recognise that impacts to high flows are multifaceted and the uniqueness of catchment characteristics and climatological differences needs to be taken into account when quantifying climate change impacts. This result highlights that it is important to recognise the complexities of flow change resulting from multiple climatic drivers and non-linear hydrological processes.

4.3 Uncertainties in climate impacts on high flows

Our results highlight the importance of considering uncertainty in projections of climate change on flood flows. The selection of RCM parameters impacted not only the range of future changes for each region (often disagreeing on the direction of change), but also variation in changes between regions, and to some extent the spatial pattern of changes across GB. This, combined with hydrological modelling uncertainties, resulted in the large ranges in future changes given in Table 1. The overall picture of climate change impact on flows differed between the four selected metrics, showing the importance of metric selection and consideration of multiple metrics in model evaluation and impact studies. ~~The selection of metrics used to explore climate impacts was a further source of uncertainty; the picture of climate change impacts on flows differed between the four metrics presented here.~~ The incorporation of multiple uncertainty sources, therefore, prevents an overconfident portrayal of climate change impacts on high flows, which could be misleading if used to inform future planning or policy decisions (Buurman and Babovic, 2016; Kundzewicz et al., 2018).

Previous studies found hydrological modelling uncertainties to be small relative to climate modelling uncertainties, especially when considering high flows (Chegwidden et al., 2019; Chen et al., 2011; Velázquez et al., 2013). For example, Chegwidden et al., (2019) used an ensemble of two RCPs, 10 GCMs, two downscaling methods and four hydrological model structures in their analysis of climate change impacts on annual streamflow across the Pacific Northwest of North America, finding that GCMs were overall the dominant contributor to the variance in projected changes. Our results generally support these previous findings, showing that the variation in future changes between RCMs is much larger than the variation between behavioural hydrological model parameter sets. However, we observed substantial hydrological modelling uncertainties for catchments in England, particularly for the Anglian river basin and drier catchments in the south-east. It is likely that interactions between the RCMs and hydrological model parameters also contribute to the total uncertainty where behaviour is not linear. For example, the AMAX variation between different hydrological model parameter sets may depend on the winter rainfall projection from the driving RCM, where certain RCM projections may lie on a threshold which produces a large difference in hydrological response between models. It has previously been shown that interactions between uncertainty sources can account for 5-40% of the total uncertainty in hydrological climate change impacts studies (Bosshard et al., 2013). This emphasized that while uncertainties in future climate may dominate, uncertainties due to hydrological model parameters are not negligible.

There are many uncertainty sources that we were not able to incorporate. In addition to RCM and hydrological model parameters, sources of uncertainty in hydrological climate impact studies include the future emissions scenario, structure and

parameterisation of the global climate model (GCM), bias correction methods, PE estimation equation, and hydrological model structure (Bosshard et al., 2013; Kay et al., 2009; Prudhomme and Davies, 2009; Wilby and Harris, 2006). The RCM ensemble projections applied here were all driven by the same GCM and emissions scenario, and so do not sample the full range of climate uncertainty. Other GCMs may have resulted in different precipitation trends into the future. Therefore, while our results provide a useful indication of the range in future changes to high flow metrics across GB the true uncertainty ranges are likely to be much larger.

A further limitation of this study is that the hydrological modelling framework did not include snow accumulation and melt processes. However, snow fractions are generally very low across GB, with a median snow fraction of 0.01, except for catchments in north-east Scotland where it reaches a maximum of 0.17 (Coxon et al., 2020). The impact of including a snow module on climate change projections for peak flows was investigated by Bell et al. (2016). They found that across most of GB the inclusion of a snowmelt regime led to small percentage differences in peak flow changes of less than 6%. However, snowmelt processes were shown to be important for upland parts of GB, mainly in East Scotland, where the reduced presence of snow in the future could have a large impact on river flows. Therefore, the results of our study need to be interpreted with caution in these upland catchments.

5 Conclusions

In this study we modelled climate change impact on the magnitude and frequency of high flows across 346 catchments in GB, considering both RCM and hydrological model parameter uncertainties for the first time at the national scale. The latest UK Climate Projections (UKCP18) were used to generate 12 spatially coherent and equally plausible time-series of precipitation and PET. These were then used to drive the DECIPHeR hydrological modelling framework, using 30 nationally consistent parameter fields. The resultant 360 future flow projections were used to investigate the range of changes in high flow magnitude and frequency between baseline (1985 - 2010) and future (2050 - 2075) scenarios, as well as the relationship between climatic change and hydrological response.

Generally, results indicated increasing magnitude and frequency of flood flows for catchments along the west coast of GB, and across most of Scotland. For western Scotland, region-average increases in annual maximum flows of up to 65% were projected. The Anglian and Thames river basins in eastern England generally showed decreasing flood magnitude and frequency. However, hydrological modelling uncertainty was high for these areas and therefore increases in flood magnitude were also within the ensemble range.

Regional differences in high flow changes were related to i) differences in climatic change signals and ii) differences in catchment conditions during the baseline period as characterised by the runoff coefficient (total discharge/precipitation). A

512 strong relationship was found between increasing heavy precipitation and increasing flood flows, alongside the moderating
513 impact of increased PET. This relationship differed between catchments; catchments with high runoff coefficients were found
514 to have a more direct response of flood flows to precipitation change, while catchments with low runoff coefficients were more
515 responsive to increased PET often resulting in very large reductions in Q1 flows (-50%) in areas with small (-5%) reductions
516 in 95th percentile precipitation.

517
518 Our results highlight the importance of considering uncertainties in climate impact studies. The variation between RCMs was
519 the largest source of uncertainty, with differences in both the magnitude of projected changes for individual regions and the
520 variability between regions. Hydrological modelling uncertainties were smaller, but still considerable for catchments in east
521 and south-east England.

522
523 This paper provides a national overview of projected future changes in median and higher flows across GB, with the full
524 ensemble range in projected changes given for each region. This information will be useful for decision-makers who have a
525 role in managing or planning water in GB, for example in water companies, regulators and government.

526
527 Author contribution

528 RL, JF, GC, JS and TW were involved in the project conceptualization and design of methodology. RL, GC and JF were
529 involved in the data curation. RL and GC setup the DECIPHeR model to run using UKCP18 data. RL carried out the model
530 parameterisation, model runs, data analysis, visualisation and writing with comments and edits from all co-authors.

531
532 Acknowledgements

533 We would like to acknowledge Emma Robinson for providing code used to calculate PET for the CHESSE-PE dataset, and for
534 her advice in applying this to the UKCP18 data. We would also like to thank Louise Slater and Jeff Neal for their helpful
535 comments on the manuscript. This work is funded as part of the Water Informatics Science and Engineering Centre for Doctoral
536 Training (WISE CDT) under a grant from the Engineering and Physical Sciences Research Council (EPSRC; grant number
537 EP/L016214/1). Jim Freer was partly funded for his time by the Global Water Futures program, University of Saskatchewan.
538 Support for Thorsten Wagener comes from the Alexander von Humboldt Foundation in the framework of the Alexander von
539 Humboldt Professorship endowed by the German Federal Ministry of Education and Research.

540
541 Code availability

542 The DECIPHeR model code is open-source and freely available under the terms of the GNU General Public License version
543 3.0. The model code is written in Fortran and is provided through a Github repository: [https://github.com/uob-hydrology/](https://github.com/uob-hydrology/DECIPHeR)
544 DECIPHeR. Code for the model parameterisation is available to view at <http://doi.org/10.5281/zenodo.4646179>.

546 Data availability
547 All precipitation, PET and discharge datasets used in this study are freely available. The CEH-GEAR and CHESS-PE datasets
548 are freely available from CEH's Environmental Information Data Centre and can be accessed through [https://doi.org/10.5285/](https://doi.org/10.5285/5dc179dc-f692-49ba-9326-a6893a503f6e)
549 [5dc179dc-f692-49ba-9326-a6893a503f6e](https://doi.org/10.5285/5dc179dc-f692-49ba-9326-a6893a503f6e) (Tanguy et al., 2014) and [https://doi.org/10.5285/8baf805d-39ce-4dac-b224-](https://doi.org/10.5285/8baf805d-39ce-4dac-b224-c926ada353b7)
550 [c926ada353b7](https://doi.org/10.5285/8baf805d-39ce-4dac-b224-c926ada353b7) (Robinson et al., 2015a) respectively. Observed discharge data from the NRFA are available from the NRFA
551 website. The UK Climate Projections data is available to download from the CEDA Archive (Met Office Hadley Centre, 2020).
552 Model outputs presented in this paper unfortunately cannot be made open access due to license restrictions on the datasets
553 used to parameterise the model.

554 Competing interests

555 The authors declare that they have no conflict of interest.

560 References

- 561 Addor, N. and Seibert, J.: Bias correction for hydrological impact studies - beyond the daily perspective, *Hydrol. Process.*,
562 28(17), 4823–4828, doi:10.1002/hyp.10238, 2014.
- 563 Addor, N., Rössler, O., Köplin, N., Huss, M., Weingartner, R. and Seibert, J.: Robust changes and sources of uncertainty in
564 the projected hydrological regimes of Swiss catchments, *Water Resour. Res.*, 50(10), 7541–7562,
565 doi:10.1002/2014WR015549, 2014.
- 566 Arnell, N. W.: Uncertainty in the relationship between climate forcing and hydrological response in UK catchments, *Hydrol.*
567 *Earth Syst. Sci.*, doi:10.5194/hess-15-897-2011, 2011.
- 568 Bell, V. A., Kay, A. L., Jones, R. G. and Moore, R. J.: Use of a grid-based hydrological model and regional climate model
569 outputs to assess changing flood risk, *Int. J. Climatol.*, 27(12), 1657–1671, doi:10.1002/joc.1539, 2007.
- 570 Bell, V. A., Kay, A. L., Cole, S. J., Jones, R. G., Moore, R. J. and Reynard, N. S.: How might climate change affect river flows
571 across the Thames Basin? An area-wide analysis using the UKCP09 Regional Climate Model ensemble, *J. Hydrol.*, 442–443,
572 89–104, doi:10.1016/j.jhydrol.2012.04.001, 2012.
- 573 Bell, V. A., Kay, A. L., Davies, H. N. and Jones, R. G.: An assessment of the possible impacts of climate change on snow and
574 peak river flows across Britain, *Clim. Change*, 136(3–4), 539–553, doi:10.1007/s10584-016-1637-x, 2016.
- 575 Bosshard, T., Carambia, M., Goergen, K., Kotlarski, S., Krahe, P., Zappa, M. and Schar, C.: Quantifying uncertainty sources
576 in an ensemble of hydrological climate-impact projections, *Water Resour. Res.*, 49(3), 1523–1536,
577 doi:10.1029/2011WR011533, 2013.

578 Brown, C. M., Lund, J. R., Cai, X., Reed, P. M., Zagona, E. A., Ostfeld, A., Hall, J., Characklis, G. W., Yu, W. and Brekke,
579 L.: The future of water resources systems analysis: Toward a scientific framework for sustainable water management, *Water*
580 *Resour. Res.*, doi:10.1002/2015WR017114, 2015.

581 Buurman, J. and Babovic, V.: Adaptation Pathways and Real Options Analysis: An approach to deep uncertainty in climate
582 change adaptation policies, *Policy Soc.*, doi:10.1016/j.polsoc.2016.05.002, 2016.

583 Centre for Ecology and Hydrology: National River Flow Archive, [online] Available from: <http://nrfa.ceh.ac.uk/> (Accessed 23
584 January 2017), 2016.

585 Charlton, M. B. and Arnell, N. W.: Assessing the impacts of climate change on river flows in England using the UKCP09
586 climate change projections, *J. Hydrol.*, 519(PB), 1723–1738, doi:10.1016/j.jhydrol.2014.09.008, 2014.

587 Chegwiddden, O. S., Nijssen, B., Rupp, D. E., Arnold, J. R., Clark, M. P., Hamman, J. J., Kao, S., Mao, Y., Mizukami, N.,
588 Mote, P. W., Pan, M., Pytlak, E. and Xiao, M.: How Do Modeling Decisions Affect the Spread Among Hydrologic Climate
589 Change Projections? Exploring a Large Ensemble of Simulations Across a Diversity of Hydroclimates, *Earth’s Futur.*, 7(6),
590 623–637, doi:10.1029/2018EF001047, 2019.

591 Chen, J., Brissette, F. P., Poulin, A. and Leconte, R.: Overall uncertainty study of the hydrological impacts of climate change
592 for a Canadian watershed, *Water Resour. Res.*, doi:10.1029/2011WR010602, 2011.

593 Christierson, B. v., Vidal, J.-P. and Wade, S. D.: Using UKCP09 probabilistic climate information for UK water resource
594 planning, *J. Hydrol.*, 424–425, 48–67, doi:10.1016/j.jhydrol.2011.12.020, 2012.

595 Clark, M. P., Wilby, R. L., Gutmann, E. D., Vano, J. A., Gangopadhyay, S., Wood, A. W., Fowler, H. J., Prudhomme, C.,
596 Arnold, J. A. and Brekke, L. D.: Characterizing uncertainty of the hydrologic impacts of climate change, *Curr. Clim. Chang.*
597 *Reports*, 55–64, doi:10.1007/s40641-016-0034-x, 2016.

598 Cloke, H. L., Wetterhall, F., He, Y., Freer, J. E. and Pappenberger, F.: Modelling climate impact on floods with ensemble
599 climate projections, *Q. J. R. Meteorol. Soc.*, 139(671), 282–297, doi:10.1002/qj.1998, 2013.

600 Collet, L., Harrigan, S., Prudhomme, C., Formetta, G. and Beevers, L.: Future hot-spots for hydro-hazards in Great Britain: a
601 probabilistic assessment, *Hydrol. Earth Syst. Sci.*, 22(10), 5387–5401, doi:10.5194/hess-22-5387-2018, 2018.

602 Coxon, G., Freer, J., Lane, R., Dunne, T., Knoben, W. J. M., Howden, N. J. K., Quinn, N., Wagener, T. and Woods, R.:
603 DECIPHeR v1: Dynamic fluxEs and ConnectIvity for Predictions of HydRology, *Geosci. Model Dev.*, doi:10.5194/gmd-12-
604 2285-2019, 2019.

605 Coxon, G., Addor, N., Bloomfield, J., Freer, J., Fry, M., Hannaford, J., Howden, N., Lane, R., Lewis, M., Robinson, E.,
606 Wagener, T. and Woods, R.: CAMELS-GB: Hydrometeorological time series and landscape attributes for 671 catchments in
607 Great Britain, *Earth Syst. Sci. Data*, doi:10.5194/essd-2020-49, 2020.

608 Dixon, H., Hannaford, J. and Fry, M. J.: The effective management of national hydrometric data: experiences from the United
609 Kingdom, *Hydrol. Sci. J.*, doi:10.1080/02626667.2013.787486, 2013.

610 Eicker, A., Forootan, E., Springer, A., Longuevergne, L. and Kusche, J.: Does GRACE see the terrestrial water cycle
611 “intensifying”? *J. Geophys. Res.*, doi:10.1002/2015JD023808, 2016.

Engin, B. E., Yücel, I. and Yilmaz, A.: Assessing different sources of uncertainty in hydrological projections of high and low flows: case study for Omerli Basin, Istanbul, Turkey, *Environ. Monit. Assess.*, doi:10.1007/s10661-017-6059-3, 2017.

Environment Agency: Flood risk assessments: climate change allowances' Guidance, [online] Available from: <https://www.gov.uk/guidance/flood-risk-assessments-climate-change-allowances> (Accessed 25 November 2020a), 2020.

Environment Agency: National Flood and Coastal Erosion Risk Management Strategy for England., 2020b.

Fowler, H. J. and Ekström, M.: Multi-model ensemble estimates of climate change impacts on UK seasonal precipitation extremes, *Int. J. Climatol.*, 29(3), 385–416, doi:10.1002/joc.1827, 2009.

Hannaford, J.: Climate-driven changes in UK river flows: A review of the evidence, *Prog. Phys. Geogr.*, 39(1), 29–48, doi:10.1177/0309133314536755, 2015.

Huntington, T. G.: Evidence for intensification of the global water cycle : Review and synthesis, *J. Hydrol.*, 319, 83–95, doi:10.1016/j.jhydrol.2005.07.003, 2006.

IPCC: Climate Change 2013 - The Physical Science Basis, edited by Intergovernmental Panel on Climate Change, Cambridge University Press, Cambridge., 2014.

Ivancic, T. J. and Shaw, S. B.: Examining why trends in very heavy precipitation should not be mistaken for trends in very high river discharge, *Clim. Change*, doi:10.1007/s10584-015-1476-1, 2015.

Kay, A. L. and Crooks, S. M.: An investigation of the effect of transient climate change on snowmelt, flood frequency and timing in northern Britain, *Int. J. Climatol.*, 34(12), 3368–3381, doi:10.1002/joc.3913, 2014.

Kay, A. L. and Davies, H. N.: Calculating potential evaporation from climate model data: A source of uncertainty for hydrological climate change impacts, *J. Hydrol.*, doi:10.1016/j.jhydrol.2008.06.005, 2008.

Kay, A. L., Davies, H. N., Bell, V. A. and Jones, R. G.: Comparison of uncertainty sources for climate change impacts: flood frequency in England, *Clim. Change*, 92(1–2), 41–63, doi:10.1007/s10584-008-9471-4, 2009.

Kay, A. L., Crooks, S. M., Davies, H. N., Prudhomme, C. and Reynard, N. S.: Probabilistic impacts of climate change on flood frequency using response surfaces I: England and Wales, *Reg. Environ. Chang.*, 14(3), 1215–1227, doi:10.1007/s10113-013-0563-y, 2014a.

Kay, A. L., Crooks, S. M., Davies, H. N. and Reynard, N. S.: Probabilistic impacts of climate change on flood frequency using response surfaces II: Scotland, *Reg. Environ. Chang.*, 14(3), 1243–1255, doi:10.1007/s10113-013-0564-x, 2014b.

Kay, A. L., Watts, G., Wells, S. C. and Allen, S.: The impact of climate change on U. K. river flows: A preliminary comparison of two generations of probabilistic climate projections, *Hydrol. Process.*, 34(4), 1081–1088, doi:10.1002/hyp.13644, 2020.

Keller, V. D. J. J., Tanguy, M., Prodocimi, I., Terry, J. A., Hitt, O., Cole, S. J., Fry, M., Morris, D. G. and Dixon, H.: CEH-GEAR : 1 km resolution daily and monthly areal rainfall estimates for the UK for hydrological and other applications, *Earth Syst. Sci. Data*, 7, 143–155, doi:10.5194/essd-7-143-2015, 2015.

Köplin, N., Schädler, B., Viviroli, D. and Weingartner, R.: Seasonality and magnitude of floods in Switzerland under future climate change, *Hydrol. Process.*, doi:10.1002/hyp.9757, 2014.

Kundzewicz, Z. W., Krysanova, V., Benestad, R. E., Hov, Piniewski, M. and Otto, I. M.: Uncertainty in climate change impacts

on water resources, *Environ. Sci. Policy*, doi:10.1016/j.envsci.2017.10.008, 2018.

Laizé, C. L. R. and Hannah, D. M.: Modification of climate-river flow associations by basin properties, *J. Hydrol.*, 389(1–2), 186–204, doi:10.1016/j.jhydrol.2010.05.048, 2010.

Lane, R., Coxon, G., Freer, J., Wagener, T., Johnes, P., Bloomfield, J., Greene, S., Macleod, C. and Reaney, S.: Benchmarking the predictive capability of hydrological models for river flow and flood peak predictions across over 1000 catchments in Great Britain, *Hydrol. Earth Syst. Sci.*, doi:10.5194/hess-23-4011-2019, 2019.

Lane, R., Freer, J., Coxon, G. and Wagener, T.: Incorporating uncertainty into multiscale parameter regionalisation to produce national parameter fields for a hydrological model, n.d.

Lane, R. A.: National-scale hydrological modelling of high flows across Great Britain: multi-model structures, regionalisation approaches and climate change analysis with uncertainty, University of Bristol. [online] Available from: <https://research-information.bris.ac.uk/en/studentTheses/national-scale-hydrological-modelling-of-high-flows-across-great->, 2021.

Lane, R. A. and Kay, A. L.: Climate Change Impact on the Magnitude and Timing of Hydrological Extremes Across Great Britain, *Front. Water*, 3, doi:10.3389/frwa.2021.684982, 2021.

Lowe, J. A., Bernie, D., Bett, P., Bricheno, L., Brown, S., Calvert, D., Clark, R., Eagle, K., Edwards, T., Fosser, G., Fung, F., Gohar, L., Good, P., Gregory, J., Harris, G., Howard, T., Kaye, N., Kendon, E., Krijnen, J., Maisey, P., McDonald, R., McInnes, R., McSweeney, C., Mitchell, J., Murphy, J., Palmer, M., Roberts, C., Rostron, J., Sexton, D., Thornton, H., Tinker, J., Tucker, S., Yamazaki, K. and Belcher, S.: UKCP18 Science Overview Report: Version 2.0. [online] Available from: <https://www.metoffice.gov.uk/pub/data/weather/uk/ukcp18/science-reports/UKCP18-Overview-report.pdf>, 2019.

Mendoza, P. A., Clark, M. P., Mizukami, N., Newman, A. J., Barlage, M., Gutmann, E. D., Rasmussen, R. M., Rajagopalan, B., Brekke, L. D. and Arnold, J. R.: Effects of Hydrologic Model Choice and Calibration on the Portrayal of Climate Change Impacts, *J. Hydrometeorol.*, 16(2), 762–780, doi:10.1175/JHM-D-14-0104.1, 2015.

Meresa, H. K. and Romanowicz, R. J.: The critical role of uncertainty in projections of hydrological extremes, *Hydrol. Earth Syst. Sci.*, doi:10.5194/hess-21-4245-2017, 2017.

Met Office: UK Climate Projections: Headline Findings, Exeter. [online] Available from: <https://www.metoffice.gov.uk/binaries/content/assets/metofficegovuk/pdf/research/ukcp/ukcp-headline-findings-v2.pdf>, 2019.

Met Office: Regional (12km) and Local (2.2km) Projections, [online] Available from: <https://www.metoffice.gov.uk/research/approach/collaboration/ukcp/high-res-projections> (Accessed 30 June 2020), 2020.

Met Office Hadley Centre: UKCP18 Guidance: Data availability, access and formats. [online] Available from: <https://www.metoffice.gov.uk/binaries/content/assets/metofficegovuk/pdf/research/ukcp/ukcp18-guidance-data-availability-access-and-formats.pdf>, 2019.

Mizukami, N., Clark, M. P., Newman, A. J., Wood, A. W., Gutmann, E. D., Nijssen, B., Rakovec, O. and Samaniego, L.: Towards seamless large-domain parameter estimation for hydrologic models, *Water Resour. Res.*, 53(9), 8020–8040, doi:10.1002/2017WR020401, 2017.

680 Moon, Heewon, Lukas Gudmundsson, Benoit P. Guillod, Vuruputur Venugopal, and Sonia I. Seneviratne. "Intercomparison
681 of daily precipitation persistence in multiple global observations and climate models." *Environmental Research Letters* 14, no.
682 10 (2019): 105009.

683 Murphy, J. M., Harris, G. R., Sexton, D. M. H., Kendon, E. J., Bett, P. E., Clark, R. T., Eagle, K. E., Fosser, G., Fung, F.,
684 Lowe, J. A., McDonald, R. E., McInnes, R. N., McSweeney, C. F., Mitchell, J. F. B., Rostron, J. W., Thornton, H. E., Tucker,
685 S., Yamazaki, K. and Murphy: UKCP18 Land Projections: Science Report. [online] Available from:
686 <https://www.metoffice.gov.uk/pub/data/weather/uk/ukcp18/science-reports/UKCP18-Land-report.pdf>, 2018.

687 De Niel, J., Van Uytven, E. and Willems, P.: Uncertainty Analysis of Climate Change Impact on River Flow Extremes Based
688 on a Large Multi-Model Ensemble, *Water Resour. Manag.*, 33(12), 4319–4333, doi:10.1007/s11269-019-02370-0, 2019.

689 Nikulin, G., Kjellström, E., Hansson, U., Strandberg, G. and Ullerstig, A.: Evaluation and future projections of temperature,
690 precipitation and wind extremes over Europe in an ensemble of regional climate simulations, *Tellus, Ser. A Dyn. Meteorol.*
691 *Oceanogr.*, doi:10.1111/j.1600-0870.2010.00466.x, 2011.

692 Ning, L., Mann, M. E., Crane, R. and Wagener, T.: Probabilistic projections of climate change for the mid-Atlantic region of
693 the United States: Validation of precipitation downscaling during the historical era, *J. Clim.*, doi:10.1175/2011JCLI4091.1,
694 2012.

695 Petrow, T. and Merz, B.: Trends in flood magnitude, frequency and seasonality in Germany in the period 1951-2002, *J. Hydrol.*,
696 doi:10.1016/j.jhydrol.2009.03.024, 2009.

697 Pool, S., Vis, M. and Seibert, J.: Evaluating model performance: towards a non-parametric variant of the Kling-Gupta
698 efficiency, *Hydrol. Sci. J.*, doi:10.1080/02626667.2018.1552002, 2018.

699 Prudhomme, C. and Davies, H.: Assessing uncertainties in climate change impact analyses on the river flow regimes in the
700 UK. Part 2: future climate, *Clim. Change*, 93(1–2), 197–222, doi:10.1007/s10584-008-9461-6, 2009.

701 Prudhomme, C. and Williamson, J.: Derivation of RCM-driven potential evapotranspiration for hydrological climate change
702 impact analysis in Great Britain: A comparison of methods and associated uncertainty in future projections, *Hydrol. Earth*
703 *Syst. Sci.*, doi:10.5194/hess-17-1365-2013, 2013.

704 Prudhomme, C., Young, A., Watts, G., Haxton, T., Crooks, S., Williamson, J., Davies, H., Dadson, S. and Allen, S.: The drying
705 up of Britain? A national estimate of changes in seasonal river flows from 11 Regional Climate Model simulations, *Hydrol.*
706 *Process.*, 26(7), 1115–1118, doi:10.1002/hyp.8434, 2012.

707 Reynard, N. S., Kay, A. L., Anderson, M., Donovan, B. and Duckworth, C.: The evolution of climate change guidance for
708 fluvial flood risk management in England, *Prog. Phys. Geogr. Earth Environ.*, 41(2), 222–237,
709 doi:10.1177/0309133317702566, 2017.

710 Robinson, E., Blyth, E., Clark, D., Finch, J. and Rudd, A.: Climate hydrology and ecology research support system potential
711 evapotranspiration dataset for Great Britain (1961-2012) [CHESS-PE]., 2015.

712 Rudd, A. C., Kay, A. L. and Bell, V. A.: National-scale analysis of future river flow and soil moisture droughts: potential
713 changes in drought characteristics, *Clim. Change*, 156(3), 323–340, doi:10.1007/s10584-019-02528-0, 2019.

714 Samaniego, L., Kumar, R. and Attinger, S.: Multiscale parameter regionalization of a grid-based hydrologic model at the
715 mesoscale, *Water Resour. Res.*, 46(5), 1–25, doi:10.1029/2008WR007327, 2010.

716 Samaniego, L., Kumar, R., Thober, S., Rakovec, O., Zink, M., Wanders, N., Eisner, S., Müller Schmied, H., Sutanudjaja, E.,
717 Warrach-Sagi, K. and Attinger, S.: Toward seamless hydrologic predictions across spatial scales, *Hydrol. Earth Syst. Sci.*,
718 21(9), 4323–4346, doi:10.5194/hess-21-4323-2017, 2017.

719 Sawicz, K. A., Kelleher, C., Wagener, T., Troch, P., Sivapalan, M. and Carrillo, G.: Characterizing hydrologic change through
720 catchment classification, *Hydrol. Earth Syst. Sci.*, doi:10.5194/hess-18-273-2014, 2014.

721 Schwalm, C. R., Glendon, S. and Duffy, P. B.: RCP8.5 tracks cumulative CO2 emissions, *Proc. Natl. Acad. Sci.*, 117(33),
722 19656–19657, doi:10.1073/pnas.2007117117, 2020.

723 Seibert, J., Vis, M. J. P., Lewis, E. and van Meerveld, H. J.: Upper and lower benchmarks in hydrological modelling, *Hydrol.*
724 *Process.*, 32(8), 1120–1125, doi:10.1002/hyp.11476, 2018.

725 Sharma, A., Wasko, C. and Lettenmaier, D. P.: If Precipitation Extremes Are Increasing, Why Aren’t Floods?, *Water Resour.*
726 *Res.*, 54(11), 8545–8551, doi:10.1029/2018WR023749, 2018.

727 Shuttleworth, W. J.: *Terrestrial Hydrometeorology*, John Wiley & Sons, Ltd, Chichester, UK., 2012.

728 Singh, R., van Werkhoven, K. and Wagener, T.: Hydrological impacts of climate change in gauged and ungauged watersheds
729 of the Olifants basin: a trading-space-for-time approach, *Hydrol. Sci. J.*, doi:10.1080/02626667.2013.819431, 2014.

730 Smith, A., Bates, P., Freer, J. and Wetterhall, F.: Investigating the application of climate models in flood projection across the
731 UK, *Hydrol. Process.*, 28(5), 2810–2823, doi:10.1002/hyp.9815, 2014.

732 Svensson, C., Kundzewicz, Z. W. and Maurer, T.: Trend detection in river flow series: 2. Flood and low-flow index series,
733 *Hydrol. Sci. J.*, doi:10.1623/hysj.2005.50.5.811, 2005.

734 Tanguy, M., Dixon, H., Prosdocimi, I., Morris, D. and Keller, V. D. J.: Gridded estimates of daily and monthly areal rainfall
735 for the United Kingdom (1890–2012) [CEH-GEAR], [online] Available from: <https://doi.org/10.5285/5dc179dc-f692-49ba-9326-a6893a503f6e>, 2014.

736

737 Teutschbein, C. and Seibert, J.: Bias correction of regional climate model simulations for hydrological climate-change impact
738 studies: Review and evaluation of different methods, *J. Hydrol.*, 456–457, 12–29, doi:10.1016/j.jhydrol.2012.05.052, 2012.

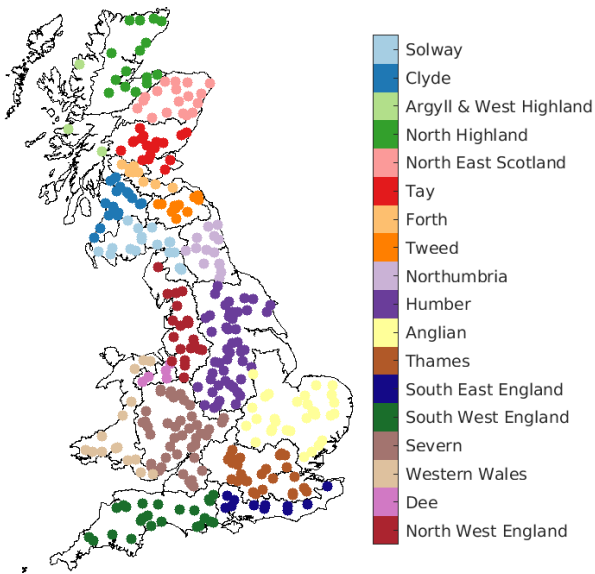
739 Thober, S., Kumar, R., Wanders, N., Marx, A., Pan, M., Rakovec, O., Samaniego, L., Sheffield, J., Wood, E. F. and Zink, M.:
740 Multi-model ensemble projections of European river floods and high flows at 1.5, 2, and 3 degrees global warming, *Environ.*
741 *Res. Lett.*, 13(1), 014003, doi:10.1088/1748-9326/aa9e35, 2018.

742 Trenberth, K.: Changes in precipitation with climate change, *Clim. Res.*, 47(1), 123–138, doi:10.3354/cr00953, 2011.

743 Veijalainen, N., Lotsari, E., Alho, P., Vehviläinen, B. and Käyhkö, J.: National scale assessment of climate change impacts on
744 flooding in Finland, *J. Hydrol.*, doi:10.1016/j.jhydrol.2010.07.035, 2010.

745 Velázquez, J. A., Schmid, J., Ricard, S., Muerth, M. J., Gauvin St-Denis, B., Minville, M., Chaumont, D., Caya, D., Ludwig,
746 R. and Turcotte, R.: An ensemble approach to assess hydrological models’ contribution to uncertainties in the analysis of
747 climate change impact on water resources, *Hydrol. Earth Syst. Sci.*, 17(2), 565–578, doi:10.5194/hess-17-565-2013, 2013.

748 Wagener, T., Sivapalan, M., Troch, P. A., McGlynn, B. L., Harman, C. J., Gupta, H. V., Kumar, P., Rao, P. S. C., Basu, N. B.
 749 and Wilson, J. S.: The future of hydrology: An evolving science for a changing world, *Water Resour. Res.*, 46(5), 1–10,
 750 doi:10.1029/2009WR008906, 2010.
 751 Wang, G. Q., Zhang, J. Y., Jin, J. L., Pagano, T. C., Calow, R., Bao, Z. X., Liu, C. S., Liu, Y. L. and Yan, X. L.: Assessing
 752 water resources in China using PRECIS projections and a VIC model, *Hydrol. Earth Syst. Sci.*, doi:10.5194/hess-16-231-2012,
 753 2012.
 754 Watts, G., Battarbee, R. W., Bloomfield, J. P., Crossman, J., Daccache, A., Durance, I., Elliott, J. A., Garner, G., Hannaford,
 755 J., Hannah, D. M., Hess, T., Jackson, C. R., Kay, A. L., Kernan, M., Knox, J., Mackay, J., Monteith, D. T., Ormerod, S. J.,
 756 Rance, J., Stuart, M. E., Wade, A. J., Wade, S. D., Weatherhead, K., Whitehead, P. G. and Wilby, R. L.: Climate change and
 757 water in the UK – past changes and future prospects, *Prog. Phys. Geogr. Earth Environ.*, 39(1), 6–28,
 758 doi:10.1177/0309133314542957, 2015.
 759 Wilby, R. L. and Harris, I.: A framework for assessing uncertainties in climate change impacts: Low-flow scenarios for the
 760 River Thames, UK, *Water Resour. Res.*, 42(2), 1–10, doi:10.1029/2005WR004065, 2006.
 761
 762
 763
 764



766
767 **Figure 1: Locations of the catchments used in this study, grouped according to the so-called ‘river basin districts’.**

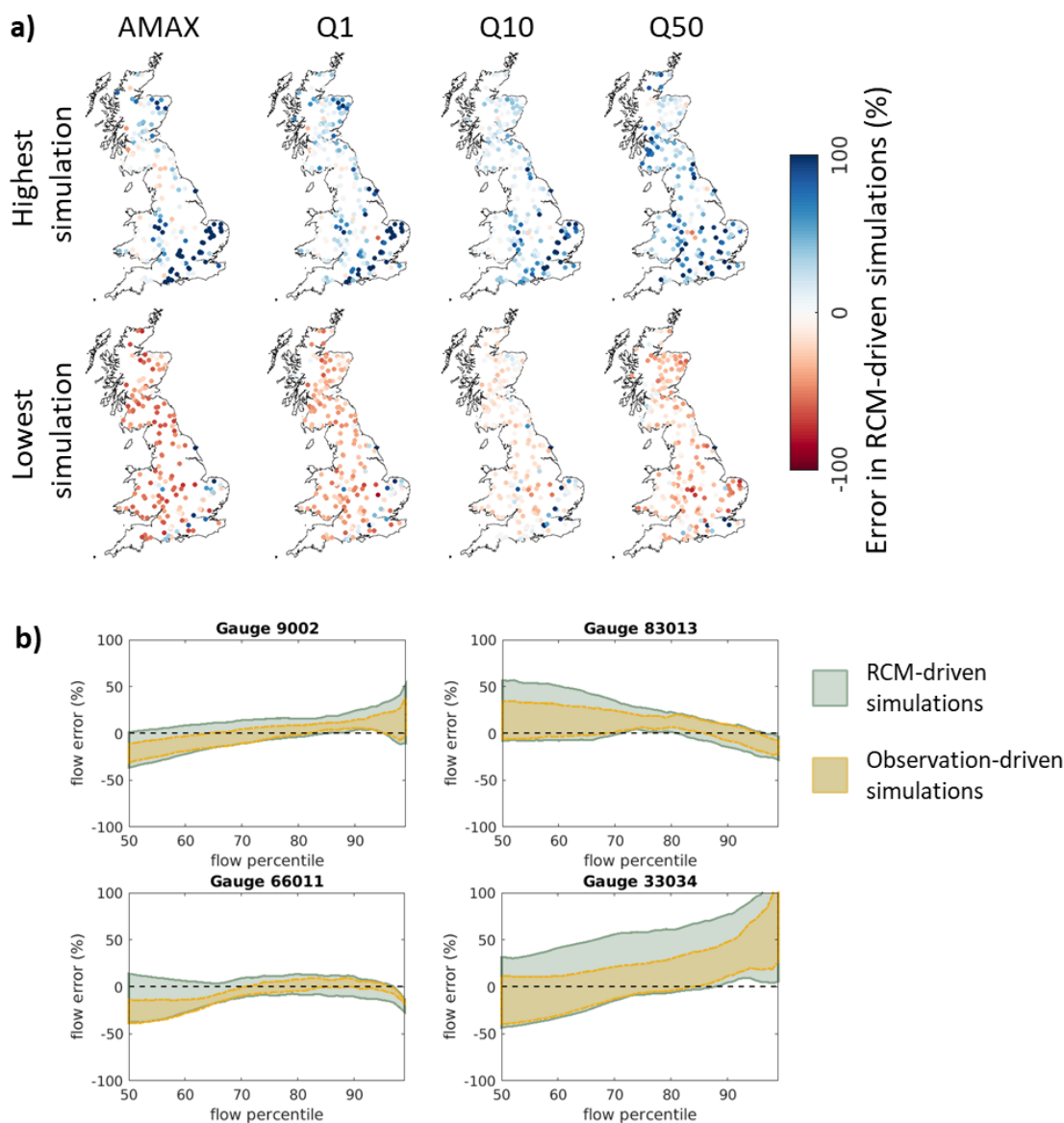


Figure 2: Evaluation of model performance, showing how well the modelled flow statistics from the climate-hydrological cascade bound the observed flow statistics over the baseline period. The maps (a) show error in RCM-driven simulations compared to the observed. The top row shows the highest positive error from the 360 simulations, while the bottom row shows the lowest negative error, calculated separately for each catchment. When considered together, these show how well the RCM-driven simulations bound the observed flows. Four gauges are shown in more detail (b), giving error across median and higher flow percentiles compared to observations, showing both simulations driven by observations and simulations driven by RCM data.

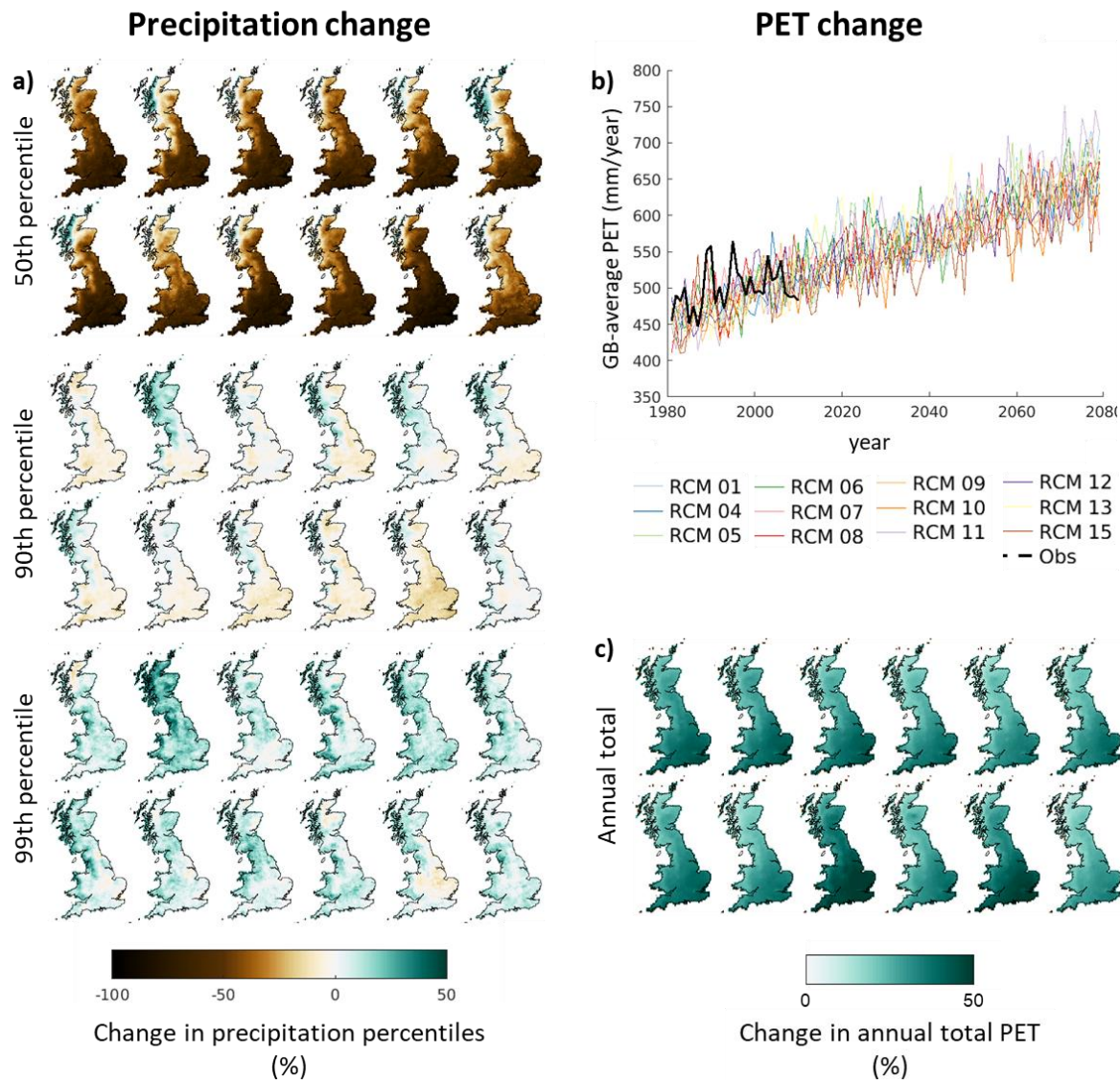
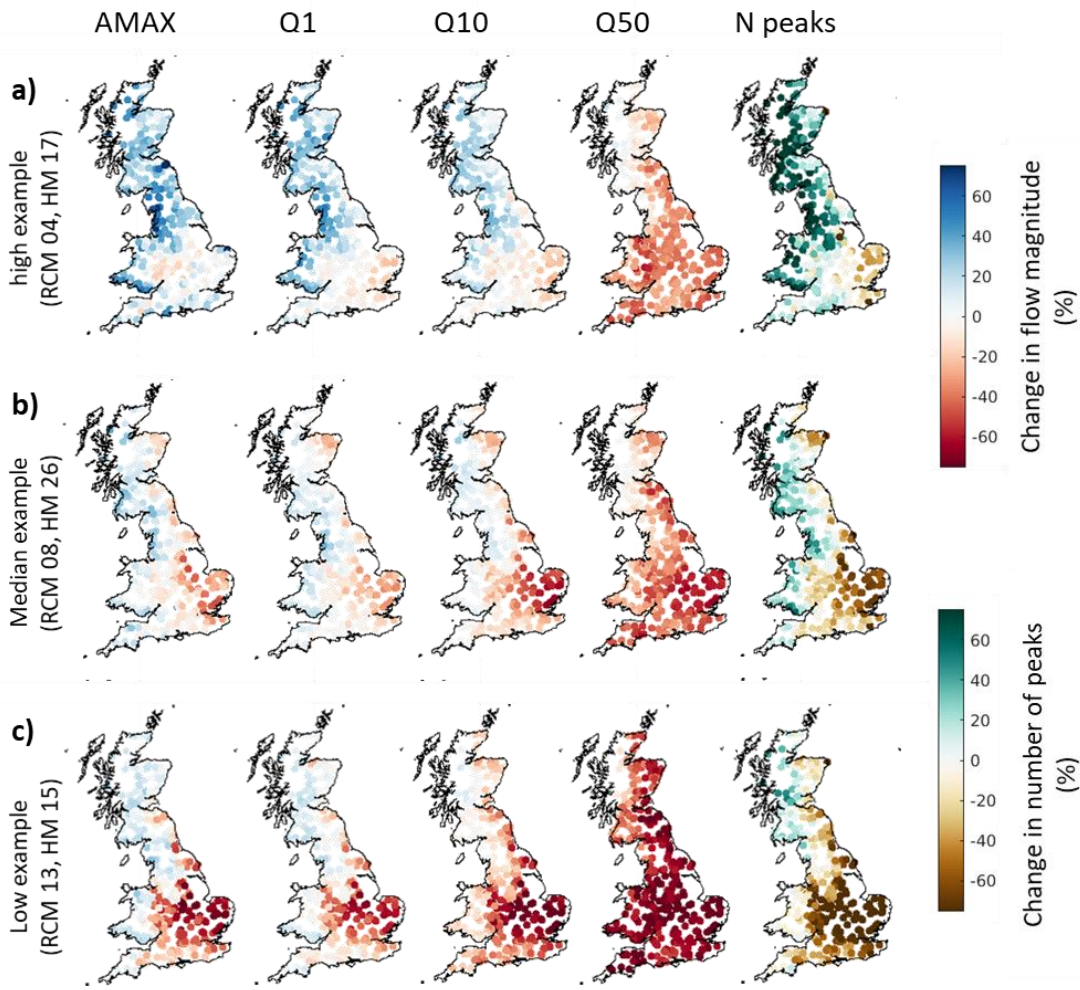


Figure 3: precipitation (a) and PET (b-c) change. GB-maps are presented for each ensemble member in order. Top row: RCM01, RCM04, RCM05, RCM06, RCM07 and RCM08, bottom row: RCM09, RCM10, RCM11, RCM12, RCM13, RCM15.



782

783

784

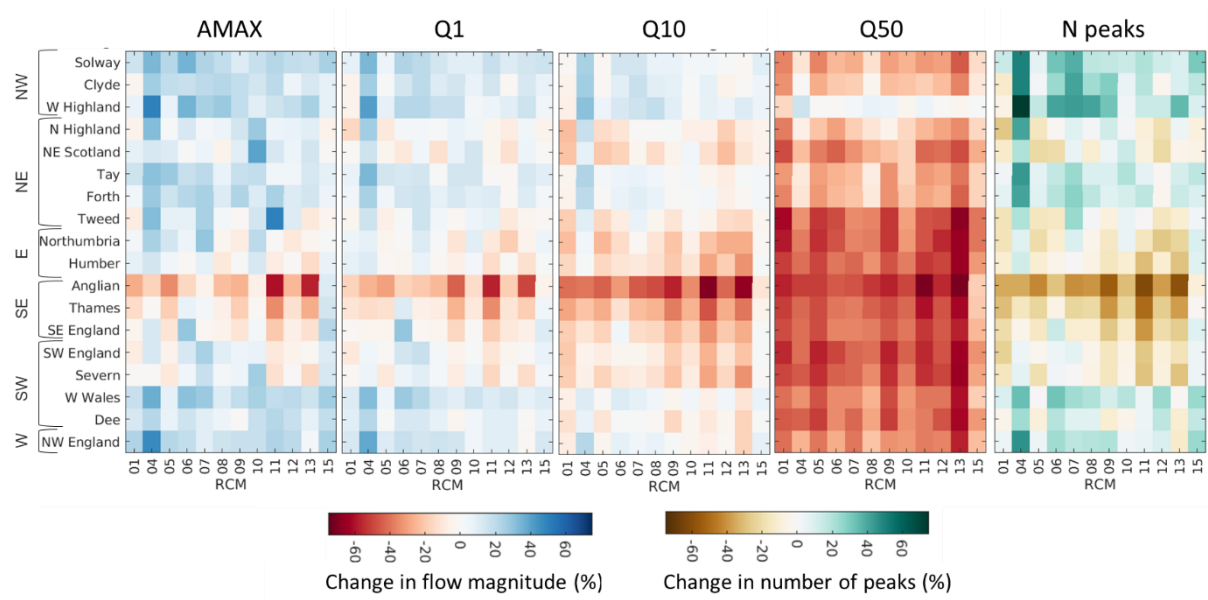
785

786

787

788

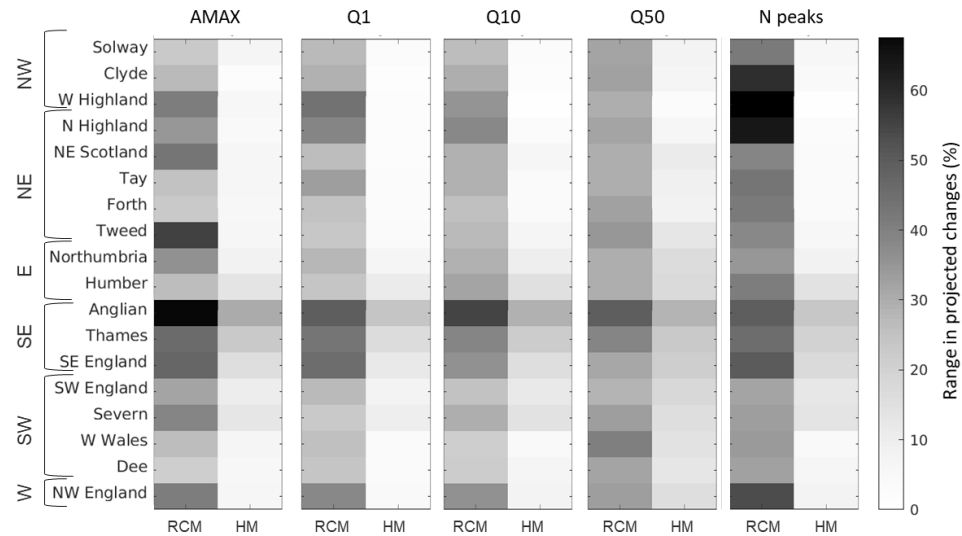
Figure 4: Maps showing changes in the magnitude and frequency of peak flows between the baseline and future periods for example simulations. Each row shows a nationally coherent projection, with plots of changes in five flow metrics (AMAX, Q1, Q10, Q50 and the number of peak flows above a threshold). This combination of RCMs and hydrological parameter sets were selected from the ensemble of 360 simulations to give an indication of the ensemble spread, as they provided the highest, median, and lowest GB-average change in Q10, but they do not show the full range of possible changes for individual catchments or all flow metrics.



790

791 **Figure 5: Heatmaps showing region-average changes in flow magnitude between the baseline and future periods, for all 12 RCMs.**
792 **Regions have been ordered by location, with the relative position within GB given on the left. To focus on differences between RCMs,**
793 **the median flow value from the hydrological model parameter sets is presented.**

794



795

796 **Figure 6: Relative uncertainties from inclusion of different RCM and hydrological model (HM) parameter sets. The RCM range**
797 **was calculated as the full range in regional-average changes between the RCMs, using the median of all HM parameter sets.**
798 **Similarly, the HM range was calculated using the median output of all RCMs.**

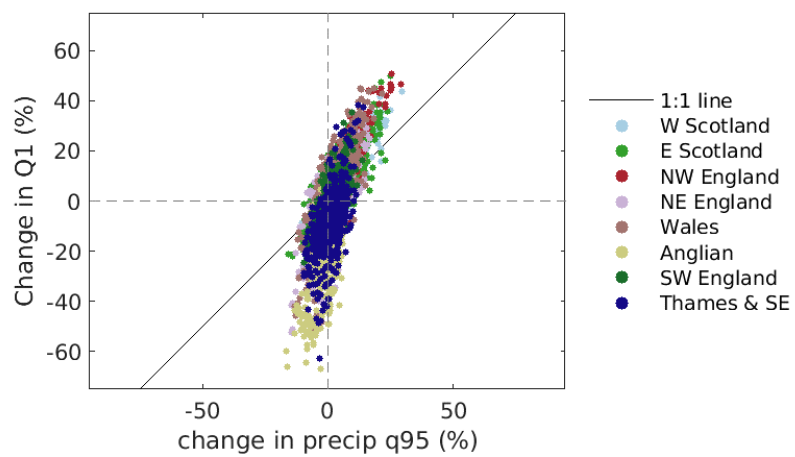


Figure 7: Relationship between precipitation change and Q1 change across all catchments. Results are presented for all RCMs using the median of all hydrological parameter sets.

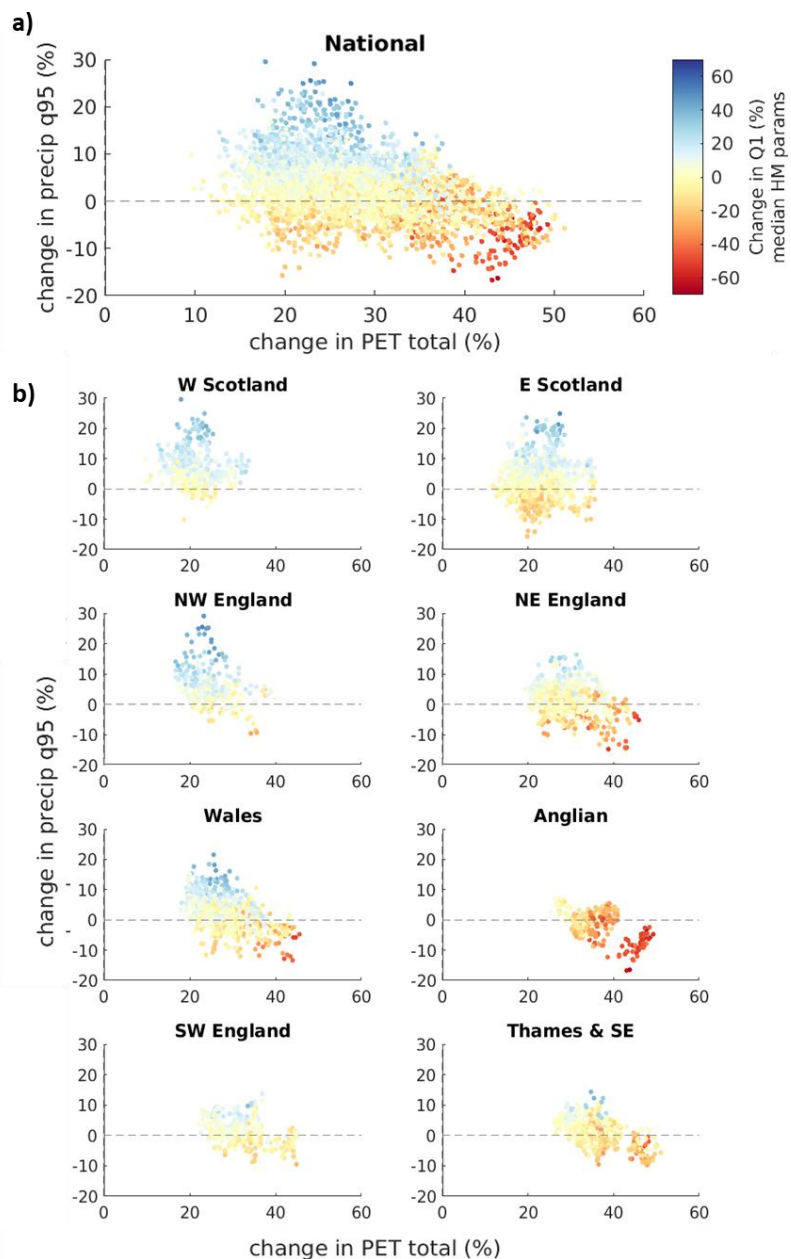
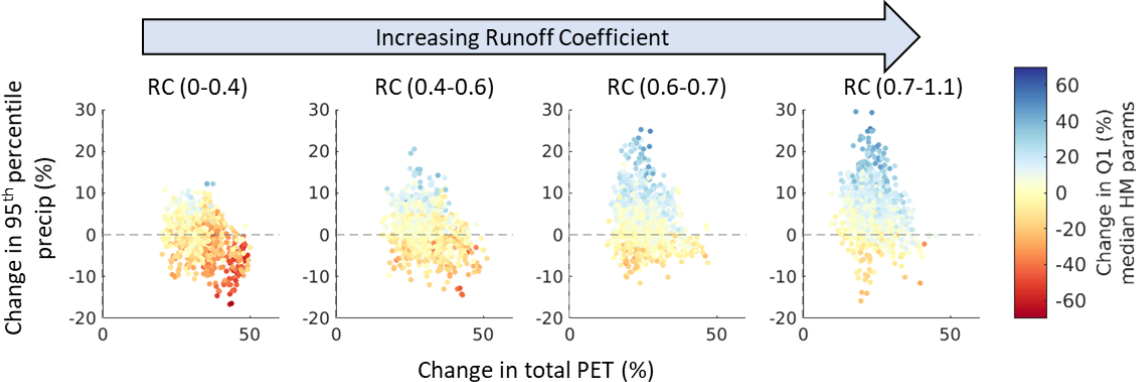


Figure 8: Relationship between changing climate and changing high flows (Q1), shown for all catchments nationally (a) and by region (b). Plots show climatic changes from all RCMs, coloured by the median change in Q1 flows from the ensemble of hydrological model parameter sets. Regions which are shown together, exhibited similar patterns.

808



809

810

811 **Figure 9: Runoff Coefficient (runoff divided by precipitation) vs flow sensitivity to climatic changes.**

812

813

815 **Table 1: Ensemble range in projected changes for each flow metric. All changes are given as percentage differences between the**
816 **baseline and future periods. Low, Med and High refer to the lowest, median, and highest region-average changes from the ensemble**
817 **of RCM and hydrological model parameters.**

Region	AMAX change (%)			Q1 change (%)			Q10 change (%)			Q50 change (%)			N. peaks change (%)		
	Low, Med, High			Low, Med, High			Low, Med, High			Low, Med, High			Low, Med, High		
Solway	7	18	49	1	13	37	-4	4	24	-49	-26	-4	4	24	79
Clyde	-10	15	29	-9	11	27	-8	5	28	-42	-20	5	-28	23	77
W Highland	3	18	65	-7	14	46	-4	9	31	-17	1	19	-16	35	113
N Highland	-15	4	39	-17	-1	33	-27	-6	18	-41	-20	0	-41	-5	68
NE Scotland	-7	8	45	-15	0	19	-27	-13	9	-56	-33	-12	-41	-12	33
Tay	1	13	36	-3	11	36	-9	2	25	-43	-26	-3	-7	17	75
Forth	6	17	40	1	11	37	-5	3	22	-49	-23	-3	-5	23	73
Tweed	-14	6	59	-14	1	19	-20	-5	14	-69	-41	-19	-37	-3	52
Northumbria	-11	3	38	-20	2	17	-32	-16	8	-69	-44	-24	-39	-16	26
Humber	-21	4	27	-18	0	17	-33	-11	9	-71	-42	-23	-53	-12	31
Anglian	-74	-21	19	-68	-22	8	-80	-41	3	-85	-50	-9	-99	-55	13
Thames	-50	-10	15	-44	-10	18	-59	-24	4	-72	-41	-11	-78	-34	16
SE England	-30	-3	37	-26	-2	32	-38	-15	13	-64	-40	-7	-64	-20	32
SW England	-18	5	29	-18	1	20	-32	-10	5	-70	-47	-22	-49	-10	21
Severn	-25	0	26	-20	0	16	-39	-11	6	-68	-43	-21	-55	-13	19
W Wales	3	21	42	3	12	36	-14	4	15	-67	-35	-12	-9	25	59
Dee	-6	13	26	-7	8	25	-21	-4	10	-62	-38	-21	-25	6	39
NW England	-1	18	57	-4	13	48	-18	2	29	-71	-33	-15	-21	24	76