

The analysis of passive heat tracer test is not sufficient. The manuscript describes an application of a passive and an active heat tracer test.

- The manuscript makes a lot of references to other studies of passive heat tracer tests but their findings are not well enough incorporated. Alternatively, present it as a case study.
- It needs to be clear from the start that you only discuss river sections that are gaining water. As rivers are meandering, even rivers that are mainly gaining water can locally lose water. It is stated in the title, but a sentence on it in the abstract would help the reader.
- I would have liked to see a detailed description of the initial boundary and boundary conditions of both the active and passive heat tracer test. And to which extent the simplifications of initial/boundary condition affect the estimated fluxes. A few lines are devoted to this at the end but I see this as something essential that should be part of the beginning.
- In the presented passive heat tracer test, the temperature at the location of the fiber is governed by heat transported by groundwater flowing into the river. No/little attention is paid to heat entering via the river's water surface (and accounting for variations in water depth). It is mentioned that the water levels vary with time (L314).
- Seasonal variations in water depth are not discussed. I can imagine that the section next to the golf court is more canalized then next to the wetlands, and therefore reacts stronger to variations in discharge. Might this also affect the temperature variations and standard deviations presented in Figure 4?
- Image an aquifer in which the water moves as a plug flow (golf court?) of which the water has a narrow distribution of the residence time. This would mean that the seasonal temperature variation of the infiltrating water is found with little damping. In the wetlands I am expecting a much broader distribution of the residence time and much more damping of the temperature of the water that seeps into the river. For a river that gains the same along their length, I would already expect more temperature variation at locations where water moves as a plug flow, with a higher SD (Fig. 4).
- Punctual means exactly on time. In the manuscript it is often used to refer to an exact location.
- The number of measurement locations is too limited to quantify the flow, as is concluded in an early stage of the analysis. As this manuscript is posed as a discussion paper the passive heat tracer test does not seems to contribute much to the discussion.
- The reduction from a complicated river system to a 1D flow model is not well supported with arguments. Apart from all the uncertainties introduced by this simplification, rough estimations of thermal properties introduce additional uncertainty.
- I would like to see the heat tracer test results including the uncertainty in the depth the cable is buried. This is now presented as an afterthought in the discussion. I would like to see it incorporated from the start.

- After accounting for all the uncertainties, are you still confidently able to discuss estimates, or maybe weaken/loosen the goals by discussing locations of inflow. Which already an achievement on its own, considering the difficulty of this type of fieldwork.



Combining passive- and active-DTS measurements to locate and quantify groundwater discharge into streams

Nataline Simon¹, Olivier Bour¹, Mikaël Fauchoux², Nicolas Lavenant¹, Hugo Le Lay², Ophélie Fovet², Zahra Thomas² and Laurent Longuevergne¹

¹Univ Rennes, CNRS, Géosciences Rennes, UMR 6118, 35000 Rennes, France

²UMR SAS, INRAE, Institut Agro, Rennes, France

Correspondence to: Nataline Simon (nataline.simon2@gmail.com) and Olivier Bour (olivier.bour@univ-rennes1.fr)

Abstract. FO-DTS (Fiber Optic Distributed Temperature Sensing) technology has been widely developed to quantify exchanges between groundwater and surface water during the last decade. In this study, we propose, for the first time, to combine long-term passive-DTS measurements and active-DTS measurements in order to highlight their respective potential to locate and quantify groundwater discharge into streams. On the one hand, passive-DTS measurements consist in monitoring natural temperature fluctuations to detect and localize groundwater inflows and characterize the temporal pattern of exchanges. Although easy to set up, the quantification of fluxes with this approach often remains difficult since it relies on energy balance models or on the coupling of distributed temperature measurements with additional punctual measurements. On the other hand, active-DTS methods, recently developed in hydrogeology, consist in continuously monitoring temperature changes induced by a heat source along a FO cable. Recent developments showed that this approach, although more complex to set up than passive-DTS measurements, can address the challenge of quantifying groundwater fluxes and their spatial distribution. Yet it has almost never been conducted in streambed sediments. In this study, both methods are combined by deploying FO cables in the streambed sediments of a first- and second-order stream within a small agricultural watershed. A numerical model is used to interpret passive-DTS measurements and highlight the temporal and spatial dynamic of groundwater discharge over the annual hydrological cycle. We underline the difficulties and the limitations of deploying a single FO cable to investigate groundwater discharge and show the impact of uncertainty on sediments thermal properties on the quantification of groundwater inflows. On the opposite, the active-DTS experiment allows estimating the spatial distribution of both the thermal conductivity and the groundwater flux at high resolution with very low uncertainties all along the heated section of FO cable. Our results highlight the added values of conducting active-DTS experiments, eventually combined with passive-DTS measurements, to fully investigate and characterize patterns of groundwater-stream water exchanges at the stream scale. The combination of both methods allows discussing the impact of topography and hydraulic conductivity variations on the variability of groundwater inflows in headwater catchments.

Summary of Comments on hess-2021-293.pdf

Page: 1

Author: bfdestombe Subject: Sticky Note Date: 27/06/2021, 09:03:00

I would like the abstract to answer the question why passive measurements are not as useful for analysis.

Author: bfdestombe Subject: Sticky Note Date: 10/07/2021, 10:06:03

Take the reader by the hand and stress in this abstract that this article only focuses on the gaining sections of a river

Author: bfdestombe Subject: Sticky Note Date: 27/06/2021, 08:51:32

Be more specific. estimation from active measurements also relies on energy balance models

Author: bfdestombe Subject: Sticky Note Date: 27/06/2021, 08:52:23

point?

Author: bfdestombe Subject: Sticky Note Date: 27/06/2021, 08:55:08

Not satisfied with this sentence. Based on your title I would expect this sentence to be (extended over multiple sentences) with more information.

Author: bfdestombe Subject: Sticky Note Date: 27/06/2021, 08:59:35

Vague. Be specific.

Author: bfdestombe Subject: Sticky Note Date: 27/06/2021, 09:03:50

Use absolute terms



1 Introduction

Understanding groundwater and stream water interactions as integral components of a stream catchment continuum is crucial for efficient development and management of water resources (Bencala, 1993; Brunke and Gonser, 1997; Sophocleous, 2002). Particularly essential for the preservation of groundwater dependent ecosystems and riparian habitats (Kalbus et al., 2006), these interactions play a major role on physical, geochemical and biological processes occurring in the stream or in the hyporheic zone (Frei et al., 2019; Jones and Mulholland, 2000). More specifically, these exchanges control water quality affecting river ecohydrology and hydrochemistry, particularly during dry periods when groundwater is the principal contribution to stream discharge (Brunke and Gonser, 1997). However, localizing and quantifying exchanges between groundwater and stream water is often difficult as these exchange are controlled by multi-scale processes and are therefore highly variable in time and in space (Brunke and Gonser, 1997; Fleckenstein et al., 2006; Flipo et al., 2014; Harvey and Bencala, 1993; Kalbus et al., 2009; Varli and Yilmaz, 2018; Woessner, 2000).

A wide range of methods exists to estimate water fluxes between stream and groundwater including solute tracer concentrations (Brandt et al., 2017; Liao et al., 2021), seepage meter measurements (Rosenberry et al., 2020) or the use of heat as a groundwater tracer (Anderson, 2005; Constantz, 2008), which is particularly efficient in identifying patterns of focused discharge. The approach relies on the detection of temperature anomalies observed at the sediment-water interface (Tyler et al., 2009; Sebok et al., 2013; Westhoff et al., 2011) or into the streambed (Krause et al., 2012; Lowry et al., 2007) when significant differences exist between groundwater and stream water temperatures. Then, the comparison of temperature variations monitored at different depths in the streambed provides information on groundwater discharge (Anderson, 2005; Constantz, 2008; Hatch et al., 2006; Keery et al., 2007; Lapham, 1989; Stallman, 1965; Webb et al., 2008; Winter et al., 1998). Indeed, the diurnal or seasonal water temperature variations propagates deeper for losing streams (downward conditions) than for gaining streams (upward conditions), since heat transfer is either attenuated or enhanced by groundwater discharge (Constantz, 2008; Goto et al., 2005). Thus, the use of Vertical Thermal Profiles is widely applied for determining flow directions, quantifying groundwater discharge (Hatch et al., 2006; Lapham, 1989; Keery et al., 2007) and estimating hydraulic parameters (Constantz and Thomas, 1996). However, only a local-scale characterization of the stream-aquifer interactions is achievable with this approach while extensive information on spatial and temporal temperature patterns are required to gain a more complete understanding at reach scale, and even at watershed scale.

This was made possible by the development and the use of the Fiber Optic Distributed Temperature Sensing (FO-DTS) technology for environmental applications (Selker et al., 2006b, a; Shanafield et al., 2018; Tyler et al., 2009). FO-DTS provides continuous temperature data through space and time along fiber optic cables at high spatial resolution (Habel et al., 2009; SEAFOM, 2010; Ukil et al., 2012). By deploying FO cables at the bottom of the stream, the DTS technology allows temperature monitoring of the longitudinal linear stream/sediments interface allowing detecting thermal anomalies induced by groundwater discharge into the stream (Briggs et al., 2012; Gilmore et al., 2019; Koruk et al., 2020; Moridnejad et al., 2020; Rosenberry et al., 2016; Selker et al., 2006b, a; Westhoff et al., 2007, 2011). This approach was also used to study



seasonal and temporal fluctuations of groundwater discharge into streams (Matheswaran et al., 2014; Slater et al., 2010) and into a lake (Sebok et al., 2013). To go further and in order to avoid signal temperature loss induced by large river flows, some studies proposed to detect thermal anomalies in the streambed by burying the FO cable into the streambed sediments in the hyporheic zone (Krause et al., 2012; Le Lay et al., 2019b; Lowry et al., 2007) improving the possibility of localizing groundwater inflows. However, beyond the localization of inflows, the distributed quantification of fluxes from passive-DTS measurements remains even more challenging. It often requires additional localized fluxes estimates or measurements (Briggs et al., 2012; Koruk et al., 2020; Krause et al., 2012; Rosenberry et al., 2016). Otherwise, energy balance models (Selker et al., 2006b; Westhoff et al., 2011) require monitoring significant temperature changes over time that often limits the application of the method to large groundwater inflows or small headwater streams. The implementation of distributed vertical temperature profiling as proposed by Mamer and Lowry (2013) remains particularly difficult to apply in the field. It requires coupling distributed temperature measurements with punctual vertical temperature profiles (Le Lay et al., 2019a), which raises the question of the extrapolation of punctual measurements to the whole profile. It also raises the question of the estimation of associated uncertainties.

To address the difficulty of using natural temperature variations for estimating fluxes, active-DTS methods have been recently developed for different environmental applications. Contrary to passive-DTS methods, active-DTS methods, consist in injecting a heat source in the sediments, better constrain the signature of diffusion and advection along a FO cable (Bense et al., 2016). Indeed, the difference of temperature measured between an electrically heated and a non-heated FO cable is directly dependent on water fluxes (Bense et al., 2016; Read et al., 2014; Sayde et al., 2015), offering the possibility to determine fluxes and their spatial distribution over a large range with an excellent accuracy (Simon et al., 2021). Active heat tracer experiments using fiber-optic DTS have been used to estimate wind speed in the low atmosphere (Lapo et al., 2020; Sayde et al., 2015), in dam monitoring (Ghafoori et al., 2020; Perzmaier et al., 2004; Su et al., 2017), for groundwater fluxes measurements in open (Banks et al., 2014; Klepikova et al., 2018; Read et al., 2014, 2015) and sealed boreholes (Munn et al., 2020; Selker and Selker, 2018) or else in direct contact within sedimentary aquifers (del Val et al., 2021; des Tombe et al., 2019). Despite promising developments, active-DTS methods have been seldom used in hydrology to estimate groundwater/surface water interactions. High-resolution vertical temperature profiling has been used to quantify vertical fluxes but only permits a local-scale characterization of the stream-aquifer dynamic (Briggs et al., 2016). Although Kurth et al., (2015) coupled passive and active-DTS measurements and highlighted areas with lower and higher flow rates over the cable, the quantification of fluxes remains unexplored.

In this context, we propose in this study to couple and compare long-term passive-DTS measurements with active-DTS measurements, which has never been achieved until now. In particular, we aim to discuss the advantages and limitations of high-resolution DTS measurements to locate and quantify groundwater discharge into streams. For doing so, FO cables were deployed in the streambed sediments of a headwater stream within a small agricultural watershed. In the following, we first present the headwater watershed and the experimental setup before presenting the methods used to

- Author: bdestombe Subject: Sticky Note Date: 27/06/2021, 09:09:21
Why is there temperature signal lost with large flows?
- Author: bdestombe Subject: Highlight Date: 10/07/2021, 12:17:32
Why would that be?
- Author: bdestombe Subject: Highlight Date: 10/07/2021, 09:39:23
Please reformulate this sentence
- Author: bdestombe Subject: Sticky Note Date: 10/07/2021, 09:46:52
The remainder of this paragraph is also confusingly formulated. The connection between the sentences should be better.
- Author: bdestombe Subject: Highlight Date: 10/07/2021, 09:48:21
How do energy balance models differ from passive-DTS measurements
- Author: bdestombe Subject: Sticky Note Date: 27/06/2021, 09:11:11
point measurements
- Author: bdestombe Subject: Sticky Note Date: 27/06/2021, 09:14:47
Reformulate sentence. And I think you mean to interpolate. Extrapolating is just as difficult with DTS
- Author: bdestombe Subject: Sticky Note Date: 27/06/2021, 09:13:23
Merge with previous sentence
- Author: bdestombe Subject: Sticky Note Date: 27/06/2021, 09:15:54
Rewrite sentence
- Author: bdestombe Subject: Sticky Note Date: 27/06/2021, 09:20:50
With diffusion I tend to agree, but with advection I do not. Be more specific, tell us why and use quantifiable arguments.
- Author: bdestombe Subject: Highlight Date: 10/07/2021, 09:50:56
Temperature measured where?
- Author: bdestombe Subject: Highlight Date: 10/07/2021, 10:08:10
Merge with previous sentence



95 interpret both passive- and active-DTS measurements. The fluxes estimates obtained with both passive- and active-DTS
measurements are then compared and the advantages and limitations of each method are finally discussed.

2 Materiel and methods

2.1 The experimental setup on the Kerrien watershed

2.1.1 The Kerrien watershed

100 The experiment has been achieved on the Kerrien watershed located in South-western Brittany
(4°7'24.87''O:47°56'26.97''N). It is part of the AgrHys Environmental Research Observatory, whose principal aim is to
understand and characterize transit times in small agricultural catchments (https://www6.inra.fr/ore_agrhys). The site is a
part of the French network of critical zone observatories (Gaillardet et al., 2018) and supports extensive hydrological and
geochemical researches. Consequently, many instruments and equipment are installed on this experimental site, as detailed
105 in Fovet et al. (2018), which is an advantage to test new methods and measurement tools in the field.

As shown in Fig. 1, the watershed is a headwater watershed with a second-order stream, subdivided in three first-
order sub-watersheds namely the Kerrien, the Kerbernez and the Gerveur sub-watersheds. The Kerrien sub-watershed is a
small agricultural watershed (9.5 ha) with higher slopes in the upper parts (14%) than in the bottom lands (5%), where a
large wetland was developed (Ruiz et al., 2002). As pointed out in Fig. 1, downstream the wetland, the fields were converted
110 into a golf course. This is a man-made environment where the stream has been completely restored and dammed to facilitate
maintenance. Drainage pipes contribute to drain precipitation from the watershed area directly into the stream, limiting the
potential groundwater recharge by draining precipitation from the watershed area into the stream. Further downstream, the
stream reaches a natural wood plain.

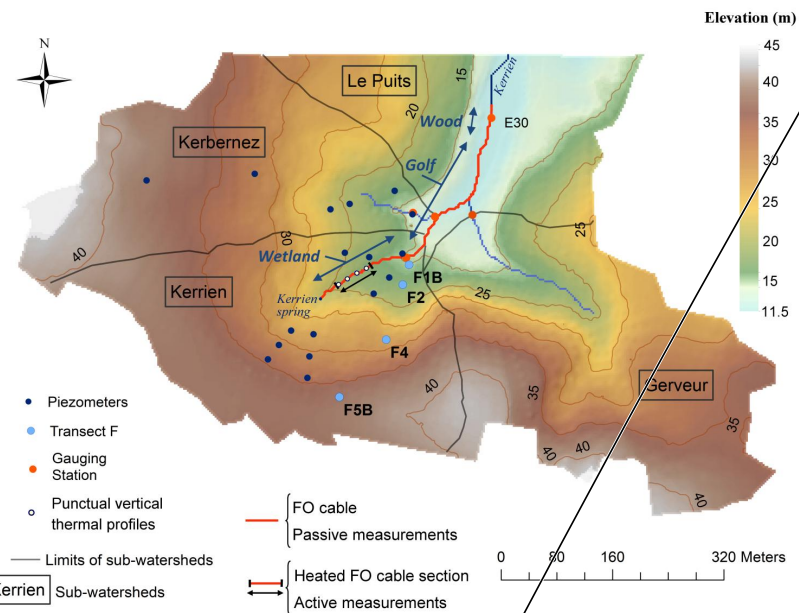


Figure 1: Description of the watershed with the location of piezometers, gauging station and fiber optic cables.

2.1.2 Hydrological dynamics of the study site

The Kerrien watershed has been particularly studied and instrumented for estimating transit times in a small agricultural watershed (Fovet et al., 2015a; Martin, 2003), as shown in Fig. 1. For this study, we are using the data from the piezometer transect F (Fig. 1) including the hillslope piezometer F5b (20 m depth) and the mid-slope piezometer F4 (15 m depth) as markers for the deep groundwater storage dynamics and the riparian piezometers F2 (2 m depth) and F1b (5 m depth) as markers for the riparian groundwater storage dynamics. The gauging station E30 provides stream flow rate.

Previous studies demonstrated that runoff is negligible so that most of effective precipitations are infiltrating in this headwater watershed. The annual rainfall (1114 mm in average) is well-distributed over the year but recharge mainly occurs in autumn and winter. Therefore, the contribution of groundwater to the stream flow reaches 80-90% (Fovet et al., 2015b; Martin et al., 2006; Ruiz et al., 2002) with the stream discharge during high water periods being highly correlated with



Author: bdestombe Subject: Sticky Note Date: 27/06/2021, 09:39:18

Be more specific. The head gradient is year round directed towards the river, and thus would expect a year round gaining river. F1b seems to be located lower. Are you sure that the river is the main drain of this subcatchment?

Author: bdestombe Subject: Sticky Note Date: 27/06/2021, 09:40:35

Are F2 and F1b reversed?

Author: bdestombe Subject: Sticky Note Date: 11/07/2021, 11:28:42

F2 and F1b mixed up?

hillslope head gradient (Martin, 2003). As shown in Fig. 2a, piezometric levels show clear seasonal fluctuations with high levels during winter and spring and low levels during summer and autumn. The hydraulic gradient between the aquifer and the stream as well as the evolution of the stream discharge suggest that groundwater discharge into the stream should be particularly expected during the high water level period (From December to June).

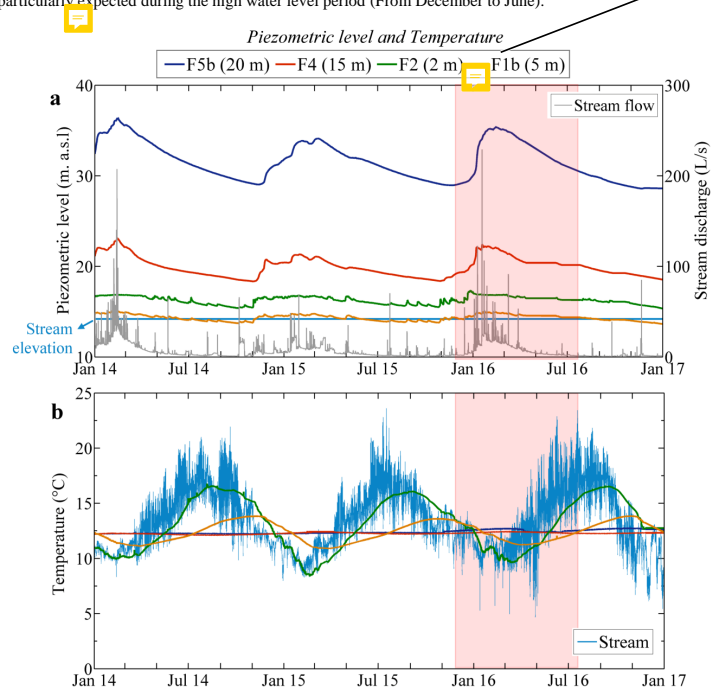


Figure 2: a. Changes in stream flow and in piezometric levels along the transect F over three years. b. Stream and groundwater temperature fluctuations over time along the transect F. The red-colored area corresponds to the period of passive-DTS measurements, conducted from December 2015 to the July 15th, 2016.

Figure 2b shows temperature fluctuations in the stream and in piezometers over a time period from July 2013 to May 2017. While the groundwater temperature is almost constant in the upslope domain (piezometers F5b and F4), temperature variations recorded in the stream and in the downslope domain (F2 and F1b) show larger variations following



daily and seasonal temperature variations. Considering the relatively small difference of temperature between groundwater and stream water, burying the FO cable within the sediments should facilitate the detection of potential temperature anomalies as marker of groundwater discharge (Krause et al., 2012; Le Lay et al., 2019b; Lowry et al., 2007). Otherwise, active-DTS measurements should highlight advective heat transfer, controlled by groundwater discharge.

2.2 Passive DTS measurements and data interpretation

2.2.1 FO cable deployment and data acquisition

The passive-DTS experiment corresponding to the long-term monitoring of temperature in the streambed was achieved from December 2015 to July 2016 in the southern part of the study site, as shown in Fig. 1. The FO cable has been deployed from the Kerrien spring and in total, more than 530 m length of BruSens FO cable has been buried directly into the streambed. Due to some obstacles (coarse gravels, cobbles, gauging stations, etc.), it was not possible to bury the FO cable in few places. Everywhere else, the burial depth was estimated in average at 8 cm. The first 165 meters of the FO cable have been deployed in the Kerrien sub-watershed, where the stream is surrounded by a wetland. The streambed is formed by sand and sludge whose thickness is low but large enough to bury properly the cable. Then, besides a harder substrate, the FO cable was deployed in the golf area. In few local places, the burying was not possible and FO cable was set on the streambed. The last 70 meters of the FO cable have been deployed in a wood plain, a natural environment, where a thick sandy riverbed facilitates cable burying. As highlighted in Fig. 2a, the nine-month experiment insured the monitoring of streambed temperature during both high and low water tables. The highest levels were recorded from January to mid-April, period over which the wetland is saturated up to the surface.

The FO cable has been connected to a FO-DTS control unit, a Silixa XT-DTS instrument (5 km range). The DTS unit was configured in double-ended configuration (van de Giesen et al., 2012) to collect data at 25 cm and 10 minutes sampling interval. Two calibration baths (one at the ambient temperature and a fridge), as well as PT100 probes (0.1°C) and RBR SoloT probes (0.002°C accuracy) were used to calibrate the data. To assess the accuracy of temperature measurements, a RBR SoloT probe was set up at the gauging station E30 located at the entrance of the wood. Comparison between DTS measurements and RBR SoloT probes validated the temperature measurements, with a relative uncertainty of measurements estimated at 0.05°C and absolute uncertainty of measurement that can reach at maximum estimated at 0.2°C depending on the period of measurement.

In complement, 4 vertical temperature profiles (VTP) were installed in the streambed in the wetland area by deploying temperature sensors at 12.5 and 22 cm-depth in the streambed sediments. The position of these punctual sensors in the stream is shown in Fig. 1 and was chosen at locations where groundwater discharge has been observed using preliminary results obtained from FO-DTS monitoring. From upstream to downstream, the VTP are numbered from 1 to 4. For each location, the evolution of temperature was recorded from April 07th, 2016 to May 03rd, 2017 using HOBO U12-015-02

Page: 7

Author: bfdestombe Subject: Sticky Note Date: 27/06/2021, 09:45:19

You should be looking for phase shifts, not absolute temperature differences.

Author: bfdestombe Subject: Sticky Note Date: 27/06/2021, 09:47:09

What happens to the measurements if you bury the cable opposed to on top of the bed?



Author: bfdestombe Subject: Sticky Note Date: 27/06/2021, 09:48:59

Stating here that burying is a possibility requires you to also say also something about placing the cable on top of the bed. If this is not what you intended, please rephrase the sentence.

Author: bfdestombe Subject: Sticky Note Date: 27/06/2021, 09:54:10

At locations in the riverbed where the river is gaining, the riverbed is soft and at where the river is losing the riverbed is harder. Burying cables is better achievable in for locations the river is gaining. Be carefull about this, because it introduces a bias in the published measurements.

Author: bfdestombe Subject: Sticky Note Date: 27/06/2021, 09:56:07

Can you actually say something about the general applicability of a passive tracer test with half a year of measurements?

Author: bfdestombe Subject: Highlight Date: 10/07/2021, 10:17:10

Don't you think that the soil structure of the riverbed coresponds/correlates to the infiltrating behavior. (riverbed of a losing stream is harder than of a gaining stream). This would introduce a bias in your measurements

Author: bfdestombe Subject: Highlight Date: 10/07/2021, 10:21:30

Be more precise in your formulation (e.g., the standard error between DTS and RBR)



sensors ($\pm 0.25^\circ\text{C}$ precision). These VTP will be used to quantify local groundwater discharge and results will be compared with estimates from FO-DTS measurements.

2.2.2 Data interpretation

The localization of groundwater inflows can be done by localizing temperature anomalies. Those can be easily identified by plotting the evolution of the temperature over time and space, especially for long time series. Thermal anomalies can also be identified using an analysis of the standard deviation of temperature for a given period (Sebok et al., 2015). Indeed, the calculation of the standard deviation provides insights about the thermal inertia mostly linked to groundwater fluxes towards the surface and can therefore be used to highlight relative variations of fluxes along the cable.

Then, to quantify vertical fluxes, we use the FLUX-BOT model, a code proposed by Munz and Schmidt (2017), using a numerical heat transport model to solve the 1D heat transport equation (Carslaw and Jaeger, 1959; Domenico and Schwartz, 1998). This 1D model aims to calculate vertical fluxes by inverting measured time series observed at least at three different depths. Temperature variations are simulated according to the optimized fluxes. The quality criteria calculated between the simulated temperatures and the measured one (NSE, R^2 and RMSE) allow discussing the quality of flux estimates. Thus, the model estimates the direction and the intensity of the flow and may highlight the temporal variability of exchange.

To apply the model, the stream temperature and the groundwater temperature measured in the piezometer F4, over time (Fig. 2b), were chosen as upper and lower boundary conditions respectively. The stream temperature was measured for the wetland area at the Kerrien spring with a punctual temperature sensor and at the gauging station E30 (RBR SoloT) for the wood plain area. The stream temperature is assumed homogeneous for each area since shade and lighting conditions and water depths are similar. Moreover, the transit time from the spring to the gauging station is relatively rapid due to the short distances and the river slopes. The FLUX-BOT model was first used for interpreting the temperature measurements of the four VTP installed in the streambed. Considering the upper and lower boundary conditions previously defined, the numerical model reproduces the temperature evolution collected at 12.5- and 22-cm depth and provides an estimate of vertical fluxes for each profile. Details about the interpretation of VTP using the FLUX-BOT model are provided as supplement (Fig. S1 and S2). The results are compared in the section 3.3 with estimated fluxes from passive- and active-DTS measurements. Identically, the FLUX-BOT model is used to reproduce and interpret passive-DTS measurements collected at various spots along the cable. A loop was added in the initial code allowing the interpretation of data collected for each measurement point. For both applications, the vertical mesh size of the model was set at 0.01 m, as recommended by Munz and Schmidt (2017). Concerning the thermal properties of the saturated sediments, the volumetric heat capacity was set at $3 \times 10^6 \text{ J.m}^{-3}.\text{K}^{-1}$ and various values of thermal conductivities, ranging between 0.9 and $4 \text{ W.m}^{-1}.\text{K}^{-1}$, were tested.

Page: 8

Author: bfdestombe Subject: Highlight Date: 10/07/2021, 10:23:43
I don't follow you here

Author: bfdestombe Subject: Sticky Note Date: 27/06/2021, 10:10:48
Here, I would like to see the measurement and the fitted response.

Author: bfdestombe Subject: Sticky Note Date: 27/06/2021, 10:37:09
Be more specific in what is steady. You are using a timeseries after all.

Author: bfdestombe Subject: Sticky Note Date: 27/06/2021, 10:35:42
You are using a 1D formula to approximate a 3D flow, this reduction is only possible when that dimension is the governing direction of heat transport. You are not making a strong case here that the heat flow from F4 to the river is the main transport direction, and can safely neglect surface temperature variations.

Author: bfdestombe Subject: Sticky Note Date: 27/06/2021, 10:39:15
VTP?

Author: bfdestombe Subject: Inserted Text Date: 27/06/2021, 10:38:48
vtp

Author: bfdestombe Subject: Sticky Note Date: 27/06/2021, 10:45:04
Please elaborate on estimating the thermal properties. Homogeneous? Full calibration? In your introduction you describe the different soil types of the stream bed. As you assume that heat transport through the aquifer is the main heat transport component, these thermal properties represent an average of the aquifer.



Author: bdestombe Subject: Sticky Note Date: 10/07/2021, 10:28:19
 Maybe a section introduction?

Author: bdestombe Subject: Highlight Date: 10/07/2021, 10:28:02
 You start your active section by talking about passive?

Author: bdestombe Subject: Highlight Date: 10/07/2021, 13:00:21
 Shouldn't this be part of the introduction?

Author: bdestombe Subject: Sticky Note Date: 10/07/2021, 10:30:55
 In the other setup you are using a ambient bath and a fridge?

2.3 Active DTS measurements

2.3.1 FO cable deployment and data acquisition

The first 3 months of passive-DTS measurements showed clear and significant temperature anomalies along the cable, especially in the wetland area, interpreted as potential groundwater exfiltration zones (See the results section below). Consequently, active-DTS measurements were conducted in April 2016 concurrently with passive-DTS measurements by deploying an additional FO cable in the streambed in the wetland, as shown in Fig. 1.

Figure 3 presents the experimental setup of the active-experiment. A FO cable is electrically heated through its steel armoring and the elevation in temperature, associated to the heat injection, is continuously monitored all along the heated section using the FO inside the cable. Without any flow, heat transfers occur through the porous media only by conduction (Constantz, 2008) and a gradual and continuous increase of temperature is therefore expected (Simon et al., 2021). If water flows through the porous medium, advection partly controls the thermal response by dissipating the heat produced by the heat source. The higher the water flow, the lower should be the temperature increase (Simon et al., 2021). Thus, contrary to passive-DTS measurements, groundwater fluxes can be investigated in any conditions, independently of natural temperature gradients. However, the same hypothesis is assumed about 1D flow considered as perpendicular to FO cables (Simon et al., 2021).

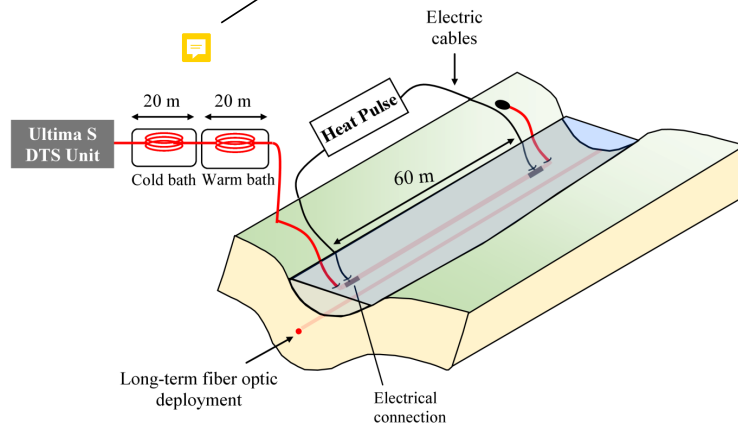


Figure 3: Experimental setup of the active experiment: a 60 meter-section of a heatable cable has been electrically isolated, buried in the sediments and then heated by connecting to a power controller.



A 150 m length of BruSens FO cable has been connected to a FO-DTS control unit, a Silixa Ultima S instrument. The unit was configured in double-ended configuration to collect data at 12.5 sampling cm and 60 seconds time interval. The effective spatial resolution of DTS measurements with this unit was estimated varying between 66 and 90 cm following the methodology proposed in Simon et al. (2020). The calibration process applied was similar to the one applied for calibrating passive-DTS measurements.

A 60-meters section of the 150 m FO cable has been buried in the streambed in parallel with the FO cable previously installed for the passive experiment. As the heating experiment induces a very localized thermal perturbation within the streambed, the non-heated cable was not affected by the heat injection. Thus, natural streambed temperature fluctuations were monitored during the experiment using the non-heated cable. It should be noted that, during the FO cable deployment in the streambed, local heterogeneities led to the impossibility to deploy the whole FO heating section in the streambed. Thanks to cable numbering, these non-buried sections were accurately located. For buried sections, the burial depth was measured in situ and estimated to be around 8 to 10 cm. This 60-m section has been electrically isolated and heated using a power controller (provided by CTEMP, <https://ctemps.org/>) supplying a constant and uniform heating rate power of 35 W.m^{-1} along the heated FO cable. The heated cable has been energized continuously during 4 hours and the recovery was also monitored for an additional 3 hours after turning off the power controller.

2.3.3 Data interpretation

Here, we interpreted the data using the ADTS Toolbox proposed by Simon and Bour (Submitted) for automatically interpreting active-DTS measurements. The ADTS Toolbox contains several MATLAB codes that allow estimating the thermal conductivities and the groundwater fluxes and their respective spatial distribution all along the heated section. It uses for the data interpretation an analytical approach proposed and validated by Simon et al. (2021), that consists in defining, for each measurement point along the heated section, the optimized values of thermal conductivity and flux that allow reproducing at best the associated temperature increase measured over the heating period. The use of the ADTS toolbox also provides an estimate of the associated uncertainties (Simon and Bour, Submitted).

3 Results

3.1 Passive-DTS measurements

3.1.1 Spatial variability of temperature signals

Figure 4a synthesizes the results of the passive-DTS experiment and shows temperature signals monitored all along the FO cable deployed in the streambed sediments. The x-axis indicates the distance between the Kerrien spring (located at 0 m) and each measurement point in the streambed. Temperature variations are presented from December 2015 to July 2016 (y-axis). In June and July, despite very low flows, the stream never dried up. Two different behaviours are highlighted in the



figure. On the one hand, vertical yellow lines can be observed near the Kerrien Spring in the first 150 meters of cable. These lines emphasize that the temperature recorded in these areas is relatively constant over time (few temperature variations are recorded). On the other hand, away from the spring, beyond 300 m, clear and large differences in temperature are observed between colder periods (from December to mid-April) and warmer periods (from mid-April to July).

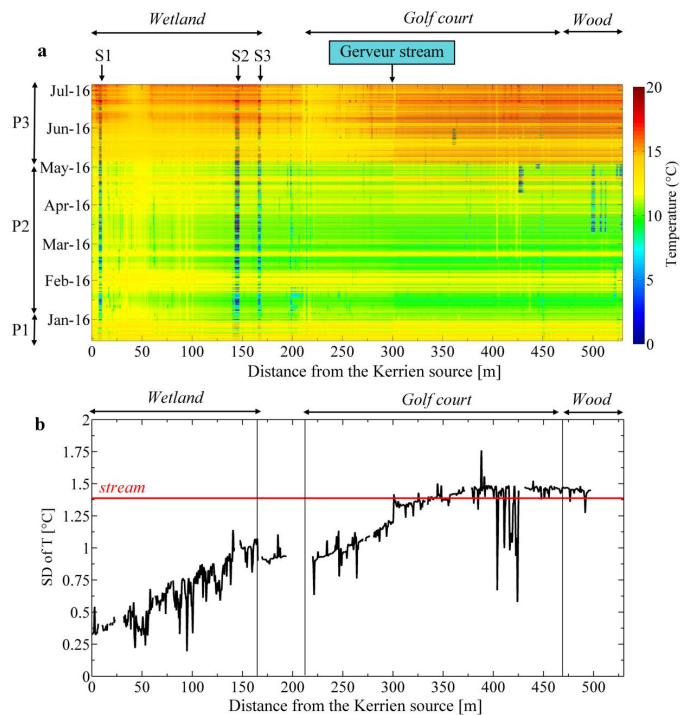


Figure 4: a. Long-term monitoring of streambed temperature along the river using DTS. Sections S1, S2 and S3 match with spots where the cable lies on the bank because of obstacles in the stream (gauging stations). Temporary thermal anomalies located for instance in 425 m and around 500 m correspond to air-exposed periods during which the cable was not held at the sediment/water interface. b. Standard Deviation (SD) of the temperature calculated over the experiment duration for each measurement point along the FO cable. Sections where the cable was outside the stream or punctually unburied were removed. The red line represents the SD of the stream temperature (1.38 °C) measured at the gauging station E30.



Author: bdestombe	Subject: Highlight	Date: 10/07/2021, 12:06:25
Heat entering from water surface		
Author: bdestombe	Subject: Highlight	Date: 10/07/2021, 13:14:23
Please quantify		
Author: bdestombe	Subject: Highlight	Date: 11/07/2021, 11:34:18
local?		

To highlight the spatial variability of the temperature signal, the Standard Deviation (SD) of temperature was calculated for each measurement point over the whole duration of the experiment as presented in Fig. 4b. In the first 50-m of measurements, near the spring, the value of the SD of temperature is relatively stable and very low (around 0.37 °C). Then, it progressively increases from upstream to downstream and stabilizes around the value of the SD of the stream temperature (≈ 1.375 °C) at around 300 meters (in the middle of the golf area). Interestingly, the value of the SD directly reflects the amplitude of daily temperature fluctuations.

The lowest SD values are recorded in the upstream wetland ($d < 160$ m in Fig. 4b). In this area, as illustrated in Fig. 5a by the red curve (94.56 m, $\sigma = 0.2$ °C), the temperature is relatively stable over time (around 12.5 °C) and the daily stream temperature fluctuations are widely attenuated. However, significant differences are observed between temperature measurements from upstream to downstream, as highlighted by the progressive increase of SD measured from the spring to 160 m. This increase reflects the increase of the amplitudes of daily temperature fluctuations collected from upstream (orange line in Fig. 5b, $\sigma = 0.36$ °C) to downstream (grey line in Fig. 5b, $\sigma = 0.95$ °C). In addition, the profile of SD (Fig. 4b) also shows punctual “peaks” associated to very low SD values, in agreement with the yellow lines observed in Fig. 4a. These peaks can be associated to spots where the amplitude of temperature is low all over the period of measurements, as illustrated by blue curve in Fig. 5b (53.38 m), where the value of the SD is equal to 0.24 °C. As we shall see in the next sections, the relative temperature stability suggests that these peaks or “hotspots” may be associated to local groundwater discharge.

Further downstream (from 220 m up to 300 m in the first part of the golf area), while the value of the SD progressively increases (Fig. 4b), higher amplitudes of daily temperature variations are monitored as illustrated in the Fig. 5a by the blue curve (227.5 m, $\sigma = 0.93$ °C). In this area, SDs values are lower than the one calculated in the stream (1.3 °C, Fig. 4b) meaning that the daily temperature fluctuations are attenuated. Once again, the progressive increase of the value of the SD highlights differences in temperature amplitude (the further, the higher the amplitudes of temperature). Finally, in the second part of the golf area and in the wood (starting from approximately 300 m), SDs values tend towards the value of the SD of the stream (1.3 °C, Fig. 4b). The associated streambed temperature variations are almost identical to the stream variations, as illustrated in the Fig. 5a by the yellow line (357.91 m, $\sigma = 1.42$ °C). Note here that the SD evolution shows a well-marked step at 300 m from 1.2 to 1.4 °C, exactly at the confluence between the Kerrien and the Gerveur streams (see Fig. 1). Moreover, very punctual decreases of SDs can be observed between 402 and 425 m, where significant thermal anomalies are monitored from mid-February to mid-April.

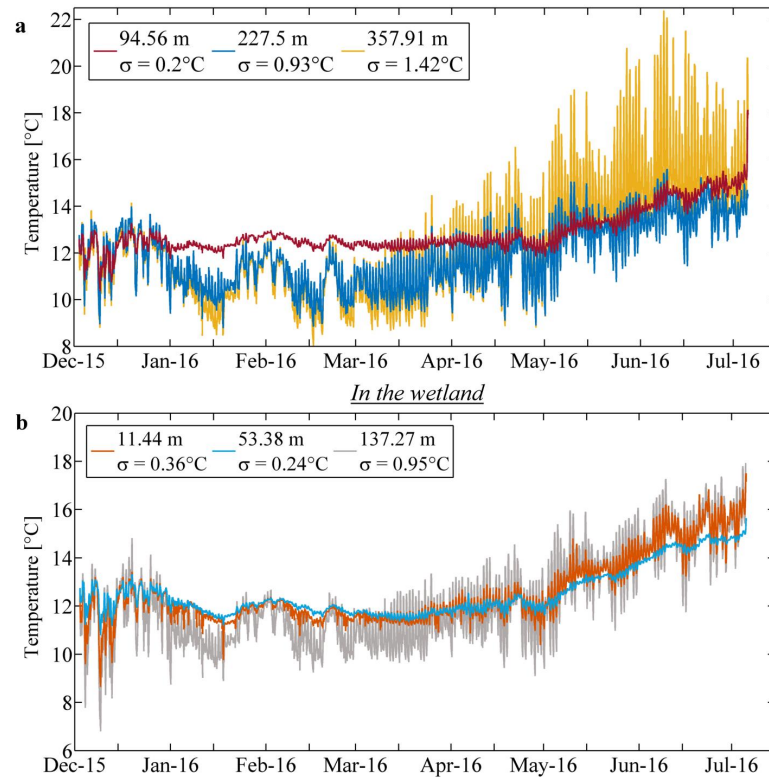


Figure 5: a. Examples of streambed temperature variations measured with the FO-DTS a. at 94.56 m, 227.5 m and 357.91 m from upstream with respective SD values equals to 0.2 °C, 0.93 °C and 1.42 °C; b. in the wetland area at 11.44 m, 53.38 m and 137.27 m from upstream with respective SD values equals to 0.36 °C, 0.24 °C and 0.95 °C.

290 Streambed temperature measurements clearly show a general trend with an increase of the amplitudes of temperature variations measured from upstream (the spring) to downstream, up to around 300 m. In the first 300 meters,

This page contains no comments



Author: bfdestombe	Subject: Highlight	Date: 11/07/2021, 11:14:08
Be more specific		
Author: bfdestombe	Subject: Highlight	Date: 11/07/2021, 10:53:17
Not marked in 5		
Author: bfdestombe	Subject: Highlight	Date: 11/07/2021, 11:45:01
Specify mean		

temperature fluctuations appear attenuated compared to the daily temperature fluctuations and the streambed temperature variations measured more downstream (beyond 300 m). Thus, lower temperature amplitude variations suggest groundwater inflows, especially for the measurement points where the lowest values of SD are recorded (minimal peaks of SD digressing from the general trend, as illustrated by the blue line in Fig. 5b). Indeed, for these “hotspots”, thermal anomalies are clearly recorded and the temperature is relatively stable over time according to the stable groundwater temperature (around 12.5-13°C). The general increase of SD from the spring up to 300 m may be associated to a global decrease of groundwater inflows from upstream to downstream in the first 300 meters of the watershed. Higher and punctual inflows would be located in spots where the value of the SD is clearly lower than the general trend. Nevertheless, the gradual increase of the SD could also be due to the fact that the stream water temperature, equal to the groundwater temperature at the spring, may progressively equilibrate with the air temperature when travelling along the stream.

To summarize, hotspots associated to minimal peaks of SD are certainly associated to groundwater discharges, but the general evolution of temperature SD may be due to different factors.

3.1.2 Temporal variability of temperature signals

Three different time periods were clearly identified with passive-DTS measurements according to the behaviour of the streambed temperature evolution over time: P1, P2 and P3 (Fig. 4 and 5). In order to characterize the temporal dynamic of groundwater discharge, the daily SD of temperature was calculated along the FO cable for each day of measurement as shown in Fig. 6. During the first month of monitoring (period P1 in Fig. 4a), quite similar temperature variations are observed all along the cable independently of the localization of the measurement point over the watershed. The temperature fluctuates between 9 and 14°C according to daily temperature fluctuations, as illustrated in Fig. 5a. The red line in the Fig. 6 is a representative example of the daily SD profiles calculated in December. During this period, the value of the daily SD calculated in the wetland area, is higher than the daily SD of the stream temperature (horizontal red line) and also higher than the daily SDs calculated in the golf or in the wood areas. Note also the piezometric levels measured near the stream during P1 are lower than the stage level and very low flow rate are measured in the stream in December (mean $\approx 2 \text{ L.s}^{-1}$) (Fig. 2a).

The second period from January to mid-April (period P2 in Fig. 4a) is characterized by well-marked temperature anomalies observed in the wetland area, where the streambed temperature stabilizes around 12.5°C (red line in Fig. 5a). During this period, the longitudinal profiles of daily SD of temperature, represented by the green line in Fig. 6, are identical to the one calculated over the experiment duration (Fig. 4b). This period is also marked by an increase of the piezometric level and water stage (Fig. 2a). Recharge starts end of December and the elevation of the groundwater table becomes higher than the elevation of the stream stage early January.

Lastly, from mid-April to the end of the monitoring (period P3 in Fig. 4a), the mean streambed temperature measured all along the cable and the daily temperature amplitudes both increase. However, the increase of the daily temperature amplitude, and thus of the SD, is more important in the downstream section (> 300m), as highlighted in Fig. 5a. Contrary to temperature measurements recorded during P1 (December), the temperature variations measured during P3 in



upstream sections (red and blue lines in Fig. 5a) are very different of the one measured downstream (orange line in Fig. 5a). Note also that the piezometric level measured during P3 gradually decreases as well as the stream flow (Fig. 2a). According to Fig. 6, the behaviour of the temperature SD is clearly different from each period of time. This suggests therefore that the temperature SD may be a good marker of possible groundwater inflows although it provides only qualitative information.

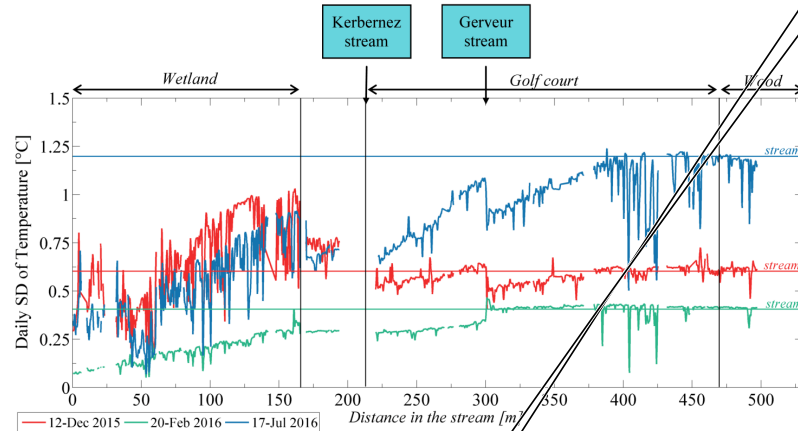


Figure 6: Examples of longitudinal profiles of daily SD of temperature calculated the Dec. 12, 2015 (red line), the Feb. 20, 2016 (green line) and the Jul. 17, 2016 (blue line). These profiles are representative of daily SD profiles calculated during the periods P1, P2 and P3 respectively. The coloured horizontal lines correspond to the daily SD of stream temperature calculated the same days.

3.1.3 Quantifying groundwater/ stream water exchanges

To go further and interpret streambed temperature variations, the FLUX-BOT model was applied for each measurement point. A detailed example of the application of the FLUX-BOT model on a single measurement point ($d = 5.08$ m) including the quality criteria associated to the fluxes estimates is presented in Fig. S3. Although the model was applied for each measurement point, simulated temperature variations are consistent only with DTS measurements located in the first 150 meters of the temperature profile ($SD < 1^\circ\text{C}$) with values of $NSE > 0.74$, values of $R^2 > 0.85$ and values of $RMSEs < 0.9^\circ\text{C}$. Beyond 150 m, the quality of the results considerably decreases with values of $NSE < 0.6$, values of $R^2 < 0.65$ and values of $RMSEs > 1.8^\circ\text{C}$. Thus, the uncertainties on fluxes estimates are too large in this lower part of the watershed (for $d > 150$ m) to estimate groundwater discharge. Consequently, the model is found not applicable to interpret temperature measurements and results are not provided here.



Figure 7 shows the results of the application of the FLUX-BOT model on passive-DTS measurements collected along the cable deployed in streambed sediments in the wetland area, for $d < 150\text{m}$, where the model is applicable. The model predicts negative values of fluxes all along the interpreted section, indicating upward water flow, which strengthens the assumption of groundwater discharge into stream. However, as shown in Fig. 7b, groundwater fluxes estimates are strongly dependent on the value of thermal conductivity of the sediments used in the model. Indeed, the model was applied for 3 values of thermal conductivity (1, 2.5 and $4\text{ W.m}^{-1}\text{.K}^{-1}$). The streambed sediments being composed of saturated clay, silt, sand and gravel, the thermal conductivity may typically range between 0.9 and $4\text{ W.m}^{-1}\text{.K}^{-1}$ (Stauffer et al., 2013). By varying the thermal conductivity from $1\text{ W.m}^{-1}\text{.K}^{-1}$ (blue line) to $4\text{ W.m}^{-1}\text{.K}^{-1}$ (green line), the estimated discharge is around 4 times higher. For instance, at $d = 75\text{ m}$, the mean flux is estimated $-3.43 \times 10^{-6}\text{ m.s}^{-1}$ for $\lambda = 1\text{ W.m}^{-1}\text{.K}^{-1}$ against $-1.48 \times 10^{-5}\text{ m.s}^{-1}$ for $\lambda = 4\text{ W.m}^{-1}\text{.K}^{-1}$. Note however that the results are more sensitive to the value of the thermal conductivity when groundwater inflows are higher (see Fig. S3 for more details).

Whatever the uncertainties, higher groundwater inflows are estimated upstream, at the head of the watershed and close to the spring (Fig. 7b). The comparison with the SD profile (Fig. 7a) tends to confirm the correlation between the value of the SD of streambed temperature and the importance of groundwater discharge. The increase of SD from upstream to downstream seems associated to a decrease of groundwater discharge. The inflows are estimated twice higher near the spring than downstream. Hence, assuming a thermal conductivity of the sediments $\lambda = 2.5\text{ W.m}^{-1}\text{.K}^{-1}$ (orange line in Fig. 7b), the mean flux is estimated $-1.24 \times 10^{-6}\text{ m.s}^{-1}$ near the spring ($d = 0\text{ m}$) while it only reaches $-6.55 \times 10^{-6}\text{ m.s}^{-1}$ for $d = 150\text{ m}$. Results also suggest that local peaks of SD (at 95 or 100 m for instance) can be associated to punctual preferential pathways, where groundwater discharge is locally estimated four times higher than elsewhere.

Figure 7c shows the temporal variability of groundwater discharge estimated for different measurement points. The range of fluxes is larger from January to May with groundwater inflows varying between 5×10^{-6} and $2.5 \times 10^{-3}\text{ m.s}^{-1}$ by considering $\lambda = 2.5\text{ W.m}^{-1}\text{.K}^{-1}$. Lower groundwater inflows are detected during the first month of experiment ($< 7.5 \times 10^{-6}\text{ m.s}^{-1}$) and at the end of the experiment ($< 6 \times 10^{-6}\text{ m.s}^{-1}$). The same temporal dynamic is observed for all data collected in the wetland area.

Author: bfdestombe Subject: Highlight Date: 11/07/2021, 13:37:24

It is unclear to me whether this is the specific discharge from your 1D heat transport model, the velocity/seepage rate (but requires you to make an assumption on porosity), or a river flow. I would expect a unit of cubic meter per second per meter river.

Author: bfdestombe Subject: Highlight Date: 11/07/2021, 12:23:45

Twice the SD means half the flow? This assumptions requires much more explanation.

Author: bfdestombe Subject: Sticky Note Date: 11/07/2021, 12:54:49

One implicit assumption is that the temperature of the river averaged over the measurement period is equal along the river, and so is the temperature of the entering water averaged over the measurement period. The latter does not hold. I would expect the temperature of the groundwater entering the river averaged of the measurement period to vary along the river, due to the measurements not covering a full year and spatial variation of the residence times. The bias introduced by this difference in mean temperature becomes part of this ratio of flows.

Author: bfdestombe Subject: Highlight Date: 11/07/2021, 13:30:20

Drops in

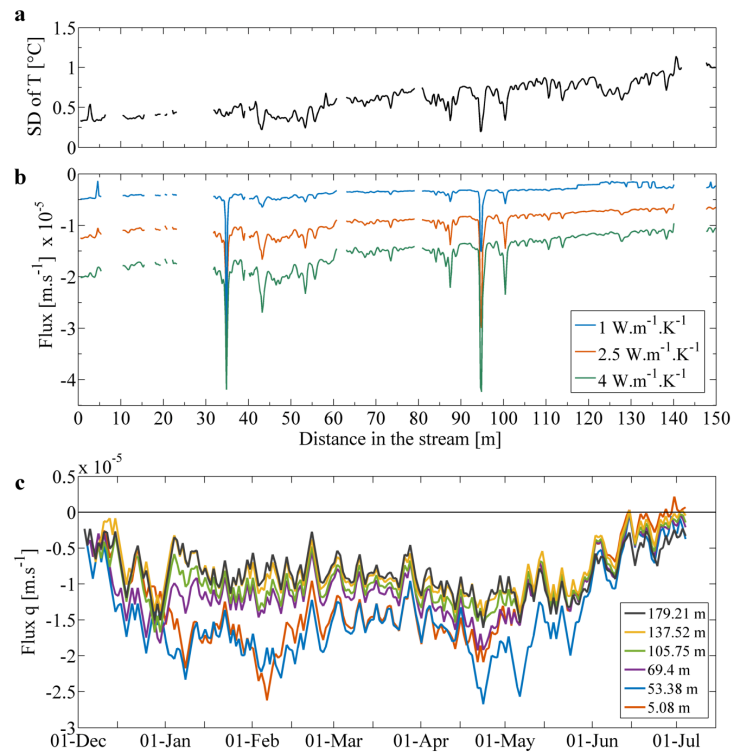


Figure 7: a. Profile of SD of the streambed temperature calculated over the experiment duration for each measurement point located along the FO cable and deployed in the wetland area; b. Profiles of mean fluxes estimated over the experiment duration using the FLUX-BOT model from DTS measurements collected in streambed sediments in the wetland area considering 3 values of thermal conductivity (Negative values indicate upward water flux); c. Temporal evolution of the estimated flow considering $\lambda=2.5 \text{ W.m}^{-1}.\text{K}^{-1}$.

This page contains no comments



3.2 Active-DTS measurements

3.2.1 Data interpretation

Among active-DTS measurements, 172 measurements points, selected following the data processing method developed in Simon et al. (2020), are thought to be **significant**. Note that the raw data of active-DTS measurements are presented in the Fig. S4 and that the data processing (sorting and quality check) and the definition of significant points are presented in detail in the supplement. Hereafter, we focus on data interpretation and fluxes estimates of the selected significant data points.

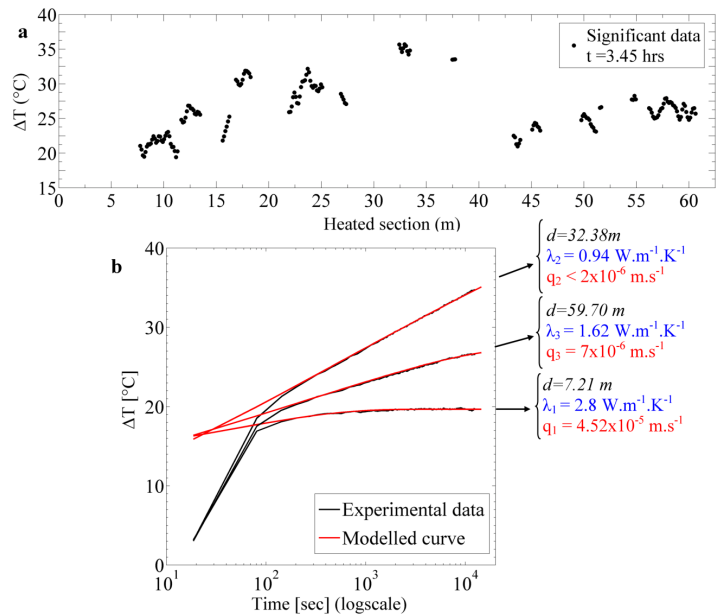


Figure 8: a. Significant ΔT values measured 3.45hrs after the start of the heating period measured along the buried FO section. b. Examples of data interpretation on three thermal response curves observed in the data (black lines). The MILS/model was used to reproduce the temperature increase during both the conduction- and advection-dominant periods (red lines).

Figure 8a shows the variability of ΔT measured 3.45hrs after the start of the heat experiment. Despite some areas without data, due to noise in the data or imperfect burying, the measurement points are distributed over less than 55 m

Author: bdestombe Subject: Sticky Note Date: 11/07/2021, 14:23:21

You are applying a model that assumes all thermal properties are homogeneous and with the background temperature at a large distance from the fiber. Is the depth at which you buried the fiber sufficient to not be affected by this? And for sections with little water entering the river?

Author: bdestombe Subject: Highlight Date: 11/07/2021, 13:49:01

Summarize your selection procedure here

Author: bdestombe Subject: Highlight Date: 11/07/2021, 13:57:22

This is something I would be very interested in. What noise are you talking about (DTS noise would gradually change along the fiber)? How do you identify locations where the fiber is buried imperfect?



offering a clear view of the variability of thermal responses. The value of ΔT is particularly variable and ranges between 19.42 °C (at 11.2 m) and 36 °C (at 132.5 m). However, despite the variability observed, adjacent points present in general a similar dynamic with similar values of ΔT , suggesting similar behaviours over a certain range or scale.

390 Each validated data point was interpreted using the ADTS Toolbox (Simon and Bour, Submitted) to estimate thermal conductivities and fluxes. Figure 8b shows three examples of thermal response curves observed in the data collected along the heated FO section (black lines) and their respective interpretation with the ADTS Toolbox (red lines). The data interpretation focuses on the interpretation of the second part of the temperature increase (for $t > 90$ sec) corresponding to the temperature increase controlled by heat conduction and advection in the sediments (Simon et al., 2021). As illustrated in Fig. 395 8b, the thermal conductivity highly controls the thermal response and the variability of ΔT . For instance, at $d = 32.38$ m, the temperature rise reaches 34.7 °C after 3.45 hrs of heating, in concordance with the very low thermal conductivity estimated ($0.94 \text{ W.m}^{-1}\text{.K}^{-1}$). On the opposite, at $d = 7.21$ m, where the temperature rise is much lower and reaches only 19.7 °C, λ is estimated at $2.8 \text{ W.m}^{-1}\text{.K}^{-1}$. The fluxes are then estimated using the temperature at later times, as the intensity of the flux controls temperature stabilization (Simon et al., 2021). Thus, for instance, the following fluxes values of $7 \times 10^{-6} \text{ m.s}^{-1}$ and 400 $4.52 \times 10^{-5} \text{ m.s}^{-1}$ are estimated at $d = 59.70$ m and $d = 7.21$ m respectively. However, for some points, as illustrated by the temperature evolution measured at $d = 32.38$ m, the temperature does not stabilize for later times and keeps increasing with no inflexion over the whole heating period. This implies either no-flow conditions ($q = 0 \text{ m.s}^{-1}$) or very low-flow conditions which presume that the heat duration was not long enough to reach temperature stabilization (Simon et al., 2021). In these cases, only an estimate of q_{lim} can be provided, which corresponds to the highest value of flow that would induce such 405 temperature increase. For instance, at $d = 32.38$ m, the flux is estimated to be lower than $2 \times 10^{-6} \text{ m.s}^{-1}$.

3.2.2 Spatial variability of thermal conductivities and water fluxes estimates

Figure 9 shows the estimation of both the thermal conductivities (Fig. 9a) and the fluxes (Fig. 9b) obtained from active-DTS measurements using the ADTS Toolbox. It provides an estimate of their respective spatial distribution at very small scale. As shown in Fig. 9a, the thermal conductivities estimated along the heated section vary between 0.8 and 3.14 410 $\text{W.m}^{-1}\text{.K}^{-1}$, with a median value at $1.65 \text{ W.m}^{-1}\text{.K}^{-1}$. The RMSE calculated between observed data and the best-fit model was systematically lower than 0.05 °C. Seeing the data noise (< 0.1 °C), the maximal uncertainty of these estimates is estimated to be $\pm 0.2 \text{ W.m}^{-1}\text{.K}^{-1}$.

As shown in Fig. 9b, estimated groundwater fluxes vary between 2×10^{-6} and $4.74 \times 10^{-5} \text{ m.s}^{-1}$, with a mean value at $1.34 \times 10^{-5} \text{ m.s}^{-1}$ and a SD of $9.18 \times 10^{-6} \text{ m.s}^{-1}$. For 9 locations (blue points), only the value of q_{lim} was evaluated since 415 departure of the conduction regime towards temperature stabilization was not reached at the end of the heating period. Note that the data interpretation does not provide the flow direction, the temperature increase being identical for upward and downward conditions. Although significant measurements are not available all along the sections, results show a decrease of the flux from upstream to downstream, particularly in the first twenty meters of measurements. At greater distances, fluxes are more diffuse in space, except at few locations, for instance at 43, 50 and 52 m from the start of the heated section where

Author: bfdestombe Subject: Highlight Date: 11/07/2021, 14:09:53

The temperature of the is increased from 3 to > 20. In this temperature range the viscosity of water is changing significantly. Are you sure you can safely neglect the effects of a changing viscosity w.r.t. its surroundings?

Author: bfdestombe Subject: Highlight Date: 11/07/2021, 13:57:59

Already cited multiple times before

Author: bfdestombe Subject: Sticky Note Date: 11/07/2021, 14:13:13

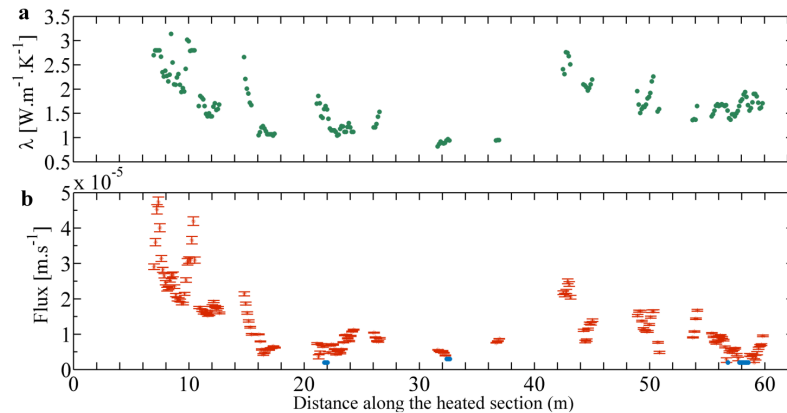
This paragraph contains many estimations. I would like to see a measure of uncertainty for each estimate.

Author: bfdestombe Subject: Highlight Date: 11/07/2021, 14:15:45

Merge this with the presented values in the previous section. Do so similarly for the estimated water flux



420 higher values are observed. Interestingly, very local and high fluxes values, spreading on less than 2 m, can be observed, as for instance at $d = 10$ m.



425 **Figure 9:** The interpretation of active-DTS measurements along the heated section of FO cable leads to estimate the spatial distribution of both a. the thermal conductivity and b. the water fluxes and their associated errors (error bars). Blue points mark locations where the temperature stabilization is not reached and where an estimate of q_{lim} is provided. Errors bars corresponding to uncertainties on flow estimates calculated with respect to data noise for each measurement points.

3.3 Comparison between passive- and active-DTS measurements

Figure 10 compares estimated values of groundwater fluxes for the 7th April 2016. The flow direction is assumed upward in agreement with passive-DTS measurements (Fig. 7b).

430 For passive-DTS measurements, the two light grey curves correspond to fluxes estimates considering $\lambda = 1 \text{ W.m}^{-1}.\text{K}^{-1}$ and $\lambda = 4 \text{ W.m}^{-1}.\text{K}^{-1}$, assuming that fluxes vary between these two thresholds. It appears that the flow quantification remains uncertain especially because of the lack of knowledge about thermal conductivity variations. Results show a slight decrease of groundwater discharge from upstream to downstream but the large range of estimated fluxes probably blurs the actual trend.

435 Fluxes estimates from active-DTS measurements (pink points) can be qualitatively compared with the evolution of the SD of temperature (green line). The lowest SD values are located in the first 55 m of the stream, which is in good agreement with active-DTS measurements that highlighted highest groundwater discharges between 47 and 53 m (between 1.7×10^{-5} and $4.9 \times 10^{-5} \text{ m.s}^{-1}$). Between approximately 55 and 60 m, the value of SD increases rapidly (from $1.25 \text{ }^{\circ}\text{C}$ at 54 m to 2°C at 60 m) while the fluxes estimated from active-DTS measurements decrease linearly (from 2.1×10^{-5} at 56.8 m to



440 $4.2 \times 10^{-6} \text{ m.s}^{-1}$ at 58.5 m). From 60 m, the SD increases and the associated values of fluxes estimated from active-DTS are particularly low, varying for instance between 2×10^{-6} and $1.1 \times 10^{-5} \text{ m.s}^{-1}$. Interestingly, the locations of punctual increases of groundwater discharge detected with the active experiment at 87.5 m, 95 m and 100 m (black arrows) match well with punctual decreases of SD values. Note also that flux estimates from active-DTS measurements are in very good agreement with the results of VTPs (blue line). The estimated flux based on passive-DTS measurements at 53.4 m is also in good
445 agreement with active-DTS results despite the large uncertainty.

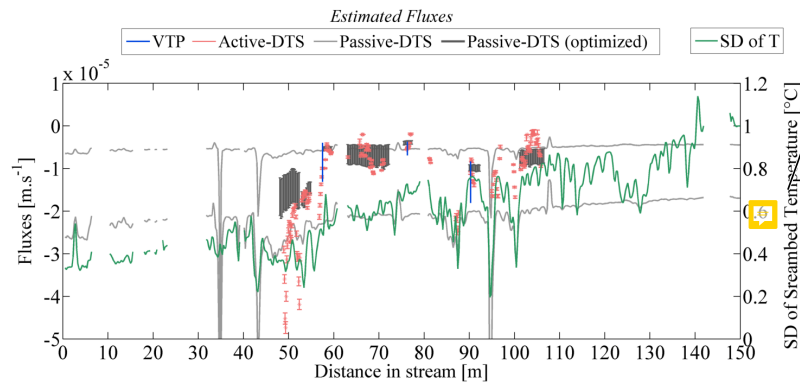


Figure 10: Comparison of flow estimated the 7th April 2016 using the vertical temperature profiles (VTP), the passive-DTS measurements and the active-DTS measurements. Results are compared with the evolution of SD of the temperature calculated from passive-DTS measurements. The black arrows highlight localized groundwater discharge.

450 For passive-DTS measurements, fluxes estimates can be highly improved if the effective value of thermal conductivity is considered in the model. Actually, the data have been once again interpreted with the FLUX-BOT model by considering the thermal conductivity estimated from active-DTS measurements. As a result, the estimated range of fluxes was highly reduced and in much better agreement with other estimates, as shown by dark grey lines in Fig. 10. For instance, between 63 and 72 m, the thermal conductivity was evaluated from active-DTS measurements between 1 and $1.9 \text{ W.m}^{-1}.\text{K}^{-1}$
455 depending on measurement points (Fig. 9a). Using such values, the fluxes estimated from passive-DTS measurements in this area vary between -9.5×10^{-6} and $-4.3 \times 10^{-5} \text{ m.s}^{-1}$ (dark grey lines), whereas initially estimated between -2.2×10^{-5} and $-5.4 \times 10^{-6} \text{ m.s}^{-1}$ considering λ between 1 and $4 \text{ W.m}^{-1}.\text{K}^{-1}$ (light grey lines). As shown in Fig. 10, except between 48 and 52 m where small discrepancies remain, this approach significantly reduces the range of fluxes estimated and shows that passive-DTS results are in good agreement with active-DTS results when an independent and more precise estimate of the thermal
460 conductivity is considered. Note however that the exact location of the non-heated cable (passive measurements) in relation to the heated cable is difficult to establish precisely which limits the precise location of the thermal conductivity estimates.



Author: bfdestombe Subject: Highlight Date: 11/07/2021, 15:12:02
 Why?

Author: bfdestombe Subject: Highlight Date: 11/07/2021, 15:13:43
 Including all the temporal variations in water depth?

Author: bfdestombe Subject: Highlight Date: 11/07/2021, 15:23:38
 If the temperature is uniform then the SD is also the same everywhere. Please be more specific.

4 Discussion

4.1 Passive-DTS measurements

4.1.1 Interpretation of streambed temperature measurements

465 Burying a FO cable in the streambed allowed recording streambed temperature variations at high resolution during
 several months along several hundreds of meters. This is clearly the main advantage of passive-DTS method since such
 achievement would not have been possible with individual temperature probes. Once the FO is installed in the streambed,
 which can be difficult depending on the streambed nature, the long-term recording of temperature is relatively easy and
 autonomous.

470 Streambed temperature measurements recorded with the FO cable allow making first assumptions about the spatial
 and temporal dynamics occurring in the watershed if used over a several month-long monitoring. For doing so, the
 calculation of the Standard Deviation (SD) of streambed temperature over time appears a reliable proxy for locating inflows
 (Fig. 4 and 5), since higher SDs values can be associated to larger daily temperature amplitudes. Here, the SD of temperature
 increases progressively from upstream to downstream up to reaching the SD of stream temperature around $d = 300$ m (Fig.
 475 4b) and very localized and low values of SD, described previously as minimal peaks of SD digressing from the general trend,
 also appear along the profile. We have already made the assumption that these hotspots could be interpreted as groundwater
 discharges while the general increase of SD from the spring up to 300 meters could be interpreted either as a general
 decrease of groundwater discharge from upstream to downstream or as a possible equilibrium between the stream
 temperature and the atmosphere.

480 Theoretically, to interpret the data and conclude about groundwater/surface water exchanges, the temperature
 variations recorded in the streambed should be compared with the stream temperature variations and the groundwater
 temperature variations (Constantz, 2008). In practice, it would require deploying at least 3 FO cables in the field (Mamer and
 Lowry, 2013), which seems technically impossible. Therefore, the data interpretation requires assuming the stream
 temperature homogeneous along the investigated section, which is consistent in our study case since shade and lighting
 485 conditions and water depths are similar. Moreover, the transit time from the spring to the gauging station is relatively rapid
 due to the short distances and the river slopes and the very low water depths certainly support the fast balance between the
 air temperature and the stream temperature. This assumption is partly confirmed with the stream temperature recorded near
 the spring with the DTS, in an area where the FO cable is not buried but lies in the bottom of the stream. At this location, the
 SD of the temperature equals 1.03°C , which is a little less 1.375°C , the value recorded in the stream at the gauging station
 490 E30, located at around 490 m of the spring. However, this suggests that the SD of the stream temperature signal should be
 relatively high, greater than 1°C all along the stream and consequently much larger than the SD recorded within the
 streambed, especially in the upstream section of the stream (first 300 meters).

If stream temperature variations are assumed almost uniform along the studied section, the values of SDs inferior to
 the SD of the stream temperature could actually be interpreted as groundwater inflows. For these lower values, daily



495 temperature variations are more or less attenuated in proportion to the value of the SD (as shown in Fig. 5). This is strengthened by the fact that, for the measurements points located in the wetland where the lowest values of SD are recorded (minimal 'peaks' of SD illustrated by the blue line in Fig. 5b), clear thermal anomalies are recorded and the temperature appears relatively stable over time according to the stable groundwater temperature (around 12.5-13°C). Therefore, results suggest a decrease of groundwater inflows from upstream to downstream in the first 300 meters of the watershed with higher and punctual inflows in spots where the SD with clearly lower than the general trend.

Beyond 300 m, the values of the SD are almost equal to the SD of the stream temperature and the recorded temperature variations are approximately similar to stream temperature variations. Concerning the second part of the golf area (from 300 to around 470 m), the data interpretation remains difficult because of the hard substrate that limited the burying of the FO cable. However, in the last 70 meters of the FO cable (wood plain), the cable was easily buried in a thick sandy riverbed. Thus, the value of the SD in this area, equals to the one recorded in the stream, would suggest the absence of groundwater inflows, which would remain limited to the wetland and therefore to the upper part of the watershed with highest topographic changes, as we shall discuss later.

4.1.2 Quantification of groundwater inflows

To go further, the inverse numerical FLUX-BOT model was used to quantify the vertical fluxes from DTS measurements recorded all along the FO cable. Once again, the stream temperature variations were assumed uniform along the studied section. The model was clearly not applicable in the lower part of the watershed (for $d > 150$ m) because of too large uncertainties on fluxes estimates. Thus, despite the values of the SD recorded between $d = 150$ m and $d = 300$ m, slightly lower than the SD of the stream temperature variations suggesting potential groundwater inflows, the fluxes quantification remains too uncertain in this area to be validated. This is probably because groundwater inflows are too low or diffuse in this part of the watershed.

In the first 150 m, where the model can be successfully used, results firstly allow determining the flow direction, showing that thermal anomalies can be associated to groundwater inflows. This confirms the spatial and temporal dynamics of exchanges occurring in the wetland. However, the numerical model requires making assumptions about boundary conditions or the burial depth of the cable, which appears to be a main limitation for quantifying groundwater inflows. For instance, although the burial depth was estimated around 8 cm, the precise determination of this depth all over the cable was not possible. Complementary tests (not shown here), conducted by varying the depth of the FO cable in the model, suggest that varying the burial depth of ± 2 cm induces in average a difference of $\pm 50\%$ on fluxes estimates, showing the high uncertainty linked to the burial depth.

Most of all, results showed that thermal conductivity value has an impact on fluxes estimates, which is consistent with the results of Briggs et al. (2014), Duque et al. (2016), Lapham (1989) and Sebok and Müller (2019). The ignorance and assumptions on thermal conductivities values lead to high uncertainties on fluxes estimates using both VTP and passive-DTS measurements. Thus, *in-situ* estimates of thermal conductivities using thermal conductivity probes could considerably



Author: bfdestombe Subject: Highlight Date: 11/07/2021, 15:37:20

Author: bfdestombe Subject: Highlight Date: 11/07/2021, 21:27:39
 Which results?

Author: bfdestombe Subject: Highlight Date: 11/07/2021, 21:35:16

This is a misleading statement. I would say that at more than half of the locations the estimates differ a factor two.

improve the fluxes estimates, as demonstrated by Duque et al. (2016), who reported up to 89% increase in flux estimates when using *in situ* measured sediment thermal conductivities. However, seeing the high spatial variability of the thermal conductivity highlighted through the active-DTS experiment, it would certainly require a tremendous effort in the field to characterize such variability with single probes.

To summarize, passive-DTS measurements can provide streambed temperature variations at high resolution during several months. As previously demonstrated (Krause et al., 2012; Le Lay et al., 2019b, a; Lowry et al., 2007), this approach can help highlighting possible groundwater inflows. The calculation of the SD is an efficient approach to rapidly identify strong thermal anomalies (Sebok et al., 2015) and to compare the temperature amplitudes recorded all along the FO cable (Le Lay et al., 2019b). However, the interpretation of temperature measurements and the fluxes quantification depend on strong assumptions about thermal properties and boundary conditions, and especially about the stream temperature. This suggests that burying a single FO cable in the streambed, although very promising and interesting, is not enough to fully characterize groundwater/surface water interactions. For further applications, results suggest the necessity of deploying an additional FO cable at the bottom of the stream in order to measure also stream temperature variations at high resolution all along the studied section. This seems the only way to fully and efficiently extend the heat-based classical methods (Constantz, 2008; Hatch et al., 2006) at high spatial resolution. A third buried FO cable would be the optimal configuration to estimate distributed vertical fluxes (Mamer and Lowry, 2013) and reduce the uncertainties on fluxes estimations.

4.2 Active-DTS measurements

Contrary to passive-DTS measurements, the active-DTS measurements turned out to be an efficient method to estimate fluxes at high resolution and with a very low uncertainty. From only 4 hrs of measurements, the approach provides an estimate of both the thermal conductivities and the fluxes along the heated cable confirming the high variability of these two parameters in space (Fig. 9). It clearly appears that the main advantage of the approach is the low uncertainty on fluxes estimates. Note that the use of the ADTS Toolbox, that automatically interprets active-DTS measurements (Simon and Bour, Submitted), highly facilitates the data interpretation, which is finally much easier than the interpretation of passive-DTS measurements.

Results show that streambed thermal conductivities are relatively variable in space but consistent with streambed sediments, composed of saturated clay and silt, and saturated sand and gravel, whose thermal conductivity values commonly range respectively between 0.9 and 4 W.m⁻¹.K⁻¹ (Stauffer et al., 2013). The large range of thermal conductivities observed in this relatively small section of streambed (less than 60m) demonstrates the interest of distributed measurements to fully characterize the streambed. No other method could provide an estimate of the thermal properties at this spatial resolution.

Groundwater fluxes were estimated between 2x10⁻⁶ and 4.74x10⁻⁵ m.s⁻¹, in very good agreement with the results of the VTPs (Fig. 10). The results suggest a decrease of the groundwater discharge from upstream to downstream, with the most significant inflows located in the first 20-m of the heated section. Elsewhere, groundwater discharge is more diffuse in space. Results also highlight very punctual increases of groundwater discharge matching with punctual decreases of



Author: bdestombe Subject: Sticky Note Date: 11/07/2021, 21:37:01
 I do not agree to this conclusion

Author: bdestombe Subject: Highlight Date: 11/07/2021, 21:48:57

I was expecting an estimate of the minimum depth the cable needed to be buried in order to still be able to assume homogeneous soil around the cable

Author: bdestombe Subject: Highlight Date: 11/07/2021, 21:50:47
 Why?

Author: bdestombe Subject: Highlight Date: 11/07/2021, 21:50:26

Author: bdestombe Subject: Highlight Date: 11/07/2021, 21:52:22

Please use correct wording

Author: bdestombe Subject: Highlight Date: 11/07/2021, 21:51:31

streambed temperature SD values, calculated from passive-DTS measurements (Fig. 10). This confirms the possibility of investigating very punctual groundwater inflows and the capability of investigating the spatial evolution of fluxes at very small scale. Thus, active-DTS measurements allow validating the hypothesis made to interpret passive-DTS measurements (diffuse inflows with very punctual increases of groundwater discharge).

The magnitude of groundwater flux is in good agreement with the measured stream flow. Considering the width and the length of the investigated stream where groundwater inflows have been estimated, contribution to the stream can be roughly evaluated around 4 L.s^{-1} . This means that 57% of the stream flow at the time of the experiment was contributed by groundwater (the average flow measured at the downstream gauging station was 7 L.s^{-1} for this period).

Results also show (Fig. 10) that the interpretation of active-DTS measurements can be used to improve the interpretation of passive-DTS measurements. Indeed, the values of thermal conductivities, estimated from active-DTS measurements, can be used to calibrate the inverse model and therefore to reduce the uncertainties on fluxes estimates from passive-DTS measurements. It can lead to a much better quantification of groundwater inflows at a new temporal and spatial scale (although the assumption on the stream temperature remains an issue).

Finally, some limitations and inconveniences should be noted:

(i) The installation of the heated FO cable was entirely manual and rapid, which probably partly explains the large number of measurement points removed before the data interpretation. Nevertheless, the use of tools like ploughs should improve the burying of the cable, limit the alteration of the riverbed and allow for a much better control of the burial depth.

(ii) In gaining streams, the burial depth of the heated cable might potentially affect the thermal response to heating. Indeed, if the cable is too close to the stream, the stream temperature could limit the temperature elevation by dissipating the heat produced. Further investigations should be done to quantify the effect of the new stream on estimates.

(iii) The data interpretation does not provide the flow direction contrary to the interpretation of passive-DTS measurements. The determination of the flow direction requires coupling the data with complementary approaches, such as passive-DTS measurements, piezometric gradients, etc. The temperature variations recorded before the heating period and after the end of the recovery can also be used as soon as the stream temperature variations are assumed uniform along the heated section.

(iv) Active-DTS experiments might cause more technical problems than passive-DTS experiments and requires a significant instrumentation (heat pulse system, electrical cables,...). Moreover, the length of the heated section is limited, due to the electrical injection limitation (Simon et al., 2021). Thus, contrary to passive-DTS measurements, the flow investigation at the watershed scale is nearly impossible unless multiplying the installation of heated sections in the streambed.

(v) Active-DTS measurements provide a punctual estimate of fluxes. To characterize the temporal dynamic of flow, these experiments must be often repeated, which is clearly more constraining than conducting long-term passive-DTS measurements (that require less instrumentation during data acquisition). However, the repetition of active-DTS measurements offer very promising perspectives for environmental monitoring such as recently showed by Abesser et al.



595 (2020) who repeated surveys under different meteorological or hydrological conditions in order to monitor the thermal and the hydraulic properties of the soil subsurface.

Finally, note also that for the interpretation of both passive- and active-DTS measurements, the flow is assumed to be vertical and perpendicular to the FO cable. Although the absence of nonvertical flow components is generally assumed when using the heat as a tracer (Constantz, 2008; Hatch et al., 2006; Lapham, 1989), nonvertical fluxes can affect natural temperature profiles and associated fluxes estimates (Bartolino and Miswonger, 1999; Cranswick et al., 2014; Cuthbert and Mackay, 2013; Lautz, 2010; Reeves and Hatch, 2016), and so passive-DTS measurements interpretation. Likewise, nonvertical fluxes could also affect the interpretation of active-DTS measurements. Thus, some studies suggest that the impact of the angle of the flow against the cable is significant as soon as it differs more than $\pm 30^\circ$ from being perpendicular (Aufleger et al., 2007; Chen et al., 2019; Perzlsmaier et al., 2004).

605 4.3 Groundwater/stream water exchanges

The use of these two DTS approaches allow characterizing spatial and temporal patterns of groundwater/stream water exchanges in order to better describe the hydrological behaviour in this headwater watershed. Results and associated fluxes estimates are consistent with previous studies that predicted that 80-90% of the stream flow was induced by groundwater discharge (Fovet et al., 2015b; Martin, 2003).

610 First, results suggest that the groundwater contribution is concentrated in the wetland and more especially in the upstream near the spring, where the steepest slopes can be observed. Further downstream, beyond 60 m from the spring, the groundwater discharge decreases progressively and rapidly. This confirms the importance of the topography in the stream generation in headwater area (Harvey and Bencala, 1993; Sophocleous, 2002; Tóth, 1963; Winter, 2007) and the role of local topography variations on groundwater discharge (Baxter and Hauer, 2000; Flipo et al., 2014; Frei et al., 2010; Stonedahl et al., 2010; Tonina and Buffington, 2011; Unland et al., 2013).

Beyond the role of topography which acts as the main driver of groundwater inflows, variations of hydraulic conductivity could also explain the presence of local hotspots with high groundwater inflows, highlighted with both methods in the wetland area, upstream near the spring. Indeed, these hotspots peaks that would highly contribute to the stream flow may be driven by local changes in the hydraulic gradient, induced by the successive streambed topography changes, but are more likely due to hydraulic properties changes given the amplitude and scale of variations. Such hydraulic conductivity variations could come from uneven bedrock weathering or to the presence of fractures which is very common in such bedrock geology (Buss et al., 2008; Guihéneuf et al., 2014). Such heterogeneities may control flow in the subsurface but can also influence the nature of the streambed. This would also explain why the values of fluxes seem correlated, at least at some places, with the values of thermal conductivities (Fig. 9). Indeed, our results suggest that local hotspots with high groundwater inflows are also associated to higher values of thermal conductivities. This is consistent with a change of streambed properties. Indeed, clay and silt have much lower hydraulic conductivities than sand but also lower thermal conductivities (Stauffer et al., 2013). Although cross-correlation analysis would be useful to go further in the interpretation,



such correlation would not be surprising since the nature of the streambed affects both its hydraulic conductivity and its thermal properties.

Then, three different time periods were clearly identified with the passive-DTS measurements according to the behaviour of the streambed temperature evolution over time (Fig. 4, 5 and 6). It seems that the increase in precipitations in winter leads to increase gradually the hydraulic gradient, which induces groundwater exfiltration into the stream once the elevation of the groundwater table becomes higher than the elevation of the stream stage. During the spring, the groundwater table decreases progressively and so do the groundwater contribution to stream flow. Since changes in piezometric levels are periodic with alternating periods of high and low water table levels, we can assume that exchanges have a similar temporal dynamic from year to year, which can help managing water resources.

These results are consistent with the temporal dynamic of exchanges observed under temperate climate where the intensity of groundwater/surface water exchanges fluctuates according to seasonal patterns (Brunke and Gonser, 1997; Sophocleous, 2002). More important, these results highlight the interest of the long-term monitoring of streambed temperature with the DTS. The high-frequency of measurements allow monitoring the rapid change of hydrological conditions and therefore to precisely identify the moments when groundwater inflows to the stream. Thus, long-term DTS measurements can provide the precise identification of hotspots of groundwater discharge and of “hot-moments”, corresponding to the groundwater discharge periods. These results are useful to understand the hydrological behaviour in the watershed but also for studying biogeochemical hotspots and hot moments (Krause et al., 2017; Singh et al., 2019; Trauth and Fleckenstein, 2017).

5 Conclusions

Passive- and active-DTS measurements were conducted concurrently in the same experimental site in order to characterize the spatial and temporal patterns of groundwater/stream interactions of a second-order stream. The long-term passive-DTS measurements and the associated quantification of vertical fluxes demonstrated the potential but also the limits of the approach to characterize both the temporal and spatial variability of groundwater discharge into the stream at the headwater stream scale. Thus, results highlighted preferential discharge areas depending on the streambed properties and topography, showing that the head of the watershed highly contributes to stream flow. The temporal variations of groundwater inflows over time were also clearly identified depending on the annual hydrological cycle and on changes in meteorological and hydrological conditions at the watershed scale. These results are consistent with the results of Martin (2003) showing that hydraulic gradients on the hillslope of the watershed imply a high contribution of the shallow groundwater to the stream discharge during high water periods.

However, this study also demonstrates the limitations of passive-DTS measurements. When a single FO cable is buried in the streambed, the data interpretation requires making strong assumptions about the thermal conductivity of sediments and about the stream temperature. Uncertainties may be reduced if previous and independent measurements of the

This page contains no comments



660 variability of streambed thermal conductivities are available, through active-DTS measurements for instance. However, the interpretation of passive-DTS measurements would still rely on the assumption that the stream temperature is uniform along the studied section. In practice, the proper estimation of passive-DTS measurements conducted in streambeds would require measuring the stream temperature with the same spatial resolution and thus deploying a second FO cable at the bottom of the stream.

665 Active-DTS measurements allowed going way further in the characterization of groundwater inflows through the estimate of fluxes and their spatial distribution with a very low uncertainty in comparison with passive-DTS measurements and *in situ* thermal methods. Firstly, the active-DTS experiment allowed identifying and quantifying the high variability of thermal conductivity in space. Secondly, the quantification of groundwater fluxes through the active-DTS measurements clearly showed the co-existence of local hotspots, characterized by very localized and high groundwater inflows and more
670 diffuse groundwater inflows elsewhere along the heated section. The method considerably decreases the uncertainty on fluxes estimates and allows describing the variability of streambed properties at an unprecedented scale.

The complementarity of passive- and active-DTS measurements to fully characterize the dynamic of groundwater/surface water interactions should also be highlighted. Indeed, while long-term passive-DTS measurements can be relatively easily conducted, the application of active-DTS measurements in the field is more constraining, meaning that
675 active-DTS experiments are generally punctual and provide a single punctual estimate of the variability of thermal conductivity and fluxes. Thus, passive-DTS measurements permitted to locate the spatial and temporal patterns of groundwater inflows on relatively large distances, while active-DTS measurements allowed a much more precise and robust estimate of both thermal conductivities and fluxes which can highly contribute to improve passive-DTS methods interpretation.

680 The combination of active- and passive-DTS methods provided an imaging of the spatial variability of groundwater inflows. It allowed better inferring the role of topography, which acts as the main driver of groundwater inflows in the upper part of the watershed, and also the impact of hydraulic conductivity variations which may explain the presence of very localized and high groundwater inflows. Thus, these methods and especially active-DTS measurements conducted in the streambed open very promising perspectives for novel characterization of the groundwater/stream interfaces, especially if
685 surveys are repeated under different meteorological or hydrological conditions.

Data availability

The data presented in this study are available online.

Link through data related to the active-DTS experiment: <http://geowww.agrocampus-ouest.fr/geonetwork/apps/georchestra/?uuid=535a3738-0ed7-4376-99f1-9a7a652b893d>

690 Link through data related to the passive-DTS experiment: <http://geowww.agrocampus-ouest.fr/geonetwork/apps/georchestra/?uuid=a5f2a68f-bf63-469c-839b-1e1edf1f8624>



Supplement link:

Author contribution

Conceptualization: NS, OB, LL, OF and ZT; Data curation: NS; Formal analysis: NS; Funding acquisition: OB;
695 Investigation: NS, OB, NL, MF, OF, HLL and ZT; Methodology: NS; Project administration: OB, OF and ZT; Resources:
NL and MF; Software: NS; Supervision: OB; Validation: NS and OB; Visualization: NS; Writing – original draft
preparation: NS; Writing – review & editing: NS, OB, OF, ZT and LL.

Competing interests

The authors declare that they have no conflict of interest.

700 Acknowledgements

This research was funded by the Agence de l'Eau Loire Bretagne and by the ANR project EQUIPEX CRITEX (grant number
ANR-11-EQPX-0011).

References

- 705 Abesser, C., Ciocca, F., Findlay, J., Hannah, D., Blaen, P., Chalari, A., Mondanos, M., and Krause, S.: A distributed heat
pulse sensor network for thermo-hydraulic monitoring of the soil subsurface, *Quarterly Journal of Engineering Geology and
Hydrogeology*, 53, 352–365, <https://doi.org/10.1144/qjehg2018-147>, 2020.
- Anderson, M. P.: Heat as a ground water tracer, *Ground Water*, 43, 951–968, <https://doi.org/10.1111/j.1745-6584.2005.00052.x>, 2005.
- 710 Aufleger, M., Conrad, M., Goltz, M., Perzmaier, S., and Porras, P.: Innovative dam monitoring tools based on distributed
temperature measurement, *Jordan Journal of Civil Engineering*, 1, 29–37, 2007.
- Banks, E., Shanafield, M., and Cook, P.: Induced Temperature Gradients to Examine Groundwater Flowpaths in Open
Boreholes, 52, <https://doi.org/10.1111/gwat.12157>, 2014.
- Bartolino, J. R. and Niswonger, R. G.: Numerical simulation of vertical ground-water flux of the Rio Grande from ground-
water temperature profiles, central New Mexico, Reston, VA, <https://doi.org/10.3133/wri994212>, 1999.
- 715 Baxter, C. and Hauer, F.: Geomorphology, Hyporheic Exchange, and Selection of Spawning Habitat by Bull Trout
(*Salvelinus Confluentus*), *Canadian Journal of Fisheries and Aquatic Sciences - CAN J FISHERIES AQUAT SCI*, 57, 1470–
1481, <https://doi.org/10.1139/cjfas-57-7-1470>, 2000.
- Bencala, K.: A Perspective on Stream-Catchment Connections, *J. N. Am. Benthol. Soc.*, 12, 44–47,
<https://doi.org/10.2307/1467684>, 1993.



- 720 Bense, V. F., Read, T., Bour, O., Le Borgne, T., Coleman, T., Krause, S., Chalarí, A., Mondanos, M., Ciocca, F., and Selker, J. S.: Distributed Temperature Sensing as a downhole tool in hydrogeology, *Water Resour. Res.*, 52, 9259–9273, <https://doi.org/10.1002/2016WR018869>, 2016.
- Brandt, T., Vieweg, M., Laube, G., Schima, R., Goblirsch, T., Fleckenstein, J. H., and Schmidt, C.: Automated in Situ Oxygen Profiling at Aquatic–Terrestrial Interfaces, *Environ. Sci. Technol.*, 51, 9970–9978, <https://doi.org/10.1021/acs.est.7b01482>, 2017.
- 725 Briggs, M. A., Lautz, L. K., and McKenzie, J. M.: A comparison of fibre-optic distributed temperature sensing to traditional methods of evaluating groundwater inflow to streams, *Hydrol. Process.*, 26, 1277–1290, <https://doi.org/10.1002/hyp.8200>, 2012.
- Briggs, M. A., Lautz, L. K., Buckley, S. F., and Lane, J. W.: Practical limitations on the use of diurnal temperature signals to quantify groundwater upwelling, *J. Hydrol.*, 519, 1739–1751, <https://doi.org/10.1016/j.jhydrol.2014.09.030>, 2014.
- 730 Briggs, M. A., Buckley, S. F., Bagtzoglou, A. C., Werkema, D. D., and Lane, J. W.: Actively heated high-resolution fiber-optic-distributed temperature sensing to quantify streambed flow dynamics in zones of strong groundwater upwelling, *Water Resour. Res.*, 52, 5179–5194, <https://doi.org/10.1002/2015WR018219>, 2016.
- Brunke, M. and Gonser, T.: The ecological significance of exchange processes between rivers and groundwater, *Freshw. Biol.*, 37, 1–33, <https://doi.org/10.1046/j.1365-2427.1997.00143.x>, 1997.
- 735 Buss, H. L., Sak, P. B., Webb, S. M., and Brantley, S. L.: Weathering of the Rio Blanco quartz diorite, Luquillo Mountains, Puerto Rico: Coupling oxidation, dissolution, and fracturing, *Geochimica et Cosmochimica Acta*, 72, 4488–4507, <https://doi.org/10.1016/j.gca.2008.06.020>, 2008.
- Carlsaw, H. S. and Jaeger, J. C.: *Conduction of heat in solids*, Oxford Univ. Press, 1959.
- 740 Chen, J., Xiong, F., Zheng, J., Ge, Q., and Cheng, F.: The influence of infiltration angle on the identification effect of seepage with linear heat source method, *Measurement*, 148, 106974, <https://doi.org/10.1016/j.measurement.2019.106974>, 2019.
- Constantz, J.: Heat as a tracer to determine streambed water exchanges, *Water Resources Research*, 44, <https://doi.org/10.1029/2008WR006996>, 2008.
- 745 Constantz, J. and Thomas, C. L.: The use of streambed temperature profiles to estimate the depth, duration, and rate of percolation beneath arroyos, *Water Resour. Res.*, 32, 3597–3602, <https://doi.org/10.1029/96WR03014>, 1996.
- Cranswick, R. H., Cook, P. G., Shanafield, M., and Lamontagne, S.: The vertical variability of hyporheic fluxes inferred from riverbed temperature data, *Water Resources Research*, 50, 3994–4010, <https://doi.org/10.1002/2013WR014410>, 2014.
- Cuthbert, M. O. and Mackay, R.: Impacts of nonuniform flow on estimates of vertical streambed flux, *Water Resources Research*, 49, 19–28, <https://doi.org/10.1029/2011WR011587>, 2013.
- 750 Domenico, P. A. and Schwartz, F. W.: *Physical and chemical hydrogeology*. Second edition, New York: John Wiley & Sons Inc., 1998.
- Duque, C., Müller, S., Sebok, E., Haider, K., and Engesgaard, P.: Estimating groundwater discharge to surface waters using heat as a tracer in low flux environments: the role of thermal conductivity, 30, 383–395, <https://doi.org/10.1002/hyp.10568>, 2016.
- 755

<https://doi.org/10.5194/hess-2021-293>
Preprint. Discussion started: 3 June 2021
© Author(s) 2021. CC BY 4.0 License.



- Fleckenstein, J. H., Niswonger, R. G., and Fogg, G. E.: River-aquifer interactions, geologic heterogeneity, and low-flow management, *Ground Water*, 44, 837–852, <https://doi.org/10.1111/j.1745-6584.2006.00190.x>, 2006.
- Flipo, N., Mouhri, A., Labarthe, B., Biancamaria, S., Rivière, A., and Weill, P.: Continental hydrosystem modelling: the concept of nested stream-aquifer interfaces, 18, 3121–3149, <https://doi.org/10.5194/hess-18-3121-2014>, 2014.
- 760 Fovet, O., Ruiz, L., Hrachowitz, M., Faucheux, M., and Gascuel-Oudou, C.: Hydrological hysteresis and its value for assessing process consistency in catchment conceptual models, *Hydrol. Earth Syst. Sci.*, 19, 105–123, <https://doi.org/10.5194/hess-19-105-2015>, 2015a.
- Fovet, O., Ruiz, L., Faucheux, M., Molénat, J., Sekhar, M., Vertès, F., Aquilina, L., Gascuel-Oudou, C., and Durand, P.: Using long time series of agricultural-derived nitrates for estimating catchment transit times, *Journal of Hydrology*, 522, 603–617, <https://doi.org/10.1016/j.jhydrol.2015.01.030>, 2015b.
- 765 Fovet, O., Ruiz, L., Gruau, G., Akkal, N., Aquilina, L., Busnot, S., Dupas, R., Durand, P., Faucheux, M., Fauvel, Y., Flechard, C., Gilliet, N., Grimaldi, C., Hamon, Y., Jaffrezic, A., Jeanneau, L., Labasque, T., Henaff, G., Mérot, P., and Gascuel-Oudou, C.: AgrHyS: An Observatory of Response Times in Agro-Hydro Systems, *Vadose Zone Journal*, 17, <https://doi.org/10.2136/vzj2018.04.0066>, 2018.
- 770 Frei, S., Lischeid, G., and Fleckenstein, J. H.: Effects of micro-topography on surface–subsurface exchange and runoff generation in a virtual riparian wetland — A modeling study, *Advances in Water Resources*, 33, 1388–1401, <https://doi.org/10.1016/j.advwatres.2010.07.006>, 2010.
- Frei, S., Durejka, S., Le Lay, H., Thomas, Z., and Gilfedder, B. S.: Quantification of Hyporheic Nitrate Removal at the Reach Scale: Exposure Times Versus Residence Times, *Water Resources Research*, 55, 9808–9825, <https://doi.org/10.1029/2019WR025540>, 2019.
- 775 Gaillardet, J., Braud, I., Hankard, F., Anquetin, S., Bour, O., Dörfliger, N., de Dreuz, J.-R., Galle, S., Galy, C., Gogo, S., Gourcy, L., Habets, F., Laggoun, F., Longuevergne, L., Borgne, T., Naaim-Bouvet, F., Nord, G., Simonneaux, V., Six, D., and Zitouna, R.: OZCAR: The French network of critical zone observatories, *Vadose Zone Journal*, 17, <https://doi.org/10.2136/vzj2018.04.0067>, 2018.
- 780 Ghafoori, Y., Vidmar, A., Řiha, J., and Kryžanowski, A.: A Review of Measurement Calibration and Interpretation for Seepage Monitoring by Optical Fiber Distributed Temperature Sensors, 20, <https://doi.org/10.3390/s20195696>, 2020.
- van de Giesen, N., Steele-Dunne, S. C., Jansen, J., Hoes, O., Hausner, M. B., Tyler, S., and Selker, J.: Double-Ended Calibration of Fiber-Optic Raman Spectra Distributed Temperature Sensing Data, *Sensors*, 12, 5471–5485, <https://doi.org/10.3390/s120505471>, 2012.
- 785 Gilmore, T., Johnson, M., Korus, J., Mittelstet, A., Briggs, M., Zlotnik, V., and Corcoran, S.: Streambed Flux Measurement Informed by Distributed Temperature Sensing Leads to a Significantly Different Characterization of Groundwater Discharge, *Water*, 11, 2312, <https://doi.org/10.3390/w11112312>, 2019.
- Goto, S., Yamano, M., and Kinoshita, M.: Thermal response of sediment with vertical fluid flow to periodic temperature variation at the surface, *J. Geophys. Res.-Solid Earth*, 110, B01106, <https://doi.org/10.1029/2004JB003419>, 2005.
- 790 Guéhéneuf, N., Boisson, A., Bour, O., Dewandel, B., Perrin, J., Amélie, D., Viossanges, M., Chandra, S., Ahmed, S., and Maréchal, J.-C.: Groundwater flows in weathered crystalline rocks: Impact of piezometric variations and depth-dependent fracture connectivity, *Journal of Hydrology*, 511, 320–334, <https://doi.org/10.1016/j.jhydrol.2014.01.061>, 2014.



Habel, W., Baumann, I., Berghmans, F., Borzycki, K., Chojetzki, C., Haase, K.-H., Jaroszewicz, L., Kleckers, T., Nikles, M., Schluter, V., Thévenaz, L., Tur, M., and Wuilpart, M.: Guideline for Use of Fibre Optic Sensors, 2009.

795 Harvey, J. and Bencala, K.: The Effect of Streambed Topography on Surface-Subsurface Water Exchange, *Water Resour. Res.*, 29, 89–98, <https://doi.org/10.1029/92WR01960>, 1993.

Hatch, C. E., Fisher, A. T., Revenaugh, J. S., Constantz, J., and Ruehl, C.: Quantifying surface water-groundwater interactions using time series analysis of streambed thermal records: Method development, *Water Resour. Res.*, 42, W10410, <https://doi.org/10.1029/2005WR004787>, 2006.

800 Jones, J. B. and Mulholland, P. J. (Eds.): *AQUATIC ECOLOGY Series*, in: *Streams and Ground Waters*, Academic Press, San Diego, ii, <https://doi.org/10.1016/B978-0-12-389845-6.50020-X>, 2000.

Kalbus, E., Reinstorf, F., and Schirmer, M.: Measuring methods for groundwater - surface water interactions: a review, *Hydrol. Earth Syst. Sci.*, 10, 873–887, 2006.

805 Kalbus, E., Schmidt, C., Molson, J. W., Reinstorf, F., and Schirmer, M.: Influence of aquifer and streambed heterogeneity on the distribution of groundwater discharge, *Hydrol. Earth Syst. Sci.*, 13, 69–77, 2009.

Keery, J., Binley, A., Crook, N., and Smith, J. W. N.: Temporal and spatial variability of groundwater-surface water fluxes: Development and application of an analytical method using temperature time series, *J. Hydrol.*, 336, 1–16, <https://doi.org/10.1016/j.jhydrol.2006.12.003>, 2007.

810 Klepikova, M., Roques, C., Loew, S., and Selker, J.: Improved Characterization of Groundwater Flow in Heterogeneous Aquifers Using Granular Polyacrylamide (PAM) Gel as Temporary Grout, *Water Resources Research*, 54, <https://doi.org/10.1002/2017WR022259>, 2018.

Koruk, K., Yilmaz, K. K., Akyurek, Z., and Binley, A.: A multi-technique approach to determine temporal and spatial variability of groundwater-stream water exchange, *Hydrological Processes*, 34, 2612–2627, <https://doi.org/10.1002/hyp.13754>, 2020.

815 Krause, S., Blume, T., and Cassidy, N. J.: Investigating patterns and controls of groundwater up-welling in a lowland river by combining Fibre-optic Distributed Temperature Sensing with observations of vertical hydraulic gradients, *Hydrol. Earth Syst. Sci.*, 16, 1775–1792, <https://doi.org/10.5194/hess-16-1775-2012>, 2012.

820 Krause, S., Lewandowski, J., Grimm, N. B., Hannah, D. M., Pinay, G., McDonald, K., Martí, E., Argerich, A., Pfister, L., Klaus, J., Battin, T., Larned, S. T., Schelker, J., Fleckenstein, J., Schmidt, C., Rivett, M. O., Watts, G., Sabater, F., Sorolla, A., and Turk, V.: Ecohydrological interfaces as hot spots of ecosystem processes, *Water Resources Research*, 53, 6359–6376, <https://doi.org/10.1002/2016WR019516>, 2017.

Kurth, A.-M., Weber, C., and Schirmer, M.: How effective is river restoration in re-establishing groundwater-surface water interactions? - A case study, *Hydrol. Earth Syst. Sci.*, 19, 2663–2672, <https://doi.org/10.5194/hess-19-2663-2015>, 2015.

825 Lapham, W. W.: Use of temperature profiles beneath streams to determine rates of vertical ground-water flow and vertical hydraulic conductivity, *Water-Supply*, Denver, Colorado: USGS, 1989.

Lapo, K., Freundorfer, A., Pfister, L., Schneider, J., Selker, J., and Thomas, C.: Distributed observations of wind direction using microstructures attached to actively heated fiber-optic cables, 13, 1563–1573, <https://doi.org/10.5194/amt-13-1563-2020>, 2020.



- 830 Lautz, L. K.: Impacts of nonideal field conditions on vertical water velocity estimates from streambed temperature time series, *Water Resources Research*, 46, <https://doi.org/10.1029/2009WR007917>, 2010.
- Le Lay, H., Thomas, Z., Rouault, F., Pichelin, P., and Moatar, F.: Characterization of Diffuse Groundwater Inflows into Stream Water (Part II: Quantifying Groundwater Inflows by Coupling FO-DTS and Vertical Flow Velocities), *Water*, 11, 2430, <https://doi.org/10.3390/w11122430>, 2019a.
- 835 Le Lay, H., Thomas, Z., Rouault, F., Pichelin, P., and Moatar, F.: Characterization of Diffuse Groundwater Inflows into Streamwater (Part I: Spatial and Temporal Mapping Framework Based on Fiber Optic Distributed Temperature Sensing), *Water*, 11, 2389, <https://doi.org/10.3390/w1112389>, 2019b.
- Liao, F., Cardenas, M. B., Ferencz, S. B., Chen, X., and Wang, G.: Tracing Bank Storage and Hyporheic Exchange Dynamics Using 222Rn: Virtual and Field Tests and Comparison With Other Tracers, *Water Resources Research*, 57, e2020WR028960, <https://doi.org/10.1029/2020WR028960>, 2021.
- 840 Lowry, C. S., Walker, J. F., Hunt, R. J., and Anderson, M. P.: Identifying spatial variability of groundwater discharge in a wetland stream using a distributed temperature sensor, *Water Resour. Res.*, 43, W10408, <https://doi.org/10.1029/2007WR006145>, 2007.
- Mamer, E. A. and Lowry, C. S.: Locating and quantifying spatially distributed groundwater/surface water interactions using temperature signals with paired fiber-optic cables, *Water Resour. Res.*, 49, 7670–7680, <https://doi.org/10.1002/2013WR014235>, 2013.
- 845 Martin, C.: Mécanismes hydrologiques et hydrochimiques impliqués dans les variations saisonnières des teneurs en nitrate dans les bassins versants agricoles. Approche expérimentale et modélisation, phdthesis, Université Rennes 1, 2003.
- Martin, C., Molénat, J., Gascuel-Oudoux, C., Vouillamoz, J.-M., Robain, H., Ruiz, L., Faucheux, M., and Aquilina, L.: Modelling the effect of physical and chemical characteristics of shallow aquifers on water and nitrate transport in small agricultural catchments, *Journal of Hydrology*, 326, 25–42, <https://doi.org/10.1016/j.jhydrol.2005.10.040>, 2006.
- 850 Matheswaran, K., Blemmer, M., Rosbjerg, D., and Boegh, E.: Seasonal variations in groundwater upwelling zones in a Danish lowland stream analyzed using Distributed Temperature Sensing (DTS), *Hydrol. Process.*, 28, 1422–1435, <https://doi.org/10.1002/hyp.9690>, 2014.
- Moridnejad, M., Cameron, S., Shamseldin, A. Y., Verhagen, F., Moore, C., Melville, B. W., and Ward, N. D.: Stream Temperature Modeling and Fiber Optic Temperature Sensing to Characterize Groundwater Discharge, *Groundwater*, 58, 661–673, <https://doi.org/10.1111/gwat.12938>, 2020.
- 855 Munn, J. D., Maldaner, C. H., Coleman, T. I., and Parker, B. L.: Measuring Fracture Flow Changes in a Bedrock Aquifer Due to Open Hole and Pumped Conditions Using Active Distributed Temperature Sensing, *Water Resources Research*, 56, e2020WR027229, <https://doi.org/10.1029/2020WR027229>, 2020.
- 860 Munz, M. and Schmidt, C.: Estimation of vertical water fluxes from temperature time series by the inverse numerical computer program FLUX-BOT, *Hydrol. Process.*, 31, 2713–2724, <https://doi.org/10.1002/hyp.11198>, 2017.
- Perzmaier, S., Aufleger, M., and Conrad, M.: Distributed fiber optic temperature measurements in hydraulic engineering: Prospects of the heat-up method, in: Proceedings of a Workshop on Dam Safety Problems and Solutions, 72nd ICOLD Annual Meeting, Seoul, South Korea. 16–22 May 2004, 2004.



- 865 Read, T., Bour, O., Selker, J. S., Bense, V. F., Borgne, T. L., Hochreutener, R., and Lavenant, N.: Active-distributed
 temperature sensing to continuously quantify vertical flow in boreholes, *Water Resources Research*, 50, 3706–3713,
<https://doi.org/10.1002/2014WR015273>, 2014.
- Read, T., Bense, V. F., Hochreutener, R., Bour, O., Le Borgne, T., Lavenant, N., and Selker, J. S.: Thermal-plume fibre optic
 tracking (T-POT) test for flow velocity measurement in groundwater boreholes, 4, 197–202, [https://doi.org/10.5194/gi-4-](https://doi.org/10.5194/gi-4-197-2015)
 870 197-2015, 2015.
- Reeves, J. and Hatch, C. E.: Impacts of three-dimensional nonuniform flow on quantification of groundwater-surface water
 interactions using heat as a tracer, *Water Resources Research*, 52, 6851–6866, <https://doi.org/10.1002/2016WR018841>,
 2016.
- Rosenberry, D. O., Briggs, M. A., Delin, G., and Hare, D. K.: Combined use of thermal methods and seepage meters to
 875 efficiently locate, quantify, and monitor focused groundwater discharge to a sand-bed stream, *Water Resour. Res.*, 52, 4486–
 4503, <https://doi.org/10.1002/2016WR018808>, 2016.
- Rosenberry, D. O., Duque, C., and Lee, D. R.: History and evolution of seepage meters for quantifying flow between
 groundwater and surface water: Part 1 – Freshwater settings, *Earth-Science Reviews*, 204, 103167,
<https://doi.org/10.1016/j.earscirev.2020.103167>, 2020.
- 880 Ruiz, L., Abiven, S., Durand, P., Martin, C., Vertes, F., and Beaujouan, V.: Effect on nitrate concentration in stream water of
 agricultural practices in small catchments in Brittany : I. Annual nitrogen budgets, *Hydrol. Earth Syst. Sci.*, 6, 497–505,
 2002.
- Sayde, C., Thomas, C. K., Wagner, J., and Selker, J.: High-resolution wind speed measurements using actively heated fiber
 optics, *Geophys. Res. Lett.*, 42, 10064–10073, <https://doi.org/10.1002/2015GL066729>, 2015.
- 885 SEAFOM: Measurement Specification for Distributed Temperature Sensing (SEAFOM-MSP-01), <http://www.seafom.com/>,
 2010.
- Sebok, E. and Müller, S.: The effect of sediment thermal conductivity on vertical groundwater flux estimates, 23, 3305–
 3317, <https://doi.org/10.5194/hess-23-3305-2019>, 2019.
- Sebok, E., Duque, C., Kazmierczak, J., Engesgaard, P., Nilsson, B., Karan, S., and Frandsen, M.: High-resolution distributed
 890 temperature sensing to detect seasonal groundwater discharge into Lake Vaeng, Denmark, *Water Resour. Res.*, 49, 5355–
 5368, <https://doi.org/10.1002/wrcr.20436>, 2013.
- Sebok, E., Duque, C., Engesgaard, P., and Boegh, E.: Application of Distributed Temperature Sensing for coupled mapping
 of sedimentation processes and spatio-temporal variability of groundwater discharge in soft-bedded streams, *Hydrological
 Processes*, 29, 3408–3422, <https://doi.org/10.1002/hyp.10455>, 2015.
- 895 Selker, F. and Selker, J. S.: Investigating Water Movement Within and Near Wells Using Active Point Heating and Fiber
 Optic Distributed Temperature Sensing, 18, <https://doi.org/10.3390/s18041023>, 2018.
- Selker, J. S., Thevenaz, L., Huwald, H., Mallet, A., Luxemburg, W., de Giesen, N. van, Stejskal, M., Zeman, J., Westhoff,
 M., and Parlange, M. B.: Distributed fiber-optic temperature sensing for hydrologic systems, *Water Resour. Res.*, 42,
 W12202, <https://doi.org/10.1029/2006WR005326>, 2006a.
- 900 Selker, J. S., van de Giesen, N., Westhoff, M., Luxemburg, W., and Parlange, M. B.: Fiber optics opens window on stream
 dynamics, *Geophys. Res. Lett.*, 33, L24401, <https://doi.org/10.1029/2006GL027979>, 2006b.



Shanafield, M., Banks, E. W., Arkwright, J. W., and Hausner, M. B.: Fiber-Optic Sensing for Environmental Applications: Where We Have Come From and What Is Possible, *Water Resources Research*, 54, 8552–8557, <https://doi.org/10.1029/2018WR022768>, 2018.

905 Simon, N. and Bour, O.: An ADTS Toolbox for automatically interpreting Active Distributed Temperature Sensing measurements, Submitted.

Simon, N., Bour, O., Lavenant, N., Porel, G., Nauleau, B., Pouladi, B., and Longuevergne, L.: A Comparison of Different Methods to Estimate the Effective Spatial Resolution of FO-DTS Measurements Achieved during Sandbox Experiments, 20, <https://doi.org/10.3390/s20020570>, 2020.

910 Simon, N., Bour, O., Lavenant, N., Porel, G., Nauleau, B., Pouladi, B., Longuevergne, L., and Crave, A.: Numerical and Experimental Validation of the Applicability of Active-DTS Experiments to Estimate Thermal Conductivity and Groundwater Flux in Porous Media, *Water Resources Research*, 57, e2020WR028078, <https://doi.org/10.1029/2020WR028078>, 2021.

915 Singh, T., Wu, L., Gomez-Velez, J. D., Lewandowski, J., Hannah, D. M., and Krause, S.: Dynamic Hyporheic Zones: Exploring the Role of Peak Flow Events on Bedform-Induced Hyporheic Exchange, *Water Resources Research*, 55, 218–235, <https://doi.org/10.1029/2018WR022993>, 2019.

920 Slater, L. D., Ntarlagiannis, D., Day-Lewis, F. D., Mwakanyamale, K., Versteeg, R. J., Ward, A., Strickland, C., Johnson, C. D., and Lane, J. W.: Use of electrical imaging and distributed temperature sensing methods to characterize surface water-groundwater exchange regulating uranium transport at the Hanford 300 Area, Washington, *Water Resour. Res.*, 46, W10533, <https://doi.org/10.1029/2010WR009110>, 2010.

Sophocleous, M.: Interactions between groundwater and surface water: the state of the science, *Hydrogeol. J.*, 10, 52–67, <https://doi.org/10.1007/s10040-001-0170-8>, 2002.

Stallman, W.: Steady One-Dimensional Fluid Flow in a Semi-Infinite Porous Medium With Sinusoidal Surface Temperature, 2821 pp., <https://doi.org/10.1029/JZ070i012p02821>, 1965.

925 Stauffer, F., Bayer, P., Blum, P., Molina Giraldo, N., and Kinzelbach, W.: Thermal Use of Shallow Groundwater, <https://doi.org/10.1201/b16239>, 2013.

Stonedahl, S. H., Harvey, J. W., Wörman, A., Salehin, M., and Packman, A. I.: A multiscale model for integrating hyporheic exchange from ripples to meanders, *Water Resources Research*, 46, <https://doi.org/10.1029/2009WR008865>, 2010.

930 Su, H., Tian, S., Kang, Y., Xie, W., and Chen, J.: Monitoring water seepage velocity in dikes using distributed optical fiber temperature sensors, *Automation in Construction*, 76, 71–84, <https://doi.org/10.1016/j.autcon.2017.01.013>, 2017.

des Tombe, B. F., Bakker, M., Smits, F., Schaars, F., and van der Made, K.-J.: Estimation of the Variation in Specific Discharge Over Large Depth Using Distributed Temperature Sensing (DTS) Measurements of the Heat Pulse Response, *Water Resources Research*, 55, 811–826, <https://doi.org/10.1029/2018WR024171>, 2019.

935 Tonina, D. and Buffington, J. M.: Effects of stream discharge, alluvial depth and bar amplitude on hyporheic flow in pool-riffle channels, *Water Resour. Res.*, 47, W08508, <https://doi.org/10.1029/2010WR009140>, 2011.

Tóth, J.: A theoretical analysis of groundwater flow in small drainage basins, *Journal of Geophysical Research* (1896-1977), 68, 4795–4812, <https://doi.org/10.1029/JZ068i016p04795>, 1963.



- Trauth, N. and Fleckenstein, J. H.: Single discharge events increase reactive efficiency of the hyporheic zone, *Water Resources Research*, 53, 779–798, <https://doi.org/10.1002/2016WR019488>, 2017.
- 940 Tyler, S. W., Selker, J. S., Hausner, M. B., Hatch, C. E., Torgersen, T., Thodal, C. E., and Schladow, S. G.: Environmental temperature sensing using Raman spectra DTS fiber-optic methods, *Water Resour. Res.*, 45, W00D23, <https://doi.org/10.1029/2008WR007052>, 2009.
- Ukil, A., Braendle, H., and Krippner, P.: Distributed Temperature Sensing: Review of Technology and Applications, *IEEE Sensors Journal - IEEE SENS J*, 12, 885–892, <https://doi.org/10.1109/JSEN.2011.2162060>, 2012.
- 945 Unland, N., Cartwright, I., Anderson, M., Rau, G., Reed, J., Gilfedder, B., Atkinson, A., and Hofmann, H.: Investigating the spatio-temporal variability in groundwater and surface water interactions: A multi-technique approach, *Hydrology and Earth System Sciences*, 17, 3437–3453, <https://doi.org/10.5194/hess-17-3437-2013>, 2013.
- del Val, L., Carrera, J., Pool, M., Martínez, L., Casanovas, C., Bour, O., and Folch, A.: Heat Dissipation Test With Fiber-Optic Distributed Temperature Sensing to Estimate Groundwater Flux, *Water Resources Research*, 57, e2020WR027228, <https://doi.org/10.1029/2020WR027228>, 2021.
- 950 Varli, D. and Yilmaz, K.: A Multi-Scale Approach for Improved Characterization of Surface Water—Groundwater Interactions: Integrating Thermal Remote Sensing and in-Stream Measurements, *Water*, 10, 854, <https://doi.org/10.3390/w10070854>, 2018.
- Webb, B. W., Hannah, D. M., Moore, R. D., Brown, L. E., and Nobilis, F.: Recent advances in stream and river temperature research, *Hydrol. Process.*, 22, 902–918, <https://doi.org/10.1002/hyp.6994>, 2008.
- 955 Westhoff, M. C., Savenije, H. H. G., Luxemburg, W. M. J., Stelling, G. S., van de Giesen, N. C., Selker, J. S., Pfister, L., and Uhlenbrook, S.: A distributed stream temperature model using high resolution temperature observations, *Hydrol. Earth Syst. Sci.*, 11, 1469–1480, 2007.
- Westhoff, M. C., Gooseff, M. N., Bogaard, T. A., and Savenije, H. H. G.: Quantifying hyporheic exchange at high spatial resolution using natural temperature variations along a first-order stream, *Water Resour. Res.*, 47, W10508, <https://doi.org/10.1029/2010WR009767>, 2011.
- 960 Winter, T., Harvey, J., Franke, O., and Alley, W.: Ground water and surface water a single resource, *U.S. Geol. Surv. Circ.*, 1139, 1998.
- Winter, T. C.: The Role of Ground Water in Generating Streamflow in Headwater Areas and in Maintaining Base Flow1, *JAWRA Journal of the American Water Resources Association*, 43, 15–25, <https://doi.org/10.1111/j.1752-1688.2007.00003.x>, 2007.
- 965 Woessner, W. W.: Stream and fluvial plain ground water interactions: Rescaling hydrogeologic thought, *Ground Water*, 38, 423–429, <https://doi.org/10.1111/j.1745-6584.2000.tb00228.x>, 2000.