

Robustness of a parsimonious subsurface drainage model at the French national scale

Alexis Jeantet¹, Hocine Hénine¹, Cédric Chaumont¹, Lila Collet^{1,2}, Guillaume Thirel¹, Julien Tournebize¹

5 ¹INRAE, University of Paris Saclay, UR HYCAR, 1 rue Pierre Gilles de Gennes, Antony, France

²Now at: EDF R&D, OSIRIS Department, 7 boulevard Gaspard Monge, 91120 Palaiseau, France

Correspondence to: Alexis Jeantet (alexis.jeantet@inrae.fr)

Abstract - Drainage systems are currently implemented on agricultural plots subjected to temporary or permanent waterlogging issues. Drained plots account for 9% of all arable soils in France. As such, the need for accurate hydrological modeling is crucial, especially in an unstable future context affected by climate change. The aim of this paper is to assess the capacity of the SIDRA-RU hydrological drainage model to represent the variability of pedoclimatic conditions within French metropolitan areas, as well as to demonstrate the utility of this model as a long-term management tool. The model is initially calibrated using the KGE' criterion as an Objective Function (OF) on a large and unique database encompassing 22 plots spread across France and classified according to three main soil textures (silty, silty-clayey and clayey). The performance of SIDRA-RU is evaluated by monitoring both the set of KGE' calibration values and the quality of simulations on each plot with respect to high and low discharges as well as the annual drained water balance. Next, the temporal robustness of the model is assessed by conducting on selected plots the split-sample test capable of satisfying the data requirements. Results show that the SIDRA-RU model accurately simulates drainage discharge, especially on silty soils. The performance on clayey soils is slightly weaker than that on silty soils yet remains acceptable. Similarly, the split-sample test indicates that SIDRA-RU is temporally robust on all three soil textures. Consequently, the SIDRA-RU model closely replicates the diversity of French drained soil and could be used for its long-term management potential.

1. Introduction

Subsurface drainage is an agricultural soil management technique that controls soil water content and increases aeration on soils subjected to temporary or permanent water saturation issues into the soil depth (Jamagne, 1968; Baize and Jabiol, 2011). Plot water conditions are stabilized, thus ensuring better crop yields (Broadhead and Skaggs, 1982; Armstrong et al., 1988; Nijland et al., 2005; Ibrahim et al., 2013) while reducing the flood risk on plots (Henine et al., 2014; Tuohy et al., 2018b). Drained soils often belong to the hydromorphic soil category and sometimes in French context lie on a shallow and impervious layer reducing the deep infiltration (Thompson et al., 1997; Lange et al., 2011).

In France, all artificially drained soils comprise more than 2.7 million hectares of arable soils (source: "RGA - Agreste" (2010)), i.e. close to 10% of all arable land, corresponding to about 20% for cereal-type field crops. In practice, several techniques exist to drain soils such as subsurface drainage and open ditch. However, in France, over 80% of drainage practices are conducted by introducing perforated pipes lying on the impermeable layer. The drain depth, spacing, slope and diameter of these pipes constitute the main characteristics of each design; they are constrained by the local study site conditions, such as soil characteristics and climate (Mulqueen, 1998).

Since the economic and environmental consequences of climate change are of increasing concern to stakeholders, proper drainage practices have become a major issue. Predicting the long-term behavior of these systems is even more crucial in this context of water resource protection and restoration since drainage has an impact on water quality (Tournebize et al., 2012, 2017, 2020). The literature contains studies targeting the impact of climate change on drainage practices, with an emphasis on either the increase in annual drained water balance (Pease et al., 2017) or agricultural productivity on drained plots (Jiang et al., 2020a). These topics raise concerns over the sustainability of existing drainage systems, and their need to be redesigned has come to the fore (Deelstra, 2015; Abd-Elaty et al., 2019). A common theme across all these studies is the need to properly represent drainage systems within each study area.

In this context, hydrological modeling offers a widespread tool for predicting drainage discharge, with several models currently in use, e.g. DRAINMOD (Skaggs, 1981; Skaggs et al., 2012) in the United States. This spatially-distributed model operates on various spatial scales (Konyha and Skaggs, 1992; Brown et al., 2013) and integrates many modules in order to represent different hydrological processes and solute transports (Breve et al., 1997). In Europe, the MACRO model (Larsbo et al., 2005; Jarvis and Larsbo, 2012) is currently used by the FOCUS group (Adriaanse et al., 1996; Boesten et al., 1997) to evaluate drainage system performance and contaminant transport (Jarvis et al., 1997; Beulke et al., 2001). These two models, despite demonstrating their effectiveness, have been designed using physically-based modeling strategies with large number of parameters. Their calibration on several study sites becomes difficult and time consuming (Beven, 1989). Given this complexity, the SIDRA-RU model offers an interesting alternative. The model is semi-conceptual (Beskow et al., 2011), being composed of one physically-based part (the SIDRA module) coupled with a conceptual part (the RU module) and parsimonious, by virtue of requiring the calibration of only six parameters, hence making it easy to configure (Perrin et al., 2003). Initially intended to simulate drained discharge during flood periods (Lesaffre and Zimmer, 1987a), the SIDRA model converts weather-dependent soil recharge into drainage discharge by solving a semi-analytical formula derived from the Boussinesq equation (Boussinesq, 1904). Various modules have been integrated so as to better represent infiltration (Kao et al., 1998), water flux in the unsaturated zone (Bouarfa and Zimmer, 2000) or pesticide leaching (Branger et al., 2009). The RU module was recently integrated in order to model water transfer in the unsaturated zone (Henine et al., in review). This new version inputs a continuous recharge term into the SIDRA module, which then allows for the simulation of drainage discharge over the entire hydrological cycle.

Due to soil diversity within French drained areas, a model used for management purposes must initially be as general as possible and correctly calibrated to ensure model behavior matches the behavior of each studied site as closely as possible (Perrin, 2000). As such, a reliable calibration protocol often depends on the choice of Objective Function (OF), which serves as the numerical criterion to be optimized so that the simulation more accurately resembles reality. Many OFs can be used to calibrate a model, such as the Nash-Sutcliffe Efficiency (NSE, Nash and Sutcliffe (1970)) or the Kling-Gupta Efficiency (KGE, Gupta et al. (2009)), depending on the purpose of the particular study. The model here is intended for use on future prediction data under a long-term management scenario. From this perspective, the model must be temporally robust, i.e. its performance and parameters must remain independent of the period chosen for calibration (Klemeš, 1986). Such an evaluation can be performed by means of various tests, which tend to depend on the model structure (Refsgaard and Storm, 1996; Refsgaard, 2001; Henriksen et al., 2003; Daggupati et al., 2015). Since SIDRA-RU is a simple model, the split-sample test (Klemeš, 1986) is considered to be sufficient (Refsgaard, 1997). However, the national-scale evaluation of a hydrological model requires a large database, which is not readily available in the drainage hydrology field. This lack of data is the reason for the paucity of studies in the current literature.

75 The aim of this study is to assess the ability of a hydrological drainage model to simulate observed drainage discharge
across several representative sites spread out in France. An exhaustive database, composed of 22 experimental sites and
encompassing the main drained regions in France, has been built to account for the large diversity of French drained soils
on which the model was tested. Database completeness is one of this paper's main strengths and allows generalizing our
results on soil diversity. The hydrological model chosen for this work is SIDRA-RU, a parsimonious model that yields
80 continuous simulations and can easily be run on the database. In addition, the SIDRA-RU model offers a novel tool for
the hydrological drainage modeling community; this study therefore provides an opportunity to test its performance at
the national scale, which raises another point of interest regarding this study. Moreover, the temporal robustness of the
SIDRA-RU model is assessed in the aim of asserting whether or not the model can be used within the scope of a long-
term management tool, i.e. one capable of incorporating climate change.

85

2. Materials and methods

2.1 French classification of drained soils

A multitude of materials constitute French soils, as defined by their geological context, textural evolution and regional
climate. All of the above characteristics serve to determine the uniqueness of a soil. Making generalizations about soil
diversity becomes then a necessary step. Indeed, grouping them by soil category facilitates their modeling. Several official
90 classifications serve to group soil types (FAO, 1988; Krogh and Greve, 1999; Driessen et al., 2000). In this study, we are
proposing to classify them by texture, thus making it possible to sort the database into three categories (see Fig. 1 & Table
1). Let's note that here we do not consider the geological context or the regional climate to classify soils.

The Lagacherie and Jamagne classification (Jamagne et al., 1977; Lagacherie and Favrot, 1987; Richer-de-Forges et al.,
95 2008) has been used to evaluate this strategy. According to Fig. 1 (top), three distinct soil types occupy most of the regions
with the highest drainage ratio (i.e. percentage of a land area that has been drained, with drainage ratio values above 50%
of total arable area). First, the glossic and planolosic soils, belonging to the Luvisols and mainly located around the Paris
Basin and in the Allier Region (see Fig. 1), are defined by textural differentiation between the surface horizon, which is
often silty and sometimes sandy-loamy, and a deep clayey horizon. Second, brown acidic and leached soils, mostly
100 distributed in the western part of France (Fig. 1), lie on a magmatic and metamorphic substratum; they are often
characterized by a silty-clayey or loamy texture. Third, the pseudogley soils are also substantially drained, yet they remain
only slightly correlated with any specific soil texture. We assume here that among the 3 studied soil textures, they are
more related to silty-clayey soils (Lévy, 1972). Figure 1 (bottom) shows the drainage ratio of arable soil in France. Most
drainage systems (approximately 80%) lie on a loamy texture, according to Lagacherie and Favrot (1987), except in the
105 eastern part of France (Fig. 1), where drained soils are either predominantly silty-clayey or heavy clayey soils.

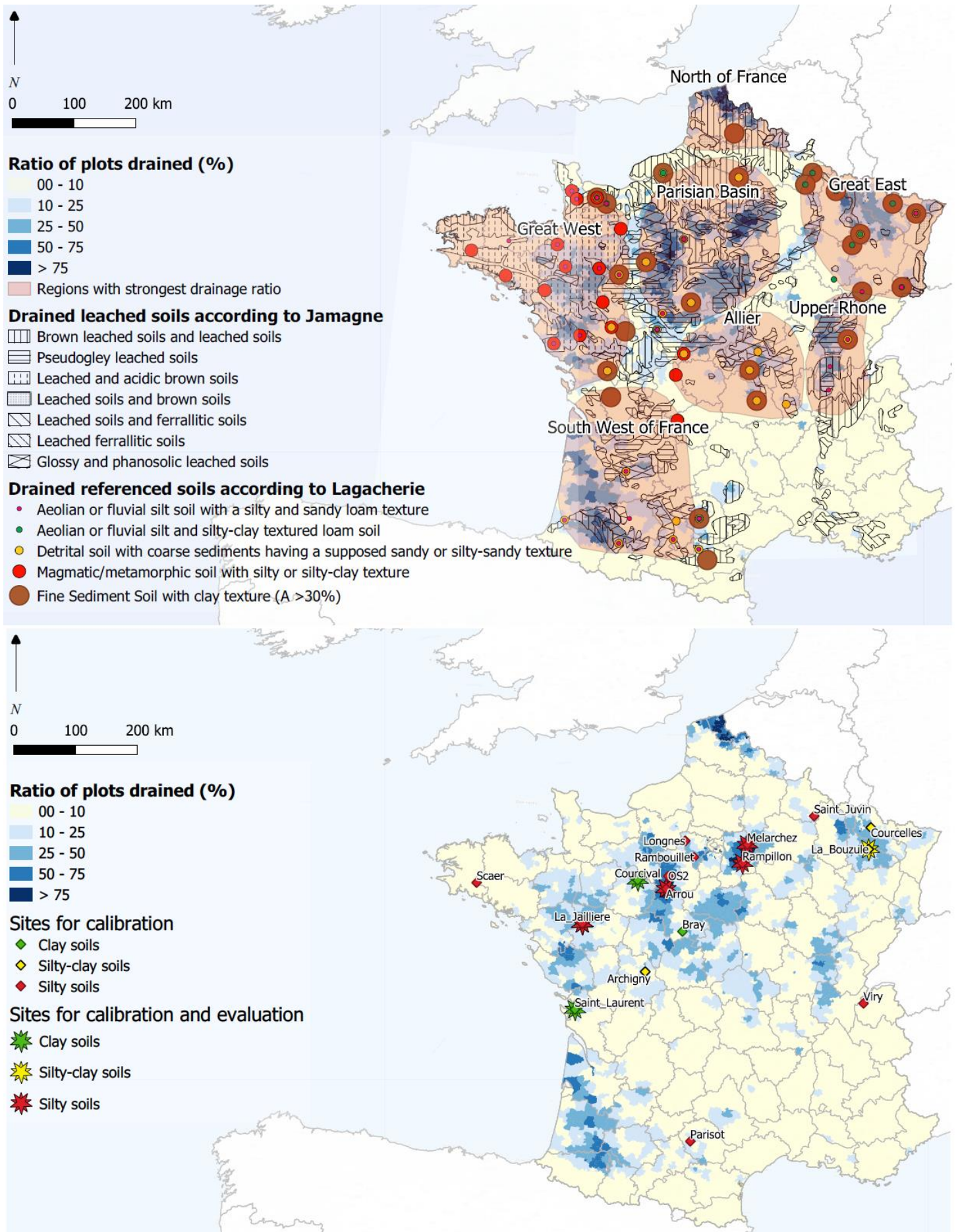


Figure 1: top) the pedological distribution of French soils, produced by Jamagne et al. (1977) and Lagacherie and Favrot (1989), overlaid on the spatial distribution of French drainage (RGA, 2010); bottom) the spatial distribution of sites aggregated by texture with observed flow data

Table 1: Main characteristics of the 22 plots with observed discharges and associated KGE' from the calibration process and split-sample tests

Texture	Plot name	Site location	Data period (years)	Surface area (ha)	Tile depth (m)	Space between drain and mid-drain ¹ (m)	Use	KGE' from total calibration	KGE' from the Split-Sample Test				Index (Fig. 10)
									In calibration	P1	P2	P1 P2	
Clayey soil	Bray_P1	Bray	6	46.0	0.9	5.0	calibration only	0.52	-	-	-	-	-
	Courcival_P3	Courcival	10	1.3	0.9	6.0	calibration and evaluation	0.44	0.42	0.48	0.36	0.34	C1
	La_Bouzule_P1	La Bouzule	13	1.9	0.9	12.0	calibration and evaluation	0.52	0.58	0.52	0.42	0.31	C2
	Saint_Laurent_P2	Saint Laurent	15	1.2	0.9	10.0	calibration and evaluation	0.76	0.75	0.75	0.58	0.63	C3
	Arrou_P6	Arrou	19	2.0	0.8	5.0	calibration and evaluation	0.65	0.57	0.78	0.75	0.55	S1
	Arrou_P8	Arrou	19	2.0	0.8	10.0	calibration and evaluation	0.65	0.54	0.72	0.72	0.53	S2
	Courcelles_P1	Courcelles	3	2.4	0.9	5.0	calibration only	0.70	-	-	-	-	-
	Courcelles_P2	Courcelles	3	2.4	0.9	5.0	calibration only	0.68	-	-	-	-	-
Silty soil	La_Jaillière_P4	La Jaillière	16	1.0	0.9	5.0	calibration and evaluation	0.83	0.82	0.87	0.79	0.82	S3
	Longnes_P2	Longnes	6	1.0	0.9	6.0	calibration only	0.66	-	-	-	-	-
	Longnes_P3	Longnes	6	1.0	0.9	7.5	calibration only	0.58	-	-	-	-	-
	Melarchez	Melarchez	39	700.0	0.9	6.0	calibration and evaluation	0.77	0.77	0.75	0.61	0.61	S4
	OS2_P1	OS2	3	2.0	1.0	5.0	calibration only	0.54	-	-	-	-	-
	Parisot_P2	Parisot	4	0.3	0.9	6.0	calibration only	0.81	-	-	-	-	-
	Rambouillet_P1	Rambouillet	3	1.0	0.9	5.0	calibration only	0.77	-	-	-	-	-
	Rampillon_GP	Rampillon	9	355.0	0.9	6.0	calibration only	0.77	0.80	0.76	0.71	0.73	S5
	Saint_Juvin_P1	Saint Juvin	3	1.4	0.9	15.0	calibration only	0.56	-	-	-	-	-
	Scaer_P2	Scaer	5	1.4	0.9	5.0	calibration only	0.61	-	-	-	-	-
Silty-clayey soil	Viry_P1	Viry	4	0.8	0.9	7.5	calibration only	0.60	-	-	-	-	-
	Archigny_P1	Archigny	2	1.0	0.9	4.0	calibration only	0.76	-	-	-	-	-
	Archigny_P2	Archigny	2	1.0	0.9	6.0	calibration only	0.76	-	-	-	-	-
	La_Bouzule_P2	La Bouzule	13	2.9	0.9	6.0	calibration and evaluation	0.54	0.50	0.60	0.45	0.56	SC1

¹ The midpoint between consecutive drains

110 2.2 Input data

A representative database of drainage discharge across France was specially assembled for this study. The data originate from various sources: (1) the ORACLE research project (Tallec et al., 2015) and artificial Rampillon wetland (Tournebize et al., 2012, 2017; Lebrun et al., 2019); (2) the partnership with the ARVALIS Institute, which monitors the *La Jaillière* experimental site; and (3) data from reference drainage sites dating between the 1960's and 1980's (Lagacherie and Favrot, 115 1987; Jannot, 1988).

The data from this last source stem from monitoring experiments managed by INRAE (formerly Cemagref) that test drainage modalities, i.e. what depth, space or pipes best fit to the field conditions. The combination of these sources yields a database of nearly 200 years of cumulative hydrological records on drained plots in diverse pedoclimatic contexts over a broad plot scale range (e.g. 0.8-700 ha). The resulting extensive dataset compiled for hydrological modeling purposes 120 encourages the transferability of this study's findings.

The drainage network of the various study plots is based on similar technical characteristics (see Table 1), composed of PCV perforated and corrugated pipes lying on a depth of 0.85 m to 1 m, with an inter-drain spacing from 8 to 24 m. The most widely used method for monitoring drainage discharge consists of measuring the corresponding water level at the drainage collector outlet using a calibration curve fitted at each measurement site, by designing a control section where 125 flow is hydraulically managed. Before the 1980's and 1990's, data were recorded on a paper sheet that followed the motion of a floater linked to the water level. Nowadays, water level sensors (floating systems equipped with ultrasonic measurements) are used and the data are digitally recorded. To ensure data homogeneity, observed data have been manually assessed by expert judgment in order to highlight periods of suspect data quality; as deemed necessary, the data have been corrected or deleted. The 22 study plots are distributed over three distinct soil textures: silty, silty-clayey, and clayey. Fifteen of them are characterized by a silty soil texture, in covering most French regions (Fig. 1). The database is more limited as regards clayey soils, characterized by sites like *Saint_Laurent_P2* or *Courcival_P3*. Some regions, e.g. 130 eastern France, which are strongly characterized by a clayey texture yet with just one clayey site, are not well represented. The SIDRA-RU performance in this region will be estimated from the SIDRA-RU global performance on clayey soils from the database, comprising 44 years of observed discharges (Table 1). Moreover, some regions with a high drainage ratio, e.g. southwestern France, have no observation points and are therefore not covered by this study. Lastly, the pseudogley soils are mostly correlated with the silty-clayey soils, yet the database does not provide any relevant silty-clayey plots. Model performance will thus be estimated by the global performance for all such sites. Each site was defined by the aforementioned technical characteristics (drain depth, mid drain spacing corresponding to the half-space between two successive drains, surface area), plus the length of available observed discharge logs and suitability to the split-sample 135 test (Table 1).

Due to a lack of agronomic data, we assume here that growing practices do not affect the subsurface drainage hydrology on the study plots, except in the absence of a tillage technique (Dairon et al., 2017), a situation that is not widespread in France. This assumption is supported by four observations, namely: 1) the subsurface drainage is mainly effective during fall and winter, when the actual evapotranspiration is low; 2) our study investigates drained soils in winter primarily used 145 for winter crops such as wheat and maize (Zimmer, 1996), so we assume that the studied plots are cultivated every year throughout this season without a fallow period; 3) these crop types impact the subsurface drainage hydrology in a similar manner; hence, annual crop rotation does not add significant bias to the model calibration; and 4) the effect of cover crops

(Meyer et al., 2018) has been neglected due to the fact that they were not widely used before 2012 and, for 19 of the 22 sites, the corresponding study periods ended before 2012.

150 The meteorological data were provided by the SAFRAN database (Vidal et al., 2010), a meteorological reanalysis covering France and supplying both precipitation and potential evapotranspiration (PET, based on the FAO-56 Penman-Monteith PET (Córdova et al., 2015)) data on all database-referenced plots. These data are available from 1959 to 2019 at a daily time step and a spatial resolution of 8 km, which is 1,000 times greater than the scale of the studied plots. This difference may introduce errors on model outputs, but all such errors are considered to be negligible.

155

2.3 The SIDRA-RU model

The SIDRA-RU model is a semi-conceptual, lumped model that describes the hydrological processes of artificial drainage systems. This model is based on the principle of rainfall-drainage discharge conversion and uses the rainfall P and potential evapotranspiration PET to predict water table height and drainage discharge at the drainage network outlet.

160 Three modules have been integrated into the current version of SIDRA-RU (see Fig. 2):

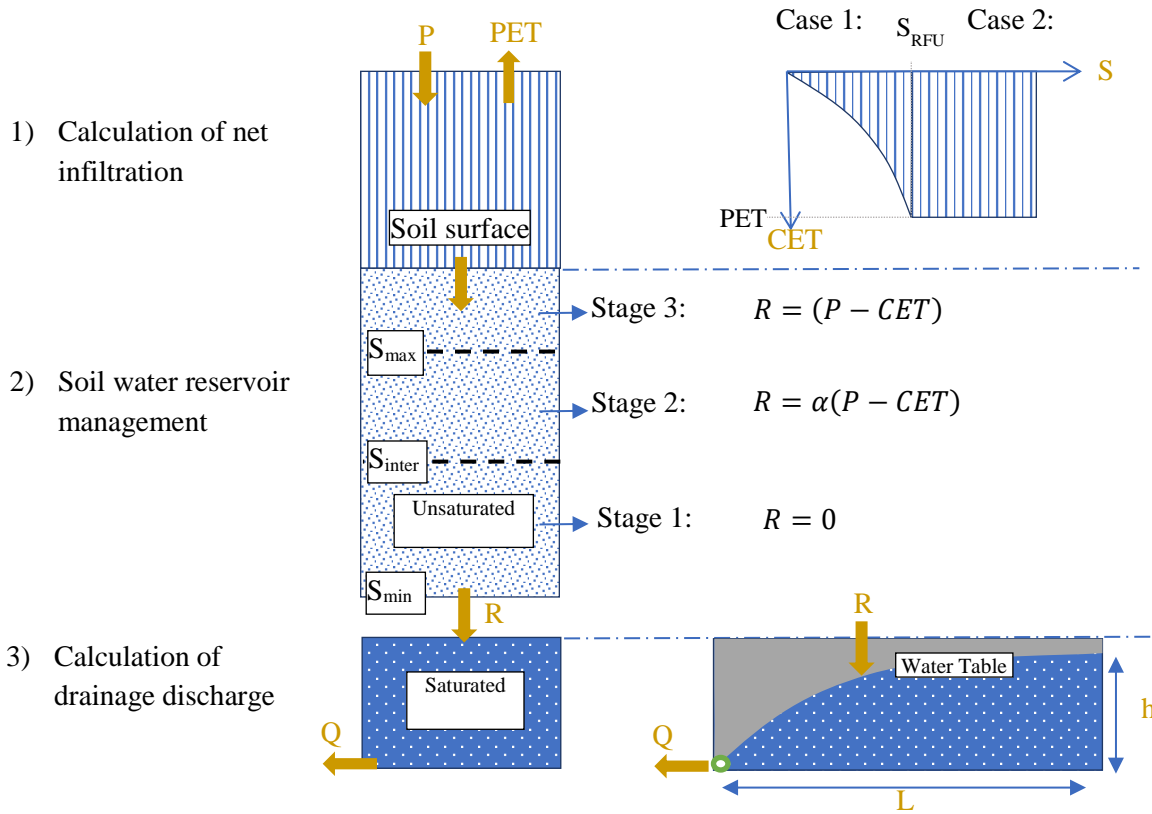


Figure 2: Diagram presenting the various modeling stages of the SIDRA-RU model

First, an evapotranspiration module converts PET into an approximate value of actual evapotranspiration, called corrected evapotranspiration (or CET), from the available water level $S(t)$ in storage to satisfy the evapotranspiration constraint. A S_{RFU} threshold is set, thereby assigning the minimum water level to fully satisfy PET (see Eq. (1)):

165
$$CET(t) = \begin{cases} PET(t) * e^{-\frac{S_{RFU}-S(t)}{S(t)}} & \text{if } S(t) < S_{RFU} \\ PET(t) & \text{if } S(t) \geq S_{RFU} \end{cases} \quad (1)$$

The net infiltration $P_{net}(t)$ is calculated by subtracting $CET(t)$ from $P(t)$.

Second, the RU module, a conceptual storage, calculates the water table recharge term $R(t)$ (mm) from the meteorological input and water storage capacity of the soil reservoir. Two main parameters control this RU module. On the one hand, the S_{inter} (mm) parameter serves as an intermediate threshold of the soil reservoir defining the water quantity required to generate flow in the reservoir before saturation of the storage (see Eq. (2)):

$$S_{RFU} = a * S_{inter} \quad (2)$$

The parameter a is set to 0.4 due to the water capacity easily available for use by the crops (RFU, for “Réserve Facilement Utilisable” in French), representing approximately 60% of S_{inter} (approximate concept of water holding capacity) on French drained soils (Tournebize et al., 2015). On the other hand, the S_{max} (mm) parameter represents the maximum capacity of the soil reservoir from which the net infiltration is fully converted into $R(t)$. These two parameters constitute an approximate concept of the water holding capacity of a soil. Three stages are to be considered (Fig. 2):

- Stage 1: $S(t) < S_{inter}$, the water level is too low to allow for the generation of subsurface flows to the drains, i.e. Eq. (2):

$$R(t) = 0 ; S(t) = S(t - 1) + P_{net}(t) \quad (3)$$

- Stage 2: $S(t) \in [S_{inter}; S_{max}[$, the water level is high enough to partially allow for the generation of water table recharge $R(t)$. The parameter α defines the proportion of $P_{net}(t)$ being converted to recharge $R(t)$, while the remainder updates the water level, i.e. Eq. (3):

$$R(t) = \alpha * P_{net}(t) ; S(t + 1) = (1 - \alpha) P_{net}(t) + S(t) \quad (4)$$

A sensitivity analysis on the SIDRA-RU model has revealed that α is not sensitive to the KGE' criterion (Henine et al., in review), used in this study as OF (see section 2.4.1), and moreover can be set at 1/3. Hence, to limit uncertainties relative to the calibration process for a non-sensitive parameter, this approach has been conserved herein.

Stage 3: $S(t) \geq S_{max}$, water storage is full, i.e. Eq. (4):

$$R(t) = P_{net}(t) = P(t) - CET(t). \quad (5)$$

Third, the calculated water table recharge $R(t)$ feeds the original SIDRA module (Lesaffre and Zimmer, 1987b; Bouarfa and Zimmer, 2000) in order to calculate the water table level $h(t)$ and drainage discharge $Q(t)$ (see Eqs. (5) and (6)), in solving a semi-analytical formula derived from the Boussinesq equation (Boussinesq, 1904). This physically-based module is mainly controlled by two parameters: the horizontal hydraulic conductivity K (m/d), and drainage porosity μ (-).

$$\frac{dh(t)}{dt} = \frac{R(t) - K \frac{h(t)^2}{L^2}}{A_2 \mu} ; h(t + 1) = h(t) + \frac{dh(t)}{dt} \quad (6)$$

$$Q(t) = AK \frac{h(t)^2}{L^2} + (1 - A)R(t) \quad (7)$$

- L : mid drain spacing (m);
- A_2 : second water table shape factor, $A_2 \approx 0.89$ (Lesaffre, 1989);
- A : third water table shape factor, $A = 0.869$ (Lesaffre, 1989). We are supposing here that the water table shape between the drain and mid-drain is an ellipse. A is therefore obtained by integrating $1/4$ of this reference ellipse (see Fig. 2, Part 3: Calculation of drainage discharge).

It can be noted that surface runoff is considered to be negligible in the model, only contributing slightly to total flow (Kuzmanovski et al., 2015). Furthermore, one of the assumptions made in the SIDRA module was to consider that pipes

lie on an impervious layer, thus all excess water is fully released through the pipes (Lesaffre, 1989). This assumption
205 seems rather reasonable since a large majority of French drained sites lie on such soils, according to the studies carried
out on the aforementioned drainage reference areas (Lagacherie and Favrot, 1987; Jannot, 1988; Tournebize et al., 2012;
Tallec et al., 2015; Tournebize et al., 2017; Lebrun et al., 2019). To be completely operational, SIDRA-RU requires
information on technical characteristics, such as drain depth $P(m)$ and mid drain spacing $L(m)$ between the drain and
inter-drain. Furthermore, due to the aforementioned assumptions dealing with the parameters a and α , a calibration
210 process is only necessary for four parameters: K and μ , with the K/μ ratio describing the responsiveness of the system,
and S_{inter} and S_{max} from the RU module.

2.4 Methods

2.4.1 Calibration method

215 Parameter optimization (i.e. calibration) is commonly performed in a hydrological modeling context in order to adapt the
hydrological model parameters to the specific study area context. This process is relevant for conceptual parameters since,
by construction, they cannot be measured directly nor easily correlated with any physical characteristics of the studied
system. Some of the physically-based parameters that are too difficult to measure can also be calibrated.

The model calibration herein has been based on the algorithm implemented in the “airGR” R package (Coron et al., 2017,
220 2020), and is composed of two parts. First, a systematic examination of the parameter space provides the most likely zone
of convergence, on the basis of a grid-screening algorithm (Mathevet, 2005), according to a given performance criterion
(i.e. Objective Function, OF). Each parameter space is defined by its specific distribution and intrinsic statistical
characteristics, with respect to the soil texture. Second, a steepest-descent local search procedure (Michel, 1991) seeks to
improve the OF, beginning with the grid-screening part, and find a more accurate estimate of the parameter set, i.e. with
225 higher model performance.

The hydraulic conductivity K and drainage porosity μ follow a log-normal distribution (Rousselot and Peyrieux, 1977;
Kosugi, 1994, 1996, 1999; Rousseva et al., 2017; Ren and Santamarina, 2018). Parameters S_{inter} and S_{max} are conceptual
and thus not defined by an intrinsic distribution. However, they are similar to the water holding capacity of a soil, which
follows a normal distribution (Vachaud et al., 1985; Brocca et al., 2007; Biswas et al., 2012; Biswas, 2019); consequently,
230 in this study, both S_{inter} and S_{max} are described as following a normal distribution. The mean and standard deviation of
each parameter are available in Appendix A. The ones for K and μ were extracted per soil texture from the aforementioned
reference drainage areas. The ones for S_{inter} and S_{max} were numerically fixed after many calibration tests.

Various OFs are commonly used in hydrological calibration processes, depending in large part on the primary aim of the
study. The most widespread OFs are RMSE (Anderson and Woessner, 1992), MSE (Ye et al., 2020), NSE (Nash and
235 Sutcliffe, 1970) and, more recently, KGE' (Gupta et al., 2009). Our goal here is to evaluate model performance in order
to simulate an entire hydrological cycle and represent the inter-annual variations of the study plot to produce long-term
projections about future drainage hydrology. We have thus introduced the KGE' criterion (Kling et al., 2012), an evolution
of KGE that is more relevant than NSE in reproducing internal flow rate variability (Santos et al., 2018). KGE' is defined
by three modeling error components, as combined in Eq. (8):

$$240 \quad KGE' = 1 - \sqrt{(r - 1)^2 + (\beta - 1)^2 + (\gamma - 1)^2} \quad (8)$$

with:

- $r = \frac{cov(Q_{obs}, Q_{sim})}{\sigma_{obs}^2 \sigma_{sim}^2}$: the Pearson correlation coefficient, which serves to evaluate the error in both shape and timing between observed and simulated flows, with cov being the covariance between observed and simulated flows and σ their standard deviation;
- 245 - $\beta = \frac{\mu_{sim}}{\mu_{obs}}$: the bias term, which evaluates the bias between observed and simulated flows, with μ being the mean of observed and simulated discharges, respectively;
- $\gamma = \frac{\mu_{obs} \sigma_{sim}}{\sigma_{obs} \mu_{sim}}$: the ratio between observed and simulated coefficients of variation, which serves to evaluate the flow variability bias.

250 KGE' values range from $-\infty$ to 1. The model performance improves as KGE' increases towards 1. If the reader intends to use the mean flow benchmark as a reference (corresponding to NSE = 0) in order to assess KGE', the target value is KGE' = -0.41 (Knoben et al., 2019). During the model calibration step, the data series over the whole time period was used for each studied plot (Table 1).

2.4.2 Split-sample test

255 The temporal robustness of the model proves to be of utility when facing a time period different from that chosen for calibration, i.e. enhancing the model's capacity to perform equally well over different and contrasted time periods (Li et al., 2011). This point is particularly important when the model is intended for application under future climate change scenarios (Thirel et al., 2015b).

260 The choice of evaluation strategy mainly depends on model structure. For lumped conceptual models, a simple split-sample test (Klemeš, 1986) is sufficient to assess the robustness of such a model (Refsgaard and Storm, 1996; Daggupati et al., 2015). The split-sample test, as illustrated in Fig. 3, consists of splitting the data period into two sub-periods (P1 and P2) and then calibrating the model over both of them independently.

Thus, two optimal parameter sets are obtained (one covering P1 the other P2), with each being tested over the other sub-period (e.g. evaluation sub-period P2 for a calibration over sub-period P1). If the KGE' scores from the evaluation sub-period lie close to the calibration KGE' score, then the model calibration is considered as temporally robust and independent of the chosen time period.

265 This test was performed on the records from 9 plots showing at least 10 years of time-series data (Table 1). These series were split into two equal-length periods, and the KGE' scores produced over the calibration and evaluation sub-periods were assessed and compared.

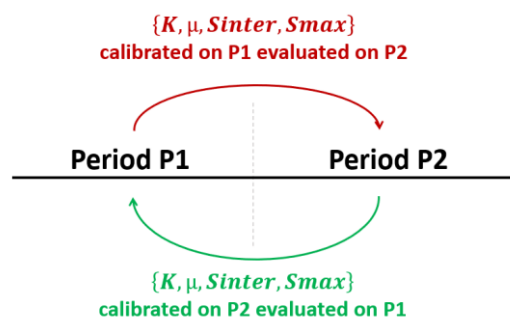


Figure 3: Functional diagram of the split-sample test

270

2.4.3 Numerical evaluation criteria

Evaluating and highlighting model performance limitations during the calibration process using numerical scores, such as NSE, RMSE or KGE criteria, is often recommended, in addition to graphical analysis (Moriassi et al., 2015). However, understanding their evolution is indeed difficult. To overcome this difficulty, a model performance classification by means of a range of numerical score values will help assess the calibration quality.

In subsurface drainage modeling, the bibliography is not exhaustive with respect to KGE' score ranges. The few articles published deal instead with catchment hydrology modeling (Crochemore et al., 2015; Poncet et al., 2017). Use of the NSE criterion has been detailed more extensively (Moriassi et al., 2007; Ritter and Muñoz-Carpena, 2013; Moriassi et al., 2015); moreover, studies focusing on model calibration using the NSE score in subsurface drainage modeling state that values above 0.5 are considered to be acceptable (Helwig et al., 2002; Wang et al., 2006; Tuohy et al., 2018a). Even if a comparison between the NSE and KGE' scores is theoretically incorrect and not unequivocal (Criss and Winston, 2008; Knoblen et al., 2019), we are assuming herein that the score ranges using the NSE criterion can be transposed to those using the KGE' criterion. We have decided to qualify the KGE' values as follows: the model calibration using KGE' values greater than or equal to 0.5 leads to acceptable model performance. KGE' values ranging from 0.6 to 0.7 are considered to reflect good performance, while a KGE' greater than or equal to 0.7 is deemed very good performance (Table 2).

The model has also been evaluated in terms of its capacity to reproduce annual cumulative discharges, with a direct comparison conducted between observed and simulated flow rates using both the linear correlation coefficient R^2 (Bailly and Carrère, 2015) and the associated linear regression equation.

3. Results

3.1 Model performance after calibration

Table 1 lists the performance over the entire calibration period obtained from all 22 sites and Table 2 classifies the model performance from each soil texture according to the score ranges. Performance varies across the three soil textures, with both unsatisfactory KGE' values, e.g. for the *Courcival_P3* site, and some "very good" KGE' values, e.g. *Parisot*. For 21 of the 22 referenced plots, the calibration KGE' lies above 0.5, thus revealing at least "acceptable" KGE' values. The silty plots show values ranging from 0.54 to 0.83, including the best model performances, such as *La_Jaillièrè_P4* plot, with a KGE' of 0.83. They include three "acceptable" scores, reaching "good" for six of them and "very good" for another six. The silty-clayey plots exhibit relatively homogenous KGE' values, ranging from 0.54 to 0.76. As regards the clayey plots, KGE' values display a wider range than on the silty-clayey plots, i.e. from 0.44 at the *Courcival_P3* plot to 0.76 at *Saint_Laurent_P2* but the model performance remains at least "acceptable" on most of them (including one "very good"). *Courcival_P3* is the only one indicating an "unsatisfactory" KGE' value.

Table 2: KGE' calibration scores

KGE' value range	Scores	Number of plots	Silty soils	Silty-clayey soils	Clayey soils
< 0.50	Unsatisfactory	1	-	-	1
[0.50 - 0.60[Acceptable	6	3	1	2
[0.60 - 0.70[Good	6	6	-	-
≥ 0.70	Very good	9	6	2	1
Total	-	22	15	3	4

The *La_Jaillièrè_P4* plot is used as an example to illustrate the temporal comparison between observed and simulated discharges over 16 years (see Fig. 4). These same graphs are available in Appendix B to illustrate the case of a silty-clayey soil at *La Bouzule_P2* and in Appendix C for the case of a clayey soil at *Saint-Laurent_P2*.

310 Figure 4 shows that the simulated discharges are in good agreement with observations in terms of both seasonal dynamics (dry and wet season alternation) and cumulative distribution. Rainfall series are not directly correlated with discharge, as some rainfall events appearing from September to November do not systematically lead to subsurface flow. However, winter rains typically turn into discharge after a period of one or two days. A graphical analysis shows that simulated drainage discharges generally start in the same period as the observed discharge, with various delays depending on soil type.

315

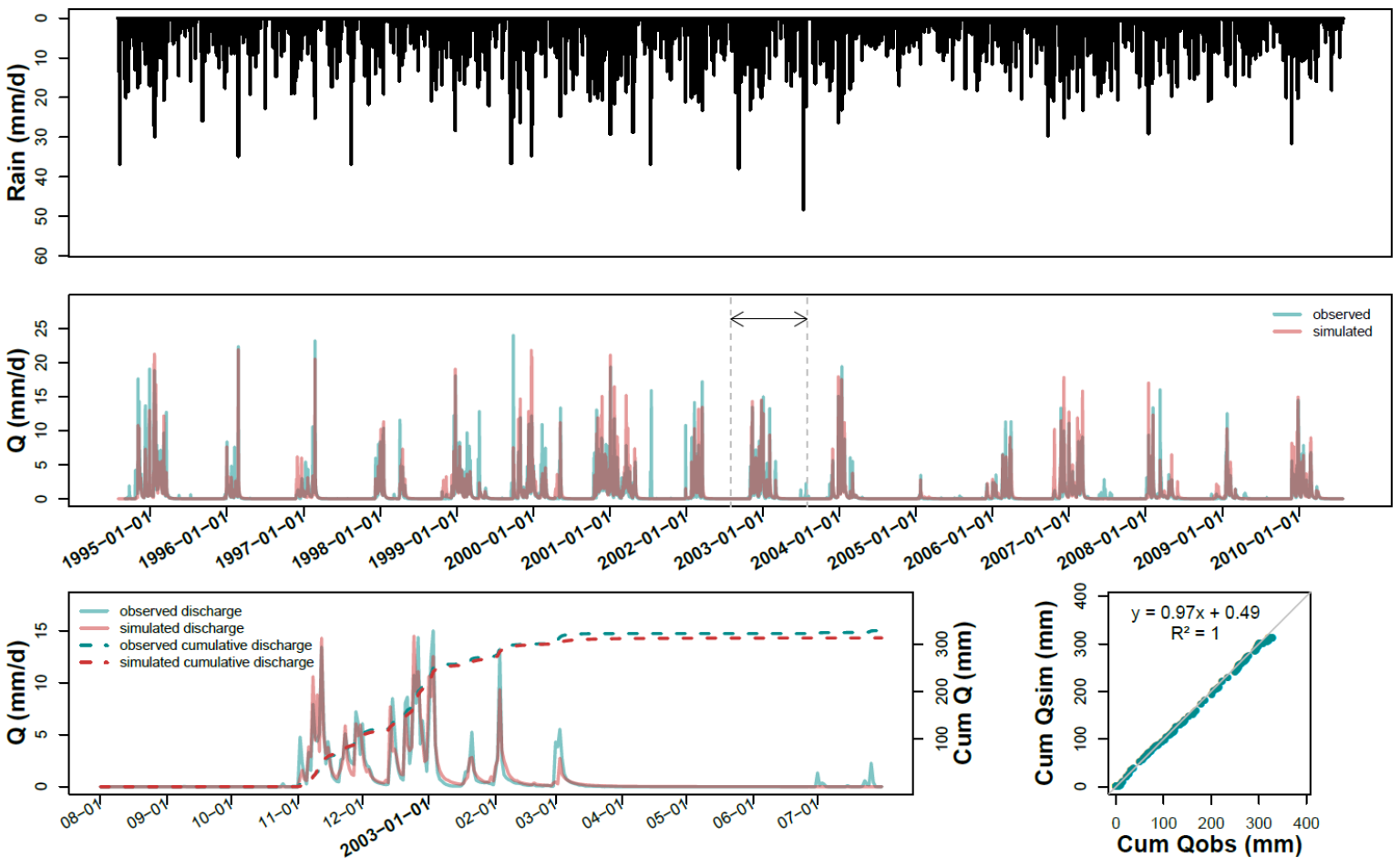


Figure 4: Hydrograph on *La_Jaillièrè_P4* after calibration over the entire available record, plus a close-up on hydrological year 2002-03 and the associated temporal and direct comparisons between observed (blue curve) and predicted (red curve) cumulative discharges

During hydrological year 2002-03, the drainage season starts on the same day for both simulation and observation (i.e. November 1st). In 2002-03, the maximum observed drainage discharge lies close to 15 mm/d, versus a lower simulated peak of 12 mm/d. The SIDRA-RU model correctly predicts the temporal evolution and magnitude of drainage discharges while accurately delimiting the drainage seasons. The simulated peak flows closely match the observed ones. Peak flows often tend to be underestimated in simulation by a few mm/d, although the timing is usually well estimated. On the whole, the dry periods are well represented by the model. Drying times are a bit longer for the simulations, but typically lie within a few days of observations. Note that spring flows are sometimes not well simulated, as was the case in 2001-02 and 2006-07.

The capacity of the SIDRA-RU model to represent the water balance has also been assessed. Figure 4 shows that the simulated cumulative drainage discharge over 2002-03 lies close to the observed discharge, with a slight underestimation of 10 mm, i.e. below 3% of the annual drained water balance relative to 350 mm. The linear regression between observed and simulated cumulative discharges yields an equation close to a 1:1 equation, with an R^2 of 1, leading to the assessment that the water balance is fully respected over this year on the *La_Jaillière_P4* plot, in terms of both time and total quantity.

Unlike at *La_Jaillière_P4*, the SIDRA-RU model at the *Courcival_P3* plot (see Fig. 5), which lies on a swelling clayey soil, shows larger discrepancies between observed and simulated discharges on the plots. The red and blue curves do not coincide on a significant portion of the logs. From 1985 to 1995, simulated discharges often started later than the observed ones, with delays ranging approximately from 2 weeks to 2 months. The start of the drainage season is defined here when significant discharges appear.

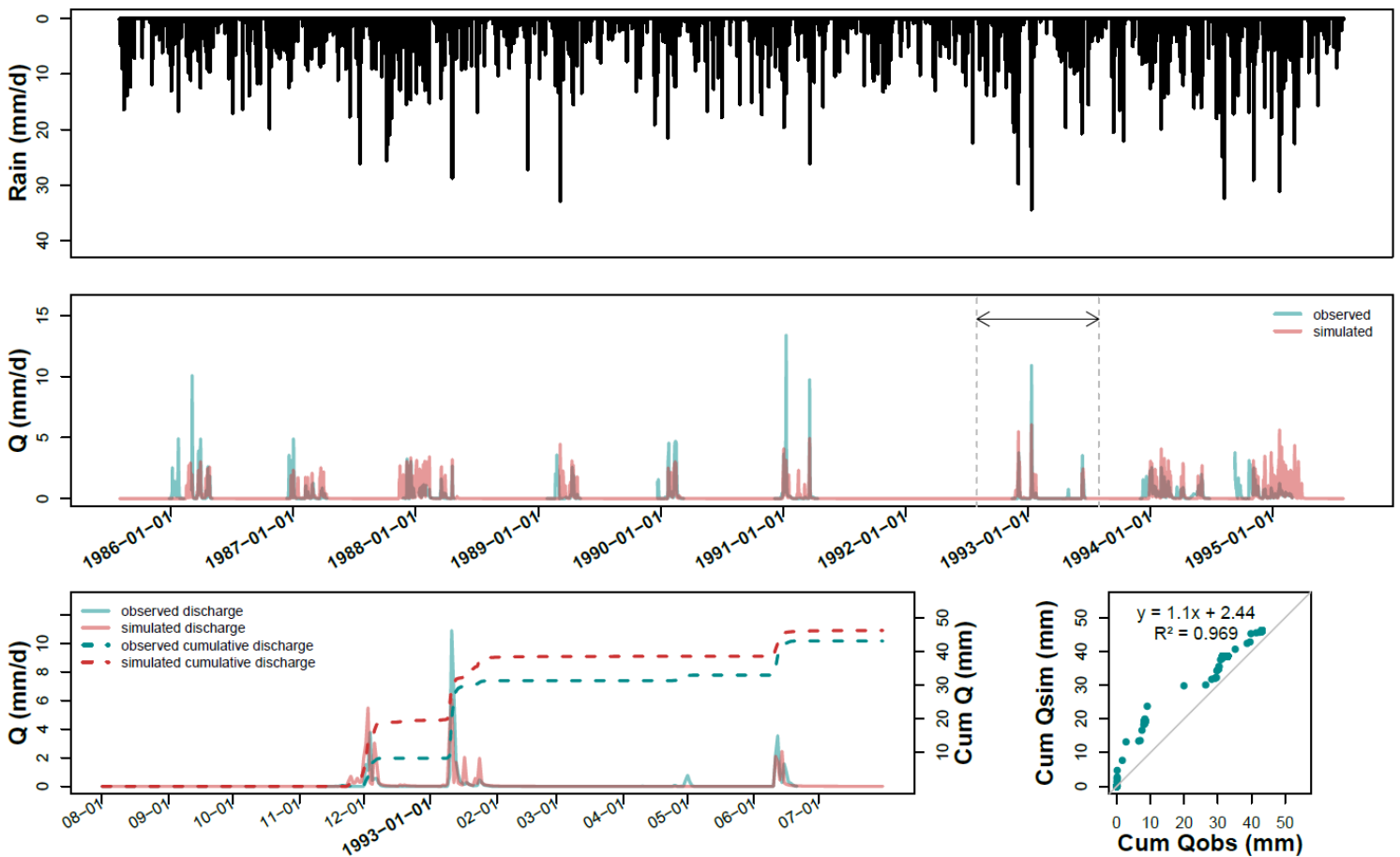


Figure 5: Hydrograph on *Courcival_P3* after calibration over the entire available record, plus a close-up on hydrological year 1992-93 and the associated temporal and direct comparisons between observed (blue curve) and predicted (red curve) cumulative discharges

The plots for the cumulative drained discharge in 1992-93 reveal that the annual drained water balance diverges by +3 mm from simulations, but the linear regression indicates a slope equal to 1.1, which is quite high and moreover shows that the cumulative discharges have not been well simulated.

Figure 6 provides a comparison between the predicted and observed total cumulative discharges on each plot and for each hydrological year, as classified by soil texture. The linear regressions lie close to the 1:1 equation, with an R^2 above 0.9 for all three textures, thereby indicating that SIDRA-RU is representing the water balance at nearly all times. However, Figure 6 does show a few discrepancies between prediction and observation, especially on the silty plots, with a deviation in the simulated cumulative discharge of 300 mm. These same observations are drawn on clayey soils, with the same discrepancies and a smaller dataset.

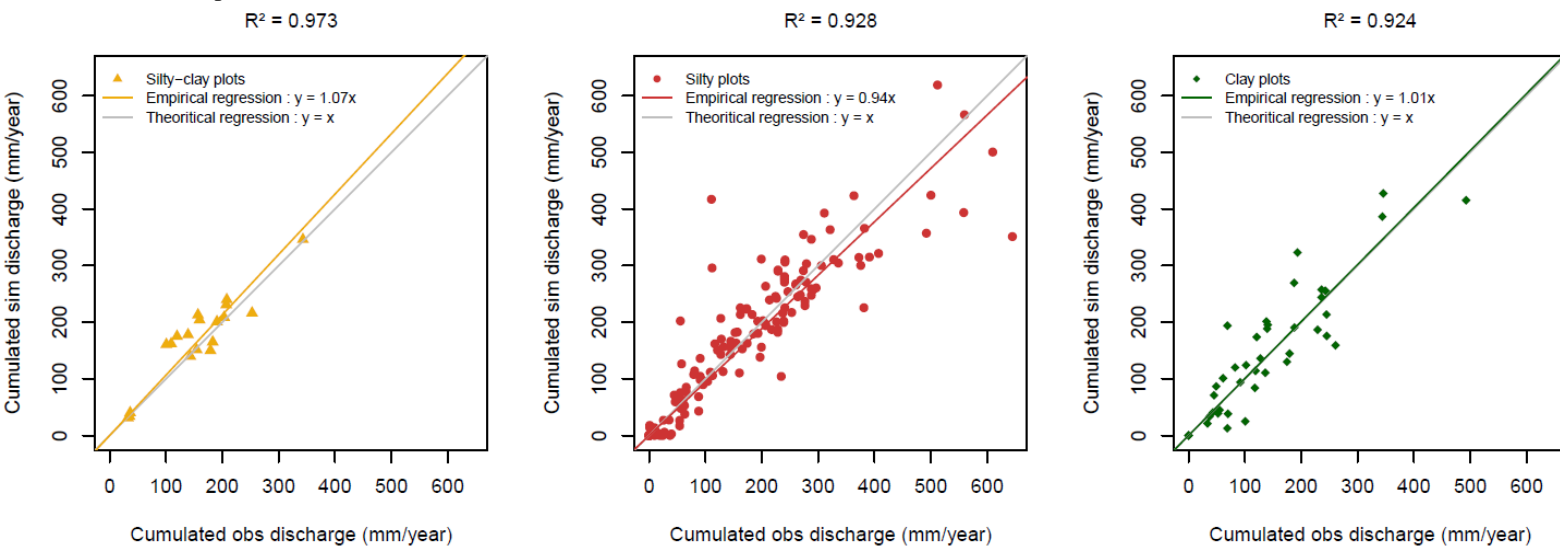


Figure 6: Comparison of the drained annual discharges between simulation and observation - each point represents the drained water quantity from a hydrological year for a given site, and all points have been classified by texture

In order to use the SIDRA-RU model for a long-term prediction of agricultural drainage management in France, the model must first be able to reproduce both high and low drainage discharges. Figure 7a depicts the differences in the Q05 quantile between observed and simulated drainage discharge. This quantile represents the values under which the annual drainage discharge occurs 5% of the time; it is used in order to evaluate low flows. The Q95 analysis (Fig. 7b) result, under which the annual drainage discharge occurs in 95% of the cases, serves to evaluate high flows. Figure 7c displays an analysis of the average discharges (Q_{mean}). This Q_{mean} analysis is then applied to each hydrological year of each plot on the nonzero flows, thus reducing the predicted drainage discharges by the observed ones; results are classified by texture using boxplots (Tukey, 1977). Regarding the Q05 quantiles (Fig. 7a), results show that for the three textures, bias between simulated and observed Q05 ranges from -0.020 to 0.030 mm/d, with some extreme points (mainly on the silty texture). The medians of biases all lie close to zero as well (from -0.002 to 0.002 mm/d), thus revealing that the model correctly predicts low flows. Regarding the Q95 quantiles (Fig. 7b), the median values are once again close to zero (from -0.247 to -0.040 mm/d); however, the ranges of the Q95 biases lie above those of the Q05 quantiles. On silty soils, the boxplot limits of Q95 biases range from -1 to +0.5 mm/d, and the whiskers range from -3 to +3 mm/d. Similarly, for silty-clayey soils, the Q95 biases vary from -3 to -2 mm/d; the discrepancies are larger on clayey soils, where the Q95 biases varies from -4 to +4 mm/d.

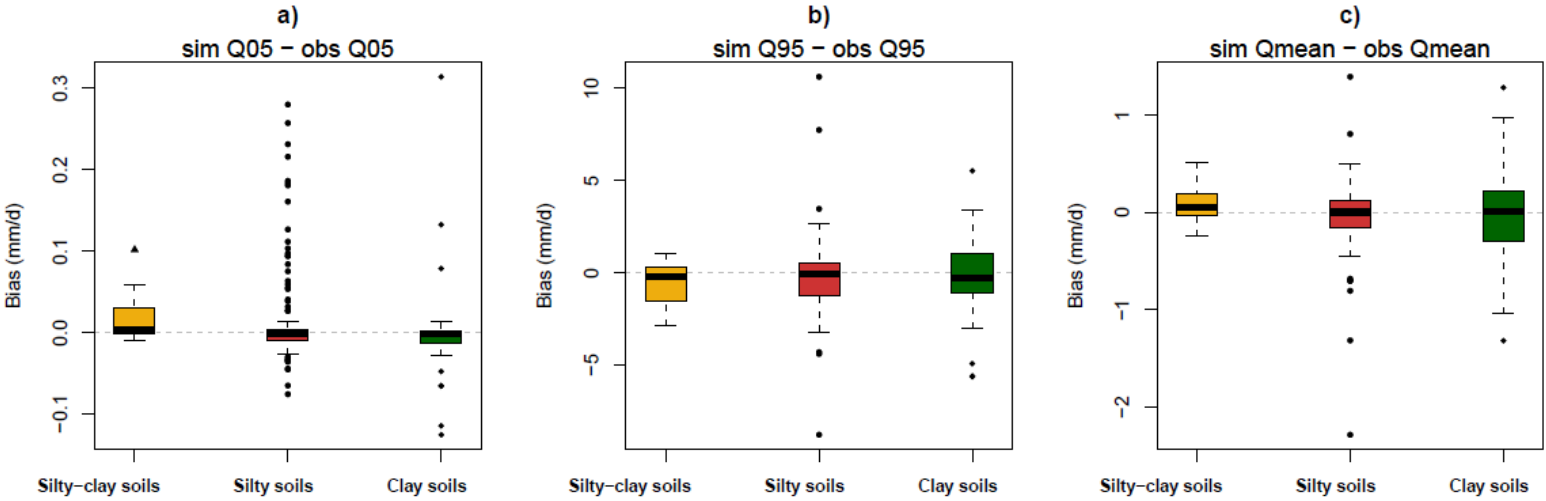


Figure 7: Differences between prediction and observation of low (Q_{05}), high (Q_{95}) and average (Q_{mean}) flows. Each hydrological year from each site has been independently considered. Results are compiled by soil texture: 142 points for silty soils, 17 for silty-clayey soils, and 44 for clayey soils.

Figure 7c shows that the boxplot medians for the Q_{mean} biases also lie close to zero (from 0.007 to 0.057 mm/d). The Q_{mean} biases range from -0.5 to +0.5 mm/d for silty soils, from -0.3 to +0.6 mm/d for silty-clayey soils, and from -0.8 to +0.9 mm/d for clayey soils. SIDRA-RU performs at a level of good agreement with respect to the average drainage discharges. The deviation on Q_{mean} biases is higher on clayey soils, thus reflecting the greater difficulties of the SIDRA-RU model in simulating Q_{mean} on this texture.

3.2 Model robustness

The KGE' values obtained during the evaluation period were then compared to those found during the calibration period, as illustrated in Fig. 8.

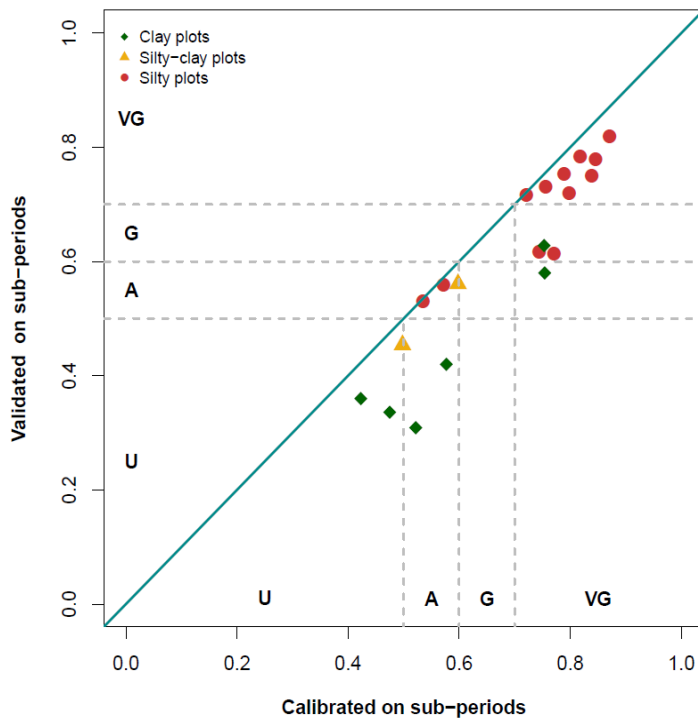


Figure 8: Comparison between the KGE' values assessed over the calibration and evaluation periods on the 9 plots used for the split-sample test: (U) Unsatisfactory, (A) Acceptable, (G) Good, and (VG) Very Good

For starters, this figure shows that all points are located under the line $y = x$, informing therefore that all evaluation KGE' values from a specific period are always less than the calibration KGE' values from the same period. Moreover, Fig. 8 indicates that the deviations differ according to soil texture.

On silty soils, the maximum variation is observed at *Melarchez* (the largest studied site with 700 ha), with KGE' values varying from 0.66 to 0.55 over the second sub-period (Table 1), yet the evaluation and calibration KGE' values are similar on four of the silty plots, over both sub-periods. Furthermore, the evaluation KGE' values on silty soils remain at least "acceptable". Results are similar for the silty-clayey soils, which feature validated KGE' values close to the calibration values. The deviations in KGE' values are more significant on clayey soils. Indeed, KGE' varies from 0.75 to 0.58 at the *Saint-Laurent-P2* site, i.e. a score going from "very good" to "acceptable". *Saint-Laurent-P2* is the only clayey plot that remains at least "acceptable" according to Table 2. On the *La-Bouzule-P1* plot, the KGE' value is reduced from 0.52 in calibration to 0.31 in validation. However, the results of Fig. 8 show that KGE' deviations on clayey soils are less than 0.21.

A graphical comparison between the predicted drainage discharges, calculated using the evaluation parameter set, and the observed discharges helps assess model robustness, as depicted in Fig. 9 at *La Jaillière-P4* during the 2002-03 hydrological year. The calibration simulations use the parameter set calibrated over sub-period P2 (including the 2002-03 season), while the evaluation simulations use the parameter set calibrated over sub-period P1. Figure 9 indicates that both calibration and evaluation drainage discharges lie close to the observed levels. The peak flows from both simulation curves have been superimposed on the main part of the drainage season, hence the evaluation parameter set performs well over the studied time period.

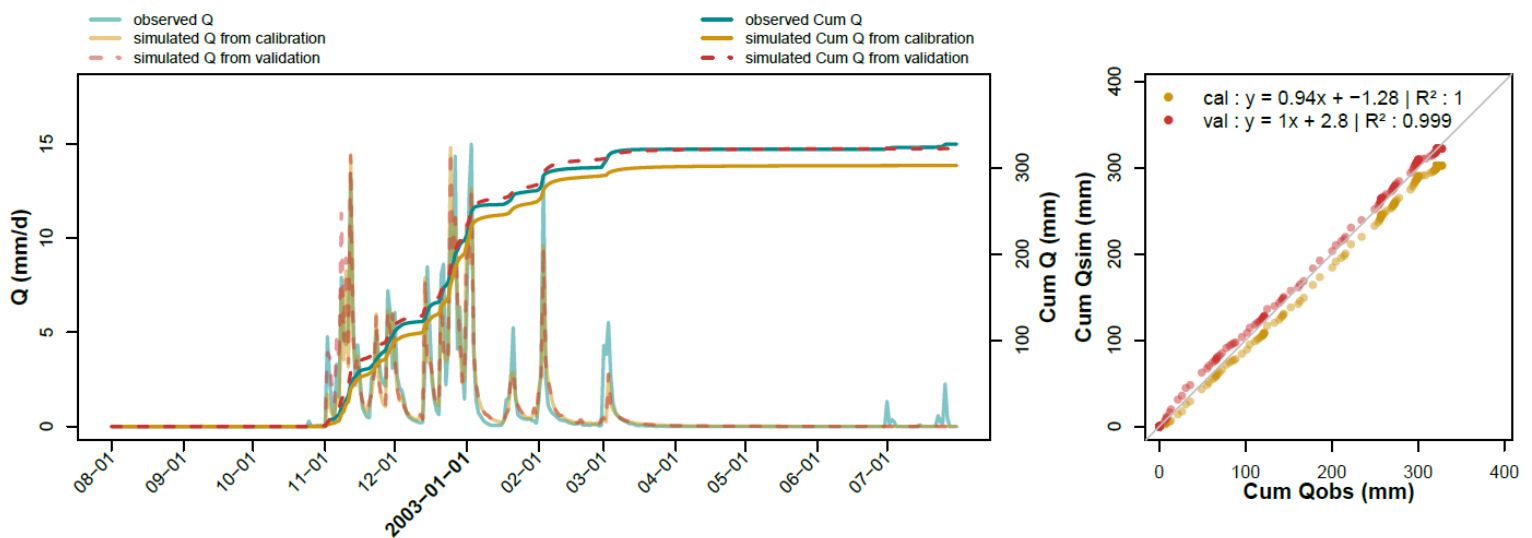


Figure 9: Hydrographs of observed and predicted discharges on calibration (parameter set derived from sub-period P2) and evaluation (parameter set from sub-period P1) recorded at *La Jaillière* in 2002-03. Predicted cumulative discharges are directly compared to observations.

Differences between the two simulations only exist at the beginning of the drainage season, as strongly controlled by the RU module. The drainage season appears to start on the same day according to both simulation curves, but the discharge magnitude during the first few days differs from one simulation to another. This same graphical approach has been used on a clayey soil available in Appendix D for *Saint-Laurent-P2* during the 1982-83 season. These observations are similar to the previous ones on *La_Jaillière-P4*.

Similar observations have also been recorded on the cumulative discharges (Fig. 9), which display an identical behavior, except for a gap between two predicted flows appearing at the start of the drainage season and have tended to remain so

395 throughout the year. A direct comparison of the cumulative flows between observation and simulation yields linear regressions near the 1:1 equation, with an R^2 of 0.999 in evaluation and 1 in calibration. This result attests to the water balance in the calibration being close to that in evaluation. These same results are listed in Appendix D for *Saint-Laurent-P2*. With the exception of the deviation at the beginning of the curves due to an early evaluation start, the curves are parallel. The water balances are similar when using either parameter set.

400 The use of the split-sample test for model calibration raises the question of parameter set similarity between the two calibration periods across all sites studied. Figure 10 illustrates how each of the four parameters (K , μ , S_{inter} , S_{max}) evolves depending on the two calibration periods. Each study site has been labeled in Fig. 10 with the available corresponding index from Table 1. Results indicate that hydraulic conductivity K is the least-changing parameter between the two periods. One of the two extreme outlier points corresponds to *Melarchez* (Point S4), where K changes from 1.46 m/d for sub-period P1 to 1.75 m/d for sub-period P2, thus demonstrating that hydraulic conductivity values remain within
 405 the same order of magnitude.

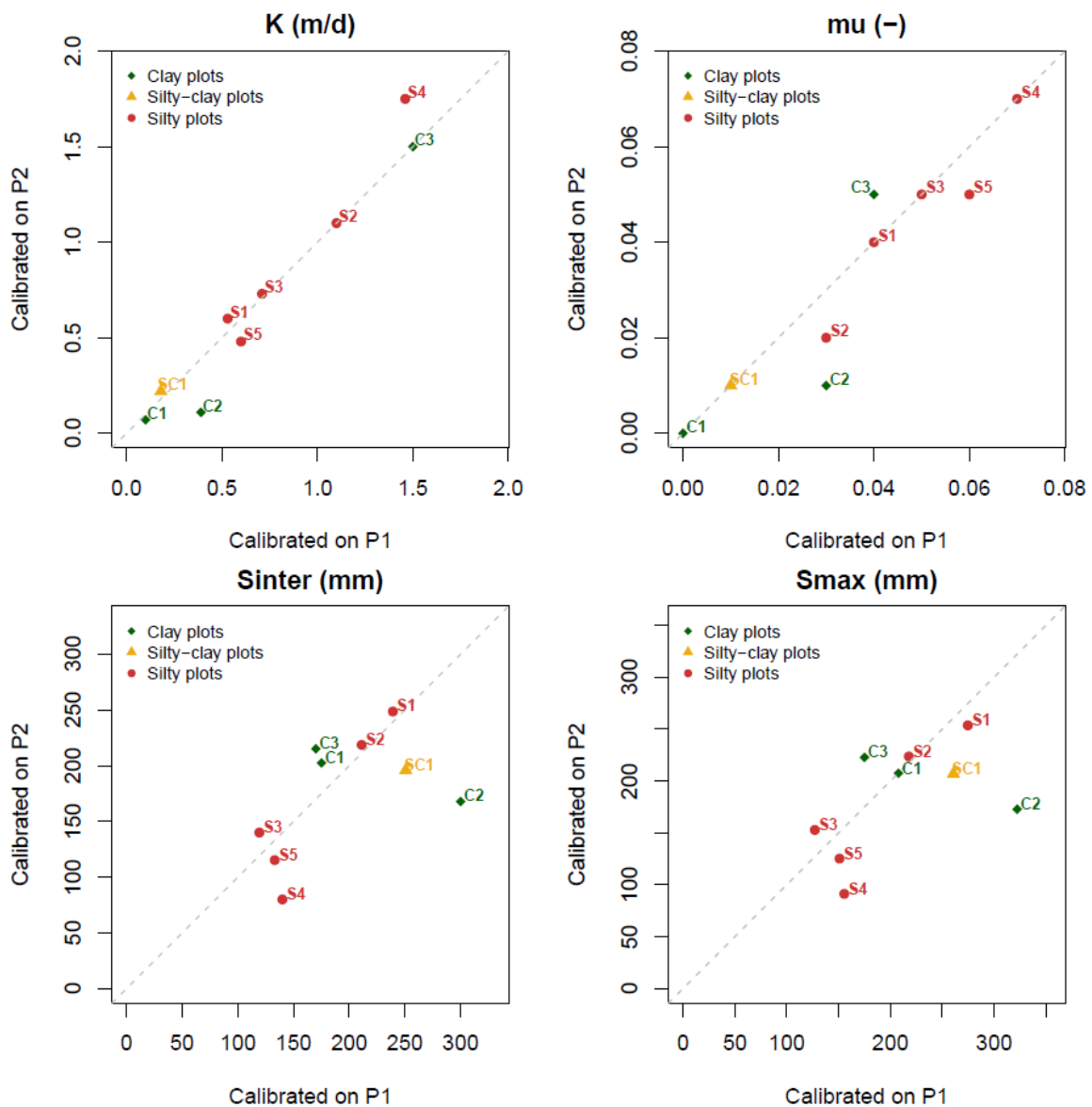


Figure 10: Comparison of parameter sets from both calibration periods (sites are referenced by their associated index, as assigned from Table 1)

Similar results were found for drainage porosity μ , with 7 of the 9 sites lying very close to the 1:1 line, thus confirming the similarity of both calibrated μ values. *La_Bouzule_P1* (i.e. C1, Fig. 10) displays the strongest deviation, from 0.03 in P1 to 0.01 in P2, which is nonetheless a small variation and acknowledges that μ is conserved between both sub-periods. Soil reservoir parameters S_{inter} and S_{max} are those exhibiting the greatest change between the two calibrated parameter sets, and in a very similar pattern. Among the 9 sites, 6 show a deviation of less than 40 mm on S_{max} , which seems to be acceptable. However, for the three other sites, i.e. *Melarchez* (S4), *La_Bouzule_P1* (C2) and *Saint-Laurent_P2* (C3), deviations range from 50 mm to 150 mm, indicating larger deviations for both conceptual parameters, especially on clayey soils. These observations are consistent with those derived from Figure 8 for *La_Jaillièrè_P4* as well as from Appendix D.

415

4. Discussion

4.1 A representative database

The literature (Perrin, 2000; Coron et al., 2012; Montanari et al., 2013; Thirel et al., 2015a) suggests that when assessing generalizable hydrological models, the aim typically consists of determining the ability of a model to reproduce the hydrological behaviors of various study areas. The larger the database, the more reliable the study because the model is being evaluated over a wider diversity of geological and climatic contexts (Gupta et al., 2014). To the best of our knowledge however, in drainage modeling, the models are often evaluated on a short-term database, with just a few years on a few sites, e.g. DRAINMOD (Skaggs et al., 2012), MACRO (Jarvis and Larsbo, 2012), ADAPT (Gowda et al., 2012) and SWAT (Arnold et al., 2012). This lack of data limits the opportunities to test models in various soil types and moreover prevents assessing the relevance of models over a broad array of spatial scales.

425

The database used in this study was specifically built to assess the performance of a drainage discharge model on a larger dataset. 22 experimental sites were compiled, accounting for nearly 200 hydrological years spread over the main drainage areas in France, on contrasted soil types and in different pedoclimatic settings featuring an extensive plot scale range. This database has been classified according to three main soil textures (silty, silty-clayey and clayey) using available drainage discharge data. Not all regions with a high drainage rate are well represented; however, 80% of French drained soils do have silty soil textures, as represented by a majority 15 of the 22 plots in the database. The real advantage of this database is the ability it offers to apply the model to referenced sites that represent a large majority of France's drainage diversity. This topic accounts for both the originality and a key contribution of this study.

430

4.2 A parsimonious hydrological model

The diversity of the database introduced requires a model that operates correctly and in accordance with each site's specific conditions, i.e. as generalizable as possible. In this context, a physically-based model is theoretically better suited. However, this kind of model is generally composed of many parameters representing the complexity of a study site such as current crop, root depth, saturated water content (i.e. unsaturated one), hydraulic parameters or water holding capacity. Performing such a model on a large database requires providing all these characteristics for each site, which is in practice very difficult, because the measurement technics are globally expensive. The calibration might be useful but it is time consuming due to the large number of parameters. Conversely, a simple model like SIDRA-RU offers significant advantages, as it requires few information and faster calibration, thus becoming in practice suitable for generalizing. The

440

445 model is lumped and, initially requiring the calibration of six parameters, the assumptions made in this study allow to
reduce this number to four parameters. Compared to the original SIDRA model (Lesaffre and Zimmer, 1987a), the current
version simulates continuous discharges over several hydrological years, thus simulating both wet and dry periods. The
calibration process only necessitates brief rudimentary knowledge of the soil texture, used here as *a priori* input data to
establish the model parameter distributions. Regarding input variables, the model requires rainfall and PET data at a daily
time step to predict the drainage discharge. Managed in conjunction with the SAFRAN climate database to satisfy data
450 needs across France, SIDRA-RU can easily be launched on all drained areas throughout the territory.

4.3 SIDRA-RU model performance

Once calibrated, the model shows a performance ranging from "acceptable" to "very good" on all sites, judging from the
KGE' value, except for clayey soil. The model provides accurate simulations on small plots (0.8 ha at *Parisot_P2*) as well
455 as on large plots (700 ha at *Melarchez*). In comparing the SIDRA-RU performance with that of other models tested in
more local studies (Gowda et al., 2012; Skaggs et al., 2012; Muma et al., 2017; Revuelta-Acosta et al., 2021), SIDRA-
RU exhibits an equivalent simulation quality. For a vast majority of simulations carried out by the model, the observed
annual water balance is indeed reproduced with a good agreement. These performances are close to those obtained using
pure physical approaches, like the models RZWQM (Ma et al., 2007) and ADAPT (Sands et al., 2003). Moreover, this
460 congruence in annual cumulative water quantity between observation (integrating drained discharge and runoff) and
simulation (without runoff) validates the assumption that considers runoff to be negligible, according to the conclusions
of Kuzmanovski et al. (2015). Similarly, this result validates the assumption made regarding the fact that a large majority
of drained soils lie on an impervious layer, hence authorizing us to neglect the recharge to groundwater. This result also
supports the assumption made regarding the fact that the effect of the current crop growth is neglected as long as
465 subsurface drainage occurs mainly in winter on non-fallow soil. Also, the SIDRA-RU model allows simulating the
temporal variation of drainage discharge for both dry and wet periods; moreover, flood peaks are simulated on time as
are recession periods, thus offering a performance comparable to that of more complex models, e.g. DRAINMOD (Skaggs
et al., 2012), CATHY (Muma et al., 2017) and RZQWM (Jiang et al., 2020b). Overall, the simple design of the SIDRA-
RU model allows achieving a performance at least as good as that found in current models, like MACRO on the *La*
470 *Jaillièrè* plot (Kuzmanovski et al., 2015) or WEPP (Revuelta-Acosta et al., 2021).

Let's note however that some peak flows have been slightly underestimated. This behavior is generalizable, being
observed on most database sites. However, the phenomenon varies from one site to another without any clear relationship
with any soil characteristic, mostly depending on the calibration quality. One explanation might be that the SIDRA-RU
model is calibrated on both high and low drainage discharges, as represented by a unique parameter set, which
475 consequently introduces biases. These biases become more significant on extreme discharges. Furthermore, the missed
variations sometimes lead to missing the beginning of the drainage season. During some hydrological years, the observed
drainage discharge starts before water level in the soil reservoir reaches the S_{inter} threshold during simulation. Indeed, a
rainfall event appearing from August to October is not specifically converted to discharge every time, mainly due to the
nonlinear processes controlling the precipitation-discharge transformation. Furthermore, the assumptions related to
480 SIDRA-RU, e.g. neglecting lateral communication with other plots of land, might also be responsible for this
phenomenon. This early start might prevent completely filling the annual water balance. However, deviations in this

indicator remain minor in the large majority of the cases, i.e. from 5% to 10%, and produce no significant consequences on long-term studies.

485 Regarding the split-sample test, results first showed that evaluation KGE' values were all lower than calibration KGE' values from the same period. This finding seems to be normal and assesses the consistency of the test since an evaluation parameter set will normally always yield a lower KGE' value than the one obtained from the calibration set, thus corresponding to the best result depending on the chosen OF (here the KGE' criterion). Second, performances using calibration parameters from both sub-periods are similar across all sites, with the evaluation KGE' values being close to the calibration values and moreover remaining quite good, especially on silty and silty-clayey soils. Performance is lower 490 on the clayey soils, while still remaining acceptable when considering the difficulties the model experiences on clayey soils during calibration. The drainage discharge behaviors are similar as well, as logs from both evaluation and calibration simulations do merge on most occasions with equal water balances. These results attest to the temporal robustness of the SIDRA-RU model on the studied textures, which represent the largest proportion of drained areas in France.

495 **4.4 Calibration consistency**

Another important analysis is the consistency of model calibration. The SIDRA module actually solves a simplified formula derived from the Boussinesq equation and requires a good estimation of both hydraulic parameters, namely hydraulic conductivity K and drainage porosity μ . Thus, model calibration is only reliable if the calibrated K and μ are probable according to the case study soil type. Figure 11 compares the distribution of the calibrated values of silty plots 500 with the distribution obtained using the measured values of K and μ during tests conducted on reference silty drainage sites. The theoretical curves have also been drawn according to these distributions using the mean and standard deviation of each sample while following a log-normal law. The database provided only allows assessing the quality of the calibration on silty soils since 15 sites are referenced for this particular texture. On both of the other soil textures, only three sites are available for silty-clayey soils and four for clayey soils, which is insufficient to compare the calibrated 505 values to a reference base, hence constituting a limitation of this study.

Regarding hydraulic conductivity K , some divergences exist between the reference base and the calibrated values, especially for the highest hydraulic conductivity values, i.e. close to 2 m/d. However, over the remaining range of values, the histogram from the calibrated K are congruent with the one from the reference drainage tests. The theoretical laws are also similar between the reference base and calibrated values even though the curve derived from the calibrated value 510 shows a higher standard deviation, due to high hydraulic conductivity values. Despite some discrepancies, the distribution of calibrated K values for silty soils seems to be reliable on the basis of soil type. As for μ , the same method has been applied (Fig. 11); the histograms and theoretical laws do match, thereby concluding that the calibration process reliably estimates μ as well. The split-sample test confirms this analysis, in showing that K and μ from silty sites are conserved from both calibration sub-periods. Each K and μ value seems to be calibrated with a robust and consistent data point, 515 attesting to the relevance of calibration on the physically-based module.

520

As regards S_{inter} and S_{max} , these parameters are conceptual and no observed data can be used as a reference to define their statistical distributions. Furthermore, even if they were to constitute a conceptual approach of water holding capacity, soil texture is insufficient as a description, and no distributions can be determined based on the database classification employed. One solution might consist of comparing the S_{inter} and S_{max} of each site with the associated actual value of the water holding capacity; however, the database does not provide this information for every experimental site and measuring it *in situ* would be very expensive, thus infeasible. Nevertheless, it can be noticed that the range of values of S_{max} are consistent with water holding capacities of those kinds of soils ranged from 70 to 200 mm for 1 m depth of soil.

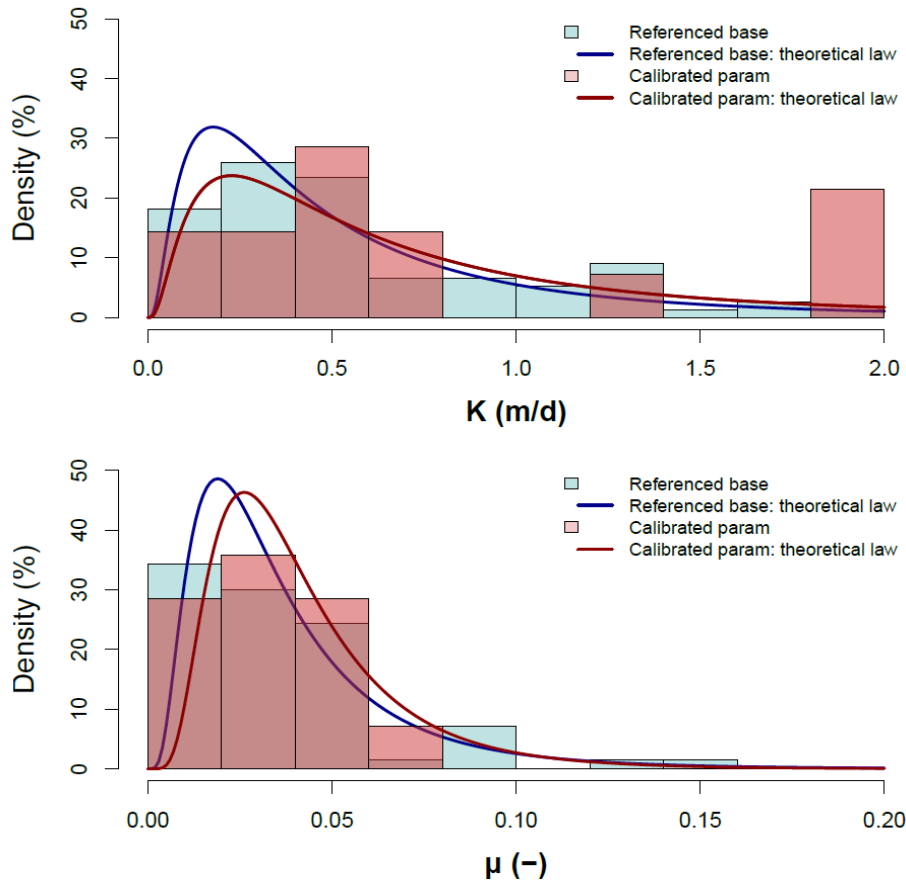


Figure 11: Distribution of K and μ from calibrated values on silty soils vs. values extracted from reference drainage sites placed on silty soils

4.5 Weaker performance on clayey soils

525

On non-deformable clayey soils, such as *Saint_Laurent_P2*, SIDRA-RU produces a good performance. However, at *Courcival_P3*, a plot lying on a deformable swelling clayey soil, the SIDRA-RU performance is significantly poorer. As such, the latter does not constitute an exception in the drainage modeling community. Indeed, the literature identifies clayey soils as a recurring problem for drainage modeling (Robinson et al., 1987; Snow et al., 2007), especially in mole drainage, as currently practiced on heavy clayey soils and swelling clays (Jarvis and Leeds-Harrison, 1987; Tuohy et al., 2016). This finding is mainly due to a difference in hydraulic characteristics between silty soils, on which the model design is primarily based, and heavy or swelling clayey soils. The latter are characterized by natural pedological deformations, like soil surface fracturing, which lead to preferential flow zones before saturation (Beven and Germann, 1982; Jarvis and Leeds-Harrison, 1987). The horizontal soil profile is no longer homogeneous, which contradicts one of the main hypotheses of SIDRA. Moreover, agricultural practices like plowing exacerbate this phenomenon and therefore

530

535 affect soil porosity. One way to improve results at *Courcival_P3* would be to artificially locate the pipe at a depth of 30 cm instead of the current 90 cm.

Another critical assumption of the SIDRA module is the elliptical shape of the water table; this assumption facilitates the numerical resolution of the Boussinesq equation. As regards heavy clayey soils, this hypothesis is no longer suitable since the water table shape evolves towards a rectangular structure (Fig. 12). This phenomenon is due to the very low hydraulic conductivity (Robinson and Rycroft, 1999; Skaggs et al., 1999), which for SIDRA-RU is difficult to integrate. 540 Furthermore, the water table level drops when approaching the drain because the soil has been turned over on this profile in order to bury the drain, like for the aforementioned natural pedological deformations.

Furthermore, the issues observed on clayey soils are specifically significant at the start of the drainage season. At *Saint-Laurent_P2*, delays occur more frequently than on silty soil, so the more the plot is defined by heavy or swelling 545 clayey soil, the longer the delay. At *Courcival_P3*, these delays were on the order of one month. The RU module design partially addresses this problem, by generating a soil profile recharge before saturation, but this issue remains a major limitation of the model, i.e. the more clayey the soil, the poorer the model performs. A soil is considered to be mainly clayey once the clay fraction exceeds 35% (Richer-de-Forges et al., 2008), which can be defined as the limit beyond which good model performance is no longer guaranteed.

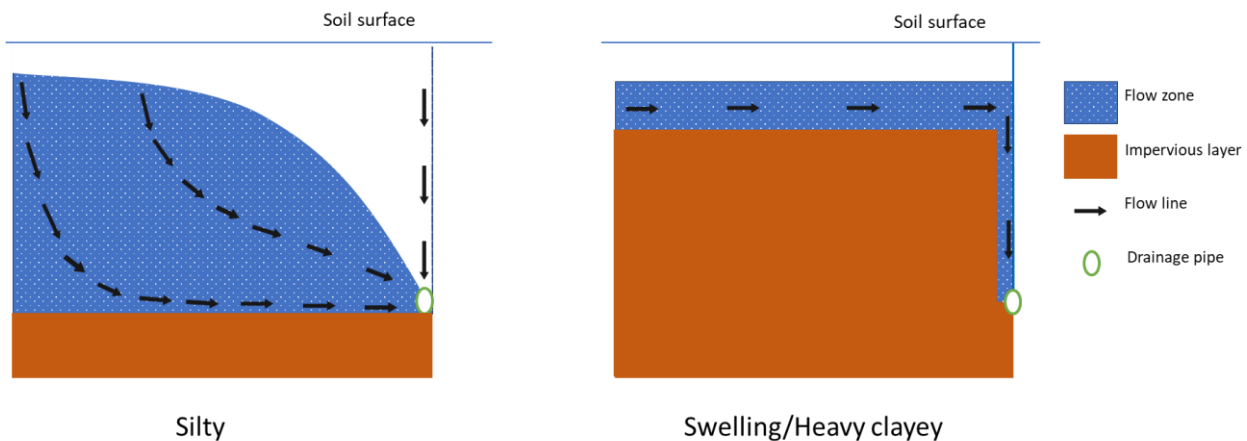


Figure 12 : Evolution of the water table shape between a silty and a heavy clayey drained soil, adapted from Bouarfa and Zimmer, 2000 and Branger et al., 2009

550 Some models show their efficiency when simulating drainage discharge on such soils. Among them, there is the MACRO model which showed its efficiency to simulate drainage discharge in Europe, including structured soils like heavy clayey soils (Köhne et al., 2009). However, these models are based on a more physically-oriented approach than SIDRA-RU. Building on this type of concept would probably improve the latter in simulating drainage discharges on clayey soils, but might undermine its generalist nature.

555

4.6 A less robust RU module

Another limitation of this model is the RU parameters are slightly less temporally robust than the SIDRA parameters, showing fewer stable values between calibration sub-periods than the SIDRA parameters. This issue might originate from dependencies of the RU module on interannual meteorological variations. The S_{inter} parameter represents the soil storage threshold that allows the model to initiate each drainage season. Compared to a common hydrological period without too 560 much extreme discharge events, a dry calibration period, defined by a larger occurrence of dry events on a same period due to climate conditions, increases S_{inter} values hence the model stores a larger quantity of water, delaying the start of the drainage season. Conversely, a wet calibration period will tend to decrease S_{inter} in anticipation of the start of the

565 drainage season. Regarding *Courcival_P3*, the split-sample test showed that S_{inter} evolved from 175 mm on 1986-1990 to 202 mm on 1990-1995, a dry period (see Fig. 5). Consequently, if the two sub-periods are meteorologically contrasted, S_{inter} (so as S_{max}) will differ from the two calibrated parameter sets. One solution might be to consider the S_{inter} parameter as a variable to be adjusted according to the meteorological conditions of the previous year as well as to soil parameters, e.g. whereby the actual water holding capacity is defined as a new parameter. Clayey soils intensify this robustness issue due to weather fluctuations exacerbating the formation of preferential flow zones.

570

4.7 Interpretations bounded by choices

The last point we wish to discuss deals with the dependency of the aforementioned interpretations on the conditions and choices involved in conducting this study. We noted above the lack of data in the database used for certain French regions. Making assumptions, e.g. grouping soils by categories, to address this weaknesses would then offer a good alternative, yet still dependent on arbitrary decisions. Adding reference sites could complete and significantly improve the SIDRA-RU model robustness analysis.

575 Moreover, the model is based on some rather important assumptions, such as neglecting both the surface runoff and recharge to groundwater, or the ones made on the parameters a and α , which limit its field of application. Indeed, even if these assumptions do seem to be acceptable on sites used to represent French subsurface drainage, up to now there is no evidence of their relevance on other sites. This limits the use of SIDRA-RU to the specific conditions outlined herein. Nonetheless, it should be noted that SIDRA-RU may be used without this assumption, in integrating the depth infiltration with Hooghoudt's equation, according to the principle of equivalent depth (Zimmer, 1992). A term " D_s ", designating the deep seepage rate is introduced in the Boussinesq's equation to reduce the recharge rate to the drains.

580 Furthermore, the choice of calibration process drives the calibration results based on study goals. We have implemented herein a grid-screening algorithm that assigns the best combination of parameters according to their respective distributions, coupled with a step-by-step algorithm. This approach has the advantage of being theoretically entirely automatic and thus eliminates the subjective aspect of calibration; however, external decisions influencing results are still necessary.

585 As an example, in order to track the main purpose of this study, SIDRA-RU is calibrated using the KGE' criterion as its OF, in combining three criteria (Kling et al., 2012), for a relevant approach to properly representing the interannual variability of drainage discharge. However, if this model is to be used for another purpose, like predicting drainage season initiation, then the KGE' criterion might not be the most efficient OF. This statement highlights the fact that the SIDRA-RU model is robust with respect to KGE', yet nothing proves the same for other OFs or purposes.

595 The distribution functions of each model parameter are required for the calibration, which in this case depends on the decision to classify soils based on their texture. Regarding K and μ , these distributions are established from measured data extracted from the reference drainage tests conducted in the 1980's, as mentioned above. These measurements are subjected to uncertainty, depending on both the number of measurements and the method employed; they constitute a significant source of error. We also mentioned above that classifying a soil by its texture alone is a major assumption and one that distorts the distributions. Consequently, the calibrated parameters, constraint by the distributions a priori defined, might be biased, due to an overly wide range of referenced values that bias the mean and standard deviation, as shown in Fig. 10 on silty sites. This problem is particularly worrisome since both those parameters are physical, making it prohibited to set outliers.

600

Driving the distribution with realistic value ranges at each site can prove to be a relevant solution. For example, if we consider that on a specific soil K might be included within a smaller value range, according to information obtained from the study site, then the calibration might lead to a more realistic value of K. This strategy reduces the risk of extracting parameters with secondary optima, and moreover calibration accuracy is refined. However, better knowledge of the soil characteristics is required, with the assumption that by knowing the reliable ranges, calibration becomes semi-automatic, thus introducing an arbitrary decision-making factor into the process. In addition, this supplementary knowledge requires relatively complete databases of drained plots, which as previously discussed constitutes a persistent issue.

610

4.8 Coupling with modules to simulate pollutant leaching

In the perspective of long-term management on drained plots, predicting flows in order to better monitor the use of agricultural pollutants is a major concern, pollutant transfers occurring with drainage flow (Kladivko et al., 2001; Trajanov et al., 2018). Thus, a good model can be used as a decision-making tool, for example to restrict pollutants' application during flow period for the case of pesticides (Lewan et al., 2009; Zajíček et al., 2018; Kobierska et al., 2020). Indeed, using water content as an indicator to anticipate the start of drainage flow in order to reduce pesticide applications is a recommended strategy instead of restriction timing (Brown and van Beinum, 2009; Lewan et al., 2009). In this context, using SIDRA-RU may be quite relevant. However, the current form of the RU module is not optimal to accurately represent the fate of pollutant in soil profile, being too simple to precisely represent the behaviour of the water table inside the unsaturated zone. To overcome this problem, this model type is generally coupled with pedotransfer functions (Jury and Roth, 1992; Magesan et al., 1994) to transfer water and pollutant stock from the unsaturated zone to the saturated zone. Within this framework, the perspective of the PESTDRAIN module (Branger et al., 2009), coupled with the SIDRA-RU model, should allow simulating pesticide leaching by including two reservoirs: fast reservoir to mimic preferential flow above the drain area and slow reservoir through the soil matrix. Based on a similar approach, combining SIDRA-RU with a nitrate leaching module might also be useful in order to correctly assess water pollution on French drained plots.

620

625

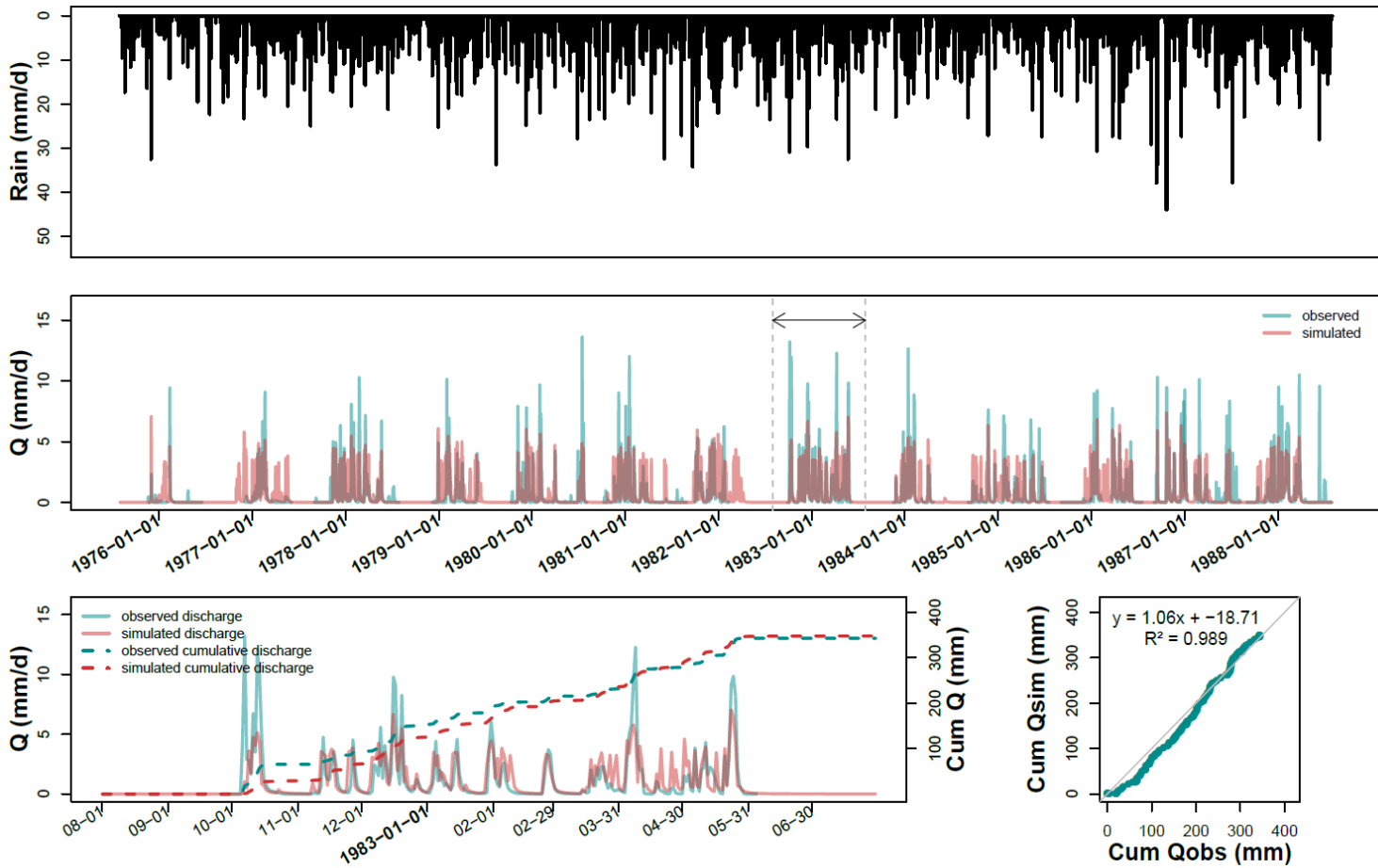
5. Conclusion

The aim of this study has been to implement an large database characterizing the main drainage areas throughout France, so as to assess the performance and robustness of the SIDRA-RU model. A database comprising 22 drained sites was built to represent French soil diversity and describe the three main soil textures from France's main drained parts (i.e. silty, silty-clayey and clayey). Results indicate that the SIDRA-RU model yields satisfactory drainage discharge simulations for nearly all studied sites. Moreover, the model shows especially good performance on silty soils, which account for 80% of all drained plots in France. Despite a number of limitations, particularly for clayey soils, the model was found to be temporally robust at the national scale, which enables conducting long-term impact studies. Once calibrated, this model can indeed be used to assess the resilience of drainage systems under climate change according to climate scenarios like those from the CMIP5 project (Eyring et al., 2007; Taylor et al., 2011) or the upcoming CMIP6 project.

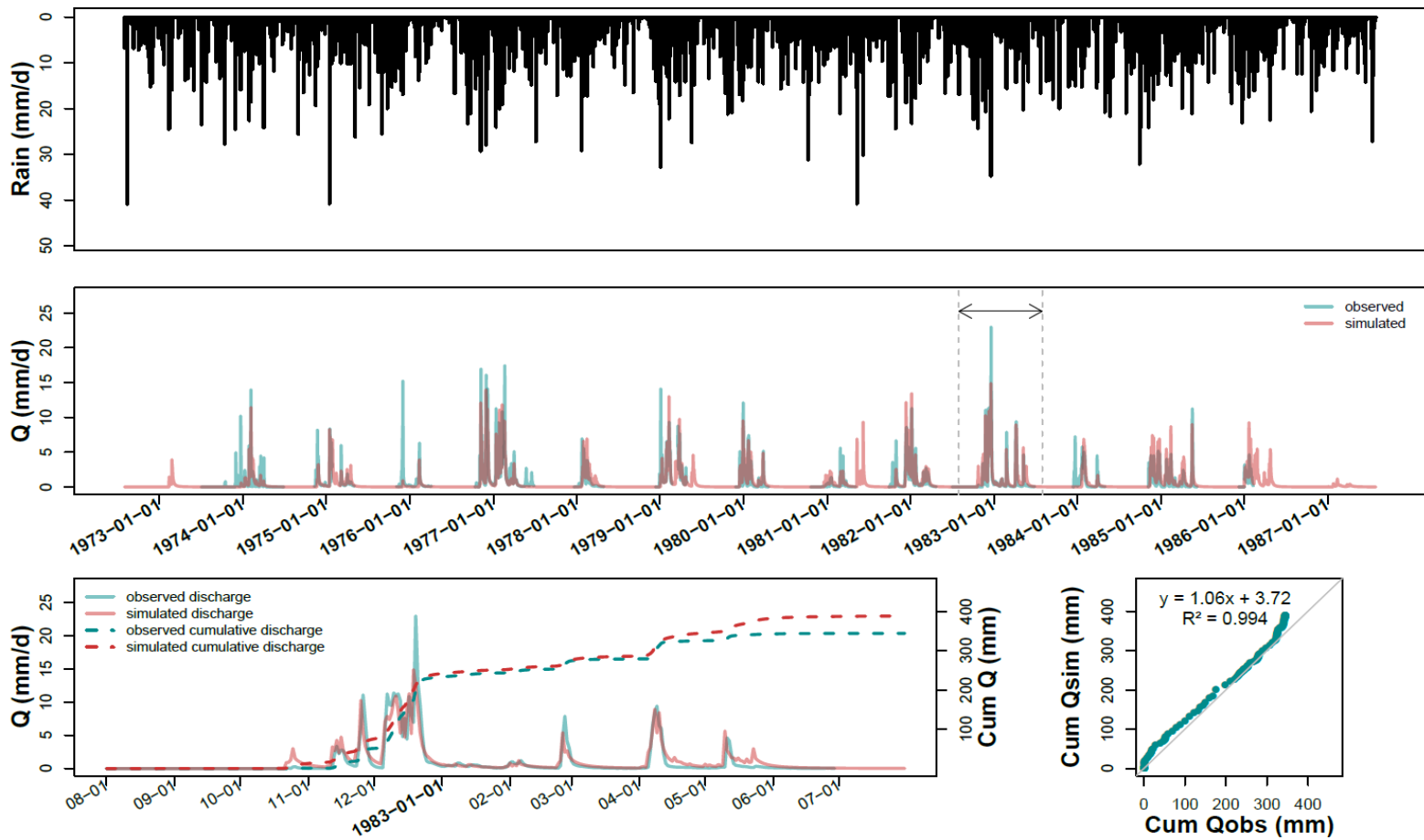
635

Texture	K (m/d)		μ (-)		Sinter (mm)		Smax (mm)	
	Mean	SD	Mean	SD	Mean	SD	Mean	SD
Clayey	0.32	2.53	0.017	2.081	138.39	53.33	171.68	70.19
Silty-Clayey	0.99	3.52	0.018	2.189	138.39	53.33	171.68	70.19
Silty	0.90	3.17	0.031	1.926	138.39	53.33	171.68	70.19

Appendix A: Table of mean and standard deviation (SD) per soil texture used for the parameter distribution

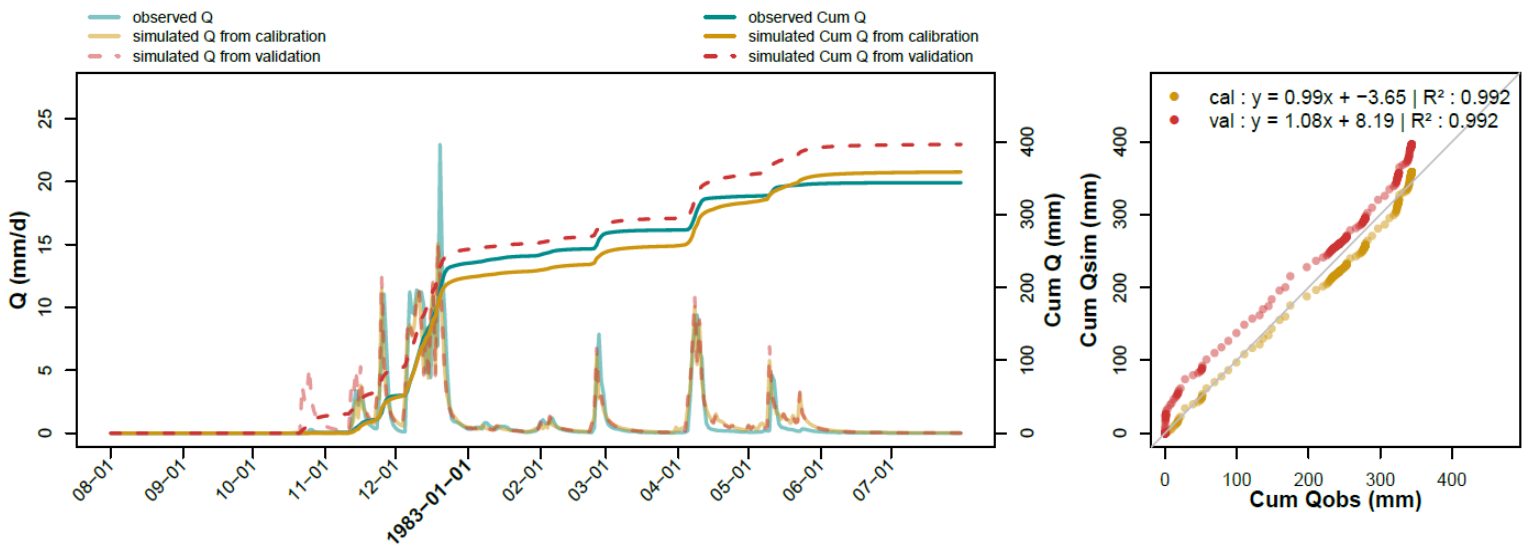


Appendix B: Illustration of observed and simulated discharges calibrated over the total period for the plot of La_Bouzule_P2



Appendix C: Illustration of observed and simulated discharges calibrated over the total period for the plot of Saint-Laurent_P2

645



Appendix D: Illustration of observed and simulated discharges for the plot of Saint-Laurent_P1 in calibration vs. validation over 1982-83

Author's contributions. AJ, HH and JT conceptualized the work. LC and GT provided methodological guidelines. CC, HH and JT collected data and rendered them sustainable. AJ drafted the paper. HH, CC, LC, GT and JT all revised the paper and contributed to its analyses and discussions.

650 *Competing interests.* The authors hereby declare that they have no conflict of interest as regards the present work.

Acknowledgments. The authors would like to thank the CLAND Convergence Institute, which partially funded the work completed for this study. Our gratitude is also expressed to the Météo-France Meteorological Agency for providing the data used in this work from the SAFRAN database. Moreover, thanks are addressed to both the ARVALIS Plant Sciences
655 Institute for data from the *La Jaillière* measurement site and the ORACLE Research Observatory for its data. The authors would also like to thank the editor (Dr C. Stamm) and the two reviewers for their constructive and kind comments and suggestions.

References

660 Abd-Elaty, I., Sallam, G. A. H., Straface, S. and Scozzari, A.: Effects of climate change on the design of subsurface drainage systems in coastal aquifers in arid/semi-arid regions: Case study of the Nile delta, *Science of The Total Environment*, 672, 283–295, <https://doi.org/10.1016/j.scitotenv.2019.03.483>, 2019.

Adriaanse, P., Allen, R., Gouy, V., Hollis, J., Hosang, J., Jarvis, N., Jarvis, T., Klein, M., Layton, R. and Linders, J.: Surface water models and EU registration of plant protection products, IRSTEA.
665 https://esdac.jrc.ec.europa.eu/public_path/projects_data/focus/docs/sw_en_6476VI96_24Feb1997.pdf, 1996.

Anderson, M. P. and Woessner, W. W.: *Applied Groundwater Modeling: Simulation of Flow and Advective Transport*, Academic Press., 1992.

Anon: RGA 2010 - Agreste, <http://recensement-agricole.agriculture.gouv.fr/>, last access: 25 August 2020, 2010.

Armstrong, A. C., Rands, J. G. and Castle, D. A.: Drainage benefits: Watertable control, workability and crop yields,
670 *Agricultural Water Management*, 14(1), 43–52, [https://doi.org/10.1016/0378-3774\(88\)90059-5](https://doi.org/10.1016/0378-3774(88)90059-5), 1988.

Arnold, J. G., Moriasi, D. N., Gassman, P. W., Abbaspour, K. C., White, M. J., Srinivasan, R., Santhi, C., Harmel, R. D., van Griensven, A., Van Liew, M., Kannan, N. and Jha, M. K.: SWAT: Model Use, Calibration, and Validation, *Transactions of the ASABE*, 55(4), 1491–1508, <https://doi.org/10/f39v78>, 2012.

Bailly, P. and Carrère, C.: Statistiques descriptives : Théorie et applications, in *Statistiques descriptives. L'économie et les chiffres*, pp. 165–167, Grenoble (Presses universitaires de), <http://journals.openedition.org/lectures/17705>, last access: 12 November 2020, 2015.
675

- Baize, D. and Jabiol, B.: Guide pour la description des sols, Editions Quae. <https://hal.archives-ouvertes.fr/hal-01195043>, last access: 10 November 2020, 2011.
- 680 Beskow, S., Mello, C. R., Norton, L. D., and da Silva, A. M.: Performance of a distributed semi-conceptual hydrological model under tropical watershed conditions, *CATENA*, 86, 160–171, <https://doi.org/10/dvz95p>, 2011.
- Beulke, S., Brown, C. D. and Jarvis, N. J.: Macro: A Preferential Flow Model to Simulate Pesticide Leaching and Movement to Drains, in *Modelling of Environmental Chemical Exposure and Risk*, edited by J. B. H. J. Linders, pp. 117–132, Springer Netherlands, Dordrecht, https://doi.org/10.1007/978-94-010-0884-6_12, , 2001.
- 685 Beven, K. and Germann, P.: Macropores and water flow in soils, *Water resources research*, 18(5), 1311–1325, <https://doi.org/10.1029/WR018i005p01311>, 1982.
- Beven, K.: Changing ideas in hydrology — The case of physically-based models, *Journal of Hydrology*, 105, 157–172, <https://doi.org/10/c8wt7q>, 1989.
- Biswas, A.: Joint multifractal analysis for three variables: Characterizing the effect of topography and soil texture on soil water storage, *Geoderma*, 334, 15–23, <https://doi.org/10.1016/j.geoderma.2018.07.035>, 2019.
- 690 Biswas, A., Chau, H. W., Bedard-Haughn, A. K. and Si, B. C.: Factors controlling soil water storage in the hummocky landscape of the Prairie Pothole Region of North America, *Can. J. Soil. Sci.*, 92(4), 649–663, <https://doi.org/10.4141/cjss2011-045>, 2012.
- Boesten, J., Helweg, A., Businelli, M., Bergstrom, L., Schaefer, H., Delmas, A., Kloskowski, R., Walker, A., Travis, K. and Smeets, L.: Soil persistence models and EU registration, Final Report of the Work of the Soil Modelling Work Group of FOCUS, 1997.
- 695 Bouarfa, S. and Zimmer, D.: Water-table shapes and drain flow rates in shallow drainage systems, *Journal of Hydrology*, 235(3), 264–275, [https://doi.org/10.1016/S0022-1694\(00\)00280-8](https://doi.org/10.1016/S0022-1694(00)00280-8), 2000.
- Boussinesq, J.: Recherches théoriques sur l'écoulement des nappes d'eau infiltrées dans le sol et sur le débit des sources, *Journal de Mathématiques Pures et Appliquées*, 10, 5–78, 1904.
- 700 Branger, F., Tournebize, J., Carluier, N., Kao, C., Braud, I. and Vauclin, M.: A simplified modelling approach for pesticide transport in a tile-drained field: The PESTDRAIN model, *Agricultural Water Management*, 96(3), 415–428, <https://doi.org/10.1016/j.agwat.2008.09.005>, 2009.
- Breve, M. A., Skaggs, R. W., Gilliam, J. W., Parsons, J. E., Mohammad, A. T., Chescheir, G. M. and Evans, R. O.: Field testing of drainmod-N, *Transactions of the ASAE (USA)* <http://agris.fao.org/openagris/search.do?recordID=US1997059848>, last access: 28 February 2020, 1997.
- 705 Broadhead, R. G. and Skaggs, R. W.: Drainage strategies and peak flood flows, in *1982 Summer Meeting*, , 1982.
- Brocca, L., Morbidelli, R., Melone, F. and Moramarco, T.: Soil moisture spatial variability in experimental areas of central Italy, *Journal of Hydrology*, 333(2), 356–373, <https://doi.org/10.1016/j.jhydrol.2006.09.004>, 2007.

- 710 Brown, C. D. and van Beinum, W.: Pesticide transport via sub-surface drains in Europe, *Environmental Pollution*, 157, 3314–3324, <https://doi.org/10/fsjg3b>, 2009.
- Brown, R. A., Skaggs, R. W. and Hunt, W. F.: Calibration and validation of DRAINMOD to model bioretention hydrology, *Journal of Hydrology*, 486, 430–442, <https://doi.org/10.1016/j.jhydrol.2013.02.017>, 2013.
- Crochemore, L., Perrin, C., Andréassian, V., Ehret, U., Seibert, S. P., Grimaldi, S., Gupta, H., and Paturel, J.-E.: Comparing expert judgement and numerical criteria for hydrograph evaluation, 60, 402–423, <https://doi.org/10.1080/02626667.2014.903331>, 2015
- 715 Córdova, M., Carrillo-Rojas, G., Crespo, P., Wilcox, B. and Célleri, R.: Evaluation of the Penman-Monteith (FAO 56 PM) Method for Calculating Reference Evapotranspiration Using Limited Data, *mred*, 35(3), 230–239, <https://doi.org/10.1659/MRD-JOURNAL-D-14-0024.1>, 2015.
- Coron, L., Andréassian, V., Perrin, C., Lerat, J., Vaze, J., Bourqui, M. and Hendrickx, F.: Crash testing hydrological models in contrasted climate conditions: An experiment on 216 Australian catchments, *Water Resources Research*, 48(5), <https://doi.org/10.1029/2011WR011721>, 2012.
- 720 Coron, L., Thirel, G., Delaigue, O., Perrin, C. and Andréassian, V.: The Suite of Lumped GR Hydrological Models in an R package, *Environmental Modelling and Software*, 94, 166–171, <https://doi.org/10.1016/j.envsoft.2017.05.002>, 2017.
- Coron, L., Delaigue, O., Thirel, G., Perrin, C. and Michel, C.: airGR: Suite of GR Hydrological Models for Precipitation-Runoff Modelling. R package version 1.4.3.65., 2020.
- 725 Criss, R. E. and Winston, W. E.: Do Nash values have value? Discussion and alternate proposals, *Hydrological Processes*, 22(14), 2723–2725, <https://doi.org/10.1002/hyp.7072>, 2008.
- Daggupati, P., Pai, N., Ale, S., Douglas-Mankin, K., Zeckoski, R., Jeong, J., Parajuli, P., Saraswat, D. and Youssef, M.: A Recommended Calibration and Validation Strategy for Hydrologic and Water Quality Models, *Transactions of the ASABE (American Society of Agricultural and Biological Engineers)*, 58, 1705–1719, <https://doi.org/10.13031/trans.58.10712>, 2015.
- 730 Dairon, R., Dutertre, A., Tournebize, J., Marks-Perreau, J., and Carluet, N.: Long-term impact of reduced tillage on water and pesticide flow in a drained context, *Environ Sci Pollut Res*, 24, 6866–6877, <https://doi.org/10.1007/s11356-016-8123-x>, 2017.
- 735 Deelstra, J.: Climate change and subsurface drainage design: results from a small field-scale catchment in south-western Norway, *Acta Agriculturae Scandinavica, Section B — Soil & Plant Science*, 65(sup1), 58–65, <https://doi.org/10.1080/09064710.2014.975836>, 2015.
- Driessen, P., Deckers, J., Spaargaren, O. and Nachtergaele, F.: Lecture notes on the major soils of the world., Food and Agriculture Organization (FAO)., 2000.
- 740 Eyring, V., Waugh, D. W., Bodeker, G. E., Cordero, E., Akiyoshi, H., Austin, J., Beagley, S. R., Boville, B. A., Braesicke, P., Brühl, C., Butchart, N., Chipperfield, M. P., Dameris, M., Deckert, R., Deushi, M., Frith, S. M., Garcia, R. R.,

- FAO: FAO-Unesco Soil Map of the World. Revised Legend. Reprinted with corrections, Technical report, Rome., 1988.
- 745 Gettelman, A., Giorgetta, M. A., Kinnison, D. E., Mancini, E., Manzini, E., Marsh, D. R., Matthes, S., Nagashima, T., Newman, P. A., Nielsen, J. E., Pawson, S., Pitari, G., Plummer, D. A., Rozanov, E., Schraner, M., Scinocca, J. F., Semeniuk, K., Shepherd, T. G., Shibata, K., Steil, B., Stolarski, R. S., Tian, W. and Yoshiki, M.: Multimodel projections of stratospheric ozone in the 21st century, *J. Geophys. Res.*, 112(D16), D16303, <https://doi.org/10.1029/2006JD008332>, 2007.
- Gowda, P. H., Mulla, D. J., Desmond, E. D., Ward, A. D., and Moriasi, D. N.: ADAPT: Model use, calibration, and validation, 55, 1345–1352, <https://doi.org/10/f39v9d>, 2012.
- 750 Gupta, H. V., Kling, H., Yilmaz, K. K. and Martinez, G. F.: Decomposition of the mean squared error and NSE performance criteria: Implications for improving hydrological modelling, *Journal of Hydrology*, 377(1), 80–91, <https://doi.org/10.1016/j.jhydrol.2009.08.003>, 2009.
- Gupta, H. V., Perrin, C., Blöschl, G., Montanari, A., Kumar, R., Clark, M., and Andréassian, V.: Large-sample hydrology: a need to balance depth with breadth, 18, 463–477, <https://doi.org/10/f5vckt>, 2014.
- 755 He, D. and Wang, E.: On the relation between soil water holding capacity and dryland crop productivity, *Geoderma*, 353, 11–24, <https://doi.org/10.1016/j.geoderma.2019.06.022>, 2019.
- Helwig, T. G., Madramootoo, C. A., and Dodds, G. T.: Modelling nitrate losses in drainage water using DRAINMOD 5.0, *Agricultural Water Management*, 56, 153–168, [https://doi.org/10.1016/S0378-3774\(02\)00005-7](https://doi.org/10.1016/S0378-3774(02)00005-7), 2002.
- 760 Henine, H., Nédélec, Y. and Ribstein, P.: Coupled modelling of the effect of overpressure on water discharge in a tile drainage system, *Journal of Hydrology*, 511, 39–48, <https://doi.org/10.1016/j.jhydrol.2013.12.016>, 2014.
- Henine, H., Jeantet, A., Chaumont, C., Chelil, S., Lauvernet, C., and Tournebize, J.: Coupling of a subsurface drainage model with a soil reservoir model to simulate drainage discharge and drain flow start, in review.
- 765 Henriksen, H. J., Trolborg, L., Nyegaard, P., Sonnenborg, T. O., Refsgaard, J. C. and Madsen, B.: Methodology for construction, calibration and validation of a national hydrological model for Denmark, *Journal of Hydrology*, 280(1), 52–71, [https://doi.org/10.1016/S0022-1694\(03\)00186-0](https://doi.org/10.1016/S0022-1694(03)00186-0), 2003.
- Ibrahim, T. G., Fenton, O., Richards, K. G., Fealy, R. M. and Healy, M. G.: Spatial and temporal variations of nutrient loads in overland flow and subsurface drainage from a marginal land site in South-East Ireland, *Biology and Environment: Proceedings of the Royal Irish Academy*, 113B(2), 169–186, 2013.
- 770 Irmak, S., Sharma, V., Mohammed, A. T., and Djaman, K.: Impacts of Cover Crops on Soil Physical Properties: Field Capacity, Permanent Wilting Point, Soil-Water Holding Capacity, Bulk Density, Hydraulic Conductivity, and Infiltration, *Transactions of the ASABE*, 61, 1307–1321, <https://doi.org/10.13031/trans.12700>, 2018.
- Jamagne, M.: Bases et techniques d'une cartographie des sols, Institut National de la Recherche Agronomique. https://www.persee.fr/doc/geo_0003-4010_1969_num_78_428_15899, 1968.

- 775 Jamagne, M., Betremieux, R., Begon, J. C. and Mori, A.: Quelques données sur la variabilité dans le milieu naturel de la réserve en eau des sols, *Bulletin Technique d'Information*, 324–325, 627–641, 1977.
- Jannot, Ph.: Drainage and crop production system on intensive dairy farms in Western France, *Agricultural Water Management*, 14, 61–68, <https://doi.org/10/d3z76b>, 1988.
- Jarvis, N.: The MACRO Model (version 3.1). Technical description and sample simulations., Reports and Dissertations - Swedish University of Agricultural Sciences <http://agris.fao.org/agris-search/search.do?recordID=SE19950122727>, last access: 2 March 2020, 1994.
- 780 Jarvis, N. and Larsbo, M.: MACRO (v5.2): Model Use, Calibration, and Validation, *Transactions of the ASABE*, 55(4), 1413–1423, <https://doi.org/10.13031/2013.42251>, 2012.
- Jarvis, N. J. and Leeds-Harrison, P. B.: Modelling water movement in drained clay soil. I. Description of the model, sample output and sensitivity analysis, *Journal of Soil Science*, 38(3), 487–498, <https://doi.org/10.1111/j.1365-2389.1987.tb02284.x>, 1987.
- 785 Jarvis, N. J., Hollis, J. M., Nicholls, P. H., Mayr, T. and Evans, S. P.: MACRO—DB: a decision-support tool for assessing pesticide fate and mobility in soils, *Environmental Modelling & Software*, 12(2), 251–265, [https://doi.org/10.1016/S1364-8152\(97\)00147-3](https://doi.org/10.1016/S1364-8152(97)00147-3), 1997.
- Jiang, Q., Qi, Z., Xue, L., Bukovsky, M., Madramootoo, C. A. and Smith, W.: Assessing climate change impacts on greenhouse gas emissions, N losses in drainage and crop production in a subsurface drained field, *Science of The Total Environment*, 705, 135969, <https://doi.org/10.1016/j.scitotenv.2019.135969>, 2020a.
- 790 Jiang, Q., Qi, Z., Lu, C., Tan, C. S., Zhang, T. and Prasher, S. O.: Evaluating RZ-SHAW model for simulating surface runoff and subsurface tile drainage under regular and controlled drainage with subirrigation in southern Ontario, *Agricultural Water Management*, 237, 106179, <https://doi.org/10.1016/j.agwat.2020.106179>, 2020b.
- 795 Jury, W. and Roth, K.: Transfer Functions and Solute Movement Through Soil: Theory and Applications, in: *Journal of plant nutrition and soil science*, vol. 155, Issue 2, 77–166, 1992.
- Kao, C., Nedelec, Y. and Zimmer, D.: Surface runoff mechanisms and modelling in subsurface drained fields, Orlando, USA., 1998.
- 800 Kladivko, E. J., Brown, L. C., and Baker, J. L.: Pesticide Transport to Subsurface Tile Drains in Humid Regions of North America, 31, 1–62, <https://doi.org/10.1080/20016491089163>, 2001.
- Klemeš, V.: Operational testing of hydrological simulation models, *Hydrological Sciences Journal*, 31(1), 13–24, <https://doi.org/10.1080/02626668609491024>, 1986.
- Kling, H., Fuchs, M. and Paulin, M.: Runoff conditions in the upper Danube basin under an ensemble of climate change scenarios, *Journal of Hydrology*, 424–425, 264–277, <https://doi.org/10.1016/j.jhydrol.2012.01.011>, 2012.

- 805 Knobon, W. J. M., Freer, J. E. and Woods, R. A.: Technical note: Inherent benchmark or not? Comparing Nash–Sutcliffe and Kling–Gupta efficiency scores, *Hydrology and Earth System Sciences*, 23(10), 4323–4331, <https://doi.org/10.5194/hess-23-4323-2019>, 2019.
- Kobierska, F., Koch, U., Kasteel, R., Stamm, C., and Prasuhn, V.: Plant protection product losses via tile drainage: A conceptual model and mitigation measures, <https://doi.org/10/gmf2xr>, 2020.
- 810 Köhne, J. M., Köhne, S., and Šimůnek, J.: A review of model applications for structured soils: a) Water flow and tracer transport, *Journal of Contaminant Hydrology*, 104, 4–35, <https://doi.org/10/fbdvsh>, 2009.
- Konyha, D. and Skaggs, R. W.: A Coupled, Field Hydrology – Open Channel Flow Model: Theory, *Transactions of the ASAE*, 35(5), 1431–1440, <https://doi.org/10.13031/2013.28750>, 1992.
- Kosugi, K.: Three-parameter lognormal distribution model for soil water retention, *Water Resources Research*, 30(4),
815 891–901, <https://doi.org/10.1029/93WR02931>, 1994.
- Kosugi, K.: Lognormal Distribution Model for Unsaturated Soil Hydraulic Properties, *Water Resources Research*, 32(9), 2697–2703, <https://doi.org/10.1029/96WR01776>, 1996.
- Kosugi, K.: General Model for Unsaturated Hydraulic Conductivity for Soils with Lognormal Pore-Size Distribution, *Soil Science Society of America Journal*, 63(2), 270–277, <https://doi.org/10.2136/sssaj1999.03615995006300020003x>,
820 1999.
- Krogh, L. and Greve, M. H.: Evaluation of World Reference Base for Soil Resources and FAO Soil Map of the World using nationwide grid soil data from Denmark, *Soil Use and Management*, 15(3), 157–166, <https://doi.org/10.1111/j.1475-2743.1999.tb00082.x>, 1999.
- Kuzmanovski, V., Trajanov, A., Leprince, F., Džeroski, S. and Debeljak, M.: Modeling water outflow from tile-drained
825 agricultural fields, *Science of The Total Environment*, 505, 390–401, <https://doi.org/10.1016/j.scitotenv.2014.10.009>, 2015.
- Lagacherie, P. and Favrot, J. C.: Synthèse générale sur les études de secteurs de référence drainage, INRA., 1987.
- Lange, B., Germann, P. F. and Lüscher, P.: Runoff-generating processes in hydromorphic soils on a plot scale: free gravity-driven versus pressure-controlled flow, *Hydrological Processes*, 25(6), 873–885,
830 <https://doi.org/10.1002/hyp.7873>, 2011.
- Lebrun, J. D., Ayrault, S., Drouet, A., Bordier, L., Fechner, L. C., Uher, E., Chaumont, C. and Tournébeze, J.: Ecodynamics and bioavailability of metal contaminants in a constructed wetland within an agricultural drained catchment, *Ecological Engineering*, 136, 108–117, <https://doi.org/10.1016/j.ecoleng.2019.06.012>, 2019.
- Lesaffre, B.: Fonctionnement hydrologique et hydraulique du drainage souterrain des sols temporairement engorgés : débits de pointe et modèle SIDRA : extension des principes théoriques de Boussinesq et Guyon, thesis, Paris 6, 1989.
835

- Lesaffre, B.: France, in: Design practices covered drains in an agricultural land drainage system, Comité National Français de la CIID, 1987
- Lesaffre, B. and Zimmer, D.: Field evaluation of a subsurface drainage simulation model predicting peak flow, p. 8, Chicago, USA, , 1987a.
- 840 Lesaffre, B. and Zimmer, D.: Field evaluation of a subsurface drainage simulation model predicting peak flow, p. 8, Chicago, USA, , 1987b.
- Lewan, E., Kreuger, J., and Jarvis, N.: Implications of precipitation patterns and antecedent soil water content for leaching of pesticides from arable land, *Agricultural Water Management*, 96, 1633–1640, <https://doi.org/10/cx2jb9>, 2009.
- Lévy, G.: Premiers résultats concernant deux expériences d’assainissement du sol sur plantations de résineux, 29, 427–450, <https://doi.org/10.1051/forest/19720402>, 1972.
- 845 Li, C., Zhang, L., Wang, H., Zhang, Y., Yu, F. and Yan, D.: The transferability of hydrological models under nonstationary climatic conditions, *Hydrology and Earth System Sciences*, 16, <https://doi.org/10.5194/hessd-8-8701-2011>, 2011.
- Ma, L., Malone, R. W., Heilman, P., Ahuja, L. R., Meade, T., Saseendran, S. A., Ascough, J. C. and Kanwar, R. S.: Sensitivity of tile drainage flow and crop yield on measured and calibrated soil hydraulic properties, *Geoderma*, 140(3), 284–296, <https://doi.org/10.1016/j.geoderma.2007.04.012>, 2007.
- 850 Magesan, G. N., Scotter, D. R., and White, R. E.: A transfer function approach to modeling the leaching of solutes to subsurface drains .I. Nonreactive solutes, *Soil Res.*, 32, 69–83, <https://doi.org/10/fwf5vw>, 1994.
- Mathevet, T.: Quels modèles pluie-débit globaux au pas de temps horaire? Développements empiriques et comparaison de modèles sur un large échantillon de bassins versants, Thèse de Doctorat, à l’Ecole Nationale du Génie Rural, des Eaux et Forêts, 2005.
- 855 Meyer, N., Bergez, J.-E., Constantin, J., and Justes, E.: Cover crops reduce water drainage in temperate climates: A meta-analysis, *Agron. Sustain. Dev.*, 39, 3, <https://doi.org/10.1007/s13593-018-0546-y>, 2018.
- Michel, C.: Hydrologie Appliquée Aux Petits Bassins Ruraux (Applied Hydrology for Small Catchments), Internal Report, Cemagref, Antony, France., 1991.
- 860 Mitchell, A. R. and Genuchten, M. T. van: Shrinkage of Bare and Cultivated Soil, 56, 1036–1042, <https://doi.org/10.2136/sssaj1992.03615995005600040006x>, 1992.
- Montanari, A., Young, G., Savenije, H. H. G., Hughes, D., Wagener, T., Ren, L. L., Koutsoyiannis, D., Cudennec, C., Toth, E., Grimaldi, S., Blöschl, G., Sivapalan, M., Beven, K., Gupta, H., Hipsey, M., Schaeffli, B., Arheimer, B., Boegh, E., Schymanski, S. J., Baldassarre, G. D., Yu, B., Hubert, P., Huang, Y., Schumann, A., Post, D. A., Srinivasan, V., Harman, C., Thompson, S., Rogger, M., Viglione, A., McMillan, H., Characklis, G., Pang, Z. and Belyaev, V.: “Panta Rhei—Everything Flows”: Change in hydrology and society—The IAHS Scientific Decade 2013–2022, *Hydrological Sciences Journal*, 58(6), 1256–1275, <https://doi.org/10.1080/02626667.2013.809088>, 2013.

- 870 Moriasi, D., Arnold, J., Van Liew, M., Bingner, R., Harmel, R. D. and Veith, T.: Model Evaluation Guidelines for Systematic Quantification of Accuracy in Watershed Simulations, *Transactions of the ASABE*, 50, <https://doi.org/10.13031/2013.23153>, 2007.
- Moriasi, D., Gitau, M., Pai, N. and Daggupati, P.: Hydrologic and Water Quality Models: Performance Measures and Evaluation Criteria, *Transactions of the ASABE (American Society of Agricultural and Biological Engineers)*, 58, 1763–1785, <https://doi.org/10.13031/trans.58.10715>, 2015.
- 875 Mulqueen, J.: Depth, spacing and length of mole drains with applications to afforestation, *Irish Journal of Agricultural and Food Research*, 37(1), 39–49, 1998.
- Muma, M., Rousseau, A. N. and Gumiere, S. J.: Modeling of subsurface agricultural drainage using two hydrological models with different conceptual approaches as well as dimensions and spatial scales, *Canadian Water Resources Journal / Revue canadienne des ressources hydriques*, 42(1), 38–53, <https://doi.org/10.1080/07011784.2016.1231014>, 2017.
- 880 Nash, J. E. and Sutcliffe, J. V.: River flow forecasting through conceptual models part I — A discussion of principles, *Journal of Hydrology*, 10(3), 282–290, [https://doi.org/10.1016/0022-1694\(70\)90255-6](https://doi.org/10.1016/0022-1694(70)90255-6), 1970.
- Nijland, H., Croon, F. and Ritzema, H.: *Subsurface drainage practices : Guidelines for the implementation, operation and maintenance of subsurface pipe drainage systems.*, 2005.
- 885 Pease, L. A., Fausey, N. R., Martin, J. F. and Brown, L. C.: Projected climate change effects on subsurface drainage and the performance of controlled drainage in the Western Lake Erie Basin, *Journal of Soil and Water Conservation*, 72(3), 240–250, <https://doi.org/10.2489/jswc.72.3.240>, 2017.
- Perrin, C.: *Vers une amélioration d'un modèle global pluie-débit au travers d'une approche comparative*, INPG(Grenoble)/Cemagref(Antony), 2000.
- 890 Perrin, C., Michel, C. and Andréassian, V.: Improvement of a parsimonious model for streamflow simulation, *Journal of Hydrology*, 279(1), 275–289, [https://doi.org/10.1016/S0022-1694\(03\)00225-7](https://doi.org/10.1016/S0022-1694(03)00225-7), 2003.
- Poncelet, C., Merz, R., Merz, B., Parajka, J., Oudin, L., Andréassian, V., and Perrin, C.: Process-based interpretation of conceptual hydrological model performance using a multinational catchment set, 53, 7247–7268, <https://doi.org/10.1002/2016WR019991>, 2017.
- 895 Refsgaard, J. C.: Parameterisation, calibration and validation of distributed hydrological models, *Journal of Hydrology*, 198(1), 69–97, [https://doi.org/10.1016/S0022-1694\(96\)03329-X](https://doi.org/10.1016/S0022-1694(96)03329-X), 1997.
- Refsgaard, J. C.: Towards a formal approach to calibration and validation of models using spatial data, *Spatial patterns in catchment hydrology: observations and modelling*, 329–354, 2001.
- 900 Refsgaard, J. C. and Storm, B.: Construction, Calibration And Validation of Hydrological Models, in *Distributed Hydrological Modelling*, edited by M. B. Abbott and J. C. Refsgaard, pp. 41–54, Springer Netherlands, Dordrecht, https://doi.org/10.1007/978-94-009-0257-2_3, , 1996.

- Ren, X. W. and Santamarina, J. C.: The hydraulic conductivity of sediments: A pore size perspective, *Engineering Geology*, 233, 48–54, <https://doi.org/10.1016/j.enggeo.2017.11.022>, 2018.
- Revuelta-Acosta, J. D., Flanagan, D. C., Engel, B. A. and King, K. W.: Improvement of the Water Erosion Prediction Project (WEPP) model for quantifying field scale subsurface drainage discharge, *Agricultural Water Management*, 244, 905 <https://doi.org/10.1016/j.agwat.2020.106597>, 2021.
- Richer-de-Forges, A., Feller, C., Jamagne, M. and Arrouays, D.: Perdus dans le triangle des textures, edited by A. F. pour l'Étude du Sol, *Étude et Gestion des Sols*, 15(2), 97–112, 2008.
- Ritter, A. and Muñoz-Carpena, R.: Performance evaluation of hydrological models: Statistical significance for reducing subjectivity in goodness-of-fit assessments, *Journal of Hydrology*, 480, 33–45, 910 <https://doi.org/10.1016/j.jhydrol.2012.12.004>, 2013.
- Robinson, M. and Rycroft, D. W.: The Impact of Drainage on Streamflow, in *Agricultural Drainage*, pp. 767–800, John Wiley & Sons, Ltd, <https://doi.org/10.2134/agronmonogr38.c23>, , 1999.
- Robinson, M., Mulqueen, J. and Burke, W.: On flows from a clay soil—Seasonal changes and the effect of mole drainage, *Journal of Hydrology*, 91(3), 339–350, [https://doi.org/10.1016/0022-1694\(87\)90210-1](https://doi.org/10.1016/0022-1694(87)90210-1), 1987.
- 915 Rousselot, D. and Peyrieux, J.-C.: Proposition pour une loi de distribution des perméabilités et des transmissivités, Ministère de l'industrie et de la recherche, Lyon., 1977.
- Rousseva, S., Kercheva, M., Shishkov, T., Lair, G. J., Nikolaidis, N. P., Moraetis, D., Krám, P., Bernasconi, S. M., Blum, W. E. H., Menon, M. and Banwart, S. A.: Chapter Two - Soil Water Characteristics of European SoilTrEC Critical Zone Observatories, in *Advances in Agronomy*, vol. 142, edited by S. A. Banwart and D. L. Sparks, pp. 29–72, Academic 920 Press, <https://doi.org/10.1016/bs.agron.2016.10.004>, , 2017.
- Sands, G. R., Jin, C.-X., Mendez, A., Basin, B., Wotzka, P. and Gowda, P.: Comparing the subsurface drainage flow prediction of the DRAINMOD and ADAPT models for a cold climate, *Transactions of the American Society of Agricultural Engineers*, 46(3), 645–656, 2003.
- Santos, L., Thirel, G. and Perrin, C.: Technical note: Pitfalls in using log-transformed flows within the KGE criterion, 925 *Hydrology and Earth System Sciences*, 22(8), 4583–4591, <https://doi.org/10.5194/hess-22-4583-2018>, 2018.
- Skaggs, R. W.: *Methods for Design and Evaluation of Drainage Water Management Systems for Soils with High Water Tables*, DRAINMOD, North Carolina State University, Raleigh., 1981.
- Skaggs, R. W., Van Schilfhaarde, J., Bartels, J. M., Hatfield, J. L., Volenec, J. J. and Bigham, J. M.: *Agricultural drainage*, American Society of Agronomy Madison, Wisc., USA., 1999.
- 930 Skaggs, R. W., Youssef, M. and Chescheir, G. M.: DRAINMOD: model use, calibration, and validation, *Transactions of the ASABE*, 55, 1509–1522, <https://doi.org/10.13031/2013.42259>, 2012.

- Snow, V. O., Houlbrooke, D. J. and Huth, N. I.: Predicting soil water, tile drainage, and runoff in a mole-tile drained soil, *New Zealand Journal of Agricultural Research*, 50(1), 13–24, <https://doi.org/10.1080/00288230709510278>, 2007.
- 935 Tallec, G., Ansart, P., Guérin, A., Delaigue, O. and Blanchouin, A.: Observatoire Oracle, , <https://doi.org/10.17180/OBS.ORACLE>, 2015.
- Taylor, K. E., Stouffer, R. J. and Meehl, G. A.: An Overview of CMIP5 and the Experiment Design, *Bull. Amer. Meteor. Soc.*, 93(4), 485–498, <https://doi.org/10.1175/BAMS-D-11-00094.1>, 2011.
- 940 Thirel, G., Andréassian, V., Perrin, C., Audouy, J.-N., Berthet, L., Edwards, P., Folton, N., Furusho, C., Kuentz, A., Lerat, J., Lindström, G., Martin, E., Mathevet, T., Merz, R., Parajka, J., Ruelland, D. and Vaze, J.: Hydrology under change: an evaluation protocol to investigate how hydrological models deal with changing catchments, *Hydrological Sciences Journal*, 60(7–8), 1184–1199, <https://doi.org/10.1080/02626667.2014.967248>, 2015a.
- Thirel, G., Andréassian, V. and Perrin, C.: On the need to test hydrological models under changing conditions, *Hydrological Sciences Journal*, 60(7–8), 1165–1173, <https://doi.org/10.1080/02626667.2015.1050027>, 2015b.
- 945 Thompson, J. A., Bell, J. C. and Butler, C. A.: Quantitative Soil-Landscape Modeling for Estimating the Areal Extent of Hydromorphic Soils, *Soil Science Society of America Journal*, 61(3), 971–980, <https://doi.org/10.2136/sssaj1997.03615995006100030037x>, 1997.
- Tournebize, J., Gramaglia, C., Birmant, F., Bouarfa, S., Chaumont, C. and Vincent, B.: Co-Design of Constructed Wetlands to Mitigate Pesticide Pollution in a Drained Catch-Basin: A Solution to Improve Groundwater Quality, *Irrigation and Drainage*, 61(S1), 75–86, <https://doi.org/10.1002/ird.1655>, 2012.
- 950 Tournebize, J., Chaumont, C., Marcon, A., Molina, S., and Berthault, D.: Guide technique à l’implantation des zones tampons humides artificielles (ZTHA) pour réduire les transferts de nitrates et de pesticides dans les eaux de drainage. Version 3, 2015
- 955 Tournebize, J., Chaumont, C. and Mander, Ü.: Implications for constructed wetlands to mitigate nitrate and pesticide pollution in agricultural drained watersheds, *Ecological Engineering*, 103, 415–425, <https://doi.org/10.1016/j.ecoleng.2016.02.014>, 2017.
- Tournebize, J., Henine, H. and Chaumont, C.: Gérer les eaux de drainage agricole : du génie hydraulique au génie écologique, , (32), <https://doi.org/10.14758/SET-REVUE.2020.2.06>, 2020.
- 960 Trajanov, A., Kuzmanovski, V., Real, B., Perreau, J. M., Džeroski, S., and Debeljak, M.: Modeling the risk of water pollution by pesticides from imbalanced data, *Environ Sci Pollut Res*, 25, 18781–18792, <https://doi.org/10.1007/s11356-018-2099-7>, 2018.
- Tukey, J. W.: *Exploratory data analysis*, Reading, Mass., 1977.

- Tuohy, P., Humphreys, J., Holden, N. M. and Fenton, O.: Runoff and subsurface drain response from mole and gravel mole drainage across episodic rainfall events, *Agricultural Water Management*, 169, 129–139, <https://doi.org/10.1016/j.agwat.2016.02.020>, 2016.
- 965 Tuohy, P., O’Loughlin, J., and Fenton, O.: Modeling Performance of a Tile Drainage System Incorporating Mole Drainage, *Trans. ASABE*, 61, 169–178, <https://doi.org/10.13031/trans.12203>, 2018a
- Tuohy, P., O’ Loughlin, J., Peyton, D. and Fenton, O.: The performance and behavior of land drainage systems and their impact on field scale hydrology in an increasingly volatile climate, *Agricultural Water Management*, 210, 96–107, <https://doi.org/10.1016/j.agwat.2018.07.033>, 2018b.
- 970 Vachaud, G., Passerat De Silans, A., Balabanis, P. and Vauclin, M.: Temporal Stability of Spatially Measured Soil Water Probability Density Function 1, *Soil Science Society of America Journal*, 49(4), 822–828, <https://doi.org/10.2136/sssaj1985.03615995004900040006x>, 1985.
- Vidal, J.-P., Martin, E., Franchistéguy, L., Baillon, M. and Soubeyroux, J.-M.: A 50-year high-resolution atmospheric reanalysis over France with the Safran system, *International Journal of Climatology*, 30(11), 1627–1644, <https://doi.org/10.1002/joc.2003>, 2010.
- 975
- Ye, W., Zhang, J., Xu, W. and Zhang, Z.: Numerical investigation on the flow structures of the multi-strut mixing enhancement ejector, *Applied Thermal Engineering*, 179, 115653, <https://doi.org/10.1016/j.applthermaleng.2020.115653>, 2020.
- Zajíček, A., Fučík, P., Kaplická, M., Liška, M., Maxová, J., and Dobiáš, J.: Pesticide leaching by agricultural drainage in sloping, mid-textured soil conditions – the role of runoff components, *Water Science and Technology*, 77, 1879–1890, <https://doi.org/10/gdgt2>, 2018.
- 980
- Zimmer, D.: Effect of deep seepage on drainage functioning and design in shallow soils, 6th international drainage symposium “Drainage and water table control”, Nashville, USA, 13-15 December 1992, 272, 1992.
- Zimmer, D.: Lessons gained from the land drainage performance assessment programs in France during the 80’s, *Workshop on the Evaluation of the Performance of Subsurface Drainage Systems*, 16th International congress of ICID, Cairo, EGY, 57–69, 1996.
- 985