

Figure R1: The density distribution of the evaporative fraction for 51 FLUXNET sites for short vegetation, savanna and forests.

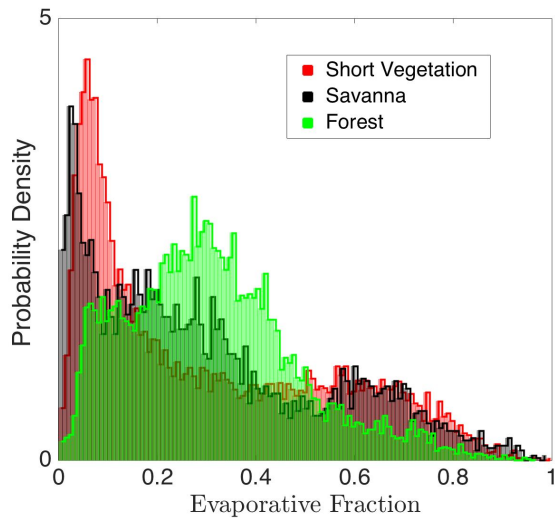


Figure R2: Warming rate response to evaporative fraction (a) and latent heat flux (b) for all the sites in short vegetation.

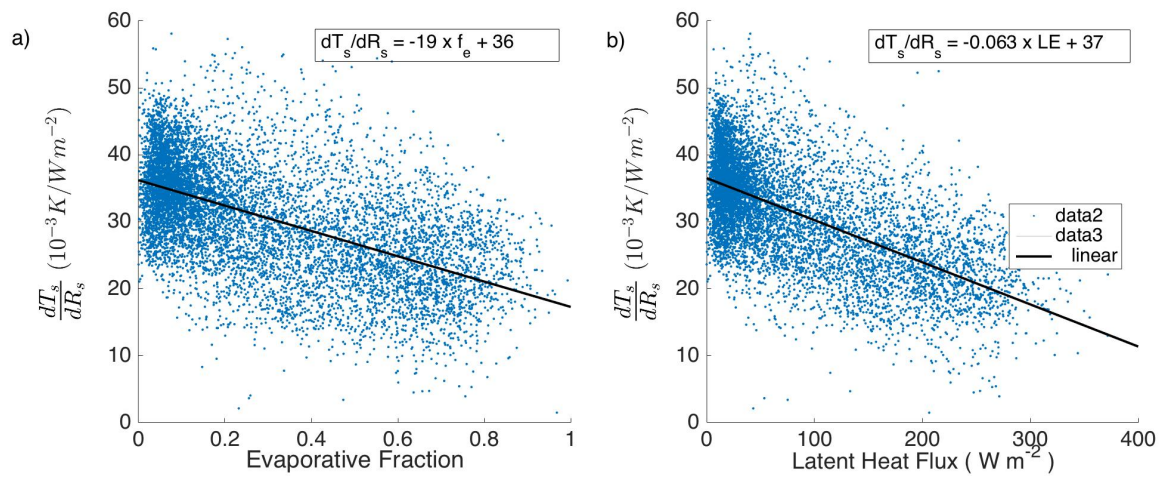


Figure R3: Demonstrating filter 1 that is used to select summer days for the analysis for US-ARM site.

The days with daily mean solar radiation greater than the median of the year are considered as summer days.

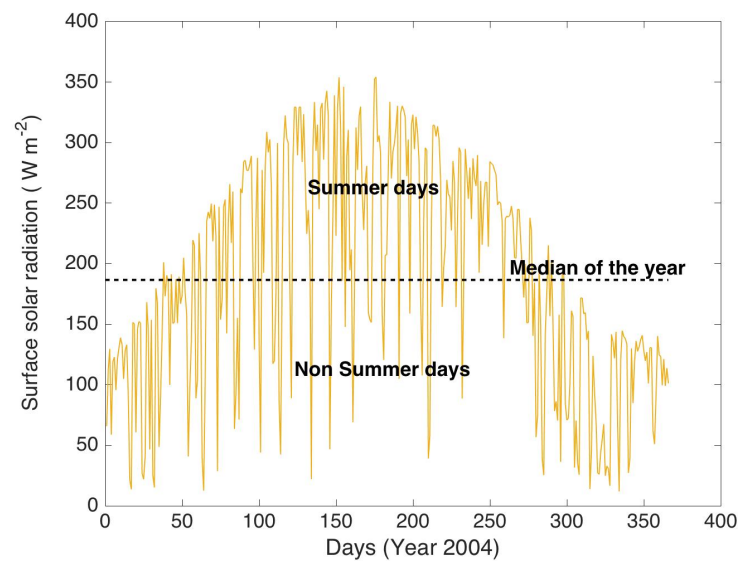


Figure R4: The legend of Figure 4 in the manuscript is corrected

