

Extreme precipitation events in the Mediterranean area: contrasting ~~two~~ Lagrangian and Eulerian models for moisture ~~sources~~ source identification

Sara Cloux ¹, Daniel Garaboa-Paz ¹, Damián Insua-Costa ¹, Gonzalo Miguez-Macho ¹, and Vicente Pérez-Muñuzuri ¹

¹CRETUS, Nonlinear Physics Group, Faculty of Physics, University of Santiago de Compostela, Spain

Correspondence: Sara Cloux (s.cloux@usc.es)

Abstract.

Concern about heavy precipitation events has increasingly grown in the last years in Southern Europe, especially in the Mediterranean region. These occasional episodes can result in more than 200 mm of rainfall in less than 24 h, producing flash floods with very high social and economic losses. To ~~the better understanding of this~~ better understand these phenomena, a correct identification of the origin of ~~the~~ moisture must be found. However, the contribution of the different sources is very difficult to estimate from observational data, ~~so~~ thus numerical models are usually ~~used~~ employed to this end. Here, we present a comparison between two ~~complex~~ methodologies for the quantification of the moisture sources in two ~~infamous events~~ flooding episodes occurred during October and November 1982 in the Western Mediterranean area. ~~In a~~ A previous study, using an ~~Eulerian approach it was~~ online Eulerian model, determined the contributions ~~of moisture evaporated into precipitation from~~ moisture evaporated over four different sources: 1) ~~the~~ Western Mediterranean; 2) ~~the~~ Central Mediterranean; 3) ~~the~~ North Atlantic ocean and 4) ~~the~~ tropical and subtropical Atlantic and tropical Africa. ~~Now, In this work~~ we use the ~~offline~~ Lagrangian model FLEXPART-WRF to quantify the role played by these ~~same~~ sources. Considering the results provided by the Eulerian analysis as ~~the~~ “virtual reality ground truth”, we validated the performance of ~~the~~ this Lagrangian model. Results show that the Lagrangian method has an acceptable ~~performance~~ skill in identifying local (Western Mediterranean) and medium-distance (Central Mediterranean and North Atlantic) sources. However, remote moisture sources, like tropical and subtropical areas, are underestimated by the Lagrangian approach. Notably, for the October event, the tropical and subtropical area reported a relative contribution six times ~~below than~~ lower than with the Eulerian method. In contrast, ~~the~~ FLEXPART-WRF overestimates the contribution of some sources, especially from ~~the Sahara. We argue that such an inconsistent contribution is associated with the fact that the Lagrangian method does not consider moisture phase changes.~~ North Africa. These over- and underestimates should be taken into account by other authors when drawing conclusions from the Lagrangian analysis.

1 Introduction

Extreme rainfall and associated floods are one of the most devastating agents in the weather context. As an example, in 2019 alone, more than 5000 people died as a result of floods and more than 30 million people were affected, resulting in economic

losses of more than USD 35 billion (International Disaster Database; dat). Therefore, the study of such catastrophic events is
25 fundamental for prediction and anticipation.

Heavy precipitation events (HPEs) are distributed unevenly across the planet, and there are places that are very prone to receiving ~~enormous~~large rain accumulations in a short time, as opposed to other areas where the precipitation regime is much more moderate. One of these regions where extreme precipitation and flooding are very recurring is the Western Mediterranean
30 Region (WMR) (Llasat et al., 2010). Several ~~exceptions~~characteristics make this part of the planet so exposed to heavy precipitation; the Mediterranean Sea ~~being~~is a large and mild water body, enclosed by very complex orography and in a relatively northern latitude ~~are some examples~~ (e.g., Buzzi et al., 1998; Llasat, 2009; Dayan et al., 2015). In this area, most of the events take place in autumn (Mariotti et al., 2002), when Atlantic lows or cut-off lows (Nieto et al., 2005) often interact with warm Mediterranean Sea waters leading to strong convection.

35

~~In spite of~~While HPEs are a regional phenomena, moisture feeding them not only comes from nearby sea evaporation, but can originate in remote regions and be transported by different atmospheric mechanisms. In this sense, it has been shown that long-distance moisture transport through atmospheric rivers (ARs) is a crucial contributor to total precipitation amounts recorded in Europe and the United States (~~e.g., Lavers and Villarini, 2015~~) (e.g., Lavers and Villarini, 2015; Hu and Dominguez, 2019)
40 and also to extreme rainfall episodes (e.g., Stohl et al., 2008; Eiras-Barca et al., 2017). As for the WMR, recent studies (~~e.g., Winschall et al., 2012; Pinto et al., 2013; Krichak et al., 2015; Insua-Costa et al., 2018~~) (e.g., Winschall et al., 2012; Pinto et al., 2013; Krichak et al., 2015; Insua-Costa et al., 2018) suggest that remote sources of moisture such as the North Atlantic or tropical or subtropical areas could contribute significantly to the frequent torrential rains there.

45 In order to find the origin of the moisture, different methodologies have been used in the past (see Gimeno et al. (2012), for a detailed review of numerical methods used in moisture source studies), ~~being~~with the Lagrangian models ~~being~~the most widely used technique. It is based on the analysis of the moisture content change of air parcels being tracked backward (or, less commonly, forward) in time. Lagrangian methods are generally offline, and therefore very efficient from a computational point of view. On the other hand, online Eulerian-type (~~online~~) methods are much more computationally expensive, and there-
50 fore have been less used. However, ~~it is~~they are considered to be the most accurate tool for moisture sources studies (see Dominguez et al. (2020), for a classification by complexity of the different models used for moisture tracking). In the western Mediterranean, ~~the~~ Lagrangian methods have been used by several authors (e.g., Reale et al., 2001; Turato et al., 2004; Nieto et al., 2010; Duffourg and Ducrocq, 2011), while the ~~Eulerian approach~~has online Eulerian approaches have only been used by Winschall et al. (2012) and ~~Insua-Costa et al. (2018)~~Insua-Costa et al. (2019).

55

In this study, we analyzed the moisture sources in two catastrophic flooding episodes occurred in the WMR, using both the Lagrangian and Eulerian approaches. The online Eulerian model for moisture tracking employed was the WRF-WVTs (Insua-Costa and Miguez-Macho (2018)). The results obtained using this tool ~~has~~have already been presented in a previous

60 article (~~Insua-Costa et al., 2018~~)(Insua-Costa et al., 2019). Thus, the objective of this study is to repeat the same strategy, but in this case using the offline Lagrangian FLEXPART-WRF model (Brioude et al., 2013), so that we can intercompare the results provided by both methodologies. This type of comparison has already been presented recently by Winschall et al. (2014). However, the present study is especially focused on identifying the possible limitations of the Lagrangian method and their causes, based on the assumption that WRF-WVTs represent the "virtual-reality-ground truth". This was the same strategy followed by van der Ent et al. (2013) ~~, where the evaporated moisture from Lake Volta (in West Africa) was tracked until it~~
65 ~~precipitates, concluding that the Lagrangian method leads to inaccuracies in the calculations in the presence of strong wind shear~~and Dominguez et al. (2020) in previous studies. One of the novelties with respect to ~~this article~~these articles, is that here the ~~sources of moisture~~moisture sources will be analyzed from a non-local point of view, that is to say, a large scale domain has been employed to be able to cover ~~the moisture source~~sources of remote origin. The aim is to check whether the Lagrangian method has the same capacity to detect short-distance sources as well as long-distance ones. In summary, the present work is
70 intended to contribute to ~~improving the~~the improvement of the Lagrangian analysis of moisture sources on the basis of another technique (WRF-WVTs) that is more accurate but much more ~~costly from the computational point of view~~computationally expensive and therefore less practical.

This study is structured as follows: in Section 2, Lagrangian and Eulerian methodologies are described and the procedure
75 presented. The two case studies are briefly introduced in the first part of Subsections 3.1.1 and 3.1.2 respectively. More detailed description can be found in ~~Insua-Costa et al. (2018)~~Insua-Costa et al. (2019). After that, results are structured as follows: Section 3.1 presents the moisture sources analysis obtained from the Lagrangian method, Section 3.2 shows the comparison between the results provided by the FLEXPART-WRF and WRF-WVTs techniques and Section 3.3 discusses the limitations of the Lagrangian approach. Finally, Section 4 summarizes and concludes this work.

80

2 Methods

This section will describe the techniques used in the study. It is important to highlight that there are different types of Eulerian and Lagrangian tools for moisture tracking, so from now on, when we refer to the Lagrangian or Eulerian approach, we will be referring to the specific methodology explained here. A summary of the characteristics of the models discussed below can
85 be found in Table 1.

2.1 Lagrangian approach

In this study we use the offline FLEXPART model (FLEXible PARTicle dispersion model; ~~Stohl and James (2004)~~Pisso et al. (2019)), which has been widely used to study moisture sources from a climatological perspective (e.g. James et al., 2003; Ciric et al., 2018; Drumond et al., 2014; Gimeno et al., 2013) as well as in particular heavy precipitation events (e.g. Stohl et al., 2008;
90 Sun and Wang, 2014). Specifically, we use a version of FLEXPART that works with the Weather Research and Forecasting

	<u>WRF-WVTs</u>	<u>FLEXPART-WRF</u>
<u>Moisture pathways</u>	<u>Eulerian</u>	<u>Lagrangian</u>
<u>Simulation</u>	<u>Online</u>	<u>Offline</u>
<u>Tracking direction</u>	<u>Forward</u>	<u>Backward</u>
<u>Phase changes</u>	<u>Yes</u>	<u>No</u>
<u>Evaporation attribution</u>	<u>Direct</u>	<u>E-P balance</u>
<u>Boundary layer parametrization</u>	<u>Hong et al. (2006)</u>	<u>Hanna (1982)</u>
<u>Convection scheme</u>	<u>Kain and Fritsch (1990)</u>	<u>Emanuel and Živković-Rothman (1999)</u>

Table 1. Some differences between the WRF-WVTs model and the FLEXPART-WRF model.

(WRF) regional atmospheric model (et al. Skamarock WC (2008)), known as FLEXPART-WRF (Brioude et al. (2013)).

2.1.1 E-P balance

According to the distribution of atmospheric mass, the simulation domain (covering from 90°W to 60°E and from 3°S to 65°N; **Figure 1 (a)**) is homogeneously divided into 4 million air parcels (or particles), which are subsequently advected backward in time during 11 days forced by the atmospheric fields provided by the WRF simulations. To find **the origin of the moisture** moisture origin, specific humidity q content change along the trajectory described by each particle is calculated as,

$$e - p = m \frac{dq}{dt} \quad (1)$$

where m is the mass of the particle and the difference between e and p **takes account of accounts for** the increasing or decreasing **ratio for the water vapour** water vapour ratio along the trajectory. From the previous equation, we can estimate the net **freshwater** water flux over a model grid cell of area A ($1^\circ \times 1^\circ$), summing the variation rate in specific humidity for all the air parcels (K) contained in the atmospheric column over that area:

$$E - P \approx \frac{\sum_{k=1}^K (e - p)}{A} \quad (2)$$

This methodology allows calculating the $E - P$ balance, but not evaporation (E) or precipitation (P) rates. However, we can approximate $E \approx 0$ when $E - P < 0$, since when precipitation occurs ($P > 0$), it usually greatly exceeds the evaporation rate ($P \gg E$). For this same reason, if $E - P > 0$, we can consider that $P \approx 0$. Applying the previous approximation, E and P can be diagnosed separately.

In order to find the To analyze the moisture source regions that fed the 1982 WMR catastrophic precipitations, we calculate the balance $E - P$ only for those air parcels involved in these episodes. Based on the precipitation fields provided by the WRF simulations (Figure 2 (b) and 5 (b)), for the October 1982 case we only consider those particles contained within the affected region (**5°W-1°E and 37°N-42°N, blue in** Figure 1 (c)) at some point during the event (from October 19, 06UTC to October

21, 21UTC). Likewise, for the November 1982 event, we consider particles within $2.5^{\circ}\text{W}-5^{\circ}\text{E}$ and $40^{\circ}\text{N}-47^{\circ}\text{N}$ (the red area in Figure 1 (c)) from the November 6, 06UTC to November 8, 21UTC. Furthermore, to ensure that we only select those particles that contribute to precipitation, we will only select those that lose moisture $\frac{dq}{dt} < -0.06 \text{ g}(\text{kg}\cdot 3\text{h})^{-1}$ over an area with outstanding accumulated rainfall rates $E - P < -2\text{mm}(3\text{h})^{-1}$. Since we are only considering a subset of the total air parcels, $E - P$ cannot be seen in this case as the net surface freshwater flux, but as an indicator of where the particles contributing to the extreme rains gained or lost moisture. We can then separate the moisture uptake (E) from the moisture losses (P) by applying the approach described above. Since we are interested in the source rather than the sink regions, the E field will be especially important in our analysis. Both the $E - P$ (then dq/dt) and E fields are calculated every 3 hours and subsequently accumulated during 1, 4, 7 and 11 days prior to the precipitation events studied. This procedure for the identification of moisture sources based on the $E - P$ field has been widely used since it was described by Stohl and James (2004).

The Lagrangian methodology for the water vapour sources study exposed here suffers from two important deficiencies: (1) moisture phase changes along trajectories are not taken into account and (2) the E field represents the moisture uptake of parcels involved in the precipitation events, but those gains may not actually contribute to the events, but to a previous precipitation discharge.

2.1.2 Quantifying the contribution of the moisture sources

Disregarding the liquid water or ice implies that clouds formation will give rise to negative $e - p$ values, when in fact that specific humidity loss are not due to a precipitation process. Likewise, part of the rain evaporates when it falls, and this will lead to positive values of $e - p$, when in fact that specific humidity gain is not due to a surface evaporation flux. The calculation of the E field will be affected by this last inaccuracy. We will try to reduce this problem by taking into account only those particles that gain moisture below 1.5 Boundary Layer Height (BLH), since the water vapour uptakes in the free atmosphere will hardly be due to a surface flux. The value 1.5 is adopted to take into account the recurrent underestimation of the marine boundary layer by atmospheric models (Sodemann et al., 2008). Hereafter, to indicate those uptakes occurring below 1.5 BLH we use the subindex $_{BLH}$. In case the subindex is absent, we consider all the particles in the entire column.

An air parcel tracked back in time over a 11-day period can suffer experience different gains and losses of water vapour during that period. Suppose Let us suppose for example that one of the air parcels involved in the 1982 Mediterranean rains has positive values of dq/dt eight days before the event, when it was located over the Tropical Atlantic. The fact that the particle gains humidity in that area does not guarantee that this region will end up contributing to the event, because it is likely that this humidity will precipitate before that particle reaches the Mediterranean. Therefore, areas with positive values of the E field or the $E - P$ field $E - P$ should not be interpreted as moisture sources but as potential moisture sources. Sodemann et al. (2008) proposes a method to avoid this problem and to quantify the relative contribution of the sources. It is based on tracking, for a given moisture uptake, all subsequent gains and losses to know if that gained moisture reaches the study area or precipitates before it does. Once we know the uptakes that really contribute to the rain event analyzed, we can recalculate the E field to obtain $\%RC$, which in this case will be a more faithful representative of the moisture sources.

Using the methodology of Sodemann et al. (2008) we can define the relative contribution (RC) of a particular region of area A_i as,

$$\%RC = 100 \cdot \frac{E|_{A_i}}{E|_{A_T}} \quad (3)$$

where $E|_{A_i}$ is the ~~surface integral for the E field accumulated~~ total water vapor gained over the region of interest in a period of 11 days prior to the event ~~and~~ $E|_{A_T}$ is the equivalent ~~but~~ for the total domain area A_T .

Sodemann et al. (2008) also propose to retain only moisture uptakes from particles below 1.5 Boundary Layer Height (BLH), since water vapor uptakes in the free atmosphere cannot be due to a surface flux, but to deficiencies in the Lagrangian model. This attempt to reduce the possible errors of the method leads to the reformulation of Eq. 3 as:

$$\%RC_{BLH} = 100 \cdot \frac{E_{BLH}|_{A_i}}{E_{BLH}|_{A_T}} \quad (4)$$

where $E_{BLH}|_{A_i}$ and $E_{BLH}|_{A_T}$ are calculated in the same way as $E|_{A_i}$ and $E|_{A_T}$, but taking into account only the air parcels within the boundary layer.

2.2 Eulerian approach

The Eulerian-online method consists of a moisture tagging tool coupled to a regional or a global atmospheric model. The ~~code of the model~~ model code is modified in order to calculate new variables, called moisture tracers, which represent, for example, water vapour or cloud water coming from a desired moisture source region. This allows ~~to estimate in great detail the~~ the detailed estimation of the relative contribution of each considered source to a given precipitation event. As mentioned in the introduction, the Eulerian tool used in this study is the WRF-WVTs ~~tool~~ (Insua-Costa and Miguez-Macho, 2018), a moisture technique recently implemented in the WRF model version 3.8.1 (et al. Skamarock WC, 2008).

The results obtained ~~using with~~ the WRF-WVTs for both 1982 precipitation events were already presented in ~~Insua-Costa et al. (2018)~~ Insua-Costa et al. (2019). For these two case studies ~~they~~, these authors analyzed moisture coming from two-dimensional (2D) and three-dimensional (3D) sources. To take into account moisture coming from sea surface evaporation over the Western Mediterranean, Central Mediterranean and North Atlantic, they used three different 2D sources, while to track moisture from tropical and subtropical regions they considered a 3D source in order to include both evaporation and atmospheric water transport from other neighbouring tropical regions. ~~For each source analyzed, they run~~ These source regions and the simulation domain used by Insua-Costa et al. (2019) are shown in Figure 1 (a). In addition, Figure 1 (b) shows the regions most affected by the October (1) and November (2) events, respectively, on which Insua-Costa et al. (2019) calculated the precipitation fractions coming from the four source regions studied. For each analyzed source, a 11-day simulation was run with the WRF model over a large domain of 20 km of horizontal resolution and 35 vertical levels. For initial and boundary conditions, they used the ERA-Interim reanalysis (Dee et al., 2011), with spatial resolution of 0.7° and updated every six hours. In the present study, the

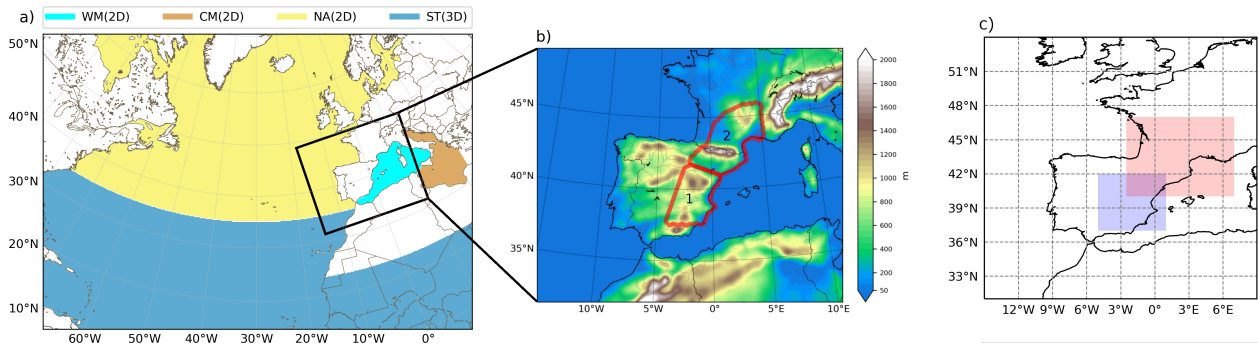


Figure 1. (a) Moisture sources considered: Western Mediterranean (~~light-blue~~cyan), Central Mediterranean (brown) and North Atlantic (yellow) 2D sources; and tropical and subtropical 3D source(~~dark-blue~~). (b) ~~Domain for precipitation analysis for~~ Regions most affected by the October (1) and November (2) ~~event events~~ [Original figure from ~~Insua-Costa et al. (2018)~~ Insua-Costa et al. (2019)]. (c) Lagrangian ~~particles domain particle~~ selection areas for the October (blue) and November (red) events.

simulations of ~~Insua-Costa et al. (2018)~~ Insua-Costa et al. (2019) are used as (1) input fields to run the FLEXPART-Lagrangian model and (2) to compare the results provided by the Lagrangian tool. Note that this strategy is especially appropriate for validating the results provided by the Lagrangian model, since both the WRF-WVTs and the FLEXPART-WRF are driven by the same WRF meteorological model.

180 3 Results

3.1 Lagrangian moisture source diagnosis

3.1.1 October event

October 20, 1982, also known as “the Tous case”, was a catastrophic flooding event caused by the extraordinary rains that fell over the Spanish Levant on that day. Heavy rainfall specially affected the Valencian Community (Fig. 2b), over which
 185 a quasi-stationary mesoscale convective complex was formed, the first identified in Europe (see Romero et al. (2000), for a detailed analysis of this episode). The synoptic situation leading to such extraordinary rainfall ~~was a~~ corresponded to the classic configuration usually affecting that region (Fig. 2a): a cut-off low near the Iberian Peninsula ~~increases~~ increasing thermal and dynamic instability and, simultaneously, low pressures emerging from north Africa at lower levels ~~organise~~ organising a warm and humid flow that permanently feeds and sustains convection.

190

Humidity exchanges along trajectories for a small subset of particles ~~from the~~ previously selected are shown in Figure 3. Only those particles that ~~experiment~~ experience a significant moisture decrease for October 20, 18-21 UTC, were considered. The high density of trajectories over the Western and Central Mediterranean indicate that much of the moisture could come from evaporation over this area. In fact, the dq/dt values for air parcels crossing the Mediterranean are generally positive,

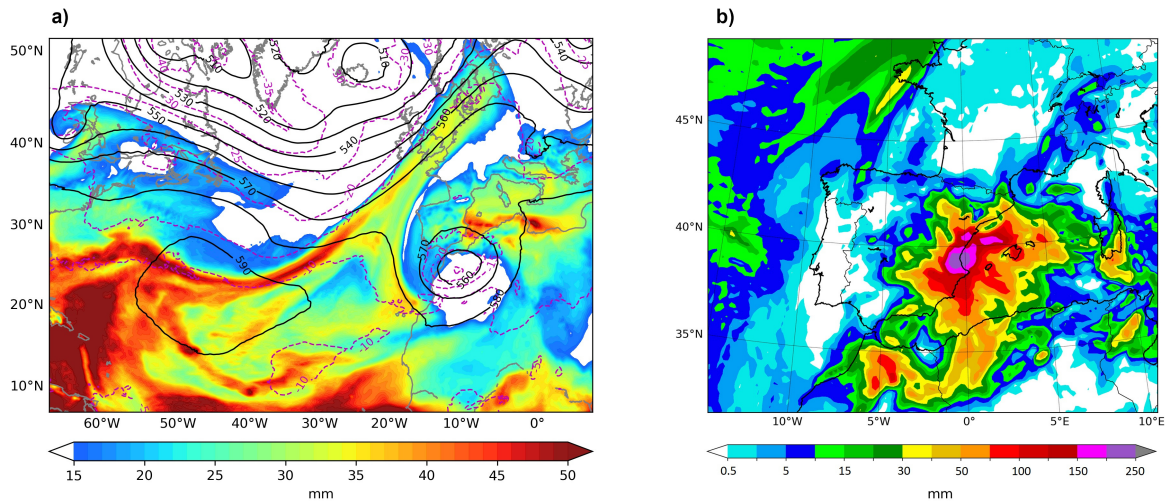


Figure 2. (a) Synoptic situation (from WRF simulation) on October 20, 1982 at 12:00 UTC. Geopotential height (solid black contours, dam) and temperature at 500 hPa and total precipitable water (shades,mm). (b) Simulated total precipitation (mm) from October 19 at 06:00 UT to October 22 at 06:00UTC ([Insua-Costa et al. \(2018\)](#)[Insua-Costa et al. \(2019\)](#)).

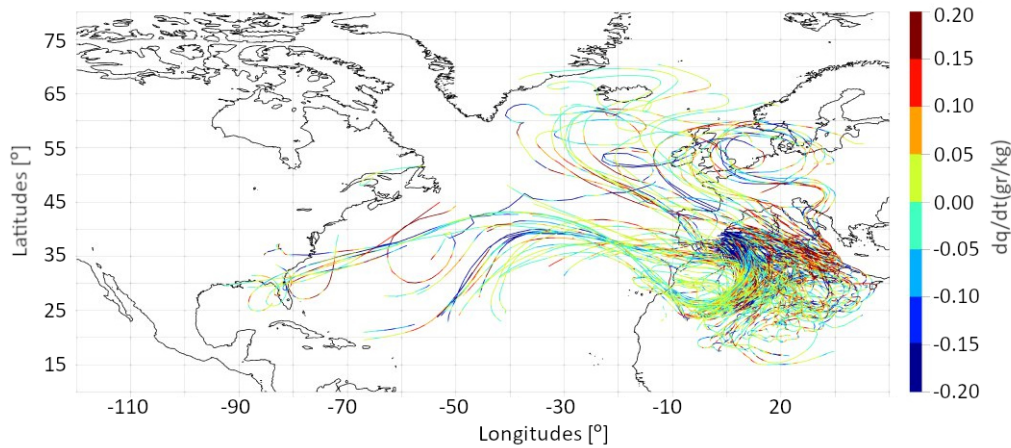


Figure 3. 11 day backtracking for a reduced subset of selected particles precipitating over the [region of interest target area \(blue in Fig. 1c\)](#) between 18-21 UTC on October 20. Moisture exchanges are represented along the particle path.

195 indicating that they gain moisture along their paths over this sea. In addition, part of the trajectories point to a remote origin of the moisture. Some of the particles comes from the tropical Atlantic and reach the affected region after crossing the Atlantic and North Africa. The anti-clockwise turn of the trajectories over Morocco reflects the position of the cut-off low that led to the

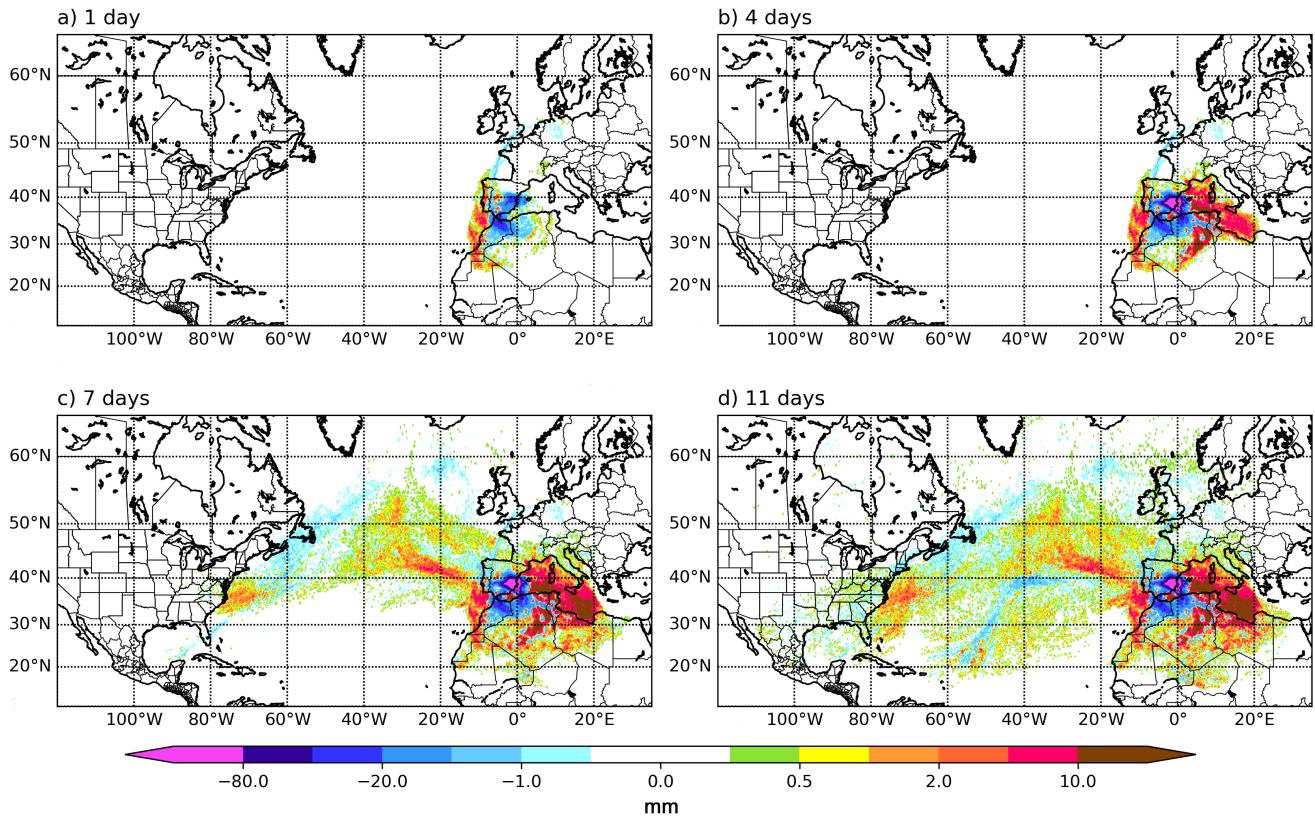


Figure 4. $E - P$ balance evolution back in time for 1 (a), 4 (b), 7 (c) and 11 (d) days. Particles were selected from $5^{\circ}\text{W}-1^{\circ}\text{E}$ and $37^{\circ}-42^{\circ}\text{N}$ for the 19 October 06UTC to 21 October 21UTC.

heavy rains (Figure 2). Finally, other air parcels originated over the North Atlantic, indicating that various [sources of moisture](#) [moisture sources](#) may have contributed to the event.

200

The $E - P$ balance shown in Figure 4 more clearly points the areas where the air parcels [that contributed to the precipitation](#) [of contributing to precipitation in](#) the events gained or lost moisture. Specifically, we show the $E - P$ balance evolution for the time periods of 1, 4, 7 and 11 days prior to the end of the event (October 21, 06UTC). As expected, the lowest values of $E - P$ are found over the target region during the first 3 days, which reflects the moisture discharge during the extreme precipitation event. Thus, negative values in the first days [shows the area more show the area most](#) affected by the extreme rainfall. In the first 24 hours, the highest positive values of $E - P$ are found in the eastern end of the Atlantic. Backwards in time, up to 4 days before the end of the event, the areas with positive $E - P$ values expand to much of the Western and Central Mediterranean. Therefore, these [nearby areas](#) [areas nearby](#) would have fed the air parcels contributing to the event just hours before they reached the target region. In the case of the Mediterranean, $E - P$ values continue to increase up to 7 days before,
210 indicating that not only was the contribution of evaporation in the hours prior to the event significant, but also evaporation in

the previous days. In addition, a clear difference between days 4 and 7 is that positive (and also negative) values of $E - P$ appear in remote regions, mainly over the North Atlantic. These positive values extend even into the tropical and subtropical Atlantic when we calculate the accumulated $E - P$ of the previous 11 days. This indicates that the contribution of humidity from the Atlantic may have been significant. Furthermore, this humidity would be older, i.e. it would have had a longer residence time. One last area with positive E-P values is North Africa. Although the values at-on the northern coast of the continent might be realistic, the values inland are totally inconsistent since evaporation in that area ~~evaporation of the Sahara desert~~ is practically zero throughout the year ~~due to the presence of the Sahara desert~~. Therefore, these values must necessarily be due to the limitations of the Lagrangian method. We will return to this subject below.

220 Finally, we would like to clarify again that while positive $E - P$ values occur in areas with a high probability of having contributed to the event, this is not entirely certain, since part of the moisture gains, especially those more distant in time and space, are likely to have been lost in a previous precipitation discharge. Regions with negative $E - P$ could also have contributed moisture to the event, although this is less likely. For example, the Spanish east coast in Figure 4 has very negative values because there the P values were very high during the event. However, this does not mean that the E values were zero.
225 In fact, it is very likely that evaporation in this area in the previous days contributed significant amounts of moisture. This contribution, which would correspond to local precipitation recycling, would be completely ignored if one considers that only areas with $E - P > 0$ can contribute to the event. It is therefore very important to take these nuances into account in order to make a proper reading of the $E - P$ field.

230 3.1.2 November event

Only a few days after the Tous case, on November 7, ~~a~~-catastrophic flooding occurred again in the WMR. In this case, heavy rainfall particularly affected ~~northwest-northeast~~ Spain, southeast France and Andorra (Fig. 5b). The atmospheric configuration that led to the excessive rainfall was very different from that occurring in October (Fig. 5a): a deep low-pressure system centred ~~on-off~~ the Atlantic coast of Galicia drove a very humid and relatively warm south-westerly flow that impacted perpendicularly against the Pyrenees and the southern face of the French Massif Central. The orographic lift in these areas ~~gave rise to-triggered~~ convective cores embedded in a wider area of stratiform rainfall, which in turn gave rise to persistent and occasionally very intense precipitation (see Trapero et al. (2013), for a more detailed discussion about this event).

Figure 6 shows the specific humidity content change for a subset of particles ~~from the previously selected~~ with significant moisture ~~loses-losses~~ between 12-15 UTC November 7. In this case the ~~partieles-particle~~ trajectories are not as varied as in the case of October, but a main route ~~is-distinguished~~ distinguishes itself. Most of the trajectories have their origin in the western tropical Atlantic. From there the parcels ~~would-have-been-are~~ advected towards the north and ~~would-have-crossed-cross~~ the Atlantic driven by the deep low-pressure system that gave rise to the extreme rainfall event (Figure 5). In the final phase, a few hours before the particles reached the northeast of the Iberian Peninsula, the air parcels were advected northward again,

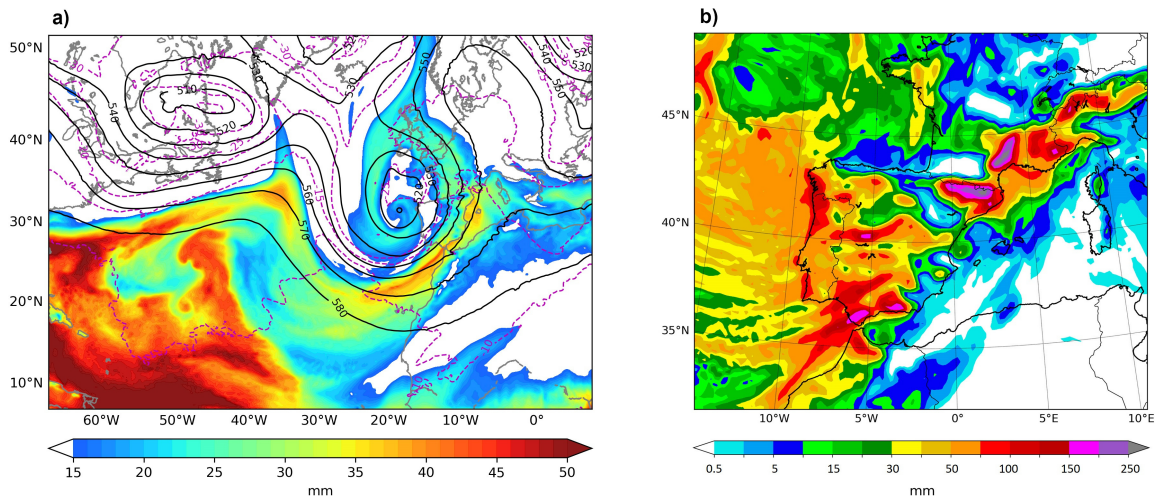


Figure 5. (a) Synoptic situation (from WRF simulation) on November 7, 1982 at 12:00 UTC. Geopotential height (solid black contours, dam) and temperature at 500 hPa and total precipitable water (shades,mm). (b) Simulated total precipitation (mm) from November 6 at 06:00 UTC to November 9 at 06:00 UTC [Insua-Costa et al. \(2018\)](#) ([Insua-Costa et al., 2019](#)).

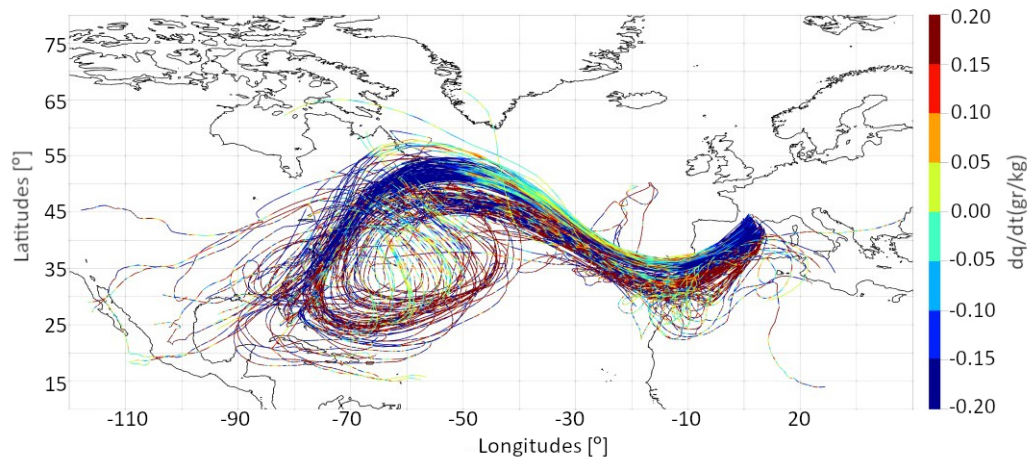


Figure 6. 11 day backtracking for a subset of particles precipitating over the region of interest between 12-15 UTC on November 7. Color corresponds to moisture exchanges along the paths followed by particles.

245 entering via North Africa and southern Spain. Some of them crossed the western end of the Mediterranean before their impact [on the target area](#). It follows that in this case the main source of moisture must be the Atlantic, while the contribution of the

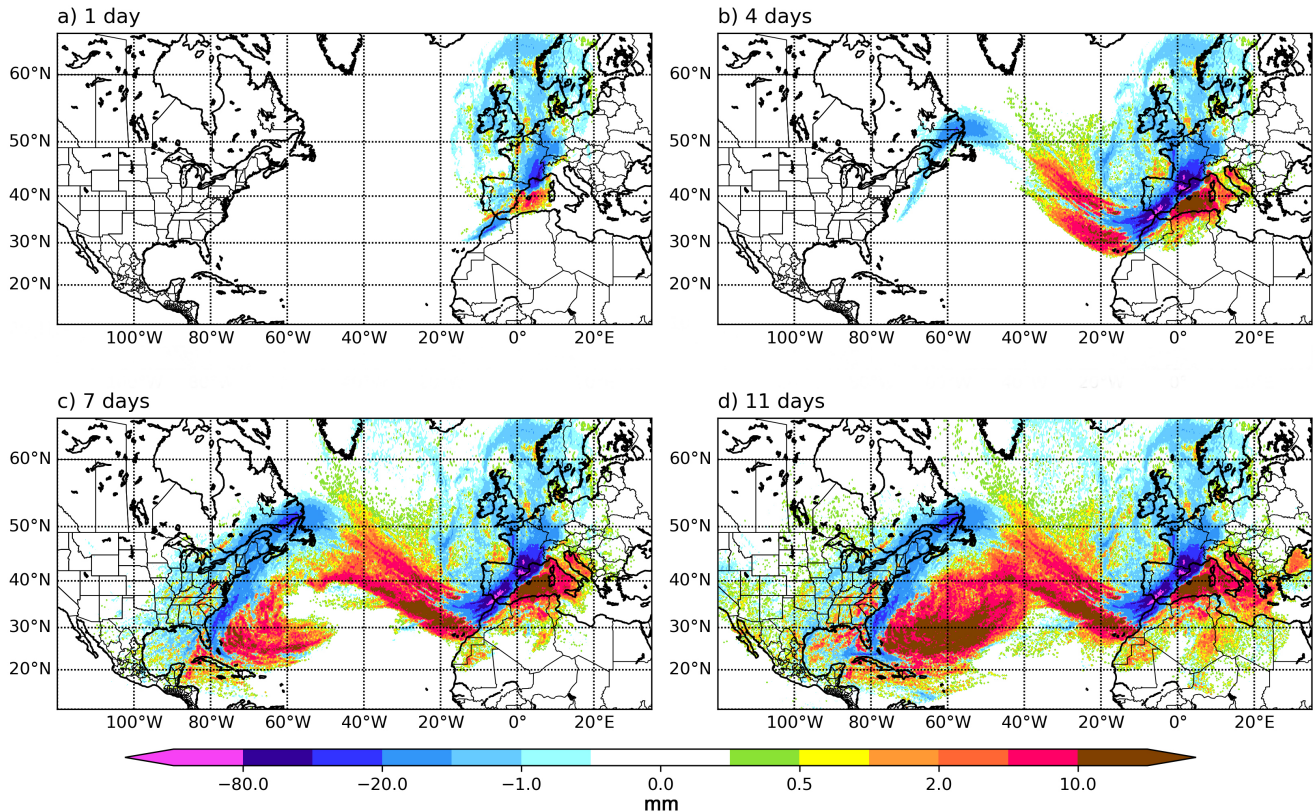


Figure 7. Similar to Figure 4. Balance $E - P$ evolution back in time for 1 (a), 4 (b), 7 (c) and 11 (d) days. Particles were selected from $2.5^{\circ}W - 7^{\circ}E$ and $40^{\circ} - 47^{\circ}N$ for the 06 November 06UTC to 08 November 21UTC.

Mediterranean should be minor because the time that air parcels spend over this potential moisture source is [seareelimited](#).

Figure 7 is analogous to Figure 4 but for the November event. In this case, the negative values of $E - P$ in the first 24 hours cover a vast region, due to the large size of the low-pressure system located off the coast of Galicia (Figure 5). Positive values of $E - P$ in the first 24 hours are only found in the Western Mediterranean. Therefore, the Mediterranean provided a last humidity recharge before the air parcels contributing to the precipitation reached the affected region. The $E - P$ field accumulated in the 4 days prior to the end of the event clearly shows the areas most affected by extreme rainfall (northeast and southwest Spain, south of France and Andorra). The positive values of $E - P$ extend towards the Atlantic and increase in the Mediterranean. Further back in time, between days 7 and 11, the highest values are found in the tropical and subtropical western Atlantic. The way the $E - P$ values are distributed is consistent with the particle trajectories (Figure 6) and also with the precipitable water field (Figure 5 (a)). In summary, the air mass in this event had a tropical/subtropical origin and was recharging its moisture content as it passed through the Atlantic and finally through the Western Mediterranean.

3.2 Comparison of Eulerian vs. Lagrangian methodologies

260 The previous analysis of the particles trajectories and the $E - P$ field allows a qualitative ~~analysis-diagnostic~~ of the moisture sources, but not a ~~qualitative one~~. ~~The tracers Eulerian method allowed Insua-Costa et al. (2018) to calculate, for the two infamous events of autumn 1982, the~~ ~~quantitative one~~. ~~In contrast, the Eulerian method Insua-Costa et al. (2019) calculates the exact~~ percentage of precipitation coming from ~~4 different sources of humidity (see Figure 1): Central and West Mediterranean sea (CMED and WMED); North Atlantic ocean (NATL) and Tropical and Sub-Tropical zones (TROP).~~ ~~the four source regions~~
265 ~~of Figure 1a for the two infamous events of autumn 1982~~. In order to compare the results provided by the Lagrangian technique with those obtained by ~~Insua-Costa et al. (2018)~~ ~~Insua-Costa et al. (2019)~~, these same percentages have been ~~calculated~~ ~~computed~~ using the methodology introduced by Sodemann et al. (2008), previously described.

~~Table ??-Figure 8a~~ shows the fraction ~~$\%RC$~~ (~~RC~~ , Eq. 3) of the total precipitation accumulated during the ~~the~~ case of
270 October 1982 coming from each of the four ~~sources analyzed~~ ~~analyzed sources~~, calculated with ~~both the Eulerian~~ ~~the Eulerian~~ ~~(blue)~~ and the Lagrangian ~~(purple)~~ methods. Both methods yield similar contributions from the Western Mediterranean ~~sea~~ ~~Sea~~ (16.81 % of Lagrangian approach versus 19.14 % of Eulerian approach) and North Atlantic Ocean (13.25 % versus 14.89 %). However, the Central Mediterranean contribution according to the Lagrangian method, is half of that calculated with the ~~tracers technique~~ ~~WRF-WVTs~~ (7.38 % versus 18.28 %). The most surprising difference between the results provided by both
275 methods is found in the tropics and subtropics; while for the Eulerian method this is the main source (31.02%), for the Lagrangian method its contribution is only 5.39%. The great difference for this source finally results in that the Eulerian method assigns about 83 % of relative contribution to the ~~four sources considered~~ ~~ensemble of the four considered sources~~, while the Lagrangian method reports a much smaller contribution for these same areas ~~in conjunction~~ (45.49 %).

280 ~~WMED CMED NATL STROP WMED CMED NATL STROP 16.81 7.38 13.25 8.05 11.44 0.83 29.41 32.69 21.56 14.38 10.43 5.39 14.44 1.35 26.58 33.94 19.14 18.28 14.89 31.02 15.60 2.96 18.20 51.39~~

For the November event, ~~the~~ relative contributions are shown in ~~Table ??-Fig. 8b~~. In this case, ~~Lagrangian method estimate~~ ~~the Lagrangian method estimates~~ 74.37 % of ~~joint~~ relative contribution for the four considered sources, a very similar value to that obtained by the Eulerian methodology (88.15 %). ~~Comparison~~ ~~A comparison~~ between both approaches shows similar
285 estimations for ~~the~~ Central Mediterranean sea (0.83 % of ~~the~~ Lagrangian approach versus 2.96 % of ~~the~~ Eulerian approach) and ~~the~~ Western Mediterranean sea (11.44 % versus 15.60 %), the ~~less-least~~ important moisture sources for this episode. Nevertheless, for the North Atlantic, the Lagrangian method results in a significant overestimation compared ~~to the Eulerian one~~ ~~with the Eulerian approach~~ (29.41 % versus 18.20 %). On the contrary, the Lagrangian method underestimates the contribution of moisture from the tropics and subtropics (32.69 % versus 51.39 %).

290

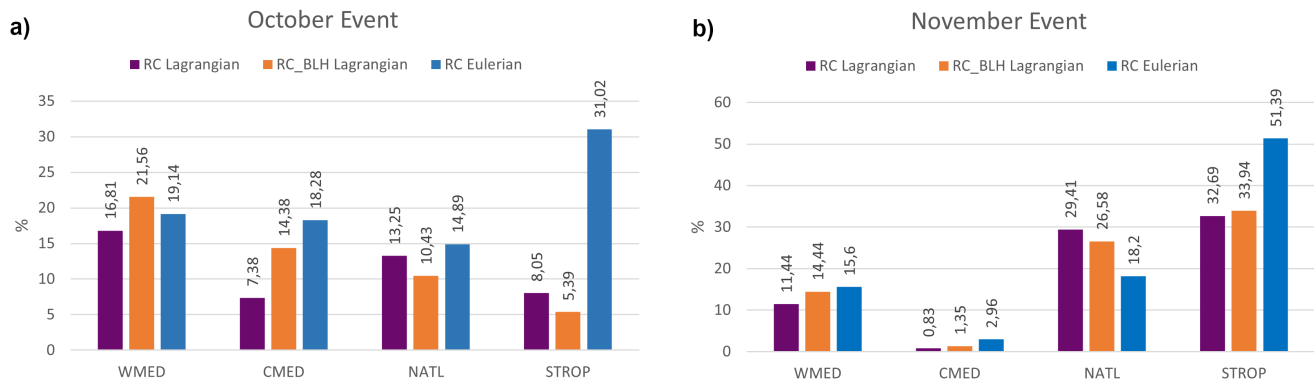


Figure 8. ~~Relative moisture contribution calculated for October and November cases for Comparison between the relative contributions provided by the Lagrangian and Eulerian simulations. RC_{BLH} was calculated as in Eq. models for the October event (3a) bt-considering particles below BLH and the November event (b).~~ WMED, CMED, NATL, and STROP correspond to Western Mediterranean, Central Mediterranean, North Atlantic and ~~South-Tropics-tropical/subtropical~~ areas, respectively.

3.3 Limitations ~~and possible improvements of the Lagrangian analysis and possible causes~~

The above results show a great difference between the relative contributions obtained ~~from the Lagrangian method and those of the Eulerian one with the Lagrangian and the Eulerian methods~~. The biggest ~~difference-discrepancy~~ is found in the subtropical and tropical contribution. For the case of October, the Lagrangian approach underestimates this source by 74% while in the case of November this underestimation is 36%. For ~~the moisture sources at a shorter distance from the Mediterranean region there is in general a better coincidence, but still important biases local moisture sources, such as the Mediterranean Sea, there is generally a better match, but significant biases remain.~~

~~This shows that this Our experiments suggest that the Lagrangian methodology is very limited for carrying out quantitative moisture sources analysis limited for quantitative moisture source analysis in specific case studies. That limitation seems to affect especially especially affect estimates of the moisture contribution from long range or remote sources, as in our case are such as the tropics and subtropics .The increase over time of inaccuracies in particles trajectories calculations or in specific moisture content interpolations could be behind this problem. Notably in our case. Notwithstanding,~~ in the November event the underestimation for tropical and subtropical moisture was substantially less than in the October case. The November episode was more “dynamic”, with higher winds that would have made air parcels to travel faster along a ~~more limited narrower~~ path-way. In the October ~~events particles travels slower trough different pathsso event, particles move slower and through diverse paths, so that~~ they disperse more backward in time and spend more time in regions ~~of-with~~ weak wind. This difference could have been crucial ~~and have made to make~~ more problematic the calculations in the October case.

310 In an attempt to reduce these large biases, we have recalculated with the Lagrangian method the relative contributions of each source considered in Insua-Costa et al. (2019) considering only the moisture increases within the boundary layer (RC_{BLH} , Eq.4). Results are also shown in Fig 8 (orange bars). In general, this new approach improves the results, i.e., they are closer to those provided by the Eulerian method. However, the error reduction is small and large biases remain for remote sources. Therefore, we conclude that most of the errors of the Lagrangian approach used here is more appropriate for a qualitative
315 ~~analysis. This qualitative interpretation of moisture sources is almost always taken from the $E - P$ field maps (Figure 4 and 7). However, we hold that, since we are interested in moisture sources, it is more appropriate to analyze the E field separately. For example, sources of moisture are usually identified from positive $E - P$ values, but an area with negative values could also contribute. For example, in the October case remarkable positive E values (Figure ?? (a)) are found over the southern half of Spain and in the northern tip of Morocco and Algeria, suggesting that moisture evaporated over land could have had an important contribution. However, $E - P$ values (Figure 4) are highly negative for that area because it was the region most affected by the heavy rains (Figure 2 (b)). Something similar occurs in the November event (Figure ?? (b)), for which positive E field values are found over the Iberian Peninsula, France and over the Atlantic sector north of the Canary Islands, while for these places $E - P$ is highly negative (Figure 7). Positive E values in these areas, although lower than in other parts of the study region, may be especially important because of their proximity to the affected region. It should be remembered that earlier or more distant moisture gains (E or $E - P$ positive) are less likely to contribute to the extreme event, as that moisture may have been lost in a previous precipitation discharge. Conversely, the closer ones are more likely to have contributed.~~Lagrangian analysis are associated with air parcels located within the boundary layer.

E

330 ~~field maps obtained from~~

$E - P$

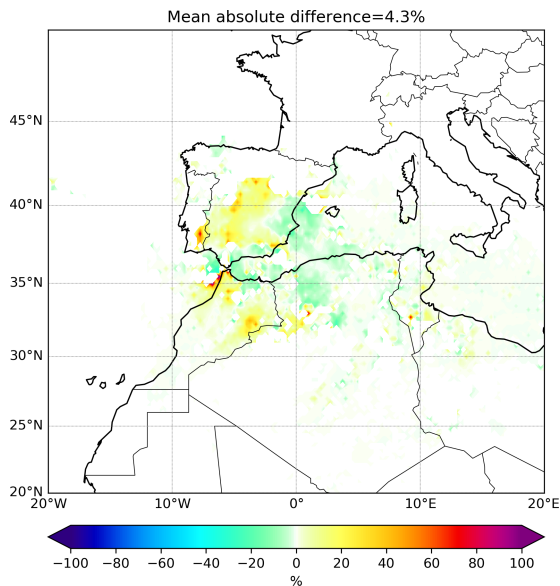
~~balance accumulated during 11 days for considered particles (a) in the entire column for October event, (E), (b) the same but for November event, (c) just below BLH for October event, (E_{BLH}) and (d) the same but for November event.~~

Another important consideration is related to the unrealistic values that the Lagrangian technique ~~used~~ yields in some parts of the region of ~~studied. These values are~~ study. This problem is especially evident for the October case over the Sahara desert, as stated above. $E - P$ and E values are highly positive suggesting an important moisture gain. However is not possible ~~that that gain comes for that gain to come~~ from a surface evaporation flux because evaporation over that area is essentially zero. ~~This moisture increase could have been~~ Initially, we had hypothesized that these unrealistic values might be due to phase changes within the particle, which are not taken into account by the Lagrangian technique. Cloudiness was abundant over most of ~~the northern countries of the African continent, so~~ Northern Africa, so that some of this water ~~would~~ could have evaporated into the very dry Saharan lower atmosphere, leading to an increase in the particles' water vapour content.

Figure ?? shows the temporal evolution of the accumulated moisture increases for all particles contained in the atmospheric column over North Africa (from latitude 23°N upwards). During the first days considered, that is, between 5 to 11 days previous to the event, moisture increases are residual because of To quantify this effect, we have taken advantage of the fact that the WRF model includes 6 moisture species (vapour, cloud water, rain water, snow, ice and graupel) to incorporate the sum of all these species in the Lagrangian analysis. That is, we have repeated the calculation shown in Eq. 1, but in this case with q being the sum of all moisture species within an air parcel instead of just water vapour. Results show that the effect of including liquid and solid water in the model is very small. Specifically, the low number of air parcels over this region. From day 3 to 5 before the event, an important amount of particles contributing to the precipitation event are already present, and the moisture gains rise. Most of these moisture uptakes take place within the BL during the central hours of the day, when the BLH is higher. However, during the rest of the day the highest moisture uptakes occur above the BL. In fact, two days (approximately 50 hours) before the end of the event, when the maximum increase in humidity is recorded, the gains above the BL are dominant. This peak could be due to the appearance of cloudiness associated with the formation of the cut-off low over Morocco (Figure 2 (a)), which in turn would lead to the appearance of phase changes above the BLH. Within the BL, gains are also important in the 3 days before the end of the event. Some of these uptakes could be real, i. e. it could actually come from a surface evaporation flux. In fact, during October 19th, significant rainfall occurred in North Africa (Figure 2), which could have increased the evaporation rate over this area the next day, when the rain had already moved to the Mediterranean. However, some of the moisture increases below the BLH may also be due to phase changes within the PBL. average relative difference in $E - P$ field values is about 4% (Figure 9). These results agree with those of van der Ent et al. (2013), who reached the same conclusion using a totally different methodology.

As explained in the Methods section, in an attempt to reduce this problem, the E field has been recalculated taking into account only the gains below 1.5 BLH. The results are shown in Figure ???. Most notably, the removal of moisture gained above 1.5 BLH clearly reduces the North African contribution in the October event (Figure ??? (e)). The E field values fall across the domain, but especially in this area. In this case, the Western and Central Mediterranean stand out more as moisture sources, which is a more expected or realistic result than that shown in Figure ??? (a). Therefore, this new approach to calculate the E field may improve the qualitative description of the sources in some cases. In the November episode, however, the reduction of E values is more homogeneous across the domain (Figure ??? (d)) and therefore the qualitative analysis that can be extracted is essentially the same.

Finally, we have also recalculated the contributions of each source considered in Insua-Costa et al. (2018) taking into account only the moisture increases within the BL. Results are also shown in Table ?? (second row). The contribution of the Mediterranean Sea increases, as expected from Figure ??? (e). This makes the percentage of precipitation coming from the Central Mediterranean increase from 7.38% to 14.38%, which is better adjusted to the errors found must have their causes in other physical or numerical processes that the Lagrangian method is not considering correctly. The increase over time of inaccuracies in the calculations of particle trajectories or in the interpolations of specific moisture content could be some examples. Importantly, one of the problems that could have contributed the most to the errors encountered is the fact that the Lagrangian approach neglects the convergence and divergence of moisture (van der Ent, personal communication). Figure 10 describes this process.



Temporal evolution of the humidity evaporated below boundary layer (light blue line), above boundary layer (dark blue line) and mean BLH (dashed blue line) for particles crossing Sahara region for the October event.

Figure 9. Relative difference (%) between E-P field values calculated considering humidity phase changes and without considering them. The domain has been cropped with respect to Figures 4 and 7 because the values outside the shown area are very small.

In a "normal" situation, a Lagrangian air parcel moves (dynamic situation) and variations in the specific moisture content along its trajectory are associated with evapotranspiration or precipitation processes. However, when the particle is in a converging air flow, the 14.89% of the Eulerian method. However, for the more distant sources, the North Atlantic and the tropical and subtropical zone, the contributions decrease and the results get worse, which makes the errors similar overall. In the case of November, however, contributions improve for all sources considered. Again, the moisture contribution of the Mediterranean rises. Thus, for example, for the Western Mediterranean the deviation from the Eulerian method is reduced from -4.46% position of the particle does not change (zero net velocity) if convergence takes place equally from all sides of the particle, but the moisture content increases. The Lagrangian method will associate this increase to -1.16%. In the case of the North Atlantic the contribution drops by about 3%, which reduces the great underestimation that the Lagrangian method yields for this source. For the tropical and subtropical zone, the contribution increases slightly which reduces the underestimation for this source. Therefore, in general this new approach improves the results, but does not avoid the large deviations for some sources. a surface evaporation process, when in fact it has nothing to do with it. On the contrary, if a particle is in a diverging flow, its moisture content could be reduced without this being associated with a precipitation process. This issue would require further and more detailed investigation, specifically focused on moisture convergence and divergence situations to establish a more robust and definite conclusion.

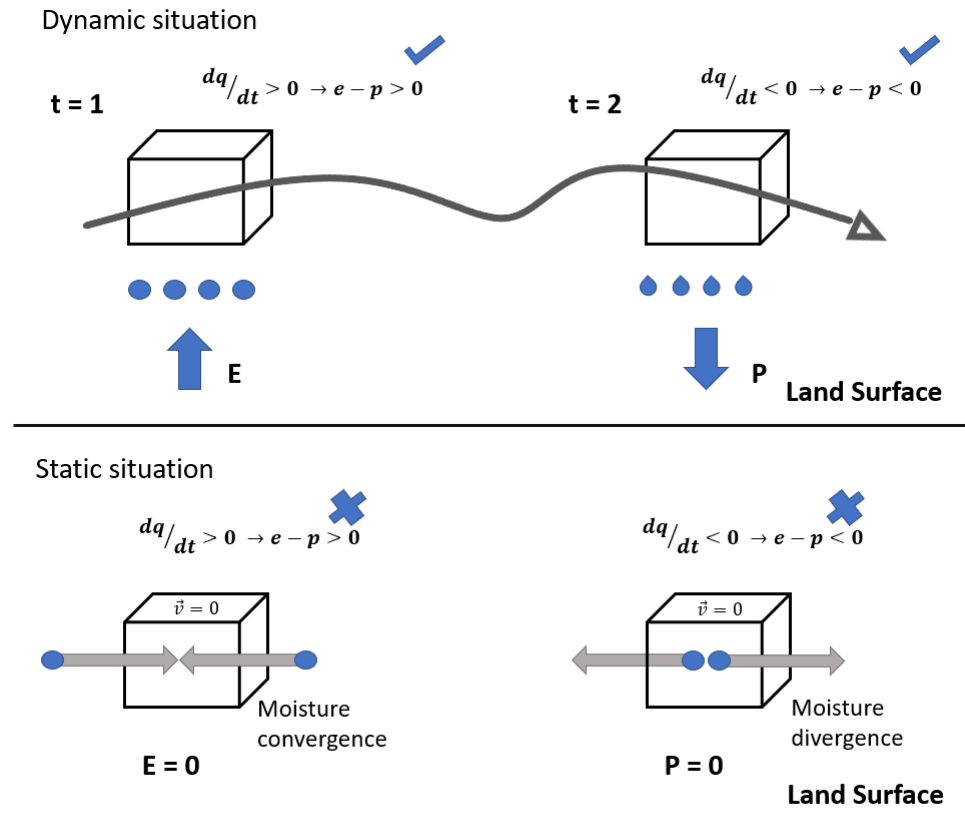


Figure 10. Schematic representation of the problem with convergence and divergence of moisture undergone by the Lagrangian method.

4 Summary and conclusion

Two of the most used techniques for the study of moisture origin are the Lagrangian and Eulerian-Lagrangian-offline and the Eulerian-online models. The use of one or the other can be a controversial point (van der Ent et al. (2013)), but in general it is clear that Lagrangian Models-models are more computationally efficient, which makes them more practical. For this reason, they have been widely used. However, it is important to take into account the limitations of this method for these methods for a more rigorous analysis.

Here, we have compared the results of the Lagrangian FLEXPART-WRF model with those obtained from the Eulerian WRF-WVTs model for two extreme rainfall events occurred in the Western Mediterranean region in October and November 1982, respectively. The objective was to validate the performance of the Lagrangian approach, assuming that the results of the WRF-WVTs represent reality (Insua Costa, Damián and Miguez Macho, Gonzalo and Llasat Botija, 2017), which supports

~~this assumption~~ considering the WRF-WVTs results as the "truth" with which to compare.

405 The results show that the use of the Lagrangian methodology for a quantitative study (Sodemann et al., 2008) of the of moisture sources is very limited because large biases were found when compared with the Eulerian analysis. For the nearest sources, as are in our case ~~it is~~ the Mediterranean Sea and the North Atlantic Ocean, the results obtained with both ~~the Lagrangian methods and the Lagrangian and~~ Eulerian methods have in general a remarkable coincidence. However, the contribution of tropical and subtropical areas is not adequately captured by FLEXPART-WRF, ~~but is widely underestimated.~~

410 ~~Therefore, we propose that the model is more appropriate for a qualitative description of the moisture origin. However, it should be noted that the model since it is grossly underestimated. In addition, the model~~ produces unrealistic values in some areas. ~~In our case these~~ These unrealistic values become especially evident over the Sahara region during the case of October. Due to the low evaporation rate in that zone, it is impossible for it to act as one of the main moisture sources, as the Lagrangian approach suggests. ~~We show that the humidity increases in the air parcels that contribute to extreme precipitation~~
415 ~~occur mostly above the Saharan BLH, so they must be due to other processes such as phase changes of hydrometeors. The abundant cloudiness over this area on October 19th and 20th makes this hypothesis more plausible.~~

Therefore, ~~Lagrangian moisture tracking tools should be further improved with the objective of being able to carry out quantitative analyses. The focus should be on avoiding the significant increase in errors over time, which results in the inability~~
420 ~~to correctly assess the moisture contribution from remote sources, which is often crucial in extreme rainfall events. On the other hand, liquid water and ice must be considered to improve results in some areas that are particularly sensitive to phase changes, as in our case is the north of the African continent.~~ we propose that the Lagrangian model is more appropriate for a qualitative description of the origin of moisture rather than to estimate precise source contribution numbers. Finally, we have delved into some of the causes and possible solutions to the errors found. We have shown that phase changes, which had been raised
425 as a potential source of error by other authors (Stohl and James (2004)), actually affect the calculations very little. A simple approach to improve the performance of the Lagrangian method, which had been proposed by Sodemann et al. (2008) and consisted in considering only the air parcels within the boundary layer, has proved insufficient to reduce the errors encountered. Therefore, we conclude that it is necessary to make further progress in the improvement of this type of tools for moisture tracking.

430 *Author contributions.* S.C. carried out the experiment and wrote the manuscript with support from D.G. and D.I.. V.P.M. and G.M.M helped supervise the project. G.M.M. conceived the original idea and D.G. supervised the project.

Competing interests. Authors declare that no competing interest are presented.

Acknowledgements. Funding comes from the Spanish Ministerio de Economía y Competitividad OPERMO (CGL2017-89859-R to ~~GMM, VPM, DIC and SCG~~) and the CRETUS strategic partnership (AGRUP2015/02). ~~All these programs are~~. This program is co-funded by the
435 20 European Union ERDF. ~~ERA-Interim data was provided by ECMWF.~~ Computation took place at CESGA (Centro de Supercomputación de Galicia), Santiago de Compostela, Galicia, Spain. ~~This research is part of the HyMeX international programme~~ We would like to thank the reviewers for their comments, especially Ruud van der Ent, who provided us with the idea for Table 1 and Figure 10.

References

- EMDAT.database, <http://www.emdat.be/database>.
- 440 Brioude, J., Arnold, D., Stohl, A., Cassiani, M., Morton, D., Seibert, P., Angevine, W., Evan, S., Dingwell, A., Fast, J. D., Easter, R. C., Pisso, I., Burkhart, J., and Wotawa, G.: The Lagrangian particle dispersion model FLEXPART-WRF version 3.1, Geoscientific Model Development, <https://doi.org/10.5194/gmd-6-1889-2013>, 2013.
- Buzzi, A., Tartaglione, N., and Malguzzi, P.: Numerical simulations of the 1994 piedmont flood: Role of orography and moist processes, *Monthly Weather Review*, [https://doi.org/10.1175/1520-0493\(1998\)126<2369:NSOTPF>2.0.CO;2](https://doi.org/10.1175/1520-0493(1998)126<2369:NSOTPF>2.0.CO;2), 1998.
- 445 Ciric, D., Nieto, R., Losada, L., Drumond, A., and Gimeno, L.: The mediterranean moisture contribution to climatological and extreme monthly continental precipitation, *Water (Switzerland)*, <https://doi.org/10.3390/w10040519>, 2018.
- Dayan, U., Nissen, K., and Ulbrich, U.: Review Article: Atmospheric conditions inducing extreme precipitation over the eastern and western Mediterranean, <https://doi.org/10.5194/nhess-15-2525-2015>, 2015.
- Dee, D. P., Uppala, S. M., Simmons, A. J., Berrisford, P., Poli, P., Kobayashi, S., Andrae, U., Balmaseda, M. A., Balsamo, G., Bauer, P., 450 Bechtold, P., Beljaars, A. C. M., van de Berg, L., Bidlot, J., Bormann, N., Delsol, C., Dragani, R., Fuentes, M., Geer, A. J., Haimberger, L., Healy, S. B., Hersbach, H., Hólm, E. V., Isaksen, L., Kållberg, P., Köhler, M., Matricardi, M., McNally, A. P., Monge-Sanz, B. M., Morcrette, J. J., Park, B. K., Peubey, C., de Rosnay, P., Tavolato, C., Thépaut, J. N., and Vitart, F.: The ERA-Interim reanalysis: Configuration and performance of the data assimilation system, *Quarterly Journal of the Royal Meteorological Society*, <https://doi.org/10.1002/qj.828>, 2011.
- 455 Dominguez, F., Hu, H., and Martinez, J. A.: Two-layer dynamic recycling model (2L-DRM): learning from moisture tracking models of different complexity, *Journal of Hydrometeorology*, 21, 3–16, 2020.
- Drumond, A., Marengo, J., Ambrizzi, T., Nieto, R., Moreira, L., and Gimeno, L.: The role of the Amazon Basin moisture in the atmospheric branch of the hydrological cycle: A Lagrangian analysis, *Hydrology and Earth System Sciences*, <https://doi.org/10.5194/hess-18-2577-2014>, 2014.
- 460 Duffourg, F. and Ducrocq, V.: Origin of the moisture feeding the heavy precipitating systems over southeastern France, *Natural Hazards and Earth System Science*, <https://doi.org/10.5194/nhess-11-1163-2011>, 2011.
- Eiras-Barca, J., Dominguez, F., Hu, H., Garaboa-Paz, D., and Miguez-Macho, G.: Evaluation of the moisture sources in two extreme land-falling atmospheric river events using an Eulerian WRF tracers tool, *Earth System Dynamics*, <https://doi.org/10.5194/esd-8-1247-2017>, 2017.
- 465 Emanuel, K. A. and Živković-Rothman, M.: Development and evaluation of a convection scheme for use in climate models, *Journal of the Atmospheric Sciences*, [https://doi.org/10.1175/1520-0469\(1999\)056<1766:DAEOAC>2.0.CO;2](https://doi.org/10.1175/1520-0469(1999)056<1766:DAEOAC>2.0.CO;2), 1999.
- et al. Skamarock WC: A description of the advanced research WRF version 3, NCAR Tech. Note, NCAR/TN-468+STR, Natl. Cent. for Atmos. Res. Boulder, Colorado, 2008.
- Gimeno, L., Stohl, A., Trigo, R. M., Dominguez, F., Yoshimura, K., Yu, L., Drumond, A., Durn-Quesada, A. M., and Nieto, R.: Oceanic and 470 terrestrial sources of continental precipitation, *Reviews of Geophysics*, <https://doi.org/10.1029/2012RG000389>, 2012.
- Gimeno, L., Nieto, R., Drumond, A., Castillo, R., and Trigo, R.: Influence of the intensification of the major oceanic moisture sources on continental precipitation, *Geophysical Research Letters*, <https://doi.org/10.1002/grl.50338>, 2013.
- Hanna, S. R.: Atmospheric turbulence and air pollution modelling, *Atmospheric Turbulence and Air Pollution Modelling*, pp. 275–310, 1982.

- Hong, S. Y., Noh, Y., and Dudhia, J.: A new vertical diffusion package with an explicit treatment of entrainment processes, *Monthly Weather Review*, <https://doi.org/10.1175/MWR3199.1>, 2006.
- Hu, H. and Dominguez, F.: Understanding the Role of Tropical Moisture in Atmospheric Rivers, *Journal of Geophysical Research: Atmospheres*, <https://doi.org/10.1029/2019JD030867>, 2019.
- Insua-Costa, D. and Miguez-Macho, G.: A new moisture tagging capability in the Weather Research and Forecasting model: Formulation, validation and application to the 2014 Great Lake-effect snowstorm, *Earth System Dynamics*, <https://doi.org/10.5194/esd-9-167-2018>, 2018.
- Insua-Costa, D., Miguez-Macho, G., and Llasat, M. C.: Local and remote moisture sources for extreme precipitation: a study of the two famous 1982 Western Mediterranean episodes, *Hydrology and Earth System Sciences Discussions*, <https://doi.org/10.5194/hess-2018-421>, 2018.
- Insua-Costa, D., Miguez-Macho, G., and Llasat, C.: Local and remote moisture sources for extreme precipitation: A study of the two catastrophic 1982 western Mediterranean episodes, *Hydrology and Earth System Sciences*, 23, 3885–3900, <https://doi.org/10.5194/hess-23-3885-2019>, 2019.
- Insua Costa, Damián and Miguez Macho, Gonzalo and Llasat Botija, M. d. C.: Moisture tagging as a tool for the systematic analysis of moisture sources in torrential rainfall episodes, *EGUGA*, p. 1538, 2017.
- James, P., Stohl, A., Forster, C., Eckhardt, S., Seibert, P., and Frank, A.: A 15-year climatology of stratosphere-troposphere exchange with a Lagrangian particle dispersion model: 1. Methodology and validation, *Journal of Geophysical Research Atmospheres*, <https://doi.org/10.1029/2002jd002637>, 2003.
- Kain, J. S. and Fritsch, J. M.: A one-dimensional entraining/detraining plume model and its application in convective parameterization, *Journal of the Atmospheric Sciences*, [https://doi.org/10.1175/1520-0469\(1990\)047<2784:AODEPM>2.0.CO;2](https://doi.org/10.1175/1520-0469(1990)047<2784:AODEPM>2.0.CO;2), 1990.
- Krichak, S. O., Barkan, J., Breitgand, J. S., Gualdi, S., and Feldstein, S. B.: The role of the export of tropical moisture into midlatitudes for extreme precipitation events in the Mediterranean region, *Theoretical and Applied Climatology*, <https://doi.org/10.1007/s00704-014-1244-6>, 2015.
- Lavers, D. A. and Villarini, G.: The contribution of atmospheric rivers to precipitation in Europe and the United States, *Journal of Hydrology*, <https://doi.org/10.1016/j.jhydrol.2014.12.010>, 2015.
- Llasat, M. C.: High magnitude storms and floods, *The Physical Geography of the Mediterranean*, edited by: Woodward, JC, Oxford University Press, Oxford, pp. 513–540, 2009.
- Llasat, M. C., Llasat-Botija, M., Prat, M. A., Porcú, F., Price, C., Mugnai, A., Lagouvardos, K., Kotroni, V., Katsanos, D., Michaelides, S., Yair, Y., Savvidou, K., and Nicolaidis, K.: High-impact floods and flash floods in Mediterranean countries: The FLASH preliminary database, *Advances in Geosciences*, <https://doi.org/10.5194/adgeo-23-47-2010>, 2010.
- Mariotti, A., Struglia, M. V., Zeng, N., and Lau, K. M.: The hydrological cycle in the Mediterranean region and implications for the water budget of the Mediterranean sea, *Journal of Climate*, [https://doi.org/10.1175/1520-0442\(2002\)015<1674:THCITM>2.0.CO;2](https://doi.org/10.1175/1520-0442(2002)015<1674:THCITM>2.0.CO;2), 2002.
- Nieto, R., Gimeno, L., de la Torre, L., Ribera, P., Gallego, D., García-Herrera, R., García, J. A., Nuñez, M., Redaño, A., and Lorente, J.: Climatological features of cutoff low systems in the Northern Hemisphere, *Journal of Climate*, <https://doi.org/10.1175/JCLI3386.1>, 2005.
- Nieto, R., Gimeno, L., Drumond, A., and Hernandez, E.: A Lagrangian identification of the main moisture sources and sinks affecting the Mediterranean area, *WSEAS Transactions on Environment and Development*, 2010.
- Pinto, J. G., Ulbrich, S., Parodi, A., Rudari, R., Boni, G., and Ulbrich, U.: Identification and ranking of extraordinary rainfall events over Northwest Italy: The role of Atlantic moisture, *Journal of Geophysical Research Atmospheres*, <https://doi.org/10.1002/jgrd.50179>, 2013.

- Pisso, I., Sollum, E., Grythe, H., Kristiansen, N., Cassiani, M., Eckhardt, S., Arnold, D., Morton, D., Thompson, R. L., Groot Zwaafink, C. D., Evangelizou, N., Sodemann, H., Haimberger, L., Henne, S., Brunner, D., Burkhart, J. F., Fouilloux, A., Brioude, J., Philipp, A., Seibert, P., and Stohl, A.: The Lagrangian particle dispersion model FLEXPART version 10.3, *Geoscientific Model Development Discussions*, <https://doi.org/10.5194/gmd-2018-333>, 2019.
- 515 Reale, O., Feudale, L., and Turato, B.: Evaporative moisture sources during a sequence of floods in the Mediterranean region, *Geophysical Research Letters*, <https://doi.org/10.1029/2000GL012379>, 2001.
- Romero, R., Doswell, C. A., and Ramis, C.: Mesoscale numerical study of two cases of long-lived quasi-stationary convective systems over eastern Spain, *Monthly Weather Review*, [https://doi.org/10.1175/1520-0493\(2001\)129<3731:MNSOTC>2.0.CO;2](https://doi.org/10.1175/1520-0493(2001)129<3731:MNSOTC>2.0.CO;2), 2000.
- 520 Sodemann, H., Schwierz, C., and Wernli, H.: Interannual variability of Greenland winter precipitation sources: Lagrangian moisture diagnostic and North Atlantic Oscillation influence, *Journal of Geophysical Research Atmospheres*, <https://doi.org/10.1029/2007JD008503>, 2008.
- Stohl, A. and James, P.: A Lagrangian analysis of the atmospheric branch of the global water cycle: Part 1: Method description, validation, and demonstration for the August 2002 flooding in central Europe, *Journal of Hydrometeorology*, [https://doi.org/10.1175/1525-7541\(2004\)005<0656:ALAOTA>2.0.CO;2](https://doi.org/10.1175/1525-7541(2004)005<0656:ALAOTA>2.0.CO;2), 2004.
- 525 Stohl, A., Forster, C., and Sodemann, H.: Remote sources of water vapor forming precipitation on the Norwegian west coast at 60°N - A tale of hurricanes and an atmospheric river, *Journal of Geophysical Research Atmospheres*, <https://doi.org/10.1029/2007JD009006>, 2008.
- Sun, B. and Wang, H.: Moisture sources of semiarid grassland in China using the lagrangian particle model FLEXPART, *Journal of Climate*, <https://doi.org/10.1175/JCLI-D-13-00517.1>, 2014.
- 530 Trapero, L., Bech, J., Duffourg, F., Esteban, P., and Lorente, J.: Mesoscale numerical analysis of the historical November 1982 heavy precipitation event over Andorra (Eastern Pyrenees), *Natural Hazards and Earth System Sciences*, <https://doi.org/10.5194/nhess-13-2969-2013>, 2013.
- Turato, B., Reale, O., and Siccardi, F.: Water vapor sources of the October 2000 Piedmont flood, *Journal of Hydrometeorology*, [https://doi.org/10.1175/1525-7541\(2004\)005<0693:WVSOTO>2.0.CO;2](https://doi.org/10.1175/1525-7541(2004)005<0693:WVSOTO>2.0.CO;2), 2004.
- 535 van der Ent, R. J., Tuinenburg, O. A., Knoche, H.-R., Kunstmann, H., and Savenije, H. H. G.: Should we use a simple or complex model for moisture recycling and atmospheric moisture tracking?, *Hydrology and Earth System Sciences Discussions*, <https://doi.org/10.5194/hessd-10-6723-2013>, 2013.
- Winschall, A., Pfahl, S., Sodemann, H., and Wernli, H.: Impact of North Atlantic evaporation hot spots on southern Alpine heavy precipitation events, *Quarterly Journal of the Royal Meteorological Society*, <https://doi.org/10.1002/qj.987>, 2012.
- 540 Winschall, A., Pfahl, S., Sodemann, H., and Wernli, H.: Comparison of Eulerian and Lagrangian moisture source diagnostics - The flood event in eastern Europe in May 2010, *Atmospheric Chemistry and Physics*, <https://doi.org/10.5194/acp-14-6605-2014>, 2014.