

# Possibilistic response surfaces: incorporating fuzzy thresholds into bottom-up flood vulnerability analysis

Thibaut Lachaut<sup>1</sup> and Amaury Tilmant<sup>1</sup>

<sup>1</sup>Laval University, Québec, QC G1V 0A6, Canada

**Correspondence:** Thibaut Lachaut (thibaut.lachaut.1@ulaval.ca)

**Abstract.** Several alternatives have been proposed to shift the paradigms of water management under uncertainty from predictive to decision-centric. An often-mentioned tool is the response surface, mapping system performance to a large sample of future hydro-climatic conditions through a stress-test. Dividing this exposure space between acceptable and unacceptable states requires a criterion of acceptable performance defined by a threshold. In practice, however, stakeholders and decision-makers may be confronted with ambiguous objectives for which the acceptability threshold is not clearly defined (crisp). To accommodate such situations, this paper integrates fuzzy thresholds to the response surface tool. Such integration is not straightforward when response surfaces also have their own irreducible uncertainty, from the limited number of descriptors and the stochasticity of hydro-climatic conditions. Incorporating fuzzy thresholds therefore requires articulating categories of imperfect knowledge that are different in nature: the irreducible uncertainty of the response itself relative to the variables that describe change, and the ambiguity of the acceptability threshold. We thus propose possibilistic surfaces to assess flood vulnerability with fuzzy acceptability thresholds. An adaptation of the logistic regression for fuzzy set theory combines the probability of acceptable outcome and the ambiguity of the acceptability criterion within a single possibility measure. We use the flood-prone reservoir system of the Upper Saint-François River Basin in Canada as a case study to illustrate the proposed approach. Results show how a fuzzy threshold can be quantitatively integrated when generating a response surface, and how ignoring it might lead to different decisions. This study suggests that further conceptual developments could link the reliance on acceptability thresholds in bottom-up assessment frameworks with current uses of fuzzy set theory.

## 1 Introduction

Imperfect knowledge is a defining feature of water resources management. As a prime example, uncertain availability of water at any given time drives human interventions such as building storage capacities or levees. To address uncertain future in water systems, the dominant paradigm has been to optimize investments or management plans according to probabilistic estimates based on past observations, assuming that the underlying processes are stationary. However, the stationary assumption has been contested as anthropogenic activities do affect the very processes that govern the water cycle (Milly et al., 2008). A well-established alternative is to rely on some form of prediction of those processes through climate modelling and downscaling. Such an approach also has its own limitations, however. Greenhouse gas emission pathways depend on policy choices which are not predictable, while climate models and downscaling processes have structural structural uncertainties (Prudhomme et

al., 2010; Mastrandrea et al., 2010; Kay, et al., 2014). Besides, a discrete set of projections may not be suited to find the hydro-climatic thresholds beyond which a system fails to reach its target (Culley et al., 2016).

In the last 15 years there has thus been a widespread effort to find new paradigms to make decisions under deep uncertainty (Marchau et al., 2019), notably through a greater focus on the robustness of the decision process rather than on improving  
30 predictions (Lempert et al., 2006; Maier et al., 2016; Lempert, 2019). Switching to a robust or decision-centric paradigm usually seeks to increase the sampling of hydro-climatic conditions. It relies on a sensitivity analysis of a water system to stressors rather than evaluating the consequences of the most probable future and optimizing accordingly (Weaver et al., 2013).

One of the most common tools within the decision-centric framework is the response function or surface (Prudhomme et al., 2010; Brown and Wilby, 2012). Through a "bottom-up" approach, an acceptability threshold is first defined with stakeholders,  
35 in order to find the states of the world that lead to unacceptable outcomes. The system is simulated through a stress-test for a large set of conditions representing possible evolutions of some uncertain hydro-climatic variables (or stressors), establishing a relationship between such stressors and the performance of the system. Alternatives like making new investments or changing management schemes are compared through their respective simulation outcomes over a whole range of possibilities (states of the world), or exposure space (Culley et al., 2016). The performance threshold is key in dividing this exposure space between  
40 acceptable and unacceptable outcomes.

The intention shared within the overall decision-centric framework is to adapt classic risk assessments to the "death of stationarity" (Milly et al., 2008) while producing information more useful and engaging than a fully descriptive scenario approach (Weaver et al., 2013). Response surfaces have been illustrated by many case studies (e.g. Nazemi et al., 2013; Turner et al., 2014; Whateley et al., 2014; Steinschneider et al., 2015; Spence et al., 2016, Pirttioja et al., 2019, Broderick et al., 2019;  
45 Ray et al., 2020; Nazemi et al., 2020; Di Francesco et al., 2020), expanded to many-objectives or stakeholder systems (Herman et al., 2014; Poff et al., 2016; Kim et al., 2019) and sometimes officially adopted in management processes (Moody and Brown, 2013; Weaver et al., 2013; Brown et al., 2019).

Such bottom-up vulnerability assessments rely heavily on the definition of the acceptability threshold in the first place. Selecting the right threshold has a major impact on the outcome of the vulnerability assessment (Hadjimichael et al., 2020).  
50 However, such thresholds are often unclear or arbitrary (El-Baroudy and Simonovic, 2004). Stakeholders and decision-makers might be unable or unwilling to provide a single, well-defined value. Ambiguity is thus a form of imperfect knowledge, different from hydro-climatic or modelling uncertainty (Maier et al., 2016), that can affect bottom-up vulnerability assessments through one of their most important components, the stakeholder-defined acceptability threshold.

Fuzzy set theory (Zadeh, 1965) provides an analytical framework to characterize and manipulate stakeholders' ambiguity  
55 (Huynh et al., 2007). It has been extensively used in the water domain (Tilmant et al., 2002; El-Baroudy and Simonovic, 2004; Le Cozannet et al., 2017; Qiu et al., 2018) in particular to solve multi-objective decision-making problems (e.g. Jun et al., 2013). However, to the best of our knowledge, fuzzy set theory has not yet been used to handle imprecise thresholds between satisfactory and unsatisfactory regions of a response surface. The very notion of an arbitrary threshold defining success, like flood control reliability above 0.95, can be considered as a departure from a strictly probabilistic framework and could justify

60 a complementary possibilistic approach based on fuzzy sets (Dubois et al., 2004). This paper therefore introduces the use of fuzzy acceptability thresholds when building a response surface for decision-centric vulnerability assessment.

A central challenge to a straightforward incorporation of a fuzzy threshold is the internal uncertainty of the response surface. The selected stressor variables can only partially explain hydro-climatic uncertainties, and stochastic realizations introduce noise in the resulting system performance. As such, performance is an expected value rather than a deterministic one, and that estimate might underestimate real risks. Such uncertainty is often integrated to the response surface, for example with a logistic regression (Quinn et al., 2018; Kim et al., 2019; Lamontagne et al., 2019; Marcos-Garcia et al., 2020). These studies show that, even with a crisp acceptability threshold, the internal uncertainty of the response surface can challenge the separation of the exposure space. Introducing a fuzzy threshold to a response surface that also has its own uncertainty is not trivial as these concepts address forms of imperfect knowledge that are very different in nature.

70 The present study proposes a method to articulate these two categories of imperfect knowledge, the ambiguity of the acceptability threshold and the uncertainty of the response surface, through a possibilistic approach. Section 2 presents this method, starting with the rationale that defines uncertain response surfaces and fuzzy sets, followed by a solution to handle a fuzzy acceptability threshold within a logistic regression approach. A case study is presented in section 3, a flood-prone reservoir system in southern Québec, Canada. Results are presented in part 4, followed by a discussion on the merits and limitations of the proposed method.

## 2 Methods

This section starts with a rationale (2.1) that defines uncertain response surfaces (2.1.1), and fuzzy sets (2.1.2). Then sub-section (2.2) proposes a method to combine a fuzzy threshold and a logistic regression for a bottom-up vulnerability assessment.

### 2.1 Rationale

#### 80 2.1.1 Uncertain response surfaces

Response surfaces are a common feature of bottom-up vulnerability assessments. Following a paradigm that is robust and decision-centric, they first consider the acceptability threshold of a water system, then ask what amount of pressure can lead a system to an unacceptable state. This pressure is sampled for different variables, that form an exposure space, representing the possible states of the world.

85 Such an approach is sometimes called scenario-neutral (Prudhomme et al.; 2010, Broderick et al., 2019) as it separates the system response from the likelihood of each scenario describing future conditions. Different versions of what is here called response surface have been used in specific decision-making frameworks. The response surface can be used to measure an uncertainty horizon between a first estimate of the state of the world and an acceptability frontier (Info-gap decision theory, Ben-Haim, 2006). In the Decision Scaling approach (Brown et al., 2012; Poff et al., 2016; Brown et al., 2019), GCM projections can then be introduced as weights on the response surface to inform probabilities associated to climate states. GCMs can thus

remain useful without conditioning the decision process. Their weights can be updated as uncertainty is resolved, resulting in a refined estimate of the expected system outcome over the response surface

95 While response surfaces usually seek to sample possible futures, for example in climate vulnerability assessments, they still have their own internal uncertainty. Hydrological modelling and internal climate variability can have strong impacts on a response surface compared to long term climate uncertainty (Steinschneider et al., 2015; Whateley and Brown, 2016). Testing a limited number of stressors as explanatory variables therefore leads to a response function that returns imprecise performance estimates.

We first formulate how a limited set of variables leads to an inherently uncertain response surface, and how it relates to the partition of the exposure space and the decision process.

100 A stress test consists in assessing the performance of a system for a large enough number of situations, in order to identify which of these situations leads to an unacceptable performance. We first define how the terms "success", "failure", "performance" and "acceptability" are used in this study. Success or failure is a state of the system at a given time step. For example failure can be defined by a streamflow exceeding a threshold at any moment, characterizing a state of flooding. Common performance indicators of a water system are statistical measures of the frequency, amplitude or duration of failures, aggregated over a certain time period (Hashimoto et al., 1982; Loucks and van Beek, 2017). For example, the reliability of a flood control system can be measured as the proportion of a given period (frequency) in which no flooding happens.

110 While success/failure define the state of the system for a single time step, acceptable/unacceptable define its behavior over a time period. When performing a stress-test of a system, the criterion for acceptable/unacceptable outcomes is usually defined by performance satisfying a threshold  $\theta$ . For example, reliability above 0.95 over a given period can define an acceptable outcome.

A stress-test maps the performance  $R$  on a response surface, to a limited number of descriptive variables or stressors  $x_i$ . Each coordinate, or state of the world, is a combination of specific values taken by such stressors. The stress-test aims to delineate the subsets  $A$  and  $D$  of acceptable and unacceptable outcomes (Fig. 1). Alternative options (management rules, infrastructure design) can be ranked based on the respective size of subsets  $A$  and  $D$ . The more states of the world lead to acceptable outcomes, the more robust an option is, thus the more preferable in this approach.

The descriptive variables or stressors, like the mean flow, the peak flow, or temporal autocorrelations, are aggregations of the time series that are the inputs of a water system model. Because a limited number of descriptors do not capture all possible fluctuations of a time series, a term of irreducible uncertainty remains. The response surface,  $R$ , is then given by:

$$R = g(x_1, x_2, \dots) + \epsilon \tag{1}$$

120 In a risk-averse approach, the objective is to find the range of unacceptable outcomes, the space over which a system fails to satisfy an acceptability threshold  $\theta$ . With two variables, this space is the set of solutions  $D = (x_1^*, x_2^*)$  to the inequality  $R < \theta$ , so

$$g(x_1, x_2) + \epsilon < \theta \quad (2)$$

Simplifying the response surface by e.g. its average estimate can thus underestimate the unacceptability domain. Irreducible  
125 uncertainty can be addressed through adaptive management (Brown et al., 2011), but there is interest in integrating estimates of uncertainty into the response surface tool. Kay et al. (2014) proposed the use of uncertainty allowances that could vary depending on the response type and catchment. More specifically, flood control systems operate on shorter time scales and are harder to assess over long term climate shifts (Knighton et al. 2017), increasing uncertainty in flood response functions. Kim et al. (2018) show how the choice of a longer modelling time scale (daily vs hourly) can lead to risk underestimation.  
130 The choice of weather generator used to generate synthetic weather series in a scenario-neutral experiment can also lead to different results (Keller et al., 2019; Nazemi et al., 2020). Steinschneider et al. (2015) and Whateley and Brown (2016) compare different sources of uncertainty in the response. Taner et al. (2019) integrate probability estimates through a Bayesian belief network model. Recently, logistic regression has been a convenient way to divide the exposure space based on probability of success (Quin et al.; 2018, Kim et al., 2019; Lamontagne et al., 2019; Hadjimichael et al., 2020; Marcos-Garcia et al., 2020).

### 135 **2.1.2 Fuzzy acceptability thresholds**

The acceptability criterion based on a threshold  $\theta$  defines the set of acceptable outcomes. It is a subjective or arbitrary opinion from stakeholders or decision makers to attribute a normative value to a certain performance level. The vast majority of the studies reported in the literature assume that the threshold between satisfactory and unsatisfactory outcomes is crisp (Brown et al., 2012; Culley et al., 2016; Kim et al., 2019). As such, a threshold shapes directly the partition of the response function; with  
140 a crisp value the exposure space can be subdivided in only two sub-spaces: acceptable versus unacceptable.

The very existence of a threshold is the basis of satisficing behaviors (Simon, 1955) that differ from utility maximizing behaviors as coined by Von Neumann and Morgenstern (1944). In practice however, there might be situations whereby the water manager is unable (or unwilling) to provide a crisp, well-defined threshold, or when such threshold is disagreed upon by stakeholders. For example, when controlling water levels in a reservoir to prevent floods, the operator can handle certain  
145 tolerances above the maximum desired level. Of course, the greater the deviation from the desired level, the less acceptable it becomes.

Mathematically, fuzzy sets theory handles imprecisely-defined or ambiguous quantities. Introduced by Zadeh (1965), fuzzy sets theory has become a common tool in decision making analysis or computational sciences when non-probabilistic imperfect knowledge stemming from ambiguity or vagueness must be considered (Yu, 2002). In our case, fuzzy sets theory allows us  
150 to introduce vagueness in target-based decision making, without forsaking a target-based model in favor of an unbounded

maximizing behavior (although a fuzzy target can also be seen as a generalization of both maximizing and satisficing behaviors – see Castagnoli and Li Calzi, 1996, and Huynh et al., 2007).

We consider here the case where such a threshold  $\theta$  may not be precisely defined by stakeholders but can take many subjective qualifications from acceptable to unbearable, hence relaxing (without fully removing) the arbitrary condition of satisfying a crisp value. A fuzzy set  $A_\mu$  of acceptable states therefore qualifies the performance  $R$  with a membership value comprised  
 155 between 0 and 1. The membership function  $\mu$  associated to the fuzzy set  $A$  describes the degree to which any value of  $R$  more or less belongs to  $A$  (Figure 2, eq 3).

$$\begin{cases} \mu(R) = 0 & R < \theta_1 \\ 0 < \mu(R) < 1 & \theta_1 \leq R < \theta_2 \\ \mu(R) = 1 & R \geq \theta_2 \end{cases} \quad (3)$$

When a threshold corresponds to a fuzzy set, it means that there is a transition zone between acceptable and unacceptable  
 160 outcomes where intermediate levels of membership exist. Conversely, another interpretation is that the membership function is the distribution of the *possibilities* (Zadeh 1978, Dubois and Prade, 1988) that any given performance  $R$  represents an acceptable outcome.

An  $\alpha$ -cut  $A_\alpha$  is the crisp set over  $A_\mu$  for which the membership degree to  $A_\mu$  is equal or above  $\alpha$ . The largest  $\alpha$ -cut is called the *support* of the fuzzy set  $A_\mu$  ( $R \geq \theta_1$ ). The smallest  $\alpha$ -cut is the *core* of the fuzzy set ( $R \geq \theta_2$ ).

$$165 \quad A_\alpha = \{R \in A_\mu \mid \mu(R) \geq \alpha\} \quad (4)$$

A fuzzy definition of acceptability is not only a way to accommodate ambiguity as a stakeholder-based constraint, it can also alter the outcome of the analysis. Theoretically, it can happen when the slope of a response as a function of stressors is different for the compared alternatives (infrastructure investments, management rules...), as illustrated in Fig. 3 for a single stressor variable. Rule 2 has a larger acceptable region with a crisp threshold, but the result is mixed with a fuzzy definition of  
 170 acceptability. In that case, a trade-off appears between minimizing a loss of any sort (i.e. any type of flooding), and minimizing the maximum loss (min-max).

For example, in Quinn et al. (2017a), an attempt at reducing flooding most of the time leads to worse results under extreme events. Hadjimichael et al. (2020) perform a sensitivity analysis on binary acceptability thresholds, and show the impact such a definition has on the outcome of a vulnerability assessment. Criterion ambiguity could lead to similar effects: the preferred  
 175 option might not be the same depending on the value of the threshold, and in the present study depending on the degree of acceptability.

## 2.2 Combination of fuzzy thresholds and uncertain response function

When incorporating a fuzzy threshold, the challenge is to combine two different sources of imperfect knowledge described in section 2.1: the uncertainty of the response itself relative to the variables that describe change, and the ambiguity of the acceptability threshold. An approximated fuzzy-random logistic regression is proposed in order to integrate both.

As the goal of the response surface is to divide the exposure space between acceptable and unacceptable outcomes, the value associated to any combination of variables can be either 0 or 1 if a specific acceptability threshold  $\theta$  is reached or not. As seen in section 2.1, an intrinsic uncertainty remains in response surfaces. Several studies use a logistic regression to divide the exposure space based on probability of acceptability (Quinn et al., 2018; Kim et al., 2019; Lamontagne et al., 2019; Hadjimichael et al., 2020; Marcos-Garcia et al., 2020). The logistic regression is used to explain a binary outcome from independent variables  $(x_1, x_2)$ , and returns a probability of acceptable outcome  $\pi$  :

$$\pi_{\theta} = \frac{1}{1 + \exp(-(\beta_0 + \beta_1 x_1 + \beta_2 x_2))} \quad (5)$$

$$\pi_{\theta}(x_1, x_2) = P(R \geq \theta) \quad (6)$$

where  $x_i$  are the defining variables of the exposure space and  $\beta_i$  the regression coefficients. The logistic response surface therefore provides the probability  $\pi$  of meeting the threshold  $\theta$  over the  $(x_1, x_2)$  exposure space. The logistic regression also has its own uncertainty but it is not considered here. While the response surface considers a range of states of the world without knowing their probability of occurrence, the logistic regression still provides a conditional probability of acceptable outcome once a given state of the world is reached. Partitions of the space between acceptable and unacceptable sub-spaces, that can be defined as  $\pi$ -cuts, are now relative to a specific probability of acceptable outcome  $\pi^*$  taken by  $\pi_{\theta}$ :

$$S_{\pi^*} = \{x_1, x_2 \mid \pi(x_1, x_2) \geq \pi^*\} \quad (7)$$

By considering the domain of acceptable outcomes as a fuzzy set, we introduce a quantification of ambiguity that is different in nature from the irreducible hydro-climatic uncertainty. While the logistic regression returns a *probability* of surpassing any given acceptability threshold for a combination of variables (eq. 5 and 6), the fuzzy set of acceptable outcomes returns the *possibility* of any such performance value being actually considered as acceptable (eq. 7).

Fuzzy regression models, including fuzzy logistic regression (e.g. Pourahmad et al., 2011; Namdari et al., 2014) replace probabilities by fuzzy numbers; they usually do not combine them. Fuzzy probabilities (Zadeh, 1984) are considered within the so-called fuzzy random regression field, however no fuzzy random logistic regression seems to have been developed to date (see Chukhrova and Johannssen, 2019, for a review of the fuzzy regression field).

Here we use a discretised approximation of a fuzzy random logistic regression based on  $\alpha$ -cuts. As illustrated in Fig. 2 and Fig. 4, a fuzzy set  $A_{\mu}$  can be decomposed in alpha-cuts. Each  $\alpha$ -cut is a crisp set, and the values belonging to an alpha-cut also belong to the fuzzy set  $A_{\mu}$  with a membership degree equal or above  $\alpha$ .

Therefore, any crisp set of acceptable outcomes  $A$ , defined by a single threshold  $\theta$ , is also an  $\alpha$ -cut of the fuzzy set of acceptable outcomes  $A_\mu$ . Then a single logistic regression for any acceptability threshold  $\theta$  is also the probability of belonging  
 210 to the  $\alpha$ -cut of the fuzzy set of acceptable outcomes defined by  $\theta$ :

$$\pi_\theta(x_1, x_2) = P(R \in A_\alpha) = P(R \in A_\mu \mid \mu(R) \geq \alpha) \quad (8)$$

with  $\alpha = \mu(\theta)$ .

Following the interpretation of Huynh et al. (2007), the overall possibility  $\Pi$  of the random variable  $R$  belonging to the fuzzy set  $A_\mu$  can be given by the integral over  $\alpha$  of the probabilities of acceptability defined at every  $\alpha$ -cut.

$$215 \quad \Pi(x_1, x_2) = P(R \in A_\mu) = \int_0^1 P(R \in A_\mu \mid \mu(R) \geq \alpha) d\alpha \quad (9)$$

And thus

$$\Pi(x_1, x_2) = \int_0^1 \pi_{\mu^{-1}(\alpha)}(x_1, x_2) d\alpha \quad (10)$$

The approximated logistic regression for a fuzzy set of acceptable outcomes is therefore the average of the logistic regres-  
 sions for all the associated  $\alpha$ -cuts. With a uniform discretization of 10 alpha levels, the spacing of every  $\alpha$ -cut, defined with  
 220  $\theta = \mu^{-1}(\alpha)$ , relies on the shape of the membership function. A linear shape of  $\mu(R)$  leads to a uniform sampling of the  $\alpha$ -cuts, while a sigmoid error function leads to a Gaussian sampling of  $\alpha$ -cuts centered on  $\theta^* = \mu^{-1}(0.5)$  (Fig. 4).

### 3 Application

A two-reservoir system in eastern Canada is used as a case study to illustrate the applicability of the possibilistic response surfaces.

#### 225 3.1 Upper Saint-François River Basin features

The Upper Saint-François River Basin (USFRB) is located in the province of Québec, Canada. The selected gauging point, near the agglomeration of Weedon, drains an area of 2940 km<sup>2</sup> with an average annual flow of 2.1 billion cubic meters. The system (Fig. 5) involves the Saint François River, controlled by two reservoirs Lake Saint-François and Lake Aylmer with a combined storage capacity of 941 million cubic meters, and the uncontrolled affluent Saumon River.

230 Both reservoirs are managed by the Québec Water Agency which is part of the Ministry of Environment (Ministère de l'Environnement et de la Lutte contre les changements climatiques - MELCC). The main operational objectives are: (i) to protect the municipality of Weedon and several residential areas around the lakes from floods, (ii) to ensure minimum river



discharges and water levels in the lakes to preserve aquatic ecosystems, (iii) to regulate the floods for downstream power plants; and (iv) to maintain desired water levels in the lakes for recreational uses during the summer (Fortin et al., 2007).

235 This multipurpose reservoir system thus follows a refill-drawdown cycle accordingly. With a snowmelt-dominated flow regime, the reservoirs are emptied in winter, filled during the spring and kept at constant pool elevation during the summer.

### 3.2 Inflow time series

At the request of system operators we use hydrologic stressors instead of climatic ones. Other authors have also used hydrologic stressors, see e.g. Nazemi et al. (2013), Borgomeo et al. (2015), Herman et al. (2014), Zeng et al. (2017), or Nazemi et al.  
240 (2020). Readily available inflow time series from GCM weather projections are used to generate additional synthetic streamflow series as in Vormoor et al. (2017). Results are then directly plotted on the exposure space according to their own  $(x_1, x_2)$  coordinates. Such a method seeks to make a greater use of hydro-climatic future scenarios when many are already available, to obtain a higher diversity of synthetic times series (based on different GCM simulations, RCP scenarios and downscaling techniques). We first describe the initially available time series, then how they are perturbed and reused to create synthetic time  
245 series.

Historical daily measurements are available for the 2000-2014 period (MELCC, 2018). They include the lakes' inflows, levels and reservoir releases, and river discharges from the tributary and at the basin outlet.

Streamflow scenarios are provided by MELCC through the Quebec Water Atlas 2015 (CEHQ, 2015, MELCC, 2018). Those hydrologic projections are based on climatic projections from the Natural Resources Canada data base of GCM simulations  
250 (CMIP5, Hydro-climatic Atlas, 2015). Meteorological time series were bias-corrected by the Québec Water Agency for the reference climate (1971-2000 period) and then processed by the Hydrotel model (Fortin, 2001) for all major rivers in the Southern part of the Quebec province. For the Upper Saint-François River Basin, resulting hydrological simulations were also bias-corrected with the historical flow record and the quantile mapping approach.

A set of 501 time series was made available, spanning 30 years of daily inflows. The set contains 135 scenarios for a 1971-  
255 2000 reference period; and 366 scenarios for the 2041-2070 period. The 366 scenarios are based on 122 GCM projections, to which 3 different downscaling techniques were applied: without bias correction, with quantile mapping or with delta quantile mapping (based on Mpelasoka and Chiew, 2009). In order to obtain the largest degree of variability, and find as many failure configurations as possible, all 501 time series are used indistinctively. These run-off time series are first perturbed to increase the sample size and cover a wider share of the exposure space, then used as input for the synthetic time series generation.

260 In order to expand the sample of the exposure space and explore less favorable conditions, the perturbation of available inflows is performed by either modifying the average annual flow, the dispersion of daily flows, or both. To increase the range of tested inflow volumes, a single change factor is applied in the first case, arbitrarily increasing all flow values at every time step by 50%. To perturb the dispersion, a varying factor multiplies flow values depending on their rank in the series distribution (factor 1 for the lowest, factor 1.5 for the highest flow). There are then 4 categories of perturbation: volume only, dispersion,  
265 volume and dispersion, and none.

This expanded set of time series is then used as input of the synthetic generator. The generator is the Kirsh-Nowak method (Nowak et al., 2010; Kirsh et al., 2013), made available online as Matlab code by Quinn (2017b), employed e.g. in Quinn et al., 2017a. Each synthetic generation is performed twice for each available time series. We then get 501 (initial tie series)  $\times$  4 (different perturbations)  $\times$  2 (synthetic realizations) = 4008 synthetic time series, each containing 30 years of daily river discharges.

$$G = \frac{1}{N} \left( N + 1 - 2 \frac{\sum_{i=1}^N (N + 1 - i) q_i}{\sum_{i=1}^N q_i} \right) \quad (11)$$

Similarly to other stress-test studies that generate inflow instead of climate time series (Feng et al., 2017), the selected driving variables (axes x and y of the response function) are the total annual inflow volume and a measure of the intra-annual variability of streamflow. The intra-annual variability is here measured with the dispersion coefficient G, a measure also known as Gini coefficient in economics but employed too in hydrology (Masaki et al., 2014). It is similar to the coefficient of variation used in e.g. Nazemi et al. (2020) but bound between 0 and 1, which offers convenient interpretation: at G=0 all daily discharges in a year are equal, if G=1 the entire yearly run-off happens in a single day. Like the variation coefficient it allows for a second variable statistically independent of the total annual run-off volume. Here  $q_i$  are the ordered daily discharges of a given year, N=365 days.

### 280 3.3 Simulation and response surface

The model is built with HEC-ResSim, the Reservoir System Simulation software developed by the US Army Corps of Engineers (Klipsch and Hurst, 2007). It relies on a network of elements representing the physical system (reservoirs, junctions, routing reaches), as well as the sets of operating rules. HEC-ResSim replicates the decision-making process applied to many actual reservoirs through a rule-based modeling of operational constraints and targets.

285 Hydrologic inputs consist of 30 years long, daily river discharges for each sub-basin. The main outputs are daily water levels in lakes, reservoir releases, as well as the discharges at the outlet. A complementary Jython routine is developed in order to run HEC-ResSim in a loop to systematically load a large set of different hydro-climatic scenarios. Dam characteristics and operational rules were provided by the Québec Water Agency (MELCC, 2018).

The model is developed with a first set of operating rules (rule 1) expected to mimic the current operation of the system. It reproduces measured daily releases over the 2000-2014 period. 4008 simulations are then run, each taking an input of synthetic daily flow series spanning 30 years. In order to increase the density of the un-gridded exposure space sampling, results are divided into 5 years periods. Such decomposition is deemed acceptable based on the reservoir system, whose storage capacity is designed for seasonal regulation, not multi-year, mitigating the effects of boundary conditions. It leads to a sample of 24,048 points, each one representing a five-year simulation.

295 Although the operating rules were designed taking into account all operating objectives, the present study focuses on the flood control performance  $R$ . More specifically, it is the reliability (Hashimoto et al., 1982; Loucks and van Beek, 2017) of the system keeping the river discharge at Weedon below  $300 \text{ m}^3\text{s}^{-1}$ . Mathematically, if  $F(t)$  is the state of flooding at time step  $t$ ,

then  $R$  is given by:

$$F(t) = \begin{cases} 0 & \text{if } Q(t) \leq 300 \\ 1 & \text{if } Q(t) > 300 \end{cases} \quad (12)$$

300

$$R = 1 - \frac{1}{T} \sum_{t=1}^T F(t) \quad (13)$$

The response function is built by representing performance  $R$  as a function of the selected inflow characteristics (yearly volume and dispersion). We consider the case where the threshold between acceptable and unacceptable performance is not clearly defined, but is bounded between  $\theta_1 = 0.93$  and  $\theta_2 = 0.97$ .

305 The separation of the exposure space between acceptable and unacceptable regions is calculated following section 2, combining a logistic regression with a fuzzy acceptability domain, its support being  $[0.93, 1]$  and its core  $[0.97, 1]$ . Consequently, any given performance value  $R$  has a membership degree of 0 for  $R < 0.93$ , and equal to 1 for  $R \geq 0.97$ . A counterfactual exercise is also run with a crisp threshold  $\theta^* = 0.95$ , where the ambiguity is ignored and only the median between bounds is selected. Performance is also calculated for a sub-set of GCM-based projections deemed more trustworthy by the CEHQ (with  
310 quantile mapping downscaling for the 2041-2070 period), each one divided into 5-year periods.

These rules are compared to an instrumental set rule 2 which slightly alters the anticipation and emergency release algorithm of the reservoirs.

The simulation is first run with 122 of the original time series made available by the Québec Water Agency. These are the bias-corrected rainfall / run-off simulations considered as the most reliable for scenario-driven adaptation plans, corresponding  
315 to different radiative forcing scenarios. Taken by 5 year periods (thus 610 time series), all lead to flood control reliabilities superior to 0.97, above any considered acceptability threshold. So both rule sets are considered successful in all these time series.

Simulations are then run for the much larger and more diverse sample of 4008 synthetic time series. The performance  $R$ , measured as the reliability of flood control, is evaluated for each 5-years period contained in the 4008 simulations of 30 years  
320 (24'048 evaluations). The color scale represents the performance (reliability  $R$  against floods) in Fig. 6 for each 5 year time series. The axes are the stressors  $x_1, x_2$ : the average annual inflow volume at Lake Saint-François and the dispersion (or Gini coefficient) of the daily inflows. The response shows considerable noise, although a north-east / south-west anisotropy or gradient can be visually noticed.

#### 4 Results

325 An acceptability value  $\mu$  is then associated to each dot (time series) in the sample depending on the value of performance (reliability)  $R$  (Fig. 7.a). The acceptability value  $\mu$  is the membership degree of  $R$  to the fuzzy set of acceptable outcomes, with  $[0.93, 1]$  as support and  $[0.97, 1]$  as core (as in Fig. 2). The sample of simulations thus leads to acceptability values between 0 and 1 in Fig. 7a.

To solve the problem of combining two uncertainties that are different in nature (probability of meeting a threshold vs possibility that this threshold is acceptable), the aggregated logistic regression presented in section 2.2.1. is performed for the fuzzy outcomes, thus proposing a continuous mapping for a case where the outcomes are not available as binary categories. The logistic regression is performed 10 times for 10  $\alpha$ -cuts corresponding to a uniform sampling of  $\alpha$ -levels. The aggregated logistic regression at every coordinate is the average of the 10 logistic regressions, each one considering a single  $\alpha$ -cut as the crisp set over  $R$  that defines acceptable outcomes.

It provides at each coordinate of the exposure space (or state of the world) a possibility value  $\Pi$  of the outcome (reliability against floods) being deemed as acceptable given the realization of the state of the world. This – conditional – possibility measure expresses both the ambiguity of the acceptability criterion, and the probability of an acceptable outcome at any location on the response surface. The surface can be divided in acceptable and unacceptable regions (Fig. 7) based on any desired level of possibility ( $\Pi$ -cut).

As a counterfactual, we also compute an alternative where the ambiguity of the threshold is ignored with the response surface converted into binary outcomes – acceptable or unacceptable frequency of flooding – based on a median crisp threshold of 0.95 (Fig. 7b). A simple logistic regression is performed for the counterfactual binary outcomes, leading to a probability  $\pi$  of acceptable outcome.

The approximation was done with the Matlabs<sup>®</sup> function *mnrfit*. The McFadden pseudo  $R^2$  of the median threshold logistic regression is 0.7531. The relation between explanatory variables is kept linear, as introducing an interaction term only increased the pseudo  $R^2$  to 0.7562. These values are considered as an acceptable goodness of fit for this study. A pseudo  $R^2$  equal to 1 represents a perfect model, and a value of 0 means the logistic model is not a better predictor of probabilities than an intercept-only model. A possible room for improvement of the predicting value of the model would be to change the predictors, although it was not the core of this study. Selecting two different predictors from a larger set of candidates might increase the final  $R^2$  (performing a first round of logistic regressions for each pair and selecting the pair with highest  $R^2$  as in Quinn et al., 2018).

$\Pi$ -cuts producing frontiers between acceptability regions can be contrasted with the mapping of time series from GCM projections on the response surface (Fig. 8). While all these downscaled time series lead to fully acceptable performances, showing reliability values above 0.97, their coordinates, thus their corresponding state of the world, can still fall below a  $\Pi$ -cut.

This is because for any of these projections, the evaluated sequence is one realization of those conditions  $x_1, x_2$ . Assuming the logistic regression model is accurate, with possibility  $1-\Pi$ , alternative realizations of those conditions may not be seen as satisfactory. A scenario sharing the same properties  $x_1, x_2$  - yearly inflow volume and daily inflow dispersion – with a satisfactory GCM projection could still lead to unacceptable frequency of flooding if its possibility of acceptable outcome  $\Pi$  is below the acceptable level.

Respectively, the binary counterfactual model (Fig. 8b), provides a degree of probability  $\pi$  of an unacceptable outcome for the same state of the world, as in the previous studies using the logistic regression. Fig 8. illustrates the straightforward difference between adapting to the ambiguity of the acceptability criterion (Fig. 8a) and ignoring it (Fig. 8b). For any given state of the world (coordinate)  $x_1, x_2$ , the aggregated logistic regression not only considers the probability of a realization leading to a certain performance, but also the possibility that such performance, the reliability against floods, would be considered an

acceptable outcome. Accepting a fuzzy acceptability criterion thus mechanically widens the range of the continuous transition  
365 resulting from the logistic regressions. A state of the world with a near 100% probability of meeting a 0.95 reliability threshold  
might still have a possibility of this threshold not being *actually* accepted.

Such differences are more noticeable in this case study when using GCM projections as ex-post weights. With a fuzzy target,  
46 projections (6.3%) fall out of the 0.99  $\Pi$ -cut, i.e. the sub-space where the possibility of acceptable outcome is at least 0.99.  
Said otherwise, there is a possibility of at least 0.01 that a realization leading to the same state of the world (coordinates)  
370 would produce an flooding pattern considered as unacceptable, according to the aggregated logistic regression. With a crisp  
simplification, thus with less information, 17 projections (2.3%) fall out of the 0.99  $\pi$ -cut. There is a probability of at least 0.01  
that a realization leading to the same state of the world would produce an unacceptable outcome.

These frontiers are specific to a reservoir operation rule. When using a stress-test with a response surface, alternative rules  
are compared based on the relative position of the frontiers between acceptable and unacceptable regions. Two of them are here  
375 compared: an approximation of current reservoir operations (rule 1) and an alternative, instrumental set of rules (rule 2). Fig. 9  
compares the two rules based on selected  $\Pi$ -cuts (Fig. 9a). The counterfactual calculation with binary outcomes and  $\pi$ -cuts is  
also provided (Fig. 9b).

Fig. 9 shows a situation partially similar to the theoretical situation of Fig. 2, where the relative advantage of each rule  
depends on the location on the exposure space and the preferred level of possibility. With a fuzzy acceptability criterion (Fig.  
380 9a), rule 2 is preferred to rule 1 for high possibility of acceptable outcome ( $\Pi \geq 0.95$ ), because the region defined by this frontier  
for rule 2 is larger than for rule 1. It means that rule 2 leads to acceptable outcomes in a larger range of states of the world  
than rule 1. However, for low possibilities of acceptable outcome (below 0.05), the comparison depends on the stressors  $x_1, x_2$ .  
Rule 2 is preferred for very high daily inflow dispersion (or Gini coefficient, y axis) but moderate yearly inflow (x axis), while  
rule 1 is preferred for low dispersion and very high yearly inflows (again assuming the logistic regression model is accurate).

385 Using a counterfactual with binary outcomes (Fig 9b), and thus frontiers defined only by probabilities, modifies the above  
results. While rule 2 remains preferable for high probabilities of acceptable outcomes, it becomes worse than rule 1 for low  
probability-cuts, this time independently of the location on the exposure space.

If the decision-makers choose to use GCM projections as ex-post weights, the preference order for low possibility levels  
becomes less important. It narrows the relevance of the exposure space to the vicinity of the projections, thus to high possibil-  
390 ities of acceptable outcomes. In this case, 8 scenarios for rule 2 (1.1%) fall below the 0.99  $\Pi$ -cut (meaning other realizations  
have a 0.01 possibility of unacceptable outcome), against 46 scenarios for rule 1 (6.3%). Again, all GCM-based scenarios  
lead to fully acceptable outcomes ( $R \geq 0.97$ ). Rule 2 would then be preferred to rule 1, but there would still be a possibility  
of unacceptable outcome superior to 0.01 with this rule, for the same states of the world (coordinates  $x_1, x_2$ ) sampled by the  
GCM-based scenarios.

395 Using only binary outcomes, thus only probability-based frontiers, produces a slightly different result. Rule 2 is not only  
preferred in the vicinity of the GCM projections, but also no such projection falls below the 0.99  $\pi$ -cut. The probability of  
unacceptable outcome is thus less than 0.01 at the vicinity of any GCM projection. Based on such projections, rule 2 would be  
adopted with less reservations with a binary model than with a fuzzy model.

## 5 Discussion

400 By itself, a stress-test approach can be seen as a departure from a probabilistic framework towards a possibilistic one. The stress-test of a water system, through a response surface, asks which states of the world could possibly lead to an unacceptable outcome, instead of evaluating the system performance with a given probability.

In this paper, we consider that the threshold employed to define acceptable outcomes might be ambiguous or contentious. The fuzzy or possibilistic framework (Zadeh 1965, 1978; Dubois and Prade, 1988), often used in decision-making analysis, 405 provides the analytical tools to incorporate an uncertainty that is not probabilistic, the ambiguity of a decision threshold, within the increasingly popular stress-test tool.

Applying a fuzzy threshold would be straightforward for a deterministic response surface, each performance value on the exposure space being mapped to a degree of acceptability between 0 and 1. This study explores how to solve the problem of combining a fuzzy definition of acceptability with the remaining hydro-climatic uncertainty of the response surface itself. 410 These two concepts represent different sources of imperfect knowledge: one applies to the performance of the system, the other to the qualification of this performance as acceptable or not. To integrate them in a same response surface, the methodology relies on the concept of alpha-cuts to produce an aggregated logistic regression from a membership function.

The case study of the Upper Saint-François reservoir system illustrates the implementation of the aggregated logistic regression and the conceptual framework behind it. Just like for previous uses of logistic regression, in the present method the response surface does not show a single frontier that divides the exposure space between acceptable and unacceptable flooding 415 outcomes, but rather a parametric frontier depending, in this case, on a desired level of possibility. While possibility and probability levels cannot be directly compared (the first comprises the latter), their difference is illustrated by the wider spread of the transition zone in the response functions. This wider spread is to be expected as more sources of ambiguity are considered in the possibilistic approach, and a consequence can be that GCM projections may fall below an acceptability frontier when 420 they do not for a probabilistic logistic regression.

Although the main goal of this study is to propose a practical adaptation to a stakeholder-driven constraint (the absence of a clear threshold), results also explore the effect that threshold ambiguity can have on final decisions. Compared response surfaces show that ignoring the ambiguity of a criterion can alter the comparison between options, either based on the size of acceptable domains or based on the position of GCM projections in the response surface. While applying specifically for a 425 fuzzy approach with varying degrees of acceptability, this type of result is comparable to more general sensitivity studies over binary thresholds as in Hadjimichael et al. (2020). Not accounting for the criterion ambiguity may thus lead, in some cases and for some actors, to worse perceived floods with the selected option than with the discarded option.

Results show that the preference between options can change depending on the possibility level  $\Pi$ . When it happens, selecting the appropriate level  $\Pi$  threshold is highly consequential and depends on the involved actors. This challenge is the 430 equivalent in possibilistic terms to the selection of the probability threshold  $\pi$  in the non-fuzzy logistic regression (Kim et al., 2019). The  $\Pi$  threshold depends on both a probability level and the value of  $\alpha$ .

Defining the membership function  $\mu$  does introduce an additional layer of complexity in the modelling process. It is ultimately up to the modeler and stakeholders to decide if it is a necessary translation of the social reality, keeping in mind how it can affect the results. The elaboration of membership functions from linguistic information is well studied in many fields (Zimmermann, 2001; Garibaldi and John, 2003; Sadollah, 2018), including in water resources management (Khazaeni et al., 2012). Future works should further explore how to elaborate adapted membership functions specific to the linguistic inputs that characterize satisfaction thresholds in the case of flood control systems,

To further address both challenges of selecting the appropriate possibility level  $\Pi$  and eliciting the membership function  $\mu$ , loss aversion, as developed by Kahneman and Tversky (1979) in prospect theory, would also be a useful concept. A parallel can be drawn with Quinn et al. (2018), where the choice of the probability level  $\pi$  in a logistic regression is instead linked to risk aversion.

Other studies have linked prospect theory with membership functions for fuzzy sets (e.g. Liu et al., 2014; Andrade et al., 2014; Gu et al., 2020). While this study focuses on the practical integration of ambiguity as a real-world constraint, further theoretical research should focus on linking both risk and loss attitudes to hydro-climatic response functions.

An important caveat is that the response surface relies on a specific set of realizations from a synthetic generator and a starting data set that is perturbed and re-shuffled. The choices and assumptions that lead to a realization deserve further scrutiny in future works. Un-gridded, on-the-fly sampling here allows exploring more freely the variability of the response, as the focus of the study is the diversity of outcomes for a given coordinate. The sampling should be improved to cover more evenly the exposure space, but without constraining too much the diversity of time series. The impact of the choice of a given synthetic generator, of the sample size and the perturbation process should be further examined. Likewise, the choice of describing variables was not the focus of the study but should be subject to an initial comparison among a larger number of candidate predictors. Finally, the quality of the logistic model should be further analysed. External validation with a separate sampling of the exposure space should be included (Kim et al., 2019). Further work should seek to integrate the goodness of fit and the external validation as additional sources of uncertainty within the method. All the aforementioned steps should be considered for this possibilistic method to be used as policy recommendation.

A possibilistic framework could integrate within a response surface many more of such uncertainties when probabilities are not relevant or too uncertain, as done in other water management studies (El-Baroudy and Simonovic, 2004; Afshar et al., 2011; Jun et al., 2013; Le Cozannet et al., 2017; Qiu et al.; 2018, Wang et al.; 2020). One particularly suitable use of fuzzy logic should be to consider as fuzzy values the ex-post expert judgement on the possibility or likeliness of the obtained synthetic time series in a given river basin. The synthetic generator explores time series configurations but those may not always correspond to the range of outcomes expected in a watershed.

The integration of uncertainty and ambiguity quantification within the response surface tool could allow for aggregation options in a multi-objective problem (like in Poff et al., 2016; Kim et al., 2019), while easily controlling its two separate components, response uncertainty and threshold ambiguity.

465 Importantly, the response surface is here considered as a generic tool for decision-making under deep uncertainty, but it is  
used within more complex frameworks. Further research should also analyse how fuzzy thresholds can be inserted within a  
more complete set of methods.

## 6 Conclusions

We explore in this study how to integrate ambiguous acceptability thresholds within uncertain response surfaces in decision-  
470 centric vulnerability assessments. We propose a method to produce a possibilistic surface when the fuzzy threshold is applied  
to an uncertain surface. Aggregating logistic regressions over  $\alpha$ -cuts incorporates in a single measure the ambiguity of the  
acceptability threshold and the probability to meet such threshold, for a given state of the world. The method is illustrated with  
the Upper Saint-François reservoir system in Canada. We show how a fuzzy threshold shapes the response surface, and how  
the way this ambiguity is treated can affect the vulnerability assessment.

475 Challenging old probabilistic assumptions, notably in a climate crisis context, brings new tools that also imply new choices  
and degrees of arbitrariness. How to transparently elaborate fuzzy thresholds jointly with stakeholders, or the choice of a syn-  
thetic scenario generator, are necessary research continuations. The presented approach can be followed by further work on  
stakeholder attitudes, multi-objective problems and aggregation choices in bottom-up vulnerability assessments. The frame-  
work here introduced to solve a practical challenge can be consolidated from a more theoretical perspective, from both possi-  
480 bility theory and decision making under deep uncertainty.

*Code and data availability.* The data can be provided upon authorization from the MELCC, Québec, Canada (Ministère de l'Environnement  
et de la Lutte contre les Changements Climatiques). The codes required to reproduce the results are available upon request (thibaut.lachaut1@ulaval.ca).

*Author contributions.* TL and AT conceptualized the study. TL developed the methods, models and simulations, and drafted the manuscript.  
AT acquired the funding and provided extensive supervision.

485 *Competing interests.* The authors declare that they have no conflict of interest.

*Acknowledgements.* The work was supported by a project from Ministère de l'Environnement et de la Lutte contre les Changements Clima-  
tiques (MELCC, Québec, Canada) entitled "Étude visant l'adaptation de la gestion des barrages du système hydrique du Haut-Saint-François  
à l'impact des changements climatiques dans le cadre du Plan d'action 2013-2020 sur les changements climatiques (PACC 2020)". This study  
does not represent the views of MELCC. The authors would like to thank Louis-Guillaume Fortin, Richard Turcotte and Julie Lafleur from



490 the CEHQ for the fruitful discussions and the knowledge of the reservoir system, Alexandre Mercille and Xavier Faucher who contributed to earlier versions of the HEC-ResSim model, and Jean-Philippe Marceau who developed the iterative Jython routine.

## References

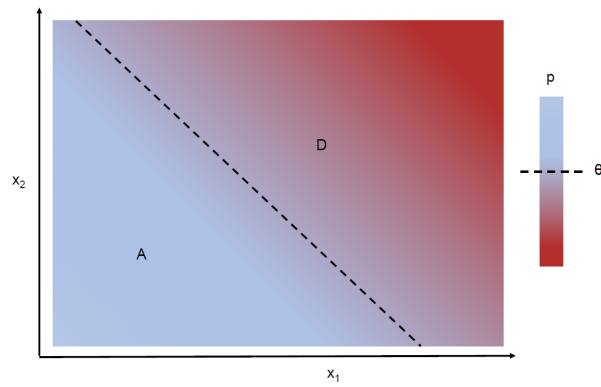
- Afshar, A., Mariño, M. A., Saadatpour, M., and Afshar, A.: Fuzzy TOPSIS Multi-Criteria Decision Analysis Applied to Karun Reservoirs System, *Water Resources Management*, 25, 545–563, <https://doi.org/10.1007/s11269-010-9713-x>, 2011.
- 495 Andrade, R. A. E., González, E., Fernández, E., and Gutiérrez, S. M.: A Fuzzy Approach to Prospect Theory, in: *Soft Computing for Business Intelligence*, edited by Espin, R., Pérez, R. B., Cobo, A., Marx, J., and Valdés, A. R., *Studies in Computational Intelligence*, pp. 45–66, Springer, Berlin, Heidelberg, [https://doi.org/10.1007/978-3-642-53737-0\\_3](https://doi.org/10.1007/978-3-642-53737-0_3), 2014.
- Ben-Haim, Y.: *Info-Gap Decision Theory: Decisions Under Severe Uncertainty*, Elsevier, 2006.
- Borgomeo, E., Farmer, C. L., and Hall, J. W.: Numerical rivers: A synthetic streamflow generator for water resources vulnerability assessments, *Water Resources Research*, 51, 5382–5405, <https://doi.org/10.1002/2014WR016827>, 2015.
- 500 Broderick, C., Murphy, C., Wilby, R. L., Matthews, T., Prudhomme, C., and Adamson, M.: Using a scenario-neutral framework to avoid potential maladaptation to future flood risk, *Water Resources Research*, 55, 1079–1104, <https://doi.org/10.1029/2018WR023623>, 2019.
- Brown, C. and Wilby, R. L.: An alternate approach to assessing climate risks, *Eos, Transactions American Geophysical Union*, 93, 401–402, <https://doi.org/10.1029/2012EO410001>, 2012.
- 505 Brown, C., Ghile, Y., Laverty, M., and Li, K.: Decision scaling: Linking bottom-up vulnerability analysis with climate projections in the water sector, *Water Resources Research*, 48, <https://doi.org/10.1029/2011WR011212>, 2012.
- Brown, C., Steinschneider, S., Ray, P., Wi, S., Basdekas, L., and Yates, D.: Decision Scaling (DS): decision support for climate change, in: *Decision Making under Deep Uncertainty: From Theory to Practice*, edited by Marchau, V. A. W. J., Walker, W. E., Bloemen, P. J. T. M., and Popper, S. W., pp. 255–287, Springer International Publishing, Cham, [https://doi.org/10.1007/978-3-030-05252-2\\_12](https://doi.org/10.1007/978-3-030-05252-2_12), 2019.
- 510 Castagnoli, E. and Li Calzi, M. L.: Expected utility without utility, *Theory and Decision*, 41, 281–301, <https://doi.org/10.1007/BF00136129>, 1996.
- CEHQ (Centre d’Expertise Hydrique du Québec): Atlas hydroclimatique du Québec méridional – Impact des changements climatiques sur les régimes de crue, d’étéage et d’hydraulicité à l’horizon 2050., 2015.
- Chukhrova, N. and Johannssen, A.: Fuzzy regression analysis: Systematic review and bibliography, *Applied Soft Computing*, 84, 105 708, <https://doi.org/10.1016/j.asoc.2019.105708>, 2019.
- 515 Culley, S., Noble, S., Yates, A., Timbs, M., Westra, S., Maier, H. R., Giuliani, M., and Castelletti, A.: A bottom-up approach to identifying the maximum operational adaptive capacity of water resource systems to a changing climate: identifying the maximum operational adaptive capacity, *Water Resources Research*, 52, 6751–6768, <https://doi.org/10.1002/2015WR018253>, 2016.
- DiFrancesco, K., Gitelman, A., and Purkey, D.: Bottom-Up Assessment of Climate Risk and the Robustness of Proposed Flood Management Strategies in the American River, CA, *Water*, 12, 907, <https://doi.org/10.3390/w12030907>, 2020.
- 520 Dubois, D. and Prade, H.: Measures of possibility and fuzzy sets, in: *Possibility Theory: An Approach to Computerized Processing of Uncertainty*, edited by Dubois, D. and Prade, H., pp. 1–31, Springer US, Boston, MA, [https://doi.org/10.1007/978-1-4684-5287-7\\_1](https://doi.org/10.1007/978-1-4684-5287-7_1), 1988.
- Dubois, D., Foulloy, L., Mauris, G., and Prade, H.: Probability-possibility transformations, triangular fuzzy sets, and probabilistic inequalities, *Reliable Computing*, 10, 273–297, <https://doi.org/10.1023/B:REOM.0000032115.22510.b5>, 2004.
- 525 El-Baroudy, I. and Simonovic, S. P.: Fuzzy criteria for the evaluation of water resource systems performance, *Water Resources Research*, 40, <https://doi.org/10.1029/2003WR002828>, 2004.

- Feng, M., Liu, P., Guo, S., Gui, Z., Zhang, X., Zhang, W., and Xiong, L.: Identifying changing patterns of reservoir operating rules under various inflow alteration scenarios, *Advances in Water Resources*, 104, 23–36, <https://doi.org/10.1016/j.advwatres.2017.03.003>, 2017.
- 530 Fortin, L.-G., Turcotte, R., Pugin, S., Cyr, J.-F., and Picard, F.: Impact des changements climatiques sur les plans de gestion des lacs Saint-François et Aylmer au sud du Québec, *Canadian Journal of Civil Engineering*, 34, 934–945, <https://doi.org/10.1139/I07-030>, <https://cdnsiencepub.com/doi/10.1139/I07-030>, publisher: NRC Research Press, 2007.
- Garibaldi, J. and John, R.: Choosing membership functions of linguistic terms, in: *The 12th IEEE International Conference on Fuzzy Systems*, 2003. FUZZ '03., vol. 1, pp. 578–583 vol.1, <https://doi.org/10.1109/FUZZ.2003.1209428>, 2003.
- 535 Gu, J., Zheng, Y., Tian, X., and Xu, Z.: A decision-making framework based on prospect theory with probabilistic linguistic term sets, *Journal of the Operational Research Society*, 0, 1–10, <https://doi.org/10.1080/01605682.2019.1701957>, <https://doi.org/10.1080/01605682.2019.1701957>, publisher: Taylor & Francis \_eprint: <https://doi.org/10.1080/01605682.2019.1701957>, 2020.
- Hadjimichael, A., Quinn, J., Wilson, E., Reed, P., Basdekas, L., Yates, D., and Garrison, M.: Defining Robustness, Vulnerabilities, and Consequential Scenarios for Diverse Stakeholder Interests in Institutionally Complex River Basins, *Earth's Future*, 8, 540 <https://doi.org/10.1029/2020EF001503>, 2020.
- Hashimoto, T., Stedinger, J. R., and Loucks, D. P.: Reliability, resiliency, and vulnerability criteria for water resource system performance evaluation, *Water Resources Research*, 18, 14–20, <https://doi.org/10.1029/WR018i001p00014>, 1982.
- Herman, J. D., Zeff, H. B., Reed, P. M., and Characklis, G. W.: Beyond optimality: Multistakeholder robustness tradeoffs for regional water portfolio planning under deep uncertainty, *Water Resources Research*, 50, 7692–7713, <https://doi.org/10.1002/2014WR015338>, 2014.
- 545 Huynh, V.-N., Nakamori, Y., Ryoke, M., and Ho, T.-B.: Decision making under uncertainty with fuzzy targets, *Fuzzy Optimization and Decision Making*, 6, 255–278, <https://doi.org/10.1007/s10700-007-9011-0>, 2007.
- Jun, K.-S., Chung, E.-S., Kim, Y.-G., and Kim, Y.: A fuzzy multi-criteria approach to flood risk vulnerability in South Korea by considering climate change impacts, *Expert Systems with Applications*, 40, 1003–1013, <https://doi.org/10.1016/j.eswa.2012.08.013>, 2013.
- Kahneman, D. and Tversky, A.: Prospect theory: an analysis of decision under risk, *Econometrica*, 47, 263–291, 550 <https://doi.org/10.2307/1914185>, 1979.
- Kay, A. L., Crooks, S. M., and Reynard, N. S.: Using response surfaces to estimate impacts of climate change on flood peaks: assessment of uncertainty, *Hydrological Processes*, 28, 5273–5287, <https://doi.org/10.1002/hyp.10000>, 2014.
- Keller, L., Rössler, O., Martius, O., and Weingartner, R.: Comparison of scenario-neutral approaches for estimation of climate change impacts on flood characteristics, *Hydrological Processes*, 33, 535–550, <https://doi.org/10.1002/hyp.13341>, 2019.
- 555 Khazaeni, G., Khanzadi, M., and Afshar, A.: Fuzzy adaptive decision making model for selection balanced risk allocation, *International Journal of Project Management*, 30, 511–522, <https://doi.org/10.1016/j.ijproman.2011.10.003>, 2012.
- Kim, D., Chun, J. A., and Aikins, C. M.: An hourly-scale scenario-neutral flood risk assessment in a mesoscale catchment under climate change, *Hydrological Processes*, 32, 3416–3430, <https://doi.org/10.1002/hyp.13273>, 2018.
- Kim, D., Chun, J. A., and Choi, S. J.: Incorporating the logistic regression into a decision-centric assessment of climate change impacts on a 560 complex river system, *Hydrology and Earth System Sciences*, 23, 1145–1162, <https://doi.org/10.5194/hess-23-1145-2019>, 2019.
- Kirsch, B. R., Characklis, G. W., and Zeff, H. B.: Evaluating the impact of alternative hydro-climate scenarios on transfer agreements: practical improvement for generating synthetic streamflows, *Journal of Water Resources Planning and Management*, 139, 396–406, [https://doi.org/10.1061/\(ASCE\)WR.1943-5452.0000287](https://doi.org/10.1061/(ASCE)WR.1943-5452.0000287), 2013.
- Klipsch, J. and Hurst, M.: HEC-ResSim: reservoir system simulation, User's manual version 3.0 CPD-82, USACE, Hydrologic Engineering 565 Center, Davis, CA, 2007.

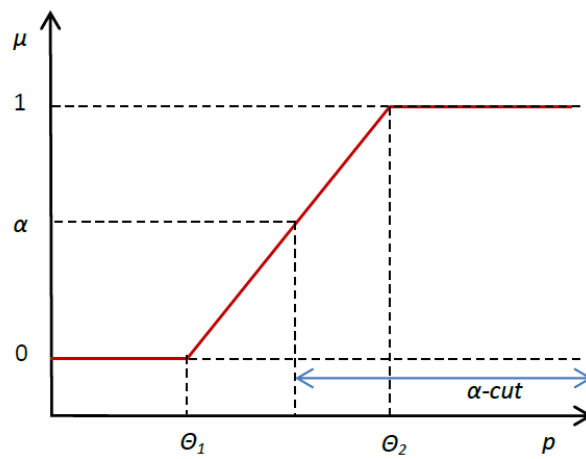
- Knighton, J., Steinschneider, S., and Walter, M. T.: A vulnerability-based, bottom-up assessment of future riverine flood risk using a modified peaks-over-threshold approach and a physically based hydrologic model, *Water Resources Research*, 53, 10043–10064, <https://doi.org/10.1002/2017WR021036>, 2017.
- Lamontagne, J. R., Reed, P. M., Marangoni, G., Keller, K., and Garner, G. G.: Robust abatement pathways to tolerable climate futures require immediate global action, *Nature Climate Change*, 9, 290–294, <https://doi.org/10.1038/s41558-019-0426-8>, 2019.
- Le Cozannet, G., Manceau, J.-C., and Rohmer, J.: Bounding probabilistic sea-level projections within the framework of the possibility theory, *Environmental Research Letters*, 12, 014 012, <https://doi.org/10.1088/1748-9326/aa5528>, <https://doi.org/10.1088/1748-9326/aa5528>, publisher: IOP Publishing, 2017.
- Lempert, R. J.: Robust Decision Making (RDM), in: *Decision Making under Deep Uncertainty: From Theory to Practice*, edited by Marchau, V. A. W. J., Walker, W. E., Bloemen, P. J. T. M., and Popper, S. W., pp. 23–51, Springer International Publishing, Cham, [https://doi.org/10.1007/978-3-030-05252-2\\_2](https://doi.org/10.1007/978-3-030-05252-2_2), 2019.
- Lempert, R. J., Groves, D. G., Popper, S. W., and Bankes, S. C.: A general, analytic method for generating robust strategies and narrative scenarios, *Management Science*, 52, 514–528, <https://doi.org/10.1287/mnsc.1050.0472>, 2006.
- Liu, Y., Fan, Z.-P., and Zhang, Y.: Risk decision analysis in emergency response: A method based on cumulative prospect theory, *Computers & Operations Research*, 42, 75–82, <https://doi.org/10.1016/j.cor.2012.08.008>, <http://www.sciencedirect.com/science/article/pii/S0305054812001736>, 2014.
- Loucks, D. P. and van Beek, E.: *Water Resource Systems Planning and Management: An Introduction to Methods, Models, and Applications*, Springer, google-Books-ID: stlCDwAAQBAJ, 2017.
- Maier, H., Guillaume, J., van Delden, H., Riddell, G., Haasnoot, M., and Kwakkel, J.: An uncertain future, deep uncertainty, scenarios, robustness and adaptation: How do they fit together?, *Environmental Modelling & Software*, 81, 154–164, <https://doi.org/10.1016/j.envsoft.2016.03.014>, 2016.
- Marchau, V. A. W. J., Walker, W. E., Bloemen, P. J. T. M., and Popper, S. W., eds.: *Decision Making under Deep Uncertainty: from theory to practice*, Springer International Publishing, <https://doi.org/10.1007/978-3-030-05252-2>, 2019.
- Marcos-Garcia, P., Brown, C., and Pulido-Velazquez, M.: Development of Climate Impact Response Functions for highly regulated water resource systems, *Journal of Hydrology*, 590, 125 251, <https://doi.org/10.1016/j.jhydrol.2020.125251>, 2020.
- Masaki, Y., Hanasaki, N., Takahashi, K., and Hijioka, Y.: Global-scale analysis on future changes in flow regimes using Gini and Lorenz asymmetry coefficients, *Water Resources Research*, 50, 4054–4078, <https://doi.org/10.1002/2013WR014266>, 2014.
- Mastrandrea, M. D., Heller, N. E., Root, T. L., and Schneider, S. H.: Bridging the gap: linking climate-impacts research with adaptation planning and management, *Climatic Change*, 100, 87–101, <https://doi.org/10.1007/s10584-010-9827-4>, 2010.
- MELCC (Ministère de l’Environnement et de la Lutte contre les Changements Climatiques): *Données du Programme de surveillance du climat*, Direction générale du suivi de l’état de l’environnement, Québec., 2018.
- Milly, P. C. D., Betancourt, J., Falkenmark, M., Hirsch, R. M., Kundzewicz, Z. W., Lettenmaier, D. P., and Stouffer, R. J.: Stationarity is dead: whither water management?, *Science*, 319, 573–574, <https://doi.org/10.1126/science.1151915>, 2008.
- Moody, P. and Brown, C.: Robustness indicators for evaluation under climate change: Application to the upper Great Lakes, *Water Resources Research*, 49, 3576–3588, <https://doi.org/10.1002/wrcr.20228>, 2013.
- Mpelasoka, F. S. and Chiew, F. H. S.: Influence of rainfall scenario construction methods on runoff projections, *Journal of Hydrometeorology*, 10, 1168–1183, <https://doi.org/10.1175/2009JHM1045.1>, 2009.

- Namdari, M., Taheri, S. M., Abadi, A., Rezaei, M., and Kalantari, N.: Possibilistic logistic regression for fuzzy categorical response data, in: 2013 IEEE International Conference on Fuzzy Systems (FUZZ-IEEE), pp. 1–6, <https://doi.org/10.1109/FUZZ-IEEE.2013.6622457>, 2013.
- 605
- Nazemi, A., Wheeler, H. S., Chun, K. P., and Elshorbagy, A.: A stochastic reconstruction framework for analysis of water resource system vulnerability to climate-induced changes in river flow regime, *Water Resources Research*, 49, 291–305, <https://doi.org/10.1029/2012WR012755>, 2013.
- Nazemi, A., Masoud, Z., and Elmira, H.: Uncertainty in bottom-up vulnerability assessments of water supply systems due to regional streamflow generation under changing conditions, *Journal of Water Resources Planning and Management*, 146, [https://doi.org/10.1061/\(ASCE\)WR.1943-5452.0001149](https://doi.org/10.1061/(ASCE)WR.1943-5452.0001149), 2020.
- 610
- Nowak, K., Prairie, J., Rajagopalan, B., and Lall, U.: A nonparametric stochastic approach for multisite disaggregation of annual to daily streamflow, *Water Resources Research*, 46, <https://doi.org/10.1029/2009WR008530>, 2010.
- Pirttioja, N., Palosuo, T., Fronzek, S., Räisänen, J., Rötter, R. P., and Carter, T. R.: Using impact response surfaces to analyse the likelihood of impacts on crop yield under probabilistic climate change, *Agricultural and Forest Meteorology*, 264, 213–224, <https://doi.org/10.1016/j.agrformet.2018.10.006>, 2019.
- 615
- Poff, N. L., Brown, C. M., Grantham, T. E., Matthews, J. H., Palmer, M. A., Spence, C. M., Wilby, R. L., Haasnoot, M., Mendoza, G. F., Dominique, K. C., and Baeza-Castro, A.: Sustainable water management under future uncertainty with eco-engineering decision scaling, *Nature Climate Change*, 6, 25–34, <https://doi.org/10.1038/nclimate2765>, 2016.
- 620
- Pourahmad, S., Ayatollahi, S. M. T., Taheri, S. M., and Agahi, Z. H.: Fuzzy logistic regression based on the least squares approach with application in clinical studies, *Computers & Mathematics with Applications*, 62, 3353–3365, <https://doi.org/10.1016/j.camwa.2011.08.050>, 2011.
- Prudhomme, C., Wilby, R., Crooks, S., Kay, A., and Reynard, N.: Scenario-neutral approach to climate change impact studies: Application to flood risk, *Journal of Hydrology*, 390, 198–209, <https://doi.org/10.1016/j.jhydrol.2010.06.043>, 2010.
- 625
- Qiu, Q., Liu, J., Li, C., Yu, X., and Wang, Y.: The use of an integrated variable fuzzy sets in water resources management, *Proceedings of the International Association of Hydrological Sciences*, 379, 249–253, <https://doi.org/10.5194/piahs-379-249-2018>, 2018.
- Quinn, J., Giuliani, M., and Herman, J.: [julianneq/Kirsch-Nowak\\_Streamflow\\_Generator](https://github.com/julianneq/Kirsch-Nowak_Streamflow_Generator), [https://github.com/julianneq/Kirsch-Nowak\\_Streamflow\\_Generator](https://github.com/julianneq/Kirsch-Nowak_Streamflow_Generator), 2017a.
- Quinn, J. D., Reed, P. M., Giuliani, M., and Castelletti, A.: Rival framings: A framework for discovering how problem formulation uncertainties shape risk management trade-offs in water resources systems, *Water Resources Research*, 53, 7208–7233, <https://doi.org/10.1002/2017WR020524>, 2017b.
- 630
- Quinn, J. D., Reed, P. M., Giuliani, M., Castelletti, A., Oyler, J. W., and Nicholas, R. E.: Exploring How Changing Monsoonal Dynamics and Human Pressures Challenge Multireservoir Management for Flood Protection, Hydropower Production, and Agricultural Water Supply, *Water Resources Research*, 54, 4638–4662, <https://doi.org/10.1029/2018WR022743>, 2018.
- 635
- Ray, P., Wi, S., Schwarz, A., Correa, M., He, M., and Brown, C.: Vulnerability and risk: climate change and water supply from California’s Central Valley water system, *Climatic Change*, <https://doi.org/10.1007/s10584-020-02655-z>, 2020.
- Sadollah, A.: Introductory Chapter: Which Membership Function is Appropriate in Fuzzy System?, *Fuzzy Logic Based in Optimization Methods and Control Systems and Its Applications*, <https://doi.org/10.5772/intechopen.79552>, 2018.
- Simon, H. A.: A behavioral model of rational choice, *The Quarterly Journal of Economics*, 69, 99–118, <https://doi.org/10.2307/1884852>, 1955.
- 640

- Steinschneider, S., Wi, S., and Brown, C.: The integrated effects of climate and hydrologic uncertainty on future flood risk assessments, *Hydrological Processes*, 29, 2823–2839, <https://doi.org/10.1002/hyp.10409>, 2015.
- Taner, M. U., Ray, P., and Brown, C.: Incorporating multidimensional probabilistic information into robustness-based water systems planning, *Water Resources Research*, <https://doi.org/10.1029/2018WR022909>, 2019.
- 645 Tilmant, A., Vanclooster, M., Duckstein, L., and Persoons, E.: Comparison of Fuzzy and Nonfuzzy Optimal Reservoir Operating Policies, *Journal of Water Resources Planning and Management*, 128, 390–398, [https://doi.org/10.1061/\(ASCE\)0733-9496\(2002\)128:6\(390\)](https://doi.org/10.1061/(ASCE)0733-9496(2002)128:6(390)), 2002.
- Turner, S. W. D., Marlow, D., Ekström, M., Rhodes, B. G., Kularathna, U., and Jeffrey, P. J.: Linking climate projections to performance: A yield-based decision scaling assessment of a large urban water resources system, *Water Resources Research*, 50, 3553–3567, <https://doi.org/10.1002/2013WR015156>, 2014.
- 650 Von Neumann, J. and Morgenstern, O.: *Theory of games and economic behavior*, Theory of games and economic behavior, Princeton University Press, Princeton, NJ, US, 1944.
- Vormoor, K., Rössler, O., Bürger, G., Bronstert, A., and Weingartner, R.: When timing matters—considering changing temporal structures in runoff response surfaces, *Climatic Change*, 142, 213–226, <https://doi.org/10.1007/s10584-017-1940-1>, 2017.
- Wang, W., Zhou, H., and Guo, L.: Emergency water supply decision-making of transboundary river basin considering government– public perceived satisfaction, *Journal of Intelligent & Fuzzy Systems*, Preprint, 1–21, <https://doi.org/10.3233/JIFS-191828>, publisher: IOS Press, 2020.
- 655 Weaver, C. P., Lempert, R. J., Brown, C., Hall, J. A., Revell, D., and Sarewitz, D.: Improving the contribution of climate model information to decision making: the value and demands of robust decision frameworks, *Wiley Interdisciplinary Reviews: Climate Change*, 4, 39–60, <https://doi.org/10.1002/wcc.202>, 2013.
- 660 Whateley, S. and Brown, C.: Assessing the relative effects of emissions, climate means, and variability on large water supply systems, *Geophysical Research Letters*, 43, 11,329–11,338, <https://doi.org/10.1002/2016GL070241>, 2016.
- Whateley, S., Steinschneider, S., and Brown, C.: A climate change range-based method for estimating robustness for water resources supply, *Water Resources Research*, 50, 8944–8961, <https://doi.org/10.1002/2014WR015956>, 2014.
- Yu, C.-S.: A GP-AHP method for solving group decision-making fuzzy AHP problems, *Computers & Operations Research*, 29, 1969–2001, [https://doi.org/10.1016/S0305-0548\(01\)00068-5](https://doi.org/10.1016/S0305-0548(01)00068-5), 2002.
- 665 Zadeh, L. A.: Fuzzy Sets, *Information and Control*, pp. 8, 338–353, 1965.
- Zadeh, L. A.: Fuzzy sets as a basis for a theory of possibility, *Fuzzy Sets and Systems*, 1, 3–28, [https://doi.org/10.1016/0165-0114\(78\)90029-5](https://doi.org/10.1016/0165-0114(78)90029-5), 1978.
- Zadeh, L. A.: Fuzzy probabilities, *Information Processing & Management*, 20, 363–372, [https://doi.org/10.1016/0306-4573\(84\)90067-0](https://doi.org/10.1016/0306-4573(84)90067-0), 670 1984.
- Zimmermann, H.-J.: Fuzzy Logic and Approximate Reasoning, in: *Fuzzy Set Theory—and Its Applications*, edited by Zimmermann, H.-J., pp. 141–183, Springer Netherlands, Dordrecht, [https://doi.org/10.1007/978-94-010-0646-0\\_9](https://doi.org/10.1007/978-94-010-0646-0_9), 2001.

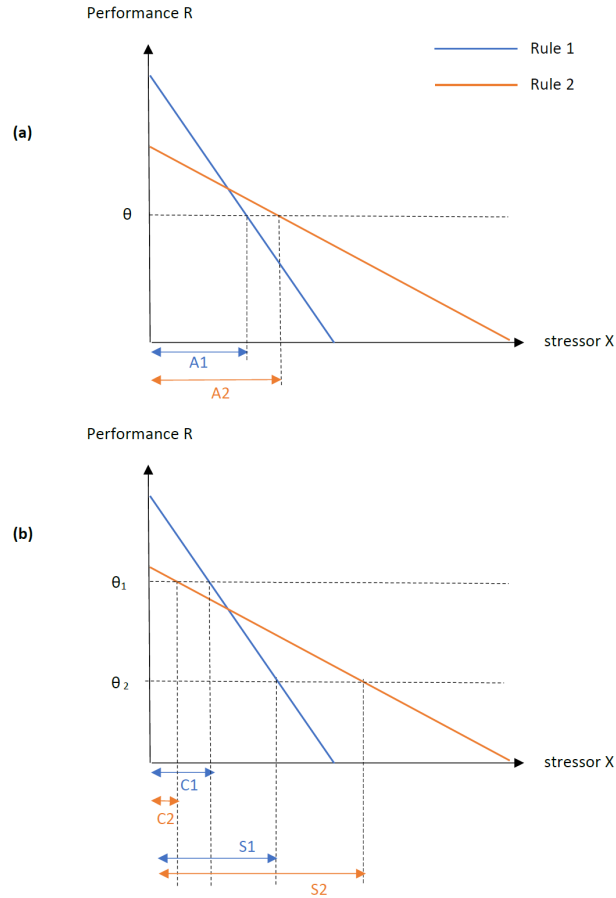


**Figure 1.** Concept of the response surface as a stress-test with descriptive variables  $(x_1, x_2)$ . Acceptable and unacceptable regions are defined by a threshold  $\theta$  over performance  $R$ .

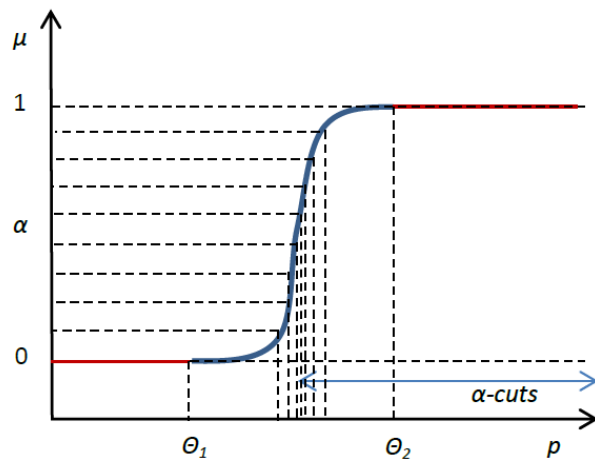


**Figure 2.** Concept for a fuzzy set of acceptable outcomes  $A_\mu$  over performance  $R$ .

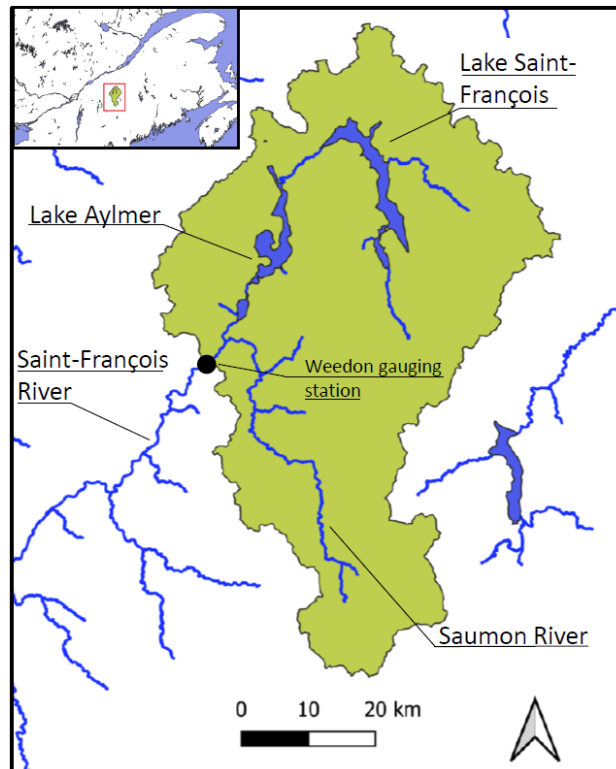




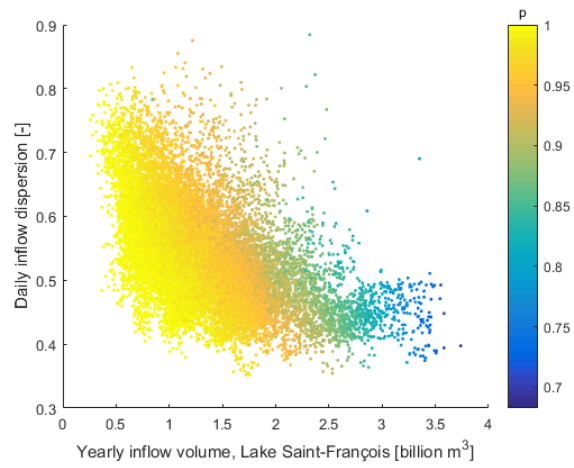
**Figure 3.** The case of different performance slopes, as function of a single stressor  $X$ . (a) With a crisp threshold  $\theta$ , rule 2 has a larger acceptable region  $A_2$ . (b) With a fuzzy threshold  $(\theta_1, \theta_2)$ , the fuzzy set of acceptable outcomes over performance  $R$  has a core ( $R \geq \theta_1$ , where acceptability  $\mu = 1$ ) and a support ( $R \geq \theta_2$ , where  $\mu \geq 0$ ), to which respective regions  $C$  and  $S$  are associated. Rule 2 has a larger “at least partial” acceptability domain  $S_2$ , but a smaller “full” acceptability domain  $C_2$ , than Rule 1.



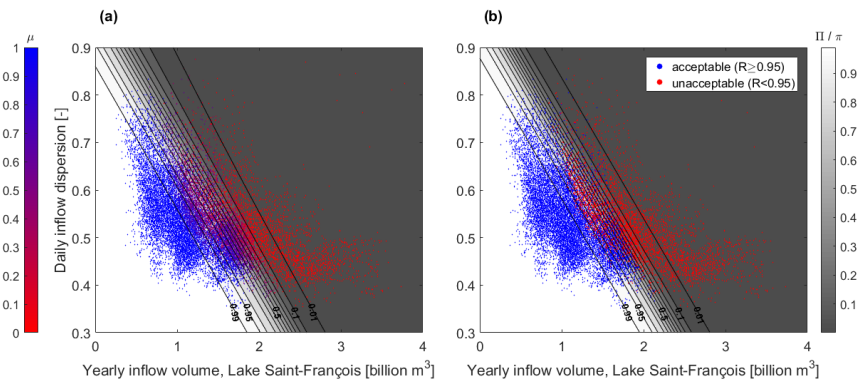
**Figure 4.** Concept for  $\alpha$ -cut sampling, sigmoid function



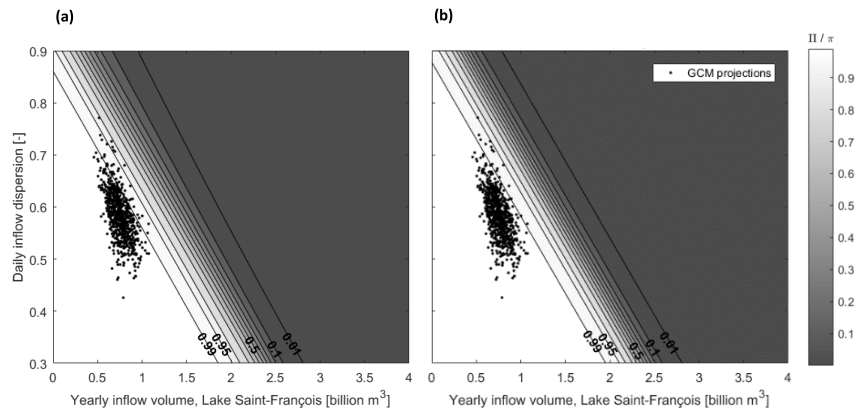
**Figure 5.** Layout of the Upper Saint-François River Basin, Québec, Canada (Credit: Ministère de l'Environnement et de la Lutte contre les changements climatiques).



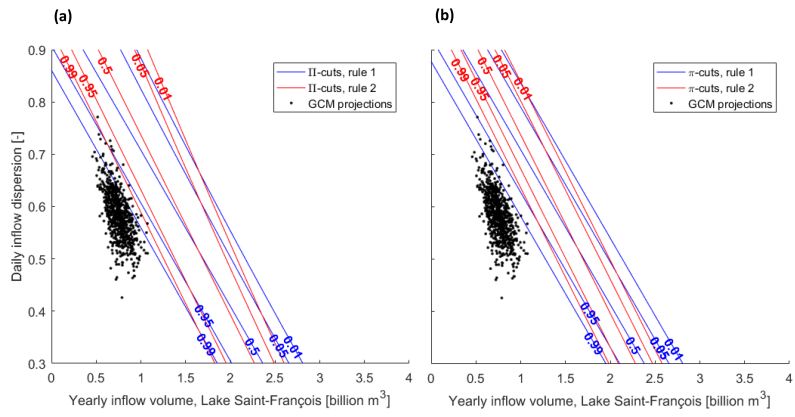
**Figure 6.** Response surface (rule 1). Performance  $R$  : flood control reliability



**Figure 7.** Acceptability of sampled outcomes and logistic regressions (a) Fuzzy outcomes and possibility of acceptable performance  $\Pi$  (b) Binary outcomes and probability of acceptable performance  $\pi$



**Figure 8.** Logistic regressions and GCM projections (a) for fuzzy outcomes (b) for binary outcomes



**Figure 9.** Compared logistic regressions, rules 1 and 2, and GCM projections. (a) for fuzzy outcomes (b) for binary outcomes