

# Rainfall-induced shallow landslides and soil wetness: comparison of ~~physically-based~~ physically based and probabilistic predictions

Elena Leonarduzzi<sup>1,2</sup>, Brian W. McArdell<sup>2</sup>, and Peter Molnar<sup>1</sup>

<sup>1</sup>Institute of Environmental Engineering, ETH Zurich, Zurich, Switzerland

<sup>2</sup>Swiss Federal Institute for Forest, Snow and Landscape Research WSL, Birmensdorf, Switzerland

**Correspondence:** Elena Leonarduzzi (leonarduzzi@ifu.baug.ethz.ch)

**Abstract.** Landslides are an impacting natural hazard in alpine regions, calling for effective forecasting and warning systems. Here we compare two methods (~~physically-based~~ physically based and probabilistic) for the prediction of shallow rainfall-induced landslides in an application to Switzerland, with a specific focus on the value of antecedent soil wetness. First, we show that landslide susceptibility predicted by the factor of safety in the infinite slope model is strongly dependent on soil data inputs, limiting the hydrologically active range where landslides can occur to only ~20% of the ~~area-country~~ with typical soil parameters and soil depth models ~~and not accounting for uncertainty~~. Second, ~~we find the soil saturation estimate provided by a conceptual hydrological model (PREVAH) to be more informative for landslide prediction than that estimated by the physically based coarse resolution model (TerrSysMP), mostly due to the physically-based approach with a coarse resolution model setup (TerrSysMP) 12.5km×12.5km downscaled to 25m×25m with the Topographic Wetness Index to provide water table simulations for the infinite slope stability model did not succeed in predicting local scale landsliding satisfactorily, despite spatial downscaling. We argue that this is due to inadequacies of the infinite slope model, soil parameter uncertainty, and the coarse resolution of the hydrological model. Third, soil saturation estimates provided by a higher resolution 500m×500m conceptual hydrological model (PREVAH) provided added value to rainfall threshold curves for landslide prediction in the probabilistic approach, with potential to reduce false alarms and misses. We conclude that although combined physically-based hydrological-geotechnical modelling is the desired goal, we still need to overcome problems of model resolution, parameter constraints, and landslide validation for successful prediction at regional scales~~ lack of temporal variability and coarse spatial resolution in the latter. Nevertheless, combining the hydrological estimate in TerrSysMP with the infinite slope approach improves the separation between triggering and non-triggering rainfall events. Third, we demonstrate the added value of antecedent soil saturation in combination with rainfall thresholds. We propose a sequential threshold approach, where events are first split into dry and wet antecedent conditions by a N-day antecedent soil saturation threshold, and then two different total rainfall-duration threshold curves are estimated. This, among all different approaches explored, is found to be the most successful for landslides prediction.

## 1 Introduction

Landslides are a natural hazard affecting alpine regions worldwide. They damage infrastructure, buildings, sometimes leading to loss of life (e.g., Kjekstad and Highland, 2009; Salvati et al., 2010; Petley, 2012; Trezzini et al., 2013; Mirus et al., 2020). Shallow landslides occur when and where the applied shear on the soil-bedrock interface exceeds the shear strength of the soil on a slope. Their occurrence is determined by two key factors: predisposing factors, which are a collection of soil and land surface properties of a certain location which make it susceptible ~~or not~~ (or not) to landsliding (e.g., Reichenbach et al., 2018); and triggering factors, which are those that initiate slope failure on susceptible slopes. In general, most landslides are either triggered by earthquakes or rainfall (Iverson, 2000; Highland et al., 2008; Leonarduzzi et al., 2017; Mare et al., 2019, e.g.) (e.g., Iverson, 2000). Here we focus on shallow rainfall-induced landslides, which involve the top layer of the soil, typically less than 2m thick, and fail instantaneously. In such landslides, failure is typically the result of the development of positive pore water pressure in the soil, which decreases its strength (e.g., Anderson and Sitar, 1995; Highland et al., 2008). This condition is often associated with intense or long lasting rainfall events that saturate the soil by vertical infiltration and lateral subsurface drainage. The wetness of the soil prior to the triggering rainfall is therefore also important (Bogaard and Greco, 2018).

Several approaches exist for the prediction of landslides that focus on one or more predisposing and triggering factors, typically classified into 3 types: susceptibility mapping, probabilistic approaches, and ~~physically-based~~ physically based modelling (e.g., Aleotti and Chowdhury, 1999).

Susceptibility mapping assesses the susceptibility of a certain area to landsliding based on predisposing factors. In statistical susceptibility mapping, the different predisposing factors, geological, topographical, and climatological properties, are combined with landslide inventories and used as explanatory variables in a statistical model (e.g., Reichenbach et al., 2018). Landslide hazard maps are then generated by various forms of linear and nonlinear multivariate regression models (e.g., Chung et al., 1995), logistic regression (e.g., Ohlmacher and Davis, 2003; Ayalew and Yamagishi, 2005; Lee and Pradhan, 2007; Yilmaz, 2009; von Ruette et al., 2011), or machine learning algorithms (e.g., Saito et al., 2009; Ermini et al., 2005; Yilmaz, 2009). Susceptibility mapping can also be achieved by applying a ~~physically-based~~ physically based geotechnical model which identifies the likelihood of failure in a region based on an assessment of likely soil water distribution in space (e.g., Baum et al., 2002, 2008; Dietrich and Montgomery, 1998; Formetta et al., 2016).

Probabilistic approaches focus mainly on the temporal component of the landslide hazard (triggering factors), rather than the spatial susceptibility (predisposing factors). They are based on the assumption that rainfall is the main triggering factor, and take advantage of historical records of rainfall and landslides. These databases are combined to learn which meteorological conditions have been associated with the triggering of landslides in the past. This allows then to recognise critical conditions in weather forecasts of the coming days and estimate how likely the occurrence of landsliding is. The most common of these approaches is that of rainfall thresholds, and in particular intensity-duration or total rainfall-duration threshold curves (e.g., Guzzetti et al., 2007; Leonarduzzi et al., 2017; Segoni et al., 2018). While rainfall is ~~mostly~~ the main triggering factor, soil wetness conditions prior to triggering rainfall can also be included in this framework (e.g., Bogaard and Greco, 2018; Marino et al., 2020). The antecedent soil wetness conditions can be derived in many different ways, each with its advantages and

limitations, for example from in-situ measurements (depend on network density, e.g., Wicki et al., 2020), remote sensing of soil moisture (suffer from low resolution and insufficient penetrating depth, e.g., Brocca et al., 2012; Thomas et al., 2019), through proxies of soil wetness like antecedent rainfall (miss evapotranspiration and snowmelt, e.g., Glade et al., 2000; Godt et al., 2006; Mathew et al., 2014), or by hydrological soil water balance modelling (e.g., Ponziani et al., 2012; Thomas et al., 2018).

Finally, ~~physically-based~~ physically based modelling approaches are usually made up of two components to directly simulate slope stability in time and space: an hydrological and a geotechnical model. The hydrological model is used to estimate the condition of the soil, i.e. the pore water pressure and/or saturation, which are then used in the geotechnical model for the estimation of slope stability (e.g., by the infinite slope or other hydromechanical slope failure model). These approaches are theoretically the most accurate and predict both when and where a landslide could occur, but are ~~typically-very~~ computationally expensive and data demanding. For these reasons, they are typically applied on individual slopes in ~~landslides-prone~~ landslide-prone areas or small catchments only (Cohen et al., 2009; von Ruetten et al., 2013; Anagnostopoulos et al., 2015; Fan et al., 2015, 2016).

In this work, we conduct a comparison of a probabilistic and ~~physically-based~~ physically based modelling approach to landslide prediction with the specific question of the value of the inclusion of antecedent soil wetness state in the prediction. Our scale of analysis is regional (Switzerland) instead of hillslope/catchment scale, because it is at this scale that landslide early warning systems need to be developed (e.g., Staehli et al., 2015). First we explore the regional susceptibility to landslides following the infinite slope approach (~~physically-based~~ physically based susceptibility mapping). This allows us to understand where hydrology can play a role in the landscape in triggering landslides, i.e. identifying areas where the transient soil wetness results in the Factor of Safety (FoS) fluctuating above 1 (stable) and below 1 (unstable). We then explore two approaches to account for the soil wetness state for landslide prediction, taking advantage of the hydrological estimates of soil moisture provided by two different models set-up for forecasting purposes and covering Switzerland.

(1) A fully ~~physically-based~~ physically based approach that takes advantage of a state-of-the-art European simulation of hydrology (Furusho-Percot et al., 2019) with three ~~physically-based~~ physically based coupled models (climate forecast model, land surface model, hydrological model) at a coarse resolution (12.5km×12.5km), from which we extract ~~water table depth at daily resolutions. We downscale these simulations to a higher spatial resolution more appropriate for landslide forecasting following the Topographic Wetness Index method (e.g., Blöschl et al., 2009; Beven, 1995). The high resolution groundwater pore water pressure. The pressure~~ field is then used as a dynamic component in the Factor of Safety estimation in the infinite slope approach. This framework is designed based on similar existing blueprints for landslide warning systems (Schmidt et al., 2008; Wang et al., 2020).

(2) A probabilistic approach in which we develop rainfall threshold curves for landslide prediction based on a combination of historical databases of rainfall and landslides for Switzerland (Leonarduzzi et al., 2017). We then combine these predictions with estimated soil saturation by a Swiss operational, semi-distributed conceptual hydrological model (PREVAH, Viviroli et al., 2009) to quantify ~~whether there is a strong~~ the strength of the signal in antecedent soil moisture which could be used in rainfall threshold curve methods for landslide prediction at this scale.

The comparison between the two approaches allows us to answer the following questions: 1) Is the infinite slope approach valuable for landslides hazard assessment at the regional scale? 2) Where does hydrology play a role in the triggering of landslides in Switzerland? 3) ~~Can we generate a computationally feasible physically-based setup for landslide forecasting and early warning at the regional scale~~ Which hydrological soil water estimate (PREVAH or TerrSysMP) is more informative for landslide prediction? 4) ~~Does soil wetness help improve prediction of landslides based on rainfall thresholds?~~ 5) ~~Which approach is preferable~~ How can we best take advantage of the saturation estimates in combination with rainfall characteristics for landslide prediction and why?

## 2 Methods and Data

### 100 2.1 ~~Physically-based~~ Physically based approach

#### 2.1.1 The infinite slope model

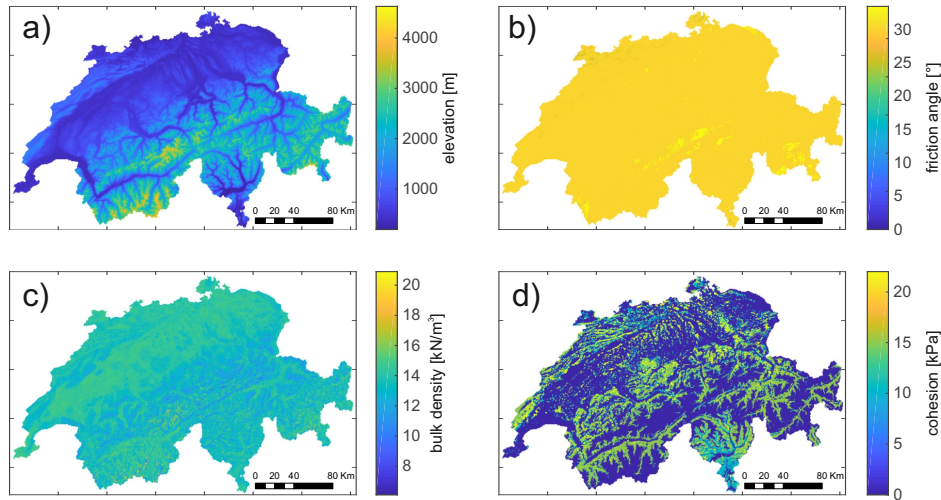
For the stability assessment, we choose to follow the infinite slope approach, because this is one of the most widely used models for slope failure prediction (e.g., Pack et al., 1998; Iverson, 2000; Baum et al., 2008; Lu and Godt, 2008). It is based on the assumption that the thickness of the sliding mass (soil) is much smaller than the length of the slope, which is typically true for shallow landslides (up to 2m deep). The Factor of Safety (FoS) is computed as the ratio between soil shear strength and applied stress to the soil layer:

$$FoS(t) = \frac{c + [\gamma d - \gamma_w h] \cos^2 \beta \tan \phi}{\gamma d \sin \beta \cos \beta} \quad (1)$$

where  $h$  is the water pressure head within the soil layer [m] (see Section 2.1.3)  $d$  the soil depth [m] (see Section 2.1.2),  $c$  is soil cohesion [Pa],  $\gamma$  is soil unit weight [N/m<sup>2</sup>] (computed from the bulk soil density  $\rho$  and gravitational acceleration  $g$  as  $\gamma = \rho * g$ ) ,  $\gamma_w$  is the specific weight of water [N/m<sup>2</sup>],  $\beta$  is the slope angle [rad], and  $\phi$  is the soil internal friction angle [rad]. Typically FoS=1 is assumed to be the threshold ~~failure value~~ of failure, with landsliding occurring when FoS<1, i.e. when the applied shear stress exceeds the soil shear strength.

All calculations are done at the resolution of the DEM, that is a grid of cell size 25m×25m in this paper. This resolution is a result of testing (not reported here), and a compromise between not violating the infinite slope assumptions (length scale of landslides >> their depth), keeping the grid size similar to that of a typical landslide detachment area, but also capturing local topographic gradients  $\beta$ , which are smoothed as resolution decreases.

To estimate the bulk soil density, cohesion, and friction angle we use publicly available datasets in OpenLandMap (OpenLandMap; Hengl et al., 2017), which provide global maps of a wide range of soil, land cover, hydrology, geology, climatic and relief characteristics. All the maps used here are available at a resolution of ca. 250m×250m. The soil properties are provided for 6 different depths up to 200 cm produced by machine learning algorithms trained on soil profiles globally (SoilGrids Dataset). For the estimation of the bulk soil density, we compute the thickness-weighted average for the 2m soil column. For



**Figure 1.** Maps of the distributed input used in the Factor of Safety calculations. a) The 25m digital elevation model (Swisstopo), b) friction angle obtained from the OpenLandMap USDA texture class and provided soil depth, c) bulk density obtained from OpenLandMap, and d) cohesion estimated for the land cover map from OpenLandMap. The friction angle depends on the local soil depth, here the soil depth estimated with the linear diffusion model is shown.

the friction angle, we first associate a value for each soil texture class (USDA system) present in Switzerland in the OpenLandMap dataset (Geotechdata.info, Angle of Friction). Then at each location, we choose the value of the friction angle at the depth corresponding to the local soil depth (e.g. if the soil is 120cm deep locally, the closest value in SoilGrids will be that at 1m depth). Finally for cohesion, we assume that the soil itself is cohesionless ( $c = 0$ ), but we add the important contribution of vegetation to cohesion on slopes. From the landcover map in OpenLandMap, we identify 8 classes of tree cover, and assign them a cohesion value between  $c = 5 - 22$  kPa. Denser tree covers and mixed forests are associated with larger values of cohesion (Schwarz et al., 2012; Dorren and Schwarz, 2016). To quantify the sensitivity of the FoS estimation to the vegetation-driven cohesion, we also simulate the reference case in which cohesion is assumed  $c = 0$  over the entire country (Figure 1). All maps are downscaled to  $25m \times 25m$  resolution by resampling with nearest neighbour.

To assess the susceptibility to landsliding in Switzerland, we compute the Factor of Safety of the two end-member scenarios: completely wet soil ( $h = d$ ) or completely dry soil ( $h = 0$ ), which give us the minimum and maximum FoS. This allows us to identify unconditionally stable and unstable areas in our domain just based on hydrology and soil and topographic characteristics. Unconditionally stable areas have the minimum FoS  $> 1$  for a completely wet soil and will never fail regardless of the actual hydrological state. Unconditionally unstable areas have the maximum FoS  $< 1$  for a completely dry soil and will (should) always fail according to Eq. 1. In all other areas, hydrology can play a role in the initiation of landslides according to the FoS methodology.

We then compute the dynamic Factor of Safety in time and its statistics for all cells ( $25m \times 25m$ ) in which at least one landslide was recorded according to the landslide database (for details on the database see Section 2.2), using the water pressure

140 head  $h$  estimated from the hydrological model described in Section 2.1.3. Additionally, we also compute the ~~average FoS~~  
departure of the minimum FoS from the local temporal mean (i.e. mean of the 25m cell) during each triggering and non-  
 triggering rainfall event which are defined in Section 2.2. These analyses allow us to observe variations in FoS at cell level  
 and relate them to observed landslide occurrence. If these relations are found to be strong, we ~~hypothesize~~hypothesise that a  
 warning system could be ~~set-up~~based on the estimated FoS, combined with forecasted rainfall. Otherwise, its use for landslide  
 145 warning is questionable.

## 2.1.2 Soil depth

Because soil depth is the most poorly known variable and uncertain parameter in the slope stability model in Eq. 1, here we  
 use four different methods to estimate soil thickness distributions in space and test their impacts on FoS estimates: (1) Uniform  
 soil depth of 1 m for the entire country. (2) Slope-dependent model (Saulnier et al., 1997):

$$150 \quad d_i = d_{max} \left\{ 1 - \left[ \frac{\tan\beta_i - \tan\beta_{min}}{\tan\beta_{max} - \tan\beta_{min}} \left( 1 - \frac{d_{min}}{d_{max}} \right) \right] \right\} \quad (2)$$

where  $d_{max}$  is maximum soil depth,  $d_{min}$  the minimum soil depth (assumed to be 5cm),  $\beta_i$  is the local slope,  $\beta_{max}$  is the  
 maximum slope above which no soil layer can form (assumed to be 45°), and  $\beta_{min}$  the minimum slope (0°). (3) Elevation-  
 dependent model (Saulnier et al., 1997):

$$d_i = d_{max} - \frac{z_i - z_{min}}{z_{min} - z_{max}} (d_{max} - d_{min}) \quad (3)$$

155 where  $z_i$  is the local elevation,  $z_{max}$  is the maximum elevation, and  $z_{min}$  the minimum elevation. (4) Steady state soil depth  
 produced by the linear diffusion transport model (Roering, 2008) where we simulate the distributed soil depth after 15'000  
 years of soil development. This approach is based on mass conservation (Eq. 4), with soil production decreasing exponentially  
 with soil depth (Eq. 5) and soil erosion and transport assumed to be linearly dependent on slope (Eq. 6).

$$\frac{\partial d_i}{\partial t} = -\nabla \mathbf{q}_{s,i} + \frac{\rho_r}{\rho_s} \epsilon_i \quad (4)$$

$$160 \quad \epsilon_i = \frac{\epsilon_0}{\cos\beta_i} e^{-\mu d_i \cos\beta_i} \quad (5)$$

$$\mathbf{q}_{s,i} = -K_l \nabla z_i \quad (6)$$

where  $\frac{\partial d_i}{\partial t}$  is the change of soil depth in time,  $\mathbf{q}_{s,i}$  the soil (sediment) transport vector at location  $i$ ,  $\frac{\rho_r}{\rho_s}$  the ratio between the  
 bedrock and soil density (2 as in Dietrich et al., 1995),  $\epsilon_i$  the soil production rate at location  $i$ ,  $\epsilon_0$  the maximum soil production

rate associated with 0 depth (0.000268 m/year as in Heimsath et al., 2001),  $\beta$  the slope at location  $i$ ,  $\mu$  the critical value depth (3  
 165 1/m as in Roering, 2008),  $K_i$  the coefficient of linear proportionality (0.0050 as in Dietrich et al., 1995), and  $\nabla z_i$  the gradient  
 of elevation at location  $i$ .

For the soil depth models (2)-(4) ~~to be consistent,~~ we fix the maximum soil depth  $d_{max} = 2\text{m}$ . to be consistent. In fact,  
for example no deeper soil depths are reported in the Swiss soil suitability map for agriculture (Bod).

### 2.1.3 Hydrology

170 The water pressure head within the soil layer required for the calculation of the Factor of Safety ( $h$  in Eq. 1), is provided by an  
 operational European forecasting system. This consists of the climatology from 1989 to current day, obtained by applying the  
 Terrestrial Systems Modeling Platform (TerrSysMP) (Kurtz et al., 2016). This platform is made up of three ~~physically-based~~  
physically based coupled models that solve the water and energy fluxes from the atmosphere to the groundwater: a weather pre-  
 175 diction model, a land surface process model, and a hydrological model for surface and subsurface 3D water fluxes. TerrSysMP  
 is produced at daily resolution over a  $12.5\text{km} \times 12.5\text{km}$  grid covering Europe. Several state and flux variables are available and  
 can be freely accessed, here we use the water ~~table depth from the surface ( $wtd$ , positive when the water table is above the~~  
~~surface).~~ pressure in the soil and soil saturation.

~~The coarse  $12.5\text{km} \times 12.5\text{ km}$  simulations of  $wtd$  by TerrSysMP have to be downscaled to the  $25\text{m} \times 25\text{m}$  grid of the~~  
~~geotechnical model so that the high resolution topography which affects the lateral redistribution of soil water (groundwater) is~~  
 180 ~~accounted for. We do this using the Topographic Wetness Index (TWI) approach, following the blueprints of previous studies~~  
~~(Schmidt et al., 2008; Wang et al., 2020). This approach assumes that the local departure of the water table to the coarser scale~~  
~~average is proportional to the departure of the local TWI from the spatial average (Eq. ?? and Eq. ??):~~

$$\underline{wtd_i(t) = \overline{wtd}_j(t) + \frac{1}{f} (TWI_i - \overline{TWI}_j)}$$

$$\underline{TWI_i = \ln \left( \frac{a_i}{\tan \beta_i} \right)}$$

185 ~~where the index  $i$  refers to the local  $25\text{m} \times 25\text{m}$  cell considered, and  $j$  to the  $12.5\text{km} \times 12.5\text{km}$  cell from TerrSysMP in which~~  
~~cell  $i$  is embedded,  $wtd_i(t)$  is the  $TWI$ -redistributed local water table depth at time  $t$ ,  $\overline{wtd}_j(t)$  is the coarser scale water table~~  
~~depth estimated by TerrSysMP in  $j$  at time  $t$ ,  $f$  is a scaling parameter (here assumed to be 1),  $TWI_i$  is the local topographic~~  
~~wetness index,  $\overline{TWI}_j$  the average TWI of all  $25\text{m} \times 25\text{m}$  cells embedded in the TerrSysMP  $j$  cell,  $a_i$  is the drainage area~~  
~~upstream of cell  $i$ , and  $\beta_i$  is the local slope angle rad.~~

190 ~~From the downscaled water table depth,~~ we compute the water-saturated layer in the soil, i.e. the We extract from the  
historical simulations the water pressure at the depth obtained by the soil depth model chosen and correct for the elevation  
difference between the centre of the corresponding TerrSysMP vertical layer and the estimated local depth and use it as the  
 water pressure head term in Eq. 1  ~~$h = d + wtd$ , with  $d$  computed with the soil thickness models presented in Section 2.1.2.~~

Whenever the disaggregated water table is above the soil surface ( $h > d$ ), then we assume the soil to be completely wet ( $h = d$ ),  
195 whenever it is below the local estimate of soil depth ( $h < 0$ ), we assume the soil to be completely dry ( $h = 0$ ). In addition  
to pressure, we also consider the average saturation of the top two layers (total depth of 60cm from the surface), in order to  
facilitate comparisons with the saturation obtained by the conceptual hydrological model PREVAH.

## 2.2 Probabilistic approach

### 2.2.1 Rainfall threshold curves

200 We combine landslide inventory data in Switzerland and a daily gridded dataset of rainfall to develop rainfall threshold curves  
following the method of Leonarduzzi et al. (2017). The historical landslides were collected in the Swiss flood and landslide  
damage database (Swiss Federal Research Institute WSL, Hilker et al., 2009). This database contains floods, landslides, and  
rockfall events which produced damages in Switzerland since 1972. We select the landslide events that ~~had~~ have a known  
location and date, and were not associated with snowmelt, for a total of 1807 events between 1981 and 2016 (timeframe of the  
205 analysis). The rainfall record is obtained as the interpolation of a network of ca. 430-460 raingauges, using the local climatology  
and regional precipitation-topography relationships (Shepard, 1984; Frei and Schär, 1998; Frei et al., 2006). It contains daily  
rainfall totals on a 1km×1km grid covering the entire country since 1961.

For the definition of rainfall events, we follow the procedure introduced in Leonarduzzi et al. (2017). First we select suscep-  
tible cells, that is rainfall cells (1km×1km grid cells) where at least one landslide was recorded. For those cells we separate  
210 the rainfall timeseries into events, where an event is defined as a series of consecutive rainy days with a minimum of 1 dry day  
in-between events. These events are then classified as observed triggering if a landslide was recorded during or immediately  
after them, and non-triggering otherwise. The properties of each event are total rainfall depth (E), event duration (D), event  
mean daily intensity, and event maximum daily intensity.

We then define a power-law total rainfall-duration (ED) threshold curve  $E = aD^b$  that ~~objectively~~ separates triggering and  
215 non-triggering rainfall events. To this end, we estimate the  $a$  and  $b$  parameters of the power law curve by maximising the True  
Skill Statistic (TSS=True Positive Ratio - False Positive Ratio), as in Leonarduzzi et al. (2017). This allows us to classify the  
rainfall events ~~into the following groups~~ by the calibrated ED threshold into the following groups (see also Leonarduzzi and  
Molnar, 2020): observed and correctly predicted triggering events above the ED curve (True Positives), observed triggering  
events which fall below the ED curve (Misses), observed non-triggering events which fall above the ED curve (False Alarms),  
220 and observed non-triggering events which fall below the ED curve (True Negatives).

### 2.2.2 Antecedent soil saturation

We use the values of soil saturation estimated by the Swiss operational hydrological model PREVAH (Viviroli et al., 2009) at  
a 500m×500m resolution to ~~check~~ explore the added value of antecedent soil saturation on the ED curve predictions. PRE-  
VAH is a conceptual model, where the soil is represented by three storage modules: soil moisture storage (SSM), upper zone  
225 (unsaturated) runoff storage (SUZ), and lower zone (saturated) runoff storage. We use the values of the first two (unsatu-



rated) layers and combine and transform them into a 0-1 soil saturation estimate. This is computed as:  $soilsaturation = (SSM + SUZ) / (SSM_{max} + SUZ_{max})$ , where  $SUZ_{max}$  is a distributed calibrated parameter, while  $SSM_{max}$  is the maximum value of SSM simulated over the entire timeframe (1981-2018) at each grid cell.

230 For each susceptible cell defined in Section 2.2.1, we extract the timeseries of the PREVAH soil saturation estimate at the corresponding cell ~~and compute (a) the probability of the saturation to be smaller or equal to the saturation on the landslide day(s), and (b) the average saturation~~, and compute the departure of the maximum saturation during triggering and non-triggering events. ~~This separation is used to analyse if soil saturation contains a predictive skill (signal) useful for landslide forecasting, i. e. if saturation is exceptionally high prior to landslide.~~ rainfall events from the local temporal mean and the N-day mean antecedent saturation (N=1,2,5,10,20,30,60 days).

235 ~~Finally, we~~ We test the information content of soil saturation for the ED curves, i.e. analyse whether information on soil saturation could reduce some of the misses and false alarms generated by the ED threshold curve estimated in Section 2.2.1. For each group of events (misses, false alarms, true positives and true negatives) and each rainfall event duration (1 to 6 days) we compute the mean soil saturation over 5-60 days prior to the beginning of the event. This allows us to examine if we fail to predict some triggering events (Misses) with the ED curve because saturation was very high, reducing the rainfall amount required for the initiation of a landslide, and likewise if some larger rainfall amounts were insufficient for the triggering (False Alarms) because the soil was very dry ~~before them.~~ We also split rainfall events according to a saturation threshold and define two different optimum ED curves for generally dry and wet conditions prior to rainfall. ~~Such curves~~

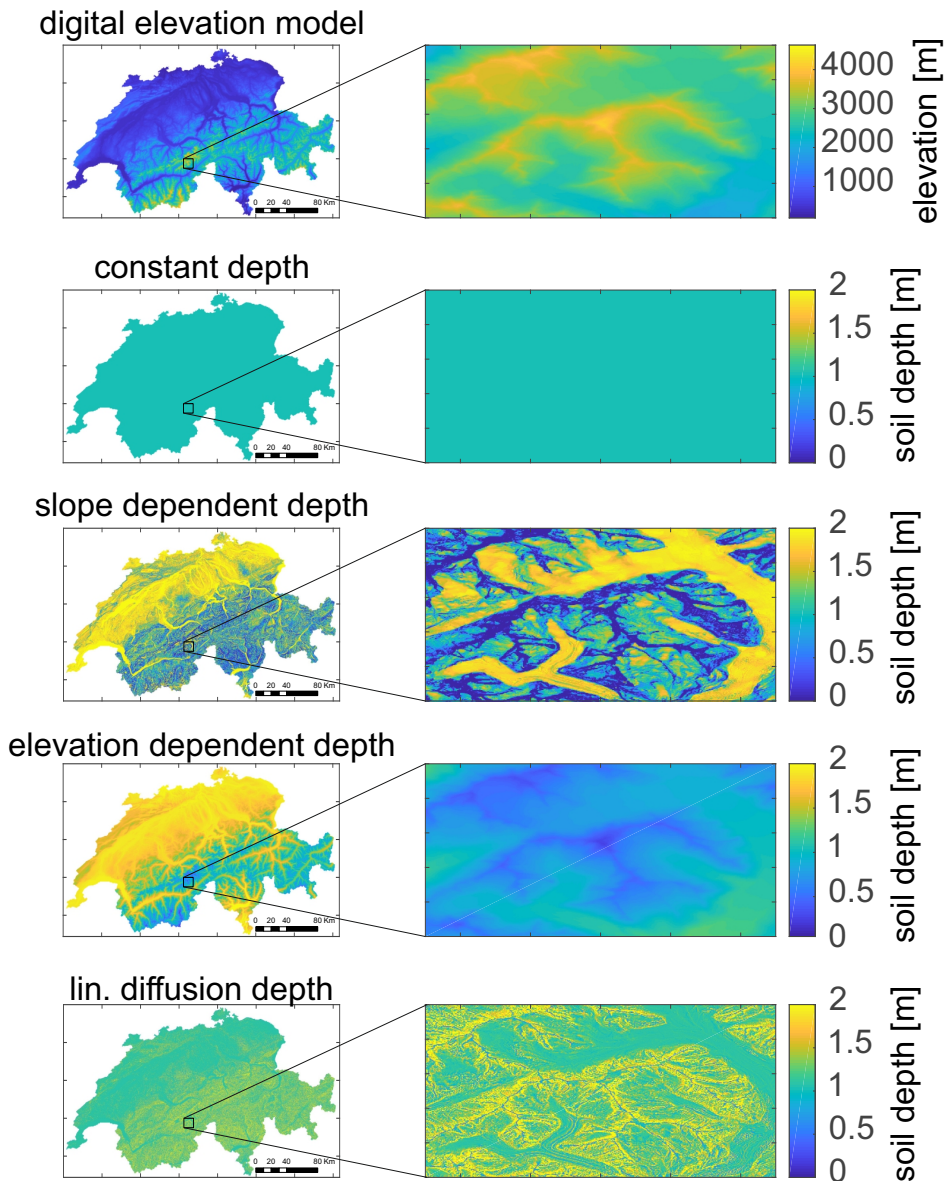
245 Finally we explore two different approaches to combine rainfall characteristics and antecedent saturation. On one hand, a hydro-meteorological threshold separating the antecedent N-days mean saturation (with N=1d, 5d, 10d, 20d, 30d, 60d) and rainfall characteristic (logarithm of either total rainfall, maximum or mean intensity) pairs for triggering and non-triggering events. On the other hand, a sequential threshold system where events are first split in high and low N-days antecedent saturation, and then two different ED thresholds are used accordingly, for wet and dry antecedent conditions. We optimise the saturation and ED thresholds by maximising the TSS, but we also consider different antecedent saturation periods (N=1d, 5d, 10d, 20d, 30d, 60d). Such thresholds could be used in a landslide warning context together with estimated current wetness and forecasted rainfall.

## 3 Results

### 3.1 ~~Physically-based~~ physically based approach

#### 3.1.1 Infinite slope model spatial patterns

255 Distributed inputs (Fig. 1) were used to compute the FoS across Switzerland as a function of the hydrological term  $h$  for the two end-member states  $h = 0$  and  $h = d$ . To do this, we first generated the distributed soil depth values following the four approaches introduced in Section 2.1.2 (Figure 2). These result in quite different spatial soil distributions, with the elevation-dependent soil depth mirroring the DEM, the slope-dependent soil depth showing low variability in depth in valleys and



**Figure 2.** From top to bottom: digital elevation model (DEM, Swisstopo 25m) and 4 soil depth distributions: constant ( $d=1\text{m}$ ), slope- and elevation-dependent, and  $d$  between 0 and 2m assuming the linear diffusion model at steady state. The maps on the right side show a zoom of to the same area to appreciate small scale variability.

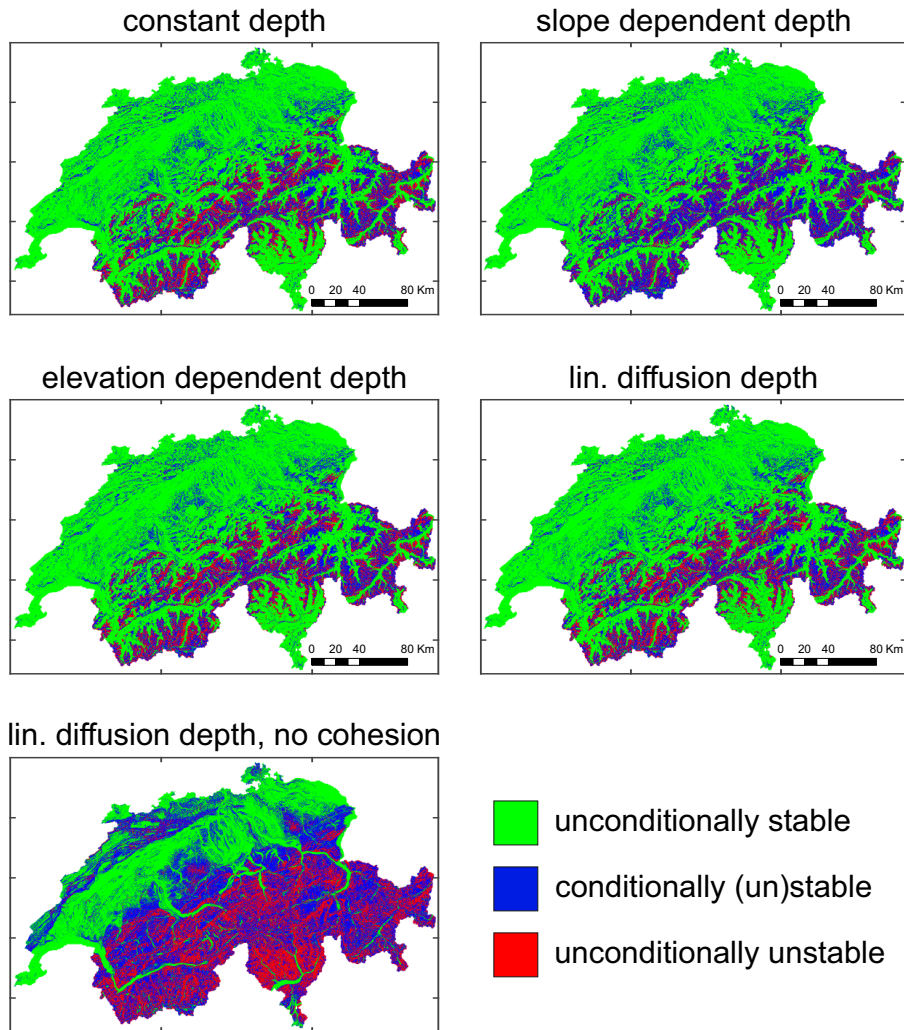
lowlands where slope is constant, and the linear diffusion model soil depth showing the highest spatial heterogeneity, with large differences in soil depth over short distances. This is due to the dependence on the second derivative of elevation (curvature), and results in low soil depth on mountain ridges, but sometimes larger values in convergent topography right next to them.

**Table 1.** Percentage of Unconditionally Stable (US), Conditionally (Un)Stable (CUS), and Unconditionally Unstable (UU) cells in Switzerland according to the FoS calculations for each soil depth model, and percentage of landslides in each condition from [the](#) landslide inventory. For the linear diffusion model the results are also shown when the cohesion is neglected ( $c = 0$ ).

soil depth model	US	CUS	UU	landslides		
				in US	in CUS	in UU
constant	66%	22%	12%	65%	30%	5%
slope dep.	66%	25%	10%	65%	30%	5%
elevation dep.	65%	22%	13%	64%	31%	5%
lin. diff.	65%	22%	13%	64%	31%	5%
lin. diff. (no cohesion)	35%	40%	25%	19%	61%	20%

We then compute the minimum (assuming soil completely wet,  $h = d$  in Eq. 1) and maximum (assuming soil completely dry,  $h = 0$  in Eq. 1) FoS for every  $25\text{m} \times 25\text{m}$  cell in Switzerland considering all four [soil](#) depth maps. We group the cells as unconditionally stable (when  $FoS_{min} > 1$ ) and unstable (when  $FoS_{max} < 1$ ), and conditionally (un)stable (all remaining cells) (Figure 3). The resulting limits of the FoS over the country seem not to be affected strongly by the soil depth model chosen. This is confirmed also when looking at the fraction of cells or landslides in each condition (Table 1). Nevertheless this is not to say that soil depth is not an important parameter for the initiation of landslides, as in Figure 3 and Table 1 we are not considering the interplay of soil depth and hydrology. Considering the two extreme scenarios (soil completely wet or completely dry), we are ignoring how likely these conditions are to occur, and the fact that a thicker soil will likely be more difficult to saturate. Therefore, while soil depth does not seem to impact the limiting conditions for completely wet and dry soil, it will very likely impact the landslide volume and the actual hydrological state and therefore FoS value.

Under the conditions studied here, only 22-25% of the area of Switzerland is conditionally unstable, i.e. area where hydrology matters for landslide occurrence according to the infinite slope model. The presence of so many landslides in unconditionally stable areas (65-66% of the total number of landslides), and the existence of some unconditionally unstable cells (10-13% of the country), are undesirable outcomes. While some inaccuracy in the location of the landslides (which might not refer to the detachment zone) could play a role, these results also suggest that either the infinite slope model is inadequate or the input parameters are inaccurate. In fact, the sensitivity of the FoS to cohesion makes the point (Figure 3 and Table 1) regarding parameter uncertainty. If we remove cohesion ( $c = 0$ ), a much larger portion of the country is now susceptible to landslides (unstable or potentially unstable), and the hydrologically active portion, conditionally (un)stable, is now 40% of the country, with more than 60% of the total landslides, and only 19% of the landslides remains in unconditionally unstable areas (3 and Table 1). This is a strong indication that the infinite slope model predictions are highly sensitive to input parameters. These aspects and potential limitations of the FoS will be further discussed in Section 4.

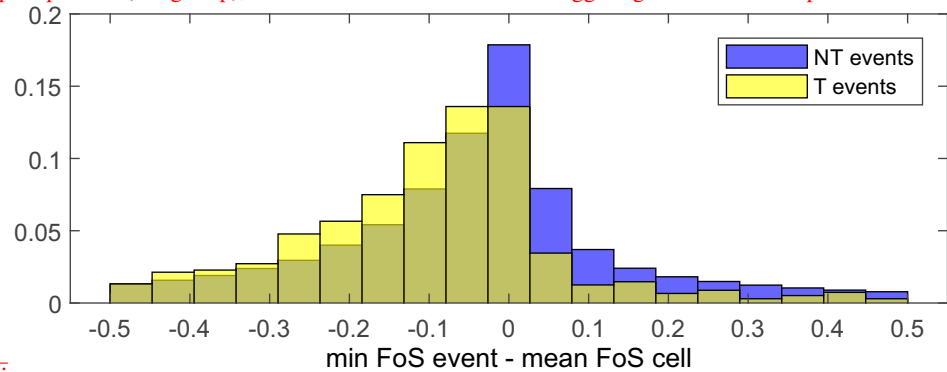


**Figure 3.** Maps of (un)conditionally (un)stable regions of Switzerland obtained from the two Factor of Safety limiting cases (soil completely wet or dry) and the different soil depth models. Panel in the bottom row is the reference case obtained with the linear diffusion model neglecting cohesion ( $c = 0$ ).

### 3.1.2 The effect of dynamic hydrology

To address the temporal dynamics of FoS in the susceptible areas ( $25\text{m} \times 25\text{m}$  cells where at least one landslide was recorded) and their connection to observed landslides, we extract the daily timeseries of simulated TerrSysMP ~~water-table-depth-soil~~  
 285 water pressure for all TerrSysMP cells within Switzerland for the period 1989-2018, and then compute the FoS in time for all  $25\text{m} \times 25\text{m}$  cells in which at least one landslide was recorded ~~by using the TWI downscaling at the local depth estimated by the~~  
linear diffusion soil depth model.

Scatter-plot of different combinations of triggering rainfall and Factor of Safety (FoS) for all landslides (each point corresponds to a landslide): the probability of the FoS in the cell being smaller than the value on the day of the landslide ( $\Pr(\text{FoS} \leq \text{FoS}_{\text{trig}})$ ), the standard deviation in time of the FoS in the cell (std FoS), the ratio between the triggering rainfall intensity (rainfall intensity on the day of the landslide) and the cell mean daily precipitation ( $R_{\text{trig}}/\text{mdp}$ ), and the difference between the triggering FoS and the temporal mean FoS of



the cell ( $\text{trigg FoS} - \text{mean FoS}$ );

**Figure 4.** Histograms of the departures of the minimum Factor of Safety from its grid-based long-term mean during triggering and non-triggering rainfall events, combining spatial (i.e. differences between landslide locations) and temporal (i.e. differences between events in the cells) variability.

The expectation is that landslides should occur when the  $\text{FoS} < 1$ . While the value of 1 is often chosen as a theoretical threshold based on the balance of forces in a soil, several studies actually calibrate either the threshold FoS value or the critical area over which  $\text{FoS} < 1$  in a region (e.g., Casadei et al., 2003). In this work we accept that the critical value  $\text{FoS} = 1$  of FoS can vary spatially depending on the soil parameters and the performance of the hydrological model, and instead we look at the likelihood of landslide-triggering FoS values in individual cells from long-term simulations. To this end, we compute the probability focus on the departure of the FoS being equal or smaller than the value on the day a landslide was observed in the corresponding cell from long-term simulations and repeat this for all landslide cells (Figure ??). This probability should be small, showing that landslides tend to occur when the FoS is smaller in a given susceptible cell, regardless of the actual value, which might be location dependent, from the temporal average of each cell. This allows to focus only on the temporal dimension and observe whether the FoS is exceptionally low during triggering rainfall events (i.e. prior to landsliding). We compare the histograms of the departures in FoS from the local temporal mean of the triggering and non-triggering events (Figure 4). While there is a clear trend of FoS being smaller than the mean (i.e. negative values) during triggering events more than non-triggering events, the separation is not sufficient to establish a warning system based on a threshold of FoS.

Instead we observe that the probability of the FoS being equal or smaller than the triggering value seems to be small in only few cases (upper panel in Figure ??). Considering rainfall triggering potential of events as a ratio between triggering intensity and mean daily precipitation ( $R_{\text{trig}}/\text{mdp}$ ), which could help distinguish the events that are extreme, also does not show any signal (middle panel in Figure ??). There are many cases where the non-exceedance probability of triggering FoS equal to 1, which means that a very high FoS led to landsliding, which is contrary to expectations. However, these are also the cases in

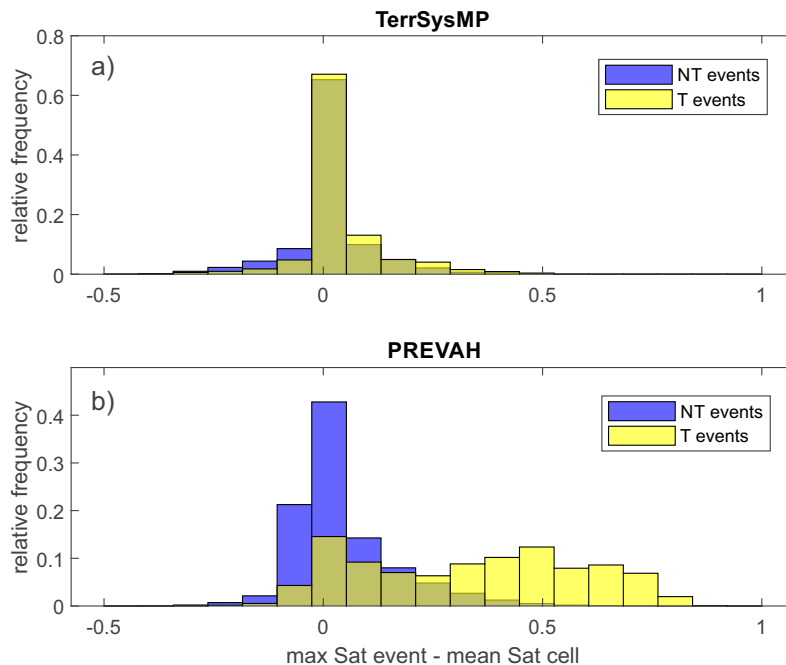
which the difference between mean FoS and triggering FoS is 0 (lower panel in Figure ??) and the standard deviation is also very small. This means that in those cells (i.e. the majority of cells), the simulated water table is constant in time or is always deeper than the soil thickness.

310 ~~Similar conclusions can be drawn by looking at the FoS distributions.~~ In addition to soil pore water pressure and the FoS,  
we also consider the mean saturation over the top two model layers estimated by TerrSysMP and compare the departure of  
it from its local temporal mean (Figure 5a). This not only allows us to directly compare the estimates of the two modelling  
frameworks (PREVAH and TerrSysMP), but also to further assess the usefulness and validity of the infinite slope approach.  
In fact, the difference between the departure from the mean during triggering and non-triggering rainfall events (Figure ??).  
315 ~~Once again we would expect that during triggering rainfall events the FoS is smaller. While this is indeed what we observe,~~  
~~the differences are barely noticeable, showing that this hydrological model-based simulation of  $h$  would not be successful in a~~  
~~predictive setup in conjunction with an infinite slope model. In summary, adding a coarse resolution global hydrological model~~  
~~prediction of groundwater table to the FoS, even though it is downscaled to the higher spatial resolutions, reduces even further~~  
~~the hydrologically dynamic range of FoS predictions by producing constant and/or deep groundwater tables in our domain,~~  
~~and does not discriminate well between non-triggering events is barely noticeable for saturation. This suggests that although~~  
320 modelled TerrSysMP soil saturation by itself is not a good metric for a landslide warning system, its inclusion into a FoS  
with additional local soil and topography characteristics has some merit. Proof of this is the clearer separation between the  
distribution of values of triggering and non-triggering conditions at the scale of individual landslides. events for FoS departure  
from the mean (Figure 4).

### 3.2 Probabilistic approach

325 The role of antecedent wetness and the information content of the saturation estimates provided by the hydrological model  
PREVAH (Viviroli et al., 2009) for landslide prediction is ~~tested~~ explored in a similar way to the ~~physically-based~~ physically  
based approach, but because we do not have an estimate of ~~water table depth~~ soil pore water pressure in PREVAH, we use  
~~the soil saturation instead~~ only soil saturation. We expect patterns opposite to that of the FoS: the saturation to be exceptionally  
large on landslide days and generally larger during triggering than non-triggering events. ~~This is exactly what we observe~~  
330 ~~considering the probability of the saturation being smaller or equal to that of the landslide day (Figure ??) and the distribution~~  
~~of average~~ The separation of the distribution of the departure of saturation during triggering and non-triggering events (Figure  
~~??). The probability of a cell being wet at the time of landsliding is very high in most susceptible cells (upper and middle panel~~  
~~in Figure ??). Also the average saturation during triggering rainfall events is clearly larger than during non-triggering events,~~  
~~especially the maximum saturation reached (Figure ??).~~

335 Scatter plot of different combinations of the rainfall and saturation (from the hydrological model PREVAH) properties for  
all landslides (each point corresponds to a landslide): the probability of the saturation in the cell being smaller than the value  
on the day of the landslide ( $\Pr(\text{Sat} \leq \text{Sat}_{\text{trig}})$ ), the standard deviation in time of the saturation in the cell ( $\text{std Sat}$ ), the ratio  
between the triggering rainfall intensity (rainfall intensity on the day of the landslide) and the cell mean daily precipitation

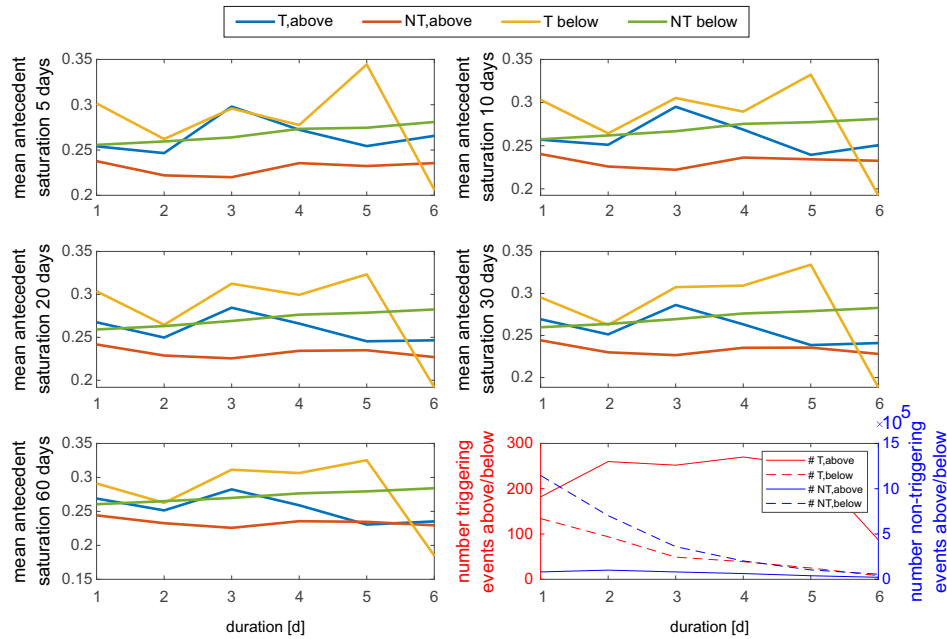


**Figure 5.** Histograms of the ~~mean (top) and minimum (bottom) Factor departure of Safety during the maximum event saturation from its local temporal mean for triggering and non-triggering rainfall events, combining spatial (i.e. differences between landslide locations) considering a) saturation estimates from TerrSysMP, and temporal (i.e. differences between events in the cells) b) differences from PREVAH.~~

( $R_{trig}/m_{dp}$ ), and the difference between the triggering saturation and the temporal mean saturation of the cell ( $trig_{Sat} - mean_{Sat}$ ).

Histograms of the mean (top) and maximum (bottom) saturation estimated by the hydrological model PREVAH during triggering and non-triggering rainfall events, combining spatial (i.e. differences between landslide locations) and temporal (i.e. differences between events in the cells) differences.

These results suggest ~~from the local mean saturation (Figure 5b) is evident and much clearer than for TerrSysMP. This suggests~~ that the saturation estimate provided by PREVAH, might contain information useful for the prediction of landslides. ~~While no significant signal in precipitation combined with soil saturation, We explore this further by focusing on the misclassification associated with a rainfall threshold (i.e. triggering rainfall being larger for events with smaller antecedent soil saturation, could be identified in the previous results for individual events (Figure ??), we choose to combine saturation estimates with ED thresholds for landslide prediction false alarms and misses).~~ We first define the optimum ED threshold for landsliding by maximising the TSS ( $E = 20.1D^{0.74}$ ,  $TSS=0.656(0.68)$ ), and then compute the average antecedent saturation for each duration and class of events: false alarms, misses, true positives, and true negatives. ~~If saturation could improve the ED threshold predictions it would reduce the number of misses and false alarms. Indeed this is what we observe in the mean~~



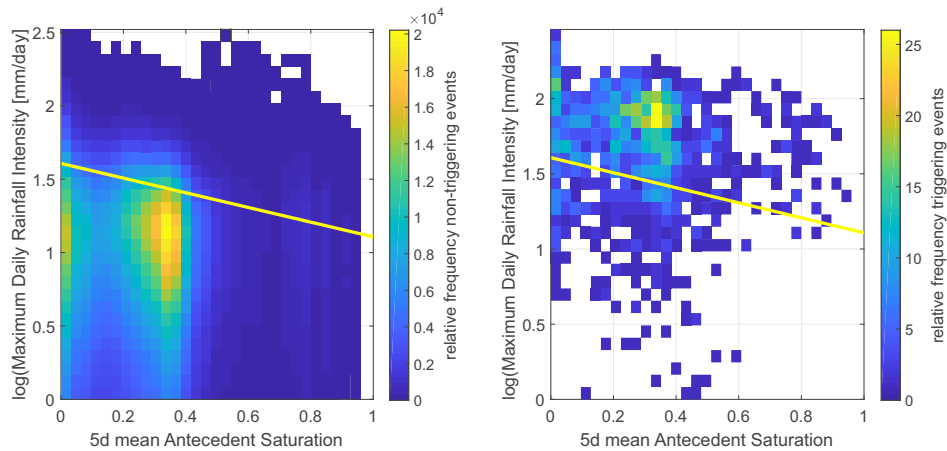
**Figure 6.** Plots of mean antecedent soil saturation averaged over 5-10-20-30-60 days prior to the beginning of the corresponding rainfall event for durations of 1-6 days. Events are divided into 4 groups: true positives (Triggering, above), false alarms (Non-Triggering, above), misses (Triggering, below), and true negatives (Non-Triggering, below). The plot in the lower right shows the number of events in each group of events for each duration, to check the robustness of the mean estimates.

antecedent saturation trends: regardless of the Regardless of the number days prior to the beginning of the rainfall event over which the mean saturation is computed, the misses (T below, in Figure 6) are always associated with the highest antecedent saturation, and the false alarms (NT above, in Figure 6) with the lowest saturation. This confirms that at least some of the misses were triggered by a smaller rainfall amount than expected due to exceptionally high antecedent soil wetness, whereas sometimes although the ED threshold was exceeded, no landslide event was observed due to exceptionally low saturation prior to the rainfall event.

While generating hydrometeorological thresholds (rainfall-saturation thresholds) does not lead to improved performances compared to the ED threshold Based on these results we consider two alternative approaches to combine antecedent saturation and rainfall characteristics for a landslide warning system. First we optimised thresholds by combining N-days (N=1, separating the events depending on the 5,10,20,30,60) with the logarithm of maximum daily rainfall, total rainfall, or mean daily intensity, in the shape of  $\log(R) = a * S + b$ , where  $R$  is the rainfall characteristic,  $S$  the N-days mean antecedent saturation and  $a$  and  $b$  the parameter optimised by maximising TSS. The best performances are obtained with maximum daily rainfall intensity and 5d antecedent saturation (Figure 7), with a TSS of 0.67.

While these results show clearly the usefulness of antecedent saturation (i.e. smaller amounts of rainfall being necessary to trigger a landslide in wetter conditions), the performances the performances are not superior to that of a standard rainfall





**Figure 7.** Relative frequency plot of triggering (right) and non-triggering (left) events for the hydrometeorological threshold combining 5d mean antecedent saturation and the logarithm of maximum daily intensity. The threshold leading to the highest TSS is indicated with a yellow line.

threshold, which does not account for saturation. In fact, the total rainfall-duration (ED) threshold obtained considering the same rainfall events, results in a maximum TSS of 0.68.

370 We therefore explored an alternative approach, where pure rainfall thresholds are defined, but for different levels of antecedent soil saturation conditions. For this sequential thresholds approach we first split the events according to the N-days mean antecedent saturation and then optimising separately two ED thresholds does. We obtain a slightly larger threshold ( $E = 22.1D^{0.76}$ ) for events with antecedent 5 days average saturation below 0.3 than for those with prior saturation antecedent wetness than 0.3 ( $E = 18.1D^{0.74}$ ), confirming that when the soil is drier prior to the rainfall event, utilise two different ED thresholds, for wet

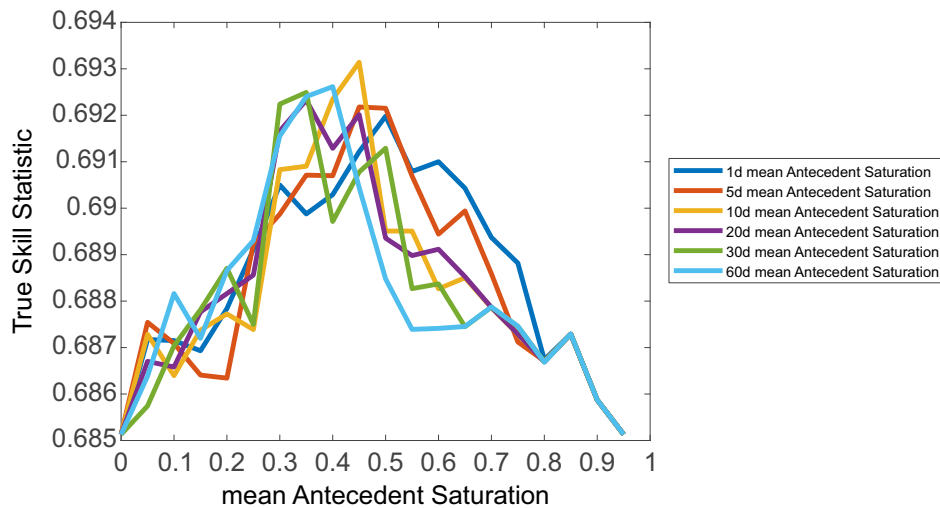
375 (exceeding the saturation threshold) and dry (not exceeding it) conditions. Of the different antecedent periods and saturation thresholds considered, we find 10d antecedent saturation with a 0.45 saturation threshold to lead to the best performances (Figure 8 and to the ED thresholds shown in Figure 9). It is interesting to notice that the parameters of the best thresholds for the wet ( $E = 17 * D^{0.75}$ ) and dry ( $E = 23 * D^{0.65}$ ) antecedent conditions suggest yet again that, at least for shorter duration events for which antecedent conditions are expected to be relevant, more rainfall is required to trigger a landslide

380 have a landslide in dry conditions. The overall TSS value is 0.69, improving slightly upon the performances of pure rainfall thresholds. We propose this sequential threshold system as a candidate for the design of a regional warning system. These combined thresholds lead to an overall TSS of 0.664, so a small improvement in model predictions.

#### 4 Discussion

The results presented here suggest that the probabilistic approach with rainfall and soil saturation thresholds is superior to the physically-based physically based approach with the Factor of Safety calculation. It is important to stress that this is not a

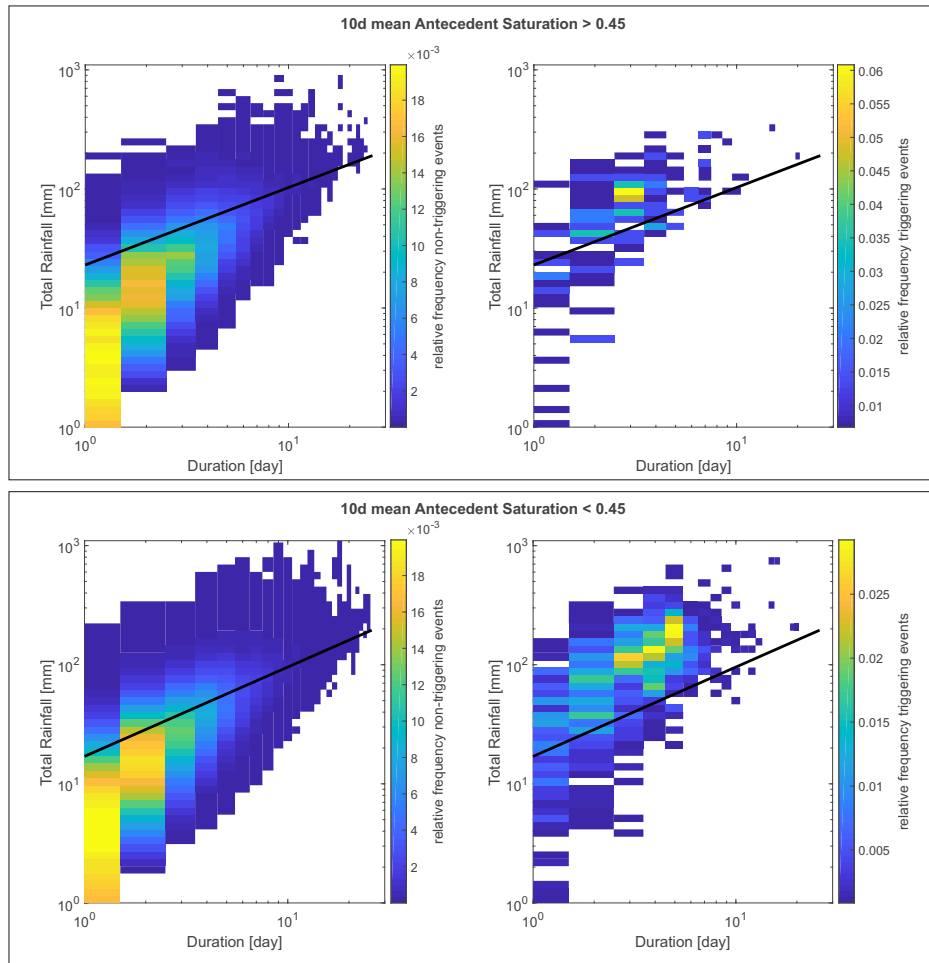
385



**Figure 8.** True Skill Statistic values associated with the dual total rainfall - duration (ED) thresholds for high/low antecedent saturation conditions separated by thresholds of mean antecedent saturation (x-axis). Colour lines represent different N-day antecedent condition time frames.

general conclusion, but rather a conclusion drawn from the specific models which we compared. In fact, if a **physically-based** physically based approach would accurately capture the pore water pressure variations at the required high resolution scales and therefore reproduce and predict slope failure with the FoS (or another geotechnical) model, we maintain that it would be superior to a probabilistic approach. It is therefore worthwhile to discuss the limitations of the tested **physically-based** physically based approach and the results obtained with regards to the geotechnical component (i.e. the infinite slope approach and FoS calculations) and those related to the hydrological component.

To look at the infinite slope approach independently from the hydrology, we can focus on the analysis of conditionally and unconditionally stable/unstable areas of the country and their validation against the location of historical landslides. There are two concerning aspects in these results: the presence of so many historical landslides (65-66%) in unconditionally stable areas and the existence of unconditionally unstable areas. The uncertainty in the location of the landslides could explain some of the slope failures in unconditionally stable areas. Out of the 1354 landslides in unconditionally stable (US) areas, for 937 there are no US cells in the 24 neighbouring cells (area of 125m×125m centred on the cell), and for 739 not even in the 80 cell neighbourhood (area of 275m×275m centred on the cell). Furthermore, unconditionally unstable areas should theoretically not exist, because they should have failed already or have 0 soil depth. Nevertheless roughly 10-13% of the country is classified as such. These two outcomes are therefore failures of the infinite slope approach ~~-This and uncertainties in the soil parameter in the model.~~ The FoS approach is based on strong simplifications and ignores potentially important processes such as suction in unsaturated soils, which temporarily increases stability. Nevertheless, we believe ~~believe~~ the uncertainties in the input parameters have the strongest influence. Proof of this are the results obtained neglecting vegetation cohesion (Figure 3). The fact that the map of (un)conditional (in)stability changes considerably when removing cohesion, shows the sensitivity of



**Figure 9.** Relative frequency plot of triggering (right) and non-triggering (left) events for the total rainfall - duration (ED) threshold above (panel above) and below (panel below) the soil saturation threshold of 0.45. The two ED thresholds curves are indicated as black lines in the upper and panels and their equations are in the text.

405 the FoS calculations to input-parametersthis parameter. Other input parameters may be similarly influential. For instance, the friction angle values obtained based on the the soil texture map from OpenLandMap (Figure 1b), are practically homogeneous over the country. We expect that this property friction angle is in reality much more heterogeneous and, together with cohesion, is affecting the unconditionally stable area. The sensitivity of the FoS estimates to the uncertain parameters can be examined theoretically or by Monte Carlo simulations, provided that parameters distributions are known (Hammond et al., 1992; Pack et al., 1998; Griffiths et al., 2011). Soil depth is also a very uncertain and influential parameter. The UU areas  $\bar{\tau}$  in the alpine region  $\bar{\tau}$  are very likely steep locations where the soil is absent (exposed bedrock). This aspect is missed by most soil datasets as well as soil depth models.

Another important aspect to consider for the FoS calculation is the spatial resolution. Higher resolutions allow to better capture the local heterogeneities (if data is available), most importantly the topography (i.e. slope). On the other hand, at high  
415 resolutions, the assumption of slope length much greater than soil depth becomes invalid and if the cell size becomes much smaller than the typical detachment area of landslides, the interactions between neighbouring cells become even more critical. For this reason, ~~several~~ geotechnical models have been developed that explicitly model progressive failure, lateral interactions and stress redistribution (Cohen et al., 2009; von Ruetten et al., 2013; Anagnostopoulos et al., 2015; Fan et al., 2015).

The limitations of the hydrological component regardless of the geotechnical model, are evident from the very ~~small~~  
420 ~~information content in the water table depth estimation produced by TerrSysMP~~ weak separation between triggering and non-triggering events in the FoS, but even more in the saturation values themselves. In our analysis we focused on the temporal variability ~~of the FoS (i.e. difference in time relative to the mean for each susceptible cell, or comparison of mean maximum and minimum FoS during departure from the local mean, for~~ triggering and non-triggering events), and the only variable in the FoS calculation which can vary in time is the soil pore water pressure. This means that the lack of temporal variability in the  
425 FoS is a direct consequence of the lack of temporal variability in the water pressure head. ~~The hydrological estimates from the physically-based framework wouldn't be successful even if used with rainfall in hydrometeorological thresholds, regardless of the geotechnical component. The signal is instead evident~~ While combining the hydrological estimates with the infinite slope approach does improve the separation compared to using saturation only, it is still insufficient to establish a threshold. The separation is instead much stronger when considering soil saturation obtained from PREVAH.

430 Theoretically, a ~~physically-based model~~ physically based model like TerrSysMP should be better capable of simulating the movement of water in the soil and therefore predicting the saturation or ~~water table depth~~ pressure more accurately.

The lack of temporal variability in soil water distribution in TerrSysMP is evident in the large number of both triggering and non-triggering events for which the departure of maximum event saturation from the local mean saturation is 0 (bars for  $x=0$  in 5a), suggesting the saturation is constant in time for those cells. We believe these results are a direct consequence  
435 of the ~~resolutions~~ spatial resolution of the model. In fact, at such coarse resolution, the model is simulating the large scale ~~fluctuations in ground water depth, which are indeed generally very small,~~ fluxes and does not capture the local changes, driven by higher resolution topography. ~~The downscaling with the topographic wetness approach cannot compensate for this. While it can account for local topography by lowering/raising the water table depth, this correction is constant in time. Therefore, if,~~ for example lateral subsurface flow. Simple downscaling techniques which can be used to increase the spatial resolution  
440 of models have been explored (e.g., TWI, Beven, 1995; Schmidt et al., 2008; Wang et al., 2020; Leonarduzzi et al., 2021), but because they are static, they would not affect the results shown here and compensate for the lack of temporal dynamics. If the coarse hydrological variable does not include enough temporal variability, ~~so~~ neither will the higher resolution spatially downscaled estimate.

For the specific cases presented here, having a higher spatial resolution (500m×500m rather than 12.5km×12.5km) in a  
445 conceptual hydrological model is therefore more beneficial than the gain in accurate physical representation of the processes. This stresses once more the importance of adequate spatial resolution of hydrological models, especially for the assessment of slope and soil saturation dependent natural hazards such as landslides.

## 5 Conclusions

We explore two approaches for the prediction of landslides and the value of soil wetness in these predictions applied to a regional scale ~~case~~-study in Switzerland. In the first approach we use the ~~water table depth soil water pressure~~ estimates from a coarse-resolution ~~physically-based~~ physically based model (TerrSysMP) ~~dowsealed by the topographic wetness approach~~ and slope stability assessment using the infinite slope approach. In the second ~~approach~~ approach we use rainfall-duration threshold curves informed by soil saturation obtained by a high resolution conceptual hydrological model (PREVAH).

Our main findings are:

- 455 – the infinite slope approach for quantifying slope instability is largely affected by the accuracy of input soil parameters, in particular cohesion in our case (removing cohesion doubled the area where hydrology mattered in FoS prediction), but improves upon the hydrological estimates by accounting for local topography and stress/strength balance
- ~~soil depth does not seem to affect the estimate of (un)conditionally (un)stable areas, although it is an essential parameters for the estimate of local wetness and determines the landslide volume~~
- 460 – according to the infinite slope approach and ~~the parameters considered here~~ without considering parameter uncertainty, hydrology can play a role in the initiation of landslides over only ca. 20% of Switzerland (the conditionally (un)stable area, where about 30% of all observed landslides have occurred). Soil depth does not seem to affect the estimate of (un)conditionally (un)stable areas, although it is an essential parameter for the estimate of local wetness and determines the landslide volume
- 465 – soil saturation estimates from a high resolution conceptual hydrological model (PREVAH) are more useful in improving landslide predictions ~~based on rainfall only and can be exploited in combined saturation and ED thresholds~~ than those from a coarse resolution physically based modeling framework (TerrSysMP), mainly due to the coarse spatial resolution of the latter model
- ~~while we maintain the best approach would be physically-based modelling of hydrology combined with geotechnical modelling, resolution is a very important aspect and a semi-conceptual model at a high resolution (500m×500m) provides more dynamic and useful estimates of the soil status than a physically-based hydrological model run at a much coarser resolution (12.5km×12.5km) despite static downscaling. we suggest the use of sequential rainfall ED thresholds that first consider antecedent soil saturation conditions (with a optimal threshold of 10d mean antecedent saturation of 0.45) and then different rainfall ED curves for wet and dry conditions~~
- 470 we suggest the use of sequential rainfall ED thresholds that first consider antecedent soil saturation conditions (with a optimal threshold of 10d mean antecedent saturation of 0.45) and then different rainfall ED curves for wet and dry conditions

475 *Data availability.* The friction angle were obtained from Geotechdata.info (Angle of Friction, <http://geotechdata.info/parameter/angle-of-friction.html>, as of September 14.12.2013, last accessed 07.07.2020). All other soil maps were downloaded from the OpenLandMap website ([www.openlandmap.org](http://www.openlandmap.org), last accessed 30.04.2020). The 25m digital elevation model was provided by swisstopo (<https://shop.swisstopo>).

admin.ch/en/products/height\_models/dhm25). The rainfall products were provided by the Swiss Federal Office of Meteorology and Climatology MeteoSwiss (available for research purposes upon request). The Swiss Federal Research Institute WSL provided the landslide data (available for research purposes upon request) and the PREVAH simulation results. TerrSysMP hydrological simulation results were downloaded from <https://datapub.fz-juelich.de/slots/cordex/index.html> (last access 16.06.2020, DOI: <http://doi.org/10.17616/R31NJMGR>)

*Author contributions.* E. Leonarduzzi conducted the analysis. E. Leonarduzzi and P. Molnar conceived the research. All authors contributed to writing the paper.

*Competing interests.* The authors declare they have no competing interest

## 485 **References**

- Bodeneignungskarte der Schweiz, Geodaten, 13147140, <https://www.bfs.admin.ch/hub/api/dam/assets/13147140/master>.
- Aleotti, P. and Chowdhury, R.: Landslide hazard assessment: summary review and new perspectives, *Bulletin of Engineering Geology and the environment*, 58, 21–44, 1999.
- Anagnostopoulos, G. G., Faticchi, S., and Burlando, P.: An advanced process-based distributed model for the investigation of rainfall-induced  
490 landslides: The effect of process representation and boundary conditions, *Water Resources Research RESEARCH*, 51, 7501–7523, <https://doi.org/10.1002/2015WR016909>, 2015.
- Anderson, S. A. and Sitar, N.: Analysis of rainfall-induced debris flows, *Journal of Geotechnical Engineering*, 121, 544–552, 1995.
- Ayalew, L. and Yamagishi, H.: The application of GIS-based logistic regression for landslide susceptibility mapping in the Kakuda-Yahiko Mountains, Central Japan, *Geomorphology*, 65, 15–31, 2005.
- 495 Baum, R. L., Savage, W. Z., and Godt, J. W.: TRIGRS—a Fortran program for transient rainfall infiltration and grid-based regional slope-stability analysis, US geological survey open-file report, 424, 38, 2002.
- Baum, R. L., Savage, W. Z., and Godt, J. W.: TRIGRS-A Fortran program for transient rainfall infiltration and grid-based regional slope-stability analysis, version 2.0, Tech. rep., US Geological Survey, 2008.
- Beven, K.: *Topmodel, Computer Models of Watershed Hydrology*. Water Resources Pub., pp. 627–668, 1995.
- 500 Blöschl, G., Komma, J., and Hasenauer, S.: Hydrological downscaling of soil moisture, Final Report to the H-SAF (Hydrology Satellite Application Facility) via the Austrian Central Institute for Meteorology and Geodynamics (ZAMG), Vienna University of Technology, 1040, 15, 2009.
- Bogaard, T. and Greco, R.: Invited perspectives: Hydrological perspectives on precipitation intensity-duration thresholds for landslide initiation: proposing hydro-meteorological thresholds, *Natural Hazards and Earth System Sciences*, 18, 31–39, 2018.
- 505 Brocca, L., Ponziani, F., Moramarco, T., Melone, F., Berni, N., and Wagner, W.: Improving landslide forecasting using ASCAT-derived soil moisture data: A case study of the Torgiovanetto landslide in central Italy, *Remote sensing*, 4, 1232–1244, 2012.
- Casadei, M., Dietrich, W., and Miller, N.: Testing a model for predicting the timing and location of shallow landslide initiation in soil-mantled landscapes, *Earth Surface Processes and Landforms: The Journal of the British Geomorphological Research Group*, 28, 925–950, 2003.
- Chung, C.-J. F., Fabbri, A. G., and Van Westen, C. J.: Multivariate regression analysis for landslide hazard zonation, in: *Geographical*  
510 *information systems in assessing natural hazards*, pp. 107–133, Springer, 1995.
- Cohen, D., Lehmann, P., and Or, D.: Fiber bundle model for multiscale modeling of hydromechanical triggering of shallow landslides, *Water Resources Research*, 45, 1–20, <https://doi.org/10.1029/2009WR007889>, 2009.
- Dietrich, W. E. and Montgomery, D. R.: SHALSTAB: a digital terrain model for mapping shallow landslide potential, University of California, 1998.
- 515 Dietrich, W. E., Reiss, R., Hsu, M.-L., and Montgomery, D. R.: A process-based model for colluvial soil depth and shallow landsliding using digital elevation data, *Hydrological processes*, 9, 383–400, 1995.
- Dorren, L. and Schwarz, M.: Quantifying the stabilizing effect of forests on shallow landslide-prone slopes, in: *Ecosystem-Based Disaster Risk Reduction and Adaptation in Practice*, pp. 255–270, Springer, 2016.
- Ermini, L., Catani, F., and Casagli, N.: Artificial neural networks applied to landslide susceptibility assessment, *Geomorphology*, 66, 327–  
520 343, 2005.

- Fan, L., Lehmann, P., and Or, D.: Effects of hydromechanical loading history and antecedent soil mechanical damage on shallow landslide triggering, *Journal of Geophysical Research: Earth Surface*, 120, 1990–2015, 2015.
- Fan, L., Lehmann, P., and Or, D.: Effects of soil spatial variability at the hillslope and catchment scales on characteristics of rainfall-induced landslides, *Water Resources Research*, 52, 1781–1799, <https://doi.org/10.1002/2015WR017758>, <https://agupubs.onlinelibrary.wiley.com/doi/abs/10.1002/2015WR017758>, 2016.
- 525 Formetta, G., Capparelli, G., and Versace, P.: Evaluating performance of simplified physically based models for shallow landslide susceptibility., *Hydrology & Earth System Sciences*, 20, 2016.
- Frei, C. and Schär, C.: A precipitation climatology of the Alps from high-resolution rain-gauge observations, *International Journal of Climatology*, 18, 873–900, [https://doi.org/10.1002/\(SICI\)1097-0088\(19980630\)18:8<873::AID-JOC255>3.0.CO;2-9](https://doi.org/10.1002/(SICI)1097-0088(19980630)18:8<873::AID-JOC255>3.0.CO;2-9), 1998.
- 530 Frei, C., Schöll, R., Fukutome, S., Schmidli, J., and Vidale, P. L.: Future change of precipitation extremes in Europe: Intercomparison of scenarios from regional climate models, *Journal of Geophysical Research Atmospheres*, 111, <https://doi.org/10.1029/2005JD005965>, 2006.
- Furusho-Percot, C., Goergen, K., Hartick, C., Kulkarni, K., Keune, J., and Kollet, S.: Pan-European groundwater to atmosphere terrestrial systems climatology from a physically consistent simulation, *Scientific data*, 6, 1–9, 2019.
- 535 Geotechdata.info, Angle of Friction: <http://geotechdata.info/parameter/angle-of-friction>, last Accessed: 14.12.2013.
- Glade, T., Crozier, M., and Smith, P.: Applying probability determination to refine landslide-triggering rainfall thresholds using an empirical "Antecedent Daily Rainfall Model", *Pure and Applied Geophysics*, 157, 1059–1079, 2000.
- Godt, J. W., Baum, R. L., and Chleborad, A. F.: Rainfall characteristics for shallow landsliding in Seattle, Washington, USA, *Earth Surface Processes and Landforms: The Journal of the British Geomorphological Research Group*, 31, 97–110, 2006.
- 540 Griffiths, D., Huang, J., and Fenton, G. A.: Probabilistic infinite slope analysis, *Computers and Geotechnics*, 38, 577–584, 2011.
- Guzzetti, F., Peruccacci, S., Rossi, M., and Stark, C. P.: Rainfall thresholds for the initiation of landslides in central and southern Europe, *Meteorology and atmospheric physics*, 98, 239–267, <https://doi.org/10.1007/s00703-007-0262-7>, 2007.
- Hammond, C. J., Prellwitz, R. W., and Miller, S. M.: Landslide hazard assessment using Monte Carlo simulation, in: *Proceedings of 6th international symposium on landslides*, Christchurch, New Zealand, Balkema, vol. 2, pp. 251–294, 1992.
- 545 Heimsath, A. M., Dietrich, W. E., Nishiizumi, K., and Finkel, R. C.: Stochastic processes of soil production and transport: Erosion rates, topographic variation and cosmogenic nuclides in the Oregon Coast Range, *Earth Surface Processes and Landforms: The Journal of the British Geomorphological Research Group*, 26, 531–552, 2001.
- Hengl, T., Mendes de Jesus, J., Heuvelink, G. B., Ruiperez Gonzalez, M., Kilibarda, M., Blagotić, A., Shangguan, W., Wright, M. N., Geng, X., Bauer-Marschallinger, B., et al.: SoilGrids250m: Global gridded soil information based on machine learning, *PLoS one*, 12, e0169 748,
- 550 2017.
- Highland, L., Bobrowsky, P. T., et al.: *The landslide handbook: a guide to understanding landslides*, US Geological Survey Reston, 2008.
- Hilker, N., Badoux, A., and Hegg, C.: The Swiss flood and landslide damage database 1972–2007, *Nat. Hazards Earth Syst. Sci*, 9, 913–925, 2009.
- Iverson, R. M.: Landslide triggering by rain infiltration, *Water resources research*, 36, 1897–1910, 2000.
- 555 Kjekstad, O. and Highland, L.: Economic and social impacts of landslides, in: *Landslides–disaster risk reduction*, pp. 573–587, Springer, 2009.



- Kurtz, W., He, G., Kollet, S. J., Maxwell, R. M., Vereecken, H., and Hendricks Franssen, H.-J.: TerrSysMP-PDAF (version 1.0): a modular high-performance data assimilation framework for an integrated land surface–subsurface model, *Geoscientific Model Development*, 9, 1341–1360, 2016.
- 560 Lee, S. and Pradhan, B.: Landslide hazard mapping at Selangor, Malaysia using frequency ratio and logistic regression models, *Landslides*, 4, 33–41, 2007.
- Leonarduzzi, E. and Molnar, P.: Data limitations and potential of hourly and daily rainfall thresholds for shallow landslides, *Natural Hazards and Earth System Sciences Discussions*, pp. 1–25, 2020.
- Leonarduzzi, E., Molnar, P., and McArdell, B. W.: Predictive performance of rainfall thresholds for shallow landslides in Switzerland from  
565 gridded daily data, *Water Resources Research*, 53, 6612–6625, 2017.
- Leonarduzzi, E., Maxwell, R. M., Mirus, B. B., and Molnar, P.: Numerical Analysis of the Effect of Subgrid Variability in a Physically Based Hydrological Model on Runoff, Soil Moisture, and Slope Stability, *Water Resources Research*, 57, e2020WR027326, <https://doi.org/https://doi.org/10.1029/2020WR027326>, <https://agupubs.onlinelibrary.wiley.com/doi/abs/10.1029/2020WR027326>, e2020WR027326 2020WR027326, 2021.
- 570 Lu, N. and Godt, J.: Infinite slope stability under steady unsaturated seepage conditions, *Water Resources Research*, 44, 2008.
- Marc, O., Gosset, M., Saito, H., Uchida, T., and Malet, J.-P.: Spatial patterns of storm-induced landslides and their relation to rainfall anomaly maps, *Geophysical Research Letters*, 46, 11 167–11 177, 2019.
- Marino, P., Peres, D. J., Cancelliere, A., Greco, R., and Bogaard, T. A.: Soil moisture information can improve shallow landslide forecasting using the hydrometeorological threshold approach, *Landslides*, 2020.
- 575 Mathew, J., Babu, D. G., Kundu, S., Kumar, K. V., and Pant, C.: Integrating intensity–duration-based rainfall threshold and antecedent rainfall-based probability estimate towards generating early warning for rainfall-induced landslides in parts of the Garhwal Himalaya, India, *Landslides*, 11, 575–588, 2014.
- Mirus, B. B., Jones, E. S., Baum, R. L., Godt, J. W., Slaughter, S., Crawford, M. M., Lancaster, J., Stanley, T., Kirschbaum, D. B., Burns, W. J., et al.: Landslides across the USA: occurrence, susceptibility, and data limitations, *Landslides*, <https://doi.org/10.1007/s10346-020-01424-4>, 2020.
- 580 Ohlmacher, G. C. and Davis, J. C.: Using multiple logistic regression and GIS technology to predict landslide hazard in northeast Kansas, USA, *Engineering geology*, 69, 331–343, 2003.
- OpenLandMap: [www.openlandmap.org](http://www.openlandmap.org), last Accessed: 30.04.2020.
- Pack, R. T., Tarboton, D. G., and Goodwin, C. N.: The SINMAP approach to terrain stability mapping, in: 8th congress of the international  
585 association of engineering geology, Vancouver, British Columbia, Canada, vol. 21, p. 25, 1998.
- Petley, D.: Global patterns of loss of life from landslides, *Geology*, 40, 927–930, 2012.
- Ponziani, F., Pandolfo, C., Stelluti, M., Berni, N., Brocca, L., and Moramarco, T.: Assessment of rainfall thresholds and soil moisture modeling for operational hydrogeological risk prevention in the Umbria region (central Italy), *Landslides*, 9, 229–237, <https://doi.org/10.1007/s10346-011-0287-3>, 2012.
- 590 Reichenbach, P., Rossi, M., Malamud, B. D., Mihir, M., and Guzzetti, F.: A review of statistically-based landslide susceptibility models, *Earth-Science Reviews*, 180, 60–91, 2018.
- Roering, J. J.: How well can hillslope evolution models “explain” topography? Simulating soil transport and production with high-resolution topographic data, *Geological Society of America Bulletin*, 120, 1248–1262, 2008.

- Saito, H., Nakayama, D., and Matsuyama, H.: Comparison of landslide susceptibility based on a decision-tree model and actual landslide occurrence: the Akaishi Mountains, Japan, *Geomorphology*, 109, 108–121, 2009.
- Salvati, P., Bianchi, C., Rossi, M., and Guzzetti, F.: Societal landslide and flood risk in Italy, *Natural Hazards and Earth System Science*, 10, 465–483, <https://doi.org/10.5194/nhess-10-465-2010>, 2010.
- Saulnier, G.-M., Beven, K., and Obled, C.: Including spatially variable effective soil depths in TOPMODEL, *Journal of hydrology*, 202, 158–172, 1997.
- Schmidt, J., Turek, G., Clark, M. P., Uddstrom, M., and Dymond, J. R.: Probabilistic forecasting of shallow, rainfall-triggered landslides using real-time numerical weather predictions, *Natural Hazards and Earth System Science*, 8, 349–357, <https://doi.org/10.5194/nhess-8-349-2008>, 2008.
- Schwarz, M., Cohen, D., and Or, D.: Spatial characterization of root reinforcement at stand scale: theory and case study, *Geomorphology*, 171, 190–200, 2012.
- Segoni, S., Piciullo, L., and Gariano, S. L.: A review of the recent literature on rainfall thresholds for landslide occurrence, *Landslides*, 15, 1483–1501, 2018.
- Shepard, D. S.: Computer Mapping: The SYMAP Interpolation Algorithm, *Spatial Statistics and Models*, pp. 133–145, [https://doi.org/10.1007/978-94-017-3048-8\\_7](https://doi.org/10.1007/978-94-017-3048-8_7), 1984.
- Stahli, M., Saaetle, M., Huggel, C., McArdeU, B. W., Lehmann, P., Van Herwijnen, A., Berne, A., Schleiss, M., Ferrari, A., Kos, A., Or, D., and Springman, S. M.: Monitoring and prediction in early warning systems for rapid mass movements, *Natural Hazards and Earth System Sciences*, 15, 905–917, <https://doi.org/10.5194/nhess-15-905-2015>, 2015.
- Thomas, M. A., Mirus, B. B., and Collins, B. D.: Identifying physics-based thresholds for rainfall-induced landsliding, *Geophysical Research Letters*, 45, 9651–9661, 2018.
- Thomas, M. A., Collins, B. D., and Mirus, B. B.: Assessing the feasibility of satellite-based thresholds for hydrologically driven landsliding, *Water Resources Research*, 55, 9006–9023, 2019.
- Trezzini, F., Giannella, G., and Guida, T.: *Landslide and Flood: Economic and Social Impacts in Italy*, vol. 2, pp. 171–176, Springer, [https://doi.org/10.1007/978-3-642-31313-4\\_22](https://doi.org/10.1007/978-3-642-31313-4_22), 2013.
- Viviroli, D., Zappa, M., Gurtz, J., and Weingartner, R.: An introduction to the hydrological modelling system PREVAH and its pre-and post-processing-tools, *Environmental Modelling & Software*, 24, 1209–1222, 2009.
- von Ruette, J., Papritz, A., Lehmann, P., Rickli, C., and Or, D.: Spatial statistical modeling of shallow landslides—validating predictions for different landslide inventories and rainfall events, *Geomorphology*, 133, 11–22, 2011.
- von Ruette, J., Lehmann, P., and Or, D.: Rainfall-triggered shallow landslides at catchment scale: Threshold mechanics-based modeling for abruptness and localization, *Water Resources Research*, 49, 6266–6285, 2013.
- Wang, S., Zhang, K., van Beek, L. P., Tian, X., and Bogaard, T. A.: Physically-based landslide prediction over a large region: Scaling low-resolution hydrological model results for high-resolution slope stability assessment, *Environmental Modelling & Software*, 124, 104607, 2020.
- Wicki, A., Lehmann, P., Hauck, C., Seneviratne, S. I., Waldner, P., and Stähli, M.: Assessing the potential of soil moisture measurements for regional landslide early warning, *Landslides*, pp. 1–16, 2020.
- Yilmaz, I.: Landslide susceptibility mapping using frequency ratio, logistic regression, artificial neural networks and their comparison: a case study from Kat landslides (Tokat—Turkey), *Computers & Geosciences*, 35, 1125–1138, 2009.