

## Answers to comments by Referee #2

### Future projections of High Atlas snowpack and runoff under climate change

March 12, 2021

---

**Comment 1** *It needs to become more clear what are the new findings of this study that extend already existing knowledge, I think.*

**Answer:** Our study brings two important contributions to the existing literature. First, we develop detailed snowpack projections for the High Atlas under future climate change scenarios, and second, we assess the implications of a declining snowpack and enhanced aridity on regional runoff. While the runoff trends themselves are not new (it has been well established that runoff would more than likely decline in this region in the future), our methodology and assessment of the influence of snowpack on runoff coefficients both extend current knowledge. Our approach also helps quantify the uncertainty in runoff projections linked to that in runoff efficiency. We agree this needs to be made clearer in a revised version. We hope the proposed changes will answer your concerns on this point.

---

**Comment 2** *Although I am not a native English speaker myself, I find that the language of the manuscript needs to be improved. I came across numerous sentences and expression that I think need improvement (see specific comments). In my opinion, a language check will improve the manuscript. Furthermore, make sure to use a space to separate the unit from the number.*

**Answer:** We will revisit the language of the manuscript in a revised version and for now hope that our proposed answers will be satisfactory.

---

**Comment 3** *A restructuring of the text can increase its comprehensibility. I think, it would be helpful to separate Results and Discussion. First present results with subsections on snow simulations and runoff coefficient model and then discuss results in a next step (maybe again use same subsection, e.g. ?snow simulations? and ?runoff coefficient model?.*

**Answer:** It is a good suggestion which we would adopt. The discussion could also be further enriched (see answers to several of the points below).

---

**Comment 4** *I miss a clear line of argumentation here that then leads to your aims/goals. Please restructure and rephrase so that the literature and numbers presented are easier to understand*

(see also specific comments). I think the main sentence is in Page 2 Line 39-40. This is your main motivation, right?

**Answer:** You are correct. We suggest rephrasing the introduction as follows (including other remarks, especially about the literature review):

*"The High Atlas is the major source of freshwater for the semi-arid plains of central Morocco. Much of the discharge of the Oum-Er-Rbia and Tensift, the two main rivers of central Morocco, comes from the mountainous terrain where they begin their course. In this region, precipitation essentially falls at elevations above 1000 m (Boudhar et al. 2009); below that, it is scarce and evaporation is extremely high, leading to minimal runoff. Though located in a rather warm region, the High Atlas rises up to more than 4000 m and often experiences below-freezing conditions between November and March (Boudhar et al. 2009). Consequently, snow is a major component of the regional water cycle (Marchane et al. 2015, Tuel et al. 2020a). It accounts for a substantial fraction of annual runoff, up to 50% in some mountain catchments (Boudhar et al. 2009), and for most of the runoff during spring, as the wet season comes to an end. Snow cover in the High Atlas is characterized by large inter-annual variability (Marchane et al. 2015, Tuel et al. 2020a), mostly following that in wet-season precipitation, itself largely shaped by the North Atlantic Oscillation (Knippertz et al. 2003, Boudhar et al. 2009).*

*However, the High Atlas snowpack may be particularly vulnerable to climate change. Climate projections over Morocco – and generally the Mediterranean – agree on robust warming and drying trends under greenhouse gas forcing (Cramer et al. 2018, Lionello et al. 2018, Drobinski et al. 2020, Tuel et al. 2020c). By the end of this century, average winter temperatures in the High Atlas could be 2-4° C higher, and precipitation 25-60% lower, depending on the emissions scenario (Ayt Ougougdal et al. 2020, Driouech et al. 2020, Tuel et al. 2020b). These combined warming and drying trends will unavoidably lead to a snowpack decline. Yet, few studies have analyzed climate change impacts on the local snowpack and regional water availability. Lopez-Moreno et al. (2017) applied a complex physically-based snow model to observed meteorological data at one station in the Moroccan High Atlas, fitted with observed snow depth at the same location. They found that High Atlas snowpack was less sensitive to warming and drying than that in other Mediterranean-climate regions (10-15% snow water equivalent decline per degree of warming), because of colder snowpack temperatures associated with high latent heat losses. Still, their results pointed to a decrease in average snow duration of 25-30% and in mean Snow Water Equivalent (SWE) of 30-55% by 2050.*

*Future trends in runoff in the High Atlas under climate change have also been investigated, notably by Jaw et al. (2015) who analyzed simulations with the Variable Infiltration Capacity model forced by regional climate model output. They found a general tendency to reductions in streamflow, with a strong sensitivity to the forcing model's precipitation trends. Tramblay et al. (2018) took a simple water balance approach, equating long-term net precipitation with water availability, to estimate future changes in dam storage across North Africa. In the High Atlas, they projected a 40-to-50% decline in water availability under business-as-usual by the end of the 21<sup>st</sup> century. Only one study tried to quantify the impact of climate change on High Atlas runoff by taking snow dynamics into account: Marchane et al. 2017 developed runoff projections for the Rheyara catchment, south of Marrakech and part of the Tensift watershed, by running conceptual monthly water-balance models incorporating a simple parametric snow module. They projected a 19 to 63% decline in surface runoff by the middle of the century, dependent on model and scenario. Coupled with population growth, such trends, if realized, will inevitably translate into growing unmet water demand, as shown by Ayt Ougougdal et al. (2020) for the Ourika*

watershed in the High Atlas.

Thus, while it is clear that the region is headed towards a pronounced decline in snowpack and runoff, much remains to be done to quantify that decline at the catchment level and reduce uncertainties. In this study, we therefore aim to develop detailed snowpack projections for the High Atlas under climate change, and to assess the implications of a declining snowpack on regional runoff. We focus on the Oum-Er-Rbia watershed, a major catchment of the High Atlas. To that end, we apply the methodology of Tuel et al. (2020a) (hereafter T20a), who modeled High Atlas snowpack by applying a simple distributed snow model forced with assimilated remotely-sensed and dynamically-downscaled data. Using satellite-observed snow cover as a baseline for the current climate, we fit and run the snow model with output data from high-resolution regional climate simulations over Morocco obtained by Tuel et al. (2020b). We then quantify the sensitivity of runoff in seven mountain catchments within the Oum-Er-Rbia watershed to large-scale meteorological and snowpack conditions, and use the results to assess the impact of warming, drying and snowpack disappearance on runoff. The paper is structured as follows. Section 2 describes the study area, the data and climate model output used in this study. Section 3 presents the snow model and panel regression framework used to model runoff response to large-scale climate conditions. Snowpack and runoff projections are presented and discussed in Section 4. Finally, major results and implications are summarized in Section 6.”

---

**Comment 5** *This section was a bit confusing for me. You present so many different data sets with different time frames, observed, simulated, station-based, satellite-based,... Often I did not understand what you use the individual data sets for. Please support the reader by e.g. an overview scheme and/or table that illustrates what data sets you use, what time frame and what for. As far as I understood, historic data sets are mostly used for the runoff coefficient model? While reading I also was not sure what data is from Tuel et al. 2020b and what is new in this study. I suggest to extend the scheme in Fig. 4. Also you present results from your comparison of the satellite-based data sets in the data section. Please consider moving this in the result section.*

**Answer:** We can add the following Table 1 to summarise the data used in this study. Also, please see Figure R1 for an update of the scheme presented in Fig. 4. The comparison of the TRMM and CHIRPS datasets is not really a result in itself; the quality of TRMM has for instance been discussed in Tuel et al. (2020a) and Ouattiki et al. (2017). Fig. 3 and the accompanying sentences are only meant to present the dataset and briefly show their adequation with the station data.

---

**Comment 6** *You use several different domains in your manuscript. What is your snow domain (Page 6 Line 162)? What is the model domain and how do the Oum-Er-Rbia watershed and the seven sub-basins fit into this? Please clarify. Add more information on the sub-basins (area, elevation,...).*

**Answer:** Please see the answers to Comment 28 and Comment 31. We can also update Figure 1 to show the Oum-Er-Rbia watershed, the snow domain and the sub-catchments (see Figure R2).

---

**Comment 7** *With annual cycles (Page 6 Line 161) you refer to mean average annual cycles for*

<b>Data</b>	<b>Description</b>	<b>Availability</b>
Station precipitation	Daily precipitation measured at seven locations in the Oum-Er-Rbia watershed	1980-2015
Station discharge	Daily discharge measured at seven locations in the Oum-Er-Rbia watershed	1978-2015
TRMM TMPA 3B42 version 7	Satellite-based 3-hourly precipitation at 0.25° resolution	1998-present
CHIRPS v2.0	Satellite- and station-based 6-hourly precipitation at 0.05° resolution	1981-present
MODIS Land Surface Temperature L3 version 6 (MOD11A1)	Satellite-based land surface temperature at 1 km resolution	2000-present
MODIS Terra snow cover daily L3 (MOD10A1)	Satellite-based fractional snow cover at 500 m resolution	2000-present
ERA/MRCM	Regional downscaling of ERA-Interim with MRCM at 12 km resolution (from Tuel et al. (2020b))	1981-2011
ERA/GCM	Regional downscaling of three CMIP5 GCMs (IPSL-CM5A-LR, GFDL-ESM2M and MPI-ESM-MR) with MRCM at 12 km resolution (from Tuel et al. (2020b))	1976-2005 (historical) and 2071-2100 (RCP4.5 and RCP8.5)
SRTM 90-meter resolution version 4.1 (STRM90)	Satellite-based elevation at 90 m resolution	N/A

Table 1: Datasets used in this study

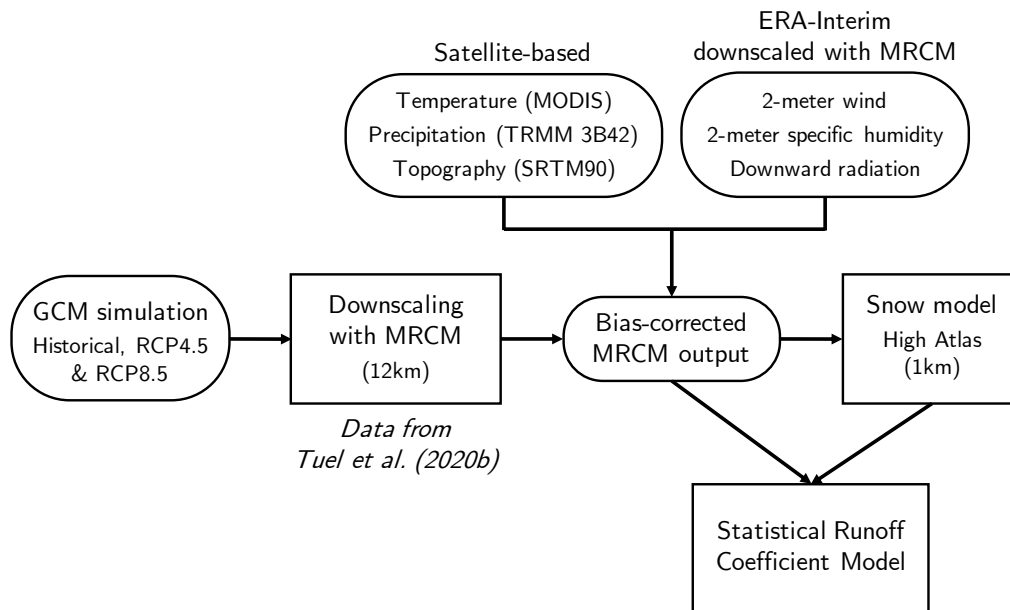


Figure R1: Summary of methodology and input datasets used to assess climate change impacts on snowfall, snowpack and runoff in the Oum-Er-Rbia watershed.

*the time frames you state (i.e. 1995-2005 and 2000-2011)? If yes, why do you use NSE values of average annual cycles that only partly overlap? Didn't you mention that the inter-annual variability is very high? Isn't it important to use the exact same time periods? I never saw this approach before, I think. Please explain in more detail why you use average annual cycles of snow fraction here. Furthermore, please provide more information on the calibration routine (how many runs, what NSE values did you get, what optimization algorithm,...).*

**Answer:** Yes, we mean average annual cycles for the stated time periods. We rely on annual cycles instead of snow cover times series because that would not work with the RCM experiments. Instead, we assume that a correctly fitted model would yield a reasonable snow cover annual cycle over a sufficiently long period. Since the MODIS observations we use here cover 10 years (2000-2011), we simply take the last 10 years in the RCM-driven simulations to estimate the annual cycle and fit the model. Admittedly, it is arguable whether 10 years is long enough to estimate a correct annual cycle given the high inter-annual variability in snow cover in this region. By using the longer MODIS record (updated until summer 2018), we can empirically estimate the uncertainty in annual cycle when selecting 10 years of data only (Figure R3). While there are certainly differences, our choice of 10 years still seems to yield a correct result, especially for snowpack build-up and melt.

---

**Comment 8** *What is the motivation to use this approach here? Please explain. What are e.g. the disadvantages compared to hydrological models, which seem predestined to investigate changes in runoff. You state that your covariates only explain 30% of the inter-annual variability. What about the other 70%? Later you use these two covariates to estimates future runoff. Please justify. Why should the relationships you established for the historic time frame hold*

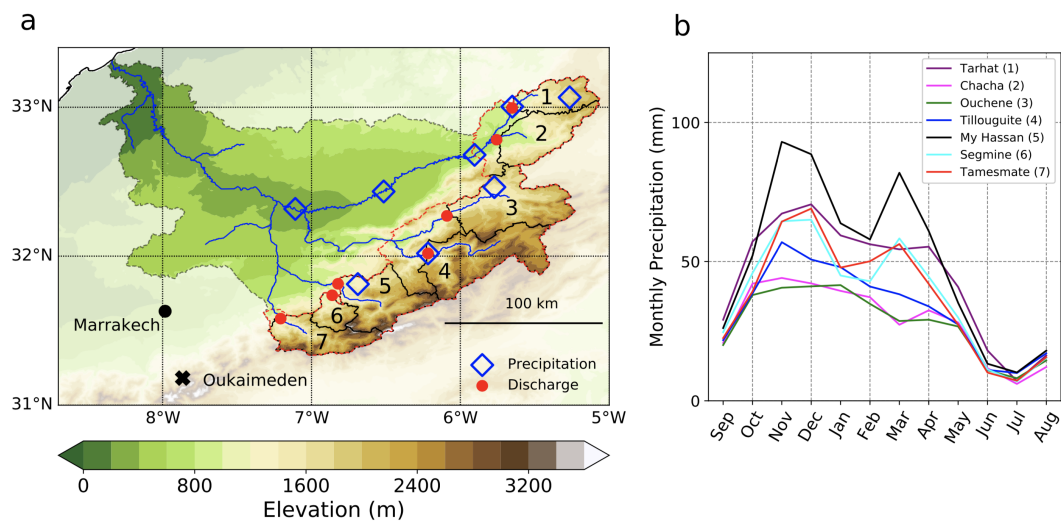


Figure R2: (a) Map of the Oum-Er-Rbia watershed, with elevation shown by shaded contours. The main waterways are indicated by solid blue lines. Blue diamonds and red circles indicate the location of precipitation and river discharge stations, respectively. The snow modeling domain is shown by the dashed red line. The seven catchments defined by the discharge stations are shown by solid black lines and are indicated by numbers: (1) Tarhat, (2) Chacha, (3) Ouchene, (4) Tillouguite, (5) Moulay Hassan, (6) Segmine and (7) Tamesmate. The location of the Oukaimeden snow station, outside our study area, is shown by a black cross. (b) Annual cycles of precipitation for the seven catchments, based on TRMM data (1998-2015).

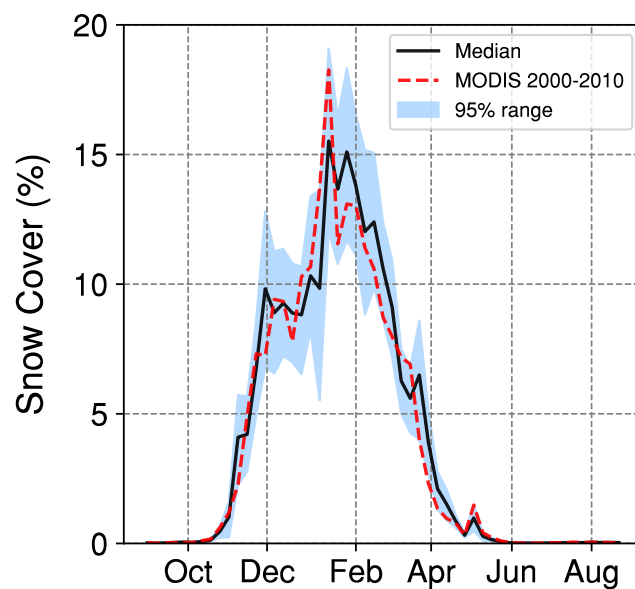


Figure R3: Basin-wide snow cover annual cycle (%) estimated with MODIS data: 2000-2010 (dashed red), and median (solid blue) and 95% range (shaded) of random sampling of 1000 10-year subsets in the 2000-2018 period.

*under future conditions? Don't you show that climatic changes with fundamentally alter the hydrological cycle in the region? Why do you think RH is so important in this model?*

**Answer:** The advantage of using such a model to investigate the sensitivity and changes in runoff is its simplicity and interpretability. It allows us for instance to highlight the influence of the snow fraction in the inter-annual variability of RCs. While hydrological models are certainly more comprehensive, they also rely on many parameters which leaves them vulnerable to overfitting and thus to even more uncertainties. In addition, they suffer from the same inconvenient as our simple model, which is that there is no guarantee that the relationships (or fitting) obtained in the current climate are directly transferable to the future climate.

Furthermore, the explanatory variables used in the regression are physical variables which we understand how mechanistically relate to runoff. The difference with a hydrological model is in the different form of mathematical relations, however the physical relationship between the variables is somewhat respected. If we were to have a hydrological model, one important test for the model would have been to reproduce the observed empirical relationships that we are using. RH is important in our model because it incorporates information on both the energy constraint (evaporative demand) and on the water availability.

---

**Comment 9** *Page 1 Line 1-8: Large parts of the abstract are introduction. Please provide more information on your model set up and results (!) here.*

**Answer:** Here is a proposed abstract update:

*"The High Atlas, culminating at more than 4000 m, is the water tower of Morocco. While plains receive less than 400 mm of precipitation in an average year, the mountains can get twice as much, often in the form of snow between November and March. Snowmelt thus accounts for a large fraction of the river discharge in the region, particularly during spring. In parallel, future climate change projections point towards a significant decline in precipitation and enhanced warming of temperature for the area. Here, we build on previous research results on snow and climate modeling in the High Atlas to make detailed projections of snowpack and river flow response to climate change in this region. We develop end-of-century snowpack projections using a distributed energy balance snow model based on SNOW-17 and high-resolution climate simulations over Morocco with the MIT Regional Climate model (MRCM) under a mitigation (RCP4.5) and business-as-usual (RCP8.5) scenarios. Snowpack water content is projected to decline by up to 60% under RCP4.5 and 80% under RCP8.5 as a consequence of strong warming and drying in the region. We also implement a panel regression framework to relate runoff ratios to regional meteorological conditions in seven small sub-catchments in the High Atlas. Relative humidity and the fraction of solid-to-total precipitation are found to explain about 30% of the inter-annual variability in runoff ratios. Due to projected future atmospheric drying and the associated decline in snow-to-precipitation ratio, a 5-30% decrease in runoff ratios and 10-60% decrease in precipitation are expected to lead to severe (20-70%) declines in river discharge. Our results have important implications for water resources planning and sustainability of agriculture in this already water-stressed region."*

---

**Comment 10** *Page 1 Line 11-12: What results have important implications!?*

**Answer:** Please see the corrected abstract above.

---

**Comment 11** *Page 1 Line 16: "1000m": Please use space between unit and number. Check your*

manuscript.

**Answer:** Noted, thanks.

---

**Comment 12** *Page 2 Line 26: "station snow data series": Please rephrase. They simulate snow for one station and use the observations from there to calibrate and validate?*

**Answer:** You are right. Here is how we would rephrase the sentence: *"Lopez-Moreno et al. (2017) applied a complex physically-based snow model to observed meteorological data at one station in the Moroccan High Atlas, fitted with observed snow depth at the same location. They found that..."*

---

**Comment 13** *Page 2 Line 27: "somewhat less sensitive": Please rephrase.*

**Answer:** Here is a suggested reformulated sentence: *"They found that High Atlas snowpack was less sensitive to warming and drying than that in other Mediterranean-climate regions (10-15% snow water equivalent decline per degree of warming), because of colder snowpack temperatures associated with high latent heat losses."*

---

**Comment 14** *Page 2 Line 27: "Atlas" ¿ "High Atlas"? In general, I was a bit confused by the different term ?High Atlas?, "Atlas", "Middle Atlas". Is there any difference?*

**Answer:** Good point. We suggest sticking to "High Atlas" to avoid all confusion.

---

**Comment 15** *Page 2 Line 34-37: With only 12 years of data no proper trend analysis can be conducted, I think. It is not very surprising that no significant trends can be found. You also state this in the following that there is a strong inter-annual variability. Maybe only inform the reader here about the strong inter-annual variability and do not discuss the results of the trend analysis from Marchane et al., 2015, as they do not seem to contain relevant information.*

**Answer:** You are correct. We suggest removing this part and mentioning inter-annual variability in the introduction's first paragraph as follows:

*"The High Atlas is the major source of freshwater for the semi-arid plains of central Morocco. Much of the discharge of the Oum-Er-Rbia and Tensift, the two main rivers of central Morocco, comes from the mountainous terrain where they begin their course. In this region, precipitation essentially falls at elevations above 1000 m (Boudhar et al. 2009); below that, it is scarce and evaporation is extremely high, leading to minimal runoff. Though located in a rather warm region, the High Atlas rises up to more than 4000m and often experiences below-freezing conditions between November and March (Boudhar et al. 2009). Consequently, snow is a major component of the regional water cycle (Marchane et al. 2015, Tuel et al. 2020a). It accounts for a substantial fraction of annual runoff, up to 50% in some mountain catchments (Boudhar et al. 2009), and for most of the runoff during spring, as the wet season comes to an end. Snow cover in the High Atlas is characterized by large inter-annual variability (Marchane et al. 2015, Tuel et al. 2020a), mostly following that in wet-season precipitation, itself largely shaped by the North Atlantic Oscillation (Knippertz et al. 2003, Boudhar et al. 2009)."*

---

**Comment 16** *Page 2 Line 34: "coefficient of annual variants (0.25)": What does this coefficient*



*mean? Where does it come from?*

**Answer:** The coefficient of annual variation refers to the standard deviation of wet-season precipitation divided by its mean. The figure comes from <https://doi.org/10.1029/2018WR022984> which we had not cited. For simplicity, we suggest removing the reference to this coefficient in the revised version.

---

**Comment 17** *Page 2 Line 34: "potential long-term climate trends will be difficult to detect in such short-term series": Yes, I agree. long-term climate trends can not be determined with short time series I would recommend to rephrase to something like "A sufficient length of the time series is needed..." I still think that it is not a good idea to base your line of argumentation here on the study analyzing 12 years of data.*

**Answer:** Good point, reference removed.

---

**Comment 18** *Page 2 Line 36: "developed" ¿ "assessed"?*

**Answer:** We would suggest "obtained".

---

**Comment 19** *Page 2 Line 46: "anthropogenic warming" ¿ "global warming"?*

**Answer:** Good suggestion, thanks.

---

**Comment 20** *Page 2 Line 46: "quantify the sensitivity [...] to large-scale meteo": You estimate changes in runoff.*

**Answer:** We estimate changes in runoff based on the sensitivity of runoff to meteorological variables in the current climate.

---

**Comment 21** *Page 2 Line 54: Refer to the map (Fig. 1) here.*

**Answer:** Noted, thanks.

---

**Comment 22** *Page 2 Line 54: "4 km<sup>3</sup>"; Where is this number from?*

**Answer:** This figure comes from official data (Oum-Er-Rbia watershed agency. The associated reference is the following:

Agence du Bassin Hydraulique de l'Oum-Er-Rbia: Plan Directeur d'Amenagement Integre des Ressources en Eau du Bassin de l'Oum-Er-Rbia et des bassins cotiers atlantiques, <http://www.abhoer.ma/index>. 2012.

---

**Comment 23** *Page 3 Line 62-63: Are the "plains" below 1000 m? The sentence is a bit difficult to read. Please rephrase. Do the "plains" play any role anyway? As far as I understood you only simulate the high-head watersheds (snow domain)?*

**Answer:** We suggest rephrasing the sentence as follows: "The climate of the area is rather continental, characterized by a large amplitude in the annual cycle of temperature (Knippertz et al., 2003). Minimum temperatures occur in January, when they range from mild (12C) below 1000 m to cold (-5C) above 3000 m."

Name	Lon (°E)	Lat (°N)	Elevation (m)
Dechra El Oued	-5.90	32.68	595
Kenifra	-5.65	33.00	1036
Mechra Eddahk El Oued	-6.52	32.43	406
Ouled Sidi Driss	-7.11	32.32	320
Seggat	-6.69	31.81	1150
Tillouguite	-6.22	32.02	1100
Tizi N'Isly	-5.77	32.46	1595

Table 2: List of precipitation stations.

---

**Comment 24** *Page 3 Line 62-63: Rephrase sentence. I would present this information more neutral and remove ?precipitation is spares?. Stick to the numbers: basin average 400 mm, lowland plains 250 mm and mountains 800 mm.*

**Answer:** Good suggestion, here is what we suggest: *Annual precipitation in the whole basin averages about 400mm, with a low of 250mm in the lowland plains, and a high of 800mm in the mountains to the south.*

---

**Comment 25** *Page 3 Line 68: At this point you did not introduce the data yet.*

**Answer:** Correct, we will remove the reference to the figure.

---

**Comment 26** *Page 3 Line 71: "somewhat persistent snowpack is not uncommon": This is a quite strange formulation. Please rephrase.*

**Answer:** We suggest rephrasing as follows: *"Snowfall is common between November and March above 1500m elevation, and it is frequent to observe snow cover persisting for several months above 2500m".*

---

**Comment 27** *Page 3 Line 72: "rapid": What does it mean here? Are melt rates higher than in other mountain regions?*

**Answer:** The choice of word was poor. It would be better to keep it simple: *"Melt begins in February, and the snowpack is typically gone by the end of May."*

---

**Comment 28** *Page 3 Line 76: "seven stations": Please include table with information on stations: location, elevation,..*

**Answer:** We can provide this information in a supplementary table:

---

**Comment 29** *Page 3 Line 77: "discard": How much of the data is left after this step?*

**Answer:** Please see the answer to your next comment.

Name	Area (km <sup>2</sup> )	Mean elevation (m)
Tarhat	997	1627
Chacha	1519	1460
Ouchene	2391	1953
Tillouguite	2488	2363
Moulay Hassan	1700	2124
Segmine	506	1897
Tamesmate	1303	2198

Table 3: Characteristics of the seven analyzed sub-basins.

---

**Comment 30** *Page 3 Line 78: "daily discharge measurements": Any quality check conducted?*

**Answer:** Good point. This concerns the precipitation data as well. Here is our proposed qualification: *For each precipitation series, we conduct basic quality checks following Durre et al. 2010. We then discard all the months for which more than 10% of the data is missing or flagged. This leaves more than 95% of the data for analysis. Daily discharge measurements are available at seven locations as well, between 1978 and 2015. Each has at most 0.5% of missing data. We implement a simple quality control following Gudmundsson et al. (2018). Days with negative discharge are flagged, as well as all consecutive periods of more than 10 days during which discharge values are equal and larger than zero. We also flag as suspect daily discharge values  $Q$  such that  $\log(Q+0.01)$  is more than six standard deviations away from its mean value, with mean and standard deviation computed over a 10-day period around the corresponding calendar day over the whole time series.*

---

**Comment 31** *Page 3 Line 82: Provide average elevation and area for each sub-basin.*

**Answer:** The information can be found in Table 3.

---

**Comment 32** *Page 3 Line 82: "remove the contribution...": Why do you do this? Is this a common approach?*

**Answer:** The base flow (aquifer discharge) contribution is important only for the Tarhat catchment (which contains the headwaters of the Oum-Er-Rbia). Removing that base flow, which hardly varies from year to year, is important to capture the inter-annual variability linked to atmospheric variables.

---

**Comment 33** *Page 3 Line 88: What is the spatial resolution of TRMM?*

**Answer:** Thanks for pointing out the oversight. TRMM has a resolution of 0.25°.

---

**Comment 34** *Page 4 Line 110: due to cloud cover?*

**Answer:** Most missing data points are due to cloud cover. We suggest reformulating as follows to avoid confusion: *"the number of missing data points (which are mainly due to the presence of clouds)"*.

---

**Comment 35** *Page 4 Line 116: "consider" ; "use"?*

**Answer:** Good suggestion, thanks.

---

**Comment 36** *Page 6 Line 155: I think you should introduce this modelling domain and its characteristics in the section on study area already.*

**Answer:** Good suggestion. We suggest moving the sentence to the end of section 2.1 as follows: *"We focus specifically on the 13104 km<sup>2</sup> domain analyzed by T20a (Fig. 1-a), which encompasses most regions within the Oum-Er-Rbia watershed that receive significant snowfall Marchane et al. 2015. Elevation in this domain ranges from 621m to 3890m. with an average of 1882m. We use a mixture of model-, station- and satellite-based hydrometeorological data, described in the following sections."*

---

**Comment 37** *Page 6 Line 158: Why 0.8? Where is this equation from? Is this your approach?*

**Answer:** There was a typo, the figure is 0.85 (see <https://doi.org/10.1016/j.jhydrol.2020.125657>) This approach was taken by Boudhar et al. (2011) (we use their value of  $k$ ) and discussed in Tuel et al. (2020), J Hydrology: *"0.85 is selected as maximum allowable snow cover due the quasi-absence of grid-scale (500 m) snow fractions larger than 85% in satellite observations. This likely reflects the strong small- scale variability of snow cover in the High Atlas at high altitudes (Baba et al., 2019)"*. The choice of parametrization for snow cover is also discussed further in the same article.

---

**Comment 38** *Page 6 Line 180-183: Move to discussion?*

**Answer:** Since these are considerations based on previous work, it makes sense to leave them here (and add references, cf. point raised by the other reviewer) to justify the selection of potential covariates.

---

**Comment 39** *Figure 5: What time frame do you compare here? Add elevation ranges to figures (header) directly. What fraction of the simulation do those elevation ranges cover? Do you simulate the whole watershed or only the ?snow domain? or the seven sub-basins? Add also a legend to indicate what lines represent.*

**Answer:** The snow modeling domain will be explicitly shown in the revised Figure 1. It includes the seven sub-catchments. Elevation ranges correspond to the following fractions of the modelling domain: > 3500m: 0.2%; 3000-3500m: 2.5%; 2500-3000m: 14%; 2000-2500m: 26% and 1500-2000m: 32%.

---

**Comment 40** *Page 8 Line 213: Where can I see "elevation gradients" in Fig. 6?*

**Answer:** This sentence was wrongly formulated and we suggest removing it altogether.

---

**Comment 41** *Figure 6: Add sub-basins to map. Use grayscale? for background map. Maybe*

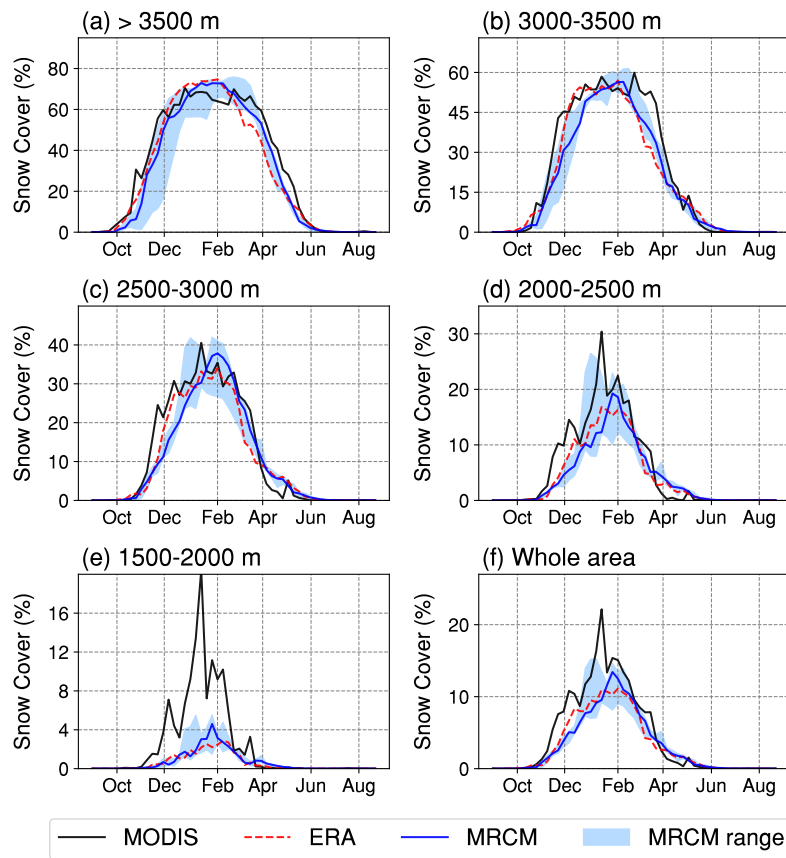


Figure R4: Annual cycles of snow cover (in %) in the MODIS observations (2000-2010, black), ERA-Interim simulation (2000-2010, dashed red) and three GCM-driven historical simulations (1976-2005, solid blue: median; blue shading: 3-model range), at various elevations ranges within our study area: (a) > 3500 m, (b) 3000-3500 m, (c) 2500-3000 m, (d) 2000-2500 m, (e) 1500-2000 m and (f) whole area.

*also add river network? Add figure headlines, so readers does not have to scan through the caption to find out what is shown.*

**Answer:** These are good suggestions, please see the modified figure:

---

**Comment 42** *Page 8 Line 215: What is a narrow band? Can you quantify?*

**Answer:** Good point, the formulation was fuzzy. Here is our suggestion: *"Still, except for elevations below 2000m, mean snow cover mostly remains close ( $\pm 20\%$ ) to MODIS values."*

---

**Comment 43** *Figure 9: What additional information do we get from Fig. 9? Why do you normalize in this way?*

**Answer:** Figure 9 allows for a more visual representation of the distribution of snowpack water content with altitude within the basin compared to Figure 8 (which focuses on each elevation

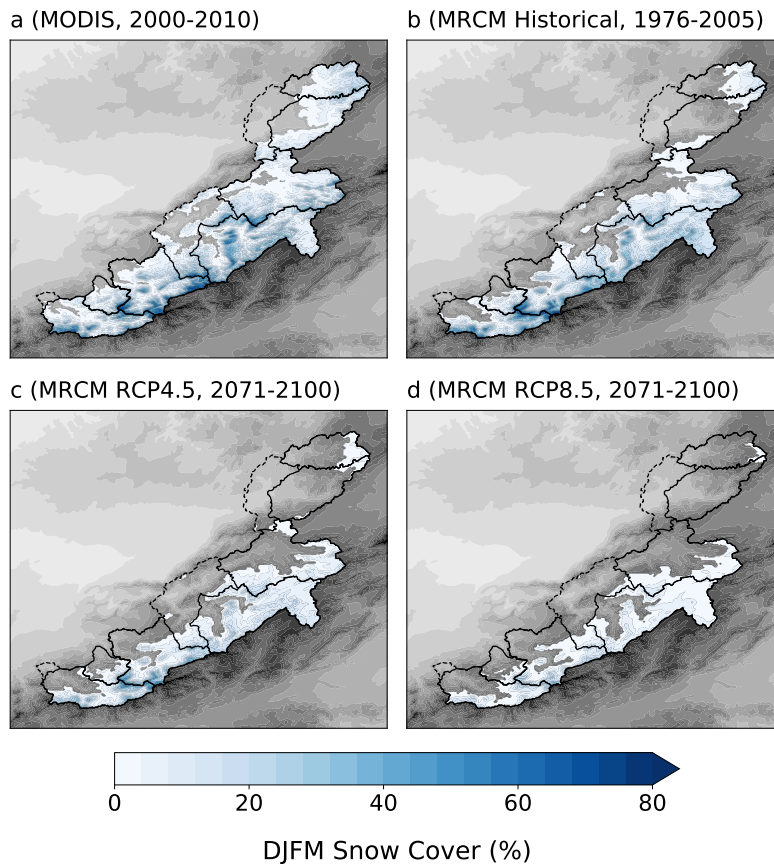


Figure R5: Mean December-to-March (DJFM) fractional snow cover (%) over the basin in (a) MODIS (2000-2010) data, and (b-d) three-GCM average under the (b) historical (1976-2005), (c) RCP4.5 (2071-2100) and (d) RCP8.5 (2071-2100) experiments.

band separately). We normalise by the historical total snowpack water content to highlight the relative decline projected under the two climate scenarios.

---

**Comment 44** *Page 8 Line 224-226: This sentence sound complicated. You want to point at two signals, right: total precipitation is getting less and in addition solid fraction is reduced. Both results in less snow accumulation.*

**Answer:** You are correct. We could reformulate it as follows: *"These SWE projections result from declines in wet-season precipitation of 25% under RCP4.5 and 40-45% under RCP8.5 (Tuel et al. 2020b), combined with warming trends which severely reduce the fraction of solid precipitation in the High Atlas. This is particularly true at mid-elevations (2000-2500 m) (Fig. 10) which are very close to the zero-degree line in the current climate. Warming also favors melt during winter, thus preventing the build-up of the snowpack."*

---

**Comment 45** *Page 8 Line 228: Why do you use MCM here? Can you change to mm?*

**Answer:** For basin-wide SWE it can be relevant to use MCM to refer to total snowpack water

equivalent. For ease of comparison we suggest adding mm as a unit to the axis of Fig. 8 panels.

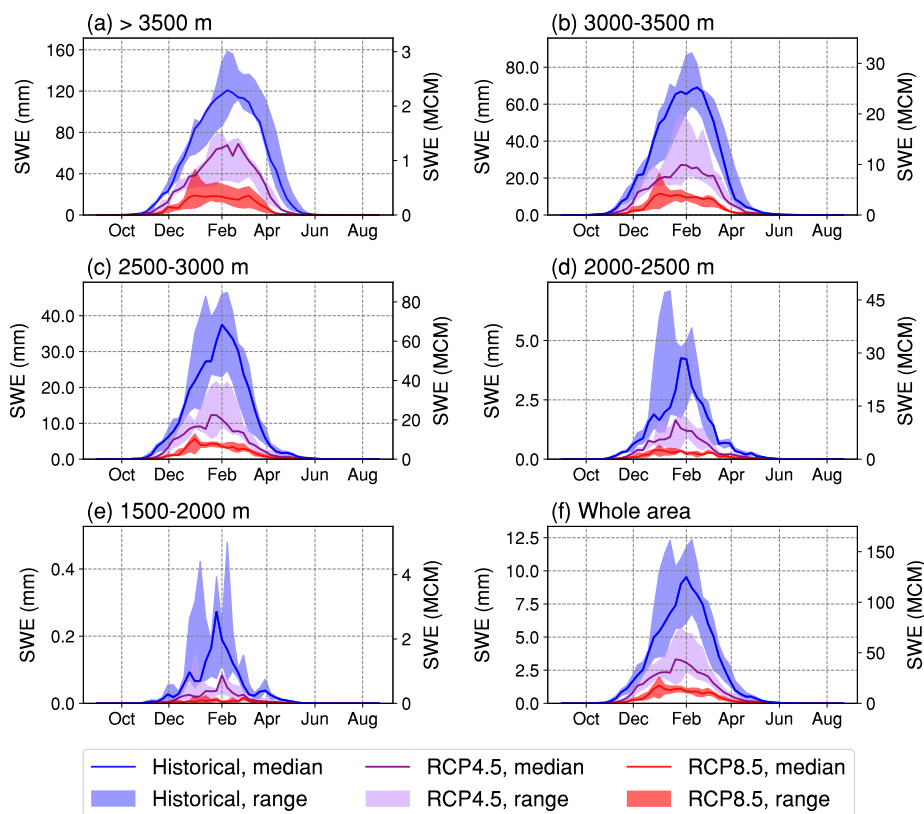


Figure R6: Annual cycles of snow water equivalent (mm, left-hand axis) and corresponding total snow water content (million m<sup>3</sup>, MCM) in the three GCM-driven experiments under the historical (blue, 1976-2005), RCP4.5 (purple, 2071-2100) and RCP8.5 (red, 2071-2100) scenarios, at various elevations ranges within our study area: (a) > 3500 m, (b) 3000-3500 m, (c) 2500-3000 m, (d) 2000-2500 m, (e) 1500-2000 m and (f) whole area. Solid lines represent the three-model medians and the shading corresponds to the three-model spreads.

---

**Comment 46** *Page 8 Line 231-232: Please rephrase.*

**Answer:** We suggest *"Despite the spread in temperature and precipitation projections among the three models, they all agree on the virtual disappearance of the snowpack by the end of the century under business-as-usual."*

---

**Comment 47** *Page 8 Line 236: This section on sublimation loss contains interesting information, but somehow comes out of nowhere and I have troubles to connect it to previous parts. Please add information on your analysis on sublimation losses in your method section.*

**Answer:** That is a good point. We can briefly add to the methods the following sentence: *"In the analysis of model results, a special focus is given to current and future sublimation fluxes. Due to the particularly arid climate of the High Atlas, sublimation losses are indeed quite significant"*

in our study area: about 9% of all snowfall on average, and up to 30% above 3500 m (Schulz et al. 2004, Lopez-Moreno et al. 2017, T20a).” The sublimation results and discussion would then be moved to the corresponding sections.

---

**Comment 48** Page 9 Line 253: *”may not increase very significantly”*: Rephrase. Maybe to *”remain largely unchanged”*?

**Answer:** Good suggestion.

---

**Comment 49** Page 9 Line 277-280: *This part of the discussion is confusing me. It mixes up a lot: groundwater, infiltration, evaporation, runoff concentration processes - all things you do not directly investigate in your study...*

**Answer:** Moving these few sentences in the revised version to a separate discussion section would help give them more context.

---

**Comment 50** Page 9 Line 284: *”The impact of decreasing RH largely dominates over that of declining snow fraction”*: Where can I see this. Don’t they have the same effect on RCs? How robust are these findings? How much uncertainty is in your runoff estimates?

**Answer:** Based on the sign of the regression coefficients, RH and snow fraction have opposite effects on RCs. Lower RH leads to lower RCs. In future projections, the decline in snow fraction, though very large, is not enough to compensate the effect of the RH decrease on RCs. This is a robust feature for all catchments and simulations. For instance, under RCP8.5, average relative humidity will decline by 3-6%, which will lead to an average 30% RC decline across the seven sub-catchments, while the decline in snow fraction increases RCs by only 10%.

Regarding the full uncertainty in runoff projections, we suggest adding the following information (Fig. R7) on worst/best-case runoff changes, for instance as an additional panel in Fig. 13, and expand on it in the discussion section:

---

**Comment 51** Page 10 Line 303: *”Final chapter”*? What final chapter?

**Answer:** Typo! It should be *”in this study”*.

---

**Comment 52** Page 10 Line 304: *”Unsurprisingly”* ¿ remove

**Answer:** We agree.

---

**Comment 53** Page 10 Line 306: *”substantial mitigation of emissions”*: Where is this? What RCP?

**Answer:** We were referring to the RCP4.5 scenario. It is best to reformulate the sentence as *”Given the warming and drying trends projected by climate models for this region, we find that the High Atlas snowpack will significantly decline, even in the RCP4.5 scenario which relies on substantial mitigation of emissions.”*

---

**Comment 54** Page 10 Line 308: *”for much of these trends”*: How much? Can you quantify? How



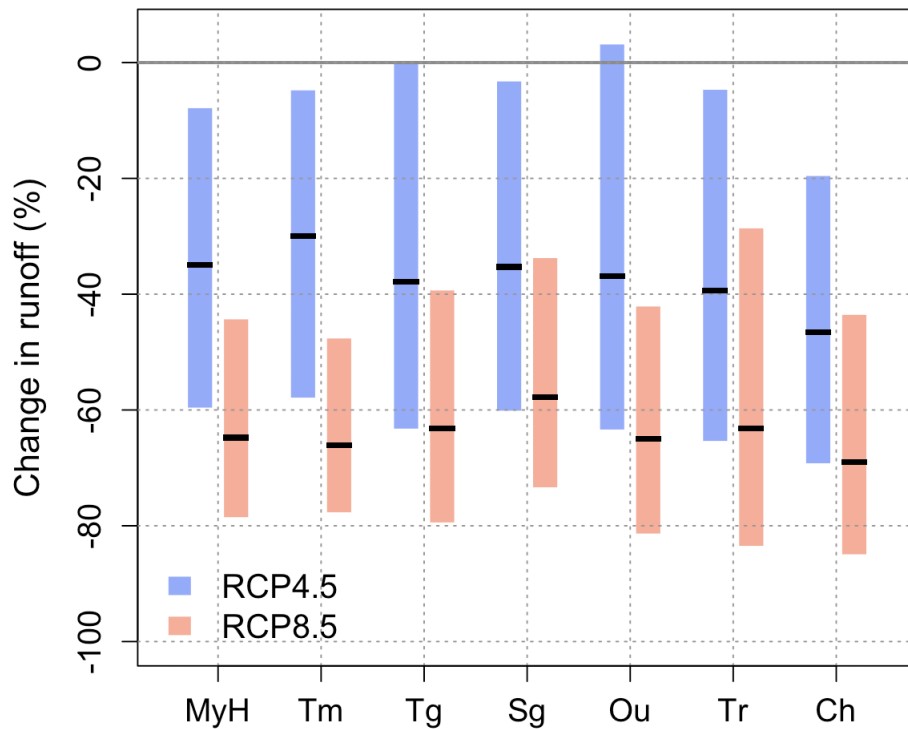


Figure R7: Projected runoff change (in %) for the seven catchments in the RCP4.5 (blue) and RCP8.5 (red) scenarios. Boxes represent 90% confidence intervals.

*much is the contribution of changes in precipitation and how much from rising temperatures?*

**Answer:** A more precise quantification could be done by running the snow model under unchanged temperatures, but at first order one can argue a precipitation decline of 40-60% will lead to a snowpack decline of (at least) roughly 50%. Still, our formulation was not very robust and we suggest replacing it in the conclusion paragraph (*"Snowpack decline is evidently connected to regional warming trends, but also affected by a projected 40-60% decrease in wet-season precipitation in Northwestern Africa."*), while adding a few sentences on the topic in the discussion.

---

**Comment 55** *Page 10 Line 308: "larger snow fraction leads to less runoff": More snow results in less runoff? Do you mean lower runoff coefficients? (This is not a surprise, as you also explain). Maybe also take a look at: <https://www.nature.com/articles/nclimate3225>*

**Answer:** You are correct, one should read lower runoff coefficients.

---

**Comment 56** *Page 10 Line 311: remove "believed". This word is more used in the context of religion, I think.*

**Answer:** We can replace it with "thought".

---

**Comment 57** *Page 10 Line 314: Where do you show that rain-on-snow events increase? At all*

*elevations? Please provide more details*

**Answer:** We do not show it in our results, neither for the current nor for the future climate. In fact it is not true in future scenarios (due to the major decline in snowfall and snow cover), but it may play a role in the current climate. It is best to remove this detail from the conclusion.

---

**Comment 58** *Page 10 Line 317-319: Where do you show this in you analysis?*

**Answer:** We don't and again this should be moved to the discussion.

---

**Comment 59** *Data availability: This is not sufficient. Please provide more information on where to get the different data sets you used.*

**Answer:** ERA-Interim reanalysis data are available from <https://apps.ecmwf.int/datasets/>. TRMM data are available from [https://disc.gsfc.nasa.gov/datasets/TRMM\\_3B42\\_Daily\\_7/summary](https://disc.gsfc.nasa.gov/datasets/TRMM_3B42_Daily_7/summary), and CHIRPS data from <https://data.chc.ucsb.edu/products/CHIRPS-2.0/>. CMIP5 model output were downloaded from <https://esgf-index1.ceda.ac.uk/projects/cmip5-ceda/>. MRCM simulations used in this study are available from the corresponding author upon request.

---

**Comment 60** *Acknowledgements: You provide information on funding here. Please do so in "Funding information". Acknowledge here the data providers etc.*

**Answer:** There is no funding section in the template and this information will be included later in the submission process.