

~~Assessing ecohydrological separation~~ Co-evolution of xylem water and soil water stable isotopic composition in a northern mixed forest biome ~~using stable isotopes~~

Jenna R Snelgrove¹, James M Buttle², Matthew J Kohn³, Dörthe Tetzlaff^{4,5}

¹Environmental and Life Sciences Graduate Program, Trent University, Peterborough, ON, K9L 0G2, Canada

²School of the Environment, Trent University, Peterborough, ON, K9L 0G2, Canada

³Department of Geoscience, Boise State University, ID, 83725-1535, USA

⁴Leibniz Institute of Freshwater Ecology and Inland Fisheries (IGB), Berlin, Germany

⁵ Department of Geography, Humboldt-University Berlin, Germany

Correspondence to: James M Buttle (jbuttle@trentu.ca)

Abstract. ~~In recent years, much attention has been paid to the issue of ecohydrological separation during Plant – soil water uptake by vegetation. This has been spurred isotopic dynamics in part by the “two-water-worlds” hypothesis, whereby mobile “blue-water” contributes northern forests have been understudied relative to other forest types; nevertheless, such information can provide insight into how such forests may respond to groundwater-recharge and streamflow-generation whereas less-mobile “green-water” held in the soil is taken up and transpired by vegetation-hydroclimatic change.~~ This study examines the ~~potential for ecohydrological separation-co-evolution of xylem water and soil water stable isotopic compositions~~ in a northern mixed forest in Ontario, Canada. ~~Stable isotopic compositions of gross~~ Gross precipitation, bulk soil water and xylem water were ~~measured throughout the sampled from pre-leaf out to post-senescence in 2016 growing-season for four species: for~~ eastern white cedar, eastern hemlock, red oak and eastern white pine. Near-bole soil water contents and mobile soil water isotopic compositions were measured for the last three species. Mobile soil water did not deviate significantly from the local meteoric water line (LMWL); ~~in~~. ~~In contrast, both bulk soil water and xylem water deviated significantly from the LMWL, with xylem water significantly depleted in ¹⁸O and particularly ³H relative to bulk soil water. Near~~near-surface bulk soil water ~~experienced~~ showed significant evaporative enrichment ~~relative to the LMWL~~ from pre-leaf out to peak leaf out under all tree canopies. ~~There were inter,~~ while xylem water was significantly depleted in ¹⁸O and particularly ²H relative to bulk soil water throughout the growing season. ~~Inter-species differences in displacement~~deviation of xylem water isotopic compositions from the LMWL and their temporal changes ~~emerged~~ during the growing season, with ~~those of~~ coniferous species ~~xylem water~~ becoming isotopically enriched while ~~those that~~ of red oak became more depleted in ²H and ¹⁸O. These divergences occurred despite thin soil cover (generally < 0.5 m depth to bedrock) which would constrain inter-species differences in tree rooting depths in this landscape. ~~Our results failed to support the ecohydrological separation hypothesis that a distinct soil-water source contributes to plant-water uptake. Potential explanations for inter-specific differences~~ Isotopic fractionation at the tree root and fractionation of xylem water via evaporation through the tree bark are among the most plausible potential explanations for deviations between xylem and soil water isotopic compositions. Differences in the timing and intensity of water use between deciduous and

Style Definition: Normal

Style Definition: Heading 2: Font: Space Before: 2 pt, After: 0 pt, Keep lines together

Style Definition: Heading 3: Font: Font color: Text 1, Space Before: 2 pt, After: 0 pt, Keep lines together

[coniferous trees may account for inter-specific variations](#) in xylem water isotopic composition and its temporal evolution during the growing season in this northern forest landscape ~~are assessed~~.

1 Introduction

Northern forest landscapes are highly sensitive to climate change (Laudon et al. 2017, Sprenger et al. 2018a) and may experience marked hydrological shifts in the future, such as changes in the amount, form and timing of precipitation (Carey et al. 2010, Hartmann et al. 2013) as well as increases in drought frequency and intensity (Brinkmann et al. 2019). Alterations in snow accumulation and ablation have important implications for soil water availability to plants at the start of the growing season (Smith et al. 2011, Carey et al. 2013), and vegetation in northern landscapes can exhibit rapid responses to such changes (e.g. Myers-Smith et al. 2019). Understanding how northern forests may respond to these anticipated hydrological changes would benefit from greater knowledge of the sources of water taken up by major tree species in these landscapes (~~Guswas~~[Guswa](#) et al. 2020). Environmental isotopes have often been used to study water use by vegetation (e.g. Evaristo et al. 2015), and efforts to account for the isotopic composition of plant water in relation to that of major water pools in forest landscapes has led to the ecohydrological separation or “two water worlds” hypothesis ([Brooks et al. 2010](#), McDonnell 2014). This hypothesis proposes that a highly mobile pool of soil water similar in isotopic composition to precipitation contributes to groundwater and streamflow while a less mobile pool of evaporatively-enriched soil water supplies plant transpiration (Goldsmith et al. 2012, ~~Sullivan et al. 2016~~, Knighton et al. 2019, Sprenger and Allen 2020).

McCutcheon et al.’s (2017) review of the ecohydrological separation hypothesis presented three assumptions that must be met for the hypothesis to be supported:

1. There is a distinct difference between the isotopic composition of water taken up by plant roots and the water that drains through the soil profile.
2. This difference can be linked to isotopically distinct soil water sources.
3. These isotopically distinct soil water sources arise from differences in soil water mobility.

Studies have called one or more of these assumptions into question, such as the assumption that mobile and tightly retained subsurface waters are independent water pools (Sprenger et al. 2018b), and there is mounting evidence that the two water worlds hypothesis is overly simplistic (Penna et al. 2018). For example, Bowling et al. (2017) noted that the assumption that plants ~~take up~~[extract](#) more strongly held soil water in the presence of less strongly retained soil water near the plant roots violates currently physiological understanding of how plants take up water, which is primarily driven by a potential gradient between the soil and the plant leaf or needle.

Nevertheless, the interface between soils and plants represents the potential source of novel advances in process understanding in ecohydrology, and systematic assessments of plant – soil water isotopic dynamics need to be examined across distinct soil types and vegetation structures (Dubbert and Werner 2019). There is a particular need to examine relationships between the isotopic composition of xylem water in relation to that of potential source waters in northern forests (Tetzlaff et al. 2015, Penna et al. 2018), since much previous research into water use by vegetation using environmental isotopes has focused on tropical, seasonally dry or arid regions (Evaristo et al. 2015, Gaines et

Formatted: Justified

al. 2016). Most ecohydrological separation studies have also been restricted to the growing season (Liu et al. 2020), and greater consideration should be paid to the full seasonal variability of soil and plant water isotopic composition (McCutcheon et al. 2017, Sprenger et al. 2018a, Tetzlaff et al. 2021). This variability in northern landscapes is driven in part by a pronounced annual cycle that ranges from isotopically-depleted snowfall to isotopically-enriched summer rainfall (Birks and Gibson 2009), with important implications for the isotopic composition of source water available for plant uptake at the start of the growing season (McCutcheon et al. 2017, Allen et al. 2019). Plant – soil water isotopic dynamics may also differ between tree species in northern landscapes. Trees cannot be treated as “simple transport vessels, or straws” (Evaristo et al. 2019, p 18), and inter-specific differences in the interplay between rooting depth and architecture and water flowpaths and storage in the soil profile may manifest themselves in the resulting isotopic composition of plant water uptake (Geris et al. 2015, Allen et al. 2019).

The purpose of this study is to examine the co-evolution of the isotopic composition of xylem water and soil water throughout the growing season from pre-leaf out to post-senescence for some common tree species in Canada’s northern forest landscapes. We address the following questions:

1. What are the temporal changes in the isotopic composition of soil water and xylem water throughout the complete growing season in a northern forest landscape, and do the trajectories of such changes differ between tree species?
- ~~2. Is there evidence for ecohydrological separation in a northern forest landscape, and does the potential for ecohydrological separation differ between tree species?~~
2. What are the potential drivers of any inter-specific differences in the deviation of the isotopic composition of xylem water from that of soil water?

Formatted: Justified

Answering these questions may improve our understanding of relationships between soil water and water taken up for transpiration by different tree species in northern forests and provide insight into how these species may respond to hydroclimatic change in northern landscapes.

2 Study Area and Methods

2.1 Study Area

The study was conducted in the Plastic-1 (PC-1, 23.3 ha) sub-catchment of Plastic Lake (Fig. 1) on the southern edge of the Canadian Shield near Dorset, Ontario, Canada (45°11' N, 78°50' W). Pleistocene glacial till overlies Precambrian metamorphic silicate bedrock (Wels et al. 1990), and thin soil cover is formed from sandy basal tills with an average depth of ~0.4 m to bedrock (Neary et al. 1987, Watmough et al. 2007). Visual observations of outcrops in PC-1 suggest the bedrock is relatively unfractured. Soils are overlain with a ~5 cm thick LFH layer (Neary et al. 1987) and are sandy with minor clay and low organic matter contents showing little decline with depth (Buttle and House 1997). Forest cover is largely coniferous and dominated by red oak (*Quercus rubra*, Or), eastern white pine (*Pinus strobus*, Pw), eastern hemlock (*Tsuga canadensis*, He), white cedar (*Thuja occidentalis*, Ce), and black spruce (*Picea mariana*). The latter is confined to a wetland occupying the central portion of PC-1. Leaf-out of Or is in mid-May while senescence occurs by early October. A meteorological station ~500 m from the study site (Fig. 1) operated by the Dorset Environmental Science Centre (DESC) provides temperature and precipitation data. Daily average

temperatures range between -10°C and 18°C throughout the year, based on meteorological station data between 1981 and 2010. Mean annual precipitation is $\sim 799\text{ mm y}^{-1}$ of rain and $\sim 260\text{ mm y}^{-1}$ of snow water equivalent.

2.2 Gross rainfall sampling and potential evapotranspiration estimation

Gross precipitation (P_g) was measured weekly for amount and isotopic composition from May 27 to October 21, 2016 using a bulk collector at the meteorological station which minimized isotopic fractionation via air exchange with the external environment by reducing the water surface exposed to the atmosphere (Gröning et al. 2012). Snowmelt samples were obtained from a snowmelt ~~lysimeter-located~~ runoff plot at Paint Lake, $\sim 12\text{ km}$ northwest of PC-1 (Lane et al. 2020). Daily potential evapotranspiration (PET) values were taken from Sprenger et al. (2018a), based on meteorological station data and the Penman-Monteith equation (Allen et al. 1998).

2.3 Xylem water sampling

Four tree species in PC1 were selected to conduct xylem water sampling: Ce, He, Or and Pw. Five mature trees with similar diameter at breast heights (DBH) were chosen for each species (Table 1). Sampled Or and Pw trees were

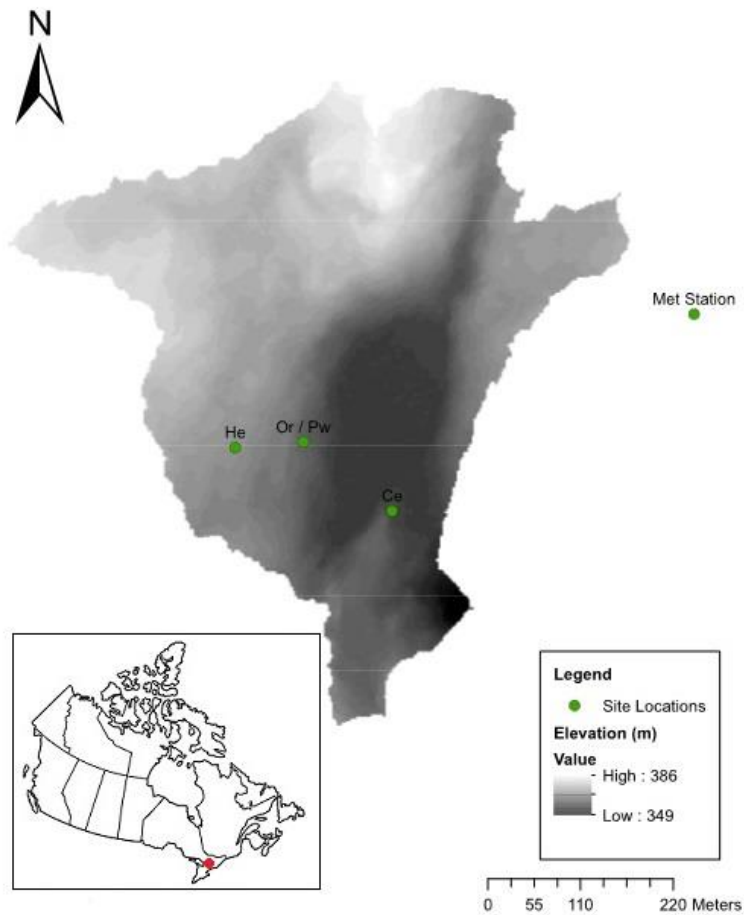


Figure 1: Digital elevation model of the PC-1 catchment, showing the location of trees sampled for xylem water and bulk soil water (Ce – eastern white cedar, He – eastern hemlock, Or – red oak, Pw – eastern white pine) and the meteorological station.

intermixed, while He trees were ~100 m away from the Or/Pw stand and Ce trees were ~200 m from the He trees and ~130 m from the Or/Pw stand (Fig. 1). Xylem water was sampled six times between October 2015 to November 2016, including post-senescence 2015 (October 26 to November 3, 2015), pre-leaf-out 2016 (April 26 to April 29, 2016), post-leaf-out 2016 (June 20 to June 22, 2016), peak-leaf-out 2016 (August 8 to August 10, 2016), pre-senescence 2016 (September 23 to September 24, 2016), and post-senescence 2016 (November 2 to November 4, 2016). Xylem cores were extracted from each tree at breast height using an increment borer (3-thread, 5.15 mm core). Cores were extracted a few cm above or below the preceding core. Bark was removed from retrieved cores which were immediately stored in 200 mL glass scintillation vials with zero headspace. These were taped, sealed with Parafilm, and stored in a freezer

Table 1. Tree height (m), diameter at breast height (DBH) (cm) and projected crown area (PCA) (m²) for all eastern white cedar (Ce), eastern hemlock (He), red oak (Or) and eastern white pine (Pw) trees sampled for bulk soil water, xylem water, soil water content and mobile soil water. *Soil surrounding trees indicated in italics was sampled for soil water content and mobile soil water as reported in Snelgrove et al. (2019).*

<u>Sampling Tree</u>	<u>Height (m)</u>	<u>DBH (cm)</u>	<u>PCA (m²)</u>
<u>Ce-01</u>	<u>11.2</u>	<u>22.6</u>	<u>9.1</u>
<u>Ce-02</u>	<u>10.9</u>	<u>25.5</u>	<u>9.1</u>
<u>Ce-03</u>	<u>11.5</u>	<u>25.1</u>	<u>10.5</u>
<u>Ce-04</u>	<u>8.5</u>	<u>21.3</u>	<u>7.8</u>
<u>Ce-05</u>	<u>11.1</u>	<u>26.6</u>	<u>8.6</u>
<i><u>He-01</u></i>	<i><u>17.5</u></i>	<i><u>34.1</u></i>	<i><u>39.0</u></i>
<i><u>He-02</u></i>	<i><u>13.5</u></i>	<i><u>40.4</u></i>	<i><u>87.4</u></i>
<i><u>He-03</u></i>	<i><u>18.5</u></i>	<i><u>41.2</u></i>	<i><u>62.2</u></i>
<i><u>He-04</u></i>	<i><u>17.8</u></i>	<i><u>35.2</u></i>	<i><u>63.6</u></i>
<i><u>He-05</u></i>	<i><u>16.9</u></i>	<i><u>39.5</u></i>	<i><u>70.9</u></i>
<i><u>Or-01</u></i>	<i><u>22.3</u></i>	<i><u>50.6</u></i>	<i><u>21.4</u></i>
<i><u>Or-02</u></i>	<i><u>20.5</u></i>	<i><u>59.5</u></i>	<i><u>44.8</u></i>
<i><u>Or-03</u></i>	<i><u>17.8</u></i>	<i><u>66.5</u></i>	<i><u>107.5</u></i>
<i><u>Or-04</u></i>	<i><u>13.6</u></i>	<i><u>50.8</u></i>	<i><u>75.4</u></i>
<i><u>Or-05</u></i>	<i><u>19.4</u></i>	<i><u>57.9</u></i>	<i><u>111.2</u></i>
<i><u>Pw-01</u></i>	<i><u>17.6</u></i>	<i><u>60.5</u></i>	<i><u>21.0</u></i>
<i><u>Pw-02</u></i>	<i><u>30.1</u></i>	<i><u>62.4</u></i>	<i><u>12.7</u></i>
<i><u>Pw-03</u></i>	<i><u>26.8</u></i>	<i><u>53.2</u></i>	<i><u>78.5</u></i>
<i><u>Pw-04</u></i>	<i><u>31.2</u></i>	<i><u>51.2</u></i>	<i><u>52.2</u></i>
<i><u>Pw-05</u></i>	<i><u>20.3</u></i>	<i><u>47.4</u></i>	<i><u>25.1</u></i>

Formatted: Font: Times New Roman, 9 pt, Bold, Font color: Text 1

Formatted: Normal

to prevent exchange with the atmosphere. Elapsed time between core extraction and storage in the sealed vials was on the order of 1 minute.

2.4 Soil water isotopic sampling **and soil water content**

~~Concurrent bulk~~ Bulk soil samples were obtained ~~concurrent with xylem water sampling~~ in a randomized direction 1 m from the bole of each tree sampled for xylem water. Following litter layer removal, a minimum of 40 g of soil was collected using an auger at 5 cm depth increments until bedrock was reached. ~~An average of six samples was obtained at a given tree, ranging from one to 16 samples.~~ Samples were double bagged in Ziploc bags while minimizing any stored air and stored at 4°C prior to analysis. ~~Samples were stored for no more than 2 weeks prior to analysis, and Hendry et al. (2015) indicated that any water losses and resulting changes in soil water isotopic content for these short storage periods would be negligible.~~ This bulk soil water was assumed to represent all water stored within the soil, including both mobile and more tightly held soil water.

Mobile soil water was sampled from tension lysimeters installed at 0.1 and 0.4 m depths at 0.1 and 1 m from the tree bole in a randomized direction for three He, three Or and three Pw trees ~~that were not used sampled~~ for xylem water ~~sampling~~ (Snelgrove et al. 2019). ~~Lysimeters~~ Tension lysimeters were manufactured using Soil Test™ 2 bar ceramic cups and PVC tubing. Tension lysimeters were sampled weekly between June 2~~nd~~ and October 21, 2016 and re-set to a minimum negative air pressure of 60 kPa using a hand pump. Samples were stored in sealed glass vials with zero headspace at 4°C prior to isotopic analysis.

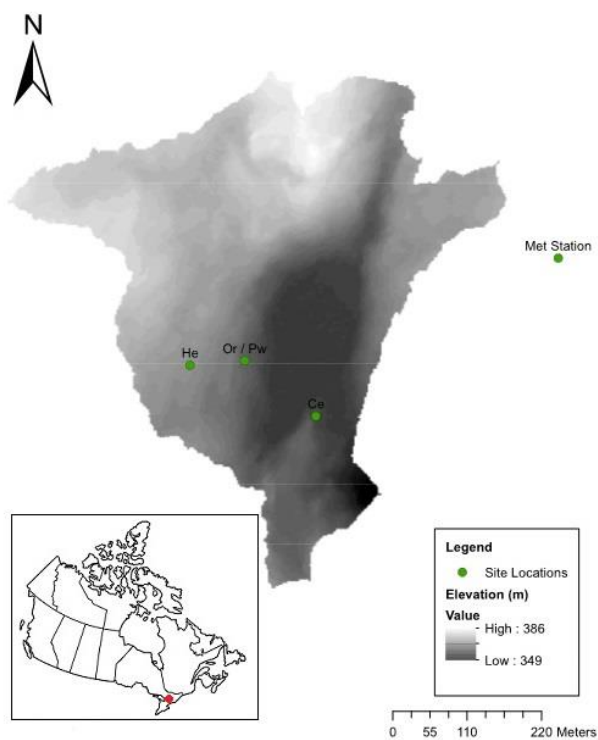


Figure 1: A digital elevation model of the PC-1 catchment, showing the location of trees sampled for xylem water and bulk soil water (Ce—eastern white cedar, He—eastern hemlock, Or—red oak, Pw—eastern white pine) and the meteorological station.

Soil water content (SWC) was measured at two ATL-1 access tubes (<http://www.delta-t.co.uk>, last accessed May 30, 2019) installed 0.1 and 1 m from the bole ~~in a randomized direction for of~~ each of the three trees of a given species sampled for mobile soil water. ~~Tubes were installed in a randomized direction from the bole.~~ Measurements were concurrent with ~~tension~~ lysimeter sampling. A Delta T PR2/6 Soil Moisture Profile Probe™ Probe™ measured SWC at each access tubes at 0.1-, 0.2-, 0.3-, and 0.4-m depths. Measurements at each depth were made three times per

access tube and averaged to obtain mean SWC at each depth. These values were used to estimate the total depth of water held in the upper 0.5 m of soil as described in Snelgrove et al. (2019).

2.5 Isotopic analyses

All isotope ratios are expressed relative to Vienna Standard Mean Ocean Water - Standard Light Antarctic Precipitation (VSMOW-SLAP, Coplen et al. 2002) using standard ‰ notation. Tree core samples were analyzed at the Boise State University Stable Isotope Laboratory. Xylem water was obtained from the cores by cryogenic extraction, followed by mass spectrometry using a Thermo Delta V Isotope Ratio Mass Spectrometer (IRMS) coupled with Thermo TC/EA configured for water injection analyses (Koeniger et al. 2011), with a precision of ± 1.0 ‰ for $\delta^2\text{H}$ and ± 0.1 ‰ for $\delta^{18}\text{O}$. An extreme maximum limit on external reproducibility can be estimated from the compositional consistency among analyses of the same species on a single sampling date (e.g., all Or data on 4/26/16, etc.). This limit is a maximum because different trees are expected to have different compositions. The mean and median reproducibilities for these data are ~ 10 ‰ in $\delta^2\text{H}$ and ~ 1 ‰ in $\delta^{18}\text{O}$. Bulk soil water, tension lysimeter and P_e samples were analyzed at the University of Saskatchewan using Los Gatos Research Liquid Water Off-Axis Integrated-Cavity Output Spectroscopy (Off-Axis ICOS) with a precision of $< \pm 1.0$ ‰ for $\delta^2\text{H}$ and ± 0.2 ‰ for $\delta^{18}\text{O}$. The ICOS instrument at the University of Saskatchewan was cross-correlated with the IRMS at Boise State University. Bulk soil samples were analyzed using vapour extraction of water in an equilibrium state from the sealed Ziploc bags. We are aware that different methods of soil water extraction have been a major focus of research in the past few years, with no definitive agreement on a standard method (e.g. Araguas-Araguas et al. 1995, Orlowski et al. 2016, 2018). Previous work has shown the direct equilibrium method to give similar results to those from cryogenic extraction for sandy soils with low organic matter contents such as those at PC-1 (Sprenger et al. 2018a, b). The accuracy of the direct water-vapour equilibration method was ± 0.3 ‰ for $\delta^{18}\text{O}$ and ± 1.1 ‰ for $\delta^2\text{H}$. For a detailed description of the procedure, we refer to Sprenger et al. (2018a). Snowmelt samples were analyzed at the University of Toronto using a Los Gatos Research DLT-100 liquid water isotope analyser with a precision of $\leq \pm 1.0$ ‰ for $\delta^2\text{H}$ and ± 0.12 ‰ for $\delta^{18}\text{O}$.

The local meteoric water line (LMWL) was determined by regressing $\delta^2\text{H}$ on $\delta^{18}\text{O}$ for all snowmelt and P_e samples (Klaus et al. 2015). Isotopic compositions of soil water and xylem water samples were compared with the LMWL using the line-conditioned excess (lc-excess), which defines the degree of deviation from the LMWL using:

$$lc - excess = \delta^2H - a \times \delta^{18}O - b$$

(1)

Table 1. Tree height (m), diameter at breast height (DBH) (cm) and projected crown area (PCA) (m^2) for all eastern white cedar (Ce), eastern hemlock (He), red oak (Or) and eastern white pine (Pw) trees sampled for bulk soil water, xylem water, soil water content and mobile soil water. Soil surrounding trees indicated in italics was sampled for soil water content and mobile soil water.

Formatted: Font: 9 pt, Bold, Font color: Text 1

Formatted: Normal

Sampling Tree	Height (m)	DBH (cm)	PCA (m ²)
Ce-01	11.2	22.6	9.1
Ce-02	10.9	25.5	9.1
Ce-03	11.5	25.1	10.5
Ce-04	8.5	21.3	7.8
Ce-05	11.1	26.6	8.6
He-01	17.5	34.1	39.0
He-02	13.5	40.4	87.4
He-03	18.5	41.2	62.2
He-04	17.8	35.2	63.6
He-05	16.9	39.5	70.9
Or-01	22.3	50.6	21.4
Or-02	20.5	59.5	44.8
Or-03	17.8	66.5	107.5
Or-04	13.6	50.8	75.4
Or-05	19.4	57.9	111.2
Pw-01	17.6	60.5	21.0
Pw-02	30.1	62.4	12.7
Pw-03	26.8	53.2	78.5
Pw-04	31.2	51.2	52.2
Pw-05	20.3	47.4	25.1

2.5 Isotopic analyses

All isotope ratios are expressed relative to Vienna Standard Mean Ocean Water–Standard Light Antarctic Precipitation (VSMOW–SLAP, Coplen et al. 2002) using standard ‰ notation. Tree core samples were analyzed at the Boise State University Stable Isotope Laboratory. Xylem water was obtained from the cores by cryogenic extraction, followed by mass spectrometry using a Thermo Delta V Isotope Ratio Mass Spectrometer (IRMS) coupled with Thermo TC/EA configured for water injection analyses (Koeniger et al. 2011), with a precision of ± 1.0 ‰ for $\delta^2\text{H}$ and ± 0.1 ‰ for $\delta^{18}\text{O}$. An extreme maximum limit on external reproducibility can be estimated from the compositional consistency among analyses of the same species on a single sampling date (e.g., all Or data on 4/26/16, etc.). This limit is a maximum because different trees are expected to have different compositions. The mean and median reproducibilities for these data are -10% in $\delta^2\text{H}$ and -1% in $\delta^{18}\text{O}$. Bulk soil water, tension lysimeter and P_g samples were analyzed at the University of Saskatchewan using Los Gatos Research Liquid Water Off-Axis Integrated-Cavity Output Spectroscopy (Off-Axis ICOS) with a precision of $\leq \pm 1.0$ ‰ for $\delta^2\text{H}$ and ± 0.2 ‰ for $\delta^{18}\text{O}$. Bulk soil samples were analyzed using vapour extraction of water in an equilibrium state from the sealed Ziploc bags. Snowmelt samples were analyzed at the University of Toronto using a Los Gatos Research DLT-100 liquid water isotope analyser with a precision of $\leq \pm 1.0$ ‰ for $\delta^2\text{H}$ and ± 0.12 ‰ for $\delta^{18}\text{O}$.

The local meteoric water line (LMWL) was determined by regressing $\delta^2\text{H}$ on $\delta^{18}\text{O}$ for all snowmelt and P_g samples (Klaus et al. 2015). Isotopic compositions of soil water and xylem water samples were compared with the LMWL using the line-conditioned excess (lc-excess), which defines the degree of deviation from the LMWL using:

$$lc\text{-}excess = \delta^2\text{H} - a \times \delta^{18}\text{O} - b$$

(1)

where a and b are the LMWL's slope and intercept, respectively (Landwehr and Coplen 2006). Negative lc-excess indicates evaporative enrichment relative to the LMWL (Landwehr and Coplen 2006). McCutcheon et al. (2017) noted the benefit of lc-excess values in showing "isotopic distinction" between two water samples. These may differ markedly in their δD and $\delta^{18}\text{O}$ values but can be considered to be genetically similar if they both plot on the LMWL.

Best-fit regression relationships were determined for xylem water in dual isotope space and the intersection points of these lines with the LMWL were obtained. Intersection points have been used to estimate the isotopic composition of the source precipitation that then may be altered as it undergoes fractionation by processes such as evaporation (Evaristo et al. 2015).

Formatted: Font color: Auto

2.6 Statistics

All statistical analyses were performed using the *stats* package in R Statistical Software (R Core Team 2019). Shapiro-Wilks tests were used to assess normality of xylem water lc-excess values for each sampling period and species. One-way ANOVAs were used to compare differences in xylem water lc-excess between sampling periods for each tree species. Levene's test confirmed homogeneity of variances. Tukey HSD tests were then performed to identify identified significant differences in the data for each tree species. Inter-specific differences in xylem water lc-excess for a given sampling period were assessed using t-tests (unequal variances, Bonferroni-corrected). Successive sampling of the same trees meant that the isotopic composition of xylem water on a given sampling date was partly dependent on that from the previous sampling. Nevertheless, our approach allowed us to examine the temporal trajectory of xylem water for each of the sampled trees. We feel this is preferable to deriving this trajectory by sampling different trees at different times, which could be influenced by inter-tree differences in xylem water isotopic composition on a given sampling date.

3 Results

3.1 Hydrometeorological conditions during the sampling period

Precipitation data for the PC-1 meteorological station were not available for the Fall 2015 period. Total precipitation at the station for January 1 to October 31, 2016 (957 mm) exceeded the 30-year normal precipitation for January to October (854 mm) at the nearby Dorset MOE climate station (station i.d. 6112072). This was the result of above-average precipitation (largely as snow) in February and March, and a wetter-than-normal August (173 mm/mo vs. 76 mm/mo). Conversely, September 2016 was much drier than normal (47 mm/mo vs. 114 mm/mo). Daily PET ranged from 1 to 6.8 mm/day, peaking in mid-June and declining to late October. Total PET from May 27 to October 21, 2016 was 597 mm, while total P_g for the same period was 440 mm. The Canadian Drought Monitor (www.agr.gc.ca/atlas/maps_cartes/canadianDroughtMonitor/ accessed June 18, 2020) indicated that the April –

October 2016 growing season was relatively dry, with conditions ranging from abnormally dry (April) through to moderate (July to October) and severe drought (June).

3.2 Soil water contents

Total water depth in the upper 0.5 m of soil at 0.1 and 1 m from He, Or and Pw tree boles showed similar trends from early June 2016 to late October 2016 (Suppl. Fig. 21): gradual draining through June into early August, a marked increase following 123 mm of rain between August 9 and August 17, and relatively high SWCs until the end of monitoring- (see Snelgrove et al. 2019 for greater detail). SWCs were similar at 0.1 m and 1 m from the boles of trees of a given species. Greatest variability in SWC was seen around Or trees, while the least was around He trees.

3.3 Isotope results

3.3.1 Precipitation

Figure 3a2a shows dual isotope plots of snowmelt and rainfall separated into periods prior to bulk soil water and xylem water sampling. Snowmelt samples represented pre-leaf out values, which were depleted in ^2H and ^{18}O relative to rainfall for the other periods; however, there was considerable overlap in rainfall isotopic composition with no clear demarcation between sampling periods. The local meanmeteoric water line (LMWL) using all samples was:

$$\delta ^2H = 7.0395 * \delta^{18}O + 4.6032; R^2 = 0.97$$

—————(2)

Most throughfall and stemflow samples for He, Or and Pw trees fell on the LMWL, indicating limited isotopic enrichment of P_g as it passed through the forest canopy (Snelgrove et al. 2019).

Formatted: Font color: Auto

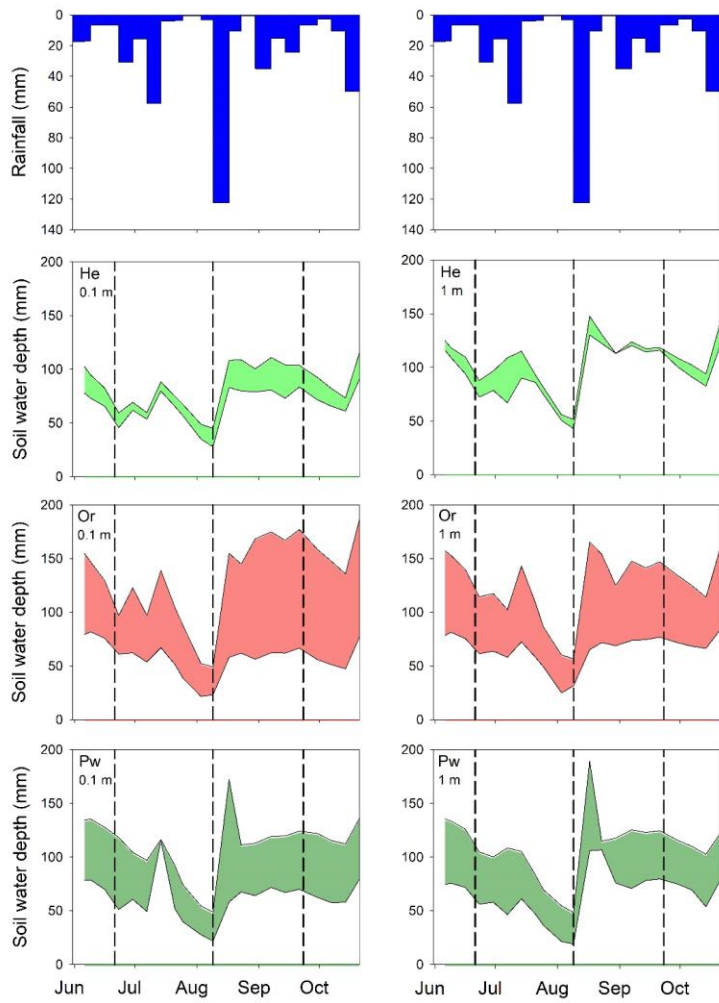


Figure 2. Rainfall depths and range of total soil water depths held in the upper 0.5 m of soil at 0.1 (left hand panels) and 1 m (right hand panels) from the bole of He (second row), Or (third row) and Pw (fourth row) trees during the 2016 growing season. Vertical dashed lines indicate the timing of post leaf out, peak leaf out and pre-senescence sampling of xylem water and bulk soil water.

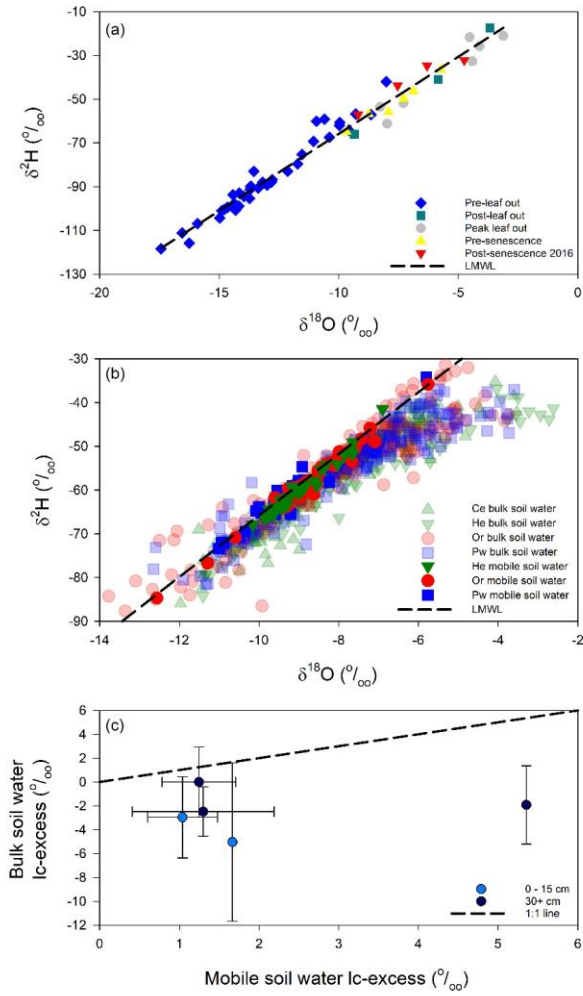


Figure 3. Isotopic composition of snowmelt and rainfall for the various sampling periods for xylem water and bulk soil water and the estimated Local Mean Water Line (LMWL) (a); isotopic composition of bulk soil water and mobile soil water for the sampled tree species (b); mean (± 1 SD) bulk soil water lc-excess vs. mobile soil water lc-excess on or close to the same date of sampling for shallow (0–15 cm depth) and deep (≥ 30 cm depth) soil water (c).

3.3.2 Mobile and bulk soil water

Mobile soil water fell on the LMWL (Fig. 3b2b), particularly deeper samples and those taken post-senescence in 2015 and 2016. Snelgrove et al. (2019) also found limited evaporative enrichment of mobile soil water and weak correspondence between isotopic composition of mobile soil water and that of P_g , throughfall or stemflow inputs to the soil.

Most bulk soil water samples also plotted along the LMWL. However, the best-fit line of $\delta^2\text{H}$ vs. $\delta^{18}\text{O}$ for bulk soil water had a slope of 5.3, shallower than for meteoric water (7.0, Eq. 2), indicating evaporative enrichment of some samples. **Enrichment was most pronounced at peak leaf out (Fig. 2c).** It is important to note the poor agreement between bulk soil water and mobile soil water Ic-excess sampled within two days or less of one another for a given tree species. **Figure 3c plots bulk soil water samples from 0–15 cm depths against tension lysimeter samples at 10 cm depth, while bulk soil water samples from depths ≥ 30 cm are plotted against 40 cm depth tension lysimeter samples; bars indicate ± 1 SD. (Fig. 2d).** Bulk soil water tended to be evaporatively enriched (more negative Ic-excess) relative to mobile soil water sampled on or close to the same day.

Bulk soil water Ic-excess values showed broadly similar distributions with depth beneath all tree species (Fig. 43). Post-senescence 2015 samples showed considerable variability at a given depth and no obvious trends with depth, with a tendency for negative Ic-excess values for all tree species. Ic-excess at all depths became more positive at pre-leaf out in late April, which may reflect large preceding inputs of snowmelt water which flushed the soil profile. Ic-excess was more negative at post-leaf out in late June, indicating evaporative enrichment. This was least pronounced for Pw relative to the other species. All species showed negative Ic-excess for near-surface bulk soil water and increasing values with depth at peak leaf out in early August. Ic-excess approached or equalled 0 at pre-senescence sampling in late September, consistent with decreased evaporation (Snelgrove et al. 2019). Ic-excess values at post-senescence 2016 were similar to those at post-senescence 2015 for Ce **and to a lesser extent for Pw**; however, 2016 values were generally more positive than 2015 values for He **and Or and Pw**.

3.3.3 Xylem water

Xylem water isotopic composition changed during the growing season, with the trajectory of this change differing between species (Fig. 54). Coniferous species saw gradual enrichment of ^2H and ^{18}O from pre-leaf out to post-senescence in 2016. This transition was most pronounced for Ce and Pw, while He saw greater overlap in isotopic compositions of post-leaf out, peak leaf and pre-senescence samples. Xylem water for Or had a different temporal trajectory: both ^2H and ^{18}O became depleted from pre-leaf out to peak leaf out, followed by slight depletion of ^2H from peak leaf out to pre-senescence, and slight depletion of ^{18}O from pre-senescence to post-senescence 2016.

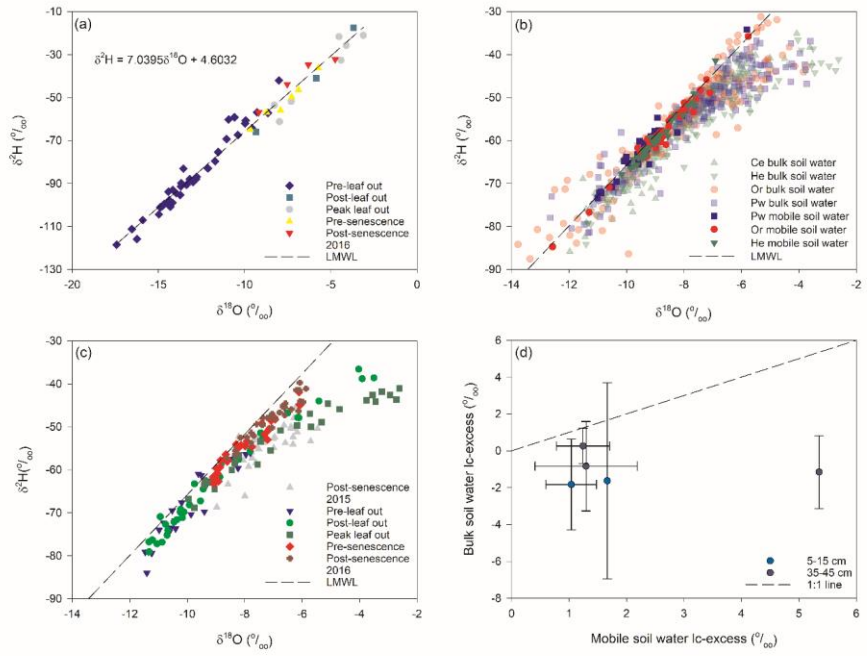


Figure 2. Isotopic composition of snowmelt and rainfall for the various sampling periods for xylem water and bulk soil water and the estimated Local Meteoric Water Line (LMWL) (a); isotopic composition of bulk soil water and mobile soil water for the sampled tree species (b); isotopic composition of bulk soil water for each sampling period beneath He trees (c); mean bulk soil water lc-excess at 5 – 15 cm and 35 – 45 cm depths (± 1 SD) vs. mobile soil water lc-excess at 10 cm and 40 cm depths, respectively, on or close to the same date (d).

Inter-specific differences and temporal changes in xylem water isotopic composition at PC-1

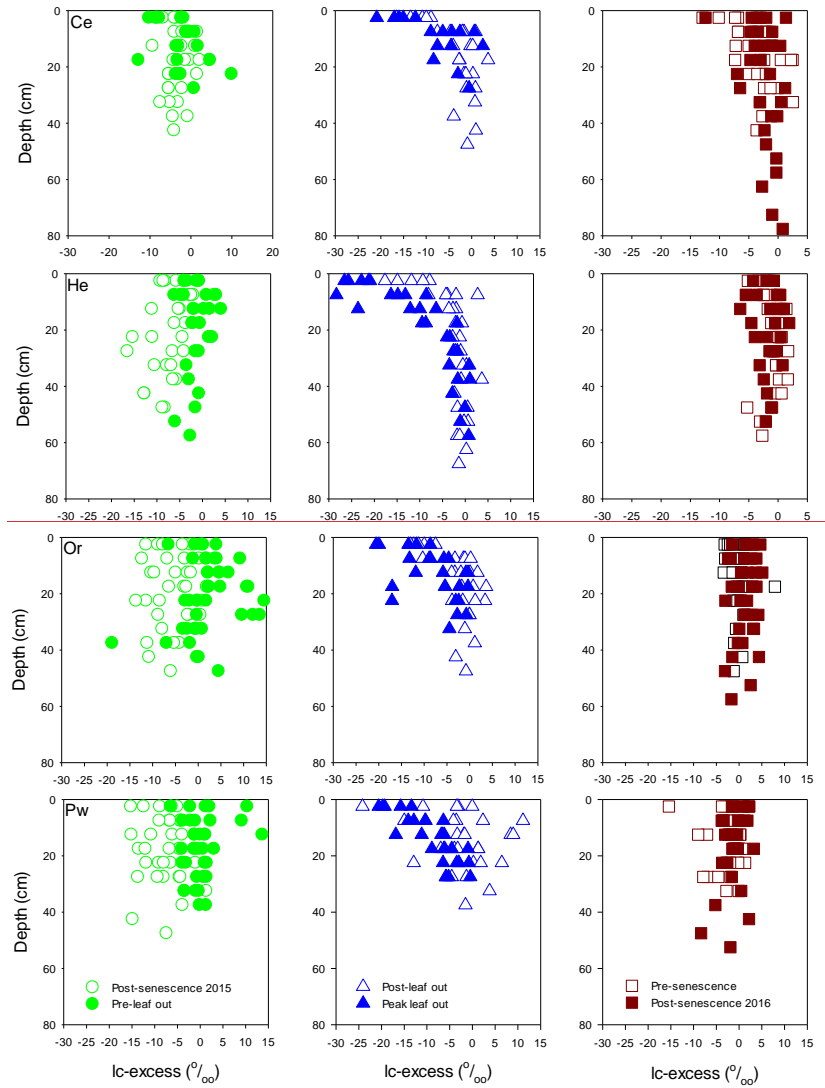


Figure 4. exceeded inter-tree differences for a given species. Standard errors for xylem water for a given species and sampling date ranged from 0.39 to 5.13 ‰ for δ^2H and 0.06 to 0.79 ‰ for $\delta^{18}O$ and were similar to previously reported results. Retzlaff et al. (2001) found insignificant differences in xylem water δ^2H between trees of a given species on a given measurement date, with standard errors of 5 ‰ or less, while White and Smith (2015) found

maximum standard errors for xylem water $\delta^2\text{H}$ and $\delta^{18}\text{O}$ of 5.49 ‰ and 0.84 ‰ for *Acer negundo* L. and 3.83 ‰ and 0.65 ‰ for *Betula nigra* L.

Shaded areas in Fig. 4 represent the typical range in evaporation line slopes (2.5 – 5, Benettin et al. 2018) originating from the most depleted snowmelt sample ($\delta^{18}\text{O} = -9.48\text{‰}$, $\delta^2\text{H} = -118.10 \text{‰}$) measured in spring 2016. These areas overlap most xylem water samples for Ce and Pw, and many He and Or samples. Overlap with samples plotting above the steepest evaporation line slope is obtained by shifting the origin of the evaporation lines along the LMWL to less-depleted snowmelt samples.

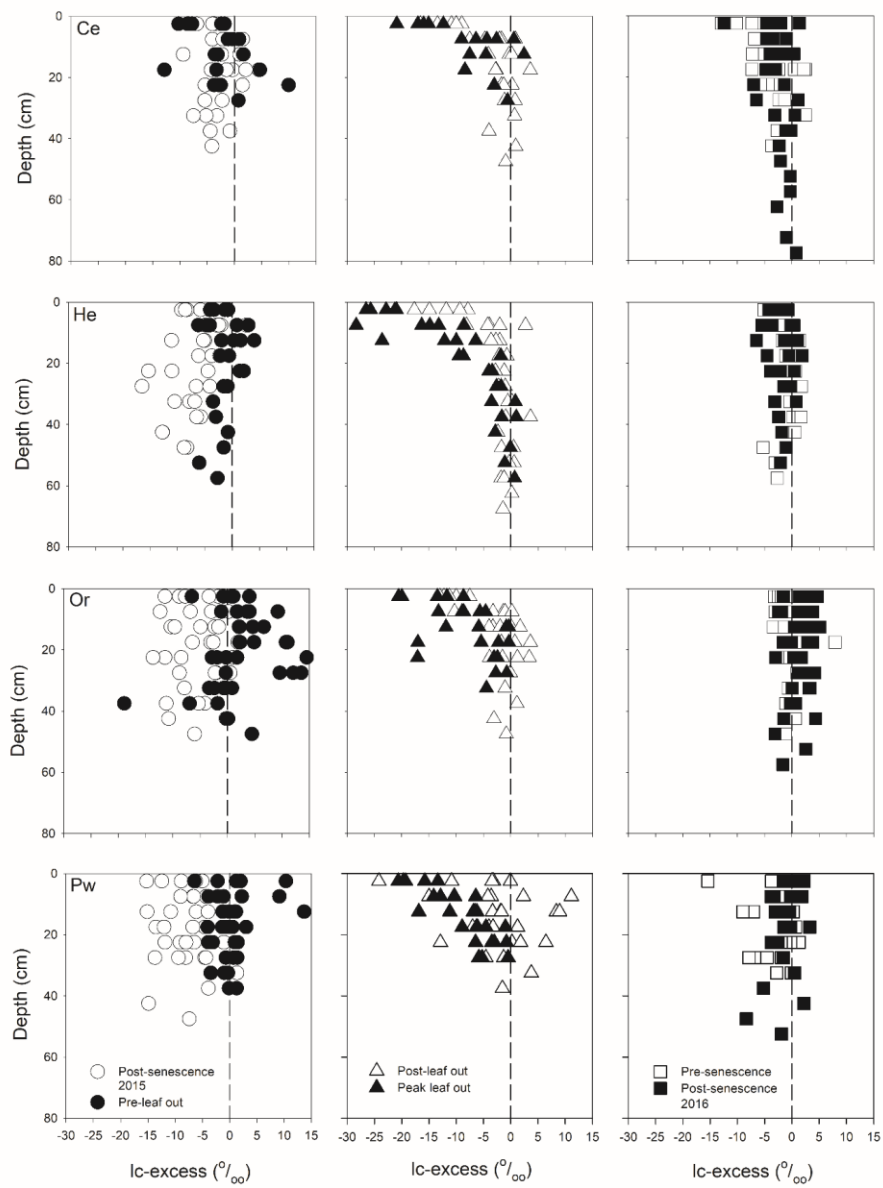


Figure 3. Bulk soil water lc-excess at different depths for the sampling periods for Ce (first row), He (second row), Or (third row) and Pw (fourth row). Vertical dashed line indicates a lc-excess of 0‰.

Formatted: Font: 9 pt, Bold

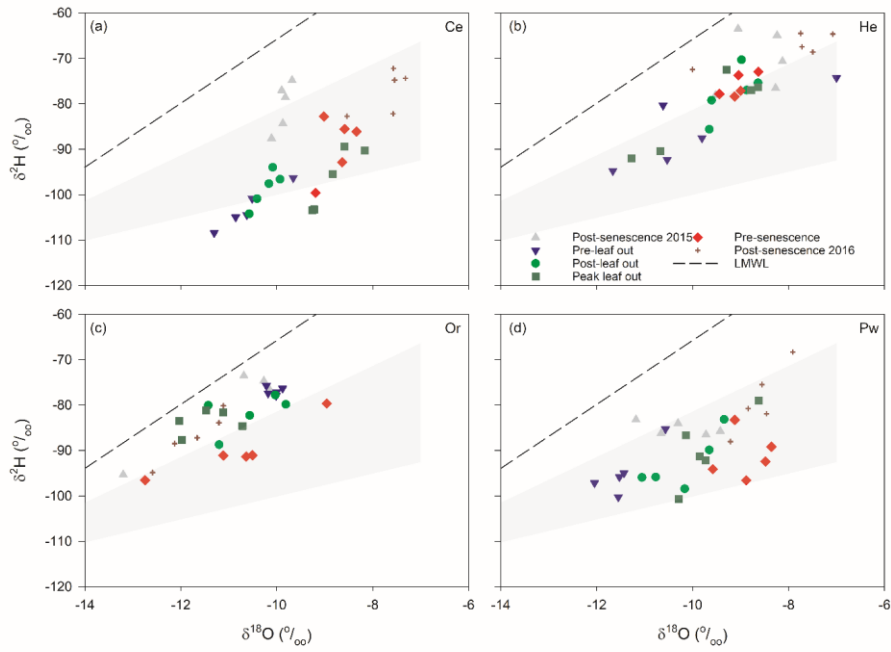
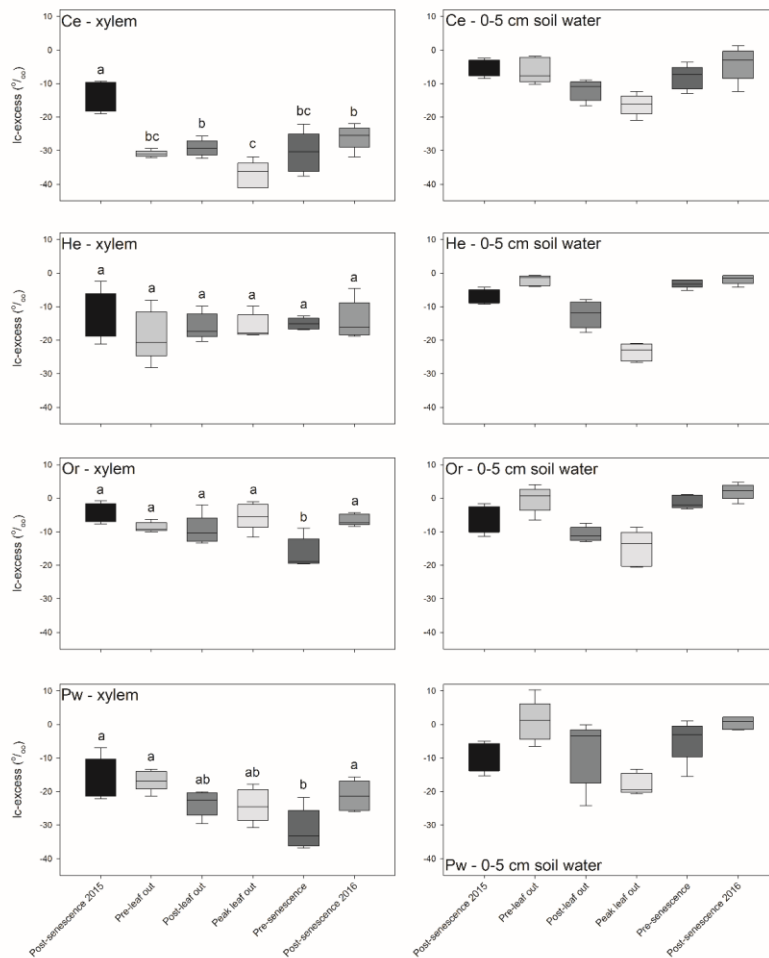


Figure 4. Xylem water isotopic composition for the different sampling periods for Ce (a), He (b), Or (c) and Pw (d).

LMWL – Local Meteoric Water Line. Shaded areas encompass the range (2.5 – 5) of evaporation line slopes originating from the most isotopically-depleted snowmelt sample measured in 2016.

5 There was little overlap of xylem water and bulk soil water in dual isotope space (Suppl. Fig. 62), with the former having much more negative $\delta^2\text{H}$ and to a lesser extent $\delta^{18}\text{O}$ relative to bulk soil water. There were pronounced inter-species differences in xylem-water lc-excess values and their relationship with near-surface soil water (Fig. 75). Bulk soil water lc-excess at 0-5 cm depth is shown, since near-surface soil experienced the greatest evaporative enrichment and thus the most negative lc-excess. Xylem water lc-excess values for a given sampling period and tree species were normally distributed. One-way
10 ANOVA indicated no significant difference in xylem water lc-excess between sampling periods for He; conversely, other species showed significant differences between some sampling periods. There were no significant inter-species differences in xylem water lc-excess post-senescence 2015; however, distinctions emerged during subsequent sampling periods (Fig. 75, Table 2). Lc-excess for Or xylem water was less negative compared to other species and showed considerable overlap between sampling periods, with the most negative values at pre-senescence. They also often overlapped near-surface soil water lc-



15

Figure 5. Box-and-whisker plots of xylem water (left-hand-side panels) and near-surface (0–5 cm depth) bulk soil water (right-hand-side panels) Ic-excess values for Ce (first row), He (second row), Or (third row) and Pw (fourth row) for the different sampling periods. Horizontal line – median, box – 1st to 3rd quartiles, whiskers – maximum and minimum values. Xylem water box and whiskers with different letters for a given tree species are statistically different ($p = 0.05$) based on Tukey HSD tests.

Formatted: Normal, Space After: 8 pt, Line spacing: Multiple, 1.08 li

Formatted: Font: 9 pt, Bold

Table 2. Significant differences in mean xylem water lc-excess for a given sampling period, determined from t-tests with $p = 0.0015$ (equivalent to $p = 0.05$ following Bonferroni correction).

<u>Post-senescence</u> <u>2015</u>	<u>Pre-leaf out</u>	<u>Post-leaf out</u>	<u>Peak leaf out</u>	<u>Pre-senescence</u>	<u>Post-senescence</u> <u>2016</u>
=	<u>Ce < Or</u>	<u>Ce < He</u>	<u>Ce < He</u>	<u>Pw < He</u>	<u>Ce < Or</u>
	<u>Ce < Pw</u>	<u>Ce < Or</u>	<u>Ce < Or</u>		<u>Pw < Or</u>
	<u>Pw < Or</u>	<u>Pw < Or</u>	<u>Ce < Pw</u>		
			<u>He < Or</u>		
			<u>Pw < Or</u>		

excess. Lc-excess for He was similar for all sampling periods, although inter-tree variability declined progressively from pre-leaf out to pre-senescence. There was occasional overlap of xylem water and near-surface bulk soil water lc-excess values. A different relationship occurred for Ce and to a lesser extent Pw. Xylem water lc-excess for the former became more negative from post-senescence 2015 to peak leaf out and then became more positive. Lc-excess for Ce was generally more negative than for other species and was often more negative than the most evaporatively-enriched bulk soil water. Lc-excess for Pw also declined from post-senescence 2015, becoming most negative at pre-senescence. Pw lc-excess also tended to fall outside the near-surface bulk soil water range, although there was more overlap than for Ce xylem water.

Figure 86 presents soil water – xylem water offsets for $\delta^2\text{H}$ throughout the study period, defined as the difference between the mean isotopic composition of soil water surrounding a sampled tree and xylem water for that tree. Offsets for $\delta^{18}\text{O}$ showed similar patterns to those for $\delta^2\text{H}$ and are not shown. Intra-species differences in $\delta^2\text{H}$ offsets on a given sampling date could be appreciable; however, inter-tree differences for a given species between sampling times did not appear to be consistent. Temporal trajectories of these offsets showed inter-specific differences. Minimum offset values for Ce occurred at post-senescence in 2015. Values rose to maxima either at post-leaf out or peak leaf out before declining to post-senescence 2016. Offsets were more temporally-constant for He with maxima at peak leaf out. There was a marked decline in the Or $\delta^2\text{H}$ offsets from 2015 post-senescence to pre-leaf out, followed by a gradual increase to maxima at either pre-senescence or 2016 post-senescence. Pw had more temporally constant $\delta^2\text{H}$ offsets with minima at either pre-leaf out or post-leaf out.

Best fit equations for xylem water in dual isotope space and the intersection points of these lines with the LMWL are given in Table 3. The Or intersection point fell within the range of observed rainfall and snowmelt $\delta^2\text{H}$ and $\delta^{18}\text{O}$ (Fig. 3), suggesting precipitation may have been the source of Or xylem water. This occurred to a lesser extent for Pw, whose intersection point fell at the lower end of rainfall and snowmelt isotopic compositions. However, Ce and He intersection points indicated no obvious precipitation source of xylem water from these trees.

Formatted: Font: 9 pt, Bold

Formatted: Normal

Formatted: Centered

Formatted: Centered

Formatted: Centered

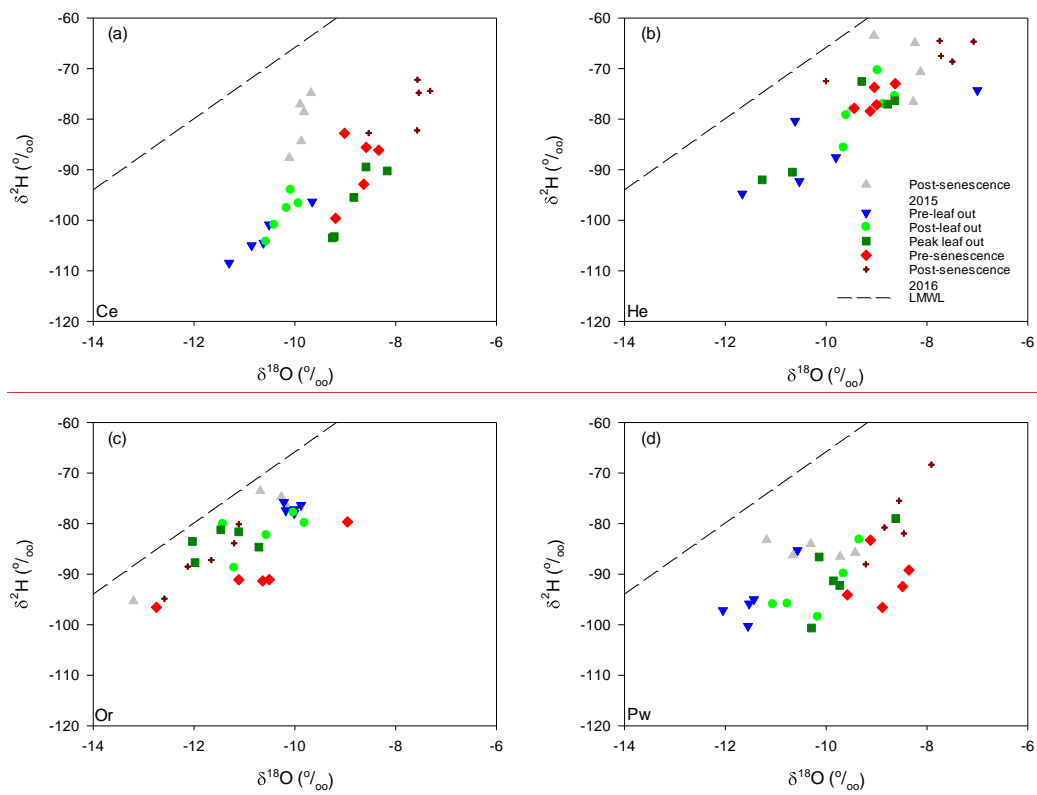
Formatted: Centered

Formatted: Centered

Formatted: Centered

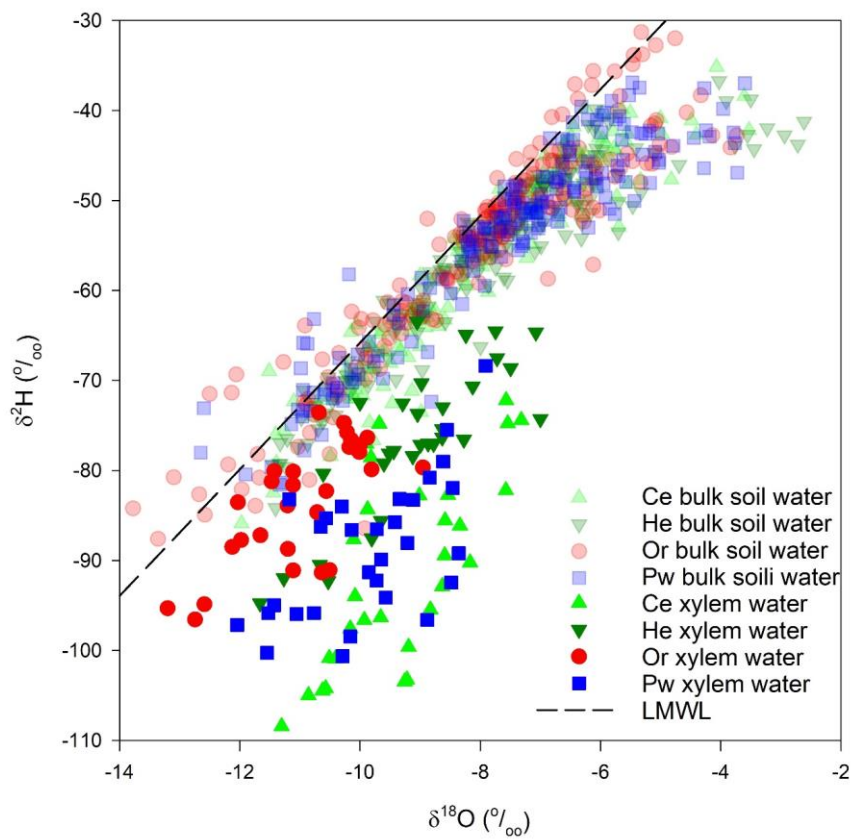
Formatted: Font color: Text 1

Formatted: Indent: First line: 0 cm

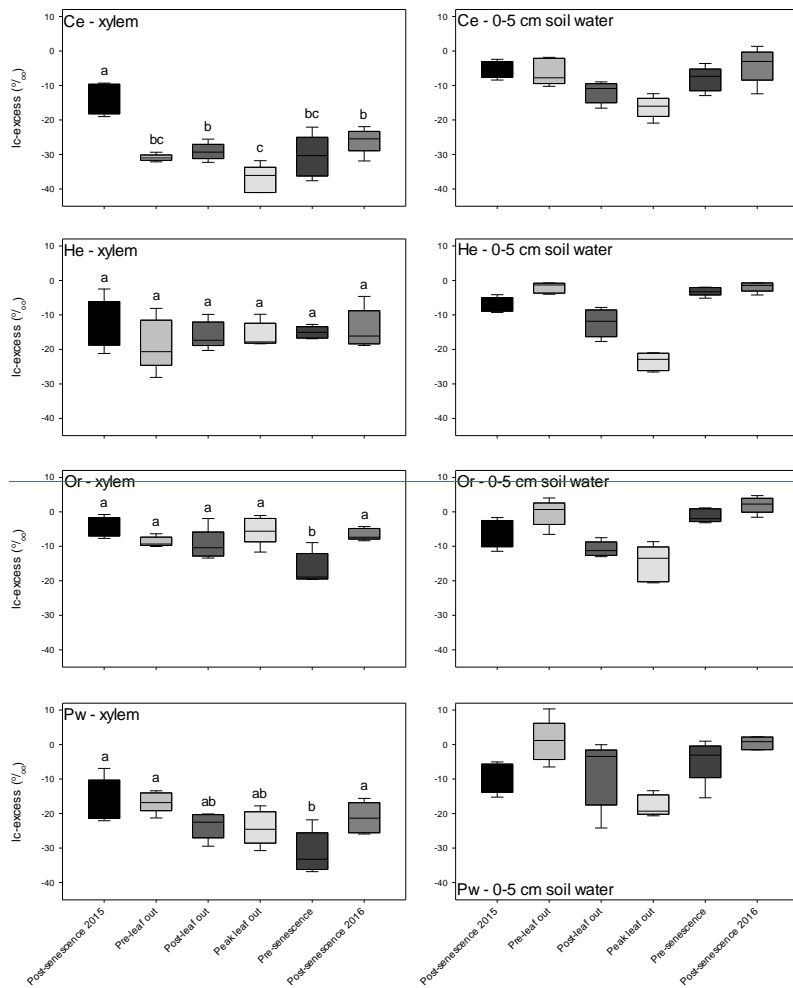


45

Figure 5. Xylem water isotopic composition for the different sampling periods for Ce (a), He (b), Or (c) and Pw (d). LMWL – Local Mean Water Line.



50 **Figure 6. Isotopic composition of xylem water and bulk soil water for the sampled tree species. Ce—eastern white cedar, He—eastern hemlock, Or—red oak, Pw—eastern white pine, LMWL—Local Mean Water Line.**

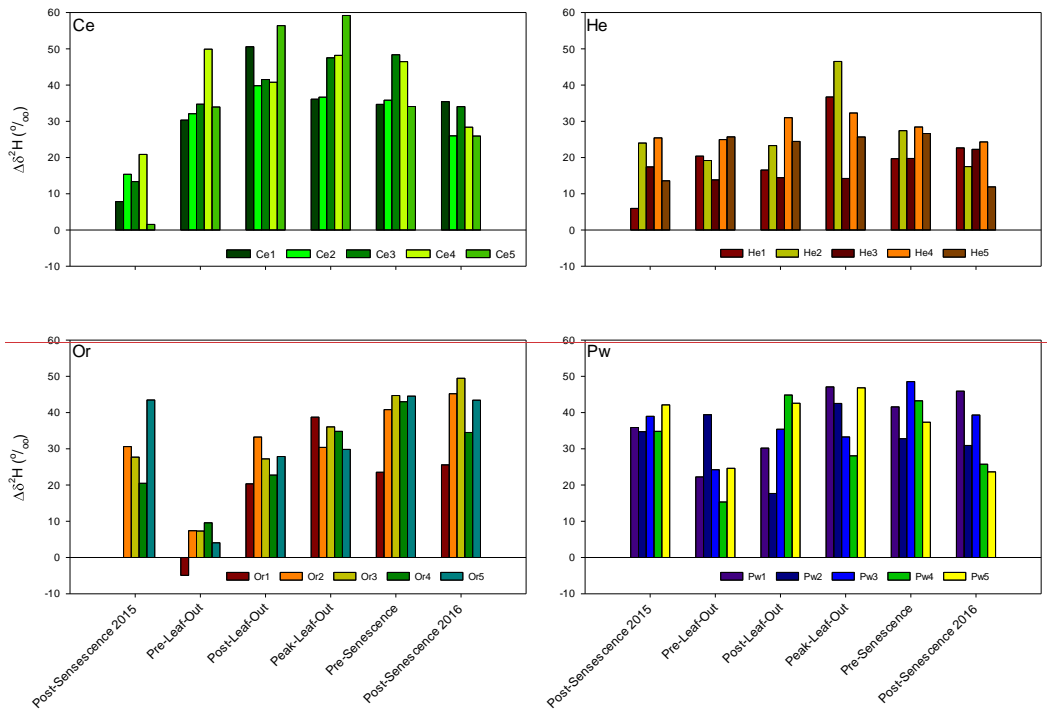


55 **Figure 7.** Box-and-whisker plots of xylem water (left hand side panels) and near surface (0–5 cm depth) bulk soil water (right hand side panels) Ic-excess values for Ce (first row), He (second row), Or (third row) and Pw (fourth row) for the different

Formatted: Normal, Space After: 8 pt, Line spacing: Mul
1.08 li

Formatted: Font: 9 pt, Bold

sampling periods. Horizontal line—median, box—1st to 3rd quartiles, whiskers—maximum and minimum values. Xylem water box and whiskers with different letters for a given tree species are statistically different ($p = 0.05$) based on Tukey HSD tests.



60 **Figure 8.** Bulk soil water—xylem water $\delta^3\text{H}$ offsets ($\Delta\delta^3\text{H}$) for the sampled trees for each sampling period. See text for details on derivation of offsets. Positive values of $\Delta\delta^3\text{H}$ indicate that xylem water $\delta^3\text{H}$ is more negative than the corresponding mean bulk soil water $\delta^3\text{H}$.

65

Table 2. Significant differences in mean xylem water l_c excess for a given sampling period, determined from t-tests with p = 0.0015 (equivalent to p = 0.05 following Bonferroni correction).

Post-senescence	Pre-leaf-out	Post-leaf-out	Peak-leaf-out	Pre-senescence	Post-senescence
2015					2016
-	Ce < Or	Ce < He	Ce < He	Pw < He	Ce < Or
	Ce < Pw	Ce < Or	Ce < Or		Pw < Or
	Pw < Or	Pw < Or	Ce < Pw		
			He < Or		
			Pw < Or		

Formatted: Font: 9 pt, Bold

Formatted: Normal

Formatted: Left: 2.54 cm, Right: 2.54 cm, Top: 2.54 cm, Bottom: 2.54 cm, Width: 21.59 cm, Height: 27.94 cm, Header distance from edge: 1.25 cm, Footer distance from edge: 1.25 cm, From text: 0 cm

Formatted: Centered

Formatted: Centered

Formatted: Centered

Formatted: Centered

Formatted: Centered

Formatted: Centered

Formatted: Font color: Text 1

Table 3. Xylem water best-fit lines in dual isotope space, and intersection points between best fit lines and the Local Mean Water Line (LMWL)

Tree species	Best fit line	R ²	p	Intersection point between xylem water best-fit line and LMWL	
				δ ¹⁸ O (‰)	δ ² H (‰)
Ce	δ ² H = -29.2 + 6.6*δ ¹⁸ O	0.43	<0.001	-56.0	-399.6
He	δ ² H = -21.9 + 6.0*δ ¹⁸ O	0.66	<0.001	-21.9	-154.3
Or	δ ² H = -29.7 + 4.9*δ ¹⁸ O	0.53	<0.001	-14.7	-102.0
Pw	δ ² H = -47.4 + 4.2*δ ¹⁸ O	0.37	<0.001	-17.2	-120.0

4 Discussion

70

4.1 What are the temporal changes in the isotopic composition of soil water and xylem water throughout the growing season in a northern forest landscape, and do the trajectories of such changes differ between tree species?

Formatted: Font color: Auto, English (United States)

Formatted: English (United States)

Formatted: English (United States)

Formatted: Font color: Auto, English (United States)

Bulk soil water isotopic composition exhibited similar trends beneath the different tree species' canopies.

Formatted: Font: Times New Roman, 10 pt, Font color: Auto, English (United States)

75

Near-surface bulk soil water showed evaporative enrichment at peak leaf out, when SWCs reached a minimum (Fig. 4, Suppl. Fig. 1). Total depth of soil water in the upper 0.5 m of soil at peak leaf out was ~50 mm (equivalent to a mean SWC of 0.1 m³ m⁻²), and l_c excess approached 30% beneath He (Fig. 4). Increased enrichment

Formatted: No Spacing, Justified, Line spacing: 1.5 lines

Formatted: Font: Times New Roman, 10 pt, Font color: Auto, English (United States)

of bulk soil water relative to both the LMWL and corresponding mobile water with declining SWCs was also observed by Zhao et al. (2013) in a loamy soil and by Sprenger et al. (2018b) at PC-1. The bulk soil water slope in dual isotope space at PC-1 (5.3) agreed with values of 5.3 to 5.8 reported by Bowling et al. (2017) for riparian soils in eastern Utah, while l_c-excess values for near-surface soils were within the range given in McCutcheon et al. (2017) for a semi-arid landscape in southwest Idaho. Bulk soil water isotopic composition following senescence did not return to that of the previous year for all tree species (Fig. 4). Brooks et al. (2010) also noted an inter-annual difference in soil water isotopic composition at the same location and depth for the same time of the year.

Formatted: Font: Times New Roman, 10 pt, Font color: Auto

Formatted: Font: Times New Roman, 10 pt, Font color: Auto

Formatted: Font: Times New Roman, 10 pt, Font color: Auto

80

Pronounced soil water – plant water $\delta^2\text{H}$ offsets (Gaines et al. 2016) and were similar to those for hemlock (5.5–6.6) in central New York state (Knighton et al. 2019). Xylem water best fit lines were displaced below both the LMWL and bulk soil water, with the least displacement for Or and the greatest for Ce. Nevertheless, xylem water slopes overlapped that for bulk soil water (5.3), as observed for all species at PC-1 (Fig. 6) may be a general occurrence in temperate forests (Barbeta et al. 2020). However, these values exceeded the mean $\delta^2\text{H}$ offset of 10.6 ± 3.05 ‰ reported by Barbeta et al. (2020) for potted saplings of European beech (*Fagus sylvatica* L.) by McCutcheon et al. (2017) but in contrast to Bowling et al.'s (2017) measurement of xylem water slopes (3.7 to 4.7) that were distinctly lower than the soil water $\delta^2\text{H}$ vs. $\delta^{18}\text{O}$ slope.

While all sampled tree species had similar mean le^- excess post senescence 2015, some species diverged from these initial values more than others. The greatest shifts in xylem water le^- excess were for Ce, with no significant change in mean le^- excess between sampling periods for He. The more negative le^- excess for Ce at peak leaf out may explain why post senescence 2016 le^- excess for Ce did not return to the post senescence 2015 values, unlike for which the other species (Fig. 7). White and Smith (2015) also found that xylem water $\delta^2\text{H}$ at the end of the growing season approached but did not equal values at the initiation of dormancy in the previous year, suggesting xylem water does not necessarily reset to a consistent isotopic composition of xylem water deviates from soil water have been observed in previous work. Gaines et al. at the start (2016) found xylem water from oak (*Quercus*) and hickory (*Carva*) trees tended to be more depleted in heavy isotopes than that of *Acer*. Xylem water ^2H for deciduous (beech and oak) species in Switzerland was more depleted compared to spruce (Allen et al. 2019). Our results contrast with those of each growing season.

Importantly, White and Smith (2015), who saw limited inter-specific differences in the isotopic composition of plant water for box elder (*Acer negundo* L.) or river birch (*Betula nigra* L.) at a given phenological stage in the foothills of the southern Appalachian Mountains. Inter-specific variations in xylem water isotopic composition and its temporal changes at PC-1 are likely not due to distinct environmental conditions for the different tree species, given the close proximity of the sampled trees and similar soil conditions under the tree canopies.

4.2 Potential drivers of plant – soil water isotopic differences

Several factors have been suggested which might account for the observed differences between the isotopic compositions of xylem water and bulk soil water in PC-1. Some of these may be common to all studied tree species, while others cannot account for interspecific differences in the temporal trajectory of xylem water isotopic composition during the study period.

Errors in measuring xylem water composition. We do not fully know what kind of vegetation water is mobilized by cryogenic extraction (the approach used here to obtain xylem water samples), although it is usually assumed to characterise xylem water (Tetzlaff et al. 2021). Millar et al. (2018) noted that cryogenic extraction resulted in more depleted xylem water ^2H in spring wheat compared to other extraction methods. However, such an experimental issue might be expected to influence measured xylem water isotopic compositions relatively consistently across species and seasons and does not readily account for the inter-specific differences in xylem water $\delta^2\text{H}$ at PC-1. We have noted our previous work that found no significant difference between the isotopic composition of soil water determined by

Formatted: Font: Times New Roman, 10 pt, Font color: Auto

Formatted: Font: Times New Roman, 10 pt, Font color: Auto

Formatted: Font: Times New Roman, 10 pt, Font color: Auto

Formatted: Font: Times New Roman, 10 pt

Formatted: Font: Times New Roman, 10 pt, Font color: Auto, English (United States)

Formatted: Font color: Auto, English (United States)

Formatted: Font color: Auto, English (United States)

Formatted: Font color: Auto, English (United States)

Formatted: Font color: Auto, English (United States)

Formatted: Font color: Auto

Formatted: Font color: Auto

Formatted: Font: Times New Roman, 10 pt, Font color: Auto

Formatted: Font: Times New Roman, 10 pt, Font color: Auto

Formatted: Font: Times New Roman, 10 pt, Font color: Auto

Formatted: Font: Times New Roman, 10 pt, Font color: Auto

Formatted: No Spacing, Justified, Line spacing: 1.5 lines, No bullets or numbering

140 cryogenic extraction and the direct equilibration method (Tetzlaff et al. 2021), and others have found no consistent evidence that cryogenic extraction alters xylem water's isotopic values (Barbeta et al. 2015, Grossiord et al. 2017), Berry et al. (2017) suggested cavitation (air entry) during extraction of stem cores from trees and increasing time lags between extraction and sealing the sample allows evaporation that fractionates the remaining sample water. Given the rapid processing of xylem water samples at PC-1, the interspecific and temporal variation in xylem water isotopic composition and its pronounced divergence from that of all other potential water sources, the displacement of xylem water from bulk soil water is likely not attributable to a methodological issue.

Formatted: Font: Times New Roman, 10 pt, Font color: Auto

145 **Unsourced water sources.** The possibility that bulk soil water does not represent root-absorbed water implies plants selectively access an isotopically-fractionated portion of soil water (McCutcheon et al. 2017). However, soils in PC-1 at peak leaf out were very dry while Ce xylem water $\delta^{13}C$ -excess was much more negative than corresponding bulk soil water (Fig. 7). Presence of sufficient soil water with very negative $\delta^{13}C$ -excess values that could both match the xylem water $\delta^{13}C$ -excess and supply the tree's transpiration demand is unlikely under these circumstances. Trees may have accessed water held in bedrock fractures that may be isotopically distinct from mobile soil water (Oshun et al. 2016). However, bedrock in PC-1 appears to be relatively unfractured, making it difficult to envisage sufficient water held in fractures that could supply transpiration to a significant extent. This echoes Gaines et al. (2016), who saw little evidence that roots within or below fractured bedrock in central Pennsylvania were consistent major contributors to transpiration.

Formatted: Font: Times New Roman, 10 pt, Font color: Auto

Formatted: Font: Times New Roman, 10 pt, Font color: Auto

150 **Soil water content.** Evaristo et al. (2019) found differences between the isotopic compositions of plant water and low mobility soil matrix water to be greatest under drought conditions and least at the transition from drought to rewetting. The greatest differences between xylem water and bulk soil water isotopic compositions at PC-1 for Ce and He were generally at peak leaf-out (Fig. 8) following a protracted decline in SWCs (Fig. 2); however, these differences persisted following soil rewetting. Barbeta et al. (2020) found soil water – plant water δ^2H offsets increased with soil water content, whereas the smallest offsets at PC-1 were either at post-senescence 2015 (Ce) or pre-leaf out (He, Or, Pw) when SWCs would be relatively large as shown by previous work in PC-1 (e.g. Devito and Dillon 1993). Thus, the influence of soil water content on differences in xylem water – soil water isotopic composition is unclear and deserves further study.

Formatted: Font: Times New Roman, 10 pt, Font color: Auto

Formatted: Font: Times New Roman, 10 pt, Font color: Auto

Formatted: Font: Times New Roman, 10 pt, Font color: Auto

160 **Storage effect.** Xylem water at a given time may be influenced by the isotopic composition of water taken up days or months beforehand (McCutcheon et al. 2017, Penna et al. 2018, Evaristo et al. 2019). Sprenger et al. (2018c) estimated median ages of total soil water storage in PC-1 ranging from 31 (25th percentile) to 74 days (75th percentile). This storage effect may assist in explaining the frequent distinction between xylem water and bulk soil water $\delta^{13}C$ -excess for a given sampling period, and is supported by partial (He, Pw) or complete (Or) overlap of the $\delta^{13}C$ -excess of post-senescence 2015 soil water and pre-leaf out xylem water in 2016 (Fig. 7). However, Ce xylem water $\delta^{13}C$ -excess was much more negative than post-senescence 2015 bulk soil water, suggesting this mechanism may differ in importance between tree species. Such a mechanism also fails to account for Ce and to some extent Pw $\delta^{13}C$ -excess values that were much more negative than any bulk soil water (Figs. 3 and 5).

Formatted: Font: Times New Roman, 10 pt, Font color: Auto

Formatted: Font: Times New Roman, 10 pt, Font color: Auto

170 **Interactions with carbonates or other geochemical and organic constituents.** These include isotopic effects between soil water and cations/clay minerals (Oerter et al. 2014), organic matter (Orlowski et al. 2016), and rock-

Formatted: No Spacing, Justified, Line spacing: 1.5 lines, No bullets or numbering

Formatted: Font: Times New Roman, 10 pt, Font color: Auto

175 water interactions (Lin and Horita 2016, Oshun et al. 2016) that differ for H and O. The potential for any or all of these processes to induce differences in xylem water isotopic composition relative to soil water at PC-1 is not known, although the low clay contents of PC-1 soils make significant isotopic effects with clay minerals unlikely (Sprenger et al. 2018b). Regardless, it would be reasonable to expect that such processes would be similar in the soil water surrounding the different tree species. Thus, they do not easily explain interspecific differences in the degree of isotopic displacement of xylem water from the LMWL and bulk soil water.

180 **Fractionation during water uptake.** There is increasing recognition that differences between xylem water and soil water isotopic compositions may result from isotopic fractionation induced by internal plant processes during water uptake (Berry et al. 2017). Ellsworth and Williams (2007) showed that 12 of 16 species of woody plants demonstrated H isotope fractionation at the soil-root interface, while Vargas et al. (2017) found plants discriminated against ^{18}O and ^2H during water uptake with differences between $\delta^{18}\text{O}$ and $\delta^2\text{H}$ in soil water relative to plant water increasing with transpiration water loss. This would lead to more negative $\delta^{18}\text{O}$ and $\delta^2\text{H}$ in plant water relative to soil water, as seen at PC-1. It also suggests the greatest differences between xylem water and soil water lc -excess would be at peak leaf out when PC-1 soils were at their driest (Suppl. Fig. 1). This was the case for Ce which showed clear separation between soil and xylem water lc -excess at peak leaf out (Fig. 5). This also occurred at pre-senescence for Pw; however, there was overlap between soil water and xylem water lc -excess for Or and He. Thus, the potential for fractionation during water uptake may be a major cause of deviations between soil water and xylem water isotopic compositions and may differ between tree species in northern mixed forests.

185 **Fractionation following uptake.** Changes in the isotopic composition of xylem water relative to that of soil water have been attributed to such processes as xylem-phloem exchange during water stress (Cernusak et al. 2005, Bertrand et al. 2014), isotopic depletion of storage water in xylem tissue compared to water moving via conductive tissues (Barbeta et al. 2020), H fractionation when water movement in the tree occurs predominantly via symplastic rather than via apoplastic pathways (Lin and Sternberg 1993, Ellsworth and Williams 2007), and fractionation within the tree's leaves which then impacts the isotopic composition of phloem sap (Farquhar et al. 2007). We are not able to assess influence of any of these processes on xylem water composition at PC-1. There is also the potential for evaporation through the tree's bark (Dawson and Ehleringer 1991, Smith et al. 1997). Bowling et al. (2017) thought this could not explain evaporative enrichment of xylem water in their study given the large stems sampled and removal of bark from all stem samples, as was the case at PC-1. They also contrast with some previous work. White and Smith (2015) saw insignificant seasonal variations for box elder (*Acer negundo* L.) Nevertheless, the overlap between many xylem water samples and the range in evaporation lines originating from the most isotopically-depleted snowmelt sample (Fig. 4) suggests that uptake of snowmelt water at the start of the growing season and subsequent evaporative enrichment of xylem water post-uptake cannot be ruled out.

190 **Plant physiology, rooting behaviour and water use strategies.** or river birch (*Betula nigra* L.) as well as limited inter-specific differences at a given phenological stage in the foothills of the southern Appalachian Mountains. McCutcheon et al. (2017) found stem water lc -excess from shrub (*Prushia tridentata*, *Prunus virginiana*, *Artemisea tridentata*), deciduous (*Betula occidentalis*, *Salix lucida*) and coniferous (*Pseudotsuga menziesii*, *Pinus ponderosa*) tree species either became less negative or remained stable during the growing season. Xylem water ^2H for deciduous

Formatted: Font: Times New Roman, 10 pt, Bold, Font color: Auto

Formatted: Font: Times New Roman, 10 pt, Font color: Auto

Formatted: Font: Times New Roman, 10 pt, Font color: Auto

Formatted: Font: Times New Roman, 10 pt, Font color: Auto

Formatted: Font: Times New Roman, 10 pt, Font color: Auto

Formatted: Font: Times New Roman, 10 pt, Font color: Auto

Formatted: Font: Times New Roman, 10 pt, Font color: Auto

Formatted: Font color: Auto

Formatted: Font color: Auto

(beech and oak) species in Switzerland was more depleted compared to that of spruce (Allen et al. 2019), which was attributed in part to differences in elevation. This contrasts with results from PC-1, where conifers (particularly Ce and Pw) tended to have more depleted ^2H than Or. Nevertheless, White and Smith (2015) noted a divergence in xylem water $\delta^2\text{H}$ between species from the beginning of the dormant period. This was similar to PC-1, where Or xylem water generally became more depleted moving from pre-leaf out to post-senescence 2016 while the reverse trend occurred for Ce, Pw and to a lesser extent He (Fig. 5). White and Smith (2015) suggested such divergence may be due to differing periods of inactivity for the two species they studied. This may be relevant to deciduous species such as Or that experiences leaf-out and senescence and whose timing and intensity of water use may differ from that of coniferous species. Philips and Ehleringer (1995) found evaporatively enriched stem water in big-toothed maple (*Acer grandidentatum* Nutt.) and Gambel's oak (*Quercus gambelii*) before leaf flush and saw stem water move closer to the LMWL at full leaf out. We found similar results for Or where lc-excess became less negative at peak leaf out relative to pre-leaf out, although the difference was not statistically significant (Fig. 75). Gaines et al. (2016) noted xylem water from larger oak (*Quercus*) and hickory (*Carya*) trees tended to be more depleted in heavy isotopes than that of from larger trees compared to smaller *Acer* ones. The reverse was the case at PC-1, where the smallest trees (Ce, Table 1) showed the most depleted xylem water ^2H .

Inter-specific differences and temporal changes in xylem water isotopic composition at PC-1 clearly exceeded inter-tree differences for a given species. Standard errors for xylem water for a given species and sampling date ranged from 0.39 to 5.13 ‰ for $\delta^2\text{H}$ and 0.06 to 0.79 ‰ for $\delta^{18}\text{O}$ and were similar to previously reported results. Retzlaff et al. (2001) found insignificant differences in xylem water $\delta^2\text{H}$ between trees of a given species on a given measurement date, with standard errors of 5 ‰ or less, while White and Smith (2015) found maximum standard errors for xylem water $\delta^2\text{H}$ and $\delta^{18}\text{O}$ of 5.49 ‰ and 0.84 ‰ for *Acer negundo* L. and 3.83 ‰ and 0.65 ‰ for *Betula nigra* L.

4.2 Is there evidence for ecohydrological separation in a northern forest landscape, and does the potential for ecohydrological separation differ between tree species?

We did not find evidence of ecohydrological separation for all tree species examined here. Ecohydrological separation depends on some degree of correspondence between the isotopic composition of xylem water and that of a water store that can supply transpiration. Such correspondence permits derivation of the soil depth from which trees abstract water, using approaches that range from visual assessment of the depth of overlap of xylem water and soil water isotope values (e.g. Goldsmith et al. 2012) to Bayesian linear mixing models (e.g. Evaristo et al. 2019). Such approaches could not be applied. Shallow soils overlying bedrock at PC-1 since xylem water $\delta^2\text{H}$ and $\delta^{18}\text{O}$ often fell outside the range for bulk soil water. Pronounced soil water—plant water $\delta^2\text{H}$ offsets observed for all species at PC-1 (Fig. 8) may be a general occurrence in temperate forests (Barbeta et al. 2020). However, these values exceeded the mean $\delta^2\text{H}$ offset of 10.6 ± 3.05 ‰ reported by Barbeta et al. (2020) for potted saplings of European beech (*Fagus sylvatica* L.). Barbeta et al. (2020) found these offsets to be most negative when soils were very dry, whereas the smallest offsets at PC-1 were either at post-senescence 2015 (Ce) or pre-leaf out (He, Or, Pw) when SWCs would be relatively large.

Nevertheless, there were inter-specific differences in the xylem water—bulk soil water relationship. Lc-excess of Or xylem water frequently overlapped that of near-surface bulk soil water for the same or a preceding sampling period

Formatted: Font color: Auto

Formatted: Font color: Auto

Formatted: Font color: Auto

Formatted: Font color: Auto

Formatted: Font color: Auto

Formatted: Font color: Auto

Formatted: Font color: Auto

Formatted: Font color: Auto

Formatted: Font color: Auto

Formatted: Font color: Auto

Formatted: English (United Kingdom)

(likely constrain the ability of different tree species to develop Fig. 7), suggesting ecohydrological separation. However, Or xylem water samples plotting well below bulk soil water in dual isotope space (Fig. 6) indicates that support for the ecohydrological separation hypothesis was not as strong as that from previous work (e.g. Goldsmith et al. 2012). There was no consistent overlap and often pronounced differences between xylem water and bulk soil water isotopic compositions for the other species, indicating they did not demonstrate ecohydrological separation. The greatest differences between xylem water and bulk soil water isotopic compositions for Ce and He were generally at peak leaf out (Fig. 8) following a protracted decline in SWCs (Fig. 2), and these differences persisted following soil rewetting. This contradicts results from Evaristo et al.'s (2019) controlled experiment, where ecohydrological separation (indicated by correspondence between the isotopic compositions of plant water and low mobility soil matrix water) was negligible under drought conditions and most marked at the transition from drought to rewetting.

Distinctions between xylem water and bulk soil water isotopic compositions have been noted elsewhere. Brooks et al. (2010) found some plant water plotting beyond (and generally below) the range of soil water $\delta^2\text{H}$ and $\delta^{18}\text{O}$ in dual isotope space but did not address it, with Goldsmith et al. (2012) later suggesting this xylem water may have undergone further evaporation. Of the 17 isotope based studies of plant water use in temperate forests (similar to the PC-1 forest landscape) cited by Evaristo et al. (2015), 13 reported both soil water and xylem water offsets (analogous to $\text{le}_{\text{excess}}$ used here) and four indicated xylem water offsets falling below the range (i.e. were more negative) of the corresponding soil water offsets. More recent work (e.g. Geris et al. 2015, White and Smith 2015, Bowling et al. 2017, Hervé-Fernández et al. 2016, McCutcheon et al. 2017, Brinkmann et al. 2019) also saw a distinction between the isotopic composition of xylem water and possible water sources that might support transpiration.

4.3 Why is xylem water isotopically distinct from bulk soil water?

In his argument for the "two water world" hypothesis McDonnell (2014) noted that "the isotopes don't lie" (p 2/17). Perhaps not, but neither do they supply us with an unambiguous explanation of their values in all circumstances. The question remains: why is xylem water isotopically distinct from bulk soil water, both at PC-1 and elsewhere? Several lines of argument have been put forward to account for this, some of which are more plausible than contrasts in rooting architectures (e.g. deep tap roots for some species vs. shallow root networks for others in a northern mixed forest such as at PC-1).

1. Xylem water is accessing an un-sampled water source not captured in bulk soil water isotope values (White and Smith 2015). This assumption is favoured by the ecohydrological separation literature (McCutcheon et al. 2017). The possibility that bulk soil water does not represent root absorbed water (McCutcheon et al. 2017) implies plants selectively access an isotopically fractionated portion of soil water, which would be consistent with the ecohydrological separation hypothesis. However, interspecific differences in the rooting. However, soils in PC-1 at peak leaf out were very dry while Ce xylem water $\text{le}_{\text{excess}}$ was much more negative than corresponding bulk soil water (Fig. 7). Presence of sufficient soil water with very negative $\text{le}_{\text{excess}}$ values that could both match the xylem water $\text{le}_{\text{excess}}$ and supply the tree's transpiration demand is unlikely under these circumstances.

Rooting behaviour and water use strategies of trees studied at PC-1 is unknown, and the The issue of root activity is one of the most difficult dilemmas facing plant ecology and ecohydrology (Beyer et al. 2016). Inter-specific

Formatted: Font color: Auto

Formatted: Font color: Auto

Formatted: Font color: Auto

Formatted: Font color: Auto

Formatted: Font color: Auto

Formatted: Font color: Auto

Formatted: Font color: Auto

Formatted: No Spacing, Justified, Indent: Left: 0 cm, First line: 0 cm, Line spacing: 1.5 lines

Formatted: Font: Times New Roman, 10 pt, Font color: Auto

Formatted: Font: Times New Roman, 10 pt, Font color: Auto

Formatted: Font: Times New Roman, 10 pt, Font color: Auto

285 differences in plant water $\delta^{13}C$ -excess may reflect variations in rooting characteristics and shifts in the depth of water uptake in response to changes in water availability (McCutcheon et al. 2017, Dubbert and Werner 2019). Nonetheless, shallow soils overlying bedrock at PC-1 would likely constrain the ability of different tree species to develop marked contrasts in rooting architectures (e.g. deep tap roots for some species vs. shallow root networks for others). This topic should be a focus of further work in northern forest landscapes. Trees

290 may have accessed water held in bedrock fractures that may be isotopically distinct from mobile soil water (Oshun et al. 2016). However, bedrock in PC-1 appears to be relatively unfractured, making it difficult to envisage sufficient water held in fractures that could supply transpiration to a significant extent. This echoes Gaines et al. (2016), who saw little evidence that roots within or below fractured bedrock in central Pennsylvania were consistent major contributors to transpiration. Here, the root length densities of *Quercus*, *Carya*, *Pinus* and *Acer* species were highest in the soil's upper 10 cm and displayed a negative relationship with depth (Gaines et al. 2016). Assuming similar rooting behaviour in PC-1, this suggests transpiration would be largely supplied by near-surface soil water. While this water had the greatest degree of isotopic enrichment, xylem water $\delta^{13}C$ -excess was often more negative (Fig. 7). Thus, an unsampled water source is an unlikely cause of xylem water isotopic compositions in PC-1.

300 2. Xylem water at a given time may be influenced by the isotopic composition of water taken up days or months beforehand (McCutcheon et al. 2017, Penna et al. 2018, Evaristo et al. 2019). Sprenger et al. (2018c) estimated median ages of total soil water storage in PC-1 ranging from 31 (25th percentile) to 74 days (75th percentile). This storage effect may assist in explaining the frequent distinction between xylem water and bulk soil water $\delta^{13}C$ -excess for a given sampling period, and is supported by partial (H_e , P_w) or complete (O_e) overlap of the $\delta^{13}C$ -excess of post-senescence 2015 soil water and pre-leaf out xylem water in 2016 (Fig. 7). However, Ce xylem water $\delta^{13}C$ -excess was much more negative than post-senescence 2015 bulk soil water, suggesting this mechanism may differ in importance between tree species. Such a mechanism also fails to account for Ce and to some extent P_w $\delta^{13}C$ -excess values that were much more negative than any bulk soil water (Figs 4 and 7).

310 2. There may be errors in the xylem water isotopic composition values. Miller et al. (2018) noted that cryogenic extraction (the approach used here to obtain xylem water samples) resulted in more depleted xylem water δ^2H in spring wheat compared to other extraction methods. However, such an experimental issue might be expected to influence measured xylem water isotopic compositions relatively consistently across species and seasons, and does not readily account for the inter-specific differences in xylem water δ^2H observed at PC-1. Others have found no consistent evidence that cryogenic extraction alters

315 xylem water's isotopic values (Barbeta et al. 2015, Grossiord et al. 2017). Berry et al. (2017) suggested cavitation (air entry) during extraction of stem cores from trees and increasing time lags between extraction and sealing the sample allows evaporation that fractionates the remaining sample water. Given the rapid processing of xylem water samples at PC-1, the inter-specific and temporal variation in xylem water isotopic composition and its pronounced divergence

Formatted: Font: Times New Roman, 10 pt, Font color: Auto

Formatted: Font: Times New Roman, 10 pt, Font color: Auto

Formatted: Font: Times New Roman, 10 pt, Font color: Auto

Formatted: Font color: Auto

Formatted: No Spacing, Justified, Line spacing: 1.5 lines, No bullets or numbering

Formatted: Font: Times New Roman, 10 pt, Font color: Auto

320 from that of all other potential water sources, the displacement of xylem water from bulk soil water is likely not attributable to a methodological issue.

4. ~~Fractionation of soil water may have occurred during water uptake by trees. A key assumption of the ecohydrological separation hypothesis is that root water uptake does not alter the isotopic composition of water in the plant roots or stems (Goldsmith et al. 2012, Penna et al. 2018). Previous work has generally not observed fractionation during water uptake by plants (e.g. Dawson et al. 2002, Vargas et al. 2017 and references therein), although Vargas et al. (2017) noted this may have resulted from saturated soil conditions used in many studies.~~ There is increasing recognition that differences between xylem water and soil water isotopic compositions may result from isotopic fractionation induced by internal plant processes during water uptake (Berry et al. 2017). Ellsworth and Williams (2007) showed that 12 of 16 species of woody plants demonstrated H isotope fractionation at the soil-root interface, while Vargas et al. (2017) found plants discriminated against ^{18}O and ^3H during water uptake with differences between $\delta^{18}\text{O}$ and $\delta^3\text{H}$ in soil water relative to plant water increasing with transpiration water loss. This would lead to more negative $\delta^{18}\text{O}$ and $\delta^3\text{H}$ in plant water relative to soil water, as seen at PC-1. It also suggests the greatest differences between xylem water and soil water le-excess would be at peak leaf out, ~~when PC-1 soils were at their driest (Fig. 2).~~ This was the case for Ce which showed clear separation between soil and xylem water le-excess at peak leaf out (Fig. 6). ~~This separation~~ also occurred at pre-senescence for Pw; however, there was overlap between soil water and xylem water le-excess for Or and He. Thus, the potential for fractionation during water uptake may be a major cause of deviations between soil water and xylem water isotopic compositions and may differ between tree species in northern mixed forests.

5. ~~Water in the trees may have been fractionated following root uptake via evaporation, transpiration or other internal mechanisms. Changes in the isotopic composition of xylem water relative to that of soil water has been attributed to such processes as xylem-phloem exchange during water stress (Cernusak et al. 2005, Bertrand et al. 2014), isotopic depletion of storage water in xylem tissue compared to water moving via conductive tissues (Barbeta et al. 2020), H fractionation when water movement in the tree occurs predominantly via symplastic rather than via apoplastic pathways (Lin and Sternberg 1993, Ellsworth and Williams 2007), and fractionation within the tree's leaves which then impacts the isotopic composition of phloem sap (Farquhar et al. 2007). There is also the potential for evaporation through the tree's bark (Dawson and Ehleringer 1991, Smith et al. 1997). Bowling et al. (2017) thought this could not explain evaporative enrichment of xylem water in their study given the large stems sampled and removal of bark from all stem samples, as was the case at PC-1. The potential for evaporative enrichment of xylem water can be assessed by considering the isotopic composition of the precipitation from which the xylem water originated (Evaristo et al. 2015). Bowling et al. (2017) argued that while the intersection point between an evaporation line and the LMWL is appropriate for estimating the precipitation source water for surface or soil water undergoing evaporation, there is no analogous mechanism by which plant xylem water can become similarly enriched. Nevertheless, the xylem water precipitation sources in Table 3 are instructive. Xylem water source $\delta^3\text{H}$ and $\delta^{18}\text{O}$ for Or and Pw were within the range of snowmelt and rainfall sampled at PC-1 (Fig. 3) as well as the range of source precipitation $\delta^3\text{H}$ reported for a variety of forest~~

Formatted: Font: Times New Roman, 10 pt, Bold, Font color: Auto

Formatted: Font: Times New Roman, 10 pt, Font color: Auto

Formatted: Font: Times New Roman, 10 pt, Font color: Auto

Formatted: Font: Times New Roman, 10 pt, Font color: Auto

Formatted: Font color: Auto

355 types (Evaristo et al. 2015). However, estimated source precipitation for He and particularly Ce was more
isotopically depleted than any snowmelt samples. Thus, it is difficult to attribute xylem water isotopic
composition for some tree species to simple evaporation of precipitation source water held within the tree.
6. ~~Fractionation may have resulted from interactions with carbonates or other geochemical and
organic constituents (Bowling et al. 2017), including isotopic effects between soil water and cations/clay minerals
(Oerter et al. 2014), organic matter (Orlowski et al. 2016), and rock-water interactions (Lin and Horita 2016, Oshun
et al. 2016) that differ for H and O. The potential for any or all of these processes to induce differences in xylem water
isotopic composition relative to soil water at PC-1 is not known, although the low clay contents of PC-1 soils make
significant isotopic effects with clay minerals unlikely (Sprenger et al. 2018b). Regardless, it would be reasonable to
expect that such processes would be similar in the soil water surrounding the different tree species. Thus, they do not
easily explain interspecific differences in the degree of isotopic displacement of xylem water from the LMWL and
bulk soil water.~~

Formatted: No Spacing, Justified, Line spacing: 1.5 lines, No bullets or numbering

Formatted: Font: Times New Roman, 10 pt, Font color: Auto

360 ~~Despite considering these manifold possible processes, the cause of isotopic distinction between xylem water and
potential water sources remains unclear. Thus, our inability to support the ecohydrological separation
hypothesis for some tree species at PC-1 remains.~~ Nevertheless, some mechanisms noted above (e.g.
fractionation at the plant root, evaporation through the bark) are more plausible under conditions at PC-1 than others
(e.g. xylem water accessing an unsampled source of water not reflected in bulk soil water isotope values, errors in
determination of xylem water isotopic composition).

Formatted: Font: Times New Roman, 10 pt, Font color: Auto

Formatted: No Spacing, Justified, Line spacing: 1.5 lines, Tab stops: 0.5 cm, Left

Formatted: Font: Times New Roman, 10 pt, Font color: Auto

Formatted: Font: Times New Roman, 10 pt, Font color: Auto

375 ~~Regardless, our results provide novel insight into potential changes in hydroecological fluxes in northern mixed
forests in response to hydroclimatic change. The landscape surrounding PC-1 in Ontario is projected to experience
increases in summer temperatures above the 1971-2000 baseline of between 2 and 8°C (and presumably
accompanying increases in evaporation) and decreases in summer rainfall of up to 25 mm for the 2071-2100 period
(McDermid et al. 2015). The 2016 growing season was a particularly dry one; thus, the small SWCs and associated
inter-specific differences in xylem water – bulk soil water isotopic relationships presented here may become typical
of future conditions in this and similar northern forest landscapes across the northern hemisphere.~~

Formatted: Font: Times New Roman, 10 pt, Font color: Auto

Formatted: No Spacing, Justified, Indent: First line: 0 cm, Line spacing: 1.5 lines, Tab stops: 0.5 cm, Left

5 Conclusion

We examined the co-evolution of xylem water and bulk soil water isotopic compositions during the growing season for four tree species in a northern mixed forest. ~~We also evaluated whether these species supported the ecohydrological separation hypothesis.~~ The major findings are as follows:

385 1 Bulk soil water isotopic composition showed similar temporal changes below the canopies of all tree species, with
evaporative enrichment of near-surface soil water from pre-leaf out to peak leaf out followed by a return to values
along the LMWL at post-senescence.

Formatted: Justified

2 In contrast, xylem water isotopic composition showed inter-specific differences in both the degree of its displacement from the LMWL and bulk soil water, and the temporal trajectory of its changes from pre-leaf out to post-senescence.

3 ~~The deciduous tree species (red oak) exhibited the greatest overlap of xylem water and bulk soil water isotopic compositions; nevertheless, several xylem samples that were isotopically distinct from bulk soil water indicated red oak showed only partial support for the ecohydrological separation hypothesis. Xylem water isotopic compositions for the coniferous species (eastern white cedar, eastern hemlock and eastern white pine) showed marked and differing degrees of displacement from both the LMWL and bulk soil water, and thus did not support ecohydrological separation.~~

4 ~~The temporal trajectory of xylem water from the deciduous tree species differed from that for the conifers. This trajectory differed between deciduous and coniferous species.~~ Red oak xylem water experienced depletion in both ^2H and ^{18}O during the growing season, while conifer xylem water showed isotopic enrichment. This may be related to inter-specific variations in the timing and intensity of growing season water use in northern mixed forests and requires further study.

5 ~~A review of possible reasons for distinctions between xylem water and soil water isotopic compositions for these tree species suggested that some mechanisms (e.g. fractionation at the tree root, evaporation through the bark) were more plausible than others (e.g. an unsampled source of water taken up during transpiration) when considered in the context of the study site's characteristics. Nevertheless, there appeared to be inter-specific differences in the degree to which these mechanisms may account for the varying relationships between xylem water and soil water isotopic compositions over may be related to the course physiology, rooting behaviour and water use strategies of the growing season in this mixed northern forest deciduous and coniferous trees.~~ These should be explored in further research as we ~~move beyond the ecohydrological separation hypothesis to~~ attempt to understand more fully how trees take up water during transpiration in order to predict their response to anticipated hydroclimatic changes in northern forest landscapes.

6 Data Availability

The underlying research data can be accessed at <https://dataverse.scholarsportal.info/dataset.xhtml?persistentId=doi:10.5683/SP2/TGCHV6>

7 Acknowledgements

This work was funded through the Natural Sciences and Engineering Research Council of Canada (2015-06116) and the European Research Council (ERC, Project GA 335910 VeWa). Thanks to the Dorset Environmental Research Centre for meteorological data, Carl Mitchell (University of Toronto Scarborough) for snowmelt lysimeter isotope data, Samantha Evans (Boise State University), Jeff McDonnell and Kim Janzen (University of Saskatchewan) for isotopic analyses, ~~and~~ Robert Monico and Ciara Cooke for field assistance, ~~and to the editor (Dr Natalie Orłowski) and two anonymous reviewers for constructive comments on an earlier version of this paper.~~

Formatted: Justified

References

- Allen, R.G., Periera, L.S., Raes, D., and Smith, M.: Crop evapotranspiration—Guidelines for computing crop water requirements, FAO Irrigation and Drainage Paper 56. FAO, Rome, 300(9), D05109, 1998.
- 425 Allen, S.T., Kirchner, J.W., Braun, S., Siegwolf, R.T.W., and Goldsmith, G.R.: Seasonal origins of soil water used by trees, *Hydrol. Earth Syst. Sci.*, 23, 1199–1210, 2019.
- [Araguás-Araguás, L., Rozanski, K., Gonfiantini, R., and Louvat, D.: Isotope effects accompanying vacuum extraction of soil water for stable isotope analyses *J. Hydrol.*, 168, 159-171, 1995.](#)
- Barbeta, A., Mejía-Chang, M., Ogaya, R., Voltas, J., Dawson, T.E., and Peñuelas, J.: The combined effects of a long-term experimental drought and an extreme drought on the use of plant-water sources in a Mediterranean forest, *Global Change Biol.*, 21, 1213-1225, 2015.
- Barbeta, A., Gimeno, T.E., Clavé, L., Fréjaville, B., Jones, S.P., Delvigne, C., Wingate, L., and Ogee, J.: An explanation for the isotopic offset between soil and stem water in a temperate tree species, *New Phytol.*, 227, 766-779, 2020.
- 435 [Benettin, P., Volkman, T.H.M., von Freyberg, J., Frentess, J., Penna, D., Dawson, T.E., and Kirchner, J.W.: Effects of climatic seasonality on the isotopic composition of evaporating soil waters, *Hydrol. Earth Syst. Sci.*, 22, 2881-2890, 2018.](#)
- Berry, Z.C., Evaristo, J., Moore, G., Poca, M., Steppe, K., Verrot, L., Asbjornsen, H., Borma, L.S., Bretfeld, M., Hervé-Fernández, P., Seyfried, M., Schwendenmann, L., Sinacore, K., De Wispelaere, L., and McDonnell, J.: The two water worlds hypothesis: Addressing multiple working hypotheses and proposing a way forward, *Ecohydrol.*, doi:10.1002/eco.1843, 2017.
- 440 Bertrand, G., Masini, J., Goldscheider, N., Meeks, J., Lavastre, V., Celle-Jeanton, H., Gobat, J.M., and Hunkeler, D.: Determination of spatiotemporal variability of tree water uptake using stable isotopes ($\delta^{18}\text{O}$, $\delta^2\text{H}$) in an alluvial system supplied by a high-altitude watershed, Pfy forest, Switzerland, *Ecohydrol.*, 7, 319-333, 2014.
- 445 Beyer, M., Koeniger, O., Gaj, M., Hamutoko, J.T., Wanke, H., and Himmelsbach, T.: A deuterium-based labeling technique for the investigation of rooting depths, water uptake dynamics and unsaturated zone water transport in semiarid environments, *J. Hydrol.*, 533, 627-643, 2016.
- Birks, S.S., and Gibson, J.J.: Isotope hydrology research in Canada, 2003-2007, *Can. Wat. Res. J.* 34, 163-176, 2009.
- Bowling, D.R., Schulze, E.S., and Hall, S.J.: Revisiting streamside trees that do not use stream water: Can the two water worlds hypothesis and snowpack isotopic effects explain a missing water source?, *Ecohydrol.*, doi:10.1002/eco.1771, 2017.
- 450 Brinkmann, N., Eugster, W., Buchmann, N., and Kahmen, A.: Species-specific differences in water uptake depth of mature temperate trees vary with water availability in the soil, *Plant Biol.*, 21, 71-81, 2019.
- Brooks, J.R., Barnard, H.R., Coulombe, R., and McDonnell, J.J.: Ecohydrological separation of water between trees and streams in a Mediterranean climate, *Nature Geosci.*, 3, 100-104, 2010.
- 455 Buttle, J.M., and House, D.A.: Spatial variability of saturated hydraulic conductivity in shallow macroporous soils in a forested basin, *J. Hydrol.*, 203, 127–142, 1997.

- Carey, S.K., Tetzlaff, D., Seibert, J., Soulsby, C., Buttle, J., Laudon, H., McDonnell, J., McGuire, K., Caissie, D., Shanley, J., Kennedy, M., Devito, K., and Pomeroy, J.W.: Inter-comparison of hydro-climatic regimes across northern catchments: synchronicity, resistance and resilience, *Hydrol. Proc.*, 24, 3591-3602, 2010.
- 460 [Carey, S.K., Tetzlaff, D., Buttle, J., Laudon, H., McDonnell, J., McGuire, K., Seibert, J., Soulsby, C., and Shanley, J.: Use of color maps and wavelet coherence to discern seasonal and inter annual climate influences on streamflow variability in northern catchments, *Water Resour. Res.*, 49, 6194-6207, 2013.](#)
- Cernusak, L.A., Farquhar, G.D., and Pate, J.S.: Environmental and physiological controls over oxygen and carbon isotope composition of Tasmanian blue gum, *Eucalyptus globulus*, *Tree Physiol.*, 25, 129–146, 2005.
- 465 Coplen, T.B., Hopple, J.A., Bohlke, J.K., Peiser, H.S., Rieder, S.E., Krouse, H.R., Rosman, K.J.R., Ding, T., Voche, R.D., Revesz, K., Lamberty, A., Taylor, P., and De Bièvre, P.: Compilation of minimum and maximum isotope ratios of selected elements in naturally occurring terrestrial materials and reagents, U.S. Geological Survey, Reston, Virginia, Water-Resources Investigations Report 01-4222, 98 pp., 2002.
- 470 Dawson, T.E., and Ehleringer, J.R.: Streamside trees that do not use streamwater, *Nature*, 350, 335-372, 1991.
- [Dawson, T.E., Mambelli, S., Plamboeck, A.H., Templer, P.H., and Tu, K.P.: Stable isotopes in plant ecology, *Annual Rev. Ecol. Syst.*, 33, 507-559, 2002.](#)
- [Devito, K.J., and Dillon, P.: The influence of hydrologic conditions and peat oxia on the phosphorus and nitrogen dynamics of a conifer swamp, *Water Resour. Res.*, 29, 2675-2685, 1993.](#)
- 475 Dubbert, M., and Werner, C.: Water fluxes mediated by vegetation: emerging isotopic insights at the soil and atmosphere interfaces, *New Phytol.*, 221, 1754-1763, 2019.
- Ellsworth, P.Z., and Williams, D.G.: Hydrogen isotope fractionation during water uptake by woody xerophytes, *Plant Soil*, 291, 93-107, 2007.
- Evaristo, J., Jasechko, S., and McDonnell, J.J.: Global separation of plant transpiration from groundwater and streamflow, *Nature*, 525, 91-96, 2015.
- 480 Evaristo, J., Kim, K., van Haren, J., Pangle, L.A., Harman, C.J., Troch, P.A., and McDonnell, J.J.: Characterizing the fluxes and age distribution of soil water, plant water, and deep percolation in a model tropical ecosystem, *Wat. Resour. Res.*, 55, doi.org/10.1029/2018WR023265, 2019.
- [Farquhar, G.D., Cernusak, L.A., and Barnes, B.: Heavy water fractionation during transpiration, *Plant Physiol.*, 143, 11-18, 2007.](#)
- 485 Gaines, K.P., Stanley, J.W., Meinzer, F.C., McCulloh, K.A., Woodruff, D.R., Chen, W., Adams, T.S., Lin, H., and Eissenstat, D.M.: Reliance on shallow soil water in a mixed-hardwood forest in central Pennsylvania, *Tree Physiol.*, 36, 444-458, 2016.
- Geris, J., Tetzlaff, D., McDonnell, J., Anderson, J., Paton, G., and Soulsby, C.: Ecohydrological separation in wet, low energy northern environments? A preliminary assessment using different soil water extraction techniques, *Hydrol. Proc.*, 29, 5139-5152, 2015.
- 490 Goldsmith, G.R., Muñoz-Villers, L.E., Holwerda, F., McDonnell, J.J., Asbjornsen, H., and Dawson, T.E.: Stable isotopes reveal linkages among ecohydrological processes in a seasonally dry tropical montane cloud forest, *Ecohydrol.* 5, 779-790, 2012.

Formatted: Font color: Text 1

Formatted: Font color: Text 1

- 495 Gröning, M., Lutz, H.O., Roller-Lutz, Z., Gourcy, L., and Pölsenstein, L.: A simple rain collector preventing water re-
evaporation for $\delta^{18}\text{O}$ and $\delta^2\text{H}$ analysis of cumulative precipitation samples, *J. Hydrol.*, 448-449, 195–200, 2012.
- Grossiord, C., Sevanto, S., Dawson, T.E., Adams, H.D., Collins, A.D., Dickman, L.T., Newman, B.D., Stockton, E.A.,
and McDowell, N.G.: Warming combined with more extreme precipitation regimes modifies the water source used
by trees, *New Phytol.*, 213, 584-596, 2017.
- 500 Guswa, A.J., Tetzlaff, D., Selker, J.S., Carlyle-Moses, D.E., Boyer, E.W., Bruen, M., ... , and Levia, D.F.: Advancing
ecohydrology in the 21st century: A convergence of opportunities, *Ecohydrol.*, doi:10.1002/e2208, 2020.
- Hartmann, D. L., Klein Tank, A. M. G., Rusticucci, M., Alexander, L. V., Brönnimann, S., Charabi, Y., ... and Zhai, P.
M. (2013). Observations: atmosphere and surface, in: *Climate Change 2013: The Physical Science Basis: Contribution
of Working Group I to the Fifth Assessment Report of the Intergovernmental Panel on Climate Change*, edited by:
505 Stocker, T.F., Qin, D., Plattner, G.-K., Tignor, M., Allen, S.K., Boschung, J., et al., Cambridge University Press,
Cambridge, UK and New York, USA, 159-254, 2013.
- [Hendry, M.J., Schmeling, E., Wassenaar, L.J., Barbour, S.L., and Pratt, D.: Determining the stable isotope composition
of pore water from saturated and unsaturated zone core: Improvements to the direct vapour equilibration laser
spectrometry method, *Hydrol. Earth Syst. Sci.*, 19, 4427–4440, 2015.](#)
- 510 Hervé-Fernández, P., Oyarzún, C., Brumbt, C., Huygens, D., Bodé, S., Verhoest, N.E.C., and Boeckx, P.: Assessing
the ‘two water worlds’ hypothesis and water sources for native and exotic evergreen species in south-central Chile,
Hydrol. Proc., 30, 4227-4241, 2016.
- Klaus, J., McDonnell, J.J., Jackson, C.R., Du, E., and Griffiths, N.A.: Where does streamwater come from in low-
relief forested watersheds? A dual-isotope approach, *Hydrol. Earth Syst. Sci.*, 19, 125-135, 2015.
- 515 Knighton, J., Souter-Kline, V., Volkma, T., Troch, P.A., Kim, M., Harman, C., Morris, C., Buchanan, B., and Walter,
M.T.: Seasonal and topographic variations in ecohydrological separation within a small, temperate, snow-influenced
catchment, *Wat. Resour. Res.*, 55, 6417–6435, 2019.
- Koeniger, P., Marshall, J.D., Link, T., and Mulch, A.: An inexpensive, fast, and reliable method for vacuum extraction
of soil and plant water for stable isotope analyses by mass spectrometry, *Rapid Comm. Mass Spect.*, 25, 3041-3048,
520 2011.
- Landwehr, J.M., and Coplen, T.B.: Line-conditioned excess: a new method for characterizing stable hydrogen and
oxygen isotope ratios in hydrologic systems, in: *International Conference on Isotopes in Environmental Studies,
Aquatic Forum 2004, IAEA–CSP–26, International Atomic Energy Agency, Vienna, 132-135, 2006.*
- Lane, D., McCarter, C.P.R., Richardson, M., McConnell, C., Field, T., Yao, H., Arhonditsis, G., and Mitchell, C.P.J.:
525 Wetlands and low-gradient topography are associated with longer hydrologic transit times in Precambrian Shield
headwater catchments, *Hydrol. Proc.*, 34, 598-614, 2020.
- Laudon, H., Spence, C., Buttle, J., Carey, S.K., McDonnell, J., McNamara, J.P., Soulsby, C., and Tetzlaff, D.: Preserve
northern latitude catchment studies, *Nature Geosci.*, 10, 324-325, 2017.
- Lin, Y., and Horita, J.: An experimental study on isotope fractionation in a mesoporous silica-water system with
530 implications for vadose-zone hydrology, *Geochim. Cosmochim. Acta* 184, 257– 271,
<https://doi.org/10.1016/j.gca.2016.04.029>, 2016.

Formatted: Font color: Text 1

- Lin, G., and Sternberg, L.S.L.: Hydrogen isotopic fractionation by plant roots during water uptake in coastal wetland plants, in: *Stable Isotopes and Plant Carbon-Water Relations*, edited by: Ehleringer, J.R., Hall, A.E., and Farquhar, G.D., Academic Press Inc., New York, USA, 497–510, 1993.
- 535 Liu, Y., Fang, Y., Hu, H., Tian, F., Dong, Z., and Khan, M.Y.A.: Ecohydrological separation hypothesis: review and prospect, *Water*, 12, doi:10.3390/w12082077, 2020.
- McCutcheon, R.J., McNamara, J.P., Kohn, M.J., and Evans, S.L.: An evaluation of the ecohydrological separation hypothesis in a semiarid catchment, *Hydrol. Proc.*, 31, 783-799, 2017.
- McDermid, J., Fera, S., and Hogg, A.: Climate change projections for Ontario: An updated synthesis for policymakers and planners. Ontario Ministry of Natural Resources and Forestry, Science and Research Branch, Peterborough, Ontario, Climate Change Research Report CCRR-44, 39 pp., 2015.
- 540 McDonnell, J.J.: The two water worlds hypothesis: ecohydrological separation of water between streams and trees?, *Wiley Interdisciplinary Reviews: Water* 1, 323-329, 2014.
- Millar, C., Pratt, D., Schneider, D.J., and McDonnell, J.J.: A comparison of extraction systems for plant water stable isotope analysis, *Rapid Comm. Mass Spect.*, 32, 1031-1044, 2018.
- 545 Myers-Smith, I.H., Thomas, H.J., and Bjorkman, A.D.: Plant traits inform predictions of tundra responses to global change, *New Phytol.*, 221, 1742-1748, 2019.
- Neary, A.J., Mistry, E., and Vanderstar, L.: Sulphate relationships in some central Ontario forest soils, *Can. J. Soil Sci.*, 67, 341–352, 1987.
- 550 Oerter, E., Finstad, K., Schaefer, J., Goldsmith, G.R., Dawson, T., and Amundson, R.: Oxygen isotope fractionation effects in soil water via interaction with cations (Mg, Ca, K, Na) adsorbed to phyllosilicate clay minerals, *J. Hydrol.*, 515, 1–9, 2014.
- Orlowski, N., Breuer, L., and McDonnell, J.J.: Critical issues with cryogenic extraction of soil water for stable isotope analysis, *Ecohydrol.*, 9, 3–10, 2016.
- 555 [Orlowski, N., Breuer, L., Angeli, N., Boeckx, P., Brumbt, C., Cook, C. S., Dubbert, M., Dyckmans, J., Gallagher, B., Galher, B., Herbstritt, B., Hervé-Fernández, P., Hissler, C., Koeniger, P., Legout, A., Macdonald, C. J., Oyarzún, C., Redelstein, R., Seidler, C., Siegwolf, R., Stumpp, C., Thomsen, S., Weiler, M., Werner, C., and McDonnell, J. J.: Inter-laboratory comparison of cryogenic water extraction systems for stable isotope analysis of soil water, *Hydrol. Earth Syst. Sci.*, 22, 3619–3637, 2018.](#)
- 560 Oshun, J., Dietrich, W.E., Dawson, T.E., and Fung, I.: Dynamic, structured heterogeneity of water isotopes inside hillslopes, *Wat. Resour. Res.*, 52, 164–189, 2016.
- Penna, D., Hopp, L., Scandellari, F., Allen, S.T., Benettin, P., Beyer, M., Geris, J., Klaus, J., Marshall, J.D., Schwendenmann, L., Volkmann, T., von Freyberg, J., Amin, A., Ceperley, N., Engel, M., Frentress, J., Giambastiani, Y., McDonnell, J.J., Zuecco, G., ... and Kirchner, J.W.: Ideas and perspectives: Tracing terrestrial ecosystem water fluxes using hydrogen and oxygen stable isotopes – challenges and opportunities from an interdisciplinary perspective, *Biogeosci.*, 15, 6399-6415, 2018.
- 565 Phillips, S.L., and Ehleringer, J.R.: Limited uptake of summer precipitation by bigtooth maple (*Acer grandidentatum* Nutt) and Gambel's oak (*Quereus gambelii* Nutt), *Trees*, 9, 214–219, 1995.

R Core Team: R: A Language and Environment for Statistical Computing [Internet]. Vienna, Austria: R Foundation for Statistical Computing, available from: <https://www.R-project.org>, 2019.

570 Retzlaff, W.A., Blaisdell, G.K., and Topa, M.A.: Seasonal changes in water source of four families of loblolly pine (*Pinus taeda* L.), *Trees*, 15, 154-162, 2001.

Smith, D.M., Jarvis, P.G., and Odongo, J.C.W.: Sources of water used by trees and millet in Sahelian windbreak systems, *J. Hydrol.*, 198, 140-153, 1997.

575 Smith, T.J., McNamara, J.P., Flores, A.N., Gribb, M.M., Aishlin, P.S., and Benner, S.G.: Limited soil storage capacity constrains upland benefits of winter snowpack, *Hydrol. Proc.*, 25, 3858-3865, 2011. ↘

Snelgrove, J., Buttle, J.M., and Tetzlaff, D.E.: Importance of rainfall partitioning in a northern mixed forest canopy for soil water isotopic signatures in ecohydrological studies, *Hydrol. Proc.*, 34, 284-302, ~~2020~~2019.

580 Sprenger, M., Tetzlaff, D., Buttle, J., Carey, S., McNamara, J., Laudon, H., Shatilla, N., and Soulsby, C.: Storage, mixing and fluxes of water in the critical zone across northern environments inferred by stable isotopes of soil water, *Hydrol. Proc.*, 32, 1732-1737, 2018a.

Sprenger, M., Tetzlaff, D., Buttle, J., Laudon, H., Leistert, H., Mitchell, C.P.J., Snelgrove, J., Weiler, M., and Soulsby, C.: Measuring and modeling stable isotopes of mobile and bulk soil water, *Vadose Zone J.*, 17, doi:10.2136/vzj2017.08.0149, 2018b.

585 Sprenger, M., Tetzlaff, D., Buttle, J., Laudon, H., and Soulsby, C.: Water ages in the critical zone of long-term experimental sites in northern latitudes, *Hydrol. Earth Sys. Sci.*, 22, 3965-3981, 2018c.

Sprenger, M., and Allen, S.T.: What ecohydrologic separation is and where can we go with it, *Wat. Resour. Res.*, 56, doi.org/10.1029/2020WR027238, 2020.

Tetzlaff, D., Buttle, J.M., Carey, S.K., McGuire, K., Laudon, H., and Soulsby, C.: Tracer-based assessment of flow paths, storage and runoff generation in northern catchments: a review, *Hydrol. Proc.*, 29, 3475-3490, 2015.

590 [Tetzlaff, D., Buttle, J.M., Carey, S.K., Kohn, M., Laudon, H., McNamara, J.P., Smith, A., Sprenger, M., and Soulsby, C.: Stable isotopes of water reveal differences in plant – soil water relationships across northern environments. *Hydrol. Proc.*, doi: <https://doi.org/10.1002/hyp.14023>, 2021.](#)

Vargas, A.I., Schaffer, B., Yuhong, L., and Sternberg, L.S.L.: Testing plant use of mobile vs immobile soil water sources using stable isotope experiments, *New Phytol.*, 215, 582-594, 2017.

595 Watmough, S.A., Aherne, J., Eimers, M.C., and Dillon, P.J.: Acidification at Plastic Lake, Ontario: Has 20 years made a difference?, *Water Air Soil Poll.: Focus*, 7, 301–306, 2007.

Wels, C., Cornett, R.J., and LaZerte, B.D.: Groundwater and wetlands contributions to stream acidification: An isotopic analysis, *Wat. Resour. Res.*, 26, 2993–3003, 1990.

600 White, J.C., and Smith, W.K.: Seasonal variation in water sources of the riparian tree species *Acer negundo* and *Betula nigra*, southern Appalachian foothills, USA, *Botany*, 93, 519-528, 2015.

Zhao, P., Tang, X., Zhao, P., Wang, C., and Tang, J.: Identifying the water source for subsurface flow with deuterium and oxygen-18 isotopes of soil water collected from tension lysimeters and cores, *J. Hydrol.*, 503, 1-10, 2013.

Formatted: Font color: Text 1