



# Applicability of Landsat 8 Thermal Infrared Sensor to Identify Submarine Groundwater Discharge Springs in the Mediterranean Sea Basin

Sònia Jou-Claus<sup>1,2</sup>, Albert Folch<sup>1,2</sup>, Jordi Garcia-Orellana<sup>3,4</sup>

5

<sup>1</sup> Department of Civil and Environmental Engineering, Universitat Politècnica de Catalunya, Jordi Girona 1-3, 08034 Barcelona, Spain

<sup>2</sup> Associated Unit: Hydrogeology Group (UPC-CSIC), Barcelona, Spain

<sup>3</sup> Institut de Ciència i Tecnologia Ambientals – ICTA, Universitat Autònoma de Barcelona, 08193

10 Bellaterra, Spain

<sup>4</sup> Departament de Física, Universitat Autònoma de Barcelona, 08193 Bellaterra, Spain

Correspondence to: Sònia Jou-Claus (soniajouclaus@gmail.com)

**Abstract.** Submarine groundwater discharge (SGD) has received increasing attention over the past two decades as a source of nutrients, trace elements and pollutants to the ocean that may alter coastal biogeochemical cycles. Assessing submarine groundwater flows and their impacts on coastal marine environments is a difficult task since it is not easy to identify and measure these water flows discharging into the sea. The aim of this study is to prove the great usefulness of the freely-available thermal infrared (TIR) imagery of the Landsat 8 thermal infrared sensor (TIRS) as an exploratory tool to identify SGD springs worldwide, from local to regional scales, for long-term analysis. The use of satellite thermal data as a technique to identify SGD springs in seawater is based on the identification of thermally-anomalous plumes obtained from the thermal contrasts between groundwater and sea surface water. We propose a conceptual framework to apply this technique worldwide and also discuss the limitations of using this technique in SGD studies. The study was developed on a regional scale in karstic coastal aquifers in the Mediterranean Sea basin at different seasons and diverse meteorological conditions. Although this study demonstrates that the freely-available satellite TIR remote sensing is a useful method to identify coastal springs in karst aquifers both locally and regionally, the limiting factors include technical limitations, geological/hydrogeological characteristics, environmental and marine conditions and coastal geomorphology.

15  
20  
25

## 1. Introduction

30 Submarine groundwater discharge (SGD) is an important component of the hydrological cycle and has been commonly defined as any flow of water across the continental margin in the ocean-aquifer interface, regardless of fluid composition or driving force with spatial scale lengths of meters to kilometers (Burnett & Dulaiova, 2003; Moore, 2010; Taniguchi et al., 2019). This definition includes



35 meteoric fresh groundwater resulting from inland recharge, but also seawater circulated through the  
sediments of coastal aquifers (Burnett & Dulaiova, 2003). Both water flows mix in coastal aquifers,  
where biogeochemical reactions may occur when this groundwater interacts with the geological matrix  
(Moore, 1999). This dynamic mixing zone influences the transfer of chemical compounds such as  
nutrients, trace metals and other contaminants to coastal waters (Alorda-Kleinglass et al., 2019; Boehm  
et al., 2004; Rodellas et al., 2015; Trezzi et al., 2016). SGD-derived inputs of chemical compounds can  
40 highly impact coastal ecosystems, by influencing productivity, biomass, species composition and  
sonification (Andrisoa et al., 2019; Garcés et al., 2011; Garcia-Orellana et al., 2016; Krest et al., 2000).  
Depending on its geological background SGD occurs in three different ways: coastal onshore springs  
(Garcia-Solsona et al., 2010; Mejías et al., 2012), diffuse submarine springs (Rodellas et al., 2012) and  
focused submarine springs (Bakalowicz, 2015; Fleury et al., 2007; Katz et al., 2009; Yobbi, 1992).  
45 Identifying and mapping groundwater discharge areas is challenging, despite the number of traditional  
methods available to locate the main groundwater discharge locations and quantify their flow rates.  
These methods include easy procedures such as traditional local knowledge, visual observation, changes  
in vegetation, changes in water temperature and salinity, seepage meters or radioactive isotope tracers  
(Mejías et al., 2012; Schubert et al., 2014). Apart from these methods, several authors have suggested  
50 Thermal Infrared Remote Sensing (TIR-RS) as an alternative methodology to identify potential SGD  
spring sites, since it enables the screening and study of inaccessible areas that have scarce  
hydrogeological information (Wilson & Rocha, 2012). Temperature has been used successfully to study  
SGD by using the relatively constant temperature of groundwater with that of surface seawaters, which  
fluctuates seasonally (Dale & Miller, 2007). In general, groundwater maintains a constant temperature  
55 between 5 m and 100 m depth, approximately 1 - 2 °C higher than the mean annual air temperature  
(Anderson, 2005). The detection of SGD springs via TIR-RS is possible in any environment where there  
is thermal contrast between the discharging fluid and the receiving surface water body (Kelly et al.,  
2013). TIR images have the potential to identify the location of major SGD springs, as well as to study  
their spatial variability, by exploring the temperature difference between coastal seawater and brackish  
60 groundwater discharges.

There are two types of platforms to obtain thermal infrared information: airborne TIR-RS (airplane,  
helicopter and drone) and satellite TIR-RS (Modis, Aster, Landsat). Airborne TIR has been used for  
different applications; for example Shaban et al. (2005) and Akawwi et al., (2008), conducting aerial  
65 TIR surveys along the Mediterranean and Dead Sea coastlines to identify potential SGD sites. Kelly et  
al. (2013) used TIRS images from localized point-source SGD to demonstrate that groundwater plume  
areas are linearly and highly correlated to in situ groundwater fluxes. Airborne TIR-RS has been also  
applied in combination with other methods, not only for qualitative SGD recognition, but also for  
quantifying groundwater flows from freshwater springs (Danielescu et al., 2009; Mejias et al., 2012). In  
70 the coastal carbonate aquifer of El Maestrazgo (Iberian Peninsula), a combination of complementary  
techniques was used to locate submarine springs with airborne high-resolution thermal infrared, radon  
measurements and physical-chemical anomalies and to quantify the groundwater discharge by direct  
quantification with flowmeters and Ra isotopes (Mejias et al., 2012). Tamborsky et al. (2015) combined  
airborne TIR overflights with coastal radionuclide surveys to investigate the significance of SGD along  
75 the north shore of Long Island (NY, US) to provide quantitative evidence for TIR-RS as a tool to



remotely identify and measure SGD. Finally, Danilescu et al. (2009) assessed total freshwater discharge in two small nutrient-sensitive estuaries in Prince Edward Island (Canada) using a combination of TIR images, direct discharge measurements and numerical simulations.

80 Compared to airplane, helicopter and drone platforms, satellite TIR-RS has some characteristics that  
limit its use for coastal water observation. The temporal resolution is fixed and varies depending on the  
satellite with a minimum daily revisit frequency and a maximum frequency of every 16 days for a  
specific area. Furthermore, the spatial resolution, which varies between 30 and 1000 meters, is lower  
85 than airborne resolution. This results in the fact, that small thermal anomalies, induced by small flows  
of SGD, are likely not to be detected. Additionally, satellite TIRS images are affected by atmospheric  
conditions (i.e., clouds and shadows). However, satellite TIR-RS imagery has the great advantages of  
being free of charge (Landsat), easily accessible, globally available, multi-temporal, and covering a  
regional scale instantaneously. These advantages turn satellite TIR-based approaches into a viable and  
promising option to detect SGD worldwide.

90 There are several satellite missions capable of measuring sea surface temperatures (SST) with a  
moderate spatial resolution and acquisition: Advanced Spaceborne Thermal Emission and Reflection  
Radiometer (ASTER), and the Landsat satellite among others, which provide appropriate spatial and  
temporal resolution for large-scale SGD monitoring. For those satellite suitable for SGD research,  
95 Landsat is the one with longest TIR data provision (1982 until today and already planned to beyond  
2030 (Wulder et al., 2019)) and the one mostly applied for SGD research (Mejías et al., 2014; Wilson  
and Rocha, 2012, among others)

100 The use of satellite imagery in SGD studies has evolved in parallel with the launch of new sensors that  
feature spatial resolution improvements over previous sensors. However, the application of satellite TIR  
images is neither extensive nor widespread compared to the airborne TIR images. Several SGD studies  
used Landsat 7 to locate groundwater discharge areas (e.g. Wang et al., 2008 ), to detect known but  
previously unmapped SGD locations (Varma et al., 2010), to determine the spatial extent and scale of  
SGD-derived temperature anomalies (Wilson & Rocha, 2012), and to infer a SGD temporal variation  
105 using long-term thermal anomaly size variations (Mallast et al., 2014). More recent studies used data  
obtained by Landsat 8 TIRS to identify and characterize SGD sites using the sensors' technical  
improvements. For example, McCaul et al. (2016) proposed a multiapproach methodology to  
understand submarine and intertidal groundwater discharge patterns. Xing et al. (2016) evaluated the  
capability of satellite remote sensing methods (Landsat 7 and 8) to detect thermal anomalies related to  
110 SGD as a possible index of the presence of offshore low-salinity groundwater storage at local scale. To  
the best of our knowledge, there is not a single study that thoroughly compares known SGD locations to  
satellite-data derived thermal anomaly indications over larger spatial scales, to analyze the  
appropriateness of satellite TIR-RS data for SGD research in a statistically robust manner.

115 The aim of this study is to prove the great usefulness of satellite TIR images in different sites, covering  
a large scale and at different seasons to assess whether Landsat 8 TIR-RS can be used as an exploratory  
tool to identify SGD springs worldwide, from local to regional scales, for long-term analysis. The

second aim is to define a conceptual application framework, identifying and discussing the principal limitations of satellite TIR-RS in the study of SGD at the local and regional level.

120

The study was carried out on the coastal karstic aquifers of the Mediterranean Sea basin, where there are many local studies that describe the discharge processes due to the great connectivity between this coastal aquifer type and the sea (Bakalowicz, 2005; Barberá and Andreo, 2015; Worthington, 1999). In this hydrogeological context, SGD takes place mainly through submarine or aerial springs (point source). Although groundwater discharge from submarine springs represents a negligible fraction of the global SGD (Luijendijk et al., 2020), in some areas, such as the Mediterranean Sea, this fraction can be locally important, strongly influencing marine ecosystems and serving as a water resource for the population (Rodellas et al., 2015; Moosdorf & Oehler, 2017). To validate the temporal effectiveness of this technique, Landsat-8 images from 2017 and 2018 on the coasts of the Mediterranean Sea basin were used to locate SGD springs described previously in the literature, showing at what period of the year and under what hydrogeological, marine and environmental conditions these SGD springs are observable with a satellite.

125

130

## 2. Methods

### 2.1. Study area

The SGD contribution to the Mediterranean ranges from  $(3 - 50) \cdot 10^{11} \text{ m}^3 \cdot \text{yr}^{-1}$ , where fresh groundwater inputs represent 1 – 25% of the total SGD inputs (Rodellas et al., 2015). SGD has been described and studied in several locations along the Mediterranean coast (e.g., Bakalowicz, 2015; Mejías et al., 2012; Tulipano et al., 2005; Bejannin et al., 2017). The Mediterranean basin is characterized by 46% of its coastline formed by karstic aquifers (Bakalowicz, 2015; Fleury et al., 2007; Trezzi et al., 2016). Its narrow continental shelves prevent large tidal amplification along the coast; tidal amplitude is usually less than 0.2 m (Werner et al., 2013). The Mediterranean climate is seasonal, characterized by windy, mild, wet winters and by relatively calm, warm and dry summers. Strong local winds, such as the cold and dry Tramontana, Mistral and Bora, from the north, and the hot and dry Sirocco, from the south, are typical of the region. These strong regional and seasonal wind regimes provide a substantial amount of vertical mixing in the seawater column (GROUP, 1970). In general, the main rainfall season is during fall and spring, with an average annual precipitation of  $500 \text{ mm y}^{-1}$  (Andreo & Carrasco, 1993); the sea temperature is approximately between 18 - 27 and 14 - 17 °C in the summer and winter, respectively. In this study, we selected 54 springs located in the Mediterranean Sea basin (Supplementary material 1) based on published scientific literature (Bakalowicz, 2018; Basterretxea et al., 2010; Fleury et al., 2007; Mejías et al., 2012) where groundwater discharge is known to take place and the hydrogeological context has been previously described. These springs are located in Spain, France, Italy, Croatia, Greece, Turkey, Syria, Lebanon and Libya (Figure 1).

140

145

150

155

The mean flow rates of the studied springs range between  $0.009$  and  $50 \text{ m}^3 \cdot \text{s}^{-1}$ . The depth and/or elevation of the discharge area with respect to sea level ranges from -30 m to 9 m. The distance of the discharge ranges between 0 and 3000 m from the shoreline. The type of coastal karst aquifer has been



defined using the same classification as in Tulipano et al. (2005) for Mediterranean coastal karst  
aquifers. The classification includes three types: (1) systems with poorly-developed, but highly  
fractured karstification; (2) systems with well-developed karstification below sea level and open to the  
sea and (3) systems with well-developed karstification below sea level, partially or totally closed to the  
160 sea.

## 2.2. Landsat 8 TIRS data acquisition

To determine the optimal time period for SGD detection using remote sensing, the SST of a series of  
images covering all seasons was compared. The TIRS instrument of Landsat 8 is a thermal imager two  
165 thermal infrared bands centred at 10.8  $\mu\text{m}$  and 12.0  $\mu\text{m}$  and a ground sampling distance (GSD) of 100  
m. However, all thermal images are resampled using a cubic convolution to 30 m (Roy et al., 2014).  
Only band 10 has been used to study temperature differences in water to detect SGD sites, because data  
collected in band 11 of the TIRS has some large calibration uncertainties (U.S. Geological Survey,  
2014b).

170 A total of 25 path/row combinations were analyzed with the Landsat 8 TIR images of the Mediterranean  
coast between January 2017 and December 2018 to cover all 54 known SGD sites. To that end, a total  
of 1536 images were acquired from the U.S. Geological Survey (USGS) with cloud coverage between  
0% and 90% in each image. A manual inspection of all images resulted in finer selection of 365 images  
175 with cloud-free conditions above the areas of interest. The finer selection of cloud-free images were  
used for subsequent steps.

## 2.3. Deriving SST values from Landsat 8 TIRS data

Data processing included the conversion of digital numbers to SST, including an atmospheric correction  
180 of each image following the methodology presented by Chander et al. (2009).

Image processing began with radiometric correction, which was performed by converting the digital  
number (DN) to sensor spectral radiance through band-specific rescaling gain and bias factors according  
to Equation (1).

$$L_{\lambda} = G_{rescale} * Q_{cal} + B_{rescale} \quad (1)$$

185 where  $L_{\lambda}$  is the sensor spectral radiance [ $\text{W} \cdot (\text{m}^{-2} \cdot \text{sr}^{-1} \cdot \mu\text{m}^{-1})$ ];  $G_{rescale}$  is the band-specific rescaling  
gain factor [ $(\text{W} \cdot (\text{m}^{-2} \cdot \text{sr}^{-1} \cdot \mu\text{m}^{-1}) \cdot \text{DN}^{-1})$ ];  $Q_{cal}$  is the quantized and calibrated standard product pixel  
values (DN) and  $B_{rescale}$  is the band-specific rescaling bias factor [ $\text{W} \cdot (\text{m}^{-2} \cdot \text{sr}^{-1} \cdot \mu\text{m}^{-1})$ ]

190 The next step was an atmospheric correction to remove the atmospheric component of the recorded  
thermal signal which strongly depends on atmospheric conditions (aerosol content, humidity,



temperature etc.) at a specific recording time and place. To atmospherically correct images at sensor spectral radiance, it was necessary to transform them into surface radiance of an ideal ‘black body’, considering the scene-specific up- and down- welling radiance and transmission values and the emissivity of the earth's surface, according to Equation (2) (Barsi et al., 2003).  
195

$$L_t = \frac{L_\lambda - L_U - \tau * (1 - \varepsilon) * L_D}{\tau * \varepsilon} \quad (2)$$

where  $L_t$  is the radiance of an ideal ‘black body’ [ $W \cdot (m^{-2} \cdot sr^{-1} \cdot \mu m^{-1})$ ];  $L_\lambda$  is the sensor spectral radiance [ $W \cdot (m^{-2} \cdot sr^{-1} \cdot \mu m^{-1})$ ];  $L_U$  is the upwelling radiance [ $W \cdot (m^{-2} \cdot sr^{-1} \cdot \mu m^{-1})$ ];  $L_D$  is the downwelling radiance [ $W \cdot (m^{-2} \cdot sr^{-1} \cdot \mu m^{-1})$ ];  $\varepsilon$  is the emissivity of the surface [-] and  $\tau$  is the atmospheric transmission [-].  
200

A web-based atmospheric correction tool developed by Barsi et al. (2003) based on MODTRAN was used to obtain values for atmospheric transmissivity and the upwelling and downwelling radiances of the atmosphere. The applied value for water emissivity in band 10 was 0.9904 (Wen-Yao et al., 1987). Finally, to obtain the sea surface temperature (SST), the corrected radiances were introduced into Equation (3).  
205

$$T = \frac{K_2}{\ln\left(\frac{K_1}{L_t} + 1\right)} \quad (3)$$

where  $T$  is the effective sensor brightness temperature [K];  $L_t$  is the radiance of an ideal ‘black body’ [ $W \cdot (m^{-2} \cdot sr^{-1} \cdot \mu m^{-1})$ ];  $K_1$  is prelaunch calibration constant 1 [ $W \cdot (m^{-2} \cdot sr^{-1} \cdot \mu m^{-1})$ ]; and  $K_2$  is prelaunch calibration constant 2 [K].  
210

The resulting atmospherically-corrected SST data represent temperature with an error less than 1.3 K for the temperature range of 270 - 330 K. This temperature represents the skin temperature of the water (<1 mm of the upper most water layer), which differs from the bulk temperature below it by about 0.1 K due to sensible heat fluxes, evaporative heat loss, and long wave radiation (Donlon et al., 2002; Wloczyk et al., 2006).  
215

## 220 2.4 Site inter-comparison between single image and multiple images

Temperature maps of coastal waters were created from temperature data to assess the significance of the SST anomalies. The identification of SGD spring sites was based on the assumption that temperatures of discharging groundwater may be different than seawater and less variable than seawater temperatures



throughout the year. SGD spring sites were analyzed using two different procedures. First, single  
225 images were used to identify SGD springs by means of the water temperature anomalies. As a second  
step of the single image approach, the change between images along the study period was also  
evaluated. This analysis allowed identifying variations in the morphology of the discharge plume. As a  
second approach, called multiple imaging, SGD spring sites were detected by evaluating the pixel-by-  
pixel standard deviation (SD) between all image sets. Lower values of SD were used as indicators for  
230 groundwater discharge using sea surface temperature (SST) data series. This statistical parameter has  
been previously applied in semi-arid areas to study groundwater and surface water interactions and  
identify spring discharge into lakes or enclosed seas (Mallast et al., 2014; Tcherepanov et al., 2005). It  
was assumed that groundwater tends to be less variable than surface water, which varies seasonally and  
daily. The applied multi-temporal thermal remote sensing approach was based on a variable number of  
235 Landsat 8 TIRS images. The images used to calculate the standard deviation varied between 5 and 17  
images, depending on the number of images without clouds available for each studied site. The thermal  
mapping results were combined with orthophoto maps (only the land part) within a GIS to locate the  
SGD springs at the identified sites.

## 240 3. Results and discussion

### 3.1 Overall identifications

As an example of the Landsat 8 TIR images analyzed in the Mediterranean Sea basin, the thermal  
images of the Almyros SGD spring in Agios Nikolaos (Greece) throughout the year 2017 are shown in  
Figure 2. In general, a thermal anomaly plume is observed in several of the 23 images (one of the July  
245 images is missing) occurring near and perpendicular to the coastline, reflecting the continuous discharge  
of groundwater. Since a satellite image provides the sea surface temperature (SST) of the first  
millimeter of seawater (Donlon et al., 2002; Wloczyk et al., 2006), the thermal contrast is because the  
groundwater is located above the seawater because of its lower density due to its different temperature  
and salinity (Wilson & Rocha, 2012).

250 The images series of Almyros Agios Nikolaos (Figure 2) shows how thermal contrast caused by the  
groundwater discharge cannot be observed throughout the whole year. The thermal contrast is more  
identifiable from the second half of April until the end of October, but the best thermal plume  
observations were from June to October (Figure 2). Conversely, this spring cannot be identified from  
November to March. The groundwater discharge was not identified in February and December due to  
255 the absence of thermal contrast, and in the other months (January, March and November) because  
clouds made identification difficult. Thus, the overall percentage of time for optimal SGD spring  
identification was 37.5% in 2017.

260 If the same approach is applied for the total of 54 SGD springs studied, only 23 springs were identified  
in individual images, representing a 44.4% success rate of the technique over the entire study period  
(2017 and 2018). The success percentage for identifying the 23 SGD springs according to the period of



the year is shown in supplementary material 2. The highest success percentage for SGD identification was during the summer, specifically from June to September (Figure 3), which corresponds to an average of 21% of the images analyzed. Conversely, the SGD springs were not identified in the remaining 79% of the images. The winter period, from December to February (Figure 3), had the lowest percentage of SGD spring identifications.

### 3.2 Conceptual framework to assess factors influencing the identification of SGD springs

The analysis of the images of the Mediterranean coast obtained with Landsat 8 TIRS during 2017 and 2018 was successful for several studied springs but did not identify SGD springs in all the images analyzed. Thus, identifying SGD springs using Landsat 8 TIRS has some limitations, as the success rate was slightly less than 50%. The following potential limitations have been previously reported in the literature in some local studied areas: only information for the first millimeters of seawater is available (Donlon et al., 2002; Wloczyk et al., 2006), spatial resolution (Wilson & Rocha, 2012), period of the year (Bayari & Kurttas 2002; Wilson & Rocha 2012; Xing et al., 2016), the results are highly dependent on atmospheric temperature, seawater currents, wind speed and direction, sea surface effects (Kelly et al., 2013) and cloud cover, and the need for specialist knowledge to convert the data into accessible (visualized) information (McCaul, 2016).

Given the limitations, we propose a conceptual framework to assess the following types of factors that should be considered: (1) technical limitations, (2) geological/hydrogeological characteristics, (3) environmental and marine conditions, (4) coastal geomorphology and (5) anthropogenic sources (Figure 4).

#### 3.2.1 Technical limitation factors

Some of the main limitations of the technique are related to the temporality of obtaining images, the spatial resolution, the availability of images in the desired period and the atmospheric conditions during the image capture. Each satellite has an image capture spatial and temporal resolution, and therefore the results are subject to these pre-established conditions. For Landsat 8 TIRS, the temporal resolution is two weeks, and the spatial resolution is 100 m resampled to 30 m, so a smaller thermal anomaly plume than this produced by an SGD spring will not be identified. In the Mediterranean basin, the Alcafar spring in Menorca (Spain) (Garcia-Solsona et al., 2010), which discharges in a semi-enclosed area with an approximate width of 20 meters, was not identified. The availability of satellite images depends, in some cases, on technical problems that the satellite experiences during image collection, which implies that there are annual series of images with some missing images. In the example used in Figure 2 to identify the Almyros of Agios Nikolaos (Greece) SGD spring, only 23 of the 24 images that should have been produced during 2017 were obtained. The striping noise that it can be seen in the images (Figure 2) which affect TIR bands especially is another technical limitation. Sometimes the difference is so large that it would hinder a proper SGD detection (Gerace and Montanaro, 2017).





300 Other important limitations related to the technique include the atmospheric conditions when the images  
are captured. Clouds and clouds shadows change radiometric information leaving the sea surface and  
prevent a correct analysis of the images.

305 For the Mediterranean Sea basin, of the 80% of the images in which SGD springs were not identified,  
60% were due to the high presence of clouds. Thus, clouds are the main factor limiting the identification  
of SGD springs. The presence of clouds is higher in winter than in summer; therefore, warmer months  
are much better for identifying SGD springs in the Mediterranean Sea. However, in at least 20% of the  
cloudless images, it was not possible to observe and locate SGD springs described in the literature.  
Therefore, a detailed analysis of the cloudless imagery is necessary to confirm the optimal conditions  
for locating SGD springs in the area of interest (Anderson, 2005).

### 310 3.2.2 Geology and hydrogeology limitation factors

The characteristics of coastal aquifers and the different driving forces that allow groundwater discharge  
to the sea are other factors that can limit the identification of SGD springs. According to Taniguchi et  
al. (2002), SGD is the combination of fresh groundwater discharge from the land and saline  
groundwater discharge from the seawater recirculation through the coastal and continental margin.  
315 Thus, the thermal signal of both types of groundwater will define the intensity and shape of the plume  
that can be observed in the sea.

For coastal aquifer SGD springs, geological factors such as the lithology (e.g., type of rock, degree of  
karstification, presence of faults or fractures, etc.) determine the hydraulic properties that greatly  
320 influence the groundwater flow that discharges into the sea (Sander et al., 1996; Brunner et al., 2007;  
Edet et al., 1998). Another aspect to consider is the connectivity of the aquifer with the sea. Coastal  
aquifers may be totally or partially hydraulically connected to the sea, depending on several factors such  
as the geological structure of the aquifer and the seabed, as well as the hydraulic properties of both  
onshore and offshore geological formations. In addition, the amount of SGD into the sea depends on the  
325 aquifer water budget, which produces variations in groundwater discharge flow. The main factors that  
influence this budget are the natural variations in recharge at different temporal scales (rainfall events,  
seasonality, inter-annual changes) and the abstraction of groundwater, which can reduce the discharge  
of the fresh groundwater component of the SGD, or even induce seawater intrusion into the coastal  
aquifer. Unfortunately, these factors are linked since in most cases when recharge is low, abstractions  
330 tend to be higher.

The present study was performed in a specific geological context - coastal limestone with different  
levels of karstification - with SGD occurring through springs (point source discharge). To analyze the  
influence of geological and hydrological component on the 54 studied karstic SGD springs,  
hydrogeological characteristics were analyzed only when detailed information was available, that is, for  
335 33 springs representing 62% of the total (Supplementary material 1). According to the hydrogeological  
characteristics, 15% of the springs correspond to a karstic system characterized by well-developed  
karstification connected to the sea (e.g., Moraig, Port Miou, Bestouan, Almyros of Iraklio, Almiros of  
Agios Nikolaos, Cephalonia, Ain Zayana and Chekka). Of these well-developed springs, most were



340 identified; only the Ain Zayana and Chekka springs were not observed. 9% of the springs 9% of the  
springs for which karst type information was available, were systems with poorly-developed but highly  
fractured karstification. These karst systems included 3 different fractured systems in which 1) faults  
dissect the aquifer such as in the Gokova (4 springs) (Bayari & Kurttas, 2002) and Ovacik spring, where  
the faults are located in the underlying beds that extend towards the sea (Elhatip, 2003); 2) groundwater  
flows along the zones of cracks, fractures and karst hollows, such as in the Donnalucata spring (Povinec  
345 et al., 2006); and 3) groundwater flows through stratification joints, such as in the Mortola spring  
(Fleury et al., 2007). Of all these types of SGD spring located in fractured systems, thermal anomalies  
were only identified in the first type, in which the faults dissect the aquifer. The last type of defined  
karst system is one with well-developed karstification but low connectivity with the sea. This group is  
represented by only two springs: Kiveri Anavalos in Greece and Vise in France, of which only the first  
350 was identified. Therefore, the best geological and hydrogeological settings for identifying SGD springs  
are karst systems with well-developed karstification and that are well-connected to the sea, as well as  
those systems with poorly-developed but highly fractured karstification. This is because these systems  
can drain large areas of recharge; therefore, SGD springs often have high flow rates, making it is easy to  
detect their thermal plumes.

355 SGD spring identification can also be limited by the groundwater flow rate, because the thermal  
anomaly generating the SGD thermal plume may be generated by the head transported by fresh  
groundwater flow (convection) and/or by the offshore movement of seawater intrusion (due to  
conduction and/or convection), which is also affected by groundwater flow rate. Therefore, low  
360 discharge water volumes it is unlikely be identified using this technique. In the studied case of the  
Mediterranean Sea basin, the identified springs have an average flow rate between  $0.75 \text{ m}^3 \cdot \text{s}^{-1}$  and  $50$   
 $\text{m}^3 \cdot \text{s}^{-1}$ . The identified springs with high flow rates were Almyros of Iraklio in Greece (with values  
between  $2$  and  $30 \text{ m}^3 \cdot \text{s}^{-1}$ ) and Jurjevka in Croatia (with values between  $0.8 - 50 \text{ m}^3 \cdot \text{s}^{-1}$ ). The identified  
SGD springs with low flow rates were Ovacik in Turkey (with values of  $0.75 \text{ m}^3 \cdot \text{s}^{-1}$ ), Gokova in Turkey  
365 (with values between  $0.02 - 0.10 \text{ m}^3 \cdot \text{s}^{-1}$ ), las Fuentes in Spain (between  $0.03 - 0.17 \text{ m}^3 \cdot \text{s}^{-1}$ ) and Moraig in  
Spain (between  $0.3 - 9.0 \text{ m}^3 \cdot \text{s}^{-1}$ ). However, there were springs with high flow rates, such as the Ses  
Ufanos spring in Spain (with values between  $20 - 30 \text{ m}^3 \cdot \text{s}^{-1}$ ), and Font Dame-Font Estramar (with values  
between  $1 - 15 \text{ m}^3 \cdot \text{s}^{-1}$ ), that were not identified, indicating that other factors affect the failure to identify  
these springs.

370 Interannual and annual changes, such as humid-dry periods/seasons, prolonged alteration to the  
groundwater systems (overexploitation) and extreme events such as strong rainfall storms, etc., can also  
modify SGD flows. Thus, the research period in which the images were collected is also important  
because seasonal variations (Lee et al., 2016) can lead to SGD thermal plume variations, not only due to  
375 the temperature difference between groundwater and seawater (Lee et al., 2016), but also annual SGD  
flow rate variations (Michael et al., 2005) that allow their identification.

Regarding hydrogeological conditions in the Mediterranean Sea basin, it was expected that the best  
seasons for identifying SGD springs using satellite TIR-RS would be spring and autumn, when rainfall  
380 is higher and therefore higher discharge flow rate is expected. However, summer was the best season



for identifying SGD springs, indicating that other factors influence the identification of SGD springs using this technique.

### 3.2.3 Environmental and marine conditions

385 Other aspects that could affect the thermal contrast between the groundwater plume and the seawater  
include environmental and marine conditions. Both factors can make the identification of SGD difficult,  
because they cause seawater mixing with the discharging groundwater, reducing the thermal contrast  
between them and modifying the sea surface temperature. The main environmental condition that can  
affect SGD identification is the action of wind, which can mix the first millimeters of the sea surface  
390 water, limiting the identification of SGD springs using remote sensing techniques. Similarly, marine  
conditions can affect SGD identification if they reduce the thermal contrast between the groundwater  
plume and the seawater. These marine conditions are basically reduced to the coastal water  
hydrodynamic conditions that can be affected by processes such as the influence of tides or coastal  
currents, the formation of a pycnocline in surface seawater or the fetch due to wind action. Tides,  
395 coastal currents and fetch generate seawater movement and mix groundwater with seawater, causing a  
thermal contrast attenuation. Similarly, the presence of a pycnocline can result in less vertical mixing of  
the water column. In subtropical areas with cold winters and hot summers, such as the Mediterranean  
Sea, coastal waters often develop a pycnocline during the summer months, as high temperatures  
increase the evaporation of seawater, generating an increase in salinity and therefore water density. This  
400 effect causes cold, fresh groundwater to flow over salty and dense seawater, generating an SGD layer  
on the sea surface.

In the Mediterranean Sea, which has low tides and maximum thermal contrast between groundwater and  
seawater during summer and winter, the SGD spring visualizations in cloud-free images decrease  
405 significantly in winter months compared to warmer months (Figure 4). Only 2 of 21 SGD springs were  
identified during winter in 2017 (Anavalos Kiveri, Greece and Torre Badum, Spain) and 0 of 20 in  
2018. The influence of marine factors in both cases was minimal; identification is therefore plausible  
during winter months. Since the number of SGD spring visualizations is much higher in summer than in  
winter, the environmental and marine conditions during winter months are unfavorable for the location  
410 of coastal springs.

Consequently, areas where the influence of various marine factors such as tides, coastal currents or  
fetch is small are ideal for identifying SGD springs, because such factors attenuate the thermal contrast  
needed to identify SGD springs. Similarly, in subtropical areas such as the Mediterranean Sea, it is  
415 easier to identify SGD springs because coastal waters often develop a pycnocline during the summer  
months, resulting in less vertical mixing of the water column and therefore better identification of SGD  
springs. Therefore, in the Mediterranean basin environmental and marine conditions in summer months  
are much more favorable for the identification of coastal springs than in winter months.



### 420 3.2.4 Coastal morphology limitation factors

Another aspect that influences SGD thermal plume visualization is the coastal morphology; depending on its characteristics, the seawater residence time in the study zone may allow the formation of a thermal plume. In semi-enclosed areas, such as bays or coves, where the residence time of discharging water in the sea is in the range of one or several days (Tamborski et al., 2020), the formation of thermal  
425 plumes from SGD can be easily detected by satellite in comparison with open sea areas, where the seawater residence time is shorter (less than a day), due to the effect of marine or weather factors such as waves, coastal currents or fetch. Groundwater discharge can occur below sea level, either at shallow (< 10 m) or at greater depths, right on the shoreline or a few meters from it (Zektser & Dzhamalov, 2006). The morphology of the coastal seabed combined with the geological characteristics of the aquifer  
430 (e.g., karstification degree and coastal hydraulic gradient) determine both the depth and offshore distance of the groundwater discharge. These two characteristics are very important, since the SGD spring's location on the coast is critical to the correct formation of the plume and the thermal contrast between groundwater and seawater that must be recorded by satellite. While groundwater discharges produced at coastal level or several meters inland usually generate thermal contrasts easily detectable by  
435 satellite (Mejías et al., 2012), submarine springs located several meters deep often represent a challenge for satellite detection. This is because when groundwater discharges below sea level, it rises to the sea surface generating a buoyant thermal layer of several millimeters, due to its lower density that arises from its temperature and salinity characteristics. Therefore, a greater discharge depth requires more time to reach the sea surface, adapting the SGD's thermal signal at the sea surface to the surrounding water  
440 temperature. Thus, marine factors may have a greater influence in balancing the seawater and groundwater temperatures, preventing the recognition of thermal anomalies on the sea surface, as stated by Mallast et al. (2013).

However, the time required for groundwater to reach the sea surface depends not only on the depth of  
445 the discharge below sea level, but also on hydrogeological factors, such as the discharge flow. Thus, SGD springs characterized by shallow depths and large flow rates will favor the detection of SGD induced thermal plumes on the sea surface, while deep areas with small flows will be undetectable. Intermediate situations, such as shallow areas with small flows or deep areas with large flows, may be detected depending of the relative importance of the environmental and/or marine limiting factors.

450 For the karstic springs studied in the Mediterranean Sea basin, 28 of the 54 springs studied were located in semi-enclosed coastal areas. Of these, 16 were identified by satellite. These springs were Port Miou and Bestouan in France; Cephalonia, Anavalos Kiveri and Almyros of Agios Nikolaos in Greece; Martinscica, Perilo, Novijanska, Jurjevaska and Patan in Croatia; and Gokova (four springs), Ovacik and  
455 Antalya (four springs) in Turkey. These results show that when discharge occurs in semi-enclosed areas, where the seawater residence time is large, the springs can be identified until late autumn, even though the flow of groundwater is relatively small ( $0.75 \text{ m}^3 \cdot \text{s}^{-1}$  was reported for the Ovacik spring in Turkey). Therefore, the success in identifying SGD springs in semi-enclosed areas also is higher throughout the year.

460



Our study showed that, of the 54 studied springs for which information is available, the seashore distances ranged from the shoreline to 1 km, and the discharge depths vary between 7 to -150 m with respect to sea level. The first group of springs discharge near the seashore and reach the sea through small streams; these karstic springs are located between 300 and 500 m inland and at elevations of 2 m, 3 m and 15 m above sea level for Patan in Croatia, Almyros of Iraklio in Greece and Maro in Spain, respectively. Of them, only Patan and Almyros of Iraklio were identified. The second group of springs discharges in coastal lagoons at a distance of 100 m from shore and a depth of -4 m (Font Dame and Font Estramar in Salses-Laucate lagoon in France) and an unknown shore distance and -30 m (Vise in Thau lagoon). None of these springs were identified. The third group of springs is located between 0 and 10 m from the shoreline and in shallow waters between 0 and -7 m (Torre Badum, Las Fuentes, Font de Dins in Spain, Ain Zayana in Libya, Agios Nikolaos, Cephalonia and Anavalos Kiveri in Greece and Ovacik and Gokova in Turkey). All of these springs were identified except the Ain Zayana spring in Libya.

The fourth group of springs is located close to the shoreline, but at a water column depth of -12 m. The two springs of this group were identified (Moraig in Spain and Port Miou and Bestouan in France). Neither of the two springs representing the fifth and last group, in which discharges occurs offshore between 100 m and 1 km with a water column depth between -35 and -150 m (Mortola in Italy and Chekka in Lebanon) were identified.

From the analysis of the images obtained by Landsat 8 TIRS and considering the hydrogeological data of the various coastal springs, we conclude that groundwater discharges that occur at significant depths (> 12 m) it is unlikely be identified by this technique, probably because the thermal anomaly generated between groundwater and seawater does not reach the sea surface. This is the probable reason for the failure to identify the springs of Vise in France, Mortola in Italy and Chekka in Lebanon. For the Vise spring, which discharges at -30 m depth, the hydrogeological information indicates that it is a mixture of karstic water, thermal water and seawater (Aquilina et al., 2002); most likely the discharging groundwater does not produce enough thermal contrast to be detected with a satellite sensor. On the other hand, SGD springs located in very shallow areas, such as the Salses-Laucate lagoon, which has an average maximum depth of -2 m (Bejannin et al., 2017), and where there are two well-known springs (Font Dame and Font Estramar) were not identified. A possible reason is that these types of shallow coastal lagoons are highly influenced by atmospheric temperature, since the small water column has little capacity to buffer temperature fluctuations (Lee et al., 2016). However, Anavalos Kiveri and Torre Badum, identified during winter months, are shallow (0 and to -10 m) SGD springs. Therefore, although initially these types of springs should be easily detectable by satellite, atmospheric factors can greatly influence the formation of the thermal contrast needed to identify them.

The shore distance at which groundwater discharge occurs is another factor that affects the identification of groundwater discharge in coastal areas. SGD springs discharging further than 500 m from the seashore were not recognized, such as the Mortola spring with a distance of 800 m. This may be related to the fact that as the distance to the coast increases, the depth of the water column increases, and the travel time of the fresher groundwater also increases, allowing a complete temperature



equilibrium. Furthermore, these zones are more affected by ocean currents that increase water mixing, attenuating the thermal signal.

505 In some cases, there is not a single factor affecting SGD spring identification, but rather a combination of several factors (flow rate, season, coastal morphology, etc.) which makes difficult to explain why an SGD spring was not identified.

### 3.2.5 Anthropogenic sources

510 There are some coastal outflows originated from anthropogenic sources may mask or modify the SGD thermal signal or even generate a similar thermal signal such as wastewater treatment outflows, fish farms, ports, power plants, among others. For example, wastewater treatment facilities discharge directly to the coastal waters in relatively shallow waters. Even when discharged at depth during periods with high stratification, it is possible to detect its thermal effect on the coastal waters due to buoyant  
515 plumes to surface (DiGiacomo et al., 2004) with SST differences of at least 0.5 °C identifiable with TIR-RS (Gierach et al., 2017). In the case of inland aquaculture, pumped seawater temperature may be modified to reach optimal growth conditions for some species. For instance, water at 15°C is used in European sea bass hatcheries (Navarro-Martín et al., 2009).

### 520 3.3 Application of the multi-temporal SST series method

In some studied areas, there may be low thermal contrast that can prevent the identification of SGD springs. In these cases, it is possible to deepen the analysis of the images by using the multi-temporal SST series proposed by Mallast et al. (2014) in the Dead Sea that minimizes the effect of the previously-indicated limiting factors. Unlike single images, the multi-temporal SST series method  
525 allows several images and thus several points in time to be integrated, accentuating the small thermal anomalies for easy identification. An example of the usefulness of the multi-temporal SST series method is in the Serra d'Irta (Eastern Iberian Peninsula) (Mejias et al., 2012; Garcia-Solsona et al., 2010; Trezzi et al., 2016). At this site, Mejias et al. (2012) identified four large thermal anomalies (Torre Badum, Punta del Pebret and Les Fonts springs) by using airborne thermal remote sensing that  
530 were not identified using Landsat 7. Using single images with Landsat 8 TIRS, only the Torre Badum spring was identified, compared with the four thermal anomalies identified by aerial thermal infrared images in 2012. The multi-temporal SST series method, which integrates 10 cloud free images from 2017 to 2018, enables the identification of Torre Badum and Les Fonts, 2 of the 4 springs identified in 2012 by Mejias et al. (2012) (Figure 5).

535 Although the multi-temporal SST series method is better for identifying SGD springs because thermal contrast is enhanced, this method did not enable SGD spring identification in other places where the single image method did not identify them. Furthermore, with multi-temporal SST series, the temporal morphological information of the discharge plume is lost (Mallast et al., 2013). Conversely, single



540 images allow the identification of morphological variations of the discharge plume and the temperature  
variations along the plume. Therefore, if the study objective is to identify SGD springs, the multi-  
temporal SST series method is the best option, but if the objective is to study the SGD plume variation,  
single images are better.

### 545 **3.4 Identification of new SGD springs in the Mediterranean basin**

One of the main objectives of this study is to demonstrate the great usefulness of satellite TIR imagery  
at local and regional scales, identifying SGD springs not previously described in the scientific literature.  
An example of this usefulness is the identification of 21 SGD springs undescribed in the bibliography  
along the Croatian coast using single images (Figure 6). This demonstrates that the analysis of single  
550 images obtained from Landsat 8 TIRS allows the identification of new SGD springs. Therefore, this  
economical technique is very useful in inaccessible areas (Gumma & Pavelic, 2013; Edet et al., 1998;  
Sander et al., 1996).

### **3.5 Challenge and recommendations for future SGD studies and application in other areas**

555 This study has shown the usefulness of satellite images for identifying coastal springs in limestone  
karstified aquifers, both locally and regionally. Therefore, in the design of SGD studies at both local and  
regional levels, it is recommended to first screen the coastal water temperatures for thermal anomalies  
using the presented satellite based TIR approach that will help narrow the sampling surveys. Although  
the study of the thermal images during a single year should be sufficient to identify potential coastal  
560 springs, it is highly advisable to analyze thermal images over several years, since there may be one or  
several factors (technical, marine, environmental, hydrogeological, etc.) that may alter the SGD thermal  
signal.

Although this study focused on the discharge of groundwater from springs located in karst aquifers, the  
565 study of satellite TIR images could be extrapolated to other types of aquifers where the discharge is  
more diffused and where the proportion of meteoric water is lower. To identify thermal plumes, water  
discharging into the sea, whether of meteoric origin or marine circulation, must have acquired sufficient  
thermal contrast in the coastal aquifer before discharge. This thermal contrast can also occur in places  
where coastal aquifers are volcanic rocks or fractured granites, and even in sedimentary formations.  
570 However, in each case, the specific geological context (aquifer matrix, hydraulic parameter distribution,  
etc.) should be considered in the analysis.

Several studies have shown the possibility of quantifying SGD through the study of thermal plumes  
obtained by aircrafts (Tamborski et al., 2015; Danielescu et al., 2009). By determining the thermal  
575 plume area, which is often directly related to the discharge volume, SGD may be quantitatively  
identified. However, there are several factors that can alter the thermal plume shape that could result in  
error. Furthermore, because the TIR image only allows a observation of the less than 1 mm of thermal



580 contrast on the sea surface prevents, a determination of the volume beneath the thermal plume is missing. Moreover, quantification by means of images represents a major challenge because satellite images (e.g., Landsat 8 TIRS) can only be obtained once every 16 days, and many factors can alter the shape of the plume independent of the actual discharge. Therefore, unless the discharge occurs in locations where the environmental and marine conditions are well-controlled, quantification by satellite images represents a major challenge that should be further investigated.

585 Although this study focused regionally on the Mediterranean Sea basin, it can be extrapolated to other parts of the world, in places where the SGD has sufficient thermal contrast when discharging into the sea. This technique has been successfully used in regional areas such as Ireland (Wilson & Rocha, 2012; McCaul et al., 2016) or the Laizhou Bay in China (Xing et al., 2016). However, in areas where the thermal contrast between the sea and the aquifer is low and/or temperature does not fluctuate during  
590 the year, such as in tropical zones, the use of satellite images represents a challenge that must be explored in detail. Furthermore, it is important to perform an initial study to attempt to identify the previously-described main factors that can limit SGD spring identification in the study area, to try to control/avoid these effects.

#### 4. Conclusions

595 This study demonstrates that satellite remote sensing is a useful tool for the identification of coastal SGD springs in karst aquifers, both locally and regionally, by performing an initial screening of the coastal water temperature images to identify possible thermal anomalies that can help narrow SGD study sampling surveys. However, this study highlights limiting factors that should be considered: (1) technical limitations, (2) geological/hydrogeological characteristics, (3) environmental and marine  
600 conditions and (4) coastal geomorphology.

In the karstic coastal aquifer of the Mediterranean Sea basin, the highest success percentage of SGD visualizations was during June, July, August and September. The best geological and hydrogeological settings for identifying SGD springs are karst systems with well-developed karstification that are well-  
605 connected to the sea, as well as those systems with poorly-developed, but highly fractured karstification. Environmental and marine conditions in the summer months are much more favorable for the identification of coastal springs than in the winter months. Semi-enclosed areas, where the seawater residence time is large, favor the identification of SGD springs throughout the year. Groundwater discharges that occurred deeper than 12 m or in very shallow waters were not identified. Also, SGD  
610 springs that discharged further than 500 m from the seashore were not recognized.

Multi-temporal SST series are better for identifying SGD springs in coastal zones, but the information of the discharge plume changes is lost, while single images are more suited to study the morphological variations in the discharge plume and temperature variations along the plume.

615





620 Although this study focused regionally on the Mediterranean Sea basin, it can be extrapolated to other  
parts of the world and other aquifer types, in places where the SGD has sufficient thermal contrast when  
discharging into the sea and where the specific geological contexts (e.g., aquifer matrix and hydraulic  
parameters distribution) are considered. Long time series are better for identifying SGD spring areas,  
625 since there may be one or several factors (technical, marine, environmental, hydrogeological, etc.) that  
can alter the SGD's thermal signal. It is recommended to first screen the coastal water temperature  
images obtained by satellite to identify possible thermal anomalies that will help narrow the sampling  
surveys. This technique allows the identification and quantification of SGD springs in zones without  
hydrogeological information.

### Data availability

All data are available from the corresponding author upon request.

### Author contribution

630 SJC, AF and JGO contributed to design and implementation of the research, to the analysis of the  
results and writing of the paper.

### Competing interests

The authors declare that they have no conflict of interest.

635

### Acknowledgements

This work was partly funded by the projects PID2019-110212RB-C22, CGL2016-77122-C2-1-R/2-R  
and PID2019-110311RB-C21 of the Spanish Government and the project TerraMAr ACA210/18/00007  
of the Catalan Water Agency. The authors want to thank the support of the Generalitat de Catalunya to  
640 GHS (2017 SGR 1485) and MERS ([2018 SGR-1588](#)) for additional funding. Authors want to  
acknowledge Francisco Carreño Conde from the Universidad Rey Juan Carlos for the initial discussions  
on the topic and Ulf Mallast from the Helmholtz Centre for Environmental Research- UFZ for the  
review of the manuscript.



## References

- 645 Akawwi, E., Al-Zouabi, A., Kakish, M., Koehn, F. and Sauter, M.: Using thermal infrared imagery (TIR) for illustrating the submarine groundwater discharge into the eastern shoreline of the Dead Sea-Jordan, *Am. J. Environ. Sci.*, 4(6), 693–700, doi:10.3844/ajessp.2008.693.700, 2008.
- Alorda-Kleinglass, A., Garcia-Orellana, J., Rodellas, V., Cerdà-Domènech, M., Tovar-Sánchez, A.,  
650 Diego-Feliu, M., Trezzi, G., Sánchez-Quilez, D., Sanchez-Vidal, A. and Canals, M.: Remobilization of dissolved metals from a coastal mine tailing deposit driven by groundwater discharge and porewater exchange, *Sci. Total Environ.*, 688, 1359–1372, doi:10.1016/j.scitotenv.2019.06.224, 2019.
- Anderson, M. P.: Heat as a ground water tracer, *Ground Water*, 43(6), 951–968, doi:10.1111/j.1745-  
655 6584.2005.00052.x, 2005.
- Andreo, B. and Carrasco, F.: Estudio hidrogeológico del entorno de la Cueva de Nerja., 1993.
- Andrisoa, A., Lartaud, F., Rodellas, V., Neveu, I. and Stieglitz, T. C.: Enhanced Growth Rates of the  
660 Mediterranean Mussel in a Coastal Lagoon Driven by Groundwater Inflow, *Front. Mar. Sci.*, 6(December), 1–14, doi:10.3389/fmars.2019.00753, 2019.
- Bakalowicz, M.: Karst groundwater: A challenge for new resources, *Hydrogeol. J.*, 13(1), 148–160,  
doi:10.1007/s10040-004-0402-9, 2005.
- 665 Bakalowicz, M.: Karst and karst groundwater resources in the Mediterranean, *Environ. Earth Sci.*, 74(1), 5–14, doi:10.1007/s12665-015-4239-4, 2015.
- Bakalowicz, M.: Coastal Karst groundwater in the mediterranean: A resource to be preferably exploited  
670 onshore, not from Karst Submarine springs, *Geosci.*, 8(7), doi:10.3390/geosciences8070258, 2018.
- Barberá, J. A. and Andreo, B.: Hydrogeological processes in a fluviokarstic area inferred from the  
analysis of natural hydrogeochemical tracers. The case study of eastern Serranía de Ronda (S Spain), *J. Hydrol.*, 523, 500–514, doi:10.1016/j.jhydrol.2015.01.080, 2015.
- 675 Barsi, J. A., Barker, J. L. and Schott, J. R.: An Atmospheric Correction Parameter Calculator for a Single Thermal Band Earth-Sensing Instrument, *Int. Geosci. Remote Sens. Symp.*, 5(C), 3014–3016, doi:10.1109/igarss.2003.1294665, 2003.
- 680 Basterretxea, G., Tovar-Sanchez, A., Beck, A. J., Masqué, P., Bokuniewicz, H. J., Coffey, R., Duarte, C. M., Garcia-Orellana, J., Garcia-Solsona, E., Martinez-Ribes, L. and Vaquer-Sunyer, R.: Submarine groundwater discharge to the coastal environment of a Mediterranean island (Majorca, Spain): Ecosystem and biogeochemical significance, *Ecosystems*, 13(5), 629–643, doi:10.1007/s10021-010-9334-5, 2010.



- 685 Bayari, C. S. and Kurttaş, T.: Coastal and submarine karstic discharges in the Gökova Bay, SW Turkey, *Q. J. Eng. Geol. Hydrogeol.*, 35(4), 381–390, doi:10.1144/1470-9236/01034, 2002.
- 690 Bejannin, S., van Beek, P., Stieglitz, T., Souhaut, M. and Tamborski, J.: Combining airborne thermal infrared images and radium isotopes to study submarine groundwater discharge along the French Mediterranean coastline, *J. Hydrol. Reg. Stud.*, 13(February), 72–90, doi:10.1016/j.ejrh.2017.08.001, 2017.
- 695 Boehm, A. B., Shellenbarger, G. G. and Paytan, A.: Groundwater discharge: Potential association with fecal indicator bacteria in the surf zone, *Environ. Sci. Technol.*, 38(13), 3558–3566, doi:10.1021/es035385a, 2004.
- 700 Brunner, P., Hendricks Franssen, H. J., Kgotlhang, L., Bauer-Gottwein, P. and Kinzelbach, W.: How can remote sensing contribute in groundwater modeling?, *Hydrogeol. J.*, 15(1), 5–18, doi:10.1007/s10040-006-0127-z, 2007.
- 705 Burnett, W. C. and Dulaiova, H.: Estimating the dynamics of groundwater input into the coastal zone via continuous radon-222 measurements, *J. Environ. Radioact.*, 69(1–2), 21–35, doi:10.1016/S0265-931X(03)00084-5, 2003.
- 710 Chander, G., Markham, B. L. and Helder, D. L.: Summary of current radiometric calibration coefficients for Landsat MSS, TM, ETM+, and EO-1 ALI sensors, *Remote Sens. Environ.*, 113(5), 893–903, doi:10.1016/j.rse.2009.01.007, 2009.
- 715 Dale, R. K. and Miller, D. C.: Spatial and temporal patterns of salinity and temperature at an intertidal groundwater seep, *Estuar. Coast. Shelf Sci.*, 72(1–2), 283–298, doi:10.1016/j.ecss.2006.10.024, 2007.
- 720 DiGiacomo, P. M., Washburn, L., Holt, B. and Jones, B. H.: Coastal pollution hazards in southern California observed by SAR imagery: Stormwater plumes, wastewater plumes, and natural hydrocarbon seeps, *Mar. Pollut. Bull.*, 49(11–12), 1013–1024, doi:10.1016/j.marpolbul.2004.07.016, 2004.
- 725 Donlon, C. J., Minnett, P. J., Gentemann, C., Nightingale, T. J., Barton, I. J., Ward, B. and Murray, M. J.: Toward Improved Validation of Satellite Sea Surface Skin Temperature Measurements for Climate Research, *J. Clim.*, 15, 353–369, doi:10.1175/1520-0442(2002)015<0353:TIVOSS>2.0.CO;2, 2002.
- Edet, A. E., Okereke, C. S., Teme, S. C. and Esu, E. O.: Application of remote-sensing data to groundwater exploration: A case study of the Cross River State, southeastern Nigeria, *Hydrogeol. J.*, 6(3), 394–404, doi:10.1007/s100400050162, 1998.
- Elhatip, H.: The use of hydrochemical techniques to estimate the discharge of Ovacık submarine springs on the Mediterranean coast of Turkey, *Environ. Geol.*, 43(6), 714–719, doi:10.1007/s00254-002-0668-y, 2003.



- Fleury, P., Bakalowicz, M. and de Marsily, G.: Submarine springs and coastal karst aquifers: A review, *J. Hydrol.*, 339(1–2), 79–92, doi:10.1016/j.jhydrol.2007.03.009, 2007.
- 730 Garcés, E., Basterretxea, G. and Tovar-Sánchez, A.: Changes in microbial communities in response to submarine groundwater input, *Mar. Ecol. Prog. Ser.*, 438, 47–58, doi:10.3354/meps09311, 2011.
- Garcia-Orellana, J., López-Castillo, E., Casacuberta, N., Rodellas, V., Masqué, P., Carmona-Catot, G., Vilarrasa, M. and García-Berthou, E.: Influence of submarine groundwater discharge on <sup>210</sup>Po and <sup>210</sup>Pb bioaccumulation in fish tissues, *J. Environ. Radioact.*, 155–156, 46–54, doi:10.1016/j.jenvrad.2016.02.005, 2016.
- 735 Garcia-Solsona, E., Garcia-Orellana, J., Masqué, P., Garcés, E., Radakovitch, O., Mayer, A., Estradé, S. and Basterretxea, G.: An assessment of karstic submarine groundwater and associated nutrient discharge to a Mediterranean coastal area (Balearic Islands, Spain) using radium isotopes, *Biogeochemistry*, 97(2), 211–229, doi:10.1007/s10533-009-9368-y, 2010.
- 740 Gerace, A. and Montanaro, M.: Remote Sensing of Environment Derivation and validation of the stray light correction algorithm for the thermal infrared sensor onboard Landsat 8, *Remote Sens. Environ.*, 745 191, 246–257, doi:10.1016/j.rse.2017.01.029, 2017.
- Gierach, M. M., Holt, B., Trinh, R., Jack Pan, B. and Rains, C.: Satellite detection of wastewater diversion plumes in Southern California, *Estuar. Coast. Shelf Sci.*, 186, 171–182, doi:10.1016/j.ecss.2016.10.012, 2017.
- 750 GROUP, M.: Observation of Formation of Deep Water in the Mediterranean Sea, 1969, *Nature*, 227(5262), 1037–1040, doi:10.1038/2271037a0, 1970.
- Gumma, M. K. and Pavelic, P.: Mapping of groundwater potential zones across Ghana using remote sensing, geographic information systems, and spatial modeling, *Environ. Monit. Assess.*, 185(4), 3561–755 3579, doi:10.1007/s10661-012-2810-y, 2013.
- Kelly, J. L., Glenn, C. R. and Lucey, P. G.: High-resolution aerial infrared mapping of groundwater discharge to the coastal ocean, *Limnol. Oceanogr. Methods*, 11(MAY), 262–277, doi:10.4319/lom.2013.11.262, 2013.
- 760 Krest, J. M., Moore, W. S., Gardner, L. R. and Morris, J. T.: Marsh nutrient export supplied by groundwater discharge: Evidence from radium measurements, *Global Biogeochem. Cycles*, 14(1), 167–176, doi:10.1029/1999GB001197, 2000.
- 765 Lee, E., Kang, K. M., Hyun, S. P., Lee, K. Y., Yoon, H., Kim, S. H., Kim, Y., Xu, Z., Kim, D. J., Koh, D. C. and Ha, K.: Submarine groundwater discharge revealed by aerial thermal infrared imagery: a case study on Jeju Island, Korea, *Hydrol. Process.*, 30(19), 3494–3506, doi:10.1002/hyp.10868, 2016.



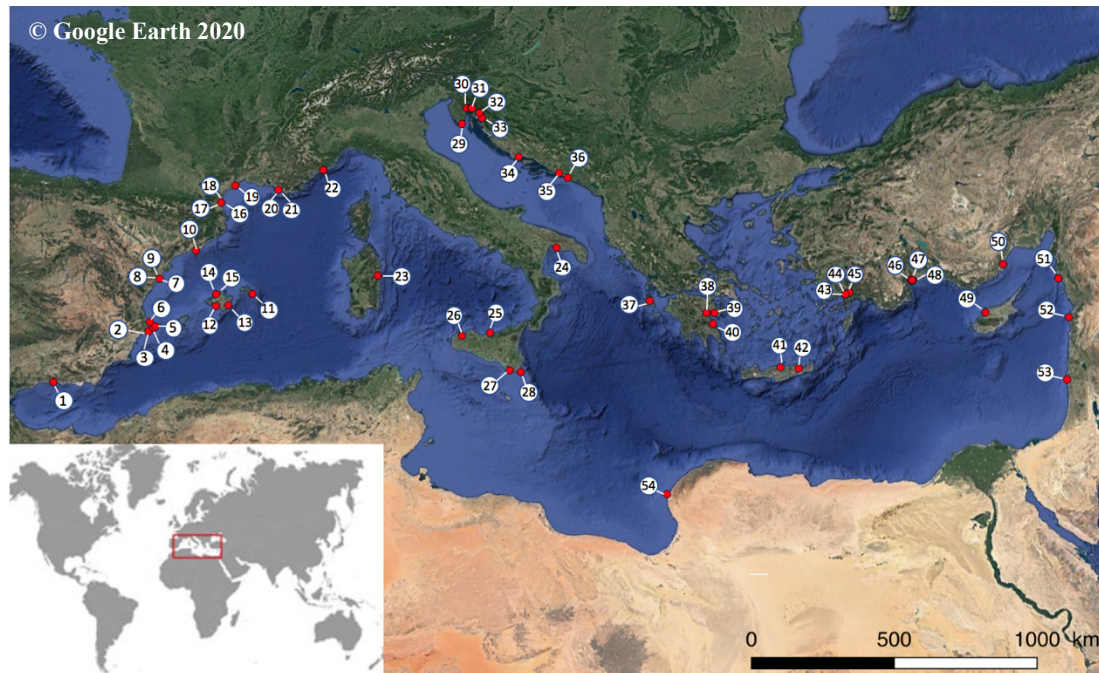
- 770 Luijendijk, E., Gleeson, T. and Moosdorf, N.: Fresh groundwater discharge insignificant for the world's oceans but important for coastal ecosystems, *Nat. Commun.*, 11(1), 1260, doi:10.1038/s41467-020-15064-8, 2020.
- 775 Mallast, U., Gloaguen, R., Friesen, J., Rödiger, T., Geyer, S., Merz, R. and Siebert, C.: How to identify groundwater-caused thermal anomalies in lakes based on multi-temporal satellite data in semi-arid regions, *Hydrol. Earth Syst. Sci.*, 18(7), 2773–2787, doi:10.5194/hess-18-2773-2014, 2014.
- 780 McCaul, M., Barland, J., Cleary, J., Cahalane, C., McCarthy, T. and Diamond, D.: Combining remote temperature sensing with in-situ sensing to track marine/freshwater mixing dynamics, *Sensors (Switzerland)*, 16(9), doi:10.3390/s16091402, 2016.
- 785 Mejías, M., Ballesteros, B. J., Antón-Pacheco, C., Domínguez, J. A., Garcia-Orellana, J., Garcia-Solsona, E. and Masqué, P.: Methodological study of submarine groundwater discharge from a karstic aquifer in the Western Mediterranean Sea, *J. Hydrol.*, 464–465, 27–40, doi:10.1016/j.jhydrol.2012.06.020, 2012.
- 790 Michael, H. A., Mulligan, A. E. and Harvey, C. F.: Seasonal oscillations in water exchange between aquifers and the coastal ocean, *Nature*, 436(7054), 1145–1148, doi:10.1038/nature03935, 2005.
- 795 Moore, W. S.: The Effect of Submarine Groundwater Discharge on the Ocean, *Ann. Rev. Mar. Sci.*, 2(1), 59–88, doi:10.1146/annurev-marine-120308-081019, 2010.
- 800 Moosdorf, N. and Oehler, T.: Societal use of fresh submarine groundwater discharge: An overlooked water resource, *Earth-Science Rev.*, 171(August 2016), 338–348, doi:10.1016/j.earscirev.2017.06.006, 2017.
- 805 Navarro-Martín, L., Blázquez, M., Viñas, J., Joly, S. and Piferrer, F.: Balancing the effects of rearing at low temperature during early development on sex ratios, growth and maturation in the European sea bass (*Dicentrarchus labrax*). Limitations and opportunities for the production of highly female-biased stocks, *Aquaculture*, 296(3–4), 347–358, doi:10.1016/j.aquaculture.2009.07.022, 2009.
- 810 Povinec, P. P., Aggarwal, P. K., Aureli, A., Burnett, W. C., Kontar, E. A., Kulkarni, K. M., Moore, W. S., Rajar, R., Taniguchi, M., Comanducci, J. F., Cusimano, G., Dulaiova, H., Gatto, L., Groening, M., Hauser, S., Levy-Palomo, I., Oregioni, B., Ozorovich, Y. R., Privitera, A. M. G. and Schiavo, M. A.: Characterisation of submarine groundwater discharge offshore south-eastern Sicily, *J. Environ. Radioact.*, 89(1), 81–101, doi:10.1016/j.jenvrad.2006.03.008, 2006.
- 815 Rodellas, V., Garcia-Orellana, J., Masqué, P., Feldman, M., Weinstein, Y. and Boyle, E. A.: Submarine groundwater discharge as a major source of nutrients to the Mediterranean Sea, *Proc. Natl. Acad. Sci. U. S. A.*, 112(13), 3926–3930, doi:10.1073/pnas.1419049112, 2015.



- 810 Ruffi-Salís, M., Garcia-Orellana, J., Cantero, G., Castillo, J., Hierro, A., Rieradevall, J. and Bach, J.: Influence of land use changes on submarine groundwater discharge, *Environ. Res. Commun.*, 1(3), 031005, doi:10.1088/2515-7620/ab1695, 2019.
- Schubert, M., Scholten, J., Schmidt, A., Comanducci, J. F., Pham, M. K., Mallast, U. and Knoeller, K.:  
815 Submarine groundwater discharge at a single spot location: Evaluation of different detection approaches, *Water (Switzerland)*, 6(3), 584–601, doi:10.3390/w6030584, 2014.
- Shaban, A., Khawlie, M., Abdallah, C. and Faour, G.: Geologic controls of submarine groundwater discharge: Application of remote sensing to north Lebanon, *Environ. Geol.*, 47(4), 512–522,  
820 doi:10.1007/s00254-004-1172-3, 2005.
- Tamborski, J., van Beek, P., Conan, P., Pujo-Pay, M., Odobel, C., Ghiglione, J. F., Seidel, J. L., Arfib, B., Diego-Feliu, M., Garcia-Orellana, J., Szafran, A. and Souhaut, M.: Submarine karstic springs as a source of nutrients and bioactive trace metals for the oligotrophic Northwest Mediterranean Sea, *Sci. Total Environ.*, 732, 1–14, doi:10.1016/j.scitotenv.2020.139106, 2020.
- 825 Taniguchi, M., Dulai, H., Burnett, K. M., Santos, I. R., Sugimoto, R., Stieglitz, T., Kim, G., Moosdorf, N. and Burnett, W. C.: Submarine Groundwater Discharge: Updates on Its Measurement Techniques, Geophysical Drivers, Magnitudes, and Effects, *Front. Environ. Sci.*, 7(October), 1–26,  
830 doi:10.3389/fenvs.2019.00141, 2019.
- Tcherepanov, E. N., Zlotnik, V. A. and Henebry, G. M.: Using Landsat thermal imagery and GIS for identification of groundwater discharge into shallow groundwater-dominated lakes, *Int. J. Remote Sens.*, 26(17), 3649–3661, doi:10.1080/01431160500177315, 2005.  
835
- Trezzi, G., Garcia-Orellana, J., Rodellas, V., Santos-Echeandia, J., Tovar-Sánchez, A., Garcia-Solsona, E. and Maqué, P.: Submarine groundwater discharge: a significant source of dissolved trace metals to the North Western Mediterranean Sea. *Marine Chemistry, Mar. Chem.*, 186, 90–100, doi:10.1016/j.marchem.2016.08.004, 2016.  
840
- Trezzi, G., Garcia-Orellana, J., Rodellas, V., Masqué, P., Garcia-Solsona, E. and Andersson, P. S.: Assessing the role of submarine groundwater discharge as a source of Sr to the Mediterranean Sea, *Geochim. Cosmochim. Acta*, 200, 42–54, doi:10.1016/j.gca.2016.12.005, 2017.
- 845 Tulipano, L., Panagopoulos, A. and Fidelibus, M. D.: COST ACTION 621 "Groundwater management of coastal karstic aquifers", Final Report., 2005.
- Varma, S., Turner, J. and Underschultz, J.: Estimation of submarine groundwater discharge into Geopraphe Bay, Bunbury, Western Australia, *J. Geochemical Explor.*, 106(1–3), 197–210,  
850 doi:10.1016/j.gexplo.2010.02.003, 2010.

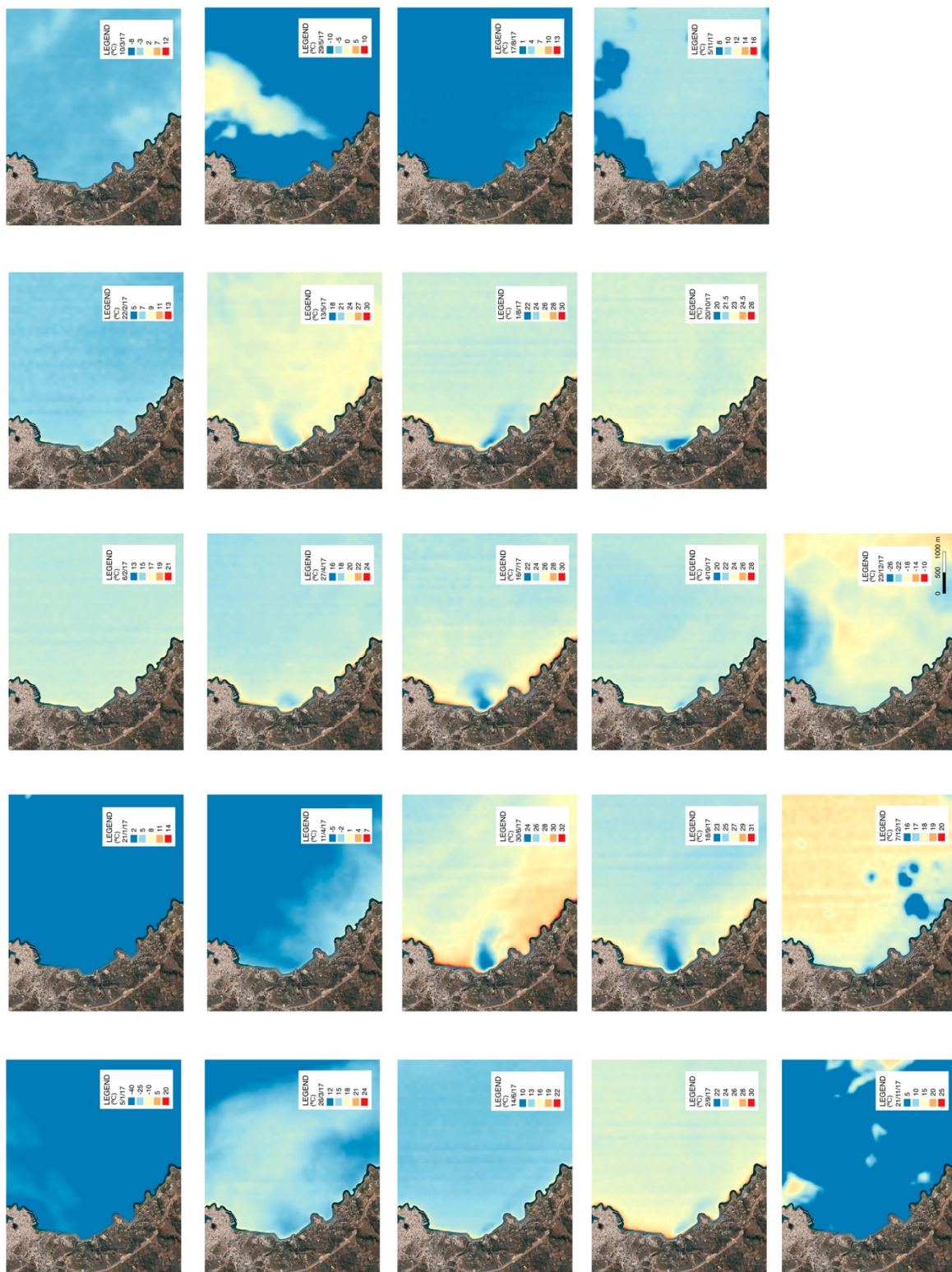


- Wang, L. T., McKenna, T. E. and Deliberty, T. L.: Locating Ground-Water Discharge Areas In Rehoboth And Indian River Bays And Indian River, Delaware Using Landsat 7 Imagery., 2008.
- 855 Wen-Yao, L., Field, R. T., Gantt, R. G. and Klemas, V.: Measurement of the Surface Emissivity, *Remote Sens. Environ.*, 5(4), 97–109, doi:10.1016/0034-4257(87)90009-5, 1987.
- Werner, A. D., Bakker, M., Post, V. E. A., Vandenbohede, A., Lu, C., Ataie-Ashtiani, B., Simmons, C. T. and Barry, D. A.: Seawater intrusion processes, investigation and management: Recent advances and  
860 future challenges, *Adv. Water Resour.*, 51, 3–26, doi:10.1016/j.advwatres.2012.03.004, 2013.
- Wilson, J. and Rocha, C.: Regional scale assessment of Submarine Groundwater Discharge in Ireland combining medium resolution satellite imagery and geochemical tracing techniques, *Remote Sens. Environ.*, 119, 21–34, doi:10.1016/j.rse.2011.11.018, 2012.
- 865 Wloczyk, C., Richter, R., Borg, E. and Nueberts, W.: Sea and lake surface temperature retrieval from Landsat thermal data in Northern Germany, *Int. J. Remote Sens.*, 27 (12), 2489–2502, doi:10.1080/01431160500300206, 2006.
- 870 Worthington, S. R. H.: A comprehensive strategy for understanding flow in carbonate aquifers, *Karst Model.*, 30–37, 1999.
- Wulder, M. A., Loveland, T. R., Roy, D. P., Crawford, C. J., Masek, J. G., Woodcock, C. E., Allen, R. G., Anderson, M. C., Belward, A. S., Cohen, W. B., Dwyer, J., Erb, A., Gao, F., Griffiths, P., Helder, D., Hermosilla, T., Hipple, J. D., Hostert, P., Hughes, M. J., Huntington, J., Johnson, D. M., Kennedy, R., Kilic, A., Li, Z., Lyburner, L., McCorkel, J., Pahlevan, N., Scambos, T. A., Schaaf, C., Schott, J. R., Sheng, Y., Storey, J., Vermote, E., Vogelmann, J., White, J. C., Wynne, R. H. and Zhu, Z.: Current  
875 status of Landsat program, science, and applications, *Remote Sens. Environ.*, 225(February), 127–147, doi:10.1016/j.rse.2019.02.015, 2019.
- 880 Xing, Q., Braga, F., Tosi, L., Lou, M., Zaggia, L., Teatini, P., Gao, X., Yu, L., Wen, X. and Shi, P.: Detection of Low Salinity Groundwater Seeping into the Eastern Laizhou Bay (China) with the Aid of Landsat Thermal Data, *J. Coast. Res.*, 74, 149–156, doi:10.2112/si74-014.1, 2016.
- 885 Zektser, I. S., Everett, L. G. and Dzhamalov, R. G.: *Submarine Groundwater.*, 2006.



**Figure 1.** Location of the 54 SGD springs used for this study. SGD spring shown in the figure are described in Bakalowicz, 2018; Basterretxea et al., 2010; Fleury et al., 2007 and Mejias et al., 2012.

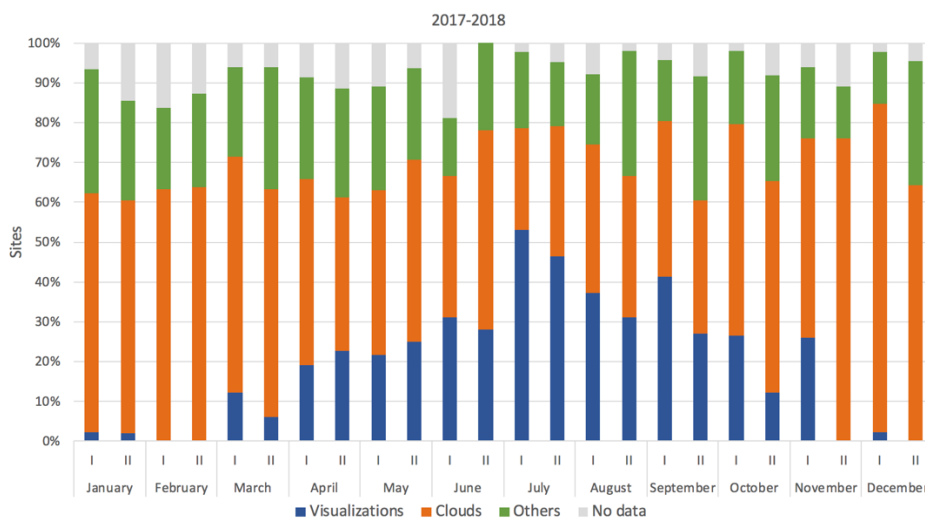




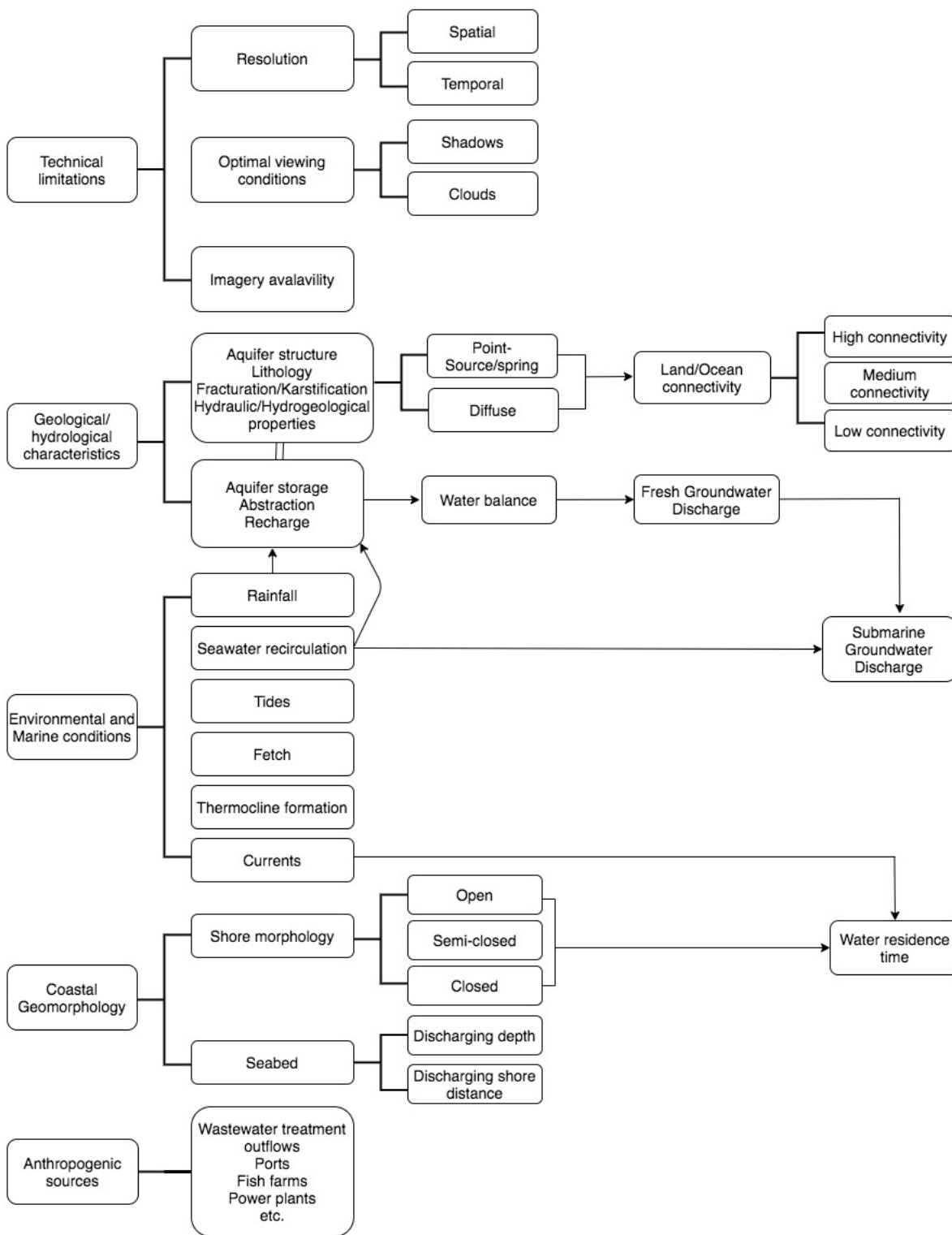


890

**Figure 2.** SST images (°C) obtained with Band 10 of Landsat 8 OLI/TIRS of the region of Almyros of Agios Nikolaos (Greece) along 2017. Of the 23 images analyzed, the presence of a SGD spring was clearly visible in 9 images that represents a 37.5% of success. In January and November 2017, it was not possible to obtain a SST image due to the presence of clouds. Negative values in dark blue represent clouds. © Google Earth 2020

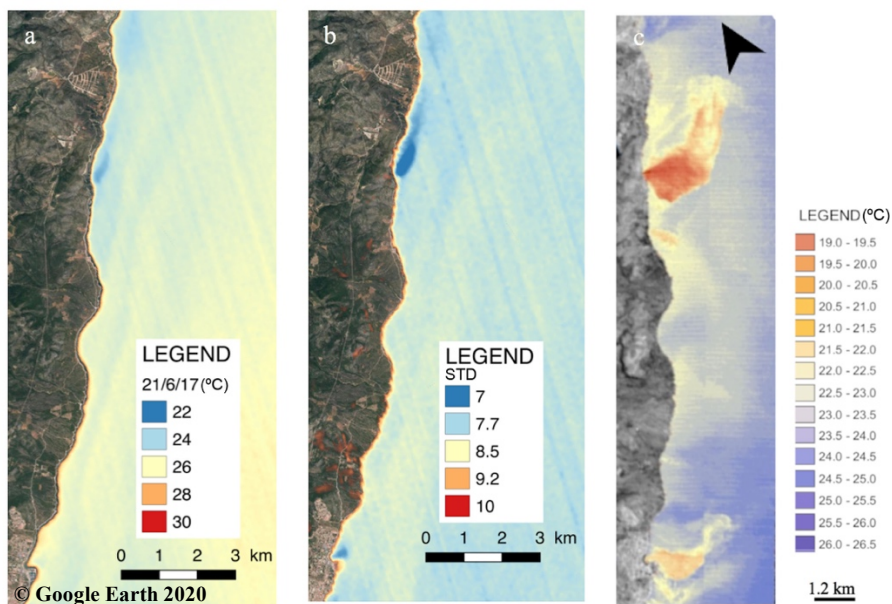


**Figure 3.** Percentage of successful and unsuccessful SGD identifications for all SGD springs that were identified at least once during the studied period 2017-2018. Percentage of successful and unsuccessful SGD identifications for all SGD springs that were identified at list once throughout 2017 and 2018, are in supplementary material. The X-axis shows the months of the year. Roman numbers (I and II) represents the two satellite passes per month that cover every area. No image available is represented with grey color while the presence of clouds is orange and blue with successful SGD identifications. Those in which images were not covered by clouds, but SGD springs were not identified are shown in the figure as “others” in green color.

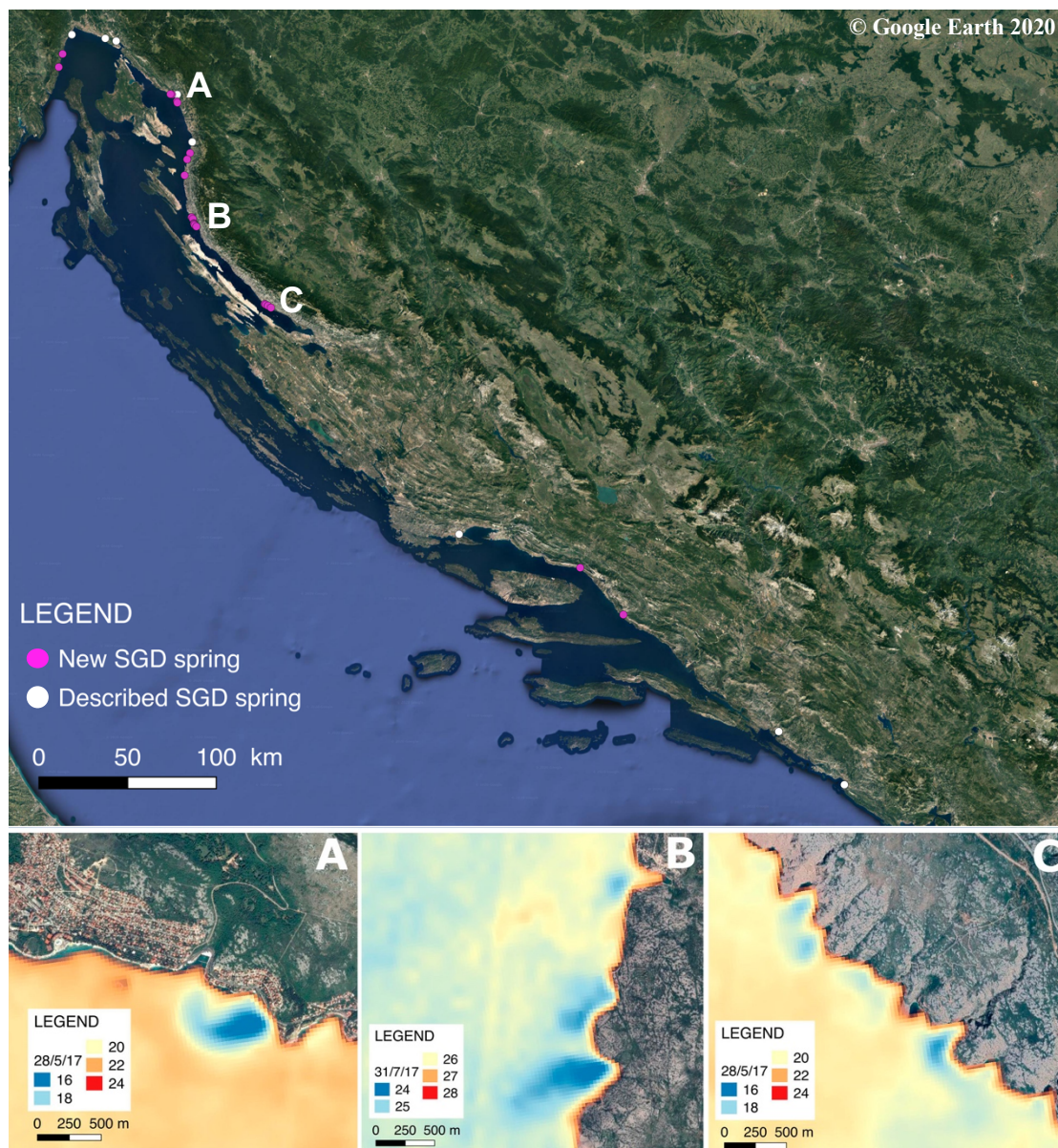




**Figure 4. Conceptual framework with the main factors that can limit de identification of SGD springs by using Landsat 8 TIRS images.**



**Figure 5. a) Serra d'Irta single image map using an image of 21/6/17. One spring in the middle the Torre Badum spring was identified. b) Serra d'Irta Standard Deviation (STD) map using 10 cloud free images acquired between 2017-2018. Two springs of Serra d'Irta, in the south the springs of Les Fonts beach in Alcossebre, and in the middle the Torre Badum spring were identified. c) Image modified from Mejias et al. (2012) where SGD springs were identified using aerial thermal infrared images.**



**Figure 6.** Springs reported in the literature (described SGD spring) vs new SGD spring identified with Landsat 8 TIRS. New SGD springs, not reported in the literature are represented with pink colour. Springs reported in the literature are represented with white colour.