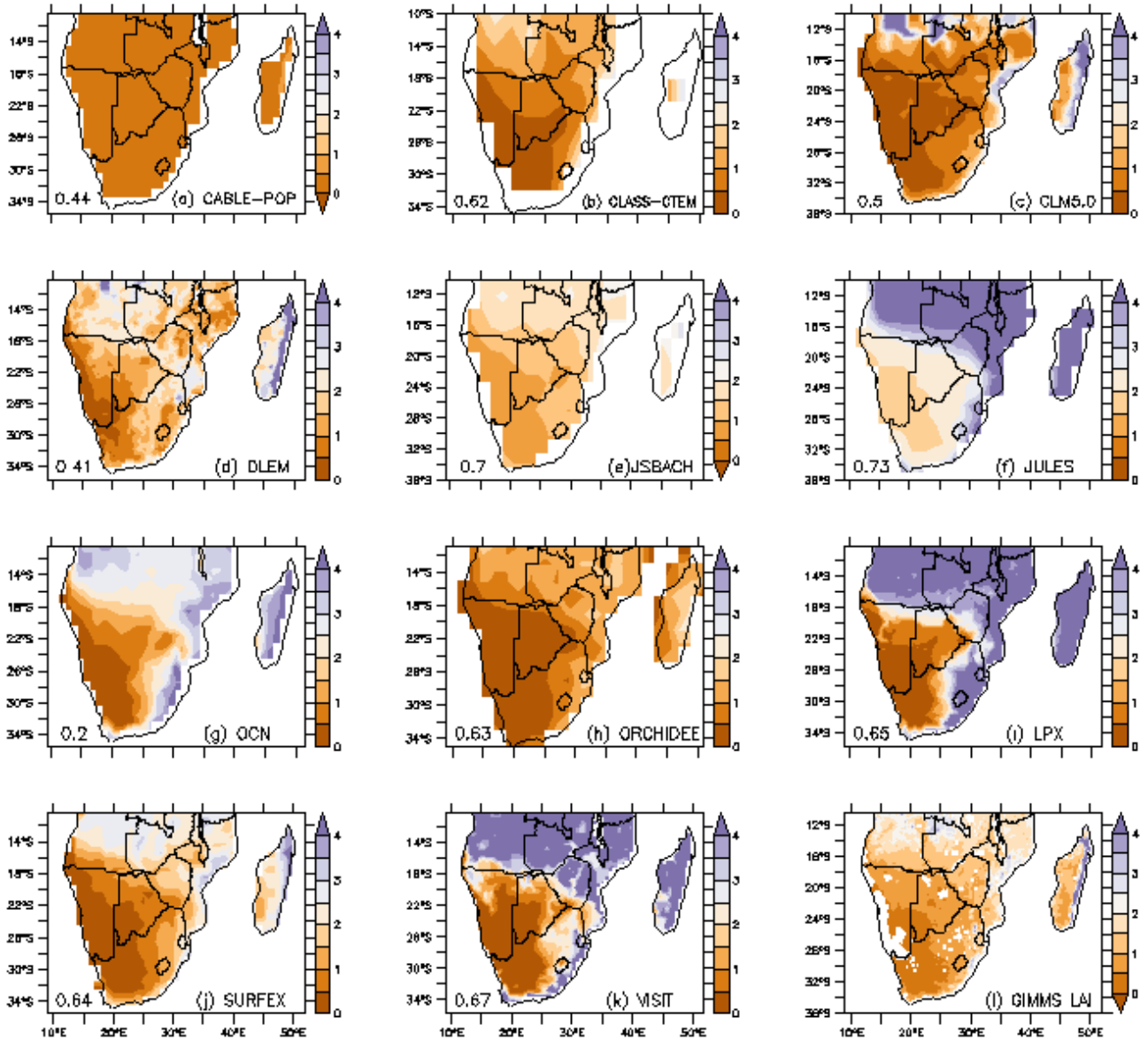


47
48
49
50
51
52
53
54
55
56
57
58
59
60
61
62
63
64
65
66
67

Figure S1. Major global vegetation biomes



68

69 Figure S2. Spatial distribution of observed and simulated LAI over southern Africa; for the
 70 period 1982 – 2011. The spatial correlation values between models and GIMMS are indicated
 71 inside the panels.

72

73

74

75

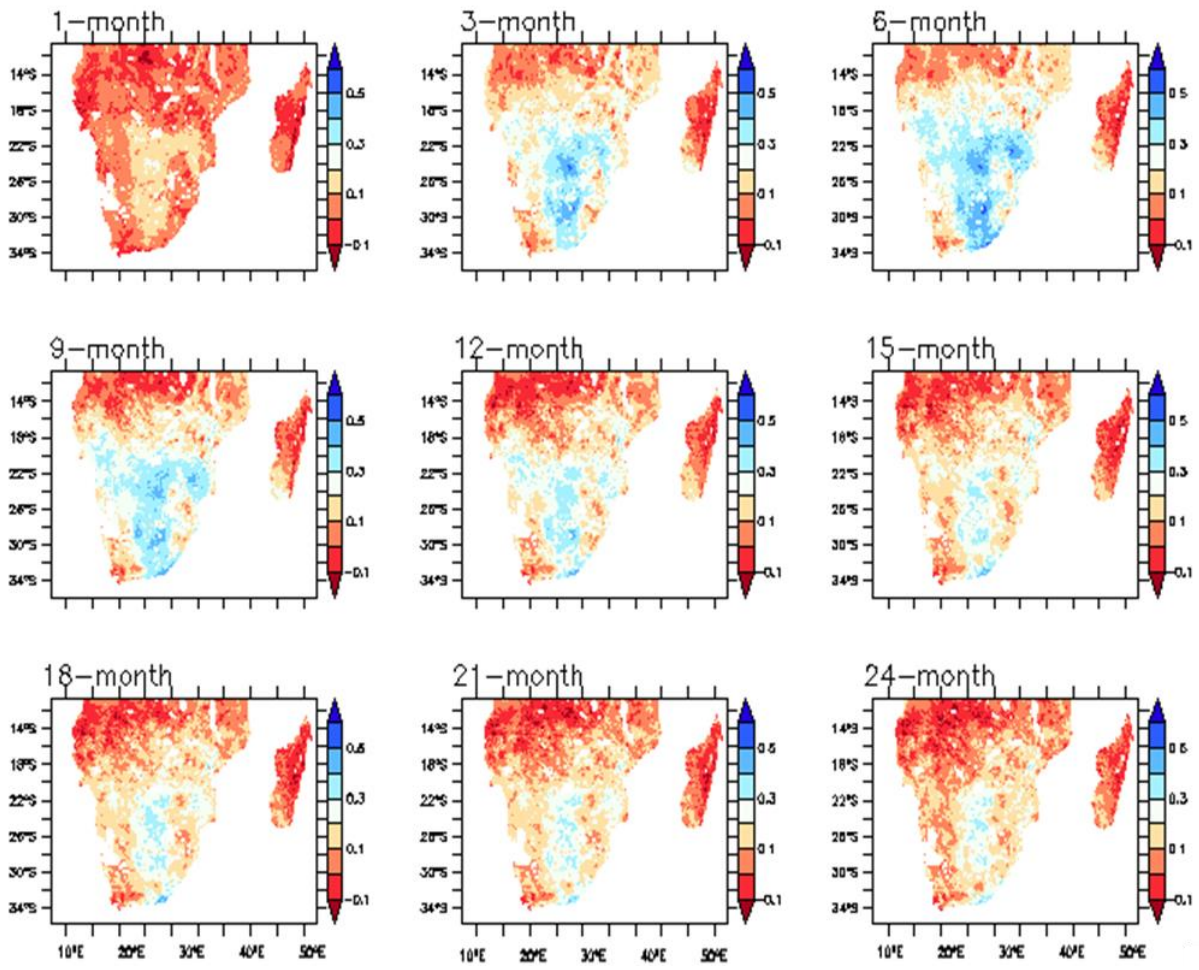
76

77

78

79

80

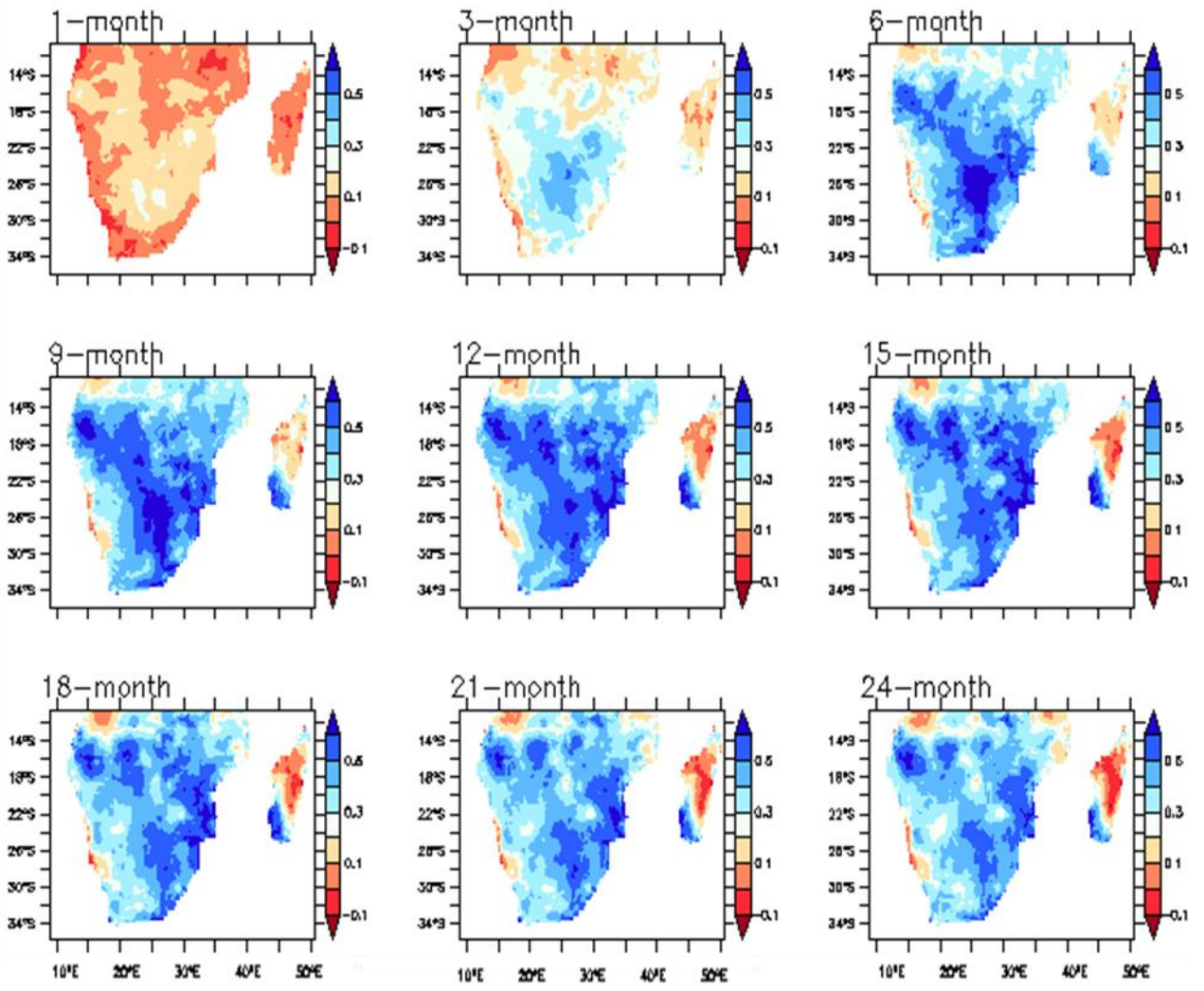


81

82 Figure S3. Spatial distribution of observed correlations at 1- to 24-month timescales over
83 southern Africa for the period 1982 – 2011.

84

85



86

87

Figure S4. As in Fig. S3 but for the model ensemble median

88

89

90

91

92

93

94

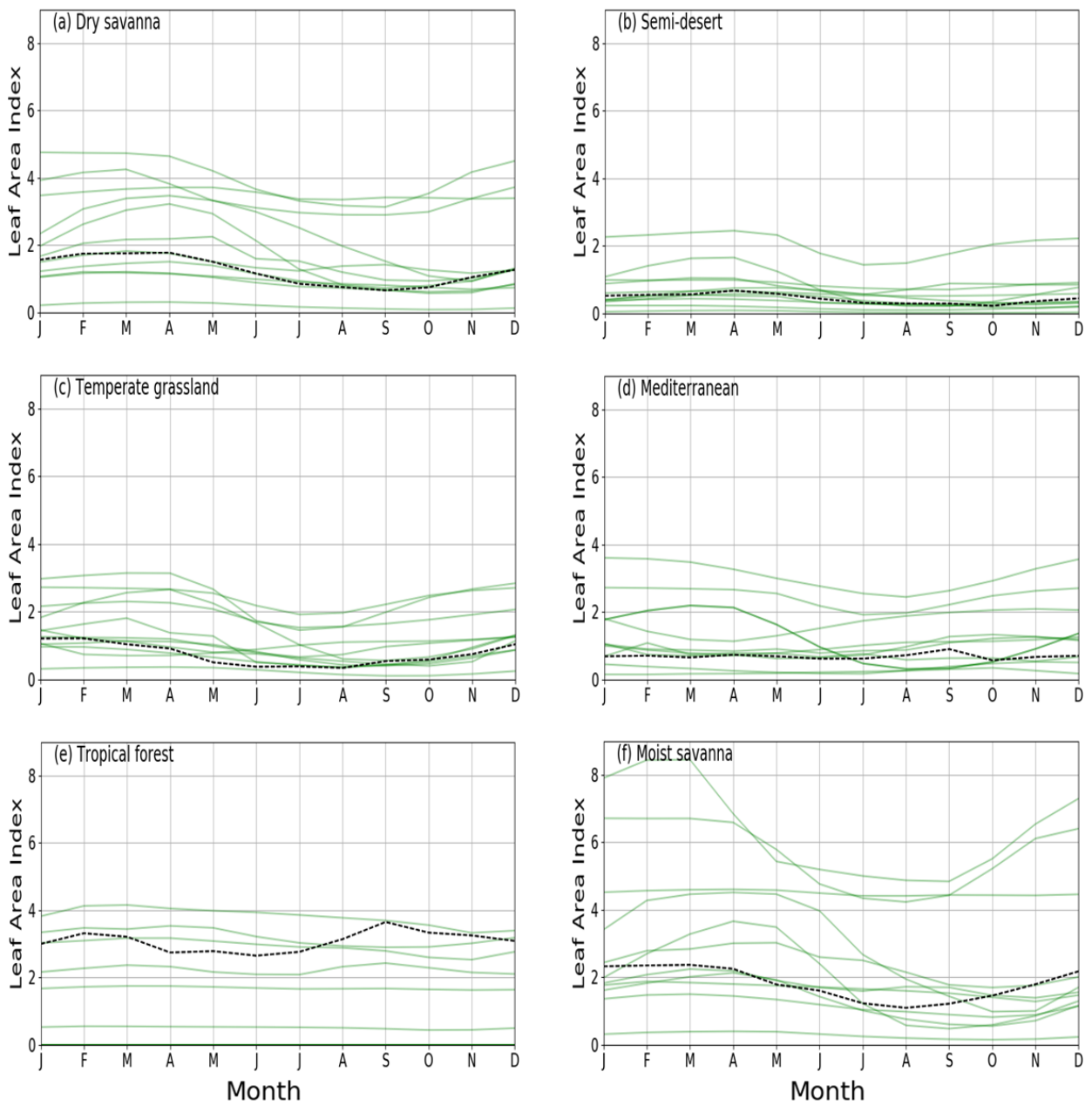
95

96

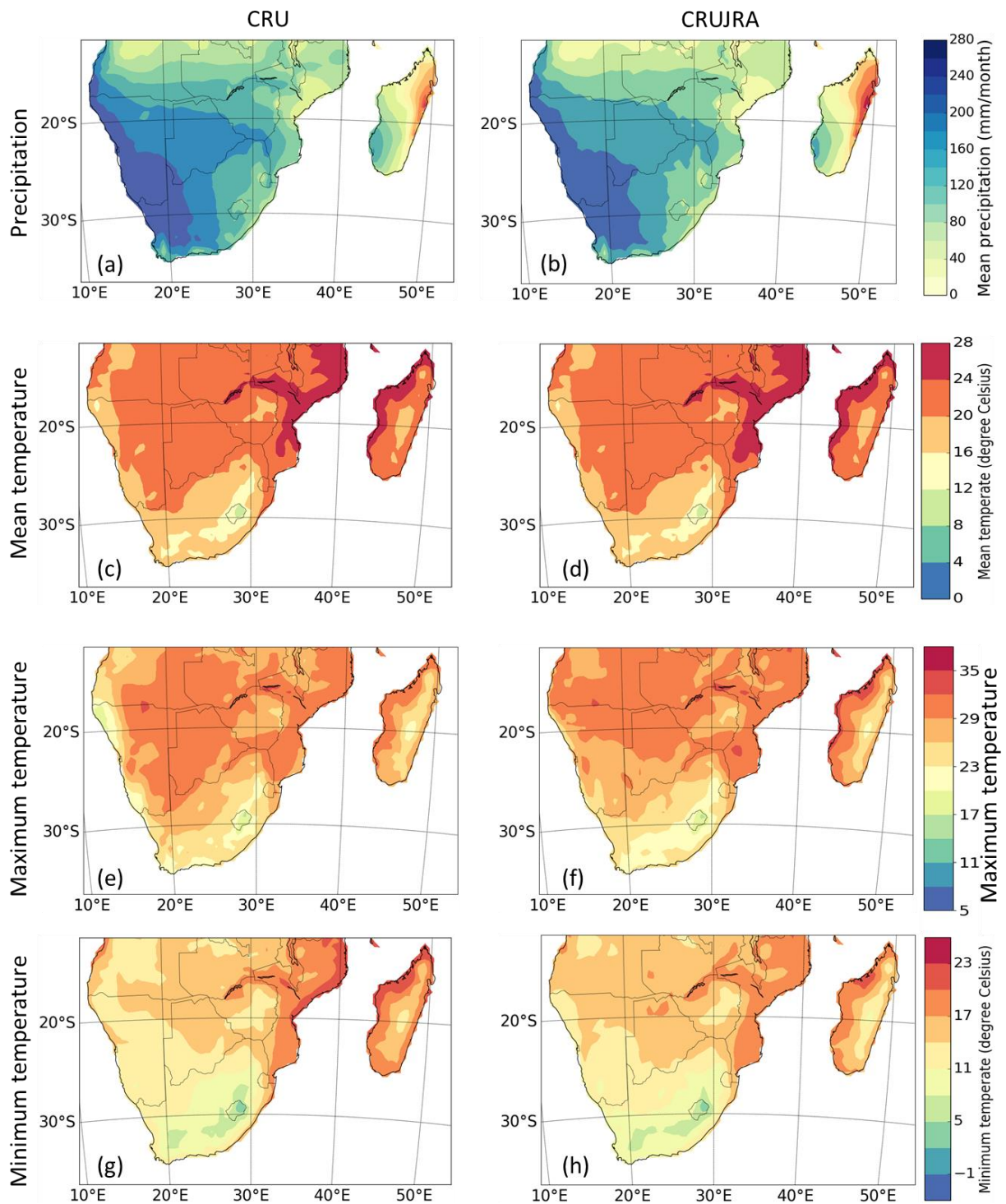
97

98

99



102 Figure S5. Annual cycle of LAI for observation and models (TRENDY) across six biomes over
 103 southern Africa for the period 1982 – 2011. The dash black line is observation while single
 104 light green lines represent each different models.



111

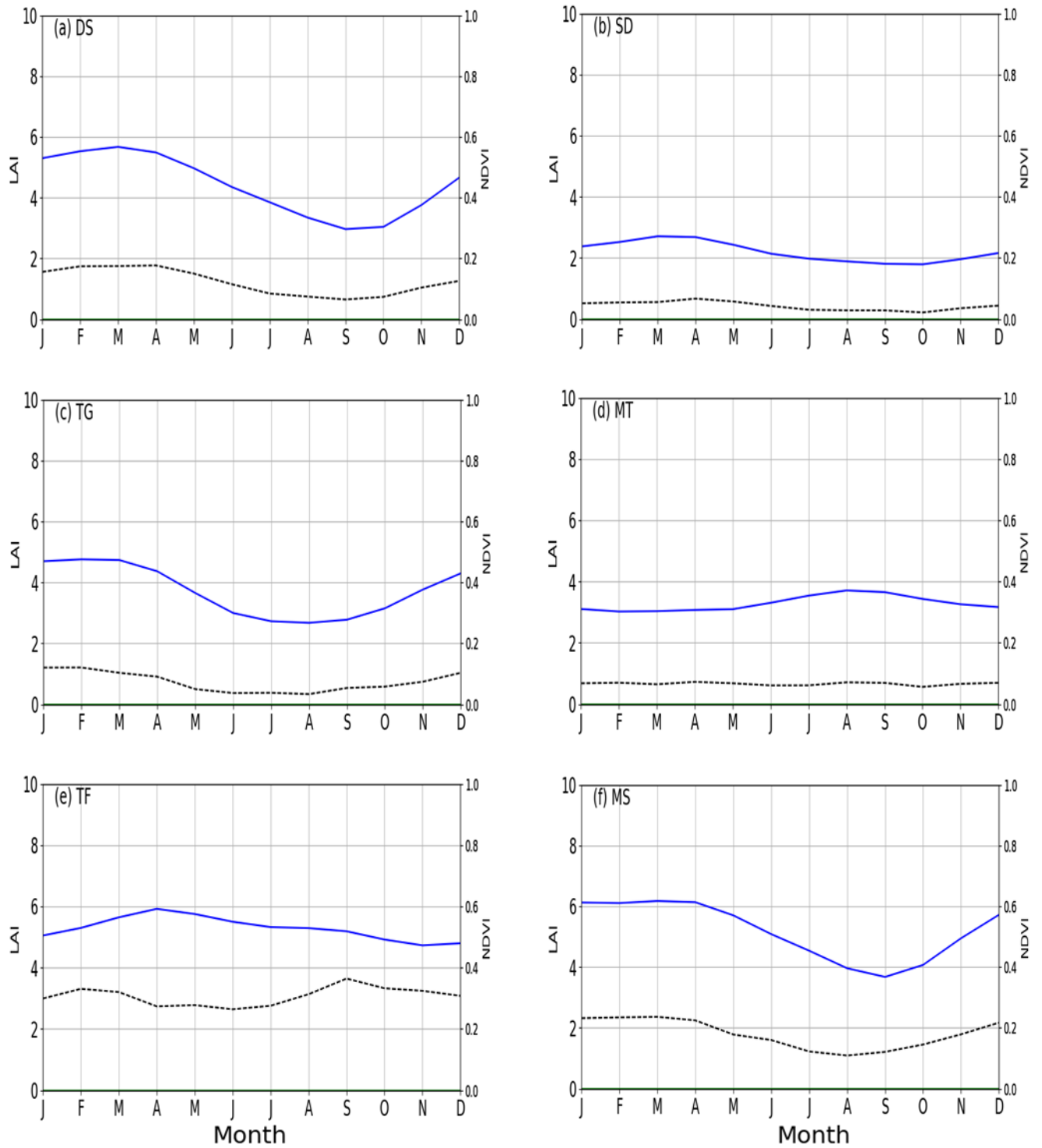
112 Figure S6. Spatial distribution of precipitation, mean temperature, maximum temperature and
 113 minimum temperature over southern Africa in CRU and CRUJRA; for the periods 1982 –
 114 2011.

115

116

117

118



119

120 Figure S7. Annual cycle of observed LAI and NDVI across six biomes over southern Africa
 121 for the period 1982 – 2011.

122

123